

Historic, Archive Document

Do not assume content reflects current scientific knowledge, policies, or practices.



GUNN'S GENUINE G O O D SEEDS

FOR BIGGER YIELDS

1919

ARISTOCRAT SUGAR CORN



This delicious Sweet Corn was first introduced a few years ago. It is a reliable extra early sort, which was for many years controlled by a prominent gardener who supplies truck to the aristocrats of Newport, R. I. It is an extra early variety, stalks grow from 4 to 6 feet high and ears are of large size. The grains are extremely sweet, and, being broad, allow of easy scoring with a knife preparatory to buttering when eating from the cob. Pkt., 10 cts.

CONTENTS OF 1919 CATALOG

Garden Seed.....	Pages 10 to 20
Flower Seed.....	Pages 21 to 23
Field Seed.....	Pages 1 to 9
Poultry Supplies.....	Pages 29 to 31
Insecticides, Sprayers.....	Pages 26 to 28
Tools and Implements.....	Page 32 and Inside Back Cover

GARDEN, FLOWER AND FIELD SEEDS
GUNN SEED CO.

Member American Seed Trade Association

127 SOUTH 10TH STREET

LINCOLN, NEBRASKA



Ed. S. Gunn

THE PRESENT HIGH PRICES OF FOOD AND FEEDSTUFFS

Will prevail for several years. That is what the best authorities say. We are now exporting every pound of Food and Feedstuffs that we can spare to the devastated countries "across the water."

Present high prices makes it necessary and very profitable for the "city fellow" to plan a bigger Backyard Garden and likewise for the Farmer to plant every available acre.

For the greatest production you must plant only good seeds—the kind we are offering herewith—good, pure seeds that will stand up under a germination test.

Seed is scarce and if you want good seed and want to be sure to get it we advise you to order NOW. DON'T DELAY.

Yours truly,
ED. S. GUNN.

Our Guarantee

We are very careful in the handling of all our seed. We guarantee that our seed has been carefully tested and that we do not send out any but what shows a good growth. When you receive our seeds test them any way you wish. If you are not satisfied, return them any time within two weeks and we guarantee to refund to you all the money you are out.

We do not guarantee the crop in any way, because we cannot plant your seed or control weather conditions. This guarantee means just what it says.

GUNN SEED CO. Ed. S. Gunn.

Our terms are cash; we pay postage or express charges on garden and flower seed when sold at catalog prices.

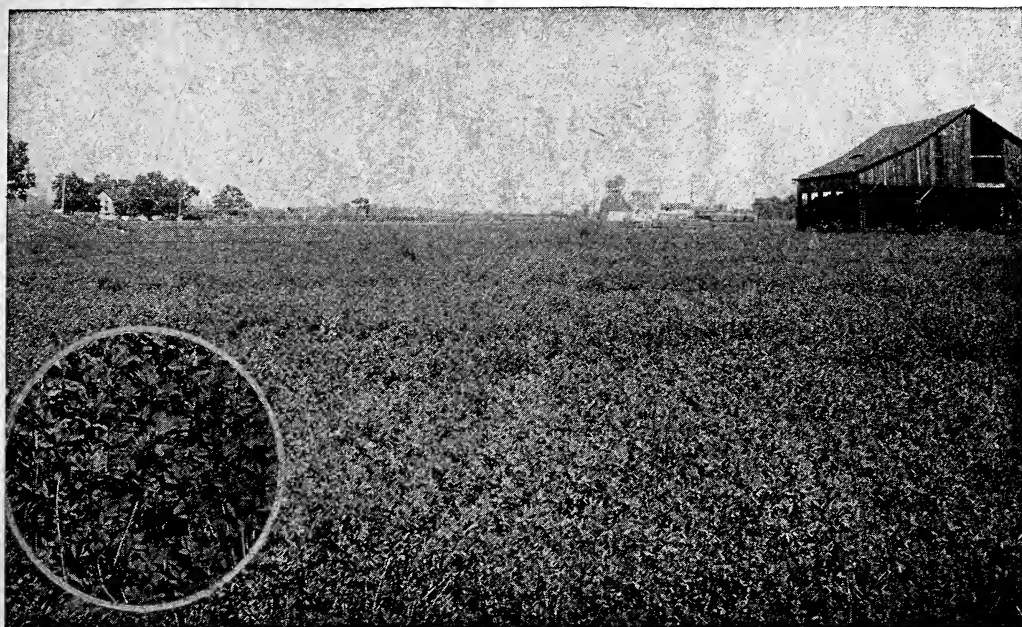
Prices on all grass and field seed and potatoes are subject to change. Colored price sheets gives latest prices. Give us a nice tryout this year.



Phil J. Eichenour



There is both pleasure and profit in the Backyard Garden



IT
GROWS

Nebraska Alfalfa Seed

PURE
99½%

"Nebraska is the real home of alfalfa." It has been growing in this state for about 50 years, having been first started in the southwest corner. Twenty years ago I sold the first seed planted in eastern Nebraska. At that time they said it would grow only in western Nebraska, but eastern Nebraska now has as many and as large fields as the western part. My twenty years of selling this seed gives me an exceptionally wide range of useful experience as the handling of this valuable hay crop. You get the benefit of this experience when you buy "**GUNN'S ALFALFA SEED.**" Our seed is taken from these old western alfalfa fields. In these old alfalfa fields the weak and non-hardy plants have long since been killed out, so that seed obtained now is only from plants capable of enduring the greatest extremes from very hot and dry to very cold and wet seasons. It is conceded by practically all the experiment stations that Nebraska seeds do as well and in most cases better than seed from other states

Gunn's Alfalfa Seed Grows

Our **Dry Land Nebraska Seed** tests 99½% pure and will grow as near 100% as it is possible to get seed to grow. It can safely be depended upon to make an ideal stand and produce an abundant crop of good, rich alfalfa when conditions are at all favorable. **Alfalfa seed will, without question, go higher as the season advances. Place your order now.** No seed can be imported and the demand is heavier this year than ever before. **Price, 30c lb.**

Ask for prices on larger lots.

Grimm's Alfalfa.—Grimm's is the hardiest strain of Alfalfa known in this country. It stools very heavily and the value of this characteristic can hardly be over-estimated as it not only does not winter kill, but the protected underground buds are less liable to injuries from over-pasturing. The spreading crown seems to be associated with a very much branched surface root system, in addition to the deep tap-root. This makes surface moisture easily available. Sow 10 lbs. per acre. **Per lb., 75c, postpaid. Not prepaid: 3 lbs. or over at 60c per lb. Prices subject to change.**

Ask for prices on large lots.



Alfalfa to make a permanent success must find in the soil a nitrogen-forming bacteria that will induce it to extract the nitrogen from the air and deposit it in the soil, thus making the soil richer all the time the alfalfa is growing. "**NITRAGIN**" is the pure culture of this bacteria. When used alfalfa will grow continuously and produce abundant crops. If used in soils already inoculated, the crop will be much heavier.

PRICES.

Nitragin ½ acre size 50c
1 acre size \$1.00.
2 acre size \$1.80.
5 acre size \$4.00.
10 acre size \$7.50.

By express, your expense.

BLACK DIAMOND DEHORNING PENCIL

Money refunded if it does not dehorn
any calf from 5 days to 6 months old.

One pencil dehorns 50 calves.

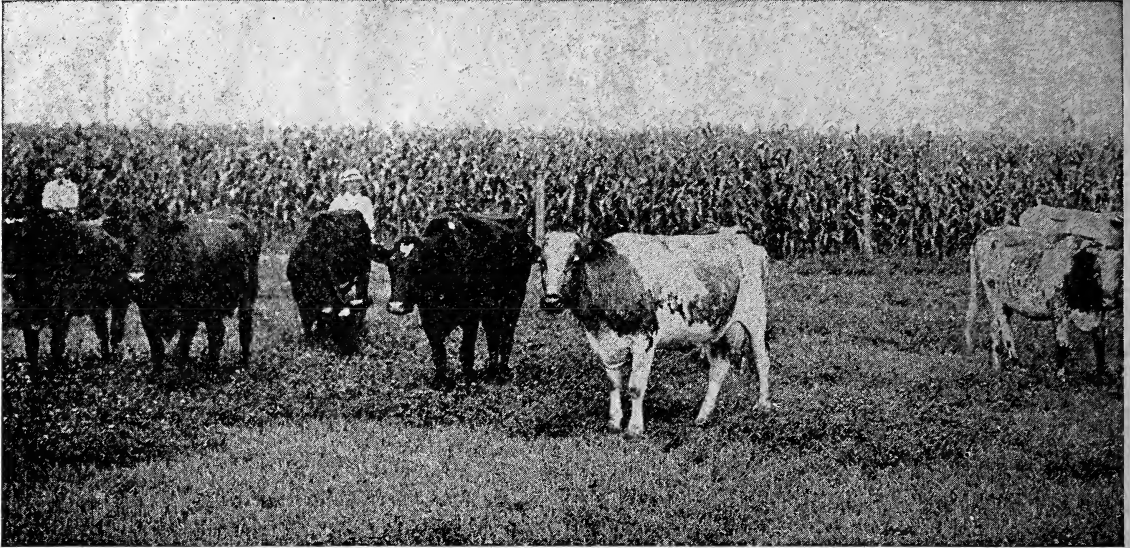
Price: \$1.00 postpaid

USE NITRAGIN

Also for

PEAS, BEANS, SWEET PEAS,
CLOVERS, SOY BEANS, ETC.

For Bigger Crops



Plant Our Grass Mixtures for big yields. Good Pastures are very important in these times of high prices of Livestock

Gunn's Grass Mixtures

Read this

We use only our best grades of seed in making our grass mixtures. The proportions are right, regardless of the value of the seed placed in the mixture. In other words—**WE TREAT YOU RIGHT!**

OUR GRASS MIXTURES ARE BETTER

BECAUSE we mix together grasses that grow under the same conditions but mature at different times. This gives a continuous pasture.

OUR GRASS MIXTURES ARE BETTER THAN ONE GRASS ALONE

1. **BECAUSE** each grass tries to outdo the others and thus grows larger, stronger and more vigorous.
2. **BECAUSE** all stock like the variety pasture.

UNIVERSITY GRASS MIXTURES

The Agronomy Department of the State University are now recommending their own combinations of grasses for use in each section of the state. They are designated by numbers from 1 to 19.

We can furnish any of these mixtures. Ask us for kind and price.

UPLAND MIXTURE

Good for all stock for pasture or hay. Brome Grass, Meadow Fescue, Orchard Grass, Timothy, Alfalfa and Red Clover mixed in proper proportions.

Use 20 lbs. per acre.

See sheet for price or ask.

PASTURE FOR HORSES

Can be sown on any kind of land, except low damp soil. Timothy, Brome Grass, Meadow Fescue, Alfalfa or Clover. Use 22 lbs. to acre.

Ask or see price sheet inclosed.

MIXTURE FOR HOG PASTURE

This will be considered very heavy seeding and expensive, but if you have a hog pasture for keeps, you cannot afford to skimp on seed or limit the varieties. Alfalfa, Mammoth, Clover, Red Clover, Alsike Clover, White Clover, Timothy, Blue Grass, Orchard Grass and Meadow Fescue. Use 20 lbs. per acre.

Ask for prices or see sheet inclosed.

MIXTURE FOR BOTTOM LANDS

Can be used even when the soil is very moist. Can be cut for hay, but better for pasture. Kentucky Blue Grass, Red Top, Meadow Fescue Alsike Clover, English Rye Grass and Timothy. We mix it in right proportions, which is very important. Use 20 lbs. per acre.

For price see sheet or ask.

TIMOTHY AND ALSIKE

This is a good mixture, when you get good stuff. We are particular on this and only sell good heavy seed. Don't buy the cheap screening sold as this mixture.

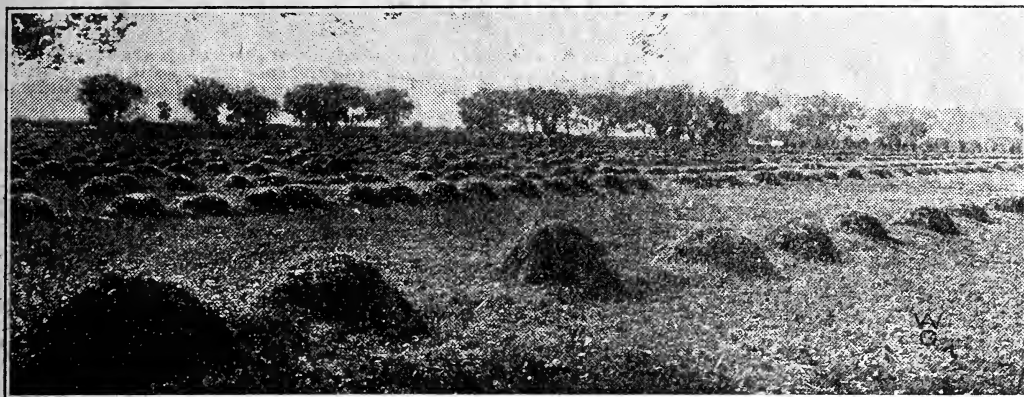
For price see sheet or ask.

GUNN'S "HEAVY TONNAGE" MIXTURE

15 Tons Green Feed to Acre. Good for Hogs, Cattle and Sheep, One Season Only.

Every year there are a lot of people, frequently renters, who do not have enough pasture or green feed for their stock. To supply this want we have devised our "Heavy Tonnage" Mixture. It is composed of a lot of fine, rapid growing, succulent forage and fodder crops that, when mixed together, make a heavy mass of rich green feed in July and August, when most needed. It is made to be pastured, but will make much more feed if cut. In this way it continues to grow up again from the roots and, if there is any left, it will make splendid good hay. Sow 40 to 50 pounds to the acre.

For prices see sheet enclosed or ask for prices.



Field of Sweet Clover—the poor land Alfalfa

Sweet Clover

**SOW SWEET CLOVER FOR PASTURE
ALFALFA FOR HAY**

Turns Sand into Loam

Fills the Soil with Nitrogen

Will Redeem Western Sandhills

Sweet clover shoulder high on the "hard" table land at the North Platte Substation, sweet clover taking hold voluntarily in the buffalo grass sod across the road from the Substation plats, sweet clover making a vigorous growth in a sandhills field so badly blown that it would not grow corn, sweet clover established on unbroken sand hills prairie sod, sweet clover growing in the Platte Valley on land so heavily impregnated with alkali that other crops would not thrive—all these things I saw on an automobile trip to North Platte the last week in June. And now I am more enthusiastic than ever about sweet clover.

I may be accused of dreaming, but I can't keep from calculating how much more grazing sweet clover would furnish on those upland pastures than the native grasses supply.

L. S. HERRON, Editor Nebraska Farmer.

Sweet Clover is practically as rich as alfalfa. It grows where alfalfa does not. It will not bloat any stock. It fills the soil with nitrogen. The roots decay every two years, filling the soil with humus. It grows on dry sandy soil. It grows on hard clay soils. Every piece of land that has been sown to Sweet Clover is made richer for it. It will not grow in cultivated land, nor will it become a nuisance. **Fine for honey.**

ABOUT SOWING.

Sow 15 to 20 pounds in fall or spring to the acre. It makes a large growth the first year. The second year it

blooms, makes seed and dies. When pastured, enough plants make seed to reseed the ground. To make hay cut when about two feet high.

Hulled white sweet clover, 60 lbs. to bu.

See price sheet or ask for price.

Clovers

MEDIUM RED CLOVER

Our Red Clover has a high test and is all Nebraska grown. It is as free from weeds as we can get it. Runs about 99 ½ per cent pure. Sow 10 to 15 pounds to the acre. 60 lbs. to bu.

MAMMOTH RED CLOVER

A Great Soil Builder.

It greatly resembles the Medium Red, but grows coarser and more vigorous. Sow 10 to 15 pounds to acre. 60 lbs. to bu.

ALSIKE OR SWEDISH CLOVER

This is one of the hardest varieties known. It is perennial and does not winter-kill. It will do better on moist land than any other variety of clover, and is suitable for either hay or pasture. Sow 7 to 8 pounds to acre. 60 lbs. to bu.

WHITE DUTCH CLOVER

Best adapted to moist soils, but does well on any land. Sow 8 pounds to acre. 60 lbs. to bu.

For prices see sheet inclosed or ask stating amount you can use.



Field of White Dutch Clover

Grasses

There is a lot of difference in the quality of Grass Seed. We furnish only the high grade, high germinating, free-from-weeds quality. It does not pay you to spend your money for cheap seed of any kind. Your time is worth too much to take the risk. Just leave it to us, and we will furnish you good suitable seed, and we will tell you the truth.

BROME GRASS

It starts very early in the spring, and continues growth until late in the fall. Brome Grass spreads by means of underground rootstalks. As a hay crop, the grass usually furnishes good cuttings for two or three years, sometimes cutting three tons of cured hay per acre, after which the sod becomes so root-bound that the grass does not grow tall enough for hay (this can be overcome by disking) but will furnish the best pasture for several years. Sow 1 1/2 bushels to acre. 14 lbs. to bu.

See price sheet inclosed or ask.

KENTUCKY BLUE GRASS

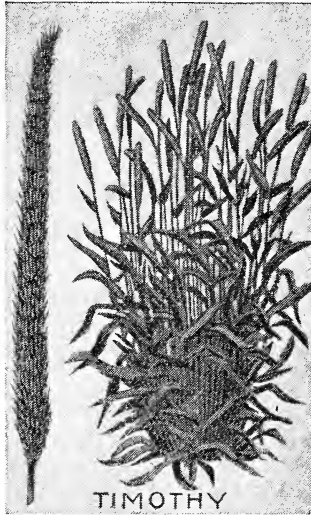
Nebraska's Pure Seed Law only requires a germination test of 40 per cent for this seed. All last season our best grade tested 95 per cent. We sell only the high quality, heavy testing grades. 14 lbs. to bu.

See price sheet inclosed or ask.

CANADA BLUE GRASS

This is the Blue Grass of Canada, New York and the New England states. It does better on poor, clayey, thin soils than on rich land. It is smaller, grows closer to the ground and stands cold and drouth better than Kentucky Blue Grass. Has a very blue color and flattish stems. Very nutritive, and really a valuable grass. 14 lbs. to bu.

See price sheet inclosed or ask.



TIMOTHY

TIMOTHY

Practically all the Timothy that we sell is grown right in this section. We put it through our powerful cleaner, which takes out not only all four weeds, but the light immature seeds as well. Don't plant timothy unless it has been thoroughly recleaned. Sow 1/2 bushel to acre, if alone. 45 lbs. to bu.

See price sheet inclosed or ask.

ORCHARD GRASS—Sure Crop

This is a very early grass and is particularly adapted to shady places. It is a valuable grass for both pasture and hay land, because of its most favorable growing qualities. Generally more than one crop can be obtained for hay purposes in a single season, after which there is a heavy growth of aftermath which gives an abundance of rich pasture until late in the fall. It grows in tufts—this is overcome when sown with other grasses. It stands drouth well and is very hardy. Sow 1 1/2 to 2 bushels to acre. 14 lbs. to bu.

See price sheet inclosed or ask.

RED TOP GRASS

Fancy Recleaned Solid Seed (14 lbs. to bu.)

We do not stock the unhulled or chaff grade, which is always so unsatisfactory. Our high grade seed will produce a dense growth of velvety turf. Very valuable as a permanent pasture grass. It withstands the cold of the northern states, and can be depended upon to flourish almost anywhere. Specially suitable for growing on damp lands. Only 10 pounds needed to sow an acre. 14 lbs. to bu.

See price sheet inclosed or ask.



KENTUCKY BLUE GRASS

RYE GRASS

English or Perennial Rye Grass.

This is a regular perennial variety which is so valuable as a pasture grass, producing, as it does, an abundance of foliage which will remain bright and green throughout the season. The hay is much relished by all kinds of stock, especially when grown on moist soil. This is the real Perennial Rye Grass, which is such a favorite (when the right one is secured) for lawn purposes, furnishing a green lawn which continues to come on until finally the blue grass takes possession. Sow 2 bushels to acre. 22 lbs. to bu.

See price sheet inclosed or ask.

MEADOW FESCUE OR ENGLISH BLUE GRASS

Especially suited for permanent pasture and is also fine for hay. Grows 2 to 3 feet high. The hay is very nutritious and cattle thrive on it, whether dry or green. Succeeds even in poor soil, and as the roots penetrate deep, from 12 to 15 inches, it takes extremely dry weather to affect it. About 21 pounds of seed are sown to the acre. 22 lbs. to bu.

See price sheet inclosed or ask.

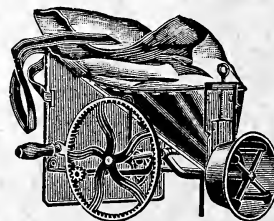
CAHOON SEEDER

The best machine of the kind in the market. The grain is held in a tight sheet iron hopper, surrounded by a bag which will hold a bushel of seed.

Price, \$5.00.

CLYCLONE CRANK SEEDER

Price.....\$2.00

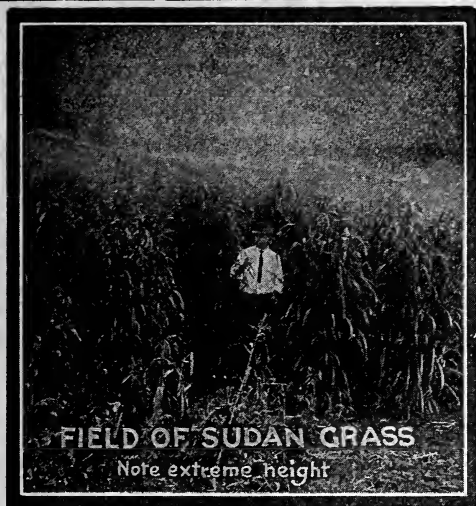


"Cahoon"

For Prices see sheet inclosed or ask, stating amount you wish. All Prices on this page subject to Change.

REMEMBER!

Every lot of seed we ship is guaranteed to give satisfaction upon arrival; if it does not, send it back and we shall cheerfully refund your money.



Sudan Grass

Look at the picture! That Sudan Grass was grown right near Lincoln last year. It is almost 9 feet tall and none of the stems are larger than a lead pencil. This makes an ideal crop when one is short of hay and for green feed. Well you will get tired cutting, for it keeps coming right along, no matter how many times it is cut. It yields as high as 8 tons of hay per acre.

SUDAN GRASS YIELDS

Sudan Grass in Wisconsin has made an average yield of 3.5 tons of hay per acre, and a yield of 12.8 tons per acre of forage was obtained when sown in cultivated rows. It is recommended that seedings from 20 to 25 pounds per acre should be used and time of seeding from June 1 to the 10th.

Sudan Grass, when planted in rows and given continuous cultivation, will withstand considerable drought.

CUT IT TWICE.

I have tried different kinds of grasses, but I think that Sudan Grass has all of them beaten for hay. This year my first cutting was seven feet tall when mowed and was in full bloom. The second cutting was five feet high when cut.

Jefferson County.

MARTIN BUCHLI.

HAS COME TO STAY.

It is a wonderful crop to stool, and I consider it as productive as cane. Since the stalks are not so coarse as cane they are eaten with less waste. A neighbor planted his Sudan Grass seed earlier and cut the first crop much earlier. His second crop was shoulder high and well headed. I think Sudan Grass has come to stay, and that soon it will be raised by most farmers.

Lancaster County.

A. M. GUTHRIE.

BEST HAY.

As soon as the grass was cured, I began feeding it to my teams and dairy cows. They eat it well. Stock eat it at the first feeding, which cannot be said of all feeds.

I am highly pleased with the Sudan Grass. I shall plant a great deal of it another year.

Sudan Grass will surely be grown by every farmer as soon as it is known.

Logan County, Colo.

J. T. CHAPMAN.

JUST GOT TO EAT IT.

One farmer had a small patch alongside a field of alfalfa. It was growing fairly well when one day the hogs and calves got through the fence and had a taste of it. After that, whenever they broke through the fence, they did not stop on the alfalfa, but made for the Sudan Grass to get a square meal.

Fall River Co., So. Dak.

F. E. PIERCE.

SUDAN GRASS CAN'T FAIL

Exhaustive trials have proved that Sudan Grass can be grown almost anywhere. It seems to be unaffected by temperature and grows as well in a cool climate as a hot one. It requires no special quantity of soil; black loam, clay and sandy loams have all produced uniformly successful crops. Its most valuable quality is its resistance to drought. In dry or semi-arid sections it thrives to perfection and yet excessive moisture does not stop its heavy yield. Sow 3 to 5 pounds in rows 30 to 40 inches apart or 20 to 25 lbs broadcast. Cut and feed green or cut for hay as soon as fully headed.

See Colored Sheet for Price.

Feterita

(New Dry Land Forage Crop)

Points in favor of Feterita: No. 1—Drouth resisting. No. 2—Branches from the root. No. 3—25 to 35 days earlier than Kaffir. No. 4—Yields from 60 to 100 bushels to acre.

It produces a stalk of medium height and size, bearing 10 to 12 leaves of medium size and a large head, well filled with pure white or bluish-white seeds. The grain is larger than Milo, is fully as soft and much whiter than Kaffir. Its feeding value is equal to either Kaffir or Milo and does not contain the dust that accompanies either.

Feterita is an excellent drouth resister. It stands erect, branches out from the root and matures 25 to 35 days earlier than Kaffir, which it resembles very much. Yields of from 60 to 100 bushels per acre were reported last season.

Owing to the extraordinary short time it takes Feterita to mature it is an exceptionally valuable crop for the middle west and northwestern states. It can be sown after early potatoes or oats have been harvested and be depended upon to produce a good yield of both fodder and grain long before frost sets in. Better than Kaffir for chickens and pigeons. Plant 4 to 6 pounds to acre if in rows to cultivate. 50 to 100 lbs. broadcast.

See Colored Sheet for Price.

KAFFIR CORN.

The old standby; used for feeding all kinds of stock and poultry. Sow 2 bushels to acre broadcast for hay.

See Colored Sheet for Price.

MILO MAIZE.

An excellent grain for dry localities; grain good food for chickens and all kinds of stock well any place. Sow 5 or 6 pounds to acre; 2 bushels to acre for hay.

See Colored Sheet for Price.

CANE OR SORGHUM.

On account of the sugar contained in the stalks, cane is used a great deal for hay; can be fed to all kinds of stock Sow 2 bushels to acre broadcast for hay.

See Colored Sheet for Price.

Schrock Kaffir-Sorghum

In Schrock Kaffir-Sorghum we have a variety that has made heavy yields of grain year after year when other Kaffirs and other Sorghums were ruined by dry weather.

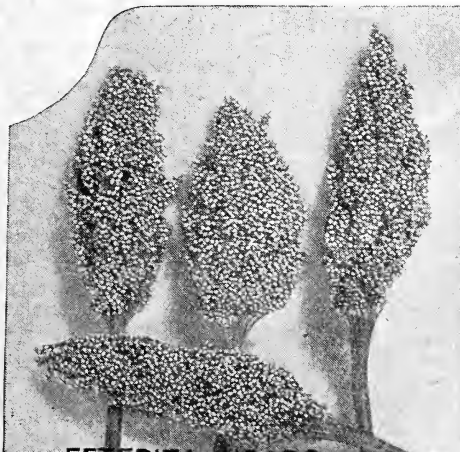
Schrock Kaffir-Sorghum grows very uniformly to a height of from 3 1/2 to 6 feet, and as you will note from the picture, stools and branches out abundantly, and each stalk bears a head of seed. As many as ten heads of grain on a stalk is no exception.

The stalks are slender and very sweet. Cattle and horses will eat it down to the roots, and some growers report that stock prefer it to the sweetest hay and will even leave alfalfa for it.

It makes excellent ensilage and when sown broadcast at the rate of about 50 pounds to the acre it makes fine leafy hay which can be handled with a wheat binder or cut with a mower.

See Colored Sheet for Price.

All prices on this page subject to change.



Heads of Feterita.

SOY BEANS

These are really peas and make a mighty good feed green, or good hay when dry.
See Colored Sheet for Price.

FIELD PEAS

Canada Field.—This is the best kind to sow with oats, using 1 1/4 bushels of peas to 1 bushel oats; or, alone, using 2 bushels per acre. A frost or two will not hurt it. Fine to turn under green.

COW PEAS

These are the kind you plant after it gets good and warm. Make very rich feed; also good to turn under for green manure. Fine sown with kaffir. 1 bushel each to acre, 2 bushels if alone.

Whippoorwill—The old standby. See Colored Sheet for Prices.

New Era.—This is the extra early variety; matures seed in 80 to 100 days. See Colored Sheet for Price.

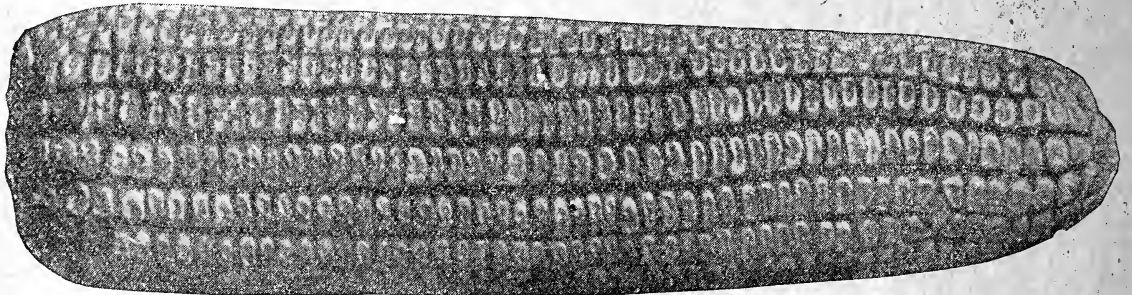
SUNFLOWER

Mammoth Russian.—Price—1 lb., 15c.

DWARF ESSEX RAPE

Produces feed in from 6 to 10 weeks from sowing. Grows 2 to 4 feet high. Produces from 25 to 30 tons of green fodder to the acre. Sow 5 to 6 pounds to acre. Good for chickens, calves, cattle, hogs, sheep. Makes milk "taste." Sow with oats. Sow with corn or alone at any time from March to July.

Genuine Imported Dwarf Essex Rape.



Improved Reid's Yellow Dent Seed Corn

Pure Bred Seed Corn**NOTE THIS**

Any seed corn we may furnish you will be the "real stuff." We do not believe in running a crib of corn through the sheller and calling it "seed corn." Neither do we believe in taking ten varieties out of the same bag. No sir, every bit of corn we sell is furnished us by real seed corn growers. We will not knowingly sell you anything that is not true to name. Every bit of it is tested and will grow under favorable conditions. All Nebraska grown.

Prices on All Seed Corn—Shelled, Peck, \$1.75; 1/4 bu., \$3.25; 1 bu., \$6.25; 10 bu., (per bu.), \$3.00.

Improved Reid's Yellow Dent.—This is one of the very best yellow varieties known in the Corn Belt. The last few years it has won more grand championship prizes than possibly all the other varieties put together. It is not adapted to the extreme northern portion of the Corn Belt, but is particularly adapted to the central portion of the Corn Belt and farther south.

Pride of the North.—The best extra early yellow corn; ripens in 85 to 90 days; yields 40 to 75 bushels per acre.

Silver Mine.—Probably the very best white corn; ripens in about 100 days; yields up to 100 bushels per acre. See Price Sheet Inclosed or Write for Prices.

FOR EARLY HOG FEED

Use White or Yellow Flint; yields well and ripens in about 75 to 80 days.

POP CORN

Monarch White Rice.—Best known white pop corn Per lb., 25c.

Queen's Golden.—A splendid yellow pop corn. Per lb., 25c.

Baby Golden.—This is the nice, small kernalled, sma eared corn just "melts" in your mouth. Per lb., 35c.

Spring Wheat**MARQUIS SPRING WHEAT.**

(See photo on next page)

It is absolutely the earliest and hardiest wheat grown, It grades No. 1 hard for milling purposes and considerably outyields other spring varieties. The heads are heavier and the stalks are short, making it less liable to lodge. The grain is plump and fleshy and has a deep red color.

As every farmer knows, the Canadians are cranks on wheat, and when we say that they swear by the Marquis as the best ever, it should be a sufficient recommendation to America wheat growers to induce them to try a few acres at least.

Don't delay your order too long, as our stock is limited, and we shall only be able to fill orders so long as our present stock lasts. Grown in the north.

See Colored Sheet for Price.

MACARONI SPRING WHEAT

This wheat is tall, with broad, smooth leaves. The heads are large, heavily bearded, and have much the ap-

pearance of barley. The kernels are large, very hard, having less starch than common wheat. Largely used in the manufacture of macaroni, and makes excellent flour. The habit of growth adapts Macaroni Wheat to regions of light rainfall, having great ability to withstand drouth and heat. See Colored Sheet for Price.

Winter Wheat**NEW MARVELOUS.**

This new wheat is taking the country by storm. It has exceptionally uniform, hard and plump grains. Outyields Turkey Red and other wheat from 10 to 20 bushels per acre. In sowing you save a lot of money, because you never use over 1/2 bushel seed per acre. In fact, the largest yields have been made on 20 pounds of seed per acre. The reason this can be done is because of its stooling habit. One seed will frequently make as many as 80 stalks. This makes it almost immune to the effect of Hessian flies, because they lay their eggs before it begins to stool, and only one stalk out of the 50 to 80 would be affected. It makes just as good milling wheat as Turkey Red. Ask us for description and price in July.

See New Wheat on Next page.

Kanred Wheat

WINTER WHEAT

Yields from 4 1/2 to 31 bushels per acre more than Turkey Red under same conditions.

This is the Kansas Agricultural College wheat that has been making such wonderful yields all over Kansas and southern Nebraska. The Kansas Agricultural College are continually endeavoring to produce new varieties of wheat. They find that by crossing two varieties they can combine in one the good qualities of both. Their Bulletin says:

"As a result of work of this kind, a new variety of hard winter wheat has recently been secured which in all respects appears to be superior to any heretofore grown. This variety has been named Kanred from Kan(sas)-red.

"This variety has given an average yield of 4.5 acre more than Turkey and 4.7 bushels per acre more

than 'Kharkof, the two varieties most generally grown in the state. It has also proved decidedly better than Turkey or Kharkof at the branch experiment stations and in co-operative tests with farmers."

"**Cold Resistance of Kanred.**—In a considerable number of tests, it has been observed that Kanred was markedly resistant to winter killing as compared with other hard wheats. In tests conducted on the farm of Mr. Frank Carlson, in Cloud County, in 1915-16, Kanred survived almost perfectly, while at least 50 per cent of Turkey and Kharkof on adjoining plots was killed. The yields in that season were 27 bushels for Kanred, 17.2 bushels for Turkey, and 16 bushels for Kharkof."

See Colored Sheet for Prices.

Kherson Oats

UNIVERSITY OATS NO. 1.

Hardy and good yielder. Largest yield in Nebraska, 112 bushels to acre. Frequently yields 80 bushels per acre. 2 to 3 weeks earlier than common oats.

Kherson Oats were introduced by the University of Nebraska in 1900. During the past fifteen years they have proven themselves to be the very best extra early oat.

They have fine large heads and extra stiff straw, which does not rust or lodge. The straw makes most excellent hay, as the broad leaves do not come off even in threshing.

Yield.—Under favorable conditions Kherson Oats have yielded as high as 112 bushels to the acre in Nebraska. At the Experiment Station at North Platte the yield averages about 50 bushels to the acre.

In a good favorable year Kherson Oats are three weeks earlier than common oats, thus losing by two weeks the risk of hail and two weeks better chance for a crop.

Buy direct from us and you get the pure seed—no substituting.

Sow on rich soil. Reports show that they do not lodge even on bottom land. They will not give satisfaction on poor soil. Sow 2 1/2 bushels per acre.

If you order only oats, remember the freight will be no more for three bushels than one bushel.

For prices see sheet inclosed, or ask for prices.

White Kherson Oats.—When ripe, are a beautiful white in color. They have fine, large sprangled or full heads, which frequently contain more than 100 seeds.

SPELTZ OR EMMER

This grain resembles barley, except that it has two berries in each hull. Sow it in place of oats. Grain is just as good for stock. Better than barley for hogs. It is liked by horses, sheep and cattle. Its straw makes feed equal to prairie hay. It can be used for pasturage and hay after the manner of rye, and if sown with field peas the hay will be strictly first quality. (48 lbs. to bu.)

See Colored Sheet for Price.

BARLEY

(48 lbs. to bushel)

White Hulless.—See Colored Sheet for Price.

Mandscheuri.—See Colored Sheet for Price.

Beardless.—See Colored Sheet for Price.

BUCKWHEAT

(50 lbs. to bushel)

Japanese.—Price, per lb., 10c.

Silver Hull.—Price, per lb., 10c.

BROOM CORN

(50 lbs. to bushel)

Oklahoma Dwarf.—Price, per lb., 15c.

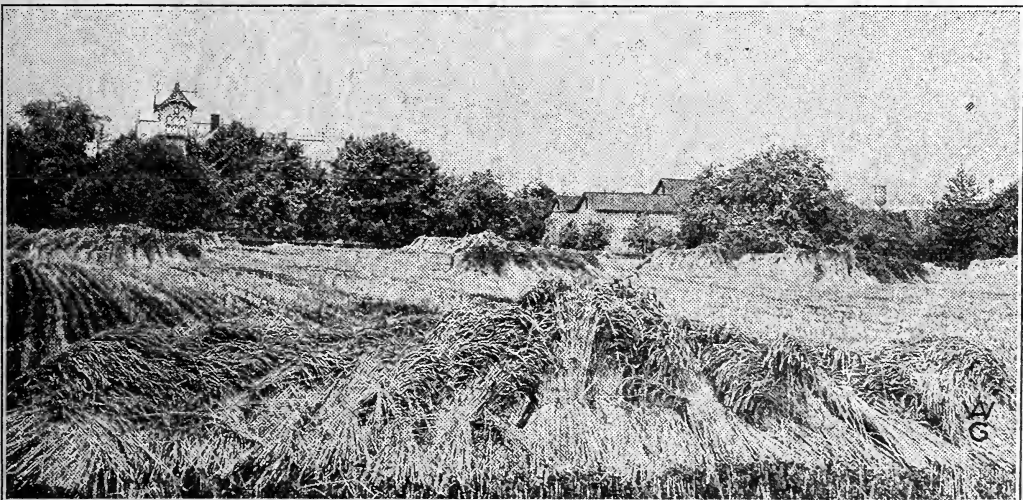
Improved Evergreen.—Price, per lb., 15c.

Dwarf.—Price, per lb., 15c.

SEED FLAX

Price—Postpaid per lb., 15c.

See Price Sheet or Ask for Price.



Field of Kherson Oats



Field of Rosen Rye

Rye

ROSEN RYE

This is a new Rye developed by the Michigan Agricultural College. The berry is almost twice as large as the common rye and will usually yield twice as much to the acre. The yields in Michigan runs from 35 to 45 bu. per acre.

Michigan farmers will not plant the common rye at all if they can get the Rosen.

Better try out 5 or 10 bu.

Sown by many in the spring for quick pasture.
See Colored Sheet for Price.

Millet

GOLDEN MILLET

This grows very rank and is one of the best varieties for hay on account of being so sweet, palatable and milk producing. On good, rich soil it will make a growth of 4 to 5 feet. A yield of five tons of hay per acre is nothing unusual. Sow 3 pecks per acre.

Price—Per lb., 10c.

For Prices see sheet inclosed or ask for price.

SIBERIAN MILLET

Also Called Red German, Dakota and Early Russian Millet.

It is from 2 to 4 weeks earlier than German Millet, and can be cut for hay in 60 days from planting. The blades are wide, the straw fine and soft. Sow $\frac{3}{4}$ bushel broadcast or $\frac{1}{2}$ bushel in drill to the acre for hay on rich land.

Price—Per lb., 10c.

JAPANESE BARNYARD MILLET

Called "Billion Dollar Grass" Owing to Its High Value.

Its greatest value is for green fodder, of which it yields 3 to 5 tons per acre. It is excellent for cows, pro-

ducing more milk than corn fodder. It grows 6 to 8 feet high and produces 50 to 90 bushels of seed per acre. It should be sown to give best results the latter half of May at the rate of 10 pounds per acre.

Price—Per lb., 10c.

HOG OR BROOM CORN MILLET

Yields enormously in seed, frequently 60 to 70 bushels to the acre, and this seed is used for fattening hogs and other stock. Also fine feed for all poultry, and especially young chicks. It will mature in about two months from sowing the seed.

Price—Fancy Recleaned Hog or Broom Corn Millet, per lb., 10c.

Stock Beets

IMPROVED BEET ROOT

There are a lot of cheap beet seeds on the market. You must not buy that kind. Ours are grown by a most careful grower. When selecting roots for seed, they take only such as are perfect, large sized, true to type and free from disease. You can see this costs much more than if they would take any and all that grow.

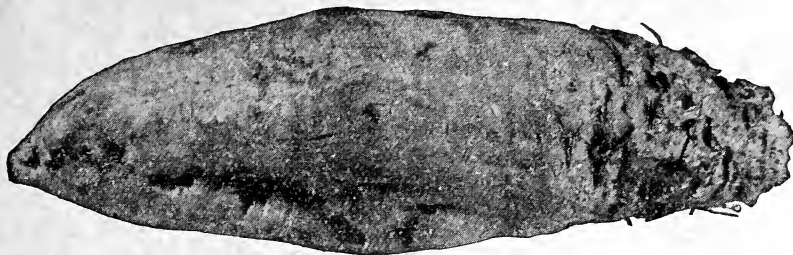
DAIRYMEN READ THIS

The farmers of the U. S. who do not grow Mangel Wurzels and Sugar Beets are losing lots of money. Just stop and think! From an expense of \$7.50 for seed, you can secure from 40 to 80 tons of valuable feed to the acre.

If you are a dairyman, you should not miss this opportunity of saving money. A ration or two a day will add richness to the odor of your cream and keep your cows in prime condition, and in addition will cut down your feed bill one-half. Give your stock one-half dry feed, one-half mangels, and just note how they will thrive; it will astound you. Any good corn land will produce beets. 1 bushel corn and 2 bushels mangels are equal to 3 bushels corn. It costs about 5c per bushel to produce mangels. Can you beat it?

(Continued on next page.)

While the war is over so far as actual fighting is concerned, the war conditions, so far as food supply remain, and no farmer or gardener can afford to let up on growing food and grain sufficient for home needs. Food is high and is going to stay high for some time to come. You can't afford to not produce food, and if you plant our seeds the food will be produced.



Corn Saver Beet

For prices see sheet enclosed or ask for prices.

STOCK BEETS—Continued

CORN SAVER BEETS

This beet is well known over most of the U. S. It takes its name from the fact that when properly fed, it will actually save corn, probably more than half, and yet produce pork at a large saving.

A HOG FEED.

By feeding beets exclusively one man made his hogs gain fifty pounds each in one month. He fed 900 pounds of beets per head. Even at a low price for hogs, \$7.00 per 100 pounds, beets fed to hogs would be worth \$7.80 per ton. Another party bought three tons of sugar beets for \$12.45; he fattened eight hogs, which, for a little over two months' feeding gave him a profit of \$43.00. In this instance the beets were cooked before being fed to the hogs. In both of these cases beets only were used, while by adding a small amount of grain, these profits may still be increased.

It is different from the regular Mangel Wurzel in that it is a cross between a Long Red Mangel and a Sugar Beet. It is easy to dig, as only about half of it grows in the soil.

These beets will frequently grow to weigh 28 pounds and yield as much as 80 tons (160,000 pounds) to the acre. They contain a large amount of sugar and are good for all kinds of stock—especially cows, hogs, sheep and chickens.

Price—Genuine Corn Saver, ½ lb., 30c; 1 lb., \$1.00; 5 lbs., \$4.75; 10 lbs. (for 1 acre) \$9.00.

Mammoth Long Red Improved.—This is the heaviest yielding of all the Mangel Wurzels, a thousand bushels to the acre being quite a common yield; single roots sometimes weigh as high as 40 pounds each. Our stock is absolutely distinct from the old red type, which was an ugly uneven root. Our Improved Mammoth Long Red produces large uniformly straight, well formed roots and can always be relied upon to produce a bumper crop of clean, sweet, crisp roots; just the kind of feed that cattle delight in. There certainly is a whole lot of good money in Mangels and we want you to get some of it. Try 5 or 10 acres.

Price—½ lb., 60c; 1 lb., \$1.00; 5 lbs., \$4.75; 10 lbs., \$8.50.

Golden Tankard—A superior strain of golden-fleshed Mangel; roots half long and very large. It is particularly rich in milk producing qualities. It is very easily polled; exceedingly hardy.

Price—½ lb., 60c; 1 lb., \$1.10; 5 lbs., \$4.75.

Sugar Beet (Klein's Wanzelben)—This is considered the most desirable variety for sugar. It is also desirable for feeding to stock, and yields an immense crop on rich land.

Price—½ lb., 65c; 1 lb., \$1.25; 5 lbs. for \$6.00; 10 lbs., \$11.00.

Giant Half Sugar Mangel.—Introducing this beet to our customers, we believe that the grower has established a strain of beets, which while giving nearly as large a yield of easily grown and harvested roots as a crop of mangels, supplies a food of very much higher nutritive value. The roots are red skinned, grow half out of the ground.

Price—½ lb., 60c; 1 lb., \$1.10; 5 lbs., \$4.75; 10 lbs., \$8.50.

Culture—Sow as soon as the soil is warm, in rows 2 to 3 feet apart; cover about one inch. Thin the plants to about 10 to 12 inches apart in the rows. Sow 10 pounds of seed to an acre. If very dry, soak the seed 24 hours in lukewarm water. Harvest just before frost. Cut off the tops and store roots in cool cave or cellar. Cut up and feed 10 to 20 pounds per day. Mangels do not taint the milk.

Our Guarantee

We are very careful in the handling of all our seed. We guarantee that our seed has been carefully tested and that we do not send out any but what shows a good growth. When you receive our seeds test them any way you wish. If you are not satisfied, return them any time within two weeks and we guarantee to refund to you all the money you are out.

We do not guarantee the crop in any way, because we cannot plant the seed or control weather conditions. This guarantee means just what it says.

GUNN SEED CO.
Ed. S. Gunn.

INSTRUCTIONS

OUR TERMS ARE CASH WITH ORDER.

One Grade Only.—We quote only on the best and highest grade. We do not believe in low grades. Better buy the best and sow less.

Safe Arrival Guaranteed.—We guarantee all goods to reach you safely. For any loss have agent make notation on expense bill and send it to us.

Subject to Inspection.—Any seeds purchased from us may be submitted to any experiment station for test. If not satisfactory return to us and your money will be refunded in full.

Order Early.—Everything is going up. For this reason we reserve the right to cancel prices when stock on hand is sold.

Errors.—Keep a copy of your order. We might make a mistake, but if we do just write us and we will make it right.

We ship Incubators and Brooders prepaid to any place in the United States.

ABOUT BAGS

Heavy 2 ½-bushel grain bags are costing us 69 cents each. We use these on Corn, Alfalfa, Clovers, Timothy, Red Top, Grains, Millets, Kaffir Corn, Milo, and other Sorghums. They weigh 1 pound each and we do not weigh them in. These cost you 65 cents each. We refund full price if you return them.

Grasses are shipped in gunny bags which are weighed in.

STANDARD SEED TESTER

Many seed houses are willing to "take a chance" on their seed because "it looks like it would grow." We do not do that. We must know that it grows. We use the Standard Tester; it is like the one used by our own Nebraska Pure Seed Commission and by many of the State Experiment Stations. It tests all kinds of seed, from the smallest (like cabbage), to the largest (like lima beans). Come in and see it work.


GROW YOUR SUGAR YOURSELF.

Yes, you can grow Sugar beets on a city lot and produce your own sugar. This is the way to do it:

Sow 2 pounds of our Genuine Sugar Beets Seed on a city lot, when matured, slice thin soak 60 minutes in hot water to extract the sugar and boil down to thick syrup. That's all there is to it. You will have a syrup that is pleasant to taste and may be used for sweetening instead of sugar. Try it this season. Sugar beet Seed 90c lb.

GUNN SEED CO.

GARDEN SEEDS



NOTICE AND WARNING

All prices subject to change.

Never before has the seedman, who values his good name and reputation, faced greater handicaps and obstacles in securing first-class seeds, but we are able to assure you that our stocks this season are of as good seeds as ever before altho the supply is not as large, and therefore we warn you not to delay ordering your seed, but order now while our stock are complete and be sure of getting your supply of Gunn's Selected Seeds.

Prepaid Prices on Garden Seed



Barr's Mammoth Asparagus

Asparagus

One ounce will produce about 200 plants, 4 to 5 pounds to the acre.

Culture.—Soak the seed in tepid water 24 hours before sowing. Sow the seeds thinly in rows 1 foot apart in March, April or May (4 to 5 lbs. to the acre) and keep down all weeds.

Barr's Mammoth.—This is a superior variety, the largest and best asparagus grown. The delicacy of its color distinguishes it from other green varieties. **Pkt., 5c; oz., 10c; ¼ lb., 30c; lb., 95c.**

Columbian Mammoth White.—White shoots which stay white. **Pkt., 5c; oz., 10c; ¼ lb., 30c; lb., 95c.**

Conover's Colossal.—A standard sort, green in color. **Pkt., 5c; oz., 10c; ¼ lb., 30c; lb., 95c.**

Palmetto.—Earlier than Conover's. Of Southern origin, but suitable for the North also; large, productive. **Pkt., 5c; oz., 10c; ¼ lb., 30c; lb., 95c.**

Asparagus roots, see page 15.

Beets

One ounce sows 100 feet, 5 pounds one acre.
Soak seed 24 hours for quick growth.

Our Beet seed will give the very best results.

Dewing's Early Red Turnip.—Flesh and skin very dark blood red; good for early or winter use. **Oz., 15c; ¼ lb., 55c; lb., \$1.60.**

Detroit Dark Red Turnip.—Small tops, smooth skin and flesh dark red, crisp, tender and sweet. **Oz., 15c; ¼ lb., 50c; lb., \$1.85.**

Crimson Globe.—Very early; deep crimson throughout, tender, sweet and good keeper. **Oz., 15c; ¼ lb., 55c; lb., \$1.60.**

Improved Early Eclipse.—A fine round beet, of first quality, very early, with blood red roots. **Oz., 15c; ¼ lb., 55c; lb., \$1.60.**

Best Early Blood Turnip.—Dark red and of fine flavor, good keeper. **Oz., 15c; ¼ lb., 55c; lb., \$1.60.**

Improved Crosby's Egyptian.—Skin and flesh very dark red, roots smooth, round, extra early, fine quality. **Oz., 15c; ¼ lb., 50c; lb., \$1.85.**

Edmund's Blood Turnip.—A strain of great regularity in shape; deep blood skin and very dark flesh of best quality; splendid keeper. **Oz., 15c; ¼ lb., 55c; lb., \$1.60.**

Half Long Blood.—Fine Dark strain; distinct variety, smooth and handsome; good for winter. **Oz., 15c; ¼ lb., 55c; lb., \$1.60.**

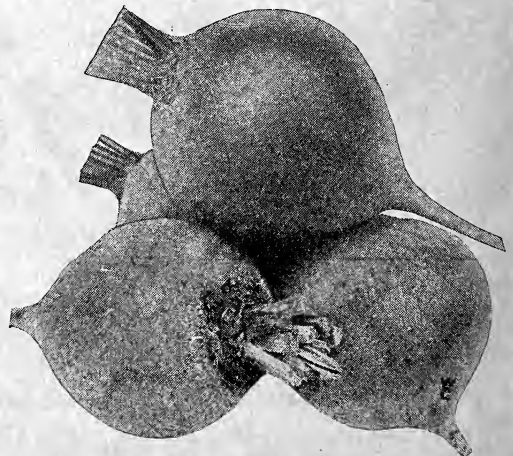
Long Smooth Blood.—A good late variety; dark red tender and sweet. **Oz., 15c; ¼ lb., 55c; lb., \$1.60.**

Swiss Chard.—Cultivated for its leaves which are used for greens. **Oz., 15c; ¼ lb., 60c; lb., \$2.00.**

Double size packets, 8c, 2 for 15c; 4 for 25c.

MANGEL AND SUGAR BEETS (See pages 8 & 9).

At Above Prices We Pay Postage or Express.



Detroit Dark Red Beets

Beans

One pint to 40 feet. Sow every two weeks.

Grown by one of the best and most careful Michigan growers.

On account of a partial failure two years ago and almost an entire failure the past year, beans are very high priced and hard to secure. Place your orders early.

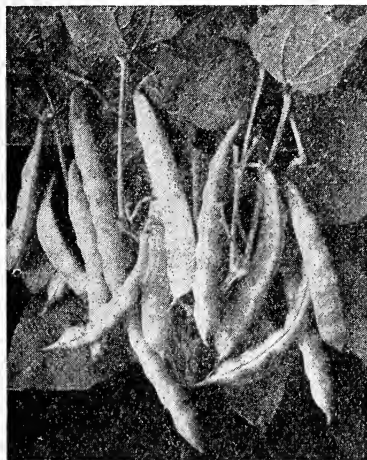
Golden Wax Imp. Grinnell.—One of the very best wax beans. Pt., 35c; qt., 65c; 2 qts., \$1.25.

Black Wax Pencil Pod.—Pods round, very early, very prolific, a golden yellow and of fine flavor. Ready for table in about forty days. Our strain is exceptionally productive, very hardy, reliable and of the best quality. Pkt., 5c; pt., 35c; qt., 60c.

Currie's Improved Rust-proof Black Wax.—Has great merit, very tender and best quality, flat pod. Pt., 35c; qt., 65c; 2 qts., \$1.25.

Davis' Kidney White Wax.—Very productive, long pods, very handsome, rustless. Pt., 35c; qt., 65c; 2 qts., \$1.25.

Wardwell's Kidney Wax.—Strong-growing vines yield a large crop of long, nearly straight, very white wax-like, handsome pods of good quality. It matures about the same time as the Golden Wax. Pt., 35c; qt., 65c; 2 qts., \$1.25.



Extra Early Red Valentine Beans.

PINTO BEAN

The bean that made New Mexico famous and added much to the wealth of that state. 1917 crop in New Mexico alone estimated at 50,000,000 pounds.

One thousand carloads valued at four million dollars (\$4,000,000), \$90 per acre average.

The Pinto grows a bush like the Pink Bean. For an inland crop it is preferable to the Tepary because of a larger yield per acre and finds a ready market.

The Pinto has never been known to have weevil.

One man grew 2400 pounds on an acre in 65 days. Pkt., 10c; qt., 30c.

GREEN POD DWARF BEANS

White Navy.—Pt., 30c; qt., 55c; 2 qts., \$1.05.

Price Pintos.—Pt., 30c; qt., 55c; 2 qts., \$1.05.

Burpee Stringless (Green Pod).—Extra early and of very fine quality. Pt., 35c; qt., 65c; 2 qts., \$1.25.

Giant Stringless Green Pod.—Plants are very productive, bearing pods which are perfectly round, very fleshy and entirely stringless. Pt., 35c; qt., 65c; 2 qts., \$1.25.

Round Yellow Six Weeks.—Early, full, round green pods. Pt., 35c; qt., 60c; 2 qts., \$1.15.

Extra Early Red Valentine.—Early strain of this popular round pod bean. Pt., 35c; qt., 60c; 2 qts., \$1.15.

DWARF LIMA BEANS

Burpee Bush Lima.—A bush form of the large Pole Lima; very productive and its dwarf character is well established. Pt., 40c; qt., 75c; 2 qts., \$1.30.

Henderson Bush Lima.—Productive; a very early small bean. Pt., 40c; qt., 75c; 2 qts., \$1.30.

POLE BEANS

Golden Cluster Wax.—This pole bean bears large clusters of golden-yellow pods 6 in. to 8 in. long, which are of delicious flavor. Seed is white. Pt., 45c; qt., 80c; 2 qts., \$1.55.

Cut Short or Corn Hill.—Used for planting among corn; one of the best. Pt., 35c; qt., 65c; 2 qts., \$1.25.

Lazy Wife.—Pod from 4 in. to 6 in. long. Beans are white and make a fine shell bean. Pods remain green and tender long. Pt., 40c; qt., 75c; 2 qts., \$1.40.

Large White Lima or Butter.—Largely grown and highly esteemed. Pt., 35c; qt., 65c; 2 qts., \$1.25.

Dutch Case Knife.—A very prolific, loose climbing pole bean. Pods are broad, flat, loose and of excellent quality. A good corn bean and can be used either for snap, shelled or dry shell beans. The beans are white in color. Pt., 35c; qt., 65c; 2 qts., \$1.25.

Kentucky Wonder.—Long, tender, green pods of most excellent flavor. Heavy yielder; seed brown. Pt., 35c; qt., 65c; 2 qts., \$1.25.

Kentucky Wonder Wax.—The Kentucky Wonder Wax is an improvement on the old style pod Kentucky Wonder. This variety is very early and excellent in quality. Pt., 45c; qt., 75c; 2 qts., \$1.55.

White Creaseback.—This variety is valuable for its extreme earliness. The vines are medium sized, wonderfully productive, bearing round, fleshy pods in clusters of from 4 to 12. They are entirely stringless and of fine quality. The dry seed is pure white and excellent for winter use. Pt., 40c; qt., 75c; 2 qts., \$1.40.

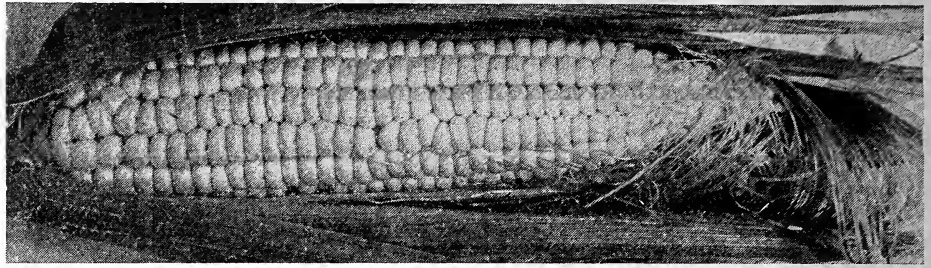
Double size packets, 10c each.



Wardwell's Kidney Wax Beans

At Above Prices We Pay Postage or Express

Sweet Corn



Golden Bantam Sweet Corn.

Grown for us by one of the largest and most reliable sweet corn growers in the Corn Belt.

Adam's Extra Early.—Not a real sweet corn, but very early. Pt., 35c; qt., 55c; 2 qts., \$1.05.

Peep O'Day.—The earliest, dwarf, very sweet. Pt. 30c; qt., 55c; 2 qts., \$1.55.

White Mexican.—The finest early sweet corn known Pt., 30c; qt., 50c; 2 qts., 95c.

Mammoth White Cory.—Largest extra early corn known. Fine quality, 12-rowed compact ears. Pt., 30c; qt., 55c; 2 qts., \$1.05.

Howling Mob.—Extra sweet; second early; extra large ears with 12 to 14 rows. Pt., 30c; qt., 55c; 2 qts., \$1.05.

Early Evergreen.—Earlier than Stowell's Evergreen and remains in condition quite as long. The ears are large. Plants average 6 to 7 feet high and in ear resemble those of Stowell's Evergreen. Pt., 30c; qt., 55c; 2 qts., \$1.05.

Golden Bantam.—Very hardy, sweet; ears 6 inches long, grains beautiful golden yellow. Pt., 35c; qt., 60c; 2 qts., \$1.10.

Early Crosby.—Matures after the Minnesota. Fair-sized ears of good quality. Pt., 30c; qt., 55c; 2 qts., \$1.05.

Early Minnesota.—Second early, dwarf growth; standard. Pt., 30c; qt., 55c; 2 qts., \$1.05.

Country Gentleman.—Improved strain; sweetest of all. Pt., 35c; qt., 60c; 2 qts., \$1.10.

Stowell's Evergreen.—Remains a long time; the most popular variety. Pt., 30c; qt., 55c; 2 qts., \$1.05.

Mammoth Sugar.—The largest ears of all; rich, sweet and superior. Pt., 30c; qt., 55c; 2 qts., \$1.05.

Double size packets, 5c each; 6 for 25c.

Cabbage

One ounce makes 1,500 plants; one half pound for one acre.

Ready for use in 100 days from seed planting.

New Chinese Cabbage Wong-Bok

A new, most delicious vegetable, which is a most profitable crop to grow for the market, and which should be in every garden.

Forms heads like Cos Lettuce, 15 inches high by 6-8 inches across, weighing about 4 lbs. each, firm like cabbage, with hearts blanching crystalline white. Leaves tender like lettuce, of a distinctive, delicate and pleasant flavor.

Used for salad like lettuce or for cold slaw like cabbage. Boiled, minced and seasoned with butter, it is as delicate a flavor as endive. Yields three times as much as cabbage and sells everywhere at 10 to 15c a pound, 40c to 60c per head, when cabbage brings only \$12 to \$15 a ton. Culture same as Winter Cabbage. Sow seed in March. Pkt., 10c; ½ oz., 25c; oz., 50c; 2 oz., 90c; ¼ lb., \$1.75.

THREE COPENHAGEN (DENMARK) CABBAGES.

Our seed for these 3 cabbages was grown in Copenhagen, Denmark, by the originator, and shipped direct to us. That makes the seed expensive, but it is from the pure original stock.

Copenhagen Market.—The originator says: "Our 1910 novelty. This new, earliest of all ball-shaped cabbages is unrivaled as the most equally maturing and large-headed early cabbage in existence. Remarkably solid, of fine quality, with small cores and an average weight of 10 pounds. Often weighing 16 pounds." ½ oz., 65c; oz., \$1.25; ¼ lb., \$1.30.

Danish Ballhead.—Originator says: "Genuine old type, head round, white, late, very hard, the best keeper. Recommended for moist, heavy soils." Oz., \$1.00; ¼ lb., \$3.65.

Danish Roundhead or Short Stemmed Ballhead. Originator says: "Short stemmed, two weeks earlier than Ballhead, head round, large, good for keeping. A sure stoneheader. Especially recommended for high light soils." Oz., \$1.00; ¼ lb., \$3.65.

EARLY

Early Jersey Wakefield.—Best American grown seed; best extra early, solid, conical heads. Oz., 80c; ¼ lb., \$2.55.

Extra Early Express (Lightning).—The earliest cabbage; small, solid heads. Oz., 80c; ¼ lb., \$2.55.

Early Winningstadt.—Very early, with solid, crisp, hard heads. Oz., 35c; ¼ lb., \$1.55.

Early Spring.—This is an early flat-headed variety. Oz., 70c; lb., \$2.30.



Copenhagen Market Cabbage.

Early Summer.—Best American grown seed; a most popular and superior second early sort. Oz., 70c; ¼ lb., \$2.30.

Early Dwarf Flat Dutch.—Best American grown seed; early, solid flat heads. Oz., 70c; ¼ lb., \$2.30.

SECOND EARLY

All Seasons (Vandergaw).—Best American grown seed; one of the finest, growing to a large size quickly. Oz., 70c; ¼ lb., \$2.30.

Sure Head.—Best American grown seed; a superior sort. Produces large and solid heads of fine quality. Oz., 70c; ¼ lb., \$2.30.

All Head.—Best American grown seed. The very best, second early. Fine flat heads, very hard, solid. Oz., 70c; ¼ lb., \$2.30.

MAIN CROP

Premium Late Flat Dutch.—We offer a remarkably fine strain; a sure, solid header. Oz., 70c; ¼ lb., \$2.30.

Late Drumhead.—A standard winter cabbage for main crop. Oz., 70c; ¼ lb., \$2.30.

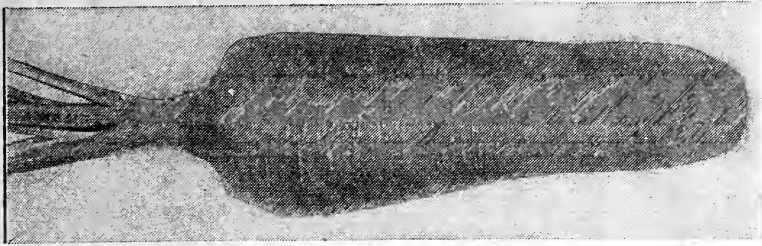
Red Dutch.—Very large, solid red heads; the finest strain of reds. Oz., 70c; ¼ lb., \$2.30.

Double size packets, 8c each; 2 for 15c; 4 for 25c.

CABBAGE PLANTS

We will have plants of all the above cabbage in season.

Ours will be strong, vigorous, sure-to-grow plants—and you get the kind you buy.



Danvers Half Long Carrots.

Carrots

One ounce sows 100 feet. Four pounds per acre.
Grown under contract for us in California
None better.

Half Long Stump Root.—Large, smooth, crisp, tender, deep orange color with blunt end. **Oz., 15c; ¼ lb., 45c; lb., \$1.35.**

Danvers' Half Long.—The leading standard variety. Flesh is of a dark orange color, very tender and appetizing; roots are of a medium length and taper proportionately; very sweet and productive. **Oz., 15c; ¼ lb., 45c; lb., \$1.35.**

Oxheart.—Early, short, thick, very smooth and handsome. **Oz., 15c; ¼ lb., 45c; lb., \$1.35.**

Chantenay.—Stump-rooted, rather small, early, fine quality. **Oz., 15c; ¼ lb., 45c; lb., \$1.35.**

Long Orange.—Improved, well known standard sort, good keeper. **Oz., 15c; ¼ lb., 45c; lb., \$1.35.**

Large White Belgian.—For cattle feeding; very productive and large. **Oz., 10c; ¼ lb., 30c; lb., \$1.10.**

Double size packets, 8c each; 4 for 25c.

White Mastodon.—Not a table carrot, although the flesh is remarkably firm and sweet. It is not a carrot for the market gardener, but is emphatically the carrot for the farmer, and once used, nothing else will take its place.

Mastodon Carrot is the heaviest cropping carrot grown. The flesh is white, crisp and solid and very sweet in flavor. The roots are short and very heavy at the shoulder, rendering them easily harvested. The roots frequently measure 15 to 20 inches in circumference, and 18 to 40 tons to the acre is not an extravagant statement as to yield. **Price: Oz., 10c; ¼ lb., 30c; lb., \$1.10.**

Cauliflower

Danish Giant (Dry Weather).—Large leaved and large pure white, compact heads. Very resisting against dry weather, the foliage giving protection. **¼ oz., 80c; ½ oz., \$1.75; oz., \$3.00.**

Early Snowball.—One of the best for forcing under glass, or for open ground. **¼ oz., 70c; ½ oz., \$1.35; oz., \$2.50.**

Celery

Best California Grown.

White Plume.—Naturally white or light foliage. **Oz., 35c; ¼ lb., 95c.**

Golden and Blanching French Stock.—**Oz., 75c; ¼ lb., \$2.50.**

Golden Self-Blanching.—A grand, solid variety. Best for general use. Crisp, brittle and of delicious flavor. **Oz., 60c; ¼ lb., \$1.85.**

Giant Pascal.—Especially for fall and winter use. Large, solid, crisp, and of rich nutty flavor. **Oz., 35c; ¼ lb., 95c.**

Celeriac.—Cook the turnip-shaped roots. **Oz., 35c; ¼ lb., 95c.**

CRESS

Curled (Pepper Grass).—**Oz., 20c; ¼ lb., 50c.**

True Water Cress.—Grows along the banks of ponds and streams, and is easily introduced; wholly unlike Curled; leaves are quite large and thick; a fine salad, sold in immense quantities in the large markets in spring. **Pkt., 5c; oz., 60c.**

ENDIVE

Moss Curled.—**Oz., 20c; ¼ lb., 60c.**

Egg Plant

Improved New York Purple.—The best, largest oval, deep purple. Grown more extensively than any other variety. **Oz., 90c; ¼ lb., \$2.50.**

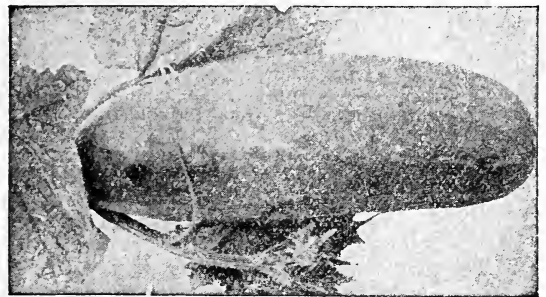
Cucumbers

One ounce for 60 hills; 2 to 3 pounds to the acre.
These Cucumber seeds are grown for us by the largest and best cucumber grower in the United States.

White Spine.—Earliest of all. A fine improved strain. Very prolific. Flesh firm and crisp. **Oz., 10c; ¼ lb., 30c; 1 lb., \$1.00.**

Improved Jersey Pickling.—Dark Green, tender, crisp, and of fine flavor. **Oz., 10c; ¼ lb., 30c; lb., \$1.10.**

Everbearing.—Very early, productive, solid few seeds, continuous bearer. **Oz., 10c; ¼ lb., 30c; lb., \$1.00.**



Davis Perfect Cucumber.

Early Cluster.—Fruit small and in clusters; very prolific. **Oz., 10c; ¼ lb., 30c; lb., \$1.00.**

Early Frame or Short Green.—For slicing or pickling; productive and early. **Oz., 10c; ¼ lb., 30c; lb., \$1.00.**

Improved Long Green.—Dark green, crisp and productive. **Oz., 15c; ¼ lb., 45c; lb., \$1.60.**

Boston Pickling.—Dark green, uniform small size, productive. **Oz., 10c; ¼ lb., 30c; lb., \$1.10.**

Davis Perfect.—An excellent cucumber for both outdoor use and forcing. It is a carefully selected strain. **Oz., 10c; ¼ lb., 30c; lb., \$1.10.**

Double size packets, 5c each; 6 for 25c.



Price.	
1 lb.	\$0.18
3 lbs.45
5 lbs.60
12 ½ lbs.	1.15

HERBS

Dill.—**Oz., 15c; ¼ lb., 40c.**

Marjoram (Sweet).—**Oz., 50c.**

Sage.—**Oz., 75c.**

Savory (Summer).—**Oz., 50c.**

Thyme (Sweet).—**Oz., 50c.**

Lavender.—**Oz., 25c.**

KALE

Dwarf German Greens.—Very Dwarf and spreading, best strain. **Oz., 25c ¼ lb., 80c.**

Tall Green Scotch.—A taller growth of the above; late variety. **Oz., 25c ¼ lb., 80c.**

KOHL RABI

Early White Vienna.—Handsome and delicate; white ball. **Oz., 25c ¼ lb., 85c.**

Early Purple Vienna.—Handsome and delicate; purple ball. **Oz., 25c ¼ lb., 85c.**

LEEK

Best Large Flag (Winter).—Hardy and productive. **Oz., 15c ¼ lb., 50c.**

Lettuce

Our Lettuce seed is grown for us by one of the very best California growers.

Gunn's May King Lettuce The Earliest of the Head Lettuce

Gunn's May King Lettuce.—The Earliest of the Head Lettuce. Heralded the country over as unquestionably the earliest head lettuce. Strikingly handsome and of superlative table quality.

Compact and very firm heads, of good size, having a diameter of 7 to 8 inches. The outer leaves are light green tinged with reddish brown, and are handsomely savoyed, the inner leaves blanch to a rich golden yellow color, are very tender and of sweet, buttery flavor. It attains a size suitable for use before any other large heading variety and the solid heads make it fine shipper. A splendid variety for outdoors planting in spring as well as in fall, and also very satisfactory for forcing. **Price: Per pkg., 10c oz., 20c ¼ lb., 45c per lb., \$1.45, postpaid. Price by express—5 pounds or over, 90c per pound.**

Burpee's Earliest Wayhead.—Earliest, surest header and best quality lettuce yet introduced. Heads are large, tightly folded, with inner leaves a rich buttery yellow tint. We sell Burpee's own stock. **Oz., 20c; ¼ lb., 60c lb., \$1.45.**

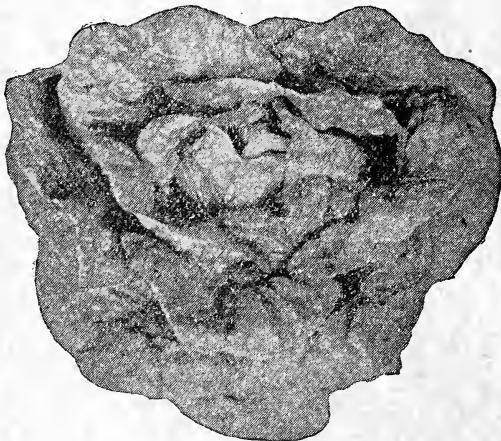
Big Boston.—Produces heads of very large size, often 10 inches across. These heads blanch beautifully and are of superior quality. Good for cold frames. **Oz., 15c ¼ lb., 45c; lb., \$1.45.**

Simpson's Early Curled.—Light green, broad, sweet, tender, frilled leaves. **Oz., 15c; ¼ lb., 45c; lb., \$1.45.**

Early Curled Silesia.—Early loose heading. Very sweet and tender. **Oz., 15c; ¼ lb., 45c; lb., \$1.00.**

Denver Market.—Very early; large light green heads; leaves blistered, crisp and tender. **Oz., 15c; ¼ lb., 45c; lb., \$1.45.**

Ice Berg—Makes large conical, tightly folded, well blanched and fine flavored heads. **Oz., 15c; ¼ lb., 45c; lb., \$1.45.**



Gunn's May King Lettuce.

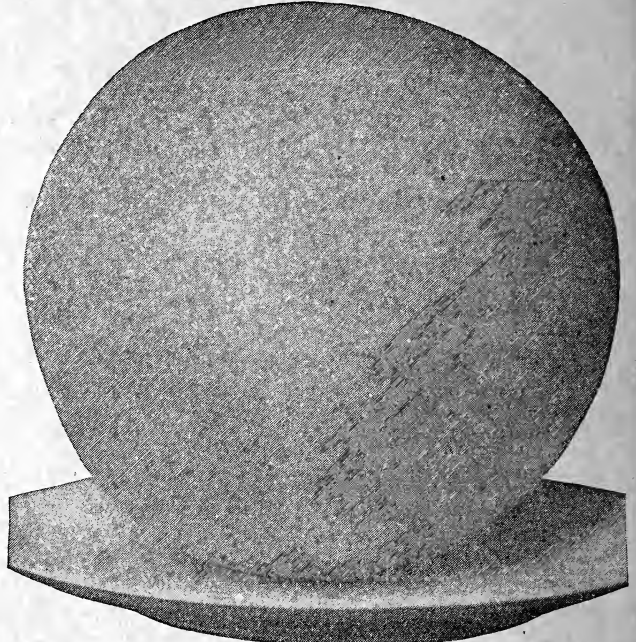
Grand Rapids Forcing.—Large, tender heads; one of the best for early forcing. California grown. The greenhouse man's favorite. **Oz., 15c; ¼ lb., 45c; lb., \$1.45.**

Black Seeded Simpson.—A superior variety; large and of light color. **Oz., 15c; ¼ lb., 45c; lb., \$1.45.**

Early Prize Head.—Bright green, tinged with brownish red; tender, crisp. **Oz., 15c; ¼ lb., 45c; lb., \$1.45.**

Improved Hanson.—Very large, solid and of fine quality. Withstands the hot sun. **Oz., 15c; ¼ lb., 45c; lb., \$1.45.**

Double size packets, 8c each; 4 for 25c.



Honey Dew Melon.

Muskmelons

One ounce to 60 hills; 2 to 3 pounds to the acre.
Ready in 90 to 100 days.

Grown for us by one of the largest Muskmelon growers at Rocky Ford, Colo., where the very best seed is produced.

Honey Dew Melon

This is a new type of melon. It is not a Casaba, the seed cavity being like the ordinary cantaloupe. The color is dull white when ripe, size about 6 inches in diameter from top to bottom and 7 to 8 inches long, all melons being nearly the same size. This melon has no netting, but the rind, though thin, is very tough and so close that the excellent flesh is practically sealed up where it keeps in finest condition from 3 to 5 months after it is ripe. Color of flesh is rich green from close to the rind to the seed cavity and the flavor is delightful to all who enjoy a good melon. It has the sweetness of honey and the freshness of morning dew. **Packet, 10c; ounce, 35c; ¼ pound, \$1.30; pound, \$4.90.**

Rocky Ford.—Improved Genuine Rocky Ford (Colorado) grown seed. Very sweet and of fine flavor; oblong, green flesh. **Oz., 15c; ¼ lb., 40c; lb., \$1.10.**

Improved Rust Resisting Rocky Ford.—This new strain has all the good qualities of the famous Rocky Ford, with the addition the vines do not rust. Yields more, with full 95 per cent of the melons standard size. Our seed grown at Rocky Ford, Colorado. **Oz., 20c; ¼ lb., 50c; lb., \$1.45.**

Hoodoo.—A very hardy, vigorous, yellow-fleshed variety that is ideal as a shipper and of the very finest quality. The vines are very hardy and resist blight and rust better than other sorts. The fruits vary in size, but average that of the Netted Gem; the netting is dense, the rinds thin but tough; flesh very thick, a rich salmon color, of fine quality and very fine flavored. **Oz., 15c; ¼ lb., 45c; lb., \$1.35.**

Eden Gem.—Genuine Rocky Ford grown. A new improved Rocky Ford cantaloupe. It is a little longer and more closely netted, and has green flesh. **Oz., 15c ¼ lb., 45c; lb., \$1.35.**

MUSKMELONS—Cont'd.

Gold Lined.—An ideal; green colored, golden thick flesh and very sweet. **Oz., 20c; ¼ lb., 65c; lb., \$2.00.**

Shumway's Giant.—The largest muskmelon grown. Very sweet. **Oz., 15c; ¼ lb., 40c; lb., \$1.35.**

Extra Early Hackensack.—Ripens 10 days earlier than the Hackensack. Green flesh. **Oz., 15c; ¼ lb., 45c; lb., \$1.10.**

Burrell's Gem.—Fine, new, salmon-fleshed, good size, handsome and of fine flavor. **Oz., 15c; ¼ lb., 45c; lb., \$1.35.**

Green Nutmeg.—Named from its shape; green flesh. Good for main crop. **Oz., 15c; ¼ lb., 45c; lb., \$1.10.**

Emerald Gem.—Very fine and sweet. Green outside, yellow flesh. **Oz., 10c; ¼ lb., 40c; lb., \$1.35.**

Large Hackensack.—Large, round, good quality. A popular variety. **Oz., 15c; ¼ lb., 40c; lb., \$1.10.**

Osage or Miller's Cream.—Yellow flesh, light green netted skin. Good quality, intermediate. **Oz., 15c; ¼ lb., 45c; lb., \$1.35.**

Paul Rose.—Flesh firm, rich orange color, covered with dense netting, not ribbed. **Oz., 15c; ¼ lb., 45c; lb., \$1.35.**

Tip Top.—Melons are round in form, well ribbed, bright salmon color, and of luscious melting character. **Oz., 15c; ¼ lb., 45c; lb., \$1.35.**

Double size packets, 8c each; 2 for 15c; 4 for 25c.

Casabas

Golden Beauty.—This one we recommend as the best of the Autumn varieties. It begins to ripen in August and continues bearing and ripening all Summer and Fall or until frost comes. The later fruits can be stored in a cool house or cellar, and will ripen slowly, so they can be marketed from time to time until late January or early February. Golden Beauty is bright yellow, about globular in shape, with wrinkled skin, slightly pointed at the stem end. The fruits are from 6 to 8 inches in diameter. Flesh thick and delicious. **Postpaid: Pkt., 5c; oz., 25c; ¼ lb., 60c; lb., \$2.50.**

Improved Hybrid.—A variety which ripens late and is a good keeper; the flesh deep, and most delicious. Is not at its best until the thumb will make an impression in the rind, as in a mellow apple. **Pkt., 10c; oz., 25c; ¼ lb., 80c; 1 lb., \$2.50.**

Try This

Plant RAPE and RUTABAGAS near all Melons and Cucumbers. The insects that live on these plants feed on and destroy the melon lice.

Watermelons

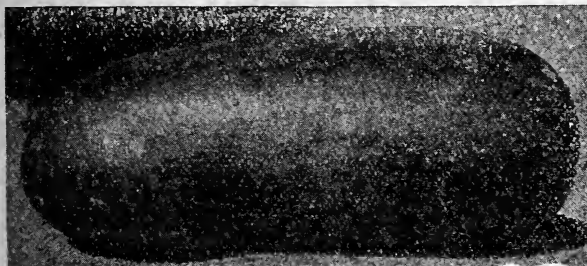
One ounce to 30 hills; 4 to 5 pounds to the acre. Ready to use in 90 to 140 days.

Our Watermelon seed is saved from the largest and most perfect melons only. Growers of cheap seed take theirs from all melons in the patch.

Alabama Sweet.—Quite early; oblong, large and very sweet. **Oz., 15c; ¼ lb., 35c; lb., 80c.**

Tom Watson.—Very large, long, medium late, good seller, and fine flavored. Produces melons 18 inches to 20 inches long, by 10 inches in diameter, weighing from 50 to 60 pounds. **Oz., 15c; ¼ lb., 35c; lb., 80c.**

Halbert's Honey.—Long and large; very green. Flesh sweet, crisp, and ripens close to rind. **Oz., 15c; ¼ lb., 35c; lb., 80c.**



Kleckley Sweet.

Kleckley's Sweets.—Exceedingly sweet and fine flavored. Dark green skin, thin rind. Flesh scarlet, solid and firm. **Oz., 15c; ¼ lb., 35c; lb., 85c.**

Cole's Early.—Very early; very sweet. Fine home melon. **Oz., 15c; ¼ lb., 35c; lb., 75c.**

Cuban Queen.—Solid and heavy, excellent quality. **Oz., 15c; ¼ lb., 35c; lb., 80c.**

McIver's Wonderful Sugar.—Large, medium early; fine quality. **Oz., 15c; ¼ lb., 35c; lb., 85c.**

Ice Cream or Peerless.—Rind thin; flesh bright scarlet, very sweet; white seed. **Oz., 15c; ¼ lb., 35c; lb., 80c.**

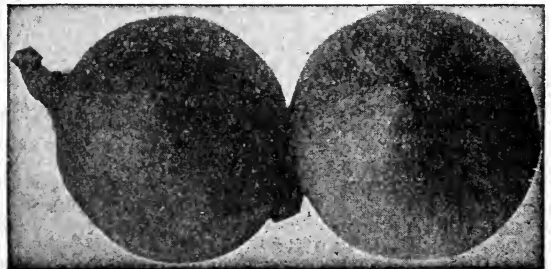
Phinney.—Early and of fine quality, red flesh, intermediate. **Oz., 15c; ¼ lb., 35c; lb., 80c.**

Sweetheart.—One of the best early; fruit large; flesh bright red, firm, melting and sweet. **Oz., 15c; ¼ lb., 35c; lb., 75c.**

Colorado Citron.—For preserves. **Oz., 15c; ¼ lb., 35c.**

Double size packets, 8c each; 4 for 25c.

Onions



Prizetaker Onion.

One ounce for 100 feet; 5 or 6 pounds to the acre.

Our Onion seed is produced for us by one of the most careful growers. All "stiff necks" and "off shapes" are thrown out. We test it carefully.

Improved Large Red Wethersfield.—Our seed stock of this standard flat onion cannot be surpassed. **Oz., 35c; ¼ lb., 90c; lb., \$3.10.**

Large Red Globe.—Southport strain, one of the best reds; good keeper. **Oz., 35c; ¼ lb., \$1.00; lb., \$3.60.**

Globe Wethersfield.—Very much like the Flat Wethersfield, only it is "ball-shaped." Fine keeper; fine for the market gardener. **Oz., 35c; ¼ lb., \$1.00; lb., \$3.60.**

Australian Brown.—A grand new onion from Australia. **Oz., 40c; ¼ lb., \$1.25; lb., \$4.10.**

Mammoth Silver King.—Grows 6 or 7 inches across. Skin very white; flesh white, tender and sweet. **Oz., 60c; ¼ lb., \$1.65; lb., \$6.10.**

Yellow Globe Danvers.—A fine variety; medium size; flesh white and mild. **Oz., 30c; ¼ lb., 90c; lb., \$3.10.**

Southport Yellow Globe.—A large deep globe; good keeper. **Oz., 30c; ¼ lb., 90c; lb., \$3.10.**

Mammoth Prizetaker.—Very large, straw colored, beautiful, mild flavored onion; white flesh. **Oz., 35c; ¼ lb., \$1.00; lb., \$3.60.**

Large White Globe.—Large, Southport strain. **Oz., 40c; ¼ lb., \$1.25; lb., \$4.10.**

Large White Portugal or Silver Skin.—Standard sort, flat. **Oz., 40c; ¼ lb., \$1.25; lb., \$4.10.**

Ask for special price on 5 lb. lots.

Double size packets, 8c each; 4 for 25c.

ONION SETS

Prices subject to change.
 White.—Pt., 20c; qt., 30c.
 Red.—Pt., 15c; qt., 25c.
 Yellow.—Pt., 15c; qt., 25c.

MUSTARD (For Sowing)

White.—Oz., 10c; ¼ lb., 25c; lb., 85c.
 Chinese.—Oz., 10c; ¼ lb., 25c; lb., 85c.
 Mam. So. Curled—Oz., 10c; ¼ lb., 25c; lb., 85c.

Peas

Our Peas are grown for us in northern Michigan by an expert pea and bean grower. All fields are carefully rogued, and there is none better.

EXTRA EARLY

Alaska.—One of the earliest and most popular blue peas. **Pt., 25c; qt., 50c; 2 qts., 90c; gal., \$1.75.**

First and Best.—Very early; popular for market and shipping. **Pt., 25c; qt., 50c; 2 qts., 90c; gal., \$1.75.**

The Ameer or Mammoth Alaska.—This new variety is rapidly growing in favor with market gardeners, being planted extensively by those who have tried it, and know its merits. It resembles the Alaska, the vine being more vigorous, a little taller, or about 3 feet in height, and the pods and peas are fully one-third larger. It is a heavy producer, with handsome, dark-green pods, containing from 5 to 7 large, blue-green, round peas of excellent quality. The crop ripens uniformly, about 3 days later than Alaska. We can recommend this to gardeners as the most prolific pea for early planting. **Postpaid: Pt., 30c; qt., 50c; 2 qts., 95c.**

DWARF EARLY PEAS

Gunn's Excelsior.—This is an improvement over Nott's Excelsior. Just as sweet; a few days earlier; better bearer, larger pods. **Pt., 30c; qt., 50c; 2 qts., 95c; gal., \$1.85.**

Nott's Excelsior.—An improvement on American Wonder. **Pt., 25c; qt., 50c; 2 qts., 90c; gal., \$1.75.**

American Wonder.—Well known, very popular. **Pt., 25c; qt., 50c; 2 qts., 90c; gal., \$1.75.**

McLean's Little Gem.—Very prolific. Garden favorite. **Pt., 25c; qt., 50c; 2 qts., 90c; gal., \$1.75.**

Extra Early Premium Gem.—Long, well filled, prolific pods. **Pt., 25c; qt., 50c; 2 qts., 90c; gal., \$1.75.**

Little Marvel.—Grows about 15 inches tall. The pods average 2 1/2 inches long and are well filled with 6 or 7 sweet, tender peas; as early as Nott's Excelsior. **Pt., 30c; qt., 50c; 2 qts., 95c; gal., \$1.85.**

SECOND EARLY AND LATE PEAS

Mammoth Podded Pea.—The mammoth of the garden in size of pod and is an exceedingly heavy bearer; peas of the most delicious flavor. It grows when "staked" or "brushed" from 3 to 4 feet high. Foliage, pod and vine of a rich, dark green color showing vigor and makes a rapid, healthy growth. Pods well filled with extra, large peas of fine flavor. In maturity this comes in just about the same as the Telephone. Its heavy-cropping qualities



Chinese Giant Pepper

as well as fine flavor will make it a favorite wherever planted. **1/2 pt., 20c; pt., 30c; qt., 50c, postpaid; pk., \$2.50, not postpaid.**

Telephone.—Very large pods, filled full of fine large sweet peas. **Pt., 25c; qt., 50c; 2 qts., 90c; gal., \$1.75.**

Improved Stratagem.—Large, full pods; quality fine. **Pt., 25c; qt., 50c; 2 qts., 90c; gal., \$1.75.**

Everbearing.—Long pods and large peas. Sow thin **Pt., 25c; qt., 50c; 2 qts., 90c; gal., \$1.75.**

Champion of England.—A well known standard pea. Sow thick. **Pt., 30c; qt., 50c; 2 qts., 95c; gal., \$1.85.**

Dwarf Sugar.—Extra fine pods, eat same as Snap Beans without shelling. **Pt., 30c; qt., 50c; 2 qts., 95c; gal., \$1.85.**

Double size packets, 10c each.

PARSNIPS

Hollow Crown.—A market gardener's strain. **Oz., 15c; 1/4 lb., 50c.**

Improved Gurnsey.—Shorter and larger than Hollow Crown. Very Smooth. Excellent quality. **Oz., 15c 1/4 lb., 50c.**

Peppers

Ruby King.—Large and very mild. **Oz., \$1.00; 1/4 lb., \$2.50.**

Large Bell or Bull Nose.—Large and mild. Excellent for pickling. **Oz., \$1.00; 1/4 lb., \$2.50.**

Sweet Mountain.—Large regular, of mild flavor. One of the best for pickling. **Oz., \$1.00; 1/4 lb., \$2.50.**

Long Red Cayenne.—Bright red; very productive. **Oz., \$1.00; 1/4 lb., \$2.50.**

Chinese Giant.—Almost twice as large as Ruby King. They grow 4 to 5 inches broad and equally as long. **Oz., \$1.00; lb., \$2.50.**

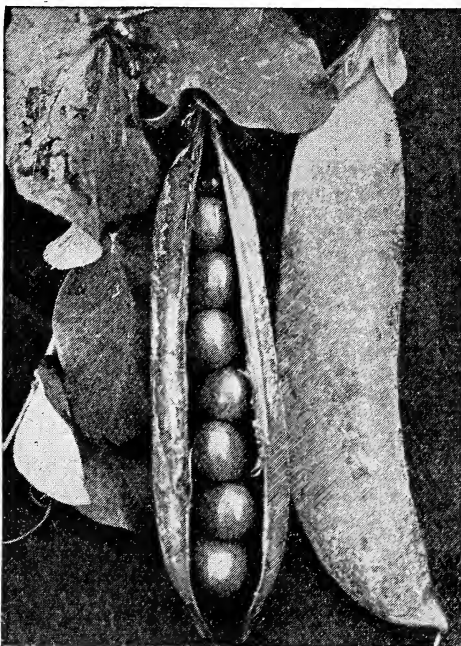
Chill.—Color red, cone-shaped; very small; one of the hottest. **Oz., \$1.00; 1/4 lb. \$2.50.**

Double size packets, 8c each; 4 for 25c.

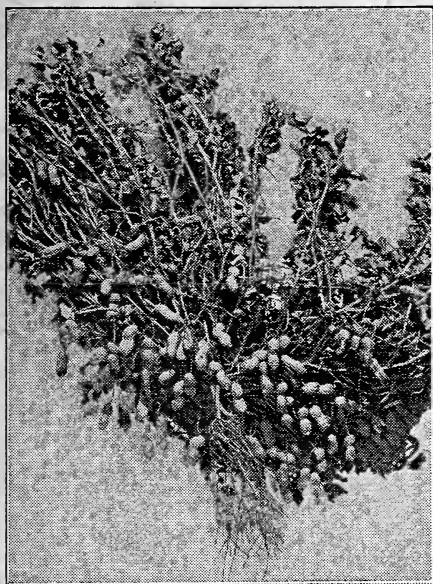
PARSLEY

Champion (Moss Curled).—Very pretty, and one of the best. **Oz., 15c; 1/4 lb., 40c.**

Hamburg or Rooted.—Edible roots. **Oz., 15c; 1/4 lb., 40c.**



Mammoth Podded Peas



Plant of Virginia Peanuts.

Peanuts

The **Virginia** is the large podded peanut sold in candy and grocery stores. It requires a longer season in which to mature, about 40 days longer than the Spanish, a rather rich soil, and the land must be light colored in order to secure bright clean pods. It yields heavily under favorable conditions and is the variety to grow in Louisiana and Arkansas, where the conditions of the soil are just right and a peanut for eating from the shell is wanted. It does not do so well under dry farming conditions, for if the growth is checked for several weeks, there is not time enough after the fall rains for this variety to fill out Jumbo. **35c per lb. At purchaser's expense—10 lbs. or more, 30c per lb.**

Ask for price on larger quantities.

Pumpkins

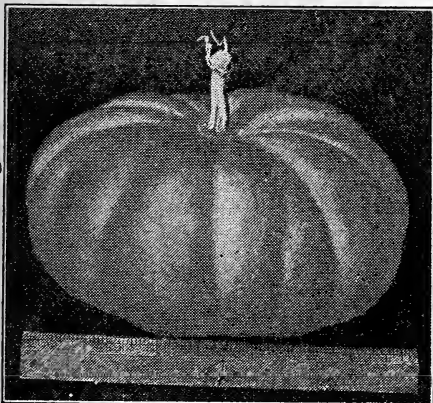
One ounce to 30 hills; 2 to 3 pounds to acre.

Tennessee Sweet Potato.—Bell-shaped; white flesh; very thick. **Oz., 20c; ¼ lb., 45c; lb., \$1.35.**

Sweet or Small Sugar.—Fine for pies, very prolific and a good keeper. **Oz., 15c; ¼ lb., 40c; lb., \$1.10.**

Japanese Pie.—Oz., 20c; ¼ lb., 45c; lb., \$1.35.

Large Sweet Cheese.—Flat; one of the best varieties for family use. Good keeper. **Oz., 15c; ¼ lb., 40c; lb., \$1.10.**



Large Sweet Cheese Pumpkin.

Striped Cushaw.—Medium size, crook neck; very productive. **Oz., 20c; ¼ lb., 45c; lb., \$1.35.**

King of Mammoth.—Grows to an enormous size; fine for exhibition. **Oz., 20c; ¼ lb., 45c; lb., \$1.35.**

Connecticut Field.—Very productive; grown largely for feeding stock. **Oz., 15c; ¼ lb., 40c; lb., \$1.05.**

Double size packets, 8c each; 4 for 25c.

Radishes

One ounce to 100 feet; 9 to 10 pounds to acre.

Ready in 18 to 45 days.

Our Radish seed is either French or Michigan grown. Both are considered about equal. California seed grows larger leaves.

Early Bird.—True stock; bright red, extra early, turnip-shaped. **Oz., 15c; ¼ lb., 55c; lb., \$1.85.**

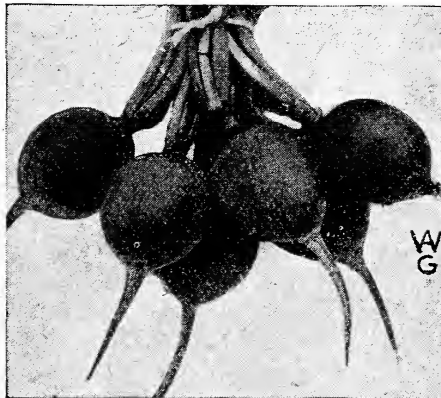
Early Scarlet Turnip.—Very early. The French favorite. **Oz., 15c; ¼ lb., 55c; lb., \$1.85.**

Early Scarlet Globe.—Beautiful, bright scarlet, globe-shaped, crisp, juicy and tender. **Oz., 15c; ¼ lb., 55c; lb., \$1.85.**

Giant Crimson Globe.—Very attractive, grows to a large size without becoming pithy or strong. Very crisp and juicy. **Oz., 20c; ¼ lb., 60c; lb., \$2.10.**

Non Plus Ultra.—Extra early. Flat, scarlet, forcing. **Oz., 20c; ¼ lb., 60c; lb., \$2.10.**

New Sparkler.—A new 20-day radish, globe-shaped. Very crisp. Bright scarlet with white tip. **Oz., 15c; ¼ lb., 55c; lb., \$1.85.**



Round Black Spanish Radishes.

Rosy Gem.—Very early, white tipped, small turnip-shaped. **Oz., 15c; ¼ lb., 55c; lb., \$1.85.**

Early Scarlet Turnip (White Tip).—Very early. **Oz., 15c; ¼ lb., 55c; lb., \$1.85.**

French Breakfast.—Very early, oblong with white tip, rapid grower, tender and crisp. **Oz., 15c; ¼ lb., 55c; lb., \$1.85.**

White Icicle.—Purest white, long, rapid grower. Tender and juicy for a long time. **Oz., 15c; ¼ lb., 55c; lb., \$1.85.**

White Vienna.—A splendid second early, long white; sweet, mild and juicy. **Oz., 15c; ¼ lb., 55c; lb., \$1.58;**

Long Scarlet Short Top.—Very long and crisp; for frames and open ground. **Oz., 15c; ¼ lb., 55c; lb., \$1.85.**

Improved Chartier.—Large, long, summer radish; scarlet with white tip. **Oz., 15c; ¼ lb., 45c; lb., \$1.60.**

White Strasburg.—The most popular and best half-long summer. **Oz., 15c; ¼ lb., 55c; lb., \$1.85.**

FOR WINTER

Round Black Spanish.—The best globe-shaped winter radish. **Oz., 15c; ¼ lb., 50c; lb., \$1.60.**

Long Black Spanish.—Very dark, long, crisp; tender. A good keeper for winter use. **Oz., 15c; ¼ lb., 50c; lb., \$1.60.**

Rose China.—Very handsome and distinct; keeps well. **Oz., 15c; ¼ lb., 50c; 1 lb., \$1.60.**

California White Mammoth.—A very large white winter variety. **Oz., 15c; ¼ lb., 50c; lb., \$1.60.**

Double size packets, 8c each; 4 for 25c.

At Above Prices We Pay Postage or Express.

RHUBARB

Victoria.—Stalks very tall and large. Best for family use. **Oz., 20c; ¼ lb., 50c.**

Linneaus.—A large tender stalk. **Oz., 20c; ¼ lb., 50c.**

Rhubarb Roots.—Set in spring. **10c each, 6 for 50c.**

SALSIFY

Vegetable Oyster.

Mammoth Sandwich Island.—By far the largest and best for market or home. **Oz., 35c; ¼ lb., \$1.00; lb., \$3.60.**

SPINACH

Bloomsdale.—Earliest. Lots of leaves, curled and wrinkled. **Oz., 10c; ¼ lb., 25c; lb., 90c.**

Long Standing.—Dark green, leaves large and thick; very long-standing. **Oz., 10c; ¼ lb., 25c; lb., 90c.**

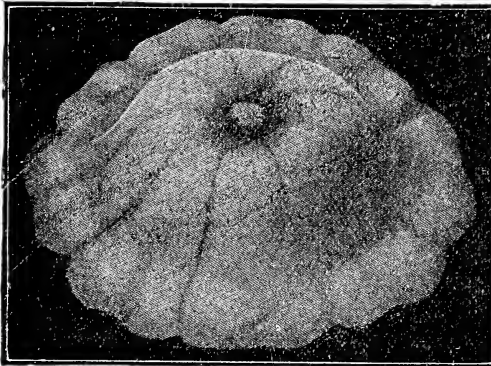
Squash

One ounce to 50 hills; 3 to 4 pounds to acre.
White Bush Squash.

Sibley's (Pike's Peak).—Pear shape, pale green, smooth skin. Thick orange colored flesh. **Oz., 20c; ¼ lb., 50c; lb., \$1.85.**

Fordhook.—Small, very early, yellow, oblong. **Oz., 20c; ¼ lb., 50c; lb., \$1.85.**

Mammoth White Bush Scallop.—A good, early shipping variety, best scallop. **Oz., 20c; ¼ lb., 50c; lb., \$1.85.**



White Bush Squash.

Mammoth Summer Crookneck.—**Oz., 15c; ¼ lb., 25c; lb., \$1.50.**

Improved Hubbard.—More harder shell, better keeper, true. **Oz., 20c; ¼ lb., 50c; lb., \$1.85.**

Golden Hubbard.—A perfect type of its parent, with red skin. **Oz., 20c; ¼ lb., 60c; lb., \$1.90.**

Mammoth Chill.—Grows to an enormous size; rich, orange yellow. **Oz., 20c; ¼ lb., 60c; lb., \$1.90.**

Tobacco Seed

Connecticut Seed Leaf.—**Oz., 35c.**

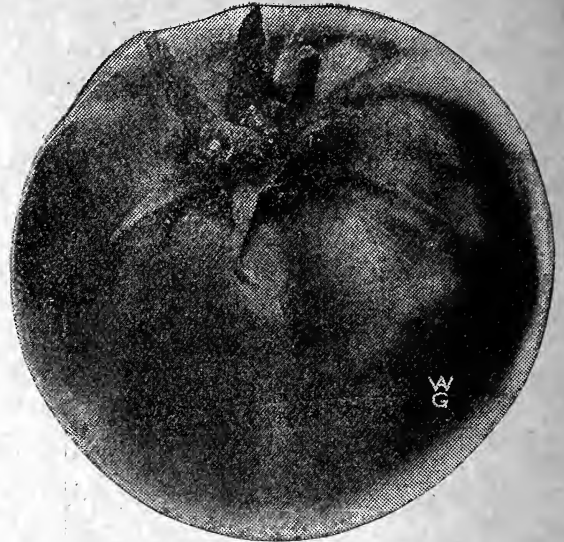
Havana.—**Oz., 35c.**

Tomatoes

One ounce to 1,500 plants; one quarter pound to transplant an acre.

Our Tomato seed is grown by two tomato specialists. Their business is growing tomato seed. Cheap tomato seed comes from the leavings of canning factories.

John Baer.—This new, wonderful, much talked of tomato produces perfectly solid, almost round fruit in 30 days. Fruit grows in clusters with from 50 to 100 on each plant. The fruit ripens evenly and practically every one perfect. It has a beautiful bright red color,



John Baer Tomato.

most delicious, sweet flavor; genuine stock. **Oz., 65c; ¼ lb., \$2.00.**

Earliana.—None earlier, good size, deep red, fine quality, very productive. **Oz., 35c; ¼ lb., \$1.10.**

Dwarf Stone.—Tree-shaped vine. Fruit large like stone with same color and quality. **Oz., 35c; ¼ lb., \$1.10.**

Dwarf Champion.—The original tree tomato. Fruit medium size, smooth and purplish pink. **Oz., 35c; ¼ lb., \$1.10.**

Field's Early June.—Field says: "Earlier than Earliana, smooth as Stone, solid and seedless as Ponderosa, more prolific than either." **½ oz., 25c; oz., 40c; ¼ lb., \$1.50.**

Burpee's Quarter Century.—One of the best tree tomatoes. Very early, good quality. **Oz., 35c; ¼ lb., \$1.15.**

June Pink.—Tomato is a pink Earliana, ripening fully as early. Crop failed. **Oz., 35c; ¼ lb., \$1.15.**

Livingston's New Globe.—Very large, smooth, firm flesh, rose colored, flavor excellent, perfect globe. **Oz., 35c; ¼ lb., \$1.15.**

Yellow Ponderosa.—Fruit large and smooth; color a beautiful golden yellow, sometimes with a slight blush of red, as smooth and well-shaped as the best of the red varieties and of superior flavor. Crop failed. **Oz., 65c; ¼ lb., \$2.00.**

Chalk's Early Jewel or Bonnie Best.—The largest smoothest, finest flavored, bright red early tomato grown. **Oz., 5c; ¼ lb., \$1.15.**

Ponderosa.—The largest variety in cultivation. **Oz., 40c; ¼ lb., \$1.40.**

Stone.—Very large, perfectly smooth, fine bright scarlet; best main crop. **Oz., 35c; ¼ lb., \$1.10.**

Matchless.—Medium early, very smooth, bright, scarlet, grows in clusters, heavy yielders, globe-shaped, almost coreless. **Oz., 35c; ¼ lb., \$1.10.**

Livingstone Coreless.—For main crop, globe-shaped, bright red, no green core, good yielders, firm solid flesh. **Oz., 35c; ¼ lb., \$1.10.**

Trophy.—Main crop, large, smooth, bright scarlet fine flavor, good yielders. **Oz., 35c; ¼ lb., \$1.00.**

Golden Queen.—Best of the large sized yellow tomatoes. Fruit smooth and of best quality. **Oz., 35c; ¼ lb., \$1.20.**

Yellow Pear.—Sometimes called Fif tomatoes. Best for preserves. **Oz., 35c.**

Red Pear.—Same as Yellow Pear, except color. **Oz., 35c.**

Double size packets, 5c each, 6 for 25c.

IN PLANTING YOUR GARDEN

NOT ONLY PLANT ENOUGH FOR TABLE USE IN SEASON BUT

PLANT ENOUGH TO CAN

FOR WINTER USE. IT WILL HELP YOU SOLVE THE H. C. L.

We deliver free at these prices.

Turnips

One ounce to 1,500 feet of drill; 2 to 3 pounds to acre.

Snowball or Six Weeks.—A beautiful, early, white skinned, sweet, tender turnip. **Oz., 20c; ¼ lb., 60c; lb., \$1.85.**

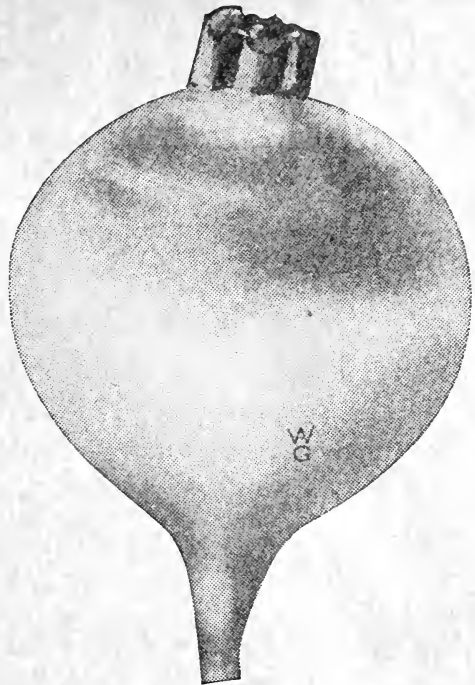
Red or Purple Top Strap Leaf.—The popular flat, fall sort. **Oz., 15c; ¼ lb., 45c; lb., \$1.35.**

Purple Top White Globe.—A standard sort; none better. **Oz., 20c; ¼ lb., 60c; lb., \$1.85.**

Early White Egg.—Very handsome, pure white; excellent for early or late. **Oz., 20c; ¼ lb., 60c; lb., \$1.60**

Cow Horn.—Long, white. In shape resembling a cow's horn. **Oz., 20c; ¼ lb., 60c; lb., \$1.85.**

Pomeranian Large White Globe.—Very large. Sweet, for table and stock. **Oz., 20c; ¼ lb., 60c; lb., \$1.85.**



Purple Top White Globe Turnip.

RUTABAGA

American Purple Top.—Yellow, with purple top. Flesh bright golden yellow, sweet and tender. Good for table or stock. **Oz., 15c; ¼ lb., 45c; lb., \$1.60.**

Sweet German (Long White French).—Grows very large, flesh white, solid and rich for table or stock. **Oz., 15c; ¼ lb., 45c; lb., \$1.60.**

Vegetable Plants

	Ready about	Postpaid			By express, your expense		
		Per doz.	Per 25	Per 100	Per doz.	Per 100	Per 1000
Early Cabbage.....	April 25.....	\$0.20	\$0.30	\$0.90	\$0.15	\$0.85	\$6.50
Late Cabbage.....	May 10.....	.15	.25	.85	.15	.75	5.50
Early Tomato.....	April 25.....	.25	.45	1.00	.20	.90	8.00
Late Tomato.....	May 10.....	.20	.30	.90	.15	.80	7.00
Cauliflower, Snowball.....	May 10.....	.25	.45	1.25	.20	1.00	9.00
Egg Plant.....	May 10.....	.25	.45	1.25	.20	1.00	8.00
Early Celery.....	May 10.....	.20	.35	.75	.15	.60	5.50
Late Celery.....	June 1.....	.20	.30	.75	.15	.50	4.50
Pepper.....	May 10.....	.25	.45	1.25	.20	1.00	9.00
Sweet Potatoes.....	May 10.....	.15	.10	.65	.05	.50	4.50
Asparagus Roots.....				1.00	.60	.60	5.00
Rhubarb Roots.....			.10 each	1.00 per doz.		.60 per doz.	

Plants Get Cheaper as Season Advances
Write for Prices in Larger Lots

Seed Potatoes



PLANT A BIG HOME GARDEN IN 1919. Money-saving and health-saving are both worth while and the right kind of a good home garden with a dozen or more kinds of vegetables in it is both a money and health saver. Every mess of vegetables from the garden that takes the place of food bought at the store knocks holes in your bill at the merchants. Every mess of vegetables from the garden helps tone up the system, making unnecessary both drug bills and trips to see the doctor.

RED RIVER OHIOS

RED TRIUMPH.—Extremely early; medium size; round and uniform in shape; eyes slightly depressed; light red skin; white flesh.

There is lots of difference in Red River Ohio potatoes. Some of the so-called Red River Ohios were never grown anywhere near the Red River Valley, and some that have been grown there were grown by growers who are careless, and the seed stock is very scabby and knotty. Our stock was produced by a man who makes a specialty of potatoes, and it runs much better than stock furnished by some grocery stores and others who frequently sell eating potatoes for seed potatoes. Be sure and see us before buying, as our quality is the very best and our prices right. Ask for prices.

IRISH COBBLER

One of the first varieties of potatoes ready for market, and will command a good price. The skin is creamy-white, sometimes netted, which is an indication of good quality; eyes are strong, well-developed and but slightly indented. The flesh is white and of fine flavor. Ask for price.

RURAL NEW YORKERS

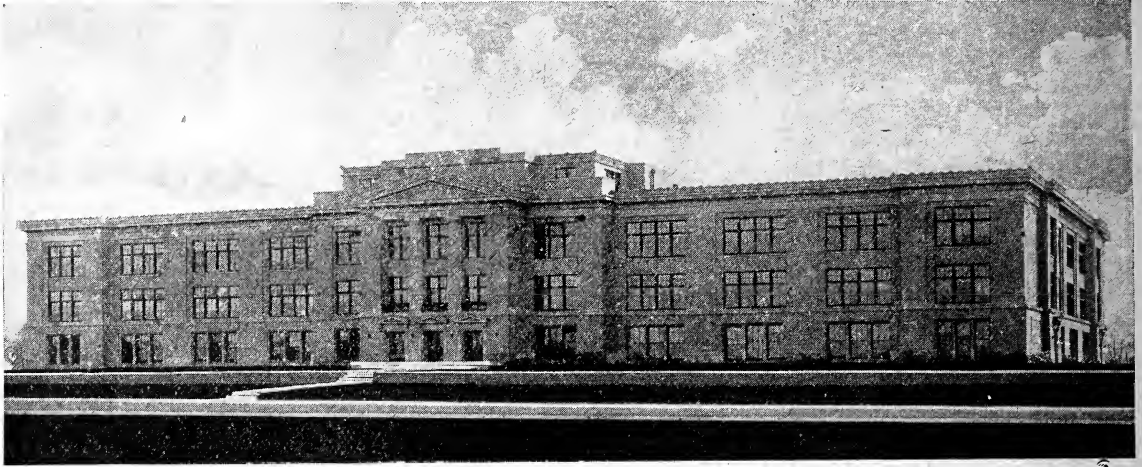
The most popular main crop variety. Ask for prices, stating amount you wish.

Spray Potatoes Five Times with Bordeaux Mixture Beginning when Five Inches High—See Page 26

All Prices on this Page Subject to Change

GUNN'S LAWN GRASS SEED

Tried and Proven to be the Very Best



NEW LINCOLN HIGH SCHOOL

GROUNDS SEEDED WITH GUNN'S VELVET LAWN GRASS.

These beautiful grounds were seeded with **Gunn's Velvet Lawn Grass Mixture** in September, 1916. The Board of Education used about 1,000 pounds of this mixture, because of the high germination and with the idea of securing a better and more lasting lawn than if sod were used. (Part of this lawn had already been sodded but dried out.) When the winter set in the lawn was covered with a most beautiful velvet like stand of rich green grass. The great trouble with sod is that it kills out easily because the heavy and more important roots are cut when the sod is taken up. When the sod is relaid, it does not come in close contact with the soil because the sod is very smooth while the soil is irregular; this causes small air spaces underneath the sod and the roots cannot start up again. This leaves the grass without sufficient nourishment and in time, if weather conditions are not very favorable, it dies out. Seed your lawn with **Gunn's Velvet Lawn Grass Mixture** and it will make you a most beautiful lawn and one that will last you indefinitely.

For Lawns

Velvet Lawn Grass Mixture.—This is composed of a mixture of grasses recommended by State University Farm as the best mixture for this part of the United States, with the idea of producing not only a desirable lawn with the least possible delay, but a lasting lawn that will give a beautiful velvety appearance, and one that will stand our severe summers. The seeds we use in this mixture are of the highest purity and germination, which makes it a little more expensive, but a great deal more valuable than the common run of grass seed. You should use about one pound of seed to every 400 square feet, and see that the seed is raked in as early in the spring as possible. **Price: Per lb., 60c; 5 lbs., \$2.75.**

and germinating right at 100 per cent. It is the best White Clover that can be had. All White Clover seed very scarce. **Price: Per lb., 75c; 5 lbs., \$3.50; 10 lbs., \$6.75.**

LAWN FERTILIZER

Gunn's Pulverized Sheep Fertilizer.—Composed of pulverized sheep manure and chemical fertilizer. The sheep manure is put through a heating process that not only eliminates the odor and turns it to a fine, pulverized mass, but it also kills all weeds. **Price: By freight, 25 lbs., 75c; 50 lbs., \$1.25; 100 lbs. (covers 30x30) \$2.25.**

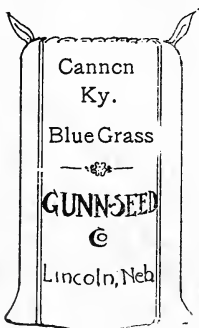
Lawn Bone Fertilizer.—Composed mainly of fine, ground bone. It is clean and dry and furnishes just the desired element for young plants, and gives to the grass a permanent, rich, green color. It can be sown easily by hand. On new lawns it should be sown same time as the seed, and on old lawns any time in the early spring. It furnishes the same nourishment as manure. One hundred pounds covers surface 30x30 feet. **Price: By freight, 25 lbs., \$1.45; 50 lbs., \$2.65; 100 lbs., \$5.00.**

THE GEM DANDELION RAKE

A scientifically constructed tool for eliminating dandelions; cuts off all buds and blossoms, preventing further propagation from seed. Original roots soon starve out. The fine blade-like teeth of the GEM RAKE slide flat along the ground and catch the buds and blossoms, but allow growing grass to slip through easily. Self-cleaning comb-bar fits between apertures of teeth and prevents clogging. This bar is connected to a rod on the handle and combs teeth clean at a slight pull on the finger hook. A stiff spring sends the comb-bar back into original position when finger hook is released.

The 24" rake has a sheet metal back for retaining leaves, grass, etc., in general lawn use. **Price, \$1.75.**

Substantially made of 14 gauge steel, aluminum painted, selected ash handle. **Price, 1.50.**



CANNON BLUE GRASS

Pure Missouri Grown Kentucky Blue Grass.—Nebraska's Pure Seed Law requires us to sell Blue Grass of a purity of 80 per cent with a germination of 40 per cent. This Blue Grass the past year tested 97 per cent pure, with a germination of 95 per cent. This year's stock will about equal last year's. It is the best produced; about four grades better than usually sold. **Price: Per lb., 60c; 5 lbs., \$2.75; 10 lbs., \$5.00.**

Fancy Kentucky Blue Grass.—This is the regular grade. It passes the state law. **Price: Lb., 35c; 5 lbs., \$1.65; bu. (14 lbs.), \$4.35.**

WHITE CLOVER LAWN SEED

Cannon Brand White Clover.—This is a special White Clover seed that is grown in Wisconsin. It is practically pure seed, testing better than 99 per cent

FLOWER SEEDS

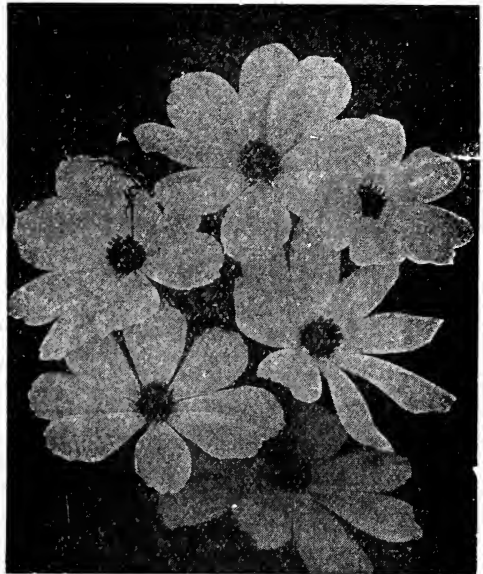
Gunn's Fine Flower Seeds Grow

We secure our flower seed from one of the most reliable and most careful importers of flower seed in the U. S. All of this flower seed is most carefully tested, and will grow **if you treat it right.** See that soil is packed. Use a shade of burlap when starting small flower seed in the sunshine, and **don't cover too deep. DON'T PLANT TOO DEEP. (Only twice the depth of the seed.)**

Flowers are inexpensive and if you select any of the ones listed below. **THEY ARE AS EASY TO GROW AS WEEDS.** For flowers all summer long and for all kinds of colors of flowers at all times be sure to plant **SWEET PEAS, HOLLYHOCKS, PINKS, NASTURTIUMS, ASTERS, and more of the OLD-FASHIONED FAVORITES.**

SEEDS OF ANNUALS

- ALYSSUM.**—Sow early. Good for borders.
Sweet.—Fragrant white flowers. The old favorite. **Pkt., 8c.**
Little Gem.—Dwarf and compact. **Pkt., 8c.**
Carpet of Snow.—Very dwarf and trailing. **Pkt., 8c.**
- AGERATUM.**—Good border plant. Blooms all summer. Grows 5 inches tall. Blue or white. **Pkt., 8c.**
- ASTERS.**—Bloom late summer and fall. Sow early.
Hohenzollern.—Very large, double with curved petals. All colors mixed. **Pkt., 8c.**
Giant Comet.—Grows like a Chrysanthemum. Mixed colors. **Pkt., 8c.**
Giant Comet.—White, **Pkt., 15c.**
Giant Comet.—Blue. **Pkt., 15c.**
Giant Comet.—Crimson. **Pkt., 15c.**
Branching.—Large and late. All colors. **Pkt., 8c.**
Betteridge Quilled.—Grows 12 inches high, with large brilliant flowers. Mixed. **Pkt., 8c.**
Truffaut's Peony Perfection.—Large, beautiful. Very double. Mixed colors. **Pkt., 8c.**
- ANTIRRHINUM (Snapdragon).**—Grows easy, a showy border plant.
Tall sorts, mixed, all colors, Pkt., 8c.
Dwarf sorts, mixed, all colors. Pkt., 8c.
- BALSAM (Lady's Slippers or Touch Me Not).**—Start seed in house.
Camellia Flowered.—The best, very large and double. Mixed. **Pkt., 8c.**
- BACHELOR BUTTON.**—**Pkt., 8c.**
- CASTOR BEANS.**—Large sized plants, grow 8 feet tall. **Pkt., 8c.**
- CALLIOPSIS.**—Double mixed.
- CANDYTUFT.**—Blooms early, making a striking display.
Empress.—Forms a mass of pure white flowers. **Pkt., 8c.**
Giant Hyacinth.—Flowered white.
Fine Mixed.—Red, white and pink. **Pkt., 8c.**
- CENTAUREA.**—Fine old-fashioned flowers.
Cyanus.—(Bachelor's Button, Blue Bottle. Ragged Sailor, Corn Flower).—Comes up every year from self-sown seed. Mixed. **Pkt., 8c.**
Gymnocarpa (Dusty Miller).—Silvery white foliages. **Pkt., 5c.**
- CLARKIA.**—Double mixed. **Pkt., 10c.**
- COCKSCOMB or Celosia.**—Free-blooming, graceful, plants, produce spikes or beautiful feathery and comb-shaped flowers. **Pkt., 8c.**
Tall Mixed.
Dwarf Mixed.
- COSMOS.**—Sow early and transplant. Blooms in fall.
Striped.—Large white centers, petals striped. **Pkt., 10c.**
Lady Lenox.—Extra large shell pink flowers. **Pkt., 10c.**
Lady Lenox White.—Large white flowers, **Pkt., 10c.**
Early flowering mixed. Pkt., 10c.
Klondike.—**Pkt., 10c.**
Mammoth Giant.—Very large. All colors. Mixed. **Pkt., 8c.**
- CALIFORNIA POPPY (Escholtzla).**—Very showy, large yellow cup-like flower. **Pkt., 8c.**
- EVERLASTINGS.**—Dry for winter bouquets. All kinds, Mixed. **Pkt., 8c.**
- FOUR O'CLOCK.**—The old favorite. Mixed. **Pkt., 8c.**
- DIANTHUS.**—Perennial pinks that bloom the first year.
Indian Pinks (Double Chinese).—Mixed. **Pkt., 8c.**
Japan Pinks.—Double, very large. Mixed. **Pkt., 8c.**



Cosmos.

- Fireball.**—Bright scarlet. **Pkt., 8c.**
Snowball.—Pure white. **Pkt., 8c.**
Midnight.—Blood red. **Pkt., 8c.**
 All mixed. **Pkt., 8c.**
Count Kerchove.—**Pkt., 8c.**
- JOBS TEARS.**—**Pkt., 8c.**
- ASTERS.**
HOLLYHOCK.—Annual mixed. **Pkt., 8c.**
HELICHRYSUM.—Double mixed. **Pkt., 8c.**
KOCHIA (Summer Cypress).—Green plants that look like little evergreens. **Pkt., 8c.**
- LARKSPUR (Hyacinth Flowered).**—Free bloomer. Flowers resemble hyacinths. Mixed. **Pkt., 8c.**
Special Mixed.—All colors. **Pkt., 10c.**
- LOBELIA.**—Annual. These are charming little plants with numerous small blossoms all summer. They flower from seed the first year. Used to an advantage in edging beds and in pots. The blossoms are particularly bright in appearance. **Pkt., 8c.**
- MARIGOLD.**—The old-fashioned free bloomers. Easy to grow.
African.—Immense double yellow flowers. Tall stems. **Pkt., 8c.**
French.—The dwarf marigold, with double flowers in rich shades of yellow and brown. **Pkt., 8c.**
- MIGNONETTE.**—The old favorite. Sow every two weeks. Large flowering. Mixed. **Pkt., 8c.**
- NICOTIANA.**—Flowers salver-shaped with long tubular corollas. About 3 ft. high. **Pkt., 10c.**

All 8c pkts., 4 for 25c. All 10c pkts., 3 for 25c

Nasturtiums

DWARF.

Our stock was grown for us by a most careful California grower.

GUNN'S SUPERB MIXTURE.—This is composed of the richest and most varied combination of named colors and will produce a rich profusion of beautiful colors. $\frac{1}{4}$ lb., 50c; 2 oz., 35c; oz., 20c; pkt., 8c.

PORTULACA (rose Moss).—These beautiful low-growing annuals bloom from spring till fall.

Single Mixed.—All colors. Pkt., 8c.

Double Mixed.—All colors. Pkt., 10c.

PETUNIAS.—Continued bloomers, pleasing fragrance and easy to grow.

General Dodds.—Velvety dark red. Pkt., 8c.

Snowball.—Pure white. Pkt., 8c.

Fine Mixed.—Pkt., 8c.

Giant Ruffled and Fringed.—Single flowers of all colors and sizes. Pkt., 10c.

Double Mixed.—Pkt., 20c.

PHLOX DRUMMONDI.—Blooms from July to frost.

Pure White, Showy Scarlet Rose.—Each color separate or mixed. Pkt., 8c.

Starred and Fringed.—Dwarf. Pkt., 8c.

POPPIES.—Grow any place.

Tulip.—Cup-shaped, brightest scarlet. Pkt., 8c.

Paeony Flowered.—Very large and double. All colors. Pkt., 8c.

White Swan.—Immense double fringed flowers. Pure white. Pkt., 8c.

Shirley.—Brilliant crimson edged with white. Pkt., 5c.

SCABIOSA (Mourning Bride).—Excellent for bouquets.

Tall German Double.—All colors. Mixed. Pkt., 8c.

Black Prince.—Very large, dark rich maroon. Pkt., 8c.

SALPIGLOSSIS.—Mixed. Pkt., 8c.

SALVIA.—Splendens.—(Flowering Sage).—A continuous bloomer with spikes of fiery red. Pkt., 8c.

SMILAX.—In many respects the Smilax is the most useful, and it is certainly one of the most graceful limbers which adorns the greenhouse or conservatory; for bouquets and floral decorations it is indispensable. Pkt., 8c.

STOCKS (German Ten Weeks).—Large double rosette-like flowers. All colors. Mixed. Pkt., 8c.

VERBENA.—Sow early, bloom profusely from June to frost. Scarlet, white, pink, blue, purple. In separate colors or mixed. Pkt., 8c.

ZINMIA.—Grows easily. Blooms all summer.

Giant Flowering.—Perfectly double. Pkt., 8c.

Dwarf Fireball.—Brilliant scarlet. Pkt., 8c.

Zebra.—Red and yellow striped. Pkt., 8c.

White Gem.—Small, double, white. Pkt., 8c.

WILD FLOWER GARDEN MIXTURE.—Pkt., 8c.
Good mixture of all easy growing flowers.

Pansies

We are most careful in the selection of the pansy seed that we sell. It is all high grade seed and grown by the best European flower seed specialists.

GIANT INTERNATIONAL.—We believe this is the the best pansy mixture in existence. It is composed of the cream of ten pansy specialists' collections. Besides the fancy selections of these growers, it also contains noted named varieties of all expert growers. Lb., \$200; $\frac{1}{4}$ lb., \$65; oz., \$16; $\frac{1}{2}$ oz., \$3; pkt., 20c.

GIANT PANSY MIXTURE.—This mixture is made of all shades of the giant pansies, such as Butterfly, Orchid-Flowered, Trimardeau, Bugnots and Cassier types. Oz., \$12; $\frac{1}{2}$ oz., \$2; pkt., 15c.

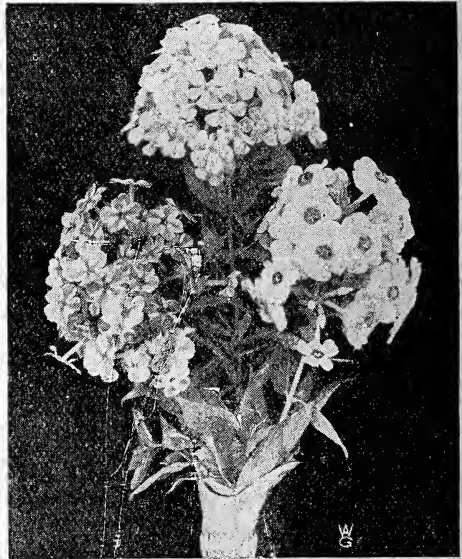
CUT FLOWER MIXTURE.—This is a good mixture of all the other desirable pansies. It is a splendid medium priced mixture. Oz., \$1; pkt., 8c.

Sweet Peas

We get ours from one of the very best California growers. They will please you. Don't plant too thick.

GUNN'S GIANT SPENCER MIXED.—Sow this mixture and you will have flowers that are unsurpassed. The old small-flowering types have been eliminated and nothing but the very highest and best types of Giant Spencers put in. Many stems will carry four or more blooms beautifully crimped and of immense size. Lb., \$2.50; $\frac{1}{4}$ lb., 75c; oz., 25c; pkt., 8c.

GIANT FLOWERING MIXTURE.—Selected from the best flowers of Unwins, Granda Floras and other desirable kinds. No small, undesirable types included. Lb., \$1.30; $\frac{1}{4}$ lb., 35c; oz., 15c; pkt., 8c.



Phlox Drummondii

Climbers

BALSAM, APPLE AND PEAR.—Very rapid climbers, golden yellow fruit. Pkt., 5c.

CARDINAL CLIMBER.—A very distinct rapid grower with beautiful deeply cut leaves. It is covered with a blaze of circular, fiery, cardinal red flowers from July to frost. Plant in a warm sunny place. Pkt., 8c.

CYPRESS VINE.—A most beautiful climber, scarlet or white star-like flower. Pkt., 8c.

DOLICHOS (Hyacinth Bean).—Splendid climbers, producing clusters of pea-like purple and white flowers. Pkt., 5c.

GOURDS.—In separate shapes or mixed. Pkt., 8c.

HUMULUS (Japanese Hop).—A rapid grower with variegated leaves. Pkt., 8c.

MOON FLOWER.—It grows rapidly, often reaching 30 ft., large white flowers. Pkt., 8c.

MORNING GLORY.—The well-known kind. Pkt., 8c.

Japanese Giant.—Mammoth flowers, from 4 to 5 inches across. Pkt., 8c.

NASTURTIUMS (Tall).—These are ideal ramblers that cover fences quickly. They bloom continually till frost. All colors. Mixed. $\frac{1}{4}$ lb., 50c; 2 oz., 35c; oz., 20c; pkt., 8c.

WILD CUCUMBER.—Covers a trellis very quickly with a vine filled with white sweet-scented flowers. Pkt., 8c.

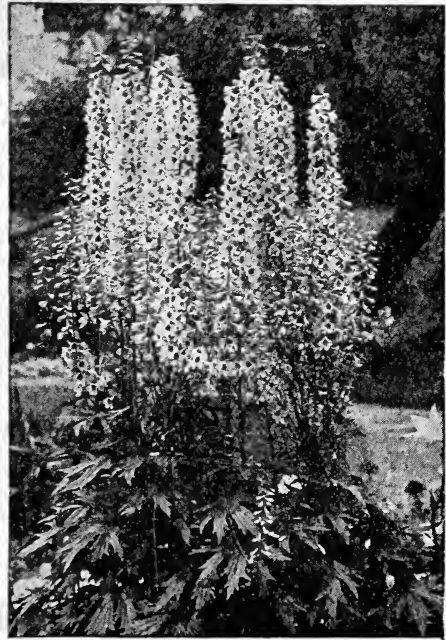
All 8c pkts., 4 for 25c.

All 10c pkts., 3 for 25c.

Perennials and Biennials

Start in the house early. All these will live outdoors through the winter.

- AGROSTEMMA.**—Coronaria varieties. Mixed. **Pkt., 8c.**
ENGLISH DAISY—DOUBLE (Bellis).—White and pink. Mixed. **Pkt., 5c.**
COLUMBINE (Aquilegia).—An old favorite. Single mixed. **Pkt., 8c.**
Special Mixed.—Contains all varieties of single and double. **Pkt., 15c.**
CAMPANULA MEDIUM (Canterbury Bell).—Single mixed. **Pkt., 8c.**
 Double mixed. **Pkt., 10c.**
Calycanthemum (Cup and saucer).—All colors. Mixed. **Pkt., 8c.**
CARNATIONS.—Double mixed. **Pkt., 8c.**
Margaret.—Dwarf. **Pkt., 8c.**
Red Grenadin.—Double, red. **Pkt., 8c.**
White Grenadin.—Double, white. **Pkt., 8c.**
FOX GLOVE (Digitalis).—Blossoms in July and August. **Pkt., 8c.**
PERENNIAL LARKSPUR (Delphinium).—Blossoms from June till frost if flowers are cut. **Pkt., 8c.**
DAISY, GIANT SHASTA.—The flowers are extremely large. Centers yellow, petals white. **Pkt., 8c.**
FEVERFEW (Pyrethrum).—Flowers aster-like, blooming throughout the summer. Mixed. **Pkt., 8c.**
FORGET - ME - NOT (Myosotis).—Bright blue **Pkt., 8c.**
HOLLYHOCK — Chater's Superb.—Double mixed. **Pkt., 8c.**
Alleghany.—Finely fringed. Large sized. Mixed. **Pkt., 8c.**
ORIENTAL POPPY.—Flowers are of enormous size, often 6 inches in diameter. **Pkt., 8c.**
CORN FLOWER ASTER (Stokesia Cyanea).—Handsome lavender blue cornflower-like blossoms. **Pkt., 8c.**
SWEET WILLIAM.—Produces large clusters of brilliant flowers.
Bright Scarlet, Pure White.—Single and double. Mixed or in separate colors. **Pkt., 8c.**



Larkspur.

- GERANIUMS.**—All kinds of colors. Plants, depending on size, **per doz., 75c to \$2.00.**
COLEUS.—Foliage plant. **Each, 5c; doz., 50c.**
DAHLIAS.—All colors. Small plants, **per doz., \$3.00.**
FERNS.—All kinds of ferns. **Each, 15c to \$1.50.**
SALVIA (Flowering Sage).—Plants, **each, 10c; doz., 80c.**
VERBENAS.—Fine collection. **Plants, each, 5c; doz., 65c.**
MADERA VINE.—A rapid climber. Strong tubers. **Each, 5c; doz., 30c.**
TUBEROSES.—Wax-like, very white, fragrant flower. **Bulbs, each, 5c; doz., 40c.**
CALADIUM ESCULENTUM (Elephant Ear).—Bulbs, **each, 15c.**

Summer Flowering Bulbs

CANNAS

- ALLEMANIA.**—Scarlet orange, bordered with yellow. 6 feet.
ALPHONSE BOUVIER.—Richest red; showy variety. 5 feet.
BEAUTE POITEVINE.—A rich glowing crimson. 2 1/2 feet.
BURBANK.—Immense flowers of rich yellow. 3 1/2 feet.
EGENDALE.—Bronze foliage, flowers deep red. 4 1/2 feet.
FLORENCE VAUGHAN.—Pure yellow dotted with red. 5 feet.
FREDERICK BENARY.—Currant with orange throat and yellow edge. 5 feet.
KING HUMBERT.—Giant flowered; orange scarlet; bronze leaf. 4 feet.
MADAME CROZY.—Crimson scarlet with yellow border. 3 1/2 feet.
MME. BERAT.—Large flower of a soft rosy carmine, nearly pink. 6 feet.
QUEEN CHARLOTTE.—Rich crimson with band of yellow. 4 feet.
Price.—All varieties of Cannas. Started plants. **Each 15c; doz., \$1.50. Postpaid.**
CARNATIONS.—All colors and varieties. **Each 12 1/2c; doz., \$1.25.**
CHRYSANTHEMUMS.—Any colors. Plants, **per doz., \$2.00.**

Gladioli

This is one of the best summer-flowering bulbs. It is a flower anyone can grow and is lovely enough to satisfy the most exacting. The flowering season may be continued by planting from the middle of April to the first of June. Set the bulbs 6 inches apart and 2 to 4 inches deep.

- AUGUSTA.**—Lovely, pure white, blue anthers. **Postpaid, each, 5c; doz., 40c.**
AMERICA.—The finest pink Gladiolus yet introduced; especially valuable to florists; spikes 2 to 3 feet long; flowers are large, open and spreading. Color delicate lavender pink. **Postpaid, each, 5c; doz., 40c.**
BARON HULOT.—Dark purplish violet. **Postpaid, each, 6c; doz., 60c.**
BRENCHLEYENSIS.—Intense fiery scarlet. **Postpaid, each, 5c; doz., 40c.**
MRS. FRANCES KING.—Bright "Flamingo" pink, strikingly attractive. Flowers 4 to 5 inches across, are borne on stalks 5 feet high. **Postpaid, each, 5c; doz., 50c.**
YELLOW SHADES.—**Postpaid, each, 5c; doz., 50c.**
LEMOINES HYBRIDS.—The size and beautiful shadings of this strain give the greatest possible range of varieties. **Postpaid, each, 5c; 6 for 25c; doz., 40c.**
CHILDSI, FINE MIXED.—All colors and varieties. Everyone a beauty. **Postpaid, each, 5c; doz., 40c.**
GOOD MIXED.—Especially recommended to make a good brilliant show in the garden for a small outlay. All bloomers. **Postpaid, each, 3c; 4 for 10c; doz., 25c.** By express, at buyers' expense, 50 for \$1.00; 100 for \$1.50.

All 8c pkts., 4 for 25c.
 All 10c pkts., 3 for 25c.



The Rose is justly the Queen of Flowers.

Roses

We furnish all roses growing in pots. Then you know they are alive and that they will keep growing when set out. All that we list will stand our winters with proper care.

HARDY CLIMBING ROSES

- Crimson Rambler**—The old standard that blooms all summer.
 - Philadelphia Rambler**—Brighter and deeper red than Crimson Rambler, very double.
 - Dorothy Perkins**—Pure pink, about twice as large as Crimson Rambler.
 - White Dorothy Perkins**—The best pure white climber.
 - Tausendschoen**—A soft pink, changing to a bright crimson rose. Almost thornless.
 - Lady Gay**—Warm Cherry Pink, shading to soft white, delicately perfumed.
- | | |
|-----------------------------------|-----------------------|
| Price of all Ramblers—Medium..... | 25c to 35c, postpaid. |
| Large..... | 50c to 75c, postpaid. |

PERPETUAL BLOOMERS

- Richmond**.—A rich red with long pointed buds. Open flowers very large. Free bloomer.
- Kaiserline**.—Extra large, pure white, very double.
- Killarney**.—A grand new rose, with long pointed shell pink buds.
- American Beauty**.—Very large, fragrant, red.
- Perle Des Jardens**.—A fine, pure yellow, free bloomer.
- La France**.—Satin pink, large and very fragrant.
- Hermosa**.—Large, very double, free blooming, fragrant, beautiful, clear pink rose.
- Clothilde Soupert**.—Vigorous bloomer, light pink good for bedding.
- Rhae Reid**.—A fine, summer, red rose. Large and double.
- White Killarney**.—Pure white, grand bud, good better.
- My Maryland**.—Large, pure double pink. Free bloomer.

General Jacqueminot Roses.

Lady Hillingdon.—Long, deep coppery yellow pointed buds, that open up into most beautiful blooms.

Prices of New Roses.

- From 3" pots..... 25c postpaid
- From 4" pots..... 50c postpaid

BABY RAMBLERS

Erna Techendorff.—The best Crimson "Baby." Very beautiful and flowers do not fade.

Jessie.—Frest of bloomers. Bright cherry crimson flowers, which never fade.

Prices on Baby Ramblers.

- 4" pots..... 35c
- Large..... 75c

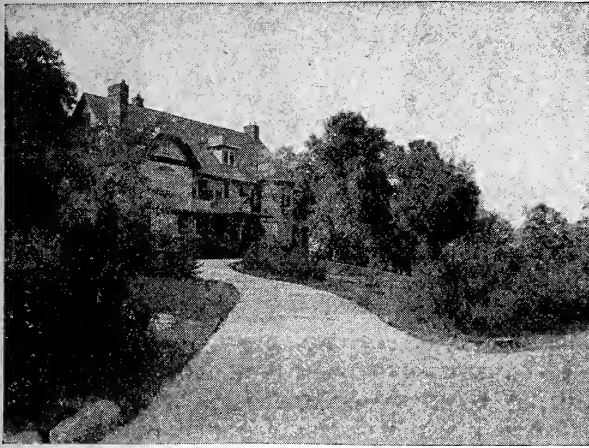


La France Rose.

OTHER HARDY ROSES

- Virginia R. Cox**.—Reddest of all reds, easy to grow, blooms continually.
 - Gen. Jacqueminot**.—Rich crimson scarlet with handsome bud.
 - Magna Charta**.—One of the best fine large pinks.
 - Paul Neyron**.—Large, full, clear pink.
 - Ulrich Brunner**.—Rich cherry red and thornless.
 - Madam Plantier**.—Pure white and free bloomer.
 - Prince Camille De Rohan**.—Very dark velvety crimson, changing to intense maroon.
- Price of All Hardy Roses.**
- Extra large, pot grown..... 60c postpaid

Ornamental Hardy Shrubs and Climbers



A few dollars spent in beautifying your home grounds will be money well spent.

All Hardy.

ORIENTAL SHRUBS

Aquilegia (Columbine)—Fine double mixed. Large clumps, each, **15c**; larger, **35c**.

Bleeding Heart.—Large roots. Each **35c**.

Bridal Wreath.—The true one with double white flowers. Strong plants **35c to 65c postpaid**.

Deutzia Gracilis.—Low growing, white flowers. **40 to 75c**.

Hardy Phlox.—All colors and shades. Pure white, pink, salmon to brilliant carmine. Large clumps, each **25c, postpaid**.

Hardy Hibiscus.—Good roots, **25 to 50c postpaid**.

Honeysuckle, Tartarian.—Upright grower, pure white flowers. Hardy. **70c postpaid**.

Hydrangea Paniculata.—Has large bunches of white flowers, lasting weeks. Hardy. **50c to \$1.00, postpaid**.

Iris.—German, all shades. Hardy. **25c, postpaid**.

Lilac.—Very fragrant. Both white and purple. Large plants. Hardy. Each **25 to 50c, postpaid**.

Spirea, Arothony Waterer.—Dwarf, deep red. Extra fine variety. Strong plants, **35 to 50c, postpaid**.

Spirea, Billardia.—Produces fine plume-like sprays of shell pink flowers. Strong plants. **35 to 50c, postpaid**.

Spirea Van Houtii or Bridal Wreath.—Becomes literally covered with pure white flowers. Strong plants. **35 to 60c, postpaid**.

Snowball.—According to size. **50 to 60c, postpaid**.

Syringa (Mock Orange).—Pure white, fragrant flowers. Large plants. **75c, postpaid**.

Weigelia Eva Rothke.—Flowers large, bright red and everblooming. Large plants. **60 to 75c, postpaid**.

Weigelia.—Produces quantities of soft shell pink, trumpet-shaped flowers. Large plants. **50c, postpaid**.

CLEMATIS

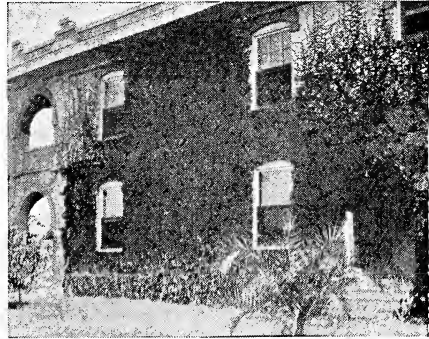
Most Beautiful Hardy Climbers.

Jackmanii.—Large rich purple. 2 to 3 year old roots. **75c to \$1.00, postpaid**.

Henryii.—Large pure white. 2 to 3 year old roots. **75c to \$1.00, postpaid**.

Ramona.—Very large, sky blue. 2 to 3 year old roots. **75c to \$1.00, postpaid**.

Paniculata.—Small, graceful, white, fragrant flowers. Large plants, **60c, postpaid**.



Boston Ivy nearly covers this house.

CLIMBERS

Wisteria.—Fine climbers, with large clusters of purple flowers. Large plants, each **50c, postpaid, 60c**.

Scarlet Trumpet.—A rapid climber, with large, scarlet, trumpet-shaped flowers. Dormant roots. **35 to 50c, postpaid**.

Honeysuckles.—In 4 colors. Scarlet Trumpet, Yellow Trumpet, Monthly Fragrant, White and Pink. Large plants. Each, **50 to 75c, postpaid**.

Boston Ivy (Ampelopsis Veitchii).—Covers walls very quickly. Each, **45c**.

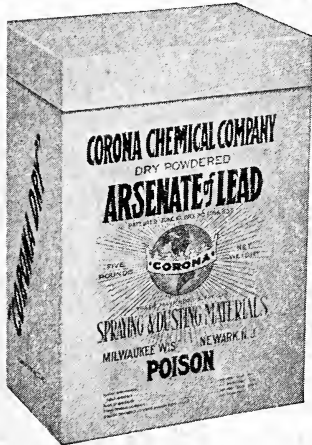


Flowers of Clematis Paniculata.

Insecticides and Syraying Materials JUST DUST

This is made possible by using **Corona Dry** (Arsenate of Lead) and **Corona Dusting Sulphur**. Just dust your **fruit trees, vegetables, shrubs, plants and small fruit.**—The combination kills all leaf-eating insects and controls most fungous diseases. It clings to the leaves and will not wash off easily. **Booklet free. For large orchards we recommend spraying.**

“CORONA DRY” (Arsenate of Lead.)



Chemically pure Arsenate of Lead, powdered form. This product contains one-third arsenic—the most effective known poison for leaf-eating insects—which is closely combined with pure lead in such a way that no free arsenic is left to “burn” the foliage.

It will not lose strength with age. Also best arsenate to use for wet spray. **½ lb., 35c; 1 lb., 65c; 5 lbs., \$2.50; 10 lbs., \$4.50.**

Special prices in large lots.

Amount to use for potatoes—4 lbs. to acre. For trees—5 lbs. per acre.

“S-W” DRY LIME-SULPHUR

Think of the trouble and expense you will save by using this Dry Lime and Sulphur. Simply mix with water. Just as effective as the old style. Been tried out by several experimental stations.

10 lbs. Dry Lime-Sulphur make 50 gallons spray. 80 lbs. costing **\$8.90**, make 400 gallons spray. Cheaper than the liquid Lime and Sulphur. **Price: 5 lbs., 85c; 10 lbs., \$1.65; 25 lbs., \$3.35; 50 lbs., \$6.00; 100 lbs., \$10.00.**

CORONA SULPHUR

For Fungous Pests.

The most common fungous diseases that annoy the gardener and orchardist are Early Blight on potatoes, Scab on apples and pears, and Brown Rot on peaches. **Corona Dusting Sulphur** is good for all these and can be used by itself or in combination with “**CORONA DRY.**” mixing the two in equal proportions. **½ lb., 12c; 1 lb., 20c; 5 lbs., 75c; 10 lbs., \$1.20.**

“CARCO” VEGETABLE SPRAY

Carco diluted with 100 lbs. of water kills cut-worms and keeps them out of the soil; also kills root maggots and cabbage worms.

It has proved a **REMARKABLE SUCCESS** in **INCREASING THE YIELD** of Cabbage, Cauliflower, Turnips, Radishes, Onions, Beans, Beets, etc. **Pt. can, 50c; qt. can, 75c.**

SULPHOR TOBACCO SOAP

Especially fine for spraying sweet peas, roses, shrubs and vines to kill bugs, slugs and lice. **3 oz. cake (6 qts. water), 15c; 8 oz. cake (4 gals. water), 25c.**



Reg. U. S. Pat. OFF.
Pat. March 16 and Nov.
9, 1897.

BUG DEATH

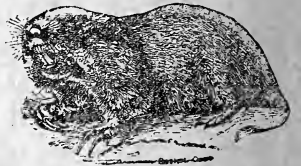
This is a powder used for killing any bug or worm that eats the foliage or flowers of any plant. It is absolutely harmless to plant or animal life, thus making it a safe poison. Can be used dry or with water. **Price: 1 lb., 18c; 3 lbs., 45c; 5 lbs., 60c; 12 lbs., \$1.25.**

**WHALE OIL SOAP.—35c lb.
GRAFTING WAX.—50c lb.**

GOPHER KILLERS

Kills Pocket Gophers, Ground Squirrels, Prairie Dogs, Ground Hogs, Etc.

Don't let the Pocket Gophers ruin your alfalfa fields. Don't let the Ground Squirrels spoil your corn stand. Don't let the Prairie Dogs lay waste your fields that would otherwise produce crops.



It's easy to poison them. A little time in early spring will rid your farm of these destructive pests.

Nox-Em-All Gopher Tablets



are the most effective poison we know. They are **sure death** to Pocket Gophers, Ground Squirrels, Prairie Dogs, Ground Hogs and other field Rodents. They are made of tidbits especially attractive to these pests which eat them greedily. **They are easy to use—sure in results.** Buy them—use them and save your crops. Directions printed on each package.

Put up in two sizes.
200 tablets..... \$.50
500 tablets..... 1.00



POISONS CAN NOT BE SENT BY MAIL.

GOPHERGO

It kills Gophers, Squirrels and Prairie Dogs. Guaranteed to get them. **Price: ½ lb. can, 30c; 1 ½ lb. can, 60c; 3 ¼ lb. can, \$1.15.**

MICHELSON'S KILL-EM QUICK

Kills Gophers.

Mix with grain. **Price, 50c, 75c and \$1.25.**

Prices Subject to Change

Devoe Insecticides and Fungicides

INSURE YOUR GARDEN AND ORCHARD AGAINST BUGS



For the Convenience of the Consumer, we put Paris Green in

1/4 lb. Cartons.....	35c
1/2 lb. Cartons.....	50c
1 lb. Cartons.....	90c
5 lb. Cans.....	\$4.00

LIME and SULPHUR SOLUTION

GUARANTEED TO TEST 33 DEGREE BEAUME



A Fertilizer, A Sheep Dip, A Fungicide. It is generally conceded that the best defense against SAN JOSE SCALE and kindred enemies of the orchard, is in spraying with a solution of Lime and Sulphur. The experimental stations and leading orchardists now generally recommend its use. To meet the growing demand for this remedy, we are now supplying the trade with Devoe Lime and Sulphur Solution. The two are perfectly combined, thus securing the largest percentage possible of Sulphide of Sulphur, the only form of sulphur of value as a spray. It is clear, free from insoluble matter, highly condensed and of great strength.

Put in

1/4 Gal. Cans, (48 to case).....	45c
1 Gal. Cans, (6 to case).....	90c
5 Gal. Kits.....	\$3.35
1/2 Barrels, (about 30 gals.).....	Ask for price
Barrels, (about 50 gals.).....	Ask for price

DEVOE BORDEAUX MIXTURE



Dry Powdered Form. FUNGICIDE ANALYSIS

Combine Copper.....	11.0%
Equivalent to Metallic Copper.....
..... or Copper Oxide.....	14.0%
Inert Ingredients.....	89.0%

DIRECTIONS FOR USE

To Control Scale and Blight.—For all Fungous diseases. The best Fungicide for curing or preventing Bloch, Rot, Mildew, Blight, Leaf Curl, Scab or other Fungous Diseases on fruit and plants, if used dry.

For Potatoes, dust without reduction, 4 to 5 pounds per acre (according to size of vines).

For Fruit Trees, dust after reducing one pound of DRY BORDEAUX with 20 lbs. of lime dust.

For Spray: To make the equivalent of 4-4-50 mixture, use eight pounds of DRY BORDEAUX MIXTURE to 50 gallons of water. For 5-5-50 mixture, use 10 pounds to fifty gallons of water.

Put in

1 lb. Cartons (for 6 gals. water).....	40c
5 lb. Cartons (for 30 gals. water).....	\$1.60
10 lb. Boxes (for 60 gals. water).....	2.90
25 lb. Drums (for 150 gals. water).....	6.65
50 lb. Drums.....	Ask for price
100 lb. Drums.....	" "
300 lb. Barrels.....	" "

BROWN AND GRAY PRUNING PAINT

Ready Mixed.

This is an insecticide paint, to be used on all trees, shrubs and vines after pruning. It not only helps to heal the wound, but keeps out all moisture, prevents "bleeding" and kills insects. Bbls. a bout 50 gal. to bbl. 5 gal. cans. 1 gal. cans, 6 to case. 1/4 gal. cans, 30 to case.

Write for Book of Instructions.

DEVOE PURE PARIS GREEN

ANALYSIS.

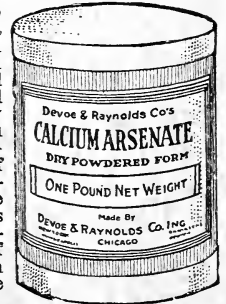
Arsenious Oxide, combined with Copper, not less than 50% Water Soluble Arsenic, not more than..... 3.5%

The Old Reliable, a strong effective poison for Potato Bugs, Tobacco and other leaf-eating insects. Can be applied either dry or in a solution of water. DEVOE—the strongest and brightest Paris Green on the market.

DEVOE CALCIUM ARSENATE

Dry Powdered Form.

For the control of Potato Bugs. Calcium Arsenate is a lighter, more fluffy powder than Arsenate of Lead or Paris Green—more bulky. When used dry, will dust more plants per pound, and when mixed with water will stay in suspension better and give you better and more uniform distribution. Lead Oxide in Arsenate of Lead has no insecticide or fungicide value; but Calcium Arsenate is made on a lime base which has fungicide value. Lime adheres perfectly to foliage; will not wash off easily and is white. For protection against the potato beetle, cabbage and tobacco worms.



Put in

1/2 lb. Cartons.....	By lb. 30c	25 lb. Drums.....	\$6.00
1 lb. Cartons.....	" 50c	50 lb. Drums—Ask for price	
5 lb. Cartons.....	" \$2.00	100 lb. Drums.....	
10 lb. Boxes.....	" \$3.50	200 lb. Barrels. " " "	

Devoe "Sure Noxem"

Dry Powdered Form

One of the best vegetable insecticides in use. Specially recommended for destroying worms and insects.

What to Use it on.

Cabbage, Cauliflower, Tomato Plants, Cucumber Vines, Melon Vines, Currant Bushes, Gooseberry Bushes, Vegetables and Flowers of all kinds attacked by Leaf-eating insects.

Is put in

1 lb. Sifter Top Cartons..... 20c
Write for Book of Directions.



"BLACK LEAF 40"

Nicotine Sulphate—40% Nicotine

This is the insecticide that is so highly recommended by Experiment Stations. It destroys Aphis (plant lice), Thrips, Leaf-hoppers on all tree, bush and vine fruits, vegetables, field crops, flowers and shrubs; also Apple Red Bug, Pear Psylla and similar soft-bodied sucking insects—all without injury to foliage.

May be combined with other sprays. Highly concentrated. Soluble in water—easy to mix—does not clog nozzles.

You can not go wrong by ordering "Black Leaf 40" for sucking insects.

PRICES:

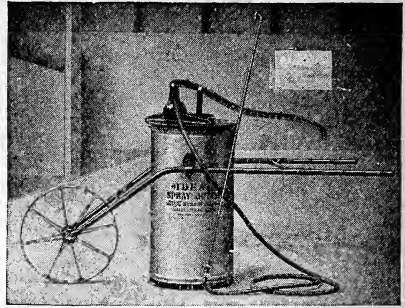
1 oz. - \$0.25—makes 6 gallons spray
1/2 lb. - 0.75— " 40 to 120 gals. spray
2 lb. - 2.50— " 160 to 500 " "
10 lb. - 10.75— " 800 to 2500 " "



SPRAYERS



No. 7.—One pint, 40c; one quart, 60c.



IDEAL

Easy to move. Tank holds 15 gallons. Can't slop. Has mechanical agitator. Sprays whitewash and all insecticides. Complete, with 10 feet of hose 3 feet extension pipe, nozzle, shut-off cock, etc.

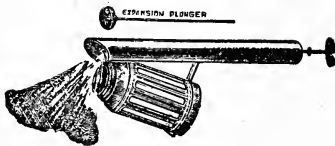
Price, \$21.00.



"EASY"

Has a large powerful pump. Automatic shut-off. Holds one gallon. 23 inches long. For large gardens, chicken houses, etc.

Price.—Galvanized, \$2.25.



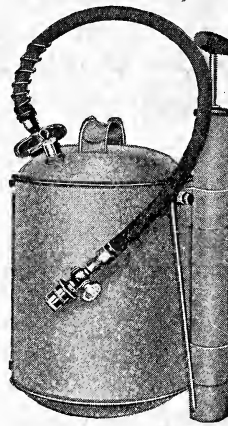
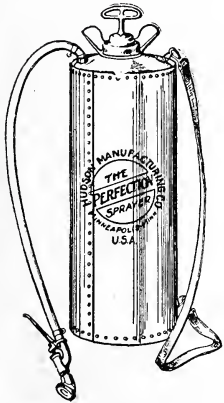
No. 20.—With quart fruit jar, 90c.

Perfection Sprayer

The hose is attached to the sprayer at an angle so that it will not kink and become cracked and broken. The shoulder strap is attached with snaps and can be quickly and easily removed. The hose is 3/4-in., 5-ply cloth inserted and is equipped with our automatic shut-off nozzle.

This sprayer will handle white-wash, Bordeaux mixtures, etc., perfectly.

Weight, 9 lbs. empty. All sprayers tested to 60 lbs. before leaving factory. Price, \$6.50.



No. 30-H

Galvanized Iron, three gallons.

Price, \$3.50.



Little Giant Sprayer

Can be used on trees, shrubs, around the chicken house, or to spray animals. All brass.

Price.—Complete, \$4.50.

No. 301

Barrel Sprayer

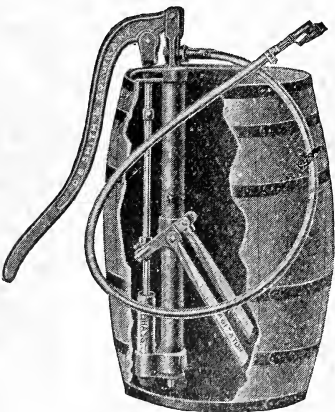
This double-acting pump is well made, with heavy brass cylinder and brass ball valves. Any kind of spraying material can be used, as it will not corrode or rust out.

Price

Complete, with 15 ft. hose, \$11.50.

No. 301. Barrel Sprayer.—With barrel, \$13.50.

No. 40.—Next size larger. Complete, without barrel, \$19.50.



Kant Clog

Holds 4 gallons. Gives both flat and round sprays.

Price.

Galvanized steel with 3 ft extension rod, \$5.00. Brass \$7.50.

New Corona Hand Duster

A Real Powder Gun.

This machine is made on a new principle and is more effective than any other kind yet introduced. It is well made, nickel-plated and, as there is nothing about it to wear out, should last a lifetime.

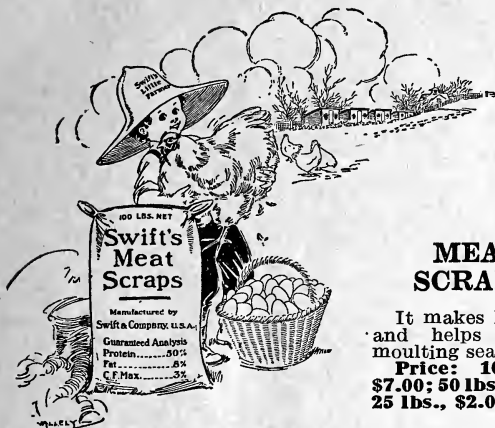


Price.—Each, \$3.25.

See Insecticides on Page 26-27

Ask for Catalog Describing Larger Sprayers

POULTRY SUPPLIES



MEAT SCRAPS

It makes hens lay and helps in the moulting season.
Price: 100 lbs., \$7.00; 50 lbs., \$3.65; 25 lbs., \$2.00.

CONKEY'S BUTTER-MILK STARTING FOOD

This is the finest stuff you ever saw to feed little chickens. Feed it the first week. It prevents white diarrhea and gives the chicks a good healthy start.

Price: Packages, 25c and 50c; 10 lbs., 90c; 25 lbs., \$2.00; 50 lbs., \$3.90; 100 lbs., \$7.55.



CONKEY'S POLUTRY TONIC

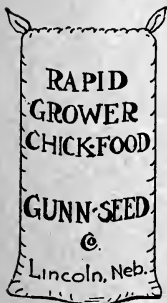
It's a Laying Tonic, Moulting Powder and Regulator. It gets hens in shape to lay, builds up tired organs and run-down systems. Fully guaranteed. Try it once.

Price: Packages, 30c and 60c; 12 lbs., \$1.40; 25 lbs., \$2.75.

GUNN'S "RAPID GROWER" CHICK FOOD

There is an awful lot of difference in chick food. Some people seem to try to make it as cheap as possible; some even put in musty seed. For what little food each chick uses, it doesn't pay you to run the risk. Buy good feed and thus keep your chicks growing and healthy. Our "Rapid Grower" is composed of nice, sweet seed, such as Millet, Cracked Wheat, Feterita, Kaffir and other seed necessary for the complete and rapid development of bone, muscle, flesh and feathers of little chicks. It is a healthy every-day feed, and will grow little chicks to your satisfaction.

Price: 4 lbs., 25c; 25 lbs., \$1.25; 50 lbs., \$2.25; 100 lbs., \$4.25.



PIGEON FEED.

We carry a full line of Pigeon foods. See us on other pigeon supplies. **Prices subject to change.**

Genuine Mixed Pigeon Food.—This is a mixture of Peas, Buckwheat, Kaffir Corn, Hemp, Cracked Corn, Wheat and other grains, suitable for pigeons and squabs. **Per 100 lbs., \$5.00; 50 lbs., \$2.65; 25 lbs., \$1.40.**

Red Cross Health Grit for Pigeons.—All birds relish it. Containing in condensed form the best tissue building ingredients for birds known to science, and the greatest variety of gritty matter. A reconstructive tonic mixture of only pure properties. **Price: 8 lbs., 25c; 100 lbs., \$2.00.**



EGG-O-HATCH

Use on incubator eggs. Weakens the shell, strengthens the chick, and makes larger hatches. Try it on half the eggs and you can tell. **Price (postpaid): Enough for 600 eggs, 55c.**

MILLET SEED

A fine scratch food for baby chicks. **Price: 3 lbs., 25c; 50 lbs., \$2.65; 100 lbs., \$5.00.**

GLUTON MEAL SEED

(For All Poultry)
Price: 25 lbs., \$1.00; 50 lbs., \$1.85; 100 lbs., \$3.50.

FILL THE BASKET EGG MASH

It causes the development of eggs, so the hen has to lay 'em. It is composed of Blatchford's Calf Meal combined with best quality of Meat and Fish Scraps, Alfalfa and Grain Meals. I feed it and it makes them lay.

Price: 25 lbs., \$1.50; 100 lbs., \$5.60.



POULTRY BONE

Keep it before hens all the time. All sizes. **Price: 100 lbs., \$5.25; 50 lbs., \$2.85; 25 lbs., \$1.50.**

MICA GRIT

Your chickens must have it to grind their food. **Price: 100 lbs., \$1.50; 50 lbs., 85c; 25 lbs., 50c.**

OYSTER SHELL

Genuine, ground just right. **Price: 100 lbs., \$1.50; 50 lbs., 85c; 25 lbs., 50c.**



BLATCHFORD'S MILK MASH

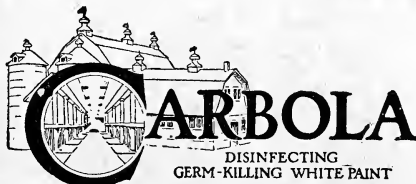
Makes mammoth chicks. Made of milk and milk substitutes. Feed as a mash with Gunn's "Rapid Grower" Chick Food.

Price: 25 lbs., \$1.65; 100 lbs., \$6.15.



CHARCOAL

All sizes. **Price: 50 lbs., \$2.50; 1 lb., 10c.**



Carbola is two things in one—a paint and a disinfectant. It is not a whitewash or a kalsomine. It is a finely-powdered mineral pigment, the same as used by many paint makers, combined with a germicide 20 times stronger than pure carbolic acid—but neither poisonous nor caustic. Carbola dries out a clear snow white—not dark or colorless—so there is no chance of missing any part of the surface under treatment. It stays white and it has no disagreeable odor. **Carbola paints and disinfects at one operation, with the same labor and in the same time required to whitewash or disinfect only.**

It costs 10 cents or less to cover 250 square feet of surface with Carbola.



AUTOMATIC FEEDER AND FOUNTAIN.

Feeds water, grain, chick food and grit for little chicks and larger fowls. Any Mason fruit jar fits it. Sold without jar. **15c, 2 for 25c, 2 for 35c, post-paid.**

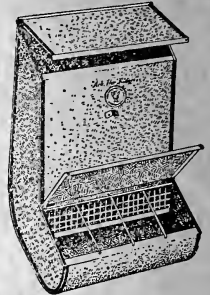
DRY FEEDERS

from \$1.25 to \$2.50, depending on size.



No. 19. FOUNTAIN

Galvanized Iron Holds 1 quart **35c.**



The feed saved by using this trough will more than pay for itself in a few weeks. Made of the best grade of galvanized iron in three sizes:

- No. 21, 12 inches long \$.50
- No. 22, 18 inches long75
- No. 23, 24 inches long 1.00



GRIT AND SHELL BOXES.

No. 45.—Small, for Baby Chicks, 45c.

No. 9.—3 compartment, for large chickens, \$1.00.

No. 8.—2 compartment, 80c.

CHAMPION LEG BAND

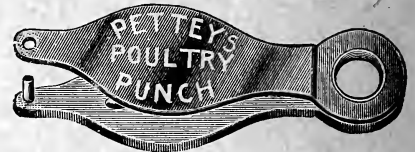


Fits any sized fowl. Will not come off. Numbered from 1 to 100. Made of aluminum. Price: Dozen, 15c; 25 for 25c; 100 for 75c.

PUNCH

For marking little chicks.

Postpaid 25c



LEE'S REMEDIES

- Lee's Egg Maker 30c and 60c
- Lee's Germazone Tablets 60c
- Lee's Germazone 60c

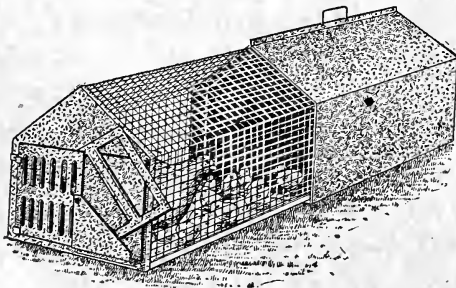
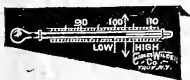
CONKEY'S GUARANTEED REMEDIES

- Conkey's Roup Remedy 30c, 60c and \$1.20
- Conkey's Roup Pills 30c, 60c and \$1.20
- Conkey's Canker Special 60c and \$1.20
- Conkey's Cholera Remedy 30c and 60c
- Conkey's Sorehead (Chickenpox) Remedy 30c and 60c
- Conkey's Bronchitis Remedy 60c
- Conkey's Gape Remedy 30c and 60c
- Conkey's Blackhead Remedy 60c
- Conkey's Limberneck Remedy 60c
- Conkey's Poultry Worm Remedy 30c and 60c
- Conkey's Rheumatic Remedy 60c
- Conkey's White Diarrhea Remedy 30c and 60c
- Conkey's Lice Powder—Pkgs. 30c and 60c
- Conkey's Lice Liquid—1 qt., 50c, 2 qts., 75c, 1 gal., \$1.25, 5 gallons \$4.50
- Conkey's Nox-i-cide—1 pt., 40c, 1 qt. 75c
- Conkey's Poultry Laxative 30c
- Conkey's Flea Salve 30c
- Conkey's Head Lice Ointment 10c and 25c
- Conkey's Lice Fix (Salve) 30c and 60c

Every Conkey Remedy is guaranteed to give satisfaction, or money back. Send 5 cent for **Conkey's Poultry Book**—it tells how to detect and cure Poultry Diseases. If Conkey's won't cure it, it can't be cured.

GUARANTEED THERMOMETER

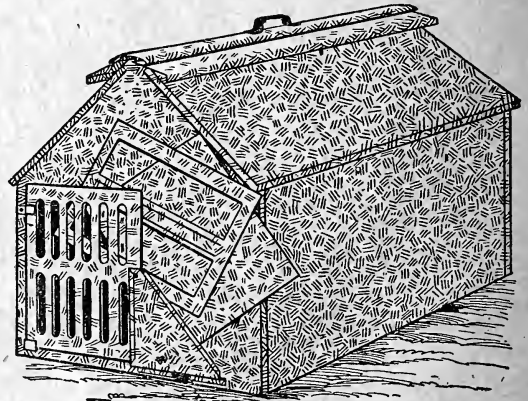
Price.—Postpaid, each..... 90c



DELIGHT COOPS

These are made just like the Perfect, except that one end pulls out in day time, making a runway for the hen. Size 18 by 48 inches.

Price.—Each, \$3.10; 6 for \$17.50



PERFECT COOPS.

Made of heavy galvanized iron. Has 3 doors that can't get out of place. Size, 18x24x18 inches high. Price.—Each, \$2.25; 6 for \$12.50

O. AND M. COOPS.

Square, 16x23 inches. Galvanized iron. Price.—Each, \$2.00; 6 for \$11.00

PERFECT ROUND COOPS.

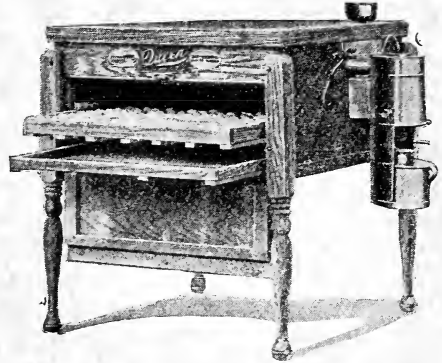
Same quality as the square ones. 21 inches wide, 18 inches high. Price.—Each, \$2.35; 6 for \$12.75

Prices Subject to Change

MONEY IN THE BACK YARD

A few chickens are not much trouble and the profit that can be made from them is no small matter now-a-days. The United States yearly produces about **TWO BILLION DOZENS** of eggs and about **FIVE HUNDRED MILLION FOWLS**, and even this is **far from being enough**. This lack of supply means fancy prices. Are you getting your share?

We recommend **QUEEN** incubators as the **one sure machine** to use, and after considerable looking around and experimenting, we have put in a full stock of these machines. The **QUEEN** has double redwood walls, lined with corrugated strawboard. **Pure Copper** heating system with all joints and seams locked, hammered, and soldered, two-walled metal, asbestos-lined jacket, safety lamp hanger, and many other superior points that are worth investigating. **QUEENS** turn out **bigger hatches** of stronger, healthier chicks and will last almost a lifetime.



Thermometers—Guaranteed "Tycos"—90c each postpaid

The Brooder That Broods Right

The **QUEEN COLONY BROODER** is new and improved and is the only stove on the market that has the draft to increase the fire above the check draft and operated automatically by the regulator, same as the check draft, and is the only one having a corrugated asbestos-lined base for protection of the floor and litter from over-heating. The hover of this stove is collapsible and on the No. 1 is forty-two inches in diameter and on the No. 2 fifty-two inches in diameter. Stove holds enough coal to last from 24 to 48 hours and costs less than 5c a day to operate.

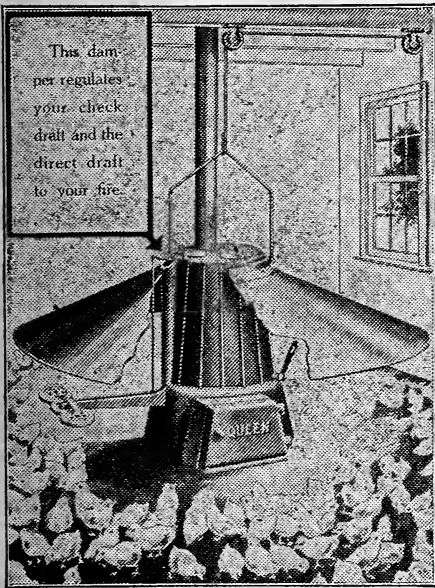
PRICES.

- No. 1, 500 chick..... \$19.00
- No. 2, 1,200 chick..... 23.50

LINCOLN INCUBATORS.

Manufactured by the Queen Incubator Co., Lincoln, Neb. The Lincoln Line of Incubators is not of the same high standard as our Queen line, in material nor workmanship, nor do they embody all the principles that have made the Queen line so successful and famous.

However, they are good substantial machines, built to sell at a lower price to people to whom price is an important consideration. Lincoln Incubators are constructed of double-wall Redwood. The top of the machine is relined with insulation. The heater and pipes are made of Aluminoid. The machine is equipped with the same expansion cup and thermometer as the regular Queen. The regulator is the same as the Queen, except of lighter construction, and has a three-inch steel wafer. The machine is finished with a coat of shellac and filler, then a coat of stain and finally a coat of varnish, giving it a beautiful appearance. **Lincoln A Incubator, Capacity 85 eggs..... \$16.50**
Lincoln B Incubator, Capacity 135 eggs..... 20.50
Lincoln C Incubator, Capacity 160 eggs..... 27.50



INCUBATORS

- No. 0— 65-egg..... \$12.00
- No. 1— 85-egg..... 19.50
- No. 2— 135-egg..... 27.50
- No. 3— 180-egg..... 32.50
- No. 4— 275-egg..... 42.50
- No. 5— 400-egg..... 52.50
- No. 25— 550-egg..... 75.00
- No. 35— 750-egg..... 105.00
- No. 45—1,000-egg..... 145.00
- No. 55—1,500-egg..... 195.00
- No. 65—2,000-egg..... 260.00

OUTDOOR LAMP-HEATED BROODER.

- No. 10—125-chick..... \$27.50
- No. 11—165-chick..... 30.00
- No. 12—250-chick..... 32.50

INDOOR LAMP-HEATED BROODER.

- No. 7—125-chick..... \$18.00
- No. 8—165-chick..... 20.00
- No. 9—250-chick..... 22.00

What Queen Owners Say

John Bowen of the Colorado Poultry Faners Association writes:

"Last season the writer installed a Queen as an experiment, and found that it hatched 18 per cent better than eastern made machines and 11 per cent better than any other machine built in the West. All of the machines were run under exactly the same conditions."

Mrs. W. F. Said, Maquoketa, Iowa, writes:
 "I have a Queen I have used 2 years. It is a 70-egg size. I hatched 48 chicks from 51 fertile eggs in April this year. I recommend the Queen to everyone. It is a dandy."

Fred. A. Eells, Concordia, Kas., writes:
 "In reply to your letter of recent date I received your instruction book. I got the machine to regulate all right. From the way I run my machine I believe a person could show a good egg a Queen Incubator and it would hatch."

WE PAY THE FREIGHT

QUEEN Catalog FREE on Request

ALEXANDER GARDEN TOOLS

THESE ARE THE BEST MEDIUM - PRICED GOODS ON THE MARKET TODAY



PRICE COMPLETE, \$9.00

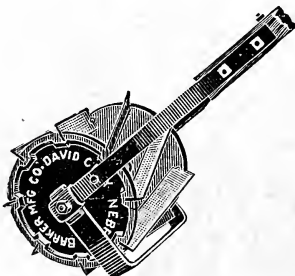
No. 1 Garden Raiser being readily converted into a single wheel tool which are furnished regularly, makes an ideal all around garden tool, by means of an extra bolt and bushings.



PRICE COMPLETE, \$5.00

No. 5 Garden Raiser. No. 5, Jr., Garden Raiser, light weight for boys \$3.50.

BARKER



Weeder, Mulcher and Cultivator

Three tools in one. Makes gardening easy and insures best yields.

The one implement every gardener should have, whether raising produce as a business or for the table.

The Barker cuts the weeds under the ground, cultivates the soil and makes the essential dust blanket or mulch—all in one operation.

Eight reel blades working in combination with the knife passing under the surface do the work. "Best Weed Killer Ever Used." Easy to operate, no delicate parts to get out of order. Enables you to safely get close to the plants and to do scientific, intensive cultivation—makes gardening pay.

No. 6D cultivates strip 6 inches wide..... Price \$7.00
8 1/2 D cultivates strip 8 1/2 inches wide..... 8.25

All Parts and Workmanship guaranteed for FIVE Years.

NO. 3 GARDEN RAISER

PRICE COMPLETE \$6.00

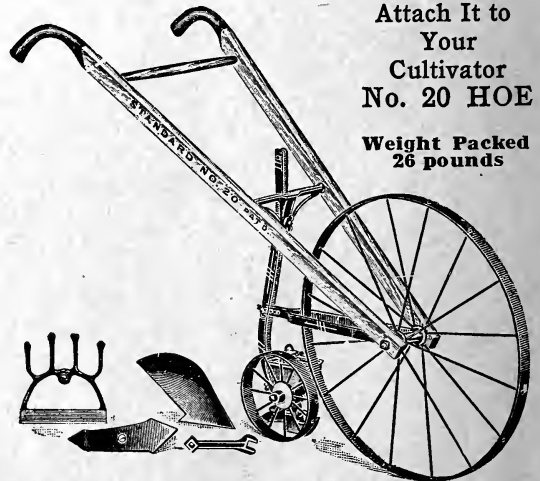
No. 3 Garden Raiser, easy running, spring teeth turn up to use 8-inch weed cutter.



PRICE DRILL, ONLY \$9.00
Attaches to No. 1 and No. 3.

No. 2 Drill sows all kinds of seed.

A New Midget Drill Sows all Seeds



Attach It to Your Cultivator No. 20 HOE

Weight Packed 26 pounds

This is just the drill for the little garden. It stands about 8 inches high and will sow a 5c package of seed just as well as large amounts. Can be attached to a

No. 20 Hoe

This cultivator has 5 combined tools, as shown in cut. Is light, yet strong. All tools made of steel as hard as a saw and nicely polished. Strong tangent spokes, 2 1/4" wheel.

Price, Cultivator.....\$4.75
Drill.....4.10
Special price, complete.....8.50

SPECIAL CASH PRICE OF PURE SEEDS

GUNN SEED CO.

OUR NEW LOCATION
 127 SOUTH 10th ST. LINCOLN, NEBR.
 February 1st, 1919

Prices quoted here are net cash and f. o. b. cars Lincoln. You to pay all transportation charges. All our garden seed is special Market Gardener Stock. In fact it is the best we can get. We test it all in a Standard Seed Tester and all of it shows good, strong, vigorous growth. The Parcel Post Table will give you the rate to your section. Beans, Peas, Corn and Onion Sets weigh just about 2 lbs. to the quart. Prices are high on account of the short crops and high cost of labor. Will appreciate your trade and ship promptly.

GUNN SEED CO.

FIELD AND GARDEN SEEDS

These Prices are Subject to Market Changes.

ASPARAGUS

	Oz.	¼-lb.	1-lb.
Columbian Mammoth White ...	\$.15	\$.25	\$.75
Palmetto15	.25	.75
Conover's15	.25	.75
Barr's Mammoth15	.25	.75
Roots	15c	Doz. 40	for 50c

BEANS

	Pt.	Qt.	2 Qt.	Gal.	Pk.
Golden Dwarf Wax...	\$.35	\$.60	\$1.15	\$2.25	\$4.20
Imp. Golden Wax...	.35	.60	1.15	2.25	4.20
Currie's Black Wax.	.35	.60	1.15	2.25	4.20
Pencil Pod Black-Wax	.35	.60	1.15	2.25	4.20
Wardwell's Kid. Wax	.35	.60	1.15	2.25	4.35
Burpee's Stringless .	.35	.60	1.15	2.25	4.20
Burpee's Fordhook					
Favorite40	.75	1.40	2.75	5.00
A new white seeded Stringless Green Pod three to five days later than the original. Pods 5½ to 6½ inches long. A good shell bean.					
Yellow Six Weeks...	.30	.60	1.15	2.15	4.00
Imp. Red Valentine...	.30	.60	1.15	2.15	4.00
White Navy25	.50	.95	1.85	3.60
Pinto, Mexican22	.40	.85	1.65	3.15
Burpee's Bush Lima.	.35	.65	1.25	2.25	4.30
Hend. Bush Lima35	.65	1.25	2.25	4.30
Davis' White Wax...	.35	.60	1.15	2.25	4.20
Giant Stringless, Imp.	.35	.60	1.15	2.15	4.00

POLE

Kentucky Wonder35	.70	1.35	2.50	4.75
White Ky. Wonder...	.40	.75	1.40	2.75	5.00
Like the original but white seeded with green pods. Very tender and stringless					
Lazy Wife35	.70	1.35	2.50	4.85
Golden Cluster Wax40	.75	1.40		
Red Kidney25	.50	.95	1.80	3.50
Cut Short (Corn Hill)	.35	.60	1.50	2.25	4.20
Large Lima35	.60	1.50	2.25	4.20
Case Knife35	.60	1.50	2.25	4.20

BEETS

	Oz.	¼-lb.	1-lb.
Detroit Dark Red	\$.15	\$.50	\$1.55
Extra Early Eclipse15	.50	1.55
Crosby's Egyptian15	.50	1.60
Other Table Beets15	.45	1.50
Swiss Chard15	.55	2.00

MANGELS AND SUGAR BEETS.

	Oz.	¼lb.	1 lb.	5 lb.	10 lb.
Mammoth Long Red. .10	.30	.95	.90	.85	
Klein's Sugar10	.40	1.15	1.10	1.00
Golden Tankard10	.30	.95	.90	.85
Giant ½ Sugar10	.30	.95	.90	.85
Corn Saver10	.30	1.00	.95	.90
Giant Sludstrup10	.30	.95	.90	.85

(Largest Beet grown)

CABBAGE

	Oz.	2 oz.	4 oz.	1 lb.
Extra Early Express.....	\$.80	\$1.50	\$2.60	\$8.00
Early Jersey Wakefield.	.80	1.50	2.45	7.90
Early Winningstadt80	1.50	2.50	8.00
Early Spring80	1.50	2.50	8.05
All Head60	1.15	2.25	7.00
Early Summer60	1.15	2.25	7.00
All Seasons60	1.15	2.25	7.00
Danish Ball Head	1.00	1.90	3.50	13.00
Surehead60	1.15	2.25	7.00
Late Drumhead60	1.15	2.25	7.00
Late Flat Dutch60	1.15	2.25	7.00
Red Dutch60	1.15	2.25	7.00
Copenhagen Market				
Imported Stock	1.25	2.25	4.25	15.00
Danish Round Head	1.00	1.90		
Early Flat Dutch60	1.15	2.25	7.00

CARROTS

	Oz.	2 oz.	4 oz.	1 lb.
Oxheart15	.25	.40	1.25
Stump Root15	.25	.40	1.25
Chantenay15	.25	.40	1.25
Long Orange15	.25	.40	1.25
Stock Carrots10	.20	.30	1.00

CAULIFLOWER

	½oz.	1oz.
Dry Weather	\$1.50	\$2.60
Snowball	1.50	2.50

CELERY

	Oz.	2 oz.	4 oz.	1 lb.
Golden Self-Blanching ..	.60	1.00	1.85	6.00
Golden Self-Blanching, French Stock75	1.35	2.25	
White Plume35	.65	1.10	3.50
Giant Pascal35	.65	1.10	3.50
Turnip Rooted Celeriac..	.35	.65	1.10	3.50

r.
eder
Hoe.

to
to
oe.
of
eel
all

d

r

he
n,
a
ill
ch
ge-

FIELD AND GRASS SEEDS

SPECIAL CASH PRICE

February 1, 1919.—These Prices Subject to Market Changes.

OUR SEEDS—We carry the best grade of seed that we can get. Practically all our seed runs 99 per cent pure, and from 95 to 100 out of every hundred seeds grow. You can have our seeds tested any way you wish, and if it is not satisfactory we will take it back and refund your money, including freight charges both ways. Prices subject to change. Order early this year.

CLOVERS

	lb.	10 lbs.	1 bu.	5 bu.
Alfalfa, Extra Fancy...	\$0.30	\$2.50	\$14.50	\$14.15
Alfalfa, Fancy25	2.25	13.50	13.15
Red Clover, Ex. Fancy.	.50	4.75	27.50	27.00
Red Clover, Fancy.....	.45	4.40	25.75	25.50
Red Clover, Mammoth	.50	5.00	28.50
Alsike, Extra Fancy..	.45	4.00	24.00
Sweet Clover, White...	.35	3.00	17.25	17.00
White Clover75	7.00		

2½ Bu. Grain Bags extra at 70c each.

GRASS SEEDS

	lb.	bu.	5 bu.
Ky. Blue, Fancy, bu. 14 lbs....	\$0.35	\$4.45	\$4.00
Brome, Fancy, bu. 14 lbs.....	.35	4.20	4.00
English Blue, bu. 22 lbs.....	.30	6.25	6.00
Orchard, Fancy, bu. 14 lbs....	.45	5.35	5.15
English Rye, bu. 24 lbs.....	.30	5.50	5.25
Timothy, Ex. Fancy, bu. 45 lbs.	.20	6.50	6.30
Timothy, Alsike mix't, bu. 50 lbs.	.25	10.00	9.65

1 A. 100 lbs.
Hog Pasture Mixture, 20 lbs. to A.. \$6.40 \$31.00
Bottom Land Mixture, 20 lbs. to A.. 5.00 24.00
Upland Mixture, 20 lbs. to A..... 6.00 28.85
Heavy Tonnage Mixture, 50 lbs. to A. 3.75 7.00

Uni. Mixture—The Uni. Farm is recommending several grass mixtures for different localities. These, they have numbered from 1 to 19. We can make and furnish all of them. Will quote you on the one you wish.

Slender Wheat Grass or Western Rye—
lb. \$0.30 10 lbs. \$0.27 100 lbs. \$0.26
Wood Meadow Grass—Ask for price.
Tall Meadow Oat Grass—Ask for price.

KAFFIR AND SORGHUM

	lb.	50 lbs.	100 lbs.
Sudan Grass	\$0.25	\$9.50	\$18.00
Sugar Cane10	2.50	4.50
Kaffir10	2.65	5.00
Milo Maize10	2.65	5.00
Feterita10	3.00	5.80
Schrock-Kaffir15	5.50	10.00

2½ Bu. Grain Bags extra at 70c each.

GRAINS

	bu.	5 bu.	10 bu.
Oats, Kherson	\$1.40	\$6.75	\$13.00
Barley, White Hullless..		(Ask for price)	
Barley, Beardless	3.50	3.40	3.30
Barley, 6 Rowed	2.00	1.90	1.80
Common Barley	1.60	1.50	1.45
Wheat Macaroni, Spring	3.60	3.50	3.40
Blue Stem, Spring.....	3.60	3.50	3.40
Wheat, Marquis, Spring	3.60	3.50	3.40
Spring Rye	2.75	2.65	2.55
Fall Rye	2.40		
Fall Rye, Rosen.....	3.50		
Speltz, 48 lbs. bu.....	1.85		
Kanred Winter	3.60		
New Marvelous, Winter	3.60		

2½ Bu. Grain Bags extra at 70c each.

	lb.	peck	bu.
Rape, Dwf. Essex, bu. 60 lbs.	\$0.20	\$2.00	\$7.50
Flax,10	1.25	4.75
Buckwheat, Jap'se, 50 lbs. bu.	.10	1.00	3.75
" Silver Hull, 50 lbs. bu.	.10	1.00	3.75
Broom Corn, Ev'g'n, 50 lbs. bu.	.10	1.00	3.60
" " Okla. Dwf., 50 lbs. bu.	.10	1.00	3.50
Peas, Canada Field.....	.10	1.35	5.00
Cow Peas, New Era.....	.10	1.25	4.70
Cow Peas, Whips.....	.10	1.25	4.70
Soy Beans.....	.10	1.35	5.10

MILLETS

	lb.	bu.	100 lbs.
Golden (German) Fancy...	\$0.10	\$3.35	\$6.50
Siberian, Fancy10	3.25	6.35
Hog, Fancy.....	.10	2.50	4.50
Japanese, Fancy.....	.10	3.75	7.00

2½ Bu. Grain Bags extra at 70c each.

SEED POTATOES

	bu.	100lbs.
Northern Grown Red River Ohio...	\$2.00	\$3.25
Red Triumph	2.30	3.75
Irish Coblér	2.15	3.50
Carman No. 3.....	2.00	3.25
Rural New Yorker.....	2.00	3.25

ONION SETS

	Quart	Peck	Bu.
Yellow	\$0.20	\$1.50	\$5.50
Red20	1.50	5.50
White25	1.60	6.00
Winter Tops20	1.35	5.00

SEED CORN

All our corn is carefully picked, butted and tipped. All grown near Lincoln.
Red's Yellow Dent Pride of North
White Cap Butcher Silver Mine
White Flint—Calico Yellow Flint
Early White (Red Cob)
 Price all corn.....\$1.25 peck; \$4.50 bu.

FEEDS

CONKEY'S BUTTERMILK STARTING FOOD.
 Feed the first 10 days. Makes the chicks grow fast and they do not have white diarrhea.
 25 lbs. \$2.00 50 lbs. \$3.90 100 lbs. \$7.55
GUNN'S RAPID GROWER CHICK FEED.
 Made only of pure sweet grains with plenty of wheat. 25 lbs. \$1.25; 50 lbs. \$2.25; 100 lbs. \$4.25
DEVELOPING FEED. Use after "Rapid Grower."
 25 lbs. \$1.10; 50 lbs. \$2.10; 100 lbs. \$4.05
OYSTER SHELLS— lb. 50 lbs. 100 lbs.
 Genuine

Ask for prices on Incubators and Brooders

GUNN SEED CO.

127 South 10th Street,

(OUR NEW LOCATION)

LINCOLN, NEBRASKA

From

.....

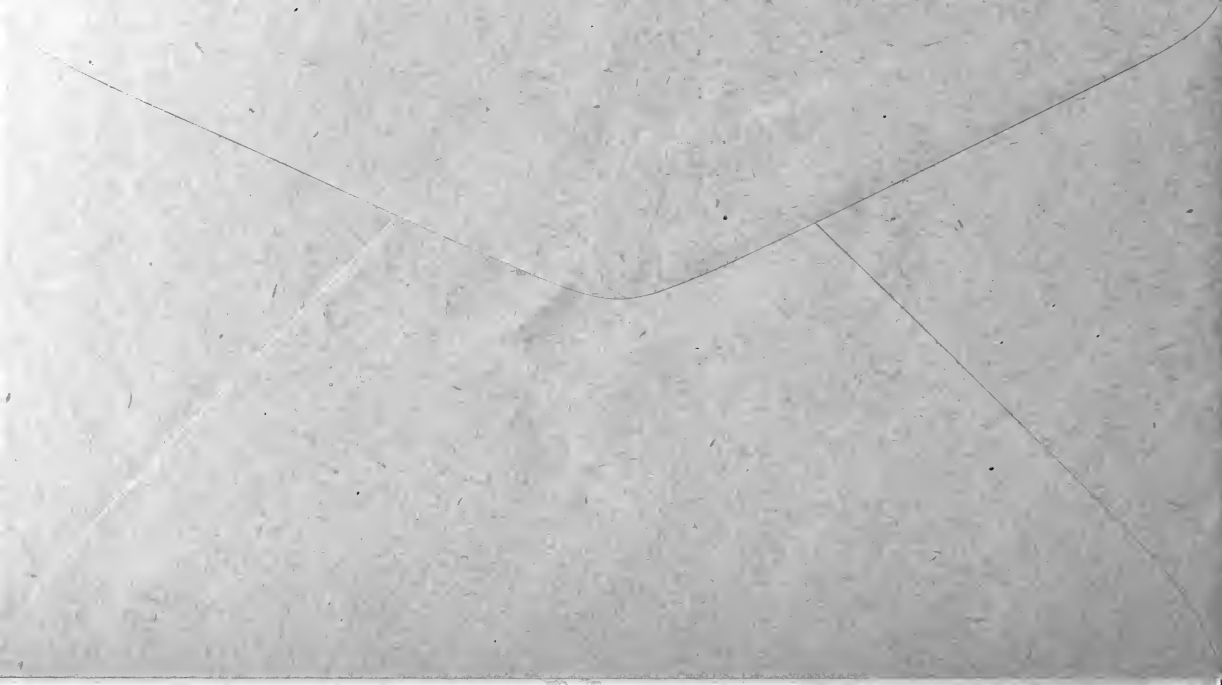
.....

GUNN SEED COMPANY

LINCOLN,

127 So. 10th St.

NEBR.





This is It

Try this big live Magazine at this Special 20-cent Rate

You will be delighted with it, and wonder how such a splendid illustrated magazine can cost so little. Sign this Coupon below, and mail AT ONCE with only 20 cents, coin or stamps. Money refunded to you any time you say so.

To THE FARM JOURNAL, Philadelphia:
Enclosed find 20 cents for which send me THE FARM JOURNAL one full year on trial. I am not now a subscriber to your magazine.

My name is.....

R. F. D. Box. or Street.....

P O. State.....

IMPORTANT: This trial Coupon must be sent direct to The Farm Journal, Philadelphia, Pa. Not accepted for renewals. (If you live in Philadelphia, Canada, or a foreign country, send 35 cents instead of 20, to cover extra postage.)

NOT GOOD FOR RENEWALS; SEE OTHER SIDE

“Mutual Benefit”

The price of The Farm Journal is \$1.00 for 5 years; but since we believe that to read this wide-awake farm and household paper is the greatest benefit to our friends and patrons, and so indirectly to us, we have persuaded the publishers to make us this

**SPECIAL
TRIAL
RATE OF** **20** cts.

for a year's trial of the paper.

The Farm Journal is published monthly, 32 to 80 pages, full of new, reliable, practical, up-to-date articles and fine pictures, War news and pictures; full of gumption and sunshine, 42 years old, has 4,000,000 readers, from Maine to California.

Suits Them All—Will Suit You

Care of stock, horses, cows, sheep, swine; big poultry department; all about tractors, engines, autos; orchard, garden, vegetables; pages for young people; dressmaking, fashions, patterns, embroidery; new Hooverized recipes; farm law; beautiful poetry, Walt Mason's "poems in prose"; absorbing short stories of love, adventure, and mystery. Mail this Mutual Benefit Coupon today with two dimes or ten two-cent stamps direct to The Farm Journal. DO NOT SEND IT TO US.

GUNN SEED COMPANY

127 S. 10th Street, Lincoln, Nebraska

SPECIAL: Add 5 cents (25c. in all) and get latest "Poor Richard Almanac," full of wit and wisdom for all.

ORDER SHEET - USE IT

LEAVE THIS SPACE BLANK

TO GUNN SEED CO.

127 SOUTH 10TH STREET
LINCOLN, NEBRASKA

WRITE YOUR NAME AND ADDRESS PLAINLY

NO. DATE

NAME

POST OFFICE

COUNTY

RURAL ROUTE STATE

SHIP BY

STATE IF BY MAIL, FREIGHT OR EXPRESS

SHIP TO

GIVE NAME OF RAILROAD STATION

IS THERE AN AGENT AT THIS STATION?

CASH - - - \$

P. O. ORDER -

EXPRESS ORDER

DRAFT - - -

STAMPS - - -

TOTAL

The Buyer Pays Freight and Express Charges Unless Otherwise Stated in Catalog
YOUR MONEY'S WORTH OR YOUR MONEY BACK

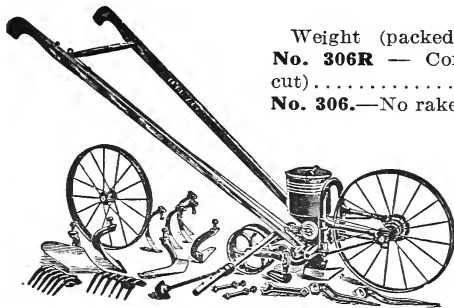
IF YOU WISH PART OF SHIPMENT BY MAIL AND PART BY FREIGHT, BE EXPLICIT

Table with 4 columns: QUANTITY, ARTICLES WANTED, DOLLARS, CENTS. The table contains 12 empty rows for listing items.

No difference how often you have written us, always give your FULL ADDRESS. Write your name, post office, county and state very plainly. By so doing you will save us trouble and possibly delay in filling your order.

IRON AGE

No. 306 COMBINED DOUBLE AND SINGLE WHEEL HOE HILL AND DRILL SEEDER



Weight (packed), 57 lbs.
No. 306R — Complete (like cut)..... **\$23.00**
No. 306.—No rakes... **22.00**

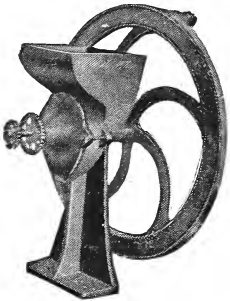
Stover's Hand Grinding Mills

These machines will grind dry corn, barley, rye, peas, nut shells, stale bread, etc., for poultry feed, or will grind table meal for family use. They will also grind dry bones and oyster shells providing the pieces are not too large.

For poultry raisers these machines are almost indispensable as with their use fresh grain and grit can be supplied to the poultry at all times.

No. 32.—Size of fly wheel, 16 in.; shipping weight, 40 lbs.; capacity, 1 to 2 bushels per hour. Price \$4.70.

Ask for prices on larger ones.



No. 1. DOUBLE AND SINGLE WHEEL HOE

(This is the No. 306 machine without the drill.)
 Weight (packed), 40 pounds.

No. 301.—Complete (like cut), 8 tools..... **\$12.00**

No. 303. — Side

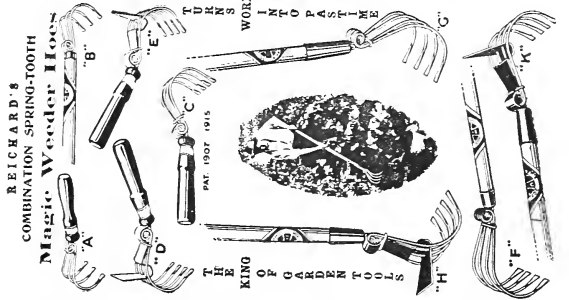
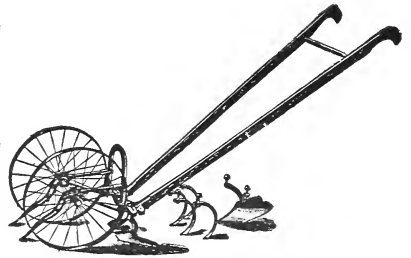
Hoes only, 2 tools

\$8.75.

No. 313. — Side

Hoes and Teeth,

6 tools, **\$10.50.**



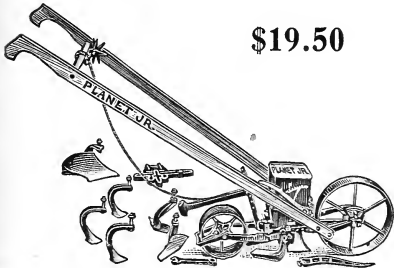
A, 15c; B, 20c; C, 25c; D, 40c; E, 40c; G, 75c; H, \$1.00; K, \$1.00.

PLANET JR.

We offer these **Planet Jr.** tools as the highest type of their class. They have a great variety of attachments which adapt the implements to a large variety of work, and there is scarcely any garden culture of which they are not capable.

No. 4 Planet Jr. Combined Hill and Drill Seeder, Wheel Hoe, Cultivator and Plow

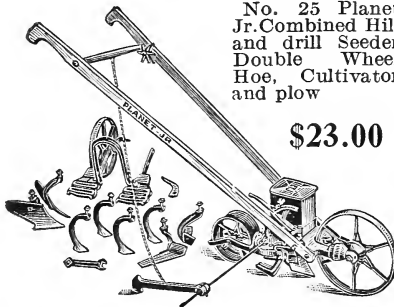
\$19.50



Sows all garden seeds (in drills or in hills), plows, opens furrows and covers them, hoes and cultivates quickly and easily.

No. 25 Planet Jr. Combined Hill and Drill Seeder Double Wheel Hoe, Cultivator and plow

\$23.00



A splendid combination for the family garden, onion grower, or large gardener. It is a perfect seeder, and combined double and single wheel hoe.

No. 31 Planet Jr. Combined Drill Seeder and Single Wheel Hoe.

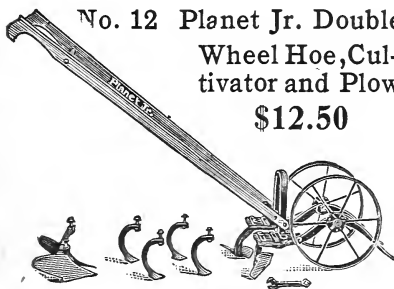
Price Complete **\$13.00**



This new tool is of great value to gardeners who have never felt able to own either a seed drill or a wheel hoe. It will sow even a small packet of garden seed with great precision. Quickly changed to a splendid wheel hoe. A special machine for the small gardener.

No. 12 Planet Jr. Double Wheel Hoe, Cultivator and Plow

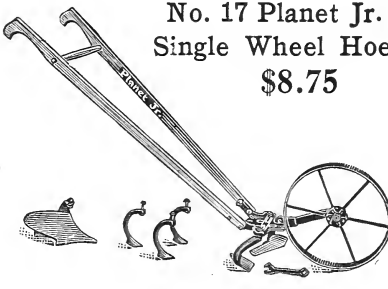
\$12.50



A single and double wheel hoe in one. Straddles crops till 20 inches high, then works between. Has steel frames and 14-inch steel wheels. The greatest hand-cultivating tool in the world.

No. 17 Planet Jr. Single Wheel Hoe

\$8.75



The highest type of Single Wheel Hoe made. Light, but strong, and can be used by man, woman or boy. Will do all the cultivation in your garden in the easiest, quickest, and best way.

72-page Planet Jr. catalog free. Describes 70 tools.

No. 19 Planet Jr. Garden Plow and Cultivator

\$6.25



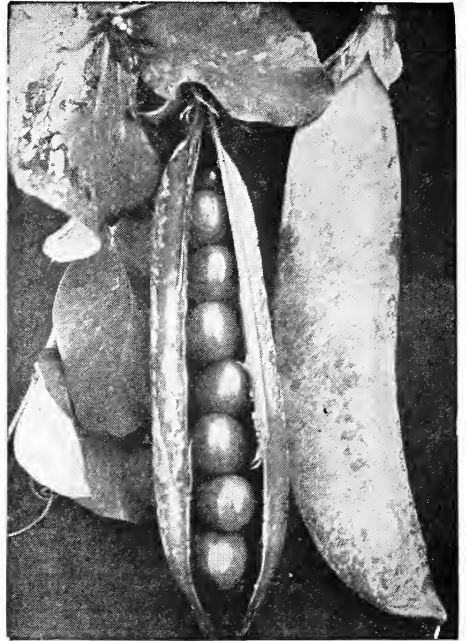
This combination will delight the suburbanite, the growing boy, women, younger or older, who will find it a light running wheel hoe that will save them hard work and help much to supply the table with fine vegetables.

RICE'S EARLY DWARF PEAS

A VALUABLE DWARF EARLY WRINKLED PEA
OF SURPASSING QUALITY

We take great pleasure and pride in offering this new pea to our customers. There is no question in our minds that it will displace Nott's Excelsior, America's Wonder and Premium Gem. The reason for this is that it is earlier than Nott's Excelsior, larger podded than Premium Gem, and much more prolific than either of them. This gives it a decided advantage. Rice's Early Dwarf Peas produces magnificent crops of pods which are large, heavy and unusually attractive on the market bench. One especially good characteristic is that pods are filled to the ends with peas. Practically as early as Gradus or Prosperity, pods nearly as large and at least twice as many of them on a plant. It also has the advantage of being much hardier than most sorts. Pods frequently contain nine large, luscious peas and it is quite a common thing to find plants bearing eight or nine pods.

Growth is dwarf, about 13 to 15 inches high, requiring no stakes at all. It grows as even and regular as a well-kept hedge. Pods all mature at one time and are held well from the ground, hence very desirable to market gardeners. **Price, prepaid: Pkt., 10c; ½ pt., 25c; pt., 45c; qt., 75c.**



Giant Sludstrup Stock Beets Produce \$500.00 Per Acre

Giant Sludstrup--Largest Stock Beet Grown

This is a variety of exceptionally even growth, showing careful production of stock seeds for many years. Color is reddish yellow, excellent in shape, which resembles Golden Tankard, and is superior to that popular sort in every way. Contains more sugar, grows larger, more above ground and is therefore easier to harvest. It is the best of all mangels for feeding purposes. Pkt., 10c; ¼ pound, 30c; pound, \$1.00.

Gunn Seed Co., Lincoln, Neb.