

Historic, Archive Document

Do not assume content reflects current scientific knowledge, policies, or practices.

2147
LIBRARY

RECEIVED

★ AUG 20 1919 ★

U. S. Department of Agriculture

IMLAY'S

SEEDS

PLANTS

FLOWERS

1919

The Imlay Company

54 North Fifth Street

ZANESVILLE, OHIO

THE IMLAY COMPANY

THIRTY-FIFTH ANNUAL CATALOGUE OF

SEEDS, BULBS AND PLANTS

TERMS AND INSTRUCTIONS FOR ORDERING—
Our terms are cash with the order.

PRICES—Prices are quoted by the packet, ounce, and pound. They are the ruling prices at this date, subject to change, and do not include cost of transportation, except as noted below.

WE SEND BY PARCELS POST, ALL PACKETS only of Flower and Vegetable Seeds to any postoffice in the United States free. We deliver also by **PARCELS POST, PEAS, BEANS AND SWEET CORN** at the prices listed plus 8c **PER LB. EXTRA** to cover postage and packing, within the first three zones from Zanesville, which includes all of Ohio, part of Pennsylvania, Indiana, Michigan, Kentucky, Virginia and West Virginia. If sufficient postage is not included, the quantity will be reduced to cover cost of postage.

MARKET GARDENERS AND DEALERS wanting larger quantities than quoted, please write for special prices.

WARRANTIES—Seeds and plants of best quality will often fail through improper treatment. Small seeds may be sown so deeply that the young plants cannot reach the surface. More failures result from disregard of the conditions necessary to germination than from inferiority of the seeds used. For such reasons we give no warranty, express or implied, as to description, quality, productiveness or any other matter of any seeds, bulbs or plants we send out, and will not in any way be responsible for the crop. If the purchaser does not accept the goods on these terms, they are at once to be returned.

“Planet Jr.” Farm and Garden Tools.

Hand seeders and wheel hoes have never been appreciated as they are today. All should appreciate that there is a great saving in work well and accurately done. Rows should be at equal distances apart, and when crops are grown in hills planting should be done at regular intervals. Every garden should have Planet Jr. Tools for labor-saving and to enable one to grow larger and better crops. **Illustrated Catalogue mailed free upon application.** It fully describes all these valuable tools.

Hammond's Slug Shot.

This preparation is non-poisonous—no danger to the person using it. It does not render vegetables or fruit on which it is applied injurious, and is the best destroyer of chewing insects, such as potato bugs, worms, etc. 1 lb. 20c, 5 lbs. 50c.

VEGETABLE SEEDS.

If ordered by mail, please add 8c per pound for postage.

ASPARAGUS

One ounce of seed sows sixty feet of drill. About 400 plants to the ounce.

Pkt. 5c, Oz. 10c, ¼ lb. 25c, 1 lb. \$1.00

Palmetto. Early, a good yielder and even grower

Early Argenteuil. Early, large, a superb flavor.

Barr's Mammoth. Large, uniform, rapid growth, light color.

ASPARAGUS ROOTS

By purchasing good strong plants, one to two years' time is saved. A bed 15x50 feet, requiring 100 plants, supplies a family.

Roots by mail postpaid—50 for \$1.00, 100 for \$1.75. By express—50 for 75c, 100 for \$1.50, 1,000 for \$7.50.

BEANS

One quart will sow 100 feet of drill. 90 lbs. to the acre.

DWARF WAX, YELLOW POD.

Pkt. 10c, ½ lb. 25c, 1 lb. 45c, 2 lbs. 80c, 10 lbs. \$4.00

If by Parcels Post 5c per lb. extra.

Michigan White Wax. White-seeded, highest quality. Vine vigorous, pods are abundant, uniform, color light golden yellow. Dry beans are as handsome and useful as any of the staple white varieties.

Challenge Dwarf Black Wax. The best early wax bean. Pods are clear waxy-white, quite round, very fleshy, crisp, tender and stringless. Dry bean jet black, long.

Improved Golden Wax. Long pods, nearly straight flat, broad, golden yellow, very fleshy and waxy, Beans white with purple shading.

Wardwell Kidney Wax. Very hardy. Prolific bearer, long flat pods, dry beans kidney-shaped.

Detroit Wax. Rust proof, long, straight, handsome pods.

DWARF SNAP OR BUSH BEANS—GREEN PODS.

Pkt. 10c, ½ lb. 25c, 1 lb. 40c, 2 lbs. 75c 10 lbs. and over \$3.50.

If by Parcels Post, 5c per lb extra.

Burpee's Stringless Green Pod. Has every good quality of the Valentine, and about a week earlier. The pods are straight and longer, fully as round and fleshy, and entirely free from strings.

Early Red Valentine, Improved Round Pod. There is nothing better for snaps among the green-podded sorts

Bountiful. Very early. Pods five inches, flat and loose; practically stringless.

Tennessee Green Pod. An early intermediate snap.

Giant Stringless Green Pod. Straight pods, light green leaves, long, slender and yellow seed of good quality.

Refugee, or Thousand-to-One. Late. Beans are a dull yellow and speckled with purple. Pods thick-fleshed and much used for pickling.

BEANS—Continued.**POLE OR RUNNING BEANS**

One quart will plant fifty hills.

Pkt. 10c, ½ lb. 30c, 1 lb. 50c, 2 lbs. 90c, 10 lbs. \$4.00.

Golden Cluster Wax Pole. Early and continues until frost. Pods from six to eight inches long, in clusters of three to six, produced freely, are stringless, very tender, delicious flavor, white seed.

Lazy Wife. Largest green-podded pole bean, pods four to six inches long, entirely stringless, and rich buttery flavor. White beans, unsurpassed for winter use.

Kentucky Wonder. Very productive, green pods in large clusters nine or ten inches long. Beans oval and dun-colored. Pods are entirely stringless, tender, sweet, mild flavor.

White Kentucky Wonder. Similar to Kentucky Wonder. The pods are stringless, tender and sweet, and the dry beans are of a pearly whiteness.

Mammoth Podded Horticultural. Pods striped and splashed with brilliant crimson. The beans are largest size, fine quality, and similarly colored and marked.

POLE LIMAS.

Siebert's Early. For earliness, ease of shelling, size, beauty and quality, is far in advance of all others. The yield is enormous. Immense size, tender and succulent.

King of the Garden. Productive, pods of largest size, filled with four or five immense white beans of fine quality and flavor.

Ford's Mammoth. Productive, pods in clusters, producing until frost.

BUSH LIMA BEANS.

Pkt. 10c, ½ lb. 30c, 1 lb. 50c, 2 lbs. 90c, 10 lbs. \$4.00.

If by Parcels Post 8c per lb. extra.

Burpee Improved. Pods five to six long by one and a quarter inches wide. The green beans, measured in the field, were one and a quarter inches long by seven-eighths wide and three-eighths thick.

Fordhook Bush. Branching freely and bearing tremendously, early, plump, remain green long, closely packed in pods, shell easily. Pods in clusters, 4 to 5 inches long, and contain usually four tender and juicy beans.

New Wonder Bush. Pods are large, mature early. The bush is less inclined to form runners and more productive.

GREEN PODS FOR SHELLED BEANS

½ lb. 15c, 1 lb. 30c, 2 lbs. 50c, 10 lbs. \$2.50

If by Parcels Post 8c per lb. extra

Large White Marrow or Mountain.

White Kidney.

White Navy or Pea.

Red Kidney.

BEETS—MANGEL WURZEL**FOR STOCK OR CATTLE FEEDING**

Five pounds to the acre

Pkt. 5c, ¼ lb. 30c, 1 lb. \$1.25.

If by Parcels Post 8c lb. extra.

Golden Tankard. Deep yellow in color, large size and exceedingly productive.

Giant Long Red. Immense size, very smooth and regular, and fine for stock feeding.

Improved White Sugar. Large size, grows considerably above the ground.

GARDEN BEETS FOR TABLE USE

One ounce of seed will sow 50 feet of drill; 5 to 6 pounds to the acre. Ready for table 40 to 75 days from sowing.

Pkt. 5c, Ounce 25c, ¼ lb. 75c, 1 lb. \$2.25.

Crosby's Improved Egyptian. Handsome form, good size, small tops, fine quality, deep blood red color, quick and rapid growth.

Detroit Dark Red Turnip. Very handsome, perfect in form, beautiful deep bright red color, crisp, tender and sweet, early.

Improved Eclipse. Fine color, globular, very small tops, sweet, crisp and tender when young.

Edmand's Blood Turnip. Root smooth, small top, dark red color, crisp, tender, good keeper.

Swiss Chard or Sea Kale. Grown exclusively for its large, juicy, tender and light colored leaf stalks, much superior to other beets for greens. 20c oz., 60c ¼ lb.

CORN—SWEET

One pound will plant 100 hills. 16 to 20 lbs to acre.

Packet 10c, ½ lb. 25c, 1 lb. 40c, 2 lbs. 75c, 10 lbs. \$2.50.

FIRST EARLY VARIETIES.

Mammoth White Cory. An extra early sweet corn. Ears, twelve-rowed, white-cobbed and covered with large white grains of extra quality.

Golden Bantam. Early, tender golden yellow grains, eight-rowed six to seven inches long, flavor exceptionally rich and delicious. 60 days.

Extra Early Adams. Very early and more the quality of field corn. 60 days.

Kendel's Early Giant. Ears seven inches in length, thick through, with ten or more rows of large grains of rich, sugary flavor.

Shaker's Early Giant. Ears seven inches in length, thick through, with ten or more rows of large grains of rich, sugary flavor.

Shaker's Early. Large ears, stalks six feet, two large ears, delicious flavor. 65 days.

Early Evergreen. Two weeks earlier than other Evergreens. 70 days.

LATE OR MAIN CROP VARIETIES.

Stowell's Evergreen. Heavy yielder, large ears, tender and sugary grains. 75 days.

Country Gentleman. Small cob, kernels are deep and irregular, sweet, tender. 70 days.

POP CORN

Packet 10c, ½ lb. 25c, 1 lb. 40c, 10 lbs. \$2.50

White Rice. Short ears, white, prolific, several ears on each stalk.

Queen's Golden. Five to six feet high, two or three large ears, pops creamy white.

CARROTS

Pkt. 5c, oz. 25c, ¼ lb. 75c.

Danvers Half-Long Orange. Dark orange, smooth, handsome roots of medium length, tapering uniformly to a blunt point, flesh sweet, crisp and tender, very productive.

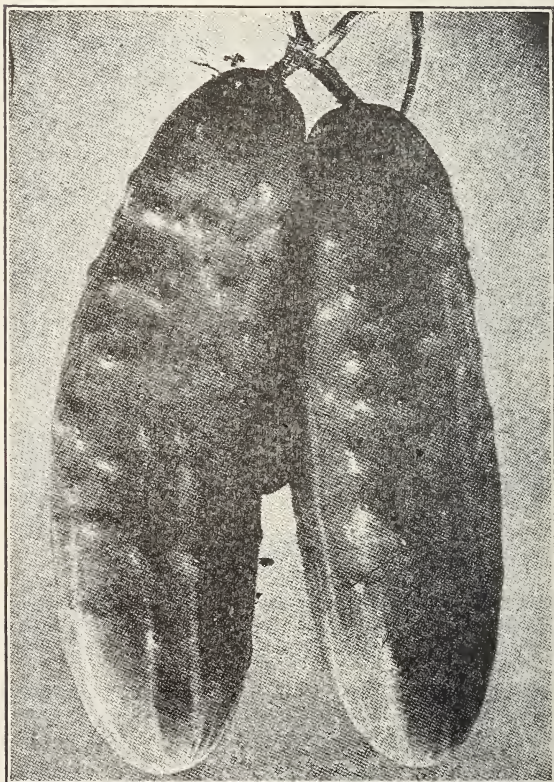
Early Scarlet Horn. Early. Small top, stump-rooted, orange flesh and fine grain.

Chantenay Stump-Rooted. Early, smooth, orange red, flesh crisp and tender.

Improved Long Orange. Grows to very large size, best for stock.



COPENHAGEN MARKET



EARLY FORTUNE

CABBAGE

1 ounce for 40 feet of drill will produce about 2,000 plants.
6 ounces to acre.

Packet 10c, $\frac{1}{2}$ oz. 40c, 1 oz. 75c, $\frac{1}{4}$ lb. \$2.75.

FIRST EARLY CABBAGE

Selected Early Jersey Wakefield. Conical heads, solid and compact.

Charleston, or Large Wakefield. Large and solid heads, pointed.

Copenhagen Market. Round-head early cabbage, very solid and of fine quality. Short-stemmed, leaves green, rather small, always tightly folded. Packet 10c, $\frac{1}{4}$ ounce 50c, 1 ounce \$1.50, $\frac{1}{4}$ lb. \$4.00.

Succession. Intermediate between Early and Late Flat Dutch, very sure header.

LATE VARIETY

Volga. A main crop sort, very desirable where large, uniformly round heads with short stem and plants of compact growth are wanted.

Danish Roundhead. Heads round, very hard, short stalk, leaves pure white and sweet flavor. Healthy, stands hot weather and resists disease. Packet 10c, $\frac{1}{4}$ ounce 50c, 1 ounce \$1.50, $\frac{1}{4}$ pound \$4.00.

Large Late Flat Dutch. Large, heavy, smooth-leaved. Head thick, broad, solid and slightly rounded on top.

Louisville Drumhead. Stands hot weather and is a sure cropper.

Surehead. A compact general crop variety.

Improved American Savoy. Large solid heads, delicate flavor, dark green, crimped and curled.

Mammoth Red Rock. Large, round, solid and deep red in color.

Chinese Cabbage. This is the famous Chinese Celery Cabbage. It does well in nearly all parts of the country and is more easily grown than ordinary cabbage; when boiled with meat is better than either cabbage or turnips. It should be grown like a late cabbage, planting in July (turnip planting time), as early plantings run quickly to seed.

CUCUMBERS

One ounce of seed will plant 50 hills; one or two pounds per acre.

Packet 5c, Oz. 20c, $\frac{1}{4}$ lb. 50c, 1 lb. \$1.50.

Early Fortune. A fine new variety, the fruit is of uniform size and shape and is of very firm texture. The skin is dark green, remains in slicing condition longer than some of the other standard sorts.

Arlington, or Extra Early White Spine. Smooth, straight fruit, excellent for slicing, a prolific bearer and makes a choice pickle.

Davis Perfect. Fruits eleven to twelve inches long, slim, slightly pointed, dark glossy green, very brittle, tender and fine flavor.

Early Green Cluster. Fruit short, holding full size to each end, dark green.

Jersey Pickling. Popular sort, very productive, slender, long and cylindrical.

Chicago, or Westerfield Pickling. Medium in length pointed at each end, large and prominent spines. Color is deep green.

Improved Long Green. One foot in length, dark green, firm and crisp. Young fruit fine for pickles, and large best for sweet pickles.

Gherkin. Bur cucumber, used entirely for pickling.

CELERY

1 ounce to 5,000 plants. About $\frac{1}{2}$ lb. per acre.

Packet 10c, Ounce 30c.

Columbia. Early, medium height, stalk thick and almost round, rich yellow tint. Its quality is exceptionally fine.

Golden Yellow Large Solid, or Golden Self-Blanching. Large heart, solid, excellent keeper. 75c ounce.

White Plume. The stalk, inner leaves and heart are white, early, handsome, easily grown and profitable.

Giant Pascal. Yellow heart, very meaty.

Celeraic. (Large Prague.) Turnip root.

CAULIFLOWER

One ounce to 3,000 plants.

Packet 15c, $\frac{1}{4}$ ounce 75c.

Early Snowball. The outer leaves are short, so that the plants may be set eighteen to twenty inches apart. Under favorable conditions nearly every plant will make a fine head of good size. Dwarf habit, early or late crops.

CORN SALAD, OR FETTICUS

One ounce for 20 square feet; 6 pounds to acre.

Large Seeded. The best variety. Packet 5c, ounce 25c.

CRESS, OR PEPPER GRASS

Packet 5c, Ounce 15c.

Fine Curled. It gives a pungent relish to lettuce and other salad plants.

EGG PLANT

One ounce for 2,000 plants.

Packet 5c, $\frac{1}{4}$ ounce 15c, 1 ounce 50c.

New York Improved. Robust plants and spineless. As the plant is very tender, should be sown early in hotbed and transplanted in rich, warm soil, and cultivate like cabbage.

ENDIVE

One ounce to 150 ft. of drill.

Packet 5c, $\frac{1}{2}$ ounce 15c, 1 ounce 25c.

White Curled. Leaves coarse with yellow midrib, frequently almost white.

Broad-Leaved Batavian. Large heads of broad, thick leaves.

Green Curled. Very hardy, crisp, tender.

HERBS

Summer Savory, Sage, Rosemary and Majorum. Packet 5c each.

KALE, OR BORECOLE

Packet 5c, ounce 20c, $\frac{1}{4}$ lb. 60c

Dwarf Curled Scotch. Low plant, leaves curled, cut and crimped, resembling moss.

Siberian. Very large leaves, plain in center, coarsely cut and frilled on the edges.

KOHL-RABI

Early White Vienna. White, firm, tender, handsome glossy bulb. Packet 5c, oz. 25.

LEEK

American Flag. Large, hardy. One ounce will sow one hundred feet of drill and produce 1000 plants. Packet 5c, ounce 25c.

LETTUCE

One-half ounce will sow 100 feet of drill.

Packet 5c, Ounce 20c, $\frac{1}{4}$ lb. 50c.

CABBAGE, OR HEADING VARIETIES.

Improved Hanson. White seed, remarkable size, very solid, bright green outer leaves, the inner head presents a white appearance, tender.

Denver Market, or Savoy. Early heading, large solid heads of desirable light green; leaves tender.

Early Prizehead. A mammoth plant, in which even the outer leaves are crisp and tender. White seed.

New Iceberg. White seed. Quick growing, hard and handsome heads, tender and true, large and curly outside leaves of light bright green.

CURLED, OR LOOSE-LEAFED VARIETIES.

Black-Seeded Simpson. Most popular sort. Large, loose heads, outer leaves a light, yellowish green, inner leaves blanched to almost white, resisting heat, and remaining a long time in an edible condition.

Grand Rapids Forcing. Black seed. Good for outdoors as well as under glass, large and beautiful leaves, crisp and tender, a very heavy producer.

Simpson Early Curled. (Silesia.) White seed. Compact mass of leaves, large and broad, crimped and blistered, light green in color.

ROMAINE, COS, OR CELERY LETTUCE

Trianon Self-Folding. A self-blanching Cos Lettuce, very crisp and tender, and of excellent flavor. If the leaves are tied up the plant soon forms a solid head and blanches to a pure white.

MUSTARD

One ounce to 75 feet of drill

Packet 5c, Ounce 15c.

White. Stems succulent, sweet and pungent, best for salads and culinary purposes.

MELONS—MUSK

One ounce will plant 80 hills, two pounds of seed to acre.

Packet 5c, Ounce 15c, $\frac{1}{4}$ lb. 40c, 1 lb. \$1.50.

Tip Top. Sweet, salmon-pink, juicy, fine flavor, firm flesh, large size, nearly round, evenly ribbed, moderately netted, and the most productive melon known.

Burrell Gem. Golden salmon meat and lots of it, delicious flavor, sweet and spicy. $2\frac{1}{4}$ pounds, length 6 inches, and thickness $4\frac{1}{2}$ inches.

Defender. Fruit medium size, oval shape, slightly ribbed, covered with gray netting. Flesh is firm, fine-grained, rich, deep salmon yellow, high flavor, hard and firm.

Emerald Gem. Early, medium size, nearly round; flesh a delicate light salmon, very thick and fine grained. The rind is thin, dark green, ribbed and slightly netted.

Rocky Ford. Oval fruit, slightly ribbed and densely covered with coarse netting. Flesh thick, green, very sweet, high flavored, uniform.

New Early Hackensack. Green flesh, large, productive, netted.

MELONS—WATER

One ounce of seed for 30 hills; four to five pounds to acre.

Packet 5c, Ounce 15c, $\frac{1}{4}$ lb. 40c, 1 lb. \$1 00.

Tom Watson. Produces fruit 18 to 24 inches long by 10 to 12 inches in diameter, and weighing 50 to 60 pounds. Dark green rind is tough but thin. Deep red flesh extends within three-quarters of an inch of the rind, is crisp, melting, fine flavor, with no sign of core. Brown seeds tipped with white.

Halbert Honey. Very sweet, long, dark green variety. Fruits average 18 to 20 inches long, have a thin and deep red meat of delightfully luscious flavor. White seeds.

Sweetheart. Early, large, handsome, heavy, good shipper, long keeper, skin and flesh of splendid color. Oval fruit is very heavy and light green mottled, bright red flesh. firm and solid, sweet, tender and melting. Dark gray seeds. 90 days.

Kleckley Sweets. Fruits uniformly large and oblong, 18 to 20 inches in length, 10 to 12 inches in diameter, tapering ends, skin rich dark green, flesh bright scarlet, ripening close to the rind, and crisp, sugary and melting.

Dark Iceing, or Ice Rind. Round form, white-seeded, thin rind, and rich, luscious, sugary flavor. Fruit large, dark green, flesh bright red and very rich. 75 days.

Round Light Iceing. Fruit of medium size, very light green, flesh light red and very sweet and tender.

Ice Cream, or Peerless. Medium size, oblong, light green rind, white seeds, with very sweet and melting crimson flesh.

OKRA, OR GUMBO

1 ounce of seed will plant 40 ft. of row.

White Velvet. Pods are round, smooth, velvety, produced in abundance, and of superior flavor and tenderness. Packet 5c, ounce 15c.

ONIONS

One ounce to 100 feet of drill, four to five pounds to acre.

Packet 5c, ounce 40c, $\frac{1}{4}$ lb. \$1.25, 1 lb. \$4.00

Danvers Yellow Globe White flesh, mild flavor, very productive, good keeper, a most profitable market onion.

Yellow Danvers Flat. More flat than Globe Danvers.

Large White Globe Southport. Handsome, clean, pure silvery white, large, even size, globe-shape, mild and pleasant flavor. Ounce 50c, $\frac{1}{4}$ lb. \$1.50.

Southport Yellow Globe. Same as White Globe, but rich yellow.

Southport Red Globe. Medium size, spherical, deep red, fine grained, mild and tender.

White Portugal, or Silver Skin. Ripens early, mild and pleasant in flavor, handsome silvery-white skin, for pickling. Ounce 50c, $\frac{1}{4}$ lb. \$2.00.

Mammoth Silver King. Enormously large, flat, snow white flesh, mild and pleasant. Oz. 50c, $\frac{1}{4}$ lb. \$2.

Prize-Taker, or Spanish King. Immense bulb, 18 to 20 inches in circumference, nearly globe-shape, thin skin of straw color, delicate white flesh.

PARSLEY

1 ounce of seed will plant 150 ft. row.

Fine Double Moss Curled. Fine dwarf variety with crimped leaves and invaluable as a garnishing plant. Bright pale green and very handsome. **Plain.** Leaves flat, dark green, hardy and of superior flavoring qualities. Packet 5c, ounce 15c.

PEAS

One pound will plant 30 feet of row.

Packet 10c, $\frac{1}{4}$ lb. 15c, 1 lb. 40c, 2 lbs. 75c, 10 lbs. \$3.00

EXTRA EARLY SORTS.

Little Marvel. Vines about 15 inches high, heavily set with pods two and a half to three inches in length, filled with six or seven large dark green peas.

Alaska. Vines bearing four or five pods filled with medium-sized dark green peas, ripening in 48 days. 2 to 2½ feet. 1 lb. 35c, 2 lbs. 60c, 10 lbs. \$2.75.

Nott's Excelsior. Large, vigorous, wrinkled, well filled pods.

Suttons Excelsior. Extra early dwarf wrinkled pea, large, tender, broad pods and very prolific. 15 inches.

Thomas Laxton. 53 days. Believed to be an improvement on the Gradus, for earliness, size and flavor. Hardier, more productive and distinct in form of pod. 28 inches.

Gradus. Extra early, wrinkled, similar to Telephone, but only 3 to 3½ feet high, immense pods filled with large peas of splendid quality.

SECOND EARLY SORTS.

Dwarf Defiance. Large, dark green pods, that in flavor and sweetness rank with the very best.

Long Island Mammoth. Large well filled pods; 60 days, 42 inches.

Telephone. Tall wrinkled, great cropper, immense pods of large peas of exquisite flavor. 4 feet, 65 days.

LATE OR MAIN CROP PEAS.

Duke of Albany. A large pea, growing about four feet high, producing heavy crops of pods which are of a deep green color.

Large White Marrowfat. Pods large and cylindrical, smooth seeds, yellow or white, 4 feet. 1 lb. 35c, 2 lbs. 60c, 10 lbs. \$2.75.

Melting Sugar. Edible pod, sweet and brittle.

PEPPER

One ounce will produce about 1,800 plants.

Packet 10c, $\frac{1}{4}$ oz. 25c, 1 oz. 75c.

Pimento Perfection. Thickest fleshed of all peppers—the solid meat is always sweet. The fruits are rich crimson-scarlet in color, while the form is very distinct, being of regular conical shape. The peppers are never hot in any part of the fruit, even the flesh around the seeds being sweet.

Chinese Giant. A magnificent new red pepper, early in ripening. Flesh thick, mild and sweet, vigorous and productive.

Neapolitan. Earliest, largest and most productive, fruit measuring four inches long and four and a half inches round. Bright red, thick-meated, sweet and mild as an apple.

Ruby King. Beautiful color, mild and pleasant, excellent for stuffing or sauce.

Large Red Cayenne. Bright red, very hot, slim pods, three or four inches long.

Golden Queen. Golden bell-shaped sort for stuffing.

Small Chili. Clusters of bright red conical pods, about three inches long.

PUMPKIN

Packet 5c, Ounce 20c, $\frac{1}{4}$ lb. 50c, 1 lb. \$1.50.

Sugar, or New England Pie. Pumpkins small, but very sweet, fine-grained, and of the best quality. Skin deep orange and flesh rich yellow.

Sweet Cheese, or Kentucky Field. Mottled light green and yellow, changing to creamy yellow when mature, flesh yellow, tender and excellent quality, fruit is flattened.

Large Field. The Yankee cow pumpkin, the big cropper for corn fields.

Mammoth. The big show pumpkin, salmon skin, yellow flesh.

Improved Cashaw. Mottled green with white stripes, rich yellow flesh, solid, fine-grained, very sweet, excellent for pies.

PARSNIPS

Packet 5c, Ounce 20c, $\frac{1}{4}$ lb. 60c.

Hollow Crown, or Guernsey. Roots long, with smooth white skin, uniform in shape, tender, best quality.

RADISH

One ounce of seed will sow 100 feet of drill.

Packet 5c, Ounce 20c, $\frac{1}{4}$ lb. 60c, 1 lb. \$2.00.

Early Scarlet Globe. Roots slightly olive shaped, rich bright scarlet in color; flesh white and tender, first early forcing radish and for early planting outdoors.

Early Scarlet Turnip White Tip. Small tops and roots, scarlet skin, flesh very mild and crisp.

Cincinnati Market. Beautiful scarlet, very small tops, six to seven inches long, very thin skin, flesh crisp and brittle, and very fine.

Long White Vienna, or Lady Finger. Long and tapering roots, mild, pure white, tender and crisp.

Beckert's Chartier. Bright salmon pink shading to white, crisp, tender.

Long White Icicle. Four inches long, transparent white, slightly stump-rooted, short leaves, mature very quickly, excellent flavor.

Golden Globe. Golden skin, very quick growth, tender and brittle.

White Strausberg. Long, pure white, very mild and brittle.

Large White Spanish Winter. Solid flesh.

Scarlet China Winter. Light rose skin, white and firm flesh.

White Celestial. Large white, solid and crisp—a fine winter sort.

SALSIFY

OR VEGETABLE OYSTER.

One ounce to fifty feet of drill.

Packet 5c, Ounce 40c.

Mammoth Sandwich Island. Grows very large, mild and delicate in flavor.

SPINACH

One ounce to 100 feet of drill.

Packet 5c, Ounce 20c, $\frac{1}{4}$ lb. 50c. 1 lb. \$1.50.

New Victoria. Heavy foliage, broad dark green leaves of true Savoy appearance, fine quality.

Round Summer Broad Leaf. Very thick and fleshy leaves.

Improved Thick Leaf, or Long Standing. Large, thick, fleshy, Savoy-leaved.

SQUASH

One ounce will plant 50 hills. Four to six pounds to the acre, according to variety.

Packet 5c, Ounce 20c, $\frac{1}{4}$ lb. 60.

SUMMER SQUASH.

Mammoth White Bush Scalloped. Bears early and until late in the fall.

Mammoth Summer Crook Neck. Golden skin, covered with fine warts, large size.

AUTUMN AND WINTER SORTS.

Hubbard. Bright orange yellow flesh, very dry, fine grained, rich flavor.

Boston Marrow. Thin skin of bright orange red, rich flesh of salmon yellow, fine grained, sweet, dry and a good keeper.

Fordhook. Flesh dry and sweet, early, productive, sure cropper, thin skin, thick meat, small seed cavity.

Chicago Wartyed Hubbard. Large size, dark green color, warty, thick flesh, and a good keeper.

TOMATOES

One ounce of seed will produce 1,500 plants. Four ounces for an acre.

Packet 5c, $\frac{1}{4}$ oz. 15c, 1 oz. 40c, $\frac{1}{4}$ lb. \$1.25.

Bonny Best. An excellent early scarlet tomato for home use or for the market. Vines very vigorous; fruit medium, uniform, smooth and fairly meaty. A splendid forcing variety.

Chalk's Early Jewel. Vines vigorous, productive, fruits deep scarlet-red, nearly round or a little flattened, smooth, large size, and of most excellent quality. They ripen very early and pickings continue through a long season.

Stone. Very large, smooth, bright scarlet, very solid and firm, not subject to rot, exceedingly heavy and attractive fruit.

Earliana. Extra early, dwarf, fruit in clusters of ten to fifteen, medium size, smooth, and ripening 85 to 90 days.

Dwarf Stone. Large fruited, upright-growing variety, Extra early, bright red in color, and good flavor. Plants may be set 18x24 inches in small gardens.

Enormous. The largest, hardiest, best keeper, handsomest red.

Ponderosa. Largest fruit, deep through, purple in color, solid flesh, small seed cells, fine, sweet flavor.

Early Detroit. Purplish pink, very attractive, medium to large in size, nearly round, perfectly smooth, solid and of excellent flavor. Fruits set and ripen early.

Golden Queen. Solid, always smooth and free from ridges, large size, ripens early, superior flavor.

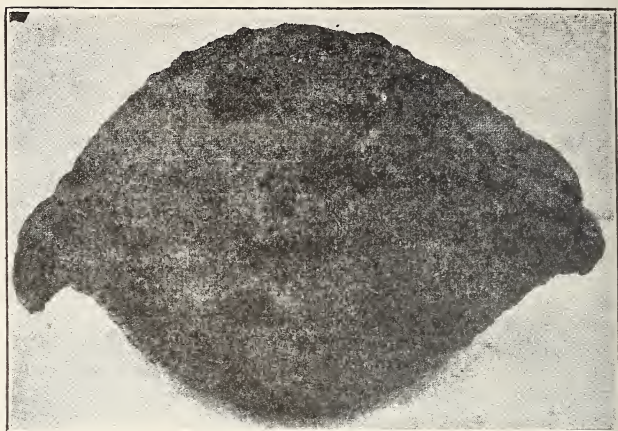
Yellow Pear.

TOBACCO

Packet 5c, Ounce 40c.

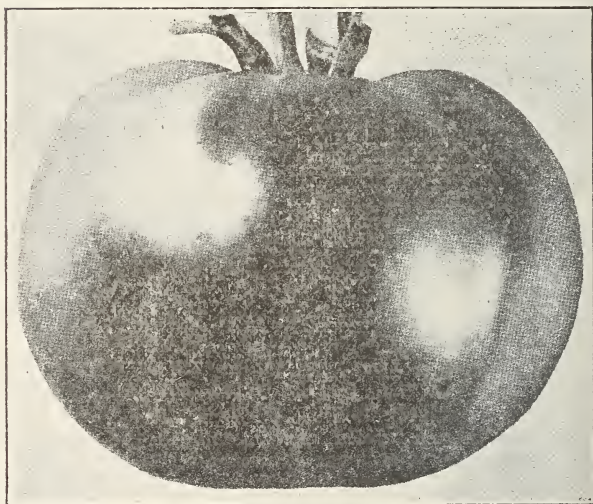
Connecticut Seed Leaf. Adapted for the middle and northern states, hardy and stands cool weather; used for cigar wrappers.

Improved White Burley. The Western favorite, superior to the old variety of Burley. Makes better color; commands higher prices.



HUBBARD SQUASH

True Hubbard. This is the well-known winter squash, now grown so largely throughout the country. Vines of strong running growth; fruits large olive shape, with dark-green skin and very rich flesh. An excellent keeper and of splendid quality. Our strain is extra fine.



STONE TOMATO

Largely grown for main crop and almost exclusively used by canning factories. Large fruit, bright red, solid and meaty enough for slicing. Yields very heavily and uniformly.

TURNIPS

One ounce will sow 150 feet of drill; two pounds an acre.

Packet 5c, $\frac{1}{4}$ oz. 15c, 1 oz. 25c, $\frac{1}{4}$ lb. 75c.

Red or Purple Top Strap Leaf. Best known variety, mostly used for sowing broadcast among corn and potatoes. Round, flat, very quick grower, white on bottom and reddish purple above ground.

Purple Top White Globe. Early, large size and of rapid growth, globe-shaped, with red or purple top, fine quality, keeps well, and excellent for early or winter market.

Early White Flat Dutch Strap-leaf variety, roots of medium size, flat, white, very early, sweet and tender.

Extra Early Purple Top Milan. Earliest in cultivation, white bulb, flat, medium size, fine flavor, with bright purple top.

Yellow Globe. Large size, yellow flesh, firm and sweet.

White Russian, or Large Ruta Baga. Superior white-fleshed and white-skinned variety, very sweet.

MISCELLANEOUS FARM SEEDS

As prices are varying daily, we do not give quotations, but will be pleased to quote prices and mail samples on application.

Clovers. We have all the varieties used in this climate—Medium or Common Red, Mammoth, Pea Vine or Large Red, Crimson or Scarlet, Alsike or Swedish, Lucerne or Alfalfa, and White Dutch.

Grasses. All the forage and pasture grasses—Timothy, Orchard Grass, Red Top, Kentucky Blue Grass, Meadow Fescue or English Blue Grass, Perennial Rye Grass, Wood Meadow Grass.

Millets—German or Golden. Tennessee grown.

Cow Peas. The soil improver, make land more productive, a splendid and nutritious green forage.

Soy Beans. Yellow and green.

Broomcorn—Improved Evergreen. The most popular variety, long straw, fine, erect, and free from crooked brush.

Buckwheat—Common, Silver Hull and Japanese.

Rape—Dwarf Essex. Forage plant of high value.

Field Peas—White Canada. Our stock is as good as the market contains.

Bird Seed. Mixed Canary, Rape and Millet. Hemp, Sunflower, Lettuce.

VEGETABLE PLANTS

Cabbage. Early Jersey Wakefield and Succession, transplanted, ready April and May. 15c per dozen, \$1.00 per 100. Late Flat Dutch, ready June and July, at 60c per 100, \$5.00 per 1,000.

Cauliflower. Snowball, ready April and May. 25c per dozen, \$1.50 per 100.

Celery. Plants ready June and July. White Plume and Columbia, 75c per 100.

Egg Plant. Ready May and June, 3 in. pots, 50c per dozen.

Pepper. Chinese Giant and Pimento, 3 in. pots, 50c per dozen.

Tomato. Earliana, Stone and Ponderosa, 5 in. pots in blossom, ready May and June at \$2.00 per dozen. Transplanted, 25c per dozen, \$1.50 per 100.

Selected Flower Seeds.

SWEET PEAS

LARGE FLOWERED WAVED "SPENCER" AND "UNWIN" TYPES.

Price of these New Sorts, 10c Packet, 25c Ounce, 4 Ounces for \$1.00.

Gigantic Orchid-Flowered—Mixed. This mixture contains all the large orchid-flowering varieties. 20c ounce, 75c $\frac{1}{4}$ lb.

Helen Lewis. An intense crimson orange, gigantic size, two inches across.

Nora Unwin. White flowers, three on a stem, the wings curved.

Phyllis Unwin. Long, stout stems with four flowers of beautiful rose color.

Gladys Unwin. Wrinkled or wavy standard, broad wings, lovely shade of pink.

Countess Spencer. Soft rose pink, which deepens at the outer edges, large flowers, three and four upon long stiff stems.

Primrose Spencer. Stems twelve inches long, frequently four to a stem, primrose color, both standard and wings.

White Spencer. Produces in the greatest profusion pure white flowers of truly gigantic size, with crinkled, fluted, wavy wings.

Frank Dolby. Lovely light lavender, wavy standard, widely spreading wings.

Geo. Herbert. Bright rose-carmine, large, open and wavy form.

STANDARD VARIETIES.

Eckford's Choice Mixed. Made up of the best sorts. 15c oz., 50c $\frac{1}{4}$ lb., \$2.00 lb.

Hon. Mrs. E. Kenyon. Beautiful primrose, a bold giant flower, described as an enlarged and improved Mrs. Eckford.

Extra Early Blanche Ferry. Dwarf habit, very early, and has no rival for forcing; brightest contrast of color, wings nearly white, standard deep rose pink.

Prima Donna. Most beautiful shade of pink, large flowers, fine form.

Blanche Burpee. Large white flowers, graceful stems and sprays of bloom.

Navy Blue. (Burpee.) Distinct and striking rich deep blue in general effect, the shade in the standard being deep lavender purple with a faint tint of wine red.

Lady Grisel Hamilton. Most attractive light lavender shading, wings of azure blue, extra large flowers of the best and most perfect hooded form.

Miss Willmott. Rich orange pink, delicately shaded with rose, enormous flowers on stiff stems twelve to sixteen inches long.

Salopian. The finest bright scarlet, a great bloomer.

COSMOS

Earliest Flowering Hybrids.

White, pink, and crimson, separate colors, 10c packet. Mixed, all colors, 5c packet.

ASTERS

Queen of the Market. Earliest, spreading habit, medium size flowers. Mixed, 5c packet. Separate colors, white, pink, blue, 10c packet.

Victoria—Mixed. Large and perfectly double, imbricated, globular pyramidal habit, 5c packet. Pure white, dark scarlet, pink and lavender, separate, 10c packet.

Giant Comet—Mixed. Long and twisted petals, 5c packet. Pure white, rose, purple, light pink and lavender, separate, 10c packet.

Peony Flowered—Mixed. Large and double, 5c pkt.

Late Branching. Large double blossoms of fine form, plants branching, two feet. Light pink, flesh pink, lavender, purple, white, separate colors, 10c packet. Mixed, 5c packet.

Finest Mixed. A mixture of fine strains and colors. 5c packet.

NASTURTIUMS

TALL OR CLIMBING.

Coccinea. Bright orange scarlet. 5c packet.

Giant of Battle. Rich blood red. 5c packet.

Von Moltke. Bluish-pink. 5c packet.

Spitfire. Bright fiery scarlet. 5c packet.

Trailing. Lobbianum varieties, mixed colors. 5c packet, 15c ounce.

Madame Gunter Hybrids. Red on orange ground. 5c packet, 20c ounce.

DWARF NASTURTIUMS.

Tom Thumb King Theodore. Velvety crimson maroon. 5c packet.

Empress of India. Fiery crimson flowers. 5c pkt.

Choice Mixed. All colors. 5c packet, 15c ounce.

PANSY

Odier, or Five Blotched. A beautiful strain, perfect form and flower. 25c packet.

Giant Trimardeau. Choice mixed flowers, immense size, beautiful colors. 10c packet.

Cassier's Giant Blotched. Unsurpassed quality, rich colors. 20c packet.

Masterpiece. A giant variety, curled petals and wide range of rich colors. 15c packet.

Mixed. All colors. 5c packet.

PETUNIAS

New Single Large Flowering Fringed. Very large, deep-throated and beautifully fringed. 25c packet.

Petunia Hybrida—Finest Mixed. All the colors, and fine for bedding or massing. 10c packet.

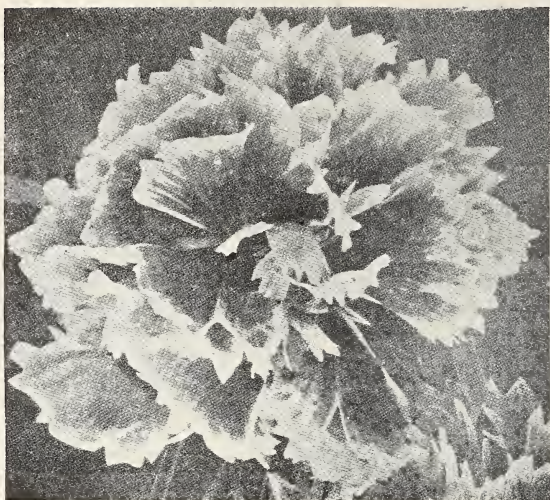
Mixed. Includes a great variety of colors and kinds, with some choice large flowering sorts. 5c packet.

PHLOX (Drummondii)

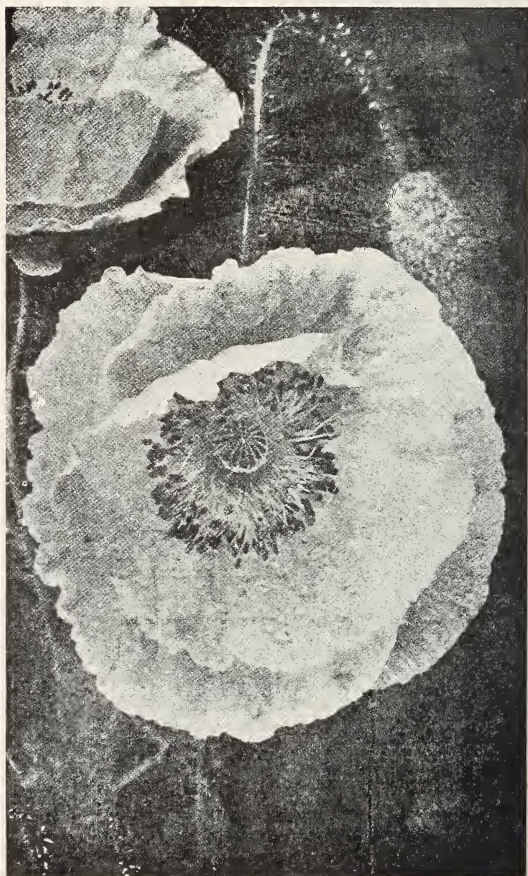
Alba. Flowers of purest white and extra large size. 10c packet. **Scarlet.** Color most intense. 10c packet.

Mixed. Many colors. 5c packet, 15c $\frac{1}{4}$ oz., 50c oz.

Starred and Fringed Phloxes. The petals bordered by broad white margins, are partly fringed, three-toothed **Mixed.** 5c packet.



CHINA PINKS



SHIRLEY POPPY

PINKS (Dianthus)

Chinensis. (China or India Pink.) Flowers extra double, all colors, mixed. 5c packet.

Heddewegii Flore Pleno. (Double Japan.) Rich crimson to delicate rose. 5c packet.

Laciniatus Flore Pleno. (Double Japan Pink.) Large, showy flowers, fringed edges, beautiful stripes. 5c packet.

Imperialis. (Double Imperial Pink.) Finest mixed, many bright colors. 5c packet.

POPPIES

Carnation Flowered. Double, large, showy. Mixed, 5c packet.

Danebrog. Scarlet, silver white spots forming a cross. 5c packet.

Shirley. Shining in great variety. 5c packet.

Umbrosium. Vermillion, shining black spots. 5c pkt.

Oriental. Crimson, black spot, hardy perennial. 5c packet.

SALVIA (Scarlet Sage)

Splendens. Two and a half to three feet high. 5c packet.

Zurich. Dwarf variety. 10c packet.

Bonfire. (Clara Bedman.) Two feet high, broad, compact. 10c packet.

VERBENAS

Mammoth Fine Mixed. Many colors and shades. 5c packet.

Defiance. Bright rich scarlet flowers. 10c packet.

Pure White. Purest white flowers. 10c packet.

Abridged List of Flower Seeds.

Packets 5c each, unless noted.

Agerantum—Imperialis. Blue and white. Dwarf bedding. 5c packet.

Alyssum—Sweet. Free flowering plants, 5c packet.

Amaranthus. (Joseph's Coat.) Tri-color foliage, 5c packet.

Antirrhinum. (Snap Dragon.) Two feet. 5c packet.

Balloon Vine. (Love in a Puff.) Rapid growing plant, 5c packet.

Balsams. (Lady Slipper, or Touch-me-not.) Extra double white, 10c packet. Double mixed, 5c packet.

Balsam Pear. Summer climber, 5c packet.

Browallia—Elata Grandiflora Coerulea. Sky-blue flowers. 5c packet.

Canna—Crozy's Mixed. Scarlet flowers. 5c packet.

Calendula. (Pot Marigold.) Showy, two feet. 5c packet.

Candytuft. Many colors. 5c packet. **Rocket.** Pure white. 5c packet.

Carnations—Marguerite. Mixed colors. 5c packet.

Early Flowered Vienna Dwarf. Varied colors, double. 10c packet.

Catchfly—or Silene. Sorts and colors. 5c packet.

Centurea—Cyanus. (Bachelor's Button.) Two feet. 5c packet.

Cypress Vine. Crimson star-shaped flowers. 5c pkt.

Chrysanthemum—Annual. (Painted Daisy.) 5c packet.

Castor Oil Bean. (Ricinus.) Ornamental-leaved plant. 5c packet.

Cucumber. Wild, ornamental climber. 5c packet.

- Celosia**—Glasgow Prize. (Cockscomb.) Crimson shades. 5c packet.
- Cobea Scandens.** Climbs 15 to 25 feet, large bell-shaped flowers, deep violet-blue 10c packet.
- Cleome**—Gigantea. (Giant Spider Flower.) 5c packet.
- Delphinium.** (Larkspur.) Spikes of bloom.
- Dusty Miller.** (Cineraria Maritima.) Silvery foliage. 5c packet.
- Eschscholtzia.** (California Poppy.) Bright flowers. 5c packet.
- Euphorbia.** (Snow on the Mountain.) 5c packet.
- Gomphrena.** (Globe Amaranth or Bachelor's Button.) 5c packet.
- Gaillardia.** Bedding plants, half-hardy. 5c packet.
- Gourd.** Calabash, Egg and Pear-shaped, Luffa or Dishrag. Mixed. 5c packet.
- Hollyhocks.** (Althea Rosea.) Hardy perennial. Choice mixed, 5c packet.
- Helianthus.** (Sunflower.) **Mammoth Russian.** Largest of all, yellow. 5c packet. **Flora Plena.** Double sunflower, 5c packet. **Cucumberfolio.** Small. 5c pkt.
- Helichrysum.** The straw flower, everlasting. 5c pkt.
- Hyacinth Bean.** Rapid growing climber. White and purple. 5c packet.
- Ipomea**—Grandiflora. (Moonflower.) Large and pure white fragrant flowers. 10c packet.
- Kochia.** (Summer Cypress or Burning Bush.) 5c packet.
- Kenilworth Ivy.** Vines suitable for vases. 5c pkt.
- Larkspur.** Beautiful spikes of blue flowers, annual. 5c packet.
- Lobelia.** For hanging baskets, vases; six inches.
- Maurandia.** Elegant climbing plant. 5c packet.
- Marvel of Peru.** (Four O'clock.) With large, showy, fragrant blooms. 5c packet.
- Mignonette.** Fragrant spikes of bloom. 5c packet.
- Morning Glory**—Japanese. Four to six inches across. 5c packet. **Convolvulus Major.** Old fashioned variety. 5c packet.
- Myosotis.** (Forget-Me-Not.) Star-shaped flowers. 5c packet.
- Nigelia.** (Love in a Mist.) 5c packet.
- Nicotinia.** Tube-shaped blooms, very sweet-scented. 5c packet.
- Portulaca.** Highly colored flowers of many hues. **Single, mixed,** 5c packet. **Double Flowered Moss,** 10c packet.
- Salpiglossis.** Curiously penciled and marked. 5c packet.
- Scabiosa.** (Mourning Bride.) Double flowers. Double mixed, 5c packet.
- Sweet William.** **Single Mixed,** large flowers and many shades, 5c pkt. **Double Mixed,** double flowers, 5c packet.
- Tagatees.** (Marigold.) Vari-colored. 5c packet.
- Thunbergia.** (Black-eyed Susan.) Climber. Mixed. 5c packet.
- Vinca.** (Madagascar Periwinkle.) Glossy foliage. Mixed colors, 5c packet.
- Wallflower.** Fragrant biennial, with large spikes of bloom. 10c packet.
- Xeranthemum.** (The Everlasting Flower.) Flowers pure white, deep purple and yellow, single and double. 5c packet.
- Zinnia.** Large size, fine form, brilliancy of flowers; 1 to 2 feet. **Mixed,** 5c packet. **Mammoth Scarlet,** large double flowers, 10c packet.

PLANT DEPARTMENT

Bulbs, Roots and the Smaller Plants may be sent by Parcels Post, if more convenient to the customer, by adding 20 per cent. extra to the value of each order for Bulbs, Roots and Plants.

Abutilon—Savitzi. Green foliage with broad white margins. 10c to 25c each.

Acalypha—Macafeana. Beautiful bronze and crimson foliage. 10c to 25c each.

Achyranthus—Emersoni. Narrow deep red foliage. 15c and 25c each.

Alternanthera—Aureanana. Bright yellow foliage. **Versicolor.** Olive, crimson and chocolate. 10c each, 75c dozen. \$5.00 per 100.

Antirrhinums. (Snap Dragons.) Mixed varieties, 10c each, \$1.00 per dozen.

Asters—Late Branching. Ready in May. 25c dozen.

Asparagus—Plumosus and Springerii. 15c to 50c each.

Begonias Several fine varieties for house culture. 10c to 50c each.

Cobea Scandens. Beautiful climber, large purple cup-and-saucer-shaped flowers, for trellises and arbors. 15c each, \$1.50 dozen.

Coleus. Beautiful variagated foliage plants, 12 best sorts. 75c dozen, \$5.00 per 100.

Cosmos—Mammoth Perfection. White, pink or crimson. 25c dozen.

Ferns. Boston and a choice collection of table pots. 15c and up to 25c each.

Geraniums. All superb double varieties. **Alphonse Riccard.** Bright vermilion scarlet flowers in great masses. **Fleur Blanc.** Pure white. **Beaute Poitevine.** Bright salmon pink, shaded from deep orange to pure salmon, immense flowers. **S. A. Nutt.** Best dark crimson-scarlet bedder. 25c each. \$2.50 per dozen.

Heliotropes. Very fragrant. 10c each, \$1.00 doz.

Hydrangea. New French sorts. 50c to \$3.00 each.

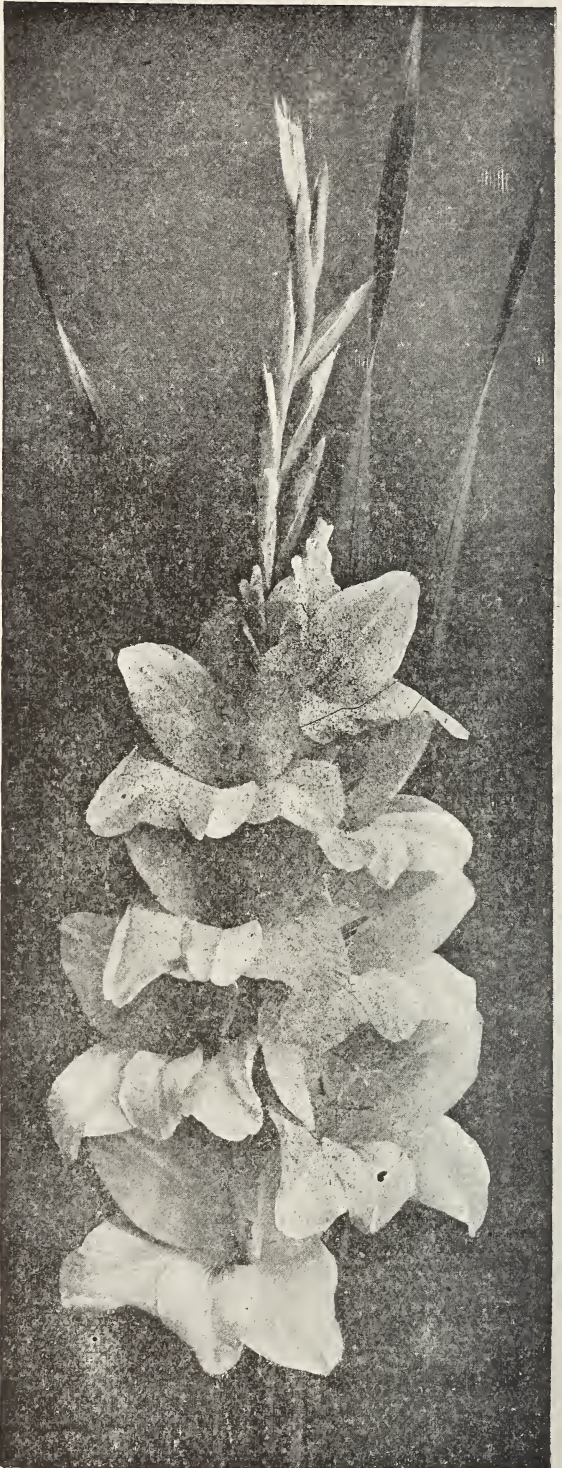
Ipomea. Moonflower, will cover 24x40 feet in a season. 15c each, \$1.50 per dozen.

Primula—Obconica. Ever-blooming house plant with lovely lavender, white and pink flowers in profusion. **Chinensis.** Chinese Primrose, popular winter bloomer. 25c to \$1.00.

Petunia. Double flowers, choice varieties, fancy single flowered, large throated, blotched, fringed. 10c each, \$1.00 dozen.

Ricinus. (Castor Oil Plant.) 10c each \$1.00 dozen.

Salvia. (Scarlet Sage.) **Splendens.** 3 feet. **Bonfire.** 2 feet. **Zurich.** Dwarf, earliest blooming. Small plants at 75c dozen, \$5.00 per 100.



AMERICA

CANNAS

Plants Ready in May. 15c each, \$1.50 Dozen.

Allemania. Dark salmon, with golden markings. 4 feet.

Mrs. Alfred F. Conrad. Popular, salmon pink flowers of large size, 4 feet.

Olympic. Rich orient red, center a lighter shade and dappled, 5 feet.

King Humbert. Gigantic, brilliant orange scarlet, bright red markings, foliage rich coppery bronze. 5 feet.

Hungaria. Ideal pink bedder. 3 to 3½ feet.

Yellow King Humbert (Queen Helene). Identical with King Humbert in habit of growth and flowering, and produces yellow flowers, dotted with red, green foliage.

Gustav Gunpper. Ideal rich yellow, good size are held well above the foliage. 3½ to 4 feet.

Brandywine. Brilliant red flowers in great abundance, bronze foliage. 3½ feet.

Charles Henderson. Popular crimson, of uniform habit, green foilage. 2½ feet.

Jean Tissot. Large flowers of intense brilliant vermilion. 5 feet.

Oscoda. Scarlet with yellow edge. 2 to 2½ feet.

Rubin. Ruby carmine flowers, dark bronzy green foliage. 4 feet.

Venus. Soft rosy pink, bright green foliage. 3½ ft.

CALADIUM.

Elephant's Ear. The leaves often reaching three feet by twenty inches wide. 10c each, \$1.00 doz. Large size, 15c each, \$1.50 doz. Extra large bulb, 25c each, \$2.50 doz. Started in pots, ready May 15th—From pots, 15c each, \$1.50 doz.

Maderia Roots. (Mignonette Vine.) White flowers. 5c each, 35c dozen.

Tube-Rose—Excelsior Pearl. Large double white flowers. 25c doz., \$1.75 per 100.

FINEST NEW GLADIOLI

5c each, 50c Dozen.

America. The flowers are of immense size, of the most exquisite, soft lavender-pink.

Baron Hulot. Rich, deep indigo-blue.

Chicago White. The earliest, pure white with faint lavender streaks in lower petals.

Halley. Delicate salmon-pink, pale ground, small red stripes.

Mrs. Francis King. Color is brilliant vermilion-scarlet. 4½ inches across.

Mrs. Frank Pendleton. Well expanded, of a lovely flushed salmon-pink with brilliant carmine or deep blood-red blotches in the throat. 10c each, \$1.00 doz.

Niagara. Canary-yellow, splashed with carmine. 10c each, \$1.00 per doz.

Panama. A seedling of America, a larger flower and a deep pink. 10c each, \$1.00 per doz.

Schwaben. Pure canary-yellow with a carmine blotch deep in the throat. 10c each, \$1.00 per dozen.



DREER'S WHITE

CACTUS DAHLIAS

Strong Divisions, 10c each, \$1.00 per dozen.

Rene Cayaux. Rich geranium-red, earliest to bloom.

Countess of Lonsdale. Salmon-pink and amber, a color difficult to describe; flowering freely.

General Butler. Dark and rich velvety maroon, tipped white.

Lawine. Magnificent flower of largest size, white suffused blush.

Libellule. Splendid form, sulphur-yellow, shaded with capucine-red.

T. A. Havemeyer. Yellow at base, shading to bronzy red.

J. W. Wilkinson. Deep rose-crimson.

Galathea. Medium-sized, splendid form, tender soft pink.

CHOICE DOUBLE SHOW DAHLIAS.

Dreer's White. Pure glistening white, first prize as finest white.

Jeanne Charmet. Pinkish lilac, white toward center.

Maid of Kent. Cherry-red, tipped white.

Miss Minnie McCullough. Soft yellow, overlaid with bronze, beautiful tint.

J. M. Goodrich. Gigantic new decorative seedling. A beautiful salmon-pink, each petal effectively tipped primrose-yellow.

Lyndhurst. Brightest vermilion, for cutting, early, free bloomer.

Arabella. Light sulphur yellow, shaded peach-blossom on the edges, and very fine.

Clifford W. Bruton. Immense canary yellow.

Jack Rose. Brilliant crimson red, rich and glowing.

Miss May Loomis. White, suffused with lavender.

Grand Duke Alexis. Large white, tinged with pink.

Henry Patrick. Superb pure white, large size.

Maid of Kent. Cherry red, tipped with white.

A. D. Livoni. Beautiful soft pink, quilled petals.

Lyndhurst. Rich and brilliant cardinal red.

Catherine Duer. Iridescent geranium red.

M. D. Hallock. Pure yellow, free and full flowering.

Storm King (Blizzard). New snow white, fine.

Susan. Soft blush pink, medium size, free bloomer.

PEONY FLOWERED DAHLIAS.

La Rainte. Beautiful lavender-pink, very free-flowering.

Queen Wilhelmina. The best pure white Peony-flowered Dahlia, large.

Pink Century. Deep pink; enormous flowers on long 3 feet stems.

Mrs. Seybold. White suffused pink, heavily tipped carmine pink and crimson.

Blanche. Single, pale yellow at the base, faintly tipped pink, with a cast of white over the whole flower.

Twentieth Century. Single, purest white at both base and tips, and the center of petals is a delicate blush rose.

Choice Mixed. All colors, 5c each, 50c per dozen.

ROSES

All hardy 2 years old 5 and 6 in. pot grown cold, ready last of April or first of May.

Choice Varieties 75c each, \$7.50 per dozen.

HYBRID PERPETUAL.

- Captain Hayward.** Brilliant crimson carmine.
Frau Karl Druschki. Pure snow-white vigorous grower.
Gen. Jacqueminot. Dark red, an old favorite.
Geo. Arends. Pink Frau Karl Druschki.
Magna Charta. Bright rose, strong vigorous grower
Mrs. John Laing. Soft rosy pink, exceedingly fragrant.
Ulrich Brunner. Cherry red, fine for forcing.

HYBRID TEA.

- Betty.** Coppery-red overlaid with golden yellow.
Caroline Testout. Silvery salmon pink.
Gen. McArthur. Crimson, long stem very sweet scented.
Gruss an Teplitz. Brilliant scarlet, profuse bloomer
Hadley. Dark red, free from mildew.
Hoozier Beauty. Red with velvety shadings.
J. L. Mock. Rose to bright red, with yellow reflections.
Kaiserin Augusta Victoria. Cream-white and yellow
Killarney. Delicate pink. **Killarney.** White.
Lady Ashton. Pale rose shading to yellow at base of petals.
La France. Silvery pink, an old favorite.
Los Angeles. New flame pink. \$2.50 each.
Mme. Abel Chatenay. Salmon pink, long pointed buds.
Mrs. Aaron Ward. Indian yellow, shaded salmon
Mrs. B. Thayer. Dark pink.
Mrs. Chas. Russell. Rosy carmine.
Mrs. Geo. Shawyer. Brilliant clear rose.
Mrs. W. C. Miller. Bright pink.
Ophelia. Salmon flesh shaded with rose.
Pharisear. Rose white with salmon centre.
Radiance. Glowing carmine salmon and coppery

BABY ROSES, OR POLYANTHA, EVERBLOOMING

- Baby Rambler.** Crimson, popular for bedding purposes.
Baby Tausendchon. Beautiful soft pink.
Clothilda Soupert. White deepening into rose blush in center.
George Elger. Coppery golden yellow.
Hermosa. Light pink, free bloomer.
Mamam Cochet. Pink. **Mamam Cochet.** White.
Orleans Rose. Geranium red with white center.

CLIMBERS.

- Aviateur Bleriot.** Saffron yellow golden center.
Dorothy Perkins. Pure salmon pink.
Dr. Van Fleet. Flesh pink splendid for cutting.
Excelsa. Double scarlet, blooms like crimson rambler.
Christine Wright. Large bright pink.
Climbing American Beauty. Large rose pink.
Hiawatha. Ruby carmine, white eye.
Crimson Rambler. Very well known, crimson.
Tausendschon. Light pink, entirely distinct.

IMLAY'S SPECIAL LAWN GRASS MIXTURE

This mixture is made from our own formula, and composed of grasses specially adapted for the purpose of producing turf which retains its rich green color and velvety appearance throughout the entire Summer and Fall. One pound will sow 600 square feet. Five pounds will sow 5,000 square feet. About four or five bushels per acre. Prices: $\frac{1}{2}$ lb. 25c, 40c per lb.; 5 lbs. (peck) \$1.50; bushel (20 lbs.) \$6.00. If by mail add 10c per pound for postage.

IMLAY'S SHADY PLACE GRASS

The grasses used in making this special mixture are only those that are well adapted for growing in shade. $\frac{1}{2}$ lb. 40c, 1 lb. 75c, 3 lbs. for \$2.00. Postage 10c lb. extra.

FERTILIZERS FOR THE LAWN

BONE MEAL—Our Bone Meal is evenly ground and especially adapted for drilling. For lawn use, 10 lbs. for 250 square feet. Price, 5 lbs. 40c, 10 lbs. 75c, 50 lbs. \$2.25, 100 lbs. \$4.00.

BONE FLOUR—Is especially adapted to florists' use. Gives the best results. 5 lbs. 40c, 10 lbs. 75c, 50 lbs. \$2.50, 100 lbs. \$4.00.

SHEEP MANURE (PULVERIZED)—A pure natural manure and very nutritious for plants. For potting soil, mix one part manure to six parts soil. For vegetable garden, place directly in hills or drills. Splendid top dressing for lawns. 5 lbs. 35c, 10 lbs. 60c, 50 lbs. \$1.75, 100 lbs. \$3.25.

HARD-WOOD ASHES—Splendid as a lawn dressing. Should be applied late in fall or early in spring. Apply at rate of 75 lbs. to 1,000 square feet. 5 lbs. 25c, 10 lbs. 40c, 25 lbs. 75c, 100 lbs. \$2.50, per barrel, \$3.50.

LAWN LIME—Lawn lime will renovate old lawns and garden, cure the acidity of the soil. Promotes growth, gives grass a rich green color. For renewing old gardens and lawns it is unequalled. Guaranteed not to burn the sod. Has a tendency to prevent the growth of weeds. Apply one ton per acre on fields, $\frac{1}{2}$ ton on lawns; 50 lbs. will cover 200 square feet. 50 lb. sack \$1.00, 3 sacks \$2.50, 500 lbs. \$7.50.

WALKER'S EXCELSIOR PLANT FOOD is a complete and colorless fertilizer for House Plants, Flowers, Lawns, Vegetables, Shrubbery and Fruit Orchard, containing Nutritive, Restorative and Color Forming elements in soluble form, producing vigorous, healthy growth and profusion of flowers and fruit. 25c per package.

