

Historic, Archive Document

Do not assume content reflects current scientific knowledge, policies, or practices.



6297

SUGGESTIONS
for Beautifying the
 Home Grounds

6167



LIBRARY
 RECEIVED
 ★ AUG 1 1920 ★
 D. & D. ...

McKAY NURSERY COMPANY
 MADISON, WISCONSIN

Beautify The Home Grounds

WE PRESENT this Booklet to encourage the beautifying of outdoor surroundings and to aid amateurs in selecting suitable Trees, Plants and Shrubs to beautify their grounds.

Our complete general Catalog describing everything that is hardy in Ornamentals as well as Fruits of all kinds will be furnished upon request.

McKAY NURSERY COMPANY

MADISON

WISCONSIN



American Elms of this type and quality are always in demand

Our years of experience in the growing of Trees, Plants and Shrubs qualifies us to assist you in selecting hardy stock to beautify your grounds. Hardiness is of first consideration, for unless the varieties planted have the endurance your efforts are in vain. Select your planting list with care so that your time and money will not be wasted.

ALL correspondence should be addressed to Madison, Wis., where our main offices are located. Our Nurseries have been established for twenty years and are located at Waterloo, Wis., on the Chicago, Milwaukee & St. Paul Railway, twenty-four miles east of Madison.

Our location furnishes a quality of soil best suited to produce the healthiest conditions of growth, with solid, firm texture of wood, with abundant fibrous roots, so necessary to successful transplanting, and enables us to offer the products of our Nurseries with entire confidence to planters in all sections of the country.

HOW TO APPLY THE ILLUSTRATIONS

IN SOME instances illustrations or plans will be found, which, with slight alterations, will suit your grounds. Sometimes a front lawn can be copied from one plan and a rear lawn from another. A careful study of the various illustrations and plans will give you ideas and show you the correct way of arranging and planting your grounds.

Shrubbery and Evergreens should be planted in groups as much better effects are derived from a quantity of one variety than from plants of various kinds. In planting care should be taken so the taller varieties are planted to the rear, then medium growing varieties and finishing with dwarf varieties. A careful consideration is also necessary as to harmony of color.

Do not plant in the center of the lawn or in straight lines except along avenues or boundaries. A well planned planting with a proper balance between the buildings, lawns and shrubbery, and with the trees and shrubs carefully selected and placed according to adaptability, hardiness and color effect, is a source of increasing satisfaction.



Barberry Thunbergi in the Foreground. Climbing Roses and Vines on the Veranda

TREES

TREES are the natural framework for every planting. With them we emphasize natural features and screen unsightly views; therefore, the planting of right varieties is important.

The following is an abbreviated list of those most suitable for various uses:

Street or Avenue—

American Elm, English Elm, Sugar Maple, Norway Maple, Silver (Soft) Maple, Catalpa-Speciosa, Horse Chestnut, American Linden, European Linden.

Rapid Growing—

Carolina Poplar, Norway Poplar, Silver (Soft) Maple, American Linden, Wisconsin Weeping Willow, Golden Willow, Box Elder, Lombardy Poplar, Catalpa-Speciosa.

Flowering—

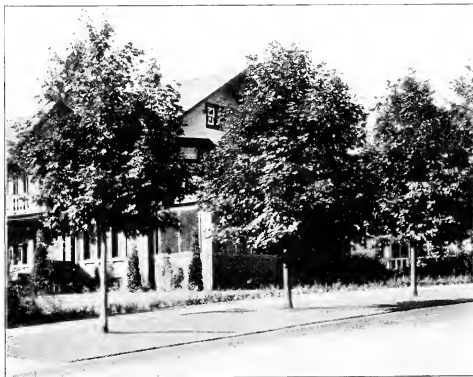
Catalpa-Speciosa, Flowering Crabs, Flowering Cherry, Mountain Ash, Flowering Thorns, Horse Chestnut, Linden, Locust.

With Weeping Branches—

Wier's Cut-leaf Maple, Cut-leaf Birch, Wisconsin Weeping Willow, Golden Willow, Tea's Weeping Mulberry, Camperdown Elm.

With Colored Foliage—

Laurel-leaf Willow, Scarlet Maple, Schwedler's Maple, Reitenbachii Maple, Flowering Crab-Floribunda, Purple Beech.



Street Scene in Madison Planted to Norway Maples

Lawn and Park—

White Birch, Cut-Leaf Birch, Schwedler's Purple Maple, Norway Maple, Catalpa-Speciosa, Beehtel's Flowering Crab, Double Flowering Thorns, American Elm, Camperdown Weeping Elm, Tea's Weeping Mulberry, European Mountain Ash, Bolleana Poplar, Lombardy Poplar, Purple Beech, Double Flowering Cherry.

For Moist Locations—

American Elm, White Ash, Poplars, Willows, Box Elder.

EVERGREENS



Koster's Blue Spruce

THE Evergreens are indispensable in some features of ornamental gardening. They are especially valuable for screens and windbreaks, for a background against which to group trees with beautifully colored leaves or branches, and for winter decoration. In fact in the Northern states the Pines, Spruces and other native Evergreens are so well adapted to the climate and soil that they are quite as important in all branches of ornamental planting as the deciduous trees and shrubs.

Choice Evergreens should be dug and shipped with a ball of earth as an extra precaution that plants will arrive in good condition. The following list includes some of the best varieties:

ARBOR VITAE:

Common American—The best known and most valuable of this genus. Extensively used for hedge purposes.

Globosa—Of dense dwarf habit, requires no shearing and always in good form.

Hovey's—Globular and dwarf habit, fan shape leaves of bright green.

Peabody's Golden—Bright Golden yellow, forming a brilliant contrast to the others.

Pyramidal—Forms a tall slender column of dark green, 20 to 40 ft. high.

Siberian—The foliage is stiff and heavy, and of a dark green color.

FIR: Balsam—A handsome symmetrical tree. Will grow on wet ground as well as dry.

HEMLOCK: Makes a fine lawn tree or ornamental hedge.

JUNIPER:

Virginiana (Red Cedar)—It does well in dry and exposed locations.

Savin—Hardy and thrives well in poor soil.

PINE:

Austrian—One of the most important for mass planting. Satisfactory for windy exposures.

Mugho—Low, spreading. Valuable for planting on rocky ground and hillsides.

Scotch—Valuable and desirable for grouping with other Evergreens.

White—Our native Northern White pine, valuable for various uses.

RETINOSPORA: Golden Japan Cypress—One of the few really golden Evergreens with feathery foliage, valuable for massing. In our Nurseries it has withstood the severe winters without any noticeable injury.

SPRUCE:

Koster's Grafted Blue—The only genuine blue spruce, fine for specimen planting or massing.

Norway—Of rapid growth and is a handsome tree of graceful habit and dark green foliage, valuable for all purposes.

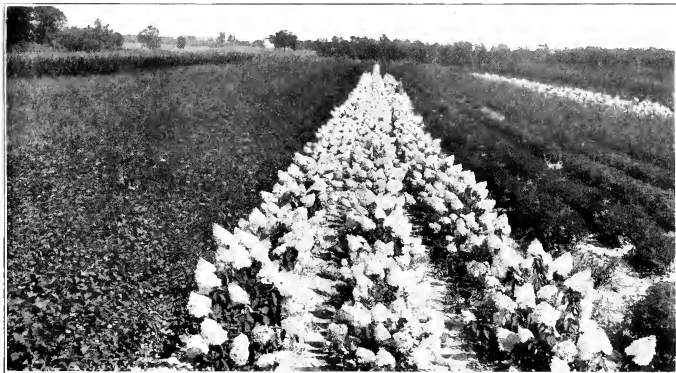
White—A very pretty variety which makes a fine specimen tree.



DECIDUOUS FLOWERING SHRUBS

THE permanent value and beauty of Deciduous Shrubs was never better understood and appreciated than at the present time. The charm and grace they lend to the home grounds is invaluable, and, if judicious selection is made, it is possible to have a continuous succession of bloom from early spring to the days when the frost nips the flowers of the very latest to bloom.

We list below only the most desirable Shrubs and have grouped them under various headings in order to give an intelligent idea of their uses and adaptability.



Field of 50,000 Hardy Shrubs Growing in Our Nurseries. Hydrangea in Bloom

TALL GROWING SHRUBS:

Barberry—
Common
Purple

Cornus—
Red Ozier
Siberian

Currant—
Yellow Flowering

Elder—
Common
Cut-leaf
Golden
Red Berried

Honeysuckle (Upright)—
Fragrantissima
Morrowi
Red Tartarian
White Tartarian

Lilac—
Purple
White

Plum—
Flowering

Russian Olive

DECIDUOUS FLOWERING SHRUBS—*Continued*

Syringa or Philadelphus—

Coronarius
Grandiflorus

Spiraea—

Aurea
Billardi

Sumac—

Cut-leaf
Staghorn
Smooth

Tamarix—

Amurensis

Viburnum—

Lantana
Opulus—High Bush Cranberry
Sterilis—Common Snowball

Weigela—

Candida
Rosea

MEDIUM GROWING SHRUBS:

Almonds—

Red Flowering
White Flowering

Currant—

Alpinum

Cornus—

Variegated Leaved

Deutzia—

Lemoinei

Forsythia—

Fortunei
Intermedia



Spiraea Van Houttei

Hydrangea—

Arborescens (Hills of Snow)
Paniculata Grandiflora

Lilac—

Persian
Md. Abel Chatenay
Villosa

Syringa or Philadelphus—

Aurea—Golden
Lemoinei

Spiraea—

Arguta
Van Houttei

Snowberry—

Red and White

Weigela—

Eva Rathke

LOW OR DWARF GROWING SHRUBS:

Barberry—

Thunbergi

Spiraea—

Anthony Waterer
Collosa Alba
Thunbergi

Weigela—

Variegated

SHRUBS FOR SHADY PLACES:

Barberry—

Common, Purple
and Thunbergi

Currants—Flowering

Cornus—In variety

Deutzia—Lemoinei

Honeysuckle—Fragrantissima

Hydrangea—Arborescens

Privet—In variety

Snowberry—

Red and White

***Viburnum—**In variety

*Viburnum will not flower in shady places, but the growth of foliage is very luxuriant.

DECIDUOUS FLOWERING SHRUBS—*Continued*

SHRUBS BEARING ORNAMENTAL FRUIT SUCCEEDING THE FLOWERS:

- Barberry—In variety
- Elder—In variety
- Cornus—In variety
- Currants, Flowering—In variety
- Honeysuckle (Upright)—In variety
- Russian Olive
- Rosa Rugosa
- Sumac—In variety
- Snowberry—Red and White
- Viburnum—In variety

SHRUBS WITH COLORED OR VARIEGATED FOLIAGE:

- Barberry—
Purple
Thunbergi, Bronze in Fall of year
- Cornus—Variegated
- Elder—
Cut-leaved
Golden
- Forsythia—Fortunei Aurea, Golden
- Japan Quince—Reddish leaves
- Plum—Purple-leaved
- Syringa—Aurea, Golden
- Spirea—Aurea, Golden
- Weigela—Variegated

We supply shrubs that are strong and thrifty, well grown and rooted, and carefully handled in every way. Shrubs that are too large, overgrown and unwieldy have no place in an artistic planting.



Staghorn Sumac

SHRUBS FOR BOUNDARY HEDGES:

- Buckthorn
- Barberry—Thunbergi
- Privet—
Amoor River North
Ibota
Polish or Russian

FLOWERING SHRUBS FOR HEDGES:

- Barberry—In variety
- Cornus—In variety
- Honeysuckle—In variety
- Hydrangea—In variety
- Japan Quince
- Lilae—In variety
- Philadelphus—In variety
- Spirea—In variety
- Snowberry—Red and White

SEASON OF BLOOMING:

May

- Almonds, Flowering
- Barberry—In variety
- Currants, Flowering
- Deutzia—Pride of Rochester
- Forsythia—In variety
- Honeysuckle—In variety
- Japan Quince
- Lilae—In variety
- Spirea—Arguta, Prunifolia, Thunbergi, Van Houttei
- Tamarix—Amurense

June

- Cornus—In variety
- Deutzia—Lemoinei
- Privet—In variety
- Russian Olive
- Philadelphus—In variety
- Viburnum—In variety
- Weigela—In variety

July

- Clethra—White Alder
- Hydrangea—Arborescens
- Spirea—Anthony Waterer, Billardi,
Bumalda, Douglassi
- Weigela—Eva Rathke

August and September

- Althea—In variety
- Clethra—White Alder
- Hydrangea—Paniculata Grandiflora



Mixed Planting Spirea Van Houttei in Foreground with Privet Border



Clematis, Paniculata

Bittersweet—A native climbing plant with yellow flowers.

Clematis—

Henryii—Free bloomer, large creamy white flowers.

Jackmani—Flowers are large intense violet purple. One of the best.

Madam Edward Andre—Beautiful bright velvety red.

Paniculata—Small flowering white. A splendid variety, useful for covering verandas, pillars, etc.

Dutchman's Pipe—A native species of rapid growth, splendid for archways and verandas.

Honeysuckle (Climbing)

Hall's Japan—Very fragrant and vigorous grower. Needs winter protection.

Climbing Vines

WITHOUT the Climbing Vines many beautiful homes would present a sad and unprotected picture during the warm weather. In addition to the attractiveness they also give the home that exclusiveness that cannot be had in any other way. Many varieties are also suitable for covering stone or wire fences; tree stumps, and other unsightly objects can be made beautiful with these vines. Only the most desirable climbers are listed.

Scarlet Trumpet—Deep red trumpet shaped flowers. Beautiful for trellises and rock work. Very hardy.

Ivy (Ampelopsis)

American of Virginia Creeper—A native rapid climber.

Boston or Japan—The vine clings closely to the wall and makes a very pretty effect, kills back some in cold winters.

Engelmani—The best for the Northwest, clings to brick or stone, foliage turns to crimson in autumn.

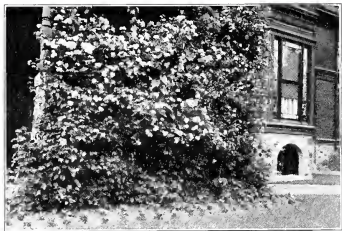
Matrimony Vine—A vigorous climber with purple flowers. Will thrive most anywhere.

Trumpet Creeper—Large trumpet shaped scarlet flowers in August.

Wisteria, Purple—Pendulous clusters of pale blue flowers in May and June.



A Nicely Arranged Approach



Climbing Rose

ROSES

ROSES are the most appreciated of any of our Flowers. They thrive best in a good, well drained clay soil where they can have plenty of sunshine. At time of planting cut tops back to within six inches of ground. The climbing Roses are valuable for covering walls, trellises and porches. The Hybrid Perpetuals, Rosa Rugosa and Hybrid Rosa Rugosas are useful for border beds. We list a few of the best for this latitude.

HYBRID PERPETUALS:

- American Beauty**—Deep rich rose
- Anne de Diesbach**—Rich carmine
- Alfred Colomb**—Dark red
- Coquette des Alps**—White
- Clio**—Satiny delicate blush
- Earl of Dufferin**—Rich dark crimson
- Fisher Holmes**—Crimson scarlet
- Frau Karl Druschki**—Pure white—extra large
- General Jacqueminot**—Red
- General Washington**—Deep crimson
- Gruss an Teplitz**—Dark red
- John Hopper**—Brilliant rose
- La France**—Silvery pink
- Marshall P. Wilder**—Bright cherry red

- Mrs. John Laing**—Large pink
- Magna Charta**—Bright pink
- Margaret Dickson**—White with blush center
- Madam Gabriel Luizet**—Silvery pink
- Madam Plantier**—Pure white, extra hardy
- Prince Camille de Rohan**—Deep crimson
- Paul Neyron**—Beautiful pink
- Soleil d'Or**—Yellow shaded with red
- Ulrich Brunner**—Brilliant cherry red

HARDY CLIMBING:

- Baltimore Belle**—Pale blush
- Climbing American Beauty**—Rosy crimson
- Crimson Rambler**—Dark crimson
- Dorothy Perkins**—One of the grandest pink

ROSES—*Continued*

HARDY CLIMBING—Continued

- Excelsa**—Red, similar to Dorothy Perkins except in color
- Flower of Fairfield** (Ever Blooming Crimson Rambler)—Crimson
- Prairie Queen**—Rosy red
- Seven Sisters**—Crimson, changing all shades to white
- Tausendsohn**—Soft pink, changing to a carmine rose. Very beautiful.
- White Dorothy Perkins**—A fine white Rambler
- Wichuriana or Memorial**—White trailing rose
- Yellow Rambler**—Decided yellow

MISCELLANEOUS:

- Baby Rambler**—Pink
- Baby Rambler**—Red
- Baby Rambler**—White
- Harrison's Yellow**
- Persian Yellow**

MOSS:

- Blanche Moreau**—Pure white
- Crested Moss**—Pink with mossy fringe
- Glory of Mosses**—Pale rose
- Princess Adelaide**—Pale rose

ROSA RUGOSA:

- Rubra**—This is a single flowering variety, very hardy, vigorous grower and not troubled with insects. It has thick, leathery, glossy green foliage, and the flowers are followed by bright scarlet seed pods, making it attractive in fall.

HYBRID ROSA RUGOSAS—All the following varieties are extra good double flowering. This class of Roses is a result of crossing the Rosa Rugosa with our common garden Roses. Bloom abundantly and stand without winter protection.

- Conrad F. Meyer**—Silvery rose, fragrant, blooms all summer.
- Hansa**—Deep violet red. Absolutely hardy.
- New Century**—Pink. A constant bloomer.
- Nova Zembla**—Beautiful white. Fine bloomer.
- Sir Thos. Lipton**—Pure white. True Rosa Rugosa foliage.

PRAIRIE OR BUSH—Single flowers, very hardy and used in grouping with other Shrubs.

- Carolina**—Pink. Thrive in moist ground.
- Rubiginosa**—Sweet Briar. Scented foliage, pink blossom.
- Setigera**—Climbing, pink flowers.

PAEONIES

PERFECTLY hardy and of easy culture. They rival the rose in perfection of bloom. Paeonies may be planted effectively in beds by themselves, as a background for other Perennials, as a foreground for shrubbery groups or borders and in single hedge rows. They are equally as successful for cut-flowers as for artistic landscape effects. Can be planted in September or October and in the Spring. We list only a few choice varieties which are all double except the Defiance.

Delicatissima—Pale lilac rose. Extra good keeper, Mid-season.

Defiance—Pink. A good variety with single bloom.

Felix Crousse—Brilliant red, ball shaped bloom. An excellent variety. Rather late.

Festiva Alba—Large, globular, pure white with a few spots of carmine in the center.

Festiva Maxima—Pure white with a crimson drop in center. Most beautiful of the white varieties.

Golden Harvest—Blush guard petals, creamy white enter. Large and free bloomer.

Louis Van Houtte—Deep carmine, with fiery reflex. Very brilliant. Late.

Marie Lemoinei—Large compact flower, sulphur white, occasionally carmine tipped. Late.

Prince Imperial—Brilliant purplish scarlet, free bloomer. Fine for massing.

HARDY PHLOX

They are among the finest of herbaceous plants, perfectly hardy, of easy culture, and very showy in masses or in border beds. The list following contains some of the best varieties and will bloom from early Summer until Fall.

Bridesmaid—White with crimson eye.

Elizabeth Campbell—Soft pink.

Eclairer—Purplish crimson.

Jeanne d'Arc—Pure white.

Le Mahde—Deep purplish violet.

Pantheon—Deep salmon rose.

R. P. Struthers—Bright rosy red.

Rynstrom—Flowers large rose pink.

Richard Wallace—White rose center.

Von Lossburg—Pure white.



HARDY PERENNIALS



Iris

NO ORNAMENTAL lawn planting, whatever its extent, can be complete without a liberal proportion of these hardy flowering plants. The ease with which they are maintained is an important factor, but their great and varied scope of usefulness gives them still greater importance. We list only a few of the very best. The figures denote the height of growth at maturity.

Aquilegia—Blooms in early summer. Yellow and White. 18-24 inches.

Aucumne—Blooms in September and October. Popular color White. 2-3 feet.

Achillea—The Pearl—Double White flower, valuable for borders. Blooms June to August. 18-24 inches.

Bleeding Heart—Blooms in May. 2 feet.

Boltonia—Blooms August and September with an abundance of Aster like flowers, showy. 4-6 feet.

Coreopsis—Yellow flowers on long stems, fine for cutting. Early summer until frost. 2-3 feet.

Chrysanthemums (Hardy)—Autumn blooming, lasting long after hard frosts. Popular colors Red and White. 2 feet.

Delphinium—Larkspur—Blooms during the summer months. The Hybrid varieties have various shades of rich Blue. 2-4 feet.

Daisy, Shasta—Daisy like flowers in June and July. 18-24 inches.

Day Lily—

White—Blooms in mid-summer. 12-18 inches.

Yellow—Blooms in June and July. 2-3 feet.

Orange—Blooms in June and July. 3-4 feet.

Fox Glove—Blooms June to August, Purple, Yellow and White. 2-3 feet.

Golden Glow—Yellow flowering, early summer until frost. 5-6 feet.

Gypsophelia—White, June to August. 2-3 feet.

Gaillardia—Flowers Crimson and Gold, early summer until August. 18-20 inches.

Hollyhocks—July and August. Leading colors Pink, Red, White and Yellow. 5-6 feet.

Iris—

German—Poplar colors, Blue, Pink, Purple, Variegated, White and Yellow. May and June. 2 feet.

Japan—Same colors as the German varieties. June. 18-24 inches.

Siberian—Dark Purple. June. 18-24 inches.

Monarda—Blooms June to August. Scarlet flowers. 2-3 feet.

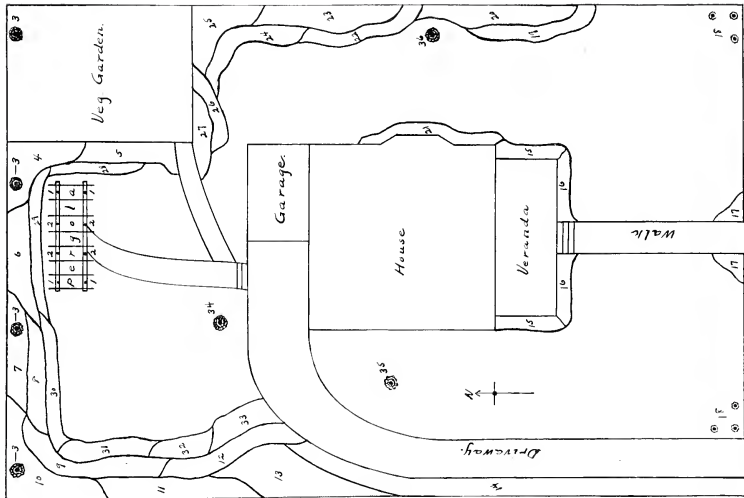
Physostegia—Blooms during September and October. Bright Pink flowers. 3 feet.

Sedum, Spectabilis—Fall blooming. Rosy Purple. 18-24 inches.

IN THE preceding pages we have attempted to list and give a brief description of hardy varieties adapted to this latitude and to show by illustration artistically arranged plantings from which can be acquired some knowledge of plant material and an appreciation of the natural beauty in Trees, Plants and Shrubs.

On the following pages are designs of grounds, which in some instances may nearly suit your requirements. We list the material used in each design which is susceptible to changes, to illustrate:—In Northern Wisconsin where the Privets are not very hardy you can substitute Barberry Thunbergi in Bed No. 14, Page 20, and Spirea Van Houttei in Bed No. 15. Neither of these changes would destroy the harmony or effect.

From these designs you will be able to form ideas for your own planting, which, when worked out for you, will make your place attractive and beautiful, and as a result there will be satisfaction that cannot be measured or its value determined.



Scale 24 feet to 1 inch

Bed No.

- 1—4 Clematis Paniculata
- 2—4 Ivy Elm
- 3—4 Maple Norway
- 4—8 Syringa Grandiflorus
- 5—10 Tamarix Amurensis
- 6—10 Lilacs
- 7—8 Cranberry High Bush
- 8—8 Weigela Variegata
- 9—12 Snowberry White
- 10—15 Honeysuckle Morrowi
- 11—12 Barberry Purple
- 12—10 Snowberry Red
- 13—15 Spirea Van Houttei

PLANTING LIST

- 14—60 Privet Amoor R. North'
- 15—8 Privet Regals
- 16—10 Spirea Arguta
- 17—8 Barberry Thunbergi
- 18—6 Globosa Arbor Vitae
- 19—12 Hydrangea P. G.
- 20—15 Spirea Anthony Waterer
- 21—8 Weigela Rosa
- 22—8 Weigela Rosa
- 23—10 Viburnum Lantana

- 24—10 Rosa Ruossa Ruhra
- 25—8 Honeysuckle Tartarian
- 26—6 Forsythia
- 27—6 Elder Golden
- 28—15 Achillea The Pearl
- 29—15 Delphinium
- 30—15 Chrysanthemums
- 31—20 Gaillardia
- 32—15 Daisy Shasta
- 33—25 Phlox Assorted
- 34—1 Linden American
- 35—1 Koster's Blue Spruce
- 36—1 Maple Norway
- 37—4 Elm American

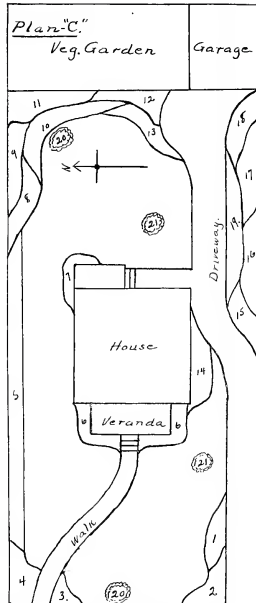
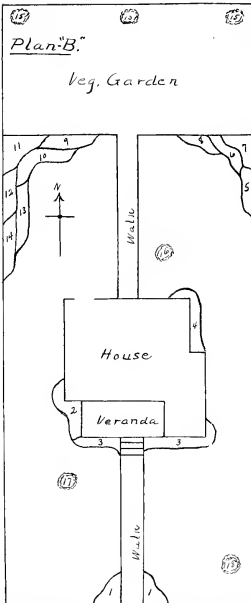
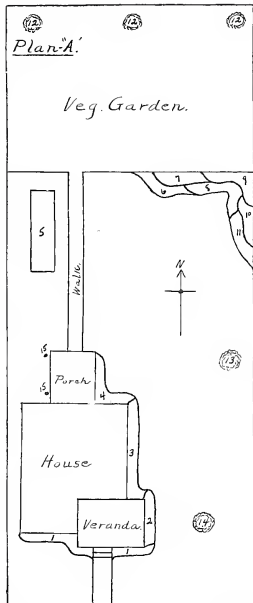
PLANTING LIST

Plan A

- Bed No.
- 5 Spirea Van Houttei (West Side)
 - 3 Privet Regals (East Side)
 - 6 Barberry Thunbergi
 - 10 Hydrangea Arborescens
 - 8 Snowberry Red
 - 16 Hardy Roses
 - 15 Hardy Phlox
 - 4 Deutzia Lemoinei
 - 18 Delphinium
 - 6 Barberry Purple
 - 4 Spirea Arguta
 - 15 Iris German
 - 3 Horse Chestnut European
 - 1 Mulberry Tea's Weeping
 - 1 Birch Cut Leaf Weeping
 - 2 Ivy Engelmani

Plan B

- 8 Barberry Thunbergi
- 5 Weigela Rosea
- 5 Syringa Aurea (West Side)
- 8 Hydrangea P. G. (East Side)
- 8 Barberry Common
- 6 Barberry Thunbergi
- 4 Syringa Coronarius
- 4 Honeysuckle Tartarian
- 4 Snowfall
- 4 Syringa Grandiflorus
- 5 Cranberry High Bush
- 5 Spirea Billardi
- 4 Cornus Variegated
- 6 Peonias
- 6 Spirea Anthony Waterer
- 3 Poplar Bolleana
- 1 Linden American
- 1 Horse Chestnut European
- 1 Maple Hard



Plan C

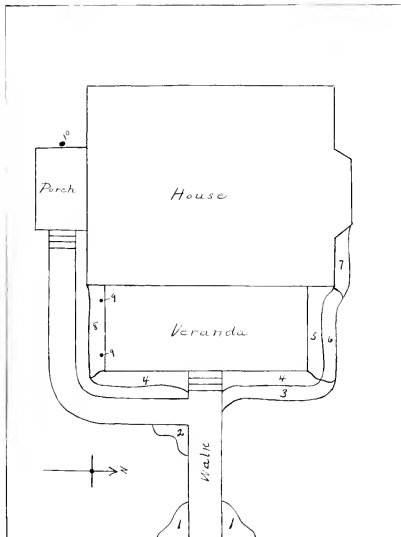
Bed No.

- 1-6 Almonds Flowering
- 2-6 Japan Quince
- 3-3 Hydrangea P. G.
- 4-4 Hydrangea P. G.

- 48 Barberry Thunbergi
- 6 Weigela Rosea (North Side)
- 10 Barberry Thunbergi (South Side)
- 6 Hydrangea Arborescens
- 8 Rosa Rugosa

- 6 Syringa Grandiflorus
- 10-10 Sumac Cut Leaf
- 5 Honeysuckle Morrow
- 4 Elder Cut Leaf
- 6 Snowberry White
- 5 Spirea Van Houttei
- 15-15 Shasta Daisy

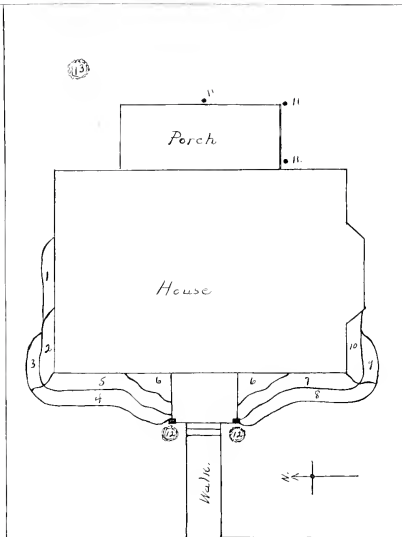
- 16-20 Hardy Phlox
- 17-15 Delphinium
- 18-10 Hardy Chrysanthemums
- 20-20 Sedum
- 2-2 Maple Norway
- 21-2 Poplar Lombardy



Scale 16 feet to 1 inch

PLANTING LIST

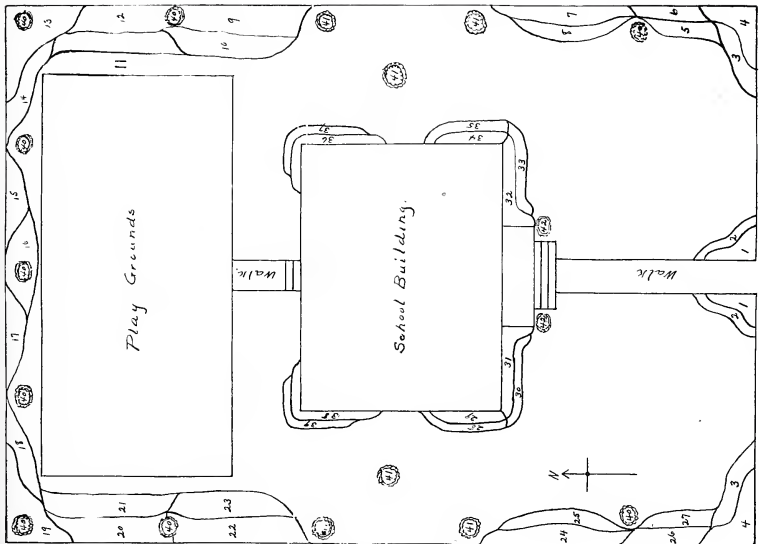
- | | |
|-------------------------------------|---------------------------|
| Bed No. | 5-4 Currant Alpinum |
| 1- 8 Barberry Thunbergi | 6-5 Hydrangea Arborescens |
| 2- 3 Syringa Aurea | 7-3 Barberry Common |
| 3-10 Spiraea Anthony Waterer | 8-4 Barberry Purple |
| 4-12 Shrubs. { 7 Barberry Thunbergi | 9-2 Ivy Engelmani |
| { 5 Weigela Rosea | 10-1 Climbing Rose |



Scale 16 feet 1 inch

PLANTING LIST

- | | |
|------------------------------|-----------------------------|
| Bed No. | 7- 7 Spiraea Van Houttei |
| 1- 4 Deutzia Lemoinei | 8- 8 Hydrangea P. G. |
| 2- 5 Barberry Thunbergi | 9- 3 Barberry Thunbergi |
| 3- 3 Hydrangea Arborescens | 10- 3 Snowberry White |
| 4-10 Spiraea Anthony Waterer | 11- 3 Ivy Engelmani |
| 5- 7 Cornus Variegated | 12- 2 Pyramidal Arbor Vitae |
| 6- 4 Barberry Purple | 13- 1 Mountain Ash European |



Scale 60 feet to 1 inch

PLANTING LIST	
Red No.	Barberry Thunbergi
1-30	Current Flowering
31-40	Syringa Aurea
41-50	Syringa Van Houttei
51-60	Syringa Van Houttei
61-70	Syringa Van Houttei
71-80	Syringa Van Houttei
81-90	Syringa Van Houttei
91-100	Syringa Van Houttei
101-110	Syringa Van Houttei
111-120	Syringa Van Houttei
121-130	Syringa Van Houttei
131-140	Syringa Van Houttei
141-150	Syringa Van Houttei
151-160	Syringa Van Houttei
161-170	Syringa Van Houttei
171-180	Syringa Van Houttei
181-190	Syringa Van Houttei
191-200	Syringa Van Houttei
201-210	Syringa Van Houttei
211-220	Syringa Van Houttei
221-230	Syringa Van Houttei
231-240	Syringa Van Houttei
241-250	Syringa Van Houttei
251-260	Syringa Van Houttei
261-270	Syringa Van Houttei
271-280	Syringa Van Houttei
281-290	Syringa Van Houttei
291-300	Syringa Van Houttei
301-310	Syringa Van Houttei
311-320	Syringa Van Houttei
321-330	Syringa Van Houttei
331-340	Syringa Van Houttei
341-350	Syringa Van Houttei
351-360	Syringa Van Houttei
361-370	Syringa Van Houttei
371-380	Syringa Van Houttei
381-390	Syringa Van Houttei
391-400	Syringa Van Houttei
401-410	Syringa Van Houttei
411-420	Syringa Van Houttei
421-430	Syringa Van Houttei
431-440	Syringa Van Houttei
441-450	Syringa Van Houttei
451-460	Syringa Van Houttei
461-470	Syringa Van Houttei
471-480	Syringa Van Houttei
481-490	Syringa Van Houttei
491-500	Syringa Van Houttei
501-510	Syringa Van Houttei
511-520	Syringa Van Houttei
521-530	Syringa Van Houttei
531-540	Syringa Van Houttei
541-550	Syringa Van Houttei
551-560	Syringa Van Houttei
561-570	Syringa Van Houttei
571-580	Syringa Van Houttei
581-590	Syringa Van Houttei
591-600	Syringa Van Houttei
601-610	Syringa Van Houttei
611-620	Syringa Van Houttei
621-630	Syringa Van Houttei
631-640	Syringa Van Houttei
641-650	Syringa Van Houttei
651-660	Syringa Van Houttei
661-670	Syringa Van Houttei
671-680	Syringa Van Houttei
681-690	Syringa Van Houttei
691-700	Syringa Van Houttei
701-710	Syringa Van Houttei
711-720	Syringa Van Houttei
721-730	Syringa Van Houttei
731-740	Syringa Van Houttei
741-750	Syringa Van Houttei
751-760	Syringa Van Houttei
761-770	Syringa Van Houttei
771-780	Syringa Van Houttei
781-790	Syringa Van Houttei
791-800	Syringa Van Houttei
801-810	Syringa Van Houttei
811-820	Syringa Van Houttei
821-830	Syringa Van Houttei
831-840	Syringa Van Houttei
841-850	Syringa Van Houttei
851-860	Syringa Van Houttei
861-870	Syringa Van Houttei
871-880	Syringa Van Houttei
881-890	Syringa Van Houttei
891-900	Syringa Van Houttei
901-910	Syringa Van Houttei
911-920	Syringa Van Houttei
921-930	Syringa Van Houttei
931-940	Syringa Van Houttei
941-950	Syringa Van Houttei
951-960	Syringa Van Houttei
961-970	Syringa Van Houttei
971-980	Syringa Van Houttei
981-990	Syringa Van Houttei
991-1000	Syringa Van Houttei

WE HOPE this Booklet has furnished some suggestions for the Beautifying of your Grounds. We invite Correspondence and will be pleased to assist in the selection of varieties and arrangement of your planting. We offer you "Quality Stock and Service" that will give satisfaction.

McKAY NURSERY COMPANY

MADISON, WISCONSIN

