

Historic, Archive Document

Do not assume content reflects current scientific knowledge, policies, or practices.



1919

62.35

c1919

RECEIVED
 ★ FEB 24 1919 ★
 HORTICULTURAL AND POMOLOGICAL
 INVESTIGATIONS

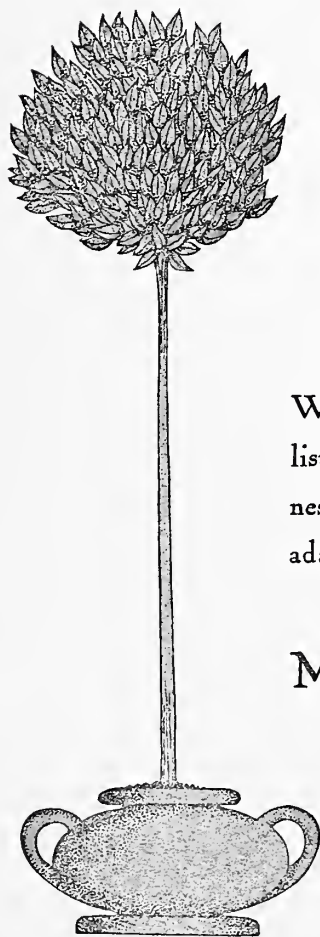


Mount
 Desert
 Nurseries
 BAR HARBOR
 MAINE



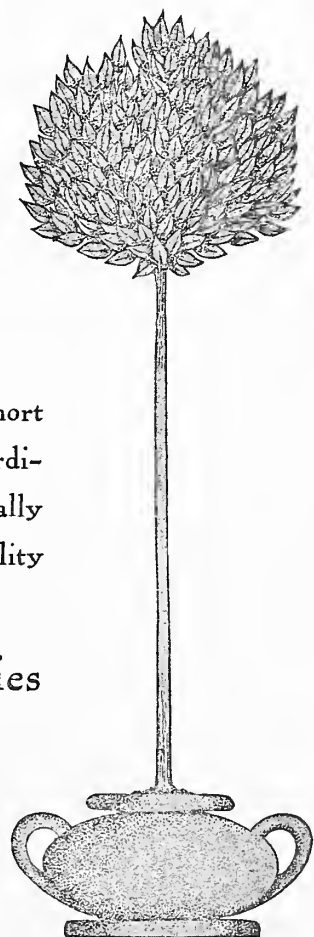


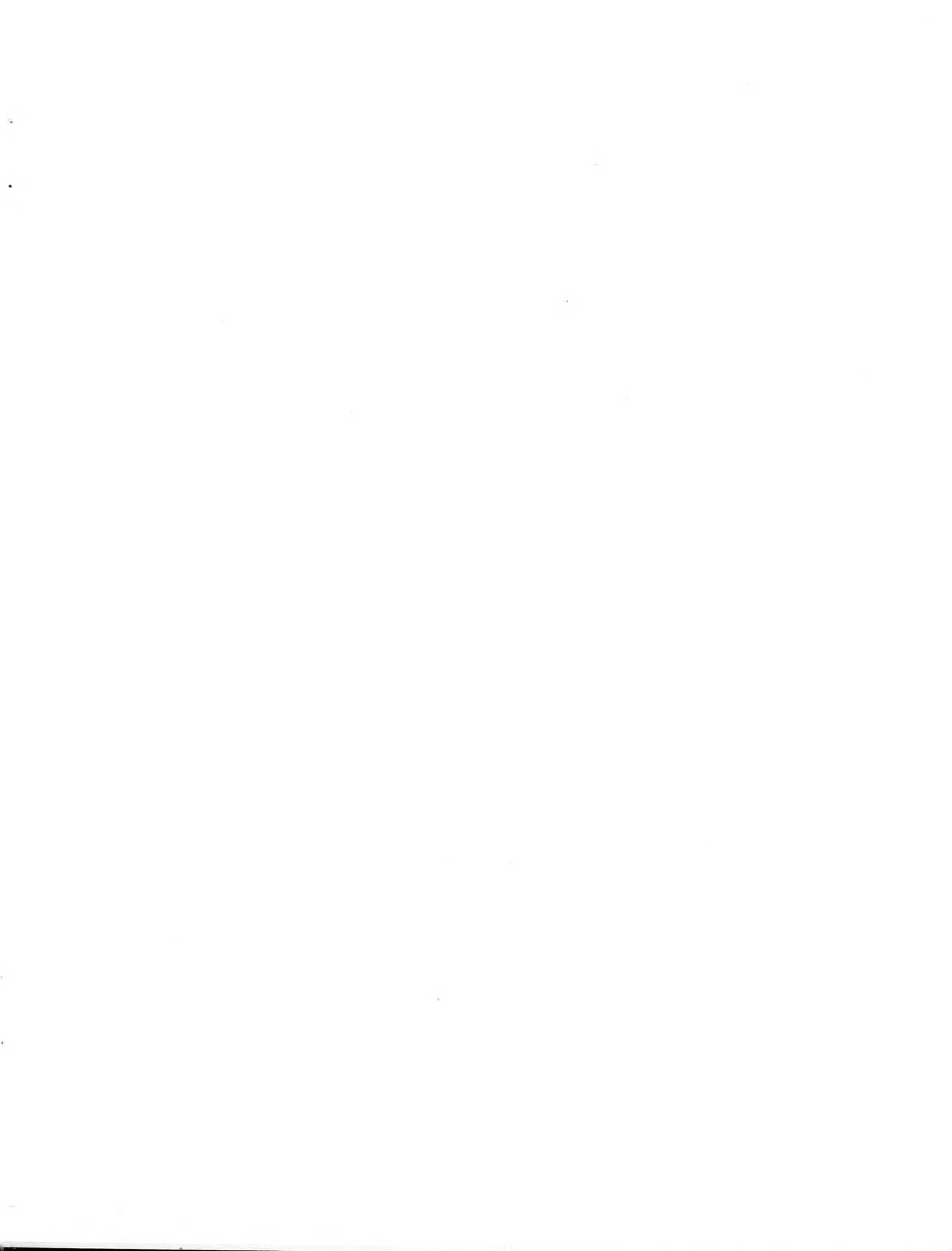
Trees, Shrubs, Vines, Fruits
and Herbaceous Plants
for Northern Planting



We take pleasure in offering this short list of Plants selected for their hardiness and vigor and which are especially adapted for planting in this locality

Mount Desert Nurseries
Bar Harbor, Maine







ROSE, TAUSENDSCHON

An extremely beautiful Rose of rambling character, with large semi-double rose pink flowers



PLANTS *of* SPECIAL MERIT

We take pleasure in drawing special attention to the following new or uncommon plants, all of which are exceptionally good and deserve inclusion in all gardens

JUNIPERUS.

communis. All the Junipers are excellent for ground covering. This variety is the native one most frequently found on our rocky hillsides and dry slopes.

Price: Pot-grown plants, \$.75 each; \$6.00 per 10.
Field-grown stock, 18-24 in., \$1.00 each; \$7.50 per 10.

JUNIPERUS.

koriensis. This recent introduction has proven absolutely hardy, and a valuable addition to this class.

Price: 18-24 in., \$1.25 each.

JUNIPERUS.

procumbens (prostrata). We cannot speak too highly of this plant, as we consider it one of the very best things we have to offer. The form we grow is the one peculiar to the Maine coast; branches very low, has long trailing shoots with numerous short ascending branchlets, and its glaucous foliage is very attractive.

Price: Pot-grown plants, 12-18 in., \$1.25 each; \$10.00 per 10.
Field-grown specimens 18-24 in., \$1.50 each; \$12.50 per 10.

ROSE.

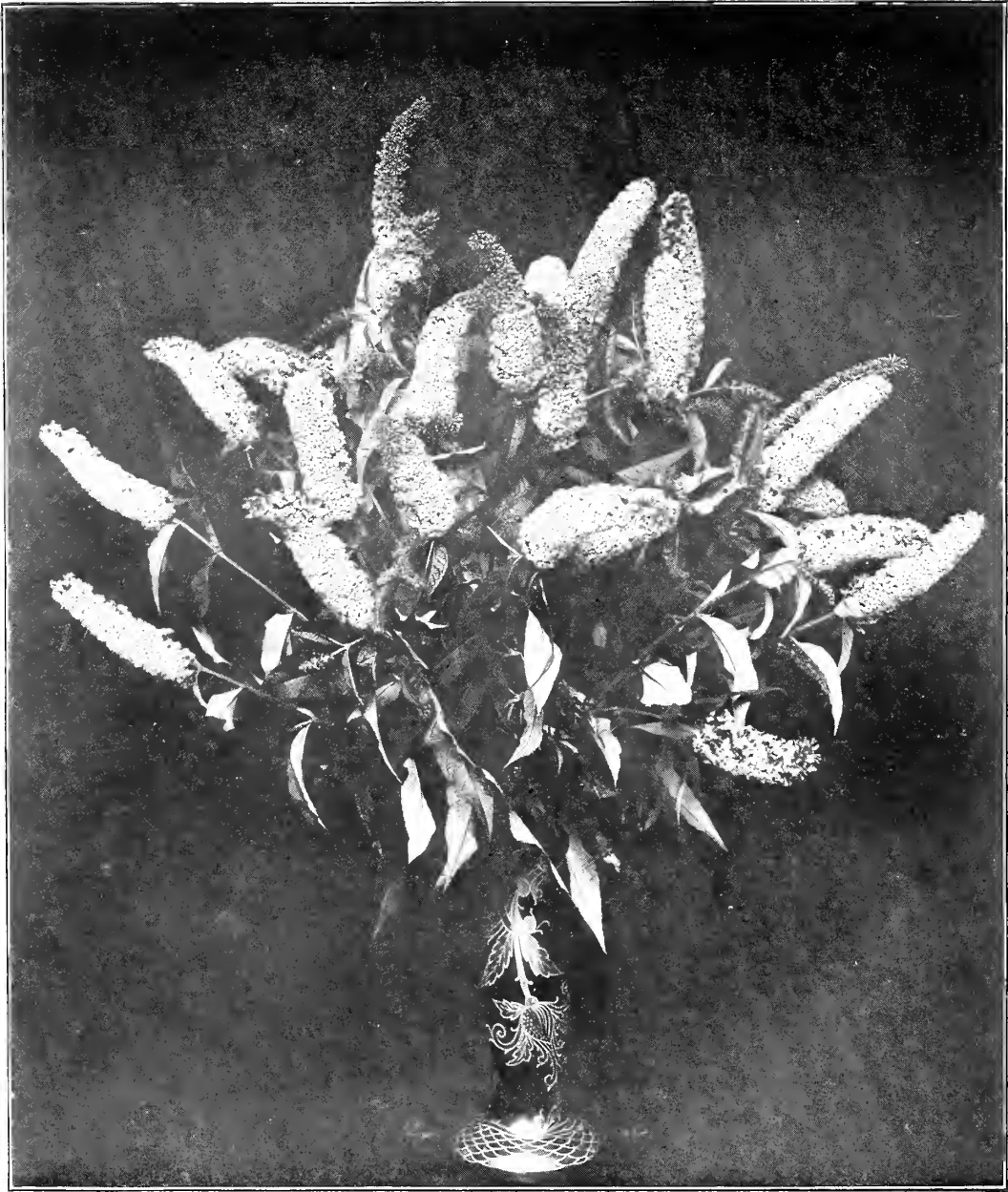
tausendschon. This climbing rose stands at the head of those best adapted to our climate. It is of vigorous growth, and its flowers, which are a beautiful shade of pink, are about two inches across, and are borne in large clusters. Foliage is very glossy and does not mildew.

Price: Plants in 6-in. pots, \$.50 each.

AQUILEGIA.

Long Spurred Hybrids. Mixed colors, containing white, blue, yellow, deep red, and exquisite shades of pink. The Columbines are among the most beautiful of hardy plants, and their graceful flowers are much prized for cutting.

Price: \$.25 each; \$2.00 per 10.



BUDDLEIA VARIABILIS SUPERBA
as a Cut Flower



MOUNT DESERT NURSERIES

SILVER WHITE. Handsome foliage and graceful spikes of white flowers, lightly shaded rose. Very attractive.

VENUS. One of the most beautiful. Deep rose on tall branching spikes.

VESTA. Very light rose. A most attractive variety.

Price: \$. 35 each; \$3.00 per 10.

BUDDLEIA. Butterfly Bush.

Very desirable plants, producing lilac like flowers in immense panicles throughout the Summer and Fall. Valuable for cutting, being adapted for design work, bouquets or window decoration. Desirable for an individual specimen in the lawn and garden, and also excellent for the shrub border.

variabilis magnifica. This is one of the best varieties, with violet purple flowers borne on long branching stems.

variabilis superba. The finest of all the Buddleias. It has gracefully arching shoots 6 to 7 feet tall, and rosy colored flowers.

Price: Pot-grown plants, \$.50 each.

NOTE.—We will be glad to quote prices on extra heavy field-grown roots, upon application.

DELPHINIUM. Larkspur.

Belladonna. Clivedon Beauty. A very popular plant, growing about 3 feet tall, with branching stems producing an abundance of clear blue flowers throughout the season.

Price: \$.25 each; \$2.00 per 10.

GYPSOPHILA.

paniculata plena. An extremely handsome new double variety of Baby's Breath. Much used for cutting in combining with other flowers.

Price: \$.50 each; \$4.00 per 10.

HEMEROCALLIS.

luteola pallens. Flowers a clear light yellow, borne on stems 3 feet long. This is without doubt the best of the Day Lilies, as it commences to bloom early in the season and continues until late in September.

Price: \$.25 each; \$2.00 per 10.



LATHYRUS.

latifolius. White Pearl. This variety of perennial Pea has a profusion of white flowers, borne throughout the Summer, with from eight to ten blooms on each stem. Valuable where a climber of medium growth is required.

Price: \$.25 each; \$2.00 per 10.

LILIUM.

myriophyllum. The Regal Lily. This magnificent Lily is found to be absolutely hardy. Its flowers are white, slightly suffused with pink, with a beautiful shade of canary-yellow at the center. It is delightfully perfumed, and lacks the heavy oppressive odor of most lilies. Blooms out of doors in July.

Price: \$1.25 each; \$10.00 per 10.

MONARDA DIDYMA. Cambridge Scarlet.

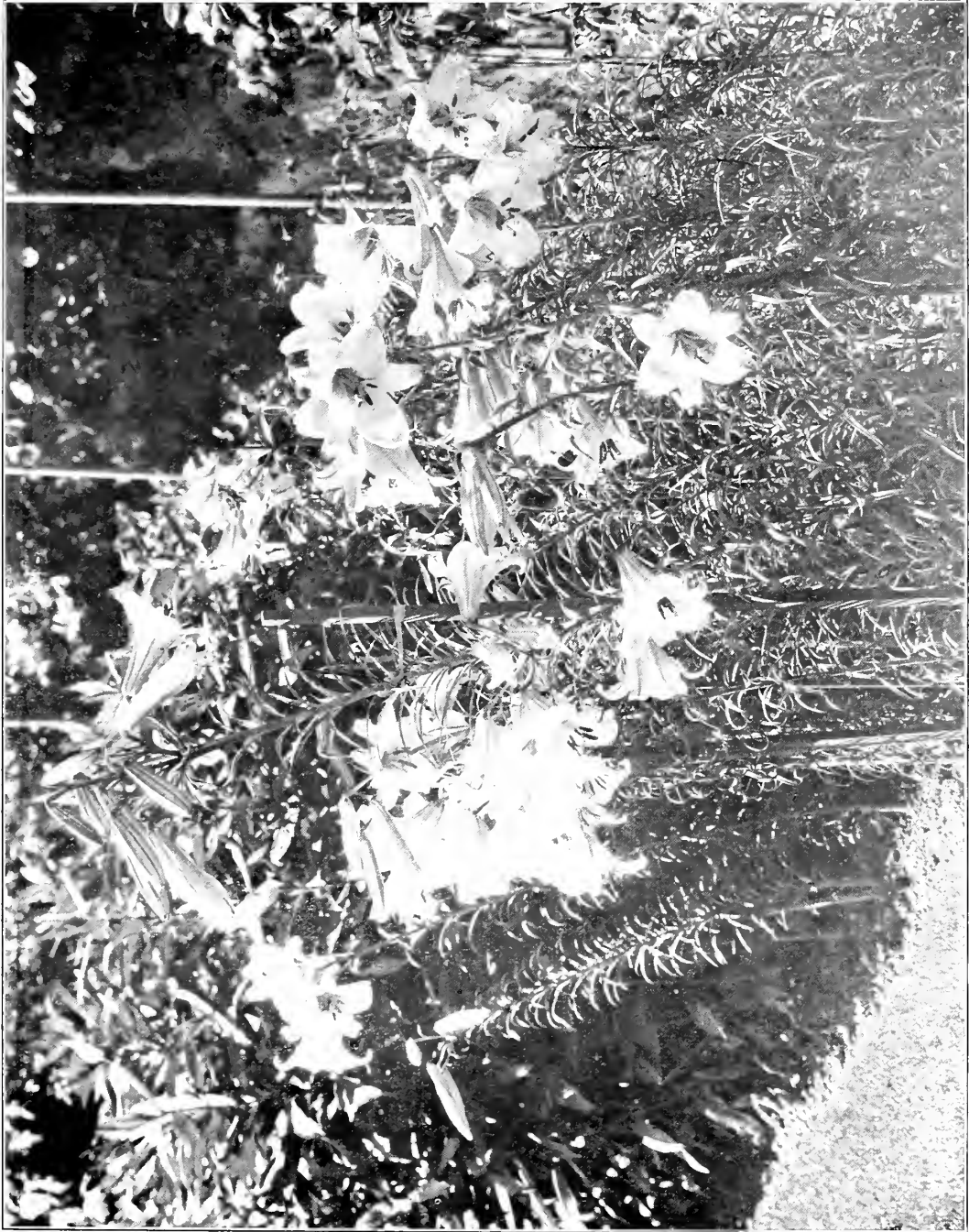
This is one of the older flowers, but it merits a place in every garden. It has dark green foliage and bright scarlet flowers produced freely in successive whorls.

Price: \$.20 each; \$1.50 per 10.

SENECIO CLIVORUM.

A new Chinese introduction, with ample foliage and large heads of rich yellow flowers. It is exceptionally well adapted for moist situations.

Price: \$.25 each; \$2.00 per 10.



LILIUM MYRIOPHYLLUM



A VIEW OF THE MT. DESERT NURSERIES' ROCK GARDEN
AND GALLERY OF PLANT PHOTOGRAPHS



ALPINE PLANTS

ROCK GARDENS, when properly constructed and planted, form one of the most interesting and beautiful additions to estates or other gardens. The variety of plants suitable for growing among and over rocks is very large, and many of them while being beautiful in flower are also evergreen in character, and have the additional advantage of being able to withstand long periods of heat and drought; the Sedums, Sempervivums and Saxifragas being notable examples.

Nothing could be more beautiful in Spring than the Alpine Phloxes, which rapidly form wonderful carpets of bloom and clothe large surfaces of rock in the most charming manner, while their foliage is always bright and cheerful.

Many early flowering bulbs can also be used in the Rock Garden with delightful effect, and from the first touch of Spring till late in Fall a wealth of bloom is to be had.

Where space permits a variety of shrubs also lend themselves admirably to such planting; the trailing Junipers especially grow finely over dry and rocky situations.

The Eastern part of North America is climatically well adapted to Rock Gardening, and nothing is capable of giving greater pleasure to the garden lover and all who take an interest in plants.

We are always glad to give advice and help select the most suitable plants for any position, either by consultation or letter, and take pleasure in showing visitors the Rock Garden in our Nurseries.



NOTE.—Everything in this Alpine List not otherwise priced, at the uniform rate of \$.20 each; \$1.50 per 10.
Price: \$.25 each; \$2.00 per 10.

ARABIS. Rock Cress.

Few plants produce a more effective display of blossom in the Spring, and the pale glaucous foliage is always good.
alpina. Masses of the purest white flowers. 9 in. May and June.
alpina plena. A double form of the above.

ARENARIA. Sandwort.

caespitosa. This variety has small flowers, and is admirable for producing a dense and verdant covering.

AUBRETIA. Purple Rock Cress.

One of the most beautiful groups of rock plants, soon covering considerable space and producing masses of richly colored flowers. Very dwarf, hardy, and of easy culture.
graeca. Lilac flowers is abundance.
purpurea. Purple.

CAMPANULA. Bellflower.

All the perennial varieties of Campanulas are beautiful garden plants, and the alpine forms are among the most charming. They increase quickly and never fail to produce a wealth of blossoms.

carpatica. Large, pale blue, bell-shaped flowers.

carpatica alba. A very pure white form.

glomerata. Very effective. Purple.

glomerata Dahurica. One of the best, with large heads of deep purple flowers on stems one foot high.

rotundifolia. Scotch Harebell. A light and graceful plant, with nodding deep blue flowers. 9 in. Flowers from Spring till Fall.

CERASTIUM. Mouse-ear Chickweed.

tomentosum. Silvery or white foliage, and masses of pure white flowers in June and July.

DIANTHUS. Pinks.

The Dianthus or Pinks succeed best in a light soil and a well-drained, sunny position in the rock garden. All are beautiful and produce masses of flowers which are much prized for cutting, especially the double forms which almost equal Carnations.

deltoides. Pale pink flowers on erect stems in July and August. 1 ft.

deltoides albus. A pure white form.



plumarius. (Garden Pink) This variety shows great diversity in form and coloring, and when grown in quantity makes a most effective display. It is one of the most satisfactory plants for clothing old walls and similar situations. 1 ft. July to August.

DICENTRA EXIMIA.

One of the prettiest of rock or dwarf border plants, with much lacinated foliage and graceful stems carrying quantities of pendulous pink blossoms. In flower longer than any other plant.

GERANIUM. Crane's Bill.

Although the dwarf growing Geraniums are not widely known, a corner in the rock garden should always be found for them. All are interesting and beautiful.

armenum. Rich crimson flowers on stems 1½ ft. high. June and July.

grandiflorum. Very large, showy, blue flowers. 1 ft. June and July.

sanguineum. Dwarf spreading habit; deep reddish purple flowers. 6 in. June and July.

sanguineum album. Very attractive form of purest white.

GEUM.

Either as single plants or in masses the Geums are very attractive, with pale foliage and richly colored, strawberry-like flowers.

Heldreichi splendens. Large flowers, glowing orange-scarlet in color.

HEUCHERA.

By hybridization of the various species many excellent garden varieties of Heuchera have been evolved, and no more beautiful rock or border plants exist today. They are extremely light and graceful, and well adapted for cutting purposes.

brizoides. A beautiful plant, with many spikes of pink flowers.

brizoides gracillima. One of the best, producing a vivid mass of color.

sanguinea. Numerous spikes of bright red, bell-shaped flowers.

HIERACIUM VILLOSUM. Shaggy Hawkweed.

A singularly beautiful plant, with an abundance of densely silvered leaves, and quantities of bright yellow flowers.

IBERIS. Perennial Candytuft.

These are among the most charming and satisfactory of all Alpine Plants.

sempervirens. Dark, glossy, evergreen foliage, with numerous heads of the purest white flowers.



LYCHNIS. *Campion.*

viscaria plena. This variety is valuable for the Rock Garden, forming dense tufts of evergreen foliage, and sending up spikes of handsome deep red, fragrant flowers. In this climate they are at their best in the early part of July.

LYSIMACHIA NUMMULARIA.

One of the most useful of dwarf plants for any position. Long trailing shoots, covered with innumerable yellow flowers.

Price: \$.15 each; \$1.25 per 10.

MYOSOTIS. *Forget-Me-Not.*

palustris var. semperflorens. Very effective in a damp position. Pale blue.

OENOTHERA MISSOURIENSIS.

A beautiful plant, especially in a dry position. It has ample foliage, long shoots, and enormous yellow flowers.

OROBUS VERNUS.

Produces a pretty effect in a rock garden pocket, with numerous stems of purple, pea-shaped flowers.

PHLOX.

Few plants are more beautiful than the Alpine Phlox. The *subulata* forms make dense carpets of evergreen foliage, and produce, during June and July, perfect masses of flowers. We cannot recommend these too strongly.

Amoena. Very distinct, with deep rose-colored flowers.

divaricata Laphami. Improved form, with blue flowers.

subulata. Deep rose.

subulata alba. Pure white.

subulata Alice Wilson. A beautiful rosy lavender.

subulata lilacina. Pale lilac.

subulata Madeline Rouge. Rosy lavender.

subulata Morgenstern. A beautiful rosy lavender.

subulata nivalis. A very pretty, pure white, starry form.

subulata Seraph. A fine pale blue.

Price: \$.15 each; \$1.25 per 10.



SAXIFRAGA.

The large Saxifraga family contains many of the most beautiful Alpine plants, and no rock garden should be without them.

cordifolia. Very large foliage, and heads of purple flowers.

cordifolia purpurea. A richly colored form.

pyramidalis. Silvery rosettes of foliage, and tall spikes of white flowers, spotted with red. This and the next variety are two of the handsomest plants in our collection.

McNabiana. Rosettes of silvery foliage, and spikes of pure white flowers. Each branching stem carries hundreds of flowers.

palmata. White flowers, and carpets of dark green foliage.

Rhei. Forms a pleasing dwarf carpet, and has pretty pink flowers.

SEDUM. Stonecrop.

These are typical rock plants, and will succeed under various conditions, a sunny position being the best. Foliage ornamental, and flower very attractive.

DWARF OR CREEPING VARIETIES.

acre. Very dwarf. Useful as a ground cover. Flowers yellow.

aizoon. Greyish-green leaves, and pale yellow flowers.

album. Very close growing, with a profusion of white flowers.

anglicum. Glauous foliage and sheets of white flowers.

brevifolium. Fleshy leaves, and quantities of rosy pink flowers.

ibericum. Throughout the Summer the foliage of this is quite red. Flowers pink.

kamtschaticum. Fleshy leaves, and numerous heads of yellow flowers.

rupestre. One of the most distinct. Dark green foliage.

Price: \$.15 each; \$1.25 per 10.

ERECT VARIETIES.

spectabile. A strong growing plant, with large, fleshy leaves, and immense heads of pink flowers on stems 1½ feet high.

spectabile Brilliant. A rich colored variety.

Price: \$.20 each; \$1.50 per 10.



SEMPERVIVUM.

An interesting group of plants which will thrive in even the driest part of the rockery. They are exceedingly varied, some forming minute tufts, composed of small rosettes arranged closely together, while others form crowns seven or eight inches across, and are often used with striking effect for edging purposes.

arachnoideum. Small rosettes, threaded with a white cobweb-like down.

globiferum. Medium size rosettes, the very tips of which are tinted reddish brown.

assimile. Medium size rosettes of pale glaucous green leaves.

Greeni. A very strong growing variety with large rosettes of green leaves.

tectorum. The most popular variety. Leaves green, with a distinct reddish brown tip; large rosettes three to four inches in diameter.

tectorum rubrum. Differing from the above only in a deeper shading on the tips of the leaves.

tectorum violaceum. Distinguished from the other forms by its distinct violet shadings.

STACHYS.

betonica var. superba. A pleasing perennial with spikes one foot high of pink flowers.

THYMUS.

These are all delightful plants which make a dense ground cover, and in the early Summer have sheets of flowers. All are pleasantly scented.

lanuginosus. Soft grey leaves and pale pink flowers.

serphyllum. Green foliage and bright rose flowers.

serphyllum album. Pure white.

VERONICA. Speedwell.

incana. Grey foliage, in striking contrast to the rich blue flowers.

repens. White flowers in quantity, on prostrate stems.

VIOLA. Horned Violet.

Viola Cornuta and its white variety are two of the best and most beautiful plants for the rock garden or herbaceous border, and make splendid masses of pale blue and white all Summer.

NOTE.—Everything in this Alpine List not otherwise priced, at the uniform rate of \$.20 each; \$1.50 per 10.



SEMPERVIVUM TECTORUM



THE GARDEN AT OLDFARM MANOR
A border of old-fashioned Hardy Perennials



HARDY HERBACEOUS PLANTS

OUR climate permits the growth of only the really hardy plants but it gives them a vigorous constitution, and a depth and brilliancy of color in their flowers that they take with them to their new homes. Our list is the result of long trial, actual experiments and careful selection. Assistance in the selection of the best varieties of plants, or advice as to the plants best suited to special conditions of soil or climate will be gladly given to anyone writing for it.

ACHILLEA. Yarrow.

ptarmica plena. (The Pearl). This variety has an abundance of pure white flowers borne on erect stems growing about two feet tall. It has an unusually long blooming period, commencing to flower in early July.

Price: \$.20 each; \$1.50 per 10.

ACONITUM. Monkshood.

Aconitums are among the most satisfactory and ornamental plants for the perennial garden. They do well if planted in open sunny situations, yet they will carry their blooms for a somewhat longer period if planted in half shade. The varieties selected for this list are distinct, and all of them make fine displays during the summer and autumn months.

acutum. A handsome variety with rich violet flowers carried on stems 5 to 6 ft. tall. The numerous side branches help greatly to make a superb display.

autumnale. This dark blue variety is one of the late blooming kinds, being at its best about September 15th.

cammarum. A splendid variety with violet flowers, lacinated foliage and compact spikes.

Fischeri. A very late variety, commencing to flower about September 15th. Grows 3 ft. high with short spikes of large pale blue flowers. Valuable for massing.

napellus. Tall spikes of striking deep blue flowers. One of the best. Grows about 5 ft. tall.

napellus var. bicolor. A distinct and beautiful form of the above, with blue and white flowers, 5 to 6 ft. tall. One of the most attractive. Commences to flower August 1st.

napellus var. Meilichoferi. This is a fine dark blue form and is one of the first to flower; commencing to bloom the last of July and continuing through the greater part of August.

Wilsoni. One of the finest and strongest growing with branching spikes of pale blue flowers. 5 to 6 ft. tall.

Price. Any of the above: \$.25 each; \$2.00 per 10.



MOUNT DESERT NURSERIES

ANCHUSA.

The two varieties we grow are two of the best and most beautiful plants in existence, and produce masses of flowers from July to September.

italica var. *Dropmore*. Very deep gentian blue, 3 to 5 ft.

italica var. *Opal*. Pale Sky blue, 3 to 5 ft.

Price: \$.25 each; \$2.00 per 10.

AQUILEGIA. Columbine.

For June and July flowering few plants surpass the Columbines, and they are invaluable for cutting. The long spurred hybrids we offer are selections from the most improved English strains.

cærulea. A fine pale blue variety with white center.

cærulea var. *candidissima*. A white form of the above.

canadensis. A beautiful native plant, fine under cultivation. Scarlet and yellow.

Long Spurred Hybrids. Most pleasing shades and combinations of color.

Price: \$.25 each; \$2.00 per 10.

ARTEMISIA.

lactiflora. A recent introduction from China, and one of the best late blooming plants. Grows 4 to 5 ft. tall and has branching spikes of creamy white flowers, pleasantly scented. This should be in every garden.

Price: \$.25 each; \$2.00 per 10.

ASTER. Michælmás Daisy.

Nothing contributes so much beauty to the fall garden as the perennial Asters, and for cutting purposes they are preeminent. We grow a representative collection of the finest hybrids and varieties specially imported from Europe; being perfectly hardy they cannot be too strongly recommended to all who value the best hardy perennial flowers.

Admiration. Large flowers of bright rosy pink, grows about 2 ft. tall.

Charmer. The flowers are a beautiful light blue; free, 5 ft. tall.

Climax. The finest large flowered Aster in cultivation. A beautiful clear blue with golden center. 5 to 6 ft. tall.

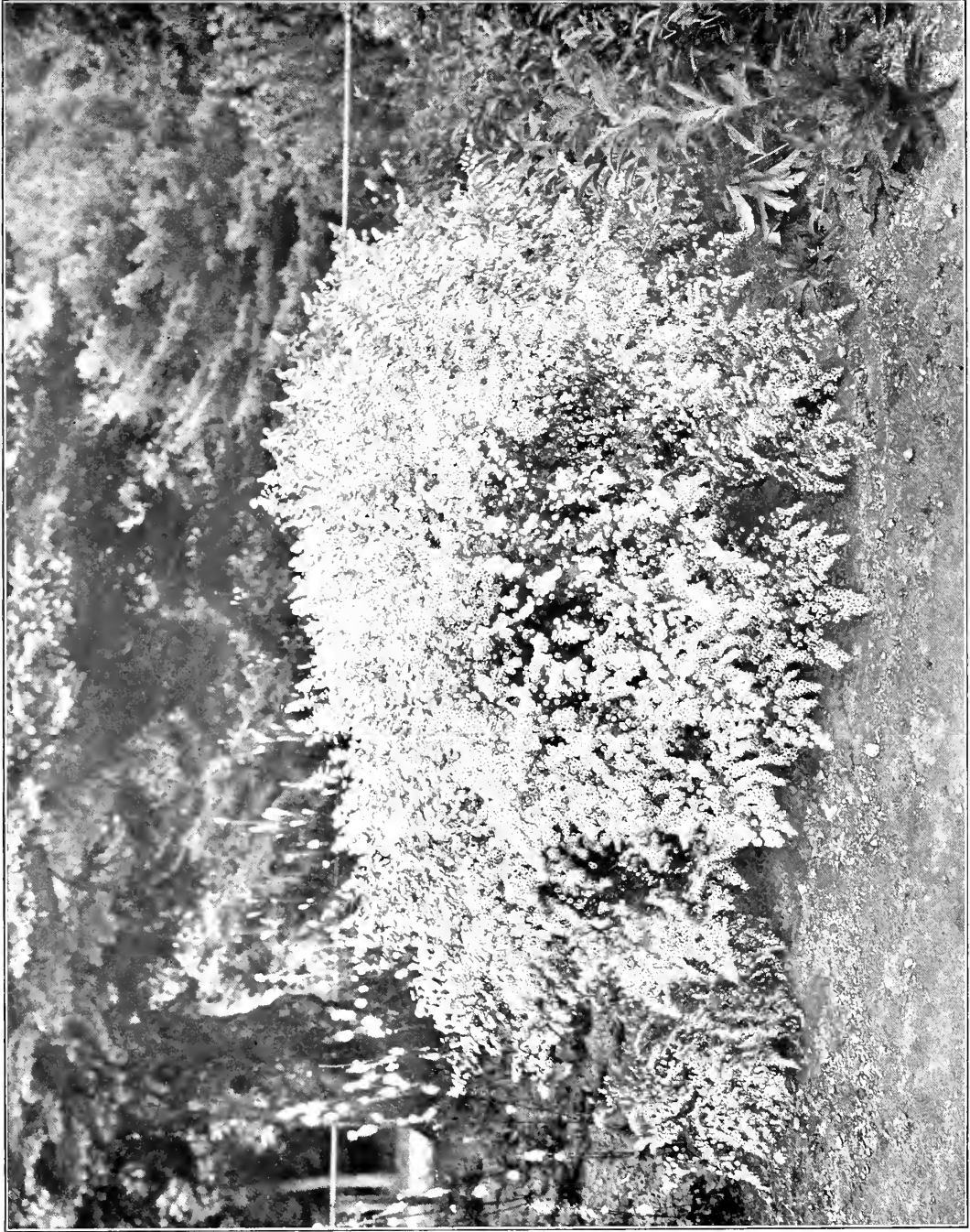
Day Dream. Pale lavender flowers borne in great profusion on stems branching from the ground. 3 to 4 ft.

Edwin Beckett. Medium sized light blue flowers; extremely fine for border decoration. About 4 ft.



LILIUM CANDIDUM

Growing on the hillside above the Nurseries' Gardens



ASTER, STAR SHOWER
Blooming in the Nurseries' Gardens



MOUNT DESERT NURSERIES

Novæ Angliæ. This section is one of the most popular and produces a magnificent display of flowers. All have very large flowers and grow about five feet tall.

Brilliant. A fine reddish crimson.

Lil Fardel. Bright pink; a beautiful variety.

Melpomene. Rich violet.

William Bowman. Deep violet, shaded blue.

St. Egwin. A dwarf growing variety with very pleasing soft pink flowers. Grows about 2 ft. tall and is one of the best for grouping.

Sensation. A very striking variety. White flowers with golden center; flowers so freely that a dense mass of bloom is made. 3 ft. tall.

Star Shower. Creamy white flowers on long graceful stems, 4 ft.

Winsome. A beautiful pure white variety growing about 3 ft. tall. Extremely free flowering and good in every way.

Price: Novæ Angliæ section, \$.20 each; \$1.50 per 10.
All other varieties, \$.25 each; \$2.00 per 10.

ASTILBE. Spiræa.

For forcing purposes and for producing masses of flowers throughout the summer months these perennial flowers have always been held in high esteem; but by the recent introduction of many new hybrids their value has been greatly enhanced. Our collection is the most complete in this country and is every year improved by the latest introductions.

Arendsi. The following Arendsi varieties are among the most beautiful of hardy plants and should be in every garden. They grow about 3 ft. tall, commence to bloom the last of July and continue until the first of September.

CERES. A beautiful light rose with branching spikes.

JUNO. Richly colored rosy violet.

ROSE PERLE. White petals overlaid with a delicate silvery sheen.

SILVER WHITE. Handsome foliage and graceful spikes of white flowers.

VENUS. A fine deep rose, tall branching spikes.

VESTA. Very light rose. A most attractive variety.

Price: This section, \$.35 each; \$3.00 per 10.

chinense. An old favorite, with strong foliage and tall arching spikes of light pink flowers.

Davidi. A very striking plant with bold foliage and numerous branching stems of reddish violet flowers.



MOUNT DESERT NURSERIES

hybrid Peach Blossom. Numerous spikes of pretty pink flowers, 2 ft.

hybrid Queen Alexandra. Deep pink flowers on stems, 3 ft. tall.

These two hybrid varieties commence to flower about July 20th.

Lemoinei. The Lemoinei hybrids are distinct from other varieties and take almost if not quite equal rank with the Arendsi section. The following are a few of the best varieties.

GERBE D'ARGENT. White petals with rosy reverse; very attractive.

GERBE DE NEIGE. Pure white, grows about 2½ ft. tall.

MONT BLANC. White shading to pale rose, 2½ ft. tall.

NEBULEUX. One of the best, producing a feathery mass of pure white flowers on stems 3 ft. tall.

NUEE ROSE. One of the most charming of hardy plants; color a delicate rose. A great favorite with all.

PANACHE. A strong grower with numerous spikes of rosy white flowers, 3 ft. tall.

Price: Any except the Arendsi section, \$.25 each; \$2.00 per 10.

BOLTONIA. False Chamomile.

asteroides. Pure white; 5 to 6 ft. tall; flowers in September.

latisquama. Pink shaded lavender; 4 to 5 ft. tall; flowers in September and October.

Price: \$.20 each; \$1.50 per 10.

CAMPANULA. (See also Alpine List).

latifolia alba. A strong growing variety with very handsome pure white flowers. Grows about 4 ft. tall.

latifolia macrantha. Differing from the above only in the color of its flowers which are rich blue. Both varieties commence to flower about July 1st.

medium—**CANTERBURY BELLS.** These showy plants should have a place in every garden. They are biennial and the ones we offer are for flowering the present season. Separate colors; pink, white and blue.

persicifolia grandiflora (**Peach-leaved Campanula**). A beautiful plant, with spikes of large single blue flowers, borne through July and the early part of August.

persicifolia grandiflora alba. A pure white form of the above.

persicifolia Moerheimi. Perhaps the finest of all, with large double white flowers.

Price: \$.25 each; \$2.00 per 10.



HERBACEOUS SPIRÆAS

In flower, at midsummer, in their nursery beds. These are among the most valuable of all hardy plants, thriving abundantly and blooming with extraordinary freedom

THE MOUNT DESERT NURSERIES, BAR HARBOR, MAINE



COMPASS HARBOR COTTAGE
One of the oldest houses on Mt. Desert Island, with its perennial border



MOUNT DESERT NURSERIES

CHRYSANTHEMUM.

maximum, King Edward. A very fine Daisy, with deep green foliage and immense pure white flowers on stems 2 ft. high. Blossoms in June and July, and is splendid for cutting.

uliginosum. Will grow 6 ft. high in moist ground. White and yellow.

Price: \$.25 each; \$2.00 per 10.

CIMICIFUGA.

With their handsome foliage and graceful spikes of bloom the Cimicifugas are very attractive in the late summer and early autumn.

cordifolia. This is the earliest of the group to bloom, commencing to flower about August 25th. Tall stems of white flowers.

racemosa. A pleasing variety with drooping racemes.

simplex. Not so tall as the above, but more beautiful. Foliage is handsome and the pendulous spikes of pure white flowers are produced freely.

Price: \$.25 each; \$2.00 per 10.

CLEMATIS.

The herbaceous Clematis are very attractive and should be much more freely planted than they are. The two that we offer are exceptionally good.

erecta alba grandiflora. Single white flowers, on slender stems 4 ft. high.

integrifolia coerulea. This variety grows about 2 ft. tall, and flowers in July. Color, beautiful clear blue.

Price: \$.25 each; \$2.00 per 10.

CONVALLARIA. Lily-of-the-Valley.

A favorite plant with all, and of great beauty for naturalizing in shady places. The two that we offer are great improvements on the type, Fortin's Giant having large bells on stalks 9 in. tall.

Berlin Crowns Pips, \$.50 per 10; \$3.00 per 100.

Fortin's Giant " \$.50 per 10; \$4.00 per 100.

Clumps, \$.30 each; \$2.50 per 10.

DELPHINIUM. Larkspur.

No plants excel the tall growing perennial Larkspurs in stately beauty. When planted in the mixed border or in separate groups they produce grand effects. The two named varieties we offer are among the most attractive hardy plants.



Belladonna. A very popular plant, growing about 3 ft. tall, with branching stems producing quantities of pale blue flowers from early Summer until Fall. An extremely beautiful and useful Larkspur.

Belladonna Clivedon Beauty. An improvement to the extent that the flowers are somewhat clearer in color, and are borne in even greater abundance.

formosum. Similar to Belladonna in habit, but with rich dark blue flowers.

formosum coelestinum. A beautiful pale blue variety.

hybrids mixed. These plants are grown from seeds saved from the best English named varieties, and embrace a large variety of colors and shades.

Price: \$. 25 each; \$2.00 per 10.

DICENTRA. Bleeding Heart.

spectabilis. The old Bleeding Heart is one of the most beautiful of hardy flowers, and is especially good for planting in partially shaded places. The curious red and white flowers are freely produced on branching stems. 3 to 4 ft. tall. June.

Price: \$.25 each; \$2.00 per 10.

DIGITALIS. Foxgloves.

No plants are finer for grouping in any position, but they are perhaps seen at their best advantage in partial shade. In the woodland they produce superb effects.

gloxinaeflora. This is the form of Foxglove commonly grown, and we can supply exceptionally strong flowering plants. The colors are varied, and while some are pure white, rose and purple, others are beautifully spotted.

Price: \$.25 each; \$2.00 per 10.

DORONICUM.

The Doronicums are all early flowering, and during May and June make a brilliant mass of golden yellow flowers similar in form to Daisies, and are much prized for cutting.

Miss Mason. Desirable bright yellow.

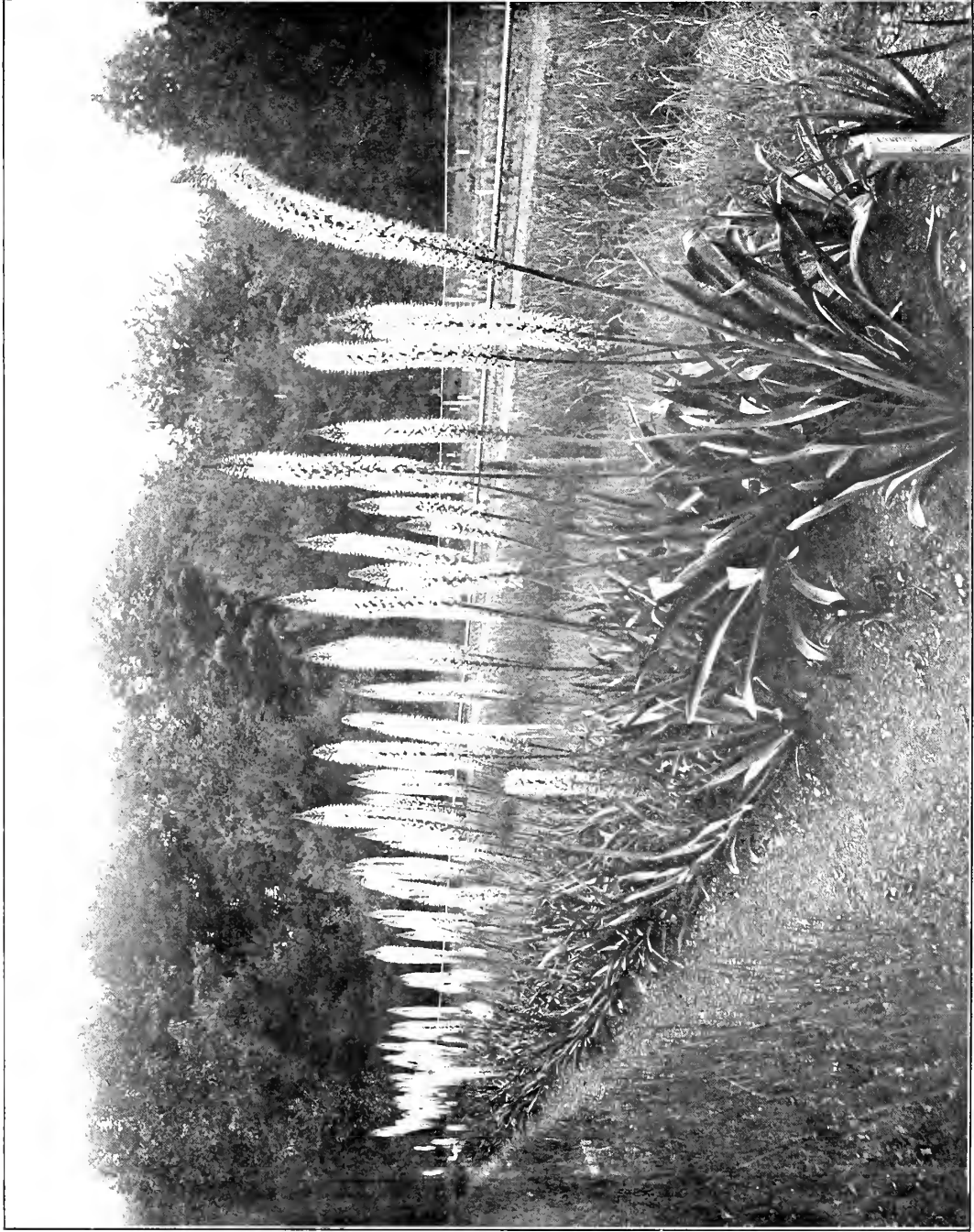
Plantagineum excelsum. Rich orange yellow flowers on stems 3 ft. tall. A fine variety.

Price: \$.25 each; \$2.00 per 10.



A FINE VARIETY OF HYBRID DELPHINIUM
OR GARDEN LARKSPUR

THE MOUNT DESERT NURSERIES, BAR HARBOR, MAINE



EREMURUS HIMALAICUS

Plants from Asiatic Mountain Uplands that find a congenial home upon Mt. Desert Island



EREMURUS.

The Eremuri are remarkable and stately plants, unlike anything else in the garden, and during June produce a striking effect. They should be planted in good loamy soil in an open sunny position, and when established should be left undisturbed. Our collection of these has been awarded the gold medal of the Massachusetts Horticultural Society.

Elwesianus. A magnificent variety, producing spikes from 8 to 9 feet tall. Carries hundreds of rosy pink flowers, with yellow anthers.

himalaicus. A very fine pure white variety, growing 6 to 8 feet high.

robustus. This variety is also remarkable for the size of its **flower stems**. Grows 9 feet tall. Has pale pink flowers.

robustus superbus. The largest growing of all, and a really superb plant. Immense stalks of white flowers.

Price: We can furnish plants from \$.75 to \$1.50 each, according to the size and age. Extra large specimens from \$2.00 to \$3.00 each.

ERYNGIUM. Sea Holly.

planum. A very pretty plant, growing 3 feet tall, with globular heads of pale blue flowers. Fine for grouping.

Price: \$.25 each; \$2.00 per 10.

EULALIA.

The Eulalias are all extremely handsome strong growing grasses with graceful drooping habit. For grouping or as isolated specimens in the border few plants surpass them, and they are also very beautiful when planted close to the water.

japonica. Very ornamental, with broad, dark green foliage.

japonica gracillima. A graceful and beautiful plant, with narrow dark green leaves.

japonica variegata. Very attractive, each leaf having a conspicuous white stripe down the center.

japonica zebrina. A highly attractive plant, each leaf variegated with broad bands of yellow.

Price: \$.25 each; \$2.00 per 10.

FUNKIA.

Valuable for many positions, either for sun or shade, and particularly fine for edging walks.

lancifolia alba marginata. This variety is particularly fine for edging purposes, and is usually planted for its foliage effects. Dark green leaves, margined white.



Sieboldiana. A tall growing variety with very handsome foliage.
subcordata grandiflora. Vigorous growth, and handsome stems of white flowers.

Price: \$.25 each; \$2.00 per 10.

GYPSOPHILA. Baby's Breath.

The Gypsophilas will thrive in any soil if planted in an open sunny position. They bear large loose panicles of small flowers, which are extensively used for cutting purposes, for which alone these plants should have a place in every garden.

paniculata. This plant is used most extensively for cutting and associating with other cut flowers. Small white flowers, borne in great profusion.

Price: \$.25 each; \$2.00 per 10.

paniculata fl. pl. New double variety of great beauty. One of the most attractive plants in cultivation.

Price: \$.50 each.

HELENIUM.

autumnale pumilum magnificum. 3 ft. With branching heads of yellow flowers.

autumnale superbum. Large heads of yellow flowers on 6 ft. stems. Of great value for producing a mass of color in the late summer.

Price: \$.20 each; \$1.50 per 10.

HELIANTHUS. Sunflower.

A fine group of plants for late summer and autumn flowering.

orgyalis. A very graceful variety, especially for grouping by the waterside. 6 ft.

rigidus Miss Mellish. Large semi-double flowers on stems 4 to 5 ft. tall. A showy and very effective plant.

strumosus. Large clear yellow flowers on 5 ft. stems.

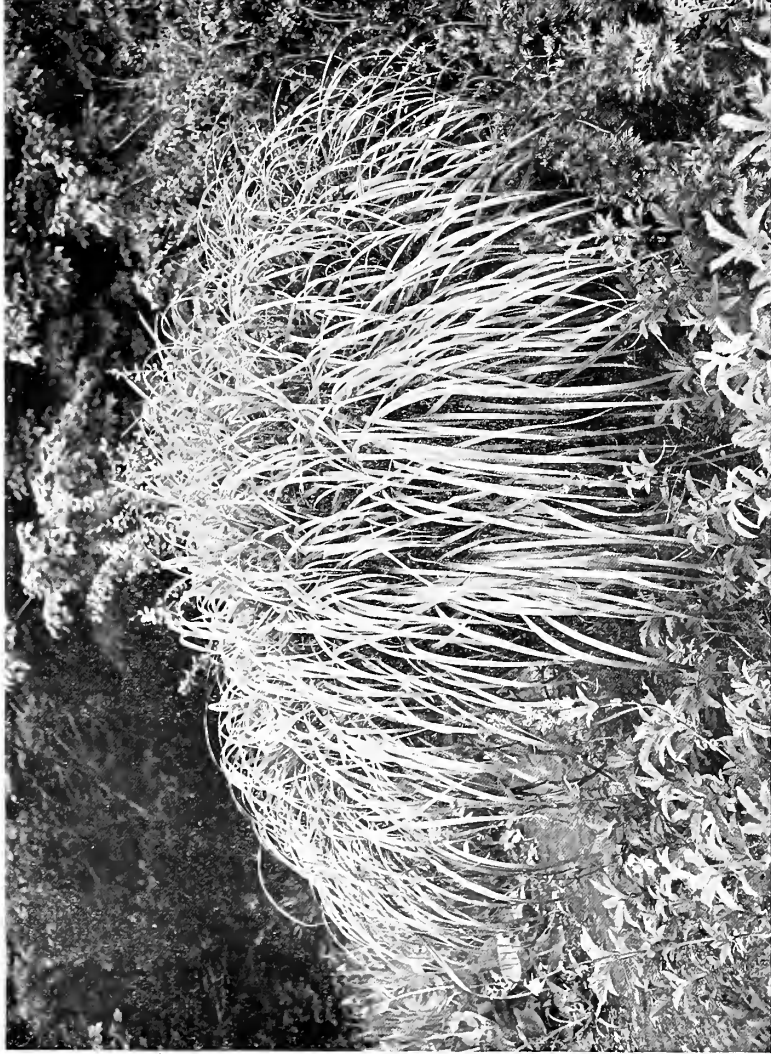
Price: \$.20 each; \$1.50 per 10.

HEMEROCALLIS. Day Lily.

The Day Lilies are a beautiful and useful class of plants with abundant foliage and numerous flowers, and are adapted for many positions. A selection of varieties will give flowers from May till September.

aurantiaca. Large orange flowers on tall stems. July.

flava. Flowers clear yellow, on 3 ft. stems. One of the earliest to bloom, coming into flower about July 1st.



JAPANESE EULALIA OR MISCANTHUS GRASS, IN ITS TYPE-FORM

It makes a massive clump, five or six feet in height, before the season's end

THE MOUNT DESERT NURSERIES, BAR HARBOR, MAINE



A VIGOROUS CLUMP OF GERMAN IRISES
THE MOUNT DESERT NURSERIES, BAR HARBOR, MAINE



fulva. The common Day Lily. A very useful plant for naturalizing. Flowers orange and coppery red. Blooms from the middle of July till the middle of August.

hybrida Gold Dust. Golden yellow; of dwarf habit.

hybrida luteola pallens. Flowers a clear light yellow, borne on stems 3 ft. long. This is, without doubt, the best of the Day Lilies, as it commences to bloom early in the season and continues until late in August.

Thunbergi. Pale yellow flowers; very much like the variety *flava*, but late flowering.

Price: \$.25 each; \$2.00 per 10.

HOLLYHOCKS.

We grow a collection of the best in separate colors in both single and double varieties, and supply only strong, healthy plants for Spring delivery, at \$.25 each; \$2.00 per 10.

INCARVILLEA.

Delavayi. Large, glossy divided foliage. Stems 2 ft. high. Large trumpet-shaped flowers, rosy crimson in color, with a handsome throat.

Price: \$.25 each; \$2.00 per 10.

IRIS GERMANICA. Fleur de Lis.

The German Irises should be planted in a well drained and sunny position. They are among the most desirable of hardy plants in this section. They bloom in early June.

In the descriptions *s* signifies "Standards"; *f*, falls, or drooping petals.

VARIETIES OF RECENT INTRODUCTION.

Aika. *s*, pure white; *f*, white with faint violet markings. Flowers medium size. Plant about 18 inches tall.

Caprice. *s* and *f*, rosy violet. *fs*, have a little deeper shade. Flowers good size. Plant about 2 ft. A really fine variety.

Dalmarius. *s*, pale lavender; *f*, a deeper shade of lavender, and veined white at base of petals. Flowers large. Plant 2½ ft.

Fro. *s*, deep yellow; *f*, a rich mahogany color. Flowers medium. Plant 2 ft.

Idion. *s*, bright yellow; *f*, yellow, heavily overlaid with reddish brown. Flowers medium large. Plant about 2½ ft.

Ignacita. *s*, pale lavender; *f*, lavender and rosy lilac. Flowers large. Plant 2 ft.



- Jaune Paille.** s, pale yellow; f, cream white, reticulated brown. Plant 2 ft.
- Lohengrin.** s and f, a deep lavender. Flowers large. Plant 2 to 2½ ft.
Free flowering; fine in every way.
- Lord Seymour.** s and f, white, tinged and margined azure blue. Like Mme. Chereau, but stronger growing. Fine. Plant 2 to 2½ ft.
- Lorelli.** s, yellow, marked with rosy scarlet; f, rosy purple, reticulated white, and edged with yellow. Flowers medium. Plant 2 to 2½ ft.
- Minerva.** s and f, general effect a deep rosy violet. Flowers medium size. Plant 2½ ft.
- Perfection.** s, deep lavender; f, rich velvety purple. Flowers medium. Plant 2 to 2½ ft.
- Princess Victoria Louise.** s, pale yellow; f, rosy violet. Flowers medium. Plant 2½ ft. General effect fine.
- Rebecca.** s, chrome yellow; f, rich violet. Flowers medium. Plant 2½ ft.
- Rhein Nixe.** s, pure white; f, violet. The combination of color is especially good, and one of the best of the German Irises. Flowers medium; plant 3 ft.
- Rose de Chine.** s and f, a beautiful pinkish lavender. The nearest approach to a pink in the German Irises. Plant 2½ ft.
- Squalens "Arnols".** s, bronzy lavender; f, deep velvety purple, slightly reticulated white. Flowers medium. Plant 2½ ft.
- Price: \$.35 each; \$3.00 per 10.

THE BEST OF THE OLDER VARIETIES.

- Asiatica.** s, deep lobelia blue, veined dark violet, and tinted yellow at the base; f, violet purple, shaded violet. Grand.
- Atropurpurea.** s and f, a deep rich purple. Very early.
- Bergiana.** s, lavender; f, a deeper shade. Flowers medium. Plant 1½ ft.
- Celeste.** s, sky blue; f, small, blue, very lightly veined dark violet. Grand. Very similar to *Iris pallida*, if not identical. Possibly a little lighter in color than *pallida*.
- Gracchus.** s, reddish brown, reticulated white; f, pure yellow. Flowers medium. Plant 2 ft.
- Jenny Lind.** s, buff yellow; f, deep purple, slightly veined yellow. Very fine. Plant 2 ft.
- Mandalisca.** A rich deep blue. One of the best. Flowers large. Plant 2½ to 3 ft.
- Mme. Chereau.** White and lavender, veined at edges. Yellow stamens. Tall. 3 ft. One of the best.
- Mrs. H. Darwin.** Almost white.



IRIS DALMATICA IN FLOWER

The plants shown are a yard or more in height; the flowers, a beautiful pale blue and white

THE MOUNT DESERT NURSERIES, BAR HARBOR, MAINE



JAPANESE IRIS

Growing in the grass beside a stream

THE MOUNT DESERT NURSERIES, BAR HARBOR, MAINE

Mrs. Reuthe. s, lavender, with white markings; f, white, with lavender markings. Flowers good size. Plant 2½ ft. tall.

Napelensis. s, a very deep shade of lavender; f, rich purple, reticulated white. Flowers large. Plant 2 ft.

Pallida Beatrice. A rich deep lavender blue. Deepest shade of the pallidas, and perhaps the best of them all.

Pallida var. Dalmatica. Tall and free flowering; rich lavender blue.

Pallida var. Khedive. Pale blue with deeper shading on the falls.

Pallida var. racemosa. A richly colored form of the preceding.

Pallida var. speciosa. A fine form, having the effect of rosy purple coloring.

Pallida var. Tinea. A really magnificent flower. Lavender blue, with pale violet shading.

Plicata. s, blue; f, deep purple. Buff at the base of petals. 2 ft.

Price: \$.20 each; \$1.50 per 10; \$10.00 per 100.

IRIS KAEMPFERI. Japanese Iris.

This group of Irises is, without doubt, the most popular. Their flowers are enormous, and have a wide range of color. They are moisture loving plants, and while they are forming their flower buds, and during their growing season, should be well supplied with water. The varieties listed below are those which we have found to be the best.

1. **Gekka-no-nami.** A magnificent pure white; tall; early flowering. Dbl.
2. **Shishi-odori.** Violet, shading to deep violet on the edges. Veined white; tall and opening early. Dbl.
5. **Ho-o-jo.** Deep reddish violet with white veins; late flowering. Dbl.
6. **Geisho-ui.** Reddish purple; of medium height. Dbl.
7. **Sofu-no-Koi.** Bright violet purple, shaded and mottled white. Dbl.
8. **Mana-dsuru.** White, penciled with bluish violet; center blue. Dbl.
9. **Hana-no-nishiki.** A rich deep reddish violet; center white; tipped purple. Dbl.
14. **Hana-aoi.** Plumbago blue, lightly shaded violet. Dbl.
15. **Uchin.** Lavender, shaded white; standards white; tipped blue. Dbl.
17. **Shippo.** Tyrian blue, penciled white; standards tipped purple. Dbl.
18. **Kumo-no-isho.** A rich purple, with a dark violet center. Dbl.
19. **Kimi-no-megumi.** A delicate heliotrope, lightly shaded violet. Sgl.
24. **Sano-watashi.** A tall, strong growing pure white. Dbl.
27. **O-torige.** Light violet, with deeper colored veins. Sgl.
30. **Kagaribi.** Reddish mauve, with white veins. Dbl.



- 33. **Kaku-jaku-ro.** Light blue and purple, veined white. Sgl.
 - 39. **Tsurgi-no-nami.** A rich purple, shaded toward the base pansy violet.
 - 40. **Iso-no-nami.** White, very lightly shaded pale violet.
 - 45. **Kigan-no-misao.** White, shading to yellow at the base; large petals. Dbl.
 - 50. **Date-dogu.** A delicate light lilac, shaded violet mauve. Sgl.
 - 54. Light bluish violet, with deeper colored veins. Dbl.
 - 55. Heliotrope, shaded and mottled violet.
 - 58. Very pale lavender with blue veins. Dbl.
 - 59. Parma violet with beautiful shadings of violet. Dbl.
 - 61. Deep purple, lightly shaded and veined white. Sgl.
- Price: Any of the above, \$.25 each; \$2.00 per 10; \$18.00 per 100.

LATHYRUS. Perennial Sweet Pea.

The Perennial Peas are delightful plants, extremely useful for many positions where climbers of medium growth are required and beautiful in the flower garden, grown in similar fashion to Sweet Peas.

latifolius White Pearl. Has a profusion of white flowers throughout the summer, with from eight to ten blooms on each stem.

Price: \$.25 each; \$2.00 per 10.

LIATRIS. Blazing Star.

pyncnostachya. A very pretty late summer flowering plant, whose tall spikes of rosy purple produce a pleasing effect when grouped.

Price: \$.25 each; \$2.00 per 10.

LUPINUS.

The perennial Lupins make a handsome display in early summer, with fine foliage and long stems of pea shaped flowers.

polyphyllus. Deep blue. 3 to 4 ft.

polyphyllus albus. A pure white form.

polyphyllus roseus. A great favorite with all. Flowers a charming shade of pink.

Price: \$.25 each; \$2.00 per 10.

LYSIMACHIA.

For planting in moist positions the Loosetrifes are very useful and soon assume a natural appearance.

clethroides. Grows 18 inches high; has beautiful pendulous spikes of white flowers.

punctata. An upright growing variety, with a profusion of large pale yellow flowers.

Price: \$.20 each; \$2.00 per 10.



THE PERENNIAL PEA, *LATHYRUS LATIFOLIUS*
These are hardy plants which have been naturalized successfully
in the Nurseries' grounds. They have a climbing habit
and are like their close relation, the Sweet Pea
in their continuous bloom

THE MOUNT DESERT NURSERIES, BAR HARBOR, MAINE



A SPLENDID TYPE OF PURE-WHITE DOUBLE PÆONY

THE MOUNT DESERT NURSERIES, BAR HARBOR, MAINE



MONARDA.

The pleasant aromatic odor and bright yet deep red flowers of the Bergamot make it a welcome addition to the herbaceous border.

didyma. Dark green foliage and red flowers produced freely in successive whorls.

didyma, var. Cambridge Scarlet. A very much improved form, with bright scarlet flowers. A very fine plant for grouping.

Price: \$.20 each; \$1.50 per 10.

OENOTHERA. Evening Primrose.

Youngi. This plant grows about 2 ft. high, and has long pendulous branches clothed all summer with bright yellow flowers. It should be planted in an exposed and sunny position.

Price: \$.25 each; \$2.00 per 10.

PACHYSANDRA.

terminalis. A trailing plant forming broad mats of bright glossy green foliage. Invaluable as a cover plant, either in sun or shade.

Price: Strong field-grown plants, \$.25 each; \$2.00 per 10; \$15.00 per 100.

PEONY. (Double Herbaceous.)

These garden favorites need no description. They are perfectly hardy and require very little care, except that they should be well supplied with plant food, and during the growing season water should be given them if the ground be dry. Our prices are for good sized flowering clumps.

18. **Alba sulphurea.** White petals; lemon yellow center; a strong growing pleasantly scented variety; tall; early.

Price: \$.50 each; \$4.00 per 10.

19. **Armandine Mechin.** Pure mauve; large, fairly compact flowers; fragrant; tall; mid-season.

Price: \$.50 each; \$4.00 per 10.

22. **Couronne d'Or.** White suffused with yellow; large and late. One of the best.

Price: \$.75 each; \$5.00 per 10.

24. **Duchesse de Nemours.** White petals; pale sulphur yellow center; fragrant; tall. A grand variety.

Price: \$.75 each; \$5.00 per 10.

25. **Duchess d'Orleans.** A beautiful rich pink, deeper in the center; free blooming; fragrant; tall; mid-season.

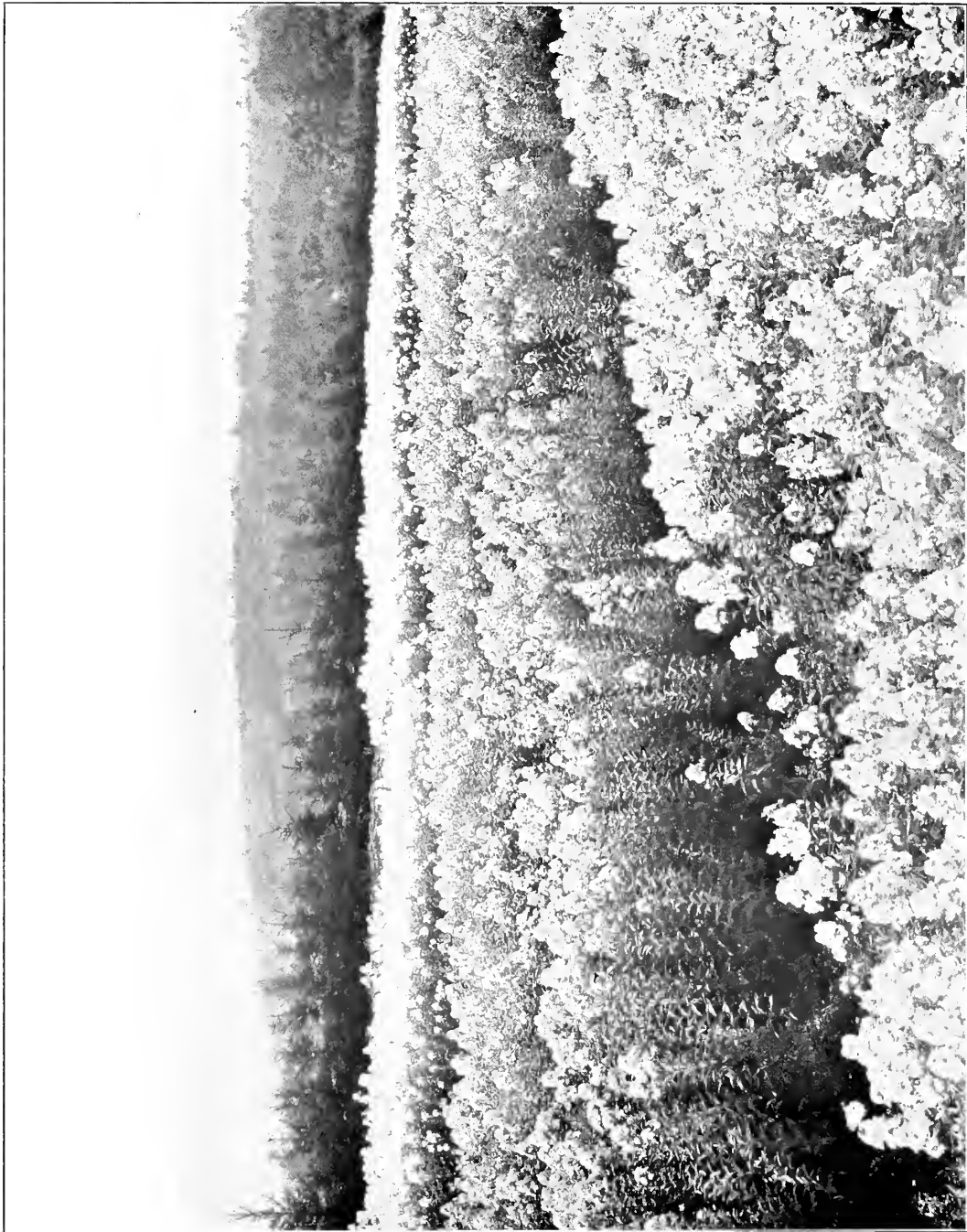
Price: \$.50 each; \$4.00 per 10.



MOUNT DESERT NURSERIES

28. **Duke of Wellington.** White; large, well-formed flowers; vigorous grower; free flowering; fragrant; late.
Price: \$.75 each; \$5.00 per 10.
29. **Eden.** Rosy magenta, with violet rose tips; very full; free bloomer; fragrant; dwarf; mid-season. One of the best.
Price: \$.75 each; \$5.00 per 10.
32. **Festiva Maxima.** A magnificent large white flower, with carmine center. A great favorite with all.
Price: \$.50 each; \$4.00 per 10.
33. **Fushimi.** A peculiar and distinct flower; violet rose, suffused with yellow.
Price: \$.50 each; \$4.00 per 10.
36. **Jeromus.** Violet rose; very full flower, and of fine form; fragrant; tall; late. A superb variety.
Price: \$1.00 each; \$7.50 per 10.
37. **Jessieu.** (Semi-double). Large dark crimson; petals loosely arranged; a fine variety; fragrant; tall; mid-season.
Price: \$.75 each; \$5.00 per 10.
38. **Jules Calot.** Pure mauve, with violet rose tips; medium height; mid-season. The best variety of this color.
Price: \$1.50 each; \$12.50 per 10.
39. **Kelway's Queen.** Rosy magenta, shading to solferino-red on tips; large size; very fragrant; tall; late.
Price: \$.50 each; \$4.00 per 10.
43. **La Coquette.** An extremely fine variety; bright rose color, with creamy pink center; tall habit; mid-season.
Price: \$.75 each; \$5.00 per 10.
44. **Livingstone.** Violet rose, with a silver tip; central petals flecked with carmine; very round and full; tall; late.
Price: \$1.50 each; \$12.50 per 10.
45. **Lord Roseberry.** Crimson variety; very fragrant and of medium height.
Price: \$.75 each; \$5.00 per 10.
47. **Mme. Calot.** White; guards rosy white, fading to white; fragrant; smooth dark foliage; medium height; early.
Price: \$1.00 each; \$7.50 per 10.
50. **Mme. Mechin.** Dark crimson; a fine color; medium height; mid-season.
Price: \$.50 each; \$4.00 per 10.





A FIELD OF LATE-FLOWERING PHLOXES
Blooming in the Nurseries' Gardens



PAPAVER. Poppy.

nudicaule. Iceland Poppy. White, yellow and deep orange, mixed.

Price: \$.15 each; \$1.00 per 10.

Large plants: \$.25 each; \$2.00 per 10.

PENTSTEMON.

Graceful and handsome plants, with tall spikes of tubular or honey-suckle-like flowers. They make fine groups and continue to flower for a long period.

barbatus Torreyi. Glaucous foliage and salmon scarlet flowers. 4 ft.

Price: \$.25 each; \$2.00 per 10.

PHLOX.

These are among the plants to which we have given especial attention. Phloxes do well in any garden soil; but for the best results the ground should be thoroughly trenched and well manured. They are perfectly hardy, yet a light covering of straw to prevent alternate freezing and thawing is beneficial.

Antonin Mercie. Grayish lavender, or violet mauve, with white center; flowers very large.

Cigale. A pure rose color, and one of the best. This is one of the dwarf varieties, seldom exceeding eighteen inches in height.

Coquelicot. Vermilion red, with deep crimson center.

Elizabeth Campbell. Bright salmon pink, with white eye; center very slightly marked crimson. This is one of the best of the recent introductions, and should be in every collection.

Frau Ant. Buchner. A large pure white. One of the best of the whites.

Fraulein Von Lassberg. Magnificent pure white.

Gen. Van Heutz. A tall growing salmon pink, with a large white ray in the center.

George B. Dorr. Pure mauve, with small white center; large and branching panicle; foliage excellent. One of the best.

Gruppenkonigin. A beautiful variety, with large trusses of pale rose flowers. One of the best in our collection.

Josephine Gerbeaux. Tall white, with large crimson center. One of the old favorites, and still the best in its class.

Le Mahdi. Dark purple; should be in every collection, as it is very effective in a mass.

Louis Abbema. A dwarf pure white, with very large flowers.

Mme. Paul Dutrie. Bright rose, with white eye; flowers very large, and borne in large trusses.



MOUNT DESERT NURSERIES

Miss Lingard. An early flowering variety; pure white, with rosy center. A profuse bloomer, and a fine garden plant.

Ornament. Bright carmine rose, with a darker center. A profuse bloomer, and one of the best of the older varieties.

R. P. Struthers. A deep rosy pink, with red center; profuse bloomer.

Richard Wallace. Tall white, with very small red eye.

Sylphide. Pure white; of medium height. A profuse bloomer, and one of the very best white Phloxes yet offered.

Price: Any of the above, \$.25 each; \$2.00 per 10.

NOTE.—For other varieties of Phlox, see Alpine List.

PHYSOSTEGIA.

Useful perennials, and excellent for wild gardening, with tall spikes of tubular flowers.

virginiana. Rosy purple, with stalks 3 to 4 ft. tall. Commences to bloom in the early part of August.

virginiana alba. Pure white; very effective in a mass.

Price: \$.20 each; \$1.50 per 10.

PLATYCODON.

The Japanese Bellflower resembles the Peach-leaved Campanula, but flowers later and has yet larger flowers.

grandiflorum. Large blue flowers, on slender stems 2 ft. tall.

grandiflorum album. White, with delicate blue tints.

Price: \$.25 each; \$2.00 per 10.

POLYGONATUM. Solomon's Seal.

Few plants are more delightful than the Solomon's Seal, nor any more beautiful for many positions. They prefer a shady place, and should be left undisturbed.

japonicum. Similar to the common variety, but much stronger in growth.

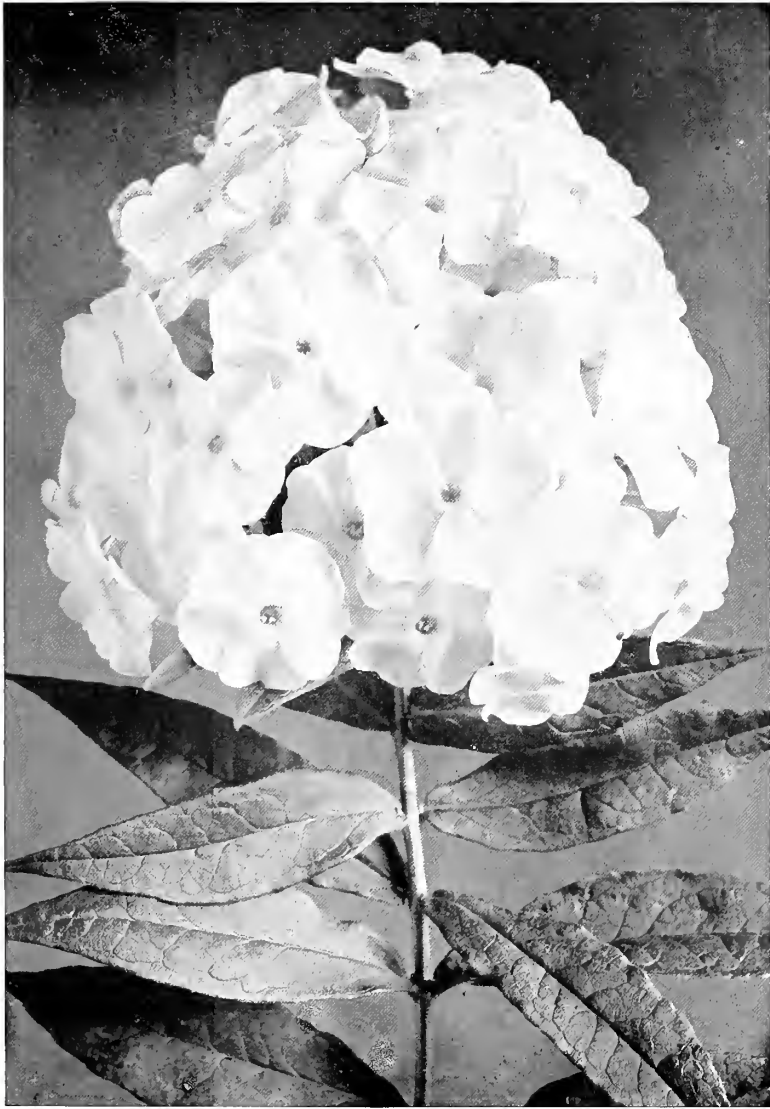
multiflorum. The common Solomon's Seal.

Price: \$.20 each; \$1.50 per 10.

POTENTILLA.

Dense growing plants, about two feet high, with glaucous foliage and innumerable flowers resembling strawberry blossoms. We have a collection of about fifteen varieties.

Price: \$.25 each; \$2.00 per 10.



A SINGLE HEAD OF THE TALL, LATE-
BLOOMING PHLOX

These plants, well massed, are the best material the garden has
for broad effects of color the whole season through

THE MOUNT DESERT NURSERIES, BAR HARBOR, MAINE



PYRETHRUM.

We cannot speak too highly of this early flowering perennial, which will thrive in any good garden soil if given a sunny, well-drained position. With us they bloom in early July, and are especially fine for cut flower purposes.

Aphrodite. One of the best pure white varieties.

James Kelway. A beautiful rich crimson.

Lord Rosebery. Brilliant carmine scarlet.

Ne Plus Ultra. White, with pale lemon center.

Price: \$.35 each; \$3.00 per 10.

RUDBECKIA.

The Rudbeckias or Cone Flowers are among the handsomest of late flowering perennials, and are extremely useful and showy.

laciniata plena. Golden Glow. A very popular double variety. Fine for massing. 6 ft.

nitida. Autumn Glory. Single yellow flowers on 6 ft. stems. A good border plant.

speciosa. A dwarf growing variety. Fine for bedding. Deep yellow flowers with black center.

subtomentosa. A pretty variety of moderate growth and numerous lemon colored blossoms.

Price: \$.20 each; \$1.50 per 10.

SENECIO.

Clivorum. Recently received from China. Ample foliage, and large heads of rich yellow flowers.

Price: \$.25 each; \$2.00 per 10.

SOLIDAGO. Golden Rod.

Sempervirens. The common Golden Rod. Valuable for naturalizing.

Price: \$.20 each; \$1.50 per 10; \$10.00 per 100.

SPIRAEA. Meadow Sweet.

The Spiraeas or Meadow Sweets are not excelled in beauty by any perennials, and a representative collection gives a wide range of form and color. They should be given a damp and partially shaded position, to see them at their best.

filipendula. Dwarf growing plants, with very pretty fern-like foliage, and heads of creamy white flowers. June to August.



MOUNT DESERT NURSERIES

filipendula plena. A double form, having pure white flowers, and one of the finest of the dwarf growing varieties.

kamtschatica. Grows fully six feet high. Has fine bold foliage and large heads of white flowers.

ulmaria plena. The double Meadow Sweet of Europe is a beautiful addition to the garden, and is unsurpassed for grouping. July and August.

lobata. (*Ulmaria rubra*) One of the most popular, and a splendid plant for grouping. Heads of crimson flowers on 4 ft. stems. July.

Price: \$.25 each; \$2.00 per 10.

STATICE. Sea Lavender.

As isolated plants in the rock garden, or for grouping in the flower border, the Sea Lavenders are well suited, and make fine masses of color.

altaica. Small blue flowers in great numbers on very branching stems.

tartarica. Very pretty rosy lavender flowers.

Price: \$.25 each; \$2.00 per 10.

SWEET WILLIAM. (*Dianthus Barbatus*).

These popular plants are very effective for the garden, and are also valuable for cutting. The best effect can be secured by planting in separate colors, for which the new shades of pink and scarlet are in great demand. We supply only strong field-grown flowering plants.

Price: \$.25 each; \$2.00 per 10.

THALICTRUM. Meadow Rue.

For their handsome foliage alone the Meadow Rues are valuable, though attractive, too, in bloom and the strong growing sorts are well adapted for semi-wild effects.

acquilegifolium. Large fine foliage, and feathery heads of white flowers, 5 ft.

Delavayi. A new Chinese introduction. 4 ft. Branching heads of drooping bell shaped flowers.

glaucum. Strong variety, with handsome glaucous foliage and creamy white flowers. 5 ft.

polygamum. Pale green foliage, and white flowers. 4 ft.

Price: \$.25 each; \$2.00 per 10.

TROLLIUS. Globe Flower.

These are the brightest of early summer perennials, and succeed admirably in almost any position; especially a damp one.

asiaticus. Bright orange colored flowers; medium size.





A CLUMP OF YUCCA FILAMENTOSA IN
FLOWER AT MIDSUMMER

THE MOUNT DESERT NURSERIES, BAR HARBOR, MAINE

MOUNT DESERT NURSERIES

caucasicus. Orange Globe. Handsome variety with large orange flower on tall stems.

europaeus. Pale lemon colored flowers, produced with greater freedom and for a longer period than any other variety.

hybridus Gibsoni. Rich orange color.

hybridus Thomas S. Ware. A very fine form. Flowers orange yellow, of large size, on tall stems.

Price: \$.25 each; \$2.00 per 10.

VERONICA. Speedwell.

longifolia subsessilis. Long branching spikes of rich blue flowers.

repens. See Alpine Plants.

spicata. A neat growing plant, with slender stems of blue flowers.

Price: \$.25 each; \$2.00 per 10.

YUCCA.

filamentosa. One of the most decorative and striking of hardy plants with tall spikes of creamy white flowers. Should be planted in protected situations.

Price: \$.25 each; \$2.00 per 10.





MOUNT DESERT NURSERIES

BULB LIST

GALTONIA CANDICANS. *Hyacinthus candicans.*

A handsome summer flowering bulb with spikes three feet tall, carrying many drooping bell-shaped flowers of pure white.

Price: \$.50 per 10; \$3.00 per 100.

IRIS.

xiphioides. English Iris. Very popular flower with wide range of color. 18 to 20 inches high. Flower about two weeks later than Spanish Iris.

Price: \$1.50 per 100.

xiphium. Spanish Iris. Even more popular than English Iris. Fine for cut flowers. Should be planted in large groups.

Price: \$1.00 per 100.

LILIUM.

	ea.	10	100
auratum	\$.40	\$3.00	\$20.00
canadense15	1.25	9.00
candidum20	1.50	12.00
elegans atrosanguineum20	1.50	12.00
Hansoni40	3.00	25.00
Henryi60	5.00	
Mammoth bulbs75		
Speciosum album35	2.50	
" roseum25	2.00	
" rubrum25	2.00	
" magnificum25	2.00	
superbum20	1.50	
tigrinum splendens10	.75	

MONTBRETIA.

A magnificent class of bulbs of the greatest value for producing a fine display of blossom from July till October. Splendid for cutting, and of very easy culture.

Ernest Davison. Rich orange, suffused with carmine.

Price: \$.50 per 10; \$4.00 per 100.



GALTONIA OR HYACINTHUS CANDICANS

A hardy bulb from Southern Africa, vigorous in habit and singularly full in flower
The drooping, bell-like flowers are ivory-white

THE MOUNT DESERT NURSERIES, BAR HARBOR, MAINE



FLOWERS OF THE SPANISH IRIS

A plant belonging to the bulbous section of the Iris family and grown readily in quantity for springtime flowering. The color range in rich and tawny shades is singularly wide

THE MOUNT DESERT NURSERIES, BAR HARBOR, MAINE

MOUNT DESERT NURSERIES

Geo. Davison. Beautiful orange yellow. Flowers large and well open.
Long stems.

Price: \$.50 per 10; \$4.00 per 100.

Germania. Large orange-scarlet flowers.

Price: \$.25 per 10; \$2.25 per 100.

King Edmund. Strong variety with strong branching spikes of golden yellow flowers.

Price: \$.50 per 10; \$4.00 per 100.

Lady Hamilton. Yellow with rose shading in center.

Price: \$.50 per 10; \$4.00 per 100.

Vesuve. Rich crimson.

Price: \$.50 per 10; \$4.00 per 100.

NARCISSUS.

Emperor	\$.40	\$3.00
Golden Spur40	3.00
Maximus30	2.00
Barri Conspicuus20	1.50
Sir Watkin40	3.00
Poeticus, extra large20	1.50
Van Sion40	3.00

SNOWDROPS.

The earliest of spring flowers. Welcomed by all.

Elwes' Giant	\$1.00 per 100
Single	1.00 per 100
Double	1.00 per 100

TULIPS.

We can supply any varieties at market prices. For transplanting outside we strongly recommend the Darwin or Mayflowering section.



AQUATICS *and* BOG PLANTS

ACORUS.

Calamus. **Sweet Flag.** A very ornamental plant for the edge of the water, with deep green Iris like foliage which emits an aromatic odor when bruised.

Price: \$.25 each; \$2.00 per 10.

Calamus variegatus. Very showy foliage variegated with broad yellow markings changing to white with age. Both of these are fine for grouping.

Price: \$.25 each; \$2.00 per 10.

APONOGETON.

distachyon. **Cape Pondweed.** One of the prettiest Aquatics for shallow water, with pure white flowers deliciously scented. Flowers freely all summer.

Price: \$.50 each; \$4.00 per 10.

ASTILBE.

The Astilbes all thrive best in a moderately damp situation, and produce beautiful effects by the water. For varieties see general list of herbaceous plants.

CALTHA.

palustris. **Marsh Marigold.** A native plant, and one of the prettiest in spring. It revels in marshy ground, and has brilliant yellow flowers.

palustris flore pleno. A very showy double variety, flowering for a long time.

Price: \$.25 each; \$2.00 per 10.

IRIS.

No plants are more beautiful or better suited for the margins of streams or ponds. All the undermentioned are particularly good in damp positions.

Kaempferi. This handsome Japanese Iris should be planted where the water does not cover the crowns in winter. For varieties and prices see general list.

pseudacorus. The common marsh Iris of England. A tall, vigorous grower, with rich yellow flowers; a fine plant for semi-wild gardening.

Sibirica. All the Siberian Iris are specially adapted for planting at the edge of the water, where they attain their full vigor and beauty. This specie has long narrow foliage and yellow, on stems 4 ft. high.



A WATER GARDEN

Made by the Nurseries in a sheltered spot beside the eastern porch at Oldfarm Manor

THE MOUNT DESERT NURSERIES, BAR HARBOR, MAINE



A PLANT OF SIBERIAN IRIS IN FLOWER

The type shown is the variety called Maxima, splendidly vigorous and free in bloom. It is a meadow-loving plant easy to naturalize in moist soil

THE MOUNT DESERT NURSERIES, BAR HARBOR, MAINE



MOUNT DESERT NURSERIES

Sibirica alba. A pure white counterpart.

maxima. A very large, strong growing form.

orientalis. Not quite as tall as the type; the flowers are larger and a rich blue in color.

orientalis Snow Queen. One of the most admired of all Iris, with snow white flowers in profusion.

Price: For any except the Kaempferi, \$.20 each; \$1.50 per 10.

LOBELIA.

cardinalis. One of the most beautiful of all herbaceous plants for a moist situation, where it will grow fully four feet high. Spikes of bright scarlet flowers.

Price: \$.15 each; \$1.25 per 10.

LYTHRUM.

roseum. Spiked or Purple Loosestrife. Few plants can be used with more striking effect in any part of the garden; but to be seen at its best it should be planted in the Bog Garden or by the edge of the water where it quickly becomes naturalized and is always an object of admiration.

Price: \$.25 each; \$2.00 per 10.

NYMPHAEA. Water Lilies.

Marliacea. For those who are interested in Water Lilies, and have not the space for growing an extensive collection, we strongly recommend the following varieties. These all have large flowers, good foliage and strong constitutions, and are always satisfactory. Eighteen inches to two feet of water suits them well, and each plant should have sufficient space to develop.

Marliacea albida. Large flowers of purest white, with golden center. Very fragrant, and produced continuously throughout the summer.

Price: \$.50 each.

Marliacea carnea. Beautiful soft flesh color, a little deeper at the base.

Price: \$.75 each.

Marliacea chromatella. One of the very best. Pale yellow flowers, produced continuously.

Price: \$.75 each.

Marliacea ignea. Fine rich deep carmine, with lighter stamens. Leaves bronzy red when young.

Price: \$2.50 each.

MOUNT DESERT NURSERIES

Marliacea rosea. A grand lily with rosy pink flowers.

Price: \$1.00 each.

Marliacea rubra punctata. A strong growing variety, reddish purple in color, with orange stamens.

Price: \$2.50 each.

odorata. The common white fragrant lily.

Price: \$.20 each.

odorata gigantea. A vigorous growing pure white lily.

Price: \$.20 each.

odorata sulphurea. A very pretty fragrant lily with sulphur yellow flowers which stand above the water. The leaves are heavily blotched with red.

Price: \$.50 each.

pygmaea. A miniature species with white flowers; very free flowering, and pretty for growing in tubs.

Price: \$.75 each.

SAGITTARIA.

japonica flore pleno. One of the finest of aquatics, with handsome spikes of double white flowers.

Price: \$.50 each.

sagittaeifolia. Fine foliage, and large spikes of white flowers with yellow centers. Should be planted in about 1 foot of water.

Price: \$.20 each.

SENECIO.

Clivorum. An uncommon herbaceous plant which succeeds well in a moist position. Handsome foliage, and tall spikes of bright yellow flowers.

Price: \$.25 each.







BIRCH WOODS AND FERNS
On a granite upland at Mount Desert



DECIDUOUS TREES

	Each	10
ACER palmatum var. atropurpureum. Japanese Maple.		
2-3 ft.	\$3.50	\$30.00
platanoides. Norway Maple.		
8-10 ft.	1.50	12.50
platanoides var. Schwedleri. Schwedleri's Purple Leaved Maple.		
6-8 ft.	2.00	15.00
rubrum. Red Maple.		
5-6 ft.75	6.00
saccharum. Sugar Maple.		
8-10 ft.	1.50	12.50
spicatum. Mountain Maple.		
2-3 ft.35	3.00
BETULA lutea. Yellow Birch.		
6-8 ft.	1.25	10.00
papyrifera. Canoe or Paper Birch.		
6-8 ft.	1.00	7.50
CRATAEGUS coccinea. Scarlet Thorn.		
4-5 ft.	1.00	7.50
macracantha.		
5-6 ft.	1.50	12.50
oxyacantha. English Hawthorn.		
4-5 ft.50	4.00
oxyacantha plena. Double White English Hawthorn.		
4-5 ft.	1.25	
oxyacantha, var. Paul's Double Scarlet.		
4-5 ft.	1.25	
FAGUS sylvatica var. Riversi. Rivers' Purple Leaved Beech.		
4-5 ft.	2.50	
FRAXINUS americana. White Ash.		
8-10 ft.	1.25	10.00
POPULUS deltoides var. carolinensis. Carolina Poplar.		
8-10 ft.	1.00	8.00
nigra var. italica. Lombardy Poplar.		
8-10 ft.	1.25	10.00
QUERCUS rubra. Red Oak.		
6-8 ft.	1.50	12.50



MOUNT DESERT NURSERIES

	Each	10
SALIX pentandra. Laurel-leaved Willow.		
3-4 ft.35	3.00
4-5 ft.50	4.50
5-6 ft.75	6.00
rosmarinifolia. Rosemary-leaved Willow.		
4-5 ft.	1.00	8.00
5-6 ft.	1.50	12.50
vitellina. Yellow-barked Willow.		
5-6 ft.75	6.00
vitellina var. Britzensis. Red-barked Willow.		
5-6 ft.75	6.00
SORBUS americana. American Mountain Ash.		
3-4 ft.35	3.00
aucuparia. European Mountain Ash.		
6-8 ft.	1.00	8.00
TILIA americana. American Linden.		
6-8 ft.	1.25	

EVERGREEN TREES *and* SHRUBS

	Each	10
ABIES concolor. Colorado Fir.		
4-5 ft.	5.00	
ARCTOSTAPHYLOS Uva-ursi. Bearberry.		
Pot grown plants50	4.00
CALLUNA vulgaris. Heather.		
6-12 in.35	2.50
JUNIPERUS communis. Ground Juniper.		
6-12 in.50	4.00
12-18 in.75	6.00
18-24 in.	1.00	7.50
procumbens. Prostrate Juniper.		
12-18 in.	1.00	7.50
18-24 in.	1.50	12.50
PICEA alba. White Spruce.		
2-3 ft.	1.00	7.50
3-4 ft.	1.50	12.50
excelsa. Norway Spruce.		
3-4 ft.	1.50	12.50



THE PATH TO SCHOONER HEAD

Built in recollection of pleasant foot-ways, older than the driving roads, in the Tyrol



A GIANT PINE



MOUNT DESERT NURSERIES

pungens. Colorado Spruce.		
4-5 ft.	3.00	
5-6 ft.	4.00	
pungens var. glauca. Blue Colorado Spruce.		
3-4 ft.	3.50	
4-5 ft.	4.00	
5-6 ft.	6.00	
PINUS austriaca. Austrian Pine.		
2-3 ft.	1.50	12.50
3-4 ft.	2.50	
cembra. Swiss Stone Pine.		
3-4 ft.	2.50	
montana var. mughus. Dwarf Mountain Pine.		
1-2 ft.	1.00	7.50
parviflora glauca elegans.		
3-4 ft.	6.00	
strobis. White Pine.		
2-3 ft.	1.25	10.00
3-4 ft.	2.00	
4-5 ft.	3.00	
sylvestris. Scotch Pine.		
2-3 ft.	1.00	7.50
RETINOSPORA filifera. Japanese Cypress.		
12 to 18 in.75	6.00
3-4 ft.	3.00	
THUYA occidentalis. American Arbor Vitae.		
2-3 ft.75	5.00
3-4 ft.	1.00	7.50
4-5 ft.	1.50	12.50
5-6 ft.	2.50	
occidentalis var. compacta.		
12-18 in.75	6.00
occidentalis var. Ellwangeriana.		
2 ft.	1.25	10.00
3 ft.	1.75	
occidentalis var. globosa.		
18 in.	1.25	10.00
24 in.	2.00	17.50
occidentalis var. Hoveyi.		
2-3 ft.	1.50	12.50
3-4 ft.	2.50	20.00
occidentalis var. pyramidalis.		
2-3 ft.	1.50	12.50
3-4 ft.	2.00	15.00



DECIDUOUS SHRUBS

	Each	10
AMELANCHIER botryapium. Shad Bush.		
3-4 ft.	1.00	8.00
ARALIA pentaphylla.		
3-4 ft.75	6.00
BERBERIS Thunbergi. Thunberg's Barberry.		
12-18 in.25	2.00
18-24 in.35	3.00
24-30 in.50	4.00
vulgaris. European Barberry.		
2-3 ft.50	4.00
vulgaris var. purpurea. Purple leaved Barberry.		
2-3 ft.50	4.00
CORNUS. alba var. sibirica. Siberian Red-twigged Dogwood.		
3-4 ft.50	4.00
Amomum. Silky Dogwood.		
3-4 ft.50	4.00
circinata. Round leaved Dogwood.		
2-3 ft.50	4.00
paniculata. Panicked Dogwood.		
2-3 ft.50	4.00
4-5 ft.	1.50	
stolonifera. Red Osier Dogwood.		
3-4 ft.40	3.50
stolonifera var. flaviramea.		
2-3 ft.50	4.00
CYDONIA japonica. Japanese Quince.		
2-3 ft.50	4.00
DEUTZIA Lemoinei.		
1-2 ft.35	3.00
2-3 ft.50	4.00
DIERVILLA floribunda.		
4-5 ft.	1.50	
florida. Weigela rosea.		
3-4 ft.	1.00	7.50
florida var. candida.		
3-4 ft.75	6.00
florida var. Kosteriana variegata.		
4-5 ft.	1.00	8.00

MOUNT DESERT NURSERIES

	Each	10
hybrida Eva Rathke.		
2-3 ft.50	4.00
hybrida Groenwegeni.		
4-5 ft.	1.00	7.50
trifida. Native Bush Honeysuckle.		
1-2 ft.25	2.00
2-3 ft.50	4.00
EUONYMOUS Sieboldianus. Spindle Tree.		
3-4 ft.75	6.00
4-5 ft.	1.00	7.50
FORSYTHIA intermedia. Golden Bell.		
3-4 ft.50	4.00
suspensa. Drooping Golden Bell.		
3-4 ft.50	4.00
suspensa var. Fortunei.		
3-4 ft.50	4.00
HYDRANGEA arborescens grandiflora alba.		
2-3 ft.50	4.00
paniculata.		
2-3 ft.50	4.00
paniculata grandiflora.		
2-3 ft.50	4.00
ILEX verticillata. Black Alder.		
2-3 ft.50	4.00
3-4 ft.	1.00	7.50
LIGUSTRUM ibota. Japanese Privet.		
2-3 ft.35	2.00
vulgare. Common Privet.		
2-3 ft.35	2.00
3-4 ft.50	4.00
LONICERA bella. Bush Honeysuckle.		
2-3 ft.35	3.00
Morrowi.		
3-4 ft.50	4.00
Ruprechtiana.		
3-4 ft.75	6.00
tartarica alba.		
3-4 ft.50	4.00
tartarica var. grandiflora.		
2-3 ft.35	3.00



MOUNT DESERT NURSERIES

	Each	10
MYRICA cerifera. Barberry or Wax Myrtle.		
1-2 ft.35	3.00
PHILADELPHUS coronarius.		
3-4 ft.50	4.00
4-5 ft.75	6.00
grandiflorus.		
3-4 ft.50	4.00
4-5 ft.75	6.00
Lemoinei.		
2-3 ft.50	4.00
Lemoinei Avalanche.		
2-3 ft.50	4.00
nivalis.		
5-6 ft.	1.50	10.00
pubescens.		
3-4 ft.50	4.00
PHYSOCARPUS opulifolius. Ninebark.		
3-4 ft.50	4.00
RHUS cotinus. Smoke Bush.		
2-3 ft.75	6.00
typhina. Staghorn Sumach.		
3-4 ft.50	4.00
4-5 ft.75	6.00
typhina laciniata.		
3 ft.50	4.00
RIBES americanum. American Black Currant.		
3-4 ft.50	4.00
aureum. Yellow-flowering Currant.		
3-4 ft.50	4.00
cereum.		
2-3 ft.50	4.00
RUBUS deliciosus. Rocky Mountain Flowering Rasp- berry.		
3-4 ft.75	6.00
SAMBUCUS canadensis. Common American Elder.		
3-4 ft.50	4.00
nigra aurea.		
3-4 ft.50	4.00
racemosa. Red-berried Elder.		
2-3 ft.50	4.00
SORBUS arbutifolia. Choke Cherry.		

MOUNT DESERT NURSERIES

	Each	10
3-4 ft.75	6.00
melanocarpa. Black Choke Cherry.		
3-4 ft.75	6.00
SPIRAEA arguta.		
3-4 ft.75	6.00
Bumalda var. alba.		
18-24 in.50	4.00
salicifolia. Meadow Sweet.		
3-4 ft.50	4.00
Thunbergi.		
2-3 ft.50	4.00
tomentosa. Hardhack. Steeplebush.		
2-3 ft.25	2.00
Van Houttei. Bridal Wreath.		
2-3 ft.50	4.00
3-4 ft.75	6.00
SYMPHORICARPUS racemosus. Snowberry.		
3-4 ft.75	6.00
SYRINGA japonica. Japanese Lilac.		
3-4 ft.	1.00	7.50
pekinensis. Chinese Lilac.		
3-4 ft.75	6.00
persica.		
2-3 ft.50	4.00
persica alba.		
2-3 ft.50	4.00
villosa.		
2-3 ft.50	4.00
vulgaris. Common Lilac.		
2-3 ft.35	3.00
3-4 ft.50	4.00
vulgaris var. alba.		
2-3 ft.50	4.00
3-4 ft.	1.00	7.50

(Named Varieties of Lilacs).

- Belle de Nancy. Light pink.
- Charles X. Large purple flowers.
- Congo. Very dark purple.
- Frau Bertha Damman. Single White.
- Madame Lemoine. Double White.



MOUNT DESERT NURSERIES

Michael Buchner. Double pale lilac.
 Ranunculæflora pleno. Double pale pink.
 Souv. de Ludwig Spath. Single dark purple.
 Any of the above, 2-3 ft.75

NOTE.—Specimen plants of hybrid Lilacs 5-6 ft. tall and very bushy at \$5.00 each.

	Each	10
VIBURNUM cassinoides. Withe Rod.		
2-3 ft.50	4.00
3-4 ft.	1.00	7.50
dentatum. Arrow Wood.		
2-3 ft.35	3.00
3-4 ft.75	6.00
lantana. Wayfaring Tree.		
3-4 ft.50	4.00
lentago. Sheep Berry.		
3-4 ft.75	6.00
opulus. High Bush Cranberry.		
2-3 ft.50	4.00
3-4 ft.75	6.00
opulus var. sterilis. Snowball.		
3-4 ft.50	4.00
tomentosum. Japanese Snowball.		
2-3 ft.50	4.00
3-4 ft.75	6.00





ROSES

	Each	10
ROSA blanda.		
2-3 ft.50	4.00
carolina. Wild Swamp Rose.		
1-2 ft.25	2.00
lucida. Wild Rose. Glossy Rose.		
1-2 ft.25	2.00
multiflora.		
2-3 ft.35	3.00
3-4 ft.50	4.00
rubiginosa. Sweet brier. Eglantine.		
3-4 ft.50	4.00
rubrifolia. Red-leaved Rose.		
3-4 ft.75	6.00
rugosa. Japanese Rose.		
2-3 ft.35	3.00
rugosa var. alba.		
2-3 ft.50	4.00
rugosa hybrids, in the following varieties:		
Belle Poitevine, Blanc de Coubert, Conrad F. Meyer, Madam George Bruant, Nova Zembla.		
2-3 ft.50	4.00

HYBRID PERPETUAL ROSES

- Baroness Rothschild.** A beautiful light pink; very large and of fine form.
- Clio.** Flesh color, shaded in the center rosy pink. Vigorous grower and free bloomer.
- Duke of Edinburgh.** Brilliant vermilion. A distinct and splendid variety.
- Frau Karl Druschki.** Pure white. Very large buds, opening to large, full flowers. Finest white rose in cultivation.
- General Jacqueminot.** Brilliant scarlet crimson; large and full.
- Hugh Dickson.** Brilliant Crimson, shaded scarlet. A grand rose and a very strong grower.
- Madam Gabriel Luizet.** Light silvery pink; very free bloomer. A superb rose of vigorous growth.
- Margaret Dickson.** White with pale flesh center.
- Mrs. John Laing.** Soft pink color; very large and of fine form.
- Paul Neyron.** Deep rose. Flowers large. Foliage and growth good.



MOUNT DESERT NURSERIES

Ulrich Brunner. Cherry red; of immense size, full form, and most effective. One of the first to flower, and lasts well throughout the season. A superb rose of vigorous growth, and should be in every garden.

Price: Any of the above, \$.40 ea.; \$3.50 per 10; \$30.00 per 100.

TEA AND HYBRID TEA ROSES.

Bessie Brown. Creamy white; of immense size and substance; very highly perfumed. Extra strong grower.

Caroline Testout. Satin rose with brighter center. Large full flower and a very free bloomer. One of the very best.

Dorothy Page Roberts. Coppery pink, suffused with apricot yellow. A very strong grower.

Etoile de France. Velvety crimson; large and full. Strong grower. A superb rose in every way.

Gruss an Teplitz. Bright scarlet crimson; free flowering.

Kaiserin Augusta Victoria. Pearly white, tinted with lemon in the center. Beautifully formed flowers on long stems.

Killarney. A sparkling, brilliant pink. Flowers are large and buds long and pointed. A strong and vigorous plant.

Madam Abel Chatenay. Carmine rose, shaded with salmon. Very free flowering.

Maman Cochet. Deep rose pink; inside of petals silvery rose.

Maman Cochet White. A white form of the above.

Price: Any of the above, \$.50 ea.; \$4.00 per 10; \$35.00 per 100.

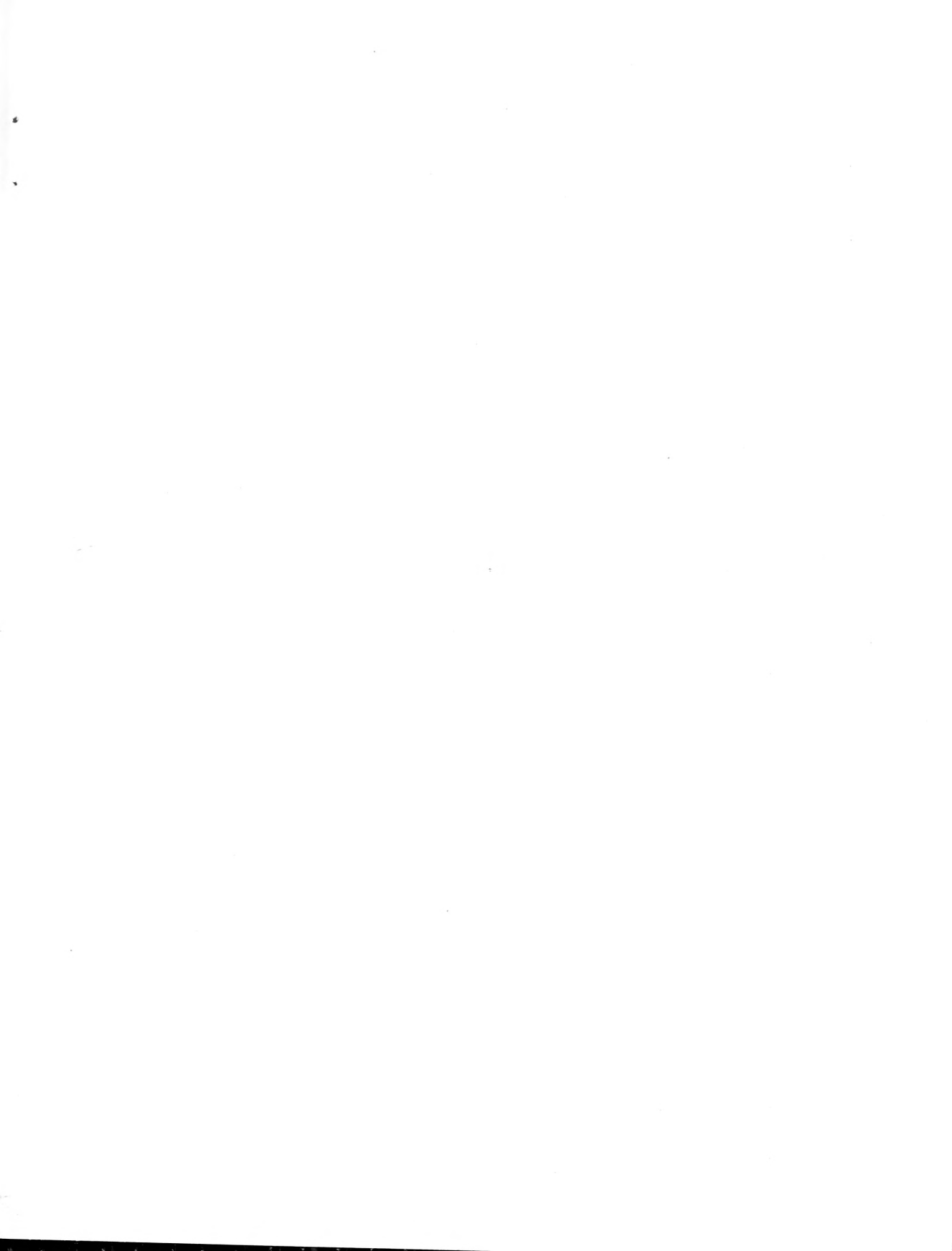
CLIMBING AND TRAILING ROSES.

An extremely beautiful and useful class of roses, well adapted for many different positions, such as clothing pergolas, fences, buildings, covering banks, etc. In the colder parts of the country the majority need slight protection in winter, but **Fairy Cup** and **Setigera** are perfectly hardy and very valuable.

Crimson Rambler
Dorothy Perkins White
Hiawatha
Setigera
Dawson
Fairy Cup

Lady Gay
Tausendschon
Dorothy Perkins
Farquhar
Prairie Queen
Wichuraiana

Strong plants,	\$.50 ea., \$4.00 per 10.
Extra strong plants,	.75 ea., 6.00 per 10.
Specimens,	1.00 to 2.00 each.





ACTINIDIA ARGUTA HEDGE, EIGHT FEET HIGH

Grown for wind protection in the Nurseries' gardens. This Japanese vine grows more vigorously than any native one in Maine and is free as yet from insect enemies

THE MOUNT DESERT NURSERIES, BAR HARBOR, MAINE



VINES *and* CLIMBERS

ACTINIDIA arguta.

2-3 ft., \$.50 ea., \$4.00 per 10.

AKEBIA quinata.

3-4 ft., \$.50 ea., \$4.00 per 10.

AMPELOPSIS quinquefolia. Virginia Creeper.

2-3 ft., \$.25 ea., \$2.00 per 10.

3-4 ft., \$.50 ea., \$4.00 per 10.

quinquefolia var. Engelmanni.

2-3 ft., \$.35 ea., \$3.00 per 10.

3-4 ft., \$.50 ea., \$4.00 per 10.

Veitchi. Boston Ivy.

Heavy, \$.35 ea., \$3.00 per 10.

ARISTOLOCHIA macrophylla. Dutchman's Pipe.

Strong plants, \$.75 ea., \$6.00 per 10.

Heavy plants, 1.00 ea., 7.50 per 10.

CELASTRUS scandens. Bitter Sweet. Wax Work.

2-3 ft., \$.25 ea., \$2.00 per 10.

3-4 ft., \$.50 ea., \$4.00 per 10.

CLEMATIS paniculata. Japanese White Clematis.

Strong, \$.35 ea., \$3.00 per 10.

Extra large, .50 ea., 4.00 per 10.

virginiana. Native White Clematis.

Strong, \$.25 ea., \$2.00 per 10.

Extra large, .35 ea., 3.00 per 10.

Large flowering hybrids:

Jackmani. Purple.

Henryi. White.

Price: \$.75 ea., \$5.00 per 10.

LONICERA Belgica. Dutch Honeysuckle. Monthly Fragrant Honeysuckle.

Strong, \$.75 ea., \$6.00 per 10.

flava. Yellow flowering Honeysuckle.

Strong, \$.75 ea., \$6.00 per 10.

sempervirens. Trumpet Honeysuckle.

Strong, \$.75 ea., \$6.00 per 10.

VITIS coignetiae. Crimson Glory Vine.

2-3 ft., \$.35 ea., \$3.00 per 10.



FRUITS

APPLES.

Summer varieties:

✓ Early Harvest, Red Astrachan.

Autumn varieties:

✓ Fameuse, Gravenstein.

Winter varieties:

Baldwin, Jonathan, King, McIntosh Red, Northern Spy, R. I. Greening, Wolf River.

Price: 2-year-old trees, \$.50 ea., \$4.00 per 10. Larger sizes from \$1.00 to \$3.00 each.

CRAB APPLES. Hyslop and Whitney.

Price: 2-year-old trees, \$.50 ea., \$4.00 per 10.

PEARS.

Summer varieties:

✓ Bartlett, Clapp's Favorite, Doyenne, Tyson and Wilder Early.

Autumn varieties:

✓ Belle Lucrative, Bosc, Seckel and Sheldon.

Price: 2-year-old trees, \$.50 ea., \$4.00 per 10. Larger sizes from \$1.00 to \$3.00 each.

BLACKBERRIES Agawam.

Price: \$.50 to \$.75 per 10; \$3.00 to \$5.00 per 100, according to size.

CURRANTS.

Red varieties:

✓ Fay's Prolific, North Star, Red Cross and Victoria.

White varieties:

○ White Grape.

Black varieties:

○ Black Naples and Lee's Prolific.

Price: \$.15 ea., \$1.25 per 10. Extra large sizes at advanced rates.

GOOSEBERRIES. Columbus, Downing, Industry, Pearl, Smith, Triumph.

Price: \$.25 ea., \$2.00 per 10. Extra large sizes at advanced rates.

MOUNT DESERT NURSERIES

RASPBERRIES. Cuthbert and Golden Queen.

Price: \$.50 per 10, \$3.00 per 100.
Extra strong, .75 per 10, 5.00 per 100.

STRAWBERRIES. The leading varieties.

Price: \$.75 per 10, \$5.00 per 100.

RHUBARB. Linnaeus and Victoria.

Price: \$.35 ea., \$2.50 per 10.
Clumps, .50 ea., 4.00 per 10.

ASPARAGUS. Columbian Mammoth and Conover's Colossal.

Price: \$1.50 per 100.

TARRAGON.

Price: \$.25 ea., \$2.00 per 10.

MINT. True Spearmint.

Price: \$.25 ea., \$2.00 per 10.





Directions to Correspondents

SHIPPING SEASON

OUR shipping season opens in the Spring, about the 15th of April, closing in early June according to the season. And in the Fall it extends from the end of August to the beginning of December.

FALL PLANTING

With a few exceptions, Fall planting is as successful as Spring, and many of the early flowering plants should be planted in the Fall when possible, in preference to the Spring.

SELECTED STOCK

Stock selected by customers at the Nurseries, or specially selected stock ordered by mail or otherwise, will be charged at advanced rates according to the value of the stock selected.

QUANTITY

Five of one kind and size will be furnished at the ten rate.

PACKING

Packing will be done in the most careful manner for shipment to any part of the world. We have made a special study of good packing, and our most distant shipments have rarely failed to reach their destination in the best condition. The packing of Trees and Shrubs will be charged for at actual cost to us. Herbaceous Plants of all kinds will be packed without extra cost.

DELIVERY

All goods are delivery f. o. b. Bar Harbor. Local orders will be delivered free to any part of the village.

SHIPPING

We can ship either by the Maine Central Railroad, or by steamers which connect directly with the steamers for New York and Boston, or by American Express. Customers are requested to state the mode of shipment; otherwise we shall forward according to our best judgment. After delivery to the forwarding agents all goods are at the risk of the purchaser.



INSPECTION

A certificate of inspection will be sent with each shipment.

ERRORS

Customers will confer a great favor if they will notify us promptly of any errors that may have been made in filling their orders, to enable us to immediately correct the same.

CLAIMS

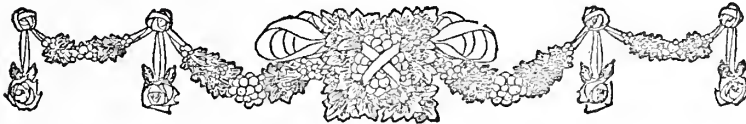
Claims, to receive consideration, must be made immediately upon receipt of goods.

NON-WARRANTY

While we use the utmost care to have our nursery stock, plants, bulbs and seeds true to name and will replace any that may prove untrue, no sale by us carries a warranty, express or implied, as to description, quality, productiveness, or other character, of any nursery stock, bulbs, plants or seeds we send out; nor will we be in any way responsible for the crop; and for any error we shall not be held liable for more than the purchase price. Every purchase from us is made on these terms.

THE MOUNT DESERT NURSERIES

Bar Harbor, Maine





INDEX

	PAGE
Plants of Special Merit - - -	1- 4
Alpine Plants - - - -	5-10
Hardy Herbaceous Plants - -	11-29
Bulbs - - - - -	30-31
Aquatics and Bog Plants - - -	32-34
Deciduous Trees - - - -	35
Evergreen Trees and Shrubs - -	36-37
Deciduous Shrubs - - - -	38-42
Roses - - - - -	43-44
Vines and Clumps - - - -	45
Fruits - - - - -	46-47
Directions to Correspondents - -	48-49



