

Historic, Archive Document

Do not assume content reflects current scientific knowledge, policies, or practices.



62.65

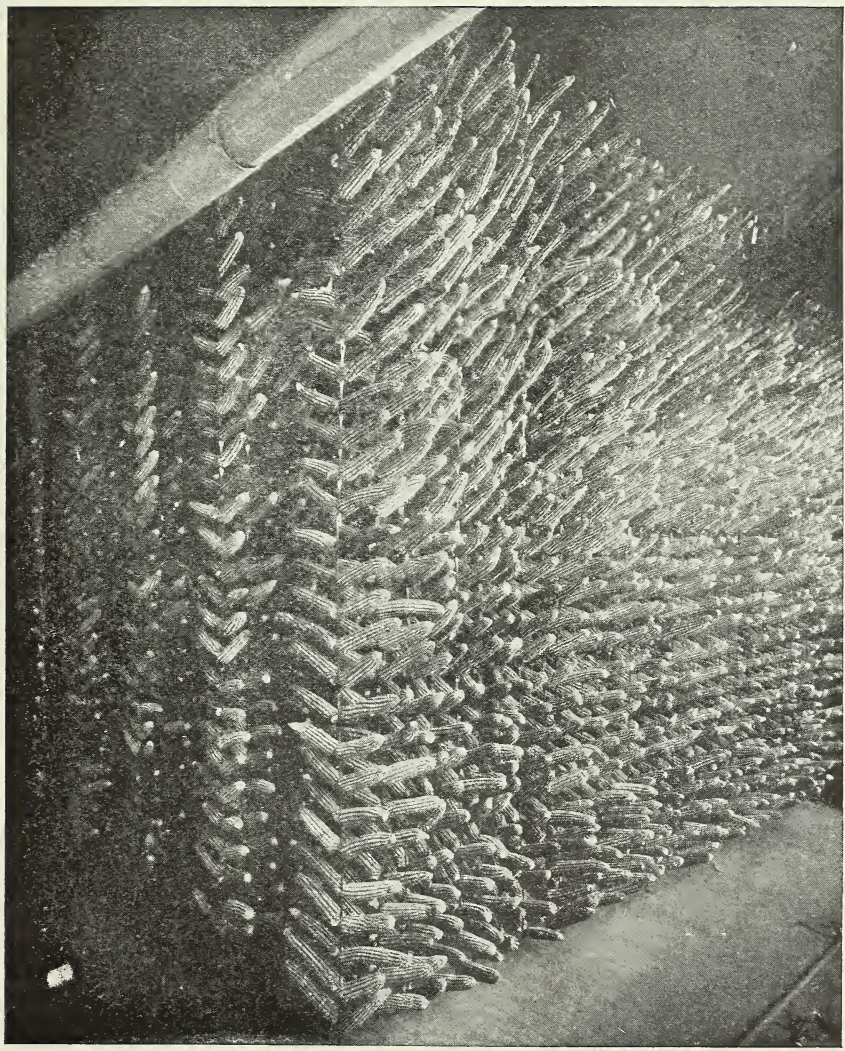
NORTHERN SEED Co.

RECEIVED
FEB 5 1919

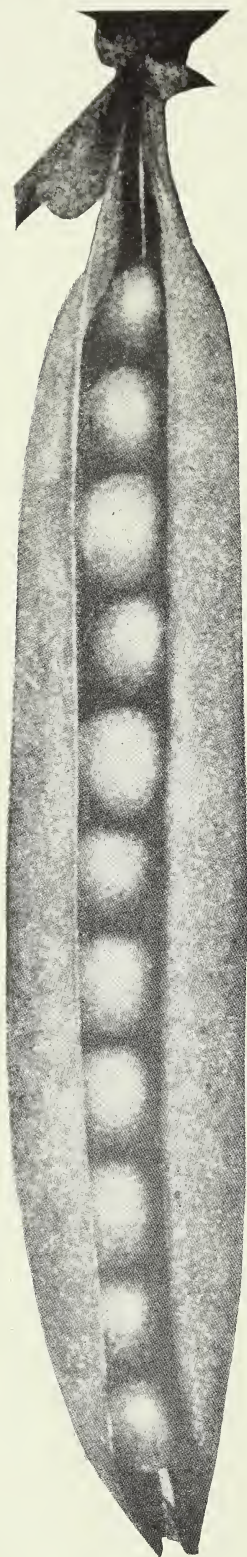
U.S. Department of Agriculture

Catalog 1919

VALLEY CITY, N.D.



Showing our method of
Curing Seed Corn.



Extra Early North Dakota Grown Notts Excelsior Pea

We offer here the best Pea for the Northwest.

Our stock of seed was grown this year on the SHEYENNE RIVER BOTTOM NEAR VALLEY CITY. We never saw a better growing crop or nicer seed after they were harvested.

As they are an exceptionally well acclimated and an extraordinary strain of

Notts Excelsior Pea

we take great pride in offering them at

Package, 10c
Half Pound, 20c
One Pound, 35c
Five Pounds, \$1.20

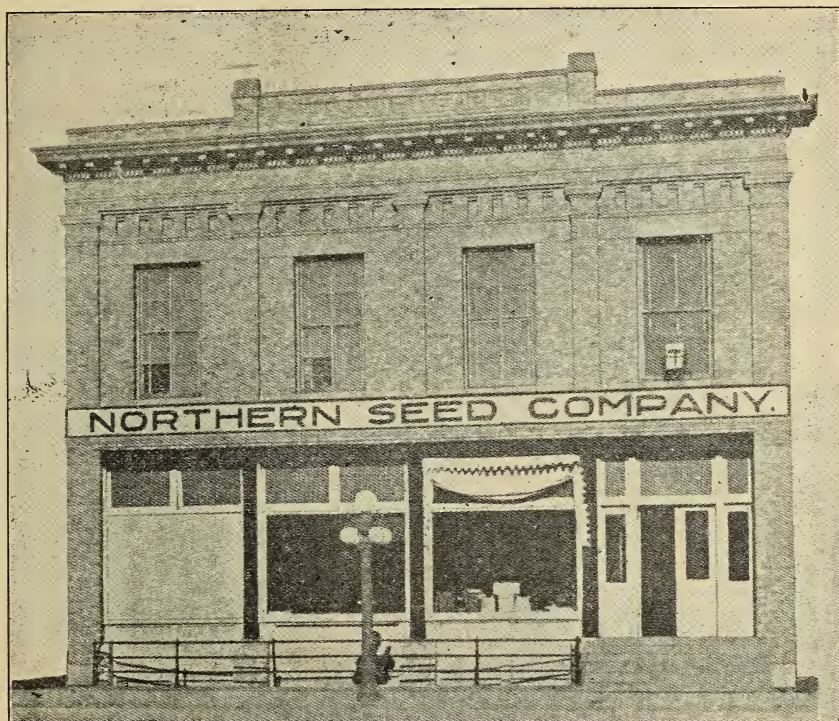
POSTPAID



President, A. P. PEAKE

Vice-President and Manager, A. G. COX

Treasurer, CHAS. W. NELSON



With this, our 1919 catalog, please accept our sincere thanks for your patronage during previous years. Satisfied customers are the ones that build a successful business. To those who have not used our goods we wish to say that we have scores of customers in all parts of North Dakota and eastern Montana whose names we will be pleased to furnish, that you may ask them about our goods and methods of doing business.

Most of the economies and sacrifices demanded by the conditions which existed during the war will be unnecessary now. But the pleasure and profit derived from the war gardens will be remembered for many years, and the United States will be called upon to furnish a large amount of food stuffs to starving Europe this year. Each meal made wholly or partly of vegetables will mean more meat and wheat to export.

If you raise a good large garden, you will derive pleasure from watching Nature's work; health from the exercise of taking care of the garden; profit from the produce consumed or sold; and satisfaction from the knowledge that you are doing your share of making our country the world leader.

We offer only carefully tested seed of varieties known to be best adapted to the northwestern soil and climate, and upon this offering solicit your orders for the season's requirements.

NORTHERN SEED COMPANY

YOUR 1919 GARDEN

USE THIS PAGE TO KEEP A RECORD OF YOUR GARDEN. YOU WILL FIND
IT CONVENIENT TO HAVE ANOTHER SEASON

	Variety	Planted Date	Date 1st Used	Grown Amount	Value Crop
Beans					
.....					
Beets					
.....					
Cabbage					
.....					
Cauliflower					
.....					
Carrots					
.....					
Citron					
.....					
Corn					
.....					
Cucumbers					
.....					
Lettuce					
.....					
Onions					
.....					
Parsley					
.....					
Peas					
.....					
Radishes					
.....					
Salsify					
.....					
Spinach					
.....					
Squash					
.....					
Tomatoes					
.....					
Turnips					
.....					
Rutabagas					
.....					
Watermelons					
.....					

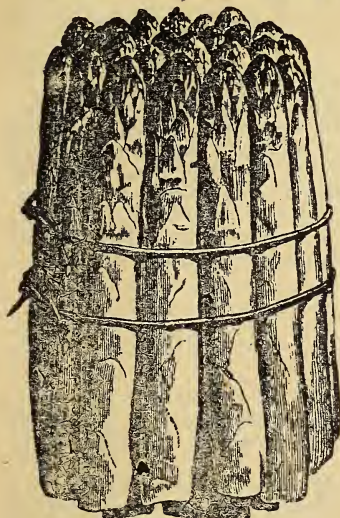
VEGETABLE SEEDS

ASPARAGUS

(1 oz. of seed to 50 feet of row—4 lbs. to the acre)

Culture—Sow 15 to 20 seeds to the foot of row early in the spring; when well up thin to one plant every inch. Frequent and thoro cultivation is required for the best results. Transplant the following spring to a permanent bed.

Conover's Colossal—Attains a bright green color with a purple tip. This variety is very popular throughout the Northwest and should be grown in every garden. Price: Pkt. 5c; oz. 10c; ¼ lb. 20c; lb. 60c.



Asparagus

BEANS

(1 lb. to 60 feet of row)

Culture—Plant when the ground is warm and danger of frost is past in rows or hills 20 inches apart, cultivate frequently until the plant blooms, but not when wet with dew or rain as the soil getting on the wet leaves will cause rust.

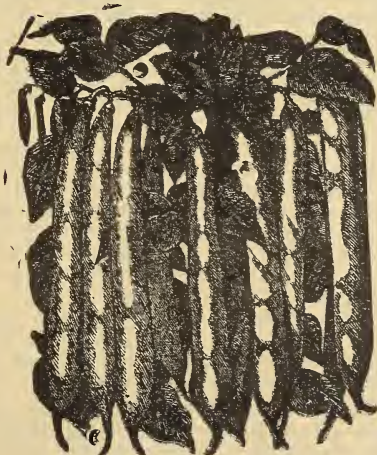
Michigan White Wax—An extra early variety of dwarf snap bean. The seed is white. Golden yellow pods of uniform size, 5 to 5½ inches in length are abundantly produced. For a snap bean there is none that will compare with it for flavor or appearance on the table. The Michigan White Wax does not discolor in cooking, it maintains its pleasing rich golden yellow color. When allowed to ripen the dry beans are as useful as any field

beans. For home canning we know of no bean that will equal it. Its earliness, color, flavor and uniform size put this bean in a class by itself regardless of how it is to be used. Your order should include some of these beans. Price: Pkt. 10c; ½ lb. 35c; lb. 60c; 5 lbs \$2.50. Postpaid.

Golden Wax—A remarkable productive bean, practically free from rust. This variety is perhaps the best known and most popular sort in cultivation. It is with the greatest confidence we offer this bean. Price: Pkt. 10c; ½ lb. 35c; 5 lbs. \$1.75. Postpaid.

Black Wax—An early kind, producing a big quantity of waxy yellow, solid fleshed, well flavored, long podded beans. This bean will stay in condition for cooking longer than some sorts. The vines are about 15 inches high, strong and sturdy; bearing the pods well off the ground. The name is derived from the color of the seed, which is a jet black with a small white spot at the eye. No garden is quite complete without a few of these beans. Price: Pkt. 10c; ½ lb. 20c; lb. 35c; 5 lbs \$1.75. Postpaid.

Extra Early Red Valentine (Green Podded)—A standard green-podded sort ready for the table in six to seven weeks from the time of planting. Pods are long, round and practically stringless. The yield is enormous. Vines are from 12 to 15 inches high. For a green-podded bean there is none better than the Red Valentine. Price: Pkt. 10c; ½ lb. 25c; lb. 35c; 5 lbs. \$1.75. Postpaid.



Michigan White Wax

Long Yellow Six Weeks (Green Podded)—The vine is large, vigorous, branching and productive, with large leaves. Pods are long, straight, thick, flat in shape, green in color, of good quality when young and fair as they near maturity. May be picked in 45 days from planting. The bean is named from the color of the seed and the length of time it takes to be ready to use. This splendid bean is becoming more popular throughout the northwest each year. Try a few. Price: Pkt. 10c; ½ lb. 25c; lb. 45c; 5 lbs. \$1.95. Postpaid.

Kentucky Wonder (Pole Variety)—A pole bean of merit. The pods are often 10 inches long, the vines are very vigorous and prolific, bearing immense quantities of delicious pods. A bean well worth a place in every garden. Price: Pkt 10c; ½ lb. 25c; lb. 45c; 5 lbs. \$1.95. Postpaid.

New Wonder Bush Lima—Bushy in habit, with the pods borne very close to the stalk. After several trials of bush limas we selected the New Wonder Bush as the sort we considered best suitable for the home garden of the Northwest. Why not grow some this year? Price. Pkt. 10c; ½ lb. 25c; lb. 40c. Postpaid.

Field Beans (White Navy)—Our stock is of strong germination and highest quality; hand-picked strictly northern grown seed is all that we carry. There is always a market for navy beans and it is our opinion that the price will stay where it will be well worth while to grow them. Price: ¼ lb. 15c; ½ lb. 25c; 1 lb. 40c. Postpaid. Price: ¼ bu. \$3.25; ½ bu. \$6.00; bu. \$11.00. Purchaser to pay freight or express.

Great Northern Bean—A white, kidney shaped bean of high quality and pleasing flavor. Especially early and a heavy yielder. Price: ¼ lb 15c; ½ lb. 25c; 1 lb. 45c. Postpaid. Bushel of 60 lbs. by freight or express at purchaser's expense \$11.00.

BEETS

THE BETTER KIND

(1 oz. to 50 feet of row—5 lbs. to the acre.)

Culture—Sow from early spring until midsummer. Rows should be 18 inches apart, plants thinned to 6 inches apart in the row. Pack in sand to prevent wilting during the winter.

Detroit Dark Red—Our strain of Detroit Dark Red is unsurpassed for uniformity of size, color, quality and smoothness, there being scarcely any side roots. As a home garden variety it cannot be equalled for either table use, canning or storing for winter, these points are also in its favor as a market product. It is only after careful and extended experiments that we make the above assertion. The roots are dark red, nearly round and of good size, flesh is a beautiful vermilion red, zoned with a lighter shade of the same color. The tops are small and the leaves a dark green, shaded with red. While this wonderful beet is slightly higher in price than the other sorts we list, it will be found well worth the extra money. Price: Pkt. 10c; oz. 15c; ¼ lb. 50c; ½ lb. \$1.00; lb. \$1.75. Postpaid.

Crosby's Egyptian—An improved strain of the Extra Early Egyptian—An exceptionally early beet of a sort that can be planted in the open ground or started under glass. The roots are slightly flattened and very smooth, the flesh is a zoned bright red, very tender and delicious. The leaves and young beets cooked together make fine greens. Price: Pkt. 5c; oz. 15c; ¼ lb. 40c; ½ lb. 75c; lb. \$1.40. Postpaid.

Long Smooth Blood—A standard late variety, which as it nears maturity forces itself above ground, sometimes to a height of three inches. The roots attain a length of 12 inches, the crown is about 3 inches in diameter and root tapering. Both the beet and the flesh are a dark rich red, without prominent zoning. A very good beet for sliced pickles or beet relish. Price: Pkt. 5c; oz. 10c; ¼ lb. 35c; ½ lb. \$1.20. Postpaid.

Early Eclipse—A globe shaped variety of a lighter red than the other sorts we list. The quality is exceptional for as early a beet. We have among our customers those who consider this beet one of the best for first early use. Price: Pkt. 5c; oz. 10c; ¼ lb. 40c; ½ lb. 75c; lb. \$1.25. Postpaid.

Early Blood Turnip—The most widely known and cultivated beet in use, it has been a favorite with gardeners for years and as a second early of the globular type will maintain its popularity for some time to come. The flesh is a dark red, zoned with a lighter shade, is crisp, tender and sweet. Both the home and market gardener will find this beet meeting with hearty approval. We recommend it for general use. Price: Pkt. 5c; oz. 10c; ¼ lb. 40c; ½ lb. 75c; lb. \$1.25. Postpaid.

Swiss Chard—This vegetable is not as well known or as extensively grown as its excellent qualities warrant. It differs from all other members of the beet family,

inasmuch as it does not produce edible roots. Swiss Chard tops make greens of most excellent quality and later the Stalks may be cooked as is Asparagus, or pickled. If greens are enjoyed this vegetable should have its place in the garden, we know it to be worth while. Price: Pkt. 5c; oz. 15c; ¼ lb. 40c; ½ lb. 75c; lb. \$1.40. Postpaid.

Sugar Beet—(Klein Wanzleben)—Hooverize on sugar! Grow Sugar Beets! Make your own syrup! Sugar beets do unusually well all over the Northwest. They will yield 12 to 18 tons to the acre. A bushel of roots will make 3 to 5 quarts of syrup. The same attention is required for the successful growing of sugar beets as is needed for the ordinary table beet or mangles.

Syrup is made in the following manner: (Send to the Department of Agriculture for Farmers Bulletin 823.) Slice the beets very thin, let stand in water that has come to a boil for one hour, strain as for jell without pressing, boil liquid until desired thickness. While boiling a scum will arise which should be carefully removed with a skimmer. Bottle or can while hot. The syrup thus made can be used in any place where syrup or molasses is used. If the evaporation is carried far enough a dark sugar will settle out. Price. Pkt. 5c; oz. 15c; ¼ lb. 50c; ½ lb. 90c; lb. \$1.60. Postpaid.

MANGEL WURTZEL

FINE FOR STOCK

(1 oz. to 100 ft. of row—5 lbs. to the acre.)

Culture—In large tracts the rows should be distant enough to permit horse cultivation. Bury the seed about an inch, planting one to every inch, when three inches high begin thinning until there is a plant every 10 inches. Cultivate frequently until the leaves become too large.

Mangles have a high feeding value for all kinds of stock, they are not only very nutritious but have a tendency to keep the stock in condition during the winter months when they do not exercise a great deal and when the ration is largely grain and roughage. The yield ranges from 15 to 30 tons to the acre depending upon conditions.

Improved Mammoth Long Red—Roots are long, straight, solid, very large and of a rich red color. The flesh is white with a rose tinge. With careful cultivation this variety will produce an enormous crop. Price: Pkt. 5c; oz. 10c; ¼ lb. 35c; ½ lb. 65c; lb. \$1.25. Postpaid.

Improved Golden Tankard—This mangle should be grown on every dairy farm. It will increase the milk flow but will not taint it. The roots are a rich orange yellow with a light yellow flesh. An acre will yield several tons of well formed roots that will make an enormous amount of feed. Price: Pkt. 5c; oz. 10c; ¼ lb. 35c; ½ lb. 65c; lb. \$1.25. Postpaid.

Giant Half Sugar—(For Stock)—Especially desirable for any stock that is being fed for market, as it is rich in sugar and very nutritious. The flesh is white and the root a grayish-white. One of the best mangles for general use. Price: Pkt. 5c; oz. 10c; ¼ lb. 30c; ½ lb. 60c; lb. \$1.00. Postpaid.

CABBAGE

The Kind That Pays

(An oz. of seed will produce 2500 plants)

Culture—For early cabbage start in the house or under glass, transplant soon as weather conditions will permit to the open ground, setting the plants 24 to 30 inches apart each way. Late cabbage should be started later or a few seeds may be sown where the plants are to grow and thinned to the sturdiest in each hill. Frequent and thorough cultivation is essential.

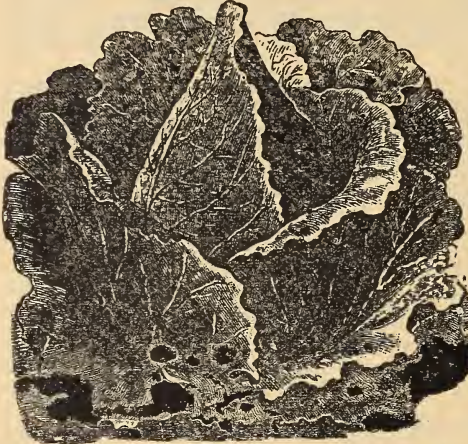
Pride of North Dakota—It was in 1916 that we first put this seed on the market and since then thousands of our customers have praised it. The demand for the seed has forced us to increase the acreage used for seed production. We are the originators, sole producers and



Pride of North Dakota
retailers of this justly popular seed. **Pride of North Dakota** is a cabbage that will

easily mature before frost if the seed is sown in the open ground. Transplanted plants are ready to cut in from 60 to 70 days. The heads average well over 10 pounds, yet do not split readily. The flavor is unexcelled. You will be as enthusiastic about it as we are once you grow it. Be sure it is included in your order. Price: Pkt. 25c; $\frac{1}{2}$ oz. 75c. Postpaid.

Copenhagen Market—(Seed imported direct from Denmark)—When started in



Copenhagen Market

Price: Pkt. 15c; $\frac{1}{2}$ oz. 60c; oz. \$1.00; $\frac{1}{4}$ lb. \$3.75. Postpaid.

Extra Early Winnigstad—The hardiest of any of the early sorts and seems to be bothered less with cabbage worms than many varieties. The heads are conical in shape, hard and keep well. Price: Pkt. 10c; oz. 75c; $\frac{1}{4}$ lb. \$2.80; lb. \$10. Postpaid.

Premium Flat Dutch — A standard main crop variety. Plants have a short stem, rather large outside leaves, are very sure heading and uniform in size and type. Heads are large, slightly flattened on top, solid and splendid quality. Price: Pkt. 10c; oz. 70c; $\frac{1}{4}$ lb. \$2.50; lb. \$9.00. Postpaid.



Extra Early Winnigstad

Large Drumhead—For a deep head this cabbage should be grown on very rich soil, but will form a medium sized head on almost any soil. Heads are flattened on top, solid and make a good cabbage for winter use. Price: Pkt 10c; oz. 70c; $\frac{1}{4}$ lb. \$2.50; lb. \$9.00. Postpaid.

Mammoth Red Rock—The best variety of red cabbage. It grows to a good size and is early. It is a good keeper and is used extensively in making salads, the color of the leaves make it very attractive and novel. Price: Pkt. 10c; oz. 70c; $\frac{1}{4}$ lb. \$2.50; lb. \$9.00. Postpaid.

March the heads are ready for cutting in July. The plants are short-stemmed, of compact, stocky growth and the saucer-shaped, rather small and tightly folded outer leaves enclose large, solid, ball shaped heads of the finest quality, smooth, with very fine veins and small core. Thirty-five tons to the acre is not an uncommon yield, as these cabbages may be grown as close as 21 inches apart each way. In uniformity of type it is marvelous and its evenness in maturing is of the greatest importance to the market gardener, entailing less labor in harvesting the crop and permitting the clearing of the ground at one cutting. Price: Pkt. 15c; $\frac{1}{2}$ oz. 60c; oz. \$1.00; $\frac{1}{4}$ lb. \$3.75. Postpaid.

Early Jersey Wakefield—The best, first early oblong headed cabbage. The plants have a short stem, are very compact and hard. A very early variety too well known to need an extensive description.

CAULIFLOWER

A Most Delicious Vegetable

Culture—Start early in the house or hotbed, transplanting after danger of severe frost to rows 24 to 30 inches distant and the plants 16 inches apart in the rows. Tie the outer leaves together when the head starts to form, to protect from the hot sun and preserve the white color.



Danish Giant or Dry Weather

Extra Early Dwarf Erfurt—A well and favorably known sort suitable for either forcing or early planting out of doors. The heads are large, regular in shape, snow-white and very tender. For early or late planting this is a very desirable variety. Price: Pkt. 15c; ½ oz. \$1.25; oz. \$2.00. Postpaid.

Snowball—This variety has proven beyond all question of doubt that it has no equal in any market. Our seed is grown especially for us in Denmark by one of the oldest and most reliable houses there. The strain is developed, after many years of careful selection, to a stage where the type is permanent and will produce heads of uniform size, snow white and with a diameter of from 8 to 10 inches, always commanding the top market price. They are tender, sweet, and palatable. Do not fail to devote a portion of your garden to this delicious vegetable. Price. Pkt. 15c; ½ oz. \$1.50; oz. \$2.25. Postpaid.

Cauliflowers are not grown by as many people as would enjoy them because of the general opinion that it is a hard vegetable to grow successfully. This is wrong, they require no more than ordinary care and attention. If the plant has not reached the proper edible size during real hot weather it should be well watered.

Danish Giant or Dry Weather—From 10 days to two weeks later than our Snowball. The plant is of dwarf growth, but has large stone-hard, snow-white heads well protected by the foliage. As is indicated by the name it is especially adapted for sections subject to dry seasons, being a sure header when other sorts fail. For growing in the open ground we know that it will out yield them. Price: Pkt. 15c; ½ oz. \$1.50; oz. \$2.75. Postpaid

CARROTS

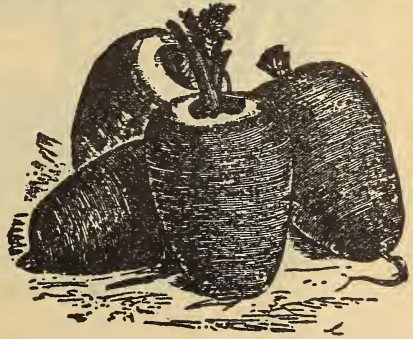
The Good Kind

(1 oz to 100 feet or row—3 lbs. to the acre)

Culture—Sow in rows 16 inches apart, a bit of radish seed mixed in will mark the rows for earlier cultivation. Cultivate often and well. When 3 inches high thin to 3 inches in the row.

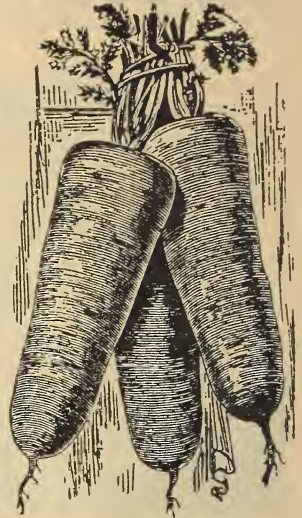
Danvers Half Long—Suitable for early summer and fall or for storing for winter use. Has a tapering root of about 8 inches in length and a diameter of from 1½ to 2 inches at the crown. Does better on deeply plowed soil than on shallow plowing. The flesh is a rich orange in color, tender and sweet. Price. Pkt. 5c; oz. 15c; ¼ lb. 40c; lb. \$1.50. Postpaid.

Oxheart—Roots grow to a length of about 5 inches, are blunt pointed and do better on a hard stiff soil than those with longer roots which do not readily penetrate the soil. The flesh is a bright orange, fine grained, tender and unsurpassed for table use. When stored in sand they keep well for winter use. Price: Pkt. 5c; oz. 15c; ¼ lb. 40c; lb. \$1.50. Postpaid.



Danvers Half Long

Mastodon—Carrots will make money for any stockman, every kind of stock will eat them and do well. Young stock being fed for market will make rapid gains in weight; show stock will have that glossy, well-kept appearance; stock that is wintered will be in better condition; cows give more and better milk; horses are ready for spring work if fed a few carrots occasionally. The cost of production is low, the yield is from 20 to 35 tons to the acre. Our seed is grown from selected, straight roots and will show a marked increase in yield over the seed ordinarily sold. Put in just a small patch if you have any doubt as to carrots being a profitable crop, next year your acreage will be much larger. Price: Pkt. 5c; oz. 20c; $\frac{1}{4}$ lb. 40c; lb. \$1.50. Postpaid.



Mastodon

CELERY

Crisp, Tender, Delicious

(One oz. of seed will produce 2500 plants)

Culture—Start early in the house or under glass, transplant when about 2 inches high and then retransplant to trenches when about 5 inches high. Keep well banked to aid in blanching.

Golden Self-Blanching (Imported Seed)—This grand variety of French origin is becoming one of the most popular sorts, and is being grown more extensively each year, both for the market and private use. While not quite as early as the White Plume it is of a heavier, more compact growth, the stalks being thick, crisp and brittle, while the hearts are large and solid, all blanching a rich waxen yellow, tender, free from stringiness, rich and delightful flavor. Price: Pkt. 15c; oz. 40c; $\frac{1}{4}$ lb. \$1.50. Postpaid.



Golden Self-Blanching

Large Smooth Prague—The main crop variety; the most popular with American growers. Roots are large, nearly round, smooth with only a few roots at the bottom; flavor and other qualities excellent. It is used in soups and stews, may also be cooked and sliced as a salad. Price: Pkt. 5c; oz. 25c. Postpaid.

Giant Pascal—Exceptionally good for fall or early winter use, either as a home or market product. It blanches to a beautiful, yellowish white, has a fine flavor, is crisp and tender. It grows to a medium height, has thick round stalks which broaden and flatten at the base. All who like celery will enjoy this variety. Price: Pkt. 5c; oz. 25c; $\frac{1}{4}$ lb. 75c; lb. \$2.50. Postpaid.

White Plume—A very early sort. The leaves shade from bright green to almost white at the tips. To blanch it is necessary to have the plant earthed up but a short time. Its attractive appearance and ease in blanching has made White Plume greatly in demand as a market product. It is also very suitable for home production. Price: Pkt. 5c; oz. 20c; $\frac{1}{4}$ lb. 60c; lb. \$2.00. Postpaid.

CELERIAC

(1 oz. of seed for 1000 plants)

Culture—Start at the same time and give the same treatment as celery. Cultivate thoroughly. Plants require no hilling. When the roots have a diameter of 2 inches they are ready to use. Pack in damp sand for winter.

CORN

Sweet or Table Variety

($\frac{1}{4}$ lb. to 100 hills—12 lbs. to the acre)

Culture—Plant 4 or 5 kernels in hills 3 ft. apart each way or in rows 3 ft. distant with a kernel every 4 to 6 inches. Keep clean by frequent but shallow cultivation.

Golden Bantam—Never in the history of the seed business has any one vegetable or variety of vegetable become so popular in so short a time. Our strain is very early with golden yellow kernels, very tender and unsurpassed quality. The ears are 8 rowed, 6 to 7 inches long and just nice table size. The stalks grow 4 to 5 feet high. For the home garden it is hard to find a corn that will give better satisfaction. One man told us he never really ate sweet corn until he had some of our Golden Bantam. Price: Pkt. 10c; $\frac{1}{2}$ lb. 20c; lb. 35c; 5 lbs. \$1.70. Postpaid.

Peep O' Day—A first early variety often producing 4 and 5 ears to a stalk. Both the stalks and ears are of medium size. The ears are tender and deliciously sweet and cook very white. For canning or home use Peep o' Day is a general favorite. Price: Pkt. 10c; $\frac{1}{2}$ lb. 20c; lb. 35c; 5 lbs. \$1.70. Postpaid.

Early Minnesota—This well known standard variety is one of the best second-early corns either for the private garden or the market. The stalks attain a height of about 6 feet and bear 1 or two ears, about 8 inches in length with eight rows of fine well flavored kernels. Price: Pkt. 10c; $\frac{1}{2}$ lb. 20c; lb. 35c; 5 lbs. \$1.70. Postpaid.

White Cob Cory—Produces one of the largest and best ears of any of the earlier sorts. The kernels are close set and grow well down to the tip. The grain is broad, very sweet and tender. The success of our customers with this corn season after season is alone enough to convince us as to its adaptability to the conditions of the entire Northwest. Price: Pkt. 10c; $\frac{1}{2}$ lb. 20c; lb. 35c; 5 lbs. \$1.70. Postpaid.

Country Gentlemen—One of the most delicious of the late sweet corns. The kernels have no regular arrangement of the cob. It is sometimes sold under the name of Zig Zag, which is a very good way of describing its appearance. The stalks grow 6 to 7 feet high and bear 2 to 5 ears. The kernels are deep and the cob small. The demand for this corn has increased each year. Every garden should have at least a few hills for the last of the season. Price: Pkt 10c; $\frac{1}{2}$ lb. 20c; lb. 35c; 5 lbs. \$1.70. Postpaid.

Black Mexican—A novelty of known worth. The seed is blue black. The grains are, when right for cooking, as white as any corn, but as they mature turn blue-black. Good sized ears of elegant flavor are produced on fairly large stalks. As a second early variety, we recommend it. Price: Pkt. 10c; $\frac{1}{2}$ lb. 20c; lb. 35c; 5 lbs. \$1.70. Postpaid.

POPCORN

An Enjoyable Confection

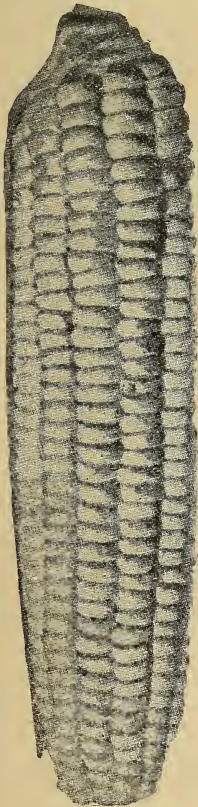
A patch of Pop Corn is something that will bring in as good returns as any of the more commonly cultivated crops. The long winter evenings can be shortened and a pleasant social time enjoyed over a good old fashioned popping of corn. More people are growing and eating Pop Corn than ever before. The sugar situation makes it a patriotic duty to eat some other confection other than that made with sugar. Don't forget to include the seed when you place your order. Price: Pkt. 5c; $\frac{1}{2}$ lb. 20c; lb. 35c. Postpaid..

CUCUMBERS

The Early Crisp Kind

(12 to 20 seeds to a hill—3 lbs. to the acre)

Culture—Hills should be from 4 to 6 feet 6 feet apart each way. Remove some of the earth, throw in a shovel or two of well rotted manure, putting back some



Golden Bantam

blue black. The grains are, when right for cooking, as white as any corn, but as they mature turn blue-black. Good sized ears of elegant flavor are produced on fairly large stalks. As a second early variety, we recommend it. Price: Pkt. 10c; $\frac{1}{2}$ lb. 20c; lb. 35c; 5 lbs. \$1.70. Postpaid.



Improved Long Green

of the soil before putting in the seed. Destroy all but 3 or 4 plants as soon as danger of the striped beetle is past.

Early Fortune—This cucumber was almost unknown in the Northwest until we offered it to our customers a few seasons ago. The increased sale and the times it has been sown year after year by the same customers, confirms our belief as to its reliability for the section we cover. While not as early as some of the varieties listed below, it is early enough for our season to develop fully. The fruit is large, smooth, well formed and a very dark green lightly striped with white about half the length. The flesh is a clear sparkling white. The Early Fortune will remain in condition for use longer after they have been pickled than any other sort we know. For shipping it has no superior. Price: Pkt. 5c; oz. 15c; ¼ lb. 40c; lb. \$1.25. Postpaid.

Improved Long Green—Vines vigorous and highly productive. The fruit average about 12 inches in length, are a beautiful dark green and the flesh is crisp, solid and fine for slicing. Price: Pkt. 5c; oz. 15c; ¼ lb. 40c; lb. \$1.25. Postpaid.

Early White Spine—An early, prolific and continuous producer of large uniform fruits of a rich deep green color, faintly marked with a light yellowish shading toward the tip. The vines are vigorous, bearing until frost. The flesh is ideal for table use, being fine grained, sparkling white and of delightful flavor. Price: Pkt. 5c; oz. 15c; ¼ lb. 40c; lb. \$1.25. Postpaid.

Improved Early Frame—A very hardy variety of excellent flavor and is a good sort for pickling. Some folks like a short cucumber for both the table and pickling and in the Early Frame in can be had. Price: Pkt. 5c; oz. 10c; ¼ lb. 30c; lb. \$1.10. Postpaid.

Boston Pickling—Very prolific. Fruits bright green, smooth and tender. Boston Pickling is grown extensively for the large pickle factories. For the home canner we recommend it very highly. Price: Pkt. 5c; oz. 10c; ¼ lb. 30c; lb. \$1.00. Postpaid.

Early Cluster—As is implied by the name the fruit is set in clusters of two or three. The vines are very prolific, bearing rather slim cucumbers that are especially good for pickling. Price: Pkt. 5c; oz. 10c; ¼ lb. 30c; lb. \$1.00. Postpaid.

Northern Seed Co., Valley City, N. D.

Gentlemen: I have used your seed for several years past, and have found them satisfactory. Kindly fill enclosed order immediately and oblige,
Citean, N. Dak. Respectfully, RUTH COLLINS.

KOHL RABI

(1-3 oz. to 100 ft. of row—2 lbs. to the acre.)

Culture—Sow in rows 18 inches apart and thin to 6 inches in the row. Use before the skin gets too hard to be readily dented with the thumb-nail.



Early White Vienna

Improved Large Purple—A favorite with the market gardener. The large size and fine quality of the fruit make it very profitable to grow. Vines vigorous and prolific. Price: Pkt. 10c; oz. 60c. Postpaid.

ENDIVE

($\frac{1}{2}$ oz. to 100 feet of row)

Culture—Sow in rows about 16 inches apart, thin to 12 inches in the row. To blanch tie the outer leaves together to protect the heart of the plant.

Moss Curled—The plants are dense and compact, the bright green leaves when properly blanched are crisp, tender and white. Endive is one of the few salads that can be used at almost any season of the year. Price: Pkt. 5c; oz. 20c; $\frac{1}{4}$ lb. 60c. Postpaid.

GOURDS

(1 oz. to 50 hills)

Culture—Plant the same as cucumbers, train the plants in the direction wanted...

Dish Cloth—The center of the fruit is a fibrous mass, that, when cut out and the seeds removed may be used for a dish-cloth. Price: Pkt. 5c; oz. 20c. Postpaid.

Dipper—Shaped like a dipper, when dried may be used as such. Price: Pkt. 5c; oz. 20c. Postpaid.

Japanese Nest Egg—Suitable for use as nest eggs or stocking darners. Price: Pkt. 5c; oz. 20c. Postpaid.

Mixed—Many varieties, shapes and sizes. Price: Pkt. 5c; oz. 20c. Postpaid.

Northern Seed Co., Valley City, N. Dak.

I have to send to you for a good many dollars worth of seed and I never used better seeds.

White Earth N. D.

(Signed)

MRS. WILL COLE.

LETTUCE

(1 oz. to 200 ft. of row—3 lbs. to the acre.)

Culture—Sow in rows, one half inch deep, 12 to 20 inches distant, thin to 4 to 10 inches in a row, allowing the greater space for the heading sorts.



Prize Head

Black Seeded Simpson—Exceptionally large thin, tender leaves. One of the best varieties very easily cultivated. It is so tender it will not stand shipping long distances. Try it, you will be sure to like it. Price: Pkt. 5c; $\frac{1}{4}$ lb. 35c; lb. \$1.10. Postpaid.

Prize Head—A popular home garden variety. Finely crimped with large exceptionally tender leaves, which are tinged with a brownish-red. A lettuce good for forcing or out of doors. It is of extra good quality and remains in condition for use a considerable time. Price: Pkt. 5c; oz. 10c; $\frac{1}{4}$ lb. 35c; lb. \$1.10. Postpaid.

Early Curled Simpson—Grows to good size and pleasing appearance. The leaves are a bright green with a slightly ruffled edge. A desirable lettuce for any garden. Price: Pkt. 5c; oz. 10c; $\frac{1}{4}$ lb. 35c; lb. \$1.10. Postpaid.

Grand Rapids—A general favorite with all gardeners. It is a loose leaf sort that lends itself as readily to forcing under glass as to cultivation in the open ground. The large leaves are bright green, firmly crimped at the edges, thin, tender and of delicious flavor. We can not recommend Grand Rapids too highly to gardeners. Price: Pkt. 5c; oz. 15c; $\frac{1}{4}$ lb. 45c; lb. \$1.25. Postpaid.

Early Curled Silesia—An early loose leaf sort which may be used when very young. Tender, sweet and well flavored.

The leaves are a light green. A good market variety. Price: Pkt. 5c; oz. 10c; $\frac{1}{4}$ lb. 35c; lb. \$1.10. Postpaid.

Hanson Head—A real head lettuce. Hardy, crisp, tender and will do well under varied weather conditions. The quality is of the best, is not bitter and does not readily go to seed. Remains in an edible condition for some time. Price: Pkt. 5c; oz. 15c; $\frac{1}{4}$ lb. 35c; lb. \$1.20. Postpaid.

Early White Cabbage--(Heading Variety) It forms large firm heads, beautifully curled and wrinkled, which are very tender and sweet. Here in the Northwest where there is a great deal of hot sun it is at its best being famous for its heat and drought resisting qualities. Price: Pkt. 5c; oz. 15c; $\frac{1}{4}$ lb. 1.10. Postpaid.



Early Curled Silesia

Hubbard Market--(Heading Variety)—Heads very compact and well formed. The flavor is excellent. A head lettuce of a sort that is a worthy addition to any garden. Price: Pkt. 5c; oz. 10c; $\frac{1}{4}$ lb. 35c; lb. \$1.10. Postpaid.

LEEK

($\frac{1}{2}$ oz. to 100 ft. of row)

Culture—Sow early; when six inches high transplant to rows 6 to 8 inches apart covering all but the center leaves.

Large American Flag—Our stock is extra fine, of quick growth, producing long stems of large size and mild flavor. Price: Pkt. 5c; oz. 30c; $\frac{1}{4}$ lb. \$1.00. Postpaid.

MUSKMELONS

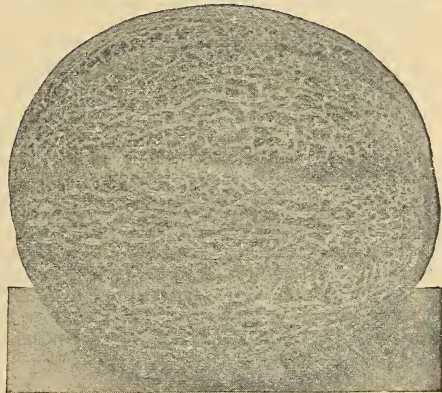
(1 oz. to 100 hills)

Cultrue—Soil should be well enriched. Plant in hills 6 feet distant each way. put in 12 to 15 seeds in each hill, thinning to 3 to 4 of the best plants. Cultivate as long as is possible. A small board or shingle placed under the fruit will hasten ripening.

Osage—Oval in shape, medium in size, slightly ribbed, green in color and somewhat netted. The flesh is of fine texture, rich salmon in color, extremely and uniformly thick, highly flavored and delicious. Has a very small cavity. Is a good shipping melon and a remarkable keeper. Price: Pkt 5c; oz. 20c; $\frac{1}{4}$ lb. 60c; lb. \$2.00. Postpaid..

Extra Early Hackensack—One of the earliest, hardiest and most prolific of the netted sorts. The fruit is large, slightly flattened though nearly round. Melons weighing as much as 10 pounds are often grown. The skin is green slightly tinged with yellow, the flesh is green, coarse but very juicy and sweet. Price: Pkt. 5c; oz. 15c; $\frac{1}{4}$ lb. 40c; lb. \$1.25. Postpaid.

Improved Extra Early Green Nutmeg—Vines hardy and productive; fruit large, slightly flattened at both ends; ribbed and covered with coarse netting. The flesh is green, thick and of the finest flavor. Price: Pkt. 5c; oz. 15c; $\frac{1}{4}$ lb. 50c; lb. \$1.75. Postpaid.



Osage

WATERMELONS

(4 oz. to 100 hills)

Culture—Follow the directions given for Muskmelons.

Cole's Extra Early—The Watermelon for the Northwest. For in northern climates it is particularly at home. A heavy yielder of melons of medium size; the flesh is a fine red color. That this melon will not stand shipping long distances is the draw back to its being a market product. For the home garden it can't be improved. Price: Pkt. 5c; oz. 15c; $\frac{1}{4}$ lb. 50c; lb. \$1.50. Postpaid.



Cole's Extra Early

Pinny's Extra Early—Ob-long in shape, medium in size, flesh a beautiful red in color. Seeds white, skin a mottled green and white. Vines prolific. For the northern gardener it is especially to be recommended. Price: Pkt. 5c; oz. 10c; $\frac{1}{4}$ lb. 40c; lb. \$1.50. Postpaid.

CITRONS

(4 oz. to 100 hills)

Culture—Follow the same directions as given for Muskmelons.

Red Seed (For Preserving)—Globular in shape and resembling the watermelon in appearance. Citrons are not good to eat raw, but make fine transparent preserves of the finest flavor. The growth is rapid, maturing the fruits early. Fruits may be stored for some time before canning. Price: Pkt. 5c; oz. 25c; ¼ lb. 50c; lb. \$1.50. Postpaid.

OKRA OR GUMBO

(7 oz. to 100 feet of row)

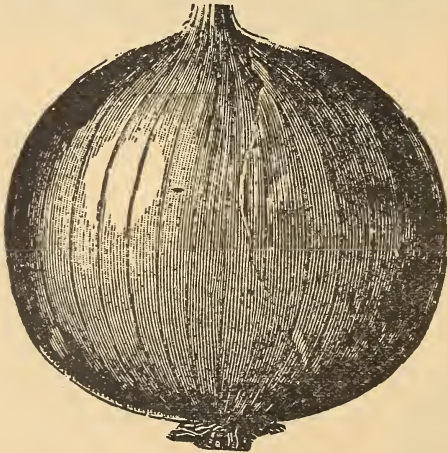
Culture—Start in house or hot bed; transplant when ground is warm. Cultivate and keep clean.

Perkin's Mammoth Long Pod—The young seed pods are highly esteemed for soups, stews, catsups, etc. This variety grows about 3 feet high, is very early and productive; pods are a deep green, very long, tender and of the best quality. Price: Pkt. 5c; oz. 15c. Postpaid.

ONIONS

(½ oz. to 100 feet of row—5 lbs. to the acre.)

Culture—Sow as early as the ground can be made ready. Bury the seed one-half inch, thin seeding tends to the production of larger onions. Give a shallow cultivation as soon as the rows may be followed. A few radish seed mixed with the onion seed before sowing will mark the rows for earlier cultivation. The onion patch should be hand weeded once before the weeds become too big. Cultivate often and well. Do not store in piles, put in crates with bottom ventilation. A temperature of 34 degrees F is best suited for the keeping of onions.



Prizetaker

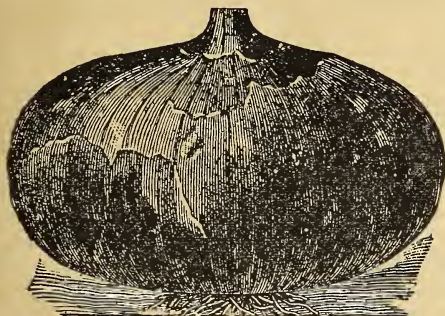
Prizetaker — A well known standard main crop variety of the best sort. The yield per acre is enormous. It is nearly globular in shape, has a pale yellow skin, the flesh is a clear creamy white. As a keeper when matured it is unexcelled. It is a pleasure to recommend it for its mild flavor together with all other good qualities make the Prizetaker a general favorite. Price: Pkt. 5c; oz. 30c; ¼ lb. \$1.00; ½ lb. \$1.75; lb. \$2.50. Postpaid.

Yellow Flat Danvers—For the so-called flat yellow onions we offer as a good variety in the Yellow Flat Danvers as good an onion as it is possible to buy. The bulbs are of medium size, somewhat flattened and with thin necks, have a flesh of clear sparkling white. For a mild onion of good flavor any gardener will do well to include some of this seed in his order. Price: Pkt. 5c; oz. 25c; ¼ lb. 85c; ½ lb. \$1.60; lb. \$3.00. Postpaid.

Yellow Globe Danver—A standard globe shaped onion which has won the favor of the home gardener as well as the more extensive grower who ships in large quantities. The skin is light golden brown or rich yellow, the flesh is pure white and well flavored. This onion is an excellent keeper and always finds a ready market. Our seed is grown especially for us from extra select bulbs. Price. Pkt. 5c; oz. 25c; ¼ lb. 85c; ½ lb. \$1.60; lb. \$3.00. Postpaid.

Australian Brown—This grand globe-shaped brown onion is a quick growing, sure cropper, with exceptionally long keeping qualities. The onions are a perfect globe or ball in shape and uniformly thin necked. The flesh is very solid, crisp, pure white and of sweet mild flavor. It is very early, sure to ripen and an excellent keeper. Its handsome globe form, combined with its most attractive colorings, insure quick sales at the highest market price. The onion without a disappointment. Price. Pkt. 5c; oz. 30c; ¼ lb. \$1.00; ½ lb. \$1.75; lb. \$3.00. Postpaid.

Red Wethersfield—One of the best known red onions on the market, having been grown for years. The skin is dark red, the flesh is white with a purplish tinge near the outside. The bulbs are somewhat flattened, but of fairly large size. The yield per acre is big. The Red Wethersfield is one of our best sellers. Price: Pkt. 5c; oz. 25c; $\frac{1}{4}$ lb. 90c; $\frac{1}{2}$ lb. \$1.65; lb. \$3.00. Postpaid.

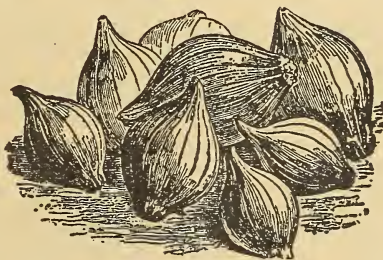


Red Wethersfield

to large size. The flesh is a clear sparkling white, tender and close grained. The yield is surprisingly big and the onions are good keepers and will stand shipping long distances. Price: Pkt. 5c; oz. 30c; $\frac{1}{4}$ lb. \$1.10; $\frac{1}{2}$ lb. \$2.15; lb. \$4.25. Postpaid.

White Pickling—Uniform, medium sized bulbs, with a clear white skin, mild flavor and good keeping qualities. Extensively used for pickling. Price: Pkt. 5c; oz. 40c; $\frac{1}{4}$ lb. \$1.50; $\frac{1}{2}$ lb. \$2.75; lb. \$5.00. Postpaid.

Mammoth Silver Skin—One of the largest sized onions under cultivation. It has always been a prize winner at fairs and exhibitions. It has the size and appearance as well as the quality which goes to make it a successful onion to grow for any use. The skin is a silvery white and the flesh a pure white. If you want big white onions send for some of this seed. Price: Pkt. 5c; oz. 40c; $\frac{1}{4}$ lb. \$1.50; $\frac{1}{2}$ lb. \$2.75; lb. \$5.00. Postpaid.



White Pickling

ONION SETS

Young onions may be had earlier by planting sets than by sowing the seed. Sets may also be left in the ground to mature or make large onions. We do not send out our onion sets until the weather is somewhat moderated, but advise the early placing of set orders.

Red Bottom Sets—Price: Qt. 30c; $\frac{1}{4}$ bu. \$2.00. Postpaid.

Yellow Bottom Sets—Price: Qt. 30c; $\frac{1}{4}$ bu. \$2.00. Postpaid.

White Bottom Sets—Price: Qt. 40c; $\frac{1}{4}$ bu. \$2.50. Postpaid.

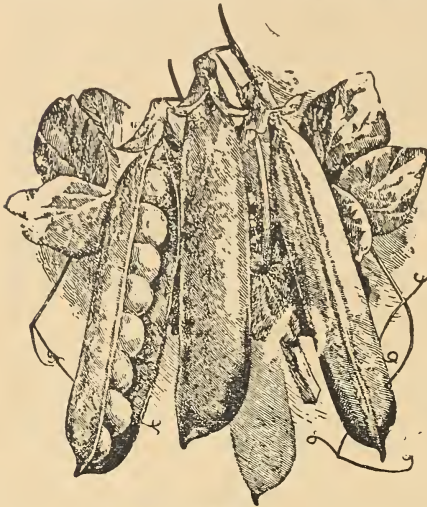
PEAS

(1 lb. to 60 ft. of row—120 lbs to the acre.)

Culture—Sow on a light warm soil for very early peas. A succession of planting may follow every two weeks up to the latter part of June, thus prolonging the season. For quick results bury the seed about an inch or put in the bottom of a 4 to 6 inch trench covering one to two inches and when vines attain a height of 6 inches fill the trench level full. Do not allow water to stand in the trench as it will cause the seed to rot or the vines to mildew. Pick the pods as soon as the peas become large enough to use, it will increase the yield.

Laxtonian—The largest podded of the early dwarf peas. The habit of growth is dwarf, the plant only growing about 12 inches high requiring no support of any kind. The vines are stocky and have a beautiful green foliage. The pods are extra

large and contain from 8 to 10 large peas of delicious flavor. The deep green color and size of the pods, as well as the color, size and unsurpassed quality of the green peas make them an exceptionally fine table pea. This pea has attracted more attention and caused more favorable comment than any of the lately developed sorts. It is in a class by itself, "Giant Podded Early Dwarf." Your garden will not be complete without some Laxtonians. Price: Pkt. 15c; ½ lb. 30c; lb. 50c; 5 lbs. \$2.25. Postpaid.



Laxonian

permitting a stripping of the vines at one picking. Our strain of Extra Early embodies all the qualities gardeners seek in a first early pea. Price: Pkt. 10c; ½ lb. 40c; 5 lbs. \$1.75. Postpaid.

A CHOICE SELECTION OF WRINKLED VARIETIES

American Wonder—A real early dwarf wrinkled pea of quality. The vines grow only 12 to 15 inches high but produce several pods 2½ to 3 inches long, filled from end to end with sweet, tender, well flavored peas of medium size, somewhat flattened and wrinkled. Price: Pkt. 10c; ½ lb. 20c; lb. 40c; 5 lbs. \$1.75. Postpaid.

Prosperity—An early pea that has won the heart of the market gardener. The Vines attain a height of about 3½ feet and produce an abundance of pods that are from 4 to 5 inches long, somewhat pointed at the end, and filled with extremely large peas of splendid flavor. For the gardener who wants an early pea of the bush type this variety will more than meet the expectations. Price: Pkt. 10c; ½ lb. 25c; lb. 40c; 5 lbs. \$1.75. Postpaid.

McLean's Little Gem—Rich, buttery, delicious, superlative. The qualities of this pea are so distinctive and many, and the strain such a popular favorite, that its merits are well known to all. Vines grow to a height of about 18 inches, are strong and prolific, bearing quantities of well filled pods. Price: Pkt. 10c; ½ lb. 20c; lb. 45c; 5 lbs. \$1.50. Postpaid.

Premium Gem—The Premium Gem is related to the Little Gem, which it strongly resembles, but is a heavier yielder. It is early, of excellent flavor and will give satisfaction to any gardener in the Northwest. Price: Pkt. 10c; ½ lb. 20c; lb. 35c; 5 lbs. \$1.50. Postpaid.

Nott's Excelsior—An extra early dwarf pea of exceptional quality. The vines average about 12 inches high, have a beautiful green color and bear multitudes of

EXTRA EARLY ROUND SEEDED VARIETIES

Alaska—Vines grow to a height of about 2½ feet, are vigorous and prolific, bearing from 5 to 7 pods that are well filled with fine flavored peas of medium size and a bluish-green. The Alaska has for years been a favorite with the professional canner. It matures evenly. Try them and you will be sure to like them. Price: Pkt. 10c; ½ lb. 25c; lb. 40c; 5 lbs. \$1.75. Postpaid.

Extra Early—Makes a very rapid growth until the vines reach a height of 2½ to 3 feet. One of the most important considerations of the market gardener is to have an early pea of even maturing habit, thereby



Extra Early

Price: Pkt. 10c; ½ lb. 20c; lb. 35c; 5 lbs. \$1.50. Postpaid.

Pods of about 2¾ inches in length and just filled with fairly large peas delightfully sweet and tender. For an early dwarf wrinkled pea, we recommend this variety. Price: Pkg. 10c; ½ lb. 25c; lb. 45c. Postpaid.

Bliss Everbearing—A stocky growth of about 2½ feet, bearing 8 to 10 broad, well filled pods containing large, fine flavored peas. Ordinarily the vines throw out branches, which also bear and in that way prolong the season. Price: Pkt. 10c; ½ lb. 20c; lb. 35c; 5 lbs. \$1.50. Postpaid.

Dwarf Champion—A rather new sort which is becoming a favorite with both the professional and private gardener. The vines grow about 3 feet high, are very hardy. The pods are about 4 inches long, well filled with large tender peas. Price: Pkt. 10c; ½ lb. 20c; lb. 35c; 5 lbs. \$1.50. Postpaid.

Champion of England—A big yielder, well known and generally admitted to be the sweetest and best flavored of the late peas. The vines reach a height of 3½ to 4 feet, the pods are large and numerous and are filled from end to end with peas of first quality. Any surplus will always find a ready market. Price: Pkt. 10c; ½ lb. 20c; lb. 35c; 5 lbs. \$1.50. Postpaid.

Dwarf Gray Sugar—(Edible Podded)—Vines grow 18 to 24 inches high. The bloom is purple. Sugar Peas are not shelled, but cooked the same as string beans. Pick the pods as soon as the pea is formed, do not wait for them to get their full growth. The yield is surprisingly large. Price: Pkt. 10c; ½ lb. 25c; lb. 45c; 5 lbs. \$2.00. Postpaid.

PARSLEY

(½ oz. to 100 feet of row)

Culture—May be started early in the house or under glass or sown early in the open ground. Bury the seed about¾ of an inch, thin to one plant each 4 inches. The germination of Parsley is very low.

Moss Curled—The color is a rich dark green and the leaves so thick that at a short distance it resembles moss. If any of the leaves turn brown the plant may be cut back, a new growth will result which will be even thicker than the first. Subsequent cuttings will give the same result. Used as a flavoring for soups, stews, etc., if desired the leaves may be dried, powdered, bottled and used when needed. As a garnish it will be found very attractive. Price: Pkt. 5c; oz. 10c; ¼ lb. 20c; lb. 75c. Postpaid.



Long Red Cayenne

PEPPERS

(1 oz. to 1500 plants)

Culture—As peppers require from 140 to 150 days before they are ready to use, the seed must be sown very early in the house or under glass. When danger of frost is past, transplant to the open ground setting the plants 30 inches distant each way.

Bell of Bullnote—The plants grow about 2 feet high, mature the crop evenly and fairly early. The fruits are deep green when young but the mature peppers are a bright red. The flesh is thick, mild and of excellent quality to use in salads. Price: Pkt. 5c; oz. 50c. Postpaid.

Long Red Cayenne—A popular medium early sort having a slender, twisted, pointed pod about 4 inches long. The fruit is a deep green when young, but as it ripens, turns to a bright scarlet. Price: Pkt. 5c; oz. 50c. Postpaid.

Dear Sirs—I will take the pleasure to let you know all the garden see I got from you last year was fine, especially the Red Globe Onions and the Golden Tankard Mangle sure were fine. I am sending again for the same. Hoping you have some for me.

Mott, N. D., March 12, 1918.

Yours truly,

PHILIP SCHMIDT.

PARSNIPS

(1 oz. to 100 feet of row.)

Culture—Sow in rows 2 feet apart and as the germination is slow and uneven the seed should be put in as early as possible; thin to one plant every six inches. Cultivate often and well. Pack in sand for winter use or dig the following spring.

Hollow Crown or Guernsey—Considered the best variety in general cultivation. The roots are long, tapering, smooth, white, fine-grained and of best quality. The flavor is improved if allowed to be nipped by frost. Price: Pkt. 5c; oz. 20c; ¼ lb. 60c; lb. \$2.00. Postpaid.

PUMPKINS

(¾ lb. to 100 hills—4 lbs. to the acre)

Culture—If planted between the rows of corn drop 2 or 3 seeds to the rod. When planted alone make hills 8 to 10 feet distant each way, dropping about a dozen seeds in each hill, and when danger of frost is over thin to 3 or 4 plants to a hill.

Connecticut Field—Cultivated largely for stock feeding but will also make good pies. Grows to a large size and will harvest a large amount of feed to the acre. This variety is often put between the hills of corn. Price: Pkt. 5c; oz. 15c; ¼ lb. 40c; 1 lb. \$1.25. Postpaid.

Sugar or New England Pie—A rather small variety of handsome appearance. The fruits are slightly ribbed, the flesh is thick, fine grained, has a sweet delicious flavor. As a pie pumpkin there is none that can equal it. Price: Pkt. 5c; oz. 15c; ¼ lb. 40c; lb. \$1.50. Postpaid.

RADISHES

Varieties of Merit

(1 oz. to 100 feet of row—10 lbs. to the acre)

Culture—Make the first sowing quite early, bury the seed about ½ inch deep. Have the seed about an inch apart in the row and the rows 12 inches distant. Successive sowings may be made every few days until midsummer. Winter radishes should be planted the later part of July or August.

Early Scarlet Globe—A globe radish with a brilliant red color and crisp white flesh. The bright red color is retained a long time after they have been pulled, making it a favorite with the professional gardener. Price: Pkt. 5c; oz. 10c; ¼ lb. 40c; lb. \$1.25. Postpaid.

Extra Early Scarlet Turnip—Turnip shaped, deep red color, small top. Very desirable for either outdoor planting or forcing. A rapid grower, popular with both the home and market gardener. Price: Pkt. 5c; oz. 10c; ¼ lb. 40c; lb. \$1.25. Postpaid.

French Breakfast—Oblong in shape, medium sized and a quick grower. The color is a beautiful bright scarlet with a clear white tip. Does well for either hothouse culture or in the open ground. A table variety, crisp, of fine appearance and tender flesh. Price: Pkt. 5c; oz. 15c; ¼ lb. 50c; lb. \$1.75. Postpaid.

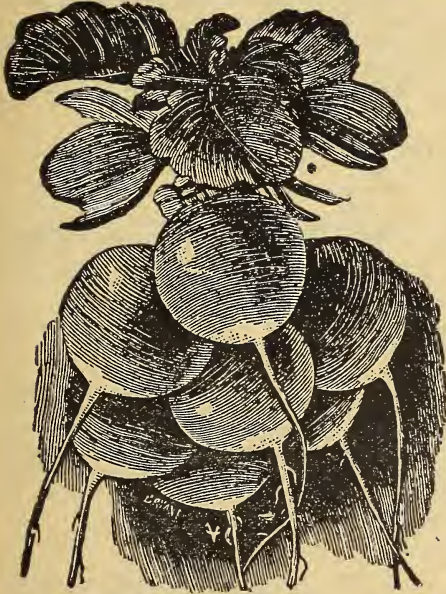
Early White Turnip—A pure white radish about an inch in diameter. While usually grown out of doors its short top and rapid growth make it a success under glass. The flesh is crisp, tender and clear white. Price: Pkt. 5c; oz. 10c; ¼ lb. 40c; lb. \$1.25. Postpaid.

White Olive—This radish grows to about the same size and has the same shape



Early Scarlet Globe

as the French Breakfast, but it is a pure white both inside and out. One of the most desirable radishes that we list both for its eating quality and attractive appearance. For the critical radish grower we recommend this variety very strongly. Price: Pkt. 5c; oz. 15c; $\frac{1}{4}$ lb. 50c; lb. \$1.75. Postpaid.



Early Scarlet Turnip

most desirable radishes that we list both for its eating quality and its attractive appearance. For the critical radish grower we recommend this variety very strongly. Price: Pkt. 5c; oz. 15c; $\frac{1}{4}$ lb. 50c; lb. \$1.75. Postpaid.

White Strasburg—Not as early as some of the kinds we have listed, but will make a good radish for use after the early kinds are gone. The white Strasburg can be used when quite small and continue in condition until they are nearly two inches in diameter at the crown. This is one of the best large white summer radishes. Price: Pkt. 5c; oz. 10c; $\frac{1}{4}$ lb. 40c; lb. \$1.25. Postpaid.

Black Spanish—(Winter)—The roots of the Black Spanish radish are large, long tapering and almost black, with a firm, clear white flesh. Mature roots are from 7 to 9 inches long and have a diameter at the top of about $2\frac{1}{2}$ inches. Winter radishes should be stored in sand and kept in a cool cellar. Price: Pkt. 5c; oz. 15c; $\frac{1}{4}$ lb. 50c; lb. \$1.25. Postpaid.

China Rose—(Winter) — The roots are straight or slightly larger at the bottom and blunt at the tip. The skin is a bright rose red and the flesh is white, firm and crisp. The roots are mature when about $1\frac{1}{2}$ inches in diameter. An extensively grown winter radish. Price: Pkt. 5c; oz. 15c; $\frac{1}{4}$ lb. 50c; lb. \$1.75. Postpaid.

Early Scarlet Turnip—White Tipped—A handsome radish that will attract attention in any market. The shape is that of the turnip, the color is a bright red with a clear white tip, the flesh is sparkling white, crisp and of extra fine quality. Our stock is exceptional, the red is very deep setting out the white tip very distinctly. Price: Pkt. 5c; oz. 10c; $\frac{1}{4}$ lb. 40c; lb. \$1.25. Postpaid.

Chartier—A long tapering radish, about 4 inches in length, of a bright red, shading to white at the tip. Often these radishes get to be $1\frac{1}{4}$ inches through at the top before they are too large to be eaten. The flesh is very crisp. Price: Pkt. 5c; oz. 15c; $\frac{1}{4}$ lb. 50c; lb. \$1.75. Postpaid.

White Icicle—An attractive, early, long white radish which is ready for the table when $\frac{1}{2}$ inch in diameter and 4 to 5 inches long. For the home garden the White Icicle is well worth the space, the quality is extra good. It has become a great favorite with hundreds of our customers. Price: Pkt. 5c; oz. 10c; $\frac{1}{4}$ lb. 40c; lb. \$1.25. Postpaid.



White Strasburg

SALSIFY

(Vegetable Oyster)

(1 oz. to 100 ft. of row)

Culture—Sow early about an inch deep in rows 20 inches distant, thin when three inches high to one plant every four to six inches. Pack in sand for winter use.

Mammoth Sandwich Island—Large, long, smooth tapering roots with few side roots. The flavor of cooked Salsify strongly resembles that of the oyster. This vegetable should be grown in every garden. Don't neglect to have it in your order.

Price: Pkt. 5c; oz. 25c; ¼ lb. 80c; lb. \$2.50. Postpaid.

SUNFLOWER

(2 oz to 100 feet of row—10 lbs to the acre.)

Culture—Plant in rows three feet apart and thin to one plant every six inches. Bury the seed about one inch firming the soil well. Frequent cultivation will give better results.

Mammoth Russian—Stalks grow eight to fourteen feet high and the heads have a diameter of 12 to 22 inches. Sunflowers can be planted and handled the same as corn for silage. If a crop is matured the seed will make one of the best poultry feeds obtainable. The yield has been known to be a hundred bushels per acre. It will give the fowls a bright lustrous plumage, it keeps them in a strong healthy condition, it makes the eggs hatch more vigorous chicks and will do more to keep a flock laying than any other one food that can be fed. The dry heads may be hung so the fowls can reach them or the seed flailed or threshed out. Every poultry raiser should grow at least a small patch of Sunflowers for the chickens. Price: Oz. 10c; lb. 30c. Postpaid. 10 lbs. by freight or express at purchasers expense, \$1.50.

SPINACH

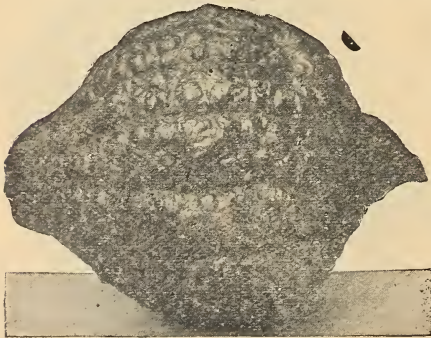
(1 oz. to 150 ft. of row)

Culture—Bury the seed one inch deep in rows 15 inches apart and thin when the leaves are an inch wide to a plant every six inches. Plants that are cut off a couple of inches above ground will make a new growth of fair quality.

Bloomsdade Savoy Leaved—No better green can be had than Spinach greens. They are easy to grow and they may be planted for either spring or fall use. Price: Pkt. 5c; oz. 15c; ¼ lb. 50c; lb. \$1.75. Postpaid.

SQUASH

Culture—After danger of frost plant the summer varieties in hills five feet distant and the winter or running kinds eight to twelve feet. Drop ten to fifteen seeds in each hill, when danger of bugs is past thin to three good plants. Cultivate as long as possible. An ounce of seed to 25 hills of the summer sorts and an ounce of the winter kinds to 10 hills. Store in moderate temperature and have same maintained.

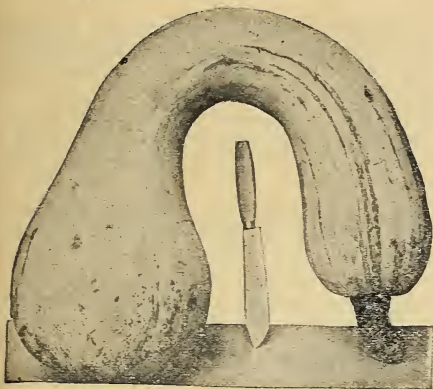


Hubbard

Boston Marrow—A general favorite in the Northwest, two weeks earlier than the Hubbard, which it resembles in size and shape, but has a deep orange color and the flesh is a deeper shade of yellow. The quality is excellent and the flavor very delicious. Price: Pkt. 5c; oz. 15c; ¼ lb. 50c; lb. \$1.75. Postpaid.

Hubbard—Considered the best of the late winter varieties. The vines are vigorous and very productive. Fruit: large, heavy, with a very dark green shell. Flesh is a rich orange yellow, fine grained, thick and

of excellent flavor. Its keeping qualities are unexcelled and will stay in condition for use until spring if properly stored. Proce: Pkt. 5c; oz. 15c; ¼ lb. 50c; lb. \$1.75. Postpaid



Summer Crookneck

Early White Bush Scallop—This is a well known summer variety, very early, of the bush variety. The fruits are somewhat flattened, scalloped along edge, white in color, smooth and has a thick flesh of fine quality. The vines are strong and prolific, bearing quantities of good sized fruits. Price: Pkt. 5c; oz. 10c; $\frac{1}{4}$ lb. 35c; lb. \$1.10. Postpaid.

Summer Crookneck—Probably the best known of the early summer varieties. The vines are very productive, bearing fruits of about twelve inches in length, with uniformly crooked neck and a densely warted surface. The color is bright yellow. When the fruit is ripe the shell is very hard. Price: Pkt. 5c; oz. 10c; $\frac{1}{4}$ lb. 35c; lb. \$1.20. Postpaid.

TOMATOES

(1 oz. to 200 or 2500 plants)

Culture—Start in the house or under glass six to eight weeks before time to set out, which is as soon as danger of frost is past. When the plants have four leaves, transplant allowing each plant four inches of space. Harden off gradually by placing them out of doors in good weather and not watering as frequently, the stem will soon become woody and hard. When the plants are set in the open ground they should be four feet apart and have shade provided for a few days, a set-back at this time will retard the productiveness.

In small patches it is advisable to train the vines up a strong stake, tying at frequent intervals and keeping the branches trimmed. The branches which will bear are readily determined by the buds which form very early. This method of cultivation tends to increase the size of the fruit and the earliness in ripening. Any of the sorts will be found highly satisfactory.

Earliana — A first early sort bearing good sized smooth red fruits. Its earliness combined with the size, smoothness and freedom from cracked and rough fruit make this a profitable tomato for the market gardener and a desirable one for the kitchen garden. The flesh is very solid, juicy and sweet. The vines are hardy and prolific, bearing many of these meaty fruits. Price: Pkt. 5c; oz. 25c; $\frac{1}{4}$ lb. 90c; lb. \$3.50. Postpaid.

Acme—A well known sort much in demand. The vines are vigorous, hardy and productive. The first fruits ripen very early. The fruits are a purplish pink, round smooth, medium sized and stand shipment in good shape. As a home garden variety the Acme is a leader. The flesh is solid and of excellent flavor. Price: Pkt. 5c; oz. 25c; $\frac{1}{4}$ lb. 80c. Postpaid.



Earliana

Dwarf Champion—Of very compact growth, suitable for the garden of limited space. The fruits are a good color, medium sized, exceptionally smooth and of fine quality. This variety is sometimes sold as Tree Tomato as the fruit is borne well off the ground. Price: Pkt. 5c; oz. 40c; $\frac{1}{4}$ lb. \$1.50. lb. \$5.00. Postpaid.

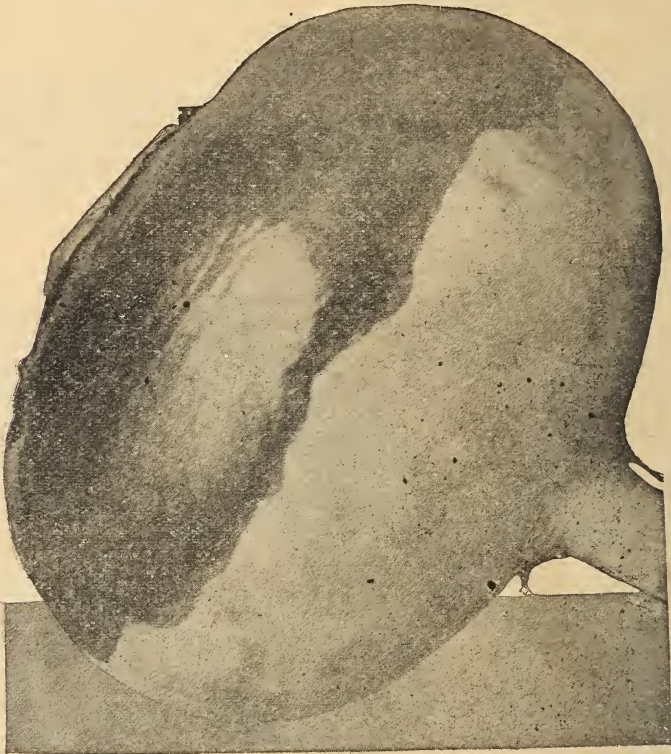
Chalk's Early Jewell—For the home garden we have no better tomato, it is early the vines are vigorous and produce quantities of bright red, smooth, fairsized, solid, nearly round fruits. Early ripening and continued pickings are features strongly in its favor. Price: Pkt. 5c; oz. 20c; $\frac{1}{4}$ lb. 75c. Postpaid.

Yellow Cherry—Fruits are light yellow, about one-half inch in diameter and are borne in small clusters. Begins to bear early and continues until frost. Price: Pkt. 5c; oz. 40c. Postpaid.

Ground or Husk Cherries—Fine for making pies and delicious for preserves. The vines cover the ground and yield abundantly. The fruit is enclosed in a loose husk. Price: Pkt. 5c; oz. 40c. Postpaid.

TURNIPS AND RUTABAGAS

($\frac{1}{2}$ oz. to 100 ft. of row—3 lbs. to the acre)



Purple Top Strap Leaf Turnip

Culture—For early use sow as soon as the soil can be worked, in rows 20 to 24 inches apart. For winter use sow from the middle of June to the middle of July, thinning when three inches high to 8 to 12 inches between plants. On new land that is apt to be free from weeds they are often sown broadcast and left to take their chances.

Purple Top Strap Leaf Turnip—A general favorite, more extensively grown than any other variety. Only seven to eight weeks are required to form good sized, edible bulbs. The root above ground is a purplish red, but white below. The flesh is white, sweet and tender. Price: Pkt. 5c; oz. 15c; $\frac{1}{4}$ lb. 50c; lb. \$1.75. Postpaid.

White Egg Turnip—Much grown for early turnips, they come very rapidly and

can be used when quite small. The roots are egg shaped and white in color. The flesh is white, firm, mild and tender. Price. Pkt. 5c; oz. 15c; $\frac{1}{4}$ lb. 50c; lb. \$2.00. Postpaid.

American Purple Top Ruta Baga—Of uniform shape and fine quality. Grows to a large size with a smooth skin. The tops are small and the necks short. The flesh is yellow, fine grained, sweet and tender. For either table use or stock feeding this variety has won universal favor. Price. Pkt. 5c; oz. 15c; $\frac{1}{4}$ lb. 50c; lb. \$1.75. Postpaid.

Monarch—A popular variety with yellowish flesh. The roots are very large with relatively small necks and tops. The color is crimson above ground, yellow below; flesh very solid, fine grained and best flavor. A very popular variety. Price: Pkt. 5c; oz. 20c; $\frac{1}{4}$ lb. 65c; lb. 52.00. Postpaid.

CAMPUS LAWN GRASS MIXTURES

This Mixture is Made of Kentucky Blue Grass, Red Top and White Dutch Clover



Campus Lawn Grass

The largest lawn in Valley City is the campus of the State Normal School. It is a beautiful lawn which attracts the attention of every one who sees it, and usually causes some comment of pleased surprise. This lawn was seeded with our lawn mixture. It attains a wonderful bright green very early in the spring and keeps it until late in the fall. There are hundreds of lawns over the Northwest sown with this same mixture, with equal success.

The various grass seeds composing this mixture are of the very highest quality. We could make a mixture that would sell for less and permit us a larger profit, but feel our customers would rather pay a little more and know that they are buying a mixture known to do well and composed of the very best seed.

"Campus Lawn Grass" is made up of a mixture of grasses that make a bright green lawn from early spring until late fall. It is drough resisting and will improve the looks of any home where the lawn is sown with this wonderful mixture. It goes without saying that the better shape the lawn is in before seeding, the better the results will be. It must be remembered that a new lawn has in every foot of earth hundreds of small weed seeds that will grow and are often blamed to the

seedmen supplying poor seed. Our seed is selected with the utmost care and is as pure as it possible for any seed to be.

Before seeding have the soil well worked and packed. Sow the seed very thickly as early in the spring as possible, raking it in well and going over it with a light packer, this will prevent blowing. The seed should be sown thickly, a good rule is a pound for every 300 square feet. Do not cut too late the first fall as a top growth will help protect the roots over winter. Price. 60c per pound. Postpaid. 50c per pound by freight or express at purchaser's expense.

HERBS

Anise—Used for cordials, garnishings and flavorings. Price; Large Pkt. 10c. Postpaid.

Balm—Leaves used for making pleasant beverages. Price: Large Pkt. 10c. Postpaid.

Basil Sweet—The leaves are used in flavoring soups, etc. Price. Large Pkt. 10c. Postpaid.

Borage—Leaves used for flavoring; flowers furnish bee pasture. Price: Large Pkt. 10c. Postpaid.

Caraway—Grown for the seeds which are used for flavoring. Price: Large Pkt. 10c. Postpaid.

Catnip or Catmint—The leaves and young shoots used for seasoning. Price: Pkt. large, 10c. Postpaid.

Coriander—Grown for seed; used in making candy and to disguise the taste of medicines. Price: Large Pkt. 10c. Postpaid.

Dill—Has an aromatic odor and pungent taste, used in the making of dill pickles. Price. Large Pkt. 10c. Postpaid.

Fennel Sweet—Seeds used in confections and medicines. Young shoots used in salads, soups, etc. Price: Large Pkt. 10c. Postpaid.

Horehound—Used in seasoning and cough remedies. Price: Pkt. 10c. Postpaid.

Lavender—Used in the distillation of lavender water and dried to perfume linen. Price: Pkt. 10c. Postpaid.

Majoram Sweet—The young shoots or the dried leaves used to flavor soups, dressings, etc. Price: Pkt 10c. Postpaid.

Pennyroyal—For flavoring puddings, etc. Price: Pkt. 10c. Postpaid.

Rosemary—Leaves used to flavor meats. Blossoms used in making toilet waters. Not large enough for use until the second year. Price: Large Pkt. 10c. Postpaid.

Sage—Much used and indispensable for flavoring. Price: Large Pkt. 10c. Postpaid.

Summer Savory—The dried stems and leaves used in flavoring soups, dressings, etc. Price: Large Pkt. 10c. Postpaid.

Thyme—A medicinal herb, grows about 10 inches high, used largely as seasoning or in the treatment of nervous headaches. Price: Large Pkt. 10c. Postpaid.

VEGETABLE PLANTS

Cabbage Plants—Early or late varieties.. Price. Per 100, \$1.30. Postpaid.

Celery Plants—White Plume or Giant Pascal. Price: Per 100, \$1.50. Postpaid.

Cauliflower Plants—Early Snowball. Price: Per doz. 25c. Postpaid.

Pepper Plants—Price: Per doz. 75c. Postpaid.

Tomato Plants—Earliana, Acme, etc. Price: Per doz. 40c. Postpaid.

Tomato Plants—Extra large pot grown plants. Price: Per doz. 75c. Express collect.

SUMMER FLOWERING BULBS

Gladiolus—Good mixed, named varieties. Price: Per doz. 60c. Postpaid.

Gladiolus—Extra fancy, in either white, red, pink or blue. Price: Per doz. \$1.00. Postpaid.

Cannas—Dry bulbs. Price: Each 20c. Postpaid.

Cannas—Started plants. Price: Each 30c. Postpaid.

Dahlias—All colors, dry bulbs. Price: Each 25c. Postpaid.

Cinnamon Vine—Price. Each 10c. Postpaid.

Maderia Vine—Popular climbers. Price: Per doz. \$1.00. Postpaid.

Peony Roots—Best sorts (state color). Strong roots. Price: Each 50c; per doz. \$5.00. Postpaid.

FLOWERING BULBS FOR FALL PLANTING

As the parent stock of nearly all these bulbs must be imported, the unsettled condition of foreign markets and the uncertainties of transportation make it impossible to quote prices upon these goods. We list the varieties now in stock—and we hope to be able to carry these as well as any others obtainable and will ask that you write for quotations upon your wants in bulbs. We will be pleased, at any time, to advise you concerning our stock and the prices.

- Daffodils—Double yellow.
- Narcissus—Paper white.
- Dutch Hyacinths—All colors, first size.
- Dutch Hyacinths—All colors, second size.
- Roman Hyacinths—White.
- Calla Lily—Bulbs.
- Easter Lily—Bulbs.
- Freesias—

HARDY PERENNIAL PLANTS

(For Fall and Spring Planting)

- Hardy Aster—Purple flowers, strong clumps. Price: Each 35c. Postpaid.
- Bleeding Hearts—Heart shaped red and white flowers. Price: Each 50c. Postpaid.
- Coreopsis—Tall yellow flowers. Price: Each 35c. Postpaid.
- Day Lily—Yellow. Price: Each 35c. Postpaid.
- Pyrethum—Assorted colors. Price: Each 25c. Postpaid.
- Shasta Daisy—Price: Each 35c. Postpaid.
- Forget-Me-Not—Price: Each 20c. Postpaid.
- Fox Glove—Price: Each 35c. Postpaid.
- Galliardia—Price: Each 25c. Postpaid.
- Golden Glow—Price: Each 35c. Postpaid.
- Hollyhock—Price: Each 25c. Postpaid.
- Iris—Blue and yellow varieties. Strong plants. Price: Each 25c. Postpaid.
- Larkspur—Large clumps, assorted colors. Price: Each 50c. Postpaid.
- Hardy Lilies—Price: Each 25c. Postpaid.
- Oriental Poppies—Assorted colors. Price: Per doz. \$2.00. Postpaid.
- Sweet William—Price: Per doz. \$2.00. Postpaid.

SPRING BEDDING PLANTS

(For the Flower Bed, Porch Box and Window Garden)

- Aster Plants—Seedlings. Price: Per doz. 35c.
- Aster Plants—Pot grown. Price: Per doz. 75c.
- Ageratum—Purple and white, for borders.. Price: Per doz. \$1.00.
- Alyssum—Price: Per doz. 35c.
- Coleus or Foliage Plant—Price: Each 15c.
- Geraniums—Standard varieties. Price: Per doz. \$3.00.
- Geraniums—Fancy leaved varieties. Price: Each 35c.
- Geraniums—Pelargonium or Lady Washington. Price: Each 50c to 75c.
- Marguerite Daisies—Price: Each 35c.
- Lobelias—Pretty for border plants. Price: Per doz. \$1.00.
- Salvia or Scarlet Sage—Large plants. Per doz. \$1.50.
- Heliotrope—Four inch pots. Price: Each 35c.
- Heliotrope—Three inch pots. Price: Each 20c.
- Verbinas—Price: Per doz. 75c.
- Feverfew—Large plants in bloom. Price: Each 25c.
- Pansy Plants—Finest strains. Price: Per doz. 50c.
- Petunias—Double. Price: Each 25c.
- Petunias—Single. Price: Doz. 35c.
- Phlox Rrummondi—Price: Per doz. 35c.
- Stocks—Ten weeks. Price: Per doz. 35c.

Northern Seed Co.. I am sending you order for garden seeds. I had very good success with your seeds last year. We sold 1000 pounds of cabbage at 4c per pound from two packages of your seed. Respectfully yours,
Coal Creek, Mont., Feb. 12, 1918.

H. F. NEWHOUSE.

WINTER BLOOMING AND DECORATIVE PLANTS

Below we list a number of blooming and decorative plants which can be readily grown in the home. They are full grown, bushy plants, usually in bud and bloom. You don't have to wait a year for your plants to become large enough to blossom.

- Asparagus Plumosus or Lace Fern—Four inch pots. Price: Each 35c.
 Asparagus Plumosus, or Lace Fern—Larger size. Price: Each 50c, 75c, \$1.00.
 Asparagus Sprengeri—Trailing fern. Price: Each 35c.
 Begonias, Foliage—12 varieties in different colors. Price: Each 25c, 35c, 50c.
 Chrysanthemums—White, pink and yellow, large plants. Price: Each 75c, \$1.00.
 Cyclamen or Alpine Violet—In 4 inch pots. Price: Each \$1.00.
 Cinerarias—Large purple flowers, medium size. Price: Each 50c.
 Cinerarias—Large purple flowers, large size. Price: Each. 75c.
 Fuschias—In many varieties of single and double, 3 inch. Price: Each 20c.
 Fuschias—In many varieties of single and double, 4 inch. Price: Each 35c.
 Hydrangeas—Large plants, 2 to 10 flower heads. Price: Each \$1.50 and \$2.00.
 Dutch Hyacinths—In bloom, 4 inch pots. Price: Each 35c.
 English Ivy—Large plants. Price: Each 50c.
 Impatiens Sultana—Perpetual bloomer. Price: Each 35c.
 Lantanna—Standard and weeping varieties. Price: Each 35c.
 Boston Ferns—Fine plants, 4 inch pots. Price: Each 35c.
 Boston Ferns—Fine plants, 5 inch pots. Price: Each 75c.
 Kentio Palms—5 to 9 inch pots. Price. Each \$1.50 to \$8.00.
 Primula Obconicas—Ever bloomers, 4 inch pots. Price: Each 40c.
 Chinese Primrose—4 inch pots. Price: Each 40c.
 Jerusalem Cherries—Full of fruit, 5 inch pots. Price: Each 65c.
 Christmas Peppers—4 inch pots. Price: Each 40c.
 Christmas Peppers—5 inch pots. Price: Each 65c.
 Poinsettias—Singal plants. Price: Each 75c.
 Poinsettias—Several plants in pan. Price: Per can \$1.50 and \$2.50.
 Periwinkles—Ever bloomers. Price: Each 35c.
 Rose Plants—In 5 inch pots. Varieties: Richmond, red; Killarney, pink; Bride, white; and Baby Ramblers. Price: Each 50c.
 Carnations—Standard varieties, in bud and bloom. Price. Each 50c.

SPECIAL NOTICE—To ship either the Spring Bedding or the Winter Blooming plants by parcel post is unsatisfactory. The prices named are for the plants by express at purchaser's expense.

DESIGN WORK

Our florist makes a specialty of this class of work and we are ready at all times to furnish any of the designs listed on short notice. Flowers or designs are packed to reach you in perfect condition regardless of extremes of temperature.

Wreaths of assorted flowers, according to size	\$ 6.00 to \$20.00
Wreath of Roses, trimmed with ferns	10.00 to 30.00
Large wreath, Carnations and Ferns	8.00 to 16.00
Plain crosses of assorted flowers	5.00 to 30.00
Maltese crosses, Casket crosses, etc	7.00 to 20.00
Standing cross on large mounted base	15.00 to 30.00
Pillows, with inscription if desired	10.00 to 25.00
Standing Harp or Lyre, 2 to 3 feet in height	10.00 to 30.00
Broken Wheel on easel, 18 to 24 inches in diameter	10.00 to 18.00
Broken Column, 20 to 42 inches high	15.00 to 40.00
Stars, Hearts, Shields, etc.	8.00 to 15.00
Anchors, Sickles, etc.	7.00 to 15.00
Baskets of flowers	6.00 to 14.00
Gates Ajar, 28 to 42 inches in height	20.00 to 40.00
Square and Compass (Masonic) height 24 to 33 inches	14.00 to 30.00
Cross and Crown (Masonic) width of crown 14 to 20 inches	20.00 to 35.00
Odd Fellows, three links on base	10.00 to 20.00
Odd Fellows, three links, flat	7.00 to 15.00
K. P. Shield	14.00 to 30.00
M. W. A. Emblem	15.00 to 25.00
Boy Scout, bow and arrow	10.00 to 15.00

Yeoman Shield	10.00 to	30.00
Bouquet of Roses tied, size varies with number of blooms	3.00 to	12.00
Spray of Carnations, tied	2.00 to	10.00

CUT FLOWERS

We can supply choice cut flowers of the kind named during the months noted. These flowers are grown here at Valley City, our service is quick and stocks always fresh.

	Per 12	
Richmond Red Roses, year around	\$ 2.50 to	\$ 4.00
Kilarney Pink Roses, year round	2.50 to	4.00
Bride White Roses, year round	2.50 to	4.00
Chrysanthemums, Sept. to Dec., white, yellow and pink, 1st size....		6.00
Chrysanthemums, Sept. to Dec., white, yellow and pink, 2nd size....		4.00
Carnations, red, white and pink, year round	1.25 to	2.00
Smilax, per string, 3 to 4 feet40
Narcissus, white, Nov. to Feb.		1.00
Tulips, all colors, Jan. to June		1.00
Daffodils, yellow, Feb. to May		1.00
Gladiolus, April to Sept.		2.00
Peonies, May to June		2.00

FLOWER SEEDS

One of the great poets says "As we journey thru life, let us live by the way." One of the inexpensive ways to "live" is to have our surroundings pleasant. Nothing makes a home so cheerful with so little effort or expense as flowers. An assortment of varieties may be planted which will yield fragrant blossoms from early summer until after killing frosts in the fall.

We list a variety of flowers which we can recommend for the Northwest because the different kinds have been tested here and we are very careful to select only the best of seeds to offer our trade.

Ageratum

Blooms early and continues in flower until late in fall; a small blue flower very pleasing to the eye.

Imperial Dwarf Blue—Grows about 6 inches high, rather compact. Price: Pkt. 10c.

Alyssum

This makes an exceptionally fine edging for a bed; flowers rather small but pleasingly fragrant.

Sweet—Usually not over 8 inches high, but spreading. Price: Pkt. 10c.

Anemone or Wind Flower

This is one of the choicest fall bloomers and is at its best when most varieties have withered.

Single Mixed—Grows about 6 inches high; blooms as large as 2 inches in diameter resembling the poppy in shape and coloring. Price. Pkt. 10c.



Imperial Dwarf Blue

Asters

Sow out of doors as early in the spring as ground is warm; cover seed with one-fourth inch of fine dirt in rows 18 inches apart and when plants are two inches high thin to 16 inches in the row. They are quite hardy and will withstand considerable frost.

Queen of the Market—A very early blooming sort with a wide range of colors;

grows about 18 inches high and each plant yields 10 to 15 flowers with wide range of colors.

White—Price: Pkt. 10c.

Rose—Price: Pkt. 10c

Light Blue—Price: Pkt. 10c.

Dark Blue—Price: Pkt. 10c.

Crimson—Price: Pkt. 10c.

Mixed—All of above sorts and many others. Price: Pkt. 10c.

Crego Giant—The best mid-season Aster. This is of American origin. Very large flowers upon large stems; the petals are long with a decided curl.

Crego Giant—Lavender. Price: Pkt. 10c.

Crego Giant—Pink. Price: Pkt. 10c.

Bachelor's Buttons

This is a tropical plant but makes a rapid growth if planted when weather is An old favorite, does well any where. Mixed colors. Price: 10c.

Balsam, also known as Lady Slipper

settled for spring; transplanting tends to make the plants smaller and of earlier maturity. We offer a mixture of many varieties. Price: Pkt. 10c.

Canterbury Bells

Plant early in rows about two feet apart and thin or transplant to two feet apart each way. We offer a mixed seed which will produce many colored blooms. Price: Pkt. 10c.

Castor Beans

A strong healthy stalk often six feet high, covered with flowers. This makes a good center for flower bed.

Mixed Varieties—Price: Pkt. 10c; oz. 25c.

Chrysanthemum

There are two distinct varieties of Chrysanthemums; one a winter bloom, propagated by dividing the roots and the spring or summer blooming which is raised from seed. We offer here the best of the summer blooming kind.

Coronation Double—A mixed seed producing many tinted blooms; this is much used by florists for cut flowers. Price: Pkt. 10c; oz. 20c.

Candytuft

Another heritage from "grandmother's garden." Sow in rows 12 inches apart and thin to 4 inches in the row; grows to 15 inches high; sown in April will give flowers from July to October. Price: Pkt. 10c.

Cosmos

A fall blooming plant which makes bushes 5 feet high from spring seeding.

Early Flowering—Gives a profusion of blooms from August till killing frost. Pkt. 10c.

Cypress Vine

A sturdy climber to be sown in spring and thinned to 6 inches apart; has dark green feathery foliage and many star shaped scarlet and white blossoms. Will climb fifteen feet in a single season. Price: Pkt. 10c.

Forget-Me-Not

A great favorite for permanent flower beds; blooms second year and will not winter kill if given a little care. A profusion of dainty blue blossoms cover the stalks from early season until frost. Price: Pkt. 10c.

Four O'Clock

Another old time favorite. It is a hardy plant bearing blooms same season planted. The flowers are red, white, yellow and striped and open about 4 p. m., remaining open until heat of sun next morning. Price: Pkt. 10c.

Heliotrope

Not very hardy, as the roots must be taken up and protected thru winter. Flowers are blue and very fragrant and the plants will well pay for the work required to raise them. Price: Pkt. 10c.

Hollyhocks

Produces long spikes of beautiful flowers often 4 inches across; make unexcelled cut flowers.

Early Flowering—Blooms readily from seed first season; a wide range of colors in large double flowers. Price: Pkt. 15c; 1-8 oz. 25c.

Hardy Perennial—Does not bloom first year but will winter and give early blooms second year. Price: Pkt. 10c; ½ oz. 30c.

Kochia—Summer Cypress

Grows to a height of 30 inches in single season; has a bright green foliage and turns deep red in autumn. Makes an attractive hedge or border.

Northern Brand—A choice selection of this popular plant. Price: Pkt. 10c; oz. 35c.

Larkspur

This furnishes one of the surest and most satisfactory blossoming plants in any garden. The blossoms range from white thru blends of blue and red. Price: Pkt. 10c; ¼ oz. 15c.

Mignonette

Its scent always surrounds the garden where it is planted. We offer an improved strain which yields large blooms. Price: Pkt. 10c; ½ oz. 20c.

Marigold

This is rather a slow plant and should be started indoors and transplanted—about as tomatoes are handled. But no garden seems quite complete without a few of the elegant yellow and orange blooms.

Dwarf French—Low bushes covered with masses of flowers. Price: Pkt 10c; ¼ oz. 15c.

Tall African—Double flowers of rich shades. Price: Pkt. 10c; ¼ oz. 15c.

Morning Glory

Grows any place and will climb anywhere; always pleasing; blooms all colors. Price: Pkt. 10c; ¼ lb. 40c.

Nicotiana

A members of the Tobacco Family which carries a large number of handsome fragrant blossoms and is easily grown. Price: Pkt. 10c; ½ oz. 20c.

Nasturtium

One of the most popular flowers planted because it is easily grown upon almost any kind of soil and yields blooms for months, if flowers are picked as fast as they appear.

Dwarf Mixed—Grow about one foot high and produces many shades and colors. Price: Pkt. 10c; oz. 15c; ¼ lb. 35c; lb. \$1.00.

Tall or Trailing Mixed—All popular colors; grows four to six feet high. Price: Pkt. 10c; oz. 15c; ¼ lb. 40c; lb. \$1.35.

Pansy

This was known as "Heart's Ease" and the old name seems to express the feeling caused by viewing a bunch of fresh pansies.

Colossal—This seed produced the largest and finest flowers for us during the past two seasons ever seen in a garden. You will receive more enjoyment from the crop from a package of this seed than the same amount of labor as will be required to mature a crop of these pansies would give you if expended in any other manner.

Giant Trimardeau—One of the old standard varieties. Price: Pkt. 25c.

White With Purple Eye—A selected strain of which the name tells the history. Price: Pkt. 10c.

Goldelse (Aurea Pura)—Bright canary yellow. Price: Pkt. 10c.

King of Blacks—A jet black flower. Price: Pkt. 10c.

Kewpie—Bronze center shading to bright yellow on outside. Price: Pkt. 10c.

Mixed—Some of each of the named varieties. Price: Pkt. 10c.

Petunia

Should not be planted until danger of killing frost is over; grow rapidly and require more water than usually falls in rain in this section; but if given good care produce a profusion of rich many shaded blooms until late in fall. Price: Pkt. 10c.

Snap Dragon

An old time favorite which florists have much improved. Long showy spikes of curiously shaped tubular lobes and finely marked throats. They are fragrant as well as brilliant. Not very hardy, but if protected thru winter will bloom better second year than first.

Choice Mixed—Price: Pkt. 15c.

Pinks (Dianthus)

Nothing prettier grows in the home garden than a bed of long stemmed, many shaded pinks surrounded by green foliage. Price: Pkt. 10c.

Phlox

For a splendid mass of colors and a constant display nothing excels a bed of phlox. Seed early and you will have a varying colored bed until late in the fall. Price: Pkt. 10c; $\frac{1}{8}$ oz. 20c.

Poppy

The most stately flower that grows in the Northwest. We offer a selection of varieties well suited to this climate.

Carnation Flowered—Large sized flowers of all shades, many striped. Price: Pkt. 10c $\frac{1}{8}$ oz. 15c.

California—The state flower of California. A deep yellow bloom. Price: Pkt. 10c; $\frac{1}{8}$ oz. 20c.

Mixed—Showing many choice colors and shades. Price Pkt. 10c.



Pinks (Dianthus)

Portulaca (Moss Rose)

When the weather is settled for spring sow in rows about a foot apart and in a sunny place; a great variety of colored blossoms will be the result of a little labor expended in caring for these plants. Price: Pkt. 10c; $\frac{1}{8}$ oz. 25c.

Stocks

A brilliant, many colored flower which yields a fragrance second to none. They should be started inside and transplanted as are tomatoes. The plants grow to 18 inches high and should be two feet apart each way. Price: Pkt. 10c; ½ oz. 25c.

Sweet Pea

The most commonly grown flower and a little extra work will be richly rewarded in raising them. For most satisfactory results, plant in a deep trench and provide supports when vines are four inches long.

SPENCER TYPE

These are the latest improved strains of sweet peas and grow considerable larger than the common strains known as the Grandiflora type.

- America—(Spencer)—White, striped with bright crimson. Price: Pkt. 15c; oz. 30c.
- Captain of the Blue—(Spencer)—A very distinct purple. Price: Pkt. 15c; oz. 30c.
- Countess—(Spencer)—A beautiful delicate pink. Price: Pkt. 15c; oz. 30c.
- Dorothy Eckford—(Spencer)—Pure white. Price: Pkt. 15c; oz. 30c.
- King Edward—(Spencer)—A brilliant crimson-scarlet. Price: Pkt. 15c; oz. 30c.
- Mrs. Walter Wright—(Spencer)—Light blue. Price: Pkt. 15c; oz. 30c.
- Othello—(Spencer)—The darkest sweet pea in existence. Price: Pkt. 15c; oz. 30c.
- Stirling Stent—(Spencer)—Brilliant scarlet. Price: Pkt. 15c; oz. 30c.
- Mixed—(Spencer)—A well balanced mixture of the named sorts. For ordinary gardens this will be found admirable. Price: Pkt. 15c; oz. 30c.

GRANDIFLORA TYPE

The old stand by in Sweet Peas.

- Blanche Burpee—Pure white. Price: Pkt. 10c; oz. 20c.
- New Countess—A delicate lavender. Price: Pkt. 10c; oz. 20c.
- Dark Knight—Very dark purple. Price: Pkt. 10c; oz. 20c.
- Firefly—Bright crimson. Price: Pkt. 10c; oz. 20c.
- Kathryn Tracy—Soft pink. Price: Pkt. 10c; oz. 20c.
- All colors—A mixture of all of the popular strains. This will be found very satisfactory. Price: Pkt. 10c; oz. 20c.

Sweet William

This was a favorite in the New England gardens when "America" was "bounded on the west by the Indians" and it still has many admirers. It is very hardy and produces a wonderful array of color.

Diadem—A striking selection which produces deep scarlet blooms with white centers. Price: Pkt. 10c.

Wall Flowers

A little labor with these will give you something to admire thru the long winter. Start seed indoors and transplant into pots; after danger of frost is gone, set pots into earth so that top of pot is level with earth; before frost in fall, take pots up and set in sun in house and you will have flowers all winter.

Triumph—A distinct blood red strain producing very large flowers of velvet texture upon sturdy stems. Price: Pkt. 5c.

Wild Cucumber

A climber which makes excellent covering for porch or trellis. Price: Pkt. 10c; oz. 25c.

Verbena

An easily raised, very pretty flower with an exquisite aroma. Seed is particularly hard and should be soaked in water before planting; start in bed and transplant two feet apart each way.

Hybrida Mixed—A wide range of colors in its flowers. Price: Pkt. 10c.

Zinnia

A brilliant and showy flower. Culture same as Verbena.

Elegans Mixed—Grow to 18 inches high and carries double blooms often two inches across. Price: Pkt. 10c.

FIELD SEED

FIELD CORN

We have succeeded in securing a good supply of northern grown seed corn; this corn has been carefully dried, sorted by hand, and each lot will be thoroughly tested for germination before shipment is made.

We will ship no seed corn which shows less than 90 per cent germination.

Culture: Sow from May 10th to June 1st. When checked a bushel will plant seven acres; put three or four kernels in a hill. Fodder corn is usually drilled at the rate of a bushel to three acres. Frequent and thorough cultivation is necessary for the best results; care should be exercised that the plows are not set too deep, so as to injure the surface roots. A mulch one inch deep of fine dirt over the roots will conserve the moisture, and keep a dry hot period from retarding the growth of the corn.



Northwestern Dent

This is more extensively grown than any other variety in the northwest; it is very hardy and will mature when most other Dent corn fails. It grows 6 to 8 feet tall with ears 8 to 10 inches long having 12 rows of well formed kernels; the ears are well up from the ground, out of the way of the sickle of a corn binder. Our seed is strictly Northern Grown and has a very high germination test. As our supply is limited we would advise ordering early. Price: Lb. 30c. Postpaid. $\frac{1}{4}$ bu. \$1.75; $\frac{1}{2}$ bu. \$3.00; 1 bu. \$5.00, by freight or express at purchaser's expense. Sacks 65c each.

Field Seed Prices Subject to Change Without Notice.

Minnesota 13

The Earliest of the Yellow Dent Corns

The ears average 8 inches long with 16 or 18 rows of kernels; the cobs are well filled and kernels close set. Price: Lb. 30c. Postpaid. $\frac{1}{4}$ bu. \$1.75; $\frac{1}{2}$ bu. \$3.00; bu. \$5.00, by freight or express at purchaser's expense. Sacks 65c each.

White Rustler

The Earliest White Dent Corn in Existence

This corn is a prize winner wherever exhibited. The ears have 14 to 18 rows of well set, good sized kernels. The ears are well up from the ground and the stalks carry a large amount of leaves, making extra fine fodder. Price: Lb. 30c. Postpaid. $\frac{1}{4}$ bu. \$1.75; $\frac{1}{2}$ bu. \$3.00; bu. \$5.50 by freight or express at purchaser's expense. Sacks extra 65c each.

North Dakota White Flint

An exceptionally early North Dakota grown flint. It does not grow quite so large nor are the ears so long as other flints but it always ripens. Nothing better for "hogging off." Price: Lb. 30c. Postpaid. $\frac{1}{4}$ bu. \$1.75; $\frac{1}{2}$ bu. \$3.25; bu. \$6.00. By freight or express at purchaser's expense. Sacks extra 65c each.

Gehu Flint

"Grows like Gehu" exclaimed one farmer who tried it some years ago. This is a cross of the early maturing, hardy flint and a larger yielding corn. The very small types of corn grown in the northwest usually ripen seed but the stalks are too short and the crop is difficult to save. The large types give size but fail to mature. In Gehu we have the happy medium, a good sized corn that ripens. Our stock of this seed was grown in Barnes county, carefully picked and sorted then dried and all tests better than 90 per cent germination. If you wish to raise corn you will make a mistake if you do not order this seed. Price: Lb. 30c. Postpaid. $\frac{1}{4}$ bu. \$1.75; $\frac{1}{2}$ bu. \$3.00; bu. \$5.50 by freight or express at purchaser's expense. Sacks extra 65c each.

SQUAW FLINT

The first white men who came to the Missouri Valley found the Indians raising a corn which had been raised by them as long as their records run. Careful selection of the best of this corn has developed what is known as Squaw Flint. It matures very early, has many colored grains and the selection has developed a heavy yielding strain. Price: Lb. 30c. Postpaid. $\frac{1}{4}$ bu. \$1.75; $\frac{1}{2}$ bu. \$3.00; bu. \$5.50 by freight or express at purchaser's expense. Sacks extra 65c each.

FODDER CORN

Fodder corn can in many instances be substituted for the northern grown corn where it is used for forage only. The yield per acre is very heavy and it produces a rough fodder at a low cost per ton.

Large Yellow Dent—Grows to a height of from eight to ten feet producing an enormous amount of fodder. The joints are short thereby making a greater amount of fodder than corn with long joints. Price: $\frac{1}{2}$ bu. \$2.00; bu. \$3.50 by freight or express. Sacks 65c extra.

Red Cob Fodder—(White Seed)—Grows to a height of about 12 feet, makes a fine yield of many tons of sweet, juicy fodder, which the stock eat clean. A great favorite with the dairymen. Price: $\frac{1}{2}$ bu. \$2.00; bu. 3.50. By freight or express at purchaser's expense. Sacks extra 65c.

Sweet Fodder Corn—This makes a fine fodder and will mature ears in practically every part of the Northwest. The stalks are rather small and when fed ear and all makes a sweet feed that is hard to equal. Drill trickly in rows. Prices upon application.

AMBER CANE

The most popular of the Sorgham family grown in the Northern states. The best yields are obtained on rich sandy loams, but when grown on gumbo, hard pan or other poor soils, it is more successful than other crops. Since the growth of the plant is very slow during the first few weeks, it is essential to have the soil free of weeds and of all good tilth, otherwise the plants may be smothered by the weeds. Prepare your land as you would for corn. One of the most enthusiastic and successful growers in this vicinity sets his drill as he would for oats stopping up the feed tubes so that the rows are three feet or three and one-half feet apart to allow cultivation. Seeding in this manner will require about 12 or 15 pound to the acre.

For silage or fodder, cane is best harvested when the seed is in the dough stage, using the corn binder. Cane is as good for fodder as corn, the stems being juicy and palatable. For hay it may be cut as soon as high enough, though the best quality is obtained shortly after blooming. Growers of both cane and corn agree that the cane will out yield corn. As forage the range is anywhere from five to forty tons per acre and of hay from two to five tons.

The popularity of cane is getting larger each year and it will soon be found growing in every section of the Northwest. Don't fail to try a field of cane this year. Price: 10 lbs. \$1.00; 25c lbs. \$2.00; 100 lbs. \$8.00, by freight or express at purchaser's expense. Sacks extra.

ALFALFA

Culture—Have as near a perfect seed bed as is possible to make, preferably on land that has been cropped to potatoes or corn the preceding year. Sow at the rate of about 8 or 10 pounds to the acre, when there is from 8 to 12 inches of growth go over the field with the mowing machine set as high as possible, leaving the clippings lay as they fall for a mulch to protect the crown of the roots through the winter. Alfalfa, whether the first or any succeeding year should not have less than eight inches of growth when freezing weather comes. The crown of the root needs this protection. After the first year it may be cut for hay or pastured. Select high well drained land for your alfalfa field, nothing will kill out a field as quickly as water standing on the field or surrounding the roots. Above all things use Northern Grown Seed.

Northern Brand—If there is any one thing we take exceptional pride in, it is our Northern Brand Alfalfa Seed. We have received many compliments for this seed since starting to handle it in 1913. We get it every year from the same parties and from the same fields, the fields have been established for nearly 25 years, so we know we can sell you acclimated seed and can guarantee you a very high purity test. We have never yet sold an ounce of our Northern Brand seed that was not at least ninety-nine one-half per cent of absolutely pure. Think what it means, seed so well cleaned that it is practically 100 per cent perfect. It must be far better than some seed that is offered.

An alfalfa field is more or less of a permanent investment. A field sown with well acclimated seed should last for 10 years at the least and some stay for a life time. When this is considered a small extra investment at the start for the best seed will pay you a high rate of interest. We know our seed is right and that it is entirely suitable for any section of the Northwest. We have customers who would no more think of sowing any other brand of Alfalfa seen than they



Alfalfa or Lucerne

would of ceasing to grow it altogether. Price: Pound, 40c. Postpaid. Pound 30c at purchaser's expense by freight or express.

Genuine Grimm—This variety of Alfalfa has the reputation of being the hardiest known. It is often spoken of as Everlasting. The seed we are offering was grown in Western North Dakota on non-irrigated land. The seed that was sown on this field was registered at the Agricultural College at Fargo. It is a well known fact that the College will not register seed that is not all that it is claimed and they insist that they have absolute proof of the origin so that no seed will be registered that is not absolutely pure and of the variety claimed. Our grower has had his seed registered and we know positively that our seed is the Genuine Grimm. This is the seed that is advocated by the County Agents all over the state.

If you are in the market for Alfalfa it will pay you to sow the Grimm or Everlasting. By sowing this seed you are making a permanent investment of the sort that will increase the value of your land. Price: Pound 55c. Postpaid. 10 lbs. \$5.00; 25 lbs. \$12.00; 50 lbs. \$22.00; 100 lbs. \$40.00. By freight or express at purchaser's expense. Sacks extra 65c each.

SWEET CLOVER

White Blossom (*Melilotus alba*)

Until within the past few years Sweet Clover was considered a noxious weed and of no value as a forage, soiling crop or land renovator. The past few seasons this wonderful plant has gained in favor to such an extent that the demand for seed has far exceeded the supply.

Soil Adapted

Almost any land reasonably well drained will grow Sweet Clover. It has been found in almost pure sand, in gravel pits and in fact on all sorts of soil except clay in sections lacking lime in the soil. If sown on the poorer fields for pasture it will in a few years bring the land up to a state where it will profitably produce the ordinary cultivated crops.

Preparation of the Seed Bed

The seed bed for Sweet Clover should be compact and worked until as many air spaces are out of the soil as is possible to remove, leaving just enough loose soil to cover the seed. The lack of thorough preparation or the providing of sufficient soil to cover the seed will more often cause a failure than any other thing.

Seeding

Early spring seeding on fall plowed land at the rate of from 8 to 10 pounds per acre and the seed sown in the same manner as Alfalfa seed has been found to give the best results in the Northwest. Hulled seed is much preferred to the unhulled, as it will germinate much more quickly.

Uses and Treatment of Sweet Clover

The first season, as soon as the weeds become at all noticeable, the field should be clipped at a height of 5 to 6 inches, thereby eliminating to a large extent many of the weeds and also causing the Sweet Clover to stool and not grow slender and spindling.

Sweet Clover may be pastured the first season until late in the fall, even after a number of killing frosts have occurred, as the plant does not seem to require a top growth for winter protection. If the pasturing is not sufficient to keep the young plants eaten back, a cutting of hay may be made when the growth ceases in the fall.

The second season, if the field is to be pastured it will be found ready to graze earlier than almost any other plant. If hay is to be made, it is best to cut before the first bloom pods appear, as after reaching this stage it becomes coarst and woody, and loses much of its nutritiousness. A second cutting may be had or the plant allowed to go to seed.

Many growers, where they desire a permanent field or pasture, cut the plant as high as possible, allowing the seed pods near the ground to ripen and reseed the field.

Sweet Clover has a number of different uses. It is grown for hay, ensilage, pasture, or for renovating wornout soils, as its root system, which is far reaching, will break up the subsoil, making it friable; it may be turned under for green manure and is used extensively for a bee pasture.

The white blossomed Sweet Clover is by far the better of the varieties. It makes more tons of feed to the acre and has a greater feeding value. The same bacteria required for Alfalfa will be found in the Sweet Clover field, making it possible for Alfalfa to successfully follow without inoculation or other special preparation.

Frequently, stock will refuse Sweet Clover when first offered them, but soon acquire a taste for it and will fatten on it very rapidly.

Our Grade of Seed

We handle but one grade of this seed that being the best obtainable anywhere and only of the one variety, that with the white blossom. We are able to buy seed of questionable quality which could be sold at a much lower price than the grade we handle. Our prices for this seed are as low as is consistent with the quality offered. Let us send you a sample before your purchase. Hulled Seed. Price per lb. 32c. By freight or express at Purchaser's expense.

Why not start a Clover field or pasture this spring? Put it on the poorest piece of land you have and let it build up a soil that will grow successfully Alfalfa or any of the cultivated crops.

Sweet Clover if included in your system of crop rotation will do more to produce a high state of fertility than any other factor.

Sweet Clover makes the earliest pasture and may be grazed latest in the fall, it is nearly equal in feeding value to Alfalfa and does not have the same tendency of causing animals to bloat.

ALSIKE CLOVER

Culture—Alsike Clover is best adapted to low lying lands, as for instance slough lands, but will grow well on most any moist soil. It does especially well on soils rich in lime. Usually it gives but one crop of hay and one crop of seed in a season. For a seed crop it ought to be sown alone, but for hay it is best sown with Timothy or with Timothy and Red Top. When sown with Timothy about 3 lbs. of Alsike and 6 pounds of Timothy are sown. If Red Top is also sown 3 lbs. of each will answer. It is usually sown with a nurse crop of barley or some other grain, preferably, the former. In some instances it is sown with Timothy and Red Clover for hay, the proportions being about 3 lbs. of Red, 2 lbs. of Alsike and 5 lbs. of Timothy per acre. The seed should be sown early in the season and in the same way as Red Clover.

Alsike Clover makes a very fine quality of hay and remains much longer in the soil than Red Clover. Like all clovers it brings nitrogen and humus to the soil.

Our seed is grown in the Northwest and so will be found thoroughly acclimated and far superior to Southern grown seed that is offered by the majority of our competitors. Price: Per lb. 50c. Postpaid. \$27.00 per bu. by freight or express at purchaser's expense.

SLENDER WHEAT GRASS

Culture—This is also known as Western Rye Grass. It will stand dry conditions better than other cultivated grasses. Sow early in the spring using 12 to 15 lbs. of seed per acre, or if sown with Bromus for pasture, use 6 lbs. of each, mixing the seed before sowing. For hay it should be cut promptly, to prevent its becoming woody.

Our sales of this seed have been increasing each year. Our methods of cleaning is such that the purity test is almost perfect.

The hay is somewhat finer than Bromus and the root system more easily eradicated than Bromus. It will be found excellent either for hay or for pasture as it will withstand an enormous amount of trampling by the stock. Price: Per lb. 25c. Postpaid. Per lb. 20c by freight or express at purchaser's expense.

BROMUS INERMUS

Culture—Brome Grass, sometimes called Russian or Australian Clover, will grow reasonably well on any soil that will produce grain crops, but it grows best on moist soils. It will stand conditions that will be more dry than would be suitable for timothy. It may be sown any month, but is best sown in the early spring with a light sowing of grain to cut for hay. The seed is sown with a wheelbarrow seeder or by hand and covered with a harrow. With due care on moist soils it may be sown with the grain. When sown with Blue Grass about five pounds of each are sown to the acre. Brome Grass is considered by some the best pasture grass grown in the Northwest. Its growth is greatly improved by a dressing of farm yard manure.

Field Seed Prices Subject to Change Without Notice.

It is sometimes renewed by harrowing the ground in the late fall or early spring. To have it remain in its best condition it should be well disked occasionally to prevent it from becoming "sod bound." From 10 to 12 pounds of seed are required to the acre.

The North Dakota Agricultural College has kept us informed of growers who have seed that is free from Quack-Grass and only such stocks are purchased. Our cleaning machinery is especially adapted for seed of this nature and we feel that we have right to be justly proud of our clean, free from fowl seeds stock. The prospective buyer will do well to compare a sample of our seed with any that may be offered him and judge for himself as to the quality. After you have made the comparisons we can not but anticipate your order. Price: Per lb. 40c. Postpaid. Per lb. 30c by freight or express at purchaser's expense.



SUDAN GRASS

Culture—Sow after the soil has become warm and on a rich loam. Two cuttings may be had under favorable conditions. 15 to 25 lbs. are used when sown broadcast; when sown in rows and cultivated 6 lbs. is sufficient. Bury the seed one-half to one inch.

Sudan Grass is of a sorgham nature and does best in hot weather. One to eight tons may be cut from an acre according to conditions. The height attained is from three to six feet, it may be cut with a mower and handled as the ordinary hay or cut with a binder. For hay it should be cut just before it heads out. It is an annual requiring seeding each spring. Price: Pound Postpaid, 40c. 100 lbs. \$25.00 by freight or express at purchaser's expense.

KENTUCKY BLUE GRASS

Culture—When sown alone, 10 pounds of seed is necessary per acre, but in the Northwest it is usually mixed with some other grass and the following mixture

is found very suitable. Kentucky Blue and Brome grass, five pounds each, Medium Red Clover, two pounds and Small White Clover one pound per acre.

Old Blue Grass pasture may be much improved with a coating of farm manure, well disked in.

Kentucky Blue Grass is also known as June Grass. Kentucky Blue Grass is one of the most nutritious, hardy and valuable of the Northern grasses. The name is somewhat misleading being that of a southern state, but the Northwest can grow it most successfully. Lawn grass mixtures contain quite a percentage of this grass and from the way they thrive throughout this section the most skeptical can not but admit that it is adapted to our conditions. Price: Per lb. 40c. Postpaid. Per lb. 35c by freight or express at purchaser's expense.

RED TOP

Culture—Red Top is best adapted to low rich lands and will grow under more moist conditions than any other grass.

Timothy, Alsike Clover and Red Top at the rate of three pounds of each per acre

will produce hay indefinitely if occasionally fertilized with top dressing. Sow quite early in the spring with a thin nurse crop.

Solid Seed—Red Top grows to a height of two feet or more and yields about two tons of excellent hay per acre. The older the field the heavier the yield, as it increases in thickness for several years after being first established. Price per lb. 35c. Postpaid. Per lb. 20c by freight or express at purchaser's expense.

TIMOTHY

Culture—Timothy grows best on a moist black loam soil and where humus is abundant. Drained sloughs and marshes are especially adapted to its growth, but it is also grown on all dark colored soil of the prairie. It also grows best in North-western areas from seed that has been grown northward. It is in nearly all instances sown with a nurse crop, preferably barley or winter wheat or rye. When sown in the spring it cannot be sown too early. When sown in the fall it is preferably sown in August. The seed may be sown by hand, with a wheelbarrow seeder or preferably with an attachment to the grain drill. In some instances it is mixed with grain and sown with it on certain soils when the grain is not buried too deeply. When sown alone not fewer than 8 to 10 pounds per acre are sown as a rule, but some farmers get fair results with a less quantity. When sown with Red or Alsike clover 4 to 6 pounds is enough. Three pounds of Alsike and 3 pounds of Timothy or Red Top make an excellent combination for slough lands.

Practically all our seed is grown in this county and is well acclimated and thoroughly cleaned. Stock of all kinds will greedily devour Timothy hay and a ready market at the highest price can always be found for any surplus. Price: Per lb. 30c. Postpaid. $\frac{1}{4}$ bu. \$2.00; $\frac{1}{2}$ bu. \$3.75; bu. \$7.00 by express or freight at purchaser's expense.. Sacks extra 65c each.

MEDIUM RED CLOVER

This seed is extremely scarce and the price is high. We have been able to secure but a few thousand pounds which we are offering at \$30 per bushel of 60 pounds by freight or express at purchaser's expense. Sacks extra 65c each.

Medium Red Clover should be sown at the rate of 10 or 12 pounds per acre.



Timothy

BUCKWHEAT

Culture—Plant four or five pecks per acre. Seed late enough to avoid spring frost.

Silver Hull—This variety is most grown and has proved to be the best for our climate and soil conditions. The grain is light grey in color and the hull is very thin. Millers prefer this variety as it makes a whiter flour and shows less waste than common varieties. It is a very heavy yielder, producing up to fifty bushels per acre. Price. \$4.00 per bushel by freight or express at purchaser's expense. Sacks extra 65c each.

SMALL WHITE CLOVER

Culture—This variety of clover will succeed under almost all climatic and soil conditions, but it is best upon fairly moist soil and in moist seasons. It is commonly grown to protect other grasses especially Blue Grass and it affords a covering for the ground much more quickly than Blue Grass alone. It does not grow tall enough for hay but makes excellent pasture. The seed is golden yellow and rather small and is used extensively in lawn grass mixtures.

We carry only the best grade of seed and can recommend it very highly. Price: 85c per pound. Postpaid. 65c per pound by freight or express at purchaser's expense.

SPELTZ

This is one feed grain which yields a good crop under almost any condition of soil and climate. It is not wheat, oats, or barley, and yet it appears to be a combination of all of them, though the grain resembles wheat more than either of the others. For fattening cattle, horses, pigs, or poultry it is better than any one of the grains mentioned. It is a better feed than oats, yet does not develop the heat caused by barley or wheat when fed to stock. Yields 60 to 100 bushels of better feed than corn per acre beside giving as much as four tons of straw equal to most of the hay we raise for feeding purposes. Excellent as pasture and can be fed green. As green grass hay it often yields 100 leafy stalks from a single seed; this shows its heavy stooling. The heads are similar to two row barley. Will grow well and produce enormous crops upon land where wheat will not grow. Price: \$1.75 Per bushel by freight or express at purchaser's expense. Sacks 65c each.

RAPE

Rape will succeed upon any soil that is free from alkali and may be sown from early in the spring until mid-summer, at the rate of about 4 pounds per acre, burying seed one to two inches deep. It makes a quick growth and a few weeks after planting the ground is covered with broad leaves like turnip tops. These leaves are relished by all stock, especially swine. A field seeded to rape which is divided into halves by a fence makes excellent hog pasture. The plants in one side spreading out while the other side is being pastured. In this manner a small pasture will feed many hogs during the entire summer.

Dwarf Essex—This rape is ready to graze six weeks after planting and may be sown alone or with oats, barley or peas. Price: Per pound 30c. Postpaid. 15c per pound by freight or express at purchaser's expense.

ORDERBRUCKER BARLEY

Barley is the main small grain crop of Wisconsin; for this reason, the State Experiment Station there has devoted much study to the improvement of the seed to be sown and has paid particular attention to procuring a type of barley which, while yielding well, would be particularly rich in protein—protein being the necessary matter for both feeding and malting barley.

Prof. Moore, of that station, declares that Oderbrucker barley yields 10 bushels per acre more than any other variety tested there and concludes his report with this statement: "In stiffness of straw and rust resistance it is superior to all other varieties tested."

It is a six row, bearded grain having exceptionally large, plump kernels. We offer a limited supply at \$1.50 per bushel by freight or express at purchaser's expense.. Sacks extra 65c each.

Northern Seed Co., Valley City, N. Dak.—Please send me a new catalog for this spring. I ordered seed from you last year and everything was o. k., so I want a catalog as soon as possible. Have you some kind of seed they call Wonder Berries? I have seen them out here but do not seem to be able to get the seed.
Phon, Mont., Jan. 16, 1918.

MISS LILLIAN CLARK.

OATS

Silver Mine—We have had splendid success the past two years with the Silver Mine oat. The yield has been much larger than other varieties sown in like fields at the same time. It matures in 95 to 110 days from planting. The seed is white and it is one of the best commercial oats upon the market. Price: \$1.30 per bushel by freight or express at purchaser's expense. Sacks extra 65c each.

White Russian—A main crop oat. Our strain of White Russian is practically rust proof. The berry is long, white, thin skinned and well borne on a stiff straw not liable to lodge. This oat is probably as well known as any oat grown in the Northwest. It is a good yielder and quite hardy. It will withstand unfavorable weather more readily than many varieties. Price: \$1.30 per bu. by freight of express at purchaser's expense. Bags extra at 65c.

Swedish Select—Another oat well known over the Northwest. The berry is plump and well filled. The yield is heavy, the grain seldom weighing less than 40 pounds to the measured bushel. Our stock is well cleaned and free from foul seed. Price: \$1.35 per bu. by freight or express at purchaser's expense. Bags extra at 45c.

FLAX

Culture—Sow with a drill, bury the seed one or two inches deep, using two or three pecks of seed to the acre.

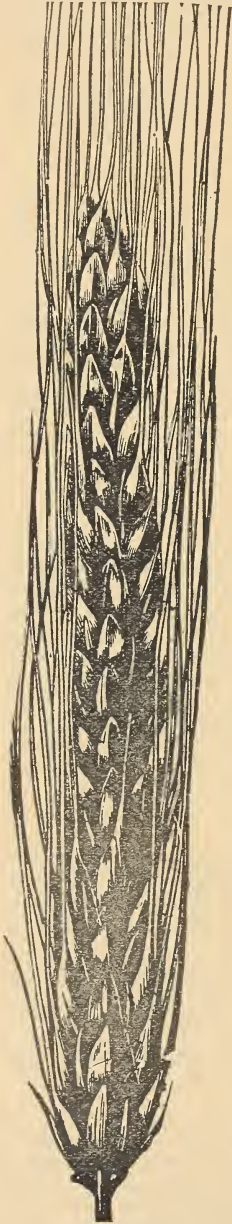
Wilt Resistant No. 52—Seed of this Flax, which originated at the North Dakota Agricultural College, was first put out to the farmers in 1907 and each successive season the wilt resisting qualities have become more firmly fixed, making it at present almost totally immune from any wilt. The flax we are offering traces directly to the first seed put out by the Agricultural College and was grown from seed that was certified last season. This flax shows a marked advantage over other varieties. Price: ¼ bu. \$1.50; ½ bu. \$2.75; bu. \$5.00. Sacks extra at 65c.

RYE

It is of the winter and spring varieties. Winter rye will succeed on soils that would not sustain wheat. No cereal can gather food so rapidly from the soil. But like other crops it gives better yields as the soil improves. It will grow on sandy loams, even on soil that will lift with the wind. Rye is grown for the grain or to provide pasture or to bury as green manure. Winter rye may be sown from mid-summer onward, but it is always preferable to sow it early enough to make a good stand before winter. Should it become too strong it may be grazed. It is sometimes drilled into the stubble of a previous crop. Spring rye is preferably sown as soon as the soil will do to work, but may be sown on until June 1st. When preparing the land a firm, fine and moist seed bed should be sought. From 4 to 6 pecks of seed per acre should be drilled in and put down to moist soil, even though four inches down, but a less depth will answer better. The heavy seeding is for pasture or green manure. When buried this should be done before it has passed the heading out stage. When grazed in the spring, other crops may follow. Rye will lodge less than any other cereal, except Speltz.

Spring Rye—One of the surest crops for the Northwest. For grain or Cutting green for hay it is extremely valuable.

Silver Mine
Price. \$2.25 per bu. by freight or express at purchaser's expense.. Sacks extra 65c.



WHEAT

Prof Bolley who has charge of the Division of Plant Diseases at our Agricultural College—and who originated the formaldehyde treatment for wheat smut, some years since sent out samples of a strain of wheat which he called D5 and said it seemed RUST RESISTANT. This grain has been raised in Barnes County for five years and proves to have not been affected by rust while other strains of wheat planted at the same time in the same fields have been destroyed by rust. Observation of this grain has prompted us to offer it to our trade this season. It yields heavier than any other wheat grown in this section; the field from which our stock was obtained threshed 38 bushels per acre by measure of mrain which tests 61 and 62 pounds to the measured bushel. The berry is a little darker than Durum, which it resembles, and is harder than other spring wheats. It mills harder and does not yield quite as much flour as some other varieties—the elevators here paid four cents under for it the past season. But, is not a sure crop worth four cents per bushel less than the top of the market better than a chance to get the top price?

In nature, nothing stands still and your wheat seed, like all else, is getting better or worse each year. Why not be sure it will get better by getting enough of D5 to raise your own seed for next year? Price: \$2.50 per bushel f. o. b. Valley City. Sacks extra 65c each.

MILLET

Culture—Millet is grown for hay, for seed or for turning under as green manure. The best results are had with Southern grown seed. Sow with a drill at the rate of one-half bushel to the acre.

Golden Millet (Southern Grown)—One of the lately developed millets, that as a hay producer is hard to equal. We have the seed grown for us in the south and when planted this far north will yield from two to four tons to the acre of high grade hay. As a catch crop this variety may be planted as late as the 10th of July and still make a good stand of forage. Price: $\frac{1}{4}$ bu. 90c; $\frac{1}{2}$ bu. \$1.60; bu. \$3.00 at purchaser's expense by freight or express. Sacks extra at 65c.

Common Millet—The good qualities of this millet are numerous and among them, it is drought resistant, will produce a fair crop on poor soil, is one of the earliest; stools freely and makes a very fine quality of hay. We look for a heavy demand for this seed so would urge early orders. Price: \$3 per bu. by freight of express at purchaser's expense. Sacks extra 65c.

Siberian Millet—The seed is a bright orange color and is fast becoming justly popular with many of our most critical customers. It stools heavily and yields an abundance of fine hay which is greedily eaten by live stock or it can be left to fully mature for the seed, producing in many instances as high as 40 to 50 bushels to the acre. Price: $\frac{1}{4}$ bu. \$1.00; $\frac{1}{2}$ bu. \$1.90; bu. \$3.50 by freight or express at purchaser's expense. Sacks extra at 65c.

Japanese Millet—The seed of Japanese Millet does not resemble any other variety of millet either in shape or color, it is a triangular shaped seed with a dark brown-



D5—Rust Resistant

ish color. Japanese Millet grows all the way from four to ten feet in height, depending upon the amount of moisture at hand. The hay is very sweet and makes an excellent ration for stock of all kinds. Japanese millet weighs 38 pounds to the bushel but is usually sold by the pound. Price: Per 100 lbs. \$7.00. Sacks Extra at 65c.

Early Fortune Millet—The seed is a plump berry of a rich dark red color. This millet is not a hay producing millet but is grown for the seed. It is also grown to clean up foul land, some of the leading agriculturists recommended it very highly for this purpose. Price: \$3.25 bu. by freight or express at purchaser's expense. Sacks extra at 65c.

BROOM CORN MILLET

This is planted more generally for seed than hay. The stalks do not grow so tall as other millets but the head branches like broom corn—hence the name—and it yields 60 to 80 bushels of seed per acre. It ripens in sixty days from planting and the seed is exceptionally good feed for fattening stock. It is much used for hogs in some localities and the grain is called "Hog Millet" by some growers. Price: \$2.75 per bushel by freight or express at purchaser's expense. Sacks at 65c extra.

FIELD PEAS

There comes a time when any soil which is cropped constantly becomes exhausted; summer fallowing was considered the only way to build up run down land but since our country has become infested with weeds and foul grains, summer fallowing unless much work is done upon the field to destroy weeds does not yield the results that were obtained from it years ago. Field Peas will yield a valuable crop of hay or pasture and at the same time restore the healthy condition of a run down field. They may be sown alone or with other small grain for pasture or hay or sown alone and allowed to mature for the crop of peas which are as good food stock as may be grown. When sown alone about two bushels per acre should be sown.

We are offering a select strain of Canadian Field Pea which is acclimated and contains nothing but seeds that will grow. Price: 25c per pound postpaid or $\frac{1}{4}$ bu. \$2.00; $\frac{1}{2}$ bu. \$3.50; bu. \$6.00 by freight or express at purchaser's expense. Sacks extra 65c each.

POTATOES

Potatoes grow best in rather a cool climate. To prevent scab seed should be treated with formaldehyde. The ground should be deeply and thoroughly pulverized; frequent cultivation is necessary for best results.

Early Ohio—The Northwest's best known potato. It is so well and favorably known that a description is hardly necessary. Price: $\frac{1}{4}$ bu. 50c; $\frac{1}{2}$ bu. 60c; bu. \$1.50 by freight or express at purchaser's expense. Sacks extra.

SPECIAL NOTICE—As potatoes are easily damaged by frost they cannot be shipped until weather conditions are favorable. In mixed orders, your seeds will be shipped the day order is received. Potatoes as explained above.

Northern Seed Co.

Gentlemen: We received your catalog today and forthwith got busy and selected what we needed for our garden. We got nearly all our seed from you last year and found them entirely satisfactory without exception. The onions (Prize-taker) grew to be the largest we ever raised, many measuring four inches across and were very uniform. Wife sold over \$80 worth of vegetables and we have an abundance for our own use till the new stuff is ready. Please find order and check enclosed. Thanking you in advance, we remain,

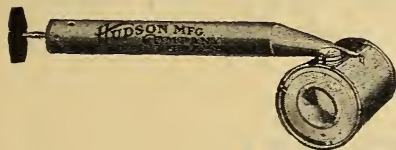
Wimbledon, N. D., Jan. 24, 1818.

MR. and MRS. HARRY BULTEMA.

GARDEN SPRAYERS

Consider the things a sprayer will do: Put poison upon potato vines; spray chicken houses, roosts and nests; put fly killer upon horses or cattle; treat grain with formaldehyde; spray bushes or trees.

We offer three sizes of sprayers, each an exceptional value for the price asked.

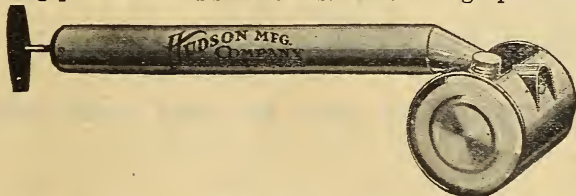


SPRAYERS

MIDGET—A small sprayer for house use. will handle disinfectants, bug-poisons, etc., etc. Length over all, 14 inches. Made of heavy tin. Holds one pint. Price 35c. Postpaid.

NEW MISTY

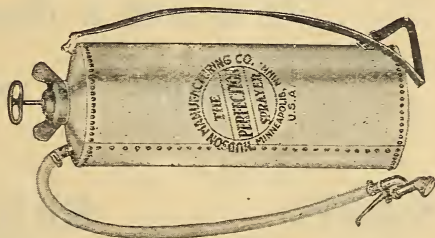
NEW MISTY—A general purpose sprayer, for farm, stable or garden uses. Handles fly-oils, bug-poisons and disinfectants. Has a large powerful pump. Lock



seamed can. Made of heavy tin. Tank 4x4½ inches. Length over all 24 inches. Holds one quart. Price 70c. Postpaid

PERFECTION

PERFECTION—For spraying, disinfecting or whitewashing, on plants, bushes, vines, etc. Made of heavy metal, with few parts, strong in construction, powerful in action. Pump has bronze ball valve and is fastened to the top of the tank with heavy threads. Tank 7½ by 20 inches, lock seamed with 26 rivets. Hose attached with clamps. Furnished with automatic shut-off nozzels which will handle whitewash and thin liquids without change of parts. Made of Galvanized Steel or Brass. Weight packed 12 pounds. Galvanized—Price \$7.00 by freight of express.



"To ere is human, but to forgive is divine."

We use all possible precaution in getting out orders the day they are received but mistakes will happen.

Should a mistake occur in our handling of your order, please advise us promptly and we will rectify it.

While America is trying to feed the world, rats annually destroy \$200,000,000 worth of food stuffs in the United States. Now, as well as during the war, it is the duty of every person to conserve food stuffs. In this connection we offer to the public

RAT CORN

The recognized Rat Exterminator. The only known Rat Destroyer that may be used with safety.

It is harmless to human beings

It is not a deadly poison

It leaves no odor

SAFE

SANE

SANITARY

If you cannot do anything else, you can kill rats. Rat Corn is put up in boxes selling at \$1.00, 50 cents, and 25 cents. Full directions upon each box.

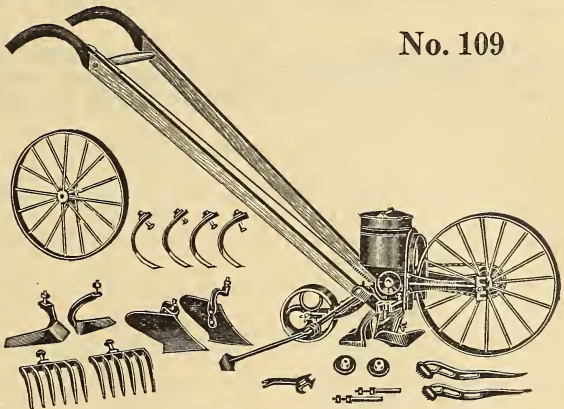
A medium sized box, costing 50 cents will prepare enough bait to exterminate all of the rats around an ordinary set of buildings.

STANDARD GARDEN TOOLS

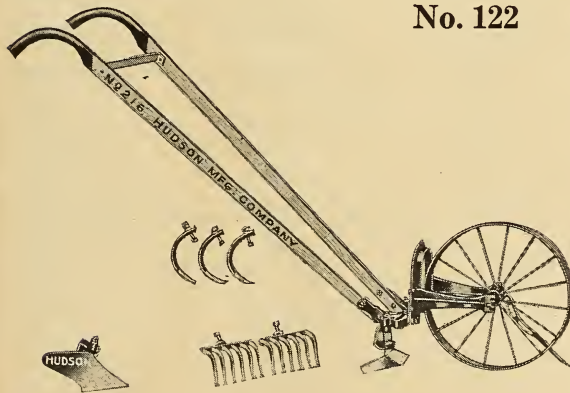
CULTIVATORS, WHEEL HOES, DRILLS AND HILL SEEDERS

A combination garden seeder and cultivator with complete equipment. It can be quickly changed to a double or single wheel cultivator. or to a seeder only. As a seeder it can be arranged for either hill or drill work. It has a positive rotary force feed. The hill spacer is the simplest known and is quickly set for hills 4, 6, 8, 12 or 24 inches apart. The flow of seed may be stopped instantly by pulling a string. It is adjustable for depths up to two inches. All metal parts are of

steel and malleable iron, oak handles, bent patterns, adjustable to suit the tallest persons; wheels sixteen inches in diameter. No. 109 combination seeder complete as shown, weight 55 pounds. Price \$17.00, F. O. B. Valley City, N. D.



No. 109



No. 122

This tool is very useful for anyone who has a garden, no matter how large or small. It is equipped with hoes, plows, rakes and cultivator teeth. It has a sixteen inch wheel and an adjustable frame, making the tool suitable for all kinds of work. The frame is so constructed that the various attachments may be adjusted to any width of row. By using this cultivator the work of caring for your garden can be done in less than one-

quarter the time and will do it better than can be done with a common hoe. Weight, packed, 28 pounds. Price, \$7.50, F. O. B. Valley City, N. D.

Brandenburg, Mont., Jan. 10, 1917.

Northern Seed Co.—Please send me your seen catalog. I did live at Charleston, N. Dak., but have moved to Montana and did not send last year for four seeds and did not raise anything. So will send again this year as yours were the best seeds I ever used and my neighbors are thinking of trying your seed this year as they had trouble with their seed not coming up. Please send catalog to the ten names I am sending and oblige,

MRS. JESS CHOLTS, Brandenburg, Mont.

FOREIGN NAMES FOR VEGETABLES AND HERBS

ENGLISH	GERMAN	DANISH-NORWEGIAN	POLISH
Anise	Anis, Gruner Anis	Anis	Anyz
Asparagus	Spargel	Asparges	Szaparagi
Balm	Citronen-Melisse	Balsamurt	Balsam
Basil	Basillikum	Basilikum	Bazylia
Beans	Bohnen	Boenner	Fasola
Beet	Rube	Roedbede	Buraki
Borage	Borestsch	Barago	Boraz
Cabbage	Kopfkohl, Kraut	Kovedkaal	Kapusta
Caraway	Feld-Kummel	Karve	Kminek
Carrot	Carroten, Mohren	Gulerod	Marchew
Cauliflower	Blumenkohl	Blomkaal	Kalafory
Celery	Sellerie	Selleri	Selery
Corn	Mais	Mais	Kukurydza
Cucumber	Gurken	Agurk	Ogorek
Dill	Dill	Dil	Koper
Egg Plant	Eierpflanze	Aegplante	Gruszka milosna
Endive, Curled	Endievien	Endivie	Endywia
Fennel	Fenchel	Fennikel	Koper
Horehound	Andorn	Groenkaal	Marubium
Kale	Blatterkohl	Kaalrabi	Solanka
Kohl Rabi	Knollkohl	Lavendel	Kalarepa
Lavender	Lavendel	Purre	Lawenda
Leek	Porree, Lauch	Salat	Pory
Lettuce	Lattich, Kopfsalat	Merian	Salata
Marjoram	Majoran	Melon	Majeranek
Melon	Melone	Vandmelon	Melon
Melon, Water	Wasser-Melone	Blomkarse	Melon, wodny
Nasturtium	Kaupciner Kresse	Hibiskus	Nasturcya
Okra	Ocher	Roedloeg	Glinka biatozotta
Onion	Zwiebel	Persille	Celuga
Parsley	Petersilie	Pastinak	Pietruszka
Parsnips	Pastinake	Erter	Pasternak
Peas	Erbsen	Spansk Peber	Groch
Pepper	Pfeffer	Graeskar	Pierprz
Pumpkin	Melonen-Kurbiss	Reddik	Bania
Radish	Radies	Rosmarin	Rzodkiew
Rosemary	Rosmarin	Roe	Rozmaryn
Ruta Baga	Kohlrube, Wurcken		
Sage	Salbei	Salvie	Szaliwija
Salsify	Haferwurz	Haverod	Jarzynwva ostryga
Summer Savoy	Bohnenkraut	Sar	Caber ogrodowy
Spinach	Spinat	Spinat	Szipinak
Squash	Kurbiss	Squash-graeskar	Miekurz
Swiss Chard	Beisskohl	Blad bede	
Thyme	Thymian	Timian	Macierzanka
Tomato	Liebesapfel	Tomat	Pomidor
Turnip	Weisse-Rube	Turnips	Rzepa, brukiew

-:- INDEX -:-

	Page		Page
Alfalfa	34	Lettuce	12
Amber Cane	34	Mangel Wurtzel	5
Asparagus	3	Millet	41-42
Barley	39	Muskmelons	13
Beans	3-4	Oats	40
Beets	4-5	Okra	14
Bromus Inermus	36	Onions	14-15
Buckwheat	38	Onion Sets	15
Bulbs and Plants	24-25	Parsley	17
Cabbage	5-6	Parsnips	17
Carrots	7-8	Peas (Field)	42
Cauliflower	6	Peas (Garden)	15-16
Celery	8	Peppers	17
Celeriac	8	Potatoes	42
Citrons	14	Pumpkins	18
Clovers	35-36	Radishes	18-19
Corn (Field)	32-33	Rape	39
Corn (Pop)	9	Red Top	37
Corn (Sweet)	9	Rye	40
Cut Flowers	26-27	Rat Corn	44
Cucumbers	9-10	Salsify	20
Egg Plant .. i.	11	Slender Wheat Grass	36
Endive	11	Speltz	39
Flax	40	Spinach	20
Flower Seeds	27-31	Squash	20
Herbs	24	Sudan Grass	37
Garden Tools	45-46	Sunflower	20-21
Gourds	11	Timothy	38
Kale	11	Tomatoes	21-22
Kentuck Blue Grass	37	Turnips and Rutabaga	22
Kohl Rabi	11	Vegetable Plants	24
Lawn Grass	23	Watermelons	13
Leek	13	Wheat	41

From your Aster seed last year I had the largest and loveliest Asters I ever saw. They were grand.
Michigan, N. D. (Signed) Mrs. A. C. GRELL.

I find your seed stock is about as well acclimated as any I can get. Have been offered stock at a nearer point but at a higher price and I believe your stock is as good.
Simms, Mont (Signed) JOHN A. GRUE.

**ORDER SHEET FOR
"THE SEED YOU NEED"**

Garden, Flower and Field Seeds—Plants and Bulbs



Northern Seed Co.

Valley City, N. D.

		AMOUNT ENCLOSED	
Name		\$	Cts.
Post Office	State	P. O. Order	
County		Exp. Order	
R. F. D.	Box	Draft	
Nearest Station	R. R.	Cash	
State how we shall ship—Mail, Express, Freight.....		Check	
		Stamps	
		Total	

It is mutually agreed and understood that any seeds ordered of us may be returned upon receipt if not satisfactory, and money paid for them will be refunded, but we do not and can not in any way warrant the stand or the crop, as they depend on so many conditions beyond our control.

NORTHERN SEED CO.

Quantity	ARTICLES WANTED	\$	Cts.

FROM

.....

.....

**PLACE
3 CENT
STAMP
HERE**

NORTHERN SEED CO.,

VALLEY CITY,

NO. DAK.

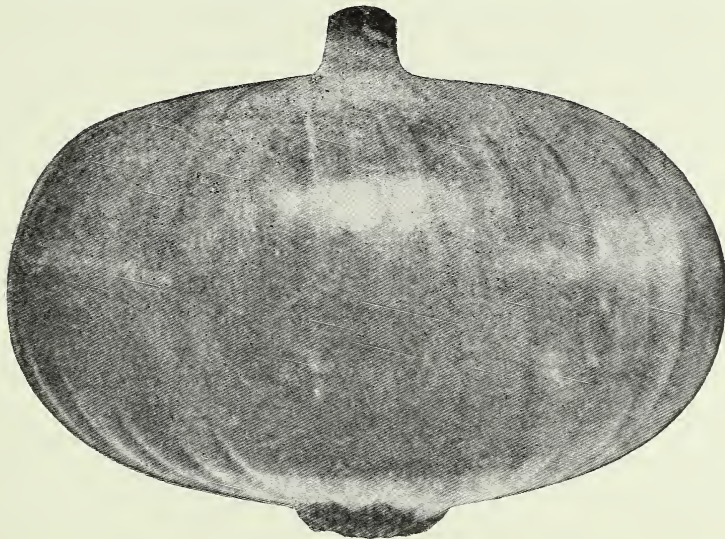


Amount Forwarded

OUR MOTTO—QUALITY OUR BEST ADVERTISEMENT

(Over)

THE NEW EXTRA EARLY RED FLAT ONION



This Onion is especially adapted to North Dakota conditions, and after thoroly trying it out we are placing it upon the market.

**Package, 5c; ounce, 30c; 1-4 pound, \$1.10; 1-2 pound \$2.15
and 1 pound \$4.25. Postpaid**

EXTRA EARLY RED FLAT. About the size of the old Red Wethersfield.
Do not confound this onion with the common Red Flat Onion.

BEANS BEANS BEANS BEANS BEANS BEANS
THEY HELPED TO WIN THE WAR

THE GREAT NORTHERN BEAN

Better yielding, better baking than the old white navy bean.

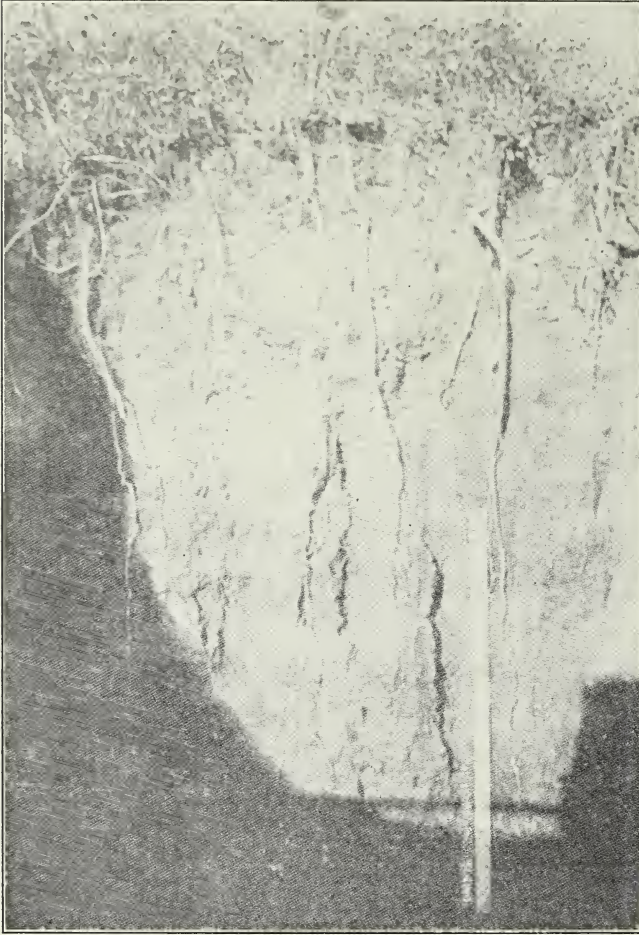
This is a variety which was obtained by careful crossing of the common navy white bean with acclimated varieties of larger yield, It is pure white, kidney shaped, larger than the old navy bean. Has a very pleasant flavor; is exceptionally early and yields heavily.

We have a limited supply of seed grown in Barnes County the past season.

Price: $\frac{1}{4}$ pound 15c; $\frac{1}{2}$ pound 25c; one pound 45c Postpaid. Bushel of 60^{lb} pounds by Freight or Express at purchaser's expense \$12.00



We have a fine stock of Northern Grown Grimm and
Montana grown Northern Brand Alfalfa Seed



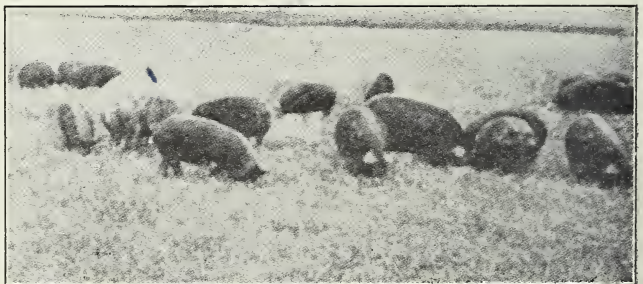
Why should the
Northwestern farm-
ers raise Alfalfa?

Because it is one
of the surest crops
raised upon cultivat-
ed land in this sec-
tion.

Because it is har-
vested and marketed
earlier and easier
than any other culti-
vated crop.

Showing depth roots penetrate the soil. This deep
root system makes Alfalfa better able to withstand
drought than the plants with surface roots

If you do not wish to
make hay of Alfalfa
this is an easy way to
harvest and prepare the
crop for market



PRICE: Northern Brand 30c per pound; Grimm 45c per pound by freight or
express at purchaser's expense.