

Historic, Archive Document

Do not assume content reflects current scientific knowledge, policies, or practices.

12.75

LIBRARY
RECEIVED
AUG 20 1919
U.S. Department of Agriculture

Dahlias

of distinction
for

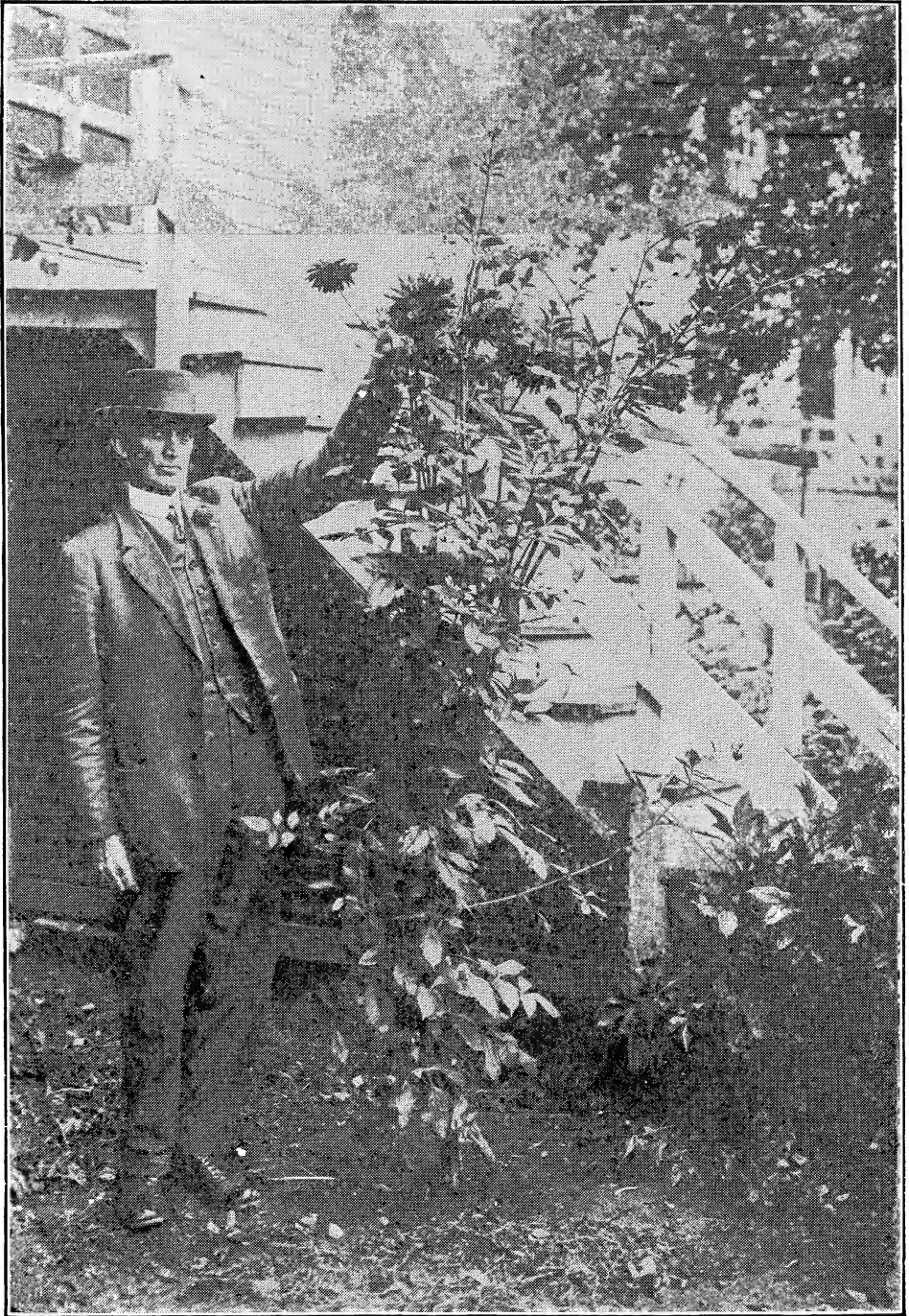
1919



The U.S.A.
Perfect Beauty
my
newest
creations

Grown at
Westerly,
Rhode Island

George L. Stillman
DAHLIA SPECIALIST



THE NEW CACTUS DAHLIA "GEO. L. STILLMAN" AND ITS ORIGINATOR

The accompanying illustration is from a photograph taken to demonstrate what the necessary quantity of water will do for a dahlia in a dry time. After one flower had nearly opened on this plant it appeared to come to a standstill: Buds died, the foliage grew bushy, lacked a lively color, and no more buds appeared. I immediately pulled up a ridge of soil a little away from the plant, forming a reservoir that held two pails of water. The plant was then supplied with four or five ten-quart pails of water every third day until rain came.

When this photo was taken there were seven full flowers, two half open, and nine buds that showed the color of the flower more or less. Three of these flowers measured seven inches in diameter and all the others over five inches. Very few people realize the quantity of water needed to carry a dahlia through a dry period. Not only does a dahlia absorb the moisture, but the dry ground around also draws on the supply.

Dahlias

of distinction for 1919

Describing my own creations,
and standard varieties of all
the different types, classes
and colors of this flower.

*Catalog and
price list for
1919*

George L. Stillman
DAHLIA SPECIALIST
Westerly, Rhode Island

Greetings to Customers, Old and New

WHEN I wrote my greetings to my old and new customers last year, the world was oppressed by dark clouds of militarism, and the fates of nations were hanging in the balance. Peace has at last come to relieve and soothe the tired nerves and minds of all who have been anxiously awaiting the final decision. It is comforting, therefore, to transfer our attention to peaceful pursuits, and enjoy again to the fullest the joy and happiness that is derived from the cultivation and enjoyment of flowers; for flowers recall tender memories, and bring peace to sensitive souls capable of appreciating the infinite possibilities of nature's curatives.

In offering my Dahlias to lovers of flowers this year, I am happy to contribute in a measure to the encouragement of the greater development of Dahlias, and make it possible for enthusiasts to obtain excellent material with which to "carry on" the work of producing better and more Dahlias.

My new original varieties have created great enthusiasm among the many visitors that have visited my gardens the past season. I have received splendid encouragement from the expressions of wonder and approbation at my success in producing such heretofore unobtainable specimens. A private grower expressed himself as follows after seeing my field: "If I had some of your new novelties, I could defeat every other grower in the country. Your exhibits at Dahlia Shows do not begin to do you justice." Many of my customers have exceeded greatly, with my own bulbs, in size and beauty any flowers I have ever grown.

The unbounded successes my customers are having in winning prizes with my stock, is indeed very gratifying to them and to me.

May I call your special attention to the new group of ten for 1919—"The Sea Lions," and especially my new ten-dollar Dahlia for 1919—the U. S. A. It is said that "wonders never cease," and in these new Dahlias one will find some real wonders.

As my new novelties became more plentiful by increased propagation of some of

my new varieties, I have been able to reduce the prices of many of them to such an extent that nearly everyone can be the owner of some of my fine stock. "The Millionaire," which has become so widely known for its mammoth size and exquisite color, has been grown the past season in Massachusetts and California to the enormous size of thirteen inches in diameter. Last year the price for this wonderful bulb was ten dollars. In order to give all Dahlia lovers an opportunity to possess one or more of these bulbs, I have decided to make the price for 1919 two dollars and a half per bulb. It has been possible also for me to reduce the price of the "Indian Family," "Loma Family" and the "Fighting Ten."

It is with genuine appreciation of the patronage of my Dahlia friends that I offer them my new creations for 1919. It shall be my endeavor as usual to give complete satisfaction, and no matter how small or large the purchase may be, I shall be willing at all times to meet the strictest requirements of old and new customers, and to assure them of my permanent interest in the success of their bulbs.

Sincerely,
GEORGE L. STILLMAN.

I make a specialty of disposing of entire stocks of any new or old varieties. An especially attractive price for the whole stock of any variety in this catalog quoted on application.

The beauty of my exhibition in New York in 1918 of my wonderful new original Dahlias so enthused a customer that she gave expression to her mind in the following verse, which I clipped from the New York Sunday Sun of October 27, 1918:

A DAHLIA GARDEN

SUGGESTED BY THE GEO. L. STILLMAN DAHLIA EXHIBIT.

A dahlia garden! Here unfurled
 Smiles, summer's gift to autumn's world—
 A tapestry by magic spun
 From wonder hues of sky and sun!
 Here purple of the jewelled night
 Contrasts with radiance of white—
 A purity like silvered mist
 By haunting light of moonbeam kissed;
 Here tints of twilight and of morn
 With amethyst and rose adorn
 The background of the autumn sky;
 Here sunset's hues of carmine lie;
 And subtly woven through each fold
 Shine heaven's varied gleams of gold.
 A dahlia garden in whose glow
 Reflects a paradise below;
 A tapestry by magic spun
 From wonder hues of sky and sun!
 "SKIP," Sheepshead Bay.

CLASSIFICATION OF DAHLIAS

AS ADOPTED BY THE AMERICAN DAHLIA SOCIETY

Cactus Dahlias. a. True, fluted type: Flowers fully double; floral rays (petals) long, narrow, incurved or twisted, with sharp, divided, or fluted points and with revolute (rolled back) margins, forming, in the outer florets, a more or less perfect tube for more than half the length of the ray.

b. Hybrid cactus or semi-cactus type: Flowers fully double; floral rays short as compared with previous type, broad, flat, recurved or twisted, not sharply pointed except when tips are divided (staghorn), margins only slightly revolute, and tubes of outer florets, if any, less than half the length of the ray.

Decorative Dahlias. Double flowers, full to centre in early season, flat rather than ball-shaped, with broad, flat, somewhat loosely arranged floral rays with broad points or rounded tips which are straight or decurved (turned down or back), not incurved, and with margins revolute if rolled at all.

Ball-Shaped, Double Dahlias. a. Show type: Double flowers, globular or ball-shaped rather than broad or flat, full to centre, showing regular spiral arrangement of florets; floral rays more or less quilled or with markedly involute margins and rounded tips.

(The class called Fancy Dahlias is not recognized separately in this classification, but is included in the sub-section A.)

b. Hybrid show, giant show or colossal type: Flowers fully double, broadly hemispherical to flatly globular in form, loosely

built so spiral arrangement of florets is not immediately evident; floral rays broad, heavy, cupped or quilled, with rounded tips and involute margins.

c. Pompon type: Shape and color may be same as A or B; but must be **under two inches in diameter.**

Pæony-Flowered, or "Art" Dahlias. Semi-double flowers with open centre, the inner floral rays being usually curled or twisted, the other or outer petals being either flat or more or less irregular.

Duplex Dahlias. Semi-double flowers, with centre almost exposed on opening of bud, with petals in more than one row, more than 12, long and flat, or broad and rounded, not noticeably twisted or curled. Many so-called Pæony-flowered Dahlias belong here.

Single Dahlias. Open centred Dahlias, small to very large, with 8 to 12 floral rays, more or less in one circle, margins often decurved (turned down or back). There are no distinctions as to colors. The type embraces the large Twentieth Century, as well as small English varieties.

Collarlette Dahlias. Single type: Open centred blossoms with not more than 9 floral rays with one or more smaller rays, usually of a different color, from heart of each ray floret, making a collar about the disc.

Anemone-Flowered Dahlias. Flowers with one row of large floral rays like single Dahlias, but with each disc flower producing small, tubular petals.

GENERAL INSTRUCTIONS

IT IS IMPORTANT THAT YOU READ THESE CAREFULLY!

First of All.—Send me your order as soon as you receive my catalogue, as the demand for some varieties often exceeds the supply, and those who order early are less liable to disappointment than if they waited till the rush at the time of planting. ORDER bulbs sent *early* to avoid disappointment. Kindly order by *name* and not by number.

If you do not want to spare all of the money to send with the order, send the order along, together with one quarter of the amount as a guarantee of good faith, and the balance can be remitted when you receive notice that your order is ready to ship.

Customers who are not personally known to me will be notified when to remit the amount of their bill.

Bulbs are shipped as soon after April 1st as convenient, unless otherwise specified.

When sending orders use the Order Blank furnished with this catalogue. Any number of additional Order Blanks may be had upon application. When filling out the Order Blank, be sure to fill out the Second Choice columns as well as the First Choice.

It is well to mention the varieties that you are willing to have substituted in case some of those selected are all sold out. Or, if requested, I will select such varieties as will substitute to best advantage. Otherwise, money sent for such bulbs will be returned to the sender.

Size of Bulbs.—Some varieties of Dahlias always produce very small bulbs (or tubers), while other varieties make large ones. So do not consider small bulbs as worthless, for they are equally as good as large ones.

I Guarantee Every Bulb I Sell.—The utmost care is always exercised in selecting every bulb I send out, and every one is believed to have at least one good sprouting eye that will produce a good plant under proper care.

Do not hesitate about ordering Dahlia Bulbs on account of distance, for they go safely by mail or express to any part of the world.

Bulbs to be replaced after June 1st will be booked for shipment the next season only, and in all cases the bulb to be replaced must be returned.

I guarantee all bulbs to be true to name and sure to grow at the time they are sent out, but **I cannot guarantee** bulbs to grow if kept in a dry place a long time before planting. **UNPACK IMMEDIATELY UPON RECEIPT.**

The best way to send money is by registered letter, money order or express order.

Do not hesitate to send small orders. An order for one bulb will be as carefully filled as an order for one thousand.

Terms.—Cash invariably in advance, or C. O. D. On all retail orders fully paid for in advance I will repay carriage to any part of the United States. This does not apply to special offers.

ATTENTION.—Orders taken in the fall not fully paid for, will be sent C. O. D., unless previous arrangement has been made.

All bulbs not fully paid for will be sent C. O. D., unless other terms have been agreed upon.

Do not delay ordering until the time to plant, as many varieties may be sold out before that time. **ORDER EARLY.**

If bulbs are received before it is convenient to plant them, they should be covered with moist earth until planted.

I use the utmost care to prevent errors in labeling and packing, but if an error does occur, kindly notify me, that it may be rectified immediately.

Address all orders and communications to George L. Stillman, Dahlia Specialist, Westerly, Rhode Island. **Important.** It is essential that you use my initial "L," as there are several Geo. Stillmans in town.

LOCATION OF GARDENS

No. 1—25 Granite Street (Residence).
No. 2—Stillholme (Farm), Ashaway Road.
No. 3—Main field, Beach Street, opposite Cemetery on car line.

No. 4—20 Newton Ave. Office and shipping dept.

Please bear in mind that orders are booked in rotation and packed for shipment at time specified or as near as possible.

POINTERS ON GROWING DAHLIAS

There are always some people who do not succeed in growing Dahlias with their first season's experience, and are naturally very much disappointed. To those I wish to say that it is not due to a fault of mine or of the bulbs, but is due wholly to your method of cultivation, kind of soil, or weather conditions. A glance through the hundreds of letters I receive from pleased, enthusiastic people who purchase their stock from me is positive proof that my stock is without fault. Exercise a little patience and a whole lot of good common sense, and you will grow as nice Dahlias as any one.

The Right Kind of Soil.—The kind of soil for Dahlias is a light loam or a stony knoll or side hill.

It is very essential that the soil has good drainage. A rich soil is all right if it has good drainage. Heavy solid ground will produce an abundance of foliage and few and inferior blossoms.

It should be borne in mind that the poorer the soil, the more fertilizer it requires; and the lighter the soil, the more water it needs. See directions for watering elsewhere. It is a very unwise thing to advise no fertilizer in growing Dahlias, especially in the Eastern States. As a rule nothing will grow without sufficient nourishment. Heavy soil is usually quite rich and when lightened as directed elsewhere, will not need as much fertilizing as weak, light soil.

Heavy Soil.—If your soil is heavy with a clay sub-soil, it should be lightened with coal ashes or sand. If coal ashes are used, the coarser that they are, the better, the main object being to make the soil light, more porous, and to give it a good drainage. I have seen Dahlias grown to perfection on a spot where the soil was nearly clear coal ashes.

In applying coal ashes they should be plowed, or spaded in, broad cast, 10 to 18 inches deep, and not dumped in one spot where the Dahlia is planted. One part coal ashes, or sand, and one part soil will not lighten it any too much. This will give a better drainage and allow the sun to act on the soil to a greater depth.

Ashes from either hard or soft coal will do, but on *very heavy* soil those from soft coal are preferable, being much coarser. Both kinds mixed together are also desirable.

Watering.—Watering is one of the most essential things in producing perfect blooms on your Dahlias. 90 per cent. of the failures in growing Dahlias is due to lack of water when the hot days of summer come. Did you ever notice that the stalk of the Dahlia is about all water except the outside shell, and that where sufficient water is supplied the hole in the centre of the main stalk is nearly full of water?

The Dahlia, as soon as it begins to bloom, will absorb the moisture from the soil for a distance of two or three feet. For example: Dig down deeply amid the roots of a Dahlia and then again about 4 or 5 feet from the

plant and observe the difference. The dry, hot days come earlier some years than others, but usually when the buds begin to open it is time to begin watering.

The best method of doing this is to make a basin-shaped mound of earth around the plant, about two feet in diameter, and into this basin turn three or four water pails full of water as often as every three or four days. Fertilizer is used to obtain size, water to make richness of color and perfection. Try it.

Planting.—The ground should be plowed or spaded to a depth of 8 to 10 inches. Make the drill to receive the bulb, 12 to 16 inches long, and 6 inches deep, and about 6 inches wide. Lay the bulb down flat in the drill and then apply the fertilizer on both sides of the bulb, 4 to 6 inches from the bulb. If pulverized Sheep Manure is used, about one pint to one quart is usually sufficient to each bulb according to the strength of the soil.

It is very desirable to plow in a quantity of stable manure broadcast. If this cannot be obtained readily any kind of animal fertilizer mixed with the soil, before planting, will be very beneficial. Always stick the stake in the ground before covering the bulb and thus avoid piercing any part of the bulb.

On the inside of the back cover page is a partial view of one of my fields containing over four acres of Dahlias. This picture alone should convince the most skeptical that they can grow Dahlias successfully.

Fertilizer for Dahlias

I receive numerous inquiries every year as to the best fertilizer for Dahlias and where it can be obtained.

From My Own Personal Experience. I find that manure from sheep stable is the best for Dahlias, and in order to make it convenient for my customers to obtain this kind of fertilizer, I procure a supply direct from the stockyards. It is absolutely pure and thoroughly kiln-dried and pulverized, and all germs of grass or weeds are destroyed in the process. It is put up perfectly dry in 100-pound bags, which is the most convenient form for shipping and handling. It is so dry that it is nearly odorless and easily handled. Price for the Sheep Manure, \$2.75 per bag.

A TALK FOR THE BEGINNER

A FEW THINGS THAT SHOULD BE CONSIDERED

Do not expect to grow as large flowers as an expert the first year that you try Dahlias, for with any flower you need some experience as well as instruction in order to have great success.

One of my customers said that he had no luck with Dahlias, until he read my catalogue. There he found the very information that he needed, viz: **How to lighten the soil and render it porous.**

If you have a heavy growth of plants and no flowers it is an indication of too heavy soil, or the same result will be en-

countered on some dry, rich land. In the latter case water is what is needed and in great abundance, say three or four pails of water three times a week to each plant, with some liquid fertilizer once a week.

Notice that after a heavy rainfall Dahlias take on new life and the flowers are fuller in the centre and more brilliant in color.

All the Dahlias described in this catalogue as to color and shape are described to the best of my ability, but I do not guarantee them to fully meet the ideas of all purchasers in regard to color shadings.

NEVER STAND THE BULB ON END WHEN PLANTING

The best method of planting in the field is to make the distance between every other row 3 and 5 feet respectively, thus affording a passageway on one side of each row after the plant will become large and fill the 3-foot space. 2½ to 3 feet apart in the row according to the nature of the plant is about the right distance when 3- and 5-foot spaces are used. Do not plant near trees or shrubs, as tree roots will take the strength of the soil from the Dahlia. In the open by themselves is the best place. Avoid the south side of a large building where the sun is extremely hot without a good circulation of air, for the flowers will burn on the back before fully open.

For early flowering they may be planted any time after May 1st or as soon as all danger from frost is passed.

Some people have an idea that the larger the bulb the better the plant it will make, but this is not the case. A small bulb is just as good as, and in many cases better than, a large one.

The Clumps should be divided about the time that you are to plant in the spring. At this time you can readily see where the sprouts are and with the use of a knife the head of the clump can be split through between the sprouts, or eyes, taking whatever bulb, or bulbs, would come off with one sprout. One sprout is always better than more. If the sprouts are over 2 inches long when you plant the bulb it is better to cut them off a half-inch from the bulb and a new sprout will come and make a better one than the slender one that grew in the cellar.

Care of the Plants.—Keep the ground well cultivated and free from weeds. A frequent stirring of the surface is very beneficial. An application of some standard fertilizer raked into the surface of the soil

around the plant two or three times during the season will be very helpful to the development of the flowers.

Never leave more than one or two stalks in a hill. You will have better plants and larger flowers if you will allow only one sprout to grow.

When the buds begin to open, a dressing of liquid fertilizer around the plants, several times in a season, will also be beneficial.

Stakes may be used to advantage to prevent plants from breaking down.

Disbudding.—The proper way to disbud the plants is as follows: If the first, or crown bud, appears to be weak or defective cut it off.

Then when flowers appear on branches, cut them for decorative purposes, below one or two joints, thus removing with the flower whatever buds and foliage may be there. The flowers and foliage cut thus, give a better effect for whatever purpose they are to be used. This method is a good invigorator for the plant and at the same time does all the disbudding required on the majority of Dahlias.

Remember, if bulbs are received before you are ready to plant them, cover them with moist earth to keep them from drying up.

Care of the Bulbs in Winter.—After the frost has killed the foliage, lift the clumps with a spade fork and allow them to dry in the sun about half a day. They should then be stored in a place free from frost. If an old-style cellar without cement bottom or heat, they need not be covered, but if cemented and heated by furnace, they should be covered with papers and cloth to keep the air from them and thus prevent too much shriveling.

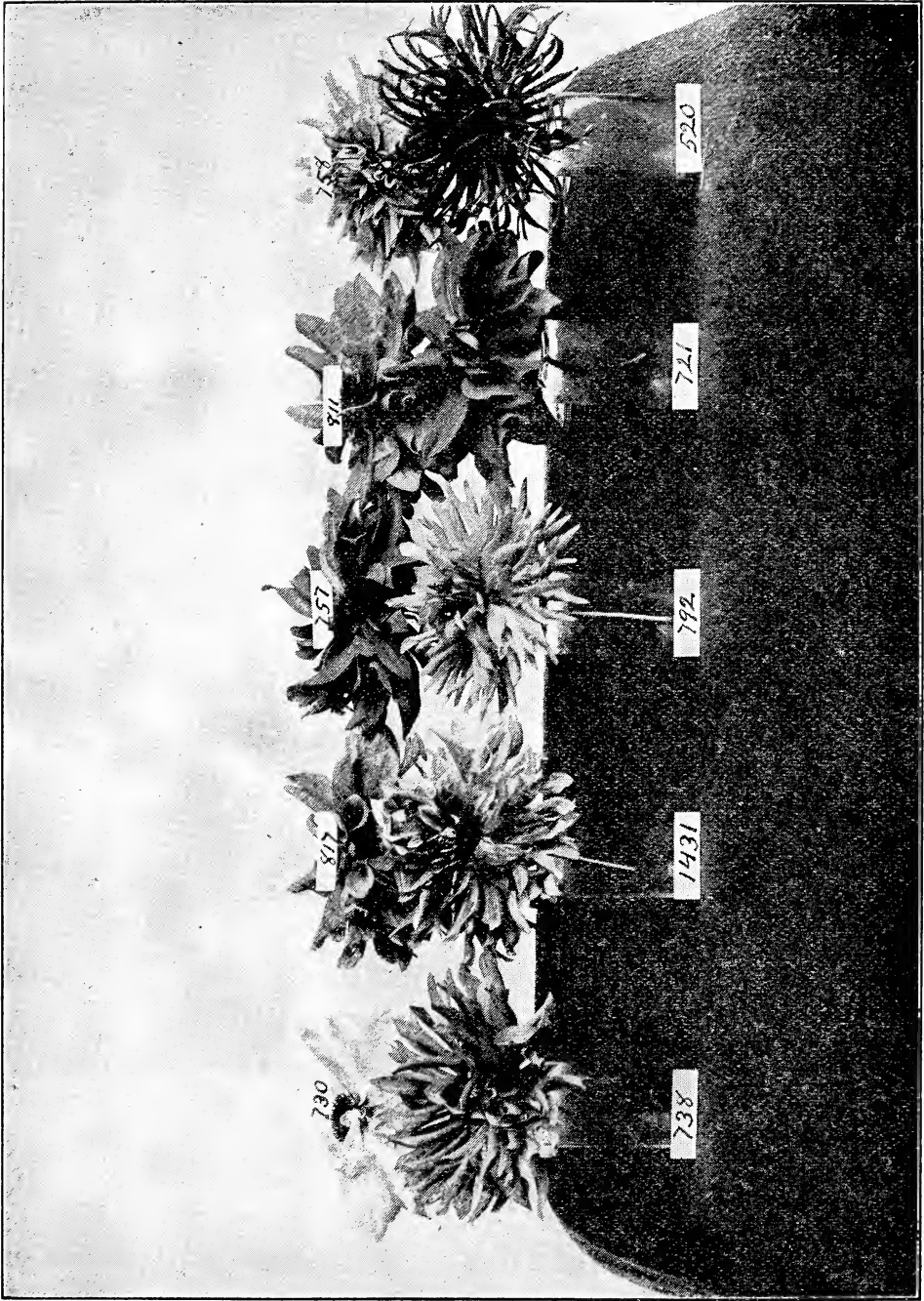


**THE U. S. A.
THE DAHLIA OF THE DAY**

In the wonderful new decorative Dahlia, "The U. S. A.," I have succeeded in bringing out some of the most important and desirable features that the flower lovers of the United States are pleased with; viz., color, formation, and size. The color of this exquisite, new mammoth Dahlia is a deep orange. That very unusual color so hard to get in a Dahlia. It beats everything for color that has ever yet been developed. The formation, too, as well as the color is so unique and novel that to attempt to describe it accurately would be an impossibility. To fully realize the magnificence of this new creation in the Dahlia family for which I placed the price at the very moderate sum of \$10.00, a person should see the flower itself. It is a very free blooming Dahlia. Therefore by growing it to the one flower system its size and beauty has no bounds. The U. S. A. is bound to win its way into the hearts of all Dahlia lovers.

Price for field-grown bulbs **\$10.00** each.

Notice: To those to whom the price of \$10.00 may seem exorbitant they should know that it is said that at one time in Europe new varieties of Dahlias sold as high as \$500.00 each.



NEW GROUP FOR 1919. TEN SEA LIONS

THE TEN SEA LIONS

THE GROUP OF WONDERS FOR 1919.

The "Ten Sea Lions" comprise ten of the most magnificent Dahlias imaginable. They are selected from my new creations for 1919, none of which have ever been offered to the public before. This group of ten new Dahlias possess the most gorgeous new colors that Dahlias could be composed of. If you want the latest and best, buy the "Ten Sea Lions." No description on paper can fully describe the beauty of these flowers.

Adriatic, No. 792. The color of this large, cactus Dahlia is a clear, bright, canary yellow. It is an immense flower and that shade of canary yellow most desired. The plants make a low growth and the beautiful flowers are very showy and attractive.
Price, \$5.00.

Aquitana, No. 758. The color of this gorgeous, new cactus Dahlia is a beautiful salmon pink. The flowers are very large and are borne on long stems with scant foliage, making it most desirable for cutting.
Price, \$5.00

Arlanza, No. 520. Style cactus. The color is a bright medium carmine. The petals are very small and wire-like and stand up and incurve in a beautiful manner. A very peculiar feature of the flower is that each petal has a hair-like red and white long petal at its base. An extremely fine, large cactus Dahlia.
Price, \$5.00.

Empress of Asia, No. 721. A wonderfully large, fine pæony-flowered Dahlia. The color is a deep old gold with a strikingly bronze effect. This is another of those colors so desirable and hard to get in a Dahlia. A flower of exquisite beauty.
Price, \$5.00.

Lapland, No. 730. Pure, glistening white is this noble flower. The petals are broad and good formation. It is a free blooming variety and has fine stems for cutting. If you want a beautiful white, buy a Lapland.
Price, \$5.00.

Mauretania, No. 738. This magnificent, big, new cactus pæony Dahlia is simply a wonder in size, shape, and color. It is a

light golden mandarin, or on the light orange order. It is quite a tall growing plant and the flowers are produced in abundance. A very showy, attractive Dahlia.
Price, \$5.00.

Medina, No. 757. This pæony-flowered Dahlia possesses one of the most striking colors that a Dahlia could possess. A *golden orange*. The flower is not as large as some of the other "Sea Lions," but the color is magnificent and desirable. It has good stems for cutting and is a very valuable member of the "Sea Lion" family.
Price, \$5.00.

Olympic, No. 817. This gigantic pæony-flowered Dahlia is very hard to describe as to color. It is on the order of old rose, but there are so many colors somewhat resembling this shade that it cannot be stated with accuracy. But to say the color is most beautiful, is putting it mildly. It is a huge flower and perfectly formed.
Price, \$5.00.

Orvieto, No. 1431. A very large, well-formed pæony-flowered Dahlia of a deep pinkish color with heavy veins of yellow running through petals which are shaded quite heavily at the base with canary yellow.
Price, \$5.00.

Rochambeau, No. 811. A very bright, deep canary yellow of immense size and fine form. The Rochambeau is the tallest plant in the "Sea Lion" family, and would make a fine background in any Dahlia garden. It is a very free flowering plant and makes a fine showing above the other members of the group.
Price, \$5.00.

Price of the whole "Sea Lion" Group.....\$45.00.

November 4, 1918.—A lady in San Francisco, Calif., writes: "I won first prize at the Palace Hotel Dahlia Show this Fall for largest flower in the Show with a wonderful blossom of your famous 'The Millionaire.' It measured 11½ inches across and 5½ inches deep with a good upright stem. You will feel proud to know that I also received first prize with your *monster*

Dahlia for largest bloom at the Pacific Coast Land and Industrial Exhibition Dahlia Show at Oakland, Calif. 'The Billionaire,' which I planted late, did not bloom in time for these shows. But when it did bloom it was wonderful. It made the Dahlias around it look like pigmies. Have you any more such large ones? I thank you for giving us such 'wonder' Dahlias."

SUPERB NEW DAHLIAS

ORIGINATED BY GEO. L. STILLMAN

The Following Are a Few of the Magnificent New Cactus, Paeony-Flowered, Decorative, Show, Semi-Paeony, Single, and Collarette Dahlias Which I have Recently Originated and I Am Now Offering For Sale to the Public. I Want to Say Right Here That This List Comprises the Best Lot of Original New Dahlias That Have Ever Been Introduced By Any One Person in This Country

CACTUS

GEORGE L. STILLMAN, No. 67. The color of this beautiful new Dahlia is a very rich velvety light maroon. The form of the flower is of a true cactus type and of an exceedingly large size, often measuring 8½ inches in diameter. The flowers are borne on long stiff stems, some measuring as long as 30 inches. Then the great length of stalks between the joints render it a most unusual Dahlia for decorations in large vases. This new Dahlia has won prizes wherever exhibited and also won the admiration of all who have seen it at the many places where the flower has been shown. One grower reports that he had one flower of this Dahlia that measured 11 inches in diameter. An idea of the beautiful shade of this Dahlia can only be gained by seeing it. As the originator of this monster Dahlia I am proud to give it my own name, with the assurance that it will win for itself a place at the head of the Cactus Dahlia family. It is an exceedingly stout, high-growing plant and should have an abundance of fertilizer and an immense quantity of water, which will amply repay one in gorgeous, beautiful flowers; a lack of which will sometimes cause an inferior flower with open centre. The New York daily papers, in commenting on this Dahlia as shown at the Dahlia Show of the American Dahlia Society in New York City, said: "The new hybrid type of Cactus Dahlia was well exemplified by Mr. Stillman's velvety crimson novelty named after himself, George L. Stillman. It is an immense flower, very full and rich. It might well be taken as the standard of American Cactus Dahlias."

This Dahlia also won the silver cup at the National Dahlia Society's Show in Portland, Oregon, for the best red Cactus Dahlia.

Price for field-grown bulbs, \$3.00 each.

Big Surprise, No. 632. Bright canary yellow. Petals long, nicely rolled and slightly twisting at points. An immense large flower and extra good for cutting.

Price, \$3.00.

Bull Moose, No. 338. Hybrid Cactus. Color of outer petals a beautiful shade of pinkish yellow. Petals slim and quite plentiful. Centre petals changing to canary yellow. A good flower with long stems. Large size, and a fine specimen. Free bloomer.

Price, \$3.00.

Capt. John Smith, No. 624. Color, deep shade of carmine. Petals long and closely rolled backward. A most beautiful Dahlia of bright color and form.

Price, \$3.00.

Christy Hoxie, No. 1436. Color, pale pink. Good formed flower on good stems.

Price, \$1.50

Caroline Laffield, No. 1427. Hybrid Cactus. A beautiful, large, light, canary yellow Cactus. Very large and full, measuring 7½ inches in diameter. Extra fine. Good length of stem. A splendid specimen.

Price, \$2.50.

Clawfish, No. 430. Deep carmine. Good size flower and a finely formed Cactus.

Price, 50c.

Cuba Ward, No. 640. Medium carmine. Petals broad and sharp pointed and lightly tipped yellow and slightly yellow at base. A beautiful flower and most attractive.

Price, \$3.00.

E. P. Thompson, No. 505. Light velvety cardinal. Petals small and rolling. Large flower and extra fine form.

Price, \$2.50.

F. Earl James, No. 242. Color, deep mottled cerise pink. This flower is very large and finely formed, of Hybrid Cactus type. Petals are very curly and twisted and some turn backward. The whole flower is most beautiful and makes an exceedingly pleasing effect.

Price, \$5.00.

F. L. Deery, No. 306. A Dahlia made up of numerous, finely formed, pointed petals of Cactus type. It is a lovely lavender pink blotched through the fine petals and in some instances tiny spots of the coloring appear like the head of a pin. The pale lavender is clearer at very tips. Yellow shows very slightly at centre. A fine

size. The long, stout stems hold the Dahlia very erect. Price, \$2.50.

Mae James, No. 179. Hybrid Cactus. Light cerise. Tips of petals clouded white. Extremely beautiful. Reverse side of petals are nearly white clouded cerise. Very attractive flower. Price, \$2.00.

Mary Sefton Thomas, No. 509. Canary yellow. Petals broad and pointed. Very heavy flower of a beautiful shade and shape. Large size and good stems. Very attractive. Price, \$2.00.

Mastodon, No. 822. Color, bright medium carmine. Petals slim and very twisting, standing in an upright and somewhat clawshaped position. Extra large Cactus Dahlia of good form. Price, \$5.00.

Mt. Shasta, No. 268. Hybrid Cactus. Very light shell pink with slightly deeper shadings of pink through the petals. A

faint tinge of yellow shows toward centre. Petals, long, slim, and rolled at points. An extra fine, full, deep flower and enormous size. This flower when grown to perfection is simply a wonder in size, shape, and color. Stands very erect on good, stout stems. Price, \$2.50.

Queen Josephine, No. 519. A handsome Cactus Dahlia of light butter yellow shaded to light pink at points. Petals are quite incurved. A good sized flower and very attractive. Price, 50c.

Rosa Bonheur, No. 669. Hybrid Cactus. Dark scarlet. Petals quite broadened out and rolled to a point at tips. Price, \$1.00.

The Perfect Jewell, No. 628. Deep velvety carmine. Each petal slightly tipped white. Petals clouded white. A very unusual beautiful flower and very low plant. Price, \$3.00.

**MY MOST IMPORTANT CREATIONS FOR 1918
THE FIGHTING TEN**

The following ten wonderful, new Dahlias which I have succeeded in originating by my own experimental process were offered for sale the first time for 1918 and the stock of these varieties is very limited. They have produced most gorgeous flowers the past season on my trial grounds. To say they are wonderful in size, shape, and coloring is indeed a mild statement. To own the *Fighting Ten* is to own a prize. Every bulb is guaranteed.

Unfortunately it becomes necessary to substitute another Dahlia for two of the *Fighting Ten*; or any other Dahlia of same price can be chosen in place of the one specified as a substitute.

Gen. Bell, No. 802. Pæony. Pure, glistening white. Petals numerous; very long and quite slim, curly and twisting. A beauty beyond description, and an enormous flower on extra long stems. Price, \$3.00.

Gen. Cadorna, No. 643. Pæony. A bright, deep yellow with a heavy shading of pink on reverse side of petals. Petals quite slim and very twisting and curly. A monster flower and is the wonder and admiration of all. Price, \$3.00.

Substitute Thos. Galvin for Gen. Edwards.

Gen. Edwards, No. 621. Pæony. A golden salmon. Petals long, quite slim and twisting with tips shaded pink. A very striking flower aside from its beautiful color shadings. Price, \$3.00.

Gen. Haig, No. 585. Decorative. A beautiful shade of peach pink, slightly clouded yellow at base of petals. A very odd and nice color and a wonderfully formed, large flower. Price, \$3.00.

Gen. Joffre, No. 638. Decorative. A light canary yellow. Petals long, broad and tapering to a point. A very deep, heavy flower of enormous size. It is a monster yet is most beautifully formed. Price, \$3.00.

Substitute Queen Esther for Gen. Mann.

Gen. Mann, No. 578. Decorative. Light Du Barry. Petals rolled and twisted at point. Color much resembles Queen Esther. A fine noble flower of immense size. Price, \$3.00.

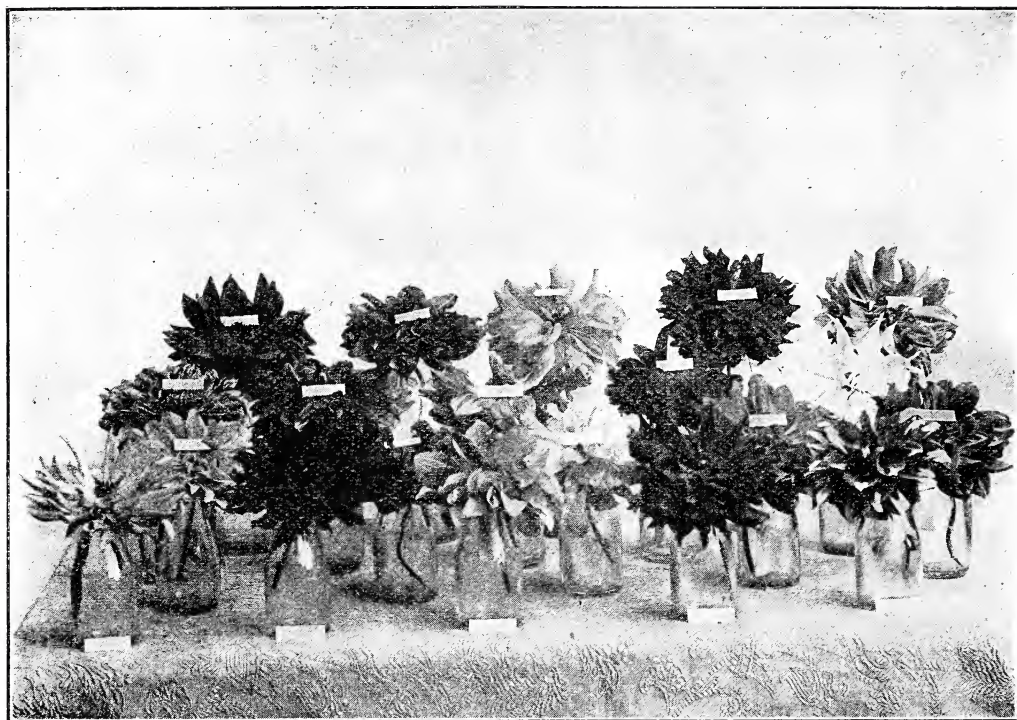
Gen. Maurice, No. 639. Pæony. Intensely bright scarlet. The brightest mammoth scarlet Dahlia in existence. The petals are quite broad, long and pointed. The yellow disc is very bright and attractive. Price, \$3.00.

Gen. Pershing, No. 617. Cactus. A beautiful bright shade of light carmine. A very full, heavy, deep flower with long, heavy stems. Some stems measured 24 in. long. The whole flower is much superior to the Kalif. Price, \$3.00.

Gen. Petain, No. 647. Pæony. Butter yellow. Petals rolled back slightly lengthwise and twisting. This flower is another of the wonders in my collection of original Dahlias. Price, \$3.00.

Gen. Scott, No. 567. Pæony. Lavender pink, a beautiful clear shade, strong on the pink. Petals heavily clouded yellow about one third their length from the centre. An unusually attractive color. Petals twist and curl as a true pæony shape. A monster flower. Price, \$3.00.

The Whole Group.....\$27.00



THE INDIAN FAMILY

NEW PÆONY-FLOWERED DAHLIAS

ORIGINATED BY GEO. L. STILLMAN

THE INDIAN FAMILY

A Most Wonderful Set of 20 Pæony-Flowered Dahlias

These superb, new, giant pæony-flowered Dahlias were originated by myself through very careful experimental processes with the largest and most superb colored Dahlias in existence. I have given them a thorough trial and find them to possess the most artistic and unusual colors ever seen in Dahlias. There are no two alike in the group, and all have fine stems for cutting.

You should own the whole "Indian Family." The stock is limited, and the person lucky enough to own the entire "Indian Family" will have a most beautiful and complete set of new pæony-flowered Dahlias obtainable.

Substitute for three of the Indian Family as follows, or select some other Dahlia of same price.

Black Hawk, No. 54. Deep velvety maroon. The darkest flower in the Indian family. The colorings are extremely rich and the flowers are large. The petals are broad and twisted to a point at tips. Is an extra free bloomer. Price, **\$1.00.**

Substitute Lady Helen for Canonchet.

Canonchet, No. 66. An entirely new color shading on a grayish salmon. Petals are long and rolled to a point at tips. Slightly incurving. Small petals curled up around the yellow centre in very unique manner. This is a large flower and the long petals are dotted with slightly deeper small blotches of pink and suffused with a pale gold which glistens faintly. Price, **\$1.00.**

Canonicus, No. 1036. Beautiful dark cerise. A very unusual shade and no other Dahlia like it in shape and size has ever been produced. A large full flower. Price, **\$1.00.**

Massasoit, No. 1021. Variegated. This flower is very showy and attractive. Petals being a dark maroon heavily tipped with white give the flower the appearance of being about one third white and two thirds maroon shade. Not as large a flower as some of the other pæonies, but very attractive. Price, **\$1.00.**

Substitute Thos. Galvin for Miantonomi.

Miantonomi, No. 1022. Deep amber buff with a tint of salmon pink. An entirely

new and most desirable color for the Dahlia. This new and attractive color has been the admiration of all who have seen it. Many years of careful experimenting were required in producing this unusual shade. It attracts the eye of everybody.

Price, \$3.00.

Minnehaha, No. 78. Light red. This is an extra large, heavy, full flower with broad petals which are slightly pointed and twisted at tips. The plant grows quite high and being a very free bloomer is one of the most showy Dahlias of the "Indian Family."

Price, \$1.00.

Minnewawa, No. 76. Bright cerise red. Base of petals yellow with white disk around the centre. Balance of petals heavily clouded and tipped white. Very striking combination of colorings.

Price, \$1.00.

Misquamicut, No. 1115. Golden yellow slightly tinged with pink. A very large full flower with very broad petals, and very desirable color.

Price, \$1.00.

Narragansett, No. 1033. Rich shade of dark scarlet. This flower should be seen in order to be appreciated. It is large, finely formed, and a very full flower. It blooms very freely and has been a general favorite wherever exhibited.

Price, \$1.00.

Ninigret, No. 151. Rich dark red, clouded and striped much lighter. The petals taper abruptly to a sharp point which is twisted in a very attractive manner. A full, heavy flower of unusual quality.

Price, \$1.00.

Nokomis, No. 1112. Variegated yellow. The base of the flower is white and canary yellow mixed together. Heavily striped and speckled with dark red. A very striking large flower. The plants are of a low growth and flowers stand high above the foliage.

Price, \$1.00.

Substitute Kenneth Loma for Osceola.

Osceola, No. 39. Very light canary yellow. An enormous flower and beautifully formed. The most delicate shade of light yellow imaginable. This is a very free blooming Dahlia and should be seen to be appreciated.

Price, \$3.00.

Pocahontas, No. 69. Light cream yellow. This flower is very large with flat broad petals except in the center. Petals are flushed and veined deep pink, possessing some of the colorings of the Geisha. A very free bloomer and in every way desirable.

Price, \$1.00.

Powhatan, No. 101. Dark crushed strawberry. This very large flower is another of unusually fine shading. While it has the colorings of the crushed strawberry, it also possesses a light tint of lavender and the free-blooming qualities.

Price, \$1.00.

Queen Esther, No. 103. Color—"Du Barry," that dazzling new shade of red. An enormous, large, full flower and a beautiful rich color. The small twisting florets in the centre of this flower give it a most unique appearance. A wonderfully free blooming Dahlia.

Price, \$3.00.

Red Cloud, No. 84. Rich deep carmine. This is a large full flower of a solid color and is borne in abundance on a plant of high growth.

Price, \$1.00.

Samoset, No. 1007-1. Light yellow. Some of the petals of this flower are slightly shaded with pink, while the whole flower is full and of the true peony type. Small curly petals on the face of this flower give it a very desirable effect. A very free blooming variety.

Price, \$1.00.

Squanto, No. 102. The color of this Dahlia is hard to describe on paper. It is of a reddish violet, growing more red at the base of petals. The flower is large and makes a very showy plant by its free-blooming qualities.

Price, \$1.00.

Uncas, No. 147. Pure white. A beautiful pure white somewhat resembling South Pole, but petals more curly and twisted. A very unique shaped, free-blooming Dahlia, and exceptionally desirable.

Price, \$1.00.

Wadawannock, No. 1034. Light coral. This is a large flower with broad, flat petals and with just enough twisting, curling petals in the centre to give it a nice peony effect. This is an entirely new shade and one of those very effective and desirable colors seldom seen in the Dahlia.

Price, \$1.00.

Price of the above, one each of the whole set.....\$25.00

The Largest Dahlia in the World



“THE MILLIONAIRE”

The Millionaire won first prize at the California Dahlia Show in 1918, and was the largest Dahlia in Show, measuring the enormous size of 13 inches in diameter. A gentleman in Boston, Mass., also grew one of these monster flowers to 13 inches in diameter.

NEW DECORATIVE DAHLIAS ORIGINATED BY GEO. L. STILLMAN

THE MILLIONAIRE, No. 1420. A monster Dahlia. This remarkably large, newly originated Dahlia of the Decorative type is certainly a wonderful production. The shade cannot be surpassed in daintiness of colorings in the most delicate of lavender with a faint pink cast overshadowing it. The depth of this flower and the number of large, finely shaped petals in its formation has never been equaled in any Dahlia. The fullness of the centre of this flower is very remarkable, as the immediate centre of this flower, when it is perfectly matured, is a pure white and the flower can be preserved until all of the lavender petals wither away and the whole flower becomes white. Another very unusual feature of this Dahlia is that the immense heavy-flower stands erect on its stems.

One plant of the Millionaire that stood near my residence in a sheltered place had on it, Oct. 28th, four fully opened flowers, thirteen buds showing color and ten smaller buds.

See what others think of this wonderful flower. A lady in Greenwich, Conn., wrote that the Millionaire was as perfect a flower as could be produced. The Millionaire took the first prize at the big Dahlia Show at the Palace Hotel, San Francisco, Calif., for the best individual flower in the Show. The largest Dahlia grower in Seattle said that the Millionaire and Mt. Shasta were the most beautiful flowers in his garden. A gentleman in Mystic, Conn., wrote that he had cut his first bloom and it measured $7\frac{1}{2}$ in. in diameter. It certainly was a beautiful flower.

I was awarded a Gold Medal on "The Millionaire," by the Rhode Island Horticultural Society. Guaranteed bulbs.

Take Notice. I have succeeded in increasing my stock of this mammoth Dahlia to such an extent that I have decided to give everyone of my customers a chance to obtain this most wonderful Dahlia ever produced at the very low price of \$2.50 each.

Baby Mae, No. 700. This unique flower is a beautiful shade of lavender pink changing to a lighter shade in centre. It is nearly a duplicate in color to the Millionaire, but much smaller in size.

Price, \$2.00.

Beacon Light, No. 591. White changing to a beautiful cream at base of petals. A most clear, beautiful flower. Fine for cutting. The formation of this flower together with the color is most desirable.

Price, \$3.00.

Black Beauty, No. 534. Nearly black. Medium sized flower larger than Eng. Blk. Prince.

Price, 75c.

Bolton, No. 1424. Golden amber. Flowers good size and odd color. Good length of stem.

Price, 50c.

Bonny Best, No. 577. Very light cream and shaded darker at base. Petals, broad and serrated at tips. A most beautiful, clean color and a good sized flower on heavy stems.

Price, \$1.00.

Butter Cup, No. 553. Butter yellow, overcast with a pink shading. A very free bloomer on long stems. A beautiful flower for cutting and a magnificent, large Dahlia.

Price, \$3.00.

Chas. Martel, No. 536. Color, canary. Extra fine Dahlia.

Price, 50c.

Clara Annette, No. 731. The color of this Dahlia is a rich, medium shade of carmine red. Each petal is slightly veined yellow and slightly tipped yellow. It is a fine flower in every respect and should be in every Dahlia garden.

Price, \$5.00.

Daniel Webster, No. 566. Deep blush rose pink. A very odd and striking color. Petals are quite slim and tapering to fine points, also have a rolled and twisting appearance. The outer edge of each petal is bordered with a much lighter shade.

Price, \$2.00.

David Garrick, No. 592. Rich purple magenta, outer petals shading lighter at tips. Petals are curled and twisted in a beautiful manner. One of the best Decoratives this year. A large flower.

Price, \$2.00.

Dorothy Hubbard, No. 605. Old Gold. Reverse side of petals heavily shaded pink. Petals rolled forward and twisted showing the reverse side of petals. A beautifully formed flower and good color. Very large.

Price, \$3.00.

Douglas Fairbanks, No. 442. Crushed strawberry shaded to yellow at base.

Price, \$2.00.

E. J. Pease, No. 1428. Fire red. Slight veins of yellow running lengthwise through petals giving the flower a prominent striped appearance.

Price, \$2.00.

Geneva, No. 598. About 8 petals first stand out erect and roll backward and of a cerise shade. The centre of the flower stands out like a narcissus giving it the appearance of a mammoth narcissus, the centre unfolds and is a dark velvety maroon.

Price, \$2.00.

Giant Geyser, No. 1393. Dark velvety carmine. A beautiful, large, full flower. The largest Dahlia in the Decorative family

of this beautiful shade. A wonderful flower and the color is simply magnificent.

Price, **\$3.00.**

Gladys L., No. 1018. Rich, soft shade of light magenta. A very heavy, deep flower on long stems. Each petal is deeply serrated at tips. One of the finest Decoratives.

Price, **50c.**

John Drew, No. 581. A very light pink, while the reverse side of the petal is darker pink. This is an elegant, large, full flower and should be seen to be appreciated.

Price, **\$3.00.**

King Arthur, No. 307. A rich garnet red, solid color. This flower when beginning to bloom somewhat resembles a narcissus, as the outer petals open usually about a day before the others begin to unfold. It is of large size and a beautiful decorative shape with extra good stems. For richness of coloring this Dahlia is seldom equaled.

Price, **\$1.50.**

Lady Helen, No. 217. A beautiful decorative Dahlia as distinctly new in quality and excellence as in origin; standing erect on long stems with finely formed and curled petals spreading out, making a diameter varying from $7\frac{1}{2}$ to $8\frac{1}{2}$ inches. It is a striking and beautifully toned pink in the main body coloring, with slight veins of white, almost cream, running through the petals. Prominent cream tips make a decidedly new and altogether forcible addition to the whole flower. The Dahlia should be seen to be fully appreciated, for words of pen cannot do it justice. A profuse bloomer.

Price, **\$3.00.**

Lady Retta, No. 417. Beautiful light pink with a very noticeable lavender tint. Fine stiff stems.

Price, **\$1.00.**

Lieut. Joe, No. 800. Color, light carmine. Petals stand up and twist to a sharp point. Stem 12 to 14 inches.

Price, **\$1.50.**

Little Dear, No. 803. The color of this Dahlia is a beautiful pink with an over-cast of lavender. The petals of the flower are quite slim and curled and almost pointed. This is a very low growing plant. The quantity of beautiful pink flowers standing well above the foliage truly make it a Little Dear. Thus far with me none of these plants have grown over two feet high, but the flowers are large and produce freely. Everyone should have a Little Dear.

Price, **\$3.00.**

Mabel Normand, No. 1005. Very light canary yellow. A nice clean colored flower on good stems.

Price, **\$1.00.**

Madame Etta, No. 1430. Very dark lavender pink. Petals long, slim, rolled and twisted. A very full, large flower. Good length of stem. A nice specimen, and very desirable.

Price, **\$2.00.**

Marcelline, No. 1353. Pure glistening white. Petals wide and curled, twisted in various shapes. Very long stems. Good sized flowers.

Price, **\$1.00.**

Marcus, No. 744. This flower is so dark in color that it could be rightfully called black. The petals are broad and flat. When it begins to bloom it somewhat resembles a giant narcissus. It is very attractive, especially the color. It is one of the darkest and most desirable decorative Dahlias.

Price, **\$1.00.**

Marietta Stanley, No. 1449. Light red heavily shaded, or clouded, salmon at outer ends of back petals. Good sized flower. Base of petals clouded yellow. Good length of stem.

Price, **50c.**

Millbank, No. 305. Light lavender, shaded darker at tips. A beautiful shade and a fine flower for cutting.

Price, **25c.**

Mongolian, No. 1092. Very dark maroon. Nearly black. Medium sized flower and a very free flowering Dahlia.

Price, **20c.**

Oweenee, No. 1117. Variegated cerise and white. This flower is of very delicate coloring, petals being fine and very numerous. They are splashed and clouded with light cerise and white. One of those very desirable light shades.

Price, **\$1.00.**

Peculiarity, No. 740. The color of this Dahlia is a light purple, or might be termed a violet shade. This is a heavily built-up flower. In shape much resembles a hybrid show Dahlia, and its formation when grown to perfection is certainly a peculiar one; as each petal has at its base a small mite of a petal resembling the collar in a collarette Dahlia. These small petals are about the same shade of the main flower and are usually striped with white. This is the only Dahlia that has come to my notice of such peculiar formation. When this Dahlia is grown to perfection these small collarette petals are produced in profusion, but under unfavorable circumstances the small petals do not show prominently. The name of this Dahlia is rightly applied; it is certainly peculiar.

Price, **\$5.00.**

Perfect Beauty, No. 582. Bright light scarlet. Outer ends of petals heavily tipped white. The colors are divided about equally, half red and half white. A most beautiful flower of very large size. One of the most attractive flowers imaginable.

Price, **\$5.00.**

Plato, No. 799. Color, salmon red. A nice colored flower and about same shape as Mrs. Roosevelt. On fine, long stiff stems for cutting. A very profuse bloomer. Price, \$1.00.

Pride of the West, No. 518. Golden apricot. A very full, desirable colored flower. Good size on long stems. Very attractive. Price, \$1.50.

Richest of All, No. 690. A beautiful light velvety and rich blood red at tip of petals, with a much lighter pink of reddish hue through remainder of petals growing lighter nearer centre. A striking novelty blending from the lightest shade of red, almost pink, to blood red at tips. Good size, nicely formed petals. Darker shade of rich, blood red runs down through centre. Flowers stand erect on long, stout stems. Price, \$5.00.

Splendor, No. 1432. Color, salmon shaded to yellow at base. A fine nice flower. Fine long stems, and erect flowers. Price, \$3.00.

W. J. Kennedy, No. 742. Color, light canary yellow, reverse side of petals are of a pinkish shade. The petals are rolled to a sharp point and somewhat twisting. It is a beautifully formed and a very full flower; also has very attractive formation of petals somewhat resembling a Cactus Dahlia. Price, \$3.00.

World's Wonder, No. 550. Color, golden salmon. Low plant and an early bloomer. This is a very large, deep, full flower with almost a never disappearing centre. The keeping qualities of this flower are very unusual and it is borne on very long, stiff stems. A profuse bloomer. Price, \$5.00.

THE LOMA FAMILY

ORIGINATED BY GEO. L. STILLMAN

THE WONDERFUL MULTIFLOROUS DAHLIA GROUP

This group of twenty new Dahlias was originated by me in 1915 and was offered to the public for the first time for 1917. They were selected from the very choicest of that year's origin. Each group of ten comprises entirely different forms, colors, and types, and there are no two in the whole family that even resemble each other. To own this whole family is to possess a prize.

Substitute for two of the sisters and also two of the brothers of the Loma Family as follows, or choose some other Dahlia of equal value.

THE TEN SISTERS OF THE LOMA FAMILY

Substitute Queen Esther for Adelaide Loma.

Adelaide Loma, No. 457. This is a narrow, long petaled Pæony-flowered Dahlia of a dark, velvety carmine, almost maroon. A good, full flower. Backs of petals streaked red and white, which shows on face as petals curl. A splendid size with erect appearance on stout stems. A beautiful and striking combination of rich coloring. Price, \$3.00.

Substitute Samoset for Dorothy Palma.

Dorothy Palma, No. 441. A Pæony-flowered Dahlia of the faintest greenish yellow, almost white, with points of petals clear white. A lovely fluffy specimen with curly petals, and with the petals rolled together twisting about the centre uniquely. Very good size on real long stems. Price, \$1.00.

Edna Rollins, No. 1460. Pæony-flowered Dahlia blotched with old rose. Streaks of yellow near centre and slightly through petals. Light blotches of dull yellow mingle faintly with the dull rose. Numerous small curly petals around centre of flower. Good size on long stems. Price, \$1.00.

Esther Du Barry, No. 489. A beautiful, clear, velvety cardinal with long, slimly rolled petals, nice Pæony type, which twist and curl beautifully at points. Numerous small petals around central disc. Extra long, stiff stems which hold the flowers very erect. Price, \$3.00.

Evelyn Loma, No. 448. A fluffy white Pæony-flowered Dahlia with long, slim pointed petals, curled and rolled in a pleasing manner. The very base of petals is slightly shaded yellow. A fine, large specimen erect on extra long stems. Price, \$1.00.

Frances Lane, No. 322. Pretty light, velvety lavender red Pæony-flowered Dahlia with pale lavender which streaks down through the main petal. Petals broad and flat with tips slightly curled. A pleasing, striking specimen. Erect on good stems. A noticeable circle of canary yellow surrounds the pollen disc. Price, \$1.00.

Hazel Van Allen, No. 1498. A lovely reddish magenta of the Decorative type, slightly shading cerise, and clouded at base of petals lighter. A full, large flower with

narrow, nicely formed petals. Erect on long, strong stems. Price, **\$1.00.**

Janet Cross, No. 432. A finely pointed Cactus type of a lovely shade of very rich salmon pink, almost clear save for a very few faint yellow petals in the centre, which are finely bordered with pink. A large size Cactus on good stems. A fine specimen. Unusual long, stiff stems often measuring 16 inches. Price, **\$1.00.**

Ruth Van Fleet, No. 1451. Clear light canary yellow. This is without doubt the

All of the ten sisters.....**\$15.00**

finest yellow Cactus Dahlia ever introduced. The stems are extra long, often measuring 16 inches. The flowers are extremely large measuring from 6 to 8½ inches in diameter and are held perfectly erect on its stiff, long stems. Hybrid Cactus. It should be seen to be appreciated. Price, **\$3.00.**

Vivian Jacoy, No. 1450. A mingling of white and light cerise, streaked and blotched through entire petals of a Pæony type. Petals toward centre curl very pleasingly. An odd and pretty specimen on long stems, and a good sized flower. Price, **\$1.00.**

THE TEN BROTHERS OF THE LOMA FAMILY

Alan Loma, No. 459. A pure waxy white Pæony-flowered Dahlia with large, broad, flat petals. Very prominent yellow pollen disc with a few small curling petals around it. A large, heavy flower. Certainly a splendid specimen. Very erect on long, stout stems. Price, **\$1.00.**

Alfred Loma, No. 504. A dark velvety cardinal of Hybrid Cactus type. Some of the petals curl giving a slightly lighter shading at points. This too stands erect on extra long, strong stems, and a large sized flower. Tall plants. Petals rolled up at points closely resembling its parent flower the "Geo. L. Stillman." A fine Dahlia. Price, **\$1.00.**

Substitute Sister Jane for Eugene Loma.

Eugene Loma, No. 418. A light canary yellow to the centre of this fluffy Pæony-flowered Dahlia. The shading runs lighter toward points and the very faintest of pink shows on sides and back of petals. Petals slim and rolled to a cup, twisted and curled around the centre in a very peculiar manner. A very unusual flower. Erect on good stems. Price, **\$1.00.**

Forest Loma, No. 468. Deep cerise pink Pæony-flowered Dahlia, blotched and streaked canary yellow, with yellow at centre. Petals are finely formed and numerous and curled at points. Very large and another erect specimen on good stems. Price, **\$1.00.**

Substitute Los Angeles for Harry Loma.

Harry Loma, No. 438. A pretty pink Pæony-flowered, streaked artistically with white and with a faint bluish cast at tips, giving a lavender hue. A full flower with very curly petals in centre. Another specimen with extra long stems. Petals long, slim, numerous, and sharply pointed. Price, **\$1.00.**

Kenneth Loma, No. 422. A lovely, clear, light canary yellow, or lemon shading makes this a fine specimen in its family. It is of the Decorative style, standing very erect on good, strong stems, and a very large flower. Nice fluffy petals slightly curled. A gorgeous flower and unusually fine clean color. Price, **\$3.00.**

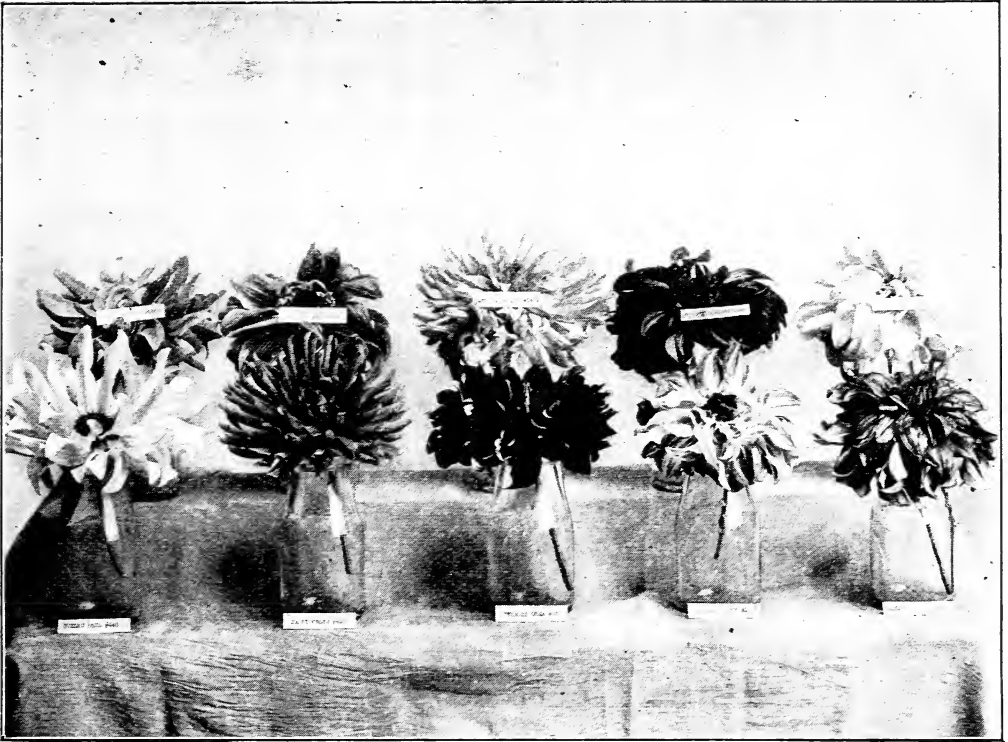
Phillip Loma, No. 447. A beautiful large Pæony-flowered Dahlia of a rich, soft, velvety, deep carmine. Large curled petals make it very pleasing. Numerous smaller curled petals are about centre in a unique manner. Fine strong stems. Price, **\$3.00.**

Robert Loma, No. 490. Golden amber shaded slightly with salmon pink, pink showing more on backs of petals, of full Pæony type. Good size with long stems. This is one of the new attractive colors so desirable in the flower garden. Price, **\$1.00.**

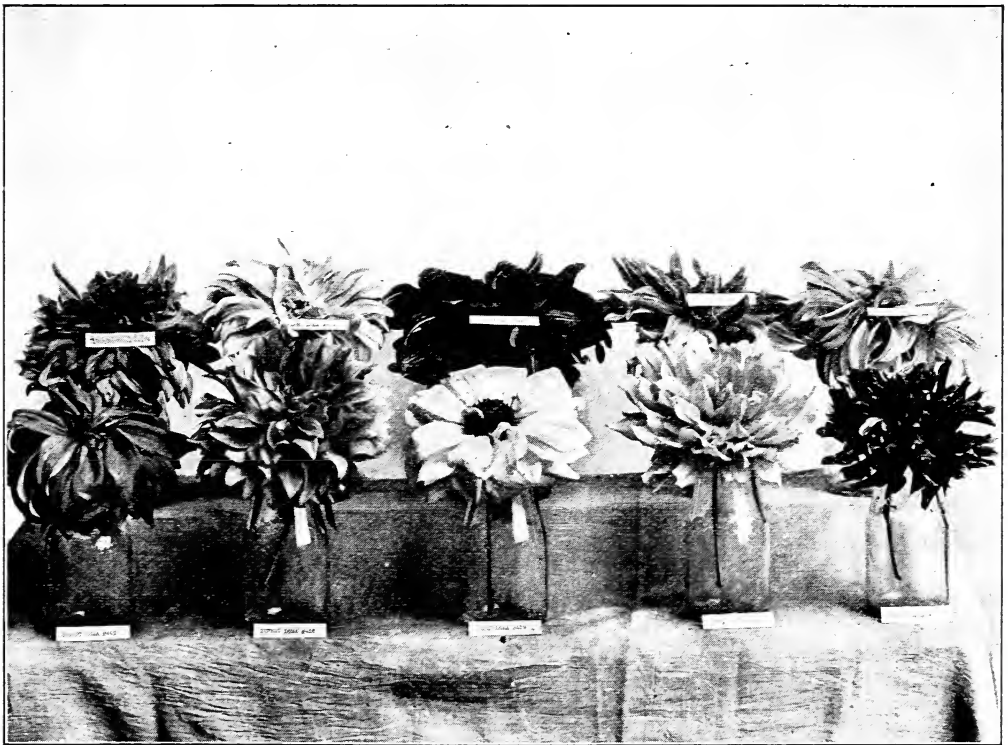
Rupert Loma, No. 456. A dull, old rose shading runs predominantly through the petals of this Dahlia, while a noticeable amount of lavender touches many of the petals' tips. It bears the appearance of being streaked lighter and darker shades of the rose and lavender. Difficult to describe. It has a very full blossom of perfect form, of Decorative type. Good size, standing boldly on its long, stout stems. This Dahlia's foliage is beautiful and scant in appearance, with long, jointed stalks. Price, **\$3.00.**

Stephen Loma, No. 1370. A very pleasing dark magenta of Pæony-flowered type. Very full toward centre with slim, nicely formed petals. Extra large size, with stout stems. Price, **\$1.00.**

All of the ten brothers.....**\$15.00**
The Whole "Loma Family".....**\$25.00**



THE TEN SISTERS OF THE "LOMA FAMILY"



THE TEN BROTHERS OF THE "LOMA FAMILY"

ADDITIONAL NEW PÆONY-FLOWERED DAHLIAS

ORIGINATED BY GEO. L. STILLMAN.

The following new Pæony-flowered Dahlias were all recently originated by me after the most expensive and exhaustive experimental trials.

My original "New Dahlias" can truthfully be termed the best and most wonderful collection of elegant mammoth Dahlias in America.

The whole lot is made up of the most unusual gorgeous colors ever brought out in Dahlias.

"The Billionaire," No. 552. Pæony-flowered. Another monster Dahlia for 1919 to class-up with the "Millionaire" which I introduced last year. The color is a beautiful shade of golden orange. Though the Billionaire is an entirely different style of flower it is fully equal to the Millionaire in its own family. It is simply a wonderful production. The color is wonderful, the size is wonderful, the shape is wonderful, the stems are wonderful, and the plant itself is wonderful. The plant making a low growth and the flowers being of an immense size, produced on extra long stems, and being a profuse bloomer gives the plant a most beautiful appearance and makes it surely a wonder. It should occupy a place in your garden. Price, **\$5.00.**

Acquinas, No. 94. Cardinal. Large flower with a tint of white and yellow at base. A beautiful bright color. Price, **50c.**

Adele, No. 1416. Beautiful canary yellow. Petals broad, slightly twisting. Numerous small, curly petals around centre. Very good specimen and very free bloomer. Price, **25c.**

Ad. Dewey, No. 413. Crushed strawberry. Canary yellow at base, slightly clouded through centre yellow. Tips yellow. A very large, full flower on very long stems measuring at times 16 inches. Price, **\$1.00.**

Alice Day, No. 812. Clear, light canary yellow. Petals are quite broad and twist and curl in various ways, making it a very attractive flower. Price, **\$1.50.**

Allbea, No. 92. Rich phlox. Very heavily clouded white at base of petals. Veins of white running through petals. Price, **25c.**

Alys L., No. 804. The color of this Dahlia is very unique. The outer half of the petals are white, clouded pink, while the lower half is a delicate canary yellow. The backs of petals are light pink bordered with yellow and white. Numerous curly petals around the centre make it a delicately formed flower. Price, **\$3.00.**

Amber Queen, No. 1120. Golden am-

ber. Flowers are of good size and with quite broad, flat petals. A most desirable Dahlia of fine form. Price, **35c.**

Anna Favor, No. 1342. Clear canary yellow. Flowers good size and good stems and a free bloomer. Price, **35c.**

Anna Katherine, No. 1458. Very light lavender pink. Centre of petals shaded to canary yellow with a few curly petals around the centre. A very delicate and lovely flower. Price, **\$1.00.**

Annie Laurie, No. 60. Deep cerise. Petals slightly veined and clouded white. White at base of petals. A medium sized flower of a beautiful color and borne on long stems above the foliage. Price, **\$1.00.**

Ansel Bourn, No. 354. Light lemon yellow shading to white at tips. A large flower and a very desirable color. Price, **50c.**

Artemus Ward, No. 257. Very deep pink cerise, veined and clouded with white. Each petal slightly tipped white. Stems good length and good size flowers. Price, **75c.**

Attraction, No. 1032. Light coral. A large flower and an entirely new color. A strong, thrifty grower, and one of the best and most attractive Dahlias for cut-flower purposes. Price, **50c.**

Aunt Basha, No. 296. Color, deep velvety maroon. Flowers very full and fluffy. Petals cup and roll the whole length with age. The most dazzling dark maroon flower yet seen. Splendid for cutting with long stems, and a good sized flower. Price, **75c.**

Aunt Electa, No. 1084. This new giant Pæony-flowered Dahlia possesses the most beautiful colorings that can be imagined in a Dahlia, being a light cerise and white blended together in such a manner that it makes the color scheme simply wonderful. The flowers are very large and are borne on long stems above the foliage. The plants are medium height, prolific, and have the desirable free-blooming qualities. Price, plants where bulbs cannot be supplied, each, **\$3.00.**

Autumn, No. 1017. Color, clear, light American Beauty. A large full flower with numerous petals which are quite pointed and twisted at tips. A very free bloomer and a most desirable flower. Price, 50c.

Avanella, No. 284. Color, a beautiful shade of pink. A large flower, very full and compact. This Dahlia won first prize for largest flower in the Hartford, Conn., Show. The color and form of this Dahlia is superb. Price, \$2.00.

Bachelor Girl, No. 56. Jaconde, or a shade of light purple. Occasionally the flowers are clouded and veined white. This plant has beautiful foliage and the flowers are an attractive color. Price, 25c.

Betty Dukane, No. 286. Velvety carmine and crimson, streaked and splashed with yellow from base to centre of petals. Reverse side of petals very much lighter. Flower is very full and heavy with long, quite slim petals which are rolled and slightly twisted at points. A very desirable flower with heavy, stiff stems. Price, \$3.00.

Bruce Westfall, No. 249. Deep carmine. Petals broad and pointed, inner ones curled and twisted and some slightly tipped yellow. Medium size but a deep flower on good stems. Price, 50c.

Cinabar, No. 707. The color of this Dahlia is a deep, velvety, rich carmine, with darker and lighter streaks running through the petals. A beautiful flower and of nice formation. Price, 75c.

Clara Lambert, No. 1313. Face of petals purple magenta at points, shading to white at centre and base, resembling Philadelphia, Pæony. Good size. Price, \$1.00.

Claude Montell, No. 805. The color of this Dahlia is light red with the petals tipped yellow and veined yellow. The petals roll backward to a point much resembling Fire Girl. The base of the petals is yellow with numerous small curly ones in centre. Price, \$1.00.

Cora L., No. 289. Color, a beautiful shade of light lavender. One of the most attractive colors for a Dahlia. A large-sized flower of extra fine form. Price, \$1.50.

Coral Beauty, No. 1035. Clear coral. This wonderful new color for a Dahlia attracted the attention of all who visited the garden. The petals of the flower are broad and heavy, and show well above the foliage. Price, 50c.

Cousin Jerry, No. 433. Color, canary yellow. Petals slightly sharpened at points

and curled around centre. A large, beautiful flower. Price, \$1.00.

C. N. Landon, No. 292. Color, old gold or bronzy yellow. A very large flower of a beautiful type. The petals are very long and slim and incurved to a nearly upright position. A most attractive form and color. Price, \$1.00.

Daisy Jencks, No. 481. A beautiful shade of carmine vermilion. Petals broad and slightly cupping. A fine color. Price, \$1.00.

Dana, No. 488. Color, light reddish buff shaded to red at centre. Petals are rolling and curve slightly backward. Price, 75c.

Dante, No. 801. Color, medium carmine. Petals bordered with a light vermilion. A very odd flower. Price, \$3.00.

David Harum, No. 1403. Beautiful shade of scarlet. Large flower and extremely bright. Of good form. Price, 50c.

Dazzler, No. 471. Medium shade of red shaded to canary yellow at base and clouded white at tips. Petals slightly rolled and twisted. Extra good stems for cutting. Price, \$1.00.

Delicacy, No. 153. White, light, cerise pink, clouded and heavily veined. Medium sized flower, but very attractive and desirable. Price, 75c.

Delicate Lady, No. 46. Soft, delicate light cream. This new Dahlia is a beauty. It is of the Cactus-Pæony type and one of the freest flowering Dahlias in my collection. Price, \$1.00.

Donalda, No. 308. A beautiful shade of canary yellow. This is a large flower with long, slim, rolled petals, standing nearly upright. It is wonderfully attractive for the garden or exhibition table. Price, \$2.00.

Dorothy Bernard, No. 264. Deep lavender. A beautiful color and finely shaped petals. Very desirable. Price, \$1.00.

Dorothy Dewy, No. 446. Lemon yellow. Petals heavily shaded and bordered with pink. A very large, exquisitely formed flower and a fine shade. Price, \$2.00.

Dr. Robert Taylor, No. 608. Deep peach pink. Petals long and quite slim, rolled and twisted in various shapes. A most beautiful shade and a very free bloomer on fine stems. Price, \$3.00.

Dudley Palmer, No. 1122. A lovely salmon amber with broad, flat petals,

curled enough to give the flower attraction. The petals are streaked and blended with a deeper shade of salmon, slightly more reddish. Smaller petals streaked in the same manner, are curled about the centre. A very desirable good sized flower erect on strong stems. Price, **\$1.00.**

Early Morn, No. 569. Lavender with a slight clouding of white. Petals slightly yellow at base. A nice shape and a very unusual combination of colors. Large size flower. Price, **\$2.00.**

Eddie Lyons, No. 1304. Lemon centre, rich ruby red with cloudings of white. A very desirable rich colored flower. Price, **\$1.00.**

Edith Bostwick, No. 1396. A pleasing shade of old rose, slightly cast lavender. Medium size and a nice specimen. Price, **\$1.00.**

Ethan Allen, No. 1447. Canary yellow. Petals long, slim and very twisting. A nice Dahlia. Price, **\$1.00.**

Eureka, No. 860. Color, deep pink. Petals long and roll forward. A heavy deep flower of extra good formation. A fine attractive color. Price, **\$1.50.**

Evening Star, No. 250. Color, light fiery red, heavily colored yellow at base of petals. Petals are flat, sharply pointed, and slightly tipped yellow. A medium sized flower, but a beautiful combination of colors and very attractive. Price, **75c.**

Ezra Dalton, No. 149. Light straw, heavily clouded and veined with light red. Price, **\$1.00.**

F. X. Bushman, No. 1348. Pink with shading of yellow running through petals. Petals long and flat and curving backwards. Small, curly petals at centre. Attractive combination of colors. Good size. Price, **50c.**

Firebird, No. 1044. Bright scarlet. Large sized flower of a very desirable color and full form. One of the bright colors that attract every one. Price, **75c.**

Fire Girl, No. 156. Bright scarlet with heavy circle around the centre of bright canary yellow. Petals are rolled and quite slim, sharp pointed and tipped yellow. Very showy and attractive. I was awarded a first-class certificate on this flower at N. Y. Horticultural Dahlia Show. Price, **\$1.00.**

Firestone, No. 370. Bright scarlet and slightly yellow at base of petals. The centre petals are curly and twisting. Price, **50c.**

Ford Sterling, No. 1389. Very light pink with dashes of deep pink. This flower is a most desirable one. Price, **75c.**

Francis B., No. 815. Color, bright, light carmine, solid color. A large deep flower and an attractive one. Price, **\$2.00.**

Freedom, No. 831. Color, deep peach pink. One of those beautiful shades which are so desirable in Dahlias. Of good pæony formation. It has good stiff stems and is a first-class cut flower Dahlia. Price, **\$1.00.**

Friedland, No. 668. Orange, scarlet slightly streaked and clouded yellow. A very showy flower. Lots of small curly petals around centre. Price, **\$1.50.**

Frizzy, No. 261. White and cerise blended together and yellow at base. Petals are of various sizes, small, sharp and twisted in various shapes. Plant is of low growth, medium size flowers, and good length of stem. Price, **25c.**

General Appleton, No. 613. Deep pink, clouded light pink. A large, fine flower of exquisite colorings. Price, **\$3.00.**

General Johnson, No. 36. Velvety cardinal. Some petals have a stripe of yellow running whole length of them. Toward the last of the season the yellow shows more prominently. One of these flowers won second prize in Hartford, Conn., as largest flower in the show. Price, **50c.**

G. H. James, No. 263. Color, light cream with a very waxy appearance, while the reverse side of the petals is clouded cerise. Petals are broad and flat and taper abruptly at ends to a sharp point. This is one of the most unique beauties of the whole Dahlia family. (See outside back cover for three flowers of G. H. James.) Price, **\$1.00.**

Golden Dawn, No. 593. Dull orange buff amber. Petals long and somewhat rolled. The flower is extra large and has a fluffy appearance. Very desirable color. Strongly resembling its parent, the Miantonomi. Price, **\$3.00.**

Golden Sun, No. 798. Color, rich, old gold. The petals of this flower stand up and are slightly rolled. A very showy flower and quite tall growing. Price, **\$2.00.**

Goodyear, No. 1114. Velvety deep cardinal. Medium sized flowers. Very desirable. Petals broad and flat with small twisting petals in centre, giving it the desirable Pæony style. Price, **25c.**

Hannibal, No. 748. Clear, light purple in color. This is really an odd color and

hard to describe. The flower is quite fluffy and very attractive. Price, \$1.00.

Harold Darling, No. 739. The color of this Dahlia is one of those very unusual shades of light orange. The formation of the flower is on the order of a Cactus Pæony, the petals being quite slim and rolled. The color is very unusual and desirable, and together with the formation of the flower it makes one of the most beautiful Dahlias of the Cactus Pæony class. Price, \$3.00.

Harriet Hubbard, No. 366. Deep pink with a slight shade of lavender. Petals rather slim and twisting and curly around centre. The flower is large and one of those most desirable colors for a Dahlia. Price, \$2.00.

Harry Lauder, No. 287. Color, light lemon yellow. Heavy petals and somewhat cupped at the base. A very clean, beautiful shade. Price, 75c.

Harry McCoy, No. 1336. Light, clear, canary yellow. Back of petals very curly at centre and slightly rolled forward. A good shaped Pæony. Long stems. Price, \$1.00.

Helen of Troy, No. 768. Color a beautiful shade of light orange. This flower is not very full, but a first-class Dahlia for cut flowers and a very desirable color. Price, \$2.00.

Henry Clews, No. 410. Golden amber. Petals broad and pointed. Slightly twisted and curled around centre. Three to four rows of petals. Price, \$1.50.

Hobby, No. 1322. Deep lavender pink. Streaks of white whole length of petals, giving the flower a clouded appearance. A beautiful flower. Medium size on good stems. Price, 75c.

Icabod, No. 277. Light cream, heavily clouded cerise. Petals narrow, numerous and very curly and twisted. Price, \$2.00.

Irva Varrelman, No. 816. The color of this beautiful flower is white shaded to a light cream at base of petals. It should be seen to be thoroughly appreciated. The flower is large and the colors are so pure and clean that it cannot fail to please the most critical eye. Flowers are produced very freely and on good stems for cutting. It should be in every Dahlia collection. Price, \$3.00.

Isabelle, No. 1003. Large flower. Petals pinkish red shaded to yellow at base. Petals around centre curled and twisted. Extra long stems. Price, 75c.

J. Austin Shaw, No. 1306. Beautiful Pæony of peach yellow. Each petal heavily veined with two lines of pink. Petals slim and pointed and heavily clouded pink. An attractive flower with extra good stems for cutting. Price, \$1.00.

Jack Dillon, No. 399. Bright cardinal with a large circle of canary yellow around the centre. The petals are slim, very curly, twisting, and very numerous. Very attractive. Price, \$2.00.

Jean Anderson, No. 1118. Salmon buff slightly clouded with deep yellow. The style of this flower is very unique, with its small twisting petals around the centre and the curly features of the large ones. One of the entirely new shades. Price, \$2.00.

Jim Dandy, No. 117. Very rich velvety magenta. Base of petals are yellow and white, forming a circle $1\frac{1}{2}$ inches in diameter. The petals are sharp, pointed, and heavily tipped and veined with white. The brightest combination of colors imaginable. Price, \$1.00.

Jo Fletcher, No. 515. Medium shade red, slightly clouded yellow. Very near a crushed strawberry shade. Very deep flower, good size, on good length of stem. Price, 75c.

John Browning, No. 343. Canary yellow, somewhat lighter at tips. A striking, extra fine and very full flower. Price, \$1.00.

John Churchill, No. 478. Red salmon pink, or nearly peach pink. Petals broad and twisting. A beautiful flower in every way. Price, \$1.00.

John Henri, No. 1121. Light velvety maroon. Petals very numerous and claw-shaped with small curly ones in centre. Cactus Pæony type. A beautiful flower. Price, 35c.

John Wilbur, No. 342. Purple magenta. This is a flower of rather peculiar formation. When beginning to bloom it has the effect of a giant narcissus, and later it makes a fuller flower. Price, 75c.

Josh Billings, No. 254. Purple. Petals flat, points sharp and twisted. Flowers medium size, but good stems. Desirable. Price, 50c.

June, No. 619. Peach pink, clouded and streaked with gold at base of petals. A fine, large flower on long stems. Very graceful for house decoration and a superb color. Price, \$3.00.

King Saul, No. 729. Color, very bright rich carmine, a very heavy, deep flower and

solid color. This is one of the most beautiful shades in red that can be found in the whole Dahlia family. The flower is good size and of nice formation. Price, **\$2.00.**

Kit Carson, No. 444. Deep pink shaded lighter at points. Centre petals beautifully rolled and curled. A large flower. Price, **\$1.50.**

Klondyke, No. 760. Color, reddish apricot shaded to yellow in centre. Centre petals quite curly and good pæony form. Price, **\$1.50.**

Lady Gay, No. 708. Color, medium, light carmine; outer half of petals heavily clouded yellow; veins of yellow and whole length of petals slightly shaded yellow at base. Price, **\$1.50.**

Lady Love, No. 63. Beautiful shade of pink, slightly specked with white. A very striking favorite shade. Flowers are nearly a Cactus Pæony type and make a beautiful cut flower decoration. Price, **50c.**

Leading Lady, No. 107. Back rows of petals are a beautiful light cerise and are tipped and veined white, while the petals of the balance of the flower are tipped cerise and clouded white to the base. A wonderful attractive combination. Price, **50c.**

Los Angeles, No. 245. Color, white heavily clouded cerise. Some of the petals almost white. The flower is large and has broad, flat petals, giving it a very decorative effect. A beauty. Price, **\$1.00.**

Loveliness, No. 51. White with about half of the petals bright cerise. There are heavy veins of white running through the whole length of petals. A most beautiful combination. Price, **\$1.00.**

Lusitania, No. 291. Color, rose pink. The numerous long slim petals are rolled enough to give them a very slim appearance, and stand out, forming large, attractive flowers. Price, **\$1.50.**

Marie Doro, No. 152. Color, light cardinal slightly clouded white at tips. Petals very curly and twisted of an unusual formation. Extra fine stems. Price, **\$1.00.**

Marguerite Clark, No. 248. Color, very light cream on face of petals which are curled and twisted in fine shape. The reverse side of petals is heavily clouded cerise pink, which gives the flower a beautiful variation of colors. Large size. Price, **\$3.00.**

Mark Twain, No. 298. Very light, bright red with heavy circle of yellow

around disc much like Evening Star. Petals pointed and very twisting. A beautiful showy flower. Price, **\$2.00.**

Maroon Leader, No. 124. Deep velvety maroon. Some flowers have lighter shadings on outer edges of petals. A lovely color and fine form. Price, **75c.**

Matchless, No. 828. Color, cardinal shaded to white at base. A fine cut flower Dahlia. Flowers stand erect on good, stiff stems. Price, **\$2.00.**

Maud Tripp, No. 250-D. The color and shape of this Dahlia are both novel. The flower is very large, with long, slim, rolled petals, standing up and incurved in a pleasing manner. The color is a purple lavender with lines of yellow whole length of petals. The flowers vary somewhat in shade. Price, **\$1.50.**

Michael Angelo, No. 1426. Light purple, outer ends of petals deeply clouded white. A square built-up flower on good stems for cutting. An unusual combination of colors. Price, **\$1.50.**

Mina Davis, No. 603. Bright orange, heavily veined and clouded yellow giving the flower a bright orange shade; a very nice, peculiar color. Petals are quite broad, but well shaped. Price, **\$5.00.**

Monte Carlo, No. 850. Color light pink, shaded deeper at centre. A nice large flower, and very attractive. Price, **\$1.00.**

Mozart, No. 622. Deep velvety carmine. Petals very broad and flat and quite pointed with a deep magenta shading. Price, **\$1.00.**

Mrs. A. J. Moulton, No. 610. A beautiful shade of golden orange changing to canary at base of petals. Petals are broad and slightly rolled, giving the flower a fluffy appearance. Reverse side of petals are a red salmon, which shows on the face where the petals are rolled. Price, **\$3.00.**

Mrs. Kate Gray, No. 854. Color, white with a light shade of yellow at base of petals; inner petals roll forward. A nice shaped flower, very curly in center. One of those good Pæony shapes. Price, **\$1.50.**

Mrs. Rockwell, No. 1048. Deep, rich cardinal. A large flower of an unusually rich color. This Dahlia should be seen to be appreciated. The flowers are borne on good stems well above the foliage and are very showy and attractive. Price, **50c.**

Mrs. Stillman, No. 218. Color, a beautiful shade of pink. One of the most exquisite shades of pink in the Dahlia family. The flower is of large size, and is made up

of very long, slim, incurving petals that stand up in a most attractive manner. The color of this Dahlia is pleasing to every one. Price, \$3.00.

Mrs. W. J. Kennedy, No. 790. Color, clear, pure canary yellow. Petals are very numerous and slightly twisting at tips. The numerous, small curled petals in the make-up of this flower are most beautiful. Price, \$3.00.

Nora Belle, No. 18. Very light yellow, heavily clouded cerise. Petals curl backward and very much twisted. Price, \$1.00.

Old Grisley, No. 61. Crushed strawberry, cerise, and yellow blended together about equally, but cerise and strawberry show more prominently. Petals quite slim and somewhat twisted. Price, 50c.

Orange Border, No. 612. Reddish orange, shaded and clouded old gold. One of those very desirable colors. Price, \$2.00.

Pat Nagel, No. 1444. Scarlet cardinal. Base of petals slightly shaded yellow. A heavy flower. Price, 75c.

Philippa, No. 116-2. Color, a golden yellow, veined and clouded red. A very free blooming variety. Price, 25c.

Princess Dagmar, No. 727. In color, this Dahlia is a very rich, deep scarlet, solid color. The flower is an unusually perfectly formed one and would be a prize in any flower garden. Price, \$2.00.

Princess of Patches, No. 1050. Light cardinal, medium sized flowers borne on long stems. Occasionally the flowers show from one to four white petals. Price, 25c.

Priscilla, No. 105. Ground color, dark American Beauty. Large, broad petals with sharp tips. Some of the petals are clouded dark maroon, while other petals are shaded to light cerise at tips. Some are thickly mottled white. Small centre petals are curled and twisted in a unique manner. Price, 25c.

Prosper, No. 754. Color, apricot yellow, shading to light butter yellow at base. Each petal is serrated, forming a three saw-tooth tip. This is a very unusual flower with a very desirable color. Price, 75c.

Rachel, No. 1495. Lavender blue. Medium size flower of unusual color, nearly blue. Price, 50c.

Radiant Charming, No. 161. White heavily clouded deep pink. A beautiful flower for cutting on long stems. Good size. Price, 50c.

Red Bank, No. 80. Color, bright light carmine. Petals heavy and slightly twisted. Extra good. Price, 25c.

Red Rover, No. 172. Dark cardinal. Each petal has the appearance of being thickly striped with a darker shade. Faint stripes of yellow are occasionally seen in this flower and the small curly petals in the centre give it a fine appearance. Price, 35c.

Reinette, No. 358. Magenta and white beautifully blended together. Two heavy veins of white run whole length of petals. Base slightly tinted yellow. Price, 50c.

Richness, No. 159. Dark velvety magenta with veins of lighter shade lengthwise of the petals. A rich color that is very pleasing. Price, 35c.

Robert Hole, No. 483. Orange red shaded and mixed with yellow. Petals broad and slightly curved. A large flower with extra long stems. Price, \$1.00.

Rose Queen, No. 91. Rose and cerise, shading to white in centre and more or less overspread with white. Closely resembles Mad. J. Coissard in color. Price, 50c.

Rosy Morn, No. 796. Color, old rose pink. One of the finest colors in Dahlias. Long stems and flowers stand up, good for cutting. Price, \$2.00.

Ruby Stone, No. 13. Bright velvety magenta. Petals slightly shaded brighter at base and heavily tipped white, making a beautiful combination. Price, \$1.00.

Ruth Thompson, No. 807. The outer half of the petals of this beautiful Dahlia are pure white, while the lower half is heavily clouded canary. Petals are rather slim and twisting. A most delicate, clean flower erect on long stems. Price, \$3.00.

Sachem, No. 000. A new attraction in the Pæony class. A slight touch of bright yellow streaks up from the centre, running into the very dark velvety cerise petals in an effective manner. The very tips have a light bluish cerise cast. The backs of petals are streaked with cerise and bluish white, curling over tips in a pleasing effect. A good sized flower and good bloomer. Price, \$1.00.

Salmon Maid, No. 6. Crushed strawberry and dull salmon. Odd combination of colors. Low bushy plant and very free flowering. Price, 25c.

Sept. Morn, No. 674. Beautiful shade of peach color, slightly tinted pink. Petals broad and twisting. A beautiful combination of colors. Price, \$1.50.

Silverine, No. 93. White clouded and veined pink. Good flower on long stems. Price, **\$1.50.**

Si Perkins, No. 499. This flower presents a brindle appearance. Having a mixture of red and white, also a tint of yellow shows quite prominently. Rather an odd combination of colors, but an attractive flower. Price, **\$1.00.**

Sir Galahad, No. 346. Carmine, heavily blended with bronze yellow. The combination of colors in this flower is very striking. It might well be termed a "Brindle Giant Curio." Price, **\$3.00.**

Sir Walter Raleigh, No. 677. A very bright shade of cerise, clouded and veined with pure white. A very attractive flower. Price, **\$1.50.**

Sir Wm. Wallace, No. 633. Light lemon yellow, slightly clouded pink. Petals long, quite broad and rolled backward to a point at outer end. Flowers are erect on stiff stems. Price, **\$1.50.**

Sister Jane, No. 437. Clear, light canary yellow, good sized flowers, true Pæony style with petals curled and pointed in artistic manner. Splendid, long stiff stems hold it very erect. Price, **\$1.50.**

Solid Gold, No. 865. Color, a nice orange. A good size flower. Very pleasing color for cut flowers. Price, **\$2.00.**

Stillman's Red Cross, No. 1412. Bright deep carmine. Petals quite long and fluffy. Solid color. Large size flower. Fine stems for cutting. Price, **\$1.50.**

Strawberry, No. 79. Crushed strawberry. Fair sized flower and a very unusual color. Centre petals are nicely twisted, giving it a good Pæony shape. Price, **25c.**

Summer, No. 108. Beautiful canary yellow. A large flat flower with broad petals. A fine color and very free flowering. Price, **35c.**

Sunrise, No. 270. Petals light red. Long, twisted at points and in centre. Heavily veined through centre with yellow. Tips of petals yellow. Somewhat resembling Geisha. Stems good length, and medium sized flower. Price, **\$1.00.**

Tango Girl, No. 122. A new shade, blending to brownish orange, or tango and paradise. An extremely and entirely new color and admired by all. Price, **\$1.00.**

Teddy Friebus, No. 285-2. Light scarlet. Petals broad and twisting. Curling and encircling at centre. Price, **75c.**

Telephone, No. 558. Pure salmon. This is one of the most beautiful flowers of the salmon shade. Fine for cut flowers with a few sprays of foliage. Early, free bloomer and a fine Dahlia. Price, **\$3.00.**

Thanatopsis, No. 794. Color, red shaded pink and base of petals yellow. A fine cut flower Dahlia. Price, **\$1.50.**

The Camelion, No. 123. Petals shaded yellow at base. Ruby red in centre fading to dark cerise at tips of petals. The broad flat petals of this large flower with their varied shading make this a most desirable Dahlia. Price, **50c.**

The Gay Boy, No. 682. Light scarlet. Petals twisted and pointed and stand up like a cactus and tipped yellow. Base of petals heavily shaded yellow. A very gay flower on long, upright stems. Price, **\$2.00.**

The Heroine, No. 650. Velvety magenta, heavily veined and clouded light pink. A mammoth flower with an elegant combination of colors. Should be seen to be appreciated. Price, **\$5.00.**

The Pink Lady, No. 30. A lovely shade of clear pink. Flowers are medium size and borne on long stems. A fine cut flower variety. Price, **\$1.00.**

The Royal Mayor, No. 594. Light butter yellow. Petals long, slim and rolled. Lots of smaller petals twisted and curled around centre in a unique form. A large, fine colored flower of unusually fine appearance. Price, **\$3.00.**

Thomy Thompson, No. 239. Color, a shaded golden salmon. A large, beautifully formed flower with long, slim, curly petals. It is a very large, full, deep flower, and of unusual quality. Price, **\$2.00.**

Thos. Galvin, No. 411. Body old gold slightly shaded pink. A deep heavy fluffy flower. Petals broad and long and twisting. The reverse side of petals clouded pink and showing from the front where the petals roll up. A wonderfully fine, mammoth, new Dahlia. Price, **\$3.00.**

Verna Thompson, No. 77. White heavily clouded cerise. This immense, large new Pæony Dahlia is a beauty beyond all doubt. It closely resembles Aunt Electa in color, but somewhat different in shape. A very full deep flower. Price, **\$2.00.**

Waycliffe, No. 1357. Bright cardinal faintly streaked with cerise, giving slight amber shade. Centre of flower yellow. Good size on good stems. Price, **\$1.00.**

Wedgewood, No. 692. A beautiful rose color. Petals broad and sharp pointed. Very desirable. Price, **\$1.00.**

Westerly, No. 752. The color of this beautiful Dahlia, as near as can be described in general terms, is a deep, old rose with peach pink shading, a most unusual color and extremely attractive. The flower is of immense size, and borne on extra long stems. I was awarded first prize on this Dahlia by the Mass. Hort. Society at their Dahlia Show in Boston, in September, where it was admired by everyone.

Price, **\$5.00.**

W. F. Brown, No. 782. Color, yellow, red and deep pink, about equally divided in this beautiful Pæony-flowered Dahlia of various colors. This is a wonderful flower of exquisite formation. The petals are curling and twisting in fine shape and colors present a beautiful combination. It is one of the most free blooming Dahlias in the whole Dahlia family. Price, **\$5.00.**

White Cap, No. 318. Pure white with broad, flat petals of a glittering appearance. This Dahlia is large and possesses qualities of great merit for house decorations, in bunches or vases. Price, **\$1.50.**

White Dove, No. 470. Very pretty pure white Pæony. Petals small and slightly curled giving fluffy appearance. Stems long. Slightly shaded light cream in centre. Very full and unique. Price, **\$1.00.**

White Mammoth, No. 597. Pure white. This is simply a "mammoth" giant and passed for the largest white Dahlia exhibited the past season at any exhibition. The flower is unusually well formed and attracts the eye of everyone who sees it. Price, **\$5.00.**

White Rock, No. 1429. Pure white. Petals long and quite slim like South Pole, curled and twisted somewhat. Small petals around centre. Very good size. Stems good length. Price, **\$1.50.**

W. T. MacFarlane, No. 1456. Bright cardinal, heavily clouded yellow at base of petals. Extra long, stiff stems, and good size. A splendid Dahlia for show and bouquet effects. Very desirable. Price, **\$2.00.**

Wyoming, No. 602. Light pink heavily clouded yellow on lower half of petals. Small curly petals around centre give the flower a fine appearance. Price, **\$1.00.**

I Love Dahlias

Geo. L. Stillman

I grow no flowers except Dahlias and give my whole attention to originating and cultivating the very choicest varieties that can be produced of this most popular flower.

The extent of my business can be imagined by the fact that I have now about 1400 varieties of Dahlias. I run short on many varieties each year and do not offer them for sale until stock has increased to a certain number.

There are no plants that can be grown

entirely in the open that produce as many large and exquisite flowers, and of so many beautiful shades and varied colors, as the Dahlia.

They not only bloom freely, but bloom continually until killed by frost.

Dahlias are especially adapted to landscape gardening, and on large estates, where an endless variety of styles and colors can be grown. For table, house and church decorations Dahlias stand pre-eminent.

NEW DUPLEX OR SEMI-PÆONY FLOWERED DAHLIAS

ORIGINATED BY GEO. L. STILLMAN

This is an entirely new, and much needed, classification for a general favorite type of Dahlia. See Dahlia classification on another page.

These Dahlias are not an extremely large flower, but just the right size for cut-flower decoration, and they possess the most beautiful combination of colors imaginable.

The following are all new varieties of my own origin:

Adelaida, No. 10. Bright cerise red. Petals tipped with yellow and yellow around base with two narrow stripes of yellow through centre. Price, **50c.**

Algoma, No. 1049. Bright garnet. Extra large flowers and a beautiful bright color. Price, **35c.**

Altadena, No. 145. Cerise and white, clouded and mixed together. After the colorings of Mosel. A fine specimen for cutting. Price, **20c.**

Aukum, No. 1073. Light pink. A very good cut flower Dahlia of medium size and with free-blooming qualities. Price, **25c.**

Banner Girl, No. 1481. Color, pure white, clouded yellow at base of petals. Petals rolled back whole length. A nice flower. Price, **\$1.00.**

Belle of the Ball, No. 246. Color a very bright cerise. Petals shaded yellow at base and veined and tipped white. Reverse side of petals nearly white. An unusually fine Dahlia for house decoration. Price, **\$1.00.**

Ben Hur, No. 310. Scarlet with yellow circle around disc. Petals slightly tipped yellow. Two veins of yellow run lengthwise of petals. Price, **\$1.50.**

Bodega, No. 1095. Pure white. A large flower and waxy white. Price, **35c.**

Bulah, No. 1102. White tinted pink. A large flower with occasional striping of lighter pink. Price, **25c.**

Buster Brown, No. 70. Beautiful shade of canary yellow. This is an immense large flower of unusual qualities. The flowers measure 7 to 8 inches in diameter and have heavy, broad petals, slightly streaked with carmine and borne on extra long stems that are very stout. It is simply a wonderful flower. Price, **\$1.00.**

Camille, No. 474. Color, a purple pink. Base of petals shaded yellow and white. Long stiff stems. Nice for cut flowers. Price, **50c.**

Cygnat, No. 818. Color, very deep purple, of god size. The color of this flower is much to be desired. It is borne on good stems, making it a fine cut flower Dahlia with a rather unusual color. Price, **\$1.00.**

Erebus, No. 645. Pink and white

clouded together. A good, large flower and beautiful color. Price, **\$1.00.**

Gladys Unwin, No. 726. The color of this beautiful Dahlia is a peach pink with yellow at base of petals. This is a first-class cut flower Dahlia and a very desirable color. Price, **\$2.00.**

Golden Crown, No. 247. Color, a rich deep shade of cream. This is a very showy flower. The petals are broad and some are twisted at centre. Being shaded red on reverse side gives the flower a pleasing appearance. Price, **\$1.00.**

Hubby Hapgood, No. 510. Color, cerise magenta, shaded white at base of petals. A fine Dahlia for cut flowers. Price, **\$1.00.**

Jennifer Hadden, No. 333. Color, cerise and white, yellow around base. Medium size on good length of stem. Price, **50c.**

Kathleen Williams, No. 353. Color, light lavender. Petals slim and long. A large, fluffy flower and nice color. Good length of stem. Price, **\$1.00.**

Koros, No. 659. Color, a very bright shade of maroon. Petals curving around centre. Price, **\$1.00.**

Latona, No. 420. Color, light coral red, shaded lighter at base. A very striking color. Tall, showy plant. Price, **\$1.00.**

Leah Baird, No. 1384. Yellow and gold centre extending by stripes and splashes along the crimson petals. Price, **\$1.00.**

Lenore, No. 329. White clouded cerise but very slightly, nearly white. Very beautiful flower, medium size, with long stems. Price, **50c.**

Lillidale, No. 868. Color, pure white, with rather long, broad, tapering petals. The petals are slightly twisting, making this large, finely formed flower a real beauty. Price, **\$1.00.**

Lord Baltimore, No. 168. Color, red. Yellow at base and heavily veined yellow in centre of petals. Price, **\$1.00.**

Louise, No. 814. A beautiful shade of rose pink is this very large semi-Pæony Dahlia. The formation of the flower is beautiful. The petals are broad and tapering at ends, also slightly twisting, making

a nice fluffy appearance. It is really a mammoth. Price, \$1.50.

Mad. Crozy, No. 881. The inner half of petals are canary yellow, while outer half are pure white with slight shading of pink. Petals are long and slightly twisting at points. Quite a novel flower and good for cutting. Price, \$1.00.

Marie Roy, No. 256. Light golden yellow heavily veined and shaded light red. Good size on good length of stem. Price, 75c.

Maria White, No. 19. Color, magenta, heavily blended white at tips. The petals are occasionally heavily veined white. Price, 35c.

Mary Fuller, No. 37. Cerise. White at base of petals. Heavily veined and clouded white. A nice color and very showy. Somewhat resembling Loveliness. Medium size on long stems. Price, 50c.

Mona, No. 393. The color of this Dahlia is rather unique, being, as near as can be judged, a light crushed strawberry. Medium sized flower and a very desirable shade. Very free bloomer. Price, 25c.

Mrs. Wiggs, No. 309. Very light salmon pink shading to canary at base. One of the most desirable flowers for decorations. Color most desirable. Price, \$1.00.

My Girl Sally, No. 472. Color, deep cherry red, shaded to yellow at base. Petals broad and flat. Fine for cut flowers. Price, \$1.00.

Orangeade, No. 601. Orange, very slightly clouded with light yellow at base. Petals extra broad and flat. A very large, showy flower with scant foliage. Fine, long stems for cutting. Price, \$1.00.

Peggy Lundeen, No. 138. Color, slightly yellow, base of petals encircled with white. Then the petals are cerise tipped and clouded white. Beautiful colorings. Price, 15c.

Princess Alice, No. 703. The color of this Dahlia is a beautiful peach pink heavily shaded to light canary at centre. Petals are long and broad and roll back to a point at tips. The color is very unusual and the flower is very desirable. Price, \$1.00.

Ruth Miller, No. 328. The color of this flower varies somewhat from a clouded bronzy red to yellow and red. The petals are broad and flat, and yellow at base. They taper abruptly to a sharp point at outer ends, giving the flower the appearance of a glistening star. Price, \$1.00.

Searchlight, No. 96. Bright fiery scarlet. Centre surrounded by heavy canary yellow disc. The broad, flat petals are pointed and tipped yellow. The New York

Horticultural Society awarded me a first-class certificate on this Dahlia.

Price, 50c.

Show Girl, No. 1006. Yellow and cerise. Base of petals yellow. Balance light cerise shading to white at tips. Two veins of white run lengthwise through petals. It is a profuse bloomer and flowers are borne on extra long stems. Price, 25c.

Song Bird, No. 304. White with faint lines of yellow, and shaded yellow at centre. A fine Dahlia for decoration. Price, 25c.

Speedway, No. 251. Rich, deep scarlet. Yellow at base of petals. Petals slightly veined lighter. Flowers very large and bright. Extra long stems. Price, 50c.

Starlight, No. 1029. Very bright fiery scarlet. Petals of this flower are broad and flat, giving it a decided "Starlight" effect. A wonderfully bright, flashy color. Price, 35c.

Star of Beauty, No. 631. Color, very bright, velvety, deep carmine. Petals shaded white and running to yellow at base. Petals pointed like a star. A most beautiful little flower, brighter than Evening Star. Price, \$2.00.

Stella Razets, No. 1459. Deep cerise, veined white. Base of petals white forming a large circle. Petals broad and pointed somewhat resembling Mme. J. Coissard. Medium size on good length of stem. Price, 35c.

Striped Beauty, No. 714. Bright, velvety crimson. Petals heavily tipped white and white stripes lengthwise of petals, which are twisted at top. A beautiful, bright, showy flower. Price, \$2.00.

Sunbeam, No. 429. Canary yellow. Petals slim and curled in a peculiar manner and a large flower. Long stems. Nice specimen. Price, 35c.

Underhill, No. 1454. Color, deep canary yellow. Petals slightly shaded and clouded pink at outer edge. Centre clear yellow. Petals wide and flat. Price, 50c.

Variation, No. 1445. Lemon yellow. Petals finely veined and clouded throughout with cerise. Some flowers lighter than others. Base of petals yellow. A very showy flower with good stems. Price, 50c.

Viola Dana, No. 1030. Color, very dark maroon, nearly black. Price, 50c.

White Eagle, No. 428. Pure white. Petals very slim and rolled to a tubular shape. Price, \$1.00.

Yawcob Strauss, No. 253. Light red, yellow at base. Heavily clouded and veined yellow. Petals stand up and edges roll back slightly. Long stems. Medium sized flowers. Price, 75c.



KING OF SHOWS

NEW SHOW DAHLIAS

ORIGINATED BY GEO. L. STILLMAN

Andrew Jackson, No. 1493. Deep purple. A fine, large, well-quilled flower on good stems. Very desirable. Price, 35c.

Budd Fisher, No. 384. Hybrid Show. Color, deep striking carmine. A very rich, desirable color. Petals are quite pointed at the very tips. Price, 50c.

Butter Queen, No. 1490. Color, light butter yellow, of large size. Tips of petals slightly shaded pink on front and more heavily shaded pink on reverse side. One of the finest new Show Dahlias. Price, \$2.00.

Ch. Dyker Dolly, II, No. 1486. Light brick red. A large flower and a fine bloomer. Price, 75c.

Deemocrates, No. 1106. Cardinal. Good sized flower, full centre. Price, 35c.

Edna Browning, No. 1440. Hybrid Show. Deep cerise pink shaded nearly white at base. Tips of petals serrated and lighter shade. Very large flowers. Stems good length. Very desirable. Price, 75c.

Frank Mallon, No. 202. Color, deep butter yellow slightly veined light red. One of the freest blooming Dahlias and good size. Price, 25c.

Gen. Booth, No. 1368. Beautiful shade of light purple. Flowers very large and has long stems, standing high above the foliage. Price, \$1.00.

General Custer, No. 1441. Reddish salmon clouded slightly yellow at base of petals. A very large flower on good length of stem. Price, \$1.00.

Golden Shore, No. 1438. Canary yellow; tips of petals shaded pink. A most strikingly clean, perfectly formed flower and very large. A perfectly cupped flower and full centre. Price, \$2.00.

H. P. Clark, No. 1492. Lavender show shaded to light pink, medium sized flowers, with good length of stem. Very desirable. Price, \$2.00.

John Stanhope, No. 312. Very red

salmon. Large flower on long stems. Most desirable rich color. Price, \$1.00.

King of Shows, No. 1439. Deep butter yellow of a solid color throughout. Every petal is most perfectly quilled and uniquely formed. A mammoth flower, on long stems. It is without doubt the finest Show Dahlia ever grown and should be seen to be appreciated. Price, \$3.00.

Lord Byron, No. 834. Color, deep purple. A large, fine Dahlia in the hybrid show class. A good sized flower and perfectly solid color. Price, 75c.

Miriam Cooper, No. 381. Light canary yellow, slightly overcast with pink. Reverse side of petals heavily clouded pink. A large sized flower and a good form. Price, 75c.

Ox Blood, No. 210. A very clear red. Very large Show Dahlia on extra long stems, like "Le Colosse" and a trifle darker shade. Price, \$1.00.

Red King, No. 1487. Hybrid Show. Rich deep carmine. Flowers extra large and extremely bright color. One of the giant shows. Price, \$1.00.

Scarlet Giant, No. 1489. Deep fiery scarlet. A most wonderful flower both in color and size. A very free bloomer with good stems. The brightest and most attractively colored Show Dahlia. Price, \$1.00.

The Hermit, No. 1437. Deep brick red. Petals small, numerous, and slightly cupped with good stems for cutting. Good flower and very desirable and attractive. Stems good length. Price, 75c.

June 18, 1917.—A gentleman from Hilo, Hawaii, writes: "I must say that the blooms from the Indian Family collection are wonderful; Queen Esther is my favorite. My collection of Dahlias are a wonderful lot and have been much admired. Everybody here is busy with Red Cross work and I am going to do my share by selling flowers for the cause."

NEW COLLARETTE DAHLIAS

ORIGINATED BY GEO. L. STILLMAN

Annette, No. 271. Color, yellow at base of petals, balance of petals cerise shading to white at tips. The collar is nearly white with cerise shadings. Price, 25c.

Billy Spear, No. 1381. This is the most novel shade of collarette ever originated. The main part of the flower is a peach flesh color. Though the flower is not large it is most exquisite. The dainty collar is nearly white. Price, 50c.

Capt. Roycroft, No. 1372. Dark maroon. Collar white bordered with pink. A large, fine color in collarette style. Long stems. Price, 35c.

Caroline, No. 1483. Deep velvety maroon. Petals broad and flat, collar maroon with clouds of white at tips. Price, 50c.

Color Blender, No. 128. Base of petals yellow for a quarter of an inch. Outer rim of petals from base to tips yellowish cream. The entire centre of the petals is a bright crimson. In some of the flowers the crimson covers the entire petals, only the rim is a shade lighter. The most beautiful collarette known. Free flowering. Price, 75c.



ANNETTE

Grace Loretta, No. 272. A very rich purple magenta with a nearly white collar. The very richest color of any of the collarettes and the flower is of good size. Price, 50c.

Greyhound, No. 1027. Color, a combination of salmon, copper and brown. A very unusual, odd color. Large flower with broad, flat petals. A faint collarette, of a lighter shade, surrounds the centre. Price, 50c.

Heatherbelle, No. 130. Yellow, centre is surrounded by collarette of yellow, faintly tipped white. Price, 25c.

Jumbo, No. 126. Deep scarlet with shadings of yellow overspreading the flower. The collar petals are quite long and red and yellow in color. The largest collarette. Price, 25c.

Pauline Frederick, No. 1484. Canary yellow base, outer half of petals dull shaded to lavender at tips. Collar nearly white. Very desirable. Price, 35c.

Peggy O'Neil, No. 1413. Deep ruby, shading lighter at tips of petals. Collar white with fine veins of ruby red. One of the finest. Price, 35c.

The Peach, No. 1123. Amber and red veined and striped. White collar. Price, 50c.

Wilda, No. 1397. Clear light purple or jacond. Base of petals yellow; a very striking contrast of colors. Price, 50c.

Winfield, No. 1361. Deep, velvety magenta with white collar shaded with magenta. A fine collarette. Good size, on long stems. Price, 50c.

Yellow Prize, No. 133. Light canary yellow. Some of the flowers have blotches of red at base of petals. The collar is yellow and white blended together. This Dahlia has a most beautiful foliage for decoration and is a free bloomer. Price, 25c.

NEW POMPONS

Density, No. 1468. A deep carmine, perfectly formed flower of exceptionally fine formation. An extremely free bloomer. Price, 25c.

NEW SINGLE DAHLIAS

ORIGINATED BY GEO. L. STILLMAN

Alemeda, No. 44. Deep crimson magenta. Veined and shaded white. Lighter at base and tips of petals. Medium size flowers and fine for cutting. Price, 25c.

Anita King, No. 1341. Cardinal with two and three stripes of orange running through petals. Base of petals shaded yellow. A fine color. Price, 35c.

Blushing Boy, No. 1096. Very dark maroon. Centre of petals and tips pure white. Occasionally some of the petals come solid dark maroon. A striking combination. Price, 25c.

Chantecler, No. 1366. Color, cinnamon, faintly streaked with gold. A very striking color. Price, 25c.

Color Card, No. 1116. A Dahlia of many colors and shades, having yellow, red, pink and amber in very attractive shadings. Price, 35c.

Fang de Charmer, No. 1097. Clouded pink. This is the most peculiarly marked Dahlia that has ever come under my observation. The tip of each petal is serrated in a diamond shape. At the base of the diamond are two fangs with sharp points, hence, the name "Charmer." One of the most profuse flowering single Dahlias in my collection. Price, 35c.

Imperial Elephant, No. 396. The largest and most wonderful single Dahlia ever originated. The color of this monster is most beautiful. There is a circle of canary yellow around the centre which is 2 inches wide. Then the petals are a bright cardinal and clouded yellow at tips. The flower measures from 7 to 9 inches in diameter, with very broad, flat petals. The plant makes a heavy, stout growth of medium height. Price, \$3.00.

Jewell, No. 118. A beautiful shade of pink. Broad, flat petals; long, branching stems. One of the finest of singles. Price, 25c.

Laura H. Crews, No. 1012. A pretty light pink single with finely formed flat petals of good size. Price, 25c.

Lorraine, No. 679. Color, dark red with a slight tinge of purple. Deep bright carmine and good for cutting. Price, 50c.

Lulu Linton, No. 1358. Very pale yellow. Heavily shaded and streaked purplish red. A very showy large single Dahlia. Price, 50c.

Margaret Ward, No. 1059. Deep lavender pink. Petals broad at base and sharp at points. Good size. Small white centre. Price, 25c.

Moliere, No. 684. Flesh pink, tinted with canary yellow at base for half length of petals. An odd color and a good single. Price, 50c.

Molly Lee, No. 1080. Very dark maroon. A very rich, velvety shade and an extra fine Dahlia. Price, 25c.

Niobe, No. 24. Color, fawn, slightly shaded pink. A very attractive, desirable color. Price, 50c.

Oakland, No. 111. Centre of bloom yellow. Tips yellow. Space between is light red. Broad petals, a large bloom, on good stems. Price, \$1.00.

Ox Eye, No. 1086. Carmine with yellow base. Has the appearance of the ox eye. Price, 20c.

Phidias, No. 652. Rich magenta with a light cream ring around disc. Tips of petals lighter. A fine single. Price, 50c.

Polly, No. 121. White flushed with pink. Tips of petals serrated. A good single. Price, 15c.

Prince of Yellows, No. 142-2. Color, a beautiful rich canary yellow. Petals broad and flat. Price, 20c.

Prosperton, No. 810. Color, medium shade of carmine. Each petal is serrated at tips and heavily clouded yellow at tips; clouded and veined through the middle and nearly all yellow on lower half. A very showy, large flower for a single Dahlia. Price, \$1.00.

Radiance, No. 1014. Deep rich magenta, slightly tipped white. A beautiful thing for table decoration. Price, 25c.

Sciepo, No. 678. Light carmine and yellow at base of petals, which are broad and flat. A beautiful flower. Price, 50c.

Single Jane, No. 21. Deep, velvety magenta with a shading of white and yellow at base of petals and a blending of white at tips. A fine combination. Extra long stems. Price, 35c.

Sir Gilbert Parker, No. 1109. Color, golden amber, heavily shaded orange and amber. An extra good single and large size. Price, 75c.

Star of the East, No. 1103. Magenta. Yellow at base, edges and tips clouded white. Price, 15c.

Susie, No. 1081. Single Dahlia of a pleasing shade of rather dark velvety magenta with one to two faint streaks of light shade running through petals. Price, 15c.

Tama, No. 1362. Magenta. This flower should have a place in every garden. Price, 50c.

White Elephant, No. 29. Pure white. This extra large flower is a wonder. The first flowers on these plants in my fields measured $7\frac{1}{4}$ inches in diameter. It is an extra free flowering variety, and should be disbudded heavily to retain size. Price, 50c.

CACTUS DAHLIAS

Adrian Knox. Bright vermilion. Sharply pointed petals; very pleasing. Price, 20c.

Alexander. Dark crimson, flushed maroon. Extra fine form and good, free bloomer. Good habits of growth and very productive. Price, 50c.

Alfred Morgan. The blooms are of a deep purple crimson with incurving form. Price, 15c.

Amateur Franz D'Or. Variegated. Flower medium size. Base of petals yellow, while ends are pinkish lavender. The whole flower striped and splashed dark red. Price, 20c.

Ami Bethier. Light carmine red, almost orange red. Very large, with long petals. Points sharply and finely twisted. Very fine and desirable flower. Price, 20c.

Amos Perry. Bright scarlet. Very long, incurved, twisted petals. This is one of the most desirable Cactus Dahlias. With proper care it produces a very large, exceptionally attractive flower and blooms freely. Price, 25c.

Arc-en-Ceil. A beautiful shade of light pink, changing to white at the points of the petals, which are sharply rolled. The centre as it opens out is primrose yellow, making a beautiful combination. Medium size flower. Price, 25c.

Artus. Orange buff. Medium size; a very desirable color. Price, 15c.

Aschenbrodel. Reddish pink, tinged with orange, petals tipped with yellowish pink. This Dahlia has often been compared to the summer sunset, because of its rare coloring. Much incurved petals, slightly twisted. Medium size and exceedingly attractive. Price, 35c.

Aunt Chloe. Very dark maroon, nearly black. Medium size and abundant bloomer. Price, 10c.

Bianca. Color, lavender pink, shaded to white at centre. Flowers stand very erect on good, strong stems. Very attractive flower. Price, \$2.00.

Brightness. Fiery scarlet. Large flower, a very free bloomer. When all buds are allowed to bloom, the plant presents the appearance of one solid mass of fiery flowers. One of the most showy cactus Dahlias grown. Price, 25c.

Bugeaud. Rich carmine red. The beauty of this Dahlia is beyond description.

It is a beautiful deep carmine in color. The flowers are borne above the foliage on good stems, and each petal is finely serrated at the point, which gives the flowers a beautiful feathery appearance. Desirable in every way. Price, 50c.

Cannel's Crest. Deep velvety crimson. Petals wide and pointed. Extremely large flower, and has free blooming qualities. Price, 25c.

Cardinal. A very good Dahlia of a cardinal red shade. Price, 25c.

Charles Grimley. Rich dark crimson, shading lighter at tips of petals. Of good size and habit. Price, 25c.

Chas. Parnot. Color, lilac rose, striped and blotched with carmine. An elegant flower. Price, 50c.

Chastity. A very pretty pale pink of very finely twisted Cactus petals which stand up most attractively. As held up the centre has the appearance of being white. Its stiff stems hold it erect. Should be seen to be appreciated. Fine size. Price, 50c.

C. H. Curtis. Rich scarlet crimson with long, narrow florets. A large, full flower of incurved form. Price, 35c.

Citizen. Dark maroon, large flower, shaded purple. Grows very strong and erect, and is free flowering. Price, 20c.



THE NEW CACTUS DAHLIA—JANET CROSS

Clara. Inner row of petals white. Outer rows pinkish lavender. Petals long and spiky, much incurving. Very pretty.
Price, **50c.**

Colada. Rich carmine-cerise, shading to crimson at tips; fine for exhibiting.
Price, **\$1.00.**

Columbia. Vermilion, tipped and striped with white. Long, narrow petals. The plants make very little foliage and the flowers are carried well above it. It blossoms profusely, and with its variety of coloring it presents a most striking appearance.
Price, **25c.**

Comte Da Ribeira. Yellow, tip sulphur color. Shading yellow and lilac at centre. Color unique.
Price, **35c.**

Conservateur Lefebvre. Salmon pink. Flowers very large and a free bloomer. The base of the petals is light buff, which shades toward the points to salmon and pink, giving the flower a delicate glowing pinkish appearance.
Price, **25c.**

Corpilla. Rich dark red petals, much lighter on back, and striped with white. Backs of petals show prominently. Blossoms are extra large and stand very straight on stiff stems.
Price, **15c.**

Countess of Lonsdale. Red, slightly shaded salmon. Flowers very freely, and is nicely formed. A very desirable Dahlia for cutting.
Price, **25c.**

Countess of Malmsbury. Inner row of petals white, outer rows pale pink, shading toward white. A dainty and pleasing variety.
Price, **25c.**

Country Girl. Inner row of petals broader than outer; of a pleasing shade of yellow. Outer petals nicely rolled, base being yellow, tips orange.
Price, **25c.**

Crepuscle. Pale orange yellow, the outer petals deepening to deep amber buff; refined flower of beautiful shape. Large, extremely early, free blooming.
Price, **25c.**

Cycle. Red, slightly of a pinkish shade, tips of petals tinged with a shading of white. With plenty of fertilizer this Dahlia will produce magnificent flowers. Although it sells for a very low price, it is an exceptionally desirable Dahlia.
Price, **10c.**

Dainty. The name Dainty aptly describes this charming novelty. The ground color is lemon yellow, which becomes paler with age and is more intense, almost approaching canary yellow, at base of petals.
Price, **25c.**

Daisy Staples. Color, bright mauve pink, centre good, stems long and wirelike, free flowering and reliable.
Price, **25c.**

Delight. Pale, pink centre shaded yellow.
Price, **25c.**

Dreadnaught. Beautiful, velvety wine color. Long, slim, pointed petals, twisted at tips. Extremely large flowers. Very attractive.
Price, **10c.**

Dr. Mene. Amber and yellow. Flowers are large and deep. In color a rich amber, while the centre is mottled amber and yellow. A most desirable Dahlia.
Price, **25c.**

Edith Carter. A large flower of unusual grace and refinement in form and color. Color, a bright yellow delicately suffused bright, rosy carmine.
Price, **50c.**

E. Glasse. Purple magenta. Blooms very freely. Good size flowers.
Price, **10c.**

Elate. An extra large flower, color, delicate pinkish mauve, shading to yellow in centre.
Price, **15c.**

Elly. Silvery rose. Fine form and large size. A good substantial garden variety.
Price, **10c.**

Else. Salmon pink, slightly suffused yellow. Blooms very freely. A most beautiful shade.
Price, **25c.**

Emperor. Plum color, pale yellow at base of petals. A very desirable Dahlia.
Price, **10c.**

Epopée. Carmine, shaded to crimson. Extra large, and petals very fine shape. Extremely desirable.
Price, **15c.**

Ericka Bornemann. Light rosy pink, growing lighter toward the centre. Small size flower. Very abundant bloomer, and extremely dainty color. Fine for boutonnières.
Price, **20c.**

Etendard de Lyon. Broad, wavy petals, color between a rich carmine rose and royal purple. One of the best.
Price, **75c.**

Etruria. Color, golden orange. This blossom shades yellow and orange. Petals are long, slim and tightly rolled, very much incurved. Base is yellow, shading into orange, and tips are yellow. A charming and beautiful variety.
Price, **25c.**

Eugenie Bonvallet. Bright pink. This beautiful new Dahlia has small, slim, well rolled petals, slightly incurved, and is beautiful in every sense of the word. The color is a lovely bright pink.
Price, **25c.**

Extase. A lavender tinged with pink. Petals fine and twisted. A very desirable Cactus.
Price, **50c.**

Fantassima. Petals are long and narrow, curling upward, of true cactus type. Inner rows of petals are salmon pink. Outer rows of petals are pinkish lavender shade. Backs of petals are much deeper in tone of a pinkish violet color. Price, **50c.**

Faunus. One of the best. Color, soft yellowish buff, tipped salmon. Large flowers. Price, **10c.**

Fighting Mack. Crimson. Very pleasing. Good form. Price, **15c.**

F. I. Pateman. Lovely bright yellow. Of good size and unusually attractive. Price, **35c.**

Flame. Orange scarlet. Florets are long and twisted. Flowers are carried on good stems. Very bright and attractive. One of the newest and best. Price, **25c.**

Flamingo. Clear, flame color. Large finely formed flowers, with long, twisted, incurved petals. This is one of the best shades of red, and a very attractive Dahlia. Long stems. Price, **25c.**

Flieder. Lavender and white. A very large flower of unusual beauty, both in color and shape. Price, **25c.**

Foxhunter. Bright scarlet. Very large, with incurved petals. A beautiful flower and free bloomer. Price, **25c.**

Freibigkeit. Deep pink. Flowers medium size, well formed, with sharply pointed petals of a deep crimson pink color. Price, **15c.**

Gen. Buller. Rich, velvety crimson, variegated. The rich crimson flowers, with their white tips, together with some that are nearly all white, and some all red, present a most striking appearance. Price, **15c.**

Genista. Amber, passing to golden. A fine shaped flower, a free bloomer. The color of this Dahlia is much admired. Price, **15c.**

Goliath. Apricot, tinted rose pink, shading to canary yellow at base of petals. A rare and striking combination of color. Flowers extremely large and noble in appearance, often measuring $6\frac{1}{2}$ to 8 inches across. Long, straight petals, very desirable. Price, **20c.**

Goodhope. Deep red striped with white. Price, **50c.**

G. W. Childs. Deep garnet, with rich, velvety appearance. Very large and full, with long, twisted petals. One of the best garnet Dahlias, and blooms profusely. Price, **25c.**

Hamlet. Rich deep red. Flowers very large, with long, well-rounded, sharp-pointed petals. A magnificent Dahlia. Price, **20c.**

Hazer Kind. Lavender pink. Undoubtedly this is one of the most profusely flowering Cactus Dahlias in cultivation. The flowers are medium size, fine form and simply beautiful. Price, **10c.**

H. G. Alford. Color, pale yellow, edged and shaded amber and pink; an immense flower. Price, **15c.**

Hereward. White, striped and sprinkled with crimson, of good form and blooms freely. One of the very desirable variegated type. Price, **25c.**

Henri Cayeux. Rose pink. Immense flower with long, slim, pointed petals produced in great numbers, with a continuous blooming centre. Price, **35c.**

H. J. Hare. Crimson. A beautiful glowing shade of red, the edges and base of florets deepening to a dark velvety garnet shade. An exquisite combination of colors. A very full, perfectly shaped flower. Blooms freely. Price, **25c.**

H. J. Jones. Light yellow, slightly tinted pink. Flowers large. Long, well-rolled petals. Very beautiful. Price, **25c.**

H. W. Sillem. Vermilion scarlet, large and good form, and a beautiful color. Price, **25c.**

H. Shoemith. Dark carmine, of a very rich shade. Long, slim petals finely rolled. Very large flower. One of the most beautiful deep red Dahlias grown. Price, **25c.**

Hyacinth. Yellow and pink. Combination of colors of unusual attractiveness. Good size and blossoms freely. Price, **10c.**

Imperator. Bright crimson. A beautiful color and good size flower. Good long stems and very desirable. Price, **20c.**

Imperial. A large Cactus; color, yellow, disc quickly changing to reddish carmine. A vigorous grower. Price, **20c.**

Ingleboro Edgealand. Medium size. Centre of yellow, balance of flower of a good, clear, medium velvety red. Price, **35c.**

Ingres. Cream white, striped rose, edge of petals shaded darker. Very striking combination of colors. Price, **35c.**

Island Queen. Light mauve, shading toward a light blue. A beautifully formed medium size flower. A distinct color by itself, and one that is admired by all who see it. Blooms full and free. Price, **10c.**

Ivanhoe. Salmon pink, with pale yellow centre. Very round, long, straight petals, closely and finely twisted. Large, full flower. Very effective coloring. Price, **20c.**

J. B. Riding. Yellow base, shading to deep orange. Large flower of fine form. Very attractive. Price, **25c.**

Jack Dovey. Ground color is yellow, flaked and striped with crimson. A large flower and splendid cactus form, and rich in coloring. Price, **25c.**

Jeanne Cayeux. Light terra cotta. Flowers large, with long, slim, finely-curved petals. Petals lighter toward the base. Price, **20c.**

Jeanette. A yellow, much the same as Stern, but a little more of a canary hue. Of good size with petals incurving. Price, **15c.**

J. H. Jackson. This is one of the best black Cactus Dahlias. Its velvety black maroon shade is very striking. The flowers are very large with long stems and stand out well from the foliage. Every lover of Dahlias should plant a J. H. Jackson. Price, **20c.**

Johannesburg. Large, beautifully formed, true cactus, of a beautiful shade of yellow orange. Price, **50c.**

John Riding. Bright scarlet. Large flower with long, slim petals. Price, **\$1.00.**

Juliet. Magnificent rose tinted pink. A very distinct flower. Price, **10c.**

Jupiter. Ground color at base of petals yellow, passing to salmon-rose at tips, the whole splashed and striped with crimson. Price, **25c.**

J. Weir Fyfe. Dark maroon, sometimes shading to bright purple. A beautifully formed, free blooming Dahlia. Price, **20c.**

Kalif. Medium carmine. A very large, solid color flower. Price, **75c.**

Kathleen Bryant. Dark maroon. Large flower of a beautiful maroon shade and fine form. Price, **15c.**

Kleber. Dark scarlet. One of the most free blooming reds. Flowers are of large size and a very desirable color. Price, **25c.**

Kreimhilde. Light pink, with white centre. Flower has curly petals, and is one of the most attractive Cactus Dahlias. This Dahlia should be in every collection. Price, **15c.**

Lauretta. Apricot, shading to deep blush

pink at tips. Small, well-rounded petals, much incurved. Large blossoms and finely shaped. Price, **10c.**

Libelle. Light purple. Flowers are very large and well formed, and present a beautiful appearance. A very desirable rich color. Blooms very freely. Price, **10c.**

Liberty. A very dark velvety maroon with finely rolled and pointed petals. Medium size. Very pretty dark shade. Price, **35c.**

Linus. Yellow suffused lavender. Very attractive and new. Price, **10c.**

Loadstone. Light flame color. Very claw-shaped, twisted petals. A strong grower and a free bloomer. Price, **10c.**

Lord Dundonald. Rich crimson. Long, straight, narrow petals. Large flowers of fine Cactus form. Price, **15c.**

Lord Minto. Very light salmon pink, with delicate lemon yellow shading in centre. Petals finely twisted and incurved. Points evenly and finely serrated. Flowers freely produced. Price, **10c.**

Lovely Ensford. A clear shade of golden amber. Very large and free. Petals wide at base and very pointed and curly at tips. This Dahlia attracts the eye of everyone. Price, **15c.**

Lucio. Yellow and white. Flowers of large size. Base of petals light butter color, tips are pure white, making a beautiful combination of yellow and white. Price, **10c.**

Mad. A. Nomblot. Rose shading rose lilac, shading toward white, delicate tinting. Price, **50c.**

Mad. Ch. Compin. Lovely rich dark scarlet. The petals of this flower are slim and well rolled, straight and of compact form. Extremely beautiful. Price, **15c.**

Mad. Henri Martinet. Salmon pink shaded sulphur yellow at base of petals. A profuse bloomer and a beautifully formed flower of good size. Price, **25c.**

Mad. J. B. Plumet. A beautiful shade of pink growing lighter toward the centre. Flowers are good size, full, and are produced very freely and on good stems. Price, **25c.**

Maravigalla. Color, light rose, with golden tips. Florets slightly serrated at tips. Extra fine. Price, **75c.**

Marjorie Castleton. The outer florets are rose pink. The tips and inner florets are pure white. Price, **25c.**

Marguerite Bouchon. A beautiful shade of light pink with lighter centre. The largest pink Cactus Dahlia known. The petals are long and slim, and are produced in unlimited numbers. A most wonderful production in Cactus Dahlias. Price, **50c.**

Marie Baker. Glowing orange scarlet. Back of petals shaded amber. Large flowers. A free bloomer. Price, **25c.**

Marion. Old gold in centre, passing to a lovely swamp pink; the middle of petals being veined and suffused with old gold, while the reverse of petals is a rich carmine pink, making it a most lovely combination of colors. The blossoms are large and produced very freely. Price, **25c.**

Marroko. Beautiful shade of very dark pink, changing to purple. Medium size, very rich in appearance and most desirable. Price, **20c.**

Marxman. Reddish apricot. Very novel shade. Medium sized flowers. Very abundant bloomer. Good circular outline. Very distinct. Price, **15c.**

Mary Farnsworth. White, slightly shaded light yellow at base. A very incurved variety. Price, **20c.**

Mary Keeling. Color, orange, shading toward yellow. Very pretty. Price, **10c.**

Mary Service. Rich salmon pink. Petals curly and pointed. A very free blooming variety, and flowers stand well above the foliage. One of the best for bouquets and for a showy plant. Try at least one of these. Price, **15c.**

Mayfield Beauty. Pink, shaded to yellow. A very unusual shade and one that attracts attention everywhere. A very desirable, medium size, low-priced Dahlia. Price, **10c.**

Mayor Tupenny. Light orange, shaded fawn, yellow centre. Large, with curly incurved petals. Flowers very freely. Price, **15c.**

Memoriae Margaritae. Beautiful blood red, shaded purple. Enormous flowers on stiff, stout stems, borne well above the foliage. A beautiful color and desirable in every way. Price, **20c.**

Mercury. Flower of unusual formation; florets curl and twist and incurve. Very large flowers of a deep yellow at base, shading to lighter yellow at tips, the whole thickly striped and splashed and speckled with crimson. Price, **35c.**

Meteor. Rich, bright crimson. Large,

bold flowers with wide, pointed petals. Rich coloring and very desirable. Price, **20c.**

Mikado. Deep rich red. Very long, slim, claw-shaped petals. Large blossoms. Very rich and effective both in shape and color. Price, **20c.**

Miss Wilmot. A lovely brilliant orange color. Very large. Outer rows of petals roll to a point. Very attractive, one of the best. Commencing to flower soon after planted, and quickly becoming a glowing mass of color. Price, **25c.**

Miniature. A rosy carnation carmine. An exquisite mixture of these delicate colorings. Entirely new. Price, **10c.**

Mirifique. Purplish maroon. Flowers large, with long, slim, pointed straight petals. A fine bloomer and durable flower. Price, **50c.**

Miss Constance Farmer. Dazzling magenta. Very large flower, with long slim petals, much claw-shaped and twisted. An elegant flower and most desirable in every garden. Price, **15c.**

Miss Fanny Foster. Variegated. Flowers of medium size. Some flowers a clear, deep red, others white with stripes of red. A fine Cactus Dahlia. Price, **25c.**

Miss Perry. Salmon with apricot shadings. Tips pinkish rose. Stems long and stiff. Price, **10c.**

Miss Webster. Ivory white. Very large, full and perfectly formed. This is one of the very best pure white Dahlias. Blooms profusely and has long stems. Price, **20c.**

Mlle. Jeanne Mamelle. Inner rows of petals beautiful, delicate yellow, outer rows of petals a dainty yellow orange. Of good size, and with its dainty coloring it is certainly a Dahlia worth owning. Price, **35c.**

Mons. Cazalis. Light magenta. Flowers of medium size and fine shape. Petals nicely pointed and curved. Flowers are white and magenta, beautifully blended together. A rare and striking combination of color. Price, **20c.**

M. Pierrot. Amber with tips white and base of petals yellow. Some of the flowers come without white tips. Price, **\$1.00.**

M. Podere Restelli. Light flame red. Large bold flower. Long pointed petals. Free bloomer. Very attractive. Price, **25c.**

M. Pol Varin. Bronze yellow. Unique form and a shade rather unusual and yet desirable. Price, **25c.**

M. Rodger Lecler. These flowers are of large size and light sulphur yellow. Tips of petals are a shade lighter. This is an extremely free bloomer, and flowers are borne well above the foliage. A beautiful Dahlia. Price, **75c.**

Mr. J. B. Bryant. Light sulphur yellow. Long curly petals, finely twisted. Very good. Price, **10c.**

Mr. J. Harrison. Crimson. Fine form. A beautiful Dahlia that catches the eye of every observer. Price, **35c.**

Mrs. C. H. Breck. Light red, tipped and overspreading more or less with white. A very showy, attractive Dahlia. Petals are broad at base and rolled to sharp points at the tips. A large flower and one of the most attractive Cactus Dahlias. Price, **75c.**

Mrs. Chas. Turner. Bright canary yellow. Flowers very large with slightly curled petals. This Dahlia measures from 7 to 9 inches in diameter. For a low-priced Dahlia this surpasses anything for size and beauty of coloring. Try one and you will not regret it. Price, **15c.**

Mrs. D. B. Crane. Pure white. Flowers of medium size and free blooming. Price, **10c.**

Mrs. DeLuca. Golden yellow, tipped with orange. Large, bold flowers, with very curly, incurved petals. A very attractive Dahlia. Free bloomer. Price, **20c.**

Mrs. Douglas Fleming. White. Petals serrated. A low plant. Price, **\$1.00.**

Mrs. E. Mauley. Clear yellow. Fine formed, large flowers with long, curly petals. One of the best yellow Cactus Dahlias. A beautiful shade and very desirable. Price, **20c.**

Mrs. H. J. Jones. Scarlet, edged cream. Variegated flowers mixed with nearly solid color petals. Price, **20c.**

Mrs. F. Grinstead. Rich crimson and purple. Flowers finely curled and of large size. A most beautiful Dahlia. Price, **25c.**

Mrs. J. Emerson. A delicate lovely yellow, shading nearly white at tips. Some of the petals marked with very fine lines and dots of red. A large and beautiful specimen. Price, **20c.**

Mrs. J. Mace. Blush pink. Very large, fine formed flower of an exquisite color. The finest shade of pink yet produced. A strong grower. Price, **25c.**

Mrs. J. W. Wilkinson. Fine pink. Petals very incurving and of beautiful form. Price, **20c.**

Mrs. Mortimer. Rich terra-cotta red. Petals finely twisted. Large, full and beautiful flowers. Very attractive. Price, **20c.**

Mrs. Moore. Deep carmine. Very full and fine form. Long stems and blossoms freely. Price, **15c.**

Mrs. Reginald Bailey. This Dahlia should be seen to be appreciated. A beautifully deep violet red. The long, rolled petals curl upward, making it a true Cactus. One of the best and most distinct. Price, **50c.**

Mrs. Seale. A charming and pleasing novelty. Inner rows of petals more than half way to tips are blackish red. The red is so very dark it seems almost to be touched with black. Tips of petals white. Outer rows of petals are broader, and about half of the petal is white, while the base is not as dark red as on the inner petals. Price, **25c.**

Mrs. T. W. Willis. A very large and exquisitely colored blossom, with very narrow florets its entire length. White in the centre with edgings of lilac on the younger florets, the greater part of the bloom being rose lilac. Price, **50c.**

Mrs. Wm. Baker. A beautiful lemon yellow; large flower. Price, **35c.**

Nahida de Semelle. Color, light scarlet. Rolling petals, sharply pointed at tips. A very unique flower. Price, **25c.**

Nelson. Deep rich crimson, shaded magenta; flowers of large size, and interlacing florets; one of the finest Cactus Dahlias. Price, **25c.**

Nerthus. The centre of this flower is a rich, beautiful bronze yellow, shading to a carmine rose at the tips, the whole suffused with a glowing golden color, which makes it very beautiful. Price, **75c.**

Octopus. Very light pink, shading to creamy white in centre. Large flowers. Very attractive and desirable Dahlia. Price, **15c.**

Pearl DeLyon. Pure white. Very large, full flowers. Florets serrated at points, giving the flowers a fine feathery appearance. Price, **20c.**

Philadelphia. Clear, brilliant red. Long, narrow petals. Very pretty and attractive. Price, **10c.**

Pink Pearl. Rosy pink. Beautiful and delicate shading. Should be seen to be appreciated. Price, **25c.**

Premier. Scarlet. One of the most refined and desirably shaped Cactus Dahlias. Price, **25c.**

Primrose Dame. Canary yellow. A beautiful shade of yellow. Good size flowers and a profuse bloomer. Price, **15c.**

Reine Cayeux. Rich, glowing blood red. This Dahlia should be seen to be appreciated. The plants grow about $3\frac{1}{2}$ feet high, and have very little foliage. The flowers are produced in great abundance well above the foliage, on good stems, making almost a solid bunch of dazzling red flowers. Price, **50c.**

Reine Wilmot. The centre of this flower is yellow, shading out to a bluish pink. Handsome and attractive. Price, **15c.**

Rev. Arthur Hall. Ruby crimson. Fine form and large size. Very desirable. Price, **25c.**

Rev. Dr. Williamson. Very dark, velvety maroon. Long, curly petals, with claw-shaped points. Flowers very large, often measuring $6\frac{1}{2}$ inches in diameter. The very best maroon Cactus Dahlia yet produced. Price, **20c.**

Rheinkonig. Pure snow-white flowers of splendid form, 5 inches in diameter. They are of good substance and last splendidly when cut. Borne on long, stiff stems, held well above the foliage, making it as valuable for garden decoration as for cutting. Price, **25c.**

Rheinischer Frohsinn. Carmine, with shadings of white and pink at base. A beautiful flower. Price, **75c.**

Richard Box. Light cream. Large flower with slim and sharp petals. Price, **50c.**

Rupert. Pale amber yellow at base. A fine shape and color. Price, **\$1.00.**

Sandy. Golden orange and fawn. A flower of great substance and durability. Most desirable in every way. Price, **50c.**

Sardigna. Dark purple; very large flower of rich shade. Full to the centre and free bloomer. Price, **35c.**

Secretaire Fuld. Salmon and buff. Striped and mottled in a beautiful manner. Large size and a most desirable new free-blooming Dahlia. Price, **10c.**

Sir A. Lamb. Crimson shaded purple. Florets very pointed. A very attractive flower of fine form. Price, **20c.**

Snowstorm. A large, pure white flower of fine form; a splendid flower for any purpose. This variety is undoubtedly one of the best white Cactus Dahlias. Price, **50c.**

Spotless Queen. Pure white. A very abundant bloomer of medium size. Fine for cut flowers. Price, **25c.**

Standard Bearer. Rich, light carmine. A standard variety of superior merit. An excellent color and a very free flowering variety. Price, **25c.**

Success. Deep canary yellow. Petals small and sharp at ends. Price, **35c.**

Stern. Canary yellow. The flowers are very large, with long pointed petals of the purest canary yellow. An extra fine Dahlia, and should be in every collection. Price, **20c.**

Sybaris. Pure white, with small twisted interlaid florets. Very fine and desirable. Price, **25c.**

T. A. Havemeyer. Base of inner rows of petals is yellow. The rest of the petal is a brickish red, slightly tinted with purple. Petals are very slim, well rolled, and curl upward in a charming manner. Very attractive. Price, **15c.**

The Pilot. Deep apricot, centre slightly shaded yellow. Very fine. Exceedingly attractive Dahlia. Colors are combined in such a way as to make an exquisite flower. Fine form. Price, **25c.**

The Prince. Color clear rich plum without shading. Flowers are large, freely produced, and the stems are long and wiry, giving the blooms good support. Price, **25c.**

Thos. Wilson. Reddish fawn, suffused amber. A beautiful combination of colors. Price, **20c.**

Thuringia. Light, flame color, with deep orange tints. Long, straight petals. Large blossoms borne on long stems. Price, **20c.**

Torpille. Dark reddish pink, striped with white. Very odd. Full, well shaped blossoms. Desirable as a novelty. Price, **25c.**

Una. A pretty Cactus Dahlia of a mixture of pink and white. The petals are *extremely* fine and each one serrated, giving a decidedly feathery appearance. The pink is somewhat spotted through the petals. Very good size and very desirable. Good stems. Price, **\$1.50.**

Uncle Tom. Dark maroon, nearly black. Medium size and quite free. Price, **15c.**

Venezia. Clear, magenta petals serrated at points, making a very unusual feathery appearance. Very desirable in every way. Price, **15c.**

Victor Von Scheffel. Exquisite, delicate light pink shading to pure white in centre, somewhat resembles Kriemhilde in color. Blossoms medium size and borne on long stems. Price, **10c.**

Ville De Lyon. Pink. Flowers very large and borne on long stems with long, sharp, spike-like petals. The outer florets are a beautiful shade of light pink, while the centre is shaded to nearly white. One of the finest pink Dahlias yet produced.

Price, 75c.

Viscountess Shearbroke. Reddish terra cotta. Large and free. Very showy.

Price, 10c.

Vivian Bruant. Rich deep wine, tinted purple. A wonderfully fine flower.

Price, 50c.

W. E. Dickson. Variegated. Ground-work of this flower is canary yellow, striped and speckled with scarlet. Very odd and attractive.

Price, 15c.

W. Hopkins. A most pleasing shade of dark rose pink maroon. Flowers very large and of exquisite form and color. A free blooming variety.

Price, 10c.

Wm. F. Balding. Salmon and yellow. clear yellow centre, with salmon shading toward tips. Petals very much incurved and claw shaped. Fine form and very free. A very attractive color.

Price, 10c.

Wm. Marshall. Orange shaded to yellow in the centre. Flowers of immense size with long, very slim petals. One of the largest and finest Cactus Dahlias yet produced.

Price, 25c.

Wodan. A very strong-growing variety, with bold, large flowers 6 inches in diameter; a graceful arrangement of semi-incurved tubular petals of a pleasing, delicate, salmon rose color, shading to old gold in the centre.

Price, 50c.

Wolfgang Von Goethe. Large, graceful, perfect flowers of a rich apricot with carmine shadings. Very nice.

Price, 75c.

W. T. Rogers. Velvety maroon with crimson shadings, large and free flowering. Petals straight and stems stiff and wiry.

Price, 50c.

Yvonne Cayeux. Pure ivory white. Long, straight, narrow petals, evenly curled. Generous bloomer. A very fine white Cactus Dahlia.

Price, 50c.

Zeppelin, III. White, tinted lavender. This beautiful new Dahlia is of large size, with very claw-shaped incurved petals. The outer petals are tinted lavender. Inner petals are shaded to nearly white.

Price, 50c.

Zoe. Pure white. A neat and pretty blossom.

Price, 15c.

Zoo. Two inner rows of petals rich crimson, while the remainder of the petals around the outside are deep brilliant scarlet.

Price, 35c.

SINGLE CACTUS DAHLIAS

Abbotsford. Fiery orange scarlet. Flowers of good form and very striking in appearance.

Price, 10c.

Amber Star. Light amber yellow on the face, while the back of the florets are thickly striped with red. Large and perfectly formed.

Price, 10c.

Captivation. Rich crimson maroon. Long, narrow petals and large flower.

Price, 10c.

Lord Goff. Pearly white, passing to soft rose at tips. Extra long, closely rolled petals. An exquisitely beautiful flower.

Price, 10c.

The Dominie. Reddish orange, flushed with salmon. Florets twisting and incurving.

Price, 10c.

Woodstock. Yellow ground, tipped with bronzy violet, slightly incurved.

Price, 10c.

DECORATIVE DAHLIAS

I prepay carriage on all retail bulb orders, accompanied by cash in full, in the United States. This does not apply to Special Offers.

Alphonse Isore. Centre of this Dahlia is a blackish red, outer petals shading lighter toward tips. Good, strong stems supporting this very handsome, dark red Dahlia. Some petals slightly streaked with purplish scarlet. Price, 20c.

Andrae Paque. Pure white, bordered delicate rose, petals incurved. Splendid variety. Price, 10c.

Atalanta. Almost white, softly shaded with lavender. Blossoms somewhat resemble the Cactus variety. Flowers freely. Price, 10c.

Augusta Weber. A golden yellow of good form. Very pleasing. Price, 15c.

Autumn Gold. Light yellow petals bordered and heavily clouded pink. Petals medium, slim, and twisting. Price, 50c.

Beaute Lyonnaise. White, edged red; grand flower, perfect form. Price, 20c.

Bermuda Red. Dark crimson. A good sized flower. Price, 50c.

Blue Oban. Lavender, with a beautiful tint of blue. Very desirable on account of its peculiar color, perfect form, and free blooming. Price, 15c.

California. A beautiful bright rose pink. An extra good Dahlia. Price, 20c.

Catherine Duer. Vivid scarlet. One of the most brilliant shades in decoratives. Blossoms large and of fine form. A great favorite. Price, 10c.

Chieftain. Clear light red, heavily streaked and splashed canary yellow. Some of the flowers come clear red. Very large and attractive flower. Price, \$1.00.

Crazy Quilt. Variegated. A mixture of yellow, white and pink. Price, 35c.

Crimson Giant. Deep crimson flowers, and produced very freely on tall plants. Price, 15c.

D. M. Moore. Rich velvety maroon. Flowers of mammoth size. Extra good. Price, 50c.

Delice. Dark rosy pink. This flower is much admired because of its striking color, which is distinctly different from any other Dahlia. Extremely beautiful and has long stems. Price, 25c.



THE NEW DECORATIVE DAHLIA—PERFECT BEAUTY

Domino. Large orange-colored blossoms. Inside row of petals much deeper orange than outside row. Petals from centre shade from deep out to light orange. A very handsome Dahlia. Blossoms also come orange and white striped. Price, 25c.

Dorothy May. An attractive light pink of good size. A very desirable color and free bloomer. Price, 25c.

English Black Prince. Dark, velvety maroon, closely shading to black. Flowers unusually large and perfect in form. Very long stems. One of the finest black decoratives. Price, 10c.

Esmerealda. White ground, with pinkish, violet petals. A fine combination of colors. Price, 10c.

Frederick Spittal. Terra cotta red and velvety vermilion suffused and tipped. A very attractive Dahlia. Price, 15c.

Gates Red. Dark, velvety carmine, good size, slightly darker toward centre. Price, 35c.

Giant Purple. The inner rows of petals of this beautiful Dahlia are deep rich magenta, tipped lighter shade of magenta. The very outside rows are a trifle lighter shade, tipped lighter magenta. Price, 75c.

Glory of Wilts. Extra large, beautiful blossoms. Color clear bright yellow.

Price, **25c.**

Helleborde. Yellow, heavily clouded and veined red.

Price, **\$1.00.**

Helen Charvet. Pure white with an occasional tint of pink. Of enormous size. Florets very broad. Excellent for decoration. Very attractive.

Price, **20c.**

Hort. Budde. A rich, rosy scarlet. A good size flower and a very free bloomer.

Price, **75c.**

Hort. Witte. A very nice, white, decorative Dahlia.

Price, **35c.**

Hortulanus Fiet. Most delicate shade of pink, tip of each petal barely tipped with gold. The entire flower has a suffusion of delicate tints of red and yellow, which gives a glow, yet softness of color difficult to describe. Large flowers, often measure 8 inches.

Price, **75c.**

Jack Rose. Brilliant crimson red, similar in shade to the popular "Jack Rose," which suggested its name; perfect for garden decoration or for cutting.

Price, **10c.**

Jacques Welkin. Color, deep pink, with the outer edge of petals a trifle deeper than the centre. A very pretty Dahlia with a very few blotches of white on the pink petals.

Price, **25c.**

Kalaeokahio. Color, salmon pink, deeply shaded golden yellow in center. Good size flower and an odd color.

Price, **\$2.00.**

Le Mandarin. Light crimson rose pink shading is the main coloring. The petals are narrow, nicely formed, and rolled. Decidedly fine markings of much deeper crimson are scattered through the numerous petals, making it rather unique in this respect. A slight coloring of yellow shows toward centre.

Price, **50c.**

Le Grand Manitou. Ground color pale pink, striped, spotted and blotched with deep reddish violet. Borne on stout, stiff stems, held well above the foliage.

Price, **50c.**

Le Geant. Enormous, bright, velvety red flowers, borne on straight stems. A particularly handsome and very large Dahlia.

Price, **75c.**

Lyon Comstock. Orange fawn, of medium size and very desirable.

Price, **10c.**

Mad. Burel. A delicate shade of light pink, striped and spotted blood red. Petals slightly curled. Large blossoms borne on long, stiff stems. Very desirable.

Price, **25c.**

Mad. Jeane Charmet. One of the best decorative Dahlias yet produced. Soft light pink. Large flowers, borne on long, graceful stems. Free bloomer.

Price, **25c.**

Mad. Van Den Dael. Delicate silvery pink, fading to a creamy white in centre. Broad, perfect petals. An exceedingly attractive and beautiful Dahlia.

Price, **20c.**

Mad. L. Tillier. Deep salmon, shaded down to light yellow at tips. A beautiful combination of colors.

Price, **20c.**

Mad. Louis Harriot. Large, beautiful yellow. One of those clear, light yellows that are so attractive in a Dahlia. Much the same shade as "Mrs. Chas. Turner." Try one and see if you are not satisfied that it is both large and beautiful.

Price, **25c.**

Mad. A. Nonin. Base of petals white, tips light lavender. Very pretty.

Price, **20c.**

Maid of Kent. Rich cherry red, splashed and blotched with pure white. A variegated Dahlia with unusually peculiar markings. The centre half of some of the flowers is white, while the other half is rich ruby red. Attractive.

Price, **10c.**

Majestic. Brilliant scarlet, borne on long stems, making it a valuable variety for decorating purposes. Each broad petal is deeply notched. An unusual and beautiful Dahlia.

Price, **35c.**

Mammoth. Like its name, it is of mammoth size, deep blood red color, some of the petals slightly tipped lighter red at extreme point. A beautiful specimen.

Price, **50c.**

Manitou. An immense amber bronze-colored blossom. Has a distinct shading of pink; is extra large and full, and unusually desirable. An excellent Dahlia, well worth adding to your collection.

Price, **35c.**

Marchioness of Bute. Pure white with slight tint of pink. An effective contrast of color very pleasing in appearance. Medium size.

Price, **10c.**

Mildred Slocombe. A beautiful shade of pink. A very large, full flower of unusual beauty.

Price, **\$1.00.**

Mina Burgle. Deep scarlet, solid color. A large flower of fine form and a beautiful rich, bright color. A fine flower.

Price, **50c.**

Minos. Rich, velvety maroon. Flowers are large and very beautiful, and are borne on long, stiff stems. The petals look like satin, and to look into the heart of the flower it appears to be a velvety black. A thoroughly handsome Dahlia.

Price, **10c.**

Mlle. Marguerite Des Blanc. White. Very large, full, fluffy flower of clear white. An elegant variety and extremely desirable. Price, 50c.

Mlle. Marie Hoste. Dark, glowing pink, each petal tinted magenta. Large, full flower. Strikingly beautiful in appearance. Price, 25c.

Mme. Victor Vassaire. Clear, beautiful yellow. If you wish to secure a handsome Dahlia, now is the time. This is a large and perfectly formed decorative Dahlia. A yellow beauty. Price, 35c.

Mons. Burel. Dark apricot yellow in centre, shading lighter toward edge of petals, which are faintly lined and dotted with dark apricot. Large blossoms borne on good straight stems. A handsome variety. Price, 25c.

Mons. Hoste. Rose carmine. A beautifully formed, large flower, on stiff stems. Price, 25c.

Mrs. George Reed. White, deeply tipped pink. Edge of petals evenly notched. Good size. Flowers freely. Price, 10c.

Mrs. E. C. Borden. Bright, glowing red. Full, well formed blossoms. Profuse bloomer. This beautiful Dahlia begins to bloom early, and produces an abundance of showy flowers continually until killed by frost. Very desirable for cutting. Price, 10c.

Oban. Mauve, shaded to fawn. This is a very odd shade for a Dahlia, but also very attractive. When cut for bouquets of solid color, this Dahlia presents an exquisitely effective appearance. The flowers should be seen to be appreciated. At the price at which this Dahlia is sold, all lovers of flowers should have a good supply of them. Price, 10c.

Papa Charmet. A magnificent large flower of a deep, velvety coral red, overlaid with a much darker shade, giving the flower a rich crimson-maroon effect. The very best decorative Dahlia of its color. Price, 35c.

Papa Treyve. Brilliant orange scarlet; large flowers in great abundance on rather dwarf plants. Price, 15c.

Papa Victor. A beautiful, clear purple blossom, with petals shading lighter at tips. Yellow centre. A very handsome flower. Price, 20c.

Royal Purple. Solid rich purple. Solid color throughout. Quite large and desirable. Price, 50c.

Royal Scarlet. Color is aptly described by its name. Petals are flat and sharply pointed. Price, 35c.

Sapho. White, slightly shaded pink. Price, 10c.

Souvenir De Gustave Douzon. This is

a decided novelty because of its gigantic size, closely resembling the sunflower in this respect. Color is a pleasing orange red. On account of its extraordinary size and elegance of form and color, this is a very attractive Dahlia. Flowers full to centre and often measure 9 inches in diameter. Price, 15c.

Thompsonii. Solid light red, of good form and size and very desirable for cut flowers. Price, 15c.

Treasure. Pink ground, striped and splashed with carmine. Price, 20c.

Uncertainty. Red and white, very harmoniously blended. Seldom has two flowers alike, some blossoms being almost clear white, while others are nearly a solid red. A beautiful Dahlia of fine form. Admired by everyone. Price, 20c.

Ville De Lyon. Very large white flowers, flushed with pink, having quilled petals. Extra good. Price, 25c.

Wm. Palmer. An immense salmon red Dahlia. A splendid acquisition to any one's collection. Very good. Price, 35c.

Yellow Colosse. Bright, canary yellow. A large, beautifully formed flower resembling Yellow Le Colosse, except that the petals are not quite as flat. Price, 25c.

Yellow Duke. Clear bright canary yellow, good size, nicely formed petals, erect, and desirable. Price, 25c.

Yellow Queen. Entirely new. A beautiful shade of yellow. Good size and fine florets perfectly formed. This Dahlia has a wonderful centre, which never fully opens during the life of the flower. Price, 15c.

Have You Joined THE AMERICAN DAHLIA SOCIETY?

"The Society is formed for the purpose of stimulating interest in, and promoting the culture and development of the Dahlia; to establish a standard nomenclature; to test out new varieties, and to give them such recognition as they deserve; to study the diseases of the Dahlia and find remedies for same; and to disseminate information relating to this flower; to secure uniformity in awarding prizes at flower shows, and to give exhibitions when deemed desirable."

*I will be glad to enter you as
a member*

See my premium offer on page 53

\$2.00 A YEAR

PEONY FLOWERED DAHLIAS

I prepay carriage on all retail bulb orders, accompanied by cash in full, in the United States. This does not apply to Special Offers.

America. A beautiful flesh pink with slight shading of light gold. A beautiful Dahlia of ideal habits and very free blooming. Price, 50c.

Annie Slocombe. Another new and choice Peony-flowered Dahlia with a diameter measuring from $7\frac{1}{2}$ to 8 inches. Its face is entirely of a bright, pleasing canary yellow; but the entire back of the petals is covered with a dulled shade of salmon red streaked with the yellow of the face. It is very striking and when held to view one might think it was tipped salmon red for some of the petals turn at the points, showing the back coloring. It is on long stems, good for cutting. An extra nice variety. Price, \$1.00.

Baron De Grancy. An odd and pretty specimen of good size. Some petals of this Dahlia come bright, velvety cardinal, while others are much darker, almost maroon. Very attractive and unique. Good stems. Price, 25c.

Bertha Von Suttner. Salmon pink, shaded yellow. Large flowers held erect on long, stiff stems. The flower is remarkable in form, with broad petals twisted at points most artistically. Price, 50c.

Caecilia. Creamy white; very large. A splendid variety. Price, 25c.

Dr. Peary. Dark velvet mahogany red, the darkest of all. A very large Dahlia, and certainly a beautiful one. Price, 50c.

Geisha. Yellow and red. A most wonderful Dahlia. If you love gorgeous coloring, here you will find it in the orange, red and yellow of this mammoth flower. Geisha flowers are held aloft on long stems in a stately manner, befitting their glorious coloring. Price, 50c.

Glenton. Color, mauve fawn. Of good size and very desirable. Price, 35c.

Golden West. A very nice yellow Peony-flowered Dahlia. Of good size. Price, 35c.

Great Britain. A lovely shade of lavender pink, rather deeper at base. Bears the appearance of being slightly blotched with white spots. A full, fluffy Peony with sharply pointed petals, curled about most attractively. A large flower on good, stiff stems. Very desirable. Price, \$2.00.

H. J. Lovinck. White shaded lilac, very fine form on long stems. A large and beautiful Dahlia. Price, 15c.

Ironmonger. Petals around centre at base white, blending into the heliotrope of the remainder of the petals. Inside row of petals lighter than outer ones, which are delicate pinkish heliotrope. Price, 35c.

Isaquah. Light purple. A very full flower. Price, 50c.

King Edward. Very large flower, over 6 inches in diameter, very dark purple crimson produced on long stems; a profuse bloomer. Price, 25c.

King Leopold. Yellow, shaded to white. Large flowers, colors exquisite. Price, 25c.

Merry Widow. Semi-Peony, or Duplex, a bright velvety cardinal, even lighter toward yellow pollen. Tips bear a darker hue which blends through sides of petals. A few curled petals of cardinal and yellow are around centre. Good size. Price, 25c.

Miss Adelaide M. Buttle. Pale lemon yellow. Large flowers with long twisting petals. Price, \$1.00.

Miss Watson (Duplex). Straw-colored disc surrounding deep yellow centre, that is base of petals straw, more than half the centre clear, beautiful shade of cerise or jacqueminot, with one or more narrow yellow stripes running through the cerise. Tips of petals white overspread cerise. Some of the petals have but a little cerise on them, and are mostly straw color, a little cerise and white. Price, 50c.



VERNA THOMPSON

Mme. J. Coissard (Duplex). Very beautiful shade of deep cerise, shading to white in centre. Whole flower more or less overspread with white. Good sized flowers and very desirable. Petals are broad and flat. Price, **50c.**

Mosel (Duplex). White, shaded to scarlet. Base of petals white, and varying from white to a beautiful scarlet the entire length. Price, **50c.**

Philmene. Very light pink shading to almost white. Very large deep flower of exquisite form and color. Price, **\$1.50.**

P. W. Janssen. Rosy salmon with a shade of yellow; an elegant flower, borne on stout, erect stem. A rich and pleasing shade. Price, **25c.**

Paul Kruger. Striped red and white. Very unique coloring. Price, **25c.**

Pretoria. Medium sized Pæony, slightly yellow at base, main body velvety red of a dark hue. Price, **50c.**

Reine Wilhelmina. Pure white. Full fluffy flowers of immense size, measuring from 6 to 7 inches. One of the very desirable Pæony-flowered varieties. Price, **25c.**

Semiramis. Large, pink flowers with open, yellow centre. Base of petals around centre is yellow, with a broad line of yellow running down the pink petal to the tip. Outside rows of petals all pink except for a tint of yellow at extreme point of petal. A very handsome Pæony. Price, **35c.**

Sherlock Holmes. Heliotrope, or light mauve. Large and beautiful. Price, **35c.**

South Pole. Pure white. A very nice Pæony-flowered Dahlia. Long stems; good for cutting. Price, **75c.**

Souvenir De M. Silvent. Very light salmon. Some flowers shading to light orange red. A combination of colors. Price, **25c.**

SHOW AND FANCY DAHLIAS

I prepay carriage on all retail bulb orders, accompanied by cash in full, in the United States. This does not apply to Special Offers.

A. D. Lavoni. Show. Delicate pink. Well-formed flowers with long stems. Very desirable for cutting. This is an old standard Dahlia which every Dahlia grower has retained from its introduction, on account of its exquisitely beautiful color and perfectly rounded ball-shaped flower. One of the freest blooming Dahlias in cultivation. Try a half dozen of these. Price, **10c.**

America. Show. Light slate, with vivid crimson stripes. Often a solid color flower on same stalk. Sometimes the plants produce solid red flowers. Much admired. Price, **20c.**

Arabella. Fancy. Sulphur yellow with pink tips. Desirable in every way as a fancy Dahlia. Price, **10c.**

Buffalo Bill. Fancy. Buff striped vermilion. Flowers of unusually fine form and appearance. Extremely attractive. Price, **25c.**

Columbus. Fancy. Deep, golden yellow. Each petal heavily bordered with mahogany red, giving the flower a beautiful red appearance. A very large flower of unusual merit. Price, **50c.**

Comedian. Show. Orange striped crimson. Large, striking and handsome. Price, **25c.**

Crown Prince. Show. Buff, deep rich color. Good formed blossoms. A very desirable ball-shaped flower. Price, **15c.**

Cuban Giant. Show. Dark reddish maroon. Flowers of great size, measuring 6 inches across; stands erect on very long stems well above the foliage. The immense number of large, richly hued flowers presents a magnificent appearance. Price, **15c.**

Dreer's White. Show. A clear snow white. This beautiful show Dahlia is very large, finely formed and beautifully quilled. It flowers very freely, and is by far one of the very best pure white show Dahlias. Price, **35c.**

Duchess of Cambridge. Show. Pink, tipped purple. A beautiful variegated show Dahlia of good size. Price, **15c.**

Earl of Ravensworth. Fancy show. Petals white edged and tipped pinkish lavender. One of the best colors. Price, **35c.**

Emily. Show. Delicate lavender, overspread with white. The daintly blended colors make this an exceptionally beautiful Dahlia. Long, stiff stems. Price, **10c.**

English Penelope. Show. Fawn, delicately shading to amber and yellow. Good form. One of the largest and most desirable show Dahlias. Price, **25c.**



KING OF SHOWS

Eric Fisher. Show. Buff, striped scarlet. Flowers are large and beautifully formed and very attractive. Price, **35c.**

Ethel Maule. Show. Pure glistening white. One of the finest in its class. Large and beautiful. Faint tint of lavender on tips of petals in centre. Price, **25c.**

Eugene Mizard. Show. Golden yellow shading to scarlet. A very large flower of compact form. Very desirable and attractive. Price, **25c.**

Fascination. Show. White suffused lavender pink. A beautiful, free-blooming Dahlia. Price, **10c.**

Frank Smith. Fancy. Dark, rich red. Petals tipped with pinkish white. A beautiful mixture of color and universally admired. Fine form. Stand well above foliage. Very showy. One of the most pleasing fancy Dahlias grown. Price, **25c.**

Frederick Smith. Show. Purple and lilac. Price, **15c.**

General Grant. Fancy show. Deep orange, striped chocolate. Sometimes the flowers will come solid chocolate shade, and even then flowers are extremely beautiful. Price, **25c.**

General Miles. Light violet striped and splashed with purplish magenta. An enormous, large flower borne on long stout stems. The very best variegated show Dahlia in existence. Price, **\$1.00.**

Gloria De Lyon. Show. White. A very fine flowering Dahlia. Price, **25c.**

Gloria. Show. White. A round, full flower. Price, **25c.**

Gold Medal. Fancy. Bright lemon yellow, regularly striped dark crimson. A bold and striking flower, very effective in appearance. Full and round. Blooms abundantly. Price, **25c.**

Grand Duke Alexis. Show. This is one of the most delicately beautiful show Dahlias. The color is pure white, softly bordered with lavender. The flowers are very large and decidedly pleasing in effect, being specially distinguished for their dainty coloring. Price, **15c.**

Helen Gould. Fancy. Some of the petals are clear, pale pink, others are entirely red, and some are red at base with white tips. A novel combination. Price, **25c.**

Henri Depresie. A very full and solid show Dahlia of a very clear shade of red, slightly orange red. Decidedly erect on heavy, strong stems. Price, **50c.**

Jas. Cocker. Show. A most beautiful, rich, purple. Fine form, abundant bloomer. Very closely laid florets and full to the stem. The lasting qualities of this Dahlia are unsurpassed. Price, **25c.**

Jesse McIntosh. Fancy show. Base of petals brick red, with tips of pale fawn color. Very attractive combination of colors. Price, **25c.**

John Bennett. Show. Yellow, deeply edged with scarlet. A very free-blooming variety and a desirable color. Price, **25c.**

John Thorp. Show. Pink, slightly tinted white at base. A very striking combination of colors and in every way desirable. Price, **10c.**

Kaiser Wilhelm. Fancy Show. Immense size, deep yellow, tipped with cherry red. Price, **20c.**

Les Amours De Madame. Fancy. Show. A very attractive lavender rose pink of fine form. Nicely rounded Dahlia of good size. The petals are marked and spotted somewhat with a much deeper shade, almost red. Very desirable; on good stems. Slightly variegated. Price, **25c.**

Lucy Fawcett. Fancy. Light, canary yellow, with stripings of clear, magenta. Large and very free. Price, **10c.**

Lumineuse. Show. Yellow with red shadings. A nice, large, full flower. Price, **25c.**

Mad. Alf. Moreau. Fancy Show. Base of petals white, edges and tips lavender. Good size and showy. Price, **20c.**

Mad. Heine Furtado. Show. Pure, waxy white, perfectly formed flower. Very large and wonderfully beautiful. A free bloomer and one of the most desirable white Show Dahlias ever produced. Unsurpassed for quality in every respect. Price, **25c.**

Mad. M. Anagnostaki. Fancy. A sensational wonder. Remarkable for its dainty blending of colors, being snowy white, delightfully shading to a beautiful rose pink. Price, **50c.**

M. Con Varin. Dark purple, some of the petals having tips touched with white. Very pleasing. Price, **15c.**

Merlin. Show. Solid color blossom of brickish red hue, petals around outside appear lighter than in the compact centre. Price, **10c.**

Meteor. Show. Bright, ruby red, shading to purple. A large striking flower and very desirable color. Extremely large, growing from 5 to 6 inches across. Profuse bloomer. Price, **10c.**

Norma. Show. Beautiful butter yellow, overspread with reddish tinge. Very round. Fine. Price, **20c.**

Ohio. Show. Dark velvety carmine standing erect on its stems. Price, **25c.**

Prof. Fawcett. Fancy. Deep lilac, striped with chocolate. A very odd combination of colors. A number come all red. Desirable as a novelty. Price, **15c.**

Queen Victoria. Show. Lemon yellow. Flowers unusually full and round. Strong stems and fine for cutting. Price, **10c.**

Rebecca. Fancy. Lilac striped crimson. Shell-shaped petals. Price, **20c.**

Red Fire. A very good light red Show Dahlia. Well worth owning. Price, **15c.**

Robin Adair. Show. A very nice Dahlia. Color, terra cotta. Price, **15c.**

Rose. Show. Aptly named. Remarkable resemblance to a rose. Of a typical rose shade. Base of inner rows of petals

much deeper reddish rose than outer petals which are somewhat paler. Price, **35c.**

Stradella. Show. Purplish crimson with cup-shaped petals, of fine form with very long stems. Price, **10c.**

Striped Banner. Tips of petals are white, jaggging down into the base of the petal, which is royal red or dark scarlet. A novel and striking blossom. Price, **25c.**

Surpasse Colosse. Show. Color, scarlet carmine, flowers large, with large quilled petals. Price, **35c.**

Sunburst. Show. Color, salmon. Fine form and a beautiful shade. Price, **10c.**

Susan. Show. A beautiful, delicate, soft shell pink, splendid form, early and free flowering, long stems. Splendid for cutting. Price, **15c.**

Tillamook. Show. Similar in shape to "Dreer's White." The whole blossom is very, very pale pink. Each petal is folded over neatly, making a beautiful flower. Price, **35c.**

Triomphe De Lorraine. Fancy Show. Light brickish red. Good, full flower and compact. Base of the many small petals is blended into a reddish salmon lighter than tips. Good stems. Price, **25c.**

Vivian. Show. Large and of beautiful colorings. Centre of blossom dark magenta, the inside of the petal being much lighter cerise or jacqueminot. A large and excellent Dahlia. Price, **25c.**

White Swan. Show. Pure white. Very nice specimen. Price, **25c.**

W. H. Williams. Show. Rich scarlet. A large, noble flower of compact form. Florets very evenly and tightly formed, and a free bloomer. Price, **10c.**

W. W. Rawson. Show. This popular novelty has been the admiration of all wherever shown the past season. The massive, perfect flowers, often measuring 6 inches across, are borne on stiff stems about 15 inches long. The entire flower is absolutely perfect in outline and formation. The color is pure white, overlaid with amethyst blue. Price, **25c.**

POMPON DAHLIAS

I prepay carriage on all retail bulb orders, accompanied by cash in full, in the United States. This does not apply to Special Offers.

Admiral Dott. Pink, with lavender tinge. Very free bloomer. Round, perfect blossoms. Price, 10c.

Ariel. Buff tinted orange. Very desirable. Price, 10c.

Belle of Springfield. Very pretty shade of light red. The smallest Dahlia known. Very round and regularly formed blossoms of diminutive size. Price, 10c.

Bleutroschen. Dark maroon, tipped light pink. Each small petal is evenly serrated, making a very dainty little flower. Price, 10c.

Bobby. Very finely formed flower of an attractive shade of plum color. An extra good Pompon. Price, 10c.

Brunette. The centre of this little Dahlia is a pale pink, in a circle about as large as a five-cent piece. Around this to the outer edge the petals are crimson, making an especially attractive flower. Price, 20c.

Catherine. Light buttercup yellow. Excellent for cutting. Very showy. Price, 10c.

Challenge. White and dark maroon. A variegated novelty, attracting much attention. Price, 10c.

Codsall Gem. Rosy red, with white tips. The coloring of this flower is combined so as to make it most attractive and striking. Price, 25c.

Darkness. Deep, solid maroon, nearly black. Price, 10c.

Darkest of all. Blackish maroon. Its name is very appropriate, and aptly describes it. A very handsome, very dark Dahlia. Price, 10c.

Edie. A clear, lovely lavender. Outside rows of petals a little lighter than inside rows. Very pretty. Price, 20c.

Elsie. The very daintiest possible pale pink. Fine. Price, 10c.

Eunice. Lavender with white shading. A very desirable color. Price, 10c.

Eurydice. Light pink, edged and tipped deep, rich carmine. Very fine combination and very desirable. Price, 10c.

Fairy Queen. Sulphur yellow, edged pink; one of the best Pompons. Price, 10c.



LITTLE JENNIE

Fascination. Pink and lavender, sometimes blotched white. Price, 10c.

Gretchen Heine. Blush white with light rose tips. Price, 15c.

Gruss Aus Wien. This is one of the finest shaped Pompon Dahlias ever offered. It is a strong grower with dwarf habit, the flowers are of extra fine form, and very compact. The color is a crushed strawberry. Price, 10c.

Henrietta. Yellow tipped crimson. Fine combination and a very desirable variety. Fine for cutting. Price, 10c.

Hesperia. This Dahlia is marked like, and resembles in color, Prof. Mansfield. Petals deep yellow, shading a little lighter toward tips, but with garnet edges and tips. Very handsome. Price, 15c.

Highland Mary. Pink and white. Quite large flowers and very productive and free. Price, 10c.

Jessica. Buff, slightly speckled with red. Very attractive. Free bloomer. Price, 10c.

Kleindomiter. Clear delicate buff color, shading lighter around outside edge of blossom. Price, 10c.

Klein Gretchen. White shaded crimson, leaving the blossom principally crimson. Base of petals white, while all the rest of petal is crimson. Striking and beautiful. Price, **10c.**

Leuchstern. Orange, richly shading to deep orange red. Very fine. Price, **10c.**

Little Jennie. Primrose yellow. A beautiful flower of diminutive size; free bloomer. Price, **10c.**

Little Mabel. Light creamy buff. Flowers very round. Blooms freely. Price, **20c.**

Little Mary. About the size of Belle of Springfield, but it is a velvety, dark, maroon, about the shade of Darkest of All. Price, **25c.**

Lydia. White, striped and mottled red. Very round, full flower. Extra good. Price, **25c.**

Madeline. Pale primrose, edged with rose purple. Variegated. Price, **10c.**

Marguerite. Deep lilac. Blooms freely on good stems for cutting. Price, **10c.**

Mary Clift. Light maroon. A very compact flower on good stems. Price, **10c.**

Prince Charming. Cream, tipped with a shade of purple. One of the best. Price, **25c.**

Santoy. Nearly all carmine, base of petals white, rest of petals bright carmine. Handsome and striking. Price, **15c.**

Snow Clad. Pure white. This dainty little white flower should be seen to be appreciated. It is very prolific, producing a great abundance of flowers. Price, **10c.**

Thalia. Deep pink, shaded lighter toward centre. Fine. Price, **10c.**

Toni. Golden yellow. Very fine. Price, **20c.**

Tulla. Wine crimson. A very free bloomer and exceedingly beautiful. Price, **10c.**

Viridi Flora—The Green Dahlia. The most unique novelty of Dahlia culture. The flower is a rich, verdant green, same shade as the foliage. Occasionally the flowers show a number of red petals. This Dahlia does best in a partially shaded location. Price, **25c.**

Winifred. White, tipped lavender. Very striking combination, and one of the most beautiful Dahlias of the Pompon family. Price, **25c.**

Zoe. Base of petals and edges clear yellow. Tips white. This is a very attractive Dahlia, and well worth having. Sometimes blossoms come all yellow. Price, **15c.**

IF YOU HAVE GOOD LUCK WITH YOUR DAHLIAS, TELL ME SO. I LIKE TO KNOW THAT YOU ARE PLEASED. IF YOU DO NOT SUCCEED BE SURE TO TELL ME THAT, FOR THERE IS A REASON, AND I MAY BE ABLE TO ADVISE YOU CONCERNING IT.

DAHLIA STAKES

As many of my customers make inquiries of me as to where they may obtain strong Dahlia stakes, I have arranged to furnish a good, strong, **HARDWOOD** Stake, $1\frac{1}{4}$ inches in diameter, and 6 feet long, turned perfectly round, ready to paint, 10c. each, F. O. B. Westerly, R. I.

Remember, I send out Field-grown Bulbs, divided ready for planting, except where noted.

CUT FLOWERS FOR SALE in their season.

For the benefit of persons living at a distance from my gardens, and who would like to see samples of my Dahlias, I will send a sample box containing fifty blossoms of different kinds, all labeled with their names, for **\$1.00**, to pay for the labeling and packing, express to be paid by purchaser. However, I should not recommend sending them over 500 miles.

Why not buy your Dahlias of the person who makes a specialty of Dahlias and who grows them exclusively? Isn't that a point worth considering?

On the inside of the back cover is a partial view of one of my fields containing over 4 acres of Dahlias. This picture alone should convince the most skeptical that they can grow Dahlias successfully.

Any one who has a few feet of garden soil can grow Dahlias. They are grown entirely in the open—you do not need to have a greenhouse to plant Dahlias. Improve the looks of your yard by planting a few of them.

SINGLE DAHLIAS

Blackbird. Deep maroon, nearly black. Large and attractive. Price, 10c.

Blush Century. Clear white, slightly overcast with delicate shade of pink. Price, 10c.

Blushing Maiden. This is a Dahlia of beautiful shadings. The florets are a light maroon mingled with a light carmine, and has a pure white stripe through the centre of petals. Very attractive. Price, 10c.

Coquette. Deep cerise pink, sometimes edged with a deeper shade. Quite large. Price, 10c.

Dauntless. About one fourth of petal at base yellow, remainder of petal rose pink, edged, dotted and streaked with magenta. Some of the petals have several stripes of the magenta through them, while others have somewhat less number of streaks. Price, 10c.

Falcon. Reddish purple, with white disc around the centre; a large flower in which the color contrast is both striking and beautiful. Price, 10c.

G. H. Longman. Lavender pink. Petals broad and flat. Medium sized flowers; long stems; very desirable for cut flowers. Price, 10c.

"Greycote." A rich, deep peach pink, and a very large Single Dahlia of beautiful shade and form. This Dahlia is borne on long, stiff stems and is a very robust, stocky plant. A fine specimen for cut flowers. Price, 50c.

Lady Mildred. Pure white. Now and then shows a very faint pink tinge. Flowers large and perfect. Extremely graceful, and one of the most desirable white single Dahlias. Price, 15c.

La Favorite. White. Suffused rose. Striped with rich purple. An exquisitely

dainty flower. Large and blossoms freely. Price, 20c.

Mabel C. A single Dahlia of unusual merit. The color is a lavender pink, with an amethyst shading at base of petals. Flowers large and graceful. Price, 20c.

Margaret Perkins. One of the most beautiful varieties of recent introduction. The flowers are very large, have rather pointed petals, are wide, but not overlapping, and are borne on very long, stiff stems. The color is pure white with about one half of each petal tipped light pink; first flower being tipped cerise pink, and, like "Twentieth Century," of which it is a seedling, growing steadily lighter as the season advances, becoming a clear, soft pink late. Price, 10c.

Madame X. Deep velvety carmine, occasionally blended and shaded lighter. Price, 15c.

Mildred C. Saunders. Yellow, blotched and splashed with red. A large, bold flower of unusual merit, and very desirable for cutting, often measuring 6 inches in diameter. The gorgeous colors present a most striking appearance. Price, 10c.

Miss Emma. Dark salmon yellow with light centre. Very large and attractive. Price, 10c.

Mrs. Evans. White, flushed pink, finely striped and spotted crimson. Price, 15c.

Sensation. Single. Vivid vermilion, heavily tipped white. An early and profuse bloomer. Very popular. Price, 15c.

Twentieth Century. Pure white at base and tip, with centre of petals a beautiful rose pink. A very popular Dahlia and worthy of the highest praise. Flowers freely. Price, 10c.

Wildfire. Color, bright, fiery red. Medium sized blooms, but very pretty for cutting. Price, 20c.

COLLARETTE DAHLIAS

I prepay carriage on all retail bulb orders, accompanied by cash in full, in the United States. This does not apply to Special Offers.

A. Manmene. Nice dark red Collarette Dahlia, with white collar. Price, 25c.

Directeur Rene Gerard. Flowers 5 inches across; ground color, creamy white, suffused with purple, very long, creamy white, collar petals. Price, 35c.

La Fusee. Petals twisted to give the flower the appearance of a single cactus; color, deep ox-blood red, the collar being of same shade, marked with white. Price, 10c.

Maurice Rivoire. A medium flower with broad petals of rich maroon, with deeper stripe down the centre, and a pure white fringed collar. Price, 10c.

Meteor. Positively the best of its color; ground color brilliant scarlet, penciled, spotted and striped with rose color. Collar white. A flower of fine form. Price, 10c.

Orphee. Brilliant crimson, tipped pink with a point of yellow. Collar light sulphur yellow. Price, 25c.

Pres. Viger. Rich carmine red, having a collar of small, pure white, very curly petals inside. Very odd and attractive.

Price, 10c.

Prince Carlie De Rohan. A pleasing, pink touched and blended with bluish

lavender. Tiny collar of same shading. Very good size, attractive and on good stems.

Price, 50c.

Souvenir de Chabanne. Ground color lemon yellow, with coral red markings; collar petals very abundant and long, lemon yellow, tipped white.

Price, 10c.

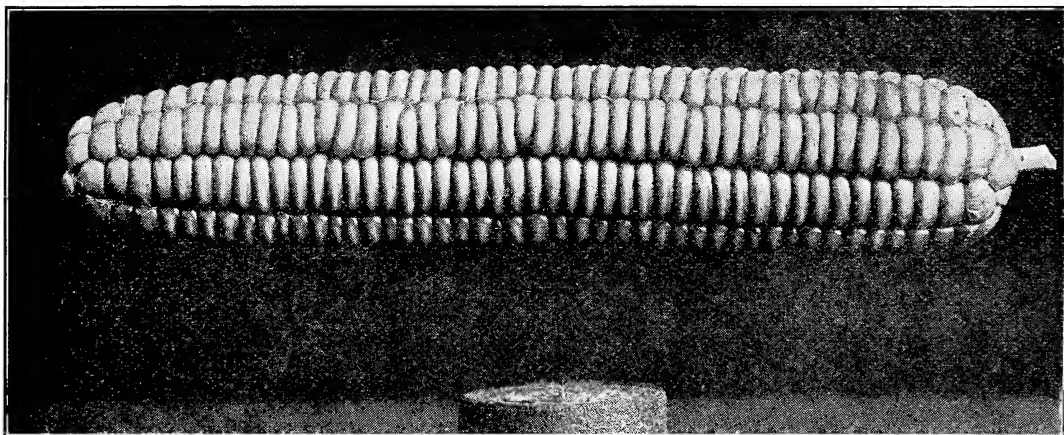
SEED CORN

On my farm I am growing a special strain of white northern corn which is superior to any corn grown for table meal. If you grow corn, grow the best. **Get Stillman's Special.**

STILLMAN'S SPECIAL RHODE ISLAND DOUBLE CAP CORN

Outer end entirely capped. Butt nearly capped. The best white northern corn grown. The ears are large, butt stems are exceedingly small. The ears are easily husked and broken off. It yields two and three ears to the stalk. The kernels are large and in straight rows. It makes the sweetest and best table meal. The kind that makes the best R. I. Johnny-Cakes. Always get the Stillman strain.

60c. pt. \$1.00 qt. \$3.00 four qts. \$5.00 eight qts. \$8.00 half bu.



SAMPLE EAR OF STILLMAN'S SPECIAL RHODE ISLAND DOUBLE CAP CORN

Note the small butt stem

All the Dahlias described in this catalogue as to color and shape are described to the best of my ability, but I do not guarantee them to fully meet the ideas of all purchasers in regard to color and shadings.

SPECIAL OFFERS

Parcel Post or Express

For the benefit of those who are not familiar with the names, colors, and characteristics of the Dahlia, and wish to have the selection made for them, I make the following collections at a special low price:

- No. 1 COLLECTION**, fifteen named varieties, several classes, my own personal selection, no two alike, and each one labeled..... **\$1.00**
- No. 2 COLLECTION** contains fifteen extra fine, high-priced varieties, my own personal selection, no two alike, and each one labeled. This collection contains not less than \$3.50 worth of bulbs..... **2.00**
- No. 3 COLLECTION** contains fifteen varieties, or more, of extra nice assorted bulbs very carefully selected, no two alike, all labeled. The Dahlias in this collection amount to not less than \$7.00 worth..... **5.00**

- No. 4 COLLECTION** contains twenty-five bulbs, without labels, that have become mixed in handling. They are all standard varieties, but labels have accidentally become detached. The supply for this collection is limited. **Price**, while they last..... **1.00**
- No. 5 COLLECTION** is made up of entirely new varieties of my introduction. I will select an assortment of styles and colors to the amount of \$30.00, or more, for \$25.00; but the selection must be left entirely to me at this price. **25.00**
- Express or postage must be paid by purchaser on all Special Offers

BULBS BY THE DOZEN

Not less than one dozen at the dozen rates.

- One dozen any 10c. Dahlias, three or more of a kind, your selection.....\$1.00
 One dozen any 15c. Dahlias, three or more of a kind, your selection..... 1.50
 One dozen any 20c. Dahlias, three or more of a kind, your selection..... 2.00
 One dozen any 25c. Dahlias, three or more of a kind, your selection..... 2.50
 One dozen any 35c. Dahlias, three or more of a kind, your selection..... 3.50

Be Sure and Read This

It has been thoroughly demonstrated that nearly all small shipments of bulbs can be sent by mail and reach their destination quicker than by express.

Notice! The postage or express on all special offers must in all cases be paid by purchaser, and if by mail, postage must be sent with the order or pay C. O. D. charges to destination, which often amounts to more than the postage.

To ascertain the amount of postage to send.

No. 1, 2, and 3 Collections weigh four pounds or less.

No. 4 and 5 Collections weigh six pounds or less.

Your postmaster can tell you the cost of any number of pounds from Westerly, R. I., to your post office. Or you can use the following table. If you send more money than is used in postage, the surplus will be returned.

TABLE

1st & 2d Zone	3d Zone	4th Zone	5th Zone	6th Zone	7th Zone	8th Zone
1 lb. 5c.	1 lb. 6c.	1 lb. 7c.	1 lb. 8c.	1 lb. 9c.	1 lb. 11c.	1 lb. 12c.
2 lb. 6c.	2 lb. 8c.	2 lb. 11c.	2 lb. 14c.	2 lb. 17c.	2 lb. 21c.	2 lb. 24c.
3 lb. 7c.	3 lb. 10c.	3 lb. 15c.	3 lb. 20c.	3 lb. 25c.	3 lb. 31c.	3 lb. 36c.
4 lb. 8c.	4 lb. 12c.	4 lb. 19c.	4 lb. 26c.	4 lb. 33c.	4 lb. 41c.	4 lb. 48c.
5 lb. 9c.	5 lb. 14c.	5 lb. 23c.	5 lb. 32c.	5 lb. 41c.	5 lb. 51c.	5 lb. 60c.
6 lb. 10c.	6 lb. 16c.	6 lb. 27c.	6 lb. 38c.	6 lb. 49c.	6 lb. 61c.	6 lb. 72c.

War tax on 25c. postage is 1 cent, and 1 cent thereafter on every 25 cents or fraction thereof.

NOTE THE FOLLOWING

Do not plant your Dahlias in the shade.

Stunted plants, thick and bushy on top, with no blossoms, are the result of dry weather, or too heavy soil.

I guarantee every bulb I send out.

Do not wait for bulbs to sprout before planting. There is nothing like mother earth to sprout them. Plant them where you want them to grow.

The more flowers you cut the better Dahlias bloom.

Dahlias do well with me; they will with you, if you follow my instructions carefully, and above all, note what is said on another page in regard to watering.

JOIN THE AMERICAN DAHLIA SOCIETY. \$2.00 per year. Every member who joins prior to the annual meeting in September, 1919, mentioning this offer, I will give free two (2) bulbs of either of the following three Dahlias of the Indian Family, viz.: Ninigret, Misquamicut, or Powhatan. Send your application to me, and bulbs will be sent in the Spring.

TESTIMONIALS

January 7, 1918.—A lady in Laurie, Miss., writes as follows: "I would like to place my order early and have you ship the following next April:

1 Geo. L. Stillman.....	\$5.00
1 Black Hawk.....	2.00
1 Millionaire.....	10.00
1 White Rock.....	1.50
1 Villa De Lyon.....	.75
1 Fang De Charmer.....	.50

\$19.75

Had splendid success last fall, and took several prizes at the county fair with your Dahlias. I was very much pleased."

February 16, 1918.—A gentleman in New Rochelle, N. Y., writes as follows: "At the Flower Show in the Grand Central Palace last Spring I bought from you a package of Pæony-flowered Dahlia seed. I raised 40 plants from them and they were the envy of my neighbors. Hardly any two alike in color. I had some 7½ inches in diameter."

February 7, 1918.—A lady in Cincinnati, Ohio, wrote me thus: "Please send me one package of seed from the Indian Family. I had tremendous success with my plants grown from these seeds last year and if the enthusiasm which my flowers created counts for anything, you should sell Dahlia seed to many Cincinnati people."

January 30, 1918.—A lady in Athens, N. Y., writes as follows: "I neglected to write you of the wonderful success I had with the bulbs I bought from you last Spring. They were simply *wonderful* and many dollars were made by their sale for the Red Cross."

March 18, 1918.—A lady in Everett, Ohio, writes: "My order for bulbs is herewith inclosed, and if it receives the consideration my first order did you can number me one of your friends. My Dahlia bed was a beauty spot and the envy of all who saw it. Unfortunately my tubers froze in the cellar. Can you assist me in recognizing these pets of my girlhood?"

March 16, 1918.—A gentleman in Florence, S. C., inclosed an order for bulbs and seeds and wrote as follows: "I want to tell you that by following *your* cultural directions I have been very successful with the bulbs obtained from you, and in each case the blooms have come true to description. Allow me to thank you for your courtesy and promptness in filling my orders."

March 18, 1918.—a gentleman in Ford City, Pa., writes: "I inclose check for the inclosed order. The Dahlias I received from you one year ago have been the talk

of the community. I was well pleased with them, but I lost all my bulbs."

February 11th, 1918.—A lady in Martins Ferry, Ohio, writes: "I wonder if you would care to hear of the fine Dahlias I raised from your seed. Two years ago I got a 25c. package and raised over 160 plants. I think every seed grew, and just three months from the day I planted the seed the first flower bloomed. They were the wonder of the country. I had one nearly black one; it was 6 inches across. Another was bright red and 8 inches across. Through sickness I lost all my bulbs. Will you please send me a catalogue for I want some more."

A lady in Center Junction, Iowa, after ordering bulbs writes: "I ordered some bulbs of you last year and was very much pleased with them. They were all so nice and all grew well. Hope these will be the same."

October 25, 1918.—A gentleman from Newark, N. J., writes me thus: "I wish to tell you that I had fine success with the Billionaire, and think it the finest Dahlia grown. Also had fine luck with the White Mammoth. The Geo. L. Stillman is the finest red Cactus Dahlia I have seen to date."

August 8, 1918.—A gentleman in San Francisco wrote me as follows: "To date most of my Dahlias that you sent me are in bloom and I must say they are simply wonderful."

June 1st, 1918.—A lady in Philadelphia writes: "The Dahlia bulbs arrived in good order, and I expect to put them in the ground to-day. Your bulbs have been a great success each season I have had them and have bloomed well, but I have lost them all the past winter."

June 10, 1918.—A lady in Walkerville, Mich., after ordering more bulbs, says: "Your Dahlias always grow good for me and are true to name. I have a good place for them. The soil is sandy loam."

May 21, 1918.—A lady in Howard, Ohio, writes: "My Dahlias I purchased of you last year were perfectly beautiful, also those from seed."

April 20, 1918.—A gentleman in Center-ville, Mo., in addition to an order, says: "I had fine flowers from your bulbs last summer, though the season was very dry. This is my second order this Spring."

A gentleman from Danville, Ky., writes, October 1, 1918: "The seeds I bought last Spring of the Indian variety were, beyond question, the very finest ever sent to Danville. I paid \$2.00 for these, and while I had eminent success I want to buy the very

'last word' in high grade Dahlia seed. I find I can grow them. I have a white one and one grand red one, 14 feet high, and the flowers measure 5 to 7 inches across face. I would not dispose of the white one for a ten-dollar note, saying nothing of the reds, yellows and pink."

A lady in Oakland, Calif., writes October 1, 1918: "The Dahlia seed I purchased from you in 1916, owing to illness, was not planted, but last Spring I planted it and succeeded beyond my expectation. In fact, words can scarcely describe them. Some measure 10 inches across. One dark red one grew 9 feet tall with flowers 8 inches across. I am delighted with them."

A gentleman in Greenwich, Conn., writes October 7, 1918: "My desire to see you at the Dahlia Show was to tell you of my success with the Dahlias you sent me. They were the first I ever planted, and I must say that they were a surprise to me and to everyone in the neighborhood. The Geo. L. Stillman is most perfect. The plant is 8 feet 5 inches high and 1¾ inches through at base. The blossom is most beautiful in color, and I have had them 8½ inches in diameter. The Mrs. Stillman also is most beautiful. Color and size perfect. But best of all is the Dr. Robert Taylor. The color, size, and number of blooms outdid anything we ever saw in this section of the country. The Verna Thompson and World's Wonder also come to the front without a fault. To-day, with all the frost we have, I counted 43 perfect blooms on the five plants."

April 15, 1918.—A lady in Columbia, S. C., after her order, says thus: "Have had splendid success with your bulbs. Have won several prizes at the State Fair, and during the one month I cut 63 bunches for the sick, beside what I cut for myself. Have over half a hundred varieties now and can say with you, 'I love Dahlias.'"

September 20, 1918.—A gentleman in White River Junction, Vt., writes thus: "I want you to know what fine luck we had with the Dahlias this season. I planted the bulbs you sent us, and they came right along fine and bloomed the best of any we ever had. We have shown them to our friends and everyone would exclaim on seeing them, 'What beauties!' And when they came to the Geo. L. Stillman they would say 'That is great, it is simply a wonder!'"

What One Lady Did.

October 30, 1918.—A lady in Kansas City, writes: "Three years ago I bought a small package of seed from you which yielded me 17 different varieties of Dahlias. The

next year I sold \$25.00 worth of flowers, and last winter I lost about half of the bulbs, but have sold this year \$118.00 worth of Dahlia blooms and could have sold more."

WORM KILLER—THE WILLIAMS WORM KILLER

I have taken the agency for this new device for killing the borer inside the Dahlia stalks. It is a handy little tool and works to perfection without the slightest injury to the plants. **Price 50c. Postpaid.**

TOBACCO DUST

for lice on rosebushes and dahlias; 15c. per lb., by mail up to five pounds. Special price by express in larger quantities.

SPRAYING UNDER THE LEAVES

An excellent hand plant sprayer to keep the insects and dust off and otherwise keep them healthful



Makes House Plants Bloom

FOR INDOOR PLANTS



Sent
Complete
for
50c
Postpaid

Real Success with your House Plants

**Spraying Under the Leaves—
—The Thing Long Needed**

Just what mother was looking for

A Cake of Tobacco Soap Free with Each
Make Suds and Spray
Your Plants Will Surprise You

**Also 2 extra bulbs for Laundry use, all, \$1.00
Do not forget to order one with your dahlias,
you need it**

DAHLIA SEED

To those who have never tried any of my Dahlia seed I must say that they are missing one of the greatest pleasures of the flower garden. I do not save seed from poor, insignificant flowers, or even from single ones, because the best of seed will usually produce a few single flowers. The wonderful success my customers have with my seed is ample proof that it is far superior to any on the market.

Important. It is very important that you understand that every plant you get from seed is an entirely new variety and may be even better than the flower it is taken from.

The limited supply of seed and the increased cost of production compels me to slightly increase the price of some kinds. It is very cheap at these prices, considering the results obtained. Prices in large packages as follows:

Indian Family seed exclusively.....	\$3.00 per pkg.
Loma Family seed exclusively.....	4.00 per pkg.
The Fighting Ten seed exclusively.....	5.00 per pkg.
Mixed Pæony seed exclusively.....	1.50 per pkg.
Mixed Collarette seed exclusively.....	1.00 per pkg.
General Mixture seed exclusively.....	1.00 per pkg.

To meet the wants of some of my customers I have kept the following four popular varieties of seed separate. **Prices as follows:**

Jean Anderson	\$2.00 per pkg.
Evening Star	1.50 per pkg.
Geo. L. Stillman	5.00 per pkg.
Star of Beauty	1.00 per pkg.
Mrs. Stillman	3.00 per pkg.

I have a few packages of one-year old seed left, which I will sell while it lasts at half price of the new. I have repeatedly tested the year-old seed and found it to germinate nearly two-thirds fertile. **Prices of one-year old seed** as follows:

Indian Family	\$1.50 per pkg.
Loma Family	2.00 per pkg.
Mixed Pæony75 per pkg.
General Mixture50 per pkg.

Full cultural directions on every package.

Orders for bulbs will be booked for spring delivery any time in the year.

NOTE.—Have you read instructions carefully about ordering and the best way to send money? Order by **name** and not by number.

Address all communications to

GEORGE L. STILLMAN,

Dahlia Specialist,

WESTERLY, R. I.

If You Love Flowers—You'll Love Garden Magazine

HERE is a magazine "after my own heart." It's brim-full of the very things I love in garden lore.—Knowledge galore, but tempered with human interest stories of how other people, like you and I, are succeeding in their gardens.

Our favorite, the Dahlia, receives plenty of attention.—In fact I found more interesting articles about the Dahlia in GARDEN MAGAZINE than in any other publication.

Trees, shrubs, vines,—fruits, vegetables, flowers,—all things of interest to us in our gardening work are treated month by month in their proper season.

New things in the floral world are reported, and authoritative opinions rendered upon them long before the general public learns of the new introductions.

A "Monthly Reminder" is the most valuable feature I find. It reminds me month by month of just what I am expected to do in the garden. And I need that reminder, because my garden is my hobby.

Taken all in all, I like GARDEN MAGAZINE very much, and I wish I could induce you to join me in appreciating its value in our gardening work.

Here is My Offer to You

The regular subscription price of GARDEN MAGAZINE is \$2.00 a year. Published monthly.

It is published by Doubleday, Page & Company. To have you place your subscription through my office, and induce you to read this valuable magazine, I'll give you a bulb of either of the five following dahlias free: POWHATAN, CANONICUS, MISQUAMICUT, NINIGRET, and STEPHEN LOMA.

The price of these dahlias is \$1.00 each.

Just send me your \$2.00 and say "Enter my name for GARDEN MAGAZINE for one year and send me bulb of variety (. . .)." "

Will you join our circle of GARDEN enthusiasts?

GEORGE L. STILLMAN

WESTERLY, RHODE ISLAND



**Try this big live Magazine
at this Special 20-cent Rate**

You will be delighted with it, and wonder how such a splendid paper can cost so little. THE FARM JOURNAL is 41 years old, prints 1,000,000 copies a month, goes everywhere, from Maine to California. Suits everyone in every state; will suit you. Sign this Coupon below, and mail AT ONCE with only 20 cents, coin or stamps. Money refunded to you any time you say so.

TO THE FARM JOURNAL, Philadelphia:

Enclosed find 20 cents for which send me THE FARM JOURNAL one full year on trial. I am not now a subscriber to your magazine.

Name.....
St. or
R. F. D.....

P. O..... State.....

IMPORTANT: This trial Coupon must be sent direct to The Farm Journal, Philadelphia, Pa. Not accepted for renewals. (If you live in Philadelphia, Canada, or a foreign country, send 35 cents instead of 20, to cover extra postage.)

NOT GOOD FOR RENEWALS! SEE OTHER SIDE

"Mutual Benefit"

The Farm Journal is always \$1.00 for five years; the publishers do not want and generally won't take shorter subscriptions. But we believe that to read this wide-awake farm and household paper is the greatest benefit to our friends and patrons, and so indirectly to us, so we have persuaded the publishers to give us, for you, this

**SPECIAL
TRIAL
RATE OF** **20** cts.

for a year's trial of the paper.

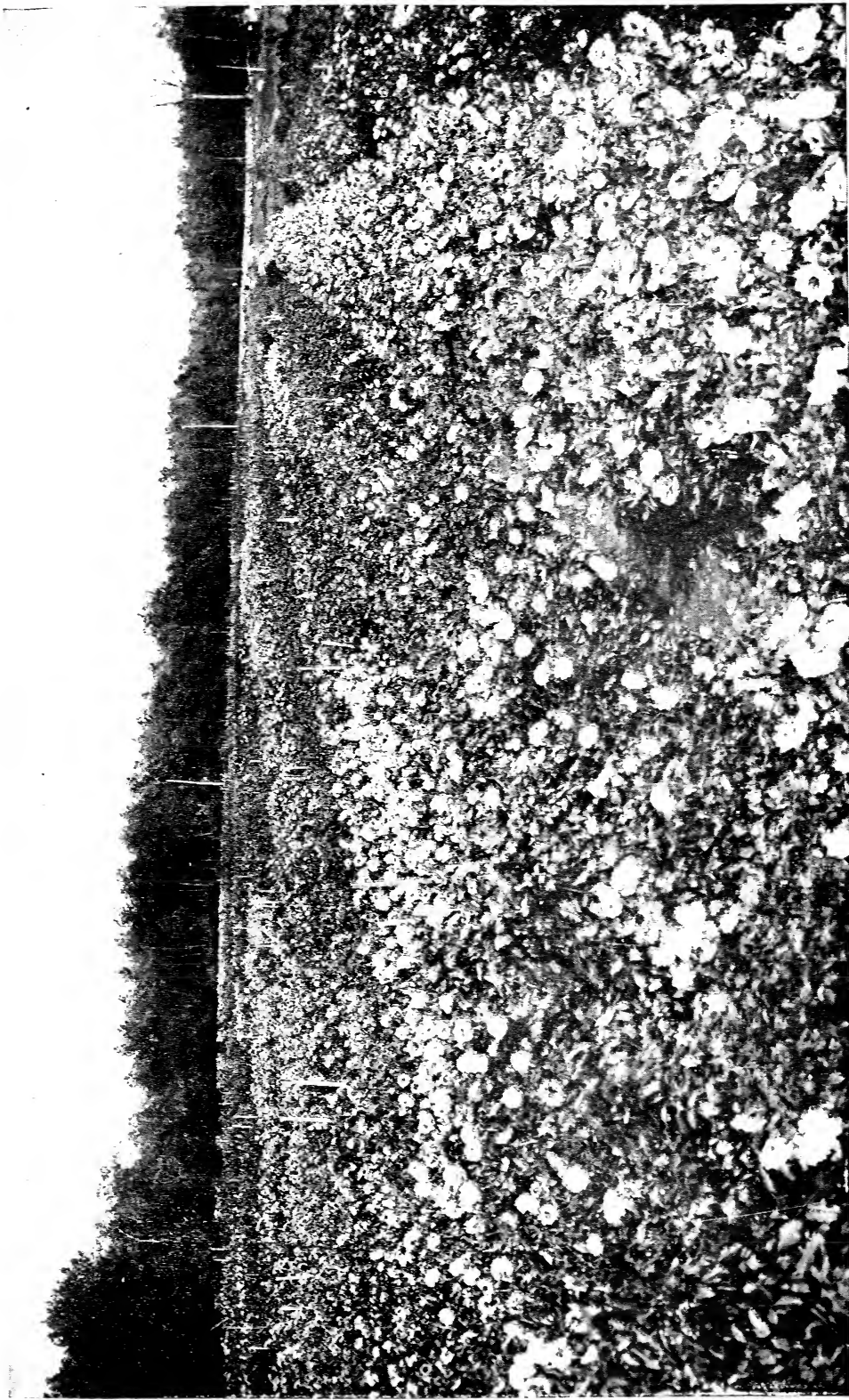
NOTE: Under no circumstances can renewals be accepted for only one year; this is exclusively a trial plan for those not now subscribers.

YOU ARE IN THIS LIST

The FARM JOURNAL is for the poultryman, farmer, fruit grower, dairyman, stockman, trucker, gardener, villager, suburbanite, the women folks, the boys and girls. Cheerful, clean, genuine, progressive, full of pictures, stories, gumption and sunshine; practical as a plow, readable as a novel; knows what to leave out, and what to put in. 32 to 80 pages monthly, stops when the time is up. Mail this Mutual Benefit Coupon today with two dimes or ten two-cent stamps direct to The Farm Journal. **DO NOT SEND IT TO US.**

GEORGE L. STILLMAN, Westerly, R. I.
Dahlia Specialist—Dahlias Exclusively

SPECIAL: Add 5 cents (25c. in all) and get latest "Poor Richard Almanac," full of wit and wisdom for all.



PARTIAL VIEW OF ONE OF MY DAHLIA FIELDS CONTAINING OVER FOUR ACRES OF DAHLIAS



ONE OF MY NEW CREATIONS, "G. H. JAMES"
A Wonderful Dahlia in Color and Form