

Historic, Archive Document

Do not assume content reflects current scientific knowledge, policies, or practices.

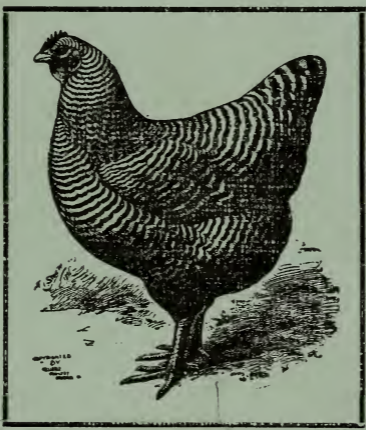
62,61
1919

LIBRARY
RECEIVED
★ SEP 13 1920 ★
U. S. Department of Agriculture

1873

1919

Annual Catalog
FROM THE
STERLING
Seed, Plant and Poultry
FARM



RALPH W. STERLING, Prop.
Formerly W. W. STERLING & SON
Cutchogue, Long Island
Suffolk Co., N. Y.

FOREWORD

I HEREWITH extend to you, my friends, greetings for 1919. On May 12th, 1918, my father, Wm. W. Sterling, passed away very suddenly. I wish at this time to thank all our friends, who, by kind word and deed, extended to us their sympathy at that time.

Although not taking an active part in the business for a number of years, he was always glad to welcome our friends and customers, and extend to them our hearty best wishes.

I would say, that although the business is under a different name the same careful attention and good business methods will be employed as heretofore.

From what reports have been received I should say Garden Seeds for 1919 will be more plentiful, and you can see by carefully perusing the prices enclosed in this booklet, that I am as reasonable and low in price as is possible considering the quality of such seeds as I put out. Always remember that good seeds are never cheap to start with but always pay big in the end.

There are a few items that are scarce and accordingly high. Good clean stocks of Cabbage, Peas, some varieties of Radishes and Spinach, Brussels Sprout and Clover Seed are hard to get.

I have priced these items as low as possible and will do my best to fill all orders for the same.

I sincerely hope that all our gardening friends had a successful season last year. We received many reports of extra fine gardens.

All this work has helped to win the war and now we all have reason to rejoice and take courage and go ahead for more strenuous efforts in the garden work of this year. We have all found out what a blessing a Good Garden is, so send in your order for Sterling's Standard Seeds and Plants early in the season and start right for 1919.

Asparagus Roots are one of my specialties. The Reading Giant's are one year old and the Giant Argenteuil are two years old. Both are

STERLING'S ANNUAL CATALOG

A No. 1. All raised from Prescott's selected seed. Be sure and set out an Asparagus Bed this year.

Strawberry Plants I have in good abundance, also, although reported scarce throughout the country. You can make no mistake in setting out a few hundred Wildwood, First Quality, William Belt, Corsican, Marshall and Stephen's Late Champion in your garden or field.

Seed Potatoes are another of my specialties. Have a fine supply of choice Green Mountains, selected from one of the best crops I ever raised. The Seed came from Mr. Osgood's Vermont stock, a very fine, healthy, vigorous strain. The Irish Cobblers also came from Mr. Osgood's stock, and I was very careful to save our seed from healthy, vigorous plants.

You will make no mistake in planting a few acres with Sterling's Selected Seed.

Fordhook Bush Limas are high again this year, but whoever braved the high prices last year and planted Bush Limas were mighty glad they did so. Our Seed did exceedingly well for our customers last year and everyone was pleased. Why not order of me and be sure of your stock when you want it? One of our customers netted over \$2,000 from three acres.

I am breeding Barred Plymouth Rock and S. C. White Leghorn poultry and selling eggs for hatching, and baby chicks.

I take the utmost care with my stock and breed only from vigorous healthy birds. My Rocks are all bred from Parks' 200 Egg Strain, some being bred from a hen that laid 248 eggs in 12 months. Come look my flocks over.

I thank you all for the business you have given us in the past, and ask for a continuance of your patronage. With the very best wishes for a successful year, I remain,

Sincerely Yours,

RALPH W. STERLING.

SEED DEPARTMENT

Instructions

Send cash with your order. This saves bookkeeping, bother and worry, and is the most satisfactory for all parties concerned.

Postage is prepaid on all seeds by the pkt., oz., and $\frac{1}{4}$ lb. and plants by the dozen. Quantities over that are priced net, to be shipped by freight or express. If desired to be sent by Parcel Post, add 5 cents per lb. extra in the first and second zones, and 1 cent extra for each additional lb.

All seeds are sold by the pound now, and the different seeds run as follows: 1 qt. of sweet corn weighs about $1\frac{1}{2}$ lbs., 1 qt. of beans or peas weighs about 2 lbs., 1 qt. of onion sets weighs about 1 lb.

Half lbs. will be sold at lb. rates, half bushels at bu. rates.

No charge will be made for packing or packages except in selling seeds and potatoes in bulk. A charge of 50 cents each will be made for the 2-bu. seamless bags and 25 cents each for the potato bags. These bags may be returned if in good condition and the amount paid will be credited to your account.

Remember, We Sell Burpee's Garden and Field Seeds

for less money than you can buy them elsewhere. We always mention it when any of our seeds come from other sources than from W. Atlee Burpee & Co.

Manorville, L. I., Jan. 28, 1918.
Wm. W. Sterling & Son:

Dear Sirs:—The potatoes and other seeds purchased of you last year germinated nicely and yielded well.

Yours very truly,

J. H. CARTER.

ASPARAGUS ROOTS

One hundred plants will set 100 feet of row;
5,000 to the acre

These plants are grown from seed selected by The Massachusetts Asparagus Association, costing over \$5.00 per lb. There is no seed to equal this selected strain. There was no Giant Argenteuil seed to be had last year.

	Doz.	100	1,000
Reading Giant, 1 year old roots. The largest variety grown	\$0.20	\$0.80	\$5.00
Giant Argenteuil, 2 year-old roots. Large and very prolific30	1.20

Asparagus Seed a Matter of Correspondence

I have tried your Prescott's Argenteuil and advise any one who wants the best to use this kind. They are cheaper at \$10.00 per 100 than the common kind for a gift.

H. E. GRATHWOHL,

BUSH BEANS—GREEN POD

One pound will plant 50 feet of drill

	Pkg.	Lb.	10 Lbs.
Burpee's Stringless Green pod, tender, prolific	\$0.15	\$0.35	\$3.00
Giant Stringless Green Pod, very long, tender pods....	.15	.35	3.00
Refugee or 1000 to 1 Buists, market gardeners most profitable sort15	.35	3.25
Extra Early Red Valentine, Buists' Lightning15	.30	2.90
Dwarf Horticultural, best shell15	.35	3.40
Red Kidney, rich10	.25	2.25
White Pea, smallest10	.25	2.25
White Marrow, medium size10	.25	2.25
White Kidney, large.....	.10	.25	2.25

STERLING'S ANNUAL CATALOG

1917 crop field beans at 15c per lb. straight.
 Suitable for baking

Field and Shell Beans are not from Burpee

BUSH BEANS—WAX POD

	Pkg.	Lb.	10 Lbs.
Imp. Golden Wax Rust Proof			
Burpee's	\$0.15	\$0.35	\$3.35
Burpee's New Kidney Wax.	.15	.40	3.95
Burpee's Brittle Wax, extra			
fine15	.40	3.75

1917 Crop Wax Beans, several varieties at 18c
 per lb., straight

BUSH LIMA AND POLE BEANS

One pound will plant 50 feet of drill.

1¼ Bushel to the Acre

	Pgs.	Lb.	10 Lbs.	Bu. of 60 lbs.
Fordhook Bush Lima				
the very best for				
garden or field.				
From Burpee.....	\$0.15	\$0.40	\$3.60	\$21.50
Fordhook's, n o t				
from Burpee15	.40	3.50	20.00
Fordhook's, f r o m				
Landreth, v e r y				
choice15	.40	3.90	22.00

	Pkg.	Lb.	10 Lbs.
Improved Burpee Bush Lima			
large, flat pods. Quality..	\$0.15	\$0.40	\$3.60
Dreer's Imp. Pole Lima, or			
Challenger15	.35	3.25
Burpee's Giant Podded Pole			
Lima, largest15	.40	...
Old Homestead or Kentucky			
Wonder Pole Bean, Long			
Pods, Tender, Sweet.....	.15	.35	...

BEETS—TABLE

One ounce will sow 50 feet of drill

	Pkt.	Oz.	¼ lb.
Henderson's Electric XXXX-earliest	\$0.10	\$0.25	\$0.95
Eclipse, standard extra early05	.15	.50
Early Model, a winner for earliness and quality,05	.25	.85
Early Wonder, Woodruff's special05	.15	.50
Burpee's Columbia, the best blood beet, for main crop05	.15	.50
Detroit Dark Red Turnip ..	.05	.15	.50
Dark Stinson, quality05	.20	.60
Swiss Chard, large white05	.20	.75
Swiss Chard, Lucullus, large curled05	.20	.75

BEETS—STOCK

Use 4 to 6 Pounds to the Acre

	Oz.	¼ lb.	Lb.
Giant Half Sugar, large, white solid	\$0.10	\$0.30	\$1.00
Golden Tankard, Yellow Mangle, Solid10	.30	1.00
Mammoth Prize, Long Red Mangle, Largest10	.30	1.00

Southold, L. I., Jan. 13, 1919.

Mr. Ralph W. Sterling,

Catchogue, L. I.

Dear Sir:—The quality of your seed and service have been excellent in the past, and I hope we may continue in this year's business relations as satisfactorily.

About what I would want for this year is as follows: 72 bu. seed potatoes, home grown; 12 bu. Fordhook Bush Limas from Landreth; 25 bu. seed oats, Scottish Chief; 6 o. Cauliflower, Sterling's Erfurt; smaller quantities of other seeds and plants.

Sincerely,

W. P. HUNSBERGER.

I consider the Columbia Beet the Best Main Crop Beet for table use I have ever tried.

FRANK H. CASE.

BRUSSELS SPROUT SEED

Three ounces will produce enough plants
for 1 acre

A choice strain of seed raised from Hand's
Stock, 2-year-old seed. Tested and found
excellent. Per oz., \$2.00 straight

CABBAGE SEED—LONG ISLAND GROWN

One ounce will raise two or three thousand
plants

	Pkt.	Oz.	¼ lb.
Extra Early Jersey Wake- field	\$0.10	\$0.50	\$1.50
Large Early Chas. Wakefield	.10	.50	1.50
Copenhagen Market, earliest round head15	1.00	...
Sterling All Season, best sec- ond early10	.75	2.00
Premium Flat Dutch10	.50	1.50
Large Late Drumhead10	.50	1.50
Mammoth Rock Red10	.50	1.90

We will have a good supply of cabbage plants
in season

CARROT

One ounce will sow 100 feet of drill;
1½ to 2½ pounds to the acre

	Pkt.	Oz.	¼ lb.	Lb.
Danver's Half Long Orange, Burpee's selected stock....	\$0.05	\$0.10	\$0.35	\$1.25
Oxheart. Best early small, Burpee's....	.05	.15	.45	1.40
Chantenay. Best 2nd early quality Bur- pee's05	.15	.45	1.40

CELERY

	Pkt.	Oz.
Golden, self-blanching, French grown	\$0.20	\$1.00
White Plume, earliest.....	.10	.30
Giant Pascale, best late.....	.10	.25
Winter Queen, large late.....	.10	.25
Buist's Winter King, late, sweet..	.10	.40

We expect to have a good supply of celery plants in season

CORN—SWEET

One pound will plant about 100 hills

	Pkg.	Lb. 10	Lbs.
Burpee's Golden Bantam, earliest, sweetest and best, from Burpee	\$0.15	\$0.40	\$3.00
Golden Bantam, home grown, from Burpee's stock15	.30	2.50
Early Mammoth White Cory, Buist's15	.30	2.60
Early Dighton, Woodruff's Special15	.35	3.25
Cosmopolitan. Best and largest second early15	.30	2.60
Howling Mob, large, fine quality, second early....	.15	.30	2.75
Country Gentleman, shoe peg Burpee's White, Early Ever- green15	.30	2.75
Stowell's Evergreen, main crop15	.30	2.75
Mammoth Late, largest.....	.15	.30	2.80
Sweet Corn for fodder.....	.10	.20	1.75

CORN—FIELD

One peck of shelled corn will plant one acre

	Lb.	10 lbs.	Bu. 56 lbs.
Luce's Favorite, selected earsPer ear, 10c	\$0.15	\$1.00	\$4.50
Pop Corn, Queen's Gold- enPer pkt., 15c	.25

CUCUMBER

One ounce will plant 50 hills, 1 pound
to the acre

	Pkt.	Oz.	¼ lb.	Lb.
Early Green Cluster, earliest	\$0.05	\$0.10	\$0.35	\$1.30
Cool and Crisp, early Buist's Perfection, early white spine..	.05	.10	.30	1.25
Davis Perfect, Buist's, extra fine05	.15	.50	1.40
Arlington White Spine, standard....	.05	.15	.50	1.40
Fordhook Famous, quality05	.10	.35	1.35
London Long Green, fine05	.20	.70	2.20
	.05	.20	.60	1.50

CAULIFLOWER

Sterling Erfurt, a very choice strain, giving
me the best crop of cauliflower in 1917 that I
ever raised and I have tried all kinds of seed.
Per oz., \$2.00.

EGG PLANT

	Pkt.	Oz.
New York Spineless Improved.....	\$0.15	\$0.60
Burpee's Black Beauty15	.60

ENDIVE

	Pkt.	Oz.
Giant Green Fringed.....	\$0.10	\$0.20

KALE

	Pkt.	Oz.
Dwarf German Sprouts or Curled Scotch	\$0.10	\$0.20

KOHL RABI

	Pkt.	Oz.
Early White Vienna	\$0.10	\$0.40

STERLING'S ANNUAL CATALOG

LEEK

	Pkt.	Oz.
Buist's Mammoth	\$0.10	\$0.25

LETTUCE

One ounce will sow 150 feet of drill

	Pkt.	Oz.	¼ lb.
Curled Simpson, for early cutting	\$0.05	\$0.10	\$0.35
Burpee's Earliest Wayahead, earliest head05	.20	.75
Big Boston, Buist's selected New York or Wonderful, quality05	.15	.50
Hanson, very large05	.15	.50
Iceburg, large crisp.....	.05	.10	.35
Deacon, best Butterhead....	.05	.10	.35
Trianon Cos., Buist's.....	.05	.10	.35

MUSK MELON

One ounce will plant 50 hills. Every seed from Burpee, which means quality

	Pkt.	Oz.	¼ lb.
Burpee's Netted Gem or Rocky Ford, selected.....	\$0.05	\$0.10	\$0.35
Montreal, very large, delicious05	.10	.35
Emerald Gem, melting.....	.05	.15	.50
Burpee's, Fordhook, large sweet05	.10	.35
Burpee's Spicy, quality.....	.05	.20	.75
Golden Eagle, best for heavy soils05	.15	.50
Honey Dew, extra quality..	.05	.20	.75

OKRA

	Pkt.	Oz.	¼ lb.
Perfected Perkins' Long Pod	\$0.05	\$0.10	\$0.25

WATERMELON

One ounce will plant 25 hills

	Pkt.	Oz.	¼ lb.
Cole's Early, earliest, very sweet	\$0.05	\$0.10	\$0.25
Tom Watson, Buist's selected05	.10	.35
Halbert Honey, very sweet.05	.10	.35
Kleckly Sweets, Burpee's Best05	.10	.35
Ice Cream, standard.....	.05	.10	.30
Sugar Stick, large sweet...	.05	.10	.35
Burpee's Cuban Queen, large05	.10	.30
Baby Delight, choice.....	.10	.25	..
Colorado Preserving Citron.05	.10	..

ONION SEED

Burpee's Choicest Strains. One Ounce Will Sow 100 Feet of Drill

	Pkt.	Oz.	¼ lb.
Prizetaker Best American Grown, largest yellow ...	\$0.10	\$0.40	\$1.50
Yellow Globe Danvers, best winter keeper10	.40	1.35
Southport Yellow Globe, quality10	.40	1.50
Large Red Wethersfield, flat10	.30	1.10
Southport Red Globe10	.40	1.50
Southport White Globe, special stock10	.50	1.90
Giant Gibraltar, Burpee, largest10	.60	

ONION SETS

Buist's Selected Philadelphia Fancy.

32 pounds to the bushel

	Pkg.	Lb.	10 Lbs.
White or Silver Skin.....	\$0.10	\$0.25	\$2.25
Yellow Globe Fancy10	.25	2.00
Dark Red Wethersfield....	.10	.25	2.00

PARSLEY

One Ounce Will Sow 50 Feet of Drill

	Pkt.	Oz.	¼ lb.
Extra Double Curled, Emerald	\$0.05	\$0.15	\$0.50
Moss Curled, fine	.05	.15	.50

PARSNIP

	Pkt.	Oz.	¼ lb.
Imp. Guernsey, fine	\$0.05	\$0.20	\$0.60
Hollow Crown, long smooth	.05	.20	.60

PEAS

One pound will sow 50 feet of drill

	Pkg.	Lb. 10	Lbs.
Extra Early Alaska, 2 ft.	\$.15	\$0.30	\$2.60
Buist's Morning Star, 2 ft.	.15	.30	2.80
Gradus, large Early, 2 ft.	.15	.35	3.40
Laxtonian, Buist's Dwarf Gradus	.15	.40	3.60
Thomas Laxton, Buist's 2½ feet	.15	.35	3.25
Little Marvel, Buist's best 2nd early, 1¼ ft.	.15	.35	3.20
Nott's Excelsion, 1¼ ft.	.15	.30	2.90
American Wonder, 1¼ ft.	.15	.35	3.40
Pride of the Market, Buist's, 2½ ft.	.15	.35	3.20
Stratagem, main crop, 2 ft.	.15	.40	3.50
Champion of England, 4 ft.	.15	.35	3.20
Buist's Improved Telephone, 4½ ft.	.15	.35	3.20
Burpee's Blue Bantam, early	.15	.50	...

My Telephone Peas, grown from your seed last year were the finest I ever grew, as handsome as pictures. In fact all my garden was from your seeds and did well.

DR. F. D. PETERSON,

Cutchogue, L. I.

PEPPER

	Pgk.	Oz.
Burpee's Chinese Giant.....	\$0.10	\$0.75
Neapolitan, large early.....	.10	.50
Belle or Bull Nose10	.60
Sweet Upright.....	.10	.75
Cayenne, Long Hot.....	.10	.45

PUMPKIN

One ounce will plant 25 hills

	Pkt.	Oz.	¼ lb.
Early Sugar, best pie.....	\$0.05	\$0.10	\$0.35
Burpee's Golden Oblong....	.05	.15	.50
Burpee's Quaker Pie.....	.05	.15	.50
Big Tom or Large Field....	.05	.10	.35
Winter Luxury05	.20	.75

RADISH

1 oz. will sow 35 ft. of drill

	Pkt.	Oz.	¼ lb.
Burpee's Earliest Scarlet Button	\$0.05	\$0.25	\$0.80
Scarlet Turnip, white tipped	.05	.15	.50
French Breakfast, olive shaped05	.15	.50
Crimson Giant Globe05	.20	.60
Buist's Trucker's Early Money05	.20	.70
White Icicle05	.20	.70

RHUBARB

	Each	Doz.
Rhubarb Roots	\$0.10	\$1.00

SPINACH

One ounce will sow 50 feet.

	Pkt.	Oz.	¼ lb.
Long Standing.....	\$0.05	\$0.10	\$0.30
Victoria, best of all.....	.05	.10	.35
Norfolk Savoy Leaved.....	.05	.10	.30
New Zealand, lasts until frost05	.20	.70

SALSIFY (VEGETABLE OYSTER)

	Pkt.	Oz.
Mammoth Sandwich Island	\$0.10	\$0.30

SQUASH

	Pkt.	Oz.	$\frac{1}{4}$ lb.
Giant Summer Crookneck..	\$0.05	\$0.15	\$0.50
Mammoth White Bush.....	.05	.15	.50
Fordhook, Burpee's Bush...	.05	.10	.35
Burpee's True Hubbard....	.05	.20	.75
Red or Golden Hubbard...	.05	.20	.75
Boston Marrow05	.15	.50
Delicata, small, quality.....	.05	.15	.50

TEOSINTE

	Oz.	$\frac{1}{4}$ lb.	Lb.
Good for summer fodder...	\$0.10	\$0.25	\$0.80

TOMATO

	Pkt.	Oz.
Earliana, Selected, Livingston's Special Stock	\$0.10	\$0.60
Henderson's Ponderosa, largest, meaty10	1.00
Livingston's Favorite, standard...	.10	.60
Livingston's Perfection10	.60
Livingston's Stone, best for can- ning10	.60
Burpee's Dwarf Giant20	.90
Yellow Pear Shape, for preserves..	.10	.50

TURNIP

One ounce will sow 100 feet, 2 pounds per
Acro

	Pkt.	Oz.	$\frac{1}{4}$ lb.	Lb.
White Egg, early....	\$0.05	\$0.20	\$0.75	\$2.25
Golden Ball, Yellow Summer05	.20	.75	2.25
Long Island Imp. Pur- ple Top Ruta Baga, .05	.05	.20	.70	2.00

Rape, Vetch, Canada Field Peas, etc., we can
get on 'short notice. Get our prices before or-
dering elsewhere.

SEED OATS

Use 2 to 3 bushels to the acre—Bags extra

	Per Bu. of 32 Lbs.
Danish Island, from Burpee.....	\$2.50
Scottish Chief, Northern Grown....	2.25

Large crops were raised from our seed last year. One of our customers bought 85 lbs. of seed and harvested 85 bu. of heavy oats.

SEED POTATOES

Use 10 to 14 bushels to the acre

My seed potatoes were grown from Osgood's Vermont seed, and selected from one of the best crops I ever raised. Vines were carefully sprayed and potatoes nicely sorted.

Prices are variable and liable to change without notice.

Bags will be charged for extra. Twenty-five cents each will be charged extra to listed prices but the amount charged will be credited to your account when they are returned in good condition, charges prepaid.

	Pk.	Bu.	100 Lb. Bag
Irish Cobblers, Osgood's. Most prolific and profitable early sort	\$0.60	\$2.00	\$3.00
Early Ohio, best quality, early sort60	2.00	...
Green Mountain, Osgood's. Handsome prolific, quality	.60	2.00	3.00
Mill's Prize, Wisconsin grown seed. Healthy, new seed80	3.00	...

Yaphank, N. Y., Jan. 28, 1918.

Wm. W. Sterling & Son.

Dear Sirs:—The Mills Prize seed potatoes I bought from you last season were the best I ever bought. They came up perfect and out-yield all others.

Very truly yours,

DAVID JONES.

GRASS SEED

Prices liable to change without notice. Terms strictly cash.

We buy the very best grade of Grass Seed from the Nungesser Dickinson Seed Co., and sell as reasonable as the highest quality re-cleaned Grass Seed can be sold.

Our Hay Mixture for one acre is eleven lbs. of Timothy, sowed with wheat in the fall, and five lbs. Red Clover mixed with three lbs. Alsike Clover sowed the next spring. In sowing alone use the same mixture, adding a little more Timothy and sowing in August or September. Without Clover use 15 to 18 lbs. Timothy to the acre. Use lime if your land is inclined to be sour.

This year on account of high prices I should advise more Alsike and less Red Clover in the hay mixture.

Special prices on 50 lb. lots or over.

	Purity %	10 Lbs. or over	1 to 10 Lbs.
Timothy	99.79	\$0.15	\$0.18
Red Clover, medium	99.38	.52	.55
Alsike Clover	99.05	.39	.43
Alfalfa, choice northern grown	99.82	.28	.32
White Clover, for lawn and pasture not tested63	.65
Crimson Clover, price on application.			
Fancy Red Top, fancy re-cleaned..	95.10	.20	.23
Kentucky Blue Grass, makes a very heavy sod..	88.05	.30	.33
Orchard Grass, early pasture	89.00	.33	.36
Golden Millet, quick growing	99.00	.09	.12
Lawn Grass, Burpee's Fordhook finest33	.35
Lawn Grass, Sterling mixture of Red Top Blue Grass and White Clover35	.38

For a good permanent lawn use 1 lb. to 400 sq. feet.; 80 to 100 lbs. to the acre. For re-seeding a thin catch or an old lawn use one-half that amount.

Inoculate Your Legumes with Mulford Cultures

Mulford Cultures have been tried and found superior to all other kinds. Try an acre of inoculated seed along side of your regular sowing and be convinced that it pays to use the Cultures. The H. K. Mulford Co. put up a different Culture for different Legumes, so be sure to specify just what crop you may need them for.

Small size for garden peas, garden beans, Lima beans and sweet peas at 25c per bottle. One-quarter-acre size for alfalfa, red clover, alsike clover, crimson clover and other legumes for field and garden, 50c per bottle.

One acre size, \$1.50 each; 5 acre size, \$5.00 each.

Culture Book mailed free.

FLOWER SEED

	Pkt.	Oz.	¼ lb.
Aster, Crego Mixture.....	\$0.20
Aster, Fordhook Favorites.	.20
Cosmos, Giant Flowering, mixed	.05	\$0.20	..
Nasturtium, Gorgeous Mixed Tom Thumb	.05	.20	\$0.75
Nasturtium, Tall, Burpee's Giant Flowered	.05	.20	.75
Salvia Splendens, Scarlet Sage	.20
Sunflower, large Russian, per quart	.25c	.05	.10
Sweet Peas, Burpee's Blend of re-selected Spencer's fine	.05	.20	.75
Sweet Peas, Burpee's Best Mixed	.05	.10	.35

Flowering plants, see page 17.

My past experiences with your seeds and plants have been pleasant.

CHAS. W. YOUNG.

PLANT DEPARTMENT

We make a specialty of plant raising, in cold frames, hot beds and in the open ground. Customers are invited to come look our plants over and be convinced that it pays to buy Sterling's Plants.

Our Plants are sold as reasonable as possible. 50 of 1 kind will be sold at 100 rates, 500 of 1 kind at 1000 rates. Labor is so high we can not make up an order of one or two hundred of three or four kinds and sell them at 1000 rates.

We pack our plants in wet moss, using the utmost pains, and make no charge for packing or package.

We ship by Express F. O. B. Cutchogue Station. Customer to pay transportation charges.

If you want Plants by Parcel Post, add 20c per 100, 30c per 200 and 40c per 300. This is an average estimate, some kinds may be more and some less, but we will always include enough extra plants to make up the difference if in any case the extra remittance amounts to more than the postage.

Plants by the dozen are quoted postpaid

Strawberry Plants Our Specialty

Our Strawberry Plants are well rooted, healthy and true to name. We have 12 of the best kinds to choose from and we are sure you can find a few kinds to suit your soil and taste.

We pack our plants in wet moss and keep kinds well separated and marked.

✓ Wild Wood, ✓ Corsican, ✓ Marshall, ✓ 1st Quality, Wm. Belt and ✓ Stephen's Late Champion are the six best kinds we have tried so far. We list them in order of ripening. We will send you 100 of each of the six kinds for \$3.00.

STRAWBERRY PLANTS

NEW KINDS

	Doz.	100
Rewastico (Per) Midseason.....	\$0.20	\$0.60
Warren (Per) Large20	.60
McAlpine (Per) Late20	.60
Progressive (Per) Fall Bearing...	1.00	..

Kinds That We Have Tested and Found to
Be the Best for This Locality

	100	200	300	1000
✓ Michael's Early (Per.), Earliest60	1.00	1.35	4.00
✓ Wild Wood (Imp.), productive, sweet60	1.00	1.40	4.00
✓ Corsican or Rykeman (Per.), large, sweet, no acid60	1.10	1.50	4.50
✓ Marshall (Per.), Hope Farm Strain superior in quality and size.....	1.00
✓ Wm. Belt (Per.), quality, productive60	1.10	1.50	4.50
✓ Brandywine (Per.), large distinct flavor is fine for canning60	1.10	1.50	4.50
✓ 1st Quality (Per.), fine in yield and flavor60	1.10	1.50	4.50
✓ Stephen's Late Champion, latest prolific (Per.)... (Per.), means perfect blossoms and (Imp.) means imperfect blossom. The (Imp.) kinds need a (Per.) kind planted every third or fourth row to pollenize the blossoms and make perfect fruit.	.60	1.10	1.50	4.50

August 15, 1918.

Wm. W. Sterling & Son,
Cutchogue, L. I.

Dear Sirs:—The strawberry plants arrived in good time and condition. They are fine and I only hope the product will be equally good. I suppose it is up to me now to see that such will be the result.

Respectfully yours,
EDWARD N. ABBEY,
Smithtown Branch, L. I.

OUR GARDEN COLLECTION

200 Strawberry Plants for \$1.00 in any of the three following combinations:

- 100 Wild Wood and 100 1st Quality.
- 100 Michael's Early and 100 Brandywine.
- 100 Michael's Early and 100 Wm. Belt.

Plants in August and September

Any of the above kinds, new plants from our new bed at \$1.00 per 100.

Potted Plants at \$2.25 per 100, potted on order.

RASPBERRY PLANTS

	Doz.
St. Regis, Fall Bearing, Red.....	\$0.40
Idaho Red, very prolific, but throws out few suckers60

RHUBARB

	Per root	Doz.
Old Fashioned Pie Plant.....	\$0.10	\$1.00

COLD FRAME CABBAGE PLANTS

Sowed in March, ready in April and May

	Doz.	100	1,000
Extra Early Jersey Wakefield	\$0.15	\$0.50	\$4.00
Large Early Charleston Wakefield15	.50	4.00
Early Summer, large heads15	.50	4.00

Southold, L. I.

The Early Cabbage Plants I purchased of you last Spring produced the finest lot of heads I ever saw. One head weighed, before it was trimmed, 18 lbs.

Yours truly,
Horace J. Booth.

HOT BED PLANTS

Ready in May and June

SWEET POTATO PLANTS

	Doz.	100	1000
Yellow Jersey, productive..	\$0.15	\$0.60	\$4.50
Gold Skin, quality and yield15	.60	4.50
Red Jersey, quality.....	.15	.60	4.50

TOMATO PLANTS

Transplanted, well hardened, stocky plants, from Burpee's, Livingston's and Henderson's seed.

	1 Doz.	3 Doz.	100
Spark's Earliana, Livingston's Selected	\$0.20	\$0.50	\$1.00
Henderson's Ponderosa, large and meaty20	.50	1.00
Stone, best for canning.....	.20	.50	1.00
Favorite, very prolific.....	.20	.50	1.00
Perfection, perfect in shape	.20	.50	1.00
Dwarf Giant or Ponderosa..	.20	.50	1.00
Livingston's Manyfold Earliest big red sort.....	.25	.75	1.50
Yellow Pear, for preserving	.20	.50	1.00
			Doz.
Henderson's Golden Ponderosa, something new30

PEPPER PLANTS

Well Hardened

	Doz.	100
Long Red Cayenne, long, hot.....	\$0.20	\$1.50
Belle or Bull Nose, large, hot.....	.20	1.50
Neapolitan, large, early.....	.20	1.50
Chinese Giant, large, sweet.....	.20	1.50
Sweet, Upright fine20	1.50
New Sweet, Meat Glory.....	.30	...
Livingston's Prolific Yellow Sweet	.30	...
Pimiento, very sweet25	...

EGG PLANTS

Transplanted, Well Rooted, Hardy

	Doz.	3 Doz.
Imp. New York Spineless.....	\$0.40	\$1.00
Black Beauty, early.....	.40	1.00

Southold, May 18, 1918.

I received the tomato plants all right. They are fine and well pleased with all that I received from you. Seeds and plants. I am perfectly satisfied. Sorry to hear of the death of your father. Hoping you will prosper in your business. Yours respectfully

JAMES H. CONKLIN,
Southold, L. I.

October 7, 1918.

Dear Mr. Sterling:

The next time anyone asks you for yellow pear tomato plants, you had better make sure that the person knows how many tomatoes are desired. Also be sure that it is thoroughly understood that each plant needs fully half an acre.

I never saw such prolificacy in any kind of plants, and as for spreading! my goodness, they started down toward Yaphank on one side, and towards the Camp on the other, and I am not sure but they got to both places.

The Stone tomatoes were fine. I like them far better than the Matchless, and shall have them entirely after this, I think.

Yours sincerely,

P. M. AYVAD.

Great Neck, L. I.

Messrs. Wm. W. Sterling & Son

Gentlemen:—The Sweet Potato Plants were fine and could not and never have been better. Thank you very much.

Yours truly,

Paul Brorstrom.

Mattituck, L. I.

Mr. Sterling

Dear Sir:—The Tomato, Pepper and Egg Plants are all growing fine. Have tomatoes off early vines, and large, firm, white heads of Cabbage from the first plants which I bought from your place in the spring. Thanks for prompt sending of plants.

Very Respectfully,

(Mrs.) Nettie L. Reitz.

FLOWERING PLANTS

Hardy, Well-rooted Plants

	Each	Doz.
Pansy Plants, ready in Apr., hardy.	\$0.05	\$0.40
Cosmos, Giant Flowering05	.30
Aster, Crego Giants05	.40
Aster, Fordhook Favorites05	.40
Salvia Splendens, Scarlet Sage....	.05	.40

STERLING'S ANNUAL CATALOG

Shelter Island, L. I.

Sterling Seed Farm
Cutchogue, L. I.

Dear Sirs:—The three dozen *Salvia* plants ordered from you last week arrived in good shape, and are flourishing nicely.

Yours truly,

(Miss) Mary Macrum.

FIELD GROWN PLANTS

Ready from June 20th to August 20th

All plants are healthy and grown on fresh sod ground from the best seed stock procurable.

BRUSSELS SPROUTS

	Doz.	100	1000
From selected seed grown,			
from Peter Hand's strain.	\$0.15	\$0.50	\$2.50

CAULIFLOWER

	Doz.	100	1000
Association Erfurt, large...	\$0.15	\$0.50	\$3.00
Sterling Erfurt, the best...	.15	.50	3.00

CABBAGE PLANTS

	Doz.	100	1000
Sterling All Season, 2nd best			
early, large heads	\$0.15	\$0.50	\$2.00
Late Flat Dutch15	.50	2.00
Large Late Drumhead15	.50	2.00
Drumhead Savoy, quality15	.50	2.00
Mammoth Rock Red.....	.15	.50	2.00

Springs.

Very much pleased with Cabbage and Brussels Sprouts plants. Came in good order.

H. J. CHICHESTER.

CELERY PLANTS

Ready in July and August

	Doz.	100	1000
Livingston's Snowwhite, early crisp, fine flavor	\$0.15	\$0.60	\$5.00
White Plume, earliest15	.50	4.00
Golden Self Blanching, Bur- pee's best15	.50	4.00
Winter Queen, large15	.50	4.00
Giant, Pascale, sweetest late	.15	.50	4.00
Winter King, Buist's15	.50	4.00

Much pleased with the celery plants. Received them Saturday after sending the card.

RUSHTON G. FOSTER,

ASPARAGUS ROOTS

**From Prescott's Selected Seed
The Very Best**

Ready in March, April and May

	Doz.	100	1000
Giant Argenteuil, 2-year-old roots, the most prolific..	\$0.25	\$1.20
Reading Giant, 1-year-old roots, makes the largest stalks15	.80	\$5.00

Can ship the Reading Giant in any quantity up to 10,000 plants.

New Jersey, 1917.

Gentlemen:—I have used your Asparagus plants for three years, setting about seven acres, and I take pleasure in recommending them to all asparagus growers. The roots were uniform in size, consequently an even growth over the entire field, making a three foot growth the first season, and a seven foot growth as one-year-old plants. The Reading Giant seems to grow larger and taller than the Giant Argenteuil, which seems to spread faster, there being twice as many stalks as in the Reading Giant. I think for fancy asparagus the Reading Giant will be the leader.

Yours truly,

J. M. HALLOCK.

POULTRY DEPARTMENT

Barred Plymouth Rocks, Parks Strain S. C. White Leghorns, Sterling Strain

Are the two breeds that we specialize in. If any one wants large, white eggs and lots of them, the Leghorns are the breed for them, but if you want a good heavy Table Fowl, combined with heavy laying qualities, a general purpose fowl, by all means breed the Barred Rocks.

BARRED PLYMOUTH ROCKS

Pens No. 1 and 2

These two pens contain my choicest breeders carefully selected, and mated for the best results. Several of these birds are direct descendants of a hen that was trapnested by Mr. Parks and that laid 248 eggs in 12 months.

EGGS FOR HATCHING

Per setting of 15 eggs\$2.00
Per 100 eggs 8:00
Ten per cent off these prices in May and June.

BABY CHICKS

Per 25 chicks\$ 6.00
Per 50 chicks 10.50
Per 100 chicks 20.00
Price in May and June \$2.00 per 100 less than above.

Eastport, L. I.
Dear Sir:—The 200 B. P. Rock Chicks arrived in fine shape. Thanks.
W. L. W. DARNELL

Herne Oaks, Southampton, L. I.
My Dear Mr. Sterling:
The pen of B. P. Rock fowl arrived in good condition and I am well pleased with them, particularly the hens.
Very truly yours,
Mrs. James A. Herne.

S. C. WHITE LEGHORNS

My Leghorns have been culled and selected so that I have a flock of as nice breeding hens as we ever had. Have mated them up to nice, vigorous cockerels and assure you of strong, vigorous and healthy Baby Chicks and hatchable eggs.

EGGS FOR HATCHING

From Two-year-Old Hens Only

	Straight
Per setting of 15 eggs.....	\$1.75
Per 100 eggs	7.50

Ten per cent off these prices in May and June.

BABY CHICKS

Hatched from 2-Year-Old Hens' Eggs Only

Per 25 chicks	\$ 5.00
Per 50 chicks	9.50
Per 100 chicks	18.00

Prices in May and June \$2.00 per 100 less than above.

Shelter Island, N. Y.

Wm. W. Sterling & Son,
Cutchogue.

Dear Sirs:—The 400 chicks received from you are doing fine. Enclosed find check for same. Have you any Plymouth Rock cockerels for sale and at what price?

Yours very truly,

C. T. CARTWRIGHT,

OUR GUARANTEE

We guarantee the fertility of our eggs for hatching to be 60 per cent. in January and February. 75 per cent. in March and April and 80 per cent. in May and June. We feel sure they will run much more fertile than the guarantee but if they run below, return the infertile eggs to us, charges prepaid, and we will replace them free of charge or replace the whole order at half price. In selling Baby Chicks we guarantee correct count and safe delivery on Long Island.

ORDER NOW

Orders for eggs and Baby Chicks booked at any time. 10 per cent. the amount of purchase price should be included in the order and the balance should be sent five days before date for the order to be filled.

CYPHERS INCUBATORS AND BROODERS

If in need of a good Cyphers Incubator or Brooder let me hear from you. Can get you one on short notice, and as reasonable as possible freight paid to your nearest freight station.

Also have a quantity of second-hand incubators on hand. If interested come look them over. Prices very reasonable.

HOVERS, BROODERS

If in need of Coal Burning Hovers of any kind, Adaptable Hovers, Out Door Brooders, or any kind of Poultry Supplies kindly call on us and we will be glad to give you our prices and descriptions,, sending you a catalogue if you wish one.

POULTRY FEEDS AND SUPPLIES

I keep in Stock—Drinking Founts, different sizes, Leg Bands in different sizes, Nest Eggs and Lice Powder, Napcreol, a good disinfectant, Poultry Remedies, Feed and Shell Hoppers, Charcoal in 50 lb. bags, Oyster Shell, Grit, Ground Oats, Scratch Feed, Beef Scrap, Bone Meal, Barley, etc. Prices on application.

MISCELLANEOUS

	Lb.	10 Lbs. and over
Flowers of Sulphur, used for- dusting potatoes, spraying, etc.	\$0.10	\$0.70
Tobacco Dust, for dusting all kinds of plants for aphids.....	.10	.60
Lime Sulphur, used for a Dor- mant sprayper gal.	.40	

ARSENATE OF LEAD

Get my price on a 100-lb. drum before or-
dering elsewhere. I also sell small quantities,
from 1 lb. up. Prices on application.

Let me know if in need of anything for
farm, garden or poultry yard that is not
listed in this book and I will do my best to
get it for you at as reasonable price as pos-
sible, considering quality.

I, *Ralph W. Sterling*, cannot guarantee results from my Seeds and Plants in any way, altho I take the utmost pains to get the very best Seed Stocks procurable. I purchase most of my Garden Seeds from *W. Atlee Burpee & Co.*, and my Grass, Clover and Alfalfa Seed from the *Nungesser Dickinson Seed Co.*

Address all communications and make all Checks and Money Orders payable to

RALPH W. STERLING,
Cutchogue, L. I., N. Y.