

## **Historic, Archive Document**

Do not assume content reflects current scientific knowledge, policies, or practices.



62,57

1920

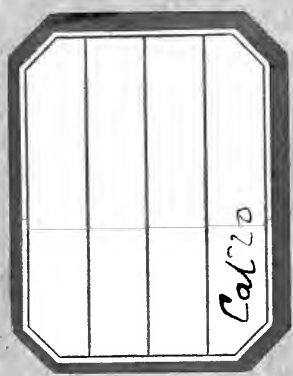
LIBRARY RECEIVED

U. S. Department of Agriculture

# PAKRO

## SEEDTAPE AND SEEDS

### FOR BETTER GARDENS



*The*  
**QUANTITY PACKAGE**  
*of*  
**QUALITY SEEDS**

American Seedtape Company  
 Newark, New Jersey  
 U. S. A.

K

WALKER

THE BETTER QUALITY

QUALITY BLENDS  
FOR THE BEST

American Tobacco Company

New York

U.S.A.

# PAKRO

SEEDTAPE  
AND SEEDS

Special Selected Garden Seed  
Ready for Planting



*Seedtape your garden  
and watch it grow*

**AMERICAN SEEDTAPE COMPANY**  
PAKRO BUILDING, 365 TO 371 OGDEN ST.  
NEWARK, NEW JERSEY, U. S. A.

*Planting PAKRO SEEDTAPE is easy on the back, clothes and temper. You do not have to double yourself up like a jackknife; your clothes do not get soiled; and you do not have to replant, or transplant, because the seeds germinate and are the correct distance apart.*

**PAKRO**  
**SEEDTAPE**  
**AND SEEDS**

## What Pakro Seedtape Is and Does



Pakro Seedtape is the simplest and most effective labor-saving method of planting seeds.

It opens a new era in gardening.

It is a scientific application of a tested and proven practical idea.

During the five years that Pakro Seedtape has been on the market it has gained great popularity. It has won the most enthusiastic support

of thousands of gardeners. Its sales have exceeded our greatest expectations, and progress made since it was first introduced has been phenomenally rapid.

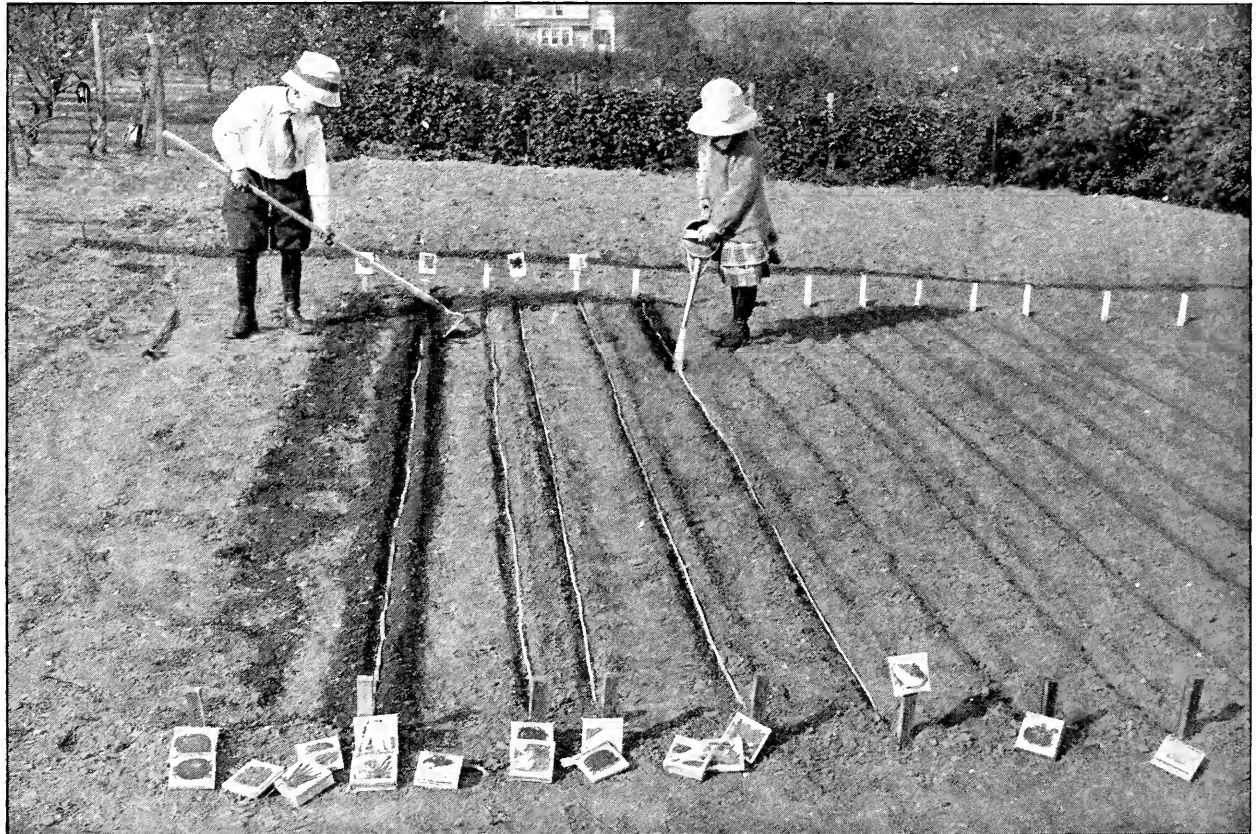
Pakro Seedtape passed the experimental stage several years ago. In 1917 alone it was planted in more than 1,000,000 gardens throughout the world, and its production of fine vegetables and flowers speaks for itself.

It is the economical, easy, laborless way to plant seeds. Its advantages over dropping seeds by hand, one or one dozen at a time, approximate the advantages of the modern mowing-machine over the scythe.

First of all, there's Pakro Seeds. These seeds are the pick of the finest prize-winning varieties. Every seed comes to you with a clean bill of health from the expert seed-growers of the world. We contract only with the most reputable reliable growers to produce seeds for us under the direct personal supervision of our own seed experts, who examine the plants at regular intervals during the growing season.

Each variety is grown in the locality and soil which has been proved to produce the best seed of its kind with respect to type and strength. Seeds that are right is the first Pakro essential, but Seedtape means more than that.

It means wonderful saving of labor in getting the seed into the ground—the whole thing is done at one operation, minus the snail-like way of dropping the seed by hand.



Let the youngsters have a PAKRO SEEDTAPE garden. They will get good results and have lots of fun besides

# PAKRO SEEDTAPE AND SEEDS

*Planting PAKRO SEEDTAPE is a very simple matter. Make a shallow trench; lay the tape in it, as you walk along; wet the tape thoroughly; cover lightly. That's all there is to it, except gathering the luscious vegetables and handsome flowers a short time after.*

Seedtape will enable you to plant more ground in less time than the old way of planting. Saves time for other things.

Thinning out of plants (required by hand-sowing) is practically done away with. Seeds are properly spaced on the Pakro tape according to the requirements of the plant. Thus Pakro not only saves work but saves seeds.

By the Seedtape way, each seed gets its full share of nourishment. It doesn't have to fight for life with a quantity of seed dropped in a lump.

Our policy is to use seed of the highest possible quality, always fresh. That's the reason why the dealers want to sell it. They have confidence in it.

## Pakro Seeds

The success which our dealers all over the country had with Pakro Seedtape last season resulted in many requests that we supply them with Pakro Seedtape and Loose Seeds of the same varieties, to enable them to sell a full line of Pakro seeds, both taped and untaped.

To the planter who desires untaped seed we are therefore offering

## The QUANTITY PACKAGE of QUALITY SEEDS

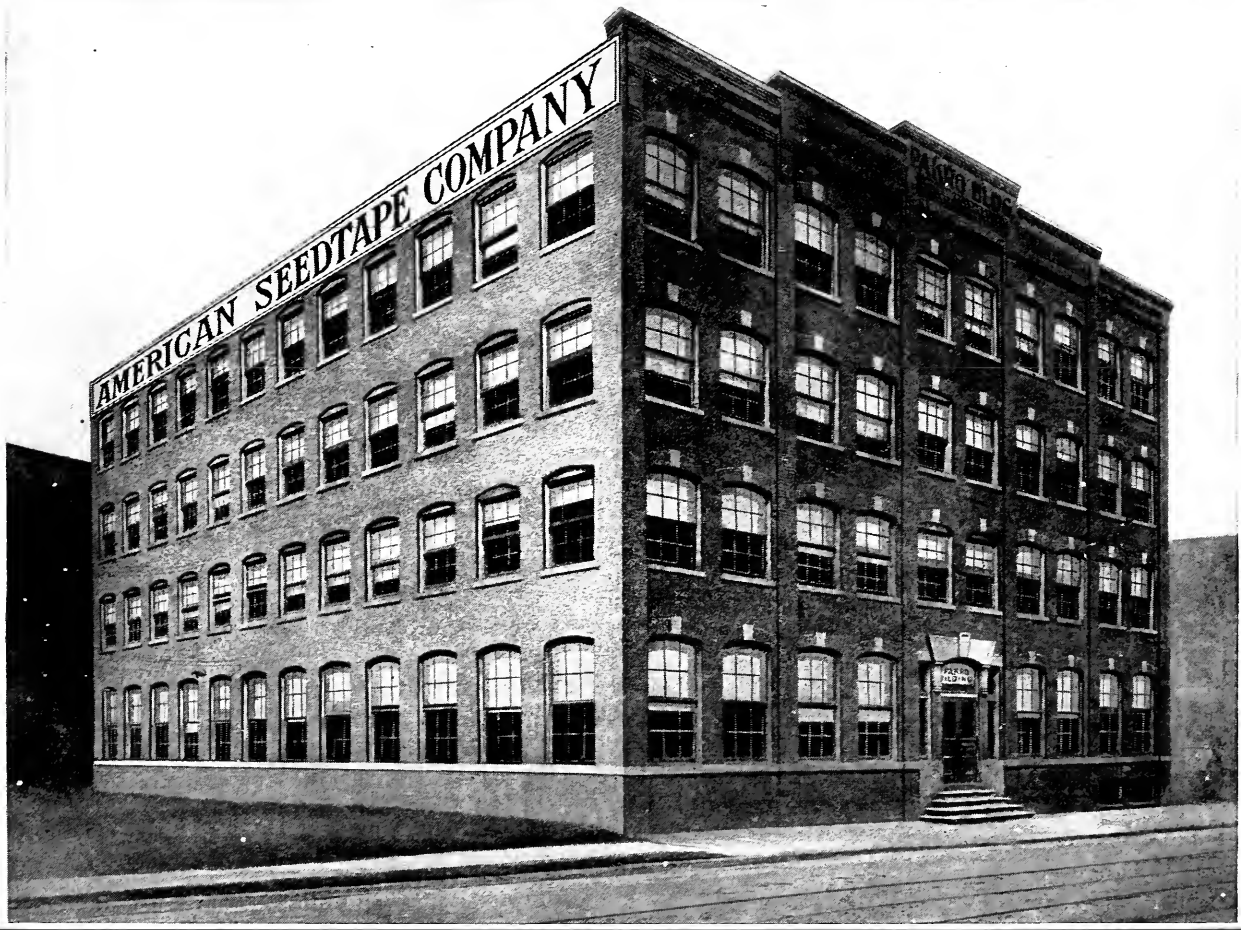
all of which are selected and tested with the same expert care as to type and germination.

You will find Pakro Seeds and Seedtape "Silent Salesman" Display Stand in your dealer's store.

When you go into a store and ask for PAKRO, you will buy it of a merchant who himself has to have confidence in it. He has had to put his money in it for we do not give him Pakro seeds on consignment.

Have your dealer supply you with Pakro Seedtape or Loose Seeds. If he cannot, send us your order on the enclosed form, together with money order or check, and we will deliver anywhere, all charges prepaid.

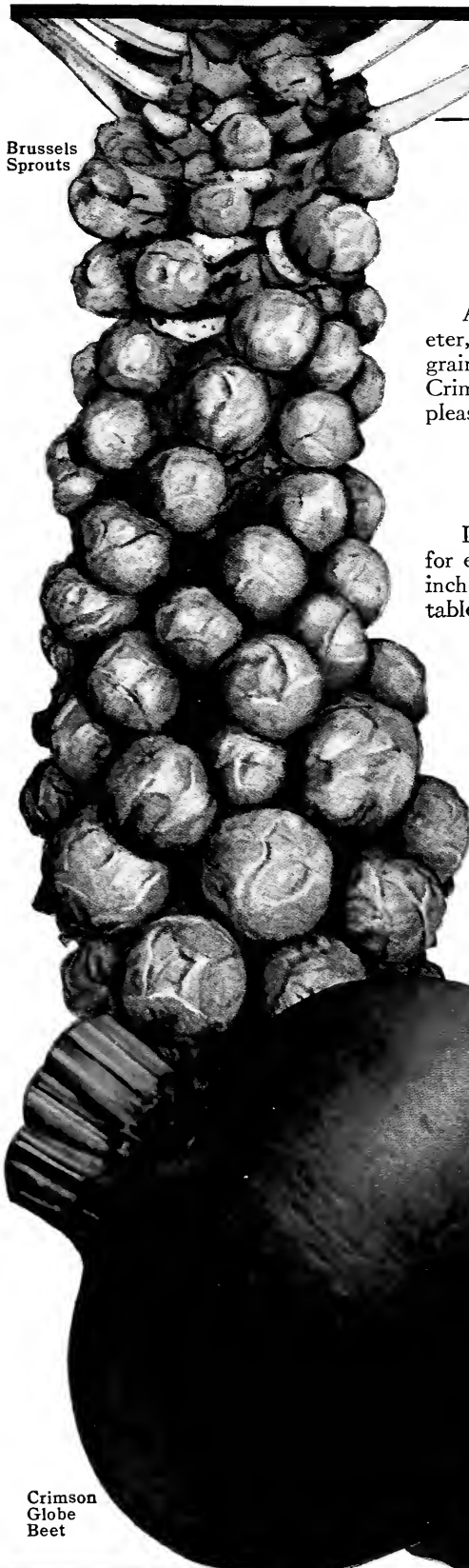
AMERICAN SEEDTAPE CO., Newark, N. J.



Don't plant SEEDTAPE too deep. Follow the directions on the package.

**PAKRO**  
SEEDTAPE  
AND SEEDS

Brussels Sprouts



## Beans

Not in tape. See page 29.

## Beet, Crimson Globe

No. 1. Pakro Seedtape, pkt. 10 cts. No. 501. Pakro Seed, pkt. 10 cts.

An excellent Beet for all gardens. It is usually about 3 inches in diameter, nearly round, with a smooth surface. The flesh is rich crimson, fine-grained, tender and good. It ripens a few days later than Early Egyptian. Crimson Globe has long been a favorite and without doubt you will be pleased with the results from Pakro, for our seed is of the highest quality.

## Beet, Extra-Early Egyptian

No. 2. Pakro Seedtape, pkt. 10 cts. No. 502. Pakro Seed, pkt. 10 cts.

Its extreme earliness in ripening makes Early Egyptian a valuable Beet for every garden. The root is a rapid grower and averages larger than 3 inches in diameter. The color of the tender flesh is bright red. For an early table Beet, or for pickling purposes, Early Egyptian is the one for you.

## Brussels Sprouts, Long Island Improved

No. 3. Pakro Seedtape, pkt. 10 cts. No. 503. Pakro Seed, pkt. 10 cts.

This variety is highly esteemed by many gardeners; in fact it is considered the best. It is a native sort of strong growth. The flavor resembles that of cabbage, and the tender nob-like heads are prepared for the table in the same way as cabbage.

All Seasons  
Cabbage  
(see page 5)

Crimson  
Globe  
Beet





*In PAKRO SEEDTAPE the seeds are spaced correctly so that thinning out is not necessary. The plants are not crowded and you get even stands and straight rows.*

## Cabbage, All Seasons

No. 5. Pakro Seedtape, pkt. 10 cts. No. 505. Pakro Seed, pkt. 10 cts.

A large, solid, round-headed Cabbage, somewhat flattened on the top. Its natural maturing period is early, but plants may be set out for successive ripenings. The flavor of All Seasons is one of the most pleasing of all the Cabbages.

Wakefield  
Cabbage

## Cabbage, Early Jersey Wakefield

No. 6. Pakro Seedtape, pkt. 10 cts.

No. 506. Pakro Seed, pkt. 10 cts.

It differs from All Seasons in shape, coming to a sharp "peak" at the top. It is high in quality, has a pleasing delicate flavor, and matures early. The gardener who grows for his own use will have every reason to be pleased with this Cabbage grown from Pakro.

## Cabbage, Premium Flat Dutch

No. 7. Pakro Seedtape, pkt. 10 cts.

No. 507. Pakro Seed, pkt. 10 cts.

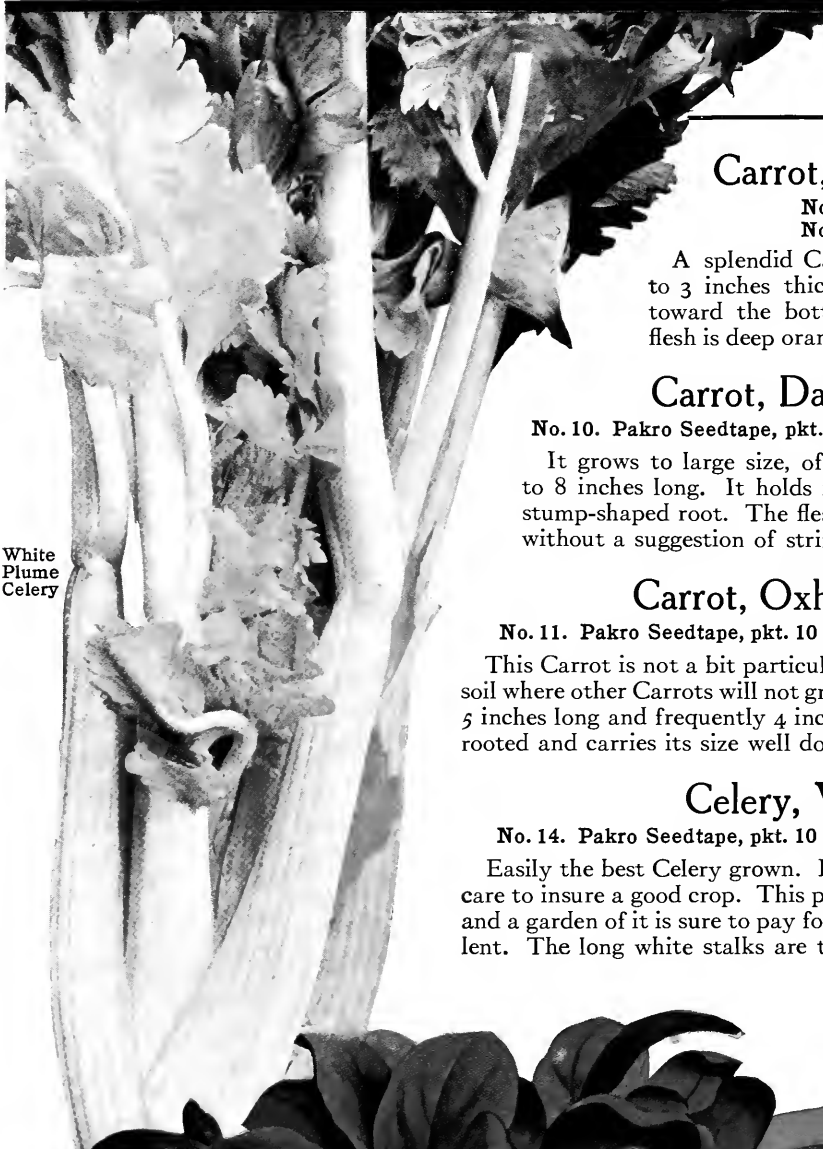
Premium Flat Dutch should always be planted with the two preceding sorts, because the three will give a succession of mature Cabbage all through the season. This old favorite sort is late in maturing, the heads are large in size, high in quality, and will grow under adverse conditions.

Premium  
Flat Dutch  
Cabbage

*"I have been using PAKRO SEEDTAPE for two years now and I am glad to recommend it to any one. I think PAKRO SEEDTAPE has many advantages and conveniences in the planting of a garden and I have found the results very satisfactory."*

—Illinois.

Extra-  
Early  
Egyptian  
Beet



White  
Plume  
Celery

### Carrot, Chantenay Stump-Rooted

No. 9. Pakro Seedtape, pkt. 10 cts.

No. 509. Pakro Seed, pkt. 10 cts.

A splendid Carrot for table use. The root is from 2 to 3 inches thick at the top, with only a slight taper toward the bottom. The entire root is edible. The flesh is deep orange.

### Carrot, Danvers Half-Long

No. 10. Pakro Seedtape, pkt. 10 cts. No. 510. Pakro Seed, pkt. 10 cts.

It grows to large size, often 2 inches in diameter and from 6 to 8 inches long. It holds its size well from the top nearly to the stump-shaped root. The flesh is of a rich orange color, tender, and without a suggestion of stringiness.

### Carrot, Oxheart or Guerande

No. 11. Pakro Seedtape, pkt. 10 cts. No. 511. Pakro Seed, pkt. 10 cts.

This Carrot is not a bit particular where it is planted, for it does well in soil where other Carrots will not grow. The form is short and stubby, about 5 inches long and frequently 4 inches in diameter at the top. It is stump-rooted and carries its size well down to the blunt end.

### Celery, White Plume

No. 14. Pakro Seedtape, pkt. 10 cts. No. 514. Pakro Seed, pkt. 10 cts.

Easily the best Celery grown. It is self-blanching and requires but little care to insure a good crop. This popular variety grows to considerable size and a garden of it is sure to pay for itself. The flavor and quality are excellent. The long white stalks are tender and add a zest to any meal.

### Corn

Not in tape. See page 31.



Chantenay  
Stump-Rooted  
Carrots

Large Round  
Corn Salad

Danvers  
Carrot

## Corn Salad, Large Round

No. 15. Pakro Seedtape, pkt. 10 cts.  
No. 515. Pakro Seed, pkt. 10 cts.

An excellent salad plant. Should be planted in late summer and early fall. Matures in late fall and early winter. It is somewhat like lettuce and is cultivated and served in the same way. Has a pleasing flavor and makes an excellent substitute for lettuce.

## Cucumber

Not in tape. See page 38.

## Endive, Green Curled

No. 16. Pakro Seedtape, pkt. 10 cts.  
No. 516. Pakro Seed, pkt. 10 cts.

This particular variety is the best known and the most largely planted, having proven itself the best adapted to all conditions. Its flavor is pleasing. If planted in July, it will be in good condition in November. Try it in Pakro Seedtape.

*Part of my order of PAKRO SEEDTAPE was planted in Pennsylvania and part in Florida. Both were beautifully satisfactory.*

—E. A. RICKMERS,  
Florida

Oxheart  
Carrot

Green  
Curled  
Endive

Before covering the tape soak it thoroughly. Allow the water to drain into ground before covering.

**PAKRO**  
SEEDTAPE  
AND SEEDS

## Eggplant, Black Beauty

No. 17. Pakro Seedtape, pkt. 10 cts. No. 517. Pakro Seed, pkt. 10 cts.

This variety is ready for use two weeks before any other. The fruits are extra large and free from spines. The color of the skin is black with a purple tinge. The flesh is tender and has an excellent flavor. Black Beauty Eggplant should be grown freely, as nearly all gardeners consider it the best variety for home use.

## Kohlrabi, White Vienna

No. 18. Pakro Seedtape, pkt. 10 cts. No. 518. Pakro Seed, pkt. 10 cts.

Kohlrabi resembles a turnip growing above the ground like cabbage. The White Vienna is the best variety. The bulb is about the size of a large apple. The skin is pale green, the flesh is clear white and tender, and the flavor is somewhat like turnip and cabbage combined.

## Kale, Dwarf Curled Scotch

No. 19. Pakro Seedtape, pkt. 10c. No. 519. Pakro Seed, pkt. 10c.

Sometimes called Borecole. A vegetable used as "greens," having a flavor similar to cabbage. Pakro Seedtape may be planted in April or May for a summer and fall crop, and in August or early September for use in early spring. Frost does not injure the plants, in fact the flavor is improved by a slight freezing. Dwarf Curled is a low grower and takes up little room in the garden. The green leaves are deeply curled, tender, and delicious. For early and late greens this Kale should be in every garden.

White  
Vienna  
Kohlrabi

Black  
Beauty  
Eggplant

Dwarf  
Curled  
Scotch  
Kale

## Leek, Large Flag

No. 20. Pakro Seedtape, pkt. 10 cts. No. 520. Pakro Seed, pkt. 10 cts.

The stalk grows upright like celery, and is blanched in the same way. The flavor resembles that of onions, but is a little milder, and is good for flavoring soups. Leek can be grown easily with Pakro Seedtape, for the correctly spaced seed does away with crowding.

## Lettuce, Mignonette

No. 21. Pakro Seedtape, pkt. 10 cts. No. 521. Pakro Seed, pkt. 10 cts.

Perhaps the most popular salad vegetable found in American gardens is Lettuce. There is a multitude of varieties, but of the number we have selected only five. Of these Mignonette is one of the best. It is ready for use in a short time, and produces many tender, crisp leaves. The outer leaves are deep green and fringed with reddish brown; the inner leaves, or heart, will blanch to creamy white. Mignonette grows rapidly, and remains tender a long time.

## Lettuce, Big Boston

No. 22. Pakro Seedtape, pkt. 10 cts.  
No. 522. Pakro Seed, pkt. 10 cts.

Big Boston is the best early head Lettuce. The heads are large and full of big green leaves of delicious flavor. It is hardy and thrives anywhere. Big Boston matures a little later than Mignonette, but can be had at different times if a succession of Seedtape is planted at intervals of ten days or two weeks. Big Boston, grown from Pakro Seedtape, is truly one of the most desirable vegetables for any garden.

Mignonette  
Lettuce

Big Boston  
Lettuce

Large  
Flag  
Leek

Trianon Cos  
Lettuce

PAKRO SEEDTAPE  
helps amateurs get the  
results obtained by experts.

**PAKRO**  
SEEDTAPE  
AND SEEDS

### Lettuce, Black-Seeded Simpson

No. 23. Pakro Seedtape, pkt. 10c. No. 523. Pakro Seed, pkt. 10c.

A dwarf-growing sort with curled leaves which are lighter colored than either of the preceding. For home use Black-seeded Simpson is a desirable variety.

### Lettuce, Salamander

No. 25. Pakro Seedtape, pkt. 10 cts.  
No. 525. Pakro Seed, pkt. 10 cts.

A large number of Lettuce varieties will not head well during hot summer weather, but Salamander is an open exception. For that reason it is widely planted. It forms a compact head of fair size and possesses an excellent flavor.

### Lettuce, Trianon Cos

No. 24. Pakro Seedtape, pkt. 10 cts. No. 524. Pakro Seed, pkt. 10 cts.

The four varieties mentioned before this one are known as "head Lettuce." This one is known as "Cos Lettuce." Instead of forming a head, the leaves grow nearly straight upward. When about half mature, draw the leaves together and tie a string around them; this will cause the leaves to become white.

### Muskmelons

Not in tape. See page 33.

Black-Seeded  
Simpson  
Lettuce

White  
Portugal  
Onion  
(p. 12)

## Okra, White Velvet

No. 26. Pakro Seedtape, pkt. 10 cts. No. 526. Pakro Seed, pkt. 10 cts.

This vegetable is grown more extensively in the southern parts of the country, but we can see no reason why it should be, because it grows equally well here in the North. White Velvet is the best variety. The edible parts are the seed-pods of the young plants, and are used in making soups and catsups. The pods are white and large, and are produced more freely than in other varieties.

## Onion, Red Wethersfield

No. 55. Pakro Seedtape, pkt. 10 cts.

No. 555. Pakro Seed, pkt. 10 cts.

In the gardens of many prominent vegetable-growers Red Wethersfield is a favorite. It is a large Onion, with a red outer skin. The flavor is excellent, but is stronger than that of some other sorts. It is a good keeper and a quick grower. The flesh is tender, and has a slight red tinge. If you want a good boiling Onion, you need look no further, for Red Wethersfield is certainly the one you want.

*The PAKRO SEEDTAPE I planted exceeded my expectations. Not only was it easy to plant, but it came up well and yielded a fine quality of vegetables.*

—MISS EDITH M. CLARK,  
Connecticut.

Salamander  
Lettuce

White  
Velvet  
Okra

Red Wethersfield Onion

Double  
Curled  
Parsley

PAKRO SEEDTAPE has given excel-  
lent results in all parts of the world.

**PAKRO**  
SEEDTAPE  
AND SEEDS

## Onion, White Portugal See illustration on page 10

No. 27. Pakro Seedtape, pkt. 10 cts.    No. 527. Pakro Seed, pkt. 10 cts.

As a salad Onion this variety cannot be beaten. The bulbs are of medium size and both skin and flesh have the same silvery white color; in fact, it is occasionally called "Silver Skin."

White Portugal is desirable on account of its pleasant, mild flavor, which makes it suitable for eating as "young Onions," and for pickling. It is the ideal summer Onion.

## Onion, Yellow Globe Danvers

No. 28. Pakro Seedtape, pkt. 10 cts.

No. 528. Pakro Seed, pkt. 10 cts.

This Onion seems to be a combination of Red Wethersfield and White Portugal, for it has the size and firmness of the former and the mild, delicious flavor of the latter. In shape it is nearly round, as the illustration on this page will show. The skin is golden yellow and the flesh is white.

## Onion, Prizetaker

No. 29. Pakro Seedtape, pkt. 10 cts.

No. 529. Pakro Seed, pkt. 10 cts.

Probably the best extra-large Onion grown. Under good conditions the bulbs will weigh a pound or more. Prizetaker is high in quality, mild in flavor, a good keeper, and, as it combines all the good points of other varieties, it should be planted no matter whether you plant one row or a hundred. The skin is pale yellow and the flesh is white; both tops and bulbs are tender. Prizetaker is excellent for salad.

Prizetaker  
Onion

Yellow  
Globe  
Danvers  
Onion



### Onion, Southport White Globe

No. 30. Pakro Seedtape, pkt. 10c. No. 530. Pakro Seed, pkt. 10c.

An excellent Onion for family use, and is equally good in salad form or for boiling. The outer skin is white in color and pleasing in appearance when bunched. The flesh is white and tender.

### Onion, Southport Red Globe

No. 56. Pakro Seedtape, pkt. 10c. No. 556. Pakro Seed, pkt. 10c.

It grows to about 3 inches in diameter. The skin is red, and the tender flesh has markings of the same color. The flavor is quite pronounced but not so strong as that of Red Wethersfield.

### Onion, Southport Yellow Globe

No. 57. Pakro Seedtape, pkt. 10c. No. 557. Pakro Seed, pkt. 10c.

By many gardeners this is considered the best Yellow Onion. In size it varies from medium to large. The skin is yellow and the flesh pure white.

### Parsley, Double Curled

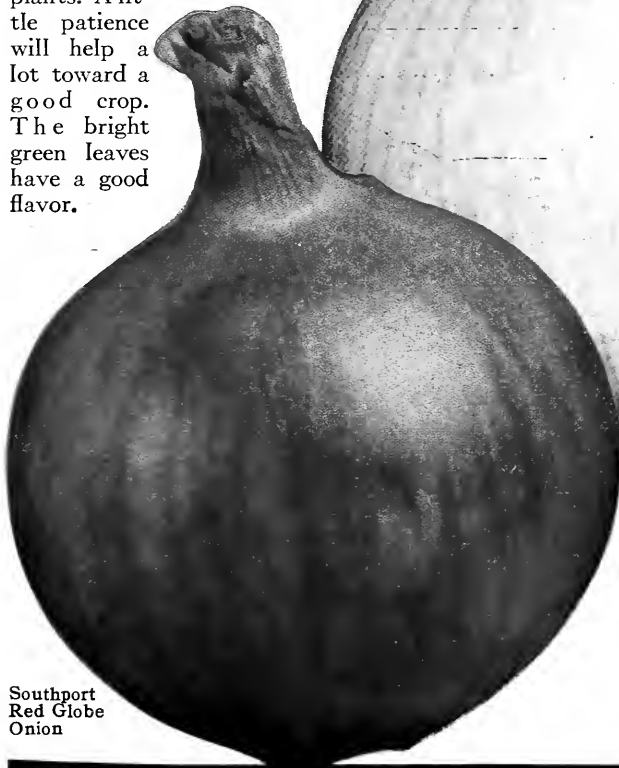
No. 31. Pakro Seedtape, pkt. 10 cts.

No. 531. Pakro Seed, pkt. 10 cts.

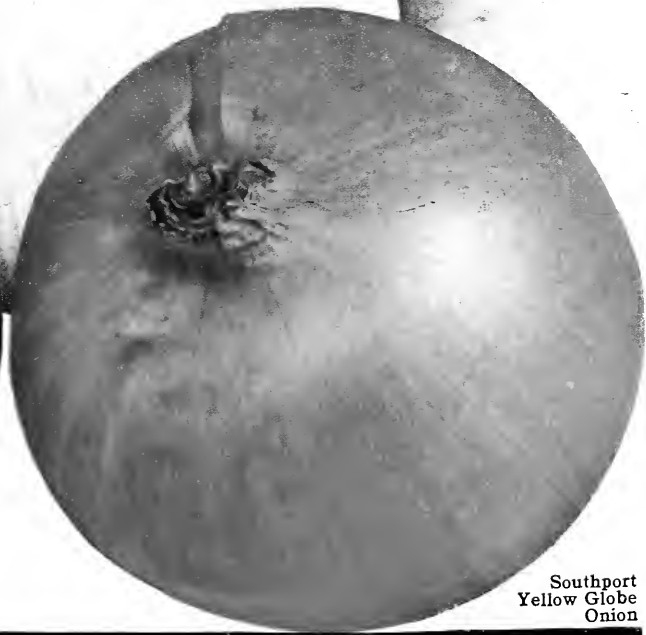
Parsley is a very slow grower; frequently a month or more passes before the seeds send up the young plants. A little patience will help a lot toward a good crop. The bright green leaves have a good flavor.

Southport  
White  
Globe

Hollow  
Crown  
Parsnips  
(see page 14)



Southport  
Red Globe  
Onion



Southport  
Yellow Globe  
Onion

*Dig a shallow trench; lay the tape in it; wet it thoroughly; allow water to drain off; cover it up. That's all the work there is to planting with PAKRO SEED-TAPE. Easy, isn't it? But remember that every garden must have cultivation.*

**PAKRO**  
SEEDTAPE  
AND SEEDS

## Parsnip, Hollow Crown

No. 53. Pakro Seedtape, pkt. 10 cts. No. 553. Pakro Seed, pkt. 10 cts.

People who know Parsnips plant Hollow Crown to the exclusion of the other sorts. It does not form the long slender tap-root so noticeable in others, most of its bulk being close to the top of the soil. The flavor is sugary; the flesh is tender and boils easily. The roots are not injured by freezing and can remain in the ground until spring.

## Pepper, Large Bell

No. 35. Pakro Seedtape, pkt. 10 cts. No. 535. Pakro Seed, pkt. 10 cts.

Without doubt the best Pepper. It ripens early, with a flavor so mild that the fruits may be eaten raw. The fruits are large in size and bright red clear through when fully mature. When green, the fruits may be picked and pickled.

Large Bell  
Pepper



## Pepper, Pimiento

No. 36. Pakro Seedtape, pkt. 10 cts.  
No. 536. Pakro Seed, pkt. 10 cts.

Another excellent Pepper, preferred by some people to Large Bell. The fruits are heart-shaped, large in size, and red in color. The flesh is soft, tender, and possesses a delightful mild flavor somewhat resembling that of an apple. It is easy to grow if you have a soft, warm soil where a liberal amount of fertilizer has been used. In Pakro you get a specially selected strain of seed.

## Peas

Not in tape. See page 34.

*I have used SEEDTAPE and found it very satisfactory.—MRS. H. D. STOGGETT, Hawaii.*

French  
Breakfast  
Radishes



Ice Radishes

## Radish, French Breakfast

No. 37. Pakro Seedtape, pkt. 10 cts. No. 537. Pakro Seed, pkt. 10 cts.

An olive-shaped Radish of superior quality. The skin is bright scarlet on the upper portion and clear white towards the bottom end. The flesh is clear white, tender, and, if grown rapidly, does not have a spongy center.

## Radish, Icicle

No. 38. Pakro Seedtape, pkt. 10 cts. No. 538. Pakro Seed, pkt. 10 cts.

Icicle is a summer Radish with pure white skin. In shape it is long, slender, and with considerable bulk in each root. The skin is smooth and thin. Its flesh is fine-grained, crisp, and tender, possessing a mild appetizing flavor.

## Radish, Long Scarlet

No. 39. Pakro Seedtape, pkt. 10 cts. No. 539. Pakro Seed, pkt. 10 cts.

A quick-growing Radish of much merit. It grows to about 6 inches in length, part of the Radish itself growing above the ground. The skin is a vivid scarlet color and the flesh is white, tender, and without a sign of stringiness.

## Radish, Scarlet Turnip White-Tip

No. 40. Pakro Seedtape, pkt. 10c.

No. 540. Pakro Seed, pkt. 10c.

Gardeners everywhere say this is the king of all Radishes. It is turnip-shaped, nearly round, and bright scarlet with a white tip at the bottom.

The flesh is white and crisp; the flavor is mild.

Scarlet Turnip White-Tip Radishes

Long Scarlet Radishes

Pimiento Peppers

Improved Purple-Top Rutabaga (page 16)

Good gardeners every-  
where plant PAKRO.

**PAKRO**  
SEEDTAPE  
AND SEEDS

## Rutabaga, Improved Purple-Top

No. 41. Pakro Seedtape, pkt. 10 cts.  
No. 541. Pakro Seed, pkt. 10 cts.

Improved Purple-Top Rutabaga is a high-quality vegetable of large size. Its shape is nearly like that of the turnip, the flesh is yellowish white and fine-grained, and the flavor is sweet and buttery. Improved Purple-Top Rutabaga is desirable for your table.

## Spinach, Long Standing

No. 43. Pakro Seedtape, pkt. 10c. No. 543. Pakro Seed, pkt. 10c.

Many varieties of Spinach do not thrive during hot weather, but Long Standing is an exception. After becoming mature it stands for quite a while before going to seed.

## Squash

Not in tape. See page 35.

## Swiss Chard, Silver Leaf

No. 46. Pakro Seedtape, pkt. 10c. No. 546. Pakro Seed, pkt. 10c.

While generally considered a member of the beet family, Swiss Chard differs in the edible part. In the beet the bulb is eaten, while in Swiss Chard the parts eaten are the soft crinkly leaves and the midrib. The tops are boiled for greens and the midrib is eaten like asparagus.

Earliana  
Tomato

Beauty  
Tomato

Long  
Standing  
Spinach

Stone  
Tomato

## Tomato, Earliana

No. 47. Pakro Seedtape, pkt. 10 cts.  
No. 547. Pakro Seed, pkt. 10 cts.

You should plant your garden so as to get a succession of ripe fruits. In that case choose Earliana for the first, for it is the earliest variety to ripen. The fruit is scarlet in color, large in size, and high in quality.

## Tomato, Beauty

No. 48. Pakro Seedtape, pkt. 10 cts.  
No. 548. Pakro Seed, pkt. 10 cts.

A favorite with many leading growers. It is a mid-season variety, with smooth crimson skin and flesh, and in shape nearly round.

## Tomato, Ponderosa

No. 49. Pakro Seedtape, pkt. 10 cts.  
No. 549. Pakro Seed, pkt. 10 cts.

A desirable late sort. It is very large in size, the rind is thin, and the flesh is solid but tender.

## Tomato, Stone

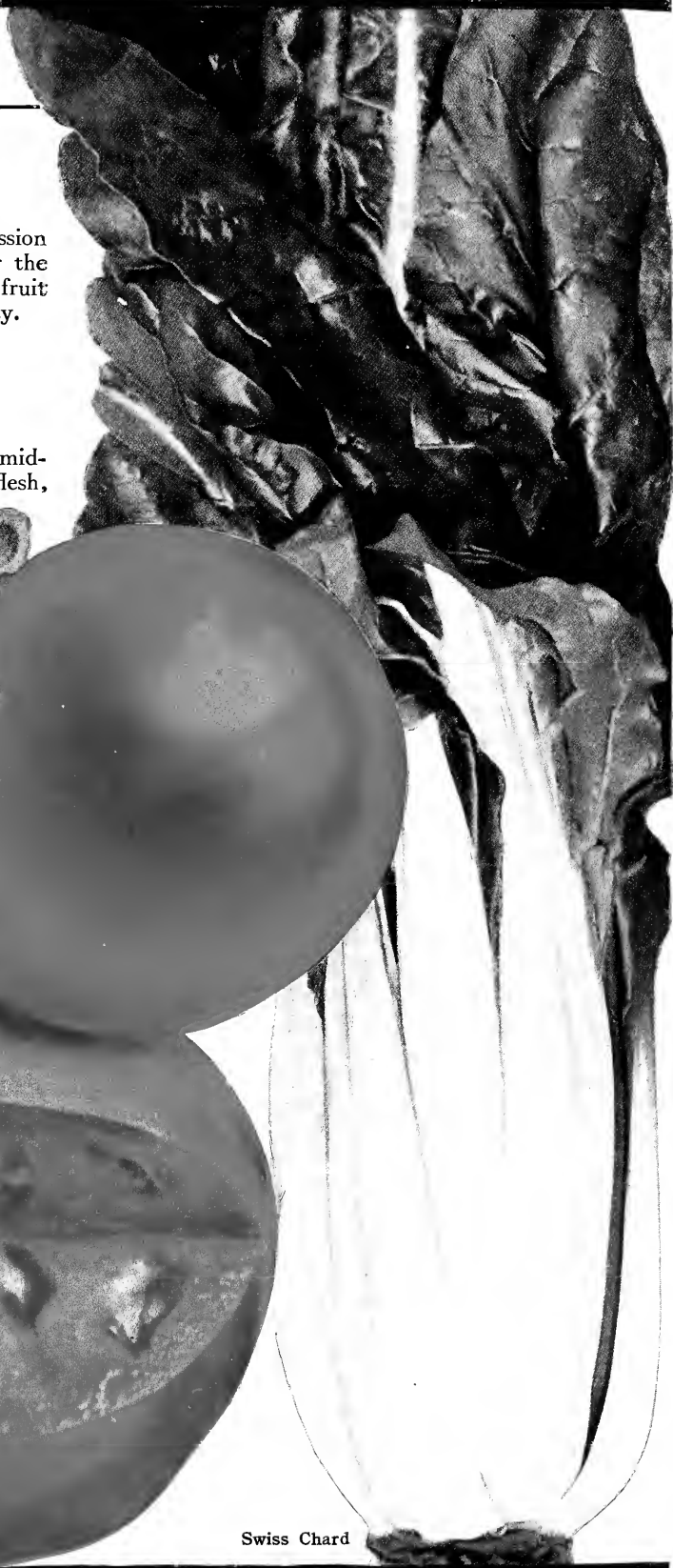
No. 50. Pakro Seedtape, pkt. 10 cts.  
No. 550. Pakro Seed, pkt. 10 cts.

Large in size, high in quality, bright red in color. The flesh being very firm, Stone will stand shipping well. For canning Stone is better than other kinds.

June Pink  
Tomato  
(see p. 18)



Ponderosa  
Tomato



Swiss Chard

*Our files contain enthusiastic letters from gardeners in all parts of the civilized world.*

**PAKRO**  
SEEDTAPE  
AND SEEDS

## Tomato, June Pink

No. 51. Pakro Seedtape, pkt. 10 cts. No. 551. Pakro Seed, pkt. 10 cts.

Ripening soon after Earliana, it is an excellent sort for a succession crop. The large fruits grow to about 3 inches in diameter and are borne in clusters of five or six each. The skin is pink, and the soft, tender flesh is deep red. The plants are strong growers and bear the handsome fruits until frost.

## Turnip, Early White Milan

No. 52. Pakro Seedtape, pkt. 10 cts. No. 552. Pakro Seed, pkt. 10 cts.

A grand Turnip for table use. Both skin and flesh are waxy white and there is no pithy core at the center. It grows rapidly and, while it is not a large Turnip, it is desirable on account of its high quality and early ripening period.

## Turnip, Purple-Top Strap-Leaf

No. 53. Pakro Seedtape, pkt. 10 cts.  
No. 553. Pakro Seed, pkt. 10 cts.

Perhaps the most popular Turnip and the most widely grown. The lower part is white, and the top is marked with a distinct purple shading. It ripens nearly as early as Early White Milan. The flesh is fine-grained and tender, and the flavor is sweet. A valuable Turnip for table use.

## Turnip, Purple-Top White Globe

No. 54. Pakro Seedtape, pkt. 10 cts.  
No. 554. Pakro Seed, pkt. 10 cts.

An early Turnip of good quality. The bulb is almost round and covered with white skin. Its size is medium to large. A good Turnip for the family gardener.

## Watermelons

Not in tape. See page 33.



## Alyssum maritimum, Sweet

No. 100. Pakro Seedtape, pkt. 10 cts.  
No. 600. Pakro Seed, pkt. 10 cts.

An abundance of sweet-scented white blooms appear from early summer until late in the season. Very effective in borders and edgings.

## Ageratum

Not in tape. See page 37.

## Aster, Queen of the Market, Mixed

No. 101. Pakro Seedtape, pkt. 10 cts.  
No. 601. Pakro Seed, pkt. 10 cts.

Blooms in mid-summer and is largely grown for early flowers. Mixed colors, lavender, pink, purple, and white.

## Aster, Giant Comet, Mixed

No. 102. Pakro Seedtape, pkt. 10 cts.  
No. 602. Pakro Seed, pkt. 10 cts.

Flowers are double and huge in size. Mixed colors, pink, white, crimson, azure, rose, purple, and violet.



Sweet  
Alyssum

Giant  
Comet  
Aster

Crego  
Giant  
Aster

Encourage the children to plant  
a PAKRO SEEDTAPE garden.  
They will enjoy taking care of it.

**PAKRO**  
SEEDTAPE  
AND SEEDS

### Aster, Crego Giant, Mixed

No. 121. Pakro Seedtape, pkt. 10 cts.

No. 621. Pakro Seed, pkt. 10 cts.

Crego blooms in early September and, if the flowers are cut and placed in water, they will keep in good condition for several days.

### Aster, Semple's Branching, Mixed

No. 122. Pakro Seedtape, pkt. 10 cts.

No. 622. Pakro Seed, pkt. 10 cts.

Semple's Branching Asters begin to bloom in mid-summer and continue until late autumn. The blossoms may be cut and placed in water. Mixed colors, azure, crimson, lavender, pink, purple, white, etc.

### Balsam, Double Camellia- Flowered, Mixed

No. 103. Pakro Seedtape, pkt. 10 cts.

No. 603. Pakro Seed, pkt. 10 cts.

A great favorite. The flowers are borne on spikes from 1½ to 2 feet tall.

The colors are scarlet, pink, white, and salmon.

Calliopsis  
coronata



# PAKRO SEEDTAPE AND SEEDS

## Candytuft, Mixed

No. 104. Pakro Seedtape, pkt. 10 cts.  
No. 604. Pakro Seed, pkt. 10 cts.

A free-blooming annual growing to about a foot in height. The flowers are white, crimson, or pink. They may be cut and placed in water.

## Calliopsis coronata, Yellow

No. 123. Pakro Seedtape, pkt. 10 cts.  
No. 623. Pakro Seed, pkt. 10 cts.

An excellent plant for borders and edgings. Flowers are large in size, and are useful as cut-flowers. Bright yellow, changing to deep orange-red.

## Carnation, Marguerite, Double, Mixed

No. 124. Pakro Seedtape, pkt. 10 cts.  
No. 624. Pakro Seed, pkt. 10 cts.

The handsomest flower found in this beautiful family. Mixed colors, maroon, scarlet, white, salmon, and striped.

Marguerite  
Carnation

Double  
Camellia-  
Flowered  
Balsam



Mixed  
Candytuft

Plant the tape a  
row at a time.

Thoroughly wet the tape  
after laying in trench.

**PAKRO**  
SEEDTAPE  
AND SEEDS

Bachelor's  
Button  
(Cornflower)

## Chrysanthemum coronarium, Double, Mixed

No. 125. Pakro Seedtape, pkt. 10 cts.

No. 625. Pakro Seed, pkt. 10 cts.

In Pakro Seedtape we have an excellent strain of tall plants bearing handsome double flowers. The flowers are compact in form and the colors vary from white to golden orange. They bloom profusely from early summer until frost.

## Cosmos

Not in tape. See page 37.

## Bachelor's Button (Cornflower), Mixed

No. 105. Pakro Seedtape, pkt. 10 cts.

No. 605. Pakro Seed, pkt. 10 cts.

It is many years since the Bachelor's Button became a favorite garden flower. The flowers are mixed colors and, may be cut frequently.

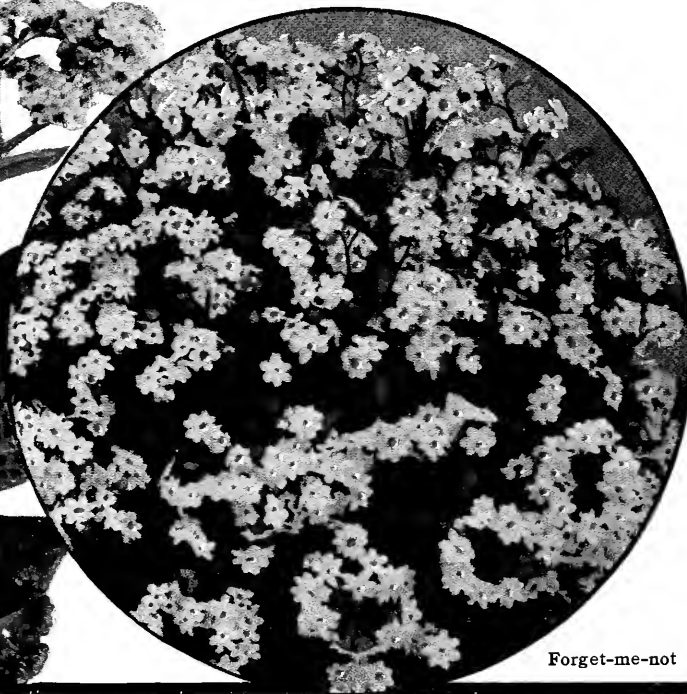
## Forget-me-not, Blue

No. 106. Pakro Seedtape, pkt. 10 cts.

No. 606. Pakro Seed, pkt. 10 cts.

A delightful old-fashioned flower. The flowers are bright azure-blue and are very pretty in a mass planting. The blooming period is in April and May.

Chrysan-  
themum  
coronarium



Forget-me-not

## Gypsophila elegans, Mixed

No. 126. Pakro Seedtape, pkt. 10 cts.

No. 626. Pakro Seed, pkt. 10 cts.

Baby's Breath, as this little plant is often called, is excellent when used with other cut-flowers. The mist-like blossoms and the finely cut feathery foliage are both very pleasing. Mixed colors, white, pink, and rose.

## Heliotrope, Lemoine's Giant, Mixed

No. 127. Pakro Seedtape, pkt. 10 cts.

No. 627. Pakro Seed, pkt. 10 cts.

A half-hardy plant which may be grown in pots during the winter. It will also grow in the garden or greenhouse. In Lemoine's Giant the flowers form an enormous head nearly a foot across.

## Hollyhock, Chater's Double, Mixed

No. 107. Pakro Seedtape, pkt. 10 cts.

No. 607. Pakro Seed, pkt. 10 cts.

One of the most pleasing of the old-fashioned flowers is the Hollyhock. Its proper place is in a mass planting, or as a background for a flower bed. The flowers are large and are carried on straight upright spikes. In color they vary through many shades from white to maroon and yellow. Plant any time up to August or early September.

Chater's  
Double  
Mixed  
Hollyhock



Gypsophila  
elegans

Every package of PAKRO SEEDTAPE in the flower varieties contains ten feet of tape, and each seed is at the right distance from the next one.

**PAKRO**  
SEEDTAPE  
AND SEEDS

Dwarf  
Rocket  
Larkspur

## Larkspur, Dwarf Rocket, Mixed

No. 128. Pakro Seedtape, pkt. 10 cts. No. 628. Pakro Seed, pkt. 10 cts.

A beautiful annual bearing sturdy upright spikes of handsome azure flowers. The seed should be planted in April so the plants may bloom in July and give a succession of flowers until frost comes. Dwarf Rocket Larkspurs grow to about a foot in height and in the Pakro strain you get tints and shades of blue. Planting the Seedtape way does away with all thinning out of the young plants.

## Lobelia Erinus, Finest Mixed

No. 129. Pakro Seedtape, pkt. 10 cts. No. 629. Pakro Seed, pkt. 10 cts.

A useful, free-flowering annual, bearing handsome blue flowers of various shades. For bedding purposes it is valuable, the blue flowers forming a charming contrast with the red and yellow flowers so generally used. It is somewhat trailing in habit, and may, therefore, be used in baskets as well as for bedding. Some people find it valuable as pot-plants for porch decorations.

## Mignonette, Sweet (*Reseda odorata grandiflora*)

No. 108. Pakro Seedtape, pkt. 10 cts.

No. 608. Pakro Seed, pkt. 10 cts.

It is entirely probable that you already know the lovely Sweet Mignonette, for its sweet, delicious odor has endeared it to flower-lovers the world over.

The flowers of the Grandiflora type are large and have a decided reddish tinge.

## Marigold

Not in tape. See page 37.

Lobelia  
Erinus

Imperial  
Japanese  
Morning-  
Glory

## Morning-Glory, Imperial Japanese, Mixed

No. 109. Pakro Seedtape, pkt. 10 cts. No. 609. Pakro Seed, pkt. 10 cts.

We wonder if this old-fashioned vine will ever lose its popularity. It seems to be as great a favorite now as it was a century ago. New flowers are introduced as "better than Morning-Glory," but in a few years they pass away with "Miss Morning-Glory" still the old stand-by. From Pakro the vines grow to 30 feet or more in a short time. The vari-colored flowers are nearly 6 inches across.

## Nasturtium

Not in tape. See page 38.

## Pansies, Finest Mixed

No. 112. Pakro Seedtape, pkt. 10 cts.  
No. 612. Pakro Seed, pkt. 10 cts.

These dwarf-growing plants never lose their quaint charm, for you see them now in just as many gardens as they were years ago. They hardly need a description, for it is more than likely that you already know them; but you do not know how much advantage it is to you to have Pansies in Pakro Seedtape. With the Pakro way you can make star-shaped or circular beds without stopping to get the seeds at exactly the right distance apart.

## Petunia, Single Bedding, Fine Mixed

No. 130. Pakro Seedtape, pkt. 10 cts.  
No. 630. Pakro Seed, pkt. 10 cts.

If you want a handsome flower bed, be sure to plant our single, finely mixed, bedding Petunias. The flowers are single; the outer edge or mouth of the flower is usually much lighter than the throat, which is delicately veined and penciled. Petunias may be considered the ideal bedding plant.

Sweet  
Mignonette

Single  
Petunias

Finest  
Pansies

Plant a PAKRO garden this year. All standard flowers are listed in this catalogue.

**PAKRO**  
SEEDTAPE  
AND SEEDS

Phlox  
Drummondii  
grandiflora



## Phlox Drummondii grandiflora, Mixed

No. 113. Pakro Seedtape, pkt. 10 cts. No. 613. Pakro Seed, pkt. 10 cts.

If you do not know the Phlox, it's time to get acquainted with it. The plants themselves are low growing and take up little room, but their charm lies in the great heads of pink, white, or yellow flowers. The colors are very brilliant and show up to best advantage when planted in masses. Phlox makes an excellent bedding plant.

## Pinks (*Dianthus chinensis*), Double, Mixed

No. 114. Pakro Seedtape, pkt. 10c. No. 614. Pakro Seed, pkt. 10c.

Did you ever see a real old-fashioned garden without several Pinks in it? If you did, that gardener failed to appreciate fully the characteristic beauty of these old favorites. The plants grow to about a foot in height and each one bears several double carnation-shaped flowers of almost fairy-like beauty. Don't fail to plant some Pakro Pinks.

## Poppy, California (*Eschscholtzia californica*)

No. 115. Pakro Seedtape, pkt. 10c. No. 615. Pakro Seed, pkt. 10c.

Be sure to plant your garden for contrast in color of flower. California Poppies must be your choice among the yellows, for they make a delightful appearance when planted with bachelor's buttons, pinks, phloxes, and many other bedding favorites. The handsome flowers are borne in profusion from June until frost.

Single  
Portulaca



Double  
Pinks



## Poppy, Shirley, Mixed

No. 116. Pakro Seedtape, pkt. 10 cts. No. 616. Pakro Seed, pkt. 10 cts.

Some people in their enthusiasm have gone so far as to pronounce this the most beautiful single annual Poppy. The flowers certainly are wonderful, ranging through many delicate shades of pink, rose, crimson, and scarlet, to the clearest white, while the plants grow to more than a foot in height.

## Portulaca, Single, Mixed

No. 131. Pakro Seedtape, pkt. 10 cts. No. 631. Pakro Seed, pkt. 10 cts.

A desirable garden plant only about 6 inches high. The flowers are single in form and show many variations of red, yellow, and white. The plants are in flower from spring until fall, adding a touch of color all through the hot summer months.

## Salvia splendens grandiflora

No. 117. Pakro Seedtape, pkt. 10 cts. No. 617. Pakro Seed, pkt. 10 cts.

*Salvia splendens*, or Scarlet Sage as it is often called, is one of the most gorgeous bedding plants known. The plants grow to about 3 feet in height and bear brilliant scarlet flowers in abundance from July to October. An extremely striking effect is obtained when *S. splendens* is planted in front of shrubs or evergreens with dark green foliage.

## Scabiosa

Not in tape. See page 38.

## Sunflowers

Not in tape. See page 39.

Salvia  
splendens  
grandiflora



California  
Poppies

Shirley  
Poppies

*Just plant the tape as fast as you walk.  
Before covering it be sure to wet it thoroughly  
as it insures quicker germination.*

**PAKRO**  
SEEDTAPE  
AND SEEDS

### Stocks, Dwarf Double, Ten-Weeks, Mixed

No. 118. Pakro Seedtape, pkt. 10c. No. 618. Pakro Seed, pkt. 10c.

Many large fragrant flowers borne on long spikes. Flowers show variations of yellow, rose, carmine, copper, blue, and white.

### Sweet Peas, California Giant, Mixed

No. 119. Pakro Seedtape, pkt. 10c. No. 619. Pakro Seed, pkt. 10c.

Sweet Peas are planted everywhere, and are too well known to need a description. The flowers show a wide range of colors.

### Verbena Hybrids, Finest Mixed

No. 120. Pakro Seedtape, pkt. 10 cts.

No. 620. Pakro Seed, pkt. 10 cts.

Low-growing plants much used for bedding. They grow to a height of about 8 inches and bear enormous flower-heads. They first open in July and continue to bloom until frost.

### Zinnias

Not in tape. See page 39.

California  
Giant  
Sweet  
Peas

Verbena  
Hybrids



## Pakro Brand Loose Vegetable Seeds

### No. 200 Beans, Bountiful

Probably the earliest of all green-podded sorts; continues to bear longer than other varieties. The pods are long, large, and solid. Plant 3 inches apart in rows about two feet apart. All varieties on this page may be planted the same way. Pkt. 10c., 1/2pt. 20c., pt. 35c.



Extra-Early Red Valentine  
Beans

### No. 201

### Beans, Extra-Early Red Valentine

For cooking when green this is one of the leading sorts. The pods are green and tender. Extra-early. Pkt. 10 cts., 1/2pt. 20 cts., pt. 30 cts.

### No. 202 Beans, Giant Stringless Green-Pod

Ripens about a week later than Extra-Early Red Valentine. Tender and good. Stringless. Pkt. 10 cts., 1/2pt. 20 cts., pt. 30 cts.

### No. 203 Beans, Refugee Extra-Early

Ripens a few days later than Giant Stringless Green-Pod. The pods are green, round, and well filled with Beans. Pkt. 10 cts., 1/2pt. 20 cts., pt. 30 cts.

### No. 204 Beans, Refugee Improved, or 1000-to-1

Matures about ten days later than Extra-Early Refugee. The bush is a compact grower, reaching a height of 12 to 15 inches, and produces amazing loads of luscious green pods 5 inches or more in length. Pkt. 10 cts., 1/2pt. 20 cts., pt. 30 cts.

### No. 205 Beans, Hodson Wax

Much larger than the average bush Bean, and it bears enormous crops of yellow pods of great size, many of them being over 8 inches long. Matures two weeks later than Bountiful. It is rust-proof and blight-proof. Pkt. 10 cts., 1/2pt. 25 cts., pt. 45 cts.



Hodson Wax Beans



Giant Stringless Green-  
Pod Beans

The  
QUANTITY PACKAGE  
of  
QUALITY SEEDS

**PAKRO**  
SEEDTAPE  
AND SEEDS



Improved Rust-proof Golden  
Wax Beans

Bountiful Beans

### No. 206 Beans, Improved Rust-Proof Golden Wax

Ripens with Refugee 1000-to-1. The pods are long, straight, and of much substance; stringless when young. The flavor is melting and buttery. See color illustration. Pkt. 10 cts.,  $\frac{1}{2}$ pt. 25 cts., pt. 40 cts.

### No. 207 Beans, Refugee Wax

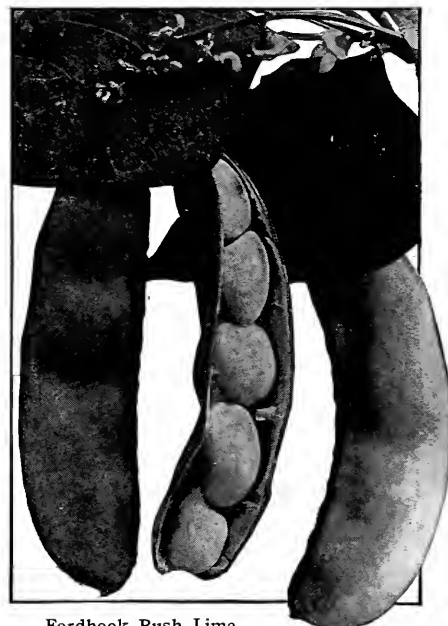
A quick-growing sort ripening with Giant Stringless Green-Pod. The pods and Beans are tender and meaty. The plants are strong and bear heavy crops. Pkt. 10 cts.,  $\frac{1}{2}$ pt. 25 cts., pt. 45 cts.

### No. 208 Beans, Burpee's Bush Lima

One of the best early Bush Lima Beans grown. The bush grows to almost 2 feet high, and is of such a branching habit that it covers a patch of ground 2 or 3 feet square. The pods average 5 inches in length and over an inch in breadth. The Beans themselves are of great size, five of them completely filling the huge pod. Plant in rows about two feet apart. Pkt. 10 cts.,  $\frac{1}{2}$ pt. 25 cts., pt. 45 cts.

### No. 209 Beans, Fordhook Bush Lima

An excellent running mate for Burpee's Bush Lima. The pods are about the same size, but in Fordhook there are more Beans in each pod; in fact, they are packed so tightly that they almost overlap each other. Plant the same as Burpee's Bush Lima Bean. Pkt. 10c.,  $\frac{1}{2}$ pt. 25c., pt. 45c.



Fordhook Bush Lima  
Beans

### No. 210 Beans, Challenger Pole Lima

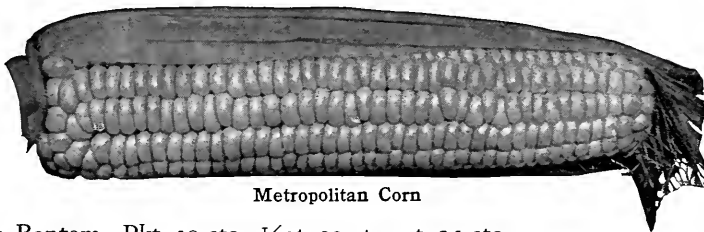
A late-maturing variety of the Pole or running type. The pods, which are borne in bunches, are often 5 inches in length and filled with big Beans of excellent flavor. Challenger is later in coming into maturity than other sorts. Plant beside poles in hills 4 feet apart. Pkt. 10c.,  $\frac{1}{2}$ pt. 25c., pt. 45c.

### No. 211 Beans, Early Leviathan Pole Lima

For an early Pole Lima plant Early Leviathan. The pods are large and well filled with good-sized Beans. Plant the same as Challenger Pole Lima. Pkt. 10 cts.,  $\frac{1}{2}$ pt. 20 cts., pt. 35 cts.

### No. 223 Corn, Metropolitan

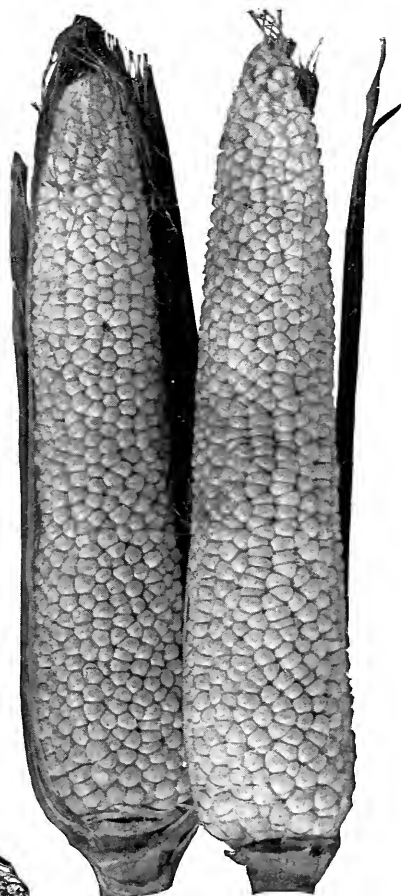
An excellent early Corn. The stalks grow to about 6 feet; the ears average over 8 inches in length and are filled with rather irregular rows of large, deep kernels. The grains are tender and sweet. Home-gardeners who like a good early sort should plant it largely. If you plant Pakro Brand seed at intervals up to July, you will get a succession of crop. Plant the same as Golden Bantam. Pkt. 10 cts., ½pt. 20 cts., pt. 35 cts..



Metropolitan Corn

### No. 221 Corn, Stowell's Evergreen

As a second crop to plant with Golden Bantam you will not be wrong if you choose Stowell's Evergreen. It has been a favorite for many years. The stalks are strong; the ears are larger than those of Golden Bantam and are well filled with good-sized kernels. The flavor is sugary and good. Plant the same as Golden Bantam. Pkt. 10 cts., ½pt. 20 cts., pt. 30 cts.



Country Gentleman Corn

### No. 222 Corn, Country Gentleman

Ripens just a few days later than Stowell's Evergreen. The ears are larger than those of Stowell's Evergreen and the soft, tender kernels are arranged on the cob in irregular rows. Country Gentleman is a general favorite with home-gardeners in many sections. In Pakro Brand the seed Corn is carefully selected so you are sure of getting clean, virile seed. Plant the same as Golden Bantam. Pkt. 10c., ½pt. 20c., pt. 35c.

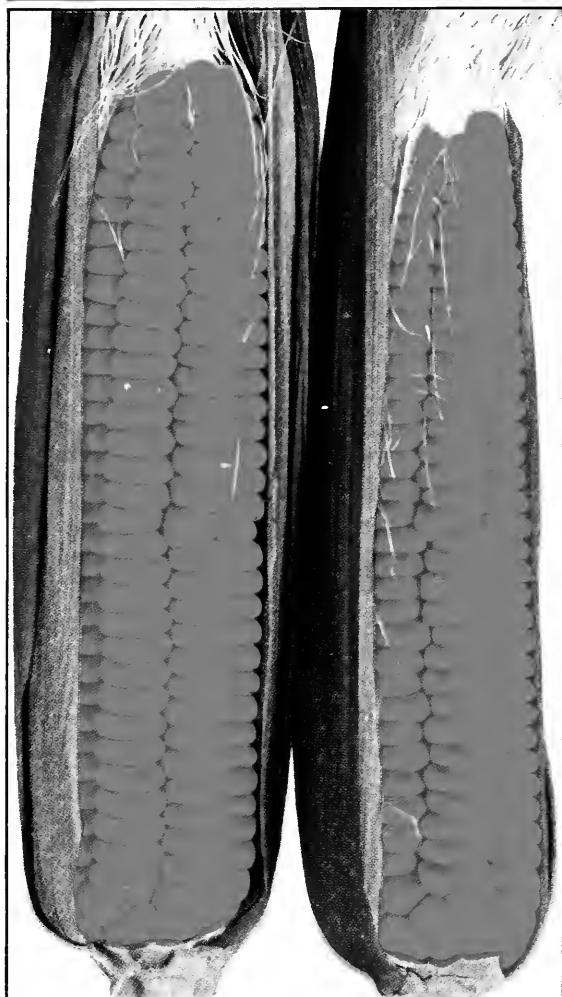
Stowell's  
Evergreen  
Corn



*All the seeds I received from you were good, but it is the convenience of PAKRO SEED-TAPE that pleases me. I will never buy any other way. Will send a much larger order next spring.—Cordova, Alaska.*

PAKRO SEEDS are grown under the direct supervision of our experts.

**PAKRO**  
SEEDTAPE  
AND SEEDS



Golden Bantam Corn

### No. 220 Corn, Golden Bantam

The most popular early Sweet Corn on the market, and a variety that should be in every garden. The ears are small but they are filled from tip to butt with large yellow kernels. The illustration shows how well the ear is filled. Planted at the usual time Golden Bantam is the first Sweet Corn to ripen. The stalks are strong growers and produce two or three ears. For a delicious early Corn plant Golden Bantam in hills about 2 feet apart, leaving a 3-foot space between the rows. Pkt. 10c.,  $\frac{1}{2}$ pt. 20c., pt. 35c.

### No. 230 Cucumber, Cool and Crisp

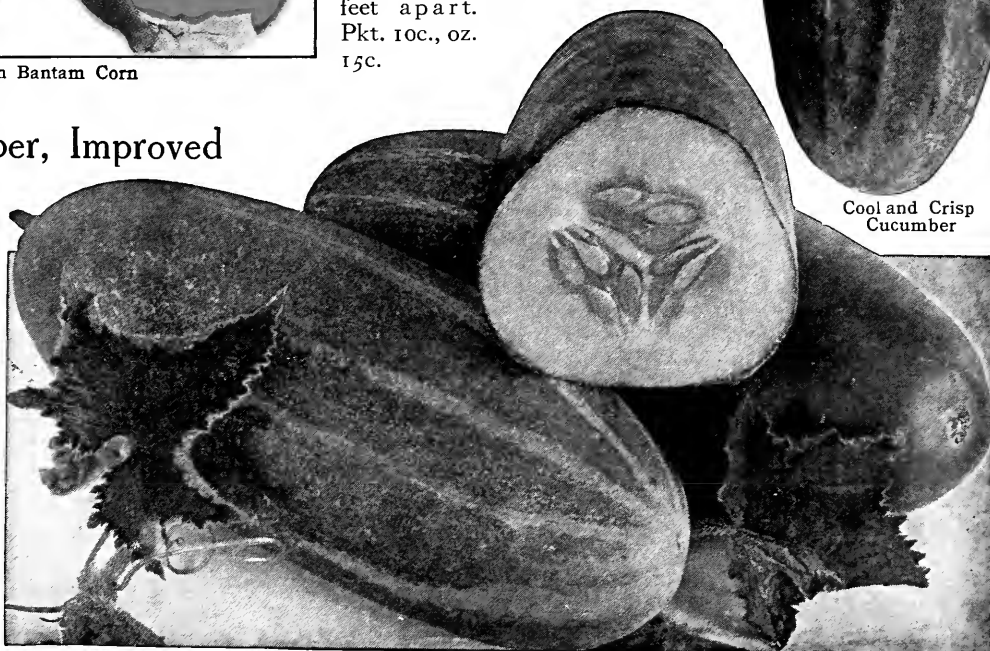
For a second-early Cucumber to go with Improved Extra-Early White Spine plant Pakro Cool and Crisp. It is a long, large Cucumber, with few knobs, of uniform shape, crisp and tender flesh. As a salad Cucumber Cool and Crisp has no superior. The vines are strong and exceedingly prolific, the fruits coming in profusion over a long season. Plant in late April in hills about 5 feet apart. Pkt. 10c., oz. 15c.



Cool and Crisp Cucumber

### No. 231 Cucumber, Improved Extra - Early White Spine

An extra-early Cucumber of great value. The fruits are large and thick. Each one is uniform in size and shape, with a very slight taper toward the blunt ends. The skin is dark green and the flesh pure white, juicy, and crisp. One of the best salad Cucumbers known. Pkt. 10 cts., oz. 15 cts.

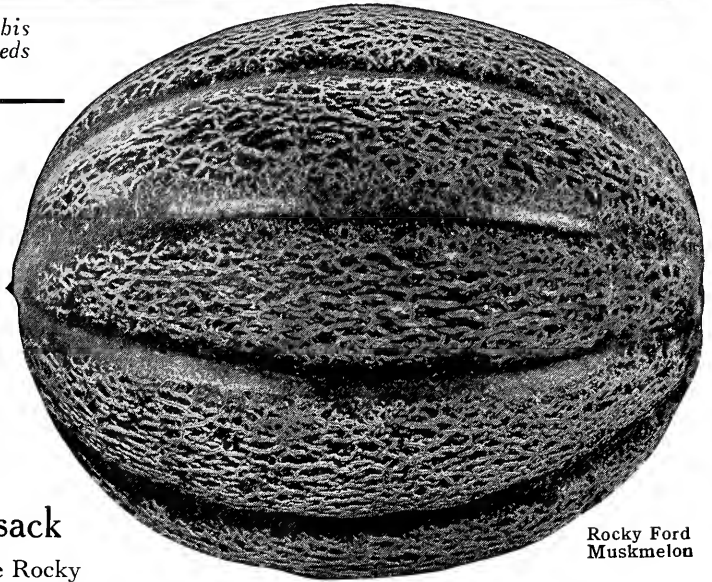


Improved Extra-Early White Spine Cucumbers

*Have a PAKRO garden this year. Both tape and seeds have the same high quality.*

### No. 240 Muskmelon, Rocky Ford

A variety known to every gardener and housewife. It is large in size; rather elliptical in shape, being longer than it is thick. The flesh is green, tender, and juicy. There is but little rind, and the soft flesh may be eaten nearly to the hard outer skin. The flavor is the most delicious imaginable, a pleasing sweet with just enough acid to make it delightfully appetizing. Plant in hills about 5 feet apart each way. Pkt. 10 cts., oz. 15 cts.

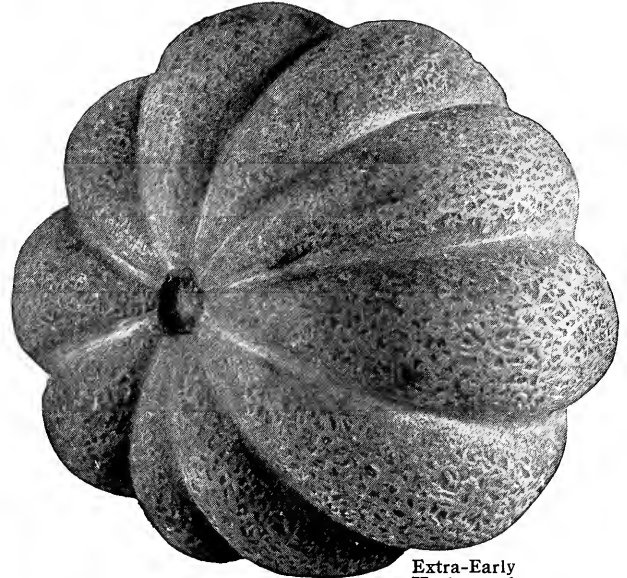


Rocky Ford  
Muskmelon

No. 241

### Muskmelon, Extra-Early Hackensack

An excellent variety maturing some time before Rocky Ford. On account of its ripening season it is a popular sort. This Melon is large in size; the flesh is green, tender, very juicy and has a pleasing flavor. In shape it is rather flattened, being thicker than it is long. For an early Muskmelon Extra-Early Hackensack is your logical selection. Plant the same as Rocky Ford. Pkt. 10 cts., oz. 15 cts.



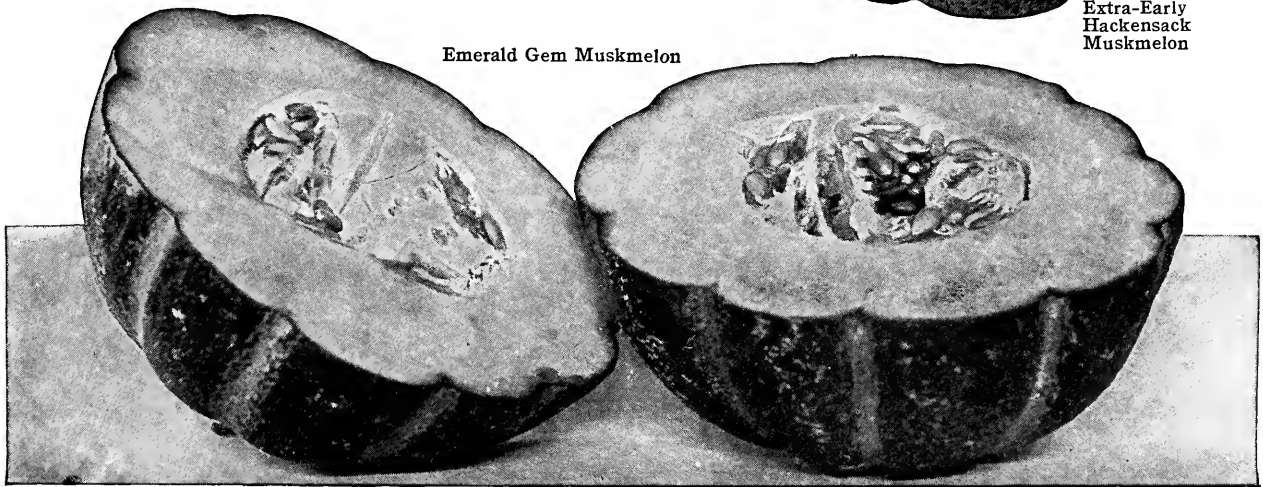
Extra-Early  
Hackensack  
Muskmelon

### No. 242 Muskmelon, Emerald Gem

In size about the same as Rocky Ford, and ripens about the same time. The skin is green, slightly netted, and has heavy ribs or sutures extending around the Melon. The flesh is salmon color, juicy and tender. The flavor is rich and delightful, seeming almost to melt in the mouth. It is not a hard-fleshed Melon but for family use it is desirable. Plant as instructed for Rocky Ford. Pkt. 10 cts., oz. 15 cts.

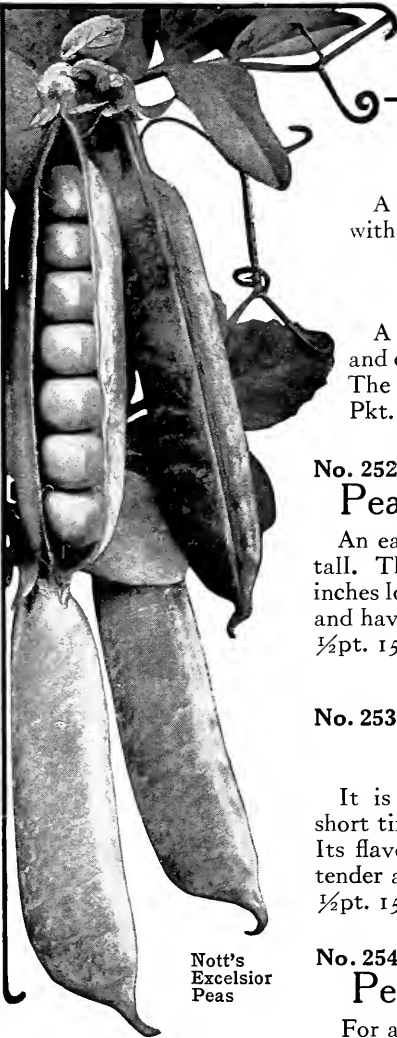
*Had very good success with PAKRO SEEDTAPE. The plants came up much quicker than from ordinary seeds and were in more orderly rows. The quality was excellent.—Livonia, New York.*

Emerald Gem Muskmelon



Indications point to a heavy demand for seeds. To be sure of getting every variety you wish, we suggest that you order today.

**PAKRO**  
SEEDTAPE  
AND SEEDS



Nott's  
Excelsior  
Peas

### No. 255 Peas, Little Gem

A dwarf grower and an early ripener. The pods are good sized and are well filled with soft tender Peas of excellent flavor. Pkt. 10 cts., 1/2pt. 15 cts., pt. 25 cts.

### No. 251 Peas, Telephone

A high-quality Pea of great productivity. There are many pods to each vine and each one is extra large in size and is filled with big pale green Peas of high flavor. The vine grows to about 4 feet tall. Pkt. 10 cts., 1/2pt. 15 cts., pt. 25 cts.

No. 252

### Peas, Nott's Excelsior

An early dwarf variety about a foot tall. The pods are thick and about 4 inches long. The Peas fill the pods well and have a pleasing flavor. Pkt. 10 cts., 1/2pt. 15 cts., pt. 25 cts.

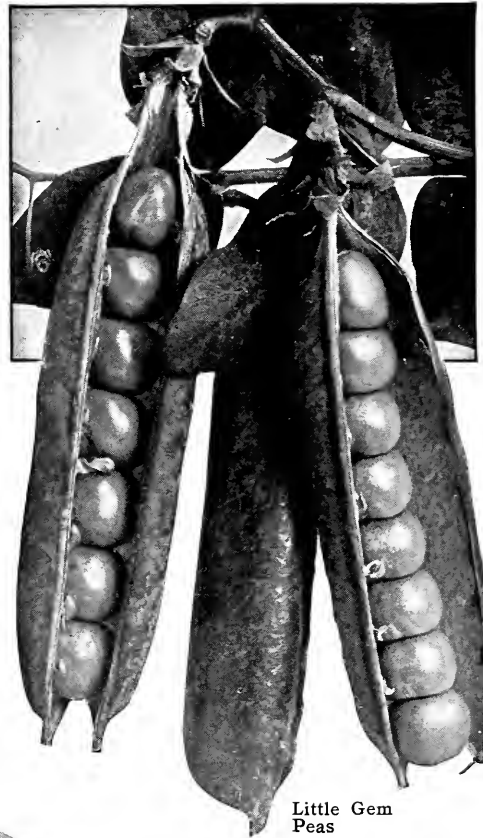
### No. 253 Peas, Champion of England

It is a tall grower and matures a short time later than Nott's Excelsior. Its flavor is excellent and the flesh is tender and cooks easily. Pkt. 10 cts., 1/2pt. 15 cts., pt. 25 cts.

No. 254

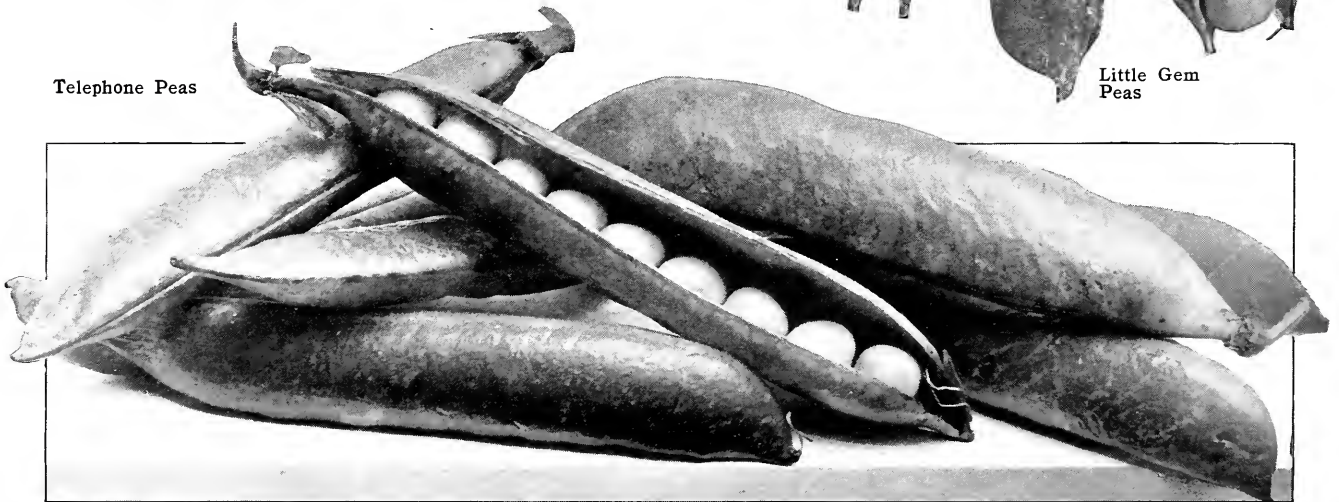
### Peas, Earliest of All

For an early crop this Pea is desirable. The plants are strong growers of dwarf habit, and bear heavy crops of large round pods about 2 1/2 inches long. Pkt. 10 cts., 1/2pt. 15 cts., pt. 25 cts.



Little Gem  
Peas

Telephone Peas



### No. 250 Peas, Gradus

This is the leading tall-growing early Pea. It is a strong, healthy grower and bears heavy loads of large pale green pods. The flesh of the Peas is tender and delicious. Plant Gradus Peas in rows about 3 feet apart putting the seed in drills. Pkt. 10 cts., ½pt. 15 cts., pt. 25 cts.

No. 260

### Squash, Early White Bush, Scalloped

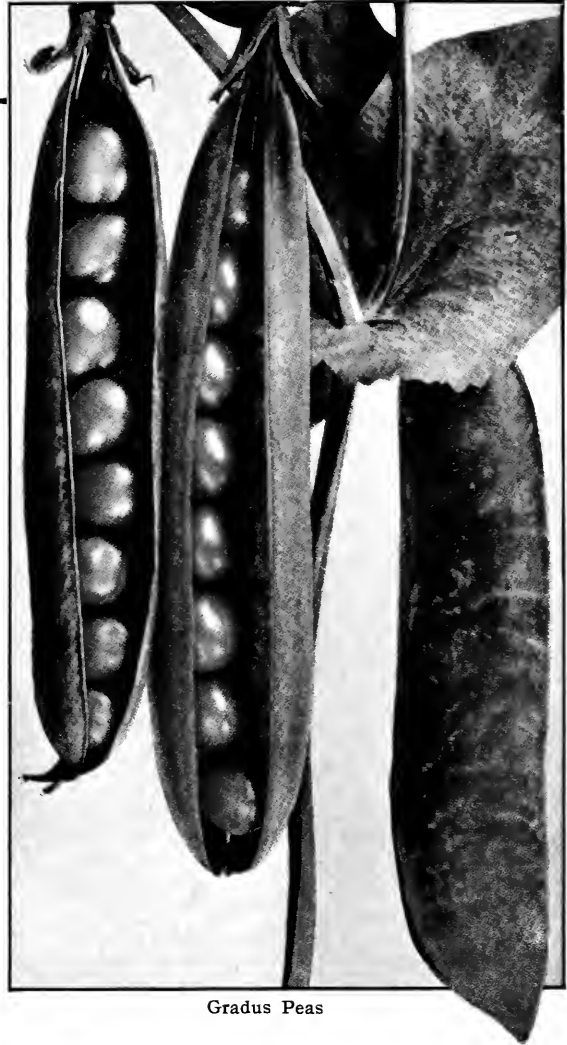
This summer Squash is large in size, often 8 to 10 inches in diameter. The rind is white and solid but not very thick. Plant in hills about 4 feet apart each way. Pkt. 10c., oz. 15c.

### No. 270 Watermelon, Kleckley Sweets

Without exception the best Watermelon for the family garden. It is of large size, about 20 inches long by a foot in diameter. It matures early; the skin is dark green; the rind is thin, the soft bright red flesh continuing nearly to the skin. In flavor Kleckley Sweets is wonderfully sweet. Plant in hills about 8 feet apart each way. Pkt. 10 cts., oz. 15 cts.

### No. 271 Watermelon, Sweetheart

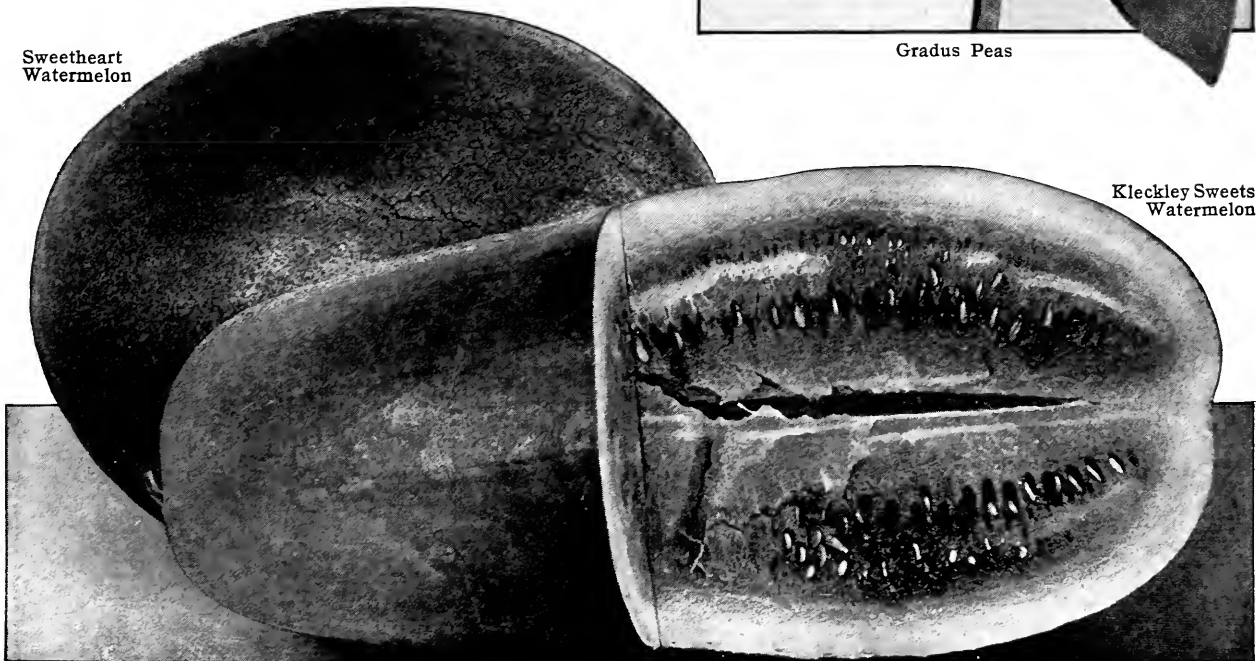
A popular sort. The skin is pale green and the rind is thicker than that of Kleckley Sweets. It has red flesh and sweet flavor. Pkt. 10 cts., oz. 15 cts.



Gradus Peas

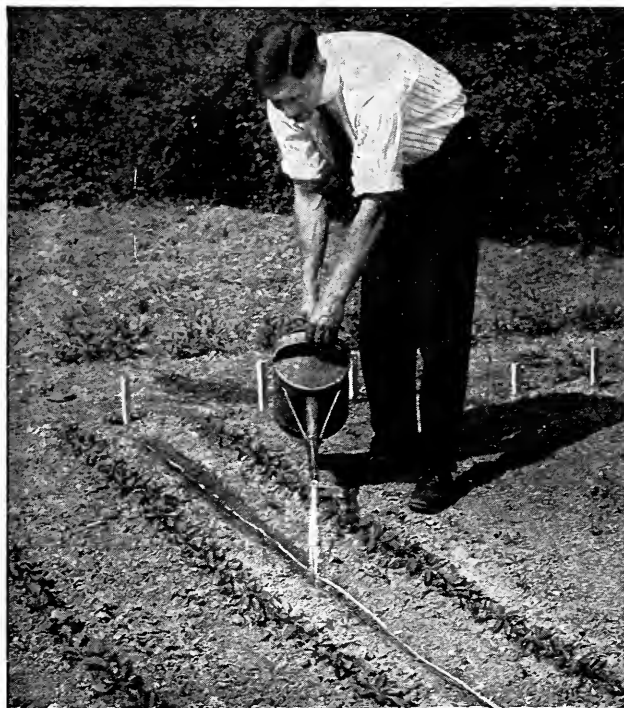
Sweetheart  
Watermelon

Kleckley Sweets  
Watermelon

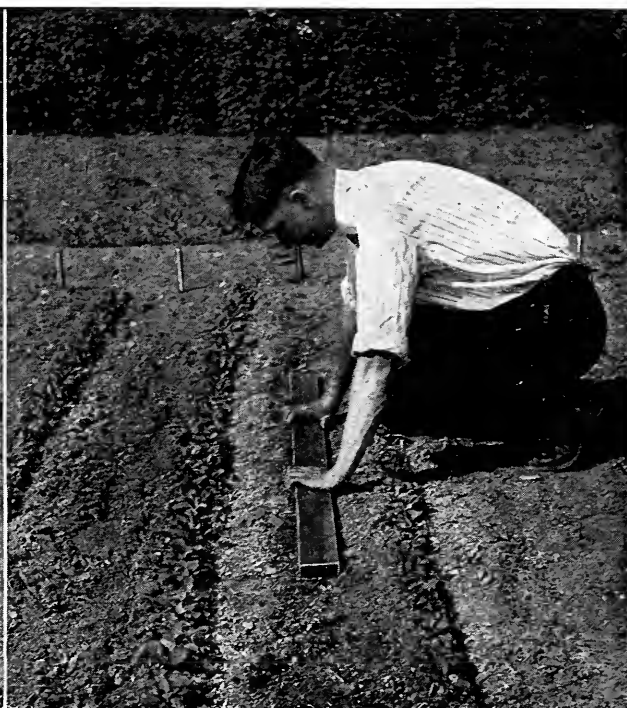


*This is the year to have a good garden. Plant lots of PAKRO SEEDTAPE or SEEDS and take good care of the garden. Then you will have every reason to be pleased with the result.*

**PAKRO**  
SEEDTAPE  
AND SEEDS



Method of watering before covering tape



Method of tamping after seed is covered

## Helpful Hints for Amateur Gardeners

Decide this fall how much ground you will use next season, and what you will plant.

Plow or spade before the ground freezes, if you can. A little fertilizer will insure better crops.

Many soils require an application of lime in order to get best results. Apply the lime lightly in the fall and work it into the top soil.

Study the Pakro Seedtape catalogue, and order your Seedtape and loose seeds early.

Don't cover the seed too deep. It will germinate more quickly if only a little soil is on the seed.

Thoroughly wet the tape as it lies in the trench. (See planting instructions on page 2)

Leave the garden alone until the plants come up. If you have sowed bulk seeds, thin the rows after the plants are up an inch or two. If you use Pakro Seedtape, you will not need to thin.

If soil is dry, water may be put on. Let it run on slowly and don't spare the water—it's cheap.

Don't think water will take the place of thorough cultivation—it won't.

You will have a better garden if you use the hoes more, and the hose less.

Weeds are garden robbers. Kill them when they are small.

Hoe often to loosen the soil and hold moisture around the roots of the plants.

You can not do good work with poor tools. Have a good hoe, rake, fork, and spade.

A small hand cultivator will make you feel like a professional gardener. It will soon pay for itself, too.

Don't try "watchful waiting" for bugs, worms, and other vermin. Swat 'em or they will spoil your plants.

Kerosene Emulsion is an excellent insecticide. Put one-fourth pint of the liquid in a gallon of water. Stir until mixed and apply with a sprayer.

Black Leaf 40 destroys aphids, thrips, and other sucking insects. Mix with water and spray.

Pyrox will control fungous diseases. Buy it almost anywhere. Follow directions on the box.

Get a good sprayer.

Sometimes a heavy or moderate rain will crust the soil. Look out for this. Scratch up the surface, being careful not to disturb the ground too deeply. Seedlings cannot get through a hard crust of earth.



## Loose Flower Seeds

### No. 300 *Ageratum mexicanum*, Blue

The flowers, which are lavender-blue and borne in dainty tuft-like heads, open from early summer until along in October. They hold their color well and are not injured by either rain or sun. *Ageratum mexicanum* is a popular plant for massing in beds, edgings, etc. Pkt. 10 cts.

### No. 304

### Cosmos, Mammoth Perfection, Mixed

A handsome fall-flowering plant. It grows to 4 or 6 feet, and furnishes an abundance of pink, white, and crimson flowers of great size. In a mass planting Pakro Mammoth Perfection Cosmos should serve as a background for lower-growing plants. In our special selection of seed the three colors are mixed. Pkt. 10 cts.

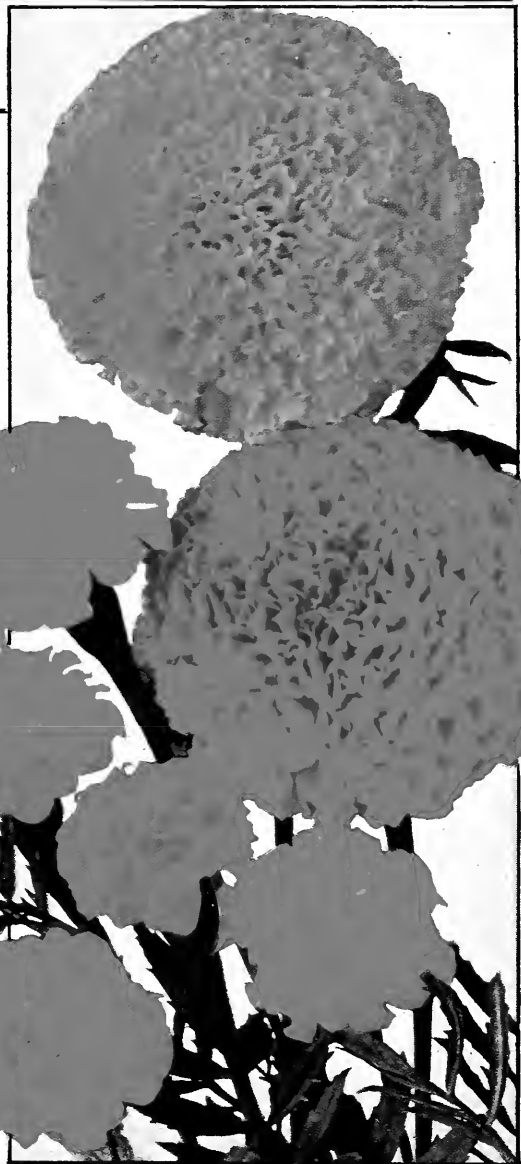
### No. 307 Marigold, African, Double, Mixed

These flowers are borne on plants varying from 2 to 3 feet high. In the Pakro Brand mixture of African Double Marigold the flowers attain considerable size, many of them reaching a diameter of 3 inches. The colors are orange and yellow, in various tints and shades. All the flowers are double in form and a mass planting of them is a splendid sight. Pkt. 10 cts.

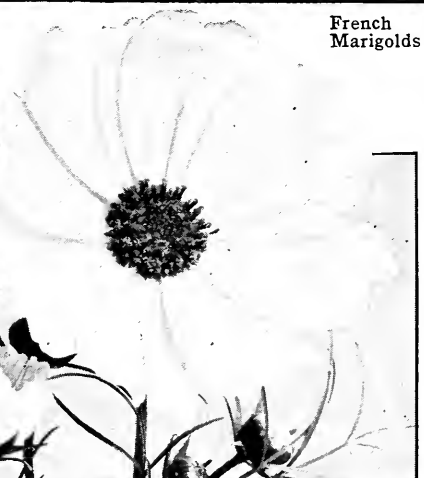
### No. 308

### Marigold, Dwarf French, Double, Mixed

These plants look well when set in front of the African Marigold. The Dwarf French variety does not often exceed 14 inches in height and the many flowers of chocolate, golden yellow, and orange make a pleasing appearance. Pkt. 10 cts.



Mammoth  
Perfection  
Cosmos



French  
Marigolds

We often hear about the great results being obtained from PAKRO SEEDTAPE.

**PAKRO**  
SEEDTAPE  
AND SEEDS

### No. 310 Nasturtium, Tall, Mixed

Tall Nasturtiums differ from the dwarf sorts both in flower and habit of growth. The tall varieties have a distinct climbing habit, covering fences, walls, and stumps with their long vines and lustrous foliage. They grow rapidly, reaching 15 feet in length in a remarkably short time. The vines bear great loads of large flowers from early July until frost puts an end to their activities. A myriad of colors are shown in the flowers, and any number of charming combinations are possible in flowers from Pakro Brand selected seed. Some of the flowers have shades and tints of one color, while others are delicately mottled and striped. Pkt. 10 cts., oz. 15 cts.

### No. 311 Nasturtium, Dwarf, Mixed

Nasturtiums have long been great favorites on account of their beauty and long period of bloom. The plants are low growers, quite compact in habit, and bear a large number of flowers. Their greatest value is for edging walks and as borders for other flower beds. In Pakro Brand you get flowers of many beautiful colors; crimson, yellow, orange, scarlet, carmine, sulphur, pink, and straw are the most prominent. They are fond of a well-drained position, preferably on the sunny side of the house, and will bloom freely in poor soil. Pkt. 10c., oz. 15c.

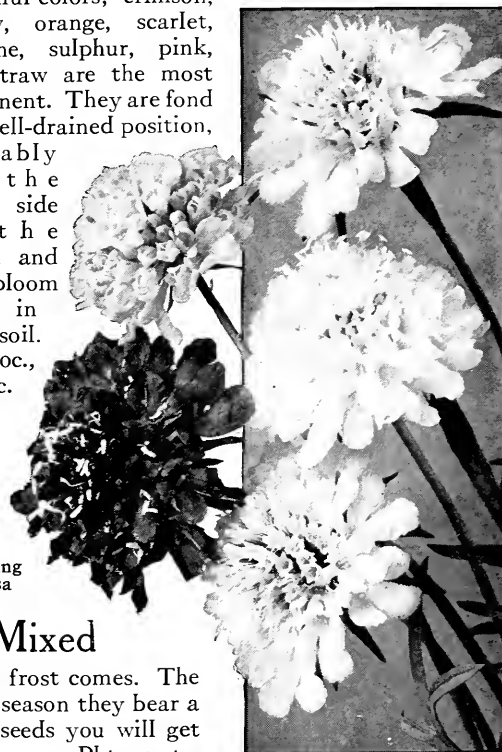
Large-Flowering Scabiosa



No. 320

### Scabiosa, Improved Large-Flowering, Mixed

Scabiosa, or Mourning Bride, blooms in July and continues until frost comes. The plants are about a foot in height, and all through the long blooming season they bear a profusion of flowers of exquisite colors. From our selected mixed seeds you will get lavender, white, lilac, purple, dull red, blue, crimson, and rosy pink flowers. Pkt. 10 cts.



**No. 330 Sunflower, Double  
Chrysanthemum-Flowered, Mixed**

A glorious ball of blazing yellow on a stem 7 feet high—that describes this wonderful Sunflower. The blooms are shaped like those of a chrysanthemum, very double in form, almost a tuft. They are of great size, many of them measuring 8 inches in diameter. The plant itself is sturdy and strong, each branch carrying several of the huge flowers. This, we believe, is one of the most remarkable flowers on our list and, if you try it from Pakro Brand seeds, you will agree with us. Pkt. 10 cts.

**No. 331 Sunflower, Single  
(*Helianthus cucumerifolius*)**

A much smaller flower than that of the preceding variety, but what is lacking in size is more than made up by abundance of bloom. The flowers are single or at best only semi-double, and of a rich bright orange color. The plants grow to about 4 feet and are almost bowed down under the weight of the numerous blossoms. Pkt. 10 cts.

**No. 332  
Zinnia, Dwarf Large-Flowering, Mixed**

This variety begins to bloom in August and continues until fall. The flowers are quite large in size, frequently 4 inches across. The plants grow about 2 feet in height and during the blooming season they are almost hidden by the beautiful double flowers. In Pakro Brand mixture the principal colors are purple, yellow, salmon, white, orange, and crimson. Pkt. 10 cts.



Dwarf Large-Flowering Zinnias

# Pakro Lawn Grass Mixtures



Grass is Mother Nature's carpet provided to cover the ground. If there is no grass, your home looks bare; if there is an abundance of soft green grass, your home will not only be more pleasing both to yourself and the people passing by, but it will also be more valuable.

## Pakro Lawn Grass Mixture

A correctly compounded mixture of seeds that have different growing periods. This gives a green lawn from early spring until snow falls. Many lawns made from this mixture of lawn grass are green nearly all winter. Don't be satisfied with a few months of green grass. Make your lawn beautiful from "snow to snow" by sowing Pakro Lawn Grass this spring. One quart will sow about 200 square feet. (See illustration at bottom of this page.) Qt. 30 cts., pk. \$1.75, bus. (20 lbs.) \$6.00, *delivered to you.*

## Pakro Shady Place Mixture

Ordinary grasses will not live under trees, on the north side of walls, or other places where the sun's rays cannot strike. Pakro Shady Place Mixture is just what you want for such spots. It is a combination of hardy grasses that have an almost evergreen habit and grow well in sheltered spots, soon making a soft green carpet. A quart will sow about 200 square feet. Qt. 45c., pk. \$2.25, bus. (20 lbs.) \$6.50, *delivered.*

## Pakro Fairway Golf Mixture

Golf-courses demand a grass mixture that will make a heavy, thick mat of fibrous roots, so the grass will not be torn out when the club strikes low on the ball. Pakro Golf Mixture is carefully combined to give the thick sod required to stand the wear and rough usage. Sow about eight bushels to the acre. Bus. (20 lbs.) \$5.50, *delivered.*

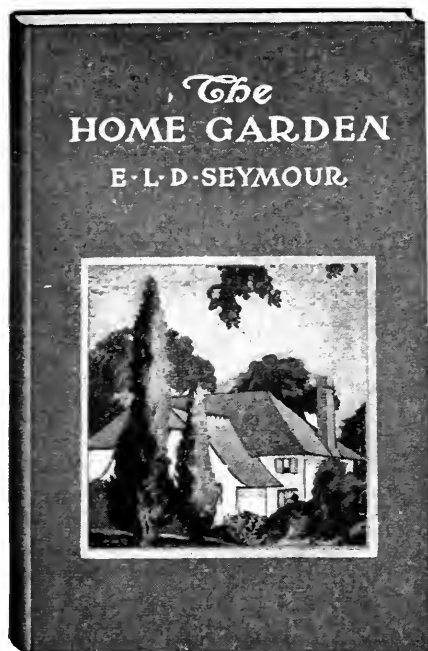
## Pakro Putting Green Mixture

The finest mixture made, from formula obtained from one of the oldest and best known professional greens-keepers in the world. Qt. 50 cts., pk. \$2.50, bus. (25 lbs.) \$8.









# The Home Garden

By  
E. L. D. Seymour

---

*Bound in boards, 43 pages, profusely  
illustrated in black and white and  
8 plates in full colors*

**Price 50 Cents**

---

**T**HIS is an extremely interesting book for home gardeners.

It tells in simple terms how to plan your garden, just when to plant the different vegetables and flowers, and just how to plant them. It gives authoritative and exact information that is easy to follow and that should be in the hands of everyone desiring to have a successful home garden.

Mr. Seymour is associate Editor of the "Garden Magazine" and "Country Life in America."

The book is beautifully bound in boards and splendidly and abundantly illustrated in colors.

---

*Order Your Copy Today*

---

**AMERICAN SEEDTAPE CO.**  
365-371 OGDEN STREET  
NEWARK, N. J. *(See other side)*

tion and maintenance and contemplation of beauty and the smiling face of Nature at her kindest. There are many who have been content with less!

And yet success—again quoting Mrs. Deland—"Success is only an incident of gardening. Any one who believes it to be an end may find, when he reaches the end, that he has passed happiness on the way—she is so often out of sight, there on her knees among the flowers! But of course, sometimes, incidentally, the happy gardener is successful; things do grow; and when they do, that is just so much to the good.

"Mrs. Julia Ward Howe once said that when it came to art, 'inspiration was perspiration'; and surely one can say the same of gardening: happiness is—perspiration." Which, interpreted, is to say that only he who makes a garden and works in it, really understands and wins its real reward. To take the place of the elusive success, Mrs. Deland thinks of the four virtues which in her opinion every garden creates or augments in its gardener. These are, first, Hope, that buries the ashes of past failure beneath the fragrant petals of future plans and expectations; second, Trust in our fellow man, that gives us commendable confidence in the catalogue descriptions and possibilities of plants even when our own attempts fail to moire



Garden joys are for youth and old age alike

spring; some carrots demand a deep soil; others will succeed in a shallower loam. Study varietal descriptions and meet the conditions of your garden and your tastes.

The ideal soil is a typical sandy loam, well drained, easily worked, well supplied with organic matter or *humus*, and of a rich, warm brown color. Too often

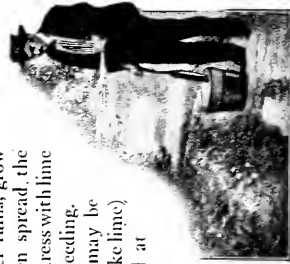
the suburban grounds are mainly sand dug out of the house foundation, plasterer's refuse, and ashes or cinders hauled in to fill up. In the worst of such cases, the only feasible plan is to obtain enough good soil to cover the rubbish a foot or more. But in many instances, careful management, generous systematic fertilizing and the judicious firing of certain crops to certain conditions will give surprisingly satisfactory results.

1. The best fertilizer is stable manure; if it is well rotted you cannot use too much; a good average application is a layer four inches deep.

2. For best results spread this in the fall, and plow or dig it under at once. Then sprinkle on raw ground limestone or agricultural (air-slaked) lime, say 100 pounds to 250 square feet, and rake it in lightly. Where the ground slopes and might be washed by winter rains, grow a cover crop over winter; then spread the manure and plow in the spring, dress with lime and harrow or rake ready for seeding.

3. Commercial fertilizers may be raked in previous to planting (like lime) or sprinkled in the drill or hill at planting time, *except* nitrate of soda which is a "tonic" and should be used only around growing crops.

4. Very sandy soils need lots of manure, commercial





## Revised Price List

# PAKRO SEEDS & SEEDTAPE



*Please notice change in prices*



Prices appearing on this sheet are correct, please disregard prices appearing in catalogue on Beans, Corn, Cucumber, Muskmelon, Peas, Squash, and Watermelon.

**SEEDTAPE** *All Varieties Vegetables and Flowers* **10c per P'kge**

Cat. Page	No. of Variety	UNTAPED SEEDS	Packet	1 oz.	¼ lb.	lb.
4	501	BEEETS, Crimson Globe	.10	.15	.40	1.10
4	502	“ Early Egyptian	.10	.15	.30	1.00
4	503	BRUSS. SPROUTS, L. I. Improved.	.10	.55	1.70	5.50
5	505	CABBAGE, All Season	.10	.80	2.75	9.90
5	506	“ Early Jersey Wakefield	.10	.60	2.10	6.90
5	507	“ Premium Flat Dutch	.10	.85	2.90	9.50
6	509	CARROTS, Chantenay Stump-rooted	.10	.15	.40	1.10
6	510	“ Danvers Half Long	.10	.20	.50	1.60
6	511	“ Oxheart or Guerande	.10	.20	.50	1.50
6	514	CELERY, White Plume	.10	.20	.50	1.60
7	515	CORN SALAD, Large Round	.10	.35	1.10	3.50
7	230	CUCUMBER, Cool and Crisp	.10	.20	.45	1.30
7	231	“ Early White Spine	.10	.20	.45	1.40
8	517	EGG PLANT, Black Beauty	.10	.65	2.30	7.70
7	516	ENDIVE, Green Curled	.10	.20	.45	1.30
8	519	KALE, Dwarf Curled Scotch	.10	.30	.80	2.80
8	518	KOHL RABI, White Vienna	.10	.55	1.70	5.50
9	520	LEEK, Large Flag	.10	.55	1.80	6.00
9	522	LETTUCE, Big Boston	.10	.20	.45	1.30
10	523	“ Black Seeded Simpson	.10	.20	.35	1.00
9	521	“ Mignonette	.10	.25	.60	2.00
10	525	“ Salamander	.10	.20	.40	1.10
10	524	“ Trianon Cos	.10	.20	.35	1.00
33	241	MUSKMELON, Early Hackensack	.10	.25	.60	1.70
33	242	“ Emerald Gem	.10	.25	.60	1.70
33	240	“ Rocky Ford	.10	.25	.60	1.70
11	526	OKRA, White Velvet	.10	.20	.40	1.10
12	529	ONION, Prizetaker	.10	.45	1.40	4.80
11	555	“ Red Wethersfield	.10	.35	1.10	3.80
13	530	“ Southport White Globe	.10	.50	1.50	5.00
13	556	“ Southport Red Globe	.10	.40	1.30	4.40
13	557	“ Southport Yellow Globe	.10	.40	1.30	4.40
12	528	“ Yellow Globe Danvers	.10	.40	1.30	4.40
12	527	“ White Portugal	.10	.50	1.50	5.00

(Continued on next page)

Price List—oz., ¼ lb. and lb. quantities (Continued)

Cat. Page	No. of Variety	UNTAPED SEEDS	Packet	1 oz.	¼ lb.	lb.
13	531	PARSLEY, Double Curled	.10	.20	.45	1.30
14	533	PARSNIP, Hollow Crown	.10	.15	.40	1.10
14	535	PEPPER, Large Bell	.10	.95	3.30	
14	536	" Pimiento	.10	.60	1.80	6.00
15	537	RADISH, French Breakfast	.10	.20	.45	1.30
15	538	" Icicle	.10	.20	.45	1.30
15	539	" Long Scarlet	.10	.20	.45	1.30
15	540	" Scarlet Turnip White Top	.10	.20	.45	1.30
16	541	RUTA BAGA, Improved Purple Top	.10	.30	.70	1.90
16	543	SPINACH, Long Standing	.10	.15	.40	1.00
35	260	SQUASH, White Bush Scalloped	.10	.25	.60	1.80
16	546	SWISS CHARD, Silver Leaf	.10	.15	.40	1.10
17	548	TOMATO, Beauty	.10	.45	1.40	4.75
17	547	" Earliana	.10	.35	1.20	4.20
18	551	" June Pink	.10	.55	1.70	5.50
17	549	" Ponderosa	.10	.65	2.30	7.70
17	550	" Stone	.10	.35	.80	2.50
18	552	TURNIP, Early White Milan	.10	.40	.90	2.10
18	553	" Purple, Top Strap Leaf	.10	.25	.60	1.75
18	554	" Purple Top White Globe	.10	.25	.60	1.75
33	270	WATERMELON, Kleckley Sweet's	.10	.15	.30	.80
33	271	" Sweetheart	.10	.15	.30	.80

Cat. Page	No. of Variety	BEANS, CORN AND PEAS	Packet	½ pt.	Pt.
29	200	BEANS, Bountiful	.15	.25	.45
29	201	" Red Valentine	.15	.25	.45
29	202	" Giant Stringless	.15	.30	.55
29	203	" Refugee, Extra Early	.15	.30	.55
29	204	" Refugee, 1000 to 1	.15	.35	.65
29	205	" Hodson Wax	.15	.35	.65
30	206	" Golden Wax	.15	.30	.55
30	207	" Refugee Wax	.15	.30	.55
30	208	" Burpee's Bush Lima	.15	.35	.65
30	209	" Fordhock Bush Lima	.15	.40	.75
30	210	" Challenger Pole Lima	.15	.35	.65
30	211	" Early Leviathan Pole Lima	.15	.30	.55
32	220	CORN, Golden Bantam	.15	.35	.65
31	221	" Stowell's Evergreen	.15	.30	.55
31	222	" Country Gentleman	.15	.35	.65
31	223	" Metropolitan	.15	.35	.65
35	250	PEAS, Gradus	.15	.50	.90
34	251	" Telephone	.15	.45	.85
34	252	" Nott's Excelsior	.15	.45	.85
34	253	" Champion of England	.15	.50	.90
34	254	" Earliest of All	.15	.40	.70
34	255	" Little Gem	.15	.45	.80

AMERICAN SEED & SEEDTAPE COMPANY

PAKRO BUILDING

365-371 OGDEN STREET, NEWARK, N. J.

*From* \_\_\_\_\_

\_\_\_\_\_

\_\_\_\_\_

**AMERICAN SEEDTAPE COMPANY**

**PAKRO BUILDING**

**365 to 371 Ogden St.**

**NEWARK**

**NEW JERSEY**



THE UNIVERSITY OF CHICAGO

LIBRARY OF THE UNIVERSITY OF CHICAGO

THE UNIVERSITY OF CHICAGO  
LIBRARY OF THE UNIVERSITY OF CHICAGO

University of Chicago  
Chicago, Illinois  
U.S.A.

**PAKRO**  
**SEEDTAPE**  
**AND SEEDS**  
**FOR BETTER GARDENS**

*The*  
**QUANTITY PACKAGE**  
*of*  
**QUALITY SEEDS**

American Seedtape Company  
Newark, New Jersey  
U. S. A.