

Historic, Archive Document

Do not assume content reflects current scientific knowledge, policies, or practices.

62,39



ATTRACTION (Japanese Type) **PEONY.**
\$2.00 each prepaid. (See page 2 for description)

1920

FALL CATALOG AND CULTURAL GUIDE

J. K. ALEXANDER

THE
DAHLIA
KING

547-559 CENTRAL STREET
EAST BRIDGEWATER, MASSACHUSETTS



J. K. ALEXANDER

I print this not because I am proud of my own picture, but because most people like to see the man with whom they are doing business.



SILVER MEDAL

Awarded me for display of Gladioli, Phlox and Dahlias. Exhibition of the Massachusetts Horticultural Society, Boston, Mass., August 19, 1919.

Announcement

In presenting you with my first Fall Catalog, I would like to have a few words with you; principally to assure you I will strive to serve you in the same satisfactory manner as I have for the past twenty-five years. This Catalog is very modest compared with my Spring Catalog, but it is a beginning, and has been made possible through your patronage. Through giving your orders my careful personal attention, I have been able to increase my business by leaps and bounds. Probably you can recall when my Spring Catalog contained nothing but Dahlias and Gladioli. Each year I have added to it.

Six years ago, I purchased the entire stock of Peonies of George Hollis, the well-known Peony Specialist of South Weymouth, Mass. I came into possession of one of the most complete collections of Peonies in the world, as Mr. Hollis had all the well known varieties, together with rare French, English and Japanese sorts and a large number of his own seedlings, which he had been hybridizing. Many of his seedlings had been introduced, others were still unnamed. For the past six years, I have been endeavoring to accumulate sufficient stock of some of them to offer them for sale; and at the same time make comparisons with other named varieties sent out by Mr. Hollis.

Mr. Hollis passed away three years before I acquired his collection, so some of the labels had been lost; where there were several lots of one variety, I found different names for what appeared to be the same variety. I still have many of his choicest, that I am not sufficiently sure of their being true or have in too limited quantity to offer in this catalog; but hope to offer them in the near future, as soon as comparisons can be made, and stock accumulated.

All varieties originated by Mr. Hollis offered herein are to the best of my knowledge true to name, and meet comparisons with others purchased from Mr. Hollis and the descriptions published by the Cornell University Bulletins, where a large number of his varieties were donated for the experimental garden of the American Peony Society.

You will be interested also in the Irises, Dutch Bulbs, Shrubs, Evergreens and Fruits offered herein, all of which can be shipped and planted this Fall. Should any of them fail to grow, let me know, and replacement will be made next Spring or Fall.

I assure you I will take as much pains in the future as in the past, to send out nothing but first-class stock, and to continue the same prompt, liberal and conscientious dealings. Hoping to receive a share of your orders this Fall, I am,

Respectfully yours,

July 1, 1920

J. K. ALEXANDER.

TERMS OF SALE

CASH WITH ORDERS. Remittances may be made by Post Office or Express Money Order, Bank Draft or Registered Letter at my risk. (Remittances for less than \$5.00 can be made in U.S. Stamps.) All orders will be shipped by Parcel Post, Express or Freight, whichever way I deem advisable, prepaid to all parts of the United States or Canada, unless otherwise stated. No extra charge for packing. I guarantee every root, plant or bulb I send out to be just as represented, absolutely true to name, reach its destination safely in good condition and prove perfectly satisfactory. I will cheerfully replace anything that fails to prove otherwise. Prices herein are void when my 1921 catalog is issued. These prices cancel all previous ones.

Always address, J. K. ALEXANDER,
The Dahlia King
East Bridgewater, Mass.



SILVER MEDAL
HIGHEST AWARD FOR EXHIBIT OF PEONIES, JUNE, 1918



PLOT OF SINGLE PEONIES

Peonies

The Peonies are among the noblest and most magnificent of our herbaceous plants. They are the "Queen of Spring Flowers," and are well adapted for massing in beds, and particularly valuable for planting in groups throughout the perennial or shrubby border, where their brilliant hues add beauty to the entire surroundings. Their requirements are so simple—a good, rich, deep soil; they are perfectly hardy, and produce their wealth of flowers in great abundance.

TIME TO PLANT: Peonies may be planted with perfect safety anytime from the middle of August till the ground freezes in the Fall, and in the early Spring until growth has advanced too far. September is the best time, as they then make a root growth before Winter sets in, usually blooming the following Spring.

After being transplanted, Peonies will not produce typical blooms the first season, many fine double varieties throwing single or semi-double flowers, and it is not until the third year that the finest flowers are produced.

They will abundantly repay good care and nourishment; but they resent an over abundance of fresh manure too near the roots. Well decayed manure is far better. A division of the clumps at long intervals, when they become so crowded as to interfere with freedom of bloom; and the soil kept loose and free from weeds, is all that is necessary. Where grown for cut flowers, they should not be disturbed oftener than is necessary; where they are grown for the sale of roots, they may be divided every second or third year. Plant so the eyes will be from two to three inches below the surface. Lay roots flat. Do not stand them on ends.

My prices are for good strong roots that, planted in September, and given proper care, may reasonably be expected to bloom the following Spring. Varieties differ so greatly in habit, that the expressions one-year and two-year, or the number of eyes, convey no meaning whatever; a strong root with one eye often being far better than a weak one with many. My prices are as low as the true varieties, and the size of the roots I send out will warrant. I grow and sell my own roots, and make no pretense of competing with those who have no stock of their own; but buy and sell indiscriminately.

ADMIRAL DEWEY. (Hollis 1903.) Rose-pink shaded heliotrope; large, high built flower. According to color chart, color, total effect, solferino red, clear; guards solferino red, center same as guards; fades silver tipped, linear petals concealed throughout bloom. Type, bomb. Form of bloom, globular compact. Fragrance pleasant. Blooming time, mid-season. **\$5.00 each.**

ADMIRAL TOGO. (Hollis 1907.) Deepest mahogany red, large high built flower, luminous. According to color chart, total color effect crimson carmine; guards clear, collar same as guards; center clear. Holds color well, no silver tip. Type of bloom semi-rose. Form of bloom flat, medium compact. Not entirely transformed. Plant medium tall, erect, compact. Blooming time mid-season. Medium to large size. **\$3.00 each.** Recommended.

ALEXANDER DUMAS. (Guerin 1862.) Medium sized, light violet-rose crown; has creamy white collar of narrow petals, mingled with wide center petals; fragrant. Medium height, free-bloomer, early mid-season. Good cut flower variety. Recommended. **\$1.00 each.**

ATTRACTION. (Hollis 1906.) (See illustration on front cover.) One of the very finest of the Japanese type, termed "Wonderful Glowing Suns" as they are entirely distinct from the other types, most of them have cup shaped guard petals, which surround a mass of petaloids or filamental petals, like a crown of thorns. They are yet comparatively little known to the general public, and mostly found in large collections of connoisseurs and Peony enthusiasts, where they awaken the admiration of all who behold them for the first time. Very large, medium compact, flat blossom. General impression, crimson pink with golden center, but according to color chart, the guards are clear tyrian rose, center same color as guards, tipped with yellow, which fades more quickly than guards. Pleasant fragrance. Growth strong and healthy, plants erect, medium to tall. **\$2.00 each.** Recommended.

AUGUSTIN D'HOOR. (Calot 1867.) Same as "Marechal Macmahon." Large, medium compact, showy, bomb type blossom. General impression, dark reddish pink with slight silvery reflex. According to color chart a solferino red. Mid-season. Medium tall. **\$1.00 each.**

AURORA. (Hollis.) Type of blossom, anemone. Form of bloom globular, loose, not entirely transformed. General impression, pink and white. According to color chart, guards are clear solferineroed, center cream to milk white, clear. Strong blooms have few central petals same color as guards, flecked. Blooming time mid-season. Medium to large size. Very compact, medium to tall, erect plant. **\$2.00 each.**

AVALANCHE. (Crousse 1886.) Medium to large, fairly compact white crown type, flecked with carmine, with cream white collar. Collar well differentiated. Tuft of short, narrow, cream petals in center of bloom. Occasional carmine petals on outside of guards. Odor pleasant. Plant is a medium strong grower of fair habit. Free bloomer in clusters. Midseason to late. **\$2.00 each.**

BARONESS SCHROEDER. (Kelway.) A very beautiful rose type bloom. Form of bloom, globular, compact, not differentiated, not entirely transformed. Color, total effect, flesh white fading to milk white; guards clear; collar same as guards, center clear, pleasant fragrance. Midseason. Tall erect strong grower. **\$2.00 each.**

BARON JAMES DE ROTHSCHILD. (Guerin 1850.) Medium size, crown type. Guards and very wide crown petals, pale lilac-rose; narrow cream white collar petals. Fragrant, vigorous, medium height, free-flowering, mid-season. **\$1.00 each.** Similar to "Formosa Rosea."

BEAUTE FRANCAISE. (Guerin 1850.) A good medium sized, compact, crown type. General impression, pink and white. According to color chart, pale lilac rose and cream white, with prominent carmine flecks on center petals. Strong vigorous plant of rather dwarf habit, strong medium to short stems. Odor pleasant. Blossoms midseason. **\$1.00 each.**

BEAUTY'S MASK. (Hollis 1904.) A very distinctive crown type blossom, of compact formation and very large size. First impression, bluish white, tinted lilac. According to color chart the guards are clear violet rose, with collar lighter than guards, and distinctive yellowish secondary stamenoids present. Fragrance pleasant. Blossoming time, late. Growth strong and healthy, plant of medium erect habit, tall and open. Buds borne in clusters. **\$10.00 each.** (Stock limited.)

BERLIOZ. (Crousse 1886.) A large, very beautiful, compact, rose type blossom. A light carmine-rose or rosy magenta, tipped silver, with golden yellow stamens concealed in bloom. Color is somewhat splashed on tips of petals fading to nearly white. Guards not differentiated, perfect rose type flower. Plant is a medium vigorous grower, stems good length and medium strong, good habit. Midseason to late. Good showy variety. **\$3.00 each.** Recommended.

CHRISTINE RITCHER. (Hollis 1907.) A globular compact rose-type bloom of good habit. According to color chart, total effect, violet rose; guards slightly flecked, centre clear, color uniform throughout; secondary stamenoids present. A good medium to small-sized late-flowering variety. **\$2.00 each.**

CONTINENTAL. (Hollis 1905.) A beautiful flat loose semi-double blossom. First impression is a deep lilac pink. Color chart gives it a deep magenta; guards occasionally flecked scarlet, clear, uniform color, throughout. Fades silver tipped, broad petals, imbricated bloom, yellow stamens visible at center. Large size. Habit of plant erect, medium tall, very compact. Blooming time, mid-season to late. **\$3.00 each.** Recommended.

CURIOSITY. (Dessert & Mechin, 1886.) Type bloom anemone. Weak blooms nearly single, while very strong ones may be semi-double. Form of bloom medium globular, compact. Differentiated. Color, total effect violet-red, guards clear, collar same as guards, center clear, with occasional yellow tips. Occasional wide petals appearing in center. Fragrance pleasant, one of the largest of the anemone type. Blooming time mid-season. Habit of plant, erect, tall, medium compact. Blooming habit tree **\$1.00 each.**

DR. BRETONNEAU. (Verdier 1854.) Synonyms "Lady Lenora Bramwell" and "Canista." Different from Guerin's "Dr. Bretonneau." General impression very deep pink, rather dull. According to color chart, a pale lilac rose, with occasional crimson fleck. Popularly grown. A vigorous growing plant of good habit. Midseason. Free bloomer. **\$1.00 each.**

DUK D'WELLINGTON. (Calot 1859.) Large bomb type. White guards, and sulphur yellow center. One of the finest white varieties. Medium tall, vigorous grower, free-flowering. Very fragrant. Midseason to late. **\$1.00 each.**

EDULIS SUPERBA. (Lemon 1824.) The popular early "Decoration Day" Peony, which is masquerading under all of the following names: "Delia," "Edlius Odorato," "Rosa Lilacina," "Mamie Cutler," "Sylvanus," "Glorie de Douai," "Pizano," "Early Rose," "Acanum," "Sainfoin" and "Lilacina." Large, loose, flat crown type. Bright deep mauve pink; collar mixed with lilac. Large tuft of wide petals same color as guards, surrounding a few narrow petals in extreme center of bloom; prominent collar. Very fragrant. Free-flowering. **\$1.00 each.**

ENCHANTMENT. (Hollis 1907.) A very beautiful semi-rose type blossom. Form of bloom flat, medium compact, not differentiated, not entirely transformed. Color, total effect, pale lilac rose; guards clear, collar same as guards; uniform color. Blossom fades in sun light to hydrangea pink. Stamens plainly visible. Odor. Mid-season to



Alexander Dumas

PEONIES—Continued.

- late. Habit of plant drooping, medium height, medium compact, growth strong and healthy. Stem long, strong and green. **\$10.00 each.**
- EUGENIE VERDIER.** (Calot 1864.) Type of bloom semi-rose. Form of bloom flat, medium compact to loose, not differentiated. Color, total effect, hydrangea pink; guards clear; collar lighter than guards, very slight occasional crimson flecks on center. Color fades to lilac white. Fragrance pleasant. Large size. Blossoming time mid-season. **\$2.00 each.**
- EVENING GLOW.** (Hollis 1907.) Very large, rose type, flat, medium compact bloom. Hydrangea pink, tipped with white. Imbricated bloom. Fragrance pleasant. Habit medium erect to erect, tall and compact. **\$15.00 each.** Stock limited.
- FELIX CROSSE.** (Crousse 1881.) Large globular typical bomb type. First impression, brilliant red. According to color chart, tyrian rose. Same color throughout. Compact and globular when first opening; but opens out somewhat with age, exposing linear petals in extreme center of bloom. Odor pleasant. Strong, vigorous grower, with long stem, rather spreading habit, medium height. Free bloomer in clusters. Midseason. **\$1.00 each.** Recommended.
- FESTIVA MAXIMA.** (Meillez 1851.) Very large globular rose type. Pure white center, prominently flecked crimson; outer petals sometimes, faint lilac-white on first opening. Very tall, strong, vigorous grower. The most popular white variety for cut-flowers. **\$1.00 each.** Recommended.
- FLASHLIGHT.** (Hollis 1906.) A very large globular, medium compact to loose bloom of Japanese type. First impression, a crimson pink with golden center. Not as dark a shade as "Attraction." According to color chart, the total color effect is tyrian rose; guards have light streak, center clear. The center is amber yellow shading pink at base. Compact, erect plants of medium height. Early bloomer. One of the best of this type. **\$10.00 each.**
- FRANCOIS ORTEGAT.** (Parmentier 1850.) Large semi-rose type bloom. General impression is a brilliant deep purplish crimson with golden yellow stamens showing at the center. According to color chart, a dark amaranth-red. Stamens intermingled with petals. Medium height, good habit. **\$1.00 each.**
- GEORGE WASHINGTON.** (Hollis 1904.) A large flat, loose bloom of semi-rose type. One of the brightest dark crimson red varieties. Guards clear, collar same as guards; center clear, uniform color. Stamens intermingled with petals. Blooming time mid-season. Habit of plant, erect, medium compact medium height. Growth strong and healthy. A strikingly brilliant color that always attracts the attention of visitors. **\$2.00 each.** Recommended.
- GLORIE DE CHAS. GOMBAULT.** (Gombault 1866.) Medium size, deep globular crown. Guards and crown light rose, collar of narrow cream-white petals widening towards the center. Cream white linear petals concealed in extreme center of the bloom. Strong, vigorous growing plant with very long, strong stem. Free bloomer in clusters. Mid-season. **\$1.00 each.**
- GLORY.** (Hollis 1907.) One of the glorious Japanese type, form of bloom medium compact to loose. In color a beautiful tyrian rose, guards clear, center golden yellow with silver tip. Bloom on strong plants will develop petals same color as guards in center of bloom. Tall erect, medium compact plant of strong growth. Blooming time mid-season to late. Very similar to "Attraction" in color, but not quite so large. **\$4.00 each.**
- GOLDMINE.** (Hollis 1907.) Japanese type. Flat loose, medium size. Guards tyrian rose, center same as guards, tipped golden-yellow. Medium tall, erect variety of good habit. Midseason. **\$10.00 each.**
- HITY TITY.** (Hollis 1909.) One of the most delicate of the Japanese type. Form of bloom globular, very loose, differentiated, not entirely transformed. Color, total effect, lilac-rose; guards clear; center canary-yellow fading to cream white. Pale, yellowish green carpels and yellow stigmas. Fragrance pleasant. Blooming time mid-season. Tall compact plant, that is strong and healthy. **\$15.00 each.**
- HUMEL.** (Anderson 1810.) A large, full double crown type bloom. Color, bright cherry-pink, with silver tips. Highly cinnamon scented. Tall, sturdy grower, producing blossoms in clusters on weak stems. Very showy. One of the latest to blossom. **\$1.00 each.**
- INNOCENCE.** (Hollis 1904.) A medium sized flat compact Japanese type bloom. General impressions, pale pink guard with golden center. According to color chart, lilac-rose; guards clear, center canary-yellow fading to cream-white, pale pink at base of stamens. Fragrant. Habit of plant, erect, tall compact. Growth strong and healthy. Blooming time mid-season. **\$10.00 each.**
- JOHN HANCOCK.** (Hollis 1907.) A very large globular semi-double flower. Its color is one not at all common in Peonies, total effect being bright rosy magenta; guards streaked light; center clear; secondary stamenoids absent. Bloom is very noticeably silver tipped. Fragrance. Blooming time mid-season. **\$5.00 each.**
- LA COQUETTE.** (1861.) Large, globular, high crown. Guards and crown light pink; collar rose-white, center flecked carmine. Strong, erect, medium height, free bloomer. Fragrant. Mid-season. **\$1.00 each.**
- LA FIANCEE.** (Dessert 1902.) A large white single, showing the golden-yellow stamens prominently in the center. Tall, vigorous grower. Early to mid-season in flowering. **\$2.00 each.**
- LA TULIPE.** (Calot 1872.) Synonym "Multicolore". Very large, flat, semi-rose type flower. Lilac-white, outer petals striped with crimson. Fragrant. Tall, strong grower, and free bloomer. Late mid-season. Very attractive. **\$1.00 each.**
- L'AVENIR.** (Calot 1868.) Globular, medium compact, anemone type bloom. Reddish-violet, center mixed with yellow. Very strong, tall, free bloomer. Mid-season. **\$1.00 each.**
- L'ETINCELANTE.** (Dessert 1902.) Single, cup-shaped flower. General impression, crimson-pink. According to color chart, a rich clear carmine, broadly edged with silver. One of the showiest and best single varieties. **\$1.00 each.** Recommended.
- L'INDISPENSABLE.** A variety of unknown French origin sent out from Holland, greatly confused with "Eugene Verdier." The two are entirely distinct however, "L'Indispensable" being very much taller, earlier, has differently formed flowers, very full, globular, rose type. Lilac-white, shading to pale violet rose toward the center. Very light buds, slow to open. **\$1.00 each.**
- LUCY E. HOLLIS.** (Hollis 1907.) Large, flat, medium compact, rose type blossom. First impression, pale pink and white. According to color chart, lilac white, guards clear, collar same as guards; center slightly flecked scarlet; secondary stamenoids present. Center of bloom shaded to pale lilac rose. Fragrance pleasant. Blooming time very late. Strong, healthy drooping habit; plants of medium height. **\$5.00 each.**
- L. W. ATWOOD.** (Hollis.) Medium globular, low crown type. Usually pure white, with occasional crimson fleck. Guards white; center cream-white. Medium height. Mid-season. **\$3.00 each.**
- MADAME BOULANGER.** (Crousse 1886.) Very large, full bloom of rose type. Glossy soft rose-pink shading to lilac, bordered silvery flesh. Late blossoming. **\$3.00 each.**

PEONIES—Continued.

MADAME BREON. (Guerin 1850.) Medium size, bomb type. White with shell-pink guards, red carpels and pink stigmas. Good habit. Early to mid-season. **\$1.00 each.**

MADAME CHAUMY. (Calot 1864.) Medium size, globular, very compact, perfect rose type. Satiny rose-pink, or pale lilac-rose, with silver reflex, central petals slightly darker; flecked crimson occasionally. Free bloomer in clusters. Mid-season. **\$1.00 each.**

MADAME CROUSSE. (Calot 1866.) Medium size, globular, crown type. Pure white, center delicately flecked crimson. Mid-season. Plant medium strong, vigorous grower with a rather spreading habit. **\$1.00 each.**

MADAME DUCEL. (Mechin 1880.) Large, globular, typical bomb type, petals incurving somewhat resembling a *Chrysanthemum*. Light mauve-rose, with silvery reflex. Fragrant. Mid-season. Foliage very large, dark, green, medium height. **\$1.00 each.** Recommended.

MADAME GEISSLER. (Crousse 1880.) Very large, compact, globular, imbricated, rose type. Violet-rose, tipped silver. Very fragrant, spreading habit. Mid-season. **\$3.00 each.** Recommended.

MARGUERITE GERARD. (Crousse 1892.) Large, compact, semi-rose developing into a crown with stamens. Very pale hydrangea-pink, fading to nearly white, central petals minutely flecked dark carmine. Strong, medium height, free bloomer. Late. **\$2.00 each.**

MARIE STUART. (Calot 1856.) Crown type. First impression, white. Cream-white, with pale pink guards, center flecked crimson, all fading to white. Guard petals are well differentiated, thick collar of narrow yellowish petals, on young bloom. Good early variety. **\$1.00 each.**

MARY A. LIVERMORE. (Hollis 1907.) One of the most beautiful of the rose type. A very large flat medium compact, not differentiated, and entirely transformed blossom. General impression rose-pink and white. Petals are a beautiful rose-pink, passing to silver and white at the tips. Fragrance pleasant. Blooming time, mid-season to late. Plants are medium erect, medium tall to tall, compact. Growth strong and healthy. Buds borne in clusters. Highly recommended. **\$15.00 each.**

MARY BAKER EDDY. (Hollis.) Large, compact, globular, rose type. Deep rose-pink with silvery tips. Plants of medium height, long strong stems. Mid-season to late. Scarce. **\$10.00 each.**

MODESTY. (Kelway.) Japanese type. Form of bloom, flat and loose. Guards clear milk white, cream center. Hairy green carpels, and white stigmas. The largest and finest of the white Japanese varieties, all of which are very rare. Very pleasant fragrance. Blooming time, mid-season. Habit of plant, growth medium strong, healthy, medium erect, medium height, medium compact. **\$10.00 each.**

MONSIEUR BOUCHARLAT AINE. (Calot 1868.) Large, full, compact, semi-rose type. Uniform light violet-rose, with silvery reflex. Very strong erect grower, medium height, free bloomer. Midseason to late. **\$5.00 each.**

MONSIEUR DUPONT. (Calot 1872.) Large, flat semi-rose type bloom. Cream to milk-white, petals are intermingled with stamens at all stages of development, but mostly concealed; petals streaked or splashed crimson. Odor pleasant. Free bloomer in clusters. Plant is a strong, tall grower, with a very stout stem, and upright habit. Mid-season to late. Very good. Similar to "Boule de Neige." **\$3.00 each.** Recommended.

MONSIEUR JULES ELIE. (Crousse 1888.) A very large medium compact, bomb type flower. Total effect, pale lilac rose, guards and center clear, collar tinted lighter than guards. A very attractive pink, base of collar petals amber yellow. Fragrance very pleasant. One of the finest pink varieties grown, somewhat resembling a *chrysanthemum*. Early to mid-season. Habit of plant medium erect, medium height, medium compact. **\$1.00 each.** Highly recommended.

PHILOMENE. (Calot 1861.) Very distinct and novel, anemone to crown type bloom of medium size, low and flat crown. Guards delicate bright pink or violet-rose. When blooms first open the narrow central petals are amber-yellow, soon fading to a more cream-white. As the bloom develops, a crown the same color as the guards appears, occasionally edged with dark crimson. Short, narrow yellow petals in extreme center of bloom, partly concealed by the crown. Some blooms are more nearly Japanese, with their pink guards and amber-yellow center. A very variable, but attractive variety. Fragrant. Very strong, upright grower, free bloomer. Mid-season. **\$1.00 each.**

PLUTACH. (Kelway.) Medium sized globular flower. Purplish-crimson. **\$1.00 each.**

PRINCESS BEATRICE. (Kelway 1886.) Large compact high crown. Guards and crown light violet rose, collar cream-white, center flecked crimson. Fragrant. Strong, vigorous, medium height, free bloomer. Early mid-season. **\$1.00 each.**



PEONY—La Couquette. \$1.00 each.

PEONIES—Continued.

PRINCE ALERT. (Hollis 1904.) A large medium flat Japanese type variety. General impression is deep pink guards and long, yellow central petals. Guards clear tyrian rose, center pale-pink with yellow tips. Carpels pale green, pinkish-white stigmas. Pleasant fragrance. Blooming time, mid-season to late. Plants erect, dwarf and compact. **\$7.00 each.**

PROLIFERA TRICOLOR. (Lemon 1825.) Medium size, very loose, white tinted with pink and sulphur-yellow, crown type bloom. Variable plants until well established. When first set the plants are more nearly Japanese or Anemone type. Clearly differentiated bloom; collar of sulphur-yellow petals; crown loose and open, same color as the guards with frequent crimson flecks. Often only a double row of petals forming an open crown, enclosing tuft of narrow sulphur-white petals. Medium height plant, good habit and strong stems. Free bloomer in clusters, making it very showy. **\$1.00 each.**

QUEEN VICTORIA. (Kelway.) Large, globular in form, medium loose, low crown. Milk-white guards, tinted flesh; center cream-white, with crimson flecks. Very fragrant. Medium height, strong, free-bloomer. Mid-season. Very popular, being one of the best white varieties. **\$1.00 each.** Recommended.

ROSY DAWN. (Barr.) One of the largest Single Peonies, if not the largest. Snow-white flowers, tinged blush at first, resembling a great white water-lily. **\$1.00 each.**

SARAH BERNHARDT. (Lemoine 1906.) A very large, beautiful flat, imbricated, compact semi-rose type blossom. Flowers of remarkable size and freshness in huge clusters, and of unusual perfection in form. First impression is an apple-blossom pink, with each petal silver tipped. According to color chart, a mauve rose; guards clear, collar same as guards, center clear. Pleasant fragrance, late blossoming. Habit of plant, medium erect, tall medium compact, growth strong. **\$5.00 each.** Recommended. This variety should not be confused with Dessert's "Sarah Bernhardt" so-called, as it is entirely different.

SIR THOMAS LIPTON. (Kelway.) Large, loose flat, semi-double flower. A uniform bright rosy crimson, showing the golden-yellow stamens prominently in the center. Pleasant fragrance. Mid-season. Plants of medium height, strong, erect growth, producing their flowers abundantly. **\$1.00 each.** Recommended.

STANDARD BEARER. (Hollis 1906.) A globular, very compact, bomb type bloom. Violet-rose total effect, guards clear, collar same as guards, center slightly flecked with scarlet. Fragrance pleasant. Blooming time, early to mid-season. Larger, but very similar to "Madame Ducl." Habit of plant erect, medium tall, compact; growth strong and healthy. **\$10.00 each.**

SUNBEAM. (Hollis 1904.) Japanese type. Total color effect, pale rose-pink; guards clear, fading to lilac-white; center canary-yellow, fading to cream-white. Fragrant. Midseason. **\$5.00 each.**

UMBELATA ROSEA. (Unknown.) Informal rose-type. Guards violet-rose shading to amber-white center. Strong upright grower. One of the most popular. **\$1.00 each.**

VILLE DE NANCY. (Calot 1872.) Large, medium compact, bomb type. Carmine-rose with silvery reflex. Tall, very strong stiff stems. Late flowering. **\$1.00 each.**

VIRGINIE. (Calot 1858.) Syn. Marquis de Lory. Large, semi-rose type flower. Outer petals very delicate lilac-rose, with lighter collar. Fragrant vertical, very tall, vigorous grower. Free-flowering, in clusters. Mid-season. **\$2.00 each.**

WELCOME GUEST. (Hollis 1904.) One of the very finest of the semi-double Peonies. A very large loose, bright silvery rose, fading to rose-white. Very strong and healthy, with long stem. Plant erect, tall and medium compact. Buds borne in clusters. Very pleasant fragrance. Mid-season. Highly recommended. **\$5.00 each.**

ZEST. (Hollis 1907.) Large compact rose type flower. Silvery rose-pink. Plants strong and healthy, of erect habit. Very late and superior. **\$10.00 each.**

Single Peonies

Single Peonies are becoming more and more popular each year, many people considering them more artistic and beautiful than the double ones. They are exceptionally attractive, and not at all common in the garden, making them especially desirable. They are very airy and stand out prominently, producing their blossoms in great abundance. The great variety of colors, and their fantastic shapes make them ideal for the home garden. For Landscape effects, they are especially valuable, on account of their brilliant colors, and upright habit, and the fact they are not easily beaten down by storms.

I have a very choice collection, principally seedlings, possessing the most delicate and rarest shades; but my stock is insufficient for me to offer them under names, therefore, I offer them under color, and at greatly reduced prices. I have over two hundred different shades in Single Peonies, and can furnish in the following colors:

Large deep rose-pink	\$1.00 each.	Pale pink and delicate shades	75 cents each.
Large-flowered pale pink	1.00 each.	Deep pink shades	75 cents each.
Largest deep crimson shades	1.00 each.	Crimson shades	75 cents each.
White shades, and pure white	1.00 each.	Pink and white shades	75 cents each.
Purple-crimson shades	75 cents each.		

Mixed Peonies

Each season, in handling our Peonies, a small amount becomes mixed in handling them, many times the very choicest varieties. It does not prove worth while for me to plant these separately, to ascertain their names, so I am offering them at 50 cents each, as long as they last. This mixture is apt to include some of the best new things, not offered in my catalog; and includes both Double and Single varieties.

SPECIAL PEONY OFFER: To give you an opportunity to have a more complete and choice collection of Peonies, I am making the following offer:—

I will ship you Three Choice Peonies for \$5.00, transportation charges prepaid to any part of the United States or Canada. These to be three distinct varieties, that I can recommend to give satisfaction. If you have Peonies, and wish different colors from those you now are growing, tell me the colors or the name of the variety if you know it, and I will make a selection of varieties that does not include what you have. If you wish the Japanese variety "Attraction," illustrated on the front cover, I will include this variety. I will give you as good a selection and variety as possible, using my best judgment, in an effort to please you.

The Iris Fleur de Lis or Iris Germanica

Familiar and well-beloved flowers of spring. The purity of their beauty and their haunting fragrance are decidedly refreshing. The winsome, modest beauty of some, forming a striking contrast to their more glorious sisters arrayed in a sheen of iridescent splendor. They fairly outrival the Orchid in the wide range of coloring, which includes yellows, from light canary to deep golden; blues from soft lavender to intense purples; reds, from pinkish mauve to claret and maroon; beautiful bronzes, and pure whites; and some varieties are marked and margined with other colors in exquisite harmony.

The Iris succeeds in partial shade, but gives the most satisfactory results in a dry, sunny location. They are perfectly hardy and require only ordinary cultivation; growing luxuriantly but respond quickly to any extra care giving large and more beautiful flowers. They should be planted in the Fall during August, September and October. Plant the bud or crown about two inches below the surface, hoe or cultivate frequently for best results.

In this description, Standards signify the three standards (erect, or upright curling petals); Falls—the three falls, or drooping petals.

My collection of Liberty Iris consists of the very newest and choicest up-to-date novelties and the finest standard varieties.

New and Rare Irises for 1920

My New Irises are the largest and finest of the Irises to date, possessing the newest and rarest colors. Their flowers are nearly twice the size of the common yellow Fleur de Lis.

This superb collection of Seven Wonderful Rare Irises, prepaid to any part of the United States or Canada for \$4.00.

HERANT. Standards, beautiful lavender-blue; Falls blue. Very large and tall. **25 cents each; \$2.50 per dozen.** The finest of the blue shades.

HER MAJESTY. Very attractive on account of its rich and unusual color. Standards, heliotrope of tissue-like delicacy; inner petals straw and lavender; Falls, light mauve, traced with white. A very fine, rich flower. **35 cents each; \$3.50 per dozen.**

JACEQUESIANA, Syn. CAROLINE de SANSEL, and CONSCIENCE. Standards, bright, coppery crimson; Falls, rich maroon. **75 cents each.**

LOHENGRIN. Standards and Falls of cattleya-rose; one of the largest and best of the Irises to my knowledge, and without exception the finest pink shade. **75 cents each.**

LORD GREY. Clouded rose-fawn. A very odd and novel shade, very rare and uncommon among the Irises. **50 cents each.**

NIBELUNGEN. Standards of fawn-yellow; Falls of violet-purple with fawn margins. A very handsome variety, that I can highly recommend. One of the very largest. **\$1.00 each.**

RHEIN NIXE. The Largest of its color to my knowledge, and in my estimation one of the very best. Standards, pure white; Falls, deep violet blue, with a white edge. **75 cents each.**

Siberian Iris

SIBERICA. (Siberian Blue.) [Rich blue flowers of exquisite beauty. **25 cents each; \$2.50 per dozen.**

SIBERICA ALBA. (See illustration on back cover.) (Siberian White.) A beautiful white flower. **25 cents each; \$2.50 per dozen.**

General Collection of Iris

I will send this collection of 15 Irises for \$3.00, prepaid.

BROOKLYN, Syn. CHALCEDONIA or JOHAN d'WORTH. A very reliable standard variety of medium height. Standards light mauve; Falls, purple, heavily veined. A prolific bloomer. **25 cents each; \$2.50 per dozen.**

COMPTE de ST. CLAIR. Deep violet with white margin. **25 cents each; \$2.50 per dozen.**

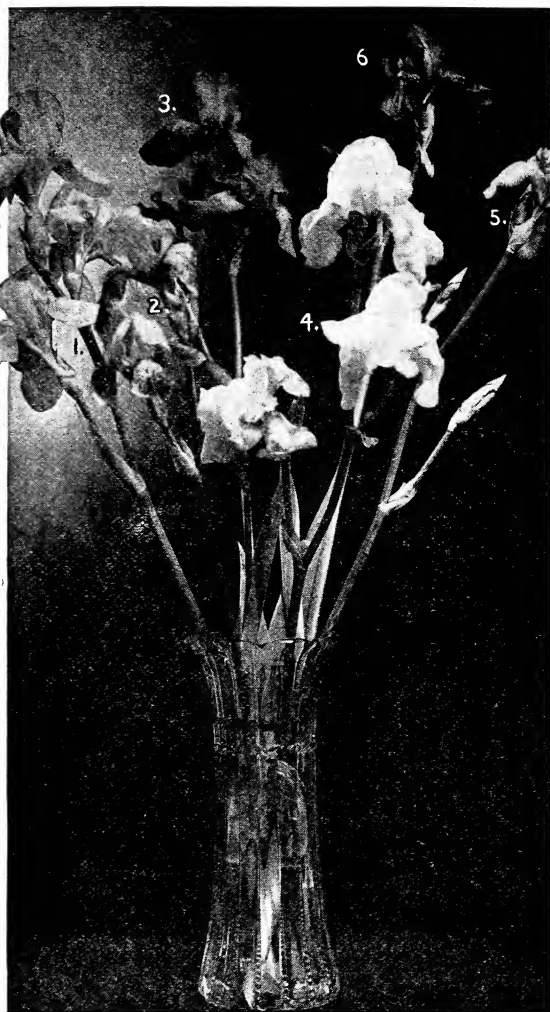
ELIZABETH. [Standards, pale lavender, darker in center; Falls, mauve, melting into pale blue. A very large, attractive flower. **25 cents each; \$2.50 per dozen.**

FLAVESCENS. Standards and Falls, a delicate shade of soft yellow. Very fragrant; fine for massing. **25 cents each; \$2.50 per dozen.**



Iris in Border

IRIS—Continued.



COLLECTION OF 6 WINSOME IRISES,
PREPAID, FOR \$1.00.

- No. 1 FLAVESCENS, soft yellow.
- No. 2 HONORABILIS, yellow and brown.
- No. 3 ELIZABETH, beautiful lavender-blue.
- No. 4 PANCHURIA, smoky shade and violet-red.
- No. 5 MME. CHEREAU, lavender and white.
- No. 6 QUEEN OF THE GYPSIES, smoky shade.

SPECIAL IRIS OFFER:—To give my friends and customers an opportunity to have a more complete collection of these early blossoming favorites, I am making the following offer:—

I will ship you Five Choice Named Varieties of Iris for \$1.00, transportation charges prepaid to any part of the United States or Canada. If you have Irises, and wish different varieties from those you are growing, tell me the color and name if you know it, and I will make a selection of varieties that does not include what you have, which will give you five new colors. In making this selection, I will use my best judgment, giving you the greatest variety of colors possible, and varieties I believe will give you satisfaction.

FLORENTINA ALBA, Syn. SILVER KING. The finest white variety. Standards and Falls, porcelain, changing to pure white. Large and very fragrant. 25 cents each; \$2.50 per dozen.

HONORABILIS. The most popular of all Iris. Similar to Sans Souci. Standards, beautiful golden yellow; Falls, rich mahogany-brown. Very effective. 15 cents each; \$1.50 per dozen.

KHEDIVE. A beautiful soft lavender, with distinct orange beard. 25 cents each; \$2.50 per dozen.

MADAME CHEREAU. The pride of the Liberty Iris; a tall, stately queenly flower. A majestic specimen of entrancing beauty. Standards, white, edged and fringed mauve, interspersed with lilac; inner petals, white; Falls, white, edged the same as the Standards. 25 cents each; \$2.50 per dozen.

MARGOLIN. Standards, light clear yellow; Falls yellow, interlaced with magenta. 25 cents each; \$2.50 per dozen.

PALIDA SPECIOSA, Syn. TURKEY FLAG. Standards, dark lavender, shaded lighter; Falls, shaded light purple. 25 cents each.

PANCHUREA. Standards, a light, smokey shade; Falls, dull violet-red. 25 cents each; \$2.50 per dozen.

PENELOPE. White delicately veined reddish-violet. 25 cents each.

QUEEN OF THE GYPSIES. Perfectly marvelous blending of colors. Standards, smokey or dusky light bronze; Falls, purplish-red. An entirely new color; one of the finest to date. 25 cents each; \$2.50 per dozen.

SANS SOUCI. Syn. REBECCA. Fine for massing and for border effect. Standards, canary; base reticulated dove color. Falls yellow, charmingly veined and interlaced with brown, fading to light maroon. Very popular. 20 cents each; \$2.00 per dozen.

SHAKESPEARE. Standards, bronze-yellow; Falls, maroon, reticulated yellow. One of the choicest. 35 cents each; \$3.50 per dozen.



Hyacinths

The Hyacinth is one of the most popular of the Fall bulbs and commands a place in every home and garden. There is nothing more attractive than a well-grown pan of Hyacinths, with their brilliant colors and delightful fragrance, together with their long keeping qualities and decorative appearance. Hyacinths may be brought to bloom about the latter part of January and if taken into the house at intervals, flowers may be obtained until the middle or latter part of April.

Culture in Pots When potting Hyacinths for growing indoors a medium light, well-enriched soil is best suited, placing some broken crock in the bottom for drainage. Set the bulbs about $\frac{1}{2}$ inch below surface of soil, giving them a thorough watering and put them away in a dark, cold place, so that they will not freeze; water them as often as need be to avoid drying. They should be allowed to remain for at least 12 weeks, or until the pot is well filled with roots, when they may be removed to a warmer location, but still kept dark until a growth of 4 to 5 inches is made, then bring to the light gradually until allowed to flower.

When a repetition of bloom is required, bring out one or more pots every week or ten days from place where allowed to root.

Outdoor Culture Prepare the beds or borders where they are to be planted with well-rotted manure, having it well dug over to a depth of at least 12 inches, being well assured that the soil is well drained to avoid any decay of the bulbs. Plant the bulbs at least 5 inches deep and 6 apart. As soon as the ground begins to freeze, cover the beds with a litter of leaves, straw or pine boughs to a thickness of 6 or 8 inches. This covering should be removed as early as possible after all danger from severe cold weather is past.

Single Named Hyacinths

25 cents each, \$2.50 per doz., \$5.00 for 25 prepaid to any part of United States.

GIGANTEA. Delicate shade of blush pink; large truss.

KING OF THE BLUES. Rich dark blue, fine, close spike.

LA VICTOIRE. Bright glistening red when growing in the open; under glass a dark pink. Large truss.

L'INNOCENCE. A pure white. One of the best.

PERLE BRILLIANT. Sky blue, tinged lilac; the finest light blue.

QUEEN OF PINKS. Brilliant pink. Long compact spike.

Hyacinths under Colors for Bedding

10 cents each, \$1.00 per doz., \$8.00 per 100. Prepaid to any part of United States

Dark red
Rose and Pink

Pure White
Blush and Tinted White

Light Blue and Lavender
Dark Blue and Purple

Yellow
Mixture of Colors.

Tulips for Bedding

The Tulips are universal favorites; the most popular and attractive for early Spring display in the garden, or for Winter blooming in the house or conservatory. Tulips can be used in many places in the garden, if one wishes to get the most out of them.

Bold masses of one, two or three solid colors are well known and prove one of the showiest and most attractive ways of growing these "Queen of Spring Flowers." In groups, several of one color together, they are very effective, especially along the hardy border, or in beds that will later bloom with Summer colors. It is best to avoid the one-flower spotty effect, as masses of one color make a far more satisfactory showing. For April and May the Tulip adds just the needed bit of color to brighten the entire lawn.

For Spring flowers, plant bulbs outside in October and November. The soil should be well dug over, and a liberal supply of well rotted manure applied. Fertilizer is also good. For best effect, when planting in small clumps, the bulbs should be set four inches deep and four inches apart, but in large beds or borders a distance of five or six inches between the bulbs can be allowed.

Selected Named Tulips

Shipped prepaid to any part of United States or Canada at prices quoted.

ALBA MAXIMA. (Double.) Large pure white. 75 cents dozen; \$5.00 per 100.

ARTUS (Single.) Large, brilliant scarlet. Early flowering, dwarf grower. 75 cents dozen; \$5.00 per 100.

CHRYSOLORA. (Single.) Pure yellow, superior to the popularly grown "Canary Bird." Medium height. Early. 85 cents dozen; \$6.00 per 100.

JOOST VAN VONDEL, Striped. (Single.) Deep cherry-red, striped white. Very large flower, medium grower. Early. 60 cents per dozen; \$5.00 per 100.

KEIZERKROON. (Single.) Scarlet red with broad yellow margin. Large flower. One of the finest tall varieties for bedding. Early to blossom. A favorite everywhere. 75 cents dozen; \$5.00 per 100.

LADY BOREEL or White Joost van Vondel. (Single.) Best pure white Tulip, exceedingly fine, large flower. Medium height, early. 90 cents dozen; \$7.00 per 100.

PINK BEAUTY. (Single.) A lovely Tulip, deep rose, with bold, snowy-white flush in outer petals; center

white and yellow. A strong growing variety of medium height. Early to flower. \$1.25 dozen; \$9.00 per 100.

SALVATOR ROSA. (Double.) Deep rose-color, flamed white. Medium height. 85 cents dozen; \$6.00 per 100.

POTTEBAKKER, Scarlet. (Single.) Tall early bright scarlet with yellow center. 75 cents dozen; \$5.50 per 100.

QUEEN OF THE NETHERLANDS. (Single.) Early. A very large, tall, globe shaped Tulip of a most delicate shade of pink. 85 cents dozen; \$6.00 per 100.

RUBRA MAXIMA. (Double.) Bright deep red, dwarf grower. 85 cents dozen. \$6.00 per 100.

SIR THOMAS LIPTON. (Single.) Deep scarlet. The largest and best scarlet sort. \$1.00 per doz.; \$7.00 per 100.

Tulip Mixtures

SINGLE EARLY TULIPS. Finest mixture. 50 cents dozen; \$1.00 for 25; \$3.50 per 100.

DOUBLE EARLY TULIPS. Finest mixture. 60 cents dozen; \$1.15 for 25; \$4.50 per 100.

Crocus, Spring-Flowering

"The Heralds of Spring"

Crocuses, among the first flowers to bloom in the early Spring, are always the admiration of everyone, especially when planted amid the grass in lawns, their bright flowers producing a fine contrast. They may also be planted among other Spring-flowering bulbs, such as Tulips, Hyacinths and Narcissi, making a splendid show, before the other varieties begin to bloom. The results obtained from planting Crocuses in pots or pans for house blooming are very satisfactory. For this purpose it is advisable to use the best. To grow Crocuses in pots, place the bulbs about one-half inch part and one-half inch deep, keeping them in a cool place until thoroughly rooted, when they may be brought to the light for blooming. In the open, bulbs should be set at least 3 inches deep.

Choice Mixtures of Crocus

The following mixtures are well adapted for bedding, naturalizing or planting in conspicuous places in lawns. The colors include a complete selection of all the shades and markings, as well as the self colors.

Large-flowered shades of White. Large-flowered, Striped and Variegated.
Large-flowered shades of Blue and Purple. Large-flowered Golden Yellow.

Mixture of all colors: Doz. 25c., 100 \$1.75, 1000 \$14.00.

Narcissus

Daffodils and Jonquils

Culture Outside The large-flowered, or the sorts which have large bulbs, should be planted from 4 to 6 inches deep and about 5 inches apart. Planting should be begun as soon as possible after October 1st, but bulbs may be planted any time before the ground is frozen too hard to work.

Culture in Pots As a general rule, treat Narcissi the same as Hyacinths. They should be planted about 6 bulbs in a 6-inch pot or pan and put in a dark and cool place where they may develop their roots. Let them remain until January 1st, when they may be removed to a warmer temperature, but keep in the dark until the foliage is about 6 inches high; then bring to the light and allow them to flower.

There is at the present time a very large assortment of Narcissi from which to make selections, and nearly all are of a quality worthy of cultivation. It is almost impossible to list the complete line of these beautiful Spring flowers, but the following few I offer are varieties which I deem will give the best satisfaction.

NARCISSUS—Continued.

Shipped, prepaid, to any part of United States or Canada at prices quoted.

ALBA PLENA ODORATA. (Double Poet Narcissus.) Large, double, pure white flowers of delicious fragrance, flowering about Memorial Day. **60 cents per dozen; \$4.25 per 100.**

BARRII CONSPICUUS. A flower of exquisite beauty, unexcelled for cutting; white with large broad spreading perianth; broad, short cup conspicuously edged bright orange scarlet. One of the most popular of the Narcissus. **75 cents per dozen; \$5.50 per 100.**

CAMPERNELLE RUGULOSUS. Rich yellow. The largest Jonquil. **60 cents per dozen; \$4.50 per 100.**

EMPEROR. (Ajax type.) New giant variety, with immense flowers, often three and one-half inches across. Trumpet clear golden-yellow; perianth deep primrose. **\$1.00 per dozen; \$8.00 per 100.**

EMPRESS. (Ajax type.) Another of the new very large flowered varieties, and one of the finest. Rich yellow trumpet, broad white perianth, reflexed. **\$1.00 per dozen; \$8.00 per 100.**

KING EDWARD VII. The very largest form of Poeticus; an exquisite flower of elegance. Pure white with orange red cup. **\$1.00 per dozen; \$8.00 per 100.**

MRS. LANGTRY. (Single Narcissus, Leedsii type.) Broad white petals, with crown edged yellow; very conspicuous; most free-flowering and recommended for bedding. One of the best sorts for naturalizing. **50 cents per dozen; \$4.00 per 100.**

POETICUS. The true Poet or Pheasant's Eye Narcissus. Pure white with orange-red cup; very fragrant. Excellent for cutting; fine for naturalizing. **50 cents per dozen; \$4.00 per 100.**

SEAGULL. (Single Narcissus Barrii type.) Large spreading pure white perianth; yellow cup, edged apricot. A beautiful flower. **\$1.00 per dozen \$7.00 per 100.**

SINGLE SWEET-SCENTED NARCISSUS JONQUILLA. Yellow free-flowering. **50 cents per dozen; \$4.00 per 100**

SIR WATKIN. (Single Narcissus, Incomparable type.) A grand flower; primrose perianth, often five inches across; cup yellow, tinted bright orange, elegantly fringed. Very popular. **\$1.00 per doz., \$7.50 per 100.**

VON SION. (The Old-fashioned Double Daffodil.) Flowers deep golden-yellow, very decorative; excellent for cutting. **75 cents dozen; \$6.00 per 100. Selected bulbs, \$1.00 per dozen; \$8.00 per 100.**

Hardy Perennial Phlox

Among hardy herbaceous plants, none are more gorgeous, and more easily grown than the Phlox. They are perfectly hardy, and will grow in any soil, and produce magnificent spikes of the most gorgeous flowers, lasting weeks, and year after year, with but little care. These plants will produce an abundance of flowers, which are very fragrant.

Choice New Phlox for 1920

TEN CHOICE NEW PHLOX FOR 1920, prepaid to any part of the United States or Canada for \$4.00.

CREPUSCULE. A superb variety with very large individual flowers, which form a truss of immense size. The coloring of this variety is very odd, and attracts considerable comment; a very difficult variety to describe; an odd shade of lavender violet, shading to pale blue. **35 cents each.**

EUROPA. A very distinct new Phlox that wins instant favor, and proves deserving of a place in the gardens of the most particular. The plants are remarkably sturdy, and of good erect habit. The individual flowers and trusses are very large, which add to its value. White with a decided crimson-carmine eye. **50 cents each.**

FRAU ANTON BUCHNER. An exquisite pure white variety. Plants are of medium height, and very sturdy. The individual flowers of this variety are much larger than those of any other white variety to my knowledge. **50 cents each.**

GENERAL VAN HEUTSZ. A very brilliant salmon-red, with an occasional light shading at the center. A variety of medium height, and good habit. This is one of the showiest. **35 cents each.**

HENRY MURGER. An exceptionally good salmon variety having good perfect trusses, and very large individual flowers. This is one of the very finest salmon-rose shades, and has all the good qualities of a Phlox. It is one of the very largest varieties I have seen. **35 cents each.**

RIVERTON JEWELL. A lovely shade of mauve-rose, illuminated by a brilliant carmine-red eye. **50 cents each.**

RYNSTROM. One of the largest and finest of the new Phloxes. Equally as good, if not better than the popular "Pantheon" and of very nearly the same color; possibly there is a trifle more pink in it. A beautiful salmon-rose. It is also described as a carmine rose, similar to the popular Rose "Paul Neyron." **35 cents each.**

THOR. A most beautiful and lively shade of deep salmon-pink, suffused and overlaid with a scarlet glow; with a light, almost white halo surrounding the aniline-red eye. This lovely variety holds a supreme place among the deep salmon-pink, and it is a pleasure to recommend this new creation. It is of exceptionally good habit, being tall and sturdy,

and producing immense trusses. Flowers are of gigantic size. **50 cents each.**

VIKING. A splendid new variety, that has proven one of the latest to blossom. A pleasing soft salmon-rose. **50 cents each.**

W. C. EGAN. One of the very finest Phloxes yet introduced, and a variety that wins instant favor, while the individual flowers, according to color chart, are of a delicate lilac, illuminated by a large bright sofferino eye, the color effect, as a whole, is a pleasing shade of soft pink. In habit of growth it is very strong and vigorous; producing immense panicles of flowers nine inches high by seven across, and the individual flowers are frequently over 1½ inches in diameter. Very satisfactory and one that I can highly recommend. **50 cents each.**



Partial view of field of Phlox in my nursery.

Select Standard Phlox

Price 25 cents each; \$2.50 per dozen; \$15.00 per 100, except where noted, prepaid.

If wanted in large lots send for 1,000 rates.

ALCESTE. A sensational variety, possessing an entirely new and rare color—deep violet, shading almost to blue. The plant is of strong, sturdy growth, of medium height, and produces remarkably large trusses; individual flower of largest size.

BRIDESMAID. One of the very best Phlox grown. White with large rose-crimson center. Very showy and desirable. Plants exceptionally sturdy, producing large trusses. Medium height.

DELIVERANCE. A very tall, pleasing variety. Deep pink with crimson eye. Individual flowers are large; very fragrant.

ECLAIREUR. An old favorite. One of the largest and best. Bright rose-carmine with light halo, a bright and cheerful face. The plants are very strong and sturdy, making a perfect border.

ELIZABETH CAMPBELL. New Pink Phlox. Very bright salmon-pink with lighter pink shadings and dark red eye. Attracted more attention in our fields than any other variety; one of the handsomest. The best pink Phlox to date. 50 cents each; \$5.00 per dozen.

INDEPENDENCE. Pure white; medium height.

JEANNE D'ARC or SNOW-QUEEN. Undoubtedly the very finest pure white variety to date. The plants are extra strong growers of medium height,

producing exceptionally large heads. Ideal for hedging or massing.

LE MAHDI. Up-to-date Novelty Phlox. A perfect beauty of special merit. The entirely new and rare color of this variety makes it one of the most desirable. The flower is a rich, dark violet-purple, a color rare among Phlox. The plants are very strong and robust; they are of medium height and produce large flower trusses; individual flowers exceptionally large.

MISS LINGARD. New Glossy Foliage Phlox. White, with faint lilac eye. This variety is an early-flowering Phlox and blooms continually throughout the season. Plants are tall, sturdy, and first-class for bedding. Dark, glossy, green foliage.

PANTHEON. Flowers are very large; pink or salmon-rose; one of the most distinct varieties. Sturdy plants of medium height.

PROFESSOR SCHLIEMAN. Bright lilac-rose with carmine eye.

R. P. STRUTHERS. Very strong grower with large heads of fiery salmon-red. Very showy. Fine for borders or hedging.

The above collection of 12 distinct named varieties for \$2.50 prepaid.

Hardy Lilies

HEMEROCALLIS

(Day Lily.)

Popular hardy plants, belonging to the Lily family. They succeed everywhere and should always be included in the border of old-fashioned hardy plants.

AURANTIACA. (Carolina Lily.) A beautiful, large trumpet-shaped Day Lily with fragrant orange flowers. One of the most satisfactory; height 2 to 3 feet; flowers in June and July. 25 cents each; \$2.50 per dozen, prepaid.

FLAVA. (Yellow Day Lily.) The best known variety; very fragrant, deep, clear lemon-yellow; flowers in June; height, 2 to 3 feet. 25 cents each; \$2.50 per dozen, prepaid.

FULVA. (Tawny Day Lily.) One of the best known varieties. Height, 4 to 5 feet; trumpet-shaped flowers of a bronzy orange-red color; flowers from June to August. 25 cents each; \$2.50 per dozen, prepaid.

LILY OF THE VALLEY

A greatly admired and very popular commercial flower at all times, its graceful racemes with numerous large, white, drooping bells, producing a delightful fragrance. Lily of the Valley may be grown for house plants twelve months in the year. 50 cents per dozen; 25 for \$1.00; 100, \$4.00.

FUNKIA. Plantain Lily

FUNKIA—Plantain Lily. The Plantain Lilies are among the easiest plants to manage; their broad, massive foliage makes them attractive subjects for

the border, even when not in flower. They succeed equally well in sun or shade. 20 cents each; \$2.00 per dozen, prepaid.

TIGRINUM. Tiger Lily

TIGRINUM SPLENDENS (The Common Tiger Lily). So well known that it does not require description. 10 cents each; \$1.00 per dozen; \$7.50 per 100, prepaid.

TRADESCANTIA

(Spider Lily.)

TRADESCANTIA VIRGINICA. An all-round plant for wet or dry, sunny or shady situations, continuing in bloom from early summer until frost. Clear blue, three-petaled flowers in clusters on long stems and long, pointed foliage. Height, 2 feet. 25 cents each; \$2.50 per dozen, prepaid.

VAR. ALBA. White flowers. A pretty contrast when planted with the purple variety. 25 cents each; \$2.50 per dozen, prepaid.

YUCCA

(Adam's Needle.)

YUCCA FILAMENTOSA. A stately foliage and flowering plant equally imposing in solitary or group planting; always conspicuous. The broad, sword-like foliage is evergreen, while in mid-summer it shows great erect, branching stems, bearing a showy display of pendant, creamy white bells. Very fragrant; flowers in July and August. 35 cents each; \$3.50 per dozen; large plants, \$1.00 each, prepaid.



Hedge of *Berberis Thunbergii*

Hedge Plants—Shipped by Express, Collect

The hedge is a valuable adjunct in embellishing the home grounds. It lends an air of individuality and refinement. Below we list the most popular varieties in present use.

BERBERIS THUNBERGII (Japan Barberry.)

Where a low, dwarf, deciduous hedge is wanted, nothing equals this beautiful Barberry. It is of spreading habit, growing extremely thick right from the base and requires but little pruning to keep it in shape. The leaves are small, light green, and towards Fall assume rich, brilliant colors, the fruit or berries becoming scarlet; absolutely hardy in all parts of the country.

	Doz.	100
2-year, 15 to 20 inches	\$2.00	\$15.00
3-year, 18 to 24 inches	2.50	18.00
5-year specimen bushes, 50c. each	5.00	

LIGUSTRUM. Privet LIGUSTRUM. Amurensis (Amoor River Privet.)

An ornamental hedge plant somewhat similar to the famous California Privet, but hardier. A tall-growing upright shrub; leaves dark green and lustrous, tardily deciduous; nearly evergreen in the South. Flowers white, in erect panicles. Splendid for hedges.

	Doz.	100
1 to 2 feet	\$1.00	\$10.00
2 to 3 feet	1.50	14.00
3 to 4 feet	2.50	18.00

L. IBOTA (Japanese Privet). L. One of the hardiest and most graceful of all Privets; branches spreading and curving; foliage grayish green; produces white, fragrant flowers in June, followed by black berries; valuable for specimen, mass planting or hedges. 2 to 3 feet, **20 cents**; **\$12.00 per 100**. 3 to 4 feet, **25 cents**; **\$15.00 per 100**.

CALIFORNIA PRIVET

L. OVALIFOLIUM (California Privet). Of all ornamental hedge plants this is the most popular and more of it is planted than all others combined. Its foliage is a rich, dark green and is nearly evergreen, remaining on the plant until mid-Winter. It is of free growth and succeeds under the most adverse conditions, such as under dense shade of trees where other plants would not exist.

To form a dense hedge from the base up the plants should be severely pruned the first two seasons. Plant the one-year old size 8 inches apart in the row, the larger sizes 10 to 12 inches apart.

	Doz.	Per 100
Strong, 1-year, 18 to 24 inches	\$1.50	\$10.00
Strong, bushy, 2-year, 24 to 30 inches	1.75	12.00

Gift Boxes

For the purpose of stimulating a greater interest in Flowers and Gardening, and believing many would be interested in sending a few bulbs or roots to a friend, I am making the following offers:—

All roots are guaranteed to grow, and are carefully selected, and packed in neat boxes. Your card can be enclosed if you desire.

All Gift Boxes shipped prepaid to any part of United States or Canada.

Three Choice Double Peonies for \$2.00, one root of white, one red, one pink. All recommended varieties.

Two Single Peonies for \$1.00, two different colors. The Single Peonies are not commonly grown, but are strong growers, with graceful fantastic flowers.

Six Rare Iris for \$1.00, to include five distinct colors of the well-known Fleur de Lis, and one of the more rare Siberian Iris.

Three Fleur de Lis or Iris Germanica for 50c., one root of lavender, one smokey shade and one yellow.

Fifteen Choice Tulips for \$1.00, either a good assortment of colors, or all one color, whichever you choose.

Ten Choice Assorted Hyacinths for \$1.00, including a good variety of colors.

Six Rare Hyacinths for \$1.00, the uncommon colors.

Fifty Assorted Crocus Bulbs for \$1.00, which make a good assortment for planting out for early Spring flowers.

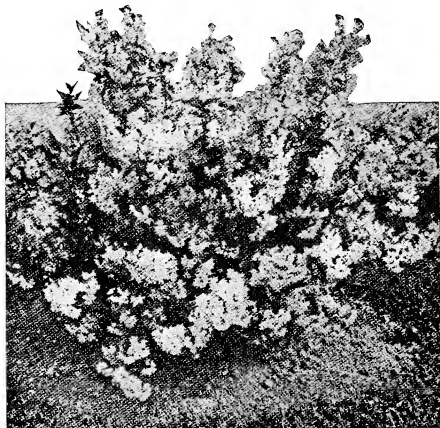
Six Double Narcissus and Six Single Narcissus Bulbs for \$1.00.

Three Hemerocalis for 50c., three different colors, clear orange, lemon-yellow and orange-red.

Ornamental and Flowering Shrubs

Shipped by Express at Purchaser's Expense

It is my aim to produce everything in flowering shrubbery that is useful, hardy and worthy of cultivation in our climate. A good shrub collection will present the greatest variety of color throughout the season, both in flower and foliage. Even in Winter it is attractive in appearance from the gracefulness of its stem and branches, and from the color of its bark. When right selections are made it will serve almost as well as evergreens to shut out from view fences or other low unsightly objects.



Deutzia—Gracelis

AMYGDALUS. Almond

ALMOND FLORE ROSE PLENO (Double Pink Almond). Flowers double, rose-colored. 18 to 24 inches, **75 cents each**. 24 to 30 inches, **\$1.00 each**.

AZALEA

AZALEA, VASEYL. A very early and beautiful Southern Azalea, which bears in great profusion delicate pink flowers in April and May. According to Ridgways color chart the flowers are a delicate hermosa pink, with dots of begonia-pink at base of the petals. The blossoms appear very early, before the leaves, making it a mass of pink, and very showy. A tall slim grower. Foliage colors dark crimson in the Fall. Strong bushes, one to two feet in height, **\$2.00 each**. Selected specimens, **\$3.00 each**.

AZALEA, VISCOSA. Flowers white, very slightly tinted rose; fine for swampy ground, suitable for any soil. It bears its fragrant flowers in profusions in late June or early July. 12 to 18 inch bushes, **\$1.00 each**; 18 to 24 inch, **\$2.00 each**.

BERBERIS. Barberry

BERBERIS THUNBERGII

Where a low, dwarf, deciduous hedge is wanted, nothing equals this beautiful Barberry. It is of spreading habit, growing extremely thick right from the base and requires but little pruning to keep it in shape. The leaves are small, light green, and towards Fall assume rich, brilliant colors, the fruit or berries becoming scarlet; absolutely hardy in all parts of the country.

	Doz.	100
10 to 15 inches.....	\$1.50	\$12.00
15 to 20 inches.....	2.00	15.00
18 to 24 inches.....	2.50	18.00
5-year specimen bushes, 50 cents each	5.00	

BERBERIS ATROPURPUREA (Purple-leaved Barberry). Especially remarkable for its dense, upright growth and its brilliant purple foliage and fruit. When full grown, plants attain a height of 4 to 5 feet, but can be kept at any height below this by shearing. It is very valuable as a border for walks

and drives. Splendid for a hedge; also good as single specimens on the lawn. Endures partial shade and is perfectly hardy.

	Each.	Dozen.
18 to 24 inches.....	\$0.50	\$5.00
2 to 3 foot specimen bushes.....	.75	7.50

CARAGANA. Siberian Pea

CARAGANA ARBORESCENS. Very hardy, tall-growing shrub, producing small yellow flowers in June; dark green wood and neat foliage.

18 to 24 inches.....	\$.75 each
24 to 30 inches.....	\$1.00 each
30 to 36 inches.....	1.50 each

CORNUS. Cornel or Dogwood.

C. FLAVIRAMEA (Golden-bark Dogwood). Branches yellow, and makes a striking contrast when planted with variety rubra; the red-barked sort. Very attractive in Winter.

1 to 2 feet.....	\$.75 each
2 to 3 feet.....	1.00 each

C. PANICULATA (Gray Dogwood). One of the best native shrubs; free-flowering; very handsome when in bloom, and with its white fruits on red peduncles in the Fall.

1 to 2 feet.....	\$.75 each
2 to 3 feet.....	1.00 each

C. SANGUINEA (European Red Oiser). Branches deep red or purplish red; greenish white flowers are followed by black fruit.

1 to 2 ft.....	\$.75 each
2 to 3 feet.....	1.00 each
3 to 4 feet specimens.....	1.50 each

CYDONIA. Japan Quince

CYDONIA JAPONICA. A shrub with spreading, spiny branches; glossy leaves; flowers are a deep scarlet, in clusters. The quince-shaped, fragrant, golden-yellow fruit remains a long time in Summer.

1 to 2 feet.....	\$.75 each
2 to 3 feet.....	1.00 each

DEUTZIA.

We are indebted to Japan for this valuable genus of plants. Their hardihood, fine habit, luxuriant foliage and profusion of attractive flowers places them among the most beautiful and most popular of flowering shrubs at the present time. Flower in June and through July and August.

CRENATA ROSEA PLENA. (Double-flowering Deutzia.) Double white, tinged with pink; very desirable tall shrub.

	Each.	Dozen.
24 to 36 inches.....	\$0.50	\$5.00
36 to 48 inches.....	.75	7.50
48-inch specimen bushes.....	1.00	

GRACILIS. A low-growing shrub with slender, graceful branches of pure white flowers; free-flowering and very sweetly scented.

	Each.	Dozen.
10 to 12 inches, bushy.....	\$0.50	\$5.00
18 inches, bushy.....	.75	7.50

PRIDE OF ROCHESTER. A variety of Deutzia Crenata Flore Plena and producing large, double white flowers; back of the petals slightly tinted with rose. It excels all the older sorts in size of flower, length of panicle, profuseness of bloom and vigorous habit; blooms nearly a week earlier.

	Each.	Dozen.
24 to 36 inches.....	\$0.75	\$ 7.50
36 to 48 inches.....	1.00	10.00
48-inch specimen bushes.....	1.25	12.00



Hydrangea Arborescens

ORNAMENTAL and FLOWERING SHRUBS—Continued.

DIERVILLA. Weigela

A very desirable family of shrubs, all of which bloom in June.

D. HORTENSIS, CONQUERANT. One of the most beautiful of the Weigelas; with very large flowers of rich rosy-lake, carmine throat. Strong vigorous grower. Blossoms profusely in June and spasmodically all Summer. Small specimen tree-shaped forms can be furnished at \$3.00 each for those two to three feet, three to four feet tree shape, \$4.00 each; five foot tree specimens, \$5.00 each. Strong bushes as follows:

1 to 2 feet	\$.75 each
2 to 3 feet	1.00 each
3 to 4 feet	1.50 each
4 to 5 feet	2.00 each
6 foot specimens	3.00 each

D. HYBRIDA CANDIDA (White Weigela). One of the best. Handsome light green foliage and showy pure white flowers. Blooms profusely in June and spasmodically all Summer. Vigorous and fine in habit.

1 to 2 feet	\$.75 each
2 to 3 feet	1.00 each
3 to 4-foot specimens	1.50 each

ROSEA. (Rose-colored Weigela.) An elegant shrub, with fine rose-colored flowers, introduced from China by Mr. Fortune, and considered one of the finest plants he has discovered; of erect compact growth; blossoms in June.

1 to 2 feet	\$.75 each
2 to 3 feet	1.00 each
3 to 4 feet	1.25 each

FORSYTHIA. Golden Bell

The Forsythia is indispensable as an early blooming shrub. The flowers appear in immense quantities before the leaves, completely hiding the branches. It is one of the easiest shrubs to cultivate.

FORSYTHIA FORTUNEI. L. Upright in habit, with broad, deep green foliage, turning to a purplish tint in the Autumn; flowers deep yellow and in great profusion.

	Each	Dozen
1 to 2 feet	\$0.50	\$5.00
2 to 3 feet75	7.50
3 to 4-foot specimen bushes	1.00	10.00
4 to 5-foot specimen bushes	1.50	12.00

HYDRANGEA

(The Hydrangeas.)

HYDRANGEA ARBORESCENS GRANDIFLORA.

(Snowball Hydrangea.) (Illustration above.) This magnificent, perfectly hardy American shrub has snow-white blossoms of largest size. One of its most valuable characteristics is its coming into bloom just after the passing of all the early Spring shrubs, while its long flowering season, from early June until late August, makes it a valuable acquisition in any garden. Strong plants, **50 cents each; \$5.00 per dozen; specimen plants, \$1.00 each.**

HYDRANGEA PANICULATA GRANDIFLORA.

Without doubt the best known and most popular Autumn flowering shrub in cultivation at the present time. The flowers, which are borne in dense, pyramidal panicles a foot long in the greatest profusion, are white when they first open, but gradually change to rose color, and remain in good condition for weeks. Fine bush plants, **75 cents each; \$7.50 per dozen; extra fine bush plants, \$1.00 each.**

LONICERA. Bush Honeysuckle

L. MORROWII (Japanese Bush Honeysuckle). A shrub with wide-spreading branches; leaves dark green above and grayish beneath; creamy white flowers in May and June, followed by bright red fruits ripening in August, and lasting until late in the Fall. Very decorative.

1 to 2 feet	\$0.75 each
2 to 3 feet	1.00 each

MALUS. Crab

MALUS PARKMANI. From Japan. An irregular, awkward-shaped tree when young, but a most attractive tree when filled with buds and blossoms. Each bud produces regularly five blossoms and are set on stems 3 inches long, and are so slender that they bend with the weight of the buds or bloom in a very graceful fashion. The buds are carmine in color; the open blossoms are semi-double, and the tree when in bloom presents a most gorgeous appearance.

2 to 3 feet	\$1.25 each
3 to 4 feet	1.50 each

ORNAMENTAL and FLOWERING SHRUBS—Continued.

FLORIBUNDA. Profuse-flowering Crab. Forms a shapely bush or small tree; bud warm red, opening to light pink, delicately shaded. Delicate fragrance. In Spring, the bush is a mass of color; this is the most prolific of all. Good specimens.

2 to 3 feet.....	\$1.50 each
3 to 4 feet.....	2.00 each
4 to 5 feet.....	2.50 each
5 to 6 feet.....	3.00 each

PHILADELPHUS

(*Syringa* or *Mock Orange*.)

PHILADELPHUS CORONARIUS. This variety is known as the "Garland *Syringa*." It is a strong-growing shrub often 10 to 12 feet in height, very hardy, and like all the *Philadelphus* is one of the best shrubs for situations which are partially shaded, although preferring sun. Orange-scented, creamy white flowers in May and June.

	Each	Dozen
1 to 2 feet.....	\$0.50	\$5.00
2 to 3 feet.....	.75	7.50
3 to 4 foot specimen bushes.....	1.00 each	

RHODOTYPOS

RHODOTYPOS kerrioides. A distinct, decorative shrub. Foliage very large and handsome; branches clustered with delicate white, pendulous flowers in spring, followed by black berries, which persist throughout the Winter.

	Each.	Dozen
1 to 2 feet.....	\$0.50	\$5.00
2 to 3 feet.....	.75	7.50
3 to 4 feet.....	1.00	10.00

SPIRÆA

SPIRÆA arguta. Feathery foliage and very profuse, pure white flowers in early May. Dwarf.

1 to 2 feet.....	\$1.00 each
2 to 3 feet.....	1.50 each

ANTHONY WATERER. A rapid grower, with upright, spreading branches and dark green foliage; very desirable for lawn decoration. Brilliant rosy-carmine flowers, in large, round clusters, blooming all through the late part of the Summer.

	Each	Dozen
1 to 2 feet.....	\$0.50	\$5.00
2 to 3 feet.....	.75	7.50
3 foot specimen bushes.....	1.00	10.00

BILLARDI ALBA. A white-flowered form. 75 cents each.

OPLUIFOLIA AUREA. (Golden *Spiræa*.) One of the best of our golden-leaved shrubs. White flowers in clusters, produced in May. Foliage golden-yellow all Summer.

	Each	Dozen
2 to 3 feet.....	\$0.75	\$7.50
4 foot specimen bushes.....	1.00	

VAN HOUTTEI. By many this is regarded as the finest of all *Spiræas*, and it is assuredly one of the most esteemed shrubs in cultivation. It forms an erect bush with graceful arching branches, well covered with neat, rich, green foliage, and in early Summer a profusion of large, pure white flower clusters. Very hardy and most effective.

	Each	Dozen
1 to 2 feet.....	\$.50	\$5.00
2 to 3 feet.....	.75	7.50
3 foot specimen bushes.....	1.00	

SYMPHORICARPOS

SYMPHORICARPOS RACEMOSUS (Snowberry). Smooth shrub, with slender branches, usually

bending under their load of white, waxy berries which appear in Autumn; flowers are rose-colored, in loose racemes in July and August.

1 to 2 feet.....	\$0.50 each
2 to 3 feet.....	.75 each
3 to 4 feet.....	1.00 each

S. VULGARIS (Indian Currant). Of more compact growth than the above; spreading, graceful habit. The flowers are greenish-red and succeeded by dark purplish red berries in clusters. Excellent for massing on hillsides or rough places.

1 to 2 feet.....	\$0.50 each
2 to 3 feet.....	.75 each
3 to 4 foot specimens.....	1.00 each

SORBUS. Mountain Ash

SORBUS AUCUPARIA (European Mountain Ash). Fine tree-bearing clusters of scarlet berries from July to Winter, making it very attractive.

2 to 3 feet.....	\$1.00 each
4 to 5 feet.....	1.25 each

SYRINGIA or LILAC

SYRINGIA VULGARIS. (Common Lilac.) One of the oldest shrubs, but still ranks among the choicest. Purple, fragrant flowers; large clusters. Flowering in May. Too well known to require description.

	Each	Dozen
2 to 3 feet.....	\$0.50	\$5.00
3 foot specimen bushes.....	.75	7.50

S.—ALBA (Common White Lilac). Similar to the *Vulgaris*. Flowers are white, appearing a week earlier than those of any other variety.

2 to 3 feet.....	\$0.75 each
3 to 4 feet.....	1.00 each

VILLOSA EMODI. A species from the Himalayas, forming a large shrub, with bright green foliage, whitish underneath and panicles of pinkish lilac flowers in May and June.

2 to 3 feet.....	\$1.00 each
3 to 4 feet.....	1.50 each
4 to 5 feet.....	2.00 each
6 ft. specimens.....	3.00 each

TAMARIX. Tamarisk

TAMARIX AFRICANA (African Tamarisk). An ornamental shrub of graceful appearance. Light feathery foliage and large, loose panicles of pinkish flowers in early Summer.

1 to 2 feet.....	\$0.75 each
2 to 3 feet.....	1.00 each

VIBURNUM. Arrow-wood

VIBURNUM ACERIFOLIUM (Maple-leaved *Viburnum*). A slender, low-growing shrub, with flat heads of creamy white flowers in May. Purple-crimson berries in Autumn. Grows well in shady situations. Splendid for massing.

1 to 2 feet.....	\$0.75 each
2 to 3 feet.....	1.00 each

V. OPULUS STERILE. Snowball. Globes of pure white flowers. Very striking.

1 to 2 feet.....	\$1.00 each
2 to 3 feet.....	2.00 each

XANTHORHIZA.

XANTHORHIZA APIIFOLIA. Shrub Yellow-Root. Attractive, dwarf shrub, with exquisite compound leaves and slender racemes of curious, brownish purple flowers; autumnal tints are very pleasing.

1 to 1½ feet.....	\$0.50 each
1½ to 2 feet.....	1.00 each



Evergreen Trees

These Evergreens are all heavily rooted, thrifty specimens, in prime condition for transplanting. They will be found invaluable for lawn decoration, high hedges, the filling out of corners, the hiding of objectionable objects, and many other purposes that will suggest themselves to the owner of the well-kept place. The proper time for transplanting is in the early Fall.

All Evergreens will be balled and bagged and shipped by express, collect. When crating is necessary, it will be charged for at cost.

ABIES. Fir

ABIES BALSAMEA (Balsam Fir). A slender tree of pyramidal form, and of rapid growth. Foliage dark green and silvery beneath. It thrives in moist soil best, but will grow on dry uplands. Not desirable farther south than Northern Massachusetts.

	Each.
18 to 24 inches.....	\$2.00
24 to 30 inches.....	3.00
3 feet specimens.....	4.00

A. CANDENSIS (Hemlock). See *Tsuga canadensis*.

ABIES Concolor. One of the hardiest and most beautiful evergreens. Tree of graceful, stately habit; grows rapidly. Pretty cones of purple and yellow. Large, broad, silvery green foliage. A rare and exceedingly choice variety that is indispensable in lawn plantings.

	Each
3 to 4 feet.....	\$5.00
4 to 5 feet.....	8.00

JUNIPERUS. Juniper

A Most Interesting and Desirable Family of Hardy Evergreens.

JUNIPERUS HIBERNICA (Irish Juniper). Tree with dense pillar-like growth. Glauccous green foliage; with tips of branchlets erect.

	Each
18 to 24 inches.....	\$2.00
24 to 30 inches.....	2.50
30 to 36 inches.....	3.00

J.—SUECICA (Swedish Juniper). Grows much like the Irish Juniper; but hardier. Foliage sharp;

rather long spreading leaves, the branches drooping at the tips.

	Each
18 to 24 inches.....	\$2.00
24 to 30 inches.....	2.50
30 to 36 inches.....	3.00
36 to 42 inches.....	3.50

PICEA. Spruce

PICEA CANADENSIS ALBA (White Spruce). Fine compact, pyramidal form; moderate growth; the aromatic leaves are silvery gray, less numerous and more pointed than in other species. Suited to the seashore. A valuable evergreen.

	Each
18 to 24 inches.....	\$0.75
24 to 30 inches.....	1.00
30 to 36 inches.....	1.50
36 to 42 inches.....	2.00
42 to 48 inches.....	2.50

PICEA PUNGENS (Green Colorado Spruce). Lm. A slow-growing, hardy conifer of symmetrical habit; will thrive near the salt water as can no other variety of conifer, consequently admirably adapted to seashore planting. A very beautiful evergreen. Specimens of larger sizes can be furnished if desired.

18 to 24 inches.....	\$1.50
24 to 30 inches.....	2.50
36 to 42 inches.....	3.50
42 to 48 inches.....	5.00
48 to 54 inches.....	6.00

PUNGENS VAR GLAUCA (Colorado Blue Spruce). A glauccous form of *Picea pungens*; same general characteristics as above, with the exception that instead of being green it has an exceedingly rich silvery-blue color. Very desirable for a specimen tree on any lawn; easily transplanted. Specimens

EVERGREEN TREES—Continued.

in larger sizes up to 10 feet can be furnished upon application.

12 to 18 inches.....	Each. \$2.00
18 to 24 inches.....	2.50
24 to 30 inches.....	3.00
30 to 36 inches.....	4.00
36 to 48 inches.....	6.50

PUNGENS KOSTERI (Koster's Blue Spruce). Same general characteristics as the above, varying in this respect only, that they are of uniform color, deep silvery-blue. Compact habit of growth; very symmetrical and most desirable of all. Larger specimens when wanted.

1S to 24 inches.....	Each \$3.00
24 to 30 inches.....	5.00
30 to 36 inches.....	7.00
36 to 48 inches.....	9.00

PSEUDOTSUGA, Douglas Spruce

PSEUDOTSUGA TAXIFOLIA (Douglas Spruce). One of the most desirable of evergreens, considered from every standpoint. When small, it is beautiful in shape and texture, and when it attains large proportions, it is majestic. Leaves dark bluish green; rapid grower, and healthy; worthy of a place on every estate. Prices for larger specimens on application.

1S to 24 inches.....	Each \$1.50
24 to 30 inches.....	2.00
30 to 36 inches.....	3.00
36 to 48 inches.....	4.00

PINUS, Pine

PINUS BANKSIANA, syn. divaricata (Jack Pine). A tree that will thrive on poorest and driest soils; very rapid grower; desirable for screening purposes. Somewhat irregular habit of growth.

3 to 4 feet.....	Each \$1.50
4 to 5 feet.....	2.00
5 to 6 feet.....	3.50
6 to 8 feet.....	4.00

P. MUGHUS (Dwarf Mountain Pine). Very valuable where a low, dense, spreading growth of evergreen is desired; foliage deep green; very hardy. A most useful tree for lawn decoration, for rock-work, or covering hillsides.

12 to 15 inches.....	Each \$1.50
15 to 18 inches.....	2.00
18 to 24 inches.....	3.00
24 to 30 inches.....	4.00
30 to 36 inches.....	6.00

P. SYLVESTRIS (Scotch Pine). One of the most rapid-growing of the conifers; decidedly beautiful and useful for screening purposes. In this country it is not a long-lived tree; when twenty-five or thirty years old it begins to show age, consequently other trees should be planted with it to ensure permanence. The foliage bluish-green.

24 to 30 inches.....	Each \$1.50
30 to 36 inches.....	2.00
36 to 48 inches.....	2.50
48 to 60 inches.....	3.00

RETINISPORA, Japan Cypress

RETINISPORA PLUMOSA (Plume-like Japan Cypress). A tree with soft, plume-like feathery foliage; light green in color; very graceful in habit of growth. To be kept at its best it should be sheared in the middle of June. In that event it will not become open and ragged.

18 to 24 inches.....	Each \$2.50
24 to 30 inches.....	3.00
30 to 36 inches.....	4.00
36 to 42 inches.....	5.00
42 to 48 inches.....	6.00
48 to 60 inches.....	7.00

RETINISPORA, PLUMOSA AUREA. Golden form of *Retinispora plumosa*. General description and habit the same as the foregoing.

10 to 15 inches.....	Each \$3.00
15 to 18 inches.....	5.00
18 to 24 inches.....	7.00
24 to 30 inches.....	9.00

R. SQUARROSA (Squarrose-leaved Japan Cypress). A choice ornamental tree of Japanese origin, with a bluish-gray foliage. Very graceful and pretty. It should be planted in somewhat sheltered positions, and will repay attention given it.

10 to 12 inches.....	Each \$1.50
12 to 15 inches.....	2.00
15 to 18 inches.....	2.50
18 to 24 inches.....	2.75
24 to 30 inches.....	3.00
30 to 36 inches.....	4.00

TAXUS, Yew

This is a family of low, slow-growing evergreens that are somewhat expensive; but worthy of a place on every gentleman's estate where something choice is desired.

TAXUS CANADENSIS (Canadian Yew). A prostrate shrub with wide-spreading, slender branches; brown bark; foliage pretty dark green; showy.

15 to 18 inches.....	Each \$2.00
18 to 24 inches.....	2.50

THUYA, Arborvitae

THUYA OCCIDENTALIS (American Arborvitae). The common upright, densely branched evergreen, so commonly used as single specimens, hedges, and windbreaks. Thrives on moist land as well as on dry. Stands close pruning.

18 to 24 inches.....	Each \$0.75
24 to 30 inches.....	1.00
30 to 36 inches.....	1.25
36 to 42 inches.....	1.50

THUYA ORIENTALIS. A slim, close-growing variety of *Arborvitae*.

12 to 18 inches.....	Each \$1.00
18 to 24 inches.....	1.50
24 to 30 inches.....	2.00
30 to 36 inches.....	3.00

TSUGA, Hemlock.

TSUGA AMERICANUS (American Hemlock).

12 to 18 inches.....	Each \$2.00
18 to 24 inches.....	3.00
24 to 30 inches.....	4.00

TSUGA CANADENSIS (Hemlock). A broadly pyramidal, medium-sized tree of dense growth, with rich green foliage; branched thickly set, with more or less pendulous tendency, giving a particularly graceful effect to the whole; choice as a single lawn tree, or for hedge purposes, succeeding in all except particularly bleak situations.

24 to 30 inches.....	Each \$3.00
30 to 36 inches.....	3.50
36 to 42 inches.....	4.00
42 to 48 inches.....	5.00
48 to 54 inches.....	6.00
60 inch specimens.....	7.00

Fruit Trees

All Fruits Shipped by Express at Purchasers' Expense

Apples

Standard Tree, 3 to 5 feet, \$1.50 each; \$15.00 per dozen, except where otherwise priced.

ALEXANDER. Fall apple. A Russian apple of very large size with beautifully striped or stained red skin and white, crisp flesh, tender, juicy and sub-acid. Tree is large and vigorous, bearing heavy crops. Ripening September and October.

BALDWIN. Vigorous growth; large, bright red; crisp, juicy, sub-acid. The most popular and profitable market variety. Ripening December to March.

DUCHESS OF OLDENBURG. Vigorous growth; Russian; large, striped, tender, juicy, sub-acid; regular and abundant bearer. One of the hardiest varieties grown. Ripening September.

EARLY HARVEST. Very early; fruit medium size, pale yellow, tender, juicy, sub-acid. Ripening August. Tree is vigorous grower.

FAMEUSE or SNOW. Vigorous growth; medium size, deep crimson; tender, sub-acid, melting, delicious; very good; hardy. One of the best desert apples. Ripening November to January.

MAIDEN'S BLUSH. Free growth; large, pale lemon with crimson cheeks; flesh white, tender and crisp, sub-acid. Tree vigorous and good bearer. Ripening September and October.

MCINTOSH RED. Color is bright, deep red; flesh white with pinkish tinge; juicy with slight acid flavor. Hardy. Ripening November to February. \$2.00 each.

NORTHWESTERN GREENING. Fall Apple. Round; very large; greenish-yellow, extremely hardy, vigorous; bears very young. Ripening September.

RHODE ISLAND GREENING. Vigorous growth; large, green, fine grained; rich, sub-acid; very good. Ripening December to April.

ROME BEAUTY. Moderate growth, large, round; mottled and striped in different shades of red; flavor and quality way above the average; appearance and size are its valuable points; tender, juicy, sprightly, sub-acid. Ripening December to May.

SPITZENBERG. (Esopus.) Large, round, dark red with gray dots; firm, rich, crisp, juicy, spicy and delicious. Ripening December to April.

STARK. (Pride of Maine.) An early and abundant bearer; fruit large and valued for its long keeping; skin greenish-yellow, shaded and striped red, thinly covered with light brown dots; flesh yellow, moderately juicy, mild. Ripening January to May.

STAYMAN'S WINESAP. A dark, rich, red Apple with indistinct stripes; flesh yellow, not in the least mealy, plenty of juice; firm. Ripening November to April.

SUTTON BEAUTY. Free growth; medium to large; yellow and crimson; tender, juicy, sub-acid; very good and a long keeper. Ripening November to April.

WAGENER. Vigorous growth, medium to large; yellow and crimson, fine texture, high flavor and excellent quality, juicy and sub-acid. Ripening December to March.

WEALTHY. Fall Apple. Tree growth, medium size; dark red; flesh white or a little stained; tender, crisp, juicy, fine grained, aromatic and very good. Ripening December to February.

YELLOW TRANSPARENT. Free growth; medium, roundish, oblate, slightly conical; pale yellow; tender, juicy, sprightly sub-acid, fine flavor, good. Ripening August.

Crab Apples

Standard Tree, 2 to 4 feet, \$1.50 each; \$15.00 per dozen.

HYSLOP. Large size; dark crimson with bloom; very showy, and to my knowledge the best of this class.

A Few of my many Testimonials

Box 179A R. D. 4, Murray, Utah.
Dec. 29, 1919.

Mr. J. K. Alexander,
East Bridgewater, Mass.
Dear Mr. Alexander,

I was certainly delighted and grateful to receive my lilies, with the Phlox which you added free of charge, and can assure you you have succeeded in your effort to please me.

I'm your friend for life!

I have never been treated so generously before. Your sketch for my shady border was beautiful, and I am going to follow out carefully all its details as soon as Spring comes.

Yours sincerely,

(Signed) Maude Chegwidden.
(Mrs. E. J. Chegwidden.)
Portland, Maine.

June 25, '20.

J. K. Alexander,
East Bridgewater, Mass.

Dear Sir:

The two Phlox you so kindly sent me arrived in fine condition, and you should see it in my garden now. It never even wilted, and I am more than pleased with it. Am sorry to have bothered you and surely did not think I would have the Phlox replaced by such nice ones. The Dahlia bulb is growing fine. Thanking you for your kindness.

Carrie E. Stack,
120 Lancaster Street.
June 27, 1920.

Mr. J. K. Alexander,
Dear Sir,

I received the bulbs on the 25th instant, in fine shape, and I thank you very much for the extra one. I will want some more plants this Fall, if you think it is the best time to plant them. Wishing you a very prosperous year.

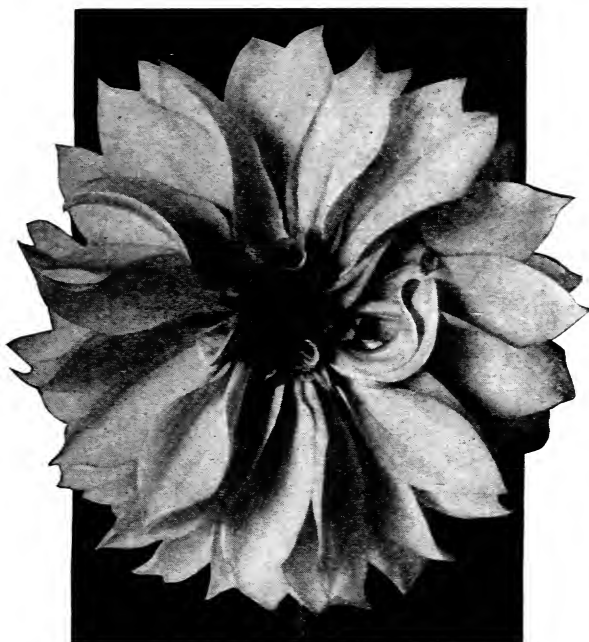
Very truly yours,

Geo. H. Hertz,
3210 A Street,
Philadelphia, Pa.



"ACHIEVEMENT" COLLARETTE DAHLIA
For description of Dahlias, write for my special Dahlia Catalog

Price 35 cents each



DAHLIA—ROSE GEM. \$1.00 Each

A Word to Dahlia and Gladioli Lovers

My regular Spring Catalog and Cultural Guide will be ready for distribution January 1st, 1921, as usual. All flower lovers who did not receive it this spring should not hesitate to send for one.

YOUR INVITATION

You are most cordially invited to visit my gardens during the flowering season while my Iris, Peonies, Phlox, Gladioli and Dahlias are in blossom, and I assure you a hearty welcome.

Iris are in blossom from June 1st to July 1st.

Peonies are in blossom from June 10th to July 10th.

Phlox are in blossom from July 1st to August 1st.

Gladioli are in blossom from August 1st until killed by frost.

Dahlias are in blossom from August 15th until killed by frost.

Imagine the pleasure in walking through my fifty-acre garden, where you can enjoy seeing 3,000 varieties of Dahlias, two acres of Peonies, 150,000 Gladioli, 75 varieties of Iris, and a select collection of Hardy Perennials that are favorites in the old-fashioned garden.

In addition you will see my Ornamental Shrubs, Hedge Plants and Evergreens.

Very cordially yours,

J. K. ALEXANDER

East Bridgewater, Mass.

Auto Drive Thru My Garden

THE DAHLIA KING

Visitors Welcome Seven Days a Week

INSECTICIDES AND FUNGICIDES.

For Insect Pests and Fungus Growths

Liquids and Poisons are not mailable. Other Insecticides and Fungicides may be sent by Parcel Post prepaid, at prices quoted.

ARSENATE OF LEAD, DRY. Has all the advantages of the paste form, but goes twice as far and is easier to handle. Can be applied like Paris Green with powder guns. Gaining in favor. 1 lb., \$1.00; 5 lbs., \$4.00.

"BLACK LEAF 40" (Sulphate of Nicotine). Highly recommended for destroying aphids, thrips, etc., without injury to foliage. Perfectly soluble in water; no clogging of nozzles. 1 oz., 50c.; ½ lb., \$2.00, makes 50 gals.; 2 lbs., \$3.50.

BORDEAUX MIXTURE, LIQUID (Sterlingworth). Very effective in preventing and checking all fungous diseases, such as potato rot, potato blight, rust, mildew and diseases of grape. Qt., 75c.; gal., \$2.00.

BORDEAUX MIXTURE, DRY. (Sterlingworth). In a popular and convenient form for immediate use; can be used dry or with water. 1 lb., 50c.; 5 lbs., \$2.00.

BUG DEATH. A non-poisonous powder, sure death to potato, squash and cucumber bugs, currant and tomato worms; safe to handle. Apply dry or in water. 1 lb., 50c.; 3 lbs., \$1.00.

Dickey Duster. Each, 50c.

B-D Sifter. Each 70c.

CUT WORM KILLER (Sterlingworth). Produces quick results. The most effective remedy yet introduced. It is non-poisonous to the user or animals. It is so alluring to cut worms that they are attracted to it in place of any vegetation. One pound sufficient for 175 plants in hills and for 150 feet of drill. Lb., 50c.; 5 lbs., \$2.00.

HELLEBORE. Effective dry or mixed with water for worms on currants, gooseberries, etc., where a violent poison like Paris Green or Arsenate of Lead is objectionable. ¼ lb., 50c.; ½ lb., 75c.; lb., \$1.00

PARIS GREEN. More extensively used than any other poison. Purest of all brands. ¼ lb., 50c.; ½ lb., 75c.; lb., \$1.00. Special price on large quantities.

PLANT LICE KILLER. (Sterlingworth). Exclusively for use on house plants and vegetables infested with plant lice. Dilute 1 part to 15 parts water and apply as a fine spray. Pt., 50c.; qt., \$1.00.

PYROX, BOWKER'S. The one best spray for apples, potatoes and general purposes against leaf-eating insects and fungus diseases. This combined insecticide and fungicide is better than Paris Green, Arsenate of Lead or Bordeaux Mixture, and cheaper to use. It sticks to foliage like paint in spite of heavy rains. Mix with cold water and it is ready to use. Lb., \$1.00; 2 lbs., \$1.75.

SLUG SHOT. A light, composite, fine powder, easily distributed either by duster, bellows, or in water by spraying. Thoroughly reliable in killing currant worms, potato bugs, cabbage worms, lice, slugs, sow bugs, etc. Also strongly impregnated with fungicides. Lb. carton, perforated top, 50c.; 5 lbs., \$2.00.

TOBACCO DUST. Valuable as an insecticide and fertilizer. Sure preventive for green fly, and better as a mulch than the stems. Lb., 25c.; 5 lbs., \$1.00

Vermine

For Greenhouses, Gardens, Lawns, Tennis Courts and Golf Links. Destroys White Grubs, Cut, Eel and Wire Worms, Slugs, Maggots, Root Lice and Ants. Directions for application on each package. Applied in watering can or with sprayer.

1 Quart	\$2.00
Pint	1.50
Half-pint	1.00
Quarter-Pint75

WHALE OIL SOAP, with Tobacco. A very effective, simple and cheap preparation for the preservation of trees, shrubs, plants, vines, rose bushes, etc., from the ravages of insects. Lb., 50c.; 5 lbs., \$2.00.

Wooden Plant Labels

For any kinds of plants. These are plain labels to be used either in pots or out of doors, with one end pointed. I am also offering Dahlia labels which are suitable for labeling all kinds of Dahlias.

Plant Labels—4 inch, plain: 50 cents per 100, prepaid; \$2.00 per 1,000, express collect. 5-inch, plain, 55 cents per 100, prepaid; \$2.50 per 1,000, prepaid. 6-inch, plain: 60 cents per 100, prepaid; \$2.75 per 1,000, prepaid.

Dahlia Labels, Painted, with Wires—3½-inch, iron wire: 75 cents per 100, prepaid; \$3.00 per 1,000, prepaid. 3½-inch, copper wire, \$1.00 per 100, prepaid; \$4.00 per 1,000, prepaid.

Dahlia Labels, Plain, with Wires—3½-inch, iron wire: 50 cents per 100, prepaid; \$2.00 per 1,000, prepaid. 3½-inch, copper wire, 75 cents per 100 prepaid; \$2.50 per 1,000.

Some of the Premiums I Won in Open Competition During the Past Year

At Annual Iris Exhibition of Massachusetts Horticultural Society, held June 7-8, 1919, in Horticultural Hall, Boston.

1st Prize for Best 12 vases of Iris Germanica.
Vote of thanks for Special Display of Irises.

At the Annual Peony Exhibition of Massachusetts Horticultural Society, held June 15th in Horticultural Hall, Boston.

Silver Medal for Display of Peonies.

At Annual Exhibition of North Shore Horticultural Society, held August 6 and 7, 1919, at Manchester-by-the-Sea, Mass.

Silver Medal for Largest and best Exhibit of Dahlias.
Silver Medal for Finest Display of named Gladioli.
Silver Medal for Largest and finest Display of Phlox.
Certificate of Merit for New Seedling Decorative Dahlia "Frank A. Walker."

At the Annual Gladioli and Phlox Exhibition of the Massachusetts Horticultural Society, held Aug. 9 and 10, 1919, in Horticultural Hall, Boston.

Silver Medal, highest award for Display of Gladioli, Phlox and Dahlias.

At the Annual Exhibition of Marshfield Agricultural & Horticultural Society, Marshfield, Mass., held Aug. 19-21, 1919.

Gold Medal for Finest Display of Dahlias.
Gold Medal for Best Collection of Gladioli.
1st Premium for Best Exhibit of Cactus Dahlias.
1st Premium for Largest Display of Perennial Phlox.

At the Annual Exhibition of the Barnstable Agricultural Society, held Aug. 26-28, 1919, at Barnstable, Mass.

1st Prize for Largest and Best Display of Gladioli.
1st Prize for Most Artistic Vase of Gladioli.
2nd Prize for Display of Dahlias.

At the Annual Exhibition of the Agricultural Society of the United Shoe Machinery Co., held August, 1919, at Beverly, Mass.

Gold Medal for Largest and Best Display of Dahlias, Gladioli, Phlox and other Perennials.

At the Connecticut State Fair, held Sept. 1-5, 1919, at Hartford, Connecticut.

1st Premium for Best Collection of Perennial Phlox.
1st Premium for Best 12 Peony-flowered Dahlias.

At the Horticultural and Agricultural Fair of Brookville Grange, held in Brookville, Mass.

1st Prize for Display of Dahlias and Gladioli.

At the Annual New England Fair, held Sept. 1-4, 1919, in Worcester, Mass.

Silver Cup for Largest and Finest Display of Dahlias.
1st Prize Best Exhibition of Dahlias.
1st Prize for Best 20 Cactus Dahlias.
1st Prize for Best Collection of all Large-flowered Dahlias, except Cactus Dahlias.
1st Prize for Finest Collection of Pompon Dahlias.

At the Annual Exhibition of the Weymouth Agricultural and Industrial Society, held in Sept., 1919, at Weymouth, Mass.

1st Premium for Best Display Dahlias.
1st Premium for Finest Exhibit of Named Gladioli.

At the Annual Exhibition of the Plymouth County Agricultural Society, held Sept., 1919, in Bridgewater, Mass.

1st Prize for Finest Display of Dahlias.
1st Prize for Largest Exhibit of Gladioli.
1st Prize for Largest and Best Display of Flowers, which included many Hardy Perennials.

At the Annual Dahlia Exhibition of the Massachusetts Horticultural Society, held Sept. 11-14, in Horticultural Hall, Boston.

Silver Medal, the Highest Award for Finest Display of Dahlias and Gladioli.
1st Prize for Best Collection of 12 Peony-flowered Dahlias.
Honorable Mention for Seedling Peony-flowered Dahlia "Miss Lymena T. Baxter."
Honorable Mention for Seedling Decorative Dahlia "Wm. Stark Smith."
Honorable Mention for Seedling Peony-flowered Dahlia "Lavender Beauty."

At the Annual Exhibition of the Rockland Horticultural Society and Rockland Grange, held Sept. 24-25 in Rockland, Mass.

1st Premium for Finest Display of Dahlias.
1st Prize for Most Beautiful Exhibit of Gladioli.

At the Annual Brockton Fair, held Oct. 3-6, 1919, in Brockton, Mass.

1st Premium for Best 25 Cactus Dahlias.
1st Prize for Finest Display of Show and Fancy Dahlias.
1st Premium for Best Display of Single Dahlias.
Gratuity as a special award for the Largest Display of Dahlias.



MEDAL AWARDED ME FOR DISPLAY OF GLADIOLI
NEWPORT, R. I., AUGUST, 1915

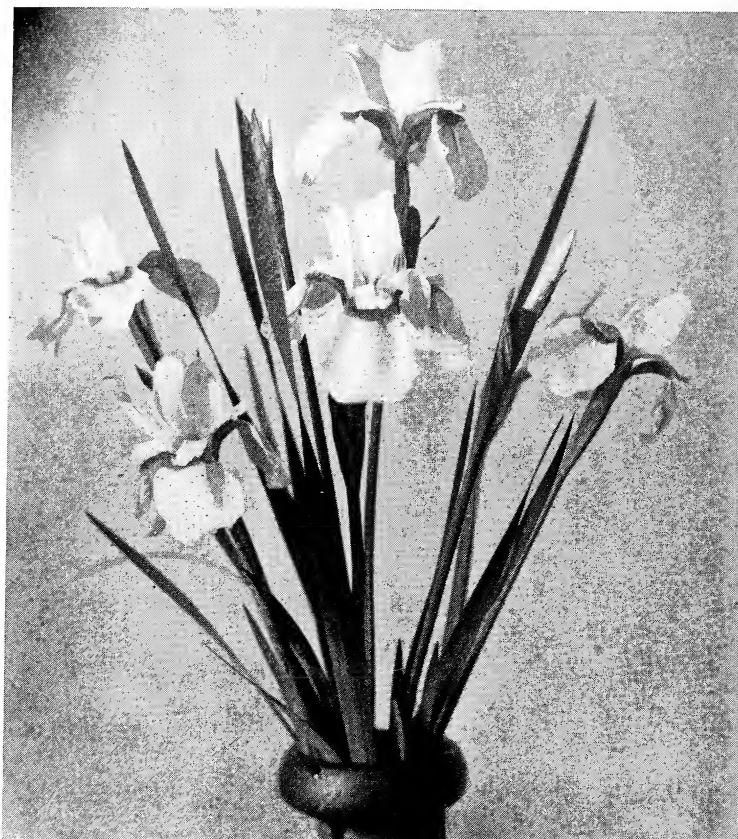


SILVER MEDAL
HIGHEST AWARD FOR EXHIBIT OF DAHLIAS AND GLADIOLI,
SEPTEMBER, 1919



SILVER MEDAL AWARDED ME IN OPEN COMPETITION WITH
THE WORLD

My Growing Exhibit competed against over six hundred growers to win
this medal



SIBERIAN IRIS; "SIBERICA ALBA"

25 cents each; \$2.50 per doz. See page 7 for description

I SPECIALIZE IN

IRIS

DAHLIAS

PEONIES

GLADIOLI