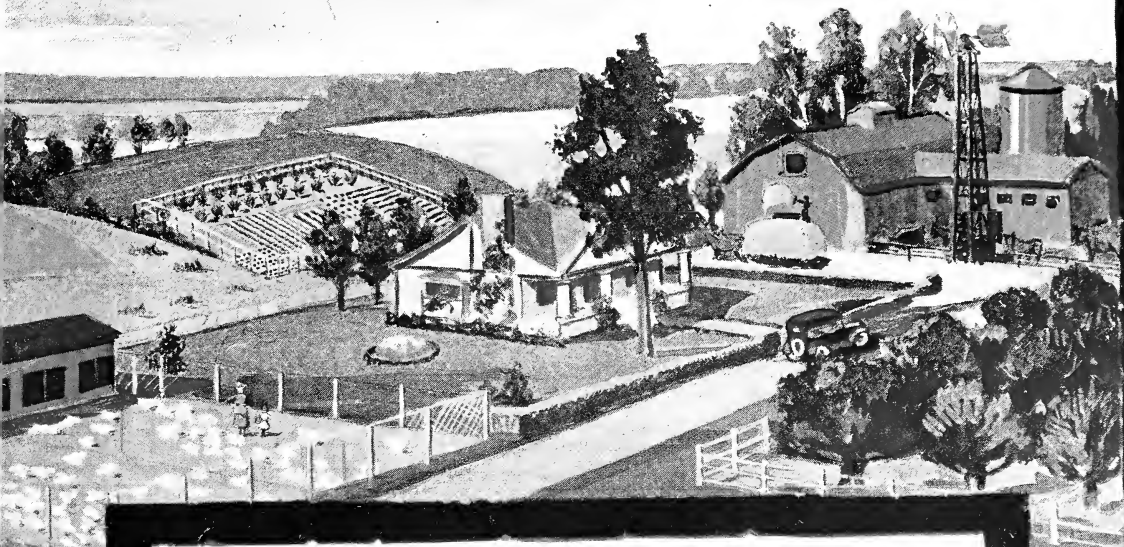


## **Historic, Archive Document**

Do not assume content reflects current scientific knowledge, policies, or practices.



RECEIVED  
★ JAN 31 1920 ★  
U. S. Department of Agriculture



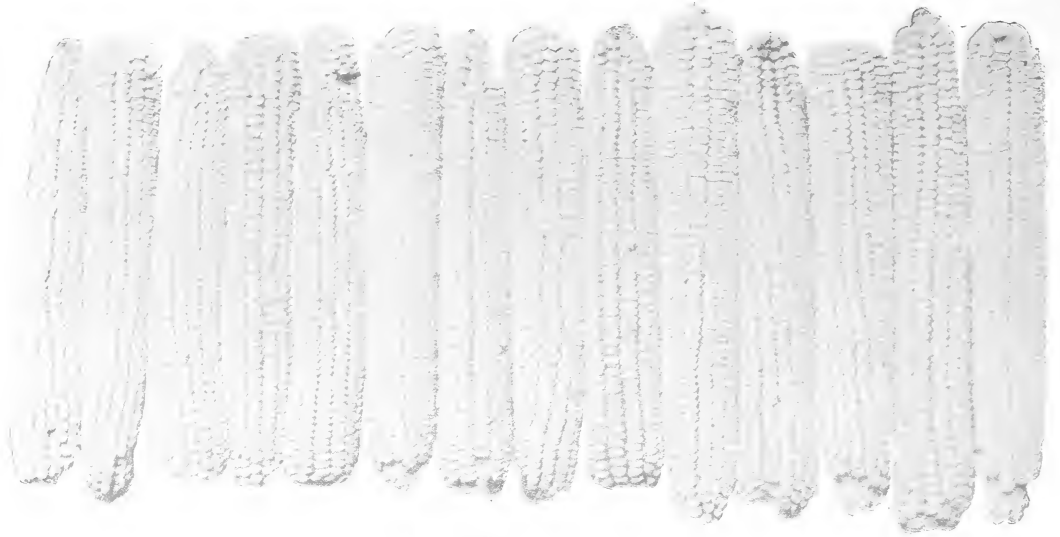
# AYE BROTHERS

1920

SEED CORN · FIELD SEEDS  
VEGETABLE SEEDS · NURSERY  
STOCK · PURE BRED POULTRY  
GERMIKIL, ETC.

## BLAIR, NEBR.

Seed Corn Center of the World



**BLAIR WHITE CORN**

**Not a show Corn but a big yielding variety. Early.**

## Blair White or Universal Corn. The Sensational Corn

### 90 to 95 Day Corn.

In Blair White Corn we have something that lots of breeders of corn thought could not be done. We have produced an early corn that is a bigger yielder than the late varieties of corn. It is without a doubt the Sensational Corn of the age. There are lots of varieties of early corn but most of them do not yield well but in Blair White we have both earliness and big yield. Our customers report that they are getting bigger yields of Blair White than of any other variety, planted on same kinds of soil and given same kind of cultivation and some growers started to husk on October 4th. Can you beat it? Almost every day we have local customers tell us how well they like the Blair White Corn and that they are sorry they did not plant their whole field to this wonderful early, big yielding variety.

During the last eleven years we have had four years of soft corn but the Blair White got ripe every year and made a big crop. Just think of it, eleven years of solid sound feeding corn by planting Blair White when other big yielding varieties were soft four years out of the eleven. This is a record we are proud of for we introduced and improved this wonderful variety of corn. No matter how wet and cold the season has been Blair White has matured every year since we introduced it eleven years ago. We have not said much about it for we wanted to be sure of our ground but now we know where we are at and we want to tell the corn growing world about it. In 1915, the year of soft corn, when other varieties of corn yielded 30 to 50 bushels of soft, mushy, unmarketable corn per acre, Blair White yielded as high as 80 bushels of sound, solid corn and had a germination test of 91%. It also Out Yields other varieties in Extreme Dry years. Everybody remembers the dry year of 1918. Lots of fields of corn made from five to ten bushel per acre and our Blair White grown in fields adjoining, yielded from twenty-five to fifty bushels. It is the corn that can be depended on every year, wet or dry, hot or cold, on any kind of soil, under almost any condition, to yield a maximum crop of corn and that is what pays, a big crop of sound solid feeding corn from an acre.

Blair White Corn does better on poor land than other varieties for you get a nice medium sized ear on almost every stalk, very few nubbins. On heavy rich soil Blair White can be planted thicker than other varieties and you will get a good sized ear on almost every stalk. It adapts itself to all sections of the country, north, east, south and west and all conditions and kinds of soil.

Can be planted for the main crop or used for replanting. Has been planted as late as the last of June and big crops of matured corn have been reported. It is truly the Most Wonderful Corn we have ever had and our customers who bought a few bushels at first to try it, are now planting their whole acreage to this variety. You cannot possibly make a mistake in ordering Blair White Corn, either for your main crop or replanting. At one of the good County Fairs in Nebraska a lot of Blair White Corn was on exhibit and the Corn Judge was surprised at the large number of entries of this new variety and he inquired from the exhibitors what variety of corn it was and said a class ought to be made for this corn. He told us that we had the right idea about improving corn for we have kept in sight, earliness and big yield.

The ears are a nice white color, not very big around but extra long, an ear on almost every stalk, and medium high from the ground, making it a very desirable corn to husk, stalks medium in height and stand up well, ears hang on stalk fine, but still husks easy, in fact it is one of the most desirable corns we know of. The demand for Blair White has been above the supply but if you send in your order early we will take care of you. Have a fine lot of seed to offer.

Price: \$6.00 per bushel in the ear or shelled, \$5.50 per bushel for 10 bushels or more. Bags free.

# Aye Brothers' Seeds

Clean Pure Field Seeds—Easy Grown Garden Seeds—Choice Nursery  
Stock—Pure Bred Poultry

Last fall we got in everything to take the right kind of care of you this spring. When you buy seed, you want it to grow and you want the BEST—not the cheapest kind you can buy. If we can't sell you that kind of seed, we want to get out of the business. If we didn't sell you the best seeds we would have to get out before long—and we've been doing business here all our lives. We stayed right here where we were born and raised and made Blair "the seed corn center of the world." We refer you to any bank or business or laboring man, any mechanic or farmer, or any boy or girl in and around Blair.



JOHN R. AYE.

**FIELD SEEDS** Unfavorable conditions haven't prevented us from getting our usual fine, large stock of field seeds. All our lots are clean, too, pure and free from foul and pesky weed seeds. Write us what you are thinking about as regards to field seeds. We will give you our best judgment.

**NURSERY STOCK** Our nursery stock—grown on the rich Loess soil, too, is of A-1 quality. We list only known and long-established varieties. We guarantee all of our stock to be free from infectious diseases—healthy, vigorous and well formed. We send out nothing but first-class stock. State inspector's certificate accompanies each shipment.

**SEED CORN** We have plenty of good, sound, solid Seed Corn to supply everybody that orders early. We always have, for Blair is "the seed corn center of the world." Here is our guarantee:

**GUARANTEE:** All seeds bought from us must please buyer. Purchaser can keep and test seeds ten days and if not entirely satisfied return them and money paid for them will be returned; but we do not and cannot be responsible for a stand or a crop.

**GARDEN SEEDS** Everybody round here knows us for our fine seed corn and pure-bred poultry. Do you know our garden seeds are of the same high quality as our world-famed seed corn and our nationally-known pure-bred poultry? To prove it—the largest planters of our garden seeds last year were those who planted our vegetable seeds the year before. We list only standard varieties. Plant them this year—of course, plant a home garden this spring. That don't mean just the city man but the farmer, too. Home gardens are helping us solve the food problems.

**PURE-BRED POULTRY** It looks like there will be a shortage of breeding stock before the season is over. Many specialty breeders have reduced their flocks and others sold off much during the summer, owing to the high price of feed. However, we are accustomed to taking care of our customers every year. And this season we are fairly well supplied with most of the popular varieties and can fill orders promptly. In fact, we usually get orders out within a day after we receive them.

**GERMIKIL** We are glad to be able to announce that we still will be able to fill all orders for Germikil, that has become so much in demand by our friends. We believe it to be the greatest remedy in the world alike for man, beast or fowl. It is A-1 for Roup, Cholera, Bowel Trouble, Sore Head, White Diarrhoea in fowls, Cuts, Sores, Bruises, Wounds, Dandruff, Itching, etc., for man; Barb-wire cuts, Sore Shoulders, Necks, etc., for horses.

## Aye Brothers

Blair, Nebraska

# Our Responsibility

## Our Location

It is only fair that you should know our standing as responsible business men. We wish to refer you to any bank in Blair, any business man, laboring man, mechanic, professional man or any boy or girl in and around Blair. Look us up in Dun's or Bradstreet's.

"Blair, Nebraska, county seat of Washington County—is to the CORN WORLD what the Red River of the North Country is to the potato world. Blair is the **Seed Corn Center of the World**. This is a just claim, for more seed corn is sold within a radius of twenty miles of Blair than at any other point on the globe. The highest quality seed, and small grains known come from Blair. The soil is the pure Loess variety of Glacial drift and is just the same, no matter how deep you go, until you strike water. Total crop failure is unknown. The seed corn is sent all over the world.

"The firm of Aye Bros., which has been selling seeds and poultry at Blair for 23 years, is known all over the world. It is largely due to the persistence and far-sightedness of the Aye Brothers—John R. and Adolph—that Blair today holds the distinction of being the greatest seed corn center of the world. Both men were born and raised in Blair and they have stuck to their native soil. They had faith in its wonderful richness, and years of faithful experimenting have produced for them the highest quality of seed corn known. They receive orders for their seed corn, wheat and grass seeds from all parts of the world and hold high testimonials from state universities and farmers all over the country. Most of the prizes awarded year after year at corn shows are from corn from Aye Bros.' seeds."—From the Omaha World-Herald.

### HOW TO SEND MONEY

When ordering, please send P. O. Money Order, Draft, Express Money Order, or Check. Don't send money if you can help it. There are reasons for this. Here is one of them: Sometimes we get letters where parties forget to sign their names, and we don't know whom to send goods to, but if a P. O. Money Order, Express Order, or Draft is sent, we can always tell whom to send seed to. Please bear this in mind. But, if you can't get P. O. Money Order, Draft, or Express Order, of course send the money.

Send cash with order. If married women would use their husband's initials it would prevent trouble sometimes in correspondence. Single women should use the title "Miss" before their names.

### WHAT'S IN A NAME?

Over at Blair, Nebraska, there is a firm by the name of Aye Bros.—John R. and Adolph. As to the pronunciation of this name, unless you hear it spoken by those who know, one might emphasize by using the letter A. This is wrong. It is just plain I, or Eye. For a quarter of a century they have been selling seed corn and field seeds and high-grade poultry. While engaged in this business they have placed their town on the map as being the seed corn center of the world. Almost every state in the Union has heard of or transacted business with this seed emporium, which is being recognized as the seed supply house of the Middle West, the name being a household word in this section. To say Aye Bros. have an "Eye" for business is perhaps the proper way to express it, with such expression echoing back with repeated and increasing orders from year to year and that is part of what is in a name.—Above was taken from "Echoes from the Highway."

### ABOUT PRICES

No one can tell exactly what the prices will be during the whole season, but we are getting out this catalog and price list, showing what the prices are now; and when you send order, if any seeds should go up or down, we will send you what amount your money will buy. These prices may remain during the whole season, but are subject to change without notice.

## Our Guarantee

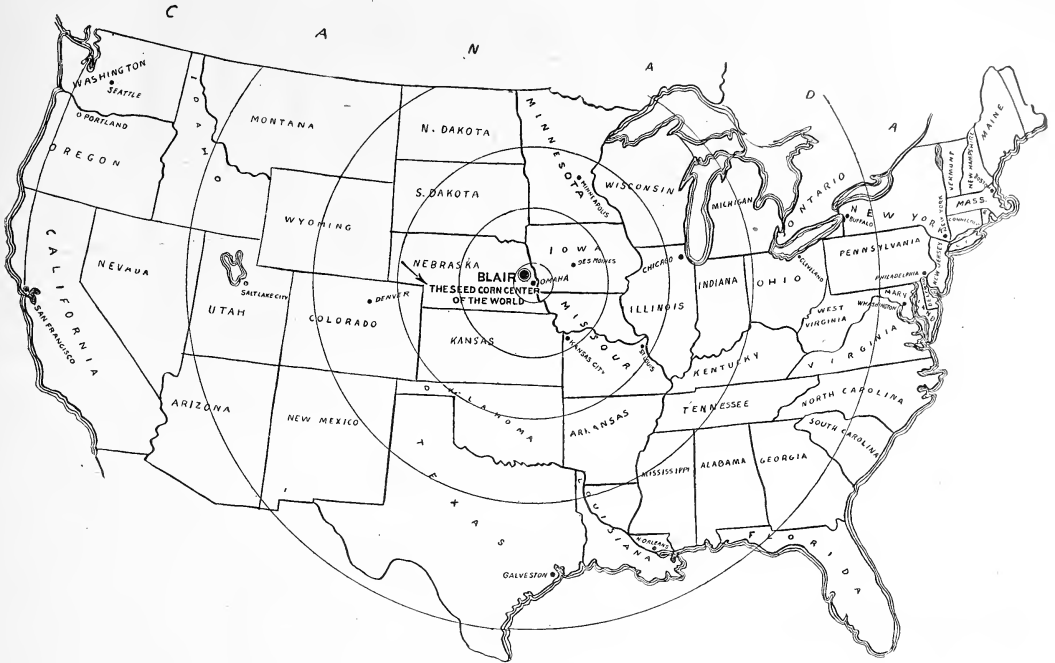
Whenever you order from us and if anything is not exactly as we say it is, you can return it to us and get your money back. We give you ten days to examine and test our corn and other seeds. We demand money with order, but we give every buyer the privilege after he buys anything from us to say whether or not it is worth the money, and if you think not, fire the stuff right back to us and get your money back and we will pay the freight one way. We want you to feel as safe as if you were right here making a personal examination. We know that if you came here and could see our corn or anything else that we have to offer, it would take but a minute to make a deal. We cannot think of anyone who ever came here looking for seed corn that did not buy from us. But we know that everybody cannot come and make a personal examination and, therefore, we give you the privilege to keep our seed or send it back. Suit yourself. It is your money that you are spending and you certainly have the right to decide what you want to buy with it.

We are not perfect, and we know it. We sometimes make mistakes, and who is there that doesn't if they do anything at all. But when we do make a mistake, don't get mad and tell your neighbors how you have been skinned. Tell us your trouble and ninety-nine times out of a hundred we can fix it up all right. Just try, and see the quality of the seed we are sending out. We have one of the biggest high-class seed corn businesses in the world. No matter where you go, or how big a price you pay for your seed, you cannot find better corn than what you get from us.

We don't guarantee against floods, hail, frost, drought, etc. By that, we mean that we don't guarantee a crop.

You can keep any seed we send you ten days, test it in any way you wish and if for any reason it does not please you, return it within ten days and get your money back. Where can you get a stronger guarantee? We make it strong. We know that our seeds will please you. Our responsibility ends with the acceptance of seeds. No responsible firm can make a stronger guarantee.

# BLAIR WHITE CORN IN A CLASS BY ITSELF



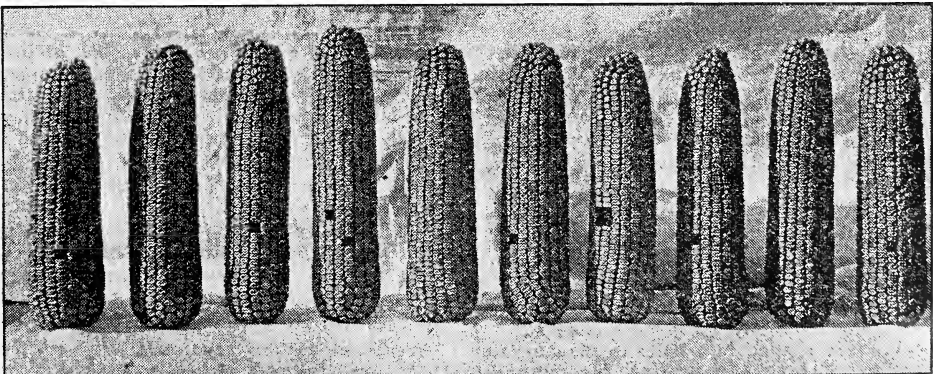
## BLAIR, NEBRASKA—

### “The Seed Corn Center of the World” and Why.

The above map shows Blair, Nebraska, is practically in the center of the United States. It is not so much the geographical position we wish to call your attention to as much as that we are ideally located to produce the finest Seed Corn in the world. We are far enough north to escape the hot winds of the South, far enough east to get plenty of moisture to produce the very finest ears, far enough south to grow nearly every worth-while variety, and far enough west to thoroughly dry out the seed ears without artificial drying. There is undoubtedly more seed corn grown and sold within a radius of fifty miles of Blair, Nebraska, than any other spot in the world, hence the term of “Seed Corn Center of the World.”

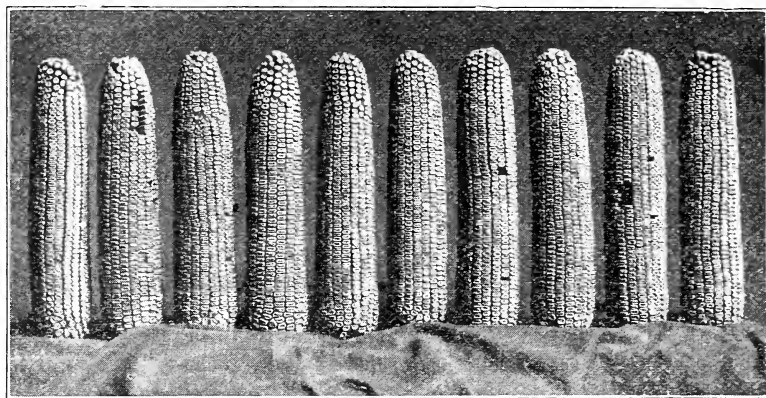
We have hundreds of letters from corn growers from the North, East, South and West in which they say they are very much pleased with results they got from the Seed Corn they bought from us.

If in need of Seed Corn send us your order and we feel sure you also will be one of our many pleased customers.



We have furnished seed corn to our customers that produced lots of corn like above picture.

## BLAIR WHITE CORN—MONEY MAKER



Prize-Winning Corn at National Corn Show Held at Columbus, Ohio.  
Grown by Aye Bros., Blair, Neb., Seed Corn Center of the World.

# Seed Corn

## Reid's Yellow Dent

Our Reid's Yellow Dent as grown in Washington County on our seed farms is without a doubt the best corn grown anywhere in the world. We will admit that in the past we have been partial to our kind of Reid's for we have seen the so-called Reid's Yellow Dent at other places that certainly did not look good to us. We used to pick the very deepest kernels for seed, but we have found, by actual experience, that it is not the best policy to follow. We have found that the medium-grained ears are the best for seed. We are getting better and bigger yields every year by our method of selection. Our strain of Reid's is winning more prizes than any other strain of corn that we have any knowledge of.

We could fill this entire catalog with testimonials and lists of prizes that our corn has

won for us and for those who have used our seed.

Price, \$4.50 per bushel in the ear or shelled; 4.25 per bushel for ten bushels or more. Bags free.

We have a few bushels of extra select Reid's Yellow Dent, Silver Mine, Nebraska White Prize and Blair White, that we offer for \$6.25 per bushel, and we believe that you will be pleased with it.

Every spring we have calls for corn for breeding plots for an acre or so, and we have selected the very finest ears we have and will ship you ten ears (enough for an acre) for \$3.00. Each ear will be wrapped separately but we will not send less than ten ears.

Sample ears 50 cents, postpaid.

Sample shelled corn free.

## Reasons Why You Should Buy Your Seed Corn from Us.

We send out only selected ears.

Our corn is handled five or six times before it goes to our customers.

We grow the best strains of corn in the world.

We live in the center of the corn belt.

Blair is the seed corn center of the world.

Our corn matures early.

It is a heavy yielder.

It reproduces itself.

It wins prizes for others.

Our corn does as well for others as it does for ourselves.

We satisfy our customers.

We have the best of shipping facilities.

We ship the same day we get the order.

You can return seed if it fails to please you.

The State Experiment Station recommends us as reliable and as having the right type of corn.

We have the best in the world.

We have sent seed to farmers, stock men, seed men, elevator men, professors, dairymen, doctors, boys and girls, professors of universities, to foreign countries, people just starting out as farmers, dealers, live-stock auctioneers, breeders, show corn growers, editors, manufacturers, cheese makers, and railroad presidents, and they like it.

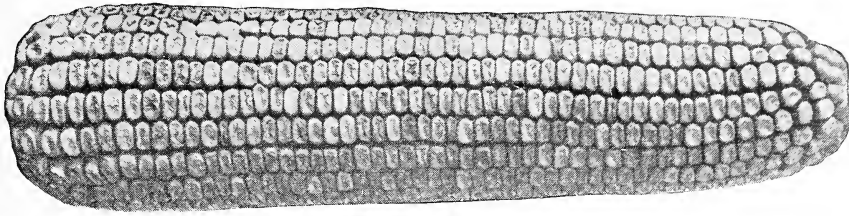
The object of this little book is to tell you what we have to sell, and you will find in the following pages as brief a description as possible of the things we are offering.

If there is anything you don't understand about our goods after reading this catalog just write us and we will answer you at once.

We want you to become one of our regular customers, for we believe that it will be mutually profitable. Let us hear from you whether you want to buy something from us or have something to sell.



## EASY HUSKING CORN—BLAIR WHITE



Reid's Yellow Dent.

### Iowa Gold Mine.

In characteristics this corn is very much similar to the Legal Tender. It is very popular throughout the middle zone, and we have seen some big yields from this deservedly popular variety. The ears are of medium size, with kernels of uniform depth and fairly smooth.

Price: Same as Reid's Yellow Dent.

### Silver Mine.

Silver Mine corn is the most popular white variety grown in the corn belt. It is early, yields heavy, has deep grains, stands up well and will probably grow more corn to the acre on this land than any other variety. It yields enormously on heavy soil. The ears are not very high from the ground and make it a most desirable corn to husk. The quality is always good and has a great feeding value. The cob is white and not large. If you want to plant a medium early white corn get some of our strain of Silver Mine. We know it will please you. Some of our Blair farmers won't grow any other kind.

Price: Same as Reid's Yellow Dent.

### Nebraska White Prize.

The cut below is a picture of a prize ear of the White variety. This corn has been winning most of the prizes in the white classes. This corn is somewhat larger than the Silver Mine, but is ten days later. It surely is the corn for rich heavy soils.

Price: \$4.50 per bushel in the ear or shelled. 4.25 per bushel for ten bushels or more. Bags free.

### Calico Corn.

We have a limited amount of fine Calico Corn that we are offering for \$4.25 per bushel for two bushels or more. Bags free.

### Bloody Butcher.

A Red Corn that matures around 100 days. Price: \$4.25 per bushel. Bags free with two bushel order or more.



Grown in South Dakota by Mr. Collins, from seed procured from us.

### "75 BUSHELS TO THE ACRE."

Gayville, S. D.  
Aye Brothers, Blair, Neb.: This corn was raised from the seed I got from you and went 75 bushels to the acre—Reid's Yellow Dent.—C. F. COLLINS.

### EXPERIMENT STATION RECOMMENDS US.

Belgrade, Neb.  
Aye Brothers, Blair, Neb.: Received your name from the Experiment Station at Lincoln, saying that you had seed corn for sale. Please send prices.—RALPH E. BARBER.

### WINS FIRST PRIZE.

Osceola, Neb.  
Aye Brothers, Blair, Neb.: The Reid's Yellow Dent corn I got of you won first prize on ten ears at Polk County Corn Show.—E. M. SWANSON.

# BLAIR WHITE CORN STANDS UP FINE

## Early Varieties

### Ninety-Day Red.

If you live in western Nebraska, western Kansas, in South Dakota, or if you want an early corn, you cannot find a corn that will do you more good than our early Ninety-Day Red. This is one of the finest varieties to plant for hogging down. Every hog raiser should grow a patch of this early corn, and turn his hogs into the patch about August. The best gains we ever make on a bunch of hogs is when we turn them into a patch of growing corn and let them harvest it. After the hogs are through with it sow winter wheat on the land and see what a big crop you will have. Our Ninety-Day Red has a red color with a white cob. It is a drouth resister. Get a few bushels for a part of your corn crop.

Price: \$4.50 per bushel, shelled; 4.25 per bushel for 10 bushels or more. Bags free.

### Flint Corn.

Flint Corn is one of the very earliest varieties of corn grown, and for real early feed or for land that cannot be planted till late in the season get some Flint Corn.

Price: \$4.50 per bushel; \$4.25 per bushel for 10 bushels or more. Bags free.

### White Cap Yellow.

White Cap Yellow is a splendid corn and in some respects is similar to Blair White, but the kernels are very short and have a yellow color capped with white. The ears are long and slim and become quite large on good rich soil but will also make a fair-sized ear on medium rich to poor soils. It is a 90-day corn and it surely is a good yielder for corn that matures that early. We have a limited quantity that we are offering either in the ear or shelled.

Price: \$4.50 per bushel; \$4.25 per bushel for 10 bushels or more.

Conclusions: When we started in the Seed Corn business we sent out only ear Seed Corn, but in the last few years our old customers who have been doing business with us, and knowing the quality of corn we have been putting out, have been demanding shelled corn.

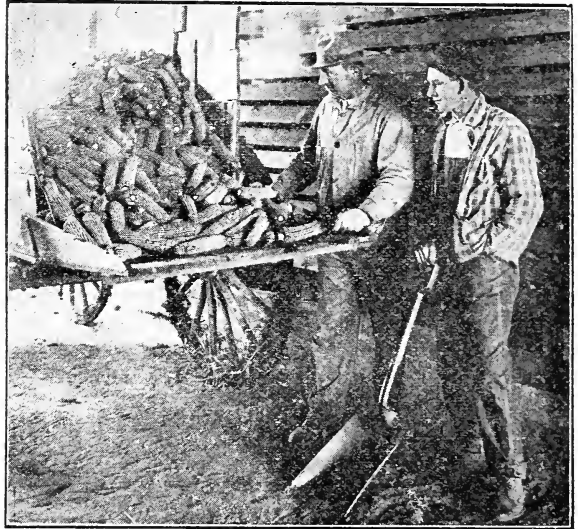
### Pride of the North.

This is a small variety of corn that matures in ninety days and is the best yellow corn to plant in the north or far west. It has a deep yellow grain, small cob and is used more than any other corn for replanting. It is also a good yielder. One man reports that he raised 65 bushels, but we never raised quite that much ourselves. We only plant a small acreage of this variety but we are always sure of ripe corn.

Price: \$4.50 per bushel, shelled; 4.25 per bushel for 10 bushels or more. Bags free.

### CORN O. K.—62 OUT OF 63 GREW.

Neola, Iowa.  
Aye Brothers, Blair, Neb.: The corn I got from you was all O. K. I tested 63 ears and 62 of them grew.—FRED OLTMANN'S.



To all new customers we want to say that the price of Ear and Shelled Seed Corn is the same. Some parties make a reduced price on shelled corn, but it costs us as much to prepare Shelled Seed Corn as Ear Corn, therefore the price is the same.



A One-Morning Shipment of Seed Corn.

## Seed Oats

### Kherson.

You should sow oats that are adapted to your locality and your land. If you have very rich land do not sow the long straw late maturing kind in the corn belt. What you need is some early maturing variety like the Kherson, and if you rotate your crop as you should, your land will soon be rich enough to grow from 85 to 125 bushels of corn to the acre, and then it is too rich for the late oats.

We would not advise sowing Kherson oats on land that will not produce 25 bushels of corn per acre. Your land should be seeded down to clover when it gets as thin as that. We have the purest Kherson oats in the United States today.

This variety of oats was introduced into this country from the Kherson district in Russia by the Nebraska Experiment Station, hence the name. This is without a doubt the best oats to sow in the corn belt, as it is early, does not rust or lodge, is a heavy yielder, weighs very heavy and as a nurse crop beats anything we have ever tried. The kernels are small, of a light golden color and very numerous on the stem and all stock like this oat better than any other variety, as it has a very thin hull. If you will compare these oats with any other variety by removing the hull, you will find that the Kherson has a larger amount of meat than most of the larger varieties.

We have shipped these oats to ten different states and have not had one word of complaint. Everyone has nothing but words of praise for them. Remember these oats come to you all recleaned and ready to put in the field.

Price: \$1.50 per bushel; \$1.35 per bushel for 10 bushels or more.

### White Kherson.

Here we have a variety of oats that has all the good qualities of the Kherson and has a whiter color and lots of growers claim that it will outyield the Kherson oats. It will have to go some if it does. We did not grow this variety but we had it raised and the grower likes them very much. It might pay you to get a few bushels to try. We are always on the lookout for better varieties, and we know that this is a good oat and that you will like it.

Price: \$1.50 per bushel; \$1.35 per bushel for 10 bushels or more.



Kherson Oats.

Sidney, Iowa, March 13, 1915.

Aye Bros., Blair, Neb.: I sent two years ago this spring to you and got enough Kherson oats to sow 10 acres. I received 600 bushels the first year and they were fine.—K. H. OTTE.

Lincoln, Neb., Feb. 2, 1910.

Aye Bros., Blair, Neb.: Your letter of the 31st ult. at hand and sample of Kherson oats. This looks like real Kherson all right. I think there will be quite a demand for the seed this spring and will be glad to refer inquiries to you.—E. G. MONTGOMERY.

OATS TEST MADE 91 BUSHELS PER ACRE—  
OTHER OATS MADE 35.

Glendo, Wyo., Jan. 25, 1915.

Aye Bros., Blair, Neb.: The Kherson oats I got from you last spring did fine. I had in 36 acres that made 91 1-10 bushels per acre, machine measure, and weighed 40 pounds per bushel. Other oats made around 35 bushels. Your seeds are cheap at most any price.—W. A. SAUL.

## Other Grains

### Barley.

Barley is a splendid nurse crop and on medium to rich land is a money maker. We would not advise sowing barley on poor soil but it is surely a profitable crop on rich soil.

The grain when ground makes splendid hog

and cow feed. It stands up well and live stock like the straw. Sow from 1½ to 2 bushels to the acre on well prepared soil.

Price: \$2.25 per bushel; \$2.00 per bushel for 20 bushels or more.

### Spring Rye.

Spring Rye is becoming more popular every year as it should. It stands up well, can be sown real early in the spring or even when sown later it yields a big crop, 40 bushels per acre being common, according to reports, and at the present price of Rye you can see that

it is a very profitable crop to grow. Some farmers even report a very much larger yield than 40 bushels, but we would advise sowing some Spring Rye.

Price: \$2.75 per bushel.

## BLAIR WHITE CORN STANDS UP FINE

### Swedish Spring Wheat.

Most farmers of our county gave up sowing spring wheat until this variety was introduced from Sweden, but since its introduction to this country many of our farmers prefer it to the winter varieties. Last year this wheat proved to be a very profitable crop. It stands up better than any other wheat we have ever seen. This is the best spring wheat we have any knowledge of and you can't afford to sow any other if you intend to sow spring wheat. Our wheat is re-cleaned and ready for the seeder.

Price: \$3.75 per bushel.

### Improved Turkey Red Wheat.

Write for our quotations and description of this wheat.

### Winter Rye for Pasture.

Winter Rye when sown in the spring makes a fine pasture during the summer. When sown

in the spring it does not head. It makes a better pasture than oats, wheat, etc., for it stands more abuse.

Price: \$2.75 per bushel.

### Buckwheat.

We handle two varieties, the Japanese and Silver Hulled Buckwheat and can send you nice clean seed at price list prices.

### Flax Seed.

Sow  $\frac{1}{2}$  to  $\frac{3}{4}$  bushels per acre. Can furnish good clean seed at any time.

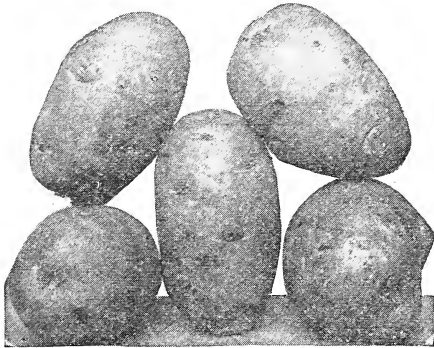
Price: See Price List.

### Speltz.

Sow about 90 pounds per acre. Can furnish good clean seed at any time.

Price: See Price List.

## Potatoes



Red River Early Ohio.

### Red River Early Ohio.

Potatoes run out quicker than any other seed and for that reason a change should be made occasionally and seed should be gotten from the north, especially the Red River country. We don't handle anything but Red River Early Ohio, except when people want other seed. We have had potato growers tell us that our northern-grown seed does better than their home-grown seed. Our stock is selected for seed.

See Price List.

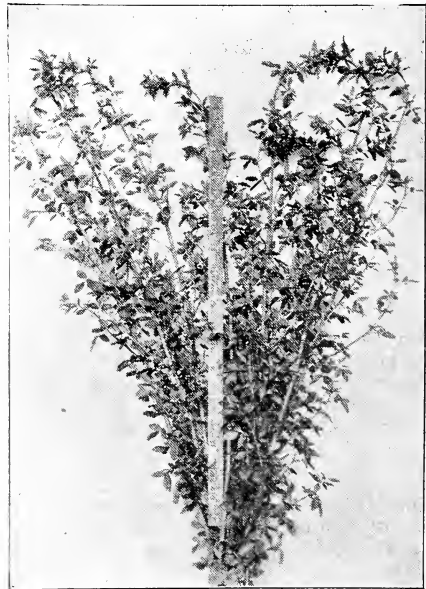
## Clover

### Common Red Clover.

Everyone should sow common red clover in his small grain every spring to restore the fertility of the soil. It makes fine pasture, excellent hay, and yields from one to four bushels of seed per acre, and when the land is again planted to corn we have known an increase of 100 per cent the first year. Sow from 8 to 15 pounds per acre, but when sown with timothy from 5 to 8 pounds is enough. Sixty pounds to the bushel. See Price List.

### Mammoth Red Clover.

On very poor soil we would sow the Mammoth Clover. It grows very rank and is a better soil restorer than the common red. It makes great pasture, but sometimes the hay is too coarse if sown on too rich soil. If you want a crop of seed you should pasture Mammoth Clover until about June 1st and then take off your stock. Let it stand and the heads will form during the dry season. See Price List.



Alfalfa.

### Alsike.

If you have low, wet land, sow Alsike Clover. It will thrive on land that is almost a swamp and on places where Red Clover will not catch. It will in time dry out the land on which it is sown and sweeten it so that other clover can be grown. It is fine to sow on thin, sandy soil and on stony hillsides where Red Clover will not catch. The seed is very small and it only requires from 4 to 7 pounds to sow an acre. Alsike certainly makes a fine pasture for all kinds of stock. See Price List.

### White Clover.

White Clover is the hardiest of all clovers and is a good kind to sow on lawns and on pastures. It does not need a lengthy description because it is so familiar to everyone. See Price List.

### Alsike and Timothy.

During the last year or two we have been selling an awful lot of the above mixture, and if you have low or damp land we don't know of a better combination than Alsike and Timothy, and as a rule we can offer you the two combined at a cheap price, for the reason that they are threshed together, and the seeds being the same size, they cannot be separated, so we will sell the two together. The proportions of seed are about one-fourth to one-third Alsike and the balance Timothy. See Price List for Prices.

### Sweet Clover.

A few years ago Sweet Clover was considered by most people to be a weed, but now it is grown in every state in the Union for hay, pasture, seed and for renewing the soil. Can be sown almost any time, but seems to do best when sown in the early spring with or without a nurse crop. It is a biennial, like Red Clover; that is, it dies at the end of the second year after sowing. There are two varieties that have any value: the White Biennial and the Yellow Biennial. At present the White Biennial is by far the most popular, although the Yellow Biennial has a lot of friends. The Annual Yellow may be of some value, but we would not advise anyone to sow it. For prices see Price List.



### Alfalfa Seed.

Alfalfa is the most valuable of all the grasses and there is not a state in the United States that cannot grow Alfalfa. It is a perennial and is very hardy. In the last 20 years we have only had one winter severe enough to kill it.

Can be sown in spring with or without a nurse crop. Lots of agricultural writers advise to not sow Alfalfa till all danger of frost is over in the spring, but some of our most successful Alfalfa growers sow as early as possible in the spring with their small grain, and sometimes after cutting the grain, cut a nice big crop of hay the same season, and the following years cut from three to four crops. By the above method you don't lose the use of your land a single season.

Alfalfa leaves are worth, ton for ton, as much as bran, and three to seven tons can be grown from an acre.

There is nothing that equals a nice patch of Alfalfa for a hog pasture, but have a patch large enough so the hogs cannot eat it down, and cut the Alfalfa for hay.

Sow 20 lbs. per acre. For prices, see Price List.

Yankton, S. D.

Aye Bros., Blair, Neb.: Have you any more alfalfa seed? The last was fine.—P. M. MAGREU. Big Sandy, Tenn., Aug. 14, 1917.

Aye Bros., Blair, Neb.: Please quote me your best prices on alfalfa seed. I bought some from you about two years ago and like it fine. Please let me hear from you at your earliest convenience.—T. C. CRANEY.



## Other Grass Seeds

### Timothy.

We always sow Timothy with our common red clover. When the clover dies, which it does the second year, the Timothy is at its best. We mix our seed with the clover when we sow it. Timothy makes fine hay and is splendid for pasture. We have some very choice seed to offer you this year. See Price List.

### Kentucky Blue Grass.

Grows almost anywhere and is sown for lawns and pastures. No better seed than Kentucky Blue Grass for lawns. We have some fine seed that is clean and new. See Price List.

### English Blue Grass (Meadow Fescue).

An excellent pasture grass and succeeds almost anywhere on low ground and high soils. It is very early in the spring and stays green late in the fall. See Price List.

### Red Top.

Here is a grass that is at home and at its best in low, swamp places and thrives there. It is not a hard grass like timothy, and when put up as hay makes excellent hay for cattle. A mixture of Alsike, Blue Grass and Red Top makes excellent pasture on bottom lands. See Price List.

### Brome Grass (Brome Inermus).

Is a native of Europe and Asia and is a hardy perennial grass. It is one of the most valuable grasses that has been introduced into this country. It is very early in the spring and stays green very late in the fall. There is no

grass that will stand as much abuse and drouth as Bromus. Can be cut two or three times a year and all kinds of stock like the grass and hay. Sow 20 to 25 pounds to the acre either in the early spring or fall. See Price List.

### Orchard Grass.

A valuable grass for pasture and hay. It is early and splendid for permanent pastures, as it stays green late in the fall. Does well in shady places like groves, orchards, etc.; 1 1/2 pounds to the bushel. See Price List.

### Sudan Grass.

Sudan Grass is an annual and belongs to the sorghum family. It originally came from Sudan, Africa. It is claimed it will stand drought well. Sudan Grass has beyond a reasonable doubt solved the hay question, for it grows readily in all sections of the country, and as it matures in less than 90 days, it can be sown whenever there is danger of a shortage in the hay crop. Sow about 15 to 20 lbs. broadcast if wanted for hay and harvest like millet. If wanted for seed sow 3 to 6 lbs. per acre in drills 3 feet 6 inches apart and cultivate like corn. For prices see Price List.

### Cane Seed.

As a catch crop there is nothing equals Cane for hay. It can be sown as late as July and no matter how dry a season you may have you can depend upon Cane to make plenty of feed. Yields enormously. It makes the finest kind of hay to winter horses on.

See Price List.



Sudan Grass.



### White Kafir Corn.

Kafir Corn drilled in at the rate of 5 to 10 pounds per acre and cultivated like corn will yield from 40 to 50 bushels to the acre. It is valuable for all kinds of stock and especially chickens. It grows somewhat as cane and heads out big bushy heads made up of white grains like cane.

See Price List.

### Dwarf Essex Rape.

Rape is an annual and belongs to the cabbage family. When sown early in the spring it furnishes a great deal of green feed all summer for the hogs and is excellent for that purpose. Can be sown in the cornfield at the last cultivation and will make a lot of feed for the hogs, sheep or cattle when they are turned into the stalks when the husking is over.

See Price List.

### Feterita.

Feterita is similar to White Kafir Corn except that it stands drought better and is 30 to 50 days earlier. Of the non-saccharine sorghums it has become the most popular.

See Price List for prices.

### Milo Maize.

For grain drill in rows 3 feet apart, 3 to 6 lbs. per acre. For fodder sow  $\frac{3}{4}$  to 1 bu. per acre. See Price List.

### New Era Cow Peas.

This is the earliest cow pea known and is the best for the northern states. Fine fertilizer as it puts nitrogen into the soil. Can be sown after the early oat crop is taken from the soil and will fertilize your soil for next year's crop and at the same time give you a lot of feeding stuff. See Price List.

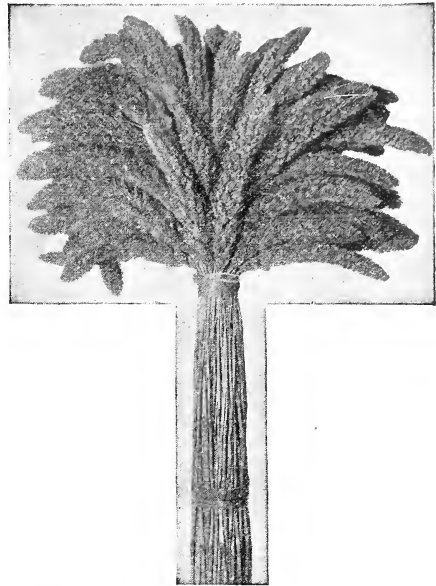
### Golden Millet.

We have a large quantity of home-grown Millet which is very choice. Our Golden Millet will make from four to five tons of hay per acre and if left for seed will yield as high as 60 bushels. Millet seed makes as fine a chick feed as you can find, and if you grow chickens it will pay you to raise Golden Millet for seed. It can be sown as late as July on places where other seed has been lost or washed out. Besides it makes an excellent fodder.

See Price List.

### Broom Corn.

Some farmers make a lot of money out of Broom Corn. Can be grown anywhere where good corn grows and should have similar cultivation. See Price List for prices.



Golden Millet.

### Sunflower.

A small patch of Sunflowers will make an immense amount of chicken feed. They like it better than most grains and it is good for them. Be sure to plant a small patch of Sunflowers.

See Price List.

Can also furnish the following seeds:

- Common Millet.
- New Siberian Millet.
- Japanese Millet.
- Hog or Broom Corn Millet.
- Hungarian Millet.
- Early Fortune Millet.
- Pearl Millet or Pencillaria.
- Teosinte.
- Bermuda.
- Perennial Rye Grass.
- Winter Emmer.
- Soy Beans.

See Price List for prices.

#### RECOMMENDED BY NEBRASKA EXPERIMENT STATION.

Belgrade, Neb., Feb. 27, 1912.

Aye Bros., Blair, Neb.: Received your name from the experiment station at Lincoln saying you had seed corn for sale. I want five bushels of good white seed corn in the ear if I can get it. Please send prices on ear and shelled both and how strong they test. Do you guarantee your seed?—RALPH E. BARBER.

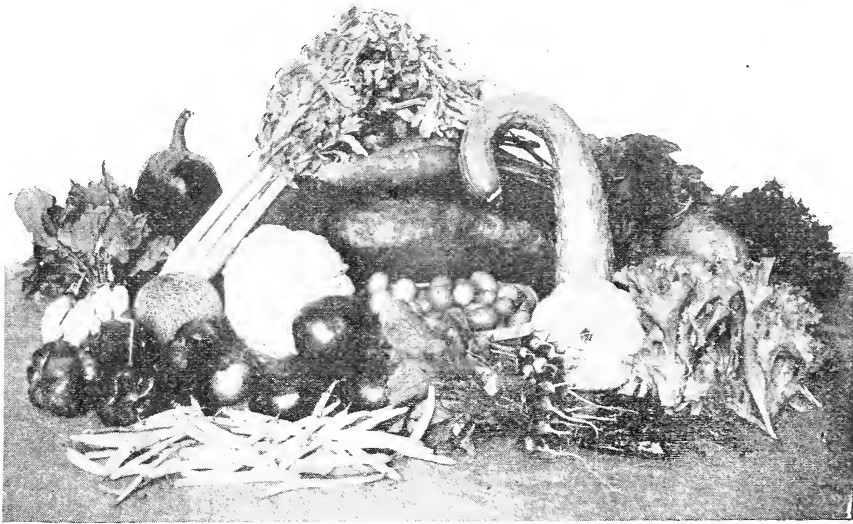
Yankton, S. D., March 20, 1911.

Aye Bros., Blair, Neb.: I received one bushel of Reid's Yellow Dent seed corn ordered by Mr. Frank Collins. I got the corn all right and find it first class. I have not been able to see Mr. Collins since he was there, so do not know what the corn cost. Wish you would quote me price on 20 bushels.—P. M. MAGREU.

Broken Bow, Neb., Aug. 22, 1912.

Aye Bros., Blair, Neb.: We are surprised at the fine crop of corn we have grown from your white seed corn. The stand being thin, the ears grew large. Ears measuring 13 inches in length and in fine roasting ear.—J. L. FERGUSON.

# USE BLAIR WHITE FOR REPLANTING AND GET A BIG CROP



## Garden Seeds

We like the Garden and Flower Seed business. Probably the reason for this is that our seeds have given such good satisfaction, but why shouldn't they? We handle only the best that can be grown or that money can buy. Some of the largest and best growers of garden and flower seeds furnish us with fresh seed every year. It is true we don't ask as much for our seeds as some seedsmen, but we don't need to. We live in a town of 3,000 inhabitants and our taxes are not as high as in some of the larger towns; we pay no rent and are not trying to get rich in a few years, but we want our business to gradually increase as the cost of living increases, and we feel sure it will if we can only get new customers to try our seeds one year. We know you will be pleased with them and become a regular customer.

We pay postage on all garden and flower seed except as otherwise specified in catalog.

Send to us for your garden and flower seeds and we believe that you will never regret it. It is impossible to get better seed from any seed house, no matter what you pay. Of course, we don't want you to think that no one else sells good seeds, for we know of lots of good reliable seed houses handling seeds that come from the same growers that we get our seeds from.

Our business is now large enough to justify us in reducing prices on most all of our garden seeds and nursery stock. We want a large volume of business, for the more business we have the cheaper we can sell. We want to sell enough so we can do our own importing and buy in car and ship loads. You will help yourself by helping us.

All prices are subject to change without notice, but we believe that the prices following will remain during the whole season.

It is reported that packets of garden seed will be increased in price to 10 cents per packet by a number of seed dealers, but we will keep our price at 5 cents per packet on most varieties, but all of our packets may not have pretty illustrations on them, but the seed will be just as good.

We are not going to list every variety of garden seed but only enough of the best so that you can have a selection. Neither do we think it necessary to describe and illustrate standard vegetables. We also take it for granted that most people who send for Seed Catalog know how to sow and take care of a garden and we are not going to give directions on how to plant garden seeds and cultivating and harvesting your crop.

Following is a list of garden seeds we have and the prices. It is easy to order from.

| Kind of Seed.<br>Price, prepaid | Per<br>pkt. | Per<br>oz. | Per<br>¼ lb. | Per<br>lb. |
|---------------------------------|-------------|------------|--------------|------------|
| <b>Artichoke</b>                |             |            |              |            |
| Large Green Globe.....          | \$0.05      | \$0.25     | \$....       | \$....     |
| <b>Asparagus</b>                |             |            |              |            |
| Conover's Colossal .....        | .05         | .20        | .50          | ...        |
| Palmetto .....                  | .05         | .20        | .50          | ...        |
| <b>Beans—Bush (yellow pod)</b>  |             |            |              |            |
| Golden Wax .....                | .05         | ...        | .15          | .50        |
| Curries' Rust Proof.....        | .05         | ...        | .15          | .50        |
| Dwarf Black Wax .....           | .05         | ...        | .15          | .50        |
| <b>Beans—Bush (green pod)</b>   |             |            |              |            |
| Burpees' Stringless .....       | .05         | ...        | .15          | .50        |
| Red Valentine .....             | .05         | ...        | .15          | .35        |
| Yellow Six Weeks.....           | .05         | ...        | .15          | .35        |
| Tepary .....                    | .05         | ...        | .15          | .30        |
| Navy .....                      | .05         | ...        | .10          | .25        |

| Kind of Seed.<br>Price, prepaid | Per<br>pkt. | Per<br>oz. | Per<br>¼ lb. | Per<br>lb. |
|---------------------------------|-------------|------------|--------------|------------|
| <b>Beans—Bush Lima</b>          |             |            |              |            |
| Henderson's Bush Lima .....     | .05         | ...        | .15          | .55        |
| Burpee's Bush Lima....          | .05         | ...        | .15          | .50        |
| <b>Pole Beans</b>               |             |            |              |            |
| Kentucky Wonder.....            | .05         | ...        | .15          | .50        |
| King of Garden Lima.....        | .05         | ...        | .15          | .50        |
| Large White Lima.....           | .05         | ...        | .15          | .50        |
| Lazy Wife .....                 | .05         | ...        | .15          | .50        |
| Cutshort or Corn Hill..         | .05         | ...        | .15          | .50        |
| <b>Beets (Table)</b>            |             |            |              |            |
| Crosby's Egyptian .....         | .05         | .15        | .40          | ...        |
| Early Blood Turnip.....         | .05         | .10        | .35          | ...        |
| Half Long Red.....              | .05         | .10        | .35          | ...        |



# BLAIR WHITE CORN DOES WELL ALMOST ANYWHERE

| Kind of Seed.<br>Price, prepaid    | Per<br>pkt. | Per<br>oz. | Per<br>¼ lb. | Per<br>lb. |
|------------------------------------|-------------|------------|--------------|------------|
| <b>Stock Beets</b>                 |             |            |              |            |
| Long Red Mangel                    | .05         | .10        | .35          | 1.20       |
| Golden Tankard                     | .05         | .10        | .35          | 1.20       |
| <b>Sugar Beet</b>                  |             |            |              |            |
| Klien                              | .05         | .10        | .35          | 1.20       |
| Wanzleben                          | .05         | .10        | .35          | 1.20       |
| <b>Broccoli</b>                    |             |            |              |            |
| Purple Cape                        | .15         | .65        | ...          | ...        |
| Large White                        | .15         | .65        | ...          | ...        |
| <b>Brussels Sprouts</b>            |             |            |              |            |
| ...                                | .10         | .30        | ...          | ...        |
| <b>Cabbage</b>                     |             |            |              |            |
| Early Jersey Wakefield             | .10         | .70        | ...          | ...        |
| Henderson's E. Summer              | .10         | .65        | ...          | ...        |
| Late Flat Dutch                    | .10         | .70        | ...          | ...        |
| Late Danish Baldhead               | .15         | 1.10       | ...          | ...        |
| <b>Carrots</b>                     |             |            |              |            |
| Oxheart                            | .05         | .15        | .40          | ...        |
| Danvers' Half Long                 | .05         | .15        | .40          | ...        |
| <b>Cauliflower</b>                 |             |            |              |            |
| Early Erfurt                       | ...         | ...        | ...          | ...        |
| Danish Snowball                    | ...         | ...        | ...          | ...        |
| <b>Celery</b>                      |             |            |              |            |
| White Plume                        | \$0.10      | \$0.25     | \$...        | \$...      |
| Golden Self Blanching              | .15         | 1.00       | ...          | ...        |
| Giant Pascal                       | .05         | .15        | .40          | ...        |
| <b>Chicory</b>                     |             |            |              |            |
| Large Rooted or Coffee             | .10         | .60        | 2.00         | ...        |
| <b>Collards</b>                    |             |            |              |            |
| Georgia Southern                   | .05         | .10        | .35          | ...        |
| <b>Cress</b>                       |             |            |              |            |
| Curled                             | .05         | .10        | .30          | ...        |
| <b>Pop Corn</b>                    |             |            |              |            |
| White Rice                         | .05         | ...        | .10          | ...        |
| Queen Golden                       | .05         | ...        | .10          | ...        |
| Blue Pearl                         | .05         | ...        | .10          | ...        |
| <b>Sweet Corn</b>                  |             |            |              |            |
| Golden Bantam                      | .05         | ...        | .10          | .25        |
| White Cory                         | .05         | ...        | .10          | .25        |
| Stowell's Evergreen                | .05         | ...        | .10          | .25        |
| Country Gentleman                  | .05         | ...        | .10          | .25        |
| <b>Cucumbers</b>                   |             |            |              |            |
| Long Green Improved                | .05         | .15        | .50          | 1.50       |
| Davis' Perfect                     | .05         | .15        | .50          | 1.50       |
| Chicago Pickling                   | .05         | .15        | .50          | 1.50       |
| <b>Endive</b>                      |             |            |              |            |
| Green Curled                       | .05         | .15        | .50          | ...        |
| Ever White Curled                  | .05         | .15        | .50          | ...        |
| <b>Egg Plant</b>                   |             |            |              |            |
| Improved N. Y. Purple              | .10         | .60        | 1.75         | ...        |
| <b>Kale or Borecole</b>            |             |            |              |            |
| Dwarf Green                        | .05         | .25        | .80          | ...        |
| Fall Green Curled                  | .05         | .25        | .80          | ...        |
| <b>Kohl Rabi</b>                   |             |            |              |            |
| Early White Vienna                 | .15         | .65        | ...          | ...        |
| Early Purple Vienna                | .15         | .65        | ...          | ...        |
| <b>Leek</b>                        |             |            |              |            |
| Large London or Scotch<br>Flag     | .05         | .15        | .50          | ...        |
| <b>Lettuce</b>                     |             |            |              |            |
| Philadelphia Butterhead            | .05         | .10        | .40          | 1.40       |
| Hanson's                           | .05         | .10        | .40          | 1.40       |
| Black Seeded Simpson               | .05         | .10        | .40          | 1.40       |
| Grand Rapids                       | .05         | .10        | .40          | 1.40       |
| <b>Mush Melons</b>                 |             |            |              |            |
| Extra Early Hackensack             | .05         | .10        | .40          | 1.20       |
| Emerald Gem                        | .05         | .10        | .40          | 1.20       |
| Rocky Ford                         | .05         | .10        | .40          | 1.25       |
| Burrell Gem                        | .05         | .10        | .40          | 1.25       |
| Bay View                           | .05         | .10        | .40          | 1.20       |
| Banana                             | .05         | .10        | .40          | 1.40       |
| Peach or Garden Lemon              | .05         | .10        | .40          | 1.40       |
| Honey Dew                          | .10         | .20        | .60          | 2.25       |
| <b>Water Melons</b>                |             |            |              |            |
| Kleckly Sweet                      | .05         | .10        | .30          | .90        |
| Halbert Honey                      | .05         | .10        | .30          | .90        |
| Ice Cream                          | .05         | .10        | .30          | .90        |
| Tom Watson                         | .05         | .10        | .30          | .90        |
| Sweet Heart                        | .05         | .10        | .30          | .90        |
| <b>Mustard</b>                     |             |            |              |            |
| White                              | .05         | ...        | ...          | ...        |
| Southern Giant Curled              | .05         | ...        | ...          | ...        |
| <b>Okra</b>                        |             |            |              |            |
| White Velvet                       | .05         | .40        | ...          | ...        |
| <b>Onions</b>                      |             |            |              |            |
| Southport Red Globe                | .05         | .40        | 1.25         | 4.50       |
| Danvers' Yellow Globe              | .05         | .40        | 1.25         | 4.50       |
| Priestaker                         | .05         | .40        | 1.25         | 4.50       |
| White Portugal or Sil-<br>ver Skin | .05         | .40        | 1.50         | 5.00       |
| Mammoth Silver King                | .05         | .40        | 2.25         | 7.00       |
| <b>Parsley</b>                     |             |            |              |            |
| Moss or Triple Curled              | \$0.05      | \$0.15     | \$...        | \$...      |

| Kind of Seed.<br>Price, prepaid | Per<br>pkt. | Per<br>oz. | Per<br>¼ lb. | Per<br>lb. |
|---------------------------------|-------------|------------|--------------|------------|
| <b>Parsnips</b>                 |             |            |              |            |
| Hollow Crown                    | .05         | ...        | .60          | 2.00       |
| Improved Guernsey               | .05         | ...        | .60          | 2.00       |
| <b>Peas</b>                     |             |            |              |            |
| Alaska (Smooth)                 | .05         | ...        | ...          | .32        |
| American Wonder<br>(Wrinkled)   | .05         | ...        | ...          | .45        |
| Nott's Excelsior<br>(Wrinkled)  | .05         | ...        | ...          | .45        |
| <b>Peppers</b>                  |             |            |              |            |
| Ruby King                       | .10         | .50        | ...          | ...        |
| <b>Pumpkins</b>                 |             |            |              |            |
| Field                           | .05         | ...        | .25          | .80        |
| Small Sugar or Pie              | .05         | ...        | .40          | 1.50       |
| King of Mammoth                 | .05         | ...        | .45          | 2.00       |
| <b>Radishes</b>                 |             |            |              |            |
| Crimson Giant Globe             | .05         | .10        | .35          | ...        |
| Rosy Gem                        | .05         | .10        | .35          | ...        |
| Iceicle                         | .05         | .15        | .50          | ...        |
| French Breakfast                | .05         | .10        | .35          | ...        |
| Black Spanish (Winter)          | .05         | .10        | .35          | ...        |
| <b>Rhubarb</b>                  |             |            |              |            |
| Victoria                        | .05         | .15        | .50          | ...        |
| <b>Salsify or Oyster Plant</b>  |             |            |              |            |
| Mammoth Sandwich<br>Island      | .05         | .25        | .75          | ...        |
| <b>Spinach</b>                  |             |            |              |            |
| Bloomsdale or Savoy             | .05         | .15        | .50          | ...        |
| <b>Squash</b>                   |             |            |              |            |
| Summer Crookneck                | .05         | .10        | .40          | 1.35       |
| Cushaw                          | .05         | .10        | .40          | 1.35       |
| Warty Hubbard                   | .05         | .15        | .50          | 2.00       |
| Mammoth Chili (very<br>large)   | .05         | .15        | .50          | 2.00       |
| <b>Tobacco</b>                  |             |            |              |            |
| Havana                          | .05         | .20        | ...          | ...        |
| Connecticut                     | .05         | .20        | ...          | ...        |
| <b>Tomatoes</b>                 |             |            |              |            |
| Earliana                        | .05         | .35        | 1.25         | ...        |
| June Pink                       | .05         | .35        | 1.25         | ...        |
| Dwarf Champion (Tree)           | .05         | .35        | 1.25         | ...        |
| Ponderosa                       | .05         | .35        | 1.25         | ...        |
| John Baer                       | .05         | .35        | 1.25         | ...        |
| Golden Ponderosa                | .10         | .50        | 1.75         | ...        |
| <b>Rutabagas or Swedes</b>      |             |            |              |            |
| American Purple Top             | .05         | .25        | .90          | ...        |
| Skirving's Purple Top<br>Yellow | .05         | .25        | .90          | ...        |
| <b>Turnips</b>                  |             |            |              |            |
| Purple Top Strap Leaf           | .05         | .25        | .90          | ...        |
| Early White Milan               | .05         | .25        | .90          | ...        |
| <b>Tobacco Dust</b>             |             |            |              |            |
| ...                             | ...         | ...        | ...          | .35        |
| <b>Nasturtiums</b>              |             |            |              |            |
| Tall                            | .05         | .15        | .50          | ...        |
| Dwarf                           | .05         | .15        | .50          | ...        |
| <b>Sweet Peas</b>               |             |            |              |            |
| ...                             | ...         | .10        | .35          | ...        |

Red Cloud, Neb., March 26, 1919.

Aye Bros., Blair, Neb.: Will you please send me one of your catalogs, as I wish to order some of your garden seed and Sudan grass seed? The best garden I ever had was raised with your garden seed.—ROSIE A. WILMOT.

Missouri Valley, Iowa.

Aye Bros., Blair, Neb.: The seed that I bought from you last year I sowed seed from this year. I planted one-half acre and sold \$137.70 worth of melons from that half-acre patch. Am going to put in four acres next year, am going to buy my seeds from Aye Bros., Blair, Neb.—JOHN WILDER.

Broadwater, Neb., May 23.

Aye Bros., Blair, Neb.: In regard to the garden seed, would say I never had better luck. They all came fine and when you stop to think that we had a snowstorm and freeze that took all of our garden it sure looks bad.—MRS. MIKE ELSASS.

Winside, Neb., May 1, 1915.

Aye Bros., Blair, Neb.: I received my seed all right. Many thanks for the same. Am well pleased with the same and you may hear from me again this summer.—MRS. MIKE ELSASS.

Winside, Neb., Feb. 5, 1914.

**BLAIR WHITE CORN DOES WELL ON POOR SOIL**

**Aromatic, Medical and Pot Herbs.**

| Kind of Seed.<br>Price, prepaid | Per<br>pkt. | Per<br>oz. | Per<br>¼ lb. | Per<br>lb. |
|---------------------------------|-------------|------------|--------------|------------|
| Anise                           | .05         | .10        | ...          | ...        |
| Balm                            | .05         | .25        | ...          | ...        |
| Borage—Gurkenkraut              | .05         | .15        | ...          | ...        |
| Caraway—Kuemmel                 | .05         | .30        | ...          | ...        |
| Catnip or Catmint               | .05         | .30        | ...          | ...        |
| Chervil                         | .05         | .15        | ...          | ...        |
| Coriander                       | .05         | .10        | ...          | ...        |
| Dandelion—Loewenzahn            | .05         | .25        | ...          | ...        |
| Dill                            | .05         | .20        | ...          | ...        |
| Horehound                       | .05         | .20        | ...          | ...        |
| Hysop                           | .05         | .20        | ...          | ...        |
| Lavender                        | .05         | .15        | ...          | ...        |
| Rosemary                        | .05         | .40        | ...          | ...        |
| Rue                             | .05         | .15        | ...          | ...        |
| Sage                            | .05         | .15        | ...          | ...        |
| Saffron                         | .05         | .20        | ...          | ...        |
| Savory                          | .05         | .20        | ...          | ...        |
| Sorrel                          | .05         | .20        | ...          | ...        |
| Sweet Basil                     | .05         | .15        | ...          | ...        |
| Sweet Fennel                    | .05         | .10        | ...          | ...        |
| Sweet Marjoram                  | .05         | .15        | ...          | ...        |
| Sweet Thyme                     | .05         | .30        | ...          | ...        |
| Wormwood                        | .05         | .20        | ...          | ...        |

**Vegetable Plants in Season.**

Our vegetable plant business is in charge of an expert gardener and plants are packed very securely, but we do not guarantee safe arrival of plants, but we hear of very few complaints.

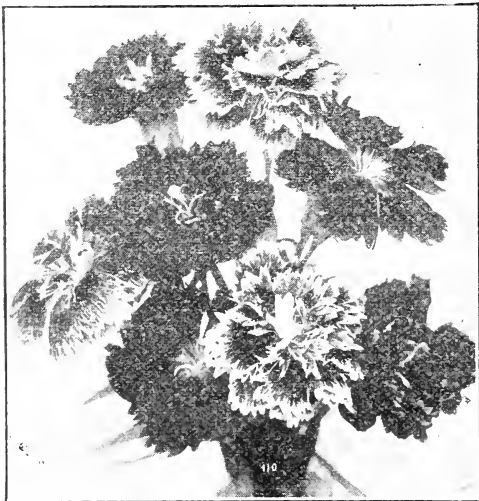
Express  
your expense

| Kinds of<br>Plants | Ready<br>after | Pr. Per<br>doz. P. P. | Per<br>doz. | Per<br>100 | Per<br>1000 |
|--------------------|----------------|-----------------------|-------------|------------|-------------|
| Cabbage—Early      | April 25       | \$0.25                | \$0.20      | \$....     | \$10.00     |
| Late               | May 10         | .25                   | .20         | ...        | 10.00       |
| Tomato             | May 1          | .25                   | .25         | ...        | 10.00       |
| Sw't Potato Plts.  | May 15         | ...                   | ...         | 1.50       | 8.00        |
| Peppers            | May 15         | ...                   | ...         | 2.00       | 10.00       |
| Asparagus Roots    | ...            | .25                   | ...         | 2.00       | ...         |
| Egg Plant          | May 10         | .25                   | ...         | 2.00       | 10.00       |

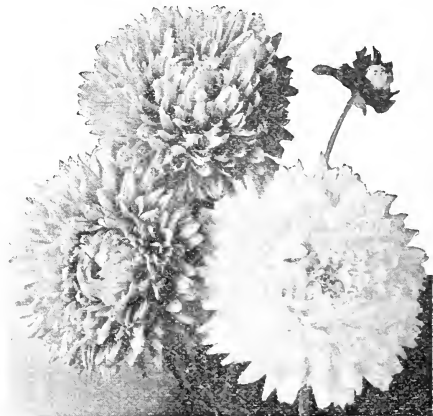
**Flowers**

We have marked the Annuals with the letter A, and the Perennials are marked with the letter P. The annuals bloom and die the first year. The perennials live and bloom a number of years.

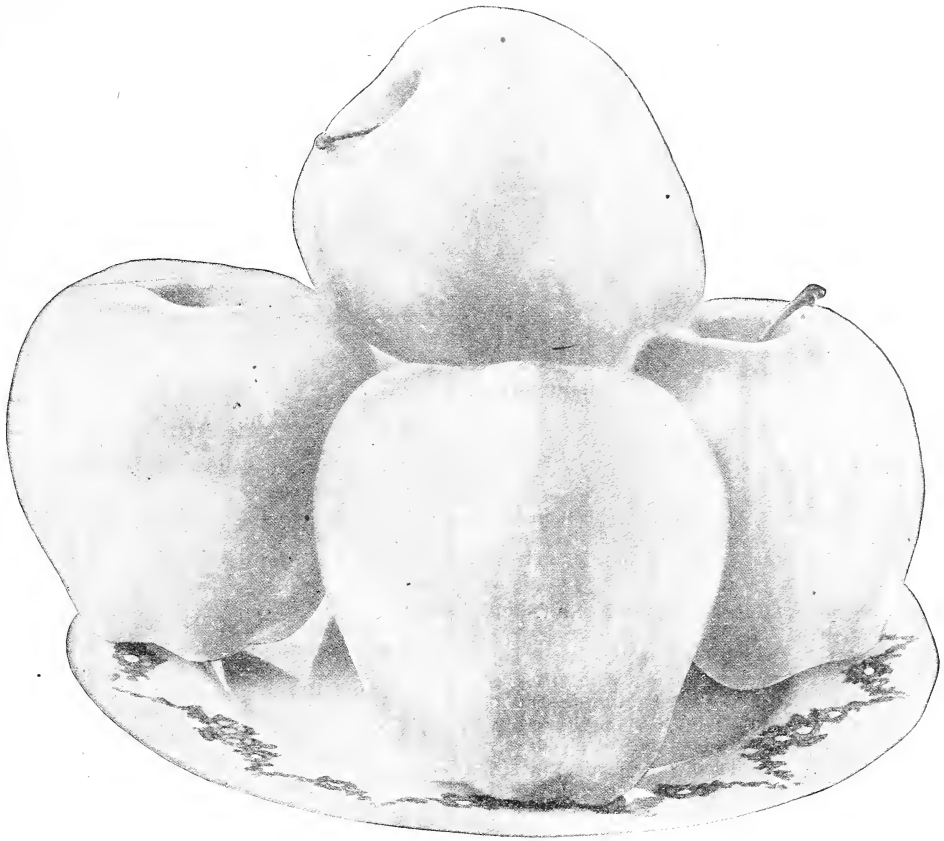
| KINDS OF FLOWERS.          | VARIETY.               | Price, postpaid per | pkt.   |
|----------------------------|------------------------|---------------------|--------|
| Aster (A)                  | Victoria Mixed         | ...                 | \$0.05 |
| Balsam or Lady Slipper (A) | Double Mixed           | ...                 | .05    |
| Chrysanthemum (A)          | Camelia Flowered       | ...                 | .05    |
| Calliopsis (A)             | Annual Mixed           | ...                 | .05    |
| Carnation (A)              | Marguerite Mixed       | ...                 | .05    |
| Candytuft (A)              | Mixed                  | ...                 | .05    |
| Hollyhock (P)              | Margaret               | ...                 | .05    |
| Mignonette (A)             | Mixed                  | ...                 | .05    |
| Nasturtium (A)             | Double Mixed           | ...                 | .05    |
| Pinks (A)                  | Giant Matchett         | ...                 | .05    |
| Sweet Peas (A)             | Tall (Best Mixed)      | ...                 | .05    |
| Dahlia (P)                 | Dwarf (Lady Bird)      | ...                 | .05    |
| Pansy (A)                  | Chinest Mixed          | ...                 | .05    |
| Petunia (A)                | All Mixed              | ...                 | .05    |
| Phlox Drummondii (A)       | Spencers' Mixed        | ...                 | .10    |
| Verbena (A)                | Fine Double Mixed      | ...                 | .10    |
| Sweet William (P)          | Bugnot's Giant Mixture | ...                 | .10    |
|                            | Trimardeau Mixture     | ...                 | .10    |
|                            | Mixed                  | ...                 | .10    |
|                            | Mixed                  | ...                 | .10    |
|                            | White                  | ...                 | .10    |
|                            | Mammoth Mixed          | ...                 | .10    |
|                            | Choice Mixed           | ...                 | .10    |
|                            | Double Mixed           | ...                 | .10    |



Pinks.



Asters.



Delicious.

## Trees, Shrubs, Vines, Bushes, and Plants

Make the Home Grounds Beautiful and Profitable.

A farm or a town home is not complete without some nice trees, shrubs, plants, etc., and the cost is small compared to the profit and pleasure there is in a nice orchard, vineyard, strawberry beds, and ornamental trees and shrubs planted in the right place.

Don't wait until next year or some future time to set out trees or plants, but do it this season and in a short time you can pick fruit from your own trees and vines.

All of our stock is properly packed so that it will get to you in the best of condition for planting. Send your order in early and we will ship at proper time.

This catalog is our only agent and by looking over our prices you will find they are cheaper than sold by most reliable agents and our quality is the very best. Purchaser pays transportation charges.

**GUARANTEE:** We guarantee our trees, plants and nursery stock to arrive at destination in good shape and that our stock has been

inspected by the State Entomologist and is free from San Jose Scale and other dangerous insects or plant diseases. A certificate goes with each shipment.

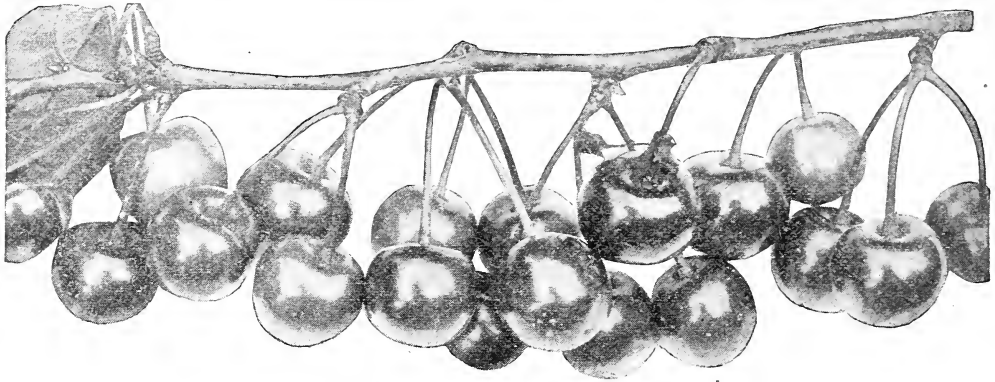
To those of our customers who are not familiar with varieties of fruit we would urge upon them to order varieties marked with a star. We know they are good for the average planter and will give good results. Of course we have varieties for those who wish still something different and have listed them.

We wish again to call your attention to the fact that all of our stock is the very best and not odds and ends that are usually thrown away by some nurserymen and then sold at some ridiculously low price. It costs money to produce high-class stock and our price is in line with stock offered.

There is a shortage of nursery stock this season and we are not sure that we can fill orders after April 1, 1920.

A discount of 10 per cent will be allowed on all nursery orders sent in before March 1, 1920.

# BLAIR WHITE CORN DOES WELL ON POOR SOIL



**Montmorency Cherries.**

## Apples.

We have the following varieties to select from:

**Summer Apples.** Chenango, (\*Duchess), Early Harvest, Golden Sweet, (\*Liveland Raspberry), Res Astrachan, Red June, (\*Yellow Transparent).

**Autumn Apples.** Snow, Peerless, Ramsdell Sweet (\*Wealthy).

**Winter Apples.** Ben Davis, Black Ben Davis, (\*Delicious), Gano, (\*Grimes' Golden), Janet, (\*Jonathan), King David, Mammoth Black Twig, (\*N. W. Greening), (\*Stayman's Wine-sap), Talman Sweet, \*Winesap, Wolf River.

|                   | Each   | Per 10 | Per 100 |
|-------------------|--------|--------|---------|
| 5 ft. and up..... | \$1.00 | \$9.00 | \$75.00 |
| 4 to 5 ft.....    | .75    | 7.00   | 65.00   |
| 3 to 4 ft.....    | .60    | 5.50   | 52.50   |



**Janet Apples.**

## Crab Apples.

(\*Florence), (\*Hyslop), Red Siberian, Trans-cendent, (\*Whitney).

|                   | Each   | Per 10 | Per 100 |
|-------------------|--------|--------|---------|
| 5 ft. and up..... | \$1.00 | \$9.00 | \$85.00 |
| 4 to 5 ft.....    | .75    | 7.00   | 65.00   |
| 3 to 4 ft.....    | .60    | 5.50   | 52.50   |

## Cherries.

Budded on Imported Seedlings and not sprout from the roots. We have the following varieties. Stock limited.

(\*Early Richmond), (\*English Morello), Dye-house, Gov. Wood, Honey Dew, Late Duke, May Duke, (\*Montmorency), Terry, (\*Wragg), Windsor.

|                | Each   | Per 10  | Per 100 |
|----------------|--------|---------|---------|
| 5 to 6 ft..... | \$1.25 | \$10.00 | \$95.00 |
| 4 to 5 ft..... | 1.00   | 9.50    | 92.50   |

\*Compass Cherry-Plum. New early bearer. Great producer.

|                | Each   | Per 10  | Per 100  |
|----------------|--------|---------|----------|
| 4 to 5 ft..... | \$1.25 | \$12.00 | \$110.00 |
| 3 to 4 ft..... | 1.00   | 9.50    | 92.50    |

## Plums.

### Native Varieties.

De Soto, Forest Garden, (\*Hawkeye), Milton, Quaker, (\*Stoddard), (\*Surprise), Wild Goose, (\*Wolf), (\*Wyant).

|                | Each   | Per 10  | Per 100 |
|----------------|--------|---------|---------|
| 5 to 6 ft..... | \$1.10 | \$10.00 | \$90.00 |
| 4 to 5 ft..... | .90    | 8.50    | 80.00   |
| 3 to 4 ft..... | .75    | 7.00    | 67.50   |

### European and Japanese Varieties.

America, (\*Abundance), Bradshaw, (\*Bur-bank), (\*Burwood), (\*Easton), German Prune, Green Gage, (\*Lombard), Yellow Egg.

|                | Each   | Per 10  | Per 100 |
|----------------|--------|---------|---------|
| 5 to 6 ft..... | \$1.10 | \$10.00 | \$90.00 |
| 4 to 5 ft..... | .90    | 8.50    | 80.00   |
| 3 to 4 ft..... | .75    | 7.00    | 67.50   |

### Hansen's Hybrid Variety of Plums.

New, very productive and very hardy. We have the following varieties and they are all worth trying:

Cheresota, (\*Hanska), Opata, (\*Sapa), Toka, Waneta.

|                | Each   | Per 10  | Per 100  |
|----------------|--------|---------|----------|
| 5 to 6 ft..... | \$1.50 | \$13.50 | \$100.00 |
| 4 to 5 ft..... | 1.25   | 11.00   | 90.00    |
| 3 to 4 ft..... | 1.00   | 8.50    | 80.00    |

**Pears.**

Can furnish the following varieties. Varieties marked with (d), grown both standard and dwarf size.

(\*Bartlett—d), Clapp's Favorite—d, (\*Duchess—d), Flemish Beauty, Garber, (\*Kieffer—d), (\*Seckel).

|                | Each   | Per 10 | Per 100 |
|----------------|--------|--------|---------|
| 4 to 5 ft..... | \$1.00 | \$9.00 | \$80.00 |
| 3 to 4 ft..... | .80    | 7.50   | 60.00   |

**Peaches.**

We have the following varieties to offer:

(\*Alexander), Bailey, (\*Champion), Crosby, Elberta, (\*Heath Cling), Greensboro, (\*J. H. Hale), Mixen Cling, Mixen Free, Russel, Salway, (\*Triumph), etc.

|                | Each   | Per 10 | Per 100 |
|----------------|--------|--------|---------|
| 4 to 6 ft..... | \$0.65 | \$6.00 | \$55.00 |
| 3 to 4 ft..... | .50    | 4.50   | 40.00   |
| 2 to 3 ft..... | .40    | 3.50   | 32.50   |

**Apricots.**

We have the following varieties to offer:

Alexander, Budd, Harris, Moorpark, Royal, Superb.

|                | Each   | Per 10  | Per 100 |
|----------------|--------|---------|---------|
| 5 to 6 ft..... | \$1.25 | \$12.00 | \$90.00 |
| 4 to 5 ft..... | 1.00   | 10.00   | 80.00   |
| 3 to 4 ft..... | .75    | 7.00    | 60.00   |

**Mulberry.**

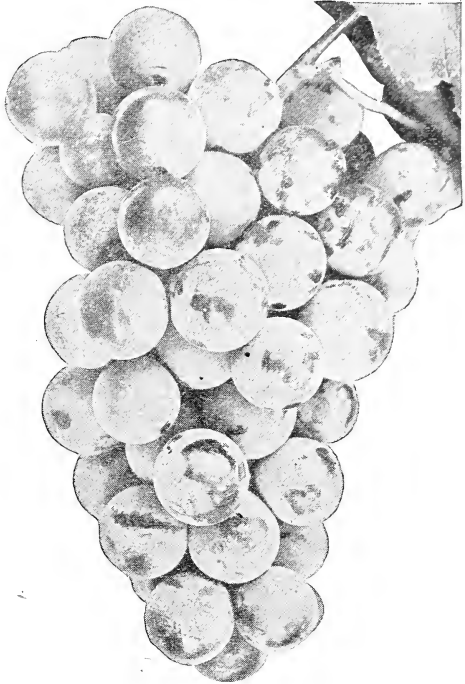
|                         | Each   | Per 10  | Per 100 |
|-------------------------|--------|---------|---------|
| Russian, 5 to 6 ft..... | \$1.25 | \$12.00 | \$90.00 |
| Russian, 4 to 5 ft..... | 1.00   | 9.00    | 75.00   |
| Russian, 3 to 4 ft..... | .75    | 7.00    | 60.00   |

**Grapes.**

We have the following varieties:

Agawam (red), \*Brighton (red), Moore's Diamond (white), \*Moore's Early (black), \*Niagara (white), Worden (black), Concord (black).

|                 | Each   | Per 10 | Per 100 |
|-----------------|--------|--------|---------|
| 2 year old..... | \$0.50 | \$4.00 | \$35.00 |
| 1 year old..... | .40    | 3.50   | 30.00   |



Concord Grapes

**Currants.**

We have the following:

Black Champion, Cherry, (\*Fay), Red Dutch, White Grape.

|             | Each   | Per 10 | Per 100 |
|-------------|--------|--------|---------|
| 2 year..... | \$0.35 | \$3.25 | \$30.00 |
| 1 year..... | .30    | 3.00   | 27.50   |

**Currants—Special.**

|                         | Each   | Per 10 | Per 100 |
|-------------------------|--------|--------|---------|
| Perfection (2 yr.)..... | \$0.50 | \$4.50 | \$40.00 |
| Tree Currant.....       | .50    | 4.50   | 40.00   |

**Gooseberries.**

We have in special varieties:

Carrie, Champion or Oregon and Josselyn (Red Jacket).

|                                       | Each   | Per 10 | Per 100 |
|---------------------------------------|--------|--------|---------|
| 2 year.....                           | \$0.50 | \$5.00 | \$40.00 |
| Houghton (2 yr.).....                 | .35    | 3.25   | 30.00   |
| Downing, Pearl and Smith (2 yr.)..... | .50    | 5.00   | 40.00   |
| Tree Gooseberry.....                  | .50    | 5.00   | .....   |

**Raspberries.**

We have the following kinds:

Black varieties: (\*Black), (\*Cumberland), Kansas, Plum Farmer.

Red varieties: (\*Cardinal), Loudon.

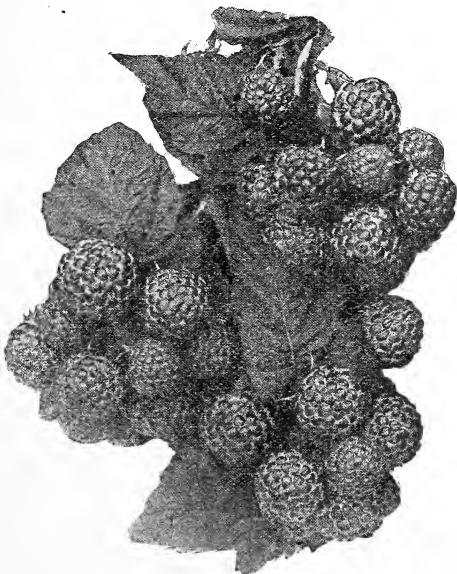
|              | Per 10 | Per 100 |
|--------------|--------|---------|
| Plants ..... | \$1.75 | \$10.00 |

**Everbearing Raspberries.**

Everbearing Raspberry (St. Regis).

Bears the first season. Begins to bear about middle of June and continues until late in October. One of the greatest Raspberries ever introduced.

|              | Per 10 | Per 100 |
|--------------|--------|---------|
| Plants ..... | \$2.00 | \$15.00 |



Black Raspberries.

# BLAIR WHITE CORN—MONEY MAKER

## Blackberries.

Can furnish the following varieties:

Acient Briton, (\*Blowers), (\*Snyder).

|              |        |         |
|--------------|--------|---------|
|              | Per 10 | Per 100 |
| Plants ..... | \$2.00 | \$10.00 |

## Dewberries.

One variety. Incretia. (L. E. Snyder's)

|              |        |         |
|--------------|--------|---------|
|              | Per 10 | Per 100 |
| Plants ..... | \$2.00 | \$15.00 |

## Strawberries.

The Senator Dunlap is the very best of the standard varieties.

|              |        |         |          |
|--------------|--------|---------|----------|
|              | Per 25 | Per 100 | Per 1000 |
| Plants ..... | \$0.75 | \$2.50  | \$20.00  |

## Everbearing Strawberries.

We consider the Progressive the very best of the Everbearing varieties and offer only this kind.

|              |        |         |          |
|--------------|--------|---------|----------|
|              | Per 25 | Per 100 | Per 1000 |
| Plants ..... | \$1.50 | \$5.00  | \$40.00  |

## Garden Roots.

|                   |        |        |         |
|-------------------|--------|--------|---------|
|                   | Each   | Per 10 | Per 100 |
| Asparagus .....   | \$0.00 | \$1.00 | \$ 6.00 |
| Horse Radish..... | .25    | 1.75   | 10.00   |
| Rhubarb .....     | .25    | 2.00   | 10.00   |

## Miscellaneous.

|                          |        |        |         |
|--------------------------|--------|--------|---------|
|                          | Each   | Per 10 | Per 100 |
| Juneberry (18 to 24 in.) | \$0.50 | \$4.00 | \$..... |
| Loganberry .....         | .50    | 4.00   | 25.00   |
| Strawberry-Raspberry .   | .25    | 2.25   | 20.00   |

## Hedging.

|                                     |         |           |
|-------------------------------------|---------|-----------|
|                                     | Per 100 | Per 1,000 |
| Buckthorn ..... 18 to 24 in.        | \$25.00 | \$.....   |
| Caragana, Per tree, 18 to 24 in.    | 25.00   | .....     |
| Honey Locust..... 2 to 3 ft.        | 7.50    | .....     |
| Osage Orange No. 1.....             | 3.00    | 25.00     |
| Privet Amoor..... 2 to 3 ft.        | 25.00   | .....     |
| Privet California.. 2 to 3 ft.      | 20.00   | .....     |
| Privet Ibotia and Polish, 2 to 3 ft | 25.00   | .....     |
| Quince, Japan..... 2 to 3 ft.       | 30.00   | .....     |

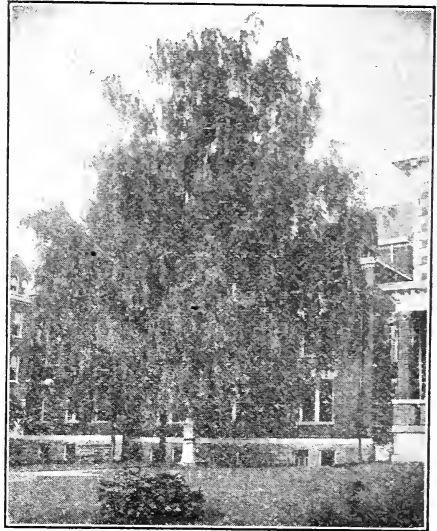
## Forest Tree Seedlings.

|                                    |         |           |
|------------------------------------|---------|-----------|
|                                    | Per 100 | Per 1,000 |
| Ash .....                          | \$ 7.50 | \$60.00   |
| Catalpa, Speciosa.. 2 to 3 ft.     | 7.50    | 60.00     |
| Elm .....                          | 7.50    | 60.00     |
| Locust, Black..... 2 to 3 ft.      | 7.50    | 60.00     |
| Locust, Honey..... 2 to 3 ft.      | 7.50    | 60.00     |
| Maple, Soft or Silver Leaved ..... | 7.50    | 60.00     |
| Mulberry, Russian.. 2 to 3 ft.     | 7.50    | 60.00     |
| Osage Orange..... 12 to 18 in.     | 3.00    | 25.00     |
| Walnut, Black... 18 to 24 in.      | 16.00   | .....     |

## Poplar and Willows.

(One year from cuttings.)

|                                   |         |           |
|-----------------------------------|---------|-----------|
|                                   | Per 100 | Per 1,000 |
| Poplar, Carolina and Norway ..... | \$ 8.00 | \$65.00   |
| Willow, Golden Leaved, 2 to 3 ft. | 7.00    | 60.00     |
| Willow, Laurel Leaved, 2 to 3 ft. | 7.00    | 60.00     |



**Weeping Birch.**

## Weeping Trees.

|                            |        |
|----------------------------|--------|
|                            | Each   |
| Birch, Cut Leaved.....     | \$2.00 |
| Elm, Camperdown .....      | 5.00   |
| Mountain Ash.....          | 3.00   |
| Mulberry, Leas Russian.... | 3.00   |
| Willow, Wisconsin.....     | 1.50   |

## Shade and Ornamental Trees.

|                                |        |         |
|--------------------------------|--------|---------|
|                                | Each   | Per 10  |
| Ash .....                      | \$1.50 | \$10.00 |
| Birch, Emp. White....          | 2.00   | 17.50   |
| Box Elder .....                | 1.00   | 9.00    |
| Buckeye .....                  | 2.50   | .....   |
| Butternut .....                | 2.00   | 17.50   |
| Catalpa, Bunge.....            | 3.00   | 25.00   |
| Catalpa, Speciosa....          | 1.00   | 10.00   |
| Chestnut, Am. Sweet..          | 2.00   | 20.00   |
| Chestnut, Horse.....           | 3.00   | 25.00   |
| Elm, White.....                | 1.00   | 8.50    |
| Hackberry .....                | 1.50   | 13.50   |
| Linden .....                   | 2.00   | 18.50   |
| Locust, Black.....             | 1.00   | 10.00   |
| Locust, Honey.....             | 1.00   | 10.00   |
| Maple, Hard.....               | 2.00   | 17.50   |
| Maple, Norway.....             | 2.00   | 17.50   |
| Maple, Schwedlers....          | 4.50   | .....   |
| Maple, Soft.....               | 1.00   | 7.50    |
| Maple, Weir's Cut Leaved ..... | 2.00   | 17.50   |
| Mountain Ash, Emp....          | 1.50   | 13.50   |
| Mountain Ash, Oak Leaved ..... | 2.50   | .....   |
| Oak, Pin and Red.....          | 3.50   | .....   |
| Olive, Russian.....            | 2.00   | .....   |
| Poplar, Bolleana....           | 2.00   | .....   |
| Poplar, Canadian....           | 2.00   | .....   |
| Poplar, Carolina....           | 1.00   | .....   |
| Poplar, Lombardy....           | 1.00   | .....   |
| Poplar, Norway.....            | 1.00   | .....   |
| Poplar, Silver-leaved..        | 2.50   | .....   |
| Sycamore, American..           | 1.50   | .....   |
| Tulip Tree.....                | 2.00   | .....   |
| Thorne Tree.....               | 2.50   | .....   |
| Walnut, Black.....             | 1.50   | .....   |
| Willow, Golden.....            | 1.00   | .....   |
| Willow, Laurel-leaved..        | 1.50   | .....   |

### Ornamental Shrubs.

|                                                                                                                            |            |        |
|----------------------------------------------------------------------------------------------------------------------------|------------|--------|
| Almond, Flowering, Red and White .....                                                                                     | 3 to 4 ft. | \$1.00 |
| Althea .....                                                                                                               | 3 to 4 ft. | 1.00   |
| Barberry, Thunbergi.....                                                                                                   | 2 to 3 ft. | .75    |
| Buckthorn .....                                                                                                            | 3 to 4 ft. | .75    |
| Butterfly Bush.....                                                                                                        | 2 to 3 ft. | 1.00   |
| Butterfly Bush.....                                                                                                        | 2 to 3 ft. | 1.00   |
| Caragana (Pea Tree).....                                                                                                   | 3 to 4 ft. | 1.00   |
| Carnus (Dog Wood).....                                                                                                     | 3 to 4 ft. | 1.00   |
| Currant, Flowering.....                                                                                                    | 3 to 4 ft. | 1.00   |
| Dentzia .....                                                                                                              | 3 to 4 ft. | 1.00   |
| Elder, Golden-leaved.....                                                                                                  | 3 to 4 ft. | 1.00   |
| Eleagnis, Longipes.....                                                                                                    | 2 to 3 ft. | 1.00   |
| Enonymus, Strawberry Tree.....                                                                                             | 4 to 5 ft. | 2.50   |
| Forsythia .....                                                                                                            | 3 to 4 ft. | 1.00   |
| Fringe Purple, or Smoke Tree.....                                                                                          | 3 to 4 ft. | 1.00   |
| Honeysuckle Bush.....                                                                                                      | 3 to 4 ft. | 1.00   |
| Hydrangea, Arboresceus.....                                                                                                | 2 to 3 ft. | .75    |
| Hydrangea, Tree Form.....                                                                                                  | 4 to 5 ft. | 1.50   |
| Lilac, Budded.....                                                                                                         | 3 to 4 ft. | .50    |
| Lilac, Tree Form.....                                                                                                      |            |        |
| Lilac, Persian.....                                                                                                        | 3 to 4 ft. | 1.50   |
| Privet, Amoor.....                                                                                                         | 2 to 3 ft. | .75    |
| Privet, California.....                                                                                                    | 3 to 4 ft. | .75    |
| Privet, Ibota.....                                                                                                         | 2 to 3 ft. | .75    |
| Prunus Tribola .....                                                                                                       | 3 to 4 ft. | 1.00   |
| Quince, Japan Scarlet.....                                                                                                 | 2 to 3 ft. | .75    |
| Snowball Clumps.....                                                                                                       | 3 to 4 ft. | 1.00   |
| Snowball, Japan.....                                                                                                       | 2 to 3 ft. | .75    |
| Snowberry, Red.....                                                                                                        | 2 to 3 ft. | .75    |
| Snowberry, White.....                                                                                                      | 2 to 3 ft. | .75    |
| Spirea, Red Dwarf.....                                                                                                     | 2 to 3 ft. | 1.00   |
| Spirea, White Dwarf.....                                                                                                   | 2 to 3 ft. | 1.00   |
| Spirea, Arguta, Thunbergi, Billardi, Callossa Alba, Douglasi, Opulifola, Prunifolia Reevesi, Sorbifolia, Van Houttei ..... | 2 to 3 ft. | .75    |

|                                              |            |     |
|----------------------------------------------|------------|-----|
| Sumac, Cut-leaved.....                       | 2 to 3 ft. | .75 |
| Sumac, Smooth.....                           | 2 to 3 ft. | .75 |
| Syringa, Mock Orange, Golden, Le-Moine ..... | 2 to 3 ft. | .75 |
| Tamarix .....                                | 2 to 3 ft. | .75 |
| Viburnum, Lantana.....                       | 2 to 3 ft. | .75 |
| Weigelia .....                               | 2 to 3 ft. | .75 |

### Evergreens.

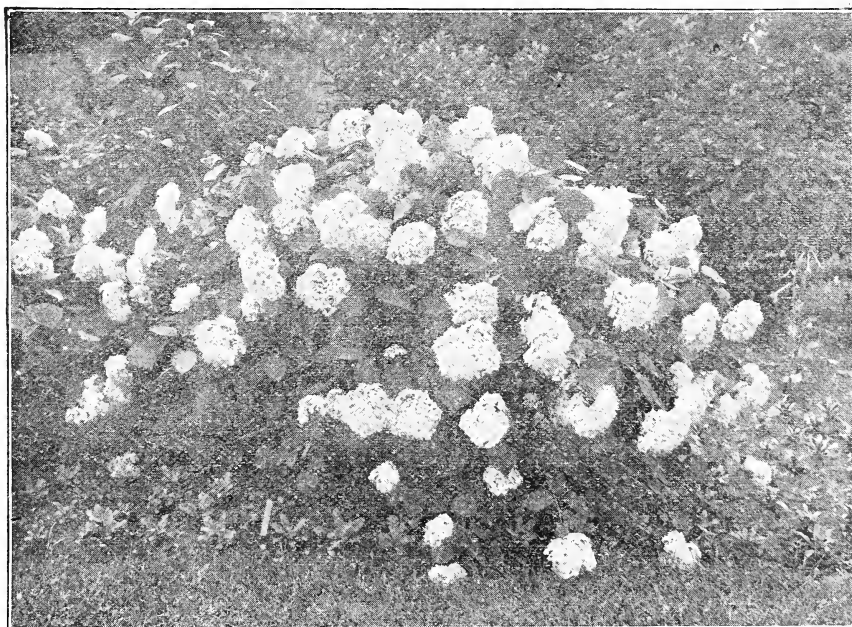
|                                      | Each       | Per 10     |
|--------------------------------------|------------|------------|
| Arbor Vitae, American .. 2 to 3 ft.  | \$1.00     | \$ 8.50    |
| Arbor Vitae, Pyramidalis. 2 to 3 ft. | 1.50       | 12.50      |
| Arbor Vitae, Siberian... 2 to 3 ft.  | 1.50       | 12.50      |
| Cedar, Red..... 2 to 3 ft.           | 1.50       | 12.50      |
| Fir, Balsam..... 2 to 3 ft.          | 1.50       | 12.50      |
| Juniper, Irish..... 2 to 3 ft.       | 2.50       | 22.50      |
| Juniper, Swedish..... 2 to 3 ft.     | 2.50       | 22.50      |
| Pine, Austrian..... 2 to 3 ft.       | 2.00       | 18.00      |
| Pine, Scotch..... 2 to 3 ft.         | 2.00       | 18.00      |
| Pine, Jack..... 2 to 3 ft.           | 1.50       | 12.50      |
| Spruce, Black Hills..... 2 to 3 ft.  | 1.50       | 12.50      |
| Spruce, Colorado Blue-balled .....   | 2 to 3 ft. | 8.50 ..... |
| Spruce, Colorado Green. 2 to 3 ft.   | 3.50       | .....      |
| Spruce, Douglas..... 2 to 3 ft.      | 3.00       | .....      |
| Spruce, Norway..... 2 to 3 ft.       | 1.50       | 12.50      |
| Spruce, White..... 2 to 3 ft.        | 1.50       | 12.50      |

With balls of dirt, add 50 per cent.

### Spruce, Kusters Blue.

Trees are shiners and shipped only with balls of dirt.

|                           | Each   |
|---------------------------|--------|
| Grafted trees..... 2 ft.  | \$8.50 |
| Grafted trees..... 18 in. | 6.50   |
| Grafted trees..... 12 in. | 4.00   |



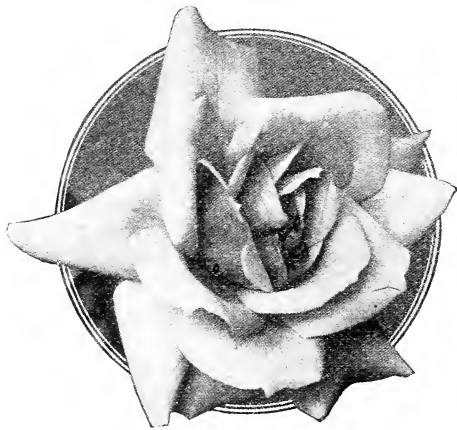
**Hydrangea.**



# BLAIR WHITE CORN—MONEY MAKER

## Vines and Creepers.

|                                  |        |         |
|----------------------------------|--------|---------|
| <b>Apelopsis:</b>                | Each   | Per 10  |
| Engelmaimi .....                 | \$1.00 | \$ 8.50 |
| Va Creeper.....                  | .75    | 6.50    |
| American Ivy.....                | .75    | 6.50    |
| Boston Ivy.....                  | 1.00   | 9.00    |
| Japan Creeper.....               | 1.00   | 9.00    |
| Aristolochia or Dutchman's Pipe. | 1.50   | 12.50   |
| Bignonia or Trumpet Creeper..    | .75    | 6.00    |
| Celastrus or Staff Tree.....     | .75    | 6.00    |
| <b>Clematis:</b>                 |        |         |
| Coccinea .....                   | 1.25   | 10.00   |
| Henryi (white).....              | 1.25   | 10.00   |
| Jackmanni (purple).....          | 1.25   | 10.00   |
| Mad Edward Andre (red).....      | 1.25   | 10.00   |
| Paniculata (white).....          | 1.00   | 8.50    |
| Ramona (blue).....               | 1.25   | 10.00   |
| Ville de Lyon (red).....         | 1.25   | 10.00   |
| Viticella (blue).....            | 1.25   | 10.00   |
| <b>Honeysuckle:</b>              |        |         |
| Halleana (white) .....           | .75    | 6.00    |
| Monthly Fragrant.....            | .75    | 6.00    |
| Scarlet Trumpet.....             | .75    | 6.00    |
| Yellow Trumpet.....              | .75    | 6.00    |
| Kudzu Vine.....                  | .75    | 6.00    |
| Matrimony Vine.....              | .75    | 6.00    |
| <b>Wistaria:</b>                 |        |         |
| American (purple).....           | .75    | 6.00    |
| American (white).....            | .75    | 6.00    |
| Chinese (purple).....            | 1.00   | 8.50    |
| Chinese (white).....             | 1.00   | 8.50    |



## Roses.

Strong field-grown and usually bloom first year. We can furnish you almost any kind you want but will list only a few on fine 2-year-old bushes, for they give best results.

**Hybrid Perpetuals:** Annie Diesbach, Baron Rothchild, Captain Hayward, Clio, General Washington, J. B. Clark, Madame Chas. Wood, Magna Charter.

**Tea Roses:** General McArthur, Helen Gould, Killarney (pink or white), La France, Mrs. Aaron Ward.

**Moss Roses:** Crested Moss, Henry Martin, Salet and White Bath.

**Wichurian Hybrid Roses:** Manda's Triumph, Universal Favorite, Wichuriana.

**Rugosa Roses:** Agnes, Emily Carman, Belle Poitevine, Conrad F. Meyer, Hansa, and Madame G. Bruant.

## Special Varieties of Roses.

American Beauty, Harrison's Yellow, Madame Plantier, Persian Yellow, Ryon d'Or.

## Climbing and Rambler Roses.

American Beauty (Climbing), Baltimore Belle, Crimson Rambler, Dorothy Perkins (pink and white), Pink Rambler, Seven Sisters, White and Yellow Rambler.

## Baby Rambler Roses.

Crimson Baby, Jessie, Pink Baby, White Baby, and Yellow Baby, etc.

Price of all above varieties of Roses is \$1.00 each or \$9.00 for 10.

|                  |        |         |
|------------------|--------|---------|
|                  | Each   | Per 10  |
| Tree Roses ..... | \$3.00 | \$..... |

## Herbaceous Peonies.

|                                            |        |         |
|--------------------------------------------|--------|---------|
|                                            | Each   | Per 10  |
| Pink, Red, White and Named Varieties ..... | \$0.60 | \$ 5.00 |

## Hardy Perennials.

|                                  |        |         |
|----------------------------------|--------|---------|
|                                  | Each   | Per 10  |
| Achillea (Ball of Snow).....     | \$0.35 | \$ 3.00 |
| Aquilegas or Columbines.....     | .40    | 3.00    |
| Asters, Assorted.....            | .40    | 3.00    |
| Bleeding Heart.....              | .75    | 7.00    |
| Boltonia .....                   | .35    | 3.25    |
| Campanula (Canterbury Bells)...  | .40    | 3.50    |
| Coreopsis .....                  | .35    | 3.25    |
| Chrysanthemum (Hardy).....       | .35    | 3.25    |
| Daisy, Shasta.....               | .35    | 3.25    |
| Delphinium (Larkspur).....       | .35    | 3.25    |
| Dianthus (Sweet William).....    | .35    | 3.25    |
| Digitalis (Fox Glove).....       | .40    | 3.50    |
| Ferns (Hardy).....               | .50    | 4.50    |
| Funkia, Day Lily.....            | .50    | 4.50    |
| Funkia, Undulated.....           | .50    | 4.50    |
| Gaillardia (Blanket Flower)..... | .40    | 4.25    |
| Gypsophilia (Baby Breath).....   | .40    | 4.25    |
| Helianthus (Hardy Sunflower)...  | .40    | 4.25    |
| Henverocallis (Lemon Lily)....   | .40    | 4.25    |
| Hibiscus (Ros Mallows).....      | .40    | 4.25    |
| Hibiscus (Meehaus Marvels)....   | .50    | 4.50    |
| Hollyhocks, Choice Double.....   | .40    | 4.25    |
| Iris, German Mixed.....          | .40    | 4.25    |
| Iris, Japan Mixed.....           | .50    | 4.50    |
| Iris, Siberica Mixed.....        | .40    | 4.25    |
| Lily of the Valley, Mixed.....   | .50    | 4.50    |
| Lilium Tigrinum (Tiger Lily).... | .50    | 4.50    |
| Phlox, Choice.....               | .40    | 4.25    |
| Phlox, Mixed.....                | .35    | 3.25    |
| Physostegia (Dragon Head).....   | .40    | 4.25    |
| Rudbeckia (Golden Glow).....     | .40    | 4.25    |
| Sedum, Brilliant.....            | .40    | 4.25    |
| Yucca Filamentosa.....           | .50    | 4.50    |

## Tender Bulbs and Tubers for Spring Planting.

|                                 |        |         |
|---------------------------------|--------|---------|
|                                 | Each   | Per 10  |
| Cannas .....                    | \$0.35 | \$ 3.00 |
| Dahlias, Double.....            | .50    | 4.50    |
| Dahlias, Mixed.....             | .40    | 4.25    |
| Gladiolus, Mixed.....           | .20    | 2.00    |
| Gladiolus, Separate Colors..... | .25    | 2.25    |
| Maderia Vines.....              | .25    | 2.25    |



## EASY HUSKING CORN—BLAIR WHITE



The above is a picture of our new poultry house on our poultry farm adjoining Blair. It is 400 feet long, 20 feet wide, is electric lighted, has three hydrants, root cellar, store room for feed and loft for straw and is probably one of the most up-to-date big poultry houses in America.

### Pure-Bred Poultry

We have been in the pure bred poultry business over 25 years and during that time have sold thousands of birds and tens of thousands of eggs to customers all over the United States, Canada and Mexico and most of our customers come back year after year which proves that we must be giving satisfaction.

A quarter of a century ago we started selling Barred Rocks and the demand for other varieties has increased until today we are selling almost fifty varieties, and are one of the largest shippers in the West.

Over 200 different families are helping us produce enough poultry and eggs to supply the present demand.

We have the largest salesroom for pure-bred poultry in the state. It takes over 225 individual coops in which to exhibit our poultry for the trade.

Adjoining Blair we have a 14-acre poultry farm with a building 400 by 20 feet, probably the largest in the state. It is up-to-date in every respect; it has three hydrants for city water, electric lights, double walls, swinging doors, open front.

We believe we are in better position than ever to take care of our trade. We have been advertising Blair as the "Seed Corn Center of the World," and if the poultry business keeps on it can be truly called the "Poultry Center of the World" also.

As we have almost 50 varieties to select from it should not be hard for you to make a choice. We are handling most of the popular breeds. If you send in an order for either poultry or eggs we will do our very best to please you.

We don't sell as cheap as some or as high as others, but we believe we are giving better value for the money than you can get anywhere else. We guarantee to send you good fresh eggs and that the eggs are fairly fertile. We don't guarantee a chick from every egg or that every chick will grow into a prize winner. If you get a poor hatch and we are to blame, we will duplicate infertile eggs for half price. If you are not satisfied with the stock we ship you, you can return it within three days and we will refund your money, less express charges.

Send cash with order, and if anything is not exactly as we say it is, return it and get your money back. Isn't that fair?

From present indications it seems that there will be a shortage of breeding stock before the season is over. On account of the high price of feed lots of specialty breeders have reduced their flocks and some of the people who have been raising poultry for us have sold their young stuff during the summer. We are at present fairly well supplied with most of the popular varieties and can fill orders promptly and usually we get orders out within a day after we receive them. We will be short on some of the less popular varieties, but can fill orders on most of them.

We have not raised prices as high as some breeders or probably as much as we should but we sell thousands every year and we don't need to. Hens are selling for \$12.00 to \$20.00 a dozen at public sales and higher prices are predicted, and it looks like a good buy, for eggs and all kinds of market poultry will surely be a good price next season. A six pound hen is worth \$1.30 on the market and a 9 pound cockerel brings around \$2.00.

Our prices are cheap this year compared to prices of other commodities. If you can, get in your orders early and we will select as good as we can for the money you send.

We will do our best to please you and we think we can.

Prices of Poultry, Turkey, Ducks and Geese will run about as follows for good breeding stock:

#### Cocks and Cockerels of all Varieties.

\$3.75 to \$4.25 each for good birds. \$6.00 each for extra good birds. \$2.75 each for a little later hatched birds.

We usually have a few extra choice cockerels or cocks that we will sell at \$7.50 to \$10.00 each. If in need of something extra choice write us.

#### Hens and Pullets of All Varieties.

\$2.50 to \$4.00 each. Later hatch, \$2.00 to \$2.50 each.

#### Geese.

Ganders \$5.00 to \$6.00 each. Geese \$5.00 to \$6.00.

#### Ducks.

Drakes \$3.50 to \$5.00. Ducks \$3.00 to \$4.00 and Trios \$8.50 to \$10.00.

#### Turkeys.

Gobblers \$8.00 to \$12.00 each. Hens \$7.50 to \$9.50.

All poultry is sent by express but eggs for hatching can be sent by Parcel Post or Express.

BLAIR WHITE CORN STANDS UP FINE



**BARRED PLYMOUTH ROCKS.**

The Barred Plymouth Rocks are without doubt the most popular fowl in America today. They do well anywhere. They are hardy, grow rapidly, pullets lay early and they mature early and are a splendid table fowl.

Show birds a matter of correspondence. We are very strong on Barred Rocks.

**Price:**

Cocks and Cockerels \$3.75 to \$4.25 each for good birds.

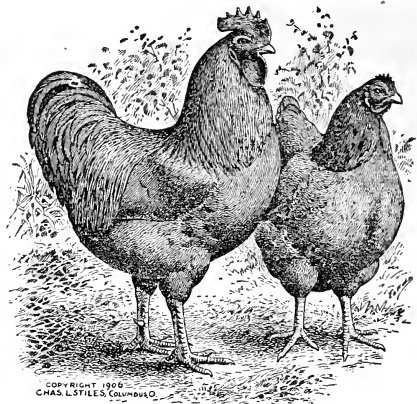
Cocks and Cockerels \$6.00 each for extra good birds.

Cocks and Cockerels \$3.00 to \$3.50 each for good birds, but later hatch.

Hens and Pullets \$2.50 to \$4.00 each. Later hatch \$2.00 to \$2.50 each.

Eggs, \$1.75 per 15; \$3.25 per 30; \$5.00 per 50; \$9.00 per 100.

Extra choice Cockerels \$7.50 each.



**BUFF PLYMOUTH ROCKS.**

The Buff Plymouth Rocks have the same shape as the Barred and the same characteristics, but are Buff in color.

We have some fine Buffs to offer. Some people prefer the Buff to the Barred on account of their color.

**Price:**

Cocks and Cockerels \$3.75 to \$4.25 each for good birds.

Cocks and Cockerels \$6.00 each for extra good birds.

Cocks and Cockerels \$3.00 to \$3.50 each for good birds, but later hatch.

Hens and Pullets, \$2.50 to \$4.00 each. Later hatch, \$2.00 to \$2.50 each.

Eggs, \$1.75 per 15; \$3.25 per 30; \$5.00 per 50; \$9.00 per 100.

**PARTRIDGE PLYMOUTH ROCKS.**

Shape is the same as a Barred Rock and color is that of a Partridge Cochin.

**Price:**

Cocks and Cockerels \$4.25 to \$5.00 each.

Hens and pullets, \$2.75 to \$4.00 each.

Eggs, \$2.50 per 15; \$4.50 per 30.

**COLUMBIAN PLYMOUTH ROCKS.**

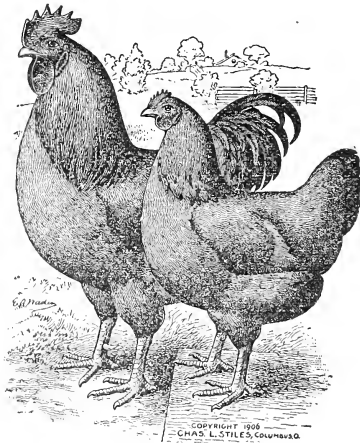
Shape is the same as Barred Rocks but color is like the Light Brahmas.

**Price:**

Cocks and Cockerels \$4.25 to \$5.00 each.

Hens and Pullets \$2.75 to \$4.00 each.

Eggs, \$2.50 per 15; \$4.50 per 30.



**WHITE PLYMOUTH ROCKS.**

White Plymouth Rocks are just like Barred and Buffs with the exception of color, which is pure white. From the time of its introduction it came to the front rapidly and today is one of the leading varieties.

**Price:**

Cocks and Cockerels \$3.75 to \$4.25 each for good birds.

Cocks and Cockerels \$6.00 each for extra good birds.

Cocks and Cockerels \$3.00 to \$3.50 each for good birds, but later hatch.

Hens and Pullets \$2.50 to \$4.00 each. Later hatch \$2.00 to \$2.50 each.

Eggs, \$1.75 per 15; \$3.25 per 30; \$5.00 per 50; \$9.00 per 100.

**Mt. View, Okla.**

Aye Bros. I am more than pleased with the two settings of eggs we received April 2, 1919. Eleven chicks hatched out of the 15 Ancono eggs. Ten are still living and doing fine. Out of the 15 Langshaus 10 chicks hatched and 9 of them are still living and doing splendidly. I wish you would please give me the name of the strain they are from. Also the strain from the eggs we are now sending for.—MRS. W. E. PATTON.

**Kimberly, Idaho, March 22, 1919.**

Aye Bros., Blair, Neb.: Received cockerel and am well satisfied with him. Am sending check for balance.—F. E. DAVIDSON.

**Butte, Neb., March 25, 1919.**

Dear Sirs: Got the geese in first-class shape and was well pleased with them. I am sending the balance on them.—Yours truly, JOSEPH KIRSCH.

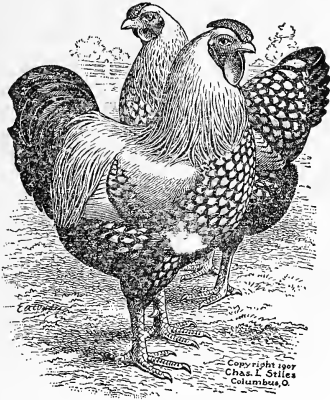
**Deshler, Neb., March 24, 1919.**

Aye Bros., Blair, Neb.: We received the chickens Saturday and think they are fine. We returned the crates this morning and find enclosed the receipt.—Yours truly, R. H. RAY.

**Brady, Neb., March 10, 1919.**

Dear Sirs: I received my chickens and was well pleased with them. I would greatly appreciate it if you would send me a catalog as I am figuring on getting some more fowls.—MRS. JOHN CONNELLY.

## EASY HUSKING CORN—BLAIR WHITE



### SILVER LACED WYANDOTTES.

Are sometimes called the beauty breed. They are hardy and mature early, good layers and, in fact, are all around good chickens.

**Price:**

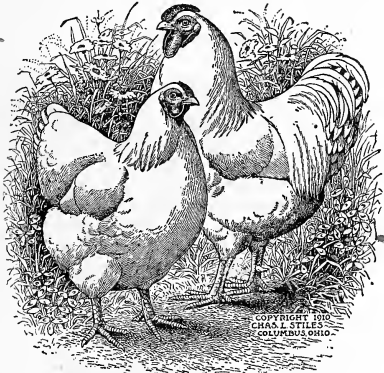
Cocks and Cockerels \$3.75 to \$4.25 each for good birds.

Cocks and Cockerels \$6.00 each for extra good birds.

Cocks and Cockerels \$3.00 to \$3.75 each for good birds, but later hatch.

Hens and Pullets, \$2.50 to \$4.00 each. Later hatch, \$2.00 to \$2.50 each.

Eggs, \$1.75 per 15; \$3.25 per 30; \$5.00 per 50; \$9.00 per 100.



### WHITE WYANDOTTES.

The plumpest looking fowl and one of the most popular is the White Wyandotte. They are becoming a favorite with lots of chicken raisers and there is a big demand for them. They are about a pound lighter than the Plymouth Rocks.

**Price:**

Cocks and Cockerels \$3.75 to \$4.25 each for good birds.

Cocks and Cockerels \$6.00 each for extra good birds.

Cocks and Cockerels \$3.00 to \$3.50 each for good birds, but later hatch.

Hens and Pullets, \$2.50 to \$3.25 each. Later hatch, \$2.00 to \$2.50 each.

Eggs, \$1.75 per 15; \$3.25 per 30; \$5.00 per 50; \$9.00 per 100.

Dodge, Neb., Feb. 3, 1919.

Aye Bros., Blair, Neb.: We received our order from you February 1st and were very much pleased with the turkeys and chickens and they were all O. K. when they got here. Enclosed you will find \$1.25 for which please send me one 50c box of Germikil and the book, "Turkeys."—Yours ALBERT MANDEL.

### GOLDEN WYANDOTTES.

Golden Wyandottes are a very rich colored bird. They have rose combs, yellow skins and legs; they are splendid layers the year around; chicks are hardy, grow fast and mature early.

**Price:**

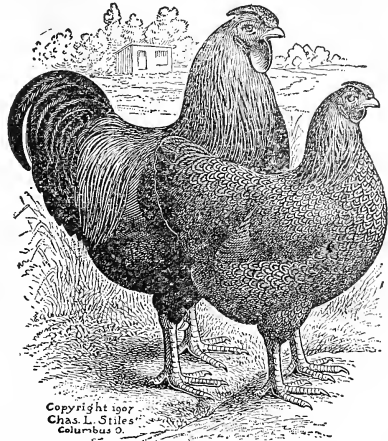
Cocks and Cockerels \$3.75 to \$4.25 each for good birds.

Cocks and Cockerels \$6.00 each for extra good birds.

Cocks and Cockerels \$3.00 to \$3.75 each for good birds, but later hatch.

Hens and Pullets, \$2.50 to \$4.00 each. Later hatch, \$2.00 to \$2.50 each.

Eggs, \$1.75 per 15; \$3.25 per 30; \$5.00 per 50; \$9.00 per 100.



### PARTRIDGE WYANDOTTES.

Wyandotte in shape and colored like the Partridge Cochins.

**Price:**

Cocks and Cockerels \$4.25 to \$5.00 each.

Hens and Pullets, \$2.50 to \$4.00 each.

Eggs, \$2.50 per 15; \$4.50 per 30.

### COLUMBIAN WYANDOTTES.

Wyandotte shape and markings of the Light Brahmans.

Price for stock and eggs are same as for Partridge Wyandottes.

### BUFF WYANDOTTES.

Have Wyandotte shape but are Buff in color. Price for stock and eggs the same as for Partridge Wyandottes.

Canton, Kan., March 4, 1919.

Aye Bros., Blair, Neb.: Received your roosters some time ago. Two of them sure are fine ones and there was a party here today who said I should write you a letter and see if you had any more such nice roosters. I am doing all I can to build up your business. So let me know if you have any more roosters for sale and the price. Please send me some envelopes and order blanks as I intend to order eggs as soon as the weather permits. Answer at once.—ARTHUR HENKE.

Telluride, Colo., Feb. 13, 1919.

Dear Sirs: Received the Blue Andalusian cockerel all O. K. He was sure a fine bird. Let me know if you can let me have two of the hens of the same kind and at what price; young ones of an early last year's hatch.—MRS. C. W. GATES.

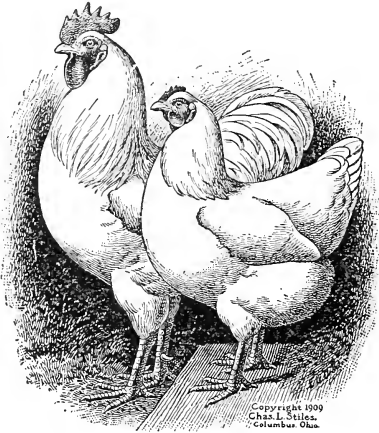
Monte Vista, Colo., Feb. 20, 1919.

Dear Sirs: The cockerels arrived all O. K. We are well pleased with them.—Yours respectfully, R. L. KNOPP.

Morrill, Kan., Feb. 26, 1919.

Aye Bros., Blair, Neb.: I received cockerels all O. K. yesterday. Nice birds.—Yours truly, B. F. ELLIOTT.

# BLAIR WHITE CORN STANDS UP FINE



**SINGLE COMB REDS.**  
(Rhode Island Reds)

The Rhode Island Reds have become very popular in a very short time and they have lots of merit. They are one of the hardiest fowls grown, are quick growers, mature early, pullets lay early and are great rustlers, and as a table fowl cannot be excelled.

Rhode Island Reds have a red plumage and are very beautiful.

**Price:**

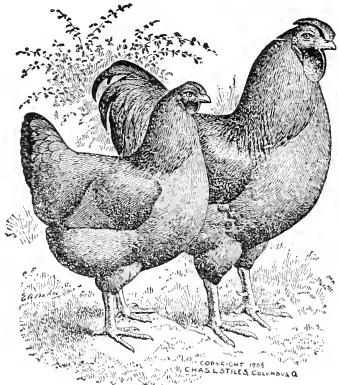
Cocks and Cockerels \$3.75 to \$4.25 each for good birds.

Cocks and Cockerels \$6.00 each for extra good birds.

Cocks and Cockerels \$3.00 to \$3.75 each for good birds, but later hatch.

Hens and Pullets, \$2.50 to \$4.00 each. Later hatch, \$2.00 to \$2.50 each.

Eggs, \$1.75 per 15; \$3.25 per 30; \$5.00 per 50; \$9.00 per 100.



**ROSE COMB REDS.**

The same as S. C. R. I. Reds except these have rose combs.

**Price:**

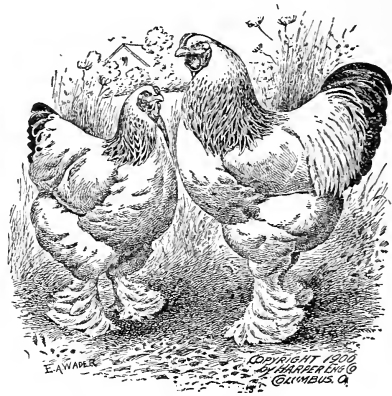
Cocks and Cockerels \$3.75 to \$4.25 each for good birds.

Cocks and Cockerels \$6.00 each for extra good birds.

Cocks and Cockerels \$3.00 to \$3.50 each for good birds, but later hatch.

Hens and Pullets, \$2.50 to \$4.00 each. Later hatch, \$2.00 to \$2.50 each.

Eggs, \$1.75 per 15; \$3.25 per 30; \$5.00 per 50; \$9.00 per 100.



**LIGHT BRAHMAS.**

The Light Brahma is the largest fowl on earth and are a splendid chicken for town lot, as they stand confinement well.

**Price:**

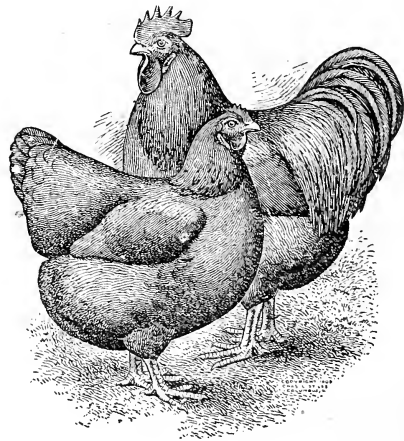
Cocks and Cockerels \$3.75 to \$4.25 each for good birds.

Cocks and Cockerels \$6.00 each for extra good birds.

Cocks and Cockerels \$3.00 to \$3.75 each for good birds, but later hatch.

Hens and Pullets, \$2.50 to \$4.00 each. Later hatch, \$2.00 to \$2.50 each.

Eggs, \$1.75 per 15; \$3.25 per 30; \$5.00 per 50; \$9.00 per 100.



**BUFF ORPINGTONS.**

The Buff Orpingtons have become very popular in the last few years, and they are a good variety, too. They have deep, full bodies, well rounded; quiet disposition and the females make fine mothers.

They have clean legs and they make a fine general purpose fowl. Buff Orpingtons have good weight and we have some very big, choice stock.

Cocks and Cockerels \$3.75 to \$4.25 each for good birds.

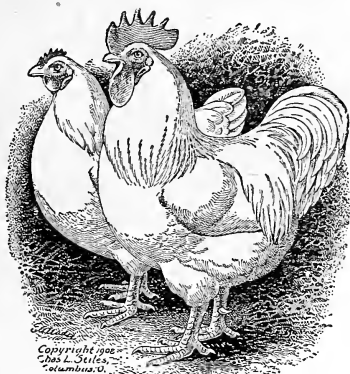
Cocks and Cockerels \$6.00 each for extra good birds.

Cocks and Cockerels \$3.00 to \$3.75 each for good birds, but later hatch.

Hens and Pullets, \$2.50 to \$4.00 each. Later hatch, \$2.00 to \$2.50 each.

Eggs, \$1.75 per 15; \$3.25 per 30; \$5.00 per 50; \$9.00 per 100.

# BLAIR WHITE CORN INTRODUCED AND IMPROVED BY AYE BROS.



## WHITE ORPINGTONS.

Same as Buff except in color. The White Orpingtons have been attracting a great deal of attention at some of our biggest poultry shows and they have commanded very high prices.

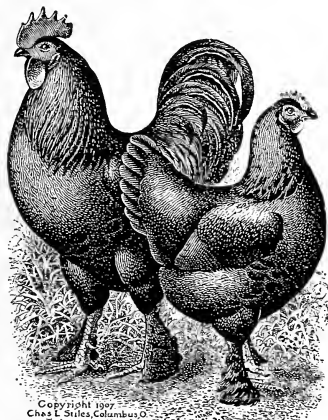
Cocks and Cockerels \$3.75 to \$4.25 each for good birds.

Cocks and Cockerels \$6.00 each for extra good birds.

Cocks and Cockerels \$3.00 to \$3.50 each for good birds, but later hatch.

Hens and Pullets, \$2.50 to \$4.00 each. Later hatch, \$2.00 to \$2.50 each.

Eggs, \$1.75 per 15; \$3.25 per 30; \$5.00 per 50; \$9.00 per 100.



## BLACK LANGSHANS.

The Black Langshan is a beautiful black, especially beautiful in the sunshine.

Langshans have single comb, are quite tall, loose feathers, large size, very active for a big chicken, feathers on their legs and stand cold weather remarkably well. They are good winter layers.

### Price:

Cocks and Cockerels \$3.75 to \$4.25 each for good birds.

Cocks and Cockerels \$6.00 each for extra good birds.

Cocks and Cockerels \$3.00 to \$3.50 each for good birds, but later hatch.

Hens and Pullets, \$2.50 to \$3.25 each. Later hatch, \$2.00 to \$2.50 each.

Eggs, \$1.75 per 15; \$3.25 per 30; \$5.00 per 50; \$9.00 per 100.

Humboldt, Kan., Nov. 26, 1918.  
Aye Bros., Blair, Neb.: Received chickens O. K. Am much pleased. Would like to know if you could furnish me any more of same quality at same price. Let me know immediately.—Respectfully, MRS. E. A. FRIEDLY.

## WHITE LANGSHANS.

These fowls are very handsome. They are very hardy. They attain maturity quite early; are excellent setters and mothers. They have white flesh and skin. They are an excellent table fowl.

All the characteristics of the Black Langshans except color, which is white.

### Price:

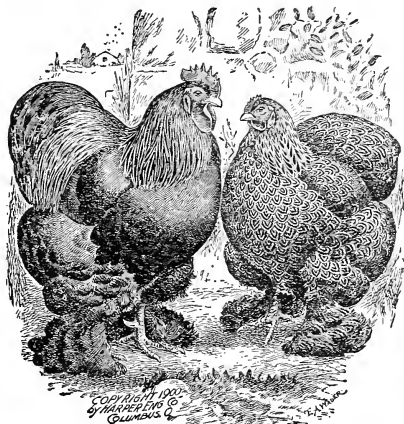
Cocks and Cockerels \$3.75 to \$4.25 each for good birds.

Cocks and Cockerels \$6.00 each for extra good birds.

Cocks and Cockerels \$3.00 to \$3.75 each for good birds, but later hatch.

Hens and Pullets, \$2.50 to \$3.25 each. Later hatch, \$2.00 to \$2.50 each.

Eggs, \$1.75 per 15; \$3.25 per 30; \$5.00 per 50; \$9.00 per 100.



## PARTRIDGE COCHINS.

Are very hardy, easy to raise, very beautiful, stand confinement well; good layers and fine setters and mothers.

### Price:

Cocks and Cockerels \$3.75 to \$4.25 each for good birds.

Cocks and Cockerels \$6.00 each for extra good birds.

Cocks and Cockerels \$3.00 to \$3.75 each for good birds, but later hatch.

Hens and Pullets, \$2.50 to \$3.25 each. Later hatch, \$2.00 to \$2.50 each.

Eggs, \$1.75 per 15; \$3.25 per 30; \$5.00 per 50; \$9.00 per 100.

Kiron, Iowa, January 14, 1918.

Aye Bros., Blair, Neb.: Received the poultry that you sent me today. The poultry was in good condition when I received it, so I thought I would write and let you know that I am satisfied with the chickens and I think that in the near future I can accommodate you by ordering eggs from you also. Thanking you for the same, I remain, Yours truly, LESLIE CLAUSON.

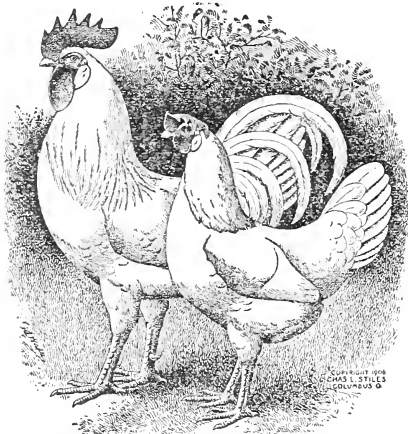
Van Tassell, Wyo., April 27, 1919.

Aye Bros., Blair, Neb.: The cockerel arrived O. K. I am well pleased with the bird. Do the incubator people take War Savings Stamps for their incubators and brooders? If they will, please advise me.—MRS. GEO. E. WOLFE.

Rouse, Colo., Sept. 19, 1919.

Aye Bros., Blair, Neb.: I have used your Germikil this summer and find it the best remedy for roup and white diarrhea in baby chicks that is made. I used the Germikil as directed and not a sign of white diarrhea and I raised over 500 chicks. I have recommended the Germikil to my friends as a sure cure.—Yours truly, P. B. HART.

USE BLAIR WHITE FOR REPLANTING AND GET A BIG CROP.



SINGLE COMB WHITE LEGHORNS.

The S. C. W. Leghorn belongs to the Mediterranean Class. They are the largest of the Leghorn family and are regular egg-machines. Some of the largest exclusive egg farms in the U. S. have only White Leghorns in their yards. They are not a large fowl.

**Price:**

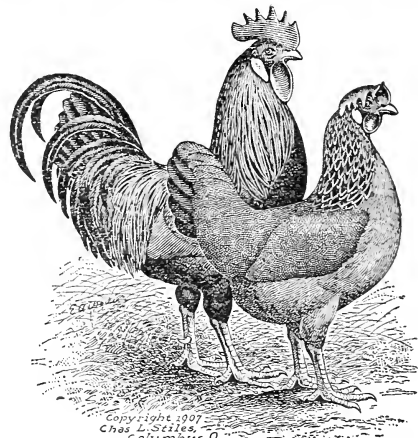
Cocks and Cockerels \$3.75 to \$4.25 each for good birds.

Cocks and Cockerels \$6.00 each for extra good birds.

Cocks and Cockerels \$3.00 to \$3.75 each for good birds, but later hatch.

Hens and Pullets, \$2.50 to \$3.25 each. Later hatch, \$2.00 to \$2.50 each.

Eggs, \$1.75 per 15; \$3.25 per 30; \$5.00 per 50; \$9.00 per 100.



SINGLE COMB BROWN LEGHORNS.

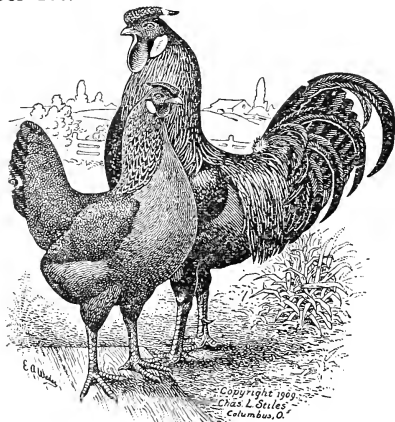
The Brown Leghorn is like the White, except in color. The Brown Leghorn is a very beautiful chicken and as a hustler, can't be beat, and the pullets begin laying at four months of age and if properly fed, will continue to lay all winter.

Prices for stock and eggs the same as for the Single Comb White Leghorns.

**SINGLE COMB BUFF LEGHORNS.**

They are great layers, equal to any if not superior to most other varieties, and in size they rank with other Leghorns; they are small eaters and bear confinement well. Our stock is of the best strains in the country.

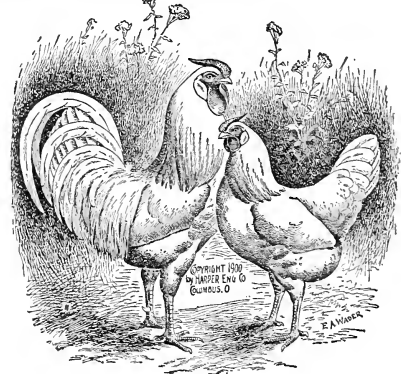
Prices for stock and eggs the same as for the Single Comb White Leghorns.



ROSE COMB WHITE LEGHORNS.

The Rose Comb White Leghorn has the same characteristics as the S. C. White, except the comb, which is a rose comb.

Prices for stock and eggs the same as for Single Comb White Leghorns.



ROSE COMB BROWN LEGHORNS.

Same characteristics as the S. C. White Leghorns except the color and comb.

Prices for stock and eggs the same as for the Single Comb White Leghorns.

**ROSE COMB BUFF LEGHORNS.**

Same characteristics as Single Comb Buff Leghorns except they have a Rose Comb.

**Price:**

Cocks and Cockerels \$3.75 to \$4.25 each for good birds.

Cocks and Cockerels \$6.00 each for extra good birds.

Cocks and Cockerels \$3.00 to \$3.75 each for good birds, but later hatch.

Hens and Pullets, \$2.50 to \$3.25 each. Later hatch, \$2.00 to \$2.50 each.

Eggs, \$1.75 per 15; \$3.25 per 30; \$5.00 per 50; \$9.00 per 100.

**HOUDANS.**

We usually have a few cockerels to offer at \$4.25 to \$5.00 each and some pullets at \$2.75 to \$4.00 each.

Eggs, \$3.00 per 15.

Crawford, Neb.

Aye Brothers, Blair, Neb.: I am much pleased with the chickens and will try to get you another order. They are certainly fine birds.—MRS. A. C. JONES.

Aye Bros., Blair, Neb.: Enclosed find \$2.50 for which send me seven Toulouse geese eggs. Hope I am not too late with my order. You may send them the best way you think. I received my garden seeds and am pleased to say they were simply fine and are coming up grand.—MRS. W. D. HUGHES.





**MOTTLED ANCONAS.**

Color is a lustrous greenish black with about one feather in five tipped with white. They are great hustlers and good layers.

**Price:**

Cocks and Cockerels \$3.75 to \$4.25 each for good birds.

Cocks and Cockerels \$6.00 each for extra good birds.

Cocks and Cockerels \$3.00 to \$3.50 each for good birds, but later hatch.

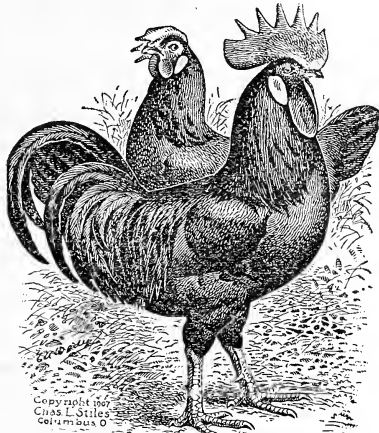
Hens and Pullets, \$2.50 to \$3.25 each. Later hatch, \$2.00 to \$2.50 each.

Eggs, \$1.75 per 15; \$3.25 per 30; \$5.00 per 50; \$9.00 per 100.

**BLUE ANDALUSIANS.**

We usually have a few cockerels to offer at \$3.75 to \$5.00 each and some pullets and hens at \$2.75 to \$4.00 each.

Eggs, \$3.00 per 15.



**SINGLE COMB BLACK MINORCAS.**

The plumage is a greenish metallic black in color. They have a large comb, white earlobes, legs a slate color. Larger than the Leghorns and they lay very large eggs.

**Price:**

Cocks and Cockerels \$3.75 to \$4.25 each for good birds.

Cocks and Cockerels \$6.00 each for extra good birds.

Cocks and Cockerels \$3.00 to \$3.50 each for good birds, but later hatch.

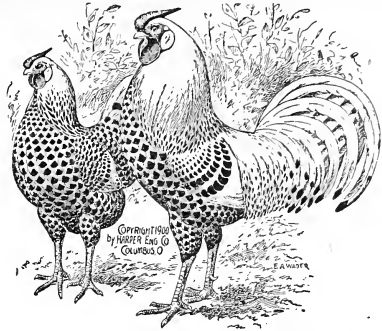
Hens and Pullets, \$2.50 to \$3.75 each. Later hatch, \$2.00 to \$2.50 each.

Eggs, \$1.75 per 15; \$3.25 per 30; \$5.00 per 50; \$9.00 per 100.

Are like the S. C. Black Minorcas except they have a rose comb and are preferred by some people on account of their low comb.

**ROSE COMB BLACK MINORCAS.**

Prices for stock and eggs the same as the Single Comb Black Minorcas.



**SINGLE COMB WHITE MINORCAS.**

The White Minorcas chicken has all the characteristics of the Black Minorcas except color which is white. They are a handsome fowl.

**Price:**

Cocks and Cockerels \$3.75 to \$4.25 each for good birds.

Cocks and Cockerels \$6.00 each for extra good birds.

Cocks and Cockerels \$3.00 to \$3.50 each for good birds, but later hatch.

Hens and Pullets, \$2.50 to \$3.75 each. Later hatch, \$2.00 to \$2.50 each.

Eggs, \$1.75 per 15; \$3.25 per 30; \$5.00 per 50; \$9.00 per 100.

**SILVER SPANGLED HAMBURG.**

One of the most beautiful varieties in existence. Everybody admires them and they are great layers but non-setters.

**Price:**

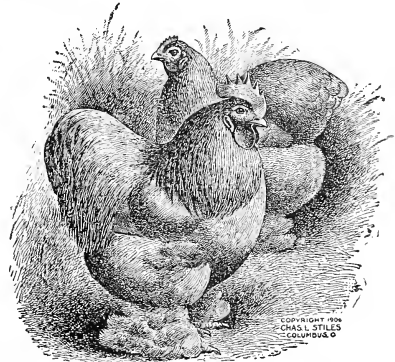
Cocks and Cockerels \$3.75 to \$4.25 each for good birds.

Cocks and Cockerels \$6.00 each for extra good birds.

Cocks and Cockerels, \$3.00 to \$3.50 each for good birds, but later hatch.

Hens and Pullets, \$2.50 to \$3.75 each. Later hatch, \$2.00 to \$2.50 each.

Eggs, \$1.75 per 15; \$3.25 per 30; \$5.00 per 50; \$9.00 per 100.



**BUFF COCHIN BANTAMS.**

We have only one breed of Bantams. The Buff Cochin are, we think, the most attractive of all Bantams, and because of their shape are much more pleasing to children. They are much tamer than any other Bantams and are great pets.

**Price:**

Cockerels, \$2.50 each; hens, \$1.75; pairs, \$4.00. Eggs, \$1.50 per 15.

**PEARL GUINEAS.**

Guineas are of a wild disposition and their meat is equal to some of the best wild game. They are quite profitable.

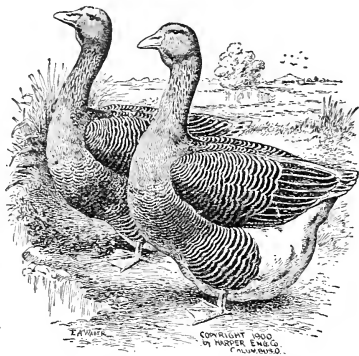
**Price:**

Cockerels, \$2.25; hens, \$2.00.

**WHITE AFRICAN GUINEAS.**

Can furnish a few males and females and also eggs. Price same as Pearl Guineas.

# USE BLAIR WHITE FOR REPLANTING AND GET A BIG CROP

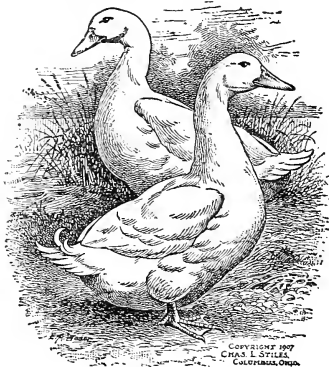


**TOULOUSE GEESE.**

Are gray in surface color and under part of body a shade lighter. They are very large, sometimes weighing 25 pounds each. They are hardy, lay well and are easy to raise.

**Price:**

Ganders, \$5.00 to \$6.00 each. Large Geese, \$5.00 to \$6.00. Later hatch, Ganders, \$3.50 to \$4.00. Later hatch, Geese, \$3.50 to \$4.00. Large Trios, \$13.00 to \$18.00. Eggs, \$3.00 per seven, \$5.75 per fourteen.



**PEKIN DUCKS.**

The Pekin Duck is very popular and profitable. They are creamy white in color, are very deep bodied and grow very rapidly and are very easy to raise, as they are not subject to many of the diseases poultry is heir to.

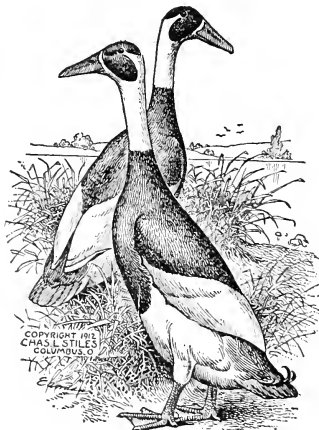
**Price:**

Drakes, \$3.50 to \$5.00 each. Ducks, \$3.00 to \$4.00 each. Pairs, \$5.50 to \$7.00. Trios, \$8.00 to \$11.00. Eggs, \$1.75 per 11; \$4.50 per 30.

**ROUEN DUCKS.**

Are a very hardy breed and are considered one of the most profitable varieties.

Prices for stock and eggs the same as for Pekins.



**Indian Runner Ducks.**

**WHITE EMDEN GEESE.**

This is a very profitable white goose to raise. Prices for stock and eggs same as for Toulouse Geese.

**INDIAN RUNNER DUCKS.**

Are the leghorns of the duck family. Fawn and white. Duck eggs are fine both for the table and for cooking, excel the hen egg in most cases, especially for scrambling eggs and custards. When it is possible to get an egg a day for weeks at a time we have a strong argument for raising more ducks. Their meat is very tender and juicy.

Prices for stock and eggs same as for Pekins.

**WHITE INDIAN RUNNER.**

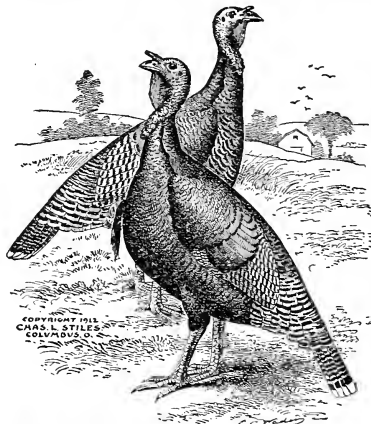
Ducks are like the fawn and white except that they are white in color.

Price for stock and eggs same as for Pekins.

**MUSCOVY DUCKS (Colored).**

The Muscovy Ducks are one of the good varieties to have around. They don't make any noise and lay a large number of eggs. Stand confinement well.

Prices for stock and eggs same as for Pekins.

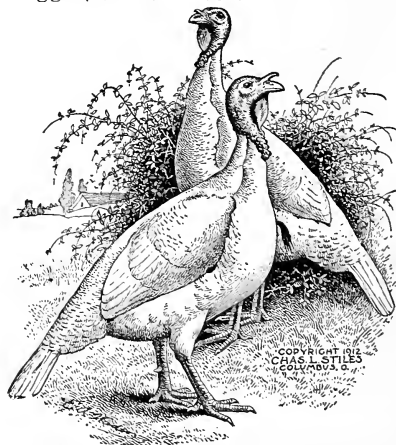


**MAMMOTH BRONZE TURKEYS.**

The Bronze is the largest and most popular turkey. Their plumage is a rich metallic bronze. They are great layers, some laying as high as from 80 to 100 eggs in a season.

**Price:**

Toms, \$8.00 to \$12.00 each; hens, \$7.50 to \$9.50 each. Eggs \$3.50 for seven.



**WHITE HOLLAND TURKEYS.**

Here is the ideal turkey for those who have limited space. They seldom wander away from home.

Price same as for Mammoth Bronze Turkeys.

**BOURBON RED TURKEYS.**

A new variety of Turkey that seems to take well.

Price for stock and eggs the same as for the Mammoth Bronze.



# GERMIKIL FOR MAN, BEAST OR FOWL

**W**E believe to be the greatest remedy in the world for roup, cholera, bowel trouble, sore head, white diarrhoea in fowls; cuts, sores, bruises, wounds, dandruff, itching, etc., for man; barb wire cuts, sore shoulders and necks, etc., for horses. Good alike for man, beast or fowl.

### AS A PREVENTIVE OF ROUP.

And all poultry diseases dissolve a number of tablets of Germikil in a fruit jar of water and every day or two put enough of this solution in your chickens' drinking water to color it a claret wine red color, and your fowls will doctor themselves. We are practical poultrymen, having been in the business twenty-five years and we find that Germikil is the best all around remedy on the market for roup, cholera, bowel trouble, cuts, burns, old sores, etc.

**YOUR MONEY BACK** if this remedy fails to do what we claim for it. Remember we guarantee each and every box. We honestly believe that if each and every poultry raised would constantly use Germikil there would be very little disease in the poultry yard. And the nice thing about this remedy is that it is so little trouble to use it.

Don't wait until your fowls are sick for it is easier to prevent disease than to cure it. Always use Germikil to prevent all foul troubles, for it is the best medicine in the world to keep chickens healthy, as it destroys the germs before they get into the system.

### AS A CURE.

Dissolve enough tablets in water so as to make the water a dark red color and apply the solution to the afflicted parts.

If hands are stained when applying a strong solution of Germikil DON'T use soap to remove the stains. Use a weak solution of oxalic acid or just lemon juice to remove stains. Don't use any other remedies in connection with Germikil. We have lots of satisfied customers of Germikil and we know that YOU can get results by using Germikil.

Germikil has been used three years at the Nebraska State Fair in the poultry department and two years at the Nebraska State Poultry Show and the secretary of both says the results have been good.

Keep a box on hand all the time.

Results are what you are after and the judicious use of Germikil will help you. The price of Germikil is only 50c a box postpaid anywhere.

### IZE HEALING AND ANTISEPTIC POWDER.

For sore necks and shoulders on horses.

When spring work begins there is always more or less trouble with sore necks and shoulders on the work horses. We believe that Ize Healing Powder dusted on the sore spots will heal them while the horses are at work.

Just clean sore spot with soap and water and dust with this powder. The price is 50 cents per box, postpaid. Easy to use, as top of box is perforated.

### IZE LICE OINTMENT.

Kills Lice, Nits and Mites on Poultry.

It is a poison.

Take a small piece the size of a pea and rub well in under the vent, back of the head and under the wings and it will keep your poultry free from lice and nits for six months or a year. Try a box, it only costs 50 cents. Enough for 100 hens..

### IZE CANADIAN HORSE COLIC REMEDY.

Every owner of horses should have some reliable remedy on hand for horse colic. One season we lost two horses with horse colic and when the third horse had an attack we called in a veterinarian who happened to be a Canadian and he fixed up some medicine for us to give to the sick animal and after we gave three doses the horse was well. We have never been without this colic remedy since. Put 25 to 30 drops of Ize Canadian Horse Colic Remedy on a half table-spoonful of sugar and put sugar and medicine on back part of horse's tongue. Give every hour till horse is well. Price \$1.00 per bottle. You can't afford to be without it.

### IZE RAT EXTERMINATOR.

Rats and mice are without a doubt one of the worst pests that mankind has to contend with. There are lots of rat killing poisons on the market and we have tried lots of them but we never could get rats to take kindly to most poisons until we run across Ize Rat Exterminator. It is easy to use. Sprinkle some of the

rat exterminator on some raw liver or meat cut in small pieces and put where rats and mice can get it. Repeat in 10 days or two weeks. \$1.00 per box.

### CARBOLA.

Carbola is a disinfecting Germ-Killing White Mineral paint which we use in our poultry houses instead of whitewash. Can be put on with a brush or sprayer. A gallon of water added to one pound of Carbola makes a paint that will cover 250 square feet of space. 10 lbs. cost \$1.00 f. o. b. Blair. Is not caustic or poisonous but destroys mites and disease germs in poultry houses. As a paint and disinfectant for dairies, barns, hog pens, cellars and out-buildings it cannot be excelled.

Recommended by agricultural colleges.

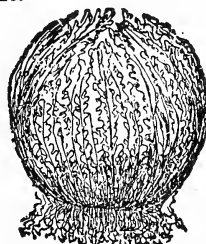
Prices, f. o. b. Blair, Neb.

- 10 lbs. (makes 10 gallons).....\$1.00
- 20 lbs. (makes 20 gallons)..... 2.00
- 50 lbs. (makes 50 gallons)..... 4.00

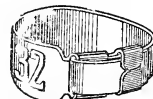
### BUG DEATH.

Bug Death kills bugs, but is not poisonous. Here is an insecticide that kills bugs but does not harm the plant or vine. Bug Death is not poisonous to human beings but it sure gets the bugs, etc., on Potatoes, Tomatoes, Cabbages, Currants, Melons, Beets and all other vegetables.

Price 15 cents a lb., 5 lbs. for 65 cents, 10 lbs., \$1.25.



Resurrection Plant.



Leg Bands.

### RESURRECTION PLANT.

The Resurrection Plant is a rare and curious plant. It will grow if roots are placed in a pan of water, and when taken out it curls up and goes to sleep, and when placed in water they grow again. Price, 15c each, two for 25 cents, postpaid.

### LEG BANDS.

Mark your chickens with Leg Bands. We have them in Aluminum and Celluloid.

The Aluminum band is for grown chickens and is adjustable. They are numbered and numbers are clear and distinct. Prices, prepaid by mail, 12 for 15c; 25 for 25c.

We have the Celluloid leg band in eight colors for grown chickens and half grown chicks.

Prices for bands for half grown chicks, 12 for 25c; 25 for 40c.

Prices for bands for baby chicks, 12 for 20c; 25 for 35c.

### BASKETS FOR SHIPPING EGGS.

Prices of Baskets F. O. B. Blair.

For 15 eggs, 7c each in half dozen lots or more  
For 30 eggs, 15c each in half dozen lots or more  
For 100 eggs, 35c each in half dozen lots or more

### BEE SUPPLIES.

No. 40 Dov. Hive—8-frame, 1½-story, with 24 sections, 4¼x4¼x1½, and sheets of foundation for starters for sections:

1 No. 40 Hive—Nailed and painted.....\$4.75

No. 40-E Dov. Hive—8-frame, 1½-story, without sections and starters:

1 No. 40-E Hive—Nailed and painted.....\$3.65

### SECTIONS (Scalloped).

Price:

No. 217—4¼x4¼x1½, scalloped, \$1.25 per 100.  
\$1.75 per 200.

### BEE SMOKER.

Standard Smoker, each.....\$1.25

### COMB FOUNDATIONS.

Per lb.

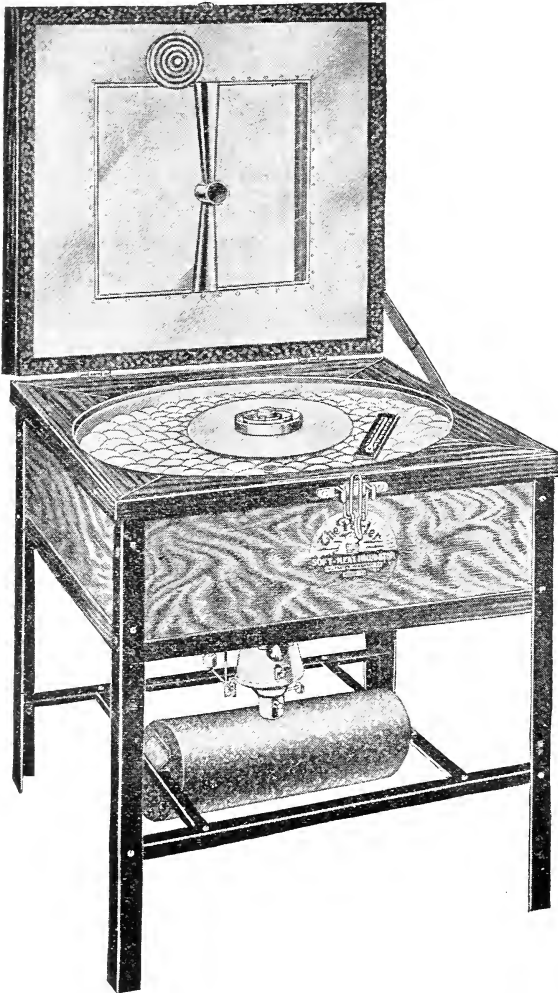
Medium Brood.....\$1.25

Heavy Brood..... 1.00

## The SOFT-HEAT INCUBATOR Is Just What You've Been Looking For

If you are interested in Bigger Hatches and Better Chicks at Less Expense

COMBINES TWENTY-SIX (26) SUPERIOR FEATURES. HERE ARE ONLY A FEW OF THEM: Combination Hot Water and Warm Air—New Soft Heat (moist air) principle—the perfect balance of heat, moisture and ventilation. That is why the chicks are PERFECT—BIG AND STURDY; NO CRIPPLES.



### GREATEST INCUBATOR DISCOVERY IN 50 YEARS

Backed by 25 Years of Incubator Success.

MADE IN FOUR SIZES—100 TO 600-EGG CAPACITY.  
COLONY BROODERS TOO—Free Catalog tells all about them.  
Prompt Shipments, Express Prepaid to Most All States.

SEND FOR OUR BIG FREE BOOK. This Fine New Illustrated Soft-Heat Catalog Gives Interesting Facts about the Better Hatching and Brooding of Chicks. Most Interesting Reports from All Parts of the Country, Proofs and Historical Details.

This Free Book Also Tells How You Can Save 300 per cent, and How You Can Make 300 per cent on Your Hatching Operations.

Write Today and Be Prepared to Get Your Share of the Big Poultry Profits to Be Made This Coming Season.

One Filling of Lamp Makes complete Hatch, instead of daily filling. Only One Gallon of Oil.

Eggs turned semi-automatically—with-  
out lifting or removing tray.

Round, like a Hen's Nest Gives Equal Heat.

Everything in plain sight: eggs, chicks and thermometer, without opening machine.

Requires only 2 or 3 minutes' time a day.

Automatic Regulation of Heat.

ALL SOFT-HEAT MACHINES ARE SOLD UNDER A POSITIVE MAKE-GOOD GUARANTEE.

We have hundreds and hundreds of similar reports, many of them even better than these:

SOFT HEAT IS THE BEST AMONG SEVEN OTHER INCUBATORS.

Vega, Tex., July 24, 1919.

Dear Sirs: Just a line to let you know of the success with the machine you sent me last spring. We set it twice. The first time got 93 chicks out of 117 eggs. The last time got 89 chicks out of 105 eggs. It is the best hatcher we have ever had after trying seven other kinds. We have the nicest flock of chicks we ever had.—Yours for success, B. C. ALSOBROOK.

LIKES THE INCUBATOR FINE.

Horton, N. Y., April 28, 1919.

Dear Sirs: We like the incubator fine. We got 100 chicks out of 108 fertile eggs and have set it again.—Yours truly, Stewart H. Fultz, Box 27.

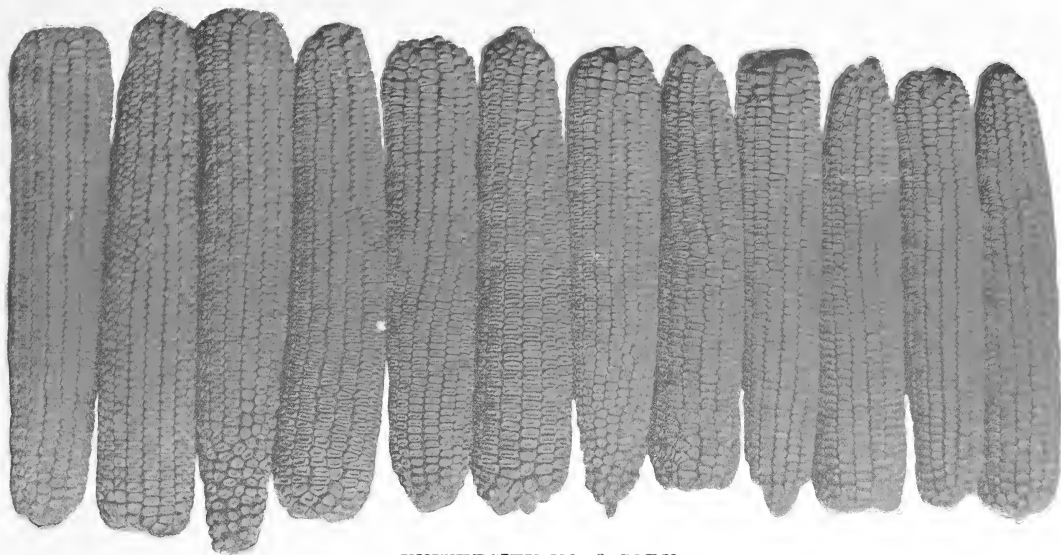
HATCHED EVERY FERTILE EGG EACH TIME IN THREE HATCHES.

Denison, Tex., August 6, 1919.

Dear Sirs: In answer to your inquiry as to the hatching qualities of incubator purchased of you last spring will say that in three incubations every fertile egg hatched a strong, perfect chick.—Respectfully, H. W. JAMES, M. D.







**UNIVERSITY NO. 3 CORN**  
Not a show Corn but a big yielding variety. Early.

## University No. 3

### 90 Day Corn

This variety is along the line of our Blair White except it is yellow in color and ears are slightly tapering. Ears long (10 to 14 inches). Grain not very deep. Like our Blair White, it is a 90-day variety, stands up well, a good feeding corn and a splendid yielder (some growers reporting around 75 bushels per acre). As you probably know, lots of early kinds of corn don't yield heavy, but University No. 3 and Blair White are the exceptions. After trying out University No. 3 with some other varieties of yellow corn one of our very best farmers here is going to plant most of his acreage to University No. 3.

If you want the best early Yellow Corn, get University No. 3.

The University of Nebraska started to develop this strain of corn about the same time we did our Blair White. The demand for a number of years has been for an early corn but still a big yielder. We have had this variety for a few years and it yields very heavy and matures in about 90 days.

Some farmers don't like White corn so we have added this variety to our list. The stalks grow a little taller than the Blair White but stand up well and ears are just about the right height from the ground to make it nice to husk.

If you want a big yielding, early yellow corn be sure and get this variety. It is not a show corn.

Price: \$6.00 per bushel in ear or shelled; \$5.50 per bushel for 10 bushels or more. Bags free.



When ordering seeds  
be sure and order some Blair  
White or University No. 3  
corn, the two big yielding early  
varieties of corn. Something  
new that is worth while. Blair  
White is described in first part  
and University  
No.3 is described  
in last part of  
catalog.

