

Historic, Archive Document

Do not assume content reflects current scientific knowledge, policies, or practices.

62.65

1920



1920

ANNUAL CATALOGUE



OF SEEDS & PLANTS THAT ARE
THE BEST FOR THE NORTHWEST'S



TTT

Tested **T**ried
T and **T** rue



OUR SEED GROWING & BUSINESS RULES.

The true foundation for a seed business is High grade seed.

We guarantee satisfaction, if not, seed may be returned, within twelve days.

Not to fool our customers, by cutting prices, and supplying cheap seed.

A pleased customer is our best advertisement
Never to send seed out before thoroughly testing for germination.



BEULAH SEED HOUSE

BEULAH, N. D.

BEULAH SEED HOUSE

THE SEED HOUSE ON THE FARM.

BEULAH, N. D.

FROM THE MAN BEHIND THE HOE

Dear Customers and Friends;

It is impossible for me to call on you in person, to thank you for the business given us, the kind words spoken about us, and to solicit your order this season. So I must depend on lifeless type to tell you.

You will not find every variety of seed, listed in our catalogue. only those I have found by years of experiance, and tests, to be the **BEST FOR THE NORTHWEST**

I hope the sevice we have given has pleased you. Now I am going to look for your order, also a big long letter.

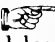
May you be blessed with prosperity, long and usefull life, and a happy home. Awaiting your commands, I am:

Sincerely yours,

MILO STEPHENS,

Owner & Manager.

3,cents for 5 GAL. of MOTOR GAS

HOW? By adding 3 MOTOR GAS TABLETS to 15 gal. gasolene GUARENTEED to increase milage 15 to 40 percent. ALSO, not to contain any injurious chemicals.  when using MOTOR GAS. adjust carburetor to feed less gas, and more air.

NOW- If you want to save gas, destroy carbon, and increase the power, order a box. if not O K return

Price - 25 tablets 3oc 100 \$1. postpaid Agents wanted.

ORDERING SUGGESTIONS

- ★PRICE:- we pay postage on all seed in pkts. ozs. & lbs
- ★EARLY ORDERS:- It will be a great advantage if you order early, also we are giving 500 credit points for orders received before MARCH 1st.
- ★ERRORS;- we make them, and will cheerfully do all we can to correct them.
- ★NAME & ADDRESS;- should be plainly written
- ★SPEAK: A GOOD WORD about us to your Friends. ★

GOOD SEED PROPERLY PLANTED — SUCCESS

WHEN TO PLANT

Cool Weather Vegetables; the following kind of seed should be sown early. Beet, Cabbage, Carrot, Kohlrabi Lettuce, Onion, Pars ey, Pasrnip, Peas, Radish, Spinach etc

Warm;-sow the folowing after the weather is settled and the ground warm. Beans, Corn, and all vines,

THE EARLY GARDENS ARE THE BEST

- ★Order plenty of seed: It pays to plant some early there is not many losses, and much is gained.
- ★FREE PREMIUMS READ ON



WE GROW and SELECT; our seed especially for the North. However, they grow just as well in the South. and mature very early.



RABBITS!

BELGIAN HARF; meat is the finest that can be grown: and at the least expense

SEND FOR PRICES AND FUR OFFER

PLEASURE & PROFIT

—  **FOR OUR CUSTOMERS**  —

10 FREE PREMIUMS VALUE \$35.00



TO THE ONE HAVING THE MOST CREDIT POINTS, WE WILL GIVE A \$25.00 METROPOLITAN OPERAPHONE FREE



2nd PRIZE; STEREOSCOPE & 200 VIEWS OF WAR; SCENERY, FAR-AWAY-LANDS, COMICS. VALUE \$5.00



3rd & 4th Will each receive a good book.

5th to 10th will each receive a handy Dictionary, as a premium



≡ HOW TO GET THEM ≡

We are giving free credit points with seed, as follows. *read carefully*

- ★ 1- all orders received on or before, MARCH, 1st will count 500 points. 
- ★ 2- orders received by APRIL 1st, 200 points. 
- ★ 3- Each pkt, you order will count 5 points
- ★ 4- credit points given as listed through-out the catalogue,

NOW HURRY! Send in your seed orders, also get your Friends and Neighbors seed & plant orders, and send them in —early— and we will credit you the points. — start now —

We do job printing, 100, letter-heads and 100 envelopes, only 90c. postpaid



BEULAH SEED HOUSE
BEULAH, N.D.

STEPHENS BIG SEED OFFER

— BEST FOR THE NORTHWEST GARDEN SEED —

— AT ONLY 4¢ a packet. —



We are just as good friends wheather you buy or not But since I have sent you a catalogue, I am going to give you a good chance to buy Tested, Tried and True seeds at only 4¢ per pkt.

I have made up a list of general varieties (we are not going to bother with variety names.) of seed every gardenor needs at a reduction of 20 to 40 percent. *please order early

★ SPECIAL- I am also going to give you 5 credit points with each pkt. and 10 with each 1/4-lb

★ ORDER. by number please, just give No. and price.



1 Beet.	7 Watermelon.	13 Pumpkin	19 Radish
2 Carrot.	8 muskmelon.	14 Parsley.	20 rutabagr.
3 Celery	9 onion.	15 Parsnip	21 Tomatoe.
4 Cabbage.	10 Lettuce.	16 squash.	22 Turnip.
5 cucumber	11 Kohlrabi.	17 salsify.	23 candytuft.
6 Mill.	12 Pepper.	18 spinach.	24 sweet peas.

The following at 12c. per 1/4-lb

30 Beans.	31 sweet corn.
32 Peas.	33 Pop corn.



MIXED SEED BARGAINS.

at 5c. a pkt. or 30c. the collection
 Beet mixture. Cabbage mixture
 onion. Watermelon
 Lettuce cucumber
 Radish. sweet corn

Each collection will count 25 points to-wards winning a prize.



PLANTS

§ THAT ARE BEST FOR THE NORTHWEST §

Our superior grade plants grow and produce, That is why we are flooded with orders, we could not fill all orders last season, so to be sure send in your order NOW and same will be sent at proper time.

Our prices are the same old before-the-war prices, You keep the war profits.

We make a speciality of growing Tomatoes, and are the only growers in the world, of the STEPHENS BEAUTY, and NEW HOME tomatoes

This list is subject to change. plants to be sent by express.

cabbage;- Ey. or late 25, 35c. 100, 90c. 500, \$3.

celery;- 25, 25c. 100, 75c.

cauliflower;- 12; 25c. 100: \$1.50.

Tomatoes;- plants 3 ins. 25; 50c. 100: \$1.50 6 ins. dozen 50c. 50, \$1.85 * large 12 ins. dozen \$1.

Pepper;- small doz. 25c. large doz. 50c.

Pansy plants small, doz. 25c. large, doz. 50c.

SWEET POTATOE, plants 50 75c. 100 \$1.35

Plant Collection: consists of 25 tomatoes, 25 Ey. cabbage, 50 late. 12 peppers, 12 cauliflower. price \$2.00

Flower Plants; House or Bedding, we can at most all times furnish Ferns, Begonias, Geraniums, Coleus, Primrose, Verbena, Smilax, etc. 10c. up as to size

50 Credit Points given for each \$1. worth of plants ordered, early orders count also.

BEULAH SEED HOUSE. BEULAH, N.D.

VEGETABLE SEEDS

RELIABLE 'HOME GROWN' SEED FOR THE NORTH

ASPARAGUS: pkt. 5c oz. 10c

★ Conovers Clossal: a standard sort of large size

GARDEN BEANS



25 points with, 1/2 lb, pkg

★ Stringless Green Pod:

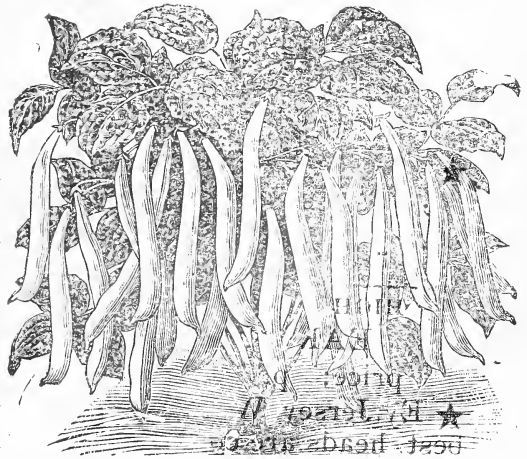
A fine bean, very early hardy, and productive. pods are long, and meaty also fine used shelled. pkg. 10c 1/2 lb. 20c lb. 35c

★ Golden Wax.

Improved, very early and hardy: handsome, meaty pkg. 10c 1/2 lb 24c lb 35c

★ Stephens Black Wax: a fine sort, extra hardy, long golden pods, brittle, and stringless, pkg. 10c 1/2 lb. 25c lb. 35c

★ Davis White Wax; very hardy, and productive, the dry beans are fine for cooking. pkg. 10c 1/2 lb. 25c lb. 35c



FIELD BEANS

pkg 10c 1/2 lb, 18c lb, 30c 10, lbs. \$1.50 50, lbs. \$6.50

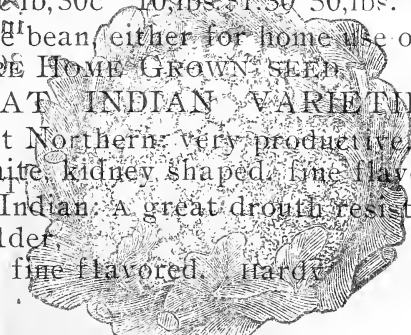
★ NAVY A fine bean, either for home use or for the market. PURE HOME GROWN SEED

3 GREAT INDIAN VARIETIES

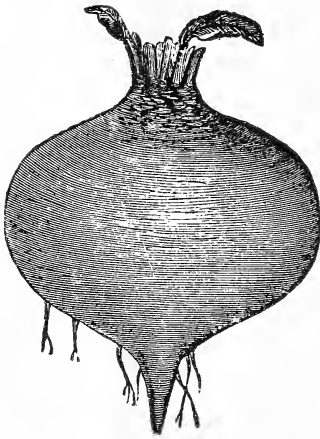
★ Great Northern: very productive, seed pure white, kidney shaped, fine flavor

★ Red Indian: A great drought resister, and a heavy yielder.

★ YELLOW INDIAN: fine flavored, hardy



BEULAH SEED HOUSE BEULAH N. D.



B E E T S

price: pkt.5c oz. 10c 1/2-lb 50c

- ★ Ey.Egyptian: best first early sort
- ★ Edmunbs: medium early, tender.
- ★ Surprise; a good general crop beet.
- ★ Dakota; Large, fine quality.

10 points with each OZ.

SUGAR BEET: Wanzleben, fine



MANGELS

price; oz.10c 1/2-lb 45c 1b.85c

50 points with 1-2 lb. pkg.

- ★ Golden Tankard; The great milk producer, Large yielder. good keeper.

- ★ Mammoth Red; Largest, and heaviest cropper.

C A B B A G E

Plants in season

HIGH-BRED FULL-OF-LIFE
EARLY CABBAGE

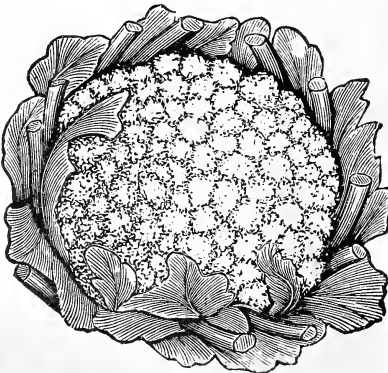
price; pkt.8c oz.28c 1/4lb \$1.

- ★ Ey.Jersey Weakfield: one of the best. heads are conical, very hardy
- ★ Ey.Flat Dutch; a fine second early, of good quality, and flavor.

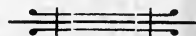
MEDIUM OR LATE Cabbage: pkt .8c oz. 35c 1/4-lb.\$1.15

- ★ Sure Crop; Extra hardy,grows compact,sweet,and tender.
- ★ Surehead; a great cabbage, fine quality and reliable.
- ★ Enkhuizen Glory; very early, large, and fine quality.

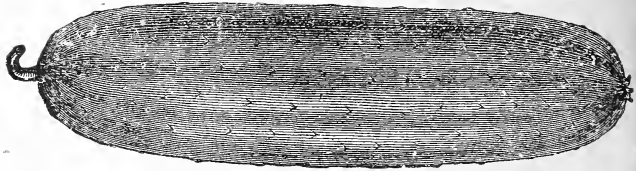
- ★ Danish Ball Head: superior in keeping. heads round, and solid
- 30 points with oz. of cabbage



CAULIFLOWER: Ey. Erfert:
The best, Early, Reliable.
pkt 15c 1/4oz. 85c



Cucumbers



★ Everbearing:

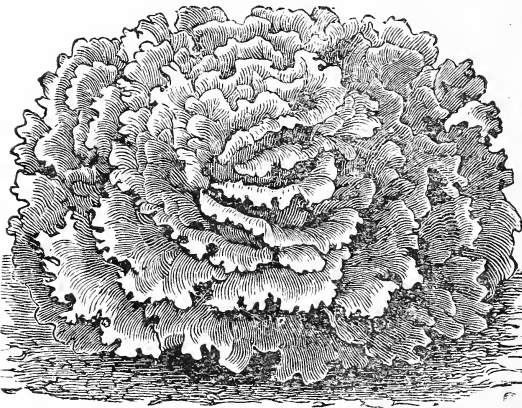
Very early and enormously productive, covering the ground with its fruit the entire season.

Fruit is medium size, of a rich dark green, excellent for pickling and slicing. pkt. 10c oz. 15c ¼-lb 45c ½-lb 75c

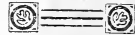
price of the following- pkt. 5c oz. 12c ½-lb .60c

- ★ Davis Perfect; fine quality, very tender and brittle
- ★ Impd. Long Green; grows quite long, very productive.
- ★ Early Fortune; one of the earliest, and best. good keeper
- ★ Ey. Frame; desirable for producing pickles.
- ★ Ey. White Spine; early, crisp, and solid,
- ★ Impd. Short Green; of medium size, good shape.

10 points given with each OZ.



LETTUCE



★ Grandmas; - a marvelous lettuce, THE KIND OUR GRANDMOTHERS USED TO RAISE.

for early, and all summer long. leaves green tinged with red.

pkt. 8c oz. 15c

THE FOLLOWING pkt .5c oz. 10c ¼-lb 45c.
10 points with each OZ. of Lettuce

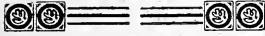
- ★ Prize Head: forms a loose head of leaves, fine flavored.
- ★ Black Seeded Simpson; popular for summer growing
- ★ California Cream Butter; grows well in cool weather
- ★ Deacon; Large heads, medium early.
- ★ Hanson; A fine heading sort

KOHLRABI; Early White Vienna; standard. pkt. 5c. oz. 20.

DILL; used in soup and pickles pkt. 5c oz. 15c

WATERMELON

We have made a speciality of growing watermelons for years, to combat the short seasons we have in N. Dakota.



Dakota Queen, it is small but sweet has the flavor of the large ones.

If you want the earliest and best order this one, pkg. 10c. oz. 18c. 1/4 lb. 65c.

each pkg. ordered will count 10 points towards a prize

Cole's Early: A fine melon near y round bark green with lighter stripes, flesh bright red. pkt. 5c. oz. 10c. lb. 70c-

Phinney's Early: one of the ear iest very sweet, pkt. 5c. oz. 12c

Yellow Fleshed; this variety is liked by many, pkt. 5c, oz. 10c



MUSK MELONS pkt. 5. oz. 10.



- Jenny Lind; the earliest melon grown, sweet,
- Exta Early Hackensack: a very fine melon, green fleshed, early
- Rocky Ford: a standard variety, flesh is green, sweet
- Emerald Gem; an early prolific variety, flesh is a light salmon,

ONIONS



EARLY RED FLAT: We recommend this onion for N.D. It is good yielder skin deep red a **GOOD KEEPER** pkt. 10c. oz; 25. 1-4 lb 85c, lb. \$2.90. each oz. will count 20 points



PRIZETAKER: This is a large onion, straw colored skin mild flavo, pkt. 10c. oz. 25. lb. 2.90

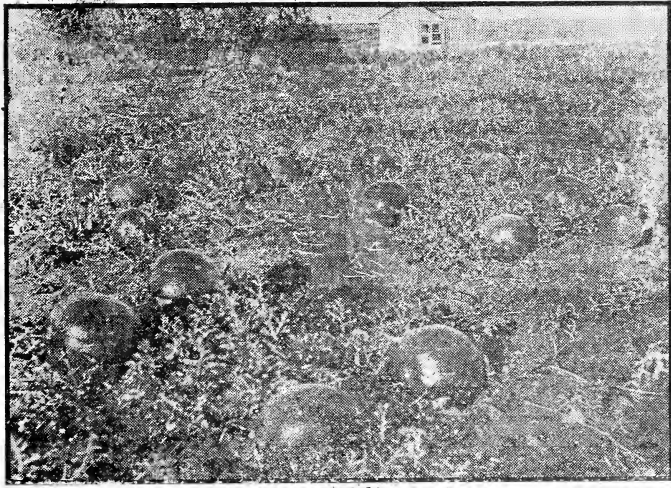
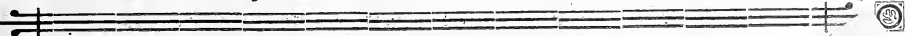
SOUTH PORT Red Globe: pkt. 10c. oz. 20c. 1-4 lb. 75c. lb. 2.75;

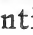
Red Weathersfield price as above
white Pickling price as above.

Keep your onion crop free from weeds, and you will have a profitable crop.


SPECIAL With every 1/4 lb of onion seed purchased we will give 100 credit points towards winning one of the prizes.

remember * early orders will count 500 credit points.



PEAS: By selecting the different varieties, and planting frequently, you will have a supply of peas the entire season.  20 credit points with each 1/2 lb pkg.

PRICES, pkt. 5c. 1/4-lb 15c. 1/2-lb 25c. lb. 40c.

- ★ Alaska;- The earliest of all, a smooth pea, very hardy
- ★ Little Gem: a great favorite. wrinkled, first early.
- ★ Horsefords Market Garden;- A very fine flavored pea, and a heavy yielder. height 2 ft.
-  50 credit points with each lb. of Horsefords peas
- ★ Nott's Excelsior: compact growth good yielder large peas



★ DWARF SUGAR PEAS ★

These peas are not shelled but cooked pods and all, like string beans. pods are sweet, brittle fine for CANNING, dont fail to order some of these FINE peas.
pkt. 10c, 1/2-lb 25c. lb. 45c.

★ 25 credit points with each 1/2 lb, purchased

PARSNIPS: fine for making soups and fries.

PRICE;- pkt. 5c. oz. 10c. 1/2-lb.45c.

— 10. Credit points with each oz. —

- ★ Guernsey Impd. a half long variety, sweet and tender.
- ★ Hollow Crown: one of the best for general cultivation.

PEPPERS: pkt.10c. oz.40c.

- ★ Ruby King; very popular, meat is thick, sweet, and mild
- ★ Sweet Salad; a very fine sweet pepper, mild and delicious

PUMPKINS; pkt.5c. 1/4-lb.25c. lb.85c.

— 25 Credit Point given with 1-4 lb. pkgs. —

- ★ Sugar;- it cannot be excelled as a table pumpkin, a sure cropper, and fine for marketing. THE PIE PUMPKIN
- ★ Connecticut Field: good for field culture, large.

PARSLEY: pkt. 5¢ oz. 10¢

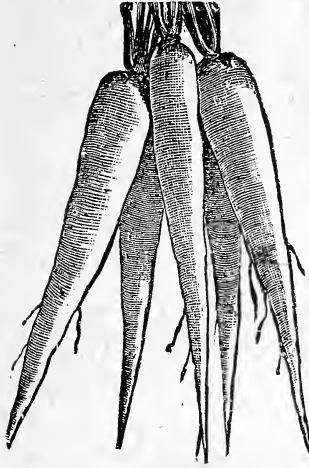
- ★ Moss Curled: leaves moss-like, of a rich green.

RHUBARB; Giant- large, early, and tender. pkt.5c. oz.10

BEULAH SEED HOUSE. BEULAH, N. D.

BEULAH SEED HOUSE: BEULAH, N.D.

RADISHES



price, pkt. 5¢, oz. 12¢, ¼-lb 40c.

- ★ Red Gem: the earliest of all bright red, crisp and tender
- ★ Scarlet Turnip; very early bright red, tipped with white.
- ★ Crimson Gem: a variety combining earliness and size
- ★ Long Bright Scarlet; this is a new long variety, delicious.
- ★ Icicle; this is the finest long white radish, very tender.
- ★ Strassburg; white, half-long
- ★ Winter, Round Black Spanish; a good keeper.
- ★ Mixed: a very satisfactory way of seeding
- ★ 10 credit points with each oz. of radish seed

S Q U A S H



- **MANDAN.**- A great early summer squash, obtained from the Indians. is of good quality very hardy pkt. 10c, oz. 20c -- 25 credit points given with each oz.

- ★ Golden Custard; an early scalloped sort, hardy. pkt. 5c, oz. 10c ¼-lb 35c.

WINTER VARIETIES

- pkt. 8c, oz. 15c ¼-lb 60c.
- ★ Fordhook; a FINE little squash for both summer and winter, very hardy. 10 points with each oz.
- ★ Hubbard: a standard winter sort, of high quality
- ★ Golden Hubbard: very productive, fine flavor.

SALSIFY. pkt. 8c, oz. 15c,

- ★ Mammoth Sandwich Island; one of best, fine flavor

SPINACH; pkt. 5c, oz. 10c, ¼-lb 30c

- ★ Bloom-da-e Savoy; the earliest and hardiest.
- ★ Long Standing; a fine later variety,

10 points with each oz.



STUBBLEBERRY for pies & preserves p. 5

TURNIPS: pkt. 5c, oz. 10c, ¼-lb 35c

- ★ Purple Top; a quick grower, and very productive
- ★ Snowball: a white early variety, good quality.
- ★ Yellow Globe: a fine keeper, sweet and tender.



RUTABAGAS; pkt. 5c, oz. 10c

- ★ Purple Top: the best, hardy and productive

BEULAH SEED HOUSE Beulah. N. D

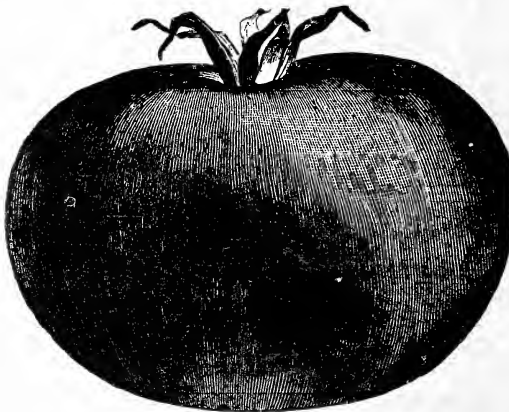
TOMATOES

**NORTH DAKOTA GROWN SEEDS & PLANTS
THAT ARE BEST FOR THE NORTHWEST**

we make a speciality of growing Tomatoes. Every seed we offer is grown on our own Seed Farms, where careful selection is made. You get the best produced.

Extensive trials each season makes us familiar with many varieties, we know the most desirable type and variety for the Northwest.

**S
T
E
P
H
E
N
S**



**B
E
A
U
T
Y**

!- STEPHENS BEAUTY- EARLY, LARGE, PRODUCTIVE. This is the most promising of all recent tomatoe introductions. The fruits are a brilliant red, borne in clusters, sweet, and fine flavored
WE CONTROLE the ENTIRE STOCK of this VARIETY
Pkt. 10c 1-4 oz. 50c oz, \$1.50

★ NEW HOME: Extreme earliness, large yields, and dependability are all factors of this great tomatoe, that radiates its reputation far and wide. The fruits are red of good size, smooth, and of fine flavor. pkt. 10c ½ oz. 50

Price of the following; pkt. 10c ½ oz. 45c oz. 75c

- ★ Red Bird;- remarkably vigorous, and hardy fine
- ★ Earlibell- an extra good all around sort, very prolific
- ★ Liberty- a delight to the eye and palate. size, 1-¾ ins, Di,
- ★ Yellow Pear.- fine for preserves etc. pkt. 5c ½ oz, 25c
- ★ Ground Cherry.- excellent for preserves. pkt. 5c ½ oz. 25

For PLANTS See Plant Department.

FLOWERS

More joy and pleasure can be had from the flower be-decked surroundings of a home, than any like investment in the world.

SPECIAL MIXTURES: pkt. 10¢ 6 for 50¢

- ⊗ **ASTER:** many elegant sorts, and colors. fine
- ⊗ **CENTAUREA;-IMPL.** beautiful, easy grown
- ⊗ **SWEET PEAS;** one of the most beautiful annuals.
- ⊗ **PANSY;** an interesting, continuous bloomer, best mixed.
- ⊗ **PHLOX:** free flowering. not killed by light frosts.
- ⊗ **VERBENA;** very beautiful. not easily killed by frost.

⊗ **SWEET PEAS** pkt. 10c oz. 25c ⊗
 Dakota; - a special extra early sort, comes in bloom two or three weeks ahead of others, and lasts until frost.

the following, pkt. 5c; 10 pkts. for 45c

Alyssum; Antirrhium; Aster; Calliopsis; Carnation; Candytuft; Centaurea; Calif. Poppy; Gaillardia; Four-o'clock; Mignonette; Morning glory; Nasturtiums; Pinks; Calendula; Pansy; Poppy; Sweet peas; Zinnia; Cosmos; Lantana; Moss rose; Balsom; Burning Bush; Marigolds. Butterfly flower.

1 point with each 1c worth of flower seed

★★ **POPPY- POENY & CARNATION FLOWERED.** fine, pkt. 10

★★ **GIANT CANDYTUFT** an extra fine strain, pkt. 10c

★★ **EVERLASTING FLOWERS,** Last for years, pkt. 10c

⊗ **Nasturtiums-** tall or dwarf. oz. 12c ¼-lb 40b

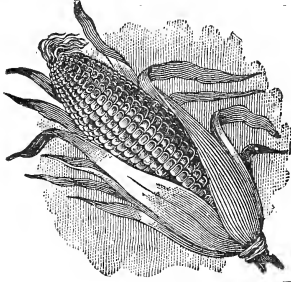
⊗ **Sweet Peas, SPENCER & GRANDIFLORA;** oz. 12c, ¼ lb 40c

FIELD SEEDS

We are only listing the main crop seeds, Therefore we will quote current prices at any time, On any kind of seed.

Prices subject to change

SEED CORN;



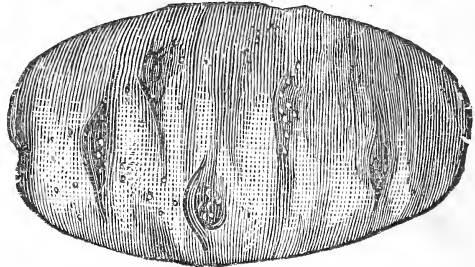
§ BEST FOR THE NORTHWEST §

DAKOTA GOLDEN DENT;- we recommend this above any other dent corn for the Northwest. we have grown this variety for 15 years, and it has never failed. matures even a large yielder, has small cods, order early
28.lbs. \$2.65 56 lbs. \$4.75

DAK. WHITE DENT; des. and price as above
Northwestern Dent;- a very good variety for corn, fine for si age, seed grown in N.D. 1 bu. 4.50: 2 bu. and up per bu. 4.25
Pearl Flint a white flint of good size, very early, is hardy and a good yielder -home grown- 28 lbs. 2.40 56 lbs. 4.50

POTATOES

arly Ohio- the most popular potatoe on the market,
Write for prices.



Prices on seed below are F O D. Moorhead warehouse

SUDAN GRASS: The great new fodder crop. It will make more hay of a better quality than any other annual, makes good when it is dry makes better when it rains. Plant after corn planting time, at the rate of 5 lbs. per acre in 3 ft. rows broadcast 20 lbs, 25 bs. 6.00 100 lbs. 20.00

CANE; has a great value as a fodder crop also for pasture. Is a great drouth resister. sow 6 to 8 lbs. in rows 40--50 broadcast. Early Amber 50 lbs. \$3.75 100 lbs. 6.80

MILLET makes a good crop, producing both hay and seed of high feeding value sow about 25 lbs. per acre
Early Fortune; Liberty, Siberian;- 50 lbs. 3.40 100, lbs 5.90

We wish you all good luck and a bounteous harvest

BEULAH SEED HOUSE, BEULAH, N. D.