

Historic, Archive Document

Do not assume content reflects current scientific knowledge, policies, or practices.

STRAWBERRIES

The Berry that Pleases Millions

AROMA

The most profitable and dependable strawberries grown. The flavor is deliciously aromatic and the flesh is firm and velvety, of a smooth, solid texture.



Note--Our plants have vigorous roots as shown above.



SPECIAL PRICES

For Early Orders.

100 plants for \$1.50

1000 plants for \$10.00

How would you like to grow big berries like this? A small plot of ground set in Aroma Strawberry Plants will bring you big returns on your investment. A berry crop means an increased bank account and weeks of real pleasure in caring for and enjoying luscious fruit. We want every customer, old and new, to have a Strawberry field, Arkansas Grown, FROM THE HEART OF THE OZARKS, and to help you we are offering a wonderful bargain. Strawberries well cared for and properly marketed will yield from \$300 to \$1000 per acre. Think of it! Isn't that wonderful?

Arkansas Nursery Company plants have strong, vigorous, healthy roots and with our careful method of packing they will reach you in excellent condition. They are fresh dug plants.

DON'T WAIT. ORDER NOW.
WE WILL SHIP AT THE PROPER TIME.

Golden Seal

This valuable medicinal herb can be successfully grown under cultivation in all parts of the United States. It once grew wild in most of the rich forests of our country, but only in Ohio, Pennsylvania, Kentucky, Indiana and West Virginia did it grow in large quantities. Fifty years ago it was practically unknown as a medicine, and it sold at 5 cents a pound. As its medicinal virtues became better understood, the use of it became more general, causing the price to advance. "Sang" diggers dug it in season and out, early and late, far and near, with the result that where it formerly grew as plentiful as May Apple, it is now almost extinct. Then too, by the clearing up of rich woodlands, its home has been taken from it. While the supply was decreasing the demand was increasing, causing the price to advance, until during the winter of 1911 it was worth \$5.00 a pound. Since then the price has fluctuated up and down, never getting below \$3.25. This past summer it reached the enormous price of \$11.50 per pound, and it is freely predicted by manufacturing chemists that in a few years it will be worth \$15.00 a pound.

IS IT PROFITABLE? For the amount of capital invested and labor required, there is no other line of agricultural work that pays so SURE, QUICK and LARGE profits as the cultivation of Golden Seal does. Fifteen or twenty dollars is plenty money to build an arbor one rod square and buy enough (1000) roots to plant it. The only cultivation it requires consists in keeping the weeds that come through the mulch pulled out. At the end of three years it will be ready to dig, and the roots would average at least one ounce each, green, 1000

ounces would, when dried, make about 18 and 1-2 pounds; which at \$4.50 a pound (the present price) would bring \$83.25 for the square rod. An acre at these rates would be worth \$13,320. This is not all, for enough small plants will be found to set out twice as large a patch, besides the fiber roots that are left in the ground will form buds and reset the patch. The plants will bear several dollars worth of seed the second and third years.

The figures we have given you are very conservative, and are not overdrawn in any way. We have grown Seal roots at only two years from planting, that weighed over four ounces each. Mr. C. M. Goodspeed, editor of Special Crops, says that he bought a crop of cultivated Seal last winter that averaged nearly eight ounces each, dried. These roots were seven years old. They were worth about \$2.20 each. Think what an acre of such Seal would bring—\$352,000. The editor or Hunter, Trapper, Trader says that one of his subscribers sent him a Seal root that weighed full eight ounces, green. An acre of such would bring over \$96,000.

Soil, Shade and Market. Any good well drained soil is suitable for the growing of Golden Seal. The richer the soil the better the Seal grows. Our choice is a sandy loam with a clay subsoil. Seal must have protection from the hot sun in summer time. Many are successfully growing it in forests by cutting out the large timber and grubbing out the smaller brush, leaving the small sized trees to furnish the shade necessary. The fertility of the soil should be kept up by fertilizing, and irrigation would insure moisture. Our experience, however, is that Seal will make five times the growth in same length of time under artificial arbor as it will in the woods, with all the manure and water you want to give it. Golden Seal can be propagated best by dividing the rhizoma into two or more pieces. It requires an expert to grow it from the seed. Price 12 for \$1.50, 100 for 5.00, 1000 for \$40.00.



PINK ROOT.

This herb grows well under cultivation, and requires but little shade. The price of the dried root is not high like Golden Seal—but it is higher than Golden Seal was fifteen years ago—and the price is advancing. It yields so well and is so easily grown that it pays well to grow it.

We plant it six inches each way requiring 1000 per rod. Our price is \$1.00 per dozen, \$5.00 for 100.

Plant Small Fruits For Quick Returns.

Small fruits this season have paid the growers a net income ranging from \$300 to \$1000 per acre. For the reason that there is a short supply of all kinds of tree fruits that cannot be supplied for many years to come, small fruits of all kinds will continue to bring handsome prices. You get quick returns when you plant Strawberries, Raspberries, Blackberries and Dewberries. When you set out Berry Plants you want the best. Thousands of successful fruit growers in all parts of the country plant only Arkansas Nursery stock. Why? Because every variety that leaves our Nursery is a sure bearer.

Plant small fruits, such as Dewberries, Gooseberries, Loganberries, Juneberries, the Giant Himalaya Berry, Huckleberries, Japanese Wineberries, Grapes and Strawberries. They are easy to grow and will bring you big returns, and will also afford you the opportunity of putting up your own fruit and add to the pleasure of living.

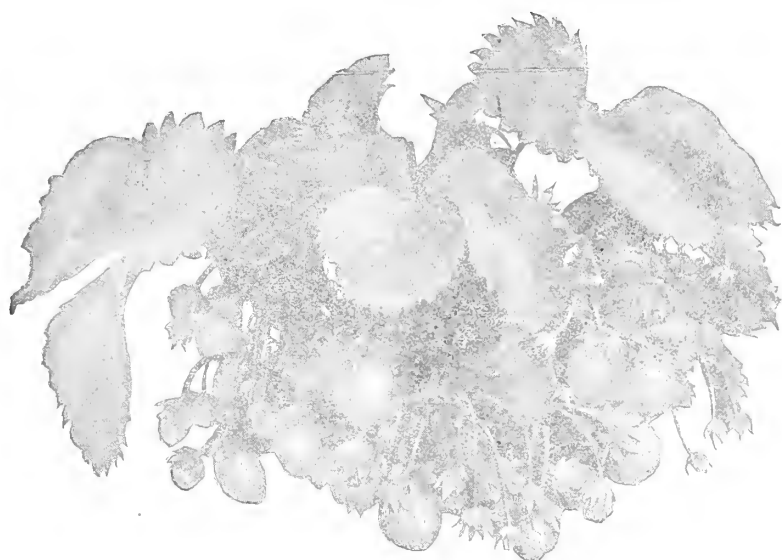
OUR POSITIVE GUARANTEE

Satisfaction or Your Money Back

We guarantee to refund your money or replace free any Nursery Stock or Seeds you buy from us at any time you decide you did not get value received

ARKANSAS NURSERY CO.,
Fayetteville, Ark.

Order now to insure shipment in time for planting. Guaranteed to reach you in perfect condition ready to set out. Rapid growers. Prolific bearers. Large plump and sugary Berries.



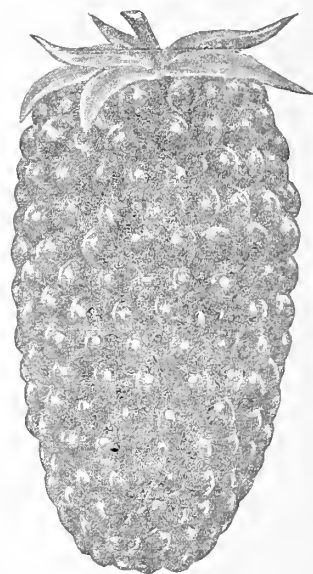
Ripe, Delicious Berries from June until November.

Think of it! If you plant the Progressive Everbearing Strawberry they will begin to fruit during the summer and fall of same year the plants are set and produce a big crop of fine dark red, deliciously flavored berries all though the season until stopped by severe freezing weather in late fall. The St. Regis Raspberry will give you finely flavored, large firm berries throughout the season.

The McDonald

Blackberry

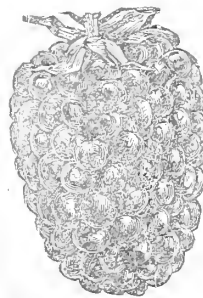
Pays \$400 per acre. This is a money maker throughout the Southwest. Our Catalogue lists many good varieties with descriptions. We will tell you how to grow them.



SPECIAL OFFER

50 McDonald and
50 Dewberries for \$3.00
Also 100 Strawberries free.

DEWBERRIES



A variety of Blackberry that trails on the ground. In size and quality the fruit excels the Blackberry; very profuse bearer and reasonably hardy. The fruit of the Dewberry is highly prized as a market fruit, owing to its large size and quality.

Big Special Offer To Early Purchasers.

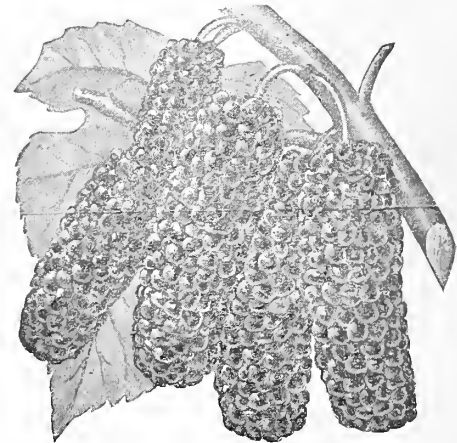
A Fine Collection of Plants for \$5.00

As an inducement for Early Spring Orders we offer the following list of choice Berry Plants for \$5.00:

- 25 Everbearing Strawberries
- 100 Aroma
- 25 Cuthbert Red Raspberries
- 5 St. Regis Everbearing Raspberry
- 25 Snyder Blackberries
- 5 Himalaya Blackberries
- 5 Strawberry-Raspberry

Russian Mulberry

There should be more of these trees planted. It makes a very good shade, holding its leaves late into the fall. Trees commence to bear at two



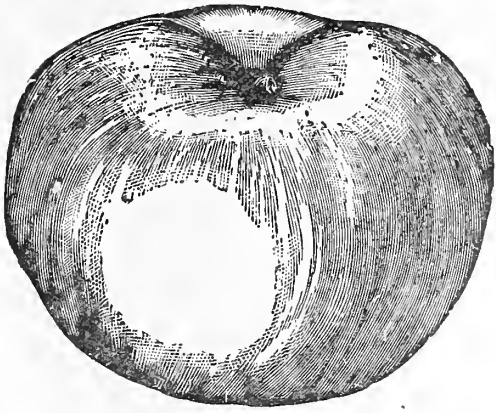
years old. Fruit resembles the Blackberry and will ripen from July 1st to September 1st. No raisers of chickens or poultry should be without them.

Special Offer-

10 one year old trees by Parcel Post for \$1.00

If you haven't a Catalogue write for one.

Three Fine Delicious Apple Trees for \$1.00



This is a remarkable offer when you consider the scarcity of fruit tree stocks.

The Delicious Apple is successful wherever apple trees are grown. Vigorous, hardy trees. Luscious fruit and good keeper.

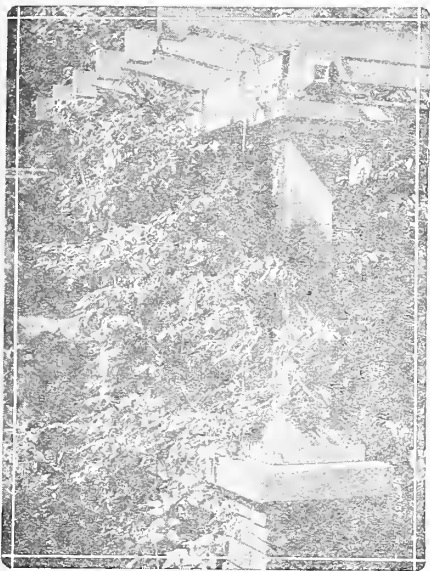
Large Flowering Cannas

The Canna is the South's most desirable flower. They thrive well in all sections of the country, succeeding in any sunny position in all kinds of soil, but best results are received by giving them liberal treatment. The bed should be spaded two feet deep with a six inch layer of well decayed manure of any kind thoroughly mixed in supplying water freely at all times. They are especially desirable when planted in large masses, planting the bulbs two feet apart.

Special \$1.00 Offer.

We will make a selection of varieties for you for a complete Canna bed and will choose varieties that will please you. Will send you 20 bulbs for \$1.00—enough for a large bed.

Border your bed with Dashens and you will have something fancy. Dashens listed in catalogue.



Three Ornamental Vines For \$1.00

Everyone likes vines on a house. They are practical, beautiful and home-like. They give shade to a window, protection to a porch and beauty to a pillar. Some of the varieties will climb and stick tight to a brick wall.

We will make a selection of three nice ornamental vines and send them to you prepaid for \$1.00.

6 Nice Dahlia Bulbs \$1.00

THE DAHLIA is one of the finest flowers grown. No garden is complete without some of these stately flowers.

No tubers give such a show of beautiful flowers with so little expense. The Dahlia is rapidly coming to the front as one of the most desirable late summer and fall flowering plants.

Arkansas Nursery Company PREMIUM OFFER

With all orders amounting to \$5.00 or more, full amount of cash with order, received not later than March 15, 1920, we will give free a premium of Fifty Strawberry Plants.

The above in addition to premiums already offered.

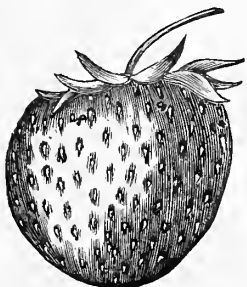
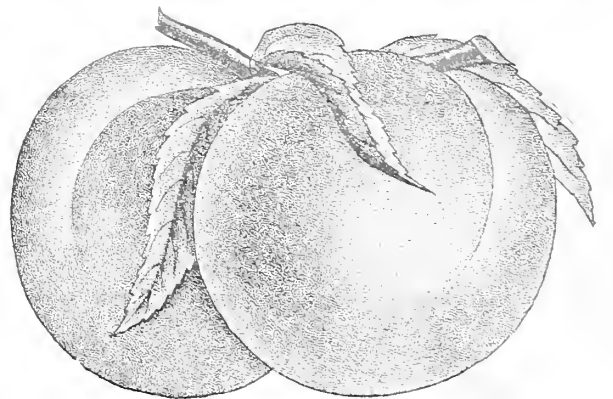
Place Your Order Now

Seedling Peaches

Plant a few seedling peaches for home use. There is a flavor and quality about seedling peaches that appeals to many people. The trees are thrifty and hardy, and they will sometimes bear when budded trees fail. Our trees come from stock that produces large crops of fruit. They are grown in our Mountain Nursery, and are strong, well-rooted trees that will please you.

This season we have some very fine stock of seedling peach trees.

Common Seedling Peaches—Extra one yeartrees. Plant some of these trees. Price each 25c, 10 for \$1.50, 100 for \$10.00.

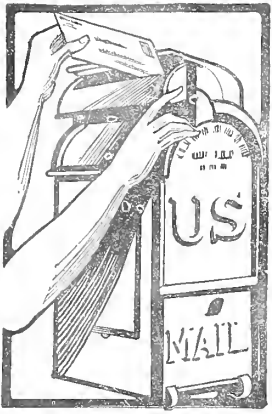


Plant an Acre of Strawberries This Spring.

VERY SPECIAL OFFER. If you will send us \$25.00 before March 1st, we will send you enough plants (4000 plants) of fresh-dug Klondyke Strawberry Plants to plant one acre. We believe that we are safe in saying that the average yield of Strawberries paid the growers last season more than \$300.00 per acre. Some received as high as \$1000.00 per acre. A few acres of Strawberry plants brought some farmers more money than they were asking for their entire farm.

Strawberries are one of the most common and extensively used of all small fruits, and as a commercial proposition there is nothing that equals them for a satisfactory profit.

Our plants are the best that are grown. They are young and vigorous and are not to be compared with plants dug from old fields. They will bear big luscious berries which will bring the very highest market prices on all markets.



ORDER NOW

Ordering Trees, Plants and seed from our Mail Order Nursery is an easy matter. All you have to do is to look over our 1920 catalogue carefully and make your selection of trees, small plants, garden seed, etc., fill out the order blank which we have sent for your convenience, send it to us and we will do the rest.

We pay all transportation charges on orders amounting to \$5.00 or more. You don't have to worry about paying freight or express bills. If your order is less than \$5.00 and you wish it sent by Parcel Post or prepaid express add 15c to each dollar to prepay charges.

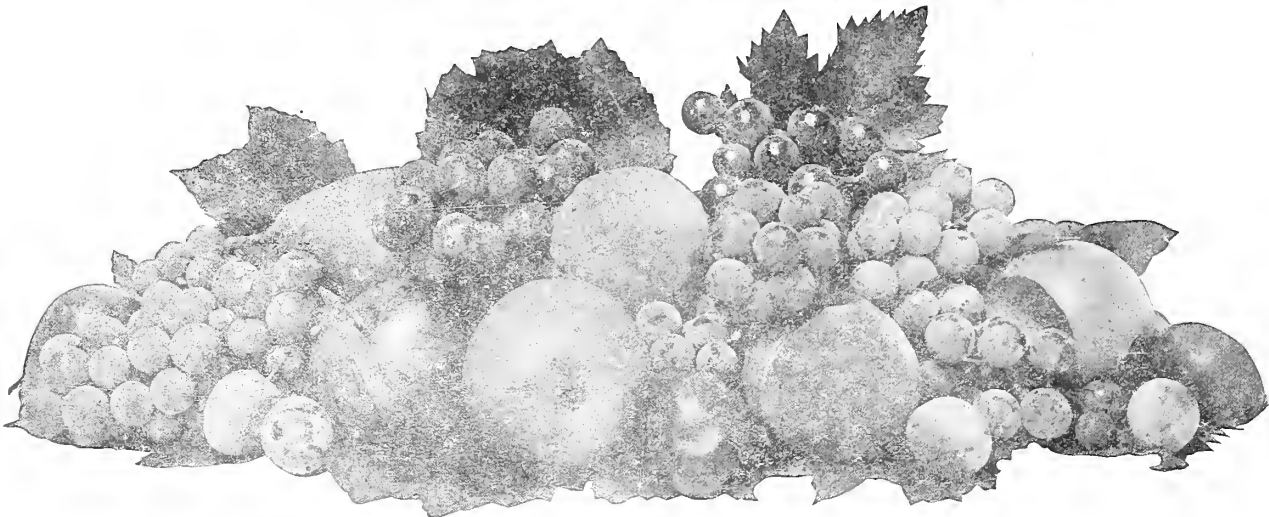
Our Nursery is a Mail Order Nursery and we are constantly installing new equipment, adopting and following new and improved methods in planting and growing our stock and increasing our force so that we may give QUALITY and SERVICE to our thousands of customers at the least possible cost to them. If you are not already one of our customers you should be because it will be to your advantage and it will be a pleasure to us to serve you. We have thousands of satisfied customers and we want YOU to be one too.

ORDERING BY MAIL SAVES YOUR TIME AND YOUR MONEY-and they are both worth saving.

Place Your Order NOW and We Will Ship When You Want It.

Satisfaction Guaranteed or Your Money Refunded on
TREES, PLANTS and SEEDS
From THE HEART OF THE OZARKS.

1c. Paid
Fayetteville, Ark.
Permit No. 1



Arkansas Nursery Co.,
Fayetteville, Arkansas.

U.S. Dept. Agriculture
Washington
D. C.

RECEIVED
FEB 21 1920
U.S. Department of Agriculture

A Complete Garden For \$1.00

There Is Nothing So Important as a Garden.

AR Always NU New CO Crop SEEDS

In planting or sowing field or garden keep in mind the all important fact that you should plant only the best seed that can be obtained. Arkansas Nursery Company seeds are good seed and give satisfaction.

Our seeds are tested for vitality and thoroughly cleaned. Full of life and sure to produce bountiful harvests. Sold direct at a saving of middle profits.

25

Regular Size Packets,
Your Selection, From Our Catalogue for \$1.00