

Historic, Archive Document

Do not assume content reflects current scientific knowledge, policies, or practices.





Baldwin's Fruit Plants

1920

LIBRARY
RECEIVED
★ JAN 31 1920 ★



O.A.D. BALDWIN
BRIDGMAN, MICH.



Gibson

*The Most Profitable
Strawberry Grown*

Buy GIBSON This Year
We Guarantee Them

Last year we sold nearly twice as many Gibson plants as any other variety (excepting Progressive everbearers). Think of it! Two-thirds of all the strawberries grown in this County (the greatest berry-growing County in the United States) are Gibson. They are far more popular than any other variety for market or canning factory.

The berries are large and of beautiful dark red color and extra fine appearance. Gibson plants out-yield other varieties and Gibson berries outsell other berries on the market. That is certainly recommendation enough, but we want to add that the Gibson is also an extra nice table or home use strawberry. The plants are strong growers, long rooted and probably the most thrifty and healthy looking variety we have on our farms. Gibson commences to ripen with the second earlies and continues for a long season, making a heavy yield of fruit.



The fruit stems are large and strong; and the dark green foliage is ample protection for the blossoms and fruit; having a strong staminate bloom, it makes a very good pollenizer for pistillate varieties. The berry is large and regular in shape, holding its size well to the end of the season; its color is a deep, rich red all through from surface to surface; its flavor is fine, being neither too sweet nor too sour, but just right for table or canning.

In manner of plant growth it very closely resembles Pocomoke, making a heavy row of very strong and healthy plants, its foliage being of a very dark and glossy green. If we were to grow only one variety of Strawberries, either for market or for general purposes, we would choose Gibson without any hesitation. Owing to the general shortage of plants, the demand for this extra profitable variety will far exceed the supply, so **ORDER EARLY**. Price, \$7.50 per thousand.

Gibson has proven its value by several years of wonderful production. Baldwin's New-Ground plants are Guaranteed by

BALDWIN OF BRIDGMAN

BALDWIN'S



Greeting to Berry Growers

There are some things that I have to do that I do not like. Other things that I do bring me a great deal of satisfaction. It is always a pleasure to greet a friend. My customers are my friends. I extend a most cordial and sincere greeting to all Berry Growers with whom I have come in contact during the past years.

One year ago the world was groaning under the severe strain of the four years' war that had just ended. My message was then a peace greeting. It is now a thanksgiving. Fruit growers are enjoying the greatest prosperity in the world's history. A scarcity of foodstuffs, a foreign demand for everything that we can produce, with prevailing high prices and an assurance of continued active business operations, give promise of many prosperous fruit years to come.

Capital or industry is perturbed, even distressed. Labor is irritated, almost to the boiling point. The farmer is the only man who is carrying on one hundred per cent in efficiency. Between the contending elements of capital and labor, the public has cause to question where it will get its food, and its clothes. The farmer is the only man who has his feet squarely on the ground. Something is wrong. The three factions should get acquainted with each other. Capital and labor have too long ignored the rights and the importance of those of us who produce the world's food. There is a growing conviction that the farmer must step between the warring factions, help stabilize conditions, and make his great influence felt at this time.

With these sentiments in mind, I believe that it is the duty of every patriotic American farmer to produce to the very limit of his capacity. Fruit supplies one of the essential elements in human food and we must produce more of it.

I have often said that I counted it the highest privilege of being in a business along productive lines, and while I am identified in business in other ways, my time and my talent are concentrated first to the production of Berry Plants of the most improved varieties. The foundation of this business was laid by my father. I am living on the farm where I was born. I love it, because of the pleasure and satisfaction it has brought me, as well as to my father before me. I have never been happier in my work than I am today, because I believe that the production of food is more important now than ever before. I must have the help and co-operation of my friends and customers if I am to carry on along these worthy lines.

Now, may I say just a word about personal matters. Never in the history of Baldwin's Farm have we produced a finer lot of Berry Plants than in 1919, and our facilities for serving you are better than ever before. This book contains a message for you. America must still feed the starving millions. She will have to do it for years to come. The man in the berry business will do well to increase his acreage, and to improve his stock. It is his opportunity to serve. The years that follow will be prosperous, for berry growers who prepare in the right way. I invite your continued friendship, your loyal support and your liberal patronage, and promise you that my service will be full measured and that I will do everything I can to make our relationship both pleasant and profitable to you.

Very truly yours,



The question is often asked, "What's in a name?" The answer, so far as we are concerned, means everything—to us, our friends and customers. We want to emphasize this point because we think it is important for you to know more about us. We have no secrets and would like to have you come here and see every step we take in filling your plant orders. "B" stands for Baldwin. We like to make it large because of its importance. If this page were larger, we would probably have made the letter larger. We want you to know that so far as we have right to use the letter "B," it stands for

Baldwin's Big Business

We have tried to tell you something in this book about our business. If you were to visit Bridgman, you could see for yourself. Not all of our thousands of customers are privileged to see us personally and witness what we are doing. For that reason, we are trying to make it emphatic that our claim for preference, so far as the berry plant business is concerned, is well founded. Heretofore, we have been very modest in asserting ourselves, remembering, as we do, the small beginning that we made, over a quarter of a century ago. We are telling you something about our past history on other pages. We are

proud of it and believe as we have achieved such prominence and success in the production of berry plants, that we have a right to speak of it in proper terms. And if this letter "B," which stands for "Baldwin," has caught your eye, may we ask that you give consideration to the further and more important fact that in the purchase of berry plants there is no place in this big land of ours where you can have your needs supplied more honestly, promptly and satisfactorily than right here. We have grown an immense stock of new ground plants—growing nothing but good varieties, all of which have proven their fruiting value here and elsewhere. We have tried to describe each variety carefully and not make any statements that might be misleading to you in any way. After you have bought from us we are just as anxious that you succeed and make money growing berries as we are to get your order. We urge, therefore, that you

Buy Berry Plants of Baldwin

We have never exploited plants under an assumed name to gain public favor, but have always produced the well known standard varieties, true-to-name, and sold them just that way. We have improved and developed certain varieties, made them yield better under our favorable soil conditions and Baldwin's method of production, but when we have done this, we have been satisfied. We are not boasting at the other man's expense. Our object of calling your attention to our name in this way is with this one fact in mind: Baldwin is best qualified to supply your needs in the berry plant line. May we ask that you read carefully the pages that follow, observe our methods of doing business and the advice we offer to fruit growers. We feel very keenly the necessity of emphasizing the difference between Baldwin's method of berry plant production as against the ordinary method pursued by so many that have not the interest at stake and perhaps do not think as much of their good name as Baldwin does.

Baldwin's Business Builders

Treatment of Our Customers

We have made a lot of changes and improvements in our big plant business; but we have never wanted to change the policy of square dealing on which our business was established over thirty years ago. An honest, live-and-let-live policy through which we hope to hand down to our growing-up sons as untarnished a name and reputation as was handed down to us. We try to treat every order received from you through the mails just as we would treat you personally if you drove to our packing house for your plants. We treat all customers alike, the little orders having the same careful attention as the big ones. All orders are appreciated. None are neglected. This policy may be somewhat selfish on our part as we realize that our future success in the plant business depends entirely upon the success our customers have with our plants. Satisfied customers are what we want and we cannot afford to have any other kind. Your dealings with Baldwin will be both pleasant and profitable to you.

An Important Fact

There are far too many worthless varieties advertised in most plant catalogs, and it is not only very confusing to fruit growers, but as all varieties are generally described as the best, some are pretty sure to disappoint the purchaser. We call your special attention to the fact that Baldwin's list contains only about twenty varieties of strawberry plants—while some catalogs describe three or four times that number. We have grown and tested several hundred varieties of strawberries in the past ten years and have kept discarding worthless ones until our list this year covers only the proven varieties that pay to plant.

Same way with other fruit plants. Look over our list and you will see only the proven varieties of well known value.

When our customers get varieties that give profitable returns on their investment they will feel good toward us.

Quality and Service

Baldwin has tried to make it plain to you that our new ground berry plants are of extra quality. We grow them ourselves, and our customers have great success in producing paying crops of first-class fruit.

We grow nothing but plants, and we grow them by the million. We have our own packing houses, cellars, storage houses, offices and working force, equipped in splendid working order. We claim to grow, sell and ship more strawberry plants than any other nurseryman or nursery company in this country. We also ship millions of raspberry, blackberry, dewberry, and grape plants each year. Baldwin's big berry plant business makes it possible for Baldwin to serve you best.

No plants are allowed to fruit on our big plant farms, and what is more important—all plants are strictly fresh dug for each order. We put no plants in cellars for storage over winter or any other time. All plants are tied 25 in a bunch—40 bunches to the thousand, and there will be ten hundred or more good, strong, well rooted plants in every thousand you get.

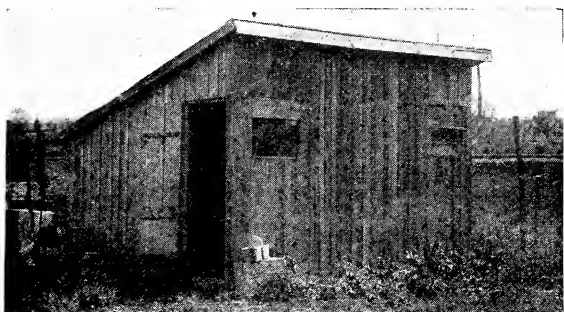
Baldwin's Plant Business is not the growth of a day. It represents years of hard work and applied ability in the production of the best berry plants. We have been growing, digging and packing plants for over thirty years and have learned many important things that help us to get our stock to you in good growing condition.

Baldwin's New Ground Berry Plants are grown right, dug right, packed right, shipped right; in fact, we want to impress upon you that Baldwin quality and Baldwin service are the best.

It is greatly to your advantage to

BUY OF BALDWIN OF BRIDGMAN

BALDWIN HISTORY



Our First Packing House in 1889.

We started packing plants in a hen-house ten feet square in 1889, as shown at the top of page.

Five years later we built a packing house 16 by 20 feet. After another five years we doubled this room, making 16 by 40 feet, as reproduced from photograph in the center of this page.

We have since added to this until we now have over 5,000 square feet of floor space used entirely for storing and packing our plants, some of which are shown at bottom of this page.

These packing houses and storing cellars are equipped with freight elevators and all conveniences for handling our stock rapidly and in the best possible manner.

This insures good service for you and that means much when buying live plants.

Baldwin's new ground plants have made a name for themselves in nearly every fruit section and the demand for them has exceeded the supply for several years.

We invite you to become one of our regular satisfied customers and we honestly believe that our dealings will be mutually pleasant and profitable.

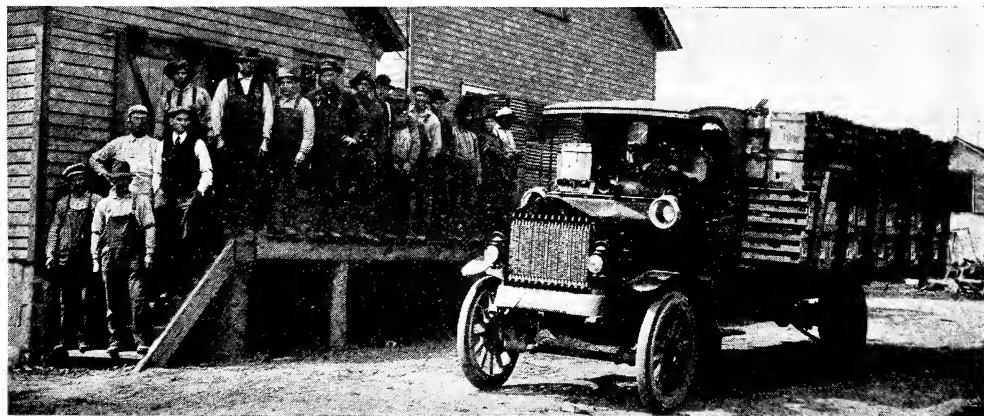
Our plant business has steadily grown from the beginning thirty-one years ago, until now we operate probably the largest fruit plant nursery in the United States.

Commencing on 20 acres of land with a little patch of red raspberries in 1889, the business has expanded until our plant farms now consist of over 600 acres, most of which is new ground and especially adapted to the growth of strong, heavy-rooted berry plants. This year we are growing about 100 acres of strawberry plants, besides many acres of raspberry, blackberry plants, etc.

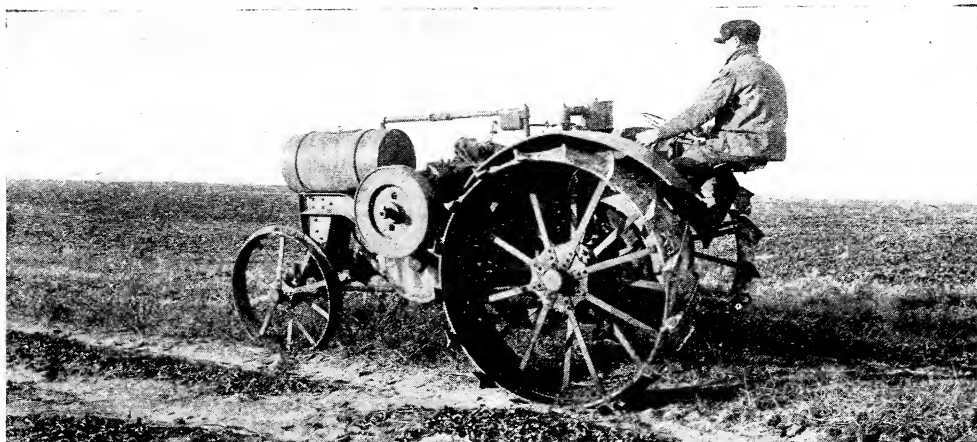
We honestly believe the one big reason for this rapid, healthy growth of our plant business is the fact that we always give our customers a little more in both quality and quantity than they expected to receive for the money sent us. We try to see each transaction from our customer's point of view as well as from our own—in short, we are doing business on the square.



Ten Years Later—Packing House, 1899.



Baldwin's Packing Houses, (packing 500,000 strawberry plants and 200,000 cane plants per day).



This Big Tractor Helps Baldwin Grow More New Ground Plants.

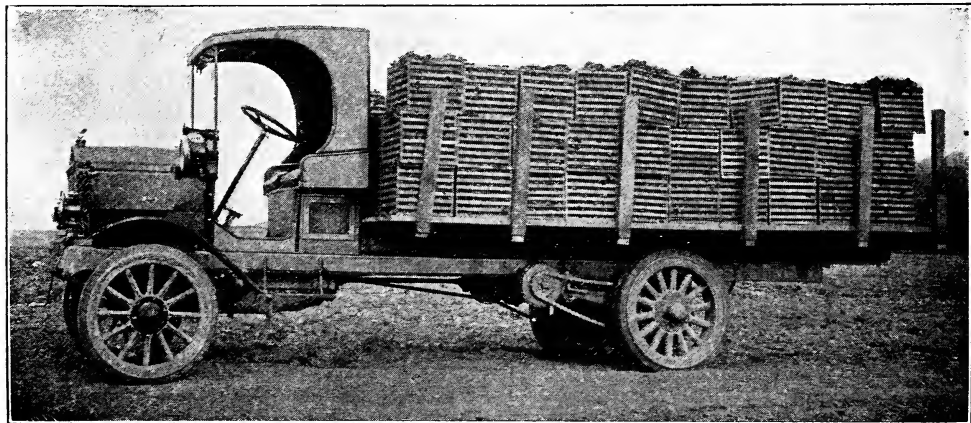
Baldwin Equipment

To meet the demands of modern business, two decidedly important factors are necessary. We must have both manpower and motorpower. We have in our organization experienced men, competent to carry on the production of berry plants in the most modern and scientific manner—men who are trustworthy and dependable. To this great force we must add the other equally important force, namely, motorpower.

On this page we illustrate the tractor and the truck we use. We have just purchased another big truck to handle our growing business without any delays in our busy seasons.

The modern factory must have the latest devices and machinery to meet competition. It is by employing improved methods that we are able to produce in larger quantity and at prices as low or below the average. Farming today is a business—the biggest business on earth. Growing berry plants is a technical business. It requires skill, modern equipment, experience and business management.

Baldwin's Berry Plants are produced under these conditions. In short, we keep abreast with the times. We modernize our equipment not alone for the purpose of economy, but for the purpose of producing better stock and handling it more rapidly and safely—Baldwin is fully equipped to take care of your plant order to your entire satisfaction.



One of Baldwin's Big Trucks. New Ground Plants Ready for Shipment.

Make \$1,000.00 Per Acre

You can do it easily with our New Ground Berry Plants as illustrated below.

This wonderful growth of roots is partly due to the fact we grow all our plants on rich new ground that produces extra long, strong roots, and partly due to the fact that we grow all plants for plants only, never letting anything fruit in our big plant fields.

There is a mighty big difference between our strong, heavily rooted berry plants that are grown for plants only and the ordinary plants that are produced as a by-product between fruiting rows. Perhaps you have never thought much about this important matter but we want to make it very plain to you that Baldwin's plants grown the Baldwin way are stronger in both root and crown. They will grow better for you and produce better crops of bigger berries than plants being sent out by many nurserymen and dealers who buy most of their plants from fruit growers.

Get started right by buying good, thrifty plants with a reputation behind them, and you will be surprised at the ease with which you can supply your table and with the finest fruit obtainable. We are satisfied that Baldwin's heavy rooted, new ground plants grown by Baldwin of Bridgman will please you in every way, grow and do well for you and bring you a big crop of berries of extra quality. Why not get started this year in a business that is pleasant and profitable?

The same rule applies in buying berry plants as when buying anything else. If you buy cheap goods you get poor quality and you are generally sorry you tried to save a little money on the purchase price.

I believe it is especially important to buy good reliable stock when putting out something permanent like a berry patch that you expect to grow for at least two years and grow for a profit to yourself.



From Photo of Baldwin's New Ground Plants
(Roots over twelve inches long)

We want to urge upon you the importance of buying first class heavy rooted berry plants of the quality we grow on our new ground—the ones we grow for plants only—and guarantee to you.

Read the following letters from some of our regular, satisfied plant customers.

"SEVEN BERRIES FROM BALDWIN'S PLANTS FILL A PINT BOX."

Fostoria, Ohio, Feb. 25th, 1919.

Mr. O. A. D. Baldwin,
Dear Sir:—

Of all my long years in the berry business, have never received as nice and strong plants from any nursery as I have from you. They certainly are great producers of large delicious berries. I have produced berries already that measured $8\frac{3}{4}$ inches around and weighed $3\frac{1}{2}$ ounces. It took but seven to fill a pint can.

Very truly yours,
JOHN E. STONE.

DON'T BE LATE WITH YOUR ORDER LIKE THIS MAN WAS.

Fort Wayne, Ind., May 14th, 1919.

Mr. O. A. D. Baldwin,
Dear Sir:—

Your letter with return of my P. O. money order received. I truly am very sorry that you could not fill my order. I should have sent it earlier in the season.

I am a Railway Mail Clerk, been in the service continuously for 47 years. I have handled many packages of strawberries; but must say those from the Baldwin Fruit Farm are in the best condition. I felt that none others would satisfy me. I have recommended your farm to many of my friends on the line. I run between Chicago and Cleveland.

Very respectfully,
GEORGE B. HARTMAN.

**Baldwin's Customer Once—Baldwin's
Customer Always.**

Cultural Directions

Soil. Almost any soil that will grow good field crops will grow good berries—good, rich, well-drained sandy loam preferred. Avoid low, frosty places if possible. Light sand or hillsides can be used to good advantage in growing berries of all kinds; land that cannot be used very well for corn, wheat, etc.

Drainage. Your berry patch should be well drained the same as your land for any other crop. Tiling of sufficient size to carry off all surplus water is best and saves ground for you.

Fertilizing. The best fertilizer we ever found for fruit is stable manure. A crop of clover or other green crop plowed under is good. Fruit plants, like any other crop, need rich ground, and respond quickly to good care and fertilization.

When to Plant. The earlier in the spring the better. As soon as you can prepare the ground so the spring rains will give the plants a good start. Plants should be handled and set before they start to grow very much, while the vitality is in the plant.

Preparing Ground. Soil for setting fruit plants should be plowed deep and harrowed till it is loose and level. We like fall plowing, as the ground gets settled during winter. Early spring plowing is all right, and the better you prepare your land the easier it will be to keep your berry patch free from weeds and keep the plants growing. We advise rolling or floating the land just before setting, and you can use a plank float (home made) with best results. The soil should be firm. You can mark out your ground with any kind of marker you use for other rowed crops. We use a hand marker (home made) that marks three rows at one operation.

Care of Plants When Received. If the ground is not in condition when they arrive, a very easy method can be used to keep them, which will be a great benefit to the plants, as follows: Take each variety, a bunch at a time, cut strings, and spread roots very thinly along the side of a shallow furrow, then cover the roots with dirt not higher than the crown of the plants. If ground is dry, water roots only. In a few days they will have taken hold, or rather sent out little white fibrous roots, and will be in good condition for transplanting.



Planting—Distance Apart, Etc.

Strawberries. We recommend putting the rows three feet eight inches apart, same as for corn—and putting the plants from fourteen to twenty inches apart in the row. This requires on an average about seven thousand plants per acre. The distance apart in rows depends upon the variety set. For instance, Senator Dunlap, Gibson, etc., produce large quantities of runner plants, while Corsican, Glen Mary, etc., do not produce many plants, so the distance in rows can be regulated accordingly.

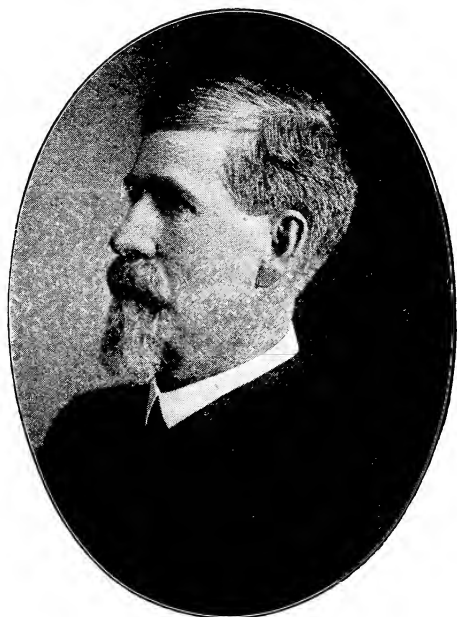
Setting the Plants. Make holes with a spade by putting in ground six or eight inches and pull toward you, then take out. If ground is in good condition and soil is damp, this should leave a "V" shaped opening. Hold plant in this hole with hand and close hole with one foot and press firmly (with feet) on both sides of plant. If one is setting plants alone a row of holes may be made, then take plants and set that row. If two are working together one can make holes and the other set the plants. Great care should be taken to set the plant at the right depth. Plants should be set the same depth as they were before being dug, with the crown of plant even with surface of ground. This is important, as plants set too deep will be washed over with mud and those set too shallow will dry out.

Selection of Varieties for Fertilizing. Varieties marked (P) are "Pistillate," and should have about every third row set to some staminate variety for fertilizer. Set early staminates with early pistillates and late with late, etc.

Varieties marked (S) are "Staminate," and self-fertilizers, needing no pistillate variety set with them for best results.



A Strawberry Plant Correctly Set.



O. A. E. Baldwin,
Founder of the Business.



O. A. D. Baldwin,
Present Proprietor.

Picking Blossoms from New Set Plants. The standard or June bearing varieties are not expected to produce a crop the year they are planted, so the fruit stems should be pinched from all plants as they appear after setting. This throws the strength into the roots and develops a strong, healthy plant that will give you a big crop of nice berries the following season. If you do not want a wide matted row (and we would not recommend matted rows for best fruits), you should cut off all runners that start up till about July 1st. There will then be plenty coming on later and your parent plant will be strong and vigorous.

All blossoms should be picked from everbearing varieties the first part of the season if you want them to form a number of runners. The midseason bloom should be left and a crop matured the same season in which they are planted. Everbearers will produce a good crop of berries during late summer and fall the year they are planted, but you must pick off fruit stems as they appear up till July 1st.

(Cultural instructions continued on page 10.)



Our New Home and Office—Our Old Home and Office Was Destroyed by Fire March 5, 1917.

PROGRESSIVE

The Best of the Everbearing Strawberries

Big Ripe Berries from June till December

This wonderful strawberry has proven beyond all doubt that it is the leading everbearing variety. Progressive plants set in the spring not only produce an immense crop of fruit the year they are planted, but the runner plants bear fruit as soon as set. Progressive yields a crop of fruit the first year that is truly wonderful. The fruit of Progressive is of good size, smooth, of good color and appearance, a single plant often producing over one hundred perfect berries during the season.

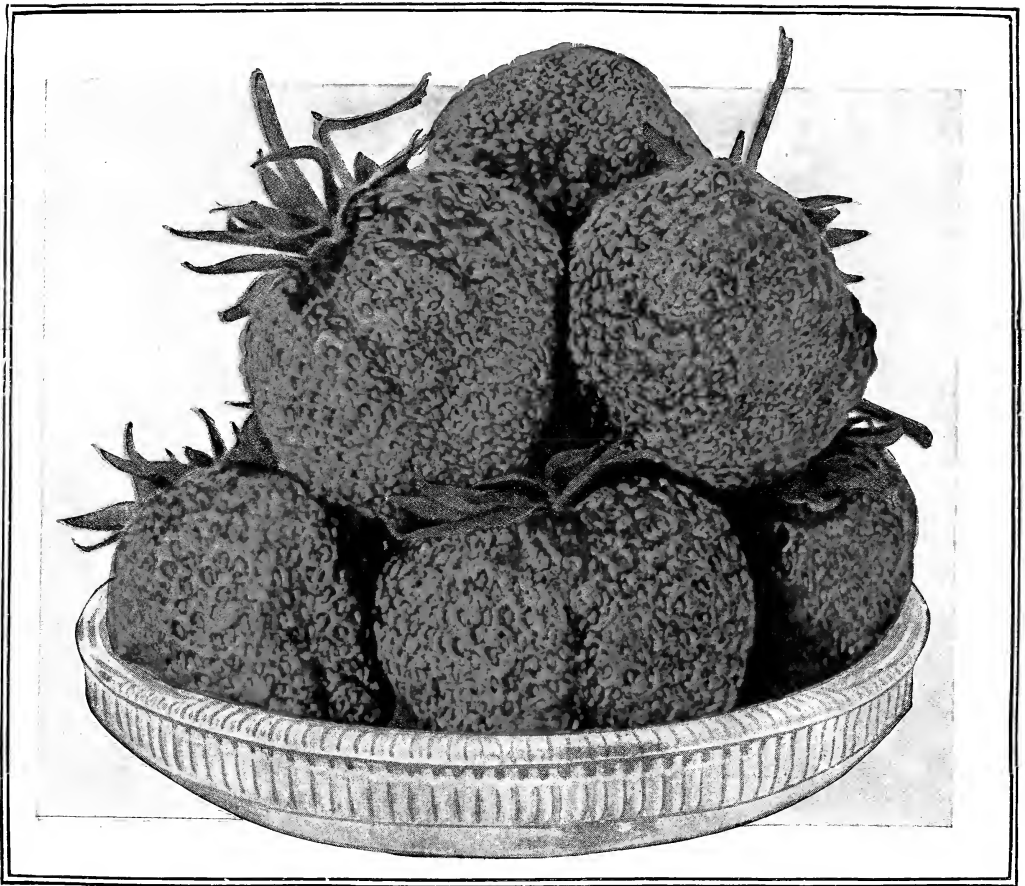
Last year we sold more Progressive plants than any other variety and this year the demand for everbearing strawberries will be greater than ever, as more people know of the success everyone is having with them. Every family having a garden should have enough Progressive plants to furnish them with fresh strawberries all through the summer and fall.

We advise ordering early, as the demand will again exceed the supply.

Heavy-rooted, new ground Progressive plants, guaranteed true to name, \$2.75 per hundred, \$19.50 per thousand. (See further description on page 11.)

Picking Progressive Strawberries on Baldwin's Plant Farms, from a photograph taken October 23rd. Please note that the Corn is in the shock and being husked and hauled while Progressive berries are being picked in large quantities. Guaranteed by Baldwin of Bridgman, Michigan.





DR. BURRILL

THE MILLION DOLLAR STRAWBERRY

Dr. Burrill is an improved Senator Dunlap, and was originated by Dr. Reasoner of Illinois, who originated the famous Senator Dunlap. It is a cross of Senator Dunlap and Crescent, both being wonderful producers. This new berry is the biggest cropper of all strawberries. Berries are very large and uniform in size and shape. Most of you know what Senator Dunlap is and what loads of nice berries they are producing everywhere. Dr. Burrill is a better berry in every way, produces more berries, bigger berries and berries of better quality. This is a big statement, but Dr. Burrill has proven its value on the grounds of the originator and on the farms of the introducers.

This great new variety is a strong fertilizer, and its season of blossoming and fruiting is extra long. It ripens in mid-season. Dr. Burrill stands the drought best of all varieties owing to its wonderful root system. Foliage is large, of a beautiful dark green and very hardy and healthy. With its extra long, strong roots, heavy crowns and healthy foliage, it is able to produce its wonderful crop of fruit every season. Berries are very dark red in color, and are of the very best quality.

Let us reserve Dr. Burrill plants for you NOW. Price, \$8.00 per thousand.

DR. BURRILL, "The Boss of Strawberries"
From Baldwin's New Ground

AT YOUR SERVICE

Mr. Stanard has been with us for the past 28 years and has had entire charge of our plant farms for many years.

He has spent all his time studying plant growth and the best methods of plant production. Naturally Mr. Stanard has learned many things about growing berry plants that are valuable to our customers as well as to ourselves.

In fact, by watching the different varieties year after year and studying the best way to grow the best plants Mr. Stanard has had much to do with the wonderful growth of our plant business.

We invite all our customers, who can, to come and visit our plant farms. Mr. Stanard will be glad to show you what he can of our methods of plant production and tell you how he takes new stump land and makes it produce our wonderful crops of new ground plants the first year. We want to impress upon you the fact that when you buy Baldwin's berry plants, you are buying quality and service that insure your success in the berry business.

Mr. Stanard's life time of practical experience in producing first-class berry plants is worth something to you.

The important fact that Baldwin's plants are grown right, kept strictly true to name, and developed to the highest degree of productiveness has been one of the big reasons why Baldwin's plants are now bought year after year by the most successful fruit growers throughout the United States.



Lewis Stanard
General Superintendent.

This is Mr. Hann's 18th season as foreman of our cane plant packing cellars. He understands the handling of raspberry, blackberry plants, etc., thoroughly. Mr. Hann has several able assistants and sees to it that no stock goes out that is not in first-class condition and properly labeled and packed. We very seldom receive a complaint about stock not arriving in good shape.



George Hann.



Lee Ashcraft.

For 7 years Mr. Ashcraft has been packing Baldwin's strawberry plants and looking after our strawberry plant packing houses. He thoroughly understands the way to pack plants so they will reach our customers in best possible condition. Not too wet or too dry, too tight or too loose—but just right. Your strawberry plants will be packed carefully and well.

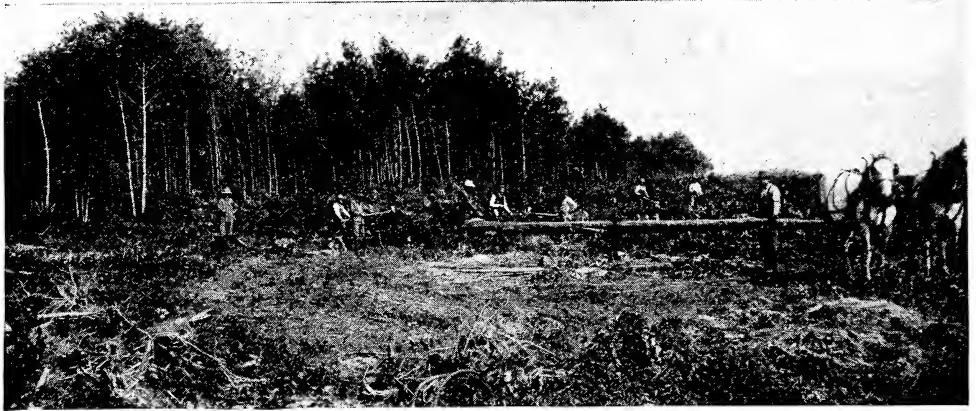
Berry Plants Are a Short Crop—Let Us Reserve Yours Now

**Buy the 4
Big Money
Makers**

CHARLES I. (Extra Early)
DR. BURRILL (Medium Early)
GIBSON (Medium Late)
AROMA (Very Late)

From very early till very late.

These four most popular varieties will bring you big money.



Our Big Stump Puller at Work. (Baldwin's plants are better, because grown on new ground.)

Cultivation. We recommend shallow cultivation as soon as the plants are set, or at least within a day or two. This levels the ground and holds the moisture. Shallow cultivation should be kept up through the growing season.

Care of Patch After Picking. Most of our customers, we think, will find it profitable to leave their strawberry patches for the second crop. A good way to care for a patch after the first crop is off is as follows: If a field is weedy, mow it and rake it off. It will be necessary to commence cultivation at once, and if the matted row is too wide we take a furrow away from each side of the rows, making a "back furrow" or ridge in the middles. Commence cultivating at once, a double shovel cultivator being the best tool to level the ground. We sometimes drag our old patches with spring tooth drag instead of plowing between the rows. This will destroy some plants but will leave plenty and give them a chance to send out new runners.

Black Raspberries should be planted three and one-half feet apart in row, with rows seven feet apart, requiring about 1,725 plants per acre. We recommend setting Black Raspberries the same as strawberries, by making holes with a spade and following same method described for strawberries. Many, however, prefer to plow a straight furrow and set the plants against the land side and pulling dirt around the plant with hoe or hook, and pressing earth firmly (with feet) around the plant. Furrows can easily be filled by plowing the earth back into them.

Trimming. As soon as the canes reach a height of about 20 inches, the ends should be pinched or cut off. We use a heavy knife for this work. This causes the canes to throw out side branches, making a stronger bush for fruiting the following season. On old patches cut out all canes that have borne a crop after fruiting season and burn them. In spring as leaf buds are starting you should trim off all parts of cane damaged by winter, leaving all bushes from twenty to thirty inches high for fruiting. This applies to both old and new patches, and is all the trimming raspberries require. New plants are grown from tips only. Cultivate often.

Red Raspberries should be set about three feet apart in row, with rows six feet apart, requiring about 2,425 plants per acre. Either method of setting suggested for black raspberries is all right for red raspberries. Trim same as black raspberries, excepting the new canes do not need pinching off. New plants grow from roots only.

Blackberries should be set three and one-half feet apart in row, with rows seven feet apart, requiring about 1,725 plants per acre. Set and trim same as raspberries. Cultivate well. New plants grow from roots only.

Dewberry, Grapes, etc. We make suggestions with descriptions in catalog.

CERTIFICATE OF NURSERY INSPECTION.

No. 2022

THIS IS TO CERTIFY, that I have examined the nursery stock of **O. A. D. Baldwin,** and find it apparently free from dangerous insects and dangerously contagious tree and plant diseases.

This certificate to be void after July 31, 1920.

L. R. TAFT,

State Inspector of Nurseries and Orchards.

Agricultural College, Mich., Oct. 1, 1919.

Everbearing Strawberries

The Biggest and Quickest Money Makers. Full Crop of Fruit Same Year as Planted.

Everbearing Strawberries are a success. It has been proven that strawberries can be grown, picked and sold, not only in June, but in July, August, September, October, and November as well.

PROGRESSIVE. (See complete description and illustration in natural colors opposite page 8.) The best and most profitable everbearing strawberry producing a full crop during Aug., Sept., and Oct., the same season as set in April. Don't wait to order as the demand for plants will exceed the supply again this year. (See price below.)

Midas, Idaho, Sept. 6th, 1919.

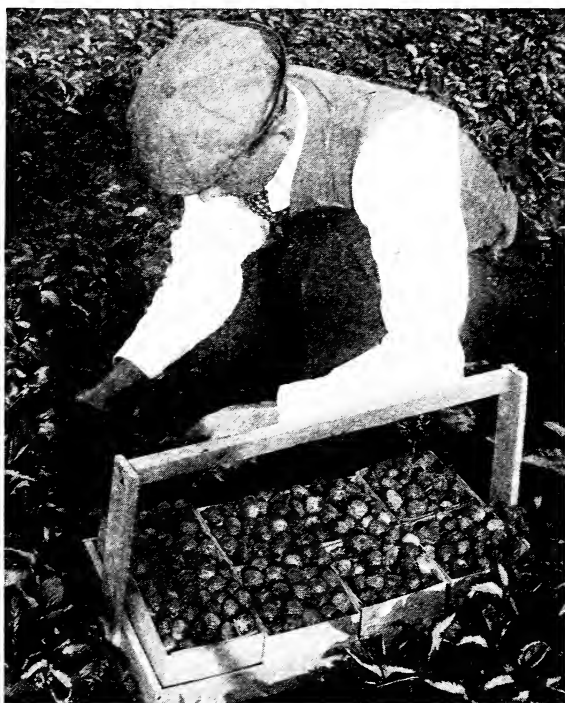
O. A. D. Baldwin,

Dear Sir:—

I ordered some Strawberry plants from you, but did not receive them until the 20th of last May. They were the finest lot of plants I ever saw coming from a plant house. I set them out and they have gone through the driest summer I ever saw here and have made a fine growth. The "Progressive" are full of berries now and some are ripe. Any time I need berry plants I will surely send to Baldwin.

Yours truly,

A. D. EATON.



From a photograph made on Baldwin's New Ground Oct. 23rd, picking Progressive Everbearing Berries.

Genuine Progressive Plants grown on our new ground. The biggest seller we have and the quickest money maker for fruit growers.

Price, \$2.75 per hundred; \$19.50 per thousand.



Progressive Everbearing Strawberries Picked on Baldwin's New Ground October 23rd. (Note the large, uniform shape and size of berries.)

BUN SPECIAL

BALDWIN'S NEW STRAWBERRY.

Bun Special is the finest flavored big, heavy-yielding strawberry we ever saw and the berries are not only very large, but are beautiful bright red in color and uniform in size and shape. A splendid market, table or canning berry.

We paid a lot of money for this wonderful new variety after watching it fruit for two seasons on the farm of the originator in Ohio. We had the plants shipped to us in the spring of 1919 and have grown some splendid plants on our new ground.

This new variety was originated by Mr. E. M. Buechly of Greenville, Ohio, who by the way originated and introduced the Greenville strawberry which was very popular for many years. He also introduced Eldorado blackberry about twenty-five years ago. Eldorado has been and is still the leading blackberry all over the country.

As Mr. Buechly has been in the plant and berry business for over forty years, he wants to retire and when he offered this variety for sale we outbid all others and bought the entire stock.

Bun Special was one of many seedlings on the farm of the originator about ten years ago. He kept discarding inferior varieties each season and this one proved far ahead of anything he had ever fruited. For several years he has tested Bun Special with other varieties, old and new, and it has outyielded all of them.

The "Bun" part of this name is the nick-name by which the writer of this book is known around Bridgman.

The plant is vigorous, healthy and a fair plant maker, (about like Gibson). The crowns of the plants are especially large, throwing out several strong fruit stems on each plant and they produce an immense amount of large berries of extra quality and flavor. Berries are deep red clear through and are extra nice looking when crated as each berry is well formed being nicely rounded and smooth.

Bun Special will bring you big profits. A valuable new variety full of life and vigor. We saw this variety producing almost twice as much fruit as the Gibson planted side by side in same soil and with same care.

By putting the price within the reach of all we hope that nearly every order will call for Bun Special.

To make our limited stock reach as many of our customers as possible we will ask that no one order more than 500 plants. Price, \$1.00 for 25; \$3.00 for 100; \$5.25 for 200; \$7.25 for 300; \$8.75 for 400; \$10.00 for 500.



BUN SPECIAL (½ natural size). Baldwin's New Strawberry.

STRAWBERRIES

CPK (For price by the hundred, etc., see page 30).

Extra Early Varieties

CHARLES I (S). Our new extra early berry. See illustration and complete description on inside of back cover.

This variety will bring you big profits on account of its being extra early and extra size and quality. Buy some Charles I plants this year and we will guarantee you entire satisfaction. We have grown an extra large stock of this variety and hope to be able to fill all orders. They produce a big crop of large berries of good quality, and the size holds up well all through their fruiting season.

Berries are of uniform size and appearance, nice looking fruit, attracting top prices on any market, as they mature their wonderful crop before the standard varieties are ready to pick.

As Charles I is so much better than other early strawberries we have discarded all others and are growing only this variety for extra early and it is fast becoming the leading early strawberry in nearly every berry growing section of the country.

Charles I comes extra early when strawberries are bringing big money. This is the longest rooted variety grown which enables it to go through the dry summers and produce big crops.

We are the introducers of this wonderfully profitable new early strawberry and we guarantee them to make you money. Take our word for it and include Charles I in your order. Price, \$8.00 per thousand.



Showing Uniform Plant Growth on Baldwin's New Ground.

Medium Early Varieties

DR. BURRILL (S). The new million dollar strawberry. (See further description and illustration in colors opposite page 9.) This new berry is the biggest cropper of all strawberries. Berries are very large and uniform in size and shape. Most of you know what Senator Dunlap is. Dr. Burrill is a better berry in every way, produces more berries, bigger berries and berries of better quality. Foliage is large, of a beautiful dark green and very hardy and healthy. With its extra long, strong roots, heavy crowns and healthy foliage, it is able to produce its wonderful crop of fruit every season. Berries are very dark red in color, extra solid and are of the very best quality for canning and home use, as well as one of our best shippers. We have grown a splendid stock of Dr. Burrill plants on new ground and plants are extra large and well rooted. We recommend this wonderful variety to all for big profits. The demand for Dr. Burrill plants will probably far exceed the supply the same as in the past and we advise ordering them early. Don't fail to include Dr. Burrill in your order this year, as they will bring you paying crops of large, extra quality berries. On account of their high color and fine appearance the fruit of Dr. Burrill sells at top prices on all markets. **Price, \$8.00 per thousand.**

HAVERLAND (P.) Exceedingly productive; fruit large and very fine; one of the most popular and well tested varieties; withstands drought better than most kinds; color light. Demand for plants has always been much larger than the supply. You will not miss it in buying some Haverland. They are a good sure berry. Bought largely for main crop all over the country. They make a good sized fruiting row and mature an immense amount of fruit which is very easy to pick, being plainly in sight. Haverland will bring you a paying crop, as it is one of our best and most profitable commercial berries. The berries are large and long, making a very attractive package when put in crates for market. We guarantee satisfaction with Haverland. This variety is not self-fertilizing and requires a staminate or self-fertilizer planted with them. We recommend Dr. Burrill or Senator Dunlap. You can alternate the rows or plant two or three rows of Haverland then one row of other variety. You will find Haverland a money maker. **Price, \$7.50 per thousand.**



Senator Dunlap.

SENATOR DUNLAP (S). This is the leading strawberry throughout the United States, and the demand for this variety has steadily increased every year since its introduction. It does very well everywhere and produces enormous crops of fine fruit regularly. Senator Dunlap is of the Warfield type, has a perfect blossom, is hardy, productive, a splendid keeper and seems able to produce a good crop under any circumstances. Senator Dunlap is a very heavy bearer of good size, evenly shaped fruit of a very beautiful dark red color, and its flavor is delicious. For canning it is fine, making a rich, red syrup. It is a first class shipper and retains its brightness long after being picked. It always looks well on the market and sells quickly at top prices. The best proof we have that this berry is a big money maker is the fact our customers in nearly every state in the Union are ordering Senator Dunlap in large quantities every year, often planting several acres solid to this variety. We guarantee Sen. Dunlap to please you in every way and make you a good big profit on your investment. **Price, \$6.50 per thousand.**

Medium Late Varieties

GIBSON (S). A wonderful new strawberry. (See picture from photograph, in natural colors, on inside of front cover). Gibson, we believe, is the most profitable variety of strawberries grown. That is a very strong statement, but we have often told our customers that if we were growing strawberries for market and were restricted to one variety, we would choose Gibson.

Gibson commences to bear with Senator Dunlap, etc., but owing to its wonderful productiveness it continues until quite late, so we class it with our medium late varieties. It is a very strong grower, with long roots that withstand dry weather.

Productiveness—The vines are simply loaded with berries. You will hardly understand how the plants can produce such quantities of fruit.

Size—Berry is extra large. One of our very largest strawberries.

Color—A beautiful dark, glossy-red. The flesh of the berry is red clear through. Calyx is bright green, adding greatly to its beauty and market value.

Quality—The flavor is as fine as can be found in any strawberry; a perfect table and canning berry, and owing to its tough skin it is a very fine shipper.

Shape—Nearly round and regular. A berry which sells itself on any market.

We have again grown a nice stock of extra strong Gibson plants and we hope every one of our customers will include some plants of this profitable variety in their order this year. **Price of Gibson, \$7.50 per thousand.**

GLEN MARY (S). Large and choice, very handsome, and of fine flavor; vigorous and productive. A strong grower and a good producer but not so good quality as many others. Glen Mary does well in some sections so we are growing it but there are better ones. **Price, \$9.50 per thousand.**

BUN SPECIAL

Baldwin's New Strawberry—(See complete description and reproduction of photograph on page 12).

We want you to try Bun Special this year. It is an extra fine berry in every way and we have watched it fruit for two seasons. This grand new variety is of extra nice flavor, being especially adapted for table use and canning.

Don't fail to include Bun Special in your order and remember Baldwin is the only one offering this variety for sale. **Price, \$1.00 for 25; \$3.00 for 100; \$10.00 for 500.**



Baldwin's New Ground Plants, Fresh Dug and Packed for Shipment.



Pocomoke.

POCOMOKE (S). This variety is one of our best and most profitable strawberries. Profitable not only for its enormous productiveness, but for its beauty, adaptability to all soils, its foliage enduring the dry, hot weather, its large size and deep color, firmness and high flavor. A strong, robust grower, with deep roots and lots of them. It ripens evenly, and is one of the best shippers yet introduced. We guarantee entire satisfaction with Pocomoke. Very nearly like Gibson and some growers call them the same variety. **Price, \$7.50 per thousand.**

✓ **CORSICAN (S).** This variety is in the heavy weight class. Not only are the berries large, but they are uniform in shape. The color is bright red. They are very firm and will sell for a fancy price in any market. The foliage is exceedingly vigorous and leathery, resisting fungus and drouth. It is both profitable and a pleasure to grow a fancy berry, like the Corsican and we recommend them to all customers as a large, attractive berry that will command fancy prices on the market. One of the most beautiful and profitable of strawberries. Buy Corsican this year. **Price, \$9.50 per thousand.**

BALDWIN PLANTS COULD BE NO BETTER.

Mr. O. A. D. Baldwin,
Dear Sir:—

Elma, Wash., April 21st, 1919.

condition. If they do not live Have had plants from several is unnecessary.

Plants arrived this morning. They are fine plants and in good it will be due to climatic conditions. Plants could be no better. places in very poor shape, in fact died on arrival, which I see Very truly yours,

JOHN BECK.

ALL OUR PLANTS GREW IN SPITE OF VERY DRY WEATHER.

Woodlawn, Ill., Oct. 10, '19
O. A. D. Baldwin,
Dear Sir:—

This is a photo of the plants I received from you last spring after a four month's drouth.

Yours truly,
E. B. HARVEY.



Baldwin's New Ground Plants on Farm of E. B. Harvey.

SEE PAGE 29
For instructions as to how and when to order, etc.
Let **BALDWIN** help you in the berry business.

✓ **BUBACH (P).** This has been a very popular berry for years. This is a great, big, beautiful berry that always sells at top prices. The plant is very large and fine looking, but a slow plant maker; the berry large and showy. If you have a nearby fancy market, it will pay you to get a large, fine looking berry.

This variety is not so good for distant market as berries are inclined to be a little soft for long shipment. Bubach is non-fertilizing, so requires a staminate variety set with it. Plant Gibson, Uncle Jim or Corsican with Bubach. Price, \$9.50 per thousand.

✓ **UNCLE JIM (S).** (Sometimes called Dornan). Plants are large and free from rust. Berry is large, regular form, and season is medium late. Uncle Jim is a comparatively new introduction, but it is one of our most profitable berries. Uncle

Jim is advertised as the sweetest and finest flavored strawberry ever introduced. Try a few in your garden for table use and you will like them. Price, \$9.50 per thousand.



Bubach.

WE LIKE TO GET LETTERS OF THIS KIND.

O. A. D. Baldwin,
Dear Sir:—

Franklin, Ind., Nov. 15th, 1919.

We would very much like to have your 1920 catalog. Have bought plants from you for the past fifteen years. It is a pleasure to deal with a man as thoroughly imbued as you with the old-fashioned American ideas of honest dealings, honest measures and whole hearted interest.

Most sincerely yours,

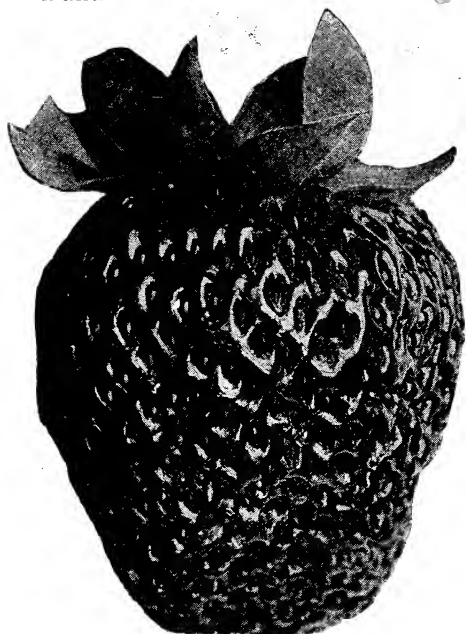
WM. CATT.



Uncle Jim—The Finest Table Berry Grown.

Very Late Varieties

AROMA (S). This is our best and most profitable late strawberry. Extra big profits in berries are always made by getting your fruit on the market when the demand is best.



Aroma.

For the big money in berry growing we recommend very early or very late varieties as they mature their crops either before or after the heavy picking season.

Aroma is the latest strawberry grown and one of the very best varieties of strawberries.

They produce an immense amount of extra large, fancy looking berries and the quality and market value is the very highest.

Every strawberry grower should plant Aroma to lengthen his fruiting season and make him more money. Many big growers especially in the Southwest plant large fields to Aroma alone for distant markets as it is one of the very best shipping varieties grown.

We will guarantee the fruit of Aroma to please all who give it a fair trial. It cannot well be beaten for quantity of fruit produced or in quality of fruit. Plants show no weakness of any kind.

Aroma fruit described as follows:—Very large, roundish, conical, rarely misshapen, glossy-red, of excellent quality and produced in abundance. They are fancy for market and bring top prices everywhere. We guarantee Aroma to bring you big profits. The demand for Aroma plants has exceeded the supply every year for the past ten years. We have

grown an extra large stock of fine Aroma plants but we advise you to place your order early to be sure of getting them. **Price, \$8.50 per thousand.**

BOUGHT PLANTS FOR 12 YEARS. BALDWIN'S BEST HE EVER SAW.

O. A. D. Baldwin,

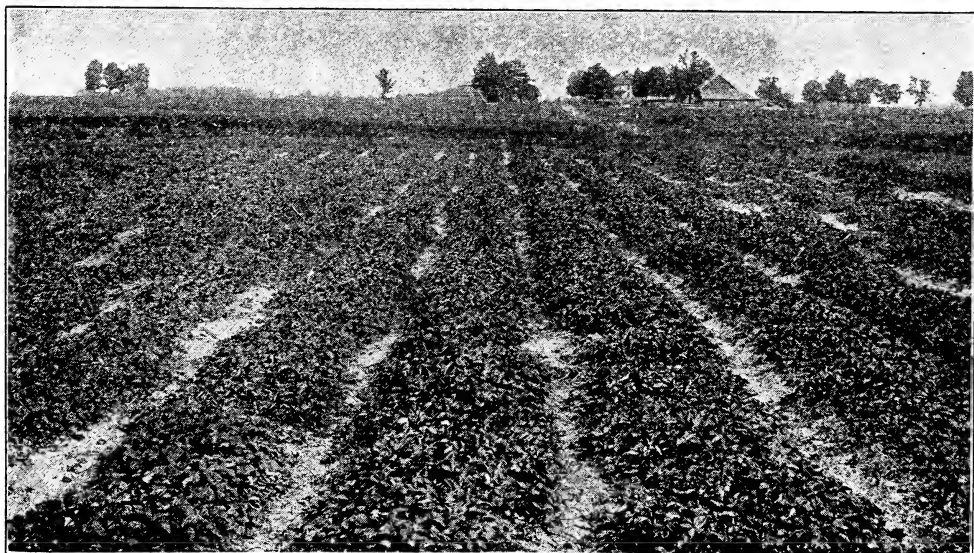
Boonville, Ind., Oct. 12th, 1919.

Dear Sir:—

Baldwin's plants are superior of any I have bought and have been buying for 12 years. They grow right and no sign of rust and above all are true to name.

Thanking you for past favors, I am,

Very truly yours, **ROY M. HULLETT.**



Millions of Aroma Plants Growing on Baldwin's New Ground.

STEVENS' LATE (S). This valuable variety makes strong, vigorous plants which yield heavy crops of fruit. The fruit is large, long, a little flattened, and sometimes slightly creased, but generally smooth. The color is bright red, and the flesh is also red, but lighter. It has a firm surface protected by prominent seeds. It is one of the best to keep after being picked, and is good for canning. Stevens' Late is one of our most profitable strawberries and we recommend them highly. - Price, \$8.00 per thousand.

GANDY (S). This is one of the leading late varieties with fruit growers all over the country. The plant is a strong grower, the fruit is large and firm; requires strong soil and fertilizers to do its best. It is very late, and a big, showy berry. Gandy is always quoted at the highest price in every market. It is the finest looking fruit and sells quickly at top prices.

We have sold out of Gandy before our shipping season was over for the past seven or eight years. The demand is extra heavy, especially from the Southern and Southwestern States, where fancy late strawberries bring big prices and Gandy is, of course, very profitable. Price, \$8.50 per thousand.

BALDWIN'S NORTHERN GROWN PLANTS MUCH BETTER THAN OTHERS.

Elkton, Ky., Dec. 6th, 1918.

Mr. O. A. D. Baldwin,

Dear Sir:—

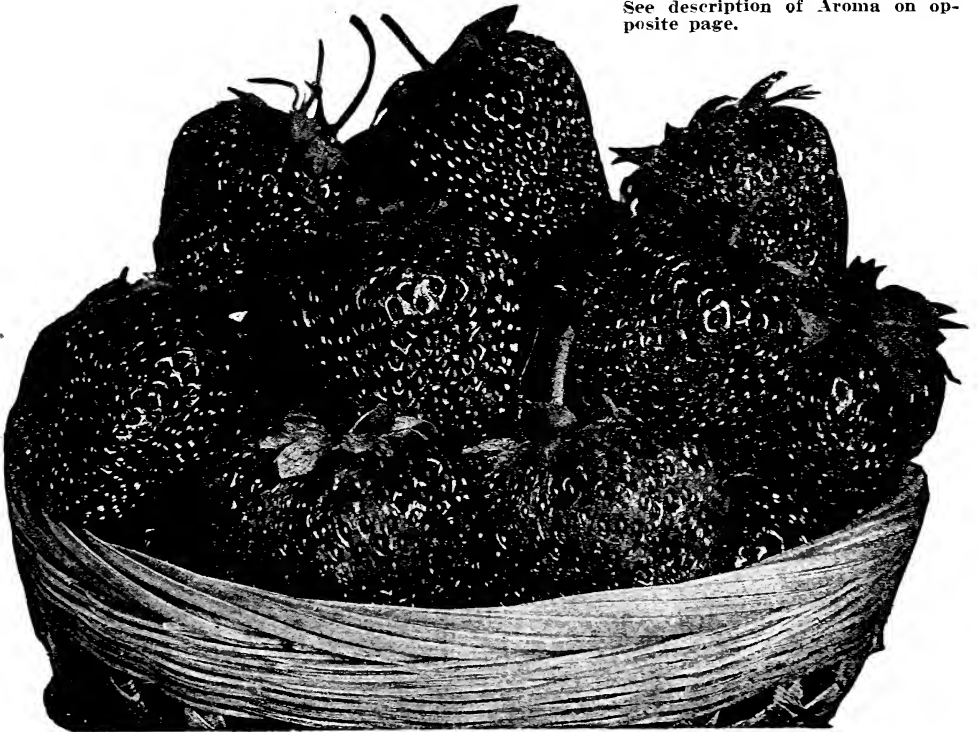
I know your plants are fine and true to name and I always recommend them to purchasers. Can buy Southern plants at \$2.00 per M., but I never fail with Northern plants, especially yours. Find check to cover order and I will advise when to ship and where.

Respectfully yours,

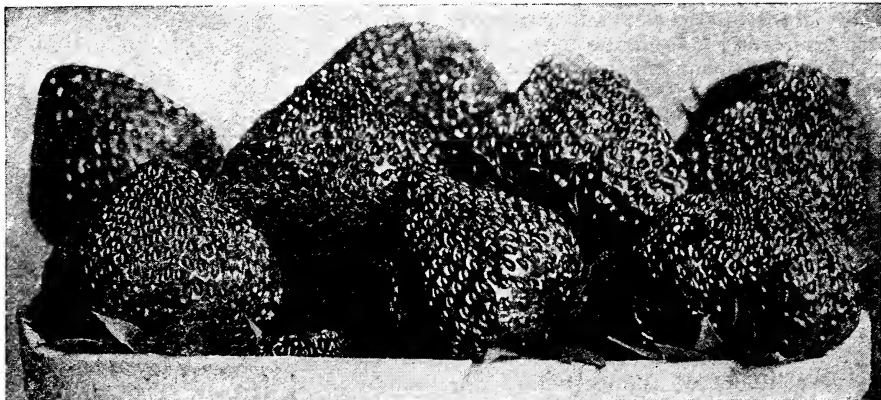
J. W. KEELING.



Look at the size and shape of these Aroma berries grown from Baldwin's New Ground plants. This crate of Aroma was grown by Mr. H. H. Harner, one of our regular customers at St. Joseph, Mo. Picture shows Mr. Harner. See description of Aroma on opposite page.



Gandy—A Big Money Maker.



Brandywine—Finest Canning Strawberry Grown.

BRANDYWINE (S). A valuable late strawberry especially adapted to home use and canning owing to its very dark red color and fine flavor. Brandywine is late, good shape, good quality, good size, firm, productive. A very good shipper, fine appearance, making an extra good market variety.

Brandywine is a good, sure berry for market as it is a nice looking berry of extra rich color. It is probably the best strawberry grown for canning, etc. We guarantee Brandywine to please you and bring you good big profits. Try this extra nice home use and canning variety this year sure. **Price, \$8.50 per thousand.**

SAYS BRANDYWINE BEST VARIETY—USED BALDWIN'S PLANTS FOR PAST 24 YEARS.

O. A. D. Baldwin,

Adair, Illinois, March 5th, 1919.

Dear Sir:—

I received 75 Dr. Burrill plants last spring and all grew but two. I have a nice matted row and hope to have some fine berries from them. I only grow them for home use. I will not raise any more, am going to quit. I am 73 years old. I think it is 24 years ago this spring since I began and got the first and last plants of Baldwin. Always got of you when in need of plants and always raised them. Have tried a good many varieties. For canning, Brandywine stands at the head and is also fine for eating. Needs high culture. I can recommend your plants.

Wishing you a prosperous season, I am your friend,

CLEMENTINE LOWNES.

SAMPLE (P). This late berry is very profitable and seems to do well everywhere. It produces a very heavy crop of extra fine, showy berries. Berry is of large size and fine quality, continues a long time in fruit; the berries are large to the last. It will yield as many berries as the Haverland, and will average as large as the Bubach. Colors all over at once. Foliage perfect, fruit perfect. **Price, \$8.50 per thousand.**

BALDWIN'S PLANTS FRUITED WELL FOR WM. H. GARRISON.

(See illustration of patch)

Fairmount, Ind., Oct. 13, '19

O. A. D. Baldwin,

Dear Sir:—

Your plants which I set in 1918 and which fruited in 1919 did fine. Enclosed you will find some photographs of my Strawberry field last year (1919), which are plants from your company.

Thanking you for past favors, I remain,

Very truly yours,

WM. H. GARRISON.



Black Raspberries

(For price on all quantities, see page 30).

CUMBERLAND. The "Business Black Cap." Biggest black raspberry grown. This black raspberry is offered with the full assurance that it is the most profitable and desirable market variety yet known, because of its immense size, firmness and great productiveness.

Cumberland is very hardy, having withstood a temperature of 16 degrees below zero without injury. Extra productive, being the heaviest bearing variety now in cultivation. Fruit is jet black and extra fine quality. We recommend Cumberland for profit. Ripens mid-season. This is the standard raspberry and the sale of Cumberland exceeds all others.

Price, \$4.00 per hundred; \$30.00 per thousand.

As raspberry plants of all varieties are very scarce and demand will be extra heavy, we suggest ordering your plants at once.



Photograph of Baldwin's Cumberland Plants Growing on Farm of Hitchcock & Manley.

WONDERFUL YIELD OF BALDWIN'S RASPBERRY PLANTS.

Mr. O. A. D. Baldwin,

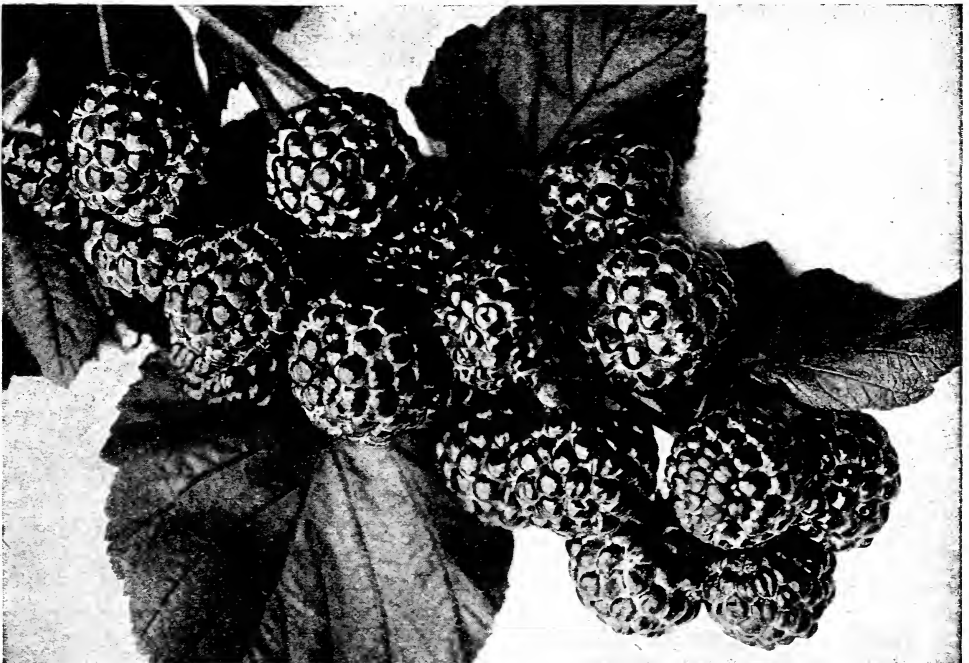
Peoria, Ill., 7-30-19.

Dear Sir:—

Three years ago we purchased 6,000 Raspberry plants of you. I enclose a photo of the patch. They produced 164 24-quart cases last year and nearly 400 cases this year. Baldwin's plants are good enough for us.

Respectfully yours,

HITCHCOCK & MANLEY.



Cumberland—The Most Profitable Black Raspberry Grown.



Plum Farmer.

PLUM FARMER. A wonderful new black raspberry that has already become one of the leading and most profitable varieties.

We guarantee Plum Farmer to bring you a paying crop of extra fine fruit. The plants are very healthy, have a silvery bluish appearance when ripened in the fall and succeed where others fail. The fruit is grayish black, very firm, a good shipper, attractive, of the very highest flavor and is adapted for evaporating, as well as for fresh market or home use.

Plum Farmer is extra early and always brings the highest prices.

Price, \$4.50 per hundred; \$35.00 per thousand.

SCARFF. This is the third time we have listed this highly advertised black raspberry. The Scarff was introduced a few years ago by W. N. Scarff of Ohio, who says it outyields all other black raspberries in his locality. We have not fruited Scarff but we have entire confidence in the introducer and we recommend this new variety to our customers. Described as follows: It compares with the Cumberland, possibly a little larger.

In productiveness it is far ahead of any blackcap we grow. It is absolutely hardy. Canes free from disease and strong upright growers. The canes are cleaner by far than any Raspberry we have seen and we think it will stand heat and drought better. **Price, \$5.00 per hundred; \$40.00 per thousand.**

HOOSIER—"The Dollar a Gallon Berry." This valuable black raspberry is certainly a money maker. This new variety is, without exception, the finest thing we ever saw in the black raspberry line. We know Hoosier will please you and make you big profits. The plants are hardy, do not winter-kill, and will mature a full crop even to the tip of the canes. Canes are strong growing and are proof against anthracnose and other raspberry pests.

Hoosier ripens with Cumberland, mid-season. A very profitable black raspberry. **Price, \$4.50 per hundred; \$35.00 per thousand.**

APPRECIATES OUR METHODS OF DOING BUSINESS.

Mr. O. A. D. Baldwin,

St. Joe, Ind., Apr. 17th, 1919.

Dear Sir:—

Received the plants in fine condition. I certainly appreciate your straightforward business methods.

Very truly yours,

A. M. BAKER.

Overland No. 27, Mo., March 9th, 1919.

O. A. D. Baldwin,

Dear Sir:—

Will give particulars about this picture of my Raspberry patch. It must be understood that this patch is only three years old, all set from Baldwin's plants and we picked from the 2½ acres, during the season of 1918, 8,400 quarts, making us a net profit of \$875.00. These figures are absolutely true as I kept a record of them.

Very truly yours,

AUGUST G. WALZ.



Baldwin's Plants Producing Big Crops on Farm of August Walz.

NOTICE.

Full addresses published on every testimonial—Do other catalogs do it?

GREGG. Fruit very fine and covered with bloom. Gregg has been the leading market variety all over the country, best for evaporating of any variety and it is said to give more pounds to the bushel than any other kind. A good all around late black cap. Very well and favorably known in every fruit district. Gregg is by far the best late black cap grown today. **Price, \$5.00 per hundred; \$40.00 per thousand.**

KANSAS. This variety is now a general favorite all over the country. Ripens early, jet black, firm, handsome and of the best quality; a strong grower, holds its foliage until frosts; stands drought and cold. It is about as large as Gregg, early and very productive. Strong, healthy canes, making plenty of strong tips, and is a money maker everywhere. **Price, \$4.00 per hundred; \$30.00 per thousand.**

Get Started in Dewberry Growing This Year Wonderful Producers—Big Profits

(See description on page 26)

Baldwin's New Ground Plants—Guaranteed

Why Baldwin Plants Are Better

See Reproduction Below of Photograph of Our New Ground Plants.

Please note that the plants are over 20 inches long, with a mass of fiber roots well over a foot in length. This wonderful development of our plants is partly due to the fact that they are grown on new ground, and partly because we grow them for plants only. We do not allow our big raspberry or blackberry patches to produce any fruit. All canes are cut away in the spring and we grow new canes only, using all the vitality of the mother plants for producing young plants. This is very important, not only because it produces better plants but also because it destroys all old growth of canes and brush each spring, keeping our patches free from insects, and plant diseases. Insects breed and diseases develop largely in the old canes and we do not give them any chance on our farms. We claim our plants are larger and stronger in both cane and root than the plants sent out by most nurserymen who grow plants as a by-product between fruiting rows.

It naturally and certainly follows that Baldwin plants grown the Baldwin way will produce more and better berries than ordinary plants.

Our business is to grow first-class plants. We have no by-products. We believe our methods of growing plants are right and we guarantee our plants to please you and bring you big paying crops.



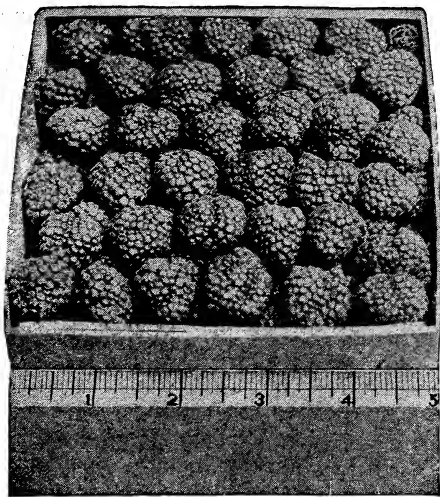
Baldwin's New Ground Raspberry Plants, Showing Tape Line.

VICTORY

OUR WONDERFUL NEW RED RASPBERRY.

See illustration in colors opposite page

Last season we introduced this valuable variety and we could have sold many times the number of Victory plants we had for sale. This is by far the best red raspberry ever introduced and we guarantee them to surprise and please you.



VICTORY.

From photograph of a pint of berries. Please note that berries are nearly one inch in diameter.

ing one fruiting season. Just think of it—nineteen pints from one plant, with positively no extra care or fertilization.

Price for fruit. Victory brought \$6.00 per 24-pint crate when common varieties were selling at from \$2.50 to \$3.50 per 24-pint crate.

Victory is a seedling of the Cuthbert, one of the best old raspberries and resembles that grand variety. Victory has produced regularly for several seasons nearly twice as much fruit as Cuthbert, bush for bush, and acre for acre, grown in the same field, under exactly the same conditions. Victory berries are very much larger than Cuthbert and of better quality and flavor.

We want as many of our customers and friends as possible to get started with Victory plants this year so have decided to limit each customer to 50 Victory plants. You may buy from one to fifty plants at the following prices which hold good till plants are sold. Introduced and for sale by Baldwin of Bridgman.

Victory Plants, 40c each; \$2.00 for 6; \$3.50 for 12; \$6.00 for 25; \$10.00 for 50.



The field of Victory where your plants were dug. Note the long even rows showing the wonderfully large growth. The bushes up to the shoulders of the men and women.



VICTORY

Our Wonderful New Raspberry

We introduced this red raspberry last year and limited each buyer to 100 plants. We are sorry we were obliged to disappoint so many of you as the demand was so great we sold out of Victory early. Our supply is again very limited owing to the very dry summer and we must limit each customer to 50 plants. This will enable many of our customers to get started with this extra profitable new red raspberry this season.

Do not forget—50 Victory plants is all you can buy, and when our stock is gone we must return all orders. Don't delay. Send your order for Victory raspberry plants—NOW.

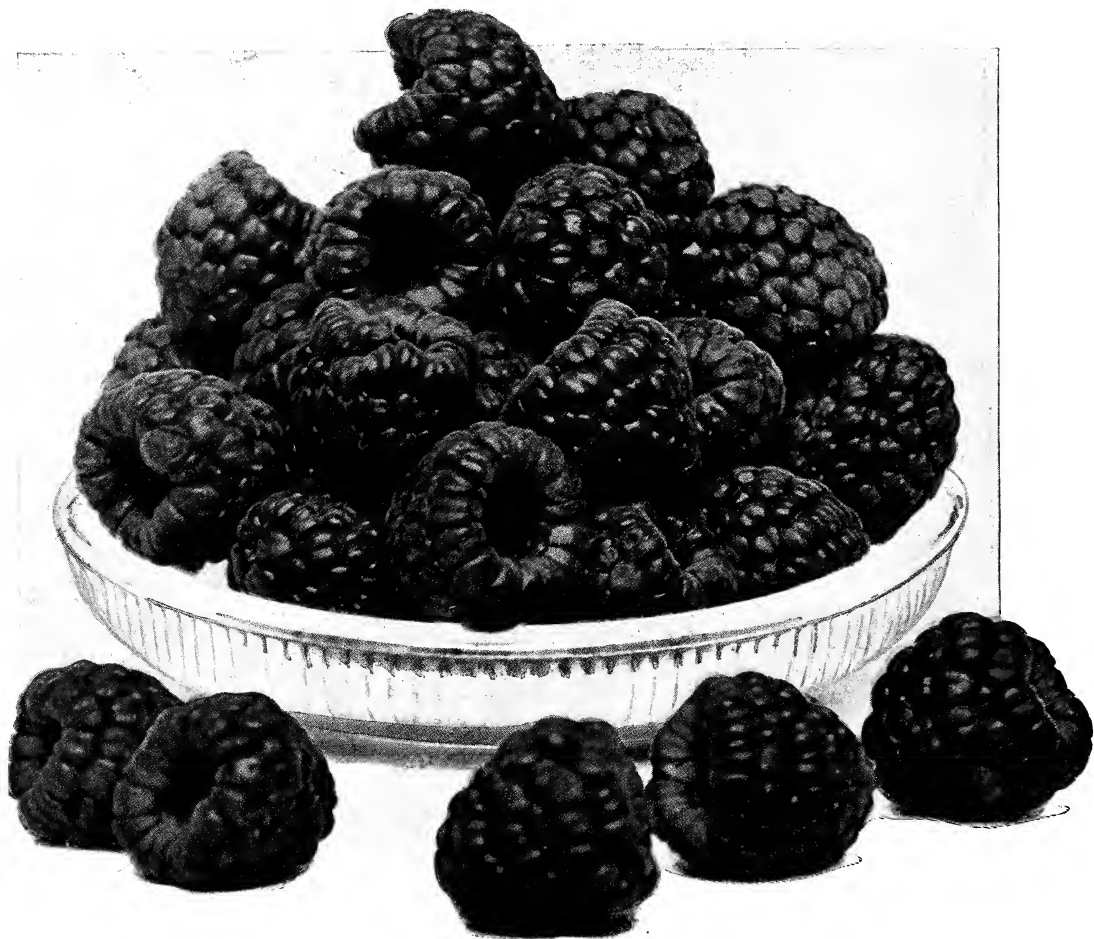
The writer saw Victory in full fruit on the farm of its originator, and it was a sight to see the great loads of fruit. The berries were about twice as large as any red raspberries I had ever seen before.

This seems like a big statement but I could hardly believe what I actually saw, as the soil where these berries were growing was not rich; in fact, it was real light sand.

Victory is not an untried variety as the originator has fruited it for seven years. It has been tested with nearly every known variety of red raspberry and is far better than any of them not only in production, hardiness, and vigor, but the fruit is larger and of much better quality than all others. (See complete description on opposite page.)

Let us reserve 50 Victory plants or less for you NOW. Price, 40c each; \$2.00 for 6; \$3.50 for 12; \$6.00 for 25; \$10.00 for 50.

**Baldwin's Guarantee Goes with Every Plant.
We Grow Them for Plants Only**



COLUMBIAN

The Great Pie and Canning Raspberry

Do You Grow Purple Raspberries?

They are by far the finest berry grown for home-use. Delicious for canning and for pies. Columbian is the best of the purple raspberries. Not only are purple raspberries extra good for table berries, but they are a very profitable commercial variety. Columbian plants are very hardy and propagate from tips. Fruit very large, often an inch in diameter, dark reddish purple; adheres firmly to stem; seeds small and deeply imbedded in a rich, juicy pulp with a distinct flavor of its own.

Every year the demand for purple raspberries has exceeded the supply and the late orders have to be turned back unfilled. We advise ordering early. No fruit farm or garden is complete without purple raspberries.

Price of Columbian, \$6.00 per hundred; \$45.00 per thousand.

**BALDWIN IS NOT SATISFIED
UNTIL YOU ARE SATISFIED**

BUY OF
ALDWIN OF
BRIDGMAN

Red Raspberries

(For price on all quantities, see page 30).



King.

KING. This is a wonderful early red raspberry. We believe you can make money faster with a good patch of King than with any other variety of fruit, if you have a good market for fancy, early red raspberries. The berries are very large, bright red, firm, easily picked. Cane is perfectly hardy, and a strong grower. We guarantee King to please you. They are easy to pick, and you get more money before the big shipments of raspberries get on the markets.

King is the earliest and most beautiful red raspberry we have ever grown and always brings top prices. Include King in your order for spring planting this year sure.

Fruit growers near Bridgman made a net profit of from \$400.00 to \$600.00 per acre this year on their King raspberries. In doing this they shipped to wholesale commission market or sold to canning factories so no fancy market was supplied at extra prices. You can make big profits with King red raspberries. **Price, \$4.00 per hundred; \$30.00 per thousand.**

CUTHBERT. Cuthbert is the leading late market variety all over the country; strong grower, very productive, fruit firm, large size, of best quality; season medium to late. Cuthbert is perfectly hardy, always yielding immense crops in the most northern states. There is not a fault to be found with the Cuthbert. If you want

an all around red raspberry, plant Cuthbert. Cuthbert produces a good big crop of extra nice large berries of fine quality every year. Red raspberry plants are scarce and we cannot sell more than 300 Cuthbert plants to one customer. **Price, \$4.50 per hundred.**

ANTWERP. An extra early red raspberry that brings big profits every year. Plants perfectly hardy and good growers, producing an immense crop of very nice berries that ripen very early in the season. Antwerp will make you big money and we recommend them to you. **Price, \$4.00 per hundred; \$30.00 per thousand.**

**You Can Make \$1000 per Acre Growing Berries
from Baldwin's New Ground Plants**

See page 30 for prices on any quantity of all varieties of plants and make out your order on page 31.

BETTER DO IT TODAY. BALDWIN PLANTS ALWAYS SELL.

Everbearing Red Raspberries

ST. REGIS. This new red raspberry will give you a good crop of fine fruit from June until the berries freeze in the fall or early winter. Introduced as the most wonderful of all red raspberries. Fruit commences to ripen with the earliest and continuing on young canes until October.

Berries bright crimson, large size, rich, sugary, with full raspberry flavor. Flesh firm and meaty, a good shipper. Canes stocky, of strong growth, with abundance of dark green leathery foliage.

St. Regis is a heavy bearer in the regular red raspberry season, being very profitable then. In fact, St. Regis is proving one of our most profitable early red raspberries, outside of being a producer of nice berries all through the late summer and fall.

Strong, well rooted, genuine St. Regis. We must limit each customer to 300 St. Regis plants. Price, \$6.00 per hundred.

Purple Raspberries

Set same distance apart as black raspberries and cultivate in same manner.

COLUMBIAN. (See illustration in natural color and description opposite page 25). The Columbian is a variety of remarkable vigor and productiveness.

Purple raspberries are being grown in large quantities in many sections and there is always a big demand for these extra quality berries at a high price. There is nothing finer grown in the line of fruit for table use, canning, pies, etc., etc. If you have no purple raspberries in your place, do not fail to order a few hundred Columbian for your own table use, and do not forget that they are one of the most profitable fruits grown for the market. This year we are growing over twenty acres of Columbian, but all our plants will be sold long before our shipping season is over. We are sure of this from past experience and we urge you to send your order for Columbian now. Price, \$6.00 per hundred; \$45.00 per thousand.

Dewberries

The Most Profitable Fruit Grown Today.

Dewberries are bringing big money and we are advising our customers to get started with them as soon as possible. Berries are large, beautiful and of excellent quality for home use or market.

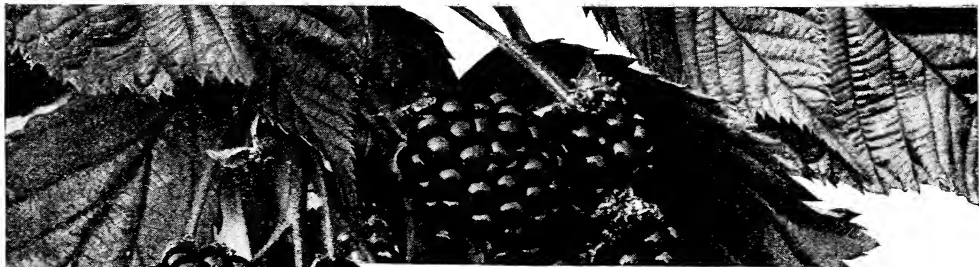
Instructions for Growing Dewberries. Plant rows six to seven feet apart with plants three feet apart in rows. Most growers use short posts and wire with very good results. Put posts in much as though for grapes but posts need be only about

30 to 36 inches high from ground. Use one wire and in the spring tie all canes onto same holding them off the ground. Let the new canes lie on the ground through growing season covering them in Northern States for winter protection. Then cut away all old wood in spring and tie new canes on wires.



Lucretia—The Big Money Maker

LUCRETIA. The best of the blackberry family. Berries are far larger and incomparably better than any blackberry; of unequaled excellence; soft, sweet and luscious throughout, of brightest glossy black color. The Lucretia Dewberry has received the endorsement and highest praise from the best horticulturists in the country. Its trailing habit renders it less liable to winter-kill. Propagates from the tips. Our stock of Dewberry plants is limited so order yours early and let us reserve them for you. Price, \$6.00 per hundred; \$45.00 per thousand.



Blackberries

(For price on all quantities, etc., see page 30).

ELDORADO. We place this variety ahead of all others without a moment's hesitation. It is the greatest blackberry in general cultivation today. Eldorado is as hardy as the Snyder, twice as large and of better quality. When you get one like that you have a berry that cannot well be beaten. Eldorado has never been known to winter-kill, even in Northern Michigan and Wisconsin. For home and market use, we recommend Eldorado above all others. We consider it the best blackberry ever fruited in every way, and we have grown them all. The fruit is good size, firm and of the very highest quality. Very profitable, as it needs no protection in winter. We guarantee Eldorado to please you in every way and to make you big money. Our plants are extra well rooted and are of good size. **Price, \$5.00 per hundred; \$40.00 per thousand.**

South Bend, Ind., Feb. 1st, 1919.

O. A. D. Baldwin,
Dear Sir:—The plants I got of you produce the finest berries on this market. Eldorado are the best blackberries grown. I am in the lead on South Bend market. Eldorado berries from your new ground plants often bring me 75 cents per crate more than common blackberries grown here.

Yours truly,
G. W. Borough.

Eldorado
Two-thirds
Natural Size.

Asparagus

No garden is complete without Asparagus. Our stock of Asparagus Roots was grown on contract for us by one of our neighbors who has good land especially adapted to this purpose. We will guarantee entire satisfaction with our plants.

Set asparagus plants four to six inches deep, and about 12 inches apart in the row, covering with only three inches of soil at first, and filling in the trenches as the plants grow. About September 1st the tops should be cut, and the bed cleared of weeds. When

this work is finished, cover the bed to a depth of three inches with coarse manure for a mulch. Very early in the spring, rake off all coarse straw and loosen the soil, being careful not to injure the crowns of plants.

PALMETTO. A valuable new variety of extra quality and very productive. Very large, tender stalks and hardy. **Price, 75c per 25; \$2.00 per 100; \$12.00 per 1,000.**



Palmetto Asparagus.



Concord.

Grape Vines

Plant grape vines for field culture eight by twelve feet, requiring about 435 plants per acre. Grape vines will grow and do well on light sand or clay where it is hard to raise a crop of grain or other fruit.

Grapes are bringing very high prices every year and the demand is growing rapidly. Grapes produce a full crop each season and continue to produce indefinitely, many vineyards being more than fifty years old and just as good as ever.

CONCORD (Black). This is the grape so largely planted all over the country for commercial purposes. Concord is the main variety of grape for profit and is sold in large quantities. A large, purplish black grape, ripening about the middle of September; vines remarkably vigorous and free from disease; the standard for productiveness and hardiness all over the country. We must limit each buyer to 200 grape plants and we urge you to order early. Price, 45 cts. each; \$2.00 for 6; \$3.75 for 12; \$6.00 for 25; \$20.00 for 100.

How to Ship

Methods of Shipment. Express is the safest, and all things considered, the cheapest way of shipping plants. We will ship all plants by express collect unless you instruct otherwise.

Parcel Post. We are now shipping a great many plants by Parcel Post and your plants are delivered at your door.

See table below for figuring the amount to send to cover postage, etc.

The Parcel Post weight limit per package for the First, Second, or Third Zones is 70 pounds. Packages weighing up to 50 pounds may be sent into all Zones. Inquire of your post master or mail carrier what zone you are in when receiving parcel post shipments from Bridgman, Michigan, our shipping point. This will determine what zone you are in from Bridgman, and by referring to the table below you can readily determine the amount to add to your order of plants to have them sent by Parcel Post. These amounts listed below include the safe wrapping of your plants in moss so that they will reach you in good growing condition.

Add to your order for each 100 plants of—	1st and 2nd Zone	3rd Zone	4th Zone	5th Zone	6th Zone	7th Zone	8th Zone
Strawberries	\$0.12	\$0.18	\$0.25	\$0.35	\$0.40	\$0.48	\$0.55
Red Raspberries15	.20	.30	.38	.45	.55	.65
Black Raspberries, Blackberries, Dewberries, etc.20	.30	.40	.65	.85	1.05	1.25

Instructions to Customers

When writing, please sign your name plainly. Be sure to give your postoffice, county and state.

If you want your plants shipped to a different town than your postoffice please mention that town on order sheet where indicated. Tear out page 31 and use it for your order sheet, filling in all blank spaces carefully.

Use our self-addressed envelope. We will acknowledge receipt of your order promptly.

Prices—See page 30. One price to all. Our prices are lowest when you consider quality of plants and service we give.

We do not try to compete with many plant "dealers" who buy and sell plants and do not know what they are selling you.

Be careful to use the correct rate on quantity of plants ordered of each variety.

Terms. Cash with order, or part cash, balance before shipment.

References. As to our reliability, we refer to the Bridgman State Bank of Bridgman, or the Commercial National Bank of St. Joseph, Mich. Also the Postmaster or Express Agent at Bridgman.

How to Send Money. By check, bank draft, express money order, postoffice order or registered letter.

Complaints, in regard to shortage or errors must be made within five days after stock is received. If the fault is ours we will make things right at once and do it cheerfully. If stock should not prove true-to-name we will replace same free of charge, upon proper proof. We are not liable for more than first cost of plants.

Claims to Express Company. If stock arrives in poor condition, you must have agent note same on express bill so claim can be made to Express Company. This is important and must be done or we cannot replace stock caused by damage.

Substitution. We do not substitute one variety for another without your permission unless order is filled late in season.

It often saves delay in filling orders if we substitute and we always use varieties of same season and value as those ordered. We guarantee you satisfaction on varieties substituted by us.

Order Early. The earlier the better. If anything more is needed it can be added later. If not prepared to send all the money, send a part when the order will be booked.

How to Ship. See opposite page. Express or Parcel Post.

Packing. We make no charge for packing, which is done in the best possible manner. We use light plant crates for shipping strawberry plants, and boxes and barrels for other stock. We pack in damp moss and single tow. Each variety is carefully separated in package and correctly labeled with printed wooden labels.

Shipping Season. We commence to ship the last of March or first of April, according to season, and will continue till May 15th to 20th.

We issue no fall catalog, but send out some stock after October 1st. Write for prices on plants for fall delivery.

Remember Baldwin's New Ground Plants are guaranteed extra heavy rooted, true-to-name, fresh dug for your order and carefully packed, F. O. B. cars Bridgman.

Baldwin's Prices, 1920

(Note—You may select 50 of a variety at the hundred rate and 500 or more of a variety at the thousand rate, 150 at the hundred rate, etc. For Parcel Post shipment see page 28 regarding charges for postage.)

Strawberry Plants

Extra Early

	Per 25	Per 100	Per 200	Per-300	Per 400	Per 1000
Charles I	\$0.50	\$1.40	\$2.10	\$2.85	\$3.50	\$8.00

Medium Early

Dr. Burrill	\$0.50	\$1.40	\$2.10	\$2.85	\$3.50	\$8.00
Haverland50	1.35	1.85	2.55	3.10	7.50
Senator Dunlap50	1.25	1.75	2.40	2.90	6.50

Medium Late

Gibson	\$0.50	\$1.35	\$1.85	\$2.55	\$3.10	\$7.50
Glen Mary65	1.55	2.50	3.45	4.15	9.50
Pocomoke50	1.35	1.85	2.55	3.10	7.50
Corsican65	1.55	2.50	3.45	4.15	9.50
Bubach65	1.55	2.50	3.45	4.15	9.50
Uncle Jim65	1.55	2.50	3.45	4.15	9.50
Bun Special	1.00	3.00	5.25	7.25	8.75	20.00

Very Late

Aroma	\$0.60	\$1.45	\$2.25	\$3.10	\$3.75	\$8.50
Gandy60	1.45	2.25	3.10	3.75	8.50
Stevens' Late50	1.40	2.10	2.85	3.50	8.00
Brandywine60	1.45	2.25	3.10	3.75	8.50
Sample60	1.45	2.25	3.10	3.75	8.50

Everbearing Strawberries

Progressive	\$1.00	\$2.75	\$5.10	\$7.00	\$8.50	\$19.50
-------------------	--------	--------	--------	--------	--------	---------

Raspberries

Cumberland	(Black)	\$1.50	\$4.00	\$7.75	\$10.75	\$13.00	\$30.00
Plum Farmer	(Black)	1.50	4.50	8.75	12.25	15.00	35.00
Gregg	(Black)	1.65	5.00	9.75	14.00	17.00	40.00
Scarff	(Black)	1.65	5.00	9.75	14.00	17.00	40.00
Kansas	(Black)	1.50	4.00	7.75	10.75	13.00	30.00
Hoosier	(Black)	1.50	4.50	8.75	12.25	15.00	35.00
King	(Red)	1.50	4.00	7.75	10.75	13.00	30.00
Cuthbert	(Red)	1.50	4.50	8.75	12.25		
Antwerp	(Red)	1.50	4.00	7.75	10.75	13.00	30.00
St. Regis	(Everbearer)	1.75	6.00	11.75	16.25		
Columbian	(Purple)	1.75	6.00	11.75	16.25	19.75	45.00
Victory	(New Red)	40c each;	\$2 for 6;	\$3.50 for 12;	\$6 for 25;	\$10 for 50	

Dewberries

Lucretia	\$1.75	\$6.00	\$11.75	\$16.25	\$19.75	\$45.00
----------------	--------	--------	---------	---------	---------	---------

Blackberries

Eldorado	\$1.75	\$5.00	\$9.75	\$14.00	\$17.00	\$40.00
----------------	--------	--------	--------	---------	---------	---------

Asparagus

Palmetto	\$0.75	\$2.00	\$3.40	\$4.60	\$5.50	\$12.00
----------------	--------	--------	--------	--------	--------	---------

Grapes

Concord	45c each;	\$2 for 6;	\$3.75 for 12;	\$6 for 25;	\$20 for 100
---------------	-----------	------------	----------------	-------------	--------------

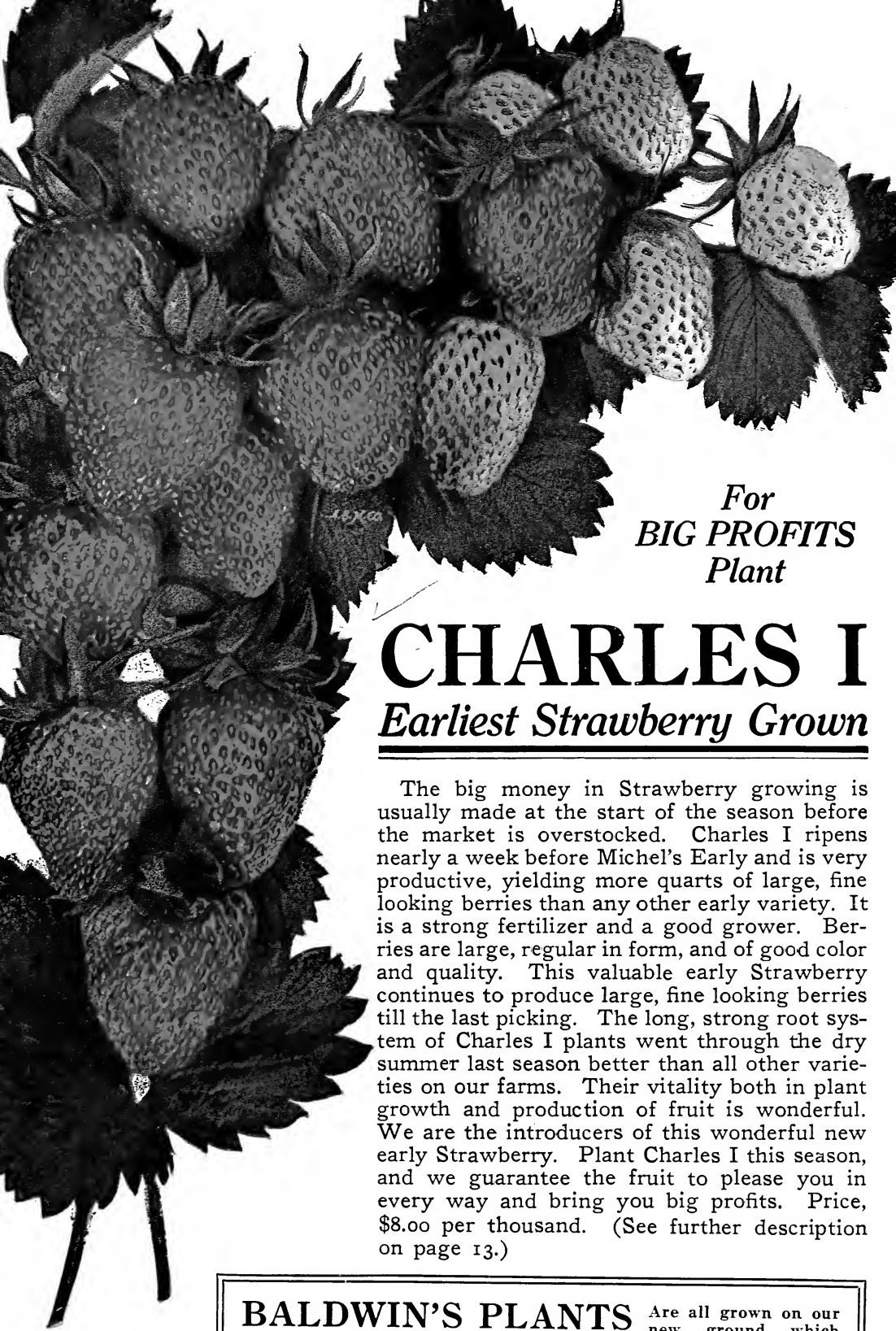
When you buy plants it is important that you get what you pay for.

Remember Baldwin guarantees every plant to be strictly first-class in every way, true-to-name, fresh-dug for your order and to be carefully labeled and packed in first-class shape, F. O. B. Cars.

It pays to buy quality, especially in plants you expect to grow for profit. Don't make the mistake of trying to save a few cents on a thousand plants.

To be sure of entire satisfaction address your plant order this year to

O. A. D. BALDWIN - Bridgman, Mich.



For
BIG PROFITS
Plant

CHARLES I

Earliest Strawberry Grown

The big money in Strawberry growing is usually made at the start of the season before the market is overstocked. Charles I ripens nearly a week before Michel's Early and is very productive, yielding more quarts of large, fine looking berries than any other early variety. It is a strong fertilizer and a good grower. Berries are large, regular in form, and of good color and quality. This valuable early Strawberry continues to produce large, fine looking berries till the last picking. The long, strong root system of Charles I plants went through the dry summer last season better than all other varieties on our farms. Their vitality both in plant growth and production of fruit is wonderful. We are the introducers of this wonderful new early Strawberry. Plant Charles I this season, and we guarantee the fruit to please you in every way and bring you big profits. Price, \$8.00 per thousand. (See further description on page 13.)

BALDWIN'S PLANTS Are all grown on our new ground which produces long, strong roots. Being grown for plants only they are better. Let us prove it to you this year. **ORDER NOW.**

BALDWIN

Guarantees all plants true to name,
to be fresh-dug—

OF

careful selection, and to be well
packed in damp moss F. O. B. cars

BRIDGMAN

