

Historic, Archive Document

Do not assume content reflects current scientific knowledge, policies, or practices.

LIBRARY
RECEIVED
MAR 25 1920
U. S. Department of Agriculture

J. V. BAILEY

GENERAL OF
HARDY NURSERY STOCK



Top Layer of a quart box of Minnesota No. 3 Strawberries
(Actual Size)

19

*Photographs were taken at Fruit
Farm by Dr. Dorsey, Pro-
fessor of Horticulture*

20

Dayton's Bluff Station
St. Paul, Minnesota

J. V. BAILEY'S
HARDY NURSERY STOCK
DAYTONS BLUFF STATION
ST. PAUL, MINN.

TO THE GROWER:

With the increasing demand for fruit you can make no mistake in buying nursery stock this spring providing the stock is reliable and you are able to obtain varieties that are adapted to the climate conditions of your location. Many varieties that prove successful in some localities are a failure in others.

NOW, MORE THAN EVER BEFORE, the grower should know that he is investing his money and spending his time on varieties that are adapted to our north-western climate conditions and not on novelties or untried new varieties that some nurseryman or agent desires to sell at a high price.

I grow and offer for sale, only, varieties that have been tried out and recommended by professional fruit growers of Minnesota and then tried out to my own satisfaction on my fruit farm at Newport, Minn.

Formerly I have propagated twenty-five or more varieties of strawberry plants but have eliminated many of these and now offer you only the very best to grow in Minnesota and surrounding states.

My evergreens, shade and fruit trees and flowering shrubs, as well as my fruit plants, are all grown in my nursery at Newport.

Price of nursery stock may seem high this year compared to prices of previous years but this is a natural result from scarcity of labor and advance of other expenses of maintaining a nursery.

Prices will probably advance still more next year as stock becomes more scarce. My prices are as low as is consistent with the propagation of first class nursery stock.

A satisfied customer is my best advertisement.

J. V. Bailey

J. V. BAILEY, NURSERYMAN

Following is a list of nurseries with prices for spring delivery. These quotations are f. o. b. St. Paul G. Nursery.

PURE-BRED STRAWBERRY PLANTS

Everbearing Varieties

The everbearing strawberry is fast taking the place of the June bearing varieties as they produce fruit abundantly the same season that the plants are set, then produce a good crop of fruit the following spring. They are not subject to the effects of the strawberry weevil which destroys so many June bearing patches. The two varieties which I offer are very hardy and are the most popular of the everbearing.

✓ **PROGRESSIVE**—Staminate. Very productive, fruit medium size and of excellent quality. Produces fruit from about a week earlier than any June variety until late fall. Price, \$3.00 per 100; \$18.00 per 1,000.

✓ **SUPERB**—Staminate. Fruit very large and attractive. While this is one of the best everbearing varieties I consider it the best June bearing variety also. I usually grow a heavy crop of this variety in the fall and the following spring the same plants produce an immense crop of excellent fruit. Price, \$3.00 per 100; \$18.00 per 1,000. Either of the above varieties 25 plants for \$1.00; 50 plants for \$1.75.

June Bearing Varieties

✓ **MINNESOTA NO. 3**—Staminate. This new strawberry is the result of a cross between Senator Dunlap and Pocomoke and in some ways resembles the Dunlap, but is far superior as it produces a larger fruit and is a much heavier yielder. The fruit has that attractive, glossy appearance which is one of the Dunlap's features. The plants are larger and the roots longer than the Dunlap which accounts for its better drought-resisting qualities and the long season of fruiting. Try No. 3 and you will be well pleased. Price, 25 plants 75c; 50 plants \$1.25; \$1.75 per 100; \$10.00 per 1,000.

✓ **MINNESOTA NO. 935**—Staminate. While this is one of the newer productions it has been tried out enough to be placed among the best varieties. Fruit is very large, season of ripening late. Plants very hardy. I consider this our best late variety. Price, 25 plants 75c; 50 plants \$1.25; \$1.75 per 100; \$10.00 per 1,000.

✓ **GIBSON**—Staminate. Early. 25 plants 50c; 50 plants 90c; \$1.50 per 100; \$8.00 per 1,000.

✓ **SENATOR DUNLAP**—Staminate. Medium. 25 plants 50c; 50 plants 90c; \$1.25 per 100; \$7.00 per 1,000.

✓ **BRANDYWINE**—Staminate. Late. 25 plants 50c; 50 plants 90c; \$1.25 per 100; \$8.00 per 1,000.

CONOVER'S COLUMBIAN MAMMOTH WHITE—Two year old roots—\$2.00 per 100; \$20.00 per 1,000.

RHUBARB OR PIE PLANT

MAMMOTH VICTORIA—Divided roots, 20c each; \$1.25 per 10. For larger quantities I will quote prices on application.

CURRENTS

The following varieties have all proven excellent in my fruiting field. They are far superior to the old varieties which I have discarded.

✓ **LONG BUNCH, HOLLAND, POMONA, WILDER, RED CROSS, DIPLOMA, LONDON MARKET, CHERRY CURRANT, BLACK CHAMPION CURRANT AND WHITE GRAPE CURRANT**—30c each; \$3.00 per dozen; \$20.00 per 100.

RED RASPBERRIES

The following varieties are all hardy and do not require winter covering:

✓ **KING**—No. 1 plants, 75c per dozen; \$3.00 per 100; \$20.00 per 1,000.

✓ **MINNESOTA NO. 4**—\$1.00 per dozen; \$5.00 per 100; \$30.00 per 1,000. Second size plants, 75c per dozen; \$3.00 per 100; \$20.00 per 1,000.

✓ **ST. REGIS EVERBEARING RASPBERRY**—\$1.00 per dozen; \$5.00 per 100.

✓ **NAME UNKNOWN**—A few years ago I found, growing in a small garden, a variety of Red Raspberry which, I think, is the best berry to grow for home use. I have been unable to find the name of this variety but, on account of its many superior qualities, I propagated it and now offer it for sale. The fruit is very large and bears for a long season, producing very abundantly. \$1.00 per dozen; \$5.00 per 100.

BLACK RASPBERRIES.

✓ **GREGG AND BLACK PEARL**—\$1.00 per dozen; \$5.00 per 100.

GOOSEBERRIES

✓ **THE CARRIE**—The best gooseberry to grow in Minnesota. 30c each; \$3.00 per dozen.

APPLE TREES

✓ **WEALTHY, DUCHESS, PATTEN'S GREENING, OKABENA, PEERLESS, WHITNEY CRAB**—Price, 3 to 5 ft. trees, 50c each; \$5.00 per dozen; \$40.00 per 100; 5 to 7 ft. trees, four years old, \$1.00 each; \$10.00 per dozen; \$75.00 per 100. Six year old trees, too large for shipping, \$1.50 each; \$15.00 per dozen.

✓ **VIRGINIA CRAB** topworked to several varieties which gives you a chance to grow several different varieties of apples on one tree. These trees are topworked to bear from two to five varieties. Price, \$1.00 for each variety.

PLUMS

✓ **DE SOTO**—Three-year-old trees, four to five feet, \$1.00 each; \$10.00 per dozen.

✓ **HOMER CHERRY**—\$1.00 each; \$10.00 per dozen.

J. V. BAILEY, NURSERY

N

FLOWER SHRUBS

TS

SPIREA VAN HOUTI, SYRINGA, SNOWBERRY, FLOER NGLA (PANICULATA), HONEYSUCKLE (TARTARIAN)—Medium size plants, 50c each; large plants, 75c each.

HEDGE PLANTS

BUCKTHORN, BARBERRY (Thunbergii)—30c each; \$2.50 for 10 plants; \$20.00 per 100.

HARDY PERENNIAL PLANTS

IRISES—Blue, 20c each; \$1.25 for ten.

BLEEDING HEART—30c each; \$2.50 for 10.

PERENNIAL PHLOX—25c each; \$2.00 for 10.

EVERGREENS AND SHADE TREES

COLORADO BLUE SPRUCE—2 to 4 feet, three times transplanted, \$2.00 to \$7.00, according to color of foliage and individual specimen; 1 to 1½ feet, 50c to \$1.50. I have a fine lot to select from.

NORWAY SPRUCE—Three times transplanted, 3 to 4 feet, \$1.00 each; 4 to 5 feet, \$1.50 each.

BLACK HILL SPRUCE—A very fine lot to select from. 2 to 3 feet, 75c to \$1.50 each, according to specimens.

RED CEDAR—3 to 4 feet, \$1.50 each; 4 to 6 feet, \$2.50 each.

ARBOR VITAE—\$1.00 each.

WHITE ELM—Ten to fifteen feet, \$1.00 to \$3.00 each, according to individual specimens.

LAUREL LEAF WILLOW—50c each.

COLDEN WEEPING WILLOW—50c each.

WHITE BIRCH—5 to 15 feet, \$1.00 to \$3.00 each.

SOFT MAPLE—Twelve to twenty feet, \$2.50 each.

Will quote prices on evergreens or shade trees in quantities on application

HUBBARD SQUASH SEED

Ounce, 25 cents; ¼ pound, 75c; \$2.00 per pound.

MILLER'S CREAM MUSKMELON SEED

Ounce, 25 cents; ¼ pound, 50 cents; \$1.50 per pound.

J. V. BAILEY, NURSERY MAN

MY GUARANTEE AND TERMS

That all nursery stock herein quoted, is grown under modern scientific methods.

That plants are securely and freshly put up in damp packing material.

That all nursery stock is true to name and correctly labeled.

That certificate of inspection accompanies each shipment of nursery stock.

In no case will I be liable for more than the original purchase price.

Prices quoted in this price-list are f. o. b. St. Paul or at nursery.

Deliveries will be made daily to the different express offices in St. Paul and to the St. Paul post office.

Cash with order when stock is to be shipped, or will accept one-fourth of purchase price in advance and ship goods C. O. D. for balance if preferable.

No. 1224

Inspection completed October 15, 1919.

MINNESOTA AGRICULTURAL EXPERIMENT STATION

Office of State Entomologist.

St. Paul, Minn., November 12, 1919.

CERTIFICATE OF NURSERY INSPECTION

This is to certify that in accordance with Sec. 1, Chapter, 206, Sessions Laws of 1913, the nursery stock and premises of J. V. Bailey of Newport, Minn.; J. V. Bailey, Proprietor, have been carefully examined by a duly authorized inspector and found apparently free from dangerously injurious insects and contagious plant diseases.

This certificate is good until November 1, 1920, unless revoked, and covers only stock actually on the premises when examined.

G. W. PEAKE,

Chief Deputy Nursery Inspector.

A. G. RUGGLES,

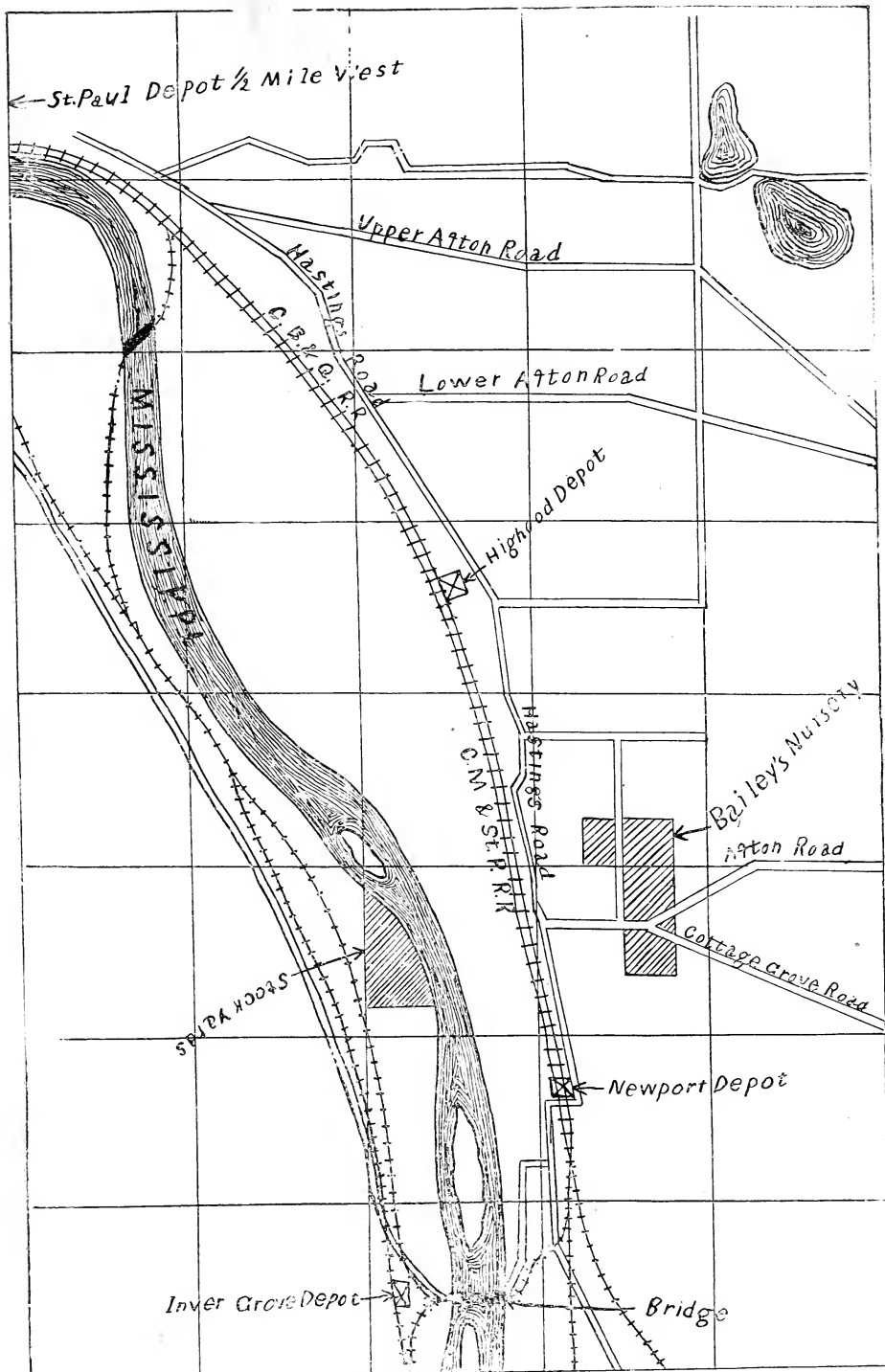
State Entomologist.

J. V. BAILEY

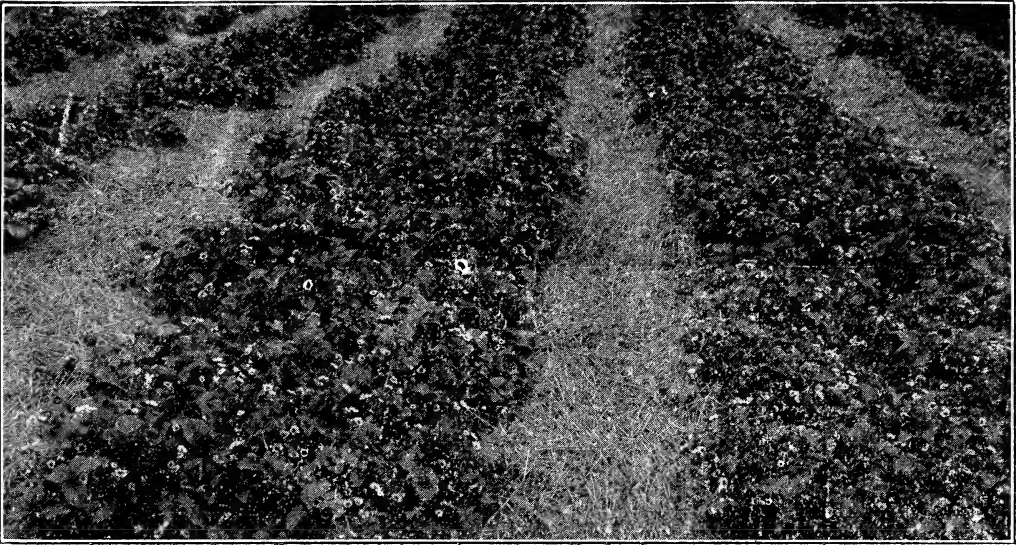
DAYTON'S BLUFF STATION,

ST. PAUL, MINN.

BOTH TELEPHONES.



MAP SHOWING LOCATION OF NURSERY



MINNESOTA NO. 3 STRAWBERRY PLANTS IN FULL BLOOM
(NOTE PROLIFIC GROWTH OF PLANTS AND BLOSSOMS)

This wonderful new Strawberry was originated at the Minnesota State Fruit Breeding Farm a few years ago and is now conceded to be the best June bearing strawberry.

If Interested in Nursery Stock Read This Folder

**J. V. BAILEY'S
HARDY NURSERY STOCK
DAYTONS BLUFF STATION
ST. PAUL, MINN.**

*From J. V. Bailey
Address Dayton's Bluff St.
St. Paul, Minn.*



U. S. DEPARTMENT OF AGRICULTURE
Official Business.

Penalty for private use to avoid the
payment of postage, \$300.

U. S. DEPARTMENT OF AGRICULTURE,

WASHINGTON, D. C.

**BUREAU OF PLANT INDUSTRY,
Horticultural and Pomological Investigations.**