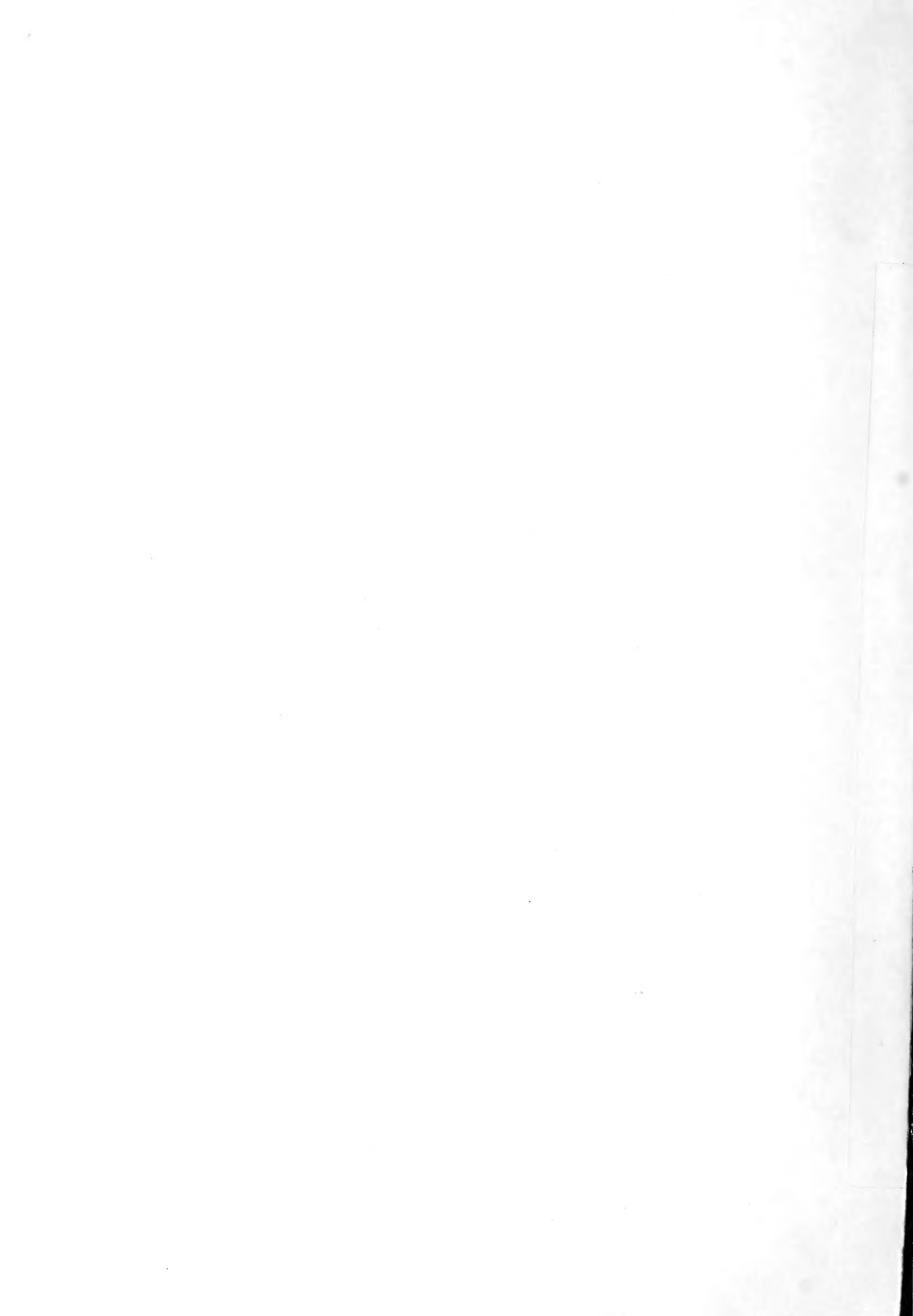


Historic, Archive Document

Do not assume content reflects current scientific knowledge, policies, or practices.



BACK'S NURSERY

ESTABLISHED IN 1898

at Altus Okla.

MEMBER SOUTHERN NURSERYMEN'S ASSOCIATION

Growers of General Nursery Stock

WHOLESALE AND RETAIL

OFFICE AND SALE GROUND ONE HALF BLOCK
EAST OF ORIENT STATION.
NURSERY ONE MILE NORTH OF TOWN.

OAKWOOD, OKLAHOMA

JAN 31 1920
U.S. Department of Agriculture

Jan 14 - 20

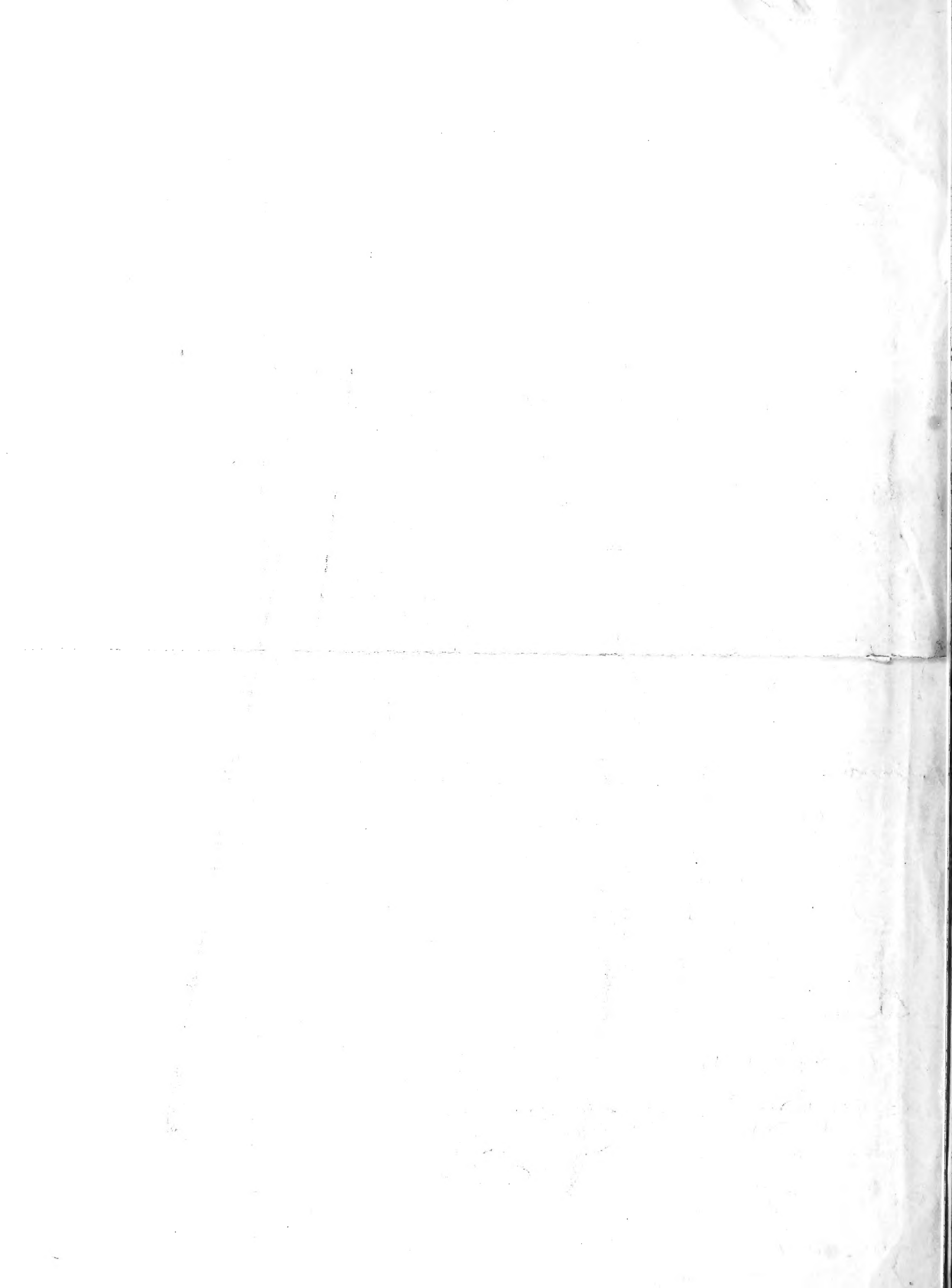
*Mr. J. C. Barbett
Washington D. C.*

Dear Sir

I in reply to yours of the 7, St. P. have discontinued my nursery at Altus Okla and just moved at Oakwood Okla two years ago have no catalogue but am sending you the names of fruit and ornamental plants recommended and sold here this will be satisfactory I hope

*Carolina Red June, yellow trumpet, Double, early harvest
Rome beauty, Grimes E, Jonathan, M. B. King, No Pippin,
Gene, Ben Davis, Stayman wine, of, ark black,
Coopers early white, Sweet June, Golden Sweet,
Transcendent E. Red and yellow Siberian E.
Peaches*

*Ames, Mayflower, Alexander, Manis Pass, asp King,
Elliott, Lambards early and late, Champion, Heath E,
Mathews beauty, Ekinets E, Jensen E, Leachy,
Indian E and Judson F, Japan Dwarf blood, Plinkard
October, Bell of Georgia, Loaman, Boston restaurant
New white melon, Japan and various Peaches
Superb, Royal, Moorpark and Gible offered to*



BACK'S NURSERY

ESTABLISHED IN 1898

at Oklahoma

MEMBER SOUTHERN NURSERYMEN'S ASSOCIATION

Growers of General Nursery Stock

WHOLESALE AND RETAIL

OFFICE AND SALE GROUND ONE HALF BLOCK
EAST OF ORIENT STATION.
NURSERY ONE MILE NORTH OF TOWN.

OAKWOOD, OKLAHOMA

2

June 14 - 20

Peach

Koonce, Seckler, Bartlett, Bell chestnut and Keiffer
Early harvest, Champion Prince

Cherries

May Duke, Early Richmond, Montmorency large, mazz
Dyaboute, English marilla, Campard,

Plum

Saffo, Satsuma, Burbank, Gold, Green gage,
Mild Good, Red June, Patavolone, German Plum

Garden Roots

Rhubarb, Hard Polish asparagus

Berries

Mc Donald BB, Early harvest, Merces, Dallas, and the
Dewber, Milton man, white Dewber, Himalay berry
Logan berry, Black champion currant, Fay's Pacific
currant, Smith's Improved, Indus berry and
Haughton goat berries, Ratham black berry and I
have under experiment the berry that had
black berry from California put them in my
test ground in Spring 1919 they bore some berries
last spring and the vines are still living and
doing nicely we have had some very bad weather

BACK'S NURSERY

ESTABLISHED IN 1898

MEMBER SOUTHERN NURSERYMEN'S ASSOCIATION

Growers of General Nursery Stock

WHOLESALE AND RETAIL

OFFICE AND SALE GROUND ONE HALF BLOCK
EAST OF ORIENT STATION.
NURSERY ONE MILE NORTH OF TOWN.

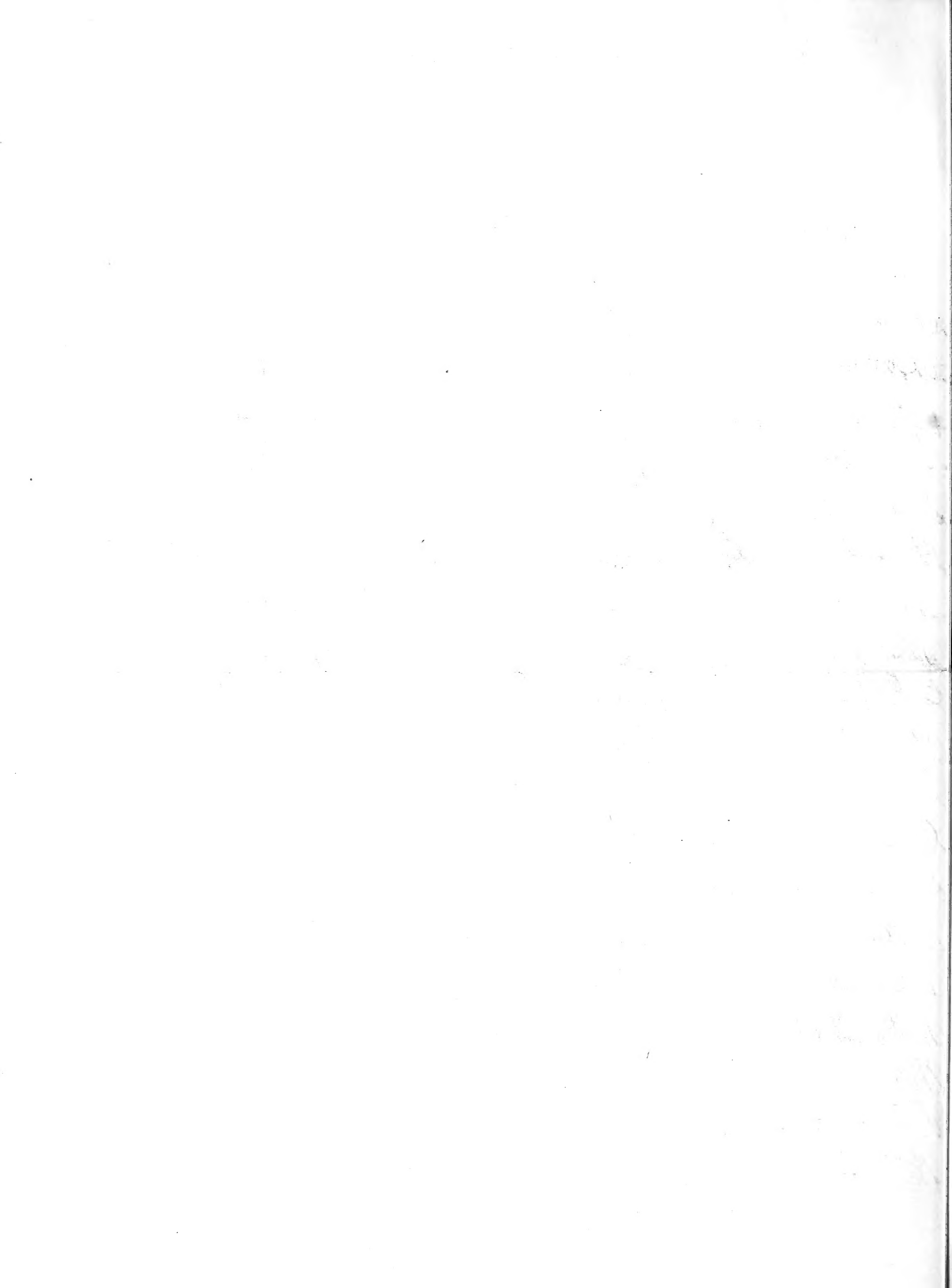
OAKWOOD, OKLAHOMA

3

this winter and I believe the vines are going through
the winter all right if they do I am going to offer them
for sale next year. have not sold any yet just
waiting to see if they will stand our winter
here. Also we sell the Struckberries
St. Regis, Raspberry, Gregg R.B., Cumberland, R.B.,
Gandy, Hampton and Gandy Strawberry, and the
Progressive & Verhearn Strawberry,
Grapes

✓ Moore's Early, Niagara, Concord, Brighton, Catawba,
Green Mountain, and Delaware
Shade trees

weeping willow, Teas weeping mulberry, Duncans catalpa
white ash, Elm, Hick & Verhearn mulberry, Russian
mulberry, Soft maple, Carolina and Fairbairn Poplar
Black locust, Catalpa speciosa,
Pyramid, Compact, Golden, and American arborescent
Red cedar, Black walnut, Stewart and Vandeman
Paperbell Pecan, Halls japon, and scarlett trumpet
Honey suckler, Bigonia grandiflora, Panton's
clematis and Jackson's clematis, English and
American Ivy



BACK'S NURSERY

ESTABLISHED IN 1898

MEMBER SOUTHERN NURSERYMEN'S ASSOCIATION

Growers of General Nursery Stock

WHOLESALE AND RETAIL

OFFICE AND SALE GROUND ONE HALF BLOCK
EAST OF ORIENT STATION.
NURSERY ONE MILE NORTH OF TOWN.

OAKWOOD, OKLAHOMA

Butter

Hyacinth, Tulip, Gladiolus, Camma, Peonia, Iris
 Dahlia, Sacred lily, Narcissus (Paper white, golden
 Spur narcissus, Tiger lily, Colic lily, Sweet
 malette, Sandy Phlox, Hardy Pink Chrysanthemum
 Geraniums, Clematis, Carnations, Rubber Plants,
 Boston, Stringers, and Plum and Mandarins
 Sago and Fan Palms, White and Purple lilacs
 Snowballs, Syringas, Grape Myrtle, Rose
 Althea Red, white, Purple, and variegated, California
 Privet hedge, Red cedar hedge,

Roses

Brimston, white, yellow and Blue Rambler, Metra
 american beauty, Mrs. R. Gray, and Pillar of gold
 Climber, Metra, american beauty, Richmond,
 Kassorine, Pink and white Kilarny, Pearl and gold
 White Lyon, Bride, Champion Pink and the
 Baby Rambler

I believe this is about all
 we offer for sale, we grow many of these, and buy
 the balance from Reliable Nurseries and Florists

Yours truly
 J. W. Back

RECEIVED
JAN 19 1920
★