

## **Historic, Archive Document**

Do not assume content reflects current scientific knowledge, policies, or practices.



INDEXED, 5-1920

# VEGETABLE SEEDS *and* PLANTS *of* ALL KINDS

Start out with good seed

FROM

CALEB BOGGS & SON

The Largest Wholesale and Retail  
Store in Delaware

POSTMASTER:—If this catalogue is not  
called for, please give it to someone who  
has a garden.

U. S. Department of Agriculture

STAMP

*W. W. Boggs & Son*

*W. W. Boggs & Son*

*W. W. Boggs & Son*

*W. W. Boggs & Son*

---

---

## Parcel-Post Rates as Follows:

1st and 2d Zones, 5 cts. first lb., 1 ct. for every additional lb.

3d Zone, 6 cts. first lb., 2 cts. for every additional lb.

4th Zone, 7 cts. first lb., 4 cts. for every additional lb.

5th Zone, 8 cts. first lb., 6 cts. for every additional lb.

6th Zone, 9 cts. first lb., 8 cts. for every additional lb.

¶ All plants are packed in nice, cool moss and great care is taken to so pack each package as to have it reach you in good condition.

¶ We pay postage on all seeds bought by the packet, ounce, quarter pound, pound and five pounds; over five pounds, purchaser pays postage or express charges.

¶ We have Strawberry Plants in the spring and Cabbage, Celery, Pepper, Tomato, and Sweet Potato Plants always ready at the right time.

---

---

# READ THIS LIST

---



---

The flowers listed herein will give the planter a perpetual bloom, in various parts of their flower garden, from early planting until frost. These shrubs attain a height of from four to nine feet. The height listed below is the size of the plant when shipped.

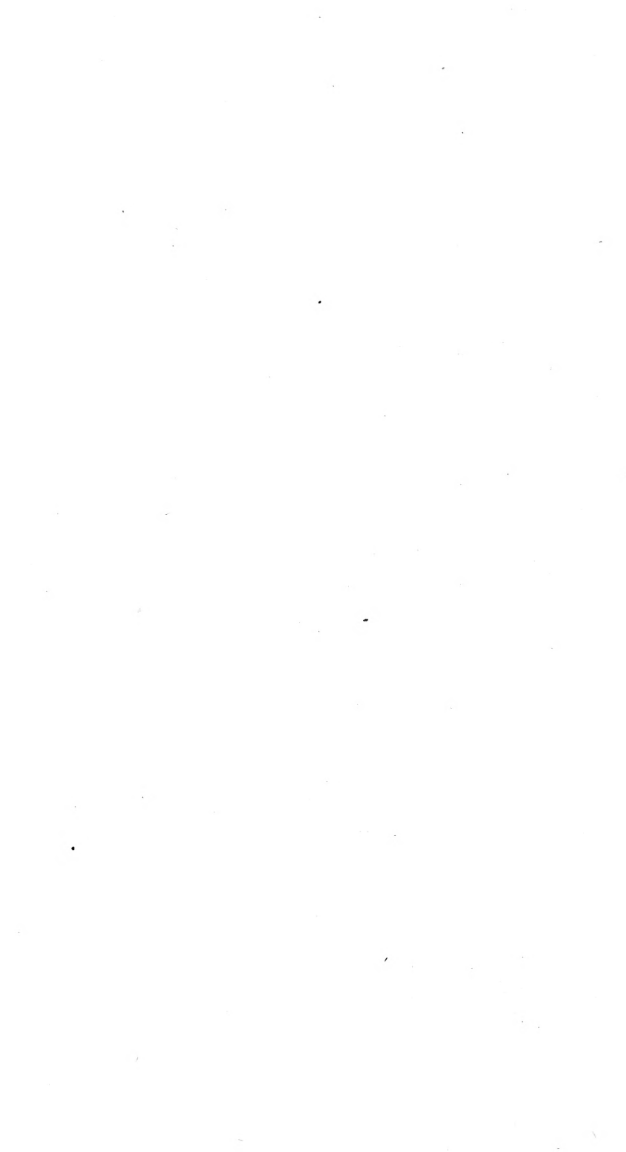
	KIND	HEIGHT	BLOOMS	PRICE
<b>ALTHEA or ROSE OF SHARON</b>				
(A)	(Jeanne d'Arc) Pure White	3 ft.	July—Frost	75c each
(B)	(Boule d'Feu) Pure Red	3 ft.	" "	75c each
(C)	(Peoniaflora) White, Red Center	3 ft.	" "	75c each
<b>PHILADELPHUS or MOCK ORANGE</b>				
(A)	(Gordonia) White	3 ft.	June—July	75c each
(B)	(Coronarius) White	3 ft.	May—June	75c each
<b>SPIREA</b>				
(A)	(Billardi Rosa) Pink Spikes	2½ ft.	June—August	75c each
(B)	(Billardi Alba) White Spikes	2½ ft.	" "	75c each
(C)	(Von Houtti) White Clusters	2½ ft.	May—June	75c each
Calyeanthus or Old Fashioned Shrub		3 ft.	June—July	75c each
Hydranges Aborescens (White Heads)		3 ft.	July—August	75c each
<b>DEUTZIA</b>				
(Pride of Rochester) White Bells		2 ft.	May—June	75c each

The price of **75c** per plant covers postage. If you are a garden lover and can use A COMPLETE SET OF ONE OF EACH we will ship a complete set, by express or parcel post, for **\$7.00** which is very cheap considering the value of a set.

Ordering a complete set makes quite a saving to the buyer. We can sell a set at that price because the trouble to pack and ship a dozen is no greater than packing and shipping a single plant. Order quick while they last.

**CALEB BOGGS & SON,**

**Cheswold, Delaware**





# FARM AND FIRESIDE

## *The National Farm Magazine*

### Why Every Farmer Should Read It

**Because** Farm and Fireside's real editors are practical farming men and women scattered all over the country.

**Because** These editors tell you in their own words, so it will be useful to you personally, how they have worked out their own farming problems.

**Because** Farm and Fireside realizes that your problems of getting more money, better clothes, easier work, contented children, comfortable homes, and good educations, stand on the same plane as the problems of folks in other lines of business, and is edited accordingly.

**Because** Farm and Fireside aims to have every reader get from each issue at least one idea he can personally translate into a bettered farm, a happier life, and a fatter pocket-book.

**Because** More than 700,000 other farm people read it, and get good from it.

Subscription Rate  
One Year, 50 Cents

USE OTHER SIDE TO ORDER THIS HELPFUL FARM MAGAZINE.

Caleb Boggs & Sons Seed Farms

CHESWOLD, DELAWARE

Date .....

Gentlemen

Enclosed you will find 50 cents for which please see that  
Farm and Fireside is sent to me for one year.

Name .....

R.F.D. No. ....

Post Office .....

State .....



---

---

## TO OUR OLD AND NEW CUSTOMERS



19 X 47

WE thank you, our old customers, for all the orders you have sent us. We have always tried to please you by sending you good seeds and plants, and we have gone further for some of you, for when the express companies have failed to deliver the goods we sent you, we have cheerfully duplicated the order. We are proud of our successful business, and we know you are pleased with our seeds and plants, for you send your orders year after year—some for more than twenty years. We shall endeavor in the future to give the same good service as we have in the past, and trust we shall have the pleasure of again serving you this season.

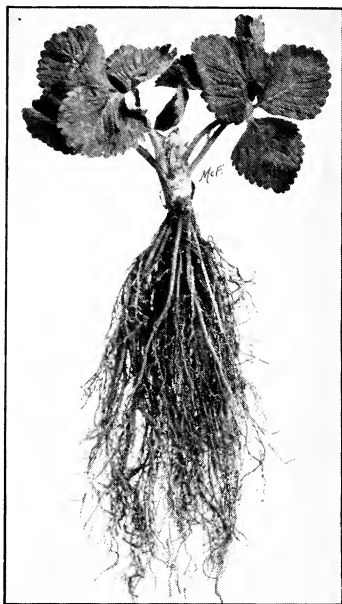
To those of you who have never used our plants or seeds, we make this request—*Just give us a trial order; results are more convincing than mere words.* Our new customers always become our old customers in time.

We extend a cordial invitation to all our customers to visit our farm and trial-grounds, where all our plants and seeds are tested. If a variety proves undesirable, it is at once discarded, which insures the customer receiving only the best. We will be glad to show you how carefully our plants and seeds are selected.

**CALEB BOGGS & SON,**  
**Cheswold, Delaware**

---

---



## Strawberry Plants

We have selected seven Strawberries which follow as the best out of a hundred varieties, and they cannot be beaten. There may be some as good, but none better.

*We pay postage on Strawberry plants in 100 lots;  
customer pays express charges on larger quantities*

✓ **Chesapeake.** The late money-maker. The berries are large, finely flavored, and deep brilliant red in color. The plants are very large, with nice long roots and heavy stems that hold the fruit well off the ground. The Chesapeake is so far superior to the old Gandy that we have discarded that variety entirely. It is the best late berry on the market today. \$1.25 per 100, postpaid; \$8 per 1,000, by express.

✓ **Campbell's Early.** The best early berry on the market. The plant bears a profusion of nice-sized, sweet berries which hold up better than any early berry we have tried—and we have tried them all. It is in good condition to eat as soon as any of the early varieties, and earlier than some. Campbell's Early is a money-maker to the shipper, and you cannot go wrong if you put out a large patch of them for market. Give them a trial. \$1 per 100, postpaid; \$7.50 per 1,000, by express.

✓ **Success.** Medium early. This is a good, all-round old variety, and particularly so for the man who grows for canneries and the like. It is not so good a shipper as some of the others, but is fine for home market. It makes a fine bed of plants, with perfect blossoms, and produces a profusion of berries which always meet a ready sale. Put in plenty of Success. \$1.25 per 100, postpaid; \$8 per 1,000, by express.

## STRAWBERRY PLANTS. Continued

**Joe Johnson** (Big Joe). Another fine medium to late berry which is of large size and a good shipper, carrying well as the Chesapeake. It is a fine table berry, and we class it as one of the best medium-late sorts. \$1 per 100, postpaid; \$7 per 1,000, by express.

**Mascot.** A good late variety which makes a strong, healthy growth and is very productive. The berries are of good quality, very large, rich glossy red, and always bring good prices. \$1 per 100, postpaid; \$7.50 per 1,000, by express.

**Tennessee Prolific.** Has been on the market for thirty years and is still in as great demand as ever. The berries are large and rather light in color, with fine-grained flesh that is firm enough to make it a good shipper. The blossoms are perfect, making it one of the best varieties to plant with the early or midseason, imperfect sorts. In every large berry-patch you will find Success and Tennessee Prolific. \$1 per 100, postpaid; \$7 per 1,000, by express.

**Progressive.** Everbearing. One of the best everbearing sorts. If all blossoms are removed until about July 15, the plants will bear an abundance of fruit from August until freezing weather. The berries are of medium size and delicious in quality. We can furnish these in 100 lots only. \$1.50 per 100, postpaid.

## Blackberries

Everybody wants a few Blackberry bushes in the home garden, and we offer the best two varieties—**Eldorado** and **Lovett**, both good old sorts that bear a profusion of luscious fruit. \$1.50 per 100; add 15 cts. per 100 for postage if to be sent by mail.



## Vegetable Plants

*We pay postage on Vegetable Plants in 100 lots; in larger quantities, by express, customer pays charges*

**CABBAGE, Large Charleston, Early Flat Dutch, Winnigstadt, and Copenhagen Market.** 35 cts. per 100, postpaid; \$2 per 1,000, by express.

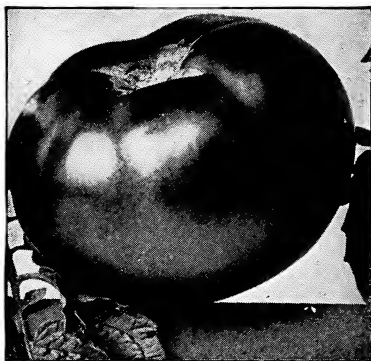
**CABBAGE, LATE, Surehead, Danish Ballhead, Flat Dutch, Drumhead, and Copenhagen Market.** We can supply all the best late varieties from May 20 to September. 35 cts. per 100, postpaid; \$2 per 1,000, by express.

**SWEET POTATO, Yellow Nansemond, Gold Skin, and Yellow Jersey.** Ready May 10. 30 cts. per 100, postpaid; \$2.25 per 1,000, by express.

**CAULIFLOWER, Early Snowball and Autumn Giant.** \$1 per 100, postpaid; \$5 per 1,000, by express.

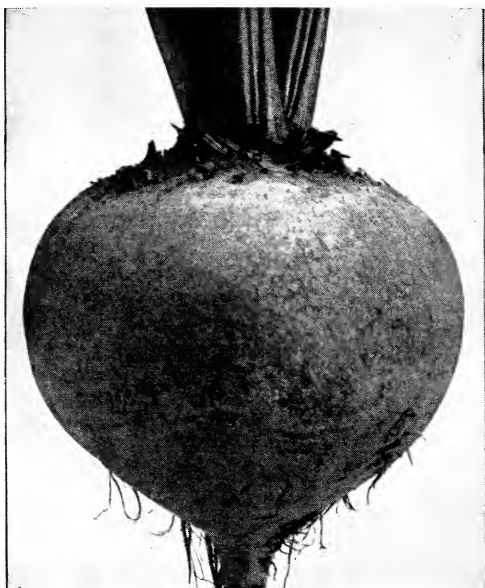
**CELERY, Golden Self-blanching,** the best early; **White Plume,** next early; and **Giant Pascal,** the best late. You can always depend on getting large, stocky plants from us, for we always have a good supply of them on hand. 35 cts. per 100, postpaid; \$2.50 per 1,000, by express; extra-fine, transplanted plants, \$5 per 1,000, by express.

**TOMATO, Earliana.** Strong, hardy plants which have been transplanted early. \$1.50 per 100, postpaid; \$10 per 1,000, by express.



### Tomato Plants for Late Crop

We are the largest growers of Tomato Plants in Delaware, planting over 400 pounds of that seed alone. Some days we load a carload or more for one man, and day after day, starting June 1, we pack two to three hundred thousand plants. We can furnish **New Stone, Matchless,** and **Red Rock,** all grown from our carefully selected seed on our own seed-farm, and harvested by our men, so we know exactly what we are selling. 35 cts. per 100, postpaid; \$1.50 per 1,000, by express. We give a special price on 50,000 or more. Do not wait until you are ready to set out your plants and then order them from us by mail or phone. Order early and be sure of them. We pack our plants in light crates and never had them carry better than they did this year.



Detroit Dark Red Turnip Beet (*See page 6*)

**Non-Warranty.** We exercise the greatest care in the selection and purchase of all the seeds and plants we offer, but we give no guarantee, expressed or implied, as to the description, purity, or quality of seeds or plants, nor do we guarantee results. If the purchaser does not accept the goods on these terms, they are at once to be returned, and we will refund the purchase price.

## Vegetable Seeds

This is the first time that we have offered Vegetable Seeds to our patrons, but we have received so many requests for them from our plant customers, that we decided to add a line of them to our stock. We have a complete collection of new Vegetable Seed of high germination and of the best quality. We have found that it always pays to get the best, even if it does sometimes cost us more, and you will find that the seeds offered are the best every time.

We invite you to visit our seed-stores, the largest and most up-to-date in Delaware. We always have seed in test to show to our visitors.

## Asparagus

**Argenteuil.** Largely grown in France for the Paris market. The stalks grow to a mammoth size, sometimes weighing as much as 4 ounces each. The head is somewhat pointed and the scales with which it is covered are very closely set. It is an early variety and remarkably healthy, being able to resist disease. The stalks cook tender and quality is superb.

**Palmetto.** An early, prolific and very desirable variety. The stalks are uniformly large in size and are of tender, delicious quality.

Pkts. 5 and 10 cts., oz. 10 cts.,  $\frac{1}{4}$ lb. 35 cts., lb. \$1



Improved Rust-Proof Golden Wax Bean

## Beet

**Early Blood Turnip.** Dark red; fine flavor; good for winter.

**Detroit Dark Red Turnip.** Round; skin dark blood-red, flesh bright red.

**Extra-Early Egyptian.** A good flat variety.

Pkts. 5 and 10 cts., 2 ozs. 20 cts.,  $\frac{1}{4}$ lb. 35 cts., lb. \$1.25

## Beans, String

**Improved Rust-proof Golden Wax.** A carefully selected strain of the well-known Golden Wax. Pods long, nearly straight, broad, flat, and clear yellow. The vines grow erect and bear the pods well off the ground, thus preventing them from getting soiled. Pkt. 10 cts., pt. 30 cts., qt. 50 cts., 4 qts. \$1.65.

**Burpee's Stringless Green-Pod.** Positively stringless and remains tender and crisp a long time after maturity. The pods are pale green, long and straight; perfectly round and meaty. Pkt. 10 cts., pt. 20 cts., qt. 40 cts., 2 qts. 75 cts., 4 qts. \$1.35, pk. \$2.50, bus. \$9.50.

**Long Yellow Six Weeks.** A well-known variety which is mostly grown for market, as it is hardy and may be planted early. It matures quickly and is very productive. Pods are long, flat, green and quite tender and good quality. Pkt. 10 cts., pt. 30 cts., qt. 45 cts., 2 qts. 80 cts., 4 qts. \$1.50, bus. \$10.

*If Beans are to be sent by mail, add for Parcel-Post as follows: To points east of the Mississippi, 8 cts. per qt.; west of the Mississippi, 12 cts. per qt.*

**BUSH LIMA BEANS**

**Fordhook Bush Lima Bean.** This variety is a perfected form of Dreer's Bush Lima, which variety it resembles in form of pod and shape of Bean, but both are larger, and the plant is of a strong, upright growth. Lb. 45 cts., 2 lbs. 80 cts., 10 lbs. \$3.50.

**Burpee's Improved Bush Lima Bean.** Pods and Beans are large. Plant grows more erect than Burpee's Bush Lima. Lb. 40 cts., 2 lbs. 75 cts., 10 lbs. \$3.25.

**POLE LIMA BEANS**

**King of the Garden Lima.** Beans large and of rich flavor. A favorite variety with market gardeners. Lb. 40 cts., 2 lbs. 70 cts., 10 lbs. \$3.

**Dreer's Improved Lima.** A very superior early variety of excellent quality and great productiveness. This is without doubt the best variety and will shell out more quarts of Beans to the bushel of pods than any other Lima Bean. Also called Challenger, or Potato Lima. Lb. 50 cts., 10 lbs. \$4.

*If to be sent by Parcel-Post, add postage as follows: To points east of the Mississippi, 7 cts. per lb.; points west of the Mississippi, 12 cts. per lb.*

**Celery**

**Perfected White Plume.** We offer a choice strain of this valuable and popular variety. It is ready for use ahead of all other varieties and is unsurpassed for fall and early winter use. The leaves are bright green with white tips and as the plants grow to maturity the inner stalks and leaves turn white, thus making very little earthing up necessary to thoroughly blanch it. The flavor is good and it is a fine Celery for early marketing, for which purpose it is largely used. Oz. 30 cts.,  $\frac{1}{4}$ lb. 85 cts., lb. \$2.50.

**Golden Self-blanching.** A splendid early sort, requiring but little labor to blanch. The plants grow to a medium size and make a very stocky growth; heart is rich golden yellow, with light yellowish green outer leaves; quality and flavor excellent. American-grown seed. Oz. 35 cts.,  $\frac{1}{4}$ lb. 90 cts.,  $\frac{1}{2}$ lb. \$1.50, lb. \$2.50.

**Giant Pascal.** A superior keeping sort. The stalks are thick, solid, crisp and of rich nutty flavor; it blanches very easily and retains its freshness a long time. Oz. 25 cts.,  $\frac{1}{4}$ lb. 70 cts., lb. \$2.25.

All seed is sold in 5- and 10-ct. packets

**Cauliflower**

**Extra-Early Paris.** Heads of medium size; first-class. Pkt. 10 cts.,  $\frac{1}{4}$ lb. \$2.50, lb. \$8.50.

**Veitch's Autumn Giant.** Vigorous in growth; very large; late. Pkt. 10 cts.,  $\frac{1}{4}$ lb. \$2.50, lb. \$8.

**Carrots**

A wholesome and nutritious table vegetable, and forms a fine winter feed for milch cows.

**Long Orange Improved.** A good sort for the table or stock-feeding. Pkt. 5c., oz. 15 cts.,  $\frac{1}{4}$ lb. 45 cts., lb. \$1.50.

---

Ask any berry-grower if the seven varieties we offer are not the best.



Early Jersey Wakefield Cabbage

## Cabbage

### EARLY VARIETIES

**Early Jersey Wakefield.** A popular early variety with very solid heads of pyramidal shape.

**Large Charleston.** A good variety with very large, solid heads.

**Early Flat Dutch.** A well-known variety with flat heads.

**Early Summer.** Produces large, solid heads of finest flavor. Second-early.

Pkt. 5 cts.,  $\frac{1}{2}$ oz. 20 cts., oz. 30 cts., 2 ozs. 40 cts.,  
 $\frac{1}{4}$ lb. 75 cts., lb. \$3

### LATE VARIETIES

**Late Flat Dutch.** Of fine quality and flavor. A well-known variety.

**Surehead.** A sure-heading variety that is in great demand.

**Danish Ballhead.** A very round, solid, winter sort. A fine shipper.

**Drumhead.** A good late sort.

Pkt. 5 cts.,  $\frac{1}{2}$ oz. 20 cts., oz. 30 cts., 2 ozs. 40 cts.,  
 $\frac{1}{4}$ lb. 75 cts., lb. \$3

## Corn

### SWEET, or TABLE VARIETIES

**Stowell's Evergreen.** A popular variety; sweet; tender.

**Country Gentleman.** A late variety producing good-sized ears; sweet; tender.

Pkt. 10 cts., qt. 40 cts., pk. \$2.60, bus. \$10

### POP-CORN

Every home should grow some Pop-Corn.

**Golden Queen.** A good yellow variety. Pkt. 10 cts.,  
 $\frac{1}{2}$ lb. 25 cts., lb. 50 cts.



## Field Corn

We make a specialty of Seed Corn. Write for prices on 100 ears, also  $\frac{1}{2}$  bushel and bushel, shelled.

**Yellow Dent.** Ears medium size; finest quality.

**Gold Mine.** Dent. Deep grain; ripens in 90 days.

**Johnson County White.** A good white variety.

We take great pains in selecting our Seed Corn, and you will find that it pays to buy pure-bred stock.

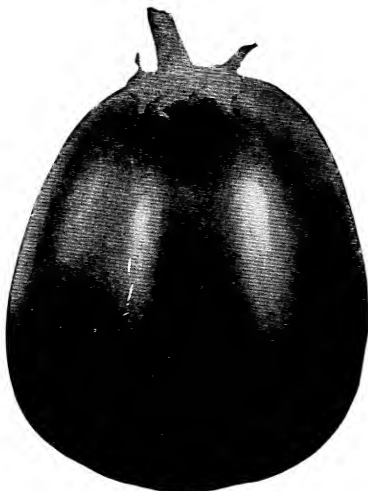
## Cucumber

A few hills well tended will supply the table the entire season and enough to make pickles for winter.

**Long Green, Improved.** Long and crisp. Good for pickles.

**Boston Pickling.** Another good pickling variety.

Pkt. 5 cts., oz. 10 cts.,  $\frac{1}{4}$ lb. 30 cts., lb. 90 cts.



New York Improved Eggplant

## Eggplant

**New York Improved.** Oval; deep purple; early and productive. Largest and best.

**Black Beauty.** About 10 days earlier than the preceding variety. Very rich purplish black.

Pkt. 5 cts.,  $\frac{1}{2}$ oz. 15 cts., oz. 25 cts.,  $\frac{1}{4}$ lb. 75 cts., lb. \$3

## Kale

**Dwarf Green Curled Scotch.** Gives the very best greens in spring and fall. Very dwarf and spreading. Pkt. 10 cts., oz. 25 cts.,  $\frac{1}{4}$ lb. 80 cts., lb. \$2.50.

## Onion Sets

**Yellow Onion Sets.** Qt. 40 cts., 4 qts. \$1.50. Write for prices on larger quantities.

---

We pay the postage on Strawberry plants in 100 lots—you pay the expressage on larger quantities.



Big Boston Lettuce

## Lettuce

### LOOSE-LEAF VARIETIES

**Grand Rapids.** Best known of all. Large; tender.

**Simpson.** Early Curled. A leading early sort; very tender.

### HEADING VARIETIES

**Big Boston.** Large solid heads; crisp; tender.

Pkt. 5 cts., oz. 25 cts.,  $\frac{1}{4}$ lb., 85 cts., lb. \$2.50

## Muskmelon (CANTALOUPE)

A delicious fruit that is easily grown if proper soil is selected.

**Rocky Ford** and **Netted Rock.** The best two varieties for market and home use. Seed saved from the best melons. Every melon had to cut sweet to justify us in saving the seed. If you wish selected stock, we have it. Pkt. 5 cts., oz. 15 cts.,  $\frac{1}{4}$ lb. 45 cts., lb. \$1.50.

## Peas

**Little Gem.** Best early wrinkled Pea; very sweet and desirable. Pkt. 10 cts., lb. 40 cts.

**Alaska.** Earliest of all; productive. Pkt. 10 cts., lb. 40 cts.

**Gradus.** The best of all; pods large; Peas large, but very tender. We consider this the best Pea to eat or for the market. Do not fail to have some of this variety in your garden. Pkt. 10 cts., lb. 50 cts.

## Pepper

**Ruby King.** For fifteen years we have been growing this grand Pepper for the best seed-houses in the country and we now offer our customers any amount they wish to purchase in addition to their other plants and seeds. Pkt. 5 cts., oz. 35 cts.,  $\frac{1}{4}$ lb. \$1.25, lb. \$4.50.

## Parsnip

**Yellow Crown.** A fine sort in every respect. It is uniformly half-long, heavy at the shoulders, and tapers evenly to a small root. Pkt. 5 cts., oz. 20 cts.,  $\frac{1}{4}$ lb. 60 cts., lb. \$2.

## Parsley

**Extra Double Curled.** A beautiful variety for garnishing.  
Pkt. 5 cts., oz. 25 cts.,  $\frac{1}{4}$ lb. 45 cts., lb. \$1.50.

## Pumpkin

**Green-striped Cushaw.** A splendid striped crookneck variety.

**Connecticut Field.** Grown in cornfields for stock.  
Pkt. 5 cts., oz. 15 cts.,  $\frac{1}{4}$ lb. 40 cts., lb. \$1.25

## Radish

**Early Scarlet Turnip White-tipped.** A very excellent variety and deservedly a great favorite with market-gardeners for early planting outdoors.

**White Turnip.** Flesh pure white; sweet.

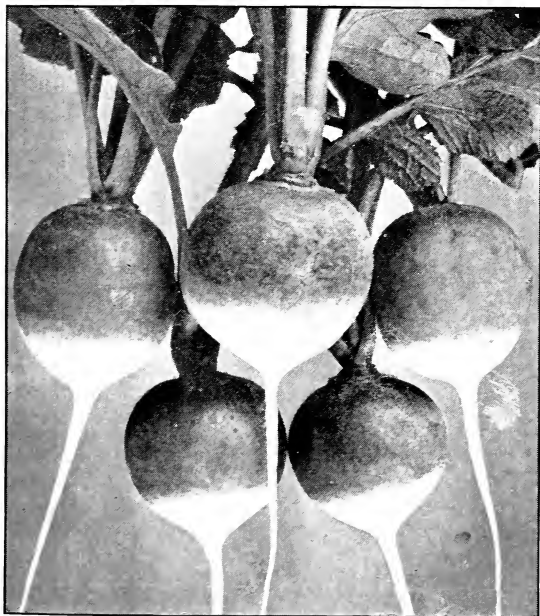
**Early French Breakfast.** Pink and white.

**Early Scarlet Turnip.** Very early. A great favorite.  
Pkt. 5 cts.,  $\frac{1}{4}$ lb. 35 cts., lb. \$1

## Squash

**Golden Hubbard.** The flesh is deep orange-color, dry, fine-grained, and of delicious flavor. This is an excellent keeper and can easily be held over for spring use. Pkt. 5 cts., oz. 20 cts.,  $\frac{1}{4}$ lb. 50 cts., lb. \$1.50.

**Boston Marrow.** A very prolific fall and winter Squash of medium to large size and oval shape. The thin skin is orange-yellow in color; flesh rich salmon. Pkt. 5 cts., oz. 10 cts.,  $\frac{1}{4}$ lb. 30 cts., lb. \$1.



Early Scarlet White-tipped Radish



New Stone Tomato

## Tomato

**Earliana.** Carefully selected for extreme earliness as well as size, shape, color, and quality. It is a settled fact that the Earliana is the best early Tomato, and we have selected for our trade some of this seed that is, without a doubt, as good and pure as any Earliana seed on the market, as it is taken only from the very best Tomatoes. Pkt. 5 cts.,  $\frac{1}{4}$ lb. \$1, lb. \$3.

**New Stone, Red Rock, Matchless.** All these varieties are selected stock, put up in  $\frac{1}{2}$ -lb. and lb. boxes, with our guarantee on each box. Lb. \$2.50.

## Turnip

**Yellow Globe.** A yellow-fleshed, globe-shaped variety of medium to large size; smooth and of light yellow color with small green crown. A fine keeper and a heavy cropper. Pkt. 5 cts., oz. 20 cts.,  $\frac{1}{4}$ lb. 50 cts., lb. \$1.50.

## Watermelons

For field culture hills should be laid off 8 feet apart each way. Well-rotted manure must be used freely. The ground should be dry and warm and well drained. Melons will not succeed on hard ground.

**Mountain Sweet.** Red flesh; late; dark green; long, tapers to stem end.

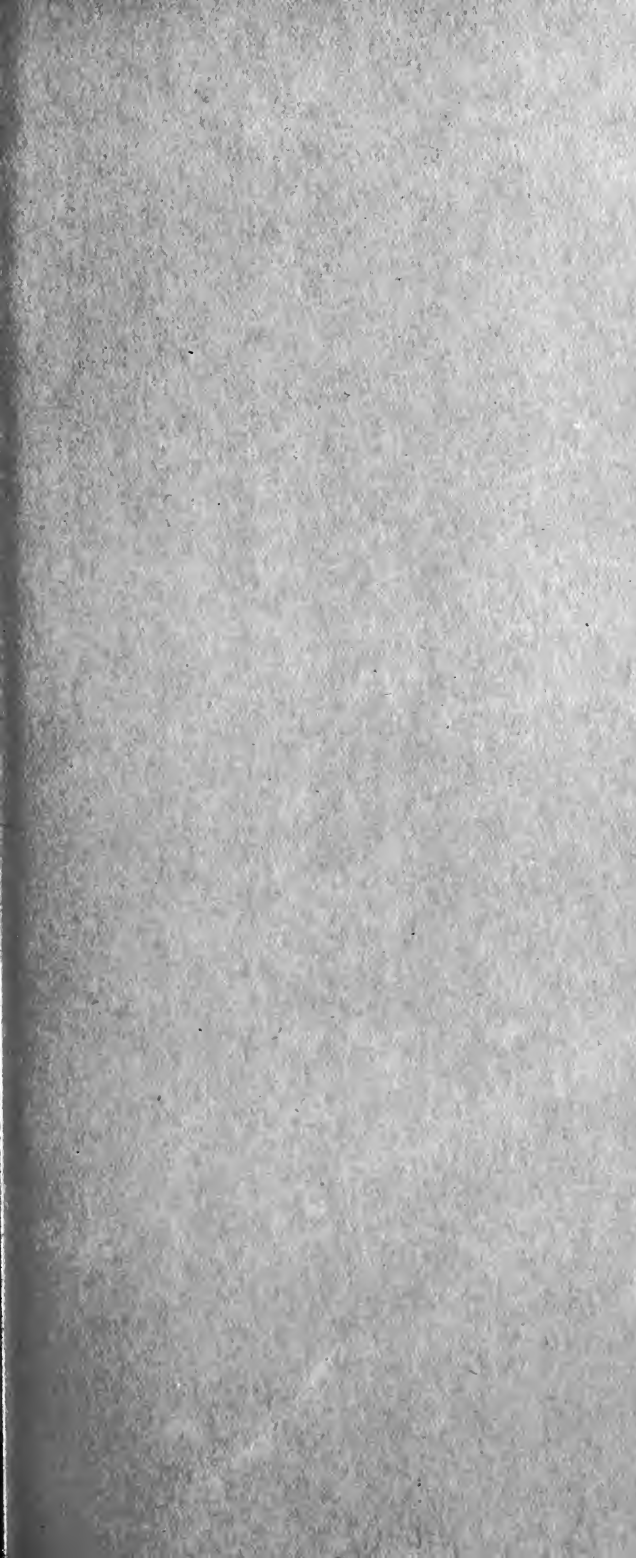
**Florida Favorite.** A superior strain; oblong; red flesh; intermediate.

**Georgia Rattlesnake.** Oblong; dark, and striped; bright red flesh; late.

**Tom Watson.** Deep red, crisp flesh, melting and of finest flavor; dark green rind; long.

**Dixie.** Excellent quality; very large and solid; red flesh; long.

**Kolb Gem.** Large; bright red flesh; oval; intermediate. Pkt. 5 cts., oz. 10 cts.,  $\frac{1}{4}$ lb. 25 cts.,  $\frac{1}{2}$ lb. 45 cts., lb. 80 cts.



**CALEB BOGGS & SON**

**Vegetable Seeds and Plants of all Kinds**

**CHESWOLD, DELAWARE**