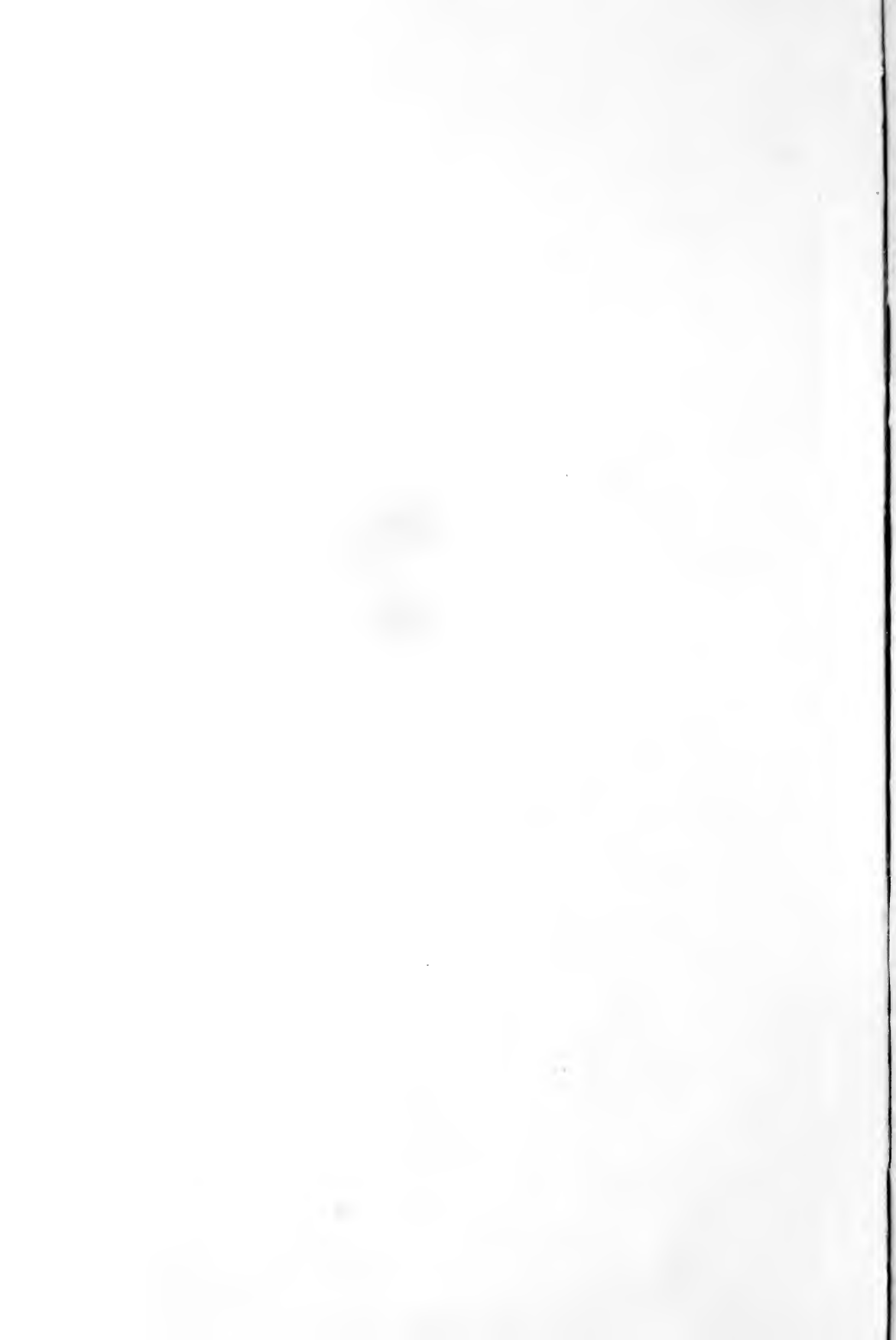


Historic, Archive Document

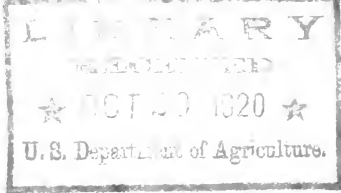
Do not assume content reflects current scientific knowledge, policies, or practices.



62.57

L. C. Transfer

1920?



American Grown
ROSES
for America

Bobbink & Atkins
 Rutherford New Jersey



Business Terms and Suggestions

ORDER EARLY. It greatly facilitates shipment if orders are received early, and will save disappointments to our customers.

IMPORTANT. Please advise when ordering, if you wish goods shipped by express or freight, giving best route for quick delivery. We will not warrant prompt delivery of goods shipped by freight. Please write Name, Post Office, County, and State, also Number of Street, as plainly as possible; also any other information necessary to expedite shipment.

TERMS. Cash, or satisfactory reference, must accompany all orders from unknown parties. A discount of 2 per cent allowed on orders accompanied by cash.

HOW TO REACH OUR NURSERIES. Visitors invited. Our Nurseries, consisting of 500 acres, are located within 10 miles of New York City. The automobile roads leading to our Nurseries are exceptionally fine. Rutherford is the first and Carlton Hill the second station on the main line of the Erie Railroad. Take the Hudson Tunnel at 33d Street or at Cortlandt Street Terminal—trains connect with the Erie Railroad at Jersey City. The Carlton Hill Station is only five minutes' walk from our Office and Nurseries.

PRICES

All Roses listed in this catalogue, unless otherwise noted, are \$1 each, \$9 for 10.

Varieties priced above \$1 each are net, regardless of quantity ordered.

To secure 10 rate, order 10 or more Roses, in lots of not less than 5 of each variety.

For example—an order of 5 General Jack and 4 Ophelia would be given the each price, but if 5 of each are ordered, the 10 rate is given.

For large quantities, ask for special rates. All standard or tree Roses (those marked with an asterisk *) are \$3 each, except as noted.

The price of our American-grown Roses has been made as low as is consistent with the high standard of quality we mean to maintain. They are f. o. b. Rutherford, N. J. This edition of our Rosebook cancels all sales conditions and prices previously quoted. Novelties are sold at the each rate in any quantity.

While we exercise the greatest care to have all Roses genuine and reliable, and hold ourselves prepared to replace, on proper proof, all that prove untrue, we do not give any warranty, expressed or implied; and in case of any error on our part, it is mutually agreed between the purchaser and ourselves that we shall not at any time be held responsible for a greater amount than the original price of the goods. No complaints will be considered that are not made within ten days after the receipt of stock.

BOBBINK & ATKINS

RUTHERFORD, N. J.

AMERICAN-GROWN
ROSES
FOR AMERICA



BOBBINK & ATKINS
RUTHERFORD, NEW JERSEY



From and by permission of the 1920 American Rose Annual

NEW HARDY CLIMBING ROSE, DR. HUEY

The blooms of this lovely climber are entirely different from all others in color, being a dark crimson-maroon of great brilliancy and having stamens and anthers of medium yellow. It blooms over a period of three weeks, but the greater part of the flowers open within a week, presenting a gorgeous sight. The semi-double blooms measure about 2 inches in diameter, and are borne in clusters of three or four, lasting a long time on the bush and when cut. The foliage resembles that of Gruss an Teplitz, one of its parents. Its hardiness and exceptionally beautiful and unique coloring insure its popularity wherever Roses are grown.



AMERICAN ROSES FOR AMERICA



HE appeal of the Rose is universal. All the earth yields to it. "Wild" Roses are the prized possession of every land, from the northern limits of growth to where shines the equatorial sun. Even the name is universal, or nearly so, for the word "Rose" pronounced in the hearing of natives of England, France, Denmark, Germany, Sweden, Norway, Italy, Spain, Portugal, Russia, Holland, Bohemia, and Hungary will bring the same smile of pleased understanding.

In his "Story of the Modern Rose," the great plant authority and collector, E. H. Wilson, urges that it is "the one flower whose name is common to the polyglot people of this land. . . . It is the national flower of one great race, but it is loved by all." It is for this reason that we speak of American Roses for America, believing and hoping that all American homes will use their privilege to have and enjoy this one world-flower.

Few who love the "queen of flowers" realize that while she holds court in America from the Atlantic to the Pacific, from the Gulf to far north of the Great Lakes, her prosperity in this great land of natural Rose conditions has been all too dependent upon growers abroad. As with other of our dependencies, the great war has taught us a needed lesson, has forced us to use our opportunities, so that now there are available Roses for America altogether "made in America." These Roses are the best; they need no acclimatization, no special coddling, because they are all and completely of the United States, root and top, "stock" and "bud."

For many years Bobbink & Atkins have experimented, tested and studied all Rose methods, in fostering their desire to produce "the world's choicest Roses for America." The plants offered in this list, and described on the following pages, are grown by their unique methods, and include the varieties which their exhaustive tests show to be worth while.

There is a great difference between these Roses and those grown with less care. The special "multiflora" stock, which provides the most vigorous root-system, is produced from carefully gathered seed, and grown in the way which will impart the utmost strength and blooming power to the varieties budded upon it. Moreover, these multiflora-stock Roses are so prepared as to avoid to the utmost the "suckers" which so often destroy Roses propagated on stocks less adapted to our American conditions.

The Bobbink & Atkins Roses are also home-tested, for every plant we send out has proved itself in bloom under the eye of our skillful Rose-growers in our own great acreage. Thus these plants, home-propagated on the best home-raised "stocks," are home-grown, home-bloomed and home-proved; they are definitely and literally the World's Choicest Roses for and in America!

The Time to Plant Roses

The little mail-order samples of Roses, usually grown in a hot hurry in heated greenhouses, may be bought and planted in the spring only. When they survive, the resulting plant may live over another season, but it can only have the blooming power of its own roots, not always strong. The plants we have perfected pump the vigor of a great root-system into the selected sorts, and there result, usually, from 10 to 100 per cent more flowers. One of these husky Roses weighs more than 10 of the mail-order type; it is a real plant!

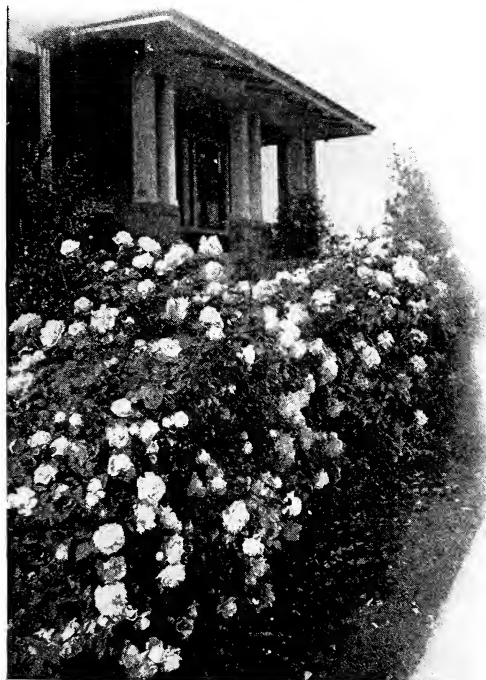
Now these "World's Choicest Roses for America" do not fear the winter. They are not greenhouse-coddled; they have lived only outdoors, bud and stock. Consequently, they can be planted in the autumn, to be ready for the very first impulse of the warming sun in the spring.

Fall Planting of Roses

The late Admiral Aaron Ward, one of the greatest Rose amateurs of the United States, and who had a world of experience with Roses, preferred fall planting. Capt. George C. Thomas, Jr., whose Rose-gardens near Philadelphia were the Mecca of American rose-lovers, prefers to plant in the fall.

Why do these men, who succeed when others fail, thus prefer? Because they have proved the advantages of fall planting to their own satisfaction.

These advantages include the much more favorable condition of the soil—warm and pleasant, instead of cold and wet; the more abundant time to plant carefully after thorough soil-preparation; and, most of all, the provision of an opportunity for the roots to settle in the ground and to be ready for quick spring growth.



The porte-cochere is made more attractive by the Climbing Rose

Spring Planting

But these best of all Roses for America will prosper with spring planting, too. Being shipped "dormant"—that is, without having been started into growth—they can be planted any time from October to April when the ground to receive them is unfrozen. The earlier they get into the ground, however, the better. They are anxious to get busy, and time lost in planting in the spring is not always made up the same season. Therefore, early planting is earnestly urged. The dormant Roses are not harmed by a late frost, and when they are properly set in the ground even the first-produced leaves and shoots laugh at a little freeze.

Getting Ready for Roses

Roses will grow under adverse conditions and make flowers; but why treat them thus? We produce the plants that are fullest of vigor and desire to grow and bloom. Ought they not to have the encouragement of a good bed and decent food at the hands of the planter?

Therefore, the preparation of the soil is important if the Roses are to prosper rather than merely to exist. Deep preparation is desirable—we know of amateurs who dig out 3 feet of the soil and replace it with various layers. But good results may be had with far less expense and trouble. To stir the ground thoroughly to the depth of 2 spade-shoves, put down honestly 9 inches each shove, will usually provide for root prosperity.

If the ground is soggy or wet, there must be drainage provided—Roses want plenty of water passing through the soil, but they won't endure wet feet! Rough clods, stones, bats, etc., to a depth of 6 inches will do the draining.

Roses are not dainty feeders. They like strong soil and plenty of food. The heavy soils, like those of clay, seem to please them most, though even in sand they will do well if additional food is supplied.

But there must be much food for many flowers! There are scores of prescriptions for Rose soil, and in a certain great garden the preparation has cost nearly \$2 a running foot for each 3-foot-wide Rose-bed! Yet splendid results are easily possible without this refinement of soil luxury.

Well-rotted manure—cow manure preferred, stable manure nearly as good—is the key that unlocks the flower gates for Roses. Plenty of it, to the extent of one-third the whole bulk that has been stirred up; well-rotted for certain; thoroughly mixed in the soil, so that the Rose roots must hunt for it, and not be in actual contact with it; and the planter may feel that he has done his part.

Bone-meal will help, if available, especially when worked into the soil as planting is done, at the rate of a large trowelful to a plant. Commercial sheep manure, in the same proportion, is useful.

Scotch soot, resulting from the burning of peat, is of known value both as a fertilizer for spring dressing and to bother the bugs; and any soot from a chimney above a wood-fire is valuable.

Well-rotted manure is the standby of the Rose-grower, however. Put in plenty, and then put in some more when the beds are prepared. Dig more in each spring; keep at it; Roses more often starve to death than die of indigestion!

Planting Roses

If at all practicable, the Rose-bed ought to be ready long enough before the Roses come to permit the ground thoroughly to settle. For early spring

Bobbink & Atkins World's Choicest Roses Grown in America

planting the preparation might well be made the preceding autumn, while for the desirable fall planting several weeks of "settling" will help, though not essential.

When the American-grown Roses for America arrive from our nurseries, the planter should have the ground ready. Open the package and separate the bundles, then "heel in"—which is simply loose planting in a slanting trench—so that the plants can be taken for setting 2 or 3 at a time. Keep the roots covered all the time, and if it is windy, carry the plants to the place of planting in a pail of water. Rose roots are not intended to be exposed to the air; they belong in the ground.

After the hole is dug and ready, take a plant and carefully prune any mangled ends of the roots, using a sharp knife or pruning-shears. If planting in the fall, cut the top out slightly, so that the final pruning may be done in the spring. If in spring, trim back all the branches to not more than 3 to 6 "eyes," or buds, and remove entirely all but the 3 or 4 strongest shoots.

Set the plant in the hole, which ought to be larger than the net space required, spreading out the roots carefully, so that fine earth can be brought into contact with them. When they are thus separated and covered, fill in more good soil over the roots (no manure in direct contact, remember!), firming it down with the hands. When the hole is full, stamp the soil firmly with the feet. Roses will not do well if loosely planted; the roots love to work in firm soil.

Plant about 2 inches deeper than the "crown" from which the shoots arise. This deep planting is essential.

Plant Hybrid Tea and Tea Roses 18 to 24 inches apart, Hybrid Perpetuals 2½ to 3 feet, and Climbers at least 6 feet. Consider the expected growth, and provide room for it.

Cultivation and Protection

Roses need continuous cultivation. Keep the soil stirred, so that it does not cake about them, but do not cultivate deeper than 2 inches.

Water thoroughly when the Roses are planted. This means that the ground ought to be soaked to the depth of the planting. During the growing season a real, thorough watering once a week will help. Do not "sprinkle" and think you are watering. Soak the ground when you do water, and then do not again water until the surface is quite dry.

Protect from bugs and bothers by spraying with bordeaux mixture (see any good Rose book for details) several times prior to June 30, beginning while the plants are dormant. If the green aphid or plant louse comes, spray with a solution of Ivory or other soap, or with a weak solution of some nicotine preparation, like "Black-Leaf 40."

The dreaded "black-spot" is less likely to bother our outdoor-grown, husky Roses than those that have been greenhouse infected. Pick up and burn dropped leaves, cultivate thoroughly, cut flowers with liberal stems, and vigorous growth will act as the best protection against insects and diseases.

When winter comes and the ground has frozen, Hybrid Tea and Tea Roses need protection against the sun and the thawing of warm winter days.

Evergreen boughs are ideal for this protection. In severe climates Roses are protected by covering with earth.

The Hybrid Perpetuals are hardy, as are most of the Climbers, but a little protection is altogether worth while for all of them. In this matter, as in other matters of Rose prosperity, association with other rose-lovers' is invaluable. Join the American Rose Society, read its Annuals, and talk with your Rose friends. It is worth while.

Using Cut Roses

To get the full value of the cut flowers, Roses should be cut when the bud is half opened. These buds should be cut with a sharp scissors or knife after sunset, in the cool of the evening. Take as long a stem as possible without mutilating the bush, but, so far as you can, take only those ready for cutting, leaving the young buds to develop.

If the cut Roses are to be carried any distance, lay them loosely in a box, preferably lined with wax paper. *Do not sprinkle with water*—their own transpiration affords sufficient moisture. On arrival at their destination, or when brought into the house, about half an inch of the stem should be cleanly cut off with a sharp knife or scissors before placing the Roses in water. The vessels containing the flowers ought to be placed in the ice-box for the night, if practicable. In the morning, the flowers can be brought out and rearranged. If another quarter-inch of the stem is cut off in the evening, fresh water given, and the flowers again placed in the ice-box, they should give pleasure for several days.

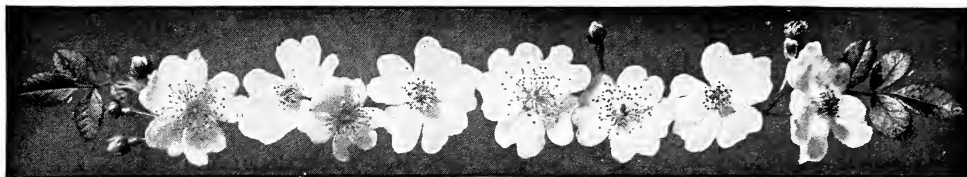
See "What Roses to Plant"
on page 32



Hybrid Perpetual Roses

Important Notice. This catalogue includes our full collection of Roses in stock at this time. Some varieties, however, are extremely limited in quantity and will, in all probability, be sold quickly. In such cases we will notify you on receipt of your order, suggesting others, but we will not substitute in filling orders unless you give us permission.

It would help us considerably, and save time, if you will, when ordering, state if we may substitute equally good varieties for those which may be sold out.



Index to American-Grown Roses for America

A. B., Austrian Brier.
 Arv., Arvensis.
 Bour., Bourbon.
 C., China.
 Cl. H. P., Climbing Hybrid Perpetual.
 Cl. H. T., Climbing Hybrid Tea.
 Cl. T., Climbing Tea.
 Dam., Damask.
 H. Bour., Hybrid Bourbon.
 H. Mac., Hybrid Macrophylla.
 H. N., Hybrid Noisette.
 H. P., Hybrid Perpetual.
 H. Sb., Hybrid Sweetbrier.
 H. Set., Hybrid Setigera.
 H. T., Hybrid Tea.
 W. Wich., Hybrid Wichuraiana.
 ana.
 Mult., Multiflora.
 Læv., Lævigata.
 N., Noisette.
 Per., Pernetiana.
 Poly., Polyantha.
 R., Rugosa.
 Spin., Spinosissima.
 T., Tea.
 W., Wichuraiana.

For complete classification descriptions, see page 32

	Page		Page		Page
Adelaide Moulle, H.W.	25	Cl. Kaiserin Auguste Victoria, Cl. H.T.	30	Florence Forrester, H.T.	8
Admiral Ward, H.T.	6	Cl. Lady Ashtown, Cl.H.T.	30	Florence Haswell Veitch, H.T.	8
Ænnchen Muller, Poly.	20	Cl. Mme. Melanie Soupert, Cl. H.T.	30	Florence Pemberton, H.T.	8
Alberic Barbier, H.W.	25	Cl. Mrs. W. J. Grant, Cl.H.T.	30	Flower of Fairfield, Mult.	27
Alexandre Girault, H.W.	25	Cl. Ophelia, Cl.H.T.	30	Francis Scott Key, H.T.	8
Amalie de Greiff, H.T.	6	Cl. Orleans, Mult.	26	Francois Foucard, H.W.	27
Amateur Teysier, H.T.	6	Clio, H.P.	22	Francois Guillot, H.W.	27
American Beauty, H.P.	22	Clotilde Soupert, Poly.	20	Francois Juranville, H.W.	27
American Pillar, Mult.	25	Colonel Leclerc, H.T.	7	Francois Poisson, H.W.	27
Amy Robsart, H.Sb.	24	Columbia, H.T.	7	Frau Karl Druschki, H.P.	22
Andree Lenoble, Poly.	20	Commandeur Jules Gravereaux, H.P.	22	Frau Margrethe Moller, H.T.	8
Anna de Diesbach, H.P.	20	Comte, G. de Rochemur, H.T.	7	Freedom, H.W.	27
Antoine Rivoire, H.T.	6	Conrad Ferdinand Meyer, R.	23	Freidrichsruh, H.T.	8
Ards Rover, Cl.H.P.	30	Constance, Per.	19	Freiherr Von Marschall, T.	18
Arthur R. Goodwin, Per.	19	Coronation, H.W.	26	General Jacqueminot, H.P.	22
Auguste Roussel, H.Mac.	25	Countess of Shaftesbury, H.T.	27	General MacArthur, H.T.	8
Augustine Guinoisseau, H.T.	6	Crested Moss, M.	24	General-Superior Arnold Janssen, H.T.	8
Augustus Hartmann, H.T.	6	Crimson Chatenay, H.T.	7	George Arends, H.P.	22
Austrian Copper, A.B.	24	Crimson Emblem, H.T.	7	George C. Waud, H.T.	8
Aviateur Bleriot, H.W.	25	Crimson Queen, H.T.	7	George Dickson, H.T.	8
Baby Dorothy, Poly.	20	C. V. Haworth, H.T.	7	George Elger, Poly.	20
Baby Lyon, Poly.	20	Danaë, Cl.H.T.	30	Gerbe Rose, H.W.	27
Baby Rambler, Red, Poly.	20	Dawn, Cl.H.T.	30	Ghislaine de Feligonde, Mult.	27
Baby Tausendschön, Poly.	20	Dean Hole, H.T.	7	Gladys Holland, H.T.	9
Baron de Bonstetten, H.P.	22	Debutante, H.W.	26	Gloire de Chedane Guinoisseau, H.P.	22
Baroness Rothschild, H.P.	22	Delight, H.W.	26	Gloire de Dijon, Cl.T.	30
Baroness von Ittersum, Mult.	25	Désiré Bergera, H.W.	26	Gloire des Belges, H.T.	9
Belle Poitevine, R.	23	Dorothy Page-Roberts, H.T.	7	Gloire Lyonnaise, H.T.	9
Belle Vichysoise, N.	21	Dorothy Perkins, H.W.	26	Golden Emblem, H.T.	9
Berwick, Spin.	21	Dr. Huey, H.W.	26	Golden Ophelia, H.T.	9
Bessie Brown, H.T.	6	Dr. W. Van Fleet, H.W.	26	Golden Spray, H.T.	9
Bess Lovett, H.W.	25	Duchess of Sutherland, H.T.	7	Goldfinch, Mult.	27
Betty, H.T.	25	Duchess of Wellington, H.T.	7	Georgeus, H.T.	9
Blanc Double de Coubert, R.	23	Duchess of Westminster, H.T.	7	Grange Colombe, H.T.	24
Blanche Frowein, Cl.H.T.	30	Earl of Warwick, H.T.	7	Green Mantle, H.Sb.	9
Blanche Moreau, M.	24	Ecarlate, H.T.	8	Greta Kluis, Poly.	20
Bloomfield Abundance, H.T.	6	Etoile, Poly.	20	Gruss an Aachen, Poly.	20
Bloomfield Progress, H.T.	6	Edith Bellenden, H.Sb.	24	Gruss an Freundorf, H.W.	27
Bouquet Rose, H.W.	25	Edith Part, H.T.	8	Gruss an Teplitz, H.T.	9
Bradwardine, H.Sb.	24	Edward Mawley, H.T.	8	Gustav Grunerwald, H.T.	9
Brenda, H.Sb.	24	Electra, Mult.	26	Hadley, H.T.	9
British Queen, H.T.	22	Elisa Robichon, H.W.	26	Hansa, R.	23
Captain Christy, H.P.	6	Ellen Poulsen, Poly.	20	Harison's Yellow, H.B.	24
Cardinal, H.T.	6	Ellen Willmott, H.T.	8	Harry Kirk, T.	18
Caroubier, H.W.	25	Elli Hartmann, H.T.	8	H. D. M. Barton, H.T.	9
Catherine Seyton, H.Sb.	24	Emil Fortepaule, H.W.	26	Heinrich Munch, H.P.	22
Cecile Brunner, Poly.	20	Erna Teschendorff, Poly.	20	Henriette Perier, Poly.	20
Celine Forestier, N.	21	Ernest Grandpierre, H.W.	26	Her Majesty, H.P.	22
Chateau de Clos Vougeot, H.T.	6	Ethel, H.W.	26	Hiawatha, H.W.	27
Cheerful, H.T.	7	Ethel Dickson, H.T.	8	Hoosier Beauty, H.T.	9
Chrissie MacKellar, H.T.	7	Etoile de France, H.T.	8	Hugh Dickson, H.P.	22
Cherokee Rose, Læv.	25	Eugene Jaquet, H.W.	26	Hugo Roller, T.	18
Christine Curle, H.W.	25	Eugenie Lamesch, Poly.	20	H. V. Machin, H.T.	9
Christine Wright, H.W.	26	Evangeline, H.W.	27	Ida Klemm, Mult.	27
Circe, H.T.	7	Evergreen Gem, H.W.	27	Imogen, H.T.	9
Clarice Goodacre, H.T.	7	Excelsa, H.W.	27	Indiana, H.T.	10
Cleveland, H.T.	7	Fisher Holmes, H.P.	22	Iona Herdmann, H.T.	10
Cl. American Beauty, H.W.	26	Flame, H.W.	27	Irish Beauty, H.T.	10
Cl. Birdie Blye, Cl.H.C.	30	Flame of Fire, H.T.	8	Irish Elegance, H.T.	10
Cl. Caroline Testout, Cl.H.T.	30	Flora McIvor, H.Sb.	24	Irish Engineer, H.T.	10
Cl. Cecile Brunner, Mult.	26			Irish Fireflame, H.T.	10
Cl. Clotilde Soupert, Mult.	26				

Bobbink & Atkins World's Choicest Roses Grown in America

INDEX TO AMERICAN-GROWN ROSES FOR AMERICA, continued

	Page		Page
Irish Glory, H.T.	10	Mme. Caroline Testout, H.T.	12
Isobel, H.T.	10	Mme. Charles Lutaud, H.T.	12
Jacques Porcher, H.T.	10	Mme. Colette Martinet, H.T.	13
Janet, H.T.	10	Mme. Constant Soupert, T.	18
Jean Girin, H.W.	27	Mme. Edmee Metz, H.T.	13
J. F. Barry, H.T.	10	Mme. Edmond Rostand, H.T.	13
J. B. Clark, H.P.	22	Mme. Edouard Herriot, Per.	19
Jeannie Deans, H.Sb.	24	Mme. Eugene Resal, C.	21
Jessie, Poly.	20	Mme. Georges Bruant, R.	23
Jonkheer J. L. Mock, H.T.	10	Mme. Ghys, Mult.	28
Joseph Hill, H.T.	10	Mme. Jenny Gillemot, H.T.	13
Josephine, H.T.	10	Mme. Jules Bouche, H.T.	13
Julia Mannering, H.Sb.	24	Mme. Jules Graveureux, Cl.T.	30
Juliet, Per.	19	Mme. Jules Gouchault, Poly.	21
Kaiserin Augusta Victoria, H.T.	10	Mme. Jules Grolez, H.T.	13
Killarney, H.T.	10	Mme. Leon Pain, H.T.	13
Killarney Brilliant, H.T.	10	Mme. Marcel Delanney, H.T.	13
Killarney, Double White, H.T.	10	Mme. Meha Sabatier, H.T.	13
Killarney Queen, H.T.	11	Mme. Melanie Soupert, H.T.	13
Killarney, White, H.T.	11	Mme. Ravary, H.T.	13
Klondyke, H.W.	27	Mme. Segond Weber, H.T.	13
K. of K., H.T.	11	Modesty, H.T.	13
Königin Carola, H.T.	11	Molly Bligh, H.T.	13
Kootenay, H.T.	11	Molly Sharman-Crawford, T.	18
Lady Alice Stanley, H.T.	11	Moonlight, Cl.H.T.	30
Lady Ashtown, H.T.	11	Mrs. Aaron Ward, H.T.	14
Lady Gay, H.W.	27	Mrs. Ambrose Ricardo, H.T.	14
Lady Godiva, H.W.	27	Mrs. Amy Hammond, H.T.	14
Lady Greenall, H.T.	11	Mrs. Andrew Carnegie, H.T.	14
Lady Hillingdon, T.	13	Mrs. Archie Gray, H.T.	14
Lady Mary Ward, H.T.	24	Mrs. Arthur Robert Waddell, H.	14
Lady Penzance, H.Sb.	24	T.	14
Lady Pirrie, H.T.	11	Mrs. B. R. Cant, T.	18
Lady Plymouth, T.	13	Mrs. Bullen, Per.	19
Lady Roberts, T.	18	Mrs. Charles Russell, H.T.	14
Lady Ursula, H.T.	11	Mrs. Edward Powell, H.T.	14
La France, H.T.	11	Mrs. Franklin Dennison, H.T.	14
La Tosca, H.T.	11	Mrs. Fred Searl, H.T.	14
Laurent Carle, H.T.	11	Mrs. F. W. Flight, Mult.	28
Le Mexique, H.W.	28	Mrs. George Shawyer, H.T.	14
Leonie Lamesch, Poly.	20	Mrs. Herbert Stevens, T.	18
Leontine Gervais, H.W.	28	Mrs. Hugh Dickson, H.T.	14
Leuchtfeuer, C.	21	Mrs. John Laing, H.P.	23
L'Ideal, H.T.	21	Mrs. Joseph H. Welch, H.T.	14
Lieutenant Chauré, H.T.	11	Mrs. MacKellar, H.T.	14
Lillian Moore, H.T.	11	Mrs. M. H. Walsh, H.W.	28
Longworth Rambler, Cl.H.T.	30	Mrs. R. G. Sharman-Crawford,	23
Lord Penzance, H.Sb.	24	H.P.	23
Los Angeles, H.T.	12	Mrs. Sam Ross, H.T.	15
Louise Catherine Breslau, Per.	19	Mrs. T. Hillas, H.T.	15
Lucy Ashton, H.Sb.	24	Mrs. Wakefield Christie-Miller,	15
Ludwig Moeller, H.P.	22	H.T.	15
Lyon Rambler, Mult.	28	Mrs. Wemyss Quin, H.T.	15
Lyon Rose, Per.	19	Mrs. W. H. Cutbush, Poly.	21
Mabel Drew, H.T.	12	Mrs. Wm. König, Poly.	21
Magna Charta, H.P.	22	My Maryland, H.T.	15
Maman Turbat, Poly.	21	Natalie Bottner, H.T.	15
Marcella, H.T.	12	National Emblem, H.T.	15
Marchal Niel, N.	28	Nerissa, H.T.	15
Margaret Dickson, H.P.	23	New Century, R.	23
Marie Adelaide, Grande Duch-	10	Newport Fairy, Mult.	28
esse de Luxembourg, Per.	10	Niege d'Avril, Mult.	28
Marie Jeanne, Mult.	28	Nova Zembla, R.	23
Marie Pavic, Poly.	21	Old Gold, H.T.	15
Marquise de Ganay, H.T.	12	Opheha, H.T.	15
Marquise de Sinety, H.T.	12	Orleans, Poly.	21
Mary, Countess of Ilchester,	12	Paradise, H.W.	28
H.T.	12	Parkziede, Mult.	28
Mary Lovett, H.W.	28	Paul Neyron, H.P.	23
May Miller, H.T.	12	Paul Noel.	23
Meg Merrilies, H.Sb.	24	Paul's Carmine Pillar, Cl.H.T.	30
Milky Way, H.W.	28	Paul's Scarlet Climber, H.W.	23
Minna, H.Sb.	24	Perle d'Or, Poly.	21
Minnie Dawson, Mult.	28	Persian Yellow, A.B.	24
Miss Alice de Rothschild, T.	18	Pharisaer, H.T.	16
Miss Cynthia Forde, H.T.	12	Philadelphia Rambler, Mult.	28
Miss Flora Mitten, H.W.	28	Pillar of Gold, Cl.T.	30
Miss Helyett, H.W.	28	Prairie Queen, H.Set.	21
Mlle. Simone Beaumez, H.T.	12	Premier, H.T.	16
Mme. Abel Chatenay, H.T.	12	Primerose, H.T.	16
Mme. Antoine Mari, H.T.	12	Prince Camille de Rohan, H.P.	23
Mme. Auguste Nonin, H.W.	28	Prince de Bulgarie, H.T.	23
Mme. Caristie Martel, H.T.	12	Purple East, Mult.	28
Queen Mary, H.T.	16	Queen of Fragrance, H.T.	16
Queen of the Belgians, Arv.	28	Radiance, H.T.	16
Raymond, Per.	19	Red Cap, Poly.	21
Red-Letter Day, H.T.	16	Red Moss, M.	24
Red Star, H.T.	16	Red-Radiance, H.T.	16
Reine Marie Henriette, Cl.H.T.	30	Red Star, H.T.	16
Renee Danielle, H.W.	28	Renee Marie Henriette, Cl.H.T.	30
Renee Wilmart-Urban, H.T.	17	Renee Danielle, H.W.	28
Richmond, H.T.	17	Renee Wilmart-Urban, H.T.	17
Robert Huey, H.T.	17	Richmond, H.T.	17
Robin Hood, H.T.	17	Robert Huey, H.T.	17
Rödhätte, Poly.	21	Robin Hood, H.T.	17
Roger Lambelin, H.P.	23	Rödhätte, Poly.	21
Rosa Banksiana.	31	Roger Lambelin, H.P.	23
Rosa Hugonis.	31	Rosa Banksiana.	31
Rosa lucida alba.	31	Rosa Hugonis.	31
Rosa moschata fl.-pl.	31	Rosa lucida alba.	31
Rosa rubiginosa.	31	Rosa moschata fl.-pl.	31
Rosa rugosa alba.	23	Rosa rubiginosa.	31
Rosa rugosa repens alba.	23	Rosa rugosa alba.	23
Rosa rubrifolia.	31	Rosa rugosa repens alba.	23
Rosa setigera.	31	Rosa rubrifolia.	31
Rosa spinosissima.	31	Rosa setigera.	31
Rosa spinosissima altaica.	31	Rosa spinosissima.	31
Rosa Wichuraiana.	31	Rosa spinosissima altaica.	31
Roseaie de l'Hay, R.	23	Rosa Wichuraiana.	31
Rosiere, Mult.	29	Roseaie de l'Hay, R.	23
Rowena, H.W.	29	Rosiere, Mult.	29
Rubin, Mult.	29	Rowena, H.W.	29
Salet, M.	24	Rubin, Mult.	29
Sander's White, H.W.	29	Salet, M.	24
Sarah Bernhardt, Cl.H.T.	30	Sander's White, H.W.	29
Senateur Mascuraud, H.T.	17	Sarah Bernhardt, Cl.H.T.	30
Sicile, Mult.	29	Senateur Mascuraud, H.T.	17
Silver Moon, H.W.	29	Sicile, Mult.	29
Sir Thomas Lipton, R.	23	Silver Moon, H.W.	29
Snowdrift, H.W.	29	Sir Thomas Lipton, R.	23
Sodenia, H.W.	29	Snowdrift, H.W.	29
Soleil d'Or, Per.	19	Sodenia, H.W.	29
Source d'Or, H.W.	29	Soleil d'Or, Per.	19
Souvenir de Gustave Prat, H.T.	17	Source d'Or, H.W.	29
Souv. de l'Aviateur Metivier, H.W.	29	Souvenir de Gustave Prat, H.T.	17
Souv. de l'Aviateur Olivier de	29	Souv. de l'Aviateur Metivier, H.W.	29
Montalent, H.W.	29	Souv. de l'Aviateur Olivier de	29
Souvenir de Pierre Notting, T.	18	Montalent, H.W.	29
Souvenir du President Carnot, H.	17	Souvenir de Pierre Notting, T.	18
T.	17	Souvenir du President Carnot, H.	17
Steil Rambler, Mult.	29	T.	17
Sunburst, H.T.	17	Steil Rambler, Mult.	29
Tausendschön, Mult.	29	Sunburst, H.T.	17
Tea Rambler, Mult.	29	Tausendschön, Mult.	29
The Farquhar, H.W.	29	Tea Rambler, Mult.	29
The Garland, Mult.	29	The Farquhar, H.W.	29
Tipperary, H.T.	17	The Garland, Mult.	29
Tip Top, Poly.	21	Tipperary, H.T.	17
Totote Gelos, H.T.	17	Tip Top, Poly.	21
Townsend, Spin.	21	Totote Gelos, H.T.	17
Triomphe Orleanais, Poly.	21	Townsend, Spin.	21
Ulrich Brunner, H.P.	23	Triomphe Orleanais, Poly.	21
Ulster Gem, H.T.	17	Ulrich Brunner, H.P.	23
Victory, H.W.	29	Ulster Gem, H.T.	17
Viscountess Folkestone, H.T.	17	Victory, H.W.	29
Walter Speed, H.T.	17	Viscountess Folkestone, H.T.	17
Waltham Rambler, Mult.	29	Walter Speed, H.T.	17
Wartburg, Mult.	29	Waltham Rambler, Mult.	29
Wedding Bells, Mult.	29	Wartburg, Mult.	29
White Dorothy Perkins, H.W.	29	Wedding Bells, Mult.	29
White Moss, M.	24	White Dorothy Perkins, H.W.	29
White Tausendschön, Mult.	29	White Moss, M.	24
Wichmoss, H.W.	29	White Tausendschön, Mult.	29
William Allen Richardson, N.	21	Wichmoss, H.W.	29
William R. Smith, T.	18	William Allen Richardson, N.	21
William Shean, H.T.	17	William R. Smith, T.	18
Willowmere, Per.	19	William Shean, H.T.	17
York and Lancaster, Dam.	21	Willowmere, Per.	19
Yvonne Rabier, Poly.	21	York and Lancaster, Dam.	21
Zephirine Drouhin, H.Bour.	21	Yvonne Rabier, Poly.	21
		Zephirine Drouhin, H.Bour.	21

HYBRID TEA ROSES

These are the hardy everblooming Roses that form the solid basis of any modern Rose-garden. They supply flowers so beautiful in form and color, so fragrant and fine, and for so much of the growing season, that they are well worth the little trouble necessary to protect and care for them, as briefly outlined on page 3. Our American-grown, outdoor-reared plants will give satisfaction.

Varieties marked with a star (★) can be supplied in tree form at \$3 each, unless otherwise noted. These have 3½- to 4-foot stems and 2-year heads

ADMIRAL WARD. A good Rose. The buds are blackish red, opening to large, well-formed flowers of crimson-red, shaded with fiery red and velvety purple. Free blooming; particularly good in autumn.

AMALIE DE GREIFF. Large, well-formed globular blooms of good substance. Brick-rose, with salmon-red and orange-yellow center.

AMATEUR TEYSSIER. The blooms are canary-yellow with deep saffron center on opening, but changing to white with age. A good grower.

ANTOINE RIVOIRE. Rosy flesh on yellow ground, edged with deep carmine, base yellow. A delightful combination.

AUGUSTINE GUINOISSEAU. Sometimes called "White La France," which is a compliment to any Rose. The blooms are white, overlaid with soft blush—a lovely and attractive color; fragrant. Very free bloomer.

AUGUSTUS HARTMANN. Brilliant geranium-red, flushed with orange. Large, well-formed flowers on stout, erect stems. Strong grower; hardy. Very fine variety.

BESSIE BROWN. A wonderful Rose of the softest ivory-white imaginable. The blooms are so well formed that it seems as if every one were cast in the same mold, and are of immense size and good substance. The perfume is delicious and penetrating.

BETTY.★ One of the points of excellence that recommends Betty is its long blooming period—from June until frost. The blooms are extra large in size, full and globular in form, with a delightful fragrance. The color is a coppery rose overspread with golden yellow. Very good autumn bloomer.

BLOOMFIELD ABUNDANCE. This Rose resembles Cecile Brunner, but it is hardier and the blooms are larger. It forms a bushy plant from 3 to 6 feet high, with glossy dark green foliage that is not susceptible to mildew. The flowers are double, of a lovely salmon-pink, and are produced singly and in sprays. This is one of the famous Roses originated by Captain Thomas, and which has been so much admired by all who have seen it.

BLOOMFIELD PROGRESS. Another of the beautiful Roses originated by Captain Thomas. It resembles General MacArthur in the color of its blooms, but is different in habit, size and form of flower. It is also an improvement on that variety in that the blooms hold their center better and are larger in hot weather. The deep velvety scarlet blooms are extremely double, often having more than 50 petals, and are very lasting, with a strong fragrance. It is a very vigorous grower of bushy habit.

BRITISH QUEEN. Pure white, except in bud stage, when it shows a slight flush, which disappears as bloom opens. Very vigorous; bearing an abundance of large, finely formed blooms; delightful fragrance. A very good white variety.

CARDINAL. A pleasing cardinal-red Rose of large size and exquisite fragrance. A fine garden Rose of excellent habit and very free-blooming.

CHATEAU DE CLOS VOUGEOT. The striking color of this flower makes it worthy a place in any Rose-garden. On opening, it is soft velvety scarlet, overspread with heavy blazing red; later the color becomes a deep crimson. A very free bloomer of vigorous habit. \$1.50 each.



Augustine Guinoisseau

HYBRID TEA ROSES, *continued*

CHEERFUL. Shining orange-flame, with heavy orange-yellow markings at base of petals.

CHRISIE MACKELLAR. The blooms open deep ochre-madder, with crimson-carminc pencilings, and change to bright orange-pink. A beautiful, fragrant semi-double Rose.

CIRCE. Large, full flowers of flesh-white, shaded with carmine, base of petals deep yellow. A good grower and bloomer. Lovely long, pointed buds.

CLARICE GOODACRE. Sharply pointed blooms; the stiff ivory-white petals are three-quarter zoned with biscuit-chrome. Orange-blossom fragrance.

CLEVELAND. Old-rose, flushed reddish copper, coppery yellow at base. Large, full flowers.

COLONEL LECLERC. The buds are well-shaped and open to flowers of beautiful cherry-red, washed with carmine-lake. Flowers large, globular. Fine autumn bloomer.

COLUMBIA.★ One of the most popular of the recently introduced Roses. The flowers are large, often measuring 6 inches across when open, and of a beautiful pink that, instead of fading, becomes more intense as the blooms mature. It resembles Mrs. George Shawyer in color, and is as lasting as Mrs. Charles Russell, with about the same number of petals. A vigorous grower, bearing its flowers on long, stiff stems that are thornless for 10 to 12 inches below the flower. Said to be free from mildew and spot. \$1.50 each. Standards \$3.50.

COMTE G. DE ROCHEMUR. Bright scarlet-red, shaded vermillion, fiery center, edge whitish pink.

COUNTESS OF SHAFTESBURY. Bright carmine, overlaid with silver and flushed pale shell-pink at the petal edges, slightly deeper at the base, and deepening with age to light cochineal-carmine; very lasting. Vigorous grower; free and continuous bloomer.

CRIMSON CHATENAY. A seedling of Mme. Abel Chatenay and similar to it in growth and habit, but more vigorous and hardy. Its beautiful bright crimson blooms are perfectly imbricated and like those of the parent in size and shape, with a strong old Rose fragrance.

CRIMSON EMBLEM. A desirable bright-colored sort. The large cup-shaped blossoms are a glowing crimson and are borne in profusion; fragrant. Vigorous grower.

CRIMSON QUEEN. The buds are long and pointed, and open into handsome, well-formed blooms of velvety crimson which are at their best in autumn.

C. V. HAWORTH. New. An intense black-scarlet Rose, with rich crimson pile—a most glorious color. The blooms are of good size, perfect form, and very freely produced; deliciously fragrant. A vigorous grower. Has been greatly admired wherever exhibited. \$1.50 each.

DEAN HOLE.★ Soft silvery carmine, shaded salmon. Blooms large, pointed, delicately fragrant. Very free-flowering and produces blooms nearly all the season.

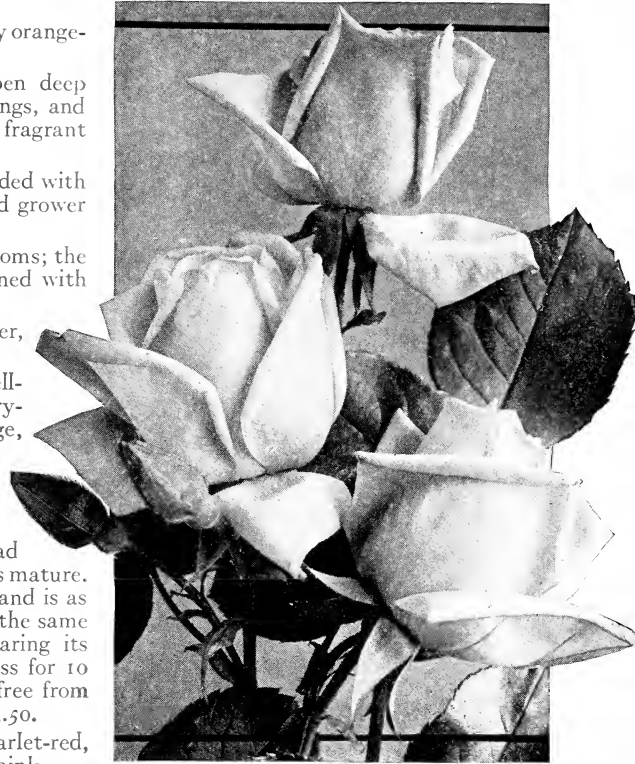
DOROTHY PAGE-ROBERTS. Large, globular blooms of coppery pink, suffused apricot-yellow. A hardy free-flowering sort, and especially attractive because of its beautiful color.

DUCHESS OF SUTHERLAND. The pink buds open into large, full blossoms of fairy-like texture and warm pink color, shading to pale lemon-yellow on white at base; delicious sweetbrier perfume.

DUCHESS OF WELLINGTON. We have long considered this the best yellow Hybrid Tea Rose ever introduced, and the more we see of it the stronger becomes our conviction. Some growers have re-christened it "Orange Killarney." The flowers are large, full, well formed, unusually long in bud, intense saffron-yellow stained with crimson, changing to deep coppery saffron-yellow; fragrant.

DUCHESS OF WESTMINSTER. Handsome flowers of exquisite fragrance. The blooms are large in size, daintily formed, clear rose-madder, nearly bordering on brick-red. The plants are strong and the lustrous green foliage makes a delightful contrast with the flowers. Fine autumn bloomer.

EARL OF WARWICK. Soft salmon-pink, with heavy vermillion shadings; large and full. Vigorous grower. A fine decorative variety; good autumn bloomer. Very sweetly perfumed.



Betty (See page 6)

HYBRID TEA ROSES, continued

ECARLATE. A robust grower that bears its medium-sized brilliant scarlet flowers in great profusion. A good bedder; never blues.

EDITH PART.★ The blooms are perfect in shape and of a lovely rich red, with a marked suffusion of deep salmon and coppery yellow; very sweetly perfumed. Vigorous grower; free bloomer.

EDWARD MAWLEY. One of the finest Roses known. The buds are deep purplish crimson, opening to extra-large, perfectly formed blooms of dark blackish crimson. With many rose-growers Edward Mawley is the favorite crimson sort.

ELLEN WILLMOTT. Long, shapely buds, opening to full cup-shaped flowers of waxy white tinged salmon, with center of bloom pale carnation-pink. Extremely prolific and a real vigorous grower; good autumn bloomer.

ELLI HARTMANN. The ovoid buds open into fine, full flowers of Marechal Niel-yellow, with old-gold center; sweet-scented. Vigorous grower and free bloomer.

ETHEL DICKSON. New. Large, full blooms of deep salmon-rose, with silvery reflexes. Strong, upright grower; profuse bloomer. \$1.50 each.

ETOILE DE FRANCE. When a noted French grower introduced this Rose in 1905 it at once became a popular sort with rose-lovers in every corner of the earth. Every year since then it has gained new friends and devotees because of its wonderful size, form, and color. The big blooms are a soft velvety crimson on the outer petals; the slightly raised center of the flowers is a vivid shade of cerise.

FLAME OF FIRE. Intensely bright orange-flame. Perhaps the most vivid color found among Roses. Very free-flowering.

FLORENCE FORRESTER. Clear snow-white, with lemon tinge, but becoming pure white as flower ages. Unusually large blooms, sweetly perfumed. A sturdy but dwarf grower.

FLORENCE HASWELL VEITCH. Brilliant scarlet, shaded with black. Large, moderately full, very fragrant; floriferous.

FLORENCE PEMBERTON. A handsome Rose of extra-large size and excellent shape and form. The color is creamy white, suffused with light pink, the edges of the petals being tinted lightly with peach-pink. The colors harmonize well. Beautiful in autumn.

FRANCIS SCOTT KEY. A glorious Rose of blazing red. Perfectly formed; large size; fragrant. An excellent bedding variety and blooms until frost.

FRAU MARGRETHE MOLLER. Perfectly formed, very large, full flowers of dark rose, edges of petals lighter; very fragrant. A vigorous grower and free bloomer.

FRIEDRICHSRUH. Deep somber blood-red bordering on maroon and mixed with blackish purple. Flowers large, full, of good substance and pleasing fragrance. Plants are almost thornless and are strong, vigorous, and productive. A fine decorative sort. \$1.50 each.

GENERAL MacARTHUR.★ A noted American variety of great worth. It was introduced in 1905 and at once became a favorite. Today it stands as one of the most desirable sorts of American origin. The blooms are extra large, full, and well developed. In color it is deep velvety scarlet, nearly bright crimson. The plants are very strong growers, of branching habit, and produce blooms in abundance. For a bedding Rose we recommend General MacArthur.

GENERAL-SUPERIOR ARNOLD JANSSEN. Finely formed buds, opening into large, full, globular flowers of glowing deep carmine; fragrant. A free-blooming sort that is especially valuable for cutting and for autumn bloom. Vigorous grower.

GEORGE C. WAUD.★ A most distinct Rose because of its wonderful coloring, which is radically different from that of any other variety. The large blooms are glowing orange-vermilion, full, globular, perfect in shape, and possess a very sweet odor. Fine in autumn.

GEORGE DICKSON. We might mention several hundred varieties of light-colored Roses but there are few good sorts in the very dark shades. George Dickson is one of the few; even more, it is one of the best dark Roses in existence. The blooms are as nearly perfect as those of any Rose, large, full, and fragrant. The color is deep velvety crimson, almost black on the front of the petals, while the reverse side is heavily and deeply veined with rich crimson-maroon. Never blues, browns or seals.



Etoile de France

HYBRID TEA ROSES, continued

GLADYS HOLLAND. The exquisite color of this Rose will win it a host of admirers. It is a lovely buff, shaded orange-yellow, with the outside of the petals soft rose and pearly peach-pink. The blooms are of magnificent size and form, delicately sweet-scented, and are borne on rigid, upright stems. A vigorous grower. It was awarded a Gold Medal by the National Rose Society. \$1.50 each.

GLOIRE DES BELGES. Long, oval buds and large, full flowers of vivid carmine and cochineal. Vigorous grower and free bloomer. Excellent for cutting purposes and massing.

GLOIRE LYONNAISE. Medium-sized but very beautiful flowers of pale lemon-yellow.

GOLDEN EMBLEM. One of the most striking of the new Roses, and a perpetual bloomer. It is a superb yellow in color, being richer and deeper than Rayon d'Or, and at its best rivals Marechal Niel in shape. The flowers are borne on long, upright stems, well above the glossy, holly-like green foliage, which is of wonderful substance and mildew-proof. Has been awarded several medals for its excellence. \$2.50 each.

GOLDEN OPHELIA. A seedling of Ophelia, with many of its characteristics. In color it is golden yellow at the center, paling slightly at the outer petals. The blooms are of medium size, very compact, and open very symmetrically. A great addition to the yellow Rose class.

GOLDEN SPRAY. New. A vigorous grower, sending up long, arching shoots which form great, loose, elegant sprays, every bud of which opens in succession. The long, pointed buds are deep Marechal Niel-yellow, opening to very large, almost single blooms of clear lemon-yellow. \$1.50 each.

GORGEOUS. Deep orange-yellow, heavily veined with reddish copper—a very unique and beautiful color. Flowers large, full, and well-formed. Vigorous grower of perfect habit; free bloomer.

GRANGE COLOMBE. Soft ivory-white, with salmon-yellow-fawn center. As the flower expands the color slowly becomes white.

GRUSS AN TEPLITZ.★ One of the best garden Roses, giving many beautiful flowers over a long period. Gruss an Teplitz bushes are well covered with blooms from early June until frost kills the buds. Few varieties have such a profuse blooming habit. The flowers are crimson-scarlet, bright enough to attract the attention of the observer, but not vivid enough to throw other sorts into the background. Fine for mass-planting and hedges.

GUSTAV GRUNERWALD. Broad petals of bright carmine-pink, center yellow. The buds are long and pointed and the flowers are large, full, and of perfect form.

HADLEY. We are enthusiastic about this wonderful Rose, which is an American variety, introduced in 1914. At Rose shows in 1915 and 1916 it created a sensation wherever exhibited. This newly crowned Queen of Rose-dom is a beautifully formed flower of bright red, slightly darker than the color of the well-known Hoosier Beauty.

H. D. M. BARTON. New. Flowers moderately large and full with long, pointed buds. Deep, rich, velvety crimson, which does not blue with age. Upright, vigorous growth. \$1.50 each.

HOOSIER BEAUTY. Beautiful in both bud and flower. The buds are long and slender and keep for a long time if cut when only partly open. Flowers are large, full, and handsomely shaped. The color is glowing crimson, with darker shadings. The plants are extremely vigorous and produce their big blooms in abundance until late autumn.

H. V. MACHIN.★ A Rose of gigantic size. The originators claim it is the "embodiment of a perfect bloom, combining size, form, and color, the attributes demanded of a model exhibition flower. Its intensely black-grained, scarlet-crimson blooms are carried on rigid flower-stalks of sturdy, erect growth embellished with ideal, glaucous, beech-green foliage." Has been awarded several medals.

IMOGEN. New. Orange-yellow in center, shading toward the outside to pale yellow and creamy white. An extremely handsome sort of beautiful form.



Gruss an Teplitz

HYBRID TEA ROSES, *continued*

INDIANA. A handsome Rose, blooming over a long period. Deep pink, with a faint suggestion of orange, making a delightful combination. Large, well-formed flowers on strong, vigorous plants.

IONA HERDMAN. Pure, clear orange-flame—a color so beautiful that it must be seen to be appreciated; sweet fragrance. Beautiful shape. Vigorous grower; very free bloomer.

IRISH BEAUTY. Single. Clear snowy white flowers of medium size. Very dainty and attractive.

IRISH ELEGANCE. Single. Bronzy orange-scarlet, changing to apricot. Blooms profusely all season. Extremely beautiful and striking color. Awarded Gold Medal by National Rose Society.

IRISH ENGINEER. Single flowers of dazzling scarlet. A robust grower, producing an abundance of very large, single blooms. A most attractive variety.

IRISH FIREFLAME. This Rose possesses one of the most pleasing color combinations found in any variety. The long, pointed buds are deep maddery orange, splashed with crimson, expanding to large single flowers of rich, satiny old-gold, then assuming various shades of yellow, beautifully venated and tinged. Irish Fireflame is worthy of a prominent place in the garden of every rose-lover.

IRISH GLORY. Single. Silvery pink, reverse crimson. An exceedingly pleasing combination.

ISOBEL. One of our handsomest Roses. The color is rich carmine, flushed orange-scarlet, with faint Austrian-copper shading and a pure yellow center. Flowers are single and delightfully fragrant.

JACQUES PORCHER. Saffron ground, overlaid with carmine-white, passing to clear yellow, with darker center. A good grower and bloomer.

JANET. Virtually a dwarf Gloire de Dijon with large, globular, cupped blooms of silky salmon-flesh, developing to deep fawn; fragrant. Splendid habit; long, rigid flower-stalks. Good autumn bloomer.

J. F. BARRY.★ This is a very attractive Rose because of its wonderful purity of color, a clear canary-yellow, retained even during the hottest days. The flowers, although not large, are produced in such numbers as to give a constant supply for cutting. The prettily undulated deep glossy green foliage is also a great asset; this variety stands very high in our estimation.

JONKHEER J. L. MOCK.★ A favorite with hundreds of rose-lovers. The flowers are extra large and of more than ordinary beauty. The bright cherry-red on the outside of the broad petals and the shining silvery white on the inside make a double-colored bloom. They are well shaped and somewhat higher at the center than at the petal edges. Fine autumn bloomer.

JOSEPH HILL. Splendidly formed flowers of large size and great beauty. The color is deep saffron-yellow on the inside of the broad petals and coppery yellow on the outside. The bushes are vigorous growers and bear the handsome blooms freely throughout the season until late fall.

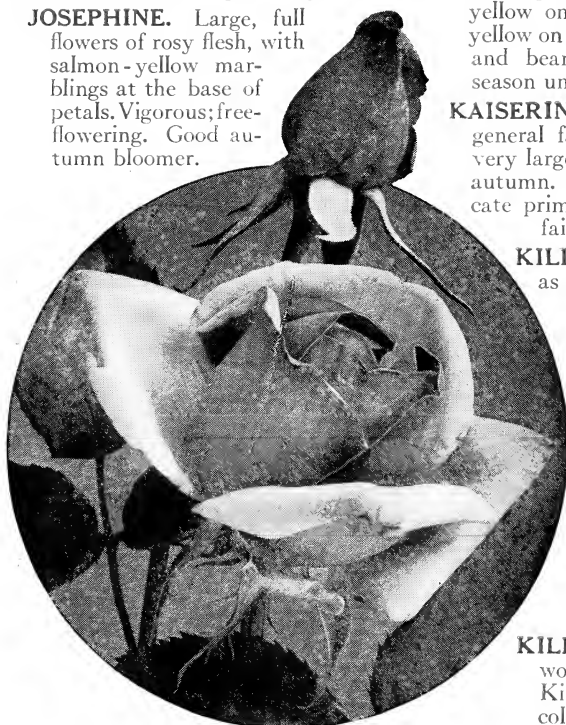
JOSEPHINE. Large, full flowers of rosy flesh, with salmon-yellow marblings at the base of petals. Vigorous; free-flowering. Good autumn bloomer.

KAISERIN AUGUSTA VICTORIA. An old sort and a general favorite with many rosarians. The blooms are very large, full, and globular and are produced until late autumn. The color is soft creamy white, shading to delicate primrose at the center, making a flower of almost fairy-like delicacy.

KILLARNEY. Few Roses have become as popular as this one. It has all the good qualities demanded in a Rose. The buds are very long and pointed and the blooms are large, and of a lovely flesh-color, shaded white and suffused pale pink; deliciously perfumed. Vigorous grower; very free bloomer.

KILLARNEY BRILLIANT. The introducers describe it in these glowing words: "An improvement on the original Pink Killarney, because of its more brilliant color, which is almost crimson in bright weather, while in dull or cloudy weather it is pure, deep, rosy carmine." Deliciously tea-perfumed. One of the best of the recent originations and very popular.

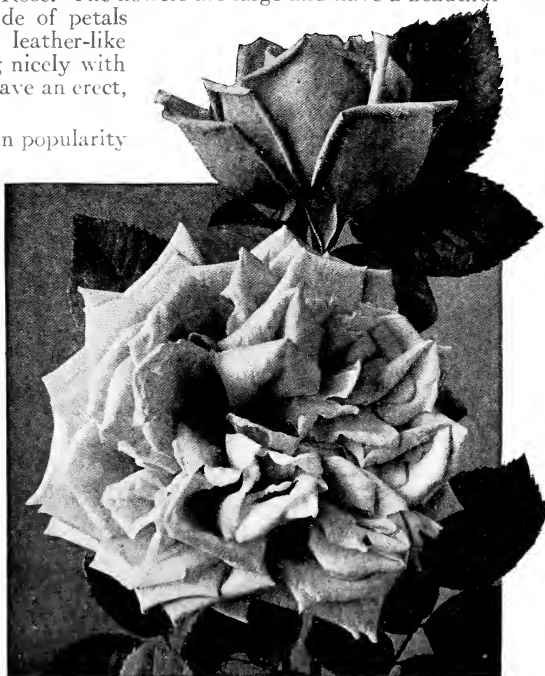
KILLARNEY, DOUBLE WHITE.★ A distinct Rose worthy of its name. It is similar to the famous Killarney in size, shape, and fragrance, but the color is snow-white instead of flesh-pink. A remarkable Rose in every way.



Jonkheer J. L. Mock

HYBRID TEA ROSES, *continued*

- KILLARNEY QUEEN.**★ A handsome sport from the well-known Killarney Rose. The blooms are large and are well formed from bud to the fully open flower. In color it is throughout a distinct, clear pink, somewhat darker and with better foliage than the original Killarney. The plants are strong and free-flowering.
- KILLARNEY WHITE.** A pure white sport of the old pink Killarney, and equally as beautiful. It is a vigorous grower and is a great acquisition for general culture.
- K. of K.** New. Large, semi-single Rose of very intense scarlet, with velvety sheen; delicious perfume. Vigorous, branching growth; free bloomer. \$1.50 each.
- KÖNIGIN CAROLA.** Soft satiny rose, with heavy markings of silvery white on the reverse side of the petals. The blooms are large and borne in abundance on strong bushes until frost.
- KOOTENAY.** New. Beautiful primrose-colored blooms of large size, globular form, and good substance. Vigorous, erect grower; profuse bloomer. \$1.50 each.
- LADY ALICE STANLEY.**★ Deep coral-rose on outside of the broad petals, pale flesh on the inside. The blooms are large, possess an exquisite fragrance, and are borne profusely on strong, upright bushes all season, and far into autumn.
- LADY ASHTOWN.**★ Extremely beautiful flowers of pale carmine-pink, shading to golden yellow at the base of the petals. The blooms are large, globular, and well formed, rather higher in the center than at the edge. Excellent for garden or greenhouse and a profuse bloomer all season until frost.
- LADY GREENALL.** Has the most perfectly shaped, long, pointed buds developing into large, finely perfumed flowers of intense saffron-orange, heavily zoned and overspread on deep creamy white; reflex of petals suffused delicate shell-pink. Grows vigorously and blooms profusely until autumn.
- LADY MARY WARD.** Flowers rich orange, shaded deeper apricot-orange, with a decided metallic sheen and touches of bronzy red—a most unusual and pleasing color combination. It is a vigorous although not a tall grower, of erect habit, and produces a profusion of its fragrant blooms. Awarded Gold Medal of National Rose Society.
- LADY PIRRIE.**★ A favorite with rose-lovers. The blooms are large and nicely formed, somewhat pointed and higher at the center. On the outside of the petals the color is deep coppery reddish salmon; on the inside flushed fawn and copper prevails.
- LADY URSULA.**★ A handsome Rose with wonderful fragrance. The blooms are large, with broad, thick petals of great substance. In color Lady Ursula is a smooth flesh-pink. This variety prefers a location where only a small amount of water will reach the roots. Good fall bloomer.
- LA FRANCE.** This was the very first Hybrid Tea Rose. The flowers are large and have a beautiful globular shape. In color a bright pink on outside of petals and a lovely silvery pink on the inside. The leather-like foliage is deep beech-green in color, contrasting nicely with the handsome blooms. The bushes are vigorous, have an erect, branching habit, and bloom abundantly.
- LA TOSCA.** This magnificent Rose seems to gain in popularity with each succeeding year. The color is silvery pink with deeper center. Flowers large and full, abundantly produced. A reliable garden Rose. The bushes are vigorous growers, with sturdy, erect stems and heavy branching habit.
- LAURENT CARLE.** Large flowers of great beauty and substance, not too full, and always opening freely. The color is brilliant velvety carmine. Vigorous grower. This is one of the really good deep-colored Roses that will reach your expectations. Fine in autumn.
- LIEUTENANT CHAURE.** A free-flowering Rose of large size and good form. The color is clear crimson-red, shaded with garnet. A vigorous grower and an ideal garden Rose.
- LILLIAN MOORE.** New. This is the \$10,000 prize Rose. The large, very full flowers are of perfect camellia-shape, and the buds are long and pointed, opening freely in all weathers. In color they are a deep, pure Indian-yellow, with slightly deeper center. Growth vigorous and branching, and very floriferous. A superb Rose for every purpose.



La France

HYBRID TEA ROSES, continued

LOS ANGELES.★ A wonderfully pretty American Rose introduced in 1915. The originators describe it thus: "Los Angeles is, by all odds, one of the finest Roses ever introduced. In color a luminous flame-pink, toned with coral and shaded with translucent gold at the base of the petals. In fragrance it is equal in intensity to the finest Marechal Niel. The buds are long and pointed and expand into a flower of mammoth proportions. The growth is vigorous to a degree. The beauty of the form and ever-increasing wealth of color are maintained from the incipient bud until the last petals drop." It is all the originators claim, and more. \$1.50 each; Standards \$3.50.

MABEL DREW. Deep cream, passing to canary-yellow in the center. Large, full flowers with delicious perfume. Good fall bloomer.

MARCELLA. Buds buff, opening to extra-large flowers of salmon-flesh. Vigorous and free-flowering. A very fine Rose.

MARQUISE DE GANAY. Very large, full flowers, growing on sturdy, erect plants. The color of this desirable Rose is clear bright silvery pink. Blooms until frost.

MARQUISE DE SINETY. A large handsome flower of striking golden yellow shaded bronzy red. Large, full flowers. Vigorous grower.

MARY, COUNTESS OF ILCHESTER. A variety of much merit; warm crimson-carmine blooms, with large smooth circular petals. The flowers are large in size and possess a genuine Hybrid Tea perfume.

MAY MILLER. Brilliant coppery rose, shaded with apricot and peach toward the edges of the petals. Vigorous grower; free bloomer.

MISS CYNTHIA FORDE.★ Large, full, perfectly formed flowers of deep, brilliant rose-pink, with light rosy pink reflex; has a distinctive perfume. Plant grows vigorously and blooms freely until late autumn. A fine Rose for the garden.

MLLE. SIMONE BEAUMEZ. Very large, delicately shaped flowers of flesh-white, sometimes tinted with saffron-yellow in center. It is a very vigorous grower, forming nice dwarf bushes, with attractive foliage and elongated buds borne on stiff stems.

MME. ABEL CHATENAY. Truly an everblooming variety producing a profusion of medium-sized well-formed flowers of bright rosy salmon-carmine, shaded vermilion-rose, base of petals deeper. A magnificent Rose and splendid in autumn.

MME. ANTOINE MARI. Pink, striped with white; beautiful in bud and flower; fine for forcing.



Los Angeles

MME. CARISTIE MARTEL. New. Large-petaled, globular flowers 5 to 6 inches in diameter, of pure sulphur-yellow, deeper in the center. Very vigorous grower of branching habit. Its enormous size and pure yellow color make it a distinct novelty. \$1.50 each.

MME. CAROLINE TESTOUT.★ Very large globular flowers of great beauty. The broad petals are bright satiny rose, slightly darkened at the center and soft carmine-pink at the edges. Bushes are strong and vigorous and very productive of perfect blooms. Fine in autumn. One of the best for open-ground planting; used in large quantities for mass planting in Portland, Ore., and elsewhere.

MME. C. CHAMBARD. The fine long buds are carried on long, stiff stems and open into large, full flowers of rosy flesh, shaded salmon and saffron, with base of petals deep yellow. A vigorous grower and very free bloomer.

MME. CHARLES LUTAUD. The long, pointed buds are of an ocher-carmine tint, opening into large, full, globular flowers of chrome-yellow slightly blended with rosy scarlet on the outer petals. Good autumn bloomer. Very attractive Rose.



Miss Cynthia Forde (See page 12)

HYBRID TEA ROSES, *continued*

MME. COLETTE MARTINET. A new Rose of high value. The long bud is golden yellow, opening into medium-sized flowers of old-gold, shaded with orange-yellow; free blooming.

MME. EDMEE METZ. Finely formed flowers of rosy carmine, with silvery salmon shading. Large size and globular form. Vigorous; very free-flowering. Blooms until frost.

MME. EDMOND ROSTAND. A long bud, opening to large flower of pale flesh, shaded with salmon and reddish orange in the center. Vigorous grower; free bloomer.

MME. JENNY GILLEMOT. Long, slender buds of nankeen-yellow, opening into full blooms of light saffron-yellow. A valuable Rose on account of its beautiful colors and long period of abundant bloom.

MME. JULES BOUCHE.* Handsome white blooms, with centers shaded primrose or lightest blush—varies; fragrant. Considered one of the best of its color. It has many good qualities to commend it, being a very vigorous grower, and developing into a well-shaped bush; a most persistent bloomer until late fall.

MME. JULES GROLEZ. Large, full flowers, perfect in form. The color is bright china-rose. The bush is strong and produces many large flowers throughout the blooming season and until frost.

MME. LEON PAIN.* Inside of petals light silvery salmon, salmon-pink on outside, center orange-salmon. Very large, full flowers are produced on the vigorous-growing bushes in great profusion until frost. One of our most beautiful Roses.

MME. MARCEL DELANNEY. This lovely Rose is comparatively little known, but is worthy of a spot in every garden. The blooms are quite large, possess a delightful fragrance, and grow on strong, upright stems. The color of the flowers is pale pink or soft rose, shaded with hydrangea-pink. Fine fall bloomer. A very distinct Rose.

MME. MEHA SABATIER. Very brilliant deep crimson; large full, globular flowers. An extremely attractive deep red Rose

MME. MELANIE SOUPERT. An extra-large flower of full and globular form. The color is a striking salmon-yellow, suffused with pink and carmine; the petals are large, broad, and have much substance. The bush is strong and sturdy, and produces handsome blooms in abundance. A very popular Rose because of its many good qualities.

MME. RAVARY. Fine oval-shaped, golden yellow buds, opening to very large, fairly full, orange yellow flowers. Madame Ravary is exceedingly free-flowering and hardy.

MME. SECONDE WEBER.* This is an exceedingly handsome flower of beautiful rosy salmon. The center of the bloom is somewhat higher than the outside petals, giving the individual flower a globular appearance. A desirable garden Rose and one that blooms well in autumn.

MODESTY. Pearly cream, faintly flushed rose. Very dainty and attractive.

MOLLY BLIGH. New. Deep maddery pink, heavily zoned orange-madder at the base of the petals; exquisite Musk Rose perfume. Vigorous grower and branching; free bloomer. \$1.50 each.



Mme. Caroline Testout (See page 12)

HYBRID TEA ROSES, continued

MRS. AARON WARD.★ A strong bush producing a profusion of flowers all season until frost. The buds are long and shapely and open into cup-shaped flowers of deep Indian-yellow, occasionally washed with salmon-rose. A most desirable and floriferous Rose.

MRS. AMBROSE RICARDO.★ Deep honey-yellow, overlaid brighter yellow, suffused flesh-pink. The blooms are of large size, fine substance, and are borne in great profusion until frost; delightful fragrance. Vigorous.

MRS. AMY HAMMOND. Clear amber, with apricot shading which deepens as season advances; delightful fragrance. Vigorous.

MRS. ANDREW CARNEGIE. White or faintly tinged yellow. Blooms of large size and beautiful form.

MRS. ARCHIE GRAY. Deep cream-yellow, opening to light canary-yellow. Fine habit, opening freely in all weathers. Flowers large and exquisitely formed. A gold medal variety.

MRS. ARTHUR ROBERT WADDELL.★ The slender, well-shaped buds are of the deepest apricot and open to graceful, loose-petaled flowers of great elegance, the apricot color paling to orange-salmon after the flower expands. In the fall is the time this fine Rose shows to its best advantage. Plant strong and vigorous.

MRS. CHARLES RUSSELL. The color is rosy carmine with rosy scarlet center. The blooms are large, globular, and of fine form when fully developed. The bush is strong, sturdy, of branching habit, and produces an abundance of beautiful blooms; possesses leather-like foliage. A fine variety of American origin.

MRS. EDWARD POWELL. Velvety crimson; large, full flowers, produced freely on strong bushes. A very promising French Rose of great beauty.

MRS. FRANKLIN DENNISON. A new Rose of surpassing beauty. Very large, full, well-formed flowers of porcelain-white, veiled primrose-yellow, deepening to ochre at the base of the petals. A strong, vigorous grower, producing its immense flowers in the greatest profusion.

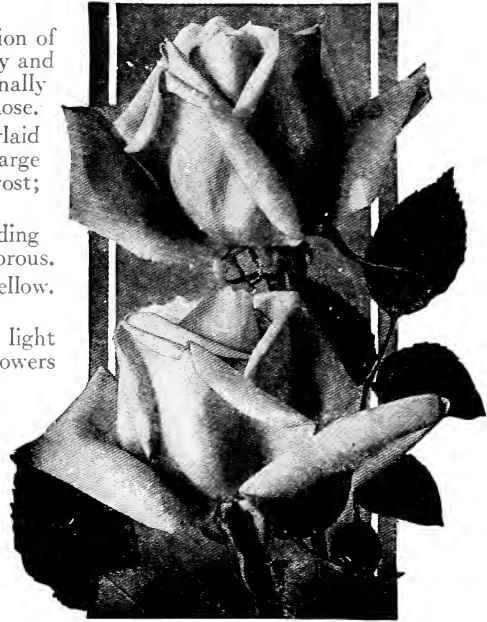
MRS. FRED SEARL. New. Very large, well-shaped flowers of fawny shell-pink, reflex of petals warm silvery carmine—deeper rose at edges—inside of petals richest fawn; very strong Tea perfume. Vigorous, branching grower; very free bloomer. \$1.50 each.

MRS. GEORGE SHAWYER. Long, slender, finely formed bud, opening to a very large, perfectly shaped flower of clear brilliant rose. A vigorous grower and free bloomer, producing its blooms until late autumn.

MRS. HUGH DICKSON. This is a splendid Rose for any purpose. It bears a profusion of large, handsome flowers which are delightfully scented. The petals are large and of good substance, and form flowers of superb build, with high-pointed center and beautiful outline. It is a deep cream, with heavy suffusion of orange and apricot. \$1.50 each.

MRS. JOSEPH H. WELCH. Very large, brilliant rose-pink flowers of perfect shape are produced in great abundance by this attractive Rose; delicately sweet-scented. A vigorous grower.

MRS. MACKELLAR. Every bud of this variety is as near perfect as possible, and each immense petal, on opening, is faultlessly finished with a satiny veneer. The bloom itself is large, finely formed, delightfully fragrant, and beautifully colored—a solid citron-yellow, or delicate, pure canary-yellow, passing to pearly primrose.



Mme. Abel Chatenay (See page 12)



Mrs. Charles Russell

HYBRID TEA ROSES, *continued*



Mme. Melanie Soupert (See page 13)

MRS. SAM ROSS. Straw-yellow, fading to light chamois-yellow, flushed buff on the reverse of petals. Vigorous. A good sort for garden or greenhouse.

MRS. T. HILLAS. A very vigorous grower of erect-branching habit, with few small thorns. The long, shapely buds are deep chrome-yellow, and the large, full cup-shaped flowers are pure chrome-yellow, without any suffusion. A beautiful Rose.

MRS. WAKEFIELD CHRISTIE-MILLER.* Large, globular, peony-formed blooms of soft pearly blush, shaded salmon, outside of petals clear vermilion rose. The lovely color is not faded by the hottest sun. The plants are strong, erect growers, and flower abundantly over a long period until late in autumn.

MRS. WEMYSS QUIN. A valuable Rose of recent introduction. Its color is intense lemon-chrome, washed with solid maddery orange, giving the flower a rare depth of color, almost a golden orange, which becomes deep, non-fading canary-yellow after the bloom fully opens; the guard petals are singed crimson-orange with odd reflexes, tipped with brilliant coppery crimson-orange. Tea fragrance.

MY MARYLAND. Originated in America and one of the most desirable sorts grown here. Its color is a clear bright salmon-pink, resembling that of Mrs. Wm. Randolph Hearst; the edges of the flower are somewhat paler than the centers. The bushes are strong and produce their blooms in abundance during the warm summer weather.

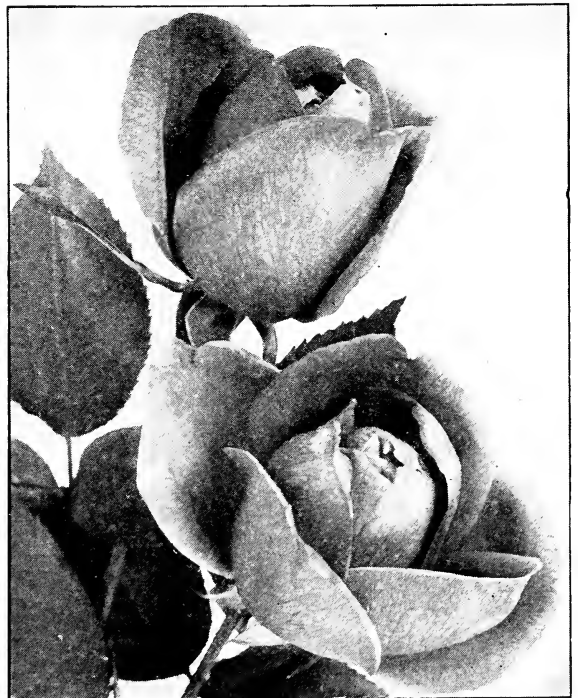
NATALIE BOTTNER. Large, full, perfectly formed flowers of pale soft flesh to creamy yellow, fading white, yellow base. The bushes are strong growers of erect, branching habit, each long stem usually being capped by a flower of elegant form.

NATIONAL EMBLEM. Very large, handsome blooms of dark crimson, overlaid with velvety crimson and shading to vermilion at the edges.

NERISSA. Extra-large full flowers of handsome globular shape. The color is creamy yellow shaded white, with faint tint of peach in the center of the bloom.

OLD GOLD. Vivid reddish orange, with coppery red and coppery apricot shadings. Medium-sized, moderately full flowers are produced in profusion.

OPHELIA.* By many rosarians Ophelia is considered the best Rose of its color. The blooms are large in size, full in form, and of very attractive appearance. The color is light salmon-pink-flesh, shading to yellow at the base of the petals. We have grown this Rose for the past few years and have found it an excellent variety in every respect, both indoors and outdoors. Blooms profusely all season and far into autumn.



Red Radiance (See page 16)

HYBRID TEA ROSES. *continued*

PHARISAER.★ The flowers are full in form, large in size, elongated in shape, and are produced in profusion on strong, erect-branching plants. The color is rosy white, shading to silvery salmon at center, a handsome combination when seen in the fully open flower. A good autumn bloomer.

PREMIER.★ The handsomest dark pink to date, the originator claims. The large, full blooms are an exquisite pure rose-pink which is very lasting. They are borne singly on stiff, thornless stems which indicate the vigorous, robust habit of the plant. It is a profuse and constant bloomer and a splendid forcer. Deliciously fragrant. \$1.50 each; Standard's \$3.50.

PRIMEROSE. Melon-yellow, in spring and summer, becoming deeper in fall, with apricot shading. The buds are long and pointed, and the flowers are large and perfectly formed; exquisite fragrance. Vigorous grower and free bloomer.

PRINCE DE BULGARIE.★ Very large full flowers, somewhat elongated. The color is silvery flesh, shading to deeper flesh in the center of the bloom, also tinted with salmon and saffron-yellow. The large flowers are borne on long stems, making this Rose equally valuable for bedding, pot culture, or forcing.

QUEEN MARY. Medium-sized flowers of handsome globular shape; primrose-tea perfume. The color is deep, bright canary-yellow in the center of the flower, while the edges of the petals are shaded with pure deep carmine. The bushes are strong, erect growers and free-blooming. A very showy and attractive Rose that has a host of admirers.

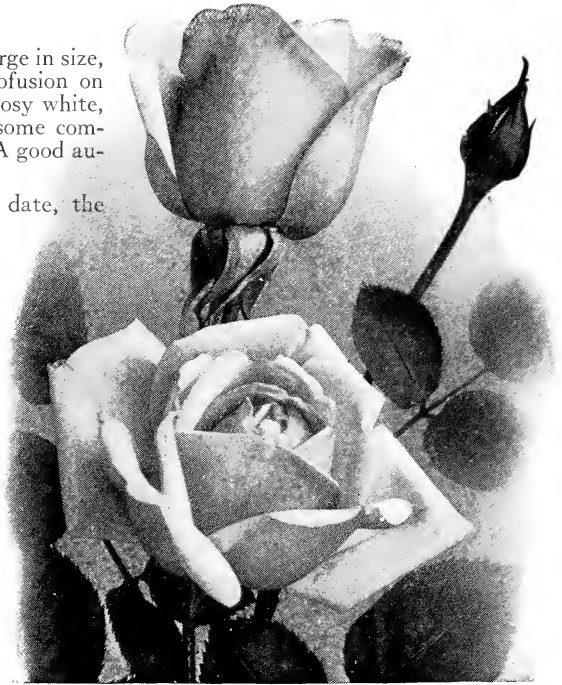
QUEEN OF FRAGRANCE. The flowers are large, double, and very elegantly shaped. In color they are a lovely shell-pink, tipped with silver. It is particularly notable for its powerful and delicious fragrance, for which it was awarded the Clay Challenge Cup by the Royal Horticultural Society. It is a vigorous grower and produces a profusion of bloom, both in summer and autumn. A splendid garden Rose.

RADIANCE.★ An erect strong-growing Rose producing an abundance of light silvery flesh to salmon-pink flowers, suffused pink and yellow coppery red. We consider Radiance one of the leading Roses of this color. An excellent sort for either garden or greenhouse and a good autumn bloomer.

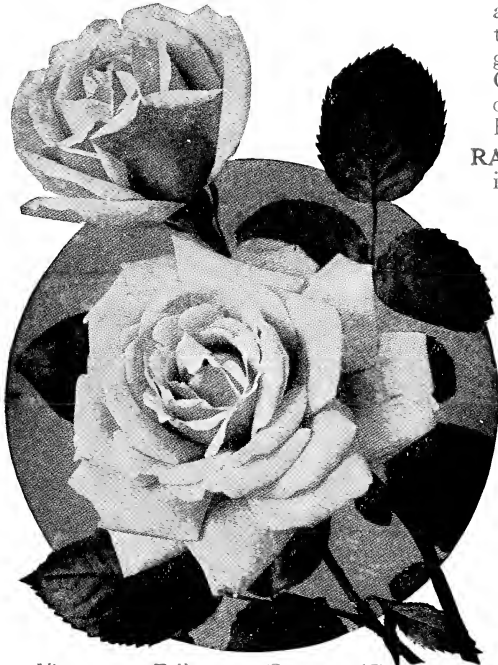
RED LETTER DAY. Semi-double. Blooms large, satiny crimson-scarlet, opening from long buds of glowing scarlet-crimson. The bushes are exceedingly vigorous and productive. The foliage is a beautiful sage-green, harmonizing nicely with the brilliant blooms.

RED RADIANCE.★ In every way except color, this beautiful Rose is the exact duplicate of its parent, the excellent Radiance Rose. The name describes it, for its color is deep red. The enormous, globular flowers are borne on heavy canes; attractive the whole season until frost.

RED STAR. Bright snappy red. Large blooms composed of wide petals; does not fade. Flowers freely and continually; good compact growth. \$1.50 each.



Radiance



Viscountess Folkestone (See page 17)

HYBRID TEA ROSES, *continued*



Richmond

RENEE WILMART-URBAN. Salmon-flesh, edged with carmine; beautiful in bud and flower.

RICHMOND. Originated by an experienced American grower. The blooms are very large and full. The color is a beautiful scarlet-crimson. For several years Richmond has been considered one of the best Roses of American origin, and it well merits this distinction.

ROBERT HUEY. Warm carmine-cerise, with wire edge of delicate pink; delicately perfumed. Vigorous; very free-flowering.

ROBIN HOOD. The blooms are a glorious rosy scarlet that is at once soft, bright and lasting. Very free bloomer; vigorous grower.

SENATEUR MASCURAUD. Long handsome bud, opening to large, full globular flowers; sea-amber-yellow, with heavy egg-yolk-yellow marking in the center, turning to pale sulphur-yellow when fully expanded. Owing to the remarkable color variations found in this Rose, we consider it worthy of a place in every Rose-garden. The bush is a strong, upright grower, with numerous erect stems and compact habit. Foliage dense, deep glaucous green, and leathery in substance. A good autumn bloomer.

SOUVENIR DE GUSTAVE PRAT. Pure light sulphur-yellow flowers, without shading, are pro-

duced freely. They are very large, fairly full, and of elegant form. Vigorous; fine autumn bloomer.

SOUVENIR DU PRESIDENT CARNOT. Another Rose from the famous house of Pernet-Ducher in France. This variety has fine, long, graceful buds on rigid stems. The flowers are large, globular in form, and of exquisite rosy flesh color, shaded with white at the edges of the petals. This is indeed a splendid Rose and is a great favorite with those who are acquainted with its many excellent points. The bushes are strong and bear the lovely blooms in profusion until frost.

SUNBURST. The introducer of this wonderful Rose describes it in these words: "Sunburst is a vigorous grower of robust constitution, with erect or slightly spreading habit and few thorns; fine reddish green bronzed foliage. The buds are long and generally borne on long stout stems; the flowers are large, full, and of fine elongated, cupped form. The color is a superb cadmium-yellow passing to yellow-orange in the center."

TIPPERARY. Soft golden yellow flowers are produced in great profusion; fragrant. A fine variety.

TOTOTE GELOS. Flesh-white, shaded chrome-yellow in the center in autumn. Very pleasing color.

ULSTER GEM. Single. Mammoth flowers of deep primrose-yellow.

VISCOUNTESS FOLKESTONE. An old variety whose popularity seems to grow with the passing years. The flowers are very large, perfectly formed, and open well; their color is creamy white, passing to salmon-pink, and slightly darker in the center than at the petal edges. Viscountess Folkestone is very free-flowering, and is especially recommended as a bedding Rose. An excellent outdoor sort, blooming until late autumn.

WALTER SPEED. Deep lemon-yellow, passing to milk-white. The large, imbricated circular petals have great substance and form a Rose of perfect form with high-pointed center. A very attractive variety.

WILLIAM SHEAN. Awarded Gold Medal by the National Rose Society. Its color is pure pink, delicately veined with ocher. The flowers are large, full, and of perfect form. The bush is strong, vigorous, and free flowering. We can heartily recommend William Shean as being a superb outdoor Rose.



Sunburst



Harry Kirk

TEA ROSES

The Tea Roses are the very cream of the everblooming class. Most of them are nearly as hardy as the Hybrid Teas, and all those we list are desirable in every way. See page 3 concerning protection, which is required in the North.

Varieties marked with a star (★) can be supplied in standard or tree form at \$3 each, unless otherwise noted

FREIHERR VON MARSCHALL. A vigorous grower, with long-pointed buds and large, full blooms of dark carmine-red. It is a very profuse bloomer and one of the most attractive of the red sorts.

HARRY KIRK. Bright primrose-amber-yellow. Very similar to the Hybrid Tea class because of its vigorous growth and free-flowering habit. To its glowing color is added a delightful perfume. Harry Kirk should be in every Rose-garden. A good autumn bloomer.

HUGO ROLLER. A medium-sized, handsome Rose of clear lemon-yellow, suffused and edged with soft crimson. It is a vigorous-growing variety of much worth for bedding. Free bloomer.

LADY HILLINGDON.★ One of the best Tea Roses of its color—deep apricot-yellow throughout. It varies from medium to large size and is very beautiful in both bud and flower. The bush is hardy, a vigorous grower and bears flowers in abundance.

LADY PLYMOUTH. The large full blooms are pearly cream, faintly flushed, giving it a most piquant finish. The bush is strong and vigorous; the foliage is bronze-green. Fine in autumn.

LADY ROBERTS. Rich reddish apricot, edges of petals shaded orange, merging to copper-red at the base. At its best in masses.

MISS ALICE DE ROTHSCHILD. Extremely handsome flowers of citron-yellow when they first open, deepening to golden yellow which does not fade. The bush is strong and vigorous, and bears its handsome flowers in profusion throughout the blooming period. Deliciously fragrant.

MME. CONSTANT SOUPERT. Full, handsome buds, opening slowly to deep yellow, peach-tinted flowers. A very fine vigorous-growing variety.

MOLLY SHARMAN-CRAWFORD. This variety is unique in color—a delicate greenish white, becoming pure white on opening. It has many good qualities to recommend it—large size, perfect form, delightful fragrance—and lasts in good condition for a long time. It is a vigorous grower and a free and continuous bloomer until frost.

MRS. B. R. CANT. Large double flowers, having deep rose outer petals, and inner petals of soft silvery rose, with suffusion of buff at base. Very vigorous grower; blooms all season.

MRS. HERBERT STEVENS. Snowy white, shaded fawn and peach toward the center. The flowers are long and pointed with petals of great depth and substance; fragrant. It rivals the Cochetts in perfection of form. Awarded Gold Medal of the National Rose Society.

SOUVENIR DE PIERRE NOTTING. Large, full flowers of apricot-yellow, blended with coppery yellow—one of those sunset-tinted Roses that win the admiration of all rose-lovers. Very distinct.

WILLIAM R. SMITH. The bush is strong and vigorous, bearing many beautiful blooms of large size; opens freely in all weathers. The color of the individual flower is soft silvery white, shading and toning to a delicate soft peach-pink. Good autumn bloomer.

PERNETIANA ROSES

A recently introduced class of Roses, peculiar in the richness of the yellow, orange, and bronzed shades of the buds and blooms. The varieties are mostly hybrids of the very hardy Austrian Brier type. They bloom freely and are of much value. A great French rosarian, M. Pernet-Ducher, is responsible for their origin. They are as hardy as the Hybrid Teas.

Varieties marked with a star (★) can be supplied in standard or tree form at \$3 each, unless otherwise noted

ARTHUR R. GOODWIN.★ A splendid Rose, presenting a wonderful transformation in color. When the buds first open the color is copper mixed with orange-red; later this is replaced by soft salmon-pink. One bush may be exhibiting its glorious coppery blooms, while the flowers on a nearby plant are a lovely soft pink.

CONSTANCE.★ This is a most attractive variety in all stages from bud to open flower. The long orange buds are streaked with crimson, and the large, globular, full flowers are a beautiful cadmium-yellow, passing to golden yellow. Much superior to Rayon d'Or. Fine autumn bloomer.

JULIET. The gorgeous coloring of this Rose has won it a host of admirers. The outside of the petals is old-gold, and the inside varies from scarlet to rosy red, passing to deep rose on opening. It is particularly beautiful in the bud and half-open stages. Very vigorous grower, producing flowers in summer and autumn. Strong and delicious fragrance.

LOUISE CATHERINE BRESLAU.★ A very vigorous grower of robust constitution and spreading, branching habit; rather thorny; fine glossy green bronzed foliage. Large oval-shaped bud of coral-red tint shaded with chrome-yellow; flower very large, full, and globular; petals of great depth, shrimp-pink, shaded with reddish coppery orange and chrome-yellow on reverse. \$1.50 each.

LYON ROSE. Shrimp-pink at the edges of the petals; center coral-red, shaded with chrome-yellow. The flowers are large, full, and delightfully fragrant. Very vigorous and free-flowering.

MARIE ADELAIDE, GRANDE DUCHESS OF LUXEMBOURG.★ The deep orange-yellow flowers are in color and of perfect form, with a delicate perfume; fine long buds on erect stems. As the petals unfold, they become reflexed in such a manner as to give the flower a starlike appearance. Exceptionally beautiful.

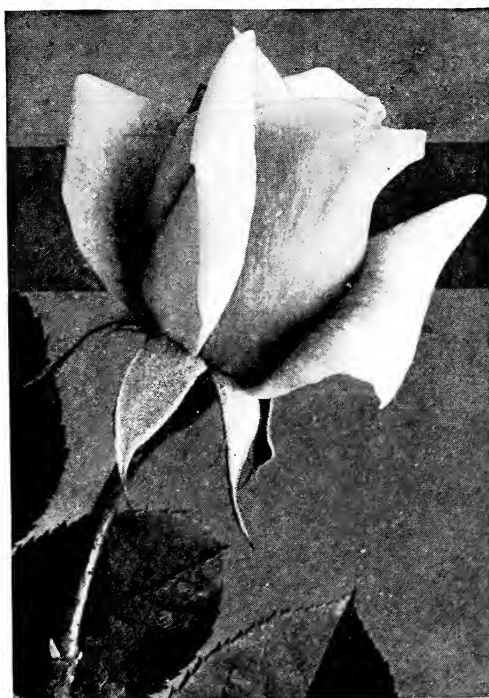
MME. EDOUARD HERRIOT.★ The coral-red buds open to semi-double, medium-sized flowers of coral-red, shaded with yellow and bright rosy scarlet, passing to prawn-red—an extraordinary coloring. Received a \$10,000 prize in England as "The Daily Mail Rose."

MRS. BULLEN. New. Large, moderately full flowers of cochineal-carmine, shaded with yellow, passing to carmine-lake, make this a most attractive variety that every rose-lover will want. A vigorous, branching grower and perpetual bloomer. \$1.50 each.

RAYMOND. New. Long buds and very large, full, globular flowers. The outer petals are peach-blossom-pink, with salmon-carmine or orange-carmine center, and darker coloring at the base of petals. Vigorous; spreading, erect habit.

SOLEIL D'OR. A vigorous straight-branching sort. Buds of lovely yellow, opening to large, full flowers from 3 to 4 inches in diameter, and of a glorious color varying from orange-yellow to a ruddy gold, shaded with nasturtium-red.

WILLOWMERE. Carmine-coral-red bud, opening rich shrimp-pink, shaded yellow in the center and toning to carmine-pink at the petal edges. A very beautiful Rose, always sure to attract attention.



The lovely Willowmere

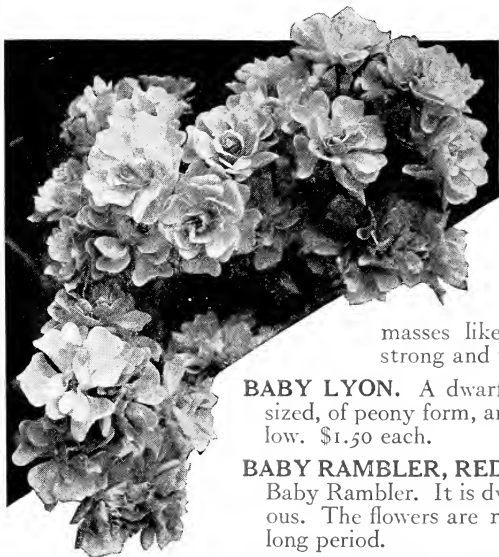
The roses and strawberries arrived in fine condition and are good, strong specimens. The roses you sent me last spring and fall have been unusually satisfying, being strong and healthy even at this late date.—
WILLIAM E. BRADLEY, Lansdowne, Pa., Nov. 20, 1918.

Los Angeles Roses received; came in fine shape. They were the finest rose plants I ever saw—such a grand root system. —————, Clearwater, Fla., Mar. 27, 1920.

POLYANTHA ROSES

Mostly dwarf in habit, all with exceeding freedom of bloom to commend them, the Polyantha Roses are especially useful for edging beds of taller-growing Roses, or for masses. They bloom continually, are easy to handle, and always delight the rose-grower. In hardiness they stand with the Hybrid Teas.

All varieties marked with a star (★) can be supplied in standard or tree form at \$3 each, unless noted



Baby Dorothy

ÆNNCHEN MULLER. A remarkably beautiful Polyantha Rose of comparatively recent introduction. It is a strong, vigorous grower, bearing large clusters of medium-double flowers from June until late autumn. The blossoms are a delightful deep rose in color. When planted in a sunny location Ænnchen Muller presents a most pleasing sight when in bloom.

ANDREE LENOBLE. Pure bright rose or clear red which does not fade. Enormous clusters of 50 to 100 large flowers. \$1.50 each.

BABY DOROTHY (Pink Baby Rambler). A delightful flower of bright pink. Blooms in

masses like the climbing Dorothy Perkins. The plants are strong and very floriferous.

BABY LYON. A dwarf variety recently introduced. Flowers are medium sized, of peony form, and a glowing coral or salmon-red, shaded chrome-yellow. \$1.50 each.

BABY RAMBLER, RED.★ For planting in masses we can highly recommend Baby Rambler. It is dwarf in habit; the bush is compact, strong, and vigorous. The flowers are rich rosy crimson and are profusely produced over a long period.

BABY TAUSENDSCHÖN. Pink, changing to rosy carmine as flowers expand. A delightful bedding Rose.

CECILE BRUNNER. A dwarf grower. The small flowers are bright rose, with yellowish center, and are borne in clusters; fragrant. A fine variety for the garden.

CLOTILDE SOUPERT. Flower of excellent form and great substance. The outer petals are pearly white, toning to rosy pink in the center, full and imbricated, large and beautiful. Excellent for bedding or massing. Plants are erect, sturdy, and very hardy. It is not a rare sight to see the buds and half-open flowers covered with frost late in fall. Should be planted if only for its hardiness.

ECHO. This resembles the Baby Tausendschön in its coloring, but is more vigorous. The flowers are a soft tender pink that is most attractive.

ELLEN POULSEN. The flowers of this desirable variety are large in size, have an elegant globular form, and are brilliant pink in color. The bushes are sturdy growers and produce their long-stemmed flowers over a long period.

ERNA TESCHENDORFF. A beautiful flower of deep crimson, darker than Red Baby Rambler. Extremely attractive when planted in masses.

EUGENIE LAMESCH. Orange-yellow, passing to clear yellow, heavily shaded with rose.

GEORGE ELGER. Coppery golden yellow, changing to clear yellow when opening—the best of its color in this section. A dwarf grower and very free-flowering. An excellent sort.

GRETA KLUIS.★ A sport of Baby Tausendschön. It is a lovely shade of deep carmine-pink, passing to glowing carmine-red—a very attractive color.

GRUSS AN AACHEN.★ Large-sized flowers of flesh-pink, overlaid with creamy yellow, and shading to deep pink at the bases of broad petals. Gruss an Aachen is an old favorite Rose of the Polyantha class. The dense glaucous green foliage harmonizes nicely with the flesh-colored blooms. The bush is a heavy, compact grower, almost as large as a Hybrid Tea bush.

HENRIETTE PERIER. Clear carmine-rose to clear rose. Buds and flowers handsome.

JESSIE. A superb flower of bright cherry-crimson which keeps its color well. The plants are of vigorous growth, and produce blooms in abundance. On account of its delightful color and free-flowering habit, Jessie is considered an excellent Rose for massing.

LEONIE LAMESCH. Striking single flowers of bright coppery red, with golden yellow center.

POLYANTHA ROSES, *continued*

MAMAN TURBAT.★ China rose, shaded with soft peach-pink; large, elegantly formed flowers.

MARIE PAVIC. The dainty snow-white flowers, with flesh-pink centers, are produced in such abundance as to make this a most desirable variety. A vigorous grower.

MME. JULES GOUCHAULT.★ Bud bright vermilion-red shaded clear orange-red, passing to bright fiery rose on opening; a brilliant attractive Rose which does not fade. Fine for bedding, cutting, and forcing.

MRS. W. H. CUTBUSH. The blooms are medium-sized, of a pleasing shade of peach-pink, and are produced very freely in large clusters until late autumn. The plants are hardy, strong, and vigorous.

MRS. WM. KONIG. A pure white, dwarf variety that is a very prolific bloomer. The blooms are globular and the foliage is a rich deep green.

ORLEANS.★ An ideal Rose for massing. The flowers are brilliant geranium-red, tinted pink, with creamy white centers and carmine on the outside of the petals. A gold medal Rose.

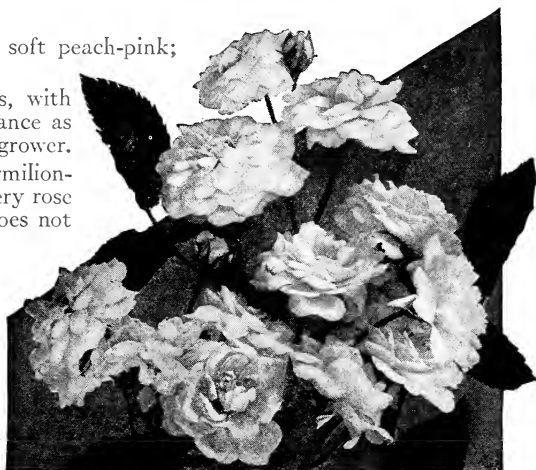
PERLE D'OR. A dwarf-growing variety of much worth. The bushes are strong and vigorous, producing their beautiful blooms in abundance. The flowers are nankeen-yellow, toning to a beautiful orange at the center.

RED CAP (Rödhätte).★ Low, vigorous-growing bushes, bearing large, semi-double flowers of bright cherry-red.

TIP TOP. A delicately marked variety of much promise. The outer petals are tipped with pale rose; the inner petals are light golden yellow and are striped and splashed with pink. The plant is a vigorous grower of dwarf habit. Sometimes called Baby Doll, or Lambert.

TRIOMPHE ORLEANAIS. Flowers large, for the class, of a bright cerise-red which is very lasting. A vigorous grower, bearing its blooms profusely in clusters.

YVONNE RABIER. The large flowers are borne in clusters and are white, tinted sulphur at the petal bases—a pleasing color combination. Of perfect habit and an excellent sort for massing.



Cruss an Aachen. (See page 20)

VARIOUS CONSTANT-BLOOMING ROSES

Here are grouped a number of excellent Roses, mostly, but not all, of constant-blooming habit, but all desirable in the well-rounded Rose-garden. Some of the sorts are not hardy north, as stated, and others bloom with the Hybrid Perpetuals in June. The really useful varieties in the China and Bourbon classes are here included.

BELLE VICHYSOISE. N. A very vigorous grower, bearing its small blossoms in bunches of 20 to 50. In color they are a dainty pinkish white. A very profuse bloomer.

BERWICK (*R. spinosissima*). One of the Scotch Roses that is largely used in bordering or for covering graves or mounds. The semi-double, bright rose flowers are very attractive.

CELINE FORESTIER. N. Bright yellow with deeper center; vigorous plants, with leathery green foliage. Free bloomer, but needs protection for northern winters.

LEUCHTFEUER. C. Large full flowers of bright red; sweetly scented. A vigorous grower.

L'IDEAL. N. Yellow and metallic red, streaked and tinted golden yellow—a gorgeous combination—all are found in the large, semi-double flowers which are produced in such profusion on the vigorous-growing plants.

MME. EUGENE RESAL. C. Rosy pink, shaded orange. Vigorous.

PRAIRIE QUEEN. H. Set. An old favorite, with large, double, cupped blooms of bright pink, sometimes striped white, and very fragrant. The showy clusters in which the blooms are arranged are very profusely borne on the vigorous-growing bushes.

TOWNSEND (*R. spinosissima*). Like the other Scotch Roses, this is fine for planting in the shrubbery border. The flowers are double, a lovely pink in color, and have a delicate fragrance. Requires little care but will develop into an attractive, bushy plant in poor soil and bloom profusely.

WILLIAM ALLEN RICHARDSON. N. Small, deep orange-yellow flowers. A distinct climber.

YORK AND LANCASTER. Dam. White, striped red; sometimes half red and half white. Spring bloomer only; of notable fragrance.

ZEPHIRINE DROUHIN. H. Bour. Bright silvery pink; semi-double; medium to large; exquisite perfume.

HYBRID PERPETUALS

Completely hardy and of vigorous growth, the Hybrid Perpetual Roses fill an important place. They bloom tremendously in June, and sometimes sparingly in the autumn. The June bloom, with that of the Hardy Climbers, is the basis of the Rose display for which the Middle States are famous. The Hybrid Perpetual Roses are taller in growth and need more space than the Hybrid Teas. They form the framework, so to speak, of the Rose-garden. In the northern latitudes, they are the only reliable hardy Roses.

All varieties marked with a star (★) can be supplied in standard or tree form at \$3 each

AMERICAN BEAUTY.★ Blooms are very large, deep pink to soft carmine-cerise, and the broad petals are delicately veined with darker red. A strong grower.

ANNA DE DIESBACH. A lovely bright carmine-red Rose that has been popular for years. The large, full flowers are very attractive. A vigorous grower.

BARON DE BONSTETTEN. Produces large, full blossoms of dark velvety crimson; fragrant.

BARONESS ROTHSCHILD. The blooms of pale rose are large in size, have a superb shape, are each set in a cup of lovely foliage,

and possess a delightful fragrance.

CAPTAIN CHRISTY. Both bud and blossom of this old favorite are distinctive. The buds are plump, with backward curling petals which show to perfection the contrast of light and dark pink. The massive blooms are darker toward

center, adding much to their beauty. Rather a dwarf but a strong and sturdy grower. A very popular variety for the garden.

CLIO.★ Delightful satiny flesh, with pink center. Flowers large, globular, borne on long stems, making this Rose valuable for cutting. When buds are nearly open they are perfectly cup-shaped.

COMMANDEUR JULES GRAVEREAUX. Velvety red, shaded maroon. Long, pointed buds and large, full flowers are borne in abundance on the vigorous-growing plants.

FISHER HOLMES. Bright velvety crimson-scarlet. The bud is long and pointed and opens into a flower of huge size, excellent shape, and great beauty. A very good Rose.

FRAU KARL DRUSCHKI.★ Many rose-lovers call this beautiful Rose "Snow-Queen"; others simply call it the "White Rose." The blooms are very large, sometimes reaching nearly 6 inches in diameter. The growth of the plant is strong and vigorous, and it bears blooms abundantly in June. If kept growing, it usually produces many flowers in the autumn. The finest white Rose.

GENERAL JACQUEMINOT.★ The old favorite "Jack" Rose is still popular. The blossoms are large, full, and globular, having an excellent cup-shaped form. In color they are brilliant scarlet-crimson, with deeper veinings toward the petal bases.

GEORGE ARENDS.★ Strong-growing plant, bearing an abundance of well-shaped delicate pink flowers. A very satisfactory sort which has been largely planted.

GLOIRE DE CHEDANE GUINOISSEAU. Very large, full, globular flowers of brilliant vermilion-red, shaded velvety red. Vigorous grower. Very fine.

HEINRICH MUNCH. Very large, full, soft pink blooms that resemble those of Frau Karl Druschki.

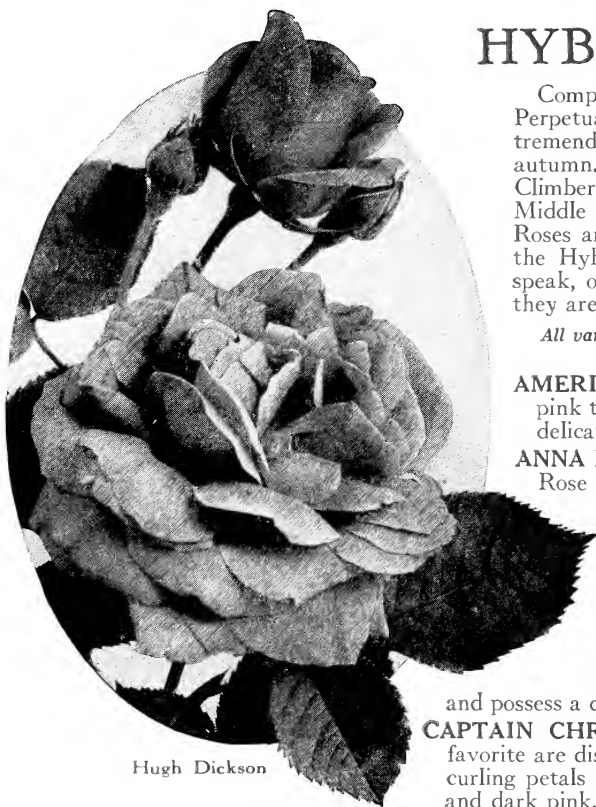
HER MAJESTY. Clear satiny rose. Very large and shapely blooms on vigorous-growing plants.

HUGH DICKSON. Intense crimson, shaded scarlet; very large; full and magnificent form, with high pointed center. Delightful perfume. A gold medal Rose.

J. B. CLARK. The blooms are extremely large and full. In color they are intense deep scarlet, heavily shaded with blackish crimson. Plant a rampant grower, blooming best in June.

LUDWIG MÖLLER. New. Bright amber-yellow. A fine variety that will be very popular in time.

MAGNA CHARTA. An old variety of great merit. The blooms are large in size and colored a rosy pinkish carmine. It is very fragrant and blooms in abundance.



Hugh Dickson

HYBRID PERPETUAL ROSES, *continued*

MARGARET DICKSON. The National Rose Society has awarded this Rose a gold medal and it well deserves the honor, for it is a dainty white variety, with pale flesh center, that wins the admiration of everyone. The blooms are large and finely formed and are borne on very vigorous-growing plants. A variety you are sure to like.

MRS. JOHN LAING.★ Extremely large blooms of soft pink. Long buds; cup-shaped, fragrant flowers. Strong grower; free bloomer. A very popular Rose.

MRS. R. G. SHARMAN-CRAWFORD. Large flowers of deep rosy pink, the outer petals being delicately flushed with pale flesh. Plant strong and vigorous.

PAUL NEYRON.★ The largest Rose in existence, frequently reaching 6 inches in diameter. The color is clear pink, shading to soft rose; has a delightful fragrance. The plant is a strong, heavy grower and blooms several times during the season. When in flower, the bushes are nearly covered by the massive blooms.

PRINCE CAMILLE DE ROHAN. Flowers dark blood-red or maroon, becoming darker as they expand.

ROGER LAMBELIN. Dark crimson, petals edged white—very unique.

ULRICH BRUNNER. Extra-large flowers of light red, bordering on scarlet or crimson—a shade of red distinctly its own. The flowers are borne in profusion on long stems. A very vigorous grower. A variety of standard excellence.

RUGOSA ROSES AND THEIR HYBRIDS

Rugosa means “wrinkled,” referring to the rich and distinct foliage of those splendid Roses. They are of rugged hardiness, of rampant vigor, and approach the ideal of a truly hardy constant-blooming Rose. The plants are likely to reach 4 to 6 feet in height, and may be used for hedges or as specimens in the shrubbery border. No garden can be at its best without them.

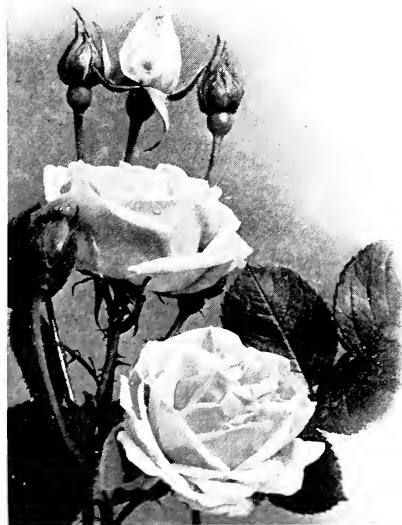
BELLE POITEVINE. Large flowers of a beautiful pink color, borne in trusses. Vigorous; very free bloomer.

BLANC DOUBLE DE COUBERT. One of the finest Rugosas. The blooms are semi-double, from 4 to 5 inches in diameter, and pure white in color; sweetbrier perfume. It blooms over a long season.

CONRAD FERDINAND MEYER. Of great beauty; when fully opened, clear silvery rose; possesses a penetrating fragrance. Among the best of this class.

HANSA. Large, double, reddish violet flowers. The plants are rampant growers and prolific bloomers. The attractive foliage adds much to the beauty of the flowers.

MME. GEORGES BRUANT. Large, loosely double flowers of pure white, with a rich fragrance. An excellent decorative sort which flowers in clusters.



Conrad Ferdinand Meyer

NEW CENTURY. Clear flesh-pink, with light red center, petals widely bordered creamy white; wild-rose fragrance. The flowers are perfectly full and double, 3 to 4 inches across.

NOVA ZEMBLA. This is exceptionally good. Large, full flowers of the purest white are borne in abundance; fragrant. Very vigorous; hardy.

ROSERAIE DE L'HAY. New. The dark red flowers are profusely produced; delightful perfume.

RUGOSA ALBA. There is nothing more striking than a hedge of this variety in bloom and the brilliant red fruits that follow the blossoms make a color-spot in the winter landscape. The white flowers often measure 3 inches across and are borne singly or in clusters. It grows to a height of 6 feet and is thickly covered with thorns and bristles, making it unexcelled for hedge purposes.

RUGOSA repens alba. The single white flowers are borne in profusion on the vigorous-growing plants. In habit of growth it is pendent or prostrate. A fine variety for planting on banks or hillsides.

SIR THOMAS LIPTON. The double, pure white flowers are borne on long stems in great profusion in early summer. It is a vigorous grower with beautiful foliage. Fine for hedges, cemeteries and parks.

BRIER ROSES

These include the Hybrid Sweetbriers and the Austrian Briers. The former were introduced by Lord Penzance and are a cross with the common English Sweetbrier. They are mostly of rampant growth, with perfect foliage and single or semi-double flowers, which appear only in spring. The Austrian Briers are a very hardy old variety, with single flowers which appear but for a short period in spring.

AMY ROBSART. H. Sb. Possesses all the fragrance that marks the Sweetbrier. The blooms are medium in size, distinct in form, and bright rose in color. A fine variety.

AUSTRIAN COPPER. A. B. The medium-sized flowers are single and of a lovely bright coppery red, reverse of petals golden yellow—a color that attracts the eye at once.

BRADWARDINE. H. Sb. Clear pink flowers of good form. Foliage is deliciously scented.

BRENDA. H. Sb. Delicate peach-rose. Plants have glaucous foliage. Vigorous grower.

CATHERINE SEYTON. H. Sb. Soft rosy pink flowers; bright golden stamens. Vigorous grower.

EDITH BELLENDEN. H. Sb. Flowers pale rose. Vigorous. A dainty variety of great merit.

FLORA McIVOR. H. Sb. A very dainty small Rose of pure white, delicately suffused and blushed with rose; fragrant. A particularly charming Rose.

GREEN MANTLE. H. Sb. Rosy red blooms. Strong grower; fine for hedges, pillars, and covering arches. A very attractive sort when covered with its lovely blooms.

HARRISON'S YELLOW. A. B. A bush of this variety is a handsome sight in spring, for the semi-double bright golden yellow flowers almost entirely cover it. A vigorous grower.

JEANNIE DEANS. H. Sb. Large, semi-double, scarlet-crimson flowers. Very showy and vigorous.

JULIA MANNERING. H. Sb. Soft pearly pink. Makes a lovely display when in bloom.

LADY PENZANCE. H. Sb. A vigorous grower, producing a profusion of flowers of a lovely soft copper tint. One of the prettiest of its class.

LORD PENZANCE. H. Sb. A lovely shade of fawn or ecru, tinted with lemon. Vigorous.

LUCY ASHTON. H. Sb. Handsome flowers of pure white, with pink edge. Very dainty.

MEG MERRILIES. H. Sb. Gorgeous crimson flowers in great profusion. A vigorous grower. One of the best of the Hybrid Sweetbriers. Makes a splendid display when in bloom.

MINNA. H. Sb. White, tinted blush. Vigorous grower. The delicate color is very attractive.

PERSIAN YELLOW. A. B. Very popular because of its lovely golden yellow color. Flowers medium size and very full.

UNA. H. Sb. Buds pale buff, opening to large, single, white flowers; early flowering.



Bradwardine

MOSS ROSES

The Moss Roses have a permanent place in the esteem of rose-lovers, not only for their mossy beauty and distinct fragrance, but for their sturdy vigor. They bloom profusely in June.

BLANCHE MOREAU. The flowers are large and full, pure snowy white, and produced in large clusters. Both buds and flowers have deep green moss.

CRESTED MOSS. A delightfully fragrant sort of pale rosy pink, crested with rich green shadowy moss.

RED MOSS. Large flowers of more than ordinary beauty. The color is clear red, and both bud and flower are heavily mossed with deep green.

SALET. Rosy pink; very double, with the true Moss Rose odor. Very vigorous, grows quite rapidly, and blooms abundantly. A favorite among the Moss Rose family.

WHITE MOSS. White. Heavily mossed; fragrant.

HARDY CLIMBING ROSES

We urge the more extended planting of Climbing Roses, for in no other way can the Rose be used outdoors to so great an advantage. Beautiful as are the Bush Roses in their various forms and colors, it must be admitted that with few exceptions they are unattractive when out of flower, and that in consequence they are not available in the shrubbery about the home.

The Climbers not only climb, and then afford a great burst of bloom upon trellises, over fences and hedges, against the porch or the house, but having attractive foliage they make the best shrubs for the hardy border. This use has scarcely been suspected, and is as yet practically undeveloped here.

The old Climbing sorts gave but a week or ten days of spring bloom, and the color range was as limited as the flowers were in form. Now we have the Hardy Climbers, such as American Beauty, and all the range of colors; such superb single Roses as American Pillar; such a modern hardy replica of the tender Gloire de Dijon as the early-blooming Miss Helyett; such a scarlet glow at the end of the season as is afforded by Excelsa—all these, and scores of others as fine and different, permit actually a lovely separate garden of hardy climbers, if a rose-lover cares so to specialize.

The modern Hardy Climbing Roses are from Chinese, Japanese, and American native sorts, hybridized with various European and Indian favorites. They are broadly grouped as of Hybrid Multiflora and Hybrid Wichuraiana classes. To avoid confusion, we here list them all in one alphabetical sequence, the letters following the name giving the class.

Our collection of Hardy Climbers is the most extensive in America. Visitors to our great Rose-garden at Rutherford are sure of a lovely display of their flowers from mid-May to mid-July.

Varieties marked with a star (★) can be supplied in tree form at \$3 each

ADELAIDE MOULLE. H.W. The blooms of this Rose are a peculiar shade of rose and pale yellow, with the usual Wichuraiana fragrance. They are double and are borne profusely in graceful clusters.

The plant is very vigorous and thrives with little attention. It blooms in midseason, the flowers lasting many days.

ALBERIC BARBIER. H.W. The buds are long, slender, and pointed, sulphur-yellow, opening to large blooms of creamy white. A very beautiful sort, distinguished also by its handsome, glossy foliage.

ALEXANDRE GIRAULT. H.W. Shining carmine, base of petals salmon. A good climber with large, double flowers.

AMERICAN PILLAR. Mult. The large single flowers are a lovely shade of cherry-pink, with a clear white eye surrounding numerous golden yellow stamens. The canes are of strong, vigorous growth, and bloom abundantly. The foliage is distinct and decorative, and the variety has no superior.

AUGUSTE ROUSSEL. H. Mac. Flowers large, semi-double, salmony flesh-pink, passing to fresh rose.

AVIATEUR BLERIOT. H.W. A magnificent new variety. The flowers are medium in size and are a pleasing saffron-yellow, shading to delightful golden yellow in the center. The large clusters of bloom are borne in great profusion.

BARONESS VON ITTERSUM. Mult. Crimson-red, splashed with brighter nasturtium-red. Very vigorous; free bloomer.

BESS LOVETT. H. W. Resembles Climbing American Beauty in shape of bloom, but is very much brighter in color and much more fragrant. The flowers are clear, bright red, of good size, and of double, full, cupped form, lasting a long time in good condition. The most fragrant of the Climbing Roses. A vigorous grower and free bloomer. The large glossy foliage, like that of Silver Moon, greatly enhances its beauty.

BOUQUET ROSE. H.W. Flowers of medium size and varying in color from very bright rose to lilac-white, and sometimes pure white. Very profuse bloomer.

CAROUBIER. H.W. Single, crimson-red flowers. Hardy, and a strong grower.

CHEROKEE ROSE. Læv. A vigorous climbing Rose with slender branches of bright green and covered with prickly bristles. The flowers are white, decidedly fragrant, and measure 2½ to 3 inches across. They are borne singly. The foliage is very attractive the entire season, being dark green and glossy.

CHRISTINE CURLE. H.W. A sport of Dorothy Perkins, and a great improvement on that variety. The flowers are flesh-pink and are produced in great profusion. A very vigorous grower.



Flowers of Alberic Barbier



Debutante

HARDY CLIMBING ROSES, continued

CHRISTINE WRIGHT. H.W. Large, double flowers of wild-rose pink. An exceptionally beautiful Rose.

CLIMBING AMERICAN BEAUTY. H.W. The fragrant flowers are large, of rich carmine color, and are produced in abundance early in the season. The canes are vigorous growers and quite thorny; the foliage is a pleasing shade of shiny beech-green.

CLIMBING CECILE BRUNNER. Mult. Handsome, fragrant, rosy pink flowers with dull golden yellow center.

CLIMBING CLOTILDE SOUPERT. Mult. Pearly white, tinted with pink toward center.

CLIMBING ORLEANS. ★ Mult. A sport of the well known Orleans Rose. The blooms are brilliant carmine, suffused rose, with white center. Very vigorous and perpetual bloomer. A splendid variety for use on porch or pergola. \$1.50 each.

CORONATION. H.W. A very attractive Rose, having bright crimson blooms, shaded scarlet, with small white streaks. The double flowers are freely produced in large trusses. The foliage is dark glossy green. A very vigorous grower.

DEBUTANTE. H.W. Soft pink flowers, borne in clusters; double and very fragrant.

DELIGHT. H.W. Large clusters of brilliant carmine flowers.

DESIRE BERGERA. H.W. The blooms of this Rose are entirely different in color from any other variety. The outside of the petals is coppery pink and the inside coppery red. A very vigorous grower and entirely new in color.

DOROTHY PERKINS. ★ Wich. One of the most remarkable climbers on our list. The blossoms are of medium size, are produced abundantly in large clusters, and are a delightful soft blush-pink color. They are very fragrant and retain their color a long time. The plants are very strong and vigorous and are extremely hardy. This Rose has a host of admirers.

DR. HUEY. H.W. (See colored illustration facing page 1). A new climber that is absolutely unique as to color, being a dark crimson-maroon of great brilliancy, with stamens of light yellow. The flowers are usually borne in clusters of three or four, and the majority of them open within a week, the entire blooming period being three weeks. They are semi-double and measure about 2 inches across. The foliage resembles Gruss an Teplitz, one of the parents.

DR. W. VAN FLEET. H.W. One of the most important climbing Roses. It has a perfectly formed bud which is long and pointed, deep pink in color, and very solid. When fully expanded the outside petals are just faintly suffused pink, gradually deepening to a rich shell-pink center which is high and full. The full-blown flowers measure on an average 4 inches in diameter and are borne on long sturdy stems. The bloom has a pleasing scent, rendering it a valuable cutting Rose. In addition to its wonderful profusion in blooming, the large glossy foliage has a great decorative value during the entire season.

ELECTRA. Mult. A fascinating little climber with pretty round buds of a wonderful color combination. The prevailing shade is a deep orange-pink, but, as the buds expand, the blending of salmon-pink and old-gold in the center is seen to perfection. When the flowers are fully expanded, they are of a delicate pink shade, with curled petals, very double. The flowers are borne in profusion and cover a long period in blooming. Very attractive.

ELISA ROBICHON. H.W. Pretty semi-double blooms of light rose, shaded with pale yellow, are produced in great abundance on this strong-growing climber.

EMIL FORTEPAULE. H.W. Clear white flowers, delicately shaded with sulphur-yellow.

ERNEST GRANDPIERRE. H.W. Small flowers of beautiful golden yellow. Extremely hardy and attractive climber.

ETHEL. H.W. Semi-double flowers of lovely flesh-pink are borne profusely in large clusters. A very vigorous grower with handsome light green foliage. A very attractive variety.

EUGENE JACQUET. H.W. Fragrant cherry-red flowers, borne freely in very large clusters. A fine climber.

Bobbink & Atkins World's Choicest Roses Grown in America

HARDY CLIMBING ROSES, *continued*

EVANGELINE. H.W. Single. White, with tips of petals carmine-pink. A very beautiful, vigorous-growing variety.

EVERGREEN GEM. H.W. A dainty sort with buff-yellow buds which open to almost white flowers of single form. It possesses a delightful penetrating perfume. The foliage is light glaucous green, harmonizing nicely with the pretty flowers.

EXCELSA.★ H.W. Of American origin, and will supersede Crimson Rambler. The flowers are of double form, have a brilliant scarlet-crimson color, and are borne in large trusses. The plants are very vigorous and are nearly covered with dark, glossy green foliage which is not subject to mildew.

FLAME. H.W. Semi-double. Salmon-pink flowers in large trusses.

FLOWER OF FAIRFIELD. Mult. Rich crimson flowers, borne profusely in clusters.

FRANCOIS FOUCARD. H.W. An excellent sort having pretty yellow blooms, passing to creamy white.

FRANCOIS GUILLOT. H.W. New. Very free bloomer, often having fifteen buds on one stem. Bud is comparatively small but solid, faintly suffused yellow; mature flower has snow-white petals, beautifully crimped, delicate substance.

FRANCOIS JURANVILLE. H.W. Bright salmon-pink, base of petals orange-yellow. Very vigorous.

FRANCOIS POISSON. H.W. White, shaded with yellow. Large, full flowers.

FREEDOM (Climbing White American Beauty). H.W. This new climbing Rose resembles Kaiserin Auguste Victoria, one of its parents, but is of more vigorous growth and much more free-blooming. The very large flowers, which are white with a slight lemon tint in the center, are much more double than Silver Moon, and are borne one on a stem. The leathery, dark green foliage forms a very attractive background for the lovely blooms and is practically free from disease. \$1.50 each.

GERBE ROSE. H.W. Blooms long; flowers large, exquisite flesh-pink. Very attractive.

GHISLAINE DE FELIGONDE. Mult. A strong-growing sort of great beauty, and, while a comparatively recent introduction, it has already endeared itself to hundreds of rose-lovers. The long, slender, shapely buds are a delightful bright yellow, opening to magnificent blooms of coppery aurora, with golden yellow aglets passing to yellowish white and tinted delicate rose-pink a few days after the blooms become fully expanded. A really everblooming climber that is greatly admired for its wonderful colors. \$1.50 each.

GOLDFINCH. Mult. Long slender buds of excellent form, deep yellow in color, opening to medium-sized, cream-colored blossoms of delicate substance.

GRUSS AN FREUNDORF. H.W. Said to be the prettiest dark red Hybrid Wichuraiana. The flowers are semi-double, glossy crimson-red to blackish red, white at center, with golden yellow stamens. They last well, both on the bush and when cut. The glossy foliage is very attractive. A particularly good climber because of its rich, dark color.

HIAWATHA.★ H.W. Single. Deep intense crimson, shading to snowy white at the base. Foliage light glossy green. An exceptionally beautiful climber.

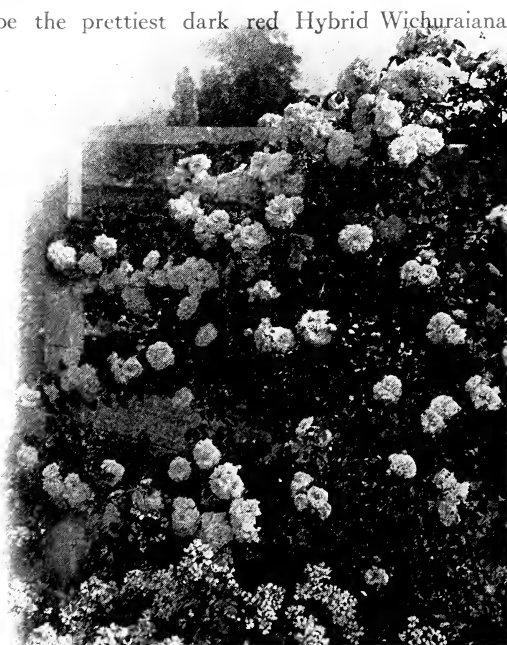
IDA KLEMM. Mult. A snow-white Rambler of vigorous growth.

JEAN GIRIN. H.W. Handsome flowers of pure salmon-pink. Vigorous. Very attractive.

KLONDYKE. H.W. Yellow in bud, primrose when open. Flowers borne in clusters on strong canes.

LADY GAY. Wich. Valuable on account of its rapid growth and free-blooming habit. The flowers are cherry-pink, toning to soft white a few days after opening. They are borne in long, trailing spray-like clusters. The bushes are very hardy and stand extremes of weather in excellent shape. Similar to Dorothy Perkins.

LADY GODIVA.★ H.W. Pale blush, deeper center.



Electra (See page 26)



The notable early-blooming Climber, Miss Helyett

HARDY CLIMBING ROSES, continued

LE MEXIQUE. H.W. Solid buds, opening to pale rose flowers with delicate silvery sheen; produced in clusters. Very dainty.

LEONTINE GERVAIS. H.W. Nasturtium-red, flamed crimson and salmon, bright yellow base a wonderful color combination.

LYON RAMBLER. Mult. Medium double flowers of bright pink, inclined to carmine.

MARECHAL NIEL. N. The most beautiful of all yellow Roses in the South, where it is hardy. Not available in the North, save in greenhouses. Buds large, pointed, full, and open flowers magnificent in deep rich yellow; fragrance unequalled. Plant of climbing habit, with shining foliage of deep green.

MARIE JEANNE. Mult. Delicate pink in bud, opening to pale blush-pink.

MARY LOVETT. H.W. New. An extremely handsome sort of pure waxy white; the large, broad petals are prettily recurved. Free blooming.

MILKY WAY. H.W. Pure waxy white flowers, usually single but occasionally semi-double.

MINNIE DAWSON. Mult. Pure white; large double flowers having exquisite fragrance.

MISS FLORA MITTEN. H.W. Large, single flowers of a delightful soft pink, with yellow stamens. A very vigorous grower and an exceedingly attractive sort where a single climbing Rose is desired.

MISS HELYETT. H.W. A notable new Rose; remarkable in many ways. It is the earliest in bloom of all hardy climbers, yet continues to provide an abundance of its lovely flowers for a month. The bud is short and round, very deep pink shaded with red, and opens to a large full flower of blush-pink with just a faint touch of creamy yellow. The plant is strong and vigorous, and the foliage is intense green, making an ideal background for the delightful blooms.

MME. AUGUSTE NONIN. H.W. A lovely shade of mauve-rose.

MME. GHYS. Mult. Large, well-formed, fully open flowers of delicate mauve, with deeper flush. Exceedingly attractive variety and a good grower. A beautiful color.

MRS. F. W. FLIGHT. Mult. Pink, with white center; semi-double flowers produced in large clusters.

MRS. M. H. WALSH. H.W. A fine, pure milk-white Rose of typical Wichuraiana habit. The large, full flowers are borne in large clusters. A vigorous, free grower that has been termed by many the finest white cluster Rose.

NEIGE D'AVRIL. Mult. Handsome, pure white blooms with prominent yellow stamens. Blooms early in pyramidal corymbs. One of the loveliest of the white climbers, making a beautiful display.

NEWPORT FAIRY. Mult. This may be fittingly described as a glorified Leuchtstern. The single flowers are pink, with white center. A hardy, vigorous-growing variety.

PARKZIERDE. Mult. Deep crimson; exceedingly attractive blooms.

PAUL NOEL. Fairly large, salmon-pink flowers, 2 to 3 inches across, opening from handsome red buds splashed yellow at the base of the petals. Long blooming period.

PAUL'S SCARLET CLIMBER. ★ H.W. New. Surpasses in brilliancy any other climbing Rose, and the flowers remain in good condition for an unusually long time. It is a vivid scarlet, shaded with bright crimson, and does not burn or fade until the petals fall. The large clusters of medium-sized, semi-double flowers are produced in the greatest profusion. Makes a magnificent display. \$1.50 each; Standards \$3.50.

PHILADELPHIA RAMBLER. Mult. Earlier than the Crimson Rambler. The flowers are double, glowing crimson, of good substance and mildly fragrant. The large clusters in which they are borne are very attractive. A very vigorous grower, and resistant to mildew.

PURPLE EAST. Mult. New. Semi-double flowers of deep rosy pink, with purplish tint.

QUEEN OF THE BELGIANS. Very vigorous and produces an abundance of pretty creamy white flowers.

RENEE DANIELLE. H.W. The bud is solid, conical deep yellow, opening to large double flowers, yellow at center of bloom, but paling at the edges.

HARDY CLIMBING ROSES, continued

ROSIERE.★ Mult. An improved Tausendschön, with the same habit of growth and character, but superior in color—a deeper and more even shade of cerise-pink or carmine; free bloomer.

ROWENA. H.W. Solid crimson buds, opening to handsomely shaped flowers of mauve-pink.

RUBIN. Mult. Large double flowers of rich ruby-red. The plants are strong growers, have heavy deep beech-green foliage, and are quite floriferous.

SANDER'S WHITE. H.W. Free-blooming, with white, double flowers. A very good variety.

SICILE. Mult. Apple-blossom-pink; pretty small flowers borne in large clusters; vigorous.

SILVER MOON. H.W. Produced by Dr. Van Fleet; an indispensable hardy climber, and a notable advance. The long, well-shaped buds are creamy yellow on first appearance and have a faint tea-scent, opening into immense flowers, often reaching 5 inches in diameter. The blooms are semi-double in form, with the center petals undulated and curled, but all of a pure waxy whiteness, the center being a mass of bright yellow stamens, thus giving a wonderful contrast. The glossy foliage is immune from disease of any kind.

SNOWDRIFT. H.W. A very vigorous-growing sort, flowering in great profusion over a long period. The blooms are medium sized, clear snowy white, and are produced in large clusters.

SODENIA. H.W. Bright carmine to scarlet-red; double; lasts well. Free bloomer.

SOURCE D'OR.★ H.W. The flowers are extra large for their class, full in form, and a delightful golden yellow in color; plant vigorous and very productive of the exquisite blooms.

SOUV. DE L'AVIATEUR METIVIER. H.W. Bright yellow fading to creamy white. Very beautiful.

SOUV. DE L'AVIATEUR OLIVIER DE MONTALENT. H.W. Flower full, dull rose, base salmon.

STEIL RAMBLER. Mult. Geranium-red; strong vigorous grower.

TAUSENDSCHÖN.★ Mult. Differs from every other Rose because the large clusters of flowers vary in color from pink to white, the buds on first opening being a light cherry-pink, changing when fully open to delightful rosy carmine, fading white. Well merits the name "Thousand Beauties." Strong, vigorous grower, almost devoid of thorns. At blooming-time the bush is covered so thickly with flowers as to hide the foliage, and appears to be a solid mass of varying shades of pink.

TEA RAMBLER. Mult. Coppery pink, flushed with dull salmon.

THE FARQUHAR. H.W. Double, bright pink flowers; glossy, light green foliage; vigorous and hardy.

THE GARLAND. Mult. Large clusters of fawn-colored buds, opening nearly white; medium-sized flowers.

VICTORY. H.W. A new Rose of great promise. Medium-sized blooms of deep pink, darker in the center, are borne, several together, on average-length stems. They are double, with a high center, moderately fragrant, and very lasting. The glossy, bronze-green foliage is disease-resistant. A very vigorous grower and profuse bloomer. \$1.50 each.

WALTHAM RAMBLER. Mult. Deep rosy pink, with paler centers and yellow stamens; flowers single, in clusters.

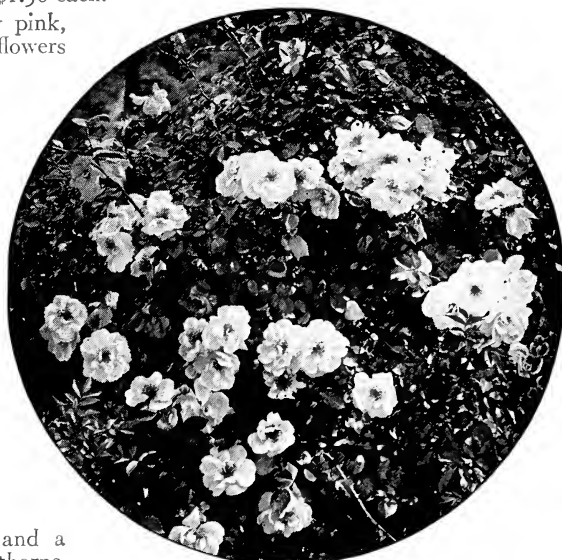
WARTBURG. Mult. Rosy carmine; flowers large, very double, formed like a cactus dahlia.

WEDDING BELLS. Mult. Shell-pink, base of petals white. Flowers are semi-double, in large clusters, and when in bloom the bush is a mass of exquisite color.

WHITE DOROTHY PERKINS.★ H.W. A handsome pure white sport from the old favorite Dorothy Perkins, and it has all of the finer qualities found in that charming variety. It fills a long-felt want in the list of white Roses, and will be equally as popular as its pink parent.

WHITE TAUSENDSCHÖN. Mult. Clear ivory-white. In form and habit same as Tausendschön.

WICHMOSS. H.W. Pink, with darker pink on reverse of petals. A vigorous climber resulting as a cross between a Moss Rose and a Wichuraiana. Stems covered with little thorns, like the Moss Rose.



Silver Moon

CLIMBING HYBRID TEA AND TEA ROSES

These are so-called climbing forms or "sports" of standard Roses. They bloom more frequently during the season than the more hardy climbers, but require protection. At no time are they covered completely with bloom, as are the June-flowering sorts.

ARDS ROVER. Cl. H.P. Large, double flowers of deep vivid crimson. A desirable sort.

BLANCHE FROWEIN. Cl. H.T. Copper, overlaid with golden yellow, passing to delicate yellow. Vigorous.

CLIMBING BIRDIE BLYE. Cl. H.C. A very hardy Climber that blooms profusely. The fragrant blossoms are quite double, bright satiny rose, and over 3 inches in diameter.

CLIMBING CAROLINE TESTOUT. Cl. H.T. Medium-sized warm pink flowers. A valuable climbing variety of this old favorite.

CLIMBING KAISERIN AUGUSTE VICTORIA. Cl. H.T. An excellent Rose of great size. The blooms are waxy white, shading to soft primrose—a very lovely shade.

CLIMBING LADY ASHTOWN. Cl. H.T. This lovely climber has exquisite flowers of pale carmine-pink, shading to golden yellow at the base. The blooms are large, globular, and well formed, with high center. A profuse bloomer.

CLIMBING MME. MELANIE SOUPERT. Cl. H.T. This is a most valuable addition to the perpetual blooming Climbing Roses. It is a vigorous, climbing sport of Mme. Melanie Soupert, identical in color, but with larger flowers of more substance. Very much admired.

CLIMBING MRS. W. J. GRANT (Climbing Belle Siebrecht). Cl. H.T. Large, soft pink flowers, borne profusely on strong canes.

CLIMBING OPHELIA. Cl. H.T. This elegant Rose is remarkably beautiful at all stages of development. The plant is strong and vigorous, throwing out many heavy, erect canes. The buds are long, slender and pointed, in color heavily flushed with delicate rose, expanding to a marvelous flower of elongated shape. The color is a delightful shade of salmon-flesh flushed with deep rose.

DANAE. Cl. H.T. Golden yellow flowers, borne in clusters on strong plants. A very profuse bloomer.

DAWN. Cl. H.T. Semi-double, bright carnation-rose flowers. A vigorous grower and persistent bloomer.

GLOIRE DE DIJON.★ Cl. T. Large full blooms of handsome creamy buff on the outer petals, orange-yellow toward the center. One of the handsomest climbing Roses. Free-flowering.



Gloire de Dijon

LONGWORTH RAMBLER. Cl. H.T. Light crimson; flowers semi-double; plant very vigorous.

MME. JULES GRAVEREAUX. Cl. T. One of the most attractive of the Climbing Teas. It has large, full, deep yellow flowers, with rosy peach center. Very vigorous and free-blooming.

MOONLIGHT. Cl. H.T. White, flushed lemon, with prominent golden stamens; sweetly scented. A perpetual-flowering cluster Rose.

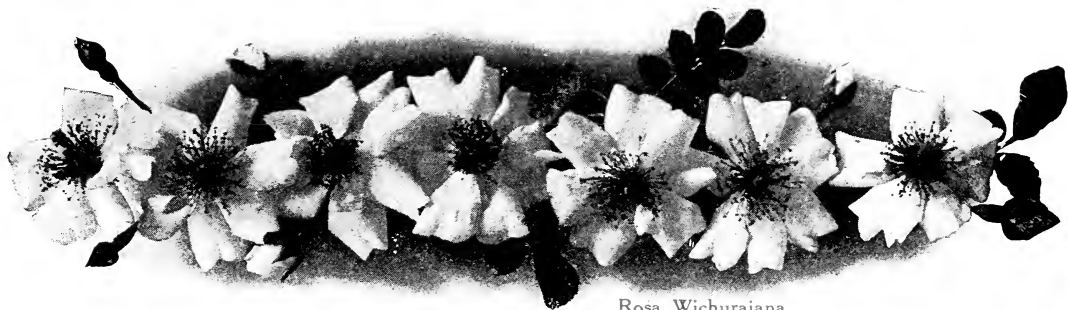
PAUL'S CARMINE PILLAR. Cl. H.T. Large, single flowers; glossy carmine. Strong plants, blooming in abundance. A good variety.

PILLAR OF GOLD. Cl. T. Deep yellow flowers of great size. A very vigorous climber.

REINE MARIE HENRIETTE. Cl. H.T. Large, full, and well-formed flowers of bright cherry-red. Commonly called "Red Gloire de Dijon." The canes are strong and free-flowering.

SARAH BERNHARDT. Cl. H.T. Bright scarlet-crimson, shaded scarlet; flowers large, semi-double, very sweet. A semi-climber.

I received all the plants which I ordered from you. Every one all right and in good condition. They are fine, healthy-looking plants. — PATRICK NOONAN, Lawrence, Mass., May 22, 1920.



Rosa Wichuraiana

ROSE SPECIES

The Roses grouped under this heading are the kinds that grow wild in many sections and which have been brought into cultivation—some of them centuries ago. There is a charm about wild Roses that the other varieties do not possess. Their exceedingly attractive foliage makes them ideal for the shrubby border, for planting over arches and pergolas, for adorning summer-houses, for covering rockeries and embankments, and for hedges. They thrive under almost all conditions.

Rosa Banksiana. Double, white and yellow flowers. Not hardy in North.

Rosa Hugonis. Fine for shrub planting, as it reaches a height of 6 feet when fully matured. The long, arching branches are thickly set with the lovely single yellow flowers in May, and it is one of the earliest Roses to bloom. Makes a most spectacular show. Never winter-kills. \$1.50 each.

Rosa lucida alba. A most beautiful single white Rose with glossy foliage that turns a striking purple in fall. The flowers measure about 2 inches in diameter and are followed by orange-scarlet fruits. It grows about 6 feet high, and is especially fine for planting in the foreground of shrubbery.

Rosa moschata fl.-pl. Musk Rose. Long, arching branches, with large, broad trusses of double white blooms, having a delightful musk fragrance. An old favorite.

Rosa rubiginosa. Sweetbrier; Eglantine. A handsome hardy shrub of compact habit and bright green foliage exhaling a very agreeable aromatic odor. Flowers single, bright pink, and borne in small clusters.

Rosa rubrifolia. Very striking because of its blue-green foliage, deeply tinged with purplish red. The single flowers are deep pink at first, fading lighter with age; scarlet fruit.

Rosa setigera. Prairie Rose. The single deep rose flowers in clusters, are borne in great profusion. A valuable, hardy Climbing Rose, attaining a height of 6 feet. Very pretty.

Rosa spinosissima. Scotch Rose. Single. The flowers of this Rose are usually white, sometimes light pink or yellowish, and are generally borne singly, but closely arranged along the stems; black fruits. Grows to 3 to 4 feet high.

Rosa spinosissima altaica. A very beautiful single white variety which is particularly attractive because of its numerous wine-colored thorns.

Rosa Wichuraiana. Memorial Rose. Single. A handsome Rose for covering banks and rockeries. Fragrant white flower-clusters; half-evergreen, glossy foliage.



Rosa rubiginosa

The fifteen roses ordered from you arrived yesterday. They were the finest lot of roses I have ever bought. In fact, did not think there was a firm in the United States putting out stock as good as I received. You may be sure of my orders in the future. —————, Auburn, N. Y., April 2, 1920.

WHAT ROSES TO PLANT

The preceding Catalogue, on pages 6 to 31, describes 423 Roses, of all of which American-grown plants are at the command of the purchaser who deals with Bobbink & Atkins. The collection is probably the largest in America, including as it does actually "the world's choicest Roses." The made-in-America plants of these varieties are assuredly the best obtainable anywhere in the world today.

The Roses described are classified according to their uses, hardiness, habit, and origin. It will be well for purchasers to read thoughtfully the following statements before selecting sorts, in the interest of that mutual satisfaction which is our aim.

HYBRID TEA Roses are in the greatest variety. They now include all colors possible to the Rose, and in a wonderful range and intermingling. They are more hardy than the Tea Roses, but not dependably hardy north of Washington unless protected, as suggested on page 3. They are worth the slight trouble of protection and cultivation because of the continuity of bloom they afford, as well as for their essential beauty and fragrance. For the best effect they should be planted in groups or beds rather than as isolated single specimens. The effect of twenty-five to fifty Roses of a kind in our great Rose-garden at Rutherford shows how well these Roses are adapted to mass planting.

TEA Roses are not dependably hardy without protection north of Atlanta. There are some superb varieties worth the trouble of protection, and these prosper anywhere south of Toronto. They bloom very freely, particularly as "made in America" by our method of propagation.

HYBRID PERPETUAL Roses are measurably perpetual as to continuance but not as to bloom. They include the indispensable and gorgeous "June Roses," typified by the old favorite General Jacqueminot and the wonderful white Frau Karl Druschki. If well cared for, some of them give fine flowers in the fall. All of them are robust in habit and suited to use as backgrounds in a Rose-garden.

HARDY CLIMBING Roses are mostly of comparatively recent origin. They are the most substantial and notable Rose resources for the gardens of the northern states, and to them is due the superb show seen in June and July all over eastern North America.

But the planting of Hardy Climbers has been of all too few varieties. It has been part of our Rose endeavor to obtain and test every Hardy Climber in the Rose world, and our test-garden at Rutherford is in consequence a museum of them. There are now available varieties immeasurably superior to the old Crimson Rambler type, and we ask especial attention to the notable assortment described on pages 25 to 29.

As their name implies, these Roses grow upon a suitable support to a considerable height, even to 20 feet. In the great burst of lovely flowers they provide in June and July lies a notable resource.

It is not only as climbers that these Roses are useful. They may be readily trained into sturdy bush or pillar forms, and may be permitted to sprawl over a stump or a bank. Near Philadelphia a real rose-lover has had them grown over a railroad embankment, to fine effect. Indeed, these Roses can be used most advantageously and economically for retaining the slope on steep banks, where they will care for themselves.

Hardy Climbing Roses are mostly of very vigorous growth. They give most bloom if the flowering shoots are cut to the ground right after the bloom is over, so that the flowering shoots for the next year are encouraged. They do not require pruning in the spring.

POLYANTHA Roses are of dwarf and very compact habit and bloom profusely. They are hardier than the Hybrid Teas but ought to be moderately protected over winter. They edge beds of taller Roses very satisfactorily.

The **WICHURAIANA** and **RUGOSA** Roses and their hybrids are based on two admirable Japanese native sorts to which rosarians have paid much attention. They are generally hardy and vigorous. Among the Wichuraiana hybrids are many excellent climbers, and the Rugosa type is pointing the way toward the hoped-for hardy and actually everblooming bush Rose.

The **PERNETIANA** Roses comprise certain most interesting productions of the great French grower, M. Pernet-Ducher, and include colors not before available in the Rose. They are being constantly improved in habit, vigor, and hardiness, but now require protection in common with the Hybrid Teas.

The **SWEETBRIERS** and the "species" Roses are entirely hardy, vigorous in growth, and of the utmost beauty in their usually single blooms. They ought to be used in the shrubbery, just as spiraea and hydrangeas are so used, because they have, in general, attractive foliage to support their appearance when out of bloom.



Tausendschon (See page 29)

OUR WORLD'S CHOICEST NURSERY AND GREENHOUSE PRODUCTS GROWN IN AMERICA

Several years of constant thought and effort places us in a position to fill orders for all kinds of Nursery and Greenhouse Products for Outdoor Planting and Interior Decorations, independent of European importations. Among the many attractions growing in our 500 acres of highly cultivated Nursery are large quantities of the following specialties :

- Roses.** It is important to place orders at once, while we have several hundred thousand in choice, new and popular kinds. We are frequently sold out of many varieties, causing annoyance and disappointment.
- Rhododendrons.** Many thousands of acclimated plants in hardy English and American varieties are growing in our Nursery.
- Evergreens, Conifers and Pines.** More than 75 acres of our Nursery are planted with handsome specimens. Our plants are worth traveling any distance to see.
- Hardy Old-fashioned Plants.** We have thousands of rare, new and old-fashioned kinds. Special prices on quantities.
- Ornamental Shade, Weeping and Standard Trees.** Many thousands of these can be seen growing in our Nursery. We grow them for every place and purpose.
- Flowering Shrubs and Hedge Plants.** We make a specialty of them and can do plantings or fill orders of any size.
- Deciduous Trees and Shrubs.** Many acres of our Nursery are planted with several hundred thousand trees and shrubs. It is worth while to visit us and inspect them.
- Trained, Dwarf and Ordinary Fruit Trees and Small Fruits.** We grow them for all kinds of Fruit Gardens and Orchards.
- Boxwood and Bay Trees.** We have thousands of trees in many shapes and sizes.
- Palms, Decorative Plants for Conservatories,** interior and exterior decorations.
- English Pot-grown Grape Vines.** For greenhouse cultivation.
- Hardy Trailing and Climbing Vines.** We have them for every place and purpose. Ask for special list.
- Bulbs and Roots.** Spring, Summer and Autumn flowering.
- Lawn Grass Seed.** Our Rutherford Park Lawn Mixture has given satisfaction everywhere.
- Plant Tubs, Window Boxes and English Garden Furniture.** We manufacture all shapes and sizes.
- Our New Giant Flowering Marsh Mallow.** Everybody should be interested in this Hardy New-fashioned Flower. It will grow everywhere and when in bloom is the Queen of Flowers in the garden. Blooms from the early part of July until the latter part of September.
- Our Formal Rose Garden.** Planted with 5,000 plants in 300 varieties. This has been one of the greatest attractions in our Nursery this season. Everybody interested in Roses should visit our Nursery during the growing season.
- Our illustrated general catalogue* gives prices and describes the above and all our other products.
- Visitors.* Take Erie Railroad to Carlton Hill, second stop on Main Line, three minutes walk to Nursery.

Robbink & Atkins

IMPORTERS

NURSURYMEN AND FLORISTS

TELEPHONE 700

Rutherford, N. J.

Jan. 19, 1920.

E. P. Lake, Esq.,
Washington, D. C.
Dear Sir:-

During the past four or five years you have probably postponed any additions or changes in your garden.

That terrible period is over now and naturally we are anxious to know if you intend doing any planting this Spring or at any future time.

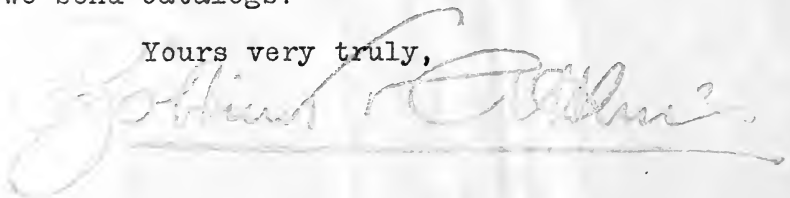
If such is the case won't you please write us that we may send our literature from time to time.

Our object is to eliminate the possibility of annoying you with printed matter that might at another time be very useful and interesting.

Shall we send catalogs?

Yours very truly,

JJ/HD



Other B. & A. Publications
Will Be Sent on Request

BOBBINK & ATKINS

RUTHERFORD - - NEW JERSEY

Bobbink & Atkins



Rutherford New Jersey