

Historic, Archive Document

Do not assume content reflects current scientific knowledge, policies, or practices.



62.03
RECEIVED
MAR 2 1920
Department of Agriculture

**GENERAL
NURSERY
AND
BEDDING
STOCK**



**EAST LAWN
NURSERY**

SACRAMENTO
CALIFORNIA



Catalog "D"

GENERAL NURSERY AND BEDDING STOCK

Ornamental Trees and
Shrubbery, Vines, Roses
Hedge Plants

Members

AMERICAN ROSE SOCIETY
CALIFORNIA ASSOCIATION OF NURSEYMEN



EAST LAWN NURSERY

A. CRUIKSHANKS, MANAGER

R. F. D. No. 2

TELEPHONE CAPITAL 45

SACRAMENTO
CALIFORNIA



GARDENING—A PRIVILEGE

All this urging people to grow some foodstuff this summer is not any effort to saddle them with an extra task but only to wake them up to their opportunities. Too many civilized men have hands too soft to be either masculine or useful. Hundreds of thousands of people in our country stay indoors so habitually throughout the year that even sitting out on a porch has for them a real quality of adventure. Perhaps one reason why porch ceilings are sometimes painted sky blue is to remind the inmates of the look of the sky! Many of us dodge so quickly from one shelter to another from home to trolley to office and back again that we get very little notion of how lovely the changes of light are at night and morning. In a garden you get all that and sometimes also the coming of the stars. Legend and science combine to tell us that we arose from the earth and in time will take our rest in it again. Why not know something more of it while we are here? In a garden certainly you learn man's place in this universe as chooser between better and worse preferring the one and hindering the other and of his responsibility for his own choices therein. How much of kindness would we have if our race had not had to deal with budding and blossoming plants and how much of intelligence if we had not had to watch the procession of the day as it strides past between our garden walls? Take your troubles out for cure to the healing peace of green things growing. Get back to earth's realities this year; go gardening!—Collier's Weekly.





GROUP OF EVERGREENS

TREES

EVERGREENS planted singly or in groups as specimens, are pleasing in appearance at all seasons of the year and, on account of the variety of coloring and form from which we may choose, there is always some species adaptable to any particular situation where such trees would be appropriate. These trees are also desirable in Evergreen boundary plantings. Many of those listed here will grow into splendid specimens.

LAWSON CYPRESS. Very beautiful evergreen. Native of California. Tall, well-shaped tree. Four varieties. Some with rich green foliage; others intensively silvery. Highly recommended for planting here. \$6.50 to \$9.50 each.

NORDMANN'S FIR. The rich, dark, glossy green effect of this compact, slow-growing conical tree is especially attractive. 1 to 1½ ft. high, \$3.00 each; 2 to 2½ ft. high, \$4.00 each.

CEDRUS DEODARA (Indian Cedar). An especially handsome tree. Branches have a graceful droop; foliage silvery-green. One of the most rapid growing and picturesque of all the Cedars. \$2.00 to \$5.00 each.



CEDRUS DEODARA

CHESTNUT, Horse Scarlet, 8 to 10 ft., \$1.50 each.

CHESTNUT (European). Very handsome. 4 to 6 ft., \$1.25 each.

CRYPTOMERIA ELEGANS (Bush). Low growth; foliage turns to a bronzy crimson in the Fall. Rare. \$1.50 to \$3.50 each.

CRYPTOMERIA ELEGANS (Standard). Long stem, with fine rounded head. \$7.50 to \$10.00 each.

CYPRESS (Italian). Tall, tapering tree; branches grow parallel with trunk. 75c to \$3.00 each.

CYPRESS (Monterey). Makes fine wind break; close, dense growing. 75c. to \$2.00 each.

CAMPHOR TREE. Very handsome tree. Leaves glossy green and scented with camphor. Turns crimson in fall. In cans, \$1.50 to \$2.50 each.



BLUE SPRUCE

CASUARINA STRICTA (Australian Beef Wood)

Grows well on alkaline soil. Fine, rapid-growing tree. Makes good hedge. Stands trimming well. \$1.00 to \$2.00 each.

ELM (English, American and Cork). Make fine street or avenue trees. Rapid growers. 6 to 8 ft., \$1.50 each.

EUROPEAN LINDEN (Lime Tree). The famous street tree of Europe. 6 ft., \$1.50 each.

EUCALYPTUS GLOBULUS (Blue Gum). No description needed. 75c. to \$1.25 each.

EUCALYPTUS ROSTRATA (Red Gum). 75c. to \$1.25 each.

GREVILLA ROBUSTA (Silk Oak). Rapid growing fair-sized tree. Sweet scented orange-yellow flowers. Stands drought well. Keep well cut back. \$1.25 each.

LAUREL (English). One of the most effective shrubs. Large, shining leaves, can be trimmed into almost any shape. Makes fine specimen plants. \$2.50 to \$3.50 each.



SILVER FIR

LABURNUM (Golden Chain). A small tree of quick growth. Flowers fragrant and hang in long, yellow racemes, resembling Wistaria. 4 ft., \$1.25 each.

LEPTOSPERMUM (Australian Tea Tree). Thrives well in this state. 75c. each.

MAPLE (English, Norway and Silver). Very handsome street or avenue trees. Too well known to need any description. 6 to 8 ft., \$1.25 each.

MAGNOLIA (Grandiflora). Slow growing tree. Very hardy and long lived. Large, green leaves. Flowers very large and pure white. In cans, \$3.00 to \$7.50 each.

MULBERRY (Tea's Weeping). A most uncommon but very graceful weeping tree, form a perfect umbrella head, with branches hanging to ground. 6 to 8 ft., \$3.00 to \$5.00 each.

MAIDENHAIR TREE (Gingko Biloba). Native of China. A most remarkable tree, rather slow growing. Leaves shaped like maiden-hair fern. 6 to 8 ft., \$1.25 to \$1.50 each.



ORIENTAL PLANE

POPLAR (Lombardy). Grows to a great height. Very distinct. 8 to 10 ft., \$1.25 each.

TULIP TREE. Medium sized tree. Large, green leaves, flowers resembling a tulip (hence the name). 6 to 8 ft., \$1.25 each.

ROSE OF SHARON (Althea). Covered with bloom during several months in summer. Hardy, tall growing shrubs. Uncommon. \$1.50 each.

ORIENTAL PLANE (European Sycamore) Most highly recommended by all authorities for street planting in California. Fast and vigorous growers. Stand pruning well. Cannot be excelled as shade trees. Free from insect pests and disease. Thoroughly endorsed by us as a good street tree. Largely planted in Sacramento's newer sections. A fine lot of straight trees. Price from \$1.00 to \$1.75 each.

THIS IS A SPECIALTY WITH US



ACACIA DEALBATA

PEPPER TREE. So well known here, no description necessary. Native of Mexico. 75c. to \$1.25 each.

PAULS SCARLET THORN. Double flowering. Small tree of quick growth. Very fine heads of berries. 4 to 6 ft., \$1.50 each.

SEQUOIA GIGANTEA (California Big Tree). \$2.00 to \$3.00 each.

SEQUOIA SEMPERVIRENS (Redwood). \$2.00 to \$3.00 each.

AUCUBA JAPONICA. Fine for tubs. \$2.25 each.

BROOM (Spanish and Scotch). Fine plants, 4 to 5 ft. high, covered with bright yellow flowers in early spring. 50c. to 75c. each.

CAMELLIA JAPONICA. Beautiful winter flowering evergreen. Dark green foliage. Unusual wax-like flowers. Red, pink and white. \$3.50 to \$5.00 each.

ACACIAS. Beautiful fast-growing evergreen trees, well suited to California, many of them covered with bloom in early spring. Fine shade trees. Mollissima (yellow flowers), Melanoxylon (black) no flowers, Baileyana (lemon-yellow flowers), very early bloomers. \$1.00 and \$1.50 each.



OLEANDER

WHITE FIR (Concolor). Rapid-growing tree. One of the finest and hardiest of the firs, standing well in the most exposed positions. 4 to 5 feet high, \$5.00 each.

OLEANDERS. Well adapted to California, though native of Asia. Large green foliage; flowers very fragrant; bloom all summer. Pink and white. \$1.00, \$1.25, \$1.50 each.

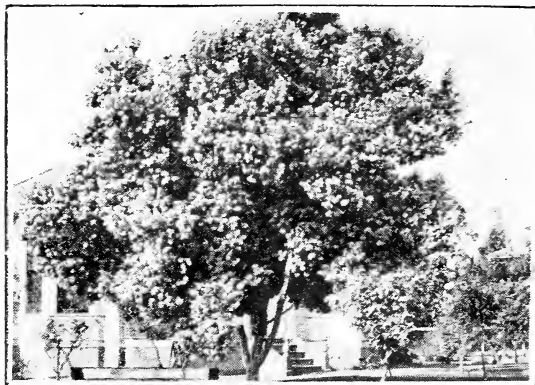
CRATAEGUS PYRACANTHUS (Burning Bush). A compact evergreen shrub. Small white flowers in spring, followed by masses of bright orange-colored berries. \$1.00, \$1.50, \$3.00 each.

VERONICA. Native of New Zealand. Small shrub. Produces numerous spikes of light blue flowers. Also in dark purple. \$1.25 and \$1.50 each.

CHINESE MAGNOLIA. Very rare. Large flowers are in full bloom before foliage appears. \$3.50 and \$4.00 each.

MAHONIA AQUAFOLIUM (Oregon Grape). A native of the Pacific Coast. Purplish, prickly leaves, with bright yellow flowers; blue-black berries, fine, strong, bushy plants. \$1.00 to \$2.50 each.

ENGLISH HOLLY. Very uncommon in California. Foliage very lustrous. Covered with red berries in fall and winter. 3 to 3½ ft., \$5.00 each.



CRAPE MYRTLE

BUDDLEIA (Butterfly Brush). Blooms continuously throughout the summer, flowers resembling lilacs in color and form. Does well planted in masses. \$1.00 to \$1.50 each.

CRAPE MYRTLE. Strong growing shrub; well adapted to almost all conditions of soil. Leaves bright green. Beautiful crimped petals, blooming all summer. \$1.50 each.

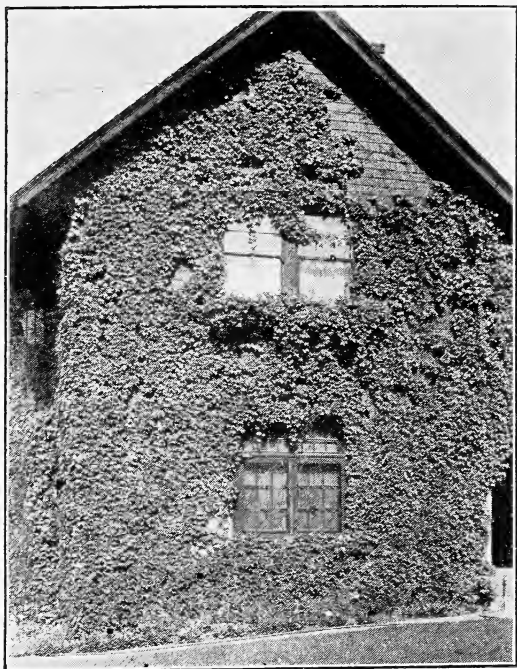
NORWAY MAPLE. A large and very handsome tree. Well adapted to superior California conditions. \$1.25, \$1.50 each.

SILVER MAPLE. Rapid growing tree, foliage bright green on top, silvery sheen below. Does well here. \$1.25, \$1.50 each.



BOSTON FERN

FERNS AND PALMS. A large stock of all the leading varieties of ferns and palms always on hand at attractive prices.



AMPELOPSIS VEITCHI

VINES

WISTARIA. One of the best hardy climbers, producing great clusters of flowers. The Wistaria is the queen of the climbing vines.

SINENSIS. The favorite variety; violet blue, perfumed.

ALBA. Similar to Sinensis, but white. 75c. and \$1.00 each.

AMPELOPSIS VEITCHI (Boston Ivy). The most popular climbing plant for covering walls. Clings to the smoothest surface like ivy. Rich olive green in summer, changing to scarlet in fall. Cut plants back to six inches when planting. 75c. each.

CLEMATIS. Montana. The best of the early spring flowering climbers. Perfectly hardy and a rapid grower. Covered with masses of white flowers. Clings to any support. 50c. and 75c. each.

CLEMATIS Jackmanii. Rich purple, very popular. 75c. each.

Vines and Hedge Plants. A few of the best varieties; all healthy, vigorous plants ❖

CLEMATIS *Paniculata*. Pure white, fragrant flowers. Blooms August and September. 50c. and 75c. each.

HONEYSUCKLE. *Halleana*. Flowers pure white, turning to yellow. Fragrant. 75c. each.

HONEYSUCKLE. *Red Tartarian*. Brilliant coral red clusters of flowers. \$1.00 each.

Many other varieties that space does not permit to list.

HEDGE PLANTS

CALIFORNIA PRIVET (*Ligustrum*). Of all the hedge plants, this is the most popular, and more of it is planted than all others combined. It is of free growth and succeeds almost anywhere. Cut back severely before planting. Plant twelve inches apart. Strong, bushy plants, two and three years old, at \$10.00, \$15.00 and \$20.00 per 100, depending on height and age.

BERBERIS THUNBERGI. Nothing equals this beautiful deciduous hedge, where a dwarf hedge is wanted. Leaves small, rich green, turning to rich brilliant colors in fall. Scarlet berries. Perfectly hardy. Plant 15 to 18 inches apart. 75c. to \$1.00 each.

LAURUSTINUS. Makes a very beautiful hedge or screen. Covered with white blossoms or buds almost continuously. 50c. to \$1.50 each.

SPIRAEA Van Houttei (*Bridal Wreath*). Makes a beautiful, informal flowering hedge. In late spring it is literally covered with a profusion of white bloom. \$1.00 to \$1.50 each.

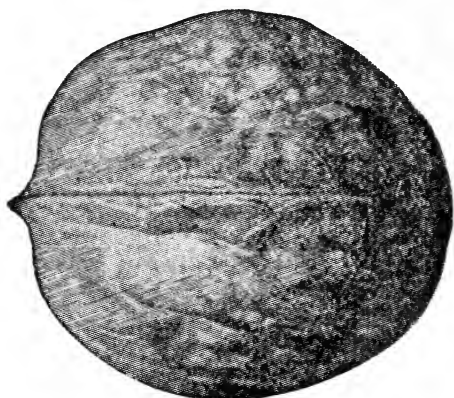
DWARF BOXWOOD. Makes a beautiful, low, evergreen border plant. 10c., 15c. and 20c. each. Larger, 35c. and 50c. each.

If a desired variety is not mentioned herein please advise us, and we will furnish it.

Write us for prices on large quantities of any of the varieties listed in this catalog.

BEDDING *and* ORNAMENTAL PLANTS

- ASTER.** In variety. 50c. per dozen.
- BEGONIAS.** Splendid collection. 50c. to \$1.00 each.
- CALLA LILY.** 10c. each, \$1.00 per dozen.
- CARNATIONS.** Leading varieties. Ready March 1st. 10c. each, \$1.00 per dozen.
- COREOPSIS (Lanceolata).** Yellow. 50c per dozen.
- CHRYSANTHEMUM.** Best varieties. \$1.00 per dozen.
- COLEUS.** Variety. 25c. to \$1.00 each.
- CYCLAMEN.** 50c. to \$2.00 each.
- CALADIUM ESCULENTUM (Elephant's Ear).** 25c. each.
- DAISIES, SHASTA.** Strong plants. 35c. per dozen.
- FUCHSIAS.** Best varieties. 25c. to 75c. each.
- GERANIUMS.** Single and Double. Red, White and Pink. \$1.50 per dozen.
- GERANIUMS.** Ivy-Leafed, Running and Climbing. 15c. each, \$1.50 per dozen.
- HELIOTROPE.** 10c. to 25c. each
- LOBELIA.** Dwarf, Compact, for Borders. 35c. per dozen.
- MARGUERITE (Mrs. Saunders).** 15c to 75c. each
- MESEMBRYANTHEMUM (Rosea).** \$1.00 per dozen.
- PANSIES.** Steele's Giant. 50c. per dozen, \$4 per 100.
- PETUNIAS.** Single or Double. 25c. each.
- PHLOX (English).** Hybrids. 35c clump.
- SALVIAS, SPLENDENS (Scarlet Sage).** \$1.00 per dozen.
- SANTOLINA.** Silver Grey Edging Plant. 50c. per dozen.
- STOCKS (Giliflower).** Red, Pink, White. 50c. per dozen.
- VERBENAS.** Varieties. 50c. per dozen.
- ZINNIA (Grandiflora).** 50c. per dozen.



FRANQUETTE WALNUT

FRUIT TREES. Although we carry most of the varieties of fruit trees, and can fill orders for almost any of them, we do not list them this season, as they are very scarce. Prices run about 70c. each.

ENGLISH WALNUTS. Grafted Franquette. 6 to 8 ft., \$2.50 each.

CHESTNUT (European). 4 to 6 ft., \$1.25 each.

OLIVES (Mission). \$1.25 each.

ORANGES. Washington Navel and Valencia. \$2.50 each.

LEMONS (Eureka). \$2.50 each.

POMELO (Grape Fruit). \$2.50 each.

CURRENTS. Perfection, Black Naples, Fay's Prolific, Red Dutch. 30c. each, \$2.50 for 10.

GOOSEBERRIES. Oregon Champion. 40c. each, \$3.50 for 10.

BLACKBERRIES. Mammoth, Loganberry, Phenomenal. 25c. each, \$2.00 for ten. Thornless, 35c. and 50c. each.

RASPBERRIES. Superlative. 30c. each, \$2.50 for 10.

STRAWBERRIES. Klondike, Brandywine. 30c. for 10.

RHUBARB. Wagner's Giant Subdivisions. (Guaranteed genuine subdivisions, direct from Wagner's). 25c. each, \$2.00 for 10.

All Roses offered are two-year-old, and will bloom the year they are planted ❀ ❀



BESSIE BROWN

BUSH ROSES

Two-year-old. Price 50c each, \$4.50 per ten, unless otherwise noted

AMERICAN BEAUTY. Deep rose to carmine-cerise.

BELLE SIEBRECHT. Bright rosy pink.

BESSIE BROWN. Creamy white. Large and fragrant.

BABY RAMBLER (Dwarf Crimson Rambler). Bloom all summer.

BRITISH QUEEN. Pure white, delightful fragrance.

CECIL BRUNNER. Salmon pink. Great favorite.

CAROLINE TESTOUT. Beautiful pink. Free bloomer. Highly recommended.

CAPTAIN CHRISTY. Delicate flesh pink.

FRAU KARL DRUSCHKI ..(White American Beauty). Snowy white, large flowers, very beautiful tapering buds. Strong grower. The very best white. Superb.

GENERAL McARTHUR. Fiery red. Magnificent color. Very free bloomer and has the richest fragrance. Highly recommended.

HADLEY. Brilliant deep velvety crimson. Very scarce.

All Roses offered are two-year-old, and will bloom the year they are planted ❁ ❁



J. B. CLARK

HARRY KIRK. Creamy yellow, with amber center. One of the best light yellow tea roses, fine fragrance. 75c. each.

HOOSIER BEAUTY. Glowing crimson, beautiful in both bud and flower. Buds long and slender. Flowers large and full. 75c. each.

IRISH ELEGANCE (Single). Apricot, shaded orange and pink. Extremely handsome in bud. Always in bloom. A great favorite.

IRISH FIRE FLAME (Single). One of the most pleasing color combinations found in any variety. The long pointed buds are deep maddery orange, splashed with crimson. Opens up to a large single flower of rich, satiny old-gold. Worthy of a prominent place in every garden. 75c. each.

J. B. CLARK. Intense deep scarlet, heavily shaded blackish crimson. Very fine.

KILLARNEY. Flesh-colored pink. Buds long and beautiful, free bloomer. Very fragrant.

KILLARNEY BRILLIANT. Most brilliant pink color. Strong grower and blooms very freely. Delicious perfume.

KAISERIN AUGUSTA VICTORIA. White. Blooms are very large, full and globular, and produces until late autumn.

LADY ALICE STANLEY. Deep coral-rose on outside of petals. Pale flesh on inside. Continuous bloomer, very fragrant.

All Roses offered are two-year-old, and will bloom the year they are planted ❀ ❀



LYON

LADY HILLINGDON. Pleasing shade of orange-yellow. Very fine in the bud stage. Free bloomer.

LILLIAN MOORE. New. This is the \$10,000 Prize Rose. Deep pure Indian-yellow. Free bloomer.

LYON. Shrimp pink color, center shaded to chrome yellow. Gorgeous color, very fragrant, good shape, very popular. 75c. each.

LA FRANCE. Silvery pink, one of the best of the pinks, constant bloomer and very sweet scented.

MME. EDOUARD HERRIOTT (Daily Mail Rose). The buds, which are long and pointed, are coral-red, shaded yellow at base. A vigorous grower. 75c. each.

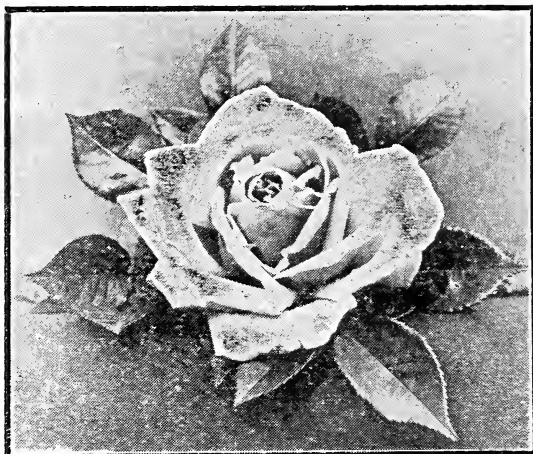
MADAM COCHET (White). Clear white, buds long and pointed and very solid.

MADAM COCHET (Pink). One of the finest pinks. Deep rose pink.

MRS. AARON WARD. Distinct shade of apricot-yellow. Free bloomer. Flowers full and very well formed.

MRS. JOHN LAING. Soft pink, free flowering. Exceedingly fragrant. A beautiful rose.

All Roses offered are two-year old, and will bloom the year they are planted ✻ ✻



CAPT. CHRISTY

MRS. W. CHRISTY MILLER. Blooms of enormous size. Rosy carmine.

MY MARYLAND. Bright salmon pink. Strong grower. Very fragrant and free bloomer.

OPHELIA. Light salmon, flesh pink, shading to yellow. Many rosarians consider this the best rose of its color. Blooms freely all season.

PAUL NEYRON. The largest of all roses. Very clear salmon-pink. Bright and double. Highly perfumed.

PAPA GONTIER. A magnificent rose. Brilliant carmine, very fragrant. A great favorite.

PERLE DES JARDINS. Bright yellow-canary color. Large, full flower, very fragrant.

PRINCE CAMILLE DE ROHAN. Deep velvety crimson. One of the best dark red roses.

PHILADELPHIA RAMBLER. Light crimson. An improvement on Crimson Rambler. Large, double flowers.

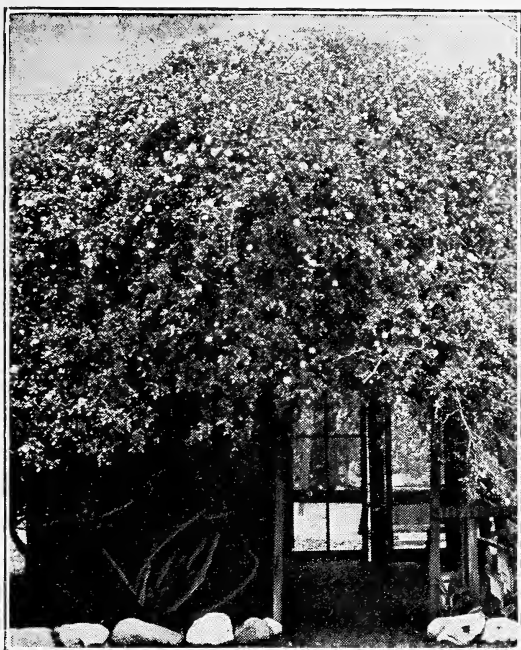
RADIANCE. Soft carmine pink. Very sweet fragrance. Vigorous grower, free bloomer.

RADIANCE (Red). Large, double bloom, clear red. Holds color well.

ULRICH BRUNNER. Bright, cherry red. Very fine. Long stems and beautiful flowers. Highly recommended.

SUNBURST. A magnificent yellow, shaded orange-copper. Long buds on strong stems. One of the best. 75c. each.

All Roses offered are two-year-old, and will bloom the year they are planted ❧ ❧



WHITE BANKSIA

CLIMBING ROSES

Two-year-old. Price 50c each, \$4.50 per dozen unless, otherwise noted.

- CLIMBING BANKSIA (White).** A thornless, climbing rose, glossy foliage, flowers small, but bloom in great profusion in early summer.
- CLIMBING BANKSIA (Yellow).** Same as white. Deep yellow.
- CLIMBING CHEROKEE (Pink).** Clear pink. Vigorous climber, foliage glossy, dark green.
- CLIMBING MME. CECIL BRUNNER.** Beautiful salmon pink. The well-known "Baby Rose." Same as bush.
- CLIMBING CAROLINE TESTOUT.** Large, beautiful pink flowers. Blooms all season.
- CLIMBING COCHET (White).** Very strong climber, creamy white, long pointed solid bud.
- CLIMBING CRIMSON RAMBLER.** Blooms but once. Very showy when in bloom. Not fragrant.

All Roses offered are two-year-old, and will bloom the year they are planted ✻ ✻



CLIMBING PINK CHEROKEE

CLIMBING DOROTHY PERKINS. Shell pink. Blooms in spring time only. Sweet fragrance.

CLIMBING KAISERIN AUGUSTA VICTORIA. Very popular white.

CLIMBING LA MARQUE. A magnificent white climber. Continuous bloomer.

CLIMBING MARECHAL NIEL. A beautiful yellow. Buds are well shaped and solid. Delightful fragrance. One of the very best.

CLIMBING PAPA GONTIER. Dark, rosy crimson, fine, large, sweet scented buds. Continuous bloomer.

CLIMBING PERLE DES JARDINS. Deep, golden yellow. Very fragrant. Large, well formed bud. Very popular.

CLIMBING REINE MARIE HENRIETTE. Cherry red. Flowers large and fragrant. A fine climber. Liable to mildew in the early season.

Many others that room does not permit us to list.



A FINAL WORD.

Trees are very scarce (almost unobtainable), so we advise ORDERING EARLY.

GUARANTEE. We accept and fill your order with the understanding that the stock must satisfy you. That's plain, and means just what it says. You are to be the sole judge. Your money back cheerfully if you are not satisfied.

SAFE DELIVERY. We guarantee safe arrival. Shipment lost or damaged in transit will be replaced without charge. Claims should be made within five days from date of Invoice.

TERMS:

Cash with Order. Free Delivery to Depot or Steamer here. Packing at actual cost.

**EAST LAWN
NURSERY
SACRAMENTO
CALIFORNIA**

