

Historic, Archive Document

Do not assume content reflects current scientific knowledge, policies, or practices.

62.57

CLARENCE B. FARGO

FRENCHTOWN, N. J.

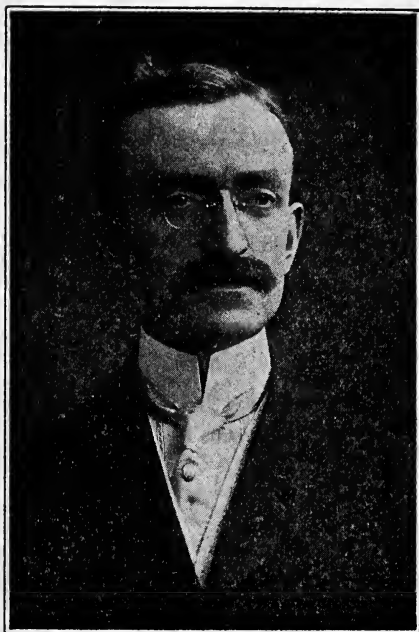


Arranged Bouquet of Gladioli curled and crested Zinnias, Ferns and Berberis.

SPRING

1920

GREETINGS FOR 1920.



CLARENCE B. FARGO

It is indeed a real pleasure to me to greet each spring and fall my thousands of old friends and patrons as well as the hosts of new ones, thru the pages of my semi-annual catalog. To each one I extend the very best wishes for a pleasurable and a profitable season. Get next to nature: grow plenty of beautiful flowers and an abundance of luscious vegetables on the home grounds and nature will more than repay the effort you put forth, by providing feasts for the eye, fresh, succulent vegetables for the home table and an abundance of health and vitality for the body.

For the information of my new friends and acquaintances I might also add that for many years I have been in business in this Borough and it is my pleasure, and a privilege, to be supplying the garden and floral wants and needs of thousands of pleased and enthusiastic patrons each season. I am indeed proud of the great number of letters constantly coming in and praising my goods and my business methods. Just as a single sample, Mr. George Dexter, a stock and investment broker, of Providence, R. I., says:

"They were fine plants and in splendid condition and I wish to express my appreciation for your courtesy in giving your personal attention to the filling of this order. You have used me so squarely that I shall not hesitate to pass the good word along to others."

This is but a single sample from amongst a host of testimonial letters in my files.

* * * * *

How We Ship. Unless especially advertised, as "by express" or "by freight," all seeds, bulbs and plants (except shrubs) are sent prepaid anywhere within the first three postal zones. If you live in N. J., Pa., N. Y., Ohio, Del., Md., R. I. W. Va., N. H., Vt., Conn. or Mass., the above goods are sent prepaid. Shipments to distant states unless sufficient extra funds to prepay postage are included with the remittance, must go by express or freight except small packages of 8 oz. or less, which will be mailed prepaid anywhere. Shrubs go by express, but small packages of shrubs weighing 10 pounds or less will be mailed to points within the first three postal zones.

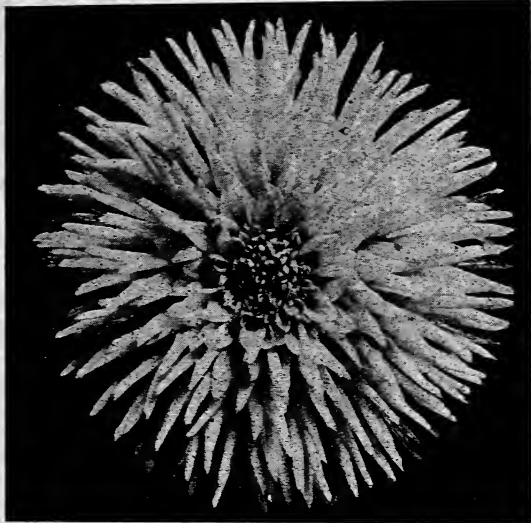
Important. My terms are cash with order. Remittances should be made by Bank Draft, Money Order or Registered Letter. Stamps however are acceptable for fractional parts of a dollar. We use every means possible to avoid errors but we are all human. In case of any error we desire to be advised at once, with full particulars and an immediate investigation will be made. The last thing before a letter is sealed, care should be taken to see that both name and address are actually there; plainly and legibly written.

Some People wait until the minute they want to plant and then send in their orders. It should be remembered that in the height of the busy season it is not always possible to fill orders immediately. We always do the best we can in filling orders promptly, but the wise plan is to study the catalog over as soon as you receive it and make out your order; remembering that all orders booked in advance of planting time have early preference and a full stock to select from. Therefore we cannot so strongly say it;

Send Your Orders As Early As Possible.

FARGO'S SUPERB DAHLIAS.

Dahlias are one of the most valued of flowers, easy to cultivate, thrive in most any soil, making grand bouquets, and are at their very best at a season when other choice flowers are scarce. I recommend three plantings. The first about time for planting white potatoes, for early bloom; the second May 1st, and the third about the last of June. Plant the tubers flat, cultivate continuously, and if you water at all, do it only during the very dry spells, once or twice a week, and do it thoroughly. Frequent light sprinklings do more harm than good.



DAHLIAMUM

Remember also the size of the tuber or root planted, in no way designates or controls the size nor quality of the resulting flowers. Some of the best sorts produce only small tubers so it is not well to consider small tubers worthless for they are every bit as good as large ones; sometimes better. Proper and continuous cultivation or hoeing is what counts—and counts big. We advise an occasional spraying of the plants with an arsenate of lead or a tobacco solution to eradicate aphids and the green fly.

Dahlia

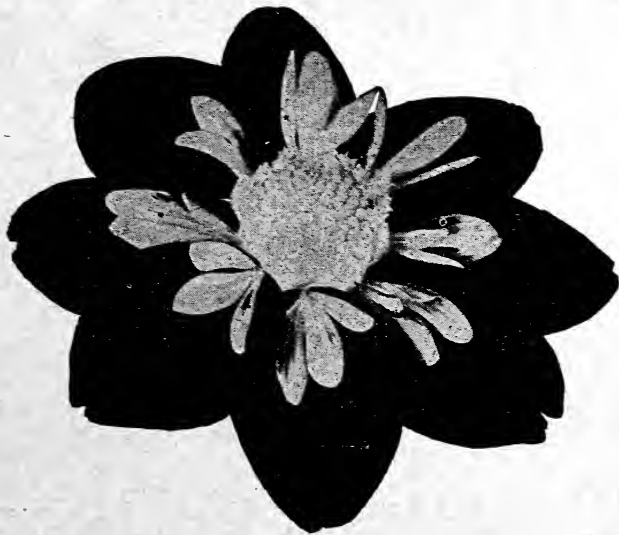
Dahlia So much does it resemble a big chrysanthemum that many think it is a cross between that flower and the Dahlia, but it is not. It is an out and out new break in the Dahlia family. The very large full flower is borne on long slender wiry stems. The color is a rich creamy-white, shading to primrose at the centre and tinting to white at the tips. Our illustration will at least convey a faint idea as to the unique shape and rare beauty of this grand flower. Price, 75 cents each. 3 for \$2.00.

Collarette Dahlias

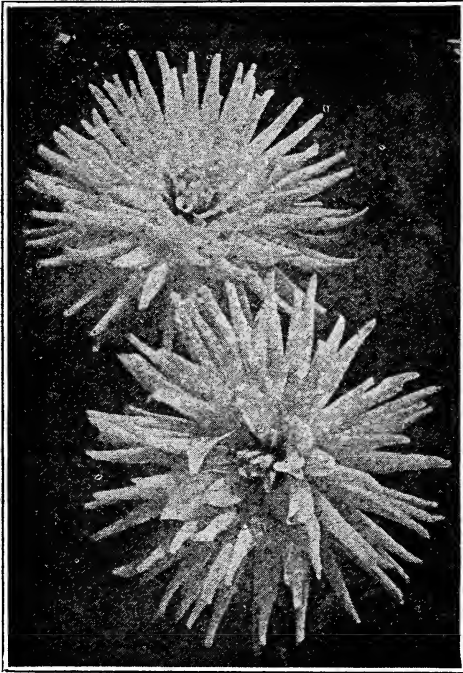
This unique and distinct type is fast gaining in popularity. Flowers are single with a row of smaller or collar petals around the center.

DIADEM .Very large. carmine-rose, collar white with light carmine markings. 25 cents

REGULARITY. Striking new variety. Color, scarlet and white. Most effective for all purposes, \$1.00.



FARGO'S CACTUS DAHLIAS



CACTUS DAHLIAS

The Cactus Dahlia is probably the best known and most admired amongst the various types of the Dahlia family; of peculiar shapes, rich in colorings and good in keeping qualities as cut flowers, they enjoy an immense popularity that they richly deserve.

FLORID Beautiful bright scarlet flowers with long narrow petals, borne on long stems. A new variety. **50 cents.**

MARJORIE CASTLETON Rosy-pink, tinted center and tips. A rarely beautiful flower. **25 cents.**

GENERAL BULLER Rich velvety maroon, lovely variegated sort. **20 cents.**

LIBELLE A beautiful formed dark bloomer. **25 cents.**

WHITE KRIEMHILDE. A new pure white, strong and vigorous; profuse bloomer on rigid stems. **30 cents.**

SUCCESS Clear yellow with long pointed petals. Early, free and continuous bloomer on long stems. **30 cents.**

QUEEN OF HEARTS Pure white with yellow at the base of petals. A beautiful flower. **25 cents.**
Entire set of 7 Cactus Dahlias
SPECIAL \$1.75.

Decorative

Dahlias

Also called Double Dahlias; they are admired by all Dahlia lovers; many placing them ahead of the Cactus Dahlias as their ideal of a perfect flower.

MINNIE BURGLE. The finest flaming red Dahlia to date. Monstrous in size, and wonderfully profuse bloomer and rich cardinal-red in color. **50 cents.**

PERL DE PARC. Very large with long stiff stems. Profuse bloomer. **25 cents.**

MELODY One of the finest, being of splendid regular form, color clear canary-yellow, to creamy-white at the tips. A delicate, pleasing color effect. **25 cents.**

SYLVIA Deep pink tinting to flesh pink at center; large perfect form on long stiff stems. **25 cents.**



DECORATIVE

Decorative Dahlias

MINNIE McCULLOUGH

Soft golden-yellow, tipped bronzy-red. A fine one. 20 cents.

JACK ROSE

A very popular crimson for garden or cutting. Brilliant crimson-red. 20 cents.

ENTIRE SET OF 6 DECORATIVES—SPECIAL \$1.50.

Ball Dahlias

These very much resemble the Decorative type but not so open, the petals being more closely quilled and the flower more ball-like in form.

ARABELLA One of the loveliest. soft primrose shaded and tipped rose. 25 cents.

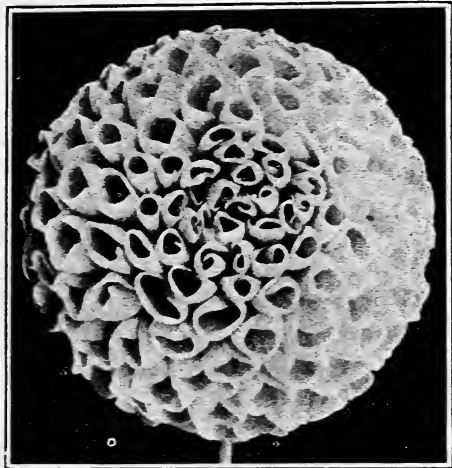
QUEEN VICTORIA Rich golden-yellow. Strong sturdy grower, profuse bloomer. 20 cents.

RED HUSSAR Rich, dazzling cardinal-red. Best red show dahlia for cutting. 20 cents.

WHITE SWAN Large pure white and a reliable flower. 25 cents.

AURORA This beautiful flower is yellow tipped with red. 20 cents.

A. D. LIVONI Clear bright pink, grilled petals, the best pink show dahlia. 30 cents.



BALL DAHLIA

ENTIRE SET OF 6 BALL DAHLIAS—SPECIAL \$1.25.

Fancy Dahlias

Of same type as Ball Dahlias but spotted, penciled or striped two or more colors, or tipped lighter than the ground color.

Emily May

Yellow flower, blotched with bronzy-red, making a flaming contrast of color. 25 cents.

Penelope

White flaked with rosy-lake. Beautiful and chaste. A grand Dahlia. 20 cents.

Prof. Mansfield

A giant of most unique coloring; a pleasing combination of red, yellow and white. 30 cents.

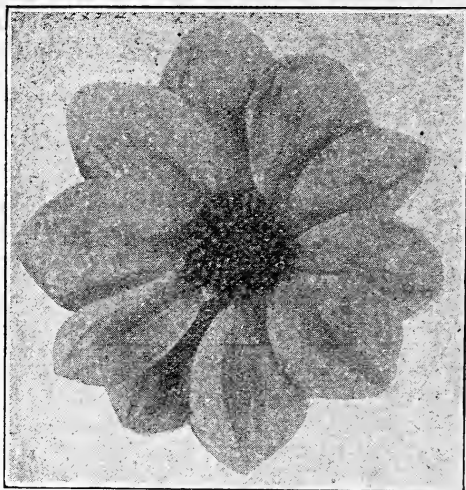
Marianne

This is a most pleasing and distinct variety; much admired. Color a rich purple and white. Very striking. 50 cents.

Entire Set of 4 Fancy Dahlias—Special \$1.00.

Fargo's Century Dahlias

An entirely new and exceedingly beautiful race of large single Dahlias first introduced in 1901. They must be seen to be appreciated as they occupy a very high place where beauty of coloring and artistic effect is desired.



CENTURY

Geisha

The inner half of petal is a rich yellow, the outer half an intensely rich scarlet—the Geisha colors—hence the name. This is the most striking of the Century Dahlias and one of the most popular. 50 cents.

Cream

A delicately colored giant flower. Blooms early, profusely and continuously until frost. Giant in size, regular in form, carried on long stiff stems. 25 cents.

Wildfire

Brilliant, rich scarlet. Acknowledged as the best scarlet Century Dahia. 20 cents.

Rose Pink

The largest and best deep pink; enormous flowers on 3 feet stems; sure and continuous bloomer. 20 cents.

Eckford

Probably the largest in existence. Pure white, spotted and penciled pink and crimson. Of great beauty and oddity. 25 cents.

ENTIRE SET OF 5 CENTURY DAHLIAS—SPECIAL \$1.25

Pompon Dahlias

A miniature form of the Ball Dahlia, indispensable in the artistic arrangement of banquets. The plants branch freely and produce blooms in endless profusion, so they can be cut in sprays, the Pompons are a practical necessity.

Klein Domitea

Bright golden terra-cotta. Profuse. 20 cents.

Snowclad

The best pure white in existence. 25 cents.

Clarissa

Color a pale primrose. Very effective. 25 cents.

Madeline

Primrose edged with rosy-purple. Handsome. 25 cents.

ENTIRE SET OF 4 POMPONS—SPECIAL 85 CENTS.

PEONY FLOWERED DAHLIAS

This is one of the newer types, also called Art Dahlias. The true type resembles the Japanese Peony. Exquisite alike in size, form and coloring.



John Wanamaker

John Wanamaker.

This lovely new Dahlia was awarded the first prize for best pink Dahlia, any class, by American Dahlia Society at the New York Exhibition. It is a superb pink of the carmine-lake shade, choice specimens often measuring 6 inches across, and even a single plant in full bloom is a lovely sight. One feature of its great charm and beauty is the irregularity of its petals, no two being exactly alike. First introduced in 1914 at a price of \$5 each. Now, only 50c.

Mrs. Wm. Kerr— One of the very handsomest, flowers very large, of beautiful twisted, irregular

formation and of most exquisite coloring; rich cream, suffused pink, and an overlaid bright carmine; the blending of shades and tints is most attractive and pleasing. **Price: \$1.00.**

F. R. Austin.—One of the most striking Peony Dahlias in existence, the beautiful flowers averaging 6 to 8 inches across. The outer petals are very long creamy-yellow, suffused, banded and shaded rich crimson; the inner petals are yellow at base tinting lighter, and suffused pink and crimson. **Price \$1.00.**

Salome.—A large fine flower of a lovely shade of apricot. **Price 30 cts.**

Sunset.—A grand flower of yellow shaded and tipped with apricot. **25 cents.**

ENTIRE SET OF 5 PEONY DAHLIAS—SPECIAL \$3.00

SPECIAL

A collection of fine mixed Dahlias suitable for beginners or for producing an abundance of cut flowers cheaply. No one knows what these collections contain, not even ourselves, until they bloom. This collection consists of

12 Dahlias for \$1.00

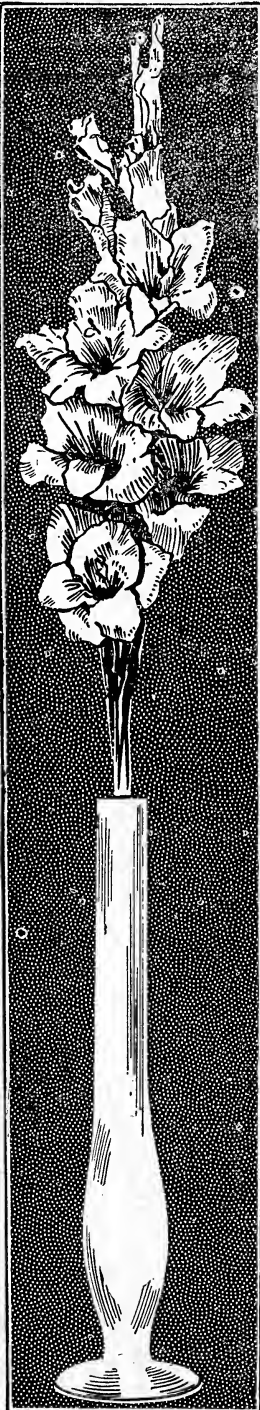
SPECIAL

A collection containing one Dahlia of our selection from each of the seven separate families listed in this catalog viz: 1 Cactus, 1 Decorative, 1 Ball, 1 Fancy, 1 Peony, 1 Pompon and 1 Century Dahlia. An educative and interesting collection of

7 Dahlias for \$1.00

FARGO'S SPECIAL XXX GLADIOLI.

Too much can hardly be said in the favor of this marvelously beautiful flower, the Gladiolus.



The flowers are produced on tall stiff stems usually three to four feet high, in all the colors of the rainbow—red, pink, yellow, purple, in fact in about all colors from white to crimson, most of them very wonderfully variegated in beautiful color combinations. The individual flowers often measure from four to six inches across. Gladioli make exquisite bouquets and are in enormous demand for this purpose. By planting some of the bulbs every week or ten days from April to July these gorgeous flowers may be had continually in bloom from July to October.

Great News For Flower Lovers.

It has been our good fortune to get into touch with a gentleman who has been growing his Gladioli from seed for over twenty years, producing many beautiful new varieties. He has done this as a labor of love rather than for profit, finding it highly interesting to watch continually for something new as a reward for his efforts and labor.

We have purchased the entire surplus stock of this gentlemen who at this writing is preparing to move to Florida, there to spend his remaining years, and we now pass our lucky purchase on to you.

All new sorts of plant life are produced only the seed, and as these Gladiolis have been grown from seed (this takes four years) the purchasers in addition to finding about one hundred varieties scattered thru this lucky purchase; also have the possibility of some welcome surprises as well. We are told that dealers a number of times have examined this growers fields when in bloom, selected out some new and attractive variety, given it a name and placed it on the market as their own creation. That one such visitor discovered one bulb in bloom that he especially desired, and

PAID \$150.00 FOR THE ONE SINGLE BULB.

digging it up on the spot and taking it right along home with him.

I wish each one of my customers could have seen these bulbs in bloom on the day in last August when I made the purchase. It would have seemed almost like a page out of fairyland.

Advance sales have cut down our stock somewhat but, while these bulbs last, we will send

20 Special XXX Gladioli for \$1.00

No reduction in price on these for larger quantities. Include at least 20 for \$1.00 with your spring order. You will want to see as many as possible of the hundred or so varieties known of, with the possibility of some welcome surprises.

Exhibition Mixture

While not grown from seed, as our Special XXX Mixture is, yet these are certainly exquisite varieties in a wide range of beautiful and showy colors and combinations and, with Gladioli as scarce and as high in price as they are this year, we are glad to be able to offer an Exhibition Mixture at

25 Bulbs for \$1.00 100 for \$3.75

Choice Mixed Gladioli

Nice bulbs of a wonderful flower, but of course not up to the standard of the two sorts listed above. Choice Mixed Gladioli.

40 Bulbs for \$1.00 100 for \$2.25

FARGO'S SUPERB GLADIOLI.



MRS. FRANCIS KING—Dark pink. Flowers of enormous size and plant of strong vigorous growth. This variety is very popular for florists work: bouquets, etc. and effective in the garden. 5 for 25 cents. 100—\$4.50.

PINK PERFECTION—A wonderful shade of pink. Often 5 to 6 inches across the flower. Must like "America" in form but of a far deeper color. 2 for 25 cents. 100—\$8.50.

E. E. Levis, Pitman, N. J., says: "They are far the largest and prettiest of any in our neighborhood."

For formal beds and for cut flowers for special purposes, such as weddings, funerals, florists' sales etc., it is advisable to make some plantings of separate named varieties as well as of the mixed sorts.

The named varieties here offered are all popular sorts of rare beauty and value and sure to please.

AMERICA—A delicate shade of pink or lilac-rose. Large strong spikes of expanded flowers. The most widely used variety and in great favor for weddings, funeral work, table decorations and for massed beds. 5 for 25 cents. 100 for \$4.00.

HULOT—Rich, velvety indigo-blue. The flowers so rich as to appear as having been cut from a piece of velvet. This flower is superb. 5 for 30 cents. 100 for \$5.00.

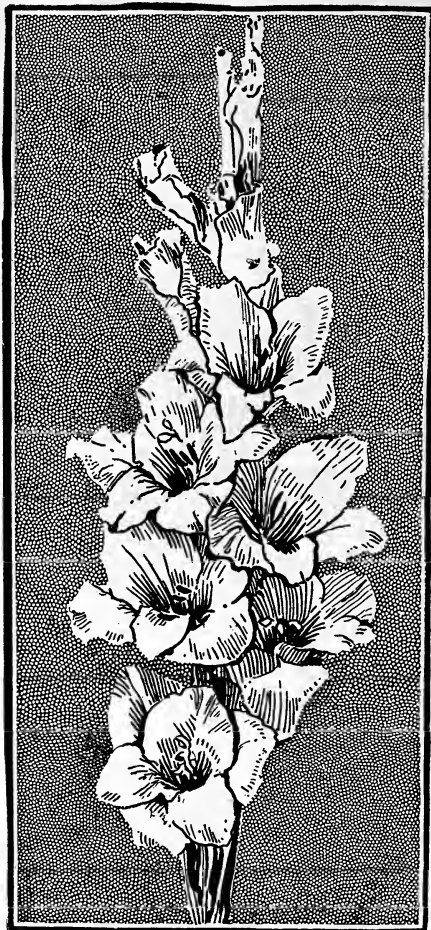
HALLEY—Flowers very large, often measuring over four inches across. A lovely salmon-pink with yellow blotch in the throat, the blotch marked with a red penciling. One of the finest and rarely beautiful. 5 for 30 cents. 100—\$5.00.

NIAGARA — Delicate creamy-yellow; lower petals blending to canary-yellow. Throat splashed and blotched carmine. A popular beauty 10 cents each. 5 for 40 cents. 100—\$7.00.

18 BULBS—Three each of the six sorts listed on this page will be sent (unlabeled) for \$1.

Jas. F. Bunting, Pittsburgh, Pa., says: "They are indeed the prettiest ones I have seen."

FARGO'S LARGEST FLOWERING GLADIOLI.



EVELYN KIRTLAND. Of enormous size, growing five feet or more in height. Beautiful rosy-pink, darker at the edge, fading to shell-pink at the center, brilliant scarlet blotches on the lower petals. A prize winning Gladiolus. 50 cts each; dozen, \$5.00.

THOS. T. KENT. Rose-pink with deep ruby running through center of each petal. One of the largest varieties, flowers measuring 6 to 8 inches across; spikes 6 feet high. 75 cts. each; dozen, \$7.00.

HERADA. A new color in Gladioli. Blooms of immense size on tall straight spikes. Pure mauve, glistening and clear. Very striking and attractive. Winner of first prize for size. 25 cts. each; dozen, \$2.50.

BERTREX. Stands right at the top of all existing white varieties. Flowers of great substance and fine form. 25 cts. each; dozen, \$2.50.

SARAH LILLE. - Reddish-lavender, throat ruby mottled with white. Flowers 5 inches across. 50 cts. each; dozen, \$5.00.

DR. FRED'K. SKIFF. Clear flesh-pink, light ruby center; sometimes slightly striped with rose-pink. Strong vigorous grower. Flowers 6 inches in diameter; spikes 5 to 6 feet high. 75 cents each; dozen, \$7.50.

Six Bulbs—one each of above—mailed for \$2.50.

John E. Tuttle, 3300 Knorr St., Tacony, Pa., says: "I have received other bulbs, but find yours the best of all I have received."

Mr. Geo. B. McKinney, Jr., Bala, Pa., says: "I have never seen any in our large florist shops in Philadelphia which were equal to yours in size and beauty."

GLADIOLI STAKES

Many growers like to stake their Gladioli to avoid the possibility of their blowing over under high winds. This is very desirable and I can supply suitable stakes, 42 inches long, dyed green at **\$1.50 per 100**, shipped by express. These stakes are also suitable for Lillies and other high growing plants.



Peonies in Bloom for a Full Month

A Peony usually is in bloom for about a week but all varieties do not bloom at the same time, therefore if Peonies are selected with care backed by knowledge, it is possible to choose a selection that will bloom for a full month instead of a single week, and thus to give much added joy and pleasure to Peony growing. The collections as given on this page has been carefully and painstakingly selected with this end in view.

Louis Van Houtti

Bright violaceous red of fine shape and dazzling effect. **50c. each.**

Berlioz

Bright currant-red tipped silver. Very showy. **60c each.**

Fragrans

An old favorite. Color salferino-red, with slight silvery replex. **50c. each.**

Mons. Krelage

The French hybridists evidently "spilled their paint pot" after producing this superb red with amorphine center as there is no other variety in its color. **75c. each.**

Princess Beatrice

Center light violet-rose; collar creamy white with shades of amber, flecked crimson. Fragrant tri-color blooms. **60c. each.**

Asa Gray

Delicate lilac sprinkled with dots of deeper lilac. Very striking, imposing and beautiful. Wonderful bloomer. **\$1.25 each.**

Festiva Maxima

Regarded by many as the finest white Peony grown. Center petals edged with red. Often measures 7 to 8 inches across. **50c. each.**

Marie Stuart

Soft lilac, changing to white. One of our most beautiful Peonies. **50c. each.**

Edulus Superba

A beautiful bright clear pink with silvery replex. **50c. each.**

Marie Lemoine

Ivory white. Blooms of truly gigantic size. **50 cts. each.**

Pres. Roosevelt

Deep, rich, brilliant red; different from any red we know and hard to beat. **\$1.00 each.**

Anemoneflora Rubra

A deep brilliant red, unusually beautiful in shape and coloring, enriched by a great mass of golden stamens that set the flower off to perfection. **65c. each.**

JEANNE d'ARC.

The guard or collar petals are blush-pink, with creamy sulphur-yellow center; tipped with white and carmine. A most striking variety, producing large fragrant blooms in great profusion and providing a delightful treat. **75 cents each.**

A Month of Peonies for Only \$7.50.

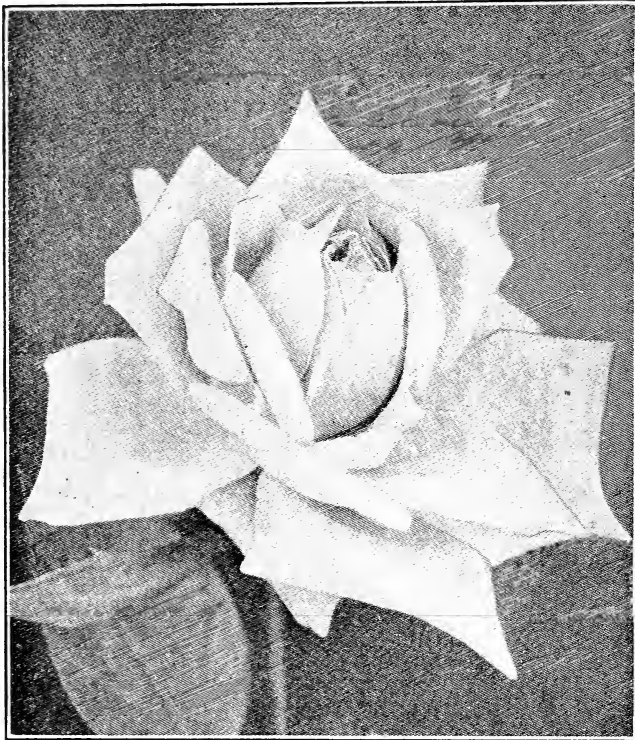
The entire selection of 13 extra choice Peonies listed above will be sent for only **\$7.50.**

Thos. B. Lighty, Steelton, Pa., says: "I received the Peonies and they were so fine I could not help but try the Roses."

FARGO'S HYBRID TEA ROSES.

Also known as "Everblooming" or "Monthly" Roses. I am offering a select list of strong dormant field grown stock, grown on their "own roots", strongly rooted, 12 to 18 inches in height and full of bloom.

Millard O. Keller, Wrightsville, Pa., says: "I received my Rose bushes and I am so pleased with what you selected that I feel I ought to write and express my appreciation and satisfaction."



THE GREAT NEW ROSE "LOS ANGELES."

Los Angeles

Known as one of the finest Roses ever introduced. Produces a succession of long stemmed flowers of a luminous flame—pink toned with coral and shaded with translucent gold at base of petals. Buds long and pointed, expanding into a flower of mammoth proportions and of rare beauty, (from four inch pots only). Price \$1.50 each.

September Morn

A striking Rose of largest size; flowers borne on long strong stems. Large shell shaped petals, undulated or waved on the edges. Color delicate flesh. Price \$1.25 each.

Irish Fire Flame

Produces beautiful buds that hold their own for a long time. Long stemmed and unique in color. Old gold or coppery-yellow, flamed with ruddy crimson. Price 75 cents each.

Killarney Brilliant

The color is a very brilliant pink, changeable with the weather; in dull weather becoming almost crimson. Fine habit of growth and freedom of bloom. Price 75 cents each.

Ophelia

Salmon-flesh shaded with rose. Produced in profusion on long stiff stems. A grand forcing Rose much used by florists. Price 75 cents each.

FARGO'S HYBRID TEA ROSES.



John Waddington, Wilmington, Del., says: "The Roses are a splendid lot; good strong plants and well rooted. I am perfectly satisfied with them."

Yellow Shades

DUCHESS OF WELLINGTON.

Intense saffron-yellow, stained with rich crimson.

MME. GILLEMOT.

Saffron-yellow opening canary. Buds long and pointed. Blooms large, petals immense, opens very freely; a fine upright grower.

OLD GOLD.

Tinted a vivid reddish-orange with rich coppery-red and apricot shadings. A gold medal winner and a grand bedding Rose.

HELENE GAMBIER.

Changes from orange-yellow to coppery-yellow and the outer petals to lemon-yellow.

Red Shades

CRIMSON QUEEN.

Rich bright velvety crimson. A grand Rose, continually in bloom. Flowers large and full.

EDWARD MAWLEY.

Dark crimson. Pronounced the finest of all dark roses.

LADY BATTERSEA.

Beautiful cherry-crimson with a shading of orange. Full pointed buds.

WILLIAM NOTTING.

Bright rosy-cerise. Flowers very large and full. Sweetly perfumed.

DEAN HOLE.

Light carmine shaded with rose and flushed old gold. Extra long buds. Agold medal rose.

Eugene Henry, Bordentown, N. J., says: "I purchased your Roses last year and they were in every way most satisfactory."

Any of the above 50 cents each. \$5.00 per dozen.

FARGO'S HYBRID TEA ROSES.

M. M. Murray, Mayfield, Pa., says: "Those Roses received from you are in every way as advertised. Fargo for mine, and my friends, in the future."



Mme. Edouard Heriot.

Buds coral red shaded with yellow at the base, the open flowers of a superb coral-red, shaded with yellow and bright rosy scarlet passing to shrimp-red. A gold cup winner. Price, \$1.00 each.

WHITE SHADES.

Antoine Revoire

Rosy flesh on yellow ground with a border of carmine. Round and full of form. An excellent cut flower and a grand forcer.

Mrs. Fred E. Moore, Coatesville, Pa., ordered 200 of our Roses last spring, saying, "I would not hear to anything but your Roses."

British Queen

Pure white slightly flushed with rose. Large full flowers of exquisite form, opening freely in all weather.

White C. Testent

Pure white. flowers very large and extremely showy.

Kaiserin Augusta Victoria

Pure white with shadings of primrose yellow. Of immense substance, smooth and nicely arranged.

Any of Above except Mme. Edouard Heriot 50c Each. \$5.00 per dozen

PINK SHADES.

Countess of Gossford

Salmon-pink suffused with yellow at base of petals, large, well formed flowers abundantly produced.

Duchess of Albany

A deep colored La France; flowers large and globular; a first class Rose.

Killarney

The finest pink forcing Rose ever introduced. Especially beautiful in coloring; an exquisite shade of deep sea-shell pink. The buds and flowers of enormous size.

La France

Beautiful bright silvery-pink with pale lilac shadings; over the entire flower a satiny sheen. Large of fine form, fragrant and a free bloomer.

Queen Beatrice

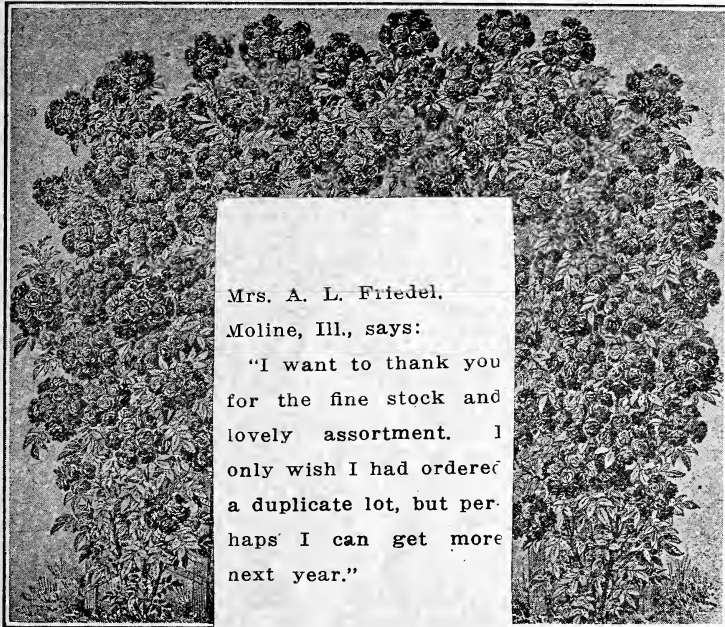
One of the finest bright pink shades, the color being very clear.

Apricot pink with a superbly beautiful aurora-borealis tint.

Winnie Davis

Brilliant rosy opaline-pink; large, free and of fine form. Very popular.





Mrs. A. L. Friedel,
Moline, Ill., says:
"I want to thank you
for the fine stock and
lovely assortment. I
only wish I had ordered
a duplicate lot, but per-
haps I can get more
next year."

HARDY CLIMBING ROSES.

LADY GAY—Climbing Rose. A new variety of remarkably vigorous growth, with double flowers of a delicate pink, changing to soft tinted white.

HIAWATHA—Among hardy Climbing Roses none surpass the Hiawatha. Each Summer the plants are smothered with great clusters of rich bloom, often fifty or more flowers to a cluster. The color is a glowing ruby-carmine, with clear white at base of petals and a mass of golden stamens at the center.

This rose has been a sight worth seeing in bloom on the grounds of the Dept. of Agriculture at Washington, and I think I can truly say it eclipses all the Climbing Roses.

WHITE DOROTHY PERKINS. Same as Dorothy except color clear white. Fills a long felt want for a hardy white climber.

EXCELSA. Intense deep crimson. Called the Red Dorothy Perkins.

Mrs. Walter Miller, W. Reading, Pa., says: "I have been so well pleased with my Roses that I would like ten more—and ten for a friend."

HYBRID PERPETUALS.

Stronger, sturdier growth than the Hybrid Teas. June bloomers.

AMERICAN BEAUTY.

This well known red Rose is so popular as to require no extended description. Price 60 cts each.

GEN'L JACQUEMINOT.

Known by many as the "Jack Rose." Crimson-scarlet; large, full and very fragrant.

PAUL NEYRON.

Deep rose-pink; flowers of immense size. Claimed by many to be the largest Rose grown.

FRAU KARL DRUSCHKI.

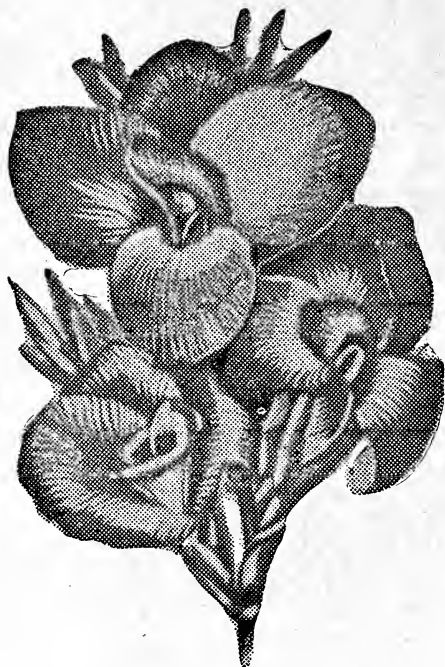
Pure snow-white; long, pointed buds; large, full flowers. Price 65 cts each.

LUDWIG MOLLER. This is the wonderful "Yellow Druschki." Vigorous grower, free bloomer, producing Yellow flowers of a great beauty. Price \$1.25 each.

Price 50 Cents Each. \$5.00 per dozen, except as otherwise noted

Choice Large Flowering Cannas

Cannas of the large flowering varieties set off the home surroundings and make a glorious display in beds or borders. Many of the improved sort have flowers larger and as beautiful as the Gladiolus. The colors are red, pinks, whites, yellows and variegated. Plant after danger of frost is over or, if you prefer, about March 1st in some shallow pans or boxes with damp moss $\frac{1}{2}$ inch deep on bottom and sides, put in the Cannas $\frac{1}{2}$ inch apart and fill in with moss, and keep it damp. They will begin to sprout in about two weeks. As they sprout, cut off with part of the root and plant in 4-in pots. Give light and plenty of moisture and transplant to beds in May.



Pink Flowering

Mrs. Alfred Conard. Exquisite salmon-pink flowers of largest size. Rich green foliage. Height 4 feet. 30 cts. each. \$3.00 per doz.

Venus. Soft rosy-pink with a pretty mottled border of creamy-yellow. $3\frac{1}{2}$ feet.

Yellow Sorts

Austria. Large, pure canary-yellow with reddish dots in center of upper petals. Height 5 feet.

Gladiator. Deep yellow, freely dotted with red. A popular bedder. $4\frac{1}{2}$ feet.

Brilliant. Rich yellow and two red petals. Height $3\frac{1}{2}$ feet.

Red Varieties

King Humbert. Best and most popular red. Bronze foliage. Universally admired. Height 5 feet. 25 cts. each. \$2.50 per dozen.

Dr. E. Ackernecht. Carmine-lake suffused with deep carmine, bronze foliage. Height 4 feet.

Duke of Marlboro. An attractive deep brilliant crimson. 4 feet.

Uhlburg. Soft rosy-carmine; edge of petals pale yellow. 3 feet.

White Shades

Maros. An excellent creamy-white, very free. Height 4 feet.

Maid of Orleans. Rich creamy ground, mottled and shaded soft pink. Height 4 feet.

Gold-Edged Cannas

Mme. Crozy. Rich scarlet flowers edged with bright golden-yellow. Height 4 feet.

West Virginia. Intense rich crimson-scarlet with golden edge. 3 feet.

Green Foliage unless otherwise stated. All Cannas 20 cents each. \$2.00 per dozen. \$12.50 per 100 unless otherwise noted above.

MIXED CANNAS. Suitable for many spaces. \$1.25 Doz., \$7.50 per 100

CALADIUM ESCULENTUM

(ELEPHANTS EARS)



Answer well as centerpieces or specimens in flower beds. Planted in a bed with a border of Scarlet Sage or "Dusty Miller" makes a beautiful and pleasing contrast. The enormous leaves of this plant often measure three feet long and twenty inches wide. Very effective planted for margins of water. Do not plant outdoors before May 1st. They can be started early in pots in the house and transplanted later if you wish. Bulbs can be stored in dry sand and over winter and kept from year to year.

Good Bulbs, 20c Each; Dozen, \$2.00

Larger Bulbs, 35c Each; Dozen, \$3.50

Excelsior Pearl Tuberoses

Improved dwarf habit of growth and does not require staking. Flowers extremely double, early flowering and very fragrant. Everyone should grow some Tuberoses for they are so lovely and so fragrant that one cannot help loving them, and then they are very easy to grow. Can be forced in pots as well as grown in the open ground. I offer choice large flowering bulbs. 4 for 25c; Dozen for 60 Cents; 100 by Express \$4.00.

Amaryllis Formossissima

OR

JACOBEEAN LILY



Great Ismene

There is hardly a flower which has such deep, rich velvety crimson color, a color so intensely brilliant as the Amaryllis. It is a free bloomer and succeeds well either in pots or in open ground, and blooms very soon after planting. Few flowers can equal it in richness and beauty of color, and it blooms profusely every year.

25 Cents Each. Dozen \$2.50

The Great Ismene

Those who are familiar with it cannot say enough in praise of its great beauty and purity. The flowers are of large size, like an Amaryllis novel form and of snowy whiteness, and also exceedingly fragrant. It is really one of the most lovely of all the Amaryllis tribe, having a peculiar grandeur which one can appreciate at sight but cannot describe. Bulbs are large and strong and begin to flower soon after planting. Make excellent pot plants.

25 Cents Each. 5 for \$1.00.

Montbretias

Somewhat like the Gladiolus, but smaller in size. The flowers are very showy and of bright and pleasing colors. Should be grown in masses or clumps. Bloom from July to October. Fine for cutting.

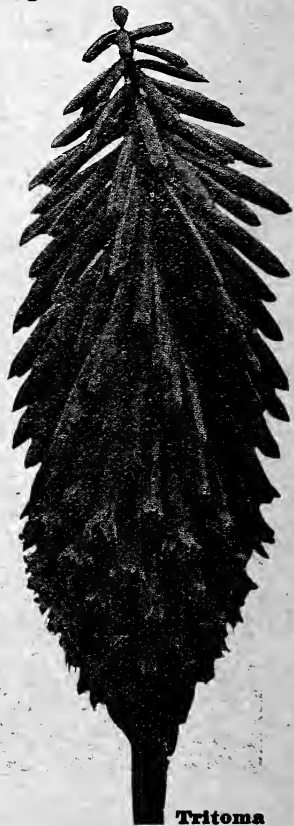
3 for 10 cts.; 12 for 35 cts.

Hyacinthus Candicans

Grows large yucca-like leaves. Flowers are pure white 20 to 50 pendant on each spike and growing four feet tall. Each bulb will send up two or more spikes of bloom. Hardy bulbs. 10c each; 4 for 25c.

Tritoma or Poker Plant

This excellent Perennial when in bloom, makes a striking display. A single plant will often throw 15 to 25 spikes of bloom in a season. The flowers are of various shades of red and yellow, are on stout stems two to three feet long; the flower head itself measuring 6 to 9 inches. Very bright and striking as a single specimen on the lawn, for use in borders, and very useful for cutting. Half hardy it requires to be covered up well for winter protection.



Tritoma



Fancy Leaved Caladiums. Glassy foliage of beautiful shape and form, oddly dotted, spotted and veined. A riot of vivid and delicate colors embracing white, yellow, pink, red, etc. Easy to grow and no foliage collection is at all complete without at least a few Fancy Leaved Caladiums. Extremely showy and to see is to admire them. **Bulbs 35 cents each. 3 for \$1.00.**



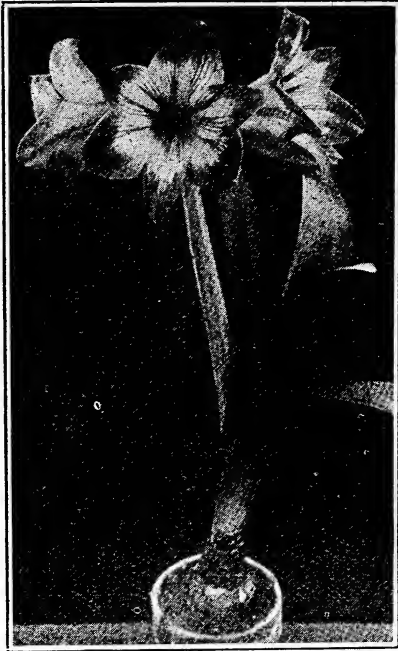
Oxalis Summer Flowering. Very useful for edging purposes. Fine along walks or around beds. Set the bulbs three inches apart and you have an unbroken row or border of lovely pink and white flowers and attractive foliage all summer. They also make showy beds planted en masse. **12 bulbs 15 cts.; 100, 75 cts.; 500, \$3.00.**



Zephyr of Fairy Lilies. These beautiful white, yellow and pink

Yucca. (Adam's Needle). This excellent hardy plant is one of the best. Each plant is a clump of broad sword-like foliage, sending up branched spikes 5 or 6 feet tall, bearing large, fragrant, drooping creamy-white flowers in the middle of summer. A row or a bed of these grand plants in bloom is a beautiful sight. **Strong plants, 40 cts. each; 3 for \$1.; 12 for \$3.75.**

Buddleia Asiatica or white Butterfly Bush. What the lavender Butterfly Bush is to the garden, just as splendid a shrub for pot culture is this new white variety, producing great quantities of pure white fragrant flowers in graceful, recurving racemes or sprays, providing a grand cut flower of unusual keeping qualities from November on. Plants from 2 1/4 in pots. **30c each.**



AN AMARYLLIS

Amaryllis

Johnsonia. Rich crimson-scarlet flowers striped with white. Flowers early. 50 cts.

Crinum

Ornatum a superbly beautiful member of the Amaryllis family. The flowers are simply immense in size. Pure white with a deep band of richest crimson thru center of each petal. Fragrant flowers, squalling orchids in beauty, are borne in clusters. 75 cents.

Amorphophallis

A large bulb quickly growing a long stem surmounted by very beautiful and ornamental foliage and a coal-black flower of enormous size. The flower

usually appears soon after the bulb is potted and before the foliage starts, then afterwards makes a very odd and attractive foliage plant for balance of the season, 50 cents each.

Chlidanthus Fragrans

The bulb starts growth as soon as potted and quickly blooms, producing a cluster of four to six of brightest golden-yellow, fragrant flowers. Each bulb usually produces two or three spikes of bloom and the bulbs can be potted any time, winter or spring. Bulbs 10 cts. each; 3 for 25c.

Cooperia

For either pots or open ground. Beautiful lily-like flowers profusely borne on stems 12 to 15 inches high, springing up as if by magic repeatedly thruout the season. Color pure white. Bulbs 10 cts. each; 3 for 25c.



CHLIDANTHUS FRAGRANS



ACHILLEA

(The Great Cemetery Plant.)

A single plant will produce hundreds, and even thousands, of flowers the first summer, but when established the second year they have more than five thousand perfect flowers on a single plant at the same time. It commences to bloom early in July and is a perfect mass of beautiful flowers until frost, the same blooms keeping perfect for two or three months. The flowers are pure white, perfectly double, and produced in large sprays, making it one of the finest cut flowers for bouquets, vases, basket, etc. For cemetery planting it is the most valuable of all flowers. Plants 25c. each, or 5 for \$1.00.

Lily-of-the-Valley



Planted once the lovely Lily-of-the-Valley, whether in sun or shade thrives and multiplies rapidly without care or attention. The flowers make lovely carriage bouquets and are much in demand. Both flowers and foliage beautify an otherwise unsightly spot. Fine pips, 60c per dozen or 25 for \$1.00.

HARDY CLIMBING VINES Madeira Vine

This is an old-fashioned vine, with fleshy heart-shaped leaves of a light green color and numerous sprays of feathery white flowers of wonderful fragrance. Also called Mignonette Vine. Protect with a litter of leaves or straw over winter. Strong selected roots, 25c each.

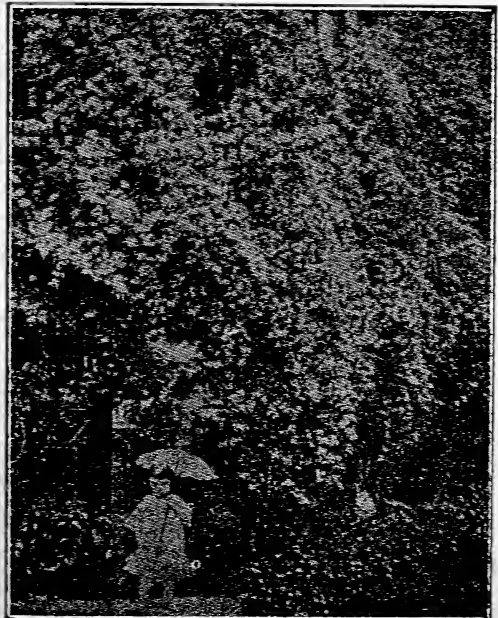
Cinnamon Vine

A rapid grower, having heart-shaped leaves, bright glossy green in color. The white flowers have a peculiar fragrance. Hardy, and often grows to 25 or feet. Fine roots, 15c each.

Clematis Paniculata

Or Japanese Virgin's Bower.

A strong, luxuriant growing climber, largely used for porch screens. Light green foliage, and at the close of August innumerable star-like flowers cover the vine in a sheet of fragrant white. Plants 25c each; 5 for \$1.00.



CLEMATIS PANICULATA

Plant Iris NOW; Plant Them Liberally

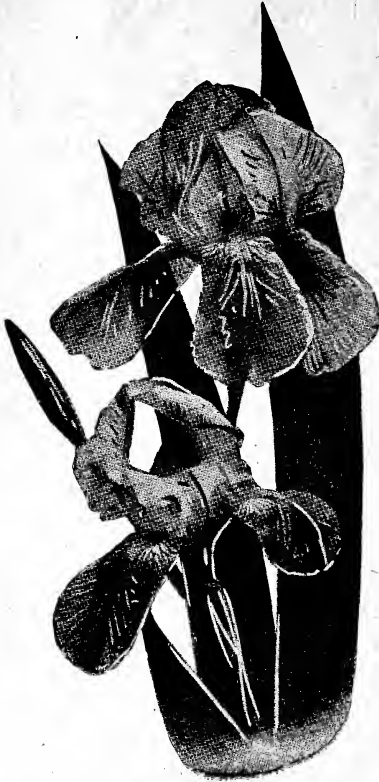
PLANTED ONCE, THEY ARE A PLEASURE FOR A LIFETIME.

Beautiful Hardy Iris

(Bloom in May.) This lovely member of the Iris family is too well known to need an extended description. They are real garden queens during May and June; richly repay planting, and give pleasure and satisfaction for a lifetime. One can go far and far worse searching for a better flower for general planting. Nothing is easier to grow, and a dozen or so planted now will quickly become large, massive clumps that will prove a source of pleasure for a lifetime. Bloom early, when flowers are scarce, and they require absolutely no care at all after once planting. The colors are legion—Blue, purples, yellow, whites, etc. I offer fine mixed sorts at—

5 for 50 cents. 12 for \$1.00.

100 by express, \$8.00.



Wonderful Japanese Iris

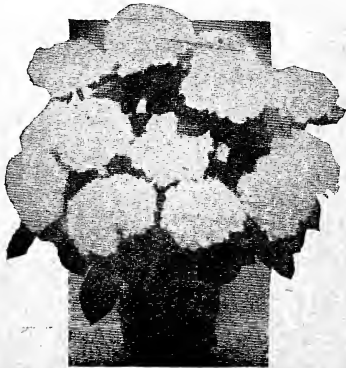
(Bloom in June and July.)

They truly rival the Lily in stateliness, the Peony in majestic beauty, the Orchid in delicacy and coloring, the Chrysanthe-

mum for profusion, and surpass almost any plant in the kingly magnificence of their bloom. Once planted in your garden they rapidly multiply and are a joy and pleasure for a lifetime. Grow three or more feet high; flowers are as big as plates; 8-10 or 12 inches across under favorable conditions. Among the many beautiful colors are whites, blues, maroons, plums, lavenders and many others. No one can make a mistake by planting the lovely Japanese Iris. We offer single and double varieties, mixed colors only.

6 for \$1.00 12 for \$1.75

100 by express, \$10.00.



Pink Otaksa Hydrangeas

Bears immense trusses of large pink flowers in July and August. As a hedge or border these Hydrangeas are superb, and very extensively used for this purpose. Also grown in pots and tubs and can be had in bloom for Easter. By mixing quarter pound pulverized alum in the soil around the plant the color of the flowers may be changed to a lovely delicate blue.

Price for Plants from 2¼-inch pots, 30c. each, or \$2.50 per dozen.

FARGO'S HARDY PERENNIAL PLANTS

Fargo's Hardy Large Flowering Chrysanthemums

Warren V. Shmeitzer, Freemansburg, Pa., says: "I am very much pleased with the Chrysanthemums that I received from you a few weeks ago."

For queen of all late flowers we must give preference to the Hardy Chrysanthemums. The plants are literally covered with flowers from the middle of September until after the snow flies. They should be planted liberally, as the fine shades we offer are especially showy, and the plants increase in size and beauty each year. You should find a place for a dozen or so at least of these excellent plants.

Mrs. Wm. J. Purdy, Somerset, Pa., says "I received Chrysanthemums and set them out. They are growing fine."

Colors: Pink, White, Yellow or Mixed,
15 cents each.

Dozen \$1.50. 100—\$10.00 by express.



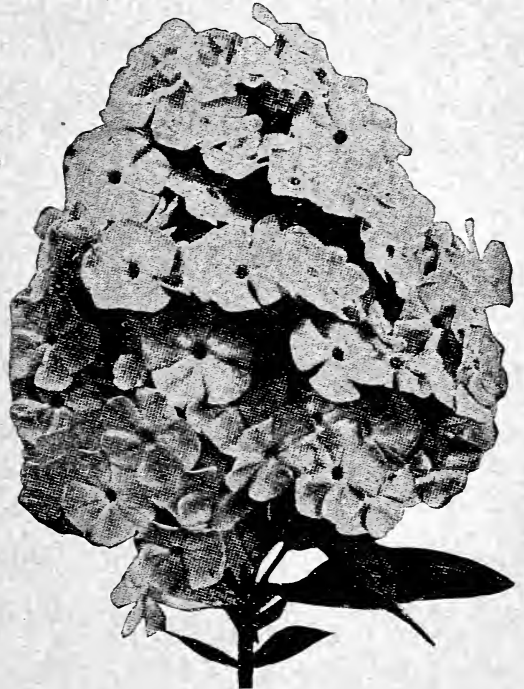
Bleeding Heart

Hardy perennial. The roots planted outdoors in the fall will begin blooming early the next spring. They also make exquisite pot plants for winter blooming and can be planted out after done blooming in pots. For pots treat same as Hyacinths and other bulbs. Strong roots, 50c. each; dozen \$5.00.



Standard Selected Phlox

Among the hardy perennial plants, no class is of more importance or more in public favor today, embracing, as they do, a wider range of attractive colors than is found in any other hardy plant, while their gorgeous masses of color are unrivalled by any other summer flower. All inferior sorts, all varieties of dull color, are left out of our collections, and we are offering only such as are distinctive and effective. Choice mixed colors, \$2.00 dozen; 100, \$10.00.



New Lemon—Ponderosa

This wonderful Lemon has created a great commotion, and is a true everbearing variety that you can grow in a pot or tub in the home and one that will prove to be a decided ornament, as well as bear fruit, such as you have probably never seen or heard tell of. On a plant 6 ft. high, no less than 89 of these ponderous Lemons were growing at one time. These trees are wonderful sights to see. The tree blooms and at the same time has fruit in all stages of development from the size of a pea, up to the ripe fruit. Fruits have been taken from these trees weighing over 4 pounds. It is one of the juiciest of all Lemons, makes delicious lemonade, and fine for pies and other culinary uses. It is not uncommon to make 12 lemon pies from one Lemon. No budding or grafting is necessary. It fruits when quite small and makes a lovely house plant. Everybody can grow their own Lemons. It should fruit freely the second year. I will mail a nice thrifty plant of the New Lemon—Ponderosa for 35c., or 3 Plants for \$1.00.



FARGO'S PLANT FOOD—1 lb., 25 Cents

When your Ferns, Palms and Foliage Plants begin to look dull and seedy, or to prevent their ever looking so; use a little of Fargo's Plant Food. As your blooming plants begin to flower, apply it to increase the number, size and brilliancy of the blooms.



A pound package will go a long ways as each potted plant, according to size, will require a teaspoon to a tablespoonful at a time. Absolutely non-injurious.

Fargo's Plant Food is also excellent for lawns and flower beds and for this purpose it is put up also in 5 lb. packages (enough for 100 sq. ft.) Also for Vines, Fruit Trees, &c. 1 lb. pkg. 25 cents; 5 lb. pkg. \$1.00; 100 lbs. by freight \$10.00.

Choice Geraniums—Grown From Seed

It is an absorbing, interesting pastime growing pot plants from seed, and Geraniums are among the easiest to grow. Our seed is a fancy strain of Zonale Geraniums, and charming new varieties come only from seed. Sow the seed any time, summer or winter. The flower trusses of this strain are frequently five or six inches across, and the individual flowers $1\frac{1}{2}$ inches in diameter. Mixed colors, from white to pink, rose, scarlet and crimson. Price 25c. per packet.



SMALL FRUITS FOR THE HOME GARDEN

GRAPE VINES



You will surely enjoy rich, sweet, luscious Grapes of your own growing each year, gathered right from the home garden. You will make no mistake in planting these four excellent well-known sorts.

NIAGARA

The finest white Grape grown. Bunches large fruits, sweet and fine flavored.

BRIGHTON

A large beautiful red grape of most exquisite flavor.

WORDEN

Immense black grapes of superb quality.

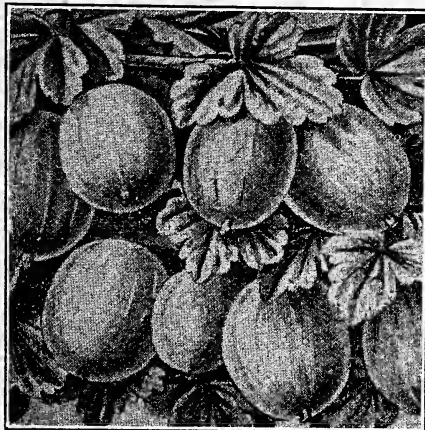
CONCORD

An old stand-by. The best known purple grape.

All Grape Vines 35c. Each.

Red Raspberries**St. Regis Everbearing**

The best known Everbearing variety; it begins bearing in June at about the end of the Strawberry season. It also gives a second crop of sweet, luscious red berries throughout the summer and autumn. Every home garden should have a dozen or so of these plants. 12 for \$1.00; 100 by express, \$7.50.

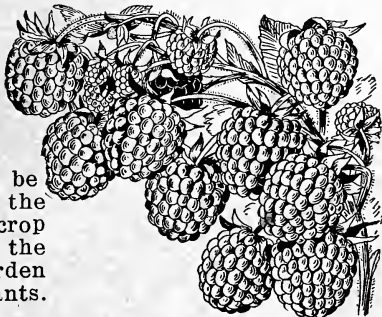
**Gooseberries**

Downing. Large, firm, solid berries, large yielders and of excellent quality. The berries can be canned or preserved and make excellent pies and tarts. Come into bearing the second year after planting and thrive for a great many years. You should have at least a few of each of the Small Fruits in your garden; they fill up the odd spaces and corners and yield a bountiful harvest. Price 30c. each, or 4 for \$1.00.

Cherry Currants

A thrifty grower, producing large deep red fruit, in short, compact bunches. Currants are in great demand, and a few of these bushes are needed in the home garden. Price 25c. each, or 5 for \$1.00.

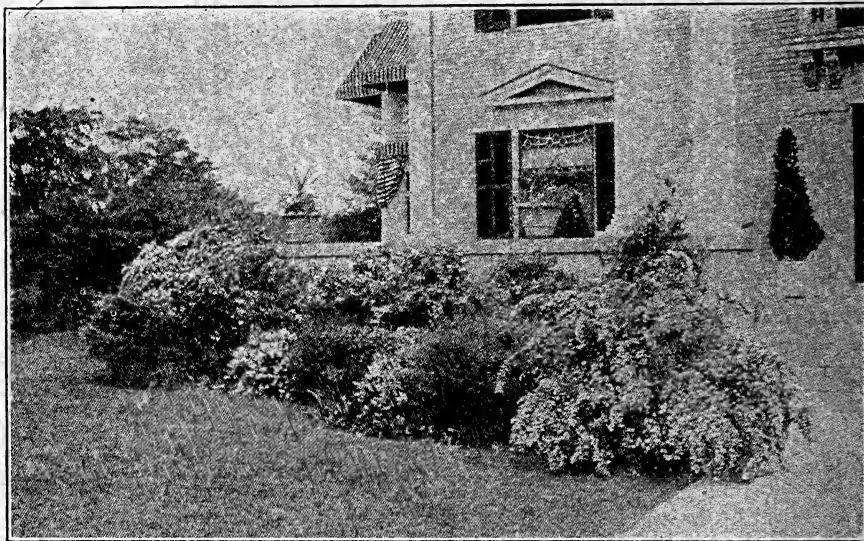
James Long, Westmont, N. J., says: "Send me 8 Grape Vines, the same as those just received, and with which I am very much pleased."



YOU CAN BEAUTIFY THE HOME

AT SMALL COST, IF YOU

PLANT FARGO'S FLOWERING SHRUBS



Notice the rare beauty of this home because of its handsome foundation planting of Flowering Shrubs. You, too, can hide the bare foundations of your house and make it more of a home by a similar planting—a thing of beauty and a joy forever. Too often people do not realize the rare beauty of Flowering Shrubs, both as to flower and foliage, until their eyes are opened by examples such as here shown.

Flowering Shrubs are valuable also as single specimens on the lawns, also for hedges and screens and for massing on banks or terraces, as well as for foundation planting. Do not neglect them.

Instead of offering the small or so-called "lining out" size, which can be sold very cheaply, we prefer to sell better Shrubs for immediate effect at a fair price. You will note we give names, approximate sizes, height at maturity and prices as a complete guide. Figure (1) before the name denotes 9—12 feet, (2) 5—8 feet and (3) 1—4 feet height at maturity. Sizes given after the names denote average present height of the Shrubs we send out.

(2) DOUBLE FLOWERING ALMOND; 2—3 feet.

Perfectly double finely formed flowers in great profusion. Each shrub appears like one mass of blooms. Beautiful and interesting.

Flowers white and pink.

Price, \$1.00 Each.

(1) PRUNUS; Purple Leaf; 2—3 feet.

Leaves when young are lustrous crimson, changing to dark purple, retaining this color throughout the season. Flowers small white, single, covering the shrub. **Price, \$1.00 each.**

G. W. Waterhouse, Charlestown, R. I., says: "I have seen some of your Shrubs that have done mighty well, and congratulate you."

FARGO'S CHOICE FLOWERING SHRUBS



Spiraea Van Houttei.

(2) *Cydonia* 18-24 in.

Or *Japan Quince*. Its large brilliant blossoms appear early in spring in great profusion before the leaves appear. Foliage bright green and glossy all thru the summer. Sufficiently thorny and strong to make a valuable hedge, and its beautiful flowers make it valuable for that purpose. 50 cents.

(2) *Cornus* 18-24 in.

Or *Red Dogwood*. Valuable shrubs either singly or in masses. Distinguished by its bright red bark in winter. Very showy. Green leaves, panicles of small white flowers. 50 cents.

(1) *Althea* 18-24 in.

Or *Rose of Sharon*. Loaded with large, showy bell-shaped flowers from July to September, when most shrubs are done blooming. Bush type. 50 cents.

(2) *Lilac* 2-3 feet.

This shrub, flowering profusely in May, is well known and popular everywhere. Hardy, vigorous growers that should be in every collection. Especially desirable and effective if planted in groups or masses instead of as single specimens. Colors white or purple. 50 cents.

(2) *Forsythia* 2-3 feet.

Or *Golden Bell*. Our finest early flowering shrub. The flowers are drooping, yellow, and appear very early in spring, before the leaves come, giving the plant the appearance of a lovely golden ball. This grand shrub, when in bloom, attracts immediate attention anywhere. 50 cents.

(2) *Kerria* 18-24 in.

Or *Globe Flower*. Slender shrubs, four to five feet high, with beautiful yellow flowers from July to October. 50 cents.

(3) *Deutzia* *Gracilis*; 18-24 in. (Dwarf white.)

Deutzias come originally from Japan. Their hardihood, fine habit, foliage and beautiful flowers render it among the most popular of flowering shrubs. The flowers are produced in long racemes during the latter part of June. Flowers are white; some of them tinged with rose. 50 cents.

(2) *Symphoricarpus* 18-24 in.

Or *Snowberry*. Very useful shrubs that grow anywhere. Pink flowers in summer, succeeded by large, white waxy berries that remain on the bushes far into the winter. 50 cents.

All the above Shrubs are 50 cents each, or \$5.00 per dozen.

FARGO'S CHOICE FLOWERING SHRUBS

(2) Spirea 2-3 feet.

Van Houtti. One of the finest Spireas. In early June it is covered with a mass of lovely white flowers, presenting a beautiful appearance. A beautiful ornament for the lawn at any season. 50c. each.

(3) Spirea 12-18 in. (dwarf)

Anthony Waterer. This too is a very lovely sort, bearing a profusion of pretty red flowers. 50c. each.

(2) Viburnum 18-24 in.

Or Snowball. A large robust shrub, with soft heavy leaves and large clusters of white flowers in May; succeeded by red fruits. Retains its foliage very late. 50c. each.

(2) Viburnum 18-24 in.

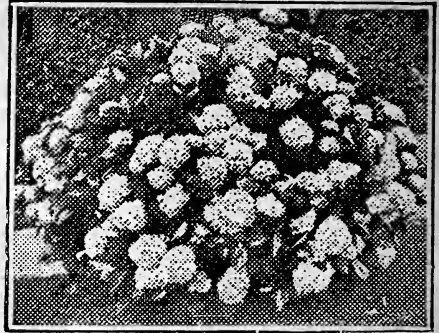
Opulus or "High Bush Cranberry." One of the best for planting. Its berries resemble cranberries, hang until destroyed by frost in the late fall. 50c. each.

All the above Shrubs \$5.00 Dozen.



Smoke Tree

Unlike any other flowering shrub; the blossoms resemble a cloud of smoke. This tree is a novelty and a great curiosity as well as a very pretty sight. A very rapid grower. Much admired and very showy and conspicuous in flower, and also on accounts of its handsome foliage. Give it plenty of room as it grows about 15 feet high. 75c. each, 3 for \$2.



Hydrangea 18-24 in.

Arborescent Grandiflora.

This is the new and very popular Hydrangea called "Hills of Snow." The flower heads are immense in size, flat shaped and creamy white in color. Blooms in June, the flowers staying on the bushes nearly all summer. 50c. each, or 12 for \$5.00.

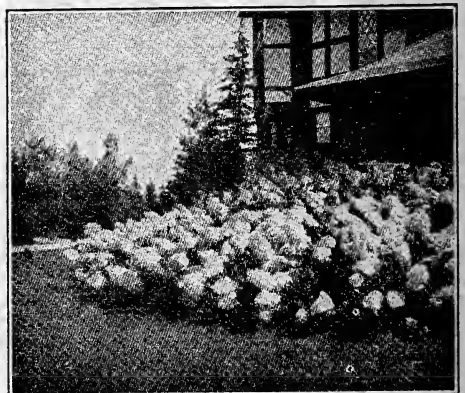
(1) Strawberry Tree 18-24 in.

A very beautiful small tree covered with bright red berries or seeds through the winter. Few trees have greater elegance. Price 75c. each, 3 for \$2.00.

Hydrangea 18-24 in.

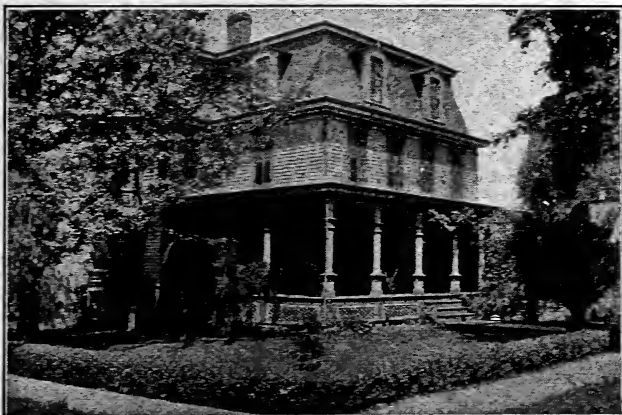
Paniculata Grandiflora.

The flowers are white, formed in great pyramidal panicles often a foot or more in length, color changing to a pinkish tint. Begins blooming early in August. This is the bush type of this variety. (We do not handle tree Hydrangeas.) 50c. each, or 12 for \$5.00.



FARGO'S HEDGE PLANTS

A living hedge, properly set out and well kept, is a thing of real beauty and adds much in attractiveness to the home grounds. Fences are out of fashion today; besides being expensive. If you haven't planted a hedge yet, do so.



CALIFORNIA PRIVET.

Easily kept at any desired height and holds its beautiful green foliage nearly all winter; being almost an evergreen. Plant in double rows with plants twelve inches apart and one row started six inches further down the line than the first row. This gives one plant for each half foot of frontage and insures a fine bushy hedge. 12 to 18 in. \$5.00 per 100; 18 to 24 in. \$6.00 per 100;

Hedge Plants, 25 and up, supplied at the 100 price.

DWARF BARBERRY.

One of the finest hedge plants in existence; the small leaves are a beautiful shade of green, turning to a pretty red in the fall. In the winter the bushes are full of bright red berries that remain nearly all winter. Grows to a height of about 2½ feet, symmetrical in form and requires no trimming. This is not only a choice hedge plant but specimens grouped on the lawn or planted in shrubby borders are very attractive. I offer 10 to 15 in. at \$8.00 per 100; 12 to 18 in. transplanted at \$10.00 per 100. Set in single rows one foot apart.

BOX EDGING.

The neatest plant to be had for bordering garden walks. Set the plants 4 to 6 in. apart.

We offer 4 to 5 in. plants at \$20. per 100.

Everblooming Butterfly Bush.

This shrub recommends itself and to see it is to want it. Produces long graceful stems which are surmounted by tapering panicles of beautiful lilac-colored flowers by the hundreds on a single flower-head which is often ten inches long. A single plant will throw out as many as fifty flower stalks in a season. The plants die down in the fall and come up again in the spring if protected with a mulch of straw manure or litter during the winter. It blooms from June until stopped by severe frosts. It is very desirable as an individual specimen on the lawn, or in clumps or shrubby border, but always in full sunlight. It receives the name of Butterfly Bush as it seems to attract butterflies in large numbers; not the common yellow species of butterfly so much as the large and gorgeously colored ones. Price 35 cents each, or 3 for \$1.00. Will bloom well the first season.



ALWAYS PLANT FARGO'S GARDEN SEEDS.

Tried, proven and tested varieties that are well known and most satisfactory alike to the home gardener and the professional trucker and market gardener, because of size, quantity and quality of the vegetables they produce. It is with pleasure that I offer my thousands of customers Fargo's Dependable Garden Seeds of high germinating qualities, and of the very best, tried and proven varieties that it is possible to obtain. You can make no mistake in ordering **FARGO'S GARDEN SEEDS.**

ASPARAGUS.

The first green delicacy for the table in spring, very easy to grow and a favorite of most everyone. Succeeds almost anywhere and can be easily raised from seed.

BARR'S MAMMOTH. Quick growing, tender and sweet. Very large stalks, often nearly an inch in diameter. Pkt. 5c; oz. 15c.

BUSH BEANS.

STRINGLESS GREEN POD. By making several plantings they may be had very early and in succession until heavy frosts. They are of fine flavor, tender and brittle and entirely stringless. Five inches long and rich green in color. Pkt. 15c; ½-lb. 25c; lb. 45c.

REFUGEE OR 1000 TO 1. Prolific producer, pale green, five inches long, with slight string. Brittle and of fine flavor. Later than above. Pkt. 15c; ½-lb. 25c; lb. 45c.

RUST-PROOF GOLDEN WAX. Heavy producer, yellow pods, stringless when young. Pods rather flat, brittle and fine flavored. One of the most popular sorts. Pkt. 15c; ½-lb. 25c; lb. 45c.

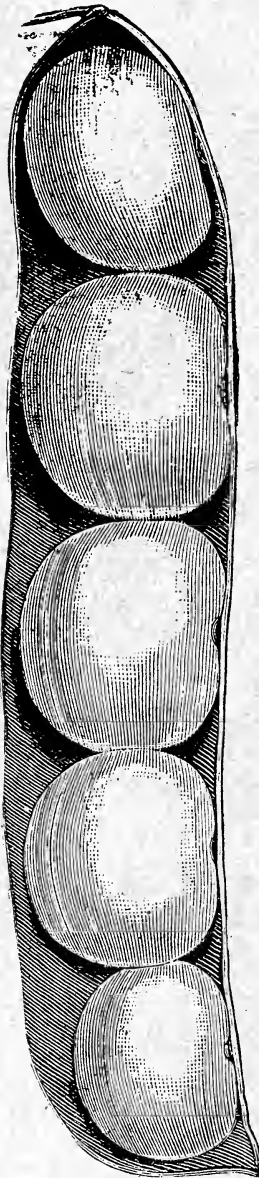
DAVIS' WHITE WAX. A heavy producer of large handsome white pods. Very popular, also excellent as a shell bean for winter use. Pkt. 15c; ½-lb. 25c; lb. 45c.

LIMA BEANS.

LEVIATHAN POLE LIMA. The earliest of all Pole Limas and a steady yielder throughout the entire season of large delicious beans. This variety is a strong grower and sure cropper. Pkt. 15c; ½-lb. 30c; lb. 50c.

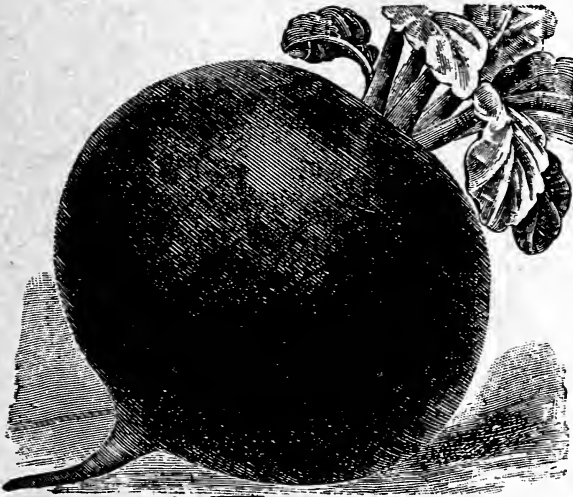
BURPEE'S GIANT PODDED. I always plant this sort in the home garden. The largest podded, the heaviest cropper among Limas and no better flavored Lima grows. Pkt. 20c; ½-lb. 35c; lb. 65c.

FORDHOOK BUSH LIMA. A week or so earlier than other Lima Beans. The beans are large, sweet and juicy and not dry and mealy like other sorts. Pods are well filled and borne in clusters. Heavy yielders and no mistake will be made in planting this variety. Pkt. 15c; ½-lb. 35c; lb. 60c.



BEETS.

Seed may be sown as early in spring as the ground is in condition to work, then once a month until July 1st, when a large sowing for winter use should be made. When frost comes the beets can be packed in moist soil and stored in the cellar for winter use. Sow in drills one inch deep and thin out or transplant the young plants.



CROSBY'S EARLY EGYPTIAN. Very early producing flat, smooth, turnip shaped beets. Pkt. 5c; oz. 20c.

EARLY BLOOD. Smooth round roots of medium size, dark red in color, fine grained and very sweet. Pkt. 5c; oz. 20c.

DETROIT DARK RED. Round, smooth, blood-red roots. A favorite for canning purposes. Pkt. 10c; oz. 25c.

BRUSSELS SPROUTS.

Sow in drills early in June, transplant to rich soil when 5 or 6 inches high. Hardy in our climate and a delicious vegetable for boiling during fall and winter months.

LONG ISLAND IMPROVED. A fine strain, grown largely on Long Island for the New York City market. Pkt. 10c; oz. 50c.

CABBAGE. Early-Cabbage seed should be sown under glass or in boxes in the house in January or February, and late sorts in the open ground in April and May. Transplant at least 18 or 20 inches apart. An ounce of seed should produce 3,000 or more plants.

Early Jersey Wakefield. Considered the best extra early pointed head Cabbage and a very dependable variety. Heads up well and is a welcome treat early in the season. Pkt. 10c; oz. 50c.

Allhead Early. Large, solid heads, flat in shape and the earliest of all large cabbage. Pkt. 10c; oz. 65c.

Late Drumhead. Much like the one below except short stemmed and not quite so flat. Pkt. 10c; oz. 50c.

Late Flat Dutch. Flat, solid heads, very large in size. One of the best for winter keeping and among the surest headers. Pkt. 10c; oz. 60c.



CARROTS.



Sow thinly in drills from early spring to middle of July. Fine as a stewed vegetable, also for soups and mixed pickles.

OXHEART. A good variety for spring and early summer. Large, sweet and tender, color bright orange. Pkt. 5c; oz. 15c.

IMPROVED LONG ORANGE. Fine variety to store for winter use. Large in size, smooth and of good flavor. Rich orange in color and of excellent keeping quality. Pkt. 5c; oz. 15c.

CUCUMBERS.

After ground becomes warm, plant 8 to 10 seeds to a hill previously well enriched with manure, hills 3 to 4 feet apart. Later thin to four plants to a hill. For succession plant every two weeks to July 10th. An ounce of seed plants 40 to 50 hills.

EARLY WHITE SPINE. The best all-purpose Cuke; for slicing, pickling. Tender, crisp and solid, light green color, 6 to 7 inches long. Pkt. 5c; oz. 20c.

LONDON LONG GREEN. One of the best for pickling and the large Cukes, often 10 to 12 inches long, are crisp and solid and of excellent quality. Pkt. 5c; oz. 20c.

JAPANESE CLIMBING. Can be trained to climb on

arbor, trellis or wire fence and economize on garden space and ripen earlier by this method. The strong vines bear white fleshed crisp fruit 12 to 16 inches long, Pkt. 10c; oz. 25c.

CAULIFLOWER.

Sow same as Cabbage, water well when heading and as head forms tie the leaves up over the head so they will blanch properly.

EARLY SNOWBALL. A good extra early sort of dwarf growth that heads up well. Pkt. 20c; ¼-oz. \$1.25.

VEITCH'S AUTUMN GIANT. A large late variety. Heads up white and solid. One of the best late sorts. Pkt. 10c; ½-oz. \$1.00.

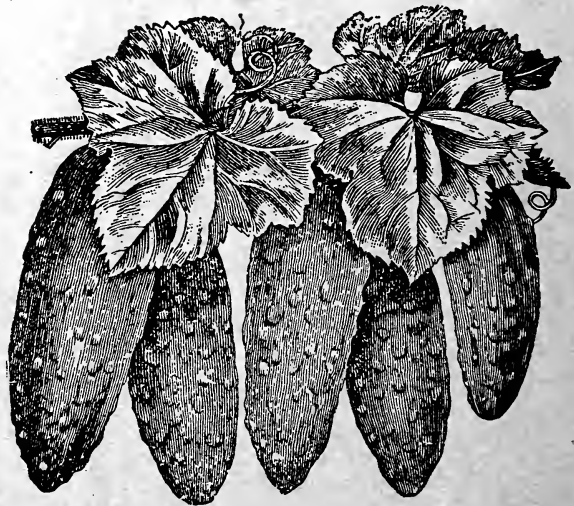
CELERY.

Sow seed thinly on top of ground and cover lightly with straw until the young plants appear, and later transplant them in rows in July. To blanch the celery, hill the soil up high around the plants or use boards. An ounce of seed should produce at least 5,000 plants.

GOLDEN SELF BLANCHING. A good early Celery. Excellent quality, very crisp and tender. Medium size and of good stocky growth. Pkt. 10c; ½-oz. 45c; oz. 80c.

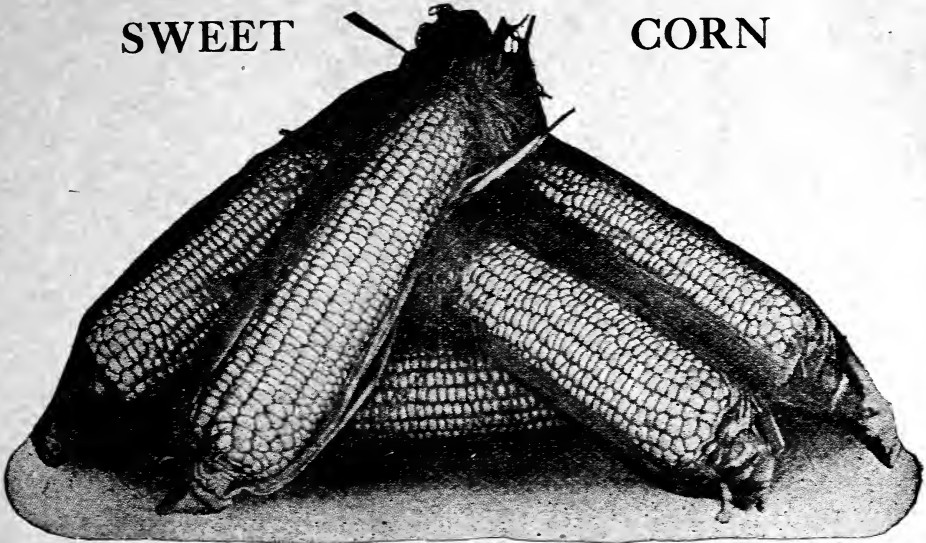
GIANT PASCAL. The standard sort for heavily ribbed stalks; solid and thick, dark green color until earthed up when it blanches to deep golden yellow. Pkt. 10c; oz. 40c.

WINTER QUEEN. This is an excellent dwarf winter sort, coming in between the two above varieties. Earlier and blanches more readily than Giant Pascal. Pkt. 10c; oz. 30c.



SWEET

CORN



GOLDEN BANTAM. I consider this the richest, sweetest, tenderest and best Corn for early and also for real late planting. Matures the earliest and the broad yellow grains are exceedingly tender and sweet and it does not toughen like other corn. Ears are small as is also the cob, while the grains are large and plump. Pkt. 15c; $\frac{1}{2}$ -lb. 25c; lb. 45c.

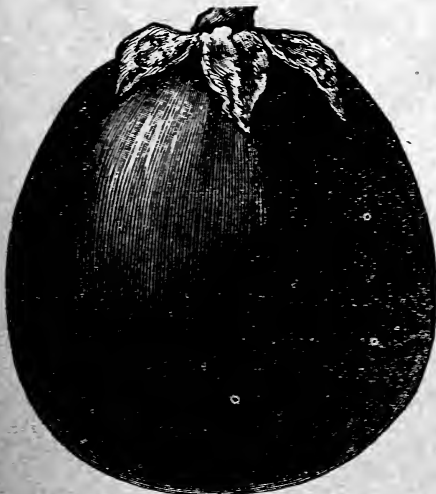
EARLIEST CATAWBA. Differs in color and flavor but otherwise resembles Golden Bantam. The grains are pearl-white flushed with rose-pink.

The small cob is white. Some pronounce it even superior to Golden Bantam. Pkt. 15c; $\frac{1}{2}$ -lb. 25c; lb. 45c.

STOWELL'S EVERGREEN. This excellent Corn has long been the leading crop for home use, market and canning purposes and is an old standby that can be depended upon. Pkt. 15c; $\frac{1}{2}$ -lb. 25c; lb. 40c.

COUNTRY GENTLEMEN. Considered by many as the best of all main-crop sweet corn. Very productive, giving large luscious ears of fine quality. Pkt. 15c; $\frac{1}{2}$ -lb. 25c. lb. 40c.

EGG PLANTS.



This vegetable is an excellent substitute for meat. Seed should be sown in hotbeds or boxes in the house in March. Transplant when

the little plants have two or three leaves and set them outdoors in the garden late in May.

BLACK BEAUTY. A deep, rich, purplish in color; grand large fruits that are a delight both to the eye and to the palate. The plants branch freely and are prolific yielders. Pkt. 15c; $\frac{1}{2}$ -oz. 45c; oz. 75c.

CELERY CABBAGE.

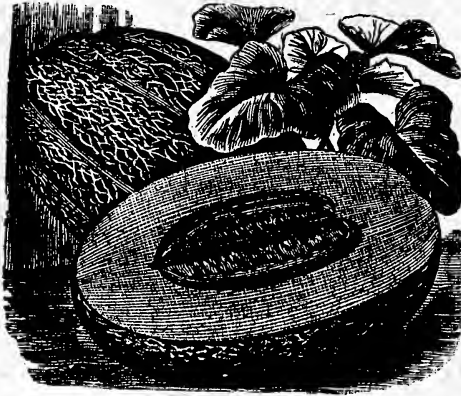
PSAI-TEI. A Chinese introduction of excellent merit as a salad and also boiled like ordinary cabbage. Grows quickly, but if planted too early is apt to run to seed instead of heading up properly, therefore seed should be sown about the first of August. The heads blanch readily but as it does not stand frost should be stored in a cool cellar for winter use. Pkt. 10; oz. 35c.

HORSE RADISH

Root cuttings should be planted each spring to furnish fine, large, smooth roots. Plant the cuttings flat and work the ground well, cultivating deeply. Root Cuttings, 8 for 25c; \$1.25 per 100.

MUSKMELON.

After danger from frost is past and the ground is warm, plant 10 or 12 seeds to a hill. Later thin out to three plants. After making a good growth pinch off the ends of runners. An ounce plants 40 to 50 hills.

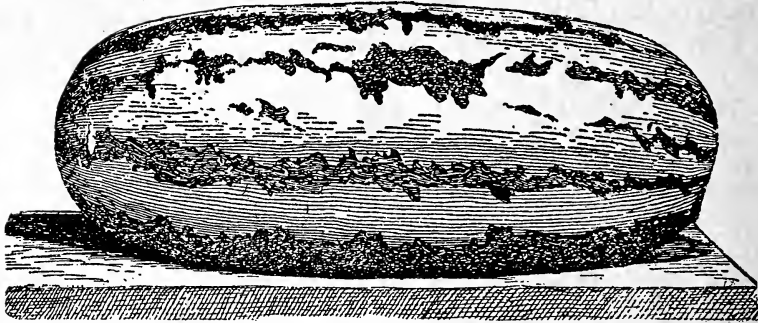


ROCKY FORD. An extremely luscious and popular melon. When ripened the skin is greenish-gray. Flesh solid, firm and wonderfully rich and sweet. Pkt. 5c; oz. 15c.

HONEY DEW. Fruits six inches in diameter, rind almost white. The thick green flesh has a peculiarly sweet flavor somewhat resembling a well-ripened banana. Store in a cool dry place two or three days after picking when they will be at their best. Pkt. 10c; oz. 35c.

JENNY LIND. The sweetest green flashed variety in existence. An old stand-by. Pkt. 5c; oz. 15c.

WATERMELON.



Follow directions for growing Muskmelons, but make hills at least eight feet apart.

SWEET HEART. Very large, bright mottled skin. Deep red solid flesh; good shipper. Pkt. 5c; oz. 15c.

STRIPED GYPSY. Oblong fruits in mid-season. Good size and fine

quality. The rind is striped and flesh dark red and sweet. Pkt. 5c; oz. 15c.

ICE CREAM. An oblong melon with pink flesh. Very sweet; early. Pkt. 5c; oz. 15c.

PRESERVING CITRON. A large-fruited strain. Flesh clear white and very solid. Pkt. 5c; oz. 15c.

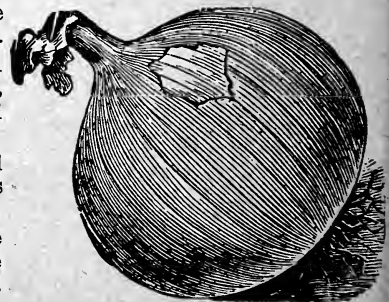
ONIONS.

Sow in drills early in the spring. Pull when the tops begin to die down and store in cool dry place.

YELLOW GLOBE DANVERS. This Onion is an old standby with experienced growers. Early, round in form; heavy yielder of solid, fine flavored Onions and a good keeper. Pkt. 5c; oz. 30c.

EXTRA EARLY RED. A Mild flavored red Onion, flat in shape, a good yielder and keeps well. Pkt. 5c; oz. 35c.

WHITE GLOBE. This globe shaped white Onion grows 2½ inches in diameter, pure white color. Crisp, fine grained and very mild flavor. This is a most excellent sort. Pkt. 10c; oz. 40c.



LETTUCE.

Sow thinly in open ground as soon as it is in workable condition. Sow every two weeks for successive crop.

BIG BOSTON. Very large heads, often 10 inches or over in diameter. Beautifully blanched and of excellent quality. A grand sort for hot beds. Pkt. 5c; oz. 20c.

GRAND RAPIDS. Does not form in heads, but in large bunches of fringed leaves. Delicious in quality, attractive in appearance. Succulent and tender. Pkt. 10c; oz. 30 c.

PEAS.

EXTRA EARLY PILOT. A smooth Pea for first early planting and the best first-early. Vigorous grower; height three feet. Nearly as large as Gradus and several days earlier. Pkt. 15c; ½-lb. 30c; lb. 55c.

EARLY GRADUS. Also known as "Prosperity." A large podded wrinkled Pea of first quality. Grows 2½ to 3 feet high. Very large handsome Peas of finest flavor. Pkt. 10c; of fine flavor. Pkt. 15c; ½-lb. 30c; lb. 55c

CHAMPION OF ENGLAND. Very productive main-crop sort, growing four to five feet high. Well filled pods; Pkt. 15c; ½-lb. 30c; lb. 55c.

TELEPHONE. A late variety, growing 3½ to 4 feet high and bearing very large pods, each containing six or seven large peas of delicious flavor. Pkt. 15c; ½-lb. 35c; lb. 60c.

PEPPERS.

Sow seed in March under glass. Transplant the small seedling plants and set in the open ground when all danger of frost is over.

RUBY KING. The most popular; a thick fleshed sort of very mild and pleasing flavor. Plants grow two feet high and bear profusely. Pkt. 15c; oz. 75c.

CHINESE GIANT. The largest mild flavored red Pepper. Vigorous growth; bears enormous, thick, bright scarlet fruits. Pkt. 15c; ½-oz. 45c; oz. 35c.

PEPPER GRASS.

Sown the same as Lettuce and fine mixed with Lettuce as a salad; makes excellent sandwiches also. The finely curled ornamental leaves have a pleasing pungent flavor similar to that of Water Cress. As it quickly goes to seed, frequent plantings should be made. Pkt. 5c; oz. 15c.

PARSLEY.

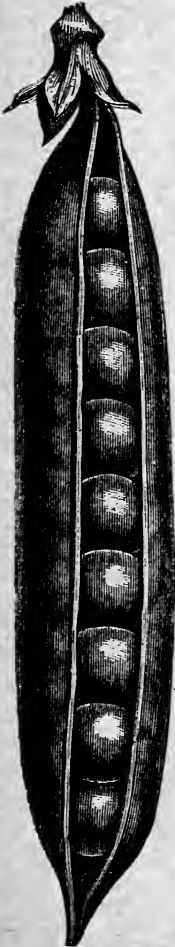
FERN LEAVED. Fine in form and color and invaluable for garnishing dishes and for use in soups. Useful as a dried herb for medicinal use also. Pkt. 5c; oz. 20c.

PARSNIPS.

Highly valued for the table and especially after they have been frozen they are much appreciated in early spring. Sow in drills in the spring same as for Carrots and cultivate deeply during the summer.

GUERNSEY. Very long roots, fine grained, sweet flavored. Pkt. 5c; oz. 20c.

RHUBARB. Roots for setting out can be grown from seed in a single season. Seed should be sown in a shallow drill and the young plants thinned to 12 inches apart. Pkt. 5c; oz. 20c.



PUMPKINS.

Sow after the soil has become warm in May. Drop seeds in corn hills in the field or in hills like Watermelons.

SMALL SUGAR. Orange color. Flesh very sweet. Size about 10 inches across. Good yielder and an excellent keeper. One of the very best for pies. Pkt. 5c; oz. 20c.

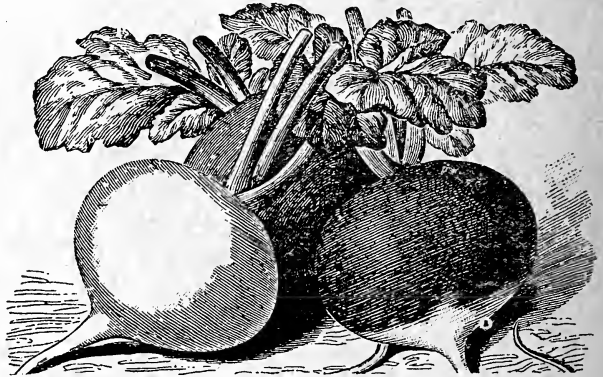
MAMMOTH or "Jumbo." Beat this one if you can. Yellow skin and deep yellow flesh. Sometimes reaches two feet in diameter and weighing far over a hundred pounds. This is a very large, but nevertheless a fine grained and tender Pumpkin. But one plant should be left in a hill and only the best fruit on the vine. Pkt. 10c; oz. 25c.

RADISH Sow broad cast or in drills very early in spring and weekly thereafter for succession.

SCARLET BUTTON. Very early small round Radish. Tender and crisp. Best for first early. Pkt. 5c; oz. 20c.

WHITE ICICLE. Long white and of fine flavor. Remains in fine condition longer than any other of the earlier sorts. From seed to table in 20 to 25 days. Pkt. 5c; oz. 25c.

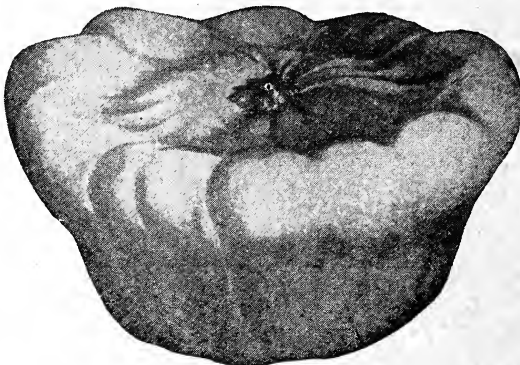
WHITE STRASBURG. Larger than the early varieties. By successive sowing this sort may be had all summer. This is a fine large solid summer Radish. Pkt. 5c; oz. 20c.



SALSIFY (VEGETABLE OYSTER)

Sandwich Island Mammoth. The long parsnip-like roots are fine for boiling, sliced and fried, or for soups, the delicious flavor resembling oysters. Sow seed in drills in early spring and thin the plants to stand six inches apart. The roots can be left in the ground all winter or stored in moist soil for winter use. Pkt. 10c; oz. 35c.

SQUASH.



Plant in hills, well manured, as for Pumpkins or Melons, 8 or 10 seeds to a hill, in May after the ground is warm; later thin the plants, leaving the three to a hill. Vine sorts should be in hills 8 feet apart.

SCALLOPED or "Patty Pan." For slicing and frying, also used for pies. Bush type, they can be in hills but three feet apart. Color, white. Pkt. 5c; oz. 20c.

TRUE HUBBARD. (Winter) Large and of olive shape, green in color. A well-known winter Squash now very widely grown. Fine keeping qualities. Pkt. 10c; oz. 25c.

GIANT CROOKNECK. (Summer) An early variety of large size, measuring often two feet in length. Pkt. 5c; oz. 20c.

TURNIPS.

For early use sow seeds as early as ground is in shape, then every two weeks to June. For fall and winter use sow early in July and August.

EARLY WHITE FLAT DUTCH. White flesh, quick grower of mild flavor. Sow this variety for early crops. Pkt. 5c; oz. 20c.

PURPLE TOP STRAP LEAF. Grows very quickly to large size, measuring six inches or more through. Globe shaped, purplish-red top; lower part creamy-white. White, crisp, mild in flavor. An excellent winter keeper. Pkt. 5c; oz. 25c.



TOMATOES.

Start early varieties under glass in February; when three inches high transplant. When weather is settled plant out. For later sorts, plant into open ground. In the home garden stake the plants and tie them up or mulch the bed with straw or lawn clippings.



CHALK'S EARLY JEWEL. A favorite with the market gardener. Good shipper. Bright red color. Pkt. 10c; oz. 50c.

EARLIANA. Very early and a prolific bearer, a plant giving over one-half bushel of fine fruit. Deep red, solid and a good shipper, fine flavor. Pkt. 10c; oz. 60c.

PONDEROSA. Very large and fine. Solid and meaty. Mid-season until frost. An enormous yielder. Purplish-pink color. Pkt. 10c; oz. 60c.

TRUCKER'S FAVORITE. A choice large fruited Tomato, regular in form and size, solid, smooth and thick meated; a dependable main-crop variety. Pkt. 10c; oz. 50c.

FREE SEED PACKETS.

For every dollar's worth of Flower or Vegetable Seed Packets ordered and paid for, you may select an additional 25 cents' worth free. This offer applies to seeds in packets only.

Why put it off to the last minute, then rush to the nearest corner store and get "Just Seeds." Why not be just a little bit beforehand and use our experience for your own benefit? We have selected from the best standard varieties of each kind of vegetable, so that even a child can order from this catalogue with confidence. No large confusing list; just a few of the better sorts of each—and ALL good.

FLORAL NOVELTIES OF MERIT.

Chinese Woolflower



This plant has created a sensation wherever shown. Grows 2 to 3 feet high and each branch ending in a large rich crimson head of bloom that does not fade until frosts come. The plant is useful and effective for beds and borders and extremely so for cutting as the brilliant blooms retain their bright color for weeks.

Per Packet: 10 cents.

New Double Morning Glory

A double pure white Morning Glory; it is truly magnificent and nothing like it was ever before known. In appearance the flower is like a single white Morning Glory with the center, completely filled by numerous white petals, the whole forming a most unique and beautiful blossom. Grows as vigorously as the common Morning Glory. It begins to bloom early and continues to flower freely until frost. **Packet 10 cents.**

New Cosmos—Crimson Ray

A distinct new sort. There are a great many more petals than in the common sorts, narrow and fluted in shape. Flowers are of the most brilliant crimson color overlaid with a velvet sheen. **Packet: 10 cents.**

Datura (or Angel's Trumpet)

Large showy plants 3 to 5 feet high, bearing immense trumpet-like flowers. Plants can be taken up in the fall and kept in a warm cellar over winter. **Packet, 10 cents.**

New Aster—American Beauty

This grand new sort differs from the Late Branching Asters in that the large blooms are produced on much heavier and longer stems, thus making them far more desirable for cutting. The plants average 2½ to 3 feet in height, while the immense flowers, frequently 4 to 5 inches in diameter, are often on heavy stems two feet in length. The color is a lovely carmine-rose of the shade of the American Beauty Rose. This grand new variety should be in every flower garden. **Packet, 15 cents.**

Curled and Crested Zinnias

This is a first class, highly decorative novelty. The petals are long, elegantly twisted and curled, giving the flower an appearance much resembling the Cactus Dahlia in shape. Blooms freely and continuously until heavy frosts; the colors are white and many shades of yellow, pink and red. **Per packet 10 cents.**



FREE SEED PACKETS.

For every one dollar's worth of Flowers or Vegetable Seed Packets ordered and paid for, you may select an additional 25 cents' worth free. This offer applies to Seeds in packets only.

BEST AMERICAN ASTERS

Probably no other Annuals give so magnificent a display during the late fall and summer months. Some varieties, under proper culture, very much resemble and rival the Chrysanthemum. Sow the seed indoors in March or April and transplant 9 inches apart in May, or sow the seed outdoors in May or June.



American Double Asters.

All grand plants of the American branching habit of growth and fine big feathery flowers all on long stiff stems.

WHITE. Very large snow white flowers.

LAVENDER. A silvery white when first opening then changing to an exquisite shade of lavender when fully expanded.

CRIMSON. Bright crimson flowers four inches in diameter.

CREGO'S GIANT ASTERS

This is one of the most beautiful of the newer types. The flowers are of very graceful form, of immense size and borne on long slender stems. Blossoms of this new variety usually measure four to five inches in diameter. The petals are peculiarly twisted and curled, presenting a very beautiful appearance. Bloom in profusion from late in August to the last of September. Colors: Pink, a soft delicate shade. Azure-Blue.

All the above 10 cts. per pkt. 3 for 25c.

SWEET PEAS

Can be planted in November by digging a foot deep trench, lining the trench with well rotted manure, and more manure mixed with the dirt before filling in. St. Patrick's Day, March 17th, is the great Sweet Pea planting time and from then on into April. For spring planting, make a trench six inches deep, sow the seeds and cover two inches deep, and firm down with the foot. As the plants grow, gradually fill up the trench. This makes them deep rooted and less susceptible to lack of moisture. Never allow seed pods to form. Cut the blooms freely and the vines will do all the better. Sow Dwarf Nasturtiums in front of the Peas and they will hide the unsightly bottoms of the vines in the middle of the season. Water well in dry weather; do not sprinkle lightly as this does more harm than good.



Spencer Sweet Peas



were first introduced some few years ago. They are the "last word" in daintiness and beauty and are the Queen of Annual Flowers. Their popularity is justly deserved and is due to their increased size, exquisite colors, many of which beggar description, and added charms, of its new waved type. True "Spencers", can never be sold as cheaply as others, yet the great number and wonderful beauty of the flowers more than makes up for the small extra cost.

IRISH BELLE "SPENCER". A superb variety that shows quite a new shade in Sweet Peas. The coloring is alike in both wings and standard—a lovely rich lilac, flushed with pink, which gives a soft tone to the flower. Throughout the entire season, even during the drought and heat of July and August, the flowers come three and four to a stem. **Per packet (40 to 50 seeds) 10 cents; 60 cts. oz.**

COUNTESS "SPENCER". The entire "Spencer" type sprang from this variety. It was the parent or original "Spencer". It is a soft rose-pink, which deepens at the outer edges; the color becoming still richer throughout. The plants are robust and flower in abundance. **Per packet (40 to 50 seeds) 10 cents; 50c per ounce.**

WHITE "SPENCER". The flowers are borne three and four to a stem about 12 inches in length. Produces abundantly pure white waved flowers of very large size. **Per packet (40 to 50 seed) 10 cents; 60c an oz.**

CAPTIVATION "SPENCER". The lovely self-colored flowers are of a rich, rosy wine-red throughout. The plants are robust and flower in abundance. **Per packet (40 to 50 seeds) 10 cents; 60c an ounce**

MIXED "SPENCERS". A great many like to grow mixed varieties instead of solid colors and our mixed "Spencers" are made up of a great number of colors and varieties. **25c per oz.;**

Grandiflora Sweet Peas

This is the Sweet Pea that is commonly grown everywhere and comes next to the "Spencer", in popular flavor. **Mixed colors: Packet 5 cts.; Oz. 15 cts.; 2 Oz. 25 cts.; lb. \$2.00.**

Dwarf Cupid Sweet Peas

The Plants grow about six inches high and form a dense mass of foliage. The flowers are generally as large as those of the tall varieties, but set more closely together, three or four flowers at the end of a short stiff stem. **Cupid Sweet Peas** give satisfaction and for light dry soils where the tall varieties do not do well, the Cupids will thrive. Also they are nice for borders or in pots.

Mixed Colors: 5 Cents Per Packet; Oz. 30c.

NASTURTIUMS

So easy to grow that a child can plant and take care of them, not troubled by drought or insects, bloom all season long, and one of the choicest and most widely grown annuals. Admired alike for their brilliant flowers and attractive foliage. The seeds are much used for putting up with mixed pickles.



Bowl of Nasturtiums.

DWARF SORTS:

FAIRY KING—Mottled and veined dark rose flowers.

FAIRY QUEEN—Lovely light yellow, which later becomes spotted with brown red.

LADY CHERRY—Deep white-red flowers.

Per Packet, 5 cents; Ounce, 40 cents.

CLIMBING—As easy to grow as the Dwarfs. Can be used for bedding by pegging the long shoots to the ground, as low climbers or as house climbers in winter.

MOONLIGHT—Light straw colored flowers of unusual size.

BLACK PRINCE—Intensely dark maroon as to appear nearly black.

BRILLIANT—Flowers of a glowing scarlet.

QUEEN VICTORIA—Deep orange.

Per Packet, 5 cents; Ounce, 35 cents.

Giant Flowered Nasturtiums

Those of our customers who desire the largest Giant Flowered Climbing Nasturtiums it is possible to procure, will be delighted with this new variety. Per packet, 10 cents; 50c per oz.



GIANT FLOWERING PANSIES.

Few flowers bloom earlier, and none more freely and continuously, and none are more delicate in texture, rich and variegated in colors, or more pleasing and attractive. A bed of these plants in bloom is gorgeous and always enthusiastically admired. Bloom continuously from April to late frosts. Pansy seed should be planted from April to August. Plants transplanted and in the fall protected with a litter of coarse straw. We offer the true **Giant Flowered**, many colors mixed at 10 cents.

ORCHID FLOWERING PANSIES.

While the flowers are not as large as the Giant Flowering type, yet their great popularity lies in their fine shape and exquisite pastel shades. Flower freely from April to late fall, and the beautiful colorings—including shades of chamois, terra cotta, pink, lilac, rose and orange—makes a charming contrast to the rich velvety effects and brilliancy of the old familiar types. Per Packet, 10 cents.

ANNUALS FROM SEED

Sow seeds about twice their thickness in depth. Very small seeds can be put in a salt shaker and scattered evenly over the ground, then pressed down with a board. For further directions see page of "Window Plants From Seed."

For each 25 cents worth of Seed Packets ordered, you are entitled to select an extra 5 cents worth of seed packet free. This offer applies to seeds in packets only.



Balsams.

rapid grower and blooms quickly from seed. The top of each plant should be pinched back to make it form the branching habit. This grand plant cannot fail to please. Flowers are about two inches in diameter. Per packet, 10 cents; 3 packets, 25 cents.

CALENDULA—Flowers very freely and of easy culture, succeed anywhere and bloom continuously. The flowers are various shades of yellow and are double. Per pkt. 5 cents.

CANDYTUFT—One of the most useful of hardy annuals bearing neat heads or clusters of flowers very freely. My Candytufts are Giant Hyacinth Flowered and very desirable for cut flowers. White and crimson mixed, per packet 5 cents.

CELOSIA—Plants are of broad, rounded form, 18 inches or more in height and diameter. Each branch is tipped with a head of richly colored bloom. Gorgeously brilliant; all shades of orange and yellow, pink, scarlet and crimson. Mixed colors, 10 cents per packet.

CELOSIA—Dwarf varieties. Per packet 5 cents.

COSMOS (Illustrated) are easily raised and of quick bushy growth, height five feet. Hundreds of beautiful flowers resembling single dahlias on each plant from Sept. to Nov. Colors are pink, white and crimson. Mixed colors, per packet, 10 cents.

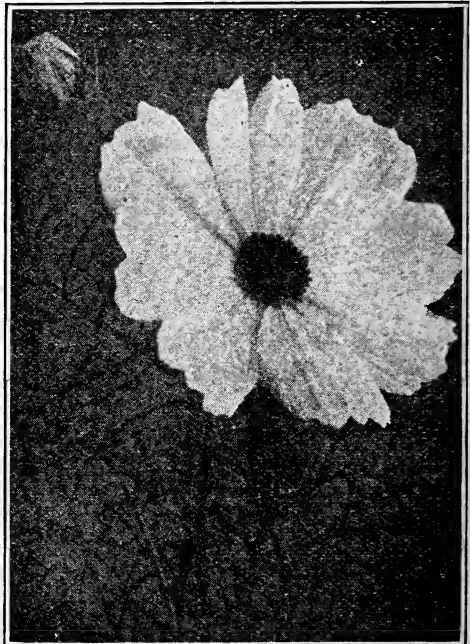
ANTIRRHINUM—(Snapdragon). This beautiful flower is becoming more and more popular every year, and deservedly so. They are very easily grown and will live over winter if given slight protection. Make a fine display on the lawn and make elegant bouquets. Colors are rose, yellow, scarlet, white &c. mixed. A bed of them with the tall varieties in the center, and with the dwarf varieties outside, will make a lovely display anywhere.

Tall—10 cents per packet; 3 pkts. 25 cents.

*Dwarf—5 cents per packet.

***ALYSSUM**—Little Gem. The plants are dwarf and spreading grows only 3 to 4 inches high and each plant completely covers a space 12 to 20 inches in diameter. Soon becomes a mass of white flowers, remaining in bloom from spring to fall. This is the finest variety of Sweet Alyssum. Per packet 5 cents.

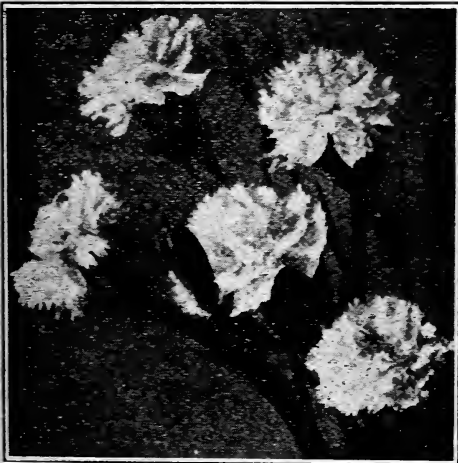
***BALSAMS**—Camellia Flowered. The flowers are waxy, showy and very handsome. It is not an uncommon sight to see 500 or more flowers at one time on a single plant. Fine among shrubbery or in borders. A very grand sight from seed. The top of each plant should be pinched back to make it form the branching habit. This grand plant cannot fail to please. Flowers are about two inches in diameter. Per packet, 10 cents; 3 packets, 25 cents.



BARTONIA. A very showy, large saucer shaped flower. The plants grow 18 inches high, with downy leaves, thrives anywhere, begins to bloom early and blooms continuously thru the summer. Color, bright yellow. **Packet, 5 cents.**

***CARNATIONS, Marguerite.** From seed sown in the garden in early spring, the plants begin to bloom in about four months. Hardy, and will live out all winter if given proper protection or may be cut back by removing the flower shoots early in the fall and potted for winter blooming in a cool room. The finest strain, all colors mixed, **per packet 10 cents.**

CENTAUREA, Cornflower. Grows 3 feet high; flowers of many colors and fine for cutting. Also called Blue Bottle or Bachelor's Button. Mixed, **per packet 5 cents.**



CARNATION

SINGLE DAHLIAS are grown from seed, as well as from roots, and if planted early, will usually flower the first season. In the fall the roots can be taken up and sorted, the same as other Dahlias. One interesting feature of growing them from seed is that one is apt, at any time to grow an entirely new variety. Try a small space of them this year. Mixed seeds, **per packet, 10 cents.**

ESCHSCHOLTZIA, California Poppy. A showy, free flowering plant of low spreading growth; blooms thruout the season. **Packet 5 cents.**

***FORGET-ME-NOT (Myosotis)** Succeed best in damp shady places. Planted in a single row around a flower bed they make a beautiful border. Blue and white mixed, **per packet 5 cents.**

GAILLARDIA (Blanket Flower) The flowers are large, brilliant and borne on long stems. Nice for bouquets. Bloom quite early and until frost. Mixed packets of red, scarlet, yellow and orange, **5 cents.**

GYSOPHILA. (Baby's Breath.) Small white star-like flowers borne in feathery sprays; highly regarded for cut flowers as they lend a most graceful effect to bouquets. **Packet, 5 cents.**

HELIOTROPE. We all know and love this grand and fragrant flower, but not many know that it can be raised from seed as easily as the **Verbena.** Choice mixed of many colors, **per packet, 10 cents.**

***LOBELIAS.** Grow 4 to 6 inches high and covered with small star-like flowers. Fine as an edging for flower beds, for hanging baskets, vases or for pots in winter. Blue and white mixed, **per packet 5 cents.**

COXCOMB. These old fashioned and ever popular flowers often grow combs 8 to 10 inches across. **Per packet 5 cents.**

DIANTHUS (Pinks) Bloom freely all summer until frost. Few plants can equal them for beauty and popularity. Pink and white mixed, 5 cents per pkt.

NEW DIANTHUS, Mirabilis. The flowers are single and measure 2½ to 3 inches across. The fringed edges are most feathery and the colors range from pure white to richest crimson; both solid colors and also blotched and ringed in contrasting shades. Mixed, **per packet, 10 cents.**

AFRICAN DAISY, Golden Orange. A bed of them in full bloom is a grand sight. The plants are hardy, of branching habit and grow 12 to 15 inches high. Its flowers are a rich, glossy orange-gold with dark eye, and measure 2½ to 2¾ inches across. **Per packet 10 cents.**

DOLICHOS. The compact bushes growing only about ten inches high and topped by a largely spike of pure white bloom 10 to 15 inches above the foliage is a fine sight. The flowers are snowy white, about one inch across, and cluster all the way up the spike. **Per packet 5 cents.**

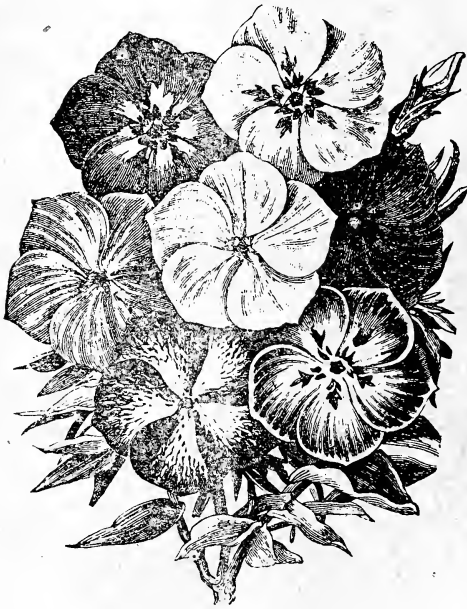
KOCHIA. Also called "Summer Cypress" and "Moses Burning Bush." The plants are always round or globe-like in form and the stems are clothed in light green leaves. Early in the fall they are thickly set with small scarlet flowers, making each plant resemble a ball of fire. Very attractive as single plants or grown in continuous rows. **Per packet 5 cents.**

LANTANA. Shrubby plants that make a grand display the first summer. Clusters of Verbena-like flowers they bloom freely all summer. Mixed colors, **per packet 10 cents.**

NICOTIANA. Grows two feet in height and a profuse bloomer. Large five pointed star-like flowers ranging in color through creamy-white and rose tints to bright red and crimson. **Packet 10 cents.**

POPPIES. Hardy annuals of quick growth, producing large numbers of the most gorgeous blooms, each on a long stem. The colors range through all shades of delicate rose, pink, carmine and crimson; many of them edged with white. Mixed colors, **per packet 5 cents.**

Whether to wait until the last moment, then hurry to the nearest corner store and buy "Just Seeds" or whether you consult our catalogue a little ahead of your needs, read over the complete descriptions given, and then be enabled to order for less money, what you really want, and from an established house with a reputation to sustain, and its patron's favor to retain—this should be an easy question to decide.



PHLOX DRUMMONDII

MARIGOLDS. This beautiful golden flower needs no description as it is an old favorite. Beautiful in the garden and fine for cutting. It grows 2½ feet high. Per pkt, 5 Cts.

MIGNONETTE. This flower is a general favorite on account of its delicate fragrance and its lovely hyacinth shaped heads of bloom. Red, gold and cream mixed, per packet 5 Cents.

PHLOX, Drummondii. When sown in a mass, the effect is truly charming. Of quick compact growth and come into bloom early. Pink, white and scarlet mixed, unsurpassed in brilliancy and beauty of coloring. Per packet 5 cents.

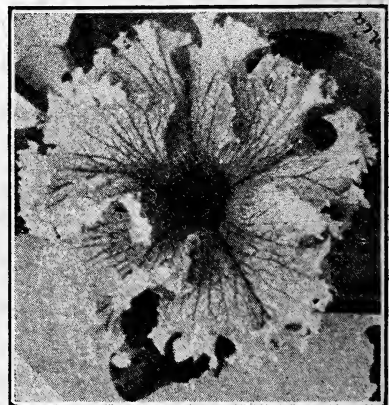
PORTULACA. This plant thrives in almost any location, plants grow rapidly and soon cover surface of bed with foliage and bright flowers. Very attractive when sown in solid masses. Single, per packet 5 cts. Double Rose Flowering, per packet 10 cts.

PETUNIAS—Extra Choice Varieties.

STAR PETUNIA. While they will always vary, yet most of the flowers show a distinct five-pointed white star on a crimson ground. The plants begin to bloom early and flower profusely. Per packet 10 Cts.

DOUBLE PETUNIA. This new novelty is the "last word" in Petunias and our illustration is so plain and clear that it needs but little further explanation. Try it this season. The seeds will produce a large percentage of handsome double flowers. The weaker seedlings should receive great care as they usually produce the finest double flowers. Selected and hybridized with the greatest care; flowers of large size, beautifully fringed and of choicest crops, mixed. Per packet, 25 Cts.

FRINGED PETUNIA. Frequently measure more than five inches in diameter, while the colors are indescribably rich and varied. All are distinctly veined, and in many the throat is darker than outer edge of petals, thus giving a very velvety effect to the flower. Most of the flowers are beautifully fringed and have a large open throat. This is a lovely variety and well worth the small extra expense. Per packet 25 Cts.



NEW FRINGED PETUNIA.

HYBRIDS. These are striped varieties of all colors mixed. Per packet 5 Cts.



RICINIS.

RICINIS. Grown on the lawn or garden this semi-tropical plant presents an attractive appearance and will draw much favorable attention and comment. Dies with first frost and grows 12 to 15 feet high during the summer season. The enormous leaves, beautifully lobed, measure $2\frac{1}{2}$ to 4 feet across. Each plant quickly becomes a perfect pyramid of foliage and is topped by large spikes of blossoms and brilliantly colored seed pods. **Per pkt. 10 Cts.**

SCARLET SAGE (*Salvia*). In mid-summer and fall, a bed of Scarlet Sage with its fiery red flowers in abundance, is a sight worth seeing. Fine for bouquets. Seed should be started in the house or in hot-beds from February to April. **Per packet 10 Cts.**

RUBECKIA. Grows 18 inches high, very showy, and of easy culture. The daisy-like flowers of deep orange-yellow heavily marked with brownish-red, grow on stiff stems about six inches in length above the foliage. **Per packet 5 Cents.**

SCABIOSA (*Mourning Bride*). The flowers are borne on tall, slender, but quite stiff stems, nearly two feet in length, are of fine rounded form and somewhat resemble the Carnation. Quite hardy and flower freely in cool locations or during late summer and fall. Mixed, of many colors **Per packet 5 Cents.**

TEN WEEKS' STOCKS. Very much prized for cutting because of their fragrance and great variety of colors. Bloom in about ten weeks from seed as their name would suggest. Crimson, Dark Blue, Pure White, Salmon, Rose, Canary Yellow, Lilac Rose and all colors mixed. **Per packet, 10 Cents.**

Annual Chrysanthemums These single varieties grow 12 to 18 inches high and produce large daisy-like flowers of many bright colors in distinct broad bands around the center of the flowers. Called "Painted Daisies." Flower freely during summer and fall. **Packet 5 Cents.**

VERBENAS—Mammoth. Verbenas grown from seed are not only much cheaper than those grown from cuttings, but are more vigorous. Single plants in rich soil, will cover a space three feet or more across. This fine variety produces magnificent trusses of bloom in a wide range of colors, some individual blossoms being larger than a silver quarter-dollar. Seed from super selected stock, **per pkt. 10 Cts.**
ITALIAN STRIPED. Striped flowers of many bright colors, **per packet, 5 Cents.**

ZINNIAS. Bloom in the greatest profusion from early spring until heavy frosts. Plants are strong, vigorous and branching, each branch ending in a big, bold, showy flower.

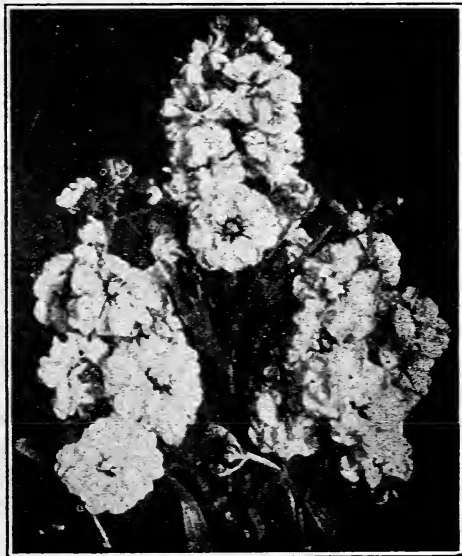
Mammoth, transplant two feet apart, **per packet, 10 Cents.**

Dwarf, transplant twelve inches apart, **per packet, 5 Cents.**

EVERLASTINGS

Retain their form and colors when dried. Fine for mantel and table decorations in the winter, some folks dye them to brighten their effect. Should be cut as soon as in full bloom tied in small bunches, and dried slowly in the shade with heads down to keep the stem straight.

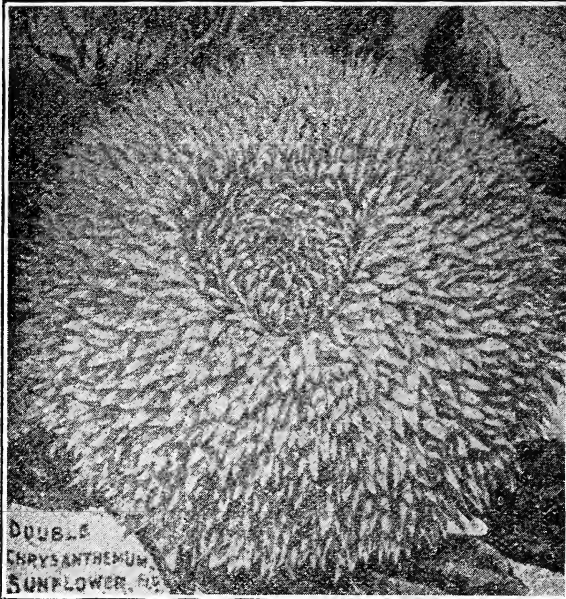
Per packet of many sorts mixed, 5c



STOCKS

Chrysanthemum—Flowered Sunflower

The flowers are perfectly double, a bright golden yellow and are borne on many side branches of the plant, thus giving the plant an attractive appearance that draws much attention. The form of these flowers is so perfect as to resemble giant asters on long slender stems. A porch jardiniere filled with these flowers adds a wonderfully bright spot to the landscape. Per pkt. 10c.; oz. 25c.



Miniature Sunflower

With hundreds of bright single flowers, miniature in size and orange in color, of pyramidal growth, this plant is worthy of a prominent position. In fact all the improved modern types of sunflowers are really gorgeous, brilliant and attractive. Pkt. 5c.; oz. 30c.

The Unique New Red Sunflower

This odd variety, like the ones above throws out many side branches and produces an abundance of blooms. The flowers vary greatly in size and are of several shades of color; chestnut-red, red tipped with yellow, others washed with red.

As a hedge or border, along the back or side fence, in front of the garden, or as single specimens they are very attractive and interesting. The flowers are useful and desirable also for bouquets.

Try this novelty this year. Per pkt. 10c.; 3 pkts for 25c.

Note:—Look for purple in stem or leaf of your seedlings and destroy those not showing this color. Occasionally they will still produce plants throwing yellow flowers but such plants can be cast out by selecting those of purple cast.

Dwarf Morning Glory

Grows ten to twelve inches high and two feet across, bearing a profusion of delicate bell-shaped flowers. The flowers remain open much later in the day than do those of the tall climbers. Sow seed thinly in shallow drills and thin out to one foot apart. Packet 5 cents.

ANNUAL AND PERENNIAL CLIMBERS

These plants are among the easiest to grow and add much to the beauty of a home; quickly cover back fences and outbuildings, as well as hide ugly unsightly views. Just the things to hide tree stumps, boulders and other ugly unsightly objects. Excellent for porch trellis, screens, arbors, etc.

COBOEA

A fine Climber for outdoors or inside. Large bell-shaped flowers that open a pretty green, but turn to a lovely purplish blue. Water them with great moderation until out of seed year.

Per packet 5 cents; 50 cents per oz.

WILD CUCUMBER

Very rapid growing and free flowering. Grow to a great height; they begin to bloom early and by mid-summer are covered with large sprays of small white flowers.

Per packet 5 cents; 35 cents per oz.

CARDINAL CLIMBER

Grows 20 to 30 feet, bears innumerable bright scarlet flowers of large size and beautifully cut foliage.

Per packet 10 cents.

CYPRESS VINE



Delicate fern-like foliage and beautiful star-shaped flowers of scarlet or white. One color or mixed.

Per packet 5 cts.; Per oz., 75 cts.

CANARY BIRD FLOWER

A dainty vine with beautiful cut leaves and pretty delicate flowers of a clear canary yellow. From its color and fancied resemblance of shape to a bird, with extended wings, it derives its name. Makes a very pretty window vine.

Per packet 5 cents; Per oz., 35 cents.

MOONFLOWER



Grow 20 to 30 feet in a single season. The foliage is large, dense and luxuriant. The vines are almost covered with hundreds of immense white flowers, many measuring six inches across. Per packet 10 cents.

BALLOON VINE

Or "Love-in-a-Puff" is a graceful climber of rapid growth, with pretty foliage and inflated capsules.

Per packet 5 cts.; Per oz., 25 cts.

PERENNIAL PEAS



In full bloom in the spring before the other varieties begin to flower, and continue blooming throughout the season. Being perennial, they bloom the second season after planting and come up again each year. Magnificent clusters of pink, white, and rose flowers. Grow eight to ten feet high.

Per pkt. 10c.; 3 pkts. 25c.

SKY-BLUE MOONFLOWER

Grows 12 to 15 feet in height. Large sky-blue flowers which come in September. Per packet 10 cents.

GOURDS

Fine for covering out buildings, back fences, back porch screens, etc. Also the dry Gourds come in useful for stocking darners, dippers, nest eggs, etc. and for the children to play with. A fine mixed assortment of shapes and colors.

Per packet 5 cents; Per oz., 20 cents.

Seeds of Hardy Perennials.

**COLUMBINE****DIANTHUS**

Hardy garden Pinks. A most satisfactory class of flowers, easily raised from seed, fragrant, and in constant bloom throughout the season. 10 cents a packet.

DELPHINUM

Or Larkspur is a plant of stately appearance, easy culture and very popular. While this is a June bloomer, if the flower spike is cut back promptly, it will branch and flower all through the fall. Blue, scarlet and yellow mixed, 10 cents a packet.

CAMPANULA

Or Bell Flowers. These are among our best known hardy perennials. The tall varieties are fine for cutting

MORNING GLORY

For covering bare and unsightly fences, and trellis the Morning Glory is justly popular with its funnel-shaped flowers of many shades and colors. And the seed is so cheap that like Nasturtiums, it should be bought by the ounce and planted liberally.

Per packet 5 cents; Per oz., 20 cents.

BALSAM APPLE

Remarkably handsome climber bearing ornamental orange-colored fruit which when ripe opens, showing a brilliant crimson interior.

Per packet 5 cents; Per oz., 35 cents.

WALLFLOWER

While this is a perennial, it is not perfectly hardy; these plants should be lifted late in the fall and placed in a cold frame or cellar, and removed to the garden again in the spring; the flowers are fragrant and splendid for cutting; double varieties, colors brown, yellow, etc. Mixed colors, 10 cents a packet.

HOLLYHOCKS

We all know this grand old flower favorably. It is one of the most popular and desirable of hardy perennials; excellent for planting among shrubbery or as a background for other flowers. Choice double pink, red, salmon, and yellow mixed, 10 cents a packet.

DIGITALIS

(Fox Glove.) Handsome ornamental hardy plants of stately growth, succeeding almost any where. Grows long spikes of very beautiful tubular shaped flowers. Colors, blue, pink, purple, and white mixed, 10 cents a packet.

while the dwarf sorts make excellent border plants; all have dainty bell-shaped flowers. Blue or white, tall or dwarf mixed varieties, 10 cents a packet.

SWEET WILLIAM

One of the finest hardy garden plants, of easy culture, thriving in any good garden soil and lasting for years. The plants form fine clumps and produce fine effects in beds or shrubbery. Red, pink, white and violet mixed, packets 10 cents each.

COLUMBINE

Or Aguiliegias. Very beautiful spring and early summer flowers, graceful in shape, the spurred flowers standing high above the foliage. 10c per pkt.

WINDOW OR POT PLANTS FROM SEED.

Sow the seeds in a cigar box. Use a porous soil about $\frac{1}{4}$ sand; sow seeds on surface and press in with a wooden block, cover box with a pane of glass, keep darkened and the soil slightly moist until seeds "sprout," then lift one corner of glass to admit air and set box in a warm, sunny window. These instructions apply to all tender flower seeds whether for window or out-door culture.

CINERARIA—The plants grow about 15 inches high, circular in form, and covered with brilliant blossoms. The colors range through all shades of blue to purple, and from crimson to deep maroon, and most of the varieties have a white eye, and are sharply margined with some high contrasting color. Mixed, per packet, 15 cents.

GERANIUMS—Easily raised from seed, which sometime rewards the grower with charming new varieties. Plants from seed started early will bloom the first summer in the garden. We will send a packet of extra choice Zonale mixed seed by mail for 25 cents.

CYCLAMEN—Produces graceful orchid-like flowers during the fall, winter and spring. The young plants develop a bulb from which spring the round glossy leaves and the slender flower, stalks which bear the brilliant hued flowers, airily posed above the foliage. The colors range from which to crimson with all intermediate shades. Per packet, 25 cents.

FRINGED CHINESE PRIMROSE is the brightest and most free-flowering of all pot plants for growing in the house in the winter months. Does well in a cool room and will bloom freely in a north window, while most flowers require the warm sunshine. Seed should be sown in shallow boxes of light soil during the spring months, barely covering from view, and if the weather is very warm it is best to keep the seed-box shaded through the hottest portion of the day. The earth should be moist always, neither wet nor dry at any time. When the young plants show two or three leaves they should be planted in small flower-pots two inches across, replanting them into larger pots as they increase in size. It is best to keep the young plants in a cool shady place during the summer months. Per packet, 15 cents.

FUCHSIAS—During the hot summer months they do best in partially shaded cool locations, such as veranda stands or in beds in a shady portion of the lawn. In the South they are hardy enough to live out doors the whole year; for other locations they must be potted before frost. Mixed varieties, per packet, 25 cents.

GLOXINIAS—Are showy summer pot plants, very desirable for porch stands or in partially shaded beds. The flowers often measure 4 inches in diameter, of large bell form with tiger markings of rich shades. Very beautiful. Per packet, 25 cents.

SMILAX—Is a most desirable window vine because of its charming glossy green, elegant and graceful foliage, while for florist's use it is as essential as roses. Per packet 10 cents.



CYCLAMEN

TUBEROUS BEGONIAS—The large flowers range from pure white, yellow, pink and rose, to flaming scarlet. We offer finest seed of single mixed colors. Per packet, 25 cents.

Grow New Varieties of Potatoes From Seed



From seed is the way all new plant varieties are created and there is money in new varieties—and fun galore. From these seed can be grown potatoes of all conceivable colors, shapes and sizes. These rare and curious seeds put up for us by a specialist—will produce white, yellow, pink, red, blue, black and variegated potatoes, of shapes, types and qualities innumerable.

Early and late varieties. Strange freaks, etc. Give your boy a chance also to grow "seedling" potatoes. It is so easy. He may be the lucky one; he is sure to get a lot of pleasure out of the experiment and so will you. The possibility of producing a new variety superior to all others—and a regular "gold mine"—is fascinating in the extreme.

Packet of New Hybridized Potato Seed with full directions for growing mailed for only 15 cents. 2 pkts. 25c. 12 for \$1.25.

How To Sow Grass Seed You cannot sow too much, the more the better. It means quicker, surer, more lasting results. 1 qt. will sow 100 sq. ft. (10x10); 4 qts. 600 sq. ft. (20x30); 1 peck 1,500 sq. ft. (30x50).

Green Velvet Lawn Grass Seed It is the result of years of untiring study and experimenting, it has stood the test in every part of the United States and it will stand wear and tear, outliving the severest winter, retaining at all times its lustrous green color. We class this as the best general purpose lawn grass. Prices: 1 quart, 35 cents; 4 quarts, \$1.25.

Shaded Lawn Grass Seed Shade causes sour soil and about every three years you should apply lime to sweeten up the soil. Use about one bushel to each 1,000 sq. ft. After much experimenting a mixture of seed has been found that will produce a perfect sward in the dense shade caused by trees, shrubby, buildings &c. Prices: 1 quart, 35 cents; 4 quarts, \$1.25.

Seashore Lawn Grass Seed A good lawn at the seashore is frequently a problem and this mixture is a result. It will produce a good lawn in 6 to 8 weeks if 3 or 4 inches of top soil is spread over the surface, seeded and well firmed down. If soil is very poor and no top soil to be had, white clover sown with the grass seed will help wonderfully. Prices: 1 quart, 35 cents; 4 quarts, \$1.25.

Pulverized Sheep Manure

Should be used on every lawn. It is also the best manure for the garden and for flowers. **REMEMBER THIS:** One bag equals a whole wagon load of barnyard manure and there are no weed seeds to cause you trouble. This manure is prepared by special drying, screening and grinding process which destroys every weed seed and eliminates every bit of worthless bedding and foreign matter. Only the pure fertilizer in most concentrated form is packed in bags for convenient and economical use.

Only requires one-half ton to the acre, so a 100 lb. bag will be sufficient for a good size lawn.

If you would have the finest, greenest lawn in your neighborhood, the brightest flowers and the most productive garden you can do so at very small expense by using Pulverized Sheep Manure. It Makes grass, plants and flowers all "sing for joy."

Shipments made by freight from either Philadelphia or Chicago, according to which is your nearest point. 100 lbs.—\$3.75.

TRY THIS BEDDING PLANT FOR 1920.

Everybody knows and admires the Aster and they are grown everywhere, but here is a Bedding Plant that we consider as being more desirable in many ways, therefore we will grow these plants this season by the hundreds of thousands in anticipation of an enormous demand for them.

Curled and Crested Zinnias

are so bright in coloring and so beautiful in form as to be hardly recognizable as the offspring or progeny of the old-fashioned Zinnia except by the foliage. For years with painstaking care, the seed of this distinctive break in the Zinnia family has been selected and re-selected, resulting in the lovely flower as it stands today, the wonderously curled and twisted petals reminding one of lovely Cactus Dahlias in shape.

The riot of colors in these gorgeous flowers runs thru cream and yellow to orange or old gold, pink, rose and on to deep crimson. We consider this flower preferable to the Aster, in that it is easier to grow and thrives anywhere under all conditions: the colors are brighter, and it blooms

over a longer period.

We class Curled and Crested Zinnias as a desirable

bedder. Planted amongst shrubbery they brighten the display immensely and the blooms work up exquisitely for bouquets as can be very readily seen by looking at our front cover illustration and also on this page showing these lovely flowers arranged in individual holders.

Curled and Crested Zinnias are excellent as borders to paths, walks, fences, gardens, anywhere there is a spot you wish to brighten with a gorgeous setting of colors. By use of this bedding plant you can provide for a grand display at almost no cost and I hope each customer who makes use of Annual Bedding Plants, will for 1920, set out at least one bed or border of Curled and Crested Zinnias. If you haven't room elsewhere, plant them in the garden where they will bloom from July to November.

We suggest setting the plants 9 inches apart (but they can be either closer or farther apart if you prefer.) I will mail 50 plants, enough for a nice big bed, for only \$1.00. 300 for \$5.00. 1,000, \$10.00. My advise is strongly and urgently, to include Curled and Crested Zinnias in your order. All orders booked in advance of planting season will be mailed at the proper time. Book your order early.

CLARENCE B. FARGO, Frenchtown, N. J.

