

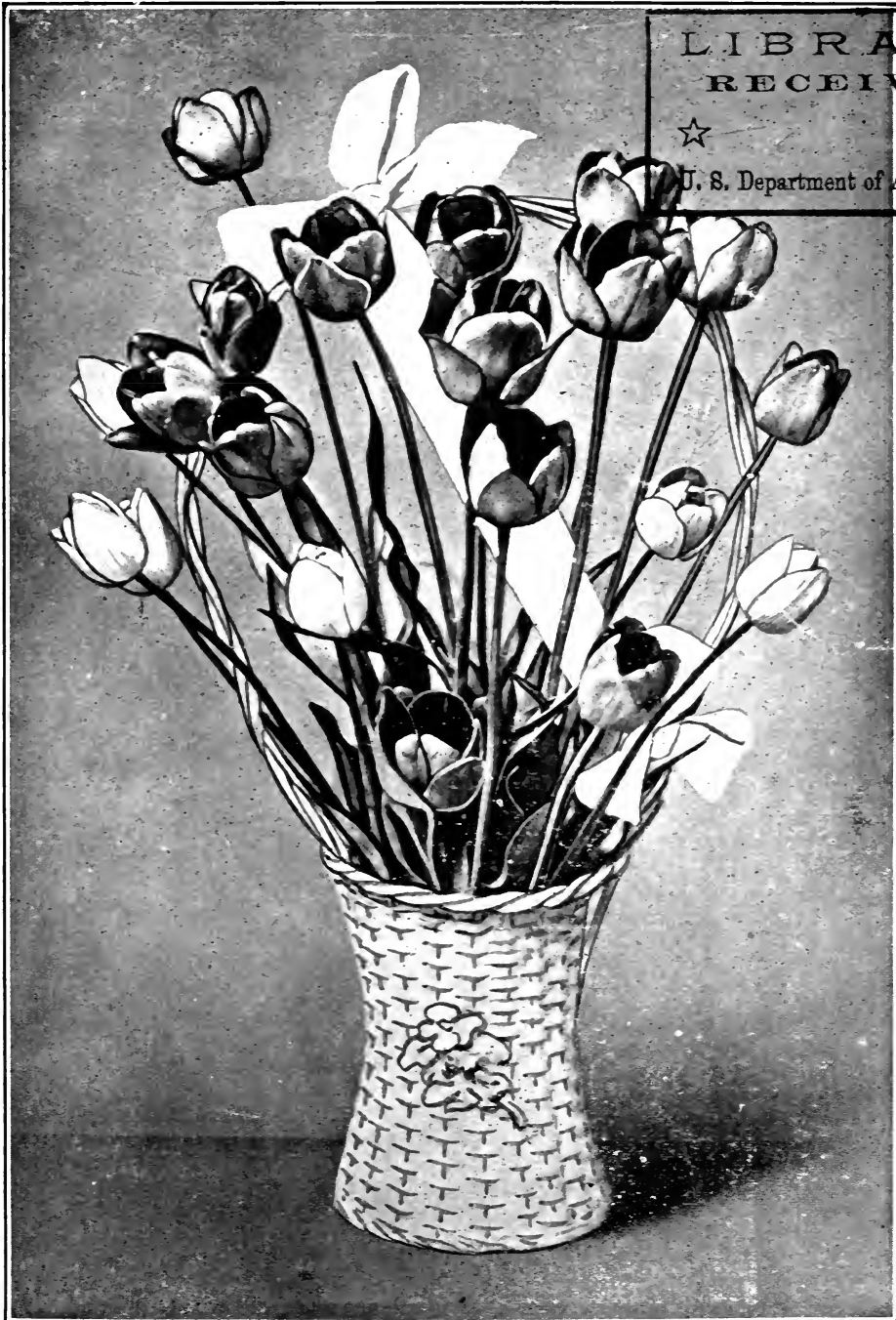
## **Historic, Archive Document**

Do not assume content reflects current scientific knowledge, policies, or practices.



# CLARENCE B. FARGO

FRENCHTOWN, N. J.



LIBRARY  
RECEIVED



U. S. Department of Agriculture.

FALL

Arranged Basket of Late Darwin Tulips.

1920

# AN INTRODUCTION TO NEW FRIENDS.

---

## A SALUTATION TO OLD ONES:

Here is a business that certainly shows that intimate personal touch that the big city concerns do not have to offer. Many are the pleasing letters that come to my desk. One flower loving friend writes: "**I receive many of the most expensive Flower Catalogs issued, yet your modest little Catalog appeals to me more than any of them.**" I consider my customers as friends and try to treat them as such.

**We find that many do not understand the advantages of Fall planting in general.** If you neglected last spring to set out that Hedge, to plant some Shrubbery, Grape Vines or small fruits, or the other things listed herein, then do so this Fall any time before the ground freezes up hard and solid for the winter. By doing this, the plants become established and begin to grow earlier than if you waited until the succeeding spring to plant. Of course it is unnecessary for me to mention the gorgeous Tulips, Hyacinths and Narcissus, all of which must be planted in the Fall if we would enjoy them in the Spring. Go over my Catalogue carefully, pick out what you may need and send in your order NOW. Seventeen years in business here in Frenchtown, shipping goods all over the world; a thriving business, backed by fairness, courtesy, personal service and financial responsibility is your guarantee. Our best recommendation is the hundreds of glowing testimonial letters we receive from pleased and more than satisfied customers from everywhere. They make us feel that we are all just a big circle of friends and neighbors.

**How We Ship.** Unless especially advertised, as "by express" or "by freight," all seeds, bulbs and plants (except shrubs) are sent prepaid anywhere within the first three postal zones. If you live in N. J., Pa., N. Y., Ohio, Del., Md., R. I., W. Va., N. H., Vt., Conn. or Mass., the above goods are sent prepaid. Shipments to distant states unless sufficient extra funds to prepay postage are included with the remittance, must go by express or freight except small packages of 8 oz. or less, which will be mailed prepaid anywhere. Shrubs go by express, but small packages of shrubs weighing 10 pounds or less will be mailed to points within the first three postal zones.

We cannot guarantee the actual result of growing anything, as so much depends upon conditions over which we have no control, such as unfavorable weather conditions, ignorant or careless culture, poor soil, and other causes.

**Important.** Remittances should be made by Bank Draft, Money Order, or Registered Letter. Stamps however are acceptable for fractional parts of a dollar. We use every means possible to avoid errors but we are all human. In case of any error we desire to be advised at once, with full particulars and an immediate investigation will be made.

**Some People** wait until the minute they want to plant and then send in their orders. It should be remembered that in the height of the busy season it is not always possible to fill orders immediately. We always do the best we can in filling orders promptly, but the wise plan is to study the catalog over as soon as you receive it and make out your order; remembering that all orders booked in advance of planting time have early preference and a full stock to select from. Therefore we cannot too strongly say it:—**Send Your Orders As Early As Possible.**

CLARENCE B. FARGO.

**Send Your Orders As Early As Possible.**

John P. Anthony, Alderman, Lock Haven, Pa., says: "The Tulip bulbs . . . to my great surprise rivaled in color and type those for which I paid three to five times as much."

# HOW TO GROW BULBS SUCCESSFULLY.



Every flower lover who buys bulbs wants to know—if uninformed on the subject—how to produce best results. Success with bulbs is extremely easy and a joy and a delight to grow them. Lack of success is a keen disappointment and easy to avoid. If you follow my directions—with **FARGO'S BULBS**—success and its attendant delights and pleasures are assured.

The main purpose of this page is to give proper instructions for growing bulbs in pots for the house, but it might be well first to give just a few general instructions for outdoor planting. The time to plant in beds is from the middle of October any time up until the ground freezes hard and solid for winter. Set the Tulip Bulbs with top of bulb three inches under ground. Narcissus the same, Hyacinths six inches. Cover beds with a thick mulch of leaves, straw or coarse manure and rake off about the middle of March. Now about pot culture:

**HYACINTHS:** Plant the bulbs one in a 4-in. pot or three in a 6-in. pot.

Store the potted bulbs in a cool closet or cellar for six weeks or more to make roots. Do not try to bloom them too early. About two weeks before the plants are wanted in bloom, bring them gradually to light and warmth; not putting them immediately in a south window or the warmest room. When several flowers open set the pot again in the cellar for a few days to lengthen the stem. You will then have glorious flowers. If you wish to hold them back for a special occasion put them in the cellar or in a cool room; to bloom faster in a warm room. The first of January or even later is soon enough to bring the rooted bulbs out of the cellar.

**TULIPS:** They require somewhat different care from Hyacinths and should not be brought in too soon. Feb. or Mar. is early enough for best results. Plant three bulbs in a 4-in. pot or five in a 6-in. pot. Bury under at least three inches of coal ashes in the garden and in early spring dig out the pots, bring into the house and treat thereafter same as Hyacinths. They are fine massed in old pans, agate kettles, etc., the bulbs planted 2 in. apart.

**NARCISSUS and Daffodils.** Treat them the same as you would Hyacinths and you will have excellent results.

**PAPERWHITE NARCISSUS:** They do not need to make roots first as do bulbs named above. Plant in pebbles and water or pot them and they will be in fragrant bloom in about five weeks. An excellent plan is to cut down a canned goods box to about three inches deep, fill it with soil and plant four rows of five bulbs each—twenty bulbs in all—in the box. It will make a display to be proud of. You can have Paperwhites in bloom continuously from before Xmas until after Easter by planting some of the bulbs at intervals of ten days or two weeks.

Plant plenty of bulbs outside, but do not fail to have a lot for inside too, for they will be doubly enjoyed and appreciated.

## THE GREAT BLACK TULIP—La Tulipe Noir.



### GIVEN AWAY FREE.

This year our growers have sold us a few thousands of the true black Darwin Tulip "La Tulipe Noir". It grows 28 inches high, and is a good forcer. This novelty in Tulips will, we are sure, be greeted with pleasure and delight by our many friends, and having but a few thousands of these bulbs this year, we have decided not to sell them at any price, but rather to give them away as an advertisement; therefore, with each dollars worth of other Tulips, Hyacinths, Narcissus and Crocus ordered either from our advertisements or from this catalog, you are thereby entitled to one of the

### GREAT BLACK TULIPS FREE OF COST.

A few grown in pots will be a treat for yourself and a surprise for your friends. Plant some outdoors too if you like. Remember: Whether your order is for \$1, for \$10 or for \$100, you are entitled to one **Great Black Tulip** for each dollar of your purchase, but as stated above, this offer applies only to purchases of Tulips, Hyacinths, Narcissus and Crocus—and to none of the other items listed in this catalog.

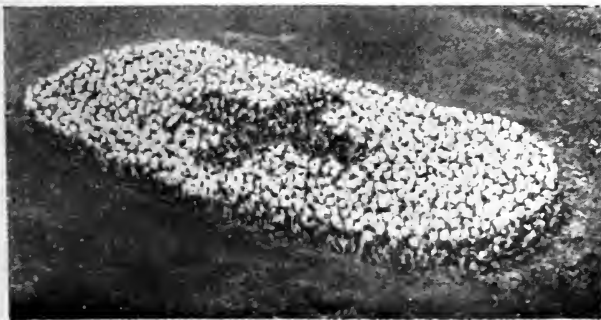
## Wonderful Monster Lemon—Ponderosa.

This wonderful Lemon has created a great sensation, and is a true everbearing variety that you can grow in a pot or tub in the home and one that will prove to be a decided ornament, as well as bear fruit, such as you have probably never seen or heard tell of. On a plant 6 ft. high, no less than 89 of these pondrous Lemons were growing at one time. These trees are wonderful sights to see. The tree blooms and at the same time has fruit in all stages of development from the size of a pea, up to the ripe fruit. Fruits have been taken from these trees weighing over 4 pounds. It is one of the juiciest of all Lemons, makes delicious lemonade, and fine for pies and other culinary uses. It is not uncommon to make 12 lemon pies from one Lemon. No budding or grafting is necessary. It fruits when quite small and makes a lovely house plant. Everybody can grow their own Lemons. It should fruit freely the second year. I will mail a nice thrifty plant of the **Monster Lemon—Ponderosa**, for 35c., or 3 Plants for \$1.00.



## CHOICE SINGLE NAMED TULIPS.

Dr. George B. Irvine, 22 South 52nd St., Philadelphia, Pa., says: "The Tulips I purchased made a splendid showing. Of the 1,400 I had some 1,380 blooms. They made a decidedly pretty display and were very much admired by neighbors and friends."



Tulips, and in fact all Holland bulbs, are scarce this year, and again higher in price, as the war stopped practically all business of the kind in Holland and many of their bulbs, owing to the food shortage, were used up for starch making, stock feed, etc., so that now, when the market is again open, stocks are high in price.

My grower arrived from Holland early last January for a short trip and received my order for a limited quantity of good things that I know my patrons will appreciate, so I would suggest early orders to avoid possible later disappointment. I offer the following named sorts in different colors:

- (10) **La Reine**; white.
- (10) **Belle Alliance**; best scarlet.
- (10) **Duchess de Parmi**; orange scarlet with suffused yellow edge; very large.
- (10) **Yellow Prince**; golden yellow.
- (8) **Rose Grisdelin**; pink.

*(Figures given before names denote average height.)*

All the above, except Duchess de Parmi, are suitable for forcing in pots.

10 for 60c.      50 for \$2.50.      100 for \$4.50.

Howard H. Rickenbach, Bernharts, Pa., says: "Your Tulips are among the finest in this vicinity. I want some more of the bulbs in the fall."

## Single Early Mixed Tulips.

This gorgeous flower, the lovely Tulip, is admired and loved universally. To have a nice bed of Tulips in full bloom in April or May is to be the envy of each one who sees the wonderful display nature affords in this wonderful flower.

I can count myself fortunate, and my floral friends with me, that I have been able to buy this excellent stock for their pleasure and enjoyment in this season of great scarcity. In addition to the five excellent named varieties listed above, I also offer a splendid assortment of mixed varieties as well, at the following prices:

25 Bulbs, \$1.00.  
50 for \$1.75.      100, \$3.00.

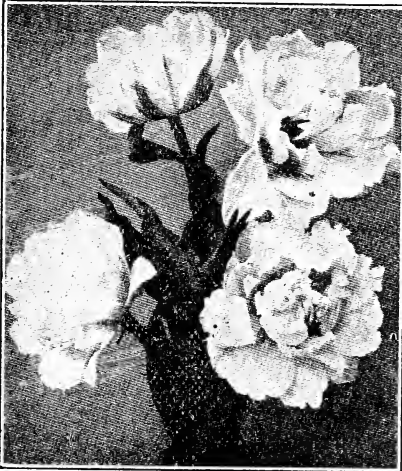


George Rankin, 1801 Edgmont Ave., Chester, Pa., writes us regarding a contest between two boroughs and says: "I am glad to tell you the Tulips took first prize."

## Georgeous Rembrandt Tulips.

These gorgeous flowers belong to the Darwin family of Tulips and are so oddly beautiful as to create a sensation wherever grown for the first time. The flowers are striped and variegated in a wonderful manner with white, brown, black, pink, rose, purple, yellow, orange, crimson, etc., the colors being blended in a truly marvelous way. They are both odd and striking in their colorings and tall and graceful in effect. We only have a few thousand Rembrandt Tulips for this season, and, while they last, we offer them at **10c each, 15 for \$1.00; 100 for \$7.00.**

Mrs. O. C. Snively, 216 Fourth Ave., Altoona, Pa., says: "The Tulips are very beautiful and are much admired by all my neighbors."



## Handsome Double Tulips.

Double Tulips produce large double flowers, many of which are as large and showy as the Peony. The bright colors of the large blooms contrast splendidly and make a most charming and gorgeous display.

- (10) *La Candeur*; very large, pure white.
- (8) *Rubra Maxima*; dazzling scarlet.
- (7) *Murillo*; a very large pink suffused with white; resembles a lovely water-lily.
- (9) *Gloria Solis*; bright scarlet with deep yellow border.

(*Figures before names denote average height.*)

Each one of the five above sorts is adapted to forcing in pots as well as for bedding out doors.

**10 bulbs 60c; 50, \$2.75; 100, \$5.00.**

## Choice Double Tulips, Mixed.

**25 bulbs for \$1.00;  
50 for \$2.00; 100, \$3.75.**

### Lord Kitchener Tulips.

Formerly known as the **Kaiserkrone**. Tremendously large gorgeous flowers, red with golden yellow borders, on long erect stems. Very popular for either bedding or for forcing in pots. **5 for 35c; 25 for \$1.35; 100, \$5.00.**

Mrs. George T. Hibbard, Guthrieville, Pa., says: "The Tulips are certainly beautiful, and many of my friends have asked where I got the bulbs, as they want some next year."

### Late Parrot Tulips.

A flower that is bizarre, fantastic, and gorgeous in the extreme. The blooms measure 6 to 8 inches across, and grow 10 inches high. Petals are toothed, horned, twisted and waved; now closely incurved, now spread flatly out like a star. They are fine for bedding and for planting among shrubbery. Gorgeous, brilliant mixed colors only.

**5 for 30c. 25 for \$1.25.**





## DARWIN LATE TULIPS.

These deservedly popular single late Tulips, growing on tall stems often 28 to 30 inches tall, are truly majestic in their beauty. Darwins are an entirely new race of Tulips of the most stately class and are unsurpassed by any other flower. A liberal garden space should be devoted to Darwins as they are superb for bouquets, lasting a week or ten days after cutting.

Blooming in May after the early Tulips are gone and before early summer flowers bloom, they fill a place of their very own, both for beds and bouquets.

We show here a vase of these lovely flowers, also a basket of some on the front cover, showing somewhat of their real stateliness and beauty. We offer three excellent separate named varieties, as follows:



- (24) **Pride of Haarlem**; fine scarlet; suitable for forcing.
- (20) **Clara Butt**; soft rose-pink; extra fine for forcing.
- (18) **Gretchen**; soft salmon-rose; good forcer.

(Figures before names denote average height.)

5 bulbs for 30c.      25 for \$1.25.      100, \$4.25.

## CHOICE MIXED DARWINS.

25 bulbs for \$1.00.      50 for \$1.75.      100, \$3.25.

George B. McKinney, Bala, Pa., says: "I have had great success with the Tulips, especially the Darwins."



## PICOTEE TULIPS.

A choice late Tulip in an unusual form. The flowers are very large, borne on tall graceful stems. The petals are pointed and white in color, with a distinct edging of scarlet, which gradually suffuses nearly the entire flower as it comes into full bloom.

4 for 25c.      20 for \$1.00.      100, \$4.25.

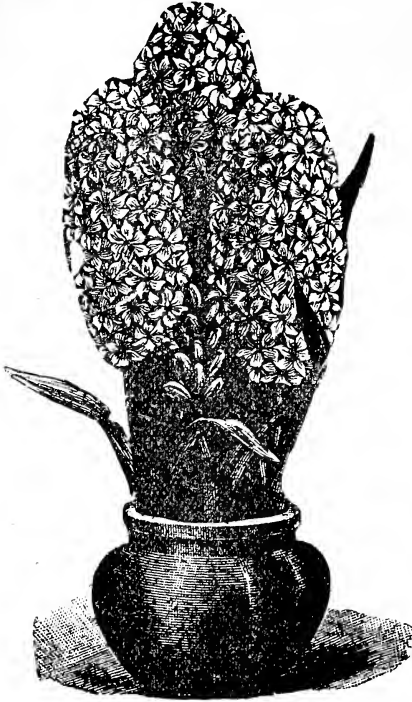
Frank R. Wilson, Ambridge, Pa., says: "I am well pleased. They are a fine display."

## Crocus: Harbingers of Spring.

Crocus are one of the first of spring flowers and stay with us for several weeks as a reminder of the other beautiful flowers to come. They are lovely for borders, for naturalizing in the lawn by planting here and there by twos or threes right in the grass, and also they bloom lovely when forced in groups in a shallow dish or plate. Their cost is so small that they can be planted freely and they repay the investment many times over.

10 for 25c.      50 for \$1.15.      100, \$2.00.

Mrs. C. Martins, Mamaroneck, N. Y., says: "Everything I have bought from you has turned out well. The Tulips were beautiful. I shall certainly continue to trade with you."



## CHOICE HYACINTHS.

A queen amongst Spring flowers. It has grown into great popularity as an Easter blooming pot plant—and it surely deserves all of its popularity. Beauty and fragrance that certainly make a desirable combination indeed.

The enormous and massive spikes of wax-like flowers of all colors, are of the most perfect shape and stateliness; and most delicious fragrance sweetly scenting the whole house.

Hyacinths certainly do make exquisite beds, either separate or combined with Tulips. The larger bulbs should always be used for pots except where planted thickly together, when the Bedding or smaller size may be used.

### BEDDING OR MINIATURE SIZE.

**L'Innocence;** white.

**Gertrude;** pink.

**King of Yellows;** yellow.

**King of Blues;** purple.

**Queen of Blues;** light blue. **Mixed**—all colors.

3 for 20 cts.

10 for 60c.

100, \$5.00.

Charles E. Dawson, Blackwood, N. J., says: "All our bulbs came up fine; and the Hyacinths looked great. Expect to give you a better order this Fall."

## LARGER HYACINTHS.

### EITHER FOR POTS OR BEDS.

**L'Innocence;** white.

**Gertrude;** pink.

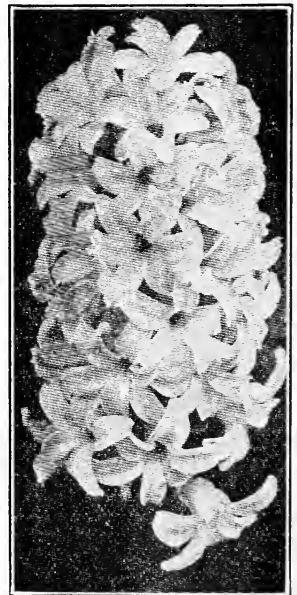
**Grand Maitre;** porcelain blue.

10c. each.

12 for \$1.00.

100, \$7.50.

Samuel C. Miller, Norristown, Pa., says: "All the bulbs and plants I bought of you last fall are growing fine."



## Paperwhite Narcissus.



One of the most popular of bulbs for forcing as they are so very easy to grow, so beautiful and so fragrant as to be admired by all who see them. Excellent either grown in pots or boxes or in dishes with pebbles and water, blooming within a few weeks after the bulbs are planted.

Our illustration shows an ordinary canned goods box cut down and planted with twenty Paperwhite Narcissus bulbs; about half in bloom when the photo was taken, the rest blooming soon after. You can easily make just as excellent a showing as this. You can plant three bulbs in a 4 or 5 inch pot or as before stated, in pebbles and water and easily grow these lovely large clusters of pure white flowers, either for sale or for the pleasure of yourself and family and the decoration of the home. It is an excellent plan

to buy a hundred bulbs or so, plant some every ten days or two weeks right up to Easter. If you know them you will grow some sure. If you and Paperwhites are strangers, get acquainted now, enjoy these lovely fragrant flowers continually from before Xmas right along until after Easter, and you will forever remain firm friends thereafter.

12 bulbs, 75 cents.

100, \$6.00.



## Golden Narcissus.

OR SOLEIL D'OR.

This lovely flower is a direct contrast to the Paperwhite and is grown the same way. It is a charming flower of a rich yellow color, with deep reddish sups in the center. 2 bulbs 25 cents; 6 for 65 cents.

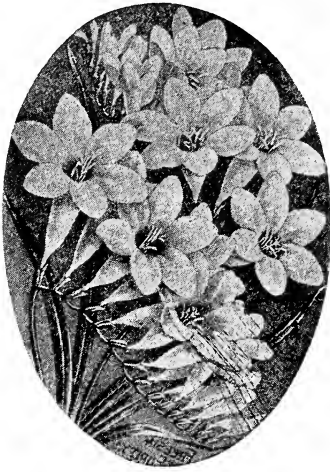


## Oxalis.

BERMUDA BUTTERCUP OXALIS.

Blooms in enormous panicles, each flower as large as a half dollar, and clear bright yellow in color. Commence blooming soon after planting in pots and continue to bloom all winter without a break. Plant three bulbs in a 4-inch pot.

3 bulbs 15c; 6 for 25 cts.



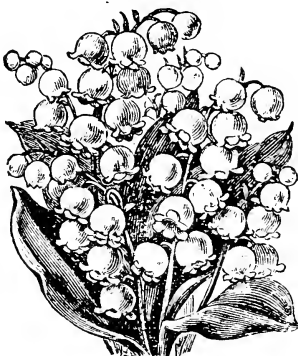
### Freesia "Purity"

One of the winter's choice flowers for pot blooming, and grow for anyone anywhere. They commence growing immediately and need not be put away to form roots first. As cut flowers they keep perfect for two weeks. The beautiful fine white clusters are a real joy to behold.

Put 3 or 4 bulbs in a 4-in. pot 5 or 6 in a 5-in. pot.  
3 for 10c. 12 for 35c. 100 for \$2.75

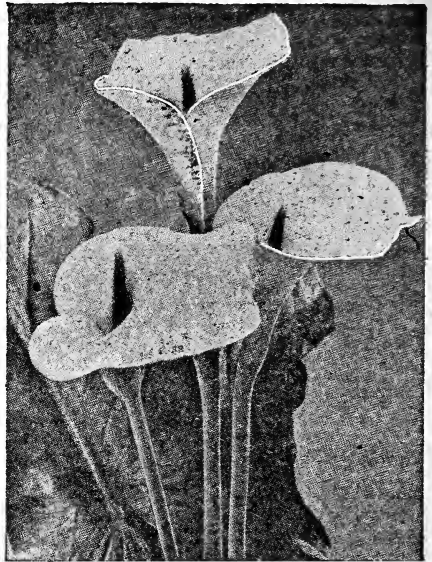
### RAINBOW FREESIAS.

new hybrids in beautiful shades of violet and pink. Try at least a few. Bulbs at least grow 2½ to 3 ft. high. Each 15 cents. Dozen \$1.50.



### LILY-OF-THE-VALLEY.

Planted once the lovely Lily-of-the-Valley, whether in sun or shade thrives and multiplies rapidly without care or attention. The flowers make lovely carriage bouquets and are much in demand. Both flowers and foliage beautify an otherwise unsightly spot. Fine pips, 60c per dozen or 25 for \$1.00.



### CALLA LILIES.

**WHITE.**—We all know and love this graceful flower for its snow-white purity and noble beauty. Set off by the large, shiny green leaves it is superb. We offer only thoroughly ripened roots that will flower prettily.

35c. each. 3 for \$1.00.

**GOLDEN YELLOW.**—This is the best of the yellow callas, the Elliotiana, and a most unusual and magnificently beautiful flower. Large flowering bulbs 69c each; 4 for \$2.00.



**CYCLAMEN**—Few plants are so desirable for winter blooming, and none more popular than the Cyclamen. They are universal favorites, especially for X-mas and Easter and all time in between. The leaves are ornamental and the flowers in their odd shape, superb coloring and profusion are simply magnificent. The flowers last a full month before fading. Plants, mixed colors, 50 cts. each; 3 for \$1.25.

## Choice Hardy Lillies.

**CULTURE:** Various varieties mature at different dates and while some sorts are ready to send out; others are not ready until as late as November, or even December. It is advisable to prepare your Lily bed early in the Fall and cover with 3 or 4 inches of straw, leaves or manure. This will keep the ground from freezing and permit the planting of even the latest bulbs to arrive. Plant the bulbs twelve inches deep except as otherwise directed below. **HARDY LILIES** are amongst the finest of our garden flowers, and once planted, require but little attention. All the varieties we list, except Candidum, are also excellent for forcing in pots. Planted in masses, Lilies give a striking effect. They are also fine for planting in the border amongst shrubbery. Every garden should have some choice Hardy Lilies. **Lilies are scarce and high in price but we must have some.**



*Lilium Auratum.*

**Auratum.** The wonderful Golden Banded Lily of Japan (illustrated). Enormous—yes monstrous—flowers; pure white ground dotted with brown spots and a yellow stripe thru the center of each petal. Wonderful—yes, thrice wonderful—amazing hardly describes its rare beauty. Bulbs, 50 cts. each.

**Giganteum or White Japanese Easter Lily.** Fine for forcing either for Easter or Decoration Day. Also for outdoor planting. A splendid type of strong, free blooming, healthy growth. Bulbs, 50 cts. each.

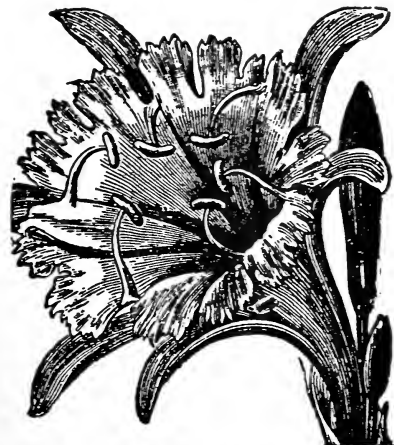
**Rubrum.** A very popular rosy-white Lily heavily spotted with rich crimson. Petals reflexed. Used for both potting and out-doors culture. Free bloomer. Bulbs, 50 cts. each.

**Candidum** also called **Annunciation** or **Madonna Lily.** One of the most popular garden Lilies. Pure snow-white, very fragrant, borne in clusters on long stems. Plant these as early as possible in the fall, give the bulb a dusting with sulphur if possible and cover with not more than two inches of soil. Bulbs, 40c. each.

**Elegans.** One of the most satisfactory colored garden Lilies for general culture. Large funnel shaped flowers in a variety of shades of red, yellow, orange, etc. Extremely hardy. Plant six inches deep. Bulbs, 25 cents each.

### THE GREAT ISMENE

Of about the same habit of growth as the Calla Lily and considered by some flower lovers as even superior to either the Calla or the Easter Lily. The flowers are of large size, odd and novel in form, snowy-white and exceedingly fragrant. Throws up tall spikes, each having several blooms. It has a peculiar grandeur which one can fully appreciate at sight, yet hard to adequately describe. It might really, we think, be classed as a white Amaryllis.



Great Ismene

Bulbs 35 cts. each; 3 for \$1.00.

## Peonies in Bloom for a Full Month



A Peony usually is in bloom only for about a week but all varieties do not bloom at the same time, therefore if Peonies are selected with care backed by knowledge, it is possible to choose a selection that will bloom for a full month instead of a single week, and thus to give much added joy and pleasure to Peony growing. The collection as given on this page has been carefully and painstakingly selected with this end in view.

**LOUIS VAN HOUTTI.** Bright violaceous red of fine shape and dazzling effect. **50c. each.**

**BERLIOZ.** Bright currant-red tipped silver. Very showy. **60c. each.**

**FRAGRANS.** An old favorite. Color salferino-red, with slight silvery reflex. **50c. each.**

**MONS KRELAGE.** The French hybridists evidently "spilled their paint pot" after producing this superb red with amaranthine center as there is no other variety in its color. **75c. each.**

**PRINCESS BEATRICE.** Center light violet-rose; collar creamy white with shades of amber, flecked crimson. Fragrant tri-color blooms. **50c. each.**

**ASA GRAY.** Delicate lilac sprinkled with dots of deeper lilac. Very striking, imposing and beautiful. Wonderful bloomer. **\$1.25 each.**

**FESTIVA MAXIMA.** Regarded by many as the finest white Peony grown. Center petals edged with red. Often measures 7 to 8 in. across. **50c. each.**

**MARIE STUART.** Soft lilac, changing to white. One of the most beautiful Peonies. **50c. each.**

**EDULUS SUPERBA.** A beautiful bright clear pink with silvery reflex. **50c. each.**

**MARIE LEMOINE.** Ivory white. Blooms of truly gigantic size. **50 cts. each.**

**PRES. ROOSEVELT.** Deep rich, brilliant red; different from any red we know and hard to beat. **\$1.00 each.**

**ANEMONEFLORA RUBRA.** A deep brilliant red, unusually beautiful in shape and coloring, enriched by a great mass of golden stamens that set the flower off to perfection. **65c. each.**

## GOLDEN HARVEST.

The guard or collar petals are blush-pink, with creamy sulphur-yellow center; tipped with white and carmine. A most striking variety, producing large fragrant blooms in great profusion and providing a delightful treat. **75 cents each.**

## A Month of Peonies for Only \$7.50.

The entire selection of 13 extra choice Peonies listed above will be sent for only **\$7.50.**

## WHICH WOULD YOU RATHER DO?

Wait until Spring to order your Roses; then find you could only get part of what you want, and at an increased price---OR--- would you rather take advantage of my

### Fourth Annual Pre-Season Sale.

As advertised on the next two pages of this catalog; making sure of getting just what you want, just when you want it, and at a saving of about one-third. Roses are mighty scarce, desirable property, these days.

## ABOUT FARGO ROSES.

My Pre-Season Rose Sales are increasingly popular each year and deservedly so. Last Fall we sold our Roses at a price that was less than the wholesale price in the Spring. This was possible only because we look ahead and our Rose loving friends reap the benefit of our foresight. And then my Roses **ARE** real Roses—and it will pay **YOU** to order them this Fall for early Spring delivery.

1640 Wyoming Ave.,  
Philadelphia, Pa., March 3, 1920.

Dear Sir:

Last year I ordered ten Rose bushes (Hybrid Teas) and I want to express my complete satisfaction and appreciation of the Roses sent. They all bloomed in the month of June, which I think is quite remarkable.

Yours very truly,  
LAURA B. INGHAM.

103 Broadway,  
Mauch Chunk, Pa.,  
May 13, 1920.

Dear Sir:

The Killarneys you sent me were so fine I could not resist throwing out a few Roses I did not care for and replacing them with some others from you. Roses such as you sent me are bound to make you friends.

Yours truly,  
GEORGE W. HALL.

Beach & Washington Sts.,  
New York City, June 9, 1920.

Dear Sir:

My father, I. W. Wilson, Granville, Ohio, tells me he has bought a good many Roses from you and is very well pleased with the stock you have shipped. I wish you would put me on your mailing list so that I will receive your catalogue. \* \* \*

Yours truly,  
R. L. WILSON.

Truly a pleased and satisfied customer is the best advertisement. Just turn to the two next pages of this book and learn further of the advantages of ordering your Roses in the Fall for Spring delivery at a saving of about one-third.

600

VALUE

# HYBRID TEA ROSES

SPECIAL

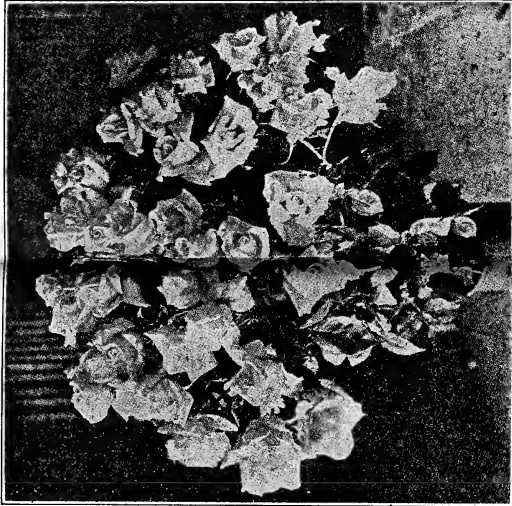
350

Excellent Field Grown Stock. Each Bush 12 to 18 Inches High.

## GRAND SPECIAL PRE-SEASON SALE OF CHOICE EVERBLOOMING ROSES

H. B. H. Moore, Maryland, Md., says: "Yours are the very best looking Rose bush es I have ever had for twice the money you charged."

- Antoine Revoire; rosy flesh.
- Betty; coppery yellow.
- British Queen; white.
- Captain Christy; delicate peach-blow pink.
- Countess of Gossford; salmon pink.
- Crimson Queen; crimson.
- Dean Hole; light carmine, shaded rose, flushed with old gold.
- Duchess of Wellington; saffron yellow, fleshed crimson.
- Edith Part; suffused red.
- Edward Mowley; dark crimson.
- Etoile de France; red crimson.
- Frances Scott Key; new red Rose.
- George Ahrends; clear brilliant pink.
- General Janssen; carmine.
- General McArthur; bright scarlet.
- Helen Gambier; orange yellow.



- Hermosa; pleasant shade of clear pink.
- Irish Fireflame; brown orange.
- Killarney Brilliant; crimson; changeable.
- Killarney; pink.
- Lady Battersea; red.
- La Detroit; shell pink shaded to rose.
- La France; silvery pink.
- Mme. Chateaux; carmine rose.
- Mme. C. Testout; satiny pink.
- Mme. J. Guillemont; canary yellow.
- Mme. Leon Pain; silvery pink, center yellowish orange.
- Mme. Jules Grolez; bright rose.
- Prince d'Arenburg; clear red.
- Queen Beatrice; fine bright pink.
- Radiance; rosy opaline pink.
- Winnie Davis; apricot pink.
- Wellesley; soft silvery pink.
- White Testout; pure white.
- White Killarney.

### THIS SALE POSITIVELY ENDS ON CHRISTMAS DAY.

This Special Pre-Season Sale will again greatly stimulate the planting of the loveliest and most popular of all flowers, as it has so wonderfully in past years. This offer brings to you truly a wonderful Rose-buying opportunity. Roses of real merit, excellent stock 12 to 18 inches high, offered for the term of this Special Sale at a bargain price. Don't you think you ought to set out a hundred or so of these most excellent bushes? **Special, 35 cents each.**

Just stop and consider a moment what it means to YOU to be able to purchase this strong, sturdy, dormant field-grown Rose stock at the remarkably low price of only 35 cents each. It is exactly the same stock as will be offered in my 1921 Spring Catalogue at 60 cents each, or \$6.00 per dozen, yes, a few of the varieties will be as high in price as 75 cents each in the spring, and the very same stock, grown by experienced Rose growers, is largely used by florists, which fact should give you some idea of the real value this sale offers. It is simply a big slash in prices, and the advantage is all yours if you act promptly. It is such an opportunity as should fill your garden full of fragrant blooms all through next season—and for seasons thereafter.

This Special Sale is made possible by handling a large quantity of stock quickly; getting it out to my customers as soon as it comes from the field, instead of having it to care for until ordered. This all saves time and expense, and the benefit is yours. As I cannot afford to have a lot of stock left over, and still sell at so low a price, neither do I want to run short and have to disappoint anyone, therefore all Special Sale orders must be on hand in advance of

**WHAT OUR CUSTOMERS SAY**  
 I. W. Wilson, Granville, O.—"The Roses came in fine shape." (Mr. Wilson bought 100 in 1917, another 100 in 1918 and 100 more in 1919.)  
 Mrs. Leonard Bacon, Bridgeton, N. J.—"Every one of my Roses lived and are doing fine."  
 Mrs. Frank L. Bowne, Cape May, N. J.—"Roses bought last year are doing fine."

digging time, so I can make up an exact list and know my actual requirements for this sale.

Dormant Roses can be planted out as soon as the ground can be worked; the earlier the better; and it is surprising how the Rose roots like to go right to work in the cold earth. All Roses sold during this Special Sale will be delivered during March or April, as soon as possible after the stock comes in. I fully expect to sell an enormous quantity of these Roses during this Sale, just as I did during the sales of 1917, 1918, and 1919, and I am offering you every possible inducement to place your order NOW. Strong, sturdy stock, early deliveries and prices pared to the bottom. Really the only question that needs deciding is, would you prefer to take advantage of my special low 35-cent price NOW, or to pay a larger price by waiting until Spring to order.

I will list the 38 excellent varieties in this Sale will be found above. You can specify the colors you prefer. You can order by name, or you can leave selections to me if you prefer. I cannot accept orders for less than ten Roses at the Special Sale price, and all orders must be in by not later than Christmas Day. Please do not wait until the last minute, however, but sit down right NOW, make up your order and let me have it as soon as possible.

You can send remittance with your order, in which case we will pay all delivery charges; or, if you prefer, I will send the Roses C. O. D. (postage extra) in the early Spring. The main and important thing is to SEND the order NOW, for you surely will want the advantage of this Great Special Sale and to reap the benefits of the 35-cent price.

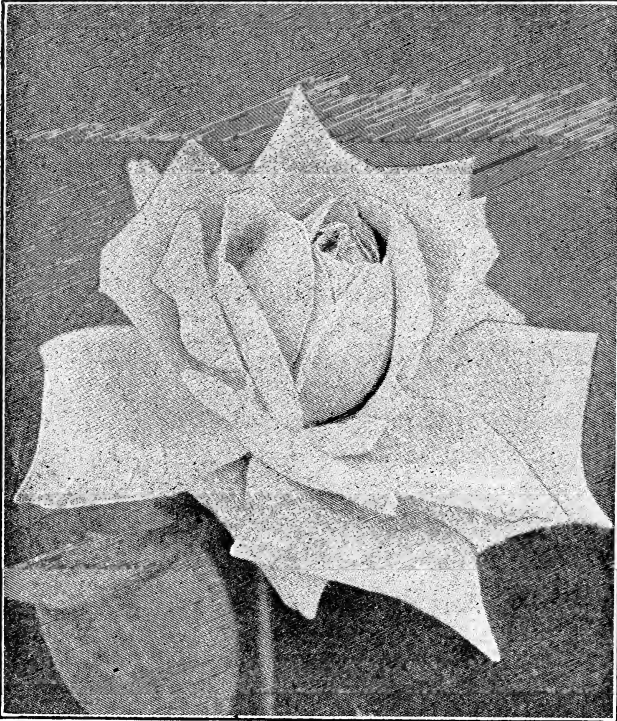
### WHAT FARGO ROSES.

Mrs. Emma C. Schaefer, Lebanon, Pa., says: "They were wonderful for bloom—James Abney, Zerbe, Pa.—Received my Roses in perfect condition."  
 Mrs. Fred Moore, Coatesville, Pa., ordered 200 of our Roses. She says: "I would not hear to anything but your Roses."





## The New Rose "Los Angeles."



This new Rose is still mighty scarce, hard to get, and high in price. Los Angeles is known as one of the very finest roses in existence. Produces a succession of long stemmed flowers pink toned with coral of a luminous flame- and shaded with translucent gold at base of petals. Buds long and pointed, expanding into a flower of mammoth proportions and of rare beauty. From 4 inch pots. **\$1.50 each.**

(If sold out of 4 in. size we will send 2 plants instead from 2 1/4 in. pots.)

## Crinum Ornatum.

A superbly beautiful member of the Amaryllis family. The flowers are gorgeous and simply immense in size. Color pure white with a deep band of richest crimson thru center of each petal. The fragrant flowers, rivalling orchids in beauty, are borne in clusters on

long stems. As a pot plant you will find **Crinum Ornatum** to be simply superb. **Monster Bulbs. \$1.00 each.**

## Cannas as House Plants.

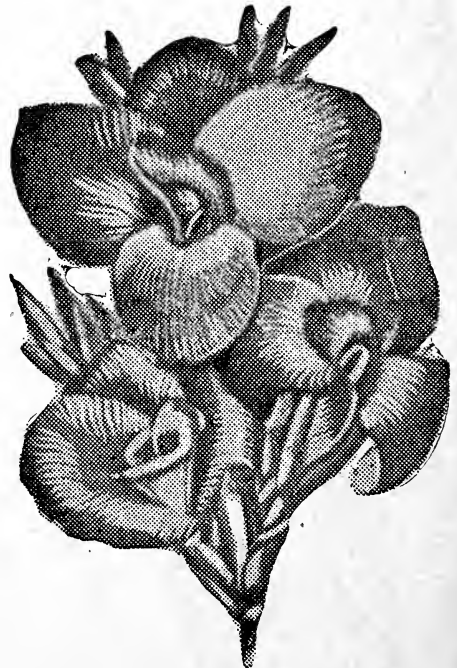
Most folks do not know what grand pot plants Cannas really make, but when we tell you they are fine for this purpose you can probably imagine just about how fine they really must be, for you know what a grand display they make in beds in the summer time.

They of course require large pots—10 in. size or up, and being of a semi-tropical nature they require a moist atmosphere, heat and sunshine, but the average home can use a few of these plants to advantage. The lovely foliage and bright blooms will beautify the room immensely.

Your choice of color; our choice of variety.

Glowing reds,  
Rich yellows  
Delicate pinks

Clumps for pot blooming **\$1.25 each.**



## Roses for Winter Blooming in Pots



### Antoine Revoire

Rosy flesh on yellow ground, shaded with a border of carmine; round and full of form. An excellent cut flower.

### Double White Killarney

A pure white Rosé and a grand Rose of large size, being double the size of the ordinary White Killarney.

### Sunburst

A magnificent giant Yellow Rose; head and shoulders above others of its color. The color is orange-copper; lighter at edge of petals.

### Ophelia

Salmon-pink; large and perfect in shape; the flowers produced on long, stiff stems.

### Hadley

Deep velvety crimson, very double, with well-formed buds. Extremely fragrant.

Here is a grand collection of five splendid roses for your window; yellow, white, rosy-flesh, pink and crimson. Excellent plants from 4 in. pots 75c. each. The entire 5 for \$3.50.

## HARDY VINES.

### Madeira Vine

This is an old-fashioned vine, with fleshy heart-shaped leaves of a light green color and numerous sprays of feathery white flowers of wonderful fragrance. Also called Mignonette Vine. Protect with a litter of leaves or straw over winter. Bulbs, 25c. each.

### Cinnamon Vine

A rapid grower, having heart-shaped leaves, bright glossy green in color. The white flowers have a peculiar fragrance. Hardy, and often grows to 25 or 30 feet. Bulbs 15c. each.

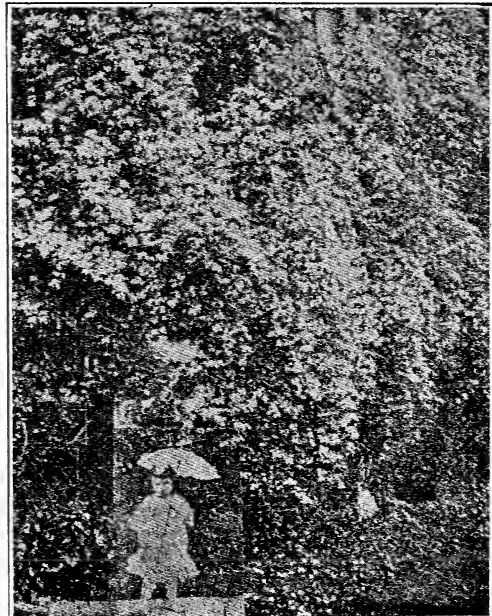
### English Ivy.

An evergreen variety much used for covering walls, tree stumps and graves in shady places where grass fails to grow. Plants 25c. each; 5 for \$1.00.

### Clematis Paniculata

Or Japanese Virgin's Bower.

A strong, luxuriant growing climber, largely used for porch screens. Light innumerable star-like flowers cover the green foliage, and at the close of August vine in a sheet of fragrant white. Plants 25c. each; 5 for \$1.00.



Clematis Paniculata.

## Plant Iris NOW; Plant Them Liberally

PLANTED ONCE, THEY ARE A PLEASURE FOR A LIFETIME.

### Beautiful Hardy Iris

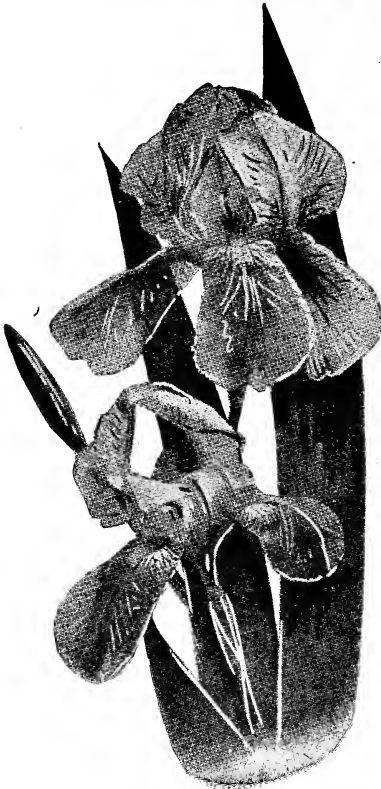
(Bloom in May.) This lovely member of the Iris family is too well known to need an extended description. They are real garden queens during May and June; richly repay planting, and give pleasure and satisfaction for a lifetime. One can go far and fare worse searching for a better flower for general planting. Nothing is easier to grow, and a dozen or so planted now will quickly become large, massive clumps that will prove a source of pleasure for a lifetime. Bloom early, when flowers are scarce, and they require absolutely no care at all after once planting. The colors are legion—Blue, purples, yellow, whites, etc. I offer fine mixed sorts at—

5 for 50 cents. 12 for \$1.00.  
100 by express, \$8.00.

### Wonderful Japanese Iris

(Bloom in June and July.)

They truly rival the Lily in stateliness, the Peony in majestic beauty, the Orchid in delicacy and coloring, the Chrysanthe-



mum for profusion, and surpass almost any plant in the kingly magnificence of their bloom. Once planted in your garden they rapidly multiply and are a joy and pleasure for a lifetime. Grow three or more feet high; flowers are as big as plates; 8-10 or 12 inches across under favorable conditions. Among the many beautiful colors are whites, blues, maroons, plums, lavenders and many others. No one can make a mistake by planting the lovely Japanese Iris. We offer single and double varieties, mixed colors only. 6 for \$1.00 12 for \$1.75

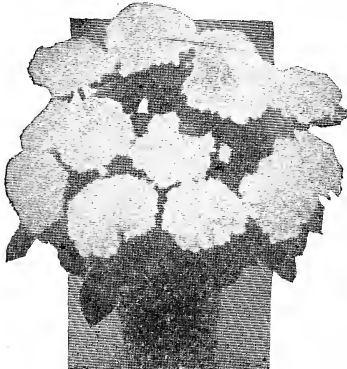
100 by express, \$10.00.



### Pink Otaksa Hydrangeas

Bears immense trusses of large pink flowers in July and August. As a hedge or border these Hydrangeas are superb, and very extensively used for this purpose. Also grown in pots and tubs and can be had in bloom for Easter. By mixing quarter pound pulverized alum in the soil around the plant the color of the flowers may be changed to a lovely delicate blue. Very rapid growers.

Young Plants from 2¼-inch pots, 30c. each, or \$3.00 per dozen.



## FARGO'S HARDY PERENNIAL PLANTS

### Hardy Large Flowering Chrysanthemums

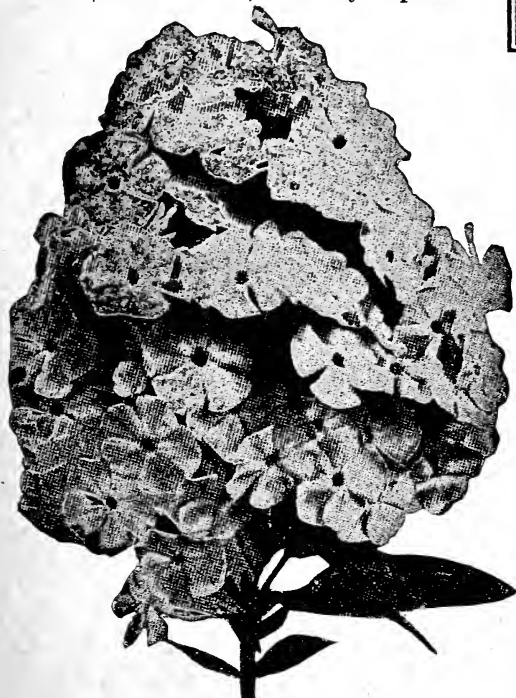
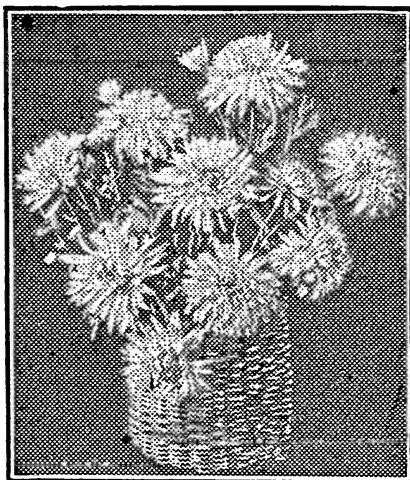
Warren V. Shcmeitzer, Freemansburg, Pa., says: "I am very much pleased with the Chrysanthemums that I received from you a few weeks ago."

For queen of all late flowers we must give preference to the Hardy Chrysanthemums. The plants are literally covered with flowers from the middle of September until after the snow flies. They should be planted liberally, as the fine shades we offer are especially showy, and the plants increase in size and beauty each year. You should find a place for a dozen or so at least of these excellent plants.

Mrs. Wm. J. Purdy, Somerset, Pa., says "I received Chrysanthemums and set them out. They are growing fine."

Colors: Pink, white and Yellow,  
20 cents each.

Dozen \$2.00. 100—\$15.00 by express.



### Hardy Phlox.

Among the hardy perennial plants, no class is of more importance or more in public favor today, embracing as they do, a wider range of attractive colors than is found in any other hardy plant, while their gorgeous masses of color are unrivalled by any other summer flower.

Hardy Phlox are distinctive and effective.

Choice mixed colors,

\$2.50 dozen.

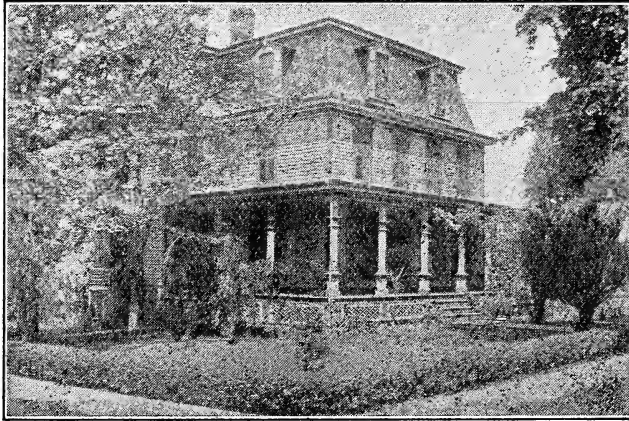


### Choice Geraniums—GROWN FROM SEED

It is an absorbing, interesting pastime growing pot plants from seed, and Geraniums are among the easiest to grow. Our seed is a fancy strain of Zonale Geraniums, and charming new varieties come only from seed. Sow the seed any time, summer or winter. The flower trusses of this strain are frequently five or six inches across, and the individual flowers  $1\frac{1}{2}$  inches in diameter. Mixed colors, from white to pink, rose, scarlet and crimson. Price 25c. per packet.

## FARGO'S HEDGE PLANTS

A living hedge, properly set out and well kept, is a thing of real beauty and adds much in attractiveness to the home grounds. Fences are out of fashion today; besides being expensive. If you haven't planted a hedge yet, do so.



### CALIFORNIA PRIVET.

Easily kept at any desired height and holds its beautiful green foliage nearly all winter; being almost an evergreen. Plant in double rows with plants twelve inches apart and one row started six inches further down the line than the first row. This gives one plant for each half foot of frontage and insures a fine bushy hedge. 12 to 18 in., \$6.00 per 100; 18 to 24 in., \$8.00 per 100.

Hedge Plants, 25 and up, supplied at the 100 price.

### THORNBERG'S DWARF BARBERRY.

One of the finest hedge plants in existence; the small leaves are a beautiful shade of green, turning to a pretty red in the fall. In the winter the bushes are full of bright red berries that remain nearly all winter. Grows to a height of about 3 feet, symmetrical in form, requires trimming not over once a year, in February. This plant makes a very choice hedge; also specimens grouped on the lawn or planted in shrubbery borders are very attractive. While the common Barberry (*Berberis vulgaris*) has been condemned in the newspapers as harboring the wheat rust, this in no way applies to the Thunberg variety so very popular as a Hedge, and which is entirely free from this disease. I offer it in 10 to 15 in. size at \$8.00 per 100; 18-24 in. at \$12.00 per 100. Set plants in single rows, one foot apart.

## The POINSETTIA

or CHRISTMAS FLOWER. There is probably no more decorative plant for the Xmas season than the Poinsettia. It is an easily grown pot or window plant, producing enormous, vivid, velvety red flowers and blooming for a long time. Likes plenty of warmth; leaves turn yellow if chilled. Plants, 35c each, or 3 for \$1.00.

## SANSEVERIA

There is scarcely a decorative plant listed that is more striking in foliage and habit than this, and certainly none other that will stand as much downright neglect and hardship. It will grow in a dark hall, cool bedroom, or stand on a mantel or table in a heated room. It will stand gas and dust, and will go for months without a drop of water, yet remain as thrifty as ever. Erect, rigid, sword-like leaves, thick



and fleshy, dark green with clouded bars of white. In May or June it sometimes sends up long, plummy spikes of soft feathery whiteness. Just the plant for sunless rooms, where nothing else will grow. Plants, 35c each; 3 for \$1.00.



## SMALL FRUITS FOR THE HOME GARDEN

### GRAPE VINES



You will surely enjoy rich, sweet, luscious Grapes of your own growing each year, gathered right from the home garden. You will make no mistake in planting these four excellent well-known sorts.

#### NIAGARA

The finest white Grape grown. Bunches large, fruits sweet and fine flavored.

#### BRIGHTON

A large beautiful red grape of most exquisite flavor.

#### WORDEN

Immense black grapes of superb quality.

#### CONCORD

An old stand-by. The best known purple grape.

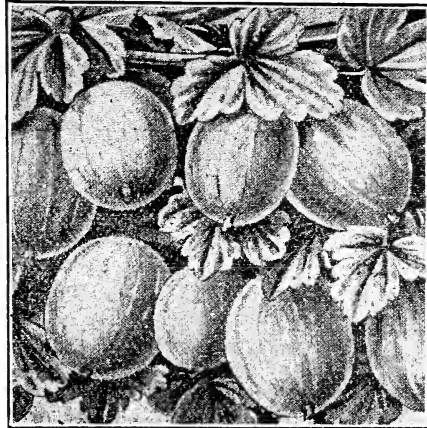
All Grape Vines 50c. Each.

Cumberland Black Raspberries. 12 for \$1.50; 100 by express \$9.50.

### Red Raspberries

#### St. Regis Everbearing

The best known Everbearing variety; it begins bearing in June at about the end of the Strawberry season. It also gives a second crop of sweet, luscious red berries throughout the summer and autumn. Every home garden should have a dozen or so of these plants. 12 for \$1.50; 100 by express, \$10.00.



### Gooseberries

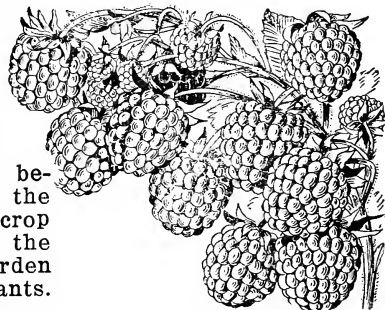
**Downing.** Large, firm, solid berries, large yielders and of excellent quality. The berries can be canned or preserved and make excellent pies and tarts. Come into bearing the second year after planting and thrive for a great many years. You should have at least a few of each of the Small Fruits in your garden; they fill up the odd spaces and corners and yield a bountiful harvest. Price 40c. each, or 10 for \$3.00.

### Cherry Currants

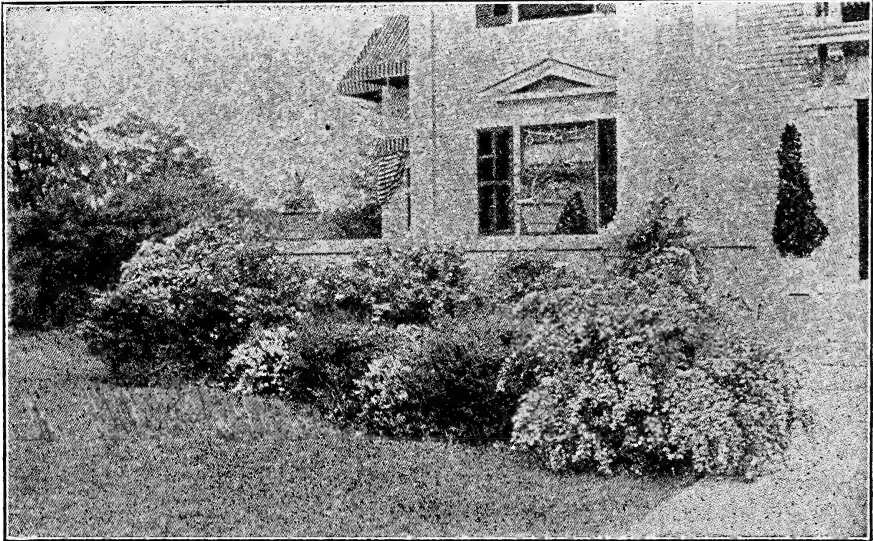
A thrifty grower, producing large deep red fruit, in short, compact bunches. Currants are in great demand, and a few of these bushes are needed in the home garden. Price 40c. each, or 10 for \$3.00.

James Long, Westmont, N. J., says: "Send me 8 Grape Vines, the same as those just received, and with which I am very much pleased."

Blackberries: 12, \$1.50; 100, \$10.00



**YOU CAN BEAUTIFY THE HOME**  
**AT SMALL COST, IF YOU**  
**PLANT FARGO'S FLOWERING SHRUBS**



Notice the rare beauty of this home because of its handsome foundation planting of Flowering Shrubs. You, too, can hide the bare foundations of your house and make it more of a home by a similar planting—a thing of beauty and a joy forever. Too often people do not realize the rare beauty of Flowering Shrubs, both as to flower and foliage, until their eyes are opened by examples such as here shown.

Flowering Shrubs are valuable also as single specimens on the lawns, also for hedges and screens and for massing on banks or terraces, as well as for foundation planting. Do not neglect them.

Instead of offering the smaller or so-called "lining out" size, which can be sold very cheaply, we prefer to sell better Shrubs for immediate effect at a fair price. You will note we give names, approximate sizes, height at maturity and prices as a complete guide. Figure (1) before the name denotes 9—12 feet, (2) 5—8 feet and (3) 1—4 feet height at maturity. Sizes given after the names denote average present height of the Shrubs we send out.

Wm. Burns, R. D. 1, Troy, N. Y., says: "I never saw thriftier appearing nursery stock nor better packed."

**(2) DOUBLE FLOWERING ALMOND; 2—3 feet.**

Perfectly double finely formed flowers in great profusion. Each shrub appears like one mass of blooms. Beautiful and interesting.

Flowers white and pink.

**Price, \$1.00 Each.**

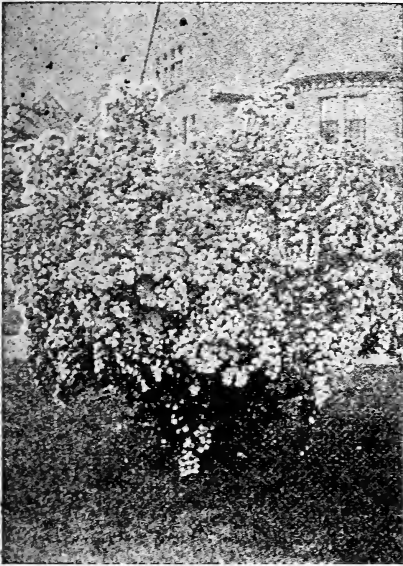
**(1) PRUNUS; Purple Leaf; 2—3 feet.**

Leaves when young are lustrous crimson, changing to dark purple, retaining this color throughout the season. Flowers small white, single, covering the shrub. **Price, \$1.00 each.**

G. W. Waterhouse, Charlestown, R. I., says: "I have seen some of your Shrubs that have done mighty well, and congratulate you."



## FARGO'S CHOICE FLOWERING SHRUBS



*Spiraea Van Houtti.*

### (2) *Cydonia* 18-24 in.

Or *Japan Quince*. Its large brilliant scarlet blossoms appear early in spring in great profusion before the leaves appear. Foliage bright green and glossy all thru the summer. Sufficiently thorny and strong to make a valuable hedge, and its beautiful flowers make it valuable for that purpose. 50 cents.

### (2) *Cornus* 18-24 in.

Or *Red Dogwood*. Valuable shrubs either singly or in masses. Distinguished by its bright red bark in winter. Very showy. Green leaves, panicles of small white flowers. 50 cents.

### (1) *Althea* 18-24 in.

Or *Rose of Sharon*. Loaded with large, showy bell-shaped flowers from July to September, when most shrubs are done blooming. Bush type. 50 cents.

### (2) *Lilac* 2-3 feet.

This shrub, flowering profusely in May, is well known and popular everywhere. Hardy, vigorous growers that should be in every collection. Especially desirable and effective if planted in groups or masses instead of as single specimens. Colors white or purple. 50 cents.

### (2) *Forsythia* 2-3 feet.

Or *Golden Bell*. Our finest early flowering shrub. The flowers are drooping, yellow, and appear very early in spring, before the leaves come, giving the plant the appearance of a lovely golden ball. This grand shrub, when in bloom, attracts immediate attention anywhere. 50 cents.

### (2) *Kerria* 18-24 in.

Or *Globe Flower*. Slender shrubs, four to five feet high, with beautiful yellow flowers from July to October. 50 cents.

### (3) *Deutzia Gracilis*; 18-24 in. (Dwarf white.)

*Deutzias* come originally from Japan. Their hardihood, fine habit, foliage and beautiful flowers render it among the most popular of flowering shrubs. The flowers are produced in long racemes during June. Flowers are white; some of them tinged with rose. This is one of the finest flowering shrubs for cemetery planting. 50 cents.

### (2) *Symporicarpus* 18-24 in.

Or *Snowberry*. Very useful shrubs that grow anywhere. Pink flowers in summer, succeeded by large, white waxy berries that remain on the bushes far into the winter. 50 cents.

All the above Shrubs are 50 cents each, or \$5.00 per dozen.

## FARGO'S CHOICE FLOWERING SHRUBS

### (2) Spirea 2-3 feet.

**Van Houtti.** One of the finest Spireas. In early June it is covered with a mass of lovely white flowers, presenting a beautiful appearance. A beautiful ornament for the lawn at any season. 50c. each.

### (3) Spirea 12-18 in. (dwarf)

**Anthony Waterer.** This too is a very lovely sort, bearing a profusion of pretty red flowers. 50c. each.

### (2) Viburnum 18-24 in.

**Or Snowball.** A large robust shrub, with soft heavy leaves and large clusters of white flowers in May; succeeded by red fruits. Retains its foliage very late. 50c. each.

### (2) Viburnum 18-24 in.

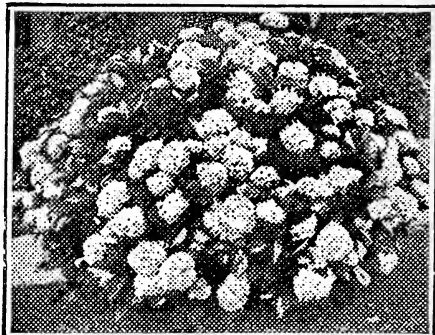
**Opulus** or "High Bush Cranberry." One of the best for planting. Its berries resemble cranberries, hang until destroyed by frost in the late fall. 50c. each.

### (1) Philadelphus 18-24 in.

**Syringa.** This shrub grows 12 to 15 ft. high, very hardy, beautiful white flowers produced in the greatest profusion. An invaluable and extremely popular flowering shrub. 50c each.

### (1) Deutzia Crenata

2-3 ft. Flowers in long racemes during June. One of the very finest flowering shrubs grown. Flowers very double white, tinged with rose. Should be planted in every yard. 50c each.



### Hydrangea 18-24 in.

**Arborescent Grandiflora.**

This is the new and very popular Hydrangea called "Hills of Snow." The flower heads are immense in size, flat shaped and creamy white in color. Blooms in June, the flowers staying on the bushes nearly all summer. 50 cents.

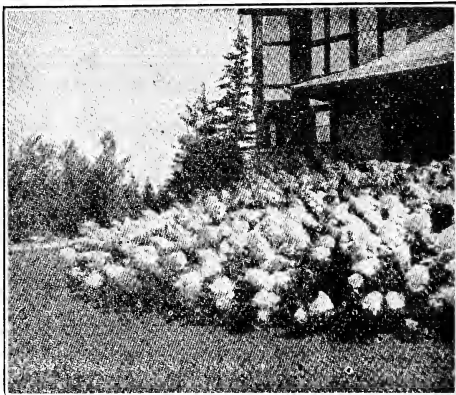
### (1) Strawberry Tree 18-24 in.

A very beautiful small tree covered with bright red berries or seeds through the winter. Few trees have greater elegance. Price 75c. each, 3 for \$2.00.

### Hydrangea 18-24 in.

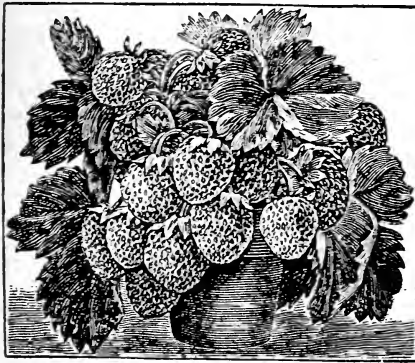
**Paniculata Grandiflora.**

The flowers are white, formed in great pyramidal panicles often a foot or more in length, color changing to a pinkish tint. Begins blooming early in August. This is the bush type of this variety. (We do not handle tree Hydrangeas.) 50 cents.



ALL THE ABOVE (except Strawberry Tree) 50c each; Dozen, \$5.00.

**THE WONDERFUL "SUPERB EVERBEARING" STRAWBERRY**



**"SUPERB EVERBEARING"  
Fruiting in Pot.**

**Won't These Taste Fine  
next Aug., Sept. and Oct.?**

In all my experience I have never seen another Strawberry that I could consider the equal of this truly wonderful berry. It should be in every home garden and a small plot will supply all the berries a family will want.

Mrs. Mary A. Blackwell, Lloyd, Pa., says: "I want to get 500 to 1000 plants such as I got last April. I had 117 plants and they began bearing in August and we picked berries until the frost froze them up in November."

Planted in April, you can begin picking large, ripe, luscious berries by August 10th and daily thereafter until checked by heavy frost in Oct. or Nov.; and then another "whale" of a crop in the spring. The fruit simply hangs in large clusters, and the fine flavored berries should retail in summer and Fall for at least 50 cents a quart. They require nothing special in the way of cultivation, and will thrive on any land suited to Strawberries. The large, shiny red berries tease the eye and tickle the palate.

**"THE FAMOUS 66"**

This is the name we gave our first test plot of 66 "Superb" plants. We began picking ripe berries that year on Aug. 8th, and daily thereafter until frost—where ordinary Strawberries give none the first season. On Sept. 10th after being picked over daily for a month and two days, a single plant still had on it just 128 blossoms and green berries of all sizes. This is truly remarkable. We removed all young plants the next spring, leaving only the original 66 plants as a test. The way they were loaded with enormous clusters of berries was a wonder and surprise to the many persons who saw them.

The first ripe berries of the spring crop were picked on Decoration Day, and on this page we give a table, showing what the "Famous 66" did in a period of only 14 days. The crop would have been much larger had we not removed all young plants from the plot. Just study over this record and then consider what a small plot of 100 plants or so in your home garden will do for you.

**Record of 14 Days Production from  
66 Plants.**

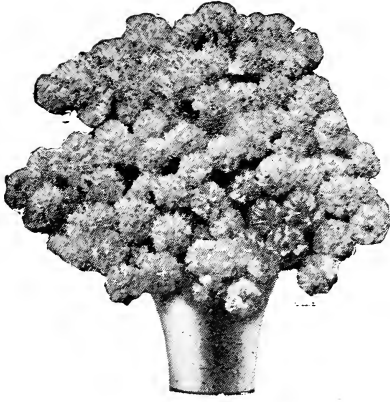
June 5th	.....	1	quart
" 6th	.....	1 1/2	"
" 7th	.....	2 1/2	"
" 8th	.....	3	"
" 9th	.....	3	"
" 10th	.....	4	"
" 11th	.....	2 1/2	"
" 12th	.....	3	"
" 13th	.....	1	"
" 14th	.....	5	"
" 15th	.....	2	"
" 16th	.....	3	"
" 17th	.....	2 1/2	"
" 18th	.....	2 1/2	"

The 66 Plants produced in 14 days.....36 1/2 " and still bearing profusely on date last given above.

We never have enough of these plants to fill our orders. The only way to get them at all is to order in the Fall for spring delivery. We will be unable to fill orders for them unless you do this and we do not list them in our spring catalog. Order NOW for April delivery. Shipped C. O. D. if you prefer.

**Prices: 20 plants \$1; 50 for \$2; 100 for \$3; 500 for \$10; 1,000 for \$17.50.**





## ACHILLEA

### (The Great Cemetery Plant.)

A single plant will produce hundreds, and even thousands, of flowers the first summer, but when established the second year they have more than five thousand perfect flowers on a single plant at the same time. It commences to bloom early in July and is a perfect mass of beautiful flowers until frost, the same blooms keeping perfect for two or three months. The flowers are pure white, perfectly double, and produced in large sprays, making it one of the finest cut flowers for bouquets, vases, baskets, etc. For cemetery planting it is the most valuable of all flowers. **Plants 25c. each, or 5 for \$1.00.**

---

## Evergreen Lawn Grass Seed

It is the result of years of untiring study and experimenting, it has stood the test in every part of the United States and it will stand wear and tear, outliving the severest winter, retaining at all times its lustrous green color. We class this as the best general purpose lawn grass. Prices:  $\frac{1}{2}$  lb. (about one quart), 35c.

---

## Shaded Lawn Grass Seed

Shade causes sour soil and about every three years you should apply lime to sweeten up the soil. Use about one bushel to each 1,000 sq. ft. After much experimenting a mixture of seed has been found that will produce a perfect sward in the dense shade caused by trees, shrubby, buildings &c. Prices:  $\frac{1}{2}$  lb., 35c.

---

## Seashore Lawn Grass Seed

A good lawn at the seashore is frequently a problem and this mixture is a result. It will produce a good lawn in 6 to 8 weeks if 3 or 4 inches of top soil is spread over the surface, seeded and well firmed down. If soil is very poor and no top soil to be had, white clover sown with the grass seed will help wonderfully. Prices:  $\frac{1}{2}$  lb., 35c.

---

## How To Sow Grass Seed

You cannot sow too much, the more the better. It means quicker, surer, more lasting results. 1 qt. will sow 100 sq. ft. (10x10); 4 qts. 600 sq. fet. (20x30); 1 peck 1,500 sq. fet. (30x50).

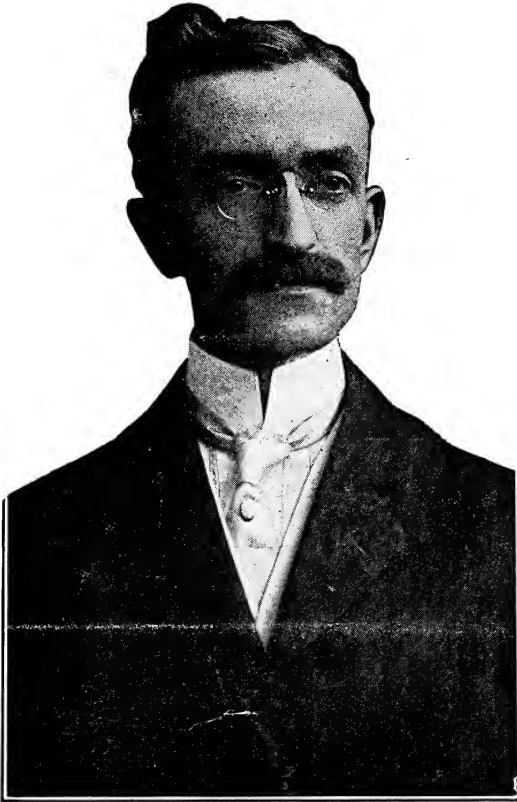
---

## Pulverized Sheep Manure

Should be used on every lawn. It is also the best manure for the garden and for flowers. **REMEMBER THIS: One bag equals a whole wagon load of barnyard manure** and there are no weed seeds to cause you trouble. This manure is prepared by special drying, screening and grinding process which destroys every weed seed and eliminates every bit of worthless bedding and foreign matter. Only the pure fertilizer in most concentrated form is packed in bags for convenient and economical use.

Only requires one-half ton to the acre, so a 100 lb. bag will be sufficient for a good size lawn.

If you would have the finest, greenest lawn in your neighborhood, the brightest flowers and the most productive garden you can do so at very small expense by using Pulverized Sheep Manure. It **Makes grass, plants and flowers all "sing for joy."** Bag of 100 lbs. by either freight or express **\$4.00.**



# Use Fargo's Plant Food

Plants and humans are alike in that to live and thrive they must be fed, and fed what their systems need and require. Feed your plants what they most need and they will thrive and be a source of real joy. Neglect and starve them and ill results are quickly in evidence.

## Fargo's Plant Food.

is an easily assimilated plant food that goes right to the root of things, and produces results quickly; the evidence of its use becoming soon apparent when used on your

### Ferns — Palms — Potted Plants

Feed them with **FARGO'S PLANT FOOD**, once in eight or ten days. To grow some really exhibition blooms use it in the garden on Roses, Gladioli and Prize Vegetables.

### One Package Makes 2 Gallons.

and it costs but a quarter dollar. Most every home has some prized potted plants. Every such home needs **FARGO'S PLANT FOOD**. Agents and dealers proposition. Sample  $\frac{1}{2}$  lb. package (makes 2 gals.) mailed for 25 cents; 5 pkgs., \$1.00; 12 pkgs., \$1.75; 1 gross by express, \$17.50.

**CLARENCE B. FARGO,** Frenchtown, N. J.