

Historic, Archive Document

Do not assume content reflects current scientific knowledge, policies, or practices.

62,57

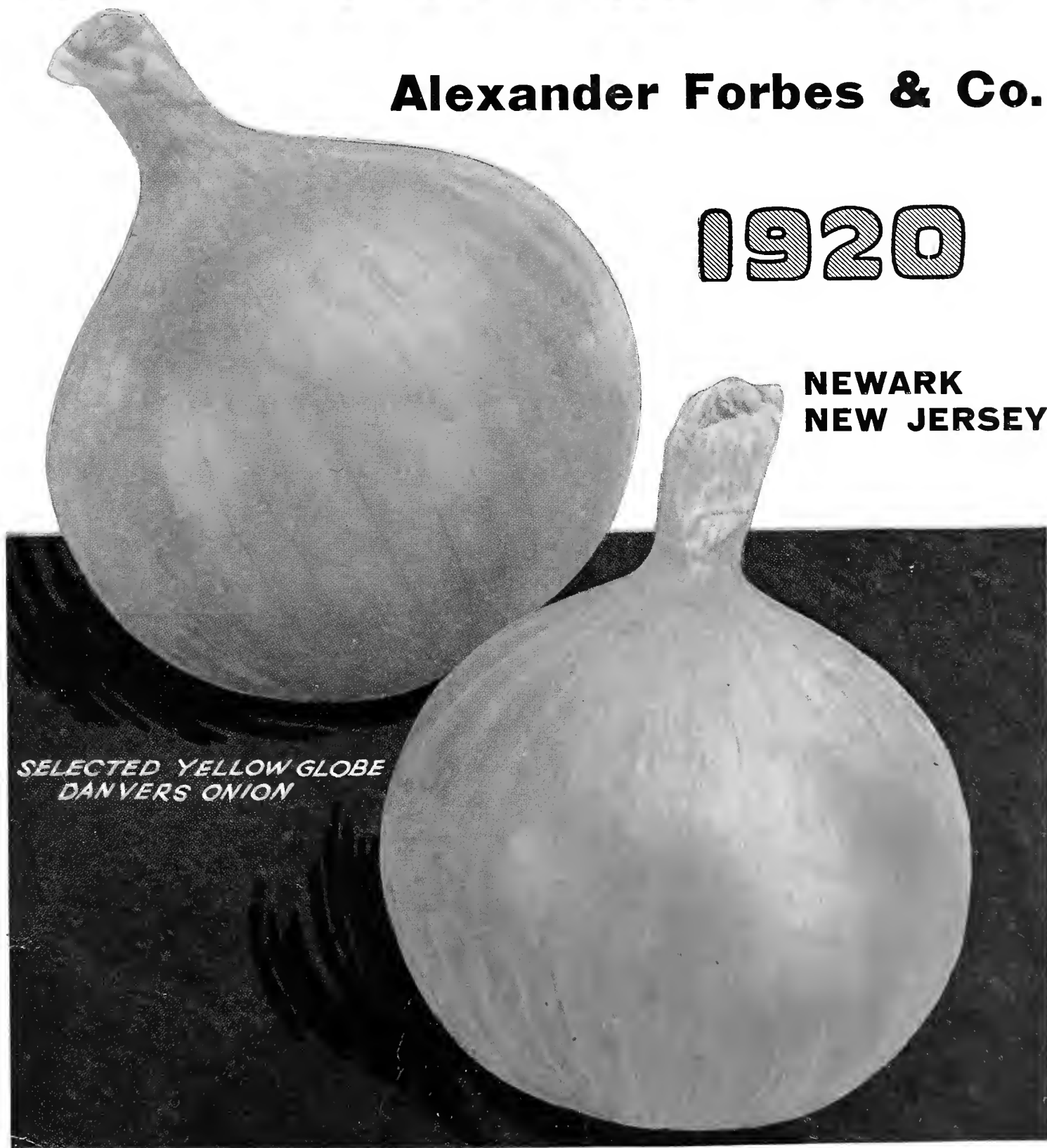
FORBES SEEDS

For Market Gardeners

Alexander Forbes & Co.

1920

**NEWARK
NEW JERSEY**



*SELECTED YELLOW GLOBE
DANVERS ONION*

To Our Customers



WE WISH to thank our friends for the continued confidence in Forbes Seeds, shown by the ever-increasing volume of business entrusted to our care. It is to our mutual interest that such relations shall continue, and we can assure our customers that we will ever do our part to make such a continuance possible and profitable for both.

In this period of unrest, a period which inevitably follows all such upheavals as that which has now happily passed into history, we wish to call attention to a fact of which we are justly proud. The Seed Trade is a good example of an essential industry which has been successful in getting back to nearly normal prices and conditions.

There was a noticeable decline in prices in 1919, but very substantial reductions will be found in this catalogue. This has not been easily done, but in the face of greatly increased costs and difficulty of production.

The nation is indeed debtor to an industry which, standing at the foundation of agricultural production, has blazed a path for all to follow in the return to more normal and happier conditions.

PRICES—All prices in this catalogue are subject to change without notice, and this list cancels any previous catalogue prices

SPECIAL FREE DELIVERY

We will prepay delivery charges to your nearest post or express office or freight station if your garden seed order amounts to \$10 or over, at prices quoted in this catalogue and if at least one-half the value of the order is made up of small seeds, that is seeds other than Peas, Beans, or Corn, and if cash is included with the order.

For Example, if the total value of seeds ordered is \$16.50 and the Peas, Beans, and Corn amount to \$8.25 or less, we will prepay.

We must reserve the right to choose the method of shipment; but, as an instance, should you require us to ship by express, when we would ordinarily ship by freight, we will do so, if you send us the difference between the higher and the lower rate.

Many of our customers whose orders amount to less than \$10 get their neighbors to combine orders with them, so that both get the benefit of this very liberal offer.

If your order is less than \$10, and seeds are wanted by mail, we ask you to send postage for Peas, Beans, and Corn; also for all small seeds from half pounds up. The zone table below will show clearly the amount required. **Always add the amount sent for postage** as a separate item on your order.

Peas, Beans, and Corn each weigh about 1 pound per pint. **Except for nearby points**, it is generally cheaper to ship 10 pounds and over by express. **We supply half-ounces at ounce rate**, half-pounds, at pound rate, half-pecks at peck rate, half-bushels at bushel rate. **We make no extra charge** for bags, or other containers.

Remittances should be made by Draft on Bank, Post Office Order, Registered Letter or Express Money Order. Small amounts may be sent in stamps of small denominations. **Charge accounts** are opened to persons of approved credit. **C. O. D. orders** must be accompanied by remittance covering at least one-quarter of the value of the order.

Write your full name clearly and include rural route, street and number, post office, and box number, county, and state. Many orders reach us without this necessary information, which causes annoyance and delay.

Non-Warranty—Alexander Forbes & Co., give no warranty, express or implied, as to description, purity, productiveness, or any other matter of any seeds they send out, and they will not be in any way responsible for the crop.

DOMESTIC PARCEL POST RATES				For First Pound Allow	For Each Additional Pound Add
Within the U. S. and Possessions, zones from Newark, N. J.					
First Zone	within	50	miles	\$0 05	\$0 01
Second	"	50 to 150	"	05	01
Third	"	150 to 300	"	06	02
Fourth	"	300 to 600	"	07	04
Fifth	"	600 to 1000	"	08	06
Sixth	"	1000 to 1400	"	09	08
Seventh	"	1400 to 1800	"	11	10
Eighth	"	over 1800	miles	12	12

Weight limit within the first, second and third zones is 70 pounds; within the other zones the weight limit is 50 pounds. In all zones, the size limit is 84 ins. for combined length and girth.

ALEXANDER FORBES & CO.
Seedsman

115 MULBERRY ST., NEWARK, N. J.

December, 1919

United States Food Administration License No. G-145498

FORBES SEEDS

NEWARK, N. J.

115 MULBERRY ST.

(Form No. 6001)

Post Office Department

THIRD ASSISTANT POSTMASTER GENERAL
DIVISION OF MONEY ORDERS

No.

Stamp of Issuing Office

The Postmaster
will insert

DOLLARS	CENTS

--

here
the office drawn on, when the office named by
the remitter in the body of this application is not a Money Order Office.

Spaces above this line are for the Postmaster's record, to be filled in by him.

Application for Domestic Money Order

Spaces below to be filled in by purchaser, or, if necessary,
by another person for him

Amount

..... Dollars Cents

Pay to }
Order of }
(Name of person or firm for whom order is intended)

Whose }
Address }
is } No. Street

Post }
Office }

State

Sent by
(Name of Sender)

Address }
of }
sender } No. Street

PURCHASER MUST SEND ORDER AND COUPON TO PAYEE

Forbes' Vegetable Seeds

Please take note that we do not charge extra for bags or containers. We will prepay your order by mail, express, or freight, at our option, if it amounts to \$10 or over, and at least half the order consists of Garden Seeds other than Peas, Beans, and Corn.

ASPARAGUS SEED

Early French Giant. Early, prolific, and vigorous; excellent quality. Oz. 10 cts., $\frac{1}{4}$ lb. 30 cts., lb. \$1.

PALMETTO. Nearly an inch in diameter but tender and delicious. Oz. 10 cts., $\frac{1}{4}$ lb. 30 cts., lb. \$1.

ASPARAGUS ROOTS

Ready March 15

Strong, 2-year-old roots of Early French Giant at \$8, and Palmetto at \$7 per 1,000.

BRUSSELS SPROUTS

Half-Dwarf Improved. A very well-selected stock for market-gardeners' use. Oz. 30 cts., $\frac{1}{4}$ lb. 85 cts., lb. \$3.

BEANS

DWARF GREEN-PODDED

BLACK VALENTINE. A popular variety for the market-gardener, being ready to pick in 45 days, producing pods about 6 inches long, slender, round, and nearly straight; quite stringy and fibrous though fine-grained, and medium green in color. It is early, productive, and most profitable for the market-gardener. Qt. 45 cts., pk. \$3.35, bus. \$12.

Bountiful. This is the best of the flat-podded stringless varieties. The light green pods are $6\frac{1}{2}$ to 7 inches long, flat, slightly curved, absolutely stringless, very slightly fibrous, attractive and of very fine quality. At the same time it is very early, vigorous, hardy and a heavy yielder. Qt. 50 cts., pk. \$3.60, bus. \$13.

BURPEE'S STRINGLESS. This Bean is very early, productive, hardy and vigorous; the pods average about 5 inches long, straight, stout, round, crease-backed, and of a dark green color. They are tender, brittle, of the finest flavor and quality, and strictly stringless. Qt. 50 cts., pk. \$3.60, bus. \$13.

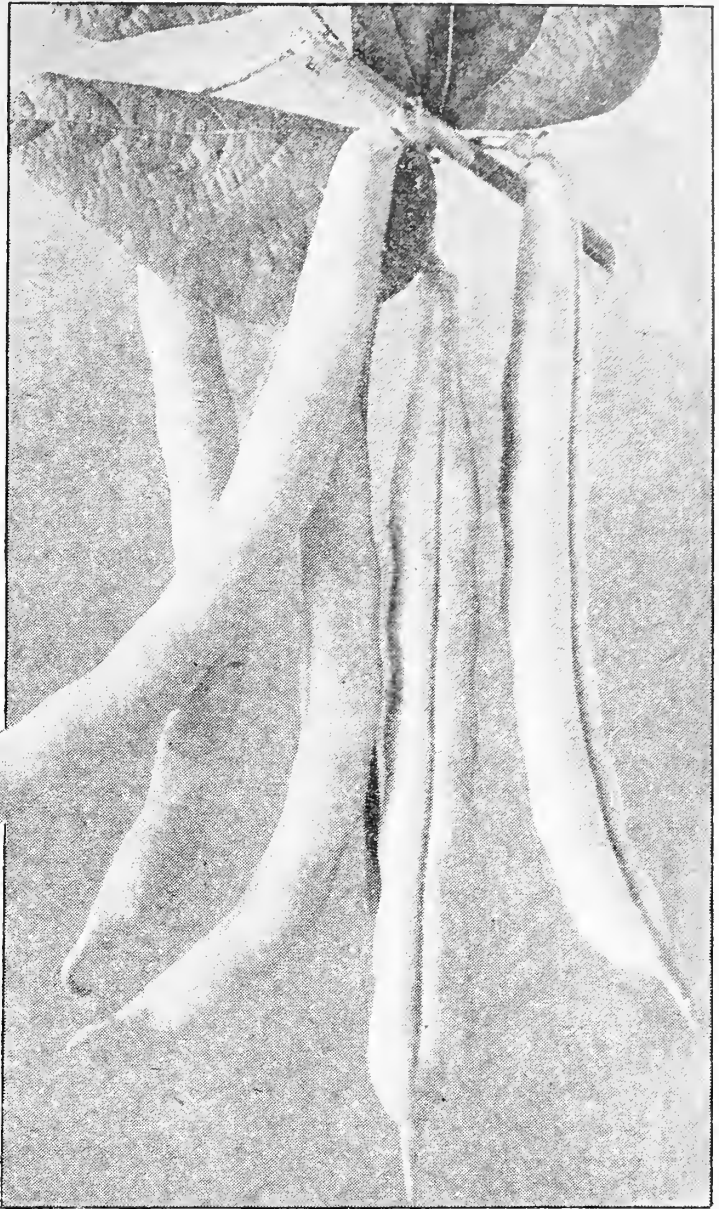
DWARF HORTICULTURAL, or SPECKLED CRANBERRY. The old standard Shell Bean. Used very largely for shelled Beans for soup and baking purposes, and also as a green-podded Snap Bean. Qt. 55 cts., pk. \$3.85, bus. \$14.

Extra-Early Red Valentine. This is the original Valentine variety, early, and productive. The pods are $4\frac{1}{2}$ inches long, round, crease-backed, medium green, slightly stringy, and of good quality and flavor. Qt. 45 cts., pk. \$3.35, bus. \$12.

Extra-Early Refugee. The pods are 4 to 5 inches long, uniform, slightly stringy, brittle, fine-grained, of a light green color and good quality, is a heavy yielder and one of the best for shipping. It is hardy and very productive. Qt. 45 cts., pk. \$3.35, bus. \$12.

LONGFELLOW. Moderately early and productive, being ready to pick in about 52 days from planting. The dark green pods grow $5\frac{1}{2}$ to $6\frac{1}{2}$ inches long, are very slender, straight, round, nearly stringless, tender, and fine-grained. Qt. 45 cts., pk. \$3.35, bus. \$12.

Low's Champion, or Boston Cranberry. Pods are 5 inches long, straight, flat, and of fine quality. Fine for Shell Beans. Qt. 55 cts., pk. \$3.85, bus. \$14.



Bean, King of the Earlies

Refugee, or 1000-to-1. This well-known, hardy, vigorous, late sort is very productive and much in favor, both for market and canning purposes. The pods are 5 to 6 inches long, somewhat slender, round and slightly curved, almost stringless, fine-grained and of good quality, tender, and meaty. They are brittle and of a light green color. Qt. 50 cts., pk. \$3.60, bus. \$13.

Full Measure. Fine, stringless, medium green pod of high quality. The pods are straight, 6 inches long, very fleshy, almost round, crease-backed, have no neck, showing depressions around the Bean, and are tender. It is a prolific sort, the heavy pods producing throughout a long season. The season is about the same as Burpee's Stringless, although more productive. Qt. 55 cts., pk. \$3.85, bus. \$14.

KING OF THE EARLIES. We strongly recommend this fine variety. It is a selected strain of the Black Valentine, producing more vigorous and hardier vines, and is a heavy yielder and slightly earlier. It will withstand cold, wet weather to a remarkable degree without rotting. The first picking is a heavy one. The long, slender, round, straight pods average about 6 inches in length and are of a beautiful dark green color remarkably adapted for late planting as well as first-early, owing to hardiness of the vine, which resists unfavorable weather and disease. Qt. 55 cts., pk. \$3.60, bus. \$13.

Please take note that we do not charge for bags or containers. This is a big saving to you

BEANS, DWARF YELLOW, or WAX-PODDED (Butter Beans)

Please take note that we do not charge extra for bags or containers. We will prepay your order by mail, express or freight at our option if it amounts to \$10 or over, and at least half the order consists of Garden Seeds other than Peas, Beans and Corn:

Black Wax Improved. A standard early variety, producing pods about 5 inches long, fleshy, brittle and stringless, somewhat curved, quite round; deep yellow, and fine flavor. Qt. 55 cts., pk. \$3.85, bus. \$14.

Brittle Wax. One of the best of the new round-pod stringless sorts. Pods are 5 to 6 inches long, pale yellow. A heavy cropper of perfect quality. Qt. 55 cts., pk. \$4.10, bus. \$15.

CALIFORNIA RUSTPROOF WAX. For hardiness and earliness, this dwarf wax variety is unsurpassed. The vines are very productive, the pods are 5½ to 6 inches long, straight, flat and of a bright, light yellow color, making an extremely attractive Bean. It is grown very largely by market-gardeners, owing to its earliness and hardiness. Qt. 55 cts., pk. \$3.85, bus. \$14.

Currie's Rustproof Wax. This is an old favorite early variety and is very vigorous and productive. The straight pods average 5½ inches in length, flat, of a light yellow color, generally somewhat stringy. A popular Bean with the market-gardener and of good reputation. Qt. 55 cts., pk. \$3.85, bus. \$14.

GOLDEN WAX IMPROVED. This is a fine, broad-podded variety, growing 4 to 4½ inches long, flat, and of good quality. The color is bright yellow. Qt. 55 cts., pk. \$3.85, bus. \$14.

Davis Kidney Wax. From the standpoint of shipping quality, this excellent Wax Bean is in strong demand by market-gardeners. It is very productive and attractive. The pods are extremely straight, handsome, and uniform, large, flat, about 6½ inches long, somewhat stringy and fibrous. The color is a clear golden yellow. This variety does finely for a late crop. Qt. 55 cts., pk. \$4.10, bus. \$15.

Hodson Wax. For late planting we highly recommend this variety. The bushes are of strong, vigorous growth, producing a heavy crop of flat, long, slightly curved, attractive wax pods, rather stringy and fibrous, but making a fine appearance. It matures 12 days later than the early wax varieties but is unusually free from all diseases. It holds up extremely well as a shipper to distant markets. Qt. 55 cts., pk. \$3.85, bus. \$14.

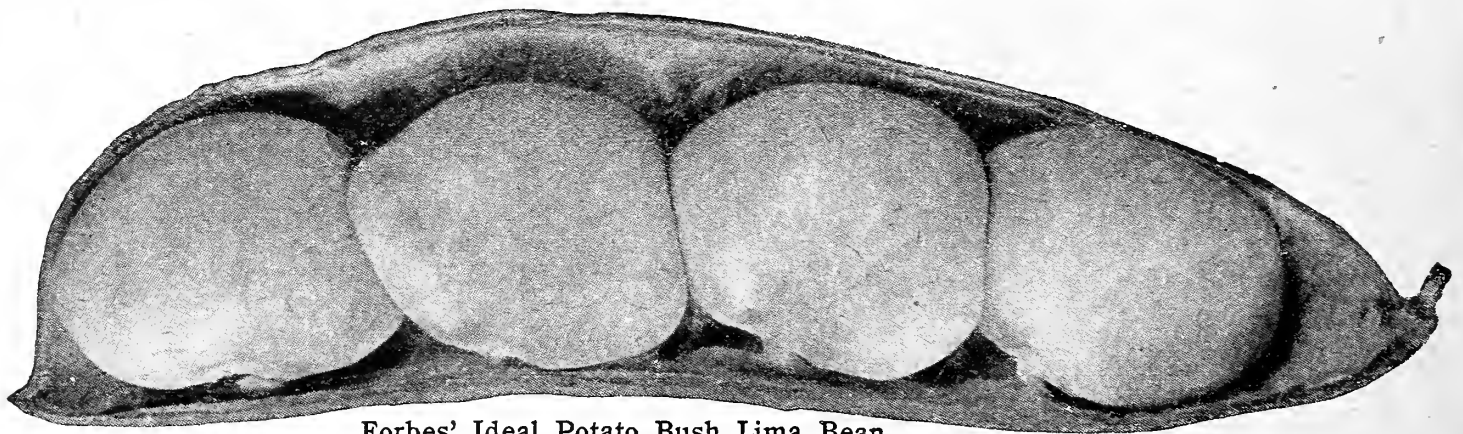
Pencil-Pod Black Wax. This is the best of the dwarf black-seeded wax varieties. Plant-growth is exceedingly strong, vigorous, and of a branching habit, 15 inches high, and very productive. The pods are 5 inches long, fully rounded, saddle-backed, of a light golden yellow color, and of the highest quality and flavor. Qt. 55 cts., pk. \$4.10, bus. \$15.

Round-Pod Kidney Wax. This is an excellent early round-podded stringless variety of highest quality and a very heavy yielder. The pods are 5½ to 6 inches long, light yellow, and mature in 55 days. It is well not to plant too early as it seems to rot quicker than any other wax sort. Qt. 55 cts., pk. \$4.10, bus. \$15.

Sure-Crop Wax. A selection from Currie's Rustproof Wax, but different from that sort in that it is stringless, more hardy, and rust-resisting. The pods average 5½ inches long, are somewhat thicker than Currie's, flat, and clear yellow. From a market-gardener's standpoint this variety is very desirable. Qt. 60 cts., pk. \$4.35, bus. \$16.

UNRIVALED WAX. Where the market demands quality in a Wax Bean, you should plant Unrivaled Wax. The pods are most uniform in size, half round in shape, and average 5 inches in length. They mature only 2 days later than the earliest wax sorts and are uniformly straight, slim, and of the most attractive color. The eating quality is perfect. They are very slow to show string, quite tender to the last, and yet are firm enough to stand up well in the basket without wilting. The leaves are small, but are produced so thickly that the pods are always well shaded. It is a very heavy cropper, and the pods are borne close to the center of the plant, which makes picking easy. Qt. 65 cts., pk. \$4.85, bus. \$18.

WARDWELL'S KIDNEY WAX. An excellent main-crop variety and extremely popular. The plants grow about 15 inches high, are vigorous and very productive. The pods are 6 inches long, straight, and almost flat. They are fleshy, brittle, fine-grained and of a rich golden yellow color. The pods will mature in about 50 days and are of good quality. Qt. 60 cts., pk. \$4.35, bus. \$16.



Forbes' Ideal Potato Bush Lima Bean

BUSH LIMA BEANS

Burpee's Improved Bush Lima. This is the largest flat-seeded Bush Lima, and we commend it highly. The growth is very vigorous, with heavy foliage, reaching 30 inches in height and 24 inches across the top. The pods, often found in clusters of five and more, measure about 6 inches in length. The Beans are very large and thick, running five to a pod. Qt. 75 cts., pk. \$5.60, bus. \$21.

Dreer's Bush Lima. The strong plants bear an enormous crop of good-sized pods. For many years it was the most popular market-gardeners' variety, and though still used to a great extent, it has been largely replaced by such large-seeded sorts as Forbes' Ideal and Fordhook. Fine for a late crop. Qt. 60 cts., pk. \$4.35, bus. \$16.

FORBES' IDEAL POTATO BUSH LIMA. To obtain the finest yield of the medium-sized Bush Limas, we advise planting this variety. We have carefully selected it for size and quality. The bushes attain 18 inches in height and are heavily filled with large pods. Most satisfactory for market purposes. Qt. 65 cts., pk. \$4.85, bus. \$18.

FORDHOOK BUSH LIMA. A very excellent sort and has become one of the most popular Bush Potato Limas, being used more largely each year. The bushes are erect, branching freely. The pods are large, and the green Beans are thick and meaty, four to the pod, very tender, juicy, and of fine flavor. This variety bears the pods in clusters and is a heavy yielder. We urge you to try it. Qt. 65 cts., pk. \$4.85, bus. \$18.

GREEN-PODDED POLE BEANS

Kentucky Wonder, or Old Homestead. This standard green-podded Pole Bean bears throughout the season, if the pods are picked as they mature. The pods are 7 to 9 inches long, thick, fleshy and of finest quality. It is quite free from string at all stages of its growth. Qt. 55 cts., pk. \$3.85, bus. \$14.

McCASLAN POLE. A comparatively new green-podded variety. The pods average 8 to 10 inches in length, are flat, slightly curved, and of a rich green color, containing ten fine Beans. This is the best of all the green-podded Snap Pole Beans. It is perfectly stringless at all stages of its growth. The pods are very solid, tender, and meaty. The ripe seeds are large, pure white, and equal to the best for use as dried Beans. Qt. 55 cts., pk. \$4.10, bus. \$15.

POLE LIMA BEANS

Dreer's Improved (Challenger). The pods are produced in great numbers. They average 3 to 4 inches long, each containing three to five thick Beans of fine flavor. Qt. 60 cts., pk. \$4.35, bus. \$16.

Early Leviathan. The earliest of the Pole Limas and a heavy cropper. The flat pods are borne in clusters. The Beans are meaty and of good flavor. Qt. 60 cts., pk. \$4.35, bus. \$16.

FORBES' POTATO POLE LIMA. The best for the market-gardener. It shells more Beans to the bushel of pods than any other. The Beans are very thick, and of excellent quality. Qt. 65 cts., pk. \$4.60, bus. \$17.

KING OF THE GARDEN. Produces large flat pods of good quality containing five or six large Beans. Qt. 60 cts., pk. \$4.35, bus. \$16.

GARDEN BEET

Crimson Globe. This fine variety is of medium size and perfect globe shape. Very tender and sweet. Oz. 10 cts., $\frac{1}{4}$ lb. 30 cts., lb. \$1.

CROSBY'S IMPROVED EGYPTIAN. Extremely early and good for forcing, having small green leaves tinged with brown. The round, smooth root has a distinct vermilion-colored flesh, zoned with lighter shade. Oz. 10 cts., $\frac{1}{4}$ lb. 35 cts., lb. \$1.25.

DETROIT DARK RED. An indispensable sort for the market-gardener. It is probably the best variety for main crop and winter storing. It holds up well and keeps its color perfectly under all conditions. It is a grand basket sort, deep globe-shaped, and intensely dark in color of flesh. Our stock has given great satisfaction. Oz. 15c., $\frac{1}{4}$ lb. 40c., lb. \$1.50.

Dewing's Improved Blood Turnip. A top-shaped, smooth Beet with carmine-red flesh, zoned with lighter shade. Oz. 10 cts., $\frac{1}{4}$ lb. 30 cts., lb. \$1.10.

EARLY WONDER. We think this the best strain of early Beet on the market. It is the earliest and has the neatest shape. The root is clean, smooth, and deep globe in shape. There is none to approach it in tenderness and fine flavor. The skin is dark in color and the flesh richly zoned in two shades of deep blood-red. Constant selection has made it so even in maturing that the early crop may be soon marketed. Oz. 15 cts., $\frac{1}{4}$ lb. 40 cts., lb. \$1.50.

Eclipse. For many years this has been in great demand as a second-early sort. The roots taper gradually at the base; the flesh is strongly zoned. Good for general crop. Oz. 10 cts., $\frac{1}{4}$ lb. 30 cts., lb. \$1.10.

Edmand's Blood Turnip. An excellent sort for succession and late crop. The roots are medium in size, uniform in shape, and intensely dark in color. It is a favorite sort for canning or for trenching. Oz. 10 cts., $\frac{1}{4}$ lb. 30 cts., lb. \$1.

Egyptian Extra-Early. This is the earliest to mature. Roots are flat, intensely dark red in color, and the flesh is still darker. It should be marketed quite young, as it gets woody with age. Oz. 10 cts., $\frac{1}{4}$ lb. 30 cts., lb. \$1.10.

Electric. A variety well known in the Eastern markets, where it is used mainly for an early frame or outdoor crop. The tops are small, the roots almost round, very dark-colored, both in skin and flesh. It is one of the most attractive sorts for early bunching, and may be relied on for a quick crop at any time. Oz. 10 cts., $\frac{1}{4}$ lb. 30 cts., lb. \$1.10.

FORBES' SUPERB. A very good selection of our own, combining all the qualities necessary to a good bunching Beet. It is almost round, very early, and intensely dark red in skin and flesh. The roots are remarkably even in size and regular in shape. The top is small, but not too small for easy bunching. It shapes up very quickly, so that it may be on the market seven weeks from sowing, thus clearing the ground for later crops. Oz. 15 cts., $\frac{1}{4}$ lb. 40 cts., lb. \$1.50.

NUTTING'S EARLY GEM. This is one of the leaders of the extra-early varieties, making a fine, smooth, spherical shaped root, of a dark red color; is very early, perfectly smooth, has a small top, and is strongly recommended for forcing. It makes an unusually attractive bunch and creates a great demand on the market. The flesh is of a fine red color, tender and sweet. Oz. 10c., $\frac{1}{4}$ lb. 35c., lb. \$1.25.

Long Smooth Blood. (Out of ground.) The best of all the long late varieties. Oz. 10c., $\frac{1}{4}$ lb. 30 cts., lb. \$1.

SWISS CHARD

COMMON. Very hardy and productive, with broad green leaves and large white midribs of excellent quality; can be sown at different seasons of the year, giving a continuous supply. Oz. 10 cts., $\frac{1}{4}$ lb. 30 cts., lb. \$1.

Lucullus. A variety having green leaves which are remarkably crimped and curled, like savoy-leaved cabbage. Oz. 10 cts., $\frac{1}{4}$ lb. 35 cts., lb. \$1.25.

MANGEL-WURZEL

Golden Tankard. The root is quite large and the skin deep orange-red. The flesh is zoned with yellow and white; very nutritious. $\frac{1}{4}$ lb. 30c., lb. 55c.

MAMMOTH LONG RED. The largest of all the Mangels. The root is 15 to 18 inches long, over 6 inches thick. It grows one-half above the ground and is easily pulled. This yields enormous crops and is in great demand for stock and chicken feed. $\frac{1}{4}$ lb. 30c., lb. 90c., 10-lb. lots, 85 cts. per lb.

SUGAR BEET

Giant Half-Sugar Rose. Very large, smooth, and clean, of oval shape. The skin is rose-white with a deeper rose-colored top. The flesh is white, sweet and of high nutritive value. A heavy cropper. $\frac{1}{4}$ lb. 30 cts., lb. 90 cts.

Vilmorin's Improved. Yields large crops and is recommendable for most soils. $\frac{1}{4}$ lb. 30 cts., lb. \$1.



Detroit
Dark
Red

All indications point to a short supply of Cabbage in the spring of 1920. It has been bringing top prices right along. You'd better be ready with a good supply for the early market

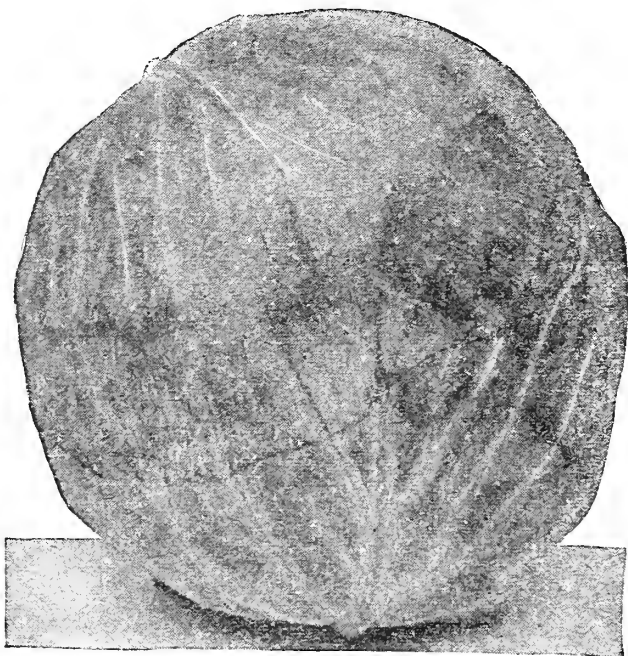


Early Jersey Wakefield Cabbage

CABBAGE

EXTRA-EARLY VARIETIES

Copenhagen Market. On its own merits Copenhagen Market has become a national standby in this country in the last six years. The heads are round, averaging 8 to 10 pounds in weight, surprisingly solid, with small core, and of excellent quality and unsurpassed uniformity. The light green, saucer-shaped leaves are folded, one over the other, very tightly and compactly. The plants are short-stemmed, placing the heads just above the level of the ground. It is ready for market as early as the Early Jersey Wakefield, and can be planted as close as the Charleston Wakefield. Many successful gardeners use this variety with good results for a late crop, as it will produce a good yield, even if sown two weeks later than the winter sorts. It is excellent for winter storing, and makes good kraut. Oz. \$1.10, $\frac{1}{4}$ lb. \$3, lb. \$11.



Copenhagen Market Cabbage

CHARLESTON WAKEFIELD. An early pointed-head sort of standard reputation. The heads are large, remarkably uniform in size and shape, and rapid sellers on every market. Ten days later than the Early Jersey Wakefield, but this is more than balanced by its larger size and consequent larger crop. An excellent shipper. Oz. 40 cts., $\frac{1}{4}$ lb. \$1.10, lb. \$4.

EARLY JERSEY WAKEFIELD. Our strain of this excellent, extra-early, pointed-head sort is selected solely for our market-gardener customers' use and is without a parallel. Heads are small but solid, and extremely uniform in color and size, which enables the gardener to market the entire crop very early in the season. We have the original strain of this Cabbage, selected to perfection. Oz. 40 cts., $\frac{1}{4}$ lb. \$1.10, lb. \$4.

SECOND-EARLY VARIETIES

Allhead Early. A very fine large early Cabbage and larger than any other of equal earliness. The large, deep, flat heads are very solid, heavy, and of astonishing uniformity. Oz. 40 cts., $\frac{1}{4}$ lb. \$1.10, lb. \$4.

EARLY SUMMER. A medium-sized, second-early variety, flat-round in shape, with light green, spreading, outer leaves enclosing a solid head. Oz. 40 cts., $\frac{1}{4}$ lb. \$1.05, lb. \$3.75.

Glory of Enkhuizen. A very good, short-stemmed, medium-early variety with large, round, very hard, dark green, handsome heads, and few outer leaves, which permits close planting. Oz. 80 cts., $\frac{1}{4}$ lb. \$2.20, lb. \$8.

Newark Early Flat Dutch. A sure header of the medium-early class. Oz. 35 cts., $\frac{1}{4}$ lb. 95 cts., lb. \$3.50.

SUCCESSION. This is a good Cabbage for all purposes, and has been well named, doing exceptionally well under ordinary conditions for either spring, summer, or fall planting. Oz. 40 cts., $\frac{1}{4}$ lb. \$1.05, lb. \$3.75.

SUREHEAD. Popular with the market-gardener, owing to its remarkable surety to head. Oz. 35 cts., $\frac{1}{4}$ lb. 95 cts., lb. \$3.50.

All our stocks of Cabbage have been selected and grown with great care for our extensive market-garden trade. Thousands of satisfied customers rely on us yearly to supply them with seed for this most important crop

CABBAGE, LATE or WINTER VARIETIES

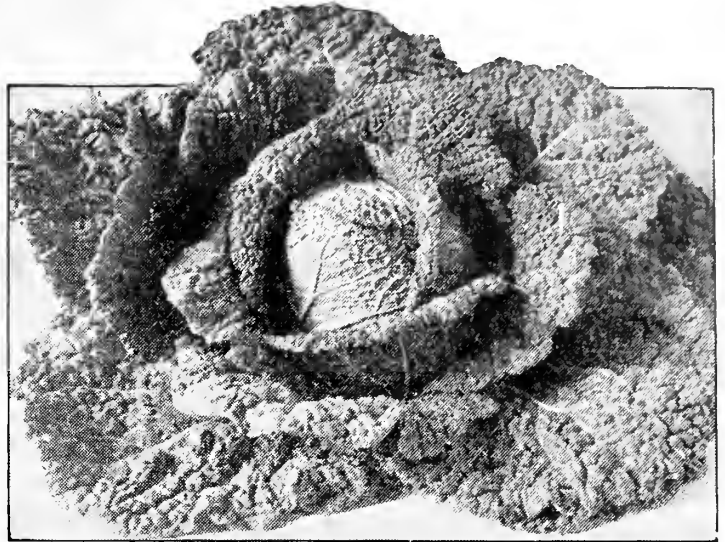
Danish Ballhead, Tall-stemmed. For late crop in a tall-stemmed, spherical, hard-heading variety it cannot be excelled. Two weeks later than Danish Roundhead, and size of head averages a little smaller. Oz. 80 cts., $\frac{1}{4}$ lb. \$2.20, lb. \$8.

Danish Roundhead, Short-stemmed. A very fine selection of this well-known variety. We consider it one of the best keeping sorts in existence. The heads are quite large, hard, and solid, always even in size and uniform in shape. Our stock comes direct from Denmark and may be always relied on to produce a good and easy selling crop under right growing conditions. Oz. 90 cts., $\frac{1}{4}$ lb. \$2.50, lb. \$9.

LATE FLAT DUTCH, SUPERB. The most popular of the old American late varieties. The plant is large and forms a flattish round head of great size and weight, and of excellent quality. Our stock is quite uniform and may be relied upon to make a good appearance on the market. It is probably the best of the large sorts to market in fall and early winter. Oz. 30 cts., $\frac{1}{4}$ lb. 85 cts., lb. \$3.



Danish Roundhead, Short-stemmed Cabbage



Perfection Drumhead Savoy Cabbage

Hollander, Short-stemmed. A very fine selection of the well-known Danish Ballhead type, and is consequently a good keeper and hard, round header. It is two weeks earlier in maturing and grows on a short stem. This is the best of the ball-shaped Cabbages for late crop, excelling in its fine flavor, beautiful appearance, and good keeping qualities. A good shipper, always in demand and the first of its kind to come in. Oz. 90 cts., $\frac{1}{4}$ lb. \$2.50, lb. \$9.

SAVOY, PERFECTION DRUMHEAD. The hardest heading and best Savoy Cabbage, having only a few outer leaves growing closely about the large, solid, round, dark green heads. Oz. 40 cts., $\frac{1}{4}$ lb. \$1.10, lb. \$4.

RED VARIETIES

Danish Stonehead. A reliable, hard-heading variety; intensely dark red. Oz. \$1, $\frac{1}{4}$ lb. \$2.75, lb. \$10.

MAMMOTH ROCK RED. The old and popular American variety. Our stock has solid heads, deep color, and sure-heading quality. Oz. 60 cts., $\frac{1}{4}$ lb. \$1.65, lb. \$6.

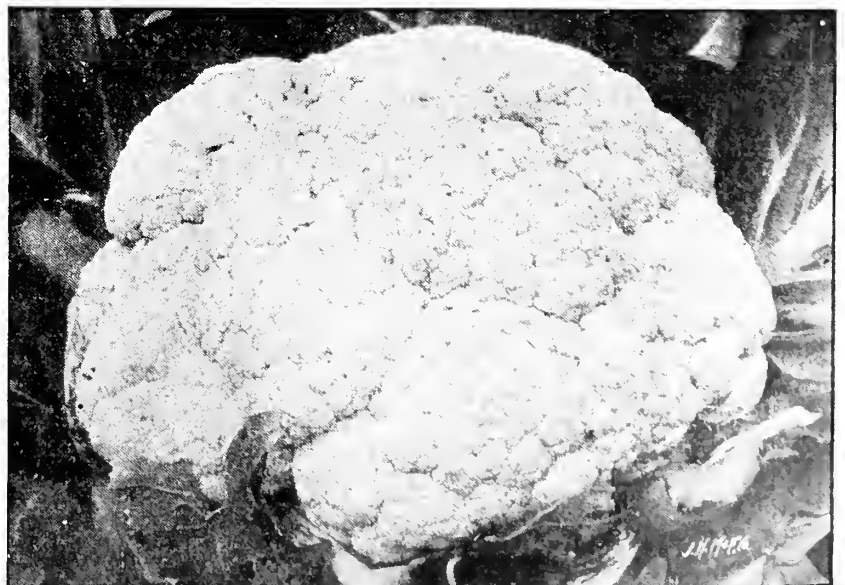
CAULIFLOWER

Early Dwarf Erfurt. Growers who planted this stock secured very handsome returns last season. We recommend this stock particularly for very early outdoor crop in spring, or for sowing in May for fall crop. The plant is vigorous and makes a strong, sturdy frame—a sure indication of sound, large heads. The flowers are large, even in surface, with a very fine “curd,” and are well protected in shipping by its strong leaf-stalks. Oz. \$2.75, $\frac{1}{4}$ lb. \$10.

EARLY SNOWBALL. This was formerly used only as an extra-early outdoor sort, or for growing under glass during winter and spring. It has been found equal, and, in some respects superior to the larger and more vigorous sorts for general outdoor cultivation. Grown thus it makes a strong, handsome plant of great vigor and produces flowers of the finest and most delicate quality under ordinarily good conditions. Anyone desiring to produce good Cauliflower will do well to try this stock. Oz. \$3.10, $\frac{1}{4}$ lb. \$11.25.

FORBES' SUPERIOR EXTRA-EARLY.

For forcing under glass or for extreme early outside growing, our stock of this wonderful strain is unequalled. This is the first Cauliflower to flower and produces beautiful large, white, smooth-surfaced heads, such as are required for fancy markets. It is dwarf and compact in growth, with short leaves, but ample to protect the flower. The heads are deep and very solid and of the very finest quality. As we make Cauliflower a specialty, we feel confident that this is the strain which will please you the most, considering its earliness, uniformity, size, and productiveness. In all our experience we have never found a strain which will produce a Cauliflower of finer appearance than this selected strain which we have named Superior Extra-Early. Pkt. 25 cts., oz. \$5, $\frac{1}{4}$ lb. \$18.



Forbes' Superior Extra-Early Cauliflower

CHINESE or CELERY CABBAGE

This delicious Chinese vegetable belongs to the Cabbage family and closely resembles a well-grown Cos lettuce, but is heavier. We advise that the seed be sown about August 1 (not earlier). It does not succeed with transplanting. It is best to sow where the plants are to remain in rows 2½ feet apart, thinning to 18 inches apart in the row. Like Cabbage it is likely to club-root.

PE-TSAI. The light green, crumpled-leaved heads are very tender and of a delicious flavor. Oz. 35 cts., ¼lb. 95 cts., lb. \$3.50.

Wong Bok. This is the original Chinese-grown strain, producing a heavier and more solid head than the Pe-Tsai variety. Has a deliciously mild Cabbage flavor. Oz. 60 cts., ¼lb. \$1.65, lb. \$6.

CARROT

CHANTENAY HALF-LONG. A medium-early, half-long, smooth, blunt-rooted sort of deep orange-red color and delicate flavor. As it has a small top, it is very popular for bunching and for frame use, allowing close planting. Shaped broadest at shoulder, tapering toward base and running suddenly to a point; and is shorter than Danvers. Oz. 15c., ¼lb. 40c., lb. \$1.50.

CORELESS. One of the newer sorts that has attained great popularity. The illustration on the cover shows its distinct shape. The tops are small, which, with its slim roots, allows more roots in the row. It may be used for an early crop when half grown, or used later for bunches or loose in baskets. The roots grow partly out of ground, which makes easy pulling. The color is reddish orange and the flesh tender throughout, and is always quite free from core. It runs uniformly clean and smooth, and no variety of its length will fork less. For any purpose it is excellent and we strongly recommend it. Oz. 25 cts., ¼lb. 70 cts., lb. \$2.50.

DANVERS HALF-LONG. Our stock of this grand old variety has been selected with great care. The roots are square-shouldered and taper gradually to a blunt end, and square tap-root. It is the standard sort for main or late crop, and you will find our stock quite uniform in color, size, and shape. Oz. 10 cts., ¼lb. 30 cts., lb. \$1.

LONG ORANGE, or SURREY. Used both for field and garden culture in deep soils. A good stock Carrot. Oz. 10 cts., ¼lb. 30 cts., lb. \$1.

Nantes Half-Long Stump-rooted. A fine Carrot for the frame. The smooth root is cylindrical with blunted end and of a bright orange color. The flesh is red, sweet, mild and almost coreless. Top is small and short. A very attractive sort. Oz. 20 cts., ¼lb. 55 cts., lb. \$2.

New York Market. The root is half-long, tapering to a blunt point, and a little slimmer than Danvers. The flesh is of a deep orange-red color. This is a very useful sort, and of fine quality. Oz. 10 cts., ¼lb. 35 cts., lb. \$1.25.

OXHEART, or GUERANDE. A stump-rooted sort with light, scant foliage. Root is about 5 inches long and 3 to 4 inches in diameter, bright orange-red, tender, and sweet. When grown in suitable soil, this is one of the finest Carrots for the market. Oz. 10 cts., ¼lb. 30 cts., lb. \$1.

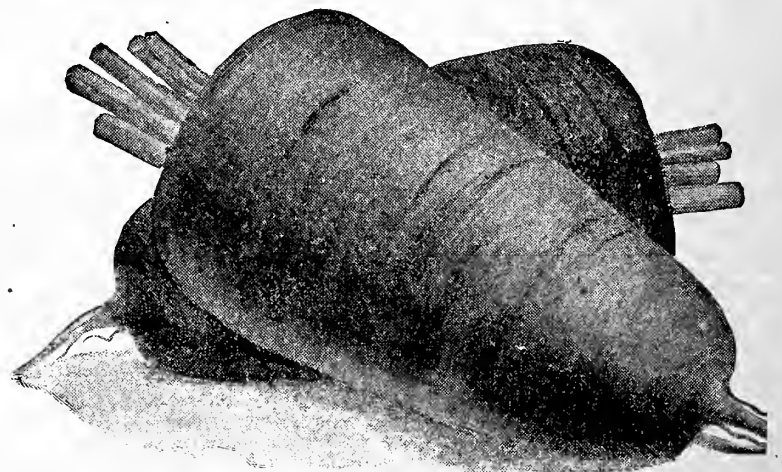
RUBICON HALF-LONG. This excellent new and distinct American strain is excellent for forcing under glass, for bunching or for growing outside at any season of the year for market use, and an excellent summer basket sort. The root is half-long, stump-rooted, of a rich orange-red color; smooth and with a short top. Oz. 15 cts., ¼lb. 40 cts., lb. \$1.50. We have a very well selected stock of this popular variety.

White Belgian. Fine for stock feed. Oz. 10 cts., ¼lb. 30 cts., lb. \$1.

CHICORY

Large-rooted, or Coffee. The dried roots are used as an adulterant for coffee. The young leaves, sprouted from year-old-roots, are excellent as a salad. Oz. 30 cts., ¼lb. 85 cts., lb. \$3.

WITLOOF, or FRENCH ENDIVE. Used almost exclusively as a salad. Cultural treatment same as parsnip. The roots should be lifted in the fall, cutting off the leaves 1½ inches from the neck, and then stored in a cool place until wanted for forcing. This should be more generally grown by market gardeners, as the crop is marketed during winter, when there is a scarcity of green vegetables. It always commands good prices, and the supply is always short. Oz. 30 cts., ¼lb. 85 cts., lb. \$3.



Oxheart Carrot



Rubicon Carrot

CELERY

Giant Pascal. Vigorous, compact, productive variety; one of the best sorts for fall and winter use. Leaves upright, short, dark green. Stalks short, broad, very thick, crisp, and tender, blanching readily to a yellowish white color; a very good keeper. Oz. 30 cts., $\frac{1}{4}$ lb. 85 cts., lb. \$3.

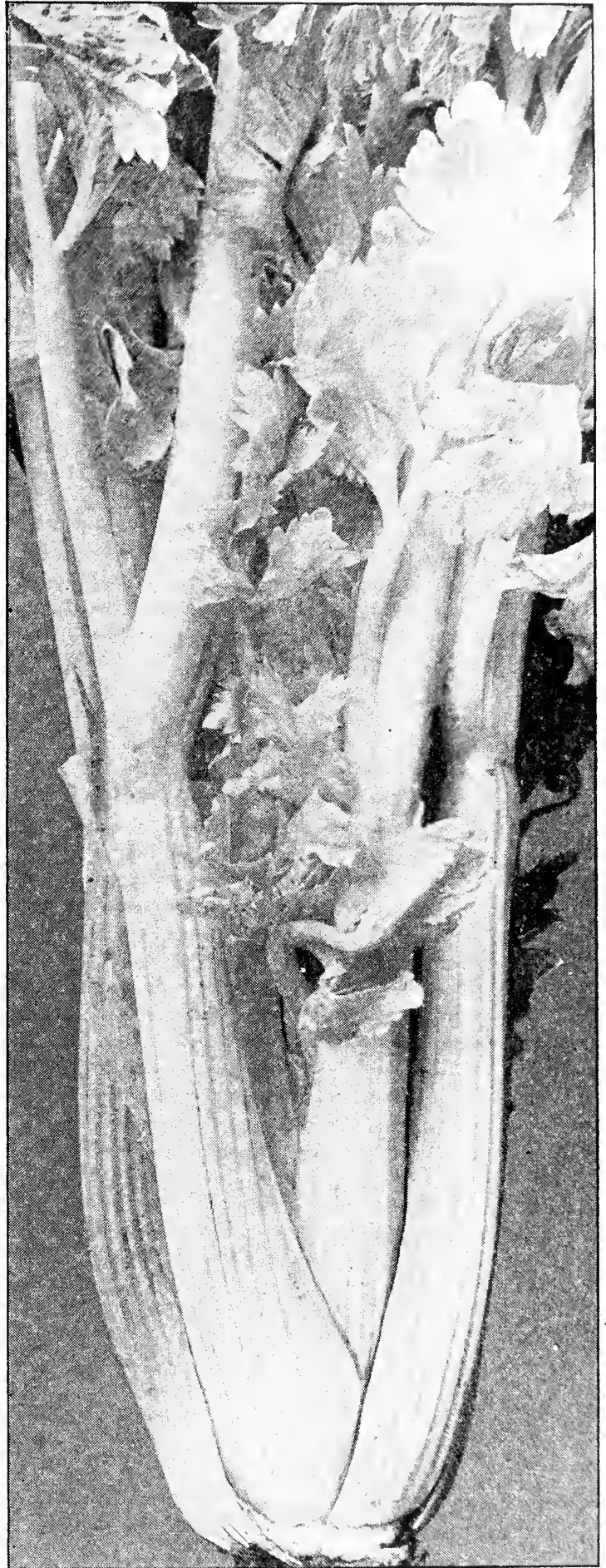
GOLDEN SELF-BLANCHING. Our stock of this famous variety, now considered a standard for early use, is unsurpassed. The plants produced by our seed are compact and stocky, with yellowish green foliage turning to golden yellow with a slight earthing up. Stalks are very thick, broad, solid and crisp, of the finest nutty flavor and natural ivory-white color. This is a big-hearted strain, with no hollow stalks, extremely even and free from green top. The seed that we offer is grown by the most careful Celery specialist in the world and is tested by us in our proving-grounds. We yearly supply the leading, most progressive and particular Celery growers in all the large Celery sections in the United States. Oz. \$1.25, $\frac{1}{4}$ lb. \$4.10, lb. \$15.

Magnificent. One of the best late green Celeries on the market; long-keeping, with very large hearts of a fine golden yellow when blanched. Grows a medium height stalk but heavy, solid and crisp. One of the best of the green winter varieties. Oz. 60 cts., $\frac{1}{4}$ lb. \$1.65, lb. \$6.

NEWARK MARKET. We first introduced this green, easy-blanching Celery in 1913. It rapidly gained great popularity, so that today almost every dealer has some sort of an imitation of it. Our stock is now better than ever, producing strong, stocky plants of great vigor. Its great distinction is shown in its ability to blanch quickly—almost as quickly as Golden Self-blanching. This means that you can get the strongest and heaviest Celery blanched and ready for market in from 15 to 21 days from boarding, and it can be had even quicker by partial earthing up before boarding. On the other hand, if planted one month later than for an early crop, it is superior to any of the so-called long-keeping varieties for storing for winter use, as the plants having greater vigor will hold up quite well; nevertheless its great value will always lie in its earliness and quick blanching habit, which make it the best for the early market. We surely consider it a great improvement on the self-blanching sorts, because it is larger, has greater vigor, and is absolutely free from Celery "sickness," a disease which has spoiled many good crops. It is the only green variety that will blanch up well in cold storage, because it is so full-hearted. The whole plant is short and stocky in habit, with large, thick, fleshy stalks of great solidity, very brittle, crisp, and of excellent flavor. It trims up with little waste, and in whatever form it is marketed is most attractive in appearance and always a ready seller. Oz. \$2, $\frac{1}{4}$ lb. \$7, lb. \$25.

Forbes' Winter Keeper. This is the best of the older sorts to keep for winter. It has a full, rich-colored heart, is very solid and holds up well without decay in the trench. Oz. 80 cts., $\frac{1}{4}$ lb. \$2.20, lb. \$8.

White Plume, Perfected. An early, distinct variety, silver-white in its inner leaves, stalks, and heart. Our stock is fine. Oz. 40 cts., $\frac{1}{4}$ lb. \$1.10, lb. \$4.



Newark Market Celery

CELERIAC

(Turnip-Rooted Celery)

MOONARCHIE. Produces large, smooth roots of fine quality, which are used as a flavoring or eaten as a salad. The outer leaves are pulled for soup greens during the summer, which increases the size of the "knob." We recommend this variety as the best obtainable, and therefore list no other. Oz. 50 cts., $\frac{1}{4}$ lb. \$1.40, lb. \$5.

We cannot emphasize too strongly the value of Newark Market Celery for use where there is danger from the disease now so common with self-blanching sorts. Our opinion, based on a very wide experience, convinces us that Newark Market is the only safe variety to grow under such conditions. The Italians use this more than any other Celery when green, because of its light color and great size.

SUGAR, or SWEET CORN

We do not charge extra for bags or containers. We will prepay your order by mail, express, or freight, at our option, if it amounts to \$10, and at least half the order consists of Garden Seeds other than Peas, Beans and Corn.

FIRST-EARLY VARIETIES

Ready for market in 60 to 65 days

Charlevoix. One of the new yellow-seeded sorts. It is 12-rowed, the ears 7 inches long, and the introducer claims that it is much earlier than any other yellow sort, and that it remains fit for use much longer than most early varieties. Our stock is procured from the introducer. Qt. 40 cts., pk. \$2.85, bus. \$10.

DAYBREAK. A good extra-early Sweet Corn of fine quality. Stalks average 4 feet in height, and the well-filled white ears average 7 inches in length. They resemble White Cory in size and shape, are 8-rowed, grow close to the stalk, and are of excellent quality. We urge every market-gardener to try this. Qt. 40 cts., pk. \$2.85, bus. \$10.

Early Buffalo. A new variety of great promise. It is of the Cory habit, but decidedly earlier, has a larger ear, and is superior in every respect. Qt. 40 cts., pk. \$2.85, bus. \$10.

Golden Bantam. An exceptionally extra-early Sweet Corn of a delightfully sweet, rich flavor. It is dwarf in growth, averaging only 4 feet in height, with two to three small, creamy yellow ears, 5 to 7 inches in length, to the stalk. We especially recommend this Corn for the home market. Qt. 40 cts., pk. \$2.85, bus. \$10.

FORBES' NEW EARLY. Forbes' New Early Sweet Corn is a winner. We introduced this in 1912, and market-gardeners have "discovered" it very rapidly. It grows an exceptionally large, well-formed, white ear on 5- to 6-foot stalks, averaging two to the stalk. Matures just after White Cory, but this is counterbalanced by the larger ears and better quality. Qt. 40 cts., pk. \$2.85, bus. \$10.

White-Cob Cory. One of the most popular varieties for first-early crop. Qt. 40 cts., pk. \$2.60, bus. \$9.

MEDIUM-EARLY VARIETIES

Ready for market in 70 to 75 days

Bantam Evergreen. A cross between Golden Bantam and Stowell's Evergreen, combining the good qualities of these well known varieties. It is second early in season and produces 8-inch ears, 12-rowed, well filled with large, deep grains of good flavor. Qt. 45 cts., pk. \$3.10, bus. \$11.

Early Champion. A second-early Corn of exceptional merit, and one of the best sorts to succeed the first-early varieties. Produces 12-rowed, white ears of good size, maturing 6 days later than White-Cob Cory. The quality is fine. Qt. 35 cts., pk. \$2.35, bus. \$8.

Early Evergreen. An early selection of Stowell's Evergreen. Qt. 40 cts., pk. \$2.60, bus. \$9.

Early Mammoth. A large-eared, 12-rowed variety of good quality. It has very deep-grained ears, well filled at both tip and butt, and of good appearance. Qt. 35 cts., pk. \$2.50, bus. \$8.50.

Golden Rod. Attains a height of 6 to 7 feet; strong and profusely leaved. The ears are medium large in size, well filled with large kernels of a golden yellow color. Qt. 45 cts., pk. \$2.85, bus. \$10.

Howling Mob. A well-known variety for second-early crop. Large, well-filled ears, and a sure seller. Qt. 40 cts., pk. \$2.60, bus. \$9.

Kendel's Early Giant. This is one of the largest of the medium-early Sweet Corns. The stalks grow about 5½ feet high, producing very sweet, tender, large-grained ears, 8 to 9 inches long and 12-rowed. One of the most popular of the medium-early varieties. Qt. 35 cts., pk. \$2.50, bus. \$8.50.

LATE VARIETIES

Ready for market in 80 to 85 days

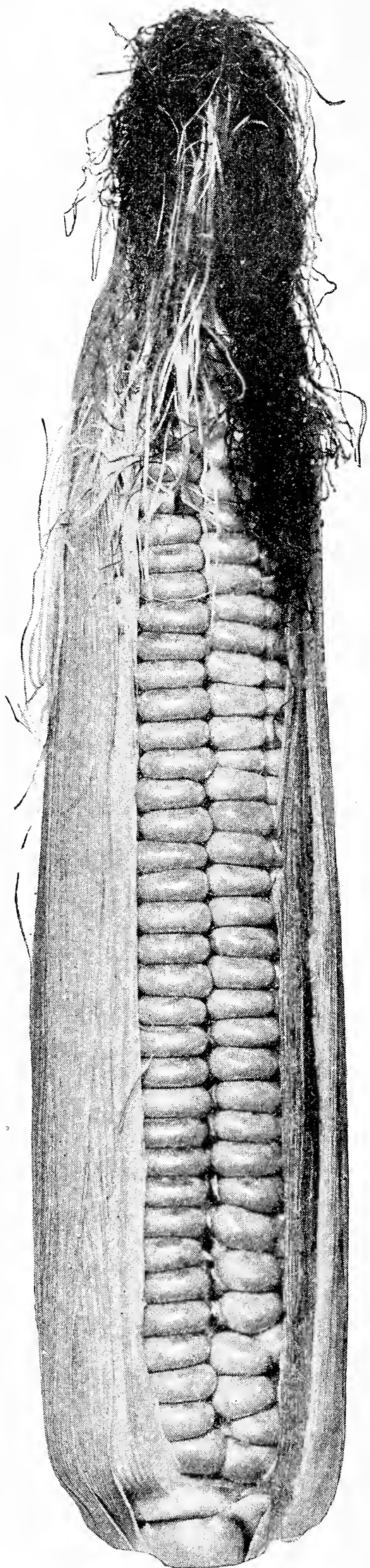
Country Gentleman. This popular variety has a small, white cob, densely covered with irregular rows of very long, slender, white "shoe-peg" grains of excellent quality. The ears are 7 to 9 inches long; stalks from 6½ to 7 feet high. Fine for fancy local trade. Considered by many as the best-flavored late Corn. Qt. 40 cts., pk. \$2.85, bus. \$10.

Late Mammoth. Produces the largest ears of any Sweet Corn. They are 16- to 18-rowed, sweet, tender and delicious. Stalks about 8 feet high. Qt. 40 cts., pk. \$2.60, bus. \$9.

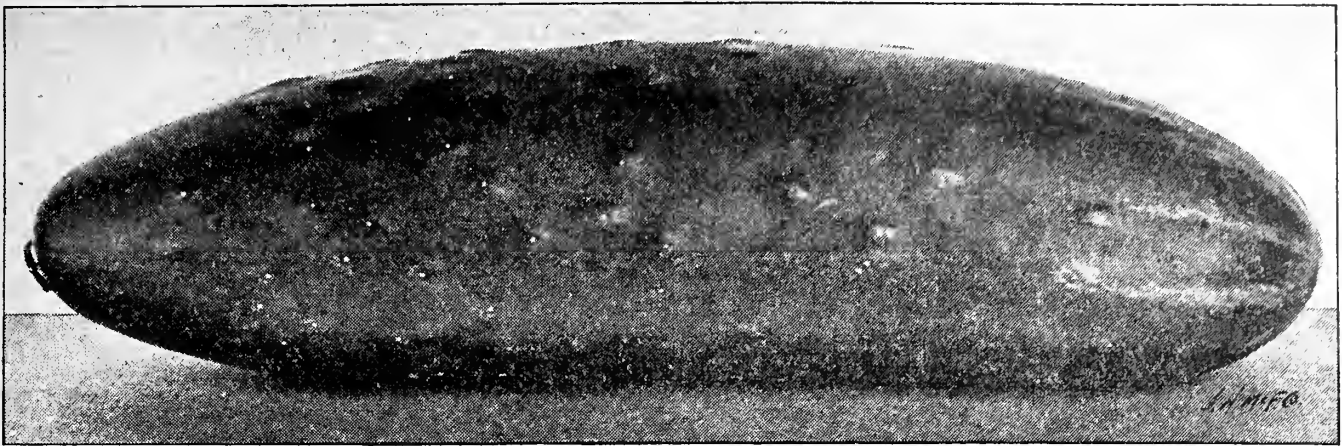
Long Island Beauty. This is a cross between Stowell's Evergreen and Late Mammoth, and produces large, well-filled ears of very excellent quality. The husk is a very dark green and holds its color longer after being picked than any other Sweet Corn. Qt. 40 cts., pk. \$2.60, bus. \$9.

STOWELL'S EVERGREEN. This is the standard main-crop variety. The ears are very white, having deep-set kernels of very fine quality. It is hardy and productive, ears remaining in a green state for a long period. The ears are 8 to 9 inches long, 16- to 18-rowed, and the stalks grow 7½ feet high. Produces ears well filled at both butt and tip, and of great uniformity. Qt. 35 cts., pk. \$2.50, bus. \$8.50.

White Evergreen. This selection from Stowell's Evergreen produces large ears similar to Stowell's in all respects except that it is 5 days earlier and the ears are quite white in color. Qt. 35 cts., pk. \$2.50, bus. \$8.50.



Golden Bantam



The "Forbes" Prolific White Spine Cucumber

CUCUMBER

Arlington White Spine, Improved. This excellent variety produces Cucumbers of uniform size and averaging 6 inches in length. Flesh white, crisp and solid, with comparatively few seeds. A heavy yielder. Oz. 10 cts., $\frac{1}{4}$ lb. 30 cts., lb. \$1.

Boston Pickling. Used extensively for Pickles. Oz. 10 cts., $\frac{1}{4}$ lb. 30 cts., lb. \$1.

DAVIS PERFECT. The long, even fruits are of comparatively small diameter and of an intensely dark, rich green color extending almost to the tip. The vines are of strong growth and very prolific. The handsome and regular fruits have fine solid white flesh of a superior quality, with very few seeds. They attain a length of 8 to 10 inches and hold their color and brittleness long after being cut. Excellent for resisting disease, and can be used under glass as well as for growing outdoors. We invite market gardeners to try our strain of this fine variety. Oz. 10 cts., $\frac{1}{4}$ lb. 35 cts., lb. \$1.25.

Evergreen White Spine. Produces dark green fruits 9 inches long. Oz. 10 cts., $\frac{1}{4}$ lb. 35 cts., lb. \$1.25.

Extra-Early Green Prolific. A very desirable variety for pickling. Oz. 10 cts., $\frac{1}{4}$ lb. 30 cts., lb. \$1.

Jersey Pickling. A desirable variety for small pickles. Oz. 10 cts., $\frac{1}{4}$ lb. 30 cts., lb. \$1.

KLONDYKE. A fine medium-early, White Spined Cucumber of handsome, dark green color, slightly striped at the ends. Fine for slicing. Vines are hardy and productive. The fruits are extremely uniform in size and color, about 9 inches long, and 2 inches in diameter. Oz. 10 cts., $\frac{1}{4}$ lb. 35 cts., lb. \$1.15.

Long Green, Improved. The very vigorous and productive vines bear beautiful, dark green fruits 9 to 10 inches long. A fine sort for slicing and much used for large mustard pickles. Oz. 15c., $\frac{1}{4}$ lb. 40c., lb. \$1.50.

THE "FORBES" PROLIFIC WHITE SPINE. This stock has been carefully selected and improved under our care until we now believe that we have in the "Forbes," unconditionally, the best Cucumber on the market. For vigor of vine, earliness and uniform size of fruit, heavy cropping from the start, and fine, dark-green color, it has no equal. Ribs shallow, slightly veined white, just enough to give it the White Spine appearance. The intense, rich, dark-green color is good from blossom to stem end. Fruits are 7 to 8 inches long, nicely tapered off at each end. This strain has all the good qualities of the so-called "Perfected" White Spine Cucumber, and none of the bad ones, such as smooth black fruit and white mixture. It is just what the trucker has been looking for, as it is earlier than any of the other White Spine varieties, will stand the hot sun better, and will yield more fruit earlier in the season than any other variety. It not only sets more fruit, but matures it. Our stock is as near cull-less as it is possible to get one. Its uniform size, shape and intensely dark-green color are making this variety very popular as a shipping sort. In short, it is the very best type of the White Spine family, and should be grown by all truckers and market gardeners, especially in the South. Oz. 15 cts., $\frac{1}{4}$ lb. 40 cts., lb. \$1.50; in 25-lb. lots, lb. \$1.40; in 100-lb. lots, lb. \$1.30.

CORN SALAD

Broad Leaf. A well-known plant used for salads in fall and early spring. $\frac{1}{4}$ lb. 55 cts., lb. \$1.75.

DANDELION

Common or French. Vigorous in growth, producing leaves of bitter flavor; used as a salad. Oz. \$1, $\frac{1}{4}$ lb. \$2.75, lb. \$10.

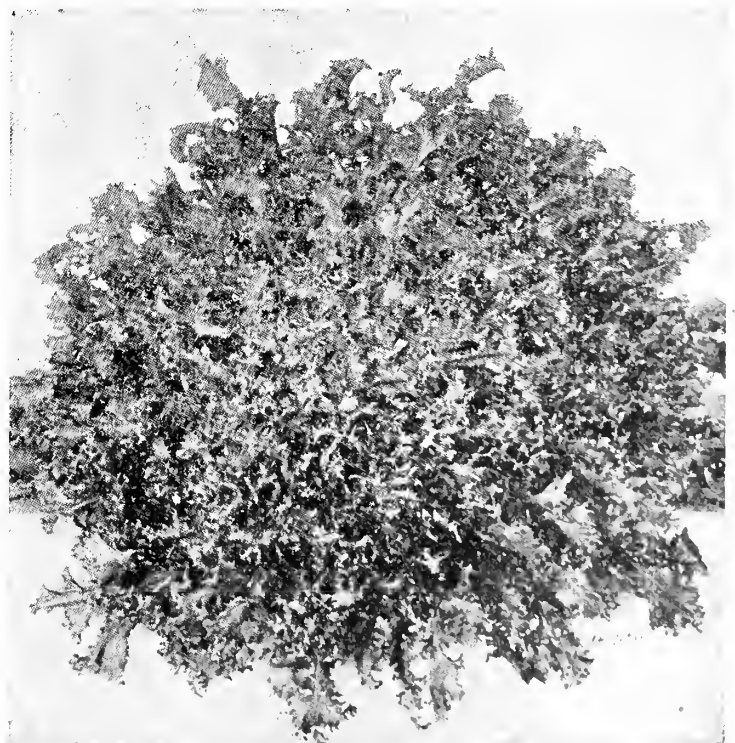
IMPROVED THICK-LEAVED. A distinct variety with thick green leaves. It grows compactly, making an abundant crop. Far superior to the Common and blanches very early. Oz. \$1, $\frac{1}{4}$ lb. \$2.75, lb. \$10.

ENDIVE

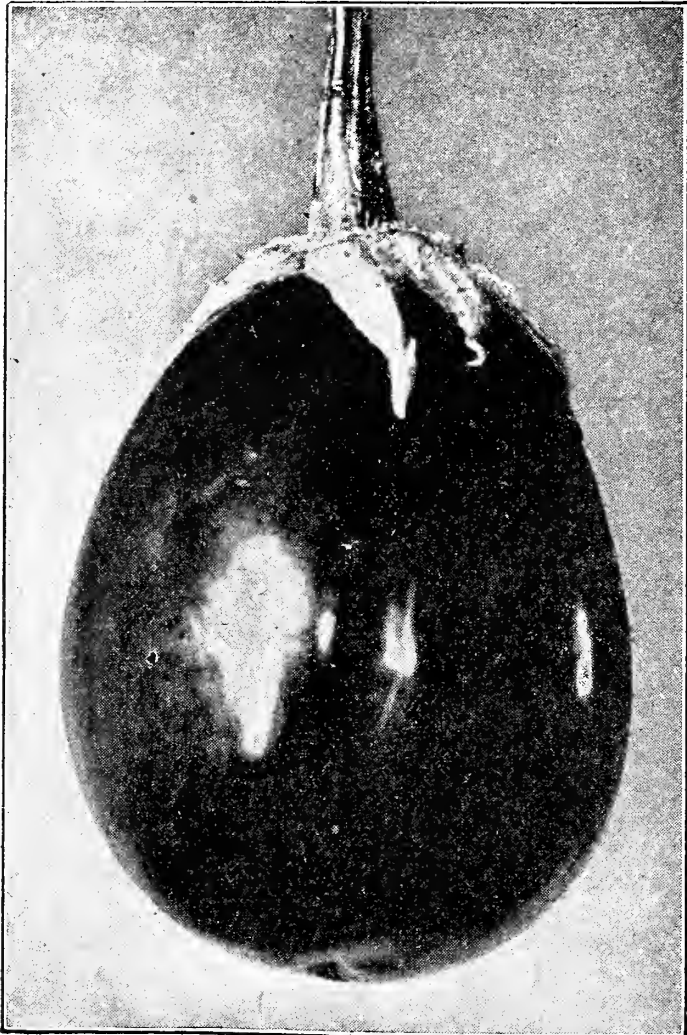
BROAD-LEAVED BATAVIAN (Escarolle). Rosette is often 6 inches in diameter; with broad, twisted or waved green leaves, and thick white midribs. Makes a fine "head," and blanches easily. The most extensively grown variety. Oz. 20c., $\frac{1}{4}$ lb. 55 cts., lb. \$2.

Green Curled Winter. A hardy variety, forming a rosette 6 inches across, with very curly leaves and rosy-colored midribs. Fine for an autumn crop. Oz. 20 cts., $\frac{1}{4}$ lb. 55 cts., lb. \$2.

MAMMOTH BORDEAUX CURLED. This fine variety attains large size and the center grows very full and close. One of the hardiest, and suitable for summer and autumn. Oz. 20 cts., $\frac{1}{4}$ lb. 55 cts., lb. \$2.



Green Curled Endive



Black Beauty Eggplant

EGGPLANT

BLACK BEAUTY. The earliest and best of all the large-fruited eggplants. Our stock produces fruits as large and 5 days earlier than the old New York Improved Spineless. The bushes are well formed, sturdy, branching freely near the ground. The large fruits are thick, heavy at the blossom end and reducing toward the stem; of a rich, lustrous, dark purplish-black color over the entire fruit. The stem and calyx are bright green, making a fine contrast, and entirely spineless. The fruits set freely and develop rapidly. Use this for your main planting. Oz. 60 cts., $\frac{1}{4}$ lb. \$1.65, lb. \$6.

Early Long Purple. An early variety with club-shaped fruits. Oz. 60 cts., $\frac{1}{4}$ lb. \$1.65, lb. \$6.

Florida High-Bush. Popular in the South. Oz. 60 cts., $\frac{1}{4}$ lb. \$1.65, lb. \$6.

NEW YORK IMPROVED SPINELESS. A very excellent standard variety with a strong bush and better in that respect for keeping the "eggs" off the ground. The large dark purplish black fruits are heavy at the blossom end and narrow toward the stem end, and are smooth and of fine quality. Oz. 60 cts., $\frac{1}{4}$ lb. \$1.65, lb. \$6.

HORSE RADISH ROOTS

Maliner Kren, or Bohemian. A variety from Bohemia far superior to the standard variety, and producing very large, pure white roots. Strong sets, \$1.10 per 100, \$7 per 1,000, 5,000 and up, \$6.50 per 1,000.

Do you realize the value of green manures? They are rapidly taking the place of stable manure. Let us quote you on Canada field Peas, Cowpeas, Rye, Vetch, etc.

KALE

DWARF GREEN CURLED SCOTCH. This is one of the best Kales for spring sowing in the North, and is the principal sort grown in the South for the northern markets. It is hardy and will remain over winter in any locality where the temperature does not go below zero. It is low-growing, with finely curled, dark green leaves, produced in great abundance. Oz. 25 cts., $\frac{1}{4}$ lb. 70 cts., lb. \$2.50.

Early Blue Curled Dwarf Siberian. A very vigorous hardy variety of dwarf spreading habit, with bluish green foliage, beautifully curled and crumpled at the edges. This variety will stand longer than any other sort before running to seed. Oz. 20 cts., $\frac{1}{4}$ lb. 55 cts., lb. \$2.

KOHLRABI

Early Purple Vienna. Very early with small tops and leaf-stems, tinged with purple. This variety is good for forcing and early outdoor planting. Oz. 30 cts., $\frac{1}{4}$ lb. 85 cts., lb. \$3.

Large White Vienna. This variety is large, and of rapid growth, although not so early as the short-leaved variety; the bulbs have greenish white skins and tender white flesh. The leaves are larger and more numerous than the short-leaved strain of White Vienna. Oz. 30 cts., $\frac{1}{4}$ lb. 85 cts., lb. \$3.

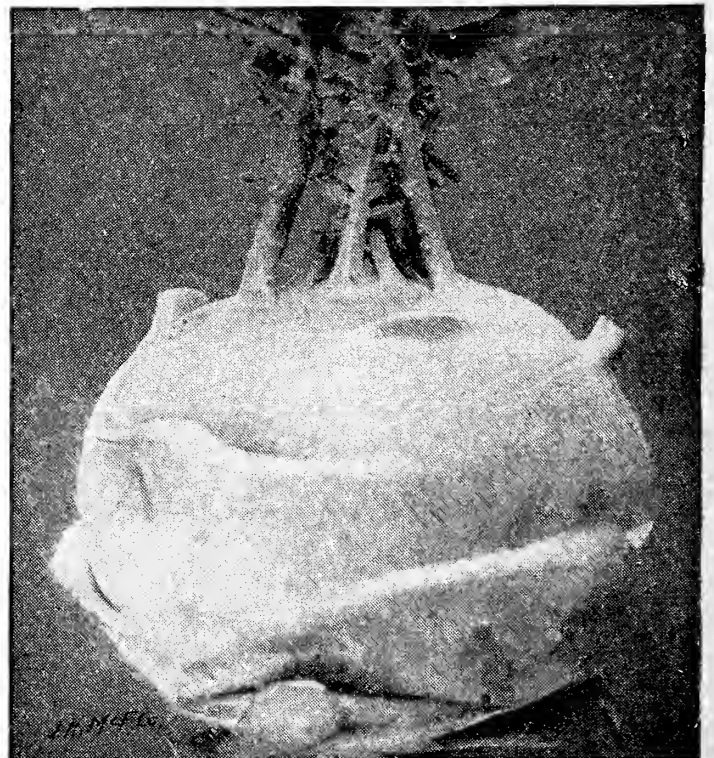
SMOOTH WHITE VIENNA, SHORT-LEAVED. A handsome, very early variety having only a few small leaves. Smooth white bulbs of medium size and fine quality, ready for the table two and a half months after sowing. A very fine sort for forcing; can be planted closely and is by far the most popular with market gardeners. The bulbs are best when about 2 inches in diameter. This variety is well adapted for sowing in hotbeds about February 15 and transplanting to permanent ground when about 3 inches high. Oz. 35 cts., $\frac{1}{4}$ lb. 95 cts., lb. \$3.50.

LEEK

American Flag. A very fine, productive variety of mild flavor. The stems are $1\frac{1}{2}$ to 2 inches in diameter and blanch 10 inches from the root. Oz. 30 cts., $\frac{1}{4}$ lb. 85 cts., lb. \$3.

Giant Italian. A most desirable sort for market use, being very hardy, long-keeping, and good for winter use, thus providing a market crop when vegetables are scarce. Stem short, 6 to 8 inches long, but very thick. Oz. 30 cts., $\frac{1}{4}$ lb. 85 cts., lb. \$3.

Musselburgh. Large-growing, full-leaved with large thick stems. Oz. 30 cts., $\frac{1}{4}$ lb. 85 cts., lb. \$3.



Smooth White Vienna, Short-leaved Kohlrabi



Big Boston Lettuce

LETTUCE • HEADING VARIETIES

BIG BOSTON (WHITE-SEEDED). Original stock. Our strain of this well-known variety is fully equal in every respect to that sent out by the introducer. Half of all the Lettuce grown for market is from this variety. In fact, in many markets it is the only sort used. For an early spring or late fall crop, it is always reliable. The plants are large, compact, and the leaves fold in naturally, making a solid, firm head, of great weight. The outer leaves are tinged with russet-red, but the inner heart leaves are always bright green. This is one of the few sorts that will stand a light frost without damage. Oz. 15 cts., $\frac{1}{4}$ lb. 40 cts., lb. \$1.40, 10 lb.-lots, \$1.30 per lb.

Big Boston, Black-seeded. Closely resembles White-seeded Big Boston, but produces larger heads. Oz. 15 cts., $\frac{1}{4}$ lb. 45 cts., lb. \$1.60.

CHAMPION OF ALL. Without a doubt the finest and largest good head Lettuce. The leaves are broad, smooth, and of a beautiful light green, forming compact heads, which, when cut, reveal a very solid, beautiful pale greenish yellow heart of remarkable flavor, tenderness, and crispness. Our stock of this Lettuce has clearly shown its superior heading qualities over other varieties of its type. We recommend that you use this strain for your spring and fall crops. As a shipper it is hard to beat. It has also proved very much in demand as a large, slow-forcing sort. Oz. 15 cts., $\frac{1}{4}$ lb. 45 cts., lb. \$1.60.

Iceberg. This has become very generally known as it is now shipped East in large quantities from California during the winter. It is one of the few thin, brittle-leaved sorts that will make a perfect head. The flavor is distinct and preferred by many to that of the "butter-heading" sorts. It will probably become very popular and we advise any grower whose trade demands quality to grow it. It stands heat well. The outer leaves are curled and fringed, the heart white, crisp and tender. Oz. 15 cts., $\frac{1}{4}$ lb. 40 cts., lb. \$1.50.

Mammoth Black-seeded Butter. A large, compact, cabbage-heading sort, with smooth, thick, yellowish green leaves; heart beautifully blanching, crisp, tender, and buttery. Oz. 10 cts., $\frac{1}{4}$ lb. 35 cts., lb. \$1.25.

MAY KING. This extremely early, compact-heading Lettuce is very fine for outdoor use. Heads medium-sized and of excellent quality. Outer leaves light yellowish green, tinged with reddish brown when mature. Hearts blanch to a rich golden yellow, tender and buttery. In great demand for forcing. Oz. 15 cts., $\frac{1}{4}$ lb. 40 cts., lb. \$1.50.

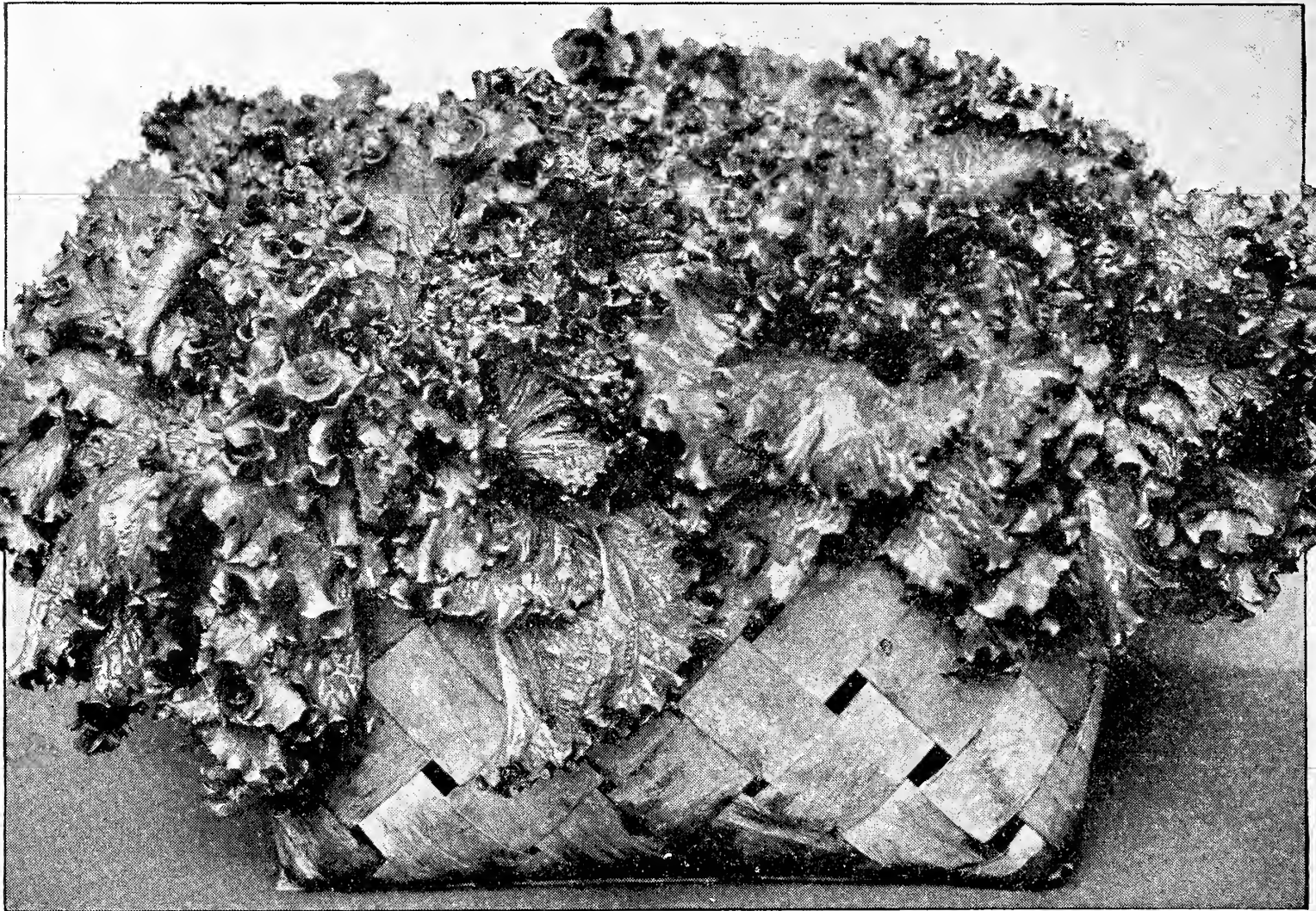
Salamander. Stands the hot weather remarkably well. It forms a large, compact, light green plant, the broad, thick, somewhat crumpled, and closely overlapping leaves blanching the inner ones to perfection. A fine summer variety. Oz. 10c., $\frac{1}{4}$ lb. 35c., lb. \$1.25.

St. Louis Market. A medium-large, firm-heading variety which stands the hot summer months remarkably well. Used largely throughout the Middle West. Oz. 15 cts., $\frac{1}{4}$ lb. 40 cts., lb. \$1.50.

TWENTIETH CENTURY. Here is a Lettuce that will grow well during the heat of summer. Many of our customers have discarded the older varieties and use this exclusively for their summer crops. It produces a large head and holds up well under all conditions before going to seed. The outer leaves are broad, smooth, and always bright, fresh green in color. Oz. 20 cts., $\frac{1}{4}$ lb. 50 cts., lb. \$1.75.

Unrivalled, White-seeded. An improvement on the White-seeded Big Boston, forming very solid, large, pale green heads of excellent quality, without the reddish brown tinge. Forms a head in about 6 weeks, and is earlier than the regular Big Boston. May be sown all through the season and stands heat remarkably well; it is also fine for coldframes. Is crisp, solid, and a good shipper. Well worthy of a trial. Oz. 15 cts., $\frac{1}{4}$ lb. 45 cts., lb. \$1.60.

Be sure to provide for a crop of Lettuce for marketing in late fall. Our stocks of Big Boston will stand light frosts and the crop brings good returns.



Grand Rapids Lettuce

LETTUCE, LOOSE-LEAVED VARIETIES

BLACK-SEEDED SIMPSON. A very large, clustering sort. Attractive, light yellowish green. The leaves are ruffled and blistered and of surprising tenderness. Our stock is very uniform. Oz. 10 cts., $\frac{1}{4}$ lb. 35 cts., lb. \$1.25.

Detroit Market-Gardeners. A very fine loose-leaved forcing variety. Exceedingly crisp and of a very light green; similar to Black-seeded Simpson in habit. A very popular sort with the market-gardener, particularly around Detroit. A good outdoor sort for summer growing. Oz. 15 cts., $\frac{1}{4}$ lb. 45 cts., lb. \$1.60.

New York, or Wonderful. One of the best of the crisp-leaved heading sorts. It is good for spring or early summer crop. The head is large but rather loose. The quality is perfect, and there is none better for local market. Oz. 25 cts., $\frac{1}{4}$ lb. 70 cts., lb. \$2.50.

GRAND RAPIDS. Our stock of this variety is selected for uniformity and quality. This sort is the best and most popular loose-leaved Lettuce, being hardy, of quick growth and fine for greenhouse forcing. The plant is upright, carried well above the soil, and so is little liable to rot and rust. It forms loose clusters of large, thin, bright green leaves, savoyed and finely crimped and remain in condition several days. Our stock of this splendid Lettuce pleases the most critical. Oz. 15 cts., $\frac{1}{4}$ lb. 45 cts., lb. \$1.60.

ROMAINE, or COS

Trianon. The best of all the Romaine Lettuces, so we list no other. Head tall and very thick, blunt at top; leaves very light green, crimped, broad-ribbed and of a long, narrow spoon-shape; easily blanched. Oz. 15c., $\frac{1}{4}$ lb. 40 cts., lb. \$1.50.

MUSHROOM SPAWN

As we can give only a brief description of the cultural directions in this catalogue, we shall be glad to send you a copy of "Mushroom Culture" if you are at all interested. It describes in detail the conditions and care which are necessary to successfully grow a Mushroom crop.

Pure-Culture, American. Our American Pure-Culture Spawn is grown from spores taken from creamy white specimens of perfect form and mammoth size and can be depended upon, under proper conditions, to produce a similar crop. Brick 30 cts., 10 bricks \$2.50, 100 bricks \$22.

MUSTARD

FORDHOOK FANCY. Has long, slender, plume-like, finely curled leaves of a deep green color, with edges deeply cut. Very productive, and stands a long time before running to seed. Oz. 10 cts., $\frac{1}{4}$ lb. 35 cts., lb. \$1.15.

Southern Giant Curled. The leaves are large, light green, with a yellow tinge, much crimped and frilled at the edges. The plant is upright or slightly spreading in growth, very hardy, and of good quality. Oz. 10 cts., $\frac{1}{4}$ lb. 30 cts., lb. \$1.

OKRA, or GUMBO

The pods should be gathered and marketed while still young and tender, before the woody fiber develops.

Dwarf Prolific. Of dwarf, stocky growth; very early and prolific. Excellent for general crop. Oz. 5 cts., $\frac{1}{4}$ lb. 15 cts., lb. 50 cts.

PERKINS' MAMMOTH. This variety is about 3 feet high, very early and productive. Pods are deep green, very long, slender, slightly corrugated, very tender and of good quality. A fine market variety. Oz. 5 cts., $\frac{1}{4}$ lb. 15 cts., lb. 50 cts.

MUSKMELON

GREEN-FLESHED VARIETIES

Extra-Early Hackensack. An early, popular, large sort. Fruits are round, slightly flattened from stem to blossom ends. Skin is green, slightly tinged with yellow at maturity. Flesh is thick, rich green in color, juicy and of fine flavor. Oz. 10 cts., $\frac{1}{4}$ lb. 35 cts., lb. \$1.25.

Honey Dew. This variety has long been popular in the West, from whence it is shipped to eastern markets. It is distinct from ordinary sorts, both in appearance and flavor. It keeps in good condition long after ripening. Oz. 25 cts., $\frac{1}{4}$ lb. 70 cts., lb. \$2.50.

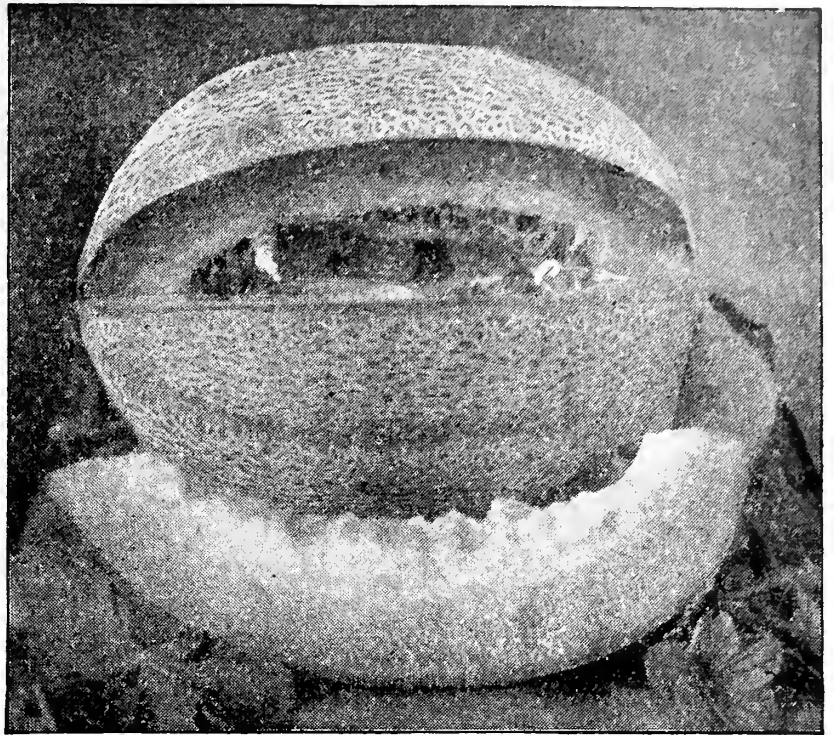
MARYLAND. A happy combination of earliness, productiveness, quality, and size. Of the Rocky Ford type, but far more productive, larger in size, and easily 10 days earlier. Vines are strong and vigorous, producing slightly oval melons of fine, regular form and size, closely netted. Skin is light golden color when mature; flesh bright green, luscious, and ripening very close to the skin. Oz. 25 cts., $\frac{1}{4}$ lb. 60 cts., lb. \$2.25.

Rocky Ford. Oz. 10 cts., $\frac{1}{4}$ lb. 30 cts., lb. \$1.

Sweet Air. An all-round melon of oval shape, very slightly ribbed, closely and finely netted. Grows to a good size and is remarkably uniform in both shape and color. The beautiful golden color of the skin makes it extremely attractive, bringing top prices on all the markets. A good shipper. Oz. 25 cts., $\frac{1}{4}$ lb. 70 cts., lb. \$2.50.

SALMON-FLESHED VARIETIES

Osage, or Miller's Cream. The vines are vigorous and productive. Fruits are oval, medium to large size, with dark green skin, slightly ribbed and covered with shallow netting. The flesh is orange-colored, deep, and of great substance, giving it a solid appearance and fine quality. Its small cavity and great solidity make it a perfect shipper. This Melon matures later than some sorts, but is always in great demand where it is known. Oz. 10 cts., $\frac{1}{4}$ lb. 35 cts., lb. \$1.25.



Maryland Muskmelon

TIP-TOP, or SURPRISE. Probably the most popular and the largest salmon-fleshed melon. In many sections it is the only sort grown. The fruits are large, nearly round, and the skin, when mature, is greenish yellow, slightly netted. The flesh is thick, delicious in quality, and it ripens clear to the rind. Where the market calls for a large, well-formed salmon-fleshed melon, this variety may be relied on to meet the most critical demand. It is a fine shipper, distinct and most attractive in appearance. Oz. 15 cts., $\frac{1}{4}$ lb. 40 cts., lb. \$1.50.

Burrell's Gem. Oz. 10 cts., $\frac{1}{4}$ lb. 30 cts., lb. \$1.

Emerald Gem. Oz. 10 cts., $\frac{1}{4}$ lb. 30 cts., lb. \$1.

WATERMELON

Colorado Preserving Citron, Green- and Red-seeded. Medium-sized, round, dark green fruits, distinctly striped and marbled with bright green. Used only for preserving. Oz. 10 cts., $\frac{1}{4}$ lb. 30 cts., lb. \$1.

EXCEL. A large, long, dark green melon very faintly striped, with a thin, tough rind, making it a wonderful shipping Melon. Flesh is red and very crisp. Rivals Tom Watson as a leader in the South. Oz. 10 cts., $\frac{1}{4}$ lb. 30 cts., lb. \$1.

Florida Favorite. A splendid long melon of very large size and excellent quality. Flesh is very deep red, sweet, and tender. A good shipper. Oz. 10 cts., $\frac{1}{4}$ lb. 30 cts., lb. \$1.

Harris' Earliest. The fruits are exceptionally large and of excellent quality for such an extra-early melon. Slightly oval, with irregularly mottled, broad stripes, of light and dark green. Flesh bright red, tender, sweet, and crisp. One of the best for northern latitudes. Oz. 10 cts., $\frac{1}{4}$ lb. 35 cts., lb. \$1.25.

Kleckley's Sweets. Vines vigorous and productive; fruits are medium to large, oblong, tapering slightly toward the stem end, dark green. The flesh is very bright, rich red and exceedingly sweet, crisp and tender. The quality of this melon is worthy of consideration. There is probably no variety grown which combines earliness, size and, above all, quality in so great a degree. Oz. 10 cts., $\frac{1}{4}$ lb. 30 cts., lb. \$1.

Sweetheart. The fruits are oval and very heavy; light green in color, with a thin, firm rind. Oz. 10 cts., $\frac{1}{4}$ lb. 30 cts., lb. \$1.

TOM WATSON. An exceptional shipping variety, owing to its tough rind. Grows very large, long melons of dark green color; very attractive and fine keeper. Flesh a rich red, sweet, tender, and crisp. Vines are very vigorous and productive. It produces an enormous crop of handsome melons which are uniform in size, shape, and quality. Oz. 10 cts., $\frac{1}{4}$ lb. 30 cts., lb. \$1.

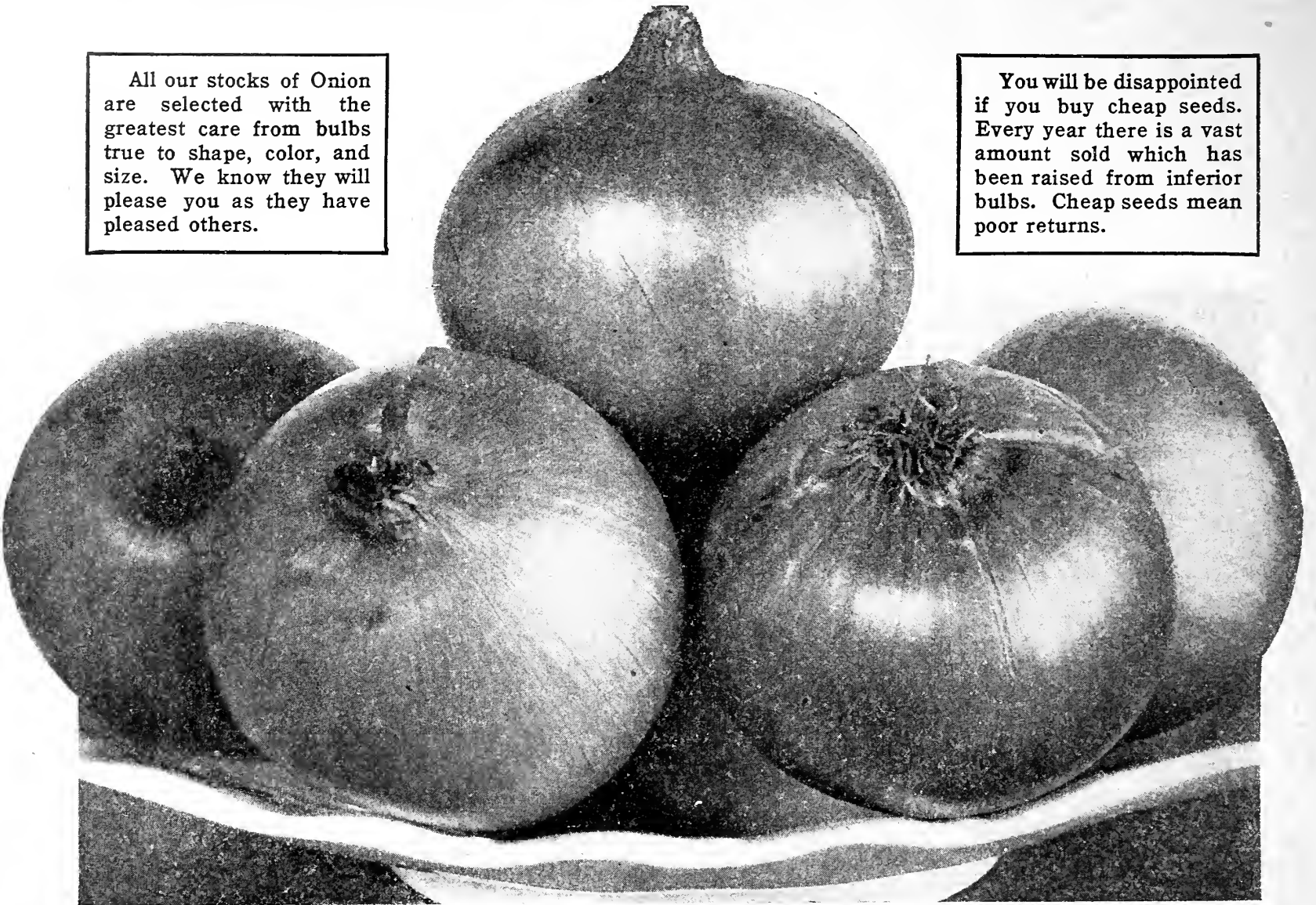
Gardeners who have not yet favored us with a share of their orders should know that our house has been established for nearly a quarter of a century.

During that time our business has grown to be safe, strong, and reliable. Our market garden department has made most satisfactory growth.

We can ask you for a share of your business with the greatest confidence, feeling sure that if you favor us with a trial order, we will add your name to our nation-wide list of satisfied customers.

All our stocks of Onion are selected with the greatest care from bulbs true to shape, color, and size. We know they will please you as they have pleased others.

You will be disappointed if you buy cheap seeds. Every year there is a vast amount sold which has been raised from inferior bulbs. Cheap seeds mean poor returns.



Selected Yellow Globe Danvers Onion

ONION

WHITE VARIETIES

Mammoth Silver King. This is the largest flat white Onion grown, often 4 to 5 inches across. Skin silvery white; flesh white, tender and mild flavored. A good summer Onion. Oz. 40 cts., $\frac{1}{4}$ lb. \$1.10, lb. \$4.

SOUTHPORT WHITE GLOBE. The finest of all white Onions. A good shipper and keeper. Our stock has the true globe shape, full at the base and shoulder. Crops raised from our seed have given excellent results to others; they will do the same for you. Oz. 30 cts., $\frac{1}{4}$ lb. 85 cts., lb. \$3.

White Bunch. The earliest and best shaped Onion for early bunching; small bulbs, skin pearly-white, flesh of good quality and flavor. Gives best results when used as an early crop. Oz. 40 cts., $\frac{1}{4}$ lb. \$1.10, lb. \$4.

WHITE PORTUGAL, or SILVER SKIN. An extremely popular and fine white sort for sets, or bunching when young. Mature bulbs are of medium size, flattened-globe-shape, of mild flavor and beautiful silver-white skin. For use during summer and early fall it cannot be excelled. Oz. 30c., $\frac{1}{4}$ lb. 85c., lb. \$3.

White Queen. A very early, very white, clean-skinned variety used for bunching when young. Oz. 40 cts., $\frac{1}{4}$ lb. \$1.10, lb. \$4.

White Welsh. A perennial sort which forms many small, slim Onions, used only to bunch for salad. The summer crop is sown in spring. To carry over winter for spring crop, it should be sown in furrows 4 inches deep and the soil leveled up as the plants grow. This bleaches a longer portion of the stem and affords good winter protection. Oz. 40 cts., $\frac{1}{4}$ lb. \$1.10, lb. \$4.

See page 15 for our strains of Connecticut Southport Globe Onions

YELLOW VARIETIES

Michigan, or Ohio Yellow Globe. A variety specially suited for muck soils. Bulbs are large, globe-shaped, with flattened base, small-necked, with slightly less slope to the shoulder than the Southport Globes. The skin is a rich yellow, tinged with orange; flesh is creamy white, mild and of fine quality. This main crop variety is fine for shipping, keeps well, and ripens uniformly. Our stock is superfine, and is well worth the attention of all market-gardeners. Oz. 25 cts., $\frac{1}{4}$ lb. 60 cts., lb. \$2.25.

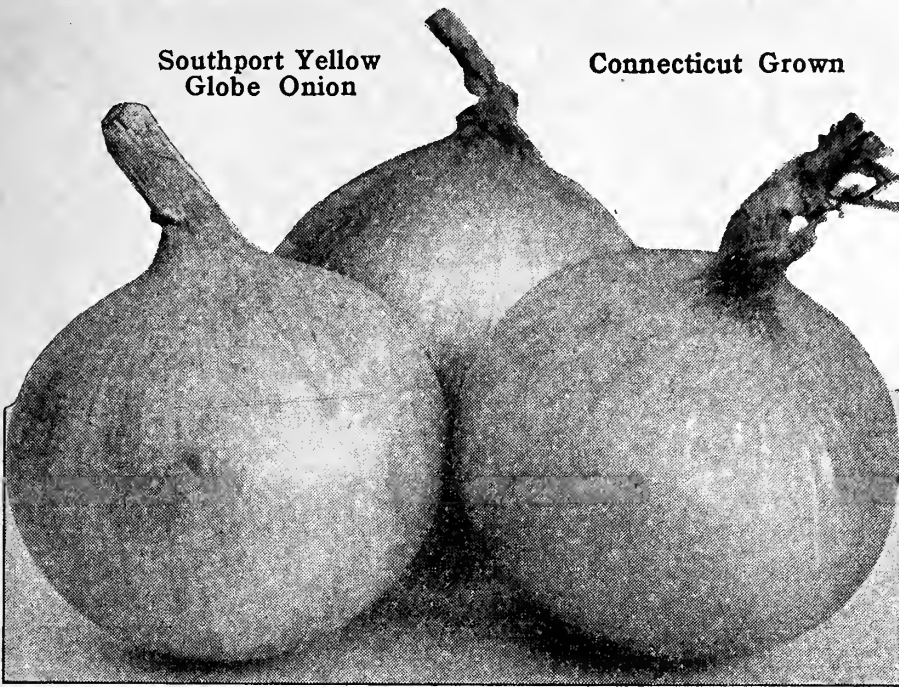
Prizetaker. A very handsome late or main crop Onion of the largest size and nearly globular in form, sloping slightly at the shoulder and base. Skin is yellowish-brown. Flesh is creamy-white, very mild, and of fine flavor. Oz. 30 cts., $\frac{1}{4}$ lb. 85 cts., lb. \$3.

SELECTED YELLOW GLOBE DANVERS. By very careful selection and breeding we have developed a strain of this fine, main crop Onion which has retained the small neck and the uniformity of ripening, without yielding any of the good features of the original strain. We have, in addition, improved the shape to a perfect globe, and brought the stock to the utmost perfection and uniformity. The bulbs, of medium to large size, are uniformly globe-shaped, with small neck; ripen evenly and are of a rich, coppery-yellow color. The flesh is creamy-white, crisp, solid, and of mild and excellent flavor. An excellent keeper, and a very fine shipping Onion. Oz. 25 cts., $\frac{1}{4}$ lb. 70 cts., lb. \$2.50.

SOUTHPORT YELLOW GLOBE. The bulbs are large, globe-shaped, with rather full shoulder, of a rich yellow color; ripens down evenly; good keeper and shipper. Flesh is creamy white, fine-grained, and of excellent flavor. Very hardy and extremely productive. Oz. 25c., $\frac{1}{4}$ lb. 70 cts., lb. \$2.50.

Southport Yellow
Globe Onion

Connecticut Grown



Yellow Dutch, or Strasburg. Bulbs are large and quite flat, of a straw-yellow color. Flesh is creamy white, mild, and of fine quality. Extensively used for sets. Oz. 20 cts., $\frac{1}{4}$ lb. 55 cts., lb. \$2.

Yellow Globe Danvers. The standard variety for main crop. Bulbs are globe-shaped, slightly flattened; of good size and rich, copper-yellow color. Flesh is creamy-white, crisp, solid and mild, and of good flavor. Widely known for its excellent keeping and fine shipping qualities. Oz. 20 cts., $\frac{1}{4}$ lb. 50 cts., lb. \$1.75.

Connecticut-Grown Southport Globe Onions

Until about twenty-five years ago, the great bulk of American Onion Seed was grown in Connecticut. Competition from California and other western states has greatly limited the output from that state, so that the supply is always more or less uncertain. As usual, we have secured a liberal supply of this seed from the best and oldest growers. It costs more to produce, but the better selection which comes from generations of experience makes it worth much more than the little extra charge we make for it. There are no better Onions to be had, in the United States or elsewhere, than those you can raise from our Connecticut-grown seed.

Southport Red Globe. Oz. 35 cts.,
 $\frac{1}{4}$ lb. 95 cts., lb. \$3.50.

Southport White Globe. Oz. 45 cts.,
 $\frac{1}{4}$ lb. \$1.25, lb. \$4.50.

Southport Yellow Globe. Oz. 35 cts.,
 $\frac{1}{4}$ lb. 95 cts., lb. \$3.50.

RED ONIONS

Extra-Early Flat Red. Bulb flat, about 3 inches in diameter and about $\frac{3}{4}$ inch thick; of a coppery, red color. This is the earliest of the red Onions to ripen, and the firm bulbs keep remarkably well. Hardy, very uniform in size and color, and of moderately strong flavor. Close-grained flesh is white, tinged with light purple. Oz. 25 cts., $\frac{1}{4}$ lb. 60 cts., lb. \$2.25.

LARGE RED WETHERSFIELD. A very popular, standard variety with handsome, large, bright purplish red bulbs. Flesh is firm, purplish white, pleasant but rather strongly flavored. It is a medium early or main crop sort, very productive, and one of the best keepers. Oz. 25 cts., $\frac{1}{4}$ lb. 70 cts., lb. \$2.50.

Southport Red Globe. This most excellent main crop Onion produces medium to large sized perfect globe-shaped bulbs, with small neck, smooth and glossy, and of deep, purplish-red color. Flesh is white, tinged with light purple, fairly mild, fine-grained and tender; one of the best keepers and fine for shipping. Oz. 25 cts., $\frac{1}{4}$ lb. 70 cts., lb. \$2.50.

ONION SETS: Red, Yellow, and White. We will be glad to submit prices and samples of Onion Sets on application.

PARSLEY

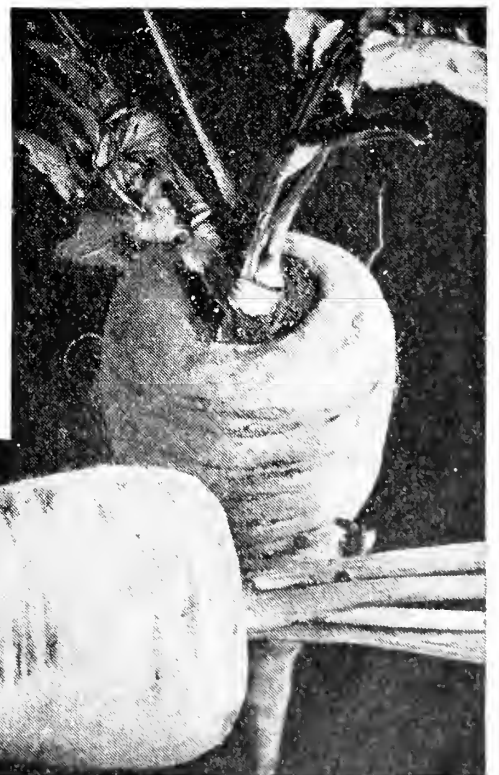
Champion Moss Curled. A compact-growing, densely curled selection. Our stock is very popular owing to the very dark green color, strong stems, and extreme uniformity. Oz. 10 cts., $\frac{1}{4}$ lb. 25 cts., lb. 80 cts.

Hamburg, or Parsnip-rooted. This variety is grown for the roots, which mature early, are short, thick and in appearance like a parsnip, although smaller. Flesh is white, a little dry and flavored somewhat like parsnips. Oz. 10 cts., $\frac{1}{4}$ lb. 30 cts., lb. \$1.

SELECTED EXTRA-DOUBLE CURLED. This excellent strain is very vigorous, growing short, stiff stems, with compact, finely cut, very densely curled leaves of an extremely dark green color. Oz. 10 cts., $\frac{1}{4}$ lb. 25 cts., lb. 80 cts.

PARSNIP

Ideal Hollow Crown. The smooth white roots are 12 inches long, uniform in shape, tapering from a heavy shoulder to a small root. An excellent stock for the market-gardener. $\frac{1}{4}$ lb. 30 cts., lb. \$1.



Our Parsnip
seed is the
f i n e s t
F r e n c h
s t o c k p r o -
c u r a b l e ;
p e r f e c t i n
c o l o r a n d
s h a p e

Ideal Hollow Crown Parsnip

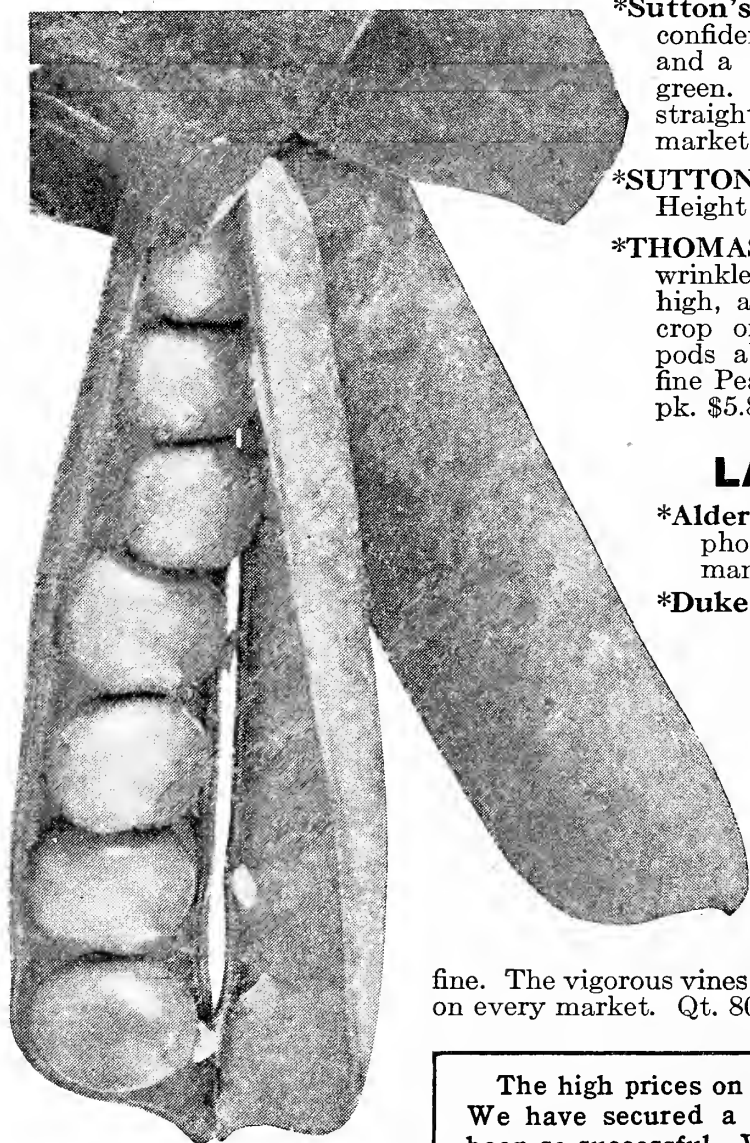
PEAS, EARLY VARIETIES

Please take note that we do not charge extra for bags or containers. We will prepay your order by mail, express or freight, at our option, if it amounts to \$10 or over, and at least half the order consists of Garden Seeds other than Peas, Beans and Corn.

Wrinkled varieties are marked with an asterisk (*)

- Alaska, or Earliest of All.** A productive, small-podded, and early sort, grown generally for first crop. The vines are 2½ to 3 feet high. Pods are light green, about 2½ inches long, straight, round, blunt-ended, and well filled with small, smooth, blue-green peas of good flavor. This Pea matures its entire crop at one time, and on this account is invaluable to the market gardener. Qt. 55c., pk. \$3.85, bus. \$14.
- Ameer, or Large-podded Alaska.** This fine variety is rapidly becoming more popular with the trucker who wants a large-podding Pea of the Alaska type. The crop ripens about 3 days later than Alaska, and uniformly. Qt. 55 cts., pk. \$3.85, bus. \$14.
- *Blue Bantam.** This dwarf, extra-early, wrinkled Pea combines extreme earliness, superb quality, and unusual productiveness, growing a very large pod for such a dwarf Pea. Vines average 15 inches in height, are very vigorous, and carry enormous crops of large, deep bluish green pods. The pointed pods are 4 to 4½ inches long, smooth, and packed tightly with 8 to 10 extra-large, deep, bluish green Peas of a most luscious flavor. Qt. 80 cts., pk. \$5.85, bus. \$22.
- *GRADUS, or PROSPERITY.** An extremely early large-podded wrinkled variety which matures only a day or two later than the dwarf round-seeded, small-podded Extra-Earlies. Its great value lies in its combination of earliness, size, and quality. The vines grow 3 feet high. The pods are long, straight, slightly curved at the tip, and contain 6 to 8 large Peas of splendid quality and medium green color. The appearance and quality of this Pea insure a large demand and ready sale at high prices. Qt. 80 cts., pk. \$5.85, bus. \$22.
- *Laxtonian.** This handsome, large-podding variety has made a remarkable impression on the market gardeners of this country. The dwarf, dark green vines are very vigorous, sturdy and productive; the pods are 4 inches long, curving very slightly to the point. The quality is unsurpassed. Qt. 80 cts., pk. \$5.85, bus. \$22.
- *Little Marvel.** This variety is very well named. The vines are of dwarf, even growth. They are sturdy, and are heavily set with straight, square-ended, nearly round, deep green pods, 3 inches long and well filled with 6 to 7 quite large, dark green Peas. The quality is particularly fine. Qt. 80 cts., pk. \$5.85, bus. \$22.
- *MARCHIONESS.** On the order of Gradus, but earlier. Vine and foliage moderately heavy and medium green in color; pods a shade darker, 3½ inches long, semi-round, straight and pointed, containing 7 medium dark green Peas; quality and productiveness equal to Gradus. Qt. 80 cts., pk. \$5.85, bus. \$22.
- *Nott's Excelsior.** This splendid early Pea has robust, vigorous vines, dwarf and uniform in growth, and is a very heavy yielder. Usually ready in 40 to 45 days. Qt. 80 cts., pk. \$5.85, bus. \$22.
- Prolific Early Market.** A smooth, white-seeded variety, extra-early, bearing pods about 2¾ inches long; light green in color. Height of vines, 2½ to 3 feet. Qt. 55 cts., pk. \$4.10, bus. \$15.

Remember that we do not charge you for bags and other containers



Thomas Laxton Pea

***Sutton's Excelsior.** A wrinkled second-early which we most confidently recommend. The vines are exceedingly productive, and a little later than Nott's Excelsior and foliage is lighter green. The pods are 3 to 3¼ inches long and very broad, straight, and well filled to the end. A standard variety for market gardeners. Qt. 80 cts., pk. \$5.85, bus. \$22.

***SUTTON'S IDEAL.** A new English variety of much merit. Height 2½ feet. Qt. 80 cts., pk. \$5.85, bus. \$22.

***THOMAS LAXTON.** An exceptionally good, extra-early wrinkled Pea of great merit. Vines grow from 2½ to 3 feet high, and have vigorous, hardy constitution. It grows a heavy crop of straight, nearly round, square-ended, medium green pods about 3¼ inches long and literally packed with 7 to 8 fine Peas of rich flavor and medium green color. Qt. 80 cts., pk. \$5.85, bus. \$22.

LATE, or MAIN CROP VARIETIES

***Alderman.** This is one of the very best varieties of the Telephone type, which it closely resembles, but is preferred by many of our customers. Qt. 80 cts., pk. \$5.85, bus. \$22.

***Duke of Albany, or American Champion.** Similar to Telephone; the pods are a little larger and produced in greater abundance. The vines are 3½ to 4 feet high, with medium green colored foliage and dark green pods 4¾ inches long, broad, pointed, straight, though slightly curved at the tip and containing 9 medium green Peas. Its productiveness, size and color make it a profitable Pea for the market gardener. Qt. 80 cts., pk. \$5.85, bus. \$22.

***PRINCE EDWARD.** One of the best of the large, dark podded Telephone types, and one of the most productive. Crop failed.

***Telephone.** Our stock of this well-known variety is fine. The vigorous vines produce a heavy crop of dark green pods which are popular on every market. Qt. 80 cts., pk. \$5.85, bus. \$22.

The high prices on Peas are owing to another disastrous failure in the crop. We have secured a fair supply of most varieties; with others, we have not been so successful. We urge you to place your order early.

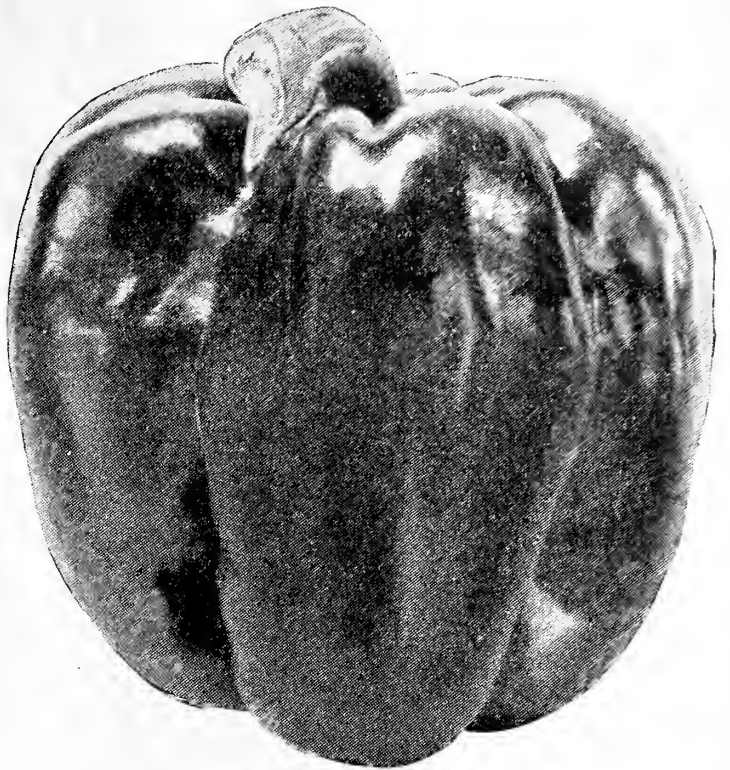
PEPPER

Chinese Giant. An exceedingly large mild Pepper. The plants are vigorous but stocky, about 2 feet high, well branched and thickly set with fruits. The fruits are blocky in form, 4 to 5 inches broad at the top and of equal length, divided into four or more large ridges of a most brilliant glossy scarlet color, and extremely mild in flavor. Oz. 80 cts., $\frac{1}{4}$ lb. \$2.20, lb. \$8.

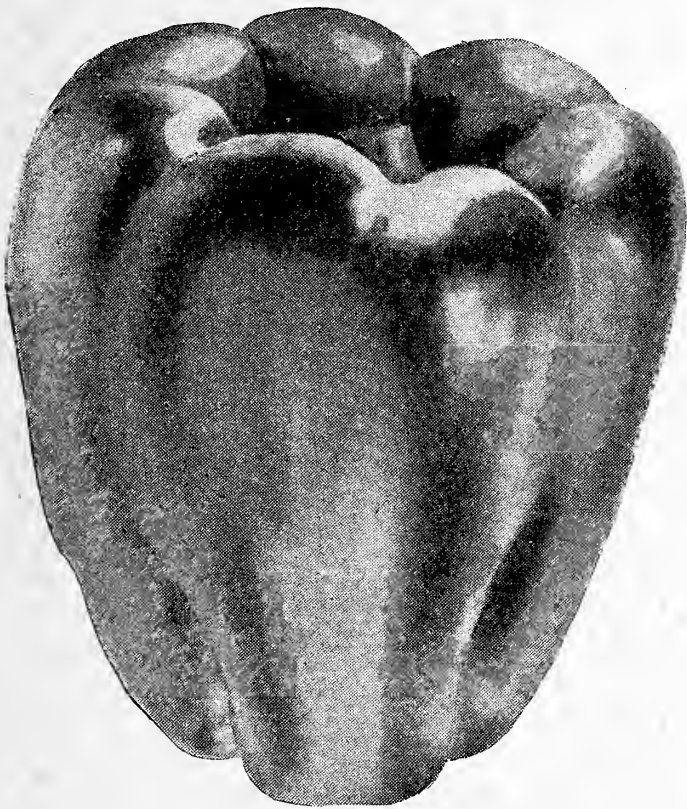
CRIMSON GIANT, or Ohio Crimson. One of the very best large-sized Peppers. It is of similar shape to Bull Nose but much larger; averaging $4\frac{1}{2}$ inches long and $3\frac{1}{2}$ inches across the top. Flesh is thick, firm and exceptionally mild and sweet. Plants are $2\frac{1}{2}$ to 3 feet high, and very productive. The fruit is deep green when young, deep crimson when matured. Oz. 75 cts., $\frac{1}{4}$ lb. \$2.10, lb. \$7.50.

Half-Long Hot. Shaped like a miniature cow-horn 4 inches long, thicker and longer than Cayenne, of a beautiful deep crimson color and fiery hot flavor. Plants are sturdy, $2\frac{1}{2}$ to 3 feet high and very productive. Oz. 80 cts., $\frac{1}{4}$ lb. \$2.20, lb. \$8.

LARGE BELL, or BULL NOSE. Fruits are large, about 3 inches long and 3 inches across the top, with very thick flesh of excellent quality. Our strain of this standard variety is fine and medium hot, a great favorite with all market-gardeners, as it produces a heavier crop than any other large fruited sort. Oz. 60 cts., $\frac{1}{4}$ lb. \$1.65, lb. \$6.



Crimson Giant Pepper



Ruby Giant Pepper

Neapolitan. The best of the early large, red, mild Peppers. Plants are laden with handsome Peppers about 4 inches long and 2 inches in diameter, irregularly tapering from the shoulder. It is very early and will continue to bear throughout the season. Fruits are green when young, a glossy red when ripe; flesh is solid and extremely mild. Oz. 60c., $\frac{1}{4}$ lb. \$1.65, lb. \$6.

Red Squash, or Tomato-shaped. Fruit small, flat, glossy dark red; early; very productive; thick fleshed and sweet. Our own special strain, far superior to ordinary stocks. Oz. 80 cts., $\frac{1}{4}$ lb. \$2.20, lb. \$8.

RUBY GIANT. This is a cross between the Chinese Giant and Ruby King. The fruits are $4\frac{1}{2}$ inches long and $3\frac{1}{2}$ to 4 inches wide at the thick end, of shape similar to Chinese Giant. The flesh is very thick, mild, and sweet in flavor. Color deep green when young, brilliant ruby-scarlet when ripe. Oz. 75 cts., $\frac{1}{4}$ lb. \$2.10, lb. \$7.50.

RUBY KING. A very attractive, well-known variety. Fruits are 4 to 5 inches long of a deep green color when young and bright red when ripe. Flesh is thick, mild, and sweet. Oz. 70 cts., $\frac{1}{4}$ lb. \$1.90, lb. \$7.

Sunburst (Yellow). The best large-fruited yellow Pepper yet introduced. Fruits resemble Bull Nose in size and shape, but are bright yellow when ripe, thick-fleshed, and mild. Oz. \$1, $\frac{1}{4}$ lb. \$2.75, lb. \$10.

PUMPKIN

CONNECTICUT FIELD. A very productive, large, orange-colored field Pumpkin; a little deeper than round and slightly flattened. Extensively grown between corn for stock-feeding; it also makes good pies. Flesh is deep rich yellow, fine-grained, and highly flavored. Will keep well if properly stored. Oz. 10c., $\frac{1}{4}$ lb. 30 cts., lb. \$1.

King of the Mammoths, or Jumbo. This variety is well named, being the largest of all Pumpkins, sometimes 2 feet in diameter and weighing 200 pounds. The shape is flattened-round, skin light salmon-orange colored and very thick, slightly rough; the flesh is bright yellow, fine grained and of very good quality. This is a fine variety for stock-feeding, and is also good for cooking. Oz. 20 cts., $\frac{1}{4}$ lb. 50 cts., lb. \$1.75.

Large Cheese, or Kentucky Field. The fruits are large flattened-round, the diameter being twice the thickness from top to bottom. The skin is mottled light green and yellow, changing to creamy yellow when mature. Flesh is yellow, tender, and of excellent quality. Oz. 10 cts., $\frac{1}{4}$ lb. 35 cts., lb. \$1.25.

Pie, or Winter Luxury. The fruits are of medium size and nearly round. The skin is light yellow, smooth and covered with a fine russet netting. Flesh is light yellow, very thick, sweet and finely flavored. This variety makes fine pies. Oz. 10c., $\frac{1}{4}$ lb. 35 cts., lb. \$1.25.

Small Sugar, or New England Pie. This variety is small, round, somewhat flattened, 8 to 10 inches in diameter, slightly ribbed, and of a deep orange color. The flesh is a rich deep yellow, fine grained and very sweet. Oz. 10 cts., $\frac{1}{4}$ lb. 35 cts., lb. \$1.25.

RADISH

EARLY ROUND or TURNIP-SHAPED

BRIGHT RED FORCING. An excellent extra-early forcing variety; small, nearly round and of bright scarlet color. Tops are very small. Flesh white, crisp, and finely flavored. Matures in 20 days. Our strain is clean and fine. $\frac{1}{4}$ lb. 30 cts., lb. \$1.

Crimson Giant. Early, nearly globe-shaped; very large and a good keeper. Skin is fine crimson; flesh pure white and of excellent quality. Matures quickly. $\frac{1}{4}$ lb. 30 cts., lb. \$1.10.

EARLY SCARLET GLOBE. This Radish is a little longer than round, a rich bright scarlet in color with tiny thread-like roots. The flesh is white, tender and crisp. Has a very small top and we recommend it as one of the best forcing varieties. A fine early outdoor Radish for market. $\frac{1}{4}$ lb. 30 cts., lb. \$1, 25 lbs. and over, 95 cts. per lb.

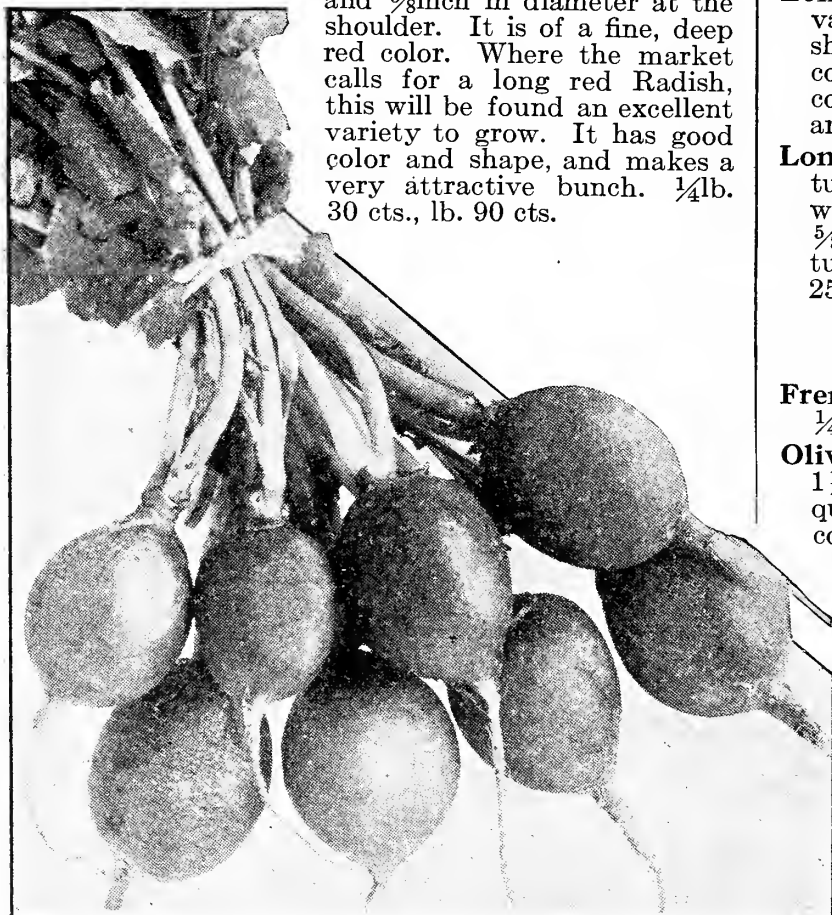
Early Scarlet Turnip. A rich scarlet-red Radish, round, turnip-shaped, with small top. Flesh is white, crisp and tender and of mild flavor. This Radish is of very rapid growth and a standard variety for bunching. $\frac{1}{4}$ lb. 25 cts., lb. 80 cts.

EARLY SCARLET TURNIP, WHITE TIPPED. A very excellent variety and deservedly a great favorite with market gardeners for early planting outdoors. It is medium sized, nearly round, being very slightly flattened on the under side; color is a bright rose-carmine scarlet, with a distinct white tip. Flesh is white and of best quality. $\frac{1}{4}$ lb. 25 cts., lb. 80 cts., 25 lbs. and over, 75 cts. per lb.

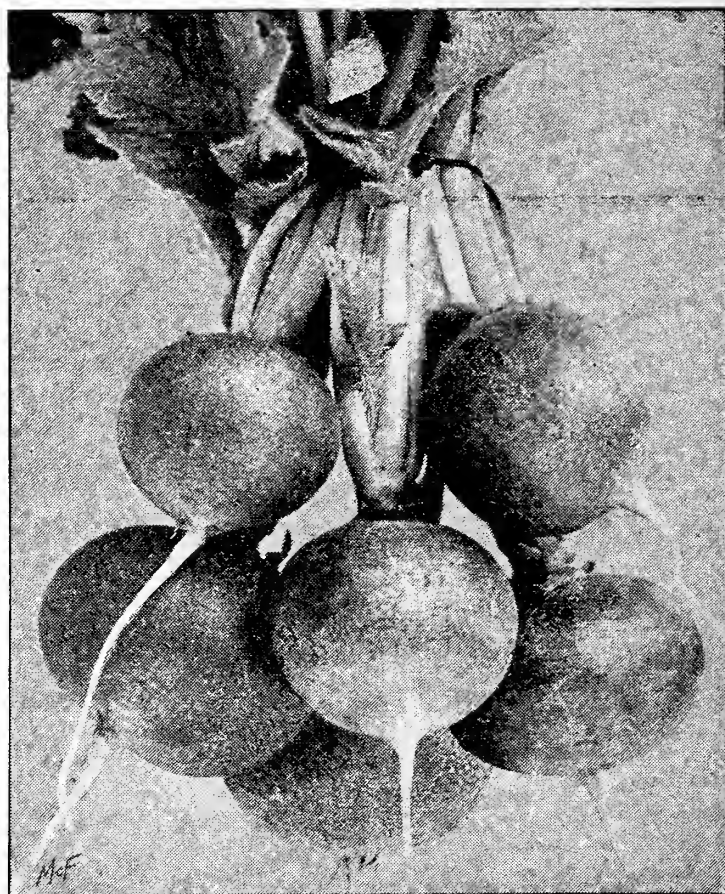
Philadelphia White Box. A very fine early Radish, round, slightly flattened, and of a beautiful white color. It has a medium top, matures early and is grown extensively both under sash and outdoors. Our stock is excellent. $\frac{1}{4}$ lb. 30 cts., lb. 90 cts.

EARLY LONG VARIETIES

Cincinnati Market. This fine market variety has long, smooth, slender, uniform, tapering roots about 6 to 7 inches long when mature, and $\frac{5}{8}$ inch in diameter at the shoulder. It is of a fine, deep red color. Where the market calls for a long red Radish, this will be found an excellent variety to grow. It has good color and shape, and makes a very attractive bunch. $\frac{1}{4}$ lb. 30 cts., lb. 90 cts.



Early Scarlet Globe Radish



Bright Red Forcing Radish

EARLY LONG VARIETIES, continued

ICICLE. A beautiful waxy white, long-rooted Radish, gradually tapering down from the shoulder which is about $\frac{5}{8}$ inch in diameter. The roots are usually 5 or 6 inches long and have small tops. This is the earliest of the long-rooted early summer white sorts, desirable for outdoor planting and for forcing. Flesh is crisp and tender. $\frac{1}{4}$ lb. 30 cts., lb. \$1.10.

Long Scarlet Short-Top. One of the best of the long varieties. The roots are smooth, slender, uniform in shape and of a very attractive bright carmine-red color. They grow about one-third out of ground and continue crisp and tender until mature, when they are about 6 inches long. $\frac{1}{4}$ lb. 25 cts., lb. 80 cts.

Long White Vienna, or Lady Finger. An early maturing Radish with medium tops. Roots are clear white, slender, smooth, about 6 to 7 inches long and $\frac{5}{8}$ to $\frac{7}{8}$ inch in diameter at thickest part when mature. Flesh crisp, tender and mild. Matures in about 25 days. $\frac{1}{4}$ lb. 30 cts., lb. 90 cts.

EARLY OLIVE-SHAPED VARIETIES

French Breakfast. Oval-shaped, with white tips. $\frac{1}{4}$ lb. 25 cts., lb. 80 cts.

Olive-shaped Golden Yellow. The roots are about $1\frac{1}{2}$ inches long and 1 inch in diameter. Matures quickly, has small tops, and resists heat well. The color is golden yellow. $\frac{1}{4}$ lb. 30 cts., lb. \$1.

Olive-shaped Scarlet. $\frac{1}{4}$ lb. 30 cts., lb. 90 cts.

OUR EXPERIENCE IS YOUR PROTECTION

We do not handle cheap seeds. Not only are our stocks grown by the best experts in the trade, but they are afterward tested and critically watched by men of life-long experience. Your crop means too much to you to waste your money and labor on poor seeds.

RADISH

SUMMER AND AUTUMN VARIETIES

Chartier, or Shepherd. A fine long, slender summer sort; the root is of a light crimson color, fading to white at tip. The flesh is white, crisp, and delicious, remaining in a good condition for a long time. $\frac{1}{4}$ lb. 25 cts., lb. 80 cts.

Giant White Stuttgart (Giant White Summer). A large turnip-shaped white Summer Radish, 4 inches in diameter, and a fine keeper. Matures in 6 to 8 weeks. Flesh is white and crisp. $\frac{1}{4}$ lb. 30 cts., lb. \$1.

WHITE STRASBURG. The roots are of a very much elongated turnip shape, 4 to 6 inches long and $1\frac{1}{2}$ to 2 inches in diameter when mature. Thick at the shoulder and roundly tapering. Flesh crisp, solid, and fine. One of the best late summer sorts. $\frac{1}{4}$ lb. 30 cts., lb. 90 cts.

Yellow Summer Turnip. A good-sized, round summer variety of fine quality, solid, crisp but best used when young. The skin is a bronzy-yellow color, and becomes slightly roughened when matured. Flesh white and crisp. Crop failed.

WINTER VARIETIES

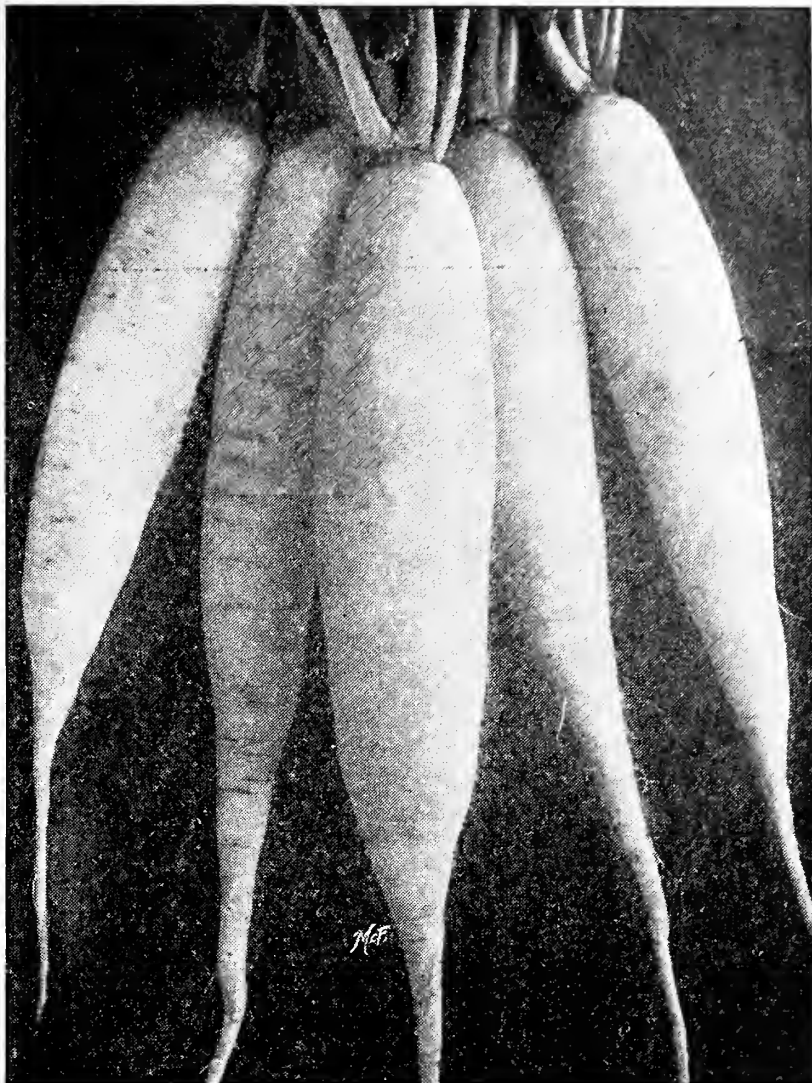
Celestial, or Chinese Winter. A very large, white, cylindrical-shaped smooth Radish often growing 12 inches long. Roots average 8 inches long but is used when smaller. Beautiful white skin; flesh pure white, compact and crisp. $\frac{1}{4}$ lb. 30 cts., lb. \$1.

Half-Long Black Spanish. Roots with grayish-black skin, 5 inches long and 3 inches in diameter, rounding out from the top and gradually decreasing in diameter to a half-long point. Flesh is white, crisp, and somewhat pungent. $\frac{1}{4}$ lb. 35 cts., lb. \$1.15.

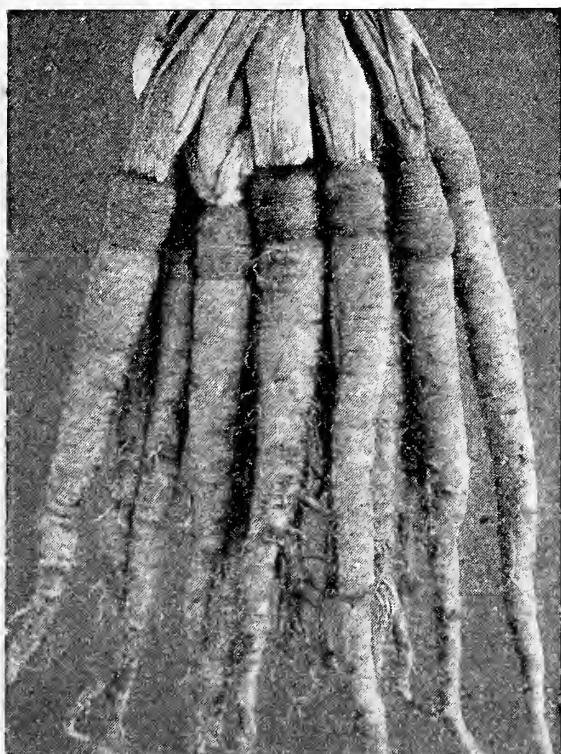
Long Black Spanish. A very late, hardy, long sort. The roots are 7 to 9 inches long and 2 to 3 inches in diameter at thickest part, gradually tapering to a point, almost black and somewhat wrinkled. Flesh is white, firm, very pungent, and of fine flavor. $\frac{1}{4}$ lb. 35 cts., lb. \$1.15.

Rose China, Winter. Cylindrical roots, slightly heavier at the lower end, blunt at both ends, about 5 inches long and 2 inches in diameter. Skin carmine, flesh white, crisp, firm, and pungent. $\frac{1}{4}$ lb. 30 cts., lb. \$1.

ROUND BLACK SPANISH. Roots are round, slightly top-shaped, 3 to 4 inches in diameter and about 3 inches long. Skin black, flesh white, firm and very pungent. but finely flavored. This variety keeps well through the winter. $\frac{1}{4}$ lb. 30 cts., lb. \$1.



Icicle Radish (see page 18)



Mammoth Sandwich Island Salsify

RHUBARB

Seed. Our stock of Rhubarb is saved from selected plants of the Linnæus, Victoria, and other sorts, but, like seed from fruit trees and potatoes, Rhubarb seed cannot be depended on to reproduce the same varieties. Oz. 15 cts., $\frac{1}{4}$ lb. 40 cts., lb. \$1.50.

Roots. Reliable standard variety. \$8 per 100, \$75 per 1,000.

SALSIFY

Mammoth Sandwich Island. This variety is a valuable improvement over the ordinary type, producing larger, thicker and white, tapering, smooth roots. Leaves larger and greener. The most popular sort with the market-gardener. Oz. 15 cts., $\frac{1}{4}$ lb. 40 cts., lb. \$1.50.

SORREL

Large French Broad-leaved. The best of the garden Sorrels. Large, pale green leaves of mild, acid flavor; esteemed as a salad; also cooked as greens, etc. Oz. 15 cts., $\frac{1}{4}$ lb. 40 cts., lb. \$1.50.

In addition to the seeds offered in this catalogue, we carry a full line of Grasses, Field Corn, and other Farm Seeds. It will pay you to write us for prices.

SPINACH

Belgian Evergreen Long-standing. A late variety, very desirable for spring and summer sowings. Leaves medium-sized, well-rounded, somewhat smooth, and produced close to the ground. Withstands hot, dry weather and is very slow to run to seed. $\frac{1}{4}$ lb. 15 cts., lb. 50 cts.

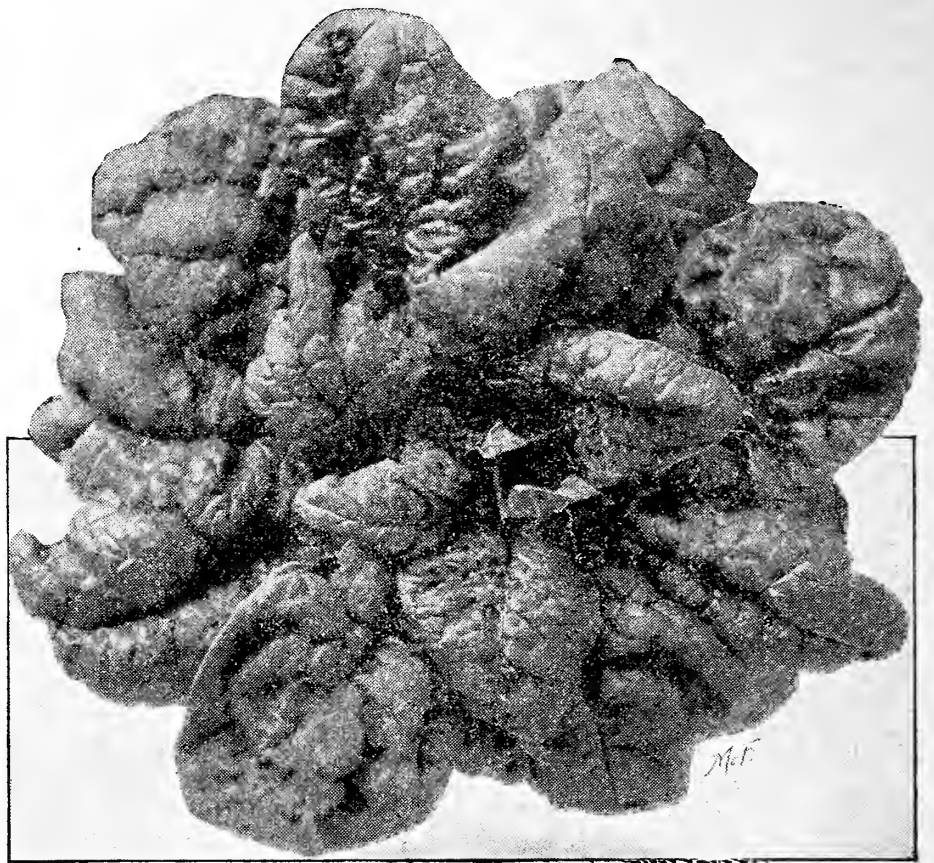
BLOOMSDALE, or NORFOLK SAVOY-LEAVED. Best for fall, but if sown very early in the spring will produce a good crop. This early, productive variety produces large, glossy, dark green leaves, crumpled or blistered, very thick and of great substance. The most largely grown Spinach on the market. Has a tendency to bolt to seed in warm weather. $\frac{1}{4}$ lb. 15 cts., lb. 40 cts.; in 100-lb. lots, 35 cts. per lb.

Long Season. An excellent second-early variety growing close to the ground, very dark green, thick, somewhat crumpled leaves, and short, fleshy stems. Does not readily crush. Will keep in salable condition for a long time. $\frac{1}{4}$ lb. 25 cts., lb. 80 cts.; in 100-lb. lots, 75 cts. per lb.

ROUND-LEAVED WINTER. An excellent variety with round, thick leaves, and growing close to the ground. $\frac{1}{4}$ lb. 15 cts., lb. 40 cts.; in 100-lb. lots, 35c. per lb.

New Zealand. Differs from any of the true Spinach varieties. Thrives in hot weather and on any soil, rich or poor. The plant is of large spreading habit, with comparatively small, broad, pointed leaves. The tender shoots can be cut throughout the summer and are of good quality. Oz. 10 cts., $\frac{1}{4}$ lb. 30 cts., lb. \$1.

Triumph. Compact in habit of growth, dark green leaves, densely and deeply crumpled. Stands up well in summer. $\frac{1}{4}$ lb. 25 cts., lb. 75 cts.



Long Season Spinach

Victoria. A low-growing variety, forming, flat on the soil a rosette of exceedingly thick, dark green, glazed, much-crumpled leaves. Good for either spring or fall sowing and stands long before going to seed. $\frac{1}{4}$ lb. 15c., lb. 45 cts.; in 100-lb. lots, 40 cts. per lb.

VIROFLAY, GIANT THICK-LEAVED. A large-growing, early variety with very thick, large, somewhat crumpled leaves of dark green color. A fine variety for both fall and spring sowing. A rapid grower. $\frac{1}{4}$ lb. 15 cts., lb. 40 cts.; in 100-lb. lots, 35 cts. per lb.

SQUASH, SUMMER VARIETIES

COCOZELLE, or ITALIAN VEGETABLE MARROW. The dwarf bushes of this fine variety produce large, very elongated, slightly curved, smooth dark green fruits which when mature become marbled with yellow and lighter green stripes. Fruits are best when 6 to 8 inches long. The flesh is very tender, marrowy, and delicious. Oz. 20 cts., $\frac{1}{4}$ lb. 55 cts., lb. \$2.

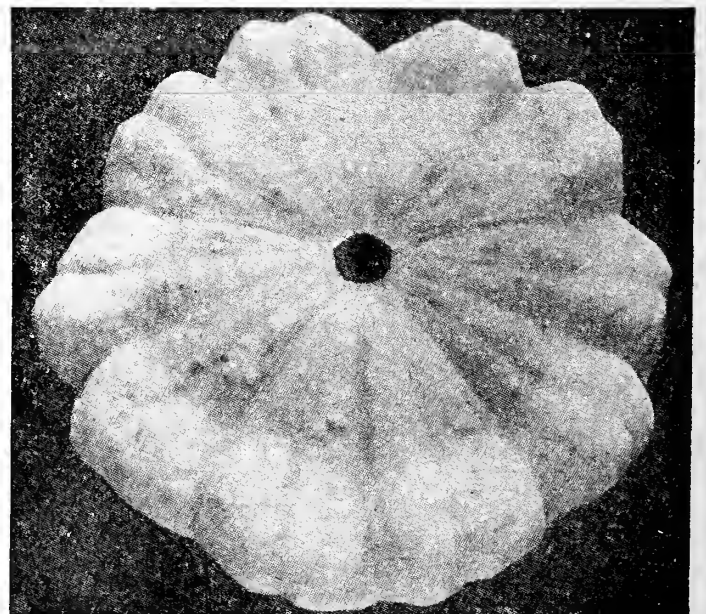
Farr's White Bush. An extremely early variety. The shape is somewhat flattened, with rounded bottom and flattish warted top. The color is a beautiful yellowish-green and decidedly attractive. The extreme earliness, uniformity of size and shape, and the wonderful color of this Squash have made it extremely popular and much in demand wherever it is grown. Oz. 25 cts., $\frac{1}{4}$ lb. 70 cts., lb. \$2.50.

MAMMOTH SUMMER CROOKNECK. A fine early variety of the Crookneck type, with vines of bush habit, large and vigorous. The fruits, when mature, are often $1\frac{1}{2}$ to 2 feet long, with an exceedingly warted golden yellow surface. Our stock has been selected for uniformity in size, shape and color, and is very attractive in appearance. Oz. 15 cts., $\frac{1}{4}$ lb. 40 cts., lb. \$1.50.

White Bush Scalloped, or Patty Pan. This is the well-known, early, somewhat flattened, scalloped bush Squash of medium size. The color is creamy white; slightly warted surface. The vines are vigorous and very productive. A very popular variety. Oz. 10 cts., $\frac{1}{4}$ lb. 30 cts., lb. \$1.



Mammoth Summer Crookneck Squash



White Bush Scalloped Squash

SQUASH, WINTER VARIETIES

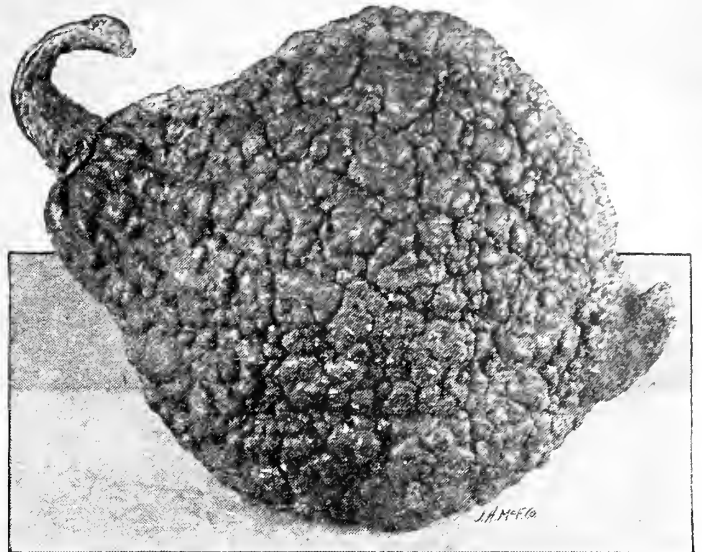
Boston Marrow. A good fall and winter Squash. Skin orange-yellow. Oz. 10 cts., $\frac{1}{4}$ lb. 30 cts., lb. \$1.

Chicago, or Warted Hubbard. An excellent strain. Very large and heavily warted, with a hard shell. The skin is dark green in color; flesh is fine-grained, dry and richly flavored. Our stock is excellent. Oz. 20c., $\frac{1}{4}$ lb. 55c., lb. \$2.

Delicata. An early ripening winter sort producing an enormous crop of oblong fruits. Orange-yellow, striped with green. Known in the Newark market as "Sweet Potato" Squash. Oz. 15 cts., $\frac{1}{4}$ lb. 40 cts., lb. \$1.50.

Golden Hubbard. Outer color is bright orange-red, otherwise similar to Warted Hubbard, except that it is generally smaller. Oz. 20 cts., $\frac{1}{4}$ lb. 50 cts., lb. \$1.75.

IMPROVED, or SMOOTH HUBBARD. Large and of Chicago Hubbard shape. Hard, tough, smooth shell of dark green color, and very rich, fine-grained tender flesh. This is a very fine stock of the old and well-known variety and is popular everywhere. Our stock is excellent in every respect but is not to be confused with the Chicago or Warted Hubbard Squash. Oz. 20c., $\frac{1}{4}$ lb. 50c., lb. \$1.75.



Chicago, or Warted Hubbard Squash

TOMATO

Our Tomato Seed is grown for us by experts from the very best stocks. It must not be confused with cheap seed from canning factories

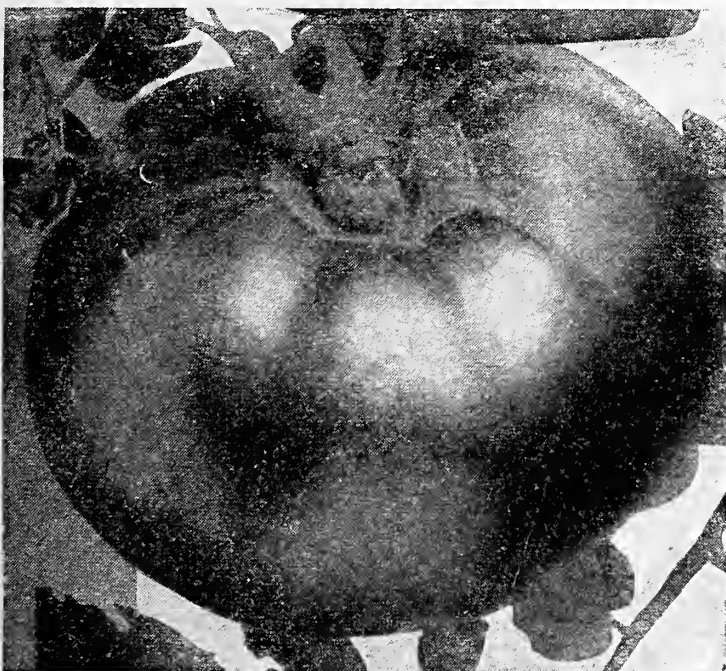
Beauty. One of the best medium-early sorts. A fine shipper and heavy cropper. Color purplish pink. Oz. 35 cts., $\frac{1}{4}$ lb. 95 cts., lb. \$3.50.

BONNY BEST. An excellent extra-early variety. Fruits are medium-sized, bright scarlet, exceedingly smooth, round, and ripen evenly close up to the stem. A good variety for under glass and for first-early outdoor crop it is unsurpassed. Oz. 35 cts., $\frac{1}{4}$ lb. 95 cts., lb. \$3.50.

Chalk's Early Jewel. A valuable variety for second-early crop. The fruits are bright, deep scarlet-red, somewhat flattened, smooth, large and excellent in quality. They hold up in size longer than most sorts. Oz. 35 cts., $\frac{1}{4}$ lb. 95 cts., lb. \$3.50.

DWARF CHAMPION. Sometimes known as the "Tree Tomato." Grown very largely for plants. The vines are upright, about 2 feet in height, and need scarcely any support. Fruits are purplish pink, medium-sized, round, flattened at stem end, and of good quality. Oz. 40 cts., $\frac{1}{4}$ lb. \$1.10, lb. \$4.

Dwarf Stone. This is the largest-fruited of all the dwarf varieties. Vines are dwarf, vigorous, and bear large, smooth, bright red, solid fruits having thick, meaty walls; flavor fine. Habit and color of the bush are the same as Dwarf Champion. Oz. 40 cts., $\frac{1}{4}$ lb. \$1.10, lb. \$4.



Earliana Tomato

EARLY DETROIT. This splendid variety is one of the largest and best of the early purplish pink varieties. Not only the most productive, but in uniformity and size of fruit, freedom from cracking and from tendency to blight, it has been found to meet the most exacting requirements. Fruits are large, smooth, uniformly globe-shaped, firm and of excellent quality. One of the finest shipping Tomatoes yet produced. Oz. 35 cts., $\frac{1}{4}$ lb. 95 cts., lb. \$3.50.

Earliana. Carefully selected for extreme earliness, size, shape and color. Fruits are smooth, nearly round, medium to large, bright deep scarlet, borne in clusters near the base of the plant. Oz. 45 cts., $\frac{1}{4}$ lb. \$1.25, lb. \$4.50.

GLORY. A new variety that shows great promise for an early shipper. It produces a large crop early in the season when prices are good. Fruits are bright red, round and ripen up well. Pkt. 20 cts., $\frac{1}{2}$ oz. \$1.25, oz. \$2.25.

John Baer. A fine extra-early, bright red variety of perfect round shape, free from core, with few seeds. Ripens right up to the stem. Vines often bear 50 to 100 fruits. As a packer and shipper this variety is hard to beat. This variety has for many years been the favorite for an extra-early crop, and it is still generally used by the most successful market-gardeners. Our stock is grown from the originator's seed. There is no better to be had. Oz. 50 cts., $\frac{1}{4}$ lb. \$1.40, lb. \$5.

June Pink. An extra-early, purplish pink variety similar to Earliana except in color. Oz. 40 cts., $\frac{1}{4}$ lb. \$1.10, lb. \$4.

LIVINGSTON'S GLOBE. A large purplish pink variety of excellent quality. It is very smooth, deep globe-shaped, with a pronounced elongation at the flower end. We have taken great care to select our stock to uniformity in size, and highly recommend it as a shipping sort, the fruits being very firm and solid. Oz. 40 cts., $\frac{1}{4}$ lb. \$1.10, lb. \$4.

Matchless. One of the best and most popular for main crop. Fruits are large, very smooth and symmetrical, ripening well to the stem, solid and of a bright red color. Bears throughout the season. A fine market variety. Oz. 35 cts., $\frac{1}{4}$ lb. 95 cts., lb. \$3.50.

Ponderosa. A large, purplish-pink-fruited variety with very solid flesh. Good for local market, but not to ship. Our stock is equal to any. Oz. 60 cts., $\frac{1}{4}$ lb. \$1.65, lb. \$6.

Stone, Selected. One of the largest and most solid main-crop red Tomatoes. Very productive and strong-growing. One of the best canning varieties. Fruits large, nearly round, somewhat flattened, smooth, uniform and of good flavor. Oz. 35 cts., $\frac{1}{4}$ lb. 95 cts., lb. \$3.50.

TURNIP

WHITE-FLESHED VARIETIES

Early Purple-Top Milan. The earliest Turnip in cultivation, with medium-sized, very much flattened, round, smooth, white roots with a purple-red top. Leaves short and few. This sort is well adapted to forcing. Oz. 25 cts., $\frac{1}{4}$ lb. 70 cts., lb. \$2.50.

Early White Milan. A remarkably early Turnip and one of the best for forcing. Root clear white, very smooth, flat, and symmetrical. Flesh white and tender. Leaves fine, very short and entire. Roots best when about 2 inches in diameter. Oz. 30 cts., $\frac{1}{4}$ lb. 75 cts., lb. \$2.75.

Purple-Top Strap-leaved. A very early strap-leaved variety having few, erect, entire, stiff leaves. Roots are regular in shape, flat, medium-sized, purple-red above ground, white below. Flesh is white, fine-grained, and tender. Best when $2\frac{1}{2}$ inches in diameter. Oz. 10 cts., $\frac{1}{4}$ lb. 35 cts., lb. \$1.25.

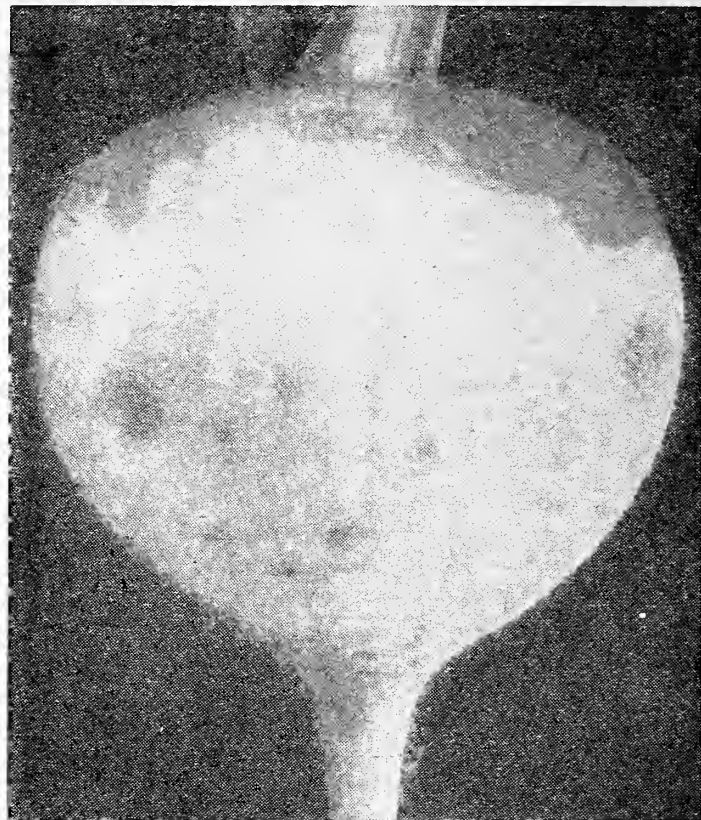
PURPLE-TOP WHITE GLOBE. This excellent market variety is of perfect globe-shape, good size and fine appearance. The roots produced by our stock are extremely uniform and attractive, color being white below the ground, and purple in the upper half of the roots. The leaves are very broad, little divided, and dark green. Flesh is white, fine-grained, and tender. Roots best when 3 inches in diameter. A very productive variety and an excellent keeper. Oz. 15 cts., $\frac{1}{4}$ lb. 40 cts., lb. \$1.50.

Snowball, Early. A quick-growing, ball-shaped, pure white, early Turnip, with medium-sized, smooth, and sweetly flavored roots, and short, scant top. Flesh pure white, fine-grained, and tender. Oz. 15 cts., $\frac{1}{4}$ lb. 40 cts., lb. \$1.50.

White Egg. An oval or egg-shaped variety, with smooth, clear white, medium-sized roots which grow about half out of ground. Tops small, with distinctly cut leaves. Flesh pure white, very sweet, firm, and mild. A quick-growing variety, best for use when about 2 inches in diameter and $3\frac{1}{2}$ inches long. Oz. 15 cts., $\frac{1}{4}$ lb. 40 cts., lb. \$1.50.

RUTABAGA, or SWEDE

Long Island Improved. The very finest purple-top Swede Turnip grown. Roots are elongated-globular in shape, of finest quality, pale yellow with a purple top; with smaller foliage and a much shorter neck than any other variety. We recommend it as the best sort. Fine for stock feeding. Oz. 10 cts., $\frac{1}{4}$ lb. 35 cts., lb. \$1.25.



Purple-Top White Globe Turnip

YELLOW-FLESHED TURNIPS

Golden Ball, or Orange Jelly. One of the most delicate and sweet yellow-fleshed Turnips to be had. Roots are medium-sized, round, smooth, and very deep yellow. Flesh is golden yellow, sweet, firm, and of fine texture. Best for use when about 3 inches in diameter. Tops are small. An early variety of rapid growth. Specially adapted to fall planting. Oz. 15 cts., $\frac{1}{4}$ lb. 40 cts., lb. \$1.50.

YELLOW GLOBE GREEN-TOP. A yellow-fleshed, globe shaped variety of medium to large size, smooth, and of light yellow color with small green crown. Flesh is light yellow, fine-grained, and sweet. A fine keeper and heavy cropper. Oz. 15 cts., $\frac{1}{4}$ lb. 40 cts., lb. \$1.50.

Yellow Stone. Roots are of medium size, of a perfect globe-shape, smooth and of an attractive pale yellow color. Flesh is pale yellow, crisp, tender and of good quality. Best for table use when 3 to 4 inches in diameter. Very largely used for stock feeding. Oz. 15 cts., $\frac{1}{4}$ lb. 40 cts., lb. \$1.50.

HERBS

Basil, Sweet. Hardy, large, green. Used for flavoring. Oz. 30 cts., $\frac{1}{4}$ lb. 85 cts., lb. \$3.

Borage. Leaves used as salad and for flavoring, hardy. Oz. 25 cts., $\frac{1}{4}$ lb. 70 cts., lb. \$2.50.

Dill. An annual used for flavoring dill pickles. Oz. 15 cts., $\frac{1}{4}$ lb. 40 cts., lb. \$1.50.

Fennel, Florence. Used for flavoring purposes, like celery; or boiled as greens. Oz. 15 cts., $\frac{1}{4}$ lb. 40 cts., lb. \$1.50.

Marjoram, Sweet. Leaves and short ends used for seasoning. Oz. 60 cts., $\frac{1}{4}$ lb. \$1.65, lb. \$6.

Sage. A broad-leaved hardy perennial used for seasoning. Oz. 50 cts., $\frac{1}{4}$ lb. \$1.40, lb. \$5.

Savory, Summer. Used for seasoning and flavoring soup, dressings, etc. Oz. 50 cts., $\frac{1}{4}$ lb. \$1.40, lb. \$5.

Thyme, Broad-leaved. Leaves dried and used as seasoning; also bee-food. Oz. 60 cts., $\frac{1}{4}$ lb. \$1.65, lb. \$6.



Why Not Have a Few Flowers Around the House?

See following pages

Nothing adds so much to the beauty of the home as a few flowers. They are so easily grown, cost so little, and are generally of great interest to the women and children. In the following pages we have listed a few of the most popular and easily grown.

Many market-gardeners have been quite successful in raising such flowering plants as Pansies, Cosmos, Asters, Salvias, etc. There are also many varieties that may be planted for the sale of cut-flowers. This applies especially to those whose farms are in a populous or well-traveled community. Many of our customers have built up a very satisfactory trade on these lines.



FLOWER SEEDS

<p>AGERATUM mexicanum ¼oz. Oz.</p> <p>Blue Gem.....\$0.15 \$0.50</p> <p>Little Blue Star.....Tr. pkt. 50c.</p> <p>White......15 .40</p> <p>Mixed......10 .25</p> <p>ALYSSUM maritimum. ½oz. Oz.</p> <p>Carpet of Snow.....\$0.25 \$0.40</p> <p>Sweet Alyssum......20 .30</p> <p>ANTIRRHINUM (Snapdragon). ¼oz. Oz.</p> <p>Dwarf Mixed.....\$0.15 \$0.50</p> <p>Large-flowering Scarlet, White, Rose .25 .75</p> <p>Large-flowering Mixed......15 .50</p> <p>AQUILEGIA cærulea. Blue and white.. ½oz. Oz. \$0.50 \$2.50</p> <p>cærulea Hybrids, Mixed......30 1.50</p> <p>glandulosa vera. Deep blue, white corolla..... 1.00 5.00</p> <p>Rose Queen. Rose shaded white..... 1.00 5.00</p> <p>chrysantha. Golden yellow......35 2.00</p> <p>Single, Mixed......15 .75</p> <p>Double, Mixed......15 .75</p> <p style="text-align: right; margin-right: 10px;">100 1,000 seeds seeds</p> <p>ASPARAGUS plumosus nanus......\$0.50 \$3.00</p> <p>Sprengeri......15 1.00</p> <p>ASTER. ½oz. Oz.</p> <p>Giant Comet, White, Crimson, Rose, Dark Violet, or Azure-Blue.....\$0.30 \$1.50</p> <p>Giant Comet, Mixed Colors......25 1.25</p> <p>Forbes' Chrysanthemum - flowered, White, Peach Blossom, Light Blue, or Scarlet......35 1.75</p> <p>Forbes' Chrysanthemum - flowered, Mixed Colors......30 1.50</p> <p>Liberty, White, Rose, or Dark Blue... .30 1.50</p> <p>Liberty Mixed......25 1.25</p> <p>Victoria, White, Crimson, Light Blue Violet, or Peach Blossom......30 1.50</p> <p>Victoria, Mixed......25 1.25</p> <p>Semple's Late Branching, White, Crimson, Shell-Pink, or Dark Blue .25 1.25</p> <p>Semple's Mixed......20 1.00</p> <p>Queen of the Market, White, Crimson, Pink, or Dark Blue......20 1.00</p> <p>Queen of the Market, Mixed......20 .95</p> <p>Crego, Giant White, Crimson, or Pink .25 1.25</p> <p>Crego, Giant Mixed......20 1.00</p> <p>Truffaut's Peony-flowered, White, Light Blue, Pink, or Scarlet......25 1.25</p> <p>Truffaut's Peony-flowered, Mixed... .20 1.00</p> <p>Purity, Sunset, Daybreak, each......40 2.00</p> <p>Forbes' Choicest Varieties, Mixed.... .20 1.00</p> <p>BALSAM, Double Mixed......65</p> <p>BEGONIA, Tuberos-rooted, Single and Double Mixed.....Tr. pkt. 50c.</p> <p>Semperflorens Vernon. Orange-carmine......50 3.00</p> <p>BOLTONIA asteroides. Pure white..... .35 2.00</p> <p>BUTTERFLY FLOWER (Schizanthus) Mixed......10 .50</p> <p>CALCEOLARIA, Fine Mixed Hybrids Tr. pkt. 50c. Oz. Lb.</p> <p>CALENDULA, Prince of Orange.....\$0.20 \$2.00</p> <p>Mixed......15 1.50</p> <p>CALLIOPSIS, Mixed......15 1.50</p> <p>Drummondii (Golden Wave)......20 2.00</p> <p>CAMPANULA Media, Single, Blue, ½oz. Oz.</p> <p>Rose, White, each.....\$0.15 \$0.75</p> <p>Mixed......15 .60</p> <p>Calycanthema, Blue, Rose, White, each......50 2.50</p> <p>Mixed......45 2.25</p> <p>CANDYTUFT, Empress.....Oz. Lb. \$0.25 \$2.50</p> <p>Little Prince......50 5.00</p> <p>Mixed......15 1.50</p> <p style="text-align: right; margin-right: 10px;">½oz. Oz.</p> <p>Gibraltarica, Hardy.....\$0.45 \$2.25</p> <p>Sempervirens, Hardy......50 2.50</p>	<p>CARDINAL CLIMBER (<i>Ipomœa Quamo-clit hybrida</i>). Annual climber, cardinal-red flowers..... ¼oz. Oz. \$0.50 \$2.50</p> <p>CARNATION.</p> <p>Giant Marguerite, White or Scarlet.. .60 3.00</p> <p>Giant Marguerite, Mixed......30 1.50</p> <p>Double Grenadin, Red......70 3.50</p> <p>Double Vienna, Early Dwarf, Mixed.. .30 1.50</p> <p>Double Perpetual or Tree......45 2.25</p> <p>CELOSIA.</p> <p>Cristata, Empress, Rich crimson..... .40 2.00</p> <p>Cristata, Glasgow Prize. Dark crimson .40 2.00</p> <p>Plumosa, Crimson or Orange......15 .75</p> <p>Plumosa, Thompson's magnifica, Mixed......20 1.00</p> <p>Childsii (Chinese Woolflower). Ball-shaped scarlet flowers......40 2.00</p> <p>CENTAUREA. ¼oz. Oz.</p> <p>Emperor William. Bright blue.....\$0.10 \$0.35</p> <p>Double Blue......20 .50</p> <p>Cyanus, Mixed......10 .35</p> <p>Odorata Margaritæ. Pure white..... .25 .65</p> <p>Imperialis, Mixed......20 .60</p> <p>Americana. Lilac-purple......25 .75</p> <p>Gymnocarpa......20 .60</p> <p>Candidissima......85 2.35</p> <p>CHRYSANTHEMUM, Annual Varieties</p> <p>Double White, Yellow each......15 .40</p> <p>Double Mixed......10 .35</p> <p>Tricolor, Single, White, Scarlet, Yellow, each......15 .40</p> <p>Mixed......10 .35</p> <p>Perennial Japanese and Chinese, Large-flowering, Mixed.Tr. pkt. 25c.</p> <p>Pompon, fl.-pl., Mixed..Tr. pkt. 25c. ½oz. Oz. \$0.15 \$0.75</p> <p>Frutescens (Paris Daisy).....\$0.15 \$0.75</p> <p>CHINESE LANTERN PLANT (<i>Physalis Franchetii</i>)......20 1.00</p> <p>CINERARIA.</p> <p>Choicest Hybrids.....Tr. pkt. 75c.</p> <p>Polyantha stellata, Mixed. Star-shaped flowers.....Tr. pkt. 50c.</p> <p>Maritima candidissima. Attractive white foliage......10 .50</p> <p>COBÆA scandens. Annual climber; ¼oz. Oz. purple flowers.....\$0.15 \$0.40</p> <p>COLEUS. ½oz. Oz.</p> <p>Fine Hybrids, Mixed.....\$0.50 \$3.00</p> <p>Rainbow, Large-leaved..... 2.50</p> <p>COREOPSIS lanceolata.</p> <p>Bright yellow flowers......10 .50</p> <p>COSMOS, Early Flowering, White, Pink or Crimson..... ¼oz. Oz. \$0.35 \$1.25</p> <p>Early Flowering, Mixed......25 .90</p> <p>Mammoth Flowering, White, Pink or Crimson......10 .35</p> <p>Mammoth Flowering, Mixed......10 .30</p> <p>Lady Lenox. Shell-pink......10 .35</p> <p style="text-align: right; margin-right: 10px;">100 seeds</p> <p>CYCLAMEN persicum, Finest Mixed..\$0.50</p> <p>persicum, giganteum, Mixed..... 1.00</p> <p style="text-align: right; margin-right: 10px;">½oz. Oz.</p> <p>CYPERUS alternifolius (Umbrella Plant)\$0.30 \$1.50</p> <p>DAHLIA, Cactus, Mixed......50 2.50</p> <p>Single, Mixed......20 1.00</p> <p>Double, Mixed......20 1.00</p> <p>DAISY (Bellis perennis).</p> <p>Double, Rose, White, or Mixed......35 1.75</p> <p>Maxima, Double Mammoth White or Red......45 2.25</p> <p>Maxima, Double Mammoth, Mixed.. .35 1.75</p> <p style="text-align: right; margin-right: 10px;">½oz. Oz.</p> <p>DELPHINIUM formosum. Blue.....\$0.40 \$1.00</p> <p>Hybrids Mixed......20 .50</p> <p style="text-align: right; margin-right: 10px;">½oz. Oz.</p> <p>Belladonna Hybrids.....\$0.55 \$3.00</p> <p>Cardinale. Orange-scarlet......20 1.00</p>
--	---

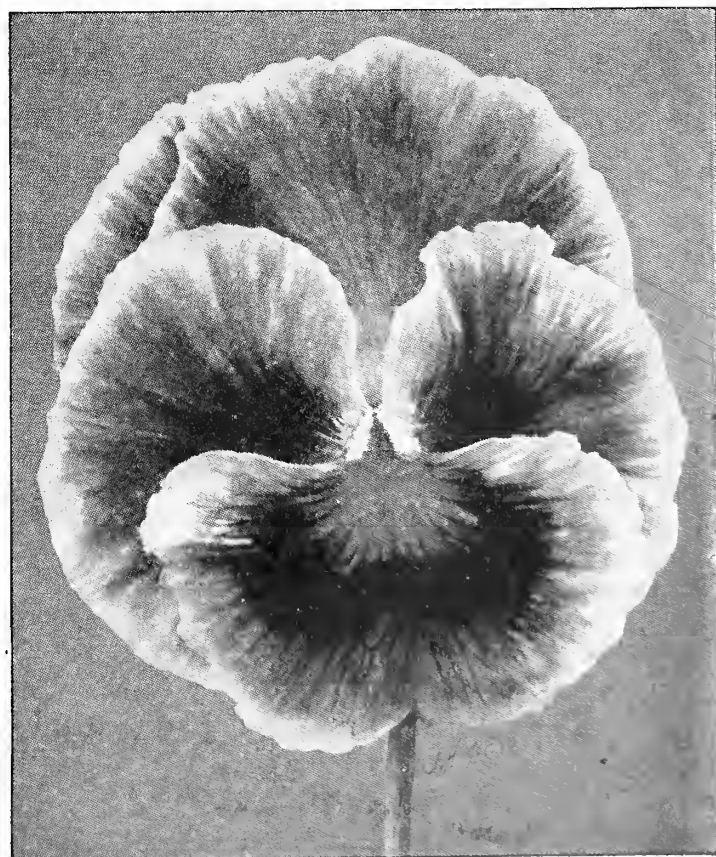
FLOWER SEEDS, continued

	1/4oz.	Oz.		1/8oz.	Oz.
DIANTHUS (Pinks).			MIGNONETTE , Allen's Defiance.....		Oz. \$0.35
Chinensis. Double, Mixed.....	\$0.10	\$0.30	Bismarck.....		.50
Fireball. Fiery scarlet.....	.20	.50	Goliath.....		.80
Snowball. Double; white.....	.40	1.00	Machet.....		.40
Laciniatus, Double; fringed; Mixed..	.20	.50	Large-flowering.....		.25
Plumarius, Single, Mixed.....	.10	.30		1/8oz.	Oz.
Plumarius, Double, Mixed.....	.45	1.25	MIMOSA pudica (Sensitive Plant).....	\$0.15	\$0.75
DIGITALIS (Foxglove), gloxiniæflora ,			MIMULUS tigrinus . Showy blotched		
Purple, White, Rose, each.....	.25	.75	flowers.....	Tr. pkt.	25c.
gloxiniæflora, Mixed.....	.10	.30	Moschatus (Musk). Yellow. Tr. pkt. 25c.		
EUPHORBIA variegata10	.30	MORNING-GLORY , Imperial Japanese,		
heterophylla.....	.20	.50	Single, Mixed.....		.25
EVERLASTING FLOWERS			Double, Mixed.....		.50
Globe Amaranth, Mixed.....		.15	MYOSOTIS (Forget-me-not).	1/4oz.	Oz.
Helichrysum, Mixed.....	.10	.30	Alpestris, Victoria, Blue or Rose.....	\$0.45	\$1.35
FEVERFEW (Matricaria), Double White	.15	.50	Alpestris, White, Blue or Rose.....	.35	1.00
FUCHSIA , Single and Double Mixed			Alpestris, Mixed.....	.20	.60
Tr. pkt. 25c.			Palustris (True Forget-me-not).....	.90	2.75
GAILLARDIA Lorenziana , Double			Palustris <i>semperflorens</i>90	2.75
Annual Mixed.....	.10	.35	Ruth Fisher. Largest flowering blue..	Tr. pkt.	50c.
Grandiflora maxima. H.P. Golden			NASTURTIUM , Tall, Scarlet, Yellow,		
yellow.....	.15	.50	White, and Golden-leaved Scarlet,	Oz.	Lb.
Grandiflora compacta. H.P. Red and			each.....	\$0.10	\$1.25
yellow.....	.15	.50	Tall, Choice Mixed.....	.10	.90
	100 seeds		Tall, Variegated-leaved, Mixed.....	.10	1.25
GERBERA Jamesonii . H.P. Scarlet....	\$0.50		Dwarf, Scarlet, Yellow, White, Cha-		
Jamesonii hybrids. H.P.....	.60		meleon.....	.10	1.25
GLOXINIA Hybrids, Mixed. Tr. pkt. 50c.			Dwarf, Mixed.....	.10	.90
GOURD . Hercules' Club, Dipper, Dish-	1/4oz.	Oz.	Dwarf, Variegated-leaved, Mixed.....	.10	1.25
Cloth, etc.....	\$0.10	\$0.30		1/4oz.	Oz.
GYPSOPHILA elegans , White or Rose.		.20	NICOTIANA affinis . White.....	\$0.10	\$0.35
Paniculata (Baby's Breath).....	.25	.75	Affinis Hybrids, Mixed.....	.20	.60
HELIOTROPE .	1/8oz.	Oz.	NIGELLA , Mrs. Jekyll. Clear blue.....	.10	.30
Lemoine's Giant Hybrids, Mixed....	\$0.30	\$1.50	Double, Mixed.....	.10	.25
HOLLYHOCK , Double, White, Pink,			PANSY .		
Rose, Scarlet, Yellow, Maroon, each	.30	1.50	Forbes' Non Plus Ultra, Mixed. The	1/8oz.	Oz.
Mixed.....	.20	1.00	richest and finest mixture obtainable..	\$1.00	\$5.00
ICE PLANT15	.75	Masterpiece, Mixed.....	1.10	6.00
IMPATIENS Sultani , Hybrids.....			Giant Orchid-flowered, Mixed.....	.50	2.50
1-32oz. 40c.			Trimardeau Giant, Mixed.....	.30	1.50
IPOMCEA grandiflora . Giant White			Trimardeau Giant, Separate Colors..	.50	2.50
Moonflower.....		50	Extra Large-flowered, Mixed.....	.55	3.00
JERUSALEM CHERRY (<i>Solanum Cap-</i>	1/4oz.	Oz.	Choice Mixed.....	.15	.75
<i>sicastrum</i>).....	\$0.10	\$0.35	PETUNIA .		
KOCHIA tricophylla (Burning Bush)....	.10	.30	Forbes' Double Prize Giant.....	Tr. pkt. 1-32oz.	\$0.25 \$6.00
LANTANA , Choice Mixed Hybrids.....	.15	.40	Mammoth Fringed Single.....	.20	2.25
LARKSPUR , Emperor, Branching,			Single Bedding, White, Rose, Red,	1/4oz.	Oz.
Rose, White, Blue, each.....	.15	.50	each.....	\$0.45	\$1.50
Emperor, Mixed.....	.10	.30	Hybrida Single, Mixed.....	.35	1.00
Tall Stock-flowered, Mixed.....	.15	.45	Howard's Star. Crimson; single.....	.65	2.00
LAVANDULA VERA (True Lavender)....	.25	.75	Rosy Morn. Carmine-pink; dwarf; single	.90	2.50
	1/8oz.	Oz.	Snowball. White; dwarf; single.....	.50	1.25
LEMON VERBENA	\$0.40	\$2.00	PHLOX DRUMMONDII .		
LINARIA Cymbalaria (Kenilworth Ivy)..	.25	1.50	Grandiflora alba, Crimson, Scarlet,		
LOBELIA compacta , Crystal Palace.			or Rose.....	.35	1.25
Dark blue.....	.40	2.00	Grandiflora, Mixed.....	.25	.75
Gracilis. Light blue; trailing.....	.15	.75	Nana compacta, White, Rose, Scarlet		
White Gem. Pure white.....	.35	1.50	each.....	.65	2.00
Oculata. Dark blue, white eye.....	.35	1.50	Nana compacta, Mixed.....	.60	1.75
Mixed.....	.15	.75	Perennial Hardy Large-flowering Tall		
	1/4oz.	Oz.	Hybrids, Mixed.....	.75	2.00
LYCHNIS chalconica . H.P.....	\$0.10	\$0.35	Perennial Hardy Large-flowering		
Haageana, Hybrids, Mixed.....	\$0.50	\$2.50	Dwarf Hybrids, Mixed.....	.90	2.50
	1/8oz.	Oz.	PLATYCODON grandiflora , Blue or	1/8oz.	Oz.
LUPINUS , Annual, Mixed.....	\$0.10	\$0.35	White. H.P. Each.....	\$0.25	\$1.25
polyphyllus, Mixed. H.P.....	.10	.35	POPPY , Double, Peony-flowered, Rose,		
MARIGOLD , African, Tall, Double,			White, Scarlet, each.....		.25
Mixed.....	.10	.25	Double, Peony-flowered, Mixed.....		.20
African, Tall, Double, Lemon Queen	.15	.50	Double Carnation-flowered, Mixed...		.20
African, Tall, Double, Prince of			Shirley, Single, Mixed.....		.25
Orange.....	.10	.30	Tulip, (glaucum), Single, Scarlet....		.30
French Dwarf, Double, Gold-striped.	.10	.30	Single, All Colors Mixed.....		.20
French Dwarf, Double, Mixed.....	.10	.25	Oriental. H.P. Fiery scarlet.....	.15	.75
French Dwarf, Single, Legion of			Oriental, Mixed.....	.30	1.75
Honor.....	.10	.30	PORTULACA , Single, White, Rose,	1/4oz.	Oz.
MARVEL OF PERU (Four o'Clock),			Scarlet, or Yellow, each.....	\$0.20	\$0.60
Mixed.....	.15		Single, Mixed.....	.15	.50
			Double, White, Rose, Scarlet, or Yel-	1/8oz.	Oz.
			low, each.....	\$0.30	\$1.75
			Double, Mixed.....	.20	1.25

Alexander Forbes & Co., 115 Mulberry St., Newark, New Jersey

PRIMULA (Primrose).	Tr. pkt.	$\frac{1}{32}$ oz.
sinensis fimbriata, White, Crimson, Blue, or Mixed	\$0.25	\$1.50
obconica grandiflora, Mixed20	1.00
malacoides, White or Lilac15	.75
officinalis hybrids (Cowslip), Mixed	$\frac{1}{8}$ oz.	\$1.25
vulgaris (English Yellow Primrose)35	2.00
polyantha, Single, Mixed35	2.00
japonica, Mixed55	3.00
Auricula	1.00	6.00
PYRETHRUM.	$\frac{1}{4}$ oz.	Oz.
aureum (Golden Feather)	\$0.15	\$0.40
atrosanguineum. Dark scarlet50	1.50
Single Mixed75	2.00
RICINUS.	Oz.	
borboniensis. Violet foliage. 15 ft.	\$0.15	
cambogensis. Maroon foliage. 5 ft.15	
Gibsonii. Violet-bronze foliage. 5 ft.15	
zanzibarensis. Various shades, mixed. 12 ft.15	
SALPIGLOSSIS.	$\frac{1}{8}$ oz.	Oz.
Emperor (superbissima), Mixed	\$0.30	\$1.50
Fine Mixed20	1.00
SALVIA splendens, Bonfire45	2.25
splendens grandiflora. Scarlet30	1.50
Zurich, Early, Dwarf90	4.50
farinacea. Light blue35	2.00
patens. H. P. Blue	1.50	8.00
SCABIOSA.	$\frac{1}{4}$ oz.	Oz.
Large Double, White, Yellow, Rose, Black, Purple, Each	\$0.20	\$0.60
Mixed15	.50
caucasica. H.P. Semi-double; blue	$\frac{1}{8}$ oz.	\$3.00
japonica. H.P. Mauve-blue15	.75
SMILAX.	$\frac{1}{4}$ oz.	Oz.
myrsiphyllum asparagoides	\$0.10	\$0.35
STATICE.	$\frac{1}{8}$ oz.	Oz.
Perennial Mixed	\$0.20	\$1.00
STEVIA.		
serrata. Pure white15	1.00
STOCKS, German Ten-Weeks.		
Dwarf Large-flowering White, Bright Red, Canary-Yellow, Rose, Light Blue, Violet or Carmine	$\frac{1}{8}$ oz.	\$3.50
Dwarf Large-flowering, Mixed50	2.50
Finest Mixed20	1.00
Cut-and-Come-Again. Pure white50	2.50
Winter or Brompton, Mixed55	3.00
Giant Abundance. Carmine-rose50	2.50
SUNFLOWER (Helianthus).	Oz.	
Chrysanthemum-flowered. Double; yellow	\$0.25	
cucumerifolius. Single; yellow30	
cucumerifolius, Orion. Single; yellow40	
globosus fistulosus. Double; yellow25	
Dwarf, Perkeo. Single; yellow, dark center25	
Large Single Russian05	
SWEET PEAS—Spencer Varieties.	Oz.	$\frac{1}{4}$ lb. Lb.
Aurora. Orange, rose striped	\$0.30	\$0.85 \$3.00
Asta Ohn. Lavender, tinted mauve30	.85 3.00
Beatrice. Blush-pink, wings white30	.85 3.00
Black Knight. Deep maroon30	.85 3.00
Blanche Ferry. Carmine-rose, white wings30	.85 3.00
Countess Spencer. Pale pink30	.85 3.00
Dainty. White, edged pale rose30	.85 3.00
Etta Dyke. Pure white30	.85 3.00
King Edward. Carmine-scarlet30	.85 3.00
Margaret Madison. Light lavender30	.85 3.00
Mrs. Chas. Mandor. Dark mauve30	.85 3.00
Mrs. Routzahn. Apricot, suffused with pink30	.85 3.00
Othello. Deep maroon30	.85 3.00
Tennant. Purplish mauve30	.85 3.00
White Spencer30	.85 3.00
Spencer Varieties, Mixed25	.75 2.75
Christmas Flowering Varieties.		
Earliest of All. Blush and white45	1.25 4.50
Christmas Pink45	1.25 4.50

Sweet Peas, continued	Oz.	$\frac{1}{4}$ lb.	Lb.
Christmas White	\$0.45	\$1.25	\$4.50
Mrs. Wm. Sim. Salmon-pink45	1.25	4.50
SWEET PEAS—Grandiflora Varieties.	$\frac{1}{4}$ lb.	Lb.	
Aurora. White, striped orange-salmon	\$0.30	\$0.80	
Black Knight. Deep maroon30	.80	
Blanche Burpee. Snowy white30	.80	
Blanche Ferry. Rose-pink, white wings35	1.00	
Countess of Radnor. Delicate mauve35	1.00	
Dorothy Eckford. Pure white30	.80	
Helen Pierce. White, mottled bright blue35	1.00	
Katherine Tracy. Soft rosy pink35	1.00	
King Edward VII. Bright crimson35	1.00	
Navy Blue. Black-purple35	1.00	
Othello. Deep maroon35	1.00	
Salopian. Dark crimson35	1.00	
Forbes' Superb Mixed30	.80	
SWEET ROCKET.	$\frac{1}{4}$ oz.	Oz.	
White, Purple. Each	\$0.10	\$0.35	
Mixed10	.30	
SWEET WILLIAM.			
Single, White, Crimson. Each15	.50	
Single Pink Beauty35	1.00	
Single, Mixed10	.35	
Double, White, Crimson, Rose. Each35	1.00	
Double, Mixed25	.75	
TORENIA.	Tr. pkt.		
Fournieri	\$0.40		
VALERIANA (Hardy Heliotrope).	$\frac{1}{4}$ oz.	Oz.	
Mixed	\$0.15	\$0.50	
VERBENA hybrida, White, Blue, Pink, Scarlet or Crimson25	.80	
hybrida, Black-Blue with White Eye25	.80	
hybrida, Giant Mixed25	.75	
Choice Mixed20	.60	
VINCA alba, rosea, rosea alba, or Mixed20	.60	
WALLFLOWER.			
Single, Mixed. H.P.10	.30	
Double, Mixed. H.P.	1.00	3.00	
Paris, Single, Annual, Mixed10	.30	
ZINNIA, Tall, Double, Scarlet, White, Golden Yellow, or Rose20	.60	
Tall, Double, Mixed15	.45	
grandiflora robusta plenissima25	.75	
Dwarf, Double, White, Rose, Golden Yellow, Purple, or Scarlet20	.60	
Dwarf, Double, Mixed15	.45	



Forbes' Non Plus Ultra Pansy

FORBES SEEDS

Everything for the
Market Gardener

Alexander Forbes & Co.
SEEDSMEN

115 Mulberry Street
NEWARK - NEW JERSEY

1920

