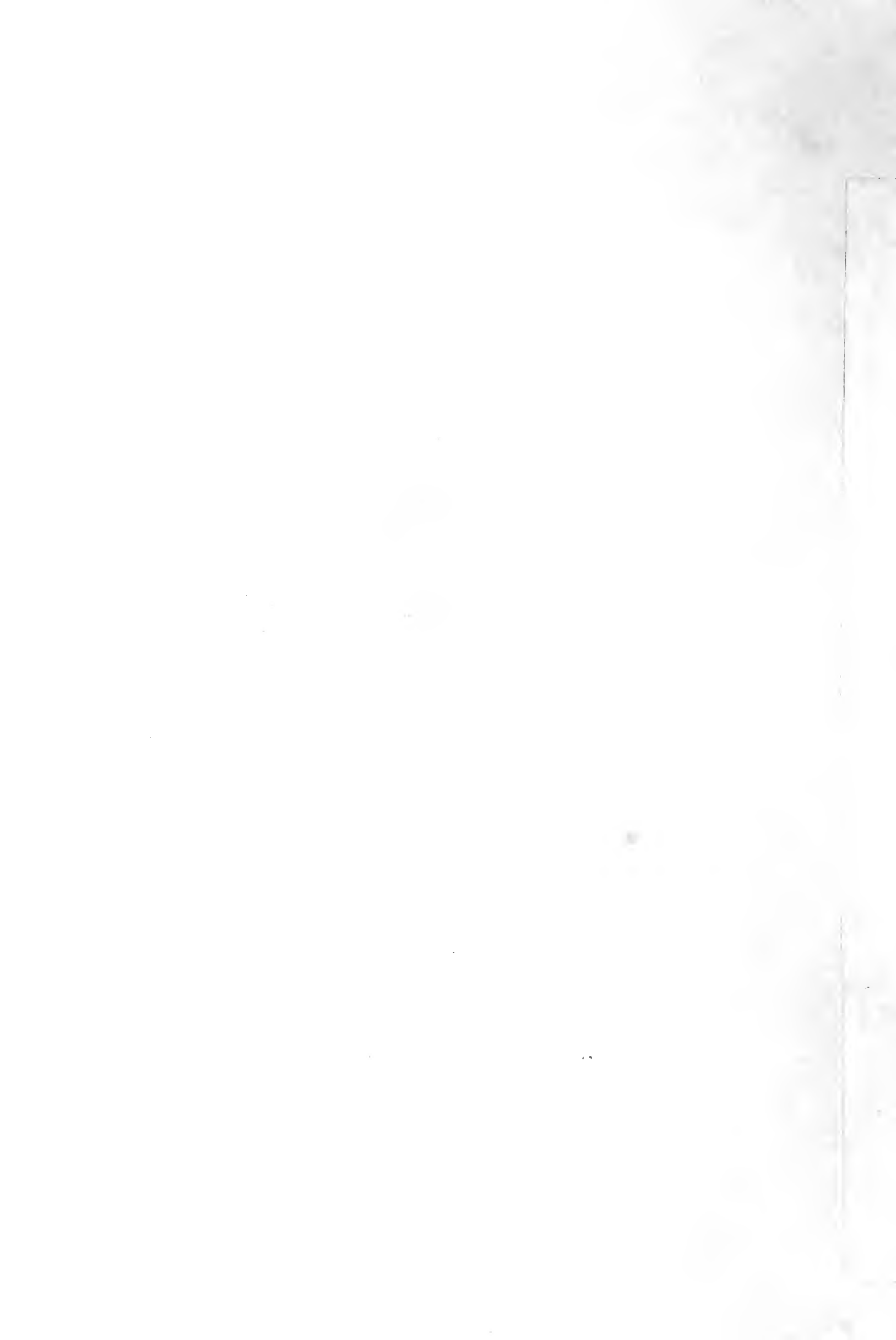


Historic, Archive Document

Do not assume content reflects current scientific knowledge, policies, or practices.





DARWIN TULIPS (See page 8)

THE GEO. H. MELLEN CO.

Established
1877

Innisfallen Greenhouses
SPRINGFIELD, OHIO.

Incorporated
1894

Bulbs, Plants, Seeds, Fruits

FOR FALL PLANTING

AUTUMN, 1920

SEASON

the best of everything we offer. We enclose with this Catalogue and order sheet which will be convenient in making a list on a line. **BE VERY SURE** before mailing your order that you state plainly, so there can be no mistake. **FORWARD MONEY** by postoffice money order, bank draft, cash by express, or express money order. **Narcissus and Crocus** will be very fine and will arrive early. The Importation of these is ample and of best quality.

CANCELS ALL PREVIOUS OFFERS

Orders Free on Express Orders

Ordered by express (charges not prepaid), you may choose extra Plants, Seeds or Bulbs to the amount of your remittance. **See exception.**

Extras are Allowed on Orders for Fruits and Other Nursery Stock.

Seeds, Bulbs and Plants free by mail, at the prices named in this Catalogue, to any part of the United States. This brings them to the doors of our customers without trouble or expense.

When an order is ordered to go by express, we do not pay the charges, unless otherwise stated in offer. The express charges, by special arrangement, carry our goods at very low rates.

SEEDS OF FLOWERS so much prized as those which are produced from bulbs. Closely following the disappearance of snow and long before ordinary outdoor flowers are in bloom, we have the hardy Crocus; then the fragrant and stately Hyacinths; a little later the varied and brilliant Tulips and Narcissus. These give an air of distinction and refinement to any lawn or garden, affording much pleasure and interest. **Send with every order full directions for both garden and indoor culture.**

We would particularly emphasize the fact that **fall** and **not spring** is the time to plant all kinds of spring-flowering bulbs. The bulbs should be planted as soon after September as possible, so that the roots will become established before the cold weather sets in. They may be set out from then until the ground becomes frozen. They require a covering of earth or straw when the ground freezes hard, the bed should be covered with three or four inches of leaves or dry litter. Too early in the spring the covering should be carefully removed.

THREE VALUABLE BOOKS

These books have our warmest endorsement as being the most practical above all others. You will be delighted with their great value.

GARDEN GUIDE

The Amateur Gardeners' Handbook.

Written by gardening experts expressly for the amateur and non-professional, therefore, concise and readily understood.

A GUIDE to GARDEN WORK FOR EVERY MONTH IN THE YEAR

256 pages. Cover in four colors. Contains over 150 teaching illustrations, planting plans and sketches.

Price; Paper cover, by mail, 75 cents. Cloth cover, by mail, \$1.00.

MILADY'S HOUSE PLANTS

Don't let your plants die when this book will help you save them. Written by an expert on house plants who has had over 25 years' experience.

Price; Paper cover, by mail, 75 cents. Cloth cover, by mail, \$1.10. 180 pages; 100 illustrations; four color cover.

PRACTICAL LANDSCAPE GARDENING

Get this book! It will save you hundreds of dollars of needless expense and much time and thought, because it is written by a landscape architect of national reputation who tells facts that are worth money.

It will be the means of beautifying your home grounds far beyond your own expectations.

Price; By mail, \$1.75, handsomely cloth bound. 266 pages. Contains 91 photographs, 67 sketches, and 29 planting plans (with key to plans). Diagrams of plots from 40x100 feet are given.



RUBBER PLANT SPRINKLER

A **PLANT SPRINKLER** is as essential to the success of your plants as the soil they grow in. With it you can, without injuring your plants or soaking the earth, quickly sprinkle them. It will render valuable aid in keeping the foliage fresh and healthy and free from insects of all kinds. Throws a spray "just like rain." Its value is so apparent that, once secured, you will not be without it again. The Plant Sprinkler is made of Rubber with flat bottom, which allows it to stand upright when not in use. It has a perforated, detachable top. The quality of the rubber is unexcelled, and all goods are guaranteed. It can be used for sprinkling plants, cut flowers, etc., also for dampening clothes and carpets, and for disinfecting uses.

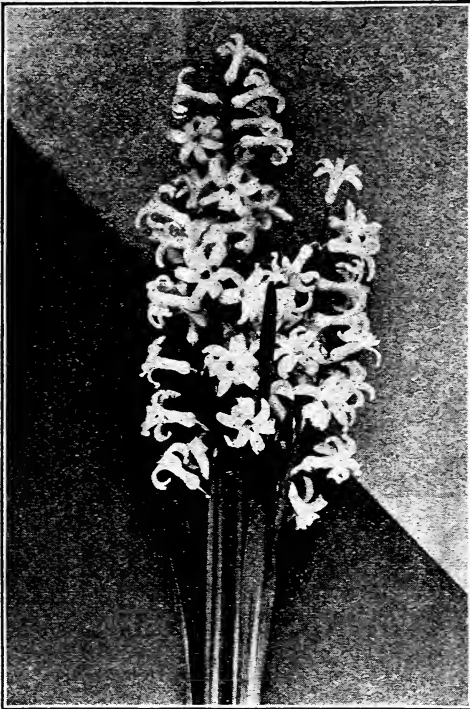
TO FILL THE SPRINKLER.—Squeeze the bulb and insert the neck into a basin or bucket of liquid; release the pressure on the bulb and it will at once fill.

OUR GENERAL CATALOG

For next Spring will be ready early in January. All purchasers from this Catalogue, and all who have been customers previous to this date, will receive a copy free at the time it is issued, and without applying for it; others wishing it, please write for it.

PRICE
MEDIUM SIZE,
BY MAIL, **\$1.50**

ROMAN HYACINTHS EARLY FLOWERING



A CHARMING class of Hyacinths producing graceful, delicately perfumed spikes of flowers. They force readily in the house. Three bulbs can be put in a four-inch, or six bulbs in a six-inch pan or pot, and as each bulb produces several spikes it makes a beautiful plant for conservatory or house decoration. Their treatment is identical with the Dutch Hyacinth. **Roman Hyacinths** are among the handsomest and most desirable of all bulbs for early winter flowering in the house or conservatory. They begin to bloom very quickly, and throw up great masses of sweet and lovely flowers almost before other bulbs get started. They are absolutely sure to bloom. Though recommended for house culture, they are quite hardy, and when planted in open ground will make an elegant display of lovely flowers very early in the spring.

DON'T FAIL TO PLANT A QUANTITY OF THEM

Imported by Us Direct From the Dutch Growers, and Measure from Twelve to Fourteen centimetres in circumference.

SINGLE WHITE—Elegant, fragrant, waxy-white flowers, of surprising beauty.

SINGLE BLUE—Extremely pretty, and in novel contrast with all other varieties.

SINGLE PINK—Fine flowers of a beautiful blush-pink color.

Price 15c. each, 3 for 40c.; 12 for \$1.50, postpaid

A FEW NOVELTIES IN SINGLE HYACINTHS

This list contains such novelties only as are real beauties, and a few varieties, which are not entirely new, but to which we wish to draw your special attention.

Price, 20 Cents Each: Six for \$1.00, Postpaid

ARENTE ARENSEN

Snow-white. The spike is unusually well filled and has a perfect round shape. The broad, wide open petals are of intense whiteness and make the flower look unusually bright and pretty.

LADY DERBY

Bright rose-pink. Is rapidly becoming the leading pink pot-hyacinth owing to its lovely shade of pink, its perfect spike on a strong stem and its splendid forcing qualities.

PERLE BRILLANTE

Light blue, tinged lavender. Produces an enormous spike of perfect shape and a big, smooth bulb. One of the best of the latest blue varieties.

BUFF BEAUTY

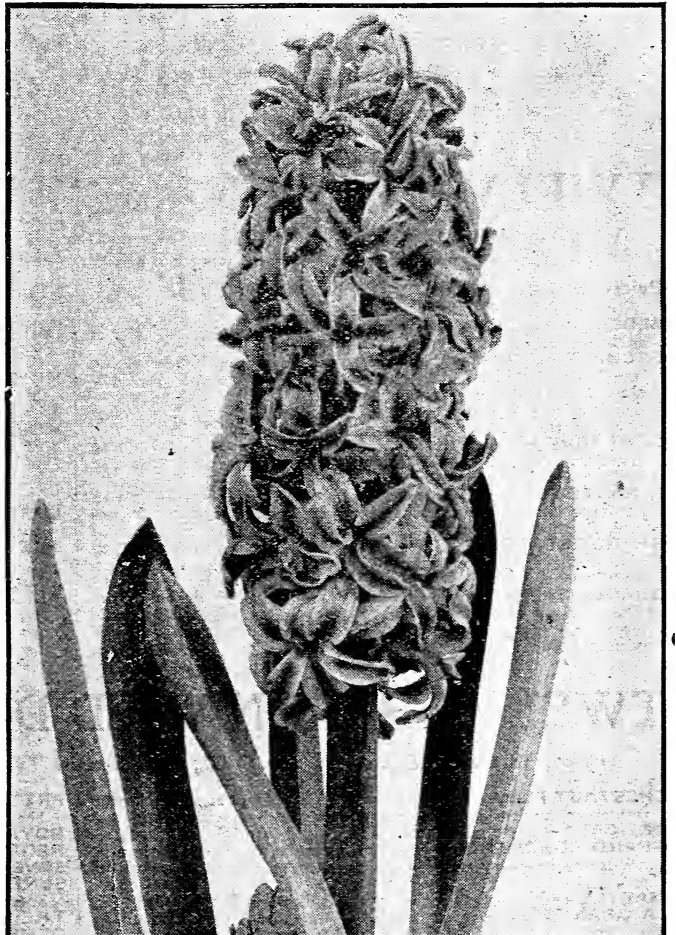
Buff orange-yellow, long narrow truss on strong stem. A very peculiar color.

GENERAL DE WET

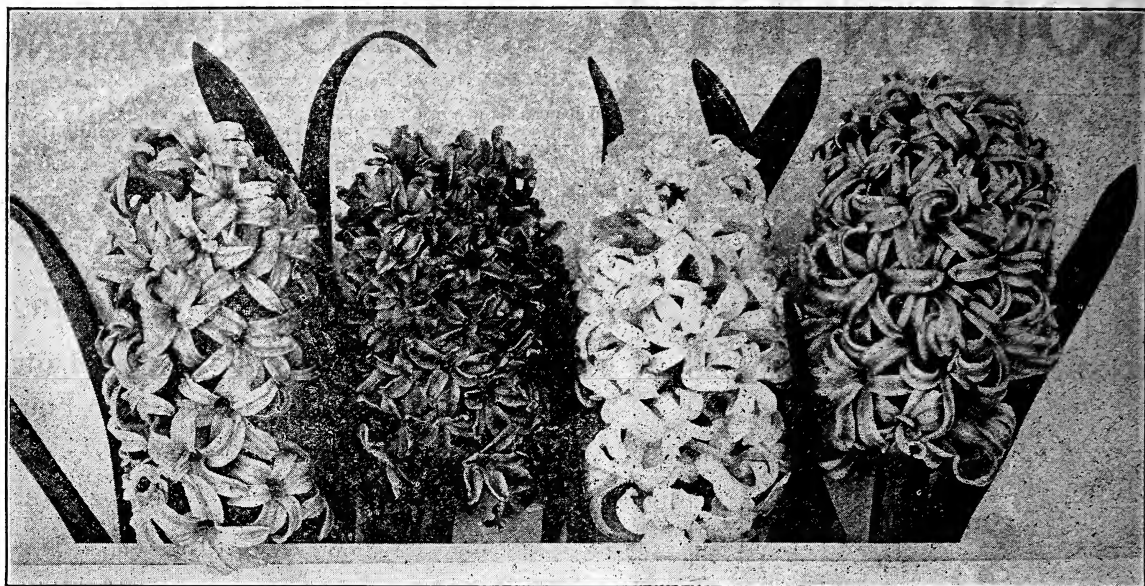
Light pink. Splendid for bedding as well as for forcing. The medium sized bells are of a lively light pink color with a lighter center and form a big, loose spike.

IVANHOE

Purplish indigo-blue. A sport of the well-known King of the Blues. The large, glossy, indigo-blue bells have a white throat and form a long, well filled narrow spike, which shows much resemblance to a Delphinium flower.



IF BULBS OR PLANTS GO BY EXPRESS, NOT PREPAID, YOU MAY SELECT 10 CENTS EXTRA FOR EACH \$1.00.



NAMED DUTCH HYACINTHS

LARGE, SELECTED, PERFECT BULBS OF FINEST QUALITY

FOR DIRECTIONS SEE "HINTS ON BULB CULTURE," SENT WITH EVERY ORDER

For winter and early spring flowering nothing surpasses the Hyacinth. It is sure to bloom and give satisfaction in the house during the winter or in the garden in early spring. Its large spikes resemble nothing else in cultivation. Rather than offer a long, confusing list of varieties, we have carefully selected twelve each of Singles and Doubles, embracing all the shades of this beautiful flower, each one being the largest, strongest and best of its color.

TWELVE BEST NAMED SINGLE HYACINTHS

We consider the Single Hyacinths more useful and valuable than the double varieties. They are better for forcing, more vigorous in growth, and produce stronger spikes of bloom, which are generally of better substance.

Price, 18 Cents Each; Any Six for \$1.00; or the Full Set of Twelve for \$1.85, Mail or Express Prepaid.

ALBERTINA—Pure white, very large, compact spike, fine for early forcing.

ENCHANTRESS—Most delicate porcelain-blue. One of the most beautiful light-blue Hyacinths. The splendid, well finished truss has a strong stem and makes it excellent for growing in pots. The blue color grows lighter towards the center of the bells.

GERTRUDE—Dark pink. The most popular pot and bedding Hyacinth, owing to its color and compact growth. Grown in larger quantities than any other kind.

GIGANTEA—Large, tall spike; large and very shapely, with drooping bells. Flowers shell-pink inside and deep pink outside, touched with violet. A superb sort.

GRANDE BLANCHE—Blush-white. Called also the white Regulus, being a sport of this old variety. Splendid bedder and early forcer.

GRAND MAÎTRE—Deep lavender-blue, shaded darker blue. The leading and most popular blue. The bright blue bells form an elegant, somewhat loose spike of immense size and perfect shape.

INNOCENCE—This superb Hyacinth is grand. Immense spike of large pure ivory bells, waxy in appearance, vying with the snow in purity; fragrance is delicate, yet penetrating.

KING OF THE BLUES—Rich dark blue, the finest of the deep blues; extra large, well furnished broad spikes with large bells; erect and fine for pots.

KING OF THE BELGIANS—Bright scarlet. The most popular of the scarlets. Its upright well filled spikes make it a good pot Hyacinth and as clear bright colors are mostly used for bedding, it is one of the most popular bedders. Immense stock.

LORD BALFOUR—Lilac-rose tinged dark violet; very early, enormous truss; the best in its color.

THE VICTORY—Bright, glistening red outdoors; under glass a fine, dark pink; long, well-filled spike. Brilliant bedding sort, strong stem and lasting color.

YELLOW HAMMER—Golden-yellow. The most popular of the yellows and a splendid forcer. The medium-sized bells form a very compact, ball-shaped truss, which makes one think of a hammer, hence its name.

TWELVE BEST NAMED DOUBLE HYACINTHS

Price, 18 Cents Each; Six for \$1.00; Full Set of Twelve for \$1.85, Mail or Express Prepaid.

CHESTNUT FLOWER—Extra large truss; bright rose, the flower resembles much that of the horse-chestnut, hence its name.

DELICATA—Clear porcelain-blue; extra large bells.

GRAND CONQUEROR—Clear bright carmine, extra large and handsome in every way. One of the best and most beautiful of all.

ISABELLA—Fine blush-white; grand spike and large bulb.

LA GRANDESSE—A pure white of fine qualities. The spikes are very long, erect and stand well above the foliage. It will always be a favorite. Best double white.

PRESIDENT ROOSEVELT—Tall stems and compact truss; beautifully shaped florets of lively pink.

ROYAL BOUQUET—Pure white, yellow center; very double.

REGINA VICTORIA—Pink, fine early flower. Beautiful.

SOVEREIGN—Golden-yellow; large, perfect bells.

SUNFLOWER—Pure rich, golden-yellow, very double and fine; one of the best double yellows.

THE VIRGIN—Beautiful cream-white, rose center.

OTHELLO—Fine compact spike of double bells. Very dark blue.

IF BULBS OR PLANTS GO BY EXPRESS, NOT PREPAID, YOU MAY SELECT 10 CENTS EXTRA FOR EACH \$1.00.

HYACINTHS for BEDDING

Choice Mixed Hyacinths in Separate Colors



THESE are selected unnamed sorts, and are chiefly used for outdoor planting, but can also be used for pot culture, although we advise using the named varieties for house culture. These are just about what is wanted for massing in borders or display beds. These bulbs are the product of one of the best growers in Holland, and are good size, solid and will produce splendid flowers. We offer them in the following separate colors:

Think of a Dozen Good Hyacinths for only \$1.25, Postpaid.
MIXED DOUBLE HYACINTHS

Pink.....	12c each.	\$1.25 per doz.
Red.....	12c each.	\$1.25 per doz.
Pure White.....	12c each.	\$1.25 per doz.
White Blush.....	12c each.	\$1.25 per doz.
Light Blue.....	12c each.	\$1.25 per doz.
Dark Blue.....	12c each.	\$1.25 per doz.
Yellow.....	12c each.	\$1.25 per doz.
All Colors Mixed.....	12c each.	\$1.25 per doz.

\$10.00 per 100
 by
Parcel Post

MIXED SINGLE HYACINTHS

Pink.....	12c each.	\$1.25 per doz.
Red.....	12c each.	\$1.25 per doz.
Pure White.....	12c each.	\$1.25 per doz.
White Blush.....	12c each.	\$1.25 per doz.
Light Blue.....	12c each.	\$1.25 per doz.
Dark Blue.....	12c each.	\$1.25 per doz.
Yellow.....	12c each.	\$1.25 per doz.
All Colors Mixed.....	12c each.	\$1.25 per doz.

\$10.00 per 100
 by
Parcel Post

SPECIAL EXPRESS OFFER OF UNNAMED HYACINTHS

(No Extras Allowed on This Offer)

For \$9.00 we will send by express (purchaser paying the charges), 100 Hyacinths in any color or colors, Single or Double, which will make a bed of fifteen feet in circumference or five feet in diameter, composed of five rows planted six inches apart. If your bed should be of another shape or larger, and would require more than 100, we will send them at the same rate.

PLANT HYACINTH BULBS SIX INCHES APART EACH WAY

Our "Rainbow" Collection of Hyacinths

This is the same collection we have offered for successive years, and we have never heard of any disappointments with it. An increasing number of this collection is sold each year, which is proof of its popularity.

For Bedding Out in the Fall, or for House Culture in Pots and Boxes. Superb Mixture and Color.

NO TWO ALIKE

In this collection of twenty bulbs we have chosen one each of the most distinct colors of this beautiful flower; this will give a grand effect when massed in a bed, and will show all the colors in striking contrast. The collection will consist of ten Single and ten Double Hyacinths, in the following named order:

- | | |
|---------------------------|---------------------------|
| One Double Rich Red. | One Single Bright Red. |
| One Double Delicate Rose. | One Single Dark Blue. |
| One Double Fine Pink. | One Single Lemon-Yellow. |
| One Double Pale Lilac. | One Single Pure White. |
| One Double Pure White. | One Single Pure Pink. |
| One Double Blush-White. | One Single Best Rose. |
| One Double Dark Blue. | One Single Light Blue. |
| One Double Light Blue. | One Single Orange-Yellow. |
| One Double Pure Yellow. | One Single Fine Lilac. |
| One Double Orange-Yellow. | One Single Blush-White. |



We Will Send the "RAINBOW" COLLECTION for \$2.25, Mail or Express Prepaid

Each Bulb is Wrapped and Labeled, Showing Color. You will not be Disappointed in this Collection.

Early Flowering Named Tulips

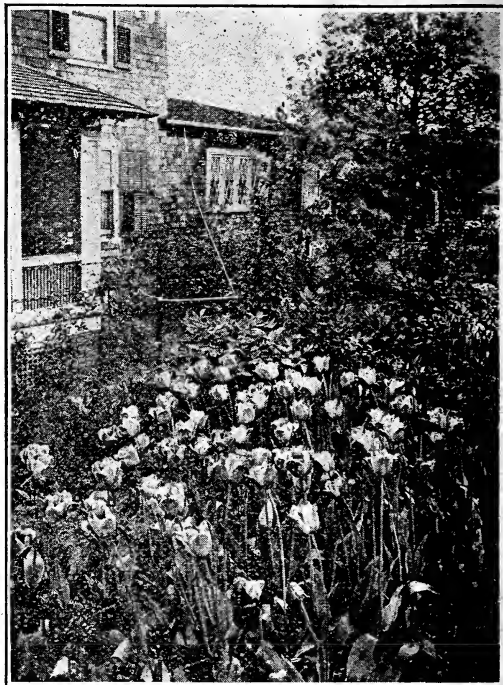
TULIPS make one of the best, brightest and most attractive and satisfactory flowers for the table that can be used. They will also last as long or longer than any cut flowers which are used for decorations. A bed of assorted Tulips used for this purpose will furnish a continuous feast for weeks during the early spring, when there are practically no other outdoor flowers in bloom. The culture of Tulips is the same as that of Hyacinths, except that the bulbs should be planted about three inches deep and four to six inches apart. Tulips are perfectly hardy, so only a slight protection is required from extreme cold and sharp winds.

NOTE—The varieties marked with a * are equally good for pot culture and for bedding. The letters D, M or T indicate the comparative height when grown outdoors, whether Dwarf, Medium or Tall. **Each bulb is wrapped and labeled true to name.**

CHOICE SINGLE FLOWERING TULIPS

Price, Ten Cents Each; Any 12 for \$1.10, or One Each of the Twenty Sorts for \$1.75.

- ***BELLE ALLIANCE**—(D.) Large, sweet-scented, dark scarlet flower; excellent for forcing and bedding.
- ***CRAMOISI BRILLIANT**—(T.) Scarlet, an early forcer of great merit.
- ***ELEONORA**—(T.) Purple-violet, edged white.
- ***CHRYSOLORA**—(M.) Clear bright yellow; very large petals, slightly ruffled at edges; exquisitely fragrant; remains in bloom a long time; ten inches.
- ***COTTAGE MAID**—(M.) Carmine-pink, lower half of each petal pure white with yellow feather at base; exquisite flower; finest bedder; eight inches.
- ***DUSART**—Carmine-scarlet, very large, wide open flower. A splendid bedder, because it keeps its color under the most trying circumstances.
- ***DUCHESS DE PARMA**—(T.) Very fine orange or terra cotta, bordered with yellow band. Very large. Fine for bedding.
- ***FRED MOORE**—(T.) Dark orange sport of "Thomas Moore," on a very tall stem, forcing easily at Christmas.
- ***GRAND DUKE**—(M.) Carmine-scarlet with broad yellow border. Forces well, seems to become more popular every year, especially for bedding. A bed of these big, showy flowers is a glorious sight. Should be planted by itself and not with other varieties.
- ***MAAS**—(T.) Bright scarlet of immense size, splendid bedder.
- ***PRESIDENT LINCOLN (Queen of the Violets)**—(M.) Pale violet, with a light edge, splendid forcer and bedder.
- ***PRINCE OF AUSTRIA**—(T.) Fine, orange-red, sweet-scented; one of the best forcers and a splendid bedder. Of great merit.
- ***PRINCESS WILHELMINA**—Deep pink and white, large pointed flower on a tall, strong stem; an attractive bedder.
- ***QUEEN OF WHITES**—(D.) One of the best pure white for bedding out. Large fine flower.
- ***QUEEN OF PINKS**—(M.) Very delicate blush-pink. There is no other pink in Tulips that comes near to the delicate color of this. The flowers are immense and of perfect shape.
- ***THE QUEEN**—(T.) White, slightly rose shaded; the most popular Tulip for forcing or bedding.
- ***VERBOOM**—(D.) Scarlet, a good bedder.
- ***VESUVIUS**—(M.) A very bright scarlet; unrivaled; pointed petals.
- ***WHITE SWAN**—(T.) Tall variety; one of the best white; egg-shaped flower.
- ***YELLOW PRINCE**—(T.) Golden Prince. Bright yellow, sweet-scented, large and showy. Fine for bedding.



Superior Set of Ten Extra Fine Early Tulips

We here offer a set of ten Superior Tulips specially selected by one of our Holland bulb growers. Each one is a gem of special merit and all are of recent introduction. Of course the cost is a little more, but we believe you will find them well worth it. Let us send you a set of these superb Tulips. **Price, 12 cents each; \$1.00 for full set of ten; 50c for any five. Ask for "SUPERIOR" Set.**

SINGLE FLOWERED

- ***COLEUR CARDINAL**—(T.) Brilliant crimson, flowers of great substance, splendid for bedding or forcing.
- ***GOLDEN HORN**—(M.) Pale yellow, shaded to rich golden tipped brownish-red; splendid forcer.
- ***JEANNETTE**—(D.) Crimson, edged old rose, a sport of "Cottage Maid." Splendid for bedding.
- ***PROSERPINE**—(M.) Rich, silky, carmine-rose. The beautifully shaped, large flower with its rich color can be seen at Christmas in every florist's window.
- ***WHITE BEAUTY**—(M.) Very large snow-white flowers of great substance; one of the finest whites in cultivation for either bedding or forcing.

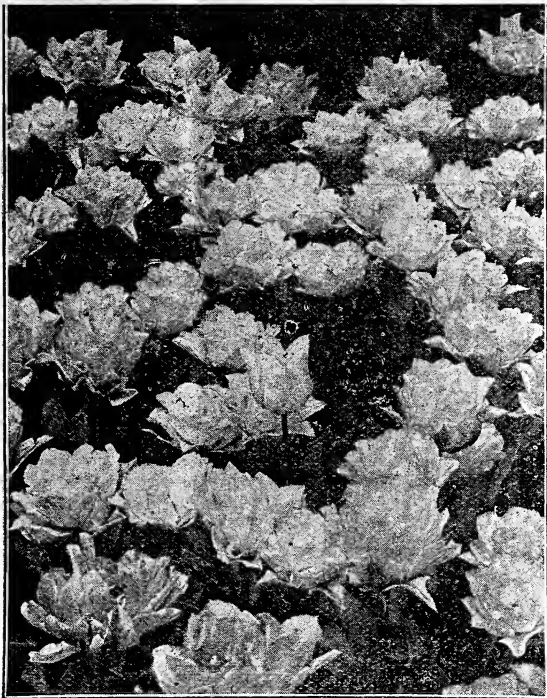
DOUBLE FLOWERED

- ***CROWN OF GOLD**—(M.) Large flower, very double, rich golden-yellow, shaded orange. A fine garden Tulip and one of the best double yellows for winter forcing.
- ***LORD BEACONSFIELD**—(M.) Fine new color, a bright cherry-rose, yellow base zoned blush-white; double flowers.
- ***SCHOONOORD**—(M.) Snow-white. Another beautiful sport of "Murillo." Produces a large flower of the most intense white; undoubtedly the best double white Tulip in cultivation.
- ***SCARLET EMPEROR**—(M.) Splendid bright scarlet, a fine full double. A fine Tulip for bedding and the finest of all double scarlets for forcing for winter flowers.
- ***TURBAN VIOLET**—(M.) Brilliant magenta-lilac, a unique shade in Tulips; big flower on strong stems; very attractive.

TULIP BEDS IN SOLID OR MIXED COLORS

The Tulip is always attractive from its beauty and brilliancy of color, and is one of the popular early spring flowers. A few bulbs scattered here and there produce but little effect, but when planted in masses or in groups, they become at once grand and brilliant, and eclipse in coloring and picturesque effect almost any other flower. Set the bulbs about five or six inches apart and four inches deep. One hundred bulbs will make a fine display in a five-foot circular bed. We offer Superfine Early Flowering Bedding Tulips in colors **Red, White, Pink or Yellow.** **Price \$5.50 per 100; mixed colors, \$5.00 per 100, postpaid: 50 at 100 rate.**

IF BULBS OR PLANTS GO BY EXPRESS, NOT PREPAID, YOU MAY SELECT 10 CENTS EXTRA FOR EACH \$1.00.



Double Tulip, La Candeur.

- RUBRA MAXIMA**—(T.) Dark velvety scarlet; large flowers. Don't miss this one.
- ***SCARLET KING**—(M.) Deep scarlet, fine shape, large flowers on strong stems.
- ***TITIAN**—(M.) Red bordered yellow, very early forcer.
- YELLOW ROSE**—Yellow, sweet-scented.

CHOICE DOUBLE EARLY Flowering Tulips

Every Bulb is Labeled with True Name

Price, 10 Cents Each; Any 12 for \$1.10, or One Each of the Twenty Sorts for \$1.75.

The letters D., M. or T. indicate the comparative height when grown out of doors, whether Dwarf, Medium or Tall. Those preceded with a (*) are suitable for forcing indoors.

- ALBA MAXIMA**—(T.) Large, incurved white, of most perfect shape. One of the best.
- BLUE FLAG**—Soft violet-purple. Large flowers of very pleasing color. A beautiful Tulip for cutting. Height, 16 inches.
- DUKE OF YORK**—(M.) Lovely variety, very double; carmine-rose, edged broadly with white, suffused rose; ten inches.
- ***GLORIA SOLIS**—(M.) Deep crimson bordered with a broad gold band. Most beautiful.
- LA GRANDESSE**—Dark pink, splendid forcer, large and very double.
- LA VERTUE**—(M.) Delicate rose and white.
- LA CANDEUR**—(M.) Large and double. Wax-like white, outer petals feathery green. Largely used for cemetery planting; a good companion for Rex Rubrorum.
- ***LADY PALMERSTON**—(M.) Rosy-pink; extra fine.
- ***LA COQUETTE**—(T.) Yellow with orange. A magnificent flower of great beauty.
- ***LIGHTHOUSE**—Brilliant scarlet. When fully open, the immense flower has an orange hue. One of the best of the scarlets and specially fit for bedding owing to its strong stem and sturdy growth.
- ***MATADOR**—(M.) Bright red, splendid forcer, beautiful shape, egg-shaped; a grand Tulip.
- ***MURILLO**—(D.) Beautiful light pink, splendid forcer, the most popular of all the double Tulips; can be used for all purposes.
- MY COUSIN**—(D.) Beautiful rich violet, white edged. This variety blooms at the same time as Rex Rubrorum and La Candeur, and makes an elegant border for these varieties.
- PURPLE CROWN**—(T.) Large and double flower; dark cardinal-red, purple shade; one of the best. The only real dark red double Tulip. Very rich and effective.
- ***QUEEN EMMA**—(M.) Very double rosy-red, enormous flower.
- REX RUBRORUM**—(M.) Large double flowers of deepest scarlet; extra fine bedder. A good companion for La Candeur.

SUPERFINE MIXTURES OF EARLY FLOWERING TULIPS

We Offer Only the Superfine Mixtures—The Best Obtainable

We have imported a large stock of unnamed early flowering Tulips for bedding, which we price so low as to make a large mass of these showy flowers a matter of trifling expense. They are excellent bulbs, and will bear handsome blooms. Double and Single collections are kept separate. Several hundred bulbs at the quotations below involve less expense than is required to secure a few summer bedding plants, and in the matter of display they are fully as valuable during their season as an equal number of ordinary blooming plants.

SUPERFINE MIXED SINGLE TULIPS—In fifty choicest kinds, splendid flowers. Price, 75 cents per dozen: \$5.00 per 100, prepaid, mail or express.

SUPERFINE MIXED DOUBLE TULIPS—In fifty choicest kinds, splendid flowers. Price, 75 cents per dozen: \$5.00 per 100, prepaid, mail or express.

SUPERFINE MIXED SINGLE OR DOUBLE TULIPS IN SEPARATE COLORS, RED, WHITE, PINK OR YELLOW, 80 CENTS PER DOZEN; \$5.50 PER HUNDRED, POSTPAID.

BED OF FIFTY LARGE FLOWERING TULIPS

FOR \$3.00

We have offered this same bed for several seasons, and it is becoming more popular each year.

ALL SEASONS' MIXTURE

This collection will contain a splendid mixture of Single and Double Early, Single and Double Late, Parrot and Darwin Tulips, and will include many of the above named varieties. The great advantage gained by ordering this collection is that it will produce flowers during a much longer period than any other collection. For a period of from fifteen to twenty-five days the bed in which you plant them will be ablaze, and will present all the colors known among Tulips. We can most heartily recommend this collection to our patrons. It will make a magnificent circular bed three and one-half feet in diameter.

Price, fifty Bulbs for \$3.00.



Bed of Fifty Mixed Tulips.

IF BULBS OR PLANTS GO BY EXPRESS, NOT PREPAID, YOU MAY SELECT 10 CENTS EXTRA FOR EACH \$1.00.

LATE or MAY-FLOWERING COTTAGE GARDEN TULIPS

THIS beautiful class is now very popular. They are quite distinct from the early-flowering sorts offered on the preceding pages, coming into bloom two to three weeks later than the early flowering types, and extending the Tulip season over a period of four weeks or more. On account of their extreme hardiness, they are specially adapted for the permanent hardy flower border, where they should be liberally planted in clumps or masses. They may also be naturalized in grass, wild gardens, etc. For bedding they are superb, while as cut flowers, having long stems with flowers of great substance, they stand in perfect condition for a long time. In planting, the bulbs should be set a little deeper than early Tulips, a covering of four inches being about right.

Leading Varieties of Garden Tulips

Price, 8c. Each, 85c. per dozen.

FAIRY QUEEN — Rosy-heliotrope with a broad yellow margin; color is absolutely unique. The flowers reach an enormous size, last very long and have long, graceful stems, making it ideal for bouquets.

GESNERIANA SPATULATA — The grandest Tulip in existence. Tall growing and late blooming, with large, long leaves and tall, erect flower stalks, which support great waxen blooms, larger than teacups, of the most vivid, glossy coral-red, each flower showing a deep blue-black blotch at the base that further enhances its beauty; in bloom a long time.

Our Collection Embraces all the Best Types of the Garden Tulip and Your Order Should Include at Least a Few of These Most Satisfactory Bulbs.



Giant Darwin Tulips.

Giant Darwin Tulips

The new Giant Darwin Tulips are late May-flowering Garden Tulips, and produce very large bowl-formed flowers of symmetrical shape and lasting wax-like substance on tall, strong stems, two to three feet high, and are exceedingly beautiful and effective grown in groups, in the shrubbery or herbaceous border, or in gardens with a background of greenery. They by far surpass in color and brilliancy anything before known in Tulips. They include almost every conceivable color and shade.

Price, 10c. Each; \$1.00 per Dozen.

BARONNE DE LA TONNAYE—A long and beautiful flower; clear carmine-rose at the midrib, toning off to soft pink at the edges; base white, tinged blue; height twenty-four inches. The leading bedder of the pink Darwins, keeping its brightness and standing upright to the last, no matter what kind of weather it is in.

CLARA BUTT—A large flower of remarkable beauty; coloring an exquisite shade of soft salmon-pink shaded rose; height twenty inches.

KATE GREENAWAY—One of the largest and latest of all the Darwins. A grand big flower of white suffused with lilac; tall grower.

NAUTICAS—Purplish-rose, with dark violet base shaded bronze; very large flower on a tall stem.

GLOW—Bright crimson-scarlet. A variety of unsurpassed qualities for bedding, but too little known. The unusually tall and strong stem holds the big flower up perfectly. The flower lasts very long and the bright crimson color never fades. One of the brightest and best of the Darwins.

GOLDEN CROWN—Brilliant crimson with yellow center; long flower with reflexing petals. An attractive Tulip for bedding, and very good for late forcing.

PICOTEE (Maiden's Blush)—This is one of the finest of late Tulips, pure white, with brilliant rose edging, large flower on stout stem. A dainty flower of exquisite beauty.

PARISIAN WHITE—Large white reflexed petals margined rosy-red, a very attractive flower. One of the finest.

PARISIAN YELLOW—Bright yellow, with darker yellow center; large, pointed flower. Very attractive among shrubbery.

SALMON QUEEN—Beautiful salmon, very tall and fine. A large, long-stemmed flower of finest substance; fine bedder and unequalled for cutting.

PRIDE OF HAARLEM—Brilliant rosy-carmine with blue base. This is one of the oldest varieties, but hard to beat yet in color and size. Most flowers have more than six petals, which makes them look semi-double sometimes. It will remain a standard variety as long as Darwins are used.

THE SULTAN—Rich, glossy black-maroon; one of the best dark varieties.

WHITE QUEEN—White. Can be called the only white Darwin. It opens rosy-white, but passes off pure white. One of the most popular varieties, which can be easily forced.

Mixed Darwin Tulips

Our supply of these comes from a specialist who grows over fifty sorts, most of which are represented in this mixture. Price, six for 40c; 75c per dozen; \$6.00 per hundred.

Parrot or Dragon Tulips

The most beautiful and interesting class of late flowering Tulips, which should be in every garden. The flowers are very large and perfect in shape, the petals are corrugated and toothed, while the color is the most striking combination of crimson and golden-yellow, streaked and edged with green, resembling the plumage of a parrot, whence these Tulips derive their name. A bed of these makes a gorgeous display, paying a hundredfold for any trouble that may be bestowed upon them. **Fine large bulbs, mixed colors, price, three for 25c; 85c per dozen; \$6.00 per hundred.**

BREEDER TULIPS

Breeders, formerly listed among the Cottage Tulips, form a distinct class by themselves, being "unbroken" forms of the old time "florist" Tulips. They have been more or less neglected and grown only in some obscure corners, until a taste for so-called "art colors" awakened and with the revival of that taste for bronze, brown and buff tones, the attention was drawn to these old-fashioned Tulips and in no time they have become the most popular of all late Tulips.

And they deserve it. Not only for their peculiar and odd colors, but also for their great lasting qualities, which make them unusually suited for garden decoration and for the size of their flowers and stems, which many times beat the largest Darwins. They are a most interesting class of Tulips and they are fast taking an important part in the bulb trade.

Price, 10c. Each; Six for 50c.; \$1.00 per Dozen.

Chestnut

Very dark brown, almost black, shows off splendidly, when planted together with a yellow Tulip.

Goliath

Dark rosy-violet flushed with rose-brown. An enormous flower of a peculiar odd color, which we cannot very well describe, but which greatly attracts the attention.

BREEDERS IN SPLENDID MIXTURE, 85 CENTS PER DOZEN.

Medea

Salmon-carmine. A large, attractive flower on a gracefully drooping stem, which makes it splendid for cutting and bedding both.

Nor Veritable

Very dark violet, long known as the Black Tulip.

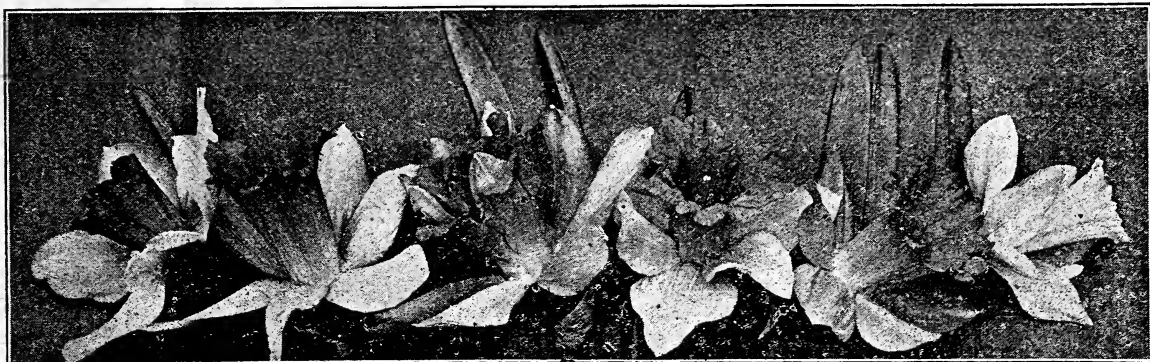
Sunrise

Ruddy apricot with yellow edge. The red color on the outside grows lighter towards the edge; an odd but attractive variety; one of the few in this class which can be supplied in sufficient quantities.

IF BULBS OR PLANTS GO BY EXPRESS, NOT PREPAID, YOU MAY SELECT 10 CENTS EXTRA FOR EACH \$1.00.

Narcissus, Daffodils and Jonquils

THE FLOWER OF THE POETS



THERE are no hardy bulbous plants which have more points of merit than the Narcissus or Daffodils. Perfectly hardy, growing and doing well in almost any and every position, sun or shade, moist or dry. They turn our gardens, lawns and woodland walks into gorgeous masses of gold and silver, with a fragrance that is enchanting. They are all of the easiest culture, perfectly hardy, and can be grown in any light garden soil. When grown as pot plants in the house they can be brought into bloom at Christmas, and by planting at different times, will bloom continually from December till April. Excepting the Polyanthus varieties, offered on next page, they are perfectly hardy, even in the Northern states; growing and doing well in almost any and every position, in sun or shade, moist or dry. They will succeed best, however, in a thoroughly drained, tolerably rich soil. If the position is one partially shaded from the hot sunshine in the spring, the flowers will retain their beauty for a much longer period than if more exposed.

Large Trumpet Narcissus

This type is the showiest of the genus, and also the most useful, growing easily either indoors or in the open ground.

NOTE—In describing Narcissus, it is usual to give the color of the trumpet or crown and the color of the perianth or petals surrounding the trumpet.

Two-Colored Varieties, White and Yellow

AJAX PRINCEPS—Very early. This is one of the most popular winter-flowering and forcing varieties grown. Flowers large, perianth sulphur, with an immense rich yellow trumpet. **Price, 8 cents each: six for 40 cents.**

MRS. WALTER WARE—The white perianth petals are broad and large, the yellow trumpet long, well expanded and frilled at the brim; a strong grower and free bloomer. **Price, 8 cents each: six for 40 cents.**

VICTORIA BICOLOR—Perianth snow-white, trumpet rich yellow, serrated and flanged at the edges, large in outline, and of rare beauty for cutting. **Price, 8 cents each: six for 40c.**

All Yellow Trumpet Narcissus

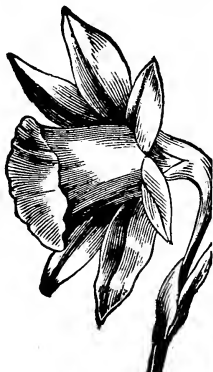
EXCELSIOR—Bright golden-yellow, one of the best for bedding, and fine winter flowering; an early and abundant bloomer. **Price, 8 cents each: six for 40 cents.**

EMPEROR—A magnificent flower; perianth deep primrose; trumpet rich golden-yellow. Should be largely grown in flower beds, borders or naturalized in grass. It is one of the finest Daffodils in cultivation and most prized for cutting. **Price, 8 cents each: six for 40 cents.**

GOLDEN SPUR—Large, spreading, full, deep yellow perianth, trumpet golden-yellow. A charming, richly perfumed flower, and one of the very best of the Golden Trumpets. In favorable situations, the flower stalks attain a height of two feet. **Price, 8 cents each: six for 40 cents.**

KING ALFRED—Uniform golden-yellow. Unrivalled in size and beauty. Its round fleshy petals, its immense, elegantly recurved and beautifully fluted trumpet, in fact every part of this plant shows its superiority. Rightly called the King of Daffodils. **Price, 35 cents, two for 60 cents.**

TRUMPET MAJOR—(Single Von Sion.) A large and shapely flower of a rich yellow color throughout. Comes into bloom early and is excellent for forcing, bedding or naturalizing. **Price, 8 cents each: six for 40 cents.**



Trumpet-flowered Narcissus.

All White Trumpet Narcissus

MRS. THOMPSON—A new and extra fine pure white variety, large and handsome, with an elegantly frilled trumpet. It is a strong grower, early and free bloomer, splendid for pot culture, forcing and the garden border. **Price, 10 cents each: six for 50 cents.**

MADAME DE GRAAF—The most beautiful of white varieties. Both trumpet and perianth are clear white; one of the best for forcing; magnificent. **Price, 15 cents each: two for 25 cents.**

SNOWFLAKE—White trumpet, tinged apricot, passing off silvery-white, holding its head well up. **Price, 15 cents each: two for 25 cents.**

Chalice Flowered or Semi-Trumpet

ALBA STELLA—One of the first in flower and wonderfully free blooming. White, star-shaped flowers three inches across, with bright yellow cups; very beautiful and one of the most popular forcing and cutting varieties. **Price, 8 cents each: six for 40 cents.**

MRS. LANGTRY—Flowers pure white, star-like. Cup at first slightly tinted, but changes to pure white. Very pretty, exceedingly sweet-scented. A very free bloomer, being fine for forcing as well as for bedding and open ground culture. **Price, 8 cents each: six for 40 cents.**



Chalice-flowered Narcissus. cents per dozen.

The True Poet's Daffodils

Narcissus With Miniature Saucer-Shaped Cups

ORNATUS—The improved "Poeticus," large, beautifully formed, pure white flowers, with saffron cup tinged with rosy-scarlet. A magnificent cut flower. Very early. **Price, 6 cents each: 60 cents per dozen.**

POETICUS—The "Pheasant's Eye," or "Poet's Narcissus," pure white flowers with orange cup edged with crimson. Splendid cut flower. **Price, 8 cents each: 80 cents per dozen.**

DOUBLE DAFFODILS

DOUBLE VON SION—The grand old-fashioned double yellow Daffodil—extra fine for cutting. Single, star-like perianth, and long, double trumpet, filled with beautifully crimped petals. Deep golden, very hardy outside, and blooms freely in pots in the house. Everybody should plant this one, sure to bloom anywhere and everywhere.

Price, 10 cents each: \$1.00 per dozen.

ALBA PLENA ODORATA—The Double White Poet's Narcissus or Gardenia-flowered Daffodil. Double snow-white Gardenia-like flowers, exquisitely scented. Price, 8 cents: 80 cents per dozen.

INCOMPARABILIS—"Butter and Eggs." Full double flowers of rich yellow, with orange nectary, splendid variety for either forcing for winter cut flowers or for open ground planting. Price, 8 cents: 80 cents per dozen.

ORANGE PHOENIX—"Eggs and Bacon." Beautiful double white flowers, with orange nectary. Splendid for pot culture and cutting or garden decoration. Price, 10 cents each: \$1.00 per dozen.

SULPHUR (or Silver) PHOENIX—"Codlins and Cream." Large creamy-white double flowers with sulphur nectary. Exquisite corsage flower, and fine for growing in pots. Price 10 cents each: \$1.00 per dozen.

POLYANTHUS NARCISSUS

OR BUNCH-FLOWERED DAFFODILS

The Polyanthus varieties of Narcissus are not only beautiful, but deliciously sweet-scented, and of the easiest culture, suitable for window garden, conservatory or garden, very free flowering and continuing long in bloom. Their tall spikes of bloom bear from six to one dozen flowers each. They are not quite so hardy as the other types of Narcissus, and therefore should be carefully protected in cold climates when grown in the garden. South of the freezing belt they are splendid for gardens.

GRANDE MONARCH—Large white flowers with lemon-yellow cup. Price, 12 cents each: six for 60 cents.

PAPER-WHITE GRANDIFLORA—This is the earliest of all, blooming by Christmas, and with its long-stemmed clusters of starry-white flowers—much larger than the old variety—is indeed most beautiful; very fragrant also. This variety is perhaps more largely forced for cut flowers than any other, millions of them being used for the large flower markets of the world. Price, 8 cents each: six for 40 cents.

GLORIOSA—This is an extra fine variety, has immense trusses of pure white flowers with primrose colored cups. Easily forced. Price, 10 cents each: six for 50 cents.



Narcissus—Grand Soliel d'Or.

FIRST GAY FLOWERS OF SPRING—LARGE FLOWERING VARIETIES

Beautiful for Growing in Pots, Among the EARLIEST to Bloom on the Lawn in the Spring.

DIRECTIONS FOR PLANTING With a trowel or spade make a slanting opening about two inches deep, put in the bulbs, then with the foot press back the sod. This is an easy way to plant flowers that will be a sheet of bloom almost before the grass is green. They will care for themselves, blooming early amid the grass, and dying down to the bulb in ample time to be entirely out of the way of the lawn mower.

CHOICE NAMED GIANT FLOWERING DUTCH CROCUS—EXTRA LARGE BULBS

The following named varieties are especially adapted for pot culture, because of their large, vigorous bulbs. Price, three for 15 cents, 50 cents per dozen: \$3.50 per hundred, postpaid.

AMAZONIA—Light blue, with silvery sheen over all. Most beautiful.

CLOTH OF GOLD—Brown and yellow.
CLOTH OF SILVER—Silvery-blue.

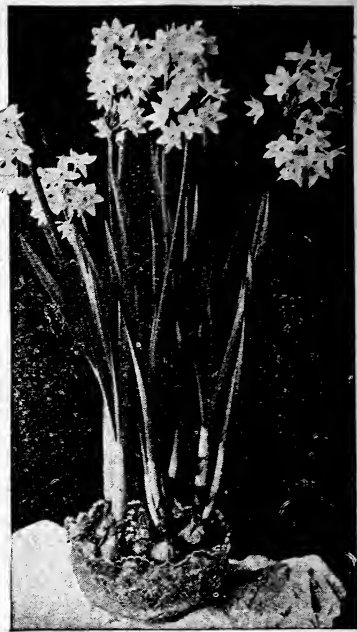
KING OF THE BLUES—Extra large dark blue.

ARGUS—The best striped.

KING OF THE WHITES—Extra large long flowers, the largest white Crocus.

YELLOW MAMMOTH—Large bulbs, producing large, golden-yellow flowers.

Giant Crocus in Colors, White, Blue, Striped, Yellow or All Colors Mixed, All Large Bulbs, 35 Cents per Dozen, \$2.50 per Hundred, Postpaid.



Polyanthus Narcissus.

NEWTON—Large yellow flowers with orange cup. This is very distinct and a free bloomer. Fine for pots. Price 12 cents each: six for 60c.

WHITE PEARL—The whole flower is pure white, large and exquisitely fragrant. A most beautiful variety and a free bloomer with large trusses. Price, 12 cents each: six for 60 cents.

We will send one each of the above four varieties for 35 cents.

Narcissus Jonquilla, or Jonquils

Much prized for their charming golden and deliciously sweet-scented flowers; perfectly hardy, and flowering very early in the spring. Admirably adapted for winter forcing.

SINGLE JONQUIL—The well-known favorite, delicately scented and beautiful for forcing. Rich yellow, very fragrant. Price, four for 20 cents: 50 cents per dozen.

DOUBLE JONQUIL—Heads of small but very double deep golden-yellow flowers, powerfully scented and good for forcing. Price, four for 20 cents: 50 cents per dozen.

CAMPANELLE REGULOSIS—Large six-lobed yellow flowers, four to six on a stem; fine for forcing, and the one generally preferred by florists. Price, four for 20 cents: 50 cents per dozen.

Grand Soliel d'Or

A charming rich yellow flower with deep reddish cup. Thousands of this variety are grown in Scilly Isles for sale in the London market. Flowers are almost identical with the Chinese Sacred Lily except in color, and may be grown in water like the Chinese variety.

As compared with the Chinese Sacred Lily this produces a much larger flower, though the bulb is smaller. Its fragrance is even better and its color a deep glowing yellow. Each bulb produces several spikes of bloom and thrives in any soil, sand, or pebbles and water. Bulbs bloom very quickly after planting and may always be had for Christmas and New Year's, or even earlier. No winter flower is more beautiful, fragrant, or easier grown. May be had in flower at any time all winter, stands freezing and any amount of abuse, and is sure to do well in any window. Three or four should be planted in a five-inch pot, or a bowl of pebbles and water. Price, 15 cents each: six for 75 cents.

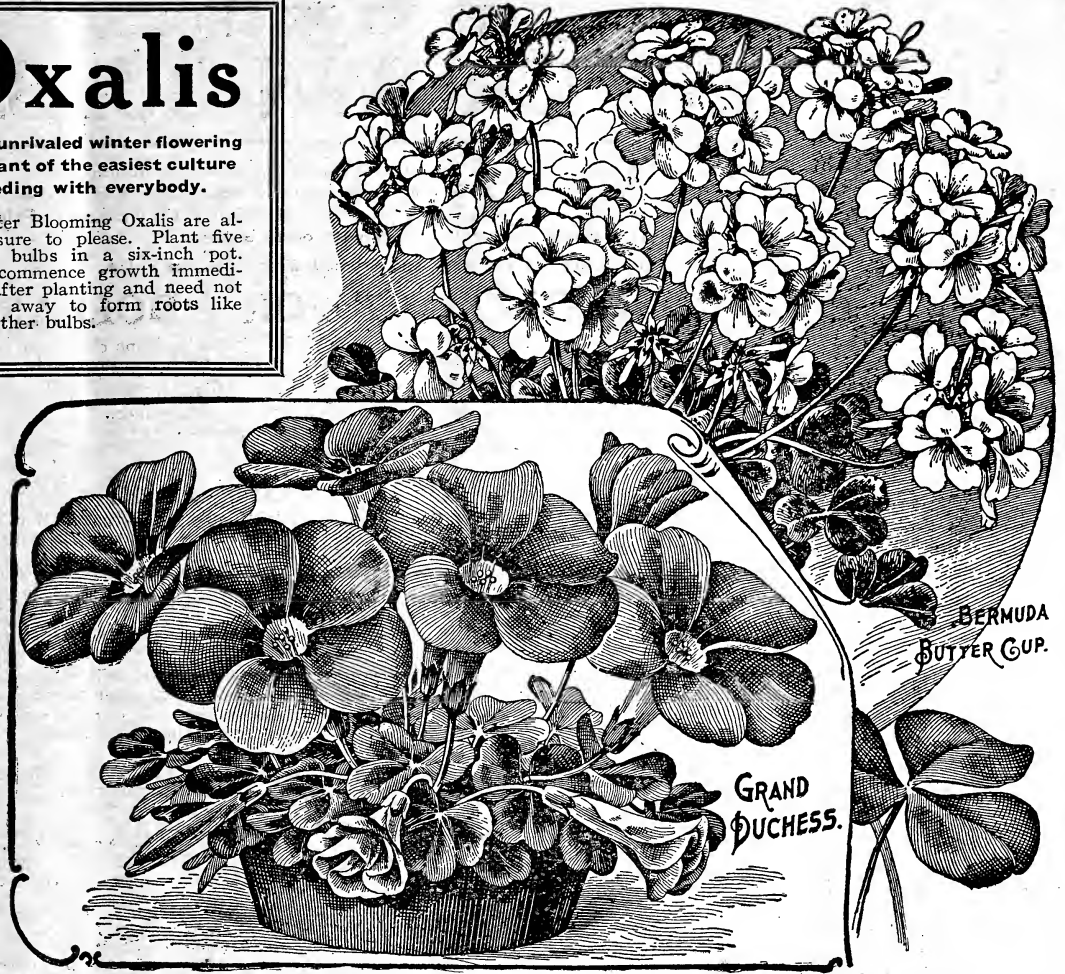
NOTE—It is very doubtful whether any Chinese Narcissus will reach this country this year.

CROCUS

Oxalis

An unrivaled winter flowering pot plant of the easiest culture succeeding with everybody.

Winter Blooming Oxalis are always sure to please. Plant five or six bulbs in a six-inch pot. They commence growth immediately after planting and need not be set away to form roots like most other bulbs.



BERMUDA BUTTERCUP OXALIS

A fine, robust-growing, large flowering sort from Bermuda. Blooms in enormous panicles, each flower being as large as a silver half-dollar, and of a clear, bright yellow color. Easily grown in any window and a most satisfactory winter bloomer. Price, three for 12 cents: 35 cents per dozen.



Freesia Purity.

GRAND DUCHESS OXALIS

THERE is no doubt about its being one of the most beautiful and taking winter flowers it is possible to have. Blossoms immense, borne well above the foliage; leaves large, clover-shaped and handsome. A most persistent bloomer, remaining constantly in flower from November to June. We have three colors to offer, bright pink, lavender and pure white.

GRAND DUCHESS PINK—Enormous size, bright rosy-pink. Finest recent novelty, and has been widely advertised.

GRAND DUCHESS WHITE—New; pure snow-white. A grand contrast to the above.

LAVENDER—A fine large flower of a unique lavender color. Plant has a branching habit, not so compact as the white or pink. Price, three for 10 cents, or 35 cents per dozen.

IXIAS

The Ixias produce their beautiful flowers in spikes, and are of most dazzling and brilliant colors. For pot culture in the house are of easy culture and free bloomers. Half a dozen bulbs may be planted in a five-inch pot, and the display will be magnificent. For open ground culture give them winter protection with leaves or straw. **Mixed, 3 for 10c: 12 for 35c.**

WINTER-BLOOMING FREESIAS

WHITE FREESIA (Purity)—A grand Freesia. The flowers are two inches long and about the same in width, and borne in clusters of six to ten. The body of the flower is pure white, with lower segments spotted lemon-yellow. The perfume is most delicate. Its cultivation is the simplest, requiring only to be potted in October, to be watered sparingly at first, placed in a sunny window and watered more as growth progresses. When out of flower, store in some place and repot at proper season in fresh soil for another year's growth. Price, three for 12c: 35c per dozen.

SPECIAL COLLECTIONS OF CHOICE HOLLAND GROWN BULBS

WE ALWAYS have a large demand for these collections, and have ordered an immense supply at prices that enable us to give you a large number of bulbs for the price we ask. Collections like these are growing in popularity, and we here present them in such shape as we believe will give the fullest measure of satisfaction and delight to the purchaser. **Price includes payment of mail or express charges by us. Full cultural directions sent with every order**

All Bulbs in these Collections are wrapped and labeled with name or color.

HYACINTH COLLECTION "L" FOR 1 DOLLAR

In making up this collection we use good, sound bulbs, and of best varieties and colors. This is a fine offer, and all who take advantage of it will be more than repaid with magnificent bloom. We offer it to you as follows, for \$1.00, postpaid.

- 1 Double Dark Red Hyacinth.
- 1 Gorgeous Single Pink Hyacinth.
- 1 Large Single Red Hyacinth.
- 1 Splendid Single Pure White Hyacinth.
- 1 Lovely Single Blue Hyacinth.

- 1 Double White Hyacinth.
- 1 Double Porcelain Blue Hyacinth.
- 1 Double Blush White Hyacinth.
- 1 Double Pink Hyacinth.

TULIP COLLECTION "M" FOR \$1.25

Here we have a fine collection of the best of our Tulips, and offer them as a collection for \$1.00, postpaid. Nothing is surer to bloom nor make a more pleasing sight than a bed of Tulips, and in making up this collection we use our best named varieties, and the unnamed kinds are superlative, blooming evenly and perfectly. Following is the list:

- 1 Double Tulip—"Gloria Solis." A brilliant crimson; a splendid variety.
- 1 Double Yellow Tulip—"Crown of Gold." Orange and yellow feather.
- 1 Double White Tulip—"La Candeur." A beautiful variety of snowy whiteness.
- 1 Double Red Tulip—"Duke of York." A charming shade of red, rich and a full flower. Edged white.
- 1 Single White Tulip—"White Swan." Tall variety; one of the best white; egg-shaped flower.
- 1 Single Pink Tulip—"Cottage Maid." A beautiful shade of pink. A fine bloomer.
- 1 Single Scarlet Tulip—"Dusart." A rich, brilliant color. A good flower.

- 1 Single Yellow Tulip—"Chrysolora." A fine yellow, and a good bloomer.
- 1 Gorgeous Flowered Tulip—"Darwin." Distinct and attractive.
- 1 "Parrot" Tulip. The best of fancy Tulips; a grand bloom. Our bulbs are sure to bloom.
- 1 "Gesnerian" or Giant Tulip. Flowering freely and on long shoots; glossy, coral-red flowers, larger than teacups.
- 1 Special "Golden Crown" Tulip—A splendid variety of a deep golden-yellow, red border. One of the finest of fancy kinds. Late bloomer.
- 8 Superfine Single and Double Tulips Unnamed, but splendid colors and kinds, and will make a fine show.

NARCISSUS COLLECTION "N" FOR 1 DOLLAR

There is no class of bulbs which is really more beautiful than the Narcissus, with its masses of white, orange and gold. The varieties we here offer are of the best, and the bulbs are large and fine. They are sure to flower, and many of them continue to do so year after year. This is a collection of great value for little money.

- 1 "Paper White" Narcissus. The most beautiful of all pure white sorts; early and easy to bloom; fine for Christmas flowering.
- 2 "Incomparable Alba Stella" Narcissus. A most striking variety, with an orange cup; a beautiful sort.
- 2 Narcissus—"Poeticus." The true, pure white and orange-cupped Poet's Narcissus; a splendid variety.
- 2 Double "Alba Pleno Odorata" Narcissus. The Jasmine-shaped, snow-white flowers of this sort are exquisitely scented.

- 2 "Trumpet Major" Narcissus. The deep golden single variety; much prized as an early forcer.
- 2 "Incomparable" or "Butter and Eggs" Narcissus. A golden double flower, much desired as a fine forcing kind.
- 1 Double "Von Sion" Narcissus. One of the finest of Narcissus. Producing gorgeous flowers with deep yellow trumpet.
- 2 Single Jonquils, fragrant and beautiful.
- 1 Campenelle Jonqui. Large, six-lobed, yellow flowers, four to six on a stem.

COMBINATION COLLECTION "O" FOR \$1.15

For those who want some of each of the three collections, "L," "M," and "N," and who do not want all three, we have arranged this fine collection. This collection contains a fine assortment of Tulips, Hyacinths and Narcissus, and will make a fine show for a very small sum.

- 1 "Poet's Narcissus"—The pure white variety, with orange cup edged with crimson.
- 1 Superb White Double Tulip—"La Candeur."
- 1 Rich Purple Double Tulip—"Purple Crown."
- 4 Superfine Mixed Tulips, which will make a gorgeous display.
- 1 "Giant Gesnerian" Tulip, the tallest of the Tulips; a striking variety.
- 1 "Parrot Tulip." This flower produces a very pleasing combination of colors.

- 1 Fine Double White Hyacinth.
- 1 Striking Single Red Hyacinth.
- 1 Beautiful Double Porcelain Blue Hyacinth.
- 1 Orange-cupped Golden Narcissus Incomparable—"Ajax Principles."
- 1 Snow-white profuse-flowering Narcissus—"Paper White."
- 1 Double Golden "Von Sion" Narcissus; a charming sort.
- 1 Orange-striped Double Tulip—"Crown of Gold."

COLLECTION "D"—12 BULBS FOR ONLY 50 CENTS

- 2 Large-Flowering Hyacinths.
- 2 Narcissus.

- 2 Beautiful Tulips.
- 4 Different Crocus.

- 2 Freesias.

GREAT SURPLUS BULB COLLECTIONS

SENT ONLY AFTER NOVEMBER 10th.

In importing enormous quantities of bulbs from Holland, France, China, Japan, Bermuda, etc., we find it impossible to estimate what the exact demand will be, and to order just the right quantity of each variety, so that we usually have a surplus of many varieties including the very choicest and most expensive. As they cannot be kept over, we must close them out at the end of the season, and offer them to our patrons in collections, strictly of our own selection, at a big sacrifice rate.

These collections may be ordered at any time, but will not be sent until the rush of trade is over, about November 10th.

EITHER OF THESE COLLECTIONS WILL AGREEABLY SURPRISE AND PLEASE YOU.

Surplus Bulb Collection No. 1 for 1 Dollar Postpaid

This will consist of a very generous lot of miscellaneous bulbs, and will be sent by mail, postpaid, for \$1.00.

Surplus Bulb Collection No. 2, by Express, Not Postpaid, for 2 Dollars

This will contain a larger proportion of the heavier and more expensive bulbs, of the finest varieties, and will be worth far more than the price asked for it. If express shipment is not desirable, send 25 cents extra for postage.

OUR "GIANT" COLLECTION OF LARGE Two-Year-Old Ever-Blooming Roses FOR IMMEDIATE EFFECT

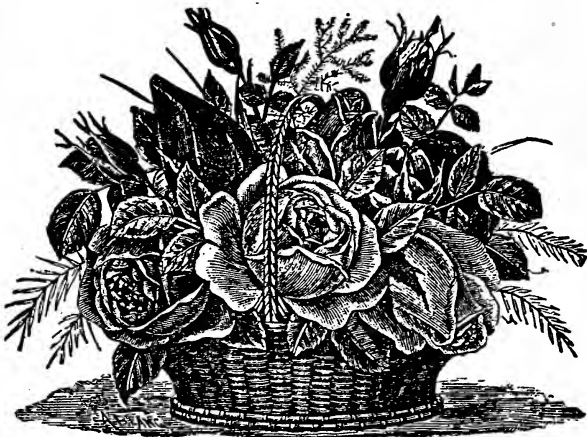
THESE large Roses have become so popular among our customers that we devote a great deal of room to them, growing them in constantly increasing number. These bushes are two years old, strong and healthy. They make, of course, more of an appearance from the first than does the smaller stock, having practically a year the advantage in all respects—an advantage for which we find many persons willing to incur the additional expense.

The selection must be left to us, and we will send only strictly high-grade Roses. All will be different and all correctly labeled.

GIANT COLLECTION No. 1—Five two-year-old Ever-Blooming Tea Roses, all different colors.....\$1.50

GIANT COLLECTION No. 2—Five two-year Hardy Ever-Blooming Roses, all different colors.....\$1.50

WE WILL SEND TWO DIFFERENT VARIETIES OF LARGE TWO-YEAR-OLD ROSES FOR 65 CENTS



Basket of Roses cut from one of our "Imperial" Collections

Imperial Rose Collection 10 Ever-Blooming Tea Roses for \$1.50 FINE PLANTS FROM TWO AND A HALF INCH POTS (POSTAGE PREPAID)

THEY are suitable for flowering in pots in the house during winter, and then in spring plant out in the garden, where they will continue to bloom all summer. If you do not desire them for house flowering, they can (at least in southern latitudes) be planted out in the flower border and covered over lightly with straw, evergreen boughs or any light material, to be removed in early spring. This will give you flowers much earlier than if you waited until spring to plant. This collection is strictly of our own selection, and we guarantee them to be well-rooted, to reach you in good condition, and to be a fine assortment of colors, all correctly labeled. Many of our very best varieties will be included in the collection.

TWELVE SPECIAL ROSE FAVORITES



A Sample Bed of Our Twelve Special Favorites in Hardy Ever-blooming Roses for Fall Planting in the Southland.

New Climbing American Beauty — Lady Plymouth — Ball of Snow — Champion of the World — Clothilde Soupert — Maman Cochet — Meteor — Red Letter Day — Rhea Reid — White Maman Cochet — Yellow Maman Cochet — Etoile de France.

Price, Entire Set of Twelve for \$1.75. Two-Year-Old Plants, Any Six for \$2.60, Set of Twelve for \$5.00.

We have selected from among our entire list twelve Roses which we can recommend as the most reliable for general planting. There are so many beautiful Roses nowadays that it would not be just to say of any twelve, "These are the best," but we do say that in this set of twelve each one contains the qualities of a high grade Rose. They are all strong, vigorous growers, bloom abundantly and all are among the hardiest in this ever-blooming class. They will bloom the first season and every succeeding season, all summer long, even the one-year size, but best about them is the beauty of the flowers, in form, color, fragrance, every way. If you can only have a few Roses, don't fail to get this collection. It will give you unbounded satisfaction. We have made the price very moderate, placing them within the reach of all.

Odorless Fertilizer for Plants Will Keep Indefinitely

MAKES FLOWERS FLOURISH

Flowers are like people—their health depends upon their food. It must be nourishing, but not too rich, to force growth and cause reaction. We offer a concentrated and odorless powder containing all elements needed for plant development. Especially prepared for the health and beauty of flowers, ornamental plants, grass, vegetables, etc. It has no odor whatever, and can be used dry or dissolved in water for sprinkling. Use it and your flowers will flourish and their health will last. Price, can containing enough food for forty plants three months, 35 cents, postpaid.

SULPHO-TOBACCO SOAP

A Wonderful Insect Pest Exterminator

Unsurpassed for quickly exterminating all insect life on plants and flowers in and out of doors, excellent for Rose bushes, shrubs, etc. This popular insecticide never fails to give satisfaction, and is cheap, effective, clean, harmless and non-injurious to the tenderest growth. It also acts as a valuable fertilizer reviving plant life. For domestic purposes it rids the house of cockroaches, and is a superior wash for dogs and all animals. Prevents poultry lice. You cannot afford to be without Sulpho-Tobacco Soap if you desire to be successful in plant culture. A trial will give highly gratifying results.

3 oz. Cake, sufficient for 1 1/2 gallons prepared solution, 10 cents: mailed, postpaid, 13 cents. 8 oz. Cake, sufficient for four gallons prepared solution, 20 cents: mailed, postpaid, 28 cents.

IF BULBS OR PLANTS GO BY EXPRESS, NOT PREPAID, YOU MAY SELECT 10 CENTS EXTRA FOR EACH \$1.00.

ROSES THAT GROW and BLOOM ROSES

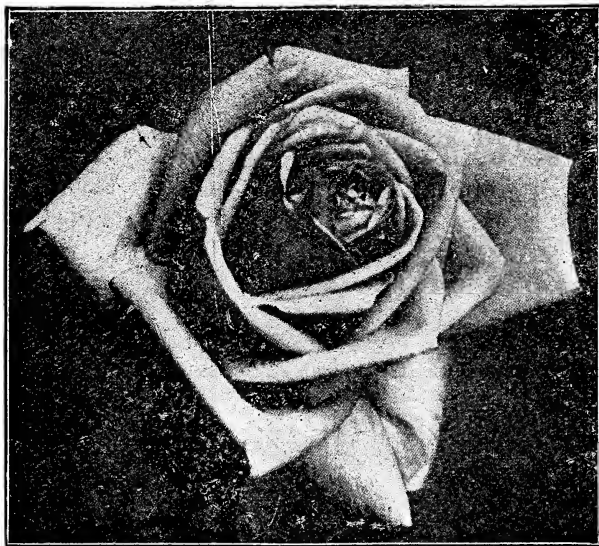
SUPERB COLLECTION OF EVER-BLOOMING HYBRID TEA ROSES

OWING to limited space in fall catalogue, we cannot enumerate and describe as many varieties of Roses as we do in spring. We can, however, furnish all Roses mentioned in our spring catalogue. The demand for Roses during the autumn months is largely confined to house culture during the winter. In the spring they may be transplanted in the open ground, where they will continue to bloom throughout the summer. Fall planting of Roses in open ground is recommended only for the Southern and Pacific Coast states, where the fall and winter is the most favorable time for all kinds of outdoor planting. The kinds here offered are especially recommended for these localities.

Price, 20c. Each; Any 4 for 75c., except where noted; Large Two-Year-Old Plants, 60c., Any 4 for \$2.00.

Antoine Rivoire Creamy-white, with rainbow tints, grand.

Bessie Brown Color is snow-white, faintly flushed and tinged with pink; fine, strong grower.



Columbia.

Columbia A big Rose, the open flower measuring six inches across. The color is a true pink, deepening as it opens to glowing-pink. A peculiarity of the variety is that the shades all become more intense until the full maturity of the open flower is reached and this color is enduring; a great Rose. Price, 25 cents each; two-year-old, 75 cents each.

Champion of the World Color rich glossy pink, delightfully fragrant, and such a strong vigorous grower that it is almost invulnerable against attacks of insects.

Etoile de France A splendid new red Rose. A very strong vigorous grower, with handsome green-bronzy foliage, and exceedingly free-flowering. The flowers are very large, and borne on good, long, stiff stems; color a lovely shade of clear red-crimson velvet.

F. R. Patzer The blooms are produced with great freedom, they are carried on stiff stems and are of large size and substance and perfect formation; highly tea-scented. Color, brilliant salmon-pink, of very fine shape, buds sharply pointed.

Francis Scott Key The flowers are from large to very large, with sixty or more petals opening to a high center. The color is a magnificent deep red rose. Wherever it has been staged this Rose has swept all competitors from the boards and secured every prize it has entered for. Grand for the garden.

Gruss an Teplitz The color is brightest scarlet, shading too deep, rich velvety crimson. It is very fragrant. The freest grower and the most profuse of any ever-bloomer.

Hadley Deep, rich, velvety crimson, retaining its brilliancy throughout the year. Well formed buds and large, double flowers on rapid growing, long and stiff stems, prolific during all seasons with a fragrance excelled only by American Beauty.

Helen Gould The flowers are full and perfectly double, the buds beautifully made—long and pointed. The color is warm rosy-crimson. A Rose for winter blooming indoors in pots or boxes.

Hermosa, the old Favorite Everybody knows this famous variety. It has been held in high esteem for many years and will always be popular, as it embraces so many desirable traits that go to make up the ideal Rose. It is hardy as an oak and always covered with its clear pink blooms.

Helen Cambier Great yellow garden Rose. Very free-blooming, flowers of splendid substance and a delightful shade of deep, rich, golden-yellow. In extreme heat comes a deep amber color. The buds are full and firm, lasting a long time when cut.

Hoosier Beauty Glowing crimson-scarlet with darker shadings; buds of good length and splendid shape; ample petalage with a texture like velvet, opening into a magnificent bloom of dazzling brilliance. A strong and clean grower, free from spot or mildew, producing long, stiff stems with a bud on every shoot, needing no pinching.

Herzogin Marie Antoinette Hybrid Tea of deep orange, striped salmon-crimson, passing to old gold or orange. Very large flowers of perfect form produced on heavy upright canes. One of the finest of yellow Roses, being a very free bloomer. Sweetly perfumed.

Jonkheer Mock A new pink Rose from Holland; vigorous in growth and hardy, with long smooth canes and great freedom of bloom. Flowers are round and full, bright pink faced carmine. A splendid bedder.

Kaiserin Augusta Victoria Color pure creamy-white; far surpasses any other white Rose; rich perfume.

Killarney Color is an exquisite shade of deep shell-pink lightened with silvery-pink. The buds are exceptionally long and beautifully formed, the open flower is graceful in the extreme.

Lady Alice Stanley Deep, clear rose-pink in color; very double flowers which open perfectly. It is a garden Rose of great value and, as a greenhouse Rose, it has many friends. It is of easy habits, grows freely, and flowers well. The foliage is hard and seldom mildews or blackspots.

Mrs. Aron Ward One of the most delightful Roses of recent years in a color that catches the eye at once. Coppery-orange in the open bud, golden-orange when partly developed, pinkish-fawn of lovely shade when fully open, when it looks like a full fluffy-silk rosette.

Mrs. Campbell Hall Delicate creamy-buff, edged or suffused rosy-carmine. The center of the bloom is warm cerise coral fawn. Very deliciously fragrant.

Mrs. Charles Hunter A strong, vigorous grower with rosy-crimson flowers, changing to a pleasing rose as they fully expand; a very bold flower with large, handsome petals, produced on strong, upright stalks.

Mrs. A. R. Waddell A strong, rampant grower with foliage that is ornamental in itself; buds long and pointed, rosy-scarlet, opening coppery-salmon; large and semi-double, but a wonderful keeper. One of the showiest Roses extant.

Madame Jennie Guillemot Deep saffron-yellow, buds long and pointed and very large in size; one of the best.

Madame Jules Grolez (Red Kaiserin.) From exquisite bud to the full shapely flower, this new Hybrid Tea Rose is superb. Color soft china rose, passing to clear satiny-pink.

Mme. Collette Martinet Golorious golden-yellow, much deeper than Sunburst, and this color does not fade with the expanding of the flower. To the grower looking for something better in yellow, we advise planting Mme. Collette Martinet.

My Maryland This splendid American introduction is destined to become one of the most popular varieties in cultivation. Large, full, double flowers, a pleasing shade of salmon-pink. Distinct and beautiful. Splendid for forcing.

Meteor A rich, dark velvety crimson, ever-blooming Rose, as fine in color as the best of the Perpetuals. The flowers are of good size, double and perfect in shape.

National Emblem Dark crimson of perfect shape, habit and inflorescence; as a bedding, massing and cutting Rose it is unique. Buds long and pointed, massing and large, full, handsome flowers of great beauty, flowering freely and continuously.

Ever-Blooming Hybrid Tea Roses---Continued

Price, Young Plants, 20c. Each, Any 4 for 75c.; Two-Year-Old Plants, 60c. Each, Any Four for \$2.00.

Natalie Bottner Pure white and is said to even excel Druschki. The shape of the flower is similar to Augusta Victoria and the blooms are borne on long strong stems.

Ophelia Brilliant salmon-flesh shaded with rose on outer edges of petals, with a heart of glowing peach-pink and orange-yellow blendings, all passing finally to lighter shades; faultless form in bud and flower; erect habit, stiff, long stems; free and continuous in growth and bloom; handsome, bright foliage.

New Rose, Premier This wonderful new American Rose has taken the country by storm; stems stiff and thornless surmounted by grand deep rose blooms of the largest size and build. Handsome foliage. Price, 30 cents each: two-year-old, 75 cents.

President Taft This Rose was raised in Cincinnati, the home of President Taft. It is without question the most remarkable of all pink Roses. It has a shining, intense, deep pink color possessed by no other Rose. It is a fine grower, free bloomer, good size and form, fragrant.

Pink La France No variety can surpass it in delicate coloring—silvery-rose shades, with pink. It has a satin sheen over all its petals; hardy beyond question.

Rose Marie This is a grand Rose of the very highest merit. A rich red that has come to stay. Might best be described as a bright watermelon red. Very desirable. Price, 25 cents each: two-year-old, 75 cents.

Radiance Color brilliant rosy-carmine, displaying beautiful opaline-pink tints in the open flower. Form is fine; flower large and full with cupped petals. Fine variety, especially on account of its value as a summer cut flower variety. Very free in growth and production of bloom, good habit; the lasting qualities of the flowers are wonderful. Extremely clear.

Rhea Reid A Rose of the type of the American Beauty, but of the easiest culture. In color it varies with the temperature, in summer a bright cherry-rose, while in winter it is a rich crimson-scarlet.

Red Radiance It is not crimson, but a bright, cheerful shade of red. In habit it is Radiance, pure and simple. It has the same characteristics of foliage and growth. Red Radiance will be a valuable acquisition.

Red Letter Day An exceedingly beautiful Rose of infinite grace and charm. Its velvety, brilliant, glowing scarlet-crimson buds and fully opened cactus-like flowers never fade, as the reflex of the petals is satiny crimson-scarlet.

Tipperary This is an Irish Rose; it makes long, slender, stiff stems in a very short time, many of them to a plant, and every one tipped with a yellow flower. The bud is slender and sharply pointed and opens into a full rosette. The color is clear yellow; it will be largely used as a corsage Rose.

Sunburst It has long, pointed buds. The color is orange-copper or golden-orange and golden-yellow; edge of petals lighter; extremely brilliant in effect. Belongs in the class of big Roses.

Wellesey Color is a beautiful shade of pink, the outside of the petals being bright and clear with a silvery reverse. It is a very vigorous, healthy grower, carrying the flowers on long, stiff stems.

White Killarney It is pure white in color, long in bud, of fine form; in fact it is the one Rose par excellence. It is also a great garden Rose, having more petals than its parent Killarney.

White La France It is identical with La France except in color. Pure white, sometimes tinted with fawn.



Maman Cochet.

Four Famous Cochet Roses

These are among the very finest hardy ever-blooming Roses in cultivation.

Price, 20 cents each: set of 4 for 75 cents: large two-year-old plants, 60 cents: set of 4 for \$2.25.

Pink Maman Cochet "The Queen of all Garden Roses." The buds are beautiful, large, full and firm, and elegantly pointed; as they expand they show great depth and richness, sometimes measuring two and a half inches from base to tip. Flowers superb when open, extra large, perfectly double and of splendid substance. Color is rich, clear pink, changing to silvery-rose.

Red Maman Cochet A fine garden variety of even shade of deep rose or red, round and full. A very free grower, in fact it is one of the strongest growing Roses we have.

White Cochet A grand Rose. Identical with its parent, Maman Cochet, the queen of all pink garden Roses, except in color of flower, which is snowy-white, sometimes faintly tinged with the faintest suggestion of pale blush. The flowers are large and very double, with petals of unusually heavy texture.

Yellow Maman Cochet The unusual hardness of this Rose—a pure Tea—makes it especially adapted for bedding. A fitting companion to those other grand summer Roses—the White and Pink Cochets. Flowers large, perfectly double and shapely, of a rich sulphur-yellow.

If Bulbs or Plants go by express, not prepaid, you may select 10 cents extra for each \$1.00.

Choice Ever-Blooming Tea Roses VERY BEST for OUTDOOR BEDDING in SOUTH or INDOOR POT CULTURE

Price, 20c. Each, Any Four for 75c.; Large Two-Year-Old Plants, 60c. Each, Any Four for \$2.00.

Alexander Hill Gray Color is deep lemon-yellow which intensifies as the blooms develop; flowers large, of great substance and perfect formation; it has a high-pointed center from which the petals gracefully reflex. We recommend it highly.

Blumenschmidt Pure citron-yellow, outer petals edged tender rose, a sport from Franzisca Kruger which it resembles in form, and which has a more vigorous growth.

Bridesmaid The most popular pink Tea Rose. Thousands of this variety are grown every year for cut flowers, and it is also very desirable for summer bedding outdoors. It is a delightful shade of bright pink, very free flowering and easily grown.

Clothilde Soupert Color a French white, deepening to a rosy-blush in the center. Form and substance of the flowers are perfect.

Etoile de Lyon This magnificent Tea Rose, south of the Ohio River, has proved to be perfectly hardy. Flowers are very large, double, full and deliciously fragrant. The color is a beautiful chrome-yellow, deepening at center to pure golden-yellow.

Freiherrvon Marschall The flowers are large, beautifully shaped, double and full. It is bright red, one of the brightest, if not the very richest colored Tea Rose in existence.

Golden Gate The buds are long and of the most desirable form; the color is rich creamy-white, beautifully tinged with fine, golden-yellow. The petals are large and broad and exquisitely bordered and tinted with clear rose.

Helen Good This is a true Cochet Rose. The color is a delicate pink suffused with yellow, each petal edged deeper, very chaste and beautiful.

Lady Hillingdon Of quick free growth, with narrow foliage and slender graceful stems, each surmounted with beautiful long pointed bud of rich orange-yellow

color. Fine cut flower sort. Awarded several gold medals in England.

Lady Plymouth (Tea)—The color is a pearly, delicate but deep ivory-cream, faintly flushed, giving it a most piquant finish that is difficult to describe. Awarded gold medal National Rose Society of England, and silver medal at Crystal Palace Show, London.

Mabel Drew Deep cream and canary-yellow. Strong grower—one of the best Teas.

Mlle. Franzisca Kruger The striking color of this handsome Rose places it at once in the front rank as a bud producer in the open air. In its shading of deep coppery-yellow, it stands unique and distinct from all others.

Marie Guillot This beautiful Tea Rose continues in popular favor, and still maintains its position as one of the best white Roses of its class.

Perle des Jardins Clear golden-yellow; very rich.

Queen of Bedders Richest scarlet; hardy bedder.

Souvenir de Pierre Notting The bloom is very large, perfectly full, of elegant form; has a beautiful long bud; colors very bright, distinct and clear and have no unpleasant tones—orange-yellow, bordered in carmine-rose.

The Bride The color is a delicate creamy-white. The bloom can be cut with long stems, and will last in a fresh state after being cut longer than any other known variety; equally valuable either for summer or winter flowering.

Wm. R. Smith Very vigorous in growth, with flowers of heavy texture; color creamy-white with shading of pink. Succeeds admirably in the open ground, bringing fine blooms on long, stiff stems. Hardy with light protection.

HARDY ROSES Hybrid Perpetuals



J. B. Clarke.

Though called Perpetual, it must be understood that they are not such early and constant bloomers as the ever-blooming Rose. The Hybrid Perpetuals should not be ordered for house culture as they are not suitable for that purpose. These Roses are especially suited to plant in all the Northern states and territories, also in the colder parts of Virginia, West Virginia, Kentucky, Tennessee, North Carolina, Arkansas, Missouri, etc.

Price, 20 cents each; any four for 75 cents; two-year-old plants, 60 cents each; any four for \$2.00.

ANNE DE DIESBACH (Glory of Paris)—Brilliant crimson shaded maroon; long, pointed buds, full and sweet.

BLACK PRINCE—A rich, brilliant crimson.

BALL OF SNOW—A finely formed pure white Rose; occasionally shows light flesh when first opening.

CLIO—Flowers flesh-colored, shaded to center with rosy-pink.
CONRAD F. MEYER—This magnificent new Rose is perfectly hardy, and blooms all through the summer and fall. The flowers are four inches across, perfectly full and double. The color is clear flesh-pink, with bright red center; it is very sweet, and has the delightful fragrance of the **Wild Rose** or **Sweetbriar**. It is extremely free from the attacks of insects, rust or blight. This is certainly a grand variety.

EUGENE FURST—A beautiful velvety crimson, with distinct shading of crimson-maroon.

FRAU KARL DRUSCHKI, or WHITE AMERICAN BEAUTY—This is undoubtedly one of the grandest hardy pure white Roses ever introduced. Makes splendid buds and immense flowers four to five inches across, perfectly full and double, and delightfully fragrant, large thick petals, very double and handsome. Bright, shining green leaves, elegantly veined; a healthy, vigorous grower, entirely hardy and a constant and abundant bloomer.

GENERAL JACQUEMINOT—A rich velvety crimson.

GIANT OF BATTLES—Rich red, very large, perfectly double.

HENRY MUNCH—The true Pink American Beauty. Makes splendid long pink buds and bloom of immense size. Very large and full; vigorous, fine for forcing and for garden culture. This is without doubt the finest of all Hardy Pink Roses. Don't fail to try this Rose.

J. B. CLARKE—A vigorous grower with handsome foliage, deep red on the young shoots, changing to deep green with age; a free perpetual bloomer; color brilliant crimson shaded scarlet; very large, and of exquisite form, with large smooth petals, slightly reflexed on the edges; does not burn in the sun; very fragrant.

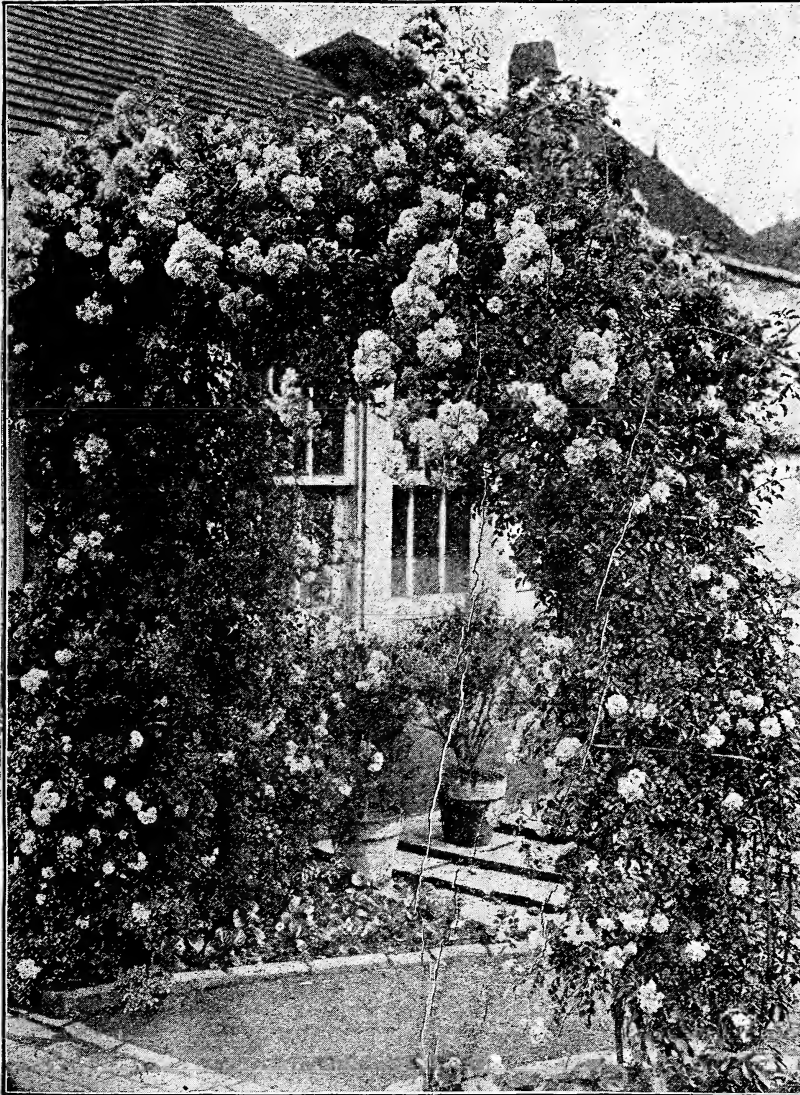
MAGNA CHARTA—A bright, clear pink, flushed with crimson; very sweet; flowers extra large, with fine form and very double.

MADAME PLANTIER—The ironclad white cemetery Rose. It bears thousands of beautiful snow-white, fragrant Roses.

PAUL NEYRON—Deep shining rose; very large.

VICK'S CAPRICE—Bright rose, striped lighter.

HARDY CLIMBING ROSES



Price, 20 cents each: any four for 75 cents. Two-year-old plants, 60 cents: any four for \$2.00.

THESE beautiful new Hardy Climbing Roses are unexcelled. There is nothing like them, after they become established, in their strong, luxuriant growth, freedom of bloom and bright colors.

AMERICAN PILLAR—A new single flowering Rose with blooms two to three inches across, borne in immense clusters. Color lovely apple-blossom pink with bright golden stamens followed in autumn with red hips. A great Rose to grow in pots for Easter.

CLIMBING AMERICAN BEAUTY—Same color, size and fragrance as American Beauty, with the addition of the climbing habit. Good foliage, and better blooming qualities. Blooms three to four inches across; has proved perfectly hardy and stands heat and drought well.

CLIMBING GRUSS AN TEPLITZ—An exact counterpart of the bush form of that superb Rose Gruss an Teplitz, except that it is a vigorous climber. A perfect sheet of dazzling crimson when in bloom. The color is dark, rich crimson, passing to velvety fiery-red. One of the brightest colored Roses we know.

CRIMSON RAMBLER—This is the wonder of the age. No Rose will cause you more pleasure. Astonishes everybody who sees it. Bright scarlet, in immense panicles of fifty or more blooms. Magnificent.

DOROTHY PERKINS—Extremely hardy. Flowers borne in clusters of from six to ten, very double, with prettily crinkled petals. Pretty pointed buds, beautiful clear shell-pink in color, lasting a long time without fading; sweet-scented.

DR. W. VAN FLEET—Flowers when open run four inches and over in diameter. Center is built high, petals beautifully undulated and cupped. Color is a remarkable delicate shade of flesh-pink on the outer surface, deepening to rosy-flesh in the center. Flowers full and double, of delicate perfume; buds pointed. Resembles Souv. de Pres. Carnot in color.

KEYSTONE—Perfectly hardy everywhere, blooms with wonderful freedom, is absolutely impervious to insect attacks. Color deep, lemon-yellow. Fragrance delicious.

VEILCHENBLAU (Blue Rambler Rose)—Seedling from Crimson Rambler, semi-double, in large clusters of medium size, opening reddish-lilac, changing to amethyst and steel blue.

WHITE DOROTHY PERKINS—(New) A pure white sport of the well-known Dorothy Perkins, of same habit of growth and freedom of flowering; a splendid companion for the pink variety, as it flowers at the same time.

TAUSENDSCHOEN—A rapid growing, almost thornless, climber of exceptional value and attractiveness. Its innumerable flower clusters show every shade of pink, rose and crimson, with white and yellow variegations.

ROSARIE (Pink Tausendschoen)—Similar to its parent Thousand Beauties, except color, which is a solid deep rose with much larger clusters and many more blooms.

EVER-BLOOMING CLIMBING ROSES

Price, 20 cents each: any four for 75 cents. Large two-year-old plants, 60 cents each: any four for \$2.00.

In the South, or on the Pacific Coast, where they stand the winters, nothing can compare with them for beauty of bud and foliage. Are never to be forgotten when seen in full bloom, loaded with thousands of magnificent flowers.

CLIMBING METEOR—A grand, velvety red Rose. It is a free persistent bloomer, and will make a growth of from 10 to 15 feet in a season; in bloom all the time, and it is a true ever-bloomer. Flowers much larger than Meteor, and are richer in color. Just the Rose to train up the veranda or arond windows, where its great beauty will show up to good advantage.

CLIMBING WHITE COCHET—Here we have a climbing form that will become as popular as a climber as its parent has as a bush Rose. Grand, huge white flowers tinged pink.

MARECHAL NIEL—A beautiful deep sulphur-yellow, very full, very large and exceedingly fragrant; it is the finest yellow Rose in existence.

PILLAR OF GOLD—Flowers largest size, coppery-yellow, suffused and flushed with bright rose. Grand.

ARBOR, OR HARDY CLIMBING PRAIRIE ROSES

Price, 20 cents each, any four for 75 cents: two-year-old plants, 60 cents each, any four for \$2.00.

GREVILLE, or SEVEN SISTERS—Flowers in large clusters, varies in color from white to crimson.

PRAIRIE QUEEN—Flowers very large and of peculiar globular form. Bright rosy-red.

TENNESSEE BELLE—Flowers bright, beautiful pink.

IF BULBS OR PLANTS GO BY EXPRESS, NOT PREPAID, YOU MAY SELECT 10 CENTS EXTRA FOR EACH \$1.00.



Baby Doll.

Baby Doll This delightful little "Sweetheart" Rose is a wonder. The color is absolutely new, and quite startling in its brilliancy, golden-yellow tipped with clear, bright cerise. The foliage is narrow, long and sharply pointed, a deep glossy green—a very beautiful setting for the lovely little Doll Roses. It has a neat, compact habit and will make a beautiful little specimen in pots.

The Hybrid Polyanthas OR BABY RAMBLER

Price, 20 cents each; any four for 75 cents. Strong two-year-old plants, 60 cents each; any four for \$2.00.

Baby Tausendschoen We have nothing lovelier in Roses than this Dwarf Polyantha with its beautiful bouquets of creamy-white, saucer-shaped flowers, every petal edged with lovely rosy-pink. One of the most beautiful of pot Roses.

Baby Dorothy A true dwarf form of Dorothy Perkins, containing the family virtues and pink beauty. The prettiest pot Rose on the market.

Erna Teschendorff (New.) Brilliant, rosy-crimson with flowers of good size in clusters; reminds one of the coloring of "Gruss an Teplitz," said to be the best red among Polyanthas.

Ellen Poulsen T. P. Dark, brilliant pink; large, full; sweet-scented; vigorous, bushy habit, most floriferous; very fine. **Young plants only.**

Gruss an Aachen Golden-rose with shadings of red; beautifully formed, well filled flowers; splendid for massing. Dwarf Polyantha.

Jesse An ideal Rose for bedding, massing or for pot culture. The flowers, which are produced in huge clusters, are of a bright cherry-crimson color, which does not fade; superb.

Mlle. Cecile Brunner This Rose has fairly jumped into popularity. Everywhere in America they are planting it simply by the thousands for cut flowers. It has become quite the rage. It makes a handsome miniature Rose coming on stems singly. The bud and flower are both handsome. Color blush, shaded light salmon-pink; distinct and desirable.

Orleans Rose A charming sort of the true Polyantha type, of clean, vigorous growth and unusually brilliant foliage. Flowers are strikingly handsome; a warm geranium-red with center of pure white.

White Baby Rambler As delicately tinted and as full of clusters as any Polyantha Rose. Its pure white flowers are perfectly double, and bloom with the unceasing freedom of the reds and pinks of this class.

MOSS ROSES Price, 20 Cents Each; Two-Year-Old Plants, 60 Cents Each.

Henri Martin Rich, glossy pink, tinged with crimson; large globular flowers, very full and sweet; finely mossed; one of the finest.

Mousseline Flowers white, sometimes tinged with flesh color; large, double cupped buds heavily mossed. One of the best Moss Roses.

JAPANESE CREEPING OR MEMORIAL ROSES

These are most desirable Roses for planting on banks, or for slopes or for covering graves. Entirely hardy everywhere.

Price, 20 cents each. Any four for 75 cents; two-year-old plants 60 cents each; four for \$2.00.

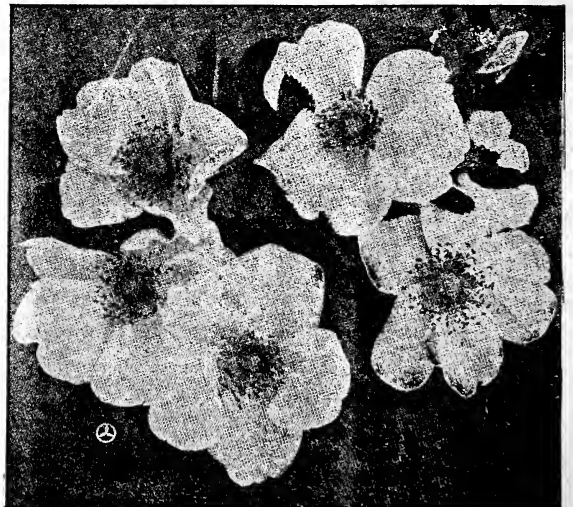
These charming Roses are of the same creeping habit as Rosa Wichuraiana, trailing over the ground or creeping about the trunks of trees and pillars with delightful effect. These Roses are of intense hardiness, and succeed in all soils, even on the poorest and driest conceivable.

Hiawatha Distinctly different from other Ramblers. Its small flowers, deep ruby-crimson, accentuated by a white eye, are uniquely borne in long trails of forty to fifty blooms. This variety is very popular for training on fences, not only as a covering for the fence, but because it is really one of the prettiest-Roses of its kind.

Mrs. Lovett New double sweet-scented Memorial Rose. Roses are very double, two to two and one-half inches in diameter, of the loveliest, most cheerful, bright rosy-pink. Best of all, it is as fragrant as the American Beauty.

Pink Roamer—Single variety; flowers nearly two inches in diameter, bright, rich pink, with almost white center and orange-red stamens.

Rosa Wichuraiana (Memorial Rose.) Handsome for covering rockeries, mounds or embankments; especially valuable for cemetery planting. The pure white, single flowers appear in greatest profusion during the month of July, while its almost evergreen foliage makes it very desirable at all seasons of the year.



Memorial Rose.

SINGLE FLOWERING GERANIUMS

Price, 15 Cents Each, Six for 80 Cents, Except Where Noted.

Alice Lemon This is one of the finest Geraniums we have in this color. Clear, healthy foliage; splendid habit of growth; wonderfully free in flowering; indispensable as a pot plant; strongly recommended for winter flowering; unsurpassed as a bedder. Color an artistic shade of bright salmon pink, slightly tinged white. Price, 20 cents each.

Mrs. E. G. Hill Single; florets two and one-half inches' The center of each petal is soft, light salmon' bordered with rosy-salmon and veined deep rose.

President Roosevelt Pure snow-white, retaining its purity the entire season; perfectly formed round flowers, borne in enormous trusses, held well above the beautiful foliage.

W. A. Chalfant Dazzling scarlet, florets slightly circular and slightly cupped, forming a magnificent truss; one of the best for bedding.

Granville Floret perfectly round; bright pink flowers.

DOUBLE FLOWERING GERANIUMS

PRICE, 15 CENTS EACH, ANY SIX FOR 80 CENTS.

Alphonse Ricard An excellent semi-double, a strong grower, dwarf and branching. Produces immense trusses of bloom; color bright orange-red.

Beauty Poitevine Semi-double. One of the very finest of the Bruant race. The color is a brilliant salmon, shading to apricot in the center; trusses colossal, florets two and one fourth inches in diameter.

Francis Perkins Color a bright pink. The blossoms are perfect in form and borne well and clear above the foliage.

Helen Michell Semi-double, of the clearest possible shade of scarlet, is early in bloom, and flowers very freely during the entire season. Grows compact, medium dwarf, with lustrous green foliage and throws up gigantic flower-heads very freely. It is a common occurrence that a single four-inch pot plant shows four fully open gigantic flowers-heads, several half open and more in bud. For earliness and constancy of bloom it surpasses all other Geraniums.

Jean Viaud Of a beautiful clear rosy-pink color with distinct white blotch at the center. A rapid, vigorous grower, yet compact and shapely.

Jean Oberle One of the most beautiful among that color known as the peach-pink; an excellent shade of hydrangea-pink, shading tenderly to almost pure white at the outer edges of each petal; the florets are especially well formed, just semi-double enough to be pleasing; the trusses are actually

immense, often having over a hundred floret to the truss. Foliage distinct, and one of the type that stands the sun perfectly; color of foliage dark green, with a slight chocolate zone.

Mrs. Buckner A pure double white Geranium, as free-flowering as the single varieties; can be used for planting in beds for furnishing a supply of beautiful white flowers for vases, etc.

Miss Frances E. Willard Is of vigorous growth; flower stalks very long and carried well above the foliage; color is a delicate blush, shaded with pearl-pink, a most charming piece of shading.

Red Wing This is a fine new American Geranium just offered for sale. It has all the marks of a successful bedder or pot plant; being a healthy, robust grower, large-flowered and extraordinarily floriferous. Color deep cardinal-red with a soft velvet luster.

S. A. Nutt This is the darkest and richest double Geranium grown. It is very bright, dark, deep, rich velvety maroon, an excellent bedder and a perfect pot plant.

Sweet-Scented Geraniums

NOTED FOR THEIR FRAGRANT FOLIAGE

PRICE, 15 CENTS EACH:

Rose-Scented Too well known to need description. These are indispensable in the formation of bouquets,

NEW EVER-BLOOMING PELARGONIUMS

Better Known as Lady Washington Geraniums
THE GRANDEST OF ALL FLOWERING PLANTS.

Do not resemble the common Geraniums in any particular, neither in foliage nor flower; more beautiful in every way. We here offer seven distinct sorts, every one entirely different in color and every one a beauty. The Lady Washington Geraniums are the handsomest of all flowers—once seen, never forgotten.

PRICE, 30 CENTS EACH; SIX FOR \$1.50

Easter Greeting This new species is the earliest of all Pelargoniums with enormous florets and clusters having light green foliage and of dwarf robust growth. It blooms from March until fall. The florets are of a fiery amaranth-red with five regular shaped spots. The first and only kind to bloom as well bedded out as in pots and to do so all summer. The only kind that stands bedding out in groups. It rivals the Azalea in beauty as a pot plant for Easter, and when bedded out in summer will remain in bloom until time for frost in September.

Gardener's Joy The ground color is apple-blossom pink, the two upper petals have blotches of carbon brown, the florets are three and one-half inches in diameter and are joined to enormous clusters which rise above the beautiful foliage and remind one of a Rhododendron cluster. It is of a half dwarf nature and very sturdy. On account of its rapid luxuriant growth it is a very profitable market variety.

Glory This splendid novelty is quite remontant, florets and clusters are very large; ground color blue, very much like the Cattlea Orchid. The upper petals contain two large purple magenta-red spots, distinctly veined. An exceedingly beautiful and entirely new color in Pelargoniums. This kind has a very robust growth.

Liberty Considered by many to be the best novelty yet sent out by Carl Faiss. The color is salmon-red and it

has equally sized reddish blotches bordered with scarlet. The flowers are of fine form, semi-double, and they form gigantic trusses. The habit is compact and the flowers held well above the foliage.

Lucy Becker This grand novelty is a sport of Easter Greeting, and is like it in everything but color, which is a rosy-pink. It is if anything even more free in bloom.

Prince Immensely large flowers, strongly crimped, of fine shape, with from six to ten petals, color rich purple with velvety black blotches. Remarkably robust habit. The large clusters rise gracefully above the beautiful foliage. The blooming plant with its enormous flowers makes a striking impression.

Pansy Geranium, MRS. LAYAL This new and beautiful Pansy Geranium is of the easiest growth, dwarf in habit, and literally covered with flowers, and as it requires little or no attention, it is invaluable as a window plant. There is nothing that gives better returns for a little care when grown in the window garden than this plant. The flowers are bright cherry-red with white at the base of each petal; the two upper petals are dark crimson-maroon. It is this combination of coloring with blotches which obtained for the title of "Pansy Geranium." The flowers are of immense size and very freely produced. Price, 20 cents each: three for 50 cents.

FLOWERING BEGONIAS

This Beautiful Class of Plants is Deservedly Popular. They are Suitable for Pot Culture in the Window for Winter-Blooming. We Can Furnish Flowering Begonias from 2½ inch Pots, 25 Cents Each. EXCEPT WHERE NOTED.



Argentea Guttata.

ARGENTEA GUTTATA

This variety is an introduction of M. Lemoine, and is a cross between Olbia and Alba Picta. This beautiful sort has the silvery blotches of Alba Picta, the grace and beauty of growth of Olbia. It has purple-bronze leaves, oblong in shape, with silvery markings, and is in every way a most beautiful Begonia. Produces white flowers in bunches on ends of growth stems. Good for house culture.

Alba Picta Long, pointed, slender leaves, thickly spotted with silvery-white. Foliage small and elegant.

Alba Perfecta Grandiflora We doubt if there is a white-flowered variety that equals it. The foliage resembles Rubra in shape, but it is lighter green, while the flower panicles are much handsomer. It is a pure white flowering Begonia of much merit.

Robusta This is one of the most popular Begonias grown. The stock, stem and under side of the leaf are Indian-red; the upper side of the leaf glossy olive-green. The flower is composed of two wide and two narrow petals, the wide ones being broadcast at the base and terminating in a round point, of a beautiful bright rose.

Rubra This Begonia is still a great favorite. The flowers are a rich coral-red, hanging in large pendent clusters; green, combined with the rich green foliage, make it one of the best plants for house culture.

Coralline Lucerne The Wonderful New Flowering Begonia. This new Begonia has simply taken everybody who has seen it by storm. It certainly is a wonder. The blooms last from a month to six weeks, and are borne in immense clusters, almost hiding the plant. The color is bright coral-red, changing to a delicate pink. It is past the power of speech to describe it. A wonder. **Fine plants, 30c.**



Gloire de Chatellaine.

Gloire de Chatellaine (New Ever-Blooming Flowering Begonia)—This new Begonia is undoubtedly the freest blooming variety known. Is of easy culture, low bushy habit and literally covered the entire year with a wealth of bright pink flowers with yellow stamens. It well merits the name of Ever-blooming Begonia.

Thurstoni The under side of leaves is a rich purplish-red the veinings very prominent, while the face or upper side is a bronzy-green, shaded with crimson and olive with a peculiar glossy metallic luster over all. Flowers rosy, white, in large clusters well above the foliage. The plant has a fine habit.



Giant Cyclamen.

Giant Cyclamen

There are few winter-flowering plants more attractive than the Cyclamen, being an ideal plant either for greenhouse or window decoration. The Giant strain here offered is of robust growth, throwing the large flowers well above the handsome foliage. We send out only strong plants, which we feel sure will produce best results. We can furnish any of the following colors in thrifty plants.

Price, nice young plants, postpaid, 25 cents each, three for 65 cents; larger size, 50 cents each.

CYCLAMEN GIGANTEUM ALBUM—Pure white.

CYCLAMEN GIGANTEUM ROSEUM SUPERBUM—Pink.

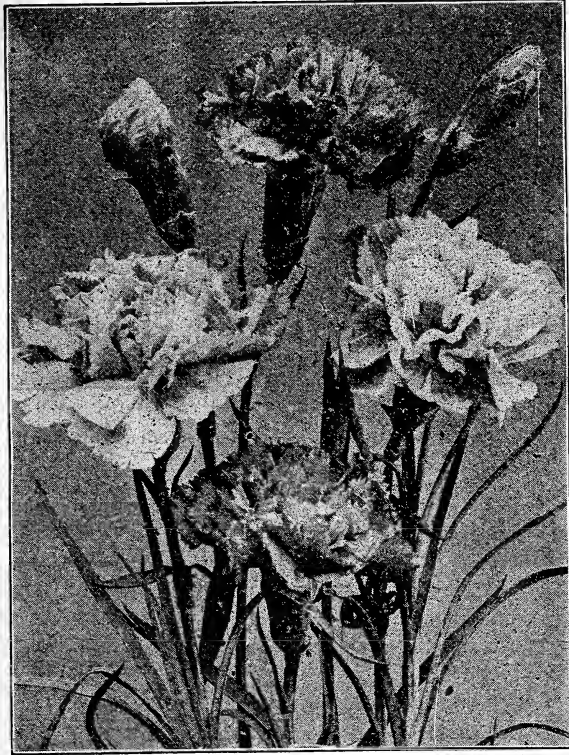
CYCLAMEN GIGANTEUM SANGUINEA—Dark red.

CYCLAMEN GIGANTEUM SALMON—Deep salmon.

LARGE FIELD GROWN CARNATIONS FOR WINTER BLOOMING

NO PLANT is more deservedly popular, after the Rose, than the Carnation. It possesses the attractive quality of fragrance, and fragrance of a most delightful odor. Every window garden should contain at least a few of them. They bloom freely and for a long time if given a cool but sunny position. When subjected to a considerable heat, their stems grow long and slender, bearing a few flowers or none. The spicy, handsome double flowers are enduring, and appear in liberal quantities with the culture recommended above. **Our Carnations are all strong field-grown plants, established in pot, have been especially prepared for winter flowering, and will give a great quantity of bloom.**

PRICE, 30 CENTS EACH; ANY THREE FOR 80 CENTS.



Matchless.

BENORA

Clear white, penciled with bright red. Narrow foliage; long stems. Flowers large, freely produced. Very clear-cut and beautiful, keeps like an "everlasting flower," always in good health and good humor.

ENCHANTRESS

A very pleasing shade of light pink, deepening towards the center. When fully developed, over four inches in diameter; very attractive and fine form; stem is strong and stiff; both outdoors and in the house the growth is ideal; very healthy and of vigorous constitution; very early, free and continuous; needs no special culture to develop its magnificent blooms.

MATCHLESS

This new white variety is well named, and well deserved the two gold medals that it won; besides being of exhibition size and quality, it is a true commercial, easy to handle, comes into bloom early, and is quite continuous; a non-burster.

NEBRASKA

It is bright scarlet; makes long stems and good sizable plants. It comes into flower early and we do not hesitate to state that Nebraska looks the best in its color.

POCAHONTAS

The flowers are full and double, finely fringed, borne in wonderful profusion on long, straight stems, remarkable for their wiry strength, surpassing the ordinary Carnation in that particular. The color is a deep lustrous carmine-crimson, very brilliant and showy. The habit of the plant is vigorous and branches freely; foliage and stems dark green. The flowers under ordinary cultivation and without disbudding will average from two to three inches across.

WHITE WONDER

A greatly improved White Perfection, which begins blooming in September and continues throughout the season; snow-white, fragrant, absolutely perfect in form, large in size, on stiff stems, healthy and free and an easy rooter; grand in every way.

New Superb French Hydrangeas The Newest and Finest Varieties

This species of Hydrangea is generally hardy in the South and throughout the Middle States with some protection during winter months, and here they will flower profusely from June to October. In our Northern States they will give better results when used as pot plants. The plants succeed rather better in a shady place than where it is too sunny, on which account they are valuable for house culture. The pot plants require a liberal supply of water during their season of growth and flowering.

PRICE, YOUNG PLANTS 20 CENTS EACH; ANY SIX \$1.00.

AVALANCHE—A splendid large white, which has made a reputation for itself during the past two seasons, an easy variety to force early, and remarkably free-flowering.

BOUQUET ROSE—Large trusses of well-formed flowers, rosy amber turning to bright pink; has proven a special favorite in the New York market this season.

LA LORRAINE—Very large flowers, pale rose, turning to bright pink; has become a general favorite during the past two years.

MME. E. MOUILLERE—This has been the favorite white variety in the New York market this year, very free flowering, of good size and form. Awarded silver medal at the National Flower Show at Boston last year.



Hydrangea Bouquet Rose.



Beautiful Fuchsias

If properly cultivated and a suitable place be had where the plants are protected from the midday sun, few flowers can equal the Fuchsias in gracefulness and beautiful showy flowers perpetually coming on. The secret of success with Fuchsias is to keep the plants properly watered and nourished to stimulate fresh, continuous growth, and consequently flowers. This satisfactory result requires repeated repotting if plants are kept in pots, or if planted out, much mulching with cow manure and watering.

WE HAVE A NUMBER OF CHOICE SINGLE AND DOUBLE FLOWERING VARIETIES. PRICE, 20 CENTS EACH; THREE FOR 50 CENTS.

FERNS

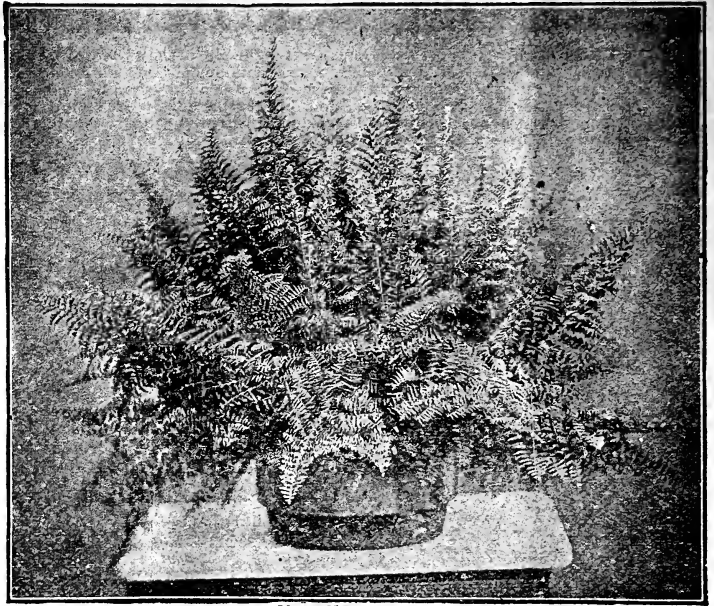
Most Beautiful of All Decorative Plants FOR THE HOUSE AND CONSERVATORY

No plants are easier to grow or more ornamental for house or conservatory culture than these grand new Ferns. They require very little care or attention, are not troubled with insects or diseases, and produce a finer effect than any other plants you can get for many times their cost. The varieties listed herewith include the newest and most beautiful sorts to date. The ordinary temperature of the living room suits them nicely, and their new growths will soon surprise you with their graceful beauty.

Any of the following Ferns in nice young plants, 20 cents each, any four for 75 cents. Strong four-inch pot plants, 50 cents each, Large specimen plants, \$1.00 each.

Verona A handsome new variety of the *Elegantissima* type, somewhat resembling *N. Whitmanii*, but with finer "Ostrich Plume" foliage, and with a stiffer mid-rib, which makes the fronds stand up better than most varieties of the Lace Ferns.

Parlor Fern (*Nephrolepis Elegantissima Compacta*)—Dwarf form of *N. Elegantissima*, making dense, bushy, compact masses of foliage. One of the most valuable Ferns.



New Fern Verona.

Ostrich Plume Fern (*Nephrolepis Whitmanii*) *Nephrolepis Elegantissima*, with still more gracefully divided pinnae, giving the whole plant an airy, lace-like appearance; makes beautiful symmetrical plants even in small sizes, and large specimen plants are beautiful beyond description.

Philadelphia Lace Fern (*Nephrolepis Elegantissima*)—The small size pinnae, or leaflets, are subdivided into perfect miniature fronds; the side pinnae stand at right angles to the midrib of the fronds, on edge instead of flat, giving both sides of the main frond the same beautiful appearance. It is impossible to conceive of the beauty and grace of this wonderful Fern from description—must be seen to be appreciated.

The Newport Fern (*Nephrolepis Scotti*)—This Fern is all the rage at fashionable Newport. Identical with the Boston Fern, except it is smaller in all of its parts, and more compact, and will make more fronds in a given length of time. The fronds are lighter green than any of the *Nephrolepis*. The plants are never straggly, always making a shapely plant.

Crested Fern (*Nephrolepis Scholzei*, **The Plumed Scott Fern**)—It is a sport from *Scotti*, possessing the merits of that most popular variety, but with the pinnae subdivided, giving it an airy, feathery appearance. The fronds, like in *Scotti*, stand erect, with a graceful arch forming a plant of ideal shape, and they never break down. The smallest plants perfectly express the type, and in every size are models of beauty for table decoration.

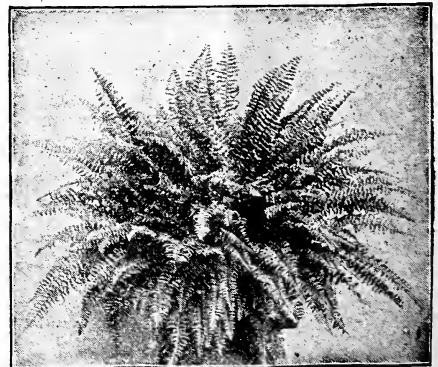


Boston or Fountain Fern.

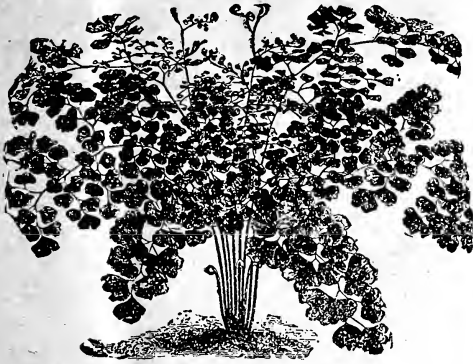
The Popular Boston Sword Fern (*Nephrolepis Exaltata Bostoniensis*)—In the vicinity of Boston no other plant is used so extensively as this graceful *Nephrolepis*, which differs from the ordinary Fern in having much longer fronds, which frequently attain a length of four feet. These fronds arch and droop over very gracefully, on account of which it is frequently called the Fountain Fern.

The "Roosevelt Fern" (*Nephrolepis Roosevelt*)—In general characteristics it resembles the Boston Fern, but with two points of great excellence over that variety. First it produces many more fronds, making it a bushier and handsomer plant; then the pinnae are undulated, giving it a pronounced wavy effect seen in no other Fern. It is highly recommended.

"Teddy Junior" This magnificent Fern is a sport from the now famous Roosevelt Fern, and while its habit of growth is to produce a shorter frond, it retains all the valuable characteristics of the parent plant. The fronds are broad and beautifully tapered from base to tip; they droop just enough to make a shapely, graceful plant. The fronds have an attractive wavy appearance, which adds materially to their charming decorative effect. "Teddy" will produce about four times more fronds than any other Fern. It is such a compact, vigorous grower that it will thrive under most adverse conditions, making an exceptionally rapid growth and producing a plant of rare beauty and perfection in the dwelling house without special care or attention. This Fern makes the finest pedestal plant ever produced; indispensable for decorating.



Teddy Junior.



Adiantum Cuneatum.

Dwarf Growing FERNs for Dishes

We have grown a large quantity of small Ferns suitable for Fern dishes. The use of ferneries as ornaments for the dinner table is now very general. Nothing makes so fine an ornament, or is so well adapted for the purpose.

PRICE, 15 CENTS EACH: ANY THREE FOR 40 CENTS.
Can be Furnished from 2½-Inch Pots Only.

Adiantum Cuneatum (Maiden Hair Fern.) A very beautiful and graceful Fern, its delicate fronds being much used for cut flower work.

Aspidium Tsussimense Without question the most valuable of all Ferns yet introduced for fern dishes; of strong but dwarf and graceful habit; of good color and of better keeping quality than any other Fern we know. A clear, good grower and very ornamental.

Cyrtomium Falcatum (Holly Fern.) We consider this one of the finest Ferns in cultivation to grow into specimen plants, and while it is coarser than the Tremula Fern, it is very graceful and is becoming very popular. The leaf is a rich, glossy green, and each leaflet is about the shape and size of a Rose leaf. The fronds are fine for cutting on account of their lasting quality.

Moss Fern (Selaginella Emiliania.) An upright-growing moss with delicate lace-like foliage. Suitable for Fern dishes or for table and house decorations.

Pteris Cretica Alba-Lineata A handsome dwarf growing Fern; deep green, striped white.

Pteris Adiantoides A very desirable Fern, whether for growing in the room or planting out. Very similar to Falcatum, having the same deep green leaf. Grows very freely and attains a height of 12 to 18 inches.

Pteris Tremula, or Shaking Fern One of the finest Ferns for house decoration, growing very rapidly and throwing up large, handsome fronds. It makes magnificent specimens, easily grown and very popular.

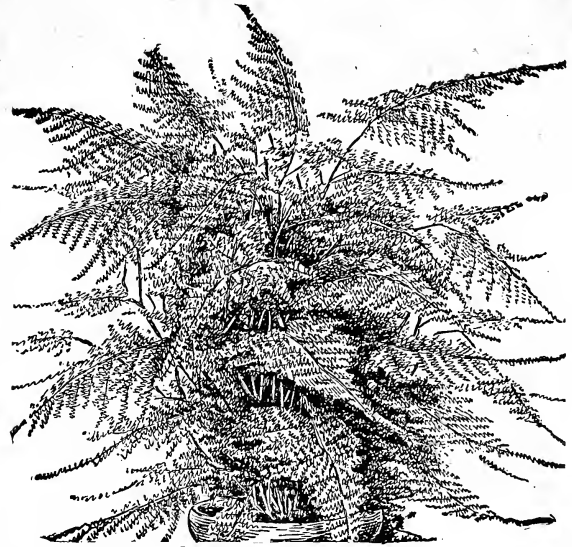
Pteris Argyrea (Silver Fern.) A very showy Fern with variegated foliage; fronds large, light green, with a broad band of silver-white down the center of each. Very distinct.

Pteris Wilsonii An ornamental Fern of unusual merit. One of the most dwarf of this class, having deep green foliage, leaves heavily crested, giving it the appearance of a tassel. A fine addition to the ornamental varieties.

Pteris Wimsetti Green leaves with the ends very peculiarly twisted. Is one of the best varieties for Fern dishes, being a short, compact grower. Will stand much rough treatment.



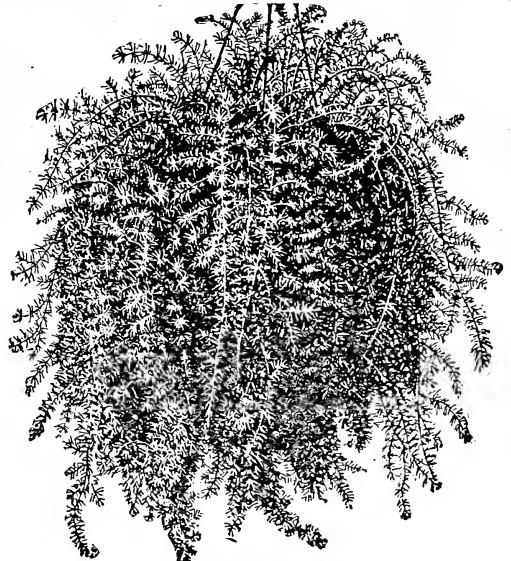
A Fern Dish Collection.



Asparagus Plumosus.

Asparagus Plumosus Nanus

(Lace Fern.) One of the handsomest of our foliage plants. The leaves are a bright green, gracefully arched, and as finely woven as the finest silken mesh. Their lasting quality when cut is remarkable, retaining their freshness for weeks, hence it ranks as the most valuable plant we have for this purpose, surpassing Maiden Hair Fern in grace, fineness of texture and richness of color. **Price, 15 cents each, three for 40 cents: large plants in four-inch pots, 40 cents each.**



Asparagus Sprengeri.

THE CHARMING DECORATIVE PLANT

Asparagus Sprengeri

Not only is it useful for cutting in sprays for fine cut flower work, more particularly in connection with large Roses, etc., but grown in suspended pots, it makes one of the prettiest decorative house plants we know of. Used in decorations as for example, in the decorations of mantels, nothing can equal it. **Price, 15 cents each, three for 40 cents: large plants from four-inch pots, 40 cents each.**

Fern Dish Collections

For these we make the following special offer, selecting the varieties which are best adapted for this use. Selection of varieties must be left to us.

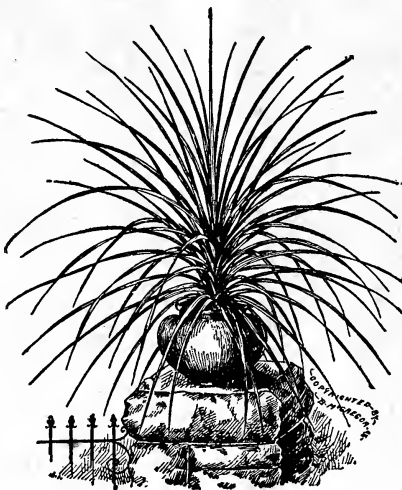
For 75 cents we will send six varieties, our selection, this being sufficient for a dish six to eight inches in diameter.

Palms and Other Choice Decorative Plants

Palms have become an almost indispensable feature in all decorations, whether for apartments, conservatories, or for tropical bedding in summer. The following varieties of Palms are of easy culture in the parlor or conservatory. No home should be without one or more. It might be well to state here that young Palms do not always resemble the illustrations; the characteristic leaves usually appear the second year. We deliver the small plants by mail, postpaid; the large plants must be sent by express.



Kentia Belmoreana.



Dracena Indivisa.



Ficus Elastica.

Palm Kentia Belmoreana The Kentias are among the best of the Palm species for general cultivation. This variety is one of the best in its class—graceful habit, bright green foliage, gracefully disposed; as a decorative plant for the window, dinner table or conservatory it scarcely has an equal. Price, small plants, 75 cents each; larger by express, eighteen inches high, \$1.50.

Palm Kentia Forsteriana This is one of the finest plants grow of any of the Palm family. Being almost hardy, it is not injured by slight changes in temperature, and its stiff, glossy leaves enable it to stand the dry, hot air of the living room, without injury. The leaves are deep, glossy green, fan-shaped, split

deeply into segments. Price, medium, 75 cents; larger, eighteen inches high, \$1.50.

Ficus Elastica (India Rubber Tree.) Very large, smooth, leathery leaves, evergreen foliage. Generally esteemed one of the finest house plants grown, the plant attaining a large size and tree shape. Price, twelve inches high, 75 cents; eighteen inches high, \$1.00. Larger size by express only, \$1.25.

Dracena Indivisa Of all the plants in use for centers of vases, baskets, or for beds in the open ground, nothing is so valuable as this. From its graceful drooping habit it is sometimes called the "Fountain Plant." Price, 15 cents each; three for 40 cents; extra large, 35 cents.

COLEUS

We have a collection of thirty kinds of the most distinct sorts out. Leave the selection of varieties to us, as it is hard to describe the various tints. Price, 10 cents each; any six for 50 cents; any twelve for \$1.00.

LANTANAS

The flowers embrace all of the most delicate shades of orange sulphur, creamy-white, etc., changing from one distinct color to another as they increase in age and development. Our varieties give a wide range of color, and include the most distinct and profuse blooming varieties. Price, 15 cents each; two for 25 cents; \$1.50 per dozen.

CREPE MYRTLE

LAGERSTROEMIA INDICA—A favorite tub plant in this latitude, where it is not hardy enough to preserve its old wood during the winter, as in the South, where it is perfectly hardy. Here it dies down to the root, but comes up again in the spring. The best way, therefore, is to keep the plants in the cellar over winter and transplant in rich soil early in the spring, watering freely during the summer, and no flower will produce better effect.

PRICE, 15 CENTS EACH: TWO FOR 25 CENTS.

CREPE MYRTLE, CRIMSON—The old crimson variety.
CREPE MYRTLE, WHITE—A fine white variety.

Buddleia Asiatica

(Winter Blooming)

A splendid new greenhouse shrub, producing great quantities of pure white, fragrant flowers in graceful, recurving racemes from November. The flowers when cut have unusual keeping qualities and will be in demand for decorative work. Fine for pot culture. Keep in temperature of about 60 degrees. Price, 20 cents each; three for 50 cents.

THE EVER-BLOOMING

Butterfly Bush

(Buddleia Variabilis.)

(Summer Blooming)

A deciduous bush, dying down in the winter. In the spring the top should be cut off quite close to the ground when the plant starts to make a new growth from the crowns. The blooms come from the new wood produced through the summer. It is very rapid growing, and two years will make a large spreading bush, four to six feet high. It produces long, graceful stems which terminate in tapering panicles of beautiful lilac-colored flowers that are of miniature size and borne by the hundreds on a flower head which is frequently ten inches long. A single plant the first season will throw out as many as fifty flower spikes which increase greatly in number during succeeding years. We recommend covering the roots with manure, leaves or other suitable material as winter approaches. Price, nice plants from two and one-half inch pots, 20 cents each; three for 50 cents.

CHOICE IMPATIENS

Some of these are entirely new and distinct in color. The Impatiens delight in a light, rich soil, and thrive best in a partially shaded position. They are a mass of bloom all the time; are splendid bedders and superb pot plants for the house. When grown in pots care should be taken to avoid overwatering. We offer Choice Impatiens in assortment of color. **Price, 15 cents each: three for 40 cents: \$1.50 per dozen.**

JASMINES

The Jasmine is a favorite greenhouse or house plant everywhere North, while in the South it is perfectly hardy. It is the idol of poets, and one of the sweetest flowers. Among the species are found equally desirable subjects for decorating the greenhouse and the outdoor border, combining in every instance freedom and elegance with the most delicious fragrance.

JASMINE PRIMULINUM—Finest of all Jasmines for pot culture. It makes a very graceful plant with long, wavy stems, thickly clothed with handsome foliage, and when in bloom each stem or branch is almost a solid wreath of large golden-yellow blossoms like immense Primroses—two inches across. **Price, strong plants that will bloom soon, 15 cents each: three for 40 cents. Plants from four-inch pots, 40 cents each.**

GRANDIFLORUM—Foliage fine; flowers white, star-shaped and fragrant; blooms from November until May, easy culture. **Price, 15 cents each: larger size, 40 cents each.**

POETICA—Similar to Jasmine Grand. Flowers smaller, but borne on large spikes. Makes a valuable climbing plant, though if desired can be grown bush form. **Price, 15 cents each: fine bushy plants, 40 cents each.**



Justicia Carnea.

Justicia Carnea

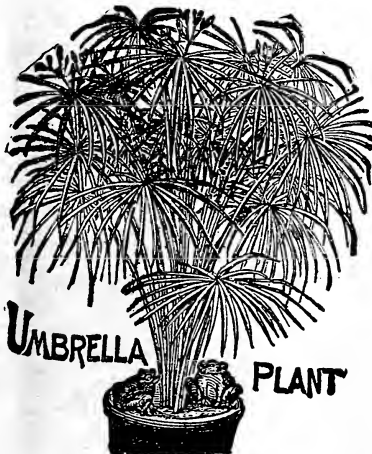
Justicia Carnea, or Brazilian Plum Plant, is a strong, rapid grower and throws up long stems on which are produced fine, plume-like pink flowers, the ends of each petal drooping in a most charming manner. Either for house or outdoor culture. **20 cents each**

HELIOTROPES

The Heliotrope is universally esteemed and admired for the delicious perfume of its flowers, and as the plant only requires the treatment ordinarily given to the Verbena, it may be enjoyed by all. We have them in large assortment, including white, purple, lavender and dark and white eye at **15 cents each: three for 40c.**

Umbrella Plant

(*Cyperus Alternifolius*)—An ornamental grass throwing up stems about two feet high, surmounted at the top with a whorl of leaves, diverging horizontally, giving it a very curious appearance. It is splendid for the center of vases or as a water plant. **Price, 15 cents each: two for 25 cents**



UMBRELLA PLANT



Godfrey Calla.

The Godfrey Ever-Blooming CALLA

This new hybrid is a true ever-blooming variety. Compared with the ordinary White Calla, it gives three flowers to one, the flower being equally large, of perfect form and very much whiter. The plant is dwarf, compact, strong growth, about eighteen inches high. **Price, 20 cents each: three for 50 cents.**

HIBISCUS

Price, 15 cents each, any three for 40 cents: in extra large size at 40 cents each, four for \$1.50.

DOUBLE FLOWERING

AURANTIACA—Large double orange-colored flowers.

MINIATUS SEMI-PLENUS—Semi-double flowers of a bright vermilion-scarlet, petals waved and recurved; flowers noticeable for the absence of formality, but are very handsome.

PEACHBLOW—An improvement over other Hibiscus in size of flower, freedom of bloom and strong growing qualities. Flowers double; of a rich shade of clear pink, with small, deep crimson center; an entirely new and most beautiful shading; four to five inches in diameter. Blooms freely on small plants. Good as house plant or planted in garden.

SINGLE FLOWERING

SINGLE PERFECTUS—Full; flower of perfect shape and of a rich, soft carmine-rose, with a deep carmine eye.

GEN. DE COURTIGIS—A very grand, large sized flower; single light scarlet; very showy.

VERSICOLOR—Combines in its flowers all colors of the whole family, handsomely striped crimson, buff, rose and white.

Bougainvillea Sanderiana

Flowers soft rosy-carmine, borne very evenly all over the plant. Blooms when quite small, and may be trained in almost any shape. On account of the lasting qualities of its flowers, it is frequently called "Chinese Paper Plant." **Price, 20 cents each: three for 50 cents.**

The American Wonder Lemon

(The Largest Edible Lemon in the World.) Superb fruit has been taken from the tree weighing over three pounds each. In addition to its fruit-bearing qualities it makes a very handsome specimen plant for house culture. The dark green foliage is very large and handsome, and the pure waxy-like flowers with yellow stems are as fragrant as orange blossoms, which it greatly resembles. The lemons have very thin rind and are full of rich acid juice. One is equal to eight or ten ordinary lemons. It makes delicious lemonade, and for culinary purposes has no equal. It is of the very easiest culture, flowering and fruiting in any good ordinary soil. **Price, for very strong, young plants, 20 cents each, three for 50 cents: second size, splendid two-year-old plants, 50 cents each.**

OTAHEITE ORANGE

A grand pot plant, and one of great beauty and novelty. It blooms most freely during the winter, though it is likely to bloom at any and all times of the year. The fruit is about one-half the size of ordinary oranges and very sweet and delicious. **Price, 20 cents each, three for 50 cents: large strong plants, 50 cents each.**

No orders accepted for Lemon and Orange Plants from Arizona, California, Florida, Louisiana and Mississippi.



Primula Obconica.

Primula Obconica Gigantea

This is a charming new plant for winter, which is always in bloom. In fact, we know of none that is better adapted to home culture than this one. It bears its elegant panicles and sprays of bloom in the greatest profusion. **Price, 20 cents each, three for 50 cents: from four-inch pots, 40 cents each.**

Primula Obconica Gigantea Kermesina—Beautiful deep crimson.

Primula Obconica Gigantea Alba—Pure white flowers greatly enhance the beauty of the existing lilac, rose and crimson shades.

Primula Obconica Gigantea Lilacina—Beautiful lilac.

Primula Obconica Gigantea Rosea—Lovely rose.

Ivy Canariensis, English Ivy

An excellent variety for cultivation in the house, being a free grower, with very beautiful, broad, glossy green leaves. **Price, 15 cents each: two for 25 cents.**

DOUBLE HERBACEOUS **SPLENDID PEONIES** "ARISTOCRATS OF THE FLOWERS"

Great, gorgeous blossoms, daintly dyed with the most exquisite shades, from white to the deepest reds. They are deliciously fragrant. Bloom several weeks in the spring. Height, 2 to 3 feet. **Culture**—They will grow anywhere, reasonably speaking—though they do best in rich, deep soil and a sunny position, but thrive well in partial shade. Plenty of water during the growing season is an added stimulus. They are perfectly hardy, require no protection and are not troubled with insects or disease.

CHOICE SELECTION OF **DOUBLE PEONIES**

ALBERT CROUSSE—All over pure shell-pink, edged creamy-white; large, very full, compact, rather high built. Blooms profusely among the later sorts and is altogether one of the choicest varieties listed. **Price, \$1.00 each.**

COURONNE d-OR—Very late. Good sized flowers of creamy-white, reflecting golden tints from the collars of stamens inside; sometimes flaked carmine at center. **Price, 65c each.**

DUCHESS DE NEMOURS—Blooms after Festiva Maxima. Cup-shaped, sulphur-white blossoms; fine for cut flowers. **65c ea.**

EDULIS SUPERBA—The famous Decoration Day Peony. With us in Ohio it never fails to be in full flower on May 30th. Beautiful bright, clear pink, with silvery reflex. To those who want flowers on Decoration Day, buy *Edulis Superba*. **65c each.**

FELIX CROUSSE—All Peony enthusiasts are familiar with the fact that it is difficult to get a red Peony that is a self color—that is, a full, rich, even shade of red without being suffused with a shade of another color. Felix Crousse fills the bill. A rich, even, brilliant ruby-red, exceptionally fiery, bright, effective; very large, full bell-shaped bloom. We place this in the front rank of Red Peonies. **75 cents each.**

FESTIVA MAXIMA—The finest white in existence, and in most quarters it is regarded as the queen of all the Peonies. It combines enormous size with wondrous beauty, often 7 to 8 inches in diameter. Snow-white, flecked with an occasional clear carmine-streak on center petals; fragrant. **65c each.**

HUMEI—Very large, compact flower that is quite striking. Cherry-pink, highly cinnamon scented. Is an old standby, being used largely for cut flowers. **Price, 50 cents each.**

JEANNE d'ARC—A choice variety, notable for its exquisite perfume and other good cutting qualities. Guards pale lilac-pink, with full tufted center of sulphur-white. **Price, 50 cents each.**

The Water Hyacinth

The Most Odd, Beautiful and Valuable Plant for Easy Growth

It forms a lovely rosette of its curious shining green leaves, and throws up spikes of the most exquisite flowers imaginable, resembling in form a spike of Hyacinth bloom. In the windows the most beautiful effect is produced by using a glass vessel of some sort, with shells and white sand so arranged as to conceal a small amount of soil. In summer it can be grown in the yards in a pool or tub of soil and about three inches of water. **Price, 15 cents each, two for 25 cents.**

Sansevieria Zeylanica

This beautiful house plant is well adapted for decoration of sitting rooms, halls, etc., as it stands dust and neglect of watering with impunity. Leaves grow to a length of from three to four feet, beautifully striped crosswise with broad white variegations on a dark green ground. **Price, small plants, 20 cents each: large size, 40 cents.**

Vinca Variegata

A beautiful variegated trailing plant, admirably adapted for hanging baskets and vases. The leaves are a glossy green, broadly margined a creamy-white; flowers blue. **Price, small plants, suitable for hanging baskets, 15 cents each, six for 75 cents: large plants, 25 cents each.**

Poinsettia Pulcherrima



Poinsettia.

This is the plant which produces the large clusters of red leaves or flowers which are seen in all the flower stores at Christmas. Does well anywhere, in southern Florida, outdoors, and anywhere in the North as a house plant, growing to large size. **Price, 20 c each: larger size, 40c each.**

Smilax

This great climber is a great addition to our basket plants, possessing the rare qualities of delicate and tolerably dense foliage and vining habit, admirably adapting it to clinging or drooping, as may be required. For using for a green with cut flowers it has no equal, its hard texture enabling it to keep for several days without wilting after being cut. It is also fine as a parlor or window plant. **Price, 15 cents each: three for 40 cents.**

LA TULIPE—Enormous, globular, fragrant flowers, delicate bluish-white, shading to ivory-white, with red tulip markings on outside of guard petals. Stays in bloom for two weeks; fragrant. Grand cut flower variety. **Price, 50 cents each.**

MONSIEUR JULES ELIE—Immense, globular, very full flowers. Ideal glossy lilac-pink, shading to deeper rose at base, entire flower overlaid with a sheen of silver that fairly shimmers in the sunlight; largest of all Peony flowers. When cut in the bud a good keeper, thus fine for cut flowers. **75 cents each.**

MODESTE GUERIN—Bomb type; midseason. Large, handsome bloom; color a uniform soferino-red; very free-flowering and fragrant. **Price, 50 cents each.**

QUEEN VICTORIA—Best every-day white. When cut a first rate keeper. Flower of good substance and color; very pretty in the bud state, when it has a faint blush tint. **50 cents each.**

SPECIAL OFFER—One each of the twelve "Choice Selection" of Double Peonies for \$7.00.

UNNAMED DOUBLE PEONIES

We offer Peonies in Color, not named, but all meritorious kinds—Red, White and Pink. **Price, 40 cents each: three for \$1.00.**



TRADES-CANTIA or WANDERING JEW

Beautiful trailing plants with thick, waxy, lance-shaped foliage; useful in baskets. Variegated purple,

scarlet and white. **Price, 15 cents each: three for 40 cents.**

Hardy Perennial Plants OR OLD-FASHIONED Garden Flowers

AUTUMN is the best time in the year for planting some hardy perennials. They get well established during the winter and are ready to start growth with the first sign of spring. The varieties listed below are among the most economical and satisfactory plants you can buy. They are perfectly hardy and last for years, and thus will save you time, labor and expense and afford a variety and succession of bloom unequalled.

Those priced at 15 cents you may have your choice of any four for 50 cents.

ACHILLEA, Boule de Neige—One of the very best white flowered border plants, resembling Pompon Chrysanthemums. 15c.

AQUILEGIA COLUMBINE—Assorted colors. 20c each.

ANEMONE WHIRLWIND (Wind Flower)—Pure white, waxy texture. 20c.

ANEMONE QUEEN CHARLOTTE—Lovely pink flowers. 20c.



Campanula.

CAMPANULA (Blue Bells of Scotland)—This is the true hare-bell or blue-bell famed in song and story, with beautiful clear blue flowers from June to August; grows about one foot high. Price, 15 cents.

COREOPSIS LANCEOLATA GRANDIFLORA—Golden-yellow, invaluable for cutting. Price, 20 cents.

DIGITALIS (Foxglove)—Gloxinia-like flowers; fine assorted colors. Price, 20 cents.

DELPHINIUM FORMOSUM (Larkspur)—No flower has such a lovely celestial blue color as this exquisite Larkspur. Price, 20 cents. We have a white flowered variety at same price.

DIELYTRA EXIMEA (Plumy Bleeding Heart)—A dwarf-growing species with showy pink flowers. Price, 25 cents each.

EULALIA JAPONICA ZEBRINA (Hardy Grass)—striped across the leaves; fine plume. Price, 20 cents.

EULALIA JAPONICA VARIEGATA (Hardy Grass)—Striped white and green; bears elegant plumes. Price, 20 cents.

GAILLARDIA GRANDIFLORA (Blanket Flower)—The center is dark red-brown, petals marked with rings of brilliant crimson-orange and vermilion. Price, 20 cents.

HOLLYHOCKS (Mammoth Double Flowering)—We offer four colors. Will bloom the first year. 20c: four for 75c.

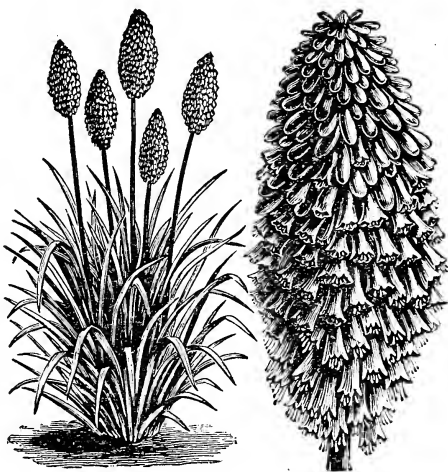
HARDY GARDEN HELIOTROPE—A greatly improved form. The size of the foliage and its quality are doubled; the habit of the plant is compact and bushy; the size of the lavender-blue flowers is magnified beyond belief, specimen heads measuring ten to fifteen inches across. Price, 25 cents.

HELIANTHUS SOLIEL D'OR—A valuable variety that closely resembles a Cactus Dahlia in shape and finish. A splendid sort, blooming in great profusion the entire season. Beautiful shade of clear yellow. Price, 20 cents.

HEMEROCALLIS FLAVA (Lemon Lily)—Few plants present a more striking appearance on the lawn or border than a large clump of this clear lemon-colored Lily, which is produced in the greatest profusion, lasting in flower a long time. Price, 25 cents each.

LIBERTY IRIS—These magnificent Iris are among the most beautiful summer-flowering plants, blooming from June to the middle of July. In colors, white, mauve, lavender, dark purple and yellow. Price, 20 cents.

JAPANESE IRIS (Iris Kaempferi Grandiflora)—Many of the flowers measure from ten to twelve inches in diameter, and rival the Orchids in their rich colorings. Prevailing colors are white, crimson, rose-lilac, lavender, violet and blue. The Iris delight in a rich, deep, moist position. Price, double and single flowered named varieties. Price, 25c: three for 60c.



Tritoma Pfitzerii.

TRITOMA PFITZERII—The flower spikes are of gigantic size, frequently four and one-half feet high, with heads of blooms over twelve inches long, of a rich orange-scarlet, shading to salmon-rose on edges. Price, 30 cents: three for 75 cents.

LYCHNIS CHALCEDONICA (Lamp Flower)—Heart-lobed stars of brightest vermilion arranged in large flat panicles, make this variety as showy as a Geranium, and an excellent cutting sort. Price, 20 cents: three for 50 cents.

LOBELIA CARDINALIS (Cardinal Flower)—Rich fiery, cardinal flowers; strong plants, often producing ten to eighteen spikes twelve to twenty-four inches long. Price, 20 cents.

PLATYCODON GRANDIFLORUM (Bush Clematis)—A free flowering plant covered with flowers that resemble somewhat the Clematis; two colors deep blue and pure white. Price, 20 cents each.

RUBECKIA LACINIATA (Golden Glow)—Grows six to eight feet high, bearing hundreds of double yellow blossoms; it is very desirable. Price, 15 cents: two for 25 cents.

STOKESIA CYANEA, or CORNFLOWER ASTER—Grows eighteen to twenty-four inches high, flowers lavender-blue; four to five inches in diameter, borne from June to October. 20 cts.

SHASTA DAISY—In growth the plants are as strong as a common field Daisy, very tall, well branched with fine cut foliage and huge white flowers borne in profusion on long stiff stems. The flowers are pure white with gold center, petals very long and center soft and velvety. It is a very pretty hardy plant and one of the novelties that has come to stay. Price 15 cents: \$1.50 per dozen.

YUCCA (Adam's Needle)—Flowers during June and July make it an effective plant for all positions. Easy to grow, and with little care. Strong plants, 25 cents: three for 60 cents.



Coreopsis.

SWEET WILLIAM (Dianthus Barbatus)—The Sweet William is a fine old plant which produces great masses of bloom of extremely rich and varied colors. The flowers are very lasting and fine for cutting. The plants offered are grown from the finest strain to be obtained in England, where hardy plants are universally grown and where new and improved varieties are constantly being produced. Good strong plants, 20 cents each: three for 50 cents.

FUNKIA SUBCORDATA GRANDIFLORA (The White Plantain or Day Lily)—Pure white lily-shaped fragrant flowers. Price, 25 cents.

FUNKIA MEDIO VARIEGATA—Green and white foliage with lavender flowers. Price, 25 cents.

IF BULBS OR PLANTS GO BY EXPRESS, NOT PREPAID, YOU MAY SELECT 10 CENTS EXTRA FOR EACH \$1.00.

PRIZE COLLECTION OF HARDY PHLOX

The plants we will send you are strong one-year field-grown roots, and will bloom profusely the first season. Among hardy perennial plants no class is of more importance than the Phloxes, succeeding in almost any position and flowering from early in summer until late in fall. They also improve from year to year, require little care and contain a range of color not found in any other hardy plant.

PRICE, 20 CENTS EACH; THREE FOR 50 CENTS.

ATHIS—Deep clear salmon. Some claim this to be the showiest variety in cultivation.

BRIDESMAID—Pure white, with large crimson eye.

CHARLOTTE SAISON—White, cherry-red blotch in center

ECLAIREUR—Medium. Brilliant rosy-magenta, with large, lighter halo; enormous florets. An excellent variety.

G. A. STROHLEIN—Orange-scarlet with bright carmine eye; extra large flowers in enormous trusses; a grand acquisition.

INDEPENDENT—An excellent large-flowering early pure white; none better.

MRS. WM. JENKINS—An early and free bloomer, one of the best tall varieties. Flowers large, pure white.

MME. P. LANGIER—Most popular red. Vivid crimson, darker eye. Makes a magnificent display when planted in rows or masses.

PEACHBLOW—Delicate peachblow-pink shading to almost white; large trusses; elegant.

PANTHEON—The peerless pink. Extra large, always flat flowers of salmon rose.

R. P. STRUTHERS—Color clear cherry-red, suffused with salmon shades; deep red eye; fine large truss. The color is so clear and clean that each individual floret stands out as distinct as a cameo.

ROSENBERG—Bright reddish-violet with blood-red eye; large truss and individual flower as large as a silver dollar.

VIBURNUM (The Snowball)

Masses of Snowballs give for spring the same showy effect produced by Hydrangeas in fall. They are all large, hardy, quick-growing shrubs valuable for screens, groups and specimens. The more showy specimens carry their flowers in balls. **Price, 30 cents each; extra large, 50 cents each.**

THE KING OF ALL SHRUBS

New Hydrangea Arborescens Grandiflora Alba or "Hills of Snow." The most Valuable Hardy Shrub Ever Introduced. **Arborescens Grandiflora.**

A grand addition to the summer flowering hardy shrubs; dwarfing the show of other sorts in July and August by the magnitude and profusion of its flower-heads. The flowers are, in a large way, similar to the familiar "snowball" in appearance, and are so conspicuously white and imposing that whether as single specimens, as cut flowers, or in groupings, their presence is predominant.

Price, nice young plants, strong and healthy, 30 cents each. Strong field-grown plants, two years old, 50 cents.



Deutzia.

DEUTZIAS

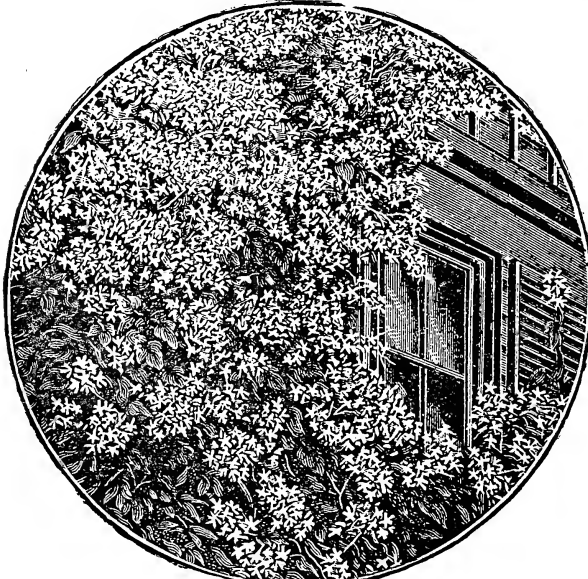
Price, 30 cents each; extra large, 50 cents each.

DEUTZIA CRENATA FLORA PLENA ROSEA—Four feet in height. Flowers double, of a pure white, beautifully tinged with rose.

DEUTZIA FLORA PLENA ALBA—This elegant variety resembles Deutzia Rosea, except that the flowers are pure white in color. It excels all others in size of flower and bloom.

DEUTZIA LEMOINEI—Without doubt one of the very best dwarf hardy shrubs; flowers very large and produced in cone-shaped heads of purest white, which open out very full.

HARDY ORNAMENTAL CLIMBING VINES



Clematis Paniculata.

CLEMATIS PANICULATA

We cannot well say too much in praise of this vine. A clean, thrifty, robust-growing vine of graceful habit, with attractive glossy foliage, covered in August and September with a sheet of clustered snow-white blooms of the most delicious fragrance. No other vine so completely covers itself with flowers. An arbor or portico over which this Clematis is trained is a wall of white for the time being and what makes it the more striking is that nearly all other vines have ceased blooming at that time. Perfectly hardy, grows rapidly. **Price, field-grown plants, 15 cents each, three for 40 cents; extra large size, 40 cents each.**

AMPELOPSIS QUINQUEFOLIA

(Virginia Creeper, or American Ivy)—This well known climber is one of the best for covering trees, trellises, arbors, etc.; its large deep green foliage assumes brilliant shades of yellow, crimson and scarlet in the fall. **Field-grown plants, 40 cents.**

AMPELOPSIS VEITCHII

This vine also goes under the name of "Japanese Ivy" and "Boston Ivy." It clings readily to any surface, where it will spread its fairy-like tracery of infinite small leaflets and the accompanying circular suckers by which it is attached. Its color, very bright in autumn, is delicate green in summer. **Price, 30 cents each; larger plants, 50 cents.**

CHINESE BLUE WISTARIA

This is one of the most popular of our hardy vines, growing very rapidly, climbing to a height of fifty feet or more. It flowers in early spring in long, drooping racemes, resembling in size and shape a bunch of grapes. **Price, 30 cents each.**

HONEYSUCKLES **Price, 15 cents each.**

AUREA RETICULATA—A variety with beautiful variegated foliage; leaves are netted and veined with clear yellow; flowers yellow and fragrant.

CHINESE EVERGREEN—Blossoms at intervals through the summer and retains its foliage late in the winter; flowers nearly white; quite distinct.

HALL'S JAPAN—This is the most constant bloomer of the class, being liberally covered all summer with beautiful yellow and white flowers.

SCARLET TRUMPET—A strong, rapid grower; blossoms very freely the entire season; bright red trumpet-shaped flowers. **ONE EACH OF THE FOUR HONEYSUCKLES FOR 50 CENTS**

HARDY CLEMATIS

The crown of the roots should be set at least three inches below the surface of the soil. Spread roots well in planting. They delight in a rich, cool soil in an open, sunny position.

Price, field-grown roots, 75 cents each; three for \$2.00.

JACKMANI—The flowers when fully expanded are from four to six inches in diameter; intensely violet-purple, with a rich velvety appearance and distinctly veined.

HENRYI—Fine large creamy-white flowers. A strong grower and very hardy; one of the best white varieties; a perpetual bloomer.

MME. EDOUARD ANDRE—Large-flowering Red Clematis—A very unique variety; color a beautiful wine-red, large flowers with heavy petals; a fine contrast to the other sorts.

GIANT FLOWERING PANSIES

It is impossible to do justice to these lovely flowers in a printed description. Cold type cannot convey an idea of the indescribable richness, the varied and exquisite coloring, the large size, perfect form and great substance of the blossoms.

Mixed Colors—Price, three for 20 cents; 75 cents per dozen.



Pansy.

Philadelphus, Mock Orange or Syringa

Coronarius—A medium-sized shrub bearing an abundance of white sweet-scented flowers last of May. **Price, 25 cents each; extra large, 40 cents each.**

RED HARDY MARVEL MALLOW

A magnificent new strain of hardy Mallows, which for size and profusion of bloom and richness of coloring are among the most striking and beautiful perennials that grow. Flowers eight to ten inches in diameter. **Price, 40 cents each.**

SNOWBERRY

Small white or pinkish flowers, succeeded by abundant white berries that last a long while during late fall and early winter. Three to five feet. Highly valued for use in densely shaded situations where little else will grow. **Price, 25 cents each; extra large, 40 cents.**

WEIGELIAS

Shrubs that bloom in July. Flowers produced in such great profusion as to almost entirely hide the foliage.

CANDIDA—This is the very best of all the white-flowered Weigelias; a strong, upright, erect grower; flowers pure white and produced in great profusion. **Price, 30 cents each; extra large, 50 cents each.**

ROSEA—One of the most conspicuous shrubs that we cultivate, flowers pink. It is a dwarf grower and admirably adapted to small lawns or gardens. **Price, 30 cents each; extra large, 40 cents each.**

EVA RATHKE—The finest Weigelia in cultivation. A variety that is a remarkably free bloomer, flowering continuously throughout the summer and autumn; of an entirely distinct color, being a rich ruby-carmine, quite different from anything heretofore offered. **Price, 30 cents each; extra large, 50 cents each.**

SPIREAS

VAN HOUTTE—The grandest of all the white Spireas; it is of compact habit and a beautiful ornament for the lawn at any season, but when in flower it is a complete fountain of white bloom, the foliage hardly showing. Clusters of 20 to 30 white florets make up the raceme and are set close along the drooping stems. **Price, 30 cents each; extra large, 50 cents each.**

BLUE SPIREA, CAROPTERIS MASTACANTHUS—Blue. Spirea is a fitting name for this remarkable new hardy plant. It is a sturdy, upright grower, and is extremely floriferous. The dense flower heads are of a rich lavender-blue, a rare color among flowers. **Price, 20 cents each; extra large, 35 cents each.**

BILLARDI—A narrow, dense shrub five feet high, with dense panicles of rich pink flowers from July on. **Price, 30 cents each; extra large, 50 cents each.**

NEW CRIMSON SPIREA, ANTHONY WATERER—It outshines all the Spireas in brilliancy of color; a bright crimson. It makes a low, compact bush fifteen to eighteen inches high, and is covered nearly the whole growing season with large umbels of deep crimson flowers. **Price, 20 cents each; extra large, 35 cents each.**



Lilac.

LILACS

As a decorative plant on the lawn or in the border it is without a peer, and its pure white graceful plumes of sweetly fragrant flowers add grace and beauty to bouquets, vases, etc. As a cemetery plant it is without a rival. The varieties we offer are new and unusually fine. Double and single in **White and Purple**. **Price, 30 cents each; large size 50 cents.**



Solanum (Jerusalem Cherry).

SOLANUM

Capsicastrum (Jerusalem Cherry)—This is a very useful pot plant for winter decoration. It is of dwarf, branching habit, leaves small and oval-shaped, bearing in the greatest profusion bright scarlet globular berries. Very ornamental; one foot. **Price, large plants, 25 cents.**

GIANT HARDY HIBISCUS

HARDY HIBISCUS "CRIMSON EYE"—(Dormant Roots) Flowers immense in size; color of the purest white, with a large spot of deep velvety crimson in the center of each flower. Will succeed anywhere and is perfectly hardy. **Price, 25 cents each; three for 65 cents.**

HARDY PINK HIBISCUS—Beautiful pink flowers; deep red eye. **Price, 25 cents each; three for 65 cents.**

ALTHEA, OR ROSE OF SHARON

Flowers of large size, bell-shaped, double, full and of brilliant and striking colors, borne in great profusion in August and September; make beautiful ornamental hedges. **Double rose, double white and double red. Price, 30 cents each, three for 80 cents; extra large, 50 cents each.**

HARDY LILY

LILIUM CANDIDUM—The old-fashioned pure white garden Lily, also known as Annunciation Lily. One of the hardiest. Flowers snow-white, with heavy yellow stamens and sweetest fragrance. It bears from five to twenty blossoms. It must be planted in the early autumn to succeed well, as it makes its leaf growth at once after planting, and prepares itself for early flowering. **Price, 25 cents each, three bulbs for 65 cents.**

Hydrangea, Paniculata Grandiflora

This is a grand plant, very showy and attractive, lasting in bloom for months. Without question the finest hardy shrub. Grows three to four feet high and is very bushy and compact. Blooms in July, at a time when no other shrub is in flower, and the flowers remain beautiful until destroyed by frost. The flowers are pure white, afterwards changing to pink, and are borne in immense pyramidal clusters more than a foot long and nearly a foot in diameter. Will bloom same season planted. **Price, strong, one-year field-grown plants, 30 cents. Extra large plants, 50 cents each.**

CALYCANTHUS

The well-known sweet-scented shrub. It bears in May a profusion of double purple blossoms which have a strong, delicious pineapple fragrance. **Price, 30 cents each; extra large, 50 cents.**

GOLDEN ELDER

Sambucus Night (Aurea)—Probably the most showy golden-leaved shrub; retains its color all summer. Contrasted with other shrubs, the golden-yellow leaves of this Elder give heightened effects in tone and color. Flowers white, in flat topped cymes. Grows naturally ten to fifteen feet, but can be pruned into a neat compact little bush. **Price, 30 cents each; extra large, 50 cents each.**

CHOICE FLOWER SEEDS

FOR FALL PLANTING

For Garden, Parlor, Conservatory and Greenhouse

On this page we give a list of seeds of the easiest grown and best Hardy Perennials which are now so deservedly popular. Sown this fall in a cold frame or protected corner of the garden, you can have, with little trouble, an abundant supply of Columbines, Canterbury Bells, Foxgloves, Gaillardias, Hollyhocks, Larkspurs, Forget-me-Nots, Daisies, Sweet Williams, etc., etc., for flowering next year. The list also includes a choice selection of other Flower Seeds for autumn sowing to produce blooming house plants during winter and spring.

Antirrhinum—(Snapdragon.) A showy and useful plant and is fast becoming one of our most popular flowers; useful for beds or borders and is also extensively grown under glass for cutting during the winter. **Price, tall mixed, per packet, 10 cents; dwarf mixed, per packet, 10 cents.**

Achillea, The Pearl—One of the best hardy white perennials in the list. **Per packet, 15 cents.**

Allegheny Vine—(Mountain Fringe or *Adlumia Cirrhosa*.) This is a hardy climbing plant, native of the Allegheny Mountains; very attractive and picturesque; dainty, feathery, pale green foliage, flowers delicate rosy-pink and white. **Per packet, 15 cents.**

Alyssum, Sweet—Flowers all winter in the house if sown in the fall. Pure white. **Per packet, 10 cents.**

Alyssum, Little Gem—Especially adapted for edging. **Per packet, 10 cents.**

Anemone—(Windflower.) A very pleasing, hardy perennial; easily grown from seed; mixed colors; double. **Per packet, 10 cents.**

Asters, Perennial Mixed—Single-flowering, hardy herbaceous plant, thriving in any good garden soil. **Per packet, 10 cents.**

Calliopsis, Lanceolata Grandiflora (Harvest Moon)—One of the grandest perennial plants. Fine in masses, or as cut flowers. The individual blooms are very large and of the richest golden-yellow. **Per packet, 10 cents.**

Candytuft, Iberis—Extra fine for cemetery use, as plants are a solid mass of white at just the time when flowers are most scarce. **Per packet, 10 cents.**

California Poppy—(Eschscholtzia.) Mixed, single cup-shaped flowers in shades of bright yellow, deep orange and silvery-white. Sow in fall where wanted. **Per packet, 10 cents.**

Campanula—Mixture of perennial sorts. **Per packet, 10 cents.**

Campanula Gymnocarpa—Silvery-gray foliage; drooping habit; very graceful. **Per packet, 10 cents.**

Carnations, Chabaud's Perpetual—Raised by a famous French specialist; blooms in five months after being sown and continues to flower in the greatest profusion indefinitely. **Per packet, 10 cents.**

Columbine, Mixed Double—Hardy Perennial, best and finest colors. **Per packet, 10 cents.**

Dianthus Plumarius, fl. pl.—Hardy Perennial, sweet-scented garden pinks. Double mixed. **Per packet, 10 cents.**

Digitalis, or Fox Glove—Hardy perennial of easy culture, producing long spikes of large, showy, tubular flowers of various colors, some spotted, blotched, etc.; three to five feet high. **Mixed colors, 10 cents.**

Double Daisy, Snowball—Large double white, with long stems, fine for cutting. **Per packet, 15 cents.**

Double Daisy, Giant Double Mixed—Extra fine. **Packet, 10c.**

Feverfew—(Double White.) **Per packet, 10 cents.**

Forget-Me-Not—(Myosotis Alpestris.) Blue flowers with small yellowish eyes. Seed sown in autumn will flower early in spring. Hardy perennial. **Per packet, 8 cents.**

Gaillardia Grandiflora Superba—Very large flowers, dark crimson centers, marked with rings of many brilliant colors **Per packet, 10 cents.**

Geranium Zonale Varieties—Several from some of the finest collections and many choice and even new varieties may be expected. **Per packet, 25 cents.**

Heliotrope, Mixed—Very fragrant, splendid for pot culture. **Per packet, 10 cents.**

New Heliotrope, Lemoine's Giant Hybrids—**Per packet, 10c.**

Hollyhocks, Double—Seeds should be sown in early fall to have flowering plants the next summer; or, if sown in the house early in the spring, they will bloom the first year.

Chartler's Improved Double White—**Packet, 15 cents.**

Chartler's Improved Double Rose—**Packet, 10 cents.**

Chartler's Improved Double Carmine—**Packet, 10 cents.**

Chartler's Improved Double Sulphur-Yellow—**Packet, 10c.**

ONE PACKET EACH OF THE FOUR COLORS, 35 CENTS.
ALL COLORS MIXED—PACKET, 10 CENTS.

Larkspur—Perennial. **Packet, 10 cents.**

Lathyrus (Everlasting or Hardy Sweet Pea)—Showy, free-flowering hardy perennial climbers for covering old stumps, fences, etc.; continually in bloom; fine for cutting. **Red, White and Mixed, per packet, 10 cents.**

Lemon Verbena—The leaves are delightfully fragrant and refreshing. It grows easily from seed, and lives from year to year. **Per packet, 10 cents.**

Mignonette, Sweet—Seeds sown in fall bloom early in spring. **Per packet, 8 cents.**

Nasturtium, Dwarf Mixed—Many colors. **Per packet, 10 cents; ounce, 20 cents.**

Nasturtium, Tall Mixed—Many colors. **Per packet, 10 cents; ounce, 20 cents.**

Nicotiana Affinis—Fall sown seedlings make excellent pot plants for the window. **Per packet, 10 cents.**

PRIMROSES—Chinese Fringed

Choicest Mixed—This mixture contains nothing but the finest sorts and cannot fail to give entire satisfaction. **Per packet, 25 cents.**

HARDY PRIMROSES

Auricula—Richly-colored, fragrant flowers. **Per packet, 10c.**

English Cowslip—Yellow. **Per packet, 10 cents.**

Vulgaris (Eglish Primrose)—This is the pale yellow, sweet-scented variety; six inches. **Packet, 10 cents.**

BEDDING PANSIES

A selection for bedding purposes, large flowers of good substance. **Per packet, 10 cents; any six packets, 50 cents.**

Emperor Frederick—Dark red, bordered orange-scarlet.

Royal Blue—Ultramarine blue.

Fire King—Golden, upper petals purple.

Gold Margined—Strikingly handsome.

King of the Blacks—Almost black.

Meteor—Bright brown, very fine.

Quadricolor—Upper petals sky-blue, edged with violet; the lower petals are marbled.

Royal Purple—Deep rich purple.

Snow Queen (Candidissima)—Satiny-white.

Striped and Mottled.

Victoria Red—The fine flowers are of a bright wine, nearly blood-red, color throughout.

Yellow Gem—Pure yellow.

Fine Mixed Bedding Pansies—**Per packet, 8 cents.**

English, Extra Choice Mixed—From a splendid English collection of the largest-flowering varieties. **Per packet, 10 cents.**

Giant Trimardeau—Largest of all. The blossoms are simply enormous, perfect in form, and run through all the various colors, from the lightest shade to the darkest purple. **Per packet, 10 cents.**

International Mixture—**Per packet, 10 cents.**

Mixture of Scarlet and Red—**Per packet, 10 cents.**

Tufted Pansies (Viola Cornuta)—**Mixed 10 cents.**

Poppies, Perennial Mixed—These Poppies produce flowers the first year from seed. The colors range from the purest white to the deepest orange-scarlet. **Per packet, 10 cents.**

Sweet Peas—The finest mixture possible, as only the large-flowered or "Grandiflora" type (Eckford's) is used. More than one hundred different colors. They are perfectly magnificent. **Per packet, 8 cents; ounce, 20 cents; one-fourth pound, 60 cents.**

Sweet William, Single, Mixed—Rich flowers. **Per packet, 10c.**

Sweet William, Double, Mixed—Very attractive and effective **Per packet, 15 cents.**

Valeriana—Hardy Heliotrope. **Per packet, 10 cents.**

Wild Cucumber Vine, Echinocystis Lobata—One of the quickest growing vines we know of; splendid for covering old trees, fences, etc. Plant seed in November. **Per packet, 8 cents.**

DESIRABLE SMALL FRUITS

STRAWBERRIES

When planted in the fall each hill should be carefully covered with a forkful of manure, heavy leaf mold or lawn clippings as soon as freezing weather comes on, and carefully removed as soon as growth starts in the spring.

The best varieties for fall planting and prices are as follows: Price 75 cents per dozen, postpaid, or \$2.50 per 100 by express. SEN. DUNLAP, HAVERLAND, WARFIELD GANDY, GIBSON, STEVENS LATE, POCOMOKE, AROMA, CORSICAN.

FALL BEARING STRAWBERRIES

Price, \$1.00 per dozen, postpaid, or \$3.00 per 100 by express. PROGRESSIVE, AMERICUS, SUPERB.

If Strawberries are wanted by mail, add 20 cents per hundred, extra.

ST. REGIS EVER-BEARING RASPBERRY

Actually bears the first season planted.



St. Regis.

Plants of St. Regis planted in early April gave ripe berries on the 20th of June of the same year. For four weeks thereafter the yield was heavy and the canes continued to produce ripe fruit freely without intermission until the middle of October. The berries were large and beautiful, firm and full flavored, to the very last. St. Regis is the only Raspberry, thus far known that will yield a crop of fruit the season planted. Price, 20 cents each; \$1.50 per dozen, by mail, or \$5.00 per 100 by express.

GENERAL LIST OF RASPBERRIES.

Price 15c each; \$1.00 per dozen, \$4.00 per hundred. Add 40c per hundred if wanted by mail: by the dozen postage paid.

EUREKA, GREGG, PALMER, OHIO, CONRATH, KANSAS, HOOSIER, CUMBERLAND, MUNGER.

RED, YELLOW AND PURPLE VARIETIES

GOLDEN QUEEN, MILLER, CUTHBERT, HANSELL, LOUDON, COLUMBIAN, MARLBOROUGH, HAYMAKER, KING, CARDINAL.

ASPARAGUS

Price, 75 cents per dozen, postpaid: by express, \$1.50 per hundred: \$10.00 per thousand.

DONALD'S ELMIRA, PALMETTA, BARR'S MAMMOTH, CONOVER'S COLOSSAL, COLUMBIAN MAMMOTH WHITE

THE BEST BLACKBERRIES

Price, postpaid, 15 cents each: \$1.00 per dozen: per hundred by express, \$4.00.

ELDORADO, MERSEREAU, SNYDER, ANCIENT BRITON, OHMER, TAYLOR'S PROLIFIC, ICEBERG (White), EARLY KING, WILSON, Jr., KITTATINY, RATHBURN, WAUCHUSSETTS.

NOTE—We can send Blackberries by mail in any quantity if 40 cents per hundred extra is added for postage.

Some Fruit Novelties Well Worth Trying

	Postpaid, Each.	Per Dozen
Logan Berry.....	\$0.50	\$5.00
Crystal White Blackberry.....	.20	2.00
Dwarf Juneberry.....	.25	2.50
Strawberry Raspberry.....	.15	1.50
Japanese Wineberry.....	.20	2.00

THE BEST CURRANTS

Price, 30c each, \$3.50 per dozen, postpaid, by express. If wanted by mail, add 40c per 100 for postage.

CHERRY, FAY'S PROLIFIC, RED DUTCH, VICTORIA, WILDER, WHITE GRAPE, NORTH STAR, RED CROSS.

THE BEST GOOSEBERRIES

RED JACKET—Price, 30 cents each, postpaid, or \$3.50 per dozen, by express.

DOWNING—Price, 30 cents each, postpaid, or \$3.50 per dozen, by express.

HOUGHTON—Price, 30 cents each, postpaid, or \$3.50 per dozen, by express.

No orders for Currants and Gooseberries accepted from Arizona, California, Colorado, Idaho, Kansas, Montana, Nebraska, North Dakota, New Mexico, Nevada, Oklahoma, Oregon, South Dakota, Tennessee, Texas, Utah, Washington, Wyoming.

OUR CHAMPION GRAPE COLLECTION, Postpaid, \$2.50

The collection consists of eight of the very finest grapes grown. Just the thing for the home garden or for covering an arbor. The eight varieties are as follows, all strong, one-year vines:

BRIGHTON (red),
WYOMING (red),
NIAGARA (white),

CHAMPION (blue),
CONCORD (blue),
MOORE'S DIAMOND (white),

MOORE'S EARLY (blue),
WORDEN (blue).

Our price is so low that everyone buys them. It is a most liberal fruit offer. Sned order at once. Price, one good, strong, one-year vine of each, postpaid, only \$2.50.

If the entire collection is not wanted, you may select as many as you wish at 35 cents each, \$4.00 per dozen.

MULBERRIES

We can supply for fall planting—The Downing Everbearing and New American Mulberry trees. Price, 50 cents each, \$5.00 per dozen, mail size postpaid.

RUSSIAN MULBERRY—mail size, 35 cents each, \$3.00 per dozen.

HARDY PRIVET FOR HEDGES, SCREENS, FENCES

Nothing adds so much to a home as a beautiful Privet Hedge Fence. Plant ten inches apart. It makes a fence the day it is planted and will last a lifetime.

CALIFORNIA PRIVET

A quick, strong growing shrub, yet easy to control by use of shears or knife to any desired shape. Fine for hedges between city lots, on large rural grounds, parks, cemeteries, in single clumps or with other shrubs; also as screens to outbuildings, fences, etc. Easy to grow on all soils, even in partial shade; almost evergreen, its rich leathery-green foliage changing to purple in winter. Price, large, well-branched plants, twenty-four to thirty inches high, 25 cents each, postpaid, by express, \$8.00 per hundred. Twelve to twenty-four inches high, 20 cents each, postpaid: by express, \$6.00 per hundred.

REGALS PRIVET, Hardy Everywhere

The Regals Privet is hardy everywhere and one of the most attractive of the Privet family. The branches are graceful and run out horizontal from the main stem, leaves flat and drooping. A strong grower and especially fitted for division fence between lots or for front fence. A distinct and attractive type that is highly satisfactory. Price, 25 cents each: \$2.00 per dozen: \$10.00 per hundred.

JAPAN BARBERRY THUNBERGI

Another very valuable hedge plant. Absolutely hardy. Dwarf. Inimitably neat and dense of growth, yet graceful because of its drooping branches. Yellow flowers are followed by vivid scarlet fruits, the foliage changing in fall to scarlet and gold. Price, 25 cents each: \$2.50 per doz. If by express, \$15.00 per hundred

AMOR RIVER NORTH, Perfectly Hardy Privet

It is a strong grower, and can be pruned at any time in the year without injury, and can be cut to any shape or height desired. Lovers of fine lawns, should plant this perfectly hardy Privet which will improve their lawns fifty per cent in appearance the day it is planted. Price, 25 cents each: \$2.00 per dozen, postpaid: \$10.00 per hundred, by express.

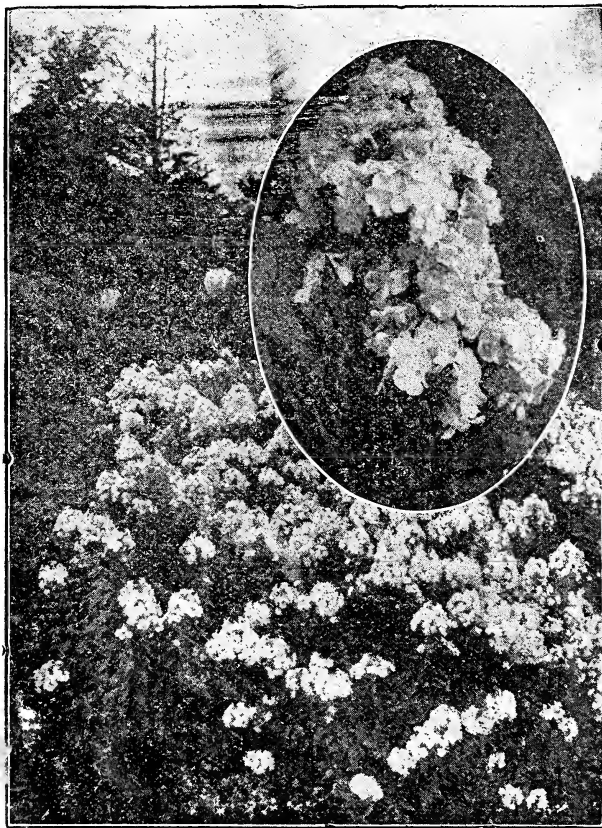
NO SELECTION OF EXTRAS IS ALLOWED ON ORDERS FROM THIS PAGE.

Beautiful House Ferns

To Cheer
Your Home
During
Winter
and for
Porch
Decoration
in
Summer



We have some extra fine large Ferns, in six-inch pots, in following named varieties: **Boston, Elegantissima Compacta, Teddy Jr., Whitmanii, Verona, Scotti, Roosevelt and Scholzeli,** all of which are fully described on page 22. These should, for best results, be shipped by express, but can be sent by mail if necessary. **Price, .1.00 each, any three for .2.75,** by express, not prepaid. If wanted by mail, add 15 cents each.



Hardy Phlox

Hardy Phlox

No class of hardy plants is more desirable than the Perennial Phloxes. They will thrive in any position and can be used to advantage in the hardy border, in large groups on the lawn, or planted in front of belts of shrubbery, where, by judicious pinching back and removing faded flowers, a constant succession of bloom may be had until frost. Hardy Phloxes are admirably adapted for cutting. We offer a select list of strong field grown roots, with full description and price, on page 28.

You should include a few of these in your Fall order.

IF BULBS OR PLANTS GO BY EXPRESS, NOT PREPAID, YOU MAY SELECT 10 CENTS EXTRA FOR EACH \$1.00.