

Historic, Archive Document

Do not assume content reflects current scientific knowledge, policies, or practices.

Retail Price List, Fall 1920

J. VAN. LINDLEY NURSERY CO.

INCORPORATED

Nurserymen and Landscape Gardeners

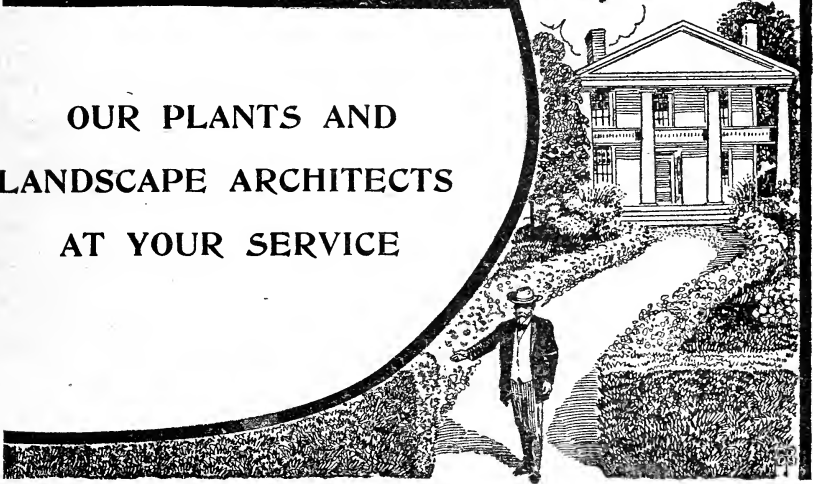
POMONA, N. C.

(VAN LINDLEY CO., FLORISTS, GREENSBORO, N. C.)

"Say it with Flowers"

**Make Your Grounds Extend
A welcome to all who pass by**

OUR PLANTS AND
LANDSCAPE ARCHITECTS
AT YOUR SERVICE



9-25-20

QUANTITY DISCOUNT----CASH WITH

When figured on Retail Price List, if order amounts
to \$20, deduct 5%; if \$50, 10%; if \$150, 12%;
if \$300, 15%; \$500 and over, deduct 20%.

FRUIT DEPARTMENT

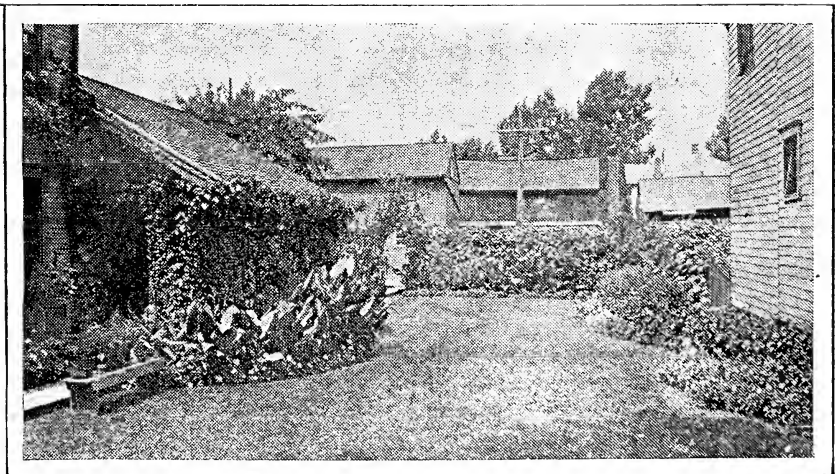
	EACH	HUNDRED
APPLE, 2 and 1 year, 4 to 6 ft.	\$ 1.00	\$75.00
ALMONDS	1.25	
APRICOTS	1.25	
ASPARAGUS ROOTS		5.00
BLACKBERRIES25	8.00
CURRANTS75	
CHERRIES	1.25	
DEWBERRIES25	8.00
FILBERTS, Hazelnuts-	1.00	
FIGS	1.00	
GRAPES, Standard bunch varieties75	
Lutie and Scuppernong Family	1.00	
GOOSEBERRIES75	
MULBERRIES90	60.00
NECTARINES	1.00	
PEACHES, 2 to 3 ft.		50.00
3 to 5 ft., Branched (Per doz., \$10)	1.00	60.00
PEARS, 4 to 6 ft.	1.25	
PECANS, Budded or Grafted, 2 to 3 ft.	2.00	
3 to 4 ft.	2.50	
4 to 5 ft.	2.75	
5 to 6 ft.	3.00	
PERSIMMONS, Japanese	1.25	
PLUMS and DAMSONS	1.25	
QUINCES	1.25	
RASPBERRIES25	8.00
STRAWBERRIES (\$12.00 per 1,000)		2.00
Progressive Everbearing (\$20.00 per 1,000) ..		3.00
WALNUTS, Common Black	1.00	
English, Budded	2.50	
Japanese, 4 to 6 ft.	1.00	

“3 to 4 ft.” means that the tree will be 3 ft. and over, but less than 4 ft., etc.

	Page
Climbing Vines	15
Distinctive Trees and Large Shrubs	8
Evergreens, Broad-Leaved	13
Evergreens, Coniferous	10
Evergreen Ground Cover	14
Hardy Flowering Shrubs	4
Hardy Perennials	14
Hedge Plants	9
Lawn Grass Seed	14
Ornamental Grasses	14
Roses	14
Shade and Street Trees	9



FLIES



FLOWERS

HARDY FLOWERING SHRUBS

		100 Each			100 Each
Acanthopanax pentaphyllum.	Aralia.		Clethra alnifolia.	Sweet Pepper Bush.	
18 to 24 in.60	2 to 3 ft.	\$.40	.60
2 to 3 ft.75	3 to 4 ft.75
3 to 4 ft.90			
Amorpha canescens.	Lead Plant.		Colutea arborescens.	Bladder Senna.	
18 to 24 in.75	18 to 24 in.50
Amorpha fruticosa.	False Indigo.		3 to 4 ft.75
2 to 3 ft.60	4 to 5 ft.		1.25
3 to 4 ft.75			
4 to 5 ft.		1.00	Cornus alba (siberica).		
Azalea aborescens.			Red Siberian Dogwood.		
12 to 15 in.		1.50	2 to 3 ft.	\$.35	.50
Azalea lutea.			3 to 4 ft.	\$.40	.60
12 to 15 in.		1.50	Cornus sanguinea.		
Azalea nurdiflora.			European Red Osier Dogwood.		
12 to 15 in.		1.50	3 to 4 ft.60
Azalea viscosa.			4 to 5 ft.75
12 to 15 in.		1.50	5 to 6 ft.		1.25
Azalea vaseyi.			Cornus stolonifera.		
12 to 15 in.		1.50	Red Osier Dogwood.		
Baccharis halimifolio.	Groundsel Tree.		2 to 3 ft.50
2 to 3 ft.75	3 to 4 ft.60
3 to 4 ft.90	4 to 5 ft.		1.00
4 to 5 ft.		1.25	Cydonia japonica.		
Benzoin aestivale.	Spice Bush.		Japanese Flowering Quince.		
2 to 3 ft.60	2 to 3 ft.60
3 to 4 ft.75	3 to 4 ft.75
Berberis Thunbergii.			Desmodium penduliflorum.		
Thunberg's Barberry.			2-year		1.00
12 to 18 in.	\$.30	.40	Deutzia crenata.		
18 to 24 in.	\$.35	.50	2 to 3 ft.60
2 to 2½ ft.	\$.40	.60	3 to 4 ft.70
2½ to 3 ft.	\$.45	.75	4 to 5 ft.		1.00
3 to 4 ft.	\$.50	1.00	5 to 6 ft.		1.25
Buddleia.			Deutzia gracilis.		
Butterfly Bush, or Summer Lilac.			12 to 18 in.60
2 to 3 ft.60	18 to 24 in.80
3 to 4 ft.75	Deutzia Lemoinei.		
Callicarpa americana.			12 to 18 in.50
2 to 3 ft.75	18 to 24 in.60
3 to 4 ft.90	Deutzia scabra candidissima flore-pleno.		
Callicarpa purpurea.			Double White Deutzia.		
18 to 24 in.75	3 to 4 ft.70
2 to 3 ft.90	4 to 5 ft.		1.00
Calycanthus floridus.	Sweet Shrub.		5 to 6 ft.		1.25
2 to 3 ft.75	Deutzia scabra florabunda.		
3 to 4 ft.90	4 to 5 ft.		1.00
Caryopteris Mastacanthus.			5 to 6 ft.		1.25
Blue Spirea or Verbena Shrub.			Deutzia scabra Fortunei.		
18 to 24 in.60	3 to 4 ft.70
2 to 3 ft.75	4 to 5 ft.		1.00
3 to 4 ft.		1.00	5 to 6 ft.		1.25
Celastrus scandens.			Deutzia scabra, Pride of Rochester.		
American Bittersweet.			2 to 3 ft.60
18 to 24 in.60	3 to 4 ft.70
2 to 3 ft.75	4 to 5 ft.		1.00
Citrus trifoliata.	Hardy Orange.		5 to 6 ft.		1.25
3 to 4 ft.60	Diervilla (See Weigela).		
4 to 5 ft.75	Eleagnus angustifolia.		
5 to 6 ft.		1.00	3 to 4 ft.		1.00
			Enonymus alatus.		
			2 to 3 ft.		1.00

	100	Each
Euonymus bungeanus. Burning Bush.		
3 to 4 ft.	1.00	
Exochorda grandiflora. Pearl Bush.		
2 to 3 ft.75	
3 to 4 ft.	1.00	
Forsythia intermedia.		
2 to 3 ft.50	
3 to 4 ft.70	
4 to 5 ft.	1.00	
Forsythia suspensa.		
2 to 3 ft.60	
3 to 4 ft.75	
4 to 5 ft.	1.00	
Forsythia suspensa Fortunei.		
3 to 4 ft.70	
4 to 5 ft.	1.00	
Forsythia viridissima. Golden Bell.		
2 to 3 ft.	\$40 .50	
3 to 4 ft.	\$50 .70	
4 to 5 ft.	\$60 .90	
Hibiscus syriacus. Altheas.		
Hibiscus Ardens.		
3 to 4 ft.75	
4 to 5 ft.	1.00	
5 to 6 ft.	1.25	
Hibiscus Boule de Feu.		
2 to 3 ft.60	
3 to 4 ft.75	
Hibiscus Carneo-plenus.		
3 to 4 ft.75	
Hibiscus coelestis.		
2 to 3 ft.60	
Hibiscus Duchesse de Brabant.		
2 to 3 ft.60	
Hibiscus Jeanne d' Arc.		
2 to 3 ft.60	
Hibiscus totus albus.		
18 to 24 in.50	
Hibiscus Seedlings. Assorted Colors.		
3 to 4 ft.50	
4 to 5 ft.75	
Hydrangea arborescens, grandiflora alba. American Everblooming Hydrangea.		
12 to 18 in.60	
18 to 24 in.75	
2 to 3 ft.	1.00	
Hydrangea Hortensis, otaksa, Thos. Hogg. and Japonica.		
12 to 15 in.	1.00	
Hydrangea paniculata.		
18 to 24 in.60	
2 to 3 ft.90	
3 to 4 ft.	1.25	
4 to 5 ft.	1.50	
Hydrangea paniculata grandiflora.		
18 to 24 in.	\$40 .75	
2 to 3 ft.	\$50 1.00	
3 to 4 ft.	1.25	
Hydrangea paniculata grandiflora. Tree Form.		
3 to 4 ft.	1.25	
4 to 5 ft.	1.50	
Hydrangea quercifolia. Each Oak-leaved Hydrangea.		
18 to 24 in.	1.00	
2 to 3 ft.	1.25	
Hypericum aureum.		
2 to 3 ft.60	
3 to 4 ft.90	
Hypericum calycinum. Evergreen Hypericum.		
2-year75	
Hypericum densiflora.		
2 to 3 ft.60	
3 to 4 ft.90	
Hypericum moserianum. 2-year75	
Hypericum prolificum.		
2 to 3 ft.60	
3 to 4 ft.90	
Indigofera Gerardiana (Dosua). Indigo Plant.		
18 to 24 in.75	
2 to 3 ft.90	
Jasminum nudiflorum. Naked-flowered Jasmine.		
12 to 18 in.60	
18 to 24 in.75	
2 to 3 ft.	1.00	
Jasminum officinale. True Jasmine or Jessamine.		
12 to 18 in.60	
18 to 24 in.75	
Kerria japonica. Japanese Rose.		
12 to 18 in.60	
18 to 24 in.75	
2 to 3 ft.	1.00	
Kerria japonica flore-pleno. Double-flowered Kerria.		
18 to 24 in.75	
2 to 3 ft.	1.00	
3 to 4 ft.	1.25	
Ligustrum Ibotia Regelianum. Regel's Privet.		
18 to 24 in.75	
2 to 3 ft.	1.00	
Ligustrum sinense nanum.		
2 to 3 ft.	1.00	
3 to 4 ft.	1.25	
4 to 5 ft.	1.75	
5 to 6 ft.	2.25	
Lilac. See Syringa.		
Lonicera fragrantissima. Early Fragrant Honeysuckle.		
2 to 3 ft.50	
3 to 4 ft.75	
4 to 5 ft.	1.00	
Lonicera Morrowii.		
2 to 3 ft.50	
3 to 4 ft.75	
4 to 5 ft.	1.00	
Lonicera Ruprechtiana.		
2 to 3 ft.50	
3 to 4 ft.75	
4 to 5 ft.	1.00	

6 HARDY FLOWERING SHRUBS (Cont'd)

	Each		Each
Lonicera tatarica.		Sambucus nigra laciniata.	
Tartarian Honeysuckle.		Cut-leaved Elder.	
18 to 24 in.50	2 to 3 ft.60
2 to 3 ft.60	3 to 4 ft.75
Lonicera tartarica alba.		4 to 5 ft.90
18 to 24 in.50	Spiraea alba.	
2 to 3 ft.60	Meadow Sweet.	
Lonicera tartarica rubra.		2 to 3 ft.50
18 to 24 in.50	3 to 4 ft.75
2 to 3 ft.60	Spiraea Billiardii.	
Lonicera Xylosteum. Fly Honeysuckle.		2 to 3 ft.50
2 to 3 ft.50	3 to 4 ft.75
3 to 4 ft.75	4 to 5 ft.	1.00
4 to 5 ft.	1.00	Spiraea Bumalda.	
Philadelphus, Bouquet Blanc.		2 to 2½ ft.	1.00
2 to 3 ft.75	2½ to 3 ft.	1.25
3 to 4 ft.	1.00	Spiraea Bumalda, Anthony Waterer.	
Philadelphus coronarius.		2 to 2½ ft.	1.00
Common Mock Orange.		2½ to 3 ft.	1.25
2 to 3 ft.60	Spiraea callosa. (Pink.)	
3 to 4 ft.75	4 to 5 ft.	1.00
4 to 5 ft.	1.00	Spiraea callosa alba.	
Philadelphus grandiflorus.		12 to 18 in.60
Large-flowered Mock Orange.		2 to 2½ ft.	1.00
18 to 24 in.50	Spiraea Douglasii.	
3 to 4 ft.75	3 to 4 ft.75
Physocarpus opulifolius aureus.		4 to 5 ft.	1.00
3 to 4 ft.60	Spiraea latifolia. Queen of the Meadow.	
4 to 5 ft.75	2 to 3 ft.50
5 to 6 ft.90	3 to 4 ft.75
Rhamnus cathartica. Buckthorn.		4 to 5 ft.	1.00
18 to 24 in.75	Spiraea opulifolia.	
2 to 3 ft.90	2 to 3 ft.75
Rhodotypos kerrioides. White Kerria.		3 to 4 ft.	1.00
18 to 24 in.60	Spiraea prunifolia flore pleno.	
2 to 3 ft.75	2 to 3 ft.75
Rhus aromatica.		3 to 4 ft.	1.00
2 to 3 ft.90	Spiraea reevesiana flore pleno (cantoniensis).	
3 to 4 ft.	1.10	2 to 3 ft.50
4 to 5 ft.	1.25	3 to 4 ft.75
Rhus glabra. Smooth Sumac.		4 to 5 ft.	1.00
2 to 3 ft.90	Spiraea salicifolia.	
3 to 4 ft.	1.10	Willow-leaved Spirea.	
Rhus typhina. Staghorn Sumac.		2 to 3 ft.50
2 to 3 ft.90	3 to 4 ft.75
3 to 4 ft.	1.10	4 to 5 ft.	1.00
4 to 5 ft.	1.25	Spiraea Tomentosa.	
Rosa blanda. Meadow Rose.		18 to 24 in.60
2 to 3 ft.60	Spiraea Thunbergii.	
3 to 4 ft.75	12 to 18 in.75
Rosa palustris (carolina).		18 to 24 in.	1.00
2 to 3 ft.75	2 to 2½ ft.	1.25
Rosa rugosa.		Spiraea Vanhouttei	
12 to 18 in.75	2 to 3 ft.50
18 to 24 in.	1.00	3 to 4 ft.75
2 to 3 ft.	1.25	4 to 5 ft.	1.00
Sambucus nigra aurea. Golden Elder.		Stephanandra.	
2 to 3 ft.50	12 to 18 in.60
3 to 4 ft.60	2 to 3 ft.	1.00
4 to 5 ft.75	Symphoricarpos racemosus. Snowberry.	
		18 to 24 in.75
		2 to 3 ft.	1.00

	Each
Symphoricarpos vulgaris.	
Coral Berry or Indian Currant.	
18 to 24 in.50
2 to 3 ft.60
3 to 4 ft.70
Syringa alba. Common White Lilac.	
2 to 3 ft.60
3 to 4 ft.75
Syringa, Charles Joly.	
2 to 3 ft.	1.00
Syringa, Charles X.	
2 to 3 ft.	1.00
3 to 4 ft.	1.50
4 to 5 ft.	1.75
Syringa, Comte de Jessieu.	
2 to 3 ft.	1.00
Syringa, Comte de Kerchove.	
2 to 3 ft.	1.00
Syringa, Congo.	
1½ to 2 ft.75
Syringa, Dame Blanche.	
3 to 4 ft.	1.00
4 to 5 ft.	1.50
Syringa, Dr. Masters.	
2 to 3 ft.	1.00
Syringa, Emile Lemoine.	
2 to 3 ft.	1.00
Syringa, Frau Bertha Dammann.	
1½ to 2 ft.75
2 to 3 ft.	1.00
Syringa japonica.	
1½ to 2 ft.60
3 to 4 ft.90
Syringa Josikaea.	
2 to 3 ft.75
3 to 4 ft.90
Syringa, Louise Henry.	
1½ to 2 ft.75
2 to 3 ft.	1.00
Syringa, Ludwig Spaeth.	
2 to 3 ft.	1.00
3 to 4 ft.	1.50
Syringa, Marie Legraye.	
2 to 3 ft.	1.00
3 to 4 ft.	1.50
Syringa, Mme. Casimir-Perier.	
1½ to 2 ft.75
2 to 3 ft.	1.00
3 to 4 ft.	1.50
Syringa, Miss Ellen Willmott.	
1½ to 2 ft.75
2 to 3 ft.	1.00
Syringa, Michel Buchner.	
1½ to 2 ft.75
Syringa persica alba. Persian Lilac.	
3 to 4 ft.	1.50
4 to 5 ft.	1.75
Syringa, President Carnot.	
2 to 3 ft.	1.00

	Each
Syringa, Prof. Stockhardt.	
2 to 3 ft.	1.00
3 to 4 ft.	1.50
Syringa, Renoncule.	
2 to 3 ft.	1.00
Syringa vulgaris. Common Purple Lilac.	
2 to 3 ft.75
Syringa, Vulcan.	
2 to 3 ft.	1.00
Tamarix africana.	
2 to 3 ft.60
3 to 4 ft.70
4 to 5 ft.90
5 to 6 ft.	1.00
6 to 8 ft.	1.25
Tamarix gallica indica.	
2 to 3 ft.60
3 to 4 ft.75
4 to 5 ft.	1.00
Tamarix hispida.	
3 to 4 ft.75
4 to 5 ft.	1.00
Tamarix odessana. Caspian Tamarisk.	
2 to 3 ft.75
3 to 4 ft.	1.00
Tamarix plumosa.	
2 to 3 ft.75
Viburnum Opulus.	
High-bush Cranberry or Snowball.	
2 to 3 ft.60
3 to 4 ft.75
4 to 5 ft.	1.00
5 to 6 ft.	1.25
Viburnum Opulus sterile.	
Common Old-fashioned Snowball.	
2 to 3 ft.60
3 to 4 ft.75
4 to 5 ft.	1.00
Viburnum tomentosum plicatum.	
Japanese Snowball.	
18 to 24 in.75
2 to 3 ft.	1.00
3 to 4 ft.	1.25
Viburnum Lantana. Wayfaring Tree.	
3 to 4 ft.90
4 to 5 ft.	1.25
Weigela candida.	
2 to 3 ft.60
3 to 4 ft.75
Weigela floribunda.	
2 to 3 ft.75
Weigela hybrida, Eva Rathke.	
2 to 3 ft.75
3 to 4 ft.	1.00
4 to 5 ft.	1.50
Weigela diervilla sessilifolia.	
High-bush Honeysuckle.	
2 to 3 ft.60
Weigela rosea nana variegata.	
18 to 24 in.60
2 to 3 ft.75

8 HARDY FLOWERING SHRUBS (Cont'd)

	Each		Each
<i>Weigela rosea</i> .		<i>Weigela vanhouttei</i> .	
18 to 24 in.50	2 to 3 ft.75
2 to 3 ft.70	3 to 4 ft.90
3 to 4 ft.90	4 to 5 ft.	1.00

DISTINCTIVE TREES AND LARGE SHRUBS

<i>Acer palmatum</i> . Green Japanese Maple.		<i>Lagerstroemia indica</i> . Crimson.	
3 to 4 ft.	1.50	Red Crape Myrtle.	
4 to 5 ft.	2.00	3 to 4 ft.	1.50
<i>Acer palmatum atropurpureum</i> .		4 to 5 ft.	2.00
Blood-leaved Japanese Maple.		<i>Lagerstroemia indica rosea</i> .	
2 to 3 ft.	3.00	Rose-colored Crape Myrtle.	
3 to 4 ft.	4.00	3 to 4 ft.	1.50
<i>Acer palmatum dissectum</i> .		4 to 5 ft.	2.00
Green Fern-leaved Japanese Maple.		<i>Lagerstroemia indica alba</i> .	
2 to 3 ft.	3.00	White Crape Myrtle.	
3 to 4 ft.	4.00	3 to 4 ft.	2.00
<i>Acer palmatum dissectum atropurpureum</i> .		<i>Magnolia obovata</i> . Purple Magnolia.	
Red Fern-leaved Maple.		2 to 3 ft.	3.00
2 to 3 ft.	3.00	3 to 4 ft.	5.00
3 to 4 ft.	4.00	4 to 5 ft.	7.50
<i>Albizzia Julibrissin</i> . Mimosa Tree.		5 to 6 ft.	10.00
3 to 4 ft.75	<i>Melia Azedarach umbraculiformis</i> .	
4 to 5 ft.	1.00	Texas Umbrella Tree.	
6 to 8 ft.	2.00	3 to 4 ft.	1.25
<i>Amygdalus persica flore-pleno</i> .		4 to 5 ft.	1.50
Double-flowering Peach, Red and White.		<i>Prunus cerasifera Pissardii</i> .	
3 to 4 ft.	1.00	Purple-leaved Plum.	
4 to 5 ft.	1.25	3 to 4 ft.	1.25
<i>Amygdalus nana</i> . Double Pink Almond.		4 to 5 ft.	1.50
3 to 4 ft.	1.50	<i>Prunus serrulata</i> .	
<i>Amygdalus nana alba</i> .		Pink Japanese Flowering Cherry.	
Double White Almond.		4 to 5 ft.	2.50
3 to 4 ft.	1.50	5 to 7 ft.	3.50
<i>Carpinus americana</i> .		<i>Ptelea trifoliata</i> .	
American Hornbeam.		Hop Tree or Wafer Ash.	
2 to 3 ft.75	3 to 4 ft.75
3 to 4 ft.	1.00	4 to 5 ft.90
<i>Catalpa Bungei (bignonioides nana)</i> .		5 to 6 ft.	1.00
2-year	3.50	6 to 7 ft.	1.25
<i>Cercis canadensis</i> .		<i>Rhus Cotinus</i> .	
Red-Bud or Judas Tree.		Purple Fringe or Smoke Bush.	
2 to 3 ft.75	3 to 4 ft.90
3 to 4 ft.	1.25	4 to 5 ft.	1.10
<i>Cornus florida</i> .		5 to 6 ft.	1.50
Common White Dogwood.		<i>Salix Caprea</i> . Goat or Pussy Willow.	
2 to 3 ft.75	3 to 4 ft.60
<i>Cornus florida flore-pleno</i> .		4 to 5 ft.75
Lindley's Double-flowering Dogwood.		5 to 6 ft.	1.00
2 to 3 ft.	3.00	6 to 7 ft.	1.25
<i>Cornus florida rubra</i> .		<i>Salix pentandra</i> . Laurel-leaved Willow.	
Red-flowering Dogwood.		2 to 3 ft.60
3 to 4 ft.	3.00	3 to 4 ft.75
<i>Gleditsia triacanthos</i> . Honey Locust.		<i>Salix vitellina aurea</i> .	
4 to 5 ft.	1.25	Golden-barked Willow.	
<i>Lagerstroemia indica</i> .		3 to 4 ft.75
Purplish Pink Crape Myrtle.		4 to 5 ft.	1.00
2 to 3 ft.75		
3 to 4 ft.	1.00		
4 to 5 ft.	1.25		

See page 10 for other Willows.

DISTINCTIVE TREES & LARGE SHRUBS (Cont'd) 9

	Each
Styrax japonica. Japanese Storax.	
2 to 3 ft.	1.00
3 to 4 ft.	1.25
4 to 5 ft.	1.50
Vitex Agnus-castus. Chaste Tree.	
18 to 24 in.60
2 to 3 ft.75

"A new cover for the old house, a little paint, some new furniture, a little foundation planting, some gravel on the front walk, and a new gate will make the old house, where southerners call home, more inviting, and I believe the passersby—Mr. and Mrs. General Public—take notice."—President Crowell, of Southern Nurserymen's Association.

HEDGE PLANTS

Per Hundred

BERBERIS THUNBERGII. Japanese Barberry.	
15 to 18 ins., clumps (plant 1½ ft. apart)	\$30.00
LIGUSTRUM AMURENSE. Amoor River Privet.	
18 to 24 in.	10.00
2 to 3 ft.	15.00
LIGUSTRUM OVALIFOLIUM. California Privet.	
1-year, strong	8.00
2-year, 3 to 4 ft.	10.00

(Privet always cut back unless otherwise ordered.)

SHADE AND STREET TREES

Size larger than 2½-inch calipre shipped other than in car lots, there will be an extra charge for packing.

Acer dasycarpum (saccharinum). Each	
Silver Maple.	
6 to 8 ft.90
8 to 10 ft., 1¼ to 1½ in.	1.25
10 to 12 ft., 1½ to 1¾ in. ...	1.75
10 to 12 ft., 2 to 2¼ in. ...	2.50
12 to 14 ft., 2 to 2½ in. ...	3.00
14 to 16 ft., 2 to 2½ in.	3.50
14 to 16 ft., 2½ to 3 in.	5.00
14 to 16 ft., 3 to 3½ in.	6.00
14 to 16 ft., 3½ to 4 in.	7.00
Acer Negundo.	
Ash-leaved Maple or Box Elder.	
6 to 8 ft.	1.00
8 to 10 ft.	1.25
10 to 12 ft., 1½ to 2 in.	2.25
Acer platanoides. Norway Maple.	
8 to 9 ft., 1½ to 1¾ in. ...	2.50
9 to 10 ft., 1½ to 1¾ in. ...	3.00
9 to 10 ft., 1¾ to 2 in.	4.00
10 to 12 ft., 1¾ to 2 in.	4.50
10 to 12 ft., 2 to 2¼ in.	5.00
12 to 14 ft., 2 to 2½ in.	5.50
12 to 14 ft., 2½ to 2¾ in. ...	7.00
12 to 14 ft., 3 to 3½ in.	10.00
Acer platanoides Schwedleri.	
Schwedler's Maple.	
6 to 7 ft.	3.00
7 to 8 ft.	3.50

Acer pseudoplatanus. Each	
Sycamore Maple.	
8 to 10 ft., 2 to 2¼ in.	5.00
10 to 12 ft., 2½ to 3 in.	6.00
14 to 16 ft., 3½ to 4 in.	10.00
Acer saccharum. Sugar Maple.	
6 to 8 ft., ¾ to 1 in.	1.75
8 to 9 ft., 1 to 1¼ in.	2.00
9 to 10 ft., 1¼ to 1½ in. ...	2.50
10 to 12 ft., 1¼ to 1½ in. ...	2.75
10 to 12 ft., 1½ to 1¾ in. ...	3.00
12 to 14 ft., 1½ to 1¾ in. ...	4.00
14 to 16 ft., 2 to 2½ in. ...	6.00
Celtis mississippiensis.	
Southern Hackberry.	
4 to 5 ft.	1.00
6 to 8 ft.	1.25
8 to 10 ft.	1.50
Fraxinus americana. American Ash.	
6 to 8 ft.	1.25
8 to 10 ft.	1.75
10 to 12 ft., 1½ in.	2.25
Fraxinus excelsior. European Ash.	
6 to 8 ft.	1.25
8 to 10 ft.	1.75
10 to 12 ft., 1¼ to 1½ in. ...	2.25
Liquidamber styraciflua. Sweet Gum.	
6 to 8 ft.	2.25

	Each		Each
<i>Liriodendron Tulipifera.</i>		Tulip Tree.	
6 to 8 ft.	2.25		
8 to 10 ft.	3.00		
10 to 12 ft., 1¼ to 1½ in. . .	3.75		
<i>Magnolia acuminata.</i>		Cucumber Tree.	
4 to 5 ft.	1.50		
5 to 6 ft.	2.25		
<i>Populus berolinensis.</i>		Volga Poplar.	
6 to 8 ft.	1.00		
8 to 10 ft.	1.25		
10 to 12 ft., 1¼ to 1½ in. . .	1.50		
12 to 14 ft., 1¼ to 2 in. . .	3.00		
<i>Populus deltoides monilifera.</i>		Carolina Poplar.	
6 to 8 ft.75		
8 to 10 ft.	1.00		
10 to 12 ft., 1½ to 1¾ in. . .	1.25		
<i>Populus nigra italica.</i>		Lombardy Poplar.	
6 to 8 ft.75		
8 to 10 ft.	1.00		
<i>Quercus coccinea.</i>		Scarlet Oak.	
6 to 8 ft.	2.50		
<i>Quercus palustris.</i>		Pin Oak.	
6 to 8 ft.	2.50		
8 to 10 ft., 1¼ to 1½ in. . .	3.00		
8 to 10 ft. 1½ to 1¾ in. . .	3.75		
10 to 12 ft., 1½ to 1¾ in. . .	4.25		
10 to 12 ft., 1¾ to 2 in.	5.00		
12 to 14 ft.	6.00		
<i>Quercus phellos.</i>		Willow Oak.	
5 to 6 ft.	3.00		
6 to 8 ft.	3.50		
<i>Quercus robur.</i>		English Oak.	
6 to 8 ft.	2.50		
8 to 10 ft.	3.50		
<i>Sterculi platinifolia.</i>		Japanese Varnish Tree.	
6 to 8 ft.	2.25		
8 to 10 ft.	3.00		
10 to 12 ft., 1¼ to 2 in. . .	4.00		
12 to 14 ft., 2 to 2½ in.	5.00		
<i>Salix babylonica.</i>		Babylonian Weeping Willow.	
5 to 6 ft.	1.00		
6 to 8 ft.	1.25		
8 to 10 ft.	1.50		
<i>Salix elegantissima.</i>		Thurlow's Weeping Willow.	
6 to 8 ft.	1.50		
8 to 10 ft.	2.00		
		See page 8 for other Willows.	
<i>Tilia americana.</i>		American Linden or Basswood.	
8 to 10 ft.	3.50		
<i>Tilia europaea.</i>		European Linden.	
6 to 8 ft.	2.50		
<i>Tilia tomentosa.</i>		Silver-leaved Linden.	
6 to 7 ft.	3.00		
<i>Ulmus americana.</i>		American Elm.	
6 to 8 ft.	1.00		
8 to 10 ft., 1¼ to 1½ in. . .	1.50		
10 to 12 ft., 1½ in.	3.00		
12 to 14 ft. 2 to 2½ in.	5.00		
14 to 16 ft., 4 to 5 in.	10.00		

CONIFEROUS EVERGREENS

Evergreens shipped with a ball of earth attached, balled and burlapped. Sizes 4 ft. and up shipped other than in car lots, there will be an extra charge for packing.

	Each		Each
<i>Abies.</i>		Silver Fir.	
12 to 18 in.	2.00		
18 to 24 in.	3.00		
<i>Cupressus sempervirens pyramidalis.</i>			
3 to 4 ft.	5.00		
<i>Cupressus sempervirens Royalii.</i>			
2 to 3 ft.	3.00		
3 to 4 ft.	5.00		
4 to 5 ft.	7.00		
<i>Juniperus chinensis aurea.</i>		Golden Chinese Juniper.	
12 to 18 in.	2.00		
18 to 24 in.	2.50		
<i>Juniperus chinensis densiflora glauca.</i>		Chinese Compact Blue Juniper.	
3½ to 4 ft.	10.00		
<i>Juniperus chinensis Pfitzeriana.</i>			
12 to 18 in.	2.50		
18 to 24 in.	3.50		
2 to 3 ft.	4.50		
<i>Juniperus communis.</i>			
12 to 18 in.	1.50		
18 to 24 in.	2.00		
2½ to 3 ft.	3.00		
3 to 4 ft.	4.00		
<i>Juniperus communis hibernica.</i>		Irish Juniper.	
12 to 18 in.	1.50		
18 to 24 in.	2.00		
2 to 3 ft.	3.00		
3 to 4 ft.	4.00		
<i>Juniperus chinensis.</i>			
2 to 3 ft.	4.00		
3 to 4 ft.	6.00		
<i>Juniperus excelsa stricta.</i>		Slender Greek Juniper.	
18 to 24 in.	3.00		
<i>Juniperus japonica.</i>		Japanese Juniper.	
18 to 24 in.	4.00		
2 to 3 ft.	5.00		
3 to 4 ft.	7.50		

	Each
Juniperus virginiana. Red Cedar.	
2 to 3 ft.	2.50
3 to 4 ft.	3.50
Juniperus virginiana.	
Red Cedar. Standard or Tree Form.	
3 to 4 ft.	3.50
4 to 5 ft.	4.50
5 to 6 ft.	6.00
6 to 7 ft.	7.50
Juniperus virginiana elegantissima.	
Lee's Golden Cedar.	
3 to 4 ft.	5.00
4 to 5 ft.	6.00
Juniperus virginiana glauca.	
Blue Virginia Cedar.	
2' to 3 ft.	5.00
3 to 4 ft.	7.50
Picea excelsa. Norway Spruce.	
2 to 2½ ft.	2.00
2½ to 3 ft.	2.50
3 to 3½ ft.	3.00
3½ to 4 ft.	3.50
4 to 5 ft.	4.50
5 to 6 ft.	10.00
Picea pungens. Green Spruce.	
3 to 4 ft.	4.00
5 to 6 ft.	6.00
Pinus maritima.	
Cluster Pine (Berckmans).	
3 to 4 ft.	3.00
4 to 5 ft.	6.00
Pinus montana Mughus. Dwarf Pine.	
12 to 15 in.	4.00
Pinus Strobus. White Pine.	
2 to 3 ft.	2.50
Pinus sylvestris. Scotch Pine.	
3 to 4 ft.	4.00
4 to 5 ft.	5.00
5 to 6 ft.	6.00
6 to 7 ft.	7.00
Retinispora ericoides.	
12 to 18 in.	2.00
1½ to 2 ft.	2.50
Retinispora obtusa nana.	
12 to 18 in.	3.00
Retinispora pisifera.	
1½ to 2 ft.	2.50
2 to 3 ft.	3.00
3 to 4 ft.	4.50
Retinispora pisifera aurea.	
1½ to 2 ft.	2.50
2 to 2½ ft.	3.00
2½ to 3 ft.	4.00
3 to 3½ ft.	5.00
4 to 5 ft.	8.00
5 to 6 ft.	10.00
Retinispora pisifera filifera.	
1½ to 2 ft.	2.50
2½ to 3 ft.	4.00
Retinispora pisifera filifera aurea.	
18 to 24 in.	3.00

	Each
Retinispora pisifera plumosa.	
12 to 18 in.	2.00
1½ to 2 ft.	2.50
2 to 2½ ft.	3.00
2½ to 3 ft.	4.00
3 to 3½ ft.	5.00
3½ to 4 ft.	6.00
4 to 5 ft.	8.00
Retinispora pisifera plumosa aurea.	
12 to 18 in.	2.00
1½ to 2 ft.	2.50
2 to 2½ ft.	3.00
2½ to 3 ft.	4.00
3 to 3½ ft.	5.00
3½ to 4 ft.	6.00
4 to 5 ft.	8.00
Retinispora pisifera squarrosa.	
1½ to 2 ft.	2.50
2 to 2½ ft.	3.00
2½ to 3 ft.	5.00
3 to 3½ ft.	6.00
3½ to 4 ft.	7.00
4 to 5 ft.	8.00
Thuja occidentalis.	
American Arborvitae.	
18 to 24 in.	1.50
2 to 2½ ft.	2.50
2½ to 3 ft.	3.00
3 to 3½ ft.	3.50
3½ to 4 ft.	4.00
4 to 4½ ft.	5.00
4½ to 5 ft.	6.00
Thuja occidentalis aurea.	
Peabody's Golden Arborvitae.	
3½ to 4 ft.	5.00
4 to 5 ft.	6.00
5 to 6 ft.	10.00
6 to 7 ft.	12.50
Thuja occidentalis Ellwangeriana.	
Tom Thumb Arborvitae.	
12 to 15 in.	2.50
18 to 24 in.	3.50
Thuja occidentalis flicoides.	
Fernlike Arborvitae.	
18 to 24 in.	2.50
2 to 2½ ft.	3.50
2½ to 3 ft.	4.50
3 to 3½ ft.	5.00
Thuja occidentalis globosa.	
Globe Arborvitae.	
12 to 15 in.	3.00
15 to 18 in.	3.50
18 to 24 in.	4.00
Thuja occidentalis Hoveyi.	
Hovey's Arborvitae.	
12 to 15 in.	3.00
15 to 18 in.	3.50

The shrubs and roses came in good condition and we are much pleased with them. I am enclosing check.—Clara J. Davis, Greenville, N. C.

	Each
<i>Thuja occidentalis pyramidalis.</i>	
Pyramidal Arborvitae.	
18 to 24 in.	2.50
2 to 2½ ft.	3.00
2½ to 3 ft.	4.00
3 to 3½ ft.	5.00
<i>Thuja occidentalis Vervaeneana.</i>	
12 to 15 in.	2.50
18 to 24 in.	3.50
<i>Thuja occidentalis Wareana.</i>	
Siberian Arborvitae.	
12 to 15 in.	2.50
<i>Thuja orientalis. Chinese Arborvitae.</i>	
2 to 3 ft.	3.00
4 to 4½ ft.	5.00
4½ to 5 ft.	6.00
5 to 6 ft.	7.00
6 to 7 ft.	8.00
<i>Thuja (Biota) orientalis aurea nana.</i>	
Berckmans' Golden Dwarf Arborvitae.	
12 to 15 in.	3.50
2 to 2½ ft.	5.00
2½ to 3 ft.	6.00
<i>Thuja (Biota) orientalis pyramidalis.</i>	
2 to 2½ ft.	3.50
<i>Thuja (Biota) orientalis aurea conspicua.</i>	
18 to 24 in.	3.00
2 to 3 ft.	4.00

	Each
<i>Tsuga canadensis. Hemlock Spruce.</i>	
1½ to 2 ft.	2.50
2 to 2½ ft.	3.00
2½ to 3 ft.	4.00
3 to 4 ft.	5.00
4 to 5 ft.	6.00

WHEN YOU ARE GONE

Plant a tree. You found several here when you landed on this old earth and you've seen a great many cut down during your time. You have probably cut down a few yourself. The children who are born after you have passed on have a right to find a few standing. But they will not if every person who passes through this vale of tears cuts down a few and forgets to plant any. Plant a tree. Plant a dozen of them, and then you will have done something for the generations who follow you, even as some one did something for you ages ago.—Fort Lauerdale Herald.

We would add the suggestion that if a tree is planted, let the planter have a distinct object when choosing and planting it. A fruit or nut tree would be of use and would be appreciated by the next generation. A shade or ornamental tree also, serves a good purpose. Bear these facts in mind and plant for a purpose.

Please send me your free catalogue on fruit trees and plants. Am anxious to make up an order at once. I would certainly recommend the Magnolia Pear. One three-year-old Magnolia tree had twenty-seven large, beautiful pears this year.—H. W. Bosse, Sallis, Miss., R. F. D. 1.



Evergreens soften the sharp outlines wonderfully!

	Each
<i>Abelia grandiflora</i> (rupestris).	
12 to 18 in.	1.25
18 to 24 in.	1.50
2 to 3 ft.	1.75
3 to 4 ft.	2.00
<i>Aucuba japonica</i> . Japanese Laurel.	
12 to 15 in.	1.50
<i>Aucuba japonica latimaculata</i> .	
Gold-dust Plant.	
10 to 12 in.	1.50
12 to 18 in.	2.00
18 to 24 in.	2.50
<i>Azalea amoena</i> . Evergreen Azalea.	
12 to 15 in.	3.00
15 to 18 in.	3.50
18 to 24 in.	5.00
<i>Azalea Hinodigiri</i> .	
12 to 15 in.	3.00
<i>Berberis ilicifolia</i> .	
Holly-leaved Barberry.	
12 to 18 in.	1.50
18 to 24 in.	2.00
<i>Buxus sempervirens arborescens</i> .	
Tree Box.	
12 to 15 in.	2.50
15 to 18 in.	3.00
18 to 24 in. Pyramidal	6.00
2 to 2½ ft. Pyramidal	8.00
<i>Buxus sempervirens suffruticosa</i> .	
Dwarf Box.	
4 to 6 in.50
<i>Cotoneaster horizontalis</i> .	
Prostrate Cotoneaster.	
12 to 18 in. spread	2.00
18 to 24 in. spread	2.50
<i>Eleagnus pungens</i> . Bronze Oleaster.	
2½ to 3 ft.	4.00
3 to 4 ft.	5.00
<i>Euonymus japonicus</i> .	
Evergreen Euonymus.	
12 to 18 in.	1.50
18 to 24 in.	2.00
2 to 2½ ft.	3.00
2½ to 3 ft.	3.50
3 to 4 ft.	5.00
4 to 5 ft.	7.00
<i>Euonymus japonicus variegatus</i> .	
Variegated Euonymus.	
12 to 18 in.	1.50
2 to 2½ ft.	3.00
2½ to 3 ft.	3.50
<i>Hypericum calycinum</i> .	
2-year75
<i>Ilex Aquifolium</i> . English Holly.	
18 to 24 in.	2.00
2 to 2½ ft.	3.50
<i>Ilex crenata</i> . Japanese Holly.	
12 to 15 in.	2.00
15 to 18 in.	2.50
18 to 24 in.	3.50
2 to 2½ ft.	4.50

	Each
<i>Ilex opaca</i> . American Holly.	
18 to 24 in.	2.00
2 to 3 ft.	3.00
<i>Laurocerasus</i> . English Laurel.	
12 to 18 in.	2.00
18 to 24 in.	2.50
2 to 2½ ft.	3.50
<i>Laurocerasus caroliniana</i> .	
Cherry Laurel.	
18 to 24 in.	2.00
2 to 3 ft.	3.00
3 to 4 ft.	4.00
<i>Laurocerasus rotundifolia</i> .	
12 to 18 in.	1.50
18 to 24 in.	2.00
<i>Ligustrum amurense</i> .	
Amoor River Privet.	
2 to 3 ft.40
3 to 4 ft.50
4 to 5 ft.60
<i>Ligustrum japonicum</i> . Japanese Privet.	
2 to 3 ft.	2.00
3 to 4 ft.	3.00
<i>Ligustrum marginatum</i> .	
2 to 3 ft.	2.50
3 to 4 ft.	3.50
<i>Ligustrum lucidum</i> .	
12 to 18 in.	1.50
18 to 24 in.	2.00
2 to 2½ ft.	3.00
<i>Ligustrum nepalense</i> .	
12 to 18 in.	1.50
18 to 24 in.	2.00
<i>Ligustrum quihoui</i> .	
12 to 15 in.	1.50
2 to 3 ft.	2.00
<i>Ligustrum sinense nanum</i> .	
2 to 3 ft.	1.00
3 to 4 ft.	1.25
4 to 5 ft.	1.75
5 to 6 ft.	2.25
<i>Lonicera fragrantissima</i> .	
Early Fragrant Honeysuckle.	
2 to 3 ft.50
3 to 4 ft.75
4 to 5 ft.	1.00
<i>Magnolia grandiflora</i> .	
2 to 3 ft.	2.00
3 to 4 ft.	2.50
4 to 5 ft.	3.50
<i>Mahonia Aquifolium</i> .	
Holly-leaved Ashberry.	
12 to 18 in.	1.50
18 to 24 in.	2.00
2 to 3 ft.	3.00

Please accept my thanks for the fine Killarney Rose you so kindly sent me in December. It came in fine shape and is putting out nicely. I am always ready to recommend your nursery to those needing anything in your line.—Mrs. F. R. Workman, Kinards, S. C.

14 BROAD-LEAVED EVERGREENS (Cont'd)

	Each		Each
Mahonia japonica.		Viburnum rhytidophyllum.	
12 to 18 in.	1.50	6 to 12 in.	1.50
18 to 24 in.	2.00	Yucca filamentosa. Adam's Needle.	
Pieris (Andromeda) floribunda.		1-year50
12 to 18 in.	2.00	3-year	1.00
Pyracantha coccinea (Crataegus		Yucca gloriosa.	
Pyracantha). Fiery Thorn.		1-year75
12 to 18 in.	1.50	Yucca wippley.	
18 to 24 in.	2.50	1-year50

ROSES

Roses. Field-grown, -strong plants1.50

ORNAMENTAL GRASSES

	Each		Each
Arundo donax. Giant reed50	Eulalia sinensis zebrina. Zebra Grass	.50
Bambusa Metake50	Pennisetum japonicum. Hardy	
Erianthus Ravennae. Plume Grass50	Fountain Grass50
Eulalia sinensis. Variegated Grass50		

EVERGREEN GROUND COVER

	Each		100 Each
Calluna vulgaris. Scotch Heather.		Pachysandra terminalis.	
12 to 18 in.60	Japanese Spurge	\$25 .30
Calluna vulgaris alba.		Rosa Wichuraiana. Memorial Rose.	
White-flowered Heather.		2-year	\$75 1.50
2 to 2½ ft.75		

HARDY PERENNIALS—Net Prices

	Each		Each
Artemesia60	Ophiopogon japonicus. Snake's Beard	.60
Chrysanthemum, Hardy30	Phlox30
Hibiscus. Marsh Mallows40	Paeonia Peony	1.00
Iris, German30	Tritoma40
Iris, Japanese30		

LINDLEY'S EVERGREEN LAWN GRASS SEED

PRICES, NET: 1 to 10 lb., at 45 cents per lb.; 15 to 40 lb., at 40 cents per lb.; 50 to 100 lb., at 35 cents per lb. (No discount on grass seed.)

Please send me your booklet, "Southern Plantings," and catalogue and prices of peach trees. I am going to plant several hundred peach trees this year, and I want the best, and I find your trees do well here.—D. W. Eubanks, Lucedale, Miss.

Please send me your catalogue of fruit trees, etc. I bought from you in 1909 and was very much pleased, and as I have moved to a new home want to set out another orchard.—W. C. Peay, Rockton, S. C.

The nursery stock was received and in fine shape. I have shown them to my friends. Guess you will have an order soon from one of them.—Mrs. R. G. Bondurant, Baugh, Tenn.

Five years ago I bought some Stuart Pecan trees from your worthy salesman, Mr. C. C. Bennett. This year one of these trees bore about four dozen of fine nuts, and I consider them a great advantage to my home.—W. J. Harris, Edenton, N. C.

DECIDUOUS		Each			Each
Akebia quinata.	Five-leaved Akebia.		Pueraria Thunbergiana.	Kudzu Vine.	
3-year	1.00	2-year50
Ampelopsis quinquefolia.	Virginia Creeper, or Woodbine.		Wisteria sinensis (chinensis).	Chinese Purple Wisteria.	
2-year50	3-year	1.00
3-year60	Wisteria sinensis alba.	Chinese White Wisteria.	
Ampelopsis Veitchii.	Japan or Boston Ivy.		2-year	1.00
2-year75	3-year	1.25
Aristolochia Siph.	Dutchman's Pipe.		EVERGREEN		
2-year50	Euonymus radicans.	Creeping Euonymus.	
Celastrus scandens.	American Bittersweet.		2-year50
1-year50	Euonymus radicans vegetus.	Evergreen Bittersweet.	
2-year60	2-year75
3-year75	Hedera helix.	English Ivy.	
Clematis Jackmanii.			2-year50
1-year75	3-year60
Clematis paniculata.			Lonicera brachypoda aurea.		
1-year75	2-year50
Gelsemium sempervirens.	Carolina Yellow Jessamine.		3-year60
1-year50	Lonicera Heckrotti.		
			2-year75
			Lonicera Vilmorinii.		
			3-year75



J. VAN. LINDLEY NURSERY CO.

POMONA, N. C.



WHAT THE ABOVE SLOGAN OR TRADE MARK STANDS FOR

It means that there are something like four hundred nurserymen who are members of the American Association of Nurserymen, which have a history of forty-five years' standing, and believe in fair dealings, high business principles and giving their customers satisfactory results. Membership to this Association is obtained only after a thorough investigation by the investigating committee. Members only are permitted to use the above trademark.

LANDSCAPE DEPARTMENT

This department has recently been enlarged and is now equipped to handle both small and large plantings. If you wish to have your shrubs and trees properly arranged, correspond with this department. We will be glad to send our landscape architects for conference on small or large plantings, and the fee is very nominal indeed. Very often a satisfactory plan can be arranged by correspondence, if you can furnish us the necessary information on blanks which we will furnish for this purpose. Send us a few kodak pictures of your house, together with dimensions of house and lot and all other information that you may think will aid us. Write us freely your landscape troubles.