

## **Historic, Archive Document**

Do not assume content reflects current scientific knowledge, policies, or practices.



62.47

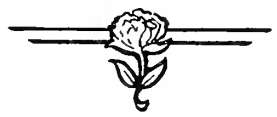
**CORRECTIONS**

Following all sold; Duchess and Winesap Apple, Transcendent Crab, Greensboro Peach Downing Gooseberry, Wild Goose Plum.

# SARCOXIE NURSERIES PEONY FIELDS



WILD BROS. NURSERY COMPANY  
Sarcoxie, Missouri



Various other nursery items listed in smaller text.

**Bulletin 7**

**Spring 1920**

## Apple Opportunities In Small Orchards



**M**ORE home markets of this country should be supplied by local orchards. Here is one of the greatest opportunities in fruit growing today. There are thousands of communities now served mainly by far-away sources, which offer big revenues to local growers. Such growers have an unusual advantage; first, because they are in close touch with the market and can cater to its tastes; second, because they can supply a variety of fruit throughout the season to regular customers; third, because they save the long freight haul and refrigeration, which is an added profit in itself.

The local market has been sadly neglected. There is a great money-making opening for properly cared for orchards in and around every center of population, and wise fruit growers will take advantage of it.—The Fruit Belt, Jan., 1917.

Another writer in the same issue says: "One apple tree will bring in more net profit than an acre of hay. Two apple trees will bring in more net money than an acre of grain.

The ripening dates are approximate average here; allow about five to seven days for each 100 miles north or south. The altitude will also affect the date of ripening.

Price of Two-Year Apple:	Each	Per 10	Per 100
XX size, about 4 1/2 ft. and up, 11-16 in. cal. and up, branched	\$0.50	\$4.50	\$40.00
Extra size, about 4 to 5 ft., 5/8 in. cal. and up, branched	.45	4.00	35.00
Standard size, about 3 1/2 to 4 1/2 ft., 1/2 to 5/8 in. cal., branched	.35	3.25	27.50

Special: Any five at the 10 rate, less at each rate; 50 at the 100 rate.

### Summer Apples

- Duchess of Oldenburg**—Excellent for cooking and market; good size; yellow, almost covered with red stripes; crisp, juicy, rather acid; July 15-August; a young, reliable bearer; very hardy.
- Early Harvest**—Bright straw; juicy, rich sub-acid; good; very early; bears rather young; productive.
- Red June**—Very red; juicy, brisk subacid, good; medium size; June-July; a young bearer.
- Yellow Transparent**—Good size; yellowish-white; fine grained, crisp, juicy, sprightly sub-acid; good for eating and cooking; mid June; hardy; a very young, regular and abundant bearer.

### Autumn Apples

- Maiden Blush**—Large; clear yellow, crimson cheek; very juicy, sub-acid; mid autumn; good for cooking and drying; hardy; bears rather young.

### Winter Apples

- Arkansas Black**—Medium large; almost black; flesh yellow, firm, crisp, sub-acid; Dec.-March; unproductive on some soils; commands a good price where it can be grown.
- Delicious**—Roundish conic, medium to large, pale yellow, mostly covered with red, striped dark carmine; juicy; mild sub-acid; good. If ordered without other apples 2c each extra.
- Grimes' Golden**—Of best quality; beautiful golden yellow; medium to large; crisp, juicy, rich sub-acid, aromatic; fine dessert apple, good for cooking, especially fine canned; Oct.-Dec.; blooms late; hardy; bears young.

- Ingram**—A very late keeper; yellow, almost covered with bright red stripes; juicy, very mild sub-acid, good; blooms late; bears young and heavily.
- Jonathan**—Very attractive, lively deep red; high flavor; excellent for dessert, cooking and market; firm, crisp, juicy, very aromatic, mild sub-acid; Oct. and later; bears rather young.
- Mammoth Black Twig**—Greenish, largely over-spread, dull, deep red, sometimes almost black; very firm, moderately juicy, sub-acid, good; keeps late.
- Reagan; Black Ben Davis**—Large; attractive rich red to maroon, rarely striped; firm, juicy, mild sub-acid; ships well, keeps well, bears young, regularly and abundantly; profitable.
- Stayman Winesap**—Large; attractive shape; greenish-yellow striped and often nearly covered with dark red; firm, crisp, very juicy, aromatic, sprightly pleasant sub-acid; very good; keeps late; bears young and regularly; less brilliant than the old winesap, but adapted to more soils and climates.
- Winesap**—Bright deep red, flesh yellow, very rich, crisp, very juicy, sprightly sub-acid, very good; Dec.-March; bears young.
- York Imperial**—Large; attractive greenish-yellow shaded crimson; crisp, juicy, sub-acid, becoming mild; Dec.; bears heavily and rather young.

### Crab Apples

- Transcendent**—A large crab; golden yellow, crimson cheek; crisp, juicy, subacid; Aug.-Sept.

## Money in a Family Orchard

Unless you already have a good family orchard there is no crop or combination of crops which can be grown on a small area that will equal in actual food value and satisfaction a good family orchard. In this case the word "orchard" should include all kinds of fruits, from the very earliest strawberries and dewberries to the latest apples, pears and quinces. Unless you have learned from experience, you cannot realize the almost endless variety of fruits which are possible in a family orchard. Did you ever know an orchard that started bearing in May and continued until frost, with some sort of fruit every day during that time? Yet it is possible and very easy to accomplish in almost all sections of the United States, excepting in the most northerly portions, where the month of May is too early.

Beginning with strawberries, the list runs through currants, raspberries, gooseberries, apples, peaches, pears and quinces. By the use of different varieties of these various fruits it is easily possible to have plenty of ripe fruit every day during the season. Take a calendar and note the time of ripening of the early and late varieties of the different fruits listed, and see if you are not surprised at the possibilities offered in even a small family orchard.—The Fruit Grower.

## Please Tell Us

Trees are scarce this season, more so than for years. Before spring is over many sizes and varieties will be sold out. Order early and have them reserved if you want later shipment.

Please tell us whether you would rather have a larger size at the larger price or a smaller size at the smaller price, if we should be out of the size you order. Also tell us whether you want us to send a similar variety if we are out of any variety ordered. If you do not want us to do so, mark "No Substitutions" on your order. If we substitute, the tree will be labeled with the correct name of the variety sent. For example, if we sent Stayman Winesap in place of Winesap it would be labeled Stayman Winesap.

If you do not tell us what to do we are obliged to use our judgment. We prefer to have your instructions.

Don't forget to tell us if your freight or express office is different from your postoffice.

## Why We Don't Prepay

We ship express or freight collect because our customers are so widely scattered that an average rate to all would be unfair to many in nearby states. If we prepaid we would have to do like anyone else who prepaays—add it to the price we wanted to get and be sure to estimate it high enough so we wouldn't lose money on it.

If wanted by parcel post, allow extra for postage, unless you wish us to ship collect, which costs 13c more. Trees larger than 3 to 4 ft. cannot be sent by parcel post. In a few cases, strawberries for example, we name an amount to be sent if wanted postpaid, because on a right light package we can't miss it but a few cents anyway.

## ORDER EARLY BECAUSE TREES ARE SCARCE

Shall we send something similar if out of any varieties? If you don't tell us we have to use our judgment.

## SEE INSIDE PAGES

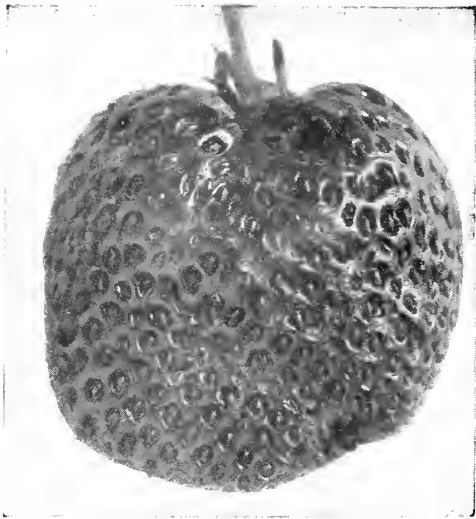
FOR OTHER FRUITS, FLOWERS, SHADE TREES, VINES, ROSES, SHRUBS, ETC.











# Home Strawberry Collection Special

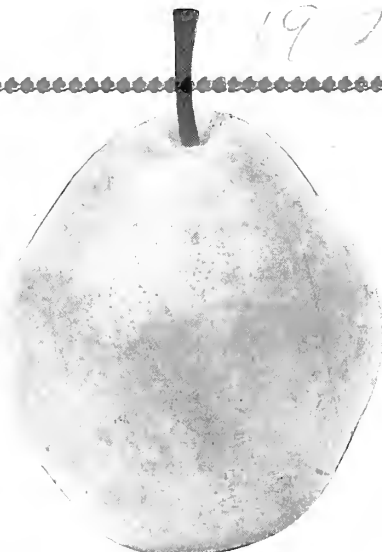
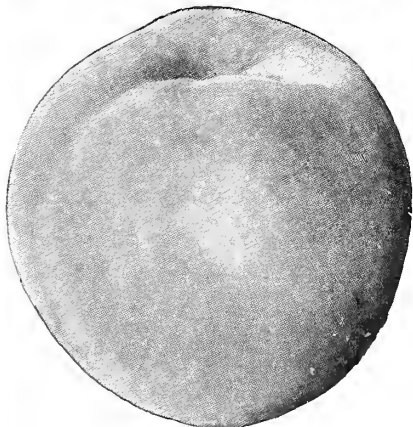
200 for \$2.00

500 for \$4.00

**W**E WILL select 500 plants, early to late, all good varieties, for \$4.00 by express collect, or 200 for \$2.00 by parcel post pre-paid. Varieties will be selected according to your locality. Order **"Home Strawberry Collection"** and leave the assortment to us. Progressive Everbearing is not included at this price.

Five hundred plants set two feet apart will plant 10 rows 100 feet long.

Plant this spring and have your own Strawberries next spring.



# Fruits Trees Flowers



Mr. L. C. Corbett,  
Bureau Plant Industry  
U. S. Dept. Agriculture,  
Washington,  
D. C.

**POSTMASTER**—If undelivered please return after 10 days. Return postage will be paid on delivery to sender.

WILD BROS. NURSERY CO.  
SARCOXIE, MO.