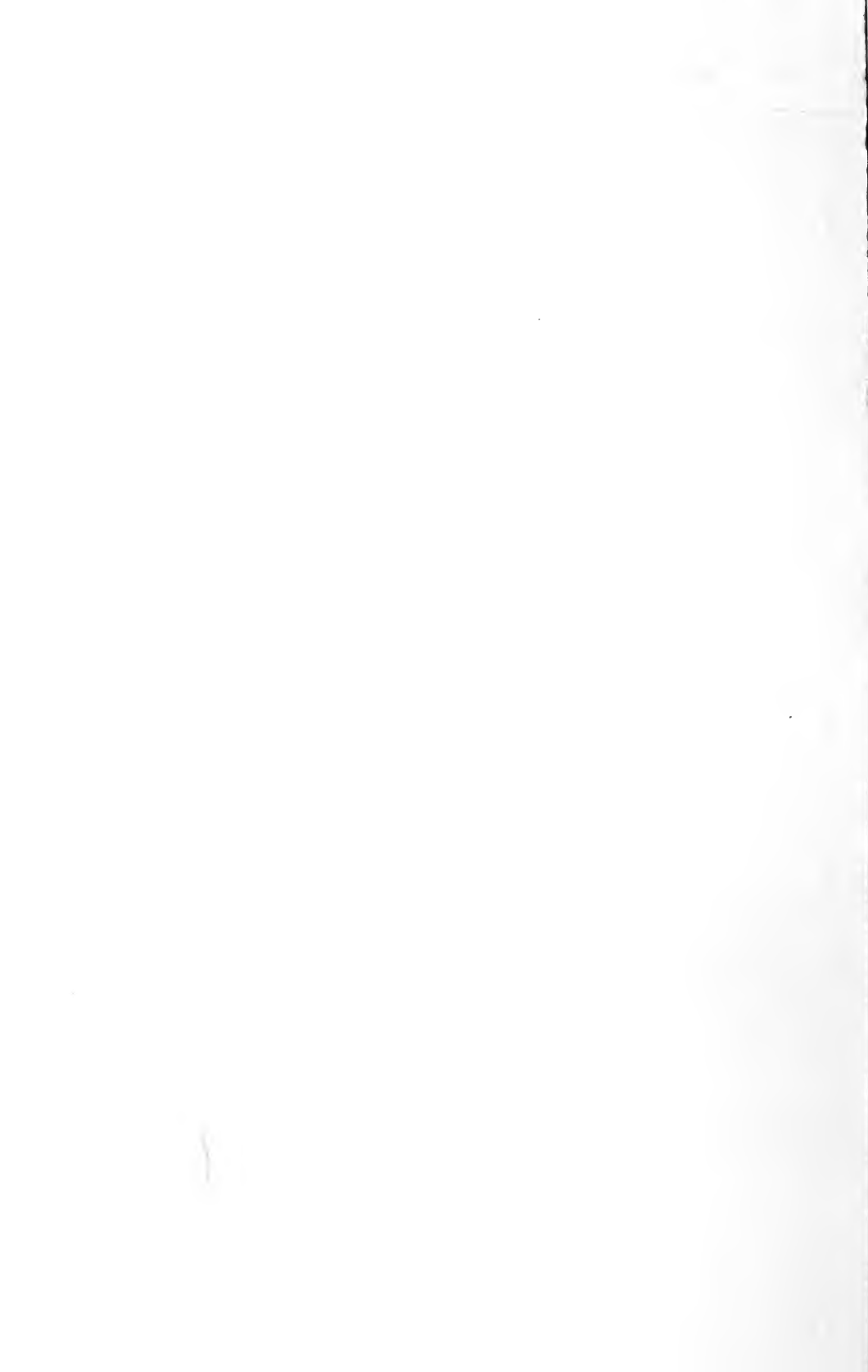


## **Historic, Archive Document**

Do not assume content reflects current scientific knowledge, policies, or practices.



# BERRY'S SEED FACTS AND BARGAIN CATALOG

1921 BERRY'S

ALSIKE AND TIMOTHY MIXED  
PRODUCES HEAVY YIELDS  
AND MAKES  
AN ECONOMICAL SEEDING



FIELD  
SEED  
OUR  
SPECIALTY

A.A. BERRY  
SEED CO.  
CLARINDA, IOWA

PURE  
BRED  
GRAIN  
AND  
GRASS  
SEED

THE WORLD'S LARGEST SEED HOUSE  
SELLING DIRECT TO THE FARMER

# THIS IS THE YEAR TO SOW GRASS SEED LIBERALLY

If there ever was a time when it was to your interest as a farmer to sow grass and clover seed it will be this spring. On account of the considerably high prices of seed for the last year or two many farmers have either cut down on their seedings or have omitted them altogether. It is possible that there was some justification for doing this but you must know that any farmer cannot afford to cut out his clover seedings and grass seedings altogether if he expects to keep up the fertility of his farm in A No. 1 manner. The higher the prices of land go the more it is necessary to keep their power of production up to the highest possible standard.

This year prices are very much lower. In many cases they are half what they were a year ago. There has been a greater decline in seeds than there has been in any other line and absolutely cannot afford to cut out your seedings or cut down your seedings any more. This is without question the year for you to sow liberally. It is natural that we should want to sell you your seeds but we are not urging you to make heavy seedings for that reason. It is for your own personal benefit that we are advising you to make liberal seedings of clovers and grasses. It makes no difference whether you buy your seeds from us or whether you get them from some other source, as long as you get A No. 1 seed at the right prices. You will be money ahead by buying it and we are confident that you will thank us later for urging you so emphatically to increase your seedings this year. You will find not only that the prices are exceptionally attractive at this time but the quality of practically all kinds of seed is rather above the average so that chances for getting successful stands are made better and that makes it all the more to your interest to sow liberally this year.

We want you to notice especially the exceptional high quality of seed that we offer you in our World Brand quality. If you do not have samples please send for them at once in order that you can see how clean and bright and pure the seed is. The color is excellent, the berry is plump and the germination high. We have never been able to offer better seed at any better prices than we can offer you in our World Brand at this time. We are confident that no matter how critical you may be that you will be exceedingly well pleased with our World Brand quality. The other grades that we handle we also endeavor to make worth the money and aim to have each grade sound dependable seed. If you want the very best such as most of our customers do send us your order for World Brand seed. Whether you have samples or not please remember that every pound of seed that we ship to you must show up to your absolute satisfaction when it arrives. You may examine it or test it in any way that you desire. If you are not thoroly pleased with the quality or convinced that you have saved money we will gladly take it back and refund every cent paid including transportation charges.

We wish to urge you especially for your own good to place your orders at once. On the information that we have, we are positive in declaring that the bottom of prices for this year has been reached and that later higher markets will prevail. The best seed almost without exception always moves first so that by buying now you not only get the benefit of lower prices but you secure as a rule better seeds and better service than it is possible for you to obtain later on.

Write us today, while we can serve you to your best advantage.

**THE EARLY BUYER WILL GET THE BEST SEED AND WILL  
BUY AT ROCK BOTTOM PRICES.**

62.27  
Established 1895

Capital and Surplus. \$650,000.00

Incorporated 1905

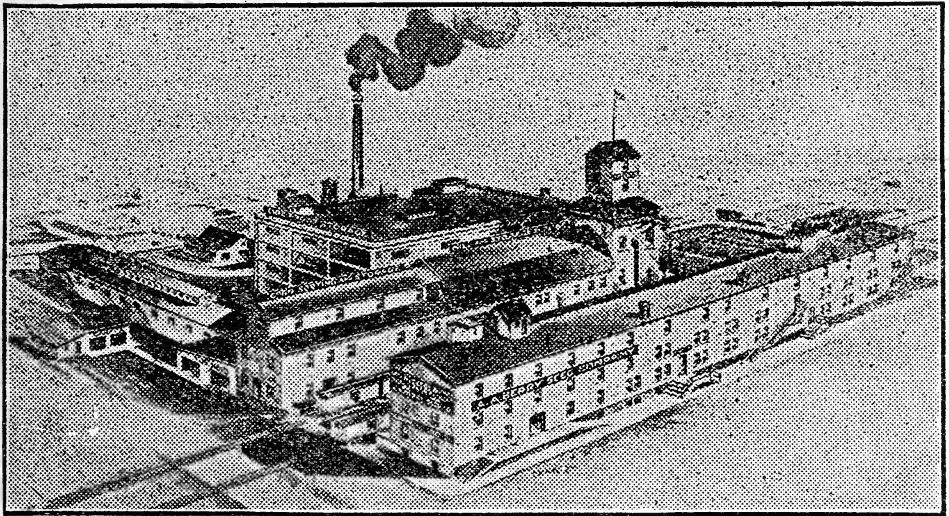
# A. A. BERRY SEED COMPANY

CLARINDA, IOWA, JAN. 1, 1921

## Special Wholesale Money Saving Price List

ALL SEEDS RELIABLE—TESTED AND GUARANTEED

TO SELL THE BEST QUALITY FOR THE LEAST MONEY, IS OUR AIM



WORLD'S LARGEST MAIL ORDER SEED HOUSE

### BUY SEEDS NOW AND SAVE MONEY

We consider now the most opportune time for buying, especially Grass Seed. Prices are unusually low, less than half of what they were a year ago, and undoubtedly have hit bottom and are due for higher prices. Buy before there is any decided advance and save many dollars. You can get the cream of the crop by early buying, and nine chances out of ten you will pay much higher prices at planting time.

If you will take our advice and buy now, we are confident you will save money. Many customers have written that they have taken our advice and bought their Seed early, saving anywhere from \$2.00 to \$5 00 per bushel. We need your co-operation, if you wish to buy your seed at a minimum price. We can sell Grass Seed today for less money than later, and if you want to make this saving, send in your order now.

Study our Price List, as it means money to you. Everything offered at greatly reduced prices. Our values in Seed are wonderful the quality is extra high—better than ever before and our guarantee protects every buyer. Our prices on everything quoted includes bags for shipping, and the value of bags in many cases will pay the freight.

#### WHY PRICES ARE QUOTED ON PRICE LIST

SPECIAL—As it requires several months to complete a large catalog, such as we issue, it is necessary to start printing it early in the fall, before crops are fully matured or values permanently established, so we are obliged to omit prices on the larger amounts, making our lowest prices in our Price List. The prices quoted in the Price List are our correct and prevailing quotations. Use only these prices, except on smaller amounts which are quoted post-paid in the catalog. Bear in mind that the prices in the Price List do not cover postage on Field Seeds, but Garden Seeds are postpaid, except Peas, Beans, Sweet Corn, Pop Corn and Onion Sets.

Prices subject to change. Order at once and take no chance on paying higher prices. We shall issue this Red Price List from time to time, as occasion demands.

United States Food Administration License No. G32384

# Wholesale Prices on Garden Seed

**EVERY LOT TESTED—Guaranteed to Grow or Replaced Free of Charge**

We are quoting current wholesale prices on seeds in quantities named. You can buy Garden Seeds as cheap as your dealer. These prices are extremely low, all postpaid except on Peas, Beans, Onion Sets, Sweet Corn Roots and Plants, and include packing.

We have already mentioned the great reduction in prices we have made. Our stocks are large and we can quote Garden Seeds to the best of advantage.

**Make out your order plainly, using Order Sheet and latest prices. This will save trouble and delay.**

**SPECIAL Please Note Prices are Post Paid in 1-2 lb 1 lb and 5 lb lots. Heavy Seeds, Such as Beans, Sweet Corn, Peas, Onion Sets, Roots and Plants are Not Post paid.**

State plainly how you wish seeds sent. See Catalog. Terms, CASH with order.

Variety	Price	Variety	Price	Variety	Price
ASPARAGUS 5 lb 1 lb ½ lb		CAULIFLOWER 1 lb ½ lb ¼ lb		MUSKMELON 5 lb 1 lb ½ lb	
Columbian.....\$3 00	75 40	Early Dwarf Erfurt.....19 00	9 75 5 00	Ed'n G'm (N'tt'd Rk) 4 50	1 00 50
Barr's Mammoth.....3 00	75 40	Early Snowfall.....20 00	10 25 5 50	Rocky Ford, Select. 4 00	90 50
<b>BEETS</b>		<b>CELERY</b> 5 lb 1 lb ½ lb		Rocky Ford.....3 50	75 40
Crosby's Egyptian.....2 50	65 35	White Plume.....9 00	1 90 1 00	Green Nutmeg.....4 00	90 50
Crimson Globe.....2 50	65 35	Gold'n S'lf Bl'nch'g...19 00	4 25 2 25	Emerald Gem.....4 50	1 00 55
Early Eclipse.....2 50	65 35	Giant Pascal.....9 00	2 00 1 10	Lg. Yel. Cantaloupe 5 50	1 25 70
Edmonds Blood Turnip 2 60	75 40	Kalamazoo.....8 00	1 75 90	Shumway's Giant...5 00	1 10 60
Early Blood Turnip...2 50	60 35	<b>CUCUMBER</b>		Burrell's Gem.....5 50	1 25 70
Detroit Dark Red.....2 60	75 40	Imp. Long Green... 5 00	1 25 65	Berry's Favorite... 8 00	1 75 1 00
Long Blood Red.....2 25	50 30	Early Cluster.....4 00	90 50	Montreal Market... 4 00	90 50
Swiss Chard.....3 75	90 60	Early Frame.....4 25	1 00 55	Paul Rose.....4 50	1 00 60
White French Sugar...2 50	60 35	Green Prolific.....4 25	1 00 55	Ex. Ey. Hackens'ck 4 00	90 50
Golden Tankard.....1 50	40 25	Ar'l'g'n Wh. Spine...4 25	1 00 55	Golden Nettle Gem 4 00	90 50
Mammoth Long Red...1 40	35 20	Chicago Pickling... 4 25	1 00 60	Grand Rapids.....4 00	90 50
Golden Globe Mangel...1 60	40 25	White Spine Ev'gr'n...4 00	90 50	Banana (true).....6 00	1 40 80
Klein Wanzeibin.....2 50	60 35	Impr. White Spine...4 00	90 50	Tip Top.....4 00	50 50
Vilmorin Sugar.....2 50	60 35	Cool and Crisp.....4 00	90 50	Osage (Miller's Cr.) 4 50	1 00 60
Danish Slud Strup...1 60	45 25	Boston Pickle.....4 25	1 00 55	Honey Dew.....8 00	1 75 1 00
<b>CABBAGE</b>		New Klondike.....4 00	90 50	Jenny Lind.....4 50	1 00 60
Ey. Winningstadt... 9 00	2 00 1 10	Cumberland.....4 25	1 00 55	<b>WATERMELON</b>	
Early Flat Dutch... 9 00	1 90 1 00	Davis' Perfect.....4 25	1 00 55	Alabama Sweet.... 3 00	75 49
Ey. Jersey Wakefld 9 00	2 00 1 10	Berry's Ch. Pickler.. 6 00	1 40 75	Cuban Queen.....3 00	75 40
Copenhagen M'k't. 11 00	2 40 1 25	<b>EGG PLANT</b>		Cole's Early.....3 00	75 40
Express.....9 00	2 00 1 10	Improv. New York...21 00	5 00 2 75	Dixie.....3 00	75 40
Early Summer.....10 00	2 25 1 25	Impr. Long Purple...20 00	4 75 2 40	Early Honey Drip... 8 00	1 75 1 00
All Seasons.....9 00	2 00 1 10	Black Giant Pekin...21 00	5 25 2 75	Fordhook Early... 3 00	75 40
Early All Head.....9 00	2 00 1 10	<b>KOHL RABI</b>		Florida Favorite... 3 00	75 40
Sure Head.....9 00	2 00 1 10	Ey. White Vienna...10 00	2 25 1 15	Ga. Rattlesnake... 3 00	75 40
Danish Ball Head...12 50	2 70 1 40	Ey. Purple Vienna...10 00	2 25 1 15	Golden Honey.....4 50	1 10 60
Savoy Am. Drum'd 9 00	2 00 1 10	<b>ENDIVE</b>		Halbert's Honey... 4 00	1 00 60
Volga.....11 00	2 40 1 25	Moss Curled.....4 50	1 15 65	Hungarian Honey... 4 50	1 10 60
Auturan King.....9 00	2 00 1 10	White Curled.....4 50	1 10 65	Harris' Earliest... 3 75	90 50
Late Flat Dutch... 8 50	1 90 1 00	<b>LETTUCE</b>		Kleckley Sweet... 3 75	90 50
Glory of Enk'isen...12 50	2 70 1 40	Ey. Curl'd Simpson... 5 00	1 25 70	Kolb's Gem.....3 00	75 40
Holland.....12 50	2 70 1 40	Bl. Seeded Simpson... 5 00	1 25 70	Kentucky Wonder... 3 00	75 40
Norsemen.....12 50	2 70 1 40	Early Tennis Ball... 5 00	1 25 70	Light Icing.....3 00	75 40
Large Late Drm'h'd 9 00	2 00 1 10	Grand Rapids.....5 00	1 25 70	Monte Cristo.....3 00	75 40
BRUSSEL SPR'TS 8 00	1 75 90	Improved Hanson... 5 00	1 25 70	Mammoth Ironclad 3 00	75 40
<b>CARROT</b>		Butter Cup.....5 00	1 25 70	McIver's Sugar... 3 00	75 40
New Chantenay... 4 50	1 10 65	Prizehead.....5 00	1 25 70	Mam. Melting Sug... 8 00	1 75 1 00
Oxheart.....4 00	90 50	Cal. Cream Butter... 5 00	1 25 70	Peerless or Ice Cr... 3 00	75 40
Early Scarlet Horn 4 00	1 00 60	May King.....5 00	1 25 70	Phinney Ex. Early... 3 00	75 40
Danvers Half Long 3 75	90 55	Iceberg.....5 00	1 25 70	Pride of Georgia... 3 00	75 40
French Forcing.....4 00	1 00 60	Big Boston.....5 00	1 25 70	Princess.....9 00	2 00 1 10
Large White Bl'g'n 3 00	80 45	Crisp as Ice.....5 00	1 25 70	Sweetheart.....3 00	75 40
Large Yellow Belg. 3 00	80 45	<b>MUSTARD</b>		Tom Watson.....3 00	75 40
Mastodon.....4 00	90 50	Giant Curled.....3 00	65 40	Triumph.....3 00	75 40
Long Orange.....4 00	1 00 55	<b>OKRA</b>		Vick's Early.....3 00	75 40
Victoria.....4 00	90 50	White Velvet.....4 00	90 50	Col. Gr Seed Citron... 3 00	75 40
		Long Green.....4 00	90 50	Red Seed Citron... 4 00	90 50
				Apple Pie.....5 00	1 25 70

VARIETY			PRICE	VARIETY			PRICE	VARIETY			PRICE		
<b>ONION</b>			5 lb	11b	¾ lb				<b>BEANS</b>				
Early Red Globe...	9 00	2 00	1 10	<b>SALSIFY</b>	5 lb	11b	¾ lb	Long Yellow Six Wks	17 00	5 40	1 90		
Lg. Red Wethers...	8 00	2 00	1 10	Long White .....	8 00	1 75	90	Imp. Red Valentine.	18 00	5 70	2 00		
Berry Imp. Rd.Weth	12 50	3 00	1 75	Mam. Sandw. Isl...	8 00	1 75	90	Refugee .....	18 00	5 70	2 00		
Danver's Yel.Globe	10 00	2 25	1 25	<b>SQUASH</b>						String'ss Green Pod	18 00	5 70	2 00
White Queen .....	12 00	2 75	1 40	Wh. Sum. Crook'n'	4 50	1 00	55	German Black Wax	20 00	6 30	2 20		
Mam. Silverskin...	12 50	3 00	1 60	Yel. Sum. Crook'n'	4 50	1 00	55	Golden Wax .....	20 00	6 30	2 20		
Australian Brown	8 00	1 75	90	Early White Bush.	4 50	1 00	55	Wardwell's Kd'y Wx	20 00	6 30	2 20		
Southp. Red Globe	10 00	2 25	1 20	Yel. Bush Scallop.	4 50	1 00	55	Bountiful .....	18 00	5 70	2 00		
Southp. Wh. Globe	15 00	3 50	1 75	Chicago War. Hub.	6 50	1 40	75	Davis' White Wax.	21 00	6 60	2 30		
Giant Prizetaker...	12 00	2 75	1 40	Sibley .....	7 00	1 50	80	H'nd'son's B'sh Lim.	20 00	6 30	2 20		
White Barletta....	11 00	2 50	1 35	Golden Hubbard...	6 00	1 30	70	Burpee's Bush Lima.	24 00	7 50	2 60		
Early Wh Portugal	12 50	2 90	1 50	Boston Marrow....	5 50	1 25	65	King of Garden Lima	24 00	7 50	2 60		
Mam. Silver King.	15 00	3 25	1 75	Banana .....	9 00	2 00	1 10	Cut Short or Corn Fld	20 00	6 30	2 20		
Southp. Yel. Globe.	9 00	2 00	1 10	Mammoth Chili....	7 00	1 60	90	Dutch Case Knife...	20 00	6 30	2 20		
Ohio Yellow Globe	10 00	2 25	1 20	Faxon .....	5 50	1 25	85	Kentucky Wonder..	20 00	6 30	2 20		
Wh. Italian Tripoli	12 50	3 00	1 60	Improved Hubbard	6 50	1 40	75	Lazy Wife .....	22 00	6 60	2 40		
Ex. Early Red Flat.	8 00	2 00	1 10	<b>SPINACH</b>						Horticultural Pole..	20 00	6 30	2 20
<b>PARSLEY</b>				Bloomsdale.....	3 60	75	40	Prolific Tree .....	12 00	3 90	1 40		
Moss Curled.....	3 50	90	50	Thick Leaf .....	3 60	75	40	White Wonder .....	12 00	3 90	1 40		
Fern Leaf.....	3 50	90	50	Long Standing....	3 60	75	40	Mammoth White Pod	25 00	7 80	2 70		
<b>PARSNIP</b>				<b>TOMATO</b>						White Navy .....	11 00	3 60	1 30
Hollow Crown.....	4 00	1 00	60	Early Michigan...	13 00	2 70	1 50	White Tepary .....	10 00	3 30	1 20		
Magnum Bonum...	4 00	1 00	60	New Stone.....	12 00	2 50	1 35	Pinto Field.....	10 00	3 30	1 20		
Half Long Guerns.	4 00	1 00	60	Red Trophy.....	14 00	2 90	1 50	<b>PEAS</b>			cwt	30 lbs	10 lbs
<b>PEPPER</b>				Acme .....	13 00	2 75	1 50	Little Marvel .....	22 00	6 90	2 40		
Sweet Mountain ..	23 50	4 75	2 40	Beauty .....	13 00	2 70	1 40	First and Best....	17 00	5 40	1 90		
Chinese Giant .....	25 00	5 40	2 75	Perfection.....	13 00	2 75	1 50	American Wonder..	20 00	6 30	2 20		
Golden Dawn.....	22 50	4 75	2 40	Ponderosa.....	17 50	3 60	1 90	Nott's Excelsior...	20 00	6 30	2 20		
Lg. Bell or Bull Nose	17 50	3 75	1 90	Dwarf Champion..	14 00	3 00	1 60	Premium Gem.....	18 00	5 70	2 00		
Ruby King .....	19 00	4 00	2 25	Yellow Plum.....	16 00	3 25	1 75	Alaska .....	15 00	4 80	2 70		
Ceyenne .....	16 50	3 50	1 80	Red Pear .....	16 00	3 25	1 75	Stratagem.....	20 00	6 30	2 70		
<b>SWEET PEAS</b>			½ lb	¾ lb	¾ lb				Abundance.....	18 00	5 70	2 00	
Mixed Spencers...	1 75	1 00	60	Berry's Tree.....	14 50	3 00	1 60	Champ. of England..	22 00	6 90	2 40		
Mixed Eckfords...	90	55	35	Golden Queen....	16 50	3 25	1 75	White Marrowfat...	12 00	3 90	1 40		
<b>PUMPKIN</b>			5 lb	11b	¾ lb				Telephone.....	22 00	6 90	2 40	
Small Sugar.....	4 00	1 00	60	Earlibell.....	16 50	3 50	1 85	Everbearing.....	20 00	6 30	2 20		
Kentucky Field...	2 25	65	35	Berry's Ey. Wonder	27 50	6 00	3 25	Advancer.....	18 00	5 40	2 09		
Common Field....	2 50	65	35	Spark's Earlianna	13 00	2 75	1 50	Hors. Mkt. Garden..	18 00	5 40	2 00		
Large Cheese.....	2 25	65	35	Alpha Pink.....	16 00	3 35	1 75	Gradus.....	24 00	7 50	2 60		
Mammoth Prize....	6 50	1 50	88	Early Jure.....	25 00	5 50	3 00	Potlatch.....	25 00	7 80	2 70		
Mammoth Tours...	6 50	1 50	90	Jn. Baer[Genuine]	16 00	3 40	1 75	Pedigree Ex. Early..	20 00	6 30	2 20		
King of Mammoth.	6 50	1 50	80	<b>TURNIP</b>						Dawrf Tom Thumb..	22 00	6 90	2 40
<b>RADISH</b>				Pur. Tp. Strap Leaf	3 00	75	40	McLean Little Gem.	20 00	6 30	2 20		
Rosy Gem .....	4 00	1 00	60	White Egg.....	4 00	90	50	Thomas Laxton.....	25 00	7 80	2 70		
Ey. Scarlet Turnip.	4 00	1 00	60	Sweet German ..	4 00	90	50	Mam. Luci's Sugar..	22 00	6 90	2 70		
Round Dark Red...	4 00	1 00	60	Purple Top Milan	4 50	1 00	55	Alderman.....	24 00	7 50	2 60		
Long Scar. Sh. Top.	4 00	1 00	60	White Milan.....	3 50	75	40	Surprise.....	23 00	7 20	2 50		
French Breakfast.	4 00	1 00	60	White Globe.....	3 00	75	40	Sutton's Pioneer...	24 00	7 50	2 60		
White Vienna.....	4 00	1 00	60	Cowhorn.....	3 00	75	40	<b>SWEET CORN</b>			BU.	¾ bu	¼ bu
White Strasburg...	4 00	1 00	60	Purple Top Globe.	3 00	75	40	Early White Cory..	5 50	2 80	1 50		
Chartier.....	4 00	1 00	60	Monar. Ruta Baga	3 25	75	40	Early Minnesota...	5 50	2 80	1 50		
Ey. White Turnip..	4 00	1 00	60	Pur. Top Ruta Baga	3 25	75	50	Crosby's Early.....	5 50	2 80	1 50		
Mixed.....	4 00	1 00	60	<b>Following Collect Prices</b>						Co'ntry Gentlem'n	6 00	3 10	1 60
Long Black Spanish	4 00	1 00	60	<b>ONION SETS</b>	bu.	¾ bu.	¼ bu.	Stowell's Evergreen	5 50	2 80	1 51		
Icicle .....	4 00	1 00	60	Yellow Bottom...	2 75	1 50	80	Golden Bantam...	6 00	3 10	1 60		
Chinese Rose.....	4 00	1 00	60	Red Bottom.....	2 85	1 60	90	Early Evergreen...	5 50	2 80	1 56		
Scarlet Globe.....	4 00	1 00	60	White Bottom...	3 00	1 60	90	Peep O'Day .....	5 50	2 80	1 50		
Scar. Tur. White Tip.	4 00	1 00	60	Summer Top Sets.	4 50	2 40	1 25	Early Sensation...	8 00	4 25	2 25		
Cincinnati Market	4 00	1 00	60	Winter Top Sets..	2 50	1 40	75	Late Mammoth...	5 50	2 80	1 50		
Non Plus Ultra...	4 00	1 00	60	<b>ROOTS &amp; PLANT</b>			100	1000	5000	Black Mexican...	6 00	3 10	1 60
Crimson Giant.....	4 00	1 00	60	Strawberry Plants	85	750	35 00	Zig Zag Evergreen.	6 00	3 10	1 60		
				Rhubarb Roots...	4 00	35 00	----	Kendall's Giant....	5 50	2 80	1 50		
				Asparagus Roots..	75	6 00	25 00	<b>POP CORN</b>			100 lbs	30 lbs.	10 lbs
								White Rice [seed]..	9 00	3 00	1 10		
								Queen's Golden.....	10 00	3 30	1 20		



ALFALFA	Bu.	½ bu.	¼ bu.
Star Brand (Prime).....	\$ 9 00	\$5 00	\$2 00
Planet Brand (Ex. Choice) ..	11 40	5 80	2 95
Dealers Fancy .....	12 60	6 40	3 25
World Brand (Ex. Fancy).....	13 80	7 00	3 35
Montana Grown (World Br.)..	15 00	7 60	3 85
Dakota Grown (World Brand) ..	15 00	7 40	4 00
Foreign Grown (World Brand) ..	13 60	6 90	3 25
Turkestan (Fancy) .....	15 00	7 60	3 85
Grimm (World Brand).....	33 60	16 60	8 35
Liscomb (World Brand).....	39 00	15 25	7 75

TIMOTHY SEED	Bu.	½ bu.	¼ bu.
Planet Brand (Ex. Choice) ..	4 05	2 15	1 15
Dealers Fancy .....	4 50	2 35	1 25
World Brand (Ex. Fancy) ..	4 95	2 55	1 53
Alsike & Tim. Mix. 45 lb bu.	5 55	2 95	1 50
Clo. Als. & Tim. Mix .....	6 30	3 20	1 60
Clo. & Timothy Mix 45 lb bu	5 85	2 95	1 56

MEDIUM RED CLOVER	Bu.	½ bu.	¼ bu.
Star Brand (Prime).....			
Planet Brand (Ex Choice).....	13 20	6 70	3 40
Dealers Fancy .....	14 19	7 25	3 70
World Brand (Ex Fancy).....	15 00	7 60	3 90

MAMMOTH CLOVER	Bu.	½ bu.	¼ bu.
Planet Brand (Ex Choice)....	13 50	6 80	3 50
Dealers Fancy .....	14 40	7 25	3 70
World Brand (Ex Fancy).....	15 30	7 75	4 00

SWEET CLOVER	Bu.	½ bu.	¼ bu.
Fcy. Wh. Bl. Unhd. 30lb bu.	3 90	2 00	1 10
Prime Wh. Bl. Hd. 60lb bu.	8 40	4 25	2 45
Choice Wh. Bl. Hd. 60lb bu.	9 60	4 85	2 85
Fancy Wh. Bl. Hd. 60lb bu.	10 59	5 30	2 79
Ex. Fcy. Wh. Bl. Hd. 60lb bu.	11 79	6 00	3 10
Fcy. Yel. Bl. Annual 60lb bu.	5 40	2 75	1 85
Ex. Fcy. Yel. Bien. 60lb bu.	10 50	5 40	2 80

ALSIKE CLOVER	Bu.	½ bu.	¼ bu.
Planet Brand (Ex Choice) ..	16 50	8 30	4 20
Dealers Fancy .....	17 70	8 90	4 50
World Brand (Ex. Fancy).....	18 90	9 50	4 80
Grimson Clover .....	6 60	3 40	1 75
Crian Incarnate Clover .....	7 20	3 70	1 90
Wh. Dutch Clover (World Br)	33 00	16 50	8 75
Japan Clover .....	6 00	3 10	1 60

GRASSES	Cwt.	50 lb.	25 lb.
Ex. Ecy. Ken. Blue Grass.....	\$28 00	\$14 10	\$7 10
Fancy Ky. Blue Grass.....	26 00	13 10	6 65
Eng. Blue Grs. (Mead Fscue) ..	26 00	13 10	6 65
Canadian Blue Grass.....	29 00	10 10	5 70
Fancy Orchard Grass.....	18 00	9 20	4 60
Unhulled Red Top .....	14 00	7 10	3 60
Fancy Re-cleaned Red Top.....	18 00	9 10	4 60
Bromus Inermis (Re-cleaned)	25 00	12 60	6 40
English Rye Grass .....	12 00	6 10	3 15
Italian Rye Grass .....	12 00	6 10	3 15
Billion Dollar Grass.....	6 50	3 30	1 70
Marvelous P.-rm. Mixture.....	16 00	8 10	4 10

SEED CORN—Shelled and Graded. Guaranteed 92 per cent or better germination.

	bus.	½ bu.	¼ bu.
Clarinda's Big Perfection .....	\$3 50	\$1 90	\$1 00
Pride of Iowa .....	3 50	1 90	1 00
Improved Leaming .....	3 00	1 65	90
Early Golden Dent .....	3 50	1 90	1 00
Legal Tender .....	3 00	1 65	90
Up-to-Date Calico .....	3 75	2 00	1 10
Improved Reid's Dent.....	2 75	1 50	85
Iowa King .....	3 00	1 65	90
Iowa Gold Mine .....	3 00	1 65	90
St. Charles White .....	2 75	1 50	85
Snowflake .....	3 00	1 65	90
Boone County White .....	3 00	1 65	90
White Wonder .....	4 00	2 10	1 15
Silver Mine .....	3 00	1 65	90
Golden Cap .....	3 25	1 75	95
White Cap Dent .....	3 25	1 75	95
Pride of the North.....	3 50	1 90	1 00
Silver King .....	3 25	1 75	95
Minnesota King .....	3 25	1 75	95
Early Longfellow .....	3 25	1 75	95
Early Yellow Dent .....	3 25	1 75	95
Sil. Triumph & San'd's W. Fl.	3 25	1 75	95
Select, per crate .....	\$4 50		
Extra Select, per crate.....	6 00		

10 bushel lots of corn, 25c per bushel less.

SEED OATS	25 bus. pr bu.	10 bus. pr bu.	Per 1 bu.
Golden Rust Proof .....	\$1 00	\$1 05	\$1 15
Canada gr. Reg. Swedish Sel.....	1 15	1 25	1 35
Colo. gr. Reg. Swedish Sel.....	90	1 00	1 10
New Alberta.....	1 15	1 25	1 35
New Scottish Wonder .....	1 00	1 05	1 15
Berry's New Sensation .....	90	1 00	1 15
Silver Mine .....	90	1 00	1 10
White Kershon .....	85	90	1 00
Yellow Kershon .....	85	90	1 00
Early Champion .....	80	85	95
Iowa 105 .....	90	1 00	1 10
Black Beauty .....	1 25	1 35	1 45
Great Northern.....	1 65	1 75	1 85
SPELTZ.....	1 25	1 35	1 40

BARLEY	10 bus. pr bu.	1 bu. pr bu.	½ bu.
Champion Beardless .....	2 00	2 10	1 20
Success Beardless .....	1 90	2 00	1 10
Improved White Hull-less.....	2 75	2 85	1 50
Berry's Blue Hull-less.....	2 25	2 30	1 25
Oderbrucker .....	1 50	1 60	90
Manshury.....	1 40	1 50	80

WHEAT AND RYE	25 bus.	10 bus.	Per 1 bu.
New Marquis Wheat.....	\$3 00	\$3 15	\$1 65
White Mammoth Spg. RYE .....	2 50	2 60	1 40
Rosen, RYE .....	2 25	3 35	1 25

FORAGE CROPS	25 bus.	10 bus.	Per 1 bu.
MILLET, Japanese .....	\$2 35	\$2 40	\$1 25
MILLET Golden Choice .....	1 90	2 00	1 10
MILLET Siberian, Choice .....	2 00	2 10	1 10
MILLET, Broom Corn.....	1 75	1 80	1 00

CANE SEED, Amber	1 bu.	Per 1 bu.
CANE SEED, Orange .....	1 60	1 70
KAFFIR CORN, White .....	1 75	1 85
KAFFIR CORN, Red .....	1 90	2 00
Feterita .....	2 00	2 10
Milo Maize.....	2 00	2 10

COW PEAS, Whipporwill	3 bu.	Per 1 bu.
COW PEAS, New Era.....	3 50	3 60
COW PEAS, Mixed .....	3 40	3 50
COW PEAS, Clay .....	3 40	3 50
SOY BEANS, Yellow .....	3 50	3 60
SOY BEANS, Ito San .....	5 70	5 80
SOY BEANS, Med. Early Yellow	5 70	5 80
SOY BEANS, Black Ebony .....	5 70	5 80

Canadian Field Peas	3 bu.	Per 1 bu.
Sand or Winter Vetch.....	10 25	10 50
Spring Vetch .....	5 00	5 10
Broom Corn .....	2 40	2 50
Silverhull Buckwheat.....	1 75	1 90
Japanese Buckwheat.....	1 75	1 90

	Cwt.	50 lb.	25 lb.
Sudan Grass .....	8 50	4 50	2 50
Billion Dollar Grass.....	6 50	3 30	1 70
Dwarf Essex Rape.....	10 00	5 10	2 60

POTATOES	4 bu.	2 bu.	1 bu.
Early White Peachblow.....	4 50	2 35	1 20
Early Red River Ohio.....	3 50	1 80	1 00
Irish Cobbler .....	3 50	1 80	1 00
Banner .....	3 50	1 80	1 00
Improved Bonanza .....	3 50	1 80	1 00
Carman No. 3.....	3 50	1 80	1 00
Rural New Yorker .....	3 50	1 80	1 00
Sir Walter Raleigh .....	3 50	1 80	1 00
Red Rose .....	3 50	1 80	1 00

MISCELLANEOUS	6 bu.	3 bu.	1 bu.
Seed Flax.....	6 00	3 10	1 00
Chicken Pasture Mixture .....	5 00	2 60	
Hog Pasture Mixture.....	4 00	2 10	



# THESE LETTERS ARE TYPICAL OF THOUSANDS WE RECEIVE

## CLAIMS 100 PER CENT STAND.

Dear Sirs:

Litchfield, Nebr. 9-14-20.

Received your shipment of Alfalfa Seed O. K. and quality proved fine. Have 100 per cent stand. I find it pays to buy seeds at any price. Your prompt service and good quality Seeds have always been highly satisfactory with me. I never miss a chance to recommend you to my neighbors.

Yours for future business,

IRA W. DOUGLAS.

## SAVED SEVERAL DOLLARS.

Oblong, Ill., 8-21-20.

Dear Sirs:

I thought I would write and tell you how well I was pleased with the Seed you sent me. It arrived O. K. It is about the nicest seed I have seen this year. I thank you very much for your promptness in filling my order and also saving me several dollars.

Yours truly,

J. N. YOST.

## FINE ALFALFA AND SWEET CLOVER.

Broadhead, Wis., 4-5-20

Gentlemen:

Your sample of World Brand Alfalfa was as fine Seed as I have ever seen and finer than most. I have limestone soil so I've been raising Alfalfa and Sweet Clover since 1911. Sweet Clover is absolutely as good for hay as Alfalfa, seven days in the week.

Yours truly,

JOHN B. DYBEVIK.

## KNOWS WHERE TO GET THE BEST.

Paw Paw, Mich.

Dear Sirs:

I am going to sow Alfalfa of the best I can get, also Oats and I want the VERY BEST of everything and I know just where to buy and get the best at the most reasonable price. This is my third year with your house and you have saved me money on the purchase price and your Seeds have given perfect satisfaction. I don't believe one can get better seeds at any price than you furnish.

Yours very truly,

W. E. WORMETH.

## SAVED MONEY.

Paxton, Ill., 9-1-20.

Dear Sirs:

I am glad to say I can do more than highly recommend your Clover, Grass and Garden Seed. Have used it for years and always been more than pleased and satisfied. Your Seed has been guaranteed, and successful to others, and have saved money by receiving it from you.

I remain, your satisfied customer,

FRED W. SAREMME.

## RECEIVED HONEST SQUARE TREATMENT.

Salem, Nebr., 9-17-20.

Gentlemen:

Thought I would let you know that we are more than pleased with our Seed we got from you. We got all kind of Seeds from you already. Corn, Oats, Potatoes, Millet and all of my Garden Seeds, and always find them what you recommend them. Always been honest and square with us. Will always put in a good word for your seed.

Yours truly,

JOHN SCHLENBERG.

## SPLENDID QUALITY AND GERMINATION.

Amboy, Ill., 8-23-20.

Dear Sirs:

I handled many different seeds from you last season and they were all up to a splendid standard of quality and germination. All that used it were

pleased and not one word of complaint and that is saying about all that can be said of any commodity.

Yours very truly,

FRANK P. BLOCHER.

## WISHES HE HAD BOUGHT MORE.

Boone, Iowa, 7-16-20.

Gentlemen:

I got some Grimm Alfalfa this spring from you and say it is doing fine. I always heard that it would be 2 or 3 inches high when the oats headed out but mine is higher than the oats. I wish I'd got more seed from you then and seeded more.

Yours truly,

EDWIN CROUTHAMEL.

## WONDERFULLY WELL PLEASED.

Covington, Ga., 5-6-20.

Gentlemen:

As I have been wonderfully pleased with the Grass and Clover Seed purchased of you in the past I am sending a clipping from the Southern Cultivator one of the leading Agricultural and Stock Journals of this section. There has been hundreds of stock breeders and farmers visit my farm in the last few months and they are all wonderfully pleased with my good Polled Hereford Cattle and the fine pastures they are grazing on and they invariably ask the question. Where did you get your seed from, and I am always glad to tell them from A. A. Berry Seed Co., Clarinda, Iowa. If you would like I can send you the names of most of these men. I am only writing this to show my appreciation of your courteous treatment and the good quality of your seed.

Yours very truly,

EVANS LUNSFORD.

## BEST SEED EVER SEEN.

Shraders, Va., 5-3-20.

Gentlemen:

I bought one-half bushel of your Alsike and Timothy seed last year but never looked at the seed until a few days ago, and I thought it was the best seed I ever saw. I am well pleased with it. The Red Top seed you sent me can't be beat. It is the cleanest and best that ever came here. We have some of your Sweet Clover here and it seems to grow just fine here. I will buy all my seed from you from this on and I think I can get some of my neighbors to order some from you by another year, as it is getting a little late to sow now. I will try them for another year.

Yours truly,

E. N. BROOKS.

## LOW PRICES—PROMPT SHIPMENT.

Arenzville, Ill., 8-31-20.

Dear Sirs:

All seed that I have received from A. A. Berry Seed Co., has been extra good, fresh, and grew well, such seed as Alfalfa, Sweet Clover, Red Clover, Alsike Clover, and Timothy that I have bought last four years has been fine and gladly recommend the A. A. Berry Seed Co., as one of the best I know for low prices and prompt shipment.

Yours truly,

CHAS ATER.

## QUALITY, SERVICE RECOMMENDED.

Schuyler, Nebr., 9-7-20.

Gentlemen:

Please accept my sincere thanks for the quick service and the quality I consider very select value. I have been using your grass and cane seed on my farms and ranches for the last five years or more, and I must say I would be pleased to recommend both your service and quality at any time.

Yours very truly,

W. J. HIGGINS.

# THIS CROP PRODUCES A GOLDEN FLOW OF DOLLARS



## WHY THE DEMAND FOR SWEET CLOVER IS INCREASING SO RAPIDLY.

Sweet Clover seed has always been a specialty with us and we probably have been in closer touch with this crop than any other seed house. We watch not only very carefully the seed production but the methods to which the crop itself is utilized by the farmers and also have kept quite closely in touch with the work of the different experiment stations with this excellent crop. The demand for the seed is becoming heavier each year and there is no question but what this increased demand is due entirely to the fact that farmers in greater numbers are realizing better each year the greater value of the crop to them.

If you are not growing Sweet Clover it will be to your interest to observe these few facts that we will mention below.

Sweet Clover will increase your wealth and whatever will increase your wealth is worthy of your earnest consideration. In the first place it is easier to get a stand of Sweet Clover than it is of Red Clover. It will also grow on land too poor to grow red clover successfully. Wherever it grows it adds a wonderful amount of nitrogen to the soil thereby enabling the production of vastly larger crops than could be grown before the Sweet Clover was established. Not only does it add nitrogen but it improves the texture of the soil because its powerful roots break up sub-soils and when they are plowed up they quickly decay leaving the ground porous enabling it to drain better and to warm up more quickly in the spring. It further inoculates the ground for Alfalfa so that there is no trouble at all in getting a stand of Alfalfa on land that has grown Sweet Clover for a year or two. It makes an excellent hay crop the first year. This crop the first year can scarcely be distinguished from Alfalfa in appearance and it is equal to Alfalfa in every respect in feeding value. The second season you can get one hay crop and a seed crop, or two hay crops or you can plow it under real early in the season and grow a crop of early corn or some catch crop. As a pasture it positively can not be excelled. It will carry more stock to the acre than any other crop and will keep such stock in the prime of condition. It cuts

down a great deal on the grain ration especially when feeding young stock. It does not have the tendency to bloat that other Clovers and Alfalfa have and it can absolutely be eradicated the second year by plowing under.

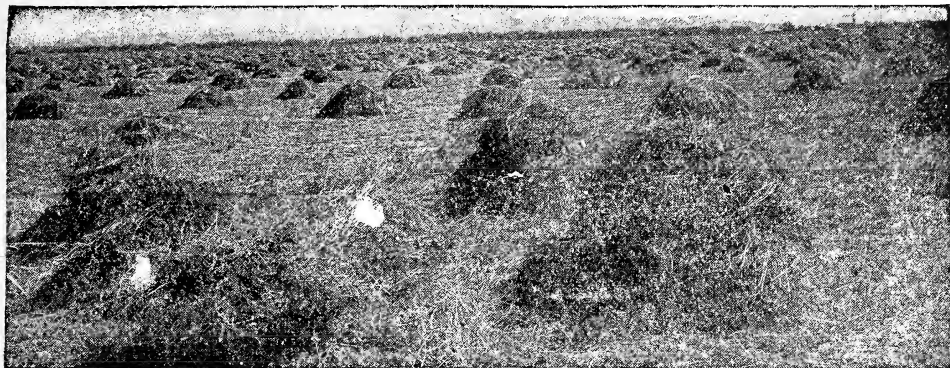
It makes no difference from what stand point you take Sweet Clover it is bound to be a money making crop for you regardless of what section you may be located in. Sweet Clover should give you remarkable results and with seed as low priced as it is this year there never was a more favorable time for you to get started with this crop than this spring.

Right at this time you can get the highest quality of seed at exceptionally low prices. As stated before Sweet Clover is a specialty with us and we know that we can serve you to your advantage.

Write us today and let us help you get started in the growing of Sweet Clover one of the biggest money making crops that you can put on your farm.

If you want to increase soil fertility, if you want to have a richer pasture that will carry more stock to the acre, pasture that does not have the tendency to bloat like other Clovers have, if you wish crops that will produce tremendous amounts of excellent hay, if you can see the value of a crop that will yield as high as \$150 for seed alone, grow Sweet Clover, whether White Blossom Biennial or Yellow Blossom Biennial. It has proven a money maker for thousands of farmers and it can do the same for you.

# GROW IT FOR HAY, PASTURES, SEED, FERTILIZER



## QUALITY OF SEED.

We are able this year to offer extraordinary high grade Sweet Clover seed. It is seed that is superior both for purity and germination and remarkable value thru out. Notice the enclosed price list for quotations. There is no extra charge for bags and the quality of the seed that we are offering at these prices makes them without question values that we are confident you will be unable to duplicate elsewhere.

Grow Sweet Clover this year because there is money in it for you and let us supply you with your seed because we can furnish A No. 1 high grade stock at a considerable saving in prices. Whether you have our samples or not send us your order. We guarantee absolute satisfaction or your money back.

## THE KIND OF SWEET CLOVER TO GROW.

There are several different varieties of Sweet Clover on the market which are adapted to different purposes and have different values. The variety that is most commonly grown is the

### BIENNIAL WHITE BLOSSOM.

This variety is the largest growing of all the Sweet Clovers. It is usually sown in the spring and almost invariably makes a good crop of hay the first year. It does not bloom the first year and does not become very coarse or woody. In fact the White Blossom Sweet Clover is practically identical to Alfalfa in appearance. The first year you can tell the difference by making a careful examination but at a glance a field of White Blossom Sweet Clover the fall of the first year looks exactly like a field of Alfalfa and it makes an excellent crop of hay. It is possible that in a backward season the growth might not be large enough to cut for hay purposes but it would at least give you ample amount of pasture and it certainly has a high feeding value. There is very little danger of Sweet Clover winter killing the first year. At the Iowa experiment station they have plowed under a crop of White Blossom Sweet Clover the first year plowing it with a tractor eight inches deep and putting the entire growth at the bottom of the furrow and the next year the entire growth came up again as thick as ever so that you can see that it is a crop having a great deal of vitality. We do not want you to get from this however, that it is hard to eradicate for if you will plow it under the second year regardless as to whether it has made a growth of four inches or four feet you will absolutely kill it out when you plow it under the second season.

The White Blossom Sweet Clover blooms the second year. When it begins to bloom it gets a little coarser and not so good for hay. However if it is cut before it blooms the hay is all good quality and excellent value. If you let it go to

seed, however it usually makes a very profitable crop for seed purposes only. Or if you plow it under for soil building purposes you will see a wonderful difference in your soil, even if you only plow under the roots and stubble you will notice almost unbelievable improvements in the fertility of your land. For pasture and soil building purposes the White Blossom Biennial is the best variety to grow.

### YELLOW BIENNIAL SWEET CLOVER.

The Yellow Biennial Sweet Clover does not grow as large or as coarse as the White Blossom Biennial. For that reason many of the customers prefer it for a hay crop as they say it makes a finer and better hay crop. It also makes a good pasture and an excellent soil builder although not quite so good as the White Blossom because it does not grow quite so rank. It is relished by stock fully as well as the White Blossom and some claim that stock greatly prefer the Yellow Biennial to the White Blossom. It has been proven a thousand times over, however that stock readily form a taste for both kinds and when once they acquire that taste they prefer Sweet Clover to practically any other kind of feed that they can secure.

### YELLOW BLOSSOM ANNUAL.

The Yellow Blossom Annual is a smaller growing Sweet Clover and it grows only one year. The growth that can be secured depends considerably upon seasonable conditions. It does not have the value of either the white blossom biennial or Yellow Biennial have but still a good many farmers sow it in grain in the spring and plow it under immediately after harvesting the grain crop. In this manner adding some fertility to the soil as well as inoculating for Alfalfa which they seed a little later on in the fall. The seed is much cheaper than the other varieties. We can supply you with any of these three kinds.

# ALFALFA REFLECTS THE FULL GLORY OF NATURE



## A TREMENDOUS INCREASE IN THE ALFALFA ACREAGE THIS YEAR.

Last year Alfalfa seed was considerably cheaper than Red Clover seed and as a result a good many farmers sowed Alfalfa instead of Red Clover. The crop has given nearly all of them much greater returns than they had thought possible and it has proven conclusively to thousands of farmers that it is easier to get a stand of Alfalfa than a stand of Red Clover. Previously they had not thought this possible on account of some reports that they had read, but no further argument is necessary with those men now, they are absolutely convinced as we have so long contended that Alfalfa is easy to grow. They are going to put in a larger acreage this year, not only they but their neighbors as well who have seen the success they have had with Alfalfa.

We want you to consider Alfalfa this year for we are confident that you can get equal satisfactory results that many other farmers have had. If you will select a fairly fertile well drained soil and sow your seed on a good firm seed bed covering the seed lightly using good seed there is very little reason why you could not secure a successful stand of Alfalfa.

When you get a stand of Alfalfa consider the fact that you have something that is of great value to you. You have a crop that will bring you on the average three good yields of hay every year and hay that has the highest commercial value. You have a crop that will make hay for you in years when it is too dry to get a good stand from any other grasses commonly grown. You have the finest hog pasture that can be secured in this country. You have a crop that is enriching your soil in a wonderful manner while it is bringing you the large cash returns whether as a hay crop, hog pasture or a seed crop. The very presence of Alfalfa itself on a farm will raise the value of that farm on the market. We can only touch on the great benefits that come to the man who has a stand of Alfalfa on his farm.

We believe that you are probably convinced as to the value and it is simply a question of getting a stand with many. If you will use good clean hardy seed there should be no trouble at all for you to get a most successful stand of Alfalfa. This year we are in position to supply you with exceptional values in Alfalfa seed. We have an abundance of domestic seed crop that is of excellent purity and germination and much superior in vitality to the European grown seed that has in the last two

years been offered in quantities in this country. We want to urge you to take particular care in buying your Alfalfa seed this year and it will pay you to insist on new crop home grown seed. We can supply you with foreign grown seed that is nice for color and purity and apparently a No. 1 seed in every respect for much less money than we can sell you domestic seed but in the long run you will find that the home grown Nebraska non irrigated seed will withstand your winters better and give you much more satisfactory results.

We will gladly send you samples to show you the excellent quality of the seed that we have to offer and at the prices that we make which include bags free of charge we are confident that you will find them values that you cannot duplicate elsewhere. We welcome any comparison that you care to make from any source. If we cannot save you money on your seed bill we do not consider that we are entitled to a dollars worth of your business but if we can make you a saving of from one to four dollars to the bushel as we are convinced that we can it is to your interest to get our samples and quotations before you buy.

Right at this time we can serve you to exceptional advantage. We wish to urge that you place your Alfalfa order promptly.

# AN ALFALFA VARIETY THAT IS EXCEPTIONALLY HARDY



## GRIMM ALFALFA.

The great majority of all Alfalfa seeded in this country is what is known as the common type. It has a very long tap root and goes down to almost unbelievable depths to supply nourishment and secure moisture for the growth of the plant. This common Alfalfa is especially favorable in sections subject to drought because the long root can secure moisture far below the surface when everything on top is drying up and dying and the common type is an excellent type to use in nearly all parts of the country providing of course that the seed comes from non irrigated lands and not grown too far south. The irrigated seed and the seed that is grown far into the south does not have sufficient vitality to withstand the severe winters of the northern states. Taking the common type Nebraska grown seed or Montana grown seed will give you a strain that is sufficiently hardy for most conditions.

However, even this type is sometimes not sufficiently hardy to withstand the conditions prevailing in some sections and for these we can recommend without reserve the use of the Grimm type of Alfalfa. This type has a branching root system instead of a straight tap root and consequently there is less danger of all the roots breaking off when the ground heaves in the spring thru the action of the frost. Some of the roots may break but there will always some remain to feed the plant successfully and we strongly recommend the Grimm to those sections that are very much bothered with winter killing.

Of course the price of the seed is somewhat higher due to it being scarcer than the seed of the common type. However, we are in excellent position to supply at figures that are very attractive and considerably below what many others ask for a similar type of seed. We purchase practically all of our Grimm Alfalfa direct from the grower. In this way we cut out a very fancy profit that is often demanded by dealers and we also are in position to exercise the best of care in securing seed that runs true to type. All the seed that we have is of very fancy quality and if you will compare our prices of Grimm Alfalfa with others that are offered to you we are sure that you can see wherein there is a big saving to be made in securing your Alfalfa seed from us.

We would like to emphasize further by sending you a sample to show you just exactly the high quality of seed that we have for you. Whether you send for a sample or not we will absolutely guarantee that the seed we ship you will show up to

your entire satisfaction. We will gladly take it back if it does not and refund all the money that you paid including transportation charges.

Agriculture experiment stations and County Agents in many places are very enthusiastic in urging the farmers to grow the Grimm type of Alfalfa seed. It has not been seeded as liberally as it should on account of the high prices demanded for it from so many sources but when you can buy the Grimm Alfalfa seed at prices such as we are making on our enclosed wholesale price list you cannot afford to pass up the seeding of the Grimm variety and especially so if you are bothered with winter killing in your section. It is without question much harder and is a better yielder. The demand for this seed is growing very rapidly and therefore we wish to urge you not to delay your order for we can give you the best seeds and service at this time.

## TURKESTAN ALFALFA.

The Turkestan Alfalfa does not grow as large as the common or Grimm type and does not yield as much. Some farmers seem to prefer it because it grows much finer even though they do not get as big a yield. The Turkestan is much harder than the common Alfalfa and also withstands drought remarkably well. It is especially adapted to sections subject to extreme cold.

We have a very fine supply of this seed to offer and any one needing Turkestan Alfalfa will find our values to represent a considerable saving on the purchase price.

Seed is A No. 1 in every respect and is guaranteed to satisfy.

## A FINE RED CLOVER VALUE LOT PURPLE

**HIGH CLASS SEED AT THE LOW PRICE OF  
\$15.00 PER BUSHEL. BAGS FREE**

The sample of Lot "Purple" Red Clover that you will find enclosed here show in a striking manner the generous and surprising values that are open to early buyers. Here is a selected lot of splendid seed. All new Crop Seed. High germination. Good Color. Plump Berry and well re-cleaned. The sample is typical of the seed we will ship. Perfect satisfaction is guaranteed to you. You can test the seed or have it tested. If you do not find it to be exactly as represented we'll take back the seed and refund every cent you paid.

This is your opportunity to make a very economical purchase. This seed is an honest dependable value. It is high grade seed, practically World Brand quality. By ordering now you can make a handsome saving on your clover seed bill. You cannot afford to pass up your clover seeding when seed of this worthy quality is offered at such a substantial reduction in price. Lot Purple is real reliable value that shrewd buyers should appreciate.

**BUY LOT "PURPLE" AT ONCE IF YOU WANT TO CASH IN ON THIS  
MONEY SAVING PRICE.**

## HIGH GRADE WHITE BLOSSOM SWEET CLOVER AT A REAL BARGAIN PRICE LOT DIVIDEND

**ONLY \$12.00 PER BUSHEL. BAGS FREE**

Sweet Clover is a crop that pays big dividends to the growers. For pasture, hay, seed and soil-building it is a proven money maker. This special lot "Dividend" that we offer here enables you to get started with high grade seed at a low cost of seeding. We can sell you cheaper quality than "Dividend" if you want it for a little less money but if you really want good seed at a bargain price, here is your chance. Examine the enclosed sample. See the excellent color. Note the nice size of the seed. Spread it out and look at the high purity. It is high-grade seed. You should find it a surpassing value in productive seed. Compare it with any other seed offered. If you cannot see a saving of at least \$2.00 and \$3.00 per bushel we will not consider ourselves entitled to your order. We can save you money on our regular grades and on this special lot dividend we are convinced that the saving to you in most cases will range around \$4.00 and \$5.00 per bushel.

Remember it is for early buyers.

**LET LOT "DIVIDEND" INCREASE YOUR PROFITS THIS YEAR.**



# A MONEY SAVING PRICE ON GRASS SEED

**BIG SPECIAL ON ALSIKE AND TIMOTHY MIXED**

**LOT "RICH" \$5.35 PER BUSHEL. BAGS FREE**

See the sample of Lot Rich enclosed herewith. Here is a real value for early buyers. You can make no seeding that would be more economical than this. It is not alone the first low cost of seed that makes it such an attractive value but the splendid yields that it produces. It is a desirable mixture in many ways. Both perennials, both mature together, adapted to the same kind of soils. Yielding more in combination than either grown alone. They are fundamentally a natural grass and clover mixture.

Notice the purity of this seed, the brightness of the seed and the plentiful portion of Alsike Clover. Remember that Lot Rich is offered at this low figure for the purpose of encouraging early buyers. The substantial price reductions are for early buyers only.

**BUY EARLY—CUT YOUR GRASS SEED BILL**

**BUY LOT "RICH."**

**FINE, IOWA GROWN TIMOTHY A CHANCE TO BUY ALFALFA  
AT A LOW FIGURE SEED AT A SUBSTANTIAL**

**LOT "SILVER" 98½% PURE  
ONLY \$4.05 PER BUSHEL  
BAGS FREE.**

Lot Silver Timothy has been especially prepared and re-cleaned for our customers who buy their seeds early. We can give you superior values in seeds at this time because we are not as badly rushed now and can use the money received from early sales to handle our business later on. Therefore we are making this price concession so that it will be to your interest to order at once. Lot Silver at this low figure is certainly a timely bargain and if you are in position to place your order now you will find the buying power of your dollars multiplied.

Lot Silver is new crop of high purity and germination. It is really an astonishing value and is sold subject to your complete satisfaction.

**\$4.05 PER BUSHEL FOR LOT "SILVER"  
IS A ROCK-BOTTOM PRICE, BUY QUICK  
IF YOU WANT HIGH GRADE TIMOTHY  
SEED AT THIS LOW PRICE.**

**SAVING.**

**LOT RURAL**

**SOLD CHEAP AT \$13.50 PER BUSHEL,  
BAGS FREE**

Good Alfalfa seed is going to be comparatively scarce this year according to all indications at this time. We advise all of our customers to place their Alfalfa seed orders early. The good seed goes first. Late comers must take what is left. We are offering at this time a nice lot of bright plump seed at a price that should certainly prove an inducement to buy early. This lot "Rural" is bright colored, plump seed of good purity and germination. This lot like all other seed is sold with the understanding that it must show up to your entire satisfaction. When you receive lot "Rural" Alfalfa you will see a clear example of the money that can be saved those making early purchases. Bear this fact in mind that we are making reduced prices to get early business. This lot of fine Alfalfa is a bona fide value. Bargains like this move quickly. We advise you to act today. It is to your advantage to do so.

**WE PREDICT HIGHER PRICES ON  
ALFALFA SEED AND ADVISE PLACING  
ORDERS IMMEDIATELY.**



# RIGHT NOW YOU CAN GET HIGH GRADE CLOVER SEED CHEAP

## CLOVERS



This year we are in position to offer you some of the most attractive values in Red Clover seed. There has been considerable increase in the production of this seed with the result that there has been more seed to choose from in making up our graded stock. The prices as you will see by the price list are very attractive and what is more, the quality is such that we consider the seed is better in every way. The color of the seed, the plumpness of the berry and the germination all range exceedingly high this year and we feel confident that in seeding stock of this kind that you should be taking very small chances indeed as your success is practically assured when you use seed of this quality.

Having exceptional financial capacities we were in position to make some very fortunate purchases of high grade Red Clover seed and we are passing these good buys along to our early customers. We want to urge every one of our friends who are in position to buy to do so at once. Place your order promptly as we are confident that we have seen the very bottom of the market and that as trade opens up that prices will be materially higher and towards the end of the season it will be necessary to take whatever seed is left and this frequently is of rather inferior quality.

When you can buy seed of the quality of our World Brand at the prices that are given on the enclosed wholesale price list you positively cannot afford to neglect your Clover seeding. This has been done to some extent in the past two years. Now is the ideal time to make it up. It is absolutely necessary for the good of your farm and the productiveness of your land that you have Clovers in your rotation. Red Clover is the foundation of successful agriculture thruout the entire Corn belt and anyone who neglects to seed Red Clover this spring is really doing himself an injustice.

Plan on a liberal acreage and buy your seed now. Every pound is guaranteed to show up to your entire satisfaction. Get the best seed and the best service and save the most money by buying at once.

Mammoth Clover was quite a scarce article last year and it is not so exceedingly plentiful this year.

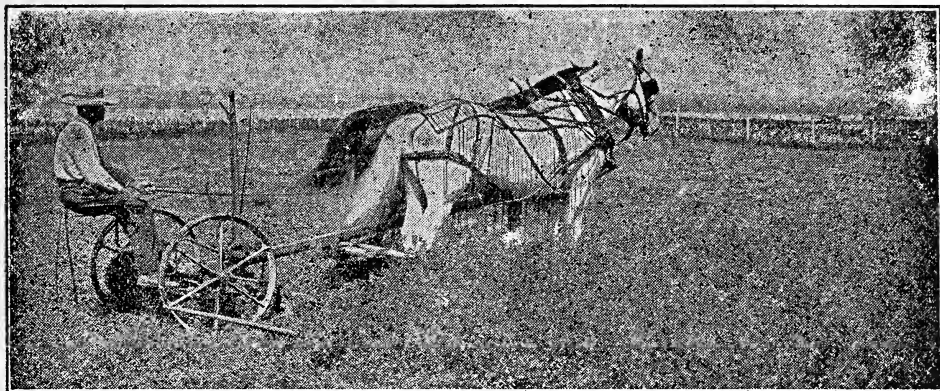
There seems to be a very heavy demand for it and the Clover is worthy of the increasing demand as it has many points of great value. In some sections our customers prefer to grow Timothy and Mammoth Clover together because Mammoth Clover matures about the same time that the Timothy does and in this way it makes an excellent combination. Then again where the crop is principally grown for soil building purposes the Mammoth is somewhat better than the Medium Red as it makes a larger growth and enriches the soil more quickly. In the northern sections where two crops of Clover cannot be produced each year the Mammoth is preferred as it will give them a bigger yield than they can secure from the Medium Red. Of course it grows somewhat coarser and does not make quite as fine a hay and we do not as a rule recommend it where the Medium Red gives good results. However, wherever Mammoth Clover is adapted it makes a very profitable Clover to grow. This year we have arranged for a nice stock of very fine seed and are also able to quote attractive prices on it as you will see from the enclosed price list.

You will find it to your interest to put in your supply of Mammoth Clover as early as possible. If you are in position to buy at this time it is our advice that you do so as we are confident that you will make considerable saving by purchasing early. The saving you have made by buying early you have the saving that we can make you on this seed. Notice the attractive values that we are offering. Get our samples and compare quality or better still send your order right in. You take no chances for the seed we ship must show up to your absolute satisfaction or comes back at our expense with a full refund to you including transportation charges.

Whether it is Mammoth Clover or Red Clover you will find that the saving ranges from one to four dollars a bushel and customers advise us that they have saved as high as six dollars a bushel and got better seeds and better stands than their neighbors who purchased elsewhere.

Let us show you what we can do for you this year.

# THE CLOVER YOU WILL EVENTUALLY GROW



## ALSIKE CLOVER.

It is naturally very much to our interest to study different farm methods thru out this country and we have been especially impressed with the increased use of Alsike Clover. The highest class type of farmer seems to be taking to Alsike Clover very strongly. Some of them are seeding Alsike Clover alone, others are seeding it with Timothy and an unusually large number are sowing a mixture of Red Clover and Alsike Clover in preference to Red Clover alone. The Alsike Clover grows somewhat shorter than the Red Clover and completely fills the ground between the Red Clover plants making a field of such mixture a solid mass of grass. Such a mixture appears to yield better either than Red Clover or Alsike Clover alone and a tremendous amount of feed per acre can be secured from this mixture of Clovers. The usual mixture is  $\frac{1}{2}$  Alsike Clover and 2-3 Red Clover. Then Alsike and Timothy is a crop that has always been a great favorite with our customers and it certainly makes a wonderful mixture. They are both perennials and ripen at the same time and produce a hay crop of remarkable value.

You will find that Alsike Clover can be grown in pastures that will not grow Red Clover at all. It is not nearly so particular as to soil conditions. It will grow on sour land and acid land and it will grow on wet land and even in sloughs. It is also very easy to get a stand of Alsike Clover and this is a great advantage in many cases. It is a perennial and will grow for quite a number of years from one seeding, is a prolific seed producer and makes a valuable crop for seed production alone. The seed is small, it only takes around 6 lbs. per acre and therefore the cost of seeding is very economical. If you have never grown Alsike Clover and have trouble in getting a stand of Clover we want to urge you especially to sow Alsike Clover this year even tho you ordinarily grow Red Clover we feel confident that you will be remarkably well pleased with the results in sowing about two lbs. of Alsike Clover along with your Red Clover taking also about that many lbs. of Red Clover from your seeding. Instead of sowing the Timothy or grass seed alone use some Alsike Clover with it. This Clover has much merit and it is to your own interest that you should learn what it can do for you.

The seed in itself is small and some what difficult to reclean therefore it is well to

watch the purity of your seed quite closely. In Alsike as in other Clovers we have magnificent values in the way of high grade seeds all ready to ship out and priced right at a figure that we are confident will be advancing a little later on. We have tried to emphasize the necessity of seeding Clovers this year. It is much more to your interest to seed liberally in Clovers than it would be to ours to sell you new seed. In more ways than one you have the value of Clover, you have the increased fertility of your soil which in turn will bring you greater yields from crops to follow.

By using Alsike Clover together with your other crops of grass seed you will increase the yields that can be secured or to sow it alone you get an excellent pasture Clover and a Clover that makes a fine hay and not dusty like other Clovers may be. We will gladly send you samples of the different grades of Alsike Clover that we handle. We are anxious that you should see them for they emphasize the fact that the prices on the price list are low figures. When you buy our World Brand Alsike you secure the best seed that we have in stock and seed that uniformly gives satisfaction. It is the grade that our most critical trade demands and a quality that we know will satisfy you.

# A WONDERFULLY POPULAR GRASS COMBINATION



## THE SEED VALUE THAT GETS BETTER EVERY YEAR.

"Men may come and men may go but I go on forever," so wrote the famous poet in his poem about the river.

If we were poetically inclined, we might write as follows: "Grass seeds may come and Grass seeds may go but our Alsike and Timothy goes on forever."

The only thing about our Alsike and Timothy Mixture is that we are making it a better seed value every year and owes its wide and increasing popularity to the very satisfactory results that our farmers are getting who seed this mixture. It stands to reason that any farmer who gets a Grass Seed combination that gives him larger yields of hay and a better quality of hay than he has grown before is going to be enthusiastic about that particular Grass Seed Mixture.

That is just what our Alsike and Timothy has been doing for thousands of farmers throughout this country. We receive more letters of praise for our Alsike and Timothy mixed than we do for any other one seed that we handle. These letters speak largely as to the increased yields that they have secured and the fact cannot be over looked that Timothy mixed with Alsike will have a higher feeding value than Timothy alone. Timothy analysis high in carbohydrates but is low in protein; Clover on the other hand is high in protein so that by growing the two together, you have a better balanced feed. The Alsike grows lower down than Timothy and fills the ground completely around the stems of the Timothy plants. The leafy proportion of the Timothy comes up above the Clover and as a result, the whole field is completely filled with a mass of green vegetation. The Alsike and Timothy ripen at the same and are therefore by nature, adapted to growing together. Furthermore, they are both perennials and will last for a number of years from one seeding and this helps to cut down the cost of seeding. But, even the first cost of seeding is very low.

A large part of our Alsike and Timothy is grown together in the field and we can buy such seed to much better advantage than we could buy Alsike Clover and Timothy separate. We reclean these lots and add sufficient Alsike where necessary to make a well balanced mixture. We have as a result, seed that has been thoroughly recleaned, of good

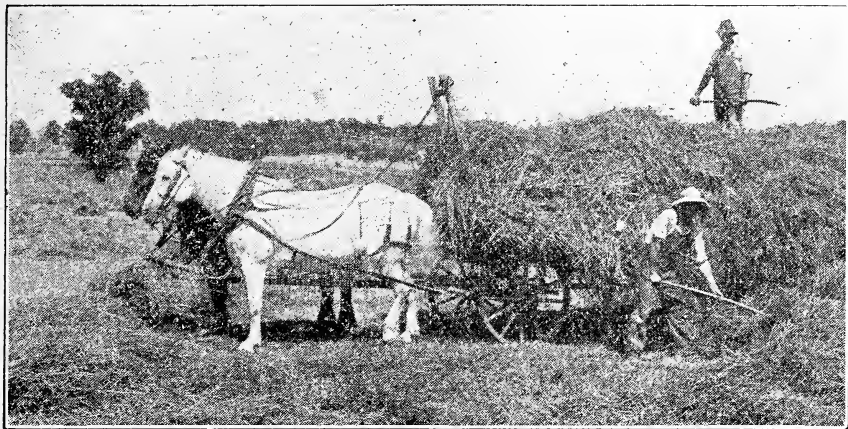
color and germination to offer at a price that makes it in our estimation, the most attractive value of grass seeds on the market. Not only is the cost of seeding low but is easy to get a stand as both of them are adapted to soils of very much the same nature and will grow where other Clovers and some other Grasses fail to do well. Both of them are very hardy and seldom winter kill so that in taking all these points together, any practical farmer must realize the advantage there is in sowing such a Grass Seed combination.

Notice the inclosed price list for quotations. This price includes bags free of charge. Get our sample and examine the quality. We will gladly leave the decision of the matter in your hands. We are absolutely convinced that any judge of seed values will see in our famous Alsike and Timothy Mixture a bargain that he would have difficulty in duplicating elsewhere.

Let us have your order now while we can give you such a remarkable value at such a very low price. You can make a big saving in your Grass Seed bill by seeding liberally with our Alsike and Timothy Mixture. It is a saving worth while and every man who appreciates the buying power of his dollar will do well by placing his order for it promptly.

See page 9 of this book for our extraordinary offer on a special lot of our famous Alsike and Timothy mixed. Here is a real bargain that is open only to early buyers. Buy now and make a big saving.

# A MAGNIFICENT MIXTURE THAT YIELDS HEAVILY



## A GRASS SEED MIXTURE RICH IN CLOVERS.

Our Marvelous Mixture is a combination of grasses, and clovers that we especially prepared for our customers who desire to have a very heavy percentage of Clovers in their mixed seedings. In this mixture there are combined Alfalfa, Red Clover, Alsike Clover, Sweet Clover and Giant Incarnate Clover. These making about 40 per cent of the entire mixture, the balance is re-cleaned Timothy seed. This combination we find to be growing very rapidly in favor with our customers and there is no question but what it fills a long felt need in grass seed. What impressed us particularly was the letters we received during this past season from farmers who have sown this rich combination that report that the mixture has given them the best results of anything that they have seeded and the letters are very enthusiastic in their praise of this grass seed. The very heavy yields that this mixture produces is undoubtedly the chief cause for its popularity. The combination of the clovers is calculated to produce the maximum yields at various times during the year so that it is excellent for pasture purposes as well as for hay.

The heavy Clover content raises the feeding value the hay making it much richer in protein and balancing the carbo hydrates in the Timothy. The clovers add to the fertility of the soil and stores large amounts of nitrogen in it; part of which they use for their own use, part of which is taken up by the Timothy, part being left for crops that follow. This leaves the ground in excellent state of fertility which improves it rather than to reduce the fertility like Timothy alone would do. Furthermore the presence of the Sweet Clover tends to inoculate the ground for Alfalfa and Alfalfa in itself usually makes a very satisfactory growth so that the use of this Marvelous Mixture paves the way to securing an excellent stand of pure Alfalfa.

To buy all these seeds separately and mix them yourself would make the cost of the seeding run rather high and probably would make it too expensive to suit the average farmer. We prepare this mixture, however in large quantities and to a considerable extent use seeds that are already mixed and therefore not as high in commercial value on the market as the seeds separately. Thus we can sell the seed at a very attractive price and make it really a very economical seeding for you. The quality of the seed in itself that goes into this mixture is good sound dependable clean seed. We will be very glad to ship it subject to any test that you may want to put it. If when you receive the seed you are not thoroly convinced that it is satisfactory

quality and excellent value we will not ask you to keep it, but will take it back and refund all the money that you paid us.

This mixture is sown at the rate of from 12 to 15 pounds to the acre. Please note the very low prices on the enclosed wholesale price list. When you consider the heavy percentage of clovers which runs around 40 percent of the total, the fact that this is good seed in every respect you will find that at this low price that it is a great value that can scarcely be duplicated elsewhere. The special low price, however we are making at this time is in order to encourage early purchases. Every one of the seed values that we are offering at this time we have priced especially low for the reason that we are in not so rushed at this time and can give you better service. If you are in position to buy your seed at this time you certainly should find it to your advantage to cash in on these low figures that we are making at this time. If you require a heavy clover mixture we are sure that you will find this Marvelous combination a seed that fills your requirements in every respect and at this low price you will find that it represents true economy to sow it.

Remember that the purity and germination is guaranteed to show up to your entire satisfaction in every way. Increase the buying powers of your dollars by making a prompt order.

# PRACTICE REAL ECONOMY IN BUYING GRASS SEED



## OLD FAVORITE GRASS SEED COMBINATIONS

The plan of seeding Clover with Timothy instead of straight Timothy is rapidly gaining favor. In nearly every section we have always handled considerable Grass Seed combinations and this year we are in a most advantageous position to make money saving prices on all seeds and especially on these grass mixtures. It is very much to your interest that you consider the advantage that may be secured by using the seed in combination and then when you consider the low cost of the seed, we cannot help but think that it will be your decision to sow one or more of these mixtures this spring.

### RED CLOVER AND TIMOTHY MIXED.

The old heavy yielding standard of Grass Seed Mixture was Red Clover and Timothy and this combination still remains the favorite with thousands of our customers. They have found they can grow such a mixture with excellent success; they have found their yields are larger and the quality of the hay better and they have also noticed that the use of the Red Clover with the Timothy leaves the soil in much better condition than when they grow Timothy alone. There are very many advantages of growing together which provide ample reasons for the increasing use of the Red Clover with the Timothy.

It was a custom of many in the past to sow their Timothy seed in the fall and their Clover in the spring but this method is being rapidly replaced by seeding the two together in the spring. We know this to be a fact for the reason that by far of the greatest per cent of our Timothy Seed, either alone or in mixture is sold in the spring and undoubtedly seeded in the spring. Fully 90 per cent of our seed is sold in the spring and customers continue to send in their reports as to the excellent success they have secured so that you need not hesitate about considering whether it is adapted to spring seeding.

You will note from the inclosed wholesale price list that our price on this mixture is not a great deal higher than that of Timothy seed alone, yet the mixture contains an ample percentage of Red Clover for practical purposes.

We are anxious that you should fully understand and appreciate the extent of this Grass Seed value and in order that you may fully understand it, send for a sample of the seed and see for yourself just what we would ship. Look the sample over carefully for color and for purity and for the size of the seed. We will guarantee to ship you seed identical to the sample. It is not even necessary to send for a sample. Let us ship you the seed out right and then when it comes, take it home and examine it in this way: also test it or send it away to

have it tested. Keep it as long as sixty days if necessary. We want you to be absolutely satisfied in your own mind that this is a grass seed value that is A No. 1 in every respect and that our price means a big saving for you. If you cannot see it in this way after you have had the seed and examined it, let us know and we will give you prompt shipping instructions and will refund your money including transportation charges and what is true of our Red Clover and Timothy mixed is true of any of our seed. We will ship it out on the same basis because we are positive that you will be unable to duplicate these values elsewhere.

The Clover and Timothy mixed that we have this year is certainly fine desirable seed. We are anxious to get your business and to show you what a saving we can make for you.

### RED CLOVER, ALSIKE CLOVER AND TIMOTHY MIXED.

This mixture is very much like either the Alsike and Timothy mixed or Red Clover and Timothy mixed. It contains about one-half the amount of Alsike and one-half Red Clover, making the total amount of Clover the same as in either of the other mixture. This also is a very popular mixture and becoming more so, for if anything the Alsike and Red Clover together fill the ground more completely than the Red Clover or Alsike Clover alone. It is just as clean, just as pure, just as remarkable a value as either of the others.

It is priced on the enclosed price list, sold with the same understanding and absolute satisfaction must be yours when the seed arrives or we take seed back and send your money back at once. You cannot go wrong on any of these mixtures.

It might be to your advantage to sow some of each kind so that you may know what is best adapted to your particular needs and we want to urge you to sow at least one of them for bigger yields of hay, better quality of hay, better soil conditions and incidentally you make a bigger saving on your Grass Seed bill by using these mixtures than you could in any other way.

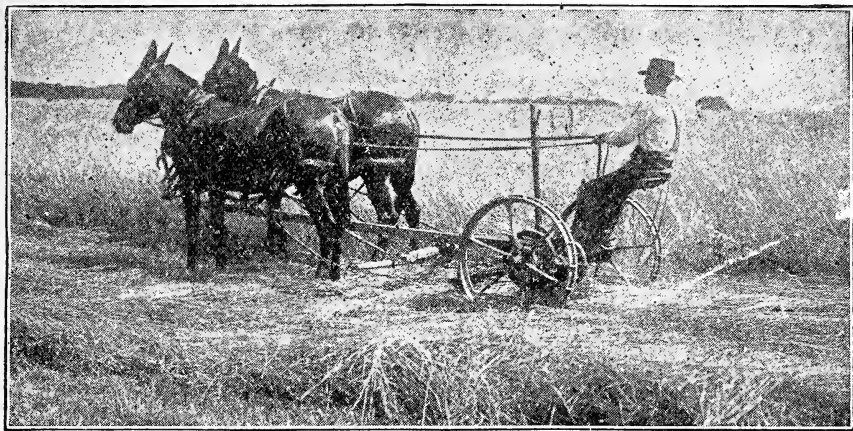








# CLEAN--NEW CROP--IOWA GROWN SEED



## A HIGH GRADE TIMOTHY SEED AT ECONOMICAL PRICES.

If you have given the condition of farm crops throughout the country much study, you must realize the emphatic necessity of increasing the grass seed acreage this Spring. You can make such seeding this Spring at practically one-half the cost of the seed that you could last year, so that it is undoubtedly to your advantage to put in just as large an acreage as possible.

Timothy has always been, and we are confident, that it will for a long time remain the standard of the grasses for hay purposes. Ninety per cent of the sales of Timothy seed are made in the Spring, and the Spring seeding is without question the most popular one and it is a method that gives excellent results.

This year there is going to be a great deal of difference in Timothy seed value. There is going to be a lot of seed that is dark and very much discolored and Timothy seed that has been taken from old meadows is inclined to run quite weedy and some of these weeds can scarcely be removed. Some Timothy seed was cut too green and as a result in these cases, there is going to be a lower percentage of germination, taking these facts altogether you can see that it is going to be to your interest to watch your Timothy seed purchases.

This Company is located in the heart of one of the largest and greatest Timothy producing sections and we are naturally in position to know conditions better than the average. For the same reason we are in position to secure the most fancy lots of seed, being situated right in the midst of the seed production, our buying expenses are lower and seed can be secured to better advantage. Neither do we have any long freight hauls.

Our cleaning facilities are most modern and cleaning the seed thoroughly at a lower cost than is true of inefficient or old equipment. It is largely for these reasons that we are enabled this Spring to come to you with very attractive values in Timothy seed. It is to your interest to study our price list carefully and note the very low prices that we are making

on Timothy Seed, also, bear in mind that these prices include bags free of charge. These prices would mean little or nothing if they did not represent the seeds that are of sound and dependable value and high in quality. You cannot appreciate our Timothy seed values fully until you have seen the samples. We will gladly send them to you upon request. When samples come you can see for your self that the seed is all that you might wish for and especially when you find our World Brand a quality much better than the average and the kind of seed that you would be proud to sow.

If you want to order at once, do not wait for the samples you take no chances in sending us your order out right. We will positively guarantee that the seed will satisfy you when it arrives and when it comes take it home, test it or have it tested. Keep it sixty days if necessary. If you are not then satisfied with the seed or not convinced that you have excellent value for your money we will take every pound of it back and refund every cent you paid plus transportation.

The entire decision is left in your hand and you must be satisfied. We want your Timothy seed business and we are asking you for it. We are confident that you would find the saving in our price very much worth your while. Write and send us your order today

# BE SURE TO GROW THIS CELEBRATED AND UN- PARALLELED FORAGE CROP

## WONDERFUL FORAGE CROP AT A LOW COST OF SEEDING.

In our experience as seedsmen we have never seen a forage crop come more quickly in to popular favor than Sudan Grass. A few years ago there was but a very small amount of this seed yielded compared to the quantity that is offered to the farmers of this country for this season's use. It has been found to be about the heaviest producing quick growing forage crop that can be grown. Not only are the yields large but the quality of the hay fine being somewhat higher than Timothy in feeding value. It grows quickly and will yield from two to three cuttings and in some sections from four to five cuttings and it makes a phenomenal growth during a dry season and will flourish at times when a large percentage of the grasses are lying dormant on account of the excessive hot weather. It is a very prolific stooler and the fine quality of the hay can easily be controlled by the rate of seeding. A very light seeding of around five lbs. to the acre will produce almost as much as a crop seeded at the rate of 15 lbs. to the acre but the heavier seeding makes a much finer and more palatable hay.

Experiment stations in various sections of this country have devoted considerable acreage to experiments with Sudan Grass and find it without question a profitable crop to grow. Last year the price of Sudan Grass seed was comparatively high making the cost of seeding somewhat more than some farmers wished

to pay. This year the seed however, is more plentiful and the price exceedingly low so you should find it one of the most economical seedings that you could make. If you need a quick growing crop that will make you tremendous amount of pasturage or a crop that will give you heavy yields of hay you will find it very much to your interest to grow Sudan Grass.

Early in the season we contracted for a large acreage of Sudan Grass at a very attractive price and the same has now been received and re-cleaned by us and we feel safe in saying that we have one of the greatest values in Sudan Grass being offered in this country. While it is true that Sudan Grass cannot be sown until after the ground is thoroughly warm in the spring we are going to make a special offer to buyers at this time. Early in the season we are not so rushed and can handle orders somewhat more easily and also can turn our money again during the same season and it is therefore somewhat of an advantage to us to get your early orders and we are glad to make sufficient inducements in prices along all lines to make it profitable for you to buy at once. In accordance with this policy we offer new crop re-cleaned Sudan Grass, guaranteed free from Johnson and of high germination, a special.

Fifteen lbs. per acre of this seed will make you a very heavy seeding when drilled in regular drill rows about eight inches apart. Even ten lbs. seems to give satisfactory results. At this low cost of seeding you can see your seed bill per acre is very small. It is entirely insignificant compared to the truly wonderful yields that this grass will bring to you. It is very easy to grow this crop, it is not at all difficult to get a stand, requires no cultivation, it grows with amazing rapidity from the time it begins until frost comes in the fall. We are confident that you have a place for Sudan Grass on your farm. We want to urge you to put in at least a trial acreage this year. When you once learn what a magnificent crop it is we are sure you will agree with us in stating that no farmer can afford to be without Sudan Grass especially when he can buy the excellent value in seeds such as our "LOT" "MIRACLE" at the reduced price of \$8.50 per CWT. 500 lbs. or more \$8.00 CWT.

Send us your order now while we can ship you the best seeds and give you the most satisfactory service and in addition making the attractive saving in the price of seed.