

## **Historic, Archive Document**

Do not assume content reflects current scientific knowledge, policies, or practices.



AUG 11 1920



SEASONS  
1920  
1921







...Descriptive of...

Brand's  
American Peonies

*Also Selected Varieties of New & Standard  
Peonies and Iris*

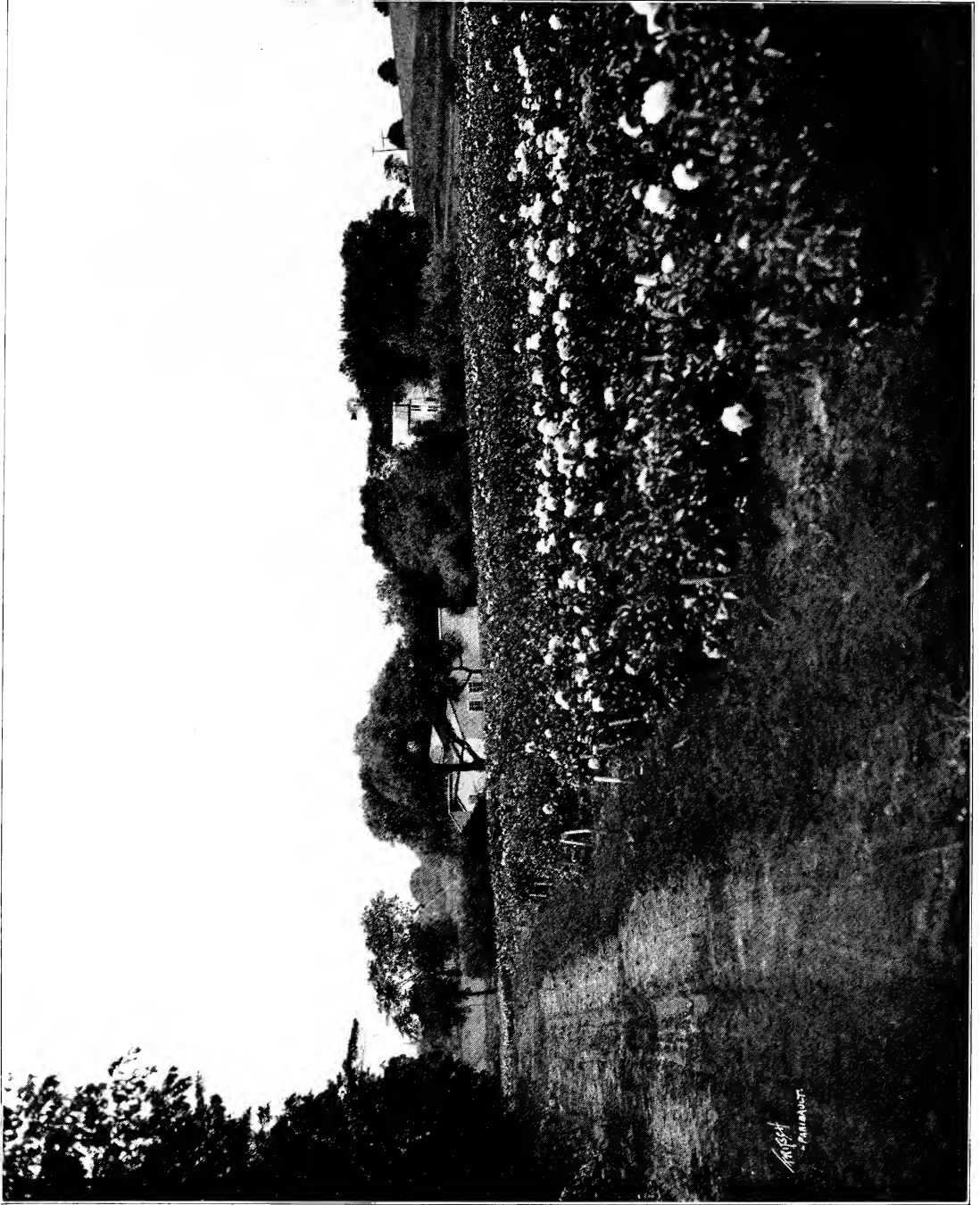


ESTABLISHED 1868

*Address all Orders and Communications to*

**BRAND NURSERY CO.**

FARIBAULT, MINNESOTA



1934  
- PARSONS -

Driveway Through the Peony Fields. Storage Building and the Office in Background.





## Introduction

### Founders of Brand Peonies

O. F. BRAND, the founder of the Brand Nursery Company, established the first nursery in Minnesota in 1868. He carried on a general nursery business, growing flowers as well as other nursery stock. Among these, peonies had a prominent place. During the first years he gave much time and study to the production of new varieties of fruit adapted to the rigors of our Minnesota climate. The knowledge and skill acquired in this work have stood him in good stead in his later work as a peony breeder. In 1910 he retired, and the business passed into the hands of his son, the present owner. For several years he has made his home in California. This year the lure of the peony was too much for him and he returned to Minnesota for the blooming season.

¶When he began to raise seedlings in 1899 his only thought was to produce one variety which he should feel worthy to receive the name of his wife, Mary Brand. This year he has found

great satisfaction in gazing on the long rows of this fine variety. But he has also taken much pleasure in seeing the great fields of peonies which have been developed during these last years as an outgrowth of the small beginnings, made so long ago.

¶A. M. BRAND was, as a child, the companion and helper of his father in all his experiments. He has literally grown up with the peonies. So far as this flower is concerned, he has thus always lived in a professional atmosphere. For twenty years he has grown the flower on a large scale. Probably there is no other man in America who is devoting the experience gained during a period of over forty years to the improvement of the peony.

¶A president of the American Peony Association has called him one of the three best judges of peonies in America. That he is generally recognized as an authority on the peony is shown by the facts that he has been chosen as judge in the three greatest peony shows in the country, those held by the American Peony As-



O. F. BRAND  
Founder of Brand Peonies

sociation and the Northwestern Peony Association, and the Duluth Peony Show, and that he has been asked to write articles on his specialty for many different publications. Extracts from some of these are given in the last pages of this book. They tell many facts about his work with the peony in a fuller and more personal way than they can be given in this general introduction.

## Our Claim to All-around Peony Specialists

¶Now, there are all sorts of so-called "specialists" in every line of work. We believe that our claim to rank with the world's best all-around peony specialists is well founded.

¶It is now fifty-two years since we began to grow peonies. For thirty-two years of that time we have been collecting the best varieties produced in Europe as well as America. But our claim to be true peony specialists does not rest entirely upon the fact that we *grow* peonies, we also *produce* them. For twenty-one years we have been developing new varieties that are being welcomed by peony lovers everywhere. During all of these years the cultivation and development of the peony have been a constantly increasing part of our business, and, at the same time, our chief pleasure.

## Home of Brand Peonies

¶The home of the "Brand Peonies" is Faribault, Minnesota, fifty miles due south of St. Paul and Minneapolis. Our gardens are situated at the eastern edge of the city on the high hills that rise abruptly from the bank of the Straight River. To the east, the hills, rising still higher, form the background for our great field of peonies. To the south and west is spread out a broad and varied scene. In the immediate foreground circles the wooded picturesque valley of the river, along which is built our attractive little city with its pleasant homes and numerous public institutions. Beyond, stretches mile upon mile of prairie, dotted with natural and artificial groves and quiet lakes. The

limit of our view is marked by a spur of the Great Woods, which forms a broken sky line.

**Our June Show**

In June, our peony gardens are in full bloom; and with their setting they form a picture which we take delight in sharing with the flower lovers who flock to our fields from far and near.

For a number of years we have maintained about twelve acres of blooming plants in named varieties. As soon as labor conditions make it possible, we expect to increase this acreage. But we doubt if twenty acres could more completely fill the eye than do the twelve. Four hundred and eighty varieties were found in our fields this year. These were planted in rows some thirty rods long; and the great beds, banded with every shade from the purest white to the deepest crimson, formed a sight to be long remembered.

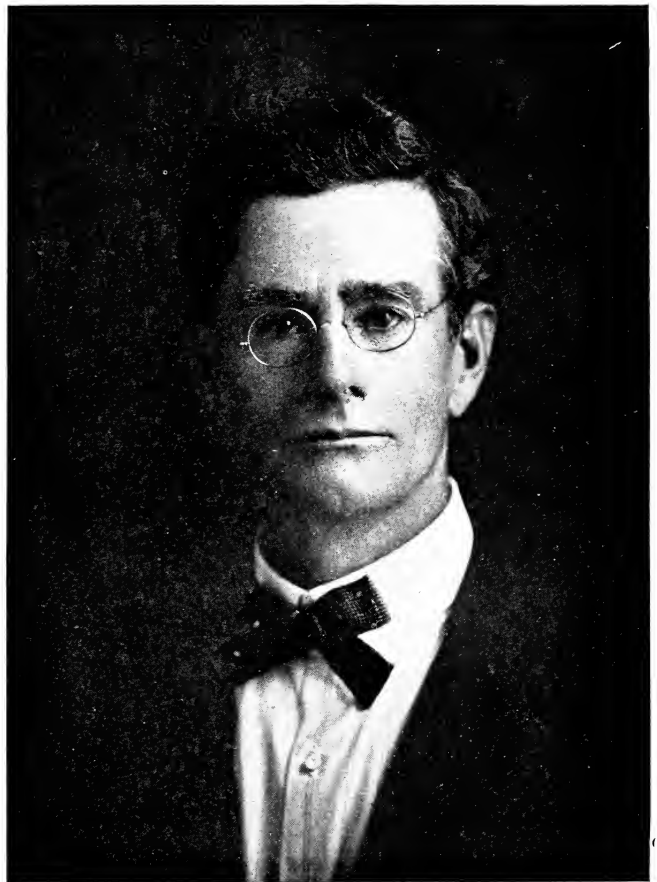
Many of our guests found their chief delight in these fields of named varieties. But others felt a deeper interest in our other beds containing more than 60,000 unnamed seedlings in various stages of development. They recognized in these beds the experimental laboratory in which, with painstaking care, we are developing new beauty in the peony world.

**Our New Catalog**

We have been pleased by the interest shown by our guests in the peony-breeding part of our work, and by the many letters of inquiry we receive concerning it. So we have decided to offer, as the special feature of our new catalog, a more detailed account of the process of producing new varieties than we have done before. In connection with the story we are including a number of new

pictures illustrating the various stages of the process. In this way we hope to give a pretty good idea of our work to those who cannot visit us in person.

We are also introducing to the reader some of our new varieties which are not yet on the market but which made our Second Trial Seedling Bed the most interesting spot in the nursery to many of our last June's visitors.



A. M. BRAND  
Peony Specialist

# How Brand Peonies Are Produced

## Fundamental Ideas

¶We wish first of all to emphasize the point that there is nothing mysterious about our work. It is based upon a few facts which, if not already known to the reader, are easily understood.

¶For example, everyone knows that the peony may be propagated by root division; that is, that if a new plant of *Festiva Maxima* is wanted, it may be produced by cutting from an old clump a division consisting of a portion of the root with a part of the crown adhering. Some persons may not know that a new plant of *Festiva Maxima* cannot also be produced by planting seed from this variety. But the fact is that the modern peony is the product of many crosses, and so does not "come true" from seed. That is, even if plants of a single variety are isolated so that the flowers cannot be fertilized by the pollen from another variety, and if the seeds produced are planted, and the resulting seedlings are cared for until they bloom, the flowers of these plants will be found to vary widely in both color and form. The plants themselves will differ in color of foliage, habits of growth, etc. Every one of the seedlings may be inferior to the parent stock; but, on the other hand, one or more may prove superior to it in some important characteristic at least. Thus we see that, although seeds cannot be used in the propagating of old varieties, they are the essential thing to the production of new sorts.

¶Now, if different varieties are grown side by side, wind, bees, and butterflies will carry pollen from bloom to bloom, and thus bring about hybridization. The seeds thus produced will, of course, bear greater possibilities of variation than those produced by a single variety. And if the parent stocks are fine varieties, their descendants are more likely to be worth while than are the descendants of common stock.

¶It must be remembered throughout that what we are after is a new combination of desirable characteristics, — a new peony as good as any yet produced but *different*.

¶Now for the story of how we apply the facts just given to the production of such plants. In following this account, we wish the reader to remember that we do not claim that our methods of handling seedlings are the only ones or even the best ones. They are, however, the ones that we have found it most practical to employ.

## Choosing the Parent Stock

¶Our first step is to set out a bed of plants to furnish seed for our venture. The varieties used are selected with great care. Each plant that is chosen must possess in clearly defined form one or more especially desirable characteristics, such as good color, fine form, or pleasing fragrance in the flower, or good habits of growth in the plant. Though we are especially anxious to secure doubles, no entirely double variety finds a place in the bed. Such flowers, possessing neither stamens nor pistils, cannot help in production of seed.

## Hybridization

¶Having chosen our parent stock with such care, we leave the work of hybridizing for the most part to nature. In this way we work on a larger scale than we could if we depended on hand fertilization. We also get some combinations of characteristics that we could not have worked for. For, although we know the qualities that our parent plants themselves possess, we do not know what latent characteristics, inherited from their many ancestors, they may be able to transmit.

## First Seedling Bed

¶We gather the pea-like seed produced by the pistillate varieties just as they have turned brown and the pods containing them are about to open. Since we have seedlings coming on continuously, we do not need to work for germination of the seed the first spring after planting, so we allow it to dry, and hold it until late fall.

¶In the meantime beds have been prepared; in general we make these four feet wide and sixty feet long. The surface is raised about six inches above surrounding soil, and sloped sufficiently to keep water from standing on it. The beds are covered by a light screen raised about eight feet from the ground.

¶The seed is sown broadcast over the bed about one inch apart, and covered with two inches of soil. Just at the approach of winter, the bed is covered with a two inch mulch of withered leaves, dry lawn clippings, or marsh hay.

¶The following spring this mulch is removed early and the beds are hand-weeded throughout the season. The seeds having dried before planting, no germination takes place this first year. As the bed goes into the second winter a mulch is again applied. This is removed early the next spring.



Our "Baby" Seedling Bed

¶With the coming of the first warm days of this second spring, germination occurs; and the little plants, almost blood red, begin to thrust their tiny heads through the soil. Within a week the entire bed is covered with a multitude of miniature peonies, and their journey of life has begun. (See above cut of our present "baby" bed.)

¶This yearling bed is kept hand weeded through the summer. By fall the little plants have established themselves, and if dug would be found to possess roots about the size of an eight-penny nail. When this bed goes into winter quarters no mulch is applied. Even at this early age the little plants are thoroughly hardy and need no winter care. At the end of the following year, or the second year after germination, the plants have attained an average height of from six to eight inches. (See picture, Page 24.)

¶We have at the present time at least 50,000 one and two year old seedlings in these screened beds.

¶This last spring, as an experiment, we sowed seeds broadcast in two rows forty rods long and six inches wide. These we did not protect by a screen. We hope that this method will give us as good two year olds as the other, with much less work.

### The First Trial Seedling Bed

¶In September we lift our two year olds and remove them to the field. Here they are planted in long rows three and a half feet apart, with the plants from six to eight inches apart in the row. This gives room for thorough horse cultivation.

¶If the ground is dry when winter sets in, this new bed is mulched with coarse litter to keep the ground from





One of Our Second Trial Seedling Beds. All Brand Seedlings

heaving. Intense cultivation is continued throughout each growing season up to the time of blooming, which generally comes the third year after transplanting and the fifth year after germination.

¶Each year this bed of five-year old seedlings is one of the most beautiful as well as the most interesting spots in the nursery. Unlike our fields of named varieties, it contains no neat rows and long stretches of a single color. Instead the entire surface of the ground seems to be covered with a rich brocaded carpet, in which pink, rose, crimson, maroon and white are here blended and there contrasted in an indescribable fashion.

¶The beauty of such a bed of seedlings strikes one at a glance, but it is not until one begins to examine the individual plants that the interesting fact about it is discovered. Search as you may among the thousands of plants you will find no two that bear flowers exactly alike. In fact the widest diversity in form as well as color exists. *For each one of these thousands of seedlings is a new variety*, and this is what makes this spot for us one of the chief centers of interest in the whole nursery. For now comes the task of selecting from among all these plants the ones that give promise of being distinctly new and choice.

¶Our this year's seedling bed of five-year olds, of which we give a picture on page 33, is distinctly inferior both in beauty and interest to our previous ones. It does not possess either their fulness of bloom or beauty of color, and contains but few flowers of fine form. We might as well confess that the quality of the bed is due to our own tendency to experiment. We thought that perhaps inheritance was not so important a factor in the production of fine plants as we had considered it to be. So, for these plants, we selected the seeds at random instead of from carefully selected parent stock. We have learned our lesson.

### Selection of Promising Varieties

¶Of all the plants raised even in our best beds about ninety per cent. revert to the original type of the peony and turn out singles. Most of these are not worth preserving; but occasionally we find one with a distinctive charm, and this we mark. However, it is the doubles that we watch with the greatest interest.

¶During the blooming season the bed is gone through several times a day. Promising varieties are noted and so marked. Each day our interest is fresh, for we know we shall find new plants in bloom; and each day we say to ourselves, with the unflinching enthusiasm of the experimenter,—among these thousands of plants, all unlike, we must surely find a few, at least, different

from any that the world has yet produced and as good as the best. But years of work with the peony have made us exacting; and along with our hope goes the constantly deepening determination not to offer to the public as a Brand Peony any variety that does not approach our standard. Fortunately for the ordinary purchaser of peonies, this standard calls for many qualities that the amateur himself would not think of demanding.

### The Brand Standard

¶A good peony, first of all, produces beautiful flowers,—that is, flowers that have the charm that comes from good color and fine form. But peonies capable of producing such blooms fall into two classes: (1) those which develop the full beauty of the flower in the field under ordinary conditions, come good every year, bloom profusely, and possess stems strong enough to support the flowers; (2) those that, in order to bring out their full beauty, must be developed in the house away from the sun and unfavorable weather conditions, or that produce good flowers only once in three or four years, or that give scanty bloom, or possess weak stems.

¶It goes without saying that the first class are the only desirable plants for persons who cannot have all the flowers they would like to have. Nevertheless the amateur cannot tell one from the other. Now Brand Peonies are selected for the qualities of the first class. Nevertheless, beauty of bloom is not sacrificed.

### The Second Trial Seedling Bed

¶But our work is far from finished when we have marked a plant as good in the first trial bed. Years of experience have taught us that the blooming season of a single year can furnish no real test of the various qualities of a really good peony. Many a seedling that we have at first marked as of exceptional promise has failed entirely in later seasons and different localities to come up to our expectations, hence further tests must be provided.

¶In September all plants that have been marked in the first trial bed as likely to turn out good are lifted, then divided as closely as possible, and planted in a different soil, thus making what we call our *Second Trial Seedling Bed*. Here each little plant is given a space three and a half by two feet. This gives them room to develop and to show what qualities they possess. This bed is given thorough horse cultivation for three years. The performance of the plant is carefully watched during this time. All sorts coming good two years out of the three or exceptionally good one year are marked for a final test.

This year we had an exceptionally fine bed in this stage (see picture page 8.) Unlike the first trial bed its plants were of royal parentage and they lived up to it. We ourselves visited the bed many times a day, and visitors could hardly leave it for other attractions. From the 110 varieties growing in this bed we selected 27 that we felt to be fine enough and distinct enough to warrant a final trial. We are so impressed by the value of six of these that we have already given them tentative names.

### The Third Trial Seedling Bed

(See page 28.)

In September we shall lift these 27 varieties, divide



MARTHA BULLOCH and LITTLE HAZEL KINNEY

the plants again, and move them to a still different soil. We consider that the varieties which come through the second year in this bed with a good record have proved themselves worthy to be included in the list of "Brand Peonies", and they are given distinguishing names. They are now put upon the market if enough stock has been produced by the various divisions of roots which have already been made. If the reader has followed the seedling from the time of planting the seed to the time of its final selection for naming, he will see that twelve years have elapsed.

We have peonies, however, which we have kept on trial much longer than this. The seed of one sort, for example, was planted in 1899 and the variety will not be put upon the market until 1923. The flowers of this variety are wonderfully beautiful and so distinct that we feel it is destined to be the forerunner of a new type of peony. However, the blossoms come in clusters, the stem is not strong enough to support these, and for many years the great masses of bloom lay all over the ground. In late years we have discovered that often a stem which is unable to support a cluster of blooms will hold up one flower well. So we have adopted the plan of disbudding such plants as this one, that is, of removing all but the central bud. This treatment has removed the last doubt in our minds about the future of this variety.

### The Development of Stock

As has been said before, a variety of peony can be propagated only by the slow process of root division. Now with some of our new varieties we are able to accumulate enough stock to warrant us in putting them on the market by dividing the plants whenever they pass from one seedling bed to another. But with other varieties, root growth is very slow and we cannot offer them for sale for years after they have been named. Such varieties will always be rare and therefore expensive. Our Martha Bulloch is such a sort, and we are still often unable to supply the demand.

### Final Results

During the twenty-one years that we have been raising seedlings, we have probably tested out 500,000 different varieties. Of all this number we now list but 45; and some of these, as we have said, we do not consider to be first



class. About 20 of them, however, we do believe must be admitted to the short list of world's best peonies; and four or five of these are masterpieces. To this last number we expect to add at least five of the varieties selected from this year's second trial bed. To some of our readers these results may seem small for so many years of work. But even if the work from beginning

to end had not been full of pleasant excitement, and if only one best variety had passed the tests, we should have been repaid for our experiments. To have produced a Martha Bulloch, or an Elizabeth Barrett Browning, for example, is reward enough for the years of working and waiting.

### Some New Brand Peonies

¶In the fall of 1907 a new bed of peony plants from which to save seed was set out. The plants for this bed were chosen with the greatest care by Mr. A. M. Brand. Each plant possessed at least one clearly defined characteristic which he especially desired to perpetuate. He has watched with the keenest interest the seedlings produced from the first lot of seeds gathered from the bed. This year, in the "Second Trial Seedling Bed", their performance surpassed his most sanguine expectations. As has been said, five varieties from this bed have been named. They will soon be on the market, and we are now introducing them to our readers. One of them, Mr. Brand feels confident, is the true ruffled peony that he has been working for; but as he is not quite sure that the type is established, we refrain from telling which.

**ELLA CHRISTIANSEN.** (A. M. Brand.) Plant tall and vigorous. Blooms large to very large. Color a soft cream pink changing to a deeper pink at the center. Petals long, narrow, and somewhat loose. Very profuse bloomer. Shape of flower regular and very pleasing to the eye. Flowers held fairly erect on good long stems. Midseason. Fragrance pleasant. Very fine.

**MRS. A. M. BRAND.** (A. M. Brand.) A large pure cream white which gradually fades to a pure glistening white with just a faint tracing of red on the very edge of an occasional petal. Blooms large, carried well up on long, heavy, clean stems. Foliage light green. Fragrance pronounced and pleasant. True rose type. A splendid late pure rich white of good cutting qualities.

In season about with Marie Lemoine. We have long been looking for a good late white that will make a good commercial sort. We have this in Mrs. A. M. Brand which we shall place on the market just as soon as sufficient stock is worked up.

Those who are familiar with the flower Mary Brand in perfection will have a perfect picture of Mrs. A. M. Brand only the latter instead of being red is a pure white.

**MRS. FRANK BEACH.** (A. M. Brand.) Plant of medium height. Flowers of very large size. Stem slender and graceful, but strong. Color a soft, pinkish, creamy white shading to an orange pink cream at the center, the entire flower slowly fading to an absolutely pure white with no tracings of red. Very double and composed of a multitude of narrow pointed petals growing shorter towards the center of the flower thus giving a slightly cupped effect to the surface of the blooms. Must be disbudded. Very sweet rose fragrance. Extra choice.

**MYRTLE GENTRY.** (A. M. Brand.) Immense flowers borne on very stiff stems that hold the great blooms well above the foliage. True rose type with great broad petals symmetrically arranged around the center in gradually enlarging circles. Opens a delicate deep cream heavily suffused with vivid pink, and gradually fades in the field to an even deep creamy white. Very lasting as a cut flower, and as such retains its colors well. Pronounced rose fragrance. Very fine.

**VICTORY CHATEAU THIERRY.** (A. M. Brand.) Plant medium to dwarf. Foliage clean. Stems very strong and straight. Blossoms held perfectly erect. Blooms of immense size. A pure bright clear pink. Petals very broad, of great substance and symmetrically arranged about the center in rapidly enlarging concentric rings. Fragrance marked and pleasant. The most sensational peony to be introduced in many years. A wonder.

### Prize Winners

¶The Brand Peonies have been exhibited three times at the Minnesota State Horticultural Society's Summer Meetings. They have won:

- 1905—1st, 2nd and 3rd.
- 1913—1st, 2nd, 3rd and 4th.
- 1914—1st, 2nd, 3rd and 4th.

¶At the American Peony Show, Cleveland, Ohio, 1918, a first and a second prize were offered for the two best varieties introduced since 1910. Both these prizes went to Brand Peonies:

- 1st Prize—Chestine Gowdy
- 2nd Prize—Phoebe Cary

¶That Brand Peonies are first class is further attested by the prizes that they have won at the annual shows of the Northwestern Peony Association:

- 1915—Seedlings—1st, 2nd 3rd and 4th.
- 1916—Seedlings—1st, 2nd and 3rd
- 1919—Medium pink—1st, Martha Bulloch.
- Red—1st, Mary Brand.
- Seedlings—1st, 2nd, 3rd and 4th.

¶The seedlings which in 1919 received the first and second prizes created a sensation, and the judges left the matter open for an

hour before deciding which was the better and placing the ribbons. The one that finally received the first prize has been named Victory Chateau Thierry, and the other, Myrtle Gentry.

¶At the 1920 American Peony Show held at Reading, Penn., in the display of best 100 Varieties awarded the Gold Medal were 8 Brand Varieties. And at the same show in the display of New Varieties awarded the Society's Silver Medal were 9 Brand Varieties.

¶In 1918 members of the American Peony Association were asked to indicate their estimate of 580 varieties of peonies by giving each a mark on a scale ranging from one to ten. In the final summing up of returns, 26 varieties were found to have received an average of 9 or over, and three of these were Brand Peonies. One, Elizabeth Barrett Browning, receiving fourth place. We consider this a very good showing since most of our best varieties have been on the market but a short time. Estimates must thus have been made from blooms furnished by very young plants, which are often not true to type. We ourselves did not vote.



A Drive Through the Peonies

## Our General List

Besides our own productions we offer a carefully selected list of the best varieties of other originators. This list includes many rare sorts. For example, we offer such French varieties as La France, Le Cygne, La Fee, Therese, Tourangelle, Solange, Sarah Bernhardt, and Mon. Martin Cahuzac. Among our varieties of English origin are Kelway's Glorious, Phyllis Kelway, and Lady Alexandra Duff. Among late American introductions we list Jubilee, Standard Bearer, Loveliness, Karl Rosenfeld, Walter Faxon, and Milton Hill. All these varieties, like our own productions, are somewhat costly, but they are the *newest* as well as the best.

But no one need think that, because he cannot afford novelties, he must go without beautiful flowers. We have included also in our general list the very best of the older varieties. These were put upon the market years ago without much formal testing along with many inferior sorts. But with us they have stood the exacting test of time. We have chosen them from the thousands of varieties offered to the public with almost the same care that we have chosen our short list of Brand Peonies from the multitude of seedlings we have tested. Large stocks of these old varieties exist and they are therefore inexpensive. For about a dollar apiece one can obtain strong roots of such fine pink varieties as Albert Crousse, La Perle, Mons. Jules Elie, Mar-

guerite Gerard, Octavie Demay, Engenie Verdier, Livingstone, and Madame Emile Galle; such good reds as Felix Crousse, Rachel, Eugene Bigot, Rubra Superba, and Meissonier; and such beautiful whites as Avalanche, Festiva Maxima, Madame De Vernville, Couronne d'Or, Duchess de Nemours, Marie Lemoine, Madame Emile Lemoine, and Baroness Schroeder.

These lists include early, mid-season, and late varieties; and by selecting from them by the help of catalogue descriptions, one may have a long season of beautiful bloom.

### Uses of the Peony

No other flower adapts itself to so many uses as the peony. It is invaluable for giving masses of color in the mixed shrubbery and perennial border. Single plants or groups of plants, according to the size of the border, should be scattered here and there in front of large shrubs and tall perennials or among low ones. It furnishes fine specimen plants for the lawn if properly cared for. It makes a good border for walks and driveways and for division lines of lots. Plants of one variety are most effective for this purpose, as they are of the same height and come into bloom at one time. But if space is limited and one plans to put the most of his collection into such a hedge, he will get more pleasure out of a mixed planting.

If such a planting is made with the idea of permanence,

the plants should be set from three to four feet apart. They can then be left indefinitely and will grow more beautiful with age. They may at first be alternated with one or more of the fine varieties of perennial phlox, and a succession of bloom will thus be secured. Such borders may often be so planned that when the peony plants are two or three years old the phlox may be moved to the front of them.

Beds of the flower as large as space permits planted in rows will give immense pleasure. Here they can be easily and thoroughly cultivated; and they not only make the garden a glorious place for weeks, but they furnish unlimited quantities of cut flowers. On large estates great masses of a single color with a good background of green shrubbery produce magnificent effects. But the peony is not an aristocrat. It helps to make simple homes beautiful when planted in unused corners, or along unsightly fences or buildings. Wherever peony plants are placed they remain attractive not only during the blooming season but throughout the summer, as the foliage remains fresh and green, and with a little trimming the plants continue shapely.

### History of the Peony

*Family relationships* between flowers as well as between people, are often hard to guess. For example, few would suspect that the peony is closely related to the common wild buttercup and the hepatica, or to the well-known garden flowers, the larkspur and the columbine. Nevertheless, all these plants belong to one botanical family, the *Ranunculaceae*.

A number of species of the peony are known to botanists. The many varieties of our modern gardens are descended in the main from two of these, *Paeonia officinalis* and *Paeonia albaflora*.

*Paeonia officinalis*. The bright red peony of the old-fashioned garden belongs here. The "piny toes" which our New England great-grandmothers separated from their cherished clumps and gave to their friends were what we should now buy as divisions of *Rubra officinalis*, although their owners would not have recognized them under this name.

This species originated in Southern Europe. In its wild state it bore single flowers, but in a state of cultivation double ones appeared. It was introduced into England at an early time, and from there was brought to New England.

It is the earliest of the really good peonies, coming with us in Minnesota about Decoration Day. Though we now have so many varieties, we could ill spare the brilliant crimson flowers of this one.

*Paeonia Albaflora*. Most of our modern peonies are descendants of *Paeonia albaflora*. This species is a native of Siberia. So it is not strange that its descendants endure so well the winters of Canada, as well as our own northern states.

This species in its wild state was early introduced into China, and soon spread through the country. Its Chinese name, Sho Yo, means The Beautiful. As early as the eleventh century, Chinese nursery men began to develop still further the beauty of the plant. Through the painstaking care for which they have always been noted they succeeded in producing many new varieties.

European travelers, already familiar with *Rubra officinalis*, brought home accounts of these Chinese flowers. Early in

the nineteenth century some of these found their way to Europe and from there to America. A number of these old Chinese varieties still appear in all good lists of peonies. Among them are Whitleyji, Humei, and Fragrans, which are described in our general list of peonies.

But Western specialists were not satisfied merely to accept the work of Orientals. Nurserymen and gardeners in France, England, and America have vied with each other in the production of new varieties.

The best known names among French peony breeders are Calot, Crousse, Dessert, Lemoine, and Verdier. In our general list are found many peonies bearing these names. We list also the best varieties of the English Kelways.

Among American pioneers in work with the peony are Hollis, Richardson, Rosenfield, Terry, O. F. Brand, and Mrs. Pleas. Shaylor, the Thurlows, Saunders, and A. M. Brand are still hard at work.

In closing this brief account of the peony, we can only say that we are proud to have a share in the future as well as the present history of this beautiful flower.

### The Future of the Peony

We have often heard it said and seen in print that there is no longer any necessity of bringing out new varieties of peonies, that the limit of beauty has already been reached. One writer upon the peony offers a list of one hundred kinds which, he says, includes all the really desirable varieties that ever have been or ever can be produced. A moment's thought will show how foolish the statement is.

The best test of a peony is what people think of it; and the best way to find out what peony lovers think of different varieties of peonies is by a vote upon their merits and demerits. In 1918 the members of the American Peony Society, as has been said, were asked to give their estimate of 580 of what are generally considered the best peonies, by marking them on a scale ranging from ten to one. The result of the vote was that in the minds of the voters only 26 varieties deserved a mark of nine or more. Of these only seven, beginning with Festiva Maxima which was introduced in 1851, were produced before 1900. The others were all introduced in that year or later. Of these, twelve varieties were under twelve years of age. The ultimate one hundred varieties just mentioned included ten under twenty years old.

Now, if improvement has been so great in the first fifth of this century, what may we expect in the years to come?

### Types, or Forms, of Peonies

The progenitor of our modern herbaceous peony, *Paeonia Albaflora*, was a native of Siberia, and bore a white flower which was single in form. It has been cultivated extensively, first in China and Japan, and later in Europe and America, and through cultivation has come to vary widely in form as well as color. Now many conditions of a state of cultivation are more favorable to variation in a plant than are the conditions of the wild state. The chief of these, as we have seen in the story of the development of Brand varieties, are (1) intensive cultivation, (2) an increased food supply, (3) cross fertilization, both natural and artificial, and (4) selection and preservation of plants bearing desirable characteristics.

Probably a variation in color occurred first. An early

Chinese writer mentions a red as well as a white peony. From these two varieties and their descendants other colors have come.

But the wide variation in form which has come about seems even more wonderful than the variation in color. The process by which double blooms have been developed from singles is interesting. This change is brought about by the transformation of stamens and pistils into petals. An entirely double variety thus contains neither stamens nor pistils. Our modern peony furnishes flowers in all stages of development, from the original single to the entirely double. It is clear, then, that no hard and fast lines can be drawn between types. But since everyone with any knowledge of peonies is as much interested in form as in color, some sort of classification is needed as a help in describing varieties.

Certain rather loosely applied names of types have come into use. In our definitions of these terms we have followed as closely as we could the generally accepted practice, while at the same time we have tried to avoid what seemed to us common inconsistencies. In our descriptions of varieties, we use the terms when they serve our purpose, but in many cases we feel that a description is better than a mere name.

1. *Single*. This class of flowers contains seed bearing carpels, a mass of pollen producing stamens, a single row of wide petals or guards, and a calyx.

2. *Japanese*. This type illustrates the first stage in the doubling process. The stamens have become greatly enlarged. They are narrow and thick and of various colors. They have taken a step towards the petal form. Vestiges of anthers remain, and these sometimes carry pollen.

3. *Bomb*. In this stage the stamens have taken on the texture of petals. They are, however, narrower than the guard petals, and their edges curve towards each other. They exist in great numbers and form a distinct ball, surrounded by the wide and more drooping guards.

4. *The Crown*. Sometimes the carpels also become transformed into petals. Often these petals differ from those produced from stamens and form a well defined central tuft. Such a bloom has thus three distinct sets of petals—those formed from carpels being surrounded by the transformed stamens, and these in turn by the wider guards. Such a flower belongs to the crown type.

5. *Rose*. When both stamens and carpels have been transformed into large round petals that differ little if any from the guards, we have the rose type.

6. *Semi-Rose*. These flowers are like those of the rose, except that part of the stamens have remained unchanged. These may be scattered among the broad petals or they may be arranged in a ring around a central group of petals as in the well-known Couronne d'Or.

7. *Double*. When all stamens and pistils have become transformed into petals, whether these are like or unlike the guards, the flower is entirely double. The rose type then is double. The bomb may be double, but it may contain carpels. The crown also may be double, but it may contain a few stamens or petals that are only partially transformed and bear remnants of anthers.

8. *Semi-Double*. Of all this list of terms this one is

most loosely used. We apply it to a very loosely built flower of the semi-rose type.

## The Culture of the Peony

The peony stands at the head of the list of hardy plants, since it will live year after year even if totally neglected. But, like corn and potatoes, it must have intensive cultivation to come to its greatest perfection. It is for those persons who like to give a plant the best chance possible to show what it can do that the following cultural directions have been prepared.

*Location and Soil*. Peonies should be planted where they will receive full sun and where the soil will not be impoverished by the roots of trees and large shrubs. A well-drained soil is necessary to good results, as peonies will not do well when the ground is wet and soggy. The heavier soils produce the best blooms, but sandy soils will give good results if well fertilized and liberally supplied with water during the blooming season and times of drought. A sandy soil is especially good for propagation.

*Preparation for Receiving Plants*. If a regular bed is to be set out, begin preparation a month before the plants arrive. If the soil is fairly good garden soil suitable for raising vegetables, plow or spade to the depth of eight inches. Then work up the soil, level it off, and leave until time to set the plants. Top fertilization will be sufficient. But if you have filled soil of poor quality dig it out to the depth of two feet. Fill in with what when well packed will make about a foot of good well rotted stable manure. Then fill in with twelve inches of good garden soil, packing it down and leaving it to settle.

If it is planned to scatter the plants in an herbaceous border already started, provide enough space for each plant to enable it to develop properly. If plants are to be set as specimen plants in the lawn, enough sod should be taken up to permit of good preparation of the soil and thorough cultivation.

*Time to Plant*. The best time to handle the peony is when the roots have become fully developed. With us this time is somewhere from the twenty-fifth of August to the fifth of September. We like to dig the plants as near this time as possible and get them to our customers some time in September. This gives them time to make good root growth before winter sets in. However, if for any reason it is inconvenient to get plants out in September, do not wait until another fall. They can still be safely planted until the ground freezes or in the spring until growth starts. The disadvantage of the later planting is that they are not likely to bloom the first season.

But if you have failed to plant in the fall do not hesitate to plant in the spring. If you wait until another fall your plants the next June are but transplants, with rootlets just establishing themselves, while spring planted peonies would be full fledged yearlings with a good strong system of year-old roots. You will have lost a year in the growth of your plants.

In 1921 we shall be thoroughly equipped to handle a spring trade in peonies; but orders for spring delivery should be placed either in the late fall or early spring.

*Planting*. When the plants arrive, remove the packing and immerse these in water for about eight hours. This will not

hurt the roots; and if they happened to be shrivelled, it will help greatly.

Peonies should be planted three feet apart each way. Four feet is better. Do not place them where the soil will be sapped by the roots of large trees, or where they will be crowded by other plants.

Set the plants so that the top of the pink or white buds will come from two to three inches below the surface. Work the soil in around the roots with the fingers. Press down firmly with the heel, being careful not to injure the buds. Then fill the hole with loose soil and mound it up about two inches above the surrounding surface. This last step insures the shedding of water during the first winter. After the ground is frozen, apply a light mulch of strawy manure, straw, wild hay, or corn stalks.

*Cultivation.* When garden making time comes in the spring, remove the mulch and level the mound. As soon as the buds appear above the ground, begin cultivation and cultivate until the plants are in bloom. The soil should be stirred to the depth of two inches close to the plant and three farther away. If the plants are in rows, cultivate to the depth of six inches between the rows. The potato fork and potato hook are good tools to use where horse cultivation is impossible. After the blooming season cultivate enough to keep down weeds.

If peonies are planted as specimens on the lawn, the sod should be removed around each plant in a circle at least three feet in diameter. The soil from which sod is removed should be continually stirred in the spring from the appearance of the plants until the blooms are about to open.

*Watering.* In times of drought, give an occasional thorough watering. A liberal supply of water during the blooming season will help greatly to make fine flowers. A good way to water is to dig a little trench around a plant about six inches from the stalks and pour in two or three pails of water at a time. Where plants are in rows an entire row may be easily watered by digging a trench on each side and filling from the hose. Such a watering will last for a week. Sprinkling is always useless. After the blooming season, cease watering.

*Cutting Back the Plant.* In cutting flowers, be sure to allow at least two leaves to remain on each stem to insure root growth for another year. After the blooms have fallen, cut off the flowers buds and trim the plant enough to make it shapely. In this way it will remain an attractive feature of the garden throughout the summer. By the first of September it is safe to cut the stalks to the ground if for any reason it is desirable to do so.

*Winter Protection.* In such localities as Illinois, Ohio, and southern Iowa, snow cannot be depended on to furnish continuous covering; and in Northern Minnesota, North Dakota, and Canada, high winds often sweep the ground bare of snow. Here the ground is likely to heave, and a light covering such as has been recommended for newly set plants should be furnished each winter. But in Northern Iowa, Southern Minnesota, and Wisconsin, where the ground is covered throughout the winter with more or less snow, no mulch is necessary after the first year.

*Fertilizing.* As a fertilizer, nothing is better than well rotted stable manure, cow manure being preferable. However, much harm is done by too frequent heavy applications

of manure. Perhaps a safe rule is to give a good covering of manure, about three inches deep, once in three years. In the spring this should be raked from the tops of the plants, and worked into the ground a little distance away.

In our own practice we have used a good deal of wood ashes. About a quart applied to a good strong three-year-old plant every other year has given splendid results. If show flowers are wanted, liquid manure, applied at intervals of two weeks from the time the plants appear above the ground until they are in bloom will bring surprising results.

## Diseases and Insect Enemies

There is but one disease that bothers the peony to any great extent. This is what is commonly called the "French Root Disease." We are sorry to say that this disease has affected many of the best varieties coming to us from France. This is especially true of the Lemoine varieties. Fortunately, however, two of the best of them, *Le Cygne* and *La France*, do not seem to be infected. This disease is not very well understood as yet, but it is being studied, and in time methods of overcoming it will doubtless be discovered. In the meantime it is probably better for the amateur to let alone those varieties that are badly infected, as they give poor and scanty bloom.

We have carried several of these sorts in our list for the last eight or ten years, but no longer offer them for sale. We continue to grow them, as we hope, through cultural methods we are now employing, to be able in time to send out healthy stock. The method which we consider most promising is that of grafting buds we can find into roots of other sorts that naturally make a thrifty growth, and are absolutely free from the disease. But this is work for the professional grower; and it will take some years for him to obtain real knowledge of the results.

There is one other disease that gives some trouble. This is the "Hollow Crown Root Disease." It is most often to be found in old clumps. It is easily recognized when the plants are dug. The center of the crown appears as a hollow shell, the bark and buds alone remaining. The parts within are rotted away, generally with a dry rot that extends down into the large roots. This disease is easily controlled. Lift the plant and divide it into good divisions. Carefully scrape out all diseased parts of the root and plant in good clean soil free from fresh manure. Generally this one treatment will eliminate the trouble. But should it not do so lift the root again at the end of the second year. Scrape out all diseased tissue, plant again, and the chances are your roots will come perfectly clean.

Leaf rust sometimes appears during a succession of very wet seasons. Bordeaux mixture will check this.

No insect troubles the peony unless it may be the ant. We have never been able to discover that it has done us any injury, but have received reports from many who say that with them it has injured the bud. Looking into these cases we universally find that the plants troubled were not cultivated, and are of the opinion that if good cultivation methods had been pursued so as to compel strong, luxuriant growth, the ants would have caused no trouble. The ant is after the sweet, sticky juice that exudes from the ball of the bud.

### Our Guarantee

We guarantee our stock absolutely true to name. Mistakes will occur through the carelessness of help and in other ways. If it should happen that plants untrue to name are received, we will cheerfully refill the order without expense to purchaser. But remember that a peony does not really become established until the third year after planting. Many great double varieties will come almost single the first year, and not very good the second, and do not produce the typical bloom until the third year. So, if a flower does not come good at first, wait until the third year. Then, if it is not what you think you have bought, let us know.

### Prices and Discounts

Everyone who understands that it takes at least ten years to produce a new variety and to raise stock enough to put it upon the market will realize that such varieties must always be expensive. It is true, too, that those first class varieties that propagate slowly will always remain rare and, therefore, costly. But for all varieties, new as well as old, we will always meet the prices of any reputable peony grower. Perhaps this statement calls for somewhat further explanation.

We have always held that a good strong three- to five-eye division is the best stock to plant, since a well cut back division starts an entirely new clean growth and produces a better plant than does a clump. Then a three-year-old from such a division produces the very finest flowers, those truest to type. But many persons wish immediate results, that is, they want to secure quantities of bloom quickly. They therefore prefer to buy older plants. To meet this demand we offer in addition to strong divisions, one, two, and three-year-old plants. Now we know what a good peony is and how to grow it, and we will furnish at the prices quoted by any reputable grower as good a grade of stock at least as he furnishes.

Prices given in the catalogue are for strong divisions. But prices of older plants, if we have them, are given in the catalogue.

If cash accompanies order, \$11.00 worth of plants may be chosen for \$10.00; \$27.50 worth for \$25.00; \$57.50 worth for \$50.00; and \$120.00 worth for \$100.00.

One of our aims as Peony Growers is to be on truly friendly terms with our customers. We want them to get the greatest possible satisfaction from the plants we send them. We always try in filling orders to do a little better than we promise.



Peonies Everywhere

### How to Remit

Our business is conducted under the name of the Brand Nursery Company, the name under which our nursery business has been conducted for many years. However, a change has taken place in the ownership during the course of the last year, Mr. A. M. Brand having taken into partnership with him Miss Myrtle Gentry, who for some time past has had charge of the office work.

All remittances, whether by post office order, registered letter, personal check, or bank draft should still be made payable to The Brand Nursery Company.

### Methods of Shipment

Orders for one or two roots can generally be shipped cheaper by parcel post than by express. If a purchaser wishes his order so shipped and will state this to us when he orders, we will cheerfully prepay postage and send statement for the same. Larger orders should be sent by express, which is paid by the purchaser. Very large orders, unless prompt delivery is important, should be sent by freight. We should like to have customers give us instructions about shipment, but in the absence of these we will use our best judgment.

## A Few Unsolicited Expressions of Approval

Spokane, Wash. "I received the first order O. K. and they are the finest lot of peonies that I have ever received from any source, and I wish now that I had got in touch with you years ago."

Aberdeen, S. Dak. "I beg to enclose you herewith check for \$18.00 to cover enclosed statement. The peonies came in fine condition and were more than satisfactory. I want to thank you for the kindly interest you took in their selection, and hope I may be able to send you more business next year."

Clinton, Iowa. "I want to take this opportunity of expressing to you my appreciation of the splendid manner in which you filled my order and to say without hesitation that I have never purchased such large, fine peony roots from any source. I want to especially thank you for the extra ones you sent."

Bowling Green, Mo. "I suppose it would be no offense if I would return you my thanks for the twenty very excellent peony roots obtained from you. They certainly were nicely prepared for planting and the utmost care taken in packing for shipment. I am wondering how you grow such excellent roots."

Duluth, Minn. "I am very much pleased indeed with the roots and found them all very satisfactory and much larger

than I anticipated, in view of the fact that they were all expensive varieties."

"I never cared for the cone-shaped peony, but Christine Gowdy this year impressed me as one of the most beautiful flowers of any kind I had ever seen."

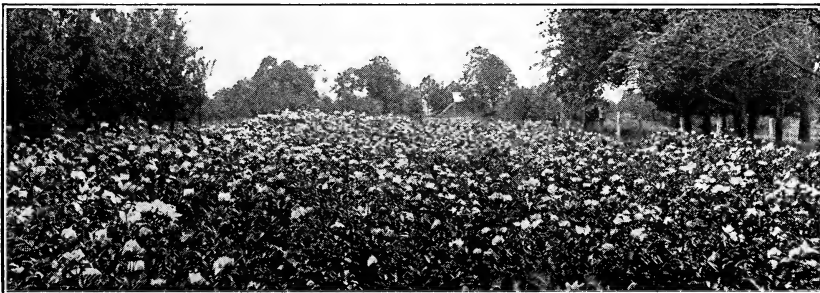
Louisville, Ky. "The peonies I ordered from you came Thursday in splendid condition, and I was delighted with the size of roots. In my mind's eye I can already see them bloom next spring."

St. Paul, Minn. "Enclosed find my check for root sent in September. Root arrived in good shape and an exceptionally fine root, better than I expected."

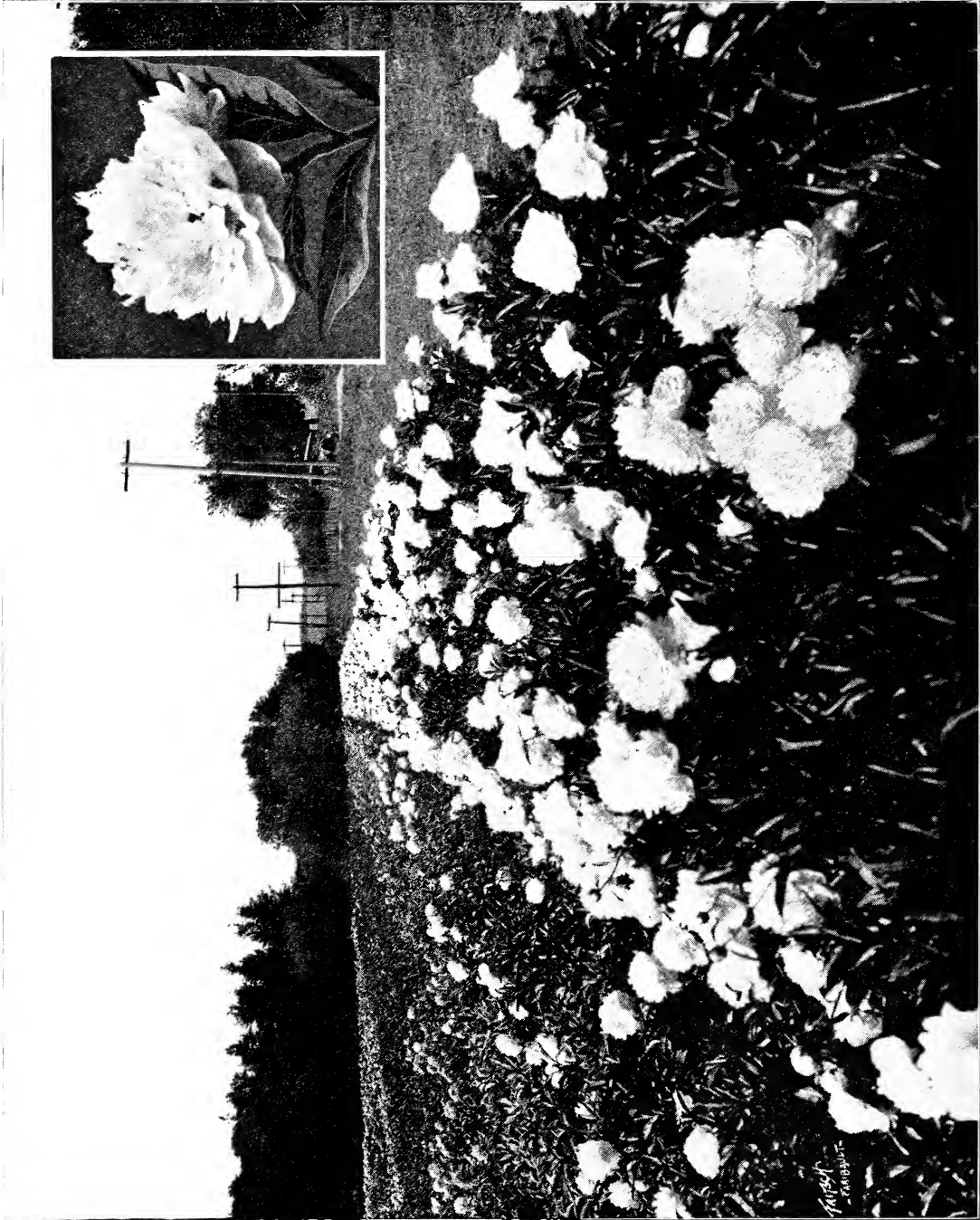
Sumner, Iowa. "Enclosed find check to cover bill rendered; the roots came O.K. and the packing was also O.K. I thank you."

Indianapolis, Ind. "The fourteen peonies that I bought of you this spring arrived in fine condition and ten of them bloomed, which, I think, is a good proof of the worth of the plants."

St. Paul, Minn. "These are dandy plants and I shall look forward with much pleasure to the time when they will bloom next spring and the year following."







A Field of Three Year Old Plants Showing Two Rows of the Brand Peony "Chestine Gowdy"



## List of Brand Peonies

In this year's catalog, we are listing our varieties according to color, thinking that this may be a convenience to our customers in making up the sort of collection that they want.

In general, our prices are for large divisions (L. D.) But in some cases we give prices for one, two, and three-year-old clumps.

### Double White Varieties

**AMANDA YALE.** (Brand 1907.) **Prize Peony.** Large, loose, semi-rose type. Color milk white with some petals heavily blotched carmine. Medium tall grower. Good bloomer. The proud and charming habit of growth and dignified poise of this plant when in bloom make it a favorite with those who prefer a pure white peony. **L. D. \$5.00. Three-year clump, \$10.00.**

**ELIZABETH BARRETT BROWNING.** (Brand 1907.) Flowers large to very large, semi-rose type. Blooms in the bud appear pure glistening white, with outer petals heavily striped crimson. As the buds develop the marvels of this wonderful flower commence to assert themselves. In the stage of the opening bud, the flower remains three or four days, and the unopened bud, about to burst, assumes gigantic size, often being as large as the expanded blooms of other fair sized varieties. Having paused thus, the flower slowly opens and the wonderful treasures hidden within slowly unfold. The outer petals draw gradually back, disclosing a loosely, artistically arranged mass of large wrinkled petals. The beauty of this flower lies in the immense size of the blooms, the artistic shape and arrangement of the petals, and the delicate and wonderful coloring within. For, starting with the tips of the petals and gazing deep into the throat of the flower, we see the color gradually deepening towards the innermost recesses of the flower. The inner surface of the petals is washed with the most delicate pinkish canary. The perfume of the flower is strong and sweet. Although not as profuse as some of our varieties, still a good bloomer. Season of blooming late, with Marie Lemoine. In the vote taken by the American Peony Society, the Browning stood fourth highest on the entire list, stamping it as one of the world's greatest peonies. To produce the best results must be grown in rich, well drained soil.

We call this and Martha Bullock our two finest flowers. **L. D. \$25.00. Three-year clump, \$50.00.**

**FANNY CROSBY.** (Brand 1907.) One row of the most lovely shade of soft pink guard petals, fading to white. These are surmounted by a canary yellow, full and symmetrically formed dome. We class this with the white because we have no class of yellows; but it is really the best yellow peony we know. **3**

to 6 lateral orbs. Seed pods tipped with carmine. Fannie Crosby is of good, large size and height, a delightfully charming acquisition to the floral world. Early midseason. **L. D. \$3.00. Three-year clump, \$5.00.**

**FLORENCE NIGHTINGALE.** (Brand 1907.) A majestic white, of peerless beauty. Language cannot well describe it. One of the world's best, either new or old. A pure white. The stars of Heaven must have looked on in sympathizing joy and admiration when this new treasure was brought forth to be named for that remarkable woman who did so much to bless mankind. Very large, tall, fragrant, faint crimson markings on edges of a few petals, not prominent. One and two orbs on same stems. Surely a queen of purity. Among the very late whites, there is nothing finer in the peony world, except Elizabeth Barrett Browning. **L. D. \$5.00. Three-year clump, \$10.00.**

**FRANCES WILLARD.** (Brand 1907.) **Prize Peony.** A perfectly formed flower. Petals of varying sizes form a very large rounded flower often having a raised cup-shaped center enclosing golden stamens. Opens an exquisite blush white with an occasional carmine touch, changing on the lawn to a pure white. As a cut flower it remains a pinkish cream. Although delicate in appearance, it is of good substance and an excellent cut flower. Altogether it is a wonderful combination of strength and delicacy; in our opinion a better peony than the Baroness Schroeder. It has a better and stronger habit of growth, better and stronger perfume, and lasts better, either on the lawn or as a cut flower. It is the best flower of its type yet produced. **L. D. \$10.00. Three-year clump, \$25.00.**

**LYNDA.** (Brand 1907.) A loose tuft of fringed blush-white petals surrounded by many finely fringed petals of deep cream. The broad reflex guard petals often tipped with carmine are again blush-white. Stems very long. A good white for late cutting, delicately fragrant. Particularly suited for landscape purposes where a tall, imposing variety is needed as a background. Its flowers are carried on tall, stiff stems, extending above the foliage, producing a grand effect. **L. D. \$1.00. Three-year clump, \$2.00.**

### Double Pink and Rose Varieties

**ARCHIE BRAND.** (Brand 1913.) **Prize Peony.** An even, deep, sea-shell pink with silvery border. The petals, closely massed, form a solid head which is surrounded by broad drooping guard petals. An immense flower of the bomb type. There is a charm about this flower in its even, soft, uniform color and the peculiar perfection of its form, which attracts the eye from a long distance. Midseason, medium height, profuse bloomer. One of the very best of the Brand Peonies. One of the chief attractions about it is its delicate fragrance, which closely resembles that of the rose. We believe that it has a stronger, truer rose scent than any other pink variety. This delicate fragrance, added to the charming beauty and grace of the flower, makes this variety especially fine for cut blossoms. It rivals the rose in fragrance and in beauty, and far surpasses it in size. It is in a class by itself. **L. D. \$5.00. Three-year clump, \$10.00.**

**CHESTINE GOWDY.** (Brand 1913.) **Prize Peony.** A striking specimen of the cone-shaped peony. The broad outer petals are silvery pink. These enclose a zone of fine irregularly shaped, closely set petals of deep rich cream, which in turn surround a prominent cone of broad, pink petals, splashed and tipped

with crimson. The perfection of its form, and its rich and delicately varied coloring have repeatedly caused it to be singled out for special admiration from a group of the finest varieties. The stems are long, slender, and strong, bearing a single flower. The flower is of good substance, and when cut just as the bud is bursting, this variety makes one of our best cut flowers. Medium late. It has a delicate fragrance, penetrating, lasting, and sweet. A vase filled with them would perfume a large drawing-room with its delightful odor. First Prize Peony, National Peony Show, Cleveland, Ohio, as best new peony introduced since 1910. **L. D. \$5.00. Three-year clump, \$10.00.**

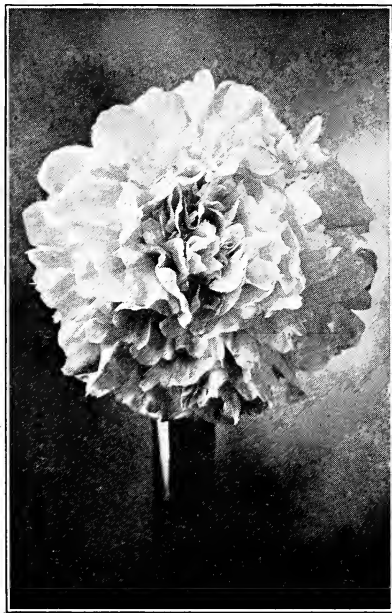
**ELLA WHEELER WILCOX.** (Brand 1907.) **Prize Peony.** Markedly bomb-shaped, but with interesting variations in details. Deep shell-pink. The elevated cup-shaped center, which is enclosed by a row of irregular crimson-tipped petals, is surrounded by many rows of irregular fringed petals, the outer ones sometimes becoming a rich cream. Around the central mass are many rows of fringed petals becoming reflexed. Unusual in its form and varied coloring. Good cut flower. Very fragrant. Late. A remarkable variety. Very distinct. **L. D. \$3.00. Three-year clump, \$5.00.**

**FARIBAULT.** (Brand 1918.) Here is a peony that I have watched for years. Selected from our first seed bed in 1904 as a flower of the second class. Planted out with over 200 seedlings so classed, and upon its second blooming after transplanting, re-selected as of first class, and so classed ever since. We have had this variety under constant test and observation since 1904, having planted it in six different soil locations. Its uniform good behavior now causes us to introduce it.

Rose type, entirely transformed. Color deep rose with a silver sheen. A peculiar shade of rose that makes everyone who sees it want it as being something strikingly different from any other rose shade they have before seen in a peony. Collar a trifle lighter than the guards. Center petals silver tipped. Total color effect of a number of blooms is that of blending shades of rose. Fragrance mild. Blooming season with Marie Lemoine. Habit of plant good, medium height and compact. Stems 28 inches long, and of good strength. A very free bloomer with large-sized blossoms.

Extra good as a cut flower. Makes a very striking display under artificial light. The color effect is peculiar where a bouquet of this variety is made up of blooms in different stages of development. There is such a variety of shades that were you not familiar with the flower you would swear that there were before you as many different varieties as flowers. L. D. \$10.00. Three-year clump, \$25.00.

**HARRIET FARNSELY.** (Brand 1916.) Rose type, flowers of large size borne one to a stem. A beautiful soft pink of the color and type of Mad. Emile Galle, but later and of better substance. A very beautiful variety that is in bloom with Rubra Grandiflora. The most of the very late peonies are not first

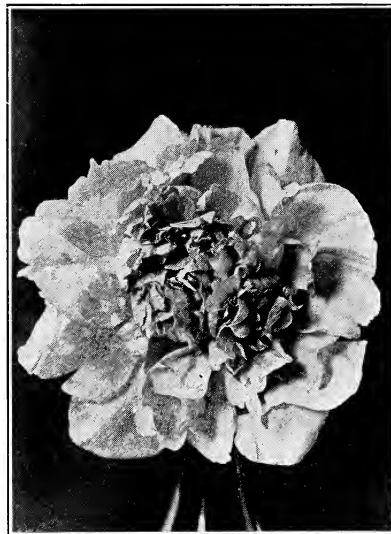


HARRIET FARNSELY

class in quality, but this is a gem. Our latest and one of our best. L. D. \$5.00. Three-year clump, \$10.00.

**HELEN WOLAVER.** (Brand 1918.) One of the most unique and at the same time one of the most fascinating of peonies. Were it not for the fact that you must cut the flowers from

peony plants you would almost think you were cutting rosebuds when you cut Helen Wolaver buds from the bush, so striking is the resemblance of the bud of this variety to that of the rose. The flower is very late and does not come to perfection until grown on four-year-old plants, when the results are wonderful. At this age it produces a profusion of bloom that in



HELEN WOLAVER

the bud look almost exactly like the rosebuds. Flowers medium size rose type. Prominent stiff sea-shell pink guard petals, more or less splashed with a deeper pink, together with generally two rows of the next inner petals slowly draw away and leave a compact rosebud shaped mass of petals in the center. Rose scented. Taken all in all, the most beautiful peony of recent years. L. D. \$5.00. Three-year clump, \$7.50.

**HENRY AVERY.** (Brand 1907.) With a stock of sufficient size to permit of a satisfactory judging of the merits of the variety, we have come to the conclusion that in Henry Avery we have one of the very choicest of peonies. The plant is of medium height and midseason in period of blooming. Flowers large to very large. General color effect creamy white. Guard petals large and prominent, enclosing a great ball of large rose type petals of the same even color as the guards. Between the guards and the central petals is a very distinct collar running from an inch to an inch and a half in width, of deep bright-yellow petals. This collar gives the flower a very striking appearance, as the petals are a real deep yellow. Fragrance delicate and very pronounced. If you are looking for something very refined in its beauty, you will not be disappointed in Henry Avery. L. D. \$10.00. Three-year clump, \$25.00.

**JEANNETTE OPLIGER.** (Brand 1913.) Medium size, globular, bomb, guard petals prominent, reflex center, petals rising into a small, exquisitely formed dome. A flower of the most pleasing salmon pink with deep shadings of rose at base of petals. The blossoms come singly and are produced on stiff, slender stems. Medium season. A chaste little flower. Very pretty. L. D. \$1.00. Three-year clump, \$2.50.

**JUDGE BERRY.** (Brand 1907.) Prize Peony. Large to very large, opening back, flat, semi-rose type. The bud opens pink, the petals open farther and farther back until it becomes a great flat disk of variegated pink and white bloom of surpassing

beauty, seven to eight inches in diameter. Ground color white, washed with a soft, delicate pink. Petals narrow, long, and fringed with some stamens intermingled. Medium tall, very profuse bloomer and always good. Very early and possesses a very delicate, though charming fragrance. This flower is the best of its season. It is a great mass of loveliness at the very beginning of the peony season, when most of the other varieties are apt to be medium or small, which makes it stand out very distinct and adds much to its desirability. It is singly attractive on the lawn, and where a massive effect is desired for interior decorations, it is simply superb. **L. D. \$10.00. Three-year clump, \$25.00.**

**LITTLE SWEETHEART.** (Brand 1907.) Small, typical bomb, with prominent recurved guard petals of delicate salmon pink. Center petals open same shade and fade a trifle lighter. Dwarf, rigidly erect, covered with a perfect mass of bloom. Early mid-season. A companion plant for Commodore Emge. Same height, same type, and like that variety, excellent for planting in rows about a driveway. Beautiful. Can always be depended upon. **L. D. 75 cents. Three-year clump, \$1.50.**

**LOUISA BRAND.** (Brand 1913.) Medium sized, deep cone-shaped bloom, semi-rose type. Color an exquisite blush white, fading to white. The blossom as it opens resembles a beautiful pink water-lily. The center, surrounded by broad, drooping guard petals, gradually rises, the petals expand and the blossom becomes a tall delicate cone of glistening pink petals intermingled with golden stamens. A visitor from a distance to our gardens, a lover of the peony, looking over the new varieties, when he reached this sort, said: "There is something wonderful! It has well paid me for my trip." Very late. Tall, clean foliage, good bloomer, fragrant. **L. D. \$5.00. Three-year clump, \$10.00.**

**LUETTA PFEIFFER.** (Brand 1916.) Semi-rose type. A very large semi-double pinkish white, produced in great profusion on long, stout stems. Flowers of immense size. Large, pure, glistening petals interspersed with just enough golden stamens to make it fascinating and beautiful. Petals here and there blotched and splashed with carmine.

Shortly after I had gotten the stock of this beautiful variety worked up, Mr. and Mrs. C. A. Pfeiffer, of the Pfeiffer Nursery Co., of Winona, Minnesota, visited my grounds and selected this sort as the very choicest of my entire collection then in bloom, and purchased of me the entire stock at a large price and named the variety Luetta Pfeiffer in honor of Mrs. Pfeiffer. Of this variety I have but a single show plant. During the season of 1919 the flowers on this plant were next to those of Marth Bullock, the best thing we had. They were immense, both in depth of bloom and in diameter. A lady to whom I showed the plant when it was in full bloom, said: "Mr. Brand, if you had not already sold this variety and had but this one plant, I would give you \$1,000.00 for it." Entire sale of stock controlled by the Pfeiffer Nursery Co. **L. D. \$25.00.**

**MARTHA BULLOCK.** (Brand 1907.) **Prize Peony.** Mammoth cup shaped blossom often 9 to 12 inches across. The largest of the good peonies. Deep rose-pink in the center, shading to silvery shell-pink in the outer petals. Stalk strong and erect. The most striking and distinct of all our seedlings. The delicate shadings of this wonderful flower from soft shell-pink on the outside to a deep rose-pink in the center, may be imagined but can never be described. The plant itself seems to realize the beauty of its flowers, since it puts forth a strong, stiff stem which supports these mammoth blossoms proudly above the foliage as if to say to the floral world: "Match me if you can." It surpasses everything of its color for landscape purposes. This, unlike most large peonies, is a fine and delicate structure with a strong and agreeable fragrance which makes it most desirable and effective as a cut flower. A single flower on a stall stem, in a graceful crystal vase, produces a charming effect in the drawing-room or on the library table. Where a peony of enormous size, delicate structure, with soft, well blended colors and having a delightful fragrance is desired, it can be found in its highest degree of perfection in Martha Bullock. One of the judges of the Minnesota State Horticultural Society flower show, a collector and recognized connoisseur, made this remark: "I awarded Martha Bullock first prize and consider it one of the very finest peonies in existence, gigantic in size and exquisitely beautiful." **One year old, \$25.00. Two-year clump, \$50.00. Three-year clump, \$100.00.**

**MOSES HULL.** (Brand 1907.) Dark shell-pink or rose, very large and full, loose-cupped, tufted, petaloids, somewhat mottled, ends of petaloids nearly white. Some blossoms 9 inches across. A remarkable flower. One of the wonders of Nature's marvelous works. Midseason. Fragrance delicate and fine. **L. D. \$8.00. Three-year clump, \$10.00.**

**MRS. A. G. RUGGLES.** (Brand 1913.) Large to very large, flat semi-rose. Ground color white, delicately suffused with lilac, gradually fading to white. Flower opens out flat. Petals long and fringed. Plant strong. Late. Here is a wonderful flower. A visitor to my grounds this year who came clear across the continent to see these flowers, and who is one of the best peony men in America, said to me while we were admiring the peony Mrs. A. G. Ruggles: "Mr. Brand, I wish to tell you how I rank your peonies. Martha Bulloch first, Frances Willard second. Mrs. A. G. Ruggles third."

Flowers come in great clusters. But the variety must be budded to get best result. One of the very best peonies in cultivation. Sweet scented. **L. D. \$10.00. Two-year clump, \$20.00.**

**MRS. CAREW.** (Brand 1907.) Large, full, rose-shaped flower often seven inches in diameter. Delicate, silvery blush, some inner petals with carmine edges. Often blooms in clusters of four to six. Excellent for cutting. This peony is named for the composer of the music for Longfellow's "Bridge." **L. D. \$3.00. Three-year clump, \$7.50.**

**PHOEBE CAREY.** (Brand 1907.) This variety was introduced in 1907, but was so good that before we were aware of it almost our entire stock was gone. We immediately removed it from our sale list, and since then have gradually built up our stock again until we now have a fair supply of plants to offer our customers. Phoebe Carey is one of the strictly finest peonies in existence. One of the most discriminating peony men in the country said of this variety last year when he saw it. "It is in a class with Therese. I must have it."



**VICTORY CHATEAU THIERRY**  
New Brand Peony



A Bed of Three Year Old Plants, Season 1920. Peony "Louisa Brand" in Foreground

First  
- FARMERS

True rose type. Petals large, broad and of good substance. Flower large, flat, slightly cupped. Color a beautiful rose pink, with center slightly deeper in shade. Fragrance very pleasant. In season with Marie Lemoine. An erect, tall growing variety, with an abundance of clean, light-green foliage. A peony that takes with everyone who sees it. Should be in every collection. **One year old, \$10.00.**

**RUTH BRAND.** (Brand 1907.) Very large, compact bomb. Guard petals prominent, enclosing a grand ball of compact center petals. A uniform, soft lavender pink, splashed with deep lavender. Tall stems, fine, graceful and strong, holding but a single bloom. Midseason. Very beautiful in bud. A splendid variety to cut. Has a delicate and pleasing fragrance. This flower was selected as superior to all others of its color on account of the waxy quality of the petals and the delicate and artistic distribution of the colors. The marked distinction claimed for this flower is that which would distinguish the work of a skillful artist from the work of an ordinary painter using the same colors. Other flowers have the same colors and some of them almost the same proportion of colors, but none of them has the delicate blending

and delicate shading shown in this wonderful flower. **L. D. \$2.50. Two-year clump, \$4.00.**

**SISTERS ANNIE.** (Brand 1907.) Large, semi-rose. Ground color a delicate sea-shell pink, heavily suffused with a deep rose. Edge of petals fringed. A beautiful flower of the deep, flat type with stamens showing among the petals. Tall, stout stems, medium season. **L. D. \$1.00. Three-year clump, \$3.00.**

**SUSAN B. ANTHONY.** (Brand 1907.) Medium size, loosely arranged, semi-rose type. Color a delicate creamy pink on a white ground as the flower opens, slowly fading to white. Very pretty. **L. D. \$1.00. Three-year clump, \$3.00.**

**WM. PENN.** (Brand 1907.) Immense, compact, semi-rose type. Color light rose, changing to a more delicate rose at edge of petals. Edge of petals notched. Plant of medium height, strong grower, lavish bloomer. Blooms are of such gigantic size that the strong stems need support to keep the flowers from the ground. Notwithstanding the great size of the blossoms they are of wondrous beauty. The most massive of all good peonies. **L. D. \$1.00. Three year old, \$3.00.**

## Double Red Varieties

**A. J. DAVIS.** (Brand 1907.) Very large, loose, semi-rose. A tall-growing, early midseason, good bright crimson. A very reliable variety that comes good every year. Flowers large, produced generally one to a stem. Petals large and loosely arranged, showing stamens. One of the very good reds. **L. D. \$3.00. Three-year clump, \$5.00.**

**AUNT ELLEN.** (Brand 1907.) Large, loose, semi-rose. Rich, uniform, purplish crimson with stamens. A fine crimson. Early, coming just after Richard Carvel in season. This is a good bloomer year after year, one that can be depended upon. **L. D. 75 cents. Three-year clump, \$1.50.**

**BEN FRANKLIN.** (Brand 1907.) Medium sized blossoms of semi-rose type. A brilliant crimson with darker shadings at base of petals. Very tall, erect stems carry single blossoms in great profusion. Medium early. This is one of the most striking of our dark peonies. A splendid commercial variety. A fine sort for massing. The fragrance of this flower is slight but agreeable. It is equally desirable as a cut flower and as a landscape variety. The flowers unfold slowly and carry their form and color much longer than most red varieties. It is a charmer and will give satisfaction. A single plant or a group on the lawn, or a vase filled with these gorgeous blossoms always attracts attention and calls forth exclamations of delight and comments of admiration. **L. D. \$2.00. Three-year clump, \$5.00.**

**BRANDS MAGNIFICENT.** (Brand 1913.) Another great red. We have become noted as the producers of a line of the very best red peonies in cultivation. The late Rev. C. S. Harrison said, "The Brands lead the world in their reds." We have produced many very fine reds, and of these this is one of the very best. Plant medium height, midseason, wonderfully profuse. Blossom semi-rose and very beautiful in shape. Petals all large like those of a rose. Color deep, dark red with a bluish cast. The nearest blue of any red peony. When this variety is in bloom people will turn to it time and time again as the best red they have ever seen. Wonderful because of the beautiful form of the flower, its prdigality of bloom, its great, broad, symmetrically arranged petals, and its magnificent color effect. **L. D. \$25.00. Two-year clump, \$50.00. Stock very limited.**

**CHARLES MCKELLIP.** (Brand 1907.) **Prize Peony.** Probably the most perfect in form of the crimson peonies. Semi-rose type. The irregular rich crimson petals of the center are mingled with golden stamens and surrounded by rows of broad, silky guard petals. This flower should be found in every collection because of the perfect form of the flower and the deep, rich, ruby color of the individual blossom. It has a charm peculiarly its own. Once seen, no one is every satisfied until he has added it to his collection. **L. D. \$5.00. Three-year clump, \$10.00.**

**COMMODORE EMGE.** (Brand 1919.) Medium bomb type. Dark crimson. One color. Dwarf grower. Good strong stems. Pro-

fuse bloomer. Medium to late. A splendid sort where a row is wanted along a driveway, as its blooms are held erect on stiff stems in such great profusion as to cover the plant completely, making one long uniform row of striking crimson. **L. D. 75 cents.**

**GOVERNOR JOHNSON.** (Brand 1907.) Tall and graceful. When in bud, delightfully conspicuous and attractive. As the bud expands and opens into a larger vivid crimson blossom, with just enough gold in it and none too much, it is still more pleasing. When the main blossom begins to fall, the orbs, mediumly long and graceful, still attract the attention of all. This is a unique and attractive variety, particularly good for landscape work. **L. D. \$1.00. Three-year clump, \$2.50.**

**H. F. REDDICK.** (Brand 1913.) Large, semi-rose, brilliant, dark crimson, with golden stamens showing among the petals. Medium height. One of our best dark reds. It has the same irresistible and indescribable brilliancy of red as Mary Brand, which the intermingled yellow stamens tend to heighten and accentuate. This variety is sometimes preferred by those fanciers who admire the commingling of the yellow with the red. Its fine habit of growth, its beautiful blossoms, and its profuse blooming habit make of it a variety which every collector should have. **L. D. \$3.00. Two-year clump, \$5.00. Three-year clump, \$7.50.**

**LONGFELLOW.** (Brand 1907.) **Prize Peony.** A bright crimson with a cherry tone. Perhaps the most brilliant of all the red peonies. Ever since we selected this variety from our first seed bed in 1904 down to the present moment, I have always claimed that it was the best dark red peony in existence, bar none. At the time our first seed bed was in bloom we had daily many visitors to our grounds to see this wonderful sight of nearly eight thousand seedling peonies in bloom at once. The bed contained many dark reds scattered promiscuously all over it. But there was one plant, the bloom of which was so striking in its color, so much brighter than that of any other red, and there were probably 300 deep reds in different shades in bloom at the time, that even the most casual observer would pick this one out. One day a gentleman drove up from town and around the bed. Stopping at the southwest corner and pointing ten rods across the flowers to the northeast corner of the bed, he said to my father, who was with him: "Do you see that bright red way across there in the corner there, that red that is so much brighter and finer than any of the other reds? Well, I will give you ten dollars for that plant." "No," father said, "a hundred times ten dollars wouldn't buy that plant; it isn't for sale." That plant was Longfellow, at that time an unnamed seedling blooming for the first time. And ten dollars at that time was an almost unheard of price for a peony. Mary Brand, now generally credited with being the best dark red, is a larger flower than Longfellow, but the flower is not so delicately beautiful in the symmetrical arrangement of its petals and in its general form, and it is not near so bright in color. The plant is also desirable



Another of Our Two Year Seedling Beds

in having good, clean foliage, good habit of growth, long, stiff stems, and good clean roots.

Longfellow is a great flower, and I am not afraid to prophesy that for years to come it will stand at the head of all deep bright reds.

Longfellow is given special mention in the report of the Secretary of the American Peony Society, in the report of the Philadelphia show. **L. D. \$10.00. Two-year clump, \$15.00. Three-year clump, \$25.00.**

**MARY BRAND.** (Brand 1907.) **Prize Peony.** A vivid crimson with a silky sheen that gives it a wonderful brilliance. The golden stamens are scattered through the center of irregularly fringed petals. The description of a single flower gives but a slight idea of the beauty of the growing plant. The single flowers are often immense, while many of the strong stems bear three or four large blossoms. The plant, which is of medium height, is often a mass of crimson bloom. Probably the best dark red peony in cultivation, for lasting effects as a cut flower as well as in the garden. Not quite so bright in color as Longfellow, but a much larger bloomer. Midseason. Its fragrance is also delightful and charming. Mr. C. S. Harrison, the veteran author of the Peony Manual and a discriminating expert, in

an address before the Minnesota Horticultural Association, June, 1916, said of it: "Mary Brand is the grandest red peony in existence." We think Mr. Harrison is right, and we believe that all discriminating experts will agree with him. It qualifies from every standpoint of excellence, and is unquestionably a superb and wonderful creation. **L. D. \$7.50. Two-year clump, \$15.00. Three-year clump, \$25.00.**

**MIDNIGHT.** (Brand 1907.) "The Black Peony." Large, loose, semi-rose, deep maroon, plume-shaped flower. Large flower borne on long stiff stems. Beautiful in mass, or in contrast. Magnificent cutting variety. Medium early, just before Longfellow. It is a question as to which is the better peony, Midnight or Prince of Darkness. Midnight is a trifle the largest, and when grown side by side shows darker. But both should be in every good collection. Two magnificent varieties. **L. D. \$3.00. Three-year clump, \$5.00.**

**OLD SILVES TIP.** (Brand 1918.) Here is a very fine peony that I have been testing for fourteen years, before finally placing on the market for sale. A lifetime spent in horticulture and floriculture has taught me to be careful about introducing a new variety of fruit or flower. There are many things to be considered in deciding upon the merits or demerits of a new can-



didate for honors. I have dropped the idea that I can determine the merits of a variety from seeing the flowers of a single plant or of a few plants upon a single occasion and in but one location. I have rather come to the conclusion that to really determine the worth of a new peony, and what is true of a peony is true of all new plants, one must see it in bloom in great numbers upon plants of different ages planted in many different locations and soils, and study it through a period of years. If it stands such a test and comes up to expectations, then it is worthy of a name and of being introduced to the public.

Such a peony is **Old Silver Tip**, so named because of the very marked silver effect on the edges of the petals as the blooms open, and which gives a very beautiful, iridescent effect to the color of the flowers as you stand and look up a row of this variety, with its silvered petals gently moving in the wind.

**Old Silver Tip** is a wonderfully profuse blooming flower, semi-rose type. Flowers of large size produced on compact growing plants of medium height and mid-season. Color a soft madder-red with a pronounced silver sheen on petals as the flower develops. Both a good cut flower and good for landscape values. A very desirable sort that through the many years I have had it under test has universally produced an abundance of first-class, good sized bloom. L. D. \$10.00. Three-year clump, \$25.00.

**PRINCE OF DARKNESS.** (Brand 1907.) Large, loose, semi-rose. A rich, dark maroon peony of the typical semi-rose type. One of the very darkest peonies in cultivation. Petals slightly fringed with dark shadings on the edges. Opens early and lasts long. Free bloomer. Excellent for landscape effect and for cutting. It is a question whether this variety is not just as good and dark as **Mons. Martin Cabuzac**. L. D. \$2.00. Three-year clump, \$3.50.

**RICHARD CARVEL.** (Brand 1913.) Immense globular bomb. Flower bright, all one shade of crimson. Guard petals large, broad and prominent. Center petals gathered into an immense central dome. Early, tall, very stout stems, annual and profuse bloomer. What **Mons. Jules Elie** is to pinks, this variety is to the early crimsons. One of the earliest to bloom. On account of its extra early blooming qualities, large size and blending colors, this variety has already become a well established favorite. The demand is increasing from year to year. A single plant on the

lawn is attractive and delightful. It is beautiful and lasting, and on account of its delicate fragrance, is valuable as a cut flower. The best of all early dark reds. The odor of most reds is offensive, but the odor of **Richard Carvel** is pleasant and pronounced, a very desirable quality in a red flower. L. D. \$5.00. Three-year clump, \$15.00.

**ROSE HERE.** (Brand 1907.) **Prize Peony.** Dark rose, solid color, seed pods green, tipped white, two rows guard petals, wide and narrow petals in center, a white stripe running through center of petals. A lovely and very attractive flower. L. D. \$1.75. Three-year clump, \$2.50.

**WINNIFRED DOMME.** (Brand 1913.) Medium sized flower with tall, prominent bomb center. Color a bright, all-in-one-color crimson. Guard petals prominent, reflex. Center compact, dense. Dwarf habit, blossoms one to a stalk, and held rigidly erect. Very profuse. An annual bloomer and always good. In making our selections from the seedling beds we attempt to plant all varieties of a color side by side for comparison. When in bloom this variety is so bright as to be distinguishable across the garden from all others of its season. Medium early. A splendid variety. L. D. \$5.00. Three-year clump, \$10.00.

Indianapolis, Ind. "I liked them all, and especially *Chestine Gowdy*. *Richard Carvel* and *Mary Brand* which I bought of you last fall bloomed this spring, and I like them better than any reds I have yet seen."

Dover, Ohio. "*Chestine Gowdy*, *Frances Willard*, *Richard Carvel*, *Longfellow*, *Ella W. Wilcox* are wonderful here. *Richard Carvel* is the *Brand Supreme*, early, tall, free, sure, grand."

"*Richard Carvel* that you sent me last fall was certainly a grand bloomer. It had five big blooms on it. Can you furnish me with a pink that will equal this red?"

St. Louis: This little fellow is *George LeBrun Smith*.

The peony he is standing by is *Reine Hortense* and you supplied the root to me last fall. I bought thirty roots from you at that time and over two-thirds of them supplied flowers this spring, the plants having from three to six blooms on them.

We had some very late frost that also hurt the peonies, as nearly every plant had buds that promised nice blooms.

The three large peonies right by the baby are *Reine Hortense*. The smaller bud just under his right hand and just opening is *Avalanche*, and the three peonies further back are *Little Sweetheart* and this bush had six flowers on it, some of which had been picked.

I was very well pleased with the quality of the roots sent me last fall and will undoubtedly put in another border this fall.

Thanking you for your many courtesies, I am,

Very truly yours,

GEO. F. SMITH.



George LeBrun Smith

## Single Varieties

Of the thousands of single varieties that have appeared in our seedling beds, so few have seemed to us worthy of cultivation that we have given little attention to the class as a whole. But occasionally a single occurs that combines marked distinction of form and color with a strong stem and perfect plant habit. In all the years that we have been selecting out varieties from our seedling beds, we have chosen only four singles for propagation.

We are now listing these together with the Dessert variety, *Albiflora*.

**ALBIFLORA.** (Dessert 1902.) Very large, single white, with long yellow stamens. Fragrant. Tall, very early, free blooming in clusters. A third larger bloom than the ordinary *Albiflora*. L. D. \$2.00.

**DARKNESS.** (Brand 1913.) Single, large. Color very dark maroon with darker markings in lower half of petals which surround a bold cluster of golden stamens. Tall, strong stems. Good bloomer. Very early. An exceptionally good cut flower. Its charm of blending colors and its delightful fragrance make it particularly choice for cut flowers. Not for sale.

**EDITH WEST.** (Brand 1920.) A pure white single. Petals long, of good substance, and symmetrically arranged. Center of yellow stamens large and prominent. Stems medium height and straight, holding flowers rigidly erect. Midseason. A daintily beautiful flower. L. D. \$5.00.

**HARRIET OLNEY.** (Brand 1920.) Flowers large. Petals long, broad, and shapely. Color a soft rose, combining attractively with the prominent yellow center. Stems of medium length and perfectly straight, hold the large flower erect. Midseason. Very good. L. D. \$5.00.

**MELLIN KNIGHT.** (Brand 1920.) A tall, straight growing plant with dark reddish stems, which are strong enough to hold the flowers well up. The petals, long, narrow, and evenly rounded on the edges, give the flower a beautiful appearance, both on close examination and from a distance. Color a bright, rich crimson. Extra good. L. D. \$6.00.

## Brand's List of Selected Peonies

### White Varieties

**ALBA SULFUREA.** (Calot 1860.) Large, splendidly built, bomb-shaped flower. Guard petals prominent and pure white, center sulphur yellow. Flowers held erect on stiff stems. Our stock of this variety is pure. Splendid cut flower. L. D. 50 cents. Three-year clump, \$1.00.

**ALSACE LORRAINE.** (Lemoine 1906.) Semi-rose type, late midseason. Supposed to have the same parentage as *La France*, having the same habit of growth as that famous variety; growth erect, upright, with the foliage standing off in a marked way from the plant. Very large imbricated flowers in clusters. The petals are pronouncedly pointed and the center petals are arranged like those of a water lily. The color is a rich creamy-white, center of the flower is delicately tinted brownish-yellow. One of the best and most highly prized of the new French varieties. L. D. \$4.00.

**ALFRED DE MUSSET.** (Crousse 1885.) Large well-formed flowers. Milk white with a bluish center and crimson flecks. A tall, free bloomer. Fragrant. Late. Very choice. L. D. \$1.00.

**AUORE.** (Dessert 1904.) Semi-rose type. Late. Extra large, flat, loose bloom. Color lilac white with collar of milk-white flecked with crimson. Guards prominently flecked with carmine. The very center of the bloom is the same shade as the guards. Fragrant and fine. L. D. \$2.00.

**AVALANCHE.** A very large milk-white flower of perfect form. Base of petals reflect a soft yellow. A few of the central petals are delicately edged with carmine. Strong grower, profuse bloomer, fragrant. Late midseason. Extra fine. L. D. \$1.00. Three-year clump, \$2.00.

**BARONESS SCHROEDER.** (Kelway.) Plume shaped flower with irregularly

shaped petals, sometimes fringed. Opens delicate blush, changing soon to pure white. Strong grower and free bloomer. Delicate odor. Regarded as one of the world's best peonies. L. D. \$1.50. Three-year clump, \$3.00.

**BLANCHE CIRE.** (Dessert 1888.) Clear, white cream white, medium size; crown type; fragrant, erect, medium height. Perhaps the earliest of the *Albiflora* species to bloom. Fragrance delicate and agreeable. Very desirable as an early cut flower variety. L. D. 50 cents. Three-year clump, \$1.00.

**BOULE DE NEIGE.** (Calot 1862.) Large globular, compact, semi-rose type. Color milk white, with guards and center flecked with crimson. Tall, erect, profuse bloomer. Early midseason. One of the good whites. Very good. L. D. 75 cents.

**CANARI.** (Guerin 1861.) Late midseason. Bomb type. Guard petals white, flushed with pink, center deep primrose yellow. Fragrant, tall, very good. Strong divisions. L. D. 50 cents. Three-year clump, \$1.00.

**CANDIDISSIMA.** (Calot 1856.) An attractive variety of the rose type. Guard petals creamy white; center sulphur, delicately tinted flesh, with carpeloides in center tipped green. Strong grower and free bloomer. A few days earlier than *Festiva Maxima*. L. D. 50 cents. Three-year clump, \$1.50.

**CLAUDE GELLE.** (Lemoine 1904.) Late. Rose type. Uniform creamy white. Dwarf, compact grower. Very neat and pretty. L. D. \$2.00.

**COURONNE D'OR.** (Calot 1873.) Very large, imbricated blooms of perfect form. Color milk white, reflecting yellow with golden stamens showing between the pet-

als and adding to the brightness of the flower. Very fragrant, a splendid bloomer and a strong plant. A reliable flower in all respects. One of the finest whites in existence. Season a little before *Marie Lemoine*. L. D. 75 cents. Three-year clump, \$1.50.

**DOC DE WELLINGTON.** (Calot 1859.) Bomb. Guard petals broad and pure white. Center flower of sulphur white, large, profuse, fragrant, late. Fine cut flower. A splendid white. L. D. 50 cents. Three-year clump, \$1.50.

**DUCHESS DE NEMOURS.** (Calot 1858.) Crown type, early. Follows *Festiva Maxima* by a few days. A splendid cup-shaped sulphur-white flower with a greenish reflex that lights up the entire blossom, which gradually changes to a pure white. Exceptionally beautiful in the half-opened bud stage. L. D. 75 cents. One-year clump, \$1.00. Three-year clump, \$1.50.

**DUCHESS OF TECK.** (Kelway.) Large semi-rose type. Creamy white, with carmine touches on central petals. Good strong habit and fine bloomer. One of the good ones. This is not the true *Duchess of Teck*. It was sold to us by Kelway as that variety. We have never been able to identify it, but since it is a splendid flower, we keep it in our list. L. D. 75 cents. Three-year clump, \$2.00.

**ENCHANTRESS.** (Lemoine 1903.) Rose type, very late. Very large globular, compact flower. Color creamy-white, guards splashed crimson. Center of flower faintly flecked crimson. Delicious fragrance. Erect, tall, vigorous grower. A perfect jewel. One year old, \$6.50.

**FESTIVA.** (Donkelaer 1838.) Full double-rose type. Cream white with prominent crimson spots on some petals. Very fragrant. In blossom about a week after *Fes-*



**tiva Maxima.** This peony, around Chicago, goes under the name of Drop White. An excellent variety. L. D. 75 cents. Three-year clump, \$1.50.

**FESTIVA MAXIMA.** (Meillez 1851.) Extra large, full, globular, rose type. Pure white, with bright, carmine flakes on the edges of the center petals. Fragrant. Heavy and abundant clean, bright foliage. Abundant bloom on long, strong stems. Early. The most popular all-around white peony in existence. L. D. 75 cents. Two-year clump, \$1.25. Three-year clump, \$1.50.

**FRANCES SHAYLOR.** (Shaylor.) A waxy cream color. The stamens are canary yellow, edged with a deep gold. They are long as petals and present a very pleasing effect. (Originator's description.) Not for sale.

**GRANDIFLORA NIVEA PLENA.** (Lemoine 1824.) Rose type, very early. Large globular flowers; guards milk-white; collar pure white; center, on first opening, an intermingling of white, salmon, and sulphur-yellow; fragrant. Though one of the oldest varieties, it ranks among the best, and the true stock is scarce. L. D. \$1.00.

**GRETCHEN.** (Goos and Koenemann, 1911.) Rose type. A beautifully formed flower. Ivory white, tinted flesh. Strong, erect grower of dwarf habit. Not for sale.

**JAMES KELWAY.** (Kelway.) Very large, loose, semi-rose type. Rose-white changing to milk-white, tinged yellow at the base of petals. Strong grower, midseason. Very double and full. Fragrance strong and pleasing. L. D. \$2.00. Two-year clump, \$5.00.

**JESSIE SHAYLOR.** (Shaylor.) Large bloom on tall stiff stems. Fragrant. A very pleasing shade of deep crimson with golden touches. Midseason. Not for sale.

**JUBILEE.** (Pleas 1911.) Rose type, midseason. The originator of this variety said of it: "Jubilee was undoubtedly the largest bloom of any that I had. It cannot be compared with anything else, as it is entirely different in form and very handsome." Delicate pink, entirely enveloped in a halo of angelic white. A variety difficult to describe. L. D. \$15.00. Strong one-year plants, \$25.00.

**KELWAY'S GLORIOUS.** (Kelway 1909.) Large flowers of pure glistening white with a touch of pink on the outer petals. Sweetly scented. Kelway's best introduction. One of the very best flowers exhibited at the Cleveland show of the American Peony Society, 1918. L. D. \$30.00.

**LA LORRAINE.** (Lemoine 1901.) Rose type, midseason, bearing enormous globular flowers, color creamy white overlaid with the faintest soft pink; sometimes it shows just a touch of salmon-pink. The petals are large. Flowers last well on both plant and as cut flowers. Delicate fragrance. Not for sale.

**LA PERLE.** (Crousse 1885.) Large cup-shaped flowers, bluish white, growing a little darker around the edges. Fragrant. Midseason. Extra good. L. D. \$1.00. Two-year clump, \$2.00.



ELLA CHRISTIANSEN  
New Brand Peony

**LA ROSIERE.** (Crousse 1888.) Large flowers produced in large clusters. Petals imbricated. Straw yellow at the center, shading to a creamy white border. Fragrance pleasant. Very free bloomer. A striking variety. L. D. \$1.50. Two-year clump, \$2.25.

**LA TENDRESSE.** (Crousse 1896.) Rose type, early. Very full, spreading flowers of immense size in clusters, petals very thick and wax-like. Color creamy-white, changing to pure white, guards slightly splashed, center flecked crimson. Flecks are very prominent on some blooms, very slight on others. Very free flowering and fragrant. One of Crousse's very choicest productions. L. D. \$2.00.

**LA TULIPE.** (Calot 1872.) Medium large, flat, semi-rose type. Lilac white, fading to creamy white with outer guard petals striped and center petals tipped with carmine. Fragrant. Blooms held erect on tall straight stems. Late. Extra commercial sort. L. D. 75 cents. Three-year clump, \$1.50.

**LE CYGNE.** (Lemoine 1907.) Rose type, midseason. Grows about two-thirds as tall as Festiva Maxima, with good, stiff, rigid stems; foliage the darkest green of all peonies; buds borne in clusters. Very large, perfectly formed flowers with broad imbricated petals. Color creamy white with a greenish luminosity at the heart, passing to a clear paper-white with age. The globular, compact type of bloom makes it easily distinguishable from all

others; probably the finest of all white peonies. Easily scores the six points of excellence. L. D. \$20.00. One year old, \$25.00.

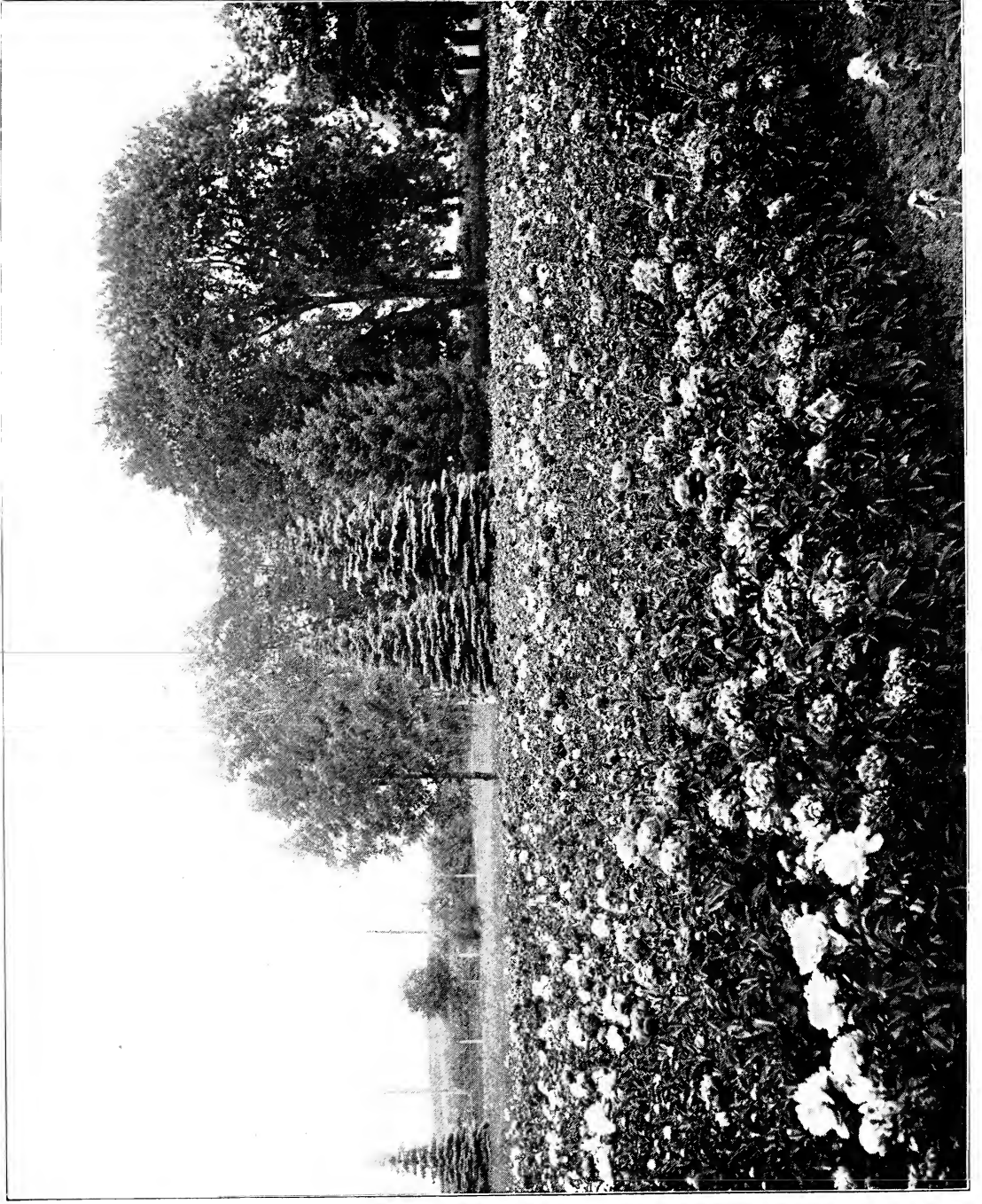
**LORCH.** (Goos & Koenemann.) Tall, very compact, full rose type. Creamy white, tinted pale rose. Fine. Not for sale.

**MADAME CROUSSE.** (Calot 1866.) Very large, compact, finely formed flower. Snow white with center petals edged with carmine. A good all-purpose flower. Midseason. One of the best. L. D. 75 cents. Three-year clump, \$1.50.

**MADAME D. TREYERAN.** (Dessert 1890.) Very large, flat, compact, semi-rose type. Rosy white, splashed lilac, center flecked with crimson. Erect, medium, tall, free bloomer. Early. A splendid variety. One year old, \$3.00.

**MADAME DE VATRY.** (Guerin 1863.) Large flowers with outer petals of flesh color and center petals buff-white with carmine stripes. A fragrant midseason free blooming variety. L. D. 75 cents.

**MADAME DE VERNEVILLE.** (Crousse 1885.) Very large, finely formed, anemone shaped flower. Guard petals sulphur white. Center petals rose white with carmine touches. Flower of good substance. Stems long and strong. An ideal cut flower. Later than Festiva Maxima and equal if not superior in beauty. Pleasing fragrance. We consider this one of the best whites if not the best. L. D. 75 cents. Two-year clump, \$1.00. Three-year clump, \$1.50.



One of Our Third Trial Seedling Beds. All Brand Seedlings

**MADAME FOULD.** (Crousse 1893.) Rose type; very late. A large, full flower, outer petals milk-white, center lilac-white, very slightly flecked with crimson. Fragrant. Blooms very late.—In fact, it is the last white to bloom. An extra good sort. L. D. \$1.00.

**MADAME EMILE LEMOINE.** (Lemoine, 1899.) Semi-rose type, midseason. Enormous buds opening into extra large imbricated round flowers that completely hide the bush, each petal overlapping the other, giving the whole flower a very unusually distinctive even shade. Color on first opening—glossy white, overlaid with a sheen of tender satiny pink, covered with minute lilac dots. When fully opened it is a pure white. Strong grower and free bloomer; rare and beautiful. L. D. \$2.00. Two-year clump, \$2.50. Three-year clump, \$3.50.

**MADAME JULES DESSERT.** (Dessert 1900.) One of the finest of all peonies. The flowers are very large, well formed, with great long, broad petals. Blooms are held rigidly erect on good straight stems of medium height. Color white, tinged with a very delicate pink and splashed with carmine. A few golden stamens also show to add beauty to an already beautiful flower. Very fine. L. D. \$6.00.

**MARCELE DESSERT.** (Dessert 1899.) Large, medium compact flower, developing a high crown. Milk-white, minutely splashed lilac, center flecked crimson. Fragrance good. Midseason. Extra fine. L. D. \$2.50. Two-year clump, \$3.75. Three-year clump, \$5.00.

**MARIE JACQUIN.** (Verdier.) (Syn-Bridesmaid, Kelway, and Waterlily, Barr.) Semi-double type, midseason. Color glossy rosy-white, with rose tinge on buds, showing golden yellow stamens in the center, which give it a very chaste and elegant appearance. When first planted the blooms always come semi-double, but after becoming

established it occasionally shows full blossoms with yellow stamens intermingled. The fragrance is delightful, resembles that of the waterlily. This is quite dissimilar to all other peonies, and is a prime favorite with everybody. L. D. \$1.00.

**MARIE LEMOINE.** (Calot 1869.) Enormous, very compact. Rose type. Sulphur white, shaded chamois, with occasional carmine tip. Erect, strong stem of medium height. The most pleasing and pronounced fragrance of any peony. Very late. It lies between Eugene Verdier and Marie Lemoine as to which is M. Calot's masterpiece. L. D. \$1.00. Three-year clump, \$2.50.

**MARY A. LIVERMORE.** (Hollis 1907.) Very large bloom of true rose type. Flat, medium compact. Color milk white. Guards slightly tipped crimson. Fragrant. Late. L. D. \$6.00.

**MIDSUMMER NIGHT'S DREAM.** (Pleas 1906.) Habit of plant good and of medium height. Season medium to late. Bloom a clear ivory white. Center a pale primrose yellow. L. D. \$20.00.

**MIREILLE.** (Crousse 1894.) Large, compact, globular, rose type, milk white. Center petals very large and distinctly edged dark crimson. Fragrant. Tall, strong grower. Very late. Good. L. D. \$1.00.

**MONSIEUR DUPONT.** (Calot 1872.) An immense, perfectly formed cup-shaped flower, opening flat when in full bloom. Glistening ivory white, center petals bordered with lively carmine. Golden stamens mingled with petals throughout the flower. Deliciously fragrant. Erect, tall, wiry stems. A wonderfully prolific and annual bloomer. Late midseason, preceding Couronne d'Or. One of the very best whites. L. D. \$1.00. Two-year clump, \$1.50. Three-year clump, \$2.00.

**MONT BLANC.** (Lemoine 1899.) Very large globular bloom. Compact. Creamy white, slightly tinged rosy white. Early

midseason. One of the very finest peonies in cultivation. L. D. \$7.50.

**MRS. EDWARD HARDING.** (Shaylor.) A wonderful white. Received the \$100.00 prize at the American Peony Society's show at Cleveland in 1918, offered by Mrs. Harding for a new white peony of superlative merit. L. D. \$100.00.

**PAPILLIONACEA.** (Very deep cone-shaped flower of small diameter. White, turning to cream at base of petals. Prominent markings of carmine on the edge of center petals. A delicately refined peony of perfect form. Stems of medium length, bearing a single blossom. Midseason. L. D. 75 cents.

**SECRETARY FEWKES.** (Shaylor 1916.) A very large, full flower. Creamy white to a pure white in the center. Very fine. L. D. \$20.00.

**SOLANGE.** Rose type, midseason. Full globular flower with a compact crested tuft in the center. Color rare, and has deep orange-salmon or Havana-brown at the heart, overlaid with a delicate, tender, reddish brown. L. D. \$30.00.

**SOLEFATARE.** (Calot 1861.) A large, medium compact bomb developing into a crown. Guard petals prominent and milk white. Collar and center sulphur, fading to sulphur white. Midseason. Fragrant. Plant of medium height and midseason. Up to the time of the introduction of Primevere, this was the best yellow peony and even now is a very fine thing to have. L. D. 75 cents.

**WHITELY VII.** (Whitley 1908.) Commonly called Queen Victoria. Medium size, loose, globular flower with fine broad guard petals. Opens flesh white, fading to milk white. Center petals tipped with coral blotches. Fragrant. Free bloomer. Extra good in bud. The very best commercial white. L. D. 50 cents. Three year old, \$1.50.

## Pink and Rose Varieties

**ADMIRAL DEWEY.** (Hollis 1903.) Bomb type. Midseason. Large, well built flower carried well erect on long stems. Color, delicate rose-pink shaded heliotrope. Fragrant. L. D. \$2.00.

**ALBERT CROUSSE.** (Crousse.) Very large, compact, bomb-shaped blossom. Rose white with fleck of crimson. Tall, erect, profuse bloomer. Fragrant. One of the most striking of all peonies. L. D. \$1.50. Two-year clump, \$2.50. Three-year clump, \$3.50.

**ALEXANDER DUMAS.** (Guerin 1862.) A brilliant pink, interspersed with salmon, white and chamois. Early, very profuse bloomer, and very rigid plant. One of the greatest bloomers of all. L. D. 50 cents. Two-year clump, 75 cents. Three-year clump, \$1.00.

**ALICE DE JUVERCOURT.** (Pele 1857.) Flower medium sized, compact, globular. Guards and center petals lilac-white, beautifully veined carmine, with occasional car-

mine spots on center petals. Very beautiful just as bud is opening. L. D. 50 cents. Three-year clump, \$1.00.

**ASA GRAY.** (Crousse 1895.) Midseason. Large, imbricated, rose formed bloom. Guard petals salmon flesh, very full and perfect in form. Color lilac, touched with minute specks of deeper lilac. Very striking in appearance. A prolific bloomer, fragrant and distinct. L. D. \$1.00.

**ALEXANDRIANA.** (Calot 1856.) Very large full flower, rose type. Light violet rose. Very fragrant. A strong, upright grower. One of the most dependable early pinks for cut flower purposes. L. D. 50 cents. Three-year clump, \$1.00.

**ANDRE LAURIES.** (Crousse 1881.) Rose type, compact, globular bloom of large size, very dense and compact. Dark, tyrian-rose, shading deeper in the center, with red reflex and with white splashes. An extra good peony. Very late. L. D. 50 cents. Three-year clump, \$1.00.

**BEAUTY'S MASK.** (Hollis 1904.) Late crown type. Large to very large. A compact flower, bluish white tinted lilac. Guard clear lilac. Collar lighter than guards and mixed with creamy petaloids. Fragrant. Good. Not for sale.

**BERLOIZ.** (Crousse 1886.) Very large, compact rose type. Light carmine rose, petals tipped silver. Tall profuse bloomer. Late midseason. One-year clump, \$1.00.

**BIEBRICH.** (Goos & Koenemann, 1912.) A large, flesh colored flower. Opens out flat. Rose type. One of the best new things seen by the writer at the Cleveland National Peony Show. Not for sale.

**CARMEN.** (Lemoine 1898.) Very large, flat, compact, semi-rose. Hydrangea pink. Center flecked crimson. Petals flecked with minute dots like Asa Gray. Plant tall and erect growing. Midseason. Very good. Not for sale.

**CHARLEMAGNE.** (Crousse 1880.) A peculiar flower in its habits. One of the very best of peonies, but having the fault of not coming good more than one year out of three. Yet when it does come good you are repaid for waiting, for then it is simply perfect. Rosy white, shaded lilac. Large, perfect formed and rounded bloom. Late to very late. L. D. 50 cents.

**CLAIRE DUBOIS.** (Crousse 1886.) Occasionally as one walks through a field of many different varieties of peonies he comes to a sort that as far as its all-around good qualities are concerned stands head and shoulders above its neighbors. Such a flower is Claire Dubois. Very large flower, globular, rose type. A uniform deep violet rose, tipped silvery white. Late. Good plant, profuse bloomer, splendid flower. L. D. \$1.50.

**CLEMENTINE GILLOT.** (Crousse 1885.) A beautiful flower of large size. Broad, deep pink guard petals, center soft mauve pink with silvery reflex. Strong, healthy grower. Extra good. Not for sale.

**DELICATISSIMA.** Large compact bloomer of a delicate all one color pink, borne in great profusion on erect, medium length stems. One of the best all-around peonies. Extra fine as a commercial sort. Fine to plant for low hedge where one color is desired. Midseason. Extra. L. D. 75 cents. Four-year clump, \$2.00.

**DOCTOR BRETONNEAU.** (Verdier, 1854.) This variety is often sold as Lady Leonora Branwell. Above medium size, bomb shaped blossom. A delicate lilac pink, vigorous grower and free bloomer. Fragrant. A good commercial sort. Keeps unusually well as cut flower. L. D. 50 cents. One-year plant, 75 cents. Three-year clump, \$1.25.



MYRTLE GENTRY  
New Brand Peony

**DORCHESTER.** (Richardson 1870.) Very late, rose type. Blossoms large and held erect on good strong stems. Pale hydrangea pink. A fine variety to supply the late trade. L. D. 50 cents. Two-year clump, \$1.00.

**DUKE OF DEVONSHIRE.** (Kelway 1896.) Rose type, large, extra large, compact, flat bloom, solferino red, narrow fringed petals intermingled with the wide petals; color effect—uniform deep rose. Tall, strong grower. Fragrant, distinct, and beautiful. L. D. \$1.50.

**EDMUND ABOUT.** (Crousse 1885.) Large, globular rose type, late midseason. Hydrangea pink, shading to lilac at the center, which is often flecked crimson. Borne in clusters. Fragrance fine. An extra fine flower. Plant medium tall, with strong, stiff stems. L. D. \$1.50.

**EDULIS SUPERBA.** (Lemoine 1824.) Large, loose crown type. Bright pink with slight violet shadings at base of petals. Fragrant. Early, strong and upright in habit, very free bloomer. Best early commercial pink. In latitude of Central Iowa in full bloom by Decoration Day. Also sold as L'Esperance. L. D. 50 cents. Three-year clump, \$1.50. Four-year clump, \$2.00.

**E. G. HILL.** (Lemoine 1906.) Semi-rose type, early midseason. Very strong, upright grower with stiff, straight stems. Petals are evenly shaped, opening horizontally into a gigantic flat flower markedly distinct in this respect. Very large full double flowers in immense clusters. Color a rich tyrian-rose or red, which shows no trace of violet or purple, with a wide border of silver-rose. An exceedingly free bloomer, even on plants one year from division. Fragrance, strong and agreeable. L. D. \$4.00.

**ELIE CHEVALIER.** (Dessert 1908.) A large globular bloom, with imbricated petals of purplish amaranth. Center flecked scarlet, with silvery reflex. Tall, medium strong, free bloomer. L. D. \$3.50.

**ELWOOD PLEAS.** (Pleas 1900.) Rose type, late midseason. Comes in clusters, opening several large blooms to the stalk. Of the largest size, flat, full double, light shell-pink. A fine flower of great size and splendid color. L. D. \$10.00.

**EMMA.** (Terry.) Large, loose, rose type. Blush rose color. Strong grower. Good bloomer. Chaste. L. D. \$1.00. Three-year clump, \$3.00.

**ETTA.** (Terry.) Very large flat rose type. Uniform pale hydrangea pink. Fragrance pleasant. Plant of medium height. A very profuse bloomer. Very late. In season with Marie Lemoine. Taking it all in all, we consider this one of the best of the very late peonies. L. D. \$1.00. Three-year clump, \$2.50.

**EUGENE BIGOT.** (Dessert 1894.) Compact, globular, semi-rose type. Deep purple amaranth. Upright habit, free bloomer, large petals. Generally regarded as one of the best late red varieties. L. D. \$1.00. Three-year clump, \$3.00.

**EUGENE VERDIER.** (Calot 1864.) Large flower, rose type. Outer guard petals lilac



MRS. A. M. BRAND  
New Brand Peony

white, total color effect pale hydrangea pink. Very erect, rather dwarf habit, with extra stout stems. A very fine flower. There has been a good deal of mixup in this variety, many growers having L'Indispensable under this name. We are sending out the genuine Eugene Verdier. L. D. \$3.00.

**EUGENIE VERDIER.** (Calot 1864.) (Syn. Pottsi Alba.) Semi-rose type, early. Do not confound the name of this variety and Eugene Verdier. The flower is large and fine. Its form is ideal, being flat, showing its great wealth of tints and blendings of coloring to fine advantage. It opens a fresh delicate hydrangea pink, with primary petals lighter, center flushed crimson. Fragrance good. Very desirable. L. D. \$1.00. Three-year clump, \$3.00.

**EVANGELINE.** (Lemoine 1910.) Large, compact, flat rose type. Delicate lilac rose splashed scarlet. Erect growing. Tall; late. Extra good. L. D. \$5.00.

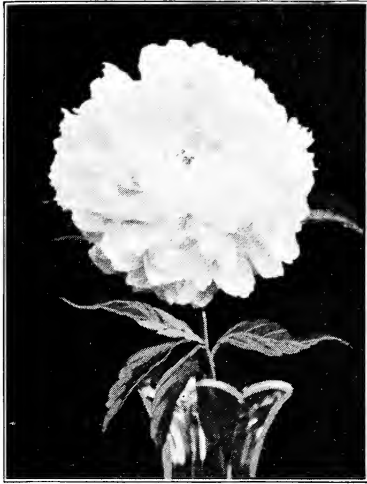
**EXQUISITE.** (Kelway) Not for sale.

**FAUST.** (Miellez 1855.) Crown type. Guard petals and crown hydrangea pink, changing to lilac white, with a collar of narrow sulphur-yellow petals. L. D. 50 cents.

**FLORAL TREASURE.** (Rosenfeld 1900.) Large, full, globular rose type. Delicate pink with lavender tinge, shading lighter at center as flower ages. Fragrant. Flowers borne rigidly erect on strong, stiff stems, and in great numbers. Midseason. L. D. 75 cents. Three-year clump, \$1.50.

**FRAGRANS.** (Sir Joseph Banks 1805.) Bomb type, compact. Dark pink with a purplish tinge. Strong, vigorous growth. Free bloomer, very fragrant. One of the best commercial sorts, in fact the finest

shipping peony we know of. L. D. 50 cents. Three-year clump, \$1.00.



MRS. FRANK BEACH  
New Brand Peony

**GALATHEE.** (Lemoine 1900.) A large, full, double flower, rose type. Color fleshy white. Fragrance pronounced and pleasant. A tall, strong grower. One of the very good late ones. **Not for sale.**

**GEORGE HOLLIS.** (Hollis 1907.) Guard petals lilac white, center petals pale rose-pink. Flowers large, medium compact rose type. Very late. **Not for sale.**

**GEORGE W. TRYON.** (Richardson.) Large, compact flower of flat rose type. Color pale lilac, with salmon shading at the base of the center petals. Slight fragrance. Erect growth of medium height. **Not for sale.**

**GEORGIANA SHAYLOR.** (Shalor 1908.) Midseason. Very large flower with extremely broad petal. Color flesh pink, center of flower fleshy-white. One of the best productions of Mr. Shaylor, who is one of America's most discriminating growers. **L. D. \$10.00.**

**GERMAINE BIGOT.** (Dessert 1902.) Clear rose-pink with lighter flesh-colored tints in the center; petals broad. Midseason. Very good. **L. D. \$2.00. Three-year clump, \$5.00.**

**GIGANTEA.** (Calot 1860.) Very large rose type. Delicate rose pink, center shaded darker, guards and collar tipped with silvery white. Exquisite, spicy fragrance. Tall, free bloomer. Early. **L. D. \$1.00. Three-year clump, \$3.50.**

**GINETTE.** (Dessert 1915.) Large, imbricated cup-shaped flower. Very soft flesh pink, shaded salmon, frequently flecked carmine. Fragrant. Free bloomer in clusters. Choice. **Not for sale.**

**GISMONDE.** (Crousse 1895.) Globular, flesh colored flowers, shading to rose at the center. Fragrance very fine. Very fine. **L. D. \$2.50.**

**GLOIRE DE CHARLES GOMBAULT.** (Gombault 1866.) Crown type, midseason. Medium sized globular flower produced in the greatest profusion, every stem bearing one or more of their beautiful tri-colored blooms; guards and crown light rose, collar of narrow cream-white petals widening towards the center. **L. D. \$1.00.**

**GLORY OF SOMERSET.** (Kelway & Son.) Bomb type, with very prominent guard petals. A beautiful soft pink blended with chamois and carmine. Especially fine in the bud just as it is bursting. Strong, robust plant, and with us one of our profuse bloomers. For the Central Northwest we consider this one of the most desirable. Received first class certificate from the Royal Horticultural Society of England. Extra fine. **L. D. \$1.00. Three-year clump, \$1.50.**

**GOLDEN HARVEST.** (Rosenfeld 1900.) Loose bomb of medium size. Guard petals lilac rose, enclosing a mass of narrow, raised center of pink carmine tipped petals. Medium height, medium strong stem. One of the best varieties to withstand the hardships of the Northwest climate. Early midseason. **L. D. 75 cents. Three-year clump, \$1.50.**

**GRANDIFLORA.** (Richardson 1883.) Very large, flat rose type. Blush white. Very fragrant. Tall, erect, strong grower. Very late. Many consider this the best late variety of its color. **L. D. \$1.50.**

**GRAZIELLA.** (Unknown.) Large and full, well-shaped bloom, guard petals lively flesh pink, center pink, canary yellow and salmon. Superb bud. Growth strong and healthy. Very free bloomer. **L. D. \$1.00.**

**H. A. HAGEN.** **Not for sale.**  
**HUMEL** (Anderson.) Very large, compact, globular rose type. Cherry pink with silver tips. Cinnamon fragrance. Weak stem. Very late. Desirable. **L. D. 50 cents. Three-year clump, \$1.00.**

**JEANNE d'ARC.** (Calot 1858.) Globular bomb, developing a crown. Soft pink guard, creamy white collar, pink central crown, tipped carmine. Fragrant, free bloomer. Moderate strong grower. Early midseason. Extra good. **L. D. 75 cents. Three-year clump, \$1.50.**

**JEANNOT.** (Dessert 1918.) Large, imbricated cup-shaped flower, of fine form. Flesh pink, slightly tinged purple, with salmon pink shadings at the base of petals, changing to silvery white. Extra fine. **Not for sale.**

**JENNIE LIND.** (Unknown.) Very large bomb shaped flowers. Bright pink with a silvery reflex. Flowers borne in profusion on long, stiff stems. Fragrant. An extra good commercial sort. Splendid in bud. **L. D. 75 cents. Three-year clump, \$1.50.**

**JOHN HANCOCK.** (Hollis 1907.) Very large flower, semi-double. Deed carmine rose with distinct silvery on edge of petals. Strong grower. Profuse bloomer. **L. D. \$2.50.**

**JOHN RICHARDSON.** (Richardson.) Very large, compact flat rose type. Pale lilac rose. Fragrant. Erect, tall grower. Midseason. Very good. **Not for sale.**

**KELWAY'S QUEEN.** Rose type. A large, compact flower of uniform mauve-rose, with center flecked crimson. A tall, strong grower, very profuse bloomer. Late midseason. One of Kelway's very best. **L. D. \$6.00.**

**LA COQUETTE.** (Crousse 1888.) Large globular flower of high crown type. The guards and crown are light pink. Collar is rose white. Center petals flecked carmine. Strong, erect, free bloomer. Midseason. **L. D. \$1.00.**

**LADY BERESFORD.** (Kelway.) Large flowers of a soft blush-pink shade. Beautiful. A good strong grower. **One-year plant, \$1.50.**

**LADY ALEXANDER DUFF.** (Kelway 1902) The originator of this flower describes it thusly: "Lovely French white, that is to say, not a snow-white, although when fully opened it is quite white; in the young stage tinted with a very fresh, delicate pale shade of what is commonly called 'blush,' or palest pink. The central flower (the first to open) is a double flower of rather flattened, circular form, and the central petals have a very small touch of carmine. It is a very nicely formed flower and scented, and the plants are exceedingly free-flowering and showy. The side flowers, which are freely produced and which open after the central flowers, come in semi-double saucer-shaped form, exposing the anthers. The back of the flower near the stem is flushed with pink." Tall and robust. Very scarce. One of Kelway's best. **One-year plant, \$10.00.**



HAZEL KINNEY  
New Brand Peony



O. F. Brand, Founder "Brand Peonies," Comes from California to See Them Again

**LAFAYETTE.** (Dessert 1904.) Rose type, midseason. The flowers are large, last well, and the petals are beautifully fringed; the color—a lovely shade of salmon-pink with touches of heliotrope and a delicate tinting of cerise in the reflex, giving it a striking and beautiful effect. It is one of Dessert's late productions. Very attractive; very desirable. L. D. \$2.50.

**LE FEE.** (Lemoine 1906.) Crown type, early. Very large, globular flower, very compact and double. Petals very long,

guards mauve-rose, collar creamy-white. Very strong, tall grower, free bloomer. Very fragrant. Not for sale.

**LA FIANCEE.** (Lemoine 1898.) Crown type, midseason. Very large, high built flower, creamy white, base of petals shaded yellow, center flecked crimson, showing stamens that light up the flower with golden glow. Very floriferous. Perfume delicate, yet penetrating. Should not be confused with the single white La Fiancee of Dessert. Not for sale.

**LA FONTAINE.** (Lemoine 1904.) Large globular compact bomb. Violet rose, collar lighter, guard petals very wide, narrow petals around the collar, center flecked crimson. Tall, strong grower. Late. Extra. One-year plant, \$2.00.

**LA FRANCE.** (Lemoine 1901.) Rose type, late midseason. It bears enormously large, full, rather flat, perfectly double flowers that are deliciously fragrant. Color—La France pink, as the flower ages finishing soft apple-blossom pink slightly reflecting mauve. The outer guard petals have a splash of crimson through the center, deepening at the base. The flower appears to light up and glow simply wonderfully. This is regarded by our American experts as Lemoine's best production. L. D. \$10.00.

**LAMARTINE.** (Lemoine 1908.) Rose type, midseason. Large flowers with broad imbricated petals of great durability, color rosy-carmine. A very attractive and striking peony. L. D. \$7.50.

**L'INDISPENSABLE.** (Origin unknown.) This variety has been greatly confused with Eugene Verdier, a variety that it in no way resembles. Large to very large, full rose type. Lilac white shading to pale violet in the center. In the east and to the south this variety waterlogs badly in the bud, but with us it is a very satisfactory flower. Occasionally a season comes that it does not open well, but as a rule it is a wonderful flower. For Minnesota, the Dakotas and Canada, one of the very best sorts. A beautiful variety. L. D. 75 cents. Three-year clump, \$1.50.

**LINNE.** (Verdier 1860.) Rose type, midseason. Large, globular, compact bloom. Color tyrian-rose; guards slightly flecked with crimson; quite floriferous. A good variety. L. D. 50 cents.

**LIVINGSTONE.** (Crousse 1879.) Very large, compact, perfect rose type. Beautiful, soft lilac rose, with silver tips; central petals flecked carmine. Odorless. Strong grower, of medium height, free bloomer. Late. An extra good one. L. D. \$1.00. Two-year clump, \$1.50. Three-year clump, \$2.50.

**LOVELINESS.** (Hollis 1907.) Hollis' best flower. Flat flowers of immense size. Hydrangea pink. Strong stems. Comes in clusters, and should be disbudded. L. D. \$10.00.

**MADAME AUGUSTE DESSERT.** (Dessert 1899.) Very large flower, semi-rose type. Uniform violet rose, petals slightly flecked crimson. Erect, medium height, free bloomer. Early midseason. L. D. \$2.00.

**MADAME BARRILLET DES CHAMPS.** (Calot 1868.) Large, finely formed bloom. A tender rose pink, bordered with white and darkened with deep rose. Late midseason. Extra fine in the west. L. D. 75 cents.

**MADAME BENOIT RIVIERE.** (Riviere 1911.) Very large, cup-shaped flower, with very large petals. Soft rose, shaded salmon. Not for sale.

**MADAME CALOT.** (Miellez 1856.) Large, flesh pink, with shell pink shadings. Early. Very vigorous. Good cut flower, sort. L. D. 50 cents.



**MADAME COSTE.** (Calot 1873.) Tender rose, tinted glossy white. Tufted center. Very chaste variety. Midseason. L. D. 75 cents.

**MADAME DE GALHAU.** (Crousse 1892.) Enormous imbricated flower, coming on tall, stout stems. Very soft, fleshy pink, shaded salmon, silvery reflex. Very fragrant. A splendid late variety of fine habit and a profuse bloomer. L. D. 75 cents.

**MADAME DUCEL.** (Mechin 1880.) A perfect formed globular bomb. Bright silver pink with a shade of salmon and silver reflex. Rank grower of dwarf habit. Free bloomer. Midseason. L. D. \$1.00. Three-year clump, \$3.00.

**MADAME EMILE DUPRAZ.** (Reviere 1911.) Great, large, exquisitely formed cup-shaped flower. Delicate carmine pink, shaded a deeper pink. Not for sale.

**MADAME EMILE GALLE.** (Crousse 1881.) Large, compact, flat rose type. Delicate sea shell-pink with touches of heliotrope and lavender. Medium tall, strong, free bloomer. Fine in the bud. Late. Something choice. L. D. 75 cents. Three-year clump, \$2.00.

**MADAME FOREL.** (Crousse 1881.) Large, compact, imbricated rose type. Glossy pink with silvery reflex and deeper rose center. Medium tall, of fine habit. Very fragrant. Extra choice. L. D. 75 cents. Two-year clump, \$1.50.

**MADAME GEISLER.** (Crousse 1880.) Rose type, compact, imbricated, well formed bloom on strong, erect stems. Color glossy pink, shading to bright bengal-rose on base of petals; fine, large, very double, globular, imbricated, massive and imposing. L. D. \$1.00. Three-year clump, \$2.00.

**MADAME LEBON.** (Calot 1855.) Very large, compact, globular rose type. Buds very tight, opening slowly. A tall, strong grower. Cherry pink to aniline red. Fragrant. Late. L. D. 50 cents.

**MADAME LEMOINIER.** (Calot 1865.) Rose type. Midseason. A large compact flower. Color pale lilac rose changing to lilac overcast with white. Collar cream white. Some petals flecked with crimson. Fragrant. A tall, vigorous grower of fine habit. Extra. L. D. \$1.00.

**MADAME MANCHET.** (Dessert 1913.) Large, imbricated, very full flower. Silver lilac, shaded purplish pink at the base of petals. Very late. Not for sale.

**MADMOISELLE JEANNE RIVIERE.** (Riviere 1908.) Beautifully formed flower, pale rose with sulphur-white center. One-year plant, \$5.00.

**MADMOISELLE LEONIE CALOT.** (Calot 1861.) Large, typical rose type. Very delicate, rose-white, center of deeper shading, slight carmine tips, fine form, medium height, rather spreading habit. Late midseason. This is a fine favorite with many admirers. Extra fine. L. D. 75 cents. Three-year clump, \$1.50.

**MADMOISELLE ROUSSEAU.** (Crousse 1886.) Very large, full flower with broad petals. Semi-rose type. Sulphur white with pinkish flesh-colored center. Extra strong stem, medium height, free bloom-



One of Our First Trial Seedling Beds. Five Rows Twenty Rods Long,

er. Strong and pleasing fragrance. A gem of the first water. One-year plant, \$1.50.

**MARGUERITE GAUDICHAU.** (Millet.) A medium sized, cup-shaped flower. Ground color white, suffused with pink. Plant good grower and free bloomer. L. D. \$5.00.

**MARGUERITE GERARD.** (Crousse 1892.) Semi-rose type, midseason. Large, flat-shaped flower with broad petals, blooming in clusters, color delicate hydrangea-pink, changing as the flower ages to creamy-white. Many of the central petals and sometimes the guards have minute dark

carmine, almost black, flecks on the tips. It is one of the most admired of Crousse's collection. L. D. \$1.00. Two-year clump, \$2.00.

**MARIE CROUSSE.** (Crousse 1892.) Bomb type, very full, globular flowers on long, strong stems. Color—soft salmon-pink shaded in glossy, satiny lilac. An exquisite fresh coloring. A most desirable peony. L. D. \$3.00. Two-year clump, \$5.00.

**MARIE STUART.** (Calot 1856.) Crown type, midseason. It always comes with three flowers to the stem; first the crown or central bud opens into a good sized high built flower of pyramidal shape, the color being a delicate lavender flecked with crimson. As this flower ages it changes to a pure soft white, and then the two lateral buds open. These buds are two or three inches lower on the stem than the crown flower. They are a delicate lavender, and with the white bloom in the center this one stem forms a bouquet of great beauty. L. D. 50 cents.

**MILTON HILL.** (Richardson.) Very large, compact, beautifully formed flower of a lovely shade of shell pink. An extra fine variety of a distinct, pure color. One of the very best peonies. Late. L. D. \$3.00.

**MISS SALWAY.** (Kelway.) Very large, compact, globular flower, with a high crown. Lilac white, collar lighter. Strong, tall grower. Profuse bloomer. Extra. L. D. \$15.00.

**MODELE DE PERFECTION.** (Crousse 1875.) Large, compact, cup-shaped, rose. Color flesh pink, marked with bright rose deepening in the center. Good erect habits. Strong stems. Wonderful bloomer. Fragrant. A very distinct and very desirable late variety. One-year plant, \$1.00.

**MODESTE GUERIN.** (Guerin 1845.) Large, compact, bomb-shaped bloom. Extra fine bud. Bright in center of bloom. Very fragrant. Medium height, extra strong, free bloomer. Midseason. Best early of its color. L. D. 75 cents. Three-year clump, \$1.50.

**MONS CHEVREUL.** (Dessert 1893.) A very large, medium compact, flat rose type flower. Color beautiful glossy pink, with a faint tinting of lilac. Late. Very good. L. D. \$1.00.

**MONSIEUR JULES ELIE.** (Crousse 1888.) Very large, compact bomb type. Large guard petals surrounding a great dome of incurved petals. Glossy flesh pink shading to a deeper rose at the base, the entire bloom covered with a silvery sheen. Strong stems of medium height. Very fragrant. This, in our opinion, is the most beautiful of the bomb-shaped peonies. A long keeper. L. D. \$1.00. Three-year clump, \$5.00.

**MYRTLE.** (Terry.) Flower large to very large. A bright delicate pink. Medium compact semi-rose type. Fragrance good. Very profuse bloomer. This we consider one of Terry's best. L. D. \$1.00.

**NE PLUS ULTRA.** (Mieliez 1856.) Rose type, early midseason. This variety when well established is an extremely showy and pretty flower. Color light violet-rose with silvery reflex, central petals overlaid with salmon-pink. A vigorous, strong growing and desirable peony. L. D. 50 cents.

**OCTAVIE DEMAY.** (Calot 1867.) Large flat crown, guards very delicate, flesh-pink, with narrow collar of ribbon-like white petals, center deeper pink. Fragrant. Early. Habit of plant low, but good flower stems. Free bloomer and good for cutting. L. D. 75 cents.

**OPAL.** (Pleas 1908.) Rose type. Midseason. Vigorous, tall growing plant. Profuse bloomer. Guard petals delicate pink, fading to white. Center of flower opal pink. Fine. L. D. \$10.00.

**PASTEUR.** (Crousse 1896.) Rose type. Midseason. A very delicate pink, nearly white, shading to tea rose at the base of petals. A very fine flower. L. D. \$1.50.

**PERFECTION.** (Richardson 1869.) Rose type, very late. Very large, double flowers of perfect shape. Delicate shell-pink or lilac-white, base of petals shaded deeper. Fragrant, vigorous, upright grower. Very good. L. D. \$1.50.

**PHILOMELE.** (Calot 1861.) Medium size flower. Flat crown type. Guards bright violet rose, anemone center of tipulated narrow amber yellow petals, changing to cream; as the flower develops, a crown of bright rose petals appears in the center. Midseason. A strong, free bloomer, very desirable. L. D. 75 cents.

**PHYLLIS KELWAY.** (Kelway 1908.) Very large, loosely built flower of exquisite beauty. Color lavender flesh, passing to white in the center. Not for sale.



MRS. A. G. RUGGLES  
Brand Peony

**PIERRE DUCHARTRE.** (Dessert 1899.) Rose type, midseason. Very full, double, imbricated flowers, cup-shaped and crowded with petals, pale lilaceous flesh with glossy reflex bordered with silver. Beautiful. L. D. \$2.00.

**PRAIRIE SPLENDOR.** (Rosenfeld 1908.) Large semi-rose. Violet rose, tipped silver. Tall. Very free bloomer. L. D. \$1.00.

**PRINCESS OF WALES.** (Kelway.) Medium sized rose type. Fine flesh, tinted yellow. Broad rose-shaped petals interspersed with narrow ribbon-like ones. Strong grower and good bloomer. A flower of good substance but of delicate beauty. L. D. \$1.00.

**RAUENTHAL.** (Goos & Koenemann 1913.) Soft lilac with silvered edges. Stamens showing. Very fine flower. Not for sale.

**REINE HORTENSE.** (Calot 1857.) Very large, compact, semi-rose type. Here is a truly wonderful flower. One of those flowers that when you take a visitor through your field, no matter how many good varieties he may see, he will always pick this one as one of the best. Also sold under the name of President Taft. A very tall growing variety, producing lots of large, perfectly formed flowers on long, stiff stems. Color a uniform hydrangea pink minutely splashed on a white background, with the center prominently flecked crimson. L. D. \$2.00.

**ROSA BONHEUR.** (Dessert.) Large, flat, rose type, with imbricated petals. Light violet rose with guard petals flecked crimson. Midseason. An erect, medium strong grower. Very fine. L. D. \$6.00.

**ROSEA SUPERBA.** (Origin unknown.) A grand flower of a beautiful rose-pink. Excellent. One of the best of the old standard varieties of true rose-pink. L. D. 75 cents.

**ROSETTE.** (Dessert 1913.) Pretty flower of fine shape, like a Capt. Christy rose, silvery flesh shading to salmon at base of petals and flecked crimson on the edges. A splendid variety of erect habit. Not for sale.

**RUY BLAS.** (Dessert.) Large fine flower. A lively china pink, tinged mauve, petals bordered silver. Extra. Not for sale.

**SAPPHO.** (Lemoine 1900.) Semi-rose type. Midseason. Large, compact, nicely formed flower. Pure mauve with silvery reflex, prominently tipped silver. Tall, vigorous grower. Free bloomer. L. D. \$1.00.

**SARAH BERNHARDT.** (Lemoine 1906.) Semi-rose type, late midseason, strong growing flowers of remarkable size and freshness, in huge clusters, full and almost double, of unusual perfection of form. Large petals that are imbricated in a peculiar fashion. Color apple blossom-pink with each petal silver-tipped, giving the appearance of a distinct border of pure white. Fragrance agreeable and penetrating; magnificent. This variety should not be confused with one of the same name sent out by Dessert, nor with Umbelleta Rosea, which is sometimes sold under the name of Sarah Bernhardt. L. D. \$4.00.

**SARAH CARSTENSON.** (Terry.) This, from what I have seen of it, I believe to be one of Terry's best flowers, if not his very best. A uniform lively bright pink. L. D. \$3.00.

**SIMONNE CHEVALIER.** (Dessert 1902.) Very large flower. Globular, compact, pale lilac rose, tinged salmon, with center flecked with crimson. Very early. Strong grower and free bloomer. An extra good variety. L. D. \$2.00.

**SOUVENIR DE L'EXPOSITION UNIVERSELLE.** (Calot 1867.) Rose type, late midseason. Very large, flat flower of violet-



rose, with silvery reflex and distinctly tipped silver; fragrant; free bloomer, with spreading habit. L. D. 50 cents.

**SOUVENIR DE LOUIS BIGOT.** (Dessert 1913.) Very large, convex bloom with imbricated petals. Color a brilliant bengal rose, slightly tinged carmine at the base, turning to a salmon pink. L. D. \$7.50.

**STANDARD BEARER.** (Hollis 1906.) A high built, globular, compact bomb. Uniform light violet rose. Medium tall, strong, stiff stems; very free bloomer. Resembles Madame Ducl, but twice as large. Not for sale.

**STRASSBURG.** (Goos & Koenemann 1911.) Very large bloom of exquisite form. Flowers very compact. Delicate lilac-rose. Not for sale.

**SULLY PRUDHOMME.** (Crousse 1898.) Large, flat, medium compact, rose type. Uniform pale hydrangea pink, changing to milk white. Fragrant. Midseason. A choice variety. Not for sale.

**SUZETTE.** (Dessert 1912.) A pretty flower of fine shape. Bengal rose, slightly tinted carmine purple. Petals interspersed with golden stamens. Strong habit. L. D. \$4.00.

**THERESE.** (Dessert 1904.) Rose type. Flowers of enormous size, produced in great quantities on stout stems. Color the most delicate rich satiny-pink, with glossy reflex. Generally conceded to be Dessert's best production. The last word in peonies. L. D. \$6.00.

**TOURANGELLE.** (Dessert 1910.) Rose type, late midseason. This is a vigorous grower, bearing large flat-shaped flowers, long stems, color pearly-white overlaid with delicate mauve and with shades of La France rose. Attractive and good. L. D. \$7.50.

**TRIOMPHE DE L'EXPOSITION DE LILLE.** (Calot 1865.) A large, compact head, often seven inches in diameter. Uniform broad petals interspersed with stamens. Pale rose pink, minutely splashed with violet rose, guard petals fading to nearly white. Medium early. Very strong, vigorous grower and free bloomer. This is one of that wonderful type of peonies whose petals open into a horizontal position, as it were, from a central axis, and rise tier above tier until we have a blossom seven inches in diameter and three or four inches deep. L. D. 75 cents. Three-year clump, \$1.50.

**UMBELLATA ROSEA.** (Origin unknown.) Rose type, very early. Large flower, guards violet-rose, shading to an amber-white center. Very strong, upright grower and free bloomer. Delightful fragrance. L. D. 50 cents. Two-year clump, \$1.00.

**VENUS.** (Kelway.) Very large, compact crown, pale hydrangea pink, large petals. Tall, free bloomer. Popular variety. L. D. \$2.00.

**WALTER FAXON.** (Richardson.) Medium size globular, semi-rose. Uniform bright rose, deepening towards the center. A delicate and distinct color. Midseason. Extra fine. L. D. \$10.00.

**WELCOME GUEST.** (Hollis 1904.) Large, loose, semi-double. Bright rose, fading to rose white. Fragrant. Erect, tall, free bloomer. Midseason. Very good. L. D. \$3.00.

**WIESBADEN.** (Goos & Koenemann 1911.) Strong, upright grower and very profuse bloomer. A whitish flesh color changing to light rose. Petals intermingled with stamens. Very beautiful. Not for sale.

## Red Varieties

**ADOLPHE ROSSEAU.** (Dessert & Metchen.) Very large blooms. Semi-double. A deep purple garnet with metallic reflex. Tall, stiff stems. One of the best early dark reds. L. D. \$1.50.

**AUGUSTIN d'HOUE.** (Calot 1867.) (Syn. Marechal McMahon.) Bomb type, midseason. Extremely large, showy, perfectly built bloom; primary petals narrow and built up close and high. Color very deep, rich, brilliant, solferino-red or violet rose, with slight silvery reflex. Very large, very attractive and very good. L. D. 75 cents.

**AUGUST VILLAUME.** (Crousse 1895.) An extra large flower of magnificent form, very compact, globular, rose type. Uniform color throughout, a deep rich violet rose. Fragrant. One of the very best flowers when the year is favorable to it. Took first prize in its class at American Peony Show at Cleveland, Ohio, 1918. Late. Very good. L. D. \$1.50.

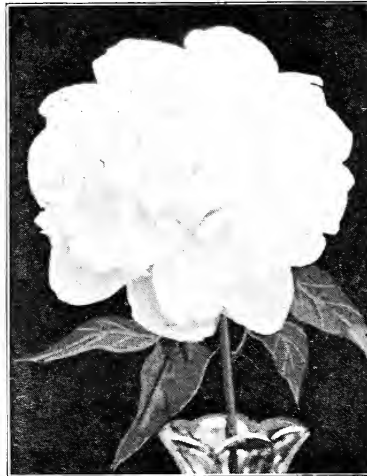
**AVIATEUR RAYMOND.** (Dessert 1915.) Large, beautiful flower. Very bright cherry red, shaded garnet and brilliant amaranth. Showy. Not for sale.

**CHARLES VERDIER.** Large rose type. Color deep rose with silver reflex. Very strong grower. Good bloomer. This is one of our most profitable late varieties. The last good kind of its color to bloom. Resembles a large rosebud. L. D. \$1.00. Four-year clump, \$4.00.

**CHARLOTTE CUSHMAN.** (Hollis.) Large, globular, compact rose type. Uniform light solferino-red. Fragrance good. Tall, erect grower. Not for sale.

**CHERRY HILL.** (Thurlow 1915.) Very deep garnet, with a peculiar sheen that makes the flower especially noticeable in a collection of varieties, similar in color. Stems very long and stiff. Silver medal

Massachusetts Horticultural Society, and "very highly recommended" by American Peony Society. One-year plant, \$25.00.



ELLA CHRISTIANSEN  
New Brand Peony

**CONSTANT DEVRED.** (Calot 1868.) Large, compact rose type. Color a dark carmine-rose. Fragrance good. Flowers borne on strong, erect stems of medium height. One of the very best of the brilliant reds. L. D. \$1.50.

**DELACHEL.** (Delache 1856.) Late midseason, compact, rose type. Deep purple, crimson reflex, a very sure and free bloomer. One of the best of the dark reds. L. D. 50 cents. Two-year clump, \$1.00.

**DOCTOR BOISDUVAL.** (Guerin 1850.) Rose type, late midseason, regular fine form, with large rounded petals, conspicuous among the reds for its brilliant, dark maroon coloring. Nothing finer in all red varieties. In color it closely resembles Delachel, but differs in the shape of its petals and formation of the flower. A rare landscape variety. L. D. \$1.00.

**DR. H. BARNSBY.** (Dessert 1913.) Large, very full, globular bloom. Solferino red, tinged purplish crimson, with a very pronounced bluish reflex. Strong stems. Habit of growth good. Blooms freely and in clusters. A very beautiful late variety. Not for sale.

**DR. H. VAN DER TAK.** (Nieuwenhuyzen 1916.) Large flowers produced in great profusion. Color wine red, with darker shadings towards the center. Edges of petals shaded somewhat lighter. First-class certificate of merit given by Pomological Society of Boskoop, Holland. Not for sale.

**FELIX CROSSE.** (Crousse 1881.) Large, compact. Deed rose red. Fragrant. Strong, robust grower. Free bloomer. Called by many growers the best one-color red in cultivation. Medium season. L. D. \$1.00. Three-year clump, \$3.00.

**FRANCOIS ORTEGAT.** (Par. 1850.) Large flower of semi-rose type. Dark amaranth red, showing stamens. Plant of medium height. Midseason. L. D. 50 cents.

**FRANCOIS ROUSSEAU.** (Dessert 1909.) Flower rose shaped. An intense brilliant velvety red, showing stamens among the petals. Erect. Medium height. Early. L. D. \$4.00.



MYRTLE GENTRY  
New Brand Peony

**FULGIDA.** (Parmentier 1850.) Loose, semi-double. Rose-magenta, with very prominent silver reflex. Plant of medium height. A single flower held rigidly erect on stiff stems. Midseason to late. Fine for cutting. L. D. 50 cents. Three-year clump, \$1.00.

**GENERAL DAVOUST.** (Crousse 1898.) Large, globular, rose type. Purplish red. Very tall, strong stem, vigorous free bloomer. L. D. \$1.00. Three-year clump, \$2.50.

**GENERAL DE BOISDEFRE.** (Crousse 1896.) A large, compact, globular bomb. Very dark crimson. An extra good sort, of strong, erect habit. Fragrant. Late. Not for sale.

**GEORGE WASHINGTON.** (Hollis 1904.) Large, flat, loose, semi-rose type. Uniform dark crimson. A strikingly brilliant color which always attracts attention of visitors. Plant of medium height. Erect grower. Midseason. L. D. \$1.50.

**GLOIRE DE TOURAIN.** (Dessert 1908.) Medium compact bomb type. Dark carmine rose. Very fragrant. Tall, erect, strong grower. Very late. Extra. Not for sale.

**KARL ROSENFELD.** (Rosenfeld 1908.) Very large, globular, compact, semi-rose type. Dark crimson. Very strong, tall, compact grower and free bloomer. Midseason. A very brilliant and striking variety. Slightly fragrant, very agreeable. Splendid keeper as cut flower. Strong one-year plant, \$3.00.

**LA FONTAINE.** (Dessert 1893.) A very large flower. Globular, semi-rose. Light crimson with prominent stamens. A tall, erect, strong growing plant. Midseason. One of the good reds. One-year plant, \$2.00.

**LA SUBLIME.** (Parmentier 1850.) It is very fine, tall, floriferous crimson. In good demand. Slight and agreeable fragrance. L. D. \$1.00.

**L'ECLÉANTE.** (Calot 1860.) Bomb type, midseason. Flowers very double and full, color deep, brilliant, velvety crimson. Every flower standing up straight and erect, well above the foliage. An attractive variety. One-year plant, 75 cents.

**LORD KITCHENER.** (Renault 1916.) Bomb type. A very early bright red. Guard petals prominent, enclosing a medium sized, loosely arranged bomb of the same color. Valuable because early. L. D. \$4.00.

**LOTTIE COLLINS.** (Kelway.) Flower of good size, semi-rose type. A dark crimson with a black reflex. Very strong grower. A distinct color. Late. L. D. \$1.00.

**LOUIS VON HOUTH.** (Calot 1867.) A medium sized flower of semi-rose type. Color carmine rose, tipped silver with fiery reflex. Fragrant. Medium height and habit. Late. L. D. 50 cents.

**MADAME BUCQUET.** (Dessert 1888.) Large, loose, semi-rose. A uniform, very large crimson. A strong, upright grower of medium height. Very free bloomer. Midseason. A very good red. L. D. \$1.00.

**MADAME GAUDICHAU.** (Millet 1909.) Very dark brilliant crimson. Nearly as dark as M. Martin Cahuzac, a better bloomer and a better plant. A strictly first-class red. L. D. \$10.00.

**MARECHAL VALLIANT.** (Calot 1864.) Extra large, compact, globular rose type. Dark mauve rose. Very tall plant, with coarse stem which fails to support the heavy bloom. Very late. A good variety. L. D. 75 cents. Three-year clump, \$1.50.

**MARQUIS C. LAGERGREEN.** (Dessert 1911.) Brilliant cherry red with darker shadings. Flowers of fine form and borne in clusters on strong, stiff stems. A splendid landscape variety, as it is a wonderful bloomer. Midseason. L. D. \$4.00.

**MEISSONIER.** (Crousse 1886.) (Syn. American Beauty.) Bomb type, midseason. Very brilliant crimson, full double flowers on wiry stems. The coloring is wonderfully rich and brilliant. In the Chicago cut flower market this peony is known as the American Beauty on account of the resemblance in color to the rose of that name. Also known as Monsieur Crousse. A grand cut flower. Valued chiefly as a cut flower bloom. L. D. 50 cents. Two-year clump, \$1.00.

**MONSIEUR KRELAGE.** (Crousse 1882.) Semi-rose type. Dark solferino-red with silvery tips. A very unusual color. Large flat flower with stamens prominent among the petals. Slightly fragrant. Strong, upright, free bloomer. Midseason. Very fine. L. D. 75 cents. Three-year clump, \$1.50.

**MONSIEUR MARTIN CAHUZAC.** (Dessert 1899.) Semi-rose type, midseason. Large, full, massive, well formed flowers; perfect solid balls of deep maroon, with garnet hues and brilliant luster. Good, erect habit, free bloomer. In great demand by those who are making collections to include all shades and want the extremes. L. D. \$4.00.

**OFFICINALIS RUBRA.** A large, round bloom of vivid crimson. This is the old deep bright red peony of the old-time garden. Earliest of all good peonies. Very desirable in this latitude, as it is generally in bloom on Decoration Day. The red "piney" of our grandmothers' gardens. As good as the new varieties and earlier. Nothing to take its place. L. D. 75 cents.

**PIERRE DESSERT.** (Dessert.) Large, medium compact, semi-rose type. Dark crimson purple, silvery tipped. Medium habit. One of the earliest dark reds. L. D. \$1.50. Three-year clump, \$3.00.

**POTTSII.** (J. Potts 1882.) Loose rose type. Intense, with dark, crimson petal, intermingled with prominent golden stamens. Fragrant. Medium height. Midseason. One of the most satisfactory crimsons. Can always be depended upon. L. D. 50 cents. Three-year clump, \$1.50.

**PRESIDENT ROOSEVELT.** (Holland 1905) Semi-rose type, midseason. It is a deep, rich, brilliant red in color. A very satisfactory, showy red. L. D. \$1.50.

**PRINCE PROSPER D'ARENBERG.** (Parmentier 1845.) Lovely amaranth crimson. This is an old though popular variety and has stood the test of time. L. D. \$1.00.

**PURPUREA SUPERBA.** (Delachi 1855.) Large, compact bomb. Uniform dark rose. Tall; free bloomer. Midseason. The tallest red. A splendid variety to use as a background for lower growing sorts. L. D. 75 cents. Three-year clump, \$1.50.

**RACHEL.** (Terry.) Medium size, semi-rose type. A bright, dark crimson. Plant of medium height, strong, profuse bloomer. This variety generally produces a single blossom on a stem, which makes it a good commercial sort. One of the brightest and best of all the crimsons. Midseason. L. D. \$1.00. Three-year clump, \$2.50.

**RUBRA SUPERBA.** (Richardson 1871.) Rose type. Very late. A beautiful rich brilliant dark crimson. Without stamens. A large full double. Fragrant. One of the very best keepers of the late varieties. It is by all means the best late dark red, and every collection should have it. Rather a shy bloomer until the plants become well establish. L. D. 75 cents.

**VICTOIRE DE LA MARNE.** (Dessert 1915.) Attractive globular blooms of immense size. Velvet amaranth red, with silver reflex. L. D. \$5.00.

**WM. TURNER.** (Shaylor 1916.) A very dark crimson with a velvety sheen. Tall, strong grower. A fine flower. L. D. \$5.00.

Kansas City, Mo. "The peonies ordered of you came to hand in excellent shape. The packing was superb. Thank you."



HAZEL KINNEY  
New Brand Peony

## Japanese Varieties

Last year we purchased quite a collection of Japanese varieties, but as no description accompanied the plants, we are unable to offer them for sale. We list below the five varieties of which we are able to give descriptions. During the next blooming season we shall write our own descriptions in the field; and a fine list of these varieties, which are growing in popularity, may be expected in the next edition of our catalogue. We expect at that time to have sufficient stock to offer them for sale.

**FUYAJO.** (From Japan.) One of the newer peonies coming in from Japan. A very dark brownish maroon with velvety shading. The center petals are narrow and a dark crimson, veined and tipped white. The most striking Japanese peony on exhibit at the Cleveland National Show. One-year plant, \$5.00.

**MARGARET ATWOOD.** Very large, pure white flowers with deep golden center. Unusually large petals of heavy texture. Plant a strong, vigorous grower. The very best white Japanese peony we know of. Not for sale.

**MIKADO.** (World's Fair Japan Exhibit 1893.) Late dark crimson Japanese. Cup-shaped guard petals enclosing a flagree cushion of petaloid which are crimson edged and tipped with gold. One of the very best Japanese. L. D. \$3.00.

**TAMATBAKO.** (Japan.) Very large flower. Broad guard petals bright china pink surround a large tuft of golden filamental petals. A beautiful variety. Not for sale.

**TOKIO.** (Japan.) Large flower. Clear carmine pink guard petals, with silver reflex. Large central tuft of golden filamental petals. Extra good. Not for sale.

Morris, Minn. "The peony, 'Therese' which I ordered from you recently, arrived, and a very fine root it is."

Ionia, Mich. "I have just unpacked the peonies you shipped me several days ago. The roots were in first class condition, and I appreciate your sending such large, healthy clumps."

Dalton, Mass. "The peonies came today in fine shape and were large, fine looking roots."

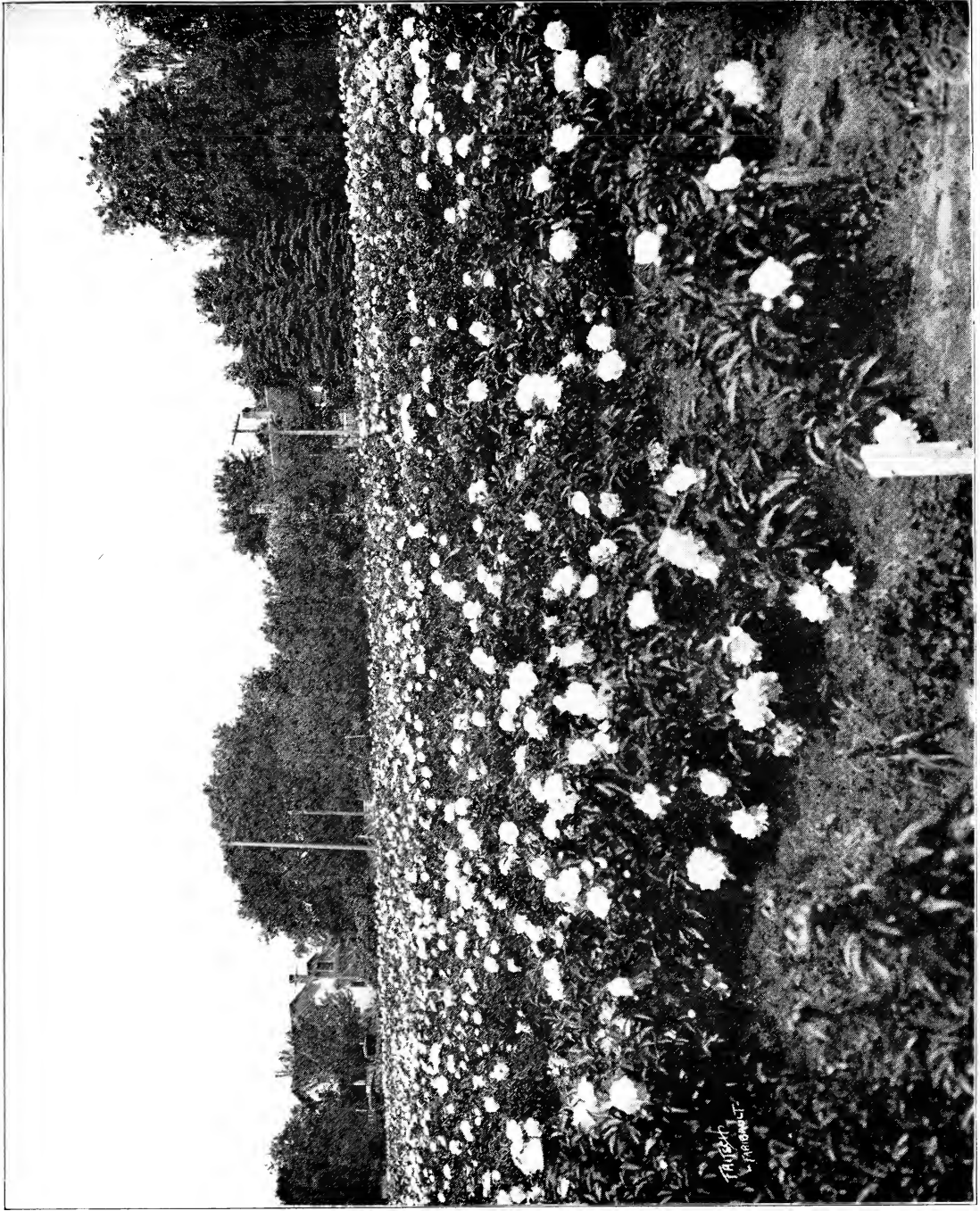
Rockford, Illinois. "I received my peonies in nice shape and am glad to say that they were very satisfactory in every way."

Detroit, Wis. "We wish to acknowledge receipt of the Mme. De Verneville peonies and thank you kindly for same. The roots were in tip-top condition."

Madison, Wis. "I hope to place another order with you next year, as the roots this year already planted were by far the best I ever had."

Washington, Iowa. "I received the Mikado this morning. A fine plant and in good condition. The peony was larger than I expected."

Duluth, Minn. "I must write to tell you how well my plants and bulbs sent me by you last fall are growing. The Eugenie Verdier peony is bursting out of the ground in three grand stems nearly an inch in diameter and seems to defy our cold spring weather when the frost limit is reached nearly every night."



A Bed of Two Year Old Plants, Mostly Brand Varieties, Season 1920



## Selected Iris

Although our specialty in flowers has for many years been the peony, and we have given to this flower most of our time and thought, still for a long time we have grown a great deal of iris; and during the last five or six years we have made many additions of new varieties to our collection.

The true garden lover wants his garden to be beautiful all the time. It is not necessary that every spot in it should be a constant blaze of color, but it must contain masses of bloom from April to November. We demand this even in Minnesota, where our summers are so short. Now there comes a time in the spring when the bloom of the early bulbs is gone, the tulips are passing, and the peonies have not come. Our gardens would then be bare if it were not for the iris. But this flower is more than a gap-filler. It is an old garden favorite because of its own peculiar charm and because it gives quick results and can be easily grown.

In recent years, however, there has been a wonderful growth of interest in the iris. This started in England and spread to America. Hybridizers in both countries have been busy. Seedlings can be raised, tested and propagated much more quickly than is the case with the peony; and hundreds of fine varieties have been introduced. The ordinary possessor of a home garden is just beginning to realize what the iris has become. Our iris fields this year were visited by hundreds of visitors while they have formerly attracted little attention.

They were not quite so colorful, did not so completely fill the eye, as did the great peony show that followed in quick succession with its larger fields and brighter flowers. They did, however, offer an even greater range of color. All shades, from the palest lavender to the deepest purple, and from the most delicate cream to the deepest gold, were seen. Then there were pure white, delicate blue, and deep blue, pink, rose, maroon, and bronze. Now, if never before, the flower justifies its name, iris, the rainbow.

Scarcely a variety furnishes a self-colored flower. Shadings, veining, or reticulations at least appear. And in many varieties the standards and falls furnish striking contrasts, such as pure white and purple, lavender and purple, light yellow and rose, gold and maroon, gold and purple, bronze and yellow.

The resemblance of the garden iris to the common wild flag is likely to lead to a wrong treatment of the iris. The flag is a water plant, while the iris will not do well unless a dry, sunny location is furnished. Given this and it is not exacting.

It can be planted in any convenient spot, but it produces a fine effect when large plantings are made on the sunny side of a hedge of tall shrubs. Lilacs and Spirea Van Houttei furnish an especially good background. All three come into bloom at the same time. The colors of the lilac harmonize with those of the iris, and the white of the spirea brings out their beauty. Iris and spirea combine beautifully as cut flowers. In a young bed of iris, gladioli bulbs may be scattered among the small plants to furnish a second season of bloom.

If iris is planted in August or September it will give first-class flowers the next year, but it can be safely planted at any season when the ground is open. The soil need not be worked deeply, and the top of the crown should come about to the surface of the ground. If there is any danger that water may at any time stand on the spot, ridge the soil up and set plants on the top of the ridge. Iris multiplies rapidly and should be divided and reset once in three or four years.

We do not recommend the planting of Japanese Iris in Minnesota. Our list includes varieties of the Iris Germanica, or the French fleur de lis, and of Iris Orientals, or Siberian Iris.



Row Upon Row of the Stately Iris in Our Nursery

## Descriptive List of Iris

To get the price per dozen, multiply the price of a single plant by ten.

In the following descriptions S. stands for Standards and F. for Falls.

**A. E. KUNDRED.** S. yellow-bronze tinged with magenta; F. Magenta-red tinged with bronze, reticulated yellow from center to base. Conspicuous orange beard. Fragrant. Glory strain. **\$1.25.**

**AMAS.** A beautiful variety with immense flowers. From Asia Minor. S. rich blue; F. gorgeous purple. 24 inches. 35 cents.

**AMERICAN BLACK PRINCE.** S. soft lilac purple; F. a velvety purple of the richest hue. 24 inches. 50 cents.

**ALBERT VICTOR.** S. soft blue; F. beautiful lavender. Large and fine. 40 inches. 25 cents.

**A. M. BRAND.** S. true golden bronze; F. maroon red, veined yellow, edged with bronze. Fragrant. Glory strain. **\$1.50.**

**ARCHEVEQUE.** S. a wonderful reddish purple; F. darkest velvety purple. 24 inches. **\$1.00.**

**ANNA FARR.** (Farr.) S. white, lightly bordered pale blue; F. pure white, pure blue marking at the base; immense flowers with very large petals of great substance. Heavy falls, producing an orchid-like effect. Distinct. 36 inches. **\$2.00.**

**ATROPURPUREA.** (Royal Purple.) A splendid large, very free flowering, pure, rich royal purple without the slightest shadings, a splendid companion to plant with Sherwin-Wright, the rich purple of Atropurpurea with the golden yellow of Sherwin-Wright forming a beautiful color combination. 35 cents.

**AUREA.** S. and F. rich chrome-yellow. Large flowers of perfect form of the purest yellow. 2 feet. 25 cents.

**A. W. BLAKELY.** S. yellow tinged with pink; F. yellow with a dividing line in center; lighter border. 28 inches. 75 cents.

**BRIDESMAID.** S. white, shaded silvery lilac; F. reticulated at the base and slightly frilled, soft lilac. Delicate and pretty. 25 cents.

**BLUE JAY.** (Farr.) S. bright, clear blue; F. intense dark blue. 30 inches. 50 cents.

**CAPRICE.** 30 inches. S. & F. light purple blending to soft lavender at base of petals. Very fine. 50 cents.

**CHELLES.** S. bright golden yellow; F. bright red-purple. Beautifully reticulated. Very showy. 15 cents.

**CHERION.** 30 inches. Midseason S. smoky lavender; F. violet, veined white. 15 cents. **\$1.00 dozen.**

**CHESTER HUNT.** (Farr.) S. celestial blue; F. dark marine-blue, bordered pale blue, shading at base; stigmas light blue. 27 inches. 75 cents.

**CLARENCE WEDGE.** S. heliotrope tinged with yellow with lighter edge; F. purple-red. It has a margin which is light bronze on one side and wider and very light yellow on the other; veined white at the base, and a light line dividing the center. One-half the fall is shaded darker than the other. This peculiarity of the border is characteristic with every fall. Conspicuous orange beard. Glory strain. **\$1.25.**

**CORDELIA.** S. rosy lilac; F. velvety crimson, edged rose. Exceptionally beautiful. 24 inches. 50 cents.



**DARIUS.** S. rich canary-yellow; F. lilac, margined white, with rich orange beard. One of the most distinct and beautiful. 20 inches. 25 cents.

**DOROTHEA.** Milky white, tinged lilac. An early, very profuse blooming sort. When in bloom resembles very much a double Japanese iris. 30 cents each.

**EDITH.** 22 inches. Midseason. S. light blue; F. deeper blue, veined white. 10 cents.

**FAIRY.** 36 inches high. A wonderful iris. White, petals bordered and suffused with the faintest tracings of the most delicate blue. A dream. 20 cents. \$2.00 dozen.

**FLAVESCENS.** 30 inches. Midseason. S. cream color; F. a slightly deeper yellow. This is one of the most satisfactory of all Iris. It may not have the delicate beauty of some, but is strong, healthy and robust, and always with you. Always does well. 15 cents. \$1.00 dozen.

**FLORENTINA ALBA.** 30 inches. Very early. S. white! F. white, tinted porcelain. A large, beautiful and very fragrant flower. 10 cents.

**FREDERICK.** S. pale lavender; F. lavender barred with brown. Very free. One of the most effective for massing. 15 cents.

**FRYER'S GLORY.** S. golden bronze tinged with crimson; F. bright velvety maroon, veined light yellow from center to base. Orange beard. \$5.00 each.

**GAGUS.** A.M., R.H.S. S. light, clear yellow; F. crimson, reticulated white and yellow, with narrow yellow border. 35 cents.

**GERTRUDE.** 34 inches. S. and F. same shade, rare violet blue. Unexcelled for house decoration where a clear uniform shade is desired. 20 cents.

**GOLDEN PLUME.** S. rich golden yellow; F. chestnut-brown, edged and reticulated yellow. Yellow beard. This is an improved Honorabilis. The plant is equally as thrifty, and is a few inches taller and very even height when in bloom. This is the variety that Mr. Wedge spoke so highly of after seeing it in bloom last season. 30 cents. \$3.00 dozen.

**G. W. PEAKE.** S. yellow shaded crimson-bronze, lighter yellow at base; F. velvety maroon red, edged with bronze-yellow, reticulated at base. Conspicuous orange beard. Fragrant. Glory strain. \$1.25 each.

**HARLEQUIN MILONIUS.** 30 inches. Late. S. white, splashed violet; F. lavender. A very striking variety. 15 cents.

**HER MAJESTY.** 32 inches. Late. S. soft rose; F. red, deeply veined. An extra fine variety, the general color effect of which is pink. 25 cents.

**IGNATI.** 30 inches. Midseason. S. and F. a delicate blue. This is another of the very robust. Always a faithful variety, even under the most trying conditions. 15 cents.

**IRIS KING.** S. clear lemon-yellow; F. rich maroon, bordered yellow. Large flowers; brilliant colors. Very fine. 50 cents.

**ISOLENE.** 36 inches. S. silvery lilac, 4 inches long; falls three and three-quarter inches long, and of the most beautiful mauve color. One of the most beautiful of all Iris. 70 cents.

**JACQUESIANA.** S. bright coppery crimson; F. rich, deep maroon. Very fine variety. 25 cents each.

**JOHAN DE WITTE.** 24 inches. Midseason. S. bluish violet; F. deep purple, veined white. 15 cents; \$1.00 dozen.

**JUNIATA.** (Farr.) S. and F. clear blue, deeper than Dalmatica. Tallest of the bearded irises. Large, fragrant flowers. 50 cents.

**KOCHIL.** S. and F. both of the deepest, richest purple. One of the very darkest of all Iris. Should be in every collection. 24 inches. 15 cents. 50 cents dozen.

**LOHENGRIIN.** 32 inches. S. and F. soft mauve, shading nearly to white. A very tall, strong growing variety, with wide leaves. One of the best of the Pallidas. 50 cents.

**LORD GREY.** S. and F. a clouded rose-fawn. 2 feet. 25 cents.

**LORD SALISBURY.** 40 inches. S. amber white; F. dark violet. 15 cents.

**LORELY.** S. canary yellow; F. creamy white with purple reticulation, blending into purple blotches near the edges. Ends of petals bordered deep canary. Fine. 35 cents.

**MADAM CHEREAU.** 42 inches. Midseason. S. and F. pure white with clear frilled lavender edge. This is undoubtedly the best to date of the frilled varieties. Fine. 20 cents.

**MARY GARDEN.** (Farr.) S. pale yellow, flushed pale lavender; F. cream-white, minutely dotted and veined maroon; stigmas clear yellow. 28 inches. 75 cents.

**MASSASOIT.** (Farr 1916.) S. and F. a very distinct shade of metallic, Venetian blue, quite difficult to describe accurately. 75 cents.

**MITHRAS.** S. light yellow; F. bright wine red with a narrow border of deep yellow. 50 cents.

**MONSIGNOR.** 28 inches. Late. S. richest satiny velvet; F. deep purple-crimson. Very large and one of the very best. 50 cents.

**MRS. ALAN GRAY.** One of the most beautiful of Iris. General color effect pink. Very fine for massing. Often gives a second crop of bloom in August. 75 cents.

**MRS. H. DARWIN.** 28 inches. S. pure white; F. white, slightly veined. One of the best whites. 20 cents.

**MRS. NEUBRONNER.** 28 inches. S. and F. rich, clear, golden-yellow. The best all yellow. 20 cents.

**MRS. S. H. SMITH.** S. rich golden yellow; F. same color, shaded light yellow in center, and veined dark yellow. Yellow beard. 24 inches. 75 cents.

**MRS. W. E. FRYER.** S. white, shaded hellotrope; F. purple-crimson, bordered a lighter shade; white veins from center to base. Orange beard. 32 inches. \$1.50.

**NAVAJO.** (Farr.) S. light bronzy yellow, shaded lavender; F. deep maroon, heavily veined white and yellow; stigmas yellow; deep orange beard. Large, distinct, beautiful. 20 inches. \$1.00.

**NIEBELLUNGEN.** S. fawn yellow; F. violet purple with fawn margin. One of the very best iris in its class. 50 cents.

**ORIENTALIS (SIBERIAN) BLUE.** Intense brilliant blue flowers. Flowers small but very striking and beautiful. Planted in a mass, gives a fine spot of color. One of the very best for cutting. 15 cents.

**ORIENTALIS (SIBERIAN) WHITE.** Pure white; fine companion for preceding. 15 cents.

**OTHELLO.** S. rich blue; F. deep dark velvety purple. A handsome clean-cut iris. 25 cents.

**ORIENTAL.** S. clear blue; F. rich royal blue, with heavy bright orange beard, forming striking contrast. 75 cents.

**ORIFLAMME.** 30 inches. S. bright blue; F. dark purple. The petals of this variety are very broad and long. The largest bloom of all Iris. \$1.00.

**OSSIAN.** (S. light yellow; F. bronze at the base, shading to a bright purple at the tip. A very distinct and beautiful Iris. 50 cents.

**PALLIDA DALMATICA.** One of the finest of the Germanica type. Plant strong habit, often growing four feet high, with very large flowers. S. delicate lavender; F. lavender shaded blue. Fine for massing. 30 cents.

**PALLIDA SPECIOSUM.** S. dark lavender with lighter shadings; F. lavender, shaded light purple. 30 cents.

**PARC DE NEULLY.** S. and F. navy blue of reddish tinge, with an everchanging effect. 50 cents.

**PARSIANA.** S. mottled lavender pink; F. creamy white center. Very heavily bordered with lavender pink. 28 inches. One of the striking Iris. 75 cents.

**PERFECTION.** 30 inches. midseason. S. lavender, flecked with deeper shade; F. rich velvety lavender. A very fine iris. Has a wonderful amount of bloom to the stalk. Fine. 35 cents.

**POCAHONTAS.** Very large orchid type of flower, with elegantly frilled petals. S. and F. pure white. Standard faintly bordered pale blue. 75 cents.

**POWATAN.** (Farr.) (Syn. Aurora.) S. light bishop-violet with deeper border; F. deep purple, shaded crimson. Large, horizontal spreading flower. 38 inches. 75 cents.

**PROSPER LAUGIER.** 30 inches. S. fiery bronze; F. velvety ruby purple. Of all the standard varieties this is undoubtedly the

most striking and distinct. Very fine. 35 cents.

**QUEEN ALEXANDRIA.** 30 inches tall. S. lavender; F. pale purple. One of Farr's choicest varieties. Very fine. 50 cents.

**R. C. ROSE.** S. purple bronze, shaded yellow at the base; F. reddish purple, light yellow. Orange beard. Fragrant. Very free bloomer, and one of the best of plants. 28 inches. 60 cents.

**REV. A. H. WURTELLE.** S. purple-bronze; F. rich velvety royal purple, lighter at the edge, reticulated light yellow at the base, and veined brown. Yellow beard. Fragrant. 18 inches. \$1.50.

**RHEIN NIXE.** S. pure white; F. raspberry purple, edged white. A splendid

grower that is always to be depended on. One of the finest and most striking in the whole list. 35 cents.

**ROSE UNIQUE.** S. and F. delicate blush rose. A very early flowering iris much admired by everybody who sees it. 50 cents.

**RUBELLA.** S. rose-lilac; F. crimson purple. 3 feet. 15 cents.

**"SHERWIN-WRIGHT."** Golden yellow. In this grand novelty we have what has long been wanted, a good vigorous growing, free-flowering, golden yellow Iris Germanica, the few yellow sorts now in commerce being deficient in these important characteristics. The plants grow about two feet high; the flowers, which are produced in lavish profusion, are of splendid texture and stand well above the foliage, and

are of a rich golden yellow without markings or shadings. 50 cents.

**TINAE.** Deep blue, shaded lilac. Fine, large flower. 40 inches. 25 cents.

**VELVETEEN.** Standard canary yellow; falls creamy white, heavily veined with purplish maroon. 35 cents.

**VIOLACEA GRANDIFLORA.** S. rich blue; F. violet blue. Extra fine. 50 cents.

**W. F. CHRISTMAN.** S. white, tinged violet, while some are flaked and reticulated with violet on inner sides; F. purple, reticulated white, with light border. Yellow beard. Fragrant. 22 inches. Free bloomer, and very even height when in bloom. \$1.25.





## Article Prepared for the Bulletin of Peony News

Discharged from the Union Army for permanent disability, my father returned home to Wisconsin in 1863. Impaired health kept him from working for some time. But it was not long after the close of the Civil War before he engaged in the sale of nursery stock, and the nursery business became his life work.

Removing to Minnesota in 1867, after several moves he finally settled down upon those grounds which now for over fifty years have been devoted to the general nursery business.

For the first twenty-seven years as a nurseryman he spent much of his time, at first afoot, but later on with horse and buggy, travelling over the state selling nursery stock. In this way during the many months of June that he was on the road he ran across quite a number of good peonies blossoming in the gardens of the many good farm wives where he stopped.

The Minnesota climate produces wonderful peonies. Cool, moist fore parts of June when the peony blooms with us, are the rule. These conditions are ideal for the flower, and with us the peony is surely the flower of flowers.

As my father found a good sort here and there in his travels, he purchased it, and in time in this way acquired quite a collection. Thus *Fragrans*, *Whitleyi*, *Delicatissima*, *Festiva Maxima*, *Humei*, *Delachei*, *Edulis Superba*, and many other sorts of like quality came to us.

As I grew up, I followed in my father's footsteps and travelled with horse and buggy over the prairies and through the great woods of Minnesota selling nursery stock. And I, too, was ever upon the lookout among the great plants of peonies I so often saw for some variety we did not have at home. I remember very well first beholding a great root of *Rubra Officialis* in full bloom during one cold, very damp June. I thought I had never seen such a flower. I purchased the root at \$5.00, which was about all the money I had at that time. In September I travelled eighty miles to dig and bring home that one peony root.

In 1889, I think it was, my father purchased of Ellwanger & Barry a dozen varieties which he selected from their catalogue, and when these sorts bloomed, from that time on he was under the spell of this wonderful flower. After that time his collection rapidly increased, until by the fall of 1899, as far as number of varieties was concerned, he had one of the greatest collections in America.

Father was the pioneer nurseryman of Minnesota. His early days in the nursery business were those years when the horticulture of Minnesota was passing through the experimental stages. All varieties had to be tested out for hardiness, and most varieties were found wanting. He gave much of his time searching for varieties of apples suitable to our climate, and finally came to the conclusion that a satisfactory stock for Minnesota could be produced only by growing quantities of seedlings from the hardiest varieties he had, and selecting from these.

Working along these lines, as he did, it was natural that when he once became really interested in the peony, he should try to improve that, as he had the apple.

In the spring of 1899 he had a collection of about three

hundred good sorts, the best he could acquire. These were planted in four different beds, most of the varieties running about three large plants to the variety. In this collection were about twenty choice singles. No hand pollenizing was done. The bees and the winds attended to that. That fall seed was saved from the entire lot, and late in the fall, planted. This seed being allowed to dry did not germinate until the spring of 1901. In June, 1902, two plants blossomed.

Growers of seedling peonies may question this statement; and, we must acknowledge we ourselves have never since secured such results. We account for them by these facts: The seeds were planted four inches apart in rows which were 2½ feet apart. The plants could thus develop and bloom without any transplanting. As quick as the seeds germinated the plants were given intensive cultivation with horse and cultivator. The soil was very rich. These conditions produced a wonderful growth the year of germination and the yearling plants at the end of the first growing season were as large as the average three-year seedling under the usual methods of handling.

The next season, that of 1903, the seedlings came strong and robust and almost all of them bloomed. This was truly a wonderful sight. The world's most beautiful flower bed is a bed of well-cared-for seedlings in full bloom. Each plant is crowned with wondrous large flowers, and the blooms of each plant are different from those of all its neighbors. Were the bed to contain a hundred thousand roots no two of these would produce blooms exactly alike. All would be different from one another.

This season of 1903 to us was truly a feast of flowers. We checked and rechecked that bed of seedlings continuously it seemed from the time the first kind opened until the last faded petals fell. We were in it with the coming of the sun, during the heat of noontide, and until dark.

From the thousands of seedlings in this bed we selected about forty as worthy of trial. These were divided in September and planted out for further trial. All the balance of the doubles of this seed bed were lifted that same September, divided, planted out, and staked, that we might not by accident have classed as poor some variety that afterwards we would wish to keep. From this lot of seedlings at first classed as second grade, I have since selected four very fine varieties.

From the forty selected as good in the first place, after years of testing we finally find that we have about ten very choice sorts.

Judgment can hardly be passed upon a new seedling inside of ten years after the planting of the seed. A new peony to be of value must in the first place possess great beauty; its habit in growth must be good; it must be a profuse bloomer; it must do well on many soils and in many different locations; and all of these things must come true every year. It takes fully ten years to test these things out. This is the test we give all our seedlings.

This first bed has given us such sorts as Archie Brand, Charles McKellip, Chestine Gowdy, E. B. Browning, Frances

Willard, Henry Avery, Judge Berry, Longfellow, Lora Dexheimer, Mary Brand, Martha Bulloch, Phoebe Cary, Richard Carvel, and William Penn.

The results have been so gratifying to us that we have been compelled to keep on planting seed. And so now each

year we plant from a quart to a peck of carefully selected seed; in the fall of 1917 making our largest planting of some sixteen quarts. And by so doing each year, we expect to have new candidates for peony honors coming on continuously in our gardens. A. M. BRAND.

## Article Prepared for the *Minnesota Horticulturist*

About the first thing I can remember, as I look back over the years that are past, is my father's field of peonies, and of a man standing at a table with a large peony clump before him cutting it up into divisions. I remember wondering how such beautiful flowers could come out of such an ugly, dirty root. The bright little eyes, some red, some white and others pink, interested me, and boy fashion I put many questions to the man about them. And then my father came by and noticing my interest in the matter, though a busy man, stopped and explained to me the process of dividing the roots.

That was forty years ago, but from that day to this I have watched with ever-increasing interest the growth and handling of peonies. I was but a small boy then, but I remember my father gave me his big pruning knife, and under his guidance I divided my first peony. And I thought I had done fairly well, for he patted me on the head and said it was well done, and that some day I would make a nurseryman.

\* \*



Four Year Old Plants of Mons. Jules Elie

1920 Field Notes

Although I have been working with the peony for over forty years, each blooming season brings new discoveries and fresh plans for the future. As this catalogue is nearly through the press the printer tells me that I must furnish another page of copy. On the spur of the moment I am assuming that some of our readers may be interested in the following quotations from my June, 1920, note-book. In most cases I have added brief explanation.

*"Found at last. A good late white."*

For a long time I have recognized the lack of a good all-around late white peony. Marie Lemoine has always been considered the standard of good late whites. But this variety, although producing a very beautiful flower, has a very poor root. It is so subject to disease that in some soils it proves a complete failure.

Among the new seedlings from our second trial bed are two white varieties that we are so thoroughly convinced to be strictly first class that we have given them names, and which are as late as Marie Lemoine.

They are two beautiful pure whites of distinctly different types. One, Mrs. A. M. Brand, is an exact counterpart of the great peony Mary Brand except in color. The other, Mrs. Frank Beach, is a great large flower resembling more than anything else I can think of the splendid show blooms I have seen of Kelway's Glorious.

A third we have not named, as we have not had it under test long enough, but it bids fair to be one of the greatest white show flowers grown. It is as late as Marie Lemoine, and of the type of Le Cygne; and as a cut flower it will hold up a week in water.

*"Wanted: A good late red."*

We have one good late red, Richardson's Rubra Superba. We do not look for anything more beautiful than this flower; but as a rule this variety is a shy bloomer, giving a full crop not oftener than once in four years. What we are working for is an annual profuse bloomer which shall give us flowers as late and as good as Rubra Superba.

*"Blood tells."*

From a bed of seedlings that came into blossom this year we have selected one plant which we believe will prove a first class peony. From a bed of the same size that came

into bloom three years ago we selected one hundred and ten plants for further trial; and of these we this year reselected six varieties as undoubtedly of the first rank, while twenty-one others we consider worthy of further trial. The plants in this bed were produced from seed gathered from a bed of varieties carefully selected for the purpose of producing seed.

*"Type of a flower cannot be judged from one year's performance."*

Young plants of the finest varieties often produce very inferior flowers. A one-year plant of the \$100 peony, Mrs. Edward Harding, this year produced a bloom of poor form and no larger than a rose. Unfavorable weather conditions may injure a plant and cause it to produce poor flowers for one or even two years.

We have, of course, long known these facts, and when we occasionally receive some such letter as the following from a customer, "The peony I received from you last fall bloomed this spring. I don't think much of it," we reply, "Wait until the third year when the type will be established."

But we must confess we were at first much surprised when a large field, which for the first two years of its life had given us very poor flowers, produced this spring great numbers of the most perfect flowers.

A review of the history of the bed made the reason of this clear. It was planted in September, 1917. At the time of planting there was no moisture in the ground. It was like a bed of ashes. No rain fell before winter set in. The temperature fell to twenty-two below before snow came. In the spring 25 per cent of the plants in this field were dead. Other fields throughout the Northwest planted at the same time suffered as bad or worse. The bloom on this field of three acres amounted to nothing the first year. The second year the plants had begun to recover, but they did not give typical blooms until this, the third year.

Le Cygne and Sarah Bernhardt are two varieties that are almost sure to give typical blooms on one-year plants.

*"A sure enough ruffled peony at last!"*

Fluffy, frilly, feathery are some of the adjectives suggested by a bouquet of one of our new varieties. The coloring, too, is delicately beautiful. We do not yet offer it for sale; but if it lives up for two years more to its past performance, look for something unusual and beautiful.

Greensburg, Pa. "Enclosed herewith please find my check in payment for peonies which arrived about a week ago and at a time when I was in the East. I opened up the box yesterday and found them in fine shape, and I also found them to be very fine roots, for which I am deeply obliged to you."

thank you for the extra root; also the fine roots."

Ridgway, Pa. "I received the peony roots ordered from you recently. They were in fine condition and so large with so many eyes. The packing too was excellent."

Clinton, Wis. "The peony roots were received in fine condition and planted the day received. I have 33 varieties listed in your catalog, not including the roots received this season, and am very much interested in peony planting. I

Ann Arbor, Mich. "Peony roots were received last Monday. They were certainly a fine lot. I also wish to thank you for the fine gift. I appreciate it very much and have given it a special place in the peony garden."

Lancaster, Pa. "The peony roots you sent me on the 12th inst. were received the evening of the 15th in good condition. They showed careful packing, nice, fresh, strong, healthy looking roots, and am very much pleased with them. I thank you very much for the extra one."

Putnam, Conn. "The balance of the order for peonies was received Saturday night following their shipment Monday. I have to thank you for fulfilling your promise as to the quality of stock. It is superior to anything I ever before secured."

### My Last Vision of Beauty

*It is a terrible thing to be suddenly stricken blind. My sight gradually faded and then went out altogether. But the last thing on which my vision rested was the most beautiful Peony I ever saw. It was Richard Carvel. In color it was glowing, radiant red, which has made a lasting impression on me. I do not know that my eyes ever rested on a more beautiful flower. It was very remarkable in many respects. Last spring all through the West and Northwest there was a failure of blooms. I had eight of these and they blossomed gloriously. They were planted late in the fall but not one of them failed. One plant I cut in two and each little root had a fine flower. They were exceedingly fragrant. They were also the earliest I ever knew, coming into bloom May 18th. The rest of them bloomed about the 21st. These were introduced by Mr. Brand. Whether he has any for sale now I do not know. I am sure however that the stock is very limited. I consider it the cheapest Peony ever yet offered at \$6 each.*

C. S. HARRISON

York, Neb., July 31st, 1918

Index

Admiral Dewey .....	29	Elizabeth Barrett Browning .....	19	Jennie Lind .....	31
Adolphe Rousseau .....	35	E. G. Hill .....	30	Jessie Shaylor .....	27
A. J. Davis .....	23	Elie Chevalier .....	30	John Hancock .....	31
Alba Sulfurea .....	26	Ella Christenson .....	11	John Richardson .....	31
Albert Crousse .....	29	Ella Wheeler Wilcox .....	19	Jubilee .....	27
Albiflora .....	26	Elwood Pleas .....	30	Judge Berry .....	20
Alexander Dumas .....	29	Emma .....	30	Karl Rosenfield .....	36
Alexandriana .....	29	Enchantress .....	26	Kelway's Glorious .....	27
Alice de Julvecourt .....	29	Etta .....	30	Kelway's Queen .....	31
Alfred de Musset .....	26	Eugene Bigot .....	30	La Coquette .....	31
Alsace Lorraine .....	26	Eugene Verdier .....	30	Lady Alexander Duff .....	31
Amanda Yale .....	19	Eugenie Verdier .....	30	Lady Beresford .....	31
Andre Lauries .....	29	Evangeline .....	30	Lafayette .....	32
Archie Brand .....	19	Exquisite .....	30	La Fee .....	32
Asa Gray .....	29	Fanny Crosby .....	19	La Fiancee .....	32
Augustin d'Hour .....	35	Faribault .....	20	La Fontaine (Dessert) .....	36
August Villaume .....	35	Faust .....	30	La Fontaine (Lemoine) .....	32
Aunt Ellen .....	23	Felix Crousse .....	35	La France .....	32
Aurore .....	26	Festiva .....	26	La Lorraine .....	27
Avalanche .....	26	Festiva Maxima .....	27	Lamartine .....	32
Aviateur Raymond .....	35	Floral Treasure .....	30	La Perle .....	27
Baroness Schroeder .....	26	Florence Nightingale .....	19	La Rosiere .....	27
Beauty's Mask .....	29	Fragrans .....	30	La Sublime .....	36
Ben Franklin .....	23	Frances Shaylor .....	27	La Tendresse .....	27
Berloiz .....	29	Frances Willard .....	19	La Tulipe .....	27
Biebrich .....	29	Francois Ortegat .....	35	L'Ecletante .....	36
Blanche Cire .....	26	Francois Rousseau .....	35	Le Cygne .....	27
Boule de Neige .....	26	Fulgida .....	36	L'Indispensable .....	32
Brand's Magnificent .....	23	Fuyajo .....	37	Linne .....	32
Canari .....	26	Galathee .....	31	Little Sweetheart .....	21
Candidissima .....	26	General Davoust .....	36	Livingstone .....	32
Carmen .....	29	General de Boisdeffre .....	36	Lord Kitchener .....	36
Charlemagne .....	30	George Hollis .....	31	Lorch .....	27
Charles McKellip .....	23	George Washington .....	36	Lottie Collins .....	36
Charles Neidl .....	35	George W. Tryon .....	31	Louisa Brand .....	21
Charles Verdier .....	35	Georgiana Shaylor .....	31	Louis Van Houtte .....	36
Charlotte Cushman .....	35	Germaine Bigot .....	31	Loveliness .....	32
Cherry Hill .....	35	Gigantea .....	31	Luetta Pfeiffer .....	21
Chestine Gowdy .....	19	Ginette .....	31	Lynda .....	19
Claire Dubois .....	30	Gismonde .....	31	Madame August Dessert .....	32
Claude Gellee .....	26	Gloire de Charles Gombault .....	31	Madame Barrillet Des Champs .....	32
Clementine Gillot .....	30	Gloire de Touraine .....	36	Madame Benoit Riviere .....	32
Commodore Emge .....	23	Glory of Somerset .....	31	Madame Bucquet .....	36
Constant Devred .....	35	Golden Harvest .....	31	Madame Calot .....	32
Couronne d'Or .....	26	Governor Johnson .....	23	Madame Coste .....	33
Darkness .....	26	Grandiflora .....	31	Madame Crousse .....	33
Delachei .....	35	Grandiflora Nivea Plena .....	27	Madame de Treveran .....	27
Delicatissima .....	30	Graziella .....	31	Madame de Galhau .....	33
Doctor Boisduval .....	35	Gretchen .....	27	Madame de Vatriv .....	27
Doctor Bretonneau .....	30	H. A. Hagen .....	31	Madame de Verneville .....	27
Doctor H. Barnsby .....	35	Harriet Farnsley .....	20	Madame Ducl .....	33
Doctor H. Van der Tak .....	35	Harriett Olney .....	26	Madame Emile Duraz .....	33
Dorchester .....	30	Helen Wolaver .....	20	Madame Emile Galle .....	33
Duc de Wellington .....	26	Henry Avery .....	20	Madame Emile Lemoine .....	29
Duchess de Nemours .....	26	H. F. Reddick .....	23	Madame Forel .....	33
Duchess of Teck .....	26	Humei .....	31	Madame Fould .....	29
Duke of Devonshire .....	30	James Kelway .....	27	Madame Gaudichau .....	36
Edith West .....	26	Jeanne d'Arc .....	31	Madame Geissler .....	33
Edmund About .....	30	Jeannette Oppliger .....	20	Madame Jules Dessert .....	29
Edulis Superba .....	30	Jeannot .....	31	Madame Lebon .....	33

# BRAND PEONIES

Madame Lemoinier .....	33	Mrs. A. G. Ruggles .....	21	Rubra Superba .....	37
Madame Manchet .....	33	Mrs. A. M. Brand .....	11	Ruth Brand .....	23
Mademoiselle Jeanne Riviere .....	33	Mrs. Carew .....	21	Ruy Blais .....	34
Mademoiselle Leonie Calot .....	33	Mrs. Edward Harding .....	29	Sappho .....	34
Mademoiselle Rousseau .....	33	Mrs. Frank Beach .....	11	Sarah Bernhardt .....	34
Marcelle Dessert .....	29	Myrtle .....	34	Sarah Carstenson .....	34
Marechal Valliant .....	36	Myrtle Gentry .....	11	Secretary Fewkes .....	29
Margaret Atwood .....	37	Ne Plus Ultra .....	34	Simon Chevalier .....	34
Marguerite Gaudichau .....	33	Octavie Demay .....	34	Sisters Annie .....	23
Marguerite Gerard .....	33	Officanalis Rubra .....	36	Solange .....	29
Marie Crousse .....	34	Old Silver Tip .....	24	Solfaterre .....	29
Marie Jacquin .....	29	Opal .....	34	Souvenir de l'Exposition Universelle .....	34
Marie Lemoine .....	29	Papillionacea .....	29	Souvenir de Louis Bigot .....	35
Marie Stewart .....	34	Pasteur .....	34	Standard Bearer .....	35
Marquis C. Lagergreen .....	36	Perfection .....	34	Strassburg .....	35
Mary Brand .....	24	Philomele .....	34	Susan B. Anthony .....	23
Mary A. Livermore .....	29	Phoebe Carey .....	21	Sully Prudhomme .....	35
Martha Bulloch .....	21	Phyllis Kelway .....	34	Suzette .....	35
Meissonier .....	36	Pierre Dessert .....	36	Tamatbako .....	37
Mellen Knight .....	26	Pierre Ducharte .....	34	Therese .....	35
Midnight .....	24	Pottsi .....	36	Tokio .....	37
Midsummer Night's Dream .....	29	Prairie Splendor .....	34	Tourangelle .....	35
Mikado .....	37	President Roosevelt .....	36	Triumph d'Exposition de Lille .....	35
Milton Hill .....	34	Prince of Darkness .....	25	Umbellata Rosea .....	35
Miss Salway .....	34	Prince Prosper d'Arenberg .....	36	Venus .....	35
Mireille .....	29	Princess of Wales .....	34	Victoire de la Marne .....	37
Modele de Perfection .....	34	Purpurea Superba .....	37	Victory Chateau Thierry .....	11
Modeste Guerin .....	34	Rachel .....	37	Walter Faxon .....	35
Monsieur Chevreul .....	34	Eaenthal .....	34	Welcome Guest .....	35
Monsieur Dupont .....	29	Reine Hortense .....	34	Whitleyii .....	29
Monsieur Jules Elie .....	34	Richard Carvel .....	25	Wiesbaden .....	35
Monsieur Krelage .....	36	Rosa Bonheur .....	34	William Penn .....	23
Monsieur Martin Cahuzac .....	36	Rosea Superba .....	34	William Turner .....	37
Mont Blanc .....	29	Rose Here .....	25	Winnifred Domme .....	25
Moses Hull .....	21	Rosette .....	34		











