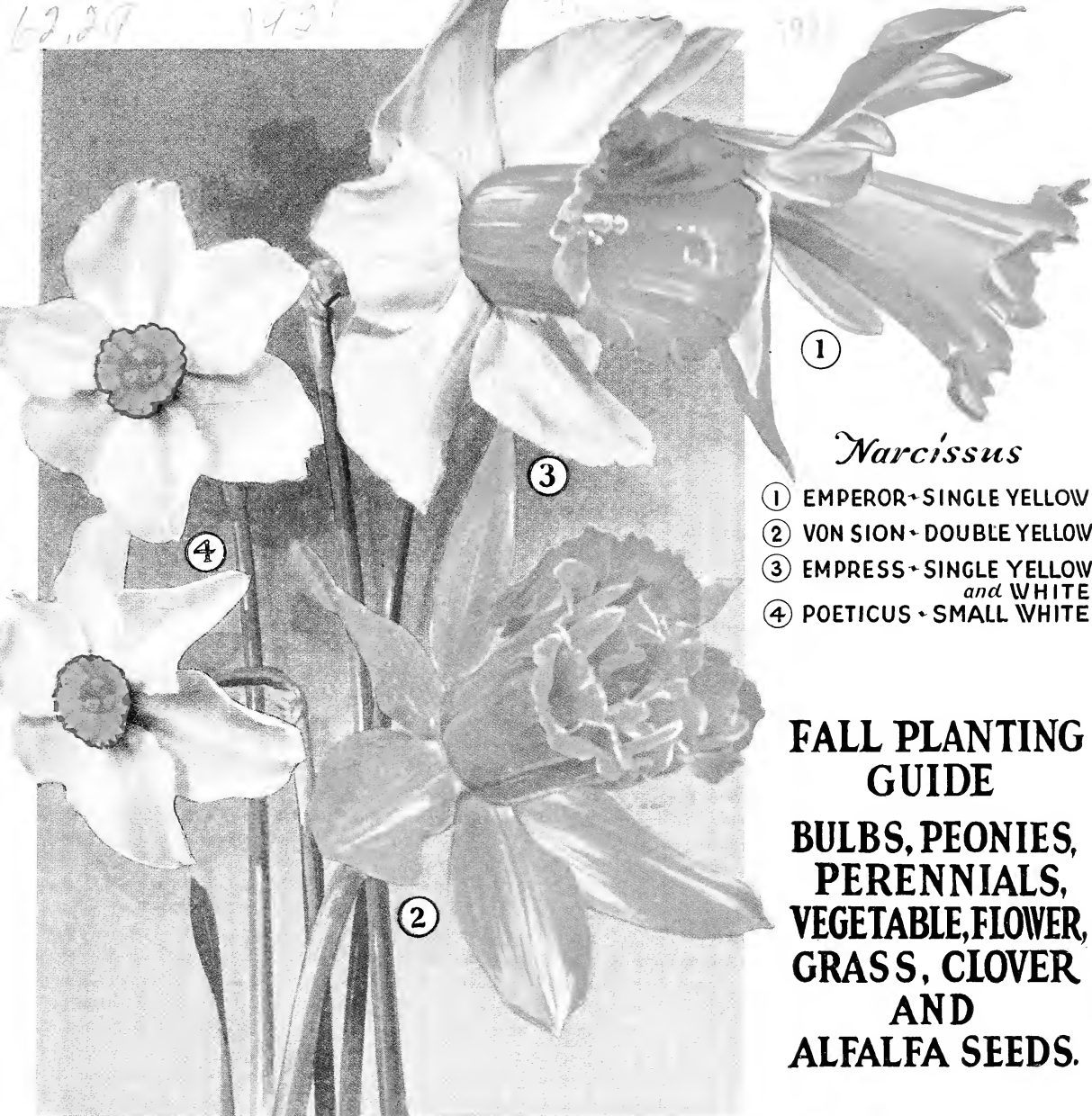


Historic, Archive Document

Do not assume content reflects current scientific knowledge, policies, or practices.





①

Narcissus

- ① EMPEROR - SINGLE YELLOW
- ② VON SION - DOUBLE YELLOW
- ③ EMPRESS - SINGLE YELLOW
and WHITE
- ④ POETICUS - SMALL WHITE

**FALL PLANTING
GUIDE**

**BULBS, PEONIES,
PERENNIALS,
VEGETABLE, FLOWER,
GRASS, CLOVER
AND
ALFALFA SEEDS.**

Barteldes
SEED CO.

LAWRENCE, KANSAS
DENVER COLORADO
OKLAHOMA CITY, OKLAHOMA

Plant a Few Bulbs This Fall

and Enjoy the Most Beautiful Flowers Early in the Spring

No other flowers require so little attention and yet make such a beautiful show as do Hyacinths, Tulips, Narcissus, and Crocus bulbs. These are simply set out in the fall and given a slight covering through the winter. They bloom very early in the spring when flowers are scarce and appreciated the most.

Special Bargain Collections

We offer below a few Special Bargain Collections at reduced prices. Order at least one of these collections and the results in the spring will repay you many times for the small expense and little work. Perhaps you have a few friends to whom you would like to send a few bulbs. Send them one of these collections. We will pack them in a neat box and put in a card with your name. These bulbs will be appreciated by anyone.



Collection No. 1

These can be planted either in a window box or outdoors in the garden. They bloom very early.

12 Hyacinths, assorted colors.

12 Tulips, mixed colors.

24 Crocus, mixed colors.

\$2.00, postpaid.

Collection No. 2

For indoor culture. Easy to grow and very early.

12 Narcissus, Paper White.

12 Roman Hyacinths.

12 Freesia, White.

\$2.15, postpaid.

**Both Collections, postpaid for
\$4.00**

A Lovely Gift for a Friend.

We will send one or both collections to any address, pack them nicely and enclose your card.

Hyacinths

For Outdoor or Indoor Planting

Ready in September.

The culture of Hyacinths is very easy. For early spring blooming out doors, the bulbs should be planted from 3 to 4 inches deep, according to the soil. In light and sandy soils the deeper planting is better. Plant as early in the fall as possible as the bulbs are in active growth until checked by frost. A covering of coarse straw or manure will make the plants stronger and the flowers larger and earlier. In planting any bulbs in the fall a good supply of well rotted manure should be worked into the soil before the bulbs are planted.

Hyacinths are excellent for indoor culture. Prepare the pots so that they will drain well and use the best soil possible. Plant the bulb about an inch below the surface, water thoroughly and put away in a dark cellar or bury them, pot and all, about eight inches below the surface in the garden. Let them stand about six or seven weeks and then bring them into the house a few at a time. A four inch pot is a good size for a single bulb and a six or eight inch pot will take three to five bulbs. During their growth in the house they should be kept near the light (avoiding direct sun), well watered and in a temperature of 50 to 75 degrees.

It is better to leave the bulbs outdoors or in the cellar until the sprout has reached the length of a man's finger. This brings them in later, but is the surest way to get fine flowers, as it is more natural than to force them quickly. When the sprout has reached the length of a man's finger they may then be exposed to the light. If brought to the light sooner the result will be that the top bells will open first and then the flower is spoiled, for the top bells will fade before the lower bells open. The sprouts are yellow by keeping them covered, but that does not matter, as they turn green quickly in the light.

FREE PICTURE BOOK FOR THE KIDDIES

Did you notice the pretty little picture on the front cover of our spring catalog? Imagine how much pleasure your children would get from a whole book of such pictures, with pretty little verses and a beautiful story.

We offer this book FREE with an order of \$3.00 worth of bulbs, garden or flower seeds or \$5.00 of field seeds.

Highest Quality Named Varieties

Large Bulbs—Large Flowers—Nothing Finer

L'INNOCENCE. Single, pure white, splendid bells and spike; early.

LA GRANDESSE. Single, pure white; fine variety; medium early.

GERTRUDE. Single, deep rose; medium early.

GIGANTEA. Single, pale rose; broad truss; medium early.

QUEEN OF THE PINK. Beautiful, rosy pink. Large flowers.

LADY DERBY. Bright pink; large flower. Fine for indoor culture.

YELLOW HAMMER. Pure yellow and early.

Prices for all the above:

ROBERT STEIGER. Single, deep crimson; medium early.

LA VICTOIRE. Single, large, crimson; fine new variety.

GRAND MAITRE. Single, deep porcelain blue; very large spike and early.

QUEEN OF THE BLUES. Single, light blue, showy and medium early.

KING OF THE BLUES. Dark blue; compact flower.

CITY OF HAARLEM. Large pure yellow. Extra fine.

Each, 15c; \$1.60 per dozen.

Hyacinths are especially valuable for planting in window boxes of school rooms. They require very little attention, the children will be very much interested in watching them grow, the beautiful flowers are extremely fragrant and a few of them will perfume the whole room.



Hyacinths and Tulips.

Dutch Roman Hyacinths

These are especially adapted for growing in pots in the house. The flowers are not as large as those of other Hyacinths but they are very much earlier and can be forced into bloom by January. By planting a little later they can be made to bloom by Easter. A pot of about five of these Hyacinths makes a very acceptable gift and a fine centerpiece for the table.

Red Roman Hyacinths. 10c each, 4 for 35c, 12 for 95c.

Pink Roman Hyacinths. 10c each, 4 for 35c, 12 for 95c.

Blue Roman Hyacinths. 10c each, 4 for 35c, 12 for 95c.

White Roman Hyacinths. 10c each, 4 for 35c, 12 for 95c.

PRICES OF BULBS ARE POSTPAID

Hyacinths for Bedding

These bulbs are especially selected for outdoor planting or bedding. They are all of good size, are in separate colors, and will produce fine, large flowers. There is nothing finer than a nice bed of Hyacinths. If you do not have room for a large bed, put out a dozen or so along your house or by the front porch.

Hyacinths are the most popular of all spring bulbs; no other flower can take their place either for garden or house culture. Even with indifferent culture they give satisfactory results, and to careful treatment they respond delightfully.

Single Hyacinths

All Sound, First-class Bulbs

YELLOW	RED
LIGHT BLUE	PINK
DARK BLUE	WHITE

10c each, 4 for 35c, \$1.00 per dozen, 25 for \$2.00, 100 for \$7.50.

Double Hyacinths

Fine Bulbs

YELLOW	RED
LIGHT BLUE	PINK
DARK BLUE	WHITE

10c each, 4 for 35c, \$1.00 per doz., 25 for \$2.00, 100 for \$7.50.

SPECIAL OFFER

Mixed Hyacinths

90c Per Dozen
25 for \$1.75
100 for \$6.75



Border Planting of Hyacinths.

Tulips

Culture. Old, well-rotted manure mixed with fine sand makes the best soil for Tulips. Water is Tulips' greatest enemy, and they should not be planted where the water is liable to stand over or under the plants. Place the bulbs about five inches apart and cover about three inches deep. For indoors treat the same as you do Hyacinths.

Tulips have a very great range of color, bloom for quite a while, and a bed of showy Tulips is a most beautiful sight.

Single Early Tulips

ARTUS. Deep scarlet, early, and very popular. Each, 6c; doz., 65c; 100, \$4.75.

BELLE ALLIANCE. Large bright scarlet. Each, 6c; doz., 65c; 100, \$4.75.

COULEUR DE CARDINAL. Velvety crimson scarlet. Fine for forcing and for bedding. Each, 6c; doz., 65c; 100, \$4.75.

CRIMSON BRILLIANT. Deep crimson scarlet. A very useful variety for early forcing. Has long stems which make it fine for cut flowers. Each, 6c; doz., 65c; 100, \$4.75.

LA REINE. White, tinged with rose. A fine variety for outdoor and for forcing. Each, 6c; doz., 65c; 100, \$4.75.

ROSE GRIS DE LIN. Rose, shaded with white. Each, 6c; doz., 65c; 100, \$4.75.

GOLDEN LION. Yellow and orange. A most showy flower. Each, 6c; doz., 65c; 100, \$5.00.

COTTAGE MAID. Delicate rose with white flush. Each, 6c; doz., 65c; 100, \$4.75.

CHRYSOLORA. A deep golden yellow. Each, 6c; doz., 65c; 100, \$4.75.

KEIZERKROON. Red with a golden yellow border. One of the showiest varieties. Each, 6c; dozen, 65c; 100, \$4.75.

PINK BEAUTY. Deep glowing rose with white flush outside. A lovely flower. Each, 6c; doz., 65c; 100, \$4.75.



SINGLE TULIPS.

1—Keizerkroon, Red and Yellow; 2—Chrysolora, Yellow; 3—Pink Beauty, Pink and White; 4—Golden Lion, Yellow and Orange.

KING OF YELLOWS. Pure deep yellow. Early and an excellent forcer. Each, 6c; doz., 65c; 100, \$4.75.

THOS. MOORE. Terra Cotta, shaded rose. Each, 6c; doz., 65c; 100, \$4.75.

SINGLE MIXED. A mixture of many different colors. All first class bulbs. Each, 5c; doz., 55c; 100, \$4.50.

Prices of all Bulbs are postpaid

Darwin Tulips.



Double Tulips

These are not as good for forcing as are the single varieties, as they bloom later. They make very beautiful flowers and every garden should have at least a few of them.

	Each	Doz.	100
LA CANDEUR. Pure white and very fine	\$0.06	\$0.65	\$4.75
TOURNESOL. Scarlet and yellow...	.06	.65	4.75
COURONNE D'OR (Crown of Gold). Yellow, shaded orange06	.65	4.75
MURILLO. White tinged with rose. Very fine06	.65	4.75
IMPERATOR RUBRORUM. Scarlet. Extra fine06	.65	5.00
VUURBAAK. Fiery, orange scarlet. Fine for pots06	.65	4.75
DOUBLE MIXED. A mixture of many beautiful double varieties05	.55	4.50

Darwin Tulips

These beautiful flowers belong to the May-flowering class of Tulips. They grow on very long stems which are stiff and hold the large, round flowers upright. This makes them especially desirable for cutting.

	Each	Doz.	100
CLARA BUTT. Beautiful soft salmon rose. Forces well—a fine cut flower.....	\$0.06	\$0.65	\$4.75
FARNCOMBE SANDERS. Scarlet, with clear white base. Large flower of perfect shape.....	.06	.65	4.75
EUROPE. Fiery salmon scarlet, with white center.....	.06	.65	4.75
GLOW. Brilliant vermilion with blue and white center06	.70	5.00
GRETCHEN. Soft blush, splendid forcer06	.70	5.00
PRIDE OF HAARLEM. Old rose color, very large flower08	.75	5.00
MIXED DARWINS.06	.60	4.50

Single Late or May Flowering Tulips

This class has become very popular for bedding. They bloom during May after the early flowering Tulips are all gone. The flowers last a long time when cut and are therefore excellent for bouquets.

May Flowering Tulips can be left in the ground without protection and will bloom year after year with practically no attention. For this reason they are used very extensively for planting among shrubbery. Their brilliant colors against the green back-ground make a most beautiful show.

	Each	Doz.	100
GESNERIANA SPATHULATA. Rich crimson scarlet with blue black center.....	\$0.06	\$0.65	\$4.75
BOUTON D'OR. Pure golden yellow.....	.06	.65	4.75
PICOTEE. White, margined carmine rose... ..	.06	.65	4.75
ISABELLA. Creamy white with carmine... ..	.06	.65	4.75
MAY FLOWERING MIXED05	.55	4.50

Parrot or Dragon Tulips

These very odd and showy tulips are of large size and have curiously cut and fringed petals making them distinct from any other tulips. They are on long stems and the colors are striking.

	Each	Doz.	100
PARROT TULIPS IN MIXED COLORS...	\$.05	\$0.55	\$4.50



Parrot or Dragon Tulips.

Narcissus or Daffodils

The Narcissus is one of the most beautiful and altogether the most satisfactory of all the fall planting bulbs. They are perfectly hardy, thriving in almost any position, sun or shade, indoors or outdoors.

They are very desirable for pot culture for winter flowering, but it is outdoors that they do their best, and when once planted need no further attention. They can be left outdoors from year to year.

Narcissus are excellent for cut flowers for table decorations as they will last in water for a week.

The Paper White Narcissus and the Von Sion are the two varieties that do the best when grown indoors.

PAPER WHITE NARCISSUS. One of the easiest to grow and a sure bloomer. Can be planted outdoors, in the house, in soil, or in a bowl of water and sand or gravel. One of the nicest ways is to plant four or five of these bulbs in a glass bowl about half full of gravel and then filled with water. Keep in the dark for about two weeks and then bring to the light. They bloom for quite a while and have a very sweet odor. 6c each; 12 for 65c; \$4.75 per 100.



Paper White Narcissus.



Narcissus.

VON SION. This is the famous old Dutch Daffodil. The flowers are double and of a beautiful golden yellow. Excellent for forcing and also for planting with Hyacinths, as they bloom at about the same time. 7c each; 12 for 70c; \$4.50 per 100.

EMPRESS. Large and hardy. Large yellow trumpet with a beautiful snow-white perianth. The combination of yellow and white makes a flower of rare beauty. Fine for bouquets. 7c each; 12 for 70c; \$5.00 per 100.

BICOLOR VICTORIA. Perianth creamy-white, trumpet rich yellow. Fine for forcing. 6c each; 12 for 65c; \$5.00 per 100.

EMPEROR. One of the largest and finest among Narcissus or Daffodils. It has a pure yellow trumpet of immense size and a wide perianth of deep primrose. Hardy and of great beauty when cut. 7c each; 12 for 70c; \$5.00 per 100.

SOLEIL D'OR. Similar to the Paper White but of yellow color with orange cup. For indoor culture. 10c each; 12 for \$1.00; \$7.00 per 100.

POETICUS ORNATUS. A fine variety of the Pheasant Eye type. The petals are white with a yellow cup margined with scarlet. Fragrant, with a rich, spicy odor, and excellent for both indoor and outdoor planting. 6c each; 12 for 65c; \$4.75 per 100.



Poeticus Ornatus.

Calla Lily

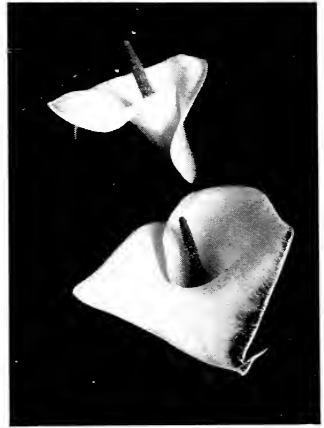
The Calla is one of the best winter flowering plants for room culture, needing little care beyond abundant water and an occasional washing of the leaves to keep them free from dust.

Take a four or five-inch flower pot, fill it with good, rich loam ($\frac{1}{4}$ leaf mold and $\frac{3}{4}$ garden soil), and then put the bulb in and cover it about one inch below the surface.

Place in the cellar or some other dark place for three or four weeks. When the bulb starts growing bring to the light and be sure to give it plenty of water. The bulbs are ready in September and should be planted in the fall.

First size Calla bulb, 30c. Second size Calla bulb, 20c.

YELLOW CALLA. Something new and very attractive. 35 cents each.



Calla Lilies.

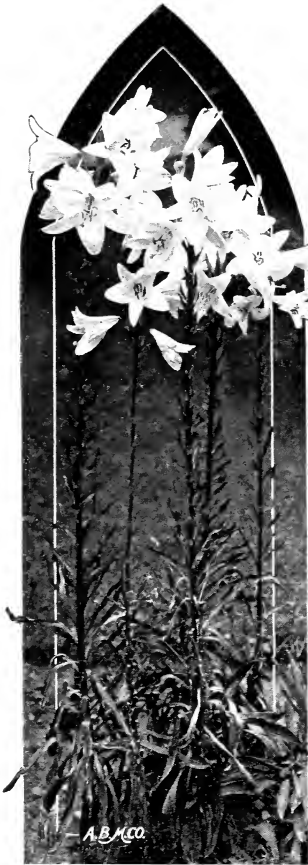
Lilies

Plant these in the fall about six to eight inches deep in good soil and in a partly shaded situation. For forcing, plant them in five or six-inch pots, in a compost of one-half good garden loam, one-fourth well-rotted manure, and one-fourth sharp sand. Just cover the bulbs, press the soil firmly around them, water well and put away in a cool place. When the pots are well filled with roots move them into the house.

LILIUM HARRISII. Used by the florists for Easter Lilies. Fine pure white. Large bulbs, 40c each; \$4.50 per dozen.

LILIUM LONGIFLORUM GIGANTEUM. Large flowers and splendid for outdoors. Large bulbs, 40c each; \$4.50 per dozen.

LILIUM CANDIDUM. Annunciation or Madonna Lily. Has been for a long time one of the most popular of the hardy garden lilies. Has a clear white flower with rich perfume. Plant outdoors where it will remain undisturbed for several years. 40c each; \$4.50 per dozen.



Lilium Candidum.

Crocus

No garden should be without these lovely Harbingers of Spring.

Among the very first flowers to appear in the spring. Are often seen blooming in favorable places even before the snow is off of the ground. They are usually planted outdoors, but can also be used indoors.

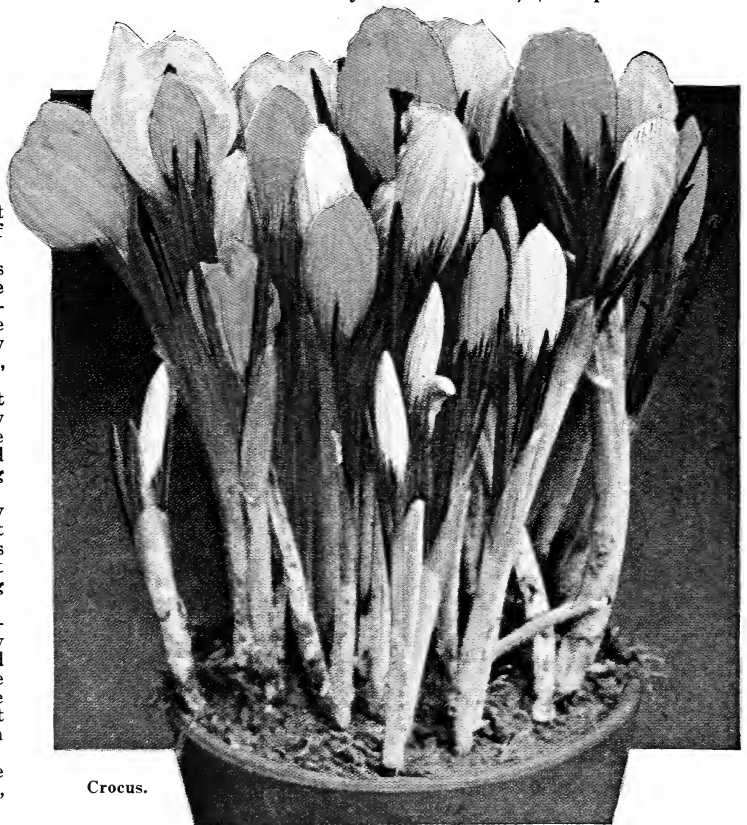
They should be planted about three inches deep. As the new bulbs are formed on top of the old ones they must be planted deep to keep them from getting too near the surface.

Do not plant them too early in the fall or they will start growing before winter, and this injures the flowers. The best effect is obtained by planting in masses or borders.

They are often set in different places on the lawn. Simply lift the turf with a trowel and insert the bulb about three inches deep. The tops will die down soon after blooming, but the bulbs will live and bloom again next year.

We have Crocus in separate colors. Blue, Yellow, White, and Striped.

35c per doz.; \$2.50 per 100.



Crocus.

Jonquils

These are very popular on account of their beauty, their fragrance, and the ease of cultivation. They are handled like Narcissus and can be planted either outdoors or in the house. The Jonquil is perfectly hardy and will last for years after once planting. They also make a good plant for house or window box. By potting early a succession of these lovely flowers can be had throughout the entire winter.

We have the Single Campernelle Jonquils which have very large yellow flowers.

5c each; 12 for 50c; \$4.00 per 100.

Chinese Narcissus

or Oriental Sacred Lily

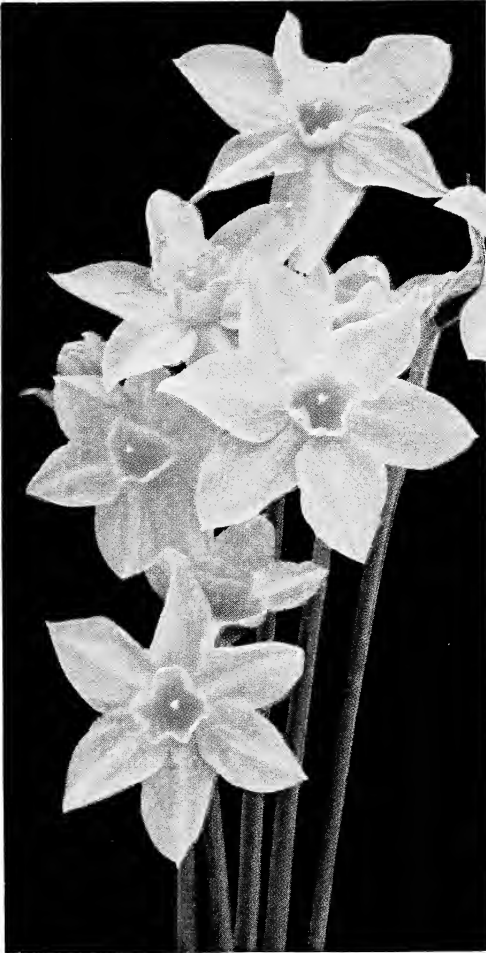
Often called the Chinese Joss Flower. These are grown by the Chinese for decorating their windows and temples for their New Year festivals in February.

These grow very rapidly and each bulb produces a number of fragrant blossoms.

They are partially aquatic and therefore must have plenty of water. They can be grown in earth, but it must be light and sandy. The more popular method is to place three or four bulbs in a glass dish or bowl. Put in enough shells, stones or gravel to hold the bulbs upright, and then add water and put the dish in the dark for about a week.

After they are brought to the light they will grow very rapidly, and one can easily have a nice bowl of blooming lilies by Christmas.

FINE BULBS DIRECT FROM CHINA, 15c each; 3 for 40c; 12 for \$1.50.



Jonquils.

Freesias

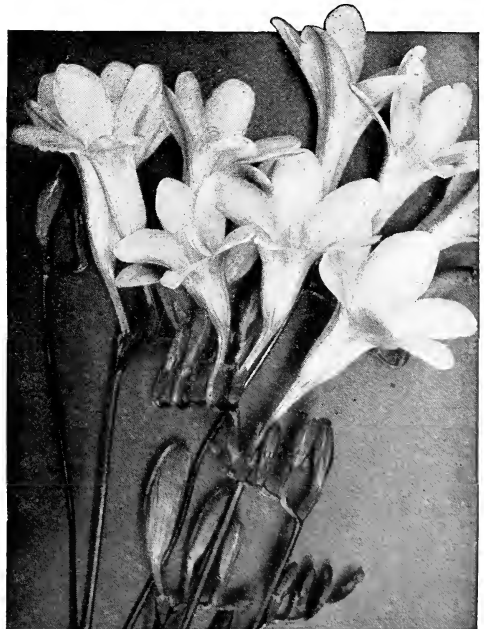
These are American grown and of the most beautiful of the Cape Bulbs. They are very graceful; their fragrance is so strong that a pot of five or six plants will perfume an entire house. They are especially fine for cut flowers, as the buds will open in water, will last a remarkably long time, and will fill the air with a most delicate perfume.

Among the most popular winter forcing bulbs. No window garden is complete without them; no conservatory must lack these exquisite, fragrant blossoms. They force readily and can be had in bloom by Christmas if planted early, and a continuance of bloom is maintained by bringing them in gradually and planting in succession. Their long, graceful sprays adapt them well for decoration or wearing.

They should not be placed in a dark room, but put directly in the light immediately after planting. They will stand a light frost with no apparent injury.

FREESIA PURITY (White). 5c each; 35c per dozen; \$2.25 per 100.

COLORED FREESIAS. Here is something new. Freesias in lovely shades of pink, purple, lavender, blue, and orange. The supply will be very limited so order early. 6c each; 50c per dozen in mixed colors.



Freesias.

Sow Perennial Flower Seeds in the Fall

Perennial flowers are becoming more popular every year. A nice garden or border of such hardy plants as Coreopsis, Delphiniums, Hardy Phlox, Shasta Daisies, Oriental Poppies, and other hardy plants make a beautiful show, furnish cut flowers for a long period, and increase in beauty from year to year.

For best results sow the seed in August or September, cover lightly through the winter, and transplant in the spring when the plants have made sufficient growth.

COREOPSIS. This is one of the most continuous blooming perennials. Easily grown, showy and invaluable when cut flowers are needed. Flowers are large, deep yellow, cup-shaped. Blooms all summer. Pkt., 10c.

SHASTA DAISY. Large white flowers, increasing in beauty each year. Pkt., 15c.

FOXGLOVE. Long, bell-shaped flowers, on stems two to three feet high; very showy. Among the most satisfactory of summer-flowering perennials. Succeeds well on most soils with little care. Blooms July to September. Assorted colors. Pkt., 10c.

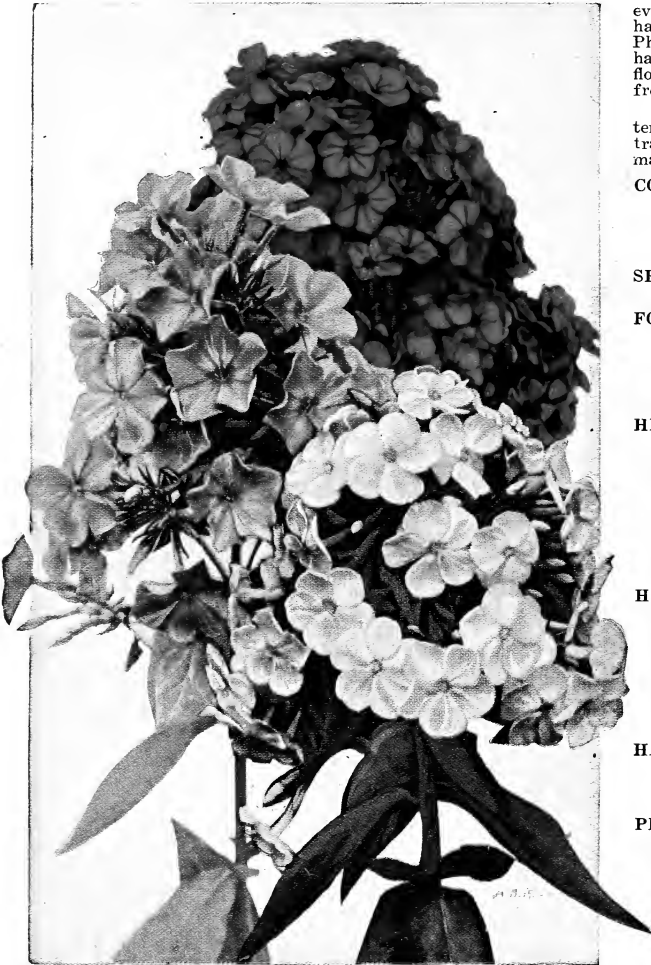
HIBISCUS or MALLOW. We wish to call attention to this extremely showy and satisfactory plant. It thrives in any garden soil, and is equally desirable as a garden plant or naturalized along the edges of brooks and ponds; or planted among shrubs. The plant grows 4 to 5 feet high, is very bushy, and in August and September is covered with immense single flowers 6 to 8 inches across, from pure white to deep rose in color. Pkt., 10c.

HOLLYHOCK. Few hardy plants combine as many good qualities as the Hollyhock. For planting in rows or groups on the lawn, or among shrubbery they are invaluable. The flowers form perfect rosettes of the most lovely shades of yellow, crimson, rose, pink, orange, white, etc. Requires rich, deep soil, well drained, and will repay in quality and elegance of bloom any extra care. Pkt., 10c.

HARDY PINKS. These Pinks are very hardy and bloom with wonderful freedom in May and June. The flowers are greatly varied in color and marking and are deliciously fragrant. Pkt., 10c.

PERENNIAL LARKSPUR. These are in bloom from June to September. Very hardy and of easy culture. Excellent for border plants, and valuable as cut flowers. Pkt., 10c.

STOKESIA CYANEA (Corn-flower Aster). A most charming and beautiful native hardy plant. Grows from 18 to 24 inches high, bearing freely from early in July until late in October, its lavender-blue, centaurea-like blossoms, which measure from 4 to 5 inches across. Should be in every garden. Pkt., 10c.



Phlox.

PERENNIAL PHLOX. The beauty and usefulness of these grand border plants give them a deservedly first place among hardy plants. For cutting, their large trusses go a long way in floral decoration. In color they range from pure white to the richest crimsons and purple, and from soft rose and salmon to bright coral-red, all having a delicate fragrance. Pkt., 10c.

PERENNIAL SWEET PEAS. Plant them in a good place and you can have Sweet Peas year in and year out without further planting. Pkt., 15c.

ORIENTAL POPPY. Nothing can equal these in gorgeous effect, and whether planted singly or in masses their large flowers, rich, brilliant colors, and freedom of bloom, render them conspicuous in any position. Pkt., 10c.

SWEET WILLIAM. Well known and beautiful hardy plant, which produces great masses of bloom of extremely rich and varied colors. Flowers are very lasting and fine for cutting. Will thrive in the shade. Pkt., 10c.

VIOLET. One of the sweetest of flowers. Pkt., 10c.

PANSIES. Bloom earliest and best when sown in the fall.

Good Mixed Pansy. 5c per pkt.

Barteldes Giant Pansy. 15c per pkt.



Hollyhocks.

THE BARTELDES SPRING CATALOG

We issue in January a complete catalog of all kinds of Seeds, Nursery Stock, Plants, Poultry Supplies, Implements, Insecticides, Spray Pumps, Seeders, etc. Be sure that you get a copy of this catalog next spring. It will give you much useful information, and you will find our prices very reasonable.

Do Not Neglect the Fall Vegetable Garden

Many people garden only in the spring and thereby lose fine crops of Radishes, Beets, Carrots, Beans, etc. The way to get the full benefit from your garden is to keep it working, spring, summer, and fall.

You can grow splendid crops of Radishes, Lettuce, Endive, and Beans, and you should by all means sow Turnips, Carrots, and Beets, both for fall use and also for winter storage.

We list below a few of the best varieties for fall sowing:

Beans for Fall Planting

Beans all require a light, rich, well-drained, sandy loam; if manured, it should have been cropped one year before planting to beans, for if fresh, rank manure is used they are apt to go too much to vine. The cultivation should be shallow and frequent, but never when the vines are wet with dew or rain, as it will cause them to rust. Don't cultivate too deep, for if the roots are disturbed in hot weather the plants are liable to wilt, causing the blossoms to fall off without producing pods.

STRINGLESS GREEN POD. This is the most popular bean of its class and is the staple variety for general purposes. The pods are long, round, thick, free from strings and very meaty. They are of dark green color, very attractive and of excellent flavor. The plants are very vigorous and the pods are produced early and in large quantities. Pkt., 5c; ½ lb., 15c; lb., 30c.

EARLY YELLOW SIX WEEKS. The pods are long, flat, and of a bright green color. Plants form erect bushes. Pkt., 5c; ½ lb., 15c; lb., 30c.

IMPROVED GOLDEN WAX (Rust Proof). The standard wax bean for years. The pods are large, slightly flattened, brittle, quite stringless when young, and of golden wax color. It is very tender, of fine flavor, and is unexcelled as a shell bean for winter use. The bushes are of compact growth and very prolific. Pkt., 5c; ½ lb., 15c; lb., 30c.

DWARF BLACK WAX. Sometimes called Butter Beans. One of the earliest varieties, producing fine, round, meaty pods of good quality. Pkt., 5c; ½ lb., 15c; lb., 30c.

Prices of all Garden Seeds and Bulbs are postpaid.

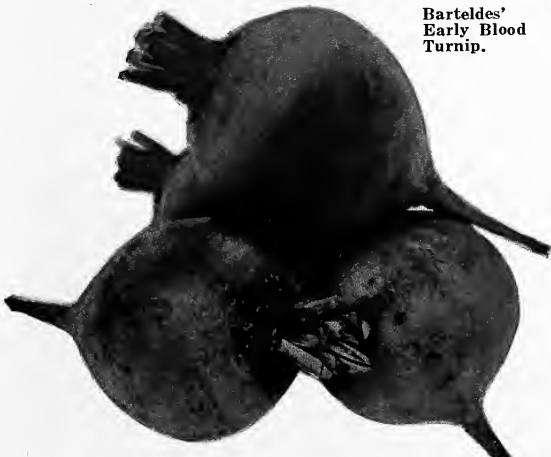
Beets for Fall Planting

Beets, like all root crops, thrive best in a deep, rich loam. Plant in drills eighteen inches apart, thin to two or three inches in the row. The ground should be always freshly prepared for Beet seed so that the seed will come in contact with the fresh soil, then press the soil down firmly over the seed. If weather is dry, good results can be had by soaking the seed in warm water over night.

EXTRA EARLY EGYPTIAN. This is an early turnip-shaped variety; has small top and grows quickly. The flesh is in alternate rings of white and red. Pkt., 5c; oz., 10c; ¼ lb., 30c; lb., \$1.00.

BARTEDES' EARLY BLOOD TURNIP. This is a carefully selected strain of this Blood Turnip Beet. It is very early, deep blood red and almost round. It is smooth and an excellent forcing variety. Good for main, spring or summer crop, and is a fine keeper. It cooks sweet and crisp and is an excellent beet in every respect. Pkt., 5c; oz., 10c; ¼ lb., 30c; lb., \$1.00.

Bartedes' Early Blood Turnip.



Golden Wax Beans.

Carrots for Fall Planting

Carrots, like all root crops, do best in a rich, sandy loam; avoid fresh, rank manure; it is better to have ground that has been well manured and cultivated for a previous crop. Sow as early as possible for early crop, but for winter use the middle or last of September will do; always have the soil freshly stirred before planting the seed, cover about one-half inch with moist soil and press down well over the seed.

CHATENAY, or MODEL. A nice, smooth carrot of perfect and uniform shape. A heavy yielder, a fine table quality, 5 to 6 inches long and easily dug. The flesh is of a deep yellow color, tender and of excellent flavor. Pkt., 5c; oz., 10c; ¼ lb., 30c; lb., \$1.00.

OXHEART, or GUERANDE. The French Carrot is one of the most valuable varieties either for family use or for market. It is an intermediate between the half-long and the Horn types, attaining a diameter of 3 to 4 inches at the neck. It is very productive, rich orange color and beautiful shape. Pkt., 5c; oz., 10c; ¼ lb., 30c; lb., \$1.00.

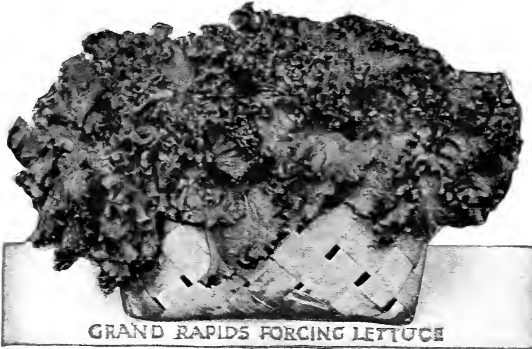
Endive for Fall Planting

Culture the same as lettuce. When bleached by exclusion of the sun, gather all the leaves and tie them for a couple of days. Open after a rain to give them a chance to dry out, as otherwise the leaves begin to rot. The inside will turn into a beautiful yellowish-green, making the plant very attractive for salads and garnishing.

GREEN CURLED. The hardy variety. Pkt., 5c; oz., 10c; ¼ lb., 35c; lb., \$1.25.

BROAD LEAVED BATAVIAN. Very thick leaved. Pkt., 5c; oz., 10c; ¼ lb., 35c; lb., \$1.25.

MOSS CURLED. Plants compact, large leaves, green and finely divided. Pkt., 5c; oz., 10c; ¼ lb., 35c; lb., \$1.25.



GRAND RAPIDS FORCING LETTUCE

Lettuce for Fall Planting

It does best on very rich, light soil; in drills sixteen inches apart; as the plants begin to crowd, thin out for use, leaving them about six or eight inches apart in the row, where they will develop very fast into large, fine bunches or heads.

GRAND RAPIDS LETTUCE. Used principally by gardeners for greenhouse forcing. Is excellent for outdoor use also, as it forms large, loose heads very quickly. Pkt., 5c; oz., 10c; ¼ lb., 35c; lb., \$1.25. Postage paid.

BARTELDES' DENVER MARKET. It is an early variety of head lettuce either for forcing or open ground. It forms large, solid heads of a good light green color and is very slow to seed. The leaves are beautifully marked and blistered, very crisp and tender and of excellent flavor. By these blistered leaves it distinguishes itself from any other kind of head lettuce now grown. Buy from us and get the true stock. Pkt., 5c; oz., 10c; ¼ lb., 35c; lb., \$1.00.

EARLY CURLED SIMPSON. One of the best of the loose-leaf varieties. Pkt., 5c; oz., 10c; ¼ lb., 35c; lb., \$1.00.

Radishes for Fall Planting

There is no vegetable more easily grown or better known than this. Any fair garden soil will produce good Radishes. They are hardy and should be planted in drills fourteen inches apart; thin to two or three inches apart in the row. Sow small round varieties for immediate use, and winter varieties for storing.

CRIMSON GIANT GLOBE. One of the very best as it matures early and grows to a large size without becoming pithy. Pkt., 5c; oz., 10c; ¼ lb., 35c; lb., \$1.00.

ROSY GEM. An early variety of beautiful red color with a white tip. Pkt., 5c; oz., 10c; ¼ lb., 35c; lb., \$1.00.

EARLY SCARLET TURNIP. The standard small, round radish. Pkt., 5c; oz., 10c; ¼ lb., 35c; lb., \$1.00.

BARTELDES GLASS. A fine, crisp radish of long shape with a white tip. Our own introduction of a splendid variety. Pkt., 5c; oz., 10c; ¼ lb., 35c; lb., \$1.00.

WINTER VARIETIES.

LONG BLACK SPANISH. An excellent keeper. Pkt., 5c; oz., 10c; ¼ lb., 35c; lb., \$1.00.

ROUND BLACK SPANISH. Fine for winter use. Pkt., 5c; oz., 10c; ¼ lb., 35c; lb., \$1.00.

WHITE CHINESE, or CELESTIAL. Cultivated extensively by market gardeners. Pkt., 5c; oz., 10c; ¼ lb., 35c; lb., \$1.00.

CHINA ROSE-COLORED. Not so strong as the "Spanish" Radishes. Pkt., 5c; oz., 10c; ¼ lb., 35c; lb., \$1.00.

CALIFORNIA MAMMOTH WHITE. Grows from 8 to 12 inches long. Pkt., 5c; oz., 10c; ¼ lb., 35c; lb., \$1.00.

Winter Top Sets

The earliest of all spring onions. They should be set out in the fall, covered lightly through the winter, and they will make fine young onions for bunching long before spring planted sets. These sets make no large bulbs, but when once established are hardy and will make spring onions year after year. Per pound, 15c; peck, 50c. Postage extra.

Spinach for Fall Planting

A fall crop may be had by sowing in August, and the main spring crop should be sown in September.

AMERICAN CURLED SAVOY LEAVED. A most valuable variety. In appearance the leaf is wrinkled in the same way as that of the Savoy Cabbage, hence, the name. It produces nearly twice the bulk of crop as the ordinary sort, is fully as hardy and in all other respects equal. Pkt., 5c; oz., 10c; ¼ lb., 25c; lb., 60c.

LONG STANDING. An improved strain of excellent merit, having all the good qualities of the ordinary sorts; but it is especially desirable because of the fact that it is much later in going to seed than the average variety. Pkt., 5c; oz., 10c; ¼ lb., 25c; lb., 60c.

PRICKLY, or WINTER. The hardest variety, and will withstand the severest weather with only a slight protection of straw or leaves. The seed is prickly, leaves triangular, oblong or arrow-shaped. It is the best for fall sowing, which in this latitude is about the first of September. Pkt., 5c; oz., 10c; ¼ lb., 25c; lb., 60c.

Turnips for Fall Planting

It scarcely requires any direction for the culture of Turnips. If they have half a chance they will grow without any culture. For garden use plant in drills 14 inches apart, thin to 4 inches in the row. For winter use they are usually sown broadcast during the latter part of August and make their growth in the fall.

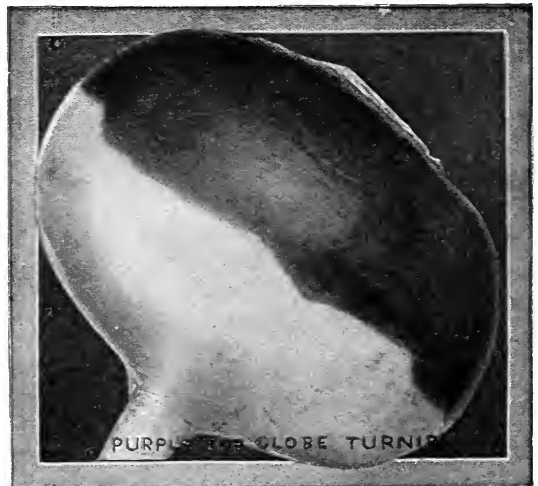
For feeding stock in fall and winter there is nothing superior to turnips and rutabagas as they are much liked by all kinds of stock, and serve to keep them in good condition.

EARLY WHITE FLAT DUTCH. (Strap-leaved). This is a popular early turnip for table use. For autumn and the early winter use this and the Purple Top are highly popular. Pkt., 5c; oz., 10c; ¼ lb., 30c; lb., 60c.

LARGE EARLY RED TOP GLOBE. An old favorite, large sized, of rapid growth, unusually attractive and admired by all who have seen it. Pkt., 5c; oz., 10c; ¼ lb., 30c; lb., 70c.

PURPLE TOP STRAP-LEAVED. The standard for this part of the country. Superior for early or late planting. Round, flat, good sized, small top with but few leaves; flesh very fine, flavor good. Pkt., 5c; oz., 10c; ¼ lb., 30c; lb., 70c.

PURPLE TOP YELLOW RUTABAGA. The best variety of Swedish Turnip in cultivation. Hardy and productive, flesh yellow, of solid texture, sweet and well flavored; shape slightly oblong; terminates abruptly with no side or bottom roots; color deep purple above and bright yellow under the ground; leaves small, light green, with little or no neck; the most perfect form, richest flavor, and best in every respect. Pkt., 5c; oz., 10c; ¼ lb., 30c; lb., 65c.



PURPLE TOP GLOBE TURNIP

PEONIES—Beautiful Flowers for Decoration Day

Plant them as early in the fall as possible, from five to six inches deep and from two to three feet apart. Be sure to put some well rotted manure or other fertilizer in the bottom of each hole. Press the ground carefully around the roots, being careful not to break the crowns.

Should the spring be very dry, water them a few times to promote a healthy growth of foliage, which is necessary to insure perfect blooming.

Peonies are absolutely hardy and when once established will take care of themselves, making larger plants and producing greater numbers of flowers each year.

There has been a wonderful development in these flowers and the new varieties are far superior to those of ten years ago. The flowers are much larger and the variety of color is much greater.



Festiva Maxima, White; Floral Treasure, Pink; American Beauty, Red.

FESTIVA MAXIMA. One of the grandest varieties in existence. The standard of perfection in Peonies. It is a strong grower, very early, free flowering and very fragrant. The magnificent flowers are of a delicate pure white color, with some of the center petals flaked with carmine. The most popular white Peony today. 45c each; \$4.50 per dozen, postpaid.

FLORAL TREASURE. This variety has few, if any, superiors as a cut flower. It is an excellent bloomer, bearing fine, large blossoms on strong, stiff stems. Color of flower a bright light pink. 45c each; \$4.50 per dozen, postpaid.

AMERICAN BEAUTY. A late bloomer. The plants are of robust growth and produce extra large, very full blossoms. Color, a deep blood-red. 40c each; \$4.50 per dozen, postpaid.

FRAGRANT ROSE. Of dark red color, very fragrant and a late bloomer. 40c each; \$4.50 per dozen, postpaid.

QUEEN VICTORIA. Very early, white, and extremely popular with florists. It produces white flowers with creamy centers, tipped with red. 40c each; \$4.50 per dozen, postpaid.

GOLDEN HARVEST (Jeanne d'Arc). Exceptionally free flowering and very showy. The attractive blossoms are of a clear yellow color with bluish guards, while the center is white with carmine tips. One of the earliest and best. 45c each; \$4.50 per dozen, postpaid.

WHITE. Unnamed, but good bloomers. 30c each; \$2.50 per dozen, postpaid.

PINK. Unnamed, but good bloomers. 30c each; \$2.50 per dozen, postpaid.

RED. Unnamed, but good bloomers. 30c each; \$2.50 per dozen.

SPECIAL OFFER
ONE WHITE, ONE PINK, AND ONE RED
FOR 80c, POSTPAID.

St. Regis
 Everbearing Raspberry
 \$1.00 per dozen,
 postpaid.



Nursery Stock For Fall Planting

Fall is an excellent time for setting out Strawberry plants, Fruit Trees, Ornamental Trees, Shrubbery, and other plants. When these are planted in the fall the roots make a good growth before the cold weather sets in and then when spring comes the trees and shrubs can start right off without any delay. In this way they get the benefit of the early rains and cool weather which is favorable to root growth.

Owing to the scarcity of labor the prices of fruits and berries are sure to be high for some time to come. Set out some fruit trees, berry bushes and strawberry plants this fall. Don't wait any longer.

Beautify Your Home

There is nothing that will add more to the appearance of your home than will a few well placed trees, shrubs, and vines. Such shrubs as Spirea, Deutzia, and Snowball are very easily planted, require but little attention and increase in size and beauty for many years to come.

Send Us Your Orders Early

You will find a price-list of a very complete line of trees, shrubs, and plants, enclosed with this catalog. These prices are very low for first class stock. We have no agents soliciting orders for nursery stock and as you buy direct from us we can save you the usual agent's commission.

Send us your order early. We will book it and ship to you at the proper time. We know you will be well pleased with everything you receive from us.

HARDY PLANTS

Plant a few of these fine Iris this fall. They bloom early in the spring, are very hardy, multiply rapidly and will give you much pleasure for years to come.

German Iris

Some new varieties of large size and striking colors.

KING OF IRIS. A striking novelty, with flowers of perfect form, the standards clear lemon color, falls deep satiny-brown, with a broad border of golden-yellow. 25c each; 5 for \$1.00.

LOHENGRIN. Foliage and flowers of gigantic size, with petals 2 inches wide, of a deep violet-mauve. 20c each; 6 for \$1.00.

PALLIDA DALMATICA. Beautiful clear shade of lavender. 20c each; 6 for \$1.00.

MONSIGNOR. Very large, velvety purple. 20c each; 6 for \$1.00.

Japanese Iris

A very hardy and beautiful plant. Come into bloom about the middle of June and continue for 5 or 6 weeks. 25c each; 5 for \$1.00.



German Iris.

LAWRENCE, KANSAS, AUG. 1, 1921



The Barteldes Seed Co.



"PINK LIST"

TERMS—CASH WITH ORDER

Today's prices including sacks but not freight, express or parcels post charges which must be paid by the customer. These prices are subject to market fluctuations but do not hesitate to send in your order. If prices have changed you will be notified and in all cases you will get full value for your money.
Order our SUNFLOWER BRAND and you will get the best seed to be had.

Nursery Stock for Fall Planting

Prices are f. o. b. Lawrence and include hauling and packing.

ALFALFA		Bu. 100 lbs.	
Alfalfa, Sunflower.....	\$12.00	\$20.00	
Alfalfa, Fancy.....	10.80	18.00	
Alfalfa, Choice.....	9.60	16.00	
Alfalfa, Prime.....	8.40	14.00	
Green Alfalfa.....	33.00	55.00	
HULLED BIENNIAL CLOVER			
White Blossom, Fancy.....	7.20	12.00	
White Blossom, Choice.....	6.60	11.00	
Yellow Blossom.....	6.00	10.00	
Unhulled White Blossom.....		8.00	
CLOVERS			
Red Clover, Sunflower.....	12.00	20.00	
Red Clover, Fancy.....	11.40	19.00	
Red Clover, Choice.....	10.80	18.00	
Mamm. Clover Sunflower.....	15.00	25.00	
White Clover, Sunflower.....	30.00	50.00	
White Clover, Fancy.....	27.00	45.00	
White Clover, Choice.....	24.00	40.00	
Alsike Clover, Sunflower.....	13.20	22.00	
Alsike Clover, Fancy.....	12.00	20.00	
Alsike Clover, Choice.....	10.80	18.00	
Burr Clover.....		30.00	
Crimson Clover.....		32.00	
Ja pan Clover.....		15.00	
Esparsette Clover.....		29.00	
APPLE AND PEACH TREES			
5 to 6 feet.....	80c each	\$7.50 per 10	\$70.00 per 100
4 to 5 feet.....	75c each	7.00 per 10	65.00 per 100
PEAR AND PLUM			
5 to 6 feet.....	\$1.25 each	11.50 per 10	105.00 per 100
4 to 5 feet.....	1.15 each	10.50 per 10	95.00 per 100
CHERRY			
5 to 6 feet.....	1.50 each	14.00 per 10	130.00 per 100
4 to 5 feet.....	1.40 each	13.00 per 10	120.00 per 100
APRICOT			
4 to 5 feet.....	1.10 each	10.00 per 10	90.00 per 100
3 to 4 feet.....	1.00 each	9.00 per 10	80.00 per 100
QUINCE			
4 to 5 feet.....	1.00 each	9.00 per 10	80.00 per 100
GRAPES			
Concord.....	20 each	1.80 per 10	16.00 per 100
Other Grapes.....	25 each	2.00 per 10	18.00 per 100
CURRENTS			
Perfection.....	40 each	3.50 per 10	32.50 per 100
Other Currents.....	30 each	2.50 per 10	22.50 per 100
GOOSEBERRIES			
Industry.....	5.00 per 10	45.00 per 100	
Other Gooseberries.....	3.00 per 10	25.00 per 100	
RASPBERRIES			
St. Rose.....			



The Barteldes Seed Co.



"PINK LIST"

TERMS—CASH WITH ORDER

Today's prices including sacks but not freight, express or parcels post charges which must be paid by the customer. These prices are subject to market fluctuations but do not hesitate to send in your order. If prices have changed you will be notified and in all cases you will get full value for your money.

Order our SUNFLOWER BRAND and you will get the best seed to be had.

Nursery Stock for Fall Planting

Prices are f. o. b. Lawrence and include baling and packing.

ALFALFA	Bu.	100 lbs.
Alfalfa, Sunflower.....	\$12.00	\$20.00
Alfalfa, Fancy.....	10.80	18.00
Alfalfa, Choice.....	9.60	16.00
Alfalfa, Prime.....	8.40	14.00
Grimm Alfalfa.....	33.00	55.00

HULLED BIENNIAL SWEET CLOVER	Bu.	100 lbs.
White Blossom, Fancy.....	7.20	12.00
White Blossom, Choice.....	6.60	11.00
Yellow Blossom.....	6.00	10.00
Unhulled White Blossom.....		8.00

CLOVERS	Bu.	100 lbs.
Red Clover, Sunflower.....	12.00	20.00
Red Clover, Fancy.....	11.40	19.00
Red Clover, Choice.....	10.80	18.00
Mamma. Clover Sunflower.....	15.00	25.00
White Clover, Sunflower.....	30.00	50.00
White Clover, Fancy.....	27.00	45.00
White Clover, Choice.....	24.00	40.00
Alsike Clover, Sunflower.....	13.20	22.00
Alsike Clover, Fancy.....	12.00	20.00
Alsike Clover, Choice.....	10.80	18.00
Burr Clover.....		30.00
Crimson Clover.....		15.00
Japan Clover.....		32.00
Espars ette Clover.....		22.00

GRASS SEEDS	Bu.	100 lbs.
Red Top, Sunflower.....	2.80	20.00
Red Top, Fancy.....	2.52	18.00
Red Top, Choice.....	2.24	16.00
Orchard Grass, Sunflower.....	3.08	22.00
Orchard Grass, Fancy.....	2.80	20.00
Orchard Grass, Choice.....	2.52	18.00
Timothy, Sunflower.....	3.38	7.50
Timothy, Fancy.....	3.15	7.00
Timothy, Choice.....	2.93	6.50
Kentucky Blue Grass, Sunflower.....	6.30	45.00
Kentucky Blue Grass, Fancy.....	5.60	40.00
Rhodes Grass.....		55.00
Johnson Grass.....		15.00
Tall Meadow Oat Grass.....		37.00
Italian Rye Grass.....		11.00
Perennial Rye Grass.....		11.00
Brome Grass.....		20.00
Teosinte, per pound.....		.75
Bermuda Grass, per pound.....		.50
Sunflower Mixed Lawn Grass One lb. 40c; 10 lbs. \$3.85; 100 lbs.....		\$36.00

WHEAT, RYE, ETC.	Bu.	25 Bu.
Kanred Wheat.....	2.00	1.75
Kanred is a new variety similar to Red Turkey but is hardier, more resistant to rust, earlier and a better yielder. Stock is limited.		
Harvest Queen Wheat.....	2.00	1.75
Red Wave Wheat.....	2.00	1.75
Seed Rye.....	1.50	1.45
Dw'f Essex Rape 10 lb. 1.25; 100 lb. 11.50		
Winter Barley.....	2.50	2.40

ONION SETS	Bu.
Winter Top Sets.....	2.50
White Pearl Sets.....	3.00
Crystal White Wax sets.....	3.50
Yellow Bermuda.....	3.00

APPLE AND PEACH TREES		
5 to 6 feet.....	80c each	\$7.50 per 10 \$70.00 per 100
4 to 5 feet.....	75c each	7.00 per 10 65.00 per 100
PEAR AND PLUM		
5 to 6 feet.....	\$1.25 each	11.50 per 10 105.00 per 100
4 to 5 feet.....	1.15 each	10.50 per 10 95.00 per 100
CHERRY		
5 to 6 feet.....	1.50 each	14.00 per 10 130.00 per 100
4 to 5 feet.....	1.40 each	13.00 per 10 120.00 per 100
APRICOT		
4 to 5 feet.....	1.10 each	10.00 per 10 90.00 per 100
3 to 4 feet.....	1.00 each	9.00 per 10 80.00 per 100
QUINCE		
4 to 5 feet.....	1.00 each	9.00 per 10 80.00 per 100
GRAPES		
Concord.....	.20 each	1.80 per 10 16.00 per 100
Other Grapes.....	.25 each	2.00 per 10 18.00 per 100
CURRANTS		
Perfection.....	.40 each	3.50 per 10 32.50 per 100
Other Currants.....	.30 each	2.50 per 10 22.50 per 100
GOOSEBERRIES		
Industry.....		5.00 per 10 45.00 per 100
Other Gooseberries.....		3.00 per 10 25.00 per 100
RASPBERRIES		
St. Regis.....		.80 per 10 6.00 per 100
Cardinal.....		.80 per 10 5.00 per 100
Other Raspberries.....		.70 per 10 4.50 per 100
BLACKBERRIES		
All Varieties.....		.75 per 10 5.00 per 100
STRAWBERRIES		
Everbearing Varieties.....	12 for 50c	50 for \$1.40 100 for \$2.75
Standard Varieties.....	12 for 40c	50 for .75 100 for 1.50 1,000 for 10.00
ORNAMENTAL		
California Privet.....		10 for \$1.30 100 for 10.00
Amoor River Privet.....		10 for 1.75 100 for 16.00
Clematis.....	75c each	\$7.00 for 10
Honeysuckle.....	50c each	4.50 for 10
Wistaria.....	50c each	4.50 for 10
Ampelopsis.....	60c each	5.50 for 10
Spiraea, Snowball, Lilac, Deutzia, Syringa and other shrubs.....	60c each	5.50 for 10
Ash, 6 to 8 feet.....	\$1.25 each	11.00 per 10
Catalpa Bungeii 5 to 6 feet.....	1.25 each	11.00 per 10
Bechtel Crab.....	1.25 each	11.00 per 10
Elm 6 to 8 feet.....	1.15 each	10.00 per 10
Silver Leaf Maple 6 to 8.....	1.15 each	10.00 per 10
Russian Mulberry 5 to 6.....	1.00 each	9.00 per 10
Carolina Poplar 6 to 8 feet.....	1.00 each	9.00 per 10
Arbor Vitae 18 to 24 in.....	1.25 each	11.00 per 10
Irish Juniper 18 to 24 in.....	1.25 each	11.00 per 10
Norway Spruce 18 to 24 in.....	1.25 each	11.00 per 10
Red Cedar 18 to 24 in.....	1.25 each	11.00 per 10

POULTRY SUPPLIES Per 100 lb.	
Barteldes Sunflower Chick Feed 25 lbs. 60c, 50 lbs. \$1.15.....	\$2.00
Barteldes Sunflower Hen Feed 25 lbs. 60c, 50 lbs. \$1.15.....	2.00
Clam Shells, Ground.....	1.20
Charcoal, Coarse.....	4.80
Charcoal, Fine.....	4.80
Barteldes Lime Grit, Fine.....	1.10
Barteldes Lime Grit, Medium.....	1.10
Ground Dried Blood.....	6.75
Meat Scraps, Coarse.....	5.25
Oyster Shell, Medium.....	1.30
Poultry Bone, Fine.....	4.50
Poultry Bone, Coarse.....	4.50
Kaffir for Feed.....	1.50

GROUND OIL CAKE	
Ground Oil Cake.....	\$2.50
BLANCHFORD'S PRODUCTS	
Calf Meal: Per 100 lb.	
25 lbs. \$1.50, 50 lbs. \$2.85.....	5.50
Pig Meal:	
25 lbs. \$1.50, 50 lbs. \$2.85.....	5.50
Egg Mash:	
25 lbs. \$1.30.....	4.40
Milk Mash:	
25 lbs. \$1.50, 50 lbs. \$2.85.....	5.50

CONKEY'S BUTTERMILK	
GROWING MASH	
10 lbs.....	90c, 25 lbs..... \$1.85,
100 lbs.....	7.00

Conkey's Poultry Remedies---See Our Catalogue

B. B. SPARK PLUG



Manufactured by

BROWN BAG FILLING MACHINE CO.
SCREW DEPARTMENT

FITCHBURG. - - - MASS.

PRICE \$1.00 EACH POSTPAID

THE BARTELDES SEED CO.
LAWRENCE KANS. DENVER COLO.

A RUSH ORDER

FROM _____

TOWN _____

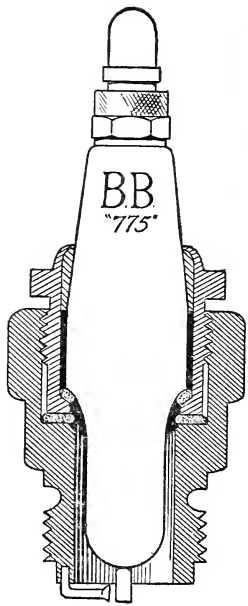
R. D. _____ BOX _____ STATE _____

For
Barteldes
SEED CO.

KANSAS
SEED HOUSE

LAWRENCE, KANSAS

BEST MATERIAL BEST WORKMANSHIP



The special construction of this B. B. plug as shown by the cut, makes same absolutely leak-proof.

PORCELAINS best made in the U. S. passed by the bureau of standards.

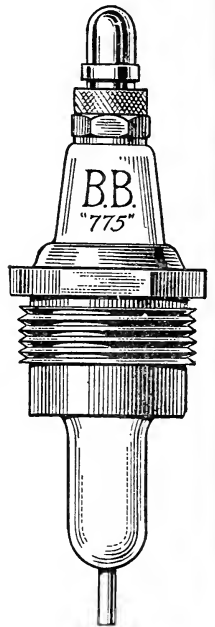
ELECTROS made of genuine meteor wire.

SHELLS AND BUSHINGS made of bessemer steel.

The B. B. two piece Spark Plug consists of Shell and assembled Bushing.

The assembling of the bushing, porcelain and special gaskets, by special process, makes practically one piece which prevents breakage of porcelain.

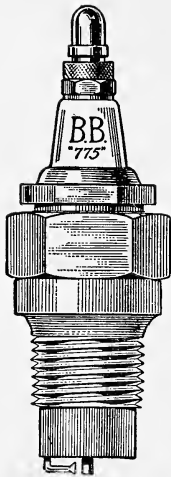
The assembled bushing can be taken from shell easily for cleaning and be put back into shell in its original position. PERFECTLY TIGHT, that is, LEAK PROOF.



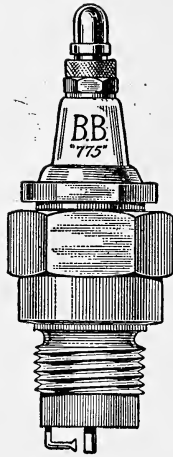
THIS IS THE BEST PLUG ON THE MARKET

PLANT

Barteldes
SEEDS



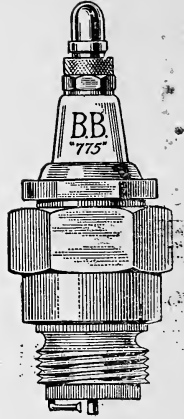
1-2 IN. LONG



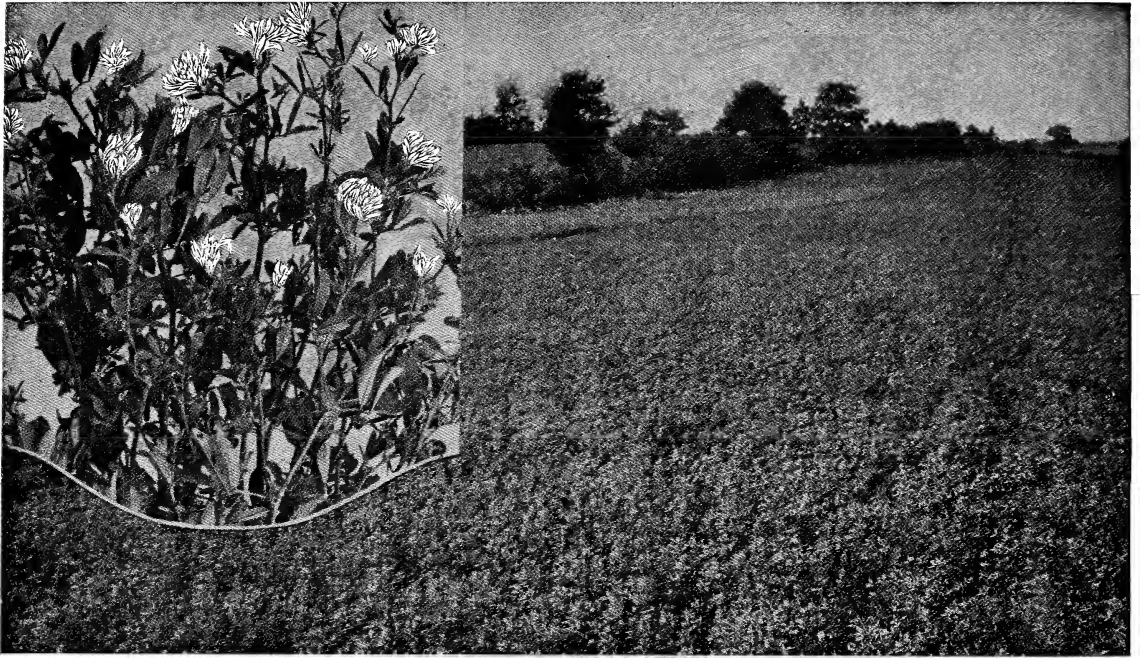
7-8 IN. LONG



1-2 IN. STANDARD



7-8 IN. STANDARD



Barteldes Sweet Clover

A Rich Crop for Poor Soils. For Many Years a Despised Weed but Now a Valuable Farm Crop.

You have no doubt seen Sweet Clover growing along the roadsides, on rocky slopes, and other barren places, and have wondered at the extreme hardness of this plant. If you have a piece of ground that is not good enough for Alfalfa or other crops, you should sow it to Sweet Clover. This will not only make a good crop of hay or furnish good pasture, but will also enrich the soil on which it is growing.

Sweet Clover is a biennial, but if left to go to seed at the end of the second year it will reseed itself. It should be sown either in the fall or early spring at the rate of from 15 to 20 lbs. to the acre on a well-prepared but firm seed-bed.

Stock often refuse to eat Sweet Clover at first, but they can easily be led to develop a taste for it by sprinkling it with brine when the stock is salt-hungry.

Mr. G. P. Holden, of the International Harvester Company, recommends it for the following reasons:

1. It is not a weed.
2. Like Alfalfa it is rich in protein.
3. It will not bloat cattle or sheep.
4. Equal to Alfalfa for pasture.
5. It is a great milk producer.
6. Furnishes early spring pasture.
7. Fits well in crop rotation.
8. Is a great soil enricher.
9. Valuable crop for honey bees.
10. Prepares soil for Alfalfa.

11. Roots are soft and give no trouble in plowing.
12. Roots being tender become inoculated more readily than Alfalfa.
13. Never damages cultivated crops.
14. Its roots decay rapidly, adding much nitrogen and humus.
15. Grows and will produce a crop in all parts of the United States.
16. Seeds freely in both humid and dry sections.
17. Will grow under conditions where Clover and Alfalfa fail.
 - (a) On land too low, too wet, or too alkali for Alfalfa.
 - (b) On land too hard and compact for Alfalfa.
 - (c) On soil too poor for Alfalfa, especially where there is no lime.

Scarified Sweet Clover

Sweet Clover seed has a very hard shell, and for this reason it has been difficult to get good stands of this variety. We have a scarifying machine which scratches the seed coat just enough to permit seed to absorb moisture and sprout readily.

Sow our scarified Sweet Clover seed and you will get a good stand and a very profitable crop.

We have both the White Blossom Sweet Clover and the Biennial Yellow Blossom Sweet Clover. For price please see our Pink List.

CLIPPER FANNING MILLS

Clean your seed wheat on a Clipper. We offer in the Clipper what we believe to be the best seed and grain cleaner on the market. We have been using the Clippers in our warehouses for nearly forty years and we know just what they will do.

The Clipper cleans seed by means of sieves which separate the larger and the smaller seeds and also by means of a vertical air blast which separates the heavier from the lighter.

Each mill comes equipped with ten zinc and two wire screens which are sufficient for general farm cleaning of both seeds and grains.

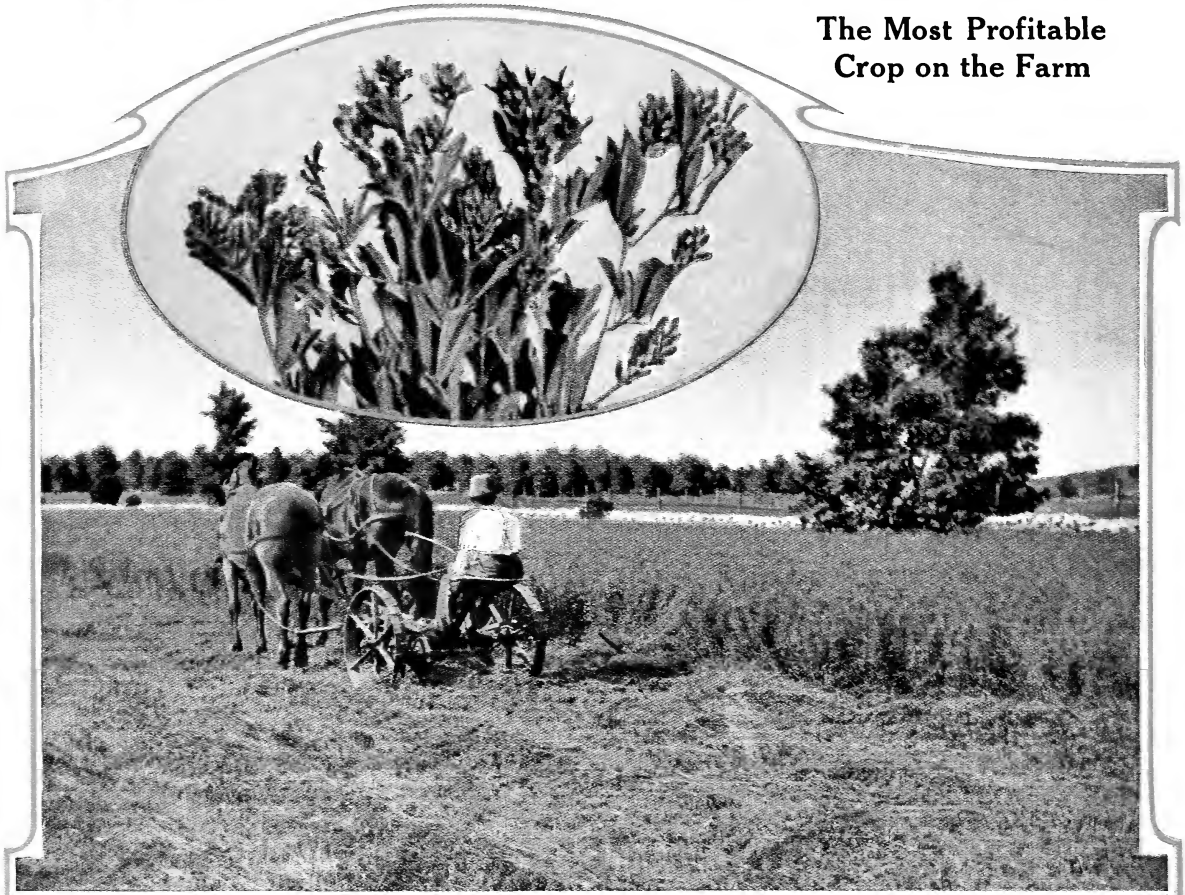
The No. 1 and No. 2 are identical except in size and capacity. The No. 1 can be run by either hand or power, but the No. 2 is rather heavy for much hand work.

Prices, including sieves but not pulley, which is 50 cents extra:

F. O. B. Lawrence		F. O. B. Oklahoma City		F. O. B. Denver	
No. 1	\$34.00	No. 1	\$35.00	No. 1	\$35.00
No. 2	42.00	No. 2	43.00	No. 2	43.00

BARTELDES ALFALFA

The Most Profitable
Crop on the Farm



Among tame hay plants Alfalfa stands supreme in longevity, yield, feeding value, soil-building, and economy, and in adaptability to wide variations of soil and climate.

Alfalfa not only produces a valuable seed crop and from three to ten tons of the finest kind of hay per acre, but also improves the soil on which it is growing. Alfalfa will do well on any well-drained soil. It stands dry weather wonderfully well but will not succeed on wet soils.

It can be sown either in the fall or in the spring at the rate of from 15 to 20 pounds to the acre on a thoroughly prepared and well compacted seed bed.

If you do not have Alfalfa on your farm, get some there at once. It will surely pay you.

Our Alfalfa Booklet gives considerable information about the sowing and care of Alfalfa. This book is free. Send for it.

We have been handling Alfalfa seed very extensively since 1875; we know Alfalfa seed; we are right in the heart of the Alfalfa seed growing district, and we can at all times supply the very highest quality of seed from any of our three houses.

Insist on Native, Home Grown Alfalfa Seed. Much foreign seed has been brought into this country but this is in no way equal to our pure native seed. Be warned and get the best.

For prices please see our Pink List.

Kanred Wheat

A new winter wheat that has taken the country by storm. Developed by the Kansas State Agricultural College and now the most popular variety in the Middle West.

It is a hard winter wheat similar to the Red Turkey but earlier, more resistant to rust and

a far better yielder. Don't waste your labor and land on common wheat when you can get the Kanred at a very reasonable price.

We have the genuine Kanred. See Pink List for Price.

FOR PRICES OF ALL CLOVER, GRASS, AND OTHER FIELD SEEDS, SEE
OUR PINK LIST—MAILED FREE AT ANY TIME.