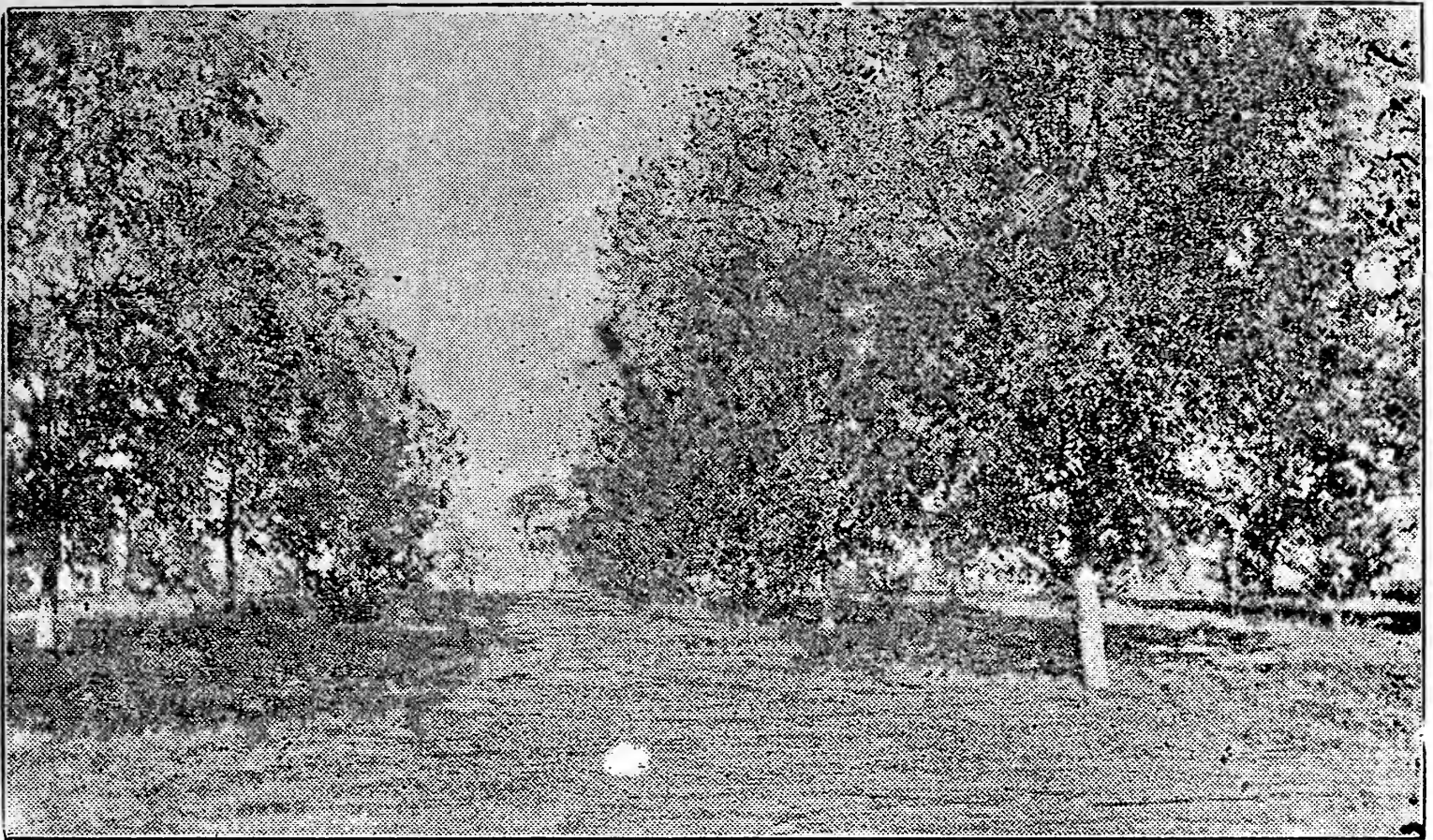


# **Historic, Archive Document**

Do not assume content reflects current scientific  
knowledge, policies, or practices





**View of the eight-year-old Pecan Orchard of Mr. and Mrs. L. P. Lilly, Citronelle, Ala.**

The history of the Paper Shell Pecan as told by individual tree records is quite often misleading and causes conclusions to be drawn which are erroneous. To overcome this error we have secured a record of thirty consecutive trees, which were planted in January 1910, at the rate of thirty trees to the acre. This season, 1918, the eighth year after planting, a total crop of 953 pounds was gathered.

Below you will find an individual tree record of this wonderful yield. These nuts are being sold at sixty cents a pound, but at the price of only fifty cents a pound you have returns of \$476.50 per acre, the eighth year after planting.

While this orchard is an exceptional one, the owner does not see why it can not be duplicated by any one who will give an orchard the proper care and attention. The writer considers each and every tree has an intrinsic value of \$100.00, thus making an acre worth \$3000.00.

The planting of the Paper Shell Pecan is not a make-shift effort for temporary existence, but is a permanent investment which will go down to posterity for hundreds of years.

The gulfcoast country is the home of the Paper Shell Pecan, and there are thousands, yes, tens of thousands of acres of fine pecan land awaiting the co-operation of the man who can look into the future and see the great opportunity in the culture of this valuable nut.

Statement of Mrs. L. P. Lilly of Citronelle, Alabama:

We planted the above mentioned orchard in January, 1910, at the rate of thirty trees to the acre, and this season, the eighth after planting we gathered nuts from thirty consecutive trees as follows:

Tree No. 1, 45 3-4 pounds.  
 Tree No. 2, 39 pounds.  
 Tree No. 3, 30 1-2 pounds.  
 Tree No. 4, 27 1-2 pounds.

Tree No. 5, 12 pounds.  
 Tree No. 6, 36 1-4 pounds.  
 Tree No. 7, 31 pounds.  
 Tree No. 8, 41 1-2 pounds.  
 Tree No. 9, 32 1-4 pounds.  
 Tree No. 10, 27 pounds.  
 Tree No. 11, 46 1-2 pounds.  
 Tree No. 12, 26 pounds.  
 Tree No. 13, 28 1-4 pounds.  
 Tree No. 14, 32 1-2 pounds.  
 Tree No. 15, 16 1-2 pounds.  
 Tree No. 16, 30 1-4 pounds.  
 Tree No. 17, 26 3-4 pounds.  
 Tree No. 18, 30 1-4 pounds.  
 Tree No. 19, 19 1-4 pounds.  
 Tree No. 20, 24 1-2 pounds.  
 Tree No. 21, 39 1-4 pounds.  
 Tree No. 22, 33 1-2 pounds.  
 Tree No. 23, 31 1-4 pounds.  
 Tree No. 24, 35 1-4 pounds.  
 Tree No. 25, 31 pounds.  
 Tree No. 26, 42 1-2 pounds.  
 Tree No. 27, 53 1-4 pounds.  
 Tree No. 28, 31 pounds.  
 Tree No. 29, 19 1-4 pounds.  
 Tree No. 30, 33 pounds.  
 Total, 953 pounds.

**R. L. SCOTT, Secretary, Citronelle Nursey and Orchard Co.**

**—To Whom It May Concern:**

The growing of the PAPER SHELL PECAN bids fair to out class any fruit or nut bearing orchard in existence today, for the following reasons:

The life of the Pecan tree is unknown. A four hundred year old tree in Mexico is just in its prime, yielding a ton of nuts at a single crop. The Pecan is exclusively an American nut, grown nowhere else in the world but America.

The improved Pecan Nut, the result of cross pollenization and selection, has only come to the front in the last fifteen years, although the work along this line has been in progress for twenty-five years.

The Pecan as a nut is as far ahead of other nuts as day is ahead of night and the possibilities of its use and culture are beyond comprehension.

The Pecan is selling this year at 50c to 75c wholesale.

The record of individual trees has aroused the wonder of the readers, but this year we are able to give a record of THIRTY CONSECUTIVE trees, EIGHT YEARS OLD, and all PLANTED ON ONE ACRE. This record is equally as wonderful as the single tree records.. The total for the thirty trees, or one acre, was 953 lbs. These Nuts, at only 50c per pound,

gives \$476.50 from ONE ACRE THE EIGHTH YEAR AFTER PLANTING.

These trees at the present time are worth \$100.00 each, thus making an acre worth \$3000.00, and with the knowledge that they will continue to increase in value for hundreds of years, it is a proposition that will turn the miser away from the glitter of his gold.

The coast country is the home of the Pecan and the man who can look forward and is able to develop an orchard can see independence for himself and his children, and his children's children.

The possibilities of over-production are so remote that it is believed that it will require all the enthusiasm of the optimists to produce enough nuts to supply the unborn generations.

It is believed by men of experience that a Pecan orchard of a size that can be cared for at a minimum expense with maximum results, will pay for itself in ten years with interest on the investment and have a property worth at conservative figures, \$1000 per acre as a clear profit.

This can be done by an individual or by a corporation with equal results. As a corporation, composed of nurserymen and horticulturists who know the possibilities and can furnish scientific advice to the foreman in

charge, the results are obvious.

The planting of a Paper Shell Pecan orchard is not a makeshift effort for temporary existence, but is a permanent investment which will go down to posterity for hundreds of years.

Those who will, either as individuals or as a corporation, develop just one little tract of 200 acres will see in ten years a property worth TWO HUNDRED THOUSAND DOLLARS, and one that will earn a dividend on several times that amount.

At twenty-seven trees per acre it would require 5400 trees and at present records it would result in a wonderful sum, but at the most conservative estimate it would be a high class investment.

To make an acre worth \$1000.00 in ten years, each tree would have to be valued at just \$37.00. Owners of ten year old trees would not take \$100.00 for them. At a basis of \$37.00 per tree it would be a gain in value each year of \$3.70 per tree, or an increase on 200 acres of \$19,980.00 each year.

Could you make a better investment?

**R. L. Scott, Secretary,  
Citronelle Nursery and Orchard  
Company, Incorporated.  
Citronelle, Alabama.**

**EXTRACTS FROM A PECAN REPORT SENT OUT FROM THE AGRICULTURAL COLLEGE, MISS.**

**—Some of the Large Yields from Seedling Trees.**

1350 pounds reported by J. R. Oliver, St. Martinsville, La.

1200 pounds reported by Judge J. L. Buckley, Enterprise, Miss.

935 pounds reported by Dr. J. F. Wilson, Waycross, Ga.

900 pounds reported by J. A. Kernodle, Camp Hill, Ala.

**—From Grafted or Budded Trees, Age Given.**

60 pounds from tree set 4 years, W. L. Davis & Sons, Vancleave, Miss.

149 pounds from tree set 7 years, I. E. Bass & Sons, Lumberton, Miss.

134 pounds from tree set 12 years, R. L. Scott, Citronelle, Ala.

185 pounds from tree set 13 years, Theo. Bechtel, Ocean Springs, Miss.

**—Profits from Acre Groves.**

\$50.00 from 8-year grove, D. C. Bramlette, Jr., Woodville, Miss.

\$75.00 from 8-year grove, J. B. Wight, Cairo, Ga.

\$2800.00 from 20 acres 8 years old, M. C. Harper, Fayette, Miss.

\$476.50 from 1 acre 8 years old, R. L. Scott, Citronelle, Ala.

**—Profit per Acre, Age of Trees Not Given.**

\$460.00 per acre, reported by C. E. Pabst, Ocean Springs, Miss.

\$600.00 per acre, reported by Rev. L. E. Hall, Hattiesburg, Miss.

\$500.00 per acre, reported by R. W. Bruce, Hermanville, Miss.

\$528.00 per acre, reported by I. E. Bass & Sons, Lumberton, Miss.

\$1200.00 per acre, reported by V. L. Beyer, Wiggins, Miss.

**R. L. Scott, Secy.,  
Citronelle Nursery & Orchard Co.,  
Citronelle, Ala.**

