

Historic, Archive Document

Do not assume content reflects current scientific knowledge, policies, or practices.



BULBS



62.39

for AUTUMN 1921



FOTTLER, FISKE, RAWSON CO.

"The Seed Store"

12 AND 13 FANEUIL HALL SQUARE
BOSTON MASS.

Parcel Post Rate Table

ZONES									
Local	1st-2d	3d	4th	5th	6th	7th	8th		
\$0.05	\$0.05	\$0.06	\$0.07	\$0.08	\$0.09	\$0.11	\$0.12		
.06	.06	.08	.11	.14	.17	.21	.24		
.06	.07	.10	.15	.20	.25	.31	.36		
.07	.08	.12	.19	.26	.33	.41	.48		
.07	.09	.14	.23	.32	.41	.51	.60		
.08	.10	.16	.27	.38	.49	.61	.72		
.08	.11	.18	.31	.44	.57	.71	.84		
.09	.12	.20	.35	.50	.65	.81	.96		
.09	.13	.22	.39	.56	.73	.91	1.08		
.10	.14	.24	.43	.62	.81	1.01	1.20		
.10	.15	.26	.47	.68	.89	1.11	1.32		
.11	.16	.28	.51	.74	.97	1.21	1.44		
.11	.17	.30	.55	.80	1.05	1.31	1.56		
.12	.18	.32	.59	.83	1.13	1.41	1.68		
.12	.19	.34	.63	.92	1.21	1.51	1.80		
.13	.20	.36	.67	.98	1.29	1.61	1.92		
.13	.21	.38	.71	1.04	1.37	1.71	2.04		
.14	.22	.40	.75	1.10	1.45	1.81	2.16		
.14	.23	.42	.79	1.16	1.53	1.91	2.28		
.15	.24	.44	.83	1.22	1.61	2.01	2.40		
.15	.25	.46	.87	1.28	1.69	2.11	2.52		
.16	.26	.48	.91	1.34	1.77	2.21	2.64		
.16	.27	.50	.95	1.40	1.85	2.31	2.76		
.17	.28	.52	.99	1.46	1.93	2.41	2.88		
.17	.29	.54	1.03	1.52	2.01	2.51	3.00		
.18	.30	.56	1.07	1.58	2.09	2.61	3.12		
.18	.31	.58	1.11	1.64	2.17	2.71	3.24		
.19	.32	.60	1.15	1.70	2.25	2.81	3.36		
.19	.33	.62	1.19	1.76	2.23	2.91	3.48		
.20	.34	.64	1.23	1.82	2.31	3.01	3.60		
.20	.35	.66	1.27	1.88	2.40	3.11	3.72		
.21	.36	.68	1.31	1.94	2.57	3.21	3.84		
.21	.37	.70	1.35	2.00	2.65	3.31	3.96		
.22	.38	.72	1.39	2.06	2.73	3.41	4.08		
.22	.39	.74	1.43	2.12	2.81	3.51	4.20		
.23	.40	.76	1.47	2.18	2.89	3.61	4.32		
.23	.41	.78	1.51	2.24	2.97	3.71	4.44		
.24	.42	.80	1.55	2.30	3.05	3.81	4.56		
.24	.43	.82	1.59	2.36	3.13	3.91	4.68		
.25	.44	.84	1.63	2.42	3.21	4.01	4.80		
.25	.45	.86	1.67	2.48	3.29	4.11	4.92		
.26	.46	.88	1.71	2.54	3.37	4.21	5.04		
.26	.47	.90	1.75	2.60	3.45	4.31	5.16		
.27	.48	.92	1.79	2.66	3.53	4.41	5.28		
.27	.49	.94	1.83	2.72	3.61	4.51	5.40		
.28	.50	.96	1.87	2.78	3.69	4.61	5.52		
.28	.51	.98	1.91	2.84	3.77	4.71	5.64		
.29	.52	1.00	1.95	2.90	3.85	4.81	5.76		
.29	.53	1.02	1.99	2.96	3.93	4.91	5.88		
.30	.54	1.04	2.03	3.02	4.01	5.01	6.00		

.30	.55	1.06
.31	.56	1.08
.31	.57	1.10
.32	.58	1.12
.32	.59	1.14
.33	.60	1.16
.33	.61	1.18
.34	.62	1.20
.34	.63	1.22
.35	.64	1.24
.35	.65	1.26
.36	.66	1.28
.36	.67	1.30
.37	.68	1.32
.37	.69	1.34
.38	.70	1.36
.38	.71	1.38
.39	.72	1.40
.39	.73	1.42
.40	.74	1.44

Kindly
remit amount for
Postage
when orders
include such items
as we do not
deliver free

IT OF WEIGHT—The limit of weight of Parcel after is 70 lbs. for parcels mailed for delivery within 1, second and third zones, and 50 lbs. for all other

Planting Season

Herbaceous perennials transplant most successfully during September and up to the middle of October.

Deciduous trees and shrubs can be safely planted after October 1st, continuing until the ground freezes.

We have purposely omitted from this list many varieties, which in our judgment do not transplant safely in the Fall.

Success in Planting depends largely on the treatment given trees and shrubs when received. Under no conditions should the roots be subjected to exposure to either wind or sun. The roots should be kept from drying out.

Too much emphasis cannot be placed upon the importance of firming the soil tightly about the roots when planting.

It is best to defer the trimming of Fall planted trees and shrubs until the Spring, at which time the past season's growth should be pruned about one-half.

DELIVERIES. Our bulbs are all well packed to withstand general transportation and every precaution taken for their safe delivery to the purchaser. In case of accident by broken packages, bulbs being lost or jammed and bruised, either sign for them "damaged," or refuse to accept such and have transportation company return them to us, notifying us instantly of same. We do not pay freight or express charges. We guarantee safe delivery to the Railroad and Express Companies.

CONDITIONS OF SALE. We give no warranty, express or implied, as to description, quality, productiveness or any other matter of any seeds, plants or bulbs we sell; and we will not be in any way responsible for the crop. All orders taken by our agents or salesmen, including any special terms or conditions pertaining to same, are subject to the approval of our home office. If the purchaser does not accept the goods on these terms, they are to be returned at once.

FOTTLER, FISKE, RAWSON CO.

Quantity of Bulbs Necessary for Round Beds		
		Distance Apart
		4 in. 6 in.
3 ft. diam.....	100	40
4 ft. diam.....	135	75
5 ft. diam.....	225	100
6 ft. diam.....	275	130
7 ft. diam.....	425	175
8 ft. diam.....	475	225

INDEX

	Page	Page	
Amaryllis.....	17	Lily of the Valley Pips.....	
Callas.....	17	(in bundles of 25).....	18
Chinese Lilies.....	14	Lycoris Squamigera.....	18
Crocus, Varieties.....	15	Narcissus. Varieties.....	11-14
Clover.....	46	Oxalis.....	18
Fertilizer.....	31	Pæonies.....	21
Freesia.....	18	Perennial Plants.....	19-21
Fruit Trees.....	25	Poultry Supplies.....	32
Grasses.....	31	Shrubs.....	22-23
Hedges.....	24	Small Fruits.....	25
Hyacinths.....	2-4	Sundries.....	26-31
Hyacinthus candicans.....	18	Trees.....	24
Insecticides.....	31	Trillium.....	18
Jonquils.....	12	Tulips. All varieties.....	5-10
Lawn Sand.....	3d cover	Vines, Hardy.....	24
Lawn Seed.....	31 and 3d cov.	Wheat.....	31
Lilies. All varieties.....	16-17	Winter Rye.....	31
Lily of the Valley Clumps	18	Winter Vetch.....	31

Parcel Post Rate Table

Local	ZONES							
	1st-2d	3d	4th	5th	6th	7th	8th	
.....	\$0.05	\$0.06	\$0.07	\$0.08	\$0.09	\$0.11	\$0.12	
.....	.06	.08	.11	.14	.17	.21	.24	
.....	.06	.07	.10	.15	.20	.25	.31	
.....	.07	.08	.12	.19	.26	.33	.41	
.....	.07	.09	.14	.23	.32	.41	.51	
.....	.08	.10	.16	.27	.38	.49	.61	
.....	.08	.11	.18	.31	.44	.57	.71	
.....	.09	.12	.20	.35	.50	.65	.81	
.....	.09	.13	.22	.39	.56	.73	.91	
.....	.10	.14	.24	.43	.62	.81	1.01	
.....	.10	.15	.26	.47	.68	.89	1.11	
.....	.11	.16	.28	.51	.74	.97	1.21	
.....	.11	.17	.30	.55	.80	1.05	1.31	
.....	.12	.18	.32	.59	.86	1.13	1.41	
.....	.12	.19	.34	.63	.92	1.21	1.51	
.....	.13	.20	.36	.67	.98	1.29	1.61	
.....	.13	.21	.38	.71	1.04	1.37	1.71	
.....	.14	.22	.40	.75	1.10	1.45	1.81	
.....	.14	.23	.42	.79	1.16	1.53	1.91	
.....	.15	.24	.44	.83	1.22	1.61	2.01	
.....	.15	.25	.46	.87	1.28	1.69	2.11	
.....	.16	.26	.48	.91	1.34	1.77	2.21	
.....	.16	.27	.50	.95	1.40	1.85	2.31	
.....	.17	.28	.52	.99	1.46	1.93	2.41	
.....	.17	.29	.54	1.03	1.52	2.01	2.51	
.....	.18	.30	.56	1.07	1.58	2.09	2.61	
.....	.18	.31	.58	1.11	1.64	2.17	2.71	
.....	.19	.32	.60	1.15	1.70	2.25	2.81	
.....	.19	.33	.62	1.19	1.76	2.23	2.91	
.....	.20	.34	.64	1.23	1.82	2.41	3.01	
.....	.20	.35	.66	1.27	1.88	2.49	3.11	
.....	.21	.36	.68	1.31	1.94	2.57	3.21	
.....	.21	.37	.70	1.35	2.00	2.65	3.31	
.....	.22	.38	.72	1.39	2.06	2.73	3.41	
.....	.22	.39	.74	1.43	2.12	2.81	3.51	
.....	.23	.40	.76	1.47	2.18	2.89	3.61	
.....	.23	.41	.78	1.51	2.24	2.97	3.71	
.....	.24	.42	.80	1.55	2.30	3.05	3.81	
.....	.24	.43	.82	1.59	2.36	3.13	3.91	
.....	.25	.44	.84	1.63	2.42	3.21	4.01	
.....	.25	.45	.86	1.67	2.48	3.29	4.11	
.....	.26	.46	.88	1.71	2.54	3.37	4.21	
.....	.26	.47	.90	1.75	2.60	3.45	4.31	
.....	.27	.48	.92	1.79	2.66	3.53	4.41	
.....	.27	.49	.94	1.83	2.72	3.61	4.51	
.....	.28	.50	.96	1.87	2.78	3.69	4.61	
.....	.28	.51	.98	1.91	2.84	3.77	4.71	
.....	.29	.52	1.00	1.95	2.90	3.85	4.81	
.....	.29	.53	1.02	1.99	2.96	3.93	4.91	
.....	.30	.54	1.04	2.03	3.02	4.01	5.01	
.....	.30	.55	1.06					
.....	.31	.56	1.08					
.....	.31	.57	1.10					
.....	.32	.58	1.12					
.....	.32	.59	1.14					
.....	.33	.60	1.16					
.....	.33	.61	1.18					
.....	.34	.62	1.20					
.....	.34	.63	1.22					
.....	.35	.64	1.24					
.....	.35	.65	1.26					
.....	.36	.66	1.28					
.....	.36	.67	1.30					
.....	.37	.68	1.32					
.....	.37	.69	1.34					
.....	.38	.70	1.36					
.....	.38	.71	1.38					
.....	.39	.72	1.40					
.....	.39	.73	1.42					
.....	.40	.74	1.44					

IT OF WEIGHT—The limit of weight of Parcel matter is 70 lbs. for parcels mailed for delivery within t, second and third zones, and 50 lbs. for all other

Kindly remit amount for Postage when orders include such items as we do not deliver free

Planting Season

Herbaceous perennials transplant most successfully during September and up to the middle of October.

Deciduous trees and shrubs can be safely planted after October 1st, continuing until the ground freezes.

We have purposely omitted from this list many varieties, which in our judgment do not transplant safely in the Fall.

Success in Planting depends largely on the treatment given trees and shrubs when received. Under no conditions should the roots be subjected to exposure to either wind or sun. The roots should be kept from drying out.

Too much emphasis cannot be placed upon the importance of firming the soil tightly about the roots when planting.

It is best to defer the trimming of Fall planted trees and shrubs until the Spring, at which time the past season's growth should be pruned about one-half.

DELIVERIES. Our bulbs are all well packed to withstand general transportation and every precaution taken for their safe delivery to the purchaser. In case of accident by broken packages, bulbs being lost or jammed and bruised, either sign for them "damaged," or refuse to accept such and have transportation company return them to us, notifying us instantly of same. We do not pay freight or express charges. We guarantee safe delivery to the Railroad and Express Companies.

CONDITIONS OF SALE. We give no warranty, express or implied, as to description, quality, productiveness or any other matter of any seeds, plants or bulbs we sell; and we will not be in any way responsible for the crop. All orders taken by our agents or salesmen, including any special terms or conditions pertaining to same, are subject to the approval of our home office. If the purchaser does not accept the goods on these terms, they are to be returned at once.

FOTTLER, FISKE, RAWSON CO.

Quantity of Bulbs Necessary for Round Beds	
	Distance Apart
	4 in. 6 in.
3 ft. diam.....	100 40
4 ft. diam.....	135 75
5 ft. diam.....	225 100
6 ft. diam.....	275 130
7 ft. diam.....	425 175
8 ft. diam.....	475 225

INDEX

	Page	Page
Amaryllis.....	17	Lily of the Valley Pips
Callas.....	17	(in bundles of 25).....18
Chinese Lilies.....	14	Lycoris Squamigera.....18
Crocus, Varieties.....	15	Narcissus. Varieties 11-14
Clover.....	46	Oxalis.....18
Fertilizer.....	31	Paeonies.....21
Freesia.....	18	Perennial Plants.....19-21
Fruit Trees.....	25	Poultry Supplies.....32
Grasses.....	31	Shrubs.....22-23
Hedges.....	24	Small Fruits.....25
Hyacinths.....	2-4	Sundries.....26-31
Hyacinthus candicans.....	18	Trees.....24
Insecticides.....	31	Trillium.....18
Jonquils.....	12	Tulips. All varieties..5-10
Lawn Sand.....	3d cover	Vines, Hardy.....24
Lawn Seed..	31 and 3d cov.	Wheat.....31
Lilies. All varieties..	16-17	Winter Rye.....31
Lily of the Valley Clumps	18	Winter Vetch.....31

HYACINTHS

The Hyacinth is one of the most popular of the Fall Bulbs and commands a place in every home and garden. There is nothing more attractive than a well-grown pan of Hyacinths, with their brilliant colors and delightful fragrance, together with their long keeping qualities and decorative appearance. Hyacinths may be brought to bloom about the latter part of January and if taken into the house at intervals, flowers may be obtained until the middle or latter part of April.

Culture in Pots When potting Hyacinths for growing indoors a medium light, well-enriched soil is best suited, placing some broken crock in the bottom for drainage. Set the bulbs about $\frac{1}{2}$ inch below surface of soil, giving them a thorough watering and put them away in a dark, cold place, so that they will not freeze; water them as often as need be to avoid drying. They should be allowed to remain for at least 12 weeks, or until the pot is well filled with roots, when they may be removed to a warmer location, but still kept dark until a growth of 4 to 5 inches is made, then bring to the light gradually until allowed to flower.

When a repetition of bloom is required, bring out one or more pots every week or ten days from place where allowed to root.

Outdoor Culture Prepare the beds or borders where they are to be planted with well-rotted manure, having it well dug over to a depth of at least 12 inches, being well assured that the soil is well drained to avoid any decay of the bulbs. Plant the bulbs at least 5 inches deep and 6 apart. As soon as the ground begins to freeze cover the beds with a litter of leaves, straw or pine boughs to a thickness of 6 or 8 inches. This covering should be removed as early as possible after all danger from severe cold weather is past.

Culture in Glasses To grow Hyacinths in glasses of water, the type illustrated on page 27 should be used. The largest size bulbs should be selected, as they produce better results, are more rigid in the glasses and will support the top-heavy bloom. When the bulb is placed in the top of the glass, fill up with water so that the bottom of the bulb is about $\frac{1}{4}$ -inch below level of water. Change the water every three or four days. A little broken charcoal put in the water will help to keep it fresh and sweet. The same general directions apply for growing in water as noted in "Culture in Pots." We recommend the Top Roots or Mother Bulbs for growing in glasses.

Glasses for Growing Hyacinths We can supply two styles of these glasses, the tall and short. See illustration (page 27). Colors: Amber, green, blue and clear crystal.

Hyacinths—Single

Mammoth or Exhibition

Our exceptionally choice Hyacinths have always given excellent satisfaction, and our stock this season gives our customers an opportunity to procure the best that comes to this country. Our own special growers who give their personal attention to this particular class of bulbs, assure us that there are none better. The varieties which we offer are the largest flowering bulbs, producing large, uniform trusses. Excellent for growing in pots or glasses.

By Parcel Post add postage at Zone rate, (see page 1). Weight 3 lbs. per doz., 22 lbs. per 100.
Each 20c., doz. \$2.00, 100 \$16.00.

Red, Rose and Pink

Cardinal Wiseman. Very broad spike, with bright rose flowers.

Daylight. Orange red, light center, fine truss.

DELICATISSIMA. Extra large bells, of fine rose color.

Duchess of Albany. Rich bright crimson, fine large truss.

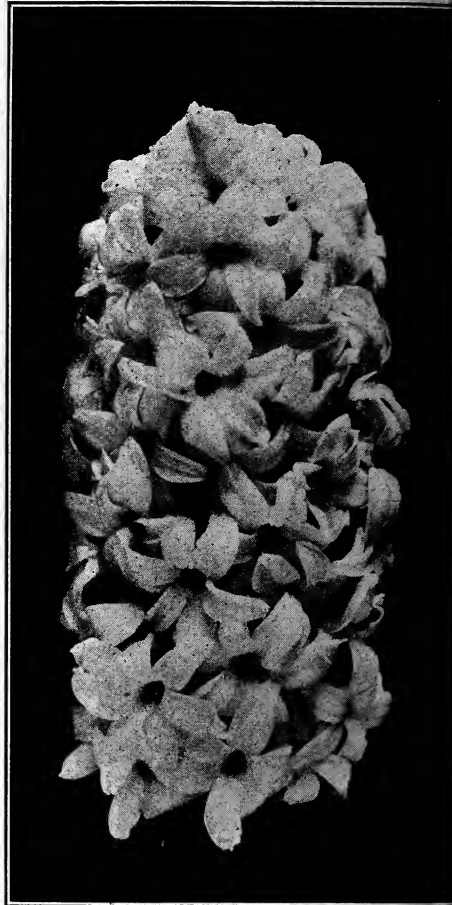
FABILOA. Pink, distinctly striped crimson; extra.

Garibaldi. Brilliant carmine; large truss; early.

GENERAL DE WET. Very light pink; large spike.

Gen. Pelissier. Crimson scarlet; early.

GERTRUDE. Bright, rosy pink; large compact spike; very choice variety.



Hyacinth L'Innocence

GIGANTEA. Delicate shade of blush pink; large truss.

Lady Derby. Bright rose pink.

LA VICTOIRE. Bright glistening red when grown in the open; under glass a dark pink. Large truss, medium bulbs.

MORENO. Lovely blush pink; large truss.

Norma. Fine waxy pink; early; large bells.

Pink Perfection. Delicate pink, shaded lavender; a distinct variety.

QUEEN OF PINKS. (New.) Brilliant pink; long, compact spike. One of the finest varieties.

Robert Steiger. Deep crimson; compact spike.

Roi des Belges. Dark scarlet; very fine flower.

Hyacinths—Single

Mammoth or Exhibition—Continued

Each 20c., doz. \$2.00, 100 \$16.00.

White and Blush

Albertine (Augusta). One of the best for forcing; pure white and early.

BARONESS VAN THUYLL. Pure white; very broad truss.

British Queen. Extra fine, pure white; fine exhibition sort.

Grandeur a Merveille. Blush white; giant spikes.

LA GRANDESE. Pure white; very large spikes and bells. One of the leading forcing varieties.

L'INNOCENCE. A pure white. One of the best for forcing or bedding.

Mr. Plimsoll. Ivory white; fine bells; very showy.

SNOWBALL. Extra fine; pure snow-white, fine, large truss.

Blue, Lavender and Purple

Baron van Thuyll. Fine dark blue; large compact truss; early.

Czar Peter. Light azure blue and lavender; large spike and bells.

ENCHANTRESS (New). Very delicate porcelain blue, with pale center, a long, full spike and large bells.

Grand Lilas. Silvery lilac; large bells; a fine truss.

Grand Maitre. Deep lavender blue; extra large truss.

King of the Blues. Rich dark blue, fine, close spike. One of the best for forcing.

La Peyrouse. Clear porcelain blue; a very showy flower.

Lord Derby. Porcelain blue; small bells; large, compact spike.

Marie. Rich, dark purple; very fine spike.

MENELIK. Deep plum color; very distinct.

Perle Brillante. Sky-blue, tinged lilac; the finest light blue.

Pieneman. Porcelain blue; large bells; immense truss.

Queen of the Blues. Beautiful azure blue; large bells handsome truss.

Single Yellow

City of Haarlem. Bright golden yellow; the best of all yellows.

Ida. Pure canary yellow; large truss; early.

King of the Yellows. Deep golden yellow; very large.

MARCHIONESS OF LORNE. Salmon orange; very fine spike.

Yellow Hammer. Golden yellow; broad spike; very showy.

Read **MILADY'S HOUSE PLANTS.** Written by an expert for amateurs. Full of helpful suggestions and information on potting, watering, temperature and other details which mean life or death, success or failure, with house plants. 180 pages, 100 illustrations. Paper 80c., cloth \$1.10 postpaid.

For gardeners on private estates and professionals we can recommend **PLANT CULTURE** by Oliver, a book of 444 pages, freely illustrated, covering practically every plant grown in the greenhouse or conservatory as well as outside. Concise and authentic. Postpaid \$3.65.

Hyacinths

Early Roman

These early flowering Hyacinths are particularly valuable for the florists in their Fall and Winter cut flower work, and are equally important for the amateurs that they may obtain flowers through Thanksgiving and Christmas until the Dutch Hyacinths commence to bloom. To obtain the above results plant early in September and force gently. Six bulbs planted in a 6-inch pot or bulb pan make a very fine effect.

By Parcel Post add postage at Zone rates, (see page 1). Weight 2 lbs. per doz., 10 lbs. per 100.

	Doz.	100
Pure White. Extra-large selected bulbs.....	\$1.00	\$8.00
Pure White. Mammoth bulbs.....	1.50	12.00
Light Pink	1.00	7.50
Light Blue	1.00	7.50

White Italian, or Parisian. These are about two weeks later than the Romans, and the blossoms somewhat larger; very fragrant. Per doz. \$1.00, per 100 \$7.50.



Hyacinths, White Roman

Six bulbs of a kind at the dozen rate, 25 bulbs at the 100 rate, 250 bulbs at the 1000 rate.

Hyacinths—II Size

Named Varieties for Bedding

These Hyacinths are a special size for bedding and when grown in the open produce nearly as large and perfect spikes as the larger bulbs. They are also well adapted for forcing in pots and bulb pans and will form perfect spikes, though not as large as those obtained from the big bulbs.

By Parcel Post add postage at Zone rates, (see page 1.) Weight 3 lbs. per doz., 18 lbs. per 100.

Each 15c., doz. \$1.50, 100 \$11.00.

RED AND ROSE

Gertrude. Bright, rosy red; large, compact spike; very popular.

General Pelissier. Deep purplish crimson; early.

Gigantea. Delicate shade of blush pink; large truss.

Moreno. Lovely blush pink; large truss.

Norma. Fine waxy pink; early; very distinct.

Robert Steiger. Deep crimson; compact spike.

BLUE AND PURPLE

Czar Peter. Light azure blue, large spikes and bells.

Grand Lilas. Silvery lilac; large bells.

Grand Maitre. Dark porcelain blue; extra large truss.

King of the Blues. Deep purplish blue, fine, close spikes. One of the best for forcing.

La Peyrouse. Clear porcelain blue; a very showy flower.

Marie. Rich, dark blue; very fine spike. An excellent variety for forcing.

Queen of the Blues. Beautiful azure blue; large bells; handsome truss.

WHITE

Baroness van Thuyll. Pure white; very broad truss.

Grandeur a Merveille. Blush white; giant spikes.

La Grandesse. Pure white; very large spikes and bells.

L'Innocence. A pure white, handsome flower. One of the best.

Mme. Van der Hoop. Splendid white; early; large bells.

Single Hyacinths for Bedding

None of the many Spring flowering bulbs can produce the uniform and symmetrical effects of the Hyacinth. Its distinct and bright colors, sturdy and erect habit, and the beautiful contrasts produced when planted in solid beds or used as a border for other tall growing bulbs, give it a deservedly front place among flowering bulbs.

Our special bedding Hyacinths are all sound bulbs, sure to bloom and develop large, compact spikes. They are fine for bordering perennial beds and shrubbery. This size will give excellent results.

By Parcel Post add postage at Zone rates, (see page 1.) Weight 2 lbs. per doz., 15 lbs. per 100.

Dark Red
Rose and Pink

Pure White
Blush and Tinted White

Light Blue and Lavender
Dark Blue and Purple

Yellow
Mixture of Colors

Each 10c., doz. \$1.00, 100 \$8.00, 1000 \$75.00.

Hyacinths

Miniature, or Dutch Roman

By Parcel Post add postage at Zone rates, (see page 1.) Weight 2 lbs. per doz., 15 lbs. per 100.

The bulbs of this Hyacinth are of a small size but of the true Dutch type, and not allied to the Roman Hyacinths as the name may imply. These bulbs are suitable for growing in large quantities where close masses of flowers are wanted, such as may be required in a perennial bed and border; or they may be used in clumps among shrubbery and also for edging.

The individual colors of the following varieties may be obtained from our list of Exhibition Hyacinths on pages 2 and 3.

RED AND ROSE

Gigantea

Gertrude

Norma

Moreno

General Pelissier

Robert Steiger

BLUE AND PURPLE

Grand Lilas

Czar Peter

Queen of the Blues

Grand Maitre

La Peyrouse

King of the Blues

Lord Derby

WHITE

Baroness van Thuyll

La Grandesse

L'Innocence

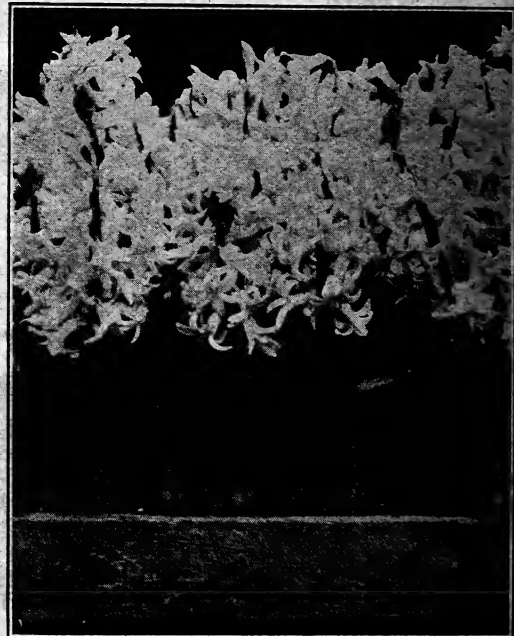
Grandeur a Merveille

YELLOW

King of the Yellows

Mixture of All Colors

Each 7c., doz. 70c., 100 \$5.00, 1000 \$48.00.



Miniature Hyacinths



Tulips will Produce a Beautiful Effect as Foundation Plantings

SINGLE EARLY TULIPS

At the time of year when a flower of any sort attracts attention, the Tulips probably have no equal. The effects which they produce with their varied and brilliant colorings cannot be obtained in any other flower during the early Spring. Tulips make a most gorgeous display in flower beds before the time for planting the regular Summer flowers and will also make a handsome show among shrubbery and perennial beds if planted in groups or clumps or used as borders. For forcing in the house in Winter, Tulips will make as nice pot plants as any one may desire. The same general directions for cultivation in pots may be used as for Hyacinths (see page 2).

The Single Early Tulips are the best for bedding, as they flower much earlier than the other sorts and will be through blooming in time for the preparation of beds for Summer flowers. Tulip bulbs should be set 4 inches apart and covered at least 4 inches deep. Close planting produces the best bedding effects.

By Parcel Post add Postage at Zone rates (see page 1). Weight 1 lb. per doz., 8 lbs. per 100.

Fottler, Fiske, Rawson Co.'s Prize Mixture Single Early Tulips

Our F. F. R. Prize Mixture is the best assortment we have been able to select during our long experience. It contains all of the most desired, brilliant, striking and fancy colors, together with those of peculiar shading and markings.

This mixture comprises our best-named varieties, as well as a great many sorts which we do not list. They are so assembled that they all attain approximately the same height and also flower within a few days of each other. The first size bulb are the only ones used in this mixture; no inferior grade used. The satisfaction which this assortment has given to so many of our customers thoroughly recommends it to all who have not tried them.

Doz. 50c., 100 \$3.75, 1000 \$35.00.

Choice Selected Mixture

This Choice Selected Mixture is a combination of well-known and standard varieties which have always proved satisfactory, but does not include the new and high-priced sorts. These bulbs are all first size, blooming as near together as possible.

Doz. 49c., 100 \$3.00, 1000 \$28.00.

Superfine Mixture

A fine imported mixture, blended by one of our best growers in Holland. These bulbs do not average as large in size but are all first-class bulbs and of fine flower-producing quality. The bulbs used in this assortment all flower at the same time and produce excellent effects.

Doz. 35c., 100 \$2.50, 1000 \$24.00.

Choicest Named Varieties

d indicates dwarf varieties; *m* those of medium height; *t* tall-growing varieties.

m Artus. Rich, bright scarlet; a good bedding sort.

Doz. 50c., 100 \$3.50.

Albion. (See White Hawk.)

d Belle Alliance. (Waterloo.) Brilliant deep scarlet; early flowering.

Doz. 60c., 100 \$4.00.

m BRILLIANT STAR. An excellent forcing sort, bright vermilion scarlet, black center. Doz. 85c., 100 \$6.00.

t Canary Bird. Rich pure yellow. Doz. 60c., 100 \$4.00.

m Cardinal's Hat. Very dark red.

Doz. 50c., 100 \$3.50.

m Chrysolora. Large, pure golden yellow; fine for forcing.

Doz. 50c., 100 \$3.75.

d COTTAGE BOY. Yellow, edged orange, very distinct.

Doz. 60c., 100 \$4.00.

d Cottage Maid. Beautiful rosy pink, shading to cream white; early.

Doz. 60c., 100 \$4.00.

t Couleur Cardinal. Brilliant crimson scarlet; fine for bedding or forcing.

Doz. 60c., 100 \$4.50.

t Crimson Brilliant. Splendid early crimson.

Doz. 50c., 100 \$3.25.

t Crimson King. Brilliant crimson; early forcer.

Doz. 50c., 100 \$3.25.

Six bulbs at dozen rate, 25 bulbs at hundred rate.

SINGLE EARLY TULIPS—Continued

- m* **DE WET** (New). Beautiful golden, flushed and striped with fiery orange scarlet. Each 25c., doz. \$2.50, 100 \$20.00.
- t* **Duchesse de Parma**. Orange scarlet, bordered yellow. Doz. 50c., 100 \$3.50.
- m* **Dusart**. Crimson scarlet with greenish-yellow center. Doz. 50c., 100 \$3.25.
- t* **FLAMINGO** (Rose Hawk). A beautiful large, cup-formed flower; is a sport from White Hawk; color bright pink, shaded deeper lake pink. Doz. 85c., 100 \$6.00.
- m* **Golden Queen**. Beautiful golden yellow, fine bold flower. Doz. 60c., 100 \$4.50.
- d* **Goldfinch**. Pure yellow; very fragrant. Doz. 60c., 100 \$3.75.
- m* **GOV. GUILD** (New). Deep scarlet; extra large flower; one of the finest in cultivation. Doz. 75c., 100 \$5.00.
- m* **Grace Darling**. Large, orange scarlet, with dark blue center. Doz. 75c., 100 \$5.50.
- d* **Jenny**. Deep cherry red, good style. Doz. 70c., 100 \$4.75.
- m* **John Bright** (Van Berchem). Excellent shade carmine rose, extra. Doz. 60c., 100 \$4.00.
- m* **Joost van Vondel, Striped**. Deep cherry red, striped white; very large flower. Doz. 50c., 100 \$3.50.
- m* **Joost van Vondel, White** (Lady Boreel). Best pure white; exceedingly fine, large flower. Doz. 65c., 100 \$4.50.
- t* **Keizerskroon**. Crimson scarlet; edged yellow; one of the finest tall varieties for bedding and excellent forcer. Doz. 50c., 100 \$3.50.
- m* **King of the Yellows**. Pure yellow; similar to Canary Bird, but much superior. Doz. 50c., 100 \$3.50.
- Lady Boreel* (See Joost Van Vondel, White).
- m* **LA GRANDEUR**. (Grand Scarlet.) Bright scarlet, very large flower; one of the best early Tulips. Doz. 65c., 100 \$4.75.
- m* **La Reine** (Queen Victoria). White, suffused delicate pink. Doz. 50c., 100 \$3.25.
- m* **Le Matelas**. Deep rose, edged white; very early. Doz. 65c., 100 \$4.50.
- m* **L'Immaculee**. Pure white; fine for bedding. Doz. 50c., 100 \$3.50.
- m* **Maas**. Dark scarlet; large flowers; desirable for early forcing. Doz. 50c., 100 \$3.75.
- m* **MCKINLEY** (New). Orange red, shaded carmine outside, tall growing, large flower, extra early forcer. Doz. 65c., 100 \$4.50.
- m* **Mon Tresor**. Intense golden yellow; early forcing. Doz. 65c., 100 \$4.50.
- m* **Ophir d'Or**. Deep canary yellow; extra large bedding sort. Doz. 60c., 100 \$4.00.
- m* **PINK BEAUTY**. A lovely Tulip; deep rose, with bold, snowy-white, flush in outer petals, center white and yellow. Doz. 75c., 100 \$5.00.
- t* **Pottebakker, Scarlet**. Bright scarlet, with yellow center. Doz. 50c., 100 \$3.75.
- Pottebakker, White**. Pure white, large, cup-shaped. Doz. 60c., 100 \$4.25.
- Pottebakker, Yellow**. Pure yellow. Doz. 60c., 100 \$4.25.
- Pottebakker, Yellow Striped**. Yellow, with red stripe. Doz. 50c., 100 \$3.50.
- m* **President Lincoln** (Queen of Violets). Purplish mauve, white base. Doz. 60c., 100 \$4.00.
- PRESIDENT TAFT** (New). Beautiful silvery cerise on white ground. Doz. \$1.25, 100 \$9.00.
- t* **Prince of Austria**. Scarlet, suffused orange, yellow center. Doz. 60c., 100 \$4.00.
- Princess Helene**. Excellent, pure white, with bluish reflex at base of petals. Doz. 60c., 100 \$4.00.
- m* **Princess Marianne**. White with a decided pink tinge. One of the finest rosy-white Tulips for bedding. Doz. 50c., 100 \$3.75.
- m* **Proserpine**. Deep rosy pink; a magnificent Tulip for forcing or bedding. Doz. \$1.00, 100 \$6.50.
- PROSPERITY**. Excellent rose pink, splendid forcer. Doz. 75c., 100 \$5.50.
- t* **Queen of the Netherlands**. A very large, globe-shaped Tulip of a most delicate shade of pink. Doz. 70c., 100 \$4.50.
- m* **Queen of the Pink** (Princess Wilhelmina). Deep rose with striking white flush on outer petals. Doz. 70c., 100 \$4.50.
- m* **RED ADMIRAL**. Inside orange scarlet, outside brown-red; beautiful, large yellow center. Doz. 65c., 100 \$4.75.
- RIISING SUN**. Deep golden yellow, very large, on tall stem. Doz. \$1.25, 100 \$8.00.
- Rose de Hollande**. Creamy white, flamed carmine pink. Doz. 60c., 100 \$4.50.
- d* **Rose Grisdelin**. Delicate rose, flushed pink. Doz. 60c., 100 \$4.00.
- m* **Rose Luisante**. Deep, silky rose; the best rose-colored Tulip. Doz. 75c., 100 \$5.00.
- m* **Royal Standard**. White ground, flaked and tipped with scarlet. Doz. 60c., 100 \$4.50.
- m* **SIR THOMAS LIPTON**. Deep crimson scarlet; extra large. One of the finest in cultivation. Doz. 75c., 100 \$5.00.
- t* **Thomas Moore**. Bright orange, shaded with scarlet; very effective in bedding. Doz. 50c., 100 \$3.50.
- m* **Van der Neer**. Rich violet; extra large flower. Doz. 80c., 100 \$6.00.
- m* **Vermilion Brilliant**. Dazzling vermilion; one of the best for forcing or bedding. Doz. 75c., 100 \$4.75.
- m* **White Hawk**. Pure white; large flower; stiff stem. Doz. 65c., 100 \$4.50.
- t* **White Swan**. Pure white; egg-shaped flower. Doz. 50c., 100 \$3.75.
- m* **Wouwerman**. Rich claret purple. Doz. 65c., 100 \$4.50.
- d* **Yellow Prince**. Bright yellow; sweet scented; excellent for forcing or bedding. Doz. 50c., 100 \$3.00.



Semi-circular Bed, 8 ft. diam., 175 | Keizerskroon

New Lily-Flowered Tulip

Siren. A very beautiful flower. The color is rich cerise-pink with pale pink at the margins of the segments and a white base. **Each 35c., doz. \$3.50.**

DOUBLE TULIPS

The earlier sorts are especially good for forcing as well as for bedding.

Double Tulips should be planted in separate colors, for mixed named sorts do not flower all at one time.

By Parcel Post add postage at Zone rates, (see page 1). Weight 1 lb. per doz., 8 lbs. per 100.

- m* **Alba maxima.** Large; pure white. **Doz. 50c., 100 \$3.50.**
- m* **Boule de Neige.** Very large, pure white. **Doz. 60c., 100 \$4.00.**
- m* **Crown of Gold.** Pure yellow. **Doz. 60c., 100 \$4.00.**
- m* **Gloria Solis.** Red, bordered with gold. **Doz. 60c., 100 \$3.75.**
- m* **Gladstone.** Glowing cherry red; good for forcing. **Doz. 60c., 100 \$4.00.**
- t* **Immaculate.** (Late.) Pure white. **Doz. 60c., 100 \$4.00.**
- m* **Imperator rubrorum.** Rich, glowing scarlet. **Doz. 60c., 100 \$4.00.**
- d* **La Candeur.** Pure white. **Doz. 60c., 100 \$3.75.**
- m* **La Grandesse.** Deep rose color of fine form. **Doz. 60c., 100 \$3.75.**
- m* **L'Innocence.** Pure white, fine for bedding. **Doz. 60c., 100 \$4.00.**
- m* **Le Matador.** Dazzling scarlet; extra fine. **Doz. 60c., 100 \$3.75.**
- d* **Lord Beaconsfield.** Deep, satiny rose; very double; immense flower. **Doz. 60c., 100 \$3.75.**
- m* **Murillo.** Superb blush pink, shaded white; good forcer. **Doz. 50c., 100 \$3.25.**
- m* **Mr. Van der Hoeff.** Pure yellow, sport of Murillo, new variety, the best double yellow. **Doz. 75c., 100 \$5.00.**
- d* **Peony, Gold.** (Late.) Golden yellow, striped red. **Doz. 50c., 100 \$3.75.**
- d* **Peony, Red.** (Late.) Deep red. **Doz. 60c., 100 \$4.00.**
- m* **Rex rubrorum.** (Late.) Scarlet. **Doz. 60c., 100 \$3.75.**
- m* **Rose d'Amour.** Flowers are of medium size and exquisite bluish pink, shading with age to deepest rose pink. **Doz. 60c., 100 \$3.75.**
- d* **Rubra maxima.** Large, deep crimson. **Doz. 50c., 100 \$3.25.**
- m* **Salvator Rosa.** Splendid deep rose, flamed white. **Doz. 65c., 100 \$4.50.**
- Schoonoord.** The white Murillo, without doubt the finest double white sort. **Doz. 50c., 100 \$3.75.**
- m* **Tea Rose.** (Saffrano.) Pale yellow, flushed salmon; a very distinct shade. **Doz. 60c., 100 \$4.00.**
- m* **Toreador.** Bright scarlet, margin buff yellow. **Doz. 75c., 100 \$5.50.**
- m* **Tournesol, Scarlet.** Red, edged yellow. **Doz. 60c., 100 \$4.00.**
- m* **Tournesol, Yellow.** Bright yellow, shaded orange. **Doz. 60c., 100 \$4.00.**
- t* **Yellow Rose.** (Late.) Pure golden yellow; fragrant. **Doz. 50c., 100 \$3.75.**

Fottler, Fiske, Rawson Co.'s Prize Mixture

Early Double

For this mixture we have endeavored to maintain the same high standard as in the Single varieties, including as many sorts as possible in order to produce a well-blended effect when in flower.

Doz. 60c., 100 \$3.75, 1000 \$35.00.

Superfine Mixture

Early Double

Contains a great number of varieties, well-blended colors; an excellent assortment.

Doz. 45c., 100 \$3.00, 1000 \$26.00.

Rare and Choice Tulips

These species are remarkable for their great range of coloring, diversity of shape and markings. Their colors are very vivid; their flowers vary considerably in size, shape and color.

Cornuta. (Chinese Horned Tulip.) Petals curiously twisted like spiral leaves; flowers yellow, striped scarlet; blooms late in May. **Each 6c., doz. 60c., 100 \$3.75.**

Florentina odorata. (Sylvestris.) A charming Tulip that one could freely naturalize on the margins of woodland and in waste places. Its flowers are yellow, borne on graceful stems. **Doz. 50c., 100 \$4.00.**

Fosteriana. A grandly flowered Bokhara species, with tapering, orange-vermilion flowers of exceptional size and brilliance. **Each 75c.**

Greigi. Its petals are elegantly marbled and flecked with chocolate, the flowers dazzling orange scarlet, often 8 inches across and of a goblet shape when closed. **Each 25c., doz. \$2.25.**

Kaufmanniana. A glorious species, and the first of all Tulips to flower; flowers large, cone-shaped, colored a soft shade of creamy white, flushed with deep orange in the center and colored externally with red. **Each 15c., doz. \$1.50, 100 \$10.00.**

Oculus solis. (The Sun's Eye.) Dazzling red-black center, small but graceful flower. **Each 7c., doz. 75c., 100 \$5.00.**

Retroflexa. Gracefully recurved light yellow petals, giving it the appearance of a Lily. A very handsome Tulip. **Each 6c., doz. 60c., 100 \$4.00.**

Viridiflora. (The Green Tulip.) Flowers green edged, yellow; immense size, odd and handsome. **Each 6c., doz. 60c., 100 \$4.00.**



Bed Containing 150 Darwin Tulips, Clara Butt

GIANT DARWIN TULIPS

The late flowering Darwin Tulip has outclassed all its predecessors in type, style and beauty, and is at the present time the Queen of the Tulip family. It attains a height of 2 to 3 feet, with strong, heavy foliage, erect and robust stem, terminating in large and massive flowers. The colors of the Darwin embrace all the shades of white, pink, lilac, rose, scarlet, crimson and maroon, and most of the flowers show a particularly satiny effect. Darwin Tulips are the finest among shrubby and perennials; they grow tall, bloom for a long time and, if planted 6 to 8 inches deep and left undisturbed, will flower for many seasons. A great many of the varieties will force to good advantage and may be had in bloom during March.

By Parcel Post add postage at Zone rates, (see page 1). Weight 1 lb. per doz., 8 lbs. per 100.

F. F. R. Special Mixture

All named sorts and collection of varieties well blended, making the best mixture possible to offer. These we can thoroughly recommend to our customers desiring a choice and beautiful assortment of mixed colors.

Doz. 50c., 100 \$4.00, 1000 \$37.50.

Selected Mixture

Choice Darwin Tulips specially assorted with a great variety of pleasing colors and shades. This mixture is carefully selected by one of the largest growers of Darwin Tulips in Holland.

Doz. 40c., 100 \$3.00, 1000 \$27.50.

Selected Named Varieties

Varieties marked (*) best for forcing

- Ariadne.** Beautiful crimson scarlet; violet center; flowers of good substance. Doz. 60c., 100 \$4.50.
- ***Baron de la Tonnaye.** A beautiful rose color, shaded blush. Flowers perfectly upright. Doz. 60c., 100 \$4.00.
- ***Bartigon.** Fiery crimson, white center; a strong grower and excellent for forcing, and enormous cup-shaped. Doz. 60c., 100 \$4.75.
- ***Clara Butt.** Globular flower; salmon colored, with rose base and external flushing of pink. A choice refined Tulip of æsthetic shade. Doz. 50c., 100 \$3.50.
- Claude Gillot.** See Glow.
- Donders.** Dark crimson red, with white center, marked blue. Extra large. Doz. 60c., 100 \$4.00.
- Dream** (Reve de Jeunesse). A beautiful, delicate lilac; large flower of fine form. Doz. 60c., 100 \$4.25.
- Edmee** (Beauty). A beautiful shade of cherry rose, silvery pink edge. Doz. 65c., 100 \$4.50.
- ***Erguste.** Satiny heliotrope, flushed silvery white; inside dark violet, with white base; early forcer. Doz. 65c., 100 \$4.50.
- Europe.** Glowing salmon scarlet, shaded rose. Medium flower and strong stem. Doz. 65c., 100 \$4.50.
- ***Farncombe Sanders.** Massive, fiery rose scarlet, inside cerise with white center marked blue. One of the largest and most beautiful of the Darwins. Doz. 70c., 100 \$5.00.

- Faust.** Deep purple black, blue base; monstrous flower. Well formed. Each 15c., doz. \$1.25, 100 \$7.50.
- Flambeau.** Brilliant scarlet, blue center; very rich and showy. Doz. 65c., 100 \$4.50.
- ***Glow** (Claude Gillot). Dazzling vermilion scarlet, white center, blue markings. Doz. 60c., 100 \$4.00.
- ***Gretchen** (Margaret). Beautiful globular flower; silvery pale rose, flushed white, inside soft pink with white center marked blue; very charming. Doz. 50c., 100 \$3.75.
- Gustave Dore.** Fine rose pink, edged silvery rose, with white center. Doz. 60c., 100 \$4.25.
- Isis.** Fiery crimson scarlet, with blue base, large and beautiful. Doz. 65c., 100 \$4.50.
- ***King Harold** (Mahony). Glowing ruby crimson; enormous flowers on very tall stems; center rich black. One of the very finest in existence. Doz. 60c., 100 \$4.50.
- La Candeur.** See White Queen.
- Lantern** (Nizza). Soft lilac inside, silvery lilac passing to white outside; inside clear lilac with white base. Doz. 60c., 100 \$4.00.
- L'Ingenue.** Very delicate rosy pink, broad border of rosy white; one of the best Darwin Tulips. Doz. 70c., 100 \$4.75.

DARWIN TULIPS—Continued

- La Tulipe Noire.** The darkest Tulip known; shape a perfect cup, of intense black maroon. Surface lustrous; very tall. **Each 8c., doz. 75c., 100 \$5.00.**
- Mad. Krelage.** Soft rosy pink, with paler margins; inside soft rose pink; very tall and shapely; thrives well and increases fast. **Doz. 65c., 100 \$4.75.**
- Margaret.** See **Gretchen.**
- May Queen** (Arentine Arendsen). Soft lilac rose, with white center marked blue. Very long, large flower. **Doz. 60c., 100 \$4.00.**
- Mrs. Cleveland.** Beautiful delicate flesh color suffused old rose, on long stem. **Doz. 65c., 100 \$4.50.**
- *Nauticus.** Silky purplish rose, center dark violet, shaded bronze; large flower and a good forcer. **Doz. 60c., 100 \$3.75.**
- Nora Ware.** A most beautiful shade of silvery lilac, shaded white; flower globular shape. **Doz. 60c., 100 \$4.00.**
- *Philippe de Commines.** Velvety dark purple. The strong stems hold the flowers erect. It is one of the earliest and best forcing varieties. **Doz. 60c., 100 \$4.25.**
- *Pride of Haarlem.** Tall; bright rose, suffused with purple; richer externally and with scarlet flushing near the rib; center blue. **Doz. 65c., 100 \$4.50.**
- *Professor Rauwenhoff.** Deep cherry rose with ivory white and blue star at base; splendid early forcer, enormous flowers of great substance. **Doz. 70c., 100 \$5.00.**
- Psyche.** Rich rosy pink, inside silvery rose with pale blue base, beautiful shade. An excellent variety for cutting. **Doz. 60c., 100 \$4.25.**
- Remembrance.** Dark lavender, shaded rose. **Doz. 65c., 100 \$4.75.**
- *Rev. Ewbank.** Heliotrope lilac, with paler edge; fine forcer. **Doz. 60c., 100 \$4.00.**
- Salmon King.** A rich, deep salmon rose, shaded scarlet. Base white; a grand bedding Tulip. **Doz. 60c., 100 \$4.75.**
- Suzon.** Immense flower of a broad shape, distinct soft salmon pink, shading to blush at edge of petals, inside soft flesh pink with white center. **Doz. 65c., 100 \$4.50.**
- Tak Van Poortvliet.** Brilliant scarlet; blue base; tall, sturdy stem; fine for forcing. **Doz. 60c., 100 \$4.00.**
- The Sultan** (Joseph Israels). Color a deep black maroon. **Doz. 50c., 100 \$3.50.**
- White Queen** (La Candeur). Lovely soft white, slightly tinged blush. The best white Darwin. **Doz. 60c., 100 \$4.25.**
- *William Copeland** (Sweet Lavender). The best early forcing Darwin Tulip, which may be flowered in February; when forced, the color is a delicate lavender, outside grown shows color of rosy lilac. **Doz. 70c., 100 \$5.00.**

COLLECTION: 6 bulbs each of the above, 37 Named Varieties, each separately marked, \$10.00.
COLLECTION: (Our Selection) of twelve varieties, 12 bulbs of each, separately marked, \$6.00.
COLLECTION: (Our Selection) of twelve varieties, 6 each, separately marked, \$3.25.

Parrot, or Dragon Tulips

A very attractive and noticeable species of Late, or May-flowering Tulips, with their large flowers of various and brilliantly striking colors and markings, the edges of the petals being curiously cut and fringed, making an odd but attractive appearance. The cultivation of these brilliant colored Tulips is increasing in popularity each year.

- Admiral of Constantinople.** Dark red, shaded and tipped orange. **Doz. 45c., 100 \$3.25.**
- Cafe Brun.** Deep yellow, striped and feathered reddish brown. **Doz. 45c., 100 \$3.25.**
- Feu Brillante.** Rich blood crimson, with bluish-black markings. **Doz. 45c., 100 \$3.25.**
- Lutea major.** Yellow, striped crimson and green. **Doz. 45c., 100 \$3.25.**
- Markgraaf.** Golden inside, feathered brilliant scarlet purple and green outside. **Doz. 45c., 100 \$3.25.**
- Perfecta.** Yellow, blotched scarlet and green. **Doz. 45c., 100 \$3.25.**
- Very Choice Mixture.** **Doz. 40c., 100 \$2.75.**



Rembrandt Tulip, Fleur de Marie

New Rembrandt Tulips

(Late Blooming)

The Rembrandt Tulip is one of the fanciest and most striking of the new Tulips, belonging as it does to the late flowering class and is a Darwin of the variegated and feathered type, having broken away from the regular self colors of the Darwin.

By Parcel Post add postage at Zone rates, (see page 1)

Weight 1 lb. per doz., 8 lbs. per 100.

- Aladdin.** Amaranth stripes on lilac ground. **Doz. 65c., 100 \$5.00.**
- Apollo.** Rosy lilac and white with deep carmine markings. **Doz. 60c., 100 \$4.50.**
- Caracalla.** White with carmine-red flames and feathers. **Doz. 75c., 100 \$5.50.**
- Fleur de Marie.** Deep rose on pale rose and white ground. **Doz. 75c., 100 \$5.50.**
- Hebe.** Pale lilac white; deep brown markings. **Doz. 60c., 100 \$4.50.**
- Marco Spado.** White ground with fiery-red flames. **Doz. 75c., 100 \$5.50.**
- Quasimodo.** A striking and distinct shade of deep ruby red and white. **Doz. 65c., 100 \$5.00.**
- Semele.** Fine vivid rose and white; extra large flower. **Doz. 65c., 100 \$5.00.**
- Titania.** Rosy lilac and white, pencilled deep red. **Doz. 75c., 100 \$5.50.**
- Vesta.** Deep carmine stripes and flames on white ground. **Doz. 60c., 100 \$4.50.**
- Collection, 10 varieties, 6 bulbs, each separately marked, \$3.00.**

Single Late, or May-Flowering Tulips

These lovely late-flowering Tulips are very effective for all kinds of decorative work and their value as cut flowers cannot be overestimated. They are all perfectly hardy, raised in the most northern part of Great Britain and Ireland, and are eminently fitted for border cultivation for bedding, forcing and every purpose to which the early flowering Tulip is put. They often grow from 2 to 3 feet high and flower usually about Memorial Day, lasting fully two weeks in bloom. We have given this group considerable attention in recent years and we can fully recommend the varieties listed below as the best of their kind.

By Parcel Post add postage at Zone rates, (see page 1).
Weight 1 lb. per doz., 8 lbs. per 100.

Beauty of America. Pale yellow, turning white, with red border. Doz. 45c., 100 \$3.25.

Bouton d'Or (Ida; Golden Beauty). Tall, stately, cup-shaped flowers of a bright golden yellow; last a long time in good condition. A grand Tulip for massing for long distance effect. Doz. 45c., 100 \$3.50.

Columbus (Gala Beauty). Rich, velvety crimson striped with gold; shape that of Mrs. Moon; deliciously, perfumed and excellent in every way. Height 16 in. Doz. \$1.00, 100 \$7.00.

Elegans. Grand border Tulip; petals rich carmine, elegantly reflexed, base yellow. The finest of the early flowering set for cutting. A free grower. Doz. 50c., 100 \$3.75.

Gesneria alba marginata. Pure white, delicate, edged rose. Doz. 50c., 100 \$3.75.

Gesneriana major. Large; crimson scarlet, with glittering blue-black center. Excellent for massive bedding; also for Memorial Day cutting. Height 20 in. Doz. 50c., 100 \$3.75.

Gesneriana lutea. Golden yellow. One of the best of this well-known type; has large, perfect-shaped flowers of the purest golden yellow, with long stems. Doz. 50c., 100 \$3.25.

GLARE OF THE GARDEN. Deep blood crimson of elegant form and tall grower. Doz. 60c., 100 \$4.00.

Golden Crown. Large, golden-yellow flowers, edged bright scarlet and becoming suffused with scarlet with age. An old Tulip, but still indispensable for bedding and cutting. Doz. 50c., 100 \$3.50.

INGLEScombe PINK (Salmon-pink). An extra large flower of a very pleasing salmon-rose shade; a very prominent flower among the late Tulips. Doz. 50c., 100 \$3.50.

Inglescombe Scarlet. A very large flower of brilliant scarlet, with black base. Doz. 45c., 100 \$3.25.

Inglescombe Yellow (New). Very tall and striking Tulip. Deep cup-shape; pale canary-yellow, on stems 2 feet high. Doz. 45c., 100 \$3.25.

Isabella (Blushing Bride, Shandon Bells). Deep, goblet-shaped flowers on stems a foot high, colored creamy white and pink, changing to cherry red with age. A very choice and popular variety; forces well and a capital bedding Tulip. Doz. 45c., 100 \$3.00.

JOHN RUSKIN. Its color, pink, bordered golden, reminds one of the setting sun in its most beautiful colors. Flowers are egg-shaped, borne on long, graceful stems. Doz. 65c., 100 \$4.50.

La Merveille. Rich coral color, with a yellow center pitcher-shaped, sweet scented and very beautiful. Quite to the lady's fancy. Height 24 in. Doz. 50c., 100 \$3.50.

LA REVE. Immense goblet-shaped flowers of a rosy-buff tone, with yellow base; very handsome and long lasting. Doz. \$1.00, 100 \$7.00.

Mrs. Moon. Giant late Tulip; flowers rich yellow, of elegant form, tapering and reflexing. One of the finest Tulips in cultivation. Doz. 60c., 100 \$4.25.

Parisian White (Snowdon). Pure white, passing to rose. Doz. 45c., 100 \$3.25.

Parisian Yellow. Clear yellow, pointed petals. Doz. 45c., 100 \$3.00.

Picotee (Maiden's Blush). Elegantly recurving pure white flowers, changing in a few days to a pink edge, gradually becoming suffused with rose; very effective in borders or beds. Doz. 45c., 100 \$3.00.

Striped Beauty. Massive petaled flowers of deep goblet form; pure white, flaked gray, crimson and blue; very effective. Doz. 60c., 100 \$4.25.

The Fawn. Strong growing plant, with goblet-shaped flowers, colored fawn with apricot external shading; of a large size and boldly erect habit. A capital Tulip of refined coloring. Doz. 50c., 100 \$3.50.

Vitellina. Large, pale primrose. Doz. 50c., 100 \$3.50.

Breeder Tulips

Old Dutch self-colored Tulips, nature's happiest color combinations of purple and bronze, grey and lilac, yellow and bronze, brown and orange, are revealed to us in this group, of perfect form and are borne on tall, strong stems.

Bronze Queen. Buff, tinged apricot. Doz. 75c., 100 \$5.00.

Cardinal Manning. A curious blend of mauve and rose which changes to an almost pure orange at the extreme edges of the petals. Doz. 60c., 100 \$4.50.

Fairy. Terra cotta and bronze large flower. Doz. \$1.25, 100 \$9.00.

Godet Parfait. Deep purple violet with white base. Doz. \$1.00, 100 \$7.00.

Golden Bronze. Old gold outside, deep golden bronze inside. Doz. \$1.00, 100 \$8.00.

Klopstock. Heliotrope with white base, extra fine and delicate shade, very beautiful. Doz. 40c., 100 \$3.00.

Lucifer. Large, reddish orange, fine large flower. Doz. \$1.25, 100 \$9.00.

MacMahon. Bronzy-violet, margined bronze yellow, very large flower. Doz. \$1.00, 100 \$7.50.

Prince of Orange. Terra cotta with orange edge. Doz. 60c., 100 \$4.50.

Superba. Chestnut brown with golden brown edge. Doz. 45c., 100 \$3.00.

Yellow Perfection. Bronze yellow, shaded deep golden. Doz. 60c., 100 \$4.50.

Narcissi, Daffodils and Jonquils

There is at the present time a very large assortment of Narcissi from which to make selections, and nearly all are of a quality worthy of cultivation. It is almost impossible to list the complete line of these beautiful Spring flowers, but in the following few pages we offer the varieties which we deem to give the best satisfaction.

The Poetas and Polyanthus types, the French-grown Trumpet Major and Jonquil Campernelle, may be flowered for Christmas, while the Large and Medium Trumpets and the double flowering sorts may be had in bloom from the middle of January until early Spring.

When ordering the large flowered or double varieties, please do not use the word "Jonquil," as the true Jonquil is the small or miniature flowered sort.

Culture Outside The large-flowered, or the sorts which have large bulbs, should be planted from 4 to 6 inches deep and about 5 inches apart. Planting should be begun as soon as possible after October 1st, but bulbs may be planted any time before the ground is frozen too hard to work.

Culture in Pots As a general rule, treat Narcissi the same as Hyacinths. They should be planted about 6 bulbs in a 6-inch pot or pan and put in a dark and cool place, where they may develop their roots. Let them remain until January 1st, when they may be removed to a warmer temperature, but keep in the dark until the foliage is about 6 inches high; then bring to the light and allow them to flower.

By Parcel Post add postage at Zone rates, (see page 1).
Weight 2 lbs. per doz., 15 lbs. per 100.

Large Trumpet Narcissus

Conqueror. The blooming, bold, enormous flower, the pale primrose perianth often measures 13 centimeters across with a large, widely expanded yellow trumpet; long stem. Each 10c., doz. \$1.00, 100 \$7.25.

Cornelia. Color soft canary-yellow, well expanded trumpet and broad, smooth perianth, a choice variety for forcing or for border use. Each 12c., doz. \$1.25, 100 \$9.00.

EMPEROR. Immense flower, clear, golden-yellow trumpet; deep primrose perianth.

Mother Bulbs: Doz. 90c., 100 \$6.75.
Single Nose Bulbs: Doz. 65c., 100 \$4.50.

Empress (Bicolor). A strong, robust grower, extra large flowers; perianth pure white, well expanded and trumpet of rich pure yellow, one of the best bicolors. Doz. 90c., 100 \$6.75.

Glory of Leiden. Immense flower with long, large, fluted trumpet of rich yellow with full, broad, overlapping perianth, petals of bright yellow; strong grower. Each 10c., doz. \$1.00, 100 \$7.25.

GOLDEN SPUR. Immense golden trumpet; early and fine flower. Extra large Double Nose, producing two or more large flower spikes.

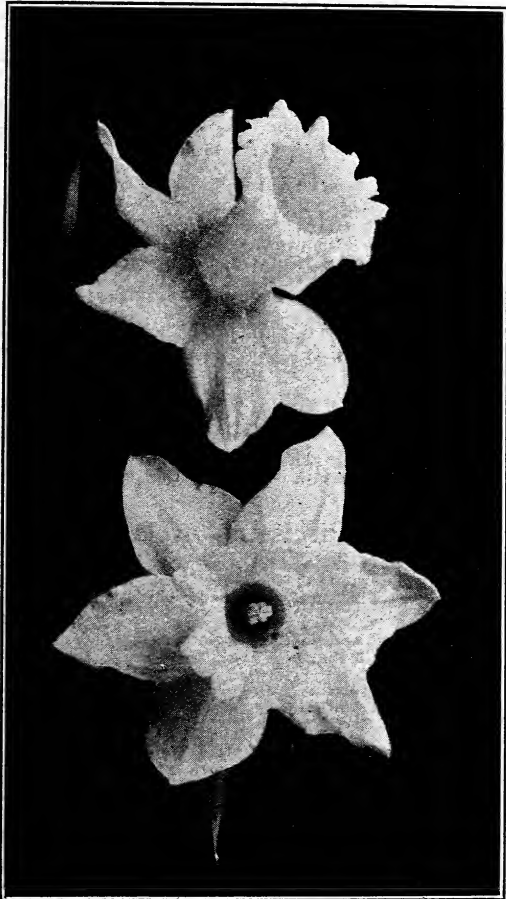
Mother Bulbs: Doz. 85c., 100 \$6.50.
Single Nose: Doz. 65c., 100 \$5.00.

Golden Spur (French Grown). An early forcing sort usually blooming for Christmas. Doz. 65c., 100 \$4.75.

Henry Irving. Very early; deep golden yellow trumpet; of fine form; vivid yellow perianth; very handsome, fringed edge. An exceptionally fine sort for forcing. Doz. 65c., 100 \$5.00.

Horsfieldii (Bicolor). A grand flower; large, golden yellow trumpet; pure white perianth; early forcing. Doz. 90c., 100 \$6.75.

J. B. M. Camm (Bicolor). Perianth white; trumpet creamy yellow. One of the finest sorts; strong habit and good substance. Doz. 85c., 100 \$6.50.



Narcissus King Alfred.

KING ALFRED. Flowers of extra size and great substance. Golden yellow perianth and trumpet, the latter of beautiful form with deeply frilled mouth, large, bold flower and strong grower. Each 20c., doz. \$2.25, 100 \$16.00.

MME. DE GRAAFF. Of the white trumpet varieties this is the largest. Perianth pure white, trumpet opening cream passing to white with age. A most beautiful flower. Often called "The Queen of Daffodils." An excellent sort for forcing. Doz. 90c., 100 \$6.75.

MADAME PLEMP. A grand flower, comparatively new and a variety much in demand. Blooms are of gigantic size, perianth pure white and gracefully twisted, while the large trumpet is of a rich golden yellow. The foliage is long and heavy, making a choice variety for pot culture. **Doz. 85c., 100 \$6.50.**

Mrs. Harry J. Veitch. Golden yellow trumpet; broad, pale yellow perianth. Very handsome and free flowering variety. **Each 35c., doz. \$3.75, 100 \$30.00.**

Olympia (New). Yellow trumpet, with perianth of slightly paler shade. Blooms are larger than Emperor, a fine variety for pot culture. **Each 20c., doz. \$2.25, 100 \$18.00.**

PRINCEPS. Large, yellow trumpet, with sulphur perianth. Very early and excellent for forcing. One of the best varieties for cutting, being an excellent keeper. **Doz. 65c., 100 \$4.75.**

ROBERT SYDENHAM (New). Sulphur-yellow, well formed perianth, beautiful large yellow, wide open trumpet with a fine, deeply frilled brim. **Each 50c., doz. \$5.00.**

Spurius (Single Von Sion). One of the finest Trumpet Daffodils; self-colored, clear yellow; large, expanded trumpet; fine for forcing. **Doz. 60c., 100 \$4.25.**

Trumpet Major (French Crown). Trumpet and perianth golden yellow. Very extensively used for forcing. This variety may be had in flower for Christmas. **Doz. 45c., 100 \$3.50.**

Van Waveren's Giant (New). An enormous flower, the largest of the Trumpet varieties. Bright yellow trumpet, with primrose perianth. A splendid variety for forcing and worthy of trial. **Each 20c., doz. \$2.25, 100 \$16.00.**

VICTORIA. Trumpet of large size, clear yellow and beautiful, frilled at mouth; perianth creamy white, etc. Of great commercial value and best late forcing variety. **Doz. 90c., 100 \$6.75.**

Weardale Perfection. White perianth, trumpet soft sulphur white, very fine. **Each 30c., doz. \$3.00, 100 \$21.00.**

William Goldring (The Swan's Neck Daffodil). Trumpet primrose, perianth pure white. **Doz. 75c., 100 \$5.00.**

Double Narcissus, or Daffodils

The double varieties of Narcissus are probably more commonly known than the other sorts, and more generally used. They are all perfectly hardy and will also force well.

**By Parcel Post add postage at Zone rates, (see page 1).
Weight 3 lbs. per doz., 20 lbs. per 100.**

Alba plena odorata (Double Poet Narcissus). Large, double, pure white flowers of delicious fragrance, flowering about Memorial Day. **Doz. 50c., 100 \$2.75.**

Incomparabilis plenus (Butter and Eggs). Flowers large, yellow, with orange center. Fine for forcing and bedding. **Doz. 60c., 100 \$4.25.**

Orange Phoenix (Eggs and Bacon). White flowers with with orange segments in the center. A most effective variety for either forcing or bedding. **Doz. 60c., 100 \$4.50.**

Silver, or Sulphur Phoenix (Codlins and Cream). Large, pure white flowers. The largest and finest of the double varieties. **Doz. 60c., 100 \$4.50.**

VON SION (The Old-fashioned Double Daffodil). Flowers deep golden yellow, very decorative; excellent for cutting and most extensively used by florists for cut flowers. Perfectly hardy and undoubtedly the very best forcing variety.

Mother Bulbs (Top Roots). Extra large and producing from two to four flowers. **Doz. 90c., 100 \$6.00.**

Double-Nosed Bulbs, Mammoth. **Doz. 70c., 100 \$4.75.**

Single-Nosed Bulbs, Mammoth. **Doz. 60c., 100 \$4.00.**



Narcissus J. B. M. Camm

Jonquils Narcissus Jonquilla

A delicate and graceful little flower; shines in the richest yellow shades and is filled with sweet perfume. Several flowers are borne on long, slender stems. The Jonquil is perfectly hardy out of doors and very choice for forcing.

**By Parcel Post add postage at Zone rates, (see page 1).
Weight 2 lbs. per 100.**

Single Sweet-Scented. Yellow; free blooming. **Doz. 35c., 100 \$2.25.**

Double Sweet-Scented. Yellow. **Doz. 40c., 100 \$2.50.**

Campernelle (French Crown). The best Jonquil for Christmas blooming; yellow; very early. **Doz. 35c., 100 \$2.75.**

Campernelle Rugulosus. Rich yellow. The largest Jonquil. **Doz. 40c., 100 \$2.75.**

Tenuior (Silver Jonquils). Sulphur, white perianth and yellow cup. Flowers on long, slender stems, very graceful. Excellent for rockwork. **Doz. 40c., 100 \$2.50.**

Narcissus

**Bulbocodium, or Hoop Petticoat
Conspicuum (Yellow Hoop Petticoat).** Dwarf variety with golden-yellow flowers, a number of which are produced by each bulb. Pretty when forced six to eight bulbs in a pan; at the same time most charming for edges of beds and is perfectly hardy. **Doz. \$1.00, 100 \$7.00.**

SINGLE NARCISSUS

Medium Trumpet Varieties

By Parcel Post add postage at zone rates, (see page 1). Weight 1 lb. per doz., 7 lbs. per 100.

BARRII TYPE.

Albatross. White perianth, pale citron yellow cup, prettily frilled and edged orange red.

Doz. 60c., 100 \$4.00

Conspicuous. A flower of exquisite beauty. unexcelled for cutting; large, broad spreading perianth; broad, short cup, conspicuously edged bright orange scarlet.

Doz. 50c., 100 \$3.50

Flora Wilson. Pure white perianth; yellow cup, edged orange scarlet. One of the best of the Barrii type.

Doz. 60c., 100 \$3.75

Seagull. Large spreading pure white perianth, cup canary yellow, edged apricot; a beautiful flower.

Doz. 65c., 100 \$4.00

Sensation. Perianth pure white; cup canary yellow edged orange scarlet; large strong-growing variety.

Each 20c., Doz. \$1.75, 100 \$10.00

INCOMPARABLE TYPE.

Autocrat. Large yellow cup, yellow perianth; large, full and well expanded.

Doz. 65c., 100 \$4.75

Cynosure. Yellowish perianth, deep orange-stained cup; extra.

Doz. 60c., 100 \$4.25

Gloria Mundi. Perianth clear yellow, cup orange scarlet.

Doz. 75c., 100 \$5.00

Princess Mary. Well imbricated perfect flower, with creamy-white perianth, cup well expanded; stained orange.

Doz. 65c., 100 \$4.50

Sir Watkin. A grand flower; primrose perianth, often 5 inches across; cup yellow, tinted bright orange, elegantly fringed. A very popular variety among florists.

Doz. 85c., 100 \$5.75



Single Narcissus, Barrii conspicuus

LEEDSII TYPE.

Duchesse de Brabant. Perianth white, yellow cup; very pretty and graceful.

Doz. 50c., 100 \$3.75

Mrs. Langtry. Broad white petals, with crown edged yellow; very conspicuous; most free-blooming and recommended for bedding. One of the best sorts for naturalizing.

Doz. 45c., 100 \$3.25

Queen of England (Minnie Hume). Large white perianth, cup passing from fine lemon to white.

Doz. 45c., 100 \$3.25

White Lady. Broad, round, overlapping perianth; pale canary cup; a very choice variety; eucharis-shaped; fine forcing variety.

Doz. 60c., 100 \$4.25

Narcissus Poeticus

Poet's, or Pheasant's Eye Narcissus

The Poeticus or Pheasant's Eye Narcissus is one of the best sorts for naturalizing in fields and woods and also for clumping in perennial beds and among shrubbery. When these are once planted they will remain in the same place for some years and will also increase their quantity of bulbs. All varieties of this type are perfectly hardy.

By Parcel Post add postage at zone rates, (see page 1).

Weight 1 lb. per doz., 6 lbs. per 100.

Poeticus. The true Poet or Pheasant's Eye Narcissus. Pure white with orange-red cup; very fragrant. Excellent for cutting; fine for naturalizing.

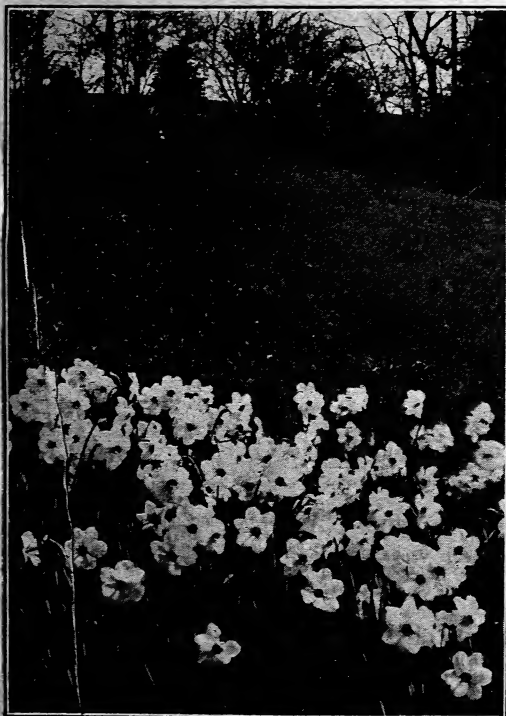
Doz. 40c., 100 \$2.75

Poeticus Ornatus. Somewhat larger than above. Broad perianth with yellow cup, margined red; very early; most valuable for forcing.

Doz. 50c., 100 \$3.00

King Edward VII (Almira). The very largest form of Poeticus Ornatus; an exquisite flower of elegance.

Doz. 75c., 100 \$5.00



Narcissus Poeticus

Narcissus Poetaz Hybrids

These new Hybrid Narcissi are perfectly hardy and will force equally as well as the Polyanthus or Poeticus Ornatus from which they originated. The individual flowers retain the size and form of the Poeticus Ornatus as well as its fragrance and do not have the strong odor of the Polyanthus, resembling it only in quantity of blooms. While it is one of the best sorts for forcing in pots, it is admirably adapted for growing among pebbles in water, much the same as Narcissus Paper-White. The producers of these beautiful Hybrid Narcissi thoroughly recommend them.

By Parcel Post add postage at Zone rates, (see page 1).

Weight 2 lbs. per doz., 16 lbs. per 100.

Aspasia. Pure white perianth with yellow eye, of true Poeticus form; growing 24 inches high; three to four flowers on stem. Doz. 60c., 100 \$4.25

Alsace. Petals pure white with yellow eye; when bursting into flower the eye is slightly edged reddish. Broad large flower of true Poet form; one of the earliest. Doz. 75c., 100 \$5.00

Elvira. Pure white with yellow eye; large flower of a good substance. Long-stemmed and a good keeper. Doz. 65c., 100 \$4.00

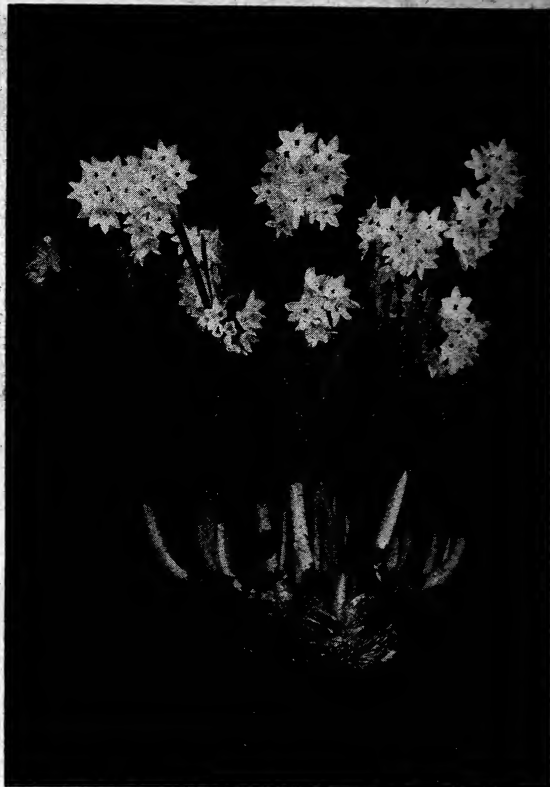
Ideal. Perianth white, with dark orange eye; large truss bearing six to seven flowers; beautiful striking color. Doz. 75c., 100 \$5.00

Irene. Perianth silky sulphur yellow, changing to light yellow. Orange eye; large, broad truss, bearing eight to nine flowers. Doz. 75c., 100 \$5.00

Klondyke. Perianth yellow with deep golden-yellow eye; one of the deepest yellows. Doz. \$1.25, 100 \$8.00

Lucia. Golden perianth, with golden-yellow eye; tall; seven to eight flowers on a stem; especially fine. Doz. \$1.00, 100 \$6.00

Triumph. Pure white perianth, with deep yellow eye. The largest flowers of this section resembles Bazelman Major of the Polyanthus varieties. Doz. 75c., 100 \$5.00



Paper-White Narcissus, growing in water and pebbles

POLYANTHUS NARCISSUS

Paper-White

THE POPULAR LARGE-FLOWERED BUNCH NARCISSUS

For Christmas Blooming
Either in Soil or Stones and Water.

By Parcel Post add postage at Zone rates, (see page 1).
Weight 2 lbs. per doz., 17 lbs. per 100

If grown in pots, eight weeks will produce the flowers. We especially recommend to grow this bulb in pebbles and water, after the fashion of Chinese Sacred Lilies, as they are far superior to the latter. Flowers appear in three weeks in greater numbers and more perfected. Twelve bulbs should be planted in an ordinary sized dish. It is advisable to start the bulbs in a dark place for four to six days. Grow cool and give plenty of water. In order to grow successions of bloom during the entire winter, we have provided to supply these bulbs until March 1.

Extra Large Bulbs:
Doz. 50c., 100 \$3.50, 1000 \$32.00

Mammoth Bulbs:
Doz. 75c., 100 \$4.50, 1000 \$40.00

In our New England climate this class is not hardy and can be used for house culture only. Their easy culture should endear them to every flower lover. In Southern States these bulbs are perfectly hardy.

By Parcel Post add postage at Zone rates, (see page 1).
Weight 2 lbs. per doz., 17 lbs. per 100

Bathurst. Deep yellow; large clusters. Doz. 75c., 100 \$5.00

Bazelman major. White flowers, yellow cup, very large and fragrant. Doz. 75c., 100 \$5.00

Double Roman. White, deep yellow cup; large truss. Doz. 50c., 100 \$4.00

Gloriosa. White, deep orange cup. Doz. 75c., 100 \$5.00

Grand Monarque. White, with primrose-yellow cup. Doz. 85c., 100 \$5.00

Grand Premo. White, with bright yellow cup. Doz. 75c., 100 \$5.50

Grand Soleil d'Or. Yellow, with deep orange cup. Doz. \$1.00, 100 \$8.00

Juane Supreme. Yellow, orange cup. Doz. 75c., 100 \$5.00

Queen Victoria. Pure white, with citron cup. One of the finest for forcing. Doz. 75c., 100 \$5.00

Staten General. Large, fine white; orange cup. Doz. 80c., 100 \$6.00

Chinese Sacred Lily (CHINESE NEW YEAR LILY)

By Parcel Post add postage at Zone rates, (see page 1). Weight 4 ozs. each, 4 lbs. per doz.

They are somewhat similar to the Polyanthus Narcissus and are usually grown in bowls partially filled with pebbles and water. We offer sound, extra large bulbs.

Each 15c., doz. \$1.50. Basket of 30 bulbs \$3.50. Mammoth: Each 20c., doz. \$2.25, basket \$4.50.



CROCUS, SPRING-FLOWERING

"The Heralds of Spring"

Crocuses, among the first flowers to bloom in early Spring, are always the admiration of everyone, especially when planted amid the grass in lawns, their bright flowers producing a fine contrast. They may also be planted among other Spring-flowering bulbs, such as Tulips, Hyacinths and Narcissi, making a splendid show before the other varieties begin to bloom. The results obtained from planting Crocuses in pots or pans for house blooming are very satisfactory. For this purpose it is advisable to use the best named varieties. To grow Crocuses in pots, place the bulbs about one-half inch apart and one-half inch deep, keeping them in a cool place until thoroughly rooted, when they may be brought to the light for blooming. In the open, bulbs should be set at least 3 inches deep.

Mailed free at dozen prices. By Parcel Post, weight 3 lbs. per 100.

Giant-Flowering Crocus

BLUE

- CESAR** (New). Extra fine, large flower, rich, deep purple. Doz. 40c., 100 \$2.50.
Baron von Brunow. Deep purple.
King of the Blues. Extra large purple blue.
Purpurea grandiflora. Dark purple. Extra large flower. Doz. 35c., 100 \$2.00.
Marquis of Lorne (New). Clear blue.
Margot. Pale, rosy-lilac, very large and showy.

STRIPED

- PALLAS** (New). White ground, with fine lilac stripes; remarkably showy orange anthers; an extra large sort. Doz. 35c., 100 \$2.00.
SCIPIO (New). White outside, purple base and pale mauve stripes inside, orange anthers. Extra fine. Doz. 35c., 100 \$2.00.
Albion. Dark violet, striped with white. Extra.
Cloth of Silver. Silvery white, striped lilac.
Mme. Mina. White, striped and shaded lilac.
Sir Walter Scott. Large white, striped with lilac.

WHITE

- KATHLEEN PARLOW**. A superb, new, pure white; large, orange anthers; an extra choice, new variety. Doz. 40c., 100 \$2.50.
WHITE LADY (New). Very fine, large, cup shaped flowers, pure white, brilliant orange anthers. Doz. 40c., 100 \$2.50.
Caroline Chisholm. Pure white.
King of the Whites. Pure white; very floriferous; extra large.
Mammoth. Pure white. Very large.
Mont Blanc. Snowy white.
Queen of Netherlands. Pure white; beautiful, large, round shaped flower.

YELLOW

- Golden Yellow, Jumbo Bulbs**. These are the largest bulbs possible to obtain. Doz. 40c., 100 \$2.50.
Golden Yellow, Mammoth Bulbs. Extra large bulbs which produce several blooms. Doz. 35c., 100 \$2.00.
Cloth of Gold. Golden-yellow, striped maroon.

GIANT FLOWERING MIXTURE. Containing the above choicest colors.

Price of above varieties, except where noted: Doz. 25c., 100 \$1.50, 1000 \$14.00.

Choice Mixtures of Crocus

The following mixtures are well adapted for bedding, naturalizing or planting in conspicuous places in lawns. The bulbs are of a somewhat smaller size than the named varieties, but may be planted quite close together. The colors include a complete selection of all the shades and markings, as well as the self colors.

Large-flowered shades of White.

Large-flowered shades of Blue and Purple.

Large-flowered, Striped and Variegated.

Large-flowered Golden Yellow.

Mixture of all colors: Doz. 15c., 100 85c., 1000 \$8.00.

Lilies for Forcing and Outside Planting

By Parcel Post add postage at Zone rates (see page 1). Weight: 3 lbs. per doz., 25 lbs. per 100.

FORCING VARIETIES

Lilium Harrisii (The Bermuda Easter Lily)

Ready for delivery in August.

This is the best Lily for the amateur to grow for house culture. Pure white, with long, broad trumpets.

Mammoth Bulbs. Each 75c., doz. \$7.50.

Extra Large Bulbs. Each 50c., doz. \$5.00.

Selected Bulbs. Each 35c., doz. \$3.50.

Lilium Formosum (Japan Grown)

A comparatively recent introduction in Easter Lilies, which will grow as easily as the Harrisii and mature early, producing large, pure white blooms, while the foliage is not as heavy as Harrisii. We recommend planting about three bulbs in one pot. September delivery.

Mammoth bulbs. Each 60c., doz. \$6.00, 100 \$45.00

Extra Large Bulbs. Each 50c., doz. \$5.00, 100 \$40.00

Lilium Giganteum (True Black Stem)

One of the best Lilies for Easter forcing, producing a large quantity of blooms from each bulb. This is a later flowering variety and requires a higher temperature. A particularly fine florists' variety. November delivery.

Mammoth Bulbs. Each 50c., doz. \$5.50, 100 \$45.00

Extra Selected Bulbs.

Each 40c., doz. \$4.50, 100 \$35.00

HARDY VARIETIES

We make a specialty of Hardy Lilies. We can only deliver these as they mature and also according to the importations. Some varieties do not arrive in this country until the middle of November, while our native Lilies can be delivered as early as October 20. Lilium Candidum can be delivered after September 10. If we have your order, and the ground is frozen before we are able to make delivery, we have facilities for caring for the bulbs, which will be shipped as early as possible the following Spring.

ALBUM (White Japanese Lily). This variety of Speciosum is undoubtedly the hardiest and most popular Lily for the border of the garden. They grow from 3 to 4 feet high and continue to bloom from August till frost. The above variety is pure white.

Mammoth Bulbs. Each 60c., doz. \$6.00, 100 \$48.00

Selected Bulbs. Each 50c., doz. \$5.00, 100 \$40.00

AURATUM (Golden-banded Lily of Japan). This variety grows on a strong stem, 4 to 5 feet high, from six to twelve immense blooms which measure 10 inches when expanded. The flowers are white, with a broad yellow stripe through the center of each petal and freely spotted chocolate crimson.

Mammoth Bulbs. Each 60c., doz. \$6.00, 100 \$48.00

Extra Large Bulbs. Each 50c., doz. \$5.00, 100 \$40.00

First Size Bulbs. Each 40c., doz. \$4.50, 100 \$35.00

AURATUM RUBRUM VITTATUM.

Very large flowers, often 1 foot across; pure ivory white, with broad crimson stripe through center of each petal. One of the choicest sorts. Each \$1.00, doz. \$10.00

BATEMANNIÆ. Japanese Lily producing bright orange-red flowers. 3 to 4 feet. July and August. Each 60c., doz. \$6.00

BROWNII. Flowers very large, trumpet-shaped, pure white inside, brownish outside. Stamens chocolate color. 3 feet. July and August. Each \$1.25, doz. \$12.00

CANDIDUM (Ascension, or Madonna Lily).

These are the famous bulbs from northern France, and, although they can be successfully forced, they are far better for the open garden. This is one of the best varieties for scattering among shrubs and in perennial beds. June and July. Our bulbs are all selected and the largest and strongest procurable. Each 25c., doz. \$2.75, 100 \$20.00

CANADENSE (Native Canadian Bell Lily).

Flowers bright yellow, with small black spots. A most graceful Lily and excellent for naturalizing in shrubs and woods. It usually grows 2 to 3 feet high, with a great quantity of blossoms; fine among shrubbery. Each 15c., doz. \$1.75, 100 \$12.50

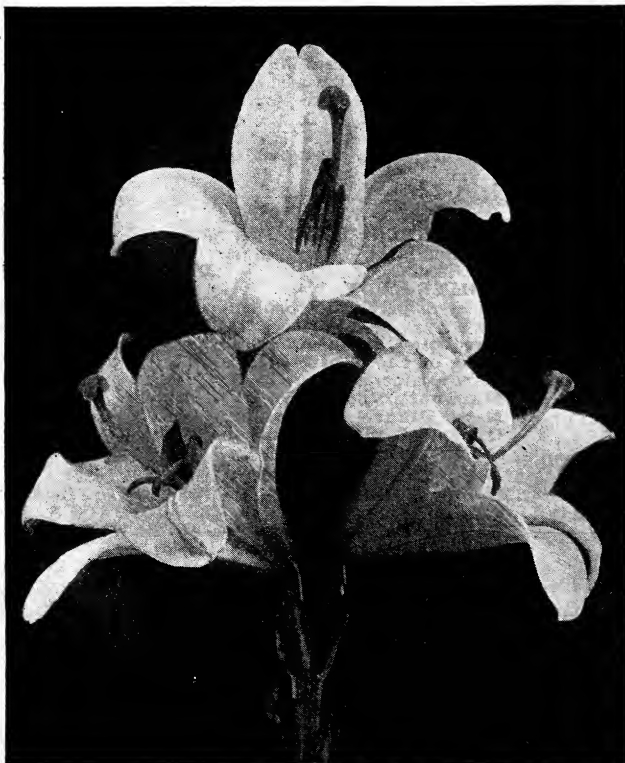
CANADENSE RUBRUM. Similar to above, only crimson, spotted with black, flowers in July and August. Each 25c., doz. \$2.50

CHALDEONICUM (Scarlet Turk's Cap). Brilliant scarlet recurved flower. Each 80c., doz. \$8.00

CROCEUM. A splendid Lily of erect type, bearing from three to eight enormous flowers of a deep orange-tinted scarlet. Flowers in July. Each 25c., doz. \$2.50

ELEGANS ATROSANGUINEUM (Van Houttei). One of the earliest-flowering Lilies. Deep, rich crimson, with dark spots. Flowers in June and July. Each 30c., doz. \$3.00

ELEGANS ROBUSTA. An immense flower of the true type; three to five flowers in a cluster. Each 40c., doz. \$4.00



Lilium Candidum, Madonna Lily

LILIES—Continued

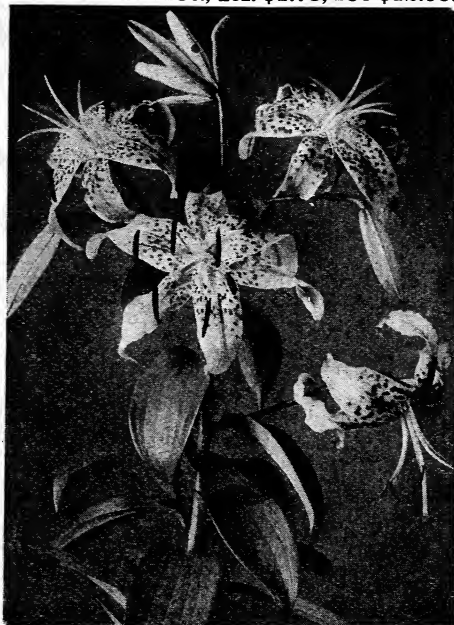
- EXCELSUM** (Isabellinum, Testaceum). Flowers recurved and of delicate buff color. Very fragrant. July. 4 to 5 ft. Each 75c., doz. \$8.00.
- HANSONII**. Deep golden-yellow, spotted chocolate. Each 60c., doz. \$7.00.
- HENRYI** (Yellow Speciosum). A vigorous Lily; color deep orange-yellow, banded with green. Each 75c., doz. \$7.50.
- KRAMERI**. Blush pink; fragrant and beautiful trumpet shaped flowers. Each 40c., doz. \$4.00.
- MAGNIFICUM**. Most intensely colored of all Speciosum varieties. A large clump of these Lilies will make a wonderful effect. Mammoth Bulbs. Each 60c., doz. \$6.00, 100 \$48.00. Selected Bulbs. Each 40c., doz. \$4.50, 100 \$36.00.
- MELPOMENE**. Large; deep crimson, heavily spotted. Mammoth Bulbs. Each 60c., doz. \$6.00, 100 \$48.00. Selected Bulbs. Each 40c., doz. \$4.50, 100 \$36.00.
- PARDALINUM** (Leopard Lily). Rich scarlet and yellow flowers, spotted with rich brown. Robust and free flowering. Each 30c., doz. \$3.25, 100 \$25.00.
- ROSEUM** (Pink Japan Lily). White, shaded and spotted dark rose. Mammoth Bulbs. Each 60c., doz. \$6.00, 100 \$48.00. Selected Bulbs. Each 40c., doz. \$4.50, 100 \$36.00.
- RUBRUM** (Red Japan Lily). White, suffused and spotted crimson. Mammoth Bulbs. Each 60c., doz. \$6.00, 100 \$48.00. Selected Bulbs. Each 40c., doz. \$4.50, 100 \$36.00.
- SUPERBUM** (Our Native Turk's Cap Lily). Rich orange-red petals, tipped red and dark spotted. 4 to 6 ft. high. Blooms July and August. Each 40c., doz. \$4.50, 100 \$35.00.
- TIGRINUM SPLENDENS** (The Common Tiger Lily). So well known that it does not require description. Each 25c., doz. \$2.60, 100 \$20.00.
- TIGRINUM SPLENDENS FL. PL.** Double-flowering Tigrinum splendens. Each 25c., doz. \$2.60, 100 \$20.00.

UMBELLATUM ERECTUM. A Lily that resembles Elegans variety. Flowers are borne in large clusters; deep scarlet to dark red. 2 ft. high. June.

Each 15c., doz. \$1.75, 100 \$12.00.

UMBELLATUM INCOMPARABLE. Beautiful dark red.

Each 15c., doz. \$1.75, 100 \$12.00.



Lilium Rubrum

MISCELLANEOUS BULBS

Amaryllis

The Amaryllis, one of the most beautiful of our tender or greenhouse bulbs, is greatly admired though little grown. Bulbs should be potted in the Autumn as soon as possible, and allowed to root slowly. Their flower scape usually appears about February, after which the foliage commences to show. They should be kept growing until August or September and then allowed to rest until flowering time. Do not disturb the roots if repotting is needed. Most varieties are ready for delivery in October.

By Parcel Post add postage at Zone rates, (see page 1).

Weight 3 lbs. per doz.

Hippeastrum. Newest hybrids. These hybrids are raised from seed of the most famous strains in the world and should not be compared with the old-fashioned species. Each \$1.00, doz. \$10.50.

Defiance. Rich carmine, striped and suffused with white. Each 75c., doz. \$7.50.

Equestris. A hybrid of Hippeastrum. Scarlet, with broad white stripe, extending from the root to half way up the segments. Each 40c., doz. \$4.00.

Johnsoni (Barbadoes Spice Lily). Another hybrid. Enormous bright crimson flowers with white stripe through the center of each segment. Each 60c., doz. \$6.00.

Zephyranthes rosea (Fairy Lily). Rose-pink flowers; quite hardy and may be planted in the garden or in the lawn. 3 in. across. Each 10c., doz. \$1.00, 100 \$7.00.

Zephyranthes candida. Pure white; fragrant. Each 10c., doz. \$1.00, 100 \$6.00.

Calla Lilies

(Arum)

By Parcel Post add postage at Zone rates, (see page 1).

Weight 3 lbs. per doz.

Callas mailed free at single prices only.

Alba maculata (The Spotted-Leaf Calla). This variety is perfectly hardy in this climate and is an excellent acquisition for the border or in clumps near ponds. Beautiful as pot plants. Flowers white. Foliage spotted white. Each 40c., doz. \$4.00.

Elliottiana (The Golden Calla). A new variety with rich, golden-yellow flower and white spotted foliage. May be grown to bloom during February and June. Flowers in Summer if planted in the early Spring. Bulbs ready in November. Each 50c., doz. \$5.00.

White Calla (Richardia Æthiopia).

The Richardia, or White Calla of the Nile, is probably the best known, and is always a very popular house plant on account of its free-flowering qualities. These bulbs, if potted during September and October, will bloom about January and continue until early Summer, when they should be dried off and replanted in the Autumn.

Extra Selected
Jumbo Size.

Each 25c., doz. \$2.50.
Each 35c., doz. \$3.50.

Freesia

One of the most popular of the early flowering Fall bulbs. If planted during last week of August or early in September, they may be flowered by Christmas. Freesias are of easy culture and may be planted in early Autumn and allowed to root in a cool place for about three weeks, when they may be brought to the light and grown until in bloom. A very handsome display may be had by planting twelve bulbs in a 6-in. pot or pan.

By Parcel Post add postage at Zone rates, (see page 1). Weight 2 lbs. per 100.

RAINBOW FREESIA. A choice variety of hybrids, including fine shades of pink and lavender.

Doz. \$1.00, 100 \$6.00.

Giant Freesia "Purity." This is, without doubt, the largest, finest and purest white Freesia in existence. Stems grow from 20 to 30 in. high and produce from six to a dozen enormous flowers of snowy white. Our stock of this superb variety is unsurpassed.

Jumbo Bulbs. Doz. 60c., 100 \$4.00, 1000 \$37.50.
Mammoth Bulbs.

Doz. 50c., 100 \$3.50, 1000 \$30.00.

First Size Bulbs.
Doz. 35c., 100 \$2.50, 1000 \$20.00.

Lily of the Valley (Cold Storage)

(For Forcing)

A greatly admired and very popular commercial flower at all times, its graceful racemes with numerous large, white, drooping bells, producing a delightful fragrance. Lily of the Valley may be grown for house plants twelve months in the year. By the aid of the cold storage which we have in our store we can supply the pips at any time. From these cold storage pips they may be flowered in three to four weeks.

By Parcel Post add postage at Zone rates, (see page 1). Weight, per bundle, 2 lbs.

Boston Quality Selected Pips. From cold storage for forcing immediately.

Per bundle, 25 pips \$1.25, 100 \$4.00.

Lily of the Valley Clumps

(For Outdoor Culture)

By Parcel Post add postage at Zone rates, (see page 1). Weight 4 lbs. per clump.

We strongly recommend them for outdoor planting only. Each clump has from 10 to 25 pips or crowns, and they are grown from the large flowering varieties.

Large Clumps. Containing many flowering pips.
Each 30c., doz. \$3.50, 100 \$25.00.

Lycoris Squamigera

or *Amaryllis Hallii*

A perfectly hardy *Amaryllis* producing beautiful pink flowers.

Lycoris Squamigera produces in early Spring attractive green foliage which grows until July when it ripens off and disappears, and one not familiar with its habits would think the bulb had died, but about a month later the flower stalks spring from the ground to a height of 2 or 3 feet, developing an umbel of large and beautiful Lily-shaped flowers 3 to 4 inches across and from eight to twelve in number, of a delicate lilac-pink shaded with clear blue.

As the bulb is perfectly hardy without any protection it can be planted either in the Fall or Spring, but we consider Fall the best time, as the bulbs will have a chance to get established before flowering time. Cover the crown about 4 inches. Very useful for the border or among shrubbery. **Each 35c., doz. \$3.75.**

Hyacinthus Candicans

By Parcel Post add postage at Zone rates, (see page 1). Weight 1 lb. per doz., 8 lbs. per 100.

A showy, hardy plant, blooming in July and August, and producing spikes about three feet long, crowned with numerous large, pendent, bell-shaped white blossoms. Bulbs ready for delivery in November. It is advisable to plant them if ground is not frozen. Should the bulbs arrive too late, orders received will be shipped in early Spring.

Large Bulbs, Doz. 75c., 100 \$5.50.



Freesia Purity

Oxalis

Lovely little plants for hanging pots and baskets. If planted early, will produce flowers in December and remain so for the entire Winter. Plant six bulbs in a 5-inch pot. Set bulbs an inch deep and keep in the sun.

Bermuda Buttercup. The best of all Oxalis. Flowers clear yellow and very large.

Doz. 40c., 100 \$2.75.

Bowiei. Large, rosy-crimson flowers; handsome foliage.

Doz. 40c., 100 \$2.75.

Grand Duchess rosea. Large, pink flowers.

Doz. 40c., 100 \$2.75.

Grand Duchess white. Large, white flowers.

Doz. 40c., 100 \$2.75.

Grand Duchess lavender. Large, lavender flowers.

Doz. 40c., 100 \$2.75.

Finest Mixed Varieties. **Doz. 40c., 100 \$2.75.**

Trillium (Wood Lily)

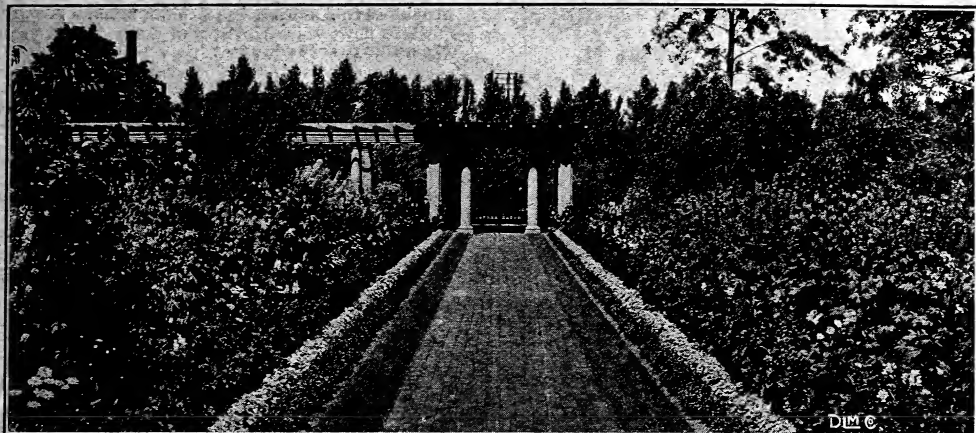
Hardy, native flowers, excellent for shady places.

Grandiflorum (American Wood Lily). Flowers pure white, changing to delicate rose.

Doz. 75c., 100 \$5.00.

Erectum. Pure white, compact growth. Height 15 inches.

Doz. 75c., 100 \$5.00.



HARDY PERENNIAL PLANTS

Plants are shipped (purchaser paying charges) by express. If wanted by Parcel Post add 5c. each to single price for small quantities. Add 10 per cent. to dozen price for delivery east of Mississippi River and 20 per cent. to dozen price for delivery west of Mississippi River.

The size mentioned in the descriptions indicates the approximate height that the plant may be expected to attain at maturity. The months represent the season of bloom.

Prices of Perennials, except where otherwise noted, 25c. each, \$2.50 per doz., \$17.50 per 100

Collection of Perennials

Twelve varieties: Our Selection. . . . \$2.00

Twenty-five varieties: Our Selection. . . 4.00

ACHILLEA Ptarmica, "The Pearl." Small double white flowers in open heads, blooming profusely all Summer. 2 ft.

ACONITUM Napellus. (Monkshood.) Dark blue flowers hooded in dense heads from July to September. 3 ft.

Napellus album. Pure white-hooded flowers.

Napellus bicolor. Flowers blue and white.

ANEMONE japonica.

alba. Flowers pure white, with prominent yellow stamens. Flowers produced on long stems.

AQUILEGIA chrysantha. (Golden Spurred Columbine.) Flowers are a pure golden yellow with long spurs. Very fragrant and one of the best of the Columbines. June to September. 3 ft.

chrysantha alba. A white-flowering form of above.

Long-spurred Varieties. A selected strain of immense flowers in all the brilliant shades.

HARDY ASTERS (Michaelmas Daisies). These are very handsome and useful. They flower at a time when few hardy plants are in bloom.

Arturens. Bright red. August to October. 3 ft.

Climax. The largest deep blue variety. 4 ft.

ericoides. White with yellow center. October and November. 3 ft. Flowers small; free flowering.

Lady Trevelyan. Large, pure white flowers; quite early. 3 to 4 ft.

longiflora formosissima. Dense head of rosy purple flowers of medium size. 3 ft.

Madonna. The best late pure white. 3 ft.

novæ-angliæ. (New England Aster.) Violet-purple large flowers. Sept. and Oct. 4 ft.

novæ-angliæ roseus. Rosy crimson. Late.

novæ-angliæ rubra. Deep red. 5 ft.

tataricus. Purple. 6 ft. September and October.

BOLTONIA latisquama. Very showy pink flowers, fine for cutting. August and September. 4 to 5 ft.

Fifty plants; 20 varieties: Our Selection, \$7.75

One hundred plants: Our Selection. . . 16.00

Campanula (Bluebells)

Carpatica. (Harebell.) A dwarf, compact-growing variety with blue, bell-shaped flowers, borne erect to a height of 9 in., from June to September.

Carpatica alba. Similar to preceding except in color, which is a pure white. Fine for borders.

persicifolia grandiflora. Purple bell-shaped flowers during June and July, borne on a spike 3 to 3½ ft. high.

persicifolia grandiflora alba. A white form of above.

Hardy Chrysanthemums

EARLY FLOWERING

Alice Howell. A rich shade of orange-yellow.

Border Beauty. Orange, petals tipped with gold.

Carrie. Deep yellow.

Etoile d'Or. Large, bright yellow.

Firelight. Large red, touched with orange.

Glory of Seven Oaks. Large, brilliant yellow.

L'Argentillaie. Medium height, a good red.

Mrs. F. Collier. Best pure white; dwarf.

Nina Blick. Golden bronze in bud, changing to yellow; dwarf.

Oconto. Japanese variety; white, large flowers.

Skibo. Clear yellow pompon.

Source d'Or. Large brilliant orange.

Wells' Scarlet. Reddish terra cotta, large flowered; dwarf.

HARDY POMPON

Brown Bessie. Mahogany brown (small button).

Chatillonaise. Large light yellow.

Excelsa. Small yellow.

Favorite. Rosy-pink.

Klondike. Deep brilliant yellow.

Model. Light yellow pompon.

Niza. Button type, deep pink, early dwarf.

Snowclad. Pure white.

Tennyson. Light pink.



Helianthus

Delphinium (Larkspur)

Belladonna. Beautiful, clear blue, with white eye; dwarf habit, free flowering, blooming all Summer.

Chinese album. A pure white Larkspur bearing flowers in open heads. Grows about 3 ft. high.

Chinese azureum. A delicate, clear blue form of above.

Formosum. The most popular and considered by many the best of the Larkspurs. Flowers deep blue with white eye, and produced on long spikes.

DIGITALIS. (Foxglove.) Old-fashioned hardy biennial plants with broad foliage and showy flowers borne on spikes. June and July.

FUNKIA (*Hosta*) **undulata variegata.** Green leaves margined and edged white. Fine for borders and edging.

subcordata grandiflora. Large white flowers, borne in heads. Foliage green, pointed; sweet scented. 18 in. August and September.

GAILLARDIA grandiflora. One of the showiest of perennials. Ray flowers ranging from red to yellow, dark maroon center. 3 ft. June to frost.

GYPSOPHILA paniculata. (Baby's Breath.) Minute white flowers borne in enormous quantity in open panicles during Summer months. Valuable for cutting.

HELIANTHUS autumnale superbum. Large, yellow flowers, with drooping rays borne in immense panicles. 6 to 7 ft. July to September.

autumnale rubrum. A variety of the above with bright terra cotta red flowers.

HEMEROCALLIS. flava. (Lemon Day Lily.) Fragrant yellow flowers in June. Grows 2 ft. high, with flowers on long stems for cutting.

fulva. (Orange Day Lily.) This old-fashioned flower is one of the hardiest. It will do in full sun or in the shade of deciduous trees, and is not particular as to soil if not too wet.

HIBISCUS, Crimson Eye. Large, white flowers, with a crimson-purple eye. Aug. and Sept. 6-7 ft.

militaris. Large, light pink flowers, crimson center. July to September. 5 to 6 ft.

Prices of Perennials on this page, except as otherwise noted, 25c. each, \$2.50 per dozen.

Moscheutos albus. (Swamp Mallow.) Large, white flowers in August and September. 3 to 4 ft.

Moscheutos roseus. A pink form of above and one of the handsomest large-flowering perennials.

HOLLYHOCK. (*Althaea rosea*.) The large assortment of colors and shades make it one of the most attractive of all biennials. 5 to 6 ft. July-Aug.

CHATER'S PRIZE DOUBLE. This strain, without doubt, is equal of any other in range of color, perfection of form and percentage of double flowers.

Flesh Color, Pure White, Red, Bright Rose, Deep Maroon, Sulphur Yellow.

SINGLE. In separate colors.

Japanese Iris (*Iris Lævigata*)

Order by number. Each 35c., doz. \$3.50,
100 \$22.00.

1. Double white.
2. Double purple.
3. Single deep violet with gray veining.
4. Single violet-red flowers. Foliage narrow.
5. Double deep blue or royal purple, white markings.
6. Single, blue gray with yellow throat.
7. Single, gray overlaid with violet veining.
8. Single, red-violet veined gray, yellow throat.
9. Double, violet-red.
10. Single, reddish-purple.
11. Double, bright violet.
12. Double, white with yellow throat.
13. Double, pure white.
14. Double, purple, veined white.
15. Double, white, veined rose.
16. Double, royal purple, late.
17. Double, deep purple.
18. Double, very light blue, white center.
19. Double, white, penciled blue, purple center.
20. Double, bluish purple, veined white.
21. Double, clear purplish blue.

German Iris (*Iris Germanica*)

German Iris begins flowering the middle of May and continue in bloom nearly four weeks, when they are succeeded at the middle of June by the Japanese Iris.

Adonis. Standard, clear yellow; falls, primrose, freely veined and tipped madder red. 18 in.

Albino. Standard, pale lavender; falls, purple. 18 in.

Black Prince. Standard, purplish lilac; falls, rich velvety black.

Chameleon. Standard, delicate blue; falls, tipped a little darker.

Charlotte Patty. Standard, golden yellow; falls, lightly veined blue.

Fairy Queen. Standard, lavender; falls, tipped and reticulated violet. 22 in.

Florentina alba. Large, fragrant, white flowers. 2 ft.

Garrick. Standard, light blue; falls, violet-blue.

Lilacina. Small flowers. White and mottled.

Mme. Chereau. White feathered edges of sky blue; free flowering; very beautiful. 32 in.

Mme. de Brabant. Standard, lavender; falls, purple streaked.

Dalmatica. Standard, lavender; falls, lavender tinged purple; flowers very large and fine. 40 in.

Pauline. Standard, light blue; falls, slightly darker.

Queen of May. A lovely soft rose lilac, almost pink; a very beautiful shade. 32 in.

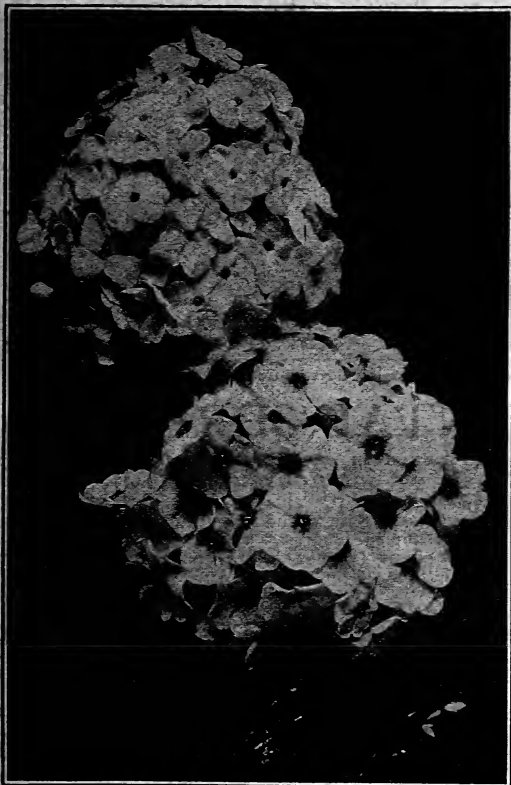
LOBELIA cardinalis. (Cardinal Flower.) Long, dense spikes of handsome rich and cardinal-red flowers. Bloom in August and September. 3 to 4 ft.

LUPINUS polyphyllus. (Lupin.) Deep blue pea-shaped flowers on long spikes. June to September.

polyphyllus albus. Pure white.

MONARDA didyma. (Bee Balm.) Bright scarlet flowers in terminal heads. July to Sept. 2 to 3 ft.

PLATYCODON grandiflora. (Balloon Flower.) Pretty blue bell-shaped flowers blooming from July to September. Sometimes classed as a Campanula. Will thrive in any good garden soil. 2½ ft.



Hardy Phlox

Hardy Phlox

Varieties marked (T) grow 3 ft.; (M) grow 2 ft.; (D) grow 1 to 2 ft.

- Annie Cook.** T. Flesh pink.
Astrild. T. Brilliant carmine, shaded deeper toward center.
Baron von Dedem. M. Brilliant scarlet red; in large trusses.
B. Conte. M. French purple; one of the best dark flowered varieties.
Boule d'Feu. T. Cherry red.
Couquelicot. M. Orange scarlet; crimson center.
Elizabeth Campbell. M. Bright salmon with pink center.
Europa. T. White with crimson eye.
F. G. von Lassburg. M. Large white.
General von Heutz. M. Brilliant salmon-scarlet, white center.
George A. Strohleim. T. Dark red.
Goliath. T. Crimson scarlet; very tall.
Hermine. D. White; the most dwarf variety. Fine for borders.
J. H. Slocum. T. One of the best crimson Phlox.
Jeanne d'Arc. T. Pure white; late.
Le Caid. M. Pink; darker eye.
Mme. Paul Dutrie. T. Delicate soft pink.
Mrs. Jenkins. M. Best early white.
Paul Herriot. M. Pale pink, shading to center.
Peach Blow. M. Pale pink, shading lighter toward edge.
Prosper Henry. M. Large white; bright crimson eye.
Rheinlander. M. Salmon with red eye.
Richard Wallace. T. Pure white; violet-rose center.
Rynstroom. T. Deep rose, very large.
R. P. Struthers. T. Scarlet pink, dark eye.
Selma. T. Delicate, soft pale pink, with distinct red eye.
Siebold. T. An improved Coquelicot, very large.
Thor. M. Deep salmon pink with red eye.
Tragedie. M. Brilliant carmine with blood-red eye.
Wanadis. T. Violet with reddish purple eye.
W. C. Eagan. M. Soft pink, very large flowering.

Collection, one each of 25 different named varieties, (our selection) \$5.75.

PAEONIES

- Albert Crousse.** Large, very full, flesh-pink center shaded clear pink; late. **\$1.00.**
Alsace-Lorraine. Flat flowers of creamy white; petals pointed, giving a Water Lily effect. Free bloomer. **\$2.00.**
Asa Gray. Large compact flower; flesh color sprinkled with carmine. Midseason. **\$1.25.**
Baroness Schroeder. Flesh color, changing quickly to white; creamy center. **\$1.50.**
Charlemagne. Very pale salmon rose; late. **\$1.25.**
Couronne d'Or. Large, pure white, showing golden stamens when in full bloom. **\$1.00.**
Duchess de Nemours. Cup-shaped bloom, sulphur white. **\$1.00.**
Eugene Verdier. Delicate flesh color at center, outside petals silvery pink. **\$1.00.**
Festiva Maxima. Pure waxy white with occasional flecks of crimson on the center petals. **.75c.**
Felix Crousse. Brilliant red with flame center. **\$1.00.**
Kelway's Queen. Rose pink, fragrant. **\$3.00.**
La Rosiere. Light sulphur-yellow, deeper at center. **\$1.50.**
La Tulipe. Tulip-shaped buds of bright pink, streaked crimson. **\$1.00.**
Marechal Vaillant. Immense blooms of crimson borne on long stems. **\$1.00.**

- Mme. Crousse.** Large, pure white flowers, slightly flecked with crimson. **\$1.50.**
Mme. Ducler. Rose-pink, with silvery reflex. **\$1.00.**
Mme. Lemoine. Soft flesh white of large size. **\$1.50.**
Officialis rubra. Old-fashioned deep red. Early. **\$1.25.**
Perfection. Very large bright pink. Fragrant. **\$1.50.**
Rosa Bonheur. Large flowers in clusters, fleshy pink, rather dwarf variety. **\$2.50.**
Rubra superba. Dark crimson. Late. Fragrant. **\$1.00.**
Sarah Bernhardt. Very delicate, flesh pink. **\$4.00.**

The following varieties 50c. each, \$5.00 per doz.

- Delachie.** Crimson.
Duke of Wellington. Large, satiny white flowers.
Edward Simmons. Rosy crimson.
General McMahon. Deep violet pink.
Grandiflora rosea. Deep pink; early.
Jean d'Arc. Pale lilac rose shading to lighter at center.
L'Elegante. Pink, center shaded to blush, rose scented.
Louis Van Houtte. Carmine crimson flowers, good form.
Mme. Coste. Early, flesh pink shading to white at center.
Pio Noni. Deep red.
Plutarch. Deep crimson, stamens yellow; large.
Prince Charles. Rich cerise rose, center tinted salmon.

- PYRETHRUM roseum hybridum.** Single flowering in shades of pink, lavender, red and yellow; mixed colors.
RUDBECKIA, Golden Glow. Flowers beautiful golden yellow and very double. June till Fall. 6 to 8 ft.
SCABIOSA caucasica. Pale lilac flowers about 3 inches across, blooming throughout the Summer. 2 ft.
SEDUM spectabile. Handsome rose-colored flowers in immense heads, during late Fall.

- STOKESIA (laevis) Cyanea.** (Cornflower Aster.) Large, deep blue flowers, from August to October.
Cyanea alba. Same as above only pure white.
TRITOMA Fitzeri. (Kniphofia uvaria grandis.) A superb variety, very free blooming. Color a rich brilliant orange; medium height; Summer till Fall.
VALERIANA officinalis. Old-fashioned garden Heliotrope, lavender flowers, June and July. 4 ft.

Foundation Planting of *Spirea Van Houttei* and *Berberis Thunbergii*

HARDY ORNAMENTAL SHRUBS

Prices of Shrubs 75c. each, \$7.50 per doz., except as noted.

ALMOND. *Prunus sinensis*

Double Pink. The very double rose-colored flowers are borne in great profusion, fairly covering the branches. Blooms in May.

Double White.

ALTHÆA. *Hibiscus syriacus*

Double White. Nearly pure white. Extra fine.

Tree form \$1.50.

Double Red. Bright rosy-red.

Variegata. Foliage handsomely variegated. Flowers double, deep purple.

ARALIA. *Acanthopanax*

Pentaphylla (Five-leaved Aralia). A graceful shrub, with arching, spiny branches and bright green, shining foliage. Excellent on rocky banks and slopes.

BARBERRY. *Berberis*

Japanese (*B. Thunbergii*). The hardiest and most valuable of this family. Remarkable for its low, dense, horizontal growth and its bright red berries which it holds throughout the Winter. See hedge plants.

Each 35c. and 50c.

BAYBERRY. *Myrica caribera*

Northern Bayberry. A low spreading native shrub admired for its dark green, fragrant foliage. The flowers which are inconspicuous are followed by white, waxy berries. Thrives in sandy places.

BUDDLEIA

Veitchiana variabilis. Flowers of a pleasing shade of violet mauve, borne on long, cylindrical spikes, and with liberal cultivation, will grow from 15 to 20 inches long. Flowers freely first season. **Each 50c.**

CORCHORUS. *Kerria*

Kerria japonica. One of the most satisfactory yellow flowering shrubs we have. Blooms all Summer and in Winter its bright green branches form a marked contrast with other shrubs.

DEUTZIA

crenata (Single White Deutzia). Showy, white, tinged pink flowers in close spikes. Vigorous growth.

gracilis. Slender, often arching branches. Low, dense, globular habit; flowers pure white in racemes.

Lemoinei. A vigorous grower and excellent for forcing; very desirable; early bloomer; panicles of pure white flowers borne on stout branches.

Pride of Rochester. The flowers which are borne in large panicles are pinkish white, with underside of petals rose. One of the best tall growing varieties.

DOGWOOD. *Cornus*

Cornelian Cherry (*C. mas*). Handsome shrub of dense growth, with glossy foliage; very attractive in early Spring with its yellow flowers, and again in the Fall with shining scarlet fruit.

DOGWOOD (Continued)

Red-twigged (*C. alba*). Shrub with erect stem, good clean foliage and bright, blood-red branches; useful for shrubberies.

Silver-Leaf (*C. mas elegantissima*). One of the finest variegated shrubs; slow growing; leaves broadly margined with white, contrasting strongly with the deep red bark.

EUONYMUS

alatus (Winged Burning Bush). A handsome shrub attaining a height of 6 to 8 ft., with corky, winged branches. Probably the most conspicuous of the Fall foliage shrubs. A fine shrub for massing and specimen work. **2-3 ft. 75c; 3-4 ft. \$1.25; 4-5 ft. \$1.75; 5-6 ft. \$3.00.**

EXOCHORDA

grandiflora (Pearl Bush). Flowers in May. Pure white, large, star like, in clusters, grows about 9ft.

FORSYTHIA

intermedia. Erect growing shrub. When large the branches become arching.

suspensa (Weeping Golden Bell). Long, graceful branches drooping to the ground and covered to the tips with handsome yellow trumpet shaped flowers in April.

suspensa Fortunei (Golden Bell). One of our best early-flowering shrubs. Before any tree or shrub shows a leaf they burst into glorious masses of golden-yellow drooping flowers.

HONEYSUCKLE. *Lonicera*

Japanese Bush (*L. Morrowii*). Leaves dark green above and grayish beneath; pure white flowers in May and June, followed by bright red fruits.

Tartarian (*L. tatarica*). Bears a profusion of pink flowers in June.

White Tartarian (*L. tatarica alba*). Similar to the Tartarian, but with large, pure white flowers and crimson fruit.

HYDRANGEA

arborescens grandiflora. The flower clusters are large, averaging 4 to 5 in. in diameter. Color is pure snow white, blooming at a time when flowers are scarce.

paniculata grandiflora. The well known hardy Hydrangea. Flowers are borne in dense panicles, pure white when opening, but later of a purplish-rose color. Excellent for massing or single specimens on lawns.

Tree form. A very desirable form of Hydrangea, the branches starting out 3 ft. from the ground. Excellent for center plants for Hydrangea bed.

ILEX

Each \$1.50.

Black Alder (*I. verticillata*). One of the brightest red berried shrubs, upright habit. Black bark.

LILACS

COMMON VARIETIES

Purple, White, Persian, White Persian.

Villosa (*S. villosa*). Color light pink. Valuable for late blooming.

SINGLE NAMED LILACS

Alba grandiflora. Large trusses of white flowers.

Charles X. Magnificent clusters of dark red flowers.

Frau Bertha Dammann. Extra large white.

Louis Van Houtte. Bright red.

Ludwig Spaeth. Dark purple-red.

Marie Le Graye. Dwarf. One of the finest white varieties.

Rubra de Marly. Purplish-red; free flowering.

DOUBLE NAMED LILACS

Alphonse Lavallee. Fine blue shaded to violet.

La Tour d'Auvergne. Violet-purple, large.

Leon Simon. Color bluish-crimson; buds clear coral.

Mme. Casimir Perier. Large trusses, white flowers.

Mme. Lemoine. A grand double white variety. Vigorous.

Michel Buchner. Dwarf. Pale lilac.

President Grevy. Blue.

President Carnot. Pale lilac, white center.

Senator Volland. Dwarf. Rose-red.

PRIVET. Ligustrum

Amoor River (*L. amurense*). Large oblong, glossy green foliage. A hardy variety.

California (*L. ovalifolium*). Vigorous shrub of excellent habit. Large, glossy dark green foliage.

Chinese (*L. Ibota*). Upright habit, narrow leaves and white flowers. One of the hardiest privets.

Prices of above, see Hedge Plants, page 24.

Regel's (*L. Ibota Regelianum*). Similar to the above except that the branches droop gracefully. Unexcelled for shrubbery borders. 18-24 in., 60c., doz. \$6.00.

JAPANESE QUINCE. Cydonia japonica

A shrub with spreading spiny branches. Glossy leaves; flowers are a deep scarlet, in clusters. The quince-shaped, golden-yellow fruit remains a long time in Summer.

RASPBERRY. Rubus

Flowering (*R. odoratus*). A noble plant, with leaves 6 to 12 in. broad, and pink-purple blossoms 2 in. across, in clusters, which continue to bloom all Summer. Very fragrant. Thrives well in shady places.

RHODOTYPOS

kerrioides. A very ornamental shrub of medium size with handsome foliage and large single white flowers in May. Fruit is black.

SPIRÆA. Spiræa

S. Bumalda Anthony Waterer. Flowers scarlet-crimson, blooming profusely from June to October. Strong plants.

Bridal Wreath (*S. prunifolia*). One of the best and earliest blooming shrubs. Flowers double, white and very abundant along the stem. May. 6 to 7 ft.

Golden (*S. opulifolia aurea*). One of the best of our yellow leaved shrubs. Golden-yellow all Summer.

St. Peter's Wreath (*S. Van Houttei*). The finest and most satisfactory of all Spiræas, either singly or among other shrubs. It forms a round and graceful bush, with arching branches, which in June are set from end to end with beautiful white blossoms.

SIBERIAN PEA TREE. Caragana arborescens

A sturdy little tree or shrub smaller than the Dogwood. The leaves are a soft green and the flowers that come in May resemble the Sweet Pea and are bright yellow. Seldom seen, but a shrub that should be on every lawn. Bush form. Each 50c.

Tree form. 5 to 6 ft. \$1.25, 6 to 7 ft. \$1.75.

SUMAC. Rhus

Cut-leaf (*R. typhina laciniata*). A very striking plant of moderate size with deeply cut leaves which turn a rich red in the Fall.

SWEET PEPPER BUSH. Clethra

alnifolia. Shrub with rich green foliage and spikes of fragrant yellowish-white flowers throughout the season. It thrives in shady, damp places.

Prices of Shrubs 75c. each, \$7.50 per doz., except as noted.

SWEET SCENTED SHRUB. *Calycanthus floridus* (Carolina Allspice). Fine and glossy foliage; pineapple scented, chocolate colored flowers all Summer; leaves dark green above and pale grayish-green beneath; a favorite shrub.

SYMPHORICARPOS

racemosus (Snowberry). Smooth shrub, with slender branches, usually bending under their load of white, waxy berries, which appear in Autumn; the flowers are rose colored, in loose racemes in July and August.

SYRINGA. Philadelphus

Golden (*P. coronarius foliis aureis*). A graceful variety, with bright yellow foliage.

Mock Orange (*P. coronarius*). Shrub with upright branches; pure white, fragrant flowers are produced in clusters in June; foliage dark green.

Large-flowered Mock Orange (*P. grandiflorus*). A vigorous, upright variety, with large, showy flowers in June; it grows rapidly.

VIBURNUM

Arrow Wood (*V. dentatum*). Glossy, handsome leaves white flowers and fine, steel-blue berries in Fall. June. **cassinoides.** Flat heads of white flowers and effective foliage. Bears black berries in clusters. June.

V. Carlesii. An early flowering Viburnum of fine habit, bearing fragrant white flowers in May. One of the most important late introductions. \$1.50.

European High Bush Cranberry. (*V. opulus*). One of the best shrubs for general planting. Red berries resembling cranberries remain until early Winter.

Snowball (*V. opulus sterile*). A well known shrub of large size, producing large, Snowball-like flowers in May.

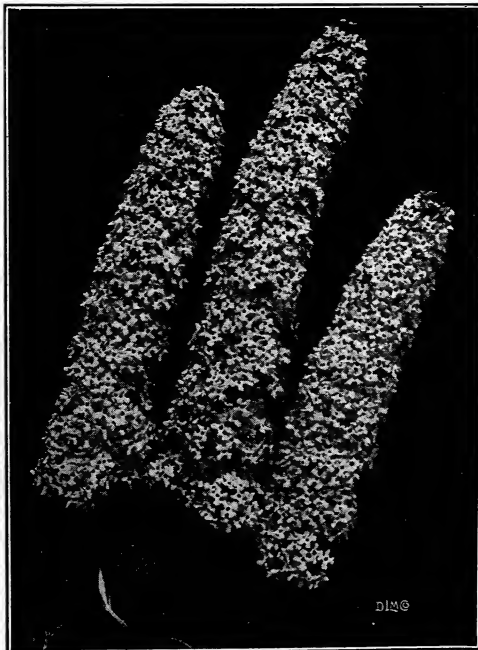
WEIGELA

Candida. Flowers pure white, vigorous and fine habit.

Eva Rathke. An erect, free flowering variety; flowers brilliant crimson. Blooms more or less all Summer.

Nana Variegata. A dwarf form, with variegated leaves; flowers pale pink.

Rosea. A strong, symmetrical grower, with good foliage; pink flowers in June.



Buddleia Variabilis

ORNAMENTAL DECIDUOUS TREES

ASH.		POPLAR. Populus.	
White (F. americana).	8 to 10 ft., \$1.75, 10 to 12 ft. \$2.50	Carolina (P. deltoides).	8 to 10 ft., \$1.00, 10 to 12 ft., \$1.50
BEECH. Fagus.		Lombardy (P. nigra italica).	6 to 8 ft., 75c., doz. \$7.50
Fern-leaved (F. sylvatica asplenifolia).	3 to 4 ft., \$4.00		8 to 10 ft., \$1.00, doz. \$10.00
Purple (F. sylvatica purpurea).	3 to 4 ft., \$3.00		10 to 12 ft., \$1.50, doz. \$15.00
Weeping (F. sylvatica pendula).	3 to 4 ft., \$4.50		14 to 16 ft., \$2.50, doz. \$25.00
BIRCH. Betula.		White (P. canescens).	6 to 8 ft., \$1.00
Canoe (B. papyrifera)	6 to 8 ft. \$1.50, 8 to 10 ft. \$2.00	TULIP. Liriodendron.	
Cut Leaf Weeping (B. alba pendula laciniata).	6 to 8 ft. \$2.00	Tulip Tree (L. Tulipifera).	5 to 6 ft., \$1.50, 6 to 8 ft., \$2.00
Sweet or Black (B. lenta).	8 ft. \$2.00	VARNISH TREE. Koeleruteria.	
European White (B. alba).	6 to 8 ft., \$1.50, 8 to 10 ft., \$2.00	K. paniculata	3 to 4 ft., \$1.25, 4 to 5 ft., \$2.00
CATALPA.		WILLOW. Salix.	
Western Catalpa (C. speciosa).	6 to 8 ft., \$1.50	Golden Bark (S. nitellina).	5 to 6 ft., \$1.00, 6 to 8 ft., \$1.50
Bungei.	2-year heads, \$2.50, 3-year heads, \$4.00	Laurel-leaved (S. pentandra).	6 to 8 ft., \$1.00
CERCIDIPHYLLUM		Royal (S. regalis).	5 to 6 ft., \$1.00, 6 to 8 ft., \$1.25
Japonica.	2 to 3 ft., \$1.50, 5 to 6 ft., \$2.00	Thurlow's (S. elegantissima).	6 to 8 ft., \$1.25
CRAB. Malus.		Wisconsin (S. blanda).	6 to 8 ft., \$1.25, 8 to 10 ft., \$1.50
Bechtel's Double-flowering Crab (M. ioensis Bechteli).	2 to 3 ft., \$1.25, 3 to 4 ft., \$2.00	YELLOWWOOD. Cladrastis.	
DOGWOOD. Cornus.		Virgilea (C. lutea).	6 to 8 ft., \$2.50
White Flowering (C. florida).	2 to 3 ft., \$1.00, 3 to 4 ft., \$1.50	MADEN HAIR TREE. Ginkgo.	
Red Flowering (C. florida rubra).	2 to 3 ft., \$1.50	Salisbury (G. biloba).	8 to 10 ft., \$2.00, 10 to 12 ft., \$3.00
ELM. Ulmus.		MAPLE. Acer.	
American (U. americana).	8 to 10 ft., \$1.75, 10 to 12 ft., \$2.50, 12 to 14 ft., \$4.00	Norway (A. platanoides).	8 to 10 ft., \$1.75, 10 to 12 ft., \$2.25, 15 to 16 ft., \$3.50
English (U. campestris).	8 to 10 ft., \$2.00, 10 to 12 ft., \$3.00	Rock, or Sugar (A. saccharum).	8 to 10 ft., \$1.75, 10 to 12 ft., \$2.50
HAWTHORNE. Crataegus.		Schwedler (A. platanoides Schwedleri).	6 to 8 ft., \$1.75, 8 to 10 ft., \$2.50, 10 to 12 ft., \$4.00
Double White (C. Oxycantha alba plena).	Each \$1.50	Silver (A. dasycarpum).	8 to 10 ft., \$1.50, 10 to 12 ft., \$2.00
Paul's Double Scarlet (C. Oxycantha fl. pl.)	Each \$1.50	Sycamore (A. pseudoplatanus).	8 to 10 ft., \$1.50, 12 ft., \$2.00
HORSE CHESTNUT. Aesculus.		Weir's Cut Leaf (A. das Weiri).	8 to 10 ft., \$1.50, 10 to 12 ft., \$2.00, 12 to 14 ft., \$3.00
European White (A. Hippocastanum).	6 to 8 ft., \$2.50, 8 to 10 ft., \$4.00	Larger specimens, 4 to 6 in. in diameter.	\$10.00 to \$30.00
Red Flowering (A. carnea).	6 to 8 ft., \$3.50	JAPANESE MAPLES. Acer palmatum.	
JUDAS. Cercis.		Blood-leaved (A. pal atropurpureum).	12 to 18 in., \$2.00
American (C. canadensis).	3 to 4 ft., \$1.25	MOUNTAIN ASH. Sorbus.	
LARCH. Larix.		European (S. Aucuparia).	10 to 12 ft., \$2.00, 12 to 14 ft., \$2.50
European (L. europæa).	4 to 5 ft., \$1.50	MULBERRY. Morus.	
LINDEN. Tilia.		Tea's Weeping Mulberry (M. alba pendula).	One year heads \$3.00, Two year heads \$3.50
American (T. americana).	8 to 10 ft., \$2.00, 10 to 12 ft., \$3.00	OAK. Quercus.	
European (T. vulgaris).	8 to 10 ft., \$2.00	Pin (Q. palustris).	6 to 8 ft., \$2.00, 8 to 10 ft., \$2.75, 10 to 12 ft., \$3.50
MAGNOLIA.		Red (Q. rubra).	6 to 8 ft., \$2.00, 8 to 10 ft., \$2.75, 10 to 12 ft., \$3.50
Soulangiana.	Each \$6.00	Scarlet (Q. coccinea).	6 to 8 ft., \$2.50
Stellata.	Each \$7.00	PURPLE LEAVED PLUM. Prunus.	
		Pissardii	4 to 5 ft., \$1.25

HARDY CLIMBING VINES

ACTINIDA arguta	Each 75c.	CLEMATIS Henryi	Each \$1.00
AKEBIA quinata	Each 75c.	CLEMATIS Jackmannii	Each \$1.00
AMPELOPSIS Engelmannii	Each 75c.	CLEMATIS paniculata First size	Each 75c.
AMPELOPSIS quinquefolia (Common Woodbine or Virginia Creeper).	Each 50c.	Monster Roots	Each \$1.00
AMPELOPSIS Veitchii (Japan or Boston Ivy).	Ea. 60c.	HONEYSUCKLE Lonicera brachypoda, var Hall-eana (Hall's Evergreen Honeysuckle).	Each 60c.
ARISTOLOCHIA tomentosum	Each 75c.	HONEYSUCKLE, Scarlet Trumpet	Each 60c.
BIGNONIA radicans (Trumpet Vine).	Each 60c.	KUDZU VINE	Each 50c.
CELASTRUS scandens (Bitter Sweet or Roxbury Wax-work).	Each 60c.	MATRIMONY VINE, var. Lycium chinense	Each 60c.
		WISTARIA chinense (Chinese Wistaria).	Each 75c.

HEDGE PLANTS

Barberry—Berberis		Privet—Ligustrum	
Berberis Thunbergii. (Japanese Barberry).		AMORR RIVER PRIVET.	Doz. 100
	Doz. 100	2 to 3 ft. Plant 12 in. apart.	\$3.00 \$20.00
12 to 18 in. Plant 12 in. apart.	\$4.00 \$25.00	3 to 4 ft. Plant 12 in. apart.	4.00 25.00
18 to 24 in. Plant 12 in. apart.	5.00 35.00	CALIFORNIA PRIVET.	
LILAC. Common		1½ to 2 ft. Plant 10 in. apart.	1.50 9.00
2½ to 3 ft. Plant 24 in. apart.	4.50 30.00	2 to 3 ft. Plant 12 in. apart.	1.75 13.00
ROSA RUGOSA.		3 to 4 ft. Plant 12 in. apart.	2.50 14.00
2 ft. Plant 18 in. apart.	5.00 45.00	CHINESE PRIVET, Iota.	
SPIRÆA Van Houttei.		2 to 3 ft. Plant 12 in. apart.	3.00 20.00
2 to 3 ft. Plant 24 in. apart.	4.00 30.00	3 to 4 ft. Plant 12 in. apart.	4.00 25.00

Six plants will be furnished at the dozen rate, fifty or more at the rate per 100.

FRUIT TREES

Apples

Standard Trees, 5 to 7 ft., each \$1.25, doz. \$12.00. Dwarf Trees, each \$1.25, doz. \$12.00

Varieties marked with an asterisk (*) can be furnished on dwarf stock.

The following list of Apples embraces varieties which have been tested and can be recommended as the very best for general cultivation.

The varieties are arranged in the relative order of their ripening.

SUMMER APPLES

- ***Sweet Bough.** Moderate growth; large; pale yellow, tender, juicy, sweet; very good. Ripening late July.
- ***Yellow Transparent.** Free growth; roundish, oblate, slightly conical; pale yellow; tender, juicy, sprightly subacid. Ripening late July.
- ***Early Harvest.** Moderate growth, medium to large yellow; tender, rather acid. Ripening late July.
- ***Red Astrachan.** Free growth; large, roundish; deep crimson; juicy, rather acid; very hardy. Ripening late July.
- ***Golden Sweet.** Free growth; large; yellow, tender, sweet, rich. Ripening late July.
- ***Williams Favorite.** Moderate growth; large, oblong red; rich and excellent. Ripening late August.
- ***Duchess of Oldenburg.** Vigorous growth; large; striped, tender, juicy, subacid; good; regular and abundant bearer. Late August.

AUTUMN APPLES

- ***Gravenstein.** Vigorous growth; very large; striped; juicy, tender, crisp, rich, subacid. September.
- ***Porter.** Moderate growth; medium to large yellow; fine grained; sprightly subacid; very good. Ripening September.
- ***Wealthy.** Free growth; medium; dark red; juicy, vinous, subacid; good; very hardy. Ripening Sept.
- ***Fall Pippin.** Free growth; very large; yellow; tender, rich. Ripening September to December.
- ***Fameuse, or Snow.** Vigorous growth; medium; deep crimson; tender, subacid, delicious. One of the best dessert Apples. Ripening October.
- ***McIntosh Red.** Vigorous growth; handsome; very good; hardy. Ripening October.
- ***Wolf River.** Very large; beautiful red in the sun, on a yellow ground; strong grower and a good bearer. Early October.
- ***Hubbardston.** Free growth; large, striped red and yellow; tender, juicy, rich. Early October.
- ***Tompkins King, or King of Tompkins County.** Vigorous growth; large, red-striped; tender, juicy, vinous; very good. Ripening early October.
- ***Wagner.** Vigorous growth; medium to large; yellow and crimson; tender and subacid. Early October.
- Jonathan.** Medium growth; red and yellow; tender, juicy and rich; very productive. Early October.
- Tolman's Sweet.** Free growth; medium; yellow; firm, rich, sweet. Ripening middle October.

WINTER APPLES

- ***Northern Spy.** Fruit is large, flesh is very juicy and crisp. November.
- ***Delicious.** The color is brilliant dark red, shading to yellow at the blossom end. The flesh is crisp, fine grained and quite juicy; flavor slightly acid but very pleasing. November.
- Putnam Beauty.** Free growth; medium to large; yellow and crimson; tender, juicy, subacid. November.
- ***Baldwin.** Vigorous growth; large; bright red; crisp, juicy, subacid; good; the most popular and profitable market sort. Ripening November to March.
- Spitzenburg.** Large, round, brilliant red with gray dots; firm, rich, crisp, juicy, spicy and delicious. Nov.
- ***Rhode Island Greening.** Vigorous growth; large; green; fine grained; subacid. December.
- ***Roxbury Russet.** Free growth; medium; greenish; rich, subacid; good, late keeper. December.

Pears

Standard Pears, 5 to 7 ft., each \$1.50, doz. \$16.00, except where noted.

- ***Anjou.** Vigorous growth; very large; greenish yellow; melting, buttery, juicy, sprightly, vinous; keeps into middle winter and is the most valuable of all Fall Pears. Ripening November nad December.
- ***Bartlett.** Vigorous growth; large; yellow and red; juicy, buttery, with a rich, musky flavor; very good. Ripening September.
- Bosc.** Moderate growth; large; russety; buttery, rich, high flavored; best. Ripening September and October. **Each \$2.00.**
- ***Clapp's Favorite.** Vigorous growth; very large and handsome; yellow and crimson; melting, buttery, vinous; very good. Ripening August.
- Dana's Hovey.** Moderate growth; small, but of fine quality. Ripening November to January.
- Lawrence.** Moderate growth; medium to large; golden yellow, melting, pleasant, aromatic; very good; a valuable Winter Pear. Ripening Nov. and Dec.
- ***Seckel.** Moderate growth; medium; brown; juicy, melting and buttery; of the highest flavor. Ripening September and October.
- Sheldon.** Vigorous growth; large; russet and red; melting, rich, delicious; very good. Ripening Oct.

We recommend Spring planting for Stone Fruits

Small Fruits

BLACKBERRIES

Each 10c., doz. \$1.00, 100 \$8.00.

- Eldorado.** Extra fine, very hardy; large, sweet berry.
- Rathbun.** Extra large and productive.
- Snyder.** Medium size; very fine. Medium.

CURRANTS

Each 50c., doz. \$5.00, 100 \$37.50, except where noted.

- Black Naples.** Large, black, for preserves.
- Cherry.** Large, red, popular sort.
- Fay's Prolific.** Largest and finest red.
- Perfection.** (New.) Color red; larger than Fay and Cherry. **Each 60c., doz. \$6.00, 100 \$48.00.**

GOOSEBERRIES

Each 60c., doz. \$6.00.

- Pearl.** Prolific sort; free from mildew. The fruit is large; light green and fine quality.
- Downing.** Whitish green, prolific.

RASPBERRIES

Each 10c., doz. \$1.00, 100 \$8.00 except where noted.

- Columbian.** Purple; very large. **Doz. \$2.00.**
- Cuthbert.** Medium to large, red, sweet.
- Marlboro.** Popular red sort. Early and hardy.
- Golden Queen.** Large, yellow and firm; fine quality.
- Gregg.** Large, black cap, great bearer.
- Herbert.** Very large berry and a heavy cropper. It has a distinctly rich flavor and is all meat. **Extremely hardy. Doz. \$1.50.**
- ST. REGIS.** The ever-bearing red; fine quality. **Doz. \$1.50.**

GRAPES—Hardy Varieties

Each 60c., doz. \$6.00, except where noted.

BLACK

- Concord.** Large, always reliable. Medium.
- Campbell's Early.** Very large berry and clusters, rich flavor and very sweet. **\$1.00.**
- Moore's Early.** Large, fine quality. Early.
- Worden.** Large, excellent quality. Early.

RED

- Brighton.** Large, best quality. Early.
 - Delaware.** Small, delicious. Late.
- WHITE**
- Green Mountain.** One of the best. Early. **\$1.00.**
 - Moore's Diamond.** Large, excellent. Early.
 - Niagara.** Large and productive. Medium.

Materials for Indoor Bulb Culture and House Plants

We will mail any of the following that we can, provided postage is remitted with the order. See Parcel Post Rates for mailing.

POTTING MATERIALS.

Bulb Fiber. Imported and specially prepared for growing bulbs in jardinières, fern dishes, or fancy bowls without drainage. Contains the necessary food for all kinds of bulbous plants. Practically odorless and superior to other preparations made of coconut fiber. Moisten before using.

Qt. 15c., pk. 75c., ½ bus. \$1.25, bus. \$2.25

Leafmold. Very essential for growing plants.

½ pk. 30c., pk. 50c., bus. \$1.50, bag, \$3.50

Pebbles. White, for use in glass or fancy bowls as a medium in which to grow bulbs, especially Paper Whites and Chinese Lilies. Can also be used for drainage when potting plants for the winter.

Qt. 15c., 15 lbs. 50c., 25 lbs. 75c., 100 lbs. \$2.00

Potting Soil. Light, sufficiently rich for all kinds of pot plants.

½ pk. 25c., pk. 40c., bus. \$1.25, bbl. \$3.50

Rotted Fibrous Peat. This has become thoroughly rotted and is invaluable for potting plants.

½ pk. 20c., pk. 35c., bus. \$1.25, bbl. \$3.50

Silver Sand. For mixing with potting soil and for propagating.

Pk. 50c., bus. \$1.50

Spaghnum Moss. We can furnish at almost any time of the year, fresh gathered or dry.

Pk. 40c., bus. \$1.25, bag \$3.25

PLANT FOOD FOR HOUSE PLANTS.

Bone Meal. The safest fertilizer for all bulbs. Mix about three pounds per bushel of soil. If outside, use two ounces per square yard of surface. Ours is the pure bone, finely ground.

5 lbs. 35c., 10 lbs. 60c., 25 lbs. 1.00, 50 lbs. \$1.75, 100 lbs. \$3.00.

Bowker's Plant Food. Dissolve two tablespoons in one gallon of water. Apply once a week for four weeks at the start and then less often. Clean and odorless.

4 oz. package, sufficient for thirty plants for three months, 20c., large package, 12 oz., 30c.

Fertilifera. A favorite liquid fertilizer for potted plants. No stronger solution can be safely used.

Bottle 40c. Unavailable.

Sheep Manure. (Pulverized). A most nutritious natural fertilizer. Apply a weak solution once a week. Very beneficial when used while buds are developing.

6 in. Each 55c., doz. \$6.00

If used in potting soil, mix one part with six parts of loam.

Lb. 10c., 5 lbs. 30c., 25 lbs. \$1.00, 50 lbs. \$1.75, 100 lbs. \$3.00

Sterlingworth Plant Tablets. Powerful and odorless, containing elements essential to healthy plant life. Dissolve in water. Trial size, 30 tablets, 10c.; medium size, 100 tablets, 25c.; large size, 250 tablets, 50c.

FLOWER POTS AND SAUCERS.

Jardiniere Flower Pots, Painted Green. Place the pot in the reservoir and pour in water through the lip around the top edge. This supply will last for 8 to 10 days.

Pots, Standard Clay Flower. Measurements from inside to inside. Width and depth equal.

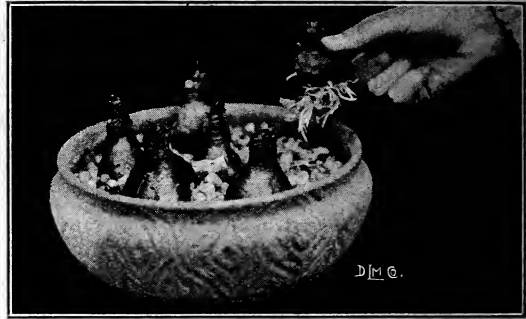
Inches	Each	Doz.	100	Inches	Each	Doz.	100
2	\$0.03	\$0.25	\$1.30	9	\$0.45	\$4.50	\$34.50
2½	.04	.30	1.80	10	.60	6.00	46.60
3	.04	.40	2.30	11	.90	9.00	69.00
3½	.05	.50	2.80	12	1.20	12.00	95.00
4	.06	.60	3.50	Each			
4½	.08	.80	4.70	13	Measure in		
5	.09	.90	6.30	14	to out		
6	.14	1.40	9.40	15	} 2.45		
7	.24	2.40	15.50	16	} With 3.45		
8	.30	3.00	22.50	18	} handles 5.20		

Bulb or Seed Pans, Round, Clay.

6 in.	Each	Doz.	100	9 in.	Each	Doz.	100
	\$0.14	\$1.40	\$9.40		\$0.45	\$4.50	\$34.50
7 in.	.22	2.40	15.60	10 in.	.60	6.00	46.60
8 in.	.30	3.00	22.50	12 in.	1.20	12.00	95.00

Fern Pans. Thin and strong, especially adapted for linings to porcelain and silver fern pans. Outside measurements are given.

Size	Each	Doz.	100	Size	Each	Doz.	100
4¾ in.	\$0.10	\$1.10	\$6.90	8 in.	\$0.25	\$2.50	\$17.30
5½ in.	.12	1.20	8.70	9 in.	.30	3.00	20.70
6¼ in.	.15	1.50	10.40	10 in.	.35	3.30	24.20
7 in.	.16	1.60	12.10				



Paper Whites growing in pebbles

Hanging Pots, Clay, Unpainted.

Size	Each	Doz.	Size	Each	Doz.
7 in.	\$0.30	\$2.50	10 in.	\$0.70	\$6.00
8 in.	.35	3.00	12 in.	1.00	9.00
9 in.	.40	3.50			

Hanging Pot Chains. Heavy Brass.

Each 35c., 6 for \$1.80

Bracket Hooks for use with hanging pots. Dull brass finish. 10 in. long, with screws. Each .25

Flower Pot Hanger, Krick's Perfect.

No.	Each	Doz.
No. 1 will fit from 3½ to 5 in. pots.	.05	\$0.35
No. 2 will fit from 5 to 8 in. pots.	.05	.40
No. 3 will fit from 8 to 12 in. pots.	.05	.45

Clay Saucers.

Size	Each	Doz.	100	Size	Each	Doz.	100
3½ in.	\$0.05	\$0.40	\$2.30	10 in.	\$0.24	\$2.40	\$15.60
4 in.	.05	.50	2.60	11 in.	.27	2.70	18.90
5 in.	.06	.60	3.50	12 in.	.32	3.30	23.50
6 in.	.08	.90	5.20	13 in.	.35		
7 in.	.10	1.10	6.90	14 in.	.40		
8 in.	.14	1.40	9.50	15 in.	.55		
9 in.	.20	2.00	13.00	16 in.	.70		

Moisture Proof (May Tree) Saucers. Are a rich reddish brown color, with a smooth wax finish and will protect woodwork, tables, etc., on which plants are to stand.

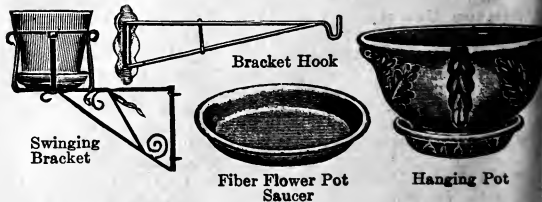
Size	Each	Doz.	Size	Each	Doz.
4 in.	\$0.11	\$1.20	11 in.	\$0.50	\$5.50
9 in.	.40	4.20	12 in.	.60	6.00
10 in.	.45	4.80			

Fiber Saucers. Far cheaper in the end than earthenware. Are not porous. Measurement given is outside diameter.

Size	Each	Doz.	Size	Each	Doz.
5 in.	\$0.42	\$4.20	12 in.	\$0.72	\$7.20
6 in.	.45	4.50	14 in.	.94	10.00
7 in.	.50	5.00	16 in.	1.65	17.00
8 in.	.55	5.50	18 in.	1.92	20.00
9 in.	.60	6.00	19 in.	2.67	25.00
10 in.	.65	6.50			

Rolling Stands with Fiber Saucers. Heavy plants can be pushed around from place to place as easily as a light table.

Outside Diam.	Will take pot of about	Diam. at bottom	Casters	Each	Doz.
	12 in.	10 in	3	\$1.00	\$11.40
	14 in.	11 in	3	1.25	14.25
	16 in.	13 in.	4	2.25	25.65
	18 in.	15 in.	4	2.50	28.50
	19 in.	17 in.	4	2.75	31.35



MATERIALS FOR BULB CULTURE—Continued



Bulb Bowls. These earthenware bowls are made of hard fired pottery, with an overrun of highly harmonizing colors. They are absolutely non-porous and as moisture cannot permeate through, will not damage furniture as cheaper ware often does. They are cupped and of a beautiful shape that is perfectly adapted to indoor bulb culture. Splendid for other uses but particularly fine for growing Paper Whites and Chinese Lilies in either gravel or our prepared fiber.

- 3 inch, light blue and green, weigh 1 lb. packed, each..... 30c
- 6 inch, light blue, deep blue or green, weigh 3 lbs. packed, each..... 60c
- 8 inch, dark green only, weigh 4 lbs. packed, each..... \$1.00



Waterproof Bulb Dishes. These embossed, mat green bulb pans have been found very satisfactory for use either with or without pebbles or fiber, for the growth of bulbs. The grids or holders have holes in them into which single bulbs are placed. When the roots grow they are held erect and firm.

Size		Wt. packed	Each	Doz.
6 inch, dish only		3 lbs.	\$0.45	\$4.50
With grid		4 "	.60	6.00
Grid only, four holes		2 "	.20	2.00
8 inch, dish only		4 "	.60	6.00
With grid		5 "	.85	8.50
Grid only, seven holes		2 "	.30	3.00

Miscellaneous Sundries for Indoor Plant Culture

BASKETS. Wire Hanging. Round bottom.

Size	Each	Doz.	Size	Each	Doz.
6 in.....	\$0.25	\$2.80	10 in.....	\$0.50	\$5.30
7 in.....	.30	3.30	11 in.....	.50	5.40
8 in.....	.35	3.80	12 in.....	.55	6.00
9 in.....	.45	4.50	14 in.....	.65	7.20

BOOKS. The following cover the entire field as the home gardener meets it. They are accurate, practical, readable and deserve a place in every home as they contain ideas within the reach of the average man. Fully illustrated.

- Garden Guide.** Postpaid, paper, \$1.10, cloth..... 1.65
- Milady's House Plants.** Postpaid, paper 80c., cloth.... 1.10
- The Home Fruit Grower.** Postpaid, paper \$1.10, cloth. 1.65

LABELS. Mark your plants and know the particulars about them.

Pot Labels.	Wooden.	Plain	100	1000	Painted	100	1000
4 in.....			\$0.20	\$1.10		\$0.25	\$1.55
4½ in.....			.20	1.35		.30	1.85
5 in.....			.25	1.60		.35	2.05
6 in.....			.30	2.00		.40	2.50

Garden Labels.	Wooden.	8 in.	10 in.	12 in.	5 in.	6 in.	7 in.	8 in.
		.90	5.80	1.15	7.40		1.45	9.60
		1.20	7.70	1.45	9.60		1.75	11.40
		1.45	9.60	1.75	11.40			

Tree Labels.	Wooden.	3½ in.	iron wired.	25	1.55	30	1.95
		3½ in.	copper wired.	.30	1.95	.40	2.45

Labels, A. L. U. Securely fastened on without tying. Can be written on both sides with either ink or pencil, varnish, and the wording remains for all time. 5 in., 1000 \$8.50, 100 \$1.00.

Labels, Copper. Made of copper and copper wired; indestructible and always legible. No. 2, 5x1½ in., doz. 35c., 100 \$2.00, No. 1, 3½x½ in., doz. 30c., 100 \$1.50.

PENCILS. Black. Waterproof. Will withstand all climatic conditions. Each 10c., doz. \$1.00.

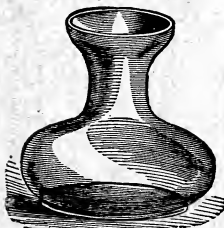
Hyacinth Glasses

(Unmailable)

Designed especially for Hyacinths.

Can be had either in crystal, green, blue or amber.

Tall. Each 45c., doz. \$4.50
Tye. Each 50c., doz. \$5.00



Tye Glass



Hyacinth growing in water

GALVANIZED IRON PLANT BOXES. Enamelled dark green outside. Can be set on the window sill inside. The only plant box which will give perfect drainage necessary for the growing of plants and at the same time not leak or drip and damage the woodwork. Bulbs in fiber do splendidly in this box.

Model A.	Width, 8½ in., depth 6¼ in.	Each	
Length	Each	Length	Each
24 in.....	\$1.35	42 in.....	\$3.30
30 in.....	1.80	48 in.....	3.75
36 in.....	2.70		

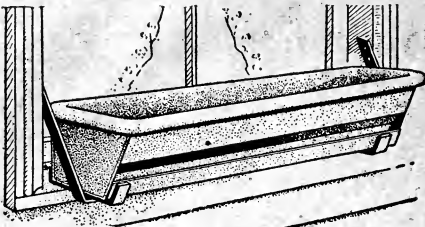
Brackets. Each box requires a pair. Three styles of same material to match the boxes.
No. 1, for setting on sill..... \$0.90
No. 2, for hanging under sill..... 1.15
No. 3, for the porch rail..... .50

GALVANIZED IRON TUBS. Made similar to Steel Plant Box.

Length	Width	Depth	Each	Length	Width	Depth	Each
10 in.	10 in.	7¼ in.	\$2.00	16 in.	16 in.	12¼ in.	\$3.50
12 in.	12 in.	8¼ in.	2.50	18 in.	18 in.	12¼ in.	4.25
14 in.	14 in.	10¼ in.	3.00				



Practical Garden Books



Galvanized Plant Box with Extension Bracket No. 1 for setting on sill.

PLANT TUBS, STANDS AND SHELVES

Heavy Cedar. Painted green. Nos. 1 and 2 have hook handles, others drop handles.

No.	Diameter		Height		Each
	Outside	Inside	Outside	Inside	
No. 1	28 in.	25 in.	22 in.	20 in.	\$15.50
No. 2	26 in.	23 in.	18 in.	18 in.	13.50
No. 3	24 in.	21 in.	18 1/2 in.	16 in.	8.50
No. 4	22 in.	19 1/2 in.	17 in.	15 in.	6.75
No. 5	20 in.	17 1/2 in.	16 in.	14 in.	5.75
No. 6	18 1/2 in.	15 1/2 in.	15 in.	13 1/2 in.	4.50
No. 7	17 in.	14 1/2 in.	14 in.	12 1/2 in.	4.00
No. 8	16 in.	14 in.	13 in.	11 1/2 in.	3.50
No. 9	14 in.	12 1/2 in.	12 in.	10 1/2 in.	2.85
No. 10	12 in.	10 in.	9 1/2 in.	8 1/2 in.	2.25

Richmond Cedar. Green. Wire hoops and without feet. Drop handles only on the five larger sizes.

No.	Diam.		Depth	Each	No.	Diam.		Depth	Each
	Inside	Outside				Inside	Outside		
13	8 in.	8 in.	8 in.	\$0.95	17	12 in.	11 in.	12 in.	\$2.00
14	9 in.	9 in.	10 in.	1.00	19	14 in.	13 in.	14 in.	2.75
15	10 in.	9 in.	12 in.	1.25	21	16 in.	15 in.	16 in.	3.25
16	11 in.	10 in.	15 in.	1.50	23	17 in.	16 in.	18 in.	4.40
					24	19 in.	18 in.	20 in.	5.25

Iron Feet. Can easily be attached to either of the two above styles of tubs to raise them 1 1/2 inches. Set of three complete with bolts and nuts. \$0.75

SWINGING BRACKETS FOR FLOWER POTS. Especially adapted to hold plain flower pots and saucers. Made of steel, very strong and durable. Artistic in design and finished black. Flower pots and saucers are absolutely secured by the spring clasp.

No.	Each Doz.	No.	Each Doz.
1 holds 5 in. pot.	\$0.50	3 holds 7 in. pot.	\$0.70
2 holds 6 in. pot.	.60		6.60

WIRE WINDOW PLANT SHELVES. Can be attached to the flat part of any window moulding. Adjustable brackets are so constructed as to allow the curtain between the window and shelf. Shelves 7 1/2 in. wide. Each complete with brackets, 42 in., each \$2.25; 36 in., each \$2.00; 30 in., each \$1.75.

PLANT STANDS, WIRE FOLDING. Strong and durable. When not in use can be folded and stored away in a small place. 4 tray, \$7.60; 3 tray, \$5.75; 2 tray, \$4.50; 1 tray, \$3.25.

RUBBER PLANT SPRINKLER. Detachable metal top, finely perforated. Indispensable for house use and for watering small seedlings. Bent or straight neck. 6 oz. 85c., 8 oz. \$1.00, 10 oz. \$1.10.

SIEVES FOR SIFTING LOAM. Galvanized wire. 1 to 8 meshes per inch. 14 in. \$1.25, 16 in. \$1.60, 18 in. each. 2.00

SILKALINE OR SMILAX THREAD. 2 oz. spools 40c., lb. 3.00

BRASS SYRINGES. All our syringes are brass, highly polished and lacquered and made with the best workmanship possible.

	Each
A. Barrel 12 in. long, 1 spray and 1 stream jet.	\$3.00
2. Barrel 13 1/2 in. long, 1 coarse and 1 fine spray.	5.00
10. Barrel 18 in. long, 1 coarse and 1 fine spray, rose and stream jet with patent valves, elbow joint.	7.50
G. Barrel 16 in. long, 1 spray rose and 1 stream jet and elbow joint.	5.25
H. Barrel 18 in. long, sheet brass, 1 spray rose.	3.25
11. Same as No. 10 without valve.	6.00

PLANT STAKES

Match Sticks, or Hyacinth Stakes	100	1000
12 in., painted green.	\$0.30	\$2.25
18 in., painted green.	.40	3.25

Bamboo Stakes. Painted green. Small and inconspicuous but strong and very useful for small plants.

Doz.	100	1000	Doz.	100	1000
12 in.	\$0.15	\$0.50	36 in.	\$0.25	\$1.20
18 in.	.15	.70	42 in.	.30	1.40
24 in.	.15	.80	48 in.	.35	1.50
25-27 in.	.15	.80	60 in.	.40	2.20
30 in.	.20	1.00			17.00

Japanese Cane Stakes. Used by plant growers and in greenhouses for tying Roses, Crysanthemums, etc.

Doz.	100	1000	Doz.	100	1000
6 ft.	\$0.35	\$1.90	8 ft.	\$0.50	\$2.80
10 ft.	.80	5.30			48.00

Southern Cane Stakes. Natural. Not as strong as the Japanese but will answer many purposes fully as well. Random lengths 6 to 9 ft. per 100, \$1.60; 1000..... \$13.50

THERMOMETERS. Every home, office and greenhouse needs them. Each

Fancy Wood Back. For house use, assorted shapes and finishes on oak. Spirit. Silvered or oxidized brass scale. 8 in..... \$0.60

Hotbed and Mushroom. Wood frame, brass scale and point. Magnifying mercury tube. 2.50

Japped Tin. (Wildler's). Guaranteed accurate. Heavy and substantially made.

Size	Each Doz.	Size	Each Doz.
6 in.	\$0.45	10 in.	\$1.10
7 in.	.75	12 in.	1.30
8 in.	.85		12.00

Self-Registering. Maximum and minimum degree of heat or cold during day or night. Magnet and instructions with each. 8 in..... \$4.00

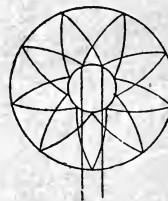
Window. Heavy metal scale, slotted to allow light around and through the tube to make reading easy. Large alternating figures. 8 in..... 1.25

TRELLIS, for English Ivies, etc. Wooden.

Bow Trellis. Rattan on wooden stick. Painted green.		Each Doz.		Each Doz.	
No. 1 30x10 in.	\$0.90	\$9.00	No. 4 48x15 in.	\$1.80	\$18.00
No. 2 30x14 in.	1.30	13.00	No. 5 60x18 in.	2.00	20.00
No. 3 36x12 in.	1.40	14.00	No. 6 72x20 in.	2.40	24.00
No. 3 1/2 42x14 in.	1.60	16.00			
No. 00 20 in. stick, 3 1/2 in. wide.		.25	2.50		
No. 00 wide, 20 in. stick, 8 in. wide.		.35	3.50		
No. 0 24 in. stick, 5 in. wide.		.35	3.50		
No. 0 wide, 24 in. stick, 8 in. wide.		.60	6.00		
No. 0 1/2 24 in. stick, 7 1/2 in. wide.		.65	6.50		

Fan Trellis. Popular for Roses. Painted green.		Each Doz.		Each Doz.	
1 1/2 ft.	\$0.40	\$4.00	4 ft.	\$2.00	\$20.00
2 ft.	.50	5.00	5 ft.	2.50	25.00
2 1/2 ft.	.60	6.00	6 ft.	3.00	30.00
3 ft.	1.40	14.00	7 ft.	3.50	35.00
3 1/2 ft.	1.60	16.00	8 ft.	4.00	40.00

WIRE IVY TRELLIS. Round. 14 in. 35c., 20 in. 40c., 24 in. 60c. Snow Shoe. 14 in., 30c., 20 in., 35c., 24 in. 50c.



Round Ivy Trellis Wire Window Shelf Snow Shoe Trellis

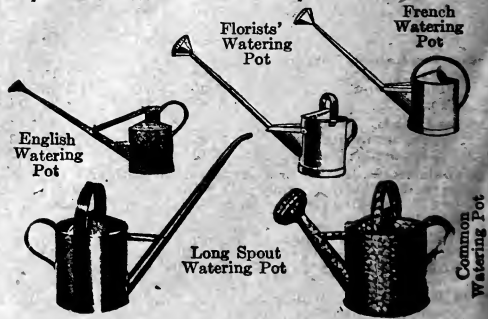
Veranda Trellis. Suitable for all climbers. Green.		Each Doz.		Each Doz.	
Height.....	Each Doz.	Height	Each Doz.		
2 ft.	\$1.00	4 ft.	\$1.60	\$16.00	
3 ft.	1.20	5 ft.	2.40	24.00	

WATERING POTS.

Common Galvanized. Made extra strong, carefully braced. 10 qt. \$1.50, 8 qt. \$1.25, 6 qt. \$1.10, 4 qt. \$1.00. Long Spouts, Japped Green. For house plants. Tin 4 qt. \$1.40, 2 qt. \$1.10, 1 qt. \$0.80.

Florists' Galvanized Iron. The best watering pot made. A coarse and fine copper faced rose with each pot.

Capacity	Spout	Each	Capacity	Spout	Each
6 qt.	21 in.	\$4.25	10 qt.	25 in.	\$5.00
8 qt.	23 in.	4.50	12 qt.	25 in.	5.50



IMPLEMENTS AND SUNDRIES

For Farm, Garden, Greenhouse and Conservatory

For Fall and Winter Use

We will mail any of the following where possible, provided postage is remitted with the order. For a more complete description see our Spring catalog.

ASBESTOS TORCH. Attach to any pole. Saturate with kerosene oil, light and hold under the caterpillars' nests and pass quickly along the branches and around the trunk of the tree where the insects lodge. The heat instantly destroys the insects. Price **\$0.50**

BOXES for Cut Flowers. We keep the following sizes in stock; others can be furnished at short notice.

No. Lgth. Width Depth Doz.	100	No. Lgth. Width Depth Doz.	100
2 21 in. 5 in. 3 1/2 in.	\$0.90	6 24 in. 8 in. 5 in.	\$1.00
4 18 in. 5 in. 3 1/2 in.	.75	7 28 in. 8 in. 5 in.	1.25
	4.00	8 36 in. 8 in. 5 in.	1.50
			10.00

BRUSHES. Caterpillar. Wire. Each **.25**
For applying creosote to destroy eggs of the gypsy moth. Each **1.25**

BURLAP. For putting around trees to trap gypsy moths. 40 in. wide, per piece of about 100 yds., 10c. per yd., per single yd. 12c.; 10 in. wide, 100 yds. \$3.00; per single yd. **.05**

BURNING BRAND. For marking tools, etc. 6 1/2-in. letters or less \$3.50; each additional letter. **.50**

CARNATION STAPLES. Pkg. of 3000 **\$1.35**, per 1000 **.50**

CARNATION SUPPORTS.
Excelsior. Galvanized wire, strong and durable. The two lengths make a complete plant support. 20 in. 100 \$2.50; 1000, \$22.50; 18 in., \$19.00 1000; 1000 **2.25**

CELERY BLEACHER. A heavy, waterproof paper, quicker and better than boards for bleaching. Leaves no taste or odor. Rolls 100 ft. long, 12 in. wide, \$3.50. 10 rolls. **32.50**
42 in. wires for single rolls, 100 \$1.55; 1000 **14.00**
Unwinders. Each **1.25**

CELERY TAPE. Red or blue in spools of 1000 yds. each. Makes bunches very attractive for the best trade. **4.00**

CHRISTMAS TREE HOLDERS. Can't tip over. Adjustable. Hardwood with steel braces. No wabbling. **.60**

CIDER AND FRUIT PRESSES.
No. 1. Height and diameter of tub 8 1/2 in. Weight 53 lbs. **14.00**
No. 2. Height and diameter of tub 10 in. Weight 74 lbs. **19.50**
No. 00. Tub, same as No. 1. Weight 37 lbs. **10.00**
No. 0. Tub, same as No. 2. Weight 55 lbs. **12.50**
Senior. Height and diameter of tubs 15 in. Weight 328 lbs. **65.00**
Medium. Height and diameter of tubs 12 in. Weight 197 lbs. **48.00**
Junior. Height and diameter of tubs 10 in. Weight 143 lbs. **37.50**

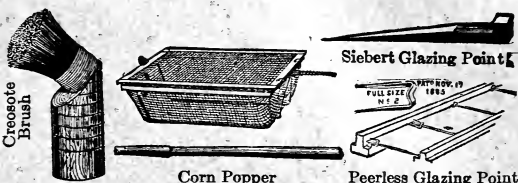
Ask for our Special Circular on these.

CORN POPPERS. Strong and well made. Holds 2 qts. Each **.40**

DIBBLE. For transplanting plants. Steel points, wood handles. **.70**

EDGING KNIVES, or Turf Edgers. American Socket. With handle. Each **1.50**

FLORAL TOOLS.
Boys' Sets. Forged shovel, rake and hoe. Handles about 3 ft. **2.15**



FLOWER POT STANDS. See page 27.

FORKS. Each

Hand Spading. Best quality; 3 tines **\$0.60**
Manure. Malleable iron D handle, strap ferrule, 6 tine, \$2.25; 5 tine, \$2.00; 4 tine **1.75**
Long handles, same price. Wood D handles, add 25c.
Potato Diggers. 6 heavy round tines \$1.65; 5 heavy round tines **1.50**
Spading. Wood D handle, strap ferrule, 4 tine, \$2.15; 5 tine **1.85**
Malleable iron D handle, strap ferrule, 4 tine **2.85**
5 tine **2.25**
Boys'. Malleable iron D handle, plain ferrule **1.15**

FRUIT PICKERS.
Common. Heavy galvanized wire. Saves fruit and energy. Attach to any convenient pole. **.65**

FUMIGATORS.
Defiance. For using insecticides in the liquid form **.75**
Eureka and Perfection. Perfection contains a water tank. **Eureka**
No 1 holds 1 pk. stems **\$5.85** **\$3.25**
No. 2 holds 1/2 bus. stems **7.00** **4.35**
No. 3 holds 3/4 bus. stems **4.75**

GLAZING POINTS.
Peerless. Made of steel wire and galvanized. Box of 1000. Nos. 1 and 2 for single thick glass. No. 2 1/2 for double thick. **.80**
Pincers for driving Peerless Glazing Points. **.75**
Siebert Style. Zinc; they will not rust. 1000 to 1400 per lb. 3/8 and 1/2 in. per lb. 65c., 5 lbs. **2.75**

GLOVES. Garden and Pruning. Per pair **\$2.50** and **2.75**

GRAFTING TOOLS or KNIVES. All steel, hook handle. **1.00**

GRAFTING WAX. A superior article neatly put up. Lb. 50c., 1/2 lb. 28c., 1/4 lb. **.15**

HEATERS FOR AUTOS AND VANS. The construction is such as to render these heaters almost indestructible, and with ordinary care they will last a lifetime.

3C' Oval, 14 in. long, polished brass ends, covered with carpet. **7.20**
2C' Triangular, 14 in. long, polished brass ends, covered with carpet. **4.50**
O. B. Oval, 12 in. long, heavy white steel ends, covered with carpet. **3.60**
11B Triangular, otherwise like O. B. **3.60**
10 Florists' or Van Heater. 14 in. long, 16 in. high, 3 drawers not covered. Iron feet that can be screwed to the floor. **9.00**

HEATER COAL. In boxes of one dozen full-sized bricks. **1.25**
In cases of 100 full-sized bricks. **9.00**

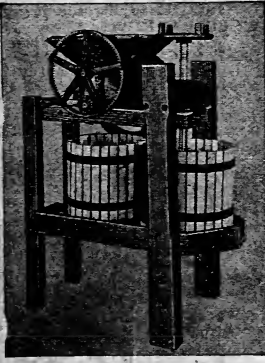
HOES. Their constant use in gardens will work wonders.

Baby Warren. For transplanting, making and covering drills in flower beds, and weeding. Excellent for scraping young trees. 4 1/2-in. blade. **.75**
Combination Draw Hoe and Rake with Handle. 6 1/2-in. cut, 6 teeth, 65c.; 4 1/2-in. cut, 4 teeth **.55**
Corn. An excellent light tool. 7-in. blade, 2 1/2-in. deep. **1.20**
Draw, or Field. Built for good hard use. 8-in. blade. **1.25**
Ladies' Size. Very handy about the flower beds. 5-in. blade. **.90**
Crub Hoe. 6 1/2-in. blade, with handle. **2.25**
Humphrey Hoe. 10 flat teeth. **1.10**

Magic Weeder Hoes.
Short Handle. 3 teeth, 25c.; 4 teeth, 40c.; 4 teeth, 1 1/2-in. blade on back for use as a hoe. **.55**
Long Handle. 4 teeth, 3-in. blade on back **\$1.10**; 4 teeth only **1.00**

Meadow Hoe. Splendid for general use. 9-in. blade. **1.50**
Mehler's Handy Gardener. Cultivates on three sides of the plant at one stroke. Each **1.00**
Mehler's Hoe Combination. **1.00**

Common Fruit Picker



"Medium" and "Junior"



Christmas Tree Holder

HOES—Continued

Norcross Hoe Cultivator. It works easier and faster than any wheel hoe. Made of first-class material, light and durable. 4 ft. handle, 5 prong, \$1.35; 3 prong, 3 prong, 9-in. handle.....	Each	1.00
Pronged Hoe, or Potato Fork. 6 heavy round tines.....		1.65
5 heavy round tines.....		1.50
Pull Easy Hand Cultivators. 18 in. 9 teeth, 4 ft. handle.		1.50
Scuffe, Arlington. Extensively used by market gardeners. We are headquarters and can supply the genuine article, made in the best possible manner. 5, 6, 7 or 8 in., \$2.75; 9 or 10 in., \$3.00.....		3.00
Scuffe, or Push Hoe with Handle. American. 10 in. 9oc., 9 in. 85c., 8 in.....		.80
Warren. Heart-shaped hoe.....		1.35

GARDEN HOSE AND ACCESSORIES

F. F. R. CO.'S BEST BRAIDED RUBBER. Guaranteed. ½ in., guaranteed, 25 ft. \$4.50, 50 ft. lengths.....		\$8.50
¾ in., guaranteed, 25 ft. \$5.25, 50 ft. lengths.....		10.00
BULL DOG HOSE BANDS. Fastens with screws. ½ or ¾ in., each 7c., doz. 70c., 1 in., doz. \$1.80, each.....		.20
HOSE COUPLINGS, CLINCHER. ½ or ¾ in., each 35c., doz.....		3.50
Common Brass. ½ or ¾ in., each 30c., doz. \$3.00, 1 in., each.....		.35
HOSE MENDERS.		
Caldwell Hose Strap. Made from best quality brass wire. ½ or ¾ in., doz. 30c. Pliers, each.....		.30
Clincher. Sure to stay on as long as the hose lasts. ½ in., each 15c., doz. \$1.35, ¾ in., each 15c., doz.....		1.35
Cooper. One of the best. 1 in., each 12c., doz. \$1.25; ½, ¾ in., each 10c., doz.....		1.00
SHUT-OFF CONNECTION. Each.....		
SPRAY NOZZLES FOR HOSE.		
Bordeaux	\$1.85	Boston Rose Spray
Champion55	Central
Fairy	1.15	Kinney Pump
Greenhouse. 4 in. face for ¾ in. hose.....	1.25	
3 in. face.....	1.00	
New Boston. Will throw a coarse or fine spray, or a large or small stream, as may be desired. Each.....		1.00
Stott's. Throws a side spray. A favorite among Rose growers especially for Red Spider. Single spray \$2.00; double spray.....		2.75

WASHERS. Rubber. ½ and ¾ in., lb. 50c., doz.....		.10
HOTBED AND COLDFRAME MATS.		
Cloth. An excellent mat for protection of young plants in coldframes or hotbeds; not as bulky as the straw mats, and undoubtedly warmer; with extra width completely to cover two sash. They are filled with waste and quilted to hold shape. Burlap one side. Each Doz.		3.00 30.00
76x76 in.....	2.00	22.00
40x76 in.....		
Straw. Made by hand from the best rye straw and in the most thorough manner.		
6x6 ft.....	3.00	33.00
3x6 ft.....	1.75	19.80
Special prices on large lots and special sizes made to order.		

HOTBED SASH. Crating is necessary for shipment. Ask for price without crates.		
Double Glass. Two layers of glass with the dead air space enclosed. Size, 3x6 ft., 10x12 glass. Each, crated for shipment, \$11.55, 6 sash for.....		65.25
Our Regular Stock. These are well made from very best quality and thoroughly seasoned lumber, free from knots and imperfections. Glazed with double thick glass, painted two coats. Each, crated for shipment, \$9.25; doz.....		100.50
Unglazed. Same as above. 1 ¼ in., 3x6 ft., either for 6x8 or 8x10 glass. Each, crated for shipment.....		4.00
Price on larger quantities on application.		

KNIVES, BUDDING AND PRUNING. Best American \$1.25 to.....		2.00
MASTICA. For glazing greenhouses. Use 1 gal. to 250-300 running feet. Gal.....		3.00
MASTICA MACHINE. For glazing with liquid putty. Each.....		3.25
MELON NETS. For supporting Melons growing in greenhouse. Doz.....		2.50
PAPER. Ask for prices on Manila, Tissue, Waxed or Plain White in the various sizes we carry.		
PUTTY, Twemlow's Liquid. For bedding glass in sash and filling cracks or seams in roof joints or frames of greenhouses or hotbeds. 1 gal. can.....		3.25
PUTTY BULB, Rubber. For glazing. Each.....		1.50
RAFFIA. The best material for tying; strong. Lb. 30c., 5 lbs.....		1.25

RAKES.		
Gem, Dandelion Lawn Rake. 16 in. \$3.00, 24 in.....	Each	\$4.00
Hay, Wood. Three steel bows. Best. 14 teeth.....		1.00
Lawn, Wood. Three steel bows, bent handle. 24 teeth.....		1.15
Reversible Wire Lawn. Heavy tinned steel teeth. The arched ones are excellent for leaves and litter; the others for fine cut grass and walks. 24 teeth.....		.85
Steel Garden. Long straight teeth. 18 teeth \$1.50, 16 teeth \$1.30, 14 teeth \$1.25, 12 teeth.....		1.15
Steel, Gravel. Short teeth for gravel walks. 18 teeth \$1.75, 16 teeth \$1.60, 14 teeth.....		1.50
PRUNING SAWS.		
Adjustable Pole Pruner. Without handle, 18 in.....		1.55
Avery Double Edge. 18 in. \$1.10, 16 in.....		1.00
Brown's Single Edge. 16 in.....		1.15
Crescent, 10 in.....		2.00
With hook, 10 in.....		3.50
Diston's Double Edge. 18 in. \$1.60, 16 in.....		1.50
Diston's Single Edge. 16 in. \$1.45, 18 in.....		1.55
Pruning Saw and Knife. 10 in. long.....		2.00

PRUNING SCISSORS.		
Flower Gatherers. For cutting; holding. 7 in.....		2.50
5 in., Keen Kutter.....		1.25
Grape or Vine Scissors. For thinning the bunch. Nickel-plated. 8 in., imported.....		4.00
Grape Clippers. For thinning the bunches.....		.60
Rose Pruners. Nickel plated, imported, 6 in. \$3.00, 5 in. \$2.50, 4 in.....		2.25
PRUNING AND HEDGE SHEARS.		
American. Black malleable iron handle.		
No. 14, with brass coil spring.....		1.00
No. 30, with volute spring, black, 9 in.....		1.25
No. 31, with volute spring, black, 10 in.....		1.50
No. 40, with volute spring, polished, 9 in.....		1.75
Branch or Lopping. Imported. With long handles. No. 4, 44 in. \$5.00; No. 3, 38 in., \$4.50; No. 2, 31 in., \$4.00, No. 1, 27 in.....		3.25
French. With steel spring. The best pruner ever offered. Polished. 7 in. \$2.25, 8 in. \$2.75, 9 in. \$3.00, 10 in.....		3.25
Hedge, Plain. 10 in. \$2.75, 9 in. \$2.50, 8 in.....		2.25
Hedge, Notched. 10 in. \$3.00, 9 in. \$2.75, 8 in.....		2.50
Ladies' Garden. With wooden handle, similar to Hedge Shears. 6 in. blade.....		1.75
Levin. Very light and extra strong. 7 ½ oz.....		.75
Telephone Tree Pruner. Can be used on a pole of any length and be operated with a cord. Sold without handles.....		1.50
Waters' Tree Pruners. With handles. 14 ft. \$1.75, 12 ft. \$1.75, 8 ft. \$1.75, 6 ft. \$1.65, 4 ft.....		1.40
Extra blades, doz. \$3.00.....		.30

CAHOON BROADCAST SEED SOWER. Positively the best seeder for the work. Every farmer needs one.....		6.25
SPRAYERS, COMPRESSED AIR, Bucket or Hand. See our Spring catalog and our Special Strawberry List for kinds and prices.		
TREE GUARDS. Protect your young fruit trees from Winter injury by rabbits, mice, etc. Rustproof, ¼ in. mesh, 6 in. diameter, 18 in. high. Doz. \$3.00, 100 \$21.00.....		
		.30

TROWELS.		
English Pattern. Handle 20 in. long, each.....		.50
Five-in-One Garden Tool. Each.....		.50
Ordinary Riveted. 7 in. doz. \$2.75, each 25c., 6 in., doz. \$2.40, each 22c.; 5 in., doz. \$2.00, each.....		.20
Solid Forged Steel. A very high grade trowel. 7 in. 80c., 6 in. 75c., 5 in.....		.70
Transplanting. Narrow blade. Can be used as a weed digger. 7 in., doz. \$3.00, each 30c., 5 in., doz. \$2.20, each.....		.20

TWINE. Ask for prices on Green and White Cotton, Jute, Hard Strong Tying, Marlin and Lathyrus.		
WHEELBARROWS. Best quality. Large and roomy. Wood wheels. Boys, \$7.50; No. 64, \$8.50; No. 65.....		
		9.00
LEAF RACK FOR WHEELBARROW. The new device for collecting weeds and litter which fits on any wheelbarrow. It is made of galvanized wire. Capacity 10 bus.....		
		10.00



FERTILIZERS FOR LAWNS AND MEADOWS, FARM, GARDEN AND GREENHOUSE USE

All prices are F. O. B. Boston and subject to Market Variations.
 "WIZARD BRAND" NATURAL MANURES



PULVERIZED SHEEP MANURE. The best, most convenient and economical natural manure. Safe for all particular uses, such as golf course, country club and park lawns, market gardens, etc., in which the introduction of weeds and foreign grasses would be extremely objectionable. It does not fill your lawn with noxious weeds; it is always ready and clean to use, also easy to apply. Lb. 10c., 5 lbs. 30c., 10 lbs. 60c., 25 lbs. \$1.00, 50 lbs. \$1.75, 100 lbs. \$3.00, ¼ ton \$14.00, ½ ton \$26.00, ton \$50.00.

SHREDDED CATTLE MANURE. A splendid substitute for stable manure in gardens and greenhouses where it is desirable to supply plant food, humus and organic matter. Excellent for composting.

PULVERIZED CATTLE MANURE. Valuable for top dressing lawns, perennial beds and gardens. Especially adapted to mixing with soil for potting all kinds of flowers and bulbs. Price of either, 100 lbs. \$2.80, ¼ ton \$12.75, ½ ton \$23.50, ton \$45.00.

BOWKER FERTILIZERS

LAWN AND GARDEN DRESSING. Especially for use on lawns, in the home garden and on flower beds. Almost odorless. 10-lb. bag 65c., 25-lb. bag \$1.25, 50-lb. bag \$2.25, 100-lb. bag \$4.00.
ACID PHOSPHATE. 16%. For mixing with other fertilizers. 100-lb. bags only, \$2.00; ¼ ton \$9.00, ½ ton \$17.00, ton \$33.00.
PLANT FOOD FOR HOUSE PLANTS. An odorless, readily available food for all kinds of flowering plants. Small size, 20c.; large size, 30c.

GROUND BONE, PHOSPHATES, Etc.

PURE BONE MEAL.	5 lbs. 35c.	100 lbs. ¼ ton	\$3.00	\$14.00
CRACKED BONE.	5 lbs. 50c.	5.00	24.00	
NITRATE OF SODA.	5 lbs. 50c., 25 lbs. \$2.00.	5.00	25.00	
DRIED BLOOD.	12 per cent.	5.00		
GROUND TANKAGE.	6-50 per cent.	3.50	13.00	
MURIATE OF POTASH.		7.00	30.00	

FINE GROUND LIMESTONE

LAND LIMESTONE. For correcting acid soils. Cloth bags. 100 lbs. \$1.15, ¼ ton \$4.50, ½ ton \$8.25, ton \$16.00.

ASHES

CANADA UNLEACHED HARDWOOD

Our ashes are rich in lime and potash, and are used as a top dressing for lawns, meadows and pastures at the rate of ½ to 1 ton per acre. If mixed with bonemeal they will provide an unusually fine dressing for all kinds of truck and farm crops as well as for orchards and small fruits. Analysis, 3 to 5 per cent. potash, 100 lbs. \$2.00, ¼ ton \$9.50, ½ ton \$18.25, ton \$35.50.

IMPORTED FERTILIZERS

CLAY'S FERTILIZER. Highly recommended by leading plantmen in the cultivation of flowers, fruits and vegetables for pleasure or profit. 7 lbs. \$1.50, 14 lbs. \$2.75, 28 lbs. \$5.00, 56 lbs. \$8.00, 112 lbs. \$15.00.

THOMSON'S SPECIAL CHRYSANTHEMUM MANURE. 7 lbs. \$1.25, 14 lbs. \$2.00, 28 lbs. \$3.50, 56 lbs. \$6.00.

THOMSON'S VINE, PLANT AND VEGETABLE MANURE. 7 lbs. \$1.00, 14 lbs. \$1.50, 28 lbs. \$2.75, 56 lbs. \$5.00.

SCOTCH SOOT. Price on application.

INSECTICIDES AND FUNGICIDES

Liquids and Poisons marked (*) are not available. Other Insecticides and Fungicides may be sent at Parcel Post rates if you remit the Postage with your order. NOTE: All prices are subject to change.

*APHINE. ½ pt. 40c., pt. 65c., qt. \$1.00, gal. \$3.00.

*APHIS FUNK. Box of 12 rolls, case of 12 boxes, ask for prices.

*CREOSOTE MIXTURE. For painting gypsy moth eggs. Qt. 45c., gal. \$1.10, 5 gals. \$4.25.

*FUNGINE. ½ pt. 40c., pt. 65c., qt. \$1.00, gal. \$3.00.

*GISHURST'S COMPOUND. Imported. For red spider, mealy bug, scale and thrips. Box 50c.

*LEMON OIL. ½ pt. 35c., pt. 60c., qt. \$1.00, ½ gal. \$1.50, gal. \$2.50, 5 gals. \$10.50, 10 gals. \$17.75.

*LIME SULPHUR SOLUTION (Bowker's). For San José scale. Qt. 50c., gal. \$1.00, 5 gals. \$3.75.

LIME SULPHUR, Dry (Sherwin Williams). Lb. 35c., 5 lbs. \$1.40, 10 lbs. \$2.40, 25 lbs. \$4.75, 50 lbs. \$8.75, 100 lbs. \$15.00.

NICO-FUME LIQUID. ¼ lb. 65c., lb. \$2.00, 4 lbs. \$7.50, 8 lbs. \$14.50.

NICO-FUME PAPER. 24 sheets \$1.25, 144 sheets \$5.00, 288 sheets \$9.50.

*NIKOTEEN. Small bottle, 50c.

*SCALECIDE. For San José scale. Qt. 60c., gal. \$1.45, 5 gals. \$6.45, 10 gals. \$11.00, 30 gals. \$27.00, 50 gals. \$39.50.

SOAP, SULPHO-TOBACCO. 3-oz. pkg. 12c., 8-oz. 25c.

*SOAP SPRAY "Imp." Qt. 80c., gal. \$2.35, 5 gals. \$10.00.

SULPHUR. 5 lbs. 40c., 25 lbs. \$2.00, 50 lbs. \$3.50.

TOBACCO DUST, Dusting. Lb. 10c., 5 lbs. 40c., 50 lbs. \$2.50, 100 lbs. \$4.50.

Fumigating. 50 lbs. \$2.75, 100 lbs. \$5.00.

TOBACCO STEMS. 100 lbs. \$1.90; large bales about 400 to 600 lbs. each, \$1.75 per 100 lbs.

TREE TANGLEFOOT. For banding trees against gypsy moths. Lb. 50c., 5 lbs. \$2.40, 10 lbs. \$4.50, 20 lbs. \$8.75.

GRAINS AND GRASSES FOR FALL PLANTING

Prices subject to change without notice. Bags extra at cost.

	Lb.	5 lbs.	15 lbs.	50 lbs.
ALFALFA. Inoculated with "Mulford Cultures".....	\$0.30	\$1.40	\$3.90	\$11.60
True Grimm. The leading variety for New England.....	.75	3.75	11.25	35.25
CLOVER.				
Alsike. Always include in pasture mixtures.....	.35	1.65	4.50	12.00
Crimson. Valuable as a soiling crop.....	.20	.90	2.25	6.80
Medium Red. The favorite for meadows.....	.35	1.65	4.50	14.30
Sweet, White Blossom. Plow under as green manure.....	.25	1.00	2.70	6.60
White Dutch. For lawns and pastures.....	.75	3.60	10.50	34.00
CREeping BENT. Best for sandy soils.....				
CRESTED DOG'S TAIL. Adapted to hard, dry soils.....				Ask for price
ENGLISH, or PERENNIAL RYE GRASS. Thrives in the shade.....	.65	3.15	9.00	27.25
ITALIAN RYE GRASS. Much relished by livestock.....	.20	.90	2.40	6.00
KENTUCKY BLUE GRASS. The leading lawn grass.....	.20	.90	2.40	6.00
MEADOW FESCUE. Suitable for moist lands.....	.40	1.90	5.25	16.00
MEADOW FOXTAIL. A good pasture grass.....	.40	1.90	5.25	15.00
ORCHARD GRASS. Excellent for orchard sowing.....	.30	1.40	3.75	10.25
RED FESCUE. Much used on golf courses.....	.65	3.10	9.00	27.25
RED TOP. Always used in meadow and pasture mixtures.				
Fancy Re-cleaned. Free from chaff.....	.30	1.35	3.90	12.30
Unhulled.....	.20	.90	2.40	6.00
RHODE ISLAND BENT. A splendid lawn grass.....	.60	2.85	8.40	27.50
ROUGH STALKED MEADOW GRASS. Essentially a pasture grass.....	.75	3.55	10.50	34.00
SHEEP FESCUE. For golf courses.....	.50	2.40	6.75	20.90
TALL MEADOW FESCUE. Especially for permanent pasture.....	.45	1.95	5.55	18.00
TALL MEADOW OAT GRASS. Will withstand extremes of temperature.....	.50	2.25	6.30	20.60
TIMOTHY. The standard hay of commerce.....	.20	.75	1.80	5.00
WINTER RYE. Rosen type. Most productive.....	.15	.50	1.05	2.35
WINTER VETCH. Splendid as a soil improver.....	.25	1.10	2.40	6.30
WINTER WHEAT. The most desirable for Fall sowing.....	.15	.50	1.20	2.50

"New England's Best Poultry Store"

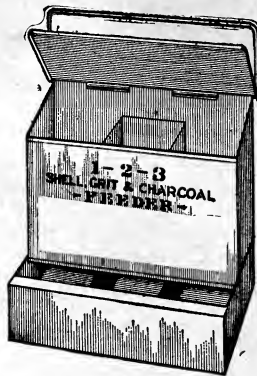
Feeders and Hoppers

SHELL AND GRIT BOX. For poultry and pigeons. Made of galvanized iron with hinged covers. No. 1 size, 3 compartments, about 2 qts. to each compartment. Each \$1.15. No. 2 size, 2 compartments, about 4 qts. to each compartment. Each \$1.25.

1-2-3 POULTRY FEEDER. For dry mash, scraps, shells, grit, charcoal, or any poultry feed. When used for one kind of feed only, take out separator; for two kinds put separator in one end; when used for three kinds, say scraps, shells and grit, put separator in the middle and you have three separate feeders. Price, small \$1.00, large \$1.35.

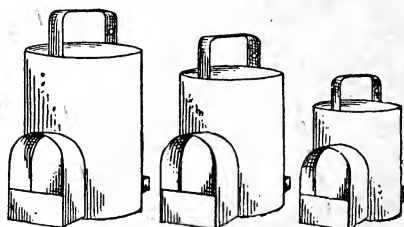
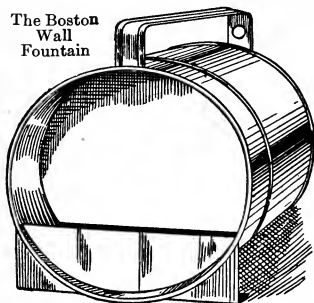
SEXTON'S DRY FEEDER. Made of galvanized iron with swinging grid automatically holding in place until all is consumed; easily filled and rat-proof. No. 1, double size, \$1.85; No. 5, \$3.25.

FAVORITE DRY-MASH HOPPER. The wire grid is raised or lowered as required for coarse or fine mash. The most distinctive feature about this Favorite Dry-Mash Hopper is the fact that it is an inch wider at the lower side than at the top, thus making it utterly impossible for the food to clog. 12 in., 12 qt. size, \$1.85; 18 in., 18 qt. size, \$2.50.



Shell and Grit Box

The Boston Wall Fountain



Wall Fountains

Drinking Fountains

POULTRY WALL FOUNTAINS.

Made of galvanized iron and warranted tight. These fountains have a flat strap on back to prevent them from tipping when hung up. 1/2 gal. 70c., 1 gal. 90c., 2 gals. \$1.25.

SANITARY STONE DRINKING FOUNTAINS.

Easily kept clean; chicks cannot tip them over. Qt. 50c., 2 qts. 65c., 4 qts. 75c.

THE DUPLEX. The latest and most practical sanitary fountain on the market. This is a standard fountain; keeps the water clean and pure. Easy to fill, easy to care for. Made in two sizes, 4 and 8 qts. Try a Duplex. 4 qts. \$1.15, 8 qts. \$1.35.

THE NORWICH AUTOMATIC AIR-LOCK FOUNTAIN. The device is worked by atmospheric pressure as against the weight of water and is absolutely perfect in its action and may be relied upon to fill its functions as truly as any condition of nature. Complete with lamp attachment to prevent freezing. 5 gal. size, \$7.50.

THE BOSTON WALL FOUNTAIN is one of the best fountains made; will keep your birds supplied with clean water with very little trouble. Made of galvanized iron; double seamed; the favorite with the trade. Qt. 60c., 2 qts. 70c., 4 qts. 90c., 8 qts. \$1.25.

THE PEERLESS. The water is always pure. It is protected from dirt and filth. Easy to clean and fill and fowl cannot injure their combs when drinking. Simple in construction, durable and practical. It is adjustable. If it becomes too loose or too tight, spring the sides of the fountain in or out as it may require, until the bottom is a perfect fit. 5 qts. 90c., 10 qts. \$1.25.

THE PEERLESS HEATER. Fits any style or size fountain. Keeps the water from freezing in any temperature. Guaranteed to burn 120 hours with one filling. Made in one size only. Each \$2.00.

CELLULOID LEG BAND.

All the different colors. Celluloid leg bands are easily applied; are by far the best band used for designating old from young fowl, as the different colors can be seen from a distance. Doz. 15c., 100 75c.

Pigeon and Baby Poultry

Size	Chick
12 bands..\$0.15	\$0.10
25 bands.. .35	.20
50 bands.. .40	.30
100 bands.. .75	.40
500 bands.. 3.00	1.75
1000 bands.. 5.50	3.00



Lee's Reliable Remedies

LEE'S GERMOZONE. A tonic; a bowel regulator; a system builder. The best preventive and cure for Roup, Cholera, Bowel Complaint and most other poultry diseases. In more general use today than any other poultry medicine ever manufactured. Given twice a week in the drinking water to all fowls, it keeps them in prime condition. No poultryman should ever be without Germozone. 4 ozs. 40c., 12 ozs. 75c., 32 ozs. \$1.50.

LEE'S LICE KILLER. The original liquid lice killer with many imitators but no equal. Guaranteed better than any other. Strongest and best. Kills both by vapor and contact all vermin, whether on the walls of the poultry house or on the body of the fowls. Also a powerful disinfectant. Disease germs cannot live where Lee's Lice Killer is used regularly. Sizes: Gals. \$1.50, 1/2 gals. 90c., qts. 60c.

Consult our Spring Catalog giving our full line of Incubators, Brooders and Poultry Remedies and Supplies. Ask for prices on Grain for Poultry, Pigeons, Parrots, Pheasants, Canaries, etc. We have a Poultry Department not to be surpassed in New England.

POPULAR GARDENING BOOKS

WE RECOMMEND

WE HAVE had it in mind that thousands of our customers would welcome our endorsement of a few of the best gardening books, the possession of one or more of which would enable them to add largely to their pleasure and profit. Accordingly, on these pages we have listed a chosen few. Together they furnish a splendid encyclopedia, containing all the information necessary in connection with every phase of garden work that the amateur, skilled or unskilled, may require to be posted on from time to time through the varying seasons of the year.

We give short descriptions of each one, and a careful reading will convince you we do not err in claiming them to be the best obtainable at the price.

Each one was written by at least one horticultural expert, then carefully edited by other practical men. **GARDEN GUIDE**, for instance, undoubtedly the most popular, complete and valuable of all the garden books on the market, is the result of the labors of many experts, each one notable in his own special field.

GARDEN GUIDE



Attractive home ground surroundings

Fourth edition; 384 pages; over 275 teaching illus. Beautiful cover in four colors.

Price, postpaid:

Paper, \$1.10; Cloth, \$1.65.

In less than five years this book has been reprinted four times, considerably added to each time until now, in its fourth edition, with its many new chapters, we consider it unapproachable from any point of view.

GARDEN GUIDE covers every step from the spading up of the garden to the Winter preservation of the crops.

Here is a brief synopsis of its contents: Diagrams showing the correct location for the dwelling house; numerous planting plans for the home ground surroundings and the fruit, flower and vegetable gardens.

Lawns and Grass Plots: How to make them and how to keep them in good order, fully explained. Tells all about Hedges and Fences. Discusses Trees, Evergreens and Shrubs for your lawn and landscape. Tells how to grow Roses, Hardy Perennials, Annuals and Biennials; how to make a Rock Garden, etc. A special chapter is devoted to "Everybody's Favorites," that is, those flowers we all delight in. Other chapters cover Bulbs and Tuberous Rooted Plants, Hardy Garden Ferns, Garden Furniture, Window Boxes and Porch Plants. The two extensive chapters on the Vegetable and Fruit Garden alone are worth more than the price of the entire book. Pruning, Plant Propagation, Transplanting, Fertilizers, Insect Pests and Diseases of plants are exhaustively treated and illustrated. There are chapters on Lawn and Garden Weeds, Greenhouse and Hotbed Frames, Garden Tools, Animal Life in the Garden, Birds in the Garden; Canning Fruits and Vegetables for Winter.

It may be seen from the foregoing brief résumé, which is not at all complete in detail, that **GARDEN GUIDE** covers every detail any one can conjure up. Its study makes gardening a joy. In such a comprehensive work it is difficult to point out one feature more valuable than another. We can and do recommend it highly; we know of none better.

Fottler, Fiske, Rawson Co.

12 and 13 Faneuil Hall Square
BOSTON, MASS.

Bulbous Plants for the Garden

Tulips, Narcissus, Hyacinths, Lilies, Crocuses, Lily of the Valley, etc.

Also Irises, Peonies, Gladioli, Dahlias, Cannas, Anemones, Ranunculus, Montbretias, Zephyranthes and Tuberoses.

There is no more interesting subject for the garden than your bulbs and no plants which repay you so profusely at so small a cost and with such a minimum output of labor. Their culture and care is of the simplest. It is well, however, to have some work of reference, in addition to the catalog, which will show you how to handle your bulbs so as to ensure the best of success, to describe their peculiarities, and to furnish you some knowledge of the many varieties in each of the classes; to tell you just how and when to plant them, and to give you the various pointers in connection therewith in order that you may get the utmost satisfactory results out of them.

Such being our object, we have compiled this brochure and offer it in full faith that our customers will find it a worthwhile acquisition to their horticultural library.

As will be noted from the title, we have covered all the bulbs and bulbous rooted plants which are today favorites in American gardens.

Price, 25c., postpaid, paper cover.



A real, enjoyable home in the country

Practical Landscape Gardening

A gentleman who is fast becoming nationally known throughout the country for his ability, by name Robert B. Cridland of Philadelphia, was engaged by the publishers to write a book on Landscape Gardening. His first effort was in the direction of the laying out of estates involving costly plans which we promptly advised him was not at all what we desired. We told him we wanted him to produce a book that would cater to the interests of people of average means, and the result was the production of the first practical book that was ever written for people with from one or two lots to an acre or so.

This book has met with wonderful success throughout the entire country, and we question whether any other work on the same subject ever met with the same welcome reception as has this, for each sale we make creates another. Through its conciseness and lucidity of expression the reader is at once encouraged by the ease with which he can acquire the needed detail instruction on the embellishment of his home grounds. Not only that, but through this advice he is enabled to avoid expensive mistakes, or if he already has a certain layout accomplished, this book will tell him how to modify, continue on, and bring the whole into complete harmony with his desires and the expression of good taste.

Additionally to its great scope of information the work is remarkable for its 91 photographic illustrations, 67 sketches and 33 plans. The type is large and clear and the binding durable. The color plate on the front cover is an irresistibly attractive landscape scene.

Cloth, 266 pages; size 6x8in. Price, postpaid, \$2.65.

Plant Culture

By GEORGE W. OLIVER

Propagator to the Bureau of Plant Industry, U. S. Department of Agriculture, Washington, D. C.

Fourth Edition enlarged and thoroughly revised by Alfred C. Hottes, Assistant

Professor of Horticulture, Ohio State University, Columbus, Ohio.

This book just recently rewritten and considerably enlarged has been a standard work for the past twenty years. It has been prepared, as its title suggests, for the benefit of all who are interested in the cultivation of plants, both under glass and outdoors. It differs also from Garden Guide in that it is encyclopedic in its information on all plants in cultivation. It is copiously illustrated and thoroughly indexed; concise and authentic, and serves as a pocket encyclopedia.

Cloth, 444 pages. Price, postpaid, \$3.65.

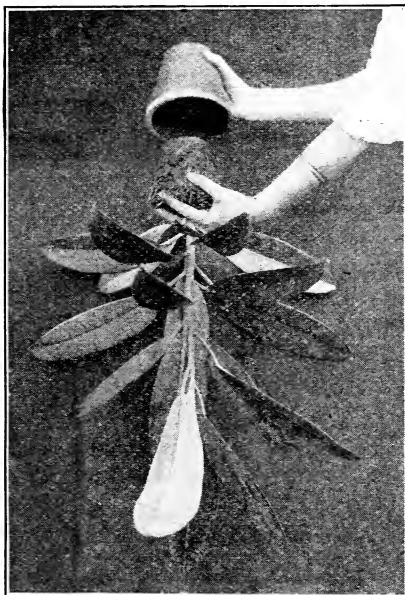
Milady's House Plants

There is quite a story connected with the publication of this book. The author, F. E. Palmer, one day, in the Hall of the Massachusetts Horticultural Society, lectured before several hundred ladies on house plants. After his lecture he was bombarded with questions for two hours by his enthusiastic hearers, evidencing the great interest in house plants which his lecture had created. So Mr. Palmer was appealed to by us to write a book on House Plants, and he has done so, embodying therein his experience of some forty years in instructing the ladies how to be successful with plants in the home.

In *Milady's House Plants* he tells the story in full, being careful to consider only those plants which can be successfully reared in the home. We know of no book—in fact we feel there is no book—so complete and thorough as this by Mr. Palmer.

It contains 100 illustrations and 180 pages, and has a beautiful cover in colors. A fitting present for the housewife.

Price, postpaid: Paper, 80c., Cloth, \$1.10.



This lady is taking a Rubber Plant out of a 5-inch pot preparatory to loosening up the soil and roots for transfer to a larger pot.

What Webster's Dictionary stands for in the general field of knowledge—

Johnson's Gardeners' Dictionary

stands for in the field of Horticulture

The Dictionary is printed in one volume of 923 pages, 9½x6½in., is light in weight, well printed, and securely bound. We will mail it postpaid, to any address on receipt of \$6.50. The Dictionary lists the names, both common and botanical, of every plant in cultivation, tells how to pronounce these names, whence they are derived, and what they mean. Defines all words and terms used in horticultural practice and literature, and discusses in a concise, helpful way every phase of horticulture and gardening activities. It is a complete up-to-date Garden Dictionary—the best of its kind available at this extremely low price.

Commercial Plant Propagation

Tens of thousands of amateur gardeners want to know how to propagate plants so as to enlarge their stock and properly, too, through the desire to learn how wonderful nature operates to reproduce and make good the losses. To look over a copy of *Commercial Plant Propagation* is to become its immediate owner for it tells completely and concisely how to perform the most fascinating operations of all garden work, that is, how to propagate and increase your plants. It is heavily illustrated with teaching pictures, showing how to secure this increase.

Cloth, 180 pages. Price, postpaid, \$1.90.

Commercial Rose Culture

For the man who wants to grow Roses for a livelihood and telling the best way to handle the stock in order to be successful in growing good Roses. A most successful book, recently rewritten and enlarged. The amateur Rose grower (under glass) will be delighted with it.

Heavily illustrated; 196 pages. Size 7¼x5 in. Price, postpaid, \$1.90.

Home Fruit Grower

A professional who has had a wide experience in many States of the Union, M. G. Kains by name, whose entire life has been spent in the culture of fruits, and who recently has achieved the height of his ambition, namely, the possession of a fruit farm of his very own, is the author. Such a man, one can well understand, being full of the subject himself, enthusiastic in the highest degree, and yet thoroughly practical, could not help but write a book for the amateur that would be clear, simple, practical and comprehensive. Its contents give the best modern methods of securing choice fruits, both small and standard, and additionally, covers Tillage, Spraying, Thinning, Fertilizing, Cover Cropping, Low Heading, Rational Pruning, and every necessary operation conducive to the production of an abundance of the best fruit. Everyone who owns a garden aspires to grow some fruit; particularly where there is a family of young children growing up the fruit crop will save hundreds of dollars in doctors' bills. This we know from our own experience. Heavily illustrated with teaching pictures. Four color cover.

Price, postpaid, Paper, \$1.10, Cloth, \$1.65.



The Book of Water Gardening

Slowly, but by imperceptible degrees, the pursuit of Water Gardening is gradually making headway. The writer of The Book of Water Gardening, Peter Bisset, was a devoted lifelong student of this class of plants and had charge, for many years, of one of the finest water gardens in the country. The text covers every condition and all the water plants. The amateur who can afford to grow but a few plants in a tub will find all the information he is in search of equally with the man who is enabled to possess a water garden of considerable extent. Splendidly printed and beautifully illustrated; 200 pages; size 7 $\frac{1}{4}$ x10in. Price, postpaid, \$3.65.

Fruits and Vegetables Under Glass

The writer, William Turner, has been associated for a lifetime with the raising of fruits and vegetables under glass and is the best known expert in this country on the subject. The work is complete and exhaustive and, so far as we know, the only practical one published in America. It is up to date in every particular. Printed on fine coated paper, clear type, contains 65 halftone illustrations, handsomely bound in cloth with embossed cover; 256 pages; size, 7 $\frac{3}{4}$ x10 $\frac{1}{4}$ in. Price, postpaid, \$5.00.

Commercial Violet Culture

This book is for the benefit of those who wish to go into Violet growing in a commercial way. It was written by Dr. B. T. Galloway of the Bureau of Plant Industry, Dept. of Agriculture, Washington, D. C., and is now in its third edition. It is well illustrated and bound in flexible cloth covers of royal purple and gold. Size 4 $\frac{1}{4}$ x6 $\frac{3}{4}$ in.; 248 pages. Price, postpaid, \$1.90.

Sweet Peas for Profit

Dealing entirely with the most up to date methods of growing Sweet Peas under glass for Winter and in the open air for Summer, and written for those who wish to go into the business commercially. Well printed and illustrated. Cloth, 147 pages with complete index. Price, postpaid, \$1.90.

Fottler, Fiske, Rawson Co.

12 and 13 Faneuil Hall Square
BOSTON, MASS.

From _____

Post Office _____

State _____

PLACE
A
TWO CENT
STAMP
HERE

Fottler, Fiske, Rawson Co.

Seeds

12 & 13 Faneuil Hall Sq.

Bulbs

Plants

"The Seed Store"

Shrubs

Poultry Supplies

Boston, Mass.

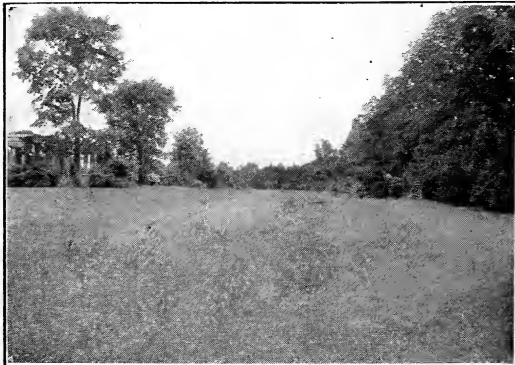


The Secret of Success with lawns made in the Fall lies in the ideal conditions existing at this season. During the cool temperatures of early Fall when the soil is warm, and usually moist, seed can germinate quickly and make deep roots, which are far less likely to be killed by Winter frosts than are the shallower roots of Spring sown grass being killed by the extreme heat of Summer. Weeds which are dormant in every soil spring up quickly, but the majority of them being annuals only, will be killed by the first severe frosts. We advise all who contemplate making a new lawn, or renewing the old, to do the work this Fall, as the grass will become well established before freezing weather, ready to start a luxuriant growth with the return of Spring.

FRANKLIN PARK LAWN SEED

TRADE MARK REGISTERED

THE BEST SEED MAKES BEST LAWNS



An Ideal Lawn Seed Mixture

CLEANEST—BEST—CHEAPEST

The formula for this mixture was originally patterned after that used by the Park Commissioners of the city of Boston so successfully for years in laying out many of the lawns and terraces which today we so greatly admire throughout our splendid park system. To this we have added from our own experience until we now have a mixture which we confidently believe to be superior to many, and second to none. The very large demand for this lawn seed has necessitated our having the name **FRANKLIN PARK** registered as a trade mark in order to protect ourselves from imitators.

Our Franklin Park Lawn Seed is blended from re-cleaned seeds of different varieties that will make a good lawn quickly. It is a mixture adapted to a wide variety of soils and is certain to give pleasing results. It will start at once and in a short time show a beautiful deep green and retain it during the season with slight attention. The foliage is fine and we confidently recommend it wherever a thick velvety sod is desired. Weight, 32 lbs. per bushel.

Other mixtures, weighing from 14 to 20 lbs. per bushel, cost more in proportion for they must necessarily contain more chaff, and more seed will be required to cover a given area. The best is cheapest, and we advise using **Franklin Park Lawn Seed** as the best investment.

QUANTITY REQUIRED FOR NEW LAWNS

1 lb. (1 qt.) for 500 sq. ft.; 4 lbs. (½ pk.) 2400 sq. ft.; 8 lbs. (1 pk.) 5000 sq. ft.; 32 lbs. (1 bu.) 20000 sq. ft.; 64 lbs. (2 bu.) one acre.

Prices: ½ lb. 30c.; 1 lb. 50c.; 2 lbs. 95c.; 4 lbs. \$1.75; 8 lbs. \$3.00; 32 lbs. \$10.00.

SHADY SPOT LAWN SEED

For sowing on the north side of buildings, between houses, and for securing a lawn under large shade trees.

In many lawns there are places where it seems as though nothing can be grown; some are shaded by large trees and others by buildings. For these locations we recommend our **Shady Spot Lawn Seed**.

It is always advisable for those who are seeding down the shady places to supply new soil, if possible, especially if large trees are producing the shade, as their roots spread so fast as to exhaust the nourishment in the soil. When unable to supply new soil, the ground should be well dug over, and if tree roots predominate, these should be taken out. In most shady places the soil has a tendency to be sour, and we strongly recommend the use of land lime (about 50 lbs. per 1000 sq. ft.)

This special mixture for shady locations is selected from the best grasses possible to obtain for this purpose, and only those that grow and flourish under shady conditions in their natural and wild state are used. Ordinary lawn grass might grow for a short time, but as a general rule it will last but a short while and then make a poor showing.

Shady Spot Lawn Seed if sown in these places will undoubtedly grow and produce the best results.

PRICE AT OUR STORE: ¼ lb. 15c.; ½ lb. 25c.; 1 lb. 45c.; 2 lbs. 80c.; 10 lbs. \$3.75; 25 lbs. \$9.00; 50 lbs. \$16.00; 100 lbs. \$30.00.

Use Climax Lawn Sand for Weedy Lawns

This remarkable preparation, when applied to weedy lawns, will adhere to the rough, hairy leaves of Dandelions, Plantains, etc., and, by absorbing therefrom all the sap, destroy them beyond recovery. It acts as a valuable fertilizer. The most weedy and impoverished lawn will show a remarkable improvement after a single application.

When to Apply. Select a bright day when the weather seems settled for at least 24 hours. The weeds should be exposed to the direct rays of the sun for three or four hours after application. Stubborn weeds like Plantain, Dandelion and Dock should have a pinch applied directly in the crown of each.

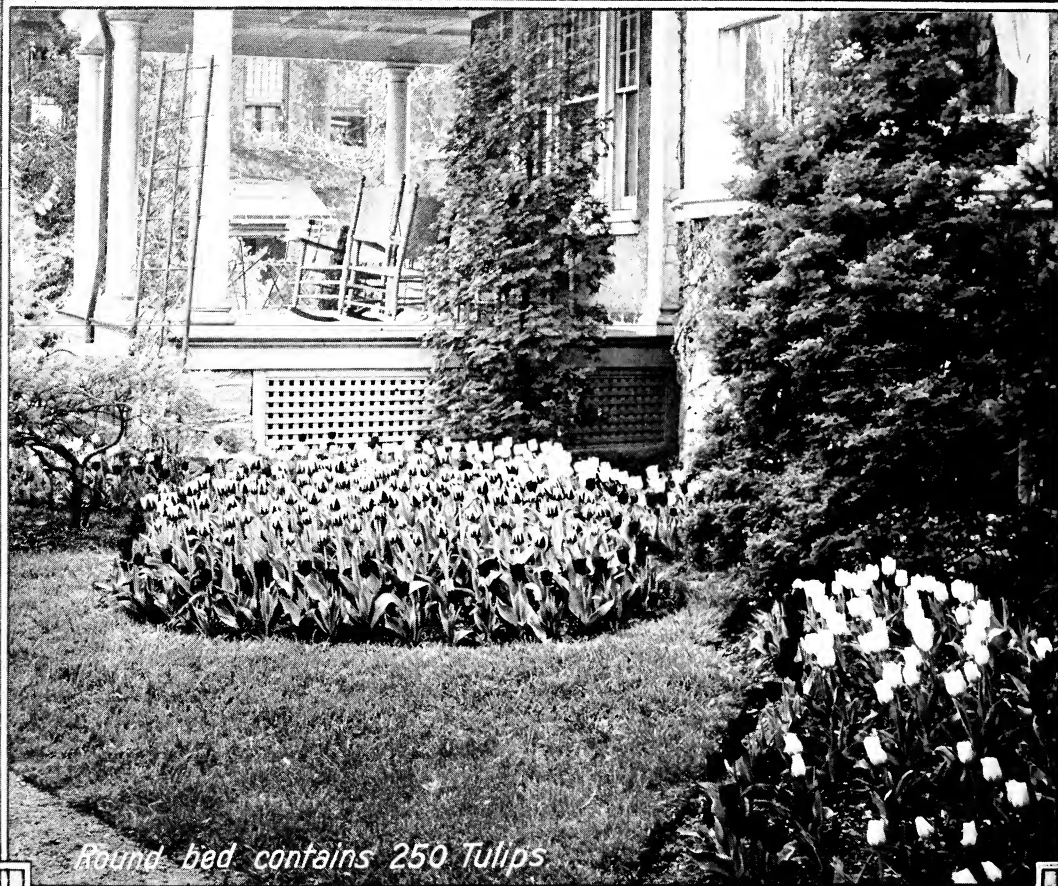
3½ lbs. 75c.; 7 lbs. \$1.25; 14 lbs. \$2.00; 28 lbs. \$3.50; 56 lbs. \$6.00. Postage extra.



BULBS



for AUTUMN 1921



Round bed contains 250 Tulips

FOTTLER FISKE RAWSON CO.

"The Seed Store"

12 AND 13 FANEUIL HALL SQUARE
BOSTON MASS.