

Historic, Archive Document

Do not assume content reflects current scientific knowledge, policies, or practices.



62.61

LIBRARY
SECRETARY
76 YEN U - 1072 47
U. S. Department of Agriculture

THE PRICE OF TREES

Condensed Price-List
Fall 1921

Compliments of

C. A. Jackson's Nursery Gardens
UNADILLA, N. Y.

or address

C. A. Jackson, Landscape Engineer

1011 Press Bldg., 'Phone 2893-R
BINGHAMTON, N. Y.

GENERAL OUTLINE

	Page
General Information	3-4
The Price of Trees.....	4-9
Evergreens	9-11
Shade Trees	11-15
Evergreen Shrubs	15
Flowering Shrubs	15-18
Vines	18
Hardy Garden Roses.....	18
Rambler Roses	19
Hardy Perennials	19
Fruit Trees	19-20
Small Fruits	20-21
Nut Trees	21
Evergreen Special Offer.....	21-22
Tree Surgery	22-23
Letters of Reference.....	25
Index	26-27
Services	28

INDEX

	Page
Abies Concolor	10
Acer	13
Achillea	19
Akebia Quinata	18
Althea, Almond	15
Ampelopsis	18
Apples	19-20
Apples, Crab	20
Apples, Dwarf	20
Aquilegia	19
Aralia Horcules Club.....	15
Arborvitae	9-10
Ash	12
Ash, Mountain	14
Asparagus	21
Azaleas	15
Barberry	15-16
Barberry, Purple	16
Beech	12
Betula	12
Birches	12
Blackberries	21
Butternut	21
Campanula	19
Canterbury Bells	19
Catalpa	12
Cedars	9-10
Cherries, Fruit	20
Clematis	18

Continued on page 26

INFORMATION

LOCATION.—Just below the village of Unadilla on state road between Unadilla and Sidney in the Susquehanna River valley between Binghamton and Oneonta.

SOIL.—We have a Silt and Clay Loam soil. Our elevation is 1,000 feet above Sea Level, which makes all our plants and trees very hardy. Our elevation is an important factor to our patrons in this part of New York State.

ROOTS.—The root development of our trees and shrubs can not be surpassed. We invite your inspection.

DIGGING.—All our stock is dug by hand, thus preserving the stock from injury and yielding good roots for transplanting.

PACKING.—Boxes and packing are free.

PRICES.—All replace stock is F. O. B. our Nursery.

RAILROADS.—Delaware & Hudson, Ontario & Western Railroads.

U. S. MAILS.—Parcel Post.

SHIPPING SEASONS.—Spring, April and May. Fall, October and November.

TERMS.—Our terms are cash with order. In consideration of prompt payment of all orders we agree to replace free of charge any stock that fails to live the first season, providing that said purchaser sets out his order carefully and promptly.

RESPONSIBILITY.—All shipments travel at the risk and cost of the Purchaser.

All agreements and contracts are made subject to the loss of the stock by drought, floods, fire, insects, or any other unavoidable causes.

We exercise the greatest care to keep our varieties pure and true to name, and we hold ourselves in readiness at all times to replace on proper proof, all stock that may prove otherwise; but it is mutually agreed between purchaser and ourselves that we shall not at any time be liable

for any amount greater than the original price of the stock.

REFERENCE.—Sidney and Unadilla National Banks, Dun & Co., Albany, and Bradstreet & Co., Utica, Commercial Agencies.

LANDSCAPE DEPT.—Should your planting proposition need the services of an expert—we are in a position to make plans and take charge of planting operations.

VISITORS WELCOME—You're welcome to come and inspect our trees and shrubs. Many come from long distances in their automobiles and select the stock that they want from our assortment, which is made up of practically everything worth planting of the hardy out-door sorts.

Write for quotations on large quantities.

THE PRICE OF TREES.

Beautifying your home, city and state can be done if you are willing to pay the price of first getting adequate planting plans, suitable planting materials and, if you are determined to make such trees and plants grow regardless of all failures. To acquire permanent planting effects continue to plant trees, shrubs, vines, etc., each year. The garden must never be finished. To change and plant and plan constitute the chief delights of Gardening.

Only those who have been engaged in the planting of trees can appreciate the amount of effort and energy required to make them a success and when their growth has been accomplished, what a delightful contrast there is between the planted and unplanted streets, lawns and gardens and, too, just think what a wonderful help they are in helping to keep this Humidity down. While it is true that many persons do not take care of trees and this tends very much to discourage those who will constantly do something worth while for mankind still we must continue our efforts and perhaps conditions will change and a more appreciative people arise, and they in turn lend a helping hand to make our surroundings more beautiful.

We who have had experience can appreciate it

fully, how hard it is to get trees started off, because we, too, have our troubles but we must not stop, else we would soon have no trees on streets and parks. Consider the increased value of a home with well planted surroundings.



Wistaria one year after planting at our back porch.

As a Forest is more than trees and as a city is more than people so is a home more than buildings. It is more than a place to sleep and eat and

find shelter and protection for the goods that we accumulate. It is also a place of satisfactions, with such arrangements and conveniences and attractions as will contribute to comfort and appeal to our best feelings. The home comprises the grounds as well as the house; and if the grounds also have their essential conveniences and attractions, Plant forms and Colors are as much a part of a good home as are the Books and interior utilities and the adornments.

It is not sufficient to have a good number of plants, they should be arranged with taste. Even the small property may be benefitted by the personal touch of a Landscape Architect who makes it his business to make the home pleasant and attractive by tasteful plantings. Plants are of many varieties of color and individuality, yet, they may not be inharmonious. We believe further that vegetable, fruit, flower, rose and formal gardens should be a unit by themselves, only they should be connected by a part of the whole planting scheme.

With our Business Office at 1011 Press Building, Binghamton, New York, we are the only Nursery in this part of New York State. With a complete line of Evergreens, Ornamental trees, Shrubs, Roses, Fruit trees and flowering plants. We are enjoying a growing business beyond anything we had hoped when we started the Unadilla Nursery Gardens at Unadilla, New York. We have a large patronage in Landscape Architectural under the expert direction of C. A. Jackson, offering to the public practical Landscape Engineering for the beautifying of your home and city. With the use of a few Shrubs and Trees properly planted the effect will prove magic for any of your vacant lots. We do not sell our goods out of a box, but we are practical growers of ornamental goods that grow to please our Clientele.

We have rendered 12 years of practical, faithful Horticultural service to the public. We are ready at all times to give our attention to your problems giving you the benefit of our scientific study of plant life and the benefit of any artistic touch that we may add to your home.

When it comes to the purchase of this class of goods we feel that it is time for all prospective purchasers to place their order for this line of goods with some one who is reliable and can render the greatest service for the money that said purchaser has available to spend on this class of work. The reliability and the nearness of our Gardens should be taken into consideration. We feel that we can give you the best service and planting for the money invested so that you need not have bare and ugly grounds. Have your name placed on our waiting list at once. We will take care of you at our earliest possible moment.

FALL PLANTING is now coming into its own. Many people have thought that Spring was the only time to transplant and adorn the home grounds. However, today we are having just as good success in Fall as we do in the Spring Season. From practical experience with this line we do not recommend planting every sort of thing in the Fall Season, but we have selected from our list that we can guarantee to be as successfully planted in Fall as in Spring which will give you the benefit of having the trees in the ground settled ready for an early Spring growth, and besides the Fall planting gives us more time to give personal attention to your job.

We are adding Hundreds of people on our lists so if you want prompt service advise us at once that you are in the market for some planting material, we will see that you have our best attention. We can furnish hardy fresh dug plants and trees that can be taken from the ground and delivered by truck anywhere within a couple of hundred miles in the shortest possible time only allowing the plants to remain out of the ground for a few hours. Our experience leads us to believe that most plants die from too much handling and carelessness in protection of their roots by the said Nursery and Salesman.

Our lists gives you sizes that we actually have to offer to the trade. Look these over carefully order promptly otherwise the particular tree and shrub might be sold, remember that we deliver free to your door anything in this price list.

ORDER EARLY. ORDER TODAY—NOW.

IMPORTANT. If you have diseased or neglected trees or bushes, send for us; we will do what we can for you at a reasonable price.

CONDENSED PRICE LIST

Taking effect in Fall of 1921—Kindly bear in mind that we are not listing everything that we have in Stock only such sorts as we think advisable



Note C. A. Jackson and C. A. Jr., inspecting some of our European Cut Leaf Specimen White Birch Trees.

for immediate planting. If you are interested in planting materials not listed kindly leave your Name and list for our consideration.

Call, Talk it over and select; order from this list; arrange for a delivery or planting. A representative can call and take your order help plan where to plant, or rearrange your present planting. Kindly remember that we have no agents; anyone representing themselves as agents for our Nursery Gardens is doing so without our knowledge and we would consider it a kindness to be informed at once of any agents who misrepresent themselves in the Nursery field.

TERMS. We guarantee all plants to grow satisfactorily or **REPLACE FREE.** Transportation and planting of replaced trees borne by purchasers. We make no charge for the delivery of orders other than for replace stock.

Our planting charges are as follows; 50 cents apiece for planting Shade, Evergreen and ornamental trees, 25 cents for fruit trees, 15 cents each for Shrubs, and 10 cents for Hedge plants. If you desire planting service leave your order in advance so that no delay may be caused by planting when delivery is made.

SERVICE

Landscape Gardening, Lawns kept in shape, Planting, Tree moving, Tree Surgery, Grading and Planting Plans.
Experienced men furnished by the DAY, WEEK or MONTH.

EVERGREENS

Evergreens are a specialty with us and our collection includes many rare and beautiful varieties as well as a large stock of the more common sorts. Our soil conditions are favorable for the development of both the top and root. We transplant and root-prune all our Evergreens frequently, which practically insures successful transplanting, even of the larger specimens.

Arborvitae, American		Each
Specimens,	5 to 7 feet	\$ 7.00
	3 to 4 feet	3.00
	2 to 3 feet	2.00
	1 to 2 feet	1.00
	12 inches50
Arborvitae, Compact		
Specimens,	18 to 24 inches	\$ 2.50
	15 to 18 inches	1.50
Arborvitae, Globe		
Specimens,	18 to 24 inches	2.50
	15 to 18 inches	2.00
	12 to 15 inches.....	1.50
Arborvitae, Douglas Pyramidal		
Specimens,	18 to 24 inches.....	4.00
	15 to 18 inches.....	3.00
	12 to 15 inches.....	2.50
Arborvitae, Hovey's Golden		
Specimens,	12 to 15 inches	2.00

Arborvitae, Pyramidal		Each
Specimens,	30 to 36 inches	4.50
	24 to 30 inches	3.50
	18 to 24 inches	2.50
	15 to 18 inches	1.50
	12 to 15 inches	1.00
Arborvitae, Siberian		
Specimens,	18 to 24 inches.....	2.50
Fir, Concolor or Blue		
Specimens,	18 to 24 inches.....	2.50
Hemlock, American		
Specimens,	2 to 3 feet	2.50
	18 to 24 inches	2.00
	12 to 15 inches	1.50



This shows a view of our nursery with evergreens in the foreground and a cherry orchard just back of the nursery.

Pine, Austrian		
Specimens,	3 to 4 feet	5.00
	2 to 3 feet	4.00
	1 to 2 feet	2.50
Pine, Excelsa		
Specimens,	18 to 24 inches	2.50
Pine, Banksiana or Jack		
Specimens,	3 to 4 feet	2.50
	2 to 3 feet	1.50
	1 to 2 feet75
Pine, Montana or Mugho Dwarf		
Specimens,	18 to 24 inches.....	4.00
	15 to 18 inches	3.00
	12 to 15 inches	2.50
	9 to 12 inches.....	1.50
Pine, Red or Norway		
Specimens,	3 to 4 feet	5.00
	2 to 3 feet.....	4.00
	12 to 18 inches.....	1.00
	18 to 24 inches	2.00

EVERGREENS

Pine, Scotch		Each
Specimens,	4 to 5 feet	5.00
	3 to 4 feet	4.00
	2 to 3 feet	2.50
	1 to 2 feet	1.00

Retinispora, Pisifera		
Specimens,	24 to 30 inches.....	3.00
	18 to 24 inches	2.50
	12 to 18 inches	2.00

Retinispora, Plumosa		
Specimens,	12 to 15 inches	2.00

Retinispora, Plumosa Aurea		
Specimens,	24 to 30 inches	3.50
	18 to 24 inches	2.50

Spruce, Colorado Blue		
Specimens,	36 inches	9.00
	30 to 36 inches	7.00
<u>7000</u>	24 to 30 inches.....	5.00
Colo. Blue Spruce	21 to 24 inches	4.00
to pick from	18 to 21 inches	3.50
	15 to 18 inches	3.00
	12 to 15 inches	2.50

Koster's Blue, a few at \$10.00 each.

Spruce, Douglas or Douglas Fir		
Specimens,	4 to 5 feet	5.00
	3 to 4 feet	3.50
	2 to 3 feet	2.50

Spruce, Norway		
Specimens,	5 to 6 feet	5.00
	4 to 5 feet	4.00
	2 to 3 feet	1.00
	12 to 15 inches50

Spruce, White		Each
Specimens,	5 to 6 feet.....	5.00
	2 to 3 feet.....	2.50
	12 to 18 inches.....	1.00

Yew, American		
Specimens,	12 to 18 inches.....	2.50
	10 to 12 inches.....	1.50
	8 to 10 inches.....	1.00

SHADE TREES

Trees which are in their prime to-day will sometimes disappear. We must plant more trees. (Note that we are using only common names in our list of varieties. Would be glad to furnish the scientific names of any varieties on request.)

Ash, American White. Its a well known native tree.		Each
Specimens,	8 to 10 feet.....	\$ 1.00
	10 to 12 feet.....	2.00
Beech, European Copper or purple leaf.		
Specimens,	3 to 4 feet.....	2.50
Birch, Canoe		
Specimens,	15 to 18 feet.....	10.00
	14 to 15 feet.....	7.00
	12 to 14 feet.....	5.00
	10 to 12 feet.....	3.00
	6 to 8 feet.....	1.50
Birch, White or Gray Birch		
Specimens,	10 to 12 feet.....	3.00
	8 to 10 feet.....	2.00
Birch, Yellow		
Specimens,	6 to 8 feet.....	2.00
Birch, European Cut-leaf Weeping White		
Specimens,	12 feet	5.00
	8 to 10 feet.....	3.00
Catalpa, Bungii		
Specimens,	2 year head.....	3.00
Crabapple, Bechtel's light pink		
Specimens,	3 to 4 feet.....	2.50
Elm, American White		
Specimens,	15 feet.....	\$ 5.00
	12 to 15 feet.....	3.00
	10 to 12 feet.....	2.50
	8 to 10 feet.....	2.00
	6 to 8 feet.....	1.50
Elm, Camperdown-weeping		
Specimens,	3 year head.....	5.00
	2 year head.....	3.00
	1 year head.....	2.50
Linden, European		
Specimens,	12 to 15 feet.....	5.00
	10 to 12 feet.....	3.00
	8 to 10 feet.....	2.50
	6 to 8 feet.....	2.00
Locust, American Honey		
Specimens,	12 feet.....	2.50
	10 to 12 feet.....	2.00
	8 to 10 feet.....	1.00
Horse-Chestnut, Red flower		
Specimens,	6 to 7 feet.....	3.50
Horse-Chestnut, White flower		
Specimens,	6 to 8 feet.....	2.50
Larch, European		
Specimens,	6 to 8 feet.....	5.00
	5 to 6 feet.....	3.00
	3 to 5 feet.....	2.50

Maple, Norway. The Norway Maple is one of the most desirable shade trees thriving on almost any soil and withstanding extreme exposure.

Would be pleased to quote on large quantities. Each

2½—3 in. diam.	12 to 15 feet	\$10.00
1½—2 in. diam.	10 to 12 feet	5.00
1¼—1½ in. diam.	10 feet.	4.00
1 —1½ in. diam.	8 to 10 feet..	2.50

Maple, Norway Schwedler's purple maple

Specimens,	10 to 12 feet.....	7.00
	8 to 10 feet.....	5.00



A group of our Norway Maples. Note the sturdy trunks and the dark green foliage of the tops.

Maple, Red

		Each
Specimens,	15 feet.....	5.00
	10 to 12 feet.....	3.00
	8 to 10 feet.....	2.00

Maple, Silver. The most rapid grower of all maples

Specimens,	15 to 16 feet.....	5.00
	12 to 15 feet.....	3.00
	10 to 12 feet.....	2.50
	8 to 10 feet.....	1.50

Maple, Weir's Cut-leaf

Specimens,	14 to 15 feet.....	5.00
	12 to 14 feet.....	3.00
	10 to 12 feet.....	2.50
	8 to 10 feet.....	2.00

Maple, Sugar		Each
Specimens,	15 feet.....	5.00
	12 to 15 feet.....	4.00
	10 to 12 feet.....	3.50
	8 to 10 feet.....	2.50
Maple, Japan Blood Leaf Shrub like tree		
Specimens,	3 to 4 feet.....	5.00
	2 to 3 feet.....	3.00
Mountain Ash, European Oak leafed		
Specimens,	8 feet.....	2.50
	6 to 8 feet.....	2.00
Mulberry, Downing		
Specimens,	6 to 7 feet.....	2.00
	5 to 6 feet.....	1.50



Hardy Japan Walnut Trees.

Mulberry, Tea's Weeping		
Specimens,	2 and 3 year heads.....	5.00
	medium grade	3.00
	light grade	2.50
Oak, Pin		
Specimens,	7 to 8 feet.....	2.50

EVERGREEN SHRUBS

15

Oak, Red		Each
Specimens,	8 to 10 feet.....	3.00
	6 to 8 feet.....	2.50
	5 to 6 feet.....	2.00
	4 to 5 feet.....	1.50
Oak, Scarlet		
Specimens,	4 to 5 feet.....	2.00
Oak, White		
Specimens,	6 to 8 feet.....	3.00
Poplar, Lombardy or Italian for Garden effects		
Specimens,	18 to 20 feet.....	5.00
	16 to 18 feet.....	4.00
	14 to 16 feet.....	3.00
	12 to 14 feet.....	2.50
	10 to 12 feet.....	2.00
	6 to 8 feet.....	.75
	5 to 6 feet.....	.50
Thorn, Paul's double crimson		
Specimens,	4 to 5 feet.....	\$ 2.50
Thorn, English double White		
Specimens,	4 to 5 feet.....	2.50
Willow, Golden		
Specimens,	5 to 6 feet.....	1.50
Willow, Weeping		
Specimens,	7 to 8 feet.....	2.00

EVERGREEN SHRUBS

Azalea, Lutea Scarlet		
Plants,	2 to 3 feet.....	\$ 2.00
Evonymus, Radicans		
Specimens,	12 to 15 inches.....	.75
Laurel, Mountain		
Plants in Truck loads at.....		2.00
Rhododendron, Maximum		
Plants in truck loads at.....		2.00
Rhododendron, Catawbiense		
Specimens,	2 to 3 feet.....	3.00
	3 to 5 feet.....	5.00

FLOWERING SHRUBS

Aralia, Hercules Club		
Plants,	4 to 5 feet.....	2.50
	3 to 4 feet.....	2.00
	2 to 3 feet.....	1.50
Almond, Pink or White		
Plants,	2 to 3 feet.....	1.00
Barberry, Japanese Thumbergii		
Plants,	18 to 24 inches.....	.35
	12 to 18 inches light grade	.25

Barberry, Purple		Each
Plants,	2 to 3 feet.....	.75
Deutzia, White Waterer		
Plants,	4 to 5 feet.....	.75
	2 to 3 feet.....	.60
Deutzia, Gracilis Dwarf White		
Plants,	12 to 18 inches.....	.75
Deutzia, Lemoine's Hybrid		
Plants,	18 to 24 inches.....	.75
Dogwood, Cornus Red-twigged		
Specimens,	4 to 5 feet.....	1.00
	3 to 4 feet.....	.75
Dogwood, Cornus Yellow-twigged		
Specimens,	4 to 5 feet.....	1.00
	3 to 4 feet.....	.75
Dogwood, Siberian Cornus		
Plants,	3 to 4 feet.....	1.00
	2 to 3 feet.....	.75
Elder, Cut-leaf		
Plants,	2 to 3 feet.....	.75
Elder, Golden leafed		
Plants,	2 to 3 feet.....	.75
Forsythii, Sieboldi drooping supensa		
Plants,	2 to 3 feet.....	.75
Honeysuckles, Bush Red and White colors		
Plants,	2 to 3 feet.....	.75
Hydrangea, Bush		
Plants,	2 to 3 feet.....	.75
Hydrangea, Tree		
Plants,	3 to 4 feet.....	2.00
	2 to 3 feet.....	1.50
Hydrangea, Everblooming Hills Snow		
Plants,	2 to 3 feet.....	.75
Japan Quince		
Plants,	2 to 3 feet.....	.75
Lilac, Old Purple		
Specimens,	4 to 5 feet.....	1.00
	2 to 3 feet.....	.75
Lilac, White		
Plants,	2 to 3 feet.....	.75
Lilac, Persian White		
Plants,	2 to 3 feet.....	.75
Lilac, Persian Purple		
Plants,	2 to 3 feet.....	.75
Lilac, Persian Red		
Plants,	2 to 3 feet.....	.75

FLOWERING SHRUBS

17

Lilac, Charles 10th		Each
Plants,	2 to 3 feet.....	.75
Lilac, Frau Dammon		
Plants,	2 to 3 feet.....	1.00
Privet, Regel's		
Plants,	2 to 3 feet.....	.60
Privet, Ibot		
Plants,	3 to 4 feet.....	.75
Privet, Amour River North		
Plants,	2 to 3 feet.....	.50
Snowberry, White		
Plants,	3 to 4 feet.....	.75
Snowberry, Red		
Plants,	2 to 3 feet.....	.75
Spirea, Dwarf Maroon Anthony		
Waterer Plants,	18 to 24 inches.....	.75
Spirea, Ninebark		
Specimens,	5 to 7 feet.....	1.00
	2 to 3 feet.....	.75
Spirea, Tomentosa Hardack		
Plants,	2 to 3 feet.....	.60
Spirea, Thunbergii		
Charming Spirea with graceful form and abundant bloom.		
Plants,	2 to 3 feet.....	.75
Spirea, Van Houttei		
Perhaps the most beautiful of all Spireas, both in leaf and in bloom.		
Specimens,	3 to 4 feet.....	.75
	2 to 3 feet.....	.50
Sumach, Bush or Smoke tree		
Plants,	3 to 4 feet.....	1.00
Sumach, Fragrant		
Plants,	2 to 3 feet.....	1.00
Sumach, Staghorn Cut-leaf		
Plants,	3 to 4 feet.....	1.00
Syringa, Moch Orange		
Plants,	2 to 3 feet.....	.75
Syringa, Lemoine's		
Dwarf habit Plants,	2 to 3 feet.....	.75
Syringa, Golden		
Plants,	2 to 3 feet.....	1.00
Viburnum, Japanese Snowball		
Plants,	2 to 3 feet.....	1.50

Weigela, Eva Rathke Red Flowering		Each
Plants,	2 to 3 feet.....	.75
Weigela, Rosa light pink flowering		
Plants,	2 to 3 feet.....	.75
Weigela, Varigated		
Plants,	2 to 3 feet.....	1.00

VINES

Boston Ivy; also known as Ampelopsis Veitchii		
Strong roots75
1 year roots50
Clematis, Large and small flowering sorts		
2 year vines.....		.75
Dutchman's Pipe, vines		
2 to 3 feet.....		2.00
2 year vines.....		1.00
Honeysuckle, Hall's vines	2 to 3 feet.....	.60
Ivy, Engleman's Strong vines75
Trumpet Creepers Vines	2 to 3 feet.....	.75
Wisteria, Purple Strong vines		1.00
Wisteria, White Strong vines		1.50

HARDY GARDEN ROSES

The Rose continues as the most prized flower of the Garden. Most experienced buyers of Roses prefer strong two year field grown Stock, plants that will make a vigorous growth and yield an abundance of bloom a few weeks after planting.

**SUPERB PERPETUAL EVERBLOOMING ROSES.
OFFERING.**

American Beauty, H. P., O. R. Red. Price \$1.00 each
 C. F. Meyer, H. R., B., Silvery Pink
 Coquette Des Alps, T., B., Blush-White
 Frau Karl Druschki, T., B., White
 Gen. Jackson, H. P., B., Red
 George Dickson, H. P., B., Scarlet-Crimson
 Gruss An Teplitz, T., B., Bright Scarlet
 Maman Cochet, T., O. R., Light Pink.
 Madame Gabriel Luizet, H. P., B., Satiny Pink
 Magna Charta, H. P., B., Pink
 Paul Neyron, H. P., B., Deep Rose
 Persian Yellow, Brier, B., Old Yellow
 Radiance, H. T., O. R., Crimson-Scarlet
 Sir Thomas Lipton, R., B., White
 Soleil D'OR, M., O. R., Orange-Yellow or Gold
 Ulrich Brunner, H. P., B., Cherry-Crimson
 Verdier, H. P., B., Pink
 White Cochet, H. T., O. R., Creamy White
 Rugosa Roses75 each

Many other varieties offered—spring season

RAMBLERS, CLIMBERS and TRAILERS

American Pillar, Dorothy Perkins pink, Excelsa red; also white, crimson and yellow Ramblers, two year grown plants, at 75 cents each.

Hardy Garden Flowers

The hardy herbaceous perennials include practically all of the interesting so called old fashioned flowers as Peonies, Iris, Phlox, Poppies, Larkspur, Foxglove, Pinks, etc. We are confining our list to a few of the most sturdy and hardy planting which would under ordinary garden treatment be permanent Landscape effects, also used for planting and Shrub borders.

The prices unless otherwise noted are .25 each and .35 each guaranteed.

- Achillia, dwarf flowers Red, White and Yellow.
- Aquilegia, Columbine in variety of colors
- Campanula
- Canderberry Bells
- Coreopsis, valuable free flowering yellow
- Daisy, Shasta dwarf habit, white flower
- Daisy, Alaska large white
- Delphiniums, Larkspur Light and Dark blues
- Dianthus, Pinks, Sweet Williams
- Digitalis, Foxglove variety of color
- Funkia, Plantnia or day lily
- Hollyhock's variety of colors
- Iris, German Variety of colors
- Iris, Japan Variety of colors
- Iceland Poppy
- Lupine, variety of color
- Poppy, Oriental Striking Colors

SPECIAL PERENNIALS

- | | | |
|-----------------------------------|-----|------|
| Eulalia Japonica grass, per clump | .50 | each |
| Peonies in variety of colors | .50 | |
| Phlox, named varieties in colors | .30 | |
| Yucca | .75 | |

FRUIT TREES

Fruit growing is one of this country's most profitable industries. The few who have orchards are fortunate and are now, reaping rich rewards. The home acre and the city garden offer opportunities for pleasure, recreation and reward.

APPLES

Trees 5 to 6 feet... \$ 1.50 each

SUMMER VARIETIES

- | | |
|--------------|--------------------|
| Astrachan | Sweet Bough |
| Bailey Sweet | Yellow Transparent |

AUTUMN VARIETIES

Alexander	Fall Pippin
Chenango Strawberry	Fameuse
Duchess	Wealthy

WINTER VARIETIES

Baldwin	Pound Sweet
Delicious	R. I. Greening
King	Spitzenberg
Liveland	Talman Sweet
McIntosh	Twenty-Ounce
Northern Spy	Wagner

CRAB APPLES

Martha	Transcendent
--------	--------------

DWARF APPLE TREES

	Trees 3 to 4 feet.... \$ 1.50 each
McIntosh	King
Spy	Red Astrachan
Delicious	Yellow Transparent

DWARF PEAR TREES

	Trees 2 to 3 feet... \$ 1.50 each
Clapp's Favorite	Sheldon
Bartlett	Dutchess
Seckel	

STANDARD PEAR TREES

	Trees 5 to 7 feet.... \$ 2.00 each
Bartlett	Sheldon
Clapp's Favorite	

CHERRIES

	Trees 5 to 6 feet.... \$ 2.00 each
Early Richmond	Tartarian
Montmorency	Windsor
Morello	

PLUMS

	Trees 5 to 7 feet.... \$ 2.00 each
Abundance	Golden Gage
Bradshaw	Lombard
Burbank	Moore's Artic

GRAPES

	Choice hardy garden variety
Brighton, Red	Niagara, White
Campbell's Early, Black	Ive's Seedling, White
Concord, Black	Worden, black or dark purple
Diamond, White	
	Price of two year vines... \$.60 each
	Extra Heavy75 each

CURRENTS

Cherry White Grape Forty cents each
 Fay's Profic Wilder

GOOSEBERRIES

Downing Houghton Sixty Cents each

BERRIES

\$1.00 per doz.
 5.00 per 100
 Cuthbert Red Cumberland, Black caps
 Red Erskine Park ever-Herbert, Red
 bearing St. Regis everbearing
 Gregg, Blackcaps Snyder Blackberry

STRAWBERRY PLANTS

Warfield \$2.50 per 100
 Sen. Dunlap

EVERBEARING VARIETIES

Never Fail \$3.00 per 100
 Progressive Supurb

ASPARAGUS ROOTS

2 year \$3.00 per 100

Rhubarb

50c per clump

Columbian Raspberry

New plants, 25c. each

NUT TREES

	Each
Butternut, trees 3 to 5 feet.....	\$ 1.00
Filberts 3 to 4 feet.....	2.00
Walnut, Black 10 to 12 feet.....	2.50
Walnut, English 3 to 5 feet.....	2.50
Walnut, Japan 7 to 8 feet.....	2.00
5 to 6 feet.....	1.50
4 to 5 feet.....	1.00

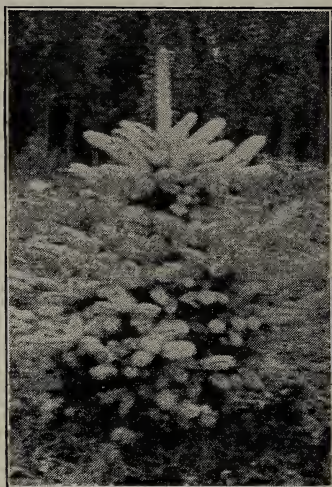
**EVERGREENS ARE A SPECIALTY WITH US,
 THEY KEEP THE LANDSCAPE COZY
 AND ATTRACTIVE.**

SPECIAL Evergreen Offer

6 trees for \$6.00

2 Colorado Blue Spruce.....12 to 18"
 2 White Spruce.....12 to 18"
 2 Douglas Spruce.....12 to 18"

If you want Evergreens here is your chance, 6 trees for \$6.00 delivered free.



One of our Beautiful Blue Spruces. If you want any of these trees 'get busy.'

Colorado Blue Spruce (*Picea Pungus*) "The Queen of all Piceas" is a striking and noble tree, very hardy, a strong, sturdy, upright grower on all varieties of soil. Its form alone would make it a striking figure in the Landscape, its beautiful color varies in some specimens from a light silvery hue to a dark blue or almost purple in some individuals. These are the trees that give satisfaction when planted on your lawn.

Douglas Spruce (Douglas Colorado Fir) The Douglas Spruce or Fir resembles the native Hemlock. It is difficult to over rate its beauty. Its horizontal branches, richly clothed with green foliage, renders it a striking object in the Landscape. Trees are hardy to Canada and endure drought and cold. Mr. E. H. Wilson Arnold Arboretum, Boston, states that the Douglas Fir is one of the most valuable of the Coniferus trees and a most indispensable Horticultural tree.

White Spruce *Picea Alba*. The White Spruce is a native tree medium size Pyramidal, shapely in appearance, foliage—a silvery gray, one of the hardiest trees for Hedges, Wind breaks, Shelter, etc. Thrives on light moist soil.

Tree Surgery Department. Twelve years of practical treatment of trees has been our record to date. If anyone has any doubt as to our ability

along this line we could recommend to you our many satisfied clients.

Our tree surgery consists of scientifically pruning, trimming, cutting back, root pruning, watering and feeding, etc. We do bolting and chaining weak trees, treatment of tree diseases, internal or exter-

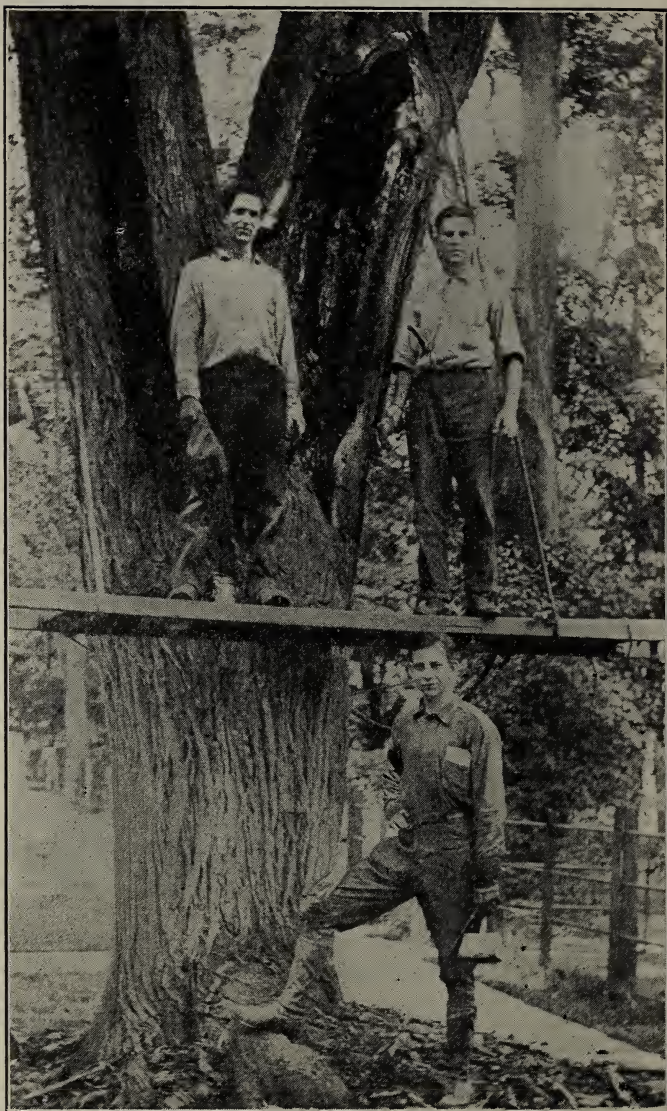


Shows a tree being treated a few years ago by C. A. Jackson. This tree was nearly girdled by maple borers. The tree survived.

nal. We cut away diseased spots in trees to arrust in decay as well as watered soaked spots, filling such places with suitable filling to shed water and keep out insects.

Treatment of cavities is a science of itself which can be done only by trained, skilled and reliable workmen who thoroughly understand the treatment of trees and are competent to be turned loose on the precious ornaments of your home.

ADDRESS: C. A. Jackson, Landscape Gardening Engineer, 1011 Press Bldg., Binghamton, N. Y. Phone 2893-R, or Nursery Gardens, Unadilla, N. Y. Phone 5-F-14.



Shows C. A. Jackson's men working on a large tree in Cooperstown, N. Y.

WHAT OTHERS SAY**State Normal School, Oneonta, N. Y.**

Feb. 13, 1919.

In June, 1917, Mr. C. A. Jackson, proprietor of the Horticultural Gardens, Unadilla, New York, planted a rose garden on the grounds of the State Normal School at Oneonta. Within a very few weeks after the work was completed the roses began to bloom and bloomed continually until into November. Last year the roses began blooming early and bloomed throughout the Summer and Fall.

Mr. Jackson's work was done in a very satisfactory manner and we are much pleased with the results.

P. I. Bugbee, Principal.

HOUSE OF REPRESENTATIVES, U. S.**Washington, D. C.**

Oneonta, N. Y., Sept. 8, 1912.

Mr. Charles A. Jackson

Unadilla, N. Y.

My dear sir:

It gives me great pleasure to say to you that careful inspection of the work recently done by you on the trees on my place in Oneonta indicate that you understand your business thoroughly, your work being entirely satisfactory. I can cheerfully recommend your services to anyone requiring them.

Yours very truly, G. W. Fairchild.

RIVERHURST CEMETERY ASSOCIATION**Endicott, N. Y.**

Endicott, N. Y., June 27, 1913.

To whom it may concern:

Mr. Charles A. Jackson of Unadilla, N. Y., furnished and set the trees and shrubs in our new cemetery according to an arrangement submitted by him.

The contract was fully carried out and the setting was well done. Riverhurst is getting much praise and when the trees get more growth will become one of the modern and model cemeteries.

Respectfully yours, C. J. James, President.

	Page
Columbine	19
Coralberry	17
Coreopsis	19
Cornus	16
Crabapple	12
Crab, Flowering	12
Currants	20
Cydonia	16
Daisy, Shasta	19
Day Lily	19
Delphinium	19
Deutzias	16
Dianthus	19
Diervilla	18
Digitalis	19
Dogwood	16
Douglas Spruce	11
Dutchman's Pipe	18
Elders	16
Elms	12
English Hawthorne	15
English Ivy	18
Eulalia	19
Euonymus Vines	15
Evergreen Special	21-22
Fagus	12
Firs	19-10
Forsythia	16
Foxglove	19
Fraxinus	12
Fruits	20-21
Funkia	19
Grapes	20
Grasses, Oramental	19
Hawthorne	15
Hemlocks	10
Hickoria	21
Hollyhocks	19
Honeysuckle Vine	18
Horsechestnut	12
Hydrangeas	16
Iris	19
Ivy, Boston	18
Ivy, English	18
Japan Maple	14
Juglans	21
Japanese Snowball	17
Larch	12
Larkspur	19
Laurel, Kalmia or Mt.....	15
Ligustrum	17
Lilacs	16-17
Linden	12
Locust	12
Lupine	19
Maples	13-14
Maple Japanese	14

	Page
Mock Orange	17
Mt. Ash	14
Mulberries	14
Oaks	14-15
Paeonies	19
Pears	20
Perennials	19
Phlox	19
Picea	11
Pines	10-11
Pinks, Hardy	19
Pinus	11
Plantain Lily	19
Plum, Fruit	20
Poplars	15
Poppy	19
Privet	17
Pseudotsuga Douglasii	11
Quercus	15
Quinces, Japan	16
Raspberries	21
Retinospora	11
Rhododendrons	15
Rubarb	21
Roses, All Varieties	18
Sambucus	16
Shrubs, Deciduous	15-18
Shrubs, Evergreen	15
Snowballs	17
Snowberry, White and Red	17
Spirea	17
Spruces	11
Strawberry Plants	21
Sumac	17
Summer Apple	20
Sweet William	19
Symphoricarpos	17
Syringa Lilac	16
Syringa, Mock Orange	17
Taxus	11
Thorn, Paul's	15
Thuja	9-16
Tilia	12
Trees, Deciduous	12-15
Tsuga	10
Trumpet Creeper	18
Ulmus	12
Viburnum	17
Vines, Ornamental	18
Virginia Creeper	18
Walnuts	21
Weigelas	18
Willows	15
Wisteria	18
Winter Apples	20
Yews	11
Yucca	19

SERVICE.



LANDSCAPE FORESTRY.—Plans and supervision of country estates, forests, parks, pleasure woodlands, fishing and game preserves.

MARKING TREES—for thinning and improvement cuttings.

LAYING OUT vistas, trails, fire guards, etc.

PLANTING PLANS and lists for ornamental and prospective developments.

IMPROVING farm wood lot.

CARE OF TREES unthrifty, diseased or injured specimens.

SUPERVISION of pruning fruit and shade trees, shrubs, etc. Filling cavities, bolting, chaining, fertilizing, spraying, etc.

FARM ENGINEERING, Testing soils, drainage problems, orchard sites, renovating old orchards.

LANDSCAPE GARDENING—We make surveys and artistic planting plans for beautifying your home grounds, parks, etc. Rose and formal gardens executed.

ENGINEERS—with plans for gravel drives and paths to grade.

SUPPLY—Fruit trees, shrubs, roses evergreens, small fruits, plants, vines, hedge plants, nut trees, spray mixtures, lawn and garden fertilizers, forest seedlings, and seedling Rhododendrons supplied in car lots.

Write Stating your Problems to
C. A. Jackson, Landscape Engineer
and Horticultural Expert,
Unadilla, N. Y.