

## **Historic, Archive Document**

Do not assume content reflects current scientific knowledge, policies, or practices.



62.61

LIBRARY RECEIVED  
★ FEB 11 - 1922 ★  
U. S. Department of Agriculture

**THE PRICE OF TREES**

**Condensed Price-List**  
**Fall 1921**

Compliments of

**C. A. Jackson's Nursery Gardens**  
**UNADILLA, N. Y.**

or address

**C. A. Jackson, Landscape Engineer**  
**1011 Press Bldg., 'Phone 2893-R**  
**BINGHAMTON, N. Y.**

## GENERAL OUTLINE

	Page
General Information .....	3-4
The Price of Trees.....	4-9
Evergreens .....	9-11
Shade Trees .....	11-15
Evergreen Shrubs .....	15
Flowering Shrubs .....	15-18
Vines .....	18
Hardy Garden Roses.....	18
Rambler Roses .....	19
Hardy Perennials .....	19
Fruit Trees .....	19-20
Small Fruits .....	20-21
Nut Trees .....	21
Evergreen Special Offer.....	21-22
Tree Surgery .....	22-23
Letters of Reference.....	25
Index .....	26-27
Services .....	28

## INDEX

	Page
Abies Concolor .....	10
Acer .....	13
Achillea .....	19
Akebia Quinata .....	18
Althea, Almond .....	15
Ampelopsis .....	18
Apples .....	19-20
Apples, Crab .....	20
Apples, Dwarf .....	20
Aquilegia .....	19
Aralia Horcules Club.....	15
Arborvitae .....	9-10
Ash .....	12
Ash, Mountain .....	14
Asparagus .....	21
Azaleas .....	15
Barberry .....	15-16
Barberry, Purple .....	16
Beech .....	12
Betula .....	12
Birches .....	12
Blackberries .....	21
Butternut .....	21
Campanula .....	19
Canterbury Bells .....	19
Catalpa .....	12
Cedars .....	9-10
Cherries, Fruit .....	20
Clematis .....	18

Continued on page 26

---

**INFORMATION**

**LOCATION.**—Just below the village of Unadilla on state road between Unadilla and Sidney in the Susquehanna River valley between Binghamton and Oneonta.

**SOIL.**—We have a Silt and Clay Loam soil. Our elevation is 1,000 feet above Sea Level, which makes all our plants and trees very hardy. Our elevation is an important factor to our patrons in this part of New York State.

**ROOTS.**—The root development of our trees and shrubs can not be surpassed. We invite your inspection.

**DIGGING.**—All our stock is dug by hand, thus preserving the stock from injury and yielding good roots for transplanting.

**PACKING.**—Boxes and packing are free.

**PRICES.**—All replace stock is F. O. B. our Nursery.

**RAILROADS.**—Delaware & Hudson, Ontario & Western Railroads:

**U. S. MAILS.**—Parcel Post.

**SHIPPING SEASONS.**—Spring, April and May. Fall, October and November.

**TERMS.**—Our terms are cash with order. In consideration of prompt payment of all orders we agree to replace free of charge any stock that fails to live the first season, providing that said purchaser sets out his order carefully and promptly.

**RESPONSIBILITY.**—All shipments travel at the risk and cost of the Purchaser.

All agreements and contracts are made subject to the loss of the stock by drought, floods, fire, insects, or any other unavoidable causes.

We exercise the greatest care to keep our varieties pure and true to name, and we hold ourselves in readiness at all times to replace on proper proof, all stock that may prove otherwise; but it is mutually agreed between purchaser and ourselves that we shall not at any time be liable

for any amount greater than the original price of the stock.

**REFERENCE.**—Sidney and Unadilla National Banks, Dun & Co., Albany, and Bradstreet & Co., Utica, Commercial Agencies.

**LANDSCAPE DEPT.**—Should your planting proposition need the services of an expert—we are in a position to make plans and take charge of planting operations.

**VISITORS WELCOME**—You're welcome to come and inspect our trees and shrubs. Many come from long distances in their automobiles and select the stock that they want from our assortment, which is made up of practically everything worth planting of the hardy out-door sorts.

Write for quotations on large quantities.

---

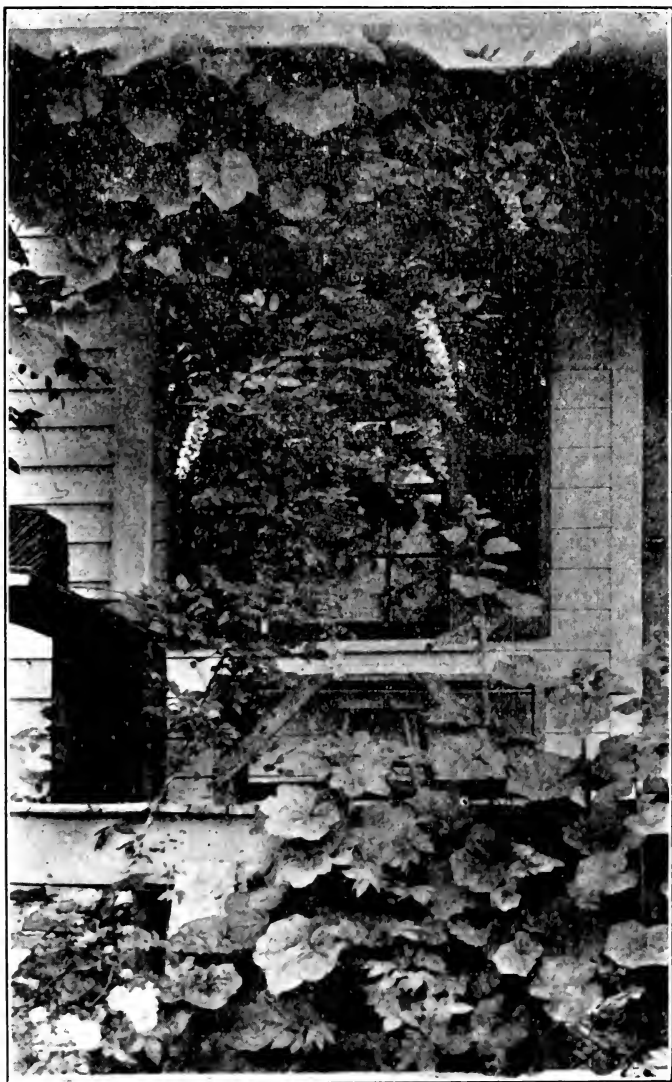
### **THE PRICE OF TREES.**

Beautifying your home, city and state can be done if you are willing to pay the price of first getting adequate planting plans, suitable planting materials and, if you are determined to make such trees and plants grow regardless of all failures. To acquire permanent planting effects continue to plant trees, shrubs, vines, etc., each year. The garden must never be finished. To change and plant and plan constitute the chief delights of Gardening.

Only those who have been engaged in the planting of trees can appreciate the amount of effort and energy required to make them a success and when their growth has been accomplished, what a delightful contrast there is between the planted and unplanted streets, lawns and gardens and, too, just think what a wonderful help they are in helping to keep this Humidity down. While it is true that many persons do not take care of trees and this tends very much to discourage those who will constantly do something worth while for mankind still we must continue our efforts and perhaps conditions will change and a more appreciative people arise, and they in turn lend a helping hand to make our surroundings more beautiful.

We who have had experience can appreciate it

fully, how hard it is to get trees started off, because we, too, have our troubles but we must not stop, else we would soon have no trees on streets and parks. Consider the increased value of a home with well planted surroundings.



Wistaria one year after planting at our back porch.

As a Forest is more than trees and as a city is more than people so is a home more than buildings. It is more than a place to sleep and eat and

find shelter and protection for the goods that we accumulate. It is also a place of satisfactions, with such arrangements and conveniences and attractions as will contribute to comfort and appeal to our best feelings. The home comprises the grounds as well as the house; and if the grounds also have their essential conveniences and attractions, Plant forms and Colors are as much a part of a good home as are the Books and interior utilities and the adornments.

It is not sufficient to have a good number of plants, they should be arranged with taste. Even the small property may be benefitted by the personal touch of a Landscape Architect who makes it his business to make the home pleasant and attractive by tasteful plantings. Plants are of many varieties of color and individuality, yet, they may not be inharmonious. We believe further that vegetable, fruit, flower, rose and formal gardens should be a unit by themselves, only they should be connected by a part of the whole planting scheme.

With our Business Office at 1011 Press Building, Binghamton, New York, we are the only Nursery in this part of New York State. With a complete line of Evergreens, Ornamental trees, Shrubs, Roses, Fruit trees and flowering plants. We are enjoying a growing business beyond anything we had hoped when we started the Unadilla Nursery Gardens at Unadilla, New York. We have a large patronage in Landscape Architectural under the expert direction of C. A. Jackson, offering to the public practical Landscape Engineering for the beautifying of your home and city. With the use of a few Shrubs and Trees properly planted the effect will prove magic for any of your vacant lots. We do not sell our goods out of a box, but we are practical growers of ornamental goods that grow to please our Clientele.

We have rendered 12 years of practical, faithful Horticultural service to the public. We are ready at all times to give our attention to your problems giving you the benefit of our scientific study of plant life and the benefit of any artistic touch that we may add to your home.



When it comes to the purchase of this class of goods we feel that it is time for all prospective purchasers to place their order for this line of goods with some one who is reliable and can render the greatest service for the money that said purchaser has available to spend on this class of work. The reliability and the nearness of our Gardens should be taken into consideration. We feel that we can give you the best service and planting for the money invested so that you need not have bare and ugly grounds. Have your name placed on our waiting list at once. We will take care of you at our earliest possible moment.

**FALL PLANTING** is now coming into its own. Many people have thought that Spring was the only time to transplant and adorn the home grounds. However, today we are having just as good success in Fall as we do in the Spring Season. From practical experience with this line we do not recommend planting every sort of thing in the Fall Season, but we have selected from our list that we can guarantee to be as successfully planted in Fall as in Spring which will give you the benefit of having the trees in the ground settled ready for an early Spring growth, and besides the Fall planting gives us more time to give personal attention to your job.

We are adding Hundreds of people on our lists so if you want prompt service advise us at once that you are in the market for some planting material, we will see that you have our best attention. We can furnish hardy fresh dug plants and trees that can be taken from the ground and delivered by truck anywhere within a couple of hundred miles in the shortest possible time only allowing the plants to remain out of the ground for a few hours. Our experience leads us to believe that most plants die from too much handling and carelessness in protection of their roots by the said Nursery and Salesman.

Our lists gives you sizes that we actually have to offer to the trade. Look these over carefully order promptly otherwise the particular tree and shrub might be sold, remember that we deliver free to your door anything in this price list.

ORDER EARLY. ORDER TODAY—NOW.

**IMPORTANT.** If you have diseased or neglected trees or bushes, send for us; we will do what we can for you at a reasonable price.

### CONDENSED PRICE LIST

Taking effect in Fall of 1921—Kindly bear in mind that we are not listing everything that we have in Stock only such sorts as we think advisable



Note C. A. Jackson and C. A. Jr., inspecting some of our European Cut Leaf Specimen White Birch Trees.

for immediate planting. If you are interested in planting materials not listed kindly leave your Name and list for our consideration.

Call, Talk it over and select; order from this list; arrange for a delivery or planting. A representative can call and take your order help plan where to plant, or rearrange your present planting. Kindly remember that we have no agents; anyone representing themselves as agents for our Nursery Gardens is doing so without our knowledge and we would consider it a kindness to be informed at once of any agents who misrepresent themselves in the Nursery field.

**TERMS.** We guarantee all plants to grow satisfactorily or **REPLACE FREE.** Transportation and planting of replaced trees borne by purchasers. We make no charge for the delivery of orders other than for replace stock.

Our planting charges are as follows; 50 cents apiece for planting Shade, Evergreen and ornamental trees, 25 cents for fruit trees, 15 cents each for Shrubs, and 10 cents for Hedge plants. If you desire planting service leave your order in advance so that no delay may be caused by planting when delivery is made.

**SERVICE**

**Landscape Gardening, Lawns kept in shape, Planting, Tree moving, Tree Surgery, Grading and Planting Plans.**  
**Experienced men furnished by the DAY, WEEK or MONTH.**

**EVERGREENS**

Evergreens are a specialty with us and our collection includes many rare and beautiful varieties as well as a large stock of the more common sorts. Our soil conditions are favorable for the development of both the top and root. We transplant and root-prune all our Evergreens frequently, which practically insures successful transplanting, even of the larger specimens.

<b>Arborvitae, American</b>		Each
Specimens,	5 to 7 feet .....	\$ 7.00
	3 to 4 feet .....	3.00
	2 to 3 feet .....	2.00
	1 to 2 feet .....	1.00
	12 inches .....	.50
<b>Arborvitae, Compact</b>		
Specimens,	18 to 24 inches .....	\$ 2.50
	15 to 18 inches .....	1.50
<b>Arborvitae, Globe</b>		
Specimens,	18 to 24 inches .....	2.50
	15 to 18 inches .....	2.00
	12 to 15 inches.....	1.50
<b>Arborvitae, Douglas Pyramidal</b>		
Specimens,	18 to 24 inches.....	4.00
	15 to 18 inches.....	3.00
	12 to 15 inches.....	2.50
<b>Arborvitae, Hovey's Golden</b>		
Specimens,	12 to 15 inches .....	2.00

<b>Arborvitae, Pyramidal</b>		Each
Specimens,	30 to 36 inches .....	4.50
	24 to 30 inches .....	3.50
	18 to 24 inches .....	2.50
	15 to 18 inches .....	1.50
	12 to 15 inches .....	1.00
<b>Arborvitae, Siberian</b>		
Specimens,	18 to 24 inches.....	2.50
<b>Fir, Concolor or Blue</b>		
Specimens,	18 to 24 inches.....	2.50
<b>Hemlock, American</b>		
Specimens,	2 to 3 feet .....	2.50
	18 to 24 inches .....	2.00
	12 to 15 inches .....	1.50



This shows a view of our nursery with evergreens in the foreground and a cherry orchard just back of the nursery.

<b>Pine, Austrian</b>		
Specimens,	3 to 4 feet .....	5.00
	2 to 3 feet .....	4.00
	1 to 2 feet .....	2.50
<b>Pine, Excelsa</b>		
Specimens,	18 to 24 inches .....	2.50
<b>Pine, Banksiana or Jack</b>		
Specimens,	3 to 4 feet .....	2.50
	2 to 3 feet .....	1.50
	1 to 2 feet .....	.75
<b>Pine, Montana or Mugho Dwarf</b>		
Specimens,	18 to 24 inches.....	4.00
	15 to 18 inches .....	3.00
	12 to 15 inches .....	2.50
	9 to 12 inches.....	1.50
<b>Pine, Red or Norway</b>		
Specimens,	3 to 4 feet .....	5.00
	2 to 3 feet.....	4.00
	12 to 18 inches.....	1.00
	18 to 24 inches .....	2.00

EVERGREENS

<b>Pine, Scotch</b>		Each
Specimens,	4 to 5 feet .....	5.00
	3 to 4 feet .....	4.00
	2 to 3 feet .....	2.50
	1 to 2 feet .....	1.00

<b>Retinispora, Pisifera</b>		
Specimens,	24 to 30 inches.....	3.00
	18 to 24 inches .....	2.50
	12 to 18 inches .....	2.00

<b>Retinispora, Plumosa</b>		
Specimens,	12 to 15 inches .....	2.00

<b>Retinispora, Plumosa Aurea</b>		
Specimens,	24 to 30 inches .....	3.50
	18 to 24 inches .....	2.50

<b>Spruce, Colorado Blue</b>		
Specimens,	36 inches .....	9.00
	30 to 36 inches .....	7.00
<u>7000</u>	24 to 30 inches.....	5.00
<b>Colo. Blue Spruce</b>	21 to 24 inches .....	4.00
<b>to pick from</b>	18 to 21 inches .....	3.50
	15 to 18 inches .....	3.00
	12 to 15 inches .....	2.50

Koster's Blue, a few at \$10.00 each.

<b>Spruce, Douglas or Douglas Fir</b>		
Specimens,	4 to 5 feet .....	5.00
	3 to 4 feet .....	3.50
	2 to 3 feet .....	2.50

<b>Spruce, Norway</b>		
Specimens,	5 to 6 feet .....	5.00
	4 to 5 feet .....	4.00
	2 to 3 feet .....	1.00
	12 to 15 inches .....	.50

<b>Spruce, White</b>		Each
Specimens,	5 to 6 feet.....	5.00
	2 to 3 feet.....	2.50
	12 to 18 inches.....	1.00

<b>Yew, American</b>		
Specimens,	12 to 18 inches.....	2.50
	10 to 12 inches.....	1.50
	8 to 10 inches.....	1.00

SHADE TREES

Trees which are in their prime to-day will sometimes disappear. We must plant more trees. (Note that we are using only common names in our list of varieties. Would be glad to furnish the scientific names of any varieties on request.)

<b>Ash, American White.</b> Its a well known native tree.		
		Each
Specimens,	8 to 10 feet.....	\$ 1.00
	10 to 12 feet.....	2.00
<b>Beech, European Copper or purple leaf.</b>		
Specimens,	3 to 4 feet.....	2.50
<b>Birch, Canoe</b>		
Specimens,	15 to 18 feet.....	10.00
	14 to 15 feet.....	7.00
	12 to 14 feet.....	5.00
	10 to 12 feet.....	3.00
	6 to 8 feet.....	1.50
<b>Birch, White or Gray Birch</b>		
Specimens,	10 to 12 feet.....	3.00
	8 to 10 feet.....	2.00
<b>Birch, Yellow</b>		
Specimens,	6 to 8 feet.....	2.00
<b>Birch, European Cut-leaf Weeping White</b>		
Specimens,	12 feet .....	5.00
	8 to 10 feet.....	3.00
<b>Catalpa, Bungii</b>		
Specimens,	2 year head.....	3.00
<b>Crabapple, Bechtel's light pink</b>		
Specimens,	3 to 4 feet.....	2.50
<b>Elm, American White</b>		
Specimens,	15 feet.....	\$ 5.00
	12 to 15 feet.....	3.00
	10 to 12 feet.....	2.50
	8 to 10 feet.....	2.00
	6 to 8 feet.....	1.50
<b>Elm, Camperdown-weeping</b>		
Specimens,	3 year head.....	5.00
	2 year head.....	3.00
	1 year head.....	2.50
<b>Linden, European</b>		
Specimens,	12 to 15 feet.....	5.00
	10 to 12 feet.....	3.00
	8 to 10 feet.....	2.50
	6 to 8 feet.....	2.00
<b>Locust, American Honey</b>		
Specimens,	12 feet.....	2.50
	10 to 12 feet.....	2.00
	8 to 10 feet.....	1.00
<b>Horse-Chestnut, Red flower</b>		
Specimens,	6 to 7 feet.....	3.50
<b>Horse-Chestnut, White flower</b>		
Specimens,	6 to 8 feet.....	2.50
<b>Larch, European</b>		
Specimens,	6 to 8 feet.....	5.00
	5 to 6 feet.....	3.00
	3 to 5 feet.....	2.50

**Maple, Norway.** The Norway Maple is one of the most desirable shade trees thriving on almost any soil and withstanding extreme exposure.

Would be pleased to quote on large quantities. Each

2½—3 in. diam.	12 to 15 feet	\$10.00
1½—2 in. diam.	10 to 12 feet	5.00
1¼—1½ in. diam.	10 feet.	4.00
1 —1½ in. diam.	8 to 10 feet..	2.50

**Maple, Norway Schwedler's purple maple**

Specimens,	10 to 12 feet.....	7.00
	8 to 10 feet.....	5.00



A group of our Norway Maples. Note the sturdy trunks and the dark green foliage of the tops.

**Maple, Red**

		Each
Specimens,	15 feet.....	5.00
	10 to 12 feet.....	3.00
	8 to 10 feet.....	2.00

**Maple, Silver.** The most rapid grower of all maples

Specimens,	15 to 16 feet.....	5.00
	12 to 15 feet.....	3.00
	10 to 12 feet.....	2.50
	8 to 10 feet.....	1.50

**Maple, Weir's Cut-leaf**

Specimens,	14 to 15 feet.....	5.00
	12 to 14 feet.....	3.00
	10 to 12 feet.....	2.50
	8 to 10 feet.....	2.00

<b>Maple, Sugar</b>		Each
Specimens,	15 feet.....	5.00
	12 to 15 feet.....	4.00
	10 to 12 feet.....	3.50
	8 to 10 feet.....	2.50
<b>Maple, Japan Blood Leaf Shrub like tree</b>		
Specimens,	3 to 4 feet.....	5.00
	2 to 3 feet.....	3.00
<b>Mountain Ash, European Oak leafed</b>		
Specimens,	8 feet.....	2.50
	6 to 8 feet.....	2.00
<b>Mulberry, Downing</b>		
Specimens,	6 to 7 feet.....	2.00
	5 to 6 feet.....	1.50



Hardy Japan Walnut Trees.

<b>Mulberry, Tea's Weeping</b>		
Specimens,	2 and 3 year heads.....	5.00
	medium grade .....	3.00
	light grade .....	2.50
<b>Oak, Pin</b>		
Specimens,	7 to 8 feet.....	2.50



## EVERGREEN SHRUBS

15

<b>Oak, Red</b>		Each
Specimens,	8 to 10 feet.....	3.00
	6 to 8 feet.....	2.50
	5 to 6 feet.....	2.00
	4 to 5 feet.....	1.50
<b>Oak, Scarlet</b>		
Specimens,	4 to 5 feet.....	2.00
<b>Oak, White</b>		
Specimens,	6 to 8 feet.....	3.00
<b>Poplar, Lombardy or Italian for Garden effects</b>		
Specimens,	18 to 20 feet.....	5.00
	16 to 18 feet.....	4.00
	14 to 16 feet.....	3.00
	12 to 14 feet.....	2.50
	10 to 12 feet.....	2.00
	6 to 8 feet.....	.75
	5 to 6 feet.....	.50
<b>Thorn, Paul's double crimson</b>		
Specimens,	4 to 5 feet.....	\$ 2.50
<b>Thorn, English double White</b>		
Specimens,	4 to 5 feet.....	2.50
<b>Willow, Golden</b>		
Specimens,	5 to 6 feet.....	1.50
<b>Willow, Weeping</b>		
Specimens,	7 to 8 feet.....	2.00

### EVERGREEN SHRUBS

<b>Azalea, Lutea Scarlet</b>		
Plants,	2 to 3 feet.....	\$ 2.00
<b>Evonymus, Radicans</b>		
Specimens,	12 to 15 inches.....	.75
<b>Laurel, Mountain</b>		
Plants in Truck loads at.....		2.00
<b>Rhododendron, Maximum</b>		
Plants in truck loads at.....		2.00
<b>Rhododendron, Catawbiense</b>		
Specimens,	2 to 3 feet.....	3.00
	3 to 5 feet.....	5.00

### FLOWERING SHRUBS

<b>Aralia, Hercules Club</b>		
Plants,	4 to 5 feet.....	2.50
	3 to 4 feet.....	2.00
	2 to 3 feet.....	1.50
<b>Almond, Pink or White</b>		
Plants,	2 to 3 feet.....	1.00
<b>Barberry, Japanese Thumbergii</b>		
Plants,	18 to 24 inches.....	.35
	12 to 18 inches light grade	.25

<b>Barberry, Purple</b>		Each
Plants,	2 to 3 feet.....	.75
<b>Deutzia, White Waterer</b>		
Plants,	4 to 5 feet.....	.75
	2 to 3 feet.....	.60
<b>Deutzia, Gracilis Dwarf White</b>		
Plants,	12 to 18 inches.....	.75
<b>Deutzia, Lemoine's Hybrid</b>		
Plants,	18 to 24 inches.....	.75
<b>Dogwood, Cornus Red-twigged</b>		
Specimens,	4 to 5 feet.....	1.00
	3 to 4 feet.....	.75
<b>Dogwood, Cornus Yellow-twigged</b>		
Specimens,	4 to 5 feet.....	1.00
	3 to 4 feet.....	.75
<b>Dogwood, Siberian Cornus</b>		
Plants,	3 to 4 feet.....	1.00
	2 to 3 feet.....	.75
<b>Elder, Cut-leaf</b>		
Plants,	2 to 3 feet.....	.75
<b>Elder, Golden leafed</b>		
Plants,	2 to 3 feet.....	.75
<b>Forsythii, Sieboldi drooping supensa</b>		
Plants,	2 to 3 feet.....	.75
<b>Honeysuckles, Bush Red and White colors</b>		
Plants,	2 to 3 feet.....	.75
<b>Hydrangea, Bush</b>		
Plants,	2 to 3 feet.....	.75
<b>Hydrangea, Tree</b>		
Plants,	3 to 4 feet.....	2.00
	2 to 3 feet.....	1.50
<b>Hydrangea, Everblooming Hills Snow</b>		
Plants,	2 to 3 feet.....	.75
<b>Japan Quince</b>		
Plants,	2 to 3 feet.....	.75
<b>Lilac, Old Purple</b>		
Specimens,	4 to 5 feet.....	1.00
	2 to 3 feet.....	.75
<b>Lilac, White</b>		
Plants,	2 to 3 feet.....	.75
<b>Lilac, Persian White</b>		
Plants,	2 to 3 feet.....	.75
<b>Lilac, Persian Purple</b>		
Plants,	2 to 3 feet.....	.75
<b>Lilac, Persian Red</b>		
Plants,	2 to 3 feet.....	.75

## FLOWERING SHRUBS

17

<b>Lilac, Charles 10th</b>		Each
Plants,	2 to 3 feet.....	.75
<b>Lilac, Frau Dammon</b>		
Plants,	2 to 3 feet.....	1.00
<b>Privet, Regel's</b>		
Plants,	2 to 3 feet.....	.60
<b>Privet, Ibot</b>		
Plants,	3 to 4 feet.....	.75
<b>Privet, Amour River North</b>		
Plants,	2 to 3 feet.....	.50
<b>Snowberry, White</b>		
Plants,	3 to 4 feet.....	.75
<b>Snowberry, Red</b>		
Plants,	2 to 3 feet.....	.75
<b>Spirea, Dwarf Maroon Anthony</b>		
Waterer Plants,	18 to 24 inches.....	.75
<b>Spirea, Ninebark</b>		
Specimens,	5 to 7 feet.....	1.00
	2 to 3 feet.....	.75
<b>Spirea, Tomentosa Hardack</b>		
Plants,	2 to 3 feet.....	.60
<b>Spirea, Thunbergii</b>		
Charming Spirea with graceful form and abundant bloom.		
Plants,	2 to 3 feet.....	.75
<b>Spirea, Van Houttei</b>		
Perhaps the most beautiful of all Spireas, both in leaf and in bloom.		
Specimens,	3 to 4 feet.....	.75
	2 to 3 feet.....	.50
<b>Sumach, Bush or Smoke tree</b>		
Plants,	3 to 4 feet.....	1.00
<b>Sumach, Fragrant</b>		
Plants,	2 to 3 feet.....	1.00
<b>Sumach, Staghorn Cut-leaf</b>		
Plants,	3 to 4 feet.....	1.00
<b>Syringa, Moch Orange</b>		
Plants,	2 to 3 feet.....	.75
<b>Syringa, Lemoine's</b>		
Dwarf habit Plants,	2 to 3 feet.....	.75
<b>Syringa, Golden</b>		
Plants,	2 to 3 feet.....	1.00
<b>Viburnum, Japanese Snowball</b>		
Plants,	2 to 3 feet.....	1.50

<b>Weigela, Eva Rathke Red Flowering</b>		Each
Plants,	2 to 3 feet.....	.75
<b>Weigela, Rosa light pink flowering</b>		
Plants,	2 to 3 feet.....	.75
<b>Weigela, Varigated</b>		
Plants,	2 to 3 feet.....	1.00

## VINES

<b>Boston Ivy; also known as Ampelopsis Veitchii</b>		
Strong roots .....		.75
1 year roots .....		.50
<b>Clematis, Large and small flowering sorts</b>		
2 year vines.....		.75
<b>Dutchman's Pipe, vines</b>		
2 to 3 feet.....		2.00
2 year vines.....		1.00
<b>Honeysuckle, Hall's vines</b>	2 to 3 feet.....	.60
<b>Ivy, Engleman's Strong vines</b> .....		.75
<b>Trumpet Creepers Vines</b>	2 to 3 feet.....	.75
<b>Wisteria, Purple Strong vines</b> .....		1.00
<b>Wisteria, White Strong vines</b> .....		1.50

## HARDY GARDEN ROSES

The Rose continues as the most prized flower of the Garden. Most experienced buyers of Roses prefer strong two year field grown Stock, plants that will make a vigorous growth and yield an abundance of bloom a few weeks after planting.

**SUPERB PERPETUAL EVERBLOOMING ROSES.  
OFFERING.**

American Beauty, H. P., O. R. Red. Price \$1.00 each  
 C. F. Meyer, H. R., B., Silvery Pink  
 Coquette Des Alps, T., B., Blush-White  
 Frau Karl Druschki, T., B., White  
 Gen. Jackson, H. P., B., Red  
 George Dickson, H. P., B., Scarlet-Crimson  
 Gruss An Teplitz, T., B., Bright Scarlet  
 Maman Cochet, T., O. R., Light Pink.  
 Madame Gabriel Luizet, H. P., B., Satiny Pink  
 Magna Charta, H. P., B., Pink  
 Paul Neyron, H. P., B., Deep Rose  
 Persian Yellow, Brier, B., Old Yellow  
 Radiance, H. T., O. R., Crimson-Scarlet  
 Sir Thomas Lipton, R., B., White  
 Soleil D'OR, M., O. R., Orange-Yellow or Gold  
 Ulrich Brunner, H. P., B., Cherry-Crimson  
 Verdier, H. P., B., Pink  
 White Cochet, H. T., O. R., Creamy White  
 Rugosa Roses ..... .75 each

**Many other varieties offered—spring season**

**RAMBLERS, CLIMBERS and TRAILERS**

American Pillar, Dorothy Perkins pink, Excelsa red; also white, crimson and yellow Ramblers, two year grown plants, at 75 cents each.

**Hardy Garden Flowers**

The hardy herbaceous perennials include practically all of the interesting so called old fashioned flowers as Peonies, Iris, Phlox, Poppies, Larkspur, Foxglove, Pinks, etc. We are confining our list to a few of the most sturdy and hardy planting which would under ordinary garden treatment be permanent Landscape effects, also used for planting and Shrub borders.

The prices unless otherwise noted are .25 each and .35 each guaranteed.

Achillia, dwarf flowers Red, White and Yellow.

Aquilegia, Columbine in variety of colors

Campanula

Canderberry Bells

Coreopsis, valuable free flowering yellow

Daisy, Shasta dwarf habit, white flower

Daisy, Alaska large white

Delphiniums, Larkspur Light and Dark blues

Dianthus, Pinks, Sweet Williams

Digitalis, Foxglove variety of color

Funkia, Plantnia or day lily

Hollyhock's variety of colors

Iris, German Variety of colors

Iris, Japan Variety of colors

Iceland Poppy

Lupine, variety of color

Poppy, Oriental Striking Colors

**SPECIAL PERENNIALS**

Eulalia Japonica grass, per clump	.50	each
Peonies in variety of colors	.50	
Phlox, named varieties in colors	.30	
Yucca	.75	

**FRUIT TREES**

Fruit growing is one of this country's most profitable industries. The few who have orchards are fortunate and are now, reaping rich rewards. The home acre and the city garden offer opportunities for pleasure, recreation and reward.

**APPLES**

Trees 5 to 6 feet... \$ 1.50 each

**SUMMER VARIETIES**

Astrachan  
Bailey Sweet

Sweet Bough  
Yellow Transparent

**AUTUMN VARIETIES**

Alexander	Fall Pippin
Chenango Strawberry	Fameuse
Duchess	Wealthy

**WINTER VARIETIES**

Baldwin	Pound Sweet
Delicious	R. I. Greening
King	Spitzenberg
Liveland	Talman Sweet
McIntosh	Twenty-Ounce
Northern Spy	Wagner

**CRAB APPLES**

Martha	Transcendent
--------	--------------

**DWARF APPLE TREES**

	Trees 3 to 4 feet.... \$ 1.50 each
McIntosh	King
Spy	Red Astrachan
Delicious	Yellow Transparent

**DWARF PEAR TREES**

	Trees 2 to 3 feet... \$ 1.50 each
Clapp's Favorite	Sheldon
Bartlett	Dutchess
Seckel	

**STANDARD PEAR TREES**

	Trees 5 to 7 feet.... \$ 2.00 each
Bartlett	Sheldon
Clapp's Favorite	

**CHERRIES**

	Trees 5 to 6 feet.... \$ 2.00 each
Early Richmond	Tartarian
Montmorency	Windsor
Morello	

**PLUMS**

	Trees 5 to 7 feet.... \$ 2.00 each
Abundance	Golden Gage
Bradshaw	Lombard
Burbank	Moore's Artic

**GRAPES**

	Choice hardy garden variety
Brighton, Red	Niagara, White
Campbell's Early, Black	Ive's Seedling, White
Concord, Black	Worden, black or dark
Diamond, White	purple
	Price of two year vines... \$ .60 each
	Extra Heavy ..... .75 each

**CURRENTS**

Cherry White Grape Forty cents each  
 Fay's Profic Wilder

**GOOSEBERRIES**

Downing Houghton Sixty Cents each

**BERRIES**

\$1.00 per doz.  
 5.00 per 100  
 Cuthbert Red Cumberland, Black caps  
 Red Erskine Park ever-Herbert, Red  
 bearing St. Regis everbearing  
 Gregg, Blackcaps Snyder Blackberry

**STRAWBERRY PLANTS**

Warfield \$2.50 per 100  
 Sen. Dunlap

**EVERBEARING VARIETIES**

Never Fail \$3.00 per 100  
 Progressive Supurb

**ASPARAGUS ROOTS**

2 year \$3.00 per 100

**Rhubarb**

50c per clump

**Columbian Raspberry**

New plants, 25c. each

**NUT TREES**

	Each
Butternut, trees 3 to 5 feet.....	\$ 1.00
Filberts 3 to 4 feet.....	2.00
Walnut, Black 10 to 12 feet.....	2.50
Walnut, English 3 to 5 feet.....	2.50
Walnut, Japan 7 to 8 feet.....	2.00
5 to 6 feet.....	1.50
4 to 5 feet.....	1.00

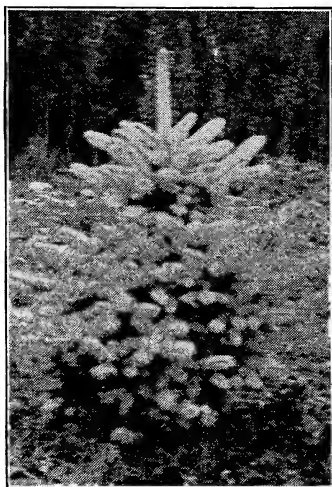
**EVERGREENS ARE A SPECIALTY WITH US,  
 THEY KEEP THE LANDSCAPE COZY  
 AND ATTRACTIVE.**

**SPECIAL Evergreen Offer**

6 trees for \$6.00

2 Colorado Blue Spruce.....12 to 18"  
 2 White Spruce.....12 to 18"  
 2 Douglas Spruce.....12 to 18"

If you want Evergreens here is your chance, 6 trees for \$6.00 delivered free.



One of our Beautiful Blue Spruces. If you want any of these trees 'get busy.'

Colorado Blue Spruce (*Picea Pungus*) "The Queen of all Piceas" is a striking and noble tree, very hardy, a strong, sturdy, upright grower on all varieties of soil. Its form alone would make it a striking figure in the Landscape, its beautiful color varies in some specimens from a light silvery hue to a dark blue or almost purple in some individuals. These are the trees that give satisfaction when planted on your lawn.

Douglas Spruce (Douglas Colorado Fir) The Douglas Spruce or Fir resembles the native Hemlock. It is difficult to over rate its beauty. Its horizontal branches, richly clothed with green foliage, renders it a striking object in the Landscape. Trees are hardy to Canada and endure drought and cold. Mr. E. H. Wilson Arnold Arboretum, Boston, states that the Douglas Fir is one of the most valuable of the *Coniferus* trees and a most indispensable Horticultural tree.

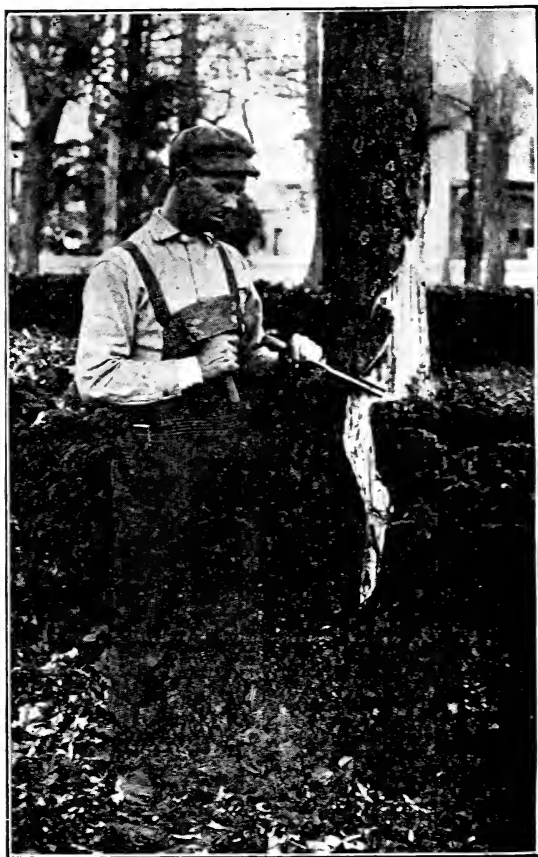
White Spruce *Picea Alba*. The White Spruce is a native tree medium size Pyramidal, shapely in appearance, foliage—a silvery gray, one of the hardiest trees for Hedges, Wind breaks, Shelter, etc. Thrives on light moist soil.

**Tree Surgery Department.** Twelve years of practical treatment of trees has been our record to date. If anyone has any doubt as to our ability



along this line we could recommend to you our many satisfied clients.

Our tree surgery consists of scientifically pruning, trimming, cutting back, root pruning, watering and feeding, etc. We do bolting and chaining weak trees, treatment of tree diseases, internal or exter-

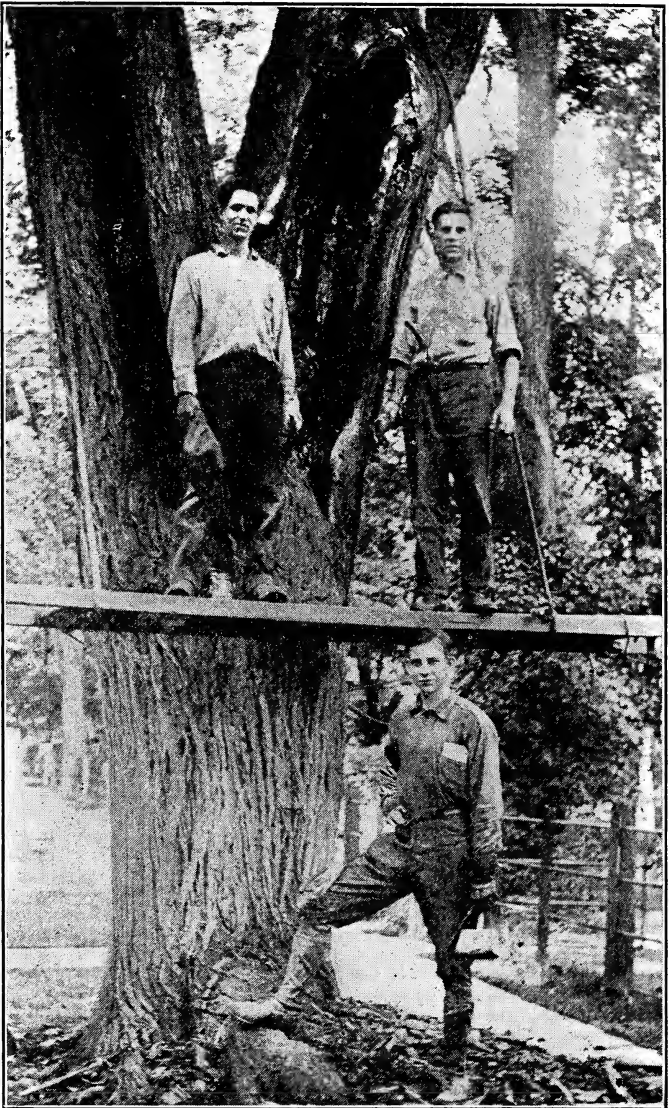


Shows a tree being treated a few years ago by C. A. Jackson. This tree was nearly girdled by maple borers. The tree survived.

nal. We cut away diseased spots in trees to arrust in decay as well as watered soaked spots, filling such places with suitable filling to shed water and keep out insects.

Treatment of cavities is a science of itself which can be done only by trained, skilled and reliable workmen who thoroughly understand the treatment of trees and are competent to be turned loose on the precious ornaments of your home.

ADDRESS: C. A. Jackson, Landscape Gardening Engineer, 1011 Press Bldg., Binghamton, N. Y. Phone 2893-R, or Nursery Gardens, Unadilla, N. Y. Phone 5-F-14.



Shows C. A. Jackson's men working on a large tree in Cooperstown, N. Y.

---

**WHAT OTHERS SAY****State Normal School, Oneonta, N. Y.**

Feb. 13, 1919.

In June, 1917, Mr. C. A. Jackson, proprietor of the Horticultural Gardens, Unadilla, New York, planted a rose garden on the grounds of the State Normal School at Oneonta. Within a very few weeks after the work was completed the roses began to bloom and bloomed continually until into November. Last year the roses began blooming early and bloomed throughout the Summer and Fall.

Mr. Jackson's work was done in a very satisfactory manner and we are much pleased with the results.

P. I. Bugbee, Principal.

---

**HOUSE OF REPRESENTATIVES, U. S.****Washington, D. C.**

Oneonta, N. Y., Sept. 8, 1912.

Mr. Charles A. Jackson

Unadilla, N. Y.

My dear sir:

It gives me great pleasure to say to you that careful inspection of the work recently done by you on the trees on my place in Oneonta indicate that you understand your business thoroughly, your work being entirely satisfactory. I can cheerfully recommend your services to anyone requiring them.

Yours very truly, G. W. Fairchild.

---

**RIVERHURST CEMETERY ASSOCIATION****Endicott, N. Y.**

Endicott, N. Y., June 27, 1913.

To whom it may concern:

Mr. Charles A. Jackson of Unadilla, N. Y., furnished and set the trees and shrubs in our new cemetery according to an arrangement submitted by him.

The contract was fully carried out and the setting was well done. Riverhurst is getting much praise and when the trees get more growth will become one of the modern and model cemeteries.

Respectfully yours, C. J. James, President.

	Page
Columbine .....	19
Coralberry .....	17
Coreopsis .....	19
Cornus .....	16
Crabapple .....	12
Crab, Flowering .....	12
Currants .....	20
Cydonia .....	16
Daisy, Shasta .....	19
Day Lily .....	19
Delphinium .....	19
Deutzias .....	16
Dianthus .....	19
Diervilla .....	18
Digitalis .....	19
Dogwood .....	16
Douglas Spruce .....	11
Dutchman's Pipe .....	18
Elders .....	16
Elms .....	12
English Hawthorne .....	15
English Ivy .....	18
Eulalia .....	19
Euonymus Vines .....	15
Evergreen Special .....	21-22
Fagus .....	12
Firs .....	19-10
Forsythia .....	16
Foxglove .....	19
Fraxinus .....	12
Fruits .....	20-21
Funkia .....	19
Grapes .....	20
Grasses, Oramental .....	19
Hawthorne .....	15
Hemlocks .....	10
Hickoria .....	21
Hollyhocks .....	19
Honeysuckle Vine .....	18
Horsechestnut .....	12
Hydrangeas .....	16
Iris .....	19
Ivy, Boston .....	18
Ivy, English .....	18
Japan Maple .....	14
Juglans .....	21
Japanese Snowball .....	17
Larch .....	12
Larkspur .....	19
Laurel, Kalmia or Mt.....	15
Ligustrum .....	17
Lilacs .....	16-17
Linden .....	12
Locust .....	12
Lupine .....	19
Maples .....	13-14
Maple Japanese .....	14

	Page
Mock Orange .....	17
Mt. Ash .....	14
Mulberries .....	14
Oaks .....	14-15
Paeonies .....	19
Pears .....	20
Perennials .....	19
Phlox .....	19
Picea .....	11
Pines .....	10-11
Pinks, Hardy .....	19
Pinus .....	11
Plantain Lily .....	19
Plum, Fruit .....	20
Poplars .....	15
Poppy .....	19
Privet .....	17
Pseudotsuga Douglasii .....	11
Quercus .....	15
Quinces, Japan .....	16
Raspberries .....	21
Retinospora .....	11
Rhododendrons .....	15
Rubarb .....	21
Roses, All Varieties .....	18
Sambucus .....	16
Shrubs, Deciduous .....	15-18
Shrubs, Evergreen .....	15
Snowballs .....	17
Snowberry, White and Red .....	17
Spirea .....	17
Spruces .....	11
Strawberry Plants .....	21
Sumac .....	17
Summer Apple .....	20
Sweet William .....	19
Symphoricarpos .....	17
Syringa Lilac .....	16
Syringa, Mock Orange .....	17
Taxus .....	11
Thorn, Paul's .....	15
Thuja .....	9-16
Tilia .....	12
Trees, Deciduous .....	12-15
Tsuga .....	10
Trumpet Creeper .....	18
Ulmus .....	12
Viburnum .....	17
Vines, Ornamental .....	18
Virginia Creeper .....	18
Walnuts .....	21
Weigelas .....	18
Willows .....	15
Wisteria .....	18
Winter Apples .....	20
Yews .....	11
Yucca .....	19

## SERVICE.



**LANDSCAPE FORESTRY.**—Plans and supervision of country estates, forests, parks, pleasure woodlands, fishing and game preserves.

**MARKING TREES**—for thinning and improvement cuttings.

**LAYING OUT** vistas, trails, fire guards, etc.

**PLANTING PLANS** and lists for ornamental and prospective developments.

**IMPROVING** farm wood lot.

**CARE OF TREES** unthrifty, diseased or injured specimens.

**SUPERVISION** of pruning fruit and shade trees, shrubs, etc. Filling cavities, bolting, chaining, fertilizing, spraying, etc.

**FARM ENGINEERING,** Testing soils, drainage problems, orchard sites, renovating old orchards.

**LANDSCAPE GARDENING**—We make surveys and artistic planting plans for beautifying your home grounds, parks, etc. Rose and formal gardens executed.

**ENGINEERS**—with plans for gravel drives and paths to grade.

**SUPPLY**—Fruit trees, shrubs, roses evergreens, small fruits, plants, vines, hedge plants, nut trees, spray mixtures, lawn and garden fertilizers, forest seedlings, and seedling Rhododendrons supplied in car lots.

Write Stating your Problems to  
C. A. Jackson, Landscape Engineer  
and Horticultural Expert,

Unadilla, N. Y.