

## **Historic, Archive Document**

Do not assume content reflects current scientific knowledge, policies, or practices.



# *Fruit Trees & Grape Vines*



GENERAL OFFICE---FRESNO, CALIFORNIA  
*Corner Tulare and G Streets*

SEASON 1920-1921

**KIRKMAN NURSERIES, Inc.**

WM. T. KIRKMAN, Jr., President

FRESNO

CALIFORNIA

#### AFFILIATIONS

*In Endeavoring to Aid all Possible  
Advancement in the Progress of Our  
Craft We Carry Memberships in and  
Support the Following Institutions*

*American Association of Nurserymen  
California Association of Nurserymen  
Nurserymen's Bud Selection Association  
of California*

# KIRKMAN NURSERIES, Inc.

ESTABLISHED 1888

PAID UP CAPITAL . . . \$100,000

WM. T. KIRKMAN, Jr. . . . . *President*

Office: Corner of Tulare and O Streets, Fresno, California, U. S. A.

---

## ANNOUNCEMENT

In making our offerings to the public, this our thirty-second year in California we have to explain that in taking care of customers who are planting large acreages we have found it advisable to limit our growing of Nursery Stock to only approved standard varieties for commercial plantings and are not therefore in position this season to solicit orders for assorted lists most suitable for home plantings, also we are already sold out on several varieties and are listing herein only varieties we can still offer.

Doubtless many who desire to plant this season will not be able to secure a supply of varieties wanted. In this event it is advisable to book orders now for planting a year later.

We are growing Nursery Stock in more than a dozen different plants in California and can therefore often make deliveries direct to customers from one of our Nursery Plants more conveniently than through our main packing yard in Fresno. The planters convenience and ours can be served better by making definite arrangements as far as possible in advance of time of delivery of large orders.

## JUNE BUDS

June Bud trees are grown in one year from the seed. The budding is done in May and June and the seedling cut back to force the bud out.

While these June Bud trees are smaller and lighter stock than yearling trees they can nevertheless be depended on to give good results in orchard planting by using good treatment in planting and subsequent care.

June Buds should be planted early in the planting season as they start growing earlier in the Spring than trees grown in the usual manner, without forcing.

Some of the most satisfactory stands have been secured with June Bud Stock.

## DOUBLE DORMANT BUDDED SEEDLINGS

In view of the great shortage of several standard varieties in yearling and June Bud Stock, we inserted two buds in each seedling on a large block of selected peach seedling stocks last Summer, with the idea of offering them to planters who could not secure regular yearling stock for their planting this winter.

In preparing these Double Dormant Budded Seedlings for orchard planting we had in mind the inconvenience in planting the ordinary dormant budded seedling. In doing this work for orchard planting this winter, we inserted the buds at a point 6 or 8 inches above the surface of the ground and had the budders insert two buds instead of one, so that in the event one of the buds fails to grow, there would still be an opportunity to form a tree from the remaining one. In using these Dormant Buds for orchard planting, the work should be done in the usual manner, that is, the planting done after thorough preparation of the ground, planting the seedling tree about two inches deeper than it grew in nursery row. The trees should be settled either with tank wagon or irrigation immediately after planting, as is also advisable in the planting of yearling stock.

During February the seedling should be cut back to a point about three-fourths inch above the eye of the top bud inserted. During March the buds will start growing, also suckers will start out on the seedling stock, and it will be necessary to remove the suckers probably twice. When the buds attain a height of 16 or 18 inches the tops should be nipped out, thus spreading the young tree into orchard form. By this treatment an ideal top can be formed without severe cutting back, as is necessary with yearling trees. Orchardists who have used this method, highly commend the results gotten and are usually well satisfied that they have given the little extra care needed to grow the orchard trees from Dormant Buds, this in view of the ease experienced in securing superior results in properly forming the orchard trees.

Unless extra careful work is done in cultivation during the Spring months, it is advisable to protect the bud by placing a stake alongside of each tree; four foot lath cut in half will suffice.

While these trees are a year younger than the "yearling stock" it does not mean that the tree will be a year later coming into bearing. As a matter of fact there will probably be no delay at all in the time of bearing.

## GUARANTEE

We are glad to rectify any mistakes we may make in filling orders and request our Customers to notify us immediately upon receipt of shipment should an error have been made.

In growing and furnishing all nursery stock we use the greatest care possible to have it true to name, and will replace any that may prove untrue. But for any errors we will not be liable for more than the purchase price. In case of unlooked-for catastrophe, such as fire, disease, etc., we are released from filling orders. All orders accepted on these conditions.

## KIRKMAN NURSERIES, INC.

WM. J. KIRKMAN, JR., PRESIDENT

FRESNO, CALIFORNIA



Four Year Old Almond Orchard in the Sacramento Valley.

## ALMONDS

Special attention is called to our fine stock of Almond **June Buds**. They are particularly fine trees. In these we have a strong surplus of **Drakes Seedling** and are in position to make very attractive prices to large planters.

### On Almond and Peach Roots

1 Year 4 to 6 ft.....	\$65.00 per 100
1 Year 3 to 4 ft.....	50.00 per 100
1 Year 2 to 3 ft.....	40.00 per 100
June Buds No. 1.....	50.00 per 100
June Buds No. 2.....	35.00 per 100

Refer to Announcement for information on June Buds. We can furnish the following varieties **June Budded—Drakes Seedling, I. X. L., Ne Plus Ultra.**

**Drakes Seedling.** A profitable variety because of its consistent heavy bearing. Nuts medium size, roundish sometimes almost spherical. Shell medium soft. Kernel of good flavor. **Special**—We have a heavy surplus of this variety. Can offer attractive special quotations to customers who can use quantities.

**I. X. L.** Tree of upright habit. Nut very large and symmetrical. Shell soft, smooth, kernel large and plump. One of the standard varieties.

**Ne Plus Ultra.** Tree a willow or drooping grower. Nut long and narrow with thick soft shell. Kernel long slender and of excellent quality.

**Nonpareil.** Tree vigorous grower but of weeping habit, nut large, long, narrow, kernel long, narrow and plump. The genuine paper shell variety.

**Texas Prolific.** Tree an upright vigorous grower. Nut medium size, soft, smooth and plump. Kernel well filled and sweet. This variety is also used as a pollinizer for other varieties.

## APPLES

We have a splendid stock of one year buds in the leading commercial varieties such as **Delicious, Spitzenburg, White Winter Pearmain, Winesap, Yellow Newton Pippin** to offer in large quantities.

1 year 4 to 6 ft.....	\$75.00 per 100
1 year 3 to 4 ft.....	60.00 per 100
1 year 2 to 3 ft.....	45.00 per 100

**Baldwin.** A large red apple of handsome appearance. Flesh yellow, firm, juicy, subacid—December to April.

**Bismarck.** Tree a stocky grower. Fruit large, yellow overspread with red next to sun. Tree a precocious bearer. September to November.

**Delicious.** Fruit large, conical, brilliant red splashed with yellow, flesh fine grained crisp, juicy and highly flavored—October to February.

**Gravenstein.** An early autumn variety, fruit is large and beautifully striped with red. Flesh tender, juicy, subacid—August and September.

**Jonathan.** Fruit roundish, skin yellow, nearly covered with dark to lively red. Flesh yellowish, fine grained, tender, juicy with an excellent flavor—October to December.

**Northern Spy.** The fruit is large, somewhat oblong. Flesh firm, fine grained, tender, juicy and subacid—November to April.

**Red June.** A good table variety of medium size, fruit roundish to oblong, skin red, flesh white, juicy, subacid—June to July.

**Rome Beauty.** Large, yellow, shaded bright red, flesh yellowish, tender, juicy, subacid. A popular variety for the mountain districts—November to February.

**Skinnners Seedling.** Fruit large, yellow, striped and splashed with red, flesh tender, juicy and of high quality. Popular in Coast Counties—September and October.

**Spitzenburg.** Fruit medium to large, deep red, flesh yellow, crisp, subacid and highly flavored. Highly suited for mountain regions—November to March.

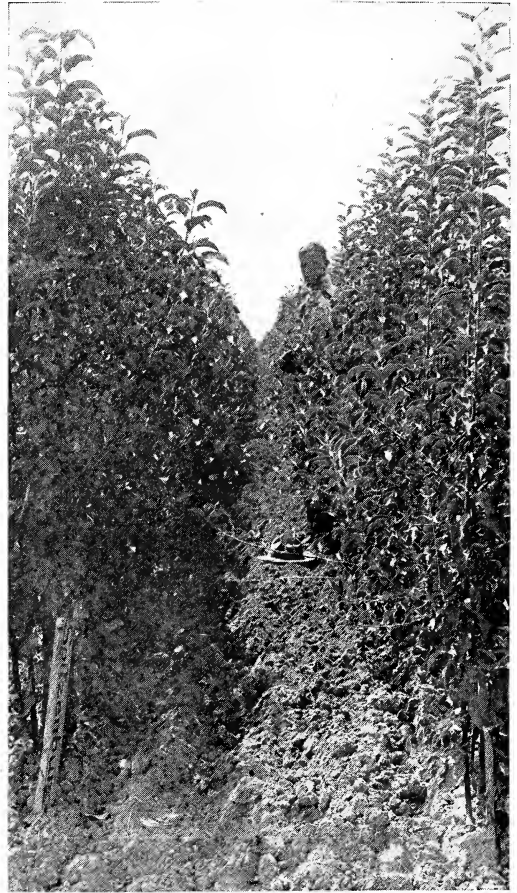
**White Winter Pearmain.** Medium size, oblong, pale greenish yellow with slight blush. Flesh yellowish, tender, crisp, juicy and of fine flavor. Productive in all parts of the State—November to January.

**Winesap.** A favorite market variety. Fruit medium, dark red, subacid, excellent—November to January.

**Winter Banana.** Tree a strong grower, fruit large, perfect form, golden yellow marked crimson, flesh lemon yellow fine grained and aromatic—October to December.

**Yellow Bellflower.** Large, conical skin yellow with slight blush on sunny side. Tender, juicy and subacid—September to January.

**Yellow Newton Pippin.** A favorite in California. Medium size, juicy, crisp and of high delicious flavor—December to May.



Block One Year Apple Buds in Our Nursery.

## APRICOTS

Our apricot surplus is limited. We still have to offer Tilton in June Budded Trees and Double Dormant Budded Seedlings in quantities sufficient for commercial planting.

### On Apricot, Myrobolan and Peach Roots

1 year 4 to 6 ft.....	\$75.00	per 100
1 year 3 to 4 ft.....	60.00	per 100
1 year 2 to 3 ft.....	45.00	per 100
June Buds No. 1.....	50.00	per 100
June Buds No. 2.....	35.00	per 100
Double Dormant Budded Seedlings.....	\$35.00	per 100

The June Buds are Tilton on Peach root, only.

The Double Dormant Budded Trees are Tilton on Peach roots.

Refer to Announcement for information about June Buds and Double Dormant Budded stock..

**Blenheim.** Fruit is large, oval. Flesh yellow, rich and juicy. A prolific bearer and profitable for canning, marketing and drying. Middle June.

**Royal.** Oval, slightly compressed, flesh yellow with orange skin tinged slightly red. It is firm and juicy with a rich vinous flavor. Early June.

**Tilton.** Large size, with a rich apricot color and of high flavor. For drying and canning it is unsurpassed. Middle of June



## FIGS

Our trees are grown in the frostless belt of Tulare County. The trees have made a fine growth and we are prepared to supply our customers with stock in good, clean, healthy condition. They are sure to please.

### Black Mission, Goodale Black, San Pedro Black

4 to 6 ft.....	\$35.00 per 100
3 to 4 ft.....	25.00 per 100
2 to 3 ft.....	20.00 per 100

**Black Mission.** The well known black fig-fruit is large, and of a deep violet color, skin thin, meaty, sweet, does not sour easily—tree a regular and heavy producer.

**Goodale Black.** This fig is fruiting on the property of the Honora Realty Company at Lemon Cove, California. Mr. Chas. Goodale, the manager, of the Honora Realty Company, purchased his trees as San Pedro Black, but the strain is beyond any question one of the Black Mission and not to be confused at all with the true San Pedro. This strain of the California Black Mission as it is producing for Mr. Goodale is a remarkably profitable variety. Mr. Goodale markets the green fruit mainly in San Francisco and Los Angeles markets. Several producers of figs have investigated this strain and pronounced it superior to the ordinary California Black Mission. It comes into bearing early in life and bears fruit larger than the average Mission.

**San Pedro Black.** The largest black fig on the market, skin smooth, violet black, pulp coppery red, sweet and delicious. The second crop will drop unless pollenized through the agency of the Blastophaga Wasp.

### Kadota also Capri or Wild Figs

4 to 6 ft.....	\$50.00 per 100
3 to 4 ft.....	40.00 per 100
2 to 3 ft.....	30.00 per 100

**Kadota (White Endrich).** Comes into bearing very early and if planted close together a satisfactory income per acre can be realized the third year.

Because of its superiority as a canning and preserving fig as well as a good variety for fresh shipment it is becoming more popular each year. Medium size, skin yellow, pulp white. First week in August.



A Properly Pruned 4 Year Old White Adriatic Fig Tree.

**Capri or Wild Figs.** These trees must be planted with the Calimyrna as they serve as a home for the Blastophaga Wasp. We have an assortment of these trees for delivery this season.

### Calimyrna and White Adriatic

4 to 6 ft.....	\$30.00 per 100
3 to 4 ft.....	25.00 per 100
2 to 3 ft.....	20.00 per 100

**Calimyrna.** The genuine commercial fig grown in Asia Minor. Large size skin lemon yellow, pulp reddish amber, excellent quality fresh or dried. The fruit can only be perfected by the transmission of pollen from the Capri or Wild Fig through the agency of the Blastophaga Wasp—August to October.

**White Adriatic.** Size medium, roundish, skin thin, green shaded yellow, pulp bright red. Very regular and prolific bearer—August.

## OLIVES

Our stock is growing in Southern California under the most favorable soil and climatic conditions. The trees are sturdy and have fine, smooth bodies. We can make very attractive prices to planters who intend planting on a large scale.



Two Year Old Mission Olive Trees in Nursery Row.

Are graded by caliper measurements taken 2 inches above the ground.

1 inch and up.....	\$90.00 per 100
¾ to 1 inch.....	75.00 per 100
⅝ to ¾ inch.....	60.00 per 100
½ to ⅝ inch.....	50.00 per 100

**Ascolano.** An Italian olive of large size exceeding the common varieties. The tree is strong spreading grower, fruit bluish black when fully ripe. It is packed and sold commercially as the "Queen Olive."

**Manzanillo.** Considered by all packers to be the best pickling olive. Tree is a free grower and heavy and regular producer. Fruit is extensively packed green as well as ripe. Ripens about two weeks before the Mission.

**Mission.** Fruit medium in size and makes an excellent pickle on account of its heavy oil content. Tree vigorous, upright grower and is highly suited for avenue or roadway planting.

### TO OUR CUSTOMERS—

*In view of our heavy stock of Fig and Olive trees, we are offering these varieties at prices unprofitable to us considering the extra expense we undertake in growing them in localities best suited to production of first class dependable trees.*

*Our Olive and Fig nursery sites are selected with the full realization of the importance of producing trees that will give the orchardist satisfactory results; trees that have no frost or other injury. The expense of suitable land and adequate water supply is far greater than in average Valley locations. Notwithstanding this we want to offer every possible inducement in an endeavor to offset the usual tendency of the planting public to plant only such varieties as are temporarily in greatest public favor.*

*We have taken this attitude at different periods. For instance a few years ago it was hard to convince planters that peaches were worth considering, because of the poor market conditions. Now, beyond much question a good Peach orchard is the most valuable asset in California horticulture.*

*We do not believe that Olives and Figs will remain permanently in disfavor.*

WM. T. KIRKMAN, Jr.

## PEACHES

We are fortunate this season in having a fine lot of one year trees also June Bud stock to offer. On account of the extreme demand for peaches especially of the leading commercial sorts and the apparent shortage we propagated **Double Dormant Budded Seedlings** and we call your attention to our "Announcement" on pages one and two which gives full information about this stock.



Two Year Old Peach Orchard in the Salt River Valley—Arizona.

### Free and Cling Stone Varieties

1 year 4 to 6 ft.....	\$75.00	per 100
1 year 3 to 4 ft.....	60.00	per 100
1 year 2 to 3 ft.....	45.00	per 100
June Buds No. 1.....	50.00	per 100
June Buds No. 2.....	35.00	per 100
Double Dormant Budded Stocks		
.....	\$35.00	per 100

Refer to Announcement for information about our **June Budded** also **Double Dormant Budded Stock**.

The following varieties can be supplied in June Buds—**Elberta**, **Lovell**, **Muir**, **Peak's Cling**, **Phillip's Cling**, **Tuscan Cling**.

The following varieties can be supplied in Double Dormant Budded Stocks—**Libbee Cling**, **Lovell**, **McDevitt Cling**, **Muir**, **Peak's Cling**, **Pelora Cling**, **Phillip's Cling**, **Seller's Orange Cling**, **Sim's Cling**, **Tuscan Cling**.

**Elberta**. Very large freestone, skin yellow with mottled red cheek, flesh yellow juicy, sweet. One of the best varieties for all purposes. Last of July.

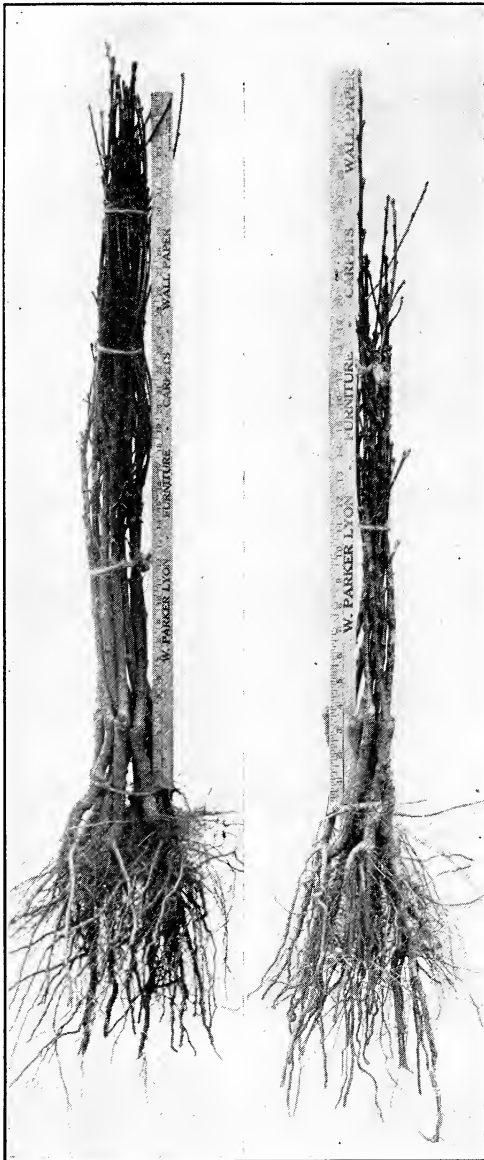
**Levy Late Cling**. Fruit very large, skin deep yellow, flushed red, flesh yellow, firm juicy, Sweet. A fine late canning variety. Middle of September.

**Libbee Cling**. Originated near Selma. Fruit large, skin yellow, blushed slightly, flesh yellow, firm, juicy and of high quality—August.

**Lovell**. A popular freestone variety used principally for drying, skin and flesh are yellow, firm, and of excellent quality. Ripens about 10 days later than **Muir**—August.

**McDevitt's Cling**. Fruit very large, golden yellow blushed deep red when fully ripe. Flesh yellow firm and of excellent flavor. A fine shipper—August.

**Muir**. Medium in size and a perfect freestone. Flesh yellow to the pit and particularly adapted to drying on account of its sweetness and density of flesh—August.



Number One                      Number Two  
June Budded Peach Trees.

**Peak's Cling.** In size and shape it resembles the Phillip's Cling. Texture firm and clear yellow to the pit. Valued as it ripens between the Tuscan and Phillip's Cling—August.

**Palora Cling.** A seedling originated at Gilroy, California, some ten years ago. A fine large yellow cling; flesh clear yellow to the pit; pit small and round, without spike; flesh of firm texture; fine grained and of excellent quality. This peach is almost identical to the Hauss, but with this additional feature which gives it the preference—it is much firmer and will ship to distant canneries in better order than Hauss. For that reason Palora and Peak's Cling are, by canners, being given the preference over Hauss and Johnson for the intermission immediately following Tuscan. Very productive and of equal canning quality to the Phillips. July 27th to August 10th.

**Phillip's Cling.** A deservedly popular canning variety. Large, yellow flesh, firm and clear, yellow to the pit. Best of all the clingstones. Early September.

**Seller's Orange Cling.** Very large, yellow with dark red cheek, flesh deep yellow, firm and juicy. Middle of August.

**Sim's Cling.** Medium to large, golden yellow with faint blush. Flesh yellow with fine texture firm and rich, pit small. Middle of August.

**Tuscan Cling.** The earliest of all the clingstone varieties. Large yellow, texture fine, firm and juicy. A most desirable variety. Middle of July.

## PEARS

While we have grown only a few varieties of pears this season, yet they are of proven value for the commercial planter. The trees are handsome one year buds, clean and smooth with a fine root system. In Bartlett we can furnish still in quantities for the heavy planters.

### On Pear Roots

1 year 4 to 6 ft.....	\$65.00 per 100
1 year 3 to 4 ft.....	55.00 per 100
1 year 2 to 3 ft.....	45.00 per 100
1 year 1½ to 2 ft.....	30.00 per 100

**Bartlett.** The leading commercial variety. Large size, skin yellow blushed next to the sun, buttery, juicy and highly flavored—August.

**Beurre Clairgeau.** Large, yellow, shaded orange and crimson and often russeted.

Flesh yellow, melting and highly flavored. Last of September.

**Beurre d'Anjou.** Medium to large, skin yellow russeted and shaded crimson, flesh rich, melting and juicy. A popular table and market variety—September.

**Winter Nelis.** The most popular winter variety. Medium size, yellowish green and russet. Flesh fine grained, melting with a most delicate flavor. Tree a straggling grower but very productive—December.

## PLUMS AND PRUNES

In order that our trees will be suitable for planting in different soils and under various climatic conditions our trees are budded on the Myrobolan and Peach seedlings. We are fortunate in still having a surplus in the varieties as listed herein.



Six Year Old Santa Rosa Plum Orchard in Madera County. Crop this year brought over \$1000.00 per acre.

### On Peach and Myrobolan Roots

1 year 4 to 6 ft.....	\$75.00	per 100
1 year 3 to 4 ft.....	60.00	per 100
1 year 2 to 3 ft.....	45.00	per 100
June Buds No. 1.....	50.00	per 100
June Buds No. 2.....	35.00	per 100
Double Dormant Budded Seedlings		
.....	\$35.00	per 100

For information about June Buds and Double Dormant Budded Seedlings see Announcement.

June Budded varieties—**Climax**, **French**, **Santa Rosa**.

Double Dormant Budded Stocks—**Beauty**, **Climax**, **French**, **Santa Rosa**.

**Beauty**. One of the best early shippers ripening ten days earlier than Santa Rosa. Heart shaped, crimson, flesh yellow streaked red, firm, juicy and of excellent quality—June.

**Climax**. On account of its extreme earliness, size, color and delicious flavor it is considered the best early shipper. Fruit heart-shaped, deep red skin, flesh yellow. Middle of June.

**French (Petite Prune d'Agen)**. More extensively planted than any other variety of prunes. Medium size, violet purple, flesh rich, sweet and meaty—August to September.

**Kelsey**. Very large, heart shaped, greenish yellow, overspread with light red. Flesh yellow, firm, clings slightly to the pit. A valuable shipper—July to September.

**Simon (Apricot Plum) (Prunus Simoni)** Fruit large, flattened and having the appearance of a nectarine. Color brick red, flesh yellow with a very peculiar aromatic flavor—July.

**Robe de Sargent**. Fruit medium to large oval skin deep purple, flesh greenish yellow, sugary, rich and delicious. Valued for drying and shipping—August and September.

**Santa Rosa**. Introduced by Mr. Luther Burbank of Santa Rosa. Very large deep crimson covered with pale blue bloom, flesh yellow, mottled and streaked with crimson, juicy and highly flavored, pit small. A valuable shipper. Early July.

**Tragedy**. Medium size, purple, flesh yellowish green, rich and sweet. Very heavy producer. A favorite early shipper. Late June.

## GRAPES

Of all the different varieties of Grapes grown in California for shipping and drying purposes the following varieties are without question the most important. Our stock are grown on soil conducive to giving the vines a fine fibrous root system. We invite the correspondence.

1 year No. 1 Vines....\$45.00 per 1000

**Emperor.** Vine a strong, rampant grower. Bunches are large, long, loose and sometimes shouldered. Berries large, oblate, deep rose to purple. It is particularly adapted for packing in kegs with redwood sawdust and on account of its thick skin and meaty flesh is a splendid shipper. Best late variety—October.

**Flame Tokay.** In the interior valleys it attains its highest state of perfection. The bunches are large and somewhat loose. Berries large, oblong and when ripening assume a brilliant red coloring that make them so attractive and remunerative in the Eastern market. One of the staple shipping varieties—September.

**Malaga.** On account of its shipping qualities this white grape is the most extensively grown variety in this State and it readily adapts itself to a wide range of soils. The vine is a strong grower and heavy producer. Bunches are very large, berries oval, yellowish green, skin thick, fleshy. When dried makes a fair raisin—August.

**Muscat.** The well known raisin grape. Bunches are long, loose shouldered, berries oval sometimes round. Skin yellowish green. When fully ripe makes a fine table variety. Flavor strong and characteristic—September.

**Sultana.** Berries small, round, firm and crisp and somewhat tart. Bunches large and long. Vine a vigorous grower and very productive. Particularly adapted to light sandy soils—August.

**Thompson Seedless.** The well known seedless raisin grape, bunches large, long and often shouldered, berries are oval, greenish yellow and larger than Sultana. Thin skin and of good flavor. The vine is a rampant grower and an unusually heavy bearer. Adapts itself to a wide range of soils including that which is somewhat impregnated with alkali—August.



Number 1 Thompson Seedless Rootings.

## WALNUTS

	Each	10
6 to 8 ft.....	\$3.00	\$25.00
4 to 6 ft.....	2.50	22.50
3 to 4 ft.....	2.25	20.00
2 to 3 ft.....	2.00	1.75

Kernel full, sweet and having a rich nutty flavor. Thrives well in the interior valleys and valuable as it is a late bloomer.

**Franquette.** Tree a hardy and vigorous grower, nuts large, long and smooth.

**Mayette.** Nuts are large well filled, rich and sweet. Should be planted with Franquette for cross pollenization. Tree hardy and a heavy bearer.

## POMEGRANATES

1 year 3 to 4 ft.....	\$45.00	per 100
1 year 2 to 3 ft.....	35.00	per 100
1 year 1 to 2 ft.....	25.00	per 100

**Wonderful.** The most attractive variety. Large size, colored a rich deep red and of excellent flavor. Valuable for shipping to the Eastern markets as the fruit is prized for table decorations. Can withstand some alkali.

## CITRUS FRUITS

All Varieties as Listed

	Each	10
1 inch and up in caliper .....	\$2.50	\$22.50
¾ to 1 inch caliper....	2.25	20.00
⅝ to ¾ inch caliper....	2.00	17.50
½ to ⅝ inch caliper....	1.75	15.00

**Valencia Late Orange.** A valuable commercial variety ripening its fruit after the Washington Navels are harvested. Fruit medium size, oblong, firm, juicy and of highest quality, few seeds.

**Washington Navel Orange.** More extensively planted than any other variety as it readily adapts itself to a wider range of soils and locations. Fruit large, juicy and of fine flavor. Has but few seeds.

**Eureka Lemon.** Tree a vigorous grower and productive bearer. Fruit uniform in size with but few seeds, rind smooth and glossy, juicy and of excellent quality.

**Marsh Seedless Pomelo.** This variety is well named for it is practically seedless. The fruits are large, round, rind thin lemon yellow, rich, juicy and of the highest quality.



Marsh Seedless Pomelo

## INDEX

	Page		Page
Almonds . . . . .	3	Plums . . . . .	8
Apples . . . . .	3-4	Prunes . . . . .	9
Apricots . . . . .	4	Grapes . . . . .	10
Figs . . . . .	5	Walnuts . . . . .	11
Olives . . . . .	6	Pomegranates . . . . .	11
Peaches . . . . .	7-8	Citrus Fruits . . . . .	11







BY ACHELITHC COLLEBNO

