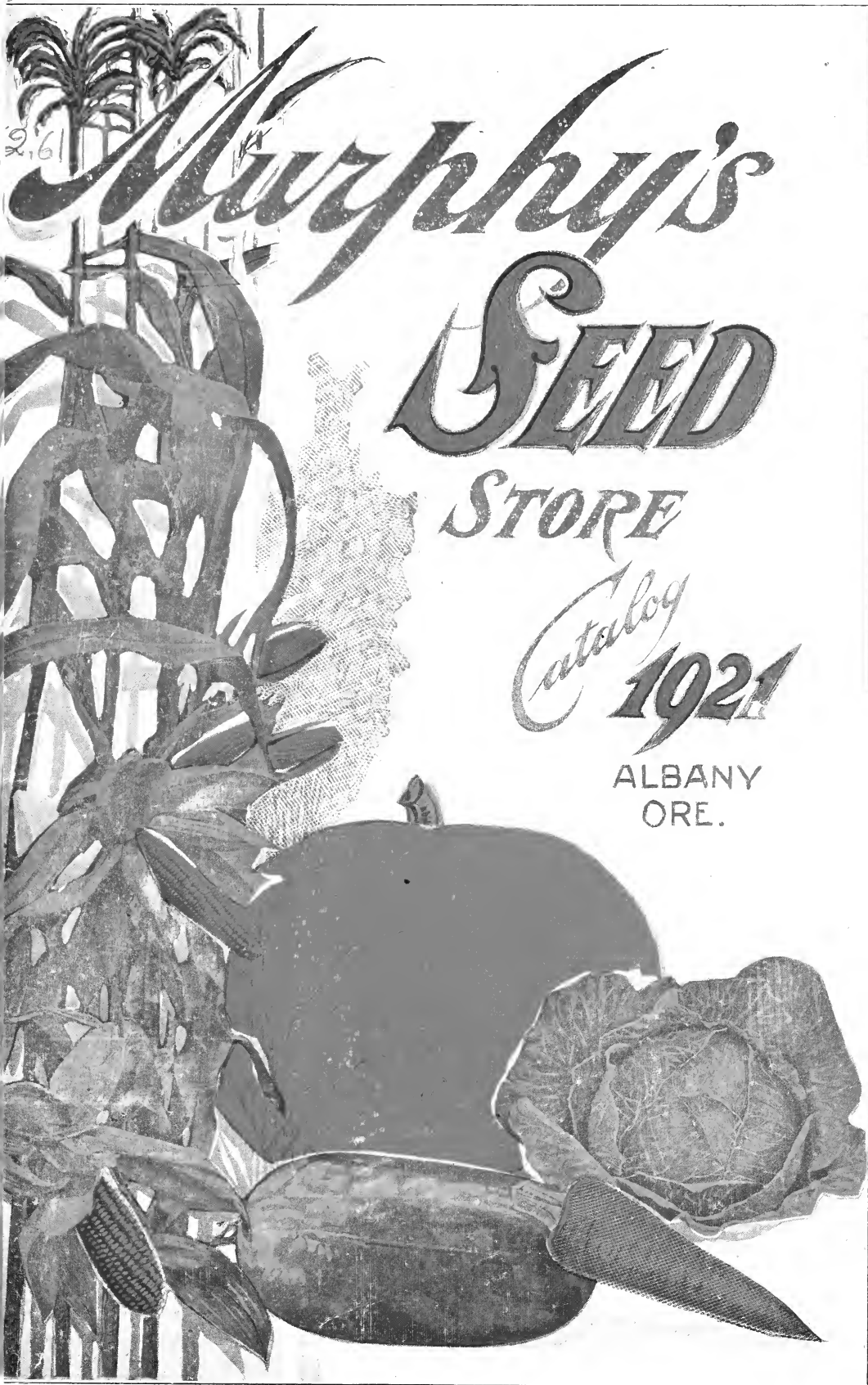


## **Historic, Archive Document**

Do not assume content reflects current scientific knowledge, policies, or practices.





2,61

*Murphy's*

**SEED**

*STORE*

*Catalog*  
**1921**

ALBANY  
ORE.

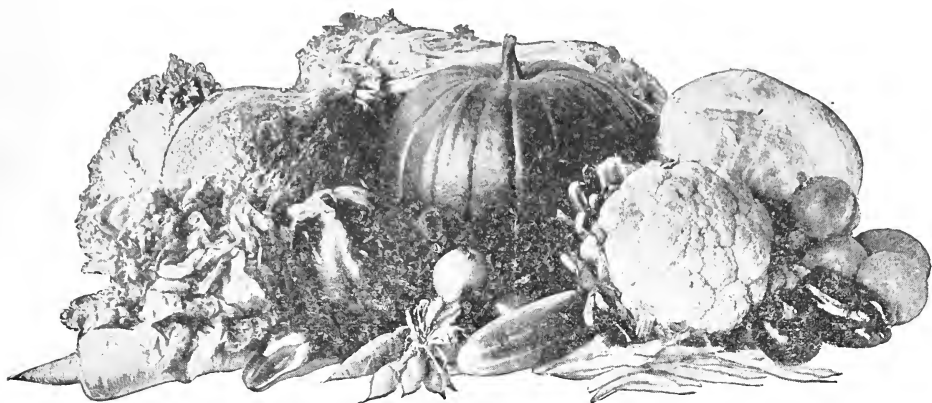


To Our Friends:---

For twelve years Murphy's Seeds has been synonymous in the valley with high grade seeds--- seeds that you can sow with confidence, knowing that all other conditions being suitable, you may anticipate satisfactory crops. And the superiority of Murphy's Seeds is freely acknowledged. They represent the truest form of garden economy, both in money and labor, which is recognized by every Western Planter who uses them. We will always try and maintain the High Quality in Seeds that we have in the past.

We wish to thank our many customers for their liberal patronage in the past, and hope that we may have your continued good will in the future.

Sincerely yours,  
Murphy Seed Company



## How To Order By Mail

We want to make it just as easy to order by mail as to come to our store to trade. Enclosed you will find Order Blanks and Self Addressed Envelope. Just fill one out, pin your check to it and mail it to us and your order will be filled immediately. Prices quoted do not include postage.

---

## Parcel Post

There is a Special Rate on Garden Seed of  $\frac{1}{2}c$  per ounce, weight limit 8 ounces.

The parcel post rate within 150 miles of Albany is 5c for the first pound and one cent for each additional pound. Weight limit 70 pounds.

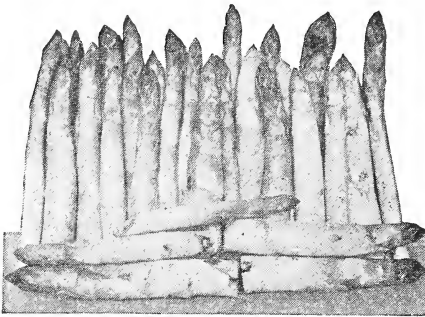
Over 150 miles and within 300 miles of Albany, rate 6c for first pound and two cents for each additional pound. Weight limit 70 pounds.

---

NOTE.—There are so many contingencies to be encountered in growing plants from seed and in setting out plants, trees, etc., that are dependent on the weather and other conditions over which we have no control that success is not altogether dependent on the seed or plant, therefore while we use every precaution in procuring fresh pure and reliable seeds, etc., we, in common with other responsible seed houses, sell our goods subject to the following disclaimer, it being adopted by the American Seed Trade Association, i. e.; We give no warranty, express or implied, as to description, quality, productiveness, or any other matter of any seeds, bulbs, trees or plants sent out, and will not be in any way responsible for the crop. If the purchaser does not accept the goods on these terms, they are to be returned at once.—Murphy's Seed Store.

## ASPARAGUS.

Asparagus is one of the earliest spring vegetables, and would be in universal use were it not for the mistaken idea that it is difficult to grow. In reality it can be produced very easily and cheaply. A bed 15x50 feet, requiring about 100 plants, should give an abundant supply for the ordinary family. In the home garden the rows should be four feet apart.



A warm sandy soil is the best, and one which has for some years been cultivated in garden crops and heavily manured is greatly preferred to a fresh soil. But at no period of its growth should the asparagus crop be allowed to lack for manuring.

**Conovers Colossal.**—A standard variety for all purposes, especially for canning. It makes large thick white shoots of delicious flavor. Pkt. 5c; 1oz. 10c, ¼lb. 30c; 1lb. 90c.

**Palmeto.**—The most popular variety grown for general garden purposes. Shoots are light green and tinted slightly with pink. Pkt. 5c; 1oz. 15c; ¼lb. 35c; 1lb. \$1.00.

**Asparagus Roots.**—As from two to three years time can be saved by planting roots, there is much demand for them, and we recommend them in preference to the seed. 2 year old roots of either variety, 25c per doz; \$1.00 pr hundred. Weight packed, 5lbs per 100.

## ARTICHOKE.

Artichokes are cultivated for the edible bud, which later blossoms into a flower, which later resembles a giant thistle. The plants want a very rich soil and plenty of moisture. Sow early in drills and when about ten inches high transplant into rows four feet apart each way. It will produce only a small crop the first year, but will continue in good bearing for five years. Cut before the buds open.

**Large Green Globe.**—The well known French vegetable; the undeveloped flower heads, when properly prepared make a most delicious dish. Pkt. 10c; 1oz. \$1.25.

---

SPECIAL PRICES to Market Gardeners where quantity of Seed is wanted.

---

## BEANS.

**Culture.**—The soil best adapted for growing beans is a light, rich, well-drained loam, which was well manured for the previous crop. If the ground is too freshly manured, the plants are apt to run to vines and set few blossoms. Plant in drills about two inches deep and from eighteen inches to two feet apart, as soon as the ground is dry enough. Beans are very sensitive to cold and wet before they have sprouted, but are not so liable to be damaged after they are above ground.

### DWARF OR BUSH VARIETIES. GREEN POD.

**New Stringless.**—The finely shaped, long green pods are absolutely stringless, and are ready to market two weeks earlier than any other green-podded bean. It is of immense value, not only to the market gardener, but also for those who seek early beans of a rare quality for the home table. Lb. 25c; 10lbs. \$2.00.

**Early Red Valentine.**—This improved strain has a healthy, vigorous growth. The beans are small, but the pods are thick, round and fleshy; very tender, rich, and quite stringless. A popular bean for canning green. Bush grows to a height of fifteen inches and is very prolific. Lb. 25c; 10lbs. \$2.00.

**Early Long Yellow Six Weeks.**—A long podded green variety. Plants strong and vigorous and leaves large of fair quality. Seed long, kidney shaped, light-yellow with darker marks about the eyes. Lb. 25c; 10lbs. \$2.00.

**Refugee, or Thousand To One.**—Of great value on account of its hardiness, vigorous growth and wonderful productiveness. Is not excelled by any other variety as a snap bean, and is considered the best for pickling, or canning. Beans small, dark purple, veined brown. Pods of perfect form, dark green, veined purple. Lb. 25c; 10lbs. \$2.00.

### DWARF OR BUSH VARIETIES—WAX OR YELLOW POD.

**Davis' White Wax.**—The most hardy and productive wax podded variety. The pods are very long and yellow and while not stringless, is a remarkably good bean. Seed white and splendid for a shelled bean in winter. Lb. 25c; 10lbs. \$2.00.

**Golden Wax.**—Hardy and productive. A good second early variety of good quality. Pods are long, nearly straight broad and flat and golden yellow. Seed white, more or less covered with two shades of purplish red. Lb. 25c; 10 lbs. \$2.00.

**Black Wax.**—The earliest of wax beans. Very vigorous and prolific, pods fairly long golden yellow very brittle and stringless. Seed black. Lb. 25c; 10lbs. \$2.00.

---

MURPHY'S SEEDS are the kind that grow. "You can't keep them in the ground." Let us help you make this the banner year by selecting Seeds of High Quality.

## CLIMBING OR POLE BEANS.

**Kentucky Wonder.**—A vigorous climber; very prolific; bearing in clusters; extremely long and very fleshy, bright yellow succulent pods, flat, thick and remarkably tender. A first-class pole variety. 11b. 25c; 10lbs. \$2.00.

**Lazy Wife.**—Pods are from four to five inches in length, produced in large clusters in great abundance. Dark green, thick, fleshy and stringless; of unusually rich flavor. Dry beans, pure white; excellent for winter use. Lb. 25c; 10lbs. \$2.00.

**London Horticultural or Cranberry.**—An old favorite. Pods short, green splash with red. Seed bluish pink, spotted with red. Used shelled, green or dry. Lb. 20c; 10lbs. \$1.50.

## LIMA BEANS.

**King of the Garden.**—The most popular Lima bean. A pole bean medium early and has long pods which are well filled with four or five good-sized beans. Pods are very straight. Vines bear abundantly. Lb. 35c; 10lbs. \$3.00.

**Burpee's Bush Lima.**—The best late dwarf variety. Plants 18 to 24 inches high. Beans as large and as fine in quality as the pole varieties. It is also a heavy yielder. Lb. 40c; 10lbs. \$3.50.

## FIELD BEANS.

**Lady Washington.**—Sturdy, bushy plant, erect habit. The bean is a great improvement over the old "Navy," being earlier, a little larger, and a very heavy yielder, being especially adapted to our western soils, and is entirely free from disease. Bush attains a height of about fourteen inches, and beans mature in September. 10lbs. \$1.20; 100lbs. \$10.00.

**White Navy.**—Grown extensively for marketing dry shelled. The best known small white bean. Dwarf in growth and very productive. 10lbs. \$1.20; 100lbs. \$10.00.

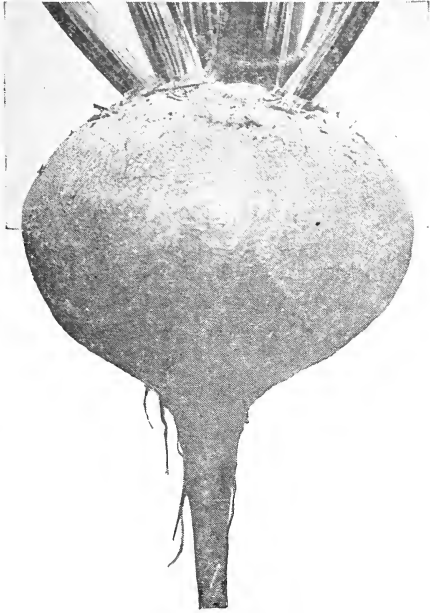
**Mexican Tree.**—Slightly larger than the small navy bean, in shape a little more round. A strong grower in tree shape. Advantage over navy is earliness and habit of growth, in which the pods are clear of the ground. 10lbs. \$1.20; 100lbs. \$10.00.

## BEETS.

**Culture.**—The beet is hardy and may be planted as soon as the ground can be well prepared, doing best in rich, sandy soil, sown in rows sixteen inches apart, covered one and one-half inches deep. The seed will sprout better if soaked twenty-four hours in warm water before planting. Thin out by using the largest ones when they are sufficient size, continuing until they are six or eight inches apart in the rows. For field crop, the rows should be far enough apart to permit the use of a horse cultivator.

**Extra Early Egyptian.**—The best variety for forcing, and for market gardeners, being very early with small tops. Roots very dark red, round on top, but flat beneath, with very small tap roots. Pkt. 5c; 1oz. 15c; ¼lb. 35c; 1lb. \$1.00.





**Detroit Dark Red Turnip.**—A fine beet for bunching for market; tops exceptionally small and uniformly upright. The roots are perfect turnip shape, with small tap roots. One of the deepest red beets. Quality is of the finest; sweet and tender; best for home garden. Pkt. 5c; 1oz. 15c;  $\frac{1}{4}$ lb. 35c; 1lb. \$1.00.

**Early Eclipse.**—A fine early table beet, top shaped or tapering globe shaped. Flesh deep crimson zoned with pink. Crisp, sweet. Pkt. 5c; 1oz. 15c;  $\frac{1}{4}$ lb. 35c; 1lb. \$1.00.

**Half Long Blood.**—A half-long variety about eight inches long and tapering abruptly. Very rich, deep red flesh of fine quality. Pkt. 5c; 1oz. 15c;  $\frac{1}{4}$ lb. 35c; 1lb. \$1.00.

## MANGEL WURZEL.

These are grown extensively for stock feeding, and afford large quantities of fresh, nutritious and wholesome food during the winter months, in connection with grain and dried forage. Sugar beets are rich and sweeter than Mangels, but the latter will generally produce one-third to one-half heavier crops per acre, and hence are preferred by many farmers.

**Golden Tankard.**—Considered indispensable by many dairy farmers. They state that they are able to obtain a higher price for milk when feeding cows on Golden Tankard. Sheep thrive on it. Golden Tankard is of a rich, deep yellow throughout. A half long variety. Early, hardy and a heavy cropper; on account of its shape the roots can be left standing close in rows. 1oz. 10c;  $\frac{1}{4}$ lb. 20c; 1lb. 50c; 10lbs. \$4.00.

**Mammoth Long Red.**—An improvement on the Long Red. Grows to a very large size, and will yield 50 tons per acre with ordinary cultivation. Very uniform, smooth and of good shape. Should be grown in deep loose soil. 1oz. 10c;  $\frac{1}{4}$ lb. 20c; 1lb. 50c; 10lbs. \$4.00.

**Giant Half Sugar.**—Valuable for feeding purposes, it being very rich. Yields as much per acre as the best Mangels, and twice as much per acre (bulk of roots) as the rich sugar beet. Roots large, very smooth, with few rootlets; creamy white in color, with medium sized taps. 1oz. 10c;  $\frac{1}{4}$ lb. 20c; 1lb. 50c; 10lbs. \$4.00.

**Yellow Giant, Intermediate, or Gate Post.**—Roots very large, growing over one-half out of the ground; flesh white, zoned with yellow, sweet and tender; tops bright green, comparatively small; neck small, short. An enormous cropper. 1oz. 10c;  $\frac{1}{4}$ lb. 20c; 1lb. 50c; 10lbs. \$4.00.

**Klein Wanzleben.**—The Standard variety grown for the production of sugar. 1oz. 10c;  $\frac{1}{4}$ lb. 30c; 1lb. 80c.

## BROCCOLI.

Broccoli is very much like cauliflower in general appearance and growth, but is hardier and will stand more cold and frost. Produces fine heads from late in the fall until early spring, according to time plants are set out. It is a very profitable crop, and is now being planted extensively. Culture same as for cauliflower. For fall use, sow in April and May, and for winter and spring cutting sow in June or July.

**St. Valentine.**—The Finest of all Broccoli. This grand new strain is a sure header of immense size, finest quality, and ready for market in February. The large, solid, handsome, white heads remain in good condition longer than other varieties. Pkt. 10c;  $\frac{1}{4}$ oz. 35c; 1oz. \$1.00;  $\frac{1}{4}$ lb. \$3.00.

**Early Large White.**—A variety with large, white heads, firm and of good flavor. Pkt. 10c; 1oz. 50c;  $\frac{1}{4}$ lb. \$1.50.

## BRUSSELS SPROUTS.

The plants, which are very hardy, grow two or three feet high, and produce from the sides of the stalk, numerous little sprouts, which resemble very small cabbages one or two inches in diameter. The leaves should be broken down in the fall, to give the little heads more room to grow. They should be treated in all respects like winter cabbage or kale.

**Dwarf Improved.**—The leading variety. Very hardy and giving compact, round sprouts of large size and good quality. Grows 2 to 3 feet high. Pkt. 5c; 1oz. 40c;  $\frac{1}{4}$ lb. \$1.50.

## CAULIFLOWER.

**Culture.**—The Cauliflower succeeds well in any soil where cabbage will grow. But best results are obtained in rich soil with an abundance of water. By sowing early varieties in a hot bed in February or March, and later in a cold frame, fine heads can be obtained quite early. For a later supply sow seeds in a prepared bed in May, choosing a cool, moist place. When large enough, transplant, making the rows about two and a half feet apart and eighteen inches between the plants. In dry seasons the crop must be watered.

**Early Snowball.**—Handsome large white solid heads. Recommended for either early or late planting. Pkt. 10c;  $\frac{1}{4}$ oz. \$1.00; 1oz. \$3.00.

**California Wonder.**—Large solid heads. Leaves large and long, and may be tied over head for protection. Late and of fine quality. Pkt. 10c;  $\frac{1}{4}$ oz. 40c; 1oz. \$1.20.

**Autumn Giant.**—A large late variety, very hardy. The large leaves protect the heads well. Pkt. 10c;  $\frac{1}{4}$ oz. 30c; 1oz \$1.00.

**Cauliflower Plants.**—For prices see page 31.

Take advantage of our Special Coupon Offer.

## CABBAGE.

**Culture.**—The requisites for complete success are: First—Good seed. There is no other vegetable where the seed has so much influence on the quality of the product, and gardeners should always use the best procurable. Second—Rich, well prepared ground. Third—Frequent and thorough cultivation. A heavy, moist and rich loam is most suitable, which should be highly manured and worked deeply. The early sorts should be sown very early in hot beds, hardened off by gradually exposing them to night air, and as early as the ground is in good condition transplanted, setting 18 to 36 inches apart, according to size of variety. The later autumn and winter varieties may be sown from the middle to the last of spring and transplanted when four to six inches high. Shade and water the late sowings in dry weather to set them up.

**Early Jersey Wakefield.**—Grown more extensively for market than any other early cabbage. Has but few outside leaves; a reliable header and always gives good satisfaction. Pkt. 5c; 1oz. 35c;  $\frac{1}{4}$ lb. \$1.00.

**All Season.**—A Drumhead Cabbage, almost as early as the Jersey Wakefield, with heads twice as large. The solid heads are as good for winter use as for summer use. Pkt. 5c; 1oz. 40c;  $\frac{1}{4}$ lb. \$1.20.

**Early Winnigstadt.**—Very conical solid heads. A sure header. Keeps better than most varieties. Pkt. 5c; 1oz. 40c;  $\frac{1}{4}$ lb. \$1.20.

**Charleston, or Large Wakefield.**—Larger and a little later than the Early Jersey Wakefield. Fine for fall sowing in the open for early spring plants. Pkt. 5c; 1oz. 35c;  $\frac{1}{4}$ lb. \$1.20.

**Copenhagen Market.**—A new early globe-shaped cabbage, slightly flattened. The large solid heads are very uniform. Keeps well, and stands handling. Pkt. 5c; 1oz. 50c;  $\frac{1}{4}$ lb. \$1.50.

### LATE VARIETIES.

**Autumn King or World Beater.**—A sure header, very solid, fine-grained and tender. Color, dark green, with a slight bronze or brownish tinge to the outer leaves. The heads are remarkably thick through, and will attain a great weight. Has short stems, grows near the ground. Pkt. 5c; 1oz. 60c;  $\frac{1}{4}$ lb. \$1.80.

**Premium Late Flat Dutch.**—A well known large late variety. Flattish round heads, very solid, has tall stout stems. Pkt. 5c; 1oz. 40c;  $\frac{1}{4}$ lb. \$1.20.

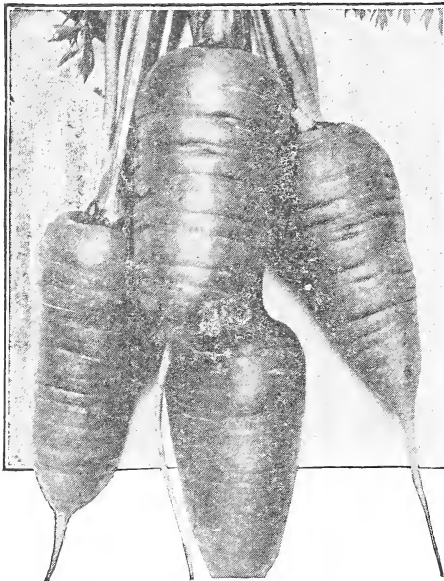
**Danish Ball Head or Hollander.**—This is one of the hardiest cabbages in cultivation and endures both frost and drouth that would destroy other varieties. Matures quite late, keeps well, and is considered by many the best cabbage for spring markets. Color bluish green. Pkt. 5c; 1oz. 40c;  $\frac{1}{4}$ lb. \$1.25.

**Mammoth Red Rock.**—Used for pickling. The heads are very fine and remarkably sure heading. Pkt. 5c; 1oz. 40c;  $\frac{1}{4}$ lb. \$1.20.

**Chinese or Celery Cabbage.**—The culture of Wong Bok is the same as for winter cabbage. The seed should be sown in July or early August and early in September the plants should be transplanted. They should be set one foot apart in the row and pushed down one and one half inches in the ground. When well grown the plants should be blanched by tying closely with burlap. Any good soil is sufficient. Wong Bok has a mild cabbage flavor, makes delicious slaw; also a very fine salad. When cooked Wong Bok makes greens delicately cabbage flavored. Pkt. 10c; 1oz. 50c;  $\frac{1}{4}$ lb. \$1.50.

## CARROTS.

**Culture.**—A sandy loam is the best soil for the carrot, but any good land, if thoroughly and deeply worked, will produce satisfactory crops. Sow as early in the spring as the ground is fit to work, though good crops may be grown from sowing as late as June 15th.



For table use, sow the smaller kinds in rows 16 to 18 inches apart, and for field culture prepare the ground thoroughly and sow in drills 18 to 24 inches apart. Cover one-half to one inch deep and see to it that the soil is well firmed above the seed.

**Early French Forcing.**—The earliest variety in cultivation, and best suited for forcing. Roots of reddish brown, globular and about two inches in diameter; should be used before full grown. Pkt. 5c; 1oz. 10c;  $\frac{1}{4}$ lb. 30c; 1lb. \$1.00.

**Danver's Half Long.**—Grown largely on account of its productiveness and adaptability to all classes of soil. Tops, medium size, coarsely divided. The smooth, handsome roots are of medium

length, tapering uniformly to blunt point; flesh, sweet, crisp, tender; deep orange in color. Although the roots of this variety are short, they produce as large bulk as the longer field sorts, and are more easily harvested. Pkt. 5c; 1oz. 10c;  $\frac{1}{4}$ lb. 25c; 1lb. 75c.

**Oxhart.**—A thick carrot, five or six inches long and very blunt at the lower extremity. It grows very rapidly and the root attains a weight of more than a pound. It is tender and of good flavor. Pkt. 5c; 1oz. 10c; ¼lb. 25c; 1lb. 75c.

**Chantenay.**—The Market Gardener's Favorite. Tops, medium size; necks, small; roots, tapering slightly, but uniformly stump-rooted and smooth; color, deep orange red; flesh, very crisp and tender. Although this is a medium early sort, it furnishes roots of usable size as early as any; is a heavy cropper, and is undoubtedly one of the best for both the market and private garden, while its great productiveness makes it very desirable as a field sort. Pkt. 5c; 1oz. 10c; ¼lb. 25c; 1lb. 75c.

### STOCK CARROTS.

**Large White Belgian.**—Extensively grown for stock feeding; very productive. Grows so much above the ground that the entire crop can be pulled by hand. 1oz. 10c; ¼lb. 25c; 1lb. 75c.

**Yellow Giant.**—This new carrot originated at the Sydney, Australia, Experiment Station and has proved itself to be the earliest and most productive stock carrot yet produced. It is a half long variety, with an immense broad shoulder. The carrot penetrates less than one-half the depth into the ground, which saves about one-half the expense of harvesting the crop. The color is of bright yellow. 1oz. 10c; ¼lb. 25c; 1lb. 75c.

### CRESS.

**True Water.**—This is quite distinct from the former, and only thrives when its roots and stems are submerged in water. It is one of the most delicious of small salads, and should be planted wherever a suitable place can be found. The seed should be sown and lightly covered in gravelly, muck lands, along the borders of small, rapid streams, and the plants will need no subsequent culture, as under favorable conditions they increase very rapidly by self-sown seed and extension of the roots. Pkt. 5c; 1oz. 60c.

**Curled, or Pepper Grass.**—This salad is much used with lettuce, to which its warm, pungent taste makes an agreeable addition. The seed should be sown in drills about 16 inches apart, on very rich ground, and the plants well cultivated. It may be planted very early, but repeated sowings are necessary to secure a succession. Keep off insects by dusting with Pyrethrum Powder. Pkt. 5c; 1oz. 15c; ¼lb. 40c.

### CELERIAC.

Grown for the edible root and not for greens. Start seed like celery and transfer to garden. Bleaching is not necessary.

**Large Smooth Prague.**—Forms a good thick root as much as four inches in diameter. Makes delicious flavored salad. Pkt. 5c; 1oz. 25c.

## CELERY.

**Culture.**—Sow the seeds early in a hot-bed or cold frame. When three inches high, transplant, setting them four inches apart. When grown six



inches, and fine, stalky plants, set in richly manured, deep soil, in rows three and a half feet apart and about nine inches from plant to plant. Water if dry weather follows transplanting. During the next two months all the attention that is required is to keep down the weeds. Afterward, earth up a little, and continue doing so at intervals until only the tops of the leaves are visible late in the autumn. Never hoe up the earth when the plants are wet. One ounce of seed produces about six thousand plants.

**White Plume. . . The Leading White Celery.**—A handsome, crisp sort, of very easy cultivation. Naturally its stalks and portions of its inner leaves and heart are white, so that by closing the stalks either by tying or by simply drawing the soil up against the plant and pressing it together, the work of bleaching is completed without the troublesome process of “banking” or “earthing up.” It is the earliest celery known. Pkt. 5c; 1oz. 25c; ¼lb. 90c.

**Golden Yellow Self-Bleaching.**—This is no doubt the best celery for early spring market use. Plants of a yellowish green color when young, but as they mature the inner stems and leaves turn a beautiful golden yellow, which adds much to their attractiveness and makes the work of bleaching much easier. Pkt. 5c; 1 oz. 45c; ¼lb. \$1.35.

**Celery Plants.**—See Plants, page 31.

Every successful Celery Grower uses a compressed air sprayer for applying sprays to prevent Celery Blight. A few dollars invested in one of these sprayers will save your celery crop.

**DON'T** Practice false economy by buying low-priced seeds. It doesn't pay. Our motto: “Quality first, price as low as we can make it.”

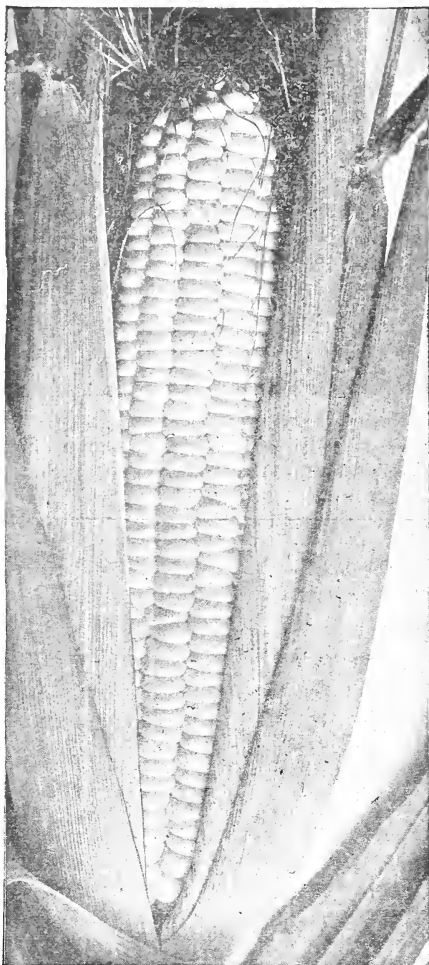
## CORN.—SWEET.

Sweet Corn is a delicious Garden Vegetable and a very profitable field crop. Nothing quite equals is.

As Corn is very sensitive to frost, it cannot be planted with any degree of safety until after the first of May. Moist rich soil is best for Corn and frequent hoeing or cultivating improves it. Plant hills three feet each way. Thin to three plants to the hill.

**Golden Bantam.**—The earliest variety. The ears are small, but are thickly set with delicious yellow kernels. The quality of this variety is superb, and it has become a general favorite early Sweet Corn with all who have tried it. Pkt. 5c; 1lb 30c; 10lbs. \$2.50.

**Early Evergreen. The Best Second Early Sweet Corn.**—In the New Early Evergreen we have a selection possessing every good quality of Stowell's Evergreen, and resembling it in every respect, except that the stalk is about one foot shorter, more closely jointed, and that it will mature for market ten to fourteen days earlier. Pkt. 5c; 1lb. 30c; 10lbs. \$2.50.



**Stowell's Evergreen.**—Remarkable for remaining a long time in a fresh condition suitable for the table. Hardy and productive, and the best late variety for general use. Sixty per cent of stalks in the field carry two perfect ears. They are of faultless shape, invariably filled well to the tips. Pkt. 5c; 1lb. 30c; 10lbs. \$2.50.

**Country Gentleman, or Shoe Peg.**—Has a long white cob, closely filled with long small "shoe peg" kernels. It is remarkably fine flavored and sweet. Considered by many as one of the best late corns. Pkt. 5c; 1lb. 30c; 10lbs. \$2.50.

**SPECIAL PRICES** to Market Gardeners where a quantity of seed is wanted. If you grow Cabbage, Kale Cauliflower, Celery—You need a Master's Planter.

**Peep O'Day.**—Is not only one of the earliest Sweet Corns, but is very sweet and immensely productive. Stalks are dwarf, about four feet in height, but produce from two to five ears. Pkt. 5c; 1lb. 30c; 10lbs. \$2.50.

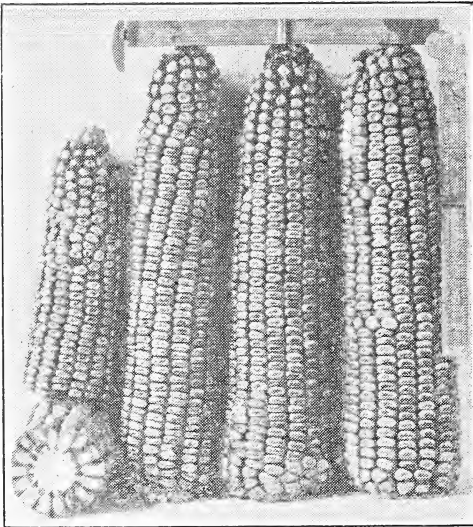
**Early Minnesota.**—This is among the earliest of the sugar varieties, and is much esteemed, not only because it matures early, but because of its excellent

#### FIELD CORN.

**Pride of the North, or Yellow Dent.**—Recommended after repeated tests, by the Agricultural College, as the best for Oregon, Washington and Idaho. A quick growing dent variety, thriving well where the summers are not very long. Bright golden color. 10lbs. \$1.75. Write for prices on larger quantities. qualities as well. Ears rather small and pointed. Pkt. 5c; 1lb. 30c; 10lbs. \$2.50.

**Champion White Pearl.**—A large, white dent variety; very popular with our dairymen on account of the great amount of green feed it makes. 10lbs. \$1.20; 50lbs. 10c per pound.

**Golden Glow.**—A very fine strain of yellow dent. Not as large a stock grower as Pride of the North, but produces fine ears of a deep golden color. 10lbs. \$1.20; 50lbs. 10c per pound.



**Minnesota 13.**—Genuine stock. This splendid variety is well known to nearly every one of our customers. It has become popular on account of its early maturing qualities, and quantity of fodder. Per pound 20c; 10lb. lots 17½c a pound.

**Smalls Yellow Dent.**—This corn which was grown near Albany, is from Minnesota 13 stock, but its parents would hardly know it now. Our soil and climate have given it a larger growth of fodder and larger ears, and yet accomplishes this in almost the same short season required by the parent stock. The Cut is from a photograph and shows ears which

while generous in proportions are not too large to be easily cured. A splendid ensilage corn, and cannot be beaten for dry shelled corn. We are making a special price, which should certainly interest you. 10lb. lots, 10c a pound; 50lb lots, 9c a pound; Sack lots 8c a pound.

**Market Gardeners Cannot Experiment.**—If you are engaged in Market Gardening, you know from past experience that you cannot afford to waste time, labor and money in experimenting with Seeds of doubtful quality. Our Seeds are Best by Test.



## CUCUMBERS.

**Culture.**—Cucumbers need a warm, rich soil, and should not be planted in open ground until the weather is settled, as otherwise they will not thrive.

Plant in hills four feet apart each way, thinning to three or four of the strongest plants, after danger from insects is past. As fast as the cucumbers attain suitable size they should be taken from the vine, whether required for use or not, as their ripening on the vine will soon destroy the vine's usefulness.



**Early Cluster.**—Fine, vigorous, producing the bulk of the crop near the root and in clusters. Fruit short, with uniformly thick end, dark green, but paler at the blossom end. A very productive sort, Pkt. 5c; 1oz. 15c;  $\frac{1}{4}$ lb. 45c.

**Long Green.**—The leading large variety. Fruit from 10 to 12 inches long. Dark green, crisp and tender. Pkt. 5c; 1oz. 15c;  $\frac{1}{4}$ lb. 45c.

**White Spine.**—One of the best sorts for table use. Vines vigorous, fruiting early and abundantly. Fruit uniformly straight, light, bright green in color with a few

white spots. Flesh crisp, tender and excellent. Pkt. 5c; 1oz. 15c;  $\frac{1}{4}$ lb. 45c.

**Gherkin.**—An extremely small fruited variety, grown exclusively for pickles. It has no value for slicing. It is very prickly, but tender and crisp if pickled when young. Seed germinates slowly. Pkt. 5c; 1oz. 25c;  $\frac{1}{4}$ lb. 75c.

**Lemon.**—A small lemon shaped cucumber of most delicious flavor. It never gets bitter or unfit for use. Vines very prolific. Pkt. 5c; 1oz. 20c;  $\frac{1}{4}$ lb. 65c.

## CORN SALAD.

**Fetticus or Lamb's Lettuce.**—A hardy winter salad, the small leaves being served like lettuce during the cool fall and early winter months. Does not succeed during warm weather. Sow seed thinly, in drills, during August, September and October. Pkt. 5c; 1oz. 25c;  $\frac{1}{4}$ lb. 75c.

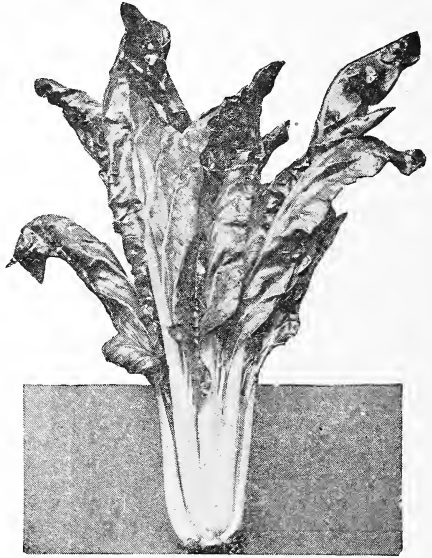
MURPHY'S SEEDS are the kind that grow. "You can't keep them in the ground." Let us help you make this the banner year by selecting Seeds of High Quality.

## SWISS CHARD.

The outside leaves of Swiss Chard are used as boiling greens, and are excellent for this purpose. They closely resemble spinach in flavor. The large white stalks are used like Asparagus. Swiss Chard grows well even during hot weather, when Spinach fails altogether. Sow 1 ounce to one hundred feet of drill.

**Lucullus.**—This is the popular variety, the stalks are large, broad and heavily ribbed, and of fine flavor. Pkt. 5c; 1oz. 15c; ¼lb. 40c.

Be sure to order early before the stocks are depleted. Advise how you want your goods shipped.



## ENDIVE.

This is a hardy vegetable cultivated principally for winter salad. Sow from May until August for a succession of crops. Tie the leaves closely together to bleach them.

**Broad Leaved Batavian.**—Large heads or broad, thick leaves which can be bleached as a salad or makes excellent cooked greens. Pkt. 5c; 1oz. 15c; ¼lb. 45c.

## EGG PLANT.

Should be started in a hot-bed and transplanted when the weather is settled and the ground thoroughly warm. They will thrive with the same treatment as that given the tomato.

**New York Purple.**—The principal market variety; plants are large and spreading. Fruit large and of deep purple. Pkt. 5c; 1oz. 45c.

## KOHL RABI.

Hardy and of easy culture. Grown from plants the same as Cabbage.

**Early White Vienna.**—Very early; bulb white; best table variety. Pkt. 5c; 1oz. 30c.

## KALE OR BORECOLE.

A species of cabbage, forming a mass of leaves. Some varieties being very beautiful and curly. The leaves are cooked as greens. The seed should be planted in September and plants will be ready to use in the winter.



**Emerald Isle.**—Medium height, very vigorous, throwing out new shoots as fast as the leaves are used. Pkt. 5c; 1oz. 25c; ¼lb. 75c.

**Thousand Headed.**—A tall variety with smooth leaves. Especially used for stock. Sow in drills 26 to 30 inches apart and thin out so as to stand 16 to 18 inches apart in rows. Use three-fourths of a pound to the acre. Can be sown broadcast, using 1½ pounds to the acre. Pkt. 5c; 1oz. 10c; ¼lb. 30c; 1lb 90c.

**Giant Marrow.**—This splendid Kale has leaf stalks thick and fleshy; also the stem is large and swollen and filled with nutritious marrow. A great

yielder of green feed. Pkt. 5c; 1oz. 25c; ¼lb. 75c.

## LETTUCE.

**Culture.**—Lettuce requires very rich soil, plenty of water, a cool growing season and intense culture to produce the best results. If the earliest varieties are planted out in the spring, and the weather turns dry and hot, they will run up to seed without heading. The same seed sown in the fall or with cooler growing weather would develop perfectly. At a temperature of 40 degrees or lower lettuce will not thrive. At 65 degrees and upward it has a tendency to run up and not head perfectly. For outside planting sow the seed in shallow drills from one to two ounces to the 100 yards. Lettuce matures in forty to sixty days from time of planting.

**New York or Wonderful.**—This is the mammoth head lettuce so popular in California from whence it is shipped to the Northern markets, arriving in splendid condition. The immense heads are solid, heavy, beautifully blanched to a creamy white with bright green outer leaves. Pkt. 5c; 1oz. 30c; ¼lb. \$1.00.

**Hanson. Improved Hard Heading Stock.**—One of the very best. Heads green outside and white inside; grow to a remarkable size, very solid, and is delicious sweet, crisp, tender. Stands the hot sun well. Pkt. 5c; 1oz. 15c; ¼lb. 45c

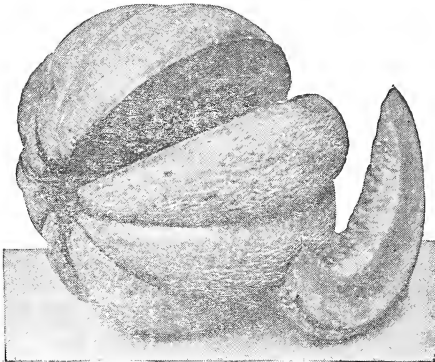
**Early Prize Head.**—Standard sort; one of the best thin leaved, clustering varieties. The very large leaves are savoyed or crimped, bright green, tinged with red, and are exceedingly tender, crisp and sweet, forming a large, loose head. Pkt. 5c; 1oz. 15c; ¼lb. 45c.

**California Cream Butter.**—A popular variety for autumn and winter use. Forms large heads which are very buttery and a rich golden yellow inside. The leaves are thick and bright green slightly tinged with brown on top of head. Pkt. 5c; 1oz. 15c;  $\frac{1}{4}$ lb. 45c.

**Big Boston.**—Plants large, hardy and vigorous. Leaves broad and wavy at edges, bright green, slightly tinged with reddish brown. Pkt. 5c; 1oz. 15c;  $\frac{1}{4}$ lb. 45c.

**Grand Rapids—For Early Forcing.**—As a lettuce for greenhouse forcing, this variety undoubtedly stands at the head of the list. Of quick growth, and stands for some days after being fit to cut. The plant is upright, and forms a loose head or cluster of forage, light yellowish green leaves. Pkt. 5c; 1oz. 15c;  $\frac{1}{4}$ lb. 45c.

## MUSKMELONS.



**Culture.**—Plant in hills four to six feet apart each way, after danger of frost is past and the ground is warm; enrich well with well-rotted manure and plant the seeds just under the surface, not too deep. One ounce to fifty hills; two to three pounds per acre.

Melons thrive best on warm, light soils, but good crops are obtained on heavy ground if it is rich and well drained; in cultivating, hill up by drawing the soil toward the plant. Use lime, slug shot or land plaster for destroying insects.

**Bay View.**—A standard variety. Fruit large (6 pounds) oblong heavily ribbed and netted. Flesh light green and of good flavor. Pkt. 5c; 1oz. 15c;;  $\frac{1}{4}$ lb. 40c.

**Burrell's Gem.**—Has a tough, thin rind, well arched ribs, covered with a closely interlaced gray netting; shape elongated, being about  $4\frac{1}{2}$  inches in diameter by 6 inches long, flesh of a reddish orange, very thick, fine grained and spicy, seedheld firmly in a triangular cavity. This is the secret of a good shipping melon. If the seeds shake loose easily a melon will quickly decay. Pkt. 5c; 1oz. 15c;  $\frac{1}{4}$ lb. 40c.

**Rocky Ford or Netted Gem.**—The most popular and best seller among muskmelons. The fruit is oval, slightly ribbed, densely covered with coarse netting. Flesh thick, green, very sweet and highly flavored. The fruit is wonderfully uniform in shape and quality. Grown largely in Colorado and shipped in carload lots all over the country. The favorite with market gardeners everywhere. Pkt. 5c; 1oz. 15c;  $\frac{1}{4}$ lb. 40c.

**Early Hackensack.**—Melons of good size. Heavily ribbed and netted. Thick, light-green flesh of fine flavor. Pkt. 5c; 1oz. 15c;  $\frac{1}{4}$ lb. 40c.

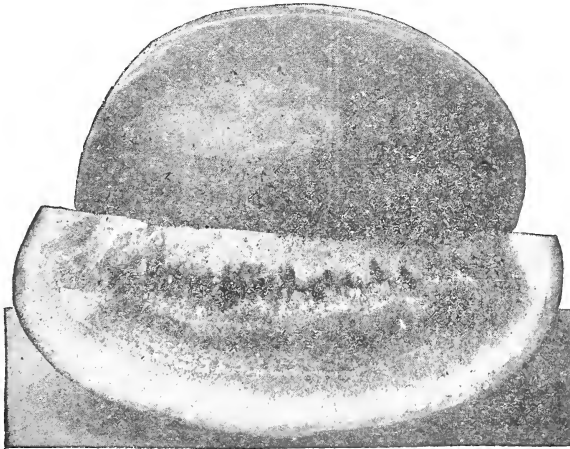
**Small Green Nutmeg.**—A variety ripening early. Flesh green, fine and sweet. Superior for the early market or family garden. Pkt. 5c; 1oz. 15c;  $\frac{1}{4}$ lb. 40c.

**Persian.**—A large Muskmelon, and heavy for its size. Heavily netted and globular. Its color is bright orange. The flavor is different from other melons and comes out delightfully when the melons are well ripened. Pkt. 5c; 1oz. 15c;  $\frac{1}{4}$ lb. 40c.

.....**Gold Lined Rocky Ford.**—There is no better melon than this sort. Of medium size, fine, uniform shape and without ribs. Slightly oval, meat thick, green and light golden toward center. Flesh very sweet and spicy. Pkt. 5c; 1oz. 25c;  $\frac{1}{4}$ lb. 75c; 1lb. \$2.25.

## WATERMELONS.

**Culture.**—Watermelons thrive best on light, well-drained soils, but give good results on any good rich garden soil that is properly drained and cultivated. Plant after the weather is settled and ground warm. Hills should be eight feet apart each way and with well rotted manure well worked into each hill. One ounce of seed will plant thirty hills.



**Sweet Heart.**—This melon has become very popular as a shipping melon. Vine vigorous and productive, ripening its fruit early. Fruit large, oval, very heavy, uniformly mottled dark and very light green; rind thin, but firm; flesh bright red, firm, solid, but very tender, melting and sweet. Fruit retains its good quality for a long time after ripening. Pkt. 5c; 1oz. 15c;  $\frac{1}{4}$ lb. 30c.

**Tom Watson.**—Has thin dark green rind and deep red flesh, crisp and sugary. Is hardy and stands handling. Pkt 5c; 1oz. 15c;  $\frac{1}{4}$ lb. 30c.

**WATERMELONS.—Continued.**

**Fordhook Early.**—A fine extra early melon. Fruit of good size, skin dark green; flesh bright and crisp, sweet and good quality; rind thin but tough. Pkt. 5c; 1oz. 15c; ¼lb. 30c.

**Halbert Honey Watermelon.**—Ripens perfectly in the cooler sections where other varieties fail. The average length is eighteen to twenty inches, both ends being blunt and fully rounded out. The rich, dark glossy green, the thin rind and the bright crimson center make the new Halbert Honey the most attractive watermelon. Pkt. 5c; 1oz. 15c; ¼lb. 35c.

**Kleckley's Sweet, or Monte Cristo.**—A splendid sort for home use or near markets. Vine vigorous and productive; fruit of medium size; oval; color dark, mottled green in two shades, forming distinct stripes. Flesh, a beautiful bright rich red; exceedingly sweet and tender. Pkt. 5c; 1oz. 15c; ¼lb. 35c.

**MUSTARD.**

Mustard is used alone as greens or with cress as salad. Sow any time in the spring, in rows, and thin out as necessary.

**Fordhook Curled.**—Beautiful dark green, finely curled leaves that are of distinctive flavor. Superior to spinach as greens. Pkt. 5c; 1oz. 15c; ¼lb. 45c.

**Southern Giant Curled.**—True curled leaf variety so popular in the south for planting in the fall to furnish early spring salad. Pkt. 5c; 1oz. 10c; ¼lb. 30c

**ONIONS.**

**Culture.**—The onion thrives best in a rather deep, rich, loamy soil, and unlike most vegetables, succeeds well when cultivated on the same ground for successive years. The best culture requires that the ground should be deeply dug and heavily manured with well rotted manure a season or two previously. Sow as soon as the ground can be prepared in the spring.

**Australia Brown.**—Early and hardy variety. The skin is thick and in color a rich brown. It is especially noted as a long keeper. Pkt. 5c; 1oz 20c; ¼lb. 60c; 1lb. \$2.00.

**White Bermuda.**—A very early variety. It is mild and of particularly fine flavor. Color pinkish straw and shape is flat. The seed we offer is grown in Teneriffe, Canary Islands, and is a fine pure strain. Pkt. 5c; 1oz. 35c; ¼lb. \$1.00; 1lb. \$3.50.

**Prizetaker.**—A very large globe shaped variety, with light yellow skin and white flesh of mild flavor. It is a heavy cropper and a fairly good keeping onion, and is very popular as a market variety. Pkt. 5c; 1oz. 25c; ¼lb. 75c.

**Red Wethersfield.**—A well known and most widely used red variety. In shape it is flattish, but thick, with very fine flesh. Is an excellent keeper as well as a heavy cropper. Pkt. 5c; 1oz. 25c; ¼lb. 75c; 1lb. \$2.25.

## ONIONS—Continued.

**Southport White Globe.**—Large, globular, pure white skin and flesh. The handsomest onion grown, very productive and of fine quality. Is used a great deal for green onions owing to the clear white stem. Pkt. 5c; 1oz. 35c;  $\frac{1}{4}$ lb. \$1.00; pound \$3.50.

**Yellow Globe Danvers.**—A very handsome, round or globe-shaped variety, of large size, with thin, yellowish skin white flesh, fine grained, mild, very firm and the best keepers. It ripens early. Pkt. 5c; 1oz. 25c;  $\frac{1}{4}$ lb. 75c; 1 lb. \$2.25.

## ONION SETS.

**Bottom Onion Sets.**—Small onions grown from seed that have been sown too thickly to attain a large size. The small onions (about  $\frac{1}{2}$  inch in diameter) thus obtained are planted out and are ready in a short time to pull as green onions for the table or bunch for the market. If left to stand they make ripe onions of the best quality, and come to maturity some six weeks earlier than a crop grown directly from the seed. Lb. 15c; 10lbs. \$1.25.

## OKRA OR GUMBO.

**Improved Dwarf Green.**—An early dwarf and prolific variety, with thick green pods. The long tender pods are very delicious when sliced and cooked in soups. While this is its chief use, it is also boiled and served like all other vegetables. Should be planted in hills, or in rows about three feet apart. Plant in any good soil when ground is in condition. The pods should be gathered when very young and then are tender. Pkt. 5c; 1oz. 10c;  $\frac{1}{4}$ lb. 25c.

## PARSLEY.

Very useful for flavoring soups, meats and for garnishing. The green leaves are used for flavoring or they may be dried crisp, rubbed to a powder and kept in bottles until needed.

**Culture.**—Parsley succeeds best on rich, mellow soil. The seed is even slower than parsnips in germinating and should be sown as early as possible in the spring in drills and when the plants are about three inches high, cut off all the leaves; the plant will then start a new growth of leaves which will be brighter and better curled.

**Champion Moss Curled.**—A compact growing, finely cut and much curled variety of a bright green color. Pkt. 5c; 1oz. 15c;  $\frac{1}{4}$ lb. 40c.

**Double Curled.**—A curled variety, very hardy and easy to grow. Deep rich green and by many preferred to the extremely curly varieties. Pkt. 5c; 1oz. 15c;  $\frac{1}{4}$ lb. 40c.

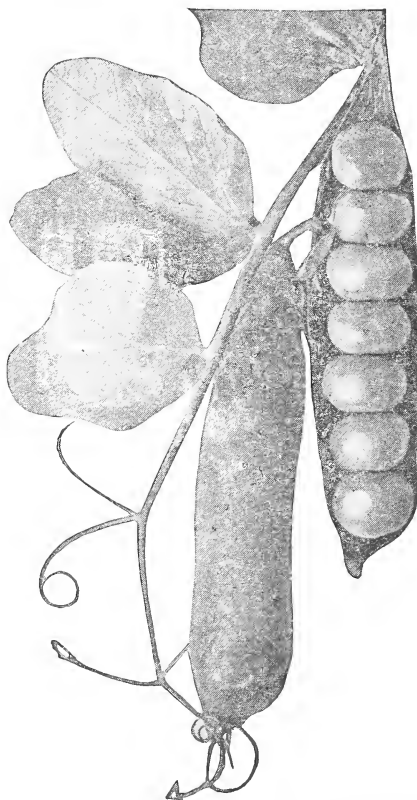
## PARSNIPS.

The Parsnip is nutritious and wholesome, with a sugary sweetness peculiar to itself, and is desirable both for the table and stock feeding. It yields a large crop, and is said to be more valuable for dairy cows than either the carrot or turnip. As the seed germinates very slowly, sow as early in spring as possible in drills fifteen inches apart on deeply cultivated, rich, loamy soil. Keep clear of weeds and thin to three or four inches apart. The roots are improved by freezing.

**Hollow Crown.**—A variety with a hollow or cup shaped top where the leaf stem begins. The most popular and best variety for all purposes. Skin smooth and white, and flesh tender while the root grows 18 to 20 inches long. Pkt. 5c; 1oz. 15c; ¼lb. 45c.

**Long Smooth or Long Dutch.**—A very long variety, with full crown, very smooth white skin. Pkt. 5c; 1oz. 15c; ¼lb. 45c.

**Tender Heart.**—True to its name, the heart of this parsnip is tender. The roots are smooth, hollow crown, thick and heavy at the top, tapering abruptly making it easy to dig. Pkt. 5c; 1oz. 15c; ¼lb. 40c.



## PEAS—GARDEN.

**Culture.**—For early peas the soil should be light and warm. Avoid fresh manure and rich, mucky soil. The peas will give quicker returns if covered only one inch deep but larger pods and more of them will be produced if the seed is planted in trenches three to six inches deep and covered with only an inch or two of soil. When the plants are five inches high, fill the trench level full. This will secure deep rooting, prevent mildew, and prolong bearing season. If peas are covered to full depth at first, or water be allowed to stand in the trench, they will not germinate or grow well.

**Alaska or Earliest of All.**—A smooth Pea well suited for Fall and Early Spring planting, as it will not rot in cold wet ground. Vines two and a half feet tall, pods small. Pkt. 10c; 1 lb. 25c; 10lbs. \$2.25.

**American Wonder.**—One of the earliest of the wrinkled Peas. Vines about twelve inches tall, bearing short well filled pods. Though small, the peas are very sweet, tender and well flavored. Pkt. 10c; 1lb. 30c; 10lbs. \$2.50.



## PEAS—GARDEN.—Continued.

**Premium Gem.**—One of the earliest dwarf varieties, coming in a little later than the American Wonder; grows taller, much more productive and continues in bearing longer. The quality of the pea is very superior. Height fifteen to eighteen inches. Pkt. 10c; 1lb. 30c; 10lbs. \$2.50.

**Carter's Daisy or Dwarf Telephone.**—Dwarf Telephone is the famous old Telephone without its long vines; of healthy, stocky growth; very productive; pods large, broad, straight and remarkably well filled with large, sweet peas of delicious flavor; very desirable. Twenty-four inches high. Pkt. 10c; 1lb. 30c; 10lbs. \$2.50.

**Gradus.**—This early, wrinkled pea bears pods of large size, and combines quality with earliness. It is very hardy; can be planted fully as early as the smooth peas; growth, vigorous and healthy; vines 2½ feet in height; very prolific. The quality and flavor are delicious, and the peas remain tender and sweet for a long time. Pkt. 10c; 1lb. 35c; 10lbs. \$3.00.

**Yorkshire Hero.**—One of the largest, sweet, wrinkled kinds; vines strong and spreading; pods of good size and well filled; much in use, and has enjoyed a long popularity; medium late; bears a long time; height, two and one-half feet. Pkt. 5c; 1lb. 30c; 10lbs. \$2.50.

**Laxton.**—A fine early tall variety, similar to Gradus, but more hardy and not quite so early. It is also a little darker in color and has large blunt pods, that fill well with peas of the finest quality. Pkt. 10c; 1lb. 35c; 10lbs. \$3.00.

**Telephone—Tall.**—Immensely productive, of the finest quality and excellent, sugary flavor, vines strong; the pods are of large size, filled with large, luscious peas; height four feet. Pkt. 10c; 1lb. 35c; 10lbs. \$2.50.

**Stratagem.**—A semi-dwarf variety with large leaves and large pods. The vines bear well and the pods are long, thick and well filled. Pkt. 10c; 1lb. 40c; 10lbs. \$3.75.

**Champion of England.**—One of the most popular tall late varieties. Is very prolific and hardy and the peas are of especially fine rich quality. Pkt. 10c; 1lb. 30c; 10lbs. \$2.50.

## PEPPER.

**Culture.**—Sow the seeds early in hot beds; or later, when the weather becomes warm, in open beds. When two or three inches high, transplant to a warm, mellow soil, in rows eighteen inches apart and a foot apart in the rows. Guano and hen manure are excellent fertilizers and will greatly increase the yield.

**New Chinese Giant Sweet.**—The largest and best of the mild Red Peppers. The fruits are four to five inches in diameter, born in clusters on the thick stocky bushes that are well branched, and grow about two feet high; color, brilliant, deep red; vigorous and about as early as Ruby King. Pkt. 5c; 1oz. 70c

**Large Bell or Bull Nose.**—Large mild, thick fleshy variety. One of the best for stuffed pickles. Pkt. 5c; 1oz. 70c; ¼lb. \$2.00.

## PEPPERS—Continued.

**Chili.**—Pods small and pointed; brilliant scarlet; very pungent when ripe. Pkt. 5c; 1oz. 80c.

**Pimento Pepper.**—This is a small pepper which you will enjoy eating in salad, either fresh or canned. Very thick flesh, wonderfully mild flavor. Pkt. 5c; 1oz. 60c.

.....Pepper Plants.—For prices see page

## PUMPKINS.

**Culture.**—Pumpkins will grow on any good farm land, but their size and quality will depend on the culture and fertility of the soil. Plant early in May, in hills six to eight feet apart. One pound of seed will plant about 300 hills. Care should be taken to keep the different varieties well apart, also away from other vining plants, as they mix and deteriorate very rapidly.

**Sweet, or Sugar.**—A handsome and productive small pumpkin ten to twelve inches in diameter; round flattened; skin, orange; flesh, deep yellow, fine grained and very sweet. Pkt. 5c; 1oz. 15c;  $\frac{1}{4}$ lb. 40c; 1lb. \$1.25.

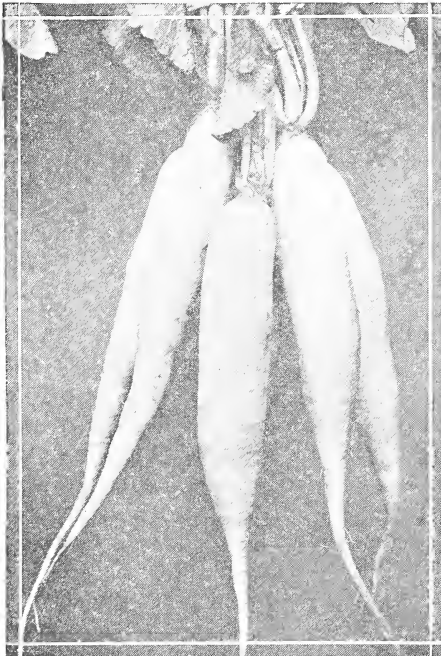
**Connecticut Field.**—Large round; deep, glossy yellow. Vine vigorous and very productive; good keeper. Grown extensively for stock feeding. Pkt. 5c; 1oz. 15c;  $\frac{1}{4}$ lb. 35c; 1 lb. \$1.00.

## RADISHES.

**Culture.**—To secure Radishes with crisp tender flesh, grow them quickly, in rich, loose soil, and gather before reaching full size. Our Radish Seed is strictly of the finest grade, being grown from carefully selected roots. Frequent planting should be made for succession, so that a supply of fresh, tender radishes in the finest condition may be had at all times.

**White Icicle.**—A handsome white variety, about five inches long, with sloping top and pointed root. Quick growing, brittle and mild in flavor. Pkt. 5c; 1 oz. 15c;  $\frac{1}{4}$ lb. 40c.

**White Strasburg.**—A large white variety for late summer use. Rather thick at the shoulder and tapering to about five inches in length. Keep firm and solid a long time. Pkt. 5c; 1oz. 15c;  $\frac{1}{4}$ lb. 40c.



## RADISHES—Continued.



**Early Scarlet Turnip.**—A small, round, red turnip-shaped radish with small top and of very quick growth; very early; rich color and crisp, tender flesh. Pkt. 5c; 1oz. 15c;  $\frac{1}{4}$ lb. 45c.

**French Breakfast, or Half-Long.**—Medium size, quick growth, crisp and tender; lower end and tap root white. Pkt. 5c; 1oz. 15c;  $\frac{1}{4}$ lb. 40c.

**Early Scarlet White Tipped.**—One of the most popular and attractive short varieties. It is globe shaped, bright rose carmine with bottom and tip clear white. Stems

and leaves small. Valuable for forcing as well as for garden and market. Pkt. 5c; 1oz. 15c;  $\frac{1}{4}$ lb. 40c.

**White Strasburg.**—A large white variety for late summer use. Rather thick at the shoulder and tapering to about five inches in length. Keep firm private gardens or market use. Pkt. 5c; 1oz. 15c;  $\frac{1}{4}$ lb. 40c.

**Long Scarlet.**—This bright scarlet, small topped variety is uniformly straight, smooth, brittle and crisp, and is a standard and excellent sort for tender; lower end and tap root white. Pkt. 5c; 1oz. 15c;  $\frac{1}{4}$ lb. 40c.

## RADISHES—WINTER.

**Chinese White Winter Radish.**—This is the largest of all radishes. Roots grow ten to twelve inches long and are solid, tender and crisp. Keeps well through winter. Pkt. 5c; 1oz. 20c;  $\frac{1}{4}$ lb. 60c.

**Chinese Rose Winter.**—A bright scarlet winter variety, about four inches long and stump rooted. Like Chinese White Winter, only red colored and two week earlier. Pkt. 5c; 1oz. 15c;  $\frac{1}{4}$ lb. 40c.

**Black Spanish Long.**—Standard winter sort, has good flavor, and keeps well. Pkt. 5c; 1oz. 20c;  $\frac{1}{4}$ lb. 60c.

## RHUBARB OR PIE PLANT.

**Culture.**—Rhubarb should have deep, rich soil. Sow in drills an inch deep and thin out the parts to six inches apart. In the fall transplant the young plants to very highly manured and deeply stirred soil, setting them four to six feet apart each way and give a dressing of coarse manure each spring. The stalks should not be plucked until the second year and the plant never allowed to exhaust itself by running to seed.

**Victoria or Mammoth.**—Very large; finest cooking variety. Pkt. 5c; 1oz. 15c;  $\frac{1}{4}$ lb. 40c.

**RHUBARB OR PIE PLANT.—Continued.**

**Giant Linnaeus.**—A large early variety, very tender and of fine flavor. Pkt. 5c; 1oz. 15c; ¼lb. 40c.

.... **Rhubarb Roots.**—It is so much easier to grow Rhubarb from the roots that nearly every home gardener does this. We have a stock of fine two-year-old roots to offer at very reasonable prices. The **Victoria** is the more popular, but we also have the **Giant Lennacus**. Four or five roots is enough to supply the average family.

Price of Roots, Each, 15c, 6 for 75c, \$1.25 per dozen.

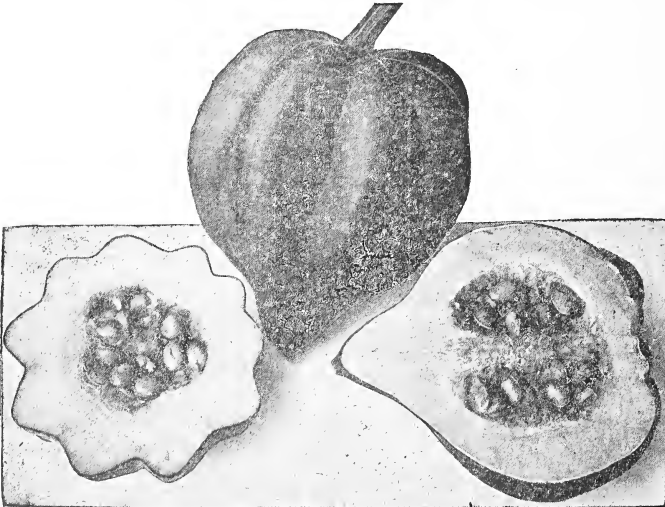
**SALSIFY OR VEGETABLE OYSTER.**

Salsify is a nutritious and wholesome vegetable, having the appearance of a small parsnip; in flavor closely resembling oysters, for which it is, in that respect, a good substitute. It is rapidly coming into more general use. Sow early in spring, in drills a foot apart, and when two or three inches high thin out to three or four inches. Its general culture is the same as that recommended for carrots. The roots are perfectly hardy and may remain in the ground during the winter, or may be stored in dry earth or sand.

**Mammoth Sandwich Island.**—The leading variety; produces a large crop of straight, smooth roots. Pkt. 5c; 1oz. 20c; ¼lb. 60c.

**SQUASHES.**

**Culture.**—The plants are very tender and sensitive to cold, and planting must be delayed until settled warm weather. The general principles of culture are the same as those for cucumbers and melons, but squash is less particular as to soil. The summer varieties should be planted four to six feet apart each way, and the winter sorts eight to ten feet. Three plants are sufficient to a hill.



## SQUASHES.—SUMMER VARIETIES.

**Yellow Summer Crookneck.**—Early, prolific, solid, curved neck; skin yellow, thin, hard and warty; flesh tender and good quality. Twice as large as the ordinary Crookneck and several days earlier. Pkt. 5c; 1oz. 15c; ¼lb. 40c; 1lb. \$1.00.

**Vegetable or Italian Marrow.**—The earliest of all Squashes. Usually eaten when quite small, but still good for the table when nearly grown. Has a distinct flavor. Color dark green at first, but changes to a light green as it matures. Pkt. 5c; 1oz. 15c; ¼lb. 40c; 1lb. \$1.00.

**White Bush Scallop.**—A well known variety of dwarf habits and upright growth. Color, creamy white. Excellent for table use while young and tender. Pkt. 5c; 1oz. 15c; ¼lb. 40c; 1lb. \$1.00.

## SQUASHES.—WINTER VARIETIES.

**New Delicious.**—This new fall and winter squash resembles the old Hubbard; average weight is between five and ten pounds. Seed cavity small; flesh exceedingly thick, compact, fine grained; color, golden orange. The flesh is mealy, granulated, tender and almost of mealy dryness, cooking sweet and rich, whether steamed, baked, boiled or made into pies. Pkt. 5c; 1oz. 15c; ¼lb. 40c; 1lb. \$1.25.

**Boston Marrow.**—A popular variety with large oval fruit. Skin bright reddish orange with light netting. Flesh orange, fine grained and of excellent quality. Pkt. 5c; 1oz. 15c; ¼lb. 35c; 1lb. \$1.15.

**Banana.**—This Squash gets its name from its shape and color. Grows eighteen to twenty-four inches long and eight to ten inches in diameter. Flesh golden yellow, thick and delicious. Is grown extensively by market gardeners and finds a ready sale. Pkt. 5c; 1oz. 15c; ¼lb. 35c.

**Golden Hubbard.**—The same in size, shape and quality as the well known Hubbard Squash, except that it is a bright red or golden color, and somewhat earlier. It is also a long keeper. One of the very best fall and winter sorts yet introduced. Maturing before the frosts; is vigorous and wonderfully productive. In flavor it has no equal. Pkt. 5c; 1oz. 20c; ¼lb. 60c; 1lb. \$1.75.

**True Hubbard.**—The best early seller and most popular variety on our list. Rind dark green, warty and very hard. Flesh light orange, very dry, sweet and rich flavored. Has no superior. Keeps perfectly through the winter. Pkt. 5c; 1oz. 20c; ¼lb. 60c; 1lb. \$1.75.

**Mammoth Chili.**—The largest of all squashes, growing to an enormous size, often weighing over 200 pounds, while its rich, fine flavored flesh insures its value for all purposes. Its size makes it valuable for stock feeding. Pkt. 5c; 1oz. 15c; ¼lb 45c; 1 lb. \$1.25.



**Mills Giant Squash.**—The cut above is from a photograph of our Show Window, taken just before Christmas. The Squash, which actually weighed 181 pounds, had been in the window for over two months and was not in the least decayed when we cut it. Mills Giant is a Mutli colored variety, very hardy, of fine texture and good flavor. Our supply of Seed is from Squashes, each of which weigh more than 100 pounds, grown near Albany. Price per ounce 15c; 1lb. \$1.25, 10lbs. \$10.00.

## SPINACH.

**Culture.**—Spinach is an easily grown plant. The seed may be sown in the fall or even through the winter to secure good Spinach early in the spring. The better and richer the soil, the larger and more tender the leaves will be. Sown broadcast, use 8 pounds pr acre. For the home garden, use one ounce to 100 feet of row.

**Improved Thick Leaved.**—Variety which grows very rapidly, forming a cluster of large, very thick, slightly savoyed leaves of fine color, and quality, when cooked. Best for market gardeners. Pkt. 5c; 1oz. 10c; ¼lb. 25c.

**Bloomsdale Savoy.**—Leaves large, round and thick, very much savoyed and rich deep green. One of the earliest varieties. Splendid for shipping. Pkt. 5c; 1oz. 10c; ¼lb. 25c.

**Long Standing.**—A deep green variety with rather elongated smooth leaves. Seed round. Stands a long time without running to seed. Pkt. 5c; 1oz. 10c; ¼lb. 25c.

## TOMATOES.

TOMATOES are very sensitive to frost and should not be set out in the open until about May 1st. The Seed must be sown in well protected hot beds, sowing same about March 1st. As soon as they have four leaves, transplant into cold frames or boxes, which can be protected.

We have selected varieties which are best adapted to our soil and climate and which will produce the best results.



**Bonny Best.**—An early scarlet fruited variety which has proven very popular. Is about ten days earlier than Chalks Early Jewel, which it resembles.

It is smooth and vry even in size, solid and prolific. Pkt. 5c; 1oz. 50c;  $\frac{1}{4}$ lb. \$1.50.

**Chalk's Early Jewel.**—Large bright red, smooth round fruits, very deep and colored evenly up to stem; very solid, almost seedless and of the finest flavor. Vines are vigorous, not subject to blight, and yield fully equal to or better than Earliana, but ten days later. Pkt. 5c; 1oz. 50c;  $\frac{1}{4}$ lb. \$1.50.

**Earliana (Sparks).**—The earliest tall variety. The fruit is large, smooth of a bright scarlet color and of fine quality. Pkt. 5c; 1oz. 50c;  $\frac{1}{4}$ lb. \$1.50.

**Early Detroit.**—A new Tomato of merit. Fruit smooth, uniform, nearly globe shaped, firm and fine quality; color purplish-pink. Season early. Pkt. 5c; 1oz. 50c;  $\frac{1}{4}$ lb. \$1.50.

**Perfection.**—One of the best medium early, round, uniformly smooth; vines very productive; fruit deep scarlet, firm and of excellent quality. Vines continue long in bearing. Pkt. 5c; 1oz. 50c;  $\frac{1}{4}$ lb. \$1.50.

**Ground Cherry, or Husk Tomato.**—Grows to great perfection under ordinary culture, yielding abundantly; very much prized for preserving; should be in every garden. A small variety that is covered by a loose covering or husk. The true edible variety is yellow. Pkt. 5c; 1oz. 50c.

**Stone.**—A very fine Tomato, large, smooth and solid. Bright red in color and a good yielder, but it is quite late. Pkt. 5c; 1oz. 50c.  $\frac{1}{4}$ lb. \$1.50.

**TOMATOES.—Continued.**

**Dwarf Champion.**—Forms a strong, erect, bushy plant two feet high, often sold as tree tomatoes. Fruit smooth, medium sized, solid, of good flavor, of purplish carmine color. Pkt. 5c; 1oz. 60c; ¼lb. \$1.75.

**Tomato Plants.**—For prices see Plants, Page 31.

**TURNIPS.****EARLY GARDEN TURNIPS.**

For early use sow the small sorts as soon as the ground can be worked in the spring, in drills fourteen inches apart. As the seed is very fine, it should be covered but slightly, except in very dry weather. For fall and winter use, sow the early kinds during July, August and September.

**Extra Early White Melan.**—A very early variety, medium sized, flat and clear white. A fine home garden variety. Pkt. 5c; 1oz. 20c; ¼lb. 60c; 1lb. \$1.75.

**Purple Top Strap Leaf.**—A leading white-fleshed variety, and one of the best, either for family, market garden or field crop. It is medium size, and produces a large crop. The flesh is firm, but tender, and of a superior rich buttery flavor. Pkt. 5c; 1oz. 15c; ¼lb. 45c; 1lb. \$1.25.

**Purple Top Flat Dutch (Strap Leaf).**—An early variety, white with purple top. Probably the most popular garden variety. It matures quickly and has fine grained flesh of mild flavor. Pkt. 5c; 1oz. 15c; ¼lb. 45c; 1lb. \$1.25.

**Yellow Globe.**—Undoubtedly one of the most delicate and sweetest yellow-fleshed turnips yet introduced. Not of large size but firm, hard and most excellent flavor. Keeps well and is superior as a table variety. It is extensively used by market gardeners. Pkt. 5c; 1oz. 15c; ¼lb. 40c; 1lb. \$1.20.

**MAIN CROP TURNIP.**

**Purple Top White Globe.**—A large, globe-shaped variety; purple above the ground. It is handsome and of excellent quality, and recommended both for the family garden and field crop. Pkt. 5c; 1oz. 15c; ¼lb. 35c; 1lb. \$1.00.

**Pomeranian White Globe.**—One of the most productive kinds, and in good, rich soil roots will frequently grow to twelve pounds in weight. It is of perfect globe shape; skin white and smooth; leaves dark green and of strong growth. Pkt: 5c; 1oz. 15c; ¼lb. 40c; 1lb. \$1.00.

**Cowhorn.**—Sometimes called Long White. Slightly crooked. Pure white except a little shade of green at the top. Grows half out of the ground and is of very rapid growth. Is delicate and well flavored. Has proved itself one of the best stock turnips ever introduced in Oregon, as it is an immense yielder. Pkt. 5c; 1oz. 15c; ¼lb. 40c; 1lb. \$1.25.

**Yellow Aberdeen.**—A medium sized variety, generally used for stock feeding. It is yellow with a purple top. Flesh light yellow. A winter variety. Seed can be sown in summer. Pkt. 5c; 1oz. 15c; ¼lb. 35c; 1lb. \$1.00.



## TURNIPS.—Continued.

**White Egg.**—A Quick growing, small, egg shaped, pure white. Flesh very sweet, firm and mild. Pkt. 5c; 1oz. 15c; ¼lb. 45c; 1lb. \$1.25.

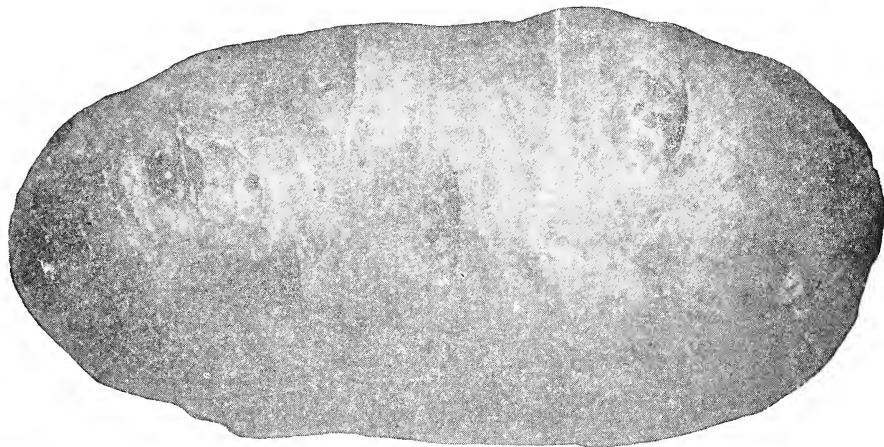
## RUTA BAGA OR SWEDES.

**American Purple Top.**—The leading standard variety, being very distinct in type, attaining a wonderfully large size; immense yielder. The flesh is yellow, very firm, and superior in every way, valuable alike for all purposes. Pkt. 5c; 1oz. 15c; ¼lb. 35c; 1lb. \$1.00.

**White Sweet Russian.**—This variety is most excellent, either for table or stock. It grows to a very large size; flesh white, solid, of firm texture, sweet and rich; an excellent keeper. Pkt. 5c; 1oz. 15c; ¼lb. 35c; 1lb. \$1.00.

## SEED POTATOES.

A deep mellow loam, rich in humus, furnishes ideal conditions for growing potatoes, but good crops are raised on both heavier and lighter types of soils. Early varieties may be planted as soon as the ground can be prepared. Late varieties May 20 to June 20, rows 3½ feet wide, 20 inches in row, cut to 2 eyes. To prevent blight, soak potatoes before cutting for two hours in a solution of 1oz. Formaldehyde to two gallons of water. The following varieties are best adapted to our soil and conditions.



Prices on potatoes are subject to market changes. Ask for quotations on larger lots.

**Earliest of All.**—A handsome shallow eyed, white skinned potato of finest table quality. Is a healthy vigorous grower not subject to blight or disease. Keeps as well as any late potato. Price: 10lb. lots. 75c. Write for prices.

**Early Rose.**—Our stock of this variety is an improved strain; is very vigorous and extremely early. 10lbs. 75c. Write for prices.

## SEED POTATOES.—Continued.

**Early White Prizetaker.**—A handsome early white potato, one of the finest of fall early sorts, being oblong in form, four or five inches in length, with white smooth skin and few eyes. It is a very superior cooking potato either baked or boiled, cooking up dry and fluffy. 10lbs. 75c; 100lbs. Write for Prices.

**American Wonder.**—The American Wonder is one of the best all-round white potatoes in cultivation. It is practically blight-proof, a strong grower, a great producer; tubers white, uniform in size; elongated; of excellent quality. It is a potato sought after. 10lbs. 65c; 100lbs. Write for Prices.

**Netted Gem.**—One of the very best main crop potatoes, rather long, smooth, and the light russet skin is finely netted. The flesh is very white, floury, and they bake quickly. 10lbs. 65c; 100lbs. Write for Prices.

**Burbank.**—A standard commercial variety. We offer a splendid strain of select Burbanks, not the "run-out" stock generally seen, but the genuine article, which is really a good potato. 10lbs. 65c; 100lbs. Write for Prices.

## PLANTS.

## STRAWBERRY PLANTS.

The strawberries here offered have all stood the market test and you will be safe in selecting any one of them that will suit your conditions and requirements. They are the best varieties obtainable.

## Special Prices on Large Quantities.



**Gold Dollar.**—One of the earliest berries on the market. Fruit medium size and attractive; rather tart, fine flavor. Foliage heavy, large and spreading, which protects the blooms from early frosts. Doz. 25c; 100 \$1.00.

**Oregon.**—One of the most satisfactory berries. They are large and fine, rich dark red, and of delicious flavor. Ripen early. Doz. 25c; 100 \$1.00.

**Marshall.**—A very popular variety. Berries not so large as others but very solid, attractive and excellent flavor. The leading canning variety. Doz. 25c; 100 \$1.00.

**Magoon.**—Berries large, fine and excellent. Subacid flavor. Bears heavily throughout the season. Doz. 25c; 100 \$1.00.

## VEGETABLE PLANTS AND ROOTS.

We are prepared to furnish in season choice transplanted plants, which are well rooted and easy to grow. We supply all the leading varieties.

## PLANTS.—Continued.

**Cabbage Plants.**—Hardy, well developed plants of all varieties are carried in stock in season. . We pack them in moist moss and oiled paper for Parcel Post shipment. You may be sure of their reaching you in excellent condition. One dozen 20c; 6 dozen \$1.00. Attractive prices on 500 and 1000 lots.

**Cauliflower Plants.**—We are prepared to supply our customers with very choice, well hardened plants, from March 1st to May 1st. These plants are grown in hot beds, then transplanted to cold frames and given as much exposure as they will stand, to make them vigorous, and hardy.

Early Snowball, is the most popular variety. Per dozen 25c; 5 dozen \$1.00.

**Celery Plants.**—It is a task to raise good, hardy Celery Plants. They should be transplanted twice, cut back to make stocky growth, and well rooted before being set in the open.

We are prepared to supply Plants which are grown by experts, and may be depended upon to produce satisfactory results.

Per dozen 15c; per hundred \$1.00. Thousand lots at much reduced prices.

**Tomato Plants.**—Stocky, well developed plants of all the leading varieties furnished promptly in season. Single dozen 25c; per hundred \$1.50. Thousand lots, much cheaper. Write for prices.

**Pepper Plants.**—Ready May 1st. Chinese Giant, Bull Nose and Chili. Vigorous, well hardened plants. These will give you excellent results and save you all the work of raising plants from the seed. Per dozen 25c; 5 dozen \$1.00.

If any of these plants are wanted in large lots, ask for prices, stating variety and amount wanted.

## CLOVER AND GRASS SEEDS.

**IMPORTANT, READ CAREFULLY.**—Clover, Grass and Field Seeds are subject to market changes, therefore we cannot print prices good for any length of time. When ready to buy, write us for special prices, stating quantity wanted; or send in your order at catalogue prices. We guarantee that we will give you full value for the money sent, whether the price at the time you order be higher or lower, or if the difference is very great, we will notify you before shipment.

There are many varieties of grass and forage plants offered by Eastern seedmen (often under new names) that will not give profitable crops in our climate, and to avoid disappointment, we refer you to the following list, which has been carefully selected and contains the most desirable varieties for the general and special purposes.

## ALFALFA.

The land should be prepared by deep plowing and thorough harrowing, and should be well drained, for Alfalfa will not stand moisture too close to the surface. It can be drilled or broadcasted in and from 15lbs to 25lbs per acre is

## GRASS SEEDS.—Alfalfa—Continued.

required. It is best to sow in the fall, after the first rain, but can also be sown in the spring.

**Dry Land Alfalfa** is the principal variety used in the valley, as it does not require irrigation, and produces large profitable crops of hay and excellent pasture. 10lb. lots, 25c per pound. Write for prices on larger quantities.

**Grimm Alfalfa**.—This strain is much more hardy than any other variety. It will stand through the cold wet winters and driest summers. It produces a good growth on poor land, not usually considered fit for Alfalfa. Per pound 75c; 10 pounds for \$7.00. Sow 10 to 12 pounds to the acre.

## CLOVER

**Crimson or Italian Clover**.—An annual variety, growing 20 to 30 inches high and having long crimson blossoms. Grows quickly in cool weather and is of great value to sow in the fall as a cover crop to turn under in the spring. 10lb. lots, 25c per pound. Write for prices on larger quantities.

**Sweet or Bokhara Clover**.—Grows three to five feet high, covered with small white flowers of great fragrance. Very valuable for bee pasture. 10lb. lots, 26c per pound. Write for prices on larger quantities.

**Red Clover**.—The standard Clover for all purposes. Hardy and succeeds well on any good soil. Makes superior hay—especially if mixed with Timothy—either for dairy cows or for general use. 10lb. lots 30c per pound. Write for prices on larger quantities.

**White Dutch Clover**.—A small variety, having a white blossom. Of a vining nature, spreading rapidly. Superior for pasture and unsurpassed for the production of honey. It makes a beautiful lawn when mixed with Blue Grass. Per pound 70c. Choice seed slightly mixed with Alsike, Per pound 45c. Ask for samples.

**Mammoth Red Clover**.—Grows very large and is used almost exclusively for plowing under for manure... 10lb. lots, 32c per pound. Write for prices on larger quantities.

**Alsike or Swedish Clover**.—A perfectly hardy perennial variety which is rapidly growing in popular favor. Excellent for hay and pasture. Valuable for bees. Resists both drought and excessive moisture. The hay of this variety is greatly preferred by some to that of Red Clover, for the reason that it is generally finer, brighter and not so dusty, making it better for horses. Fancy, 10lb. lots 25c per pound. Write for prices on larger quantities.

WE KNOW this territory, know the soil and its needs, and have selected our stock of Seeds, Fertilizers, Etc., with a view of always furnishing the variety and kind which is best adapted to our soil and climate.

We invite your criticism as well as your praise, and when in Albany, come in and see us.

## GRASS SEEDS.

**Kentucky Blue Grass.**—As this grass takes some time to become established it is preferably sown in mixtures for pasturage. It is truly perennial and prefers lime soil, for pasturage, sow 50lbs. to the acre. Per pound 40c; 10lbs for \$3.50.

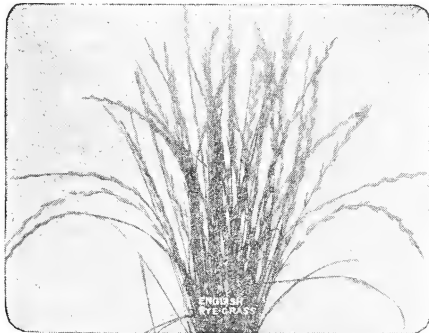


**For Lawns.**—Kentucky. Blue Grass is used very extensively for lawns and is found in all lawn grass mixtures. Sow 1lb. to 200 square feet if used alone.

**Oregon Rye Grass.**—This seed produces a splendid pasture in the valley and is used extensively on the hills of Southern Oregon for pasture and hay. It is a mixture of English and Italian Rye Grasses and seems to produce better results than either variety, when used separately. The Seed we offer was grown especially for us, and was cleaned in our own mill. We shall be glad to send you a sample for your inspection and for testing its fertility, if you care to do so. Price, in 10lb. lots, 14c per pound.

**SPECIAL.**—A 70lb sack will be sent postpaid to any one in the first and second zones, for \$7.00. Try it.

**English Rye Grass.**—A strong growing, hardy perennial grass, noted for its nutritive qualities. It is equally valuable for both grazing and hay. Valuable for planting early on dry hillside, as it grows very quickly. A good lawn grass, but a little coarse. 10lb. lots, 14c per pound. Write for prices on larger quantities.



**Italian Rye.**—A quick growing grass, attaining a height of 2½ to 4 feet; very desirable for temporary meadows or pastures. Sown in the fall will produce an excellent hay crop the following season, but lasts only one year. Thrives best on soils that are slightly moist, and will even stand considerable overflow. Grows easily and bears an abundance of foliage that makes the best and sweetest hay imaginable. Sow 40 pounds to the acre.

10lb. lots, 15c per pound. Write for prices on larger quantities.

**Sudan Grass** is an annual plant with fibrous roots like the cultivated sorgums. In growing seasons, where the growing period is long, one can secure as many as four cuttings. It has been grown successfully on almost every class of soil, and after a thorough trial has proven its adaptability to

## GRASS SEEDS.—Sudan—Continued.

Oregon soil and climate. Sudan Grass Hay is superior to millet hay and is said to be equal to timothy. On account of its upright growth, it would be excellent grown in combination with legumes. The seed should not be planted until the soil has become warm. Two to four pounds of seed will be required per acre if seeded in rows 36 to 40 inches; sixteen pounds if sown broadcast. 10lb. lots, 15c per pound. Write for quantity prices.

**Timothy.**—This is the most valuable of all grasses for hay. Thrives best on moist, loamy soil. Sow early in the spring or fall. Not adapted for pasture as there is little growth after cutting, and tramping of stock soon destroys it. Sow 15 to 20 pounds per acre. Choice Idaho Seed. 10lbs. lots, 15c per pound. Write for prices on larger quantities.



**Orchard Grass.**—One of the most valuable of all the cultivated grasses, blooming with Red Clover, and making with it admirable hay. As a pasture grass it is more productive than any other, and does best under close feeding. It succeeds well in quite shady places. Sow 28 pounds per acre. 10lbs. 32c per pound. Write for prices on larger quantities.

**Mosquito.**—Also known as Velvet Grass, is of little agricultural value, except for pasture on light sandy or marshy soils, where other grasses will not grow. Is used extensively on slashings or burns. Sow 15 pounds per acre of hulled seed. 10lb. lots, 22c per pound. Write for prices on larger quantities.

**Red Top.**—A good perennial grass. Generally sown for permanent pasture. Does best on moist or even marshy land. If the ground is not overflow land it is advisable to mix it with Meadow Fescue, Orchard Grass or Alsike Clover. Sow 28 pounds per acre chaff seed; 14 pounds hulled. Choice Hulled, a very superior grade of Red Top that is free from chaff and light seed. 10lb lots. 32c per pound. Write for prices on larger quantities.



**Meadow Fescue, or English Blue Grass.**—A valuable grass for permanent pasture and for meadows for cutting which are rather damp. Makes a quick second growth, but does not do well on dry soils. Often sown in mixtures. 10lb. lots, 45c per pound. Write for prices on larger quantities.

**Creeping Bent Grass.**—Being of fine texture, this grass is most valuable for lawns, and permanent pastures. Specially adapted to moist situations. It is of rapid growth and spreading habit. Per pound 60c.

## GRASS SEEDS.—Continued.

**Tall Meadow Oat Grass.**—Of rapid luxuriant growth, recommended for soil-ing and in permanent hay mixtures. Also for winter grazing. It is best sown with other grasses and should not exceed one-fifth of the total amount of seed sown. Per pound 50c; 10lb. lots, 45c per pound.

**FIELD AND MISCELLANEOUS FARM SEEDS.****BUCKWHEAT.**

**Buckwheat** is a valuable crop and can be easily grown wherever wheat will grow, producing a good yield even on light or poor soil and under favorable conditions is very profitable, being in big demand for milling—and is also the best “Bee pasture.” Sow late in spring when the ground is warm.

**Silver Hull.**—Of a light gray color, rounder than the common; has a thin husk; matures earlier and yields heavily. An excellent milling variety. Per pound 10c; 100lbs. \$8.00.

**Japanese.**—Ripens early, is hardy and yields a large crop. The grains are extra large, dark brown, very thin hulled and makes the highest grade of Flour. Per pound, 10c; 100lbs. for \$8.00.

**BARLEY.**

As barley is a shallow rooted crop, the soil should be made very fine and firm with plenty of available plant food. Barley is a crop that will succeed best when sown about corn planting time.

**Beardless.**—The earliest barley known. The straw is about the height of the Common Barley, but better, and will stand up on any land; with good season and land, has produced 80 bushels per acre. Sow as early as you can; frost does not hurt it. Many farmers will not grow barley on account of the long hard beards which are so disagreeable in threshing, although it is a profitable crop. This is beardless, and as easy to grow and handle as oats. It is becoming more popular each season. \$5.00 per 100lbs, subject to change.

**Common, or Bearded Barley (Fall).**—We endeavor to have a nice clean stock of good Seed Barley on hand at all times. This is the common six row bearded type. \$5.00 per 100 pounds, subject to change without notice.

**White Hulless, or Bald Barley (Spring).**—A grand barley for stock feeding. Grain plump, heavy and when threshed is hulless like wheat. A heavy cropper. When grown and cut for hay it produces a magnificent fodder, which is very rich and almost equal to a grain feed. Much relished by horses and stock of all kinds. An excellent hog feed. Culture the same as that of Common Barley. \$5.50 per 100lbs. subject to change.

**Hannchen.**—A new variety, recommended by the O. A. C. Sown about the tenth of April. Will yield more than fifty bushels to the acre. It is the two row bearded variety. \$5.00 per 100lbs. subject to change.

## FIELD AND MISCELLANEOUS FARM SEEDS.—Continued.

## CHEAT SEED.

Cheat yields a good crop of hay, especially on low or moist soil and will stand considerable overflow without harm. It makes an excellent hay for cows or horses, but should be cut before it gets too ripe. Sow in the fall same cultivation as oats and about 100 pounds per acre. Per 100lbs. \$3.00. Write for prices on large quantities.

## FIELD PEAS.

Field Peas are a very profitable crop and are grown here very extensively. They can be grown alone or with oats. When planted with grain and cut green they make a large amount of very rich feed; also very valuable for enriching the soil if plowed under. The dry peas make excellent hog-feed and are quite fattening. Sow, if alone, 120 pounds to the acre; if with other grain, 60 pounds.

**White Canadian.**—A leading kind; seed almost white; a heavy cropper. 10lb. lots, 14c per pound.

**Blue Prussian Peas.**—Very much like the above, except in color. This variety is largely sold for soup peas. 10lb. lots, 15c per pound. Write for prices on larger quantities.

## COW KALE.

(Or Thousand Headed Kale).

The great demand for this wonderful forage plant proves it to be the most valuable green feed for Pacific Coast dairy and stockmen; endorsed by Agricultural Colleges and Government Stations. Cow Kale should be grown in the same manner as cabbage. Make the rows 4 feet, plant 3 feet apart in the row. Can be set as late as July. Seed 1oz. 10c; 1lb. 90c. Plants, 100, 50c; 1000, \$4.00.

## MILLETS.

Sow in April, May or June, 12 to 15 pounds for seed or 20 to 30 pounds for hay per acre.

**German or Golden.**—An improved variety, yielding a larger crop of seed than the Common Millet. It is also taller than the Common, and yields a heavy crop of hay. 10lbs. for \$1.20. Write for prices on larger quantities.

**Hungarian.**—A dwarf annual Millet. It is finer than the Common or German Millet, but produces a closer stand and yields almost as much per acre as the taller varieties. Superior for hay. 10lbs for \$1.20.

**Common.**—A variety growing from three to four feet high, having rather broad blades and strong stalks. 10lbs. for \$1.20.

## RYE.

**Winter.**—Grown for hay by dairymen, but principally for grain. Is also planted with Vetch and in combination makes an excellent fodder. 10lbs 70c; 100lbs. \$5.00.



**FIELD AND MISCELLANEOUS FARM SEEDS.—Continued.**

**Spring Rye.**—Can be used late in the spring, when too late to plant Fall Rye. Does not stool as much as Fall Rye, but makes good growth with heavy yield of seed. 10lbs. 70c; 100lbs. \$5.00.

**EMMER OR SPELTZ.**

A grain somewhat resembling barley. Is adapted to any land which will raise oats. Yields 40 to 60 bushels to the acre and an immense amount of fine straw. A splendid hog and chicken feed. 100lbs. \$5.00.

**VETCH OR TARES.**

(Greatest Forage Plant).

**Common or Winter.**—A plant resembling pea vines and valuable for forage or green manure. It is usually sown with oats, wheat or rye to hold them up. Sow.... 60 pounds per acre with grain or 80 to 100 pounds if sown alone. It is very hardy and makes a fine winter growth. 10lbs. \$1.00. Write for prices on larger quantities.

**White Spring or Pearl Vetch.**—Can be sown when it is too late to sow the winter vetch. Makes a good growth when sown as late as April. Use same amount of seed and sow in same manner as the winter vetch. 10lbs. \$1.25. Write for prices on larger quantities.

**RAPE, DWARF ESSEX.**

One of the best forage plants, producing immense quantities of green feed when grass and other crops are dried up. Per pound 14c; 25lb. lots, 12c per lb.

**SEED WHEAT.**

Write us for quotations when you are ready to buy seed wheat. We carry the best varieties adapted to our climate and soil, and will quote you the lowest market price, quality considered.

**Early Wonder.**—An excellent variety for sowing either spring or fall. Is early and yields well. 100lbs. \$5.00.

**Forty Fold.**—A favorite winter variety in many localities. Is quite early, resembles Blue Stem, and is in good demand for milling. 100lbs. \$4.00.

**Early Baart.**—A bearded spring wheat. Has large white grains of the finest milling quality. Is fully as early as Marquis. 100lbs. \$5.00.

**Marquis.**—A beardless spring wheat, which is a cross of Red Fife and Hard Calcutta. Produces heavy heads, shorter straw than Red Fife. 100lbs. \$5.00.

**SEED OATS.**

We offer select, recleaned, well-matured seed oats of standard varieties, suitable for this section.

**Three Grain.**—One of the best varieties for spring planting. The oats are large and plump. 100lbs. \$4.00.

**FARM AND MISCELLANEOUS SEEDS.—Oat Seed—Continued.**

**Gray Winter.**—This oat is planted extensively throughout the Northwest as a fall or winter oat. Is well and favorably known, being a good yielder, and the oats are large and plump. 50lb. lots, 5c a pound; 100lbs. \$4.50.

**Climax (Tree Oats.**—For early spring planting. Especially good for hay. 100lbs. for \$4.00.

**FLOWER SEEDS.**

We have a very complete line of flower seeds in 5c and 10c packets, but for lack of room in our catalogue cannot list them. Send us your orders for flower seeds and we will see that they are promptly and carefully filled.

**SWEET PEAS.**

The new "Spencer" type has lovely waved and fluted flowers of gigantic size, and in exquisite colorings, length of stem and lasting qualities are much superior to the older types. "Spencers," however, are very shy seeders and require much careful selection to develop fixed types. The seed is therefore scarce, and cannot be cheaply produced. We carry the following varieties in bulk and sell as little as 5c worth, at 50c per ounce. Any variety.

**Ethel Roosevelt.**—Primrose, with light pink flakes and stripes. Most beautiful deep cream pink sweet pea.

**Fiery Cross**—Brilliant flame color.

**Illuminator**—Brilliant orange scarlet.

**Sterling Stent**—Metallic Salmon.

**Masterpiece**—Large wavy lavender tinted mauve.

**Afterglow**—Violet blue and rosy amethyst.

**Blue Picotee**—White with narrow edging of blue.

**American Spencer—Red and White.**—The largest and finest of its class, pure satiny white, striped and splashed brilliant crimson; flowers of perfect form borne on long stems.

**Apple Blossom Spencer—Rose and Pink.**—A truly giant flower; color, standard rose with deep veining, wings light carmine, ground color, primrose.

**Countess Spencer—Pink.**—The first Sweet Pea of the Spencer type. Flowers extremely large, beautifully expanded, crumpled and waved, color silvery white suffused and tinted with soft shell pink, deeper at the outer edges.

**Othello Spencer.**—Very deep maroon, of largest Spencer Type; wings very wavy, large and drooping; the finest of its color.

**King Edward Spencer.**—Bright Crimson Scarlet, largest size, wavy standard, drooping wings, very long stems; one of the finest bright reds.

**Primrose Spencer.**—Truly primrose color. Very vigorous, free-flowering, excels in beauty of form, length of stem and keeping qualities.

## FLOWER SEEDS.—Sweet Peas—Continued.

**Captain of the Blues.**—Clear purplish blue, light at edges.

**Duplex Cream.**—Color a deep cream. The standards are larger, bold and beautifully curved.

**Asta Ohn.**—Lavender, soft pinkish shade. Very large and wavy.

**King White.**—The newest and most beautiful white, of perfect type.

**Mixed Spencers.**—This splendid mixture contains nearly all varieties of the Spencer type, mixed for the benefit of those who wish all varieties, but do not care to keep them separate. The flowers are the same as those produced by the straight varieties. Royal Mixed, per ounce 25c;  $\frac{1}{4}$  lb. 75c.

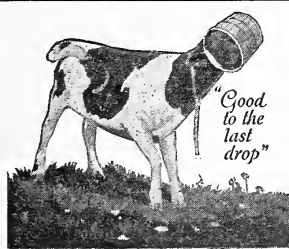
## CUPID OR DWARF SWEET PEAS.

These grow from four to six inches high, and are beautiful grown in pots or planted for borders. White, Pink, Scarlet, Primrose, Lavender, Striped, Maroon or Mixed. Price, Pkt. 5c; 1oz. 35c.

## NASTURTIIONS.

Nasturtions are hardy annuals, of easy cultivation and flower best where the soil is not too rich. The new hybrids include variols shades of rose, salmon, bright red, pale yellow, etc., either self-colored or spotted, striped and margined

For covering trellises, fences, arbors, piazzas, trailing from vases, over rock-work, for bedding, etc., nothing can equal the gorgeous effect produced by their marvelous wealth of bloom, born in uninterrupted splendor from early summer until cut down by frost. Either Tall or Dwarf. Pkt. 5c; 1oz. 10c.



## Blatchford's Calf Meal

The complete milk-equal—contains all the elements of milk and is just the thing for weaning the calves as soon as they can be taken away from the cow. Then all the milk may be sold and you get the benefit of the high creamery prices.

It is the only calf meal that is thoroughly cooked and prepared for digestion.

*Sold in 25-lb., 50-lb., and 100-lb. bags*



## Blatchford's Pig Meal

Weans your little pigs easily, quickly and safely. It keeps them growing sturdily, rapidly and profitably, bridges the critical weaning period and always makes the runts catch up.

*Sold in 25-lb., 50-lb., and 100-lb. bags*

## Blatchford's Milk Mash

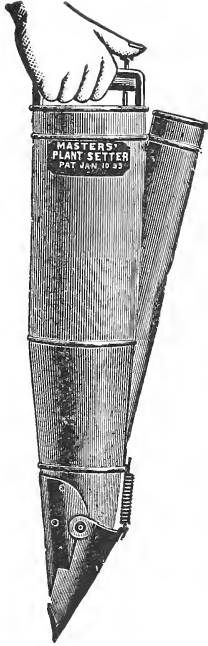
Indispensable for fattening broilers, roasters and capons, and putting show birds in the pink of condition for poultry shows.

Five pounds raises one chick from the shell up to three months old.

*Sold in 25-lb. and 100-lb. bags and 4-lb. cartons*

Blatchford Booklet No. 17 describes fully the Blatchford products. It's free for the asking.

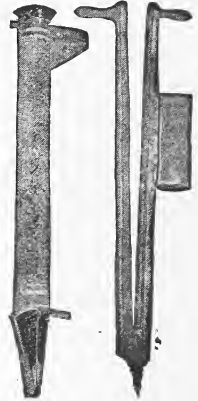
## FARM TOOLS.



**Masters' Plant Setter.**—For planting Cabbage, Tobacco, Celery and small plants of any kind. With this handy tool you can set, water and fertilize ten thousand plants per day. It is simple, durable, practical and sure in its work. Price each, \$6.50.

**Potato Planters—Peerless.**—This is the lightest and best tuber planter made. With this planter one man can plant several times as much ground without getting a lame back as he can plant by hand. The planter locks itself as it is lifted out of the ground, so that the next potato may be dropped in at once, and opens automatically as the top of it is moved forward in walking. (See cut). Price each, \$2.00.

**Corn Planter—Acme.**—A two-hand planter; light, strong and durable. Especially adapted for planting in heavy, cloddy or stony soils. The seed dropper of the Acme is a straight slide, which vibrates horizontally and will drop seeds ranging from pop corn to large kidney beans. Made with spring, brass cut-off and steel blades. (See cut). Price each, \$1.75.



Peerless... Acme.

**Gordon Automatic (one hand).**—Much easier to operate than the Acme. Requires only one hand, either right or left. Puts the right number of kernels just where you want them. Price each \$3.00.

## FERTILIZERS.

The best results are obtained by applying fertilizers in the late fall or early spring. The average amount used is 600 to 1000 pounds per acre, but two or three times this amount is often used to advantage by market gardeners.

**NOTE.**—As Fertilizers are sold on a small margin, prices are subject to market changes, but you will always get full value for your money.

**Land Plaster—Sulphate of Lime** is a combination of lime, sulphuric acid and water, which combination is known as Gypsum. Lime is not a direct fertilizer in itself, but it takes the place of potash in certain chemical combinations existing in the soil, thereby releasing the potash and rendering it available as a plant food. For clover or other forage crops apply 40 to 50 pounds to the acre. Apply when growth begins in the spring or half at that time and the balance when there is a growth of a few inches.

**Apex Brand (made in Oregon).** 100lbs. 75c; ton lot, \$13.50.

## FERTILIZERS.—Continued.



**Gromore.**—A highly concentrated fertilizer containing 6% Nitrogen, 9 to 10% Phosphoric Acid, 5% Potash. One pound sufficient for 50 foot row of vegetables. Ask for booklet which gives valuable instructions for growing garden crop. Price, 2lb. package, 35c; 25lb. bag, \$2.35.

**Winner Brand No. 1.**—For orchards, Berries, Grain, Corn, Grass, Clover and early truck crops. Nitrogen, 2%, Phosphoric Acid, 10%, Potash, 2%. Price, 10lb. lots, 3½c per pound; 100lbs. \$3.10.

**Winner Brand No. 2.**—For Vegetables, Cabbage, Tomatoes, Sugar Beets, Onions and Potatoes. Nitrogen, 1%, Phosphoric Acid, 10%, Potash, 3%. Price, 10lb. lots, 3¾c per pound; 100lbs. \$3.25.

**Winner Brand No. 3.**—For Strawberries, Melons, Squash, Spinach, Asparagus, Lettuce, Peas, Beans and Orchard. Nitrogen, 3%, Phosphoric Acid, 10%, Potash, 1%. Price, 10lb. lots, 4c per pound; 100lbs \$3.35.

**Nitrate of Soda** is used for stimulating top growth, making a rapid tender growth so necessary in producing the best Lettuce, Celery, Cabbage, Etc. Per pound 6c; 100lbs. \$5.40.

**Superphosphate.**—A concentrated form of phosphoric acid; a form of phosphorous is a very necessary element of the soil. It produces substance and stability in growth. It enters into seed and fruit and produces a strong root system. Price, per pound 3c; 100lbs. for \$2.40.

**Kelp Charcoal.**—Analysis, 1 to 14 per cent potash. Potash enters into the production of starch and fibre, and is a necessary element in productive soils. Price, per pound 3c; 100lbs. \$2.40.

**Sheep Guano.**—The best, best natural manure.. Analysis: 1.62 per cent Nitrogen, 1.14 per cent Phosphoric Acid, 2.1 per cent Potash. Per pound 3c; per 100lbs \$2.40.

**Lime Rock.**—This is the for mof Lime recommended by the Agricultural Department for sweetening sour, acid soils. It also makes heavy, clay soils more porous and light, and renders the plant food in them more available. Use one-half to one ton to the acre. Per pound 3c; 100lbs. for \$1.25.

## FERTILIZERS.—Continued.

**Roselawn.**—A splendid concentrated fertilizer for lawns and roses. 10lb. buckets, each 85c.

**Plant Food.**—For house plants and ferns. Odorless, ½lb. package, 25c.

**How to Use Fertilizers.**—When no manure is used, the fertilizer should be spread over the surface of the seed bed at the rate of five pounds for each ten square feet, just before planting. Rake thoroughly to mix the fertilizer with the soil. Never plant seed or transplant plants in direct contact with fertilizers. A second application to the plants when half grown is very beneficial. Use between the rows at the rate of ¼lb. to ten feet of row.

## SPRAYS, PUMPS AND SPRAYERS.



**Aspinwall Sprayer.**—One of the most convenient and economical hand sprayers for applying liquid lice-killers, sprays, etc. Nothing cheap but the price. Weight, 1¼lbs. Price, 60c.

**Myers Lever Handle Bucket Pump.**—The lever handle and large air chamber make this the most powerful bucket pump and the easiest to operate. All working parts are solid brass with brass ball valves and patent agitator. Fitted with graduating Vermorel nozzle to throw a fine or coarse spray or a solid stream. Weight, 8lbs. Price, each \$8.00.

**Acme Compressed Air Sprayer.**—A 3-gallon galvanized iron tank tested to 60 lbs. Brass pump, bronze ball check. Self-cleaning nozzle. Gives a finer spray than an other pressure pump. Price, \$7.50.

## SPRAYS, SPRAY MATERIAL AND WASHES.

**Black Leaf 40.**—Destroys Aphis, Thrips, Leaf Hoppers on all tree, bush and vine fruits, vegetables, field crops, flowers and shrubs without injury to the foliage; 1oz. to 6 gallons of spray. 1oz. 25c; ½lb. \$1.00; 2lbs. \$3.25; 10lbs. \$13.75.

**Dry Lime Sulphur.**—It is not a substitute for Lime Sulphur Solution, but is the actual material in dry powdered form. It possesses all the advantages of Lime Sulphur Solution with none of its disadvantages. It is very simple to use as it goes into solution in water almost instantly and the spraying operations can be started immediately. It is simply a case of dumping the desired amount of powder into the spray tank, filling the tank with water and the spraying operations starts. Use 10lbs. to 50 gallons of water. 1lb. 30c; 5lbs. \$1.00; 10lbs. \$1.80; 25lbs. \$3.25; 50lbs. \$7.00; 100lbs. \$12.75.

**Lime Sulphur Solution (Dependable Brand).**—Tests 30 Beaum Scale. The best of this kind to be had is what we handle. Sold by the barrel only. \$1.00 credit allowed for each empty barrel returned. Price per Barrel, 50 gallons, \$12.50.

**SPRAYS, SPRAY MATERIALS AND WASHES.—Continued.**

**Bordeaux Mixture, Dry.**—Mixed with water according to directions makes a standard Bordeaux mixture. 1lb. packages, 40c.

**Arsenate of Lead.**—The best and latest insecticide for all leaf-eating insects. It will not burn the foliage, and stays on the trees longer than any other spray made. ½lb. 30c; 1lb. 50c; 5lbs. \$2.50; 10lbs. \$4.50; 25lbs. \$8.75.

**Bluestone (Vitrol).**—1lb.20c; 6lbs \$1.00.

**Whale Oil Soap.**—For aphis, plant lice, etc. 1lb. 25c; 10lbs \$1.50.

**Sulphur, Powder.**—1lb. 5c; 100lbs. \$3.00.

**B-K.** is a Bacteria destroyer, which has ten times the power of undiluted Carbolic Acid for killing germs of disease. It is colorless, contains no poison or acid, imparts no taste or smell to vessels purified with it, is cheap. A gallon of diluted solution ready to use costs about one-fifth of a cent. Mixes immediately with water. 1oz. B-K to 1 gallon of water. Every Dairyman should use it. Single gallon, \$3.00; Quart, \$1.00. Ask for circular and letters of endorsement.

**Carco Vegetable Spray.**—A wonderfully successful spray for destroying maggots, grubs and worms which infest Turnips, Radishes, Beets, etc. To get best results, the ground should be sprayed freely before planting, then again as soon as the vegetables come up. Dip Cabbage plants in a solution of Carco before planting. Carco is highly concentrated. Use 1 pint Carco to 100 to 125 parts of water. Price: ½ pint, 20c; pint, 30c; quart, 50c; ½ gallon, 90c.

**Hygeno A.**—The Greatest Disinfectant Known.—For use in the home, in the barn, in the poultry houses and hog pens, as a cure of and preventative for disease. Ask for convincing proofs of its value. 1 quart, 50c; ½ gallon, 85c; 1 gallon, \$1.50.

**Cendor Wood Preserver.**—Unexcelled for dipping posts and poles for preserving sills or timbers that come in contact with the ground or dampness. Prevents dry rot. An excellent Spray for Chicken Houses. Disinfects and kills all insects. 65c per gallon.

## HATCHING EGG SHIPPING BOXES

Made of corrugated straw board. Will comply with all requirements of the Parcel Post Law.

15 Egg size, 30c. 30 Egg size, 45c. 50 Egg size, 65c.

## LIVE CHICK SHIPPING BOXES

25 Chick size, 35c; per dozen, \$3.50. 50 Chick size, 45c; per dozen, \$4.50.

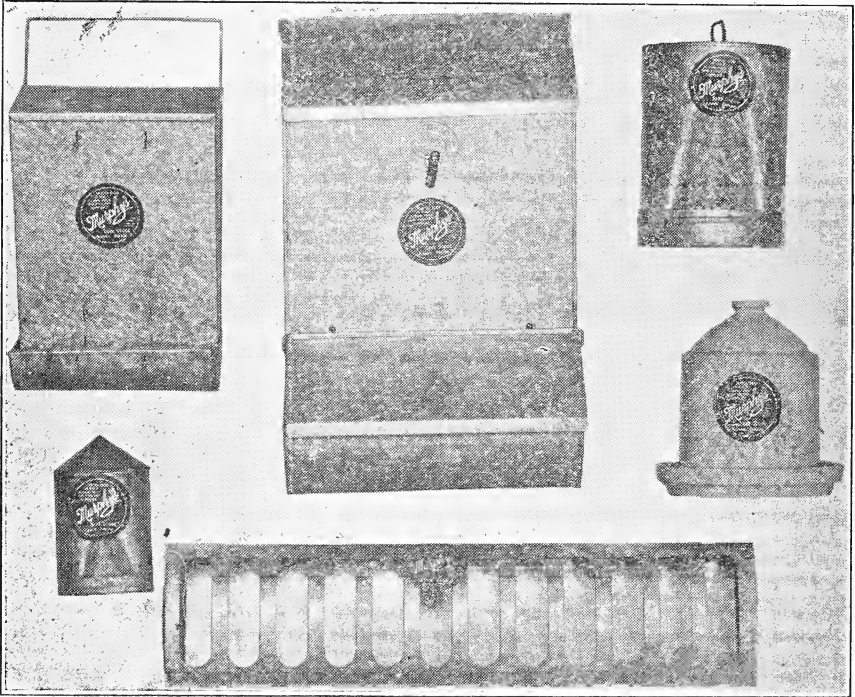
100 Chick size, 55c; per dozen, \$6.00.

## BUCK EGG CRATE

Holds 12 dozen Eggs, each 60c.

## HOPPERS AND FOUNTS.

The hopper method of feeding is both practical and economical. The chickens cannot waste the feed and still it is always ready for them. Our line is made of heavy galvanized iron—nothing cheap or shoddy, yet our prices are reasonable.



**Dry Mash Hoppers (See cut).**—Our hoppers certainly furnish the cleanest most economical and satisfactory way of feeding dry mash. These hoppers have curved bottoms, which keeps the feed within easy reach of the birds. The gradual enlargement from the top to the base prevents clogging. The wire grid and the wires running from the flange through the wire grid prevent any chance of the fowls throwing out or wasting the feed. The sloping cover prevents the birds from roosting on the hopper and when both covers are closed it is mouse proof. Made of heavy galvanized iron, in three sizes:  
 .....No. 35.—8½ inches wide, each \$1.90; No. 36.—12 inches wide, each \$2.50;  
 No. 37.—24 inches wide, each \$3.50.

**Grit, Bone and Shell Hopper, 3 Compartment.**—If allowed to have their own way about it, fowls are extremely wasteful, especially of grit, oyster shell, etc. These shell boxes not only will enable you to stop this loss, in large part, but they possess true sanitary value, because their use prevents poultry—both adult fowls and growing chicks, from picking up and swallowing unsanitary substances. **Price each, \$1.00.**



**HOPPERS AND FOUNTAINS.—Continued.**

Grit, Bone, Charcoal and Shell Hoppers, 4 compartments, each \$1.50.

Wall Fount.—A splendid Fount, made of heavy galvanized iron, can be hung on the wall of the poultry house out of the litter. Has removable bottom, so that all parts can be easily cleaned. 1 gallon capacity, each 85c.

Star Fount and Feeder.—Will fit pint, quart or half-gallon Mason jars. Made of one piece non-rusting metal. Without jar, each 15c.

Round Baby Chick Feeders.—Can be used for feed, water or milk. 6 inches in diameter, each 30c; 8 inches in diameter, each 45c.

Chick Food and Water Holders.—Especially recommended for use in feeding mashes of any kind. Saves twenty-five per cent of feed. The guard lifts out of pan, making them easy to clean. Small, 12 inches, 50c; Medium, 18 inches, 75c.

Otis Rat Exterminator for use in poultry houses and yards. Each, \$1.00.

**INCUBATORS AND BROODERS.**

Queen Incubators.—For fifteen years Queen Incubators have been regarded by Poultrymen as the high-grade, moderate priced line of America. In the Queen, has always been built the very best incubator that could possibly be built. More expense could be added to the machine, but it would not make it a better incubator.

**The Points of Superiority in the Queen:**

**Insulation.** — Insulation is what keeps the water in a Thermos Bottle hot or cold, whichever it may be. It is packing that prevents the easy entrance or escape of heat. The Queen is doubly insulated, first with double walls of California Redwood, forming a dead air space. This space being filled with corrugated straw-board holds the heat evenly.



**Heating System.**—The Queen Hot Water Heating System, eliminates the injurious drying out tendencies found in all hot air incubators and provides a soft uniform heat over every part of the egg chamber that is most natural for the hatching eggs. The radiator and boiler of the Queen are made of copper, not copperized tin.

**Ease of Operation.**—The Queen Lamp and movable parts are conveniently located, and easily adjusted.

### INCUBATORS AND BROODERS.—Queen Incubators—Continued.

**Substantial.**—All parts of the Queen are built for long, hard service, and the Queen will be found to give the same satisfaction, year after year.

Send for complete illustrated Catalog of the Queen, or better still, come to our store and see one of these machines in operation.

- No. 1. 85 egg capacity, Price \$32.50. No. 5, 400 egg capacity, Price \$ 82.00.  
 No. 2, 135 egg capacity, Price \$46.00. No. 25, 600 egg capacity, Price \$120.50.  
 No. 3, 180 egg capacity, Price \$54.50. No. 35, 800 egg capacity, Price \$158.00.  
 No. 4, 275 egg capacity, Price \$68.50. No. 45 1000 egg capacity Price \$190.00.

### NEWTOWN COLONY BROODER, 1921 MODEL.

A Blue Flame, Wickless Kerosene burning Colony Brooder, which is practical, safe and economical. The large carefully designed hover properly affords the chicks just the degree of heat they require and the automatic regulator maintains this temperature. The large glass fount holds one gallon of oil, enough for twenty-four to thirty-six hours, depending on the outside temperature. A glance at the bowl is sufficient to know when it needs refilling, and it is easily removed and can be filled away from the brooder without affecting the flame in the burner in any way.

Each Brooder is shipped with everything complete in one crate all ready to operate. A thermometer and full instructions for operating are furnished with each Brooder.

No. 118.—36 inches in diameter, capacity 300 chicks, weight crated for shipment about 90lbs, Price complete, \$25.00.

No. 125.—52 inches in diameter, capacity 600 chicks, weight crated for shipment 150lbs. Price complete, \$32.50.

**Note.**—Some dealers over rate the capacity of Brooders. We give the number of chicks which can properly be accommodated.

### KRESKY, "PRIDE OF PETALUMA" BROODER STOVES.

This is one of the most popular and successful Brooder Stoves on the coast for the Poultryman who hatches over 1000 chicks at a time. They are not a hover and are not intended to be such. They are a room warmer and are intended to be used in rooms or houses arranged especially for them, but they are very successful and reliable. Burns Kerosene or Distillate. Send for complete Catalog which gives diagram of houses and full information.

No. 2 B.—42 inch Radiator, Price complete, \$62.50.

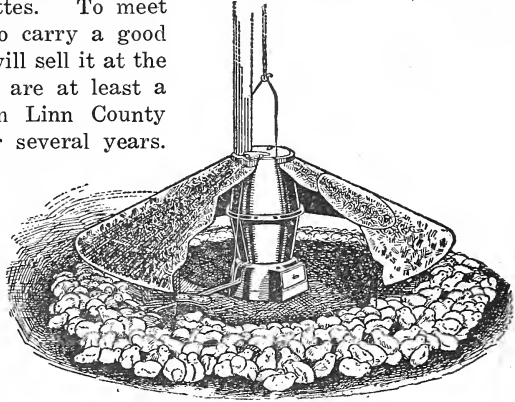
No. 4 B.—50 inch Radiator, Price complete, \$65.00.

No. 12 A.—Fresh Air Model, Price complete, \$55.00.

## INCUBATORS AND BROODERS.—Continued.

## COAL BURNING BROODER STOVES.

Nearly everyone is familiar with this reliable Brooder Stove. It is as safe as your cook stove, and more easy to operate as it is self regulating, but you must use good coal or briquettes. To meet this condition we are going to carry a good supply of the proper coal and will sell it at the lowest price possible. There are at least a hundred of these Brooders in Linn County alone that have been used for several years. This alone indicates their dependability. We will carry in stock only the 1000 chick size this year as the small stove is not satisfactory, as it holds such a small amount of coal that it is difficult to keep the fire burning. **Price complete, \$33.50.**



**Day Old Chicks.**—We are prepared to fill orders for day old chicks. Any of the standard breeds in any number wanted. Tell us of your requirements and we will quote you prices.

## BIRD SEED.

The mixed seed we offer consists of Canary, Hemp, Rape and Millet in proper proportions, mixed by ourselves, Per pound 15c.

Canary Seed, 1lb. 15c; 10lbs. \$1.30.	Snu Flower Seed, 1lb. 15c; 10lbs. \$1.20
Hemp Seed, 1lb. 10c; 10lbs. 70c.	Bird Gravel, 1lb. 10c.
Rape Seed, 1lb. 10c; 10lbs. 70c.	Cuttle Fish Bone, 1oz. 5c.
Millet Seed, 1lb. 10c; 10lbs. 70c.	

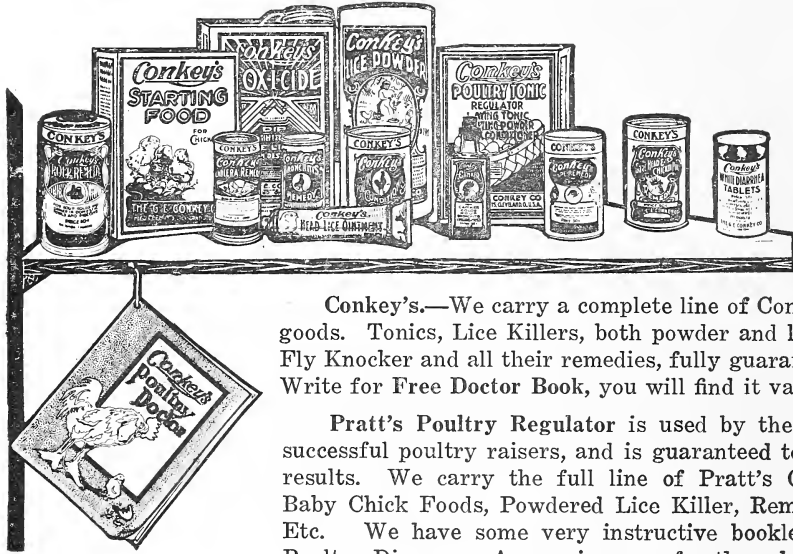
We carry the celebrated Max Geisler's Bird Foods and Tonics. Imported German Roller Seed, Pkg. 25c. German Bird Biscuit, per carton, 15c. Bird Manna Food and Medicine Combined—a combination, per cake, 15c.

## SUNFLOWER SEED.

**Mammoth Russian.**—The largest and most productive variety. It makes one of the very best of foods for poultry. A great egg producer. Pkt. 5c;  $\frac{1}{4}$ lb. 10c; 1lb. 20c.

## NOTE.—

At the time our Catalog is being printed prices are tumbling over themselves, getting back to "Normalcy." It is impossible to quote prices which will be effective in the Spring when the goods are wanted... Just drop us a postal when you want feeds, and we will send you our revised price. You may be sure that the prices will be as low as we can possibly make them.



**Conkey's.**—We carry a complete line of Conkey's goods. Tonics, Lice Killers, both powder and liquid. Fly Knocker and all their remedies, fully guaranteed. Write for Free Doctor Book, you will find it valuable.

**Pratt's Poultry Regulator** is used by the most successful poultry raisers, and is guaranteed to give results. We carry the full line of Pratt's Goods. Baby Chick Foods, Powdered Lice Killer, Remedies, Etc. We have some very instructive booklets on Poultry Diseases. A copy is yours for the asking.

**Licene.**—A guaranteed lice exterminator. A 60c tube, enough for 200 chickens—lasts six months. Ask for "The Poultry Doctor", an interesting book.

**Chick Food**—We carry the extensively advertised brands in addition to our own make and desire to give our customers their choice of feeds.  
Ask for Prices.

**Broiler Food**—A little coarser grain feed than the chick food for the chicks after they are a month old. Ask for Prices.

**Scratch Feed**—A mixture of whole grains of wheat, gray oats, corn, kaffir corn, sunflower seed, our own make. Ask for Prices.

**O. A. C. Scratch.**—Gray Oats, Corn and Wheat, mixed in right proportions. Ask for Prices.

**O. A. C. Mash.**—A dry mash, made after the formula used by the O. A. C. This with the Scratch Food makes a complete ration for laying hens. Ask for Prices.

**Grit**—It is a mistake to give the chickens shell only thinking it will serve as grit. Shell is needed for the lime it contains but good granite grit is very necessary to keep the chicks in good health. 2 sizes, chick and hen sizes. Price, 14lbs. 25c; 100lbs. \$1.50.

**Eastern Shell.**—The best Eastern shell is the most economical feed but we carry the other kinds for those of our customers who want it. Prices, 9lbs. for 25c; 100lbs. for \$2.25.

**Western Shell.**—Made from Olympia oyster shells. Not quite so clean and white as the Eastern shell but a very good grade. Price, 100lbs. \$1.85.

**Sea Shells.**—A very good grade of mixed sea shells. Price, 100lbs. \$1.50.

**Granulated Bone.**—Made from selected hard white bones. Indispensable for laying hens. Price, 5½c per pound; 100lbs. for \$5.00.

**Charcoal.**—Should be before the chickens at all times. Two grades, medium and coarse. In small quantities, 7c per lb; 50lbs. \$3.00.

**Beef Scrap.**—The three best brands manufactured. Best grade, 10lb. lots, per pound 8c; 100lbs Ask for prices.

**Fish Scrap.**—Made from clean dried fish. Per pound 7c; 100lbs. Ask for prices.

**Alfalfa Meal.**—The best substitute for green for Winter feeding. Mix with the mash. Write for Prices.

**Poultry Pepper.**—A red pepper compound. A splendid tonic for the chickens. Mix in the dry mash. Price per pound 35c.

**Soy Bean Meal.**—Rich in Protein, excellent for use in the mash. Less Meat Scrap is needed when Soy Bean Meal is used. 10lbs 50c; 100lbs. Ask for prices.

These prices are subject to change up or down. You will get your money's worth in either case.

We have many other poultry foods and supplies which we cannot list for lack of space. Send us your order—if we haven't the article in stock you ask for, we will gladly get it for you.

## BEE SUPPLIES.

There is such a difference of opinion as to the proper amount of comb foundation which should be used in brood frames and section boxes, and as the foundation and sections are usually purchased in quantities, we will not include brood foundation, section foundation or section honey boxes in our prices of hives.

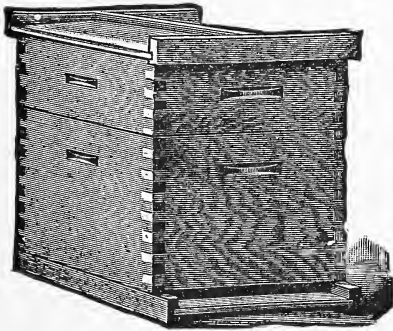
**Dovetailed Pine or Cedar Hives.**—8 frame, consists of 1 bottom board, 1 body, 1 cover, 8 Hoffman brood frames, 1 division board, wire, nails, etc. To fill the brood frames with full sheets of Brood Foundation, requires 8 sheets or 1 and one-seventh pounds—(See Comb foundation.

Set up, each \$2.60; 5 not nailed, \$10.50.

**Super.**—8 frame, consists of 1 Super, 6 section holders, 6 slotted separators, 24 Bass Wood sections, 1 Super follower, 2 tightening springs, nails, tins, etc. To fill the section honey boxes full width, requires 6 sheets or 3½ ozs. of light section foundation.

Set up, each \$1.05; 5 packed flat, \$4.20.

**Dovetailed Hive.**—10 frame, same equipment as 8 frame Hives. each set up \$2.90; 5 not set up, \$11.90.



**Super.**—10 frame, same equipment as 8 frame Super, each set up \$1.20 5 packed flat, \$4.90.

Hive Bodies, empty, 8 frame \$1.05; 10 frame, \$1.20.

Hive Covers, 8 frame, each 65c; 10 frame each 70c.

Hive Bottoms, 8 frame each, 40c; 10 frame each 45c.

Super Bodies, 8 frame each 90c; 10 frame each \$1.10.

**Section Honey Boxes.**—Our No. 1 Sections are made of the choicest white Baswood lumber, and are all perfect in finish and free from defects. Price per 100, \$2.10; 500 for \$9.75.

**Comb Foundation.**—Light Standard Brood, sheets  $7\frac{3}{4} \times 16\frac{7}{8}$ , No. per lb., 7; per pound 85c... Light Section, sheets  $3\frac{7}{8} \times 15\frac{1}{2}$ , No. per lb., 28; per pound 90c.

**Hoffman Brood Frames.**—Per 10, 75c; 100 for \$6.30.

**Section Holders.**—Six section holders, one follower and spring are put in each super and each holder holds four one-pound honey boxes. The bottom strip is  $1\frac{1}{4}$  inches thick and is cut out to fit inserts of sections  $1\frac{1}{4} \times 18\frac{1}{2}$  inches, slotted. Each 5c; per 100, \$4.50.

**Division Boards,** each 15c; per 10, \$1.00.

**Separators.**—One separator should always be placed between each section holder so that the bees will build honey comb even in each sector

**Separators.**—Western (Veneer) per 100 95c. Fence Separators 10 for 70c; 100 for \$6.50.

**Tightening Springs,** each 1c.

**Alley's Queen and Drone Traps.**—A non-swarmer device that works very successfully. Simple and easy to use. For 8-frame hive, 85c; for 10-frame hive, 90c.

**Porters Bee Escape.**—Makes taking off supers a pleasure. When in position it permits the bees to leave the super but prevents their return. Price 25c. Mounted, 8 or 10 frame, each, 75c.

**Honey Shipping Cases.**—Glass front, corrugated non-dripping packing, 24 pound Eastern, nailed, each 55c.

**Honey Boards.**—Used to confine Queen to the brood chamber. Wood and wire, 8 frame each 80c; 10 frame each 85c.

**Spur Wire Embedder.**—Each, 40c.

**Smokers.**—The improved Cornell Smoker has proven very satisfactory. Standard size, \$1.50; Jumbo, \$1.75.

**Smokers.**—Clark's Cold Blast.—The best low priced smoker. Price \$1.10.

**Foundation Fastener.**—The VanDeusen Wax tube fastener is very simple and convenient, 35c.

**Bee Feeders—Miller's.**—A splendid feeder, which fits inside a Super and holds 25lbs of Syrup. Bees enter it from below. Weight 5 pounds. Each \$1.00.

**Bee Feeders—Boardmans.**—Uses a fruit jar inverted. Sets in front of hive. Price without jar 35c.

**Root Nickered Steel Hive Tool.**—Made of Spring Steel. Truly a necessity Each, 75c.

**Bee Veils.**—The hat veil made of silk tulle and having a rubber band round the top, so as to fit the hat snugly, seems to be the most popular veil. Price \$1.60. Cotton Tull, Silk Face, each \$1.40.

#### TINNED WIRE NO. 30

1lb. Spool.....	Each 60c	¼lb. Spool.....	Each 25c
½lb. Spool.....	Each 40c	¾ oz. Spool.....	Each 10c

**MODERN HIVES.**—We particularly wish to impress upon you the importance of putting your bees into good hives. With few exceptions almost every new frame put into the hive this year will be wired and have full sheets of foundation. This should not be overlooked by the amateur beekeeper for his results will more than repay him.

We cannot list everything in the line of bee supplies, which we carry in stock, but will be glad to quote you prices and fill your order for anything you may want, even if we do not have it in stock, we will get it for you, without additional charge to you above the usual catalog prices.

**THE BEES.**—The population of the beehive is made up of three different kinds of bees: One queen, a limited number of drones and many thousands of workers, each filling an important and indispensable place in the make-up of the colony. The most important member of the family is the queen, as it is her function to lay all the eggs from which all workers, drones and other queens are produced, being, in fact, the one mother of the entire colony, and the loss of the queen will, unless her successor has been provided for, result in the extinction of the colony within a few weeks. The queen is usually extremely prolific, laying from 2,000 to 4,000 eggs every 24 hours, or about twice her own weight, and at the same time she consumes food of about the same weight. When the population of the hive becomes crowded in the early part of the Summer, the worker bees select one or more eggs, which in the ordinary course of hive treatment would hatch into workers, build an enlarged cell around each of them and by giving a large quantity of specially prepared food, known as royal jelly, they transform it from a potential worker into a perfect queen. It may be stated as a fact that any egg which would ordinarily produce a worker will, under the proper treatment, produce a queen.

Although she is really the hardest worker in the whole community, laying eggs ceaselessly day and night for several months, the queen usually lives much longer than any other bee in the hive. While some queens die, apparently of old age, the second Summer, they frequently live to be two or three years old and have been known to lay fairly well even into the fourth season. They are seldom profitable after the second year. When a queen commences to fail, even though it be in her first season, she is usually killed by the worker bees and a young queen raised to take her place.

The drones are the male bees, their only use being that of mating with a young queen. They are tolerated in the colony during the mating and swarming season and usually as long as honey is coming in freely. At the close of the honey flow they are ejected from the hive by the workers and, as they are not

allowed to return, they die from starvation within a few hours. The eggs which are to produce drones are deposited in cells somewhat larger than those from which workers are hatched, and no manipulation or special feeding of the drone larva can ever produce anything except drones.

The workers are imperfect females whose duty, and ambition, is to toil unceasingly for the welfare of the entire bee colony. It is their task to build the combs, mix and carry to the young bees the honey and pollen necessary for their development, cap over the brood cells when the larva has reached the proper stage, go out to the fields and bring in the nectar and pollen required for the present and future needs of the colony, cap over the stores and at all times maintain a vigilant guard at the entrance, ready to repel all invaders even at the cost of their own lives. So constant and unremitting is the labor of the workers that their lives are cut short by the wearing out of their wings. During the height of the season it is probable that workers do not live longer than six weeks. At the close of a long day's work during the honey flow numerous of ragged-winged workers may be seen crawling slowly into the hive or moving aimlessly about on the ground, apparently knowing that they are of no further use and only anxious to get away from the hive before they die. It has been estimated that the loss of workers from a strong colony may be as high as 2,000 each day. They do not all die of old age, as many of them are caught by birds or predatory insects or chilled by a sudden fall of temperature or a shower before they can reach the shelter of the hive.

## NURSERY STOCK

Our nursery stock is grown by the most reliable growers and is warranted true to name; should it prove otherwise we will replace the stock or refund the amount, but in no case will we be responsible for more than the purchase price. The stock we handle is strong and healthy and is first-class. Delivery in good condition ends our responsibility except as above stated. We do not ship nursery stock C. O. D. Give careful shipping directions. Write for prices on large quantities.

**Important ! Please Read Before Ordering.**—Five of any one kind may be ordered at half the ten-lot price. This applies to varieties listed by the dozen. The ten-rate or dozen rate applies only where applied to one variety. To illustrate, if ten apples in mixed kinds are ordered, send the price based on the single unit for each tree.

### APPLES.

Prices.—1 year-old, 4 to 6 feet, 65c each; 10 for \$5.50. 2 year--old, selected, 65c each; 10 for \$5.50.

Alexander	Grimes Golden	Stayman Winesap
Arkansas Black	Jonathan	Spitzenberg
Red Cheek Pipin	King of Tompkins Co.	Snow
Baldwin	Lady Apple	Tolman Sweet
Crab, Hyslop	McIntosh Red	Winter Banana
Crab, Red Siberjan	Northern Spy	Winesap
Crab, Transcendant	Ortley	Waxen
Duchess of Oldenburg	Red June	Wagner
Delicious	Rome Beauty	Wealthy
Gravenstein	Rhode Island Greening	Yellow Transparent
Golden Russett	Red Astrachan	Yellow Newton



## APRICOTS.

Prices.—1 or 2 year-old, 4 to 6 feet, 75c each; 10 for \$6.50.

Lewis      ✓ Moorpark      Royal      Tilton

## CHERRIES.

Prices.—2 year, branched, 75c each; 10 for \$6.50. 1 year-old, 4 to 6 feet, 75c each; 10 for \$6.50. 1 year, 3 to 4 feet, 60c each; 10 for \$5.00.

Royal Ann      Oregon      May Duke      Bing  
Kentish      Lambert      Black Republican      Montmorency  
Black Tartarian      Late Duke

## PEACHES.

Prices.—1 year, 4 to 6 feet, 75c each; 10 for \$6.50.

✓ Early Crawford      ✓ Early Charlotte      Alexander      Phillips Kling  
Muir      ✓ Hale's Early      Lemon Kling      ✓ Triumph  
✓ Alberta      ✓ Late Crawford

## QUINCES.

Prices.—1 year, 75c each; 10 for \$6.50. 2 year, 75c each; 10 for \$6.50.

✓ Champion.—Large yellow sort; very popular.

✓ Pineapple.—Very delicious, resembles Orange Quince.

## PEARS.

Prices.—1 year, 4 to 6 feet, 75c each; 10 for \$6.50. 2 year, branched, 75c each; 10 for \$6.50.

✓ Bartlett      ✓ Keifer's Hybrid      Fall Butter  
✓ Flemish Beauty      Reurre D'Anjou      Clapp's Favorite  
Bose      Seckel      Comice  
✓ Winter Bartlett      Winter Nellis      Beurre Clairgeau

## PLUMS.

Prices.—1 year, 4 to 6 feet, strong, on peach root, 75c each; 10 for \$6.50. 2 year, branched, on peach root, 75c each; 10 for \$6.50.

✓ Bradshaw      Silver      Yellow Egg      Green Gage  
✓ Damson      ✓ Peach Plum      Coe's Golden Drop

## PRUNES.

Prices.—2 year, on peach roots, 75c each; 10 for \$6.50. 1 year, 4 to 5 feet, on peach roots 75c each; 10 for \$6.50. 1 year, 3 to 4 feet, on peach roots 65c each; 10 for \$5.00.

✓ Hungarian      Petite      Sugar      Italian  
✓ Silver      Imperial      Pacific

## NUT TREES.

.....Almonds.—Nonpareil, Ne Plus Ultra; 1 year, 4 to 6 feet, 75c each; 10 \$6.50.

✓ Butternut.—Large trees, each \$2.50.

Walnut, English.—Franquette, grafted stock, 6 to 8 feet, each \$3.00; 10 for \$25.00.

Walnut, American.—Black, large trees, each \$2.50.

Chestnut.—American Sweet, strong trees, each \$1.75.

## Small Fruits

In these days of food conservation, fruit should not be overlooked and no fruit will give such quick results as berries. Every home should have them growing in the garden, and they are proving more and more profitable every year for markets, canneries, etc.

### CURRENTS.

One-year Plants.....	Each.	Doz.	100.
✓ Perfection.—Extra large, red currants.....	\$.20	\$2.00	\$12.00
✓ Lady Victoria.—Large, long bunches, red fruit.....	.15	1.50	9.00
✓ Fay's Prolific.—Heavy yielding, red fruit.....	.15	1.50	9.00
✓ Cherry.—Popular large red sort.....	.15	1.50	9.00

### GOOSEBERRIES.

✓ Oregon Champion.—Transparent green color.....	.15	1.50	9.00
✓ Houghton.—Medium size, smooth, pale red.....	.15	1.50	9.00

### RASPBERRIES.

✓ Cuthbert.—Most profitable red sort.....	.15	1.25	6.00
✓ Marlboro.—Large, firm, light crimson.....	.15	1.25	6.00
✓ Golden Queen.—Bright yellow, sweet.....	.15	1.50	8.00
✓ St. Regis.—(Everbearing) red, produces summer and fall..	.15	1.50	8.00

### BLACK CAP RASPBERRIES.

✓ Plum Farmer.—Early, firm, dark crimson.....	.15	1.25	6.50
✓ Cumberland.—Strong grower, producing large fruit.....	.15	1.25	6.50
✓ Gregg.—Old standby; good, firm fruit.....	.15	1.25	6.50
✓ Kansas.—Strong grower; large, handsome fruit.....	.15	1.25	6.50

### LOGANBERRIES.

✓ Logan.—Oregon's popular berry.....	.20	2.00	7.00
✓ Phenomenal.—Large, sweet and better color.....	.25	2.50	15.00

### BLACKBERRIES.

✓ Lawton.—Large, productive; very popular.....	.15	1.25	6.00
✓ Kittatinny.—Large, long fruit; very sweet.....	.15	1.25	6.00
✓ New Mammoth.—Strong grower, trailing, large; early.....	.20	2.00	10.00
✓ Himalaya Giant.—Trailing, large, sweet and coreless; 1 yr.	.20	2.00	12.00
✓ Oregon Evergreen.—Native product; late, trailing; 1 yr.....	.20	2.00	12.00
✓ Lucreta Dewberry.—Trailing; large and sweet; June, 1 yr.	.20	2.00	12.00
✓ Cory's Thornless.—The claims for this new berry are absolute freedom from thorns, yields heavy, berries of finest flavor .....	.50	5.00	
✓ Iceberg (White Blackberry).—Berries white, sweet and tender; an excellent contrast to th blackberries.....	.25	2.00	

### GRAPES.

✓ Concord.—Popular, large black grape; sweet.....	.35	3.50	15.00
✓ Niagara.—Pale yellow, tender and sweet.....	.35	3.50	15.00
✓ Worden.—Large, compact bunches of black fruit.....	.35	3.50	15.00

# Reducing Work to Pleasure With the VIKING

HERE'S one job on the farm you can make a pleasure. You don't need to put much time on a Viking cream separator, either in operation or in cleaning. You will enjoy doing the skimming and can take the Viking apart and clean it quickly. No clumsy, heavy parts to get mixed up—no chance to go wrong, and it runs as smoothly as a watch.

Nothing to get out of order; always clean, fresh and ready. The time you save in using a

## VIKING CREAM SEPARATOR

will pay for the machine. The **Straight Discs**, held together by a ring—the greatest time-saver science has ever invented in cream separators.

You cannot put them together wrong.

You'll realize what a pleasure it is to have a separator when you own a **Viking**.

Come in and see it.



WE KNOW this territory, know the soil and its needs, and have selected our stock of Seeds, Fertilizers, Etc., with a view of always furnishing the variety and kind which is best adapted to our soil and climate.

We invite your criticism as well as your praise, and when in Albany, come in and see us.

## QUANTITY OF SEED REQUIRED

	Quantity per Acre.		Quantity per Acre.
Alfalfa .....	8 to 15 lbs.	Grass, Lawn, 1 lb. to 300 square ft.....	145 lbs.
Artichoke, 1 oz., to 500 plants.....	6 oz.	Hemp .....	40 to 50 lbs.
Asparagus, 1 oz. to 500 plants.....	1 lb.	Horse Radish Roots.....	15000 to 20000
Asparagus Roots .....	5000	Kale, 1 oz. to 150 feet of drill.....	1 lb.
Barley .....	100 lbs.	Kale, Thousand Headed .....	1 lb.
Beans, Dwarf, 1 lb. to 100 feet of drill .....	50 lbs.	Kohlrabi, 1 oz. to 150 feet of drill.....	2 lbs.
Beans, Tall, 1 lb. to 150 hills.....	25 lbs.	Kaffir Corn .....	6 to 8 lbs.
Beet, Garden, 1 oz. to 50 feet of drill...	5 lbs.	Leek, 1 oz. to 100 feet of drill.....	4 lbs.
Beet, Sugar, 1 oz. to 50 feet of drill.....	5 lbs.	Lettuce, 1 oz. to 150 feet of drill.....	3 lbs.
Beet, Mangel Wurzel, 1 oz. to 50 feet of drill .....	5 lbs.	Melon, Musk, 1 oz. to 60 hills.....	2 to 3 lbs.
1 oz. to 2000 plants.....	4 oz.	Melon, Water, 1 oz. to 30 hills.....	3 to 4 lbs.
Brussels Sprouts, 1 oz. to 2000 plants..	4 oz.	Millet .....	30 lbs.
Broom Corn .....	12 lbs.	Nasturtium, 1 oz. to 50 feet of drill.....	15 lbs.
Buckwheat .....	45 lbs.	Oats .....	75 lbs.
Cabbage, 1 oz. to 1500 plants .....	½ lb.	Okra, 1 oz. to 100 feet of drill.....	8 lbs.
Carrot, 1 oz. to 125 feet of drill.....	3 lbs.	Onion, 1 oz. to 100 feet of drill.....	8 lbs.
Cauliflower, 1 oz. to 2000 plants.....	3 oz.	Onion, for sets .....	30 to 80 lbs.
Celery, 1 oz. to 5000 plants .....	1 lb.	Onion Sets, 1 lb. to 75 feet of drill.....	400 lbs.
Cheat .....	100 lbs.	Parsley, 1 oz. to 300 feet of drill.....	3 lbs.
Clover, White and Alsylke .....	6 to 10 lbs.	Parsnip, 1 oz. to 200 feet of drill.....	6 lbs.
Clover, White, for Lawns.....	25 to 100 lbs.	Peas, Garden, 1 lb. to 50 feet of drill.....	200 lbs.
Clover, Red, Mammoth and Crim- son .....	12 to 20 lbs.	Peas, Field .....	150 lbs.
Collards, 1 oz. to 2000 plants.....	4 oz.	Pepper, 1 oz. to 100 plants.....	.....
Corn, Sweet, 1 lb. to 200 hills.....	15 lbs.	Potatoes .....	400 lbs.
Corn, Field .....	12 to 20 lbs.	Pumpkin, 1 oz. to 30 hills.....	3 to 2 lbs.
Corn, Fodder .....	125 lbs.	Radish, 1 oz. to 100 feet of drill.....	10 lbs.
Corn, Pop .....	8 to 10 lbs.	Rape, Dwarf Essex .....	5 to 10 lbs.
Cress, ¾ oz. to 100 feet of drill.....	1 lb.	Rutabaga, 1 oz. to 150 feet of drill.....	2 lbs.
Cucumber, 1 oz. to 60 hills.....	2 to 3 lbs.	Rye .....	90 to 120 lbs.
Egg Plant, 1 oz. to 2000 plants.....	4 oz.	Salsify, 1 oz. to 50 feet of drill.....	8 lbs.
Endive, 1 oz. to 100 feet of drill.....	4 oz.	Speltz .....	100 lbs.
Flax, for seed 30 lbs. to acre. For fiber .....	50 lbs.	Spinach, 1 oz. to 100 feet of drill.....	8 lbs.
Grass, Kentucky Blue, Canadian Blue .....	20 lbs.	Squash, Summer, 1 oz. to 25 hills.....	3 lbs.
Timothy .....	25 lbs.	Squash, Winter, 1 oz. to 12 hills.....	4 lbs.
Red Top, in chaff 60 lbs. Solid.....	30 lbs.	Sugar Cane .....	10 lbs.
Rye Grass, Oat Grass, Fescue Grasses .....	30 lbs.	Sunflower .....	8 lbs.
Orchard Grass .....	40 to 60 lbs.	Tobacco, 1 oz. to 10000 plants .....	.....
		Tomato, 1 oz. to 2000 plants .....	4 oz.
		Turnip, 1 oz. to 150 feet of drill.....	2 lbs.
		Vetches, Spring .....	60 to 90 lbs.
		Vetches, Winter .....	30 to 60 lbs.
		Wheat .....	90 to 120 lbs.

## USUAL DISTANCE FOR PLANTING

<p>Apple Trees, 20 to 30 feet each way. Asparagus, 3 to 4 by 2 feet. Beans, Bush, drills 2 to 3 feet apart. Beans, Pole, 3 to 4 feet each way. Beets., Early, drills 12 to 18 inches apart. Beets, Late, drills 2 to 3 feet apart. Blackberries, erect growing, 6 to 9 by 4 feet. Blackberries, Mammoth and Himalaya, 8 by 24 feet. Cabbage, Early, 16 by 30 inches. Cabbage, Late, 24 by 30 inches. Carrots, drills 1 to 2 feet apart. Corn, Sweet, 3 to 3½ feet by 9 to 24 inches. Corn, Field, 3½ to 4 feet each way. Cucumber, 4 to 5 feet each way. Currants, 5 by 3 feet. Celery, rows 3 to 4 feet 6 inches in row. Cauliflower, 2 by 2 by 2 by 3 feet. Cherry Trees, 15 to 20 feet each way. Egg Plant, 3 by 3 feet. Gooseberries, 5 by 3 feet. Grapes, 8 by 8 to 10 by 12 feet. Lettuce, drills 18 inches apart. Melon, Musk, 5 to 6 feet each way.</p>	<p>Melon, Water, 7 to 8 feet each way. Onions, drills 14 to 20 inches apart. Parsnip, drills 18 to 36 inches apart. Peach Trees, 18 to 24 feet each way. Pear Trees, standard, 20 to 25 ft. each way. Pear Trees, Dwarf, 12 to 15 feet each way. Peas, drills 2 to 3 feet apart. Pepper, 15 to 18 inches by 2 to 2½ feet. Plum Trees, 15 to 20 feet each way. Potatoes, 12 to 18 inches by 2½ to 3 feet. Pumpkin, 8 to 10 feet each way. Quince Trees, 15 feet each way. Radish, drills 10 to 18 inches apart. Raspberries, 6 to 8 by 3 feet. Rhubarb, 2 to 4 by 4 feet. Salsify, drills 19 to 24 inches apart. Spinach, drills 12 to 18 inches apart. Squash, Bush, 3 to 4 feet by 4 feet. Squash, Running, 12 feet each way. Strawberries, Hills, 36 by 18 inches. Strawberries, Matted Rows, 48 by 12 inches. Sweet Potatoes, 2 feet by 3 to 4 feet. Tomato, 4 feet by 4 to 5 feet.</p>
---	--

**SPECIAL PRICES to Market Gardeners where a quantity of seed is wanted.**



# EARLY ORDER COUPON

Our object in giving this Special Offer is to have our customers send in their orders early, to avoid the rush in the busy season.


This special discount offer amounting to 10 per cent or more is for orders accompanied by cash only. Remember, this Coupon is good for Garden and Flower Seed only.

For Example; for \$1.00 and This Coupon you are entitle to \$1.10 worth of Seeds; For \$2.50 and Coupon, \$2.75 worth of Seeds; For \$5.00 and Coupon, \$5.60 worth of Seeds; For \$7.50 and Coupon, \$8.25 worth of Seeds; For \$10.00 and Coupon, \$11.25 worth of Seeds.

All orders are given our prompt and careful attention.

Murphy Seed Company, Albany, Oregon

NOTICE.—This Offer Expires February 15, 1921.



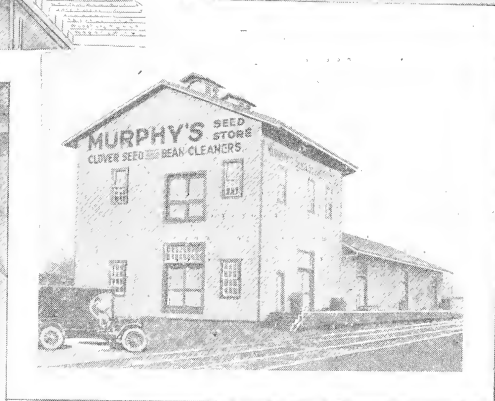
Very faint, illegible text, possibly bleed-through from the reverse side of the page.

REVISED 1964

## TABLE OF CONTENTS

	Page		Page
Asparagus .....	2	Kohl Rabi .....	14
Artichokes .....	2	Kale ar Borecole .....	15
Alfalfa .....	31 - 32	Kale, Cow .....	36
Beans .....	3 - 4	Lettuce .....	15, 16
Beets .....	4, 5, 6	Muskmelons .....	16, 17
Broccoli .....	6	Mustard .....	18
Brussels Sprouts .....	6	Millet Seed .....	36
Buckwheat Seed .....	35	Nursery Stock .....	53, 54, 55
Barley Seed .....	35	Onions .....	18, 19
Brooders .....	46, - 47	Onion Sets .....	19
Bird Seed .....	47	Okra or Gumbo .....	19
Bee Supplies.....	49, 50 - 51	Poultry Remedies .....	48
Cauliflower. ....	6, 7	Poultry Feeds .....	48, 49
Cauliflower Plants .....	31	Parsley .....	19
Cabbage .....	7, 8	Parsnips .....	20
Cabbage Plants .....	31	Peas, Garden .....	20, 21
Carrots .....	8, 9	Peas, Field .....	36
Celeriac .....	9	Potatoes, Seed .....	29, 30
Cress .....	9	Pumpkins .....	22
Celery .....	10	Peppers .....	21, 22
Celery Plants .....	31	Radishes .....	22, 23
Corn .....	11, 12	Rhubarb or Pie Plant.....	23, 24
Corn Salad .....	13	Ruta Baga or Suedes .....	29
Chard, Swiss .....	14	Rye, Seed .....	36, 37
Cucumbers .....	13	Salsify or Vegetable Oyster.....	24
Clover, Seed .....	32	Squashes .....	24, 25, 26
Cheat, Seed .....	36	Spinach .....	26
Calf Meal .....	39	Strawberry Plants .....	30
Chicks, Day Old .....	47	Sprays .....	42, 43
Endive .....	14	Sprayers .....	42
Egg Plant .....	14	Shipping Boxes .....	43
Egg Crates .....	43	Sunflower Seed .....	47
Flower Seeds .....	38, 39	Separators .....	52
Fertilizers .....	40, 41, 42	Tomatoes .....	27, 28
Fountains .....	45	Tomato Plants .....	31
Fruit Trees .....	53, 54	Turnips .....	28, 29
Grass Seeds .....	33, 34, 35	Tools, Farm .....	40
Hoppers .....	44, 45	Watermelons .....	17, 18
Incubators .....	45, 46		

# Murphy's SEED STORE



ALBANY, OREGON