

Historic, Archive Document

Do not assume content reflects current scientific knowledge, policies, or practices.



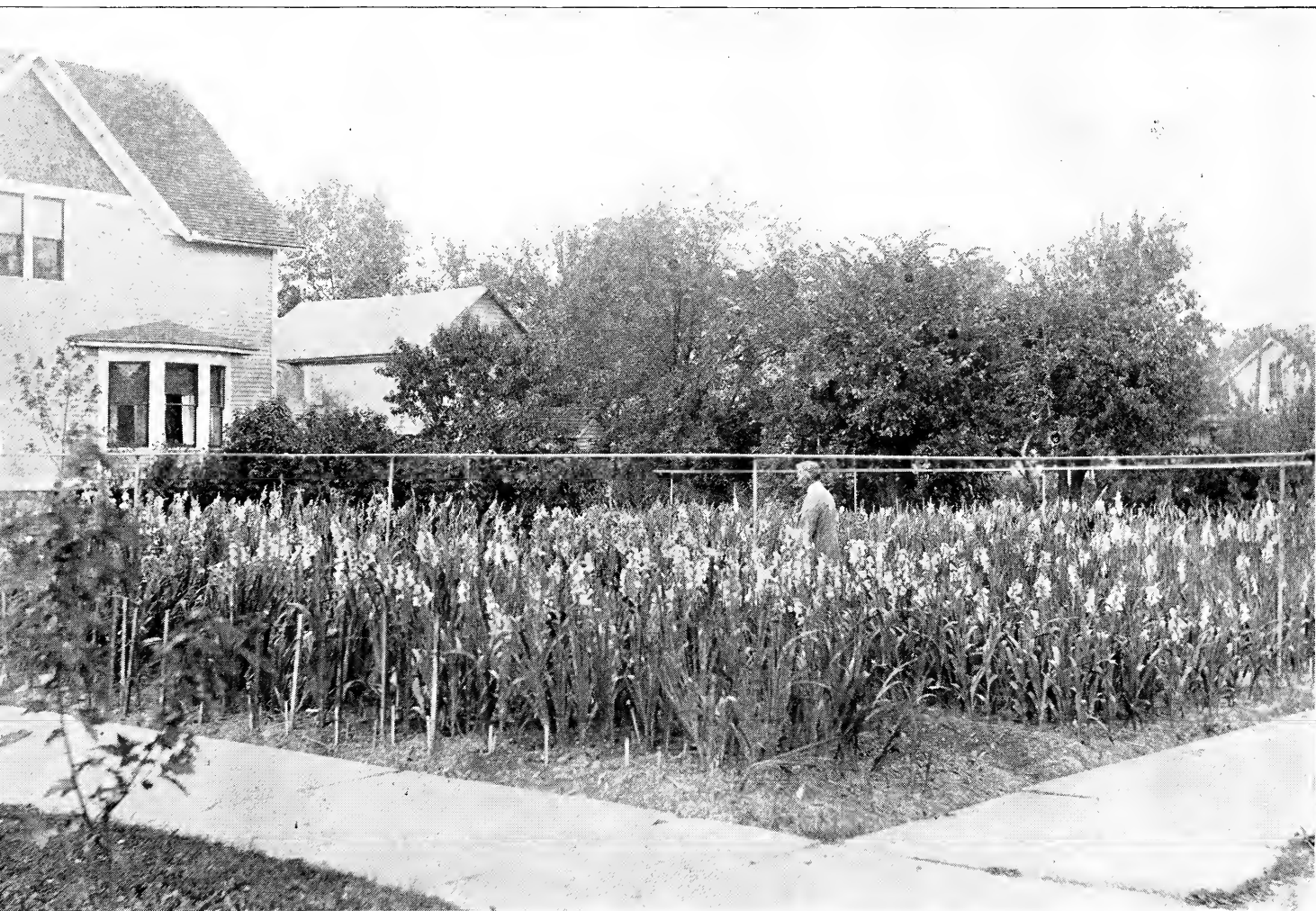
67 1921

Give me 37 2015

Floriculture Beauties

ONLY THE BEST
TREATISE AND CATALOGUE

W. H. PHIPPS, GROWER AND HYBRIDIZER, PAULDING, OHIO



GROW ONLY THE BEST FOR THE POOREST TAKE AS
MUCH ROOM AND AS MUCH LABOR AND TIME TO
GROW AS DO THE BEST. YOU WILL BE DISSATISFIED
WITH THE RESULT UNLESS YOU GROW THE BEST



MRS. WM. KENT

A Word to Flower Growers



address myself to flower lovers who see in the beauty of the rose, the peony, the gladiolus a reward for the care and culture bestowed upon them.

Too often we find that flower lovers content themselves with indifferent care of the flower once planted seemingly thinking that once the seed, the bulb or the root is in the ground that all is ended and they have only to wait until blooming time to proudly show their friends the flower in all its glory.

Go to the field see the corn that grows in one field in its dark sturdy green and you say that man is a good farmer, while across the road you may see a field of corn spotted in growth, yellow in color and sickly in general appearance and you say that that farmer does not attend his crops, his field is not well drained, the ground was not well plowed and the crop was not cultivated. You are not wrong in your conclusions for to raise a crop you must prepare the ground with proper drainage; and tiling is the best sort of drainage if other than natural drainage is necessary. Then if the land needs fertilizer you must fertilize with the right kind of fertilizer supplying what your land lacks to make it produce a good crop.

Then you must plow it deep and prepare with care above all things get your seed bed in proper condition.

When once you have sown your seed or planted your roots or bulbs cultivate the ground after each rain so that no crust forms to prevent the young shoots from coming through and all through the season cultivate till your crop covers the ground well.

Use good sense and care with your flowers such as you expect the farmer to use in raising his sturdy crops. Your reward will be great.

With most flowers in the blooming season much water must be given them. If you wish to obtain some idea of the amount of water they drink cut a lily or peony or gladiolus put it in a long slim vase and leave it there a day and note at the end of twenty-four hours how the water has gone down in the vase. Where has it gone, not in the air by direct evaporation, it has been drunken by the flower whose capillaries

have sucked the water to the farthestmost tips of the petals. If the cut flower does this then how much more necessary is it that the flower in the field shall be supplied with abundant moisture for the sun drinks the water from the flower and when its supply is shut off the flower dies.

This is the prime reason that no verdure will grow well under a thrifty tree for the roots gather the moisture out of the ground and send it up the trunk to the branches and then into the leaves and fruit using in this fashion tons of water every season. So keep away from trees and other vegetation that will drink the water that our flowers must have and the fertility of soil that must be supplied by mother earth.

Cultivation keeps the soil loose and aerates it besides removing weeds and other foreign vegetation.

It prevents the ground from cracking which is very detrimental as the crack may expose the root or bulb to the drying air and scorching sun. Keep your ground in a well mulched condition, it aids in retaining moisture.

Much of the season is dry and artificial watering must be used if you want good results in bloom; if you fail to water your plants and fail to cultivate them your efforts will result in disaster.

You may like a mixture but were I advising you from a personal standpoint I would advise against buying mixtures in any flower. Buy good named varieties and be sure to properly segregate them when harvesting. Purchase a good tag of some sort and fasten to the stalk of the flower whatever it may be and later place a label on the receptacle holding it so that you know just where each variety is. When planting plant each variety so that it may be properly located at any time. This may be done by planting a stake on either side of the variety. The stake should be thick enough so as to not be easily broken and high enough so that the name will not be covered with dirt dashed up by the rains.

Peonies require less care than any flower that must be planted annually and once the root is planted if it continues healthy it may be left for five or six years without being disturbed but peonies should be carefully cultivated as soon as the ground will permit in the spring and continue the cultivation well through the summer.

Gladiolus must be taken up in the fall carefully dried and stored in a cool place where the temperature is not more than forty-five and not less than forty degrees above zero—the stalk should be removed in a short time after digging. The cormels should be removed after the

bulbs have partially cured and the old corm should be removed and discarded.

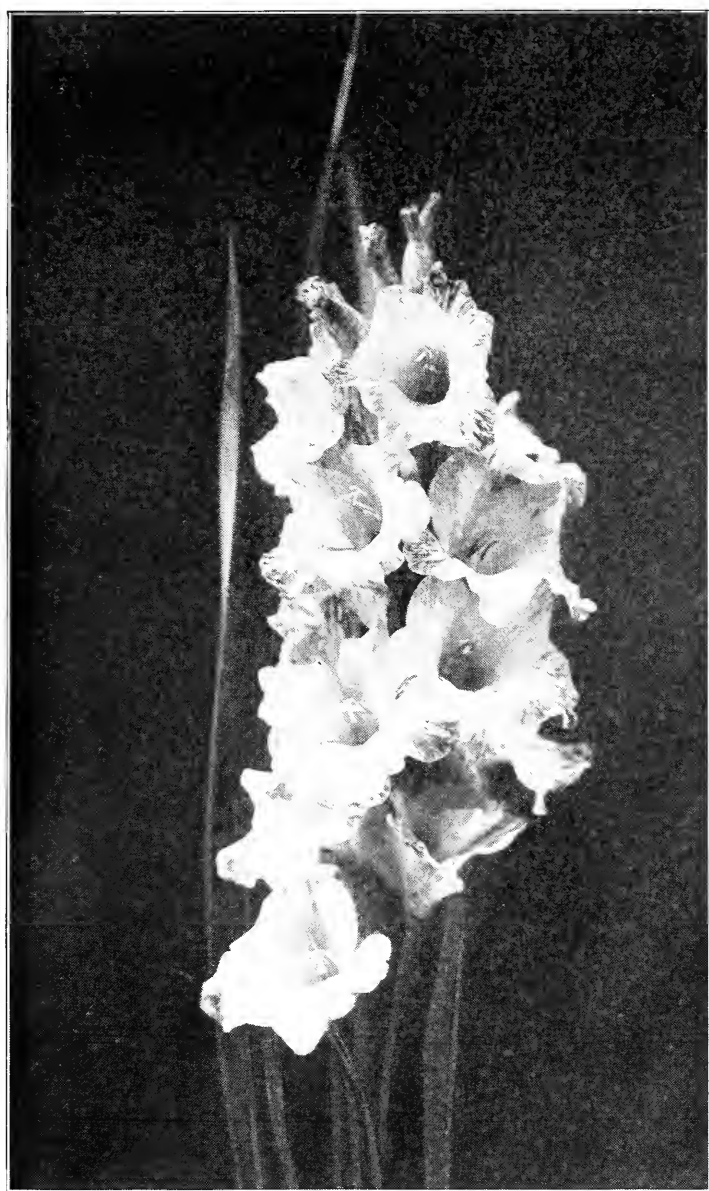
Plant not closer than four inches in rows not closer than eighteen inches a part and if you have abundance of ground you can well afford to plant the rows three feet apart; but if your space is limited they will do well much closer.

The cormels form after blooming time and it is well to permit the plants to stay in the ground until they have thoroughly matured, and so long as there is no danger of freezing. Frost will not hurt the corm which is some inches below the surface. The increase you will obtain by waiting will pay you well for any inconvenience of late harvesting.

Do not plant too often in the same place. Fertilizer should be used with care. Only WELL ROTTED manure should be used, fresh manure will burn your plants. Avoid it—Do not over fertilize, it is dangerous—A reasonable amount will produce good results but in the desire of the grower to produce surpassing results the tendency is to over fertilize—Learn what your soil needs and supply that need—Do not use a fertilizer which contains a substance already abundant in your soil. The result will be sadly disappointing.

If your plants are too light a green sprinkle the ground with Portland cement this will darken the foliage and the plants will be healthier.

If you are anxious to produce an unusually large flower use dried blood just before the plant flowers or some sort of liquid fertilizer but remember that if you force the flower to an unusual size your corm will not be as vigorous the coming year—You intoxicate the flower and the reaction comes just as it does in the human being after intoxication—This law applies to all plant and animal life—Do not forget it.



No. 428

Gladiolus Catalogue

	Each	Per Doz.	Per 100
ABERDEEN—Beautiful lavender tinted pink.....	.15	1.50	
ADALINE KENT—Delicate light rose pink, straw colored throat, with ruby dashes, petals heavily ruffled, very fine, flowers 4 to 5 in. in diameter, spike 4-5 feet high, price50	5.00	40.00
ADMIRATION	1.00	10.00	
ADORATION—Very large saffron or Lincoln red, a fine flower	1.00	10.00	
ALBION—Very large salmon rose pink.....	.25	2.50	
ALICE TIPLADY—P. yellow, quite large, orange saffron color35	3.50	28.00
ALTAIR P.—Spike 5-6 feet, fine salmon saffron color.....	.25	2.50	20.00
AMERICA—Delicate light pink, one of the grandest of the old varieties06	.60	4.00
ANITA—Not tall, rich canary, deeper colored throat, many blossoms open at one time.....	.20	1.00	15.00
ANNA EBERIUS—Dark velvety purple, deeper shade in throat, flowers 6 in. in diameter, spikes 4-5 feet.....	.20	2.00	15.00
ANNA THOMPSON—Pale sulphur yellow, flowers 5 in. in diameter, spikes 5-6 feet, a very good yellow.....	3.00		
APPOLLON—Large dark red, with yellow tinge in throat, very fine20	2.00	15.00
ASHES OF ROSES—A most distinctive flower, with long pointed ruffled petals, flowers 6 in. in diameter, one of the newest on the market.....	3.00		
ATTALLA—Soft creamy white, deeper cream throat.....	.25	2.50	20.00
BERTREX—Beautiful large white, slightly marked in throat, fine flower20	2.00	15.00
BRICK RED—Spike five to six feet, brick red in color, with darker throat.....	.15	1.50	12.00
BUTTERFLY—Very strong and vigorous, large pale sal- mon yellow, with ruffled flowers.....	.25	2.50	20.00
CALIFORNIA GIANT—Deep lilac, thin white stripe run- ning through center of each petal, flowers 7 inches in diameter, spikes 7 to 8 feet high; not on sale this year	4.00		
CANOPUS—Large, fine solid yellow, fine shade of deeper yellow throat, extra good.....	.25	2.50	20.00
CAPELLA—Tall, fiery orange red, something choice.....	.10	1.00	7.50

	Each	Per Doz.	Per 100
CAPTAIN ASHER CARTER BAKER—A very fine red, spikes 3-4 feet, flowers 5 inches in diameter.....	.10	1.00	6.00
CANARIBIRD—Beautiful canary color, one of the finest primulinus	3.00		
CATTELYA—Fine orchid color, one of the best cut flowers10	1.00	6.00
CHAUTAUQUA RED—Very new, deep red in color, flowers large, splendid spike.....	2.00		
CHAUTAUQUA SUNSET—P. golden yellow, overlaid with russet, very fine.....	1.00	10.00	
CHAUTAUQUA WHITE—The largest white grown, very full flowers, many open at one time.....	3.00		
CHERRY SPOT—Fine red, with deep cherry colored blotch, fine spike35	3.50	25.00
CHICAGO WHITE—Fine for cut flower.....	.10	1.00	6.00
CINNEBAR—Fine cinnamon red with heavily ruffled flowers, overlapping each other.....	.50	5.00	40.00
COSTA RICA—White, overlaid with pink, flowers moderate size25	2.50	20.00
CRIMSON GLOW—One of the very best reds with overlying yellow in the throat.....	1.00	10.00	
DAVID STARR JORDAN—Fine large flowers, red with lighter speckled throat, opens like a very large Amaryllis, flowers 6-7 inches.....	.50	5.00	40.00
DICK—Deep purple pansy color.....	.10	1.00	6.00
DIENER'S AMERICAN BEAUTY—Brilliant American Beauty color, yellow throat, as many as 15 flowers open at one time, flowers 6-7 inches in diameter.....	1.00	10.00	
DIENER'S WHITE—Milk white with faint tinge of pink in throat, awarded Gold Medal Panama Pacific Exposition	3.00		
D. J. WHITNEY—Salmon flesh color, 2 striped yellow under petals, gives appearance of a magnificent canna, flowers 5½ in. in diameter, very early, one of the best grown	1.00	10.00	
DR. FREDERICK I. V. SKIFF—Clear flesh pink, light ruby center, sometimes striped rose pink, vigorous growth, flowers 6 in. in diameter, spikes 5-6 ft.....	.25	2.50	
DR. LINCOLN COTHRAN—Salmon pink, blue striped, yellow throat, flowers of good size, spike medium size.....	.25	2.50	
DOMINION—Same as Red Emperor, largest and most magnificent red yet grown.....	.15	1.50	
EDWIN MAYER—Very dark red, large flowers 7 in. across, originated in Germany, one of the finest flowers grown	1.00	10.00	
ELEGANCE—Tall massive, soft yellow, beautiful throat, profusely ruffled75	7.50	

	Each	Per Doz.	Per 100
ELIZABETH GEBERDING—Shell pink with speckled center of ruby and yellow, very heavily ruffled, spike 5 feet20	2.00	
ELSE ROSE—Cattleya pink, a blending of rose pink, shading to white with creamy throat, orchid flowering, spikes 3-4 feet, price.....	.75	7.50	
EMILIE ASHE—Creamy white, small cerise blotch in lower petal, heavily ruffled, spike 4-5 feet.....	3.00		
ESTA—Tall, strong, clear white with slight halo, beautiful flower35	3.50	
EVELYN KIRKLAND—Dark pink, with dark throat, very large flower, spike 5-6 ft., one of the best things grown15	1.50	
FAIREST WHITE—Clear white with tall spike, one of the best grown50	5.00	
FAIRFAX—Solid magenta, lips of throat light yellow with a deep magenta spot.....	.15	1.50	12.00
FIREFLY—P. extra bright scarlet, rich self-color.....	.50	5.00	
FIRERIBBON—Tall with many blooms open at a time, long spike, fiery band of glowing red, very striking25	2.50	20.00
FLORA—Very fine, light yellow, many flowers open at once, spike 5-6 ft., strong and vigorous, no better flower grown	1.00	10.00	80.00
FRANK J. SIMMES—Salmon rose pink, with red center, ruffled edge, spike 5-6 ft., very striking.....	.50	5.00	40.00
GENEVIEVE BOTHIN—Deep pink, thickly overlaid with steel blue, unusual flower.....	5.00		
GIANT—Large clear white flower, one of the best grown, no better white on the market.....	.50	5.00	
GIANT FAWN—Very large, deep fawn yellow, splendid substance, red line in throat.....	.50	5.00	
GLADIS PLATH—Orchid flowering, lilac, with red velvet blotches, very large flowers.....	3.00		
GLORY OF KEMMERLAND—A very unusual color, almost cerise pink with underlay of yellow.....	.50	5.00	
GOLD DROP—Large, pure deep yellow, beautiful red line on petals, well ruffled.....	2.00		
GOLDEN BUFF—Golden buff, with yellow lower petals, very fine50		
GOLDEN GATE—Very tall, large yellow, well ruffled.....	.35	3.50	
GOLDEN MEASURE—Large, light yellow, considered one of the finest yellows on the market	3.50		
GOLIATH—Large, very dark maroon, many flowers out at one time20	1.50	12.50.
GOVERNOR HANLEY—Deep clear red, a very fine flower, early, multiplies rapidly10	1.00	7.50.

	Each	Per Doz.	Per 100
GRETCHEN ZANG—Beautiful light orange with reddish blotch on lower petal—very large, very fine flower....	.15	1.50.	
HELEN TODD—Light rose pink with deep pink seam around the entire edge of the flower, bright scarlet center, flowers large15	1.50	10.00.
HERADA—Deep lilac, very large flowers, considered very good15	1.50	
ILLINOIS—Apple blossom pink06	.60	5.00
INA COLLINS—Deep rose pink, underlaid with lilac, orchid flowering, flowers 5 in. in diameter, spike 4-5 ft.....	.50	5.00	40.00
INDIAN SUMMER—Very large flower, splendid breeder, well ruffled, color a bluish or light lavender rose pink on white ground, very distinct	25.00		
JOHN MERLE COLTER—A very fine red, fine upright spikes, splendid flower in every way25	20.00	
KENTFIELD—Pale yellow with flesh tinge, canary throat....	.25	20.00	
LE MARECHAL FOCH—Very large flower, somewhat like America, but a much better spike, larger bloom, better color, one of the finest flowers grown, an importation from Holland	1.00	10.00	65.00
LILLIAN HARRIS COFFIN—Light rose pink, salmon striped, very fine flower	1.00	10.00	65.00
LILLIAN WEBB—Strawberry pink, with light maroon, velvety center, slender stems, very unique in appearance05	3.50	
LISS—Deep apple blossom pink, large spike10	7.50	
LILYWHITE—Beautiful white flower, splendid spike, slight yellow tinge in throat, very fine25	2.50	20.00
LILY WHITE—Little yellow in throat, very good companion flower to Lilywhite25	2.50	20.00
LOUISE—Deep lilac, very large flower and considered one of the best lilacs on the market	1.00	10.00	
LOVLINESS—Very fine flower, predecessor to Mrs. Dr. Norton15	1.50	12.00
LUCIFER—Very large orange red, almost scarlet, very fine25	2.50	20.00
MABEL HUBBARD—Pure white, lip of throat light canary, covered with violet spot, very fine spike50	5.00	40.00
MAINE—Claimed to be the best white grown	4.00		
MAJESTIC—Fine orange pink, large flowers	1.00	10.00	60.00
MARIN—Pale greenish yellow, a fine cut flower variety.....	3.00		
MARTHA FERNEKES—Pale blue with deeper blue blotch violet spot in center, flowers 4 inches in diameter, extremely beautiful variety	3.00		
MARY PICKFORD—Creamy white flower with deep creamy throat. There is no better flower grown35	3.50	25.00

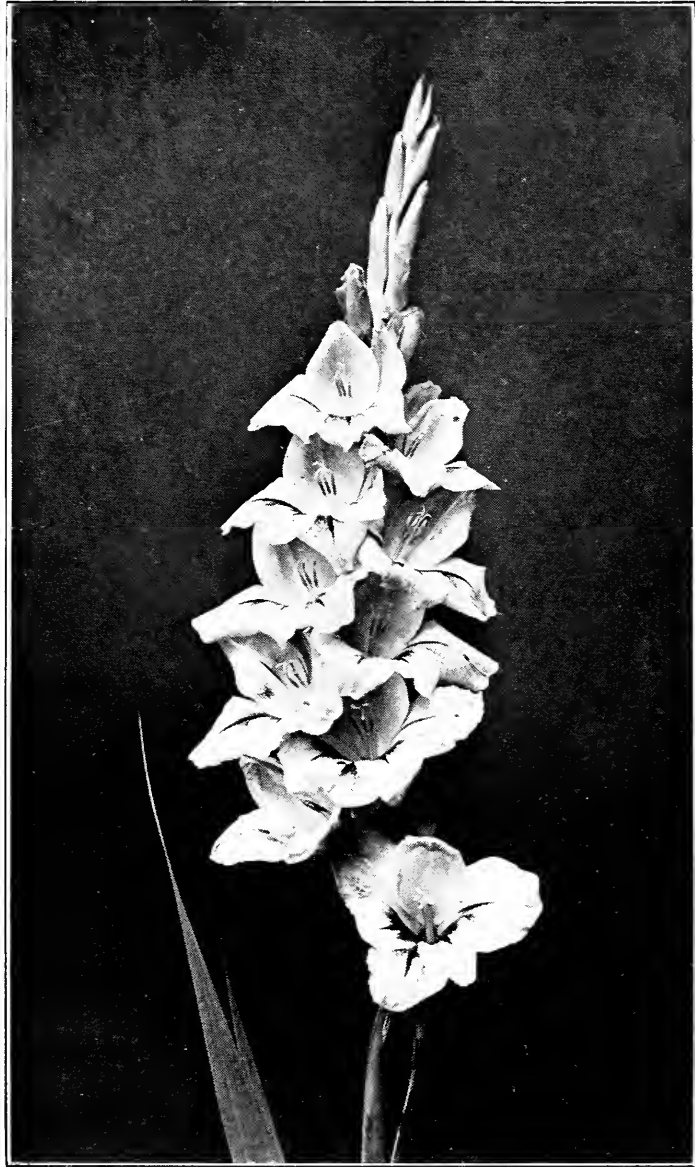
	Each	Per Doz.	Per 100
MARY STERNES BURKE—Canary yellow, overlaid with apricot, deep canary center, fine flowers, well placed on spike, considered one of the finest yellows.....	1.00	10.00	80.00
MESSENGER—Dark mahogany red, a fine rich color20	2.00	15.00
MISS MAUD FAY—Clear cattleya pink, light stripe running through center of each petal, one of the finest of Diener's productions	1.00	10.00	80.00
MISS U. S. A.—Dainty blush white, very refined25	2.50	20.00
MOONBEAM—Very tall plant, all white, many flowers on it at one time20	2.00	
MONA LISA—Pale soft rose pink or blush white, a beautiful color and a magnificent flower75	7.50	
MR. H. A. HYDE—White, faint tintings of pink, flower 6 in. in dia. Very fine for cut flowers	3.00		
MRS. COTHRAN—Crushed strawberry or ashes of roses, very odd color, flower 6 in. in dia.25	2.50	20.00
MRS. DR. NORTON—One of the finest of newer gladioli; regarded as very fine by everyone	1.00	10.00	75.00
MRS. FRANK PENDLETON—Bright rose pink on pure white ground giant blotch of richest carmen red on lower petal15	1.50	10.00
MRS. J. E. WEBB—Pale blue with vivid throat, very fine flower, price on application.			
MRS. JAMES K. ARMSBY—Coral pink, with creamy yellow throat, flowers 6-7 in. dia. splendid spike, one of the finest of the Diener productions	15.00		
MRS. JOHN R. WALSH—Flesh pink with flame colored center, very fine flower with a very tall spike, one of the finest flowers grown	1.50		
MRS. LEON DOUGLAS—Flesh salmon pink, orange strip dotted with brown spots in center, the largest fine gladiolus grown, spike 6-7 ft.	15.00		
MRS. LILLIAN GUERNSEY—Yellow, pink blotched, good flowers, very fine spike	5.00		
MRS. STANLEY ARNOLD—Soft purple pink, a deep pink throat, very fine flower	10.00		
MRS. TRUXTON BEALE—Cream rose pink, large open flower, yellow lip, speckled with brown	3.00		
MRS. WM. KENT—Light fawn to light ashes of roses, old rose in throat, flowers bloom in a mass at end of spike50	5.00	40.00
MYRTLE—Tender, delicate, rose pink, very popular in Chicago market20	2.00	15.00
MYRTLE McNALLY—Cream with touches of rose spike on each, ruby center, clear yellow lip, heavily ruffled, vigorous growth10	1.00	7.50
NEUTRALITY—An "America" seedling. Larger plant and flower. Purer pink and showier, better form.....	.50	5.00	37.50



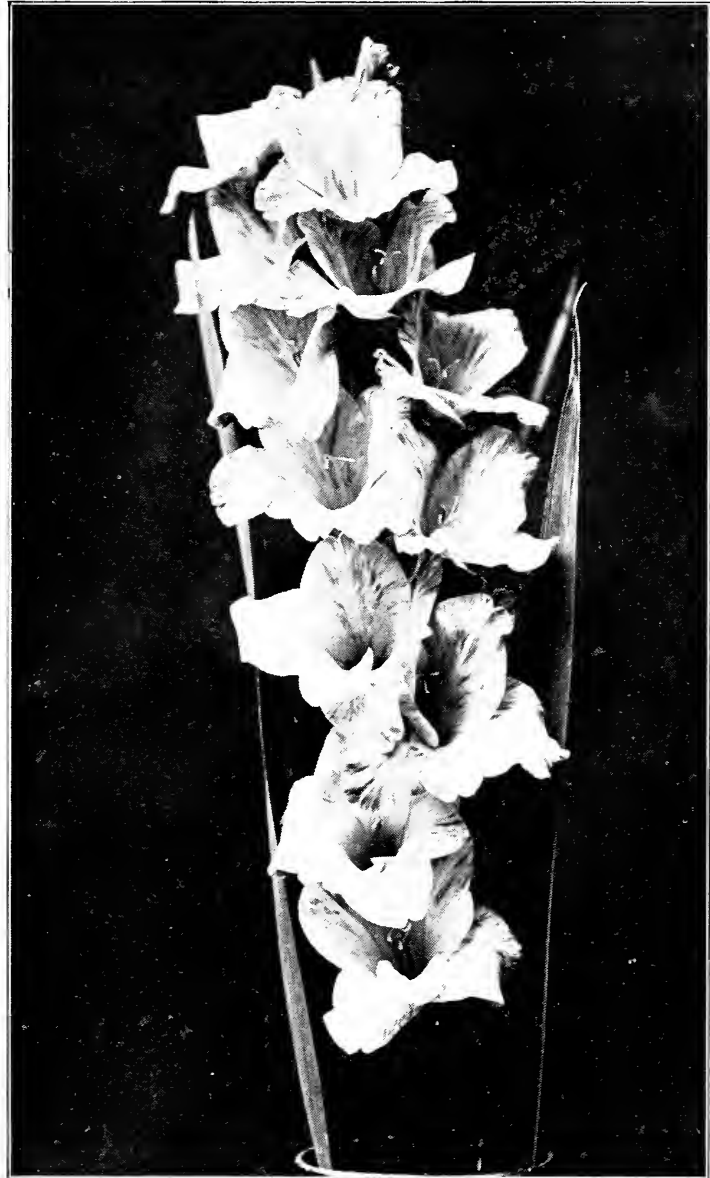
No. 140

	Each	Per Doz.	Per 100
1910 ROSE—Very large flower, pure rose pink, very fine shade, white central line on lower petals20	2.00	15.00
NORA—Pale blue with deep blue on lower petals, extra fine flower50	5.00	40.00
NORMA KRAUSGRILL—Light rose pink with deeper stripe, throat canary yellow, large flowers	5.00		
NORTH POLE—Beautiful white, splendid spike, very fine....	.40	3.50	30.00
NUMBER 17—Fine large spike, deep salmon pink, with water melon pink blotch, one of the most vigorous of flowers	1.00	10.00	75.00
PRINCE OF WALES—One of the standard varieties, light salmon pink10	1.00	7.50
PURPLE GLORY—Very large flower, most remarkable, color, deep velvety maroon red, beautifully ruffled, very fine	2.00		
PYTHIA—Very large, dark red with many flowers opened at one time	1.00	10.00	
QUEEN OF THE NIGHT—Very dark, almost black, well ruffled medium-sized spike	5.00		
QUEEN OF WHITES—Pale yellow, with deeper throat, most magnificent35	3.00	25.00
RED AMARILLAS—Very large, deep red flower, medium height, a most showy flower15	1.50	11.00
RED FIRE—Firery red with splendid spike, flowers withstand hot weather35	3.00	25.00
RED NIGHT—Large oxblood red, distinct red and very fine50	5.00	40.00
RICHARD DIENER—Salmon pink, one of the finest flowers grown, splendid spike, flowers 6-7 in. in dia.	15.00		
ROANOKE—Vigorous, large yellow Primulinus, very fine30	2.50	20.00
ROMANCE—Large orange salmon, red and yellow throat, very distinct and showy	1.00	10.00	
ROSY GLOW—Very large plant, fine rose pink on white ground35	3.50	
ROSS VALLEY—Salmon pink, striped with ashes of roses, red peacock eye25	2.50	20.00
RUFFLED AMERICA—Like America in form, deeper color, with throat markings and heavily ruffled35	3.50	
SALMON BEAUTY—Very large flowered primulinus, deep salmon35	3.50	
SAN ANSELMO—Pure white, slightly striped with pink, large flowers, spike 4-5 ft. high50	5.00	40.00
SAUSOLITO—Rose pink, overlaid with salmon, ruby throat	2.50		
SCARLANO—Deep scarlet, bright orange red, very fine flower, heavily ruffled50	5.00	40.00

	Each	Per Doz.	Per 100
SEDAN—A fine ruffled primulinus hybrid35	3.50	
SENTINEL—Tall, strong plant. Large pure rose-pink, with elegantly white-penciled, Iris-like throat15	1.50	11.25
SILVERETTA—Silver white, with scarlet markings in throat15	1.50	12.50
SPECIAL—Deep lavender blue with red blotch50	5.00	40.00
SPLENDORA—			
SUFFRAGETTE—White with circle of light lilac running across each petal, creamy white throat, flowers 7 in. in dia.50	5.00	40.00
SUMMER—Light rose pink, many flowers open at one time, beautiful in every respect25	2.50	20.00
SUMMER BEAUTY—Very fine pink, deep salmon, a grand flower15	1.50	12.50
SUNSET—Pale flesh pink overlaid and striped with rose pink, a fine flower	2.00		
SWEET ORA—Tall pale sulphur yellow, pink lines in throat, primulinus.15	1.50	12.50
TAMALPAIS—Salmon orange, with flame orange stripes, slender spiked, very fine flower	5.00		
THOMAS T. KENT—One of the most vigorous gladioli grown, delicate rose pink, straw colored throat with ruby dashes, very fine25	2.50	20.00
UNIQUE—Tall, large, salmon pink, very showy flower30	3.00	25.00
VEGA—P. A very fine yellow, similar to Canopus, many flowers open at one time30	3.00	25.00
VENETA—Massive old rose red with deep red border50	5.00	40.00
VENTURA—Pure white with barred throat, very heavily ruffled35	3.50	30.00
WETONIA—Dark deep red, almost black50	5.00	40.00
WHITE AMERICA—Like America in shape but white in color with lavender markings in throat25	2.50	20.00
WHITE GIANT—Very large pure white flower, one of the best whites grown	1.00	10.00	80.00
WHITE GLORY—Gorgeous pure white of the same size and type as Kunderd's Glory, with Iris blue throat35	3.50	30.00
WILBRINK—Blush pink, with deeper throat with pencil lines on lower petals, sport of Halley10	1.00	7.00
WILLIAM KENT—One of the grandest flowers grown, the delicate tints of this flower are beyond description, heavily ruffled, the finest of all light pink gladioli	15.00		
WONDER—			
YELLOW GEM—Tall yellow, beautiful tint, a very distinct flower25	2.50	20.00



No. 62



No. 416
HELEN PHIPPS