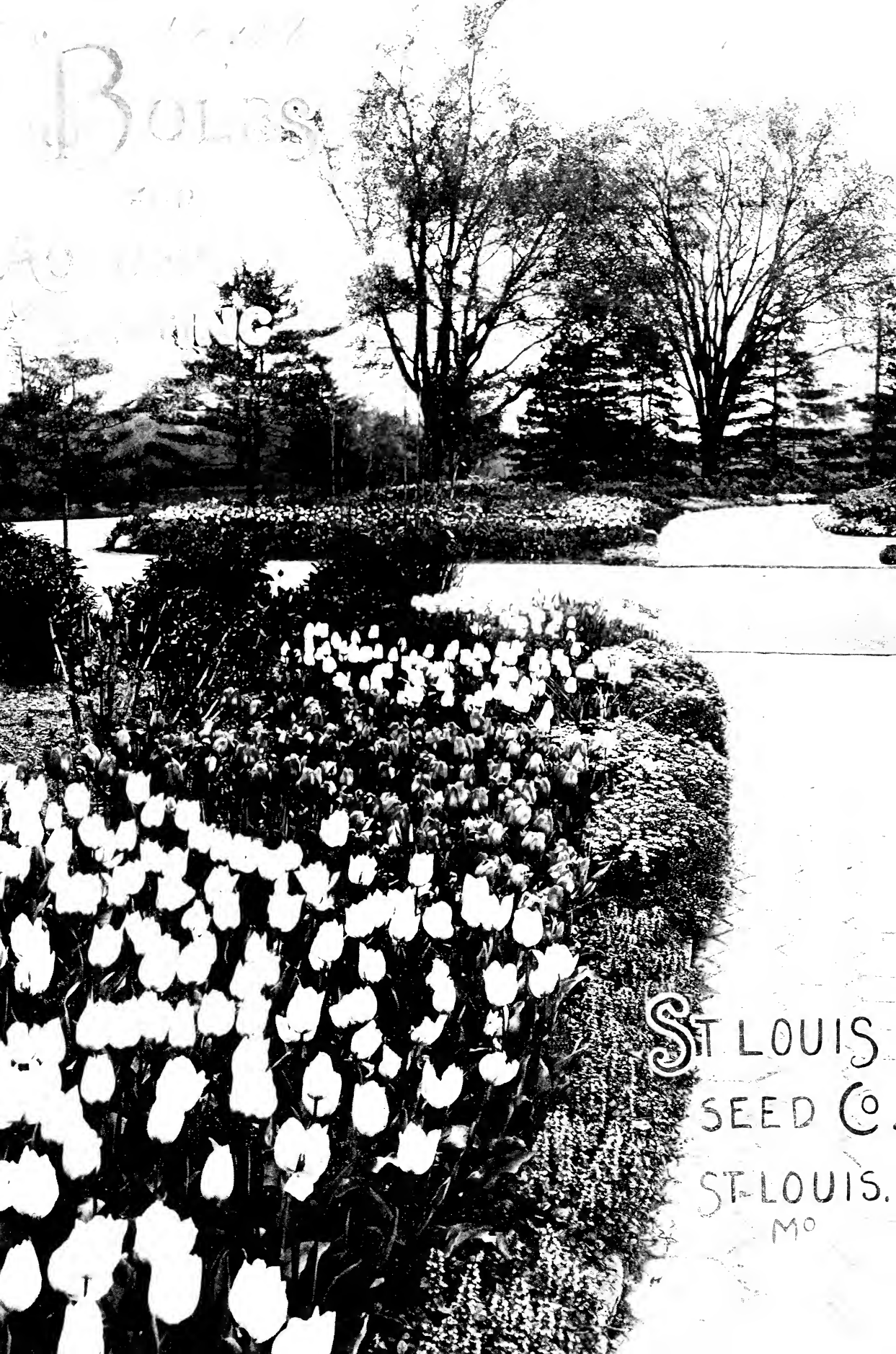


Historic, Archive Document

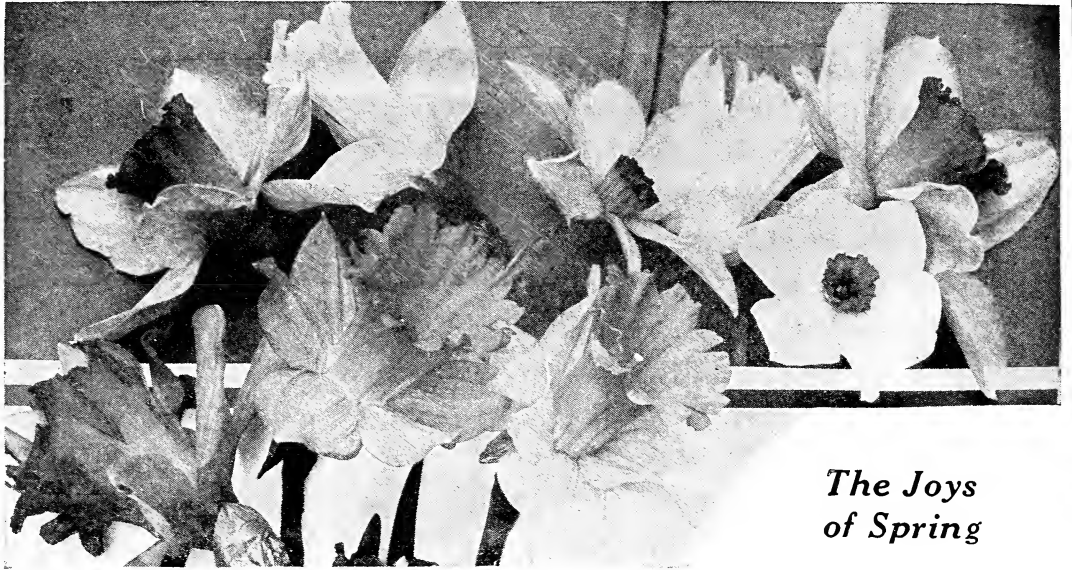
Do not assume content reflects current scientific knowledge, policies, or practices.



BOLBS

INC

ST LOUIS
SEED CO.
ST-LOUIS.
MO



*The Joys
of Spring*

Plant Dutch Bulbs Now *for the Early Flowers of Spring*

IT is after the long winter months that all is again joy and happiness. Again the trees come to life; the flowers begin to grow; the birds return, and fields and streams and all the wonders of nature join in making man's life happier and better than ever.

That is the time that flowers are of the greatest value. Their brilliancy of color; their state y shapes and their wealth of blooms are new blessings that greet us on every side. You, too, can have plenty of flowers with those days of happiness, when the heart is light and nature stirs up in us a fervent appreciation of all its beauties.

Tulips, Hyacinths, Narcissi and Crocus are the first tokens of a rejuvenated world. During the winter months they have been idle, but with the first warm weather they come forth with new life. The Tulips add color and life to the new landscape. The Hyacinths, with their tiny bells, are the admiration of all, and the Crocus, spread through the lawn, are the first signs of Spring.

Make up your mind to have some of these flowers this Spring. The time to plant them is here. "Pure and Sure" Bulbs will produce the flowers of real joy and beauty.

ST. LOUIS SEED COMPANY

The Home of "Pure and Sure" Seeds

411-413 Washington Avenue

ST. LOUIS, MO.

General Directions for Customers

ORDER your bulbs now. The planting time is here. Do not wait until the ground freezes up, for then it will be too late for outdoor planting. Also start your bulbs indoors in time and by successive plantings you can have plenty of flowers all during the winter.

Our Terms Are:

Cash with order. You are perfectly safe in sending remittance with the order. Inquire of any bank as to our reliability.

The best way to send remittances is by Post Office or Express Money Orders or Drafts on St. Louis banks. Register your letter if you send cash or currency.

Be sure to sign your name and address to every order or letter. Give explicit shipping instructions to avoid confusion and delay.

All goods in this catalog are sold f.o.b. St. Louis. We make no charge for packing or boxes or for delivery to express and freight offices in St. Louis.

If goods are desired by parcel post, please include the parcel post charges necessary to forward the goods. The weight of bulbs, packed, is shown after each variety. For parcel post rates from St. Louis, consult your local postmaster.

All goods in this catalog are offered subject to being unsold upon receipt of order. All prices are subject to change, and we reserve the right to advance all prices without notice

Mistakes will happen. Let us know when anything is wrong and we will adjust it to your satisfaction. We want you perfectly satisfied with our goods.

We are located in the very center of the country, and goods reach you promptly through our efficient service and vast transportation system out of St. Louis.

Non - Warranty

We wish it to be distinctly understood that although we take all possible pains to supply only New, Genuine and Unadulterated Seeds, Plants and Bulbs, we still give no warranty, express or implied, as to description, quality, productiveness, or any other matter of any of the Seeds, Plants or Bulbs we send out, and will not be in any way responsible for the crop. Every order received for articles named in this catalog will be executed on these conditions only.

ST. LOUIS SEED COMPANY

The Home of "Pure and Sure" Seeds

411-413 Washington Avenue

ST. LOUIS, MO.



The Culture of Hyacinths

FOR general use the Hyacinth is one of the best hardy Spring bulbs. It is easily cultivated, blooms early in the Spring, remains a long time in flower, ranges through so many rich and delicate colors that all tastes can be suited. Its delightful fragrance is enough to make it a general favorite.

The Single Hyacinths are preferred on account of their less crowded appearance, but the double are extremely effective and should be included in all collections which aim toward completeness.

For outdoor culture Hyacinths will do well in any good garden soil, but a light, rich soil suits them best. Beds should be well drained to prevent bulbs from rotting or too much water standing on the beds during winter. Plant bulbs six inches apart and from four to six inches deep, according to the heaviness of the soil. Hyacinths may be planted any time from October to December. When a crust has been formed, cover the beds with straw, litter or leaves to protect the bulbs from hard freezing.

Remove the covering when all danger of heavy frost is over in the Spring. The bulbs need not be removed after blooming, but if you wish to remove them wait until the leaves wither and die down.

Pot culture of Hyacinths is very fascinating. Use a light soil or our potting soil to fill the pots. Pot fairly firm and let the tip of the bulb just peep out of the soil. After potting water them well and then set the pots in a cool, airy place, covering the pots with ashes until the bulbs are rooted. They should remain in the dark for six weeks or more, when they can be brought to the light. A shady position is best for a few days, after which they may be placed where they are to bloom. One bulb is enough for a five-inch pot, or three bulbs in a six- or seven-inch pot or pan.

Fine blooms may be secured from growing Hyacinths in glasses. Only the very best bulbs should be used. Place the bulbs so that the base merely touches the water. A piece of charcoal in the water will keep it sweet. The glasses should be set in a cool, dark place until they are filled with roots, when they can be brought to the light. A temperature of 60 degrees will produce the best results.

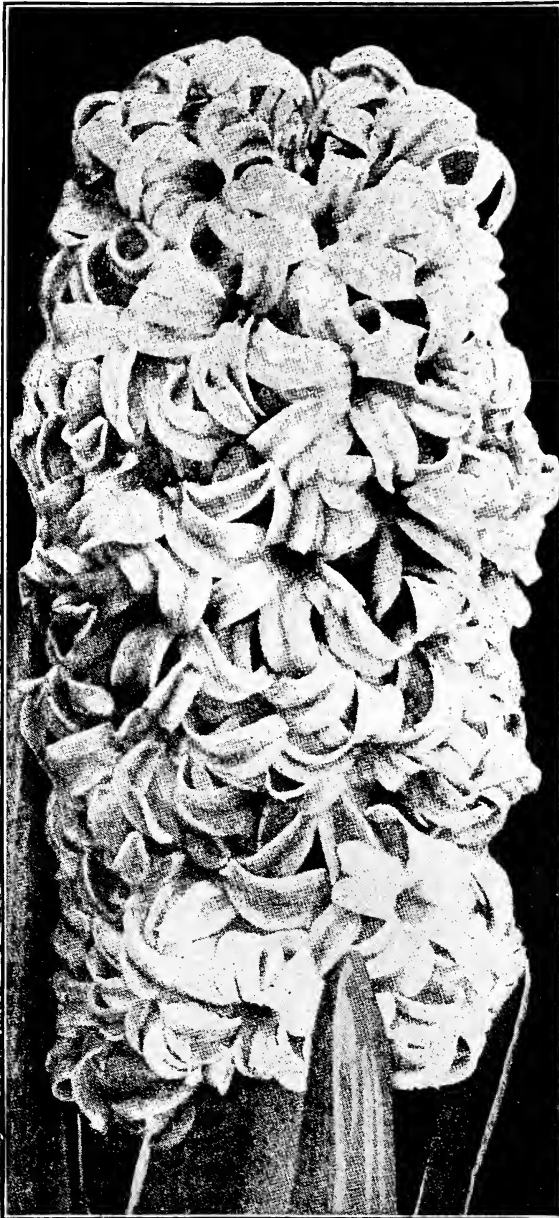
On the following pages will be found descriptions of the varieties of Hyacinths we carry.

HYACINTHS

Selected First Size

OUR Selected First-Size Hyacinths are exceptionally choice and have always proven very satisfactory to those who require the very best in bulbs. Our stock this year is easily up to the high standard that we have placed on this grade of bulbs, and you are assured of the finest producing bulbs for whatever purpose you wish to use them.

Large, uniform flowers, and especially fine for pot or glass culture and length of blooming time are the main recommendation for these Selected Bulbs. For beds or borders they can be depended on to surpass anything that you have ever planted. The varieties that we list comprise the best in the different colors and afford plenty of choice to growers.



SINGLE RED

Robert Steiger—Deep red; a splendid bedder.

SINGLE PINK, ROSE

Cardinal Wiseman—Charming light rose pink; large broad spike.

General De Wet—Very fine light rose; broad spike.

Gigantea—Very large, light pink flower; compact spike; extra fine variety.

Gertrude—Light red, large attractive spike; a splendid early.

Moreno—Great number of bells and deep pink, early variety.

Lady Derby—Soft, rose; large truss and bells; fine for pot culture.

La Victorie—Brilliant carmine rose; very fine spike.

SINGLE BLUE, PURPLE

Chas. Dickens—Porcelain shaded purple; extra fine large bells.

Captain Boynton—Porcelain blue; large bells and well-filled spike.

Grand Maitre—Deep, lavender-blue; dark stem and compact truss.

King of the Blues—Rich, dark blue; splendid spike and bells. The finest for late forcing.

Queen of the Blues—Porcelain sky-blue; a very beautiful flower.

SINGLE WHITE

Albertine—Purest white; early.

Arentine Arendsen—Early pure white, with open petals; an extra fine hyacinth.

L'Innocence—Purest white; equally good for forcing or bedding.

La Grandesse—The most showy white; fine bells.

SINGLE YELLOW

King of the Yellows—A splendid pure yellow; not early; tall and handsome spike.

Yellow Hammer—Pure yellow; beautiful neat truss.

PRICE ON ABOVE HYACINTHS

Each.....\$0.20
Per dozen..... 2.25
One dozen Hyacinths, packed, weigh 3 lbs.

HYACINTH GLASSES

Used for forcing Hyacinths as recommended in cultural directions. Green, Blue, Amber and Wine colors. Each, \$0.50.

HYACINTHS

Select Second Size, Named

THESE second-size Hyacinths will be found fine for forcing and are very highly recommended for those who desire extra fine bulbs for bedding.

For outdoor planting in beds and borders, they are the best that can be had; the flower spikes are not as heavy as the first-size bulbs and endure much better the sharp days of spring.

Our list of Second-Size embrace the leading sorts and are larger bulbs than those sold as mixed, and are strictly true to name and color.

SINGLE PINK, ROSE

Cardinal Wiseman—Charming light rose pink, large spike.

Gigantea—Very large; light pink flower. Extra fine bulbs.

Moreno—Pink shade; very early.

Lady Derby—Soft rose; large truss and bells. A good variety for pot culture.

SINGLE BLUE-PURPLE

Chas. Dickens—Blue, extra fine large bells.

Captain Boynton—Porcelain blue, shaded darker blue.

Grand Maitre—Deep porcelain blue; large truss.

King of the Blues—Rich, dark blue; fine for forcing.

Queen of the Blues—Pale blue; very fine.

SINGLE WHITE

Albertine—Pure white, early.

L'Innocence—Purest white; a grand variety.

PRICE ON ABOVE HYACINTHS

Each.....\$0.15
Per dozen..... 1.50

Weight, 3 lbs. per dozen.

HYACINTHS FOR BEDDING

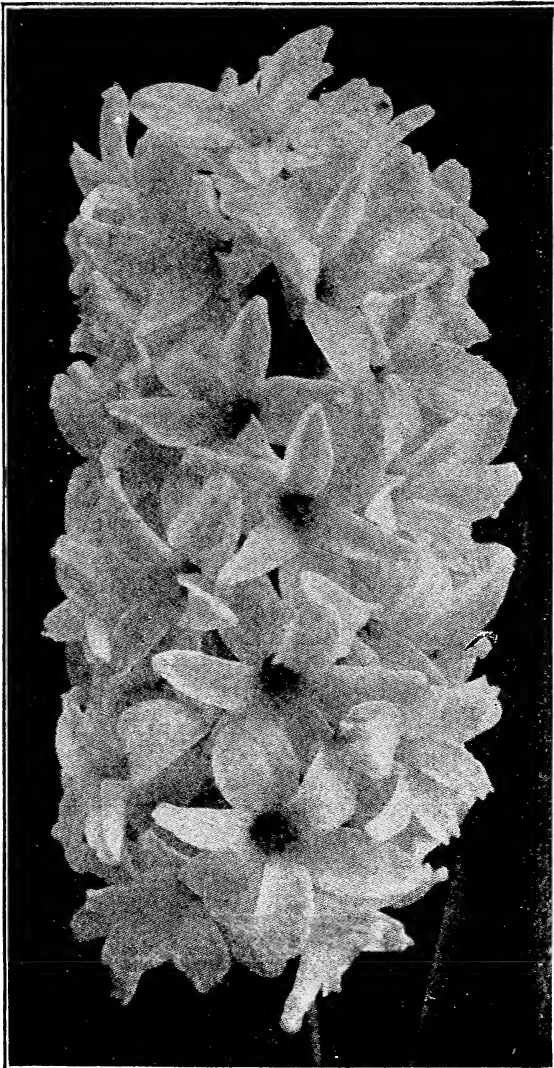
FEW bulbs can be used for bedding with such wonderful effectiveness as Hyacinths, and every Spring they form one of the features of the principal parks and country places. It is a matter of comment that larger plantings are not made when so little care is needed to produce loads and loads of flowers at a small cost. The bulbs last for years, and while the first outlay may seem large, yet their lasting qualities readily overcome this first cost.

Their delightful fragrance and attractive appearance draws the admiration of all. Not only in formal beds can Hyacinths be used to advantage. Along fences, borders, and hundreds of places can be well utilized by at least a small planting of these beautiful flowers.

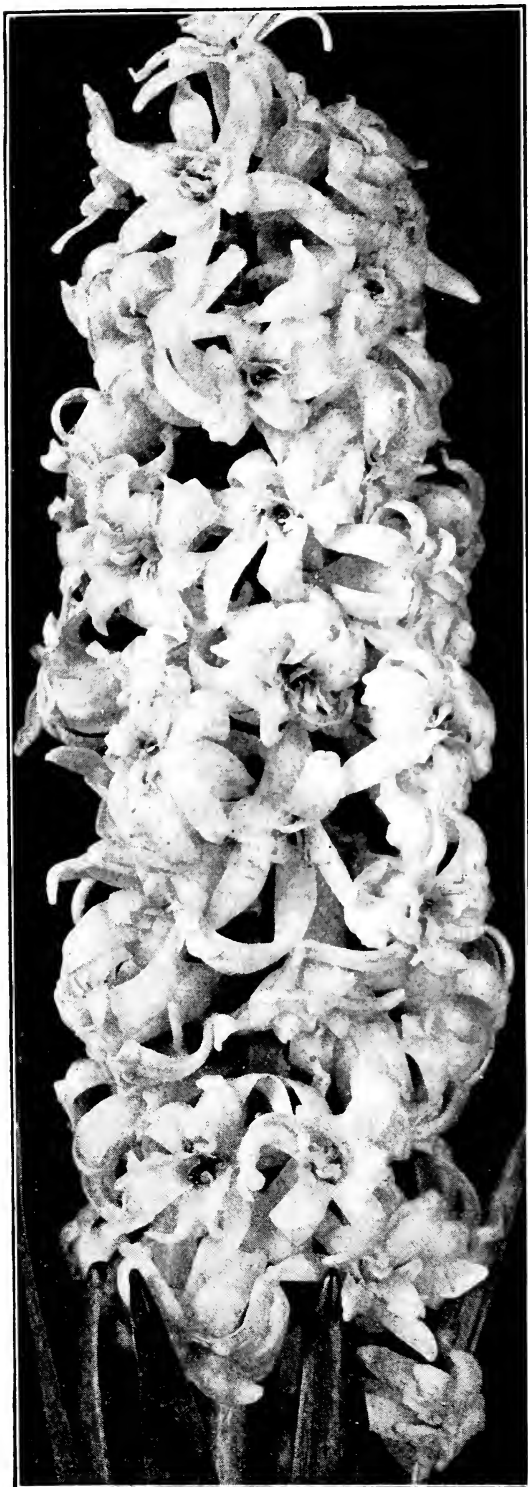
Our Bedding Hyacinths can be depended upon to turn out the kind of beds you want—full of flowers. All these bulbs are grown under the best of care and are shown in separate colors so that you can easily make your selection. They are especially adapted to outdoor growing. We can supply them in the following colors: Rose Red, Light Blue, Dark Blue, White and Yellow, Single or Double.

Per dozen.....\$1.00

Per 100..... 8.00



Bedding Hyacinths



DOUBLE HYACINTHS

Selected First Size

DDOUBLE Hyacinths are exceedingly beautiful and richly deserve a place in every garden and home. While they do not have as large a spike as the single sorts, yet their fantastic shapes readily make them very attractive and showy.

We offer only the leading varieties in the different colors. Popular choice has shown us that these varieties are the finest for the amateur grower.

Bouquet Royal—Salmon pink, with a beautiful dark center.

General Kohler—Bright blue; a splendid forcing variety; easily the best double blue.

Lord Wellington—A fine pink.

La Grandesse—A clear, pure white; fine bells and spikes.

Princess Louise—Deep red; large flowers.

Each.....\$0.25

Per dozen..... 2.75

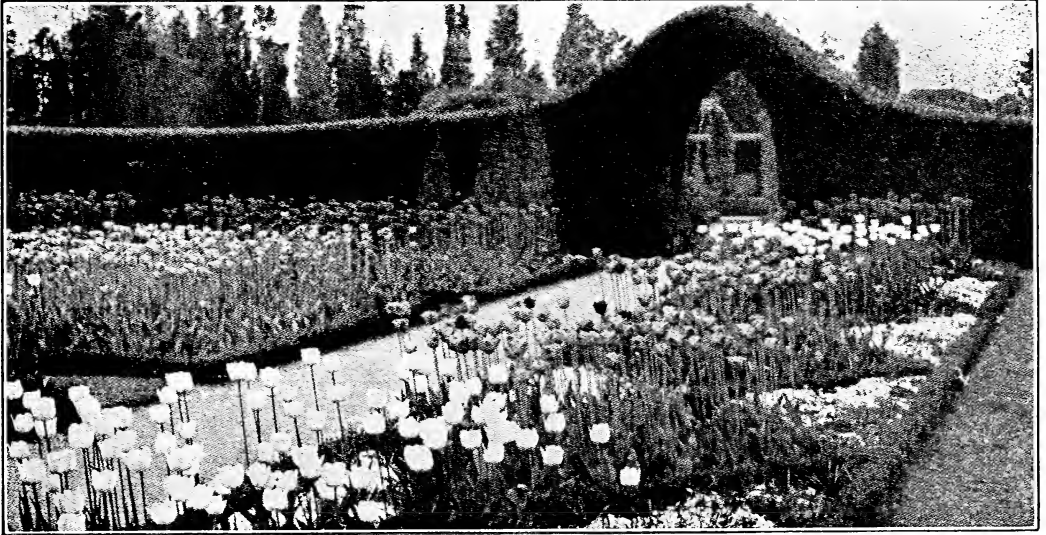
IN SHADY SPOTS

Perhaps there is some place in your garden or lawn where you would like to grow flowers, but some tree makes this impossible. That is a good place to set out some fall bulbs.

They will be through blooming before the trees have their leaves and you can in this way have flowers where you thought that you couldn't. Don't let this spring find you without at least a few Tulips and Hyacinths scattered through the yard.

SOW HAVALAWN GRASS SEED

For a Perfect Lawn



The Culture of Tulips

IT is difficult to conceive anything more brilliant in color than a bed of good Tulips. Their great variety of color, intense brilliancy and beautiful shadings make them universal favorites. The ease with which they can be grown and the low price at which they are offered are added points in their favor and the cause of the many plantings of Tulips seen throughout the country.

Tulips do well in any good garden soil and may be planted any time during the autumn before the ground is closed by the frost. The bulbs should be placed from five to six inches apart and from three to five inches deep, varying with the soil. They are perfectly hardy and require no covering during the winter, but a light covering of leaves or manure will keep the frost from throwing them out of place. A dry, sunny position is the best.

While Tulips are usually planted in beds, yet they can be used to great advantage in many places. They make an effective border for beds of shrubbery or perennials. Plant in triple rows and lift them every three years after the leaves have died down and then replant the bulbs the following Fall.

For pot culture, the directions given for Hyacinths on page four can be followed, as the forcing of these bulbs is practically the same. Plant the bulbs as early as possible, as upon the slow growth of the flower bud depends the success of forcing. Three months at least will be required to bring them into successful bloom.

Tulips may be planted singly in four-inch pots, five or six in six-inch pots or in double or triple rows in window boxes. They need practically no care after planting other than to be set in a cool, dark cellar and watered occasionally. When an inch or two above the ground they may be brought to the light of a cool window. Plenty of time and little heat mean success, while haste and too much heat spell disaster in forcing Tulips.

GIANT DARWIN TULIPS

The Most Beautiful of All the Tulips

THIS magnificent class of May-flowering Tulips has, by sheer force of its many merits, forged its way to the greatest and most lasting popularity and is grown by every lover of Spring flowers.

Darwin Tulips are quite distinct in their style of growth from the other late flowering sorts, and growing tall—attaining a height of 24 to 40 inches—they bear on long straight stems the most beautiful globular flowers of remarkably heavy texture. Their range of color delights the eye, as they embrace every conceivable tone in rich and rare shades.

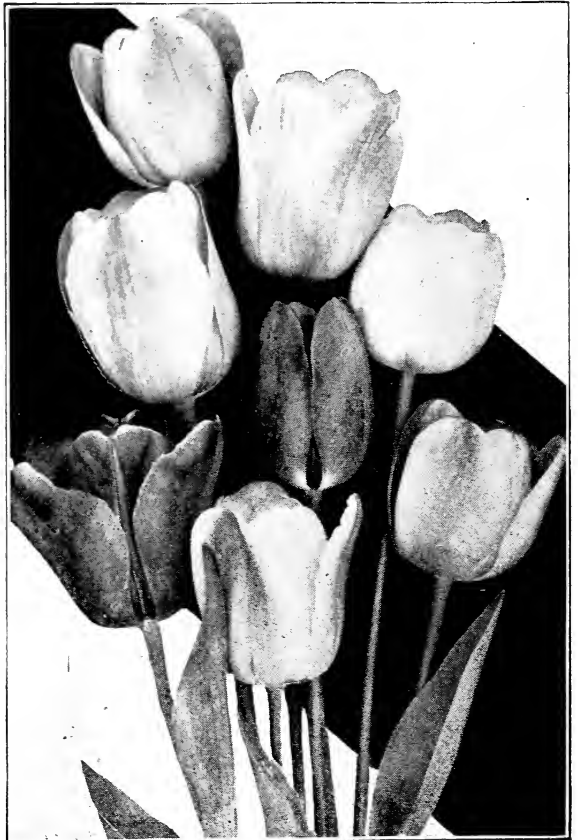
They are simply wonderful flowers; you need not plant a lot of them to prove to yourself what beauties they really are; just plant a few of them this year and you will readily be convinced that they can't be beat.

For permanent plantings they far excel any of the other varieties. For every purpose they are admirable. For borders and for beds; combined with other flowers or standing by themselves, they are without equal or peer.

You can't do better if you want rich effects, for in no other flower is there such stateliness, such wealth of beauty, such a range of glorious colors as is found in "Pure and Sure" Darwin Tulips.

We List Only the Very Best Varieties of Darwin Tulips

	Doz.	100		Doz.	100
Baronne de la Tonnay —A long and beautiful flower; clear carmine-rose at the mid-rib, toning off to soft pink at the edges; base white, tinged blue. Height, 26 inches.....	\$0.60	\$4.50	Pride of Haarlem —Magnificently formed flower of immense size; brilliant, deep salmon-rose, shaded scarlet; light blue base.....	\$0.85	\$6.50
Bartigon —Fiery crimson; a very showy variety, with white base which shows up splendidly when the flower is open. One of the earliest forcing varieties....	1.00	8.00	Painted Lady —The finest creamy white; an extra fine all-around variety.....	.60	4.50
	Doz.	100			
Clara Butt —Soft salmony pink, tinged with blush. Forces well. One that will please the most critical Tulip grower.....	\$0.60	\$4.50			
Dream —It is really like a dream to see this beautiful lilac-shaded Tulip; words can not describe it.....	.75	6.00			
Europe —A fiery scarlet with white center; an extra fine variety.....	.75	6.00			
Farncombe Sanders —Scarlet, with center white; large broad-petaled flower of perfect shape; easily the best in its color; fine for forcing or outdoors.....	.85	6.25			
Flamingo —Rosy flesh color; pointed flower. Extra distinct white center.....	.75	6.00			
Gretchen —Outside of petals are a delicate blush, while the inside are a soft rose.....	.60	4.50			
Harry Veitch —A rich blood-red; very brilliant in the sunlight; with blue base; large, bold flower on long stem. Height 28 inches.....	.85	6.50			
Kate Greenway —A blend of white and lilac that makes an exceptionally pretty flower.....	.60	4.50			
King Harold —Large flowers of dark maroon-scarlet.....	.65	5.00			
La Candeur —A white Darwin of exceptionally fine quality.....	.60	4.50			
Madame Krelage —Bright pink, light edge; large flower.....	.75	6.00			
Mixed Darwin Tulips —If you want a lot of variety at a low price and still secure quality bulbs, you can't do better than to plant our special mixed Darwin Tulips.....	.50	4.00			



Darwin Tulips

To the above prices add postage at zone rate of 1 lb. per dozen bulbs.

EARLY SINGLE-FLOWERING TULIPS

Selected First-Size Bulbs Only

By parcel post, add postage at zone rate of 1 lb. per dozen bulbs.

It is difficult to conceive anything more brilliant in color than a bed of Tulips. Their beautiful shadings, great variety of color and intense brilliancy makes them the great favorites for early spring flowers. Another consideration in their favor is their low cost and ease of cultivation, for anybody can grow Tulips successfully.

They are within the reach of all and should be planted by every flower lover. If it is only a few, you can brighten up some spot with them. They are perfectly hardy and need very little protection during the winter.

But not only outside do they do well. Try your hand at forcing some of them indoors this year. If you admire flowers for the house there is no easier way to have them. On page 8 we have endeavored to explain briefly how to grow Tulips.

The Tulips we offer are among the most perfect flowers in form, wealth of color and variety of markings. Do not be bothered with planting cheap bulbs. All you will get out of them is disappointment. Secure the very best and make sure of the results.

The letters A, B or C following the varieties indicate their earliness of bloom; those marked A flower together and are the earliest; B's follow before the A's are out of bloom, etc. The figures indicate average height in inches.

SINGLE SCARLET OR RED

	Doz.	100		Doz.	100
Artus—B 7. Deep red, fine bold flowers, very fine for forcing and bedding	\$0.65	\$5.00	Dusart—B 7. Rich deep scarlet, a grand bedder	\$0.60	\$4.50
Belle Alliance—B 10. Brilliant scarlet, yellow base; large flower. Excellent for bedding or forcing75	6.00	Duc Van Thol, Scarlet—A 7. Very early60	4.50
Couleur Cardinal—C 9. Brilliant crimson-scarlet, with beautiful purplish sheen on the outer petals. Excellent bedder85	6.50	Pottebakker, Scarlet—A 9. Good bedder60	4.50
Cramoisi Brilliant—C 9. Glowing scarlet, yellow base. Excellent bedder60	4.50	Vermillion Brilliant—A 12. Bright glistening scarlet, with yellow base. For forcing or bedding85	6.50



Kaiserkroon Tulips

RED AND YELLOW

	Doz.	100
Duchesse de Parma—B 10. Deep orange maroon with irregular border of deep yellow. Excellent for bedding or early forcing	\$0.70	\$5.50
Duc Van Thol—A 7. Red and yellow, quite early60	4.50
Joost Van Vondel—B 9. Cherry red, feathered white through center of petals60	4.50
Kaiserkroon—B 12. Red, edged clear rich yellow; large flower. Excellent showy bedding or forcing variety. Extra large bulbs75	6.00
Prince of Austria—B 10. Brilliant orange-scarlet; yellow base; large and showy flower; deliciously sweet scented. Good for bedding or forcing75	6.00

SINGLE WHITE

	Doz.	100
Duc Van Thol, White—A 7. Extremely early, popular for forcing	\$0.65	\$5.00
L'Immaculee—A 8. Pure white, large, very early flowers65	5.00
Pottebakker, White—A 9. Pure white; large and showy flower. Excellent for bedding or forcing70	5.50
White Hawk—A 10. January forcing. Large, pure white flower of globular form; excellent shipping variety on account of its lasting qualities. Good bedder65	5.00
White Swan—B 10. True, pure white, late60	4.50

EARLY SINGLE-FLOWERING TULIPS

PINK AND ROSE

	Doz.	100		Doz.	100
Cottage Maid—B 9. Rosy pink edges, shaded to white.....	\$0.65	\$5.00	Rose Gris-de-lin—C 10. Rose, flushed and feathered creamy white. Very fine for bedding.....	\$0.65	\$5.00
La Reine—B 8. White, faintly flushed with rose; fine forcer.....	.60	4.50	Rose Luisante—C 10. Brilliant deep rose-pink; large flower of great substance. Splendid for bedding or for pots and pans when forced late.....	.75	6.00
Pink Beauty—B 10. Vivid cherry-rose, center of petals striped white. One of the best dark pink bedding Tulips.....	.75	6.00	Queen of the Netherlands—B 14. Beautiful, soft rosy pink, flushed white; an exquisite variety for growing in pans.....	.60	4.50
Proserpine—A 12. Rich, silky carmine rose. This variety still heads the list for Christmas forcing. Excellent for bedding also.....	1.00	8.00			

SINGLE YELLOW

	Doz.	100
Chrysolora—B 10. Clear, golden yellow; large globular flower. Excellent for bedding.....	\$0.60	\$4.50
Duc Van Thol, Yellow—A 8. Excellent early yellow, for pots..	.60	4.50
King of the Yellows—B 9. For early forcing or bedding. Large and fine form.....	.75	6.00
Mon Tresor—A 12. Golden yellow; the flowers are large and of a pure color. Mostly used for growing in pots or pans, for which purpose it is best; a good bedder also.....	.85	6.50
Pottebakker, Yellow—A 9. Large yellow.....	.60	4.50
Thomas Moore—B 12. Rich apricot-orange. Excellent for bedding or forcing.....	.60	4.50
Yellow Prince—B 10. Excellent for bedding or forcing.....	.65	5.00

SINGLE VIOLET

	Doz.	100
President Lincoln—B 12. Clear magenta-violet; large flower; very effective.....	.65	5.00
Wouwerman—B 9. Deep violet, fine bedder.....	.75	6.50

“PURE AND SURE”
Special Mixed Tulips

SOME mixed Tulips are nothing but cheap, undersized bulbs of low quality. That is why they are offered at low prices.

But not so with our Special Mixture. They are all “Pure and Sure” Bulbs of highest quality and such that will come up to your expectations.

They are fine for bedding, as this mixture is made up of a great variation in colors and shades, which makes an effective group when massed in beds. And what is more, they are offered at a lower price than the named varieties.

Per dozen.....	\$0.50
Per 100.....	4.00



Single Tulips

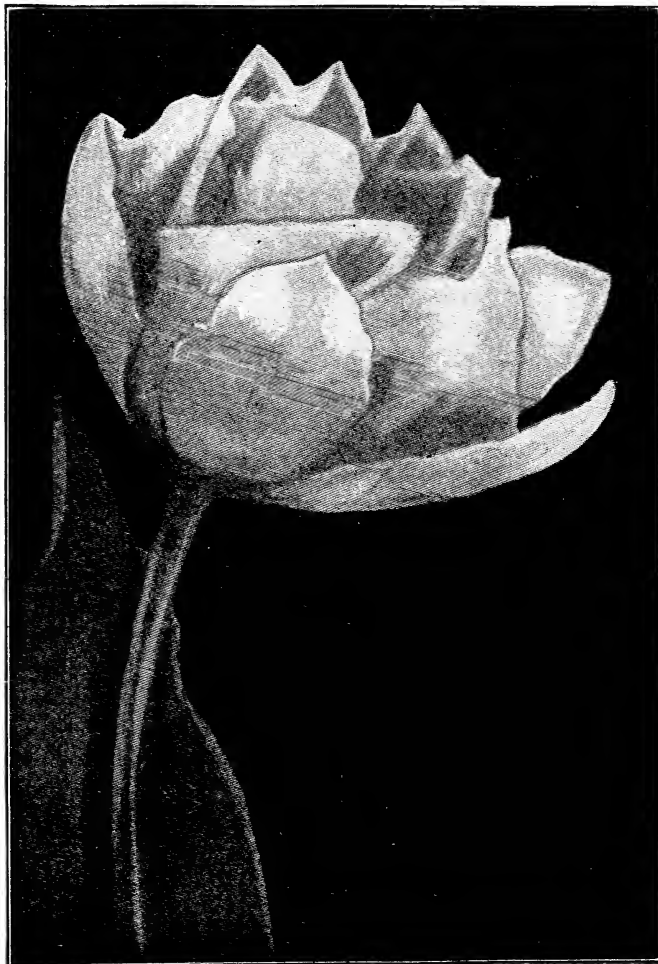
TULIPS DOUBLE EARLY

THE double Tulips are very desirable for bedding purposes, and while they are generally later in blooming than the single sorts, the length of time they bloom lasts much longer than those of the single early varieties.

Their very large peony-like flowers in brilliantly contrasting colors serve to prolong very distinctly the season of gorgeous beauty in the Spring flower garden.

The culture of the Double varieties is the same as for the single Tulips, but they do not stand forcing as well as do the single varieties. For beds or borders the Double Tulips stand out pre-eminent.

	Doz.	100		Doz.	100
Couronne d'Or—A 10. (Crown of Gold), golden yellow; excellent.....	\$0.75	\$6.00	Rose Blanche—B 8. Pure white, good out-of-doors.....	\$0.60	\$4.50
Duke of York—B 10. Carmine rose, bordered white.....	.60	4.50	Tournesol—B 9. Red and yellow.....	.75	6.00
Imperator Rubrorum—A 9. One of the best scarlets either for bedding or forcing.....	.75	6.00	Tournesol—B 9. Yellow, bright yellow, shaded orange.....	.75	6.00
La Candeur—B 10. Pure white, splendid for out-of-doors.....	.60	4.50	Murillo—B 9. White rose, shaded, best forcing variety.....	.75	6.00
Rubra Maxima—B 10. Brilliant scarlet.....	.60	4.50	Salvator Rosea—A 9. Light pink, extra.....	.85	6.50
			Double Mixed.....	.50	4.00



Double Early Tulips

WHEN TO PLANT

We wish to emphasize to the amateur that the fall is the proper time to plant the spring-flowering bulbs shown in this catalog. The greater part of them are ready for shipment in September while some do not mature until later. Varieties will be shipped in time for you to set them out.

The reason they are set out in the fall is so that they will develop a proper root growth before the cold weather sets in. While satisfactory results have sometimes been received from later plantings, yet it is safest to get them out before the ground freezes up. All bulbs require a moderately rich soil that has been well fertilized for previous crops, or else apply well-rotted manure or bone meal. Do not use fresh manure, as it is injurious to bulbs. The soil should be well drained to prevent the bulbs from rotting.

Place your order for bulbs in time and you will then be sure of securing the varieties you want and in plenty of time to plant them.

GLASS BOWLS

These are used for bulbs indoors, and especially for Paper Whites. Large size, crystal, holding 6 bulbs, each.....\$0.25

HYACINTH GLASSES

In blue, green, amber and wine colors. Used for growing Hyacinths in water. Price; each.....\$0.50

NARCISSUS

Paper White Grandiflora

By far the most popular bunch Narcissus. Grown especially for Christmas blooming either in soil or stones and water.



Giant Paper-White Grandiflora

PAPER White Narcissus are undoubtedly the most popular of all house-flowers and in thousands of homes are seen these pretty white flowers, blooming in mid-winter. For the purpose of quick flowers and plenty of them during the cold months, certainly nothing equals the Paper Whites, as they are commonly called.

They produce large trusses of blooms and are quite fragrant. The bulbs are not hardy and should not be planted outdoors. They serve their purpose too well indoors and the ease with which they are forced recommends them as the favorite Narcissus.

Paper Whites can be grown in water, with pebbles, in shallow dishes or bowls. Six bulbs should be planted in an ordinary sized dish.

It is advisable to start the bulbs in a

dark place for four to six days. Grow cool and give the bulbs plenty of water. In order to grow successions of flowers during the entire winter, plant some bulbs every two weeks.

Paper Whites are grown extensively by Florists, and they have flowers from November until Easter. You can easily do the same at a low cost and small amount of time and care.

	Doz.	100
Mammoth Large Flowering Bulbs.....	\$0.75	\$6.00
First Size Bulbs, Regular Stock.....	.50	4.00

CHINESE LILIES

Joss Flower or Sacred Lily

These, like the Paper Whites, are largely grown indoors and are excellent for forcing. They are similar to the Paper Whites, but have a yellow cup in the center. The outer rim of the flower is white.

Chinese Lilies can be grown in pots, but they do better when planted in bowls filled with pebbles and water.

	Each	Doz.
Mammoth Bulbs only.....	\$0.25	\$2.75

Paper White Narcissus and Chinese Lilies should be grown in every home. They are easy to grow and make fine flowers for Christmas-time.

SINGLE NARCISSEUS

Giant Trumpet Varieties

By parcel post, add postage at zone rate of 2 lbs. per dozen bulbs.

THERE are no hardy bulbous plants which have more points of merit than the Narcissus. Perfectly hardy, growing and doing well in almost any soil, they have a preference for a good, deep soil, and a semi-shaded position—amongst the grass, under the trees, etc., etc., could not be used to better advantage than by filling with Narcissus. They are equally desirable for pot culture or for winter flowering. Three or four bulbs can be put into a 5-inch or 6-inch pan or pot and with the same treatment as given to Hyacinths. But it is outdoors that Narcissus do best, and if planted in October or November out in the open ground, in a good soil, let them remain undisturbed. After flowering let the leaves die back, but do not cut them off or the bulb will not flower next year. Set 5 inches deep and 6 to 8 inches apart. The bulbous roots will multiply and send up fine long flower stems every Spring. Be sure to keep the ground moist during the growing season if season is dry. We handle only strictly selected bulbs that are sure to produce satisfactory returns.

	Doz.	100
Emperor —One of the largest and finest Daffodils in cultivation, pure yellow trumpet of immense size, and wide overlapping, rich primrose perianth; for bedding, naturalizing or for growing in the house it is unequalled. Much in demand for cutting.		
Exhibition or Jumbo Bulbs.....	\$1.20	\$9.00
First size, round bulbs.....	.75	6.00
Empress —Of strong, robust growth, with fine large flowers; the perianth snow-white, trumpet rich yellow, serrated and flanged at the edges; one of the best bi-colors and of rare beauty for cutting.		
Exhibition or Jumbo Bulbs.....	1.20	9.00
First size, round bulbs.....	.75	6.00

	Doz.	100
Golden Spur —The most popular of the golden yellow trumpets with cut-flower growers, as it produces freely and early its handsome rich, deep yellow flowers.		
Exhibition or Jumbo Bulbs.....	\$1.20	\$9.00
First size, round bulbs.....	.75	6.00
Glory of Leiden —Immense flower with long, large fluted trumpet of rich yellow with full, broad, overlapping perianth petals of bright yellow; strong grower.		
Per dozen, 75c; per 100, \$6.00.		

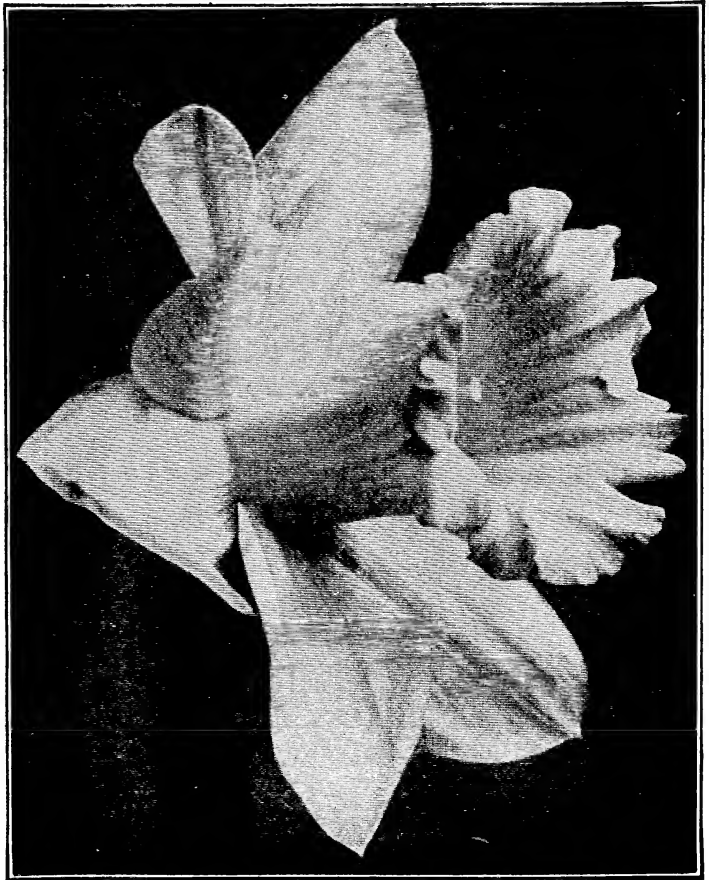
Henry Irving—Remarkable for its deep yellow, imbricated wheel-shaped perianth and large trumpet of a lovely golden-yellow hue; fine variety for any purpose. Per dozen, 75c; per 100, \$6.00.

Princes—Very early. This is one of the most popular winter-flowering and forcing varieties grown. Flowers large; perianth sulphur, an immense, rich yellow trumpet. Per dozen, 60c; per 100, \$4.50.

Sir Watkin—The Giant Chalice Flower. A gigantic variety; immense long-stemmed flowers, sometimes measuring 5½ inches across, being the largest variety grown. Color a rich light yellow, with a very large dark cup, tinted with orange. Per dozen, \$1.20; Per 100, \$9.00.

Trumpet Major: Single Von Sion—A large and shapely flower of a rich yellow color throughout. Comes into bloom early and is excellent for forcing, bedding or naturalizing. Per dozen, 75c; per 100, \$6.00.

Victoria—Bi-color, famous for its large and durable flowers, which stand boldly erect; broad perianth of creamy white; large, broad, fluted trumpet of rich yellow. A strong grower, with massive flowers. **Exhibition or Jumbo Bulbs.** Per dozen, \$1.20; per 100 \$9.00.
First size, per dozen, 75c; per 100 \$6.00.



DOUBLE NARCISSUS OR DAFFODILS

By mail, add postage at zone rates.

THESE old-fashioned daffodils are still very popular, and though they lack the sturdiness of some of the single varieties as bedders, they have a delightful fragrance and are excellent for cutting, while the old Von Sion has no equal. This is the old favorite variety, so highly prized in old-fashioned gardens. Excellent for either forcing or cut flowers. If planted out of doors it can remain where planted for a number of years, blossoming freely every year. It is as popular now as ever and everyone who loves daffodils should plant it.

	Doz.	100		Doz.	100
Von Sion's XXX—Extra fancy double nosed mother bulbs. These never throw less than three flowers, often more. These are fine for pans.....	\$1.20	\$9.00	Orange Phoenix (Bacon and Eggs)—Beautiful double white flowers, with orange nectary. Splendid for pot culture and cutting and for garden decoration.....	\$0.75	\$6.00
Von Sion Extra Selected Double-nosed Bulbs—Each bulb will produce at least two flowers, and frequently three or more.....	1.00	7.50	Sulphur or Silver Phoenix—Creamy white, with pale sulphur center. Considered the finest of the double sorts..	.60	4.50
Von Sion Selected Single-nosed Bulbs—Each bulb will produce at least one fine flower, and often two.....	.60	4.50	Grand Soleil d'Or—A delightful variety, rich yellow flower with reddish cup ..	.50	4.00

MEDIUM TRUMPET NARCISSUS

THIS is also a very popular type—or, rather, types—of the Narcissus or Daffodil family. Splendid for garden culture, in pots or pans, or in flats, for cut flowers.

BARRII. Daffodils are crosses between Yellow Giant Trumpet and the Poet's Narcissus. The crown usually is not over one-third the length of the perianth petals.

INCOMPARABILIS. The Incomparabilis varieties are also crosses between the Yellow Giant Trumpet and the Poet's Narcissus, but the crowns are larger than those of the Barrii. The color of the perianth is either yellow or white.



Double Narcissus

Autocrat (Incomparabilis)—Clear golden yellow; broad perianth tending to reflex, cup widely expanded at the mouth. Height 20 inches. Selected bulb.....

	Doz.	100
	\$0.60	\$4.50

Barrii Conspicuus—Large, broad-spreading perianth of soft yellow; short, yellow cup, edge bright orange-scarlet. A fine large flower; one of the handsomest of all. Height 21 inches. Selected bulbs

	.60	4.50
--	-----	------

Figaro (Incomparable)—Cup orange yellow, edged red; perianth sulphur yellow.....

	.60	4.50
--	-----	------

Mrs. Langtry (Leedsii)—A remarkably free-flowering variety, each bulb usually producing several flowers; broad, white perianth, and white cup opening pale primrose. Height 16 inches. Selected bulbs.....

	.60	4.50
--	-----	------

ORDER EARLY

While stocks are complete. Any goods not in when order is received will be shipped in plenty of time for planting. Again, we say "Order Early"

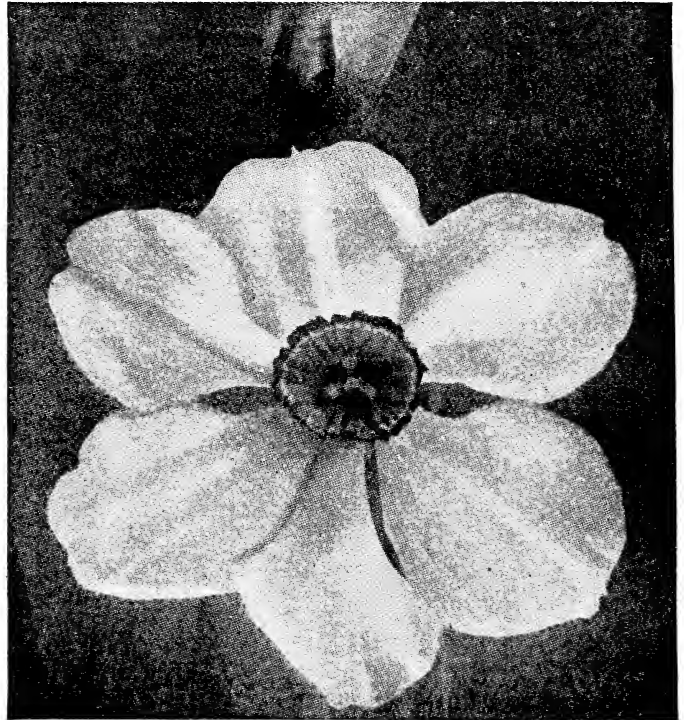
POET'S NARCISSI

By parcel post, add postage at zone rate.

THIS class of Narcissus, instead of having a trumpet or crown, has a small, wide-mouthed cup. They are very hardy, and are used in large numbers for naturalizing, their simplicity of form and delightful fragrance making them highly prized.

Poeticus Ornatus—This is the old-fashioned favorite type, with white flowers, the cups margined with red and with rich, spicy odor. Do well in the open border, are perfectly hardy, and once planted take care of themselves. Per dozen, 50c; per 100, \$4.00.

Glory of Lisse—The improved Poeticus Ornatus, a splendid forcer. Per dozen, 75c; per 100, \$6.00.



Poet's Narcissus



Jonquils

JONQUILS

THESE are much prized for their deliciously scented, small golden flowers; perfectly hardy in gardens or naturalized. They are also admirably adapted for winter flowering in pots of soil.

Many confuse the Jonquils with the Giant Trumpet Narcissus. The illustration shows the difference between these two distinct varieties.

	Doz.	100
Double Jonquil —Double deep golden yellow flowers; powerful scented and good for forcing.	\$0.40	\$3.00
Single Jonquil —The well-known favorite, delicately scented and beautiful for forcing. Rich yellow; very fragrant.35	2.50
Campanelle —Large, yellow flowers, four to six on a stem; fine for forcing.40	3.00



Giant Crocus—Kathleen Parlow

CROCUS, SPRING FLOWERING

“The Heralds of Spring”

CROCUS, among the first flowers to bloom in the early spring, always attract the admiration of everyone. In no way does their beauty show forth more splendidly than when spread through the lawn they bloom before the snow has left the ground. They are truly called the “Heralds of Spring,” for theirs is the honor to bloom before the rest of the flowers show any signs of life.

But not only in lawns do they do well. Among the other Spring-flowering bulbs, such as Tulips, Hyacinths and Narcissus, they make a splendid show before the other varieties begin to bloom. Every garden and lawn can be improved by a liberal planting of the splendid early flowers.

Crocus may also be grown in pots, and the results are very satisfactory. Use only the best-named varieties. Place the bulbs about one-half inch apart and one-half inch deep, keeping them in a cool place until thoroughly rooted, when they may be brought to the light for blooming.

GIANT FLOWER CROCUS

		Doz.	100			Doz.	100
<p>Cloth of Gold—Yellow veined, brown outside.....</p> <p>Albion—Dark purple, striped white; extra large, fine flower.....</p> <p>Baron von Brunow—Very large, deep, rich purple.....</p> <p>David Rizzio—A fine, deep purple....</p> <p>Kathleen Parlow—Purest white, with large orange anthers; a leader.....</p>		\$0.50	\$3.50		<p>King of the Blues—Dark blue; large flower.....</p> <p>King of the Stripes—A fine striped variety.....</p> <p>Mammoth Yellow—Golden yellow, free flowering.....</p> <p>Mont Blanc—Pure white.....</p> <p>Sir Walter Scott—Large white; lilac striped.....</p> <p>Queen Victoria—Purest white; very large, free bloomer.....</p>	\$0.50	\$3.50
		.45	3.25			.40	3.00
		.45	3.25			.60	4.50
		.45	3.25			.40	3.00
		.50	3.50			.40	3.00

“PURE AND SURE” CROCUS MIXTURE

THE finest mixture that you can obtain for bedding, naturalizing or planting in conspicuous places in the lawn. The bulbs are somewhat smaller than the named varieties, but regardless of this they give splendid results wherever they are grown.

Sold at a much lower price than the named varieties is a greater inducement to make more liberal plantings of the finest mixture of Crocus Bulbs.

Per dozen.....\$0.30 Per 100.....\$2.25

CALLA LILLIES

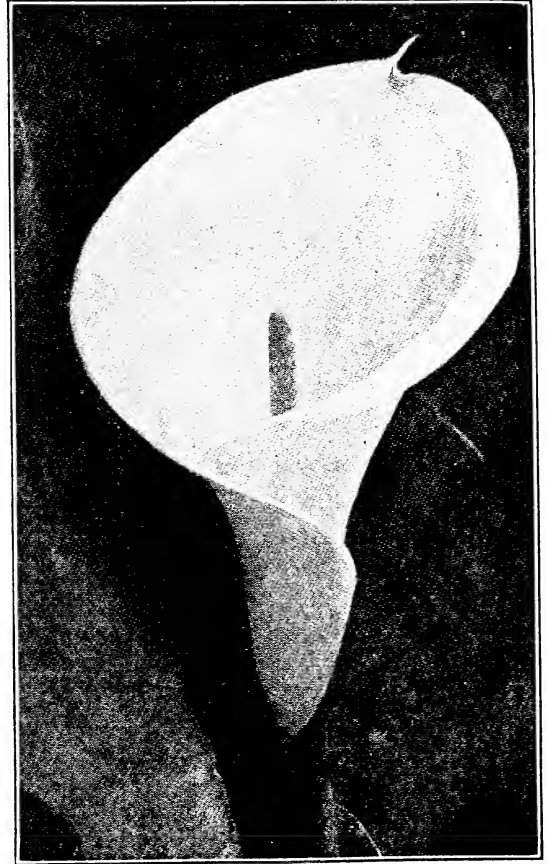
CALLAS occupy a prominent place among our favorite house plants because they are so easily grown and give thorough satisfaction, even where they only receive moderate attention and nursing. For best results they should be planted in rich soil, and plenty of water during the growing period is essential to ideal development. Repot in good, rich soil by September 1st; bring to the light, and give an abundance of water in a warm room.

	Each	Doz.
Large Bulbs.....	\$0.50	\$5.50
Medium Bulbs.....	.35	4.00

GIANT FREESIAS

Without doubt the most sweetly scented flower growing; a single bloom permeates the living-room with its delicate perfume. Although they are quite popular and very easily raised, we would suggest the following treatment: Procure the bulbs as early as possible, and plant them in successive batches from August to October. The soil should be a mixture of loam, to which must be added leaf-mold and sand.

	Doz.	100
Improved Purity —The finest and purest white variety yet introduced; of strong growth and with larger flowers than the type. Extra large bulbs.....	\$0.50	\$4.00
Select Bulbs.....	.40	3.00



Calla Lily

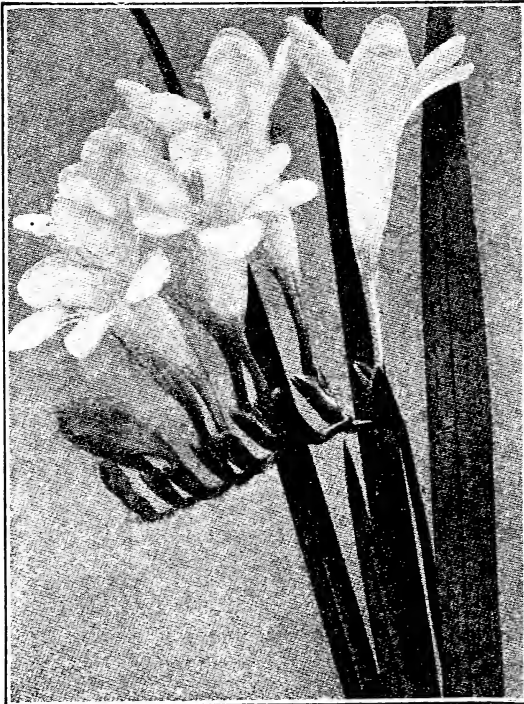
LILIUM HARRISII

(Bermuda Easter Lily)

THIS magnificent lily is undoubtedly the best for winter forcing, as it comes quickly into bloom. The flowers are trumpet-shaped, pure white, gracefully formed and delightfully fragrant.

The freedom with which the flowers are produced is truly remarkable, even the smallest bulbs blooming freely.

The bulbs we supply are first-class in every way and can be depended on to produce lilies of exceptional beauty. However, we do not recommend these lilies for outdoor planting unless they are protected well during the winter months. Price: each \$0.50; dozen, \$5.50.



Giant Freesias

**HAVALAWN
GRASS SEED**

Sown in the fall will make the
finest lawn of all

LILIES

By parcel post, add postage weight, 3 lbs. per dozen.

HARDY Lilies are one of the most important features of the flower garden. While the original cost may seem large, yet when the permanence of these beautiful flowers is considered, there is nothing cheaper. Lilies will last for years.

The soil for Lilies should be a warm, friable loam suits them best. Avoid dampness and sour soil if you are anxious to secure the best results. The soil should be dug deeply, as the bulbs should not be disturbed for a long time. Lily bulbs should be planted just as soon as they arrive. Some varieties arrive earlier than others and we fill all orders just as soon as our bulbs reach us. Therefore, it is advisable to have the beds all prepared and covered with some litter to prevent freezing. You will then be able to set out the bulbs when you receive them.

Candidum Lilies should be planted nearer the surface than the other varieties. Shade around the roots and young stalks is best, but Lilies do not do well when the entire stalk and flower is shaded.



Candidum Lilies

LILIUM CANDIDUM

THE Candidum, also known as the Madonna, Annunciation or Easter Lily, is one of the noblest of garden plants—the emblem of purity. The sacred tradition in connection with this Lily will make it the favorite forever. If there would be but one Lily it would be the Candidum.

The flowers are pure snow-white and very fragrant, borne on long stems. To succeed best with these Lillies they should be planted early in the Fall.

For the open garden there is no Lily to compare with the Candidum. It is excellent for scattering among shrubs and in perennial beds. Flowers during June and July.

Our bulbs are all selected stock and the very best procurable.

Selected Bulbs, Each.....\$0.40
Selected Bulbs, Dozen..... 4.50

LILIUM LONGIFLORUM
FORMOSUM

THE plants are of healthy, strong growth and produce beautiful snow-white trumpet-shaped flowers.

It is perfectly hardy, blooming in the open during June and July. A fine variety for cut flowers.

Selected Bulbs, Each.....\$0.50

Selected Bulbs, Dozen..... 5.50

LILIUM GIGANTEUM

THIS type is the latest of the longiflorum lillies to bloom, but it is good for late winter and Easter forcing.

The plant is of sturdy, stocky growth, bearing flowers of the purest white. It is also a splendid garden lily.

Selected Bulbs, Each.....\$0.40

Selected Bulbs, Dozen..... 4.50

HERBACEOUS PEONIES



Festiva Maxima

THE old-fashioned Peony officinalis of our grandmother's garden, while still popular because of their early flowering, have been eclipsed by the wonderful improved sorts introduced in recent years. They are the "Queen of Spring Flowers," and are well adapted for massing in beds, and particularly valuable for planting in groups throughout the perennial or shrubby border, where their brilliant hues add attraction to all around. Their requirements are so simple—a good, rich, deep soil, and an open, sunny position—which, however, is not absolutely necessary, as they thrive almost equally well in a partly shaded position, and a liberal supply of water during their growing season being sufficient to give an abundance and wealth of flowers, which rival the finest roses in coloring and fragrance, and produce during their flowering season a gorgeous effect not equalled by any flower, and once planted they take care of themselves, increasing in beauty each year.

SELECT NAMED PEONIES

	Each	Doz.		Each	Doz.
Candidissima (Calot) —Large, cream - yellow, with green heart. Very full flowers; white guard petals and sulphur center; beautiful flowers.	\$0.40	\$4.50	Festiva Maxima —Very large, pure-white flowers; tall and vigorous stalks, early.	\$0.50	\$5.50
Couronne d'Or (Golden Crown) —Immense ball-shaped blooms, snow-white flower with golden yellow stamens; delicate carmine markings; one of the best, and fine for cutting.	.50	5.50	Marie Lemoine —Large, but very compact; rose type; pure white with cream-white center.	.50	5.50
Duchesse d'Orleans —A deep pink, bearing fine flowers; one of the best keepers.	.35	4.00	Mme. de Verneville —Broad sulphur white guard petals and compact white center, touched with carmine.	.40	4.50
Edulis Superba —Beautiful deep-rose pink, large and of good form; fragrant flowers; a fine variety.	.35	4.00	Officinalis —Old-fashioned, fragrant; double dark red.	.40	4.50
			Zoe Calot —Beautiful rose pink; large and of good form; fragrant and very early.	.40	4.50

MISCELLANEOUS GARDEN SUPPLIES FOR FALL

CEDAR TREE TUBS

Made of the very choicest seasoned cedar, highly finished with black hoops; will last twice as long as cypress tubs.

	Diam.	Height	Price
No. 1	12 in.	10½ in.	\$2.50
No. 2	13 in.	13 in.	3.25
No. 3	14½ in.	15 in.	3.60
No. 3½	16½ in.	15¾ in.	4.60
No. 4	19½ in.	17 in.	5.50

RICHMOND STYLE TREE TUBS

These Tree Tubbs are made of the same selected Virginia White Cedar, bound with flat steel hoops.

	Top Diam.	Depth	Price
No. 3B	8 inch	8 inch	\$1.25
No. 4B	9 inch	9 inch	1.60
No. 5B	10 inch	9 inch	2.00
No. 6B	11 inch	10 inch	2.50
No. 7B	12 inch	11 inch	2.80

FLOWER POTS

We are headquarters for Flower Pots of every description. Send us your orders.

	Each	Doz.	Each	Doz.
2½ in.	\$0.03	\$0.30	7 in.	\$0.15 \$1.50
3 in.	.04	.40	8 in.	.20 2.25
4 in.	.05	.50	10 in.	.75 ..
5 in.	.07	.65	12 in.	.95 ..
6 in.	.10	1.10	14 in.	1.90 ..

Saucers

	Each	Doz.
4 inch	\$0.03	\$0.30
5 inch	.05	.50
6 inch	.07	.80
7 inch	.10	1.10
8 inch	.16	1.75
10 inch	.28	3.00
12 inch	.35	3.75

Bulb Pans

	Each	Doz.
6 inch	\$0.10	\$1.10
8 inch	.20	2.25

Fern Pans

	Each	Doz.
6 inch	\$0.10	\$1.10
8 inch	.20	2.25

PLANT STAKES AND POT LABELS

Natural Cane Stakes

6 ft., doz.	\$0.20	100	\$1.50
8 ft., doz.	.35	100	2.50
10 ft., doz.	.50	100	4.00

Plant Stakes—Bamboo Painted Green

1 ft., doz.	\$0.10	100	\$0.75
1½ ft., doz.	.10	100	.85
2 ft., doz.	.15	100	1.00
3 ft., doz.	.17	100	1.25
4 ft., doz.	.20	100	1.50

Dahlia Poles, Painted Green

5 ft., doz.	\$1.40	100	\$11.00
6 ft., doz.	1.50	100	12.00

Pot Labels

	Per 25	Per 100	Per 500
4 inch	\$0.08	\$0.25	\$1.30
5 inch	.10	.35	1.60
6 inch	.15	.50	2.25
8 inch	.25	.75	3.50
12 inch	.40	1.50	..

Wired Tree Labels

3½x5½ inch, per 500	\$2.75
5x1¼ inch, per 500	3.00

RUBBER PLANT SPRINKLERS

Scollay Plant Sprinkler—Best made. Price: \$1.75.

Putty Bulb—The best appliance for distributing putty. Used by a large number of leading florists. Price: each, \$1.50.

MOLE TRAPS

Riddle—The best trap made. Sure to catch them. Made of best material. Price: \$1.25.

GLASS BOWLS

Large size, crystal, holds 6 bulbs. Each \$0.25

HYACINTH GLASSES

Glasses, either style in the blue, green, amber and wine colors. Each, \$0.50.

SPRAYERS

New Misty—We consider the best, and fully equal to the more expensive machines for this purpose. All tin. 1-quart size. Each \$0.75

Deming Prize Bucket Spray Pump—For spraying and whitewashing. Has an adjustable foot-rest to fit any bucket or tub. Price, with 3-foot hose. 6.50

Deming Perfect Success Bucket Pump—Can be rigidly clamped to bucket and easily carried from place to place. For spraying or whitewashing. 8.75

SPRAYERS

AUTO-COMPRESSED AIR SPRAYERS



CONSISTS of a solution tank, holding about 4 gallons. The tank is made of galvanized steel or heavy brass. A brass air pump is located inside the solution tank, protected from injury, and is provided with our cam-locking device, which closes the filler opening airtight with a half-turn of the wrist. The entire machine is made without screws or bolts and no tools of any kind are required to take it apart.

Two pumpings will discharge the contents. Price: No. 1-D, Galvanized, \$8.50; No. 1-B, Brass, \$12.00.

LEVER BUCKET PUMP No. 324—This is the best combination made for small fruit growers. Has brass cylinders; a No. 1 machine for whitewashing as well as spraying.....\$12.00

MYERS' BRASS BARREL SPRAYER No. 305½—It fastens to the chime of any good barrel. Is fitted with one discharge hose, 5-ply, 15 feet long, graduated Vermorel nozzle and agitator..... 25.00

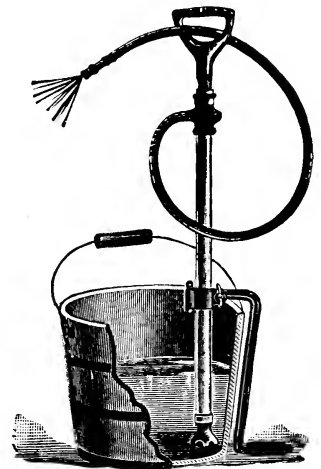
No. 305—Without mechanical agitator..... 23.00

DEMING GARDENER'S CHOICE—It is a splendid whitewashing outfit, as the pump is strong and durable and has a good agitator. The tank holds 25 gallons fitted with a powerful pump; complete, with hose and nozzle. (See cut).....\$42.50

DEMING PRIZE BUCKET SPRAY PUMP—For spraying and whitewashing. Has an adjustable foot-rest to fit any bucket or tub. Price, with 3-foot hose.. 6.50

DEMING'S SUCCESS—The most popular bucket pump on the market. For spraying and whitewashing, throwing a uniform stream..... 8.00

CENTURY BARREL SPRAYER—The leading barrel sprayer. Will supply two leads of hose and two nozzles. Corrosion-proof. Easy to operate. Comes 12½ feet hose and Vermorel nozzle..... 27.50



Deming's Success

INSECTICIDES AND FUNGICIDES

LIME SULPHUR SOLUTION—A perfect Scale and Fungus Destroyer; special for Plum and Peach Trees, which need Fall and Spring treatment; cures peach-leaf-curl. Use during dormant period. Protect the hands with gloves when applying. Dilute with 10 parts of water. Apply with spray pump. Price: Quart, 50c; ½ gallon, 75c; gallon, \$1.00; 5 gallons, \$3.25; 50-gallon barrel, \$13.50.

DRY LIME AND SULPHUR—Use from 10 to 12 pounds of Dry Powdered Lime-Sulphur, dissolved in 50 gallons of water. Should be used as a dormant spray against insects. Price: lb., 35c; 5-lb. package, \$1.50; 10 lbs., \$2.75.

BLACK LEAF "40" (40 Per Cent Strength for Spraying)—Strongest, purest and most economical. Death to Aphis or Green Fly, Spider, Mealy Bug, Thrip, and many other forms of Flower, Fruit and Vegetable Lice. Price: Small bottle, 25c; 8-oz., \$1.00; 10-lbs. \$13.75.

SCALECIDE—Soluble crude oil. Used for the destruction of the San Jose scale. Dilute at rate of one gallon to twenty gallons of water. Scalecide does not clog nozzles, hose or pump, and is pleasant to use. Trees may be sprayed in Winter and early Spring before they start to come to bud. Price: Quart, 75c; gallon, \$1.75; 5 gallons, \$6.50.

TO THE HOME OF
"PURE AND SURE SEEDS"

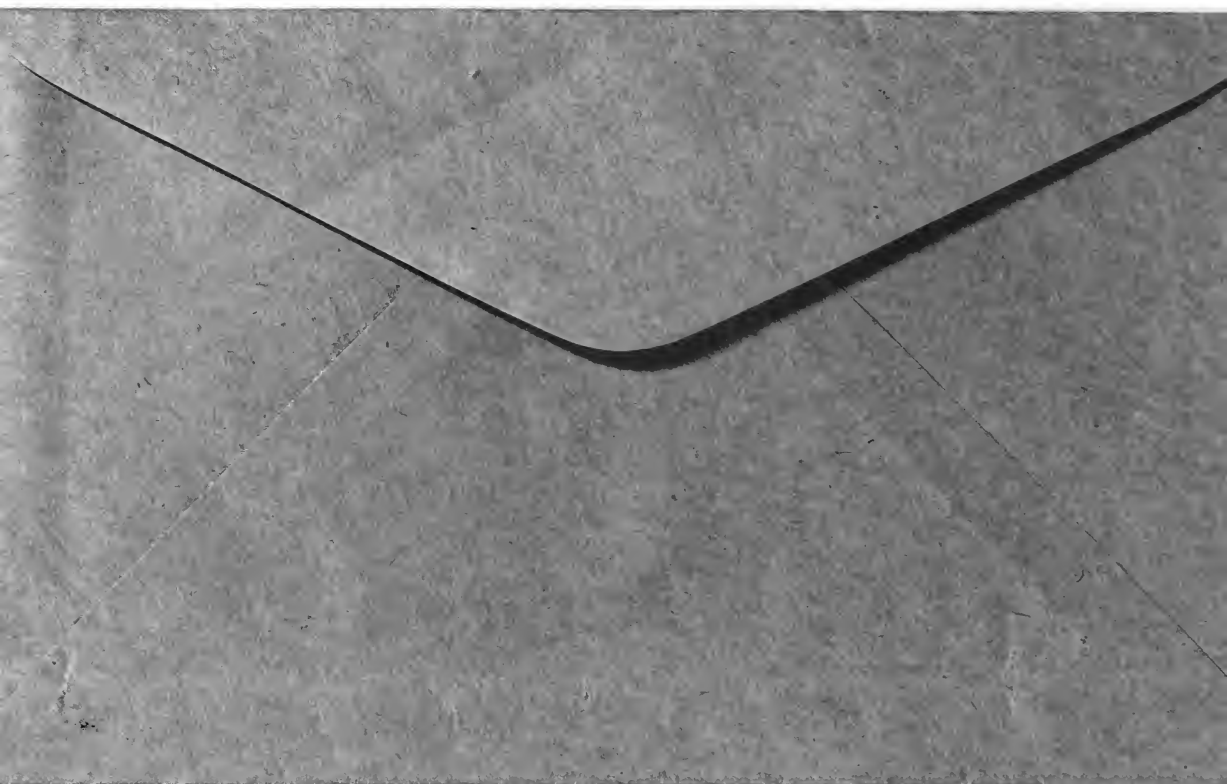
From.....
P. O.....
State.....

ST. LOUIS SEED CO.

411-413 Washington Ave.

ST. LOUIS, MO.





A BEAUTIFUL, SMOOTH, VELVETY, GREEN LAWN
 IS CERTAIN BY SOWING
ST. LOUIS SEED CO. HAVALAWN GRASS SEED

Especially Adapted for This Locality and Will Insure a Fine Velvety Lawn
ONE POUND WILL SOW 300 SQUARE FEET. 50 LBS. TO THE ACRE

HAVALAWN MIXTURE

WILL insure a beautiful, compact evergreen sod on any lawn where the essential requirements of grass culture have been complied with. Its component parts are the grasses particularly adapted to lawns and door yards. It is composed of the best thriving varieties, together with the best sodforming sorts. Timothy and orchard grass are wholly excluded on account of their coarse leaves, and only finest sorts are used. Full provision is made for a succession of growth, so that there shall be no break in the richness of the verdure from spring until autumn; and experience proves that Havalawn Grass Mixture is now perfect. Nothing better can be purchased on the American market, no matter what claims may be advanced by other seedsmen. Price: lb., 45c; 3 lbs., \$1.25; half bu. (7 lbs.), \$2.75; bu. (14 lbs.), \$5.50.

SHADY LAWN MIXTURE

This mixture is a combination of fine dwarf-growing evergreen varieties of grass, which grow naturally in the woods or in shaded spots. They are mixed in proper proportions to make a fine lawn under shade trees. Sow thickly. Price: lb., 50c.

Fancy Kentucky Blue Grass—This famous grass is well known in all sections. It generally grows well on any stiff or loamy soil in Central and Northern States where rich, moist, though moderately well drained. Kentucky Blue Grass is at its best in the Spring and Fall months, but being rather sensitive to heat does not grow luxuriantly during Summer. Price: lb., 45c; 7 lbs., \$2.50; bushel, \$5.00.

English Perennial Rye Grass—(20 lbs. per bu.) It is invaluable for permanent pastures, for hay if cut when in blossom. Price: lb., 30c; 10 lbs., \$2.50.

Red Top—A very hardy perennial grass, succeeding best on moist land. It accommodates itself to a variety of soils, however, even to quite dry situations, and stands our hot climate admirably. Fancy or solid seed. Price: lb., 40c; 10 lbs., \$3.50.

White Clover—Valuable for the lawn with other grasses; helps to shade same and keep the soil from washing out. Price: per lb., 90c.

FERTILIZERS

FOR LAWN, GARDEN, FIELD AND HOUSE PLANTS

Pulverized Sheep Manure—As a top dressing for lawns there is nothing better. Promotes a steady and rapid growth in the vegetable garden. For garden and field crops, 1 to 2 tons per acre, one-half before plowing, balance before harrowing. For top dressing use 1 ton per acre—Fall or early Spring. Price: 5 lbs., 25c; 10 lbs., 45c; 25 lbs., 90c; 50 lbs., \$1.50; 100 lbs., \$2.75.

Nitrate of Soda—Carries nothing but nitrogen (ammonia)—no phosphoric acid or potash. It is highly stimulating. On grass or other vegetation it is visible in a few days after application. Price: lb., 15c; 10 lbs., \$1.25; 50 lbs., \$4.50.

Hydrated Lime—Hydrated lime used for top dressing on lawns and mixing soil for potting plants. 50 lbs. to cover 1,000 square feet. Price: 50 lb. bag, 90c.

St. L. S. Co.'s Excelsior Plant Food—It will make weak plants strong and make healthy plants have brighter flowers and prolong the period of blooming. Price: Small size, 20c; large size, 35c.

Bone Meal—For top dressing for lawns, pastures and meadows; also for use in the vineyard and about fruit trees and bushes. It carries ammonia and phosphoric acid. One of the safest and most economical manures. Use 400 to 600 lbs. per acre. Price: 5 lbs., 50c; 10 lbs., 70c; 25 lbs., \$1.50; 50 lbs., \$2.50; 125 lbs., \$5.00.

HUMUS

Humus is dry, thoroughly pulverized, odorless and clean to handle and apply, and absolutely free from weed growth. For Flower and Vegetable Garden, apply at rate of ½ to 2 inches deep and fork it well into the soil. 100 lb. bag, \$2.00.

HAWAIIAN.

LIPIASSE SEED

