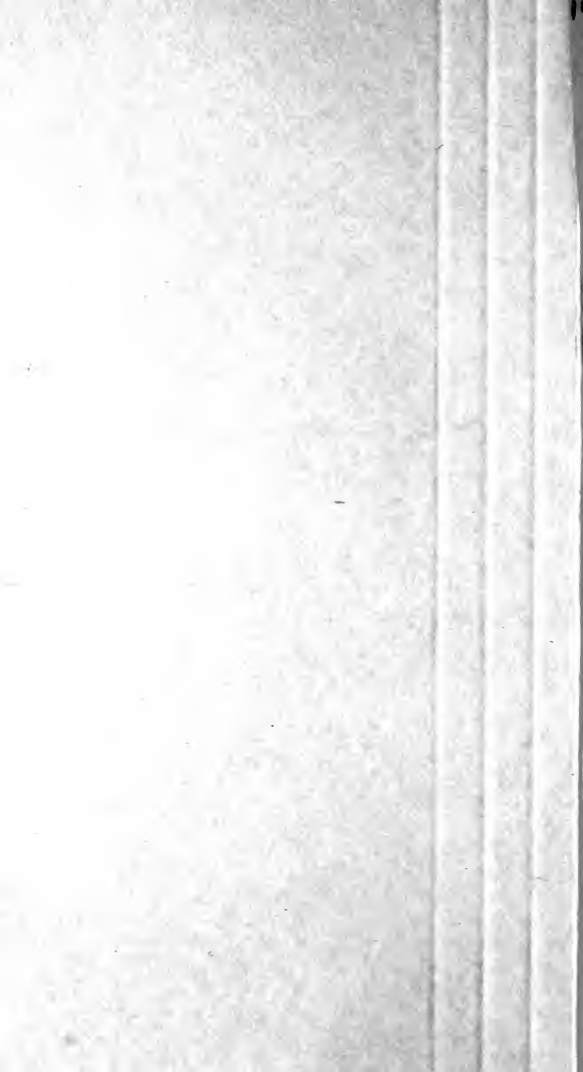


Historic, Archive Document

Do not assume content reflects current scientific knowledge, policies, or practices.





Peach Tree Specialists

Joe Shadow Nursery Co.
Winchester, Tenn.



JOE SHADOW

JUNE BUDDED
PEACH TREES



We Specialize in Growing
Peach Trees

FOR

COMMERCIAL
ORCHARDS

Joe Shadow Nursery Co.

Winchester, Tenn.

PEACH TREE SPECIALIST



Joe Shadow

I have had thirty-six years' experience in Propagating Nursery Stock, and for the past seven years have been in the business for myself. Previous to that time I acted as foreman for the largest and most successful Nurseries of the South, and who are still in the business today.

I now specialize in propagating and growing vigorous and healthy JUNE BUDDED PEACH TREES for the wholesale trade and Orchardists. We sell direct and save you money. Sell at the lowest possible price to insure you first-class stock, true to name. We do not compete with our competitors, but we sell you stock that we will be glad to have you compare with any of its kind from any Nursery.

All Buds for budding trees are selected with great care by an experienced man. We also contract to grow you trees from your bearing Orchards or of other varieties you desire. We grow Peach only, and it is reasonable that we can grow better trees and give better satisfaction than other Nurserymen who grow the entire line. We know we can save you money.

Yours for business,

JOE SHADOW.

FRUIT GROWING DEVELOPMENT

JUNE BUDDED PEACH

Commercial Orchard business has grown to be a great success. It was estimated that in GEORGIA alone the fruit growers received for peaches marketed in June and July, 1915, over \$2,000,000, more than 500 car loads to move later, was also estimated that 4,500 cars of Peaches were shipped this season. This enormous crop was moved mostly through the Fruit Exchange with practically no congestion at all.

Planters have blindly plunged into the business and made fortunes, for it does not take a skilled man for this business. Failures sometimes come, but the returns are so great when crops hit that it is not so discouraging to the growers.

We make a specialty of growing JUNE BUDDED PEACH TREES for the planters. JUNE BUDS are much easier to transplant, much smoother trees and can be bought for less money than the year old trees. We specialize on this line and give our whole attention to the Peach for the Planters.

We guarantee satisfaction and will be glad to have you compare stock bought from us with any stock from any other Nurseryman. Our Buds are selected with great care at budding season by an experienced man. Our trees are free from disease and varieties true to name. In the following pages we give description of varieties we offer for sale this season. Write us if you are in the market. We have gone in the business to stay, and rest assured you will get what you order.

Yours for business,

JOE SHADOW NURSERY CO.

FALL PLANTING BEST

Fall planted trees become firmly established in the ground and the roots are well set for early spring growing, ready to start into immediate growth. They will live better and longer, and records prove that they will bear a year sooner. Much of the spring planting is done when the ground is too wet, but there are times when Fall planting cannot be done, and in these cases we insist that great care is taken at the time of planting.

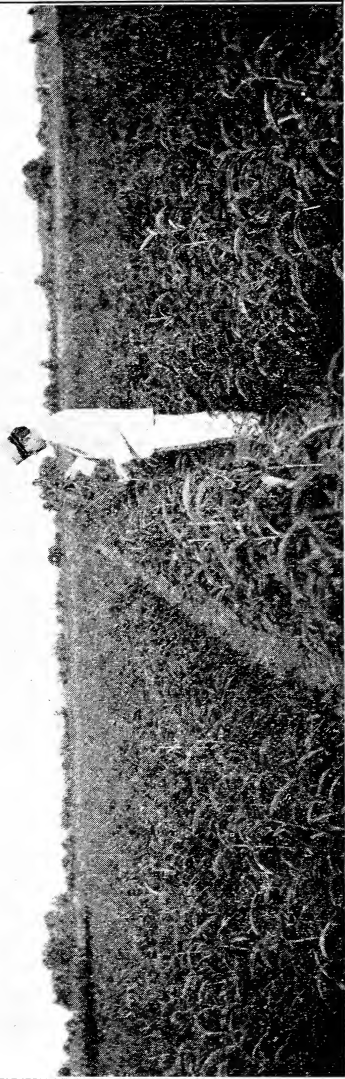
DIRECTIONS FOR HEALING IN TREES

Many planters buy their trees some time before they are really ready for them, and it is an excellent idea. This will often do away with the delay. In such cases the following directions may be of service: Dig a trench two feet in depth and throw the earth to one side, cut all bruised roots, spread trees open and lay in layers, covering with dirt. Repeat this till all trees are healed in, and do not be afraid to put the dirt on them. See that dirt is pressed firmly to trees. They will keep in fine condition till needed.

SEASON OF RIPENING

This can only be estimated, for location, condition of climate, soil, sunshine and rainfall, etc., have much to do with ripening. As we ship mostly to Georgia, we figure about the time they will ripen at Fort Valley.

MAYFLOWER (Semi-Cling) A revelation to peach growers. Red all over (Earliest of all Peaches) like a Cherry. Beautiful, (White) attractive, juicy, good quality for an early peach. A surprising seller on the early markets. Profitable. Ships well for an early variety. Should go in every collection.



We specialize growing June Budded Peach for Orchard Trade. Joe Shadow Nursery Co., Winchester, Tenn.

Strong, healthy tree; one of the hardiest. Precocious early bearer, often yields fruit second season.

Season of Ripening: The earliest peach to ripen. Fifty-seven days before Elberta.

GREENSBORO (Semi-cling) The Greensboro is a large, round, creamy white (Very Early Peach) peach, highly colored (White) shaded with a dark red blush and broken stripes towards the blossom end. The flesh is white, tender and very juicy. The quality is fair—very good for an early variety. The Greensboro is the largest, most attractive and one of the best quality early peaches and is resistant to rot.

The tree is a strong, healthy, vigorous grower, extra hardy in bud and wood—a guarantee of annual crops. It belongs to the North China type. Bears third to fourth year. One of the most profitable early commercial varieties and one of the best for the home orchard.

“The Greensboro is a standard early peach, not subject to rot—its large size, attractive appearance and reliability in bearing combine to make it one of the best of its season.”—Ohio Agricultural Experiment Station.

Season of Ripening: Seven days after Mayflower, fifty days before Elberta.

QUEEN OF DIXIE. This remarkable peach is very (Early Peach) much like Arp Beauty, ripens (Yellow Freestone) about the same time and in some localities is preferred. However, we think one as good as the other. We leave it to the Orchardists to decide.

Ripens about forty-five days before Elberta.

ARP BEAUTY. Arp Beauty is a large, beautiful peach (Freestone) with a mottled red cheek. Flesh is (Early Peach) yellow. High quality; juicy. Tree is (Yellow) a strong, vigorous grower, hardy, very productive. Bears third to fourth year.. Arp Beauty is of the Elberta type and the first of all the early peaches that has high quality. It is profitable wherever Elberta can be grown. It is a great shipping peach and especially valuable for

orchards located a long way from market. Heavy bearer; sometimes thinning is necessary to produce large fruit.

Season of Ripening: Twelve days after Mayflower and forty-five days before Elberta.

RED BIRD The Red Bird is a remarkable
(Semi-clingstone) peach. It is the first profitable
(Very Early Peach) commercial shipping peach to
(White) ripen. It is a large, round, rich,
 creamy white peach and nearly
 covered with a bright red. Flesh
is firm, juicy, fair to good quality. Splendid shipper,
remarkably free from rot. The tree is a vigorous grower,
hardy, and a very regular cropper.

The commercial peach growers are no longer planting entire orchards of one variety. It is hard to get enough men to handle the crop when it ripens all at one time. There have been serious car shortages in some large peach growing sections and the markets have been glutted, all of which is being remedied as more orchards come into bearing, with a succession of early, medium, and late varieties. The Red Bird is the first of the very early peaches that is a good shipper. It reaches the market in good condition and shows up well and is of greatest value to southern growers and to all northern growers for their local market. It should be followed by Greensboro, Carman, Champion, etc.

Season of Ripening: Seventeen days after Mayflower. Forty days before Elberta.

CARMAN (Freestone) The Carman is a large, broadly
(Early Peach) oval peach, creamy white, with
(White) a red cheek. The flesh is tender,
 white, tinted with red near
 the seed. It is juicy, with a
fine, rich, sprightly flavor, very good quality, hardy in
bud and does well in a great many localities where most
peaches fail. It is truly a remarkable peach.

The tree is a strong, vigorous, upright grower and is very productive. Carman is said to have same parentage as the Elberta and possesses many good qualities of the Elberta. Bears third to fourth year. Fairly good shipper. In quality the Carman is among the best of the early season peaches.

Season of Ripening: Twenty-seven days before Elberta.

CHAMPION (Freestone) The Champion is a large, round, rich, creamy white (Early Peach) peach, pink on exposed side, (White) and red where kissed by the sun. Beautiful. The flesh is white, melting, juicy, tender, and delicious.

The tree is very strong, vigorous, upright, spreading. One of the very hardiest peaches in wood and in bud. Bears third to fourth year and is a sure cropper. It is profitable commercially and we recommend it be planted extensively for profit and home use, because of its size, beauty and quality. It is the highest quality white peach known.

Season of Ripening: Fifteen days before Elberta.

EARLY BELLS The Hiley is a large, smooth, or white peach with a bright red **HILEY (Freestone)** cheek on the sunny side. Resembles its parent, Georgia Belle, (Early Peach) but more highly colored. The (White) flesh is white with red streaks, fine rich, juicy, luscious.

The tree is a vigorous, spreading grower; not quite as fast growing as Georgia Belle, but it is even harder in bud—one of the extra hardy peaches. Bears third to fourth year.

The Hiley is of great value as an extremely hardy peach, of best quality, a long keeper, a good shipper, and one which comes at a season when a reliable market peach of good size is necessary to complete the succession of ripening in the modern commercial orchard. Should be in every home orchard for its re-

liability and high quality. Don't miss planting the Hiley.

Season of Ripening: Fifteen days before Elberta.

BELLE OF GEORGIA The Georgia Belle, sometimes
or known as the white Elberta
GEORGIA BELLE because of its great commer-
(Freestone) cial value, is a roundish white
(Mid-season Peach) peach, a little oblong, one
(White) side slightly enlarged, tinted
with a red blush on the
sunny side, and striped and
splashed with a bright red. The flesh is white, firm,
fine texture, melting and juicy, rich, sugar-sweet. One
of the most delicious peaches grown. It is to the
white peach what Elberta is to the yellow peach, but
it is far superior in quality and hardier of bud.

The tree is a strong, vigorous grower, very hardy in both bud and wood. It is a dependable bearer, very productive; famous for its valuable peaches. Bears third to fourth year.

Georgia Belle is one of the best quality and most profitable commercial white peaches, and we especially recommend it for commercial planting and for home use. Its fine quality, hardiness and productiveness make it a popular peach with the consumer and the orchardist.

Season of Ripening: Nine days before Elberta. It overlaps the Elberta season.

EARLY ELBERTA The Early Elberta is truly named.
(Freestone) It is of the Elberta type, large,
(Mid-season Peach) golden yellow, which is in beau-
(White) tiful contrast to the rich blush
on the sunny cheek. The flesh
is yellow like the Elberta, but
far better quality, sweeter and finer grained.

The tree is a strong grower, of the Elberta type, carrying moderate loads of fruit.

The Early Elberta originated in Utah.

Seedling of Elberta with all the characteristics of its parent, stocky growth of tree, even size of fruit, long keeping and shipping, hardier, better quality, higher color, and a week earlier—going out as Elberta is coming in. As a canning peach it has better flavor and color than the regular Elberta. Its size and shape being almost identical with Elberta, it passes on the market as an Elberta and the customer gets a better peach, the grower thereby getting the benefit of repeat orders.

Season of Ripening: Three days before Elberta.

ELBERTA (Freestone) The Elberta is a large, golden
(Mid-season Peach) yellow peach nearly covered
with crimson on the sunny
cheek. It is the most widely
planted commercial variety. It has done more to de-
velop the peach-growing industry than any other va-
riety. It can be grown profitably North, South, East
and West. In the North it is a roundish peach, while
in the South it is more pointed. The flesh is a rich
yellow, red at the pit, firm and juicy, but only fair
quality.

The tree is a large, vigorous grower, very productive, yielding fruit uniform in size and shape and always highly colored. Bears third to fourth year.

Its adaptability to practically every soil and climate and its prolific bearing of large, beautifully colored peaches, of splendid shipping and market qualities, and its comparative freedom from rot, and the fact that it can be gathered for market before it is fully ripe made it the greatest peach of its time.

The Elberta is found on the markets from the middle of the summer until the peach season is closed.

Season of Ripening: Fifty days after Mayflower.

KRUMMEL (Freestone) Krummel is a large, round
(Very Late Peach) peach, one side a little
larger than the other. A
rich golden yellow, blushed
with carmine. Flesh is yellow, tinted red at the pit.
Firm, melting, rich, sub-acid and refreshing. Good
quality. A good keeper and shipper.

The tree is hardy, healthy and a strong, vigorous grower. Bears third to fourth year. Krummel is a favorite in the southern peach regions, where a very late peach is wanted. It is hardier, more productive and a better money-maker than Salway.

Season of Ripening: Thirty-seven days after Elberta. The latest freestone peach.

PEACH RIPENING LIST

We arrange the variety according to their dates of ripening as best we can. Dates will vary in different localities and under different conditions. This information may be of benefit to you.

MAYFLOWER	CHAMPION
GREENSBORO	HILEY
QUEEN OF DIXIE	GEORGIA BELLE
ARP BEAUTY	EARLY ELBERTA
RED BIRD	ELBERTA
CARMAN	KRUMMELS OCT.

WHEN TO PLANT

Planting season is regulated altogether by the location, conditions, etc., that may arise before the planter. Either spring or fall is all right. We, however, ship the largest portion of our Stock to the Southern states, and planters in this locality prefer planting in November, December and January.

ARRIVAL OF TREES

As soon as your trees arrive, unpack immediately. Do not expose the roots to the sun, air, wind or frost.

If not ready to plant at once, we suggest that trees be heeled in the ground, cutting the bundles apart and covering well with dirt. Do not be afraid of getting too much dirt on the trees.

LAYING OUT ORCHARD, PLANTING DISTANCE AND HOLE DIGGING

The planting plans must be determined by the planter. Some prefer the square plan, others triangular plan, both of which are good and either will serve the purpose. Planting distances also vary in different localities. Trees on very strong land should be further apart than trees on thin land. Peach trees are planted from 16 to 20 feet apart. In digging holes be sure to get the holes plenty large. You cannot give a young tree too much loose dirt, and the larger the hole the better. Be sure to prune off all bruised roots with a sharp knife.

LOCATION

We are located eighty-five miles from Nashville and seventy-two miles from Chattanooga, on the N. C. & St. L. Railway, and no point has better shipping facilities. We also have a very low freight and express rate from Winchester to all points north and south.

SHIPPING

We prefer parties ordering to instruct us how to ship, whether by freight or express. If no instructions are given, we forward to the best of our judgment, but in no case assume responsibility.

GUARANTEE OF GENUINENESS

We exercise the greatest care to keep all our stock pure and true to name and label, and are ready, on proper proof, to replace any that may prove otherwise, free of charge; but it is mutually agreed and understood, between purchaser and ourselves, that we are not liable for any greater amount than sum paid us for said trees, that may prove otherwise.

TERMS OF PAYMENT

Cash or satisfactory reference is requested from parties unknown to us, otherwise they will be shipped to parties "Collect on Delivery."

ACTUAL REPRODUCTION, 90 DAYS' GROWTH FROM BUD

WHEN BETTER JUNE BUDS ARE GROWN

JOE SHADOW NURSERY CO.

WILL GROW THEM



FINAL SURPLUS LIST OF THE SEASON

February 10, 1921

	2-3 ft.	18-24 in.	12-18 in.
Elberta	19,100	12,750
Hiley	5,000	12,750	10,700
Carman	1,675	10,500
Bell of Ga.	750	14,875
Red Bird	2,050
Ea Rose	3,000	9,750
J. H. Hale	2,500	7,200
Uneda	675
Mayflower	650

Our prices right. Let us quote you. This stock is in cold storage and can be shipped any day.

JOE SHADOW NURSERY CO.

Winchester, Tennessee.

POST CARD

62,81

L I B J

RECORDED

★ APR

U.S. DIVISION OF POSTS AND TELEGRAPHS

PLACE
ONE-CENT
STAMP
HERE



We specialize growing June budded Peach for Orchard Trade.

Joe Shadow Nursery Co., Winchester, Tenn.

Post Card

PLACE A
ONE CENT
STAMP
HERE

CORRESPONDENCE HERE

THIS SIDE FOR THE ADDRESS



