

Historic, Archive Document

Do not assume content reflects current scientific knowledge, policies, or practices.

2.63 1971

LANDSCAPING

The Home Grounds

*How, When, Where
and What to Plant*

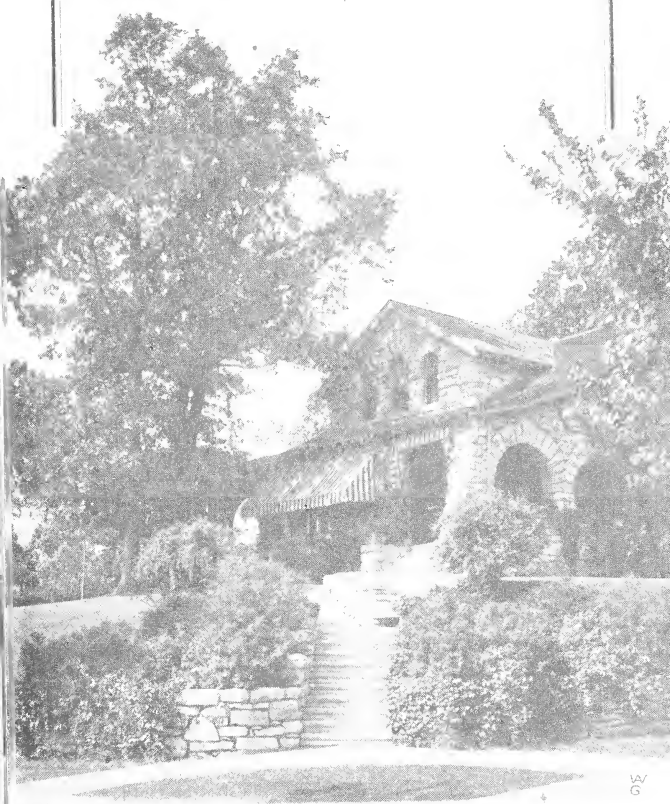
CATALOG OF

Evergreens, Shrubs, Vines
Roses, Perennials and Bulbs

*Fruit Trees
and Plants*

Valdesian Nurseries

Bostic, North Carolina





Flower of Abelia Grandiflora

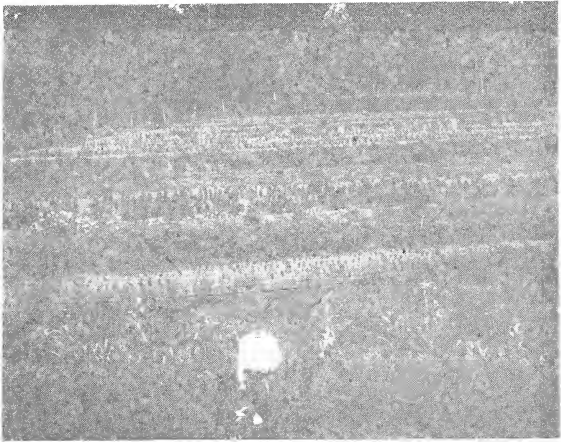
The Finest little broad-leaved Evergreen in Cultivation

YOU SHOULD BEAUTIFY YOUR HOME GROUNDS THIS SEASON

Don't be content with just ordinary Fruit and Shade Trees. Make up your mind that you are going to make your home beautiful—not only with deciduous shrubs, but "Real Beautiful" with Coniferous and Broad-Leaved evergreens, etc. Be first, don't wait for your neighbor to "*Beautify First;*" act yourself

—DO IT NOW

VALDESIAN NURSERIES
BOSTIC, NORTH CAROLINA



**View on One of Our Nursery Farms Showing
Acres of Coniferous Evergreens**

“A WORD TO THE WISE”

In this small booklet we have not the room for many testimonials, but we ship to most of the states, and before the war to foreign countries. We are no new concern, own our own land, have no connection with any other nursery, our plant being situated in Bostic, where we own 8 acres running down to the depot on which are located our packing and storage house, offices and buildings, with three plantations a few miles out, where most of our stock is grown. You need not fear to place your order with us, as we know in your case, as with most others, the placing of even a small order will mean more orders and you will come back to us year after year. We did not engage in this business planning to get what we could out of it for a year or two and then stop. We have plants, thousands of them, growing in our nurseries that it takes years to develop. Some of those quoted herein we have been growing for ten years. Our one main object is to grow Specimen Evergreens, that one may beautify his home and get the effect NOW, without waiting years for his place to grow into beauty from small seedlings or other plants.

Any banker, or business house in your city, it differs not where you are, can tell you that we are reliable, and that you will be safe in placing your order with us. It will not only mean the selling to you, but to your neighbor, because we sell hundreds of customers every year to those learning of us by seeing our stock shipped to others.

If you want ornamentals, or other stock, if you want to beautify your home, that will bring beauty and cheer the whole year thru, or if you want to plant only a few rose bushes, small fruits for the garden, or an orchard, write us about it. If you don't know what you want, tell us; we can no doubt help you, and if we can't we will tell you so. We are looking for satisfied customers, which means continued business, and not for simply what there would be in one little order now.

If you wish to improve your surroundings, beautify your premises, at the smallest possible cost, write us about it. We can send our man to look over the proposed improvement, make you an estimate on the stock, supply it and send men to plant it out, or you can take your measurements, map out a general plan, send it with your man to our office and nurseries, and we will go over it with him, make out a planting list and planting plan, and go over our nurseries showing him the identical stock that we propose supplying.

For Quality and Service

**VALDESIAN NURSERIES
BOSTIC, NORTH CAROLINA**



Landscape Architecture

A Landscape Plan For Your Home — Change your grounds from an ordinary yard to a place of beauty, the cost is small and you will have something of enduring value, artistic and satisfying to show for the money you spend on your grounds. Many people come to us who have spent considerable time and money with no pleasing results. Here is the trouble with most of us. We plant a tree and a rose now, then two or three shrubs and a few more later, and have no definite scheme. We wind up just about where we started. The beauty of planting depends greatly on the preparing, grouping and arrangements.

When Landscape Gardening is mentioned many people think of vast estates and the expenditure of large sums of money, but this is a mistaken idea, for the small and medium sized places lend themselves to artistic treatment fully as well as larger ones.

Planting Plans—Parties desiring the services of a Landscape Gardener will do well to correspond with us before contracting this work, as we can have one of our men call, if within a distance of 200 or 300 miles of our nurseries, and look over the work, make out the planting plans, supply the nursery stock, and if a satisfactory man cannot be had to do the planting, we can send a man from our nurseries to oversee the planting.

HARDY EVERGREENS

Coniferous Evergreens are particularly valuable, in all classes of ornamental plantings. Every efficient Landscape Gardener knows that no grounds are complete without the plantings of coniferous as well as deciduous shrubs.

During the summer months, when every tree or shrub is full of foliage, deciduous stock looks all right, but it appears lonesome during six months of the year.

Your new house may be all that you can ask for, yet no matter how substantial or how costly, it is not complete until its surroundings are blended with a sprinkling of coniferous evergreens.

Winter landscapes without evergreens look lacking and incomplete. If the home is to be made beautiful it can not be done with shrubs alone. It is to be regretted that the owners of pretty homes and villages, in attempting to beautify them permanently, have in so many cases planted shrubs and trees alone. They are pretty during summertime, but at the first appearance of frost, the foliage and flowers are gone, and there is but little beauty until spring, when they again put on their summer foliage. But this is not the case with Hardy Evergreens. During the cold winter months, when all is so dreary and lonesome, lacking and wanting for beauty and cheer, there is nothing so desirable as the brilliant evergreen with its beautiful colors and forms. No other investment possible for one to make will bring as much pleasure, comfort and beauty as the proper planting of Arborvitaes, Biotos, Hemlocks, Junipers, Pines, Retinisporas, Thuyas Spruces and other like sorts.

(Continued on page 1.)



Proper Plantings Add So Much to the value of Your Property, and Cost So Little

HARDY EVERGREENS—Cont'd

Some homes do not require all of these, it is owing to the size of the building, premises and situation. But in our opinion no home is complete and affords the owner the satisfaction and pleasure it should until it has had the proper plantings of coniferous evergreens. Of course, the variety and sort should be suited to the size and height of the buildings and the surroundings. Some large and tall growing sorts not being suited to small homes and premises and the proper effect cannot be had unless the different sorts are arranged in an artistic manner.

Many public buildings, schools, towns, factories and other institutions could be wonderfully changed for the better, if instead of using Maples, Poplars, Elms, Oaks, Lindens and Willows, a few dollars were invested in Evergreens.

It is true that many cotton mill owners of today are leading the community in which they live by the beginning to beautify their surroundings with nursery stock, which are without taste and beauty, be the plantings ever so varied and extensive, without a mixture of Evergreens. The broad-leaved sorts are good and there are places for them, but no planting is what it should be without the coniferous sort.

For thirteen years we have made the growing of Evergreens our specialty. We have them growing in our nurseries, from the propagating beds to large specimens ten or more feet in height.

It is necessary in the proper growing of Evergreens that they should be transplanted a number of times, in order that they form a mass of fibrous roots.

This is one reason that so many fail in the transplanting of them. Most concerns who grow only a few Evergreens buy their stock of plants from an Evergreen Specialist, who supplies them from seed bed, or propagating frame, where they have been rooted. They are then lined out in rows in the nursery and there grown until they are dug for the customer. Hence they carry few roots and even if they are large specimen trees they have a poor root system, and while they may be dug and burlapped carefully, the earth becomes loose and when transplanted, even if it is done by an experienced gardener, they have not sufficient root system to take up enough nourishment from the soil to start them, and the result is you do not only suffer the loss and time in transplanting, but a year behind in securing successfully grown and transplanted ones.

We begin the planting of coniferous evergreens about September the first and continue until cold weather. Except in cold sections of the country, where the winters are severe and the ground frozen, we make shipments successfully throughout the winter, when the weather is favorable here, by ball and burlapping the roots and packing in paper lined cases. Our shipments continue in the spring until the new growth is too far advanced for removal of the plants.

The prices in this booklet are for plants packed and F. O. B. here for either express or freight shipment. Purchaser paying transportation charges unless otherwise noted.

(Continued on next page.)



Block of Kuster's Blue Spruce and Dwarf Coniferous Evergreens

HARDY EVERGREENS—Cont'd

To near-by points arrangements may sometimes be made that we make delivery by truck.

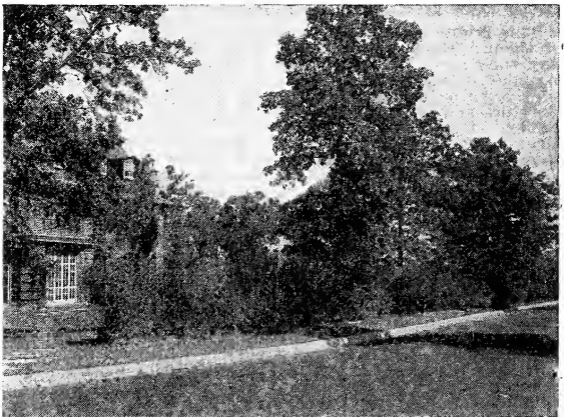
In carload shipments of evergreens they are dug with a ball of earth which is burlapped around the roots and placed in the car that they remain in perfect condition, the dirt not being molested but planted as they grew in nursery, insures their living, and the best result.

Parties in this and adjoining states, who wish to purchase in car lots can by arrangements with us, before shipment, secure at reasonable cost the services of our Landscape Gardener, who will direct the planting of the stock. This will be a man who has spent years in the growing of coniferous evergreens and who "Knows How."

SCREEN PLANTING

The planting of evergreens for screens or breaks can be made to do much more than beautify. For instance, possibly there is an unpretty view from some of your windows, an unkept vacant lot, the service yard, or a neighbor's place, or perhaps your own back yard, your own clothes line, is exposed to view, your house may be too close to your neighbor's, one can look into your windows, or vice versa. Light from the other's house or from the street may annoy you, you have not the feeling of seclusion you would most enjoy, and the planting of deciduous trees and shrubs could not be satisfactory. You have likely been on your vacation during the summer months when you would have enjoyed the foliage and beauty of these deciduous shrubs, but now during the

(Continued on next page.)



Here is an Effective Screen Planting



**Block of Cedrus Deodora, with Everblooming
Roses on the Left**

SCREEN PLANTING—Cont'd

winter months, when you spend more time in your home, the leaves are off, and a more serviceable and beautiful type of screen to plant would be our Hardy Coniferous Evergreens. We have many sorts suitable for screen planting, and where it is desirable can ship in car lots of large sizes that will bring beauty and seclusion NOW.

WINDOW BOXES

Nothing is prettier for the amount expended and there are few homes of today in which the women people have not planned for a few well filled Window Boxes for winter.

We have over a hundred thousand well kept plants suitable for boxes, in twenty different sorts and we can plant and start them for you if you wish, or we can pack so they will reach you in good order and give you directions whereby you can plant successfully yourselves.

We can supply the boxes where wanted, that run four feet in length, 9 by 10 inches, made from North Carolina pine lumber, and painted green. These hold six little evergreens, which of course are mixed according to taste and wishes. The boxes crated for shipment cost \$2.00 each f. o. b. here.

The evergreens for filling of boxes can be selected from this catalog, such as desired, the prices of each being given with a description of same.

**It Pays to Buy the Best, When
Buying Nursery Stock**

ARBORVITAE

American Arborviate (*T. Occidentalis*)—Without doubt one of the best and most widely planted Evergreens for lawn, grouping or hedges.

	Each	Per 10
12 to 18-inch.....	\$1.00	\$9.00
18 to 24-inch, stout stocky plants.....	1.50	14.00

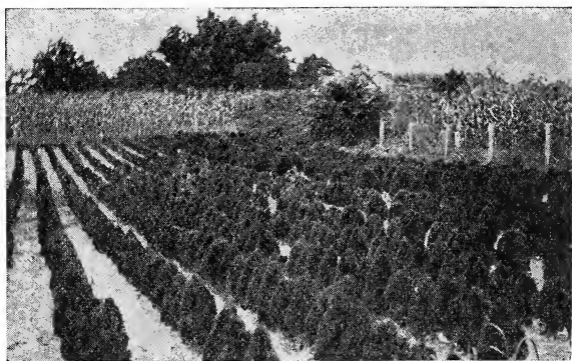
We can supply these in all sizes running as large as 7 to 8 feet at \$6.50 each. Other sizes in proportion.

Oriental Arborvitae—A pretty pyramidal or torch-shaped hardy evergreen with bright green foliage.

	Each	Per 10
12 to 18 inches.....	\$1.00	\$9.00
18 to 24 inches.....	1.25	12.00

Pyramidal Arborvitae—(*T. Occidentalis Pyramidalis*)—A compact and narrow pyramidal tree; its branches are short and densely clothed with bright green foliage; very formal and attractive and the narrowest and most columnar of the arborviate.

	Each	Per 10
12 to 18 inches.....	\$1.50	\$14.00
18 to 24 inches.....	2.50	24.00
2 to 3 feet.....	4.00	40.00



Block of 3,000 Biota Nana Perfect Specimens, 2 to 4 Feet

Rosedale Arborvitae—Foliage very fine; light green in summer, assuming a purplish hue in winter. Very decorative.

	Each	Per 10
12 to 18 inch.....	\$1.50	\$14.00
18 to 24-inch.....	3.00	30.00

Globe (T. Globosa)—A dense, light green evergreen of dwarf habit, grows naturally round like a ball; one of the best dwarf trees.

	Each	Per 10
12 to 18-inch B. & B.....	\$2.50	\$24.00
18 to 24-inch B. & B.....	4.00	40.00

Bioto Aurea Nana—This is a dwarfish, compact grower, with yellow foliage, and owing to its deep golden color, its compact and shapely form, it is one of the most popular of all evergreens. One of the best for window decorations, porches, tubs or boxes. For the lawn either singly or in groups, for borders where small growing sorts are wanted we know of no other variety so desirable as this sort. This variety should not be overlooked even in the smallest plantings as we know of no other sort that would please you better.

	Each
8 to 10 inches.....	\$1.50
10 to 12 inches.....	2.00
12 to 18 inches.....	3.50

These are all bushy compact specimen plants. One of the best in cultivation.

Compact (Compacta)—Handsome, cone-shaped, compact grower. Foliage fine. Limbs or branches extending from the center as pages in an open book.

	Each	Per 10
12 to 18-inch B. & B.....	\$2.50	\$24.00
18 to 24-inch B. & B.....	3.50	35.00

Bioto Conspicua—This is a beautiful little pyramidal evergreen of intense golden foliage, a new but very popular sort.

	Each	Per 10
12 to 18 inch.....	\$2.00	\$20.00
18 to 24-inch.....	3.50	35.00
2 to 3 feet, choice trimmed specimens....	5.00	50.00

CEDAR—Cedrus

Red Cedar (J. Virginiana)—Always popular and can be used ornamentally in a number of ways, thriving well and making a fine appearance in soils or situations where other trees will not grow.

	Each	Per 10
12 to 18-inch B. & B.....	\$1.00	\$ 8.00
18 to 24-inch B. & B.....	2.00	18.00
2 to 3 feet, B. & B.....	3.00	28.50
3 to 4 feet, B. & B.....	4.00	40.00

Indian Cedar (C. Deodora)—A majestic tree of pyramidal outline from the Himalaya Mountains. Leaves are in tufts or fascicles, bluish-green. A magnificent lawn tree.

	Each	Per 10
18 to 24-inch B. & B.....	\$3.50	\$35.00
2 to 3 feet, B. & B.....	5.50	50.00
3 to 4 feet, B. & B.....	7.50	70.00

Evergreens add a distinctive touch to the landscape that cannot be obtained with other ornamentals.



How much have Shrubs and Trees added to the Beauty and Value of this Place?

SPRUCE—Picea

Spruce Norway.—Is absolutely hardy, a good grower of drooping habit. Makes a fine single specimen for ornamental lawn tree.

If planted in rows and not pruned it soon becomes an excellent screen, or for a low hedge it may be kept pruned to any desired height.

	Each	Per 10
18 to 24-inch B. & B.....	\$1.50	\$14.00
2 to 3 feet, B. & B.....	2.50	24.00

Spruce White.—Has a whitish color when first growing out in the spring, which turns to blue; is perfectly hardy and makes a fine tree. In form about the same as the Norway Spruce.

	Each	Per 10
12 to 18-inch B. & B., bushy	\$1.50	\$15.00
18 to 24-inch B. & B.....	2.50	25.00
24 to 30-inch B. & B.....	4.00	40.00

Douglas Fir.—(A Douglasii)—A native of Colorado; large, conical form; branches are spreading, horizontal; the leaves are light green above, silvery-white below.

	Each	Per 10
12 to 18-inch B. & B.....	\$1.50	\$15.00
18 to 24-inch B. & B.....	2.50	25.00
2 to 3 feet, B. & B.....	4.00	40.00

Colorado Blue.—One of the most beautiful of all spruces. In color it is a rich bluish-green, that makes it an object of great beauty. A few well grown specimens make an almost priceless addition to a well-kept lawn.

	Each	Per 10
12 to 18-inch B. & B.....	\$2.50	\$25.00
18 to 24-inch B. & B.....	4.00	40.00
2 to 3 feet, B. & B.....	6.00	60.00

Kuster's Blue.—A rare tree, with brighter blue foliage than any other Spruce. A vigorous grower, with fine form and an ornament to any lawn.

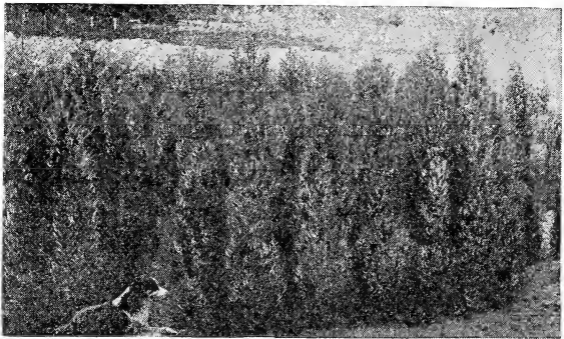
	Each	Per 10
12 to 18-inch B. & B.....	3.50	\$35.00
18 to 24-inch B. & B.....	5.50	55.00
2 to 3 feet, B. & B.....	7.50	70.00

CYPRESS—Retinispora

Lawsonian Cypress.—Pendulous branches like ostrich feathers; foliage has a silver-gray sheen. One of the most beautiful evergreens in cultivation.

	Each	Per 10
12 to 18-inch.....	\$1.50	\$15.00
2 to 3 feet, stocky plants.....	4.50	40.000

We Grow Our Own Stock



Block of our English Juniper, 4 to 6 feet

JUNIPER—Juniperus

Irish (*J. Hibernica*)—A slender columnar form, with numerous upright branches and is invaluable in Italian gardens and whose architectural features are desired; foliage glaucous green.

	Each	Per 10
12 to 18-inch B. & B.....	\$1.00	\$ 7.50
18 to 24-inch B. & B.....	1.50	12.50
2 to 3 feet, B. & B.....	2.50	22.50
3 to 4 feet, B. & B.....	4.00	35.00
4 to 5 feet, B. & B.....	5.50	55.00

J. Sabina (Savin Juniper)—Of spreading form, with deep green foliage. Fine for rockeries, grouping or border planting.

	Each	Per 10
10 to 12-inch B. & B.....	\$1.50	\$15.00
12 to 18-inch B. & B.....	2.50	25.00
18 to 24-inch B. & B.....	4.50	45.00

English Juniper—A fine evergreen, with pretty silvery-like foliage, is rather compact but not so dense and columnar as the Irish.

	Each	Per 10
12 to 18-inch B. & B.....	\$1.00	\$ 8.50
18 to 24-inch B. & B.....	1.50	15.00
2 to 3 feet, B. & B.....	3.00	30.00
3 to 4 feet, B. & B.....	4.00	40.00

Juniperus Communis Depressa—Without doubt the best prostrate form of Juniper for ground cover. It will grow on sandy or gravelly hillsides, and where fully exposed to the sun. It varies somewhat in form, from prostrate to ascending type, sometimes two to three feet high.

	Each	Per 10
6 to 10-inch B. & B.....	\$1.50	\$15.00
10 to 12-inch B. & B.....	2.50	25.00
12 to 18-inch B. & B.....	4.00	40.00

FIR

Frazier's Fir—This is a distinct species from the highest peaks of the Carolina mountains, has dark green thick set foliage with blue underneath, is very compact and of pyramidal habit. This is by far the best variety, unless it be in middle to northern Maine or like latitude where the Balsam succeeds, but the Balsam Fir is not very satisfactory south of Massachusetts.

	Each	Per 10
12 to 18-inch B. & B.....	\$1.50	\$15.00
18 to 24-inch B. & B.....	2.50	25.00
5 to 6 feet, B. & B.....	7.50	75.00

Once a Customer, Always a Customer.

Malden, N. C.

Valdesian Nurseries.

Bostic, N. C.

Gentlemen:—Just a word to let you know that we have received the car of plants and I'm sure a prettier lot of evergreens was never seen anywhere. I couldn't have selected better ones.

Yours very truly,

Mrs. R. D. Taylor.



Not an Expensive Planting, but Effective

HEMLOCK—Tsuga

█ **Carolina Hemlock**—This splendid new Hemlock is of distinct pyramidal growth. Its hardiness, dense, drooping foliage and beautiful form, makes it rank among if not ahead of the Japanese sorts. Its fine, feathery-like foliage makes a splendid contrast among other evergreens, for either box or lawn plantings, and one could think of nothing finer for border or screen. It is said to be the coming American evergreen for the finest plantings.

	Each	Per 10
10 to 12-inch B. & B.....	\$1.50	\$15.00
12 to 18-inch B. & B.....	2.50	25.00
18 to 24-inch B. & B.....	4.50	45.00

█ **Canadian Hemlock** (Canadensis)—A tall growing, graceful evergreen, fine for lawn, box, tub, screen or group planting. Has beautiful drooping, feathery-like foliage of a little darker color than the Hemlock Carolina and a very handsome tree.

	Each	Per 10
10 to 12-inch B. & B.....	\$1.50	\$14.00
12 to 18-inch B. & B.....	2.50	20.00
18 to 24-inch B. & B.....	3.00	30.00

█ **Retinospora Plumosa Aurea**—Low, compact tree of regular outline. Foliage plummy, very graceful; tinged in spring with a golden hue.

	Each	Per 10
18 to 24-inch B. & B.....	\$1.50	\$14.00
2 to 3 feet, B. & B.....	2.50	25.00
3 to 4 feet, B. & B.....	4.00	40.00
4 to 5 feet, B. & B.....	6.00	60.00

PINE—Pinus

█ **Austrian Pine**—The long straight needles are 4 to 5 inches in length and of a rich green color, borne two in a sheath. It resembles the long leaf of Eastern North Carolina, but a native of Europe and easily grown here, and will thrive in any ordinary soil. Is a fine looking Pine and much used in ornamental plantings.

	Each	Per 10
18 to 24-inch B. & B.....	\$3.00	\$30.00
3 to 4 feet, B. & B.....	4.50	40.00

█ **Japanese Red Pine**—This is a strikingly beautiful little pine of refined habit and used among the finest ornamental plantings. If you want a pretty little pine, with fine form and distinct variety, this is the one.

	Each	Per 10
2 to 3 feet, B. & B.....	\$3.50	\$35.00
3 to 4 feet, B. & B.....	5.00	50.00

█ **White Pine**—Has beautiful foliage of a delicate silvery green, and will grow in the poorest soil.

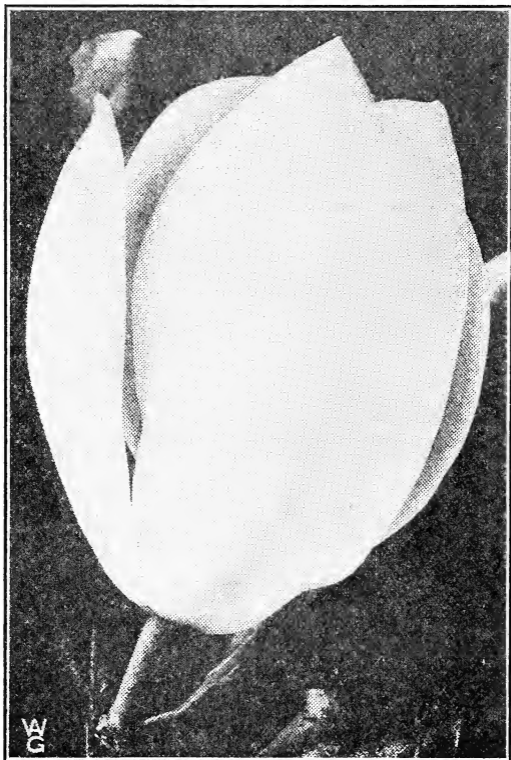
The Federal Horticultural Board forbids the shipping of White Pine into most of the states.

	Each	Per 10
2 to 3 feet, B. & B.....	\$1.50	\$14.00
3 to 4 feet, B. & B.....	2.40	22.50
4 to 5 feet, B. & B.....	4.00	35.00
5 to 6 feet, B. & B.....	5.00	45.00

If you don't know just what to plant, write us—We can help you.

Broad Leaved Evergreens

Magnolia Grandiflora—It has been said there is no tree which creates such admiration and beauty as the Magnolia Grandiflora and there is no doubt about its being king among all broad-leaved evergreen trees. To prize it is only necessary to see its beautiful radiant green leaves, and not at any certain size, but anywhere from a small plant to a full grown tree, its fine foliage standing out in the coldest of weather, retaining its glistening, glossy green color, and so wondrously fine, that they are sold by the thousands every year for decorative purposes. The tree begins to blossom in June, and continues through July and August, displaying hundreds of great, large flowers. These beautiful cream-like and bell-shaped flowers emit a very rich perfume that can be detected fully a block away. Several years ago, the Brooklyn (N. Y.) Eagle, wrote half a column in praise of this splendid tree. We quote from one sentence in part. "It seems strange that a tree so beautiful is not cultivated to a greater extent hereabouts." The tree the Eagle referred to, is growing in Brooklyn, N. Y., and planted there some 30 years ago. It was se-



Bloom of the Ever Popular Magnolia Grandiflora

cured on the Cape Fear river near Fayetteville, N. C., by a hunter who was spending the winter there. The paper stated, that the sight of the tree was something wonderful, and even a limb with its loads of bloom, which had been presented to one of the merchants of the city and placed on exhibition in his store, was attracting the attention and admiration of thousands of customers who stopped to enjoy the sight. It used to be thought they were not suited for cold sections of the country, but time has proven that such is not the case, as we have them now growing in New York, New Jersey, Rhode Island, Pennsylvania, Ohio, Indiana, Missouri and other like cold sections. A customer in Indiana, from whom we had an order wrote us a few weeks ago, "They are growing successfully in Cincinnati, Ohio, and we are no colder here than they are in Cincinnati." In cold sections of the country,

(Continued on next page.)

MAGNOLIA GRANDIFLORA—Cont'd

where the thermometer gets below 15 to 18 below zero, they should be planted on the northern side of buildings where they are protected from the southern sun during the winter-time. A number of these trees have been lately planted around the Washington Home at Mount Vernon. There is one street planted to them in Los Angeles, Cal., which is said to be one of the most beautiful sights of that city. For the beautifying of mill villages, towns and parks, there is no tree that will afford the beauty, attraction and improvement as the Magnolia Grandiflora. Of course for lawn or resident planting, only a few trees are needed, but in our opinion you will make a mistake unless you buy at least a few of these trees. Our trees are being well and carefully grown on up-land fields where they are plowed and hoed like corn. Here they make a better root system, and if properly handled otherwise, insures their successful transplanting. Trees grown in bottom land have less fibrous roots, do not make as shapely trees and not as easily transplanted.

We can ship them safely anywhere, having delivered them successfully in far away California and the Isle of Pines. Where wanted we can quote on large specimen trees, some of which have been successfully removed from our nurseries, to Providence, Rhode Island, and other distant sections. Special planting directions are given with each shipment. By all means plan to plant a few Magnolia Grandiflora this season and do it NOW. You will be pleased with them.

	Each	Per 10
18 to 24-inch.....	\$1.00	\$9.00
2 to 3 feet.....	1.50	14.00
3 to 4 feet.....	2.50	20.00
4 to 5 feet.....	4.00	40.00
5 to 6 feet.....	5.50	50.00

American Holly—Has spikes on the edges of its peculiar shaped evergreen leaves and makes a striking contrast among other shrubbery. It is hardy as far north as Pennsylvania and is becoming more in demand every year.

	Each	Per 10
12 to 18-inch.....	\$1.00	\$9.00
18 to 24-inch.....	1.50	14.00
2 to 3 feet.....	2.50	24.00

Japanese Holly—We also have this Holly, which has larger and finer foliage, and makes a pretty little tree.

	Each	Per 10
12 to 18-inch.....	\$1.50	\$14.00
18 to 24-inch.....	3.00	30.00

Rhododendron Maximum—Perfectly hardy in the coldest sections of the country where it retains its beautiful foliage throughout the year. Bears great clusters of pink colored flowers in May and June which are nearly double the size of other Rhododendrons. They should be planted on the north side of the house, or where shaded by coniferous or other trees or shrubbery. Even a few of these much admired, broad-leaved evergreen shrubs will add taste and beauty to your planting that you will be pleased with. Get a few this time, which will be the cause of your buying more later. You'll like them.

	Each	Per 10
12 to 18-inch B. & B.....	\$1.50	\$15.00
18 to 24-inch B. & B.....	2.50	25.00
24 to 30-inch B. & B.....	4.00	40.00

Kalmia Latifolia—A valuable native evergreen shrub, which blooms in terminal clusters of the clearest rich pink to white. Has small, pointed shaped leaves which retain their color throughout the year. These are hardly native shrubs and you will be surprised at the beauty and satisfaction you will get from even a few of them.

	Each	Per 10
12 to 18-inch B. & B.....	\$1.50	\$12.50
18 to 24-inch B. & B.....	2.50	25.00

Mahonia Aquafolia—Holly-like leaves, yellow flowers in May followed by great clusters of blue berries. Especially effective in mass plantings or under shade of trees.

	Each	Per 10
12 to 18-inch.....	\$1.00	\$9.00
18 to 24-inch.....	2.50	25.00

The time has come when the "house-folks" do not have time to work with box flowers and summer annuals. You want among your hardy deciduous flowering shrubs, besides a goodly number of coniferous trees, a well selected lot of Hardy Native Broad-Leaved Evergreens, that have their various colored blooms, and that retain their cheery green coloring the whole year thru. Most of us have been unthoughtful of the fact that during wintertime all summer foliage and flowering shrubs and plants are bare for nearly six months during which time the surroundings look lonesome, but this can be turned into cheer and admiration at little cost with a collection of our Hardy plants.

BROAD LEAVED EVERGREENS

Boxwood—Used for boxes, edging and pyramids in various sizes. Its glossy leaves are always pleasing. They are long lived shrubs and many can be seen growing about old places, which have stood perhaps several generations.

Owing to embargo on importations this stock is going to be very scarce and high. We have a fine lot of plants, in sizes 12 to 18 inches, that are well formed and bushy that will make a pretty effect now. We look for this stock to cost double the price it is now selling for in a year.

	Each	Per 10	Per 100
12 to 18-inch.	\$1.00	\$8.00	\$75.00



Flowers of Abelia Grandiflora.
The finest little Broad-Leaved Evergreen in Cultivation.

Abelia Grandiflora—A pointed leaved evergreen shrub, bearing profusely during the entire summer and fall months beautiful little bell shaped cream colored and fragrant flowers that completely cover the plant. It is hardy and a wonderfully fine thing, its beautiful foliage being attractive at all seasons.

There is not a finer plant in cultivation than this Abelia. It is pretty anywhere and all the time. It seems almost to realize its own beauty, in that it is always trying to put on more loads of beautiful little fragrant flowers that always appear at just the right place, to add more admiration and wonder from those who see it.

A most beautiful sight was a border of this Abelia about one of the Government Buildings in Washington a few years ago, and it was so intensely beautiful the writer had to stop at the risk of being called "country-like" to enjoy the sight. You will not regret any money spent for this plant. We have never been able to get much stock ahead, but just now have a nice lot of very fine plants, which have been several times transplanted, and run from one year lightly branched to bushy sheared specimens.

	Each	Per 10	Per 100
12 to 18-inch.	\$0.75	\$6.50	\$50.00
18 to 24-inch.	1.00	7.50	75.00
20 to 30-inch B. & B.	2.50	25.00	
Heavy sheared specimens.	4.00	40.00	

Acuba Japonica—Has large variegated leaves, followed in the spring with clusters of bright red berries, which it retains through the winter, the contrast with its pretty leaves

(Continued on next page.)

BROAD-LEAVED EVERGREENS—Cont'd

and bright red berries makes a very beautiful effect. They grow a few feet in height, and can be used to good advantage in winter as an indoor plant. Perfectly hardy.

	Each	Per 10
12 to 18-inch B. & B.....	\$2.50	\$25.00
18 to 24-inch B. & B.....	4.00	40.00

English Laurel (*Laurocerasus*)—A small tree or bush with handsome, shining foliage. Native of Europe. Flowers white, in numerous short racemes expanding in April or May.

This is one of the finest of Broad leaved evergreens for banking or mixing with other shrubbery, as it has fine large leaves, of a deep glossy green color, which it retains throughout the year and will make a valuable addition to any collection.

	Each	Per 10
12 to 18-inch B. & B.....	\$2.00	\$20.00
18 to 24-inch B. & B.....	3.00	30.00
20 to 30-inch B. & B.....	4.00	40.00

Azalea Amoena—A very desirable little evergreen shrub, with dark glossy leaves. Flowers of a rich wine color, which are produced in such profusion as to quite envelop the plant when in bloom. Its leaves somewhat resemble box in summer but as the cold weather sets in they assume a beautiful shade of bronze. Perfectly hardy, and a high class little evergreen shrub, that is used among the finest plantings.

	Each	Per 10
12 to 18-inch B. & B.....	\$2.50	\$25.00
18 to 20-inch B. & B.....	3.50	35.00

Ligustrum Amurense—This is hardy and an evergreen in the south, while it is mainly used for hedges, it is now used by some Gardeners among shrubbery planting as a broad-leaved evergreen. It bears freely of very fragrant and while to cream colored flowers, that are if untrimmed followed by clusters of little blue berries that hang on until late in the spring.

	Each	Per 10
12 to 18-inch, bushy.....	\$0.50	\$4.00
18 to 24-inch.....	.75	7.00

Ligustrum Napalensis—A very attractive hardy shrub, with handsome glossy-green foliage, with beautiful cream colored fragrant and showy flowers. The leaves are larger than the *Abelia Grandiflora*, of a deeper glossy green, and being in a class to itself, bearing no resemblance to other hardy broad-leaved evergreens, and holding its splendid cheerful coloring throughout the year. It is one of the finest shrubs for landscape, banking among coniferous evergreens or shrubbery. It grows rapidly until it gets a couple of years old, when it seems to delight in a greater production of its beautiful glossy evergreen leaves and fragrant flowers.

	Each	Per 10
12 to 18-inch B. & B.....	\$1.50	\$15.00
18 to 24-inch B. & B.....	2.50	24.00
24 to 30-inch B. & B.....	3.50	34.00

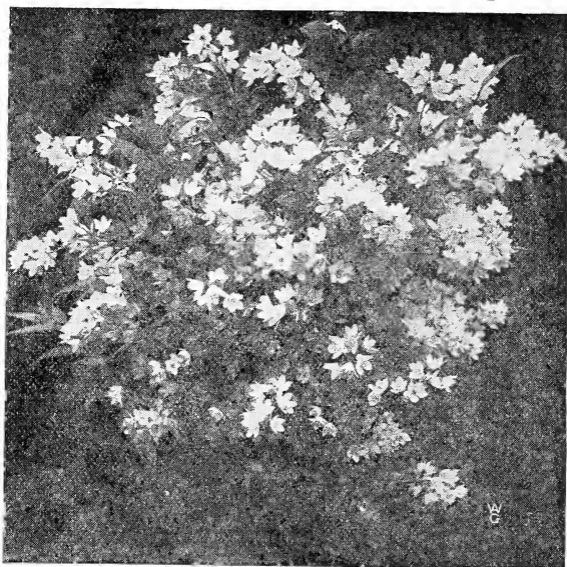
Ligustrum Lucidum—A pretty little evergreen, but is not hardy in the colder sections of the country, or Canada, but in the South it is a fine thing, being about the same as *Napalensis*, except in leaves which are a little larger, yet a lustrous green, with cream colored fragrant flowers.

	Each	Per 10
12 to 18-inch B. & B.....	\$1.50	\$15.00
18 to 24-inch B. & B.....	2.00	24.00
24 to 30-inch B. & B.....	3.50	34.00

Ligustrum Japonicum—This is a valuable evergreen shrub, but does not have the glossy green leaves as the other varieties, and is much used by landscape gardeners among shrubbery planting, lending a splendid contrast among other sorts.

	Each	Per 10
12 to 18-inch.....	\$0.75	\$7.00
18 to 24-inch.....	1.00	10.00
24 to 30-inch.....	1.50	14.00

For a beautiful home, the whole year through, plant liberally of Coniferous and Broad-Leaved Evergreens. Write us about them. We are Evergreen Specialists.



Deutzia Gracilis

HARDY DECIDUOUS ORNAMENTAL SHRUBS

If one will select them with care a succession of bloom may be had from early spring until late in the fall. The list following is one of the finest collections for general decorative purposes.

The following sorts run from 18 to 24 inches and fine for landscape planting. Price, 60c each; \$5.00 per 10, unless otherwise noted.

Althea (Rose of Sharon)—A beautiful small flowering tree growing eight to ten feet tall. It is much used for hedges and screens as well as specimens.

Price, each.....\$0.50

CALYCANTHUS

Calycanthus. Sweet Scented Shrub—Strong growing shrub with ample foliage. Curious purple flowers terminate the branches, and exhale an odor of ripe fruit.

DEUTZIA

Pride of Rochester—Six to 8 feet high, blooms in early spring with extra large, double white flowers. A distinct and valuable variety.

Slender Branched (D. Gracilis)—Usually about two feet high with slender and arching branches. Foliage bright green; blossoms very early with a profusion of white flowers. An excellent plant for indoor culture.

FORSYTHIA—Golden Bell

Intermedia—Erect in growth, somewhat slender, very profuse in bloom.

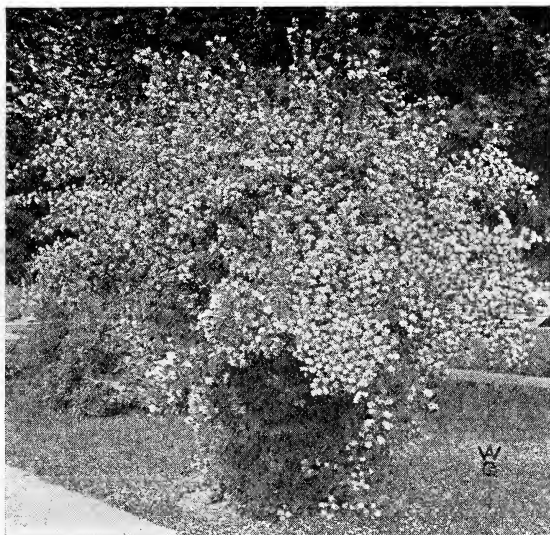
Viridissima Golden Bell—It comes from the north of China, and blooms in April or early May. Flowers rather pale, very profuse and attractive.

HIBISCUS

Meehan's Mallow Marvels—Colors red, white and pink. Season of flowering from July to late autumn. Quite conspicuous in shrubbery.

SPIREA—Bridal Wreath

Van Houttel's Spirea (S. Van Houttei)—Five to 6 feet high with numerous arching branches; foliage dark green persisting until late autumn; blossoms in late spring, the white flowers often bending the branches in graceful curves to the ground under their profusion. The most popular sort for specimens or hedge.



Philadelphus or Mock Orange

Spiraea Anthony Waterer—Constant bloomer from June until October. The brightest of all Spireas. A fine hedge plant.

	Each	Per 10
12 to 18-inch.....	\$0.50	\$4.50
18 to 24-inch.....	.60	6.00
2 to 3 feet.....	.75	7.00

PHILADELPHUS

Large Flowered Mock Orange (*P. Grandiflorus*)—Foliage bright green; blossoms in June with very large, pure white flowers.

HYDRANGEA

Hydrangea Paniculata Grandiflora—A beautiful hardy shrub; has large bright, shiny green leaves, bearing huge panicles of flowers, 6 to 7 inches in diameter, and 8 to 10 inches long. Begins to bloom in July, appearing white for three or four weeks, when it begins to change to a light pink, changing to brown later in the fall. A fine thing for planting with other shrubbery, or for border planting alone. This is the thing about which you hear so many exclaiming, "Oh, what is that pretty flower, yonder; it is so fine."

We can supply this in large heavy plants 3 to 4 feet at \$1 each. They bloom profusely the first summer.

Arborescens Alba Grandiflora—Resembles the *Paniculata* in general form and shape of flowers; borne in panicles of pyramidal shape from 5 to 8 inches in diameter and 8 or 10 inches long. White of such an imposing appearance they dominate all displays in which they appear.

	Each	Per 10
12 to 18-inch.....	\$0.50	\$4.50
18 to 24-inch.....	.60	5.50

WEIGELIA—Diervilla

Candida—Flowers pure white; strong grower, but has a refined appearance.

Rosea—Handsome, rose-colored flowers.

Hendersoni—Fine, compact habit; flowers medium size; outside of petals red.

	Each	Per 10
Price.....	\$0.50	\$4.00

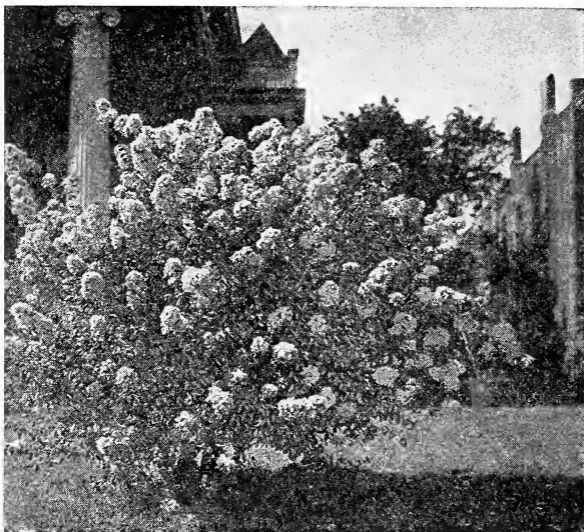
SYRINGA—Lilac

Persian Lilac—Six to 8 feet high with slender, upright branches; foliage rich green; blossoms in late spring with pale lilac-colored flowers. Very fragrant.

	Each	Per 10
2 to 3 feet.....	\$0.75	\$7.00

White Persian Lilac—Same as above with white flowers.

	Each	Per 10
2 to 3 feet.....	\$0.75	\$7.00



Crepe Myrtle—One of the Prettiest Shrubs

MYRTLE—Lagerstroemia

Pink and Crimson—A large shrub, with brown bark Native of Asia. Leaves ovate, dark, lustrous green. Flowers crinkled and ruffled, produced in panicles in summer, continuing for two or three months.

	Each	Per 10
2 to 3 feet.....	\$1.00	\$ 9.00
3 to 4 feet.....	1.25	12.00

White Flowered Crepe Myrtle—The same as the pink and crimson, only bearing beautiful white flowers; a splendid acquisition and much in demand.

	Each	Per 10
2 to 3 feet.....	\$1.50	\$14.00
3 to 4 feet.....	2.00	17.50

For Screen or High Shrubbery Hedges the Crepe Myrtles are unsurpassed. Makes a small tree for avenues, specimens, or planting in groups, or can be kept trained to shrub.

PYRACANTHA (Crataegus)

Large shrubs identical in flower and fruit with Hawthorns, but are evergreen. Bear a profusion of showy berries.

P. coccinea lalandi—Variety of strong growth, making long shoots that can be trained against a wall if desired. Leaves, long. Berries orange yellow. Supply limited. Write for prices.

Hedge Plants

We can supply any variety of hedge plant at very reasonable cost, as we grow in quantity, shipping thousands every year to nurserymen for their retail trade, as well as supplying our own retail trade, shipping to almost every state in the Union.

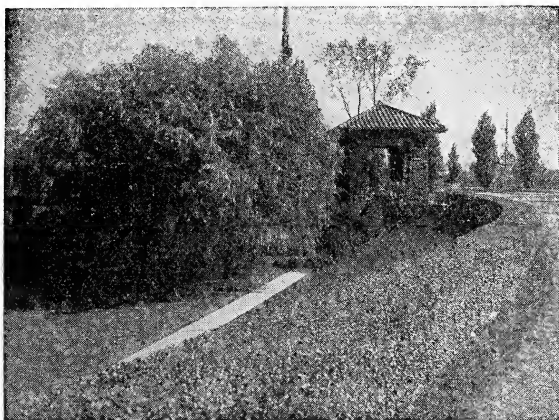
PRIVETS

California (Ovaliforum)—A well known and popular variety; is a vigorous grower, with deep green foliage, used much for hedges and borders, but will winter kill occasionally in the colder section, tho in the south generally it is very nearly an evergreen.

	Per 10	Per 100	Per 1000
10 to 18-inch.....	\$1.50	\$4.00	\$35.00
18 to 24-inch.....	2.00	6.00	55.00

Amoor River Privet—This is a fast growing hedge either in sun or shade, and bears trimming into any desired shape. We sell this variety in large quantities to towns, cities, schools, parks, factories, land improvement companies and

(Continued on next page.)



Amoor River Privet Hedging and Weeping Willows

PRIVET—Cont'd

other institutions for the improvement and beautifying of their grounds which enhance the value so quickly. No wonder it is sought for by the rich and the poor alike for adorning the lawn of the most handsome homes, as well as those of the humblest cabin.

We save our customers hundreds of dollars every year on this best of all hedge plants as we grow in quantity for the wholesale trade, our prices being less than half many concerns.

We supplied the Government in one shipment, spring 1919, 20,000 plants for Town Buiding plantings, in the Hampton Roads District.

We hold this stock in storage during the winter and spring that we are able to make prompt shipment to the warmer sections, where plantings continue during the winter, and hold same in perfect condition until summer. Shipping 2,000 to a Georgia Nurseryman last July, who wrote us afterwards he never had better success, it all living and growing off nicely.

	Per 10	Per 100	Per 1000
12 to 18-inch.....	\$ 2.50	\$ 6.00	\$50.00
18 to 24-inch.....	3.00	7.50	70.00
24 to 30-inch.....	4.50	10.00	90.00

We can supply small 2-year, well rooted and branched plants, that have been cut back and every one a fine little plant, delivered prepaid to any address at \$5.00 per hundred. The only difference in this and the 12 to 18-inch stock, as listed above, is that they are little smaller plants, running 8 to 10-inch, but stocky little fellows. We sell lots of them, as they soon make a pretty hedge, and for long distance there is some saving in transportation charges.

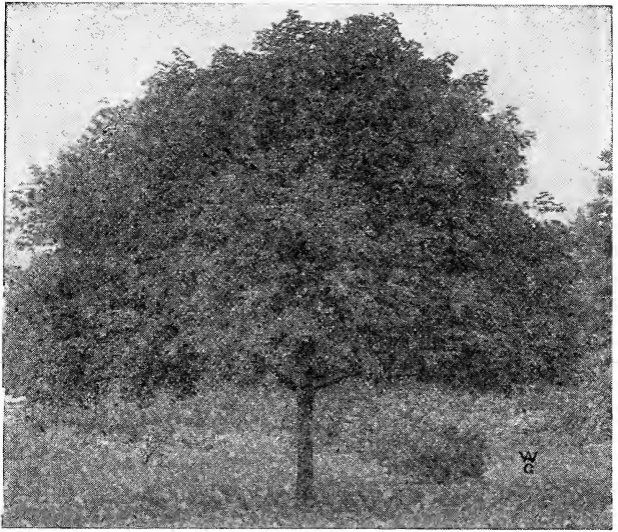
Privet, Northern Type—Amoor River North. This variety is not an evergreen, but it is the kind that is hardy in Minnesota and other like cold climates; in habit of growth is very much like the old California privet but does not winter-kill and is a most valuable variety, which is fast taking the place of California.

	Per 10	Per 100	Per 1000
12 to 18-inch.....	\$ 2.50	\$ 6.00	\$50.00
18 to 24-inch.....	3.00	7.50	65.00

Thunberg's Barberry—A beautiful shrub that is hardy anywhere. Even in cold Alberta, Canada, where the thermometer for months during the winter hovers around forty degrees below, one of our customers has it growing successfully. Has small round bright green leaves, changing in autumn to a beautiful shade of orange, scarlet and crimson, bearing bright red berries in profusion which do not drop off until late in the spring. Excellent for low hedges and borders, for which it is much used.

	Each	Per 10	Per 100
8 to 12-inch.....	\$.35	\$2.50	\$15.00
12 to 18-inch.....	.40	3.25	25.00
18 to 24-inch.....	.50	4.50	35.00

This is a good thing to mix with other shrubbery, and is much used in landscape work.



Norway Maple

Deciduous Shade Trees

We have a good lot of shade trees in the best sorts, but in this condensed list we have not the room to list them.

Sugar and Norway Maples are two mighty good sorts. They have hard wood, make pretty well formed tops and never attacked with insects or disease. If you want a good, shapely, hardy and lasty tree "they are it."

	Each	Per 10
3 to 4 feet.....	\$.40	\$ 3.50
4 to 5 feet.....	.50	4.50
5 to 6 feet.....	.75	6.00
6 to 7 feet.....	1.50	14.00
10 to 12 feet.....	3.00	30.00

The 10 to 12-foot size are heavy, well formed trees, with pretty tops and straight bodies.

Lombardy Poplar—This grows to a great height and is remarkable for its columnar growth. Breaks the monotony of the lower rounded-top trees, and is used by all gardeners.

	Each	Per 10
4 to 6 feet.....	\$.50	\$ 4.50
6 to 8 feet.....	.75	6.00
8 to 10 feet.....	1.50	14.00
10 to 12 feet.....	2.50	24.00

Tulip Poplar—A healthy, fast-growing tree, which bears fine large tulip-shaped flowers of a greenish yellow, blotched with orange, which appear in May and followed by curiously shaped cones.

	Each	Per 10
4 to 6 feet.....	\$.75	\$ 7.00
6 to 8 feet.....	1.25	12.00
8 to 10 feet.....	2.00	20.00
10 to 12 feet.....	3.00	30.00

White Flowering Dogwood (C. Florida)—This is a splendid little tree which produces its array of white flowers in the spring before the leaves appear. Has distinct grayish-green foliage that flames to bright red, followed with scarlet berry clusters on the crimson winter twigs. It is rather a unique tree in its form and horizontal arrangement of its branches.

	Each	Per 10
2 to 3 feet.....	\$1.25	\$12.00
3 to 4 feet.....	\$2.00	18.00

Red Flowering Dogwood (C. Florida Rubra)—A new variety which has proven very valuable for ornamental planting. Has beautiful pink to red flowers, which create a most pleasing effect. Its new branches are of a red, showy color, making a stout, stocky little tree, that begins to bloom when quite young. It is a high class little ornamental tree, which lends a pretty appearance among other trees.

	Each	Per 10
2 to 3 feet.....	\$2.00	\$20.00
3 to 4 feet.....	3.00	28.50

DECIDUOUS SHADE TREES—Cont'd

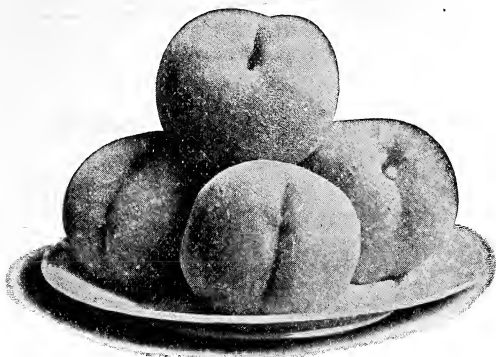
Siberian Dogwood (C. Alba)—This is possibly a form of the Cornus Sanguiana, with intensely colored bark of the deepest crimson. A very fine thing, and classed as shrub, but makes a pretty little tree.

	Each	Per 10
18 to 24-inch.....	\$1.00	\$ 9.00
24 to 30-inch.....	1.50	14.00

Yellow Bark Dogwood (C. Stolonifera Aurea)—This is a beautiful little shrub for winter coloring effect, which has bright yellow bark, and is invaluable for bringing out nature's coloring among other plantings.

	Each	Per 10
18 to 24-inch.....	\$1.00	\$ 9.00
24 to 30-inch.....	1.50	14.00

We know of no investment that will give you better returns than the planting of Shade Trees.



Elberta Peaches

Fruit Trees

All Fruits are Scarce and High Priced. Now is the Time to Plant Fruit Trees

We can do most sorts of peach and apple in 3 to 4-foot trees at \$8.00 per 10, and if the selection is left to us, we will select such varieties that are suited to the section for which they are wanted. Best to state whether mainly early or late sorts are wanted, and we shall be governed by your wishes.

Pears, Plums, Cherries, Figs, Quinces, Apricots, Damson are \$1.00 each or \$10.00 per dozen. Order the number wanted, stating when you want them to ripen, and we will make a selection that will please you.

Yellow Sandy River Seedling Cling. This is a fine large yellow seedling cling peach, which we have known for a number of years and is the only peach that we know of that comes true from seed. While we have never grown them into bearing trees, the writer has observed their growth by an old fruit grower, who has many bearing trees, which he has grown from seed. It is a wonderful variety, is very delicious—juicy and acid, ripening up well and a most valuable variety for canning, for eating, home use or market. We know of none better. If we were going to plant an orchard for ourselves, for either home use or for commercial purposes it undoubtedly would be Yellow Sandy River Seedling Cling.

A number of parties have heretofore asked that we supply them, which we could not do until this year, and at this time we have only a limited number and can only supply them in small lots.

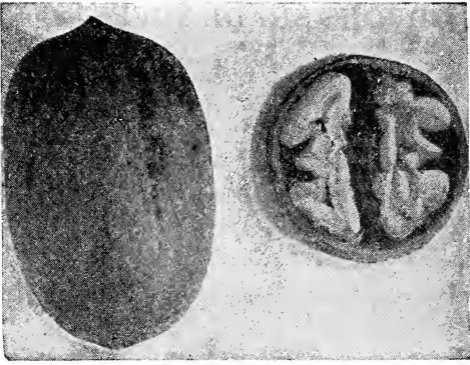
Prices 2 to 3 ft., \$1.00 each. \$10.00 per dozen.

Peach Trees.

We can supply in quantity at very reasonable prices Elberta in size 2 to 3 feet. Write for prices on number wanted.

Apple Trees.

Can furnish in quantity for Commercial orchards most lake varieties 2 year and also one year from bud. Prices on application.



Stuart Pecan

Nut Bearing Trees

Grow Them for Profit.

ENGLISH WALNUTS

The well known commercial nut. Needs no description. Should be more generally planted.

	Each	Per 10
2 to 3 feet.	\$1.00	\$7.50

PECANS

Of all the nuts grown in the world, none compare with the Pecan. Trees grow easily, are sure to bear good crops, live for generations, require no care after being well established, and the market for good nuts will never be glutted and they will always command a good price.

For home use, everyone should plant Pecan trees. Besides producing an abundance of rich, nutritious, wholesome food, they are highly ornamental and become magnificent and lasting shade trees. They grow in almost any soil and in any location.

✓ **Stuart**—Size large; long, pointed; shell thin; meats plump, full, separating easily; quality best; recommended by horticulturists, and the most popular sort for Southern planting. A good grower.

✓ **Van Deman**—Large; oblong shell, moderately thin; cracks well; meats plump and full, of good quality.

	Each	Per 10
18 to 24-inch.	\$1.00	\$8.00
2 to 3 feet.	1.50	14.00
3 to 4 feet.	2.00	20.00

Small Fruits

GRAPES

Grapes are one of the most productive and hardy fruits that we have. They can be grown in small spaces and trained up the sides of buildings or along fences, occupying very little room. Make the soil mellow and plant vines somewhat deeper than they stood in the nursery and about 8 feet apart by a fence or building.

A Wonderful New Grape

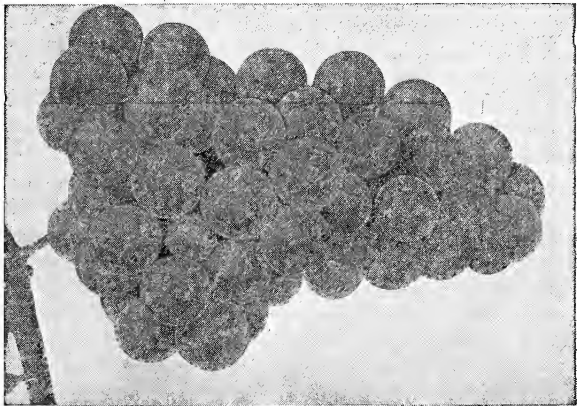
Old English Grape. We secured our stock plants of this variety from our friend and horticulturist, Joe DePriest. This grape has been in his immediate family for over fifty years. In fact, his father grew it from the time he can first remember, and why it was called by these older settlers "The Old English Grape" he does not know unless it was brought by them in coming to this country. He has never seen or heard of but one other vine that was of the same variety—this was grown by an old settler who has long been dead, and the place has many years ago gone down, and the

OLD ENGLISH GRAPE—Cont'd

vines from which we have secured our propagating plants are the only ones now known.

The vine is a strong grower, with large, healthy and fine foliage, which is not very particular in its growth as to its location, as is shown by some of these bearing vines, which this old horticulturist, who is one of the greatest fruit lovers we have ever known, has growing, not only on trellises and arbors, but some of them trained on growing trees, where it ripens to perfection, even among the shady foliage. It is a most delicious variety. If it ripened among the general run of bunch grapes, it would stand out pre-eminently as one of the most valuable sorts, but yet another and a most valuable characteristic about it is that it does not ripen until the last of September after all other bunch grapes are gone. In color it is a light pink to red, which ripens up splendidly, the bunches being well shouldered and medium large, which does not crowd on the bunches.

We have attempted several times to secure a supply of these vines, but have never been able to propagate them in quantity until this year. We have a limited amount of splendid and well rooted one year vines. We haven't enough of them to supply them in quantity for commercial purposes at present, and being desirous of supplying even a few vines to as many of our customers all over the country as possible, we would not like to offer more than one to three vines to a customer. We would advise parties who wish to secure them to notify us at once, that we may be able to supply them. Price prepaid, single plant \$1.50 each. 3 for \$4.00.



Concord Grapes

Agawam—Large, round, early, dark red or brown; large bunched berries, meaty and free from sour pulp; has tough skin and bees never attack it; in flavor it is sprightly, moderately sweet. Midseason.

Concord—The most popular and widely planted black grape. Very hardy and productive. Ripens about the middle of September. Because of its adaptability and low cost of production Concord is widely planted for both home and commercial use.

Niagara—Large, slightly oval; pale yellow with a white bloom; the quality is equal to Concord and is the standard white grape of the country. Bunches are large and compact. Vine vigorous, hardy and very productive.

Moore's Early—Very large, round; a black with a blue bloom; quality very fine and is classed as better and sweeter than Concord. Extremely hardy and productive.

Price, well rooted vines.....	Each	Per 10
	\$0.40	\$3.50

Lutie—Rich red, a good grape; succeeds better in South; vigorous, heavy bearer and always dependable.

Green Mountain—From the Green Mountains of Vermont. Bunches rather large, and shouldered. Berries medium, greenish white; thin skin, juicy with tender and sweet pulp.

Price, Lutie and Green Mountain.....	Each	Per 10
	\$0.75	\$7.00

Scuppernong—Large, bronze-colored berry. Flesh sweet, pulpy and vinous. The most popular grape on the southern market. Supply is seldom equal to the demand. Vines produce abundantly. Scuppernong wine is considered among the best.

Price, Scuppernong.....	Each	Per 10
	\$0.75	\$7.00

GRAPES—Cont'd

Brighton—Medium in size, red; flesh rich, sweet and of the best quality. Ripens earlier than Delaware. Vinous, vigorous and very hardy. Early.

Delaware—Berries rather small, round, skin thin, light red, flesh juicy without any hard pulp; sweet and spicy and delicious flavor. Vine moderately vigorous, hardy and productive. Midseason.

	Each	Per 10
Brighton and Delaware well-rooted vines . . .	\$0.60	\$5.00

BLACKBERRIES

The Crop That Will Make You Money—Quick.

Blackberries make one of the best paying crops—five acres in berries will earn as much as 40 acres in corn or wheat, with less than one-eighth the upkeep or labor. Try out one-fourth, or better still, one acre; plant it in rows or "hill fashion." Plant between the three rows in your orchard; make every foot of ground pay. Berries bring good prices and will go still higher.

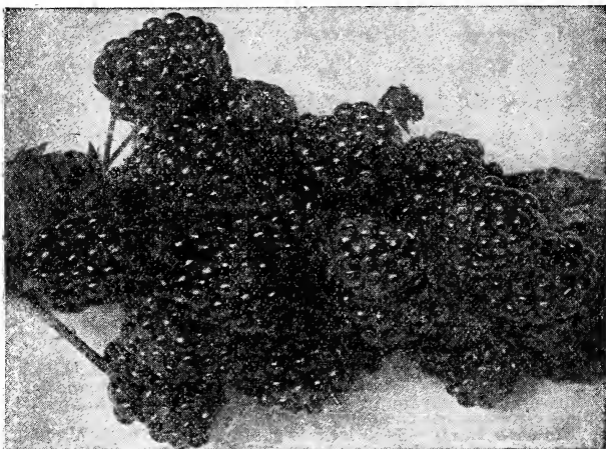
Early Harvest—The first to ripen—a most productive early bearer. Fruit medium size, roundish—oblong. Flesh tender, juice mild and of good quality. The very best early variety.

Snyder—Extremely hardy, enormously productive, medium size, no hard, sour core. Easy to pick, fruit in clusters, mostly on top like raspberries.

Eldorado—Very vigorous and hardy, enduring the winters of the far Northwest without injury, and their yield is enormous. The berries are large, jet black, borne in clusters, and ripen well together; they are very sweet, melting and pleasing to the taste; have no hard core.

Rathbun—Berries very large; sweet, luscious; have no core and are firm enough to ship and handle well; canes make a strong, erect growth yielding fine crops.

	Each	Per 10	Per 100
Price, strong plants	\$0.20	\$1.50	\$10.00



Eldorado Blackberries

DEWBERRIES

Plant in rows six feet apart, three feet distant in the row. Keep the soil mellow and clean.

Lucretia—The very best of the blackberry family. Berries are far larger and incomparably better than any blackberry; of unequalled excellence. The Lucretia Dewberry has received the highest praise from the best horticulturists in the country. Hardy, a great bearer, fruit large, black and glossy, without hard core and very delicious. Ripens with early blackberries.

	Each	Per 10	Per 100
Price, strong plants	\$0.20	\$1.50	\$10.00

Hardy Climbing Vines

Probably there is no element of decorative planting that is more essential than the climbing vine families. They produce the desired effect and mass backgrounds of green so restful and pleasing to the human eye while occupying the minimum of space, and upon brick or stone houses a few of the ivy family is especially desirable to break the monotony of the mass effects of blank walls.



Ampelopsis Veitchii on Wall

AMPELOPSIS

American Ivy or Virginia Creeper—The well-known native vine with five-parted leaves that change to rich crimson in autumn; berries are blue-black. Very rapid grower and entirely hardy. One of the finest for covering walls, verandas and trunks of trees.

	Each	Per 10
Price.....	\$0.60	\$5.00

Engelmanni (Engelmann Ivy)—Shorter jointed than Quinquifolia. A good climber; grows 6 to 10 feet in a season.

	Each	Per 10
Price.....	\$0.60	\$5.00

Veitchi (Boston Ivy)—Of Japanese origin; entirely hardy, with foliage turning brilliant red in autumn. It clings tightly to walls, and is unsurpassed as a basket or vase plant.

	Each	Per 10
Price.....	\$0.60	\$5.00

ARISTOLOCHIA—Dutchman's Pipe

A. siphon—A magnificent vine, of climbing habit, with beautiful foliage, 8 to 10 inches in diameter, and curious shaped yellowish brown flowers.

	Each	Per 10
Strong plants.....	\$0.75	\$6.50

BIGNONIA—Trumpet Vine

B. radicans (**American Climbing Trumpet Vine**)—A splendid, hardy climbing plant, with large trumpet-shaped scarlet flowers in August.

	Each	Per 10
Strong 2-year old plants.....	\$0.60	\$5.00

CLEMATIS

A beautiful class of hardy climbers, excellent for pillars, or trellises. They delight in a rich soil and sunny situations and are perfectly hardy.

C. paniculata—A vine of very rapid growth, quickly covering trellises and arbors with handsome, clean, glossy green foliage. The flowers are of medium size, pure white, borne in immense sheets, and of a most delicious and penetrating fragrance.

	Each	Per 10
Strong 2-year old plants.....	\$0.50	\$4.00

WHY wait years to secure effect, when you can buy from this catalogue large Evergreens and ornamentals that bring beauty now?

VINES—Cont'd

HONEYSUCKLE—Lonicera

Japanese Bush Honeysuckle (L. Morrow)—Four to 6 feet high with spreading branches; dark green with light under side. Blooms from early spring until fall.

	Each	Per 10
Price.....	\$0.50	\$4.00

Hall's Japan Honeysuckle (var. Halliana)—Pure white and creamy yellow, very fragrant flowers; in bloom the whole season. Almost evergreen. Besides its ordinary uses as a climber it is valuable for covering banks, bare places, etc., where grass will not grow.

	Each	Per 10
Price.....	\$0.50	\$4.00



The Wistaria is in Bloom on this Porch

WISTARIA

The Wistaria is one of the most decorative of vines, and for porch decoration without too much shade it has no superior. The long, twining branches bear great sprays of foliage, while its charming flowers sway with ever passing breeze.

W. sinensis (Chinese)—Flowers in clusters, pale blue; sometimes gives a second crop of flowers in the fall.

	Each	Per 10
Strong 2-year-old plants.....	\$0.50	\$5.00

W. sinensis alba—Of similar habit to Chinensis, with pure white flowers.

	Each	Per 10
Strong 2-year-old plants.....	\$0.50	\$5.00

EVERGREEN VINES

Euonymus Radicans—One of the finest evergreen vines, with small rich green foliage. For covering rocky mounds, rough walls, tree trunks and other objects it is a treasure. Much used for vases, baskets and borders.

	Each	Per 10
Price.....	\$0.40	\$3.50

Myrtle—Has small deep glossy evergreen leaves. Fine for covering graves, or mounds, and for hanging baskets, etc.

	Each	Per 10
Two-year bushy plants.....	\$0.35	\$3.00

Vinca, Variegated—A trailing plant with glossy green leaves, margined with creamy white. Flowers blue. One of the best plants for hanging baskets, vases or hanging over window or porch boxes.

	Each	Per 10
Price, 2-year heavy.....	\$0.40	\$3.50

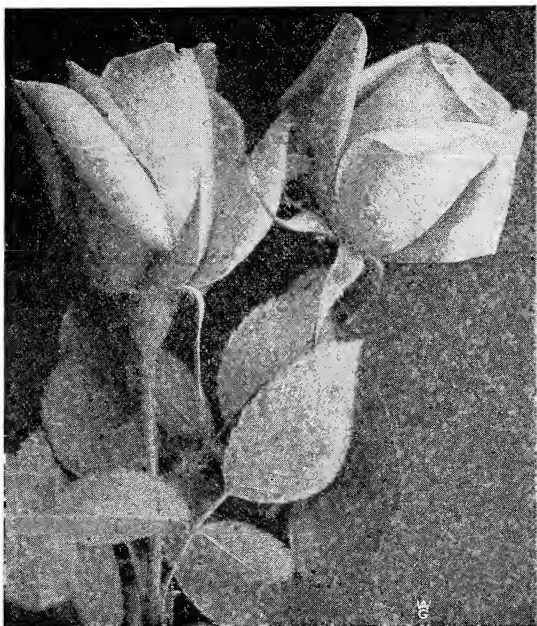
Vines Are Invaluable for Hiding Unsightly Objects.

**Valdesian Nurseries,
Bostic, N. C.**

Gentlemen:—Please send us Amoor River Privet 100 plants 18 to 24 inches. We received your last shipment in good order and tickled to death with it.

Very truly,

J. C. Brittingham.



Sunburst
ROSES

The very name of roses carries with it the suggestion of the greatest perfection and beauty of the world of vegetation. No arrangement is satisfactory that neglects them; in fact, they are indispensable. The stock we offer is all field grown, acclimated to the outdoor life and will make much quicker and more hardy growth than the greenhouse plants offered by rose specialists.

EVERBLOOMING VARIETIES

The everblooming roses are especially desirable for their profuse and continuous bloom, fragrance of their bloom and the delicate beauty of their buds.

Killarney—One of the most beautiful roses grown; strong, vigorous, perfectly hardy, flowers are very large, buds long and pointed. Color an exquisite shade of deep seashell-pink.

White Killarney—An offspring of the pink with all the exquisite beauty of the parent in size and shape.

Sunburst—This magnificent grand yellow rose is a fine forcer. Its color ranks in value and grandeur with the American Beauty and Killarney. Long, pointed buds, color orange-copper or golden orange and golden yellow, extremely brilliant in effect. This is the finest yellow rose in cultivation and pleases every one who sees it. Many grow it in preference to White American Beauty and other leading roses. It puts all the yellows to sleep when it comes to bedding in the garden. The golden-yellow stays right with the flower until it fully finishes.

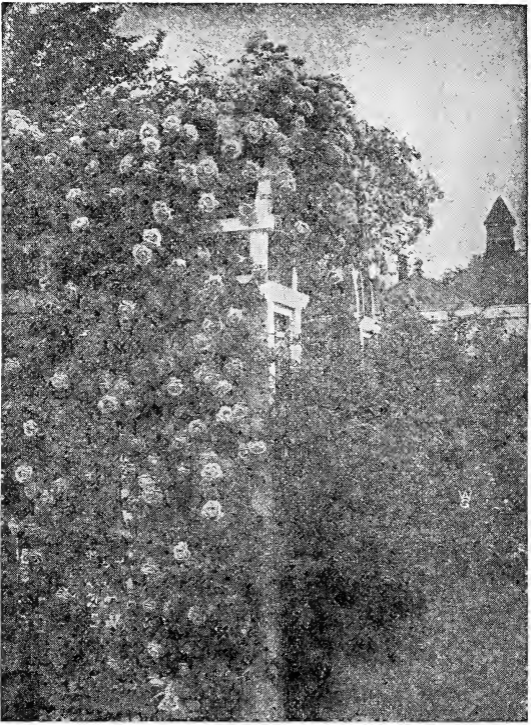
Mrs. Geo. Sawyer—Brilliant rose-pink, or bright peach-pink. Flowers large, well formed, fairly full, with petals of good substance. Freer in growth and bloom than Killarney; breaks in rapid succession, throwing up three to four-foot canes carrying heavy, leathery foliage, every shoot tipped with a bud.

Ophella—Brilliant salmon-flesh shaded with rose on outer edge of petals, with a heart of glowing peach-pink and orange-yellow blendings. Fragrant as Richmond. Perfect flowerer long, stiff stems. Free from mildew.

Richmond—This is said to be the best red forcing variety yet produced. Strong grower. Color deep red, long buds; elegant dark foliage.

The above roses are all bush roses. They bloom all summer, and are among the finest American sorts, and will please the most particular customer. They will bloom freely the first season.

	Each	Per 10
Two-year strong plants	\$0.75	\$7.00



Climbing American Beauty Roses on Arbor

CLIMBING ROSES

The demand for climbing roses has always been constant. The rose-covered cottage still carries the charms of romance and sentiment, that it has done for hundreds of years. We have specialized on all these beautiful climbers, and here we offer the best.

Pink Dorothy Perkins—A splendid new climbing rose. In foliage and habit of growth it is remarkably like Crimson Rambler; the flowers are double, of good size and borne in clusters. The petals are very prettily rolled back and crinkled; buds remarkably handsome; color a clear shell pink and holds a long time without fading.

Red Dorothy Perkins—It is a good deal to claim for a rose, but we are within bounds when we describe Excelsea as a brilliant Crimson Rambler flower on glossy, varnished Wichuraiana foliage. The flowers are very double, produced in large trusses of thirty to forty, and almost every eye on a shoot produces clusters of flowers. The color is intense crimson maroon, the tips of the petals tinged with scarlet. The finest of all Crimson Ramblers.

White Dorothy Perkins—This beautiful rose is the counterpart of the well known Dorothy Perkins, except in the color, which is pure white, but it is quite as hardy and vigorous. It has now become a universal favorite.

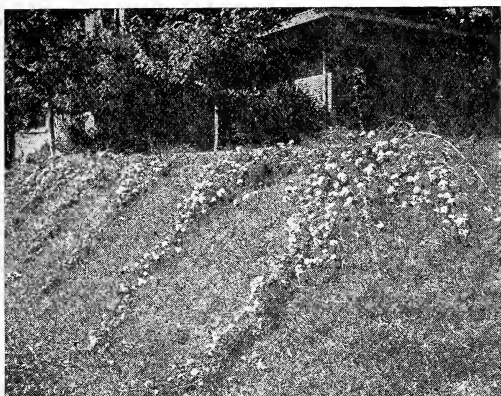
Flower of Fairfield (Everblooming Crimson Rambler)—Similar to the Crimson Rambler, except that it flowers from early spring until frost falls. A rampant climber and a persistent bloomer.

Cl. American Beauty—The great and popular American Beauty Rose in a real climbing form. It has all the characteristics of its relative, including form and fragrance.

Lady Gay—Flowers of a delicate cherry pink color, which fades to a soft white; deep green foliage. Vigorous grower, perfectly hardy. Will cover a large porch or trellis in an incredibly short time. One of the most charming of all climbers.

The above Climbers we have in both one and two-year sizes.

	Each	Per 10
Two-year strong runners	\$0.60	\$5.00



Climbing Roses Used on Terrace

CLIMBING ROSES—Cont'd

American Pillar—Large single flowers of rich, rosy-pink, approaching brilliant carmine, golden yellow stamens; profuse bloomer. Originated by the U. S. Government Department of Plant Introduction.

Thousand Beauties—Flowers when opening are a delicate shade of pink, changing to rose carmine. It gets its name from its many flowers and the variation in coloring. A beautiful rose.

Silver Moon—Hardy Climber. Blooms very large, four or more inches in diameter, pure white in color and of good substance, beautifully cupped, forming a clematis-like flower. The large bunch of yellow stamens in the center makes it very attractive. The blooms are produced on long stems 12 to 15 inches in length. Sweetly scented. Rank grower.

Dr. W. Van Fleet—Flowers when open run four inches and over in diameter. The center is built high, petals beautifully undulated and cupped. The color is a remarkable delicate shade of flesh-pink on the outer surface, deepening to rosy flesh in the center. The flowers are full and double, of delicate perfume; buds pointed. Strong, rapid grower. Immune from insects and disease. Foliage deep green the entire growing season.

Golden Rambler—One of the prettiest ramblers. Golden yellow flowers. Very popular variety.

	Each	Per 10
Two-year strong runners	\$0.75	\$7.00

Huganis—This is a rare new rose from China, and is as hardy as an oak. The color is an intense canary yellow, very bright and attractive, and the plant is noteworthy all the growing season by reason of its dainty foliage. When in bloom the entire plant is covered with its bright yellow blossoms and buds. It is in great demand, there being nothing like enough to supply the demand, we are paying \$1.50 each for our stock plants being only little rooted cuttings. We quote while they last.

	Each	Per 10
Huganis, 1-year old	\$1.00	\$9.50

ROSA RUGOSA

This class of roses is especially adapted to hedges, or for shrubbery collections, the splendid foliage, the flowers and later the seed pods, makes this class one that should be more largely used in landscape work.

Rugosa Alba—Single pure white.

Rugosa Alba—Single deep rosy carmine.

PRAIRIE ROSES—Rosa Setigera

This class is perfectly hardy and requires no protection. Colors, red and white.

	Each	Per 10
Two-year strong plants	\$0.50	\$4.00

We have many other roses not listed here, and if you do not see what you want, write us about it. We can no doubt supply you.

There is always a place for more Climbing Roses.

THE CHARM OF HARDY FLOWERS

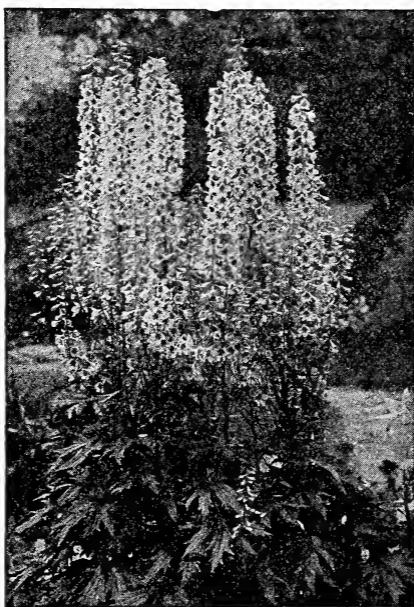
Much of the charm of the hardy garden lies in the varied and pleasant changes constantly taking place. Every day during the growing season brings something new to interest and delight.

Haven't you noticed the luxuriant tangle around the doorway of an abandoned homestead? Observation will reveal nooks of elegant foliage effects and the old neglected flower beds in luxuriant bloom. Why? Nature has had her gardener work and crowded out the weak growers that had no place in the informal garden and placed in their stead strong growers and profuse bloomers that delight in the rich soil, sunshine or shade in which you find them. Why can't we flower lovers take a lesson from nature's garden? If we love roses and they do not adapt themselves to our garden, then plant these sturdy, hardy flowers that require so little care. Roses should find a place at every home, but that place is not the informal garden, but a location where they can be tended.

MISCELLANEOUS HARDY PERENNIALS

These are so easily grown that almost without instructions a flower lover would give them proper care. Good garden soil well spaded to a depth of one or two feet, enriched with well decayed manure or bone meal, light stirring of the soil during summer and a winter mulch.

Prices quoted are for good strong outdoor grown plants, not the tiny plants offered in cheap collections by parcel post.



Delphinium—Hardy Larkspur

LARKSPUR

Delphinium—These free flowering plants can be depended upon for the necessary touch of blue in the hardy flower garden, producing tall spikes of dainty spurred flowers in June and at intervals till frost if cut as they fade. Phlox and larkspur make an excellent combination as they bloom alternately. Of easy culture.

	Each	Per 10
Large flowering	\$0.35	\$3.00

**The Valdesian Nurseries,
Bostic, N. C.**

Crozet, Va.

Gentlemen:—The evergreens arrived in fine condition and are beautiful trees. I thank you greatly for your care and promptness in filling my order.

Very truly,
(Miss) Sallie L. Leckle.
Hamlet, N. C.

MALLOW MARVELS

In brilliancy of color and profusion of bloom they surpass all other summer blooming perennials. They bloom during hot, dry weather better than almost any other flower, making bushes 4 to 6, sometimes 8 feet high in a season, according to age. In winter cut off the old stalks to within 4 to 6 inches of the ground and they will come up again in the spring. They like moist ground. We have found a soil of average fertility with good cultivation gives better flowers than very rich soil, which sometimes causes so much top growth. Red, Pink, White, Yellow.

	Each	Per 10
Two-year strong roots	\$0.40	\$3.50



Mallow Marvels

GERMAN IRISES (Fleur des Lis)

German Irises success in partial shade, but produce their best in full sun. They are not particular as to soil, will grow almost anywhere—but do best in well-drained, rich loam or garden soil, succeeding in quite dry locations. The beauty of their form and texture, shimmering in the sun, with their delicacy and wide range of colors, has given them the name "Orchid of the Garden."

Colors: Yellow, Blue, White and Pink.

	Each	Per 10
Strong Bulbs, 2 and 3 eyes	\$0.25	\$2.00

Hollyhocks—Few hardy plants combine as many good qualities as the Hollyhock. For planting in rows or groups on the lawn, or for interspersing among shrubbery, they are invaluable. The flowers form perfect rosettes of the most lovely shades of yellow, crimson, rose, pink, orange, white, etc. The Hollyhock requires a rich, deep soil, well drained, and will repay in quality and elegance of bloom any extra care.

	Each	Per 10
Two-year strong roots	\$0.30	\$2.50

**Vaideslan Nurseries,
Bostic, N. C.**

Murphy, N. C.

Gentlemen:—Dr. J. W. Thompson of this town wishes to get fifty Japanese Barberry plants for use in setting a hedge, and we have referred him to you. He asks us to write and have you ship him fifty plants by express at once, provided they are in good condition and can be safely transplanted this late in the spring.

We always refer our friends in need of Nursery stock to your company, as all dealings with you have always been satisfactory, and we remember your Mr. Jones so pleasantly.

**Yours very truly,
Witherspoon & Witherspoon.**

SUPERB HARDY PHLOX

Brilliant summer effects may be produced with these easily grown hardy perennials. They are especially desirable for their great variety of color—and many are delightfully fragrant. They are excellent as single specimens or in the mixed border, but the most imposing effects are produced by planting masses of each color. Phlox are admirably adapted for cemetery planting. They commence blooming in early summer, and if early, midseason and late varieties are chosen and the flowers cut off as they fade, will bloom quite late. They succeed in almost any position or soil, but give best results in a rich, mellow soil, well prepared. Plant 18 inches to 2 feet apart. After three or four years take them up, divide the clumps, remove any dead portions and replant. A winter mulch of old manure is a great benefit.

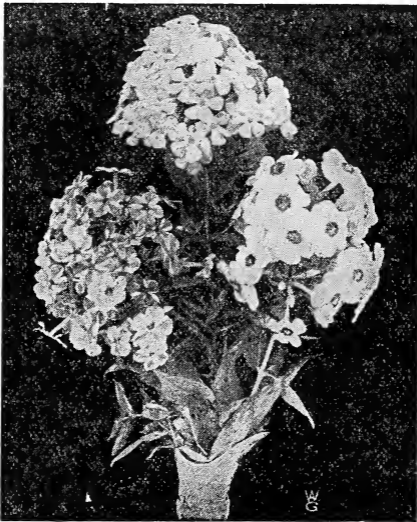
Bridesmaid—Pure white, with large crimson center.

LaVogue—Pure mauve-pink, with red eye.

Richard Wallace—Pure white, with violet center.

Snowstorm—Beautiful white.

	Each	Per 10
Strong plants.....	\$0.30	\$2.50



Hardy Phlox

HARDY FERNS

In almost every garden suitable positions can be found for a few Hardy Ferns. They do best in shady or semi-shady positions, in rich but well-drained soil, where they can be liberally supplied with water during dry weather. Ground should be enriched with a liberal quantity of leaf mold, peat or other like material.

Christmas—A beautiful evergreen fern with stout root stocks and densely chaffy stipes. Leaves deep green, 1 to 2 feet long.

Lady—A beautiful fern with deciduous leaves 1 to 3 feet long. Stipes tufted straw-color or brownish-red, bearing numerous bright green incised divisions. A showy and thrifty species.

Maiden Hair—A graceful species with large, deciduous leaves. The dark chestnut-brown stipes are smooth and shining. One of the most distinct and beautiful of the native ferns.

Boston Fern—This variety has proved immensely popular as a house plant on account of its graceful robust habit and splendid durability.

Teddy, Jr.—The grandest fern of its class yet introduced. Resembles the Boston fern, but produces twice as many wide, drooping fronds.

Asparagus Sprengeri—Graceful pot plant for house decoration or for hanging baskets.

	Each	Per 10
Price, nice plants.....	\$0.50	\$4.00



Festiva Maxima Peonies

PEONIES

There is something of magnificence about this aristocrats of flowers, as they produce an effect that one will long remember. Great, gorgeous blooms, daintily dyed with the most exquisite shades from pure whites to the deepest reds, with almost every tint being shown among them. They are perfectly hardy, requiring no protection in the severest weather, and will thrive in all kinds of soil, succeeding better in a deep mellow soil, which if not already can easily be made so, when planting. For social functions, they are exceedingly effective and will last longer than most other flowers after being cut. They thrive everywhere in open sun or light shade, except where water is accustomed to stand. No wonder they are to be found on the broad vistas of the millionaire's estate and at the doorway of the humblest cottage.

In China, it is said the Peony has been their chief pride and glory for 1400 years, a theme for the poets and painters, praised by emperors for the beauty and fragrance of their flowers, but the modern peony had its birth among the nobility of France, where a greater part of them have originated in one locality by a few enthusiastic amateurs who have made the growing of them a study.

TIME FOR PLANTING—Peonies may be planted with perfect safety any time from the middle of August until the ground freezes in the fall, and in the early spring until the growth is too far advanced. September and October is the best time, so they make a good root before hard winter sets in, and they usually bloom the following spring; thereby a whole year is gained since late spring planting will not bloom until a year later. They must not be expected to bloom heavily the first year, as they must have a little time in which to establish themselves, but when once planted they continue to grow larger and stronger for many years. Plant so that the eyes will be four to five inches below the surface.

Andre Laurias—Big, full flowers, anemone shaped, violaceous, red, late. Owing to its good keeping qualities, its fine coloring and its fragrance, it is one of the standard cut flower varieties.

Humel (Anderson)—Immense bloom, carmined pink, very late.

Sarah Bernhardt—Unusually large, perfectly double rose-formed flowers in clusters, color of apple blossoms, very fragrant.

	Each	Per 10
Price, 2 to 3 eyes	\$0.75	\$7.00

(Continued on next page.)

PEONIES—Cont'd

Festiva Maxima—Generally considered the finest white Peony grown. Though an old variety, it has never been surpassed, and the true variety is always scarce. Color snow white, center petals touched purplish carmine, enormous, full double bloom, very broad petals, handsome foliage.

Grover Cleveland—Large brilliant crimson, from mid-season to late variety. Is a good keeper, fine for cut flowers and one of the most fragrant.

Theodore Roosevelt—Semi-rose type; midseason. A variety purchased in England under number (1) and named in Holland for our ex-president. It is a deep, rich, brilliant red in color, different from any red we know and a grand Peony.

Mons. Jules Elie—Very large and full globular flower, finest glossy fresh pink, deepening at the base of the petals, reflex silvery pink, broad overlapping petals, strong, vigorous grower and free bloomer, probably the finest and most perfectly formed pink Peony in existence.

	Each	Per 10
Price, 2 to 3 eyes.	\$1.25	\$10.00



Gladioli Bulbs in Bloom

Bulbous Plants

CANNAS

Of quick growth and tropical appearance. Throughout the summer and until they are killed down by the frost they present a mass of gorgeous bloom. They will grow in any soil, but will respond quickly to liberal treatment. In groups or for background for other plants they present a brilliant display. We offer large bulbs from which may be had continuous clusters of bloom the first season. They may be left in the ground south of Richmond, Va., and they seldom freeze.

Florence Vaughan—Flowers of the most brilliant golden yellow, dotted with brightest scarlet.

Italia—Red flowers with yellow border. Large flowers, with heavy, healthy foliage.

Chas. Henderson—4 feet. Green foliage. Crimson flowers.

Burbank—3 to 4 feet Green foliage. Flower canary yellow.

	Each	Per 10
Price, dormant roots.	\$0.30	\$2.50

America—Bright lemon yellow with red spots.

King Humbert—Orange-scarlet, striped crimson. Foliage bronze.

	Each	Per 10
Price, dormant roots.	\$0.30	\$3.00

DAHLIAS

During recent years the Dahlia has rapidly grown in favor with its many new and improved forms. There are indeed few flowers so pure and rich in color and so graceful and decorative as Dahlias. They are the most important summer and autumn-flowering tubers. When planted in a new and virgin soil best results are obtained. The popular idea is the larger the tuber the better plant it makes, but this is not true as, in most cases, the best results have been obtained by using small tubers. We have all sorts: Cactus, Decorative, Peony flowered, etc.

CACTUS DAHLIAS

This is the most important class of Dahlias, and the flowers are distinguished by their long, twisted or pointed petals.

Countess of Lonsdale—A blending of salmon and amber; very free flowering.

Golden Gate—Bright clear yellow, slightly suffused.

White Swan—Pure white; splendidly formed flower.

	Each	Per 10
Price.....	\$0.75	\$6.00



The Dahlia is One of the Showiest Garden Flowers.

DECORATIVE DAHLIAS

Professor Mansfield—A combination of yellow, red and white.

Wm. Agnew—Orange scarlet, on long stems.

Bronze Beauty. Orange King. Mont Blanc.

	Each	Per 10
Price.....	\$0.35	\$3.00

NEW IMPORTATIONS

Geisha—The showiest and most attractive of its type yet introduced; the rich colored flowers are original in form, consisting of peculiarly twisted and curled petals, of an effective and rich combination of scarlet and gold.

Leo XIII—A deep canary-yellow, entirely distinct in form, large, very free-flowering and a valuable sort for cutting.

Suther—Exceptionally large flowers of salmon pink with yellow suffusion.

Dream—A beautiful new variety.

	Each	Per 10
Price, dormant roots.....	\$1.00	\$8.00

HYACINTHS

Hyacinths are among the most popular and satisfactory hardy flower bulbs. Hyacinths succeed with every one and may be had in flower throughout the winter, grown either in pots of soil, fibre or glasses of water. Very popular for bedding.

Can mail promptly after the last of September all listed bulbs.

All separate colors, Dark Blue, Pink, Red, White.

	Each	Per 10
Price.....	\$0.20	\$1.50

GLADIOLI

A search of the floral kingdom, be it ever so painstaking and complete, will discover no flower to match the Gladiolus in ease of culture or another which shows so great a diversity of color in endless combination and variety. It is matchless as a cut flower. The great advancement recently effected in the size and colors of the blossoms justly entitle the Gladiolus to the position it now holds, aristocrat of the border.

The amateur gardener appreciates its sure blooming qualities, the stored up nourishment in the bulb making certain its vigorous growth. Seldom attacked by insects or disease, it blossoms under conditions which would discourage any less hardy bulb or plant.

We supply only all color mixture, which includes every imaginable color, in big large bulbs that will bloom freely the first season.

	Each	Per 10	Per 100
Price, dormant bulbs	\$0.15	\$0.75	\$6.00

NARCISSI

Narcissi are fast coming to the front. They are easily grown and are unexcelled for beauty, fragrance, hardiness and value when cut for decorative purposes. Narcissi are perfectly hardy; they do well planted in any location and increase in size and flower year after year. For outdoor culture plant bulbs in October, November or December, 5 to 6 inches apart, according to size of bulbs. Never use fertilizer.

	Each	Per 10
Strong bulbs	\$0.10	\$1.00

PAPER WHITE GRANDIFLORA

Flowers pure snow-white and pure yellow, desirable for their beauty and delicious odor; forces admirably and flowers freely in dense clusters; will come into bloom as early as December. For indoor planting only. Paper Whites may also be grown in fibre or sand and water like Chinese Sacred Lilies.

	Each	Per 10
Strong bulbs	\$0.10	\$1.20

Greenville, S. C.

**Valdesian Nurseries,
Bostic, N. C.**

Gentlemen:—Express us quick to Taylors 100 Abella Grandiflora like last shipped us. Those were fine plants, and we appreciate the size you gave us. We may want several hundred more.

**Yours respectfully,
Greenville Nursery Co.**

**Black Mountain, N. C.
Sept. 14, 1920.**

**Valdesian Nurseries,
Bostic, N. C.**

Gentlemen:—My roses you sent me in July are blooming nicely and are such beauties that our boarders from Florida and Georgia are amazed that we have such beautiful roses. We are delighted with them ourselves.

I am enclosing another order for \$13.20, which you will send as soon as convenient.

**Yours sincerely,
Miss Eliza C. Wilson.**

Valdesian Quality

**Our Stock Will Please You
A Trial Will Convince You**

—Send it Now

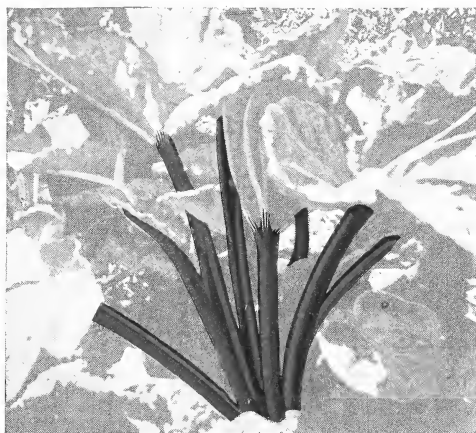
Garden Roots

For Every Home Garden.

ASPARAGUS

Asparagus Roots should be planted in a well-prepared bed, the roots covered about 5 or 6 inches and the soil made very rich with fertilizer each season. We recommend only one standard variety of large size.

	Per 10	Per 100
Two-year strong roots.....	\$1.00	\$5.00



Rhubarb Growing in the Nursery Row

RHUBARB

You should have a row of Rhubarb or Pie Plant in your garden: 10 or 20 plants are enough for any family, and if the roots are well fed and continuously pruned or reset, they will yield for 20 years. Easy to plant; cultivating consists merely in keeping the weeds down and preserving the mulch until the leaves cover the ground. The soil should be rich and deep and for an early start it should be warm. Prepare the bed or hill for each plant to a depth of two feet if possible, working in much compost or well-rotted manure. There is just one kind of Rhubarb to plant—that is the giant kind. It's a strong, vigorous grower.

Myatt's Leanamus---	Each	Per 10
Two-year roots.....	\$0.25	\$2.50

COME TO THE NURSERY

Come to the Nursery if you can. We are always glad to see you and will consider it a pleasure to show you around and to talk over your order with you.

VALDESIAN NURSERIES

BOSTIC, NORTH CAROLINA

Raspberries

Raspberries are one of the most delicious and popular fruits grown, are easily cultivated and require little care. Cut out old and weak roots each year. Plant in good soil in hills about 4 feet apart. With a little care and attention they will produce large crops of berries. In large plantings it is advisable to plant them thickly the same as hedge row.

Cumberland—The largest of all the blackcaps; coal black berries; very firm and quality of the very best; excellent shipper. Bush a strong grower, stocky canes and unusually prolific. Midseason.

Golden Queen—Medium large; clear amber yellow with highest quality; for dessert and kitchen; one of the best yellow berries ever introduced. Bush vigorous, hardy, upright and productive.

	Each	Per 10	Per 100
Price, strong plants.....	\$0.25	\$1.50	\$10.00



St. Regis Everbearing Raspberry

St. Regis—Earliest of all, wonderfully prolific; it equals most blackcap varieties; gives a crop of fruit all summer and autumn, fruiting on old canes in generous quantities until late in August, when berries begin to ripen on young canes. Berries bright crimson, of large size and surpassing quality; canes stocky, strong growth with abundance of dark green, leathery leaves. It succeeds upon all soils, whether light and sandy or cold, heavy clay, and canes are absolutely hardy.

	Each	Per 10	Per 100
Price, strong plants.....	\$0.25	\$2.00	\$15.00

Pacolet, S. C., April 1920.

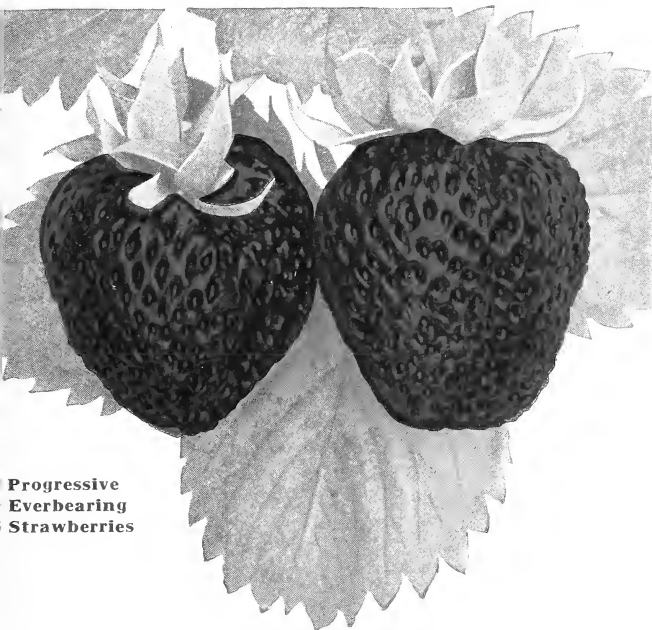
**Valdesian Nurseries,
Bostic, N. C.**

Gentlemen:—Please ship at once to Pacolet Mfg. Co., Pacolet, S. C., 2800 Privets. It is not needed to ask to hurry the shipment, as I know that your esteemed firm is always prompt in shipments. I have always been very pleased with the different nursery stock we received from you. Car lots and small orders have always arrived in a No. 1 condition. I am glad to recommend your esteemed firm to all my friends.

Very truly yours,
G. Loveling,
Gardener for Pacolet Mfg. Co.

Strawberries

Growing this delicious fruit is the most fascinating of all occupations in the nature of garden growing. They thrive on any kind of soil, well drained, and it is surprising the results that are had. Interesting stories are told by persons who have given it a thorough test, and which have come from men and women, as well as boys and girls. Any one living near a town or city can pick up many a dollar from this source, and if you are in the remote country places it is always a pleasure to have these splendid berries for home use. An acre of strawberries will bring more returns than the same quantity of land planted in any other farm or garden fruit or vegetable.



**Progressive
Everbearing
Strawberries**

BY ALL MEANS plant acclimated varieties that are best adapted for our climate. We list the kinds that do best in the South and East. You know the country is flooded with advertisements who list many kinds of berries that are not adapted to this part of the country.

Bubach (P)—Of large and uniform size, fine form and color, great vigor of plant and productive. Leaves large, dark green, and endures the hottest sun perfectly. Medium late.

Improved Lady Thompson—This variety has been grown world-wide in great variety of soils, and it seems to succeed quite well. It is early, very large, and quite productive.

Excelsior—Medium size, flesh firm, rich and red, rather tart, but is an unequaled shipper. Largely raised in the south for the northern markets. Plants very productive. Perfect. Extra early.

Ozark.

	Per 10	Per 100	Per 1000
Price, common sorts, strong plants	\$0.25	\$1.50	\$12.00

Everbearing Strawberry

Progressive—The best ever-bearing berry yet introduced. We have tried several of the best, but have not found any of them that compare with the great Progressive. Just set plants out and work them and they start in June to bear, and will bear until a hard frost cuts them down in the fall. The flavor of this berry is as good as any spring berry grown.

Any one may plant this berry and take no chances; in fact, we believe that you will get fruit all summer.

	Per 10	Per 100	Per 1000
Price, Progressive	\$0.60	\$2.50	\$15.00

Landscaping The Home Grounds

*How, When, Where
and What to Plant*



English Juniper and Texas Umbrella
Tree on Our Grounds

CATALOG OF
Evergreens, Shrubs, Vines
Roses, Perennials and Bulbs
Fruit Trees
and Plants

Valdesian Nurseries
BOSTIC, NORTH CAROLINA