

Historic, Archive Document

Do not assume content reflects current scientific knowledge, policies, or practices.

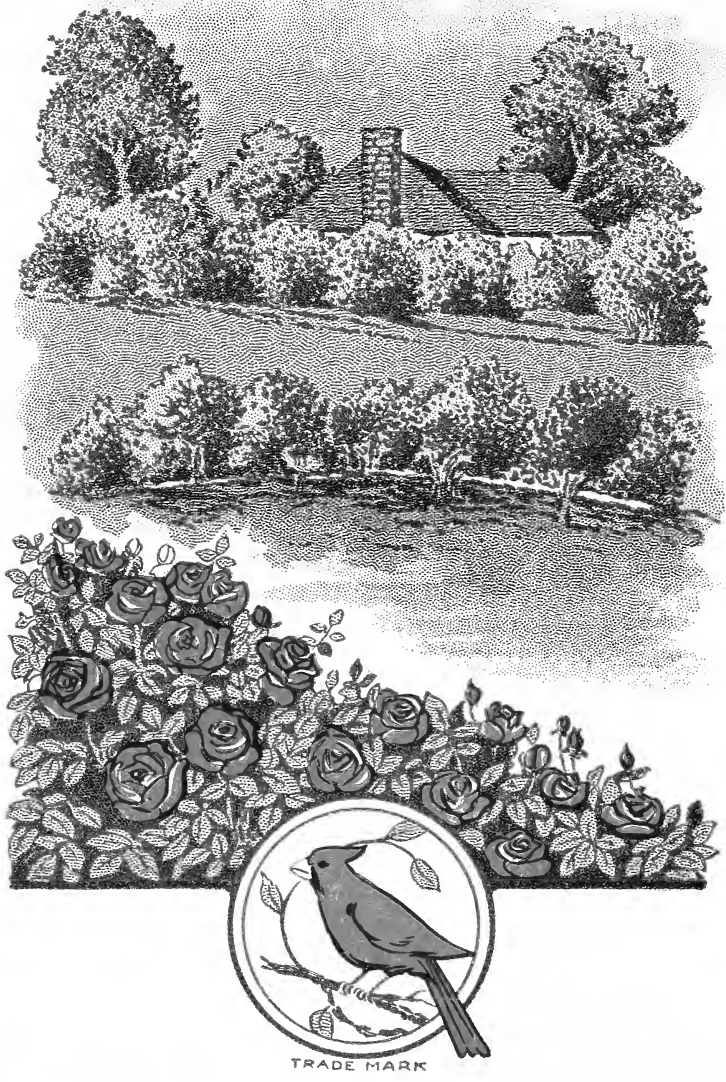


62.63

1223/23

LIBRARY
RECEIVED
★ FEB 20 1923

DESCRIPTIVE HANDBOOK
of
Choice Ornamental Trees
Shrubs and Plants



AUDUBON NURSERY
Wilmington, N. C.

*Practical Nurserymen and
Landscape Designers*

GENERAL INFORMATION AND SALE CONDITIONS

A certificate of Nursery inspection attached to all shipments.

FUMIGATING. All shipments fumigated with Hydrocyanic Acid Gas when State laws or customers so require.

PACKING at actual cost.

All orders taken and accepted by the AUDUBON NURSERY are subject to the conditions of crops or short supply beyond their control.

PAYMENT. All orders should be accompanied with cash in the form of DRAFT, CHECK, or MONEY ORDER. Owing to the difficulty in collecting accounts no order will be attended to unless accompanied by remittance from parties unknown to us or those whose account remains unsettled.

All bills are due the first of the month following shipment.

RESERVING ORDERS. When purchasers desire these to be reserved for one month or any longer time they must pay at least one third of the purchase price.

RATES. Five of one kind at the ten rate; forty at the 100, and 250 at the 1,000 rate.

OUR RESPONSIBILITY. All goods travel at purchasers' risk and cost.

All plants are carefully labeled and in case of mistake on our part, we hold ourselves prepared to replace, on proper proof all that may prove untrue, or to refund the amount paid therefor, but at no time should we be held responsible for a greater amount than the original purchasers' price of the plants.

All plants offered in this price list are grown in our own Nurseries.

ERRORS. All claims must be made within five days after receipt of goods; otherwise they will not be entertained.

NUMBER OF TREES OR PLANTS ON ONE ACRE AT GIVEN DISTANCES APART

Distance apart each way	Number of Plants
1 foot	43,560
2 feet	10,890
3 feet	4,840
4 feet	2,722
5 feet	1,742
6 feet	1,210
7 feet	888
8 feet	680
9 feet	537
10 feet	435
12 feet	302
13 feet	258
15 feet	193
16 feet	170
18 feet	134
20 feet	108
25 feet	70
30 feet	48
35 feet	35
40 feet	27
50 feet	17

HANDBOOK

OF CHOICE
ORNAMENTAL

*Trees, Shrubs
and Plants*



*Nurserymen
and Landscape
Designers*

AUDUBON NURSERY
Wilmington, N. C.



Cornus Florida

Deciduous Trees

All of our trees are nursery-grown and these should not be compared with trees dug in the forest. Our trees have smooth straight bodies, with well-balanced tops and abundant fibrous roots, which guarantee success in transplanting. Trees dug from forest always give a poor stand.

In planting our trees always cut off the broken or bruised roots and limbs, in case there should be any. Large trees should be severely pruned when planted; neglecting this important work will often cause the trees to die. The holes should be dug of ample size, so there will be plenty of loose dirt for the young roots when they start. Use well-rotted manure in planting and mix it well with the soil when filling in the holes.

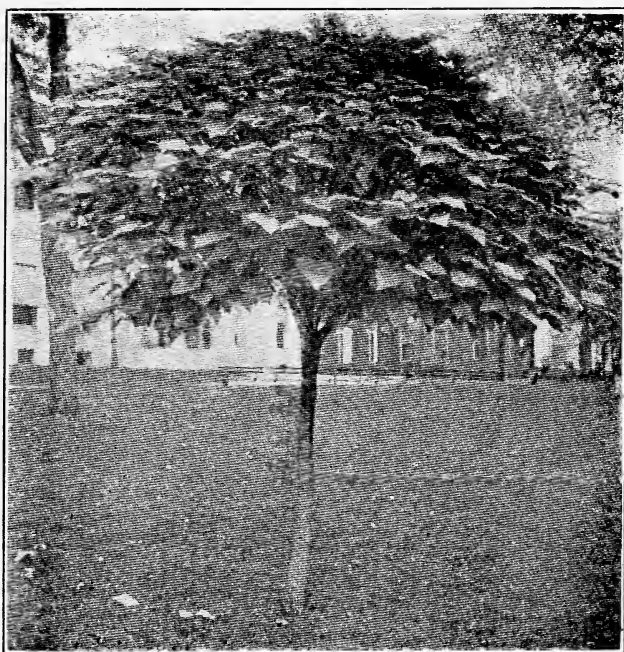
Plant the trees about two inches deeper than they originally stood in the nursery rows, and use plenty of water. The soil should also be firmly packed around the roots.

ACER Platanoides. Norway Maple. Large handsome trees with round spreading head, valuable for park and street planting. Height 40 to 50 feet.

Prices:	Each	10
6 to 8 ft.....	\$ 1.25	\$ 11.00
8 to 10 ft.....	1.50	12.50

ACER Negundo. Box Elder. Large, rapid growing trees of spreading habit, thriving best in moist and rich soil; used for shelter belts, very hardy. Height 60 to 70 feet.

Prices:	Each	10
6 to 8 ft.....	\$ 1.25	\$ 11.00
8 to 10 ft.....	1.50	12.50
10 to 12 ft.....	2.50	20.00



Catalpa Bungei

Deciduous Trees, continued

CATALPA Speciosa. Tall, quick growing tree. Handsome when in bloom in spring.

Prices:	Each	10
6 to 8 ft.....	\$ 0.75	\$ 6.50
8 to 10 ft.....	1.00	9.00
10 to 12 ft.....	1.50	12.50

CERCIS Candensis. Red Bud or American Judas Tree. A fast growing round headed tree with leathery heart shaped leaves. The last of March, before the foliage appears, the tree is covered with a profusion of delicate reddish-purple flowers.

Prices:	Each	10
5 to 6 ft.....	\$ 1.00	\$ 9.00
6 to 8 ft.....	1.50	12.50

CATALPA Bungei. Round headed Catalpa. Low, round headed trees very desirable for formal gardens. They grow in any somewhat moist soil and are hardy as far north as the New England States. These trees are grafted on stems 6 to 7 feet high.

Prices:	Each	10
2-year heads.....	\$ 2.50	\$ 22.50

FRAXINUS Americana Alba. American White Ash. Tall growing trees valuable for streets and parks. Grow in any moderately moist soil and are easily transplanted. Height 80 to 100 feet.

Each, 6 to 8 ft., \$1.25; 8 to 10 ft., \$2.00; 10 to 12 ft., \$3.00.

LIQUIDAMBAR Styraciflua. Sweet Gum. A beautiful pyramidal tree of very symmetrical habit, with maple-like leaves assuming a deep crimson color in autumn. Conspicuous in winter because of its unusually corky branches. Height 60 to 80 feet.

Prices:	Each	10
8 to 10 ft.....	\$2.25	\$ 20.00
10 to 12 ft.....	3.00	27.50



Quercus Palustris (Pin Oak)

Deciduous Trees, continued

MELIA Azedarach Umbraculiformis. Texas Umbrella Tree. Rapid growing trees which form very desirable shade trees. Foliage is retained until late in the fall; blooms middle of April. Not hardy north of Norfolk, Va. Ultimate height 25 feet.

Prices:	Each	10
4 to 5 ft.....	\$ 0.75	\$ 7.00
5 to 6 ft.....	1.00	9.00
6 to 8 ft.....	1.25	10.00

POPULIS Carolinensis. Carolina Poplar. Rapid growing trees, making straight, upright, pyramidal heads, used for street planting.

Prices:	Each	10
8 to 10 ft.....	\$ 0.60	\$ 5.50
10 to 12 ft.....	1.00	9.00

QUERCUS Palustris. Pin Oak. Broad handsome trees with drooping branches. Excellent for street planting. Besides having a well balanced top, our Oaks have a splendid system of fibrous roots, which is very important, as the frequent failures in Oak-planting are due to a poor root-system.

Prices:	Each	10
3 to 4 ft.....	\$ 0.60	\$ 5.50
4 to 5 ft.....	0.70	6.50
6 to 8 ft.....	1.50	12.50
8 to 10 ft.....	1.75	15.00
10 to 12 ft.....	2.75	25.00
12 to 15 ft.....	3.50	32.50

Deciduous Trees, continued

QUERCUS Phellos. Willow Oak. A very graceful variety, with narrow lanceolate leaves resembling those of the willow. Well-known native tree but extremely difficult to secure.

Prices:	Each	10
3 to 4 ft.....	\$ 0.60	\$ 5.50
4 to 5 ft.....	0.90	8.00
5 to 6 ft.....	1.50	12.50
6 to 8 ft.....	1.60	15.00
8 to 10 ft.....	2.25	20.00
10 to 12 ft.....	3.25	30.00
12 to 15 ft.....	3.75	35.00

LIRIODENDRON Tulipifera. Tulip Tree. (Tulip Poplar.) A magnificent rapid growing tree of pyramidal shape; foliage broad and glossy; flowers yellowish-green tulip shaped. Valuable for street and lawn planting. Needs severe pruning when transplanted.

Prices:	Each	10
5 to 6 ft.....	\$ 1.50	\$ 14.00
8 to 10 ft.....	3.00	27.50

SALIX Babylonica. Weeping Willow. A large picturesque tree with slender pendent branches. Leaves are narrow and of a bright green color.

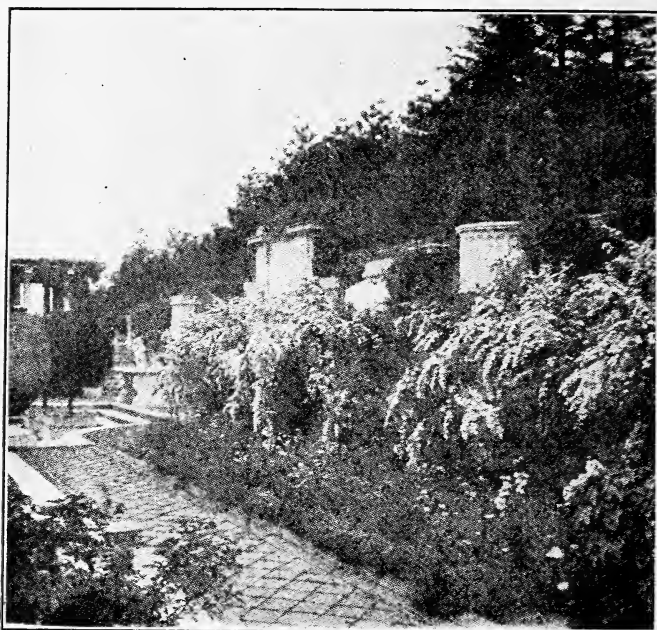
Prices:	Each	10
6 to 8 ft.....	\$ 1.50	\$ 14.00
8 to 10 ft.....	2.00	17.50
10 to 12 ft.....	2.50	22.50

SALIX Japonica. Japanese Weeping Willow. This tree is similar in growth to the preceding one, but puts out its foliage about ten days later in the spring, which prevents injuries from late frost.

Prices:	Each	10
6 to 8 ft.....	\$ 1.50	\$ 14.00
8 to 10 ft.....	2.00	17.50

PLATANUS Orientalis. European Sycamore. Stately trees with spreading branches. Fine for street and avenue planting. They are very hardy and of rapid growth.

Prices:	Each	10
6 to 8 ft.....	\$ 1.00	\$ 9.00
8 to 10 ft.....	1.75	15.00
10 to 12 ft.....	2.25	22.00



Planting of Spirea Vanhouttei (see page 11)

Deciduous Shrubs

Our flowering shrubs are extensively used for the beautification of the home grounds. They not only improve the appearance of the property, but greatly increase its value. They can be used for base planting, screening unsightly buildings, border planting and for planting along walks. Great care is being taken in having the plants well grown and dug with plenty of roots. All deciduous shrubs should be pruned annually directly after the blooming season is over. All the old and spindly shoots should be cut out. Directions as given for the planting of our deciduous trees apply to average deciduous shrubs.

ACER Japonicum. Japanese Maple. These Japanese trees are very valuable for landscape planting. The leaves are very different in the various kinds, some are very finely cut. The foliage ranges from fresh green to deep purplish-red. We offer the following varieties.

Atropurpureum. Dark purple.

Dissectum Purpureum. Deep purple and finely cut.

Roseum Marginatum. Bright pink and silver, finely cut.

Versicolor. Green leaves with white and rosy spots.

Japonicum Purpureum. Deep purple.

Prices:	Each	10
18 to 24 inches.....	\$ 3.00	\$ 27.50
2 to 3 ft.....	4.50	42.50
3 to 4 ft.....	6.00	57.50

ALTHEA. Rose of Sharon. Strong-growing shrubs, fine for hedges, blooming from May until September. Very effective when planted in masses. We offer a fine collection of the best varieties as follows:

Ardens. Double lilac.



Deutzia Gracilis

Deciduous Shrubs, continued

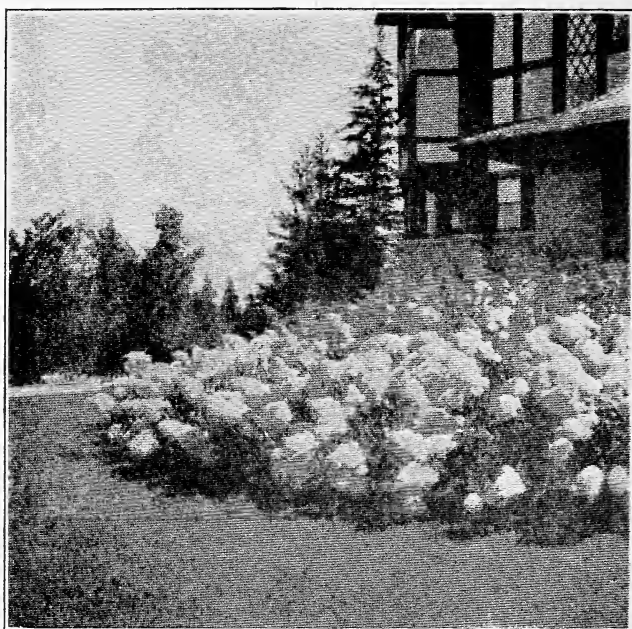
- Boule de Feu.** Double; bright red.
- Coelestis.** Single; violet-blue.
- Carneo-Plena.** Double; rose.
- Duc de Brabant.** Double; dark rose.
- Jeanne d'Arc.** Double; white.
- Lady Stanley.** Double; blush-white.
- Rubro-Plena.** Double; red.
- Peonyflora.** Double; pink.
- Totus Albus.** Single; white.

Prices:	Each	10	100
18 to 24 inches.....	\$ 0.30	\$ 2.75	\$ 25.00
2 to 3 ft.....	0.45	4.25	40.00
3 to 4 ft.....	0.75	7.00	60.00
4 to 5 ft.....	1.25	11.00	100.00

AZALEA Mollis. Hardy Azalea. Free, spring-flowering shrub. When in bloom the whole plant is a mass of flowers. They thrive best in a shady and moist place and should be planted with leaf-mold. An annual application of rotted leaves will be of much benefit to them. We offer upwards of twenty varieties in all shades of pink, crimson, yellow and white.

Prices:	Each
18 to 24 inches.....	\$ 2.00

BUDLEYA Davidii Veitchiana. (Butterfly Bush.) Another beautiful new shrub from China with very dark green leaves; plant attains a height of from 8 to



Hydrangea Paniculata Grandiflora

Deciduous Shrubs, continued

10 feet; flowers violet with orange throat borne in arching racemes 12 to 15 inches in length; commence to bloom in June and last until frost; very fragrant; a most desirable plant.

Prices:	Each	10
12 to 15 in.....	\$ 0.30	\$ 2.75
15 to 18 in.....	0.45	4.25
18 to 24 in.....	0.50	4.75
2 to 3 ft.....	0.75	7.00
3 to 4 ft.....	1.00	9.00

CALICANTHUS Florida. Sweet Shrub. Sweet or Strawberry Shrub. The native sweet or brown shrub. Flowers double, chocolate-colored, very fragrant; blooms in early April and last for several weeks.

Prices:	Each	10
15 to 18 in.....	\$ 0.40	\$ 3.75
18 to 24 in.....	0.55	5.00
2 to 3 ft.....	0.75	7.00

DEUTZIA Gracilis. Slender Deutzia. A small Japanese shrub with slender branches and bright green leaves. Flowers white, in clusters. A very showy shrub.

Prices:	Each	10
8 to 10 in.....	\$ 0.40	\$ 3.50
10 to 15 in.....	0.50	4.50

FORSYTHIA Viridissima. Golden Bell. Flowers golden-yellow produced in great profusion last of

Deciduous Shrubs, continued

February or early March. Most effective when planted in large groups.

Prices:	Each	10	100
2 to 3 ft.....	\$ 0.40	\$ 3.75	\$ 35.00
3 to 4 ft.....	0.60	5.50	50.00

HYDRANGEA Paniculata Grandiflora. Large flowered Hydrangea. The most popular variety and the showiest in cultivation. The flowers are produced in large panicles and are white when fully expanded. To insure large panicles of flowers, this shrub should be severely trimmed back in the early spring.

Prices:	Each	10	100
15 to 18 in.....	\$ 0.30	\$ 2.75	\$ 25.00
18 to 24 in.....	0.40	3.75	35.00
2 to 3 ft.....	0.60	5.50	50.00
3 to 4 ft.....	0.75	7.00	65.00

HYDRANGEA Hortensis. Hydrangea. A beautiful shrub with dark green foliage and showy flowers. The color of the flowers varies in different soil from white to shades of pink and blue. Plants are not hardy in the north and should be well protected in the winter. We offer the following varieties.

HYDRANGEA Otaksa. Clusters of blue or pink flowers.

Prices:	Each	10	100
12 to 15 in.....	\$ 0.45	\$ 4.25	\$ 40.00
15 to 18 in.....	0.70	6.50	60.00
18 to 24 in.....	0.90	8.50	80.00
24 to 30 in.....	1.25	11.00	100.00

HYDRANGEA Souvenir de Clair. Resembles the Otaksa, but the heads of blooms are smaller. The flowers are produced in great profusion. Bright pink.

Prices:	Each	10	100
10 to 12 in.....	\$ 0.55	\$ 5.25	\$ 50.00
12 to 15 in.....	0.70	6.50	60.00
15 to 18 in.....	0.90	8.50	80.00

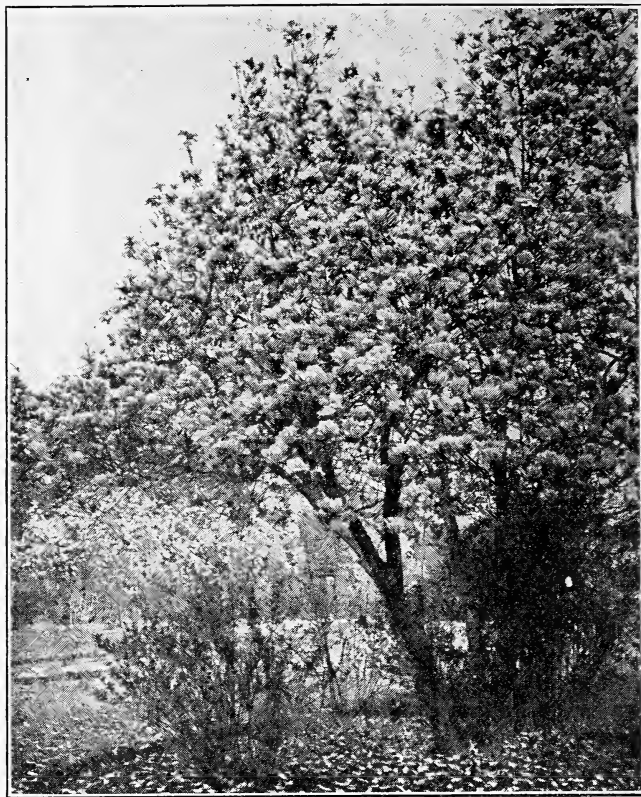
HYDRANGEA Thomas Hogg. Huge Clusters of white flowers. When given a rich moist soil where they are protected from the afternoon sun of summer, and the plants kept well enriched, there is nothing more attractive than a mass of well developed specimen Hydrangeas. They are also very desirable when grown single or in tubs.

Prices:	Each	10	100
12 to 15 in.....	\$ 0.50	\$ 4.50	\$ 40.00
15 to 18 in.....	0.60	5.50	50.00
18 to 24 in.....	0.90	8.50	80.00
2 to 3 ft.....	1.25	11.00	100.00
3 to 4 ft.....	2.50	22.00	200.00

JASMINUM Floridum. Jasmine. A very desirable variety with flexuous branches and very pretty foliage. Golden-yellow flowers half an inch in diameter produced during the summer. Hardy as far north as Washington.

Prices:	Each	10	100
Two-year well-branched.....	\$ 0.60	\$ 5.50	\$ 50.00

HYPERICUM Moesianum. St. John's-Wort. A small shrub attaining a height from one to two feet. Leaves are dark green and the flowers, which are golden-yellow, are about two inches across. In our section this shrub is almost evergreen. A very



Magnolia Soulangeana

Deciduous Shrubs, continued

effective shrub for mass planting. Blooms all through summer.

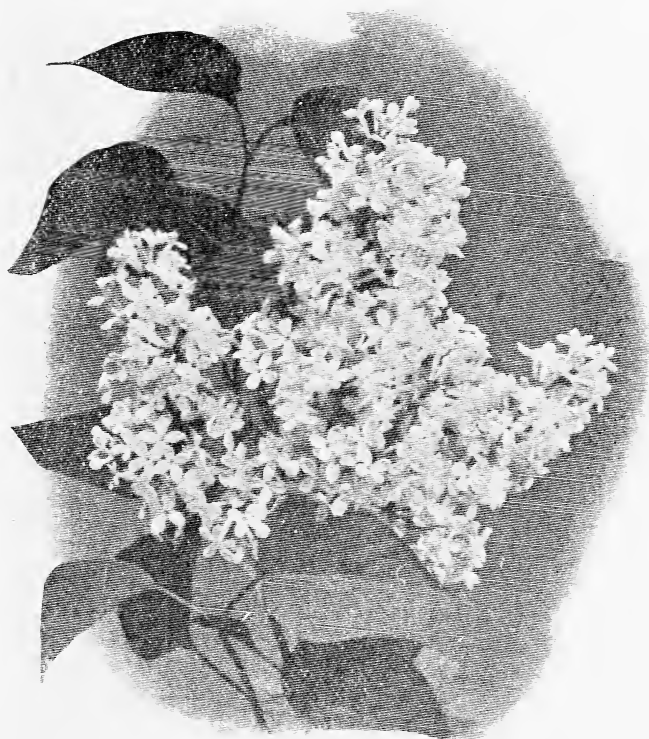
Prices:	Each	10
12 to 15 in.....	\$ 0.50	\$ 4.50
15 to 18 in.....	0.70	6.50

LAGERSTROEMIA Indica. Crepe Myrtle. A handsome free-flowering shrub or small tree, extensively planted in the south for its showy flowers. The flowers are beautifully fringed and are borne in large clusters. They are fine plants for massing, also very effective as single specimens. Flowers crimson.

Prices:	Each	10	100
3 to 4 ft.....	\$ 0.90	\$ 8.50	\$ 80.00
4 to 5 ft.....	1.25	11.50	100.00
5 to 6 ft.....	1.50	14.00	125.00

LONICERA Fragrantissima. Early Fragrant Honeysuckle. Handsome hardy shrubs with showy flowers. They thrive in almost any fertile soil and like a sunny situation. The leaves are large, bright green, and are retained until late winter. Flowers are creamy-white and appear in early February when flowers are scarce.

Prices:	Each	10	100
2 to 3 ft.....	\$ 0.35	\$ 3.25	\$ 30.00
3 to 4 ft.....	0.50	4.75	45.00
4 to 5 ft.....	0.75	7.00	65.00
5 to 6 ft.....	1.00	9.00	80.00



Syringa Vulgaris (Single Lilac)

Deciduous Shrubs, continued

PHILADELPHUS Coronarius. Mock Orange or Sweet Syringa. Hardy, free-flowering shrubs, with upright, sometimes arching branches, attaining a height of 8 to 10 feet. The leaves are bright green, 2 to 4 inches long. The flowers which are produced in great profusion are white and very fragrant.

Prices:	Each	10
3 to 4 ft.....	\$ 0.50	\$ 4.50
4 to 5 ft.....	0.75	7.00

SPIREA Bumalda, Anthony Waterer. Crimson Spirea. A dwarf free-flowering shrub attaining a height of about 3 feet. The flowers are bright crimson, and are produced throughout the summer.

Prices:	Each	10	100
10 to 12 in.....	\$ 0.20	\$ 1.75	\$ 15.00
12 to 15 in.....	0.30	2.50	20.00
15 to 18 in.....	0.35	3.00	25.00
18 to 24 in.....	0.50	4.50	40.00

SPIREA Vanhouttei. Bridal Wreath. A very graceful shrub, attaining a height of 5 to 6 feet. The single white flowers appear in the early spring. The most popular Spirea.

Prices:	Each	10	100
2 to 3 ft.....	\$ 0.40	\$ 3.50	\$ 30.00
3 to 4 ft.....	0.50	4.50	40.00

SPIREA Thunbergii. Snow Garland. A beautiful shrub with narrow, bright green leaves and slender



Weigela Rosea

Deciduous Shrubs, continued

branches, forming a dense feathery bush. Flowers pure white, appearing in the early spring.

Prices:	Each	10	100
15 to 18 in.....	\$ 0.30	\$ 2.75	\$ 25.00
18 to 24 in.....	0.40	3.75	35.00
2 to 3 ft.....	0.50	4.50	40.00

SYRINGA Vulgaris. Common Lilac. Well-known, old-fashioned shrub which thrives in almost any fertile soil, with moderate moisture. Our collection embraces some of the old as well as the cream of the new European sorts. The first blooms appear here in March. The Lilac will give best results in rich fertile soils moderately moist but well-drained.

Charles Dix. Trusses large; reddish-purple.

Ludwig Spaeth. Dark purplish-red. Very distinct.

Marie LeGray. Large panicles of single white flowers. One of the finest white lilacs.

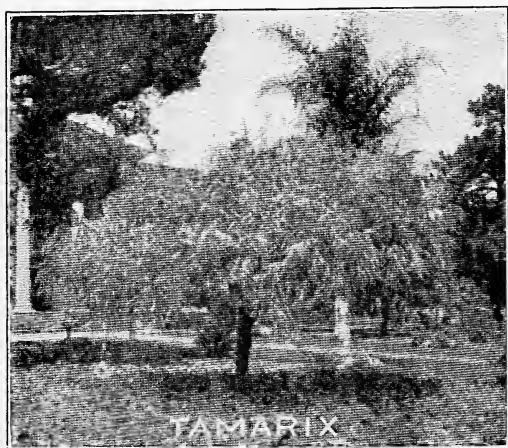
Madam Lemoine. Double; white, very fragrant.

Persica. Pale lilac.

Prices:	Each	10	100
15 to 18 in.....	\$ 0.60	\$ 5.50	\$ 50.00
18 to 24 in.....	0.80	7.50	70.00

WEIGELIA Roseum Variegated. Hardy free-flowering shrubs producing great masses of showy flowers in spring. Variegated foliage and pink flowers.

Prices:	Each	10	100
2 to 3 ft.....	\$ 0.40	\$ 3.75	\$ 35.00
3 to 4 ft.....	0.60	5.50	50.00



Broad-leaved Evergreens

ABELIA Grandiflora. Hybrid Abelia. Medium sized shrubs with shining persistent foliage. One of the hardiest and most free-flowering Abelias. It flowers continuously from June to November. The rather small but numerous flowers are pink, and after they have fallen off the purplish sepals are very attractive.

Prices:	Each	10	100
12 to 15 in.....	\$ 0.40	\$ 3.50	\$ 30.00
18 to 24 in.....	0.50	4.50	40.00
2 to 3 ft.....	0.70	6.50	60.00

AUCUBA Japonica. Gold Dust Tree. Ornamental plants with handsome variegated leaves. They are hardy in the Southern States about as far north as Washington, D. C., and are well adapted for city gardens, as they withstand dust and smoke to a considerable degree. They do best when planted in a somewhat shaded situation and given a moist, rich, well-drained soil. Extensively used for vases and window boxes. Furthermore, this tree is especially effective when planted in masses or large groups.

Prices:	Each	10	100
6 to 8 in.....	\$ 0.40	\$ 3.50	\$ 30.00
8 to 10 in.....	0.60	5.50	50.00
10 to 12 in.....	0.80	7.50	70.00
12 to 15 in.....	1.60	14.00	125.00

AZALEA Japonica. Japanese Azalea. Low-growing evergreen shrubs, which are hardy in New York. When in bloom the plant is a solid mass of bright flowers which vary in the different shades of white, pink and red. These plants remain in bloom for a long period and present a picture of brilliant beauty. We can supply Japanese Azaleas in different varieties. For best results use plenty of leaf-mold with well-rotted cow manure, also a considerable quantity of rotted leaves should be used for mulching.

Prices:	Each
Balsmeaflora —10 to 12 in.....	\$ 1.75
Eliminatum —12 to 15 in.....	2.00
Bene Giri —12 to 15 in.....	2.00
Hinode Giri —12 to 15 in.....	2.25

Broad-leaved Evergreens, continued

Macrantha—10 to 12 in..... 1.50

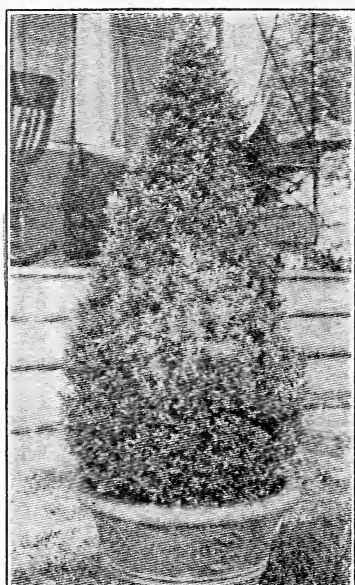
Hatzu Giri—15 to 18 in..... 2.00

BERBERIS Japonica. *Maonia Japonica.* Japanese Barberry. This splendid plant thrives in almost any situation, but does best in partially shaded location where the ground is well drained. Leaves are very broad with five pairs of leaflets. Flowers yellow, in long spikes during the first three months of the year followed by dark purple berries. A magnificent shrub. Hardy at New York in protected situations.

Prices: Each
12 to 15 in.....\$ 2.00

B. Neubertii. Holly-leaved Barberry. A beautiful hardy low-growing shrub with prickly leaves. In winter the foliage assumes tones of bronze or copper. Flowers yellow in March.

Prices: Each
15 to 18 in.....\$ 2.00
18 to 24 in..... 2.50



Buxus Sempercivens

BUXUS Arborescens.

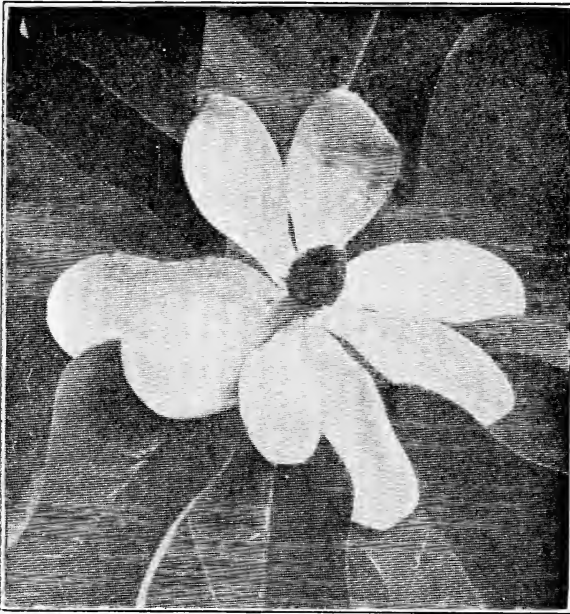
Boxwood. Common Tree Box. This old favorite is again in great demand and is being extensively used for vases, urns, hedges and as single specimens. Much used in old formal gardens of Europe, often trimmed in fantastic shapes. The glossy, aromatic foliage is always fresh and green.

Prices:
Each 10 100
8 to 10 in.—
\$0.50 \$ 4.50 \$ 40.00
10 to 12 in.—
0.75 7.00 65.00
12 to 15 in.—
1.25 11.50 100.00
15 to 18 in.—
2.00 17.50 150.00

B. Suffruticosa. Dwarf Boxwood. This variety so extensively used in the old-time gardens for edging walks and beds. It is of very slow growth, and its ultimate height is from 4 to 5 feet. The plants should be set from 4 to 5 inches apart.

Prices: Each 10 100
4 to 6 in.....\$ 0.35 \$ 3.25 \$ 30.00
6 to 8 in..... 0.50 4.50 40.00

CINNAMONUM Camphorum. Camphor Tree. *Laurus Camphora.* This desirable and beautiful tree is hardy south of Wilmington, N. C. Along the Atlantic and Gulf Coast it is largely used as a shade tree for street and avenue planting. In Florida the Camphor is now being extensively and successfully planted for the extraction of gum. The tree is of a very rapid and stately growth; leaves bright, glossy green.



Magnolia Grandiflora

Broad-leaved Evergreens, continued

The young growth is very attractive, as it is tinged with red, which gives a most striking and pleasing effect. The Camphor will do well on poor soil, but will give a most satisfactory growth when properly fertilized, and when grown on well-drained soil. It does not thrive in wet situations. In transplanting, plants should have their side branches cut back and the plants defoliated, otherwise loss is apt to ensue.

Prices:	Each	10
3 to 4 ft.....	\$ 1.50	\$ 12.50
4 to 5 ft.....	2.00	17.50
5 to 6 ft.....	2.50	22.50

CLEYERA Japonica. Japanese Cleyera. A shrub of medium height; foliage very glossy; flowers creamy-white, produced in great profusion during June; delightfully fragrant; followed by red berries, which are retained all winter.

Prices:	Each
12 to 15 in.....	\$ 1.50
15 to 18 in.....	2.00

EVONYMUS Japonica. An evergreen shrub which attains a height of from 8 to 10 feet with dark green, glossy leaves, very hardy; it stands clipping well and may be used for hedges with good results. A splendid plant for single specimens or for planting in masses.

Prices:	Each	10	100
12 to 15 in.....	\$ 0.50	\$ 4.50	\$ 40.00
15 to 18 in.....	0.75	7.00	65.00
18 to 24 in.....	1.50	12.50	100.00

E. Japonica Variegated. Variegated Evonymus. A compact grower with rich glossy green and golden foliage.

Prices:	Each	10	100
8 to 10 in.....	\$ 0.60	\$ 5.50	\$ 50.00
10 to 12 in.....	0.75	7.00	65.00

Broad-leaved Evergreens, continued

GARDENIA Florida. Cape Jasmine. Tender shrubs, hardy as far north as Norfolk, Va. The evergreen foliage is glossy and bright and the waxy camellia-like flowers are fragrant, blooms are produced in May. The Cape Jasmine is often used for hedges in the south, and in some parts of Texas it is planted on a commercial scale for the use of the flowers which are sent to the northern markets.

Prices:	Each	10	100
12 to 15 in.....	\$ 0.60	\$ 5.50	\$ 50.00
15 to 18 in.....	0.80	7.50	70.00
18 to 24 in.....	1.25	11.00	100.00
2 to 3 ft.....	1.75	16.00	150.00

ILEX Opaca. American Holly. In transplanting, the plants should be defoliated and the large sizes should also be severely pruned.

Prices:	Each	10	100
15 to 18 in.....	\$0.85	\$ 8.00	\$ 75.00
18 to 24 in.....	1.25	11.00	100.00
2 to 3 ft.....	1.75	16.00	150.00

I. Vomitoria. Youpon Cassena. Large shrub or small tree up to 25 feet, with spreading branches and small oval or oblong leaves. The small scarlet berries are retained all winter and are very effective. The Youpon stands trimming well and makes very effective hedges; it is also a fine plant for planting in groups.

Prices:	Each	10
15 to 18 in.....	\$ 1.25	\$ 10.00
18 to 24 in.....	1.75	15.00

I. Vomitaria X Opaca. This is a very beautiful and rare variety of Holly; a crossing between the Ilex Opaca and Ilex Vomitoria. The leaves of some plants are deep shining green with undulating, spine tipped margins. It retains its berries all winter which almost cover the foliage; very attractive.

Prices:	Each	10	100
12 to 15 in.....	\$ 1.00	\$ 9.00	\$ 85.00
15 to 18 in.....	1.50	12.50	
18 to 24 in.....	1.75	15.00	
24 to 30 in.....	2.25	20.00	

ILICIUM Anisatum. East India Anise. Small trees with broad, light evergreen leaves, the odor and flavor of which strongly resemble anise. This tree is a native of Japan and its plants are about as hardy as the camellia. It is a very desirable evergreen. Ultimate height 10 to 20 feet.

Prices:	Each	10	100
10 to 12 in.....	\$ 0.75	\$ 7.25	\$ 70.00
12 to 15 in.....	1.25	11.00	100.00
15 to 18 in.....	1.50	14.00	125.00

LAUROCERASUS Rotundifolia. English Laurel. Very ornamental evergreen shrub, cultivated chiefly for its handsome broad, shining leaves. The flowers are very small and only produced until the plant gets to be several years old. The English Laurel is not hardy north of Washington, D. C., but if given some protection in winter, it can be planted much further north. They are specially useful when planted in masses and also when used for single specimens, few plants possess more advantages than the English

Broad-leaved Evergreens, continued

Laurel. Ultimate height 12 to 15 feet with a corresponding breadth.

Prices:	Each	10	100
12 to 15 in.....	\$ 0.75	\$ 7.00	\$ 65.00
15 to 18 in.....	1.25	11.00	100.00
18 to 24 in.....	1.50	14.00	125.00
24 to 30 in.....	2.00	18.00	175.00
30 to 36 in.....	3.00	27.50	250.00
3 to 4 ft.....	4.25	40.00	

LIGUSTRUM Japonicum. Japanese Privet. Very handsome evergreen shrub, with dark green leaves. The white flowers are followed by purple berries, which are retained during the winter. Very fine plants for mass planting or as single specimens on the lawn. Ultimate height 20 to 30 feet.

Prices:	Each	10	100
15 to 18 in.....	\$ 0.75	\$ 6.50	\$ 60.00
2 to 3 ft.....	1.25	10.00	90.00
3 to 4 ft.....	1.50	14.00	125.00

L. Japonicum Aureum Marginatum. Golden-Leaved Privet. A vigorous growing variety with large leaves beautifully margined with yellow. Stands the sun well. In winter the large bunches of purple berries combined with the yellow foliage makes a very striking effect. Ultimate height 15 to 20 feet.

Prices:	Each	10	100
12 to 15 in.....	\$ 0.75	\$ 7.00	\$ 67.50
15 to 18 in.....	1.00	8.50	75.00
18 to 24 in.....	1.25	11.50	100.00

L. Japonicum Exelsum Superbum. Silver-Leaved Japanese Privet. A tall growing form of Japanese Privet. Leaves large, beautifully variegated white and green. Stands sun to perfection. In winter the dark purple berries are very effective. Ultimate height 12 to 15 feet.

Prices:	Each	10
12 to 15 in.....	\$ 0.75	\$ 7.00
15 to 18 in.....	1.00	9.00

L. Japonicum Lucidum. A beautiful form of Japanese Privet. Leaves large, thick, ovate, lanceolate, of very dark shining green. Large heads of white flowers produced in May, followed by black berries which are retained throughout the winter. Hardy as far north as Baltimore. Ultimate height about 20 feet. A most desirable variety.

Prices:	Each	10	100
10 to 12 in.....	\$ 0.60	\$ 5.50	\$ 45.00
12 to 15 in.....	0.75	7.00	60.00

MAGNOLIA Fuscata. (Meichelia fuscata.) Banana Shrub. Handsome evergreen shrub, with small magnolia-like leaves, and yellow fragrant flowers. The shrub is very popular in the south; the blooming season from April until June, and the strong banana fragrance is noticed a distance from the plant. It is a very desirable conservatory plant in the north.

Prices:	Each	10	100
12 to 15 in.....	\$ 1.50	\$12.50	\$100.00
15 to 18 in.....	1.65	14.00	
18 to 24 in.....	2.00	17.50	
2 to 3 ft.....	3.30	29.00	



Broad-leaved Evergreens, continued

METROSIDEROS Floribunda. Bottle Brush. Evergreen shrub planted for the showy, red, long-stemmed flowers. The narrow leaves are of a reddish color when young. Blooms for several weeks in April.

Prices:	Each	10
2 to 3 ft.....	\$ 2.00	\$16.50

NANDINA Domestica. Japanese Nandina. A beautiful upright growing shrub with numerous reed-like stems springing from the same root. The terminal trusses of white flowers are followed by brilliant scarlet berries which are retained all winter. Toward the winter the glossy green leaves change to a reddish color, which makes this plant an interesting and attractive shrub throughout the year. Hardy as far north as Washington, D. C. Ultimate height 8 to 10 feet.

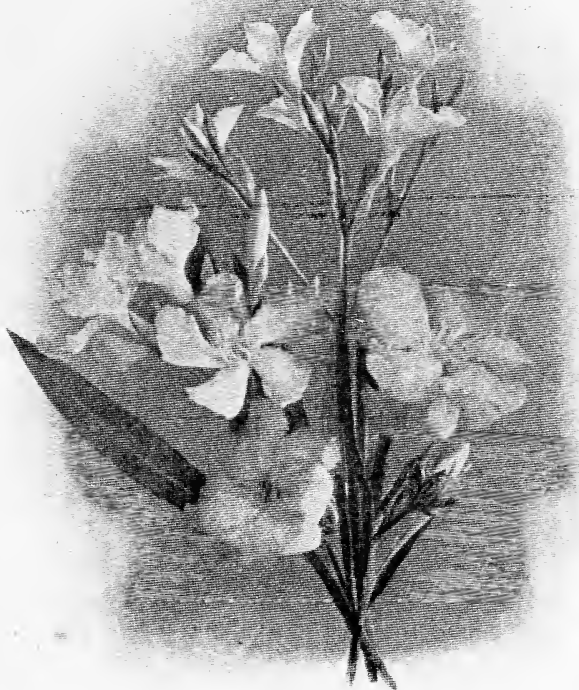
Prices:	Each	10
8 to 10 in.....	\$ 1.50	\$12.50
12 to 15 in.....	3.00	25.00
18 to 24 in.....	4.25	
2 to 3 ft.....	4.50	
3 to 4 ft.....	5.00	
4 to 5 ft.....	6.00	

NERIUM Oleander. Old-fashioned shrubs known to everybody and cultivated everywhere in the south. All Neriums are practically hardy south of Wilmington, N. C. They commence to bloom the last of April and bloom throughout the summer. The plants attain a height of 10 to 12 feet. The plant is of easy culture and well adapted to City conditions.

Prices:	Each	10
10 to 12 in.....	\$ 0.85	\$ 7.50
12 to 15 in.....	1.00	9.00

OLEA Fragrans. (Osmanthus Fragrans.) Sweet Olive. Handsome evergreen shrubs with white fragrant flowers; it is of easy culture and almost a continuous bloomer. In the north it is frequently used and grown as a greenhouse plant for its very fragrant flowers. Ultimate height 15 to 20 feet.

Prices:	Each	10	100
10 to 12 in.....	\$ 0.90	\$ 8.50	\$ 75.00
12 to 15 in.....	1.10	10.00	90.00
15 to 18 in.....	1.25	12.00	110.00
18 to 24 in.....	1.50	14.00	125.00



Nerium Oleander (see page 18)

Broad-leaved Evergreens, continued

PITTOSPORUM Tobira. Japanese Pittosporum. A very useful evergreen for the south. The dark green leaves are clustered at the tips of the branches. Flowers are yellowish-white, and are produced in short dense clusters, about the middle of April. It stands clipping well and may be used for hedges with good results. A splendid plant for single specimens on the lawn or for planting in masses.

Prices:	Each	10	100
10 to 12 in.....	\$ 0.85	\$ 7.50	\$ 70.00
12 to 15 in.....	1.00	9.00	85.00
15 to 18 in.....	1.40	13.50	125.00
18 to 24 in.....	2.50	21.00	165.00
2 to 3 ft.....	3.50		

P. Tobira Variegated. Similar to Pittosporum Tobira, but with leaves beautifully margined white. Hardy south of Wilmington, N. C. Dwarf habit.

Prices:	Each	10
10 to 12 in.....	\$ 0.85	\$ 7.50
15 to 18 in.....	1.25	11.00

PRUNUS Cerasus Caroliniana. Mock Orange of the south. An evergreen tree with dark green foliage. It is very useful for planting in masses and backgrounds. It stands pruning very well, can be trimmed in any shape and makes fine hedges. This tree is very difficult to transplant and should therefore be defoliated before being shipped. It is also advisable to give it a severe pruning after planting.

Prices:	Each	10
2 to 3 ft.....	\$ 2.00	\$16.50
3 to 4 ft.....	2.50	21.00

Broad-leaved Evergreens, continued

QUERCUS Laurifolia Darlington. This is a very handsome form of Evergreen or Laurel-Leaved Oak. The tree is of more upright growth than the Live Oak. A magnificent species and very popular wherever known.

Prices:	Each	10	100
3 to 4 ft.....	\$ 0.85	\$ 7.50	\$ 70.00
5 to 6 ft.....	1.50	14.00	135.00
6 to 8 ft.....	2.00	17.50	165.00
8 to 10 ft.....	3.00	27.50	250.00
10 to 12 ft.....	3.75	35.00	

Q. Sempervirens. Live Oak. A very large tree seldom exceeding 50 feet in height, but covering a large circumference. It is a native along our coast and adapts itself to inland sections, where it does not attain the great size of the coast region. We have a fine lot of these beautiful trees which were several times transplanted and have nice tops. Most of the Oaks are difficult to transplant and should therefore be severely cut back before being planted. Give them plenty of water and keep them well-mulched until well established.

Prices:	Each	10	100
3 to 4 ft.....	\$ 1.00	\$ 9.00	\$ 85.00
4 to 5 ft.....	1.40	13.50	125.00
5 to 6 ft.....	1.85	17.50	165.00
6 to 8 ft.....	2.50	23.00	210.00
8 to 10 ft.....	3.75	35.00	330.00
10 to 12 ft.....	5.50	50.00	

RHUSCUS Eculatus. A beautiful evergreen shrub with numerous stems springing from the same root. The plant is of very dwarf growth with small light green leaves. Ultimate height 2 feet. Fine for low hedges or borders.

Prices:	Each	10	100
10 to 12 in.....	\$ 1.25	\$11.00	
12 to 15 in.....	1.50	13.50	\$125.00
Single stems 10 to 12 in.....	\$ 3.50		30.00

VIBURNUM Odoratissimum. Evergreen Viburnum. A Japanese variety with broad, glossy green leaves, of spreading growth. Attains a height of 8 to 10 feet. Very fragrant, pure white flowers in large panicles produced in March. Not hardy north of Wilmington, N. C.

Prices:	Each	10	100
12 to 15 in.....	\$ 1.00	\$ 9.00	\$ 85.00
15 to 18 in.....	1.35	12.50	120.00
18 to 24 in.....	1.65	16.00	150.00
2 to 3 ft.....	2.50	21.00	

V. Suspensum. Evergreen Viburnum. A fine shrub with dark green leaves, attaining a height of about 8 to 10 feet. Blooms in March with creamy-white flowers. Prefers a well-drained soil with plenty of plant food. Should be protected from the afternoon sun in summer. Not hardy north of Wilmington, N. C.

Prices:	Each	10
12 to 15 in.....	\$ 1.00	\$ 9.00
15 to 18 in.....	1.20	11.00
18 to 24 in.....	2.50	21.00



Broad-leaved Evergreens, continued

V. Tinus. Laurus Tinus. Evergreen Viburnum. One of the handsomest Broad-Leaved Evergreens. A flowering shrub of rapid growth. The flowers are creamy-white, very fragrant. The buds before opening are of a bright red color, very attractive. blooms early in February and lasts a long time. Plants attain a height of 10 feet; native of Europe.

	Each	10	100
10 to 12 in.....	\$ 0.85	\$ 7.50	\$ 70.00
12 to 15 in.....	1.20	11.00	100.00
15 to 18 in.....	1.35	12.50	

Palms

In the Southern Coast States from North Carolina to Mexico many of the most beautiful Palms thrive in the open without protection, and should have a larger part in the beautifying of home grounds and parks and streets. There is no class of plants which gives such a tropical effect as Palms. These plants should be set out in spring or late summer, so they may become well established before cold weather sets in. Palms are very heavy feeders and must be well supplied with manure. Use a fertilizer which contains a great amount of potash and a small per cent of nitrate. Nitrate will cause a sappy growth and the Palms will not be sufficiently matured in the fall to stand freezing. Do not cultivate too late in the fall. In planting Palms dig good-sized holes and fill these with a very good earth and add to this a quantity of well-rotted stable manure. Do not disturb the ground around the roots. When the ground is dry, it should be properly mulched and the watering must be well attended to. If the Palms are once established they will take care of themselves. Palms can be transplanted safely, no matter how big and old if done properly.

Palms, continued

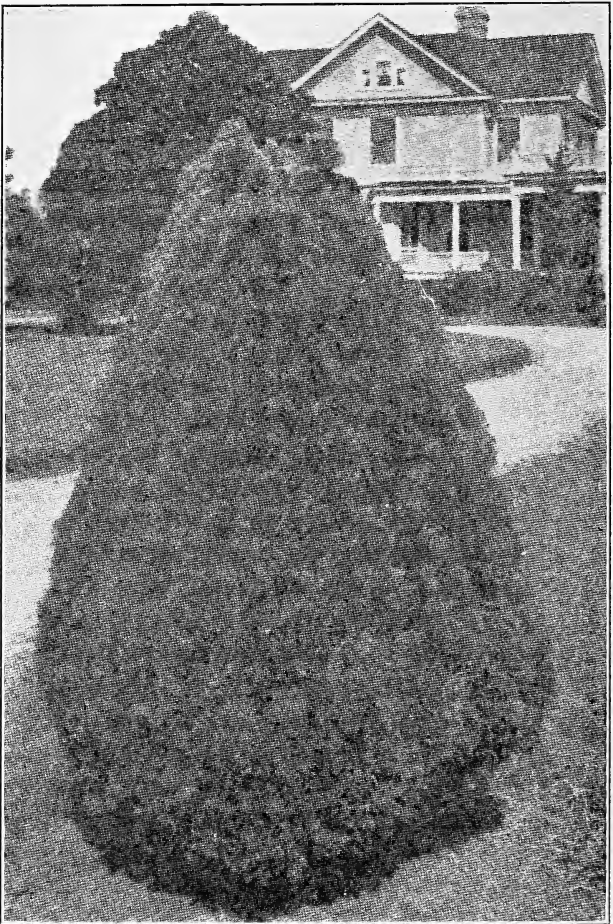
COCOS Australus. Very graceful with upright recurved leaves resembling the Phoenix or Date Palm leaves. Very desirable for drives and specimen planting.

Prices:	Each
2 to 3 ft.....	\$ 8.50
3 to 4 ft.....	10.00
4 to 5 ft.....	13.50

TRACHYCARPUS Exelsa. The Windmill Palm. Dwarf growing, very hardy fan Palm; unique, slender trunk, covered with brown fibre at the base of leaf stems and always remaining on trunk.

Prices:	Each	10	100
12 to 15 in.....	\$ 1.40	\$13.50	\$125.00
15 to 18 in.....	1.65	16.00	150.00
18 to 24 in.....	2.50	21.00	

T. Fortunei. Chamaerops Fortunei. Chusan Fan Palmetto. This is without doubt the hardiest of all exotic Palms. The plant attains a height of 12 to 15 feet. Seems to adapt itself to a great variety of soils, but will give best results when grown in heavy, rich well-drained soil. This is a very graceful and ornamental Palm. Each: 18 to 24 in., \$2.00; 2 to 3 ft., \$5.00; 3 to 4 ft., \$12.50



Biota Aurea Nana (see page 24)



Juniperus Sabina

Coniferous Evergreens

Here at Wilmington we have a soil specially adapted to the growing of Conifers. Our soil consists of a sandy loam which gives the plants a good system of small fibrous roots. A great many of the Conifers that are raised in clay soil have but a few big leaders and these give a poor stand when transplanted. To further insure our customers success with Audubon Conifers, we transplant ours every two years in new well-fertilized soil. Every year we propagate thousands of Evergreens in our up-to-date propagating plant. Generally we keep them one year in pots after leaving the propagating plant and afterwards move them to the fields. All our Coniferous Evergreens, 15 to 18 inches and larger, are dug with a ball of earth around the roots and this is securely wrapped in burlap. Plants should be well-watered and fertilized for best results.

BIOTA Aurea Conspicua. Golden Arborvitae. An erect, compact-growing tree with beautiful golden foliage.

Prices:	Each	10
18 to 24 in.....	\$ 1.75	\$16.50
24 to 30 in.....	2.50	21.00
3 to 4 ft.....	3.75	33.00
4 to 5 ft.....	7.00	66.50

B. Orientalis. Chinese Arborvitae. Upright, thrifty grower, retains its green color all during the winter. Fine for screens, wind-breaks, as well as specimen trees, which we can supply in natural shape, or sheared into beautiful compact forms; a very desirable Arborvitae and costing much less than other varieties.

Prices:	Each	10	100
15 to 18 in.....	\$ 0.75	\$ 7.00	\$ 60.00
18 to 24 in.....	1.00	9.00	85.00
2 to 3 ft.....	1.50	14.00	135.00
3 to 4 ft.....	2.00	18.00	165.00
4 to 5 ft.....	3.00	27.50	250.00

Coniferous Evergreens, continued

5 to 6 ft.....	3.75	35.00	330.00
6 to 7 ft.....	5.00	47.50	

B. Orientalis Compacta. Specimen Evergreen trees, when properly placed, form beautiful additions to any grounds. This variety of Arborvitae is similar to the Biota Orientalis with same dark green foliage, but of a very compact growth.

Prices:	Each	10
12 to 15 in.....	\$ 0.85	\$ 7.50
15 to 18 in.....	1.25	11.00
18 to 24 in.....	1.75	16.50
2 to 3 ft.....	3.00	25.00
3 to 4 ft.....	3.75	35.00

B. Japonica Filiformus. Orientalis Siboldii. A Japanese variety with thread-like foliage and compact habit. Well suited for cemeteries, also desirable for tubs.

Prices:	Each	10
2 to 3 ft.....	\$ 2.50	\$24.00
3 to 4 ft.....	4.50	42.00
4 to 5 ft.....	5.50	50.00
5 to 6 ft.....	7.00	66.50

B. Aurea Nana. Berckman's Golden Arborvitae. A very dwarf, compact shrub, with golden-yellow foliage. A very popular variety and one of the best dwarf evergreens. Very effective for planting in vases or window boxes. Used also in great numbers for cemetery planting. A perfect gem for small gardens.

Prices:	Each	10
12 to 15 in.....	\$ 1.00	\$ 9.00
15 to 18 in.....	1.40	13.50
18 to 24 in.....	2.50	21.00
24 to 30 in.....	3.50	30.00

B. Orientalis Pyramidalis. Pyramidal Arborvitae. A compact-growing form of Arborvitae, with a rich deep green foliage. The green color of the foliage is retained throughout the winter and does not change to a brownish color as is the case with some varieties of Arborvitae.

Prices:	Each	10	
2 to 3 ft.....	\$ 2.75	\$25.00	} Specimens
3 to 4 ft.....	3.75	33.00	
4 to 5 ft.....	4.50	42.00	
5 to 6 ft.....	6.00		

B. Orientalis Pyramidalis Aurea. Golden Pyramidal Arborvitae. A tall hardy variety of Arborvitae with a beautiful golden color; its columnar habit adapts it to formal planting and evergreen groups. Will attain a height of 20 feet.

Prices:	Each	10
18 to 24 in.....	\$ 2.00	\$16.50
2 to 3 ft.....	2.75	25.00
3 to 4 ft.....	3.75	33.00

B. Rosedale. Hybrid Rosedale. This is a variety of Arborvitae with dark green plume-like foliage. Very compact growth which makes it very useful for formal gardens.

Prices:	Each	10
10 to 12 in.....	\$ 0.90	\$ 8.50
12 to 15 in.....	1.25	11.00
15 to 18 in.....	1.50	14.00
36 to 42 in.....	3.75	

Coniferous Evergreens, continued

CEPHALOTAXUS Pedunculata Fastigiata. Korean Yew. An ornamental evergreen in appearance very like an English Yew but of more graceful habit. They thrive best in a somewhat moist, but well-drained sandy loam and in partly shaded situations. A very valuable plant as a lawn specimen.

Prices:	Each	10
8 to 10 in.....	\$ 1.00	\$ 8.50
10 to 12 in.....	1.50	12.50
12 to 15 in.....	2.00	16.50

CUPRESSUS Arizona. A vigorous growing form of Cypress, with glaucous foliage. A very useful Blue Cypress for landscape planting, making fine specimens.

Prices:	Each	10
2 to 3 ft.....	\$ 2.00	\$17.50
3 to 4 ft.....	3.75	33.00
4 to 5 ft.....	5.00	
5 to 6 ft.....	6.25	
6 to 7 ft.....	8.50	

CHAMAECYPARIS Sempervirens. Cupress Sempervirens. A narrow columnar shrub with upright branches, deep green. A very valuable shrub, which, on account of its formal outline, is very useful in Italian gardens. Ultimate height 40 to 60 feet.

Prices:	Each	
3 to 4 ft.....	\$ 4.00	
4 to 5 ft.....	5.00	
5 to 6 ft.....	6.50	
6 to 7 ft.....	7.50	
8 to 10 ft.....	15.00	

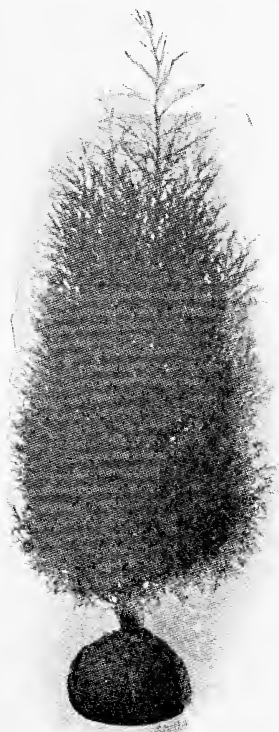
CUPRESSUS Toides. A beautiful variety of Cypress of green and yellowish color which gives an appearance of bronzy color. A fast, erect-growing variety, very desirable. Height 60 to 80 feet.

Prices:	Each
2 to 3 ft.....	\$ 2.50
5 to 6 ft.....	5.00
6 to 7 ft.....	7.00

CRYPTOMERIA Japonica Compacta. When partially protected this tree is hardy as far north as New York. A compact Japanese Cedar with a bluish-green foliage. The Cryptomerias are extensively planted in Japan as avenue trees and are also much used for their timber in that country. A very rare variety.

Prices:	Each
5 to 6 ft.....	\$10.00
6 to 7 ft.....	15.00

JUNIPERUS Virginiana. Red Cedar. A large native tree with conical head and spreading upright branches. It is quite variable in color and shape of foliage;



Juniperus Virginiana



A Block of Coniferous Evergreens

Coniferous Evergreens, continued

in the summer the leaves are bright green, while a bronzy color is assumed in winter.

Prices:	Each	10
2 to 3 ft.....	\$ 1.35	\$12.50
3 to 4 ft.....	1.75	16.50
4 to 5 ft.....	2.75	25.00
5 to 6 ft.....	3.75	33.00
6 to 7 ft.....	5.50	50.00

J. Carnatii. A tall growing tree with spreading branches and dark green foliage; very valuable for lawn specimens.

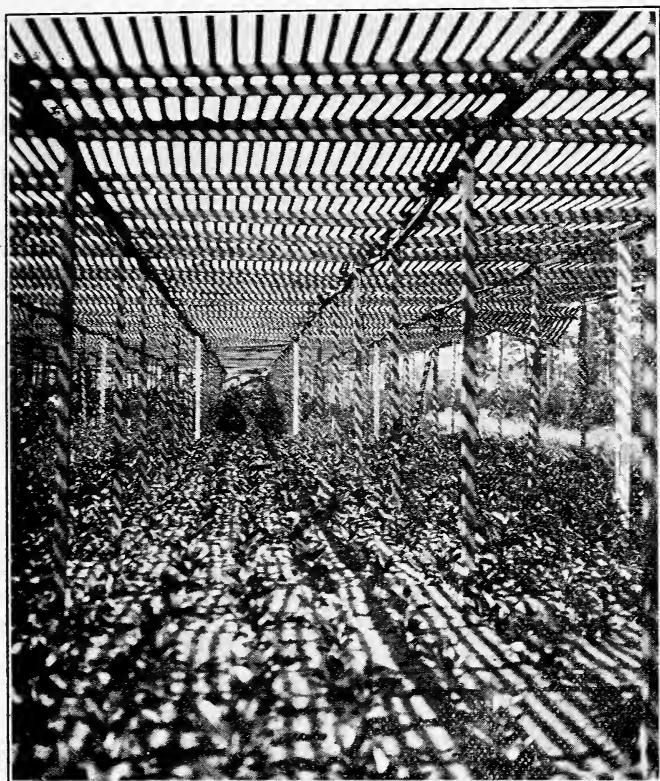
Prices:	Each	10
3 to 4 ft.....	\$ 3.75	\$33.00
4 to 5 ft.....	5.50	50.00
5 to 6 ft.....	7.50	
8 to 10 ft.....	17.50	

J. Canadensis. A very hardy variety of great merit; invaluable where ground cover is desired, foliage bright green with yellow, a very desirable variety of spreading habit.

Prices:	Each	10
18 in. high, 4 to 5 ft. spread.....	\$ 5.00	
18 in. high, 5 to 6 ft. spread.....	7.00	

J. Elegentissima Van Lee. Lee's Golden Juniper. This tree is similar to the Red Cedar with the tips of the young growth golden-yellow. Retains its golden color throughout the winter.

Prices:	Each	10
3 to 4 ft.....	\$ 4.50	\$43.00
6 to 7 ft.....	8.50	
8 to 10.....	20.00	



A Part of Our Lath House

Coniferous Evergreens, continued

J. Sinensis Femine. Chinese Juniper. This Conifer is of a compact upright growth, foliage greyish-green, very hardy and most desirable variety.

Prices:	Each	10
10 to 12 in.....	\$ 1.25	\$10.00
12 to 15 in.....	1.40	12.50
15 to 18 in.....	1.75	16.50
18 to 24 in.....	2.25	20.00
6 to 7 ft.....	12.50	
7 to 8 ft.....	17.50	

J. Virginiana Glauca. Blue Virginia Cedar. Another vigorous growing form of the Red Cedar with glaucous foliage. A very useful Juniper for landscape planting, as it retains its silvery-blue color throughout the year. A magnificent variety.

Prices:	Each	10
12 to 15 in.....	\$ 1.35	\$12.50
15 to 18 in.....	1.75	16.50
2 to 3 ft.....	4.00	37.50
3 to 4 ft.....	5.50	50.00
4 to 5 ft.....	7.00	66.50
5 to 6 ft.....	8.75	85.00
6 to 7 ft.....	12.00	100.00
7 to 8 ft.....	15.00	135.00

J. Hybernica. Irish Juniper. A narrow columnar shrub with upright appressed branches, foliage deep green. A very valuable shrub which, on account of its formal outline, is very useful in Italian gardens.

Prices:	Each	10	100
12 to 15 in.....	\$ 0.75	\$ 7.00	\$ 60.00
15 to 18 in.....	0.90	8.50	80.00

Coniferous Evergreens, continued

J. Japonica. Japanese Juniper. One of the most desirable of all Junipers. It adapts itself to a great range of climate, temperature and soil. A distinct and beautiful variety with bright green foliage which does not change during the winter; of pyramidal growth. Ultimate height 15 feet.

Prices:	Each
2 to 3 ft.....	\$ 6.75

J. Japonica Aurea. Japanese Golden Juniper. Dense low shrub with spreading, long, robust branches. The young growth is golden-yellow; retains its color throughout the year. Very distinct and attractive shrub.

Prices:	Each	10
12 to 15 in.....	\$ 1.25	\$11.00
24 to 30 in.....	5.00	46.00
30 to 36 in.....	7.00	66.50

J. Neaboriensis. Foliage light green with spreading branches, upright growth very compact. Ultimate height 20 feet.

Prices:	Each
18 to 24 in.....	\$ 2.00
4 to 5 ft.....	6.00
6 to 7 ft.....	10.00

J. Pfitzeriana. German Juniper. A new, very valuable, and hardy addition to the Juniper family. It forms a broad pyramid with horizontally spreading branches. It is quite variable from other forms of Juniper, with its nodding branchlets of a grayish-green color. The under side of the leaves presents two very well-defined white lines.

Prices:	Each	10	100
10 to 12 in.....	\$ 0.90	\$ 8.50	\$ 75.00
12 to 15 in.....	1.20	10.00	90.00
15 to 18 in.....	1.30	12.00	110.00
18 to 24 in.....	1.75	16.50	
30 to 36 in.....	4.50	42.00	
3 to 4 ft.....	6.00	58.50	
4 to 5 ft.....	7.50		

J. Sabina. Savin Juniper. A compact spreading shrub; branchlets rather slender and of a strong odor when bruised. Native of Central Europe. A dwarf trailing variety. Very desirable for rock work.

Prices:	Each	10
10 to 12 in.....	\$ 0.85	\$ 7.50
12 to 15 in.....	1.20	11.00

J. Sinensis. Chinese Juniper. A beautiful tree with slender branches pyramidal in outline, with silver-green scale-like foliage. One of the most desirable Junipers for lawn or garden. It retains its dense habit.

Prices:	Each	10
10 to 12 in.....	\$ 1.00	\$ 9.50
12 to 15 in.....	1.35	12.50
18 to 24 in.....	3.00	27.50

PICEA Exelsa. Norway Spruce. This tree is often used as a Christmas tree and is too well-known to be mentioned.

Prices:	Each	10
12 to 15 in.....	\$ 0.50	\$ 4.50
15 to 18 in.....	0.75	7.00



A Block of English Laurel

Coniferous Evergreens, continued

PINUS Strob. White Pine. An American native tree with silver-green foliage. A tree of compact growth, hardy and does remarkable in the south. Height 60 to 70 feet.

Prices:	Each	10
12 to 15 in.....	\$ 0.75	\$ 7.00
15 to 18 in.....	1.00	9.00
18 to 24 in.....	1.50	12.50

RETINOSPORUS Obtusa. (Chamaccyparus Obtusa.) Japanese Cypress. A dwarf and very compact grower, foliage dark green; very hardy and desirable as single specimen on the lawn or as planted in masses.

Prices:	Each	10
12 to 15 in.....	\$ 0.85	\$ 7.50
15 to 18 in.....	1.00	9.00
18 to 24 in.....	1.50	13.50
2 to 3 ft.....	2.75	25.00

R. Pisifera. Pea-Fruited Cypress. A very hardy and valuable Japanese evergreen with bright green, somewhat pendulous foliage. It is used by the Japanese in making miniature trees. This interesting tree is not very common in cultivation, but makes a shapely specimen.

Prices:	Each	10	100
10 to 12 in.....	\$ 0.50	\$ 4.50	
12 to 15 in.....	0.85	7.50	\$ 70.00
15 to 18 in.....	1.00	9.00	85.00
18 to 24 in.....	1.25	12.00	100.00

R. Pisifera Aurea. Golden Pea-Fruited Cypress similar to the last-mentioned evergreen, except the new

Coniferous Evergreens, continued

growth is rich golden-yellow. A most exquisite variety.

Prices:	Each	10	100
10 to 12 in.....	\$ 0.60	\$ 5.50	\$ 50.00
12 to 15 in.....	0.75	7.00	65.00
15 to 18 in.....	1.00	8.50	80.00
5 to 6 ft.....	6.00		
7 to 8 ft.....	12.50		

- R. Pisifera Filifera.** Thread-Branched Cypress. A remarkably fine tree with graceful thread-like branches, which are light green and hang down in a graceful way. A very popular and desirable evergreen.

Prices:	Each
18 to 24 in.....	\$ 2.50
7 to 8 ft.....	12.50
8 to 10 ft.....	17.50

- R. Pisifera Filifera Aurea.** Golden Thread-Branched Cypress. Similar to the preceding one, but of a bright golden-yellow color, also more of a dwarfish growth. This is one of the brightest evergreens.

Prices:	Each	10
15 to 18 in.....	\$ 2.00	\$17.50
18 to 24 in.....	2.50	22.50
24 to 30 in.....	3.25	30.00
30 to 36 in.....	4.00	37.50
3 to 4 ft.....	5.00	
6 to 7 ft.....	20.00	

- R. Plumosa.** Plume-like Cypress. A small tree with slender feathery branches and bright green foliage. Fine for screens, hedges and wind-breaks, as well as specimen trees. A very popular evergreen.

Prices:	Each	10	100
10 to 12 in.....	\$ 0.60	\$ 5.50	\$ 50.00
12 to 15 in.....	0.80	7.50	70.00
15 to 18 in.....	1.10	10.00	90.00
18 to 24 in.....	1.40	13.50	125.00
2 to 3 ft.....	2.50	23.00	210.00
3 to 4 ft.....	3.50		
4 to 5 ft.....	6.00		
6 to 7 ft.....	12.50		

- R. Plumosa Aurea.** Golden Plume-like Cypress. One of the most popular of all the ornamental evergreens with a bright golden-yellow foliage. Very hardy and vigorous.

Prices:	Each	10	100
12 to 15 in.....	\$ 0.85	\$ 8.00	\$ 75.00
15 to 18 in.....	1.10	10.00	90.00
18 to 24 in.....	1.40	13.50	125.00
24 to 30 in.....	2.50	23.00	

- R. Pisifera Squarosa Veitchii.** Veitch's Silver Cypress. A beautiful evergreen with bluish-green foliage. The tree is densely branched with feathery spreading branches. Rapid grower. A most exquisite variety.

Prices:	Each	10	100
12 to 15 in.....	\$ 0.85	\$ 8.00	\$ 70.00
15 to 18 in.....	1.25	10.00	90.00
18 to 24 in.....	1.40	13.50	125.00
24 to 30 in.....	2.50	23.50	
30 to 36 in.....	3.00	27.50	
4 to 5 ft.....	5.00		



Retinospora Veitchii

Coniferous Evergreens, continued

R. Pisifera Squarosa Sulfurea. Similar to the Squarosa Veitchii, except the new growth is sulphur tinted. A very fine plant for the lawn or as single specimens planted in groups.

Prices:	Each	10	100
10 to 12 in.....	\$ 0.75	\$ 7.00	\$ 60.00
12 to 15 in.....	1.10	10.00	90.00
15 to 18 in.....	1.40	13.00	120.00
18 to 24 in.....	1.60	15.00	140.00
2 to 3 ft.....	2.50	21.00	

THUYA Occidentalis. American Arborvitae. Low, open, fine flat-leaved Arborvitae. Admirable for hedges, also a very good plant as single specimen on the lawn. Native from Nova Scotia to the Mountains of North Georgia. Height 20 feet.

Prices:	Each	10	100
2 to 3 ft.....	\$ 2.00	\$16.50	\$150.00
3 to 4 ft.....	2.90	25.00	240.00
4 to 5 ft.....	4.50	42.50	400.00

T. Occidentalis Aurea Spica. A dwarf, compact-growing tree with bright green foliage, with golden tips on the young growth; spreading habit, very compact.

Prices:	Each	10	100
15 to 18 in.....	\$ 1.40	\$13.50	\$125.00
18 to 24 in.....	2.00	17.50	165.00
24 to 30 in.....	3.00	27.50	
5 to 6 ft.....	12.50		
6 to 7 ft.....	17.50		

T. Occidentalis Columbia. A very erect-growing Arborvitae. Foliage dark green with silver tips on the

Coniferous Evergreens, continued

young growth. A most desirable plant, which fills a long felt want.

Prices:	Each	10
15 to 18 in.....	\$ 1.40	\$13.50
18 to 24 in.....	2.00	17.50
24 to 30 in.....	2.75	25.00
30 to 36 in.....	3.25	30.00
3 to 4 ft.....	4.00	37.50

T. Occidentalis Compacta. Compact American Arborvitae. A very compact spreading plant, bright green foliage, and very fine plant for single specimens on the lawn.

Prices:	Each	10
15 to 18 in.....	\$ 2.00	\$18.00
18 to 24 in.....	2.75	25.00
24 to 30 in.....	3.25	29.00
30 to 36 in.....	4.00	37.50

T. Occidentalis Dauglasy Pyramidalis. An erect and formal Arborvitae with a rich green foliage. The peculiar foliage gives the tree a spiral appearance. A very valuable plant.

Prices:	Each	10
18 to 24 in.....	\$ 1.75	\$16.50
24 to 30 in.....	2.75	25.00
30 to 36 in.....	3.25	29.00
3 to 4 ft.....	4.25	
7 to 8 ft.....	10.00	

T. Occidentalis Elegantissima. A very compact-growing tree of spreading habit; foliage dark glossy green. One of the best Arborvitae. Ultimate height 25 feet. Very hardy and vigorous.

Prices:	Each	10	100
12 to 15 in.....	\$ 1.20	\$11.00	\$100.00
15 to 18 in.....	1.40	13.50	125.00
18 to 24 in.....	2.00	17.50	165.00
24 to 30 in.....	3.00	27.50	250.00
30 to 36 in.....	3.25	29.00	
3 to 4 ft.....	4.00	37.50	
6 to 7 ft.....	8.50		



Thuja Occidentalis Globosa

Coniferous Evergreens, continued

T. Occidenthalis Elwangeriana. A low, broad, very compact growing Arborvitae, with slender branches clothed with two kinds of foliage. Can be planted very successfully in tubs or vases.

Prices:	Each	10	100
12 to 15 in.....	\$ 0.85	\$ 8.00	\$ 70.00
15 to 18 in.....	1.25	11.50	100.00
18 to 24 in.....	2.00	17.50	165.00
24 to 30 in.....	3.75	35.00	330.00
30 to 36 in.....	5.50	50.00	
36 to 42 in.....	7.00	66.50	

T. Occidenthalis Globosa. Globe Arborvitae. A very dwarf compact variety of spherical growth, stands shearing well, fine for formal effect, also for vases. Ultimate height 5 to 6 feet.

Prices:	Each	10
15 to 18 in.....	\$ 2.50	\$21.00
18 to 24 in.....	3.00	27.50
24 to 30 in.....	3.75	35.00
30 to 36 in.....	5.00	

T. Occidenthalis Hovey. A dwarf, globe-shaped Arborvitae with bright green foliage. Ultimate height about 7 to 8 feet.

Prices:	Each	10	100
10 to 12 in.....	\$ 1.00	\$ 9.00	\$ 85.00
12 to 15 in.....	1.25	11.00	110.00
15 to 18 in.....	1.50	14.00	135.00
18 to 24 in.....	2.00	18.00	165.00
24 to 30 in.....	3.00	27.50	
30 to 36 in.....	4.00	37.50	

T. Occidenthalis Luthea. George Peabody's Arborvitae. A dwarf, compact growth; foliage of bright golden color, which is intensified during the winter. A most desirable variety.

Prices:	Each	10
12 to 15 in.....	\$ 1.25	\$12.00
15 to 18 in.....	2.00	18.00
18 to 24 in.....	2.75	25.00
24 to 30 in.....	3.75	

T. Occidenthalis Little Gem. The most dwarf Arborvitae we know of, with bright green foliage and spreading habit. Very attractive for rock gardens. Ultimate height 3 to 4 feet.

Prices:	Each	10
6 to 8 in.....	\$ 1.25	\$11.00
8 to 10 in.....	1.50	13.50
10 to 12 in.....	2.25	21.00
12 to 15 in.....	3.50	33.00
15 to 18 in.....	4.50	

T. Occidenthalis Lobby Semper Aurea. Lobb's Arborvitae. A tall growing variety of spreading habit; foliage glossy green with golden tips on its young growth. Height about 20 feet. Desirable as single specimens.

Prices:	Each	10	100
15 to 18 in.....	\$ 1.25	\$12.00	\$110.00
18 to 24 in.....	2.00	18.00	165.00
24 to 30 in.....	2.75	25.00	
30 to 36 in.....	3.50	33.00	

T. Occidenthalis Pyramidalis. Pyramidal Arborvitae. A valuable upright-growing evergreen of compact habit and bright green foliage. Very formal and

Coniferous Evergreens, continued

attractive. In this locality it will attain a height of 15 to 25 feet. Of erect form; adapts itself to a wide range of territory and soils. Very popular.

Prices:	Each	10	100
18 to 24 in.....	\$ 1.85	\$17.50	\$165.00
2 to 3 ft.....	3.00	28.00	265.00
3 to 4 ft.....	4.00	38.00	375.00
4 to 5 ft.....	6.00	57.50	
5 to 6 ft.....	7.50	70.00	

T. Occidentalis. George Peabody. See *Thuya Occidentalis* Lutha.

T. Occidentalis Rosenthaly. This is without doubt the finest tree of the American *Arborvitae* family. The foliage is deep green and the growth terminates with a small whitish ball; upright grower, very compact.

Prices:	Each	10	100
10 to 12 in.....	\$ 1.00	\$ 9.50	\$ 85.00
12 to 15 in.....	1.50	13.50	125.00
15 to 18 in.....	2.50	21.00	
18 to 24 in.....	3.00	27.50	
24 to 30 in.....	4.00	37.50	
30 to 36 in.....	5.50	50.00	
3 to 4 ft.....	6.50	62.50	

T. Occidentalis Recurve Nana. A very dwarf, compact grower with bright green foliage, globe-like form; very desirable where formal effect is desired. Height about 8 feet.

Prices:	Each	10
15 to 18 in.....	\$ 2.25	\$21.00
18 to 24 in.....	3.25	30.00
24 to 30 in.....	4.00	37.50
30 to 36 in.....	5.00	

T. Occidentalis Siberica. Siberian *Arborvitae*. An exceedingly hardy variety of *Arborvitae*, which keeps its bright green color well in winter. Growth is compact and pyramidal. Very valuable for hedges.

Prices:	Each	10	100
10 to 12 in.....	\$ 1.00	\$ 9.00	\$ 85.00
12 to 15 in.....	1.25	11.00	
15 to 18 in.....	1.50	14.00	
18 to 24 in.....	2.75	25.00	
4 to 5 ft.....	7.00		
6 to 7 ft.....	10.00		

T. Occidentalis Spathii. Spath's *Arborvitae*. A dwarf variety of *Arborvitae*. It is very peculiar, in that it has two kinds of foliage and on the lower branches there are spreading leaves, while on the upper branches the leaves are appressed.

Prices:	Each
15 to 18 in.....	\$ 1.50
30 to 36 in.....	4.00

T. Occidentalis Spiralis. An erect and formal *Arborvitae* with a rich green foliage. The peculiarly twisted foliage gives the tree a spiral appearance. A valuable plant for formal gardens.

Prices:	Each	10
15 to 18 in.....	\$ 1.25	\$12.00
18 to 24 in.....	1.75	16.50
24 to 30 in.....	2.25	21.00

Coniferous Evergreens, continued

2 to 3 ft.....	2.75	25.00
3 to 4 ft.....	3.50	33.00
4 to 5 ft.....	5.00	
6 to 7 ft.....	10.00	
7 to 8 ft.....	12.50	
8 to 10 ft.....	17.50	

T. Occidentalis Standishii. A stately tree with bright green foliage and spreading branches; rapid grower.

Prices:	Each	10
15 to 18 in.....	\$ 1.00	\$ 9.00
5 to 6 ft.....	5.00	

T. Occidentalis Toides. A very compact form of Arborvitae. Bluish-green foliage in summer, changing to a bronzy color in winter; very dwarf grower; desirable for formal gardens.

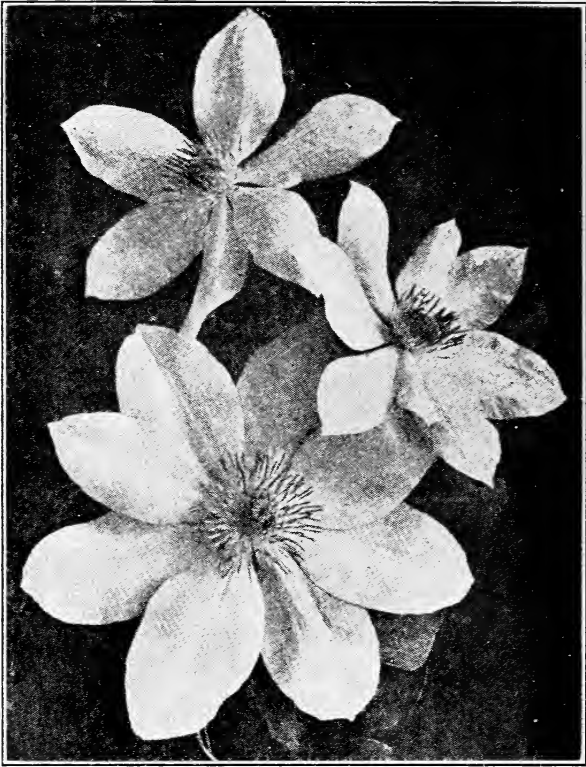
Prices:	Each	10
24 to 30 in.....	\$ 2.75	\$25.00
30 to 36 in.....	3.50	33.00

T. Occidentalis Warriana Aurea. Arborvitae of smaller, denser habit than the type. Slender branches, foliage slightly variegated with yellow, which turns to bronze in winter.

Prices:	Each	10
12 to 15 in.....	\$ 1.75	\$16.50
15 to 18 in.....	2.75	25.00



Wall covered with *Amelopsis Veitchii*



Clematis Hybrid

Vines and Climbers

Climbing plants are always useful in the garden. They may be used for trellises or for covering walls. If you have a wall you want to cover quickly, plant the Boston Ivy, as this plant is about the quickest vine that will cling to any wall without any support or help.

AMPELOPSIS Veitchii. Japanese or Boston Ivy. Foliage is dense and glossy and turns yellow and red in the fall. The vine is of rapid growth and will cling to everything. Drops its leaves in the fall.

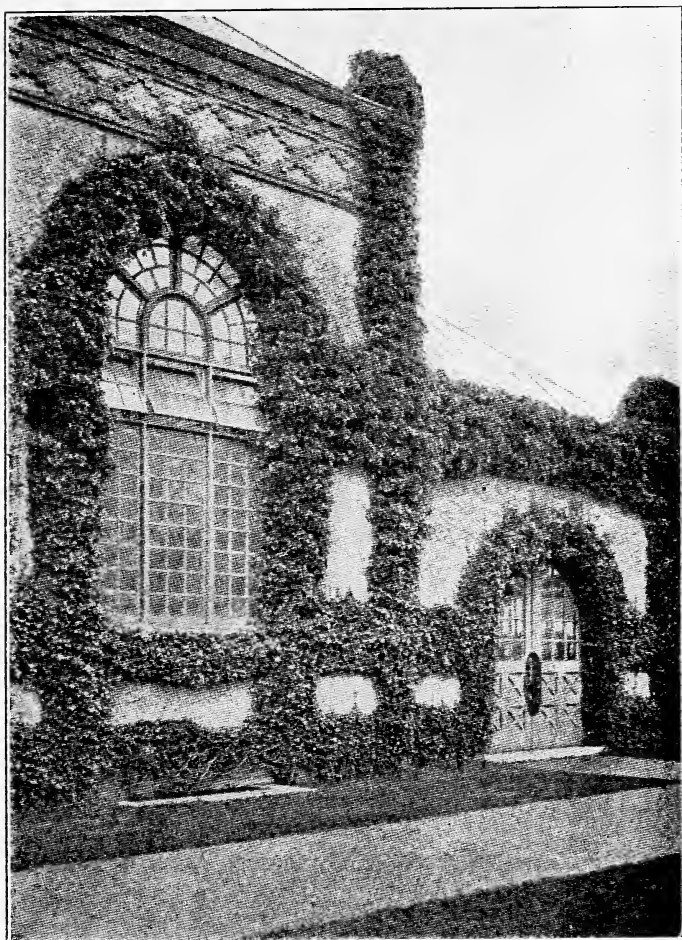
Prices:	Each	10	100
2-year old vines....	\$0.40	\$ 3.50	\$ 30.00

ELEAGNUS PUNGENES REFLEXA. Climbing Eleagnus. A wonderfully vigorous Japanese evergreen climber with leaves green above, silvery beneath, overspread with yellowish-brown, giving the entire surface a bronzy tint. This vine will go to the top of the highest tree, and by frequent pruning can be grown as a shrub.

Prices:	Each	10
10 to 12 in. from pots.....	\$ 0.75	\$ 7.00
12 to 15 in. from pots.....	1.00	9.00
4 to 5 ft. from open ground, heavy	3.00	
6 to 8 ft. from open ground, heavy	4.50	

EVONIMUS Radicans. Climbing Evonimus. A trailing evergreen of rapid growth; good for covering walls and stumps; fine ground covering for shady places.

Prices:	Each	10
Strong plants.....	\$ 0.50	\$ 4.50



Hedera Helix

Vines and Climbers, continued

GELSEMIUM. Yellow Jasmine. *Caroline Yellow* Jasmine. Our native variety with bright yellow flowers, very fragrant, which are so profusely produced in early spring.

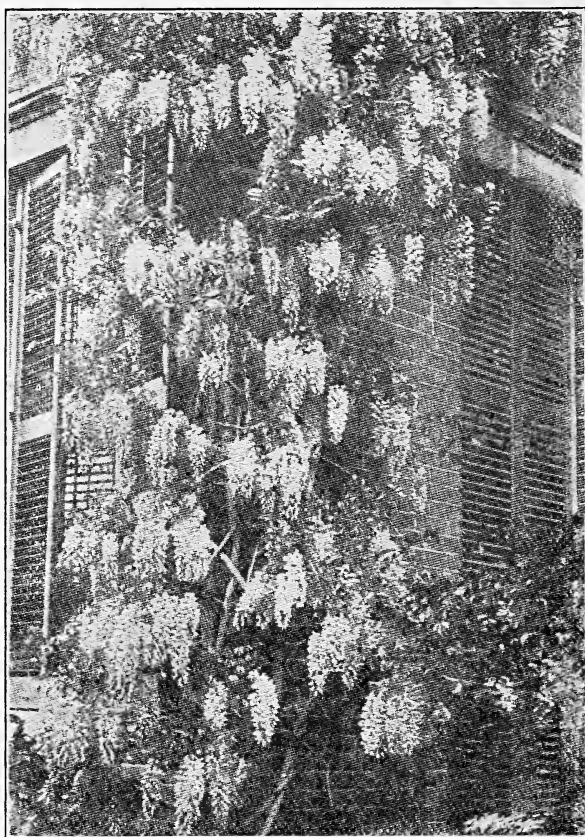
Prices:	Each	10
Strong plants	\$ 0.50	\$ 4.50

CLEMATIS *Paniculata*. Japanese Clematis. A vigorous-growing vine; a native of Japan. The small white flowers are very fragrant and are borne in axillary and terminal panicles. A useful vine to plant on trellises and arbors. Blooms in the fall.

Prices:	Each	10
2-year old plants.....	\$ 0.50	\$ 4.50

JASMINUM *Primulium*. Chinese Jasmine. This vine, recently introduced from China, is a hardy evergreen climber. Light yellow flowers are produced in March, and the plant continues to bloom for three months or longer. The foliage is rich dark green; in this locality the vine is evergreen. Not hardy north of Washington, D. C.

Prices:	Each	10
2-year old plants.....	\$ 0.50	\$ 4.50



Chinese Wisteria

Vines and Climbers, continued

J. Floridum. Chinese Jasmine. A rambling, free-flowering evergreen vine, with slender four-angled branches. Flowers are primrose yellow, with a dark eye 1 1-2 to 2 inches across. One of the best introductions; will stand some frost. It blooms in early spring, the season lasting two months or more. Not hardy north of Washington, D. C.

Prices:	Each	10
2-year old strong plants	\$ 0.50	\$ 4.50

WISTERIA Chinensis. Chinese Wisteria. Free-flowering vine with handsome showy flowers. Very hardy and ornamental. They may be trained on trellises, arbors, porches, trees, etc. Flowers purple.

Prices:	Each	10
Strong plants.....	\$ 1.00	\$ 9.00

W. Chinensis Alba. Chinese White Wisteria. Similar to the above variety, with pure white flowers.

Prices:	Each	10
2-year old strong plants.....	\$ 1.00	\$ 9.00



Hedge of Berberis Thunbergii

Bamboos and Grasses

The Bamboos are cultivated for the surpassing beauty of their foliage and habit. Some of them are hardy even in parts of the northern states, but they are warm-country plants. Some varieties attain a height of 100 to 120 feet, with culm having a diameter of 8 to 12 inches. They are objects of beauty in the garden and conservatory and, under special conditions of landscape, Bamboos are matchless. They delight in a deep, rich loam and generally respond to good treatment. A warm, slightly shady nook, protected from prevailing cold winds of winter, and in which moist but well-drained soil is plentiful, is an ideal location. During the first few years, a new plantation should receive generous protection in localities in which the winters are trying. Planted in tubs or large pots the Bamboo makes a fine decorative plant for conservatories, especially as it may be grown and used out-of-doors in the summer.

ARUNDINARIA Falcata. Bamboo. Height 10 to 20 feet; leaves 4 to 6 inches long and one-third of one inch wide, light green striate-veined. Mild climate.

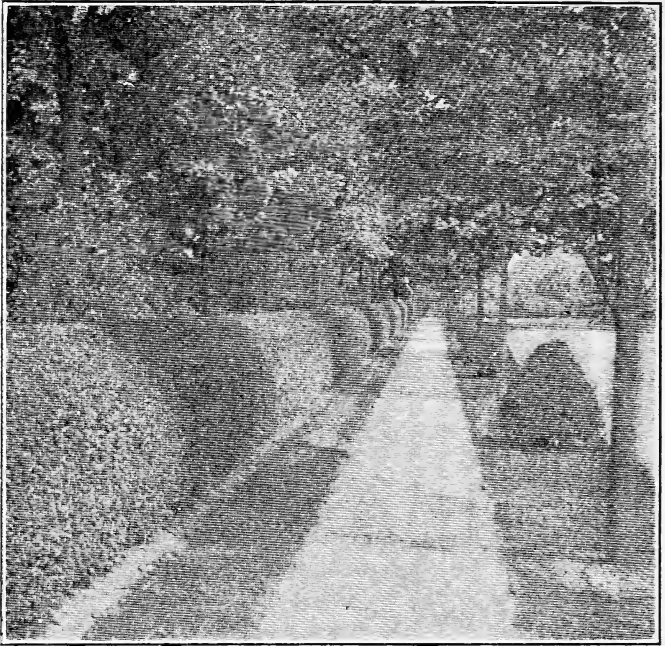
Prices:	Each	10
Strong plants.....	\$ 0.75	\$ 7.00

BAMBUSA Metake. Japanese Bamboo. Height 10 to 12 feet. The commonest of the hardy Bamboos. Particularly recommended for cities. Native of Japan.

Prices:	Each	10
Strong plants.....	\$ 1.00	\$ 9.00

GYNERIUM Argenteum. Pampas Grass. An immense grass growing in great clumps, with feathery plumes often 2 feet long. Evergreen.

Prices:	Each
Strong clumps 4 in. in diameter.....	\$ 0.60
Strong clumps 6 in. in diameter.....	0.75
Strong clumps 10 in. in diameter.....	1.00



Hedge of Ligustrum Ovalifolium

Bamboos and Grasses, continued

Strong clumps 15 in. in diameter.....	1.50
Strong clumps 20 in. in diameter.....	2.00
Strong clumps 3 ft. in diameter.....	3.00

CORTADERIA Roi de Roses. Pink Pampas Grass. Plumes very compact of a delicate rose color. A very beautiful and scarce variety.

Prices, same as for *Gynerium Argenteum*.

Hedges

Hedges may be used for two distinct purposes, for defense and for ornament. Ornamental Hedges may be rendered defensive by stretching tightly 2 or 3 strands of barbed wire through the center of the Hedge. In setting out Hedges the following rules should be observed: Make a trench about 15 inches wide and deep, so there is sufficient space for the roots without bending. Fill the trench with the best dirt you have and use plenty of well-rotted manure. The latter should be thoroughly incorporated with the soil. Pack the dirt well around the roots, as this will insure good growth. Give sufficient water until well established. The tops of the plants should be severely cut back. It is best to plant the Hedges in a single row. The double row, as formerly used, is impractical, as it is more difficult to cultivate and preserve free from weeds. As to the best outline of the Hedge, it should be understood that a Hedge should never be wider on top than at the bottom, as this will cause the Hedge to be without foliage near the ground.

ABELIA Grandiflora. A broad-leaved evergreen, suitable for Hedges up to 4 feet. Not hardy north of Washington and St. Louis.

Prices:	100
12 to 18 in.....	\$ 30.00

Hedges, continued

BUXUS Arborescens. Boxwood Evergreen. A low-growing hedge plant; stands shearing well; thrives as far north as central New York.

Prices:	100
6 to 8 in.....	\$ 25.00
8 to 10 in.....	45.00

B. Suffruticosa. Dwarf Boxwood.

Prices:	100
4 to 6 in.....	\$ 25.00
6 to 8 in.....	35.00

HIBISCUS. (Althea Frutex.) Rose of Sharon. Deciduous, flowering hedge plant. Useful for hedges and screens under 10 feet where an open bottom is not objectionable. Will grow successfully except in the most northern part of the United States.

Prices:	100
2 to 3 ft.....	\$ 40.00
18 to 24 in.....	25.00

LIGUSTRUM Amurense. Amoor River Privet. Broad-leaved evergreen with leaves smaller than the California Privet and better for hedges than that plant. Hardy as far north as Virginia and Missouri.

Prices:	100
12 to 15 in.....	\$ 5.00
18 to 24 in.....	7.50
2 to 3 ft.....	10.00
3 to 4 ft.....	15.00

PITTOSPORUM Tobira. Japanese Pittosporum. Broad-leaved evergreen. Thrives in the South Atlantic and Gulf States.

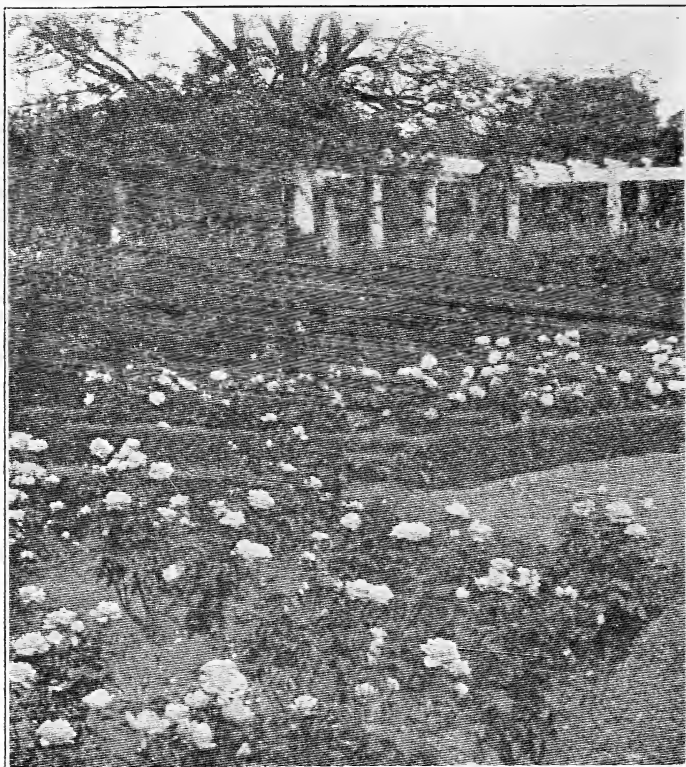
Prices:	100
10 to 12 in.....	\$ 70.00

SPIREA. Anthony Waterer. Crimson Spirea. A dwarf, free-flowering shrub attaining a height of about 2 feet. The flowers are crimson and produced throughout the summer.

Prices:	100
10 to 12 in.....	\$ 15.00
12 to 15 in.....	20.00
15 to 18 in.....	25.00

S. Thunbergii. Snow Garland. Useful for hedges up to 5 feet, with white flowers early in the spring. It has fine foliage but the tips of the branches are sometimes winter-killed in the north.

Prices:	100
15 to 18 in.....	\$ 25.00
18 to 24 in.....	35.00
2 to 3 ft.....	40.00



Roses

The Rose is at home in the south, where it will produce flowers almost the year round. Roses should be heavily fertilized to get the best results. The old wood should be cut out every spring. This is specially important for the Tea Roses, which are the best bloomers. Most of our Roses are grown on their own roots. Grafted Roses will sometimes send out suckers from the wild stock, and these should always be promptly removed, as they will injure the grafted Rose above. Roses are frequently attacked by mildew, a fungous disease which under certain climate conditions is of rapid development. When a Rose is attacked by this disease, the leaves show a whitish mold. The best remedy is to use powdered sulphur, which should be applied early in the morning when the dew is on the leaves. The sulphur should be evenly sifted over the entire foliage and it is often necessary to repeat the treatment for several times.

Everblooming or Monthly Blooming Varieties (Tea and Hybrid Tea)

Our Selection	Purchaser's Choice
\$0.50 Each, \$5.50 Per Doz.	\$0.75 Each, \$7.00 Per Doz.

Abel Chatenay. A good grower and perpetual bloomer; large and beautiful when in bud and bloom; deeply recurved petals of rose-pink, with a tinge of salmon.

Madame Caroline Testout. Brilliant satiny rose, deepening at center; immense broad petals and large flowers.



Catherine Zeimet

Roses, continued

A magnificent Hybrid Tea of the very loveliest shade of pink.

Etoile de France. A very vigorous grower; flowers very large, full, cupped; dark velvety-crimson center, vivid cerise. A fine variety.

Helen Gould. Rosy-pink, long pointed buds.

K. A. Victoria. Pure white flowers. The choicest Rose for cut-flowers. A sturdy grower; blooms from early spring until late frost.

La France. One of the best known Roses; silvery-peach; excellent; weak grower.

Marie Lambert. Pure white; a fine grower and bloomer all summer.

Madame Franciska Kruger. A vigorous grower and constant bloomer; large blooms of deep copper-yellow, shading to peach.

Mrs. Andrew Carnegie. Brilliant cherry-red flowers, upright growth.

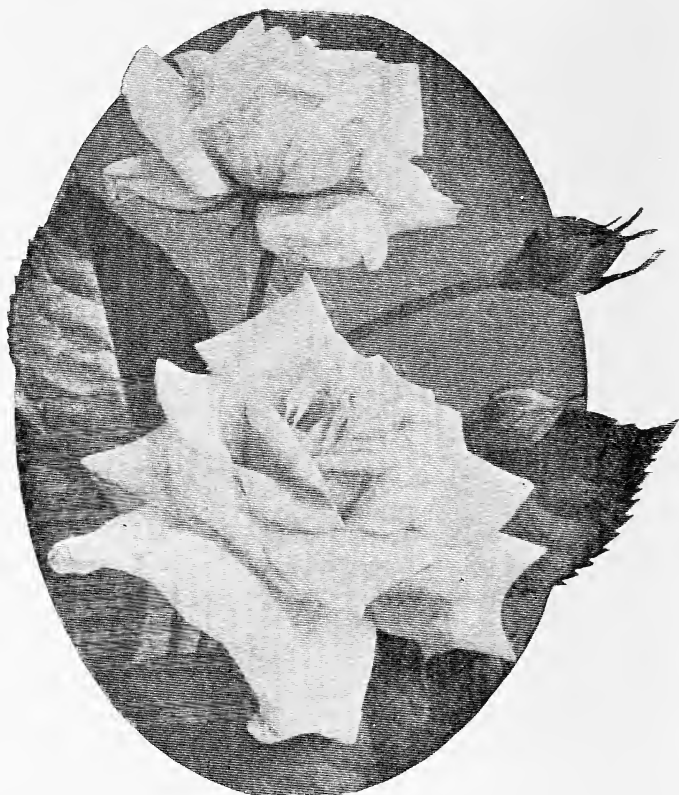
Madame Ravery. Rich nankeen yellow; very strong grower; constant bloomer. Excellent variety.

My Maryland. Known to almost every one as an excellent cut-flower. Color is salmon pink, which brightens as the flower expands.

Ophelia. Salmon-flesh color shaded with rose. The blooms come on strong stems and the perfectly formed flowers are very lasting when cut. A favorite with every one who grows them.

Olivia. Flowers double deep rose color; fine variety.

Pink Maman Cochet. A famous Tea Rose. This superb Rose is well-known as a queen among Roses; one of the best and most beautiful varieties ever grown and quite hardy. The flowers are of enor-



Kaiserin Augusta Victoria

Roses, continued

mous size, very full. Extra strong grower; fine bloomer. The finest Rose by far that has been introduced for a long time. It ranks among the finest everblooming Roses.

White Maman Cochet. A splendid Rose with all the good qualities of the Pink Maman Cochet, but is pure white with the outside petals tipped pink in the fall.

Radiance. Rosy carmine and soft pink, continuous bloomer, very fragrant.

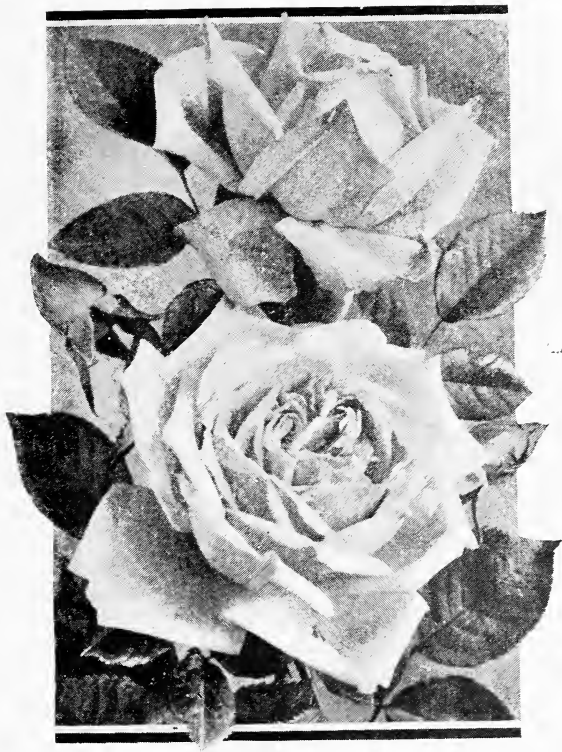
Robin Hood. Glorious rosy scarlet color; bloom full and of beautiful form. A ready grower and free producer.

Souvenir de President Carnot. Makes immense well-formed flowers. Color shell-pink tinted golden fawn. A beautiful Rose.

Hybrid Perpetual Roses

American Beauty. Crimson flowers 3 to 4 inches in diameter. Well-formed, fragrant, strong grower; holds its foliage until late in the fall. Blooms in May and June and sometimes during summer.

White American Beauty. The best white Rose ever introduced. Pure snow white with long buds and immense perfect double flowers 4 to 5 inches. It is one of the most continuous flowering Roses in its class. A hardy Rose good for cutting and garden decoration.



Maman Cochet

Roses, continued

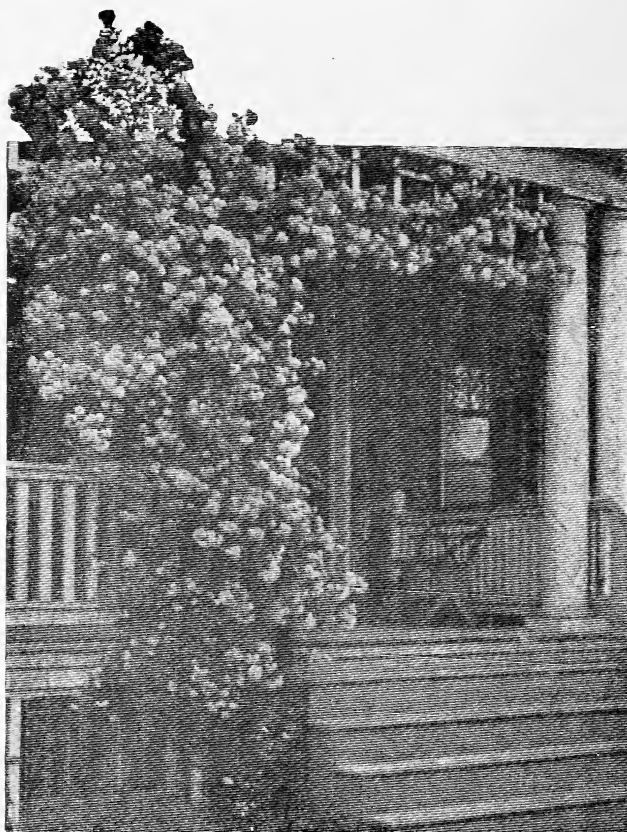
- Magna Charta.** Extra large full blooms, bright rosy-pink. The flowers are produced on long stiff stems. Very hardy.
- Prince Camille de Rohan.** Very dark velvety-crimson, almost black. The best dark red Rose ever produced.
- Ulrich Brunner.** Brilliant cherry-red flowers of immense size. A very strong and disease-resisting variety.

NOISETTE ROSES

- Marechal Niel.** A favorite climber of the south, where it attains its greatest perfection. Flowers golden-yellow. A vase of these flowers will perfume a whole house.
- Reve d'Or.** Flowers orange-yellow or deep saffron; a strong climber and a beautiful pillar Rose.
- William Allen Richardson.** Large full flowers of coppery-yellow, tinged with carmine; has a delicious fragrance. Very free bloomer and is greatly admired for its unique color.

CLIMBING TEA AND HYBRID TEA ROSES

- Gainsborough.** Rosy-flesh color; very large flowers.
- Climbing Madame Caroline Testout.** The blooms are very large and of a globular form. A very beautiful rampant climber, identical with its parent Madame Caroline Testout.



Dorothy Perkins Roses

Roses, continued

Pillar of Gold. Rosy-pink, base of petals yellow, variable in color; sometimes almost solid pink. Very large and double to the center. Blooms throughout the season.

BOURBON ROSES

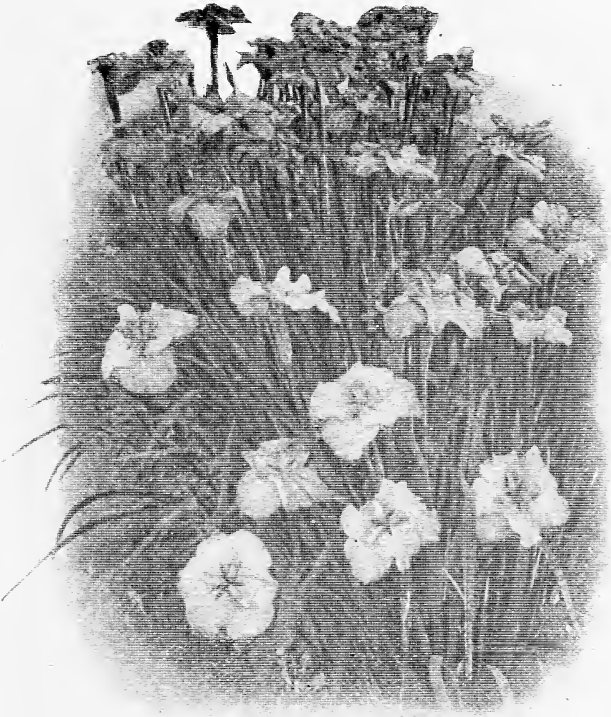
Souvenir de LaMalmaison. Queen of beauty and fragrance. A beautiful climbing form of this well-known Rose. Flowers flesh-colored, large and very full, rampant grower, evergreen.

MOSS ROSES

Crimson Globe. Flowers crimson, beautiful mossed.

POLYANTHE ROSES

Souvenir de Soupert Notting. The color is a combination of creamy-white, faint orange-yellow and light peach. Large and full flowers, continuous bloomer.



Iris Kaempferi

Perennials

IRIS Kaempferi. Japanese Iris. For good flowers these plants should have an abundance of water and stable manure. The plants form strong clumps, attain a height of 2 to 3 feet, and bear several flower-stems. The leaves are slender, erect, growing almost parallel to each other. The flowers range in color from white through various shades of blue to deep purple, with the segments variegated with darker veins and streaks, or plain. All the varieties are hardy and thrive best in cool, moist situations. They begin flowering in May and continue for several weeks. We offer the following most desirable varieties.

Aoigata. Single; white, purple-striped; upper petals violet.

Araragai. Double; velvet-blue, center yellow.

Gekka-no-Nami. Large-flowering; double; white.

Iso-no-Nami. Extra large-flowering; white, striped blue; upper petals blue.

Kuro-kumo. Large-flowering; double; blue, center yellow; dwarf.

Oku-Banri. Single; white, suffused blue.

Shigu-no-Uranami. Double; large-flowering; violet-blue, veined white, center yellow.

Sueren. Double; violet-blue, center white.

Zama-no-mori. Double; violet-red margins, center yellow.

Prices:	Each	100
Strong plants—1-year.....	\$ 0.15	\$12.00
Strong plants—2-year.....	0.35	30.00



Yucca Filamentosa (Adams Needle)

Perennials, continued

HIBISCUS Meehan's Mallow Marvels. Improved and valuable hardy form of the native herbaceous Rose-Mallows. They bloom from June until fall. The plants grow as high as 5 to 6 feet and the flowers, which are produced in great profusion, measure as much as 9 inches across. We offer white, pink and red-flowering forms.

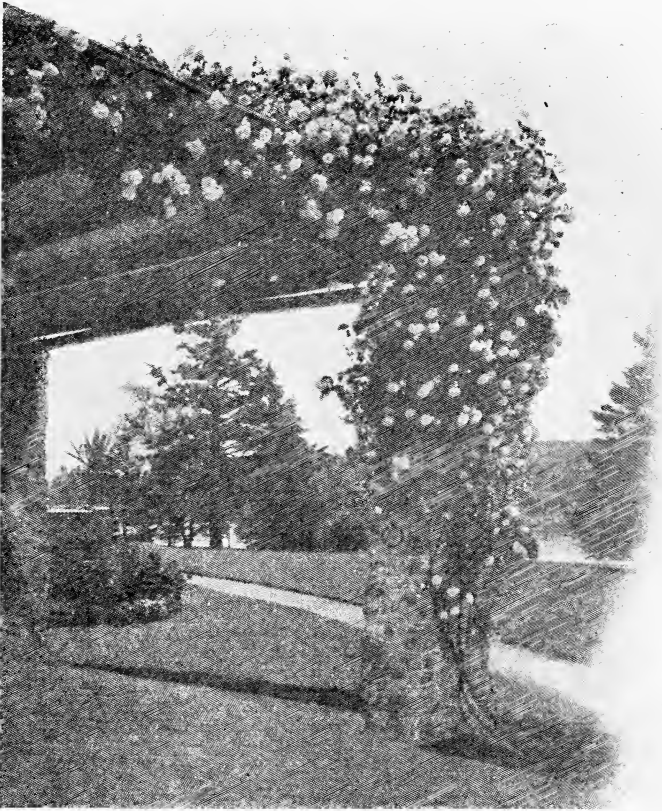
Prices:	Each	100
Strong roots.....	\$ 0.35	\$ 25.00

PAEONIA Sinensis. Peonies. The Peonies are of easy culture, thriving in any good ordinary garden soil. For best results Peonies should be planted in the fall. We offer a nice collection in various mixed colors. White, pink and red.

Prices:	Each	100
Strong plants.....	\$ 0.50	\$ 40.00

TRITOMA Uvaria. Red-hot Poker. Torch Lily. Extremely showy plants, with grass-like leaves 2 to 3 feet long. Flowers tubular, about an inch long, massed in tall spikes borne well above the foliage. The upper flowers are bright red, the lower ones are yellow.

Prices:	Each	100
Strong plants.....	\$ 0.25	\$ 20.00



Landscape Department

No matter how large or how small one's place may be, whether it is a small back yard or an estate of acres, its planting can best be done according to a plan. Just as the sculptor sees the finished statue in a block of marble, so the landscape gardener sees, with the same kind of sight, the undeveloped beauties of every tract of land. It is an easy matter to plant a tree or a shrub, but it is not so easy to set them in their proper positions in relation to surrounding objects and for the effect they are intended to create.

We have, therefore, added to our organization a fully equipped landscape department in charge of a qualified expert. It is the business of that department to furnish our patrons with suggestions for the proper use of the stock we supply. Every place has its own problem, upon the proper solution of which depends the success or failure of the planting. Our men are trained to give satisfactory answers to these problems, and this service is rendered free of charge, except where the planting is very extensive or where it is necessary to send our men to study the problem on the spot. For this service a charge is made only to cover expenses.

Suggestions for proper planting of smaller places will be cheerfully furnished upon the receipt of a diagram of the place, showing its size, location of buildings, points of the compass and, if possible, the nature of the soil.

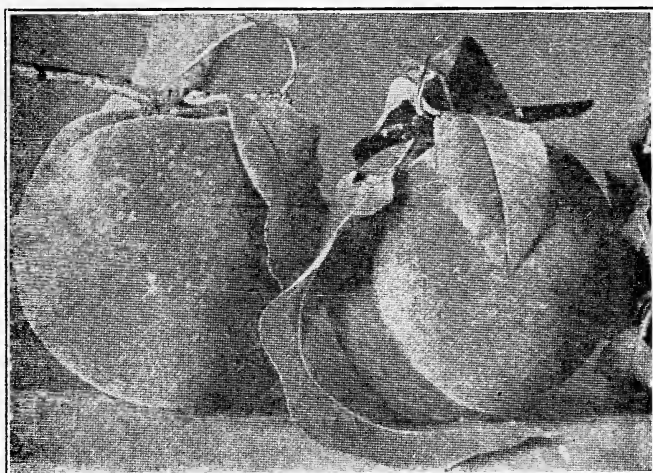


Beautifying Your Home Grounds Pays Big Dividends

There is a strong economic side to beautifying the home grounds, the sight of which must not be lost. A prominent professor of landscape gardening sums it up in this way:

“Of course, you do not expect to make money out of your home—you expect to live in it—but the day will come when you or your children will wish to sell part or all of your property. And the buyer will look at everything you have done from the cold, unsympathetic viewpoint of hard-cash value. The man of wealth who indulges every personal whim, and makes an eccentric place, will lose a lot of money. On the other hand, if you leave your place bare, it may be absolutely unsalable when the time of need comes, or you will get less than it is worth. But if it is sensibly planted, you can get a bigger profit for the money you put into trees and shrubs than for the same money spent on house or barn or hogs. Then old trees, that cost you nothing to plant, may bring you a millionaire buyer. Ten dollars spent on shrubs and vines planted against the foundation of your house may add \$100 to its cash value. It may be much more important to spend \$100 on a bathroom, but for one person who sees the \$100 you spend on plumbing or interior decoration, there are thousands of passers-by who see the \$10 spent in your front yard.”

To our mind this sums up the entire question and we refer it to our patrons as a most practical side of beautifying the home grounds.



Fruit Trees

PEARS

Bartlett. Summer; golden-yellow.

Garber. Fall; yellow.

Kieffer. Fruit large; skin yellow with a light vermillion cheek; flesh-yellow, very juicy. Matures from September to October.

Le Conte. Fall.

Seckel. Fall. Small, very sweet.

Prices:	Each	100
5 to 6 ft.....	\$ 0.60	\$ 50.00

PEACHES

Belle of Georgia. Ripens in July.

Carman. Ripens in June.

Elberta. Ripens in July.

Greensboro. Ripens in June.

Hiley. Ripens in June and July.

Mayflower. Also called Neva-Miss and Early Wonder. Ripens in May and June.

Salway. Ripens in August.

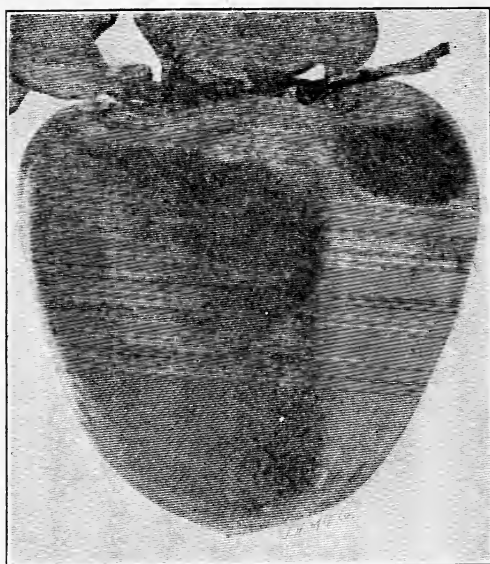
Prices:	Each	10
3 to 4 ft.....	\$ 0.30	\$ 2.75
4 to 5 ft.....	0.40	3.50
5 to 6 ft.....	0.50	4.50

FIGS

Prices	Each
2-year strong.....	\$ 0.75
1-year strong.....	0.50

PECANS

Frotcher.	Schley.	Stuart.	Van Deman.
Prices:		Each	10
2 to 3 ft.....		\$ 0.80	\$ 7.50
3 to 4 ft.....		1.00	9.00
4 to 5 ft.....		1.25	12.00
5 to 6 ft.....		1.75	16.00



Japanese Persimmon

PLUMS

Abundance. Medium to large; red to purplish-red.
 Prices: Each 10
 4 to 5 ft.....\$ 0.75 \$ 7.00

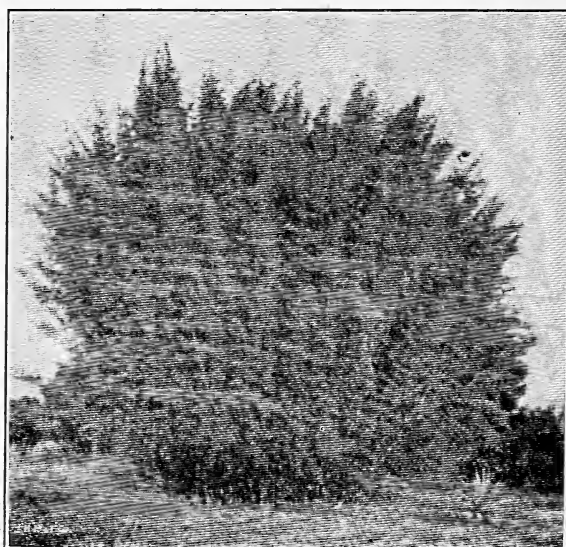
GRAPES

Bunch Grapes

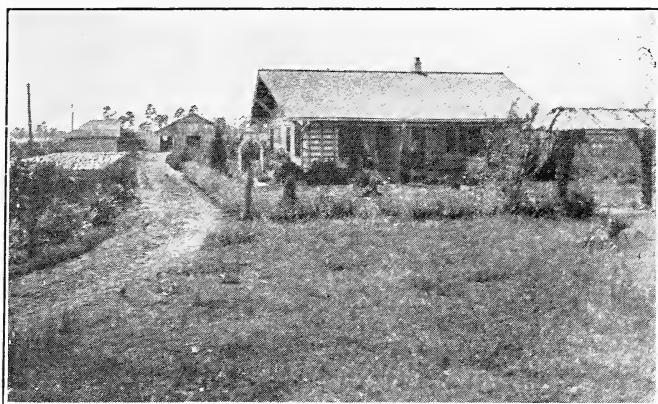
Brighton.	Catawba.	Concord.	Delaware.
	Moore's Early.	Niagara.	
	Prices:	Each	10
	Strong plants.....	\$ 0.35	\$ 3.00

Muscadine Grapes

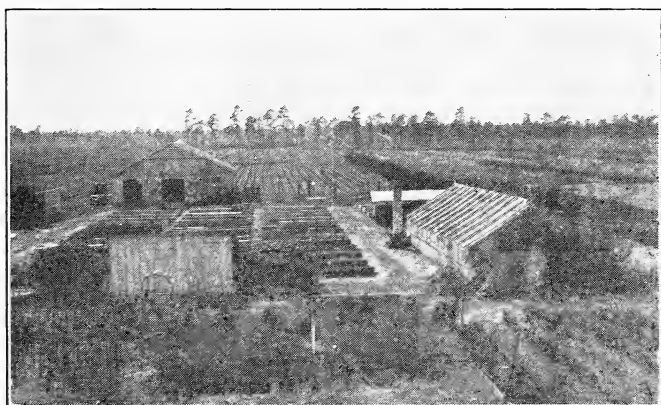
Scuppernong.	Flowers.	James.	Thomas.
	Prices:	Each	10
	Strong plants.....	\$ 0.60	\$ 5.00



Bambusa (see page 39)



Entrance to the Audubon Nursery



General view of Audubon Nursery

INDEX

Abelia.....	13, 40
Acer.....	2, 6
Althea.....	6, 7
Ampelopsis.....	36
Anise.....	16
Arborvitae.....	23, 24, 31-35
Arundinaria.....	39
Ash.....	3
Aucuba.....	13
Azalea.....	7, 13, 14
Bamboos and Grasses.....	39, 40
Bambusa.....	39
Banana Shrub.....	17
Berberis.....	14
Biota.....	23, 24
Bottle Brush.....	18
Box Tree.....	14
Boxwood.....	41
Bridal Wreath.....	11
Budleya.....	7, 8
Butterfly.....	7, 8
Calicanthus.....	8
Camphor Tree.....	14, 15
Cape Jasmine.....	16
Catalpa.....	3
Cedar.....	25-27
Cephalotaxus.....	25
Cercis.....	3
Chamaerops.....	22
Chamaecyparis.....	25
Cinnamonum.....	14, 15
Clematis.....	37
Cleyera.....	15
Cocos.....	22
Cortaderia.....	40
Cryptomeria.....	25
Cupressus.....	25
Cypress.....	29-31
Deciduous Trees.....	2,-5
Deutzia.....	8
Elder Box.....	2
Eleagnus.....	36
Evergreen, Broad-Leaved.....	13-21
Evergreens, Coniferous.....	23-35
Evonymus.....	15,36
Figs.....	51
Forsythia.....	8, 9
Fraxinus.....	3
Fruit Trees.....	51, 52
Gardenia.....	16
Gold Dust Tree.....	13
Golden Bell.....	8, 9
Gelsemium.....	37
Grapes.....	52
Grass, Pampas.....	39, 40
Gum, Sweet.....	3
Gynerium.....	39, 40
Hedges.....	40, 41
Hydrangea.....	9
Hypericum.....	9, 10
Ilex.....	16
Illicium.....	16
Iris.....	47
Ivy, Japanese or Boston.....	36
Jasmine.....	9, 37, 38
Judas Tree.....	3
Juniper.....	26-28

Juniperus.....	25-28
Lagerstroemia.....	10
Landscape Department.....	49
Laurel, English.....	16, 17
Laurustinus.....	21
Laurocerasus.....	16, 17
Ligustrum.....	17, 41
Lilac.....	12
Lily Torch.....	48
Liquidambar.....	3
Liriodendron.....	5
Lonicera.....	10
Magnolia.....	17
Mahonia.....	14
Marvels Meehan's Mallow.....	48
Melia.....	4
Metrosideros.....	18
Michelia.....	17
Mock Orange.....	11, 19
Myrtle, Crepe.....	10
Nandina.....	18
Nerium.....	18
Oak, Live.....	20
Oak, Pin.....	4
Oak, Water.....	—
Oak, Willow.....	5
Olea.....	18
Oleander.....	18
Olive, Sweet.....	18
Osmanthus.....	18
Paeonia.....	48
Palms.....	21, 22
Peaches.....	51
Pears.....	51
Pecans.....	51
Peonies.....	48
Perennials.....	47, 48
Philadelphus.....	11
Picea.....	28
Pine.....	29
Pinus.....	29
Pittosporum.....	19, 41
Plane.....	5
Platanus.....	5
Plums.....	52
Poplar.....	4
Privet.....	17, 41
Prunus.....	19
Quercus.....	4, 5, 20
Red Bud Tree.....	3
Red-Hot-Poker.....	48
Retinosporus.....	29-31
Rhuscus.....	20
Rose of Sharon.....	6, 7, 41
Roses.....	41-46
Salix.....	5
Shrubs, Deciduous.....	6-12
Snow Garland.....	11, 12, 41
Spirea.....	11, 12, 41
Squarosa.....	30, 31
St. John's-Wort.....	9, 10
Spruce, Norway.....	28
Sweet Shrub.....	8
Syringa.....	12
Syringa, Sweet.....	11
Thuja.....	31-35
Trachycarpus.....	22
Trees, Deciduous.....	2-5
Tritoma.....	48
Torch Lily.....	48

Tulip Tree.....	5
Umbrella Tree, Texas.....	4
Viburnum.....	20, 21
Vines and Climbers.....	36-38
Weigelia.....	12
Willow.....	5
Wisteria.....	38
Youpon.....	16
Yew.....	25

This catalogue is an abridged list of the plants at our nursery. Quotations gladly furnished upon any plant not listed in this handbook

MEMBER
SOUTHERN NURSERYMEN'S
ASSOCIATION

PRINTED BY
WILMINGTON PRINTING COMPANY
WILMINGTON, N. C.

*Choice Ornamental Trees
Shrubs and Plants*



AUDUBON NURSERY
WILMINGTON, N. C.