

## **Historic, Archive Document**

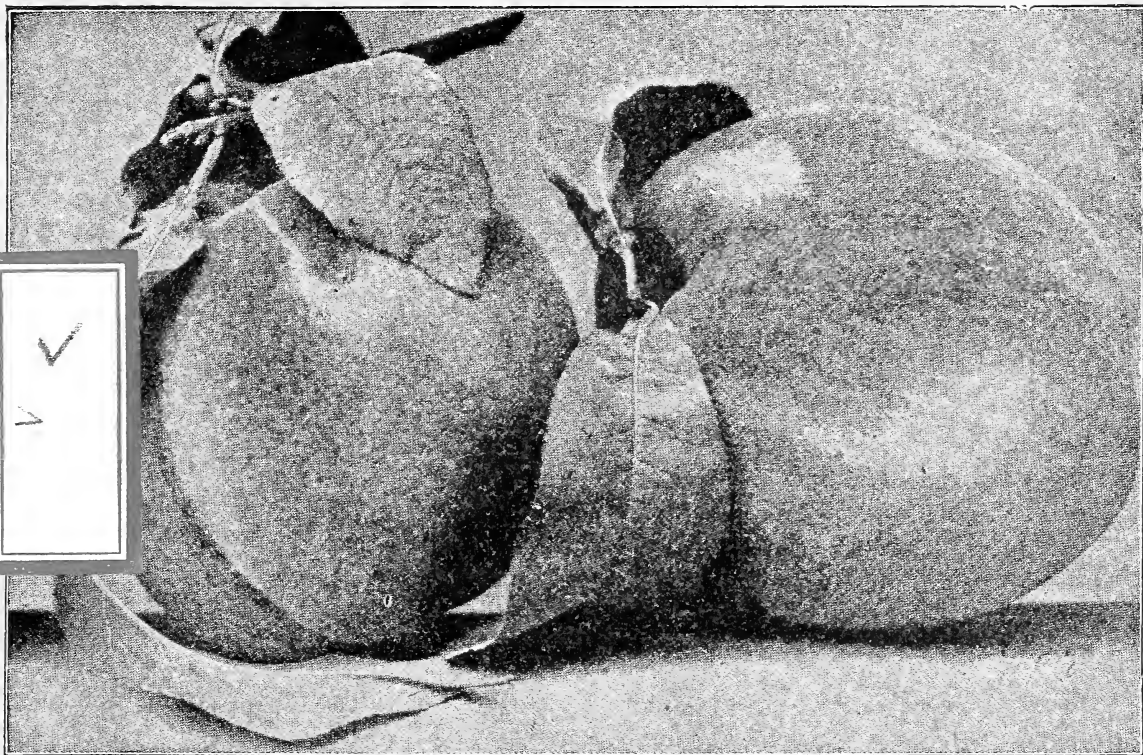
Do not assume content reflects current scientific knowledge, policies, or practices.



LIBRARY  
JAN 6 1924  
The University of Michigan

# ALLEN'S

## Catalog 1922



BEERS SMOCK

**Seeds • Fruits • Trees  
and Vines**

Allen's Nurseries & Seed House, Geneva, O

# Allen's Nurseries and Seed House

## TO OUR PATRONS

Dear Friends:

We wish to thank you, our customers of 1921 and former years, for your liberal patronage.

We trust that we satisfied most of you last season and that you will be with us again this year. It is our aim each year to send out better graded stock and to satisfy all, as we realize that satisfaction is our best advertisement.

POST OFFICE, GENEVA, OHIO  
TELEPHONE, GENEVA, OHIO  
TELEGRAPH, GENEVA, OHIO

SHIPPING AND RECEIVING STATION,  
SAYBROOK, OHIO.  
STOP 61, C. P. & A. ELECTRIC R. R. is at  
north end of our Nursery, between Geneva  
and Ashtabula, Ohio.

## INFORMATION—READ CAREFULLY

**No. 1—True to Name—**All stock will be labeled true to name. We exercise great care in filling orders, but we all make mistakes. Upon proper proof where stock is not true to name it is mutually agreed and understood between us and the purchaser, that we will not be held liable for any greater amount than the purchase price of the stock.

**No. 2—Inspection—**A Certificate of Nursery Inspection will accompany each shipment, showing that the stock is healthy and free from disease.

**No. 3—**We commence shipping in the spring about the first of April and in the fall about October 15.

**No. 4—**If you have a neighbor who would like our price list send us his address.

**No. 5—**Our terms are cash.

**No. 6—**Send money by draft, express money order, post office money order or by registered letter.

**No. 7—Orders—**In ordering be sure to write your name and address plainly, giving name of post office, express office and railroad.

Purchaser pays transportation unless otherwise noted. We deliver all goods to railroads, free.

### DELAYS IN FORWARDING—

**No. 8—**All articles are at the risk of the purchaser after being delivered to

forwarders. We will not be responsible for any loss or delay that may occur through the **negligence of forwarders or Horticultural Inspectors.** We will use every means possible to secure prompt delivery, but are not liable for delays in transit; and our responsibility will cease on delivery of goods in good order to the carrier companies, and the **Remedy for Loss** must lay between the Buyer and Carrier Companies, but in case of loss or delays we will gladly render any assistance possible.

### "LIBERTY BONDS"

We will take Liberty Bonds and Victory Bonds at Face Value in exchange for Trees, Plants and Garden Seeds at catalog prices.

**No. 9—Appreciation—** We are always pleased to have our friends get up neighborhood orders; it saves freight charges for all. We tie each person's order separate, placing their names on each bundle so there will be no bother or mistake in distributing.

### PEACH ORCHARDS

This famous Fruit has been neglected for the past ten years, and the orchards of the Central States are practically gone.

We have a fine block of well-rooted, straight, well-graded Peach trees in 4 sizes, 4 to 5 foot, 3 to 4 foot, 3 foot and 1½ to 2½ foot. If you are interested in planting a Peach Orchard write us.

**WE ARE MEMBERS OF OHIO FARM BUREAU**

## SEED DEPARTMENT

It was only a few years ago that we started this Department, but by honest handling of our customers and the sending out of nothing but the freshest of Seeds and those that have been Tested by one of the Firm, and also our fair and square system of selling by weight only instead of the "Hold Up Game" of Package and Pint, and by so doing our Seed Department has become a tremendous business by itself. We have also made it a point to send out all Seed orders within a few days from the day we received your order; in other words you are sure of Promptness in this Department, and we wish you to take into consideration that we pay the Postage to Your Door and that while we do not use as fancy Packages as some (which you pay for as a rule) that the Seeds inside the Packages are of the finest True to Type, Sure to Grow kind. We hope for your Seed business this year and there is no order too small for us to give the greatest care to, AND WE GIVE ONE PRIZE PACKET WITH EVERY SEED ORDER. If there are any varieties or any quantity we do not list, write us and we will get same for you.

## TREES BY MAIL POSTPAID

Again last season (1921) our demand for this sized tree was greater than our supply. These trees are 3 to 4 ft. tall, are selected specially for our Mail Order Trade. They are healthy, thrifty, well rooted and strictly straight, well-grown trees. They have given good satisfaction for the past 10 years and we believe they will please you.

They come postpaid to your door thus saving transportation, insuring speedy delivery, and we GUARANTEE their safe arrival.

Prices of these trees by mail are as follows: Apple at 25c each; Peach at 20c each; Plum, Pear, Cherry and Quince at 40c each.

We have taken special pains in selecting our Peach and Apple for this trade and we will say these are as nice trees as can be purchased anywhere. These trees are just the thing for your home Fruit Garden and we know they will please you.

## MAKE MONEY IN FRUIT

In these discouraging times when Farmers' Agricultural Crops are selling below actual cost of production we all turn to the question, what shall we raise for profit? Stop and think, hasn't there in the past three years been more money made in Fruit than any other Agricultural pursuit, and there will be in the next ten years also. Take this season of bad financial conditions and lack of money in the cities. Apples sold at \$3 per bushel; Peaches at \$3.50 per bushel; Raspberries at 25c per quart; Strawberries at 15c per quart; Grapes at \$4 per bushel. The reason is that the Orchard and Fruit Farms of today are insufficient to cope with the ever increasing population and the development of the big cities. And this business is only in its infancy—Go ahead—Don't wait.

## PEOPLE SHOULD PLANT FRUIT

We have reduced prices this season as much and on as many articles as we possibly could. Labor and packing materials have been reduced some, thus we are able to lower the prices on part of our stock. Apples and Peach Trees have been reduced somewhat and also is this true of Berry Plants and Grape Vines. We think everyone should have their own Orchard or Vineyard. Much better have these healthful fruits than to have to buy medicine, or to have your children eating apples, peaches and grapes at home peaceably than to be boy-like helping themselves from the neighbor who has been far-sighted enough to put out an orchard.

## WINTER TIME WORK

Do not wait until your busy time in the Spring or when weather begins to make you think of planting things and watching them grow, but sit down in the long evenings of the Winter time when you have lots of time on your hands, and give the picking out of what seeds and trees you wish to plant the proper amount of time. You will thus, pick the varieties carefully and perhaps save yourself money; and by getting your order in at this time you will insure yourself in getting what you want and also will get more prompt shipment in the spring, as we always, where possible, ship orders in rotation as they come in. Get busy. Don't put off work until the last.

## "CORN BORER"

This disease does not effect us from shipping into any state, any kind of shelled Sweet, Pop or Field Corns.

## ASPARAGUS

Prices on all varieties,  $\frac{1}{2}$  oz. 5c.  $\frac{1}{4}$  lb. 20c, 1 lb. 60c.

**Columbia Mammoth White**—Pure white tips, fine, keeps well.

**Conovers Colossal**—A great old standard sort, of rapid growth.

**Palmetto**—Lighter in color, large and productive, of good quality.

## BEANS

Prices on all Beans unless otherwise mentioned,  $\frac{1}{4}$  lb. 10c,  $\frac{1}{2}$  lb. 15c, 1 lb. 25c, 1 pk. \$3.00.

Pecks and Bushels Prices by express, others postpaid.

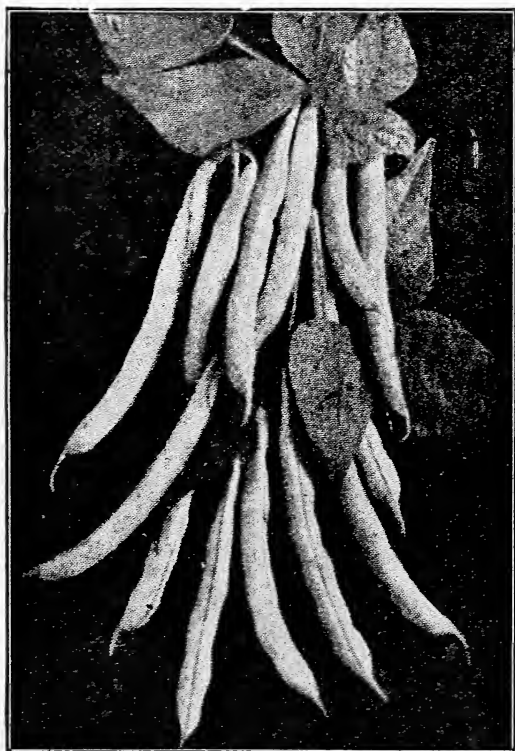
Our Bean Crop this season was the finest we ever grew and can quote prices on car lots. We will duplicate prices of any reliable Seed House.

When you purchase Beans by the pint you get 14 oz. We give you 1 lb. or 16 oz and pay the postage.

## WAX OR YELLOW PODDED

**Wardwell's Kidney Wax**—This gives general satisfaction everywhere and is one of the best and earliest. On account of its hardness it can be planted earlier than any other wax bean; yellow pods, fine flavored and brittle, best for home or market.

**Currier's Rust Proof**—A very good wax bean of rust resisting qualities, good keeper, fine shipper, generally satisfactory.



**Hodson Wax**—Long, creamy white pods, quite free from rust, later than others, good producer.

**Imperial Michigan Black Wax**—The best black wax and a great improvement over the old black wax, a heavy producer.

**Davis White Wax**—This bean is adapted alike for the canner, market gardener, shipper or amateur. The dry bean is large, kidney shaped and white in color, making it one of the best for cooking in a dry state. Pods are long, meaty, flat in shape and of a beautiful yellow color and fair quality.

## GREEN PODDED VARIETIES

**Extra Early Red Valentine**—Pods round and fleshy, almost stringless, hardy growers of a big crop, 10 days earlier than the old Valentines.

**Early Refuge**—Very productive even in a dry season, extra long pods of good quality.

**Burpee's Stringless**—This variety claims considerable attention in recent years, due to its fine combination of good qualities.

## BUSH LIMAS

**Burpee's Improved Bush Lima**—This is a good early one, pods 5 to 6 inches long and full of beans of finest quality.

**Henderson's Bush Lima**—A good one of excellent qualities.

**Dreer's Bush Lima**—Thick meated and fine. Good for table and market.

**New Wonder**—This gives the largest and best returns—a big crop from a small space—and is a decided improvement on the original type of Burpee's Bush Lima. The beans are of flat shape and fully equal in flavor to the famous Dreer's Bush Lima, so well and favorably known.

Write for prices of Beans by peck or bushel.

## POLE BEANS

**Early Golden Wax**—Grows 6 to 8 feet high and is loaded with fine wax colored pods of extra length, entirely stringless.

**Early Golden Cluster**—The finest of all the waxed podded pole beans, pods from 6 to 8 inches long, produces up to frost, entirely stringless and of excellent quality, good for baked beans when dry.

**Lazy Wife**—This bean is surely a wonder in production and lasting qualities, gives general satisfaction. Everyone who saw this bean last year was immensely pleased and there is sure to be a good trade on this bean.

**Kentucky Wonder**—This is surely stringless, pods 7 inches long, full of large fine beans, good dry or green, if gathered will continue to set a large crop until frost. Should be in everyone's garden.

**Giant French Wax**—A recent introduction from France. This wax has proved in U. S. to be all there is claimed for it. Giant in production of large pods 8 inches long of a beautiful transparent golden color, will grow 8 feet high and are simply loaded down with immense loads of pods filled with large quantities of fine beans. A basket filler of pods or shelled beans. We believe this bean will be planted more than all others as soon as better known. Demands good soil.

1 pt. Beans or Peas equal 14 oz. We quote you 1 lb. or 16 oz. You gain 2 oz.

## POLE LIMA

**King of the Garden Lima**—The old standard market and family sort. The vine begins to produce pods at the foot of the pole, and the bearing season continues until frost. Pods are large and well filled with beans of mammoth size.

**Ford's Pole Lima**—We have tried quite a few Pole Limas and find this one answers the place of all. Combines all the good qualities and has no bad ones.

## FIELD SEED BEANS

There were a great many Beans planted last season, but the early frost caught the large planters' beans when they were not ripe, consequently there is a shortage in the Bean Crop and high prices; in fact, it does not make any difference how big a crop is raised, the price will be high for a number of years.

Hand Picked Marrow, \$5.00 per bushel.

Hand Picked Navy, \$5.00 per bushel.

Hand Picked Kidney, \$6.00 per bushel.

Bags free.

Get our prices in car lots.

## BROCCOLI

**Early Purple Cape**—This plant is similar to Cauliflower in table use only it has a large purple head. Postpaid, 1-6 oz. 5c, 1 oz. 30c.

## BRUSSELS SPROUTS

**Improved Danish**—The only good one, sold under many different names. Plant seed in April. Postpaid, 1 oz. 10c, 1-3 oz. 5c.

## BEETS

Our Beet Seed is of the best carefully selected stock and true to name.

Prices on all Beets, ½ oz. 5c, 1 oz. 10c, ¼ lb. 20c, 1 lb. 75c.

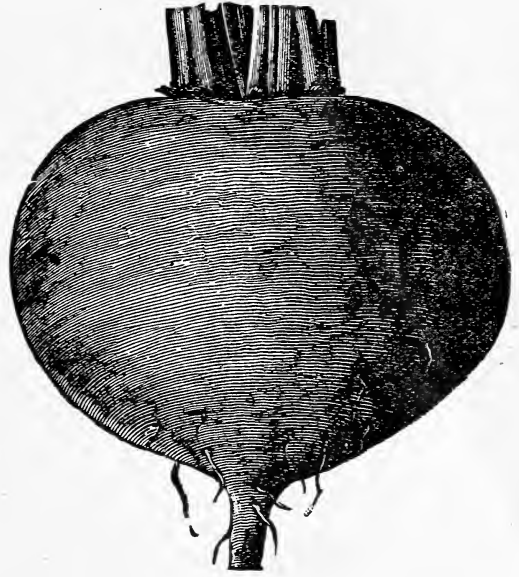
**Allen's Select**—Several years ago we noticed in a bed of Crosby's Egyptian, a beet that grew faster and larger, and matured earlier than the rest. After carefully testing and saving the seed, we became convinced that this beet is of, not only commercial value, but deserves trial by all lovers of beets. It is globular shape, dark red color, fine flavored and good keeper, ripens early, excellent for greens. We can spare only a limited quantity of this seed.

**Crosby's Egyptian Improved**—A quick grower, best quality, good for forcing in or out of doors, roundish, well colored, a favorite with market gardeners in this section. Our seed is fresh and will satisfy.

**Detroit Dark Red**—Small tops, can be planted closer than some, very sweet, fine for table use.

**Eclipse**—Early and smooth, roundish, good quality, can't be beat.

**Half Long Blood Improved**—This improved half long makes an excellent beet for those desiring this shape. One of the best for cooking and an easy grower.



**Crimson Globe Beet**

**Crimson Globe**—From England and still one of the best globe shaped beets. Can be marketed early.

## SWISS CHARD

**Lucullus**—This is so far the best, we feel that there is no use offering any others, the leaves and stalks are very tender, making best of greens.

¼ oz. 5c, 1 oz. 15c, ¼ lb. 40c, 1 lb. \$1.25.

## MANGEL WURTZEL

**Mammoth Long Red**—Grows to an immense size in good soil, has yields of 1,400 to 2,000 bu. per acre. Every farmer should grow ¼ acre of these for his hogs, chickens, cows or any stock. This is our largest seller and always satisfies.

½ oz. 5c, 1 oz. 10c, 1 lb. 60c.

**Golden Tankard**—A big cropper of long round shape, skin golden yellow, claimed to contain more sugar and richness than any other.

½ oz. 5c, 1 oz. 10c, 1 lb. 75c

## SUGAR BEETS

Our Sugar Beet Seed is grown by an expert in the heart of the sugar beet district of Michigan and we feel that no one can place a finer or fresher article, for near this price, on the market. He grows beets for the sugar factory himself and knows the necessity of good, pure seed.

**Klein Wanz Leban**—The most cultivated and probably the best heavy yielder.

½ oz. 5c, 1 oz. 10c, ¼ lb. 25c, 1 lb. 75c

**Lane's Imperial**—An improved French sugar, will yield 30 to 40 tons per acre in good soil, perfect shape and large size. Prices same.

½ oz. 5c, 1 oz. 10c, ¼ lb. 25c, 1 lb. 75c

Prices quoted are postage paid. Guaranteed safe arrival to your mail box.

## ALLEN'S GUARANTEED CABBAGES

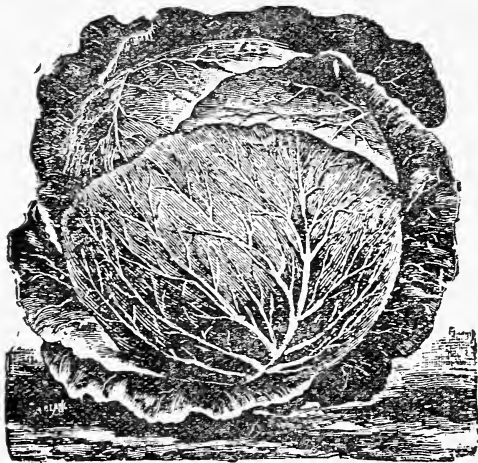
The cabbage is more largely grown than any other vegetable outside of the potato and experience has shown from our last season's results that it pays to sell nothing but the best seed. The demand for our cabbage seed began before this season's crop was harvested and scarcely a week goes over but that some of last year's cabbage seed customers ask to have saved or send them their supply.

Prices on all Cabbages,  $\frac{1}{4}$  oz. 5c, 1 oz. 20c,  $\frac{1}{4}$  lb. 50c.

**Copenhagen Market**—Here is an early, round headed cabbage equaling Jersey Wakefield for earliness, light green leaves of remarkable solid head that will mature about the same time. This is just what market gardeners are after.

**Hauser**—This weighs from 10 to 12 pounds and is the king of cabbages. If you have never planted this kind, better give it a trial.

**Early Jersey Wakefield**—From selected stock. This is a market favorite as well as fine early cabbage for summer use, grows quickly and cooks tender.



**Danish Ball Head**

**Danish Ball Head**—The heads are of medium size to large, fine white color, thick meated and can be kept all winter to good advantage. One of the best market sorts.

**Early Flat Dutch**—One of the most desirable second early varieties, maturing a good flat head.

**Glory of Enkhuizen**—Has become a great favorite very quickly, early, round headed, dark green heads, of medium size, but of best quality.

**Lightning Express**—The earliest cabbage grown, will mature 10 days sooner, we believe, than any other cabbage. Better try this.

**Premium Flat Dutch**—Highly valued everywhere where cabbage is grown.

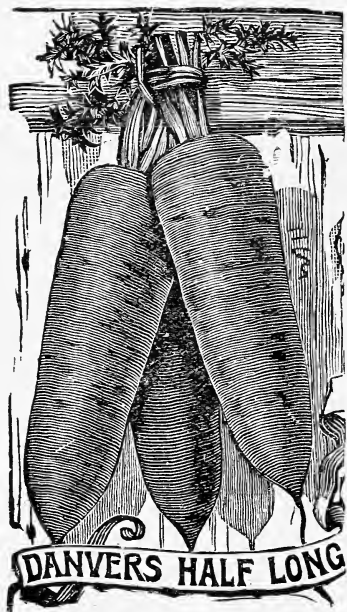
**Volga or Stonehead**—Larger than Danish Ball Head, matures more perfect cabbages on an acre of the poorest ground we ever saw, keeps longest in winter. We know you will like this cabbage.

**Old Standard Giant Red Ball Head**—Best red, similar to Danish Ball Head, but for color.

## CARROTS

Prices on all Carrots,  $\frac{1}{2}$  oz. 5c, 1 oz. 10c,  $\frac{1}{4}$  lb. 25c, 1 lb. 80c.

**Giant Intermediate**—A cross between Oxheart and Chantenay, beautiful in color and a money maker of best quality for farmer and market gardener alike. Length of Chantenay and size of Oxheart.



**Improved Danvers**—A standard market sort, fine for table use, a rich orange, 6 to 8 inches long,  $2\frac{1}{2}$  inches thick, very productive.

**Oxheart**—Forms a thick root, 3 to 4 inches in diameter, and produces large crops. Some report growing 800 bushels to the acre.

**Chantenay**—Like Oxheart, but larger, deep orange. We like this for table use, best half long variety.

**Improved Long Orange**—Standard late, immense producer of long carrots, good keeper, demands deep soil.

**Improved White Belgian**—This is the universal Stock Carrot of Belgium. Dairymen prize it for its great amount of saccharine, immensely productive. There is no vegetable grown that will produce the amount of feed and is so much relished by all kinds of stock. Good keeper.

Prices quoted are postage paid. Guaranteed safe arrival to your mail box.



**CELERY**

Nothing is harder to please a customer with than celery seed. To overcome this we are aiming to supply each variety to a perfect standard as our other "GUARANTEED SEEDS" and to those who have never used our seeds, we can only ask a trial on our celery seeds and let your future seed orders be governed by the results.

**Giant Pascal**—One of the best on the market. It produces perfect branched stalks, 2 ft. long, crisp and thick, blanches early and easily, fine keeper and shipper.

¼ oz. 10c, 1 oz. 15c, ¼ lb. 45c, 1 lb. \$1.45.

**White Plume**—A good early variety, easy to blanch.

¼ oz. 10c, 1 oz. 15c, ¼ lb. 50c, 1 lb. \$1.50

**Golden Self Blanching**—A great self-blanching variety, easily marketed and a great keeper, of fine quality and has just enough of the nutty flavor that makes celery popular for flavoring and eating.

⅛ oz. 10c, ½ oz. 30c, 1 oz. 50c.

**CAULIFLOWER**

Remember 1 oz. of Cauliflower seed makes 1,500 to 2,000 plants.

**Henderson's Extra Early**—Is the earliest—quality is best, tender, delicious when cooked, a sure header, like all Cauliflower it demands rich moist soil.

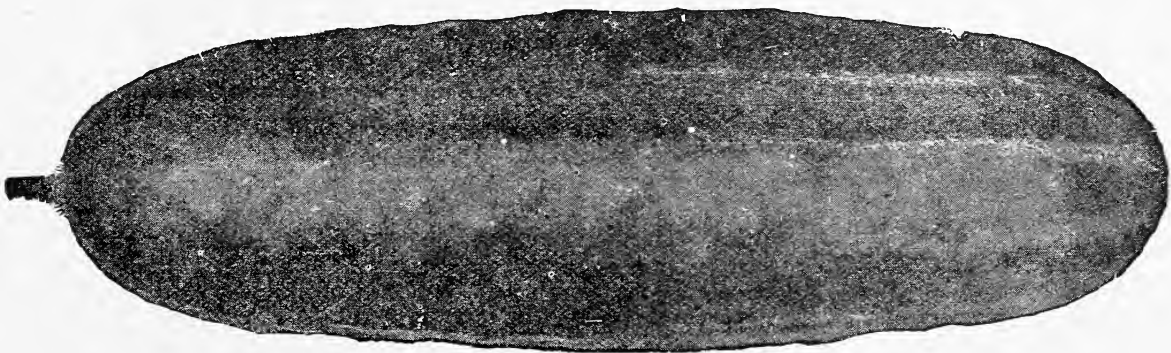
1-10 oz. 10c, ¼ oz. 25c.

**Velches Autumn Giant**—Very large and fine, producing as many pounds as any variety grown, grows where others fail.

1-10 oz. 10c, ¼ oz. 25c.

**Ford's White Sure Head**—An improved snowball of best quality, an excellent variety, good header in dry weather, and does well in all climates.

1-10 oz. 10c, ¼ oz. 25c.



**Early White Spine**

**CUCUMBERS**

On no seed can you gain more by buying our way than you can on Cucumber and other Vine Plants. You gain almost ten times as much by buying by the oz. and lb. as the old style pkg. There is a secret in keeping this seed so it will germinate and gain from 6 to 10 days in growing to maturity, and a trial of our seed, side by side with any other seed, will convince you.

Prices on all Cucumbers, ½ oz. 5c, ¼ lb. 25c, 1 lb. 90c.

**Fordhook Famous**—Strong grower and very productive, does not blight, makes good pickles, grows from 12 to 15 inches, very tender and crisp, practically spineless.

**Davis Perfect**—This is King of Cucumbers, largest, a heavy bearer of perfect salable fruit, becoming known everywhere and a general favorite.

**Early White Spine**—A good crisp one, early to mature, a general favorite as an early variety, widely planted for pickling factories, etc.

**Japanese Climbing**—This variety can be trellised and will not blight. An immense size, a novelty of the best quality, from 40 to 50 large fruits have been counted on one vine at a time.

**Chicago Pickling**—A big favorite at pickling works, grows the fruit in bunches, a regular mass of blossoms and pickles when gathered daily.

**Boston Pickler**—A good one, general favorite in the eastern markets, one of our best sellers.

**London Long Green**—This is far the best long green variety, 12 to 16 in. long, of a superior quality, the young fruit is best for pickling and when matured is fine for sweet pickles, a good slicer.

**Early Cyclone**—Not as large as we expected but earlier and a hard one to beat, a fine white spine.

**Short Green**—Similar to Long Green but matures earlier, shorter, great favorite for picklers and market.

**Arlington White Spine**—One of the most profitable of the white spine. It is the leading variety in many eastern markets.

**Perfection Ridge**—Introduced by us, we claim this variety will rival all other long green varieties when better known.

**Gherkin or Burr**—A small burr shaped variety, claimed to excel for pickling, every garden should have a pkg. of these.

Prices quoted are postage paid. Guaranteed safe arrival to your mail box.

**CORN SALAD**

Large round leaved, used during winter for lettuce, or cook like spinach.  $\frac{1}{2}$  oz. 5c.

**CRESS**

**Water Cress**—An improved Cress, grows in ponds and streams.  $\frac{1}{2}$  oz. 5c.

**Pepper Grass**—A rapid grower.  $\frac{1}{2}$  oz, 5c.

**CHICORY**

Resembles Parsnips, root when dried makes a good substitute for coffee, or when mixed, adds a mild, pleasant flavor.  $\frac{1}{2}$  oz. 5c.

**DANDELION**

Improved large leaved, an imported variety of large size, makes several times as many greens per plant as the common Dandelions. Will supply itself after first planting.  $\frac{1}{4}$  oz. 10c.

**EGG PLANT**

**New York Spineless**—Is a great improvement over the old time Egg Plant, deep purple, of large size, highest quality.

$\frac{1}{8}$  oz. 5c,  $\frac{1}{2}$  oz. 15c, oz. 30c,  $\frac{1}{4}$  lb. \$1.00.

**Black Beauty**—Early, large and productive, deep color and gives general satisfaction, easy to grow.

$\frac{1}{8}$  oz. 5c,  $\frac{1}{2}$  oz. 15c, oz. 30c,  $\frac{1}{4}$  lb. \$1.00.

**ENDIVE**

Endive is one of the best salads for Fall and Winter use.

**White or Moss Curled**—Fine quality, beautifully curled.  $\frac{1}{2}$  oz. 5c, 1 oz. 10c,  $\frac{1}{4}$  lb. 25c.

**Green Curled**—Very hardy, dark green.  $\frac{1}{2}$  oz. 5c, 1 oz. 10c,  $\frac{1}{4}$  lb. 25c.

**Broad Leaved Batavia (Escarolle)**— $\frac{1}{2}$  oz. 10c, 1 oz. 15c,  $\frac{1}{4}$  lb. 40c.

**KALE OR BORECOLE**

**Dwarf Green Curled Scotch**—The best variety. Improves in winter, green and beautiful.  $\frac{1}{2}$  oz. 5c.

**KOHL RABI OR  
TURNIP ROOTED CABBAGES**

**Early White Vienna**—Flesh white and tender, used before fully grown.  $\frac{1}{4}$  oz. 5c.

**Early Purple Vienna**—Same except color.  $\frac{1}{4}$  oz. 5c.

**LETTUCE**

We take great pains in having Lettuce Seed pure and all plants showing a difference are taken out. We believe that market gardeners will make no mistake in giving our seed a trial. It is fresh and ready to start like all of our "GUARANTEED SEEDS." The ordinary package of Lettuce contains  $\frac{1}{4}$  to 1-3 of an ounce. If you do not believe it go to your store and weigh one.

Price on all varieties of Lettuce,  $\frac{1}{2}$  oz. 5c, 1 oz. 10c,  $\frac{1}{4}$  lb. 25c, 1 lb. 75c.

**Iceberg**—Very solid, compact heads, fine flavor and crisp, one of the best headed varieties. From what we have seen of this we believe there is none better.

**Denver Market**—Light green, tender and crisp, leaves finely wrinkled, good flavor.

**May King**—One of the first to mature for the table and a good one.

**Hanson**—Probably the largest variety in cultivation, a rapid grower, crisp and tender, stands a long season without becoming tough.

**Big Boston**—Called Cabbage Lettuce, big head, fine flavor, and medium early. One of the best summer sorts.

**California Cream Butter**—Claimed to be the best flavored, and a good one.

**Black Seeded Simpson**—This is not a head lettuce, but spreads a mass of curled leaves around over the ground, it is excellent and a favorite with many.

**Grand Rapids, Ashtabula Strain**—This strain of lettuce has been famous in all the leading cities for its crisp appearance after its long shipments, rapid growth in greenhouse or hotbed makes it the highest sought after by all growers of lettuce. Our strain is 99 per cent. pure and is being used by leading greenhouse men.

**Early Prizehead**—This old standard variety is still the best of the large, thin-leaved, clustering sorts for the home garden but is not a good kind to ship a long distance as the leaves are so tender they are easily spoiled in handling, the leaves are very crimped, bright green tinged with brownish red and are exceedingly tender, crisp, and sweet, forming a large loose head.

**Big Boston, Selected Stock**—With gardeners who ship north, many of whom plant our seeds exclusively, this is the most popular; the best early large heading sort, a valuable first early. Plants are vigorous, mature heads of bright green leaves which are very tender.

**Simpson's Early Curled**—Does not head but forms a compact mass of curly leaves of yellowish-green color. It matures early, generally grown in cold frame and as an outside crop.

**Mixed Lettuce Seed** so as to give variety.

**LEEK**

**Broad American Flag**—Best.  $\frac{1}{2}$  oz. 5c.

**MUSTARD**

**Chinese or Giant Southern Curled**—Very large leaves, which often measure 15 in. Are ready for use in about 45 days from sowing. Plants will continue to yield until frost. Leaves are eaten boiled like spinach.

$\frac{1}{2}$  oz. 5c, 1 oz. 10c,  $\frac{1}{4}$  lb. 20c, 1 lb. 60c.

**White**—This is very popular, one of the best for general use, flavor mild and excellent.

$\frac{1}{2}$  oz. 5c, 1 oz. 8c,  $\frac{1}{4}$  lb. 20c, 1 lb. 50c.

**Brown**—Some people prefer this variety on account of its strong flavor, large leaved. Prices same as White.

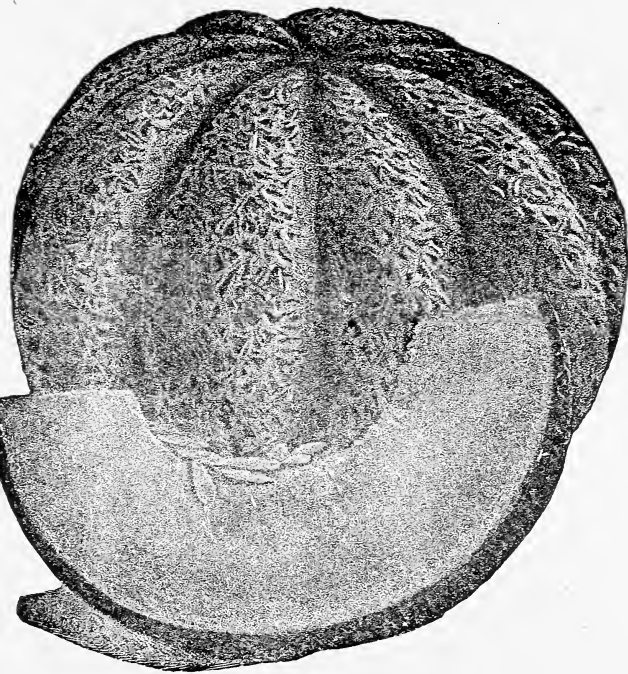
**MUSHROOMS**

**Pure Spawn**—Write for prices, stating quantities wanted.

**OKRA**

**White Velvet**—Very prolific, free from spines.  $\frac{1}{2}$  oz. 5c.

Prices quoted are postage paid. Guaranteed safe arrival to your mail box.



Osage

## MUSKMELONS

The general satisfaction that our Melon Seed gave last season again proves the superior quality of our Melon Seed. For years this Seed has stood the test of the most critical Planters in United States until today we are leader in this line.

Prices on all Muskmelons,  $\frac{1}{2}$  oz. 5c, 1 oz. 10c,  $\frac{1}{4}$  lb. 25c, 1 lb. 75c.

**Rocky Ford or Netted Gem**—Greatly improved over the Gem varieties, slightly oblong, very sweet and fine flavored, thick fleshed, early and sure. The kind you liked when a boy. Made Colorado famous for Muskmelons.

**Osage (Millers Cream)**—Dark green, egg shape, medium size, a thick, red salmon meat, thin skin and best of flavor.

**Emerald Gem**—Old standard, smooth skin, salmon color flesh, very sweet, hardy, thrifty and prolific.

**Early Hackensack**—Very early, green flesh, sweet, of good size, juicy, and small seed space, good market melon.

**Paul Rose**—Melons uniform, averaging about 5 inches through, nearly round, solid, seed cavity small, flesh rich salmon, good quality.

**Honey Dew**—Light cream in color, extra fine flavor, enormous size, many specimens measure 9 in. in diameter, weighing 10 pounds; nearly round in shape, ripens a week later than Rocky Ford, splendid shipper and keeper; properly cared for can be kept until Christmas. Every grower of melons should include this in their order.

**Hoodoo**—Flesh orange color, fine flavor, ripens in 70 days, exceedingly productive.

flesh firm, thin hard rind, splendid shipper. Try this for home and market gardens. Michigan growers get a higher price for it in city markets than any other melon.

## WATERMELONS

After trials of about 20 kinds we selected the following:

Prices on all varieties of Watermelon,  $\frac{1}{2}$  oz. 5c, 1 oz. 10c,  $\frac{1}{4}$  lb. 15c, 1 lb. 50c.

**Alabama Sweet**—The best long melon grown; fine for shipment, large, of oblong form, flesh bright red and delicious flavor seeds are white.

**Cole's Early**—Best home variety and near-by market, early and hardy, very sweet, red, rind slightly striped.

**Halbert Honey**—Another good home variety, with a dark green skin and crimson flesh, extra flavor, rather oblong, once tried it will always find a place in the garden.

**Keckler's Sweet**—A big melon, rank grower and simply covers the ground with fruit of fine market quality. It does well in northern climate and cannot be beaten for the medium crop.

**Tom Watson**—Although this variety matures early, it is the largest melon, 18 to 24 inches long and 10 to 12 inches thick and has a record of weighing from 40 to 50 pounds. A tough rind, making a good shipper. Its quality is as good as any melon grown. There is no mistake in "TOM WATSON."

**Sweet Heart**—A mottled variety, commanding the best market prices, a great favorite with local market gardeners and a good seller, excellent quality.

**Fordhook Early**—A good melon and ranks up with Cole's Early, only larger and better, long distance shipper.

**Seminole**—A beautiful melon, with dark and light green exterior, shape oblong, flesh bright crimson, crisp and deliciously sweet, ripens ahead of Kolb's Gem, Ironclad or Rattlesnake, a good shipper.

**Iceberg**—A favorite, oblong to nearly round, melons weigh from 30 to 50 pounds each, the rind, though thin, is tough and melons bear handling and shipping well. Flesh is bright red. A profitable market melon.

**Ice Cream**—White seeded fruit of medium size, nearly round, skin pale green, rind thin, flesh scarlet, solid, crisp, delicious.

**Boss**—Oblong, dark green, flesh deep scarlet, rind thin, intermediate.

**Allen's Ohio Favorite**—One of the biggest growers of melons in Ohio sent us 6 of these Melons in 1914, stating that we could save the seeds and try it on our land. We did and it produced more melons, better quality and ripened up better than any melon we have ever planted. We made a contract with the originator to introduce this melon. It is early, extra fine flavor, form rather long, color dark green, seeds dark, very productive, crisp and sweet. Try it.

**Mountain Sweet**—Fine flavor, medium early, rather long, an old favorite, always ripens, crisp and sweet.

Prices quoted are postage paid. Guaranteed safe arrival to your mail box.

## ONIONS

All varieties of Onions unless other wise noted,  $\frac{1}{4}$  oz. 10c; 1 oz. 30c;  $\frac{1}{4}$  lb. 50c; 1 lb. \$1.50.

All varieties are very scarce.

Our Onion Seed is already cleaned and dried ready for shipment and never have we had such fine looking seed. We grew this from the best selected Onions and we will guarantee you will not get any better. Can make a very attractive price on large lots or car load lots. Write and state number of lbs. wanted. This is one of our leaders.

**Allen's Select Ohio Yellow Globe Danvers**—This is the variety we make a speciality of. Hundreds of carloads of this variety are shipped from this section each season and are considered by buyers to be the truest Globe Danvers type, also the best keepers in any section of Ohio. We sell large quantities of this seed. While last season we sold all we had we believe we now have enough to supply all our customers. Write for prices on 10 to 100 lb. lots.

**Yellow Globe Danvers**—While this grade is not quite so true to type it is a very fine, clean seed and from all we can learn from large growers of onions that we have sold large quantities of seed claim they are perfectly satisfied and will want more of the same brand.

**Yellow Globe Southport**—A good mild onion, good for market.

**Red Globe Southport**—Same as above only red.

**Prize Taker**—The largest onion grown, weighing up to 6 lbs., perfectly round, light yellow, with pure white flesh, mild flavor, solid, is a profitable sort to grow, sells best.

**White Globe Southport**—A white globe onion, mild and pleasant.

**Giant Red**—Largest red onion, grown from selected stock, an early market variety, weighs as high as 5 lbs.

**Silver King**—Largest white variety, flat.

**White Silverskin**—The favorite white onion, flat shaped, flesh mild, ripens quite early, good keeper, fine for green onions and bunching for markets.

**Red Wethersfield**—Is the largest, heaviest yielding and best keeping of the red onions.

**Australian Brown**—Very early, good keeper, fine mild flavor, amber brown in color.

## ONION SETS

Last season we expected to have enough to supply all of our customers but the demand was so large we were sold out before

the season was half finished. We have a great many more this season and believe we will have enough for all our customers.

By mail, pint, 15c, quart, 30c.

By freight or express, not prepaid, per peck, \$1.00; bushel, \$3.50.

Red, yellow or white bottom sets, your choice.

## PARSNIPS

All Parsnips prices  $\frac{1}{2}$  oz. 5c,  $\frac{1}{4}$  lb. 20c. 1 lb. 75c.

**Hollow Crown (Long Smooth)**—Long, sweet, excellent quality, very productive.

**Improved Guernsey**—Thicker than the above and easier harvested, fine grained, well flavored.

**New Intermediate**—This new sort does not require the depth of soil for its cultivation that is necessary for the older varieties. Although equal in quality and flavor to the old sort, the roots of this variety are only one-half to two-thirds as long when grown under ordinary conditions. On heavy or clay soils, intermediate is especially valuable. During the past few years of drought, the Intermediate, of all varieties, yielded the heaviest, made the best looking roots, and was the easiest to harvest.

## PARSLEY

**Champion Moss Curled**—Very handsome curly leaves.  $\frac{1}{2}$  oz. 5c.

**Fern Leaved**—New improved, worth a trial.  $\frac{1}{2}$  oz. 5c.

## GARDEN PEAS

Choice Northern Grown and hand picked extra fine seeds. This seed is very scarce and a great many gardeners will be without their supply unless they order early.

We quote you by the pound which is 16 oz. Other firms quote you by the pint which is from 12 to 14 oz.

Prices on Garden Peas,  $\frac{1}{4}$  lb. 10c;  $\frac{1}{2}$  lb. 15c; 1 lb. 25c; 10 lbs. \$2.00.

**Premium Gem**—One of the best medium Ey wrinkled peas; has large full pods, grows 12 to 15 inches in height, is one of the best home sorts.

**Horsford's Market Garden**—One of the very best Peas, has very large pods, grows about 2 feet in height, is in fact highly recommended by everyone, is a medium season variety.

**Alaska**—Extremely early, grows from 20 to 28 inches high, matures in about 45 days after planting under favorable conditions, ripens the whole crop at once, fine quality, small pod but well filled with peas, best early.

Prices quoted are postage paid. Guaranteed safe arrival to your mail box.

**Champion of England**—Old time favorite, a sure cropper of extra sweet peas, an abundant bearer, wrinkled, claimed to still be the best late sort.

**American Wonder**—Is an extra early wrinkled pea, a dwarf of standard high quality. Vines 10 to 12 in. high, dwarfier than Nott's Excelsior, usually matures a day or two in advance of Nott's, develops firm, well filled pods. Very prolific, almost as heavy a yielder as Nott's Excelsior. This is a home and garden variety of highest class for succession planting each week, vines require no support or bushing during growth.

**Allen's Extra Early**—(New)—This is one of the earliest and best peas grown, splendid table qualities, very productive. If you want early peas you should give this a trial. We have placed the price low so as to give it a wider introduction.

**Nott's Excelsior**—A real standard variety of extra quality, both for home garden and market, a dwarf pea of 16 inches, the vines are covered with pods and claimed to be the sweetest pea grown.

**Laxtonia**—Called the dwarf Gradus, needs no support, it produces immense quantities of pods of large size filled with sweet flavored peas of fine quality and very tender.

**Thomas Laxton**—Very early, large pods, a rival to Gradus, best quality, one of the popular varieties with market gardeners.

**Gradus**—Almost a new pea, but the demand for this has increased until the supply never equals the demand. About 3 ft. tall, medium early, wrinkled, bears more peas than any other, just as sweet as the best and after all has no equal. Due to the demand a great many seedmen have been sending out most anything for this pea. Our stock is pure and prime, extra select.

**Telephone**—A tall grower bearing 14 to 16 large pods to the stalk, filled with large sweet, handsome wrinkled peas. This is a grand pea.

## PEPPER

### "GUARANTEED PEPPER SEED"

Prices on all varieties of Peppers,  $\frac{1}{8}$  oz. 5c, 1 oz. 30,  $\frac{1}{4}$  lb. \$1.00.

**Chinese Giant**—This is the largest, best and handsomest pepper of them all, grows from 12 to 15 inches in circumference, a mild pickler, heavy yielder, should be thinned to get best results in size.

**Ruby King**—A popular, mild flavored variety, growing 5 to 6 inches long, bright red.

**Ruby Giant**—A cross between the two above kinds combining the good merits of both, mild and large, brilliant scarlet.

**Neapolitan**—Earliest pepper, 4 inches long, runs as high as 50 to the stalk, a bright glossy red, a big improved old fashioned pepper.

**Sweet Mountain**—Large, sweet, extra good for stuffed pickles.

**Golden Queen**—Although a novelty, it is very handsome and good, worth trying.

## PUMPKINS

**King of Mammoth**—The Show Pumpkin grows to 200 lbs., salmon pink flesh, splendid keeper, known as the Giant, etc.  $\frac{1}{2}$  oz. 5c, 1 oz. 8c,  $\frac{1}{4}$  lb. 25c, 1 lb. 90c.

**Japanese Pie**—Seeds marked with Japanese letters, fine for pie, dry and sweet, ripens early, keeps well.  $\frac{1}{2}$  oz. 5c, 1 oz. 10c,  $\frac{1}{4}$  lb. 30c, 1 lb. \$1.00.

**Small Sugar**—The best pie pumpkin, small, almost solid, very sweet, very productive, excellent keeper.  $\frac{1}{2}$  oz. 5c, 1 oz. 10c,  $\frac{1}{4}$  lb. 20c, 1 lb. 75c.

**Connecticut Field**—Good one for stock or pies, a favorite for canneries and producer on account of hardiness, ease to grow and its immense crops. Have seen fields of this that you couldn't hardly step between the pumpkins.  $\frac{1}{2}$  oz. 5c, 1 oz. 10c,  $\frac{1}{4}$  lb. 20c, 1 lb. 50c.

**Winter Luxury**—Generally regarded as the finest quality pie pumpkin. Besides its high quality it is the best keeper of all. In size about 9 or 10 inches in diameter; its skin is beautiful deep orange yellow with a very close netting almost as russeted as a potato. This is one of the very best pie pumpkins, always brings first price on the market.  $\frac{1}{2}$  oz. 5c, 1 oz. 10c,  $\frac{1}{4}$  lb. 25c, 1 lb. 90c.

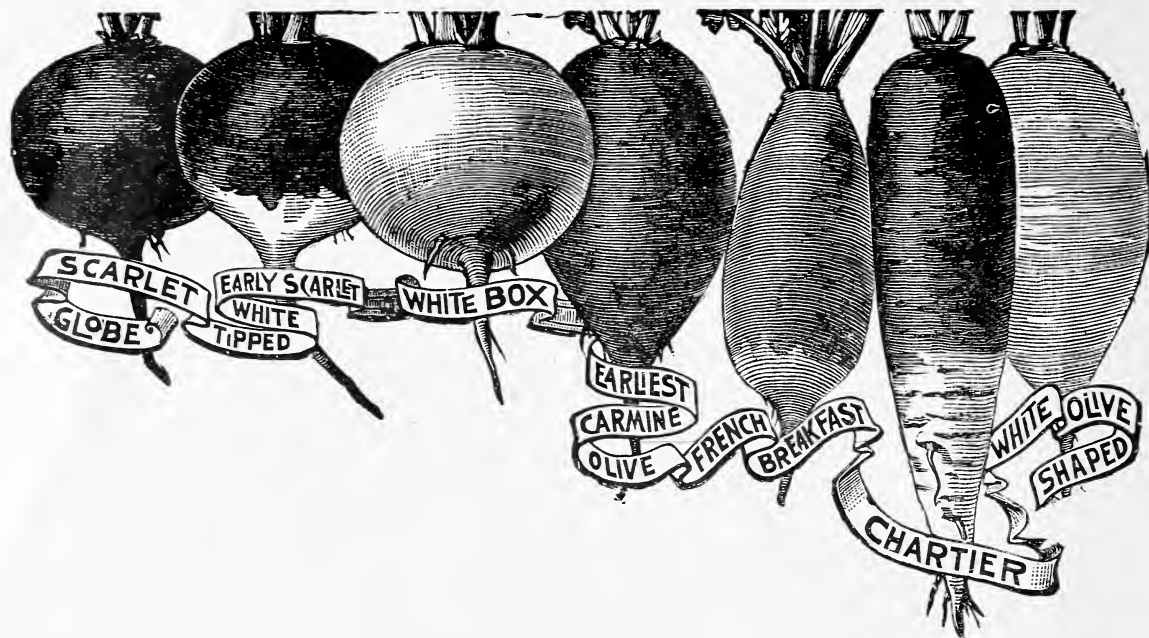
**Large Sweet Cheese**—A very large sized pumpkin, it is an excellent keeper and extra fine flavor, splendid for table, flat like a cheese, skin is orange red.  $\frac{1}{2}$  oz. 5c, 1 oz. 8c,  $\frac{1}{4}$  lb. 20c, 1 lb. 60c.

---

We need names of planters of seeds.  
Kindly send us same of the largest in  
your neighborhood.

---

1 pt. of peas or beans equal 14 oz. We quote you 1 lb. or 16 oz. You gain 2 oz.



## RADISH

We do not want you to compare our "GUARANTEED RADISH SEED" with the common seed sold from other sources. It is grown from carefully selected and transplanted stock, the kind that will satisfy our patrons. Our big present supply enables us to offer it at bargain prices. The ordinary store package contains 1-5 to 1-3 of an ounce. Stop and think of the number of cents you have lost this way during your life feeding the seed combine and help the outside firm up the ladder with an order.

Prices for all Radishes,  $\frac{1}{2}$  oz. 5c, 1 oz. 10c,  $\frac{1}{4}$  lb. 20c, 1 lb. 75c.

**Icele**—Pure white, long and crisp, very valuable for table, always a good seller, quite large.

**Early Scarlet Globe**—Early, and all around first class, small top, bright scarlet, well flavored.

**French Breakfast**—Fine oval shaped, white tipped, quick grower, good for home and market, very mild, crisp and tender, old favorite.

**Cincinnati Market**—6 to 7 inches long, straight and smooth, scarlet, crisp and fine flavored.

**Chartier**—Well known, long red, crisp and tender, holds its quality well.

**Philadelphia White Box**—One of the earliest and best, often matured in 18 days, pure white, one of the best flavored, can be planted close.

**Red Ball**—Small red round radish of best quality.

**Crystal Beauty**—Probably never was a long, white radish as near perfection in shape, mild in flavor, not pithy, matures quickly, sells very readily in city.

**White Olive Shaped**—A good one to mature in 15 to 18 days, oblong, crisp and tender, good for home or market.

**New Leafless**—A new variety of considerable prominence, but few leaves, deserving of a trial.

**Long Scarlet Short Top**—A standard variety of long radishes, straight and smooth; grows partly above ground, develops long roots that are tender, crisp and sweet. Fine for the home garden.

**Mixed Radish Seed**—Containing nearly all kinds.

## WINTER RADISH

**White Chinese Rose**—The roots grow from 4 to 5 inches long, are cylindrical, the largest at the bottom, blunt at both ends, skin deep rose, the flesh is white, good keeper, firm and crisp. Prices same.

## RHUBARB SEED

**Myatt's Victoria**—Largest, best, generally used. We are able to offer this very cheap due to the immense crop on hand.

1 oz. 5c,  $\frac{1}{4}$  lb. 20c, 1 lb. 50c.

## SALSIFY (Vegetable Oyster)

**Mammoth Sandwich Island**—The improved variety.

$\frac{1}{4}$  oz. 5c, 1 oz. 15c,  $\frac{1}{4}$  lb. 50c.

Prices quoted are postage paid. Guaranteed safe arrival to your mail box.

## SQUASH

Note what other firms ask for oz. and lbs., not pkgs.

### Summer Varieties

**Giant Summer Crookneck**—Golden yellow, best quality, 18 to 24 inches long, command an extra price in market.

½ oz. 5c, 1 oz. 8c, ¼ lb. 25c, 1 lb. 75c.

**Mammoth White Bush**—Scalloped, pure white, good, early and prolific.

½ oz. 5c, 1 oz. 8c, ¼ lb. 20c, 1 lb. 75c.

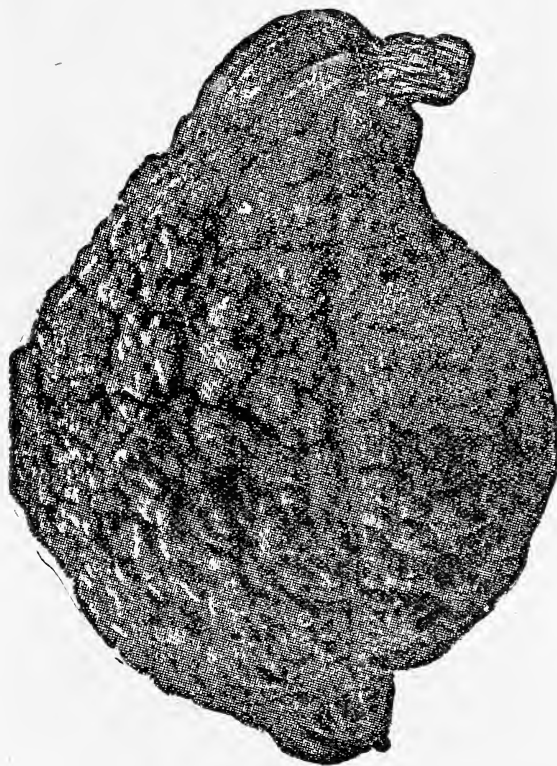
**Golden Custard**—Very similar to above kind only yellow.

½ oz. 5c, 1 oz. 8c, ¼ lb. 25c, 1 lb. 75c.

### Fall and Winter Varieties

**Delicious**—This variety comes from an experiment to improve on the old Hubbard. It cooks dry and tender with a rich flavor, skin dark green and flesh dark orange or brick color, ripens in early fall and lasts all winter; good for the market grower.

½ oz. 5c, 1 oz. 10c, ¼ lb. 25c, 1 lb. \$1.00.



Select Hubbard

**Select Hubbard**—Claims to produce more than the old Hubbard, very similar, really the best winter squash for use.

½ oz. 5c, 1 oz. 10c, ¼ lb. 30c, 1 lb. \$1.00.

**Boston Marrow**—Bright orange yellow oval thin skin, rich and fine grained, melting to the taste.

**Golden Hubbard**—Same as Select Hubbard, only golden color instead of green, slightly smaller and earlier.

½ oz. 5c, 1 oz. 10c, ¼ lb. 25c, 1 lb. \$1.00.

**Ford Hook**—Very productive, oblong, slightly ribbed, splendid flavor.

½ oz. 5c, 1 oz. 10c, ¼ lb. 25c, 1 lb. \$1.00.

**Mammoth Whale**—One of the largest squashes grown, used mostly for stock feeding and exhibition.

½ oz. 5c, 1 oz. 10c, ¼ lb. 35c, 1 lb. \$1.25.

## SUNFLOWER

**Mammoth Russian**—Very large heads, seeds striped and grey. ¼ lb. 8c, 1 lb. 20c, 5 lbs. postage not paid, 50c, 25 lbs. \$2.00.

## TOMATOES

After last season's success of filling large orders of "GUARANTEED TOMATO SEED," as well as small, we feel we cannot help but demand the attention of tomato growers everywhere who wish the best article on the market regardless of price. Tomato seed must be fresh, kept right, from moisture or heat. We offer only varieties found good in trials this season. Canning factories wishing large quantities, write for special prices.

**Bonny Best**—A very early sort, attractive in shape and color, the flesh is of the very solidest. Vines are vigorous and very productive. Color deep scarlet; excellent for home or market. ¼ oz. 5c, 1 oz. 20c.

**Improved Earliana (Sparks)**—A great favorite with us and the earliest variety, we believe, in existence. Smooth and productive, large, vigorous of vine, this will yield 500 to 600 bushels to the acre. We claim our Earliana will ripen from 6 to 10 days earlier than any other.

¼ oz. 5c, ½ oz. 10c, 1 oz. 20c, ¼ lb. 75c, 1 lb. \$2.50.

**June Pink**—In many, perhaps the greater number of markets a pink early tomato is the most desired; this is the earliest of the pink varieties, and is similar in habit to the famous Earliana. We have bred this to such fine smoothness of skin that in our strain growers for market find few rough fruits and in western markets where pink tomatoes only sell readily, this is a profit maker. The fruits are of fair size and good quality; vines ripen evenly, permitting quick harvesting.

¼ oz. 5c, ½ oz. 10c, 1 oz. 20c, ¼ lb. \$1.00, 1 lb. \$3.00.

**Chalk's Early Jewel**—A splendid all around kind, medium in season, uniform in size, of large fruit, very solid, bright red, used in local canning factory almost exclusively last season with fine results.

¼ oz. 5c, ½ oz. 10c, 1 oz. 20c, ¼ lb. 75c, 1 lb. \$2.50.

**Livingston's Coreless**—Late, without a core, splendid for main crop, deep red and productive.

¼ oz. 5c, ½ oz. 10c, 1 oz. 20c, ¼ lb. 75c, 1 lb. \$2.50.

**Pondarosa**—Very large and solid, few seeds, very handsome, dark rank foliage. Some will not use anything else.

¼ oz. 5c, ½ oz. 10c, 1 oz. 20c, ¼ lb. \$1.00, 1 lb. \$3.50.

**Enormous**—Probably largest, smooth and red with a glossy appearance, few seeds, almost solid, fine flavor, good keeper, market or home garden variety.

¼ oz. 5c, ½ oz. 10c, 1 oz. 20c, ¼ lb. \$1.00, 1 lb. \$3.50.

Prices quoted are postage paid. Guaranteed safe arrival to your mail box.

**Livingston's Globe**—Very desirable quality, round, ripens early, large, good slicer, perfect shape, very productive.

$\frac{1}{4}$  oz. 5c,  $\frac{1}{2}$  oz. 10c, 1 oz. 20c,  $\frac{1}{4}$  lb. 75c,  
1 lb. \$2.50.

**Yellow Wonder**—As large as any tomato, pure yellow.

$\frac{1}{4}$  oz. 5c,  $\frac{1}{2}$  oz. 10c, 1 oz. 20c,  $\frac{1}{4}$  lb. \$1.00,  
1 lb. \$3.50.

**Stone**—A main crop variety, hard to beat, heavy and firm, bright scarlet, keeps well in long shipments, does not crack or rot, no core.

$\frac{1}{4}$  oz. 5c,  $\frac{1}{2}$  oz. 10c, 1 oz. 20c,  $\frac{1}{4}$  lb. 60c,  
1 lb. \$2.00.

**John Baer**—Resembles in color and earliness the Bonny Best, comes to us with the highest praise from large market growers around Baltimore where it was first introduced. Everyone should try it.

$\frac{1}{4}$  oz. 10c, 1 oz. 30c,  $\frac{1}{4}$  lb. \$1.00, 1 lb. \$3.00.

**Red Rock**—Smooth and solid, very fine variety, color is clear red, flavor of the best, shipping qualities could not be better.

$\frac{1}{4}$  oz. 5c, 1 oz. 20c,  $\frac{1}{4}$  lb. 50c, 1 lb. \$2.00.

## SWEET CORN

Prices quoted include postage on pound and fractions.

Seed is very scarce and prices, unless otherwise noted, on all varieties,  $\frac{1}{4}$  lb. 10c,  $\frac{1}{2}$  lb. 15c, 1 lb. 20c, 10 lbs. \$1.75.

Larger quantities a matter of correspondence.

Our Seed Sweet Corn is carefully selected with both ends carefully taken off and only best ears saved, is dried and cared for so as to guarantee a perfect stand of uniform corn.

**Country Gentleman**—A well known and deserving old sort that has always been very popular, due to its large, compact ears of irregular rows.

**Stowell's Evergreen**—Known everywhere, an old one but still King of the latest, considering everything.

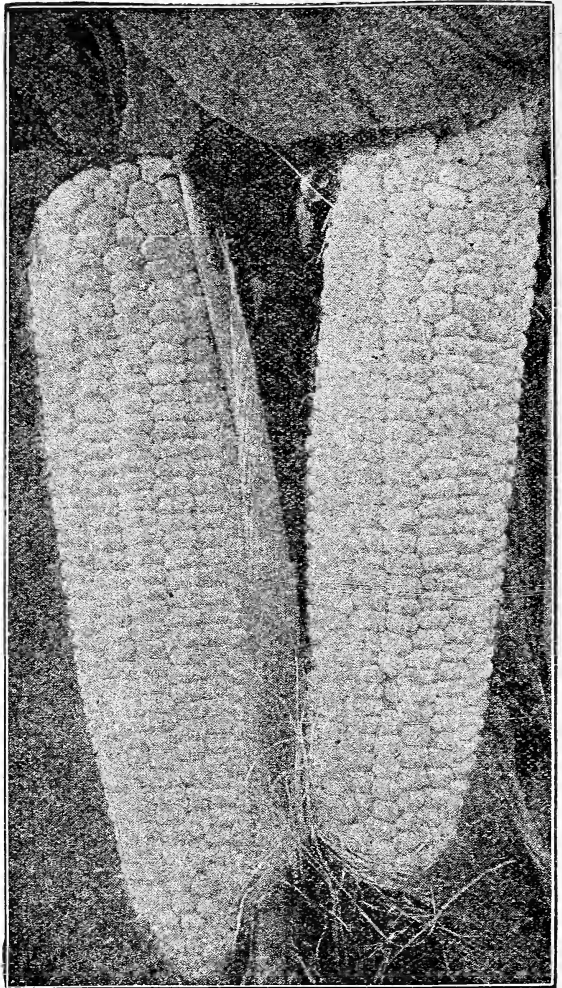
**White Evergreen**—Claimed to be improved Stowell's Evergreen.

**Kendall's Early Giant**—Ears are large and long with ten to twelve rows, corn pure white, medium early, has a long season.

**Crosby's Early**—Noted for its richness and sweetness, quite early and of good size, very often has several ears to the stalk.

**Golden Bantam**—This is a sweet corn of most exquisite quality, which when ready to use is of a bright golden yellow color. It looks rich and is rich and no mistake. It can be planted very early, as it is hardy as the Extra Early Adams. The small stalks can grow closely together in the row and will produce 2 or 3 ears each.

**Black Mexican**—This corn, when in condition for the table, cooks remarkably white but the ripe grain is black or bluish black. It is surpassed by none in tenderness and fine quality.



Allen's Choice

**Allen's Choice**—Or an improved Malakhoff which was brought to this country by the U. S. government from Russia, and was the earliest corn ever grown. Has been grown by a local market gardener and carefully selected by him until he has a distinct variety of the Malakhoff of his own. After careful inspection we have made arrangements to supply our trade with this corn calling it "ALLEN'S CHOICE." Not only the sweetest early corn but the largest early corn, better and earlier by far than Peep o' Day.

**Delues Golden Giant Sugar Corn**—The famous winner of many Horticultural prizes. This is no fake variety, it is exactly what the Gardener has been looking for. A Sweet Corn 3 to 6 days earlier than its parent Golden Bantam. Of more superior quality than Golden Bantam, will yield twice as much per acre as the Golden Bantam, larger eared and larger stalk, making it the most productive and the best yellow Sweet Corn in existence. We have purchased a limited quantity of this seed from the originator who stands back of the above description. This we offer in limited quantities as follows postage paid:  $\frac{1}{4}$  lb. 20c;  $\frac{1}{2}$  lb. 30c; 1 lb. 50c; 10 lbs \$4.00.

Prices quoted are postage paid. Guaranteed safe arrival to your mail box.



**Peep of Day**—This is a first class, extra early sweet corn, quality of the best, a small cob.

**Premo**—Medium early and probably one of the best sweet corns ever introduced. No corn ever gave better satisfaction than this variety.

## POP CORN

Prices on all varieties,  $\frac{1}{4}$  lb. 5c,  $\frac{1}{2}$  lb. 10c, 1 lb. 20c.

Write for prices on larger quantities.

**Queen's Golden**—Of beautiful yellow color and pops white, grows 6 ft. tall and a heavy yielder, several ears to the stalk.

**White Rice**—Common white pop corn known to all, good one.

**Red Beauty**—Similar to Golden Queen but red, runs from 3 to 4 ears to a stalk.

**Blue Beauty**—A blue pop corn that pops the whitest.

## TOBACCO

Any of the following will do well in the northern latitudes. It will surprise anyone trying to grow tobacco what a useful article for hen lice, and any other insects it is.

**Havana**—An imported article that does well here.

$\frac{1}{4}$  oz. 10c, 1 oz. 30c.

**Connecticut Seed Leaf**—Hardy, very popular.

$\frac{1}{4}$  oz. 10c, 1 oz. 30c.

**White Burley**—A large growing variety, excellently flavored.

$\frac{1}{4}$  oz. 10c, 1 oz. 30c.

## TURNIPS

Prices on all Turnips and Ruta Bagas,  $\frac{1}{2}$  oz. 5c, 1 oz. 8c,  $\frac{1}{4}$  lb. 20c, 1 lb. 60c.

**Purple Top Strap Leaf**—Better known than any other turnip and deserves its popularity, grows quickly and of a large size, brings the highest market price, due to its quality.

**Early White Flat Dutch Strap Leaf**—Fall use, pure white, good.

**Extra Early White Milan**—The earliest white turnip; you can make no mistake in this. Try it.

**Red Top Milan**—Earliest of all, red top, similar in quality to the one above.

**Gold Ball**—One of a yellow flesh, claimed to be richer and sweeter, good keeper.

**Cow Horn**—Good, long, white, rapid grower.

## RUTA BAGA

**Improved American**—Purple top, large, smooth, with small top, flesh yellow, an immense yielder.

**Improved Yellow Mammoth**—Large yellow sort, fine grained, and well flavored.

**White Sweet**—Best table variety, well flavored and a good producer.

## HERBS

### Sweet and Medicinal

No garden is complete without herbs for medicinal and culinary purposes. Cut when dry, just before they are in full bloom, dry quickly in the shade and pack closely in tight boxes.

**Anise**—Seeds aromatic and medicinal. Pkt. 5c, 1 oz. 10c.

**\*Balm**—Used for tea; medicinal. Pkt. 5c, 1 oz. 20c.

**\*Caraway**—Seeds used in cakes and candy. Pkt. 5c, 1 oz. 10c.

**Coriander**—Seeds used for confectionery. Pkt. 5c, 1 oz. 10c.

**Dill**—Seeds aromatic. Pkt. 5c, 1 oz. 10c.

**\*Fennel**—Sweet. Seeds aromatic. Pkt. 5c, 1 oz. 10c.

**Ginseng and Golden Seal**—Seeds and roots a matter of correspondence.

**Horehound**—Medicinal. Pkt. 5c, 1 oz. 25c.

**\*Lavender**—Aromatic, medicinal. Pkt. 5c, 1 oz. 15c.

**Marjoram**—Used for seasoning. Pkt. 5c, 1 oz. 12c.

**\*Rosemary**—Aromatic, seasoning.

**\*Sage**—Seasoning and medicinal. Pkt. 5c, 1 oz. 15c,  $\frac{1}{4}$  lb. 30c.

**Summer Savory**—Seasoning. Pkt. 5c, 1 oz. 20c.

**Sweet Basil**—Use, seasoning. Pkt. 5c, 1 oz. 15c.

**\*Tansy**—For medicinal use. Pkt. 5c, 1 oz. 20c.

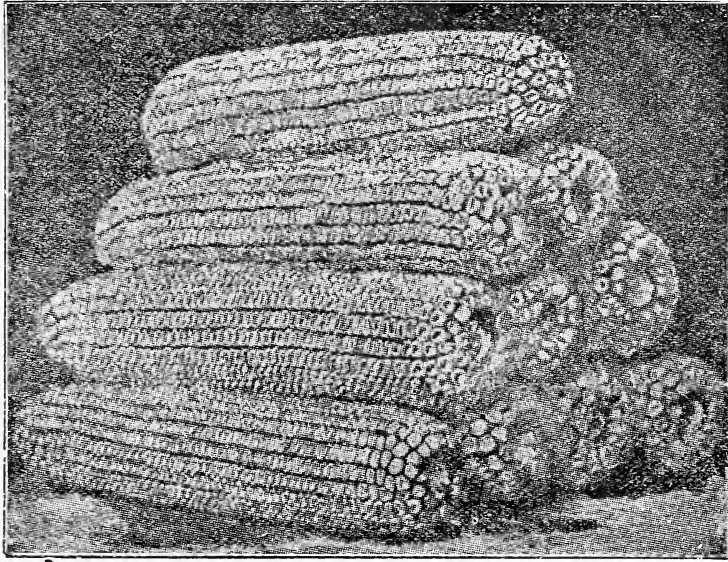
**\*Thyme**—Use, seasoning and medicinal. Pkt. 10c, 1 oz. 30c.

**\*Wormwood**—Medicinal. Pkt. 5c,  $\frac{1}{2}$  oz. 15c.

Those marked (\*) are perennial and when once established will remain for years with little care.

Prices quoted are postage paid. Guaranteed safe arrival to your mail box.

# GUARANTEED FARM SEEDS



**Pride of the North**

## SEED CORN

This season's crop of Seed Corn is very satisfactory and we quote you prices on same, if at time of planting our prices are higher than you can purchase elsewhere we would thank you for chance to quote prices on same in quantities up to carload lots. Our seed is grown by expert farmers on separate farms and from carefully selected seed.

Do not compare our Seed Corn with the inferior seed corn sold by merchants and millmen from the elevators.

Samples Free.

Prices on all Field Corns, 14 lbs. \$1.00, 56 lbs. \$2.50.

## FIELD CORN

By express or freight, bags free.

**Allen's Sure Ripe**—This corn is nothing particularly new but has been grown for years by some of the best farmers in North-

ern Ohio and this season has proved the good judgment of them that stick to this variety. No doubt you have seen a corn very similar. It has ears 8 to 10 inches, of a reddish tinge, medium sized cob, kernels quite long, quick starter, making extra fine fodder and gets ripe from 80 to 90 days from planting. The farmers who raise this kind are the only ones in this section who have nice hard corn fit to crib. If you raise only what corn you feed yourself we believe this is the most profitable corn for most farmers. We procured all that was grown on two large farms in Northern Ohio, near Lake Erie. We believe this Corn would have made good seed right from the field, but of course we have put it through the most improved system of drying seed corn.

**Early Butler**—A remarkable early corn of a reddish-yellow color, better than Pride of the North and matures in 75 to 80 days, with 7 to 8 foot stalks, small cob, deep kernels, matured the last five seasons in Northern Ohio in good shape.

**Early Yellow Dent**—A clear, early yellow corn, 80 days, ripens anywhere in an early frosty season, produces an immense crop of fine corn.

Write for prices on clover

**Gold Mine**—Longest kernels we ever had in this section, will produce far more pounds of corn to the bushel than any other corn grown, a beauty for color. A sample of this will impress you. Small cob, 100 to 110 days, stalks 8 to 10 feet.

**National Champion**—Another season only sends this corn to the head of the list as the best farmer's corn grown. The best reported yield this season was 137 9-10 bushels per acre. A winner of several prizes and still scarcely known outside of a few sections. We have had many highly flattering letters as to the result of last season's crops of the **National Champion**. The stalks are large, of dark green, with many broad leaves, the roots are large and strong. The ears are 8 to 12 inches, nicely finished to the end with 12 rows of deep, broad kernels. Any wishing a new corn will make no mistake in **National Champion**. Send for a sample.

**Pride of the North**—This corn is selling under almost any old name, but we claim our strain is pure as the original seed and still is the earliest yellow seed corn obtainable. In some sections of our country where the early frost cut the corn crop short, our **Pride of the North** ripened a good crop, a beautiful yellow, of medium size, deep kernel, no more than 90 days and often 75 days, stalks 6 to 8 feet, 7 to 9 inch ears.

**Early White Cap Yellow Dent**—A strong grower, claimed to do well on thin soil, takes 100 days, produces an abundance of fodder, stalks 7 to 8 feet, ears 7 to 10 inches.

**Improved Leaming**—A big corn, grown to harvest an immense crop of large yellow corn, with a good season. This is hard to beat, can be used for ensilage.

**Improved Long Yellow Flint**—Yellow, we believe this the best flint corn, extra long ear, ripens early, prices same as **Pride of the North**.

**Reid's Yellow Dent**—A great many farmers will not use anything else. Something like **Leaming**, but better and earlier, a large ear, deep kernel, 100 days.

## ENSILAGE CORN

Our Ensilage Corn this season matured very early on the Virginia Farms where it was grown for us under contract and we can assure you a good percentage of vitality.

Will be out of driers about February and advise placing orders at once, as same will be very scarce, as Southern farmers had no help to husk their corn before wet season there. Can quote special prices on large lots or carloads.

**Improved Old Virginia**—We quote this only. The demand in this section is for nothing else, it being superior to all others, much sweeter, earlier, better ears, a big milk maker, cattle eat it well when not put in silo. We advise trying this corn.

Per bushel, 56 lbs., \$3.00.

**Eureka**—This is a large stalk, claiming to

contain more sugar than many, also considerable grain. Per bu., 56 lbs. \$3.00.

**Cuban Giant**—The largest of all, the seed is uniform, matures more tons to the acre than any other. Per bu., 56 lbs. \$2.50.

**Red Cob**—Personally we have always favored this corn because of its immense crop of ears. The ensilage looks full of nice grain. Per bu., 56 lbs. \$3.00.

**Western Leaming**—We can furnish a big strain for ensilage. Per bu., 56 lbs. \$2.50.

## OATS

Price on all oats by express or freight.

**New Kherson Oats**—These New Oats were introduced from Russia by the U. S. Agricultural Department. After a few experiments it was shown that the New Kherson Oats were a hardy, vigorous variety. The straw grows short, bushy and stiff. They never rust, lodge or blight. In color they are slightly yellow, but give a bright, rich appearance. Our seed is plump and heavy ordinary wagon loads weighing seventy-five bushels.

Per peck, 8 lbs., 50c, per bu., 32 lbs. \$1.00.

**Banner**—After a thorough trial we feel that the claim of 80 to 100 bushels by weight is no over estimate. A sample of these oats will convince you it is the best grown. Smut proof.

Per peck, 8 lbs. 50c; per bu., 32 lbs. \$1.00.

**The Quaker**—This oat is claimed to be the result of careful breeding up of Swedish Select and other varieties in order to get a stiff stem to carry the immense load of grain that the new oats are producing. Claimed to produce 100 bu. per acre, mature quickly, extra weight. We predict this oat to be a general favorite in a few years.

Per peck, 8 lbs., 50c; per bu., 32 lbs. \$1.00

**Swedish Select**—A pedigreed variety introduced from Russia. Weighs from 38 to 40 pounds per measured bushel. The straw is coarse, noted for its stiffness and power to withstand lodging. The grains are pure white in color, large, thick and plump, making a very handsome appearance. The heads are upright, large and bushy, they are also nearly all meat, the hull being exceedingly thin, making them especially valuable as a feeding oat. Their great root development enables them to resist drouth better than most kinds. They are quite early and are less liable to smut and rust than most any other sort.

Per peck, 8 lbs., 50c; per bu., 32 lbs. \$1.00

**Mammoth Cluster**—This oat is a heavy producer and does fine on light soil where other oats fail. Good for 50 to 60 bushels most anywhere. Samples of any of our oats free.

Per peck, 8 lbs., 50c; per bu., 32 lbs. \$1.00

## ALLEN'S TEOSINTE

A fodder plant of great value; every stockman should give it a trial.  $\frac{1}{2}$  oz. 10c, 1 oz. 15c,  $\frac{1}{4}$  lb. 30c,  $\frac{1}{2}$  lb. 55c, 1 lb. 90c.

The prices on oats, corn, grains and farm seed change so often, write for prices.

**SUDAN GRASS**

This is a much talked of grass, is very highly spoken of, every farmer should try it. Allen's Northern Crown, postpaid, 1 oz. 10c,  $\frac{1}{4}$  lb. 15c, 1 lb. 25c, 10 lbs. \$1.50.

**BROOM CORN**

More money for you in this crop than any other. Think of it, brooms cost the housewife now from \$1.00 to \$1.50. What about starting a factory in your locality? Broom Corn will produce one ton per acre worth from \$100 to \$200 per acre and a great deal more than this if you will learn to make brooms. A small warm shed will do to make them in and give you an occupation for winter months when practically you are earning nothing. Every neighborhood has some one who knows about making brooms. In the northern states the tall varieties do best. Broom Corn will grow where corn grows and needs the same treatment. Plant later than field corn, 70 to 80 days will ripen the crop. The seed makes good feed. Plant in drills  $3\frac{1}{2}$  feet apart, 2 to 3 inches apart in row. 10 lbs. seeds are grown per acre.

**Improved Evergreen**—The leading variety. Western grown standard Imp. Evergreen. By mail, postpaid, 1 oz. 5c,  $\frac{1}{2}$  lb. 15c, 1 lb. 25c. By freight, 10 lbs. \$1.00.

**SAGO OR SOY BEANS**

$\frac{1}{2}$  to  $\frac{3}{4}$  bu. to acre,  $2\frac{1}{2}$  feet apart, cultivate.

**Yellow Soy Beans**—By mail, postpaid,  $\frac{1}{4}$  lb. 10c, 1 lb. 20c; by express, per peck, \$2.00, per bu. \$6.50. Bags free.

**Black Beauty**—Mail, postpaid,  $\frac{1}{4}$  lb. 10c, 1 lb. 20c; by express, per peck, \$2.00, per bu. \$7.00. Bags free.

**SUGAR CANE OR SORGHUM**

**Early Amber**— $\frac{1}{4}$  lb. 10c, 1 lb. 25c; by freight, 10 lbs. \$1.50, 50 lbs. \$6.00.

**White Kafir Corn**— $\frac{1}{4}$  lb. 5c, 1 lb. 10c; by freight, 10 lbs. 40c, 50 lbs. \$1.50.

**BARLEY**

**Champion Beardless and Montana Hulless**—By freight, pk. \$1.00, per bushel \$3.00. Send for samples and best prices.

**COW PEAS**

We make a great specialty in Cow Peas. Last year we supplied a great many, giving general satisfaction. \$5.00 per bushel.

**SPELTZ OR EICUNEER**

This is proving itself a great feed crop. It flourishes under neglect, grows splendid crops in all climates. We were simply overwhelmed with orders for it last season and we sold short on the latter part of the season. This season we have arranged, we believe, so we will have enough for all. It yields 60 to 75 bushels of grain and gives 4 tons of hay. Every farmer should try it.

By mail, 1 oz. 5c, 1 lb. 25c. By express, 15 lbs. 75c, 50 lbs. \$2.00.

**DWARF ESSEX RAPE**

This great crop for feeding hogs and sheep. In from 8 to 10 weeks from sowing it is ready to turn them on; for daily mowing

producing 20 to 30 tons of green feed per acre. Covers the ground and chokes out the weeds. Sow latter part of June, 6 lbs. to the acre. By mail, postpaid, 1 lb. 20c; by express, 10 lbs. \$1.50, 50 lbs. \$6.00.

**WHEAT**

**Ohio No. 127**—The Grand New Wheat. This Wheat is the new wheat that has been so highly recommended by the Ohio Experiment Station. The average yield of this wheat at the Experiment Station for the past six years has been  $37\frac{1}{2}$  bu. per acre. Is similar in type to the Fultz but a much better yielder, spike is awnless, kernal red, good size, semi hard, straw purple and extra stiff, heavy grower and erect. Is extra good milling wheat and reduces easily. Is very hardy and immune from attacks of loose Smut. This wheat has proved to be the best wheat we have ever tried. We have a quantity of it to offer to you at planting season, grown on our farms, and well re-cleaned, price given to you on application at planting time, write us. A wheat for Ohio, Michigan, Pennsylvania, Indiana, New York, Illinois.

**RYE**

**Rosen Rye**—Michigan Experiment Station produced this famous Rye which is the greatest yielder that has ever been produced. We have a quantity of this Rye produced by us and we wish to say that our customers will not fool themselves by buying the best to plant. We will gladly quote you prices at or before planting season, write us at that time.

**SAND VETCH**

We could not supply our demands for this seed last year. Does well on sandy land, wornout or anywhere else. Of course better land produces better crops. 1 oz. 5c, 1 lb. 30c. By freight, 10 lbs. \$2.50, 50 lbs. \$12.00.

**CLOVERS**

We carry a big line of these. On account of the constant change in prices, we hesitate in making a set price. Very often the price will drop then we lose your order when if given a chance to write you a personal letter and give bottom prices, we could quote your order. We will quote special prices on all grass seeds, and gladly send samples of each grade wanted. Our clover seed is carefully raised by experts and is bright and clean. Write for prices before buying.

**MILLET**

Millets—Golden, Hungarian and German. Prices on application.

**TIMOTHY**

Will be high, is very scarce. Fortunately we had a fine large field on our own place that was the cleanest that we have ever seen. Prices and samples on application.

**GRASSES**

**Allen's Pasture Grass**—Price on application.

**Allen's Meadow Mixture**—Price on application.

**Kentucky Blue Grass, Red Top, Orchard Grass**—Samples and bargain prices on all of these.

**Alfalfa**—We have a fine fresh article in this, grown in the west, that will give satisfaction. Particulars, samples, etc., free.

**LAWN GRASS**

1 lb. is equal to about  $1\frac{1}{2}$  quarts; 1 lb. sows 300 sq. ft.

We pay postage on 1 to 3 lbs., larger amounts by express.

Write for our weekly price list of Grass Seeds, etc.

**Allen's Evergreen Mixture**—This is the blending of grasses, the formula was given us by an expert English gardener, who had acquired fame in this country making and seeding lawns. In comparing prices remember quality has a value. By mail, postage paid, 1 lb. 30c.

## POTATOES

We will have No. 1 and No. 2 Seed of the following varieties to offer of clean Seed Potatoes. We shall not give prices but if you are interested, please write us.

**Extra Early Cobbler, Irish Cobbler**—One of the most reliable first early potatoes ever sent out. It ripens almost with the Early Ohio and is so uniform that every hill seems to ripen all at one time. The yield is very large for an early variety, equal to some of the late ones, form oval and round, skin slightly netted, creamy white and having eyes, which are quite shallow, some even with the surface, flesh pure white and of finest quality and very handsome appearance has brought it right to the front as a profitable variety for market or for home use.

**Early Ohio**—We have an extra early choice stock of this variety, selected seed from year to year.

**Carmen No. 3**—Raised by a neighbor who makes a specialty of this variety and has bred it up to perfection by careful selection of his seed until we believe it is better than the original. His last season's crop in spite of dry weather simply covered the ground with large solid potatoes.

**Sir Walter Raleigh**—The general market favorite in this section. We have carefully renewed and bred our strain of this potato until it hardly looks like the same potato you see carelessly grown year after year from the same selected seed.

**Rural New Yorker**—This is one of the best late varieties.

**Early Michigan**—Long, early variety, one of the best for baking, enormous bearer on extra rich ground.

**Six Weeks**—The heaviest yielder of extra early potatoes, claimed to have a record of 600 bushels to the acre. It is a fine keeper.

# Guaranteed Flower Seeds

We have confined ourselves to the more important varieties of Flowers, although we can supply a complete line. So many articles listed hardly ever are needed in the flower garden and only serve to tire the reader of the more important varieties. If you find you need anything not listed kindly drop us a line and we will see that you get the same without delay. The same care is taken in raising our flower seeds as other seeds. They are all fresh and pure. Remember we will meet anyone's prices on any seeds. Our packets of flower seeds contain more than other dealers. This is a broad statement, but a trial will convince you of its merits. If you are dissatisfied let us know. "We guarantee satisfaction."

## ANTIRRHINUM—SNAP DRAGON

Very Stylish now. An old Flower so greatly improved that it has become a leader in planting.

### TALL GIANT FLOWERED VARIETIES

**Cottage Maid**—Creamy white shaded with rose and yellow lip. Pkg. 5c.

**Snow Queen**—Long spikes of pure white. Good for cutting. Pkg. 5c.

**Yellow Giant**—Best large yellow. Pkg. 5c.

**Tall Mixed**—Pkg. 5c.

### NEW HALF DWARF

**Fire Flame**—Bright vermilion. Pkg. 5c.

**Queen of North**—Pure white. Pkg. 5c.

**Brilliant Rose**—Bright rose. Pkg. 5c.

**Defiance**—Bright scarlet. Pkg. 5c.

Above Mixed. Pkg. 5c.

## ASTERS

One of the greatest flowers. We grew all varieties last season and we now feel our seed is as good as the best in the U. S. They were very fine, true to name and of excellent type.

**Giant Branching Comet**—This variety is one of the most beautiful of all flowers. Often from 4 to 6 inches across, plants grow from 12 to 20 inches tall. The flowers resemble the Chrysanthemum in their twisting shapes. The stems are very stiff, bearing the flowers well up and running from 20 to 30 to the plant. Flowers last a long time, excellent for cutting and selling. Following colors separate. Pkg. 10c, ¼ oz. 30c.

White, Carmine, Rose, Pink, Lavender, Dark Blue. Mixed pkg. 8c, ¼ oz. 30c.

**Crego Asters**—Best late flowering Asters in existence, flowers larger than Giant Comet, long twisted petals, free bloomer. fine for cutting purposes, you will make no mistake in planting some of these; White, Rose, Lavender, Purple and Mixed. 10c per packet; ¼ oz. 25c.

**Heart of France**—The Greatest Aster ever introduced; pure ruby red, stays red until the end, soft and velvety as a rose, flowers large and full bloomer, branching, stems long. The petals appear strikingly changeable. Heart of France will certainly take the place of all other red asters. We have a limited amount of seed. We recommend a trial of these. 25c per pkg.

Look Over Our Asters

**King Asters**—This class of new Asters is quite distinct. Flowers of great size, with long, slender folded petals, long stems, excellent class. All colors mixed. Packet 8c.

**American Beauty**—Large, resembling American Beauty Rose in color, growing very high, very beautiful. Pkg. 10c.

**Queen of the Market**—Choice mixed, earliest of all asters. 12 inches high, very branching, one of the very best for marketing flowers. Pkg. 8c,  $\frac{1}{8}$  oz. 25c.

## AGERATUM

**Mexican Blue and White Mixed**—One of the best summer flowers, the blue is fine in color. Pkg. 5c.

**Tom Thumb**—Good for border work, blue, a distinct variety. Pkg. 5c.

## ALYSSUM

For border this dainty little flower has no equal.

**"Carpet of Snow" (New)**—Forms close mat of snow white bloom. Pkg. 5c,  $\frac{1}{4}$  oz. 20c.

**Little Gem**—3 to 4 inches high, 15 to 20 inches across, a mass of white flowers from spring until late frost. Pkg. 5c, oz. 50c.

## BALSAM

**Double Cammelia Flowered**—Extra fine bloomers, all colors mixed. Pkg. 5c.

## BEGONIAS

**Begonia**—Splendid for bedding or pot plants, large flowers, easily grown. Mixed, double or single, pkg. 25c.

## CALENDULA

**Pot Marigold**—A free blooming plant for summer bedding of various colors. Pkg. 5c.

## COLLIPSIS

**Golden Wave**—Bushy compact flowers of various yellow shades of about 2 inches across. Blossom from July until frost. Pkg. 5c.

## CANDY TUFT

**Giant Empress**—Long spikes of white flowers. Pkg. 5c.

**Snow Flake**—Large pyramidal flower, larger than ordinary Candytuft. Pkg. 5c.

**New Carmine**—Of fine carmine color, large and handsome. Pkg. 5c.

**Crimson Giant**—Beautiful crimson colored variety, new. Pkg. 5c; mixed pkg. 5c.

## CANNA

Mixed colors of the Canna, best strains. Pkg. 5c.

## CARNATIONS

**Giant Marguerite**—Flowers early, giant in size, compact, large flowers of a beautiful fragrance, best mixed colors, pkg. 10c.

## CELOSIA (COCK COMB)

**Ostrich Feather**—Orange and crimson, mixed. Pkg. 5c.

## CENTAUREA (Bachelor's Button)

**Marguerite**—Pure white, very fine for cut flowers. Pkg. 5c.

**Blue Bottle**—Mixed shades of blue, never seen by many. Pkg. 5c.

**Allen's**—Mixed. Pkg. 5c.

## CHRYSANTHEMUM

**Annual**—Mixed. Pkg. 5c.

**Snowball**—Hardy bearing cluster of very double white flowers on long stems. Fine cut flowers. Pkg. 5c.

**Golden**—Of yellow shade, blooms early and the second year. Pkg. 5c.

**Primrose**—Differs in color only from Golden. Pkg. 5c.

## COLEUS

**Large Leaved Fringed**—A fringe colored foliage, very large, with a large variety of color. Pkg. 15c.

## COSMOS

A very pretty flower of tall growth, makes an excellent screen, 4 ft. tall foliage, looks very much like asparagus only thicker and has every color of flower possible, deserves a place in every garden.

**Crimson Ray**—Big, new. Pkg. 10c.

**White Ray (New)**—White, best. Pkg. 10c.

**Lady Lenox**—New, of great merit. Great flowers of beautiful shell pink. Plants grow 6 ft. and are a mass of bloom. Pkg. 5c.

**Dwarf**—Mixed, 4 to 5 feet. Pkg. 5c.

**Mammoth**—Mixed, 6 to 8 ft. Pkg. 5c.

**Mammoth White Perfection**—Pkg. 5c.

**Mammoth Red Perfection**—Pkg. 5c.

**Mammoth Pink Perfection**—Pkg. 10c.

## DAHLIA

Mixed seed taken from leading varieties of Dahlias, if sown early will blossom first season, single flowered. Pkg. 10c.

**Double Flowered**—Pkg. 10c.

## DATURA

**Horn of Plenty**—Bears large trumpet-shaped flowers 7 to 9 inches long and 6 inches across, more beautiful than a lily, color is purple shade, hard to get. Pkg. 5c.

**DIGITALIS (FOXLGLOVE)**

Tall spikes of deep throated flowers, beautifully colored and marked, remains in bloom a considerable time. Mixed pkg. 5c, Select White, pkg. 5c.

**CAMPANULA**

**Canterbury Bells**—Easily grown, large bell-shaped flowers of many delicate shades. Pkg. 5c.

**Cup and Saucer Varieties**—Very beautiful. 2 ft. high, flowers from 3 to 4 inches, mixed. Pkg. 5c.

**DIANTHUS (PINKS)**

Chinese double mixed, including all the new colors. Pkg. 5c.

**Japanese Varieties**—Extra large, 2 inches across. Pkg. 5c.

**Single Chinese Pinks**—Pkg. 5c.

**Snow Drift**—A double pure white pink of great beauty, flowers extra large, finely cut. Pkg. 10c.

**CALIFORNIA POPPY**

A flower of rather dwarf habit that embraces nearly all colors, will grow almost anywhere. Mixed pkg. 5c.

**EUPHORBIA**

**Mexican Fire Bush**—Leaves of glossy green turning to bright red in the fall. Pkg. 10c.

**GLADIOLUS**

Seed gathered from the leading varieties, gives a profusion of color and is very interesting to see what you get. Pkg. 10c.

**HELIANTHUS  
(CALIFORNIA SUNFLOWER)**

Large double orange flowers. Pkg. 5c.

**HELIOTROPE**

This plant is a tender perennial of rapid growth and in the new varieties named below we find a new study in an old favorite, noted for its sweetness.

**Dark Bouquet**—Close compact heads of purple flowers. Pkg. 10c.

**Lady in White**—Large clusters of pure white flowers. Pkg. 10c; mixed colors pkg. 10c.

**HOLLYHOCKS**

An old plant generally improved and becoming more popular under its new shapes and colors.

**Chaters Double Mixed**—At 10c per pkg. or any of the following named colors of this strain at 10c per pkg., pure white, crimson, yellow or salmon.

**Allegheny**—A new strain that blooms almost constantly, finely formed flowers of a beautiful silky texture, all colors, mixed pkg. 10c.

**LARKSPUR**

**New Compact Blue**—Of deepest blue and blooms profusely two seasons, flowers of large size. Pkg. 10c.

**Double Dwarf Rocket**—Pkg. 5c.

**Tall Rocket**—Many colors. Pkg. 5c.

**Emperor**—Mixed, pkg. 5c.

**Dwarf Double Rose**—Pkg. 10c.

**Dwarf Double White**—Pkg. 10c.

**New Red**—Fine. Pkg. 10c.

**MARIGOLD**

A very free flowering plant for bedding purposes. We call special attention to our variety in this flower claiming we grow it as near to perfection as any seed house in U. S. It is divided into two classes, African and French.

**African**—Very double mixed. Pkg. 5c.

**African—"Lemon Ball"**—A great beauty, lemon in color. Pkg. 10c.

**African—"Orange Ball"**—Very similar except in color. Pkg. 10c.

**African Eldorado**—Very large double. Pkg. 5c.

**Dwarf French**—Mixed. Pkg. 5c.

**Legion of Honor**—Only single variety, bright yellow. Pkg. 10c.

**Brown Marble**—Reddish brown. Pkg. 10c.

**Marvel of Peru (Four O'Clocks)**—Greatly improved over the old Four O'Clocks. Pkg. 5c.

**MIGNONETTE**

**Allen's Defiance**—Immense spikes, leader in the New York flower markets, one of the best. Pkg. 10c.

**Pure Matchet**—Grey flowers, very fragrant. Pkg. 10c.

**Improved Giant Red**—Largest flowered of all, very pyramidal. Pkg. 10c.

**Yellow Prince**—Finest yellow, very new. Pkg. 5c.

**White Pearl**—Beautiful white, very taking. Pkg. 5c.

Mixed. Pkg. 5c.

**MYOSOTIS (FORGET-ME-NOTS)**

**Alpestris Blue**—A great favorite of these little flowers, a pretty China blue. Pkg. 5c.

**Alpestris Alba**—Same only pure white. Pkg. 5c.

**Alpestris, Pink**—Same only in color. Pkg. 5c.

**Eliza Fonrobert**—New, a great improvement, sprays twice as large, covered with extra large flowers of a rich China blue. Pkg. 10c. Mixed pkg. 5c.

**MORNING GLORIES**

**Rochester**—Flowers 4 to 5 inches, deep violet blue, white edge. Pkg. 10c.

**Convolvulus Major**—Of tall growth, common variety. Pkg. 5c.

**Dwarf**—Remain open all day. Pkg. 5c.

**Brazilian**—Very leafy rose, flowers 3 to 4 inches, 8 to 10 inch leaves. Pkg. 5c.

**Imperial Japanese**—Flowers 4 to 6 inches, every color, some foliage slightly mottled with cream buff. Pkg. 5c.

Prices quoted are postage paid. Guaranteed safe arrival to your mail box.

**NASTURTIUMS DWARF**

Our seed of this is very choice and packages are very large. Note the prices by the ounce, also new varieties and colors.

**David Burpee**—A new novelty from Holland, introduced by Burpee. Named by the originator after Mr. Burpee's son. The foliage is very different, a charming little flower, leaves are a waxy shape, waxy dark green. Every lover of Nasturtiums should try this. Pkg. 10c.

**Cloth of Gold**—Foliage of golden color, crimson flowers. Pkg. 5c.

**Golden Yellow**—Brilliant yellow. Pkg. 5c.

**Empress of India**—Crimson flowers, foliage very dark. Pkg. 5c.

**Lady Bird**—Rich crimson, barred with yellow. Pkg. 5c.

**TALL NASTURTIUMS**

**Ivy Leaved**—A variety becoming very popular, due to its beautiful foliage. Pkg. 5c.

**Tall Nasturtiums**—Mixed. Pkg. 5c.

**Scarlet Beauty**—The finest dark colored variety, very handsome. Pkg. 5c.

**Pearle**—Creamy white. Pkg. 5c.

**Rose**—Fine rose. Pkg. 5c.

**Salmon Prince**—Finest salmon colored. Pkg. 5c.

**Loops Mixed Nasturtiums**—Best flowering. Pkg. 5c; oz. 10c. Also this variety in following separate colors, same price. Dark Cardinal, Brilliant Crimson, Gold, Lemon or Red.

**Madame Gunther's Hybrids**—Mixed beautiful colors in extra large flowers, one of the best. Pkg. 5c.

**Burpee's** new race of variegated leaved mixed. Pkg. 10c.

**PANSIES**

There is no flower that is so general a favorite as this. We take especial pleasure this year to introduce to you five new Giant varieties as well as the Royal Mixed. These cost you 10c per pkg. and are the finest.

**Giant White**—Large and satiny white.

**Giant Emperor Frederick**—Rich velvety maroon.

**Giant Curled Goliath**—Enormous ruffled flowers of a pure golden yellow with three large black blotches. Very beautiful.

**Giant Ruffled**—Masterpiece, giant sized flowers, very fine, mixed.

**Burpee's Giant Fancy (New)**—Largest, best mixed. Pkg. 50 seeds, 15c.

**Fire King**—Bright reddish brown.

**Royal Purple**—Deep rich purple.

**Cardinal**—Brilliant scarlet.

**Royal Prize Mixture**—Contains all the new colors.

**PETUNIAS**

The new giant flowered strains are very handsome.

**Giant Mixed**—Extra large. Per pkg. 25c.

**Howard New Star**—A new race of velvety flowers. Pkg. 5c.

**Snowball**—Best white. Pkg. 5c.

**Brilliant Rose**—Fine rose colored. Pkg. 5c.

**California Giant**—Largest, 5 inches across. Pkg. 25c.

**PHLOX—DRUMMONDI**

The annuals have no equal for variety in color that will show as far as eye can see, fine for cut flowers, easily grown, should be the center of every garden. We selected the finest tints last year into a mixture of our own and promise you a great variety of our separate colors of our own in a few years.

**Allen's Unsurpassed Mixtures**—Pkg. 7c.

**New Dwarf**—Mixed. Pkg. 8c.

**Starr and Fringed**—Mixture. Pkg. 5c.

**Extra Fine White**—Pkg. 8c.

**Blood Red**—Pkg. 10c.

**Large Yellow**—Pkg. 10c

**Fire Ball**—Very compact. Pkg. 10c.

**POPPIES**

New double and single, will grow anywhere, making a gorgeous display of colors.

**Snow Drift**—Pure white, very desirable, large and double. Pkg. 5c.

**Mikado**—New Japanese sort, white with brilliant scarlet edges. Pkg. 5c.

**Shirley**—A lovely, showy flower, tinted with all colors.

**Oriental**—A hardy variety growing 2½ ft. tall, large crimson flowers blotched with dark. Pkg. 10c.

**Admiral**—One of the finest white, perfectly edged with a bright band of scarlet. Pkg. 5c.

**Tulip**—Resembles tulips, brilliant scarlet. Pkg. 5c.

**PRIMULA (PRIMROSE)**

Large Flowering—Mixed. Pkg. 20c.

**RICINUS (CASTOR OIL BEAN)**

Plant noted for its semi-tropical appearance, shooting out large spikes of flowers.

**Zanzibarensis**—Common kind generally used. Pkg. 5c; oz. 15c.

**SCABIOSA (MOURNING BRIDE)**

Double Mixed—Pkg. 5c.

Snowball—White. Pkg.

Yellow Prince—Pkg. 5c.

All Mixed together—Pkg. 5c.



**SALVIA**

Due to the immense demand for this we have added a complete list of all new varieties. Varying in every shade from bright scarlet to dark blood red, mixed. Per pkg. 10c.

**Scarlet Sage**—Large flowering of brilliant scarlet, a constant bloomer. Pkg. 10c.

**Bonfire**—Compact, roundish bush, completely a fiery red mass in Autumn. Pkg. 10c.

**Blood Red**—Very dark and similar. Pkg 10c.

**SWEET PEAS**

Sweet Peas to succeed best should be planted very early. Some plant about Thanksgiving for the earliest. Plant in a trench about one foot deep with well rotted manure. Our mixtures are from the best named kinds and we are selling the best that are in the market.

**SPENCER VARIETIES**

These are enormous flowered Sweet Peas, producing flowers from 1 $\frac{3}{4}$  to 2 inches across. Pkg. 10c, oz, 20c, lb. \$2.00.

**Geo. Herbert**—Large Spencer, rose crimson, suffused with magenta.

**King Edward**—Spencer, best pure red, very large.

**Asta Ohn**—Spencer, a splendid lavender, enormous frilled flowers on stiff stems.

**Royal Purple**—Large.

**Othello**—Spencer, large maroon.

**Lovely**—Spencer, bright pink at throat shading to soft blush almost white at edge.

**Mrs. Hugh Dickson**—Cream pink and buff.

**Queen Victoria**—Spencer, a fine soft yellow.

**White**—The best white Spencer.

**Apple Blossom**—Spencer, rose, standards, blush rose wings, large flowers, waved.

**Countess**—Spencer, pale pink, dark edge.

**Primrose**—Spencer, primrose color, a good one.

**Mrs. Routzahn**—Spencer, deep cream with rose edge.

**Mixed Spencer**—10c pkg.; oz. 20c.

**GRANDIFLORA STRAIN**

These Sweet Peas, while not as crimped as the Spencers, are almost as large.

**Mixed Grandiflora**—5c pkg., 10c oz., lb. \$1.00.

**Allen's Best Mixture**—Consists of a mixture of the best Sweet Peas in America. Pkg. 10c, oz. 20c, lb. \$2.00.

**HARDY PEAS**

Mixed or in select white or select dark rose. Pkg. 6c.

**SUNFLOWERS**

Our collection of these are most extensive and embrace all varieties worth attention.

**Chrysanthemum Flowered**—Is the grandest of all double sunflowers, beautiful golden yellow and remains in bloom a long time. Pkg. 5c.

**Selta**—Large single flowering, simply a hill of gold. Pkg. 5c.

**New Red**—Very red and single.

**SWEET WILLIAM**

A great favorite in old times and its new shapes and colors are again appealing to all lovers of flowers.

**Single**—Mixed. Pkg. 5c.

**Pink Beauty**—Finest selected pink. Pkg. 10c.

**Scarlet Beauty**—Flaming scarlet. Pkg. 5c.

**Double**—Mixed. Pkg. 15c.

**VERBENA**

**Aurculaeflora Gigantica**—Extra fine, mixed. Per pkg. 10c.

**ZINNIA**

**Brilliant**—Magnificent double flowers, rivals to the Dahlia in color, beauty, size. Last year our seed beds were a very handsome sight.

**Carnations**—Brilliant colors of many shades. Pkg. 5c.

**Fire King**—A select variety of beautiful crimson. Pkg. 5c.

**Dwarf Snowball**—Pure white. Pkg. 5c.

**ANNUALS, MIXED**

A great assortment of flowers, always keeps you looking for something new. Pkg. 5c.

Our quotations are postage paid, other firms let you pay the postage.

Prices quoted are postage paid. Guaranteed safe arrival to your mail box.

## APPLES

This season has proved that every farm owner should plant an Apple Orchard. Prices for apples have been out of reach of the common people, in fact they are worth more than oranges.

You evidently have a few acres broken hilly land that has not paid you a cent for years and if you would plant an orchard on it of Apples, it would pay you more money than the same amount of land put into any other crop; not only that but every acre of Fruit Trees that have attained the age of 3 years from planting adds \$100 to your farm.

**ORCHARD SIZE**—3 to 4 ft. postpaid 25c each. Just the right size to make a wonderful thrifty tree.

**First Class**—2 to 3 years, 5 to 7 feet, 50 cents each; 10 for \$4.50; 100 for \$42.

**Medium**—2 to 3 years, 4 to 5 feet, 40 cents each; 10 for \$3.50; 100 for \$32.00.

**Early Harvest**—Medium to large, pale yellow, fine flavor. Tree a moderate, erect grower and good bearer. A beautiful and excellent variety for orchard or garden. August.

**Golden Sweet**—Rather large, pale yellow, very sweet and good, strong grower and good bearer. August.

**Red Astrachan**—Large, roundish; nearly covered with deep crimson, overspread with a thick bloom; juicy, rich, acid. The tree is a vigorous grower with large foliage; good bearer. August.

**Sweet Bough**—Large, pale greenish yellow, tender and sweet, moderate grower and good bearer. August.

**Yellow Transparent**—A Russian variety pronounced by some as the most valuable early apple ever introduced. Tree an upright grower and a very early and abundant bearer. Fruit of good size, skin clear white, turning to pale yellow, flavor acid and very good. August.

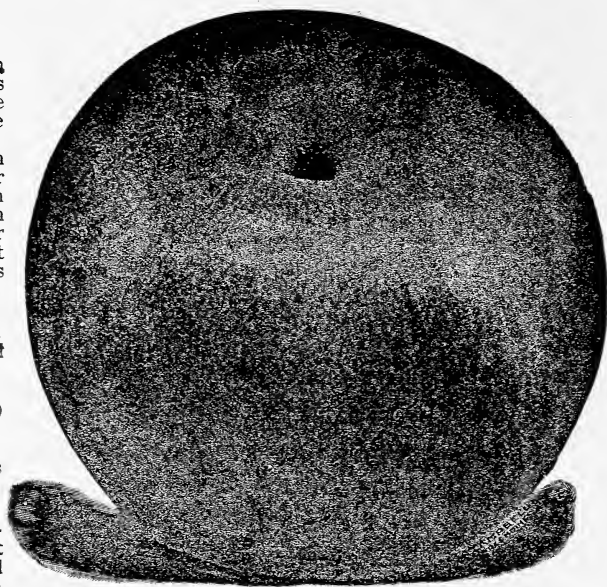
**York Imperial**—Medium to large; yellow, shaded red; firm, sub-acid, an excellent shipping apple.

**Duchess of Oldenburg**—Russian, large size, roundish, streaked with red and yellow, flesh white, juicy, flavor sprightly sub-acid; tree a vigorous grower, very hardy, early and abundant bearer. We recommend it for the orchard as one of the most valuable sorts for market. Fine for domestic use. September.

**Autumn Strawberry**—Medium, streaked, tender, juicy, sub-acid, fine vigorous and productive. September.

**Maiden Blush**—Medium size, flat, smooth and fair, pale yellow with beautiful red cheek; tender, sprightly, pleasant, acid flavor, fair grower and good bearer. October.

**Fall Pippin**—Very large, yellow, tender, juicy and rich. Tree vigorous. October to December.



**Baldwin**

**Baldwin**—Large, roundish, deep bright red, crisp, sub-acid, good flavor. Tree vigorous, upright and very productive, fruit handsome. One of the best. January to April.

**Pumpkin Sweet**—A very large, round, yellowish russet apple, very sweet and rich. Tree a vigorous, rapid, upright grower. October.

**Rambo**—Medium, yellowish, streaked with dull red and somewhat dotted; mild, tender and good; fine grower, productive. October to January.

**Roxbury Russet**—Medium to large, greenish or yellow russet, crisp, good sub-acid; tree vigorous and productive. Very popular on account of its long keeping.

**Rome Beauty**—Large, yellow shaded with bright red, flesh tender, juicy, sub-acid; good grower.

**Twenty Ounce**—(Cayuga Red Streak). Very large and handsome; one of the best for market. Sprightly, crisp, pleasant. October to January.

**Wine Sap**—Medium, dark red, sub-acid, fine flavor. Tree a good bearer. Considered one of the best for market. December to March.

**Smith's Cider**—Medium, striped; flesh tender, juicy, sub-acid. Very popular in Pennsylvania.

**Limber Twig**—Round, oblate, conical; medium large, yellow and red striped, flesh yellowish, pleasant, sweet. Valuable for market; season late.

**None Such**—Large, handsome, yellow, overlaid with red, tender fleshed, with distinct, delightful flavor; strong grower and heavy bearer. November to January.

**Red Vandevere**—Medium size, yellow, striped with red and becoming deep crimson next to sun; flesh rich and fine. Tree is a fine grower and a good bearer. October to March.

**Delicious**—Introduced from Missouri, flourishes well in every state in the union. Bears annually, great yielder, hangs well on trees, very thrifty, long lived and extremely hardy, fruit very large, nearly covered with brilliant dark red; flesh fine grained, crisp, juicy, melting and delicious, splendid keeper and shipper, should be in every orchard.

**Spitzenburg**—Medium to large, deep red, flesh yellow, crisp, sub-acid, high flavored, bears and grows well in all sections.

**Staymans Wine Sap**—This is one of the finest apples ever introduced, medium size, crisp, juicy, aromatic; tree quick grower, adapts itself to any section. November to February.

**Winter Banana**—Large, golden yellow, shaded and marbled with bright crimson; streaked with white; quality good. December to February.

**Ben Davis**—A large, handsome, striped, flesh lemon yellow, fine grained, with rich aromatic sub-acid flavor. Tree a strong grower, hardy and very early, bears a beautiful and valuable apple. November to May.

**McIntosh Red**—An exceedingly valuable hardy Canada sort, medium size, nearly covered with dark red; flesh white, fine, very tender, juicy and refreshing; a good annual bearer of fair handsome fruit. Resembles the Fameuse but larger and more hardy and fully equal in quality. October to February.

**North Western Greening**—Like Grimes Golden in shape and color, good flavor, keeps long; tree hardy and vigorous. An annual bearer.

**Fameuse**—(Snow Apple.)—Medium size. A roundish, oblate, whitish ground, striped with deep red; flesh very white, juicy and pleas-

ant. Tree very hardy; one of the most valuable Northern sorts. November.

**Wealthy**—A native of Minnesota where it has proven perfectly hardy, vigorous and productive. Fruit of medium size, red streaked with white; quality good. December to February.

**R. I. Greening**—Large, greenish yellow, tender, juicy and rich, with an acid flavor. Tree grows strong and spreading; abundant bearer. December to April.

**King**—(Tompkins County). Large and handsome; striped red and yellow; vigorous and productive; one of the best. November to May.

**Jonathon**—Fruit medium roundish, skin yellow, nearly covered with dark red; fine grained, very tender and fine flavor. November to April.

**Newton Pippin**—One of the very best of apples; very juicy, crisp, highly delicious flavor.

**Yellow Bellflower**—Large with blush cheek, very tender, juicy, sub-acid, in use all winter. Very valuable; good bearer.

**Northern Spy**—Large, roundish, slightly conical, striped with the sunny side neatly covered with dark red; flesh white and tender with a mild sub-acid, rich and delicious flavor. Tree strong upright grower. November to April.

**Wagner**—Medium yellow, shaded with crimson, very tender, juicy, crisp, early bearer; mild, acid, fine flavor, very productive and an extra fine apple for home or market.

**Fallwater**—(Tulpehocken). Very large, juicy, crisp, pleasant sub-acid; tree strong grower, very productive. November to March.

**Grimes Golden**—An apple of extra fine quality. Medium to large size, tree hardy, vigorous and productive. January to April.

**Gano**—Originated in Missouri. Form conical, good size and smooth; dark red, very attractive, flesh pale yellow, fine grained; an annual bearer, late keeper.

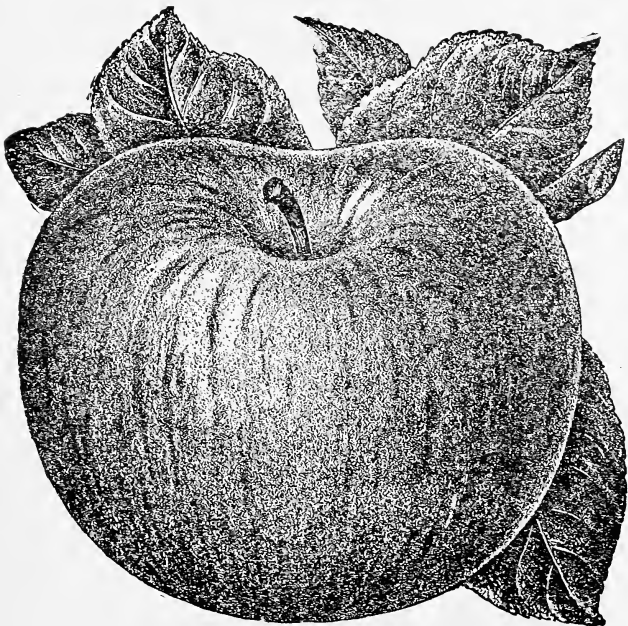
**Golden Russet**—Medium size, dull russet with red on exposed side, flesh crisp, juicy and fine flavor. Tree a vigorous grower and great bearer, very late keeper.

**Smokehouse**—Large; yellow, shaded with bright red; flesh firm, crisp, juicy and fine flavored. Especially esteemed in Pennsylvania. September to November.

## CRAB APPLES

First class, 2 to 3 years, 5 to 7 feet, 60 cents each; 10 for \$5.00.

**Varieties**—Hyslop, Transcendent, Whitney, Siberian.



**Northern Spy**

Apple Trees 3-4, postpaid, 25¢

## PEAR TREES—STANDARD

3 to 4 feet, postpaid, 40c each.

**First Class**—2 years, 5 to 7 ft, 80c each; 10 for \$7.50.

**Medium**—2 years, 4 to 5 ft., 65c each; 10 for \$6.00.

**Anjou**—A large greenish pear, shaded with crimson. The flesh is high flavored, sprightly, vinous, melting and juicy. We consider it the best pear of its season. Late keeper.

**Lyerle**—Medium size, smooth, color green with blush cheek, small core and few seeds; quality fine, rich, spicy, sweet. July.

**Clapp's Favorite**—A splendid pear, resembling Bartlett and ripening 10 days earlier. The tree is hardy and vigorous, fruit juicy, fine grained and delightful. One of the best. August.

**Flemish Beauty**—A large, beautiful, melting sweet pear. Tree very hardy, vigorous and productive, succeeds well everywhere. September.

**Duchess**—(Angoulene). One of the largest of good pears, attains its highest perfection as dwarf. It is one of the most profitable market sorts. October.

**Rossney**—Medium to large size; fine grained, melting, juicy, very sweet, excellent keeper and shipper. October.

**Lawrence**—Medium to large; golden yellow with melting aromatic flesh; unsurpassed as an early winter pear. The tree is hardy, healthy and productive, bearing large crops annually. November to December.

**Seckel**—The finest pear grown; small but of the highest flavor. Tree stout, erect grower; should be in every collection. September to October.

**Keiffer**—Large. Tree a fine grower; makes a beautiful tree for planting along drives; fruit, while not extra good from tree, yet if placed in cellar until Thanksgiving makes fine eating; sells well in market.

**Koonce**—Originated in Illionois. It is very early; does not rot at core like most early pears; is a vigorous grower, free from blight, productive; the best early pear. First of August.

**Worden Seckel**—Seedling of the old Seckel, quite as sweet and luscious; much larger and a better keeper. The tree makes more rapid growth than the Seckel and excels it in productiveness.

**Henry**—This pear is not widely known but it is one of the best. You will be delighted with it.

**Bartlett**—Large, buttery and melting, with rich flavor. A vigorous, erect grower; bears young and abundantly. One of the most popular. September.

**Pears, Dwarf**—Leading varieties. Same Varieties as Standard.



Bartlett

## PLUM TREES

3 to 4 feet, postpaid, 40c each.

**First Class**—2 years, 5 to 7 ft., 85c each; 10 for \$8.00.

**Medium**—2 years, 4 to 5 ft., 75c each; 10 for \$6.00.

**Wickson**—Largest of the Japan plums; is very fine in every way. The color is bright red; the pit is small; flesh thick, sweet, tender; good keeper and shipper. The yield is heavy; almost rot proof. The fruit sells at sight.

**Lombard**—Medium round, oval, violet red, juicy, pleasant and good; tree vigorous and productive. A valuable market variety; one of the most hardy and popular. Last of August.

**Gueff**—Extensively grown for market, having proved to be one of the most profitable for that purpose; tree a hardy, very strong, vigorous, upright grower, an early and abundant bearer; fruit large, roundish; skin dark purple, covered with a thick blue bloom; flesh pale yellow, firm, juicy, sweet, sprightly, sub-acid, free-stone. Last of August.

**Grand Duke**—Large, very dark purple; prolific; valuable addition to late varieties.

Pear and Plum 3-4 feet, 40c Postpaid.

**Yellow Egg**—Fruit of the very largest size; skin yellow with numerous white dots; flesh yellow, sub-acid, fine for cooking; tree vigorous and productive. Last of August.

**Shipper's Pride**—The fruit is of large size, it being no uncommon occurrence to find specimens measuring two inches in diameter each way, as it is nearly round. It is a handsome dark purple color, good quality and fine for market.

**Shropshire Damson**—Largest of Damson class; is much used for preserving; tree vigorous and productive; brings highest price in market.

**McLaughlin**—Large, greenish yellow, sugary and fine. Tree a free grower, one of the best for family or market. Middle of August.

**Burbank**—Of Japanese origin, fruit large and fine, amber turning to a rich, bright red; flesh juicy, tender, sweet; very productive. Early August.

**Abundance**—Of Japanese origin; fruit large and fine, amber turning to a rich, bright red; flesh juicy, tender, sweet; very productive. Early August.

**Bradshaw**—Fruit very large, dark violet red, flesh yellowish green, juicy and pleasant. Tree vigorous, erect, productive. August.

**Niagara**—This plum has become very popular. Quite early. Reddish purple.

**Rein Claud**—(Bavay's Green Gage). Large, greenish yellow spotted with red, firm, juicy, sugary and fine quality; very productive. September.

**Green Gage**—Small. Considered the standard of excellence; slow grower. Last of August.

**York State Prune**—Very large; color dark blue; flesh yellow and delicious; vigorous and hardy.

**German Prune**—Medium oval; purple; one of the best; tree vigorous and hardy.

## QUINCE TREES

3 feet size by Mail postpaid, 40c each.

**First Class**—4 to 5 ft., 80c each; 10 for \$7.00.

**Medium**—3 to 4 ft., 75c each; 10 for \$6.00.

**Champion**—Fruit very large, fair and handsome; surpassing other varieties in this respect; bears abundantly; flesh cooks as tender as an apple and without hard spots or cores; flavor delicate, imparting an exquisite quince taste and odor to any fruit with which it is cooked.

**Orange**—An old standard variety, large, roundish; bright golden yellow; excellent flavor.

**Reas Mammoth**—This is a seedling of the Orange with all its good qualities and larger.

## CHERRY TREES

Last season there was such a demand for cherries for canning that the supply did not hold out and the price went up. Everyone should plant enough for their own use.

Many people have trouble getting Cherry Trees to live, due to the fact they purchase too large trees which have had the large roots cut.

Extensive experiments have proven that 3 to 4 ft. Trees give better satisfaction and results at one-half the price and at the end of 3 years will outgrow the larger tree planted side by side.

### PRICES—SWEET AND SOUR

3 to 4 feet, postpaid, 40c each.

**First Class**—2 years, 5 to 6 feet, 80c each; 10 for \$7.00.

**Medium**—2 years, 4 to 5 feet, 75c each; 10 for \$6.00.

### SWEET VARIETIES

**Bing**—Fruit large, black, one of the most delicious late sweet cherries on the Pacific Coast; is considered one of the most profitable. Tree hardy and vigorous, succeeds well in the east.

**Lambert**—Very large, heart shaped, dark purplish red, turning to jet black when fully ripe; flesh very firm, solid, rich and juicy. Tree strong grower, hardy, enormous bearer.

**Yellow Spanish**—Large, pale yellow with red cheek; firm, juicy and excellent; one of the best light colored cherries, vigorous and productive. June.

**Black Heart**—(Black Ox Heart). A very old variety; fruit medium size, heart shaped, rather irregular; skin glossy, deep black; flesh tender, juicy, sweet; tree a rapid grower, hardy and productive. Early in July.

**Allen**—This is one of the best sweet cherries and it will be the leading market variety where the sweet cherry succeeds. Fruit of excellent quality, large size, nearly heart shape, color when ripe nearly black. So far free from rot. Last of July.

**Black Tartarian**—Very large, bright purplish black, juicy, very rich, excellent flavor, productive. June.

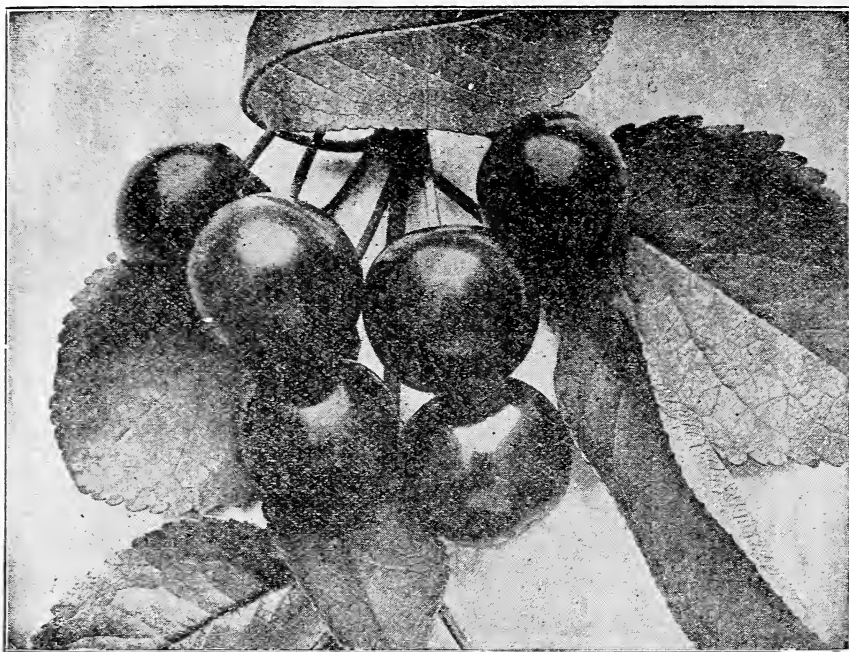
**Black Eagle**—Large, black, very tender, juicy and rich and high flavored, productive. July.

**Gov. Wood**—One of the best cherries; very large, light red, juicy, rich and delicious; tree healthy and a good grower. June.

**Napoleon**—Very large, pale yellow or red; firm, sweet and productive; one of the best. July.

**Schmidt's Bigarreau**—Very vigorous, hardy and productive. Fruit grows in clusters. July.

Quince and Cherry, 3-4 feet, by mail 40c each



Montmorency

**SOUR CHERRIES**

Sour Cherries have taken the place of the Peach as a filler among Apples recently by many leading orchardists, being free from all diseases, bearing as quickly and far more profitable. Buy the 3 to 4 ft. tree and head 2 to 3 feet from the ground.

**Early Richmond**—Medium size, dark red, melting, juicy, acid flavor. This is one of the most valuable and popular. June.

**Montmorency Ordinaire**—A fine, large, acid variety, ten days later than Early Richmond. Prolific and hardy. A variety of great value. Tree free grower.

**Large Montmorency**—Large, red, productive, ten days later than Early Richmond. Last of June.

**English Morello**—Medium to large, blackish red, rich, acid, juicy. First of July.

**May Duke**—Large, red, juicy and rich, excellent variety; tree vigorous and hardy. June.

**Dye House**—Partakes of both the Duke and Morello in wood and fruit. A very early and sure bearer; productive.

**PEACHES**

3 feet by Mail Postpaid, 20c each.

**First Class**—4 to 5 ft., 35c each; 10 for \$3.00; 100 for \$25.00.

**Medium**—3 to 4 ft., 25c each; 10 for \$2.00.

Our Nursery has always been headquarters for Peach Trees. We believe we have distributed more peach trees for home use than any other nursery in the state. Our 3 feet trees are offered by mail for 20 cents postpaid, delivered to your mail box, and are exceptionally fine and will please you. This is the same size we sell for some of the largest commercial orchards.

All peaches in this list are freestones unless otherwise noted. Those ripening in July are semi-cling.

**Alexander**—Extra early; one of the finest. July.

**Heath's Cling**—Very large, good keeper and shipper. October.

**Hale**—This is a new introduction and is well spoken of. We have a number of thousand and will make prices same as other peaches to our customers wishing to try it.

**Triumph**—It ripens with Alexander. A sure and abundant bearer. The fruit is of large size. July.

**Carman**—Large, resembles Elberta; creamy white, fine flavor. July.

**Captain Ede**—Large, yellow freestone, similar to Elberta, but ripens ten days earlier.

**Yellow St. John**—Nearly as large as Crawford and a much surer bearer. One of the earliest freestones. August.

**Beer's Smock**—A large yellow fleshed peach. An improvement on Smock's Free, which it resembles; ripens a few days later and is a better bearer. September.

3-foot Peach, express, \$15.00 per 100

**Champion**—A large, handsome, early variety, white, red cheek, sweet, rich, juicy, hardy and productive. August.

**Elberta**—The most popular peach grown. Large, yellow with red cheek; flesh yellow, firm, juicy; exceedingly prolific, sure bearer and hardy. Last of August.

**Crosby**—One of the hardiest. Abundant bearer, medium size, bright yellow, fine quality.

**Crowford's Early**—A large early peach of fine quality.

**Kalamazoo**—A leading market sort. Large, yellow, fine quality, very productive.

**Lemon Free**—Lemon shape and color, large size; immensely productive; excellent quality. September. Is one of the best commercial peaches.

**Niagara**—Originated in Western New York where it has been well tested. Sure bearer and hardy, bright yellow, very large, fine quality.

**Prolific**—Another season has proved this peach to be the very best and largest yellow free-stone peach of its season; ripens a week after Elberta. September.

**Fitzgerald**—Fruit large, brilliant color, one of the best market varieties; very hardy. Early September.

**Banner**—Large, yellow with crimson cheeks, flesh yellow, firm, rich, excellent.

**Dewey**—The best early freestone; flesh yellow, good for market.

**Smock's Free**—Large, yellow and red, bright yellow flesh. One of the best. Last of September.

**Globe**—Extra large, flesh firm; fine for home or market. October.

**Salway**—Large, flesh deep yellow, juicy, rich, sweet. October.

**Engle's Mammoth**—Large, round, yellow with red cheek, freestone. September.

**Stearns**—A Michigan peach; freestone; yellow flesh and brilliant red skin, the best of shippers; strong, upright grower; extremely hardy.

**Belle of Georgia**—Very large, white with red cheeks, firm, excellent flavor; very productive.

## MULBERRY TREES

**Russian**—An old variety; rapid grower. Fruit of good size and productive. First class, 4 to 6 feet, 30 cents each; 3 foot size, postpaid, 20 cents each.

**Downing's Everbearing**—One of the most prolific, bearing an abundance of large, black fruit; hardy. First class, 4 to 6 feet, 75 cents each; 3 foot size, postpaid, 50 cents each.

**New American**—Equal to Downing's in all respects and a much hardier tree, vigorous grower, very productive, the best variety for fruit. Ripe from middle of June to middle of September. First class, 4 to 6 feet, 75 cents each; 3 foot size, postpaid, 50 cents each.

## NECTARINE TREES

3 feet size, by mail, postpaid, 40c each.

First class, 4 to 6 feet, 75 cents each.

**Early Violet**—Medium size, yellowish green with a purplish cheek; flesh pale green, melting, rich and high flavored; freestone.

**Elruge**—Medium size, yellowish green with a dark red cheek; flesh greenish white, juicy and high flavored; excellent.

## APRICOT TREES

3 feet size, postpaid, 40c each.

First class, 4 to 6 feet, 75c each.

**Early Golden**—Small, pale yellow, juicy, sweet; tree hardy and fruitful. July.

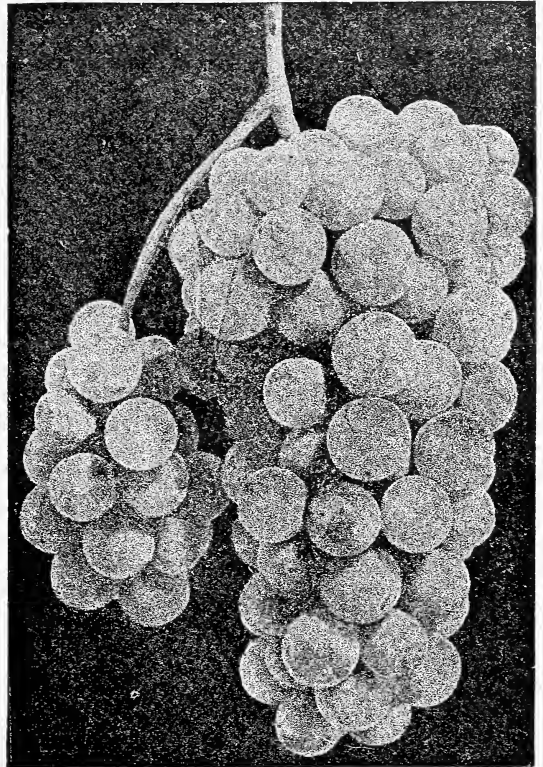
**Harris**—Uniformly large, golden yellow, flesh rich and juicy. Tree hardy and productive.

**Superb**—This variety excels in quality as well as in hardiness. It has a large, beautifully colored fruit, sweet and juicy.

## GRAPES

Grapes, postpaid, 15c each.

The grape is the most healthful of all fruits, and the most highly esteemed for its many uses. It can be grown by everyone who has a garden, a yard or a wall. It can be confined to a stake, bound to a trellis, trained over an arbor, or extended until it covers a large tree or building, and still it yields its graceful bunches of luscious fruit. Capable of most extraordinary results under wise management.



### Niagara

**Niagara**—White. Occupies the same position among the white varieties as the Concord among the black; bunch and berry large greenish white, excellent quality, hardy, productive. If you want a white grape this is the one. Strong 1 year, 15c each; 10 for \$1.20; 100 for \$10.00.

Grapes. Postpaid, 15 cents each

**Concord**—Black with blue bloom. An old tested sort, sure bearer, hardy. There is 100 times more of this grape grown than all other varieties put together. Strong 1 year 15c each; 10 for \$1.00; 100 for \$6.00.

**Moore's Early**—Black with blue bloom; very large berries, compact clusters, perfectly hardy, fine flavor; the best early black grape for market or home. Strong 1 year 15c each; 10 for \$1.00.

**Campbell's Early**—Strong grower, productive, ripens with Moore's Early; bunch and berry large, black with blue bloom, good flavor, seeds few. Strong 1 year, 20c each; 10 for \$1.50.

**Worden**—Black with blue bloom. A very fine grape, hardy and healthy foliage; ripens before Concord. Strong 1 year, 18c each; 10 for \$1.50.

**Delaware**—Red, bunch small, compacted. The finest flavored grape grown, ripens with Concord. Strong 1 year, 15c each; 10 for \$1.00.

**Catawba**—Red. An old established variety; berries large, bunch large, and compact sweet, rich, musky flavor; one of the latest to ripen. Strong 1 year, 15c each; 10 for \$1.00.

**Wyoming**—Red. Vine very hardy and healthy; medium sized berry, compacted clusters, flesh tender, juicy and sweet. The best red grape for market and home, ripens before Concord. Strong 1 year, 15c each; 10 for \$1.00.

**Moore's Diamond**—White. The best early white grape, juicy, few seeds, fine flavor. This grape will not disappoint you; hardy. Strong 1 year, 15c each; 10 for \$1.00.

## STRAWBERRIES

We have been to great expense and time in selecting each season from our propagating beds the healthiest, thriftiest and most productive plants for planting to raise stock for our customers and we believe we have now practically got a superior strain of all varieties we list. While in shape, color and flavor they are the same, in vitality, size of plant, productiveness and healthy foliage they are worth to the planter twice as much as stunted, neglected plants sent out by some so-called Strawberry Specialists.

By express 100 for 75c; 250 for \$1.75; \$6.00 per 1000.

By mail, 25 for 50c; 100 for \$1.50; 250 for \$2.50, postpaid.

Write for special prices on 5000 or more.

**Early Jersey Giant**—(Male). The plants are good healthy growers making an excellent row, and produces a heavy crop of good quality fruit, although not quite as firm as Early Ozark, we call it a better yielder and it does not require quite as strong a soil as the Ozark. We strongly recommend the Early Jersey Giant as an early berry for planting, also will say it is a very large berry.

**Corsican**—(Male). The plants are large and good growers. Fruit large, longish heart shape, good quality; stands shipment well. Midseason. Very similar in plant and fruit to Uncle Jim. A good variety and a favorite.

**Senator Dunlap**—(Male). A well tested wonderfully productive variety and one of the safe sorts to plant. The plant is perfectly healthy and an enormous bearer. It commences to ripen soon after the earliest and continues until near the close of the season.

**Bubach**—(Female). This is a well known variety and we doubt if there has been a new variety yet introduced to take its place.



William Belt

**Wm. Belt**—(Male). A large, productive berry for market or home use. Vigorous, thrifty; sends out strong runners; berries extra large and fine quality.

**Parson's Beauty**—(Male). A good grower and an immense cropper of large, solid berries of good form, bright red and firm, but its chief point of merit is its enormous crop of fruit.

**Sample**—(Female). Fruit large, one of the best berries and succeeds everywhere. Plants strong, large and healthy; hardy, one of the best for home or market.

**Glen Mary**—(Female). Berries large to very large, season medium to late. One of the most productive.

**Haverland**—(Female). Crimson, long and conical; fruit large, flavor mild, extra heavy yielder, makes an abundance of runners; favorite with commercial growers; season early.

**Uncle Jim**—(Male). One of the largest, makes lots of runners, good flavor, fine shipper; an all around good commercial berry, will also please small growers, one of the best.

**Warfield**—(Female). One of the old standbys; a great row maker, heavy producer of big red berries, a fine market sort, is very popular with everyone.

**Gibson**—(Male). A new variety which has done well in nearly every section of the United States where it has been tried; is a wonderful row maker of big heavy foliage; great producer of big berries, dark glossy red in color, choice flavored. They are highly recommended by all and we think everyone should at least try some of these in their garden so as to have some to plant their patch with next year.

**Early Ozark**—(Male). The greatest early berry in existence; bears as heavy as the later ones, is a good row maker; berries are very large and of excellent quality. If one wants an early berry for home or market purposes they would do well to buy this variety; highly spoken of by all that have planted it.



**FALL BEARING STRAWBERRIES**

**Americus—(Male).** This is one of the best of fall bearing strawberries. Think of it! We had strawberry shortcake Thanksgiving Day and our vines were loaded. Fine flavor, good size and productive. By mail, postpaid, 25 for \$1.00, 100 for \$2.00. Express, 500 for \$5.00.

**Superb—(Male).** Fall bearing, fruit large, dark red, fine flavor, good plant producer. These varieties of fall bearing strawberries produce as many berries as the earlier varieties, and they give you berries until winter comes.

By mail postpaid, 25 for \$1.00, \$100 for \$2.00. Express, 500 for \$5.00.

**RASPBERRIES**

Mail, postpaid, 25 for 75c; 100 for \$2.75.

**Gregg—(Black).** Fruit very fine and covered with bloom. This variety has been a leader for a number of years. A good, all around late blackcap; one of the largest. 100 for \$2.00; 1000 for \$18.00.

**Cumberland—(Black).** The largest of all blackcaps. A healthy, vigorous grower, throwing up stout, stocky, well-branched canes that produce immense crops of berries. By freight or express, 100 for \$2.00; 1000 for \$18.00.

**Plum Farmer—(Black).** This is a very large and productive raspberry. It has been tested in all sections and proved itself perfectly hardy. You will make no mistake in setting this berry extensively. By freight or express, 100 for \$2.00; 1000 for \$18.00.

**Golden Queen—Yellow variety, fruit large, productive, quality first class.** Every grower should have enough of these plants to mix with their Red and Black for the table. It makes quite a novelty in a mixture of Red and Black in a fruit dish, the flavor is very fine, fruit large. 5c each; \$4.00 for 100.

**Marlborough—(Red).** This is the earliest and best. This berry has been before the public for years and has proven itself the best for all sections. 100 for \$2.00; 1000 for \$15.00.

**St. Regis Everbearing—**This remarkable berry produced a crop all through the fall. It ripens with the earliest and produces berries until frost. This is certainly an ever-bearing berry. By mail, 12 for 50 cents, 25 for \$1.00; by express, 100 for \$3.00; 1000 for \$25.00.

**Columbia—(Red Purple).** A decided improvement on the Shaffer. Of the same type and similar color. A wonderfully strong grower and producer; rich sprightly flavor, attains a very large size. We recommend it for general planting. Claimed to have yielded 8,000 quarts per acre, which we do not doubt by its behavior on our grounds. 100 for \$2.50; 1000 for \$25.00; 25 by mail, postpaid, 75 cents.

**Kansas—(Black).** Strong, vigorous grower standing extremes of drouth and cold and bearing immense crops. Ripens just after Palmer. Berries of the largest, jet black,

**Kansas**

free from bloom, firm and good shipper. We have seen it growing in plantations for the last few years and consider it the best market variety. By freight or express, 100 for \$2.00; 1000 for \$15.00.

**King—(Red).** We fruited this berry this season and found it the very best early red raspberry. It has large and attractive bright red fruit of excellent flavor, firm and good shipper. 100 for \$2.00; 1000 for \$15.00.

**Cuthbert—(Red).** Queen of the market. Large, conical, deep, rich crimson, firm, of excellent quality. A vigorous grower, entirely hardy and immensely productive. 100 for \$2.00; 1000 for \$15.00.

**GOOSEBERRIES**

**Josselyn—(Red Jacket).** An American seedling of great value. 2 year, No. 1, 20 cents each; by mail, postage paid, 1 year, 20 cents each.

**Downing—Large, handsome, pale green, very fine.** 2 year, No. 1 20 cents each; by mail, 1 year, 20 cents each.

**Houghton—Medium in size, red, sweet, tender, enormously productive.** 2 years, No. 1, 20 cents each; by mail, 1 year, 20 cents each.

**BLACKBERRIES**

Mail, postpaid, 5c each. any variety via express 25 at 100 rates, 250 at 1000 rates. Blackberries are very scarce and high.

**Ancient Briton—**One of the best, hardy varieties. This berry has stood the test for years, always having a full crop after a severe winter when the thermometer would register 20 below zero. This is the berry for commercial planting. Very vigorous, healthy and hardy. 100 for \$4.00; 1000 for \$35.00.

**Eldorado—**The vines are very vigorous and hardy, enduring the winter when it is 12 to 20 below zero without injury, and their yield is enormous. Berries large, jet black, very sweet, no hard core; one of the best keepers. 100 for \$4.00; 1000 for \$35.00.

**Snyder—**Very hardy, productive, fine for market. By mail, postpaid, 100 for \$4.00; 1000 for \$35.00.

Raspberries Post Paid, 25 for 75c.

**Blower**—Originated in Chautauqua County, N. Y., where it has been thoroughly tested. The hardiest, most productive blackberry grown. Has produced 2,694 berries on one bush, 2,720 quarts on 1-3 acre. Large size, good shipper. Best quality. Express, 100 for \$4.00; 1000 for \$35.00.

**Early Harvest**—The earliest blackberry and consequently valuable for market. The canes are strong and upright in growth and enormously productive. Berries sweet and of the highest quality, though not as large as some others. 100 for \$3.00; 1000 for \$25.00.

**Taylor**—Berries of fine flavor, larger than Snyder, canes of vigorous growth, iron-clad hardness and wonderfully prolific, ripens late. We have grown some wonderful crops, which have paid us the price of the land on which they were set. 100 for \$3.50; 1000 for \$30.00.

**Iceberg**—(White Blackberries). While quality and size are good, it is mostly used for its appearance, mixed with black sorts for the table, which makes a very striking appearance. By mail, postpaid, 10 cents each, 3 for 25 cents.

**Lucretia**—(Dewberry). A trailing form of the blackberry with large luscious fruit. It matures in advance of the ordinary varieties. 100 for \$3.00.

**Himalaya Berry** — Wonderful grower, abundance of fruit. The fruit looks like a blackberry, same shape and color, quality good. By mail, 10 cents each, 12 for 75 cents.

## CURRENTS

Mail, postpaid, 15 cents each, 1 year, No. 1 plants of any variety.

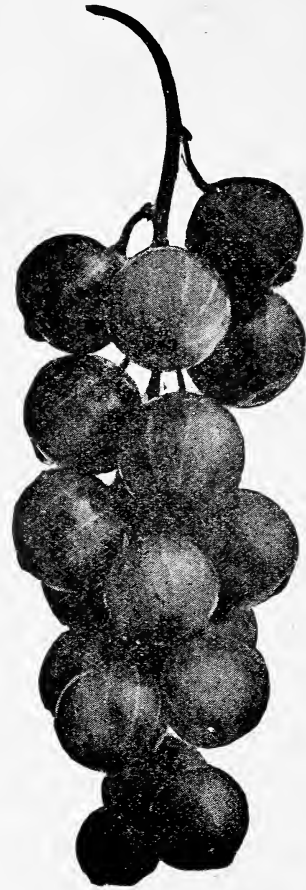
**Perfection**—The latest introduction, created by crossing Fay's Prolific with White Grape, and combines best qualities of both parents. In color it is a beautiful bright red and of size larger than Fay. The clusters average longer and the size of the berries is maintained to end of bunch. Very productive. It was awarded the Barry Medal of the Western New York Horticultural Society in 1901 and the Pan American medal the same year. 2 year, No. 1, 15 cents each; 1 year, No. 1, by mail, 15 cents each, 12, \$1.50.

**Cherry**—Berries sometimes more than half an inch in diameter, bunches short, vigorous and productive when grown on good soil. 2 years, first class, 15 cents each, 12 for \$1.50.

**North Star**—The strongest grower among the red varieties. Should be given plenty of room and good ground. Bunches average four inches in length and the bush just loaded. Combines extreme hardness, vigorous growth, extra quality and great productiveness. 2 year, No. 1, 15 cents each.

**White Grape**—This is the best white currant we know of; mild, acid flavor, large, handsome clusters; one of the best for dessert. 2 yr., No. 1, 15 cents each, 12 for \$1.50.

**Wilder**—Berries large, dark red, mild sub-acid, hangs on bushes well, midseason, clusters large compact, easy to pick, bushes upright and large. A very desirable variety and hardy in all regions east of the Mississippi River. Above is Government description. 2 year, one plant 15c by express; 1 year, No. 1, by mail 15 cents each.



Perfection

**Fay's Prolific**—The leading market variety, extra large stems and berries; uniform in size, easily picked, exceedingly productive. You will not make a mistake if you plant largely of it. Price 15 cents each, 12 for \$1.50.

**Lee's Prolific**—Large, black, fruit of finest quality, desirable for both kitchen and market, bush a vigorous grower and very productive, growers are evidently missing an opportunity by not planting more currants. Last season the price was exceedingly high for Black Currants. 2 year, No. 1, 20 cents each, 12 for \$2.00.

**Black Naples**—Very large, black, rich, tender; one of the best blacks. 2 year, No. 1, 20 cents each, 12 for \$2.00.

## HORSE RADISH

We have a distinct hardy variety of our own that we have propagated by selection for years. Extra fine flavor, 25 for 25c, 100 for \$1.00; 10 by mail 15c.

## RHUBARB OR PIEPLANT

**Queen**—Extra large stalks, tender and delicious. Fine for canning or cooking, strong grower. 10 cents each, 12 for \$1.00; by mail, 15c each, 8 for \$1.00.

Blackberries Postpaid 5c each, 25 for \$1.00

## ASPARAGUS

**Columbia Mammoth White, Barrs Mammoth and Conover's Colossal.**

### Planting Asparagus

See that ground is well drained naturally or otherwise; work it up fine and deep and make it very rich with well rotted barnyard manure. Place the plants eight inches apart in rows three feet apart. Spread out the roots in a trench made deep enough to permit their crowns to be covered with three or four inches of mellow earth. Give the beds liberal dressings of manure at intervals and except near the sea shore, three pounds of salt per square yard early every spring. Do not cut for use until the second season. For seed, see Seed Department.

### Asparagus Roots

Every family should plant enough for home use. This is the only way to have fresh nice asparagus. Our plants are two years old and will be fresh dug. Express or freight, 100 for \$1.00; 1000 for \$9.00. By mail, postpaid, 50 for \$1.00.

## HYBRID AND PERPETUAL ROSES

By mail Roses postpaid, 2 year field grown, 75 cents.

We probably have more complaints from parties purchasing Roses than any other plant we sell. The roots are small and must have protection from the time they are dug until transplanted. The fault is sometimes the Nurserymen but most always the planter. Make a hole big enough so you can plant with your feet instead of your hands, tramp the earth solid and if you think they need watering do not just give them a teaspoonful, but a whole pail full and do it every day at dusk. We have all the facilities for handling Roses and we are going to see that everything in the way of packing is done so there will be no doubt but what we did our part.

**Alfred Colomb**—Bright carmine, crimson; one of the very best dark colored sorts.

**Anne de Diesbach**—Brilliant rose color; very fine.

**Harrison's Yellow**—Free bloomer, the finest of yellow, hardy roses.

**Persian Yellow**—The finest yellow rose grown, hardy and adapted to all climates.

**J. B. Clark**—A distinct crimson red.

**Baron de Bonstetten**—A splendid shade of dark red, changing to velvety maroon.

**Margaret Dickson**—A pure paper white large sized and free flowering. The bloom is perfect in form on fine long stems.

**Magna Charta**—A general favorite, prized on account of its strong, upright growth and bright, healthy foliage, as well as for its fine bloom. The color is beautiful bright pink.

**Mrs. J. H. Laing**—A grand sort with flowers of soft, delicate pink with satin cast.

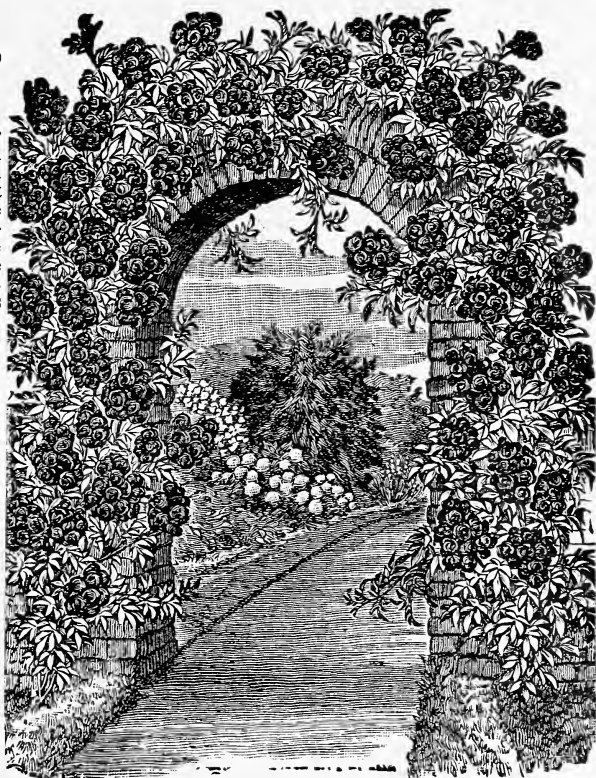
**Ulrich Brunner**—This is one of the best red roses; perfectly hardy in all sections.

**Chlo**—Rosy pink with a delicate, satiny blush, very fine.

**Mme. Gabriel Luizet**—Rose color. This is one of the roses that please everybody.

**American Beauty**—Color red. One of the finest of roses, not hardy in all sections.

**Gen. Jacqueminot**—Brilliant crimson, large and very fine.



**Crimson Rambler Rose**

## HARDY CLIMBING ROSES

By Mail 50c Each

**Crimson Rambler**—The plant is a very vigorous grower and thus makes a splendid climbing rose. Everyone should have this rose.

**Dorothy Perkins**—A beautiful shell pink. This is the finest of pink climbers.

**Lady Gay**—Cherry pink, flowers large. One of the strongest climbers. 2 year, field grown.

**Pink Rambler**—Resembles Crimson Rambler in every respect but color.

**Yellow Rambler and White Rambler**—Similar to the above except in color.

**Baltimore Bell**—White, very double, flowers in large clusters, the whole plant appearing a perfect mass of flowers. If you want a white rose this will please you.

**Prairie Queen**—Standard variety and one of the most popular, perfectly hardy, bright rosy red, large compact and globular flowers. Plant this rose and you will always have roses.

**Memorial Rose, Manda's Triumph**—This is a grand variety. The flowers, which are pure white and very double, are produced in clusters from 10 to 12. On each cluster are small side shoots, literally covering the plant.

**Moss Roses**—White Moss, Crested Moss.

**American Pillar**—One of the most valuable of the hardy climbers, flowering profusely in large compact clusters, brilliant carmine rose.

**Baby Rambler**—Red. Very compact clusters of crimson flowers.

**Veilchenblau**—"The Blue Rambler." Similar in all respects to Crimson Rambler, only the flowers are blue.

Currants, Postpaid, 15c each

**Flower of Fairfield**—Ever bearing crimson Rambler.

**Baby Dorothy**—(Pink). A dwarf form of Dorothy Perkins.

**Tree Roses**—4 to 5 feet high. In this shape we offer only Hybrid Perpetuals or hardy class. We have them in White, Pink, Red and Crimson. 2 year, 4 to 5 feet, field grown, \$1.50 each.

## HARDY CLIMBERS

Any of these shrubs same price by mail.

**Wisteria Chinese**—Purple, one of the most magnificent, hardy climbers, producing racemes of pale purple flowers, early in spring and autumn and growing at the rate of fifteen or twenty feet in a season. 2 year, first class, 50 cents each. By mail, postpaid.

**Wisteria Chinese**—White, different from the purple in color only. 2 year, first class, 50 cents each. By mail, postpaid.

**Dutchman's Pipe**—Of climbing habit and rapid growth, light green foliage 10 to 12 inches in diameter, flowers yellowish brown and curious pipe shape. 2 year, first class, 50 cents each. By mail, postpaid.

**Trumpet Flower Bigonia Radicau**—A splendid hardy climbing plant, with large trumpet shaped scarlet flowers in August. 2 year, field grown, 25 cents each. By mail, postpaid.

**English Ivy**—One of the best climbing plants, foliage is rich, waxy dark green, makes beautiful appearance trained on side of a building. By mail or express, 30 cents each.

**Boston Ivy**—One of the hardiest climbers. Fine for covering walls; will cling to the smoothest surface. 2 year, field grown. By mail, postpaid, 30 cents each.

**Clematis Jackmani**—Flowers when fully expanded, 4 to 6 inches in diameter; intense violet purple with rich velvet appearance. It blooms continually. 2 year, 75 cents each. By mail, postpaid.

**Clematis Paniculata**—A native of Japan; a beautiful and rapid growing climber which in a very brief time will cover any ordinary veranda. The flowers are pure white and very fragrant. 2 year, 30 cents each. By mail postpaid.

**Clematis Henryi**—This is the finest of all white clematis and should find a place in every collection; continuous bloomer. June to October. 2 year, 50 cents each. By mail, postpaid.

**Golden Leaved Honeysuckle**—Of vigorous growth; a handsome variety. 2 year, by mail, 25 cents each.

**Hall's Japan Honeysuckle**—A strong vigorous evergreen variety, with pure white flowers; very fragrant. Covered with flowers from June to November. 2 year, 25 cents each.

**Matrimony Vine**—A vigorous, hardy climber, dark green foliage and beautiful flowers. 2 year, 25 cents.

**Trumpet Vine**—A splendid climber with clusters of large trumpet shaped flowers. 2 year, 25 cents each, by mail postpaid.

## HEDGE PLANTS

**Privet California**—Undoubtedly the most popular of all hedge plants. 18 to 24 inch plants, 100 for \$4.00, 1000 for \$30.00.

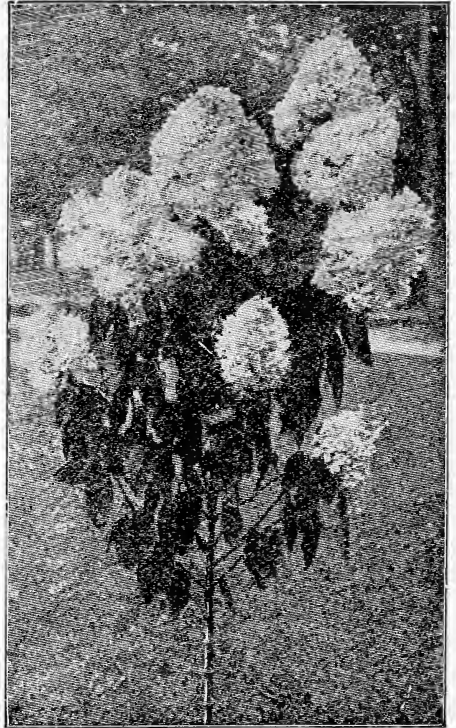
**Japan Barberry**—Very fine as a hedge plant. Where a less informal hedge is required, nothing can rival it. 15 to 18 inch, \$2.50 for 10.

**Osage Orange**—This makes strong hedges, Plants 1 year old, 100 for \$2.00.

**Honey Locust**—Makes a very fine hedge. Plants 1 year old, 100 for \$2.00.

## HARDY SHRUBS

**Hydrangea Aborescens Grandiflora Alba**—"Hills of Snow." This magnificent, hardy shrub is the very finest addition to this class of plants found in many a year. The blooms are of the very largest size, of pure snow white color, perfectly hardy, standing 20 degrees below zero. 2 year, 2 to 3 feet, 50 cents each, by mail, postpaid.



Hydrangea P. G.

**Hydrangea Paniculata Grandiflora**—Too well known to need description. The most popular of all shrubs. Large plants, 2 years, 2 to 3 feet, 50 cents each; by mail, 50 cents each.

**Calycanthus**—(sweet scented shrub). The Calycanthus is one of the most desirable shrubs, growing 6 to 8 feet high. The wood is fragrant, flowers double purple, blossoms in June and at intervals afterwards. 2 year, 25 cents each; by mail, 30 cents.

**Deutzia, Pride of Rochester**—Large, white, double flowers, the back of the petals being slightly tinted with rose, it excels all other

Get Prices by 100 and 1000 on Trees

sorts in size of flowers, length of panicle, profuseness of bloom, and vigorous habit; early bloomer. 2 year, 25 cents each, by mail, postpaid.

**Syringa, Lilac Rothomagensis Vara Alba—**

Vigorous grower, foliage small and narrow flowers, white with a bluish tint, fragrant and free flowering. 2 year, 25 cents, by mail, postpaid.

**Lonicera—Morrowii—**Noted for its handsome flowers and showy fruit, should be in every collection. 2 year, field grown, 25 cents each, by mail, postpaid.

**Althea or Rose of Sharon—**The Altheas are fine, free growing, flowering shrubs flowering in August and September. We offer the following: Double Red, Double Purple, Double White. 2 year, field grown, 40 cents each, by mail, postpaid.

**Lilac—Japan Tree Lilac.** The only tree form; exceedingly handsome when in bloom. Flower plumes 18 to 20 inches long. Field grown, 3 to 4 feet, 50 cents each, by mail, postpaid.

**Lilac—White.** 2 to 3 feet, field grown, 25 cents each. 2 to 3 feet, field grown, by mail, postpaid, 30 cents.

**Lilac—Purple.** 2 to 3 feet, field grown, 25 cents each. By mail, postpaid, 30 cents.

**Snowball—(Opulis Sterilis).** A well known shrub of large size, used extensively for Decoration Day. 2 year, field grown, 2 to 3 feet, 30 cents each. By mail, postpaid, 30 cents.

**Spiraea Von Houtte—**The grandest of all spiraeas and one of the very best flowering shrubs in cultivation. Flowers pure white. 2 year, 25 cents each. By mail, postpaid, 30 cents.

**Spiraea, Anthony Waterer —** A crimson flowered variety. One of the most beautiful of dwarf flowering shrubs. It makes a low compact bush 15 to 18 inches high, and is covered nearly the whole growing season with large umbels of deep crimson flowers. Perfectly hardy. 2 year, 25 cents each, 6 for \$1.00. By mail, postpaid, 25 cents each.

**Spiraea (Billardi)—**A dense shrub, grows 6 feet high, covered with rich pink flowers from July to frost. 2 year, field grown, 25 cents each. By mail, 30 cents each.

**Yucca, (Spanish Bayonet)—**Has a fine appearance; the stem is covered with large bell shaped flowers on laterals, forming a perfect pyramid; valuable for rockwork and very effective in clumps on the lawn. 2 year, large clump, 15 cents each. By mail postpaid, 25 cents.

**Philadelphus Grand—(Mock Orange).** A beautiful shrub, arching and graceful, very nearly covered with large flowers. June. 2 to 3 feet, 25 cents each. By mail, postpaid, 30 cents.

**Golden Sumac—(Rhus Glabra).** Grows to a small tree with beautiful cut leaves which

color beautifully in Autumn, flowers in July followed by crimson or brown berries. 2 to 3 feet, 35 cents each. 1 to 2 feet, 25 cents each. 1 to 2 feet, by mail, 30 cents.

**Cornus Floridus—(Dogwood).** A beautiful white flowering tree, blossoms  $3\frac{1}{2}$  inches across, very abundant, showy and beautiful, foliage grayish green, glossy and handsome, in Autumn turns to deep red; one of the most beautiful at this time. 2 to 3 feet, 35 cents each. 1 to 2 feet, 25 cents each. 1 to 2 feet, by mail, 30 cents each.

## EVERGREENS

### ARBOR VITAE

**American,** 2 to 3 feet, 30 cents each.

**American,** 3 to 4 feet, 50 cents each.

**Pyramidalis,** 2 to 3 feet, \$1.00 each, 10 for \$3.50.

**Pyramidalis,** 3 to 4 feet, \$1.00 each.

**Hovey's Golden,** 2 feet, \$1.00 each.

**Siberian,** 2 feet, \$1.00 each.

**Tom Thumb,** \$1.00 each.

### FIR—SILVER

**American Balsam,** 3 to 4 feet, 75 cents

### SPRUCE

**Norway,** 12 to 15 inches, 40 cents each, 10 for \$2.50.

### JUNIPER

**Irish,** 2 to 3 feet, \$1.00 each.

**Virginia Red Cedar,** 3 to 4 feet, 75 cents.

**Hemlock,** 2 to 3 feet, 60 cents each.

**Norway,** 2 to 3 feet, 60 cents each, 10 for \$6.00.

## TREES

**Birch, European,** 6 to 8 feet, 75 cents each.

**American Elm,** 6 to 8 feet, 75 cents each.

### CATALPA

**Speciosa,** 5 to 6 feet, 50 cents each.

**Catalpa, Bungei,** 6 to 8 feet, 2 year head, \$1.50.

**Catalpa, Bungei,** 6 to 8 feet, 1 year head, \$1.25 each.

### POPLARS

**Carolina,** 8 to 12 feet, 50 cents each.

**Lombardy,** 8 to 10 feet, 50 cents each.

Get prices by the 100 and 1000 on trees

## NUT TREES

- American Sweet Chestnut**, 6 to 7 feet, 50 cents.  
**Japan Sweet Chestnut**, 3 to 4 feet, \$1.00 each.  
**Paragon Grafted**, 3 to 4 feet, \$1.00 each.  
**Walnut, Black**, 3 to 4 feet, 25 cents; 5 to 8 feet, 50 cents each.  
**Walnut English**, 2 to 3 feet, 50 cents each.  
**Walnut, Japan**, 4 to 5 feet, 75 cents each.  
**Butternut**, 6 to 8 feet, 75c each.  
**Pecans**, 75 cents each.

## HORSE CHESTNUTS

- White Flowering**, 4 to 5 feet, 40 cents; 6 to 7 feet, 50 cents.  
**Red Flowering**, 4 to 5 feet, \$1.00 each.

## MAPLE

- Silver Leaf**, 8 to 10 feet, 75 cents each; 10 to 12 feet, \$1.00 each.  
**Sugar Maple**, 8 to 10 feet, 75 cents each.  
**Norway Maple**, 8 to 10 feet, \$1.25 each.  
**Wier's Cut Leaf**, 6 to 8 feet, \$1.25 each.

**Maple-Ash-Leaf**—(Manitoba) A tree of vigorous growth and singular beauty. In summer it is covered with a dense foliage, in winter the young wood turns to a beautiful green color, making it a very distinctive appearing tree, and strikingly handsome in the winter as in the summer. Very desirable. 6-8 feet, 75c each.

**European Sycamore**—Well known as Oriental Plane, a lofty, wide spreading tree, heart shaped leaves, valuable for its handsome foliage and free growth. Makes fine tree for street work, or for the shade of the yard. 6-8 foot trees, 75 cents each.

## WEEPING TREES

- Birch, Cut Leaved**, 6 to 8 feet, \$1.50 each.  
**Willow, Kilmarnock**, 2 years, \$1.00 each.  
**Willow, Wisconsin**, 6 to 8 feet, \$1.00 each.  
**Camperdown Weeping Elm**, 1 year heads, \$1.50 each.

We can furnish all sizes and kinds of Deciduous and Evergreen Trees and Shrubs. Write for prices.

## NUT TREES BY MAIL

These are nice little trees and will bear early.

- Butternut**, 15 cents each; 8 for \$1.00.  
**American Sweet Chestnut**, 10 cents each; 10 for 60 cents.  
**Hickory, Shellbark**, 20 cents each; 6 for \$1.00.  
**Pecan**, 20 cents each; 6 for \$1.00.  
**Walnut, English**, 15 cents each; 8 for \$1.00.  
**Walnut, Black**, 15 cents each; 10 for \$1.00.  
**Walnut, Japan, Sieboldi**, 20 cents each; 6 for \$1.00.  
**Walnut, Japan, Max Cordiformis**, 20 cents each; 6 for \$1.00.

**Dianthus Barbatus**—(Sweet William). We are making a specialty of these Plants. We have the following colors: White, Red, Pink, Yellow. Postpaid at 15 cents each.

## PEONIES

## FLOWERS AND BULBS

**Alba Sulphurea**—(Mont Blanc). Light sulphur yellow changing to white as a flower becomes older. By mail, postpaid, 40 cents each; 3 for \$1.00.

**Dorchester**—(Richardson). Pink; one of the latest to bloom; compact grower; flowers full and double, color silvery pink. By mail, postpaid, 40 cents each; 3 for \$1.00.

**Duchess de Orleans**—Large and compact, rosy lake with incurving almond center. By mail, postpaid, 40 cents each.

**Duke of Wellington**—Large, creamy white, very fine bulbs. By mail, postpaid, 40 cents each.

**Leclantanta**—Broad, full flower; purplish crimson. The best of its color. By mail, postpaid, 40 cents each.

**Festive Alba**—One of the best whites. By mail, 40 cents each.

**Festive Maxima**—The largest and most popular peony; long stiff stems, pure white inner petals slightly tipped carmine; early. By mail, postpaid, 35 cents each.

**Hercules**—A magnificent bedder, foliage concealed by bloom, color from bright rose to bluish white and center deepest yellow. By mail, postpaid, 40 cents each.

## HARDY PERENNIAL PLANTS

We have several thousand of each of these varieties and we are quoting them all Postpaid to your Mail Box. They are extra nice Plants, grown on our own soil and on the outside, so they are very hardy.

**Hollyhocks**—Magnificent double flowered varieties of the finest kinds and in the following colors: Red, White, Yellow, Black, Pink. These are of the finest named kinds and we are selling them to you at 15c each, postpaid.

**Giant Mallow Marvels**—We have these wonderful Plants in three colors. Red, White and Yellow. These Plants postpaid to you at 20 c each.

**Carnations**—Everyone should have a few carnations in their list of plants. We have these Plants in Pink, Red and White at 15 cents, postpaid.

# HOW TO PLANT TREES

---

## SUITABLE DISTANCE FOR PLANTING

Apples, Standard.....	30 to 40 ft.	Grapes .....	8 by 10 ft.
Apples, Dwarf .....	8 to 10 ft.	Currants .....	3 by 5 ft.
Pears, Standard.....	18 to 20 ft.	Gooseberries .....	3 by 5 ft.
Pears, Dwarf .....	10 ft.	Raspberries, Red.....	3 by 6 ft.
Peaches .....	16 to 18ft.	Raspberries, Black.....	3 by 6 ft.
Nectarines and Apricots	16 to 18 ft.	Blackberries .....	7 ft.
Cherries, Sweet .....	18 to 20 ft.	Strawberries, Rows ___	1 by 3½ ft.
Cherries, Sour .....	15 to 18 ft.	Strawberries, in Bed _	1½ by 3½ ft.
Plums .....	16 to 20 ft.	Asparagus in Bed.....	1 by 1½ ft.
Quinces .....	10 to 13 ft.	Asparagus, in Field....	1 by 3 ft.

Use Sour Cherries for fillers in Apples

## NUMBER OF TREES OR PLANTS ON AN ACRE

2 feet each way.....	10,890	15 feet each way.....	194
3 " " " .....	4,840	18 " " " .....	135
4 " " " .....	2,730	20 " " " .....	110
5 " " " .....	1,742	25 " " " .....	70
6 " " " .....	1,210	30 " " " .....	48
8 " " " .....	680	33 " " " .....	40
10 " " " .....	430	40 " " " .....	28
12 " " " .....	302		

To ascertain the number of plants required to the acre at any given distance divide the number of square feet (43,560) in an acre by the number of square feet you desire to devote to each plant. For instance, in strawberries planted 1½ by 3 feet, each hill will occupy 4½ square feet, making 9,680 plants to acre.

## TREATMENT OF FROZEN TREES

To care for trees that have been frozen in the packages or received during frosty weather, place the packages unopened in a cellar or some such place, cool but free from frost, until perfectly thawed, when they can be unpacked and either planted or placed in a trench until convenient to plant. Treated thus they will not be injured by the freezing. Trees produced in the fall for spring planting should be laid in trenches in a slanting position to the winds, the situation sheltered and the soil dry.

---

**Allen's Nurseries & Seed House**  
GENEVA, OHIO

---

# High-Grade Fruit Trees

---

Pure Northern-Grown Seeds

" QUALITY FIRST "

