

Historic, archived document

Do not assume content reflects current scientific knowledge, policies, or practices.

62.61
1922

Potatoes Grown Especially for Seed



No other section produces as Healthy and Vigorous Seed Potatoes as Northwestern New York. Try them and be Convinced.

GET THE BEST.

PURE SEED. TRUE TO NAME.

NORTHERN GROWN.

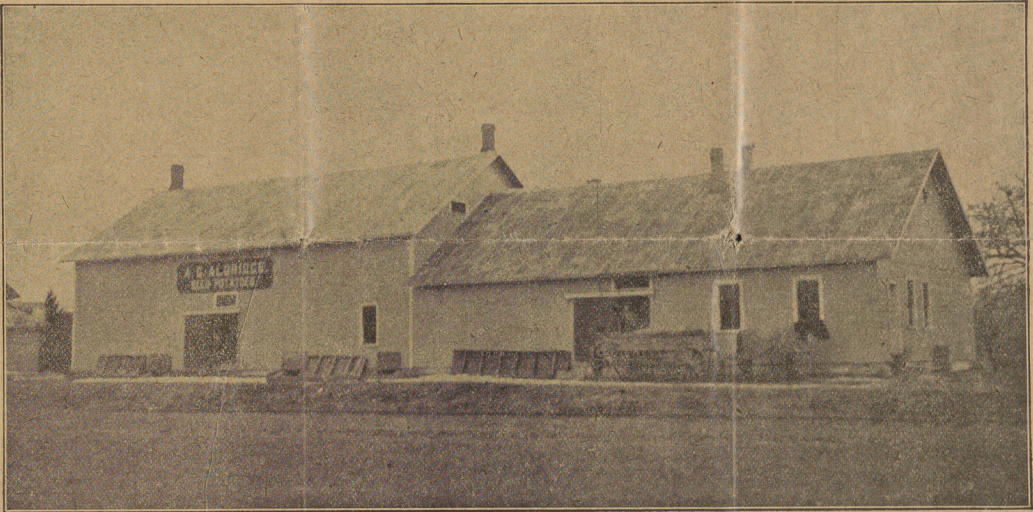
A. G. ALDRIDGE SONS,

FISHERS, Ontario County, N. Y.

Special Discounts to Members of the Grange and Farmers' Exchange.
(Officers please distribute these Price Lists among Members.)

OUR SEED POTATOES.

WE HAVE a good supply of true stock now in store, which is very fine, and in good condition. Orders will be booked as received, and shipped in rotation, after danger of freezing is over. We can ship nearly any time between March 15th and June. We assume no responsibility for damage incurred in transit, but we will exercise the greatest care to guard against the sudden changes of temperature. At the LOW RATE here offered, customers are expected to pay the charges when sent by freight or express. Our soil is especially adapted to growing smooth, handsome tubers, perfectly free from disease. Our location for furnishing Good Seed Stock is unsurpassed. TO ALL WHO INTEND to BUY SEED POTATOES we will say that the best potatoes grown in the United States are grown in Western New York. More potatoes are grown in this town than in any other town in New York State. Western New York took the Sweep Stake Premium for the best exhibit of potatoes at the World's Columbian Exposition. Where our Seed Potatoes have been tested with those grown in Maine and other states, they have excelled in almost every instance. If you have never planted seed from this section, give us a trial order, and we will convince you what we say is true. Always get your seed direct from the grower when possible. We are now shipping in car lots and using refrigerator and produce cars. Write also for price on car fancy eating potatoes for grocer-trade, to be loaded in good sacks.



OUR FROST-PROOF STOREHOUSE

And cellars at Fishers, Ontario Co., N. Y., on the N. Y. C. & H. R. railroad. This is where our seed stock is stored for our customers during the cold winter months and until it is safe to ship out in early spring.

"ORANGE BRAND" EATING POTATOES.

DO YOU know that some people never have really good eating potatoes? Let us tell you the reason. Potatoes are loaded in cars by commission men, and it requires from 10 to 15 wagon loads to fill a car. In many instances potatoes from at least four different kinds of soil, and as many different varieties are loaded and mixed in one car. How do such potatoes cook? Some will cook in twenty minutes some in thirty, some in forty, and some never will cook so you can eat them. We receive many letters every season from persons wishing to secure good potatoes for table use. Our "Orange Brand" is selected stock of some one variety grown in warm sandy soil which is especially adapted to growing excellent potatoes that when cooked will be dry, floury and of good flavor. We are prepared to furnish families, boarding houses or hotels and want one GROCER in your city or village to keep these on hand. Potatoes in this section are mostly hoed and harvested by machinery, which does away to a great extent, with hook marks and green ends, and causes much less waste. We ship in sacks and book no orders for less than 180 pounds. Write for prices, and state quantity needed. We make a specialty of furnishing fancy eating potatoes for the grocery trade. 180 pounds good weight in each sack.

PURE SEED.

Our potatoes are grown especially for seed purposes, are not to be classed with the common stock handled by commission men. The growing, storing and packing are under our personal supervision, and the greatest care is exercised in keeping all seed pure. You may be asked to pay higher prices, but remember they are no better on that account, and many times not as good.

HOW TO SEND MONEY.

Remittances may be made at our risk by either of the following methods, viz.: Postoffice money order, draft on New York, Express Company's money order, or by registered letter. Money order office at Fishers, N. Y.

References—NATIONAL BANK OF COMMERCE, Rochester, N. Y.; W. A. HIGGINBOTHAM, Banker, Victor, N. Y.; Mrs. GEO. FOWLER, General Store, Fishers, N. Y.; MERRILL'S AGENTS, and the Trade.

A GOOD STOREHOUSE

Is very important in carrying on the business of growing and selling potatoes for seed. Potatoes that have been wintered too cold or even too warm, are not good seed. Our customers may rest assured that all seed ordered from us will be the very best.

LOCATION.

Fishers is located in the town of Victor, on the N. Y. C. & H. R. Railroad, and is in the center of the best potato growing section in New York state. We ship potatoes every season to Maine, Michigan, Wisconsin, Minnesota, and all of the Southern and Middle States; have also shipped to Canada, Mexico and Russia. It is generally known by people in other countries as well as in this country, that potatoes grown in this section possess unusual vitality. We have Western Union Telegraph, American Express, Bell Phone.

TO SALESMEN AND AGENTS.

We want a good reliable man in each town to sell our Seed Potatoes. Our agents who are willing to work are making big sales and doing a very profitable business. We will make special low prices to Agents, wishing to commence the trade in new sections where our seed has never been tested. If you can sell 100 nbs. this year by a little hard work, you can sell 500 nbs. very easy next year. For one trial will convince the growers that our Seed Potatoes are the best. There is nothing you can do through the winter and spring months that will pay you as well. Write for agent's prices. Begin the work early and sell your neighbor a barrel of the best pure seed at a lower price than other agents would charge him for one bushel of poor seed.



EARLY SIX WEEKS.

This new variety in season is *extra early*, and we find by growing that it is one of the earliest ever introduced. It yields well, and will always be ready for market early while prices are high. Color light pink; flesh very white and floury. One of the best for early garden purposes. Give it a trial.



AMERICAN GIANT.

A long, white, late potato that is a standard sort. Tubers are long, smooth, glossy and somewhat flattened and inclined to be smallest at stem end. The American Giant yields immense crops in Monmouth County, N. J. The above is reproduced from a photograph of one taken from our cellar recently. Our stock is grown from seed which was certified last season.



HEAVY WEIGHT

New late main crop, round, white. A very high yielding strain of the rural type. Not susceptible to disease or partial toward difference in soils.



NEW SCOTCH ROSE POTATO.

This new rose colored potato is a great favorite. The seed first came from Scotland. The tubers are oblong, bright, and thick, with shallow eyes; tops large, dense, with strong stocky stems. There are few small tubers, and we recommend growing this new Scotch Rose in drills. We will match it against any late variety for productiveness, and which it tested beside any of the late sorts, because we have never tested a more productive variety. Its season is medium early, ripening after the early sorts, and before Carman No. 3. We consider the Scotch Rose an extremely desirable variety and specially recommend it to our friends for trial. It will produce more large tubers on light poor sand than any other variety.



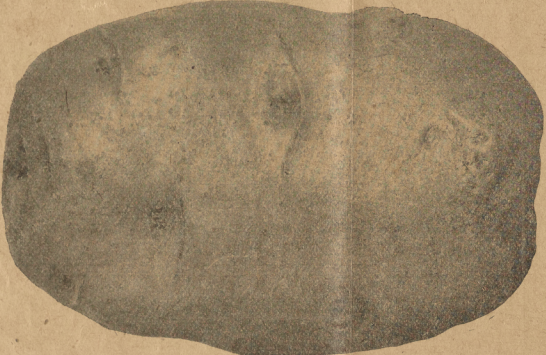
WHITE MAMMOTH.

Round, white, late, main crop variety of unusual quality for table use. Easy to harvest, good keeper and very productive. White Mammoth always brings the highest market price and makes a satisfied customer.



NEVER-BLIGHT.

New, late, long red, with very smooth skin. The tubers put out large thrifty vines and set very heavy, average yield of 275 bushels per acre. It is especially adapted to light soil and is considered blight proof. Excellent eating potato, cooks white.



GREEN MOUNTAIN IMPROVED

This main crop variety is attracting much attention here and is wanted by our best potato growers. It is oval, white, with shallow eyes, and very handsome. Easy to harvest and always produces an abundant crop of handsome tubers, about all of which are large enough for market. It has the number and the size in each hill. Cooking quality excellent. Our stock of these is pure and handsome.



NEW NUMBER NINE.

A new and valuable late round white variety, grown here now several seasons, giving excellent satisfaction, and sold for big money. Each season it yields immense crops of white, handsome tubers and pleases all who have seen it. It is an easy potato to harvest, a fine table variety, and many seasons yields 200 to 300 bushels per acre.

NATURAL POTATO SOIL.
Our Seed Potatoes are grown on the best and most natural potato soil in Western New York. Potatoes have been grown here extensively for over fifty years and during that time there has never been a crop failure. Our soil is sand and loam, and many of our best Potato Farms are quite rolling and hilly.

A CHANGE OF SEED
From one soil to another often doubles the yield, and improves the quality of the potatoes. Don't plant that old worn out seed any longer, but get something new and saleable.

PRESENT THROUGH FREIGHT RATES, WHICH WILL PROBABLY BE LOWER IN SPRING.

(SUBJECT TO CHANGE)
We have low through freight rates to nearly all stations on the following railroads: N. Y. C. & H. R. R., L. V. P. & R. Penna., Central of New Jersey, D. L. & W., B. & A., Long Island, N. Y., N. H. & H., Walkill Valley, B. & M. R. W. & O., N. Y. O. & W. S. B. & O., Northern Central, Harlem, Central New England, Central Vermont, Norfolk & Western, B. R. & P., W. N. Y. & P., L. S. & M. S., Michigan Central, Nickel Plate, L. E. & W., and many others not mentioned.

PRESENT RATES OF FREIGHT PER 100 LBS. ON TWO OR MORE SACKS OR BARRELS

E. St. Louis 58	Cincinnati 52½	Pittsburgh 42½	Camden 38
Chicago 54½	Boston 41½	Albany 32	Baltimore 38
Louisville 38	New York 38	Buffalo 24	Philadelphia 38
Washington 46	Brooklyn 38	Trenton 38	Jersey City 38

Rate on full car load of 600 bushels is much lower.

If there is no freight agent at your shipping station and freight must be prepaid here, be sure to state the fact when giving your order.

Choice Early Potatoes are scarce, and likely to be much higher in the Spring. Prices are for immediate Order and Spring Delivery on Board Cars Here. Subject to Being Unsold.

WHOLESALE PRICE LIST.

JANUARY 1, 1922

Prices subject to change without notice. Special price on five or more sacks or barrels Car Lots a Specialty. Correspondence Solicited.

N. B.—In writing for quotations on large lots state quantity each variety needed; also whether you wish to have them packed in barrels or sacks. Barrels do cents more than Sacks.

NOTICE.—Should you receive more than one copy of this Price List, please do us a favor by handing it to some one interested in good Seed Potatoes.

Cash must be accompany orders to secure attention.

The Following varieties are the best and most popular now in cultivation.

	Per 165 lb. Sack	Sec. Size 165 lb. Sack
American Giant, late, long, white, very productive and good keeper	5 50	4 10
Beauty of Hebron, early, well known and one of the best	6 00	5 50
Bliss Triumph, extra early, bright red, handsome and productive	6 25	5 75
Blue Victor, late, round, blue skin, productive, very white flesh	5 75	5 25
Bovee, new, plump and very early, heavy yielder	6 00	5 50
Burpee's Extra Early, new, early, a choice variety for the garden	6 00	5 50
Carman No. 1, new, white, medium early, heavy yielder	5 50	5 00
Carman No. 3, late, white, comes well recommended, big yielder	5 25	4 75
Carman Seedling, new, round, white, main crop, large branching vines	5 50	5 00
Delaware, medium early, white, slightly flattened, a good one	5 50	5 00
Delaware, extra early, round, white, good cooker and keeps well	5 25	4 75
Early Six Weeks is extra early, best garden variety	6 25	5 75
Early Market, extra early, short stocky vines, productive	6 25	5 75
Early Rose, old yet always reliable, order early	6 00	5 50
Early Vermont, early, smooth, pink, productive and fine quality	6 00	5 50
Enormous, new, large, white, late, large vines, productive	5 50	5 00
Eureka, extra early, round, white, good cooker and keeps well	5 75	5 25
Green Mountain Improved, round, white, large tops, big cropper, fine for table	5 50	5 00
Heavy Weight, new late main crop, round white, heavy yielder. Try it	5 50	5 00
Irish Cobbler, best extra early variety, large, white, pleases all	5 75	5 25
Longfellow, long, white, late, big vines, productive, does not blight, new	5 50	5 00
Manistee, roundish, red, handsome, productive. New	5 50	5 00
Million Dollar, new, round white, Carman type. Very productive	5 25	4 75
Mills Prize, very large, white and productive, best main crop	5 50	5 00
Never-Blight, long red, late, big cropper. Does not blight	5 50	5 00
New Scotch Rose, very prolific, handsome rose colored	5 50	5 00
New No. 9, large round white, big yield, fine for table and keeps well	5 25	4 75
Ohio Junior, extra early. A new seedling from Ohio, a good one	6 25	5 75
Ohio, extra early, almost first in market, productive	6 10	5 60
Pan-American, medium late, round, white, plump, good keeper	5 25	4 75
Peerless Junior, late, round, white, smooth, slightly flat. Fine for table	5 25	4 75
Rural New Yorker No. 2, white, one of the best we grow, and well known	5 10	4 60
Sir Walter Raleigh, large, white, nearly round, very productive	5 25	4 75
Spaulding Rose No. 4, handsome red, some flat, ripens mid-season	5 50	5 00
State of Maine, large, white, round, fine eating, heavy yielder	5 50	5 00
Stray Beauty, extra early, round, bright red, fine for early garden	6 25	5 75
Swiftsure, extra early, of excellent quality, round white and productive	5 75	5 25
Uncle Sam, white, oval, excellent quality, heavy yield, extra large	5 50	5 00
Vermont Gold Coin, new, round, white, great yielder of the cooking quality	5 50	5 00
White Mammoth, new, blight proof, round, white, productive	5 50	5 00
World's Wonder, very large, round, white, late sort. Pleases all	5 25	4 75

CERTIFIED SEED POTATOES

In sacks containing 120 lbs. net.

HEAVY WEIGHT \$4.50

The second size mentioned in the List average about the size of hen's eggs, for planting whole; saves rotting on cut sides. Especially adapted where fertilizer is used. One bushel will plant nearly as many hills as one of the large ones cut to two eyes. No extra charge for cartage packing or sacks. Full 165 pounds in each sack or barrel. Many of our customers prefer second size and have planted them several years with excellent results.

Our seed potatoes are always sold by weight. By a barrel or sack of seed potatoes we always mean 165 pounds net, except certified stock, and a sack of table potatoes 180 pounds net.

EARLY ORDERS.

We do not hesitate to advise our customers to place their orders early, as good seed stock will be sure to be higher at planting time, and those who order early while present stock is unsold will be sure to get choice stock and pure seed. Early varieties especially will surely be scarce in spring. We do not anticipate lower prices this season, and indications point to a substantial advance before spring.

WESTERN N. Y. SEED POTATOES ARE THE BEST

Note the firm, crisp flesh of our seed, compared with those grown in other sections of our country. Solid flesh potatoes will be sure to grow and give you an even stand over your whole field, while the soft spongy stock will rot and disappoint you. Give us at least a part of your order, and compare results.

Write today for SPECIAL QUOTATIONS on five or more sacks, naming number of sacks each variety wanted.



LONGFELLOW.

New, medium late, long, white, with shallow eyes and very smooth skin. Vines unusually large and branching, with many leaves to shade and cover the ground. It produces a great many very large, long, white potatoes in each hill, and pleases all with yield and quality. It is blight-proof, and will make immense crops on any good potato soil. Often yields 300 bushels per acre.



DIBBLE'S RUSSET

This new round white rusty skin variety is giving excellent satisfaction here. The vines are stocky and thrifty, and not susceptible to blight or disease of any kind. The tubers grow round and plump, and are of excellent cooking quality. It is an easy potato to harvest, will keep late in spring without sprouting, and is one of the best new sorts at the present time. When you sell your customer the Russet, he will always come back after more. Our sales of this variety are increasing each year.

SATISFIED CUSTOMERS.

We have hundreds of them who write very pleasing letters every season. Please read below what a few of them have to say regarding our SEED POTATOES, and give us a chance to please you as well. When you recommend your own goods there is an underlying motive! When they are recommended by others with no reason other than the natural outburst of honest enthusiasm, there is a reason why every thinking person should investigate.

The Green Mt. and Gold Coin seed potatoes you sent me last spring did finely, and gave me a good yield of excellent quality potatoes under very trying conditions. Nov. 28, 1921
F. M. C. West, Co., N. Y.

I received my shipment of potatoes, all in first class condition, nice stock and evenly sorted. April 25, 1921.
W. C. Col. Co., Ohio

I had a fine crop of New Scotch Rose from the seed I bought of you. March 16, 1921
A. S. Mon. Co., Pa.

We are more than pleased with the seed we bought of you last spring. We have some fine potatoes, the best cookers we ever had. Sept. 21, 1921.
W. Z. Bens. Co., N. Y.

Your seed has always been satisfactory and produced fine crops for me. Some of my neighbors use your seed quite regularly, and have grown splendid crops from same. Jan. 12, 1921.
F. M. West. Co., N. Y.

Potatoes received and very much pleased with them. May 9, 1921.
E. K. Brockton, Mass.

We have received the potatoes in good condition, and wish to express our appreciation of prompt shipment and quality of seed. May 10, 1921.
W. R. Mon. Co., N. Y.

I received the potatoes all O. K. They are a fine looking lot and I am well pleased with them. May 9, 1921.
A. H. Col. Co., Ohio



IRISH COBBLER.

This is an extra early variety, first in the market, brings highest price, and is the most popular early potato grown at the present time. We always sell more bushels of the Irish Cobbler than of any other early variety. An Irish shoemaker was found to have a variety not offered by seedsmen, producing plump, handsome tubers of good size and excellent quality while the early sorts that gardeners had were yet too small for market. The tubers are a beautiful creamy white, eyes strong, well developed, and but slightly indented. Flesh is white, and skin often netted, and this netted skin is nature's mark of the quality. Any of our customers who grow potatoes for early market will make no mistake in planting this most valuable variety, the Irish Cobbler.

EUREKA.

Extra early, and a coming favorite. Although a chance seedling, it is very remarkable for its extreme earliness, and the number of large, round, white tubers in each hill. Now is the time to buy a few of these and grow some extra early potatoes to sell to your neighbors.

SPAULDING ROSE NO. 4.

A new seedling which is making for itself a great reputation among southern growers. In some instances it has yielded 100 bushels per acre more than others in same field. In a field test here last season, it out-yielded Rural New Yorker 60 bushels per acre on sandy soil. We recommend it especially for sand or gravel soil, for it will give good crops in this class of land where some others would not produce crop enough to pay for labor. It is a beautiful red potato, nearly round and somewhat flattened. Tops large and thrifty, easy to harvest, fine cooking quality and an excellent main crop variety.

HOW SEED POTATOES ARE CERTIFIED IN NEW YORK STATE.

The fields are inspected three times during their growth by experts from Plant Pathology Department from State College of Agriculture. They must be free from varietal mixture, and not contain more than 10 per cent. of all the following diseases combined: Leaf Roll, Mosaic, Wilt, Rot, Blight, Black Leg, Scab, Rhizoctonia.

They must also have a substantial yield before being certified by the Board of Certification.

They must be carefully graded when packed, run over 1 3/4 inch ring sorter, and all tubers of 12 oz. or over, thrown out, then packed in new sacks containing 120 lbs. net, and tagged with a blue tag.

If you have never grown a crop from New York State Certified Seed Potatoes, it will pay you to try our Certified Heavyweight.

POTATO CUTS used in this Catalog are made from photos of the potatoes taken from our Cellars.