

## **Historic, Archive Document**

Do not assume content reflects current scientific knowledge, policies, or practices.



62.39

PEONIES, IRIS,  
PHLOX *and other*  
PERENNIALS

OFFERED BY THE

**Cherry Hill Nurseries**



1921 - 1922 ISSUE  
Superseding All Previous Lists

**T. C. THURLOW'S SONS, INC.**  
WEST NEWBURY, MASS.  
TEL. 682-W NEWBURYPORT  
Not Open Sundays

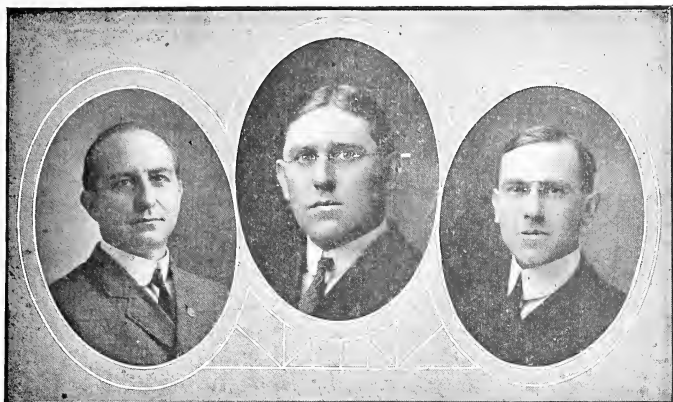
## LIST OF AWARDS

The following awards will in a measure testify to the quality of our stock, but to appreciate more fully their value one must visit us in mid-June, when our peony flowering season is at its height.

- 1893 Appleton Silver Medal, Collection of Peonies, Boston, Mass.
- 1897 Kelway Bronze Medal, Collection of Peonies, Boston, Mass.
- 1899 Kelway Bronze Medal, Collection of Peonies, Boston, Mass.
- 1903 Kelway Silver Medal, Collection of Peonies, Boston, Mass.
- 1909 M. H. Society Silver Medal, Collection of Peonies, Boston, Mass.
- 1914 M. H. Society Gold Medal, Popularizing Peonies, Boston, Mass.
- 1915 A. P. Society Gold Medal, Best Collection of Peonies, Boston, Mass.
- 1915 M. H. Society Silver Medal, Seedling Cherry Hill, Boston, Mass.
- 1915 Pan-American Silver Medal, Peonies, San Francisco.
- 1916 N. B. H. Society Silver Medal, Collection Peonies, New Bedford, Mass.
- 1917 M. H. Society Silver Medal, Best Collection Peonies, Boston, Mass.
- 1917 A. P. Society Silver Medal, Best Collection Peonies, Boston, Mass.
- 1918 A. P. Society Silver Medal, Best Collection Peonies, Boston, Mass.
- 1918 N. B. H. Society Silver Cup, Collection Peonies, New Bedford, Mass.
- 1918 M. H. Society Silver Medal, Best Collection Peonies, Boston, Mass.
- 1919 M. H. Society Silver Medal, Best Collection Peonies, Boston, Mass.
- 1919 M. H. Society Silver Medal, Collection Peonies, Boston, Mass.
- 1919 A. P. Society Gold Medal, Best Collection Peonies, Detroit, Mich.
- 1920 A. P. Society Silver Medal, Best Collection of Peonies, Boston, Mass.
- 1920 M. H. Society Silver Medal, Display of Peonies, Boston, Mass.
- 1920 Appleton Gold Medal, Collection of Peonies, Boston, Mass.

Besides hundreds of first and second prizes in keen competition on individual peonies exhibited at the leading horticultural exhibits in New England.





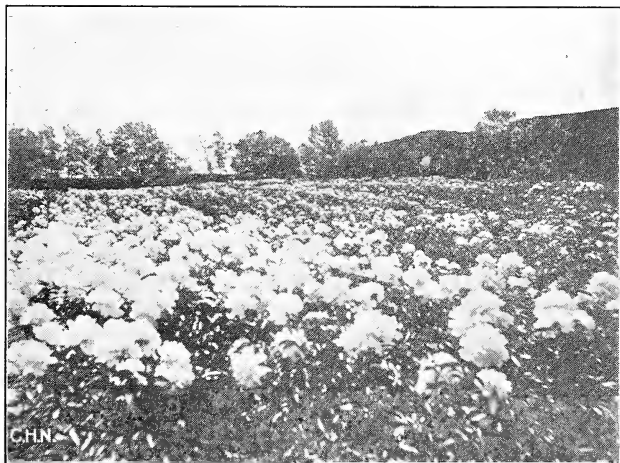
G. C. THURLOW, President

D. C. STRANGER, Vice-Pres. W. H. THURLOW, Treasurer

## FOREWORD

**T**HERE is an old fable that when man first wandered on this earth, all things were drab and monotonous. After a time, when the newness of the plants and animals had worn off, man languished, and so the Creator, to keep him happy, put color into the world. Ever since the beauty of color has been a source of delight to the eye of man. We admire beautiful paintings for the coloring and for the technique of the master, but those who love and study flowers have found that for exquisite coloring and marvelous workmanship flowers and plants so far surpass human efforts that we exclaim, like the scientist of old: "Oh, God, I but think Thy thoughts after Thee."

After the strain of business or social obligations we may gain the peace and rest we need from our own secluded gardens, training a plant here and pulling out a weed there, all the while seeing the freshness and beauty of nature. So may we truly make recreation, recreation.



A Field at Cherry Hill, June, 1920.

## SHIPPING NOTES

All of the plants listed in this catalog are thrifty and vigorous plants, that will be dug as ordered and packed in a satisfactory manner, so as to reach their destination in the best of shape.

Small lots may be sent by parcel post, but larger lots we would recommend by express.

Be sure to state, when ordering, about when you wish your stock shipped, whether *post* or *express*, and your *exact shipping point*.

*It may happen occasionally that our stock of a certain variety has been exhausted, and we will then substitute a similar color of a higher grade at the same price unless otherwise requested.*

## PEONY NOTES

Peonies, like ancestors, cannot be acquired in a day. They must have some time to become rooted, but when well established will last for many years. We often hear of some Peony plant which "has been growing in the garden since my grandmother's day." It is this feeling of permanence which is one of the charms of the Peony, for we know that it will appear above the ground just as surely as the spring comes, and that it will be of the same delicate shade, only bigger and better in size and form.

Some fifty years ago, the late Thomas C. Thurlow began to collect Peonies, sending to Europe for the choicest varieties. But what a change from the flower of that time. Many of the old favorites have stood the test of time, but under the skilful care of the propagators the Peony has been transformed, and he would be delighted could he see the wonderful blooms in such exquisite shades.

We have new varieties from all parts of Europe and this country, and test them before offering them, comparing the new ones with the best possible to be found. At different times we have absorbed other choice collections and offered them in our list, which we believe consists of as many really fine Peonies as may be found in any collection in the world.

Our own seedlings, which we offer in Series H, were sown over twenty years ago, and have been thoroughly tested and compared with the best of other originators. As they become better known, we believe they will attract wider attention. Our first variety, "Cherry Hill," introduced in 1915, had a greater call last year than in any previous season. Some very meritorious ones have not been put on the market as yet, as our stock is limited.

## PEONY CULTURE

Peonies may be transplanted almost any time when the ground is not frozen, but the best time is in September and October, as the plants receive the least shock at that time and get well settled before making the next season's bloom. In the spring, if orders are sent early, we can dig and hold dormant, as we do not carry plants in cellar storage, but dig each order fresh as called for.

The size we list is a one-year plant, which is a plant divided and reset a year before, or, in some cases, in the rare varieties, a strong division. Many of our customers have told us that they divided the plants we sent them, but we strongly advise against this, as we know that small divisions will not recover for a number of years, and we have found from observation that plants may be permanently weakened by dividing oftener than once in two or three years. Peonies should have an opportunity to develop and "find" themselves before undergoing the shock of another division. Many plants which we have imported from Holland have been so small that it took years for them to develop, and we had to wait to see whether the new varieties were worth while or should not be admitted into the garden to displace others.

We have carefully selected our plants for propagation, choosing only those which were above the average in vigor and blooming qualities, and believe that we have developed a superior strain of Peonies which we are proud to call the "Cherry Hill strain."

Peonies do best in a light, rich loam, but in no case should manure be applied directly to the roots. It is not necessary to trench out a deep bed, but plant them in well-loosened soil to a depth of about two inches below the top of the ground. Deep planting is the most frequent cause of "blind" plants—that is plants which appear perfectly healthy but do not bloom. The buds on the plant should be about two inches below the top of the ground. We use a fertilizer containing considerable lime and potash in the fall, and some form of manure in the spring which acts as a tonic and, with liberal watering, will produce extra large flowers.

Those wishing quicker results will find the larger two and three-year plants offered will produce the desired effects. We have never seen a Peony plant which will produce its best bloom the first year after planting, but the clumps will be far ahead by the second year.

Very few diseases or pests affect Peonies. Of course rose-chafers will attack any flower, and the best way to destroy them is by hand picking. Sometimes, in gardens where too much manure has been applied every

year, or in a very wet season, the stems will wilt down. These stems should be removed and air-slaked lime sprinkled on the ground. In very bad cases the plants should be lifted in the fall and the earth removed, putting in fresh soil.

## SINGLE HERBACEOUS PEONIES

### SERIES A

**50 cents each; \$5.00 per dozen, except as noted**

2 year clumps 75c each, \$7.50 per dozen

3 year clumps \$1.00 each, \$10.00 per dozen

4 year clumps \$1.25 each, \$12.50 per dozen

The single-flowered Peonies are the first to bloom of the Chinese varieties and should be included in every collection, as the season is thus extended a week or more. To become acquainted with these beautiful flowers at their best, they should be seen growing in the garden, the large flowers of delicate tints showing masses of golden stamens seeming to float over the foliage. Almost all the varieties have a tendency to flower in clusters, and the effect of a large mass of pink and gold is especially pleasing. Many times they are more effective than the double varieties, as the single flowers show more individuality.

**AREOS**, broad silky petals of delicate shell pink changing lighter as flower matures. Very early.

**CELESTE BROCHET (Brochet)**, milk white petals thickly sprinkled with minute dots of lilac, giving a total effect of pale lavender or faint pink. Stock limited. \$2.50 each.

**CLAIRETTE (Dessert)**, tall, strong stems with dark green foliage bearing very large pure white flowers. The petals are long and silky and the center mass of stamens is bright yellow. \$2.50 each.

**DEFIANCE**, the striking contrast of the bright crimson petals and the golden stamens make the variety very effective for a spot of color in the garden. 75 cents each.

**HERMES**, a soft shade of deep shell pink.

**LADY LILIAN OGLE (Kelway)**, faintly tinted bud, opening into pure white flowers. Strong, vigorous plants of a rather bushy habit. \$1.50 each.

**LA FIANCEE (Dessert 1902)**, large white flowers with a glowing mass of stamens. Tall, stiff stems and luxurious foliage. \$2.00 each.

**MILLAIS**, medium sized flowers of deep, dull red with yellow stamens.

**MRS. KEY**, a deep shade of glowing crimson. Very effective and one of the best of this color. 75 cents each.

**PRINCE BISMARCK**, deep crimson with golden stamens.

**PRINCESS OF WALES (Barr)**, a beautiful shade of pink. The delicate flowers resemble wild roses. Our stock is limited. \$2.00 each.

**PURITY (Kelway)**, a free-blooming variety with extra large, pure white flowers. Very choice. \$2.00 each.

**ROSY DAWN (Barr)**, vigorous, branching habit, foliage large and dark green. Buds of faintly tinted pink changing into pure white in the open flower. Very desirable. \$2.00 each.



- SINGLE WHITE**, from among our many thousands of seedlings we selected a number of the best. Glistening white flowers with golden stamens. \$1.00 each.
- THE QUEEN (Kelway)**, a beautiful single white, delicately suffused blush pink. Free blooming and vigorous. \$1.50 each.
- WHITLEYI MAJOR**, quantities of blush-white flowers with golden hearts are borne on the strong stems. Foliage heavy and dark green. \$1.50 each.

## RARE SINGLE JAPANESE PEONIES

This class of Peonies is coming to be appreciated more and more. The flowers appear later than the Chinese singles and are distinguished from the latter by the almost total lack of pollen on the stamens. The stamens are large and in many cases form a thick cushion of gold. Although strong, the plants propagate slowly, and the number we have to offer is always limited.

- DOG ROSE (Kelway)**, very delicate pink petals with rounded tips and a mass of golden stamens. Resembles the wild rose for which it is named. \$3.00 each.
- FLASHLIGHT (Hollis 1906)**, crimson petals with narrow central petals deep yellow with crimson shades. A most distinct and attractive flower. \$5.00 each.
- ISANI GIDUI**, considered by many the best of all Japanese varieties. Stems strong and tall, bearing exquisite white blossoms of pure white with a thick round cushion of golden stamens. \$10.00 each.
- PERLE BLANCHE (Dessert)**, broad, rounded petals of pure white and a glowing mass of golden stamens. Very choice.
- TAMATBAKO**, broad petals of clear soft pink with a large center of yellow stamens. Foliage dark green. Not for sale.
- WHITE LADY**, dwarf plant but vigorous in growth, with light green foliage. Flowers of glistening white with a very thick mass of deep yellow stamens. The true variety is scarce. \$10.00 each.
- YESO**, guard or outside petals pure white, narrow center petals white, shaded slightly yellow, with oftentimes a carmine top. \$8.00 each.

## LEMOINE'S HYBRIDS

These beautiful hybrids, produced by crossing the Chinese Peony with *Paeonia wittmanniana*, flower earlier than the Chinese singles, and are especially beautiful for their delicate coloring.

- AVANT GARDE**, single flower of pale smoky pink with golden tints and golden stamens. \$3.50 each.
- LE PRINTEMPS**, a creamy yellow shade, difficult to describe, with faint reddish veinings at base of petals. Yellow stamens. \$2.50 each.
- MAIFLEURI**, delicate flesh-white, with a rich creamy yellow overcolor. Very fine. \$3.50 each.

\* \* \*

- PAEONIA LUTEA**, a recently introduced specie from Central Asia. Dwarf plant with deeply-cut foliage and small single flowers of deep buttercup yellow with reddish lights at base of petals. \$3.00 each.

## EUROPEAN PEONIES

The Peonies in this class have rather finely divided foliage and medium dwarf growth. The flowers appear nearly three weeks earlier than the Chinese varieties and give a much longer Peony season.

- OFFICINALIS ROSEA PLENA**, beautiful rose-pink flowers, fully double, possessing good substance, so that they will last for some time as cut flowers. 75 cents each.
- OFFICINALIS RUBRA PLENA**, the old-fashioned "piney" of our grandmothers' gardens. Bright blood-red with almost no trace of purple. With us it blooms about Memorial Day. 50 cents each.
- ANOMALA, PETER BARR (Barr)**, the earliest to bloom in our collection. Single flowers of bright scarlet with golden yellow stamens. Finely-cut foliage adds a charm to this attractive variety. \$2.50 each.
- SMOUTHA**, this Peony follows close on the blooms of Peter Barr. Long silky petals of deep crimson and yellow stamens. \$2.00 each.

## DOUBLE HERBACEOUS PEONIES

### SERIES B

**35¢ cents each ; \$3.50 per dozen.**

Two year plants 55 cents each ; \$5.50 per dozen  
Some of the older varieties, but all good kinds.

- CANDIDISSIMA (Calot 1856)**, guard petals pure white deepening to a pale yellow in the center. A good early white.
- COMTE DE DIESBACH (Calot 1873)**, the earliest red Chinese peony. Flowers light crimson of good form and substance.
- LOUIS VAN HOUTTE (Calot 1867)**, flowers of medium size, of a beautiful dark crimson, with a luster which makes them noticeable.

### SERIES C

**50 cents each ; \$5.00 per dozen.**

Two year clumps 75 cents each ; \$7.50 per dozen  
Three year clumps \$1.00 each ; \$10.00 per dozen

Many of the varieties in this series are very pleasing and of considerable merit, but because of earlier origin are offered at a lower price.

- ACHILLE (Calot 1865)** delicate shell pink but with a fresh, lively tint. Foliage "crinkled" on edges. Midseason.
- ALEXANDRE DUMAS (Guerin 1862)**, large, attractive blooms of bright pink often intermixed with creamy white petals. Midseason.
- ALICE DE JULVECOURT (Pele 1857)**, well formed flowers with broad petals of white faintly tinged lavender. Sometimes flecked crimson. Late midseason.
- DELICATISSIMA**, medium to large rather flat flowers of soft pink changing to nearly white. Early.
- DR. BRETONNEAU (Verdier 1854) (syn. Lady Bramwell)**, large, very full flowers of medium pink. Good as a cut flower. Early midseason.

- DUC DE WELLINGTON** (Calot 1859), large, flat flowers with broad guard petals of clear white and rather narrow central petals of deep cream with greenish lights. Midseason to late.
- EDOUARD ANDRE** (Mechin 1874), medium sized blossoms of a satiny crimson maroon with rich golden center. Midseason.
- EDULIS SUPERBA** (Lemoine 1824), deep rose pink with an occasional crimson marking. Guard petals wider than those in the center. Very early.
- FESTIVA MAXIMA** (Miellez 1851), probably the most widely known of any Peony. Exceptionally large ivory-white flowers of rather feathery appearance, with a fleck of crimson in the center. Strong grower and free bloomer. Midseason.
- GOLDEN HARVEST** (Rosenfield 1900), guard petals deep rose pink and a collar of creamy yellow with tufted center of pink. Midseason.
- MADAME COSTE** (Calot 1873), guard petals and center of rose pink and a collar of deep cream. The whole flower has a particularly fresh look and is very charming. Early midseason.
- MADAME FOREL** (Crousse 1881), a good sized flower with incurved petals of silvery pink. Long stems and good foliage. Midseason.
- MARECHAL VAILLANT** (Calot 1864), immense full blooms of crimson of good substance. Stems long but should be supported to keep up the heavy blossoms. Very late.
- NOBILISSIMA** (Miellez 1858), long stems bear good-sized flowers of deep rose pink. Shows well as a landscape flower. Midseason to late.
- PHILOMELE** (Kelway), medium sized flowers of a bright rose guard petals and center and collar of deep creamy yellow. Midseason to late.
- TORQUEMADA**, a free-blooming variety of soft rose pink. Even color and good as a cut flower. Midseason.

## SERIES D

**75 cents each ; \$7.50 per dozen.**

Two year clumps \$1.13 each ; \$11.25 per dozen

Three year clumps \$1.50 each ; \$15.00 per dozen

- ADELAIDE DELACHE**, rose pink, petals tipped creamy white and rather loosely arranged. Midseason.
- AUGUSTIN d'HOURL** (Calot 1867), rich, deep carmine with silvery reflex. Midseason.
- DELIA**, guard petals ivory white with narrower center petals a sulphur yellow. A very pleasing variety, vigorous and free blooming. Early midseason.
- DOCTEUR CAILLOT** (Verdier 1856), good sized flowers of crimson. Blooms very freely, oftentimes in clusters, and is a very good variety for garden effects. Midseason.
- DUCHESS DE NEMOURS** (Calot 1856), cup-shaped blooms, broad guard petals of white and narrower central petals of sulphur yellow with oftentimes a marking of green. Early midseason.
- GENERAL CUSTER** (Terry), evenly shaped flower of bright pink, showing a double row of stamens between the petals. Midseason.
- JEANNE d'ARC** (Calot 1858), soft rose with a collar of lighter petals and carmine tinted center. Midseason.
- LA COQUETTE** (Guerin 1861), evenly shaped, globular blooms of deep rose-pink with somewhat lighter center. Sometimes shows flecks of carmine. Midseason.

- LA TULIPE** (Calot 1872), large pointed buds of light pink, beautifully marked with carmine stripes. Flowers light flesh pink. Very good. Midseason.
- MME. BARILLET DESCHAMPS** (Calot 1868), a variety well adapted for landscape work, blossoms large, well formed and of a beautiful soft rose with silvery reflex. Foliage quite broad. Midseason.
- MME. CAMILLE BANCEL** (Crousse 1897), blooms light pink with silvery reflex, large and of good form. Excellent as a cut flower. Late.
- MME. DE GALHAU** (Crousse 1883), a distinct globular shape. Blossom of a delicate pink, with lighter guard petals. Late.
- MME. DE VERNEVILLE** (Crousse 1885), a beautiful milk-white Peony with center flesh-pink when first opened. Center petals sometimes tipped with carmine. Early to midseason.
- MME. DUCEL** (Mechin 1880), extra large globular blooms of a beautiful rose pink with silver reflex, resembling a mammoth chrysanthemum. Very fine. Midseason.
- MME. MECHIN** (Mechin 1880), very dark lustrous garnet, showing bright golden stamens in strong contrast. Flowers of medium size but well shaped. Midseason.
- MODELE IN PERFECTION** (Crousse 1875), large full flowers of a light rose-pink with silvery shadings, center somewhat darker. Late.
- M. BOUCHARLAT AINE** (Calot 1868), strong plants bearing immense imbricated blooms of soft pink. Very good for landscape work.
- PRINCE OF WALES** (Kelway), a semi-double dark crimson of medium size, with a pronounced showing of golden stamens. Midseason.
- UMBELLATA ROSEA** (Guerin 1895), medium to large blossoms with guard petals a violet-rose and center petals a creamy white. Formerly listed as Sarah Bernhardt. Early.
- ZOE CALOT** (Mieliez 1855), a large flower of semi-flat type with a soft pink coloring.

## SERIES E

**\$1.00 each ; \$10.00 per dozen.**

Two year clumps \$1.50 each ; \$15.00 per dozen

Three year clumps \$2.00 each ; \$20.00 per dozen

This series includes many of the best in the standard varieties. We can heartily recommend them where well-tried varieties of merit are desired, and they will be found to be satisfactory in every way.

- ARMAND ROUSSEAU** (Dessert & Mechin 1893), stiff stems bearing large, symmetrical blooms of bright rose-pink prettily mixed with golden stamens. Midseason.
- AVALANCHE** (Crousse 1886), a very fine ivory-white bloom of convex form, center oftentimes splashed with carmine. Excellent as a cut flower. Late midseason.
- CAROLINE ALLAIN** (Kelway), an exceptionally fine white of marked quality, with narrow central petals. Midseason.
- COURONNE d'OR** (Calot 1872), large, full flower of pure white with a circle of golden stamens. A very beautiful variety and valuable as a cut flower. Late.
- DORCHESTER** (Richardson), plant somewhat dwarf, bloom of a delicate pink of good size and fine form. Late.
- EDITH LYTTLETON** (Kelway), quite an early and free-blooming variety of large globular form. Coloring a beautiful deep shell-pink with light satiny tips.

- EUGENIE VERDIER** (Calot 1864), (syn. *Pottsi Alba*), a tall and free-blooming variety of good size and form. Delicate flesh center with lighter outer petals of a beautiful satiny sheen. Midseason.
- FELIX CROUSSE** (Crousse 1881), a compact globular bloom of large size and fine form. Deep ruby red, center shading somewhat deeper. Very choice. Midseason to late.
- GLOIRE de CHARLES GOMBAULT** (Gombault), tall, strong stems bearing large flowers of mauve-pink with a deep collar of creamy white and a pink tuft in the center. Very distinct. Midseason.
- GLOIRE de CHENONCEAUX** (Mechin 1880), large, medium rose-pink flowers, with center petals streaked with red. Midseason.
- GRANDIFLORA** (Richardson), exceptionally large, very flat flowers of silvery, shell pink. Petals are pointed, giving a very pretty effect. Very late. Extra.
- HELENA**, a delicately formed white Peony with a faint straw center. Very pretty. Midseason.
- JULES CALOT** (Calot 1861), large double flowers of a beautiful shade of deep rose-pink. Blooms very freely and is choice as a cut flower. Late.
- LAMARTINE** (Calot 1860), extremely large flowers of delicate pink. A showy variety in the garden and has good keeping qualities. Midseason.
- L'INDISPENSABLE**, very large flat blooms of delicate flesh pink. Valuable as a cut flower.
- MME. CALOT** (Mieliez 1856), large, flesh-pink blossoms with some buff shades. Strong stems. Early.
- MME. CROUSSE** (Calot 1866), a very large and beautiful pure white flower, sometimes showing a crimson fleck on a central petal. Extra. Midseason.
- MME. EMILE GALLE** (Crousse 1881), an exquisite shade of shell-pink. Flowers large and borne on long stems. We can thoroughly recommend this where a very late variety is desired.
- MME. LOISE MERE** (Calot 1863), large full flowers of a delicate flesh-pink, petals edged with crimson. Late.
- MME. DESBUISSONS** (Crousse 1893), large imbricated flowers of a pleasing satiny pink. Valuable for landscape effect. Midseason.
- MME. LEONIE CALOT** (Calot 1861), a beautiful shade of salmon-pink fading to a soft flesh-white. Blooms freely in clusters on long stems. Late.
- MME. MARIE CALOT** (Calot 1872), a pure milk-white flower of good size and form with occasional edgings of crimson. Late midseason.
- MARIE** (Calot 1868), well formed, compact flowers of white with a faint tinge of canary yellow. Very tall, stiff stem and very late.
- MARIE JACQUIN** (Verdier), (syn. *Bridesmaid*), medium-sized flowers of delicate flesh-white changing to pure white. Petals pointed, and this, with the golden stamens often visible, give a pond-lily effect. A charming and exquisite flower. Midseason.
- MARIE LEMOINE** (Calot 1869), plants somewhat dwarf, bearing large, full, creamy-white flowers with golden reflex. Very late.
- MIREILLE** (Crousse 1894), flowers quite large and of a beautiful milky-white color. Late.
- MR. MANNING** (Kelway), a deep glowing crimson, oftentimes showing some golden stamens. Stems erect and a very fine variety for garden effects. Late.

- MODESTE GUERIN** (Guerin 1845), large globular blossoms of a bright solferino pink, very vigorous and extra good as a cut flower. Midseason.
- MONSIEUR DUPONT** (Calot 1872), large, symmetrical flowers of ivory white with crimson markings in center. Strong, vigorous growth and a fine variety. Late.
- OCTAVIE DEMAY** (Calot 1867), large rather flat flowers of pink and white beautifully blended. Fragrant. Rather dwarf plant, but good foliage.
- PIERRE DESSERT** (Dessert & Mechin 1860), large, full flowers of a dark satiny garnet. Very fine. Midseason.
- PRINCESS IRENE** (Kelway), tall, strong grower and blooms freely. Guard petals clear flesh color, and center petals sulphur yellow. Midseason.
- RUBRA SUPERBA** (Richardson), a choice dark crimson of fine form and substance. Very late.
- SOUVENIR de l'EXPOSITION de BORDEAUX** (Dessert 1896), extra good as a landscape variety, with its large, clear blooms of vinuous red. Midseason.
- TRIOMPHE de l'EXPOSITION de LILLE** (Calot 1865), deep shell-pink with minute splashings of a deeper shade. A remarkably uniform blossom, as the petals are laid in regular order. Midseason.
- VENUS** (Kelway), exquisite pointed buds, opening into large, compact flowers of delicate shell-pink with a collar of flesh-white. Extra good both as a garden flower and as a cut flower. One of the best in our collection. Midseason.
- VIRGINIE** (Calot 1858), large fragrant blooms of shell-pink fading to a flesh color. Bright golden stamens showing in center of fully opened flower. Extra nice. Midseason to late.

## SERIES F

**\$1.50 each; \$15.00 per dozen.**

Two year clumps \$2.25 each; \$22.50 per dozen

Three year clumps \$3.00 each; \$30.00 per dozen

- ALBERT CROUSSE** (Crousse 1892), large, well-formed flowers of soft shell-pink with faint salmon tints. Stems tall and strong and a vigorous grower. Very fine as a cut flower. Late.
- ALFRED de MUSSET** (Crousse 1885), large, full, double blossom of a light pink with a somewhat deeper center. Fragrant. Tall, upright stems and good foliage. Late.
- ASA GRAY** (Crousse 1886), a variety which was introduced a good many years ago, but rather scarce, as there is always a good demand. Unique flowers of milk-white thickly sprinkled with minute carmine dots, so that the total effect is delicate pink. Midseason.
- AURORE** (Dessert 1904), rather loosely arranged petals give a charming effect of creamy white with golden lights. Midseason.
- BARONESS SCHROEDER** (Kelway), one of the best and most satisfactory white Peonies. Immense globular flowers, white guard petals, and a soft, baby-pink center becoming pure white. Stems very strong and rather light green foliage. Late midseason.
- CLAIRE DUBOIS** (Crousse 1886), very large globular blooms of satiny pink, petals long and incurved. Strong stems and dark green foliage. Late.
- COQUELIN** (Dessert 1905), very pretty cup-shaped flowers of china pink, evenly formed and of medium size. Strong stems. Early.
- EUGENE VERDIER** (Calot 1864), rather dwarf with very stiff stems bearing flowers of deep shell-pink intermixed with creamy yellow. Distinct. Late.

- JAMES KELWAY** (Kelway), exquisite white with a golden glow at base of petal. Sometimes seem double. Very tall and strong and very fragrant. Early midseason.
- LA ROSIERE** (Crousse 1888), a dainty variety with semi-double white blooms having yellow tints like a tea rose. Foliage dark green and "crinkled." Not large but very charming. Midseason.
- LA TENDRESSE** (Crousse 1896), delightful milk-white flowers with an occasional splashing of carmine; good size and borne freely in clusters. Midseason.
- MME. EMILE LEMOINE** (Lemoine 1899), large, full blooms of soft flesh-white petals having a rather translucent effect. Erect habit. Midseason.
- MLLE. ROUSSEAU** (Crousse 1886), milk-white with a few carmine splashes on back of guard petals and in center. Full double and of large size. Late midseason.
- MARGUERITE GERARD** (Crousse 1892), globular blooms of flesh pink fading to a creamy white, showing a ring of gold when fully developed. Strong grower and free bloomer. Late.
- M. JULES ELIE** (Crousse 1888), immense globular blooms, guard petals recurved, resembling chrysanthemums. Clear medium pink with a silvery tinge. Midseason.
- NORFOLK** (Richardson), somewhat cup-shaped flower of deep shell-pink. Rather weak stems. Late.
- PERFECTION** (Richardson), large flower of light pink, changing to flesh-white. Late.
- PETITE RENEE** (Dessert 1899), semi-double flowers of deep rose-pink, central petals striped with creamy white. Somewhat of an orchid coloring. Midseason.
- SIMONNE CHEVALIER** (Dessert 1902), soft pink with a lighter reflex. Large size and a lasting flower. Early midseason.
- SOUVENIR du DR. BRETONNEAU** (Dessert 1896), deep rose; rather loosely aranged petals. Midseason.
- SUZANNE DESSERT** (Dessert & Mechin 1890), guard petals deep pink with a center of a lighter shade and a silvery reflex. Very free flowering and good as a garden variety. Midseason.

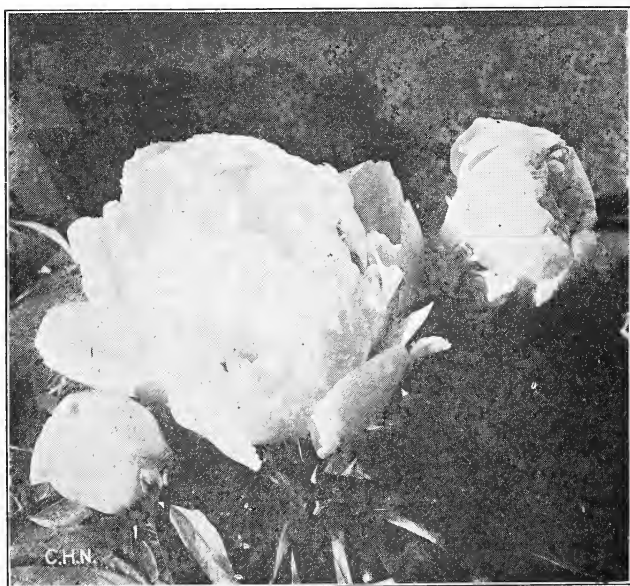
## SERIES G

In this series are listed the new and rare varieties, which include the best we have been able to procure, both in Europe and this country. The stock of many of these is extremely limited, and on some, like the French varieties introduced last year, we have not placed any price. We shall be glad to advise you by special correspondence of the quantity of these we can furnish.

*The fine varieties which have been originated at Cherry Hill will be found listed in Series H.*

- ADMIRAL TOGO** (Hollis 1907), a fine shade of crimson which is very attractive in the garden. Midseason. \$3.00 each.
- ADOLPHE ROUSSEAU** (Dessert & Mechin 1890), very tall, strong grower, bearing rather loose, sometimes semi-double flowers of deep garnet. Very fine for the garden, where its height and color make it conspicuous. Early midseason. \$2.00 each.
- ALSACE LORRAINE** (Lemoine 1906), pointed white petals suffused with a golden light from the stamens make this a charming variety, giving the thought of a water-lily. Tall and vigorous grower. Late. \$5.00 each.

- AUGUSTE DESSERT** (Dessert 1920), cup-shaped flower of fine form, with rounded petals, velvetish crimson carmine, very brilliant, with silvery reflex and often streaked white; very large, silvery border; visible stamens intermixed with the petals in many flowers. A superb variety, awarded certificate of merit at the Paris show, June, 1920. (Originator's description.)
- AVIATEUR REYMOND** (Dessert 1915), a very attentive shade of cherry-red with deeper garnet shades at base of petals. \$8.00 each.
- BAYADERE** (Lemoine 1910), large, globular flowers of creamy white with a golden heart. Symmetrical and very pleasing in form. Midseason. \$6.00 each.
- BEAUTY'S MASK** (Hollis 1904), large flower of faint blush-pink with narrow petaloids of deep cream, edged yellow. These are incurved with the petals and give the flower a distinct appearance. \$3.00 each.
- BELISAIRE** (Lemoine 1901), large cup-shaped flowers of white, powdered and sprinkled with lilac, giving a total effect of a delicately-tinted flower. Midseason. \$2.50 each.
- BELLE MAUVE** (Lemoine 1903), large, full flowers of silvery lilac-rose. Fragrant, vigorous and a free bloomer. Midseason. \$4.00 each.
- BERTRADE** (Lemoine), large, compact blooms of ivory white; stiff stems and of vigorous habit when established. Late.
- CANDEUR** (Dessert 1920), large, globular, delicate, silvery pink, slightly tinged lilac-rose, fading to nacre (iridescent) white; center flecked with carmine. Vigorous grower and fine clear green foliage. (Originator's description.)
- CLEMENCEAU** (Dessert 1920), very large imbricated bloom, very full. Carmine, slightly shaded amaranth with silvery tints, very large silvery border. A beautiful, very late variety, of which the flowers always open very well. (Originator's description.)
- CORONATION** (Kelway), delicately tinted buds opening into creamy-white flowers, backs of guard petals very pale pink. Base of petals show golden light and the symmetrical blooms are very charming. Late midseason. \$5.00 each.



Peony, Mary Woodbury Shaylor.



- DOCTEUR H. BARNSBY** (Dessert 1913), large, very full blooms of crimson with darker shades. Free bloomer in clusters, making a good variety for garden effects. Late. \$5.00 each.
- E. G. HILL** (Lemoine 1906), large, symmetrical flowers, petals very closely and evenly placed. Rose-pink with lighter tints and occasionally a few golden stamens. Stiff stems of medium height. Our stock is strong and vigorous. Mid-season. \$4.00 each.
- E. J. SHAYLOR** (Shaylor 1918), clear, silvery pink of globular shape with yellow stamens edged gold. These are incurved like the petals and give a very distinct appearance to the flower. Midseason. ~~\$3.00~~ each. <sup>\$3.00</sup>
- ELIE CHEVALIER** (Dessert 1908), large blooms of rose-pink, globular, rather loosely formed. Tall grower. Midseason. \$2.50 each.
- ELWOOD PLEAS** (Pleas 1900), very large, flat flowers of a very delicate pink or white tinted pink. A strong grower. Midseason. \$10.00 each.
- ENCHANTERESSE** (Lemoine 1903), large, globular flowers of creamy white, sometimes showing flecks of carmine. A tall, strong grower. Late. \$7.50 each.
- ENTENTE CORDIALE** (Riviere 1920), very large flower, pale rose-pink with only two rows of petals. Extra. (Originator's description.)
- ESTAFETTE** (Dessert 1910), good sized, globular blooms of carmine with silvery light. Very early. \$4.00 each.
- ETTA** (Terry), exceptionally large, semi-flat flowers of a very fine shade of deep shell-pink. We consider this one of Terry's best. Very late. \$2.00 each.
- EUCHARIS** (Lemoine 1909), fragrant, creamy white, of large size and globular shape. Late. \$6.00 each.
- EUGENE BIGOT** (Dessert 1894), a very fine, brilliant crimson, of upright habit and medium height. One of the most conspicuous of this color. Late midseason. \$2.50 each.
- EUGENE REIGNOUX** (Dessert), large, strong grower, producing an abundance of semi-double, rather brilliant pink flowers. Early midseason. \$2.50 each.
- EVANGELINE** (Lemoine 1910), well formed, compact flowers of pale pink. A very fresh and charming flower. Late. \$5.00 each.
- EXQUISITE** (Kelway 1912), good-sized flat flowers of warm pink, petals rather pointed. Not strong in young plants, but well established plants produce fine flowers. Fragrant. Midseason to late. \$25.00 each.
- FERDINAND STOLICZKA** (Richardson), shell-pink guard petals; center petals shell-pink intermixed with narrow, creamy white. Tall, stiff stems. Early. \$3.00 each.
- FRAICHEUR** (Lemoine 1915), like almost all of Lemoine's varieties, very large flowers of fine form. Creamy white, with delicately tinted guard petals. \$10.00 each.
- FRANCES SHAYLOR** (Shaylor 1915), globular flowers of iridescent white petals interspersed with incurved yellow stamens. A very distinct variety. Dwarf plant. Midseason. \$20.00 each.
- FRANCOIS ROUSSEAU** (Dessert 1909), dark red of fine form and very lustrous. Medium height. Early. \$5.00 each.
- GALATHEE** (Lemoine 1900), a well-formed flower of pearly white. Very full double, yet opens well. Long stem and very late. Extra. \$6.00 each.
- GEORGIANA SHAYLOR** (Shaylor 1908), exceptionally large, flat flowers of pale rose-pink with an occasional crimson fleck. Dwarf but sturdy habit. Midseason to late. We consider this to be one of the finest of Mr. Shaylor's seedlings. \$15.00 each.

- GERMAINE BIGOT** (Dessert 1902), cameo-pink with lighter flesh-colored tints in center of flower, very broad petals, sometimes showing a few stamens. Medium height and strong, stiff stems. Midseason. \$2.00 each.
- GINETTE** (Dessert 1915), large, symmetrical flowers of deep flesh, with salmon tints at base of petals. Golden stamens are visible in flowers from young plants, but when well established the flowers are extra fine. Fragrant. \$10.00 each.
- GISMONDA** (Crousse 1895), full double flowers of creamy white with a rosy light deepening toward the center. Fragrant. Late. A very charming variety. \$4.00 each.
- GLOIRE de TOURAINE** (Dessert 1908), velvety crimson flowers borne on long stems. Very late. Fragrant. \$3.50 each.
- GROVER CLEVELAND** (Terry), fine, dark crimson blooms on upright stems of medium height. Extra good for garden effects. Late. \$2.00 each.
- H. A. HAGEN** (Richardson), one of the best of the Richardson varieties. Deep rose-pink with a few inconspicuous narrow yellowish petals, fresh "lively" coloring. Very late but blooms well. \$10.00 each.
- JEANNE GAUDICHAU** (Millet), large, well-formed flowers of delicate pink fading to creamy flesh at tips of petals. Late. \$6.00 each.
- JEANNOT** (Dessert 1918), cup-shaped flowers of soft shell-pink slightly tinted lavender. Salmon-pink lights at base of petals. This variety gives great promise.
- JESSIE SHAYLOR** (Shaylor 1916), large, rather flat flowers of a delicate shade of deep cream with a reflexed light much like that of a tea rose. Fragrant. Midseason. \$20.00 each.
- JOHN RICHARDSON** (Richardson), large, flat flowers, center deep pink, gradually fading lighter toward the tips of the petals. Tall grower. Fragrant. Considered by many to be one of the best very late varieties. \$5.00 each.
- JUBILEE** (Pleas 1908), extremely large, flat flowers of ivory white, petals long and narrow and arranged loosely, giving a feathery effect. Stems long but weak. Midseason. \$15.00 each.
- KARL ROSENFELD** (Rosenfield 1908), brilliant, dark crimson; of good form and substance. Stems stiff. One of our best of this color. \$5.00 each.
- KELWAY'S GLORIOUS** (Kelway 1909), buds slightly tinted pink, opening into large blooms of iridescent white. Fragrant. Late midseason. This is undoubtedly one of the finest Peonies. Scarce. \$35.00 each.
- KELWAY'S QUEEN** (Kelway), large, globular blooms of fine form and habit. Deep flesh-pink with a few markings of carmine in the center. Fragrant. Midseason. The true variety. \$15.00 each.
- LADY ALEXANDRA DUFF** (Kelway), this variety is one of the finest of the Kelway productions. Very broad petals of soft French pink, with flesh tints. Height medium and stems upright. The true variety is a strong grower in every way. Midseason. \$15.00 each.
- LA FAYETTE** (Dessert 1904), large, evenly-formed blooms of rich pink with a silvery reflex. Fragrant and a fine variety. Midseason. \$4.00 each.
- LA FEE** (Lemoine), globular flowers of rose-pink with a silvery light, collar creamy yellow. Fragrant and early. The available stock of this variety is limited. \$12.00 each.
- LA FIANCEE** (Lemoine 1901), very large blooms of creamy white, sometimes with crimson flecks in center. Rather high center in bomb type. Long, strong stems. Midseason. \$3.00 each.

- LA FRANCE** (Lemoine 1901), enormous, rather flat flowers on strong stems. Soft pink, with lavender lights at base of petals. Late. A very fine variety. \$10.00 each.
- LA LORRAINE** (Lemoine 1901), wonderful globular blooms of creamy white, borne high above the foliage. Some golden stamens are visible, giving a golden light to the open flowers. Stock very limited. Midseason to late. \$10.00 each.
- LAMARTINE** (Lemoine), full, evenly-formed bloom of carmine, ends of petals tipped white. Strong stems. Late. Scarce. \$10.00 each.
- LA PERLE** (Crousse 1885). The true variety is a charming flower. Bluish-white in center, growing darker toward the edge. Fragrant. Late. \$2.00 each.
- LAURA DESSERT** (Dessert 1913), creamy-white guard petals deepening to a canary-yellow in center. The flowers are symmetrical and of good size. Stock is very scarce. Midseason. \$15.00 each.
- LE CYGNE** (Lemoine 1907), charming milk-white flower with incurved petals. Immense size, but symmetrical, so that it does not seem coarse. Stiff stems and dark green foliage. At the American Peony Society exhibits this variety has been awarded first as "best specimen bloom." \$20.00 each.
- LORD KITCHENER** (Renault 1916), brilliant red. Flowers in abundance on strong stems. Very early. \$3.00 each.
- LOVELINESS** (Hollis 1907), large, flat, very full flowers of light pink tinted lavender. Stem strong and upright. Late. \$7.50 each.
- MADAME AUGUSTE DESSERT** (Dessert 1899), very beautiful soft pink, fading to flesh color. In the half-open flower a ring of golden stamens is visible. Midseason. A fine variety. \$2.00 each.
- MADAME BENOIT RIVIERE** (Riviere 1908), very large, cup-shaped flower, with broad, soft pink petals, narrower in the center; soft rose with salmon lights.
- MADAME BOULANGER** (Crousse 1886), beautiful blooms of cameo-pink with some markings of carmine. Delightfully fragrant, the buds resembling large roses. Late. \$2.50 each.
- MADAME D. TREYERAN** (Dessert 1899), delicately-tinted white petals, dotted and splashed with lilac. A free bloomer and very fragrant. Early. \$4.00 each.
- MADAME FOULD** (Crousse 1893), milk-white flowers borne on strong stems. Very full double, but if watered plentifully will develop into immense flowers. Very late. \$2.00 each.
- MADAME GAUDICHAU** (Millet 1909), exceptionally dark crimson garnet, full globular flowers. The stalks and leaf stems are dark crimson. \$12.00 each.
- MADAME GUYOT** (Paillet), large, high-built flowers of deep cream or pale yellow, with some markings of green. A strong grower and free bloomer. Very desirable. Early midseason. \$5.00 each.
- MADAME JOANNE SALLIER** (Paillet), carmine-rose with occasional flecks on guards and center. Semi-double blooms of large size on tall strong stems. Early. \$5.00 each.
- MADAME JOSEPH PERRAUD** (Riviere 1920), enormous flowers of white slightly tinted sulphur and occasional carmine markings.
- MADAME JULES DESSERT** (Dessert 1909), exquisite flowers of large size; broad, delicate petals of a translucent texture. Creamy white but lighted with buff and salmon shades. A very fine flower in every way and one of the best we know. Midseason to late. \$8.00 each.
- MADAME MANCHET** (Dessert 1913), very full cup-shaped flower of rose-pink with a silvery light. Tall, stiff stems. Very late. \$6.00 each.

- MADAME SAVREAU** (Paillet), guard petals and center tinted faint lavender with a collar of creamy white. Center petals show carmine markings. Early midseason. \$5.00 each.
- MADMOISELLE JEANNE RIVIERE** (Riviere 1908), guard petals deep flesh gradually changing lighter, center petals narrower and of a deep cream shade. Tall, strong stems and abundant flowers. This variety is especially good for garden or mass effects. Midseason. \$5.00 each.
- MARCELLE DESSERT** (Dessert 1899), creamy white splashed with minute lilac dots, giving the effect of a delicately tinted flower. Some "accidental" carmine markings. Fragrant. Midseason. \$4.00 each.
- MARGUERITE GAUDICHAU** (Millet & Son), very delicate shell-pink petals, rather incurved, interspersed with an irregular ring of yellow stamenoids. Fragrant. Very charming variety. Late. \$10.00 each.
- MARIE CROUSSE** (Crousse 1892), globular blooms of a very delicate shell-pink or deep flesh color. Stiff, upright stems. Fragrant. A very attractive flower. Midseason to late. \$5.00 each.
- MARQUIS C. LAGERGREN** (Dessert 1911), brilliant cherry red with darker shadings. Flowers borne in clusters on stiff, upright stems, which make it an excellent variety for mass planting. Midseason. \$3.50 each.
- MARY WOODBURY SHAYLOR** (Shaylor 1916), guard petals fresh shell-pink, center creamy yellow with golden lights at base of petals. Plants dwarf with upright stems. Midseason. Owing to the great demand for this variety the stock is extremely scarce. \$45.00 each.
- MIGNON** (Lemoine 1908), globular flower of pale pink, with sometimes slight crimson markings. The blooms are symmetrical and stand well above the luxuriant light green foliage, giving a finished appearance. Rather dwarf. Midseason. \$7.00 each.
- MILTON HILL** (Richardson), very beautiful flower of a delicate shade of flesh color with pale salmon-pink tints; sometimes marked crimson. Of globular form and rather incurved petals; it is an exquisite flower in every way. Late. \$3.00 each.
- MRS. C. S. MINOT** (Minot 1914), rather dwarf plant with stiff stems and dark green foliage. Very large flowers, finely formed, with broad petals. Guard petals faint shell-pink, center of creamy white with golden lights at base of petals. Some accidental carmine markings. Late. Awarded Silver Medal by Massachusetts Horticultural Society. We have a few plants to offer at \$50.00 each.
- MRS. GEORGE BUNYARD** (Kelway), finely formed flower of shell pink changing to deep blush, under-side of guard petals somewhat flecked green. Tall, strong stems bearing an abundance of flowers. Midseason to late. \$5.00 each.
- M. MARTIN CAHUZAC** (Dessert 1899), very dark garnet or maroon; globular flowers of medium size on strong stems. The darkest Peony we have ever seen. Midseason. \$5.00 each.
- MONT BLANC** (Lemoine 1899), extremely large flowers of milky white, very full double. Petals of medium width fringed at tips, giving a feathery appearance. Stems very large and tall. Midseason. \$7.50 each.
- NEPTUNE** (Dessert 1905), faint lilac guard petals, center milk white, well formed flowers on strong stems. Midseason. \$2.00 each.
- ODETTE** (Dessert 1909), large, bomb-shaped flowers of deep creamy white, guard petals tinted pink. Strong stems and fragrant flowers. Midseason. \$2.50 each.

- PASTEUR (Crousse 1896)**, large flowers of very delicate shell pink with soft yellow lights at base of petals. Midseason. \$2.00 each.
- PHILLIPE RIVOIRE (Riviere 1911)**, very fine bright crimson, of good form and growth. The most fragrant of the "red" Peonies. Midseason. Very scarce. \$25.00 each.
- PHYLLIS KELWAY (Kelway)**, large flowers of flushed pink, yet with the delicate coloring which gives a fresh and charming effect. Strong, erect stems. Fragrant. Late. \$15.00 each.
- PIERRE DUCHARTE (Crousse 1895)**, evenly-colored deep shell-pink flower with very broad, rounded petals. Stems strong and upright, although only of medium height. Very late. \$2.00 each.
- PIERRE REIGNOUX (Dessert 1908)**, large flowers of bright rose-pink petals rather loosely arranged. A free bloomer in clusters. Early. \$2.00 each.
- PINK BARONESS SCHROEDER (Kelway)**, sent out by Kelway in some cases as Baroness Schroeder. Exceptionally large fine flowers, flat in form, of deep shell-pink with delicate tints. Extra good both as a cut flower and for garden effects. Midseason. \$10.00 each.
- POETE FREDERIC MISTRAL (Riviere 1911)**, large bomb-type flower of broad bright rose, center petals narrower, with salmon tints. Early.
- POMPONETTE (Dessert 1909)**, dwarf to medium height; flowers velvety pink with a silvery reflex. Midseason. \$2.00 each.
- PRIMEVERE (Lemoine 1907)**, guard petals deep creamy yellow and center petals sulphur yellow. If not exposed to the full sun the flowers will hold a canary yellow which is most attractive. Very fine. Midseason. \$5.00 each.
- RACHEL (Lemoine 1904)**, large, globular flower of excellent form; fresh, soft rose. Strong stems. \$10.00 each.
- RAOUL DESSERT (Dessert 1910)**, large bloom with broad petals of shell-pink with deeper gleams. Distinct and fresh coloring. Late midseason. Scarce. \$15.00 each.
- RENEE MARIE (Dessert 1920)**, pretty flower of very elegant shape, soft fleshy pink shaded salmon, fading to silvery white flecked with carmine; strong stems and erect habit. (Originator's description.)
- REINE HORTENSE (Calot 1857)**, large compact flower with broad rounded petals of soft flesh-color, center showing some crimson splashes. Very charming variety. Midseason. \$2.50 each.
- R. P. WHITFIELD (Richardson)**, flesh, shading a little deeper towards the edge. Rather flat flowers borne on long stems. Very late. \$2.00 each.
- ROSA BONHEUR (Dessert 1905)**, delightful flowers of fresh soft pink. Petals even and incurved, giving a globular shape. Plant rather dwarf and compact. Midseason. \$7.50 each.
- ROSETTE (Dessert 1918)**, delicate shell-pink illuminated with salmon tints at base of petals. Golden stamens are sometimes visible. Occasional accidental markings on guard petals. Early midseason. \$12.00 each.
- SAMUEL HENSHAW (Richardson)**, guard petals clear rose-pink tinged with white, center petals narrower; cream and pink intermixed. Very large. Late. \$5.00 each.
- SARAH BERNHARDT (Lemoine 1906)**, very large, well formed flowers of good quality. Delicate shell-pink of charming freshness. Extra. Late. \$6.00 each.
- SECRETARY FEWKES (Shaylor 1916)**, very large flowers with broad rounded petals of great substance. Creamy white with lighter center. Tall, strong stems and a vigorous grower. \$20.00 each.

- SOLANGE (Lemoine 1907)**, extra large flowers with broad rounded petals of such fine form that the flower does not look coarse. Petals waxy white but suffused with a reddish golden light, so that the total effect is such as may be seen on a cloud at sunset. One of the very finest. Late midseason. \$10.00 each.
- SOUVENIR de FRANCOIS RUITTON (Riviere 1908)**, large globular blooms of bright cherry red, darker at base of petals. Strong grower and free bloomer.
- SOUVENIR de LOUIS BIGOT (Dessert 1918)**, exceptionally large blooms of a very distinct shade of rich salmon-pink with silvery lights. Extra fine. Late midseason. Scarce. \$7.50 each.
- SOUVENIR du GENERAL GALLIENI (Riviere 1920)**, very double flower with mingled petals, strong rose and salmon carmine. Foliage bordered red. (Originator's description.)
- STANLEY (Crousse 1879)**, large globular flowers of light pink with lilac lights. Total effect is very pretty. Midseason. \$3.50 each.
- SUZETTE (Dessert 1911)**, petals of brilliant rose-pink interspersed with golden stamens. Strong stems that give a profusion of bloom, literally covering the plants, making this a fine variety for garden effects. Midseason. \$4.00 each.
- THERESE (Dessert 1904)**, one of the very best and probably the most satisfactory variety in commerce. Vigorous and free blooming, producing large flowers of soft shell-pink with lighter center. Stems of medium height and good strength. Midseason. \$6.00 each.
- TOURANGELLE (Dessert 1910)**, cup-shaped flowers of delicate creamy white with deeper salmon shadings at base of petals. Most unusual and beautiful coloring. Very fragrant. Late. \$7.50 each.
- VICTOIRE de la MARNE (Dessert 1915)**, large globular blooms of dark crimson with a silvery reflex. Stems strong and vigorous. Midseason. \$7.50 each.
- WALTER FAXON (Richardson)**, medium sized blooms of bright rose-pink with salmon shades. Very distinct. A variety which should be in every garden. Late. \$8.00 each.
- WILLIAM F. TURNER (Shaylor 1916)**, very dark red or garnet. Tall, strong grower and gives a fine spot of color in the garden. Midseason. \$5.00 each.

## SERIES H

For many years we have been raising seedling Peonies, and from the many thousands we have selected a few which had superior merit and which, we believe, are worthy of a place among the best ever produced. We have grown them under close observation for a number of years, noting and comparing their qualities from season to season, and have had the opinion of some of the leading Peony judges. We are grouping all our seedlings in this class, both those introduced in previous years and two new ones we are listing for the first time. If more ample descriptions are desired we will gladly furnish them.

- A. P. SAUNDERS (1919)**, large flesh-white flowers changing to nearly pure white in center, guard petals sometimes marked carmine. Petals very long and curved, giving a magnolia bloom effect, except the center petals, which form a ball until flower is well developed. Late. \$20.00 each.

**BLACK PRINCE**, single. Very dark garnet of a "flat" tone, not glossy, with a mass of golden stamens. Owing to its soft yet bright coloring this attracts attention whenever exhibited. \$4.00 each.

**CHERRY HILL** (1915), very deep garnet, yet with a sheen which makes it especially noticable in a collection; in blooms not fully developed stamens are visible. Stems long, from four to four and a half feet, and very erect. It shows at its best in the garden where the glowing flowers are visible from a distance. Awarded Silver Medal by Mass. Hort. Society. \$25.00 each.

**EDWIN C. SHAW** (1919), clear rose, slightly lighter at tips of petals. Outer petals broad and imbricated and extreme center petals much shorter. No traces of carmine are visible. A beautiful flower, both in color and form. Mid-season. \$35.00 each.

**JAMES BOYD** (1919), flesh, changing to nearly white, tinted at base of petals with yellowish salmon. Guard petals sometimes touched with carmine and green. Petals notched at tips, giving a fringed effect. Fragrant. Late. \$20.00 each.

**JAMES R. MANN** (1920), large, deep, rosy pink, with one or two crimson streaks in the center of the flower and an occasional marking on back of guard petals. Central petals incurved, giving a very graceful effect. \$30.00 each.

**KATHARINE HAVEMEYER** (1921), large, rose-type blooms of flesh-pink; guard petals broad and rounded, somewhat notched at the ends, center petals narrow and fringed, full high center. Sweet fragrance. Midseason to late. \$40.00 each.



Peony No. 49-A is now named Katherine Havemeyer.

**NYMPHAEA** (1919), large, flat flowers with wide silky petals of delicate creamy white, notched at tips, and edges somewhat rolled; yellow stamens in center and a reflex of golden light throughout whole flower. Midseason. \$15.00 each.

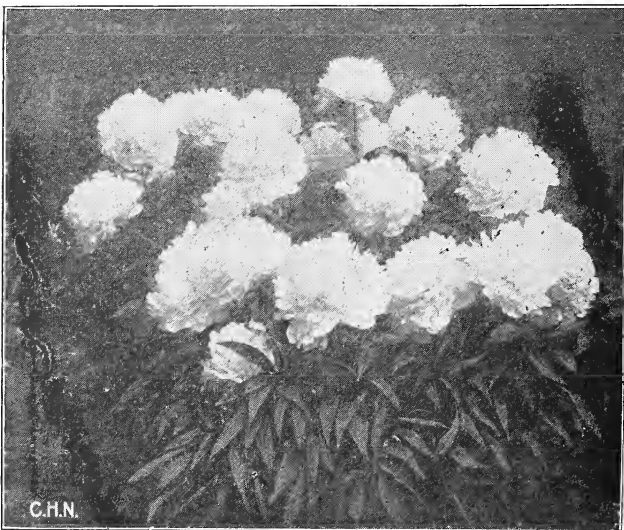
**PRESIDENT WILSON** (1918), soft rose-pink changing to shell-pink as flower opens, guard petals sometimes show crimson markings. Center petals very short, somewhat lacinated, gradually increasing in length outward, producing a cup-like effect. Fragrant. Late. \$50.00 each.

**PRIDE OF ESSEX** (1916), exceptionally broad petals of deep flesh-pink make a very large flower of good form. Stems long and stiff. Midseason. First Class Certificate Mass. Hort. Soc. \$15.00 each.

- SARAH K. THURLOW** (1921), large size, broad, rounded guard petals of flesh white or pearly white, with deeper heart of soft blush with faint salmon shades. Fragrant. Stiff stems and good foliage. Somewhat resembles Tourangelle in style. Late. \$40.00 each.
- THOMAS C. THURLOW** (1919), salmon-flesh changing to white. Guard petals broad and collar of narrower petals or broad petaloids tinted and edged yellow, giving a delicate coloring. The extreme center is made up of short yellow petaloids surrounded by a ring of cup-shaped petals edged yellow. Midseason. \$50.00 each.
- WINNIKENNI**, very full blooms of cherry-pink, tall and vigorous grower and bears a profusion of flowers. Buds very tight and sometimes inclined to burst. Very late. \$4.00 each.

We are listing below a number of varieties originated by Mr. Brand of Minnesota. They have attracted much favorable comment in the West, and we have secured and planted in our gardens all the varieties here listed. They have a wide range of color and we believe will find their way into many collections. In most cases we give originator's descriptions.

- ARCHIE BRAND** (1913), large, beautifully formed, shell pink with lighter border. \$7.50 each.
- BENJAMIN FRANKLIN** (1907), deep bright red, medium size. Stems long and straight. \$2.00 each.
- CHARLES McKELLIP** (1907), large size, rich bright red. \$5.00 each.
- CHESTINE GOWDY** (1913), shell pink with cream colored collar. \$5.00 each.
- ELIZABETH BARRETT BROWNING** (1907), very fine flossy white of large size. Late. \$25.00 each.
- ELLA WHEELER WILCOX** (1907), deep pink of noticeable fragrance. Blossoms in clusters. \$3.00 each.
- FARIBAULT** (1918), deep rose of a peculiar shade with a silver sheen. \$10.00 each.



What a four or five year old plant will produce.



- FLORENCE NIGHTINGALE** (1907), dainty white. Among the very latest. \$5.00 each.
- FRANCES WILLARD** (1907), tall, strong grower, producing creamy white flowers of large size, yet delicate texture. One of the best of the Brand seedlings. \$10.00 each.
- HARRIET FARNSLEY** (1916), beautiful shell pink. Late. \$5.00 each.
- HENRY AVERY** (1907), white with some accidental markings of yellow and green in the center. Very fragrant. \$10.00 each.
- JUDGE BERRY** (1907), delicate pink, flat flowers of large size. Very early. \$10.00 each.
- LONGFELLOW** (1907), pronounced by its originators the brightest red Peony in existence. \$10.00 each.
- LORA DEXHEIMER** (1913), another red of much the same shade as Louis Van Houtte, only larger. \$5.00 each.
- MARTHA BULLOCH** (1907), considered the best of the Brand Peonies. Tall, strong grower, producing immense blooms of soft rose pink, well formed and of good substance. \$25.00 each.
- MARY BRAND** (1907). Mr. Brand has produced a good many red Peonies and he considers this to be the best one of this color. \$10.00 each.
- MIDNIGHT** (1907), large, very dark maroon; good for cut flowers. Early midseason. \$3.00 each
- MRS. CAREW** (1907), delicate, silvery blush, some inner petals with carmine edges. Very fragrant. \$5.00 each.
- OLD SILVER TIP** (1918), soft madder-red with silver tipped petals giving a silvery sheen. Stiff stems and good foliage. Late. \$10.00 each.
- PHOEBE CAREY** (1907), petals large, broad and of good substance. Color a beautiful rose pink with center slightly deeper in shade. Tall grower. Late. \$10.00 each.
- PRINCE of DARKNESS** (1907), an exceptionally dark maroon, one of the darkest of Peonies. Early. \$2.00 each.
- RICHARD CARVEL** (1913), very early, deep red. In bloom with *Edulis Superba*. Fragrant. \$6.00 each.
- RUTH BRAND** (1907), large, compact bomb-type of soft lavender pink. Strong stems. Midseason. \$3.00 each.
- WINNIFRED DOMME** (1913), medium size, brilliant dark red. Medium early. \$5.00 each.

## PHLOX

There is no class of perennials which give a more spectacular bloom than the Phlox, with its masses of white, crimson, or pink, and for garden or border effects, and its long season of bloom through July, August and September make it most desirable. Oftentimes very pleasing effects may be obtained by planting groups in front of shrubbery, as it is usually strong enough to hold its own against the encroaching roots. Many of the varieties, in their delicate shades of shell-pink and lavender, make exquisite color combinations in the perennial garden.

Sometimes, in a wet season, the lower leaves are attacked by mildew and turn brown. This may be prevented by spraying with Bordeaux mixture or by dusting dry sulphur on the leaves. Do not use stable manure, as you will be liable to be annoyed with cut-worms. We would recommend pulverized sheep manure or wood ashes. If the seed-pods are cut off as soon as

the flowers are wilted the plants will bloom again and there will be no seedlings to spring up and choke out the parent plant. These are usually purple and if left to grow will spoil the color effect planned.

### SERIES A

**20 cents each ; \$2.00 per doz ; \$15.00 per hundred**

Six plants of one variety will be furnished at the dozen rate, and fifty of one variety at the rate per hundred. Double-sized clumps at double price.

- ANTONIN MERCIÉ**, a tall variety of a beautiful shade of lavender, eye lighter. Midseason.
- ECLAIREUR**, a medium height variety bearing a good sized truss of pansy-purple flowers with a lighter center. Early midseason.
- LE FEU DE MONDE**, a tall variety, excellent for massing, bright crimson-red with slightly darker center. Midseason.
- LE POLE NORD**, a fine tall late-blooming phlox that gives good results. Ivory-white with a large crimson eye. Late.
- MME. PAPE-CARPENTIER**, a medium growing variety, producing large trusses of waxy-white blossoms. Extra. Midseason.
- MISS LINGARD**, one of the earliest flowering tall varieties. Medium sized white flower with light red eye. A continual bloomer.
- RICHARD WALLACE**, a tall, pure white, with violet-red eye. Always has a clear-cut and tidy appearance. Midseason.
- SAISON'S LIERVAL**, tall, clear white with small red eye. One of the old-fashioned varieties but always acceptable. Late midseason.
- STELLA'S CHOICE**, a tall vigorous grower. Trusses very large and snow-white. Extra nice. Late.

### SERIES B

**25 cents each ; \$2.50 per doz ; \$18.00 per hundred**

Six plants of one variety will be furnished at the dozen rate and fifty of one variety at the rate per hundred. Double-size clumps at double price.

- ARETE**, white with crimson eye, fresh and pleasing. Medium height. Midseason.
- COQUELICOT**, a noticeable bright vermilion with small purple eye. Medium height. Midseason.
- EUGENE DANZANVILLIERS**, a choice variety bearing large trusses of soft lavender with lighter-tinted center. Medium height. Midseason to late.
- EUROPA**, a pleasing variety of medium height with ivory-white blooms and carmine eye. Trusses large and well formed. Midseason.
- F. G. VON LASSBURG**, plants of medium height, bearing pure white trusses of good size and substance. Individual panicles extra large. Midseason.
- GEN. VAN HEUTZ**, large panicles of salmon-red on medium sized trusses. Eye a grayish-white. Midseason to late. Tall.
- HANNY PFLEIDERER**, a beautiful velvety white, overlaid with light rose-pink with carmine eye, flowers large, medium height. Midseason.
- INDEPENDENCE**, a tall vigorous growing white of fine shape and quality. Early.
- JEANNE d'ARC**, another tall white, bearing large trusses of waxy white flowers in abundance. Midseason.

- LANIBOIRE**, rosy scarlet with darker center, free blooming and trusses of good size. Tall. Midseason to late.
- LE MAHDI**, about the best dark blue phlox grown. Flowers large, plants tall. Late.
- LE SOLEIL**, beautiful soft rose with darker-shaded eye, very choice. Medium height. Abundant bloomer during July, August and September.
- MR. GLADSTONE**, a tall growing variety of a beautiful satiny rose with darker center. Midseason.
- MONS. GRAHAM**, a profuse bloomer of bright rose-pink. Medium height. Midseason to late.
- PANTHEON**, a somewhat lighter rose-pink than Mons. Graham. Very choice. Tall. Medium to late.
- PEACH BLOW**, as its name implies, this variety is practically a peach-blossom pink with a somewhat lighter eye. Plant somewhat dwarf. Midseason.
- PINK BEAUTY**, a bright clear pink of medium sized flowers. Tall. Midseason.

### SERIES C

**35 cents each; \$3.00 per doz; \$22.00 per hundred**

Six plants of one variety will be furnished at the dozen rate and fifty of one variety at the rate per hundred. Double-size clumps at double price.

- ASIA**, one of the newer varieties, a beautiful lilac-rose with brilliant carmine eye. Medium height. Midseason to late.
- BARON VON DEDEM**, a rich satiny blood-red with large attractive panicles. Truss of good size. Medium height. Midseason.
- BERENICE**, a medium growing ivory-white of good size and vigor. We consider this an extra choice variety. Midseason.
- CAMERON**, an exquisite shade of deep apple-blossom pink, one of the best ever offered. Trusses of medium size with large panicles. Medium height. Midseason to late.
- ELISABETH CAMPBELL**, too much praise cannot be given this most popular variety. Large individual salmon-pink panicles on good-sized trusses, very distinct. Plant medium. Midseason to late.
- FRAU ANTON BUCHNER**, a rich creamy-white blossom of extra size panicle and truss. Medium to tall. Midseason.
- LE CYGNE**, an extra good bloomer, large trusses of rich waxy white blossoms. Medium height. Midseason.
- MME. PAUL DUTRIE**, a strong bloomer of exquisitely shaded apple-blossom pink, lighter toward the center. Medium. Midseason.
- MAID MARIAN**, one of the best of our own seedlings, an ideal soft lavender, very even in its color. Panicles are extra large. Midseason.
- MRS. OLIVER**, a rich salmon-pink with lighter center, very soft coloring. Medium height. Midseason.
- MARQUIS de ST. PAUL**, a tall clear salmon-pink with darker eye. One of the best. Medium sized trusses. Midseason.
- RYNSTROOM**, an exceptionally beautiful brilliant rose blossom large size and truss. Tall. Midseason to late.
- SELMA**, large trusses of a rich hydrangea-pink with carmine eye, a strong bloomer. Tall. Midseason to late.
- TAPIS BLANC**, a dwarf white of value. Trusses and panicles large and elegant. Midseason.
- WIDAR**, a deep violet-blue with pure white eye. Medium. Midseason.

## JAPANESE IRIS—IRIS KAEMPFERI

The Japanese Iris is the last of the Irises to bloom, and it is truly the crowning Iris. When grown in a favorable location the flower stems will attain a height of nearly five feet and the blossoms a size of eight to twelve inches across. They should be planted in the early fall or spring, in a well-drained but not sandy soil. The ideal place is one which is rather dry in the winter and may be well watered in the spring up to the time of blooming, which is in this locality about the first of July. We have used leaf mold or peat muck worked into the soil, and this holds the moisture like a sponge.

This class of Iris is very scarce, as no large stocks are to be found. We have added to our collection from time to time, both by direct importations from Japan and from private gardens which had especially fine varieties. We are listing a number of varieties under number, as the Japanese names are so long, and if other varieties are desired we will be glad to have you advise us. We have a good many others not listed.

**Price 35 cents each, \$3.00 per dozen.**

Six plants of one variety will be furnished at the dozen rate.

- NO. 9, three petals; deep violet heavily overlaid with grey veinings, producing a tinted grey effect S. grey, bordered violet.
- NO. 42, six petals; pure, glistening white with a golden throat radiating at the base of the petals. Tall and vigorous.
- NO. 122, six petals; a very fine, tall white, with broad petals and yellow throat. Strong and vigorous.
- NO. 140, three panels; bluish-grey, heavily veined and overlaid violet or blue-violet. S. are well developed, rather narrow and semi-erect, same color as petals.
- NO. 143, six petals, or three petals with three laid over them. Soft blue lavender veined white at base; yellow throat, anthers and stamens form a tuft in the center.
- NO. 145, very double, really nine petals, as the stamens have developed into petals. Violet-red, veined white. S. white, tipped violet-red.
- NO. 148, three petals; very broad white petals heavily overlaid with violet red. S. white, edged red.
- NO. 154, six petals of soft blue with broad white veining. S. ivory-white, tipped soft blue.
- NO. 157, three petals; raisin purple with yellow throat. S. white at base, tipped with purple.
- NO. 169, six petals; clear royal purple slightly veined lighter. S. ivory white, tipped royal purple.
- NO. 200, six petals; deep royal purple, broad petals overlapping yellow throat.
- NO. 119-A, six petals; delicate lavender having an appearance of crepe. Broad petals and large flower.

## FLEUR-DE-LIS—LILY OF FRANCE

These beautiful flowers have been well called by some "Rainbow Flowers," for there is no shade or tint but what may be found in some measure among them.

The blossoming season usually opens with the dwarf Pumilas about the last of April and continues through May and early June, finishing up with the Siberian varieties.

Iris may be planted in any well-drained soil and with safety almost any time when the ground is not frozen, but to secure the best results they should be put in the soil either in April or after the first of August.

Plant the tubers or roots so that they will be about one inch below the surface and put wood ashes or potato fertilizer on the surface and rake lightly in.

The following varieties have undergone the testing-out process and can be heartily recommended as among the best.

In the description given "S" signifies standards and "F" indicates falls.

### SERIES A

**Flowering plants, 15 cents each ; \$1.50 per dozen  
\$12.00 per hundred.**

Six of a variety at the dozen rate and fifty of a variety at the hundred rate. Double-size clumps double price.

**EDITH**, a bountiful bloomer and very desirable for a border.

S. white, F. clear deep lavender. Height 24 to 30 inches.

**GOLIATH**, a good bloomer of pleasing color. S. lavender, F. white with purple veinings. Height about 21 to 24 inches.

**JOHN BRIGHT**, S. and F. reddish violet. Plant about 18 inches high.

**MISS MAGGIE**, S. and F. soft pinkish lavender, very nice. Height about 21 to 24 inches.

**PUMILA** varieties, height about 5 inches. Light blue, dark blue, white, royal purple.

**SIBIRICA ORIENTALIS**, rich deep blue, very attractive in the opening bud. Blooms about mid-June. Height about 42 inches.

**VAN GEERTII**, a charming variety with S. dusky lavender and F. a dark violet with white veinings and orange crest. Height 21 to 24 inches.

**VIRGILE**, a low-growing variety and free flowering. S. bronze, F. purple.

### SERIES B

**Flowering clumps, 25 cents each ; \$2.50 per dozen  
\$15.00 per hundred except as noted.**

Six of a variety at the dozen rate and fifty of a variety at the hundred rate. Double-size clumps double price.

**APHILLA**, height, 30 inches. S. and F., white, fringed purple.

**AUREA (Variegata)**, height, 24 inches. 35 cents each; \$3.00 per dozen. S. and F., rich, orange yellow.

**CRIMSON QUEEN**, height, 24 inches, very dark reddish plum. A fine shade which is very attractive. 75 cents each.

- CYPRIANA SUPERBA, height, 18 inches. S. and F., fine royal purple; large flower.
- DR. BERNICE, height, 30 inches. S., coppery bronze; F., rich velvety plum; extra.
- ELEGANS, height 30 inches. S., white shaded bluish lavender F., reddish plum.
- FAIRY, height 30 inches; white, sometimes delicately shaded lavender. Branching habit bearing quantities of flowers. 35 cents each; \$3.00 per dozen.
- FLAVESCENS, height 30 inches. S. and F., a delicate shade of soft yellow; prolific bloomer. Very good for borders.
- FLORENTINA ALBA, height 18 to 24 inches. White; very early and vigorous; valuable for cut flowers.
- GLORY OF READING, height 30 inches. S., deep blue; F., rich royal purple with a conspicuous orange beard. 75 cents each.
- GRACCHUS, height 18 inches. S., clear yellow; F., maroon red, reticulated white.
- GYPSY QUEEN, height 36 inches. S., bright coppery crimson; F., rich dark maroon.
- HALFDAN, height 24 inches. Very faint yellowish white. S. and F., self color with yellow beard. Very early. 50 cents each.
- H. CRAMER, height 24 inches. S., pale lavender; F., a little darker.
- HECTOR, height 30 inches. S., soft clouded yellow; F., rich violet red; very showy. 50 cents each.
- HER MAJESTY, height 24 inches. 35 cents each; \$3.00 per dozen. S., old rose; F., white, striped rosy lilac. Very large flower.
- INGEBORD, height, 15 inches. Light straw color, nearly white with light yellow beard. Early. 50 cents each.
- IROQUOIS, height 24 inches. S., clouded lavender dotted brown. F., very dark plum reticulated white. Unique. 50 cents each.
- IRIS KING (new), height 30 inches. S., rich yellow; F., velvety plum edged yellow. A very striking variety. 50 cents each.
- JUNIATA, height 36 inches. Clear blue with tall stems and large flowers. Very fine. 50 cents each.
- KHARPOT, height 24 inches. Very large; rich royal purple; extra.
- LOHENGRIN, height 36 inches. A beautiful shade of old rose. A vigorous grower, producing large flowers in abundance. 75 cents each.
- LORD WOLSELEY (Monspur), height 36 inches. A new hybrid blossoming in the latter part of June. Narrow foliage and light blue flowers.
- LORELEY, height 24 inches. S., light yellow; F., ultramarine blue, bordered cream. 75 cents each.
- MADAME CHEREAU, height 3 to 4 feet. Pure white, edges beautifully penciled azure; superb.
- MADAME PACQUITTE, height 30 inches. S. and F., bright rosy claret; late.
- MISS E. EARDLEY, height 24 inches. S., creamy yellow. F., blue bordered cream. 50 cents each.
- MRS. H. DARWIN, height 24 inches. White; F., slightly reticulated violet at base; extra.
- MRS. NEUBRONNER, height 24 inches. Deep golden yellow; one of the best of this color. 50 cents each; \$5.00 per dozen.
- MONSEIGNEUR, height 30 inches. S., rich violet; F., darker. Very rich coloring. New, \$1.00 each.
- MONTEZUMA, height 24 inches. S., golden yellow dotted brown at base. F., white, clouded yellow and veined rich brown, especially on the throat. Very delicate and fine. Not for sale.
- MT. PENN, height 30 inches. S., violet red. F., deeper with rich coloring. Not for sale.

- PALLIDA AUSTRALIS**, height 36 inches. S., deep lavender. F., soft blue. Very handsome.
- PALLIDA DALMATICA**, height 36 inches. A much sought variety with strong, broad leaves and wide petaled lavender flowers. The true variety is very scarce both in this country and Europe.
- PALLIDA SPECIOSA**, height 3 to 4 feet. We formerly listed this under the name of P. Dalmatica, but this variety is taller and, we think, more effective than the latter in mass plantings. It has the broad foliage of the Pallida varieties and lavender flowers borne four or five on a stalk.
- PFAUENAUGE**, height 24 inches. S., rich yellow. F., velvety plum color bordered deep yellow. 75 cents each.
- PRINCESS VICTORIA LOUISE**, height 30 inches. S., pale yellow; F., rich violet edged cream. Very fresh coloring and especially attractive in the garden. 75 cents each.
- QUEEN OF MAY**, height 30 to 36 inches. Delicate old rose; early.
- ROSE UNIQUE**, height 24 inches. Very bright old rose, the nearest to clear pink of any Iris we have seen. 75 cents each.
- SNOW QUEEN (Siberica)**, height 42 inches. Pure white. This is a variety of the Siberian Iris which blooms a little later than the German Iris.
- TECUMSEH**, height 36 inches. S., clouded yellow or buff; F., reddish plum. 50 cents each.
- THORBECK**, height 12 inches. S., white, sometimes marked blue; F., rich clear blue. 35 cents each.
- WALHALLA**, height 20 inches. S., deep lavender; F., plum color. Early. 50 cents each.
- WALNERIANA**, height 30 inches. S., light blue, flushed bronze; F., pale violet; orange crest.
- WINDHAM**, S. soft lavender pink. F. heavily veined darker. Large flower. \$1.00 each.

## HERBACEOUS PLANTS

We do not attempt to carry a long line of perennials, but our aim has been to grow the BEST, both in variety and in the size of the plants. In many cases we can furnish strong clumps which will produce an immediate effect and give color to the perennial border throughout the season.

Sometimes certain varieties are superior to the type and we have discarded those which have not distinct coloring and free-blooming habits.

Some varieties are very scarce, as the foreign supply has been cut off, and these varieties we are able to furnish in small quantities only, for this season.

We have, many times, plants in our gardens which are not listed, and would be glad to advise you by special correspondence if certain articles are desired.

**STRONG FIELD-GROWN PLANTS IN FOLLOWING VARIETIES, 25c EACH, \$2.50 PER DOZ., EXCEPT AS NOTED.**

**ACHILLEA PTARMICA FL. PL. "THE PEARL."** (Yarrow). Rosette-shaped flowers of pure white are produced in profusion practically all summer. 2 feet.

- ACONITUM AUTUMNALE.** (Monkshood). These tall spikes of dark blue flowers will do well in a shady place, although they should not be planted where roots or trees will sap the ground. August and September. 4 feet.
- ACONITUM NAPELLUS BI-COLOR.** Blue and white flowers. Very pretty. August and September. 4 feet. 35c each; \$4.00 per doz.
- AGROSTEMNA CORONARIA.** (Mullein Pink). Ornamental foliage of a "woolly" appearance and velvety carmine flowers. June and July. 2 to 3 feet.
- ALTHAEA ROSEA.** (Hollyhock). Tall spikes of single and double flowers, ranging from white to dark maroon. July to September. 6 to 8 feet.
- ALYSSUM SAXATILE COMPACTUM.** (Gold Tuft). Small clusters of bright yellow flowers. Very useful for rock work. 8 to 12 inches. May.
- ANCHUSA ITALICA DROPMORE.** Bright blue flowers. 3 to 5 feet. May and June.
- ANEMONE JAPONICA.** (Japanese Windflower). Beautiful rosy red or carmine flowers with yellow stamens. Fall flowering. 2 to 3 feet.
- ANEMONE JAPONICA ALBA.** (Handsome white flowers with yellow stamens. September. 2 to 3 feet. 30c each; \$3.00 per dozen.
- ANEMONE, PRINCE HENRY.** Rich double pink. Fall. 2 to 3 feet. 35c each; \$4.00 per doz.
- ANEMONE, QUEEN CHARLOTTE.** Deep apple blossom pink, semi-double. 2 to 3 feet.
- ANEMONE, WHIRLWIND.** Pure white, semi-double flowers. 3 to 4 feet. 35 cents each; \$3.50 per dozen.
- AQUILEGIA CANADENSIS.** (Columbine). Bright scarlet and yellow flowers. 12 to 15 inches. May and June.
- AQUILEGIA, LONG-SPURRED HYBRIDS.** New large-flowering strain. Blossoms of exquisite shades. 18 to 24 inches. May and June.
- AQUILEGIA NIVEA GRANDIFLORA.** Beautiful pure white flowers. 18 to 24 inches.
- AQUILEGIA CHRYSANTHA.** Yellow with claret-tinted tip. Excellent. 18 to 24 inches.
- ARABIS ALPINA.** (Rock Cress). Pure white, dwarf. May. 6 to 12 inches.
- ASTER, NOVAE-ANGLIAE.** (New England Aster). Cerulean blue flowers. 3 to 5 feet. September and October.
- ASTER NOVAE-ANGLIAE ROSEA.** Beautiful soft rose-colored flowers. 3 to 5 feet.
- ASTER NOVI-BELGI.** Pale blue flowers, not quite as tall as the novae-angliae.
- ASTILBE JAPONICA, GLADSTONE.** (Japanese Spirae). Fine white flowers, in large pyramidal heads. June and July. 2 feet.
- ASTILBE, QUEEN ALEXANDRA.** Soft pink hybrid. New. Very handsome. 30c each; \$3.00 per doz.
- BOCCONIA CORDATA.** (Plume Poppy). Unique buff flowers. Valuable for screen and foliage. 5 to 8 feet. July and August.
- BOLTONIA ASTEROIDES.** (False Chamomile). Daisy-like flowers in great abundance. 5 to 7 feet. September and October.
- CAMPANULA CARPATICA.** (Carpathian Harebell). Beautiful large, deep blue flowers. 12 inches. June to September.

---

Prices for perennials, unless otherwise noted, are 25 cents each; \$2.50 per dozen. Six of a variety at the dozen rate. Extra large clumps charged according to size.



- CAMPANULA MEDIA.** (Canterbury Bells). Bell-shaped flowers, dark blue, light blue, white, and rose. Biennial. 2 to 3 feet. July and August.
- CAMPANULA PERSICIFOLIA GRANDIFLORA.** Large, deep blue, salver-shaped flowers. 2 feet. July and August.
- CAMPANULA PERSICIFOLIA ALBA.** A pure white variety of the above.
- CAMPANULA CALYCANTHEMA.** (Cup and Saucer). Self colors, rose, blue, and white. 2 to 3 feet. July and August.
- CHRYSANTHEMUM, SHASTA DAISY.** Large white blossoms, 3 to 4 inches across, yellow centers. 15 to 18 inches. September and October.
- CHRYSANTHEMUM, HARDY POMPON.** Strong, hardy plants in yellow, white, bronze, and pink. 3 to 4 feet. November. 30c each; \$3.00 per doz.
- CONVALLARIA MAJALIS.** (Lily of the Valley). Delicate waxy white flowers. 6 to 10 inches. May. Clumps, 50c each; \$5.00 per doz.
- COREOPSIS LANCEOLATA.** (Tick Seed). Bright golden-yellow single flowers. June to September. 2 to 3 feet.
- DELPHINIUM BELLADONNA.** (Larkspur). Beautiful blue flowers, free blooming. Dwarf habit. 30c each; \$3.00 per dozen.
- DELPHINIUM CHINENSIS.** Delicate light blue flowers. 12 to 15 inches. July to September.
- DELPHINIUM CHINENSIS ALBA.** A white form of the above.
- DELPHINIUM ELATUM.** Dark blue. 3 to 6 feet. June to September.
- DELPHINIUM HYBRIDUM.** Superb strain, flowers varying from lightest to darkest blue. 5 to 6 feet. June to September.
- DIANTHUS BARBATUS.** (Sweet William). Large flat heads of flowers in scarlet, white, maroon, and pink. Entire season. 12 to 15 inches.
- DIANTHUS PLUMARIUS.** (Old-fashioned Garden Pink). Light, silvery foliage, flowers in various shades, from flesh-white to deep pink. 12 to 15 inches. May to July.
- DICENTRA SPECTABILIS.** (Bleeding Heart). Peculiar, heart-shaped pink and white blossoms borne in long racemes. 2 feet. May to June. 50c each; \$5.00 per doz.
- DICTAMNUS FRAXINELLA.** (Burning Bush). Very bushy plants, bearing peculiar red flowers, balsam scented. 2 to 2½ feet. June and July. 30c each; \$3.00 per doz.
- DIGITALIS.** (Foxglove). Large, woolly-leaved biennial bearing enormous spikes of showy flowers in many colors. 3 to 4 feet. June to September.
- FUNKIA COERULEA.** (Blue Day-Lily). Light blue flowers, foliage large and of tropical appearance. 18 to 24 inches. July to August. 30c each; \$3.00 per doz.
- FUNKIA SUBCORDATA.** (White Day-Lily). Large, pale green, tropical foliage, bearing waxy-white flowers. 18 to 24 inches. 40c each; \$4.50 per doz.
- FUNKIA VARIEGATA.** Variegated foliage, very showy, dwarf. 6 to 12 inches.
- GAILLARDIA GRANDIFLORA.** (Blanket Flower). Large crimson and gold flowers. Very showy. 18 to 24 inches. July to October.

---

Prices for perennials, unless otherwise noted, are 25 cents each; \$2.50 per dozen. Six of a variety at the dozen rate. Extra large clumps charged according to size.

## GLADIOLI

Strong flowering bulbs. No. 1 size.

- AUGUSTA.** Ivory white with light blue anthers. Very choice. 75c per 12; \$4.50 per 100.
- AMERICA.** One of the best. Flowers an exquisite shade of pink and quite large. 75c per 12; \$4.50 per 100.
- BARON HULOT.** Rich deep blue, the best of its color known. 90c per 12; \$6.50 per 100.
- BRENCHLEYENSIS.** Bright vermilion. Very good for planting among shrubbery. 60c per 12; \$3.50 per 100.
- EMPRESS OF INDIA.** Dark blackish-red. Very rich and velvety in appearance. \$1.50 per 12; \$8.00 per 100.
- FANCY HYBRIDS.** Very free flowering and rich in their colorings. 60c per 12; \$4.00 per 100.
- GLORY OF HOLLAND.** New, white with a slight tinting of pale pink, anthers of delicate lavender. \$1.50 per 12; \$11.00 per 100.
- GOLDEN WEST.** Clear, orange-scarlet, with lower petals blazed with golden yellow and violet shadings. \$2.50 per 12; \$20.00 per 100.
- GOLDEN QUEEN.** Clear-cut cream color, with diamond-shaped blotch of carmine; will not fade. \$1.25 per 12; \$8.00 per 100.
- INDEPENDENCE.** Clear flame color. 75c per 12; \$5.00 per 100.
- KUNDRED'S GLORY.** Delicate pink with creamy buff shading, ruffled petals; very fine for display. \$1.50 per 12; \$9.00 per 100.
- LILY LEHMAN.** Pure, glistening white, with a faint tinge of pink on the tips of the petals. \$1.50 per 12; \$10.00 per 100.
- MRS. FRANCIS KING.** Bright flame-pink, large flowers. 75c per 12; \$4.50 per 100.
- MRS. FRANK PENDLETON.** Clear, soft rose-pink, one of Mr. Kunderd's best. \$1.50 per 12; \$10.00 per 100.
- MRS. WATT.** Deep blood red, very striking. \$1.25 per 12.
- NIAGARA.** Clear, delicate yellow of a pleasing tint. \$1.25 per 12; \$9.00 per 100.
- PANAMA.** A variety somewhat deeper and larger than America and much better. \$1.25 per 12; \$9.00 per 100.
- PEACE.** Large, beautiful white flowers, with pale lilac feathering on inferior petals. \$1.25 per 12; \$8.00 per 100.
- PRINCEPS.** Dazzling scarlet of extra size, plants somewhat dwarf. \$1.25 per 12; \$8.00 per 100.
- SCHWABEN.** New. One of the largest and best of the yellow, with royal purple tongue on lower petals. \$1.50 per 12; \$11.00 per 100.
- SULPHUR KING.** Clear sulphur-yellow, considered the best of all the yellows. Rewarded the Certificate of Merit in Holland, 1912 and 1913. \$3.00 per 12.
- SUMMER BEAUTY.** Handsome deep pink, with crimson throat; quite early. \$2.50 per 12; \$18.00 per 100.
- HELENIUM AUTUMNALE.** (Sneezewort). Bright yellow flowers. August and September. 4 to 6 feet.
- HELENIUM AUTUMNALE RUBRUM.** New, bright terracotta flowers. August and September. 3 to 4½ feet.
- HELIANTHUS MOLLIS.** (Sunflower). Bright lemon-yellow flowers. 5 feet. July and August.

Prices for perennials, unless otherwise noted, are 25 cents each; \$2.50 per dozen. Six of a variety at the dozen rate. Extra large clumps charged according to size.

- HEMEROCALLIS THUNBERGII.** Pale yellow, single. July. 30c each; \$3.00 per 12.
- HEMEROCALLIS, GOLD DUST.** (Yellow Day-Lily). Bright orange-yellow, with buds and reverse side of petals handsome golden bronze. May and June. 2½ feet.
- HEMEROCALLIS FLAVA.** (Lemon Lily). Bright, single yellow flowers, foliage long and narrow. 2 feet. June.
- HEMEROCALLIS KWANSO FL. PL.** Double; orange-yellow with deep red spots. July. 2 to 2½ feet.
- HEMEROCALLIS DUMORTIERI.** Very dwarf. 18 inches. Rich golden yellow. June.
- HEMEROCALLIS MINOR.** Clear yellow flowers, appear in June, fine foliage. 18 inches.
- HEUCHERA SANGUINEA.** (Alum Root.) Bright crimson flowers; good for cutting. June to September. 1 to 2 feet.
- HIBISCUS MOSCHEUTOS.** (Mallow). Single white flowers with crimson center. 4 to 6 feet. August. 30c each; \$3.00 per 12.
- IBERIS SEMPERVIRENS.** (Hardy Candytuft). Numerous flat, snow-white flowers. Very pretty. 9 to 12 inches. May and June.
- LAVENDULA VERA.** (Sweet Lavender). Fragrant lavender flowers with aromatic silver-gray foliage. 9 to 12 inches. July to September.
- LILIUM AURATUM.** (Gold-banded Lily). Glistening ivory-white, dotted with brownish spots and a gold band through the center of each petal. Fragrant. 2 to 3 feet. July and August. 50c each; \$5.00 per dozen.
- LILIUM RUBRUM MELPOMENE.** Dull ivory-white thickly dotted with red spots, giving a rosy effect. 2 to 3 feet. July and August. 50c each; \$5.00 per dozen.
- LILIUM TIGRINUM.** (Tiger Lily). Quite showy scarlet, with crimson dots. 4 to 5 feet. August. 30c each; \$3.00 per 12.
- LOBELIA CARDINALIS.** (Cardinal Flower). Long spikes of intense red. 3 feet. July and August.
- LOBELIA SYPHILITICA.** (Great Lobelia). Spikes of deep royal purple; very attractive. 2 feet. September.
- LUPINUS POLYPHILLUS.** (Lupin). Deep blue flowers on long spikes, very handsome. 2 to 3 feet. June.
- MONARDA ROSEA.** (Bergamot). Fragrant rose-colored flowers. Spicy foliage. 2 to 3 feet. July and August.
- OENOTHERA MISSOURIENSIS.** (Evening Primrose). Large, deep, buttercup-yellow flowers spotted with red. 9 to 12 inches. June to September. 30c each; \$3.00 per 12.
- PAPAVER NUDICAULE.** (Iceland Poppy). Beautiful blossoms the entire season of yellow, white, and orange. 12 inches.
- PAPAVER ORIENTALE.** (Oriental Poppy). Large, brilliant scarlet flowers, 4 to 6 inches in diameter. Very striking. 3 to 4 feet. May and June. 30c each; \$3.00 per 12.
- PENSTEMON BARBATUS TORREYI.** (Beard Tongue.) Medium spikes of deep scarlet-red. 2 feet. June to August.
- PENSTEMON DIGITALIS.** Large spikes of white flowers, somewhat resembling foxglove. June and July. 2 to 3 feet.
- PHYSOSTEGIA VIRGINICA.** (False Dragon Head). Tall erect spikes bearing pink flowers. Very pretty. 3 to 4 feet. July and August.
- PLATYCODON GRANDIFLORA.** (Chinese Balloon Flower). A bushy plant, bearing soft blue flowers all summer; buds resemble tiny balloons. 2 to 3 feet.
- PLATYCODON ALBA.** Same as the above, except that the flowers are clear white with purple veinings.

---

Prices for perennials, unless otherwise noted, are 25 cents each; \$2.50 per dozen. Six of a variety at the dozen rate. Extra large clumps charged according to size.

- POLYMONIUM RICHARDSONI.** (Jacob's Ladder). Finely-cut foliage, bearing heads of bright blue flowers. 18 inches. June and July.
- POLYMONIUM RICHARDSONI ALBA.** A white variety of the above.
- PYRETHRUM FLORA PLENA.** (Feverfew). Very showy flowers of double pink, red, and white. 2 feet. June and July. 50c each; \$5.00 per dozen.
- PYRETHRUM ULIGINOSUM.** (Giant Ox-Eye Daisy). Numerous daisy-like blossoms. 4 to 5 feet high. September. 30c each; \$3.00 per dozen.
- SCABIOSA CAUCASICA.** (Mourning Bride). Delicate lilac-blue flowers, borne in handsome bunches from June to September. 1 to 1½ feet. 30c each; \$3.00 per dozen.
- SEDUM ACRE.** (Stone Crop). Tiny flowers forming a carpet of golden yellow. Good for rock work. 4 to 6 inches. May and June.
- SEDUM SPECTABILE.** Rose and purple-colored flowers borne in large clusters. Very showy. 18 to 24 inches. June and July.
- TROLLIUS EUROPAEUS.** (Double Buttercup). Large, showy, lemon-yellow flowers. 15 to 18 inches. June and July.
- VERONICA INCANA.** (Speedwell). White woolly plants with pale blue flowers. 1 to 1½ feet high. Very ornamental for rockery or border. July and August. 30c each; \$3.00 per 12.
- VERONICA SUBSESSILIS.** Medium to long spikes of deep blue flowers. 2 to 3 feet. July and August. 30c each; \$3.00 per dozen.
- VIOLA CORNUTA.** (Tufted Pansy). These ornamental plants bloom practically all summer; dwarf. 3 to 6 inches.
- Admiration. Dark blue to soft purple, with dark splotches.
- Lutea Splendens. Deep, golden yellow.
- Perfection. Light blue, very nice.
- White Perfection. Fine white, sweet scented.

---

Prices for perennials, unless otherwise noted, are 25 cents each; \$2.50 per dozen. Six of a variety at the dozen rate. Extra large clumps charged according to size.

---



Oceans of Beauty.

# INDEX TO PEONIES

---

Name	Page	Name	Page
Achille .....	6	Frances Shaylor .....	13
Adelia Delache .....	7	Frances Willard .....	21
Admiral Togo .....	11	Francois Rousseau .....	13
Adolphe Rousseau .....	11	Galathee .....	13
Albert Crousse .....	10	General Custer .....	7
Alexandre Dumas .....	6	Georgiana Shaylor .....	13
Alfred de Musset .....	10	Germaine Bigot .....	14
Alice de Julvecourt .....	6	Ginette .....	14
Alsace Lorraine .....	11	Gismonda .....	14
Anomala, Peter Barr .....	6	Gloire de Charles Gombault .....	9
A. P. Saunders .....	18	Gloire de Chenonceaux .....	9
Archie Brand .....	20	Gloire de Touraine .....	14
Areos .....	4	Golden Harvest .....	7
Armand Rousseau .....	8	Grandiflora .....	9
Asa Gray .....	10	Grover Cleveland .....	14
Archie Brand .....	20	H. A. Hagen .....	14
Auguste Dessert .....	12	Harriet Farnsley .....	21
Augustin d'Hour .....	7	Helena .....	9
Aurore .....	10	Henry Avery .....	21
Avalanche .....	8	Hermes .....	4
Avant-Garde .....	5	Isani Gidui .....	5
Aviateur Reymond .....	12	James Boyd .....	19
Baroness Schroeder .....	10	James Kelway .....	11
Bayadere .....	12	James R. Mann .....	19
Beauty's Mask .....	12	Jeanne Gaudichau .....	14
Benjamin Franklin .....	20	Jeanne d'Arc .....	17
Belisaire .....	12	Jeannot .....	14
Belle Mauve .....	12	Jessie Shaylor .....	14
Bertrade .....	12	John Richardson .....	14
Black Prince .....	19	Judge Berry .....	21
Candeur .....	12	Jules Calot .....	9
Candidissima .....	6	Jubilee .....	14
Caroline Allain .....	8	Karl Rosenfield .....	14
Celeste Brochet .....	4	Katherine Havemyer .....	19
Charles McKellip .....	20	Kelway's Glorious .....	14
Cherry Hill .....	19	Kelway's Queen .....	14
Chestine Gowdy .....	20	Lady Alexandra Duff .....	14
Claire Dubois .....	10	Lady Lillian Ogle .....	4
Clairette .....	4	La Coquette .....	7
Clemenceau .....	12	La Fayette .....	14
Clementine Gillot .....	13	La Fee .....	14
Comte de Diesbach .....	6	La Fiancee (double) .....	14
Coquelin .....	10	La Fiancee (single) .....	4
Coronation .....	12	La France .....	15
Couronne d'Or .....	8	La Lorraine .....	15
Defiance .....	4	Lamartine .....	15
Delia .....	7	La Perle .....	15
Delicatissima .....	6	La Rosiere .....	11
Doctor Bretonneau .....	6	La Tendresse .....	11
Docteur Caillot .....	7	La Tulipe .....	8
Docteur H. Barnsby .....	13	Laura Dessert .....	15
Dog Rose .....	5	Le Cygne .....	15
Dorchester .....	8	Le Printemps .....	5
Duc de Wellington .....	7	L'Indispensable .....	9
Duchesse de Nemours .....	7	Longfellow .....	21
Edith Lyttleton .....	8	Lora Dexheimer .....	21
Edouard Andre .....	7	Louis Van Houtte .....	6
Edulis Superba .....	7	Lord Kitchener .....	15
Edwin C. Shaw .....	19	Loveliness .....	15
Elizabeth Barrett Browning .....	20	Madame Auguste Dessert .....	15
E. G. Hill .....	13	Madame Barillet Deschamps .....	8
E. J. Shaylor .....	13	Madame Benoit Riviere .....	15
Elie Chevalier .....	13	Madame Boulanger .....	15
Ella Wheeler Wilcox .....	20	Madame Calot .....	19
Elwood Pleas .....	13	Madame Camille Bancel .....	8
Enchanteresse .....	13	Madame Coste .....	7
Entente cordiale .....	13	Madame Crousse .....	9
Estafette .....	13	Madame de Galhau .....	8
Etta .....	13	Madame de Verneville .....	8
Eucharis .....	13	Madame D. Treyeran .....	15
Eugene Bigot .....	13	Madame Ducl .....	8
Eugene Reignoux .....	13	Madame Emile Galle .....	9
Eugene Verdier .....	9	Madame Emile Lemoine .....	11
Eugenie Verdier .....	10	Madame Forel .....	7
Evangeline .....	13	Madame Fould .....	15
Exquisite .....	13	Madame Gaudichau .....	15
Faribault .....	20	Madame Guyot .....	15
Felix Crousse .....	9	Madame Joanne Sallier .....	15
Festiva Maxima .....	7	Madame Joseph Perraud .....	15
Ferdinand Stoliczka .....	13	Madame Jules Dessert .....	15
Flashlight .....	5	Madame Loise Mere .....	9
Florence Nightingale .....	21	Madame Manchet .....	15
Fraicheur .....	13	Madame Mechin .....	8

[NDEX (continued)

Name	Page	Name	Page
Madame Savreau .....	16	Poete Frederic Mistral .....	17
Mlle. Desbuissons .....	9	Pomponette .....	17
Mlle. Jeanne Riviere .....	16	President Wilson .....	19
Mlle. Leonie Calot .....	9	Pride of Essex .....	19
Mlle. Marie Calot .....	9	Primevere .....	17
Mlle. Rousseau .....	11	Prince Bismarck .....	4
Maifeuri .....	5	Prince of Darkness .....	21
Marcelle Dessert .....	16	Prince of Wales .....	8
Marechal Vaillant .....	7	Princess Irene .....	10
Marguerite Gaudichau .....	16	Princess of Wales .....	4
Marguerite Gerard .....	11	Purity .....	4
Marie .....	9	Rachel .....	17
Marie Crousse .....	16	Raoul Dessert .....	17
Marie Jacquin .....	9	Reine Hortense .....	17
Marie Lemoine .....	9	Renee Marie .....	17
Marquis C. Lagergren .....	16	Richard Carvel .....	21
Martha Bulloch .....	21	Rosa Bonheur .....	17
Mary Brand .....	21	Rosette .....	17
Mary Woodbury Shaylor .....	16	Rosy Dawn .....	4
Midnight .....	21	R. P. Whitfield .....	17
Mignon .....	16	Rubra Superba .....	10
Millaïs .....	4	Ruth Brand .....	21
Milton Hill .....	16	Samuel Henshaw .....	17
Mireille .....	9	Sarah Bernhardt .....	17
Mrs. Carew .....	21	Sarah K. Thurlow .....	20
Mrs. C. S. Minot .....	16	Secretary Fewkes .....	17
Mrs. George Bunyard .....	16	Simonne Chevalier .....	11
Mrs. Key .....	4	Single White .....	4
Mr. Manning .....	9	Smoutha .....	5
Modele de Perfection .....	8	Solange .....	18
Modeste Guerin .....	10	Souvenir du Dr. Bretonneau .....	11
Monsieur Dupont .....	10	Souvenir de l'Exposition de Bordeaux .....	10
Monsieur Jules Elie .....	11	Souvenir de Francois Ruitton .....	18
Monsieur Martin Cahuzac .....	16	Souvenir de General Gallieni .....	18
Mont Blanc .....	16	Souvenir de Louis Bigot .....	18
M. Boucharlataine .....	8	Stanley (double) .....	18
Neptune .....	16	Suzette .....	18
Noblissima .....	7	Suzanne Dessert .....	11
Norfolk .....	11	Tamatbako .....	5
Nymphaea .....	19	The Queen .....	4
Octavie Demay .....	10	Therese .....	18
Odette .....	16	Thomas C. Thurlow .....	20
Officinalis rosea plena .....	6	Torquemada .....	7
Officinalis rubra plena .....	6	Tourangelle .....	18
Old Silver Tip .....	21	Triomphe de l'Exposition de Lille .....	10
Paeonia Lutea .....	5	Umbellata Rosea .....	8
Pasteur .....	17	Venus .....	10
Perfection .....	11	Victoire de la Marne .....	18
Perle Blanche .....	5	Virginie .....	10
Petit Renee .....	11	Walter Faxon .....	18
Phillipe Rivoire .....	17	White Lady .....	5
Philomele .....	7	Whitleyi Major .....	4
Phoebe Carey .....	21	William F. Turner .....	18
Phyllis Kelway .....	17	Winnifred Domme .....	21
Pierre Dessert .....	10	Winnikenni .....	20
Pierre Duchartre .....	17	Yeso .....	5
Pierre Reignoux .....	17	Zoe Calot .....	8
Pink Baroness Schroeder .....	17		

