

Historic, Archive Document

Do not assume content reflects current scientific knowledge, policies, or practices.

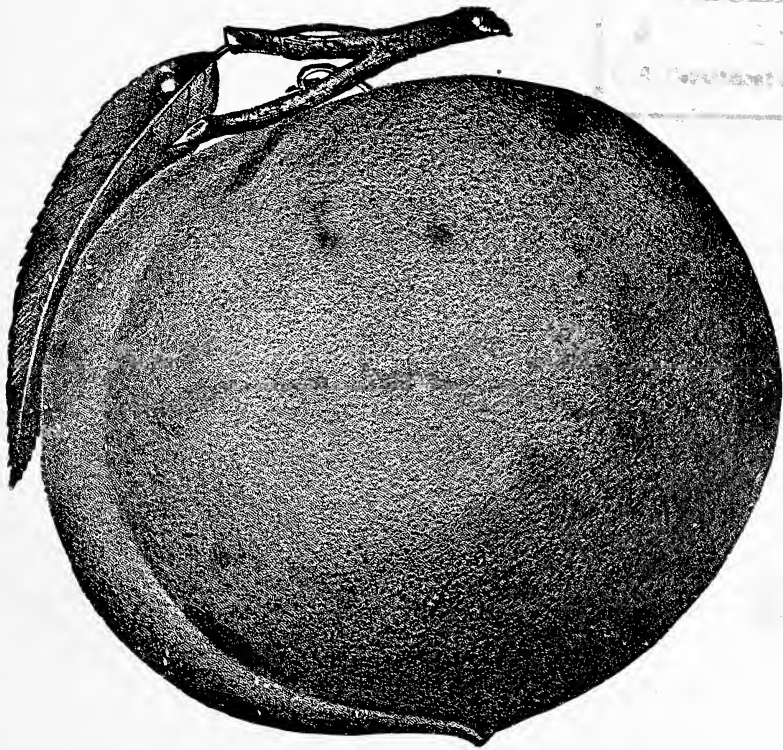
62.60
15.3


80th Semi-Annual Catalogue of
THE CONTINENTAL PLANT CO.
KITTRELL, N. C., U. S. A.

One of the Largest Nurseries in the World selling direct to the people
AN INSURANCE POLICY WITH EVERY COLLECTION. See page 3

Delicious Peaches Every Day
MAY TO NOVEMBER

SEE PAGE 3

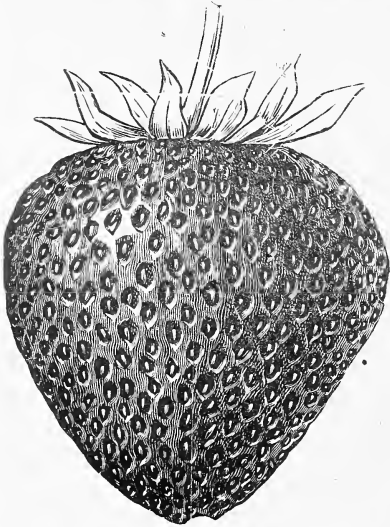


 This collection of trees delivered free (see page 3). We send free tree food, hastening growth and fruiting. Also a book showing how to get quick and big results from fruit growing.

**WE INSURE EVERY TREE TO LIVE AND GROW OR
REPLACE SAME FREE.**

This refers to collections on pages 3, 5, 6, 16 and 19 only.

NEVER-STOP



Our Great Everbearing
Strawberry

Bears Full Crops First Year

FRUITS

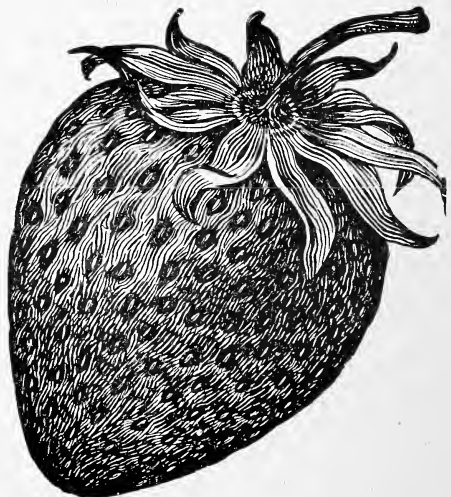
Spring Summer Fall

GIANT

Largest, Handsomest Berry in the World

We not only deliver above
plants free (see page 6), give
free plant food, doubling the
crop, and book worth \$25
to any general fruit grower

*But we also insure every
plant to live and grow or
replace same free*



AN INSURANCE POLICY

With Every Tree and Plant

WE DELIVER ALL COLLECTIONS ON PAGES 3, 4, 5, 6, 15 AND 17 FREE

We insure all to live or replace absolutely free. We can afford to because trees and plants grown in a natural nursery region like this are almost sure to live and grow off. We send free tree- and plant-food, greatly hastening growth and fruiting. We send 100-page book, making success certain.

This refers to collections on pages 3, 5, 6, 16 & 19 only

NEVER-STOP STRAWBERRY Genuine Everbearing

You don't have to wait. Full crop first year. Fruit spring, summer, fall. Absolute guarantee and bank reference. Most delicious of desserts. Big money-maker. Novelty of summer, fall and early winter Strawberries; catches customers wholesale. The exquisite flavor of Never-Stop, surpassing that of almost any other fruit in the world, holds them. So sweet, when fully ripe, it needs no sugar. A great saving. Thrives anywhere. See page 7 as to its success in twenty states. Garden beds have paid at the rate of \$7,500 an acre.

GIANT Largest and Handsomest Strawberry Under the Sun, and one of the Best Spring Bearers

Its tremendous size and blazing red color makes it a nine-days' wonder and sells it at high prices when other kinds go begging.

100 plants, Never-Stop, value \$3 } 200 Plants, \$4.50
 100 plants, Giant, value . . . \$3 }

These 200 strictly select plants with Strawberry plant-food for both for one year, which doubles the crop, and 100-page "Modern Methods Fruit Book," worth \$25 to any general fruit grower. **Delivered free for \$4.50.** See cover page for life-size illustration of these great berries.

MODERN METHODS GIVE YOU

Delicious Peaches Every Day

From May to November (June to October in the North)

Plant Peach Trees You Don't Have to Wait They Bear in Two Years

- 1 select tree of Neva-Miss. Earliest of all Peaches; has never failed to bear. May \$0 75
- 1 select tree of Sneed. So luscious you can drink it like an orange. Early June. 50
- 1 select tree of Greensboro. One of the handsomest of Peaches. Mid-June... 50
- 1 select tree of Carman. Soft and delicious. Early July..... 50
- 1 select tree of Belle of Georgia. Famous for size, flavor and beauty. Mid-July 50
- 1 select tree of Elberta. Most delicious of Peaches. Late July..... 50
- 1 select tree of Niagara. Soft and delicious. Early August..... 75
- 1 select tree of Wine. A luscious drinkable Peach. Mid-August..... 75
- 1 select tree of Four-in-One. Largest of all Peaches. Mid- and late August.. 75
- 1 select tree of Eaton's Gold. Fine for eating; best for preserving. Early to mid-September..... 50
- 1 select tree of White Heath. Fine for eating or preserving. Late September and October..... 50
- 1 select tree of Albright's October. Fine for eating or preserving. Mid-October to November..... 50

All Trees in this Collection Guaranteed to Live \$7 00

Above collection (12 select trees), fruit tree food, hastening growth and fruiting, and 100-page "Modern Methods Fruit Book," **delivered free, cash with order, for \$6**

See pages 5, 16, 19 and 33 for collection of Apples, Pears, Raspberries, Roses, etc., delivered free with "Quick Fruit" fruit tree food and book.

We never send Fruit Book unless it is asked for. Thousands of our customers already have it. See page 34 for index telling you where to find anything

INDEX

	Page		Page
Strawberry Plants.....	8-12	Fruit Tree and Plant Food.....	13
Never-Stop Strawberries.....	3, 6, 7	Grape Vines.....	25
Apple Trees.....	19, 20	Hedge Plants.....	30
Apricot Trees.....	21	Maple Trees.....	29
Asparagus Roots.....	26	Modern Methods Fruit Book.....	13
Blackberry Plants.....	27	Mulberry Trees.....	22
Cabbage Plants.....	28	Peach Trees.....	14, 16-18
Cherry Trees.....	22	Pear Trees.....	24
Collections of Fruit Trees, Plants, Rose Bushes, etc.....	3, 5, 34	Pecan Trees.....	22, 23
Dewberry Plants.....	27	Raspberry Plants.....	27
Evergreens.....	29	Roses.....	33
Fig Bushes.....	26	Shade Trees.....	29
		Umbrella Trees.....	29
		Violet Plants.....	34

See Pages 31 and 32 for Price List.

Why we can afford to sell strictly first-class trees and plants as low or lower than others, deliver them free, guarantee them to live and grow and give free Tree and Plant-Food and Book.

With the advantages of soil and climate we can grow them for less. Freedom from disease and an even maturity of trees and plants leave few culls, nearly all being first-class stock. Then our open climate enables us to handle them economically and without the loss inevitable with cellared stock.

These advantages enable us to sell the highest grade of trees and plants as low or lower than others and to give small growers, the ones that need it most, the very great lift of delivering free and furnishing tree and plant-food to give a quick start. Our 100-page book tells how to keep it up and make fruit pay.

WHAT "MODERN METHODS" MEANS

All trees in collections on pages 3, 5 and 16 are grown by modern methods, which means the selection of the very best-up-to-date varieties; then the growing of the young trees full of vigor by starting each kind in its natural soil, which our location in the greatest natural nursery region in the world enables us to do; then pruning them to a perfect balance of root and branch; and then furnishing the fruit trees food to give them a quick start. All that we do. Then it means planting, manuring, pruning, and cultivating them on plain sensible principles. That our 100-page book makes plain and simple to you, no matter how "green" you may be in fruit-growing. Every tree is freshly dug, carefully packed to reach you in perfect order, and with each tree comes nearly half a pound of highly concentrated fruit-tree food, which will greatly hasten growth and fruiting. Our 100-page book, *Modern Methods in Fruit-Growing*, is well worth \$25 to any grower.

OUR GUARANTEE. Our stock must satisfy our customers. We strive as hard as mortals can to fill every order just right but if by any means a mistake should occur we want to know it. Write us if anything whatever is wrong—an order is not considered complete on our books until our customer is satisfied. In other words we guarantee satisfaction and our bank references will tell you we are good for our contract.

We want our customers to feel that we are just as much interested in their success with our trees and plants as they are themselves and are just as anxious for them to succeed with them. Should they at any time need information as to cultivation, spraying, etc., our thirty-odd years experience is at their command.

OUR REFERENCES. Write and find out all about us (enclosing stamped envelope for reply) from the Citizens Bank, Henderson, N. C.; First National Bank, Henderson, N. C.; Farmers & Merchants Bank, Henderson, N. C.; Citizens National Bank, Raleigh, N. C.; Old Dominion Trust Co., Richmond, Va.; Federal Trust Co., Richmond, Va.

REMEMBER THIS OFFER REFERS ONLY TO COLLECTIONS ON PAGES 3, 5 AND 6

12 Apple Trees. Varieties that Circle the Season Like the Sun

1 Early Colton. May and June\$0 75	2 Winesap. October and November. Keeps all winter.....\$1 20
1 Yellow Transparent. Late June.. 60	2 Stayman Winesap. October and November. Keeps all winter.... 1 20
1 Summer Ambrosia. July, August. 75	1 Mammoth Black Twig. October and November. Keeps all winter.. 60
1 Grimes Golden. September, Oct... 60	Regular price.....\$7 80
1 Magnum Bonum. September, Oct. 60	
2 Fall Ambrosia. October, November. Keeps all winter..... 1 50	

12 Trees delivered free with fruit tree food and book (cash with order) \$7

PEARS ALL SEASON

9 PEAR TREES—GIVING YOU THIS DELICIOUS FRUIT THE SEASON ROUND

All Trees in this Collection Guaranteed to Live

2 Early Harvest. Delicious pink-cheeked Pear. June.....\$1 50
1 Koonce. Large, luscious Pear. July..... 75
2 Bartlett. Famous for fine flavor. August..... 1 50
2 LeConte. A superb Pear. September..... 1 50
2 Kieffer. Best keeping of all Pears and good eating when mellow..... 1 50
Regular price.....\$6 75

All 9 Trees delivered free with fruit tree food and book (cash with order) \$6.50

EVERBEARING RASPBERRIES of Unusual Merit

These plants will bear good crops the first year; the canes carry great burdens of fruit from May until September. To make this offer especially attractive, we will deliver

24 plants of Everbearing Raspberries	} This includes Plant-Food and Modern Methods Fruit Book, delivered free to your door	\$5
100 plants of Giant spring-bearing Strawberries		

Quick Money Fruits and fruits that lower the cost of living. Fruit's power as a moral agent in lessening the craving for dope and drink and making home attractive has long been recognized. Then good fruit not only improves health, lessens doctor's bills, or keeps the doctor away entirely, but properly used it makes an immense saving in food bills; and all not consumed at home can quickly be turned into cash.

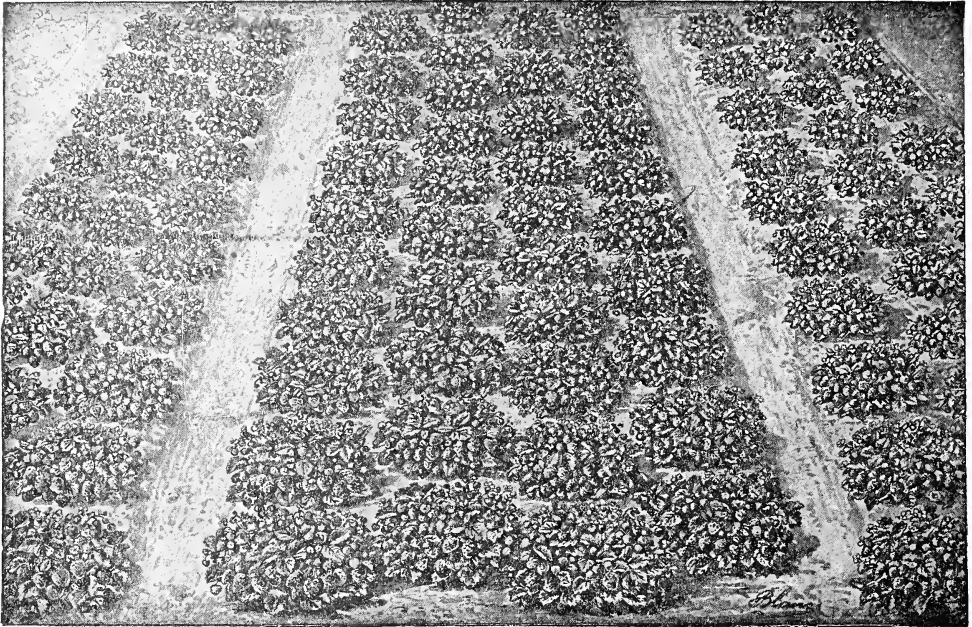
Alive to the importance of quick relief for the high cost of living, we are offering, at a moderate price, trees and plants of highly-improved, quick-fruited varieties. These we are delivering free in collections and giving "Quick Fruit" tree and plant food, which greatly hastens growth and fruiting. We also send free a plain, practical book telling how to grow all kinds of fruit quickly and in large quantities, and then how to sell it or how to serve, preserve and can it to the very best advantage. Remember that Never-Stop, our great Everbearing Strawberry, planted, gives you a full crop of delicious berries summer and fall of 1922. Our Everbearing Raspberry planted now gives this exquisite fruit from May to September, 1922. With our trees, tree food and book, you will have peaches in two years and other fruits as quick in proportion.

WE RESERVE THE RIGHT TO SUBSTITUTE OTHER VARIETIES IN THE PRECEDING COLLECTIONS IF IT IS NECESSARY. We are forced to do this to protect ourselves, but of course we only substitute a variety of equal value, and which ripens its fruit at the same time as the tree or plant for which it was substituted. These collections have found such a ready sale that we are sometimes unable to supply as many trees of one or two of the varieties as we need.

I take pleasure in adding that I have ordered several fruit collections from you for this season and I cannot speak too highly of the splendid quality of stock, careful and secure packing and prompt shipment. Your manager is certainly on the job from field to carrier. Truly there is no better or more lasting advertising.—Roy Duff, Danville, Va., Mar. 21, 1921.

The peach trees had fruit the first year, which was a surprise to everybody.—Mrs. Cora D. Towle, Piedmont, Ala., Jan. 27, 1921.

Thirteen years ago I purchased a little orchard from you. The trees were very satisfactory, all true to name and did and are doing fine. The peaches still bearing profitably.—Robt. L. Wolfe, Manchester, Tenn., Feb. 3, 1921.



SEE WHAT HAS BEEN DONE ON A PATCH THE SIZE OF A VERY SMALL ROOM
 100 plants have yielded \$25 worth of Never-Stop berries (100 quarts at 25 cts.), in a bed 12 x 12 feet, size of a very small room, or at the rate of \$7,500 per acre

Never-Stop THE GREAT EVERBEARING Strawberry

Fruits April to December. Bears Full Crop First Year. Plant-Food Free, Which Greatly Increases the Crop

Sweet, mild flavored; needs no sugar. Delicious table berry. Big profit in it for home or nearby fancy market.

Has been tested for seven years, from Virginia to California, with wonderful success. Well adapted to all parts of the country. See testimonials, from twenty-one states, on opposite page.

Never-Stop continues to bloom freely till heavy frost sets in late in the fall. But long after that quantities of splendid berries remain under cover of the dense foliage till the heavy freezes set in, here usually just before Christmas. Its hardihood in this respect is one of the wonders of the Never-Stop.

While Never-Stop fruits spring, summer, and fall, it is far best the first year to pinch off all blooms as fast as they come till plants get full growth, say August 1. It will then bear heavily all late summer, fall, and early winter. Do this and depend on the spring-bearing varieties we send with each collection for early berries.

Second year Never-Stop can be allowed to fruit all season round. Plants after fruiting all of the first summer and fall will the following spring bear a tremendous crop of berries. In fall, 1918, we gathered from a small plot at the astounding rate of about 30,000 quarts an acre. True, the season was unusually favorable. Still, in our over forty years' experience in fruit, we never before had a variety to come anywhere in sight of that yield.

Plant in beds as shown above or, if you have plenty of space, in rows 2½ feet apart, 15 inches apart in row.

DELIVERED FREE

100 choice Never-Stop plants, selected for heavy bearing	\$3 00
100 choice Giant (largest and handsomest of all berries), spring-bearing plants to suit your locality	3 00
Value	\$6 00

But for Cash with order we will send not only the 200 plants above, but also 100-page "Modern Method Fruit Book," with Strawberry plant-food for one year for **\$4.50**

Splendid Success of Never-Stop in Twenty-one States

SELECTED FROM THE THOUSANDS OF TESTIMONIALS WE GET

VIRGINIA

I would also like to say that our Never-Stop Strawberries were a complete success, one plant having sixty-three berries on it at one time. A perfect curiosity.—MRS. W. W. LANIER, Jr., Petersburg, Va.

I think the Never-Stop are the greatest Strawberries I ever saw.—MRS. P. C. PHIPPS, Mouth of Wilson, Va.

My Strawberries (Never-Stop) bore nicely until December.—MRS. L. J. DAUGHERY, Holland, Va.

Your Never-Stop beats anything I ever saw. 50 plants supplied my table with luscious berries from July until December, picking the last December 23, besides I sold about 15 quarts.—MRS. W. B. STIDHAM, Roanoke, Va.

NORTH CAROLINA

I have picked about sixteen quarts of berries this summer from 100 Never-stop. They are the best berries I create.—J. F. COX, Winston-Salem, N. C.

Some five years ago we ordered some of your Never-stop Strawberry plants. They certainly proved to be a fine berry with us. Now we want to get a new start of this grand Strawberry, fresh from you.—JOHN D. A. FISHER, Salisbury, N. C.

A wonder. Had a good crop all season. Fine berries Thanksgiving day; also Christmas, and had a few yesterday. (January.)—ROSS I. GIDDENS, Goldsboro, N. C.

Tested Never-Stop several years, and highly pleased. I have had your Never-Stop berries for several years and have found it very satisfactory.—Geo. T. Thorne, Enfield, N. C., Oct. 24, 1921.

SOUTH CAROLINA

Pegging away all the season—blooms and fruit. Everybody who sees them gets your name.—ALFRED A. ALDRICH, Greenwood, S. C.

GEORGIA

I have been cultivating your Never-Stop Strawberries for five years and can say they are exactly what you claim for them.—W. A. ROWE, Woodbury, Ga., Feb. 20, 1920.

A wonder. Have borne all the year steadily. Great luscious ones today, though plants white with frost.—J. B. WATERS, Dalton, Ga.

I bought of you a number of Everbearing and Giant Strawberry plants from you in 1919. They are fine berries and have done well.—MRS. ANNA H. LEWIS, Cornelia, Ga.

ALABAMA

Plants set in January commenced bearing in April; now (November), full of blooms and ripe berries.—JNO. A. KELLER, Hanceville, Ala.
(Writes later that he will move near Birmingham so as to be close to big market for Never-Stop.)

MISSISSIPPI

Neva-Myss Peach stands in a class by itself. Never-Stop has borne regularly since I stopped pinching the blooms in July. Now (November 26), still loaded with fruit.—H. C. MCCOUN, Corinth, Miss.

LOUISIANA

Supplied my table during the summer and continued to fruit till November despite the great drought.—J. C. H. MCKINNEY, Houston, La.

I made a great success from your Never-Stop last season. I sold 50 plants; they supplied my table and also that of some friends. They held out so wonderfully in spite of intense drought.—MRS. S. M. VENTRESS, Bains, La.

TEXAS

Despite hail storms in June and July, still yesterday (August), we gathered half a gallon berries from the 100 plants and they are still blooming and fruiting heavily.—P. B. SNYDER, Plainview, Texas.

CALIFORNIA

A wonder. Fruited continuously from April to December.—M. ROOR, Chico, Calif.

ARKANSAS

My success with Never-Stop was phenomenal, picking last on 14th of December.—DR. J. W. MCCracken, Sulphur Springs, Ark.

As to Never-Stop Strawberries, they met every expectation. The only thing is to keep them from bearing themselves to death. They are indeed a mystery in the berry family.—W. S. ELLIS, Jonesboro, Ark.

NEW MEXICO

After four years' test have decided to cut out all other kinds. Intend to make growing of the berry my business, establishing farms in different parts of the country. It must have a big future.—W. H. RIED, Las Cruces, New Mexico.

KANSAS

Had plants from New Jersey, Michigan and Iowa but your Never-Stop outgrew all and bore fine berries till freezing weather.—DR. H. T. JOHNSON, Cottonwood Falls, Kans.

MEXICO

I wish to say the Never-Stop Strawberries are wonderful. Never saw anything to beat them. They are very fine and abundant bearers and many grew to be 1½ inches through. My Giant you sent me were strong vines and large berries.—W. T. WILKERSON, Mexico, Mo.

TENNESSEE

Make price on 1,000 Never-Stop plants. I set 200 last April, kept blooms pinched off until the first of June and had berries continuously until the middle of November. They were set on land that had not been manured or cultivated for over 50 years.—J. G. POTTER, Jonesboro, Tenn., January 2, 1918

KENTUCKY

Been ripening since May, delicious berries every day. Never expect to plant any other kind.—J. M. JENNINGS, Arlington, Ky.

ILLINOIS

Fruited finely all last summer and fall. Had some berries late as December. Had 50 years' experience. Think it the berry for the garden.—F. DANKSCH, Villa Ridge, Ill.

IOWA

Amazed to find plants set this fall now (October), in full fruiting.—C. F. AINSWORTH, Council Bluffs, Iowa.

NEW YORK

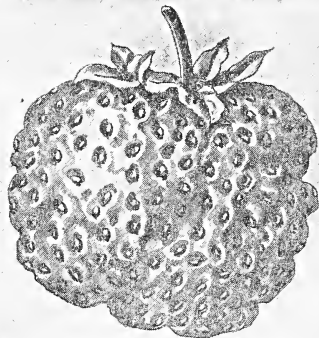
The only continuous ever-bearer we have found. Picked today (January), in the open, berries as fine as any on your catalogue envelope.—H. B. FULLER, Jr., Medford, L. I., N. Y.

PENNSYLVANIA

The Never-Stop Strawberry far surpasses my most sanguine expectations, as I am gathering nearly a quart of fine berries every other day from 100 plants.—J. B. SPENCER, Llanerch, Pa.

DISTRICT OF COLUMBIA

We were much pleased with the Never-Stop Strawberry. Ordered 100 plants from you several years ago and they are the best-flavored berries I ever tasted.—A. D. DAVIS, Washington, D. C.



PARENT
PLANT
STRIPPED
FOR
DIPPING.

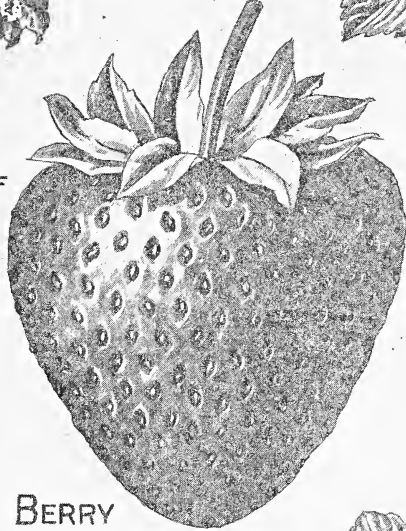
BERRY GROWN
FROM
DISEASED PLANT.



COMMON RUN OF
PLANTS SHOWING
EFFECT OF RUST
AND BLIGHT.



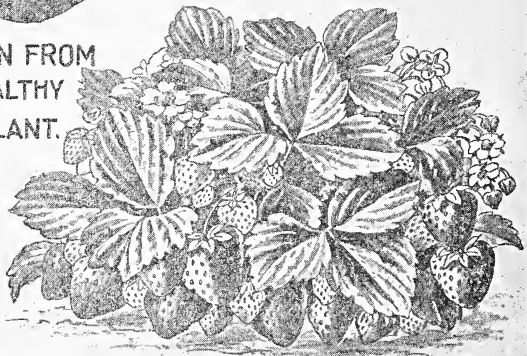
A
HEALTHY
PLANT
GROWN
FROM IT.



BERRY
GROWN FROM
HEALTHY
PLANT.



ABOVE PLANT AT
FRUITING TIME



ABOVE PLANT AT
FRUITING TIME.

Add 10 to 50 Per Cent to Your Strawberry Crop

It is an undisputed fact that rust, blight, and obscure fungous diseases cut down the Strawberry crop of the whole country from 10 even up to 50 per cent, if the weather of the fruiting season is exceedingly favorable for the spread of these diseases. These diseases cover the country like the dew, no matter how loudly some sections may claim to be free from them. While they do some harm in killing the leaves and checking growth during the summer, it is at fruiting-time that the great damage is done. They attack the long, delicate stem on which the fruit grows, sap its vigor, and lessen the size of the berry, often deforming it and making it knotty. This is the chief reason that Strawberries run smaller and of a poor shape toward the end of the season. By that time disease has got in full possession of the infected plant. Of course, the difference shown in the illustration on the opposite page is an extreme case, but, except in exceedingly rare seasons, the disease is there and it tells on the profit all the way from 10 per cent up.

Only the most heroic remedy that goes right down to the bedrock of the trouble will destroy disease as deep seated as this. We strip all plants down to the bud and plunge them head and ears in strong fungicide before planting. This destroys every germ of disease. The plants are then set on fresh land. The result is that plants grown in these fields are absolutely free from rust and blight, and that no matter how prevalent these diseases are in your neighborhood your fields set with our plants will not suffer to any appreciable extent the first two years, no matter how unfavorable the weather may be for the plant or favorable for the disease. You will get a larger and finer crop of berries with a much smaller proportion of small and knotty berries, which always ruin the late pickings from diseased plants.

The parent plants, after the above treatment, are not allowed to weaken themselves by fruiting. All blooms are kept off and the whole vigor of the plant thrown into making the young plants which are sold to our customers for planting. This is believed to throw greater vigor into the young plants. It certainly has the effect of making young plants take root early in the season, and gives them full time to complete their root-growth by fall. We never strip the young plants we sell; they would not ship as well. We leave enough of the old growth around the bud to protect it.

Our Trees and Plants Are Better than the Common Run

BECAUSE THEY ARE GROWN BY MODERN METHODS, THAT IS, EACH IN ITS NATURAL SOIL

The success of everything depends upon the start it gets and especially is this true of the fruit tree and plant, for there are more points essential to the highest success with fruit trees than anything else in the world. Trees and plants instead of loafing must get right down to business and come into bearing young. Of the fruit there must not only be quantity but, what is nowadays even more important, quality. And quality embraces many things—size, color, shape, flavor, firmness, keeping qualities, etc.

How Can We Give the Right Start?

WE CANNOT DO IT OURSELVES. ALL THAT WE CAN DO IS TO GIVE NATURE A FREE HAND AND LET HER DO IT

We have to start the young tree in its natural soil—in the kind of soil in which nature started it when she called it into being—created it. Now probably nowhere else in the world is there as great a variety of soils right side by side as in the North Carolina hills. Our twelve nursery farms extend right through the heart of this natural nursery region. Side by side we have the stiff soil in which the young peach tree must start to be free from borers and other enemies; the well-drained loam on which the young apple tree is freest from knot and gall; the gravelly hill for the young cherry tree; in the pockets between the hills the deep, peaty loam for the pear; and in others the alluvial soil—mixture of sand and humus—for the hedge plant, reproducing identically its habitat on the Amoor River in Siberia.

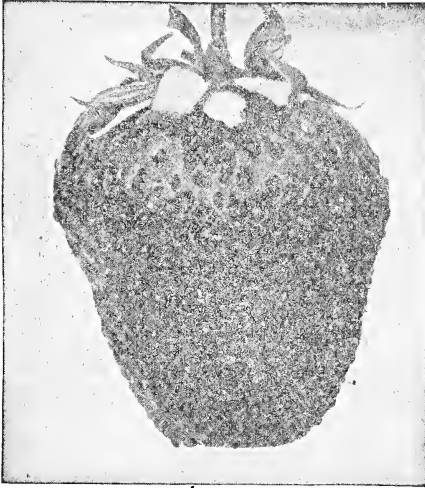
We have at command an almost unlimited quantity of fresh land which enables us to grow all trees and plants on clean, uncontaminated soil.

Then we are situated in the country at an average altitude in an average climate. Our growing season is long, enabling trees and plants to mature thoroughly.

Our open winters enable us to ship trees and plants dug right fresh from the ground instead of the stale, cellared stock often sold. The result is that trees and plants grown here are acclimated—that is, at home over the whole country—north, south, east and west—and are surer to live and succeed than if they did not have this advantage.

We do not mean that other nurserymen are ignorant of the forementioned soil advantages and that they do not avail themselves of them as far as possible; but few, if any, are so favorably situated in that respect as we are. Nor do we claim that the start we give trees will do it all. It gives a substantial advantage more than equal to the cost of the trees and plants, but it is only one step in Modern Methods. For the best results, it must be followed by Modern Methods in planting, in pruning, in manuring, and in cultivating, all of which are explained by the story and plain cuts in our 100-page book.

All that we ask is that you compare our trees with the common run. The huge, gawky size of common trees is a mere matter of heavy manuring, and when not backed up by root-growth is a positive disadvantage. But note the wealth of roots of our trees and the perfect balance between root and tree, and the general business-like look of the whole combination. We destroy all over-size trees as carefully as all under-sized ones.



STRAWBERRY PLANTS

GROWN BY MODERN METHODS

That is, from parent plants not allowed to weaken themselves by bearing, and which are treated by fungicide, insuring perfect health. It increases the crop 10 to 50 per cent according to season.

What do we mean by plants grown by Modern Methods? See page 9 for full description. To prove that we are right or wrong write to your state agricultural department and ask them what effect that method of growing will have on the health of the Strawberry plant.

Too Many Varieties

There is only confusion in the endless number of kinds of Strawberry plants now offered for sale. We have tested nearly every variety that has come out in the last forty years. Varieties that twenty years ago we found worthless, or at least inferior to others of the same class, are still being pushed and sold. We believe that we have done a real service to the public in sifting out the kinds most generally successful over the whole country and dropping the undesirable or unnecessary varieties.

WE GROW OUR OWN PLANTS. NO SECOND-HAND PLANTS SOLD

We are one of the few large Strawberry plant shippers that grow all of their own plants. Nearly all of the others are situated in the midst of thousands of small growers, who grow berries for market, and from whom their plants come at second hand. Of course, there is great risk in setting plants grown in this offhand way. You run great risk, not only of buying mixed plants, but of getting absolutely the wrong kind. Then there is the very serious danger of disease—the deadly black root, weevil, etc.—which once brought on your land would quickly drive you out of business. Among so many growers, constantly bringing in new varieties from every quarter, more or less disease is unavoidable. That we make enemies by this statement and draw attacks upon us, we well know. But we are stating facts—the plain, unvarnished truth.

We are in a natural Strawberry region, separated by a hundred miles or more from all other growers. Our plants are grown on our own farms, and on rigid scientific principles.

HOW TO GROW BIG CROPS OF STRAWBERRIES

A large part of our 100-page book, "Modern Methods in Fruit-Growing," is devoted to the Strawberry. It shows by plain cuts the best and most economical implements to use and exactly how to set the plants for quick growth. It tells how to select the best land; how to grow for home use or market; how to plant, manure, cultivate, gather, and pack. It gives a simple, effective mode of protecting blooms from frost.

In short, it follows the Strawberry from the time the plants arrive at your place till you sell the fruit and pocket the money. Nor does it stop there. It follows the fruit you raise into your home and tells the housewife the numberless ways it can be used as dessert. How to make delicious Strawberry shortcake, Strawberry ice cream; how to preserve, can, make jelly, jams, etc.

THIS BOOK IS FREE WITH EVERY ORDER OF \$5 OR OVER, AND WITH THE COLLECTIONS ON PAGES 3, 4, 5, 33, AND 34

\$1,284 AN ACRE FROM OUR MODERN METHOD KLONDIKE PLANTS

I have one acre of your Klondike plants, and from this acre of strawberries I sold, in 1919, \$1,284 worth of strawberries. I must say that the Klondike is the largest and best early strawberry that I have ever seen grow.—ST. GEO. TUCKER, Old Church, Va.

Extra-Early Strawberries

Price-List on page 31

Excelsior. A standard extra-early variety that succeeds everywhere; firm; brilliantly colored. Fine table berry when perfectly ripe.

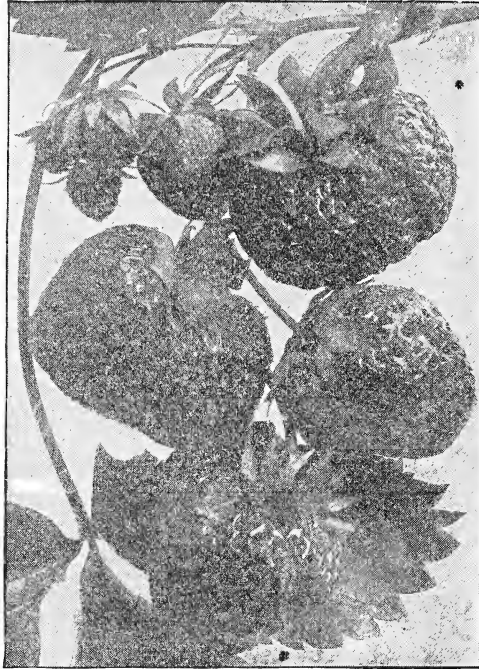
Missionary. Ranks fully up with Excelsior as a standard extra-early shipper and table berry generally. In most places it is taking the place of Excelsior. A heavy bearer of fine fruit.

Heffin's Early. In large regions of the South and central parts of the country, Heffin surpasses all other varieties in large size, brilliant coloring, and profitableness.

Red Bird. Firm and well colored; a valuable berry.

Climax. A magnificent extra-early berry for central, western, and northern sections of the country. Not recommended for the far South.

Virginia. One of the very best of its class, but too soft to ship.



Early Kinds

Genuine Klondike. This is the standard early shipping berry. It succeeds everywhere. Ripens close on the heels of Excelsior and Missionary. Productive, brilliantly colored and so firm that on the great northern market it classes as a reshipper, that is, a berry firm enough to reship to the smaller tributary markets, and therefore commands top-notch prices. There is another entirely different and far inferior variety masquerading under the same name. We have the genuine Simon-pure Klondike. Fine table berry when perfectly ripe.

Lady Corneille. Similar to Klondike and, like it, a great drought-resister. Regarded by many as a distinct improvement, even on that magnificent variety, and as the coming market berry.

Lady Thompson. Ranks with Klondike as a standard market berry.

Senator Dunlop. The standard all-purpose berry through an immense region of the West and Northwest. Specially valuable in regions subject to drought, being equal to Klondike as drought resister.

Brandywine. A large, highly productive variety that fruits continuously for a long time. Succeeds everywhere.

Midseason Kinds

Haverland. A sure and enormous bearer, but berries are too soft for anything but home use or nearby market. It has also the habit of fruiting close to the ground and needs careful mulching. Pistillate, pollinize with any good staminate like Brandywine, Klondike, or Dunlop.

Warfield. Like Dunlop, is suited to the dry regions of the country. Medium size, but famous for its excellent quality as a table berry. Pollinize as with Haverland.

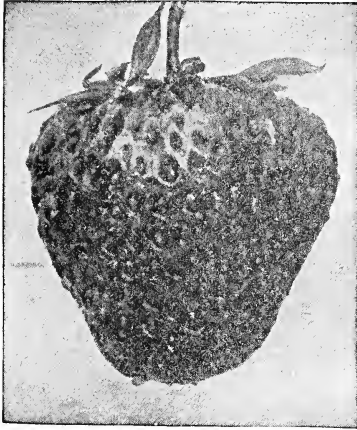
Largest and Handsomest Berries that Grow

Giant. Under this head we class several varieties that combine huge size, brilliant color, and the finest flavor. Will send the kind best suited to your locality. These plants are grown specially for gardens and home market growers.

SATISFACTORY SERVICE.

Newport News, Va., April 8, 1921.

I am writing to acknowledge receipt of the trees recently ordered, and especially to thank you for the eminently satisfactory service. Your shipment was most carefully packed and arrived in splendid condition. Every tree and shrub was finer than I had expected and your generous additions included were a most agreeable surprise. I thank you very much.—Rev. E. T. Wellford, Pastor First Presbyterian Church.



Late Strawberries

Aroma. Like Gandy, everywhere a standard late berry. Some pronounce it even ahead of Gandy and a heavier bearer and thriving in all kinds of soil and climates from Maine to Florida.

Gandy. Shares with Aroma the kingship of all the late kinds. A magnificent berry in all respects. Very large, of perfect shape, glorious color, excellent flavor; a standard large berry. Its firmness and meaty quality makes it not only a fine shipper but also fine to can and to preserve. Gandy thrives everywhere.

Chesapeake. Good late variety. Perfect flowering, with uniformly good-sized fruits. Because of the stout stems, the berries are very easily picked.

Next to the great standard varieties like Klondike, more money has been made on the very late kinds than on any others. They not only ripen after most kinds are gone and the market bare, but their large size, brilliant coloring and their first-rate flavor give them the command of the market.

Strawberry Plants by Mail

Strawberry plants will be delivered by parcel post at the following rates. You can easily find out from your postmaster what zone you are in with reference to Kittrell, N. C., and then you can send postage according to the table below, unless you are ordering a collection of plants or trees which is delivered free.

	Zone 1		2	3	4	5	6	7	8
100 plants.....	\$0 07	\$0 07	\$0 10	\$0 15	\$0 20	\$0 25	\$0 31	\$0 36	\$0 42
200 plants.....	09	09	14	23	32	41	51	60	70
300 plants.....	12	12	20	35	56	65	81	96	111
500 plants.....	14	14	24	43	62	81	1 01	1 20	1 40
1,000 plants.....	22	22	40	75	1 10	1 45	1 81	2 16	2 51

A Statement as to New Varieties

Our method of doing business, of cutting out and denouncing the tree agent, who, as a rule, not only gets 50 to 75 per cent commission, but whose slick tongue often foists upon the public all sorts of worthless varieties of trees and plants, has made us many enemies. For, strange to say, most of the nursery stock of the country is still sold in that old before-the-flood way. The result of our attitude in this respect is that many of those old-method nursery-men, their agents and henchmen, attack us in all sorts of ways—openly, secretly, in the papers and out of them. They have been at it for thirty years, but we have thrived by it, for the people to whom our method of selling direct has saved hundreds and thousands of dollars see through these attacks and stand by us.

This time we are being attacked because when we find a new or apparently new variety of fruit we pay more attention to its merits than to its antecedents. If we had given all the attention to the history and origin of the fruit and none to its quality it would have been all right, no matter how worthless it was or how much fraud and deception was practised to sell it.

For thirty years and more we have kept keenly on the lookout for varieties of fruit that were better than those in common use. If on full trial one that we found or had sent to us proved good, we propagated and sold the plants or trees, paying little attention to their antecedents. In fact, that seemed to us a matter of little importance provided the fruit was good. If the fruit had a local name we adopted it; if none, we gave it one.

Among the varieties thus propagated are the Ellis & Hunt Everbearing Apples (varieties that ripen continuously from June to August); the Summer and Fall Ambrosia Apple; the Wine, Ambrosia, Four-in-One and Neva-Myss Peach; the Tip Top and Never-Stop Strawberry; the Queen of Sheba Violet, etc.

We are not absolutely sure that all of them are new varieties. We are dead sure that they are good varieties. That is the main point, compared with which others are trifles. The Strawberries were propagated from single plants found in a neglected spot in an old orchard, where for years countless varieties have been tested; as none of them proved of unusual merit we had reason to believe that a plant of great value found among these orchard plants was a seedling and a new variety.

Conditions of Sale. Under our rigid system of marking trees, plants, etc., it is almost impossible for an error to occur. But, if it should, and the wrong variety of any fruit be sent, we will replace it free or refund the money on satisfactory proof of the error. But further than this we will not be responsible in any respect, and all stock is sold under that understanding and no other. Never-Stop Strawberry and Neva-Myss Peach are sold on the condition that the buyer will not sell or give away any trees, plants, or buds of either.

Modern Methods Quick Fruit Plant-Food Gives You Fruit Quicker and More of It

Usually, though not always, large fruit-growers are able to get suitable manure or fertilizers, or at least something similar to it. Small growers, people who grow fruit to lessen the cost of living, to eke out a slender income, those who can least afford to blunder, have to put up with anything they can get, which is nearly always the wrong thing. Millions of dollars are wasted that way every year, and tens of thousands of people deprived of, or scantily supplied with, fruit who might have it in abundance.

After years of practical test we have compounded odorless, inoffensive plant-food, which any lady can handle as she would meal or flour, and which will greatly increase results.

The Plant-Food for Everbearing Strawberries and Raspberries is compounded to greatly increase the quantity and size of the fruit rather than to promote plant-growth. Plow or hoe in deeply half the plant-food before planting; hoe the remainder in lightly around plants the following spring. The Everbearing Strawberry, fruiting heavily through the heat and occasional drought of summer and fall, must not be so heavily manured as to cause "firing" of the foliage. If stable manure is used to enrich the soil before planting, it must be well rotted and deeply and thoroughly mixed with the soil. Best to use only the plant-food.

The Plant-Food for Fruit-Trees and Rose Bushes is highly concentrated (highly ammoniated) so as to promote rapid growth and bring the roses into full bloom the first year and the fruit trees into fruiting younger than ordinary fertilizing.

By using this food and planting, pruning, manuring, and cultivating as we direct, you get fruit about one year sooner than in the ordinary way.

You can easily prove this by comparing a young tree fertilized with our tree-food and one on which the same quantity of ordinary fertilizer is used. With fruit trees and rose bushes this plant-food puts in its work in rapid growth the first year and afterward must be supplemented with other manure as directed in book. (See label on plant-food and our book for full directions.) Do not understand by this clause that this tree-food increases all the fruit crops to come; that depends on future manuring and treatment of the tree.

Modern Methods Fruit Book

A book that no one who sets a fruit tree or plant can afford to be without. Embraces and puts in helpful form the practical fruit-growing experience of forty years.

Realizing the urgent need for quick results in this driving age, this book shows how to get these quick results. Other books tell; this book tells and shows. Pictures tell plainer than any words the whole interesting story of fruit-growing from the moment that the plant or tree arrives at your place till the ripe product is eaten or sold. It shows how to dig the hole for plant or tree, how to fill with soil, manure, and fertilize, how to prune the roots, how to prune the tops the first, second, and third year, and how to give the final shape so that the sun can get in and give color and flavor to the fruit. It shows how to plant, manure, and prune a hedge to get perfect results before the first summer is half past. How to get perfect roses the first year and a fine shade tree in three to four years. It shows how to grow strawberries; how to plant, manure, cultivate and handle them, and all other kinds of small fruit. How to make an asparagus bed that will last a century and give a large supply of this delicious vegetable every year from April to August. Not only does it tell the big points but it tells and shows the countless little ones that other books do not, but on which success depends. No other book on growing fruits, ornamentals, etc., covers anything like the ground that this does, or covers it so thoroughly and plainly.

And not only does it give outdoor instructions, but it follows the fruit indoors and tells the lady of the house exactly what to do with it. A whole department is devoted to this subject. It tells how to serve all kinds of fruit. How to make all kinds of fruit ices and desserts. How to can, preserve, make jellies, jams, wines, cordials, and everything connected with the serving or preserving of fruit. Last, not least, it is all compressed into a compact 100-page book that can be carried in your pocket.

**IT IS FREE WITH EVERY ORDER OF \$5 OR OVER AND WITH COLLECTIONS
ON PAGES 3, 5, 6, 16, 19, 33 AND 34.**

Modern Method Book Most Complete Ever Seen

While in Norfolk yesterday I saw Mr. J. A. Winslow who showed me your catalogue or booklet entitled "Modern Methods in Fruit-, Plant-, and Tree-Growing" which is the most complete and interesting of the kind I have ever seen.—S. B. ELLIOTT, Pres. Belle Meade Farms, Belle Meade, Va.

Really Wonderful Growth from Peach Collection with Our Plant-Food

Last spring I ordered the collection on page 3. Every one of the trees lived and it is really wonderful to see their growth. I used the plant-food you sent me.—MARIE SMITH, Grand Coteau, La.

Neva-Myss THE EARLIEST OF ALL Peaches

THE ONLY ONE THAT HAS NEVER MISSED A CROP. FRUITED 19 YEARS.
HAS PAID \$1,400 A SOLID ACRE
(PRICE-LIST ON PAGE 32)

Of course, these are exceptional profits, but an average net profit of \$250 to \$400 an acre is within the reach of any live man living near a town or with fair shipping facilities.

There is large profit in the Neva-Myss because it ripens in May long before any other kind begins to turn, and creates a sensation in any market, big or little, or in any neighborhood it takes them by surprise by its earliness.

This effect is immensely increased by the fact that Neva-Myss stands clear outside the common run of early Peaches. They are small, pale and tasteless; Neva-Myss is a large, brilliant, red Peach of good quality.

Has paid \$1,400 a solid acre, and also has paid \$5.75 a tree at two years old, \$30 at four years.

There is sure profit in it because it never misses a crop. Fruited nineteen years, with only one light crop—1918—all others heavy—no dark mystery about this—simply plain everyday cause and effect. It is well known that most early Peaches have the habit of blooming late. They bloom much in a bunch—quick to come and quick to go. If frost hits them, no Peaches hit that year. Neva-Myss is the latest of all to begin blooming, but it has another safeguard that most of them are lacking in. Neva-Myss keeps at it gradually for weeks. Frost may come again and again, still there are enough blooms left to make a full crop. Indeed, occasionally, when no frost at all comes to thin them, it must be done by hand, if large Peaches are desired.

Neva-Myss, too, has in greater degree than most Peaches the habit of retaining for a long while the "shuck" or butt of the bloom. This dies, dries up and forms an effective overcoat, as it were, for the young Peaches. All smooth talk, you say. Come and see our orchard in blooming time; we have the rise of 140 acres set solid to Neva-Myss, said to be the largest orchard in the world set to one kind, which shows, after testing all other Peaches, what we thought of the Neva-Myss.

There is quick profit in it because the trees usually begin to bear a year younger than most other kinds. Now there is no dark mystery here. A Neva-Myss at three years old usually fruits like a four-year-old-tree, simply because at three years old it is apt to be as large as most kinds at four years old.

Six Select Trees with Modern Methods Plant-Food and Modern Methods Fruit Book, all delivered free for \$4.50

Trees in this collection are the very pick of our immense stock, so perfectly balanced in root and branch growth that they will grow fast and come quickly into bearing. They are put into perfect shape before leaving us by being pruned root and branch precisely right, saving you all doubt and trouble in that respect. They are packed with extra care so as to arrive as fresh as when dug. With each collection is sent enough strongly concentrated (highly ammoniated) Modern Method Fruit Tree-Food to push the trees into quick growth and fruiting. This food, combined with their superior vigor, brings them into bearing at two years old, a year younger than ordinary trees.

We also send our 100-page book, worth \$25 to any fruit-grower because it not only tells, but shows, by clear practical cuts, how to plant, prune, manure, and cultivate all kinds of fruit. Page 13 tells also about the book and fruit tree-food. See page 3 for collection of Peaches selected for their delicious flavor, ripening without a break from May to November.

As to Being Frostproof. Again some of our competitors attack us on this point, claiming that there is no such thing as a frostproof Peach. We do not claim there is. We simply state that Neva-Myss has been fruited nineteen years and has never missed a crop, and we give the reason why. That it is a late and gradual bloomer, and that enough blooms always escape frost to make a fine crop.

See page 15 for splendid success of Neva-Myss in ten states. See pages 16, 17, and 18 for other varieties of Peaches. For other collections of fruit trees delivered free with tree-food and book, see pages 3, 4, 5, 14, 16, and 19.

\$804 AN ACRE FROM NEVA-MYSS

It might interest you to know that your peach, the Neva-Myss, ripened for picking here June 25. I have a few of the trees on my fruit farm, three years old, which had about two crates to the tree and which I sold at a price per crate which averaged \$804 per acre of 134 trees. The fruit seems to stand shipping well and I think is equal to, if not better than, any of the early peaches raised in this peach section.

It may interest you further to know that the acre of strawberries purchased from you last spring (Klondike and Aroma) are now making runners. Up to date they look much better than several other patches set at the same time but bought elsewhere.—L. C. ROSENKRANS, Crozet, Va.

Fifteen Years' Success of the Great Neva-Myss Peach in Ten States.

I set a Peach orchard from your nurseries four years ago the 29th of last November. I think it is the prettiest I ever saw. The trees look as though they were six or seven years old and all the fruit seems to be of fine quality. The Neva-Myss has never failed to bear and of fine quality.—J. W. Ponton, Saxe, Va., April 12 1920.

I had some wonderful Neva-Myss this season, three that weighed 17 ounces. I fixed up two dozen specially in a box and got \$2 for them. One of the oldest produce merchants here says my Peaches (yours) have the best flavor of any early Peaches he has ever seen on this market.—A. S. Wily, Mobile Ala., June 3, 1920

Some years ago I had you send some Neva-Myss Peach trees to a kinsman of mine (P. K. Goree), at Midway, Madison Co., Texas. They have never missed. He tells me they were heavily laden with splendid ripe Peaches on May 7. They are beautiful trees.—Judge Norman G. Kittrell, Sr., Houston, Texas, September 24, 1919.

I find that your Neva-Myss Peach ripens about eight or ten days earlier than Mayflower. It proves so in my orchard.—G. W. Miller Gilbert, S. C., August 22, 1919.

The Neva-Myss is the most profitable peach. I have fifteen varieties. It brings the best price, because it is the earliest. It needs only two sprays—viz., the dormant and insecticide. It recovers from heavy bearing and makes a fine growth, having three and a half months to do this; consequently it is always well budded by the end of the growing season. Then it is hardy and, being a late bloomer, it is always sure to bear a good crop, and last, but not least, it is as beautiful as a peach can be.

The Four-in-One you sent me five years ago are fine, healthy trees now and bear heavy crops of very large, brilliantly-colored peaches. They are the largest of 15 varieties I have grown on my place. One of the trees bore 10 fine peaches 16 months after planting. The largest of them measured 11½ inches around and weighed ¾ of a pound.—Julian Du Perrieu, Paducah, Ky.

I want to say in regard to your Neva-Myss Peaches that they are about as heavy bearers as I have ever seen. They are a good color and very good flavor for an early peach. If they set a crop as regularly as they have done in the last two or three years they should be a great peach for the early market in this section.—Jno. R. Hutcheson, Blacksburg, Va.

I bought 13 Peach trees from you in 1916 and this spring I had a splendid crop on every single tree. The Neva-Myss had at least a bushel of magnificent Peaches on each tree—beautiful to behold and delightful to eat.—They began to ripen the 25th of April and had been beautiful and red for over a month then.—Mrs. C. H. Maxwell Calvary, Ga.

I have been growing your Neva-Myss Peaches for five years and during this time they have not failed to have a full crop, and I have had the first peaches I have seen in Augusta every year. In my opinion, they are the very best and surest peach known.—B. W. Brawner, Augusta, Ga., Jan. 21, 1921.

Have planted your Neva-Myss Peaches when I lived in Macon and they were each year the wonder and admiration of all who saw them. That is what affords me a large part of the pleasure I get out of raising them. And I have always told my friends the only way to succeed in having such fine fruit was to buy from you.—Harry C. Tindall Atlanta, Ga., Feb. 21, 1921.

All that you say about Neva-Myss Peach (so far as my experience has gone) has proven true. I had four other varieties of Peaches set out about same time as were the Neva-Myss. All bloomed this spring, and most of them fruited more or less, but the Neva-Myss were the only ones that held and developed their fruit. The Neva-Myss was the latest of the five varieties to bloom. They are certainly beauties, and get their color eight or ten days before they are ripe. You certainly cannot recommend the Neva-Myss Peach too highly.—J. W. Belknap, Palacoi, Texas.

My Neva-Myss Peaches have never failed to bear a big crop each year. I had ripe Peaches last year on my Neva-Myss trees on the 10th day of May.—E. P. Harris, North Birmingham, Ala.

I bought some of your Neva-Myss Peach trees and set them out last November. They were full of Peaches last spring and the finest I ever saw. I had no idea they would be bearing for three years.—L. A. Dukes, Franklin, Va.

I already have 100 of your Neva-Myss, set in April, 1917. Had a few delicious Peaches on April 27, 1918, from these trees and they are growing splendidly now. My trees are attracting attention in my neighborhood, particularly because of their rapid growth and early ripening.—A. S. Wily, Bay Minetta, Ala.

Bought 11 Neva-Myss Peaches from you in March, 1916. Had some Peaches from them in 1917. This year had a good crop and they began to ripen the 27th of April. By the 10th of May they were ripe and gone. Want 25 more trees.—J. M. Nutt, Jennings, La.

About four years ago I bought of you 196 Neva-Myss Peach trees and planted one acre. This past season 700 crates of Peaches were sold from same at \$2 per crate amounting to \$1,400. It would do you good to see this acre. You would be proud of it.—F. P. Nininger, Bristol, Tenn.

I have been out to see the Neva-Myss Peach trees of Mr. Keister's. They are a beautiful sight loaded down with magnificent Peaches. One five-year-old tree had fully 4 bushels of fine Peaches on it. They were very large and of a deep crimson color.—(Dr.) Ellison A. Smith, A. & M. College, Blacksburg, Va.

I found the tree a vigorous, healthy grower, and the second year I sold \$5.75 worth of Peaches. During the three years I've fruited this Peach, it has never failed to have a heavy crop, owing to its late blooming which enables it to escape the late frosts and blizzards that are so common here (summit of Alleghanies). During the time a sleet came as the tree was dropping the bloom and still I had a full crop.—A. T. Keister, Blacksburg, Va.

Neva-Myss trees began to bear this year. They are ahead in ripening, appearance, and quality to Mayflower which is also fruited here.—J. R. Osborne, Shelby, N. C.

I cannot say too much for the Neva-Myss Peach. Being a railroad man and not having any chance to look after them. I have about 15 trees: Been trimmed one time in 10 years. Not having any attention, they are full of wax. Sell about \$100.00 off of them every spring; give them away to any one that will come after them. I think they are something wonderful. They are the earliest peach in Warren County, I judge, by them selling so fast. They are gone when others are coming in.—G. S. Rodenbaugh, Vicksburg, Miss., Jan. 25, 1921.

SPECIALTY PEACH TREES (SEE PAGE 32 FOR PRICE-LIST)

Peaches not only make the daintiest of desserts, Peaches and cream, ice cream, preserves, jellies, etc., but they are the leading canning fruit. Peaches that are not sold or consumed fresh can be turned into money by canning.

It is generally conceded that the Peach is not only the most beautiful, the most delicious, but also the most wholesome of all tree fruits. Why not enjoy it from May to November, including both months? It is perfectly practicable to do so. See page 3 for trees delivered free with book and tree-food.

The Giant Four-in-One Peach

This is far and away the largest Peach that grows. It is the firmest of all midsummer Peaches. Its grand size and glorious coloring make it certainly one of the very handsomest, while when fully ripe and soft it has no superior and few equals in delicious flavor. It colors up deep cream and crimson long before it softens. This adds immensely to its value as a shipping and market Peach, for it can be gathered when well nigh firm as a cannon ball, shipped 2,000 miles to market, and softens at leisure. Then its veritable nectar, clear seed, soft, juicy, melting—all that a perfect Peach can be, and is fully entitled to the name it bears, as it would be from another point of view, to wit: the best seller, the best eater, the best canner, the best preserver. In fact, it is King of all midseason varieties, just as Neva-Myss is of all the extra-early sorts, and like it, it is a quick grower and enormous bearer.

6 Trees delivered with plant-food and book, for **\$4.50**
INSURANCE POLICY WITH THEM. SEE PAGE 3

Exquisitely Flavored Table Peaches

The following superb varieties of soft, clear seed Peaches are for home use or strictly fancy market. Their exquisite flavor fits them for Peaches and cream, ice cream, or they are delicious eaten right from the tree.

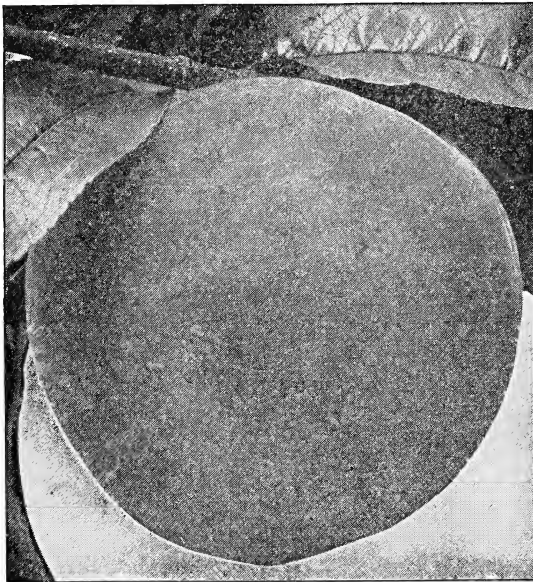
Ambrosia (Food of the Gods) ripens in early July, Niagara in late July, and Wine Peach in August, while Neva-Myss and Four-in-One color up long before ripe and are usually picked and shipped to market in this stage of ripeness. If allowed to ripen thoroughly on the tree, they rank well up with the fine table Peaches.

AMBROSIA (Food of the Gods). The most exquisitely delicious Peach yet produced. Clear seed, soft and melting. A revelation in Peach flavor. A heavy and sure bearer ripening in July. Color beautiful cream and crimson. So delicious that it can be eaten with cream without sugar, making it wholesome for even the weakest stomach.

NIAGARA. An immensely large, brilliantly colored, exquisitely flavored Peach of the Elberta type, but much earlier and far superior to it in quality. It seems certain that Niagara will take the lead of the class of the strictly fancy Peaches, for it is in size, color, and productiveness not surpassed by any of them and not approached in flavor by the best of the giant Peaches. July.

WINE PEACH. A beautiful, red-cheeked, medium-sized Peach of the most delicious flavor. Clear seed, soft, so luscious that it can be drunk like a glass of wine, which it resembles in flavor. It has the almost unique habit of propagating true from the seed. You can grow all the trees you want by simply planting the seed. Has been grown here from seed for fifty years and has never missed a crop. This gives a rare and distinct value to the Wine Peach.

6 Trees of Neva-Myss, Four in One, Ambrosia, Niagara, or Wine, selected as you please, **\$4.50** delivered free with plant-food and book. (Insured. See page 3.)



Extra-Early Peaches (Following the Neva-Myss)

FOR PRICE OF FOLLOWING TREES SEE PAGE 32

Sneed. This is recognized as one of the standard early Peaches over the whole country. It follows Neva-Myss closely, ripening early in June. It is of good size and is unusually productive; a fairly well-colored Peach, which is so luscious that when ripe it can be drunk like an orange.

Arp Beauty. An early Peach of good quality.

Alexander. An early Peach. Popular in some sections.

Greensboro. This is a glorious mid-June Peach. In size it ranks among the very largest. Its color is an exquisite cream and crimson and in quality is luscious and melting. Succeeds generally throughout the country and as far south as the Gulf of Mexico.

Dewey. This is a large, exceedingly handsome, red and yellow soft Peach. The trees are fine growers and heavy bearers. It is one of the few really fine varieties that succeeds generally throughout the country and in Florida, where it thrives well, except in the extreme southern part. Follows Sneed closely in time of ripening.

Early Peaches

Carmen. A very large, brilliant red Peach of excellent quality and immense productiveness. Soft and nearly freestone when ripe. Equally good for home and market, being firm and a fine shipper. Does splendidly throughout the country clear down to the Gulf of Mexico. Ripens in June.

Belle of Georgia. Another of the great cream and crimson Peaches. An exceedingly showy Peach and a good one, too. An excellent shipper, firm and a good carrier, though a freestone, and soft and luscious when thoroughly ripe. Succeeds generally throughout the country down to the Gulf. Early in July.

Burke. A mammoth, superb, white and red Peach of showy appearance and good quality. Late July and early August. Clingstone.

Chinese Cling. A large white Peach shaded with red; fine quality. Late July.

Stonewall Jackson Cling. Similar to Chinese Cling, of which it is a seedling, but a decided improvement on it. A really magnificent Peach. Last of July.

Early Elberta. A type of this grand variety ripening in June.



MODERN METHODS FRUIT BOOK AND PLANT-FOOD MAKE OUR TREES BEAR LIKE THIS

Midsummer Peaches

Elberta. Easily king of its ripening season. A mammoth gold and crimson Peach of excellent flavor. Famous for its vigorous growth, immense productiveness, and adaptability to all soils and climates. Great for home use, for market, and for all purposes. Thrives generally, and even as far south as Florida. Freestone. August 1.

CAUTION.—There are two, if not three or four varieties, differing greatly in merit, called Elberta. We have the genuine Elberta on which so many millions have been made by the Georgia growers.

New Prolific. Similar to Elberta, and one week later. Valuable to keep up the succession of Peaches. Freestone.

Globe. A very large, soft, clear seed Peach of excellent quality. Early August.

Crawford's Late. Another splendid red and yellow Peach. A trifle later in ripening than Globe. Freestone. Does well even as far south as Florida.

Stonewall Jackson's Free. Said to have originated from a seed brought by a Confederate soldier from the Gettysburg campaign in 1863. A giant gold and crimson Peach of excellent quality. Noted as being a sure bearer. Valuable. Late August.

Old Mixon Free. A large, white and red, soft Peach of fine quality. Late August.

Matthew's Beauty. Another excellent red and yellow Peach. Freestone. Last of August.

Fall Peaches

White Heath. A large, white, clingstone Peach of excellent eating, canning, preserving, and selling qualities. First half of September.

Eaton's Gold. A very large, finely flavored, gold and crimson Peach. Valuable for all purposes. Said to have originated here from seed sent from Japan before the war, about 1855. Clingstone. Last half of September.

Durham or Flintin's October. A magnificent, late, white Peach. Considered far superior to even the Standard White Heath.

Krummel's Late. Another first rate September Peach.

Albright's October. A large, white, well-flavored Peach for any season, doubly valuable because it ripens so late. Clingstone. First half of October.

Stinson's October. A standard very late Peach.

Peaches All Year

Before you decide which of these varieties you wish to grow, turn to page 3 and see if our great Peach collection would not be the best thing for your home garden. Look also at the pictures of these peaches on the cover. The twelve kinds we offer will furnish the table with fruit all season long; you'll have plenty left to can and preserve, or to sell.

The professional fruit-grower prefers to grow only four or five varieties, as they will furnish a complete picking season and keep a band of men busy from the beginning until the end of the season. The home grower, however, wants trees which are always ripening throughout the season. We think our Peach collection on page 3 suits the home-garden better than anything else you might select.

An Insurance Policy

With Every Tree and Plant

WE DELIVER ALL COLLECTIONS ON PAGES 3, 4, 5, 6, 14 AND 16 FREE

We insure all to live or replace absolutely free. We can afford to because trees and plants grown in a natural nursery region like this are almost sure to live and grow off.

We send free tree- and plant-food, greatly hastening growth and fruiting.

We send 100-page book, making success certain.

This refers to collections on pages 3, 4, 5, 6, 14 and 16 only



APPLE TREES

Have Apples the Year Round From Your Own Trees. All-the-Year-Round Collection of Trees Delivered Free with Tree-Food and Book. See page 5

By intelligent people the Apple is now deemed almost as indispensable an article of food as bread itself. It is food, medicine, and no mean moral agent all in one. Indigestion, bladder and kidney trouble, and rheumatism, which has its chief seat in such troubles, are benefited and often cured by the liberal eating of Apples. People, especially boys, who eat Apples freely do not have the same hankering for dope, drink, and tobacco as the non-fruit eaters.

The only way for the average family to have Apples is to grow them themselves. One good tree of the right variety will yield more fruit than can be bought for \$10. We furnish trees of varieties that ripen in succession from May to November. With a little care Apples can be kept through the winter till Apples come again. A cellar is best, but almost any dark, dry place will do, the cooler the better, so the Apples cannot freeze.

Any surplus of Apples can easily be sold if kept until winter. Still, it is often the case that summer and fall Apples sell well right from the tree if fine.

Thus, Summer Ambrosia would sell on sight, at any time, and if not then, surely by taste. Few people, if allowed to see its exquisite beauty and taste its delicious flavor, could resist it.

Then what a friend the Apple is to the housekeeper. The fresh Apple, of course, comes first, but then dried Apples, canned Apples, Apple marmalade and Apple-butter stand her in good stead. Then there's Apple vinegar. One tree of Apples will yield many gallons, and there is really a crying demand for pure vinegar. For not even the shadow of an Apple ever fell in most of the vinegar we use, and we know it.

Apple Aristocracy

PRICE-LIST
ON PAGE 32

The following are the *creme de la creme* (cream of the cream) of Appledom, which thirty years' tests have enabled us to select as the very best varieties of the Apple family.

Summer Ambrosia. A medium-sized, golden flecked, red Apple of the most excellent flavor. Till you have eaten one of these strains of Ambrosia you can have no idea of what a really tip-top Apple can be. Ripens in August when Apples are scarce.

Fall Ambrosia. Superior in flavor even to the Early Ambrosia, that is, if such a thing were possible. Very large, brilliant red. Ripens in the fall and keeps all winter.

Dixie. A superb fall and winter Apple for the South. Originated there and will therefore succeed much farther south than any other Apple.

Ellis Everbearing. An excellent, large, yellow Apple that ripens from June to September.

Early Colton. Valuable because it ripens far ahead of all other Apples of any value. A large, handsome, well-flavored Apple, ripening in early June into a veritable ball of gold.

Hunt Everbearing. A medium-sized Apple of most delicious flavor, ripening all through June, July, and August.

This Collection Carries INSURANCE POLICY. See page 3

Six Trees of any of above kinds, delivered free with plant-food and book. **\$4.50**

GENERAL LIST OF APPLE TREES

SEE PAGE 32 FOR PRICES OF FOLLOWING TREES

Spring and Summer Apples

Yellow Transparent. This is a very fine Apple indeed; good quality, good size, beautiful, with a yellow tint; a sure and heavy bearer. A really delicious Apple. Ripens in June.

Red June. Famous for its striking beauty and also for its sprightliness of flavor. With a coat of flaming red and meat of purest white, it is one of the best known and the most popular of Apples. A good bearer, and though only of medium size, a very valuable Apple for home use or to sell. Ripens in June.

Early Harvest. A widely known standard early Apple, valuable for its large size, excellent flavor, and is a sure and heavy bearer. Fruit is pale yellow streaked with dull red. Time of ripening, June. Early Harvest is universally popular.

Summer Pearmain. One of the most popular summer Apples. Ripens in July.

Horse. A large, old Apple, famous for its fitness for cider, pies, drying, and for all culinary purposes. When allowed to mellow to deepest gold, it is a delicious eating Apple. We have the genuine old-time Horse Apple of our daddies and granddaddies. Ripens in August.

Fall Apples

Magnum Bonum (Great Good). The standard fall Apple. Famous everywhere for its immense productiveness and unequalled flavor. Really a most excellent and valuable Apple. In size it is medium, and in looks nothing extraordinary, but its quality leaves nothing to ask for. King of its season, which is late September.

Grimes Golden. A large, golden yellow Apple of exquisite flavor, ripening in October. A heavy bearer, and in all respects an Apple of genuine value, and of the very best of its season.

Late Fall and Winter Apples

Winesap. Named for its delicious, sprightly, winey flavor. A standard fall and winter Apple, universally popular, known to everybody and liked by everybody. In fact Winesap has everything in its favor—name, flavor, appearance, and productiveness. Winesap is an immense and never-failing bearer of large, flaming, red Apples, which color up months before they ripen, making the tree a most striking and ornamental sight through the whole summer and fall. No one can go amiss when he plants Winesap. It keeps all winter.

Stayman Winesap. A seedling of the famous old standard Winesap. Similar to it in many respects. A heavy and sure bearer, and a fine keeper. Thrives in all soils and climates, like Winesap. Every orchard should contain some Stayman trees. The fine flavor and beautiful appearance of this Apple make it a good seller, and no variety could surpass it for home use. Keeps till Apples come again.

York Imperial. Also called Johnson's Fine Winter. A very large, round, flattish, whitish Apple, speckled with red. Meat yellowish and of excellent flavor. Keeps till Apples come again.

Mammoth Black Twig. Also called Arkansas Black. Said to be a seedling of Winesap, which it resembles in appearance and flavor. A very large, blackish red Apple of first-rate flavor. Ranks with those fall kings, Winesap, Stayman and York Imperial, as surpassing all others, as they do, in the few essentials of a first-class fall and winter Apple: productiveness, flavor, beauty and "keepingness," if we may be allowed to coin a much-needed word.

Red Limbertwig. A very large, pale-yellow Apple, sprinkled with red. Flavor rich, juicy, and equal to the very best. A very fine Apple, keeping all winter.

Yates. A small, red, winter Apple, famous as a keeper and for its delicious flavor.

Bismarck. Tree dwarfish and noted for the early bearing. Fruit of fine flavor, large, and strikingly beautiful. A magnificent October Apple.

Siberian Crab. Grows in clusters with long stems. Makes the best and most beautiful preserves.

Champagne Cider Crab. Makes delicious cider.

I am greatly pleased with the trees and plants received from your house and the excellent packing, which has placed goods here, over 400 miles west of San Antonio, invariably in excellent shape.—Rev. J. R. Jacobs, Marfa, Texas, June 8, 1921.

We were most agreeably surprised in the fruit trees sent. They are without question the finest have yet seen and have bought trees and plants from practically all the nurseries in the country.—V. H. Crusselle, Union City, Ga. Mar. 30, 1921.



JAPANESE PLUMS

PRICE-LIST ON PAGE 32

This magnificent Plum is a genuine revelation to a person who has never seen it. Its large size, exquisitely beautiful coloring, and immense productiveness is astonishing. At fruiting time the trees are simply piles of flaming, red Plums. The delicious flavor and wholesomeness of the fruit is as striking as its qualities. It is entirely free from the unwholesome qualities of the common wild Plums. Children and invalids eat the best sweet varieties not only with safety but positive benefit. After testing all varieties in our trial orchard, we have selected the following as the finest and best of this glorious family. Fine Plums, like fine peaches, sell well at home or on the large market. The trees are beautiful ornaments for yard or garden.

Red June. The earliest of the Japan group of Plums, ripening in June. Size very large, color flaming red, quality very good. A sure and exceedingly heavy bearer. Valuable for home use or market on account of its earliness, beauty, and general excellence.

Abundance. Very large and of indescribable beauty. Closely follows Red June in ripening, and remains in bearing a long time. Rightly named for its immense productiveness. Quality probably equal to any fruit that grows. Begins to bear on good soil at two years old, and rarely or never fails to produce a large crop of the finest fruit.

Climax. A cross between Japan and our native Plums, originated by Luther Burbank. Climax ripens soon after Red June. In size, in magnificent coloring, in enormous, amazing productiveness, and in exquisite flavor, it ranks with the best.

Ogan. One of the finest of these splendid Plums. Almost as large as a peach, and as delicious as any apricot you ever tasted.

Wickson. Cross between the Japanese Plum and our native Plum. Noted also for the beauty of its tree growth and fruit and for the excellence of its immense crop of fruit. Ripens soon after Abundance.

Apple Plum. Resembles an apple in appearance. A very large Plum of excellent flavor. Ripens in July.

Hale. A very large and yellow Plum with a peach flavor. Early August.

Chabot. Another large, red and yellow Plum of good quality. Ripens in late August.

Wild Goose. A large, purple-red Plum of native origin. Well known for its productiveness and good-eating qualities. Early June.

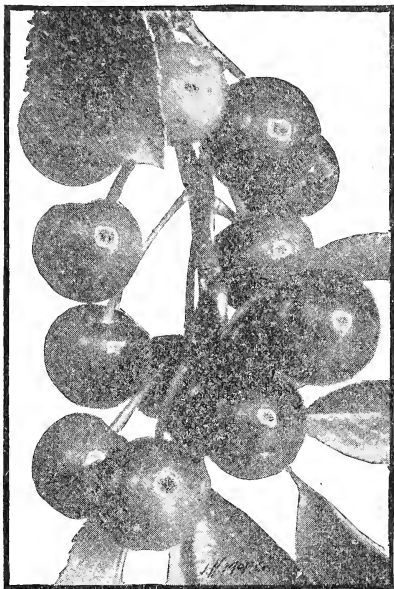
Shropshire Damson. The finest and most productive of all the Damson family. Grown chiefly for preserving, for which it is unequalled.

APRICOT

Early Golden. A very fine, deep yellow Apricot.

Have you the same Klondike that you had several years ago? They were not like any other Klondike—much earlier, and that is what I want.—G. C. Draughon, Plant City, Fla., Jan. 26, 1921.

I am sending you an order of \$30 65. The 100 Elberta Peach trees I bought of you did fine. The last season I received orders for twenty-five miles around. I had hundreds of bushels of peaches, but could not fill all of the orders sent me. They were sure fine.—M. J. Henry, Willets, N. C. Feb. 12, 1921.



CHERRY TREES

The Combination Tree—Fruit and Shade

Few trees combine the useful and ornamental in as large degree as the Cherry. They make an exceedingly handsome shade tree, worthy of a place in every yard or lawn. Or they can be grown in any spare or waste space or corner, no matter how rough and stony, needing no cultivation after the first two or three years, and they are very long lived.

PRICE-LIST ON PAGE 32

Early Purple. A large, luscious Cherry, rich purple in color. Ripens here at the very beginning of May with the earliest strawberries. Its fine flavor makes it valuable for home use and its size and earliness for market.

Black Tartarian. Another splendid, large, black Cherry of same habit as Early Purple. Ripens in May. A standard Cherry, most uniformly successful of all.

Governor Wood. A very handsome, large, yellow Cherry of sweet, delicious flavor.

Short-Stem May. An old standard variety whose fine quality and unsurpassed productiveness makes it immensely popular.

Rockport. A fine, red Cherry of first-rate quality, belonging to the same class as the preceding varieties.

May Duke. A very fine, large, dark red Cherry that succeeds and bears heavily over a wide region.

Early Richmond. A fine, large Cherry of brilliant red color.

English Morello. An improvement on the popular old Morello.

EVERBEARING MULBERRY TREES

These trees are exceedingly rapid growers and come into heavy bearing in three or four years. Then for months they continue to ripen large quantities of fine, large fruit, good to eat and of the highest value for poultry and hogs, which can be penned around trees and kept fat and healthy. No raisers of chickens or poultry of any kind can afford to be without them if they cost \$5 a tree.

This valuable tree should be planted where hogs and poultry can be penned under them. They do well anywhere, being exceedingly hardy. They will thrive in low places near streams, where water can be penned with them for the pigs and poultry.

PAPER-SHELL PECAN TREES

PRICE-LIST ON PAGE 32

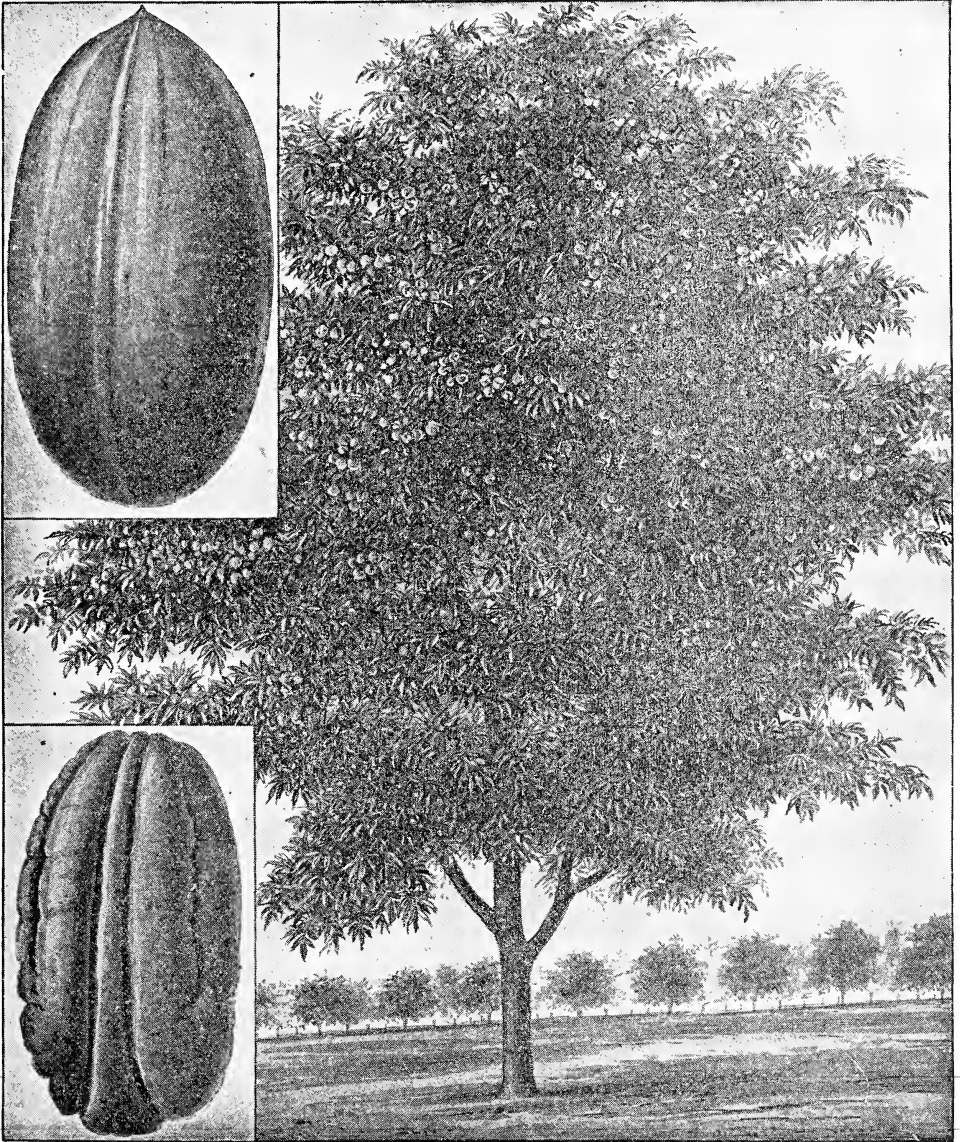
The demand for this splendid nut is increasing faster than the supply. Trees thrive in any soil and climate that cotton does. Set 50 feet apart each way, 20 to the acre, with a peach tree between each way, 100 to the acre, profit will begin in two years and rapidly increase. In four years Pecans will begin to pay and in eight years, peach trees, after paying all expenses and leaving handsome profit, can be cut out. We recommend the Stuart Pecan as best, but can also supply Schley, Pabst, Van Deman, Frotscher, Delmas, Money Maker and Success. Also hardy seedling varieties for the North.

Pecan Tree sent with taproot cut back, so as to force branching, as recommended by successful growers

The stock you sent me last year was exactly what I wanted and I invite you to come and see the best looking young orchard in North Carolina. I lost only two trees out of your order of 3,100.—M. G. Backer, Southern Pines, N. C., June 13, 1921.

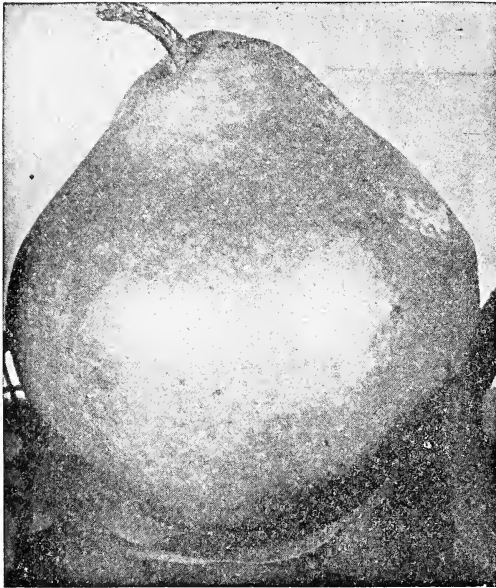
The pecan tree bought from you four years ago has fruit this year.—Geo. W. Sirrine, Greenville, S. C., Nov. 12, 1920.

Shade and Dollars from the Same Tree



A Typical Five-Year-Old Pecan Tree

This illustration shows a five-year-old tree which was photographed in our own orchard. It was then fifteen feet tall and it bore ten pounds of large nuts which were worth at that time fifty cents a pound. (Now they are much more valuable.)



Seckel. A small, brown, russet-red Pear, popular for its sweet flavor. Ripens in late August.

Japan Golden Russet. An extra-fine variety for home use and market sales.

Wilder's Early. Quite a popular sort among growers who appreciate an extra quality early Pear.

Le Conte. Strikingly beautiful in tree and fruit. Immensely productive of very large, yellow Pears of fine quality. September. Most universally successful of all Pears except Kieffer.

Garber. Of Oriental origin, like Le Conte and Kieffer, and, like them, amazingly productive. A large, yellow, pink-cheeked Pear of excellent flavor, rich, juicy and luscious. Ripens late September.

Kieffer. The largest, handsomest, and most productive of all Pears. A huge lump of gold, brilliantly tinted with red when ripe. Ripens in late October and November and keeps well all winter. Trees easy to live, quick to grow off, and early to bear. We know single trees of Kieffer that bear over ten bushels year after year without ever failing. Good quality when thoroughly ripe. This superb fruit, the king of all late Pears, has been discovered to have one immense advantage over all other Pears, and indeed of most other fruit—the tree is proof against San José scale.

I want to tell you how pleased I am with a Kieffer and a Le Conte Pear tree I got from you in February, 1918. They bore this year, 1919, the Kieffer had eight large pears on it. Everyone that saw it thought it wonderful. I sent a picture of it to the *Progressive Farmer*. The Le Conte had three large fruits on it.—Mrs. CHARLES RUTER.

Five years ago I ordered trees and vines from you to plant on a farm I owned near Biloxi. They grew so fine and the fruit was even better than you advertised in your catalogue.—MINNIE HILL, Orange Grove, Miss.

PEAR TREES

PRICE-LIST ON PAGE 32

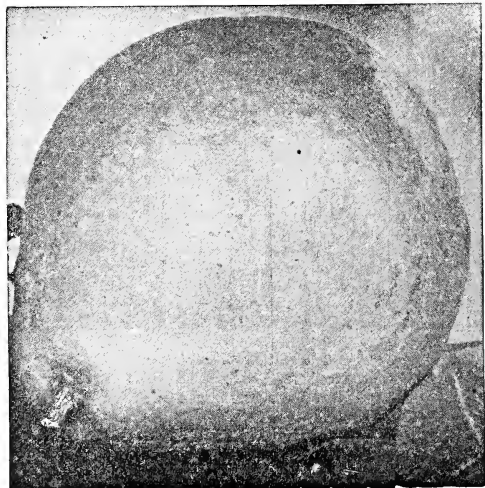
For Choice Collection of Pear Trees Delivered Free, with Tree-Food and Book see page 4.

Early Harvest. A large, yellow, pink-cheeked Pear of good quality. Exceedingly handsome variety in both tree and fruit. Ripens early in June. The extreme earliness, far ahead of all other kinds, gives it a high value for home use and for market.

Koonce. Similar to the Early Harvest. A very fine Pear. Ripens in June.

Early Green Sugar. A small green Pear of excellent flavor. Very productive, and said never to fail. Ripens in July.

Bartlett. A magnificent, large, juicy yellow Pear. Easily King of all August Pears. A variety of very high value indeed that should be planted in every orchard and in every home garden.



GRAPES

Scuppernong. The most wonderful of all the Grape family. In lusciousness of flavor not surpassed, and hardly equaled by any Grape or fruit that grows. Immensely prolific, and needing no attention after the first two or three years except to provide a frame or arbor for the rapidly spreading vines to grow on and be supported. There is scarcely any limit to the age to which it lives, or to the quantity of Grapes a vine will bear.

James. A black Scuppernong, but larger, and by some considered even more luscious and better in all respects. Similar in growth and fully as heavy a bearer. As good for wine as for the table. Both of these Grapes seem immune from all diseases. Even in damp low places they thrive wonderfully. Both make excellent wine.

Bunch Grape-Vines

The Grape-vines take up such little room and yield such a heavy crop of the most delicious and wholesome fruit that no garden should be without them. They can be planted along the fence or on each side of the garden walk. If so planted and trained over the walk in a trellis they bear heavily, the Grape-vines completely roofing the leafy arch.

The bunch Grape is noted the world over, not only for its deliciousness, but also for its wonderful wholesomeness. People who can eat no other fruit, except perhaps the peach and Never-Stop Strawberry, eat Grapes, not only without harm, but often with benefit to their health. In fact, the Grape cure is a well-recognized system of dietetics in some countries.

Moore's Early. A large, dark, purple, very early Grape of excellent quality. In fact, we find it to be the very earliest good and most reliable Grape that we have ever seen; prolific bearer; succeeds everywhere.

Concord. A fine, purple Grape, closely following Moore's Early, and giving a succession of Grapes for a long while. Concord is an immense bearer of most excellent and wholesome fruit. Great also for wine. A standard Grape everywhere.

Delaware. A small red Grape, but borne in large bunches. Famous for its delicate flavor and as a dessert Grape.

Niagara. The best, most popular and most generally successful white Grape. A truly excellent variety.

.....

We are enclosing check \$471.00, covering shipment of Oct. 30th, and it is with pleasure that we advise you the trees look to be as fine as we have ever handled. The state inspection is rigid, yet our inspector passed them as fine, and they look to be so.

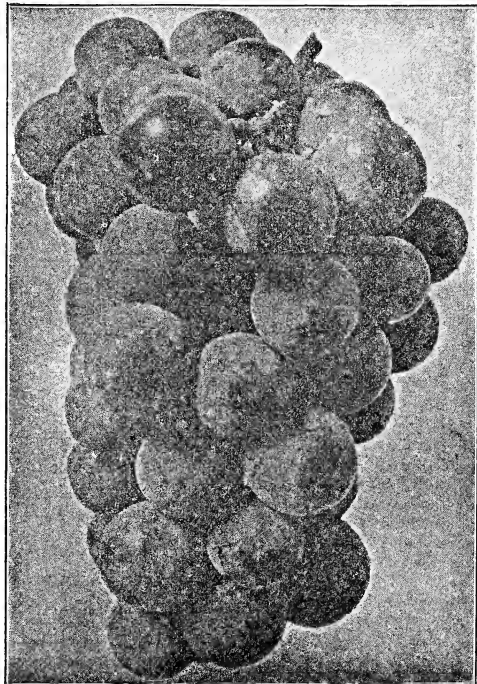
The writer set several thousand trees, apples and peaches purchased in 1911, and they were all true to name and made fine orchard; this is the place I sold last year to Mr. Rosenkrans, of whom you wrote about.

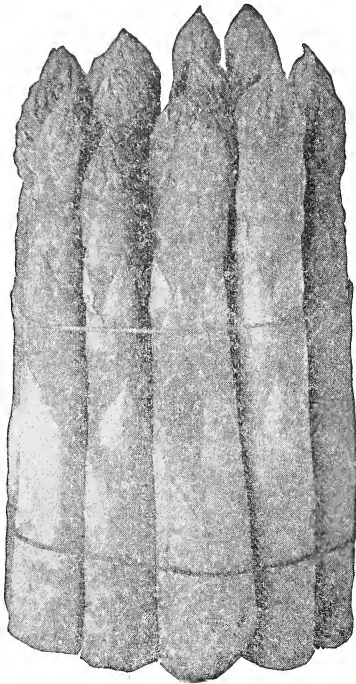
We may need more trees next spring, and if so will be glad to take the matter up with you.—Virginia Apple Co., Charlottesville, Va., Nov. 4, 1920.

.....

State Inspector says, "Never Saw Better Peach Trees"

I have just received and unpacked the peach trees. I am more than pleased with their appearance. The state inspector who looked them over says he has never seen any better and lots not as good. They seem to run even in size, both in tops and roots. You may be sure that I shall feel safe in buying from you in the future.—L. C. ROSENKRANS, Crozet, Va., March 18, 1920..





ASPARAGUS ROOTS

PRICE-LIST ON PAGE 32

No garden is complete and no housewife has justice done her unless provided with a bed of this excellent and most wholesome vegetable. Coming, as it does, next to the earliest of vegetables (rhubarb being the earliest), its value is very great. It is most beneficial in bladder and kidney troubles. A bed once established will give an abundant supply for a generation.

Our book tells how to grow asparagus, figs, rhubarb, etc., to perfection

RHUBARB (Pie-Plant)

This is exceedingly easy to grow and, like asparagus, once set, lasts for years. It is much earlier than asparagus. The edible parts are the stems of the long leaves. These can be cut as fast as they come in the spring and, stewed with sugar, make most delicious and wholesome pies, tarts, and sauces. Stewed rhubarb also makes a most excellent breakfast dish. In all respects it may be used in the place of cranberries.

HORSE-RADISH

Thrives in any fence-corner or spare-space

It is easy to grow as a weed, and every good housewife knows its great value in the making of sauces and seasonings. Once used in pickle it will never

be gone without. Horse-radish sauce is one of the chief appetizers of the golden old-time southern cuisine. It is also one of the few sauces or condiments that is pronounced by the best authority to be perfectly wholesome. A dozen plants will supply a large family for a lifetime, and it grows and multiplies very fast.

FIG BUSHES

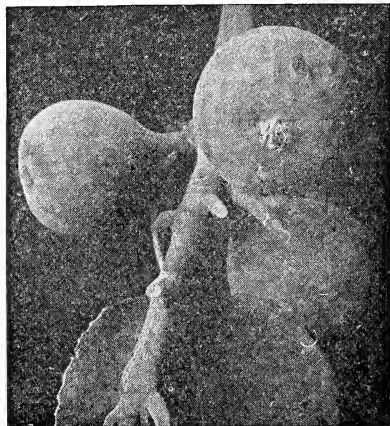
FOOD AND MEDICINE IN ONE

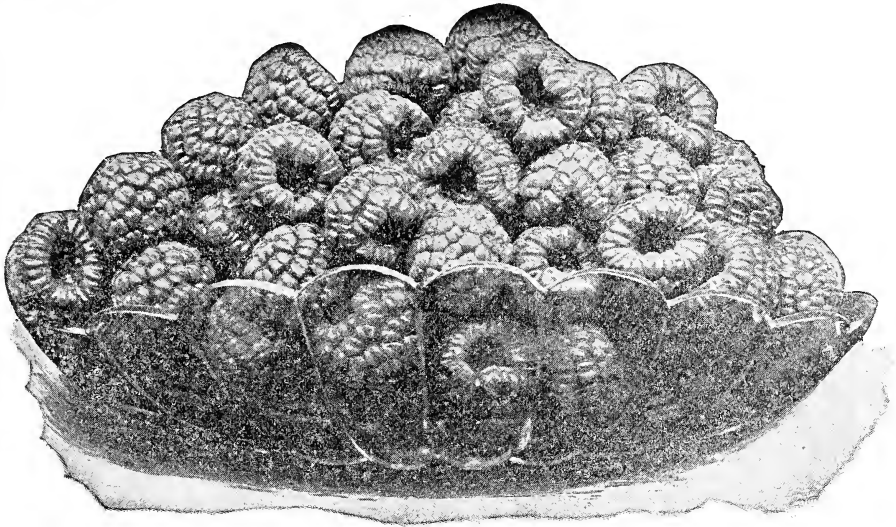
This luscious and mildly laxative fruit—old almost as time itself—the fruit that refreshed and nourished the men who made history in Bible days, is about the easiest of all to grow. After the first year or two it needs no further attention unless you are far enough north for the branches to be winterkilled. With a few cedar or pine bushes stacked around it as cold weather sets in, it can be fruited much farther north than is usually believed. In the southern and central parts of the country (except in the mountainous portion of the central parts, where it will need protection), it thrives without attention, growing into 10-foot trees and producing amazingly of its delicious and wholesome fruit—ten bushels to the tree has been known.

No southern home is half complete without its Fig bushes and Scuppernong vines. We grow the Brown Turkey Fig, which we find to thrive and bear heavily over a wider range of country than any other kind.

I bought from you in November, 1918, 100 Everbearing Strawberry plants, and they have given me perfect satisfaction ever since I planted them. On September 21, 1919, I gathered two quarts of nice berries.—Geo. P. HENING, Richmond, Va.

Last February or March I got an order of the Never-Stop Collection of strawberries from you. The strawberries are growing and doing fine and are the most delicious I ever tasted.—T. J. ROBERTS, Ridgeway, Va.





EVERBEARING RASPBERRIES

We do not list separate varieties of Everbearing Raspberries because not any of them seem to be suited to all localities. We have in stock the St. Regis and other valuable varieties, and if you specify Everbearing Raspberries on your order we will send the sort best suited to your vicinity.

Spring-Bearing Raspberries

Cuthbert. The best red kind for the South. Fruits are always large and sweet.

Ohio. Berries are large and handsome; plants quite hardy and productive.

We can supply other varieties.

DEWBERRIES

Lucretia. The one best variety; larger, and with a better flavor than blackberries.

BLACKBERRIES

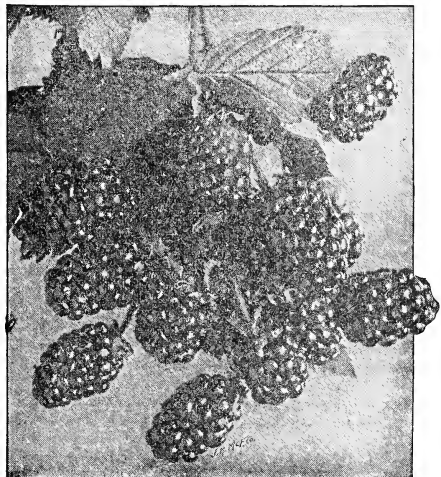
Early Harvest. Medium-sized berries of excellent quality. The canes are most prolific.

I received the trees you shipped me. They are the finest I have ever seen.—J. E. JOHNSON, Hattiesburg, Miss. Feb. 9, 1920.

I am in receipt of the shipment of fruit trees ordered of you some time ago and am very glad to say that I do not think I have ever seen quite such fine specimens.—T. O. MARSHALL, Americus, Ga. Feb. 6, 1920.

I bought a Le Conte Pear tree from you year before last, and the second year it bore twenty-two pears. Your Ambrosia Peach is the finest peach I ever tasted. I certainly do like your trees.—J. W. PUCKETT, Chunky, Miss. Feb. 14, 1920.

The trees arrived in perfect condition and are decidedly the best I have ever had.—MRS. H. M. BRUNSON, Florence, S. C. Feb. 12, 1920.



CABBAGE PLANTS

Our Cabbage Plants Head Two or Three Weeks Earlier Than the Common Run Because—

They are frost-proof and can be planted two or three weeks earlier.

They are hardened and toughened by being grown in the open air in Nature's own region for making them—on the Sea Islands of the South Carolina coast.

You do not have to wait for spring to set such plants. Set them in winter. The roots of such plants take hold and grow every day the ground is not actually frozen. When spring opens they make quick heads.

Shipped direct from Sea Island farms any time from December 1 to April 15.

PRICES by express, buyer to pay charges. Lots of 1,000 to 4,000, \$2 per 1,000; 5,000 to 8,000, \$1.80 per 1,000; 10,000 and over, \$1.60 per 1,000. Not less than 1,000 plants of one variety shipped by express.

PRICES, delivered free by parcel post. 50 cts. per 100 plants to all places in the postal union. On larger quantities the prices are as follows:

Group 1. Georgia, North Carolina, South Carolina. \$1.35 for 500 plants; 1,000 or more at \$2.40 per 1,000.

Group 2. Alabama, Delaware, Florida, Kentucky, Maryland, Mississippi, New Jersey, Ohio, Pennsylvania, Tennessee, Virginia and West Virginia. \$1.50 for 500 plants; 1,000 or more at \$2.70 per 1,000.

Group 3. Arkansas, Louisiana, Missouri, Connecticut, Illinois, Indiana, Iowa, Massa-

chusetts, Michigan, New Hampshire, New York, Oklahoma, Rhode Island, Vermont and Wisconsin. \$1.65 for 500 plants; 1,000 or more at \$2.95 per 1,000.

Group 4. Kansas, Texas, Minnesota, Nebraska, South Dakota. \$1.80 for 500 plants; 1,000 or more at \$3.25 per 1,000.

Group 5. All states not listed, also Canada. \$1.95 for 500 plants; 1,000 or more at \$3.55 per 1,000.

Plants are packed for parcel post shipment either 100, 200, 300, 400, 500 or 1,000 plants to package. For express shipment 1,000 or 2,000 plants to package. Order in these quantities; one variety to package. They weigh 15 to 25 pounds per 1,000 plants packed for shipment.

VARIETIES—Early Jersey Wakefield, Large Charleston Wakefield, Succession, and Early Flat Dutch

In former seasons we have guaranteed good order delivery, but owing to the congestion of all transportation, caused by the war, we do not guarantee delivery. Our responsibility ceases upon delivery to transportation company.

TERMS, CASH WITH ORDER. No plants shipped C. O. D. We advise that you have all shipments of 2,000 plants or less sent by parcel post. They make quicker time, are delivered by the mail carrier, and save you the time of going to the express office for the shipment. On larger lots inquire of your express agents what the charges will be. To a great many points the parcel post rates are as low or lower than the express rates. When rates are nearly the same always order by parcel post, as time and service are better.



THINK OF THE PLEASURE IN NEVER-STOP, GENUINE EVER BEARING STRAWBERRY.

Fruits spring, summer, fall. Full crop first year. So delicious and mild flavored that invalids, unable to touch other fruit, eat it with great benefit. Ripening off season, sells like hot cakes. \$25 has been realized from bed 12 x 12 feet—size of very small room. See pages 6 and 7.

Ornamentals

In many parts of the South too much attention is paid to fruit and crops and entirely too little to the appearance of the house and grounds. At very little expense you may have shade trees about your house—not only for appearances but for the sake of comfort as well. About the base of the house you can plant Spirea and Golden Bell; the same shrubs massed in a corner of the lawn will make a splendid display.

Maples are among the best shade trees as they make a fast and regular growth; the heads of the trees always assume pleasing shapes.

If you wish to combine shade and profit at the same time, plant Pecan trees around your home. In a few years they will provide abundant shade and you will be assured of a supply of valuable nuts. (See page 22.)

You can easily avoid bare grounds by the careful arrangement of evergreens. No matter how severe the winter may be, they are always green and cheerful, and in shape are always beautifully symmetrical.

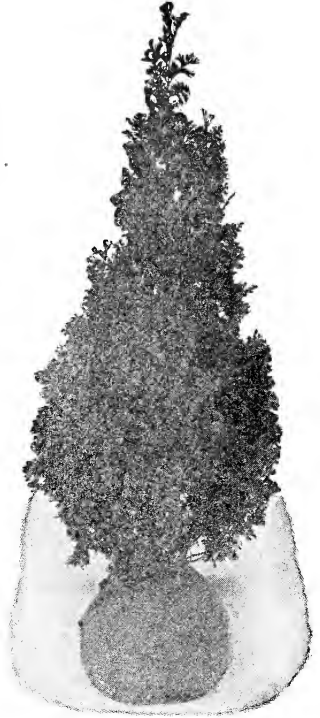
EVERGREENS

American Arborvitæ. The best material for an evergreen hedge, and equally fine for specimen growth. Sometimes the trees grow as high as 15 to 20 feet.

Pyramidal Arborvitæ. Quite similar in growth to American Arborvitæ, except for shape.

Norway Spruce. Grows into fine large trees, or if it is kept clipped it will make a good hedge.

The above trees are shipped with ball of earth attached to roots—the only safe way to ship evergreens.



MAPLE TREES

Silver Maple. Leaves are light green. Fastest growing of all the Maple family; the tree will make dense shade in a short time.

Sugar Maple. Native tree with brilliantly colored foliage in fall months.

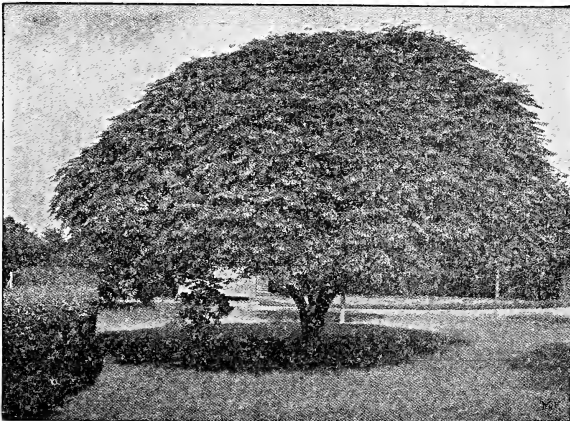
Norway Maple. The best all-around shade tree. Great for street and lawn planting.

UMBRELLA TREE

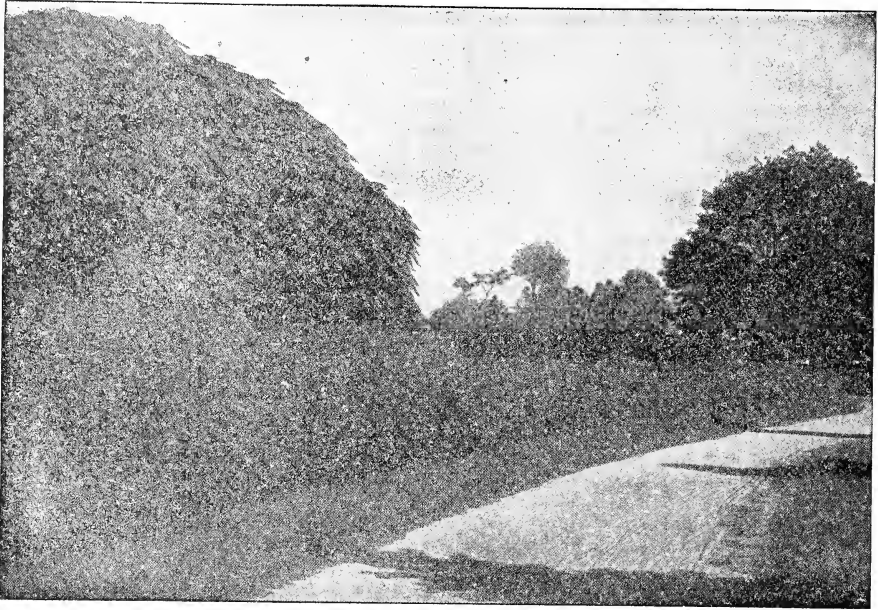
For some years this has been most popular as a specimen tree for the lawn. It makes a fairly rapid growth, with a large spread, but flattish head. When it has grown for several years it bears quite a remarkable resemblance to an umbrella in shape.

A slight winter protection given by straw, paper or pine boughs tied about the trunk will promote more rapid growth for several years.

The tree has been so popular that some nurseries could not obtain the true strain, so they substituted other sorts. We absolutely guarantee that our trees are pure Umbrellas.



I received the shipment of Arbor Vitæ and other evergreens in good condition. They were beautiful specimens and I consider them excellent values.—Dr. C. S. Brooke Columbia, Ga., Feb. 7, 1921.



Amoor River Privet makes a neat boundary

Grow a Perfect Hedge as Quick as a Hill of Beans

Yes; just as quick. Plant this fall, winter, or spring and before July, there, as if by magic, stands your Hedge. Three months of growing makes it instead of three years. With more time the Hedge can be grown to any height up to 10 feet, if desired as a windbreak to give privacy to back yards, etc. Most Hedges are thin along the bottom; ours are as solid as a brick wall. Price-list on page 32.

Our Book telling and showing by plain cuts just how to grow a perfect hedge is free with every order of \$5 and over

Amoor River Privet. A genuine evergreen Hedge.

California Privet. We can also supply this variety, but recommend Amoor River, as it is a genuine evergreen.

ORNAMENTAL SHRUBS

Spirea. In the spring it is covered with multitudes of small white flowers, and it is quite ornamental the rest of the year.

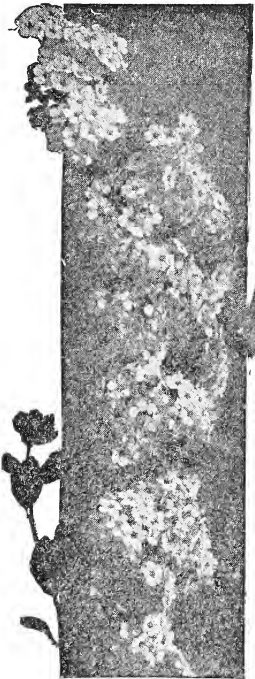
Golden Bell. The graceful branches make a splendid appearance the year round. In the spring the limbs are full of small yellow blooms.

Golden Poplar. Principally attractive because of its handsome leaves, which are gold on upper side and silver on lower. When the leaves are tossed about by the wind the bush is most beautiful.

Every Tree and Plant in Our Collections Is Insured

With each collection of fruit trees or berry plants we send an insurance policy, which guarantees that every plant and tree will grow or be replaced free.

With each collection we send plant-food and book of instructions, which enables you to get first-class fruits and flowers. All collections are delivered free of charge.



Price-List, Winter and Spring, 1922

STRAWBERRY PLANTS

Grown by modern methods—that is from parent plants not allowed to weaken themselves by fruiting last spring, and which just before planting were treated by fungicides. This renders the plants they produce free from the rust and fungus which annually lessen the Strawberry crop of the country 10 to 50 per cent. See pages 9 and 10.

Write for Special Prices on Strawberry Plants and Peach Trees in Large Quantities

NEVER-STOP STRAWBERRY lowers cost of living. So sweet it needs no sugar.	10,000 and over, per 1,000	5,000 to 10,000 per 1,000	3,000 to 5,000 per 1,000	1,000 to 3,000 per 1,000	500	100	50	25
Excelsior (Per.) Standard Extra-early berry.....	\$6 00	\$6 00	\$6 00	\$6 00	\$4 00	\$1 25	\$1 00	\$0 75
Heflin's Early (Per.).....	6 00	6 00	6 00	6 00	4 00	1 25	1 00	75
Virginia (Imp.).....	6 00	6 00	6 00	6 00	4 00	1 25	1 00	75
Lady Corneille (Per.).....	6 00	6 00	6 00	6 00	4 00	1 25	1 00	75
Chesapeake (Per.).....	6 00	6 00	6 00	6 00	4 00	1 25	1 00	75
Red Bird (Per.).....	6 00	6 00	6 00	6 00	4 00	1 25	1 00	75
Climax (Per.).....	6 00	6 00	6 00	6 00	4 00	1 25	1 00	75
Missionary (Per.).....	6 00	6 00	6 00	6 00	4 00	1 25	1 00	75
Improved Lady Thompson (Per.).....	6 00	6 00	6 00	6 00	4 00	1 25	1 00	75
KLONDYKE (Per.).....	6 00	6 00	6 00	6 00	4 00	1 25	1 00	75
Brandywine (Per.).....	6 00	6 00	6 00	6 00	4 00	1 25	1 00	75
Dunlop (Per.).....	6 00	6 00	6 00	6 00	4 00	1 25	1 00	75
Warfield (Imp.).....	6 00	6 00	6 00	6 00	4 00	1 25	1 00	75
Haverland (Imp.).....	6 00	6 00	6 00	6 00	4 00	1 25	1 00	75
Gandy (Per.).....	6 00	6 00	6 00	6 00	4 00	1 25	1 00	75
Aroma (Per.).....	6 00	6 00	6 00	6 00	4 00	1 25	1 00	75

100 NEVER-STOP PLANTS (Per.). Our Great Everbearing Strawberry—value \$3, and 100 spring-bearing plants of the huge giant varieties, all grown specially for garden planting, and selected to suit your locality—value \$3. Both lots, value \$6 for \$4.50, delivered free with Plant-Food and Book.

FALL-BEARING KINDS

	Per 100		Per 100
Americus (Per.).....	\$3 00	Francis (Per.).....	\$3 00
Iowa (Per.).....	3 00	Autumn (Per.).....	3 00
Progressive (Per.).....	3 00	Productive (Per.).....	3 00
		Superb (Per.).....	3 00

GIANT (Per.)

Under this head we class several varieties of enormous size and will send you the one best suited to your locality. \$1 for 25, \$1.75 for 50, \$3 per 100.

NEVER-STOP The wonderful Everbearing Strawberry. Fruits regularly spring, summer and fall; fine berries remaining under dense foliage till December. Succeeds where all other so-called everbearers fail. See testimonials from twenty states, page 7. We deliver free 100 plants and also 100 choice spring-bearing plants, selected with care, all for \$4.50, and also a special Strawberry Plant-Food which greatly increases the yield (see page 6, and our 100-page book, "Modern Methods in Fruit-, Plant-, and Tree-Growing," which tells and shows by plain cuts how to plant, cultivate, manure and manage all kinds of Fruits, Pecans, and Shade Trees, Rose Bushes, Hedges, Ornamentals, etc. Worth \$25 to any one wishing fine fruit or a beautiful yard.

Varieties of Strawberry plants marked (Imp.) have imperfect or pistillate blooms and should have every fourth row of the field planted in a (Per.) perfect or staminate blooming kind.

Write for special prices on peach trees and strawberry plants in large quantities.

When to Plant.—In the southern and central parts of the country they can be set any time during the fall, winter or spring, that the ground is not actually frozen or miry, the earlier the better; at the North in fall or early spring. Plants shipped September 15 to April 15, or later, according to season.

We advise that you have all shipments of 500 plants or less sent by parcel post. They make quicker time, are delivered by mail carrier, and save you the time of going to express office for the shipment. When rates are nearly the same we will ship by parcel post if we think it to your best advantage, C. O. D. for amount of charges. If you do not wish this done, and if you prefer express shipment, so state on order sheet.

A Gold Mine in Your Garden, and not much Digging if Set in Giant and Never-Stop Strawberries. Good as Gold. They Sell at Sight

Price List, Winter and Spring 1922

Write for Special Prices on Strawberry Plants and Peach Trees in Large Quantities

VARIETIES	100	50	25	Dozen	Each
APPLE—Dixie, Early Colton, Ellis' Everbearing, Summer Ambrosia, Hunt's Everbearing, Fall Ambrosia (pages 3, 19, 20).....	\$50 00	\$25 00	\$14 00	\$ 7 50	\$ 0 75
All other Apple trees, except the six kinds above....	45 00	24 00	12 00	6 00	60
PEACH—Neva-Myss, Four-in-one, Ambrosia, Wine, Niagara (pages 3, 14, 16-18).....	40 00	25 00	14 00	7 50	75
All other Peach trees, except the five kinds above....	25 00	17 00	10 00	5 00	50
JAPAN PLUM (page 21).....			12 00	7 50	75
APRICOT (page 21).....				9 00	1 00
MULBERRY, Everbearing (page 22).....	40 00	24 00	12 50	6 00	60
CHERRY (page 22).....				9 00	1 00
PEAR (pages 4, 24).....	45 00	25 00	14 00	7 50	75
PECAN. Large paper-shell, 4 to 5 ft. (pages 22, 23)...				20 00	2 00
SHADE TREES—					
Maples, Sugar and Norway. Extra-large (page 29).....					1 50
Maple, Silver (page 29).....					1 00
Extra-large (page 29).....					1 25
Umbrella Trees. First-class (page 29).....					1 00
Very large, extra selected.....					1 25
EVERGREENS—American and Pyramidal Arborvitæ, Norway Spruce (page 29).....					1 50
EVERGREEN HEDGE PLANTS—Amoor River Privet; large. Makes perfect hedge first year (pages 28, 30).....	7 50	4 00	2 50	1 50	25
California Privet.....	7 50	4 00	2 50	1 50	25
ORNAMENTAL SHRUBS to beautify lawns (page 30).....					75
ROSE BUSHES (pages 31, 32).....				7 50	75
VIOLET PLANTS—Queen of Sheba (page 34).....	4 00				
GRAPE-VINES—Scuppernong and James.....				5 00	50
Concord, Delaware, Moore's Early, Niagara (page 25).....		14 00	8 00	4 00	50
FIG BUSHES (page 26).....			8 00	4 50	50
ASPARAGUS ROOTS (page 26).....	2 50	1 50	1 00		
RHUBARB (page 26).....				2 00	
HORSERADISH (page 26).....				50	
CABBAGE PLANTS. (See page 28 for prices)					
DEWBERRY and BLACKBERRY PLANTS (page 27).....	5 00			2 00	
RASPBERRY PLANTS (page 27). Ordinary varieties	5 00			2 00	
Everbearing (pages 5, 27).....	6 00			3 00	

WHAT WE DELIVER FREE

For the very choicest varieties of peach and apple trees, strawberry, raspberry and violet plants and rose bushes, all delivered free with book and plant-food, see pages 3, 5, 6, 16, 33 and 34. Only these collections are delivered free.

Low Express Rates.—Being one of the largest shippers, the express company allows us a large per cent off the regular rates. We pack lightly, and spare no pains to save our customers every cent possible in transportation.

All orders for trees for less than \$1 must include 25 cents extra to cover actual cost of packing. All larger tree orders and all other orders packed free.

Be Sure to Give the Number of Your Order if you should have occasion to write about it. If you do not, we cannot possibly find it among the thousands on our books. Number is given on acknowledgment postal we mail upon receipt of order.

To Make Sure of Getting Just What You Want it is always best to send in your order as soon as you receive this catalogue. First-class stock will then be reserved for you and shipped when directed.

Time of shipment of fruit trees, shade trees, hedge plants, rose bushes, grape-vines, etc., from October 15 to April 15. Plant in fall, winter, or early spring, no matter how cold, if the ground is not frozen or muddy.

Write for special prices on peach trees and strawberry plants in large quantities.

Trees Grown by Modern Methods, Each Kind in Its Natural Soil, Live Better,
Grow Better, Bear Better



ROSES

Large, Hardy, Two-Year-Old Field-Grown Rose Bushes That Go Right off to Blooming First Year

You must not expect our rose bushes to come to you green and delicate like hothouse plants. Ours are hardened in the open air and are as vigorous as trees.

In the following list will be found the queens of rosedom, varieties selected for their surpassing beauty and for their vigor in producing abundant flowers. We endeavor, in parentheses, to give the pronunciation of the French names.

12 LARGE, HARDY, TWO-YEAR-OLD, FIELD-GROWN ROSE BUSHES that go right off to blooming first year, Rose Plant-Food for two years, and 100-page book, "Modern Methods in Fruit-, Plant- and Tree-Growing." **ALL DELIVERED FREE FOR \$7.50.**

This collection is made up of the very cream of varieties, assorted colors, whites, reds, pinks, creams and yellows.

Every plant is specially selected and pruned in root and branch, to perfect balance for quick and big results. Remember that we send plant-food to make quick growth and quick superb blooms.

RED ROSES

Etoile de France (A-twahl du France). Brilliant crimson. An abundant bloomer and a superb Rose. 75 cents.

Meteor. Vivid, glowing crimson, with a velvety texture. A truly magnificent Rose and a free and constant bloomer. 75 cents.

Red Radiance. Clear cerise-red which does not fade. A free bloomer. 75 cents.

Gruss An Teplitz. Bright crimson, white, fiery-red center; Cup-shaped; semi-double; flowers in clusters, presents a blaze of scarlet. 75 cents.

Ecarlate. Finest bedding rose known. 75 cents.

Helen Gould. A grand rose of highest merit; bright watermelon red; very free grower and bloomer. 75 cents.

Papa Gontier. Rosy-Crimson; fine long bud. 75 cents.

Rhea Reid. Flower large and double; rich dark velvety red. 75 cents.

Eugene E. Marlitt. Flower large and double; of a bright carmine with scarlet tones. 75 cents.

Gen. Jacqueminot. Crimson-scarlet. Very fragrant. 75 cents.

PINK ROSES

Bridesmaid. A fine, deep pink Rose, interesting for its great beauty as well as its sentimental name. 75 cents.

Maman Cochet (Mama Cochay). Among the very finest of all the grand family of pink Roses. A truly superb variety. 75 cents.

La France. Another splendid pink Rose. (75 cents).

Radiance. A very free-flowering Rose. Color rosy carmine and soft pink. 75 cents.

William R. Smith. Cream color with soft pink shading. One of the finest Tea Roses ever grown. 75 cents.

Quantity	NAME OF VARIETY	Price	Amount
	Remember, we never send our Fruit Book unless it is asked for. Many already have it.		

Please write here the names of your friends specially interested in fruits or flowers

.....

.....

.....

We deliver free only when specially so stated. See collections on pages 3, 4, 5, and 32.

But no pains are spared to pack light, and secure the lowest possible express or freight rates.

PARCEL POST.—When cheaper and better for our customers, we ship small orders by parcel post C. O. D. for charges. We ship C. O. D. as it saves extra trouble and the C. O. D. charges are less than postage would be on bill, were we to send it. If you prefer express, so state on order.

AN INSURANCE POLICY WITH EVERY TREE. SEE PAGE 3.

A Special Offer for You

To introduce the "Kant Klog" Sprayer we make a very special offer to the first reliable applicant in each locality.

If you need a sprayer for your own use—or if you want to book the orders of your neighbors and friends, fill in and send this blank to address given below.



Name _____

P. O. _____

St. _____ State _____

Mail this to Rochester Spray Pump Co.
177 Broadway, Rochester, N. Y.

(OVER)

\$1700 Made by One Man

Selling the "Kant-Klog" Sprayer in his home County during spare time



The "Kant-Klog" has distinct features found on no other sprayer. It is the first and only nozzle to give both flat and round sprays and solid streams. Has cleaning device for removing obstructions without stopping the spray. The new spring Hose-Cock starts or stops the spray instantly, so preventing waste of fluid.

**Sprays Trees, Potatoes, Vegetables,
Vines, Whitewashing, Disinfecting
and many other uses.**

A Special Offer for You

If you wish either to book the orders in your section, or want a sprayer for your own work, fill out the blank on opposite side and we will send special proposition, descriptive matter, etc.

(OVER)



WHAT JUDGE KITTRELL OF TEXAS THINKS OF THE NEVA-MYSS

A few years ago I bought of you for a relative of mine in Madison County, Texas, a lot of Neva-Myss Peach Trees. I was at his house in July, August, 1920, while he gathered peaches in his orchard and he said to me: "You should have been here May 7th and seen the Neva-Myss loaded with splendid ripe fruit."

I understand from my relative they have never missed a crop.

Full grown ripe peaches 100 miles north of Houston on May 7th is very rare and to never miss a crop is even rarer.—**Judge Norman G. Kittrell**, Houston, Texas, Dec. 17th, 1921.

PLACES ORDER AFTER SEEING HIS NEIGHBORS NEVA-MYSS.

I am sending you an order for Neva-Myss Peach. I have a neighbor who is delighted with them.—**H. L. King**, Midway, Ala., Dec. 2, 1921.

LARGE ORCHARDIST HIGHLY PLEASSED WITH OUR TREES. LOSES 2 OUT OF 3100

The stock you sent last year (3100 peach trees) was exactly what I wanted and I invite you to come and see the best looking young orchard in North Carolina. I lost only two trees out of 3100. (Places another order in Nov. 1921, for several thousand trees.)—**M. G. Backer**, Southern Pines, N. C. June 13th, 1921.

OUR TREES STAND THE TEST OF TIME.

I ordered from you, fifteen years ago, strawberry plants, rose bushes and hedge plants. The roses are still blooming and are beauties now. My hedge is the finest in town. (Places another order.)—**Mrs. B. D. Knapp**, Fayette, Miss., Nov. 8 1921.

I received the trees in perfect condition, with which I am well pleased. They are as nice a lot of trees as I ever saw, so uniform in size and perfect shape and your prices are always consistent with the cost of production. Your trees are well adapted to our climate and soil.

The trees bought of you in 1915 and 1916 are a delight to the eye in the fruiting season. Every variety true to name and fully up to representation.—**J. M. Carrothers**, Union City, Tenn., Jan. 8th, 1921.

Your shipment of peach and apple trees came in on time by express in first class shape, and I must confess that trees were first class in every respect. I had a shipment from you about 10 years ago and they have done better for me than any trees bought elsewhere.—**J. Henry Phipps**, Greensboro, N. C. March 14th, 1921.

BUYS OUR PLANTS NOT BECAUSE THEY ARE THE CHEAPEST BUT BECAUSE THEY ARE THE BEST.

Enclosed check \$36.00 for order. Will say you are getting my order not because you sell the cheapest but your plants are the best I have ever seen.—**Mrs. Henry Wilson**, Darlington, S. C., Dec. 20th, 1921.

WHAT A LARGE COTTON MILL THINKS OF OUR MODERN METHODS BOOK.

I am in receipt of your book, Modern Methods, which accompanied acknowledgment of our order for pecan trees.

This is the only really practical treatment of this subject I have even seen and as I am very much interested and am trying to interest every householder in the village, it would be a great help to have at least two dozen copies of Modern Methods Books. Of course would be willing to pay for these books.—**Whitney Manufacturing Co.**, Whitney, N. C., Dec. 29th, 1921.

OUR PECANS BEAR IN THREE YEARS.

Please find inclosed check \$10.00 for pecan trees. The four trees you sent my neighbor W. H. Bare bore in 3 years after set out.—**Geo. Gamble**, Columbus, Ga., Dec. 27th, 1921.

OUR ROSES FULLY UP TO EXPECTATION.

My roses received from you several days ago came fully up to my expectation and much better than some purchased in Springfield, Ohio, supposed to be same age as ones purchased from you.—**C. L. Smallwood**, Tuscaloosa, Ala., Nov. 30th, 1921.

OUR MODERN METHOD PEACH TREES GROW EIGHT FEET IN ONE SEASON

Enclosed you will find my check \$7.50 for order.

I bought some trees from you last year and had same shipped to Bond, Miss. The peach trees grew 7 and 8 feet high in one season and am well pleased with them.—**H. W. Cassibry**, Gulfport, Miss., Dec. 14th, 1921.

HOW OUR TREES COMPARE WITH OTHERS.

Your Neva-Myss Peach trees show up better than any. These are far away ahead of the five varieties purchased from the biggest nursery in the world. There is no comparison between appearance of your trees and the appearance of trees from the Northern and Western Nursery. **W. P. Patterson**, Shannon Mills, Va.

OUR TREES FAR THE BEST.

The fruit trees arrived to day and were set out this afternoon. I am well pleased with the size and condition in which they arrived. Several weeks ago I set out several hundred peach trees bought from another nursery and I must say that your trees were far the best.—**Rufus A. Oliphant**, Chester, S. C., Dec. 21st, 1921.

OUR SUPERB PECAN TREES BRING ANOTHER ORDER FROM TEXAS

My son-in-law has just received the pecan and peach trees and they are such splendid specimens that I hasten to send in order for pecan trees.—**Mrs. J. H. Ware**, Rogers, Texas, Dec. 3rd, 1921.

PIT GAMES FOR SALE. STOCK AND EGGS.

Genuine Bacon's Warhorse. Gilkerson's Whitehacksles, and Means Cubans. All are select breeding stock and pure eggs from above breeds, \$3.00 per 15 eggs; \$5.00 per 30. A satisfactory hatch or replaced at one-half price. Price of stock a matter of correspondence.

S. T. FIELDS, Kittrell, N. C.

80th Semi-Annual Catalogue

OF

The Continental Plant Co.

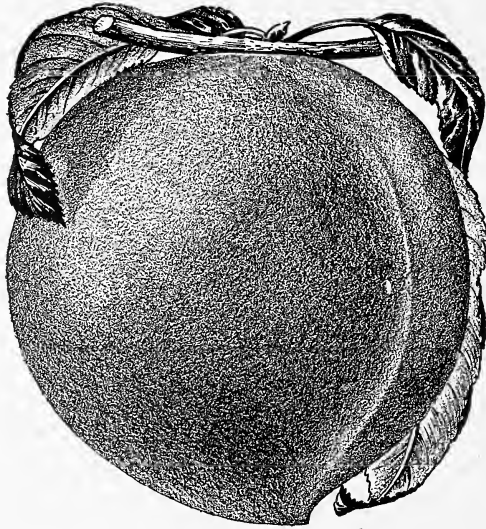
KITTRELL, N. C., U. S. A.

ONE OF THE LARGEST NURSERIES IN THE WORLD
SELLING DIRECT TO THE PEOPLE

Delicious Peaches Every Day

MAY TO NOVEMBER

SEE PAGE 3



We not only deliver all collections free, give you our 100-page book, which tells and shows by plain pictures how to get quick and big results with all kinds of fruit and plant-food, doubling crop of strawberries and raspberries and bringing fruit trees into bearing much younger, but also insure all to live and grow.

WE GIVE AN ABSOLUTE INSURANCE POLICY WITH ALL COLLECTIONS

See Page 3