

## **Historic, Archive Document**

Do not assume content reflects current scientific knowledge, policies, or practices.



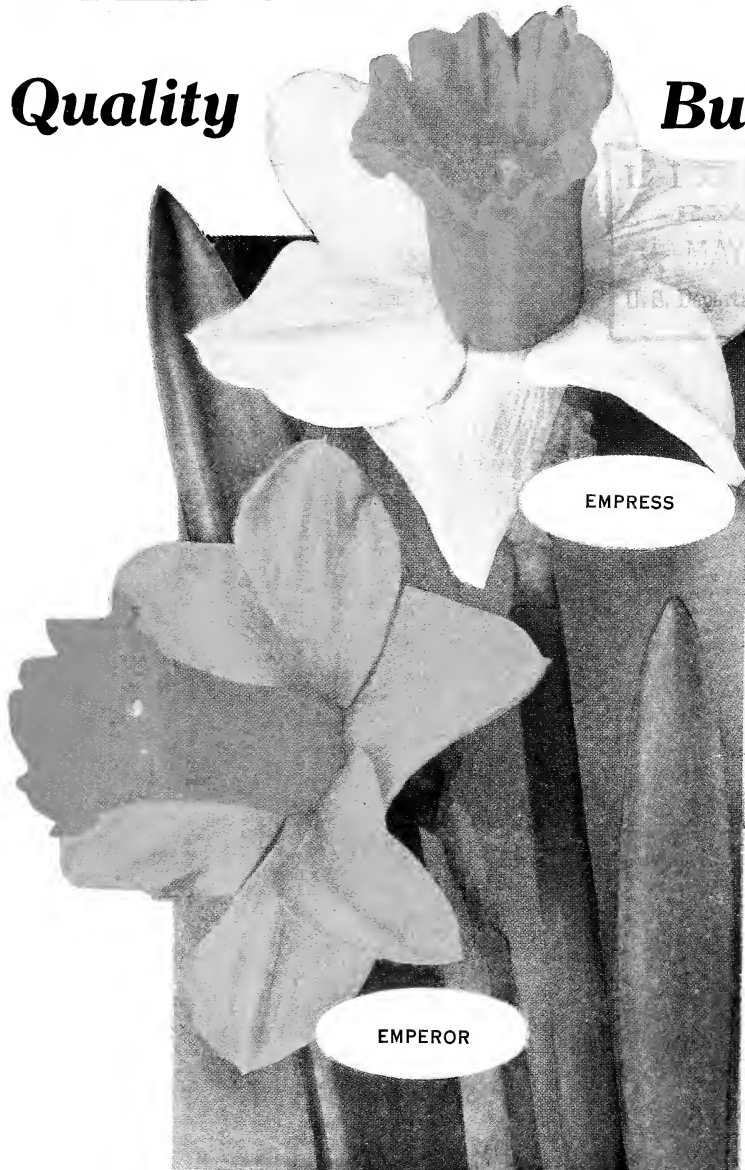
# BERTRAND H. FARR

Wyomissing Nurseries Co.

WYOMISSING, PA.

**Quality**

**Bulbs**



**"KNOWN AND GROWN IN ALL GOOD GARDENS"**



## BULBS FOR FALL PLANTING

**Quality.** Our list includes only first-size bulbs. We purchase our stock from the same growers each year and make no attempt to obtain bargain lots at low prices, as such bulbs are decidedly inferior.

**Our Guarantee.** All shipments by express or parcel post are guaranteed to reach you in good condition. If you find any damaged bulbs, please inform us and we will replace them immediately.

***DISCOUNT.** We allow a special discount of 10 per cent upon all bulb orders received before July 15. An additional 2 per cent will be allowed on orders accompanied by cash and received before June 1.*

**Time of Shipment.** Bulbs arrive in this country in late September or early October; they are shipped to you as soon as they can be repacked.

**Terms.** Cash should accompany order unless satisfactory credit references can be given.

**Prices.** Six bulbs of one variety may be ordered at the dozen rate; twenty-five at the 100 rate. Not less than six of any variety will be supplied, except where the rate for a single bulb is specifically quoted.

**Large Quantities.** We will gladly furnish special quotations upon extra-large lots. Write for prices.

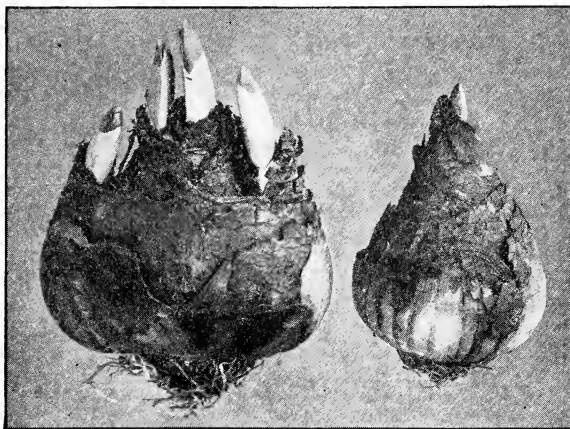
## FARR'S HARDY PLANT SPECIALTIES

### EIGHTH EDITION

Will be issued to all customers this fall. Reprint copies of the Seventh Edition, without color plates, are free for the asking. Copies with color plates are free to customers. Those who are not customers may secure copies by sending us \$1; with each copy is mailed a certificate which is applicable on the first \$10 order. Remember that customers receive their copies free of charge.







Bulbs of Sir Watkin Narcissus. Showing Farr's "Mother Bulb" in comparison with the ordinary first-size bulb

## DAFFODILS (NARCISSI)

Daffodils will continue to increase every year, and, when naturalized on the lawn, in meadows, or in orchards, they will form great colonies. They are invaluable for planting among shrubs and in the hardy border, and especially among the peonies, their golden cups making a beautiful contrast with the bright red peony shoots coming out of the ground.

"Mother Bulbs" (often called "double-nose") are those that have reached maturity and are about to break into several smaller bulbs. The "Mother Bulbs" will send up several flower-stems, whereas the ordinary bulbs seldom produce more than one stem. So many of our customers call for "Mother Bulbs" that we have decided not to list the common "first-size" bulbs.

### SINGLE LARGE TRUMPET NARCISSI (AJAX)

These are the true Daffodils and produce the largest flowers. Colors range from pure white to darkest yellow.

*Not less than six each of any one variety will be supplied, except the new high-priced kinds where the rate for a single bulb is specifically quoted  
To obtain the dozen rate your order must be for six bulbs or more of one variety. Less than six bulbs will be charged at the single rate*

**Bicolor, Empress.** (Mother.) Large yellow trumpet with pure white perianth. This variety and Emperor are the most permanent sorts for naturalizing. \$1 per doz., \$7 per 100.

**Bicolor, Van Waveren Giant.** Widely expanded, bright yellow trumpet, with broad primrose perianth; said to be the largest trumpet Narcissus in existence. Strong grower. 40 cts. each, \$3.50 per doz., \$27.50 per 100.

**Bicolor, Victoria.** Golden yellow trumpet; pure white perianth. Flowers large; fine for forcing. \$1.25 per doz., \$8.50 per 100.

## BERTRAND H. FARR—WYOMISSING NURSERIES CO.

### SINGLE LARGE TRUMPET NARCISSI, continued

**Bicolor, Weardale Perfection.** A magnificent, large-flowering Daffodil; makes a fitting companion to King Alfred. The perianth is pure white, with sulphur-white trumpet. 35 cts. each, \$3.50 per doz., \$27.50 per 100.

**Emperor.** (Mother.) Deep yellow. Unsurpassed by any other Narcissus. \$1 per doz., \$7 per 100.

**Giant Princes.** (Mother.) Sulphur-yellow. Extra early and adapted for forcing. 65 cts. per doz., \$4.50 per 100.

**Glory of Leiden** (King of Daffodils). Giant flowers of the deepest golden yellow. \$1.30 per doz., \$8.50 per 100.

**Golden Spur.** (Mother.) Rich golden yellow. \$1.35 per doz., \$9 per 100.

**King Alfred.** (Mother.) The King of Daffodils. Immense yellow trumpet and broad golden yellow perianth. 30 cts. each, \$2.75 per doz., \$18 per 100.

**Mme. de Graaff.** Both trumpet and perianth pure white. \$1.15 per doz., \$7 per 100.

**Mme. Plemp.** Long, deep yellow trumpet and white perianth. Splendid for border planting. \$1 per doz., \$7 per 100.

**Spring Glory.** Pure white perianth; large; very early. New. \$2.50 per doz., \$18 per 100.

**Trumpet maximus.** Deep golden yellow; perianth twisted at tips; trumpet recurved. 85 cts. per doz., \$6 per 100.



Daffodils are delightful when massed along the roadside



## SINGLE MEDIUM TRUMPET NARCISSI

(Chalice Cup, or Star Narcissi)

In the Barrii type, which is a cross between the Trumpet and Poeticus groups, the crown or cup is about half the length of the perianth segments.

The Incomparabilis types are also crosses between the Trumpet and Poeticus groups, but the crowns are larger than Barrii, often three-quarters the length of the perianth.

Leedsii Narcissi are crosses between the white Trumpet and Poeticus groups. The cup or crown is white or light yellow, and the perianth is always white.

**Barrii, Blood Orange.** Lemon-yellow perianth; orange cup. \$1 per doz., \$7 per 100.

**Barrii, Conspicuus.** (Mother.) Perianth broad, soft yellow; orange-scarlet cup. Splendid for borders. 75 cts. per doz., \$5 per 100.

**Barrii, Firebrand.** Primrose perianth, red cup. 85c. per doz., \$6 per 100.

**Barrii, Seagull.** White perianth; canary-yellow cup. 85 cts. per doz., \$6 per 100.

**Glorious of Sassenheim.** Large and very substantial flower; pure white perianth, yellow trumpet. 20 cts. each, \$2 per doz.

**Incomparabilis, Cynosure.** Primrose-yellow perianth; yellow and orange cup. 65 cts. per doz., \$4.50 per 100.

**Incomparabilis, Gloria Mundi.** Yellow perianth; orange-scarlet cup. 85 cts. per doz., \$6 per 100.

**Incomparabilis, Lucifer.** Beautiful new variety. Large sulphur-white perianth. Cup chrome-yellow, edged orange-red. 85c. per doz., \$6 per 100.

**Incomparabilis, Sir Watkin** (Giant Chalice Flower). Extra large; sulphur-yellow perianth, orange-stained cup. \$1.10 per doz., \$7.50 per 100.

**Incomparabilis, Will Scarlett.** Extremely large cup of fiery orange-red, an unusual color in the Trumpet Narcissi. 40 cts. each, \$3.50 per doz.

**Leedsii, Evangeline.** Pure white perianth; soft lemon cup. 20 cts. each, \$1.50 per doz.

**Leedsii, Fairy Queen.** Pure white perianth; creamy white cup. \$1.10 per doz., \$7.50 per 100.

**Leedsii, Mrs. Langtry.** Pure white perianth, with primrose cup. Free flowering; used extensively for mass planting. 75 cts. per doz., \$5 per 100.

**Leedsii, M. Magdalene de Graaff.** Long white perianth; orange-rose cup. Often bears two blooms to a stem. 75 cts. per doz., \$5 per 100.

**Leedsii, White Lady.** Elegantly formed flower, with white perianth and canary-yellow cup. \$1 per doz., \$7 per 100.

## POET'S NARCISSI

**Poeticus.** The familiar "Poet's Narcissus," with pure white perianth and orange cup. One of the best for the border or for naturalizing, but not suitable for forcing. 60 cts. per doz., \$4 per 100.

**Poeticus, Horace.** Extra-large and unusually handsome flowers. Snow-white perianth, blood-scarlet cup. 30 cts. each, \$2.75 per doz., \$18 per 100.

**Poeticus ornatus.** Blooms earlier than the others, and can be used for forcing. Perianth is pure white, cup rich yellow with scarlet margin. Extra-size, double-nose bulbs, 65 cts. per doz., \$4.50 per 100.

## **DOUBLE NARCISSI**

**Alba-plena odorata.** Pure white; for outdoor planting only. 65 cts. per doz., \$4.50 per 100.

**Orange Phoenix.** Excellent for forcing. Flowers large, full double, white with reddish orange center. 85 cts. per doz., \$6 per 100.

**Sulphur Phoenix.** Silvery white, with sulphur-yellow center. These two varieties make a charming combination. 85 cts. per doz., \$6 per 100.

**Von Sion.** Flowers extra large, pure golden yellow. The most popular double variety for forcing. Extra-selected mother bulbs, \$1.10 per doz., \$7.50 per 100.

## **PAPER-WHITE NARCISSI**

Valuable for indoor forcing. 5 cts. each, 50 cts. per doz., \$3.75 per 100.

## **JONQUILS**

These are the old-fashioned familiar garden flowers. They are very fragrant, of medium size, and pure yellow in color. Flowers grow in clusters and as a group will increase in size and value each year.

**Campernelle odorus plenus** (Queen Anne). Much larger than the common Jonquils. Color rich yellow. 50 cts. per doz., \$3.50 per 100.

**Campernelle rugulosus.** Handsome flowers, with broad, clear yellow imbricated cup. 50 cts. per doz., \$3.50 per 100, \$32 per 1,000.

**Single Jonquils.** 50 cts. per doz., \$3.50 per 100, \$30 per 1,000.

**Double Jonquils.** 50 cts. per doz., \$3.50 per 100, \$32 per 1,000.



How could this stream be more pleasantly set off than by its border of Daffodils?

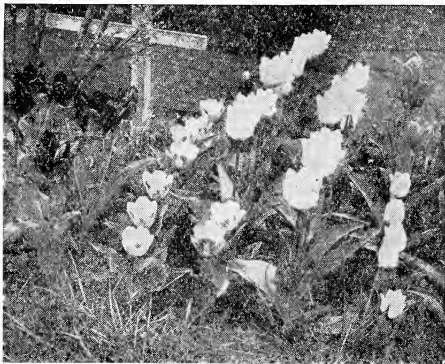
## TULIPS

The great variety of dazzling colors, in every conceivable combination, makes the Tulip the most popular of the spring-flowering bulbs. By planting bulbs of the different classes, a display of bloom may be had for several weeks, beginning first with the early-flowering section and ending with the Darwins.

Tulips may be planted any time from the first of October until the ground freezes, and if the beds are later to be occupied by shallow-rooting plants, such as geraniums, coleus, etc., they may be allowed to remain a second year without lifting, merely by removing the tops as soon as they turn yellow.

If necessary, the bulbs may be carefully lifted as soon as they have ceased blooming and hilled-in in an out-of-the-way place until they have completed their growth, when they may be stored in a cool, dry place until fall. Planted in the hardy border and among shrubbery, they may be allowed to remain undisturbed; but they will gradually deteriorate and will, in a few years, have to be replaced.

Many ways of using Tulips in the garden will give pleasing results, but the happiest way is to have the colors massed. Charming combinations can easily be had with reds, pinks, yellows, when planted in groups.



Single Early Tulips

### SINGLE EARLY TULIPS

All the varieties in this list may be used with equal success for bedding or for forcing.

*Not less than 6 bulbs of a variety sold.*

*Not less than 50 bulbs of any variety at the 100 rate, nor less than 500 bulbs of any one variety at the 1,000 rate.*

*To obtain the dozen rate your order must be for six bulbs or more of one variety. Less than six bulbs will be charged at the single rate.*

**Artus.** A bright scarlet variety, which is extra fine for bedding or for forcing. 65 cts. per doz., \$4.50 per 100.

**Belle Alliance.** One of the finest deep scarlet, single, early Tulips. 75 cts. per doz., \$5 per 100.

**Chrysolora.** A large and extra fine pure golden yellow Tulip; desirable for bedding with red and white sorts. 65 cts. per doz., \$4.50 per 100.

**Cottage Maid.** Soft pink, suffused with white. 75 cts. per doz., \$5 per 100.



Chrysolora is a universal favorite for bedding

**SINGLE EARLY TULIPS, con.**

**GEN. DE WET.** A novelty that created a sensation at this year's National Flower Show, Crystal Palace, New York. Bloom is very large, brilliant orange-yellow. 35 cts. each, \$3.50 per doz.

**Keizerkroon.** One of the best Tulips for bedding. Flowers large, brilliant red, bordered with deep golden yellow. 65 cts. per doz., \$4.50 per 100.

**Lady Boreel (Joost Van Vondel, White).** A recent introduction. Pure white; large and extra fine. 75 cts. per doz., \$5 per 100.

**La Reine.** White, suffused with rosy blush. About 11 inches in height. 60 cts. per doz., \$4 per 100.

**Pink Beauty.** Rosy pink, slightly shaded white; unsurpassed in beauty and size. \$1 per doz., \$7 per 100.

**Pottbakker.** A popular variety for bedding. Flowers are rich scarlet with a yellow center. Height 13 inches. 65 cts. per doz., \$4.50 per 100.

**President Lincoln (Queen of Violets).** Flowers large, deep crimson-purple. Desirable for bedding and forcing. 65 cts. per doz., \$4.50 per 100.

**Prince of Austria.** Orange-red, and one of the best Tulips in color; very fragrant. 75 cts. per doz., \$5 per 100.

**Proserpine.** A rich carmine-rose, with tinges of purple. Blooms are very large and come quite early. \$1.25 per doz., \$9 per 100.

**Rising Sun.** Sport of Duchesse de Palma. Flower of enormous size on very tall stems. Golden yellow. \$1 per doz., \$7 per 100.

**Rose Gris-de-Lin.** A beautiful and useful variety. White shaded with delicate pink. 60 cts. per doz., \$4 per 100.

**Thomas Moore.** Bright orange, shaded with scarlet. Splendid for bedding. 65 cts. per doz., \$4.50 per 100.

**White Hawk.** One of the best white varieties; petals slightly fluted. 90 cts. per doz., \$6.50 per 100.

**Wouverman.** Dark violet. 90 cts. per doz., \$6.50 per 100.

**Yellow Prince.** Golden yellow; the best of the low-growing yellow Tulips; sweet-scented. 60 cts. per doz., \$4 per 100.

**SINGLE EARLY TULIPS IN SUPERFINE MIXTURE**

A choice collection made up from the best named Tulips. The bulbs will bloom at about the same time, and the flower-stems are about the same length—important points when selecting bedding varieties. The mixture is superior in every way. 50 cts. per doz., \$3.25 per 100, \$25 per 1,000.



Couronne d'Or is a favorite for forcing

## DOUBLE EARLY TULIPS

With few exceptions the Double Tulips should be used for bedding only, as they do not force so well as the single varieties. While the Double Tulips may not be quite so effective as the single sorts, the flowers are more durable, and, as they bloom later, they prolong the flowering period.

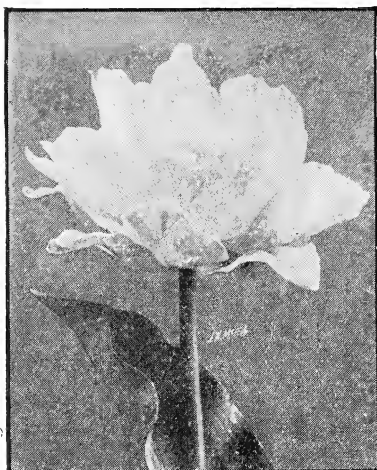
Usually it is advisable to use only one variety of Double Tulips in a bed, rather than to combine them as with the Single Tulips. Beds of different varieties can usually be arranged within a few feet of each other, thus permitting the characteristics of each variety to stand out distinctly, and also to give the effect of one large bed of double flowers.

*Not less than 6 bulbs of a variety sold.*

*Not less than 50 bulbs of any variety sold at the 100 rate, nor less than 100 bulbs of one variety at the 1,000 rate.*

*To obtain the dozen rate your order must be for six bulbs or more of one variety. Less than six bulbs will be charged at the single rate.*

**Alba maxima.** Flower-stems of medium length, surmounted by pure white blooms. 75 cts. per doz., \$5 per 100.



La Candeur Double Tulip

petals tinged with purple. Good forcer and bedder. 75 cts. per doz., \$5 per 100.

**Murillo.** Light pink blooms on medium height stems. Popular for either house or garden. 60 cts. per doz., \$4 per 100.

**Salvator Rosa.** Large, dark pink-and-white blooms; stems from 10 to 12 inches long. 75 cts. per doz., \$5 per 100.

**Tournesol.** A very showy Tulip, growing about 11 inches high; red bordered with yellow. \$1 per doz., \$7 per 100.

**Wilhelm III.** Orange-scarlet. Dwarf, useful for front of taller sorts, or in beds. 85 cts. per doz., \$6 per 100.

### DOUBLE EARLY TULIPS, continued

**Couronne d'Or** (Crown of Gold). A magnificent golden yellow flower, slightly shaded with orange; of great beauty and size, and one of the best for forcing. 80 cts. per doz., \$5.50 per 100.

**Couronne des Roses.** Blooms are unusually large and of a deep, rich, rose-color. \$1 per doz., \$7 per 100.

**El Toreador.** Orange-scarlet, with edges of the petals margined with yellow. \$1.25 per doz., \$9 per 100.

**Imperator rubrorum.** A brilliantly glowing scarlet; good forcer. \$1 per doz., \$7 per 100.

**La Candeur.** Clear white; fine for bedding in contrast with pink and red sorts. 65 cts. per doz., \$4.50 per 100.

**Le Matador.** Scarlet, outside of

## COTTAGE TULIPS

### Single or May-Flowering

**Caledonia.** Bright orange-red, with dark stems; beautiful and effective. 65 cts. per doz., \$4.50 per 100.

**Ellen Willmott.** The finest May-flowering Tulip. Large, soft creamy yellow blooms. 60 cts. per doz., \$4 per 100.

**Fairy Queen.** Rosy heliotrope, with broad amber-yellow margin. 60 cts. per doz., \$4 per 100.

**Gesneriana lutea** (Improved Bouton d'Or). Handsome yellow flowers on long stems. 65 cts. per doz., \$4.50 per 100.

**Gesneriana major** (Spathulata). Crimson-scarlet with blue-black center. The best of its class. 65 cts. per doz., \$4.50 per 100.

## SPECIAL LIST OF HOLLAND BULBS, AUTUMN, 1922

### COTTAGE TULIPS, continued

**Glare of the Garden.** Dazzling scarlet. 75 cts. per doz., \$5 per 100.

**Golden Crown.** Recommended for naturalizing, as it increases rapidly. Golden yellow with red edges. 65 cts. per doz., \$4.50 per 100.

**Grenadier.** Large; orange-scarlet. 90 cts. per doz., \$6 per 100.

**Inglescombe Pink.** Soft rose, flushed with salmon. When the large blooms first open, they are quite pink. 65 cts. per doz., \$4.50 per 100.

**Inglescombe Scarlet.** Brilliant scarlet with black base; large flowers. 65 cts. per doz., \$4.50 per 100.

**Inglescombe Yellow** (Yellow Darwin). Large globular flower. 65 cts. per doz., \$4.50 per 100.

**Isabella** (Shandon Bells). Carmine-rose, shaded white; desirable with some of the more striking colors. 60 cts. per doz., \$4 per 100.

**John Ruskin.** Bronzy rose, with sulphur-yellow edge, rosy lilac inside; very handsome. 85 cts. per doz., \$6 per 100.

**La Candeur** (Parisian White). White, changing to rose. 65 cts. per doz., \$4.50 per 100.

**La Merveille.** Salmon-rose, with yellow center; delicately scented, about 20 inches high. 65 cts. per doz., \$4.50 per 100.

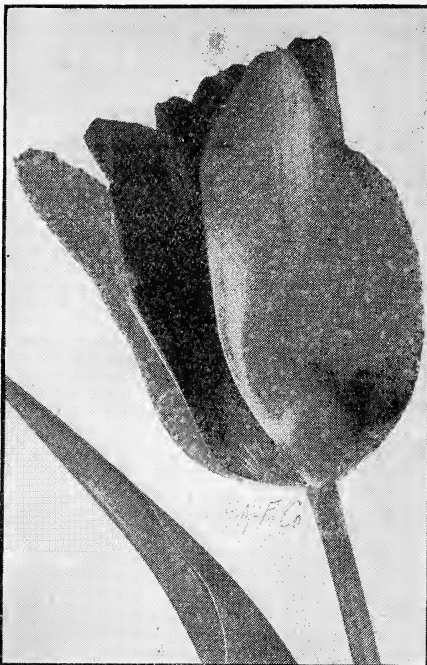
**Moonlight.** Lemon-, or canary-yellow; long oval-shaped flower. One of the handsomest Cottage Tulips. 85 cts. per doz., \$6 per 100.

**Orange King.** Deep orange, with delicate shadings of rose. 60 cts. per doz., \$4 per 100.

**Picotee** (Maiden's Blush). Pure white, margined rose; petals recurved. Useful for naturalizing. 60 cts. per doz., \$4 per 100.

**Scarlet Mammoth.** Extra-large, dark crimson flowers. 65 cts. per doz., \$4.50 per 100.

**The Fawn.** Delicate pale rosy fawn, shading to blush-rose. An extra-fine variety. 65 cts. per doz., \$4.50 per 100.



Gesneriana major is most vivid when planted before a dark background



**Darwin Tulips.** No other blooms of summer or fall can give such decisive sweeps of color

## DARWIN TULIPS

Darwin Tulips are highly recommended for massing in shrubbery and for providing contrasting colors in the spring garden. In form, the blooms are entirely distinct from all other classes of Tulips; they are unusually large and are borne on long stems. They may be forced if brought to the heat not earlier than January.

*Not less than six bulbs of a variety sold. Not less than 50 bulbs of any sort at the 100 rate, nor less than 500 bulbs of any one variety at the 1,000 rate.*

*To obtain the dozen rate, you must order six bulbs or more of one variety; less than six bulbs will be charged at the single rate.*

**Anton Roozen.** Rose-pink, tinged with apricot at base of the petals. 85 cts. per doz., \$5.50 per 100.

**Ariadne.** Rich rosy crimson, shaded with scarlet. 85 cts. per doz., \$5.50 per 100.

**Baron de la Tonnaye.** Bright rose, margined with blush. Extra-large flowers on long stems. 85 cts. per doz., \$5.50 per 100.

**Bartigan.** Very large; fiery red. Earliest to bloom of all the Darwins. Good forcer. \$1 per doz., \$7 per 100.

**Clara Butt.** Delicate salmon-pink. The best of its color. 65 cts. per doz., \$4.50 per 100.

**Dream.** Pale heliotrope, shaded violet. 85 cts. per doz., \$5.50 per 100.

**Edmee.** A splendid variety for late forcing; cherry-rose, edged with a lighter shade; large and beautiful. 85 cts. per doz., \$5.50 per 100.

**Europe.** One of the newer introductions. Bright scarlet, shading to rose. 85 cts. per doz., \$5.50 per 100.

**Gretchen.** A delicate flesh-pink, cup-shaped flower. 65 cts. per doz., \$4 per 100.



## SPECIAL LIST OF HOLLAND BULBS, AUTUMN, 1922

### DARWIN TULIPS, continued

**Kate Greenaway.** A late-flowering variety; white with tint of lilac-rose. Especially handsome. 85 cts. per doz., \$5.50 per 100.

**La Tulipe Noire** (The Black Tulip). Enormous flowers, nearly black. The most striking variety. 75 cts. per doz., \$5 per 100.

**Loveliness.** Soft rosy carmine, making a beautiful contrast with darker-colored varieties. 65 cts. per doz., \$4.50 per 100.

**Mme. Krelage.** Bright lilac-rose with a lighter margin; extra-fine. 90 cts. per doz., \$6.50 per 100.

**Mr. Farncombe Sanders.** One of the best and showiest of the Darwins; blooms of immense size, brilliant scarlet in color. 90 cts. per doz., \$6.50 per 100.

**Mrs. Cleveland.** Delicate flesh-color, suffused with rose. 65 cts. per doz., \$4.50 per 100.

**Nauticas.** Purplish rose, with dark violet center; desirable for garden or forcing. 65 cts. per doz., \$4.50 per 100.

**Painted Lady.** White, shaded with heliotrope; large and beautiful. 65 cts. per doz., \$4.50 per 100.

**Phillippe de Commines.** One of the earliest Darwins for forcing; deep purple. 85 cts. per doz., \$6 per 100.

**Pride of Haarlem.** Violet-rose, with a blue base. Extra large blooms. 75 cts. per doz., \$5 per 100.

**Psyche.** Outside petals deep rose, inside shaded silvery rose, light blue base. 75 cts. per doz., \$5 per 100.

**Reverend Ewbank.** Soft heliotrope or lavender-violet. 75 cts. per doz., \$5 per 100.

**Suzon.** Soft salmon-rose, shading to blush. Good for forcing. 65 cts. per doz., \$4.50 per 100.

**Whistler.** One of the new Darwins. Maroon-crimson, base of the petals dark blue, with pure white lines. 90 cts. per doz., \$6.50 per 100.

**White Queen** (La Candeur). Rosy white, changing to white. 65 cts. per doz., \$4.50 per 100.

**William Copland.** Extra large and early; flowers light lilac, borne on long stems. 85 cts. per doz., \$6 per 100.

**William Pitt.** Dark crimson, shading to purplish tint on outer petals. Quite large blooms. \$1.10 per doz., \$7.50 per 100.

**Zulu.** Purplish black; a splendid large flower for forcing or for garden culture. \$1.10 per doz., \$7.50 per 100.

**Superfine Mixture of Darwin Tulips.** 50 cts. per doz., \$3.25 per 100, \$30 per 1,000.



Darwin Tulip



## OLD DUTCH, or BREEDER TULIPS

The Breeder Tulips are the unbroken forms of the old florists' Tulips. The blooms strongly resemble the Darwin Tulips, excepting that they have an entirely different range of color, comprising artistic tones of bronze, terra cotta, orange, and brown. Breeder Tulips are May-flowering, producing blooms of enormous size, and because they are vigorous growers are valuable for the garden. We have taken great pains to select only choicest varieties, and can heartily recommend these to anyone who wishes something especially fine.

**Aspasia.** Red, shaded with tones of salmon. 85 cts. per doz., \$6 per 100.

**Cardinal Manning.** Wine-red, flushed with rosy brown. 70 cts. per doz., \$5 per 100.

**Clio** (Bronze Queen). Soft buff, inside tinged with golden bronze. 70 cts. per doz., \$5 per 100.

**Grand Maitre.** Dark purplish violet. 85 cts. per doz., \$6 per 100.

**Jaune d'Œuf** (Sunrise). Ruddy apricot, edged with golden yellow. 65 cts. per doz., \$4.75 per 100.

**Medea.** Salmon-carmine, with heliotrope shading; an unusually large flower. 65 cts. per doz., \$4.75 per 100.

**Noire Veritable.** Extremely dark purplish black. 65 cts. per doz., \$4.75 per 100.

**Prince of Orange** (Orange Beauty). Orange-scarlet, shaded with light red. A large flower of unusual beauty. 85 cts. per doz., \$6 per 100.

**Queen Alexandra.** Soft primrose, with black anthers. 85 cts. per doz., \$6 per 100.

**Yellow Perfection.** Light bronze-yellow, edged with golden yellow. A Tulip of remarkable beauty. \$1 per doz., \$7 per 100.

---

Ten per cent discount will be given on Bulb orders received before July 15.

## **HYACINTHS**

For garden culture, the treatment is about the same as for Tulips, except that the bulbs should be set farther apart—say 6 to 10 inches.

For indoor culture the bulbs may be potted any time from September to December, using a light, rich soil containing plenty of well-rotted cow or sheep manure. Set the bulbs so that the tops are just above the surface.

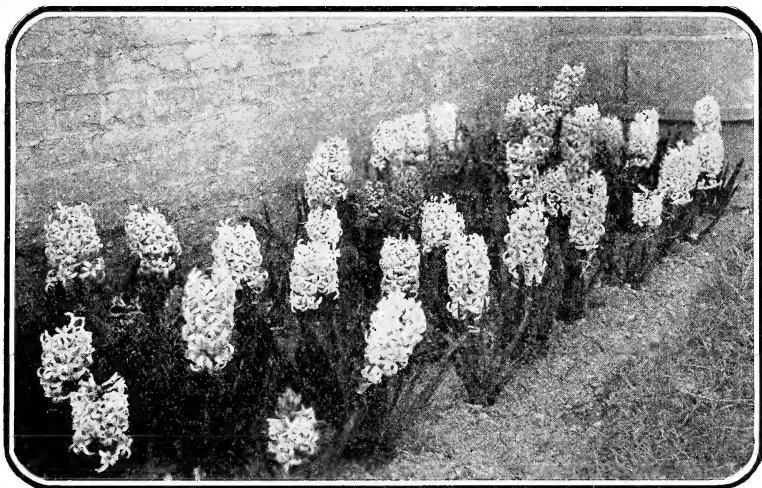
The pots should then be placed outside, and covered with coal-ashes or some litter for a period of ten to twelve weeks, when the bulbs will be thoroughly rooted. Bring them in, a few at a time, for a succession of bloom as wanted. They should be brought into heat gradually; to place them at once in a room having a high temperature will cause them to flower prematurely.

If it is desired to grow them in glasses of water, the base of the bulb should barely touch the water. They should then be set in a cool, dark place until the glass is full of roots.

### **FIRST-SIZE EXHIBITION**

Comparatively few bulbs of this quality come to this country—they are the very finest selections from the stock of several growers, are extra large and solid, and must not be confused with those often sold as “Exhibition Bulbs,” which the Hollanders consider a second size. We recommend these exhibition bulbs to all who wish the finest blooms.

20 cts. each, \$2 per doz., \$16 per 100



Note the well-filled trusses and sturdy growth

Single Red and Rose Hyacinths

For first-size prices, see page 13. Varieties marked \* can be supplied in second size at 15 cts. each, \$1.50 per doz., \$10 per 100

\***General de Wet.** Extra-fine, soft pink, with large spike and bells. (Improvement on Baron Van Thuyll.)

**Gertrude.** Splendid, dark pink; large, compact spike.

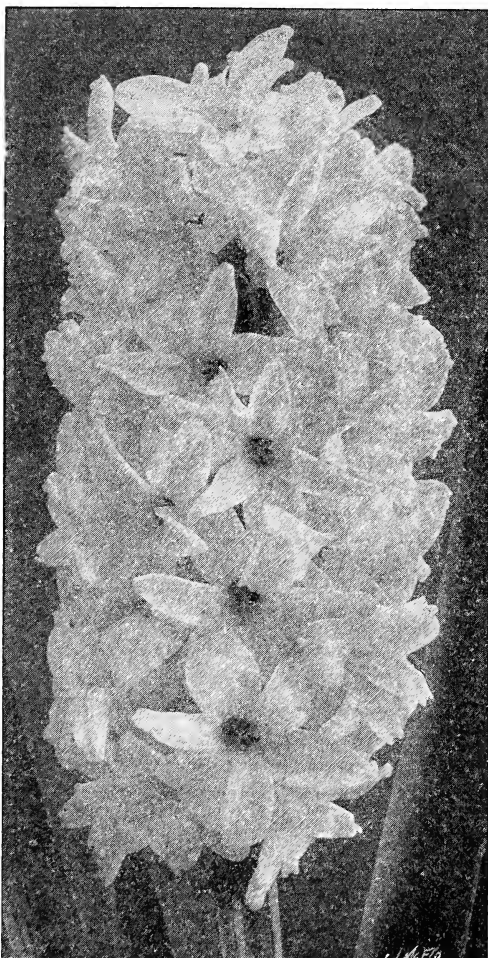
**Gigantea.** Light pink; compact spike.

\***Lady Derby.** Rose; very large truss.

\***La Victoire.** Brilliant carmine - rose; extra fine.

**Marconi.** Pink; large truss. New.

**Roi des Belges.** Extra fine; dark red.



Hyacinth

Single Pure and Creamy White

**La Franchise.** Creamy white.

\***La Grandesse.** Pure white; large bells; perfect truss.

\***L'Innocence.** Very fine; pure white.

Single Light and Dark Blue

**Czar Peter.** Light lavender-blue.

**Enchantress.** Delicate porcelain - blue; splendid truss.

\***Grand Maitre.** Deep sky-blue; large, compact spike.

**King of the Blues.** Rich dark blue; splendid form; late.

**Queen of the Blues.** Porcelain-blue; handsome spike.

**Single Violet and Purple Hyacinths**

**Lord Balfour.** Violet; very early; enormous truss of fragrant bells.

**Yellow Single Hyacinths**

**Yellow Hammer.** The best pure yellow.

**CROCUSES**

When the spring sun begins to warm the ground, the little yellow Crocuses quickly respond to the bright rays. They are among the very earliest spring flowers, and are most effective when dotting the lawn without any fixed plan of arrangement. The bulbs can be strewn thickly over the surface and be set where they fall, merely lifting the sod with a knife or trowel, slipping the bulbs underneath, and pressing the sod back into place.

**Mixed Crocuses.** All Colors Mixed. 20 cts. per doz., \$1 per 100, \$8 per 1,000.

**Named Crocuses, except where noted, 30 cts. per doz., \$2.25 per 100**

*Not less than six bulbs of any variety supplied*

**Albion.** Dark violet, with stripes of light blue.

**Baron von Brunow.** Dark blue; velvety and beautiful.

**King of the Whites.** Snowy white; large blooms.

**Mammoth Yellow.** Especially desirable for lawn planting. 50 cts. per doz., \$3 per 100.

**Maximilian.** Porcelain-blue; a new and large variety.

**Mont Blanc.** White and one of the best of its class.

**Purpurea grandiflora.** Largest purple of all. 50 cts. per doz., \$3 per 100.

**Sir Walter Scott.** Large dark blue flowers, striped with white.



Crocuses are most delightful when naturalized

## IRISES AND PEONIES THAT MADE WYOMISSING FAMOUS



Irises and Tulips may be  
grown together

Little need be said of the national reputation of Farr's Irises and Peonies. You can find Farr's Specialties in gardens in every state, and in many foreign countries. All of them are grown here in Wyomissing, and many of them originated here. We feel privileged to talk about them in this booklet because Irises and Peonies are planted in the fall, and should be ordered with the spring-flowering bulbs.

On this page we offer several collections which have been carefully prepared. In them you will find beautiful and noteworthy varieties. Great care has been taken to include only those sorts which are characteristic in color and type of bloom.

### Favorite Collection of Peonies

	Each
Claude Gellee.....	\$2 50
Albert Crousse.....	1 50
Princess Maud.....	1 50
Duke of Clarence.....	75
Liberty.....	1 00
Germaine Bigot.....	2 00
Gloire de Chenonceaux.....	1 00
James Kelway.....	1 50
Duchess de Nemours.....	50
Geraldine.....	1 00
Agnes M. Kelway.....	75
Mlle. Rousseau.....	1 50

The 12 plants, bought singly.. \$15 50

**The entire Collection, \$12**

### Amateur Collection of Peonies

	Each
Rubra superba.....	\$0 75
Princess Beatrice.....	50
Queen Victoria.....	75
Gen. Bertrand.....	75
Simonne Chevalier.....	2 00
Festiva maxima.....	50
La Perle.....	1 50
Edulis superba.....	50
Dr. Bretonneau (Verd.).....	50
Candidissima.....	50
Marie Lemoine.....	75
Souv. de l'Exposition Bordeaux.....	1 00

The 12 plants, bought singly.. \$10 00

**The entire Collection, \$8**

### Wyomissing Collection of Irises

	Each
Eldorado.....	\$1 50
Hiawatha.....	75
Prosper Laugier.....	75
Kathleen.....	50
Princess Victoria Louise.....	50
White Knight.....	1 00
Iris King.....	50
Swatara.....	75
Glory of Reading.....	1 00
Quaker Lady.....	50
Rose Unique.....	75
Jacquesiana.....	50

The 12 plants, bought singly.. \$9 00

**The entire Collection, \$7.50**

### Rainbow Collection of Irises

	Each
Mrs. H. Darwin.....	\$0 20
Grand Bouquet.....	50
Arnols.....	25
Juniata.....	50
Pauline.....	50
Massasoit.....	50
James Boyd.....	50
Blue Boy.....	75
Lohengrin.....	50
Nibelungen.....	50
Trautlieb.....	50
Rhein Nixe.....	75

The 12 plants, bought singly.. \$5 95

**The entire Collection, \$5**



Japanese Irises are not like the other types in appearance, they have no standards; all of the petals are borne at right angles to the stem with a perceptible droop at the tips.

## JAPANESE IRISES

These are the largest and showiest of all Irises. The flower-stems vary in height from 3 to 5 feet, and are crowned with blooms in a bewildering array of colors and combinations. Totally unlike the German Irises in their cultural requirements, they enjoy a well-enriched soil with plenty of moisture during the growing and blooming season. They may be most successfully planted during August or September.

We offer two each of twelve of our finest varieties, our selection, making a total of **24 Japanese Irises for \$5.**

## HARDY LILIES

Japanese Lilies do not arrive until about December 1, often too late for fall shipment; in such cases they will be held by us until time for spring planting which is fully as satisfactory as fall planting. European Lilies are not carried in stock and can be supplied only on special orders which must be received before August 1. Prices are so unstable that we would suggest you write us for quotations on the desired varieties.

**NOTE.**—We have been able to secure our usual high grade of bulbs from Holland at a lower figure than last year, therefore we have been able to lower the price on many of the varieties here listed. In addition to this we have effected certain economies in handling orders. These two accomplishments are distinctly to the advantage of our customers.

# BETTER BULBS BY FARR



KEIZERKROON TULIPS. See page 6

**BERTRAND H. FARR**

Wyomissing Nurseries Co.

WYOMISSING, PA.