

Historic, Archive Document

Do not assume content reflects current scientific knowledge, policies, or practices.





Barberry Thunbergii

Every Home Needs Hedges and Hedging

No item in use for landscape planting will improve the appearance of your property as much as a well trimmed hedge. Note artistic effect of low growing Barberry Thunbergii hedge at left and upright growing Iboia Privet hedge at the right.

Buckthorn—Very fine and hardy; dark, green.
Upright Honeysuckle—Flowers pink and white followed by red berries.

Red Dogwood—Bark deep red, foliage light green.
Spirea Van H.—Masses of white blossoms in early spring; very fine.

Caragana—Yellow flowers; fine foliage; light green.

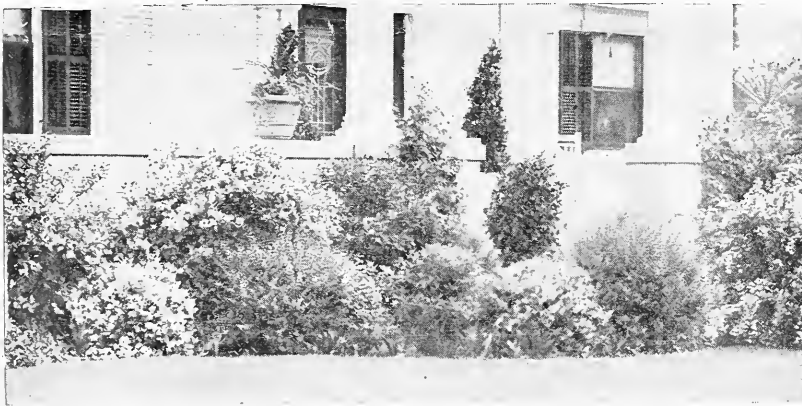
Siberian Hedgewood—Bushy; handsome foliage; desirable.

Thunbergii Harberry—Low growing; very popular; attractive foliage; red berries.

All of the above varieties are hardy and will stand shearing if desired. They are the best ornamental hedges for the north that can be safely planted.



IBOIA PRIVET



A FEW OF OUR BEST PERENNIALS

These Hardy Perennials when properly arranged will give a profusion of bloom continuing from Spring until Fall; also fine for borders and cut flowers.

Dahlias—Assorted colors; hardy all summer.

Shasta Daisy—White, June-September, free flowering.

Gaillardia, Grandiflora—Yellow to red; all summer.

Iris—A large assortment of colors. May to July.

Phlox—A great variety of colors. July-October.

Platycodon (Chinese Bell Flower)—July-August.

Golden Glow (Golden Yellow)—July to September.

Yucca—Sword-like foliage cream white flowers.

Bleeding Heart—Blooms early, red heart-flowers.

Gladiola—Many colors; beautiful effect. July

Tiger Lily—Spotted red; profuse bloomer. July

Lily-o-Valley—Low growing; small white flowers.

It is a Good Investment and Inexpensive When
 You Buy From—

**THE HOWARD LAKE & VICTOR
 NURSERIES.**

HOWARD LAKE, MINN.

Trees Especially Adapted to Street and Lawn Planting



Norway Maple

Birch, Cut-leaved Weeping—40 ft. Extremely vigorous and hardy; white bark; drooping branches; finely cut foliage.

Catalpa, Speciosa—40 ft. Fragrant white flowers in July; open irregular growth; large heart-shaped leaves.

Elm, American White—60-80 ft. A magnificent tree with graceful drooping branches, a favorite fast growing tree.

Linden, American (Basswood)—50-60 ft. Fragrant yellow flowers in July; large smooth showy leaves.

Magnolia, Soulangeana—10-15 ft. Large cup-shaped white and rosy pink flowers in May in showy clusters.

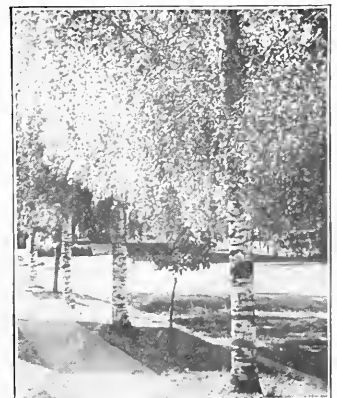
Maple, Norway—50-60 ft. A beautiful handsome tree with spreading branches; round head; great favorite everywhere.

Maple, Schwedleri—30-40 ft. Handsome. with color changing foliage; crimson to green, red and brown.

Mulberry, Tea's Weeping—20-30 ft. A most graceful weeping tree; dense green foliage forms umbrella shape.

Sycamore, American (Buttonwood)—50-60 ft. A beautiful majestic tree with its bright foliage.

Sugar Maple—50-60 ft. A tall, handsome, moderately rapid growing tree. Autumn foliage gold and scarlet. Very handsome. Grows rather erect, but spreads nicely.

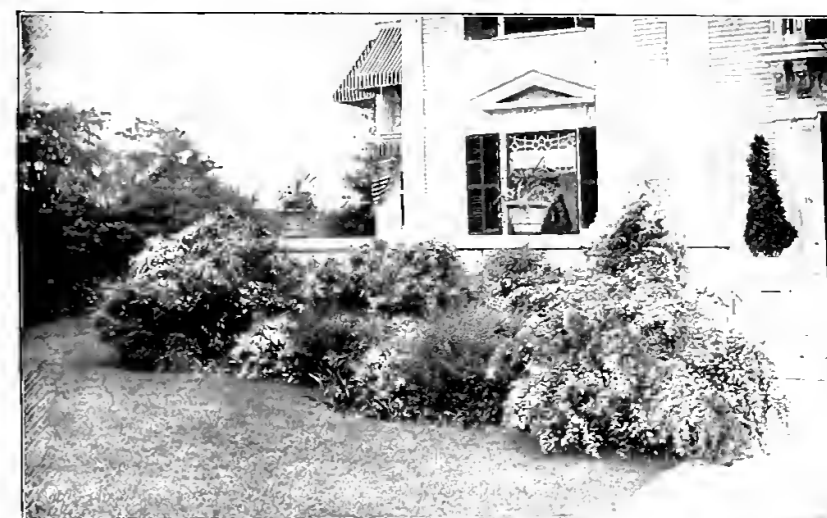


Home Beautifying



The principles of proper planting are not hard to master. The shrubs should be massed into corners and borders, and a selection made differing in height so that all of them can be seen and intermingle in effect, with their bloom coming at different seasons so that they are always interesting. You can easily choose this graduation from the lists referred to. One often sees an elegant house that lacks the final touch to change it into a "home." Landscape planting is the frame of the picture; the artistic setting; that final touch that changes your house to a home.

As a background or a frame to the picture which is to be created, shrubs or trees are indispensable. The idea being to have the surroundings harmonize so that the impression will be comfortable and home-like. If you need any assistance in producing an artistic effect our landscape department is at your command



Shrubs Suitable for Screens and Backgrounds

- Crab, Bechtel's Flowering**—10-15 ft. Pink rose like flowers. May.
- Elder, Golden-Leaved**—6-8 ft. Clusters of white flowers. July.
- Elder, Fern-Leaf**—6-8 ft. White fragrant flowers in June.
- Honeysuckle, Grandiflora**—Bush—White flowers May-June.
- Lilac, Purple and White**—6-8 ft. Flowers in May-June.
- Philadelphus, Grandiflora**—White flowers in June
- Rhus, Cotinus**—8-10 ft. Yellow green flowers in June, changing to purple and plumose.
- Sumach, Fern-Leaf and Glabra**—Flowers in July; beautiful autumnal coloring.
- Tamarix**—White or pink flowers. April-May; blue-green foliage.
- Viburnum, Opulus Sterilis** (Snowball)—Pure white flowers in June.

A Few of Our Shrubs for Nifty Foundation Plantings

- Calycanthus, Sweet Scented Shrub**—4-6 ft. Deliciously fragrant flowers through summer.
- Deutzia, Pride of Rochester**—White flowers. May.
- Forsythia, Intermedia**—Yellow flowers in April.
- Hydrangea, Paniculata Grandiflora**—Hardy. Immense cone-shaped heads of flowers in September-October
- Honeysuckle, Tartarian Bush**—Pink flowers. May-June.
- Rhodotypos, Kerroides**—Single white flowers in May.
- Snowberry, Red and White**—Flowers in July; white berries.
- Spirea Vanhouttei, Bridal Wreath**—White flowers. May-June.
- Syringa, Philadelphus Coronarius**—White flowers. May-June.
- Weigelia, Rosea**—Pink flowers in June; an old garden favorite.



Screen and Foundation Planting



Porch and Foundation Planting



HOWARD LAKE AND VICTOR NURSERIES
Howard Lake, Minnesota

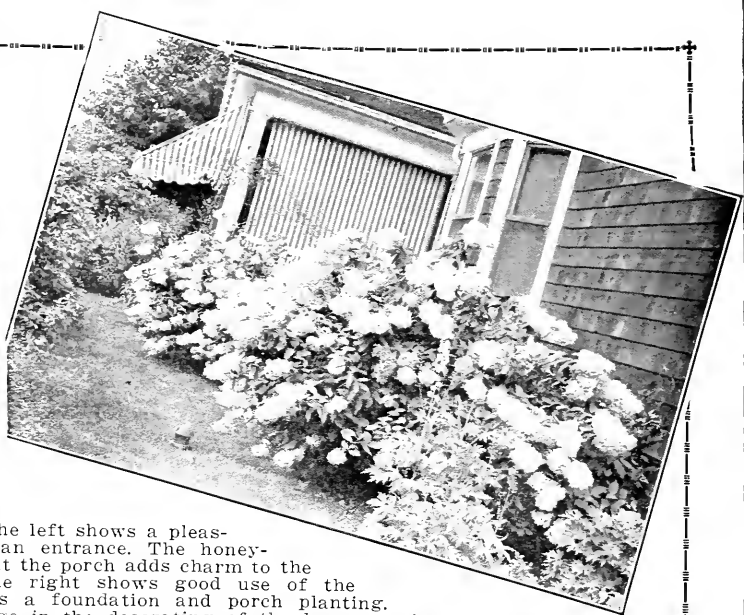
Dwarf Shrubs Suitable for Foundation Planting

- Barberry, Thunbergii**—Orange-yellow flowers in May and June; superb foliage coloring in the fall; vari-colored fruits; ornamental.
- Deutzia, Lemonel**—Panicles of extra large white flowers. June.
- Deutzia, Gracilis**—Numerous white flowers in May and June.
- Spirea, Anthony Waterer**—A beautiful shrub with broad heads of deep pink flowers; blooms almost continuously.
- Spirea, Arguta (Snow Garland)**—Flowers in clusters along drooping slender branches; blooms in May.
- Spirea, Callosa Alba**—Upright in growth, with flat clusters of flowers on erect branches.
- Spirea, Thunbergii**—White flowers. April and May; retains delicate foliage late.
- Syringa, Philadelphus Avalanche**—White flowers in May and June.
- Weigelia, Eva Rathke**—Handsome, fragrant flowers in June and July.
- Weigelia, Variegata**—Rose flowers in June; leaves are margined with white.
- Desmodium Penduliflorum (Lespedeza Sieboldi)**—Rose-colored; hardy. September.

A Few Vines Recommended for Walls, Fences and Pergolas

- Ampelopsis, Boston Ivy**—One of the most beautiful and popular vines for stone walls; blue berries.
- Ampelopsis, Engelmanni Ivy**—For stone walls; similar to the above but has a smaller and denser foliage.
- Clematis, Assorted Varieties**—Among the best climbers.
- Climbing Roses**—Many varieties in a wide range of colors.
- Honeysuckle, Hall's**—White to yellow flowers in August and September; semi-evergreen; very fragrant; one of the best.





The picture on the left shows a pleasing planting about an entrance. The honeysuckle vine entwined about the porch adds charm to the residence. The picture to the right shows good use of the *Hydrangea paniculata grandiflora* as a foundation and porch planting. A climbing rose is here used to advantage in the decorating of the large porch.



Foundation Planting for Factories

The plantings below show the value of mass planting. The one on the left consists of *Barberry Thunbergii*, *Deutzia Gracilis*, and *Englemanni Ivy* which in a few years will thoroughly beautify this home. The picture on the right is of an ideal home and shows good use of a specimen tree. The shrubs planted surrounding this home are: Snowberry, *Syringa*, *Rhodotypos*, *Barberry Thunbergii* and *Fragrant Sumac*.

