

## **Historic, Archive Document**

Do not assume content reflects current scientific knowledge, policies, or practices.



6323

P. Bisset



D. Hill, Evergreen Specialist

# HILL'S

SPRING 1922  
WHOLESALE

# FLORIST'S CATALOG

of

## HILL'S CHOICE EVERGREENS

and

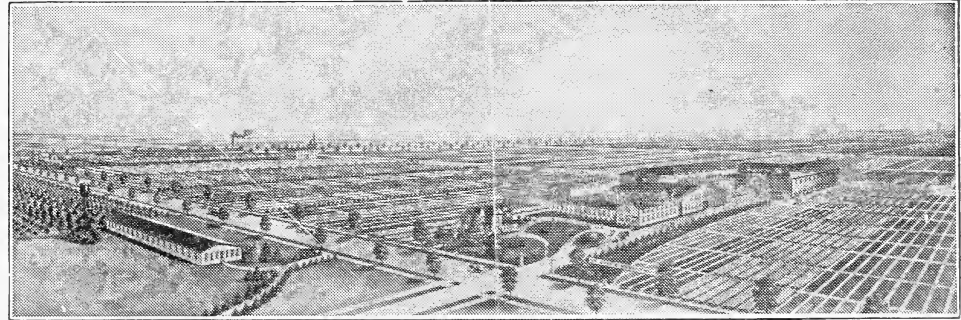
### General Nursery Stock

Located 42 miles northwest of Chicago.  
Hourly service from Chicago via A.E.&C.  
Electric Line direct to Office and Nursery.  
Founded 1855                      Incorporated 1910  
500 Acres                                      67 Years  
Telephone Dundee 217

## The D. Hill Nursery Co., Inc.

Evergreen Specialists—Largest Growers in America

### Dundee, Illinois



A Bird's Eye View of the Hill Establishment

# THE D. HILL NURSERY CO., Inc.

D. HILL, President

EVERGREEN SPECIALISTS—LARGEST GROWERS IN AMERICA

**Dundee, Illinois** (Near Chicago)

This List Cancels All Previous Editions

## TERMS AND CONDITIONS OF SALE

### TERMS OF PAYMENT:

- 1. Cash Plan.** Whereby we book the order, reserve the stock, notifying you a few days prior to shipping time when remittance can be sent and shipment will be forwarded promptly. This cash plan earns 3% discount and free boxing. This is equivalent to between 6 and 8% profit on the goods before you receive them.
- 2. Partial Payment Plan.** Whereby 1/3 amount of order is remitted in advance and the balance goes forward freight or express C. O. D. payable at destination.
- 3. Charge Account Plan.** Goods will be shipped on charge account only to customers of approved credit who supply satisfactory trade and bank reference allowing time for investigation.

**CONDITIONS**—We accept all orders upon condition that they shall be void should any injury befall stock from causes over which we have no control. At the moderate price at which we sell our goods we give no warranty except genuineness, expressed or implied, the purchaser assuming all risk and responsibility of the transportation, planting, growth and life of stock. Our responsibility ceases when goods are turned over to carriers. Prices do not include any guarantee as to growth.

**BOXING AND PACKING**—Boxing and packing will be charged for at actual cost of material used. We make no charge for delivery to the railroad station.

**RATES**—Five of same variety and size at the ten rate. Fifty of the same variety and size at the 100 rate. Five hundred of the same variety and size at the 1,000 rate.

**PRICES**—Are limited to Spring, 1922, and supercede all previous lists and ARE SUBJECT TO CHANGE WITHOUT NOTICE.

**CLAIMS**—For any cause will receive consideration only when made within 5 days after the arrival of goods.

**SPECIAL NOTICE**—Correspondents are requested to use their printed business letter-heads. This list is for the trade only and in justice to our trade customers we use every possible effort to limit distribution of trade prices to those we know to be entitled to receive them. USE PRINTED STATIONERY.

**LOCATION**—We are situated in Northern Illinois, on well drained, rich, fertile soil, located forty-two miles northwest of Chicago. Visitors are always welcome. For complete directions for reaching Nursery see page 24.

**STOCK GROWN ON CONTRACT**—We are equipped to grow Evergreens and Deciduous Young Stock on contract for future delivery. Get our prices on anything you need. Our 65 years' experience will save you money.

**NOTE**—Copy of our complete retail descriptive catalog of Evergreens will gladly be sent upon request. Illustrations and descriptions are accurate, authentic and true to life.

### TESTIMONIALS FROM THE TRADE

"Your shipment of Evergreens arrived in fine condition, and we want to thank you for care in selecting it."—Ernest Wienhoeber Co., Chicago, Ill.

"The Evergreens arrived O. K. and we are well pleased with them."—Graul Bros., Wheat Ridge, Colorado.

"The Evergreen trees arrived in fine condition."—Geo. Vatter, Florist, Marinette, Wisconsin.

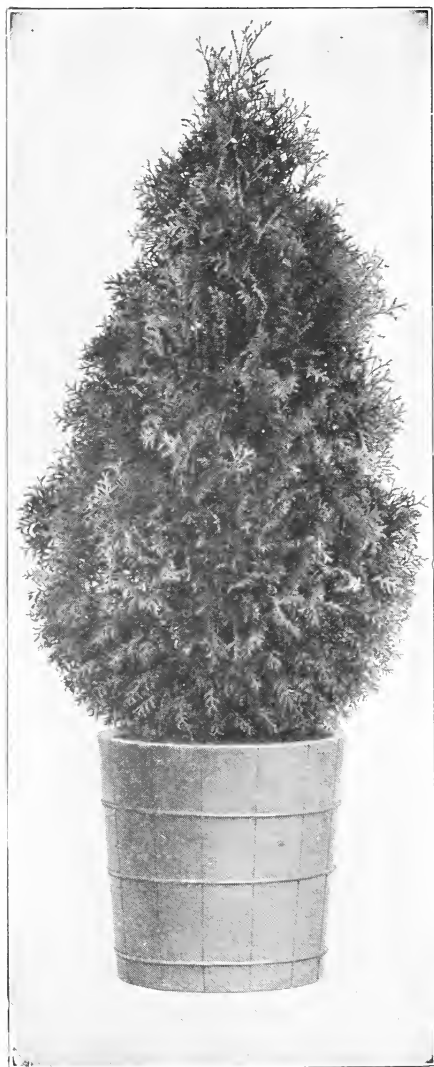
"Received the trees O. K. Am more than pleased. There was not one branch broken."—Desner & Fisher, Florists, Saginaw, Michigan.

"The stock you sent me arrived in good condition. Thanks for your promptness."—Fred Rupp, Florist, Lawrenceburg, Indiana.

"I received the shipment of Evergreens and am well pleased."—Wyncroft Greenhouses, Norristown, Pa.

"The Evergreens for Window-Boxes were received and prove entirely satisfactory. The Evergreens have attracted a great deal of attention."—C. Young & Sons Co., St. Louis, Missouri.

# Hill's Evergreens for Tubbing



Pyramidal Arbor Vitae

With the present scarcity and high prices of box-woods, Hill's Evergreens for tubbing sell themselves. Our tubbing Evergreens are especially grown, compact and well formed, suitable for the very best trade.

Pyramidal Arbor Vitae, dark green pyramid, is the leader; Red Cedar is also preferred by many florists. We offer both varieties.

Trees are furnished Balled and Burlapped (B&B) and come singly or in pairs. Note—Retail prices average 2½ times the wholesale rates listed below:

	Size Feet	Matched Each Pairs
Pyramidal Arbor Vitae (Thuya).B&B	2	\$3.00 \$5.50
Pyramidal Arbor Vitae (Thuya).B&B	3	4.00 7.50
Pyramidal Arbor Vitae (Thuya).B&B	4	5.00 9.50
Red Cedar (Juniperus).....B&B	3	5.00 9.50
Red Cedar (Juniperus).....B&B	4	7.00 13.50
Sheared Globes (Thuya).....B&B	1¼x1¼	4.00 7.50
Sheared Globes (Thuya).....B&B	1½x1½	5.00 9.50

## Window Box Evergreens

For Summer or Winter Decoration

We grow a large assortment of varieties in all sizes for window box planting, but offer here only the best varieties. We recommend especially the special offer of 50 trees, assorted varieties.

Assorted Varieties	10	50
Our Selection (per case of 50).....	...	\$25.00
<b>Thuya Pyramidalis (Tall, Slender)</b>		
10-12 inch .....	\$6.50	25.00
12-18 " .....	7.50	35.00
<b>Juniperus Canadensis,</b>		
Low Spreading, Dark Green—		
10-12 inch, Twice Transplanted.....	7.50	30.00
<b>Juniperus Virginiana,</b>		
Pyramidal, Feathery Foliage—		
12-18 inch, Twice Transplanted.....	3.75	15.00
18-24 " " .....	4.50	20.00
<b>Picea Canadensis,</b>		
Compact and Conical—		
10-12 inch, Twice Transplanted.....	5.25	22.50
12-18 " " .....	6.00	27.50
<b>Pinus Mugho,</b>		
Globular, Deep Green—		
8-10 inch, Twice Transplanted.....	7.50	30.00
10-12 " " .....	9.00	37.50

## Evergreen Vine

<b>Pachysandra Terminalis (Japanese Spurge)</b>	100
4-6 inch, Once Transplanted.....	\$ 7.50

Above Prices do not include either tubs or window boxes.





Variety	Each	10
<b>Juniperus Canadensis (J. Communis Depressa)</b>		
The well known, valuable, many-stemmed Dwarf Juniper. Rarely exceeds 2 feet in height, good form of Juniper for ground cover. It is at home on sandy or gravelly hillsides fully exposed to the sun, where single plants often reach 15 feet or more in diameter. Is sometimes catalogued as <i>Juniperus Communis</i> which is erroneous. The name <i>Juniperus Communis Depressa</i> is also applied, which is a synonym. Grows native in various sections of the country, but we obtain our seed from Northern Wisconsin, which is the superior type.		
1-1½ feet xxx Heavy Specimens—Solid Balls—B&B.....	\$ 2.25	\$17.50
1½-2 " xxx " " " " " .....	2.75	22.50
1-1½ " xx (Light) Specimens—Solid Balls—B&B .....	1.50	11.50
<b>Juniperus Chinensis Mascula</b>		
A valuable variety from China and Japan growing 60 to 70 feet high and long recognized as one of the most desirable forms. There are two forms distinguished as <i>Mascula</i> and <i>Femina</i> , the first being the most desirable as an ornamental plant, from which our trees are propagated.		
2-3 feet xxx Heavy Specimens—Solid Balls—B&B.....	5.00	45.00
<b>Juniperus Chinensis Pfitzeriana</b>		
Originated some years ago in Pfitzer's Nursery, near Berlin, Germany. Introduced by Ludwig Spaeth into general cultivation, from whom we obtained our original plants for propagating. A wide, plumose and graceful Evergreen of healthy blue green foliage. Branches grow horizontal from the stem. Height 6 to 10 feet.		
2-3 feet xxx Heavy Specimens—Solid Balls—B&B.....	6.00	55.00
3-4 " xxx " " " " " " .....	8.00	75.00
<b>Juniperus Chinensis Procumbens (Japanese Creeping Juniper)</b>		
A dwarf variety from Japan, with robust, spreading, procumbent branches and short branchlets. There is considerable variance among varieties offered as <i>Procumbens</i> , but we are careful to propagate only from the true strain consisting of hardy, compact growing plants.		
1-1½ feet xxx Heavy Specimens—Solid Balls—B&B.....	4.00	37.50
1½-2 " xxx " " " " " " .....	5.00	45.00
<b>Juniperus Communis Depressa See Juniperus Canadensis</b>		
<b>Juniperus Sabina (Savin Juniper)</b>		
Native of Central and Southern Europe. Prefers dry, rocky, sunny slopes. Very hardy, growing from 4,000 to 10,000 feet above sea level. The Savin Juniper was introduced into British gardens at a very early date, as it is mentioned in Turner's "Names of Herbes," published in 1548. Color is a dark green.		
1-1½ feet xxx Heavy Specimens—Solid Balls—B&B.....	4.00	35.00
<b>Juniperus Sabina Horizontalis</b>		
An interesting type of <i>Sabina</i> produced from seed we procured from Russia for the first time in 1916 of absolute hardiness. Three distinct types are noticeable, some procumbent, others semi-dwarf having interesting variations in foliage. Possesses wonderful possibilities and should be given a trial by everyone interested in Conifer culture. Our stock is limited.		
1-1½ feet xxx Heavy Specimens—Solid Balls—B&B .....	3.25	27.50
<b>Juniperus Sabina Tamariscifolia</b>		
Another good creeper. The foliage is fine in texture, average height is one foot with a spread of 6 to 8 feet when full grown. Sometimes called Gray Carpet Juniper and the name <i>Tamarisk Leaved Juniper</i> is also applied to it. It is said to occur wild in Sicily, Greece and other places. Our stock is propagated from true stock from the Kew Gardens.		
1-1½ feet xxx Heavy Specimens—Solid Balls—B&B.....	4.00	37.50
1½-2 " xxx " " " " " " .....	5.00	45.00
<b>Juniperus Scopulorum (Hill's Silver Juniper)</b>		
The merits of Hill's Silver Juniper are self-apparent to anyone who has seen the tree. It embodies all that could be desired in a narrow pyramidal very close growing Juniper with the increased desirability of exquisite silvery blue coloring, equal to the Blue Spruce. The berries, borne abundantly, are smooth and clear blue in color, due to a whitish bloom over the blackish skin.		
Several years' experimenting and testing in various parts of the country have proved conclusively that it is absolutely hardy in the North and well adapted for Southern conditions. Many testimonials from firms and individuals confirm its worth.		
1½-2 feet xxx Heavy Specimens—Solid Balls—B&B.....	4.00	35.00
<b>Juniperus Virginialis Globosa Light Green.</b>		
A good globe form with light green foliage, very desirable, hardy and comparatively scarce.		
12-15 inch xxx Heavy Specimens—Solid Balls—B&B.....	4.00	37.50
<b>Juniperus Virginialis Globosa Aurea Golden.</b>		
Same as above with bright golden foliage.		
12-15 inch xxx Heavy Specimens—Solid Balls—B&B.....	4.25	40.00
<b>Juniperus Virginiana (Red Cedar)</b>		
Pyramidal habit, dark green to bluish foliage. Our stock is the hardy Northern strain. One of the most useful and characteristic trees of our American landscapes, rivaling the Italian Cypress in beauty. Adapted for planting in all sections of the country. The propagation of this valuable Conifer has been a specialty with us for many years and we exercise great care in the selection of our strain of seed.		
2-3 feet xxx Heavy Specimens—Solid Balls—B&B.....	3.00	25.00
3-4 " xxx " " " " " " .....	3.50	30.00
4-5 " xxx " " " " " " .....	4.50	40.00
5-6 " xxx " " " " " " .....	7.00	60.00
6-7 " xxx " " " " " " .....	11.00	100.00

Each x—Indicates one Transplanting. B&B signifies Balled and Burlapped.  
5 of the same variety and size at the 10 rate.

Variety	Each	10
<b>Juniperus Virginiana Counarti (Counarti Juniper)</b>		
Handsome dark green variety, with foliage of deep rich green. Upright grower, reaching 15 to 20 feet. Our plants are propagated by grafting selected scions of Juniperus Virginiana Counarti on native Juniperus Virginiana root, insuring stock true to name and absolutely hardy.		
1½-2 feet xxx Heavy Specimens—Solid Balls—B&B.....	\$4.00	\$37.50
2-3 " xxx " " " " " " .....	4.75	42.50
3-4 " xxx " " " " " " " .....	6.00	55.00
4-5 " xxxx " " " " " " " .....	9.00	85.00

<b>Juniperus Virginiana Elegants Lee (Lee's Golden Juniper)</b>		
A graceful, upright variety with slightly drooping tendencies, reaching about 10 to 15 feet. Each season the new growth is a rich creamy golden color eventually changing to green. This is one of the most beautiful Junipers. Absolutely hardy, and a good grower.		
2-3 feet xxx Heavy Specimens—Solid Balls—B&B.....	6.50	60.00
3-4 " xxx " " " " " " .....	8.00	75.00

<b>Juniperus Virginiana Glauca (Silver Cedar)</b>		
In this variety, the whole of young growths are of almost silvery whiteness, which changes to pale glaucous green in winter. The Juniper Glauca is foremost among the interesting group of Junipers that have been developed from the Juniperus Virginiana (Red Cedar). We constantly strive to improve our strain by careful selection and reproduce only the best types, most true to form, color, compactness and habits of growth. In grafting this tree, we are careful to use for understocks only the dependable Red Cedar, insuring hardiness and longevity.		
2-3 feet xxx Heavy Specimens—Solid Balls—B&B.....	4.00	35.00
3-4 " xxx " " " " " " .....	5.50	50.00
4-5 " xxxx " " " " " " " .....	8.00	75.00

<b>Juniperus Virginiana Pyramidalis</b>		
A variety of distinct merit noticed by A. H. Hill on a visit to the Johannes Von Ehren nurseries, near Berlin, Germany, in 1908, and introduced into the United States the following Spring when we imported all the available stock, 100 trees, 3 feet, which forms the basis of our propagating stock. It is absolutely hardy and a good grower, being narrow, very pyramidal with good dark green foliage.		
2-3 feet xxx Heavy Specimens—Solid Balls—B&B.....	6.00	55.00
3-4 " xxx " " " " " " .....	6.75	62.50

<b>Juniperus Virginiana Schotti (Schotti Juniper)</b>		
A valuable, dense growing pyramidal form, with rather light green foliage, very hardy, grows 15 to 20 feet high.		
2-3 feet xxx Heavy Specimens—Solid Balls—B&B.....	4.00	35.00
3-4 " xxx " " " " " " .....	5.50	50.00
4-5 " xxxx " " " " " " " .....	6.50	60.00

<b>Picea Alba (White Spruce)</b>		
Derives the name White Spruce due to its light frosty green foliage, slightly tinged with blue. Thrives to the best advantage in the colder climates, north of Philadelphia or St. Louis. Although native throughout a wide range, the best types prevail throughout Northern Wisconsin, from where our seed is gathered from carefully selected grounds.		
2-3 feet xxx Heavy Specimens—Solid Balls—B&B.....	3.50	30.00
3-4 " xxx " " " " " " .....	5.00	45.00
4-5 " xxxx " " " " " " " .....	6.00	55.00
7-8 " xxxx " " " " " " " .....	17.50	.....
8-9 " xxxx " " " " " " " .....	20.00	.....
9-10 " xxxx " " " " " " " .....	25.00	.....
10-12 " xxxx " " " " " " " .....	30.00	.....

<b>Picea Canadensis (Black Hill Spruce)</b>		
Somewhat similar and closely related to White Spruce, but much more symmetrical, compact and bushy. Hardest of all Spruces. A native of the Black Hills of South Dakota and first introduced into commercial culture by Mr. D. Hill many years ago, since which time it has been fully tested in all parts of the country and found satisfactory. Foliage varies from green to bluish tint. Found entirely satisfactory north of St. Louis and Philadelphia.		
2-3 feet xxx Heavy Specimens—Solid Balls—B&B.....	4.50	40.00
3-4 " xxx " " " " " " .....	6.00	55.00
4-5 " xxxx " " " " " " " .....	7.00	65.00
5-6 " xxxx " " " " " " " .....	8.00	75.00
6-7 " xxxxx " " " " " " " .....	13.00	.....
7-8 " xxxxx " " " " " " " .....	20.00	.....
8-9 " xxxxx " " " " " " " .....	25.00	.....
9-10 " xxxxx " " " " " " " .....	30.00	.....

<b>Picea Excelsa (Norway Spruce)</b>		
As the Norway Spruce prevails over a wide range of territory in Europe, there are naturally many sources from which to obtain seed. Our careful experiments and close study of this situation for many years has proven conclusively that seed from French and German sources are unreliable for U. S. A. conditions. The French and German seed is easily obtainable and low in price, usually from 75c to \$1.00 per pound, but the really superior type of Norway Spruce exactly suited to U. S. A. conditions comes from high elevations in the Swiss Alps and is always scarce and high in price, usually costing from \$4.00 to \$6.00 per pound. The exclusive use of this seed by us insures a really superior type of Norway Spruce exactly suited to U. S. A. conditions.		
4-5 feet xxxx Heavy Specimens—Solid Balls—B&B.....	3.50	30.00
5-6 " xxxx " " " " " " " .....	5.00	45.00

Each x—Indicates one Transplanting. B&B signifies Balled and Burlapped.  
5 of same variety and size at 10 rate.





Variety	Each	10
---------	------	----

**Pinus Mugho (Dwarf Mountain Pine)**

NOTE: See Pinus Mugho Compacta (Hill's Dwarf Mountain Pine), our superior selected strain described below.

**Pinus Mugho Compacta (Hill's Dwarf Mountain Pine)**

Our Pinus Mugho is the genuine true dwarf type, many stemmed, compact, with good dark green color, which it retains throughout the winter. Many inferior forms of this variety offered as Pinus Mugho, are on the market, some of which are loose, open growers and some of upright, irregular habit. The strain we offer is the true dwarf, compact type, and the seed (from the Riesenbirge Range in Silesia), is obtainable only at great expense in small quantity, because of its scarcity. When obtainable, the true seed costs as high as \$15.00 per pound, in contrast to \$1.50 per pound for the common form. Rarely grows over 3 to 6 feet high.

1-1½ feet xxx Heavy Specimens—Solid Balls—B&B.....	\$ 2.25	\$20.00
1½-2 " xxx " " " " " " .....	3.00	25.00
2-2½ " xxx " " " " " " " .....	3.75	32.50

**Pinus Ponderosa (Ponderosa Pine)**

Sometimes called Bull Pine or Western Yellow Pine. The most widely distributed Evergreen of North America. The type found growing in the Black Hills of South Dakota, from where we obtain our seed, is a much superior type, being a hardy, free, upright grower. Very deep rooted and drought resistant. It is a handsome, ornamental tree, with interesting long needles.

2-3 feet xxx Heavy Specimens—Solid Balls—B&B .....	3.00	25.00
--	------	-------

**Pinus Resinosa (Red or Norway Pine)**

Native of the Northern part of the United States, reaching its greatest development in Northern Wisconsin. One of the most ornamental Pines for the North.

2-3 feet xxx Heavy Specimens—Solid Balls—B&B .....	3.00	25.00
3-4 " xxx " " " " " " " .....	3.75	32.50
4-5 " xxx " " " " " " " .....	4.00	35.00

**Pinus Strobus (White Pine)**

The great, well known American timber tree and long used as an ornamental. Grows to a large size of regular, symmetrical growth.

3-4 feet xxx Heavy Specimens—Solid Balls—B&B .....	2.00	15.00
4-5 " xxx " " " " " " " .....	2.50	20.00
5-6 " xxx " " " " " " " .....	3.25	25.00
6-7 " xxx " " " " " " " .....	4.00	30.00
7-8 " xxx " " " " " " " .....	5.50	45.00
8-9 " xxx " " " " " " " .....	6.00	50.00

**Pinus Sylvestris (Scotch Pine)**

The Scotch Pine has a greater geographical distribution than any other Pine. It is spread over the whole of Europe, including the British Isles, and in Asia it occurs throughout nearly the whole of that part of the continent comprised within the Russian Dominions. As a result of this wide range, many different forms are prevalent, many of which are inferior and not suited to the conditions of the American States. We obtain our seed from Sweden, where this form grows best and exactly suited to American conditions, in contrast to seed from Southern Germany, which is low in price, abundant, but produces very inferior stock. We pay as high as \$7.50 per pound to obtain this choice Swedish seed when the German seed is selling on the market for \$1.50 per pound.

2-3 feet xxx Heavy Specimens—Solid Balls—B&B.....	2.75	22.50
3-4 " xxx " " " " " " " .....	3.25	27.50

**Pinus Tanoysha Globosa (Japanese Table Pine)**

A really distinct and valuable variety, lately introduced by us from Japan, its native home. Forms a low growing flat top tree. Delicate light green foliage, an interesting acquisition. It is destined to become more popular when better known.

2-2½ feet xxx Heavy Specimens—Solid Balls—B&B.....	7.00	65.00
--	------	-------

**Taxus Canadensis (American Yew)**

A valuable dwarf Evergreen, seldom ever growing more than two to three feet above the ground. Has densely clothed dark green foliage. Particularly beautiful in autumn, when loaded with scarlet colored fruits. Thrives well in shade. Can be trimmed to any desired shape. Very hardy. Sometimes called Canadian Yew.

1-1½ feet xxx Heavy Specimens—Solid Balls—B&B .....	3.50	32.50
---	------	-------

**Taxus Cuspidata (Japanese Yew) See page 9.**

**Taxus Cuspidata Brevifolia (Dwarf Japanese Yew)**

Similar to Taxus Cuspidata, but is very dwarfish and compact growing. The foliage consists of little bunches of black green foliage. Of irregular and picturesque outline, ultimately becoming 2 to 3 feet high and 5 or more feet wide. Absolutely hardy. It retains its rich dark green color entirely throughout the winter, which, added to its other points of superiority, makes it one of the most valuable Yews. Can be used for low, irregular hedge to separate one garden from another. Grows so slowly in height and keeps in such good condition that it should be considered as the permanent plant in many mixed groups. In time it will become as much the pride of the owner as the Dwarf Boxwood, for it has the same velvety and billowy outline as the Dwarf Boxwood when 50 to 100 years old, with the advantage of being hardier. On a visit of Prof. Sargent, director of the Arnold Arboretum at Jamaica Plain, Massachusetts, to our nurseries in 1915, he was greatly impressed with the fine appearance of our stock of this valuable variety, and mentioned especially about its absolute hardness and adaptability to all American conditions, also the probability of its great popularity, and we are trying to carry out his recommendation to propagate this variety as fast as possible.

1-1½ feet xxx Heavy Specimens—Solid Balls—B&B .....	4.25	40.00
1½-2 " xxx " " " " " " " .....	5.50	52.50

Each x—Indicates one Transplanting. B&B signifies Balled and Burlapped.  
5 of same variety and size at 10 rate.

Variety		Each	10
<b>Taxus Cuspidata (Japanese Yew)</b>			
A distinctly valuable Yew, growing 40 to 50 feet high. Under cultivation, somewhat smaller. Has been cultivated throughout Japan from time immemorial, and introduced into America many years ago, having taken its place as one of the most noteworthy and valuable on the entire list. Originating in the cold high altitudes of Northern Japan from where we obtain our seed, it is found fully able to successfully withstand extremes of heat and cold in America. Grows close, upright and compact. Foliage dark green, fruit bright scarlet.			
1-1½ feet xxx	Heavy Specimens—Solid Balls—B&B	\$ 3.75	\$35.00
1½-2 " xxxx	" " " " " " " " " " " "	4.50	40.00
<b>Thuja Occidentalis (American Arbor Vitae)</b>			
Being the leading and popular Evergreen hedge plant, we grow this variety in large quantities and can furnish twice transplanted sizes in car load lots. This species is also used as an understock for grafting all the different varieties of Thuja. For this purpose the heavier grades of seedlings or the once transplanted size is mainly used. Our annual culture of seedlings reaches several hundred thousand. Growing over such a wide range in its native growths, some trees are open growing and undesirable, but we are careful to obtain our seed from Northern Wisconsin, producing stock of absolute hardiness, good green color and compact habit of growth.			
2-3 feet xxx	Heavy Specimens—Solid Balls—B&B	1.75	15.00
3-4 " xxx	" " " " " " " " " " " "	2.50	20.00
4-5 " xxxx	" " " " " " " " " " " "	4.00	35.00
5-6 " xxxx	" " —Extra Heavy Sheared	7.00	65.00
6-7 " xxxx	" " " " " " " " " " " "	9.00	80.00
7-8 " xxxx	" " " " " " " " " " " "	10.50	95.00
8-9 " xxxxx	" " " " " " " " " " " "	12.00	110.00
<b>Thuja Occidentalis (Sheared Globes)</b>			
15x15 inch xxx	Heavy Specimens—Solid Balls—B&B	3.50	30.00
18x18 " xxx	" " " " " " " " " " " "	4.00	35.00
<b>Thuja Occidentalis Compacta (Parson's Arbor Vitae)</b>			
There is a considerable mixture in this variety in nurseries throughout the country, but we continue to confine our propagation to the true Parsons' form originated by Parsons. It is of slow growth, broad and compact and very hardy, of charming oval form.			
15x15 inch xxx	Heavy Specimens—Solid Balls—B&B	3.00	27.50
<b>Thuja Occidentalis Douglasi Aurea (Douglas Golden Arbor Vitae)</b>			
A really valuable Golden form originated by Robert H. Douglas. A good golden color, not so bright as Peabody's, but a superior grower, forming a broad, bushy, heavy specimen.			
1½-2 feet xxx	Heavy Specimens—Solid Balls—B&B	2.75	25.00
2-3 " xxx	" " " " " " " " " " " "	3.75	35.00
3-4 " xxx	" " " " " " " " " " " "	4.75	42.50
<b>Thuja Occidentalis Douglasi Pyramidalis</b>			
A comparatively new variety, chiefly valuable on account of its crested foliage, deep dark green in color. Reaches a height of 12 to 15 feet.			
1½-2 feet xxx	Heavy Specimens—Solid Balls—B&B	3.00	27.50
2-3 " xxx	" " " " " " " " " " " "	3.75	35.00
3-4 " xxxx	" " " " " " " " " " " "	4.75	42.50
<b>Thuja Occidentalis Lutea (Peabody's Golden Arbor Vitae)</b>			
A distinct golden type, which we have been able to improve considerably by closer selection, propagating only the brightest golden color, producing plants of exceptional merit. Rather slender in habit, reaching 12 to 15 feet high with a diameter of 2 to 2½ feet.			
1-1½ feet xxx	Heavy Specimens—Solid Balls—B&B	2.50	22.50
1½-2 " xxx	" " " " " " " " " " " "	2.75	25.00
2-3 " xxxx	" " " " " " " " " " " "	3.75	32.50
<b>Thuja Occidentalis Pyramidalis (Hill's Pyramidal Arbor Vitae)</b>			
Unfortunately many inferior types are on the market. Our carefully selected strain, which we have improved through years of careful selection and propagation, is of noteworthy value, being the genuine narrow, pyramidal type, retaining its deep green color, summer and winter. It is an especially hardy, vigorous grower, forming a compact, narrow column of dense, dark green foliage. (Please note that our strain of Pyramidal Arbor Vitae does not brown, but retains its bright green color throughout the entire year.)			
2-3 feet xxx	Heavy Specimens—Solid Balls—B&B	2.75	25.00
3-4 " xxx	" " " " " " " " " " " "	3.75	32.50
<b>Thuja Occidentalis Umbraculifera</b>			
Of smaller and denser habit than the type, branchlets slenderer, with yellowish foliage, bronzy in winter.			
1x1 foot xxx	Heavy Specimens—Solid Balls—B&B	3.75	.....
<b>Thuja Occidentalis Wareana Siberica (Siberian Arbor Vitae)</b>			
This well known variety is well worthy of its wide popularity, combining as it does excessive hardiness, regular conical outline, and a peculiar dark green and remarkably dense foliage. Very compact grower.			
1½-2 feet xxx	Heavy Specimens—Solid Balls—B&B	3.75	32.50
2-3 " xxx	" " " " " " " " " " " "	4.25	37.50
3-4 " xxx	" " " " " " " " " " " "	5.50	50.00
<b>Thuja Occidentalis Woodwardi (Woodward's Globe Arbor Vitae)</b>			
Without doubt one of the best globe forms on the list. Originated and introduced by Mr. Jacob Manning, proprietor of the Reading Nurseries, Reading, Massachusetts, and named after his son, J. Woodward Manning. A few plants presented by the introducer shortly before his death to D. Hill, forms the basis of our stock. Therefore, we can justly say that our stock is the true strain.			
15x15 inch xxx	Heavy Specimens—Solid Balls—B&B	3.00	27.50
18x18 " xxx	" " " " " " " " " " " "	4.00	35.00
2x2 feet xxx	" " " " " " " " " " " "	4.75	42.50
<b>Tsuga Canadensis (Hemlock) See Abies Tsuga Canadensis Page 4.</b>			

Each x—Indicates one Transplanting. B&B signifies Balled and Burlapped.  
5 of same variety and size at the 10 rate.





Variety	10	100	1000
<b>Gingko Biloba (Maiden Hair Tree)</b>			
Popularly so named owing to its resemblance to the Maiden Hair Fern. One of the oldest trees in existence. Leaf bearing, yet a conifer, considerably planted in Washington, D. C., as a street tree. Grows 60 to 80 feet.			
10-12 inch o	1 yr. From Seeding Beds.....	\$.....	\$ 8.00 \$70.00

**JUNIPERUS CANADENSIS**

(J. Communis) (J. Communis Depressa)

The well known, valuable, many-stemmed Dwarf Juniper. Rarely exceeds 2 feet in height, good form of Juniper for ground cover. It is at home on sandy or gravelly hill sides fully exposed to the sun, where single plants often reach 15 feet or more in diameter. Is sometimes catalogued as Juniperus Communis which is erroneous. The name Juniperus Communis Depressa is also applied, which is a synonym. Grows native in various sections of the country, but we obtain our seed from Northern Wisconsin, which is the superior type.

		10	100	1000
6-8 inch o	2 yr. From Seedling Beds .....	\$.....	\$10.00	\$90.00
8-10 " x	Once Transplanted—Bedded Stock.....	.....	20.00	.....
10-12 " xx	Twice Transplanted—From Field Rows..	6.00	50.00	.....
12-18 " xx	" " " " " " " " " " " "	7.50	65.00	.....

**Juniperus Chinensis Procumbens (Japanese Trailing Juniper)**

A dwarf variety from Japan, with robust, spreading, procumbent branches and short branchlets. There is considerable variance among varieties offered as Procumbens, but we are careful to propagate only from the true strain consisting of hardy, compact growing plants.

6-8 inch x	Once Transplanted—Bedded Stock.....	4.25	.....	.....
------------	-------------------------------------	------	-------	-------

**Juniperus Chinensis Stricta**

A variation from the type having a more tapering form, growing broader at the base. Foliage extremely glaucous. A good compact grower of medium height.

10-12 inch xx	Twice Transplanted—From Field Rows.....	7.50	70.00	.....
---------------	---	------	-------	-------

**Juniperus Communis (English Juniper)**

Good upright grower, narrow, pyramidal form, light green foliage. Very popular.

6-8 inch o	2 yr. From Seeding Beds.....	.....	6.00	50.00
------------	------------------------------	-------	------	-------

**Juniperus Communis Depressa (See Juniperus Canadensis)**

**Juniperus Sabina (Savin Juniper)**

Native of Central and Southern Europe. Prefers dry, rocky, sunny slopes. Very hardy, growing from 4,000 to 10,000 feet above sea level. The Savin Juniper was introduced into British gardens at a very early date, as it is mentioned in Turner's "Names of Herbes" published in 1548. Color is a dark green.

6-8 inch x	Once Transplanted—Bedded Stock.....	3.75	30.00	.....
8-10 " xx	Twice Transplanted—From Field Rows.....	6.50	60.00	.....

**Juniperus Sabina Horizontalis**

An interesting type of Sabina produced from seed we procured from Russia for the first time in 1916, of absolute hardness. Three distinct types are noticeable, some procumbent, others semi-dwarf having interesting variations in foliage. Possesses wonderful possibilities and should be given a trial by every one interested in Conifer culture. Our stock is limited.

6-8 inch x	Once Transplanted—Bedded Stock.....	.....	32.50	.....
12-18 " xx	Twice Transplanted—From Field Rows.....	7.00	62.50	.....

**Juniperus Sabina Prostrata (Hill's Waukegan Juniper) (Superior Blue Type)**

A prostrate and creeping Juniper found growing along the Western shores of Lake Michigan. First extensively propagated and introduced to the trade by D. Hill. The type we have developed is a close compact grower with silvery blue foliage. Very striking. Excellent for ground cover or terrace planting. Has handsome winter color due to action of the frost.

6-8 inch x	Once Transplanted—Bedded Stock.....	4.25	32.50	.....
------------	-------------------------------------	------	-------	-------

**Juniperus Scopulorum (Hill's Silver Juniper) See Page 13.**

**RED CEDAR (Juniperus Virginiana)**

Platte River Type—Very Uniform

Pyramidal habit, dark green to bluish foliage. Our stock is the hardy northern strain. One of the most useful and characteristic trees of our American landscapes, rivaling the Italian Cypress in beauty. Adapted for planting in all sections of the country. The propagation of this valuable Conifer has been a specialty with us for many years and we exercise great care in the selection of our strain of seed. Also used as an understock for grafting Junipers.

		10	100	1000
4-6 inch o	2 yr. From Seedling Beds.....	\$.....	\$ 5.00	\$40.00
6-8 " o	2 yr. " " " " " " " " " " " "	.....	6.50	55.00
8-10 " o	3 yr. " " " " " " " " " " " "	.....	7.50	65.00
12-18 " xx	Twice Transplanted—From Field Rows..	3.00	25.00	225.00
18-24 " xx	" " " " " " " " " " " "	3.75	32.50	300.00
2-3 feet xx	" " " " " " " " " " " "	5.50	45.00	400.00

o—Indicates never Transplanted. Suitable for Bedding Out.

Each x indicates one Transplanting.

5 of the same variety and size at 10 rate; 50 at 100 rate; 500 at 1000 rate.

Variety	10	100	1000
<b>Juniperus Scopulorum (Hill's Silver Juniper)</b>			
Neat pyramidal habit, fine silvery blue. New introduction—from the Rocky Mountains, very choice and valuable. Grows from cuttings or seedlings. For illustration see page 18.			
4-6 inch o 2 yr. From Seedling Beds.....	\$.....	\$13.50	\$125.00
6-8 " o 2 yr. " " " .....	.....	16.50	155.00

<b>Juniperus Virginiana Kosteri</b>			
Semi-dwarf habit, naturally spreading, foliage dense. Good strong grower. Very hardy. Marine blue in color.			
8-10 inch x Once Transplanted—Bedded Stock .....	4.25	32.50	.....

<b>Larix Europea (European Larch)</b>			
The European Larch is a deciduous Conifer, similar in form and size to our native Tamarack. The good qualities of the Larch have been proved by long experience and it is now looked upon by many as almost a native tree. We obtain our seed from Scotland where the best type is found.			
10-12 inch o 3 yr. From Seedling Beds.....	.....	4.50	30.00
12-18 " o 3 yr. " " " .....	.....	6.00	35.00
12-18 " xx Twice Transplanted—From Field Rows.....	2.50	20.00	.....
18-24 " xx " " " " " .....	3.00	25.00	.....

<b>Larix Occidentalis (Western Larch)</b>			
3-6 inch o 2 yr. From Seedling Beds.....	.....	7.50	65.00

<b>Pachysandra Terminalis (Japanese Spurge)</b>			
A splendid Evergreen ground cover with thick glossy foliage, forming a dense mat, making low growing cover plant, excellent for edging. Does well in dense shade. Hardy.			
4-6 inch x Once Transplanted—Bedded Stock.....	.....	8.50	70.00
6-8 " x " " " " .....	.....	9.50	85.00

<b>Picea Alba (White Spruce)</b>			
Derives the name White Spruce due to its light frosty green foliage, slightly tinged with blue. Thrives to the best advantage in the colder climates, north of Philadelphia or St. Louis. Although native throughout a wide range, the best types prevail throughout Northern Wisconsin, from where our seed is gathered from carefully selected grounds.			
6-8 inch o 2 yr. From Seedling Beds.....	.....	6.50	55.00
8-10 " x Once Transplanted—Bedded Stock.....	.....	12.00	110.00
10-12 " xx Twice Transplanted—From Field Rows.....	3.00	25.00	.....
12-18 " xx " " " " " .....	3.75	32.50	.....
18-24 " xx " " " " " .....	4.50	40.00	.....

<b>Picea Canadensis (Black Hill Spruce)</b>			
Somewhat similar and closely related to White Spruce, but much more symmetrical, compact and bushy. Hardest of all Spruces. A native of the Black Hills of South Dakota and first introduced into commercial culture by Mr. D. Hill many years ago, since which time it has been fully tested in all parts of the country and found satisfactory. Foliage varies from green to bluish tint. Found entirely satisfactory north of St. Louis and Philadelphia.			
4-6 inch o 3 yr. From Seedling Beds.....	.....	11.50	100.00
10-12 " xx Twice Transplanted—From Field Rows.....	4.50	40.00	.....
12-18 " xx " " " " " .....	5.00	45.00	.....

<b>Picea Engelmanni (Engelman Spruce)</b>			
One of the natives of the Rocky Mountains of Colorado. Resembles Picea Alba more than it does its near neighbor Picea Pungens, being of finer foliage and not such stiff branches as the latter.			
4-6 inch o 3 yr. From Seedling Beds.....	.....	4.50	35.00
6-8 " xx Twice Transplanted—From Field Rows.....	5.00	45.00	.....
10-12 " xx " " " " " .....	7.50	65.00	.....
12-18 " xx " " " " " .....	9.00	85.00	.....

**NORWAY SPRUCE**

(Picea Excelsa)

We are growers on the very largest scale of this popular fast growing Evergreen. Seedlings are produced in million lots and our annual transplantings now exceed over 500,000 plants every year. Chiefly valuable for screen and farm windbreak planting in the standard grades of twice transplants 10-12 inch, 12-18 inch, 18-24 inch and 2-3 feet. Car-load lots a specialty. It is also rapidly becoming popular for Xmas trees. As the Norway Spruce prevails over a wide range of territory in Europe, there are naturally many sources from which to obtain seed. Our careful experiments and close study of this situation for many years has proven conclusively that seed from French and German sources are unreliable for U. S. A. conditions. The French and German seed is easily obtainable and low in price, usually from 75c to \$1.00 per pound, but the really superior type of Norway Spruce exactly suited to U. S. A. conditions come from high elevations in the Swiss Alps and is always scarce and high in price, usually costing from \$4.00 to \$6.00 per pound. The exclusive use of this seed by us insures a really superior type of Norway Spruce exactly suited to U. S. A. conditions.

	10	100	1000
4-6 inch o 3 yr. From Seedling Beds .....	\$ 3.50	\$20.00	
6-8 " o 3 yr. " " " .....	4.00	25.00	
8-10 " o 4 yr. " " " .....	4.50	30.00	
8-10 " x Once Transplanted—Bedded Stock.....	.....	7.50	65.00
10-12 " xx Twice Transplanted .....	1.75	12.50	120.00
12-18 " xx " " " .....	2.25	17.50	165.00
18-24 " xx " " " .....	3.25	27.50	265.00
2-3 feet xx " " " .....	4.25	32.50	315.00

o—Indicates never Transplanted. Suitable for Bedding Out.

Each x—Indicates one Transplanting.

5 of same variety and size at 10 rate; 50 at 100 rate; 500 at 1000 rate.

Variety		10	100	1000
<b>Picea Pungens (Colorado Blue Spruce)</b>				
A leading specialty with us. The stock offered below is nursery run, containing both blue and green trees. Our careful collection of seed from the bluest trees insures an unusual high percentage of blue trees. Many authorities agree that the selected seedling trees (compared to grafted trees) are more satisfactory, and eventually make much finer specimens. We obtain our seed from the Colorado Rockies, the blue forms being glistening silvery blue in color. This handsome Spruce was discovered on Pike's Peak, by Dr. Parry, in 1862.				
4-6	inch o	3 yr. From Seedling Beds	\$.....	\$ 7.00 \$55.00
6-8	" o	3 yr. " " "	.....	8.00 70.00
6-8	" x	Once Transplanted—Bedded Stock	.....	14.00 130.00
8-10	" x	" " "	.....	16.50 155.00
6-10	" xx	Twice Transplanted—From Field Rows	3.75	32.50 .....
10-12	" xx	" " " " "	4.50	40.00 .....
12-18	" xx	" " " " "	5.00	45.00 .....

<b>Picea Rubra (Red Spruce)</b>				
A tree growing to 80 feet with short and slender branches forming a narrow pyramidal head. Range from N. Carolina to along the Alleghany Mountains. Handsome tree, but requires cool and moist situation, and is less drought enduring than most others.				
4-6	inch o	3 yr. From Seedling Beds	.....	8.00 65.00

<b>Pinus Austriaca (Austrian Pine)</b>				
Is sometimes called Black Pine. Has rich glossy dark foliage. Well adapted for planting in cities, as it is highly resistant to smoke. Its native home is in the lower provinces of Austria and also the northern half of the Balkan Peninsula. A fast growing, dense tree of wonderful adaptability. For years we have secured our seeds from original sources in Austria, but since the war are now using carefully selected home grown seed which has proven as satisfactory or even more so than the imported seed.				
4-6	inch o	3 yr. From Seedling Beds	.....	7.00 55.00
6-8	" o	3 yr. " " "	.....	8.50 70.00
6-10	" x	Once Transplanted—Bedded Stock	.....	15.00 140.00
8-10	" xx	Twice Transplanted—From Field Rows	2.75	22.50 .....
10-12	" xx	" " " " "	3.50	30.00 .....
12-18	" xx	" " " " "	4.00	35.00 .....

<b>Pinus Banksiana (Jack Pine)</b>				
Fast growing pine well adapted to rough gravelly and sandy locations. Not particularly recommended for ornamental use, but largely for planting on dry sandy soils and hot climates such as certain sections of Nebraska, Kansas and the Dakotas. Grows and thrives on barren soils where other trees could not live.				
8-10	inch o	2 yr. From Seedling Beds	.....	3.00 20.00
10-12	" o	3 yr. " " "	.....	3.50 25.00
12-18	" xx	Twice Transplanted—From Field Rows	2.50	20.00 .....
18-24	" xx	" " " " "	3.00	25.00 .....
2-3	feet xx	" " " " "	4.25	32.50 .....

<b>Pinus Flexilis (Limber Pine)</b>				
Fine blue color. Hardy.				
6-10	inch xx	Twice Transplanted—From Field Rows	3.75	32.50 .....

<b>Pinus Montana Uncinata (Single Stem Mountain Pine)</b>				
An upright form of the Mountain Pine found growing naturally in the Mountains of Italy, also abundant in the Spanish Mountains. It differs from the Mugho Pine in that it has a main stem, or leader, which predominates the tree; the other branches growing closely up around it in successive lengths, forming a compact, conical-shaped Pine, broad at the base and tapering at the top.				
10-12	inch xx	Twice Transplanted—From Field Rows	5.00	45.00 .....

**Pinus Mugho (Dwarf Mountain Pine)**  
 NOTE: See Pinus Mugho Compacta (Hill's Dwarf Mountain Pine), our superior selected strain described below.

**HILL'S DWARF MOUNTAIN PINE**  
*Pinus Mugho Compacta*  
 True Dwarf Type

Our Pinus Mugho is the genuine true dwarf type, many stemmed, compact, with good dark green color, which it retains throughout the winter. Many inferior forms of this variety offered as Pinus Mugho, are on the market, some of which are loose, open growers and some of upright, irregular habit. The strain we offer is the true dwarf, compact type, and the seed (from the Riesenbirge Range in Silesia), is obtainable only at great expense in small quantity, because of its scarcity. When obtainable, the true seed costs as high as \$15.00 per pound, in contrast to \$1.50 per pound for the common form. Rarely grows over 3 to 6 feet high.

6-8	inch x	Once Transplanted-Bedded Stock	\$.....	\$20.00	\$.....
8-10	" xx	Twice Transplanted—From Field Rows	6.00	50.00	.....
10-12	" xx	" " " " "	7.00	60.00	.....

o—Indicates never Transplanted. Suitable for Bedding Out.  
 Each x—Indicates one Transplanting.  
 5 of same variety and size at 10 rate; 50 at 100 rate; 500 at 1000 rate.



Variety	10	100	1000
<b>Pinus Ponderosa (Ponderosa Pine)</b>			
Sometimes called Bull Pine or Western Yellow Pine. The most widely distributed Evergreen of North America. The type found growing in the Black Hills of South Dakota, from where we obtain our seed, is a much superior type, being a hardy, free upright grower. Very deep rooted and drought resistant. It is a handsome, ornamental tree, with interesting long needles.			
4-6 inch o 2 yr. From Seedling Beds.....	\$.....	\$ 3.00	\$20.00
6-8 " o 3 yr. " " " .....	.....	3.50	25.00
8-10 " o 3 yr. " " " .....	.....	4.50	30.00
10-12 " xx Twice Transplanted—From Field Rows .....	2.50	20.00	.....
12-18 " xx " " " " " .....	3.00	25.00	.....
18-24 " xx " " " " " .....	3.75	32.50	.....

<b>Pinus Rigida (Pitch Pine)</b>			
Tree of medium size. Hardy, grows on dry and sterile soil. As an ornamental tree, may be used on dry and rocky slopes where it becomes very picturesque when older.			
8-10 inch o 2 yr. From Seedling Beds .....	.....	3.00	20.00

<b>Pinus Strobus (White Pine)</b>			
The great, well known American timber tree and long used as an ornamental. Grows to large size of regular, symmetrical growth.			
6-8 inch o 2 yr. From Seedling Beds .....	.....	2.75	16.50
6-8 " x Once Transplanted—Bedded Stock .....	.....	11.50	100.00
12-18 " xx Twice Transplanted—From Field Rows.....	2.50	20.00	.....
18-24 " xx " " " " " .....	3.00	25.00	.....
2-3 feet xx " " " " " " .....	3.75	32.50	.....
3-4 " xx " " " " " .....	5.00	40.00	.....

<b>Pinus Sylvestris (Scotch Pine)</b>			
The Scotch Pine has a greater geographical distribution than any other Pine. It is spread over the whole of Europe including the British Isles, and in Asia it occurs throughout nearly the whole of that part of the continent comprised within the Russian Dominions. As a result of this wide range, many different forms are prevalent, many of which are inferior and not suited to the conditions of the American States. We obtain our seed from Sweden where this form grows best and exactly suited to American conditions, in contrast to seed from Southern Germany which is low in price, abundant, but produces very inferior stock. We pay as high as \$7.50 per pound to obtain this choice Swedish seed when the German seed is selling on the market for \$1.50 per pound.			
4-6 inch o 3 yr. From Seedling Beds .....	.....	3.00	20.00
10-12 " xx Twice Transplanted—From Field Rows .....	2.50	20.00	.....
12-18 " xx " " " " " .....	3.00	25.00	.....
18-24 " xx " " " " " .....	3.75	32.50	.....
2-3 feet xx " " " " " .....	5.00	40.00	.....

<b>Retinospora Obtusa Crippsi</b>			
6-8 inch x Once Transplanted—Bedded Stock .....	5.00	.....	.....

<b>Retinospora Plumosa Aurea</b>			
A small dense tree of conical outline. The terminal shoots are tipped with light golden yellow, which gradually subsides to deep green as the season advances, and is succeeded in the following year by a renewal of the golden growth. One of the most popular varieties.			
6-8 inch x Once Transplanted—Bedded Stock .....	3.00	25.00	.....

<b>Retinospora Squarrosa Veitchii</b>			
A low, densely branched tree with feathery spreading branches. Foliage silvery blue, soft and dense. Very distinct.			
6-8 inch x Once Transplanted—Bedded Stock .....	3.50	30.00	.....

<b>Taxus Canadensis (American Yew)</b>			
A valuable dwarf Evergreen, seldom ever growing more than two to three feet above the ground. Has densely clothed dark green foliage. Particularly beautiful in autumn when loaded with scarlet colored fruits. Thrives well in shade. Can be trimmed to any desired shape. Very hardy. Sometimes called Canadian Yew.			
10-12 inch x Once Transplanted—Bedded Stock .....	3.00	20.00	.....

<b>Taxus Cuspidata (Japanese Yew)</b>			
A distinctly valuable Yew, growing 40 to 50 feet high. Under cultivation, somewhat smaller. Has been cultivated throughout Japan from time immemorial, and introduced into America many years ago, having taken its place as one of the most noteworthy and valuable on the entire list. Originating in the cold high altitudes of Northern Japan from where we obtain our seed, it is found fully able to successfully withstand extremes of heat and cold in America. Grows close, upright and compact. Foliage dark green, fruit bright scarlet.			
6-8 inch x Once Transplanted—Bedded Stock .....	.....	35.00	.....

<b>Taxus Cuspidata Capitata</b>			
A narrow pyramidal growing form of the Japanese Yew which is an improvement over the parent form.			
6-8 inch x Once Transplanted—Bedded Stock .....	3.75	32.50	.....

<b>Taxus Polycarpus</b>			
6-8 inch x Once Transplanted—Bedded Stock .....	4.50	.....	.....

<b>Taxus Repandens (Spreading English Yew)</b>			
A dwarf spreading variety, excellent for edging, grouping and covering banks. Foliage lustrous green. Not hardy in the North, but does well in mild climates.			
6-8 inch x Once Transplanted—Bedded Stock .....	4.25	32.50	.....

o—Indicates never Transplanted. Suitable for Bedding Out.

Each x—Indicates one Transplanting.

5 of same variety and size at 10 rate; 50 at 100 rate; 500 at 1,000 rate.



Variety	10	100	1000
<b>Thuja Occidentalis Spicata Alba</b> (Hill's White Tipped Arbor Vitae) Tips of young shoots creamy white. Very desirable.			
6-8 inch x Once Transplanted—Bedded Stock .....	\$ 3.75	\$32.50	\$.....
<b>Thuja Occidentalis Umbraculifera</b> Of smaller and denser habit than the type, branchlets slenderer, with yellowish foliage, bronzy in winter.			
6-8 inch x Once Transplanted—Bedded Stock .....	3.75	32.50	.....
<b>Thuja Occidentalis Vervaeneana</b> Light golden. Natural pyramidal habit, compact in outline. Attains great beauty as the tree develops.			
6-8 inch x Once Transplanted—Bedded Stock .....	3.75	32.50	.....
<b>Thuja Occidentalis Wareana Lutea</b> A golden foliated type of the well known Siberian Arbor Vitae, very desirable.			
6-8 inch x Once Transplanted—Bedded Stock .....	3.00	25.00	.....
<b>Thuja Occidentalis Wareana Siberica</b> (Siberian Arbor Vitae) This well known variety is well worthy of its wide popularity, combining as it does excessive hardiness, regular conical outline, and a peculiar dark green and remarkably dense foliage. Very compact grower.			
6-8 inch x Once Transplanted—Bedded Stock .....	.....	25.00	.....
10-12 " xx Twice Transplanted—From Field Rows .....	5.50	50.00	.....
<b>Thuja Occidentalis Woodwardi</b> (Woodward's Globe Arbor Vitae) Without doubt one of the best globe forms on the list. Originated and introduced by Mr. Jacob Manning, Proprietor of the Reading Nurseries, Reading, Massachusetts, and named after his son, J. Woodward Manning. A few plants presented by the introducer shortly before his death to D. Hill, forms the basis of our stock. Therefore, we can justly say that our stock is the true strain.			
6-8 inch x Once Transplanted—Bedded Stock .....	.....	6.50	50.00
<b>Thuja Biota Orientalis</b> (Chinese Arbor Vitae) We have been growing this variety successfully for many years. Our plants are propagated from seed obtained in northern China, insuring the genuine pure strain, best adapted for planting in South-Eastern, Southern and Pacific Coast States.			
6-8 inch o 2 yr. From Seedling Beds .....	.....	4.00	25.00
8-10 " o 2 yr. " " " .....	.....	4.50	35.90
8-10 " x Once Transplanted—Bedded Stock.....	.....	5.50	45.00
10-12 " x " " " .....	.....	6.50	55.00

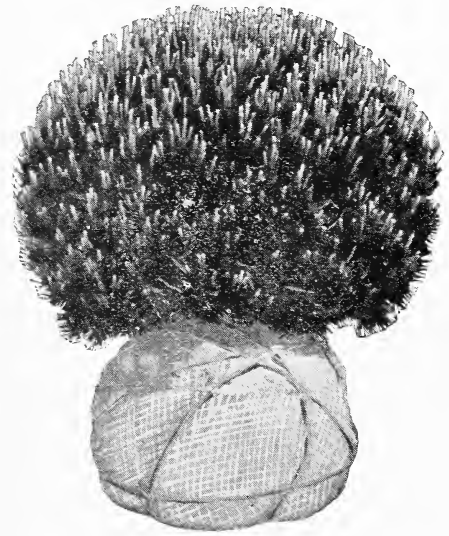
**Tsuga Canadensis** (Hemlock)  
Owing to the fact that the botanical name of Hemlock is known to some as Abies and others as Tsuga, we have listed under both, and the description under Abies Tsuga Canadensis on page 4 will apply equally to this.

6-8 inch x Once Transplanted—Bedded Stock .....	.....	18.50	175.00
8-10 " x " " " .....	.....	21.00	200.00

o—Indicates never Transplanted. Suitable for Bedding Out.  
 Each x—Indicates one Transplanting.  
 5 of same variety and size at 10 rate; 50 at 100 rate; 500 at 1000 rate.

## Special Offer No. 2 Hill's Dwarf Mountain Pine *(Pinus Mugho Compacta)*

1 to 1½ feet  
 BALLED AND BURLAPPED  
**\$2.25 Each**  
**\$20.00 per 10**



This is the genuine true dwarf type, many stemmed, compact, with good dark green color, which it retains throughout the winter. The branches in the Spring tipped with the new growth, closely resemble tiny candlesticks over the entire tree.

Truly a sensational triumph in Evergreen growing. Described by an eminent horticulturist as a "marvel of rich beauty." It grows to perfection in all parts of the country and is absolutely hardy.

**HILL'S DWARF MOUNTAIN PINE**  
*(Pinus Mugho Compacta)*



# Twice Transplanted Evergreens

## For Lining Out

The sizes offered here are suitable to line out directly into open field rows to grow on for specimens. They have been growing in field rows in the nursery and are strong, thrifty and well rooted.

Variety	Inch	10	100
Abies Balsamea Fraseri . . . . .	xx 10-12	\$ 3.75	\$32.50
Abies Concolor (Concolor Fir) . . . . .	xx 8-10	4.50	40.00
“ “ “ “ . . . . .	xx 10-12	5.50	50.00
Abies Douglassi (Douglas Fir) . . . . .	xx 10-12	3.75	32.50
“ “ “ “ . . . . .	xx 12-18	4.50	40.00
“ “ “ “ . . . . .	xx 18-24	10.00	.....
“ “ “ “ . . . . .	xx 24-36	12.50	.....
Juniperus Canadensis (J. Communis) (J. Comm. Depressa) .xx	10-12	6.00	50.00
“ “ “ “ . . . . .	xx 12-18	7.50	65.00
Juniperus Sabina (Savin Juniper) . . . . .	xx 8-10	6.50	60.00
Juniperus Sabina Horizontalis . . . . .	xx 12-18	7.00	62.50
Juniperus Virginiana (Red Cedar) . . . . .	xx 12-18	3.00	25.00
“ “ “ “ . . . . .	xx 18-24	3.75	32.50
“ “ “ “ . . . . .	xx 24-36	5.50	45.00
Larix Europea (European Larch) . . . . .	xx 12-18	2.50	20.00
“ “ “ “ . . . . .	xx 18-24	3.00	25.00
Picea Alba (White Spruce) . . . . .	xx 10-12	3.00	25.00
“ “ “ “ . . . . .	xx 12-18	3.75	32.50
Picea Canadensis (Black Hill Spruce) . . . . .	xx 10-12	4.50	40.00
“ “ “ “ . . . . .	xx 12-18	5.00	45.00
Picea Engelmanni (Engelman Spruce) . . . . .	xx 6-8	5.00	45.00
“ “ “ “ . . . . .	xx 10-12	7.50	.....
“ “ “ “ . . . . .	xx 12-18	9.00	.....
Picea Excelsa (Norway Spruce) . . . . .	xx 10-12	1.75	12.50
“ “ “ “ . . . . .	xx 12-18	2.25	17.50
“ “ “ “ . . . . .	xx 18-24	3.25	27.50
“ “ “ “ . . . . .	xx 24-36	4.25	32.50
Picea Pungens (Colorado Blue Spruce) . . . . .	xx 6-10	3.75	32.50
“ “ “ “ . . . . .	xx 10-12	4.50	40.00
“ “ “ “ . . . . .	xx 12-18	5.00	45.00
Pinus Austriaca (Austrian Pine) . . . . .	xx 8-10	2.75	22.50
“ “ “ “ . . . . .	xx 10-12	3.50	30.00
“ “ “ “ . . . . .	xx 12-18	4.00	35.00
Pinus Banksiana (Jack Pine) . . . . .	xx 12-18	2.50	20.00
“ “ “ “ . . . . .	xx 18-24	3.00	25.00
“ “ “ “ . . . . .	xx 24-36	4.25	32.50
Pinus Flexilis (Limber Pine) . . . . .	xx 6-10	3.75	32.50
Pinus Montana Uncinata (Single Stem Mountain Pine) . . . . .	xx 10-12	5.00	45.00
Pinus Mugho Compacta (Hill's Dwarf Mountain Pine) . . . . .	xx 8-10	6.00	50.00
“ “ “ “ . . . . .	xx 10-12	7.00	60.00
See page 8 for description of Hill's Dwarf Mountain Pine.			
Pinus Ponderosa (Ponderosa Pine) . . . . .	xx 10-12	2.50	20.00
“ “ “ “ . . . . .	xx 12-18	3.00	25.00
“ “ “ “ . . . . .	xx 18-24	3.75	32.50
Pinus Strobus (White Pine) . . . . .	xx 12-18	2.50	20.00
“ “ “ “ . . . . .	xx 18-24	3.00	25.00
“ “ “ “ . . . . .	xx 24-36	3.75	32.50
“ “ “ “ . . . . .	xx 36-48	5.00	40.00
Pinus Sylvestris (Scotch Pine) . . . . .	xx 10-12	2.50	20.00
“ “ “ “ . . . . .	xx 12-18	3.00	25.00
“ “ “ “ . . . . .	xx 18-24	3.75	32.50
“ “ “ “ . . . . .	xx 24-36	5.00	40.00
Thuja Occidentalis (American Arbor Vitae) . . . . .	xx 10-12	1.75	12.50
“ “ “ “ “ . . . . .	xx 12-18	2.50	20.00
“ “ “ “ “ . . . . .	xx 18-24	3.50	25.00
“ “ “ “ “ . . . . .	xx 24-36	3.75	32.50
Thuja Occidentalis Compacta (Parson's Compacta Ar. Vit.) .xx	10-12	4.50	40.00
Thuja Occidentalis Globosa . . . . .	xx 10-12	6.50	50.00
Thuja Occidentalis Hoveyi . . . . .	xx 10-12	5.00	45.00
Thuja Occidentalis Pyramidalis (Hill's Pyramidal Arb. Vit.) .xx	10-12	5.00	45.00
“ “ “ “ “ . . . . .	xx 12-18	6.50	50.00
See page 9 for description of Hill's Pyramidal Arbor Vitae.			
Thuja Occidentalis Wareana Siberica (Sib. Arb. Vit.) . . . . .	xx 10-12	5.50	50.00

Each x—Indicates one Transplanting.

Orders for Twice Transplanted Stock must call for at least 5 of a single variety and size.

# Deciduous Lining Out Stock

## Shade Trees, Shrubs and Vines

The propagation of deciduous young stock is a department we have given special attention. The installation of special equipment, such as overhead watering systems, etc., gives our stock unusual vigor and stockiness. Orders for this stock should be placed early. Samples gladly sent on request.

Variety	Size	100	1000
<b>Acer Platanoides</b> (Norway Maple).....	6-8 inch	\$ 6.50	\$50.00
“ “ “ “ .....	10-12 “	8.50	70.00
Propagated from carefully selected seed from Northern Illinois, insuring hardiness and true type. Should be transplanted close together.			
<b>Acer Saccharum</b> (Hard or Sugar Maple).....	12-18 “	5.00	40.00
<b>Berberis Thunbergii</b> (Japanese Barberry).....	6-8 “	4.50	35.00
“ “ “ “ .....	8-10 “	6.00	50.00
<b>Calycanthus Floridus</b> (Sweet Shrub).....(1 Trans. x)	10-12 “	8.50	70.00
<b>Clematis Paniculata</b> .....	1 yr.	4.50	35.00
<b>Cornus Alternifolia</b> (Alternate leaved Dogwood).....	10-12 “	6.00	50.00
<b>Cornus Paniculata</b> (Panicked Dogwood) .....	12-18 “	8.50	70.00
<b>Cornus Stolonifera Aurea</b> (Yellow) .....	10-12 “	8.50	70.00
<b>Crataegus Arkansiana</b> (Small, Shrublike) .....	12-18 “	9.00	.....
<b>Crataegus Cordata</b> (Washington Thorn).....	10-12 “	8.50	70.00
Our stock is carefully selected, and is the true variety with no mixture.			
<b>Crataegus Forbesae</b> .....	12-18 “	10.00	.....
<b>Crataegus Mollis</b> (Scarlet Thorn) .....	10-12 “	8.50	70.00
<b>Crataegus Pastorum</b> .....	12-18 “	10.00	.....
<b>Crataegus Peryrena</b> .....	12-18 “	10.00	.....
<b>Crataegus Pruinosa</b> (Tall Tree, Flat Top) .....	12-18 “	10.00	.....
<b>Crataegus Prunifolia</b> (Black Fruit) .....	12-18 “	10.00	.....
<b>Crataegus Punctata</b> (Large Fruited Thorn).....	12-18 “	9.50	85.00
<b>Crataegus Splendens</b> .....	12-18 “	10.00	.....
<b>Deutzia Crenata Flore Rosea Pleno</b> (Double Pink).....	6-10 “	10.00	.....
<b>Deutzia Crenata Pride of Rochester</b> (Double Pink).....	10-12 “	11.00	.....
<b>Elaeagnus Angustifolia</b> (Russian Olive).....	12-18 “	6.00	50.00
<b>Evonymus Radicans Acutus</b> .....(1 Trans. x)	12-15 “	15.00	.....
Distinguished on account of its sharp pointed leaves. A good Evergreen Vine. Very attractive. Our stock is extra fine.			
<b>Evonymus Europeus</b> (European Burning Bush).....	10-12 “	9.00	75.00
<b>Evonymus Radicans Vegetus</b> .....	(1 Trans. x) 10-12 “	16.50	.....
A pretty trailing Evergreen vine. Produces an abundance of showy red fruits and yellow pods.			
<b>Exochorda Grandiflora</b> (Pearl Bush) .....	(1 Trans. x) 10-12 “	9.50	85.00
<b>Forsythia Intermedia</b> (Hybrid Golden Bell).....	10-12 “	8.50	70.00
<b>Fraxinus Americana</b> (American White Ash)			
Genuine American White Ash. True free growing form. Seed collected locally from carefully selected trees. Good understock for grafting Lilaacs. Does not sucker.			
“ “ “ “ “ .....	12-18 “	1.50	8.50
“ “ “ “ “ .....	18-24 “	2.00	11.00
<b>Hicoria Ovata</b> (Shagbark Hickory).....	8-10 “	8.50	70.00
<b>Juglans Nigra</b> (Black Walnut).....	12-18 “	4.50	30.00
We have a splendid lot of Walnut seedlings this season. Strong well rooted plants grown from Northern collected Seed. Extra choice Stock. Price very reasonable.			
<b>Ligustrum Lucidum</b> .....	6-8 “	5.00	35.00
An Evergreen Privet excellent for the South. Of low spreading habit and compact growth.			
<b>Ligustrum Polishi</b> (Polish Privet).....	6-12 “	5.75	42.50
Valuable hedge plant with bluish lustrous foliage. Adaptable to clipping.			
<b>Ligustrum Regelianum</b> (Regels Privet) .....	10-12 “	10.00	.....
<b>Liriodendron Tulipifera</b> (Tulip Poplar).....	18-24 “	6.50	50.00
<b>Lonicera Fragrantissima</b> (Early Fragrant Honeysuckle)....	12-18 “	7.00	55.00
<b>Lonicera Morrowi</b> (Japanese Bush Honeysuckle).....	12-18 “	8.50	70.00
<b>Pachysandra Terminalis</b> (Japanese Spurge)....(1 Trans. x)	4-6 “	8.50	70.00
“ “ “ “ “ .....	(1 Trans. x) 6-8 “	9.50	85.00
<b>Philadelphus Coronarius</b> (Garland Mock Orange).....	12-18 “	8.00	70.00
<b>Philadelphus Coronarius Grand.</b> (Large Flowering).....	10-12 “	8.00	70.00
<b>Prunus Americana</b> (American Wild Plum).....	18-24 “	4.00	30.00
<b>Prunus Davidiana</b> (Chinese Flowering Peach) .....	12-18 “	4.50	35.00

Lining Stock is tied in bundles of 50. Orders should call for multiples of 50.  
50 of same variety and size at the 100 rate. 500 at the 1,000 rate.

Variety	Size	100	1000
Prunus Mahaleb	10-12 inch	\$ 4.00	\$30.00
Prunus Persica (Apricot)	12-18 "	4.00	30.00
Quercus Palustris (Pin Oak)	10-12 "	8.50	70.00
Quercus Rubra (American Red Oak)			
Best strains of Red Oak are native of Northern Michigan from where we obtain our seed, producing trees of exceptional merit and hardiness.			
" " " " "	10-12 "	6.50	55.00
" " " " "	12-18 "	8.50	70.00
Rhus Glabra Laciniata (Cut Leaved Sumac)	18-24 "	15.00	.....
" " " " "	24-36 "	16.50	.....
Robinia Pseudocacia (Black Locust)	12-18 "	4.00	30.00
Rosa Canina (Dog Briar) No. 1 Grade	10-12 "	2.25	12.50
One of the most satisfactory stocks for the use of budding and grafting hybrid roses.			
Rosa Wichuriana (Memorial Rose)	12-18 "	7.00	.....
Salix Diamond (Diamond Willow)	18-24 "	5.00	.....
Salix Dolorosa	18-24 "	6.50	.....
Salix Matsudana (Dry Land Willow)	18-24 "	7.00	.....
Salix Niobe (Golden Bark Weeping Willow)	18-24 "	8.00	.....
A weeping variety with unusually bright golden bark. Very striking.			
Salix Ural (Ural Willow)	18-24 "	5.50	.....
Salix Vetellina (Golden Barked Willow)	18-24 "	6.25	.....
Large tree with bright yellow bark. Very conspicuous in winter.			
Sambucus Canadensis Aurea (Golden Elder)	12-18 "	8.00	70.00
The strain we offer is of unusually fine golden color.			
Sambucus Nigra Laciniata (Cut Leaved Elder)	12-18 "	8.00	70.00
Spirea Froebelli	(1 Trans x) 6-8 "	10.00	.....
Spirea Van Houttei (Bridal Wreath)	6-12 "	6.50	55.00
" " " " "	12-18 "	8.00	75.00
Symphoricarpos Alba (Snowberry) Heavy	12-18 "	5.25	42.50
Symphoricarpos Rubra (Coral Berry)	18-24 "	6.50	55.00
Syringa Amurense (Siberian Lilac)	10-12 "	10.00	.....
Syringa Persica (Persian Lilac)	6-10 "	8.50	70.00
" " " " (1 Trans x)	12-18 "	17.50	.....
Syringa Persica Alba (White Persian Lilac)	6-10 "	9.50	85.00
Syringa Villosa (Himalayan Lilac)	12-18 "	7.00	.....
Syringa Vulgaris (Purple Lilac)	6-8 "	6.50	55.00
Syringa (Lilac)—following, rare, named—varieties, own roots.		25.00	.....
We will supply these choice lilacs in lots of 10 at 35c Each.			
Syringa Chas. Joly (Double Blackish Red)	(1 Trans x) 10-12 inch	35.00	.....
Syringa Mad. Casimer Perier (Dbl. Cr'my. White)	(1 Trans x) 10-12 "	35.00	.....
Syringa Mad. Abel Chatney (Large Milk White)	(1 Trans x) 10-12 "	35.00	.....
Syringa Chas. X (Single Reddish Purple)	(1 Trans x) 10-12 "	35.00	.....
Syringa Marie Le Gray (Single White)	(1 Trans x) 10-12 "	35.00	.....
Syringa Michel Buchner (Double Clear Blue)	(1 Trans x) 10-12 "	35.00	.....
Syringa Pres. Grevy (Double Light Blue)	(1 Trans x) 10-12 "	35.00	.....
Syringa Florent Stepman (Single Pure White)	(1 Trans x) 10-12 "	35.00	.....
Syringa Souv. de la Spathi (Dbl. Blackish Red)	(1 Trans x) 10-12 "	35.00	.....
Syringa Senator Volland (Rose Color)	(1 Trans x) 10-12 "	35.00	.....
Viburnum Cassinoides (Withe Rod)	(1 Trans x) 3-6 "	8.50	.....
Viburnum Dentatum (Arrow Wood)	(1 Trans x) 10-12 "	10.00	90.00
Viburnum Lentago (Nanny Berry)	(1 Trans x) 10-12 "	12.00	110.00
Viburnum Opulus Nana (Dwarf)	(1 Trans x) 4-6 "	14.00	.....

## Forest Tree Seedlings

Since the Hill Nurseries were established, in 1855, the growing of Forest Tree Seedlings has been one of our specialties. We constantly apply increasing care in the selection of seed to insure trueness to type and hardiness. Customers can depend upon getting well graded stock in fine condition. We also grow forest tree seedlings on contract and if interested, will be pleased to figure with you.

Variety	Size	100	1000
Acer Platanoides (Norway Maple)	6-8 inch	\$ 6.50	\$50.00
" " " " "	10-12 "	8.50	70.00
Fraxinus Americana (American White Ash)	12-18 "	1.50	8.50
" " " " "	18-24 "	2.00	11.00
Hicoria Ovata (Shagbark Hickory)	8-10 "	8.50	70.00
Juglans Nigra (Black Walnut)	12-18 "	4.50	30.00
Prunus Americana (American Wild Plum)	18-24 "	4.00	30.00
Quercus Palustris (Pin Oak)	10-12 "	8.50	70.00
Quercus Rubra (American Red Oak)	10-12 "	6.50	55.00
" " " " "	12-18 "	8.50	70.00
Robinia Pseudocacia (Black Locust)	12-18 "	4.00	30.00

Lining Stock is tied in bundles of 50. Orders should call for multiples of 50. 50 of same variety and size at the 100 rate. 500 at the 1,000 rate.

## Lemoines New Deutzias

Magnificent Flowering Sorts—Strong Plants from Two-inch Pots

Variety	10	100
<b>Deutzia Discolor Elegantissima Fasciculata</b> This sort forms spheric bushes of arched branches, covered with a profusion of well expanded flowers, pale pink with a crown of yellow stamina.		
6-12 Inch From 2 inch Pots.....	\$ 2.50	\$15.00
<b>Deutzia Discolor Elegantissima Arcuata</b> The long arched branches carry on their whole length small clusters of about 8 to 10 flowers, with broad round well expanded petals, pure white, and a crown of yellow stamina.		
6-12 Inch From 2 inch Pots.....	3.00	17.50
<b>Deutzia Discolor Rosea Grandiflora</b> Very large well expanded flowers, shining white flushed pink with carmine buds.		
6-12 Inch From 2 inch Pots.....	3.25	20.00
<b>Deutzia Gracilis Fastuosa</b> Long spikes with 20 to 25 upright flowers, milk white. Fine for forcing.		
6-12 Inch From 2 inch Pots.....	3.00	17.50
<b>Deutzia Crenata Magnifica</b> This sort begins to flower in the last week of May, a fortnight before the older varieties of D. Crenata. Handsome well expanded full of flowers, pure white, produced in the greatest profusion.		
6-12 Inch From 2 inch Pots.....	4.00	30.00
<b>Deutzia Crenata Magnifica Eburnea</b> Single white flowers, produced in great profusion, borne in light and graceful clusters.		
6-12 Inch From 2 inch Pots.....	2.50	15.00
<b>Deutzia Crenata Magnifica Insignis</b> Branches slender and black, clusters of a peculiar form, double white flowers with brown pedicels and sepals.		
6-12 Inch From 2 inch Pots.....	2.50	15.00

## Lilacs—Named Varieties

Choice Rare Sorts—On Their Own Roots

Variety	10	100
<b>Syringa Chas. Joly</b> One of the most striking dark varieties, color deep red, large double flowers produced in well shaped trusses.		
10-12 Inch Once Transplanted .....	\$4.50	\$35.00
18-24 " Twice Transplanted .....	6.50	.....
<b>Syringa Chas. X</b> A strong rapid grower, leaves dark and shining, trusses large and rather loose, color reddish purple single. Good variety for forcing.		
10-12 Inch Twice Transplanted .....	8.50	.....
<b>Syringa Mad. Abel Chatney</b> Large compact trusses, with milk white flowers.		
10-12 Inch Once Transplanted .....	4.50	35.00
18-24 " Twice Transplanted .....	8.50	.....
<b>Syringa Mad. Casimir Perier</b> Finest double white lilac. The individual flowers, as well as the truss are of immense size.		
10-12 Inch Once Transplanted .....	4.50	35.00
18-24 " Twice Transplanted .....	6.50	.....
<b>Syringa Mad. Florent Stepman</b> Extra large pyramidal trusses of single pure white flowers.		
10-12 Inch Once Transplanted .....	4.50	35.00
<b>Syringa Marie LeGraye</b> Beautiful creamy white flowers of immense size, bush of dwarf habit, one of the most popular white single varieties, good forcer.		
10-12 Inch Once Transplanted .....	4.50	35.00
18-24 " Twice Transplanted .....	8.50	.....
<b>Syringa Michel Buchner</b> Dwarf, pale lilac flowers, very double.		
10-12 Inch Once Transplanted .....	4.50	35.00
18-24 " Twice Transplanted .....	8.50	.....
<b>Syringa Pres. Grevy</b> Very large handsome soft blue flowers, extra double.		
10-12 Inch Once Transplanted .....	4.50	35.00
18-24 " Twice Transplanted .....	6.50	.....
<b>Syringa Senator Volland</b> Large panicles of double rose colored flowers.		
10-12 Inch Once Transplanted .....	4.50	35.00
18-24 " Twice Transplanted .....	6.50	.....
<b>Syringa Souvenir de la Spathi</b> Immense trusses of deep rosy purple flowers. Very choice, single.		
10-12 Inch Once Transplanted .....	4.50	35.00
18-24 " Twice Transplanted .....	6.50	.....

5 of same variety and size at 10 rate, 50 at 100 rate,



## Transplanted Shrubs and Vines

Variety	Size	10	100
Amelanchier Canadensis (Shadbush).....	1½-2 feet	\$2.50	\$20.00
Cornus Amomum (Silky Dogwood) .....	2-3 "	2.50	20.00
Cornus Alternifolia (Alternate Leaved Dogwood).....	2-3 "	2.50	20.00
Cornus Mascula (Cornelian Cherry).....	1-1½ "	2.50	20.00
Cornus Paniculata (Panicked Dogwood).....	2-3 "	2.50	20.00
Cornus Siberica (Siberian Red Osier).....	2-3 "	2.75	22.50
Cotoneaster Acutifolia (Quince Berry) .....	2-3 "	3.75	32.50
Deutzia Gracilis (Slender Deutzia) .....	10-12 inch	2.50	20.00
Deutzia Lemoinei (Lemoines Deutzia).....	10-12 "	2.50	.....
Elaeagnus Angustifolia (Russian Olive) .....	2-3 feet	2.50	20.00
Elaeagnus Edulis .....	2-3 "	2.50	20.00
Evonymus Atropurpurea (Strawberry Bush) .....	1½-2 "	2.50	20.00
Evonymus Vegetus .....	10-12 inch	2.50	20.00
Forsythia Fortunei (Golden Bell).....	2-3 feet	2.50	20.00
Forsythia Intermedia (Hybrid Golden Bell).....	2-3 "	2.50	20.00
Ligustrum Amurense (Amoor River Privet).....	1½-2 "	2.50	20.00
" " " " " " " "	2-3 "	3.00	25.00
Ligustrum Regelanium (Regels Privet).....	2-3 "	3.00	25.00
Lonicera Maackii .....	1½-2 "	2.50	20.00
Lonicera Tatarica Grandiflora (Pink) .....	2-3 "	2.50	20.00
Malus Toringo (Dwarf Crab).....	2-3 "	3.00	25.00
Malus Zumi .....	2-3 "	3.00	25.00
Philadelphus Boquet Blanc .....	1½-2 "	3.75	32.50
Philadelphus Coronarius (Garland Mock Orange) .....	2-3 "	3.00	25.00
Philadelphus Coronarius Grand. (Large Flowering) .....	2-3 "	3.00	25.00
Philadelphus Lemoinei Erectus .....	1½-2 "	3.00	25.00
Philadelphus Mt. Blanc .....	1½-2 "	3.00	25.00
Rhus Glabra Laciniata (Cut Leaved Sumac) .....	1½-2 "	2.50	20.00
" " " " " " " "	2-3 "	3.00	25.00
Rosa Acicularis (American Prickly Rose).....	2-3 "	3.00	25.00
Rosa Blanda (Meadow Rose).....	2-3 "	3.00	25.00
Rosa Manetti .....	2-3 "	3.00	25.00
Rosa Multiflora (Japanese Climbing Rose).....	2-3 "	3.00	25.00
Sambucus Canadensis Aurea (Golden Elder).....	2-3 "	3.00	25.00
Sambucus Nigra Laciniata (Cut Leaved Elder).....	2-3 "	3.00	25.00
Spiraea Anthony Waterer .....	10-12 inch	3.00	25.00
Spiraea Froebelli .....	1½-2 feet	2.50	20.00
Spiraea Van Houttei (Bridal Wreath).....	1½-2 "	2.50	20.00
" " " " " " " "	2-3 "	3.00	25.00
Symphoricarpus Alba (Snowberry) .....	2-3 "	2.50	20.00
Symphoricarpus Rubra (Coral Berry) .....	2-3 "	2.50	20.00
Syringa Persica (Purple Persian Lilac).....	1½-2 "	3.00	25.00
Syringa Persica Alba (White Persian Lilac).....	1½-2 "	3.25	27.50
" " " " " " " "	2-3 "	3.75	32.50
Syringa Vulgaris (Purple Lilac) .....	1½-2 "	3.00	25.00
Syringa Chas. Joly (Dbl. Deep Red).....	1½-2 "	6.50	.....
Syringa Chas. X (Single Reddish Purple).....	10-12 inch	6.50	.....
Syringa Abel Chatney (Milk White).....	1½-2 feet	8.50	.....
Syringa Vulgaris Mad. Casimir Perier (Dbl. Creamy White) .....	1½-2 "	6.50	.....
Syringa Vulgaris Marie Le Gray (Single White).....	1½-2 "	8.50	.....
Syringa Vulgaris Michel Buchner (Double Clear Blue).....	1½-2 "	8.50	.....
Syringa Vulgaris Pres. Grevy (Double Light Blue).....	1½-2 "	6.50	.....
Syringa Vulgaris Senator Volland (Rose color) .....	1½-2 "	6.50	.....
Syringa Vulgaris Souv. de la Spathi (Dbl. Blackish Red)....	1½-2 "	8.50	.....
Viburnum Dentatum .....	1½-2 "	3.00	25.00
Viburnum Lantana (Wayfaring Tree) .....	2-3 "	3.00	25.00
Viburnum Lentago (Nanny Berry) .....	1½-2 "	3.00	25.00
Viburnum Molle .....	1½-2 "	2.50	20.00
Wistaria Chinensis .....	2-3 "	3.00	25.00

## Fruit Tree Stocks

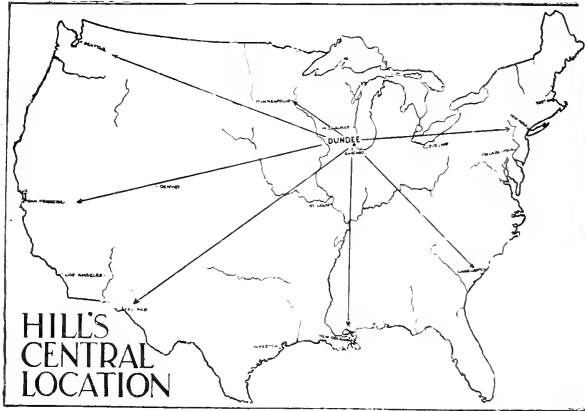
		100	1000
Prunus Americana .....	(Dia.) 2/16—3/16	2.50	15.00
Prunus Davidiana (Amygdalus) Chinese Wild Peach (Dia.) .....	2/16—3/16	3.50	25.00
Prunus Mahaleb .....	2/16—3/16	3.00	20.00
Prunus Persica (Apricot) .....	(Dia.) 2/16—3/16	3.00	20.00

5 of same variety and size at 10 rate, 50 at 100 rate.

# Choice Nursery Stock



Scenes in Hill's Nursery

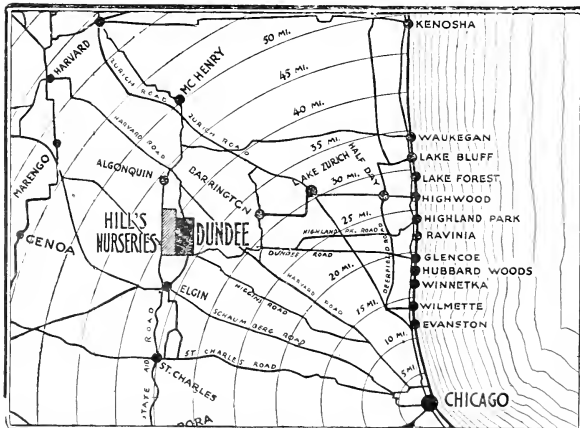


## How to Reach Our Nursery

Visitors are always welcome. We are conveniently located only 42 miles northwest of Chicago.

When coming by the way of Chicago, you are directed to the C. & N. W. Depot on Madison Street, from where it is an interesting ride of one hour and thirty minutes direct to Dundee.

For an hourly service from Chicago, take the A., E. & C. Electric Line at Wells Street and Jackson Boulevard, direct to Elgin, transferring to the Dundee-Carpentersville car, getting off at Stop No. 4, from where it is but a two-minute walk direct to our office, which is located right on the nursery grounds.



Paved road from Chicago brings you direct to our Nursery.