

Historic, Archive Document

Do not assume content reflects current scientific knowledge, policies, or practices.

62.19

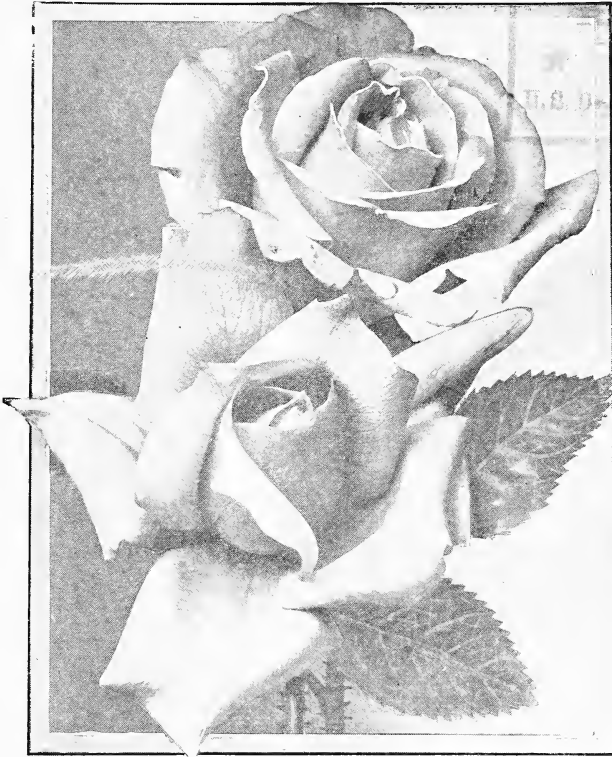
SPRING and
SUMMER

CATALOG 1922

J. E. JACKSON

Piedmont Greenhouses

Gainesville, Georgia



FRANK W. DUNLOP
(See Page 2)

SPECIALTIES: Roses and Chrysanthemums

Useful Greenhouse and Bedding Plants

Largest Grower of Roses in the South

FOREWORD

GET GUARANTEED STOCK FROM A FIRM IN WHICH YOU HAVE FAITH.

The greatest purpose of this catalogue is to acquaint our many friends and customers with a better knowledge of plants for the home and garden. As we send it forth we are glad to say we are in a position to give you better service than ever. Since our last issue we have erected a new, modern, up-to-date office and packing house, with many of our greenhouses reconstructed anew. This brings into line a plant corresponding with the splendid business we have built up in the last thirty-four years and insures to our customers, plants and service of the highest quality.

Our stock of plants was never better than now, all clean, healthy, vigorous, and most important of all, true to name.

Visitors are always welcome; our greenhouses are open to the public.

ROSES OUR SPECIALTY.

We have roses for every garden—old fashioned and right up to the latest and best varieties. Grown in 2½ to 4 inch pots, they will bloom profusely the first year. You will note the sensational "Jackson's Set of 12 Everblooming Roses." It includes many of the best varieties and if you really don't know roses we urge you to try this set. One trial will make you a lover of Roses.

CHRYSANTHEMUMS

Don't fail to notice our "Mum" list, a wonderful collection of the best in America. We ship you plants that will grow and be prize winners. We grow thousands of these beautiful flowers for the trade. Our Mums are known all over the country.

FERNS

We give one large house to Ferns and we offer to you this season two of the latest introductions, Macauii and Verona, they have come to stay with us. We have had them on trial for a year. Macauii is far superior to any of the Boston types. A splendid fern for the amateur as it grows well in the house. Verona looks delicate, but stands erect. It is the best in the Ostrich Plume class. Very easy to grow.

GERANIUMS

We are proud of our Geraniums and they are admired by all who have had the opportunity of seeing them and we have reduced the price to the lowest minimum, so you can share with us the joy of having some of these grand varieties, both single and double.

WEDDING BOUQUETS, CORSAGES and FLORAL DESIGNS.

This work is done by an experienced designer, and we guarantee it to be the best possible, both in quality of flowers and make-up. Great care is exercised in packing. We ship flowers to all points in the country.

WRITE US YOUR TROUBLES AND SUCCESSES

It is always a pleasure to hear from our customers. If you have been successful with our plants, it is encouraging to know it. If at any time you have been dissatisfied, try us again, if given the opportunity, we will adjust it. We want to please you, and we will.

We want the names of every flower lover in the country. Will you help by sending us the names of those whom you know? We will appreciate it, and we will send them by return mail one of our new catalogues.

"MAKE OUR COUNTRY BEAUTIFUL",—this is our motto. We thank you for past favors and we will ever strive to please you.

J. E. JACKSON

Gainesville, Ga.

See Inside Back Cover for Terms.

Jackson's Set of 12 Everblooming Roses for only \$1.00

Each one plainly labeled. All strong, healthy plants, from 2½ inch pots, by express collect or by mail prepaid for \$1.00, with soil off.



Photograph showing size and vigor of my 10c Roses from 2½ inch pots, ready to pack for express orders.

These are selected from among our very best and most beautiful Roses and will surely please any lover of fine Roses. See the price when you select them. I make this offer in order to get the good Roses established among my trade.



Photograph showing the vigorous roots of my 10c Roses, ready to pack for mail orders

REMEMBER—The twelve Roses below are from two and one-half inch pots, for \$1.00, or strong 2-year-old plants from four inch pots, for \$4.00 Satisfaction guaranteed.

Bride—White with delicate flush on outer petals; very beautiful in bud or open flowers; blooms profusely.

Bridesmaid—A fine, clear, dark pink.

Blumenschmidt—Pure citron-yellow, outer petals edged tender rose. A sport from Mad. Francisca Kruger.

Catherine Mermet—Bright flesh color, full and finely formed.

Duchess de Brabant—Soft, rosy pink; good bloomer. A general favorite.

Etoile de Lyon—Beautiful chrome yellow, deepening at center to pure golden yellow.

General de Tartas—A first-class rose for bedding, brilliant carmine, large size; very double, full and fragrant.

Helen Gould—One of the strongest growing and freest blooming Hybrid Teas ever known. In color a rich, glowing crimson. Buds long and pointed, forming full double blooms.

Mad. Camille—Delicate rosy-flesh, changing to salmon-rose; immense double buds.

Mad. Francisca Kruger—Deep yellow, sometimes rich and glowing, and at other times dark, with shadings of copper and rose; large and double.

Maman Cochet—One of the best. It is of strong, vigorous growth; the flowers are large, of perfect form and produced on long, stiff stems. Color deep rose pink, the inner side of the petals being of silvery rose.

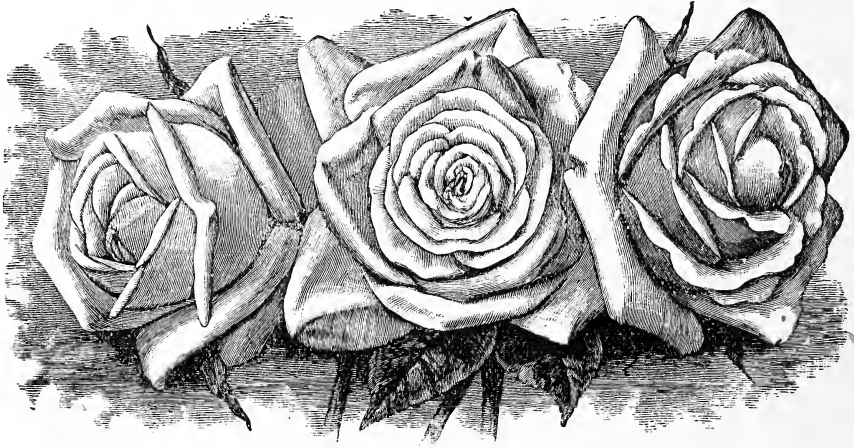
White Maman Cochet—Identical with Maman Cochet, except the color is white; very desirable. Best white rose grown.

IN ORDERING, ASK FOR JACKSON'S SET OF 12 ROSES

MY CATALOGUE IS THE ONLY REPRESENTATIVE I SEND OUT

ROSES

No flower is so universally popular as the Rose, the "Queen of Flowers." It is everywhere wanted and always admired.



Gladys Holland

The demand for roses is increasing every year, and I feel justified in stating that my collection is unsurpassed.

Roses will grow in any ordinary fertile ground, but they are particularly fond of a heavy soil, liberally enriched and well cultivated. The ground should be well spaded and pulverized to the depth of a foot or more, and enriched by digging in a good coat of any well-decayed manure. When the ground is thoroughly prepared, fine and in nice condition, put in the plant slightly deeper than it was before, and cover it with fine earth, taking care to draw it closely around the stems and pack firmly. It is important that the earth be tightly pressed on

roots; water immediately after planting, so as to settle the soil, and if hot or windy, it may be well to shade for a few days. The ground should not be allowed to bake or become hard, but should be stirred frequently with hoe and rake so as to keep light and mellow, as well as free it from weeds and grass. The proper time to prune is early in the spring before growth has commenced; no exact time can be given, as that depends on the locality. The Hybrids must be cut back severely. They bloom best on strong new wood. In pruning the Everblooming Roses all winter killed branches should be removed, also the wood which has become exhausted after several years' blooming, and younger shoots should be allowed to take their place.

CREAM OF THE NEW ROSES

We here offer what is good in the new Tea and Hybrid Tea Roses. To have what is good you must try these Roses. They are the best that England, France, Luxemburg, Germany, Italy, Ireland, Holland and America can produce.

All Nice, Strong, Well-Rooted Plants, from 2½ inch and 4 inch pots.

These Plants are at this date, **October 1, 1921**, rooted and growing in pots.

Alexander Hill Gray—Deep lemon-yellow which intensifies as the blooms develop. A perfectly formed flower with a high-pointed center, 25c; 2 years, 50c.

Columbia (H. T.)—This is a new American Rose, grown by the veteran rosarian E. G. Hill. It is a very vigorous grower of a true pink shade, deepening as it opens to glowing pink. A peculiarity of this variety is that the shades all become more intense until the full maturity of the open flower is reached, and this color is enduring. 35c each; two-year-plants, 75c.

Double White Killarney—Pure white sport from White Killarney; has much larger bud. 50c; 2 years, 75c.

Etoile de France—The Gold Medal Rose of France, and claimed by the raiser, J. Pernet Ducher, of Lyons, France, to be the finest rose he has ever sent out. We believe with him that it has no superior. The flowers are very large and borne on good, long, stiff stems; color a lovely shade of clear crimson velvet; very fragrant. 20c; 2 years, 60c.

Edward Mawley—By its marvelous outstanding qualities is now regarded by rosarians as the

greatest advance and most wonderful rose yet raised. Finest of all dark Crimson Roses. Prices, 2½ inch pots, 20c; 2 years, 60c.

Frau Karl Druschki (The White American Beauty or Snow Queen)—An everywhere hardy, vigorous grower, with bright green leaves delicately veined; splendid long buds and magnificent snow white blooms with large saucer-shaped petals. Rightly named. 50c. 2 years, 75c.

Frank W. Dunlop (Dunlop 1920)—Did you see it at the International Flower Show at New York the past spring? Its record at the exhibition was: Winning silver medal for the best new pink Rose and gold medal sweepstakes for the best seedling in the show. Frank W. Dunlop was the best flower in the exhibition. Claimed to be better than Mrs. Charles Russell. 50c; 2 years, \$1.00.

Gladys Holland (H. T.)—Of magnificent form and size, color buff shaded orange-yellow, outside of petals pearly-peach. Very free flowering. Awarded gold medal National Rose Society of England. 25c; two-year plants, 75c.

Hadley—Color a deep velvety crimson, retaining its brilliancy at all seasons. The variety is double and buds are well formed. The fragrance is excelled only by American Beauty. Strong, rapid grower, and the flowers are borne on long stiff stems. 20c; 2-year-old, 60c.

Hoosier Beauty—If you need a better red rose than you are growing, Hoosier Beauty will fill the bill. Color, glowing crimson-scarlet with velvety crimson shadings. The bud is long and opens into a magnificent bloom; dazzling in its velvety brilliance. 20c; 2-year-old, 60c.

Jonkheer J. L. Mock—This grand rose is the strongest growing in Hybrid Tea class. Color clear imperial pink. Awarded two gold medals, one silver medal, and five first prizes in Europe. 20c; 2-year-old, 60c.

Killarney—A splendid new rose, beautiful pointed buds and extra large flowers; bright coral pink, very fragrant and beautiful. 20c; 2-year-old, 60c.

Los Angeles (H. T.)—The following is the originator's description, all of which we fully endorse: "Los Angeles is, by all odds, one of the finest Roses ever introduced. The growth is very vigorous, and produces a continuous succession of long-stemmed flowers of a luminous, flame-pink, toned with coral and shaded with translucent gold at the base of the petals. In richness of fragrance it equals in intensity the finest Marechal Niel. The buds are long and pointed, and expand into a flower of mammoth proportions, while the beauty of form and ever-increasing wealth of color is maintained from the incipient bud until the last petal drops." 50c each; two-year plants, \$1.00 each.

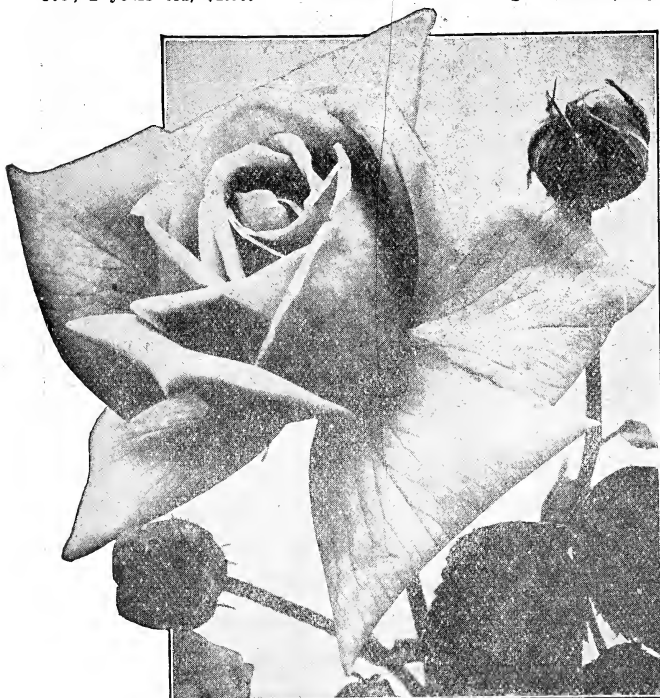
Lady Hillingdon—A long, slender pointed bud of brilliant, deep apricot-yellow; very free flowering and a good grower; a very striking decorative rose. Awarded gold medal. 25c; two years old, 75c.

Mad. Butterfly—Ophelia-like in appearance, but far deeper and richer color. Very attractive. 50c; 2 years old, \$1.00.



Jonkheer J. L. Mock

Mad. Caroline Testout—A charming variety of the LaFrance type; flowers large and double; color bright satiny pink with rose center; strong grower; free flowering and very fragrant. 20c; 2 years, 60c.

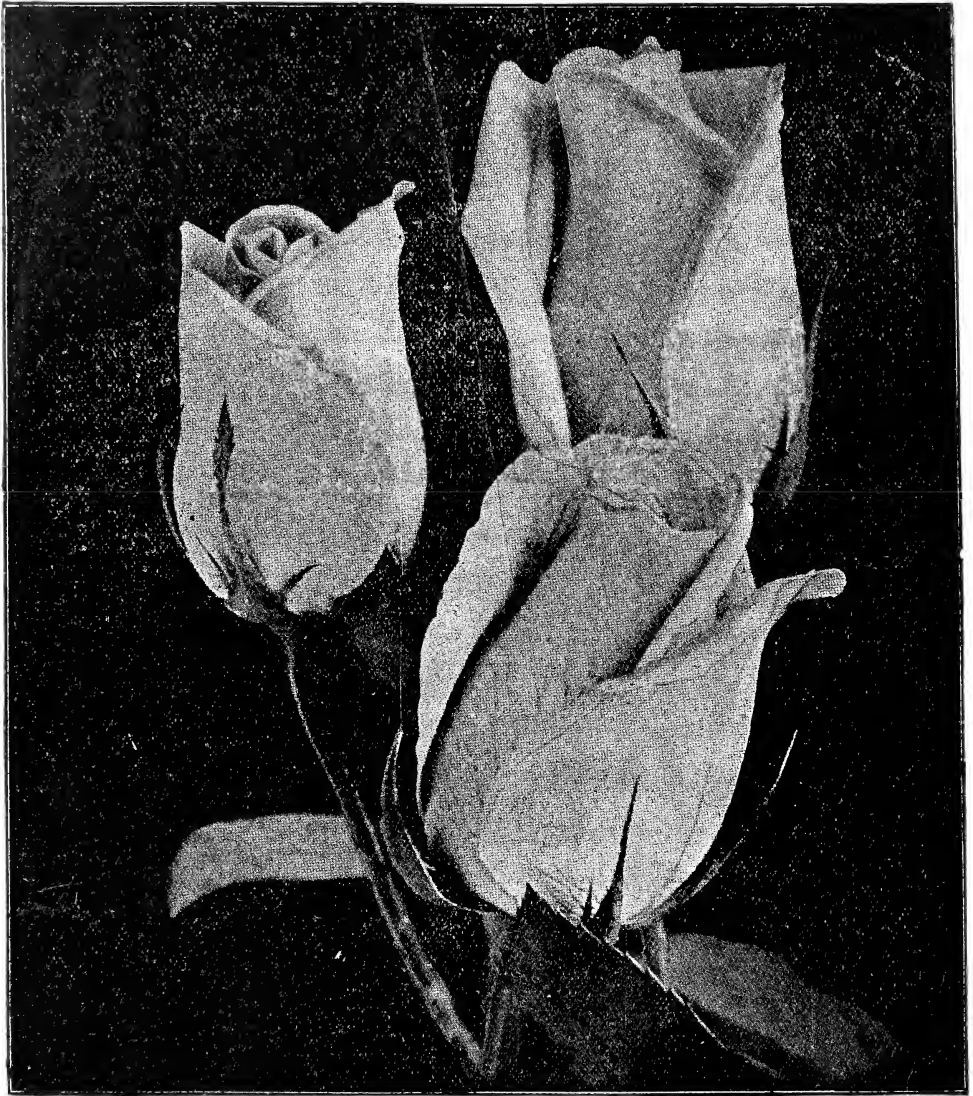


Mad. J. Guillemot

Madame Jenny Guillemot—Deep saffron-yellow, opening canary with dark golden shadings; buds long and pointed; petals and blooms immense. A very beautiful and upright grower and free bloomer. 25c; 2 years, 75c.

Mrs. Aaron Ward—Coppery-orange in the open bud, golden-orange when partly developed, pinkish-fawn of lovely shade when fully open, when it looks like a full fluffy-silk rosette. Color effect of the whole flower is Indian yellow. 20c; 2 years 60c

Mrs. Chas. Russell—Pink American Beauty, enormous in size, which lines into beautiful shape in flower, stem and foliage. 50c; 2 years, \$1.00.

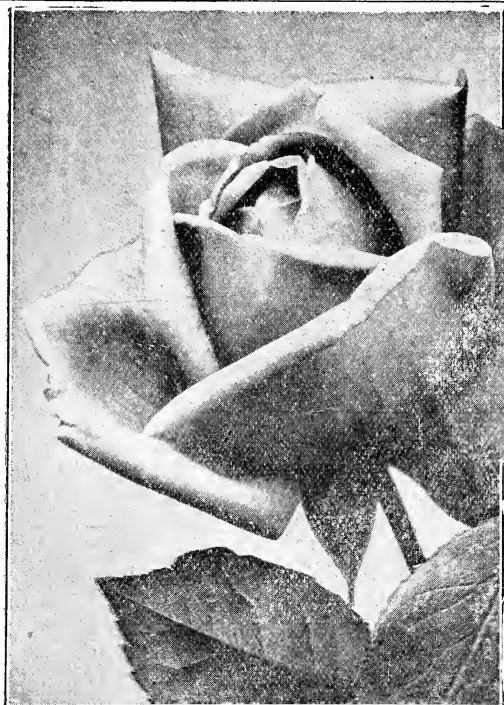


Lady Hillingdon (See page 3)

Ophelia—When Ophelia was sent out on its message of rose beauty to enhance the world, there was placed a tablet in the hall of rose fame to Wm. Paul & Son that will grow brighter with the flight of time. Salmon-flesh, shaded with rose; large, and of perfect shape; of excellent habit, the flowers standing up

well on long, stiff stems and produced in great profusion. 20c; 2 years, 60c.

Premier—This fine variety is too well known to need description. A magnificent novelty in the class with Russell. Deep rose; fragrant; thornless: free. 25c; 2 year old. 75c.



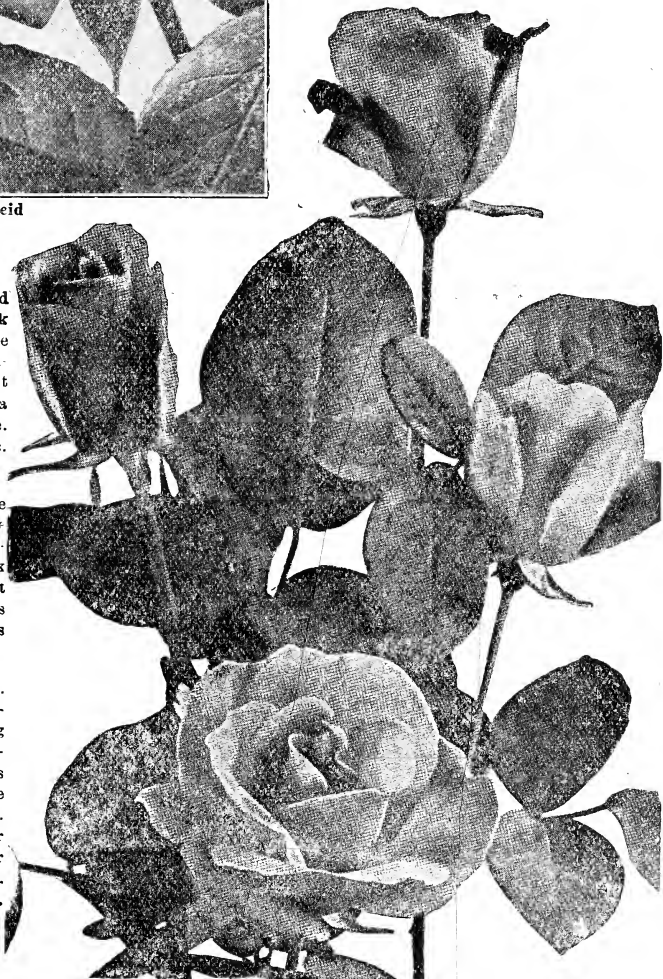
Rhea Reid

Red Radiance—The Washington Red Radiance. A glowing crimson sport of Radiance with all the magnificent qualities of the parent; the enormous globular flowers on heavy canes are a sight to be long remembered. This variety will be in very heavy demand as soon as it is known. The color is dazzling crimson-scarlet. An improvement on the other Radiance sports that have appeared. 20c; 2 years old, 60c.

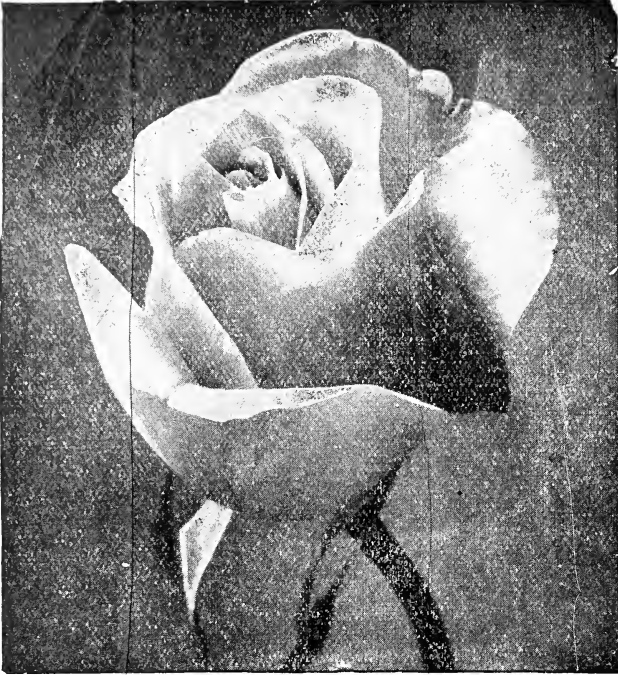
Radiance—A splendid and popular rose; deep pink in color. Will produce three-foot breaks without pinching. Almost mildew proof, and a wonderfully fine rose. 20c; 2 years old, 60c. (See cut page 6).

Rhea Reid—Flowers large and double; very free blooming and exquisitely fragrant; rich, dark velvety red. The best of all red garden roses to date. 20c; 2 years old, 60c.

Richmond—Color fine red. Produces freely throughout the season long pointed buds and elegant dark foliage. Has as delicious a fragrance as American Beauty. Was awarded the silver cup at the World's Fair for the best seedling. 50c; 2 years old, \$1.00.



Sunburst (See page 6)



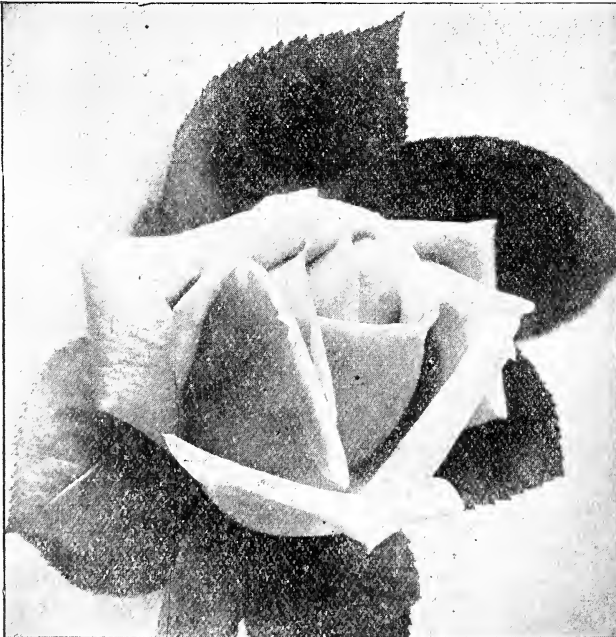
Radiance (See page 5)

Sunburst — A magnificent giant yellow rose, well adapted for outdoor growing, being a vigorous and healthy rose. Buds long and pointed, borne singly on long, stout stems.

The color is superb orange copper or golden orange, with a deep orange center. It has proven invaluable for bedding and garden purposes. This rose creates a sensation wherever grown. 25c; 2 years old, 75c.

White Killarney — An offspring of the famous pink Killarney as described on page 3; identical with it except that the flowers are pure white. 20c; 2 years old, 60c.

William Shean — Purest pink, petals shell-shaped, four to five inches long; flowers of immense size and substance and of perfect form; free blooming and distinct. 35c; 2 years, 75c.



White Killarney

Select, New, Rare and Scarce Roses

All Nice, Strong, Well-rooted Plants, from 2½-inch pots, 2 years old.

These Plants are at this date, October 1, 1921, rooted and growing in pots.

PRICE, 10c each; \$1.00 doz. Strong 2-year-old plants, 40c each; \$4.50 per doz.



Bride

Augustine Guinoisseau (White La France)—Sport from La France, identical in habit, form and vigor, but in color it is a delicate blush.

Bessie Brown—A rose of transcendent beauty, and one of the largest and fullest we have ever seen; color pure white, sometimes faintly flushed pink; petals enormous, shell shape.

Blumenschmidt—Pure citron-yellow, outer petals edged tender rose. A sport from Mad. Francisca Kruger.

Bride—White with delicate flush on outer petals; very beautiful in bud or open flowers; blooms profusely.

Bridesmaid—A fine, clear, dark pink.

Burbank—A free-flowering everbearing rose, raised by Mr. Luther Burbank, known the world over as the "Wizard of Horticulture." The only rose which he was willing should bear his name. Color deep pink.

Catherine Mermet—Bright flesh color, full and finely formed.

Cornelia Cook—This beautiful rose is in great demand for its magnificent buds, which are large, perfect and pure white.

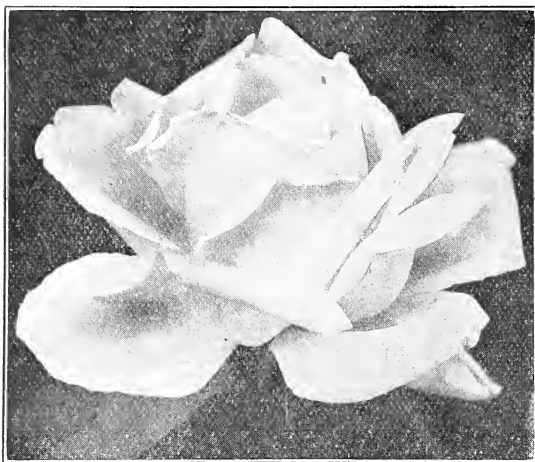
Duchess de Brabant—Soft, rosy pink; good bloomer. A general favorite.

Dean Hole—An intense salmon-pink, with bud of extraordinary length opening into a mammoth bloom of splendid substance.

Duchess of Albany—A sport from LaFrance, retaining all of the characteristics of the type, with the bloom three or four shades darker.



Burbank



Cornelia Cook (See page 7)

Etoile de Lyon—Beautiful chrome yellow, deepening at center to pure golden yellow.

Florence Pemberton—Creamy white, suffused pink; large, full, perfect in form, with very high pointed center; very fine.

F. R. Patzer—A most beautiful and distinct rose of very free flowering character. The color is creamy-buff, back of petals delicate warm pink. Valuable for garden culture.

General de Tartas—A first-class rose for bedding, brilliant carmine, large size; very double, full and fragrant. (See page 10).

General Superior Arnold Janssen—A fine new rose. Color a deep, glowing rose of brightest color. Flowers of largest size, full and fragrant.

Golden Gate—Flowers are large, very double and full. Color rich creamy white, tinged and shaded with yellow; petals large, broad and frequently bordered with clear rose.

Gruss an Teplitz—As a bedding rose this is one of the finest. Color scarlet, shaded to velvety-crimson.

Helen Good—Helen Good is a genuine Cochet, being a sport from the world-famous variety, Maman Cochet. It is a delicate pink, each petal edged deeper, is totally distinct from Maman Cochet.

Helen Gould—One of the strongest growing and freest blooming Hybrid Teas ever known. In color a rich, glowing crimson. Buds long and pointed, forming full double blooms.

Helen Cambier—Flowers large and full, varying from rosy-flesh and salmon to copper; an extra fine and showy variety.

Ivory or White Golden Gate—Pure white.

Isabella Sprunt—Bright canary yellow; beautiful buds.

Jules Finger—Extra large and finely formed flowers; full and fragrant. Color rosy scarlet, beautifully shaded with crimson.

Kaiserin Augusta Victoria—A vigorous grower; flowers extra large, and very double. Color creamy white.

La Detroit—The color is shell pink, shaded soft rose, the outer petals cream color, with fragrance like Bon Silene.

La France—The oldest and best of the Hybrid Teas; deliciously fragrant; very large, full, round, globular form; color true pink.

Louis Philippe—Rich, dark, velvety-crimson; profuse bloomer.

Lucullus (The Black Rose)—Splendid, large, rich crimson; extra full and fragrant, very double and a constant and profuse bloomer.



Lucullus



Mad. F. Kruger

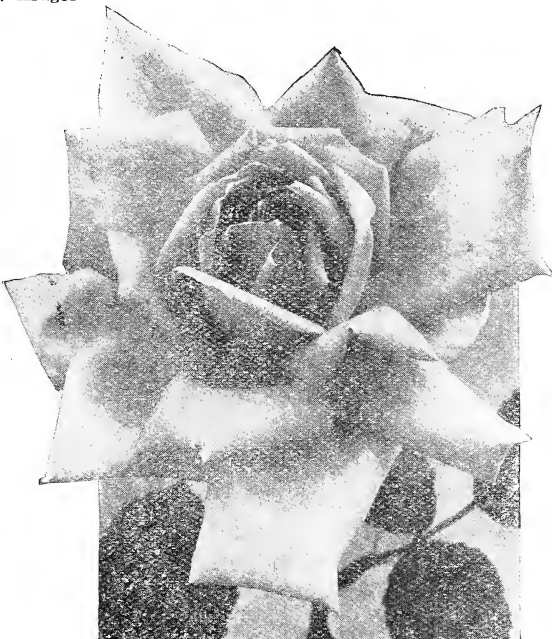
Mad. Angelique Veysset (Striped La France)—Identical in all respects with its parent, La France, except it is much stronger in growth and the flowers are beautifully striped and shaded with a delicate white.

Mad. Camille—Delicate rosy-flesh, changing to salmon-rose; immense double buds.

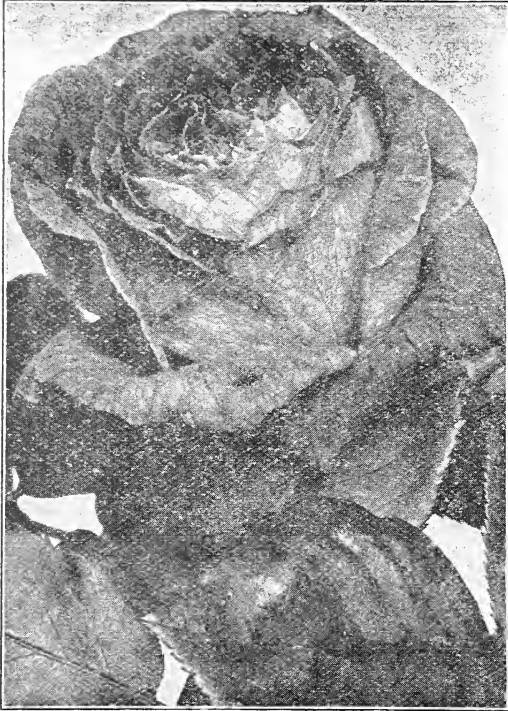
Mad. de Vetry—One of the very best and most satisfactory roses for general planting. It makes big clear buds and opens well, showing to great advantage. The color is a rich crimson-scarlet.

Mad. Francisca Kruger—Deep yellow, sometimes rich and glowing, and at other times dark, with shadings of copper and rose; large and double.

Madison—A greatly improved Bride, and when we say improved we mean a genuine improvement. Best feature of Madison is the foliage does not mildew. After being well established Madison will cut as many flowers as Killarney. (See page 12).



Helen Good



Gen. de Tartas (See page 8).

Mad. Jean Dupuy—A lovely high-class rose; color fine creamy pink with golden center; outer petals edged with red; a constant and abundant bloomer; almost thornless.

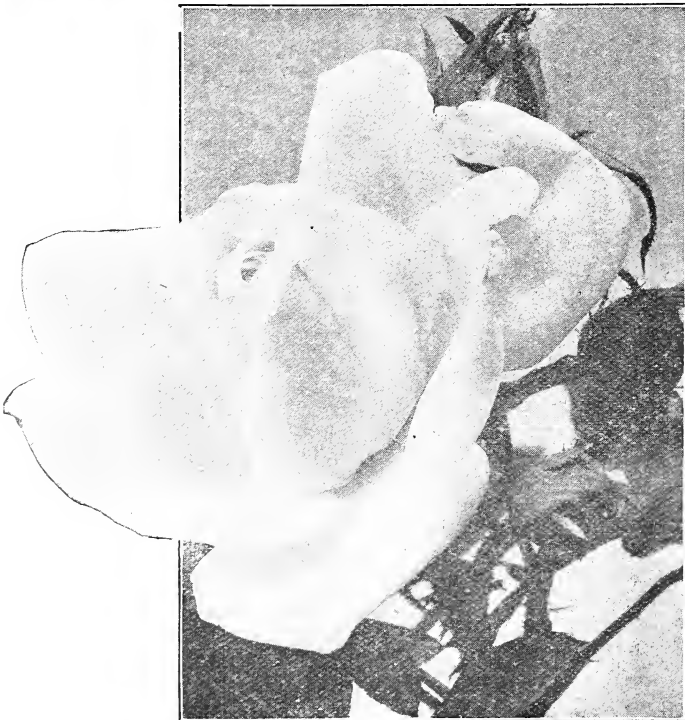
Mad. Lambard—A first-class rose; extra full flower, double; beautiful rose color; tinged salmon and buff; buds and reverse of petals crimson.

Malmaison—Rich, creamy flesh, changing to lovely fawn with rose center; very large, perfectly double.

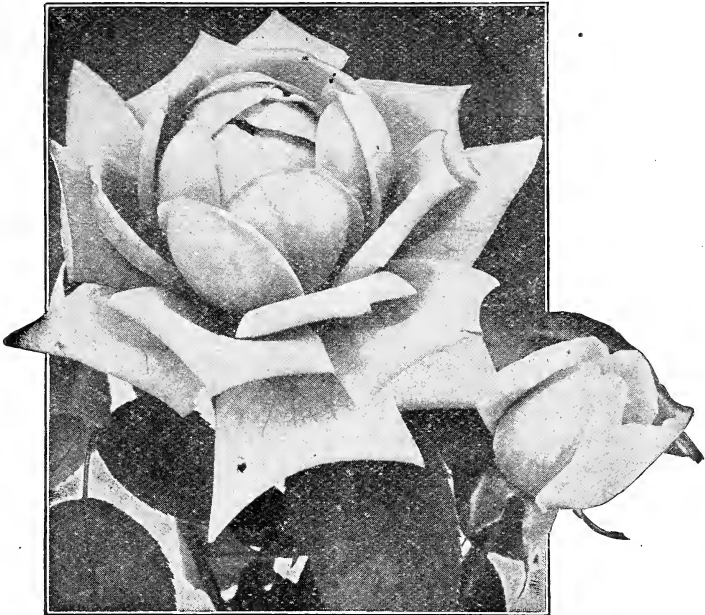
Maman Cochet—One of the best. It is of strong, vigorous growth; the flowers are large, of perfect form and produced on long, stiff stems. Color deep rose pink, the inner side of the petals being of silvery rose.

Marie Guillot—One of the standard varieties of Tea Roses; splendid for any use; especially desirable for summer rose beds; color pure white.

Marie Van Houtte—A lovely rose; color white tinged with yellow; delicately shaded with pale rose on outer petals; full and double; sweet tea scent.



Marie Guillot



Marie Van Houtte

Meteor—A rich, velvety-crimson, bright and striking; a constant bloomer.

Molly Sharman Crawford—Strong, vigorous and branching in habit, flowering profusely and continuously; blooms large and perfect; grand for bedding purposes; color snow white.

Mrs. B. R. Cant—A splendid garden rose; solid even color; clear, bright rosy pink; large size, perfectly double and full; heavy bloomer, particularly fine in the fall, and is a clean, handsome grower.

Mme. P. Euler—Very large flower, full and very lasting; form perfect; delightfully fragrant; a free flowering rose; color deep rose.

Papa Gontier—One of the most fashionable roses, similar to the old Bon Silene, but larger, more double and richer in color.

Queen Scarlet—A constant and profuse bloomer; color rich velvety-scarlet



Mrs. B. R. Cant

Souvenir de Pierre Notting—This variety is a seedling of M. Niel and Maman Cochet, with beautiful closely set foliage. Bloom is very large, perfectly full, of elegant form, and has a beautiful long bud; the colors are very bright, distinct and clear, and have no unpleasant tones; orange-yellow bordered in carmine-rose.

Souv. de President Carnot—This is an ideal rose, combining strong, vigorous growth with long-stemmed, large flowers of great substance. A grand garden rose. Color light pink; edge of petals, flesh color.



Souvenir de Pierre Notting



Madison

Safrano—Bright apricot yellow, tinged with rose; valued for its beautiful buds.

William R. Smith—Creamy-white with shadings of pink; a seedling from Maman Cochet and Kaiserin Augusta Victoria. Beautiful in form and color; glossy foliage; long stiff stems; vigorous in growth; a superb summer bedder.

White Maman Cochet—Identical with Maman Cochet, except the color is white; very desirable. Best white rose grown.

Wellesley—Bright, clear, salmon-rose, reverse of petal silvery-rose.



Climbing Maman Cochet

Climbing Roses

The Noisettes and Climbing Teas are included in this class, which is especially valuable in the South for covering porches, arbors, trellises and the like.

The plants obtain great luxuriance in our climate.

All Nice, Strong Plants, Well Rooted, from 2½-inch pots. Price, 10c each; \$1.00 per dozen. Strong 2-year-old, 40c each; \$4.50 per doz. Except where noted.

Climbing Meteor—A rich, velvety-crimson; very bright and striking; a continuous and profuse bloomer; very sweet.

Climbing Mad. C. Testout—An exact counterpart of C. Testout, except that it is a very vigorous climber.

Climbing White Maman Cochet—If there is one rose that stands out in the affections of the people more than another it is White Maman Cochet. Here we have a climbing form that will become as popular a climber as its parent has as a bush rose. Grand, huge white flowers.

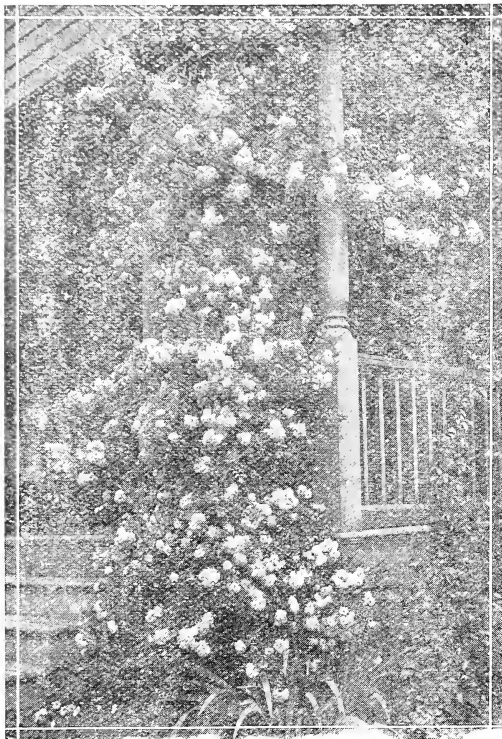
Dorothy Perkins—Flowers are borne in large clusters, are very double, with prettily crinkled petals; beautiful clear shell-pink in color, lasting a long time without fading.

Climbing Maman Cochet—No Rose we grow is so popular as Maman Cochet. Here we have an exact counterpart of that popular variety, except that it is a vigorous climber. All will welcome this new Rose.

Climbing American Beauty—A seedling from American Beauty with Wichuraiana and Tea blood in its veins. Same color, size and fragrance as American Beauty, with the addition of the climbing habit. Good foliage, and better blooming qualities. 15c; 2 years, 50c.

Climbing Kaiserin, or Mrs. Robert Peary—A most remarkable rose of recent introduction. An offspring of that grand variety Kaiserin Augusta Victoria. 15c; 2 years, 50c.

Climbing Marie Guillot—Of a semi-climbing habit, and is identical in bloom with Marie Guillot, the loveliest of all white roses in bloom.



Dorothy Perkins (See page 13)

Dr. W. Van Fleet—Flowers when open run four inches and over in diameter. The color is a remarkably delicate shade of flesh-pink on the outer surface, deepening to rosy-flesh in the center. The flowers are full and double, of delicate perfume; buds pointed.

Gardenia (The Hardy Marechal Niel)—This grand Rose has proven itself hardy in Virginia and Tennessee. It is a deep golden-yellow of the largest size.

Hiawatha—This rose is just coming into its own, being largely forced in pots for Easter time, and its good qualities as a grand outdoor climber are becoming known. Its flowers are about one and one-half inches across, and produced in long, pendulous sprays, with frequently from forty to fifty flowers on a spray. In color it is brilliant, ruby-carmine, with a clear white eye and a mass of golden stamens; strong, vigorous growth, with bright green, glossy foliage, which is retained all winter.

Lamarque—Pure white, with lemon-colored center; a good grower. 25c; 2 years, 75c.

Madam Jules Graveraux—A splendid rose of highest value. Makes long-pointed buds and extra large, double flowers of excellent substance. Color a pretty shade of chamois yellow, with rosy-peach center.

Marechal Niel—The grandest rose of any kind or color. The immense size and dark yellow-golden color of Marechal Niel flowers are familiar to all. 15c, 25c, 35c and 50c.

Mary Washington—Flowers pure white; very sweet and produced in large clusters from early spring till frost. It is a strong grower and quite hardy.

Red Dorothy Perkins, or Excelsa—Same as Dorothy Perkins with crimson flowers.

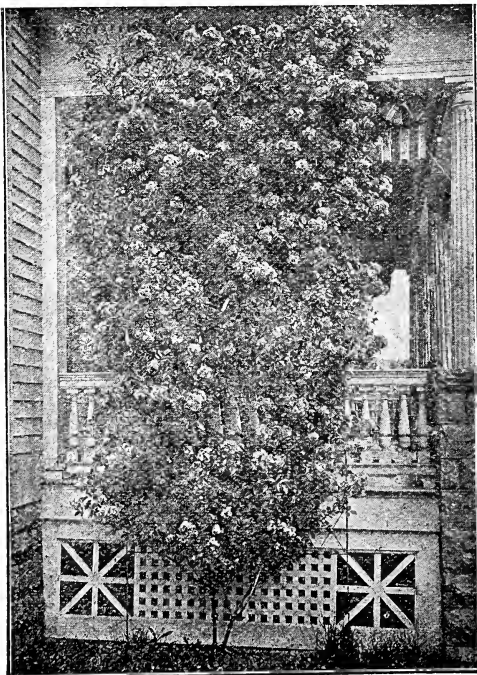
Reine Marie Henriette—Clear cherry red. A strong, vigorous grower and free bloomer.

Solfaterre—Sulphur-yellow; large, full, handsome.

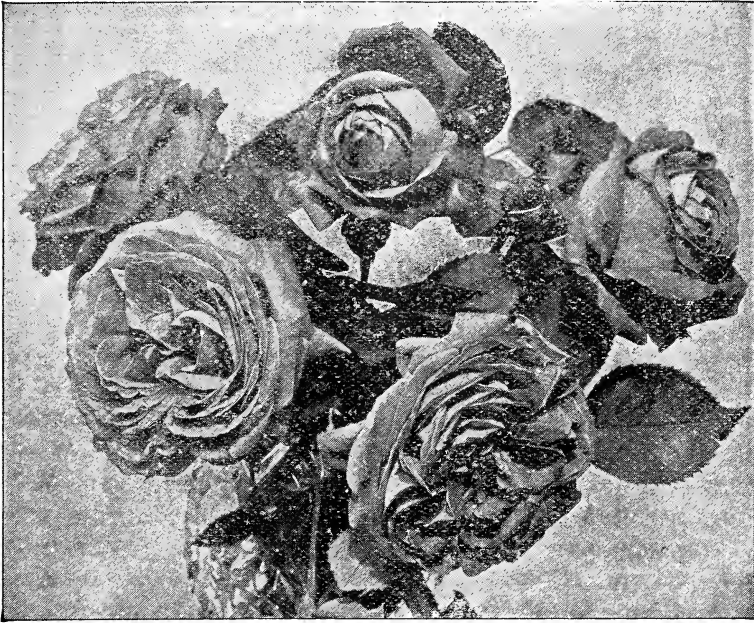
Tausendschoen, or Thousand Beauties—A Climbing Rose that comes to us from Germany. The flowers upon first opening are the most delicate shade of pink ever seen in a rose, might be described as a white, delicate flushed pink, changing to rosy-carmine. It gets its name from its many flowers and the variation in coloring; beautiful; will become as famous as Crimson Rambler or Dorothy Perkins. We wrote the above a year ago, and now we can add that this rose is sweeping the country like a prairie fire. Simply a wonder.

William Allen Richardson—Orange-yellow; outer petals lighter, center coppery yellow; strong grower; good bloomer.

White Dorothy—Among Rambler Roses none has justly gained greater popularity than the beautiful pink Dorothy Perkins. The White Dorothy is a duplicate except in color, which is white, a decided acquisition to this class of roses.



Hiawatha



Madam Masson

Hybrid Perpetual Roses

All Roses of this Class are perfectly hardy. The flowers are very double and of the most gorgeous and dazzling colors, but they do not bloom perpetually as their name would lead one to suppose. They will give one grand crop of bloom in the spring, and some sorts bloom occasionally in the summer and fall.

Price, from 2½-inch pots, 20c each, two-year-old plants, 60c each.

General Jacqueminot—Crimson-scarlet; large, full; very fragrant; excellent.

Jubilee—Rose of wonderful beauty, bearing large flowers 5 and 6 inches across; very full and double; buds long and graceful; color glowing velvety-crimson; fragrance delicious.

Madam Charles Wood—A true perpetual bloomer; flowers large, very double and full, and quite fragrant; color bright cherry-red. One of the best roses ever introduced for general planting.

Mad. Masson—Flowers as large as American Beauty, and same color. A deep rose or bright red; highly perfumed; a constant and free bloomer. Fine.

Paul Neyron—Flowers immense; probably the largest rose grown, and one of the finest; color deep pink; very double and full; finely scented, with no suspicion of coarseness.

Prince Camille de Rohan—This variety is always a prime favorite with everybody; richest crimson.

Chrysanthemums



Mrs. J. Leslie Davis (Pink Turner)

If you leave the selection to us you are sure to get Prize Winners. We always give you the kind that will make you call on us again.

How an Amateur May Grow Chrysanthemums

The first important item in growing potted Chrysanthemums is the proper preparation of the soil. One-third manure and two-thirds sod stacked together and rotted (must be thoroughly rotted), and run through a coarse sieve is best. To one bushel of this soil add a double handful of pure "bone-meal," one handful of lime and one of wood ashes, and you are ready for potting. Drainage is of utmost importance, for without it the surplus water will sour the soil, the root will decay, and all your labor will have been in vain. About April 15 to May 1 get good, healthy plants from some reliable florist, and repot them at once in 3½ or 4-inch pots, and when the pots are filled with roots, repot into 6-inch pots, and from these, when filled with roots, into 9 or 10-inch pots.

In making the final shift, leave 1½ or 2 inches of space at the top of the pot to receive water, and later on, when the buds appear, this space can be filled with manure to act as a stimulant. Immediately after the last potting, plunge the pots in the ground up to the rim, place your pots in rows 2 feet apart by 1 foot, and water only when it is needed. Never allow the soil to become dry enough to wilt the plant. With a soft cord fasten the plant to a small neat cane-stake plunged deep enough to make steady, and if the branches are inclined to fall over, tie around the plant a cord which will act as a hoop and keep it in shape.

If a bushy plant is desired, when the plant is about 6 inches high, pinch out the top; this will cause other branches to appear, and when these branches are 4 or 5 inches long, pinch the top out, and so on until July 15, when you must give the final pinching. At this season you can begin to feed your plants with manure water, made by putting a shovelful of cow manure into a half barrel of water. Give this once a week until the buds begin to form; then you can in-

crease to twice a week. As the buds begin to swell, give it three times a week until the buds begin to show color; then give it once a week and as the buds begin to unfold withhold all stimulants. It should be said that soot water is good, given, say, once in two weeks in place of manure water. Now to grow fine flowers on long stems, you must watch the plant, and as soon as the buds are large enough you must remove all as fast as they appear, except the largest and strongest bud on the end of each branch; also remove all buds that appear at the junction of the leaves, and fine, large flowers will be your reward.

As to the plants grown in the open ground, it is best not to have it too rich; prepare as you would for your vegetable garden. In case you have some plants that have stood over winter and which come up in clumps, you must take them up and plant them, only one sprout in a place.

Let me tell you how I grow some of my finest blooms: I prepare the ground as above stated, and then plant in rows 2½ feet apart and 6 or 8 inches apart in the rows, and train plants to one flower each. Place stakes 1x1 inch thick and 4 feet high, 17 feet apart in the rows, and fasten to these stakes by giving a cord one turn around each stake. Three cords, 12 inches apart will be necessary, the first one 12 inches from the ground. Stretch them from one end of the row to the other, and tie the plants to these cords as fast as they grow up to them. Keep up a high state of cultivation, and water if needed during dry, hot weather. When the buds appear take all off except one to each plant as fast as they appear. At this time give them manure water (same as used for pot plants) about every ten days until they show color, then leave off the manure water, but don't allow them to get too dry. Follow this treatment and kindly let me know the result.

Cream of the New Chrysanthemums

Orange Queen (1920)—An immense deep reflexed yellow. 50c.

Calumet—One of the very finest exhibition bronzes; large bloom, perfect in form and one of the easiest doers. 15c.

Corporal J. Fred. Piper—Immense yellow on the type of the old Col. Appleton, but much larger and altogether better in color and growth. Stem and foliage ideal. Corp. Piper is assured of a hearty welcome from growers of exhibition blooms, looking for a really fine yellow. Crown bud any time after August 20th. Height, 5 ft. 25c.

Delight—An immense reflexed pink that was awarded the Certificate of the Chrysanthemum Society. Scored 92 points. Color, clear, bright rose. Size enormous. Stem perfectly stiff and able to support the flower perfectly and any bud after August 15th. Height 3½ to 4 ft. 25c.

Earl Kitchener—Amaranth, with a silvery reverse. An enormous flower in a color not too plentiful in exhibition 'Mums at the present time. Stem, foliage and flower are alike tremendous. There will never be any question about weak neck or poor foliage with this variety. Bud August 20th. 25c.

Elberon—Large Japanese incurved, similar to Louiseau Rousseau in type and color; strong grower; stiff stem, with foliage well up to bloom.

G. F. Moseman—Fine old favorite; crimson with old gold reverse. 15c.

Louisa Pockett—Color purest possible white. Mr. Pockett calls this his "greatest achievement," and has named it after his wife. He says it will, when generally distributed, displace the popular Wm. Turner, which has been the "King" of the exhibition tables for the past four years. Flower, stem and foliage are alike enormous. Plants need plenty of room to develop. Culturally speaking, when handled precisely the same as Wm. Turner, bud taken the same time, late August or early September, it will give splendid results. 25c.

Miss Grace Durkin—Lovely sport of Nerissa. Identical in every respect except color, which is a clear, light pink. This variety will doubtless gain many friends on account of its beautiful coloring. A splendid grower, with handsome foliage. Crown bud any time after August 20th. Height 5 feet. 25c.

Mrs. G. M. Pullman—Extra large, deep yellow, fine form and a prize winner where ever staged. 25c.

Mrs. H. S. Firestone—The outstanding Novelty of the year. It is wonderfully massive, stem perfectly rigid and foliage right up to the flower. Color pinkish, chamois-buff. This variety will be found invaluable in the classes calling for "Any other color," in the exhibitions. First bud after August 15th. 50c.

Mrs. J. Willis Buhl—Crimson of the very largest size and a welcome addition to this color, which is very much like Pockett's Crimson, but the plant is considerably taller in growth. Bud about August 25th gives best result as to color, size and finish of flower. 15c.

Mrs. J. Leslie Davis (Pink Turner)—We consider it a great privilege to present this pink sport of Turner to our customers. We introduced the original variety (white) in 1912, and two years ago we introduced the yellow variety. With the pink sort we are now introducing it completes the trio. It is absolutely identical with Turner in every respect except color, which is a clear lavender-pink. The growth and habit are a duplicate of the original parent and no other description is necessary. Pink Turner will find a premier place on its own merits. Height 5 feet. 50c.

Mrs. Chas. W. Johnson—Purest possible white, raised and named by the Secretary of the O. S. A. and certificated by this Society. Height about 4 feet. Bud August 25th and later. The foliage in this variety is carried right up to the flower and the stem is very rigid. Can be classed as a superb variety in all respects. Won C. S. A. Cup, New York, 1919, for best new variety not in commerce. Scored 97 points before C. S. A. Committee. 25c.

Meudon Surprise—A sport of the well known Meudon, which will be invaluable when well distributed on the exhibition table. Color, pale fawn and maize yellow, with rose pink shadings on the petals. This will make a welcome addition to the Novelty colors in the exhibition classes of "twenty-four distinct varieties." Very robust in habit. 25c.

Meudon—An immense flower of bright pink; same shade as Morton F. Plant. Habit of plant absolutely ideal. One of the strongest growers we have ever sent out. Dwarf grower, with beautiful foliage right up to the flower. Bud August 20th. 25c.

Nagirroc (Golden Champion)—Finest exhibition bronze we have ever distributed; color, deepest glowing orange bronze, 45 inches in circumference; every petal reflexing showing the color to the best advantage. This is the variety exhibited at the shows under the provisional name of Golden Champion. Every bud makes a splendid flower. Stem and foliage perfect. Any bud after August 15th. 25c.

Nerissa—Bright, rosy mauve. Fine form and stiff, upright growth, with rigid stem. 25c.

Reflexed Louisa Pockett—Duplicate of Louisa Pockett in every way except that the petals reflex instead of incurve, but in all other respects it is identical; having large foliage, strong stem and enormous flower. Height 5 feet. Buds taken late August or early September give best results. 25c.

Sergeant Wm. E. Young—An enormous bronze, larger and heavier than W. H. Waite, though hardly so bright in color. One of the kind that is indispensable for short stem classes. Stem fully able to carry the flower erect. This variety will make a place for itself among all exhibitors. Bud after October 15th onwards. Height 5 ft. 25c.

Vermont—This variety won the C. S. A., Silver Cup in New York, 1918 Fall Show for the best new variety not yet in commerce. It is a most welcome addition to our exhibition list of pinks. The flowers are of enormous size reminding one very much of the old variety M. L. Rousseau. Every bud produces a perfect flower and we feel sure Vermont will rank as one of the very best pink varieties in cultivation. Bud August 1st to 15th. Height 5½ to 6 feet. 25c.

White Bonafon—Color pure snow-white. The flower forms a perfect ball when in full bloom. Is a dwarf grower. 10c.

Wm. Rigby (The Yellow Sport of Mrs. Gilbert Drabble)—This was the largest variety exhibited at the shows in 1915; color beautiful bright canary yellow. Lower petals of this variety are 1½ inches in width. While we have considerable stock on hand of this variety, it roots very poorly and orders will be filled in rotation. 25c.

White Frick—Identical with Helen Frick excepting in color it is snow white. One of the best, 25c each.

William H. Waite—Color, deep warm bronze so brilliant as to seem almost shading to scarlet, in some of the flowers, when compared with some standard variety such as Mary Mason, the superiority of its wonderful color is at once apparent. The standard is gradually climbing, but this variety shows a wonderful advance over previous introductions. Foliage right up to the flower and stem absolutely perfect. Bud early in August will develop, but bud taken around August 25th will show a more brilliant color. Height 4 to 5 feet. Certificated C. S. A. 25c.

New, Scarce and Desirable CHRYSANTHEMUMS

Plants in this list 10c each; \$1.00 per dozen. Our Selection, not labeled, 20 for \$1.00.

Beatrice May—Snow white, sometimes flushed pink. 4½ feet high. Buds August 10 to 15. Blooms October 20. This is the best white of its date; a splendid commercial and exhibition variety.

Bol D'Or—Color, clear maize yellow; magnificent flower of the very largest size, forming a perfect hemisphere. This flower will be very popular for use either in a collection or as individual blooms. Height 5 feet.

Chieftain—A beautiful incurving pink of perfect shape. Certificated in Boston, Philadelphia and Chicago. Perhaps the finest incurving pink commercial variety in cultivation today.

Chrysolora—This new variety can be briefly described as an early Col. D. Appleton, coming in fifteen days earlier; is of larger size, stronger stem, not quite as tall and in color is intermediate between this variety and Major Bonnafon. Best buds are those selected August 1st to 15th.

Chas. Rager—Flower nicely incurving in form; pure snow-white with a grand stem, and foliage as handsome as "Eaton"; a very easy doer.

Col. D. Appleton—A large Japanese incurved yellow, of fine finish and form. The color, a deep yellow, is of an even shade. Excellent stem with foliage to the flower. Mid-season.

Dr. Enguehard—One of the best introductions of recent years. Color a true pink, without the slightest trace of purple. Stem and foliage perfect. Equally valuable for exhibition or commercial purposes. Perfectly double.

Golden Wedding—Richest Golden yellow, intense and dazzling in color.

Glenview—An enormous incurving globe of dark bronze and clear red. Dwarf grower with stiff stem; easy doer; a magnificent sort for exhibition or for commerce, as the color is very pleasing.

Golden Eagle—Dwarf, easy doer; long, incurving golden petals.

Harvard—A particularly attractive flower and fine for exhibition; color is very dark crimson; grand stem and foliage. Nov. 15. Good from any bud.

Lady Carmichael—Pure white Japanese, reflexed with perfect foliage and stem like an iron rod. This variety was really planted too late to be shown at its best. Next year it will unquestionably find its place very near the top of the exhibition whites. Buds August.

Lynnwood Hall—Pure white. One of the largest in size; perfectly incurved.

Mrs. E. A. Seidwitz—A very late commercial variety, of beautiful incurving form, quite full, brilliant pink, good enough to follow Chieftain. It is a fine addition to the list of commercial varieties. Flowers November 15 and later.

Mrs. Chas. H. Totty—Very large, of a beautiful shade of light pink. Semi-dwarf.

Mrs. J. Gibson—A phenomenal variety. Enormous alike in stem, foliage and flower; color light pink, shading to deeper pink lines on ends of petals. We exhibited this variety 10¼ inches deep and 10 inches across. Bud as soon as possible after August 1st.

Marigold—A monster yellow; flower unsurpassed both in size and color in its season; our first flowers of this variety were cut October 5th this year. Must be secured on an early bud.

Major Bonnafon—Grand, incurved yellow of large size, full to the center; stem dwarf and erect.

Miss Helen Frick—Immeasurably superior in every respect to Maude Dean; a Perrin seedling, its stems and foliage equal that variety, but there the resemblance ceases; a pure soft pink of varying shades. Very perfect shades; very perfect in form. Grand Thanksgiving variety.

Mrs. Henry Robinson—Ready to cut October 14, and increases in beauty until November 1. In the entire Chrysanthemum family there is no grander white variety, no matter when it blooms. Immense, incurving, broad-channeled petals of great substance and of the purest white.

Mrs. Clay Frick—White sport from Wm. Duckman. Every "Mum" grower knows the variety, Wm. Duckman; the sport above named is identical with the parent save in color, which is almost white.

October Frost—Early October; the largest commercial white of its date.

October Herald—Orange-yellow, similar in color to Old Gold or Modello; reflexing form, with somewhat twisted petals.

President John Everitt—Color, very unique chamois-buff; when first opening, the petals are very closely incurved, forming a perfect ball, 27 inches in circumference. As the flower develops, the center petals open outward and show considerable of the bronzy-crimson reverse. Very dwarf, robust grower, and one of the largest flowers. This variety, with its enormous size and splendid habit will make its own place among the best. Bud August 15th onward.

Polly Rose—Pure white sport from Glory of Pacific, and just as popular.

Ramapo—American seedling of Col. Appleton, which will take the place of that variety. It has all the good points of Appleton, the same color, splendid stem, foliage right up to the flower, and never shows a top-knot, as does Appleton.

Roman Gold—From September buds; a Japanese incurved and darker yellow. From August bud it produces a large reflexed flower, very suitable for exhibition tables but not so intense in color. Best bud for August 15.

Smith's Sensation—A fine variety of soft cameo-pink. Largest and attracted more attention than any variety in my entire collection last fall.

Smith's Advance—New. Pure white when fully expanded, showing a creamy center when semi-developed. This is the earliest large white variety ever known.

Silver Wedding—Purest white, very broad petals reflexed, forming a bold, handsome flower. One of the most distinct varieties of the season. Certificate at Philadelphia show; certificate and gold medal at Chicago show.

Sunstone—Most pleasing and distinct in color combination. Petals hook up at end, showing light straw reverse; the upper surface is a bright yellow shading to red.

Timothy Eaton—An enormous, globular Jap. incurved variety of perfect form and growth. Color pure white. It captured every prize for which it was entered; also C. S. A. certificate.

White Cloud—A large, deep Jap., 8 inches in diameter; white on the edge, cream at the center, finishing almost pure white.

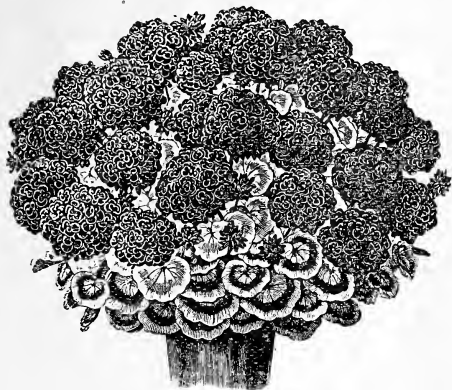
Wm. Turner—This variety has created a sensation as exhibited at several shows. Makes a perfect ball of the purest possible white and as such will displace Merza and all others of that character on the exhibition table.

Yellow Wm. Turner (1916 Novelty)—Same as Wm. Turner, its parent, except that it is a beautiful lemon yellow. A monster.

Yellow Eaton—Bright yellow sport from Timothy Eaton. Considered better commercially than its parent. Good for all purposes.

Geraniums

Double and Semi-Double Varieties



Alphonse Ricard

New and Scarce Sorts, 10c each; \$1.00 doz. Not labeled 15 for \$1.00.

Alphonse Ricard—Large, semi-double flowers, often measuring two inches in diameter, borne in enormous trusses, on long flower stems. Continue in bloom the entire season.

Beaute Poitevine—Conceded to be one of the best semi-double bedders among the light salmon shades. The color is a beautiful shade of shrimp pink, delicately shading to white.

Double Gen. Grant—A vigorous grower, free blooming, splendid foliage, large trusses, color intense orange-scarlet.

Edmond Blanc—One of the most handsome and brilliant Geraniums in the cerise shade; the color is a bright carmine shaded around the white eye, and on upper petals with bright scarlet.

Helen Michell—By all odds the most brilliant and finest scarlet Geranium ever put on the market. The blooms are gigantic, the number of flower heads on the individual plant is remarkable.

Jean Viaud—An attractive, bright, clear shade of mauve rose, fading to a distinct white throat. The flowers are large and trusses enormous, sometimes measuring six inches in diameter.

La Favorite—One of the finest double whites in this class; pure in color. Unsurpassed as a white bedder.

Marquise de Montmort—Deep crimson-carmine; a very novel and beautiful shade.

Miss F. Perkins—An exquisite shade of deep rose pink with a distinct white throat; large, handsome flowers.

Mme. Jaulin—Color delicate peach pink, shading to a shade of Daybreak pink in the center.

Mme. Landry—A distinct salmon pink, with a slight shading of scarlet; habit semi-dwarf, vigorous, broad, heavy deep zoned foliage. It has all the best points of a Bruant Geranium.

Mrs. Lawrence—This is, without exception, the finest geranium of this color that we have ever seen; clear, healthy foliage; splendid dwarf, compact habit of growth; wonderfully free in flowering; indispensable as a pot plant, being strongly recommended for winter blooming. The color is an artistic shade of bright satiny salmon-pink, slightly tinged white.

M. Anatoile Roseleur—A most beautiful shade of deep rose pink, rivaling in beauty and freshness the color of the Paul Neyron rose. The flowers are large, semi-double, showing a distinct white center, enormous trusses, borne on long stems well above the clean extremely handsome foliage.

S. A. Nutt—This is a standard dark red geranium, more generally used than any other, both as a pot plant and for bedding. Brilliant deep scarlet, with maroon shading.

Single Varieties

Granville—A fine bedding variety, with large flower trusses. The color is a clear pink. One of the best.

Jean Pabon—Robust and free flowering, enormous trusses held well above the foliage; grand round flowers, blood red color, small white eye.

Mrs. E. G. Hill—The center of each petal is a soft light salmon, bordered with rosy salmon and veined deep rose. Frequently throws six petals. Resembles a rare begonia bloom more than a geranium.

Nuit Poitevine—A remarkably strong and vigorous variety, which we have no hesitation in recommending to those who wish a handsome dark single geranium; color beautiful rosy-purple; lower petals feathered rich scarlet; splendid habit and growth.

Pamela—Immense round flowers, with a large, pure white center shading through a maculated effect to a broad, distinct outer margin of crimson-lake.

IVY LEAVED GERANIUMS

Price 10c each; \$1.00 dozen.

This class of the geranium is a most useful one. The leaves are ivy shaped, thick and glossy, excellent for vases, hanging baskets or to be trained on a trellis.

Col. Baden-Powell—The flower is of enormous size, the largest among the Ivies. The color varies at times from pearl-white to soft blush, exquisitely beautiful.

Garden Glory—Double. Fine deep scarlet; best red.

Souv. de Chas. Turner—Deep bright pink, full and double; fine.

SCENTED GERANIUMS

10c each; \$1.00 per dozen.

Balm—Large flowers, upper petals light lilac, lower petals dark; large leaves with very strong fragrance.

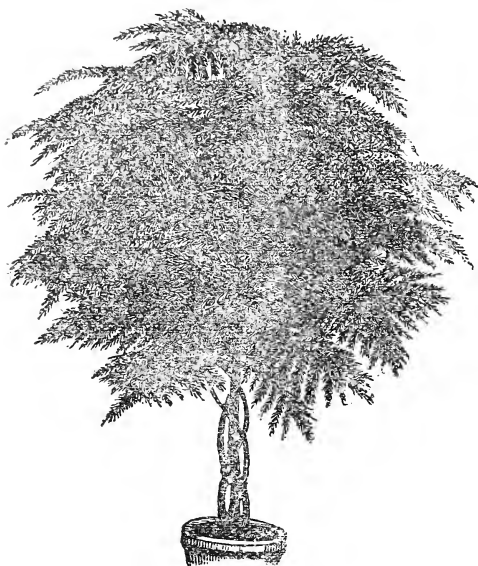
Nutmeg—Very fragrant.

Oak-Leaved—Shape of oak leaf; almost black.

Rose—The old fragrant variety. Always a favorite.

Staghorn—Finely cut foliage; strongly scented.

General Collection of Plants



Asparagus Plumosus

ASPARGUS

No other green mingles with cut flowers as well as Asparagus.

Plumosus—An excellent plant for window culture, and the lacelike texture of the foliage excelling that of Maiden Hair Fern in grace and daintiness. It is fine as a pot plant, and in floral decorations and sprays are almost indispensable. Price, 10c, 25c and 50c.

Sprengeri—It is useful for cutting in sprays for fine cut flower work with roses, etc. Pretty decorative house plant. Used in decorations as, for example, in the decoration of mantels, nothing can equal it. Price, 10c, 25c and 50c.

Tenuissimus—We cannot praise too highly this beautiful plant. If desired it can be grown like smilax or on a trellis; a great acquisition for decorative purposes or cut flower work. Price, 15c and 25c.

ACHILLEA ALBA (The Pearl)

The Pearl—It is a hardy perennial. Its flowers are perfectly double, pure white and are produced in great profusion throughout the summer. Valuable for bouquets and designs. Also unsurpassed for cemetery planting. 10c each; 7 for 50c; 75c per dozen.

ACALYPHA (Chenille Plant)

Sanderi—Beyond any doubt this is the most sensational new plant introduced for many years, and very ornamental. It is of strong, free growth, with large, dark green leaves, from each axil of which rope-like racemes of velvety crimson flowers, 1 to 2 feet long and nearly 1 inch thick, are gracefully suspended. 15c and 25c. (See cut).

Tricolor—Foliage broad, mottled and blotched crimson scarlet and rose; always of bright color; neither fades nor burns during our warmest weather; bushy plant; fine bedder. (See cut.) 10c and 25c.

ACHYRANTHES

Achyranthes—Yellow variegated crimson. Also the deep solid crimson. Fine for baskets, vases and boxes. 5c; 50c doz.

ALOYSIA CITRIODORA

Lemon Verbena—A well-known plant, noted for its delightful fragrance; indispensable for bouquets. 10c.

AGERATUM

Stella Guerne—Compact, even habit; color a fine, deep blue, and literally a sheet of bloom the entire season; finely adapted to winter blooming in the window, garden or conservatory. Price, 5c each; 6 for 25c; 50c per doz.; \$4.00 per 100.

ALYSSUM

Similar to the single variety, but far preferable. 10c each; 75c per doz.

ASTERS

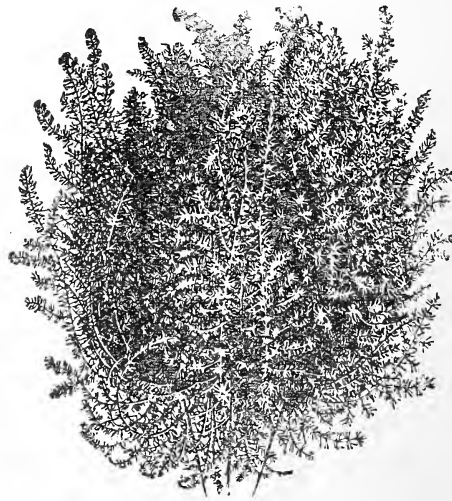
Separate or Mixed Colors, White, Blue, Pink and Crimson. 50c per doz.; \$4.00 per 100.

BEGONIAS—Flowering Varieties

Alba Picta Improved—Same as Alba Picta in every way except that it has larger foliage and larger flowers which are twice the size of the old one. This fine variety originated here with me, and has been tested five seasons and prove worthy of a place. 10c.

Argenta Guttata—An elegant begonia. Rich green leaves, spotted with silver; produces white flowers in bunches, on ends of growth stems; very handsome. 10c.

Begonia, Ione—This beautiful little gem originated with me, and attracted more attention than anything in my houses last year on account of its beautiful compact form and pretty blooms. The foliage is a glossy-green, touched with orange, flowers pink—an entirely new shade of begonia. A true everbloomer, being entirely covered with blooms all the year. 15c. See cut page 22.



Asparagus Sprengeri



Acalypha Sanderi

Corallina Lucerna—Immense trusses of bronzy red flowers. Blooms almost continually. This is the choicest of the flowering type. 15c and 25c.

Feastii (Beefsteak Begonia)—The old fashioned "beef steak" Begonia. Thick, rounded leaves of deep green, with red on reverse side. 15c and 25c.

Gloire de Chatelaine—There is no equal to it as an outdoor bedder; very prolific bloomer. It is continually covered with large rosy-pink flowers, a good substitute for Cincinnati as a Xmas pot plant. 15c and 25c.

Graecilis Luminosa—As the name implies, it is one of the most symmetrical and yet graceful plants we have ever known; very strong and robust, but still keeping its shape so as to make a very attractive winter house plant. Its foliage is rich glossy green, often shaded deep bronze. The flowers, when first opening are bright cherry, changing to a clear coral red. 15c and 25c.

Manicata—Large smooth, bright green leaves, hairy on stem and under side of leaf; large panicles of pink flowers high above the foliage; a strong grower and one of the best of recent introductions. 10c and 25c.

McBethii—Foliage fern-like and distinct from other begonias. Flowers of waxy texture. 10c and 25c.

Metallica—A fine erect-growing begonia, with dark, rough leaves. The surface is a lustrous bronze-green with a metallic hue; flowers pure waxy-flesh. 10c and 25c.

Mme. de Lesseps—A decided improvement on B. Argenta Guttata, the leaf being four times the size seen in that variety, while the silky texture is the same. It is beautifully spotted with silver. A very strong, free-growing variety; will succeed with ordinary care. 10c and 25c.

Nitida Alba—A strong growing, profuse blooming variety, producing immense panicles of pure white flowers, standing well above the foliage. 10c and 25c.

Otto Hacker—In a class by itself. A strong vigorous grower, of fine upright habit, with large shining deep green leaves eight to ten inches long. Flowers bright coral red, borne in immense clusters eight to ten inches across. 15c. and 25c.

President Carnot—A strong growing variety of stiff, upright habit; foliage large, somewhat in style of B. Rubra, but more than twice as large; upper side deep green, under side purplish red; flowers beautiful coral red, in pendant panicles. 10c. and 25c.

Richardsonii—Flowers white, foliage finely cut. 10c. and 25c.

Rubra—A magnificent begonia. Bright, clear red in large trusses; beautiful, attractive, handsome glossy foliage; constant bloomer. 20c, 35c and 50c.

Thurstonii—A beautiful stately plant with remarkably handsome glossy foliage. The under side of the leaves is a rich purplish red, the veinings very prominent, while the face or upper side is a bronzy-green, shaded with crimson and olive, with a peculiar glossy metallic luster over all. Flowers rosy-white, in large clusters well above the foliage. 10c and 25c.

BUDDLEIA

"Butterfly Bush"—(Summer Lilac)—One of the most admired and sought after shrubs in the trade. Of quick bushy growth; when the lovely bloom-spikes appear in July, the shrub which had probably died down nearly to the ground during winter, is now a perfect specimen of about five feet; radiating a delightful perfume and glowing with the tints and flower-shape of the Spring Lilacs. 10c; \$1.00 doz. 4 in. 25; \$2.50 doz.



Acalypha Tricolor



Begonia Ione
See page 20

COLEUS

These make the showiest and cheapest bedding plants we have. There is such an endless variety in their color and markings that, with a little taste in planting varieties the most gratifying results can be obtained at a trifling cost. They are easy of cultivation and make fine specimens in a very short time. Plants should be set about a foot apart, so that it is easy to figure out how many plants are needed. We grow them in large supply of best sorts. 5c each, 50c per doz., \$3.50 per 100.

TRAILING QUEEN COLEUS

An excellent variety for hanging baskets and vases on account of its trailing habit; center of leaves fiery crimson surrounded with deep maroon; deeply serrated edges of bright olive-green. 5c each; 50c per doz.; \$3.50 per 100.

YELLOW TRAILING QUEEN COLEUS

Same as Trailing Queen except center of leaves a bright yellow bordered with olive-green, with deeply serrated edges intermingled with yellow. 5c each; 50c per doz.; \$3.50 per 100.

CLEMATIS PANICULATA

The flowers are pure white and are borne in great panicles or clusters of bloom, fairly covering the plant, so that it is a mass or sheet of fleecy white. The fragrance is delicious, resembling the English Hawthorne blossom. It begins to bloom early in August, when other hardy climbers are out of bloom. Grows quickly and strongly, reaching a height of 15 to 20 feet. Hardy in all sections of the country. There is no better hardy vine. Strong plants, in pots, 15c each, 50c for 4. 2-year-old plants now in pots, 25c each, \$2.50 per doz.

CALLAS

Calla Ethiopica—Lily of the Nile. Blooming plants, \$1.00 and \$2.50 each.

CALADIUM ESCULENTUM

Elephant's Ear—One of the most effective plants in cultivation for the flower border or for planting out upon the lawn; it will grow in any good garden soil, and is of the easiest culture. Price of bulbs, 25c and 50c each.

NEW DWARF FRENCH CANNAS

Few flowering plants combine so many good qualities as the modern cannas. They are the most important new addition to the floral world. Nothing equals their combination of bloom and tropical effect, and the low prices, for the very choicest, place them within the reach of all.

Allemania—A splendid variety. The outer petals are bright scarlet with a broad yellow border, the inside colors being scarlet and dark red, beautifully mottled and variegated. Height 5 feet. Dormant roots. 15c each; \$1.50 doz. Started Plants 25c.

Austria—Grows to 6 feet high, with leaves 15 to 18 inches broad. Flowers 6 to 7 inches across; color pure golden yellow; a vigorous grower. 15c each; \$1.50 doz. Started Plants 25c.

City of Portland—3½ ft. Glowing pink, deeper in color than its parent, Mrs. Alfred F. Conrad; profuse bloomer. 25c each; \$2.50 doz. Started Plants 35c.

Eureka—Our own introduction, and in our opinion the very best white-flowered Canna. The immense trusses of substantial flowers are borne upon very vigorous plants in greatest profusion. 4½ ft. 25c each; \$2.50 doz. Started Plants 35c.

Gaiety—Reddish orange, mottled with carmine and edged with yellow. The tongue is yellow spotted with carmine. A magnificent, bright bedder. 15c; \$1.50 doz. Started plants 25c.

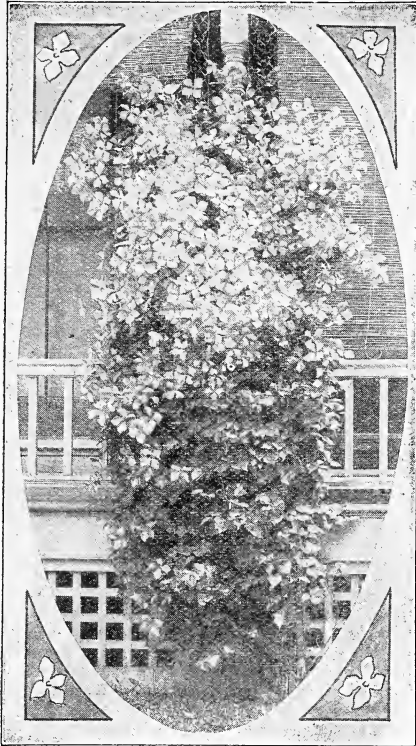
Hungaria—Flowers large, in good-sized trusses, freely produced. The color is a beautiful rose-pink, which has been compared to that of the Paul Neyron Rose. It impresses one with its refinement. 3½ feet. 25c each; \$2.50 doz. Started plants 35c.

King Humbert—Has flowers as large as the largest of the orchid flowering cannas. Bright orange-scarlet, streaked with crimson. Foliage is bronze with brownish-green stripes, large, thick and leathery. A strong, robust grower. Height 4 feet. 25c each; \$2.50 doz. Started plants 35c.

Meteor—It is impossible to convey the full value of this magnificent bedding variety with its massive erect trusses of deep, blood-red flowers, produced with a freedom that leaves nothing to be desired in effectiveness. Unqualifiedly the best deep red bedding Canna; 5 feet. 25c each; \$2.50 doz. Started plants 35c.



Cissus Discolor



Clematis Paniculata

Mrs. Alfred Conrad—The best pink canna ever introduced and unsurpassed for planting either singly or in large beds. The exquisite salmon-pink flowers are of largest size and so freely produced as to keep up a superb showing for months. 4 feet. 25c each; \$2.50 doz. Started plants 35c.

Wintzer's Colossal—Colossal indeed are the flowers and bloom-heads of this magnificent Canna. The effect produced by the vivid scarlet flowers is very striking. It is the largest-flowered Canna yet introduced, also the earliest, most persistent, and most prolific bloomer 25c each; \$2.50 doz. Started plants 35c.

Yellow King Humbert (Queen Helen)—This is a sport of the well-known bronze-leaved variety, but this sort has green foliage; makes an attractive, symmetrical plant, growing about 4 feet high, surmounted with masses of golden yellow flowers, dotted red; occasionally some will be streaked red. It is of strong, vigorous habit, and makes a splendid variety to bed with the bronze-leaved King Humbert where a combination of red and yellow is wanted. 25c each; \$2.50 doz. Started plants 35c.

CARNATIONS

Price 15c each, \$1.50 per dozen

The great improvement made in this grand race the past few years has directed popular attention to them until now they are exceeded by the rose alone in the number annually grown for cut flowers. Our collection contains only sorts of approved merit and our plants are in the finest possible condition.

Beacon—Fine scarlet variety, in front of the class of "reds." The color is brilliant and a variety of strong, sturdy growth; a very free blooming sort.

Enchantress—Just what the florists are looking for—light pink Lawson. It is large in size and longer stemmed; a beautiful shade of light pink, deepening towards the center. Immense, attractive flowers of fine form and exceptional keeping qualities. The growth is ideal; very healthy, vigorous constitution.

Rose Pink Enchantress—A pure clear pink flower without markings, having the extra large size and other good qualities of Enchantress.

White Enchantress—This needs no further description than to say that it is just what its name implies, a white sport from Enchantress.

CINERARIA—White Leaved

Dusty Miller—These are called "Dusty Millers." Fine for bedding, ribbon-beds and margins; prized for their beautiful downy, silvery foliage; half hardy perennials, 10c each, 3 for 25c, 75c per doz., \$5.00 per 100.

CISSUS DISCOLOR

A well-known climber, with leaves shaded dark green, purple and white, the upper surface of the leaf having a rich, velvet-like appearance. In a warm place it is an extremely handsome and notable plant. Eight of these vines planted as late as July 15, completely covered my veranda and was the admiration of the whole town. Price 15c; \$1.50 doz.



Carnation Beacon

Dahlias



SELECT DAHLIAS

- Atlanta (Cactus)**—Creamy, white, extra large flower. Bulbs, 25c; plants, 10c.
- A. D. Livoni (Show)**—Beautiful, soft pink, with quilled petals. The standard pink for cutting. Bulbs, 25c; plants, 10c.
- Ayesha (Show)**—A wonderfully handsome, clear light yellow dahlia, that has attracted great attention. The flowers are of immense size; beautiful, regular form, with large shell like petals, and borne on long stiff stems. The plant is a strong, vigorous grower and a most profuse bloomer. Excellent for garden, exhibition and commercial purposes. Price, 35c each; plants, 20c.
- Attraction (Cactus type)**—The real flower and the habit of the plant must be seen to fully appreciate this splendid variety. The flowers measure invariably over 6 inches in diameter and are made up of gracefully twisted petals still uniform in shape; the exquisite shade of pink is just what the retail trade demands. Roots, 50c; plants, 25c.
- Black Beauty (Show)**—A grand, dark maroon of distinct form. Bulbs, 25c; plants, 10c.
- Bon Ton (Show)**—Rich garnet; very free. Bulbs, 25c; plants, 10c.
- Countess of Lonsdale (Cactus)**—A pleasing blend of salmon, pink and amber; the freest bloomer of all the Cactus Dahlias. Bulbs, 25c; plants, 10c.
- Dreer's Yellow (Show)**—“The Best Yellow Show Dahlia yet sent out.” It is a good grower, an early and profuse bloomer, frequently over seven inches in diameter. Bulbs, 50c; plants, 20c.
- Dorothy Peacock (Show)**—Large, perfect shaped flowers of a bright sea-shell pink color; very early, free and continuous blooming. Bulbs, 25c; plants, 10c.
- Delice (Decorative)**—A beautiful new shade of pink; large flowers on long, rigid stems. Bulbs, 35c; plants, 20c.
- Emilie (Show)**—Rosy lavender, white at base of petals; excellent for cutting. Bulbs, 25c; plants, 10c.
- Geisha (Peony)**—A combination of scarlet and gold, so beautifully arranged as to make one wonder as to the possibilities of Nature. The flowers vary, none being marked exactly alike. Bulbs, 50c; plants, 25c.
- Golden Gate (Cactus)**—Novelty of 1914. One of the very best dahlias ever introduced; a grand flower of immense size, measuring from 7 to 9 inches in diameter. Color a deep golden yellow, overlaid bronze. Bulbs, 25c; plants, 10c.
- Golden West (Decorative)**—The finest dahlia ever shown, clear, yellow, large elegant flower, on long stems. Bulbs, 35c; plants, 15c.
- Hortulanus Fiet (Decorative)**—A colossal flowered variety with blooms over eight inches in diameter, of the most delicate shade of shrimp pink, the tip of each petal barely touched with gold. The entire flower has a suffusion of delicate tints of red and yellow; which gives a glow yet softness of color difficult to describe. Much admired by all who see it. Bulbs, 35c; plants, 15c.
- Jack Rose (Decorative)**—A brilliant crimson-red with fiery tones in the center of the flower, the whole overlaid with a soft violet-maroon. Double to the center, never showing the yellow stamens or immature green. The flowers are from five to six inches across under normal conditions. Bulbs, 25c; plants, 10c.
- Kaiserin Augusta Victoria (Decorative)**—The earliest and one of the best white decorative Dahlias; large, flat, open flowers of purest white on stout, erect stems. Bulbs, 25c; plants, 10c.

L. Kramer Peacock (Decorative)—In this new decorative we have an ideal white. The flowers are pure white of splendid form, with slightly cupped petals, something of the shape of Aylesha and of the greatest substance, being thick, leathery and keeping longer than any other white. 35c each; plants 15c.

Melody (Show)—One of the finest, being of splendid regular form with full high center and reflexed outer petals. Color clear canary yellow, tinting to creamy white at the tips; an effect so delicate and pleasing as to suggest the name. Strong roots, 25c; plants, 10c.

Minnie Burgle (Decorative)—Another year has again demonstrated that this is the best red dahlia in the world. The plant is a strong, vigorous grower, with dark glossy foliage and an early free and continuous bloomer. The flowers are of large size, perfect form and produced on long stiff stems. The color is a vivid vermilion red. It has no faults, and requires no special care or attention. 35c. plants, 15c.

Marjorie Castleton (Cactus)—The best standard pink cactus dahlia. It is much softer than most of the pinks, and is an early continuous bloomer. The color is soft pink, tinting lighter toward the center. It is a very rapid grower, with good stems and keeps well after cutting. 35c; plants 15c.

Mrs. J. Gardner Cassatt (Decorative)—A large-flowered variety of elegant shape, mauve-pink of a shade that is very pleasing in a Dahlia; a fine cut flower. Bulbs, 35c; plants, 15c.

Mrs. Roosevelt (Decorative)—One of the quaint flowered type, with broad flattish flowers which keep well; an exquisite suffusion of white and shell pink. Bulbs, 35c; plants, 15c.

Maid of Kent (Decorative)—The most constant in variegation, yet it varies somewhat. Rich crimson, tipped snow-white. Bulbs, 25c, plants, 10c.

Oregon Beauty (Decorative)—A brilliant gorgeous flower that attracts much attention on account of its rich color, an intense Oriental-red with golden sheen and garnet suffusion. Produces its large flowers on long stems in the greatest profusion. A splendid garden variety. Bulbs, 35c; plants, 15c.

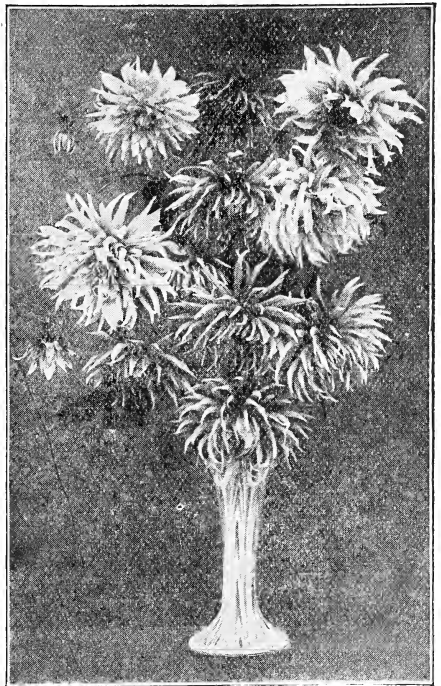
Perle de Lyon (Decorative)—A most valuable white Decorative Dahlia, and one of the best whites of any class for cut flower purposes; its flowers are of good size, and held erect on long, stiff, wiry stems. Bulbs, 35c; plants, 15c.

Princess Victoria (Show)—A sterling novelty, being the earliest and freest-flowering primrose-yellow; never produces an imperfect flower and is in bloom early and late; long, stiff stems; fine for cutting. Bulbs, 25c; plants, 10c.

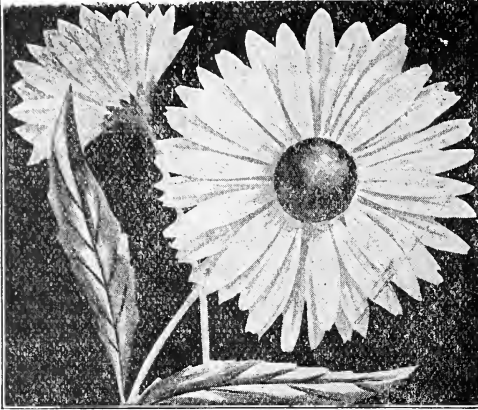
Sunset (Show)—Primrose Yellow, edged and tipped rose and lavender. Fine and free bloomer. Bulbs, 35c; plants, 15c.

Sylvia (Decorative)—White shading to soft pink on the outer petals. Splendid substance, giving it an unsurpassed keeping quality. Bulbs, 25c; plants, 10c.

Wm. Agnew (Decorative)—The most popular standard red. Bulbs, 25c; plants, 10c.



Vase of Cactus Dahlias—Marjorie Castleton



NEW SHASTA DAISY

In growth the plants are as strong as a common field daisy, very tall, well branched with huge white flowers borne in profusion on long stiff stems. The flowers are pure white with gold center, petals very long and center soft and velvety. It is a very pretty hardy plant and one of the novelties that has come to stay. 10c; 6 for 50c; \$1.00 per dozen.

FERNS

The popularity of ferns has increased wonderfully. In the past few years I have added greatly to my collection, which is now the largest in the South. Ferns are now indispensable in all choice table and house decorations. Where there can be a little moisture and shade all varieties listed will do well. They delight in a good leaf mold. Good drainage must be provided, as stagnant water allowed to remain about the roots is fatal to ferns as well as all other plants.

Adiantum Croweanum (New)—This is not only the best and most profitable Maidenhair to grow for cutting but it is also the best variety to recommend to the retail buyers for house culture, it standing the dry atmosphere of the room better than any variety we have yet tried. Strong 2½-inch pot plants, 25c; 4-inch, 50c.

A. Cuneatum—The Maidenhair. This variety is a general favorite. 25c and 50c.

A. Capillius Verneris—Handsome, hardy Maidenhair Fern. 2½-inch plants, 15c; strong 3-inch plants. 10c to 50c, according to size.

SELANGINELLAS (Moss Fern)

A beautiful, upright-growing moss, with numerous feathery stems branching from the base and forming a dense tuft. Well-grown plants attain 12 to 18 inches in height and a corresponding diameter. We know of no moss superior to it and it is exceedingly appropriate for table decoration. Strong pot plants, 25c

THE BOSTON FERN AND ITS VARIETIES

Nephrolepis Bostoniensis (The Boston Fern)—The fronds grow 6 feet long. It has been commonly called the Boston Fern. Nice young plants, 10c; 3-inch pots, 25c; 4-inch pots, 50c; 6-inch pots, \$1.00 to \$2.50 and up.

Nephrolepis Norwood—The most beautiful form of *Nephrolepis* to date; graceful, compact and symmetrical; best of all the ostrich plume types; a vigorous, healthy grower. All are invited to inspect it at our greenhouses. Strong 2½-inch pot plants, 20c; 4-inch, 35c up to \$3.00.

Nephrolepis Whitmani—In this we have a most valuable *Nephrolepis* of the Ostrich Plume type. Not only is it of more dwarf and compact habit than the *N. Elegantissima*, but the plume being more deeply divided, gives the plants a more graceful appearance. Strong 2½-inch pots, 10c; 3-inch pots, 15c; 4-inch pots, 50c; and 6-inch pots, \$1.00 to \$1.50.

Nephrolepis Scotti (The Dwarf Boston Fern)—This is the best house plant of all the Sword Ferns, identical with the celebrated Boston Ferns, except that it is smaller in all its parts, more compact and makes a nice specimen in a short time. 2½-inch pots, 15c; 3-inch pots, 25c; 4-inch pots, 50c.

Nephrolepis Macauii (New)—one of the grandest ferns of late introduction; far superior to any we have yet grown; it stands erect, a wonderful fern for the home. 2½-inch pots, 25c; 3-inch, 50c; 4-in. 75c. Large specimen plants, \$1.50 to \$5.

Nephrolepis Verona (New)—Ostrich Plume. This is far superior to *Whitmani*; a wonderful fern that we strongly recommend. We have had it on trial for one year and it pleases us very much, (Give it a trial) 2½-inch pots, 25c; 3-inch pots, 50c; 4-inch pots, \$1.00.

HIBISCUS ROSA—SINENSIS

These plants are becoming very popular as bedding plants, being almost continually in bloom and very effective, either planted out or cultivated in pots. The greater the heat the more numerous and beautiful are the large and magnificently colored flowers.

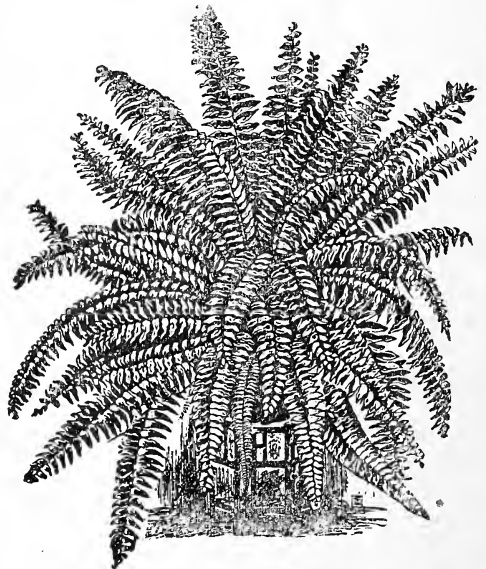
Peachblow—This is one of the finest plant novelties offered in recent years. The flowers are double and from 4 to 5 inches in diameter, and of a charming, rich, clear pink color with a small deep crimson center. It blooms abundantly and continuously even on small plants; may be easily wintered in greenhouse or dwelling. 15c. 25c and 50c.

Joan—Double yellow. 15c, 25c and 50c.

Rubra—Double red. 15c, 25c and 50c.

Crimson Peachblow—A sport from *Peachblow*. Identical with the parent except in color, which is a beautiful cerise red. Strong grower and wonderfully free bloomer. Cropped out in 1911 in my house No. 6. I have the only plants in existence. 15c, 25c and 50c.

Crimson Eye—A remarkably showy and handsome hardy plant. It is a robust grower. The color is of the purest white with a large spot of deep velvety crimson in the center of each flower. It will succeed anywhere and is perfectly hardy in all sections of the country. 15 and 25c.

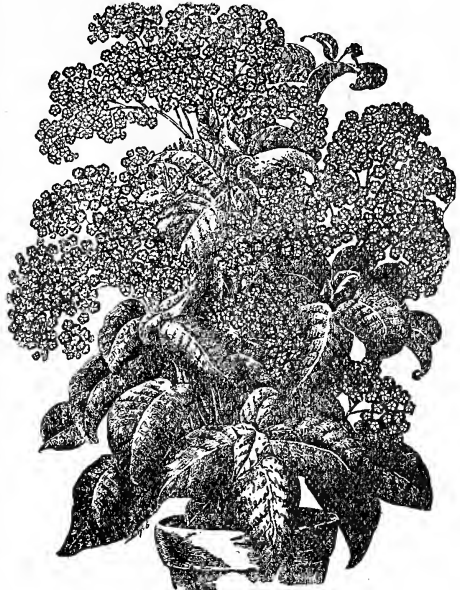


Boston Fern.

Southern Beauty—A wonderfully beautiful herbaceous Hibiscus, a remarkable bloomer and so fine as to be generally cultivated by all. It forms pyramidal-shaped specimens, lower branches slightly reclining, clothed with five-cleft leaves, segments toothed and crimson margined, presenting a fine appearance. In open ground it is covered with handsome deep crimson flowers, shaded darker to throat till almost black. When pot grown it begins to bloom in thumb-pots while not more than 3 inches high. Entirely hardy and of the easiest culture. 15c, 25c and 50c.



Hibiscus—Peachblow



Heliotrope

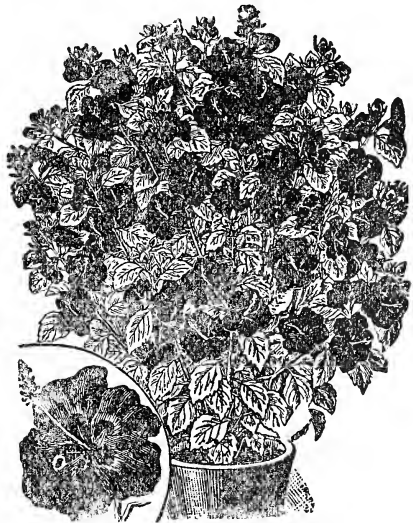
HELIOTROPES

Below we give a list of choice and distinct varieties of this popular and indispensable plant, so much valued for its fragrant flowers and successive bloom. Price 10c each; \$1.00 doz.
Queen of the Violets—Deep violet purple, with large almost white center; very fragrant; has recently become very popular.
Mad. Bruant—Plant dwarf and exceedingly free bloomer. Immense panicles of very large flowers, rich purple with a large white eye.
Snow Wreath—The nearest approach to pure white; large trusses, compact growth.

HYDRANGEA

NEW FRENCH VARIETIES—HARDY

- Avalanche**—Large corymbs of pure white flowers; a splendid advance on all white sorts. 25c and 50c.
- E. G. Hill**—Trusses of immense size; color a most pleasing shade of pink which does not fade; growth vigorous. 25c and 50c.
- Otaska**—The well-known garden variety, producing immense heads of bright pink flowers. 25c and 50c.
- Paniculata Grandiflora**—Continues to be one of the best and handsomest hardy ornamental shrubs grown. It blooms finely the first year and gets better and grows larger with age. The flowers are pure white. In great demand for lawn, cemetery and park planting. 50c and 75c each.



Hibiscus—Southern Beauty



Impatiens Sultani

IMPATIENS SULTANI

This is one of the most distinct and beautiful pot plants in winter or for summer bedding, of compact, neat habit, and always in bloom; the flowers are bright and contrast finely with the glossy, lovely green leaves. We have this plant in all shades of pink, salmon pink, delicate apple blossom pink, also purple, near white, variegated white and salmon and bright orange scarlet. Price 10c each; \$1.00 per doz.

PARLOR IVY

A very rapid grower, with smooth, glossy light green leaves; fine for baskets, vases, etc. Price, 10c; 7 for 50c; 75c doz.

JASMINE

Grandiflorum (Catalonian Jasmine) — Flowers pure white, star-shaped and very fragrant. Blooms from October to May. 15c and 25c.



Parlour Ivy

LANTANAS

One of the best summer flowering plants for our climate; equally fine in dry or wet weather. There are few bedding plants that bloom more continuously or afford a greater variety of color. Price 10c each; \$1.00 per doz.

Countess Morny—Flowers lemon color.

Favorite—Yellow, merging into crimson.

Francine—Flowers large and rosy lilac.

Javoi—Purest white; very large flowers.

Harkett's Perfection—A new variety, with beautiful flesh and yellow flowers, and golden variegated foliage.

Mrs. McKinley—This charming new weeping Lantana is admirable for baskets, vases or pots; but it is, if possible, more beautiful still when bedded out. The flowers are borne in elegant clusters; in bloom all the time.

THE WONDERFUL GIANT MOON-FLOWER

(Ipomoea Maxima)

"A Giant in Growth and Flowers, and Wonderfully Fragrant"

This grand new Moon-flower is a decided improvement over the well-known variety Ipomoea Grandiflora. The flowers are more than twice the size of the old variety, oftentimes measuring from 6 to 7½ inches across, and are produced in such wonderful profusion that they completely cover the vine with a veil of glistening white. Its growth is very rapid when planted in good rich light soil, nothing to equal it as a tender vine for porch and lattice shading. (See cut.) 15c each, \$1.50 per dozen.

MOON-FLOWER

(Price 10c each, \$1.00 per dozen)

Ipomoea Grandiflora—Large Moon-flower, or Evening Glory. Flowers pure white, 4 to 5 inches in diameter. Very rapid grower and free bloomer.

Ipomoea Learii—The Blue Moon-flower. This is a grand companion for the white variety. It is similar in all respects except the color, which is a lovely satin blue with crimson bars. When grown with white the effect is grand.



Umbrella Palm

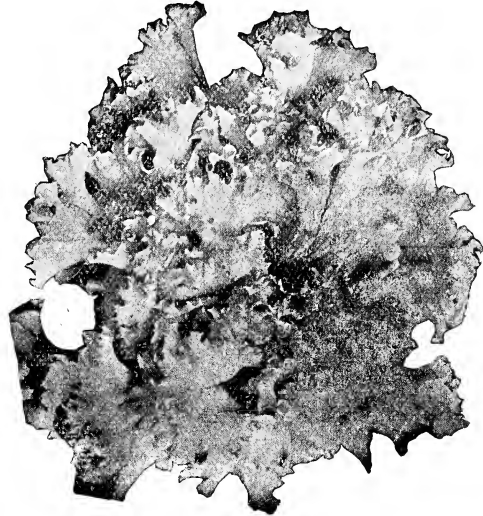
OXALIS

(Ortgieße)

A new variety growing a foot or more in height. The upper side of the leaf is rich olive green, the under side purple. This is not a bulbous rooted variety. Flowers yellow; a constant bloomer. 10c and 25c.

UMBRELLA PALM

The plant shown in the accompanying engraving is one of the most useful of our house plants. It is exceedingly hardy in constitution, and if given plenty of water will thrive where others would die. Being semi-aquatic in its nature, it is very pretty when grown in a bowl and kept filled with water above the soil. 15c, 25c and 50c.



Double Petunia

DOUBLE PETUNIA

The collection offered this season is particularly rich in color. Flowers of the largest size; fine in form and double. Price 10c each; 12 for \$1.00.

- Petunia, Pink Beauty—Large, clear pink.
- Gem—Variegated, white and crimson.
- Majestic—Rich deep purplish crimson.
- Seafoam—Best of double whites.

RUSSELLIA MULTIFLORA

Profuse bloomer, a well-known plant, bearing a perfect shower of bright coral-red flowers; the most dainty basket plant extant. 10c each; \$1.00 per doz.



Giant Pansy

PANSIES—GIANT MIXED

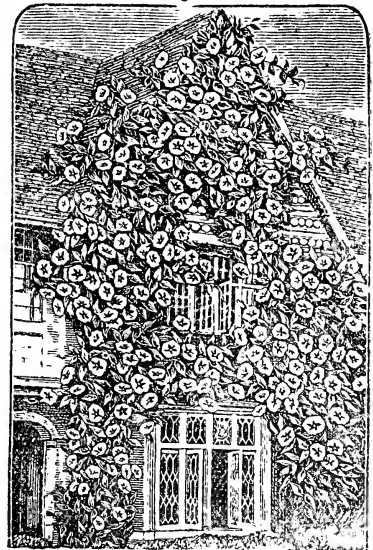
The ground must be rich, using only well decayed manure, and avoid planting in a dry, exposed place. They delight in partial shade and moisture. 5c each, 50c per doz., \$3.50 per 100.

PLUMBAGO

These plumbagoes are desirable on account of their beautiful shades of flowers, which they produce abundantly the whole summer. They stand the sun admirably.

Capensis—Light blue; very free flowering. 10c each; \$1.00 per doz.

Capensis Alba—The exact counterpart of Capensis except in color, which is a creamy white. It is constantly in bloom through the season. 10c each; \$1.00 per doz.



Giant Moonflower



VINCA—Periwinkle

SALVIA

Excellent summer blooming plants, especially brilliant in the fall months; fine for bedding and of easy culture. Price, 5c each; 50c per doz.; \$4.00 per 100.

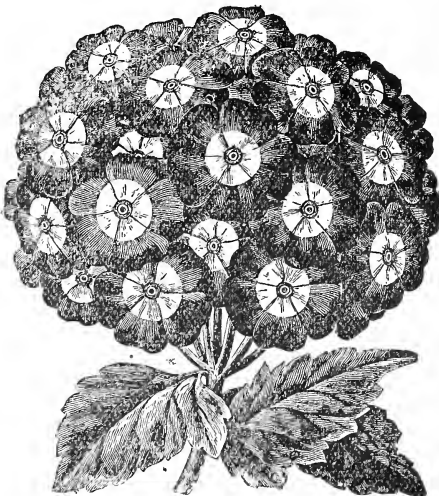
New Dwarf Salvia Bonfire—Forms a compact bush completely covered with rich scarlet flowers all summer; grows 12 inches high.

Splendens (Scarlet Sage)—Long flower spikes of the most dazzling scarlet.

America—A new bedding or pot variety that will supersede all other dwarf kinds on all-round merit. The growth is vigorous and healthy, but dwarf and compact. It commences flowering early and continues a mass of glowing scarlet until heavy frosts occur. Can also be flowered in pots from Christmas on. 10c each; 7 for 50c; 75c doz.

SANSEVIERA ZEALANICA

A new decorative plant of great beauty and value. Splendidly adapted for the decoration of drawing rooms or halls, as it stands drought or dust with impunity and requires scarcely any water. The leaves grow to a length of 3 to 4 feet and are beautifully striped crosswise with variegations on a dark green ground. 10c, 25c and 50c.



Verbenas

VINCA

Major (Variegated-Leaved)—An elegant slow growing, climbing vine, glossy green leaves, widely bordered with creamy white; always bright and pretty; extra nice for pots, vases, baskets, window boxes and rockeries; good everywhere; always wanted. Price 10c each; 12 for \$1.00.

Periwinkle—Everblooming bedding plants, flowers phlox shaped. In separate colors, rose or white. 10c; \$1.00 per doz.; \$7.00 per 100.

MAMMOTH VERBENAS

With the exception of the geranium the verbenas is the most popular and useful of our bedding plants. Colors run from the purest white to scarlet and maroon through all shades of blue to deepest purple; some have white or cream centers; others are striped, etc. 5c each; 50c per doz.; \$3.50 per 100.

WANDERING JEW

Two distinct varieties. Green striped white or cream and bronze striped pink and silver. Also plain green. 10c each; 7 for 50c; 75c doz.

TUBEROSE

Double Pearl—Dwarf sort. 10c each; 75c doz.

NEW SEMI-DWARF ANTIRRHINUMS

(Snapdragon)

This type is becoming very popular for bedding purposes owing to their dwarf and compact habit of growth; height about 18 inches. 15c each; \$1.50 per doz.



Sansevieria Bealanica

Vegetable Plants

ALL POT GROWN

EGG PLANTS—Black Beauty, from 2 1-2 inch pots, 5c each, 50c doz.

PEPPERS---Chinese Giant, from 2 1-2 inch pots, 50c doz.

Glory or Pimento, 5c each, 50c doz.

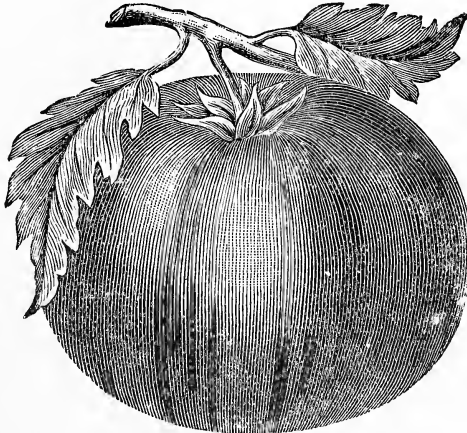
Tomato Plants

From ½ each pots

5c each,

50c doz.

\$3.50 per 100



Ponderosa

Golden

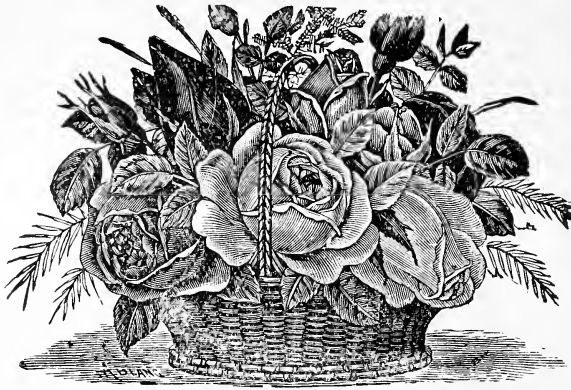
Queen

Dwarf Stone

Trucker's

Favorite

I DO NOT SEND OUT ANY REPRESENTATIVES



Cut Flowers and Design Work

In design work and cut flowers we are better than ever prepared to care for your wants. During the past two years, when stock has been so high and scarce, we have taken care of every retail order sent us. We carry on hand a large stock of seasonable cut flowers. Frequently, persons are undecided what to order and at such times you may leave the selection to us, stating what you wish to use them for and the price you wish to pay.

HOW TO ORDER. Give us as much time as possible. Do not be afraid to order even a week or two ahead. Then you are sure of getting just what you want.

Please notice that orders for early morning shipment must be in the night before. Our postoffice closes at 7 p. m.

When time is limited, *always* order by telephone or telegraph. *Don't trust the mails*; trains are often late and we often do not receive orders on time. If order by mail is for immediate shipment, please affix a special delivery stamp.

HOW WE SHIP. All cut flowers, designs, corsages and bouquets, packed to carry long distance safely, either winter or summer.

TERMS. All cut flowers and design work strictly cash.

RESPONSIBILITY. While we exercise the greatest care to have all flowers reach their destination on time, and will not ship unless we are reasonably sure they will reach you on time, we can not be responsible for delays in trains, wrecks, or express agents' negligence. Should your flowers reach you too late accept them under protest, do the best you can with them. If for a funeral, lay them on the grave, we will share the loss with you and take care of any claim against express company.

A Supply of Handsome Gift Plants Always in Stock.



TERMS OF SALE

ORDER EARLY.—Our aim is to execute all orders as soon as received, but during the rush season in the spring, delays are sometimes unavoidable, which can be partly overcome by our patrons anticipating their wants and ordering early. We give every order, no matter how large or small, prompt and careful attention.

GUARANTEE.—We guarantee that our goods must reach their destination in good condition, satisfactory to you, or they will be duplicated or money refunded. We are very careful to keep each variety true to name as labeled, and are ready at any time to replace, on proper proof, any that may prove otherwise.

NON-WARRANTY.—Most failures with plants and bulbs are due to causes entirely beyond our control, such as unfavorable weather or soil conditions, too deep or too shallow planting, etc., which renders it impossible for us to guarantee success and although we take all possible care to supply only such goods as will, under proper conditions, produce satisfactory results, we can give no warranty as to productiveness of any of the plants or bulbs we send out. It must, however, be plain to everyone who gives the matter the slightest thought, that it is to our best interests to send out only such stock as will reach perfection.

PLEASE NOTE.—It is not unusual for us to receive orders without any signature or identification mark attached—if you do not get a response to your order within a reasonable time, please write again enclosing copy of letter or order so we may be able to trace same quickly.

ERRORS.—We exercise the utmost care in filling orders, striving to do a little more than we offer; yet in the press of business, errors sometimes occur. In such a case, please notify us at once, and correction will be promptly and cheerfully made.

Please keep copies of all your orders for comparison.

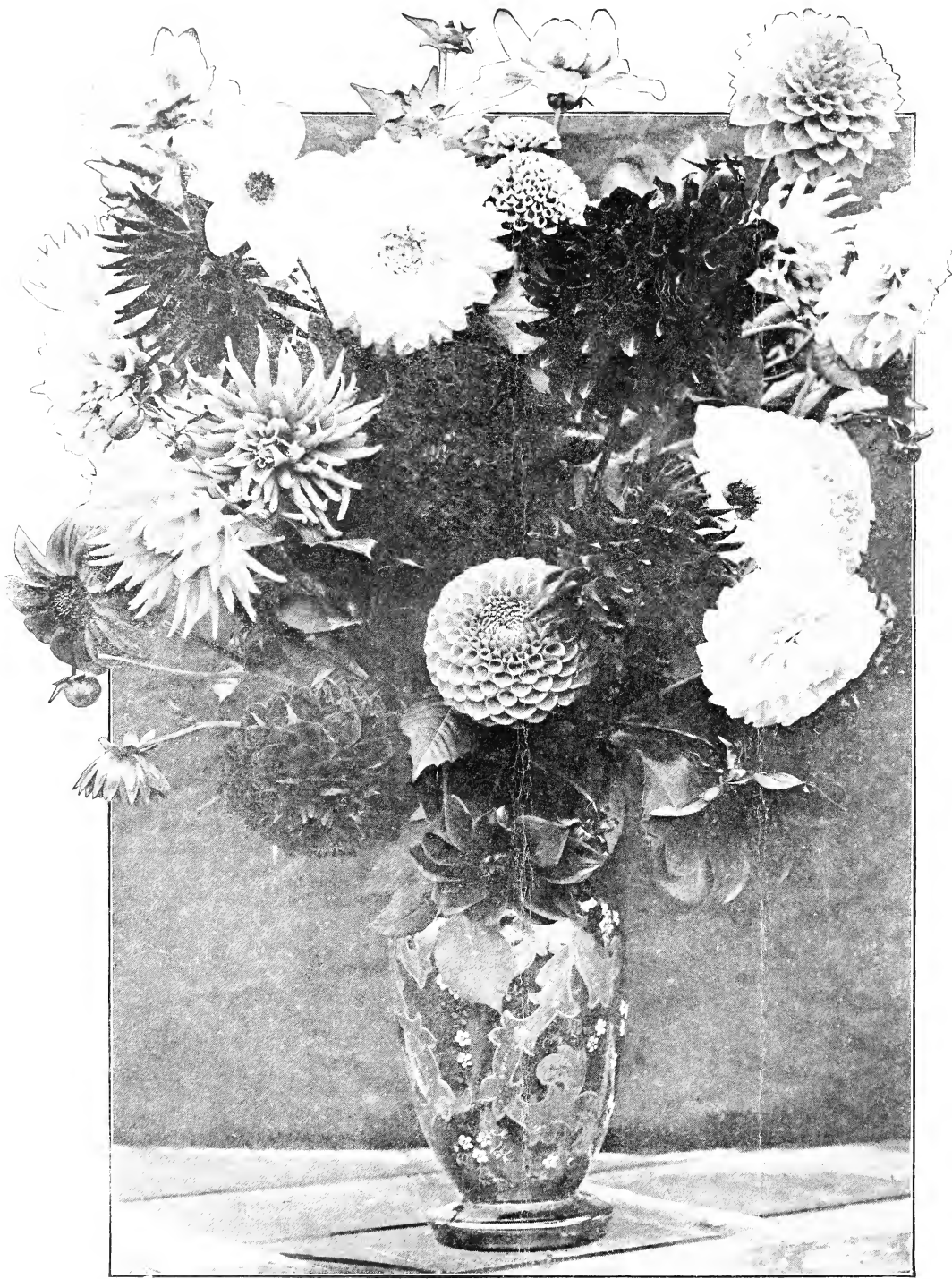
Please send cash with the order sufficient to cover the whole bill. No C. O. D. orders accepted unless remittance be made on account to guarantee acceptance. Coin should not be sent by mail.

MAIL.—When plants are shipped via mail we remove part of dirt; the roots are wrapped in damp moss, then placed in a heavy paper tube; this is a very satisfactory way to ship but they take a little time to recover, as they must be potted in fresh soil and handled with care for a few days.

EXPRESS.—This is the ideal way to ship plants as we give you a perfect ball of soil on every plant, the roots are undisturbed and they start growing from the first. Under the new ruling they go at special rates making the cost very reasonable.

QUALITY.—The many kind letters we receive every year complimenting us on the stock sent out are evidence enough that the quality of our goods cannot be approached.

J. E. JACKSON
Gainesville, Ga.



VASE OF HANDSOME DAHLIAS