

Historic, Archive Document

Do not assume content reflects current scientific knowledge, policies, or practices.

2.39
17227

Evergreens for August-September Planting

When August comes—then is the time for planting balled and burlapped specimen evergreens with greatest success.

Why? It is the season of *root growth*. Conifers and Broadleaf Evergreens have usually finished their normal *top growth* by August 1st and then begins *root activity*. Sap action has slowed down above ground, except for a ripening process and bud making, but is doing double time below the surface.

So August and early September have proved to be the one very best time for transplanting and establishing evergreens, including the

Conifer Group

Firs, Spruces, Hemlocks, Pines, Yews, Redcedars, Arborvitæ and Cypress.

Broadleaf Group

Rhododendrons, Kalmias, Leucothoe, Rose Daphne, Leiophyllum, Andromedas, etc.

Send for catalog or telephone or write.



HARLAN P. KELSEY
HARDY AMERICAN PLANTS
HAWTHORNE BUILDING
SALEM, MASSACHUSETTS

**BOXFORD-HIGHLANDS NURSERY AT
EAST BOXFORD, MASS.**

Easy to reach by automobile.

See map last page.

When August Comes

You may best plant the following Specimen Evergreens. The Springtime is next best. Send for Catalog which gives descriptions and prices.

THE CONIFER GROUP

FIRS (*Abies*)

Concolor Fir
Fraser Fir
Nikko Fir
Dimplecone Fir
European Silver Fir
Veitch Fir

SPRUCES (*Picea*)

White Spruce
Engelmann Spruce
Norway Spruce
Servian Spruce
Oriental Spruce
Colorado Spruce
Blue Colorado Spruce
Koster Blue Spruce

HEMLOCKS (*Tsuga*)

Common Hemlock
Carolina Hemlock

PINES (*Pinus*)

Jack Pine
Swiss Stone Pine
Japanese Red Pine
Limber Pine
Swiss Mountain Pine
Western White Pine
Japanese White Pine
Western Yellow Pine
Table Mountain Pine
Red Pine
Pitch Pine
White Pine
Scotch Pine
Japanese Black Pine
Austrian Pine
Mugho Pine

REDCEDAR AND JUNIPERS (*Juniperus*)

Prostrate Juniper
Savin
Colorado Juniper
Redcedar
Pfitzer Juniper
Schott Redcedar
Silver Redcedar
Tamarix Savin

YEWS (*Taxus*)

Canada Yew
Japanese Yew
Dwarf Japanese Yew

ARBORVITAE (*Thuja*)

American Arborvitae
American Globe Arborvitae
American Pyramidal Arborvitae
Golden American Arborvitae
Siberian Arborvitae

THE BROADLEAF GROUP

RHODODENDRON (*Rhododendron*)

Carolina Rhododendron
Catawba Rhododendron
Catawbiense compacta
Rosebay Rhododendron

BOGROSEMARY (*Andromeda*)

BEARBERRY (*Arctostaphylos*)

LEATHERLEAF (*Chamaedaphne*)

ROSE DAPHNE (*Daphne*)

LAMBKILL (*Kalmia angustifolia*)

MOUNTAIN LAUREL (*Kalmia latifolia*)

BOX SANDMYRTLE (*Leiophyllum*)

DROOPING LEUCOTHOE (*Leucothoe*)

JAPANESE PACHYSANDRA (*Pachysandra*)

MOUNTAIN ANDROMEDA (*Picris*)

Your Summer Home

Now is the time to plan your year's landscaping, and now is the time to plant your evergreens for real results.

We will carefully select and plant for you, or you can visit Boxford-Highlands Nursery, East Boxford, and select your own stock. We want you to see our specimen evergreens growing in the nursery.

We cannot carry many descriptions or prices in this announcement, but we are glad to send full catalog and to make estimates—or a visit by Mr. Kelsey on your grounds may be arranged for.

Deliveries by truck are prompt and safe, and place the specimens at the right spot. The cost is reasonable.



Block of *Pinus mughus* specimens at Boxford-Highlands Nursery

(Photo by H. P. K.)

The Mugho Pine. The most effective of all dwarf shrubby black Pines and easily grown. Splendid for rockeries, borders and edging for plantations or for a low hedge border, two to five or six feet. Cut shows block of Mugho Pines at Boxford-Highlands Nursery. The Swiss Mountain Pine is a taller variety, sometimes reaching ten to twelve feet and as much in diameter.

Mugho Pine

	Each	10	100
6 to 12 in.	\$1.00	\$ 8.00	\$ 70.00
12 to 18 in.	1.25	10.00	90.00
18 to 24 in.	2.00	18.00	150.00
2 to 3 ft.	4.00	36.00	300.00
3 to 4 ft.	7.00	64.00	
Extra specimens	\$8.00 to \$12.00 each.		

Swiss Mountain Pine

	Each	10	100
1 to 2 ft.	\$2.00	\$18.00	\$160.00
2 to 3 ft.	4.00	36.00	300.00
Extra specimens	\$6.00 to \$12.00 each.		

Our Most Beautiful American Evergreen



THE CAROLINA HEMLOCK (*Tsuga caroliniana*)

Introduced to American Horticulture by Harlan P. Kelsey in 1884, it is now known to tree lovers as the most distinctive and graceful of Hardy American Conifers.

In the Arnold Arboretum Bulletin of November 10, 1919, the Director, Professor Sargent, says of it: "The handsomest of the Hemlocks which can be grown in Massachusetts and now one of the most beautiful trees in the Arboretum is a native of the Southern Appalachian Mountains — *Tsuga caroliniana*."

Its tufted foliage is dark and dense on sweeping pendulous branches. At Boxford-Highlands Nursery we have a stock of thousands of specimens up to four and five feet, and a few grand specimens up to ten feet.

Unrivalled as a hedge plant, and we recommend the 18 to 24 inch, 2 to 3 foot or 3 to 4 foot grades for this purpose.

	Each	10	100
9 to 12 in.	\$ 1.00	\$ 9.00	\$ 80.00
12 to 18 in.	1.50	14.00	132.00
18 to 24 in.	2.25	20.00	180.00
2 to 3 ft.	3.50	30.00	270.00
3 to 4 ft.	6.00	50.00	450.00
4 to 5 ft.	10.00	90.00	
5 to 6 ft.	15.00	135.00	

A few larger specimens \$30.00 to \$75.00 each.

Kelsey's Specimen Evergreens



(Foto by H. P. K.)

Avenue of specimen Koster Blue Spruces
at Boxford-Highlands Nursery

Visit Boxford-Highlands Nursery and see our famous avenue of brilliant specimen Koster Blue Spruces. Nothing like it may be seen elsewhere.

	Each	10
2 to 3 ft.....	\$ 6.00	\$ 56.00
3 to 4 ft.....	9.00	86.00
5 to 6 ft.....	25.00	236.00
6 to 7 ft.....	35.00	325.00
7 to 12 ft. specimens \$40.00 to \$100.00 each.		

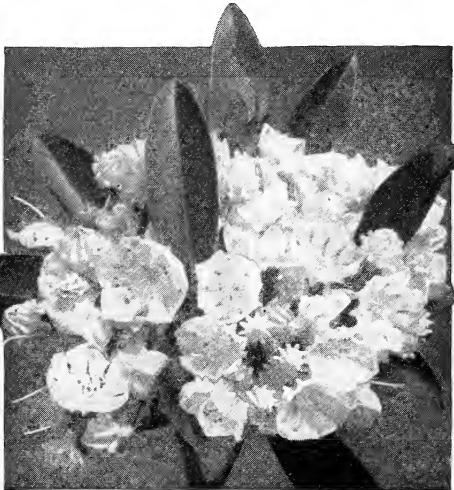
Rhododendrons

Visit Boxford-Highlands Nursery and see how we propagate them by tens of thousands. The beautiful clear pink Carolina Rhododendron is our introduction. We have **maximum** and **catawbiense** in large, heavy specimen clumps, full of buds for next spring.

How to make a "Successful Rhododendron Bed" is told in our Catalog sent on request.

Kalmia or Mountain Laurel

One of the grandest of our native broadleaf evergreen shrubs attaining tree-like proportions in our Southern Mountains. In cultivation it is a broad, thick shrub, and, when in full bloom, of surpassing beauty. The wheel-shaped flowers in close terminal corymbs, pure white to pink, appear in May or June in such profusion as almost to smother the foliage. Its thick, shining leaves conspicuous the year round, make it a shrub of greatest value for massing.

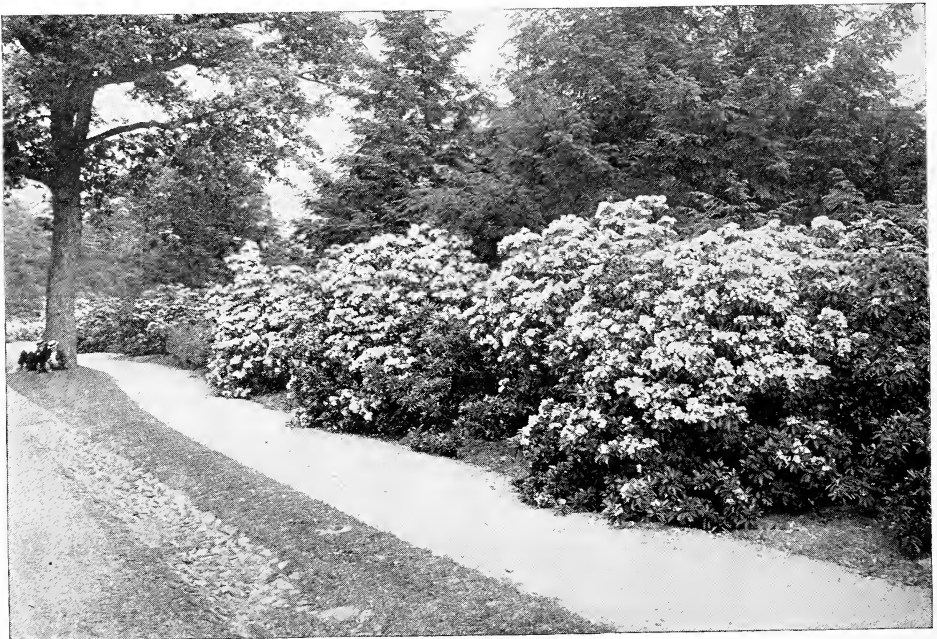


Kalmia latifolia

Heavy nurserygrown clumps of Kalmia at following prices.

	Each	10	100
9 to 12 in. clumps.....	\$1.25	\$10.00	\$ 90.00
12 to 18 in. clumps.....	1.75	16.00	114.00
18 to 24 in. clumps.....	3.00	28.00	255.00
2 to 3 ft. clumps.....	4.00	36.00	340.00

Pink-flowered variety, double above prices.



(Foto by H. P. K.)

Kalmia at Arnold Arboretum

Fraser Fir (*Abies fraseri*)

Thousands of perfect specimens up to 18 feet. The only permanent variety of the "Balsam" group. Foliage dark-green, blue underneath. One of the most satisfactory Evergreens for New England Planting.

	Each	10	100
5 to 6 ft.	\$5.00	\$40.00	\$360.00
6 to 7 ft.	7.00	64.00	600.00
7 to 8 ft.	9.00	80.00	750.00
8 to 12 ft. specimens	\$10.00 to \$50.00 each.		

Juniperus communis depressa, Prostrate Juniper

The native ironclad New England prostrate form, often reaching a diameter of twenty feet. The best of ground covers and for rocky situations. Thousands of specimens from a foot up to six feet diameter at Boxford-Highlands Nursery.

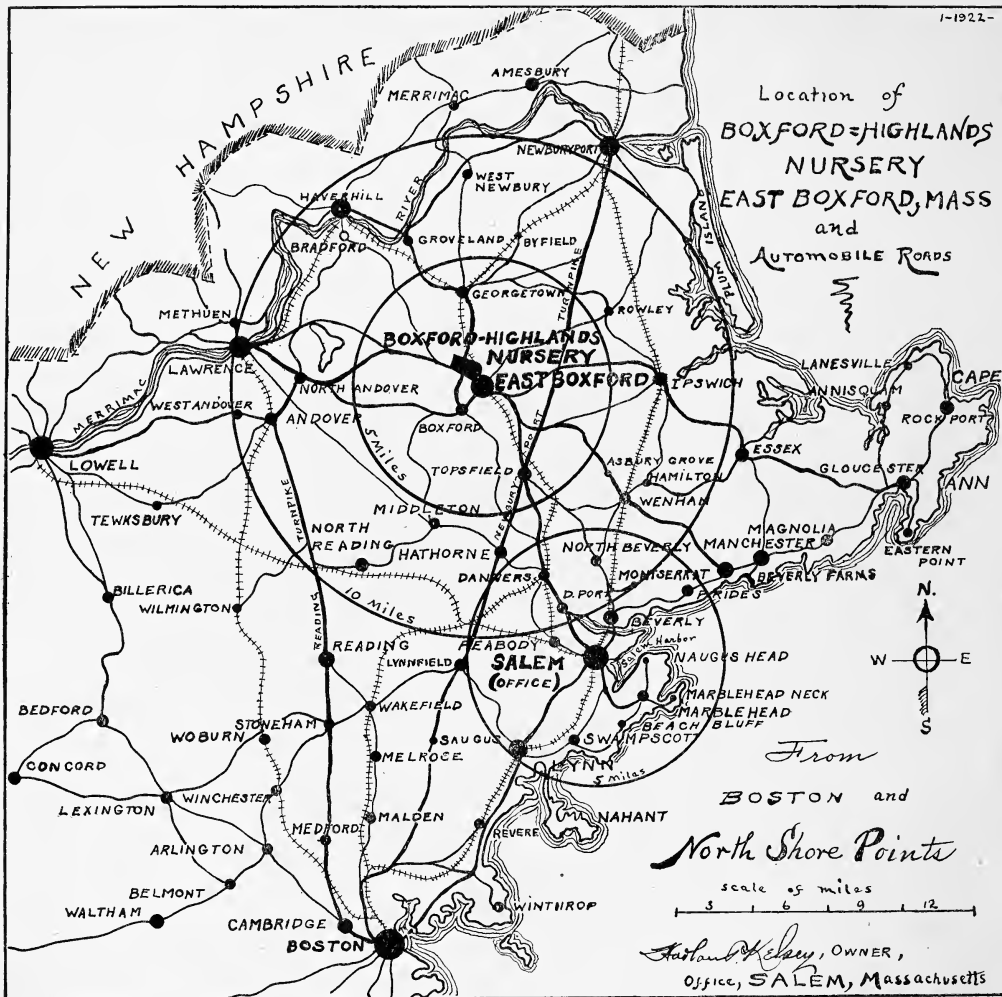
The Flowering Crabs (*Malus*)

Spring-flowering trees and shrubs producing gorgeous effects in Spring. Our collection includes the choicest and rarest varieties from Arnold Arboretum. These will be ripened up and ready to ship in October.

American Hardy Azaleas

Thousands of specimens full of buds for display the coming season. Ready for shipment in September.

HOW TO REACH BOXFORD-HIGHLANDS NURSERY
BY AUTO OR TRAIN TO EAST BOXFORD, MASS.



Boxford-Highlands Nursery, East Boxford, Massachusetts, is located 28 miles north of Boston, at Boxford Station, Georgetown Branch, B. & M. R.R.

It is readily reached by good automobile roads from any part of New England. From Boston, 28 miles, take either Newburyport Turnpike, turning West at Topsfield, or Reading Turnpike, turning East at North Andover. Other distances are Salem, 13 miles; Lawrence, 11 miles; Haverhill, 9 miles; Newburyport, 10 miles; Manchester, 13 miles; Ipswich, 9 miles; Lowell, 20 miles.

The Newburyport Turnpike is being resurfaced and is not passable at this time, but numerous other roads lead to East Boxford as shown on the above map.

Tens of thousands of evergreens may be seen growing from baby seedlings up to fifteen and twenty foot specimens. You will find a visit highly interesting.

Address all orders and correspondence to

HARLAN P. KELSEY . SALEM, MASSACHUSETTS