

## **Historic, Archive Document**

Do not assume content reflects current scientific knowledge, policies, or practices.



62.61

U. S. DEPARTMENT OF AGRICULTURE  
OFFICE OF FORESTRY  
★ MAR 28 1922 ★  
U. S. DEPARTMENT OF AGRICULTURE

SPRING 1922

# Wholesale List of Special Offers

at

## *Pre-War Prices*

*“Everything Worth Planting”*

*Of Our Recognized Standard “Quality First” Stock*

This Company is a merchandising Corporation of abundant responsibility, long established business and has every facility for the despatch of business and for furnishing reliable planting material in wide variety of highest standard of quality and proper grading and on the most favorable terms. We are not agents or brokers, nor commission men of or for any nursery or combination of nurseries—our business as always heretofore, being conducted solely as principals in all transactions.

### OPPORTUNITY LEADS TO SUCCESS

On a very large and varied Park planting list of 1922 requirements, including many kinds of Trees, Shrubs, Evergreens and other Hardy Plants, where we have been supplying planting stock for forty years, of the 206 items we quoted upon in close competition, we were low bidders on 179 items. Is it not obviously desirable for you to send us your list of planting requirements before placing orders for such hardy stock as you may wish?

See Page Four referring to the Furnishing of Planting Lists complete.

If we are not already on your list for information, quotation or orders, it will be worth while to let us hear from you as you are interested in any kinds of Trees or Hardy Plants.

### PERSONAL SELECTION

Knowing that it is an appreciated service and convenience for patrons to place with a well established and reliable company like this confidence in the selection of the material desired, with the responsibility therefor, this from our long experience will insure satisfactory stock. This will also avoid the loss of time in the busy season of going to various nurseries to select when as is often the case, the same material is received where with our careful system of grading, the selection is left to us.

Where, however, patrons or intending purchasers, owners, landscape architects or others prefer nursery inspection, on advices as to the kind of stock examination is desired, we will gladly arrange as convenient for inspection or selection accordingly. And on extra sizes or specimens, we usually prefer purchaser's inspection before shipment.

On ordinary standard grades of planting and Forestry Stock, we send if desired samples, as now becoming quite customary, with our usual stipulation that grade, quality, size and condition of Stock furnished shall be in every way equal to the samples submitted.

### F. W. KELSEY NURSERY COMPANY

50 Church Street

Established in 1878

New York City

Telephones: Cortlandt 6380-2123

We furnish the stock herein quoted, 250 or more at 1000 rates; 50 or more at 100 rates. At these special offers, transportation is not included. Packing containers, less than carlots, at cost.

**SHADE TREES**  
**FOR AVENUES, PARKS AND PRIVATE ESTATES.**  
**ALL FINE, TRANSPLANTED, WELL ROOTED STOCK.**

**Spring is an ideal time for planting these trees to secure best results.**

**NORWAY MAPLES** (*Acer Platanoides*) Here is a real bargain. Fine, shapely, straight trees, with good heads, transplanted and root pruned, exceptional stock for street and park planting.

	Doz	100
1½-2 inches caliper	\$22.50	\$145.00
2 -2½ inches caliper	27.50	195.00
2½-3 inches caliper	35.00	250.00
3 -3½ inches caliper	45.00	335.00
3½-4 inches caliper	55.00	365.00
4 -5 inches caliper	68.00	475.00

Special combination rates on these fine Maples in carlots, or by the thousand while remaining unsold.

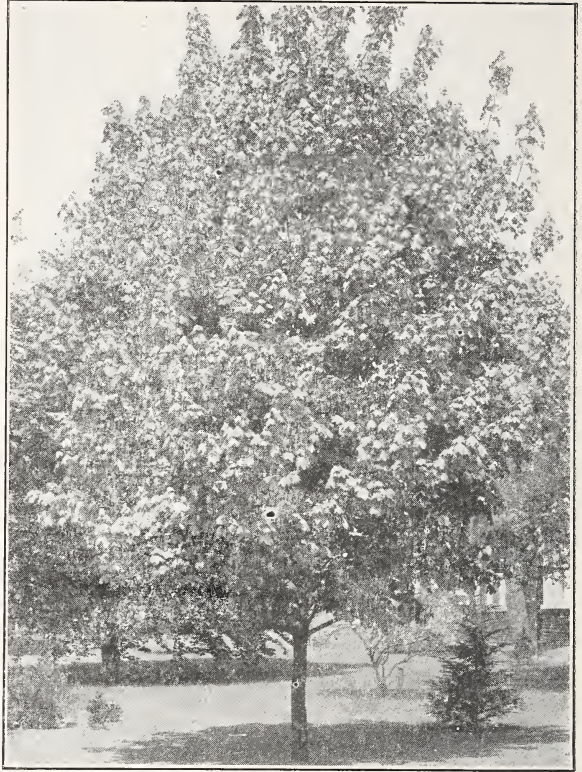
**JAPANESE MAPLES**

Owing to the practical operations of U. S. Quarantine #37, these beautiful plants are not now being imported, and are practically out of the market irrespective of price. While our supply is limited, we offer until sold at the following exceptionally attractive rates:

<b>Palm Leaved Maple</b> ( <i>Acer Palmatum</i> )	
2½-3 feet .....	\$2.00 each
3-4 feet .....	2.50 each
<b>Blood Leaved Maple</b> ( <i>Acer Polymorphum Atropurpureum</i> )	
3-4 feet .....	4.50 each

**WHITE FLOWERING DOGWOOD** (*Cornus Florida*) Well branched and well developed, transplanted and with good roots, Very special.

	Doz	100
3-4 feet.....	\$5.00	\$35.00
4-5 feet.....	6.50	45.00
5-6 feet.....	9.00	60.00
6-8 feet.....	12.00	75.00



**NORWAY MAPLE** (*Acer Platanoides*)  
 Very fine for street planting.  
 See bargain offer (above) for this Spring.

	Doz.	100
<b>CAROLINA and LOMBARDY POPLARS</b>		
8-10 feet .....	\$ 5.00	\$ 30.00
10-12 feet .....	7.50	38.50
1½-2 inches caliper.....	15.00	90.00
2-2½ inches caliper.....	25.00	165.00
Special rates in thousand lots.		

**AMERICAN ELMS** (*Ulmus Americana*): Well developed, straight trees with leaders and fine root systems. A favorite for street and avenue planting. Compare these prices with those of other responsible nursery offers. This is very special—really worth while for you to order while stock of this quality at these prices is to be had.

8-10 feet (1-1½ inches caliper).....	\$ 8.50	\$ 50.00
10-12 feet (1½-2 inches caliper).....	13.50	90.00
2-2½ inches caliper.....	25.00	170.00
2½-3 inches caliper.....	33.50	225.00
3-4 inches caliper.....	40.00	295.00
4-5 inches caliper.....	60.00	475.00

**ORIENTAL PLANES** (*Platanus Orientalis*): Another bargain. Shapely, well headed trees, best varieties for Avenue planting.

6-8 feet .....	\$ 7.50	\$ 40.00
8-10 feet .....	12.50	80.00



ORIENTAL PLANES (Continued)

	Doz.	100		Doz.	100
10-12 ft 1 1/4 in. caliper) ....	\$16.00	115.00	2 1/2-3 inches caliper .....	30.00	225.00
1 1/2-2 inches caliper .....	20.00	140.00	3-3 1/2 inches caliper .....	40.00	295.00
2-2 1/2 inches caliper .....	24.00	165.00	- 4 inches caliper .....	55.00	425.00

WESTERN CATALPA (Catalpa, Speciosa): Very rapid growth, where quick effects are wanted.

1 1/2-2 inches caliper .....	\$20.00	\$120.00	2 1/2-3 inches caliper .....	35.00	225.00
2-2 1/2 inches caliper .....	27.50	190.00	3-4 inches caliper .....	42.50	295.00
			4-5 inches caliper .....	55.00	460.00

In addition to the above, our SHADE TREE FAMILY comprises all the others, including ASH, BEECH, BIRCH, CHESTNUT, GINKO, LINDENS, MAPLES, OAK, POP-LAR, etc., in the leading varieties and sizes. We shall be pleased to quote you on your requirements special combination rates or in carlots.

Careful planting for cities and closely built towns and villages is primarily a matter of economics. To improve the layout of most American cities is a great public need. Our extended knowledge and observation is at your service.

**HARDY FLOWERING SHRUBS**

Continuous Bloom throughout the Summer may be had by careful selection of varieties. May we confer with you without obligation, to secure this desired effect?

ALTHEAS, ROSE OF SHARON (Hibiscus Syriacus): An unusually attractive offer of these beautiful large flowering shrubs which are becoming increasingly scarce. Furnished in named varieties and assorted colors.

	doz.	100	1000
2-3 feet.....	\$4.50	\$23.50	\$215.00
3-4 feet.....	6.00	30.00	265.00

**CORALBERRY**

(Symphoricarpos Vulgaris)

18-24 inches....	\$2.50	\$10.00	\$60.00
------------------	--------	---------	---------

**LILAC, COMMON PURPLE**

(Syringa Vulgaris)

2-4 feet.....	\$2.00	\$12.50	\$100.00
4-5 feet.....	4.00	22.50	190.00

**LILAC, COMMON WHITE**

(Syringa Vulgaris Alba)

2-4 feet.....	\$2.50	\$15.00	\$120.00
4-5 feet.....	5.00	25.00	215.00

**EUROPEAN RED BRANCHED DOGWOOD (Cornus Sanguinea)**

18-24 inches.....	\$2.50	\$10.00	\$ 75.00
2-3 feet.....	3.00	12.00	100.00
3-4 feet.....	4.00	15.00	125.00

**SIBERIAN DOGWOOD (Cornus Siberica)**

18-24 inches.....	\$2.50	\$10.00	\$ 90.00
2-3 feet.....	4.00	16.00	140.00

**SNOWBERRY (Symphoricarpos Racemosus)**

18-24 inches.....	\$2.50	\$10.00	\$60.00
2-3 feet.....	4.00	18.00	
3-4 feet.....	5.00	25.00	



ALTHEAS: A "close-up" of Flowers of Rose of Sharon (Hibiscus Syriacus)

See our special offer here.

Our supply in all the more desirable varieties of other hardy flowering shrubs, including Deutzias, Dogwoods, Forsythias, Hydrangeas, Spirea, Syringas, Weigelias, etc., is in good assortment of sizes, for group or mass planting. Consult us about your plans, both for suggestions and quotations.

For Barberry, Privet, etc., see "Hedges," page seven.

## AZALEAS.

### BEAUTIFUL NATIVE VARIETIES

These beautiful hardy shrubs are rapidly taking their deserved place as substitutes for the formerly imported Azaleas. We offer carefully selected, bushy plants with good ball, in leading varieties and color, including *Arborescens*, *Lutea*, *Nudiflora*, *Vaseyi*, *Viscosa*, etc.

	doz.	100
12-18 inches.....	\$ 7.50	\$60.00
18-24 inches.....	10.00	75.00
2-3 feet.....	12.00	90.00

Smaller sizes quoted special on request.

### JAPANESE EVERGREEN AZALEAS

Like other formerly imported varieties, these are very scarce. We can, however, on early orders, furnish a limited quantity of these of the best and most desirable varieties.

#### AZALEA AMONEA

9-12 inches.....	\$15.00	\$ 90 00
12-15 inches.....	18.00	100.00

#### AZALEA HINODIGII, Exceptionally fine and very scarce.

9-12 inches .....	\$35.00	\$235.00
-------------------	---------	----------

Of larger sizes, fine, bushy and budded plants. Special quotation on your requirements.

### EVERGREEN BARBERRY (*BERBERIS TRIFOLIATA*)

#### This Is An Exceptional Bargain.

This rare shrub is readily adaptable to any group or hedge planting and is rapidly becoming one of the popular varieties for Evergreen plantations. Note these low prices for well branched, bushy plants, with good roots.

	Doz.	100	1,000
12-18 inches .....	\$5.00	\$30.00	\$260.00
2-3 feet .....	7.50	40.00	375.00

THE FURNISHING OF PLANTING LISTS COMPLETE, has been a special service of this company since the business was established, and is a service rarely obtainable from other equally responsible concerns. This service often permits of a substantial saving to the purchaser. Send us your planting list for quotation.

TREE INSURANCE—Large specimen trees which would require many years to replace, if indeed replaceable, may be destroyed in a single season through insect pests or improper attention. Careful Tree Surgery is the proverbial "stitch in time" to save such specimen trees, many of which have sentimental as well as ornamental value.

Our "Tree Doctors" are a most dependable tree insurance. Their service is expert, efficient and satisfactory. And our charges are reasonable.

We shall be pleased to have an expert examine your trees and give you an estimate.

RHODODENDRON MAXIMUM REPORT—"I am glad to say the plants arrived in good condition."

This list shows only A FEW SPECIAL BARGAINS, from our usual complete assortment of Deciduous Shade Trees, Hardy Flowering Shrubs, Fine Evergreens, Vines, Roses, Herbaceous Perennials, Delicious Fruits, and Nuts, etc. Should you be interested in or think of using anything not shown here, we are sure it would be of mutual advantage for you to get in touch with us or ask for quotation.

### INTERESTING READING

"LITTLE BITS OF SUGAR FOR THE BIRDS"—Interesting and instructive to bird-lovers, conservationists, officials and members of Government, State and Municipal Departments, schools, colleges and institutions, Nature Study and Audubon Societies, game and civic associations, and others will find our folder on game and bird food varieties of value. Mailed on request.

"SOME OBSERVATIONS ON THE CARE OF PUBLIC PARKS"—For Park Commissioners, members of Park Boards, and other park officials. Sent on application.

"THE LANDSCAPE VALUE OF TREES"—For Landscapers, Park Officials, Shade Tree Commissions, Foresters and others interested in large plantations of trees. Mailed to those interested.

**NATIVE RHODODENDRONS AND LAUREL**  
**Great American Rosebay (*Rhododendron Maximum*) and**  
**Mountain Laurel (*Kalmia Latifolia*)**

These beautiful native shrubs have been among our leading specialties for more than forty years. Our personal attention and care in selecting and the quality and reliability of our stock are unsurpassed and bring repeat orders every season from customers who appreciate the KELSEY NURSERY SERVICE.

Carefully selected, bushy plants, with ball, in our standard carlots.

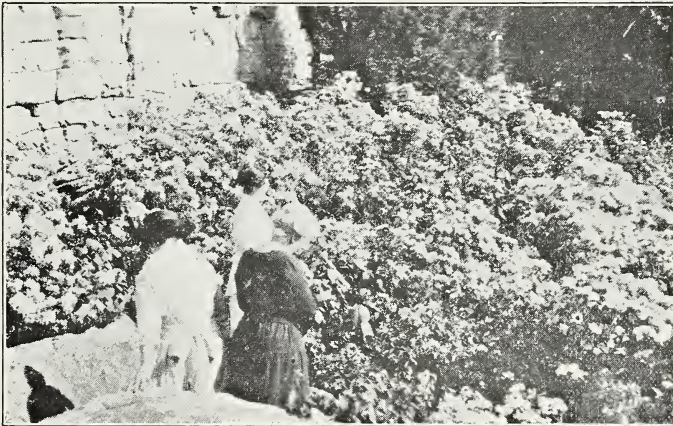
Now at pre-war prices :

175 to 200 plants 2-4 feet with ball .....\$125.00 per car  
 150 to 175 plants 3-5 feet with ball ..... 140 per car

We also load double quantity combination cars, viz.:

350 to 400 plants 2-4 feet with ball .....\$240.00 per car  
 300 to 350 plants 3-5 feet with ball ..... 275.00 per car

For smaller sizes of these fine shrubs see page eight.



Beautiful MOUNTAIN LAUREL in bloom  
 Grouping of Native Plants, Lake Mohonk, N. Y.

**HARDY HYBRID RHODODENDRONS**

We are still furnishing these elegant shrubs, all bushy and budded plants in best named, hardiest varieties and fine assortment of colors, in limited quantities. The increasing scarcity of plants of the quality of these plants which we have for so many years furnished in large quantities are now in limited supply on account of the workings of U. S. Quarantine No. 37, prohibiting importations, which tend toward higher prices; if indeed, obtainable at any price. If you want some of our stock, we recommend your early order or reservation to avoid disappointment. Let us know the quantity you want, and we shall be pleased to quote you acceptable prices.

We were recently awarded with other orders, an order for 300 of these Hardy Hybrids in competition with all of these fine plants now available in the country.



## EVERGREENS

For most favorable results, we recommend Spring planting of these fine Evergreens. All selected, shapely, well transplanted and dug with good ball of earth around roots. Burlapping if desired, at cost.

Doz.      100

### Special

#### HEMLOCKS (*Tsuga Canadensis*)

Shapely specimens, sheared, and with fine fibrous roots, put up with ball and burlapped.

2-3 feet .....	\$25 00	\$160.00
3-4 feet .....	30 00	200 00
4-5 feet .....	40 00	265.00

#### NATIVE HEMLOCKS—

Carefully selected, shapely and well rooted trees, not transplanted. We have furnished this stock for many years to discriminating purchasers, and the results have been satisfactory.

2-3 feet .....	\$15.00	\$ 85.00
3-4 feet .....	20 00	125.00
4-5 feet .....	28.00	195.00

Other sizes quoted on application.

#### AUSTRIAN PINE (*Pinus Austriaca*)

2-3 feet .....	\$25 00	\$160.00
3-4 feet .....	35.00	235.00

#### COLORADO BLUE SPRUCE

(*Picea Pungens Glauca*)

12-18 inches .....	\$10.00	\$ 65.00
18-24 inches .....	12 00	75.00
2-3 feet .....	15.00	95.00

#### SELECTED BLUE—

12-18 inches .....	\$15.00	\$ 95.00
18-24 inches .....	20 00	140.00
2-3 feet .....	30.00	240.00

#### RED CEDARS (*Juniperus Virginiana*)

2-3 feet .....	\$12 50	\$ 65.00
3-4 feet .....	20.00	125.00
4-6 feet .....	30.00	200.00

#### DWARF MOUNTAIN PINE

(*Pinus Mughus*)—Scarce

12-18 inches .....	\$16 00	\$ 95.00
18-24 inches .....	25.00	145.00

#### WHITE SPRUCE (*Picea Alba*)—

18-24 inches .....	\$12.50	\$ 55.00
2-3 feet .....	16.50	95.00
3-4 feet .....	25.00	165.00
4-5 feet .....	35.00	225.00



### Very Special Offer BEAUTIFUL HEMLOCKS (*Tsuga Canadensis*)

Note our Special Offer Prices.

#### SILVER FIR (*Abies Concolor*)

	Doz.		100
18-24 inches .....	\$15.00	\$100.00	
2-3 feet .....	20 00	135.00	

#### AMERICAN ARBOR VITAE

(*Thuja Occidentalis*)—

18-24 inches .....	\$ 6.00	\$ 30.00
2-3 feet .....	7 50	50.00
3-4 feet .....	15.00	120.00
4-5 feet .....	27.50	185.00
5-6 feet .....	35.00	260.00

OTHER FINE EVERGREENS, in desirable and popular varieties and sizes including Cedars, Firs, Pines, Retinosporas, Spruces, Yews, etc. Let us know your wishes for quotation.

Also see Forest Planting Stock, page eight.

A RECENT REPORT OF A SHIPMENT OF OUR HEMLOCKS: "I am greatly pleased with them (the Hemlocks) and they are now thriving. They came in excellent condition, roots carefully protected from the air and moist, so I look for good results."

WE ARE OFTEN CALLED UPON to confer on proposed planting plans and offer suggestions for landscape improvements, which is a service we gladly extend you without charge or obligation and we shall be pleased to have you call upon us when contemplating changes, additions and improvements. Our many years experience and observation in landscape plans and planting both here and abroad, makes the KELSEY NURSERY SERVICE one which will be of much value to you.

Where capable and efficient superintendents or gardeners are required, our system of investigating the character, experience and capability of applicants for such vacancies is a dependable and appreciated source of such information to owners of estates and others. This service is extended you without charge.



## HARDY VINES AND CLIMBERS

**HALL'S JAPANESE HONEYSUCKLE** (*Lonicera Hallcana*). The most popular and valuable climber, with fragrant blossom continuous throughout the Summer and holding its rich dark green foliage until late Autumn.

	100	1000
2 years, number one stock .....	\$12.50	\$110.00

**JAPANESE or BOSTON IVY** (*Ampelopsis Veitchii*) The most hardy of the ivies with its beautiful leaves turning to fiery red in Autumn.

2 years, fine and well rooted plants .....	\$16.00	\$145.00
2 years, fine and well rooted plants, heavy .....	20.00	185.00
3 years, XXX .....	23.50	210.00

**JAPANESE SPURGE** (*Paschysandra Terminalis*). Undoubtedly the best Evergreen ground cover, especially adapted to shady places or where grass or other ground covers will not thrive. Perfectly hardy.

6-8 inches, strong plants.....	12.00	\$100.00
--------------------------------	-------	----------

**TRAILING MYRTLE** (*Vinca Minor*). Very popular and desirable evergreen ground cover.

2 years, number one strong plants.....	\$12.00	\$100.00
--	---------	----------

**OTHER CLIMBING VINES** and trailing plants in fine, strong stock, can be furnished in quantity and at right prices. Tell us your wants for special quotation.

## HEDGES

### JAPANESE BARBERRY

(*Berberis Thunbergii*)—

	100	1,000
12-18 inches.....	\$16.50	\$125.00
Larger sizes quoted on request.		
Box Barberry ( <i>Berberis Thunbergii</i> var. Nana.)		
Special prices quoted for your requirements.		

### CALIFORNIA PRIVET

(*Ligustrum Ovalifolium*)—

	100	1,000
12-18 inches.....	\$ 5.00	\$ 30.00
18-24 inches.....	6.50	45.00
2-3 feet .....	10.00	60.00
3-4 feet .....	12.00	80.00
4-5 feet .....	14.00	110.00

**EVERGREEN BARBERRY** (*BERBERIS TRIFOLIATA*). A rare, beautiful and hardy variety, which should be in every shrub border or grouping; and note the very low prices for these carefully selected, well developed plants with good fibrous roots.

	doz.	100	
12-18 inches .....	\$5.00	\$30.00	\$260.00
2-3 feet .....	7.50	40.00	375.00

**ALTHEAS, LILACS, LOCUSTS, HEMLOCKS, NORWAY, SPRUCE, ARBOR VITAE**, and many other make very attractive hedges. We shall be pleased to offer suggestions for hedges, if you will let us know your wishes; and quote inducement prices that will be acceptable.

**ROSES**: Leading varieties in flowering sizes of Everblooming, Hybrid Perpetuals, and other hardy varieties, also Climbers; in good assortment and best colors can be furnished in quantity. We shall be pleased to quote you attractive prices and confer with you on your Rose Garden requirements or the planting of your rose garden. Let us know how we can serve you.

**HARDY PERENNIALS**: The best and most desirable flowering varieties in strong plants or clumps, we can furnish in quantity at attractive prices. Early flowering and continuous bloom may be had with proper selection. May we help you to secure this desired effect?

**FRUITS and NUTS**: Our dependable Fruits and Nut trees in the best orchard and garden varieties, and all grades, have earned a deserved reputation for quality and best final results. "Extra size" bearing age trees for immediate results, have been among our Specialties for several years, and these can be furnished in the popular varieties as well as in many of the rare or novelty kind. We shall be pleased to confer with you without charge or obligation on your garden or orchard problems.

Don't take a chance on Fruit and Nut Trees—buy where you will be assured of satisfaction. After shipping 4,000 of our fruit trees to the Pacific Coast, we received this report:

"We want to say that it is a very ne lot of trees. Our Fruit Inspector said: that he had never seen a nicer lot of trees come into Washington."

Result—An additional order for 10,000 which brought this report:

"The car of (10,000) trees arrived here in good shape last evening."

**FOR FORESTRY AND NURSERY PLANTING,  
SMALL STOCK, SEEDLINGS AND TRANSPLANTS**

All well graded and carefully dug and packed.

"S" denotes Seedlings—Each "X" denotes one transplanting.

**DECIDUOUS**

	1,000	10,000		1,000	10,000
AMERICAN ELM ( <i>Ulmus Americana</i> )			HONEY LOCUST & BLACK LOCUST—		
12-18 inches S.....	\$12.00	\$100.00	12-18 inches S.....	\$10.00	\$ 90.00
18-24 inches S.....	15.00	135.00	18-24 inches S.....	12.00	110.00
2-3 feet S.....	25.00	225.00	2-3 feet S.....	18.00	165.00
AMERICAN LINDEN ( <i>Tilia Americana</i> )			Very Special		
12-18 inches S.....	\$15.00	\$125.00	JAPANESE LARCH ( <i>Larix Leptolepis</i> )		
18-24 inches S.....	20.00	175.00	12-15 inches X.....	\$30.00	\$275.00
AM. WHITE ASH ( <i>Fraxinus Americana</i> )			RED OAK ( <i>Quercus Rubra</i> )—		
12-18 inches S.....	\$15.00	\$125.00	12-18 inches S.....	\$40.00	\$375.00
18-24 inches S.....	20.00	160.00	18-24 inches S.....	50.00	460.00
BLACK WALNUT ( <i>Juglans Nigra</i> )			SCARLET MAPLE ( <i>Acer Rubrum</i> )—		
12-18 inches S.....	\$15.00	\$125.00	6-12 inches S.....	\$10.00	\$ 90.00
18-24 inches S.....	18.00	165.00	12-24 inches S.....	15.00	125.00
2-3 feet S.....	24.00	220.00	2-3 feet S.....	20.00	165.00
3-4 feet S.....	45.00	425.00	SWEET GUM ( <i>Liquidambar Styraciflua</i> )		
BOX ELDER ( <i>Acer Nigundo</i> )—			2-3 feet S.....	\$25.00	\$200.00
12-18 inches S.....	\$10.00	\$ 90.00	3-4 feet S.....	35.00	275.00
18-24 inches S.....	15.00	110.00	TULIP POPLAR		
2-3 feet S.....	18.00	140.00	( <i>Liriodendron Tulipifera</i> )—		
3-4 feet S.....	25.00	200.00	12-18 inches S.....	\$16.50	\$150.00
CAROLINA POPLAR			18-24 inches S.....	24.50	220.00
( <i>Populus Monilifera</i> )—			2-3 feet S.....	35.00	315.00
12-18 inches S.....	\$20.00	\$185.00	3-4 feet S.....	45.00	400.00
18-24 inches S.....	25.00	225.00			

**EVERGREEN**

AMERICAN ARBORVITAE			Very Special Offer		
( <i>Thuja Occidentalis</i> )—			HEMLOCKS ( <i>Tsuga Canadensis</i> )—		
12-18 inches X.....	\$110.00		6-12 inches S.....	\$ 30.00	\$250.00
18-24 inches X.....	145.00		12-18 inches S.....	50.00	425.00
2-3 feet X.....	185.00		18-24 inches S.....	75.00	685.00
A Rare Bargain			SCOTCH PINE ( <i>Pinus Sylvestris</i> )—		
DOUGLAS FIR ( <i>Pseudotsuga Taxifolia</i> )			2-4 inches S.....	\$ 10.00	\$ 90.00
12-15 inches X.....	\$ 35.00	\$300.00	4-6 inches S.....	15.00	135.00
NORWAY SPRUCE ( <i>Picea Excelsa</i> )—			4-8 inches X.....	45.00	375.00
3-6 inches S.....	\$ 13.50	\$125.00	12-18 inches X.....	90.00	850.00
6-12 inches X.....	65.00	575.00	18-24 inches X.....	140.00	
12-18 inches X.....	\$ 90.00	\$850.00	VERY SCARCE—A REAL INDUCE-		
18-24 inches X.....	140.00		MENT PRICE.		
BALSAM FIR ( <i>Abies Balsamea</i> )—			SILVER FIR ( <i>Abies Concolor</i> )—		
12-18 inches S.....	\$ 60.00	\$500.00	18-24 inches X.....	\$125.00	

**EVERGREEN SHRUBS**

RHODODENDRON MAXIMUM			KALMIA LATIFOLIA		
(See page five)—			(See page five)—		
9-12 inches S.....	\$ 45.00	\$400.00	9-12 inches S.....	\$ 45.00	\$400.00

Send for quotation on your requirements including other kinds or sizes.

**TREE SEEDS**

THIS IS HEADQUARTERS for fresh crop forest tree seeds of highest germinating quality, in both native and imported varieties, such as we have furnished with entire satisfaction to many State and Governmental Departments and private users. Send us your list of wants for quotation.

**F. W. KELSEY NURSERY COMPANY**

50 Church Street

Established in 1878.

New York City

Telephones: Cortlandt 6380 and 2123.