

## **Historic, Archive Document**

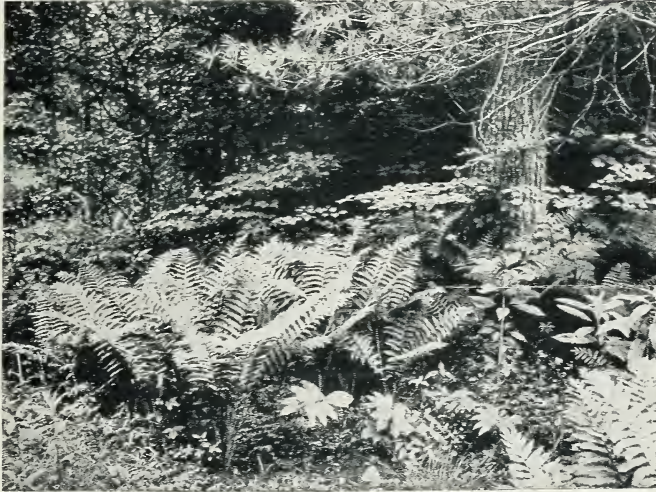
Do not assume content reflects current scientific knowledge, policies, or practices.



62,63 1322

# ADVANCE TRADE LIST

JULY AND AUGUST ACCEPTANCE ONLY



Cinnamon Ferns. (See page 2)

LIBRARY  
RECEIVED  
JUN 20 1922  
Department of Agriculture.

## GARDENS OF THE BLUE RIDGE

# E. C. ROBBINS

*Collector and Plantsman*

PINEOLA, AVERY COUNTY

NORTH CAROLINA

This is a special offer for early autumn delivery, including Native Ferns, Lilies, Trilliums, Cyripediums, Dicentra, Sanguinaria, Shortia, Ginseng, Golden Seal, Stenanthium, and many other specialties of approved merit. Order immediately, as prices in my next List will advance September 1.

At these prices, not less than 500 at 1,000 rate, or 25 at 100 rate. ALL GUARANTEED FIRST-CLASS STOCK.

### TERMS AND CONDITIONS OF SALE

Prices quoted are net and not subject to discount. F. O. B. shipping point.

Packing and grading will be held to highest standard.

Certificate of Inspection attached to all shipments.

Remittance or satisfactory reference required of unknown parties.

Discount of 5 per cent allowed on cash orders.

All bills due and payable 30 days from date of invoice; 3 per cent, 10 days.

Shipping instructions should always be given fully.

Not responsible for damages after receiving signed bill of lading.

All claims for damages in transit must be handled by consignee.

All claims for errors must be reported on receipt of goods.

July 1, 1922

## VINES, CLIMBERS, AND CREEPERS

<i>Ampelopsis Engelmanni</i> . Scarlet Virginia Creeper. Strong collected plants.....	100 \$1 50	1,000 \$10 00
<i>Clematis virginiana</i> . Virgin's Bower. Strong plants.....	5 00	40 00
<i>Celastrus scandens</i> . Bittersweet. 1 to 2 feet. Strong plants.....	9 00	
<i>Epigæa repens</i> . Trailing Arbutus. Selected clumps.....	7 00	55 00
<i>Galax aphylla</i> . Galax. Clumps, with ball Selected clumps.....	5 00	40 00
<i>Gaultheria procumbens</i> . Creeping Wintergreen. Strong clumps.....	5 00	40 00
<i>Houstonia serpyllifolia</i> . Bluets. Clumps.....	4 00	30 00
<i>Lonicera japonica Halliana</i> . Hall's Honeysuckle.		
Light plants, for lining out.....	3 00	25 00
Strong plants, for immediate effect.....	5 00	40 00
<i>Mitchella repens</i> . Partridge Berry. Selected clumps.....	7 00	60 00
<i>Phlox reptans</i> . Trailing Phlox. Selected clumps.....	3 50	25 00
<i>Rubus hispιδus</i> . Running Swamp Blackberry. 1 to 2 feet.....	4 00	35 00
<i>trivialis</i> . Dewberry. Strong, 2 to 3 feet.....	4 00	30 00
<i>Shortia galacifolia</i> . Shortia. Light, established plants.....	4 00	35 00
Strong, selected, clumpy plants.....	7 50	55 00

## FERNS

For shady situations no class of plants can equal Ferns which are very easily grown in ordinary soils and will thrive where it is often impossible to make flowering plants succeed. I handle many thousands annually and would highly recommend the following for general use:

	100	1,000
<i>Adiantum pedatum</i> . Maidenhair Fern. Strong, selected.....	\$5 00	\$40 00
<i>Asplenium filix-fœmina</i> . Lady Fern. Strong, selected.....	8 00	60 00
<i>Aspidium acrostichoides</i> . Dagger Fern. Strong, selected.....	4 00	30 00
<i>marginale</i> . Shield Fern. Strong, selected.....	5 00	30 00
<i>spinulosum</i> . Wood Fern. Strong, selected.....	3 50	25 00
<i>Botrychium lunaroides</i> . Moonwort. Nice little plants.....	5 00	
<i>lunaroides dissectum</i> . Very rare. Extra nice plants.....	25 00	
<i>virginianum</i> . Virginia Grape-Fern. Extra nice plants.....	6 00	
<i>Dicksonia punctilobula</i> . Hay-Scented Fern. Strong clumps.....	2 50	20 00
<i>Onoclea sensibilis</i> . Sensitive Fern. Selected plants.....	5 00	
<i>Osmunda cinnamomea</i> . Cinnamon Fern. Extra selected plants.....	5 00	40 00
<i>claytoniana</i> . Clayton's Fern. Extra strong plants.....	7 50	60 00
<i>regalis</i> . Royal Flowering Fern. Strong plants.....	8 00	65 00
<i>Phegopteris hexagonoptera</i> . Broad Beech-Fern. Strong plants.....	6 00	
<i>Polypodium vulgare</i> . Polypody. Strong plants.....	4 00	
<i>Pteris aquilina</i> . Brake. Selected.....	4 00	25 00



Foundation Planting of Hardy Ferns

AQUATICS AND BOG PLANTS

	100	1,000
Aster puniceus. Swamp Aster. Strong clumps.....	\$4 00	\$30 00
Chelone glabra alba. White Snakehead. Strong plants.....	8 00	
Lyoni. Pink Snakehead. Strong plants.....	5 00	
Orontium aquaticum. Golden Club. Extra strong plants.....	10 00	
Vaccinium macrocarpon. Cranberry. Extra strong plants.....	4 00	25 00



Cypripedium acaule

ORCHIDS

	100	1,000
Calopogon pulchellus. Grass Pink. Nice little plants.....	\$7 50	
Cypripedium acaule. Purple Lady's Slipper. Light plants.....	4 00	\$30 00
Strong selected plants.....	8 00	60 00
pubescens. Yellow Lady's Slipper. Strong selected plants.....	8 00	60 00
Light plants.....	4 00	30 00
reginæa (spectabile). Showy Lady's Slipper.		
Medium size, 1 to 3 crowns.....	15 00	
Large, selected, 4 to 6 crowns.....	25 00	
Habenaria ciliaris. Yellow Fringed Orchis. Strong plants.....	6 00	45 00
Orchis spectabilis. Showy Orchis. Strong plants.....	8 00	



*Convallaria majalis* (Lily-of-the-Valley)

## LILIES AND BULBOUS PLANTS

	100	1,000
<i>Arisæma triphyllum</i> . Indian Turnip. Strong plants.....	\$5 00	
<i>Amianthium muscætoxicum</i> . Fly-Poison. Strong plants.....	3 50	\$25 00
<i>Convallaria majalis</i> . Lily-of-the-Valley. Selected plants.....	3 00	15 00
<i>Dicentra eximia</i> . Wild Bleeding-Heart. Strong size, rare.....	8 00	65 00
Light, selected plants.....	4 00	35 00
<i>Erythronium americanum</i> . Dog's-Tooth Violet. Selected.....	1 00	7 50
<i>Lilium canadense</i> . Canada Lily. Yellow-orange, first size.....	9 00	75 00
<i>carolinianum</i> . Carolina Lily. First size. Orange. Very fragrant.....	15 00	
<i>Grayi</i> . Asa Gray's Lily. First size. Dark red.....	8 00	60 00
Second size.....	4 00	35 00
<i>superbum</i> . Turk's-Cap Lily. XX, largest size.....	15 00	
First size, X, selected bulbs.....	8 00	60 00
Second size, selected, mostly blooming size.....	4 50	35 00
Third size, small but good for growing on stock.....	2 50	20 00



*Trillium grandiflorum*

LILIES AND BULBOUS PLANTS, continued

	100	1,000
<i>Trillium erectum</i> . Purple Wake-Robin. First size, X, nice. . . . .	\$2 00	\$15 00
<i>grandiflorum</i> . Large, white, turning to pink. . . . .	2 00	15 00
Second size . . . . .	1 00	7 50
<i>stylosum</i> . Pink nodding flowers. Rare. First size. . . . .	5 00	35 00
Second size . . . . .	3 00	25 00
<i>undulatum</i> ( <i>T. Erythrocarpum</i> ). Painted Trillium. White with scarlet center. First size, X, nice. . . . .	2 50	20 00



*Lilium carolinianum*  
See page 4



*Sanguinaria canadensis* (Blood-Root)

## HERBACEOUS PERENNIALS

	100	1,000
<i>Aconitum uncinatum</i> . Blue Monkshood. Selected plants.....	\$8 00	
<i>Actæa alba</i> . White Baneberry. Strong plants.....	6 00	
<i>Angelica Curtisii</i> . Angelica. Strong plants.....	5 00	\$35 00
<i>Aralia nudicaulis</i> . Wild Sarsaparilla.....	3 00	25 00
<i>racemosa</i> . Spikenard. Strong plants.....	5 00	35 00
<i>quinquefolia</i> . Ginseng. One-year plants.....	3 50	25 00
Two-year plants.....	4 50	35 00
Three-year plants.....	5 50	45 00
Stratified Seeds.....	40	1 50
<i>Asarum macranthum</i> . Wild Ginger. Strong clumpy plants.....	6 00	50 00
<i>Aster cordifolius</i> . Blue Wood Aster.....	3 50	25 00
In variety.....	2 50	20 00
<i>Asclepias tuberosa</i> . Butterfly Weed. Strong plants.....	10 00	
<i>Baptisia tinctoria</i> . Wild Indigo. Strong plants.....	10 00	75 00
<i>Campanula divaricata</i> . Harebell. Strong plants.....	6 00	
<i>Carex Fraseri</i> . Evergreen Carex. Rare. Strong plants.....	10 00	
<i>Caulophyllum thalictroides</i> . Blue Cohosh. Strong plants.....	3 50	25 00
<i>Chamælorium luteum</i> . Devil's-Bit. Selected plants.....	3 00	25 00
<i>Cimicifuga americana</i> . American Bugbane. Fragrant. Clumpy plants.....	6 00	50 00
<i>racemosa</i> . Black Cohosh. Selected clumpy plants.....	3 50	30 00
<i>Clintonia umbellata</i> . White Clintonia. Nice plants.....	3 00	25 00
<i>borealis</i> . Yellow Clintonia. Rare. Nice plants.....	10 00	80 00
<i>Coreopsis lanceolata</i> . Lance-leaved Tickseed. Clumps.....	4 00	30 00
<i>trichosperma</i> . Tall Tickseed Sunflower. Strong plants.....	5 00	
<i>verticillata</i> . Whorled Tickseed.....	5 00	
<i>Diphylleia cymosa</i> . Umbrella-Leaf. Selected plants.....	6 00	
<i>Eupatorium ageratoides</i> . White Snakeroot. Strong plants.....	4 00	30 00
<i>purpureum</i> . Joe-Pye or Trumpet Weed. Strong plants.....	6 00	
<i>Gentiana Andrewsii</i> . Closed Gentian. Strong plants.....	4 00	25 00
Light plants.....	2 00	15 00
<i>Gillenia trifoliatus</i> . Indian Physic. Strong, selected plants.....	5 00	35 00
<i>Helenium autumnale</i> . False, or Swamp Sunflower. Clumps.....	4 00	30 00
<i>Hepatica acuta</i> . Sharp-lobed Hepatica.....	3 00	25 00
<i>Heuchera americana</i> . Alum-Root. Beautiful fall coloring.....	6 00	50 00
<i>villosa</i> . Hairy Heuchera.....	4 00	25 00



HERBACEOUS PERENNIALS, continued

	100	1,000
<i>Houstonia purpurea</i> . Large Houstonia. Purple clumps.....	\$5 00	
<i>Hydrastis canadensis</i> . Golden Seal. One-year plants.....	2 50	\$20 00
Two-year plants.....	5 00	35 00
Three-year, heavy plants.....	7 00	55 00
Seeds.....	50	3 50
<i>Iris cristata</i> . Crested Dwarf Iris. Strong clumps.....	5 00	40 00
<i>pseudacorus</i> . Yellow Flag. Strong, selected plants.....	7 50	
<i>verna</i> . Dwarf Iris. Clumps.....	4 00	30 00
<i>Laciniaria spicata</i> . Gray Feather. Strong plants.....	4 50	
<i>Monarda didyma</i> . Oswego Tea. Selected plants.....	4 00	30 00
<i>Phlox subulata</i> . Moss Pink. Light plants.....	7 50	50 00
<i>Podophyllum peltatum</i> . May-Apple. Strong plants.....	3 50	25 00
<i>Polygonatum commutatum</i> ( <i>P. giganteum</i> ). Solomon's Seal. Strong, selected plants.....	4 00	30 00
<i>Sanguinaria canadensis</i> . Blood-Root. Selected plants.....	3 50	20 00
<i>Sedum ternatum</i> . Stonecrop. Clumps.....	4 00	25 00
<i>telephoides</i> . American Orphine. Selected plants.....	6 00	45 00
<i>Silene stellata</i> . Starry Campion. Selected plants.....	5 00	
<i>virginica</i> . Fire-Pink. Selected plants.....	5 00	35 00
Light plants.....	2 50	15 00
<i>Smilacina racemosa</i> . False Solomon's Seal.....	5 00	
<i>Solidago odora</i> . Anise-scented Goldenrod. Strong plants.....	6 00	40 00
In variety.....	3 50	25 00
<i>Stenanthium robustum</i> . Mountain Feather Fleece. First size.....	7 00	50 00
Second size.....	4 00	35 00
Third size.....	2 50	15 00
<i>Thermopsis caroliniana</i> . Thermopsis. Very ornamental. Selected plants.....	7 00	
<i>Uvularia sessilifolia</i> . Bellwort. Selected plants.....	5 00	30 00
<i>Viola cucullata</i> . Heart's-Ease. Strong clumps.....	3 00	25 00
<i>hastata</i> . Halberd-leaved Violet.....	4 00	30 00
<i>pedata</i> . Bird's-foot Violet. Strong plants.....	4 00	25 00
<i>pedata bicolor</i> . Bird's-foot Violet. Blue and purple. Strong plants.....	7 00	50 00
<i>rotundifolia</i> . Round-leaved Violet. Strong plants.....	5 00	35 00
<i>Yucca recurvifolia</i> . Spanish Bayonet. Light plants.....	4 00	30 00
<i>Xerophyllum asphodeloides</i> . Turkey-Beard. Heavy clumps.....	6 00	40 00
<i>Zygadenus leimanthoides</i> . Pine-Barren <i>Zygadenus</i> .....	10 00	



Bed of Violets

## My Complete List will be Ready September 1

offering many rare and valuable items, including *Abies Fraseri*, Native Azaleas, *Andromeda floribunda*, *Kalmia latifolia*, *Leiophyllums*, *Leucothoe catesbæi*, *Oxydendrum*, *Rhododendrons*, Hemlocks.

"ERICACEOUS" Plants my specialty, and many other items carried in stock to meet requirements of the trade.

Thirty years' experience growing and handling Native Ornamentals. Carload shipments solicited for **FALL AND NEXT SPRING DELIVERY.**



*Trillium undulatum.* (See page 5)

*Your orders will be appreciated and receive careful attention*

# E. C. ROBBINS

PINEOLA, AVERY COUNTY

NORTH CAROLINA