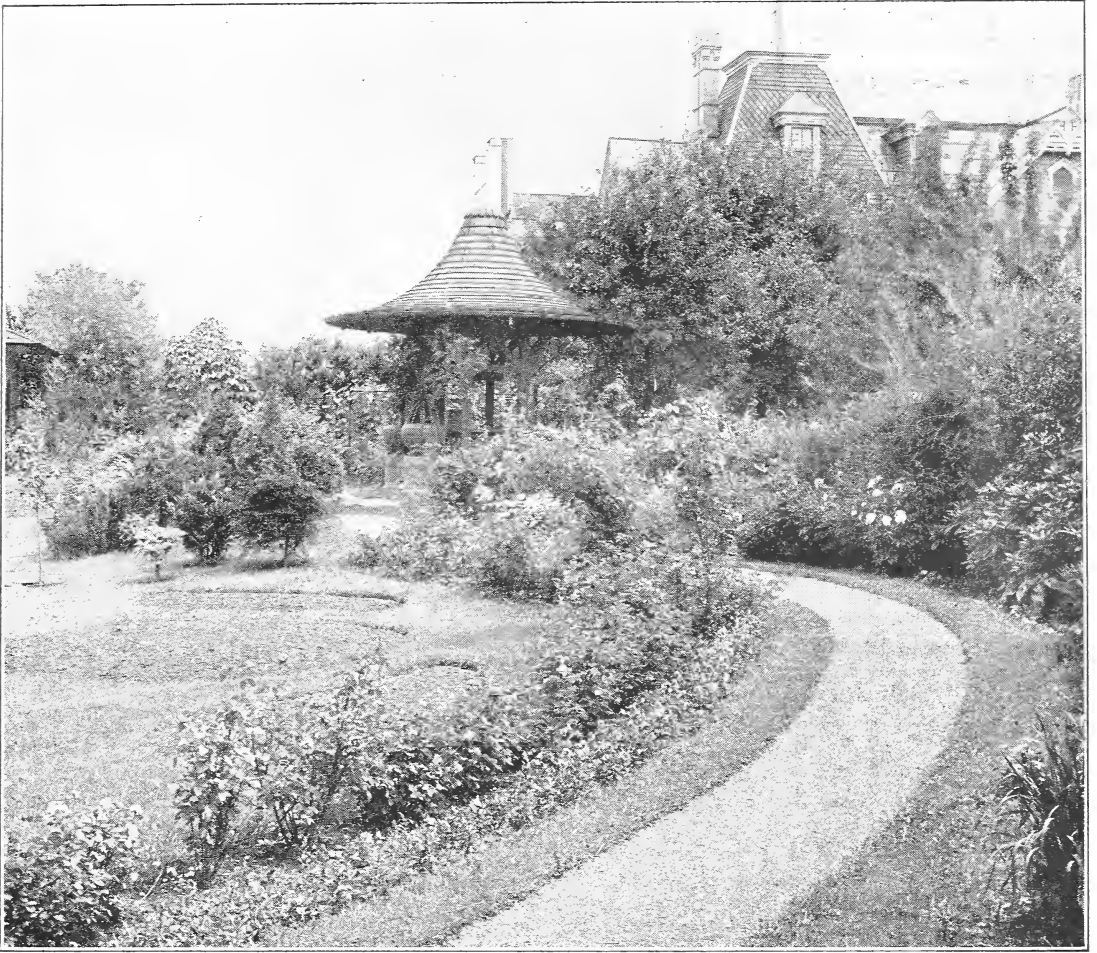


## **Historic, Archive Document**

Do not assume content reflects current scientific knowledge, policies, or practices.



62+3



1922 Catalog

# Edward W. Schuster

Crookston, Minn.

Crookston's Day and Night Flower Phone 754

**Trees, Shrubs, Small Fruit  
and Vegetable Plants**

**Cut Flowers, Funeral  
and Wedding Designs**

“Leave the World More Beautiful than You Found It”

# An Annual for Our Friends

## Flowers for every Home. A shrub for every Lawn.

Cut flowers for funerals, weddings, receptions and every occasion. Plants, ornamental shrubs, shade trees and vegetable plants.

We again thank you for your past favors and patronage the past year. The increased demand for our plants and flowers the past year has proven to us that it pays only to send out quality stock. We ask you only for a trial order and after this we know that you will always be one of our customers. Our motto is and has been since we established in business—"a satisfied customer."

**Order Early**—We aim to fill all orders as soon as received, but during the rush season in April, May and first part of June delays are unavoidable; which, however, can be overcome by ordering your wants early.

All trees, plants, roots and bulbs are forwarded by express, purchaser paying charges, which rates are very reasonable. For this class there is a 20% discount from the general merchandise rates.

Heavy plants, if shipment is large enough, may be sent by freight.

Small packages may be sent by parcel post. For packages you wish to be forwarded by parcel post add 10% of order for postage.

**Cash With Order**—Please send check, money order, or draft with order to cover the whole. We decline sending goods "Collect on Delivery," unless remittance be made on account to guarantee acceptance.

**Correspondence**—We try and give prompt attention to all proper letters of inquiry regarding anything in our line. We want to assist you to be successful with your plantings. However, we ask as a favor that all questions be stated clearly and briefly.

January 1, 1922.

EDWARD W. SCHUSTER.

## Cut Flowers

**WE ARE THE LEADING FLORISTS** of the North and Northwest. In design work and cut flowers we are better than ever prepared to care for your wants. With our competent artists and long experience we place our work in competition with the best in the land. We furnish and execute in the most modern manner all kinds of designs for funerals, weddings, table, house or church. All orders entrusted to us will be executed promptly in the latest styles and at reasonable prices. If you are undecided as to what to order leave the selection to us, stating what you wish them for.

# FUNERAL FLOWERS



**Sunday Mail**—If your order is sent by mail for Monday shipment be sure and affix a special delivery stamp if letter is liable to be sent in on Sunday, as we do not receive our Sunday mail until Monday morning.

**How to Order**—When time is limited always order by telephone or telegraph. If order by mail is for immediate shipment affix special delivery stamp.

**Flowers By Express**—All cut flowers, designs, etc., packed to carry long distance safely, either winter or summer.

**Flowers By Mail**—On request we often send small boxes of flowers by mail. As a rule they reach their destination all right, but we do not guarantee these shipments by parcel post, and much prefer sending by express, as flowers carry better.

If order goes out by mail, add 10 cents postage and 10 cents extra for special delivery.



# Floral Designs

Our New Cut Flower Catalog listing all designs separately will be gladly sent on your request. This catalog is issued at a large expense and can only be sent on request.

## Measurement of Standing Designs Includes Height

	12-in.	15-in.	18-in.	21-in.	24-in.	30-in.	36-in.
Anchor Flat .....	\$5.00	\$ 8.00	\$10.00	\$12.00	\$15.00	\$20.-\$25.	\$30.-\$50.
Anchor on Stand .....		10.00	12.50	15.00	18.00	20.- 25.	35.- 75.
Anchor on Easel .....		8.00	10.00	12.00	15.00	20.- 25.	30.- 50.
Broken Column .....			15.00	20.00	25.00	30.00	40.- 50.
Broken Wheel .....		10.00	12.00	15.00	18.00	25.00	35.- 50.
Crosses Flat .....	4.00	5.00	7.00	10.00	15.00	20.00	25.- 50.
Cross of Magnolia Leaves for Grave Use .....	2.00	3.00	4.00	5.00			
With Flowers \$2.00 Extra.							
Crosses Standing .....			10.00	15.00	20.00	25.00	35.- 50.
Cross, Maltese .....	5.00	6.00	8.00	12.00	15.00		
Cross, Casket .....		10.00	12.00	15.00	20.00		
Cross and Sickle on Stand.....							20.- 50.
Cross and Crown .....			15.00		20.00	25.00	
Door Badge, \$3, \$4 and \$5.....							
Door Badge Wreath .....	4.00	5.00	6.00				
Crescent .....	5.00	8.00	10.00	12.00	15.00		
Crescent and Star on Stand.....		12.00	15.00	20.00	25.00		
Gates Ajar .....		12.00	15.00	20.00	25.50	35.00	50.-100.
Harp on Stand .....		10.00	12.00	15.00	20.00	25.00	35.00
Heart Solid .....	5.00	6.00					
Heart Open .....	5.00	6.00	8.00	10.00			
Lyre on Base.....		10.00	12.00	15.00	20.00	25.00	
Sickle .....	5.00	6.00	10.00	12.00	15.00		
Star, Flat .....	5.00	7.00	12.00	15.00	20.00		
Star on Base, \$2.00 extra.							
Star and Crescent on Easel.....				15.00	18.00	25.00	
Star and Crescent on Base.....				18.00	21.00	28.00	
Sheaf Wheat .....		2.00	2.50	3.00	4.00		
Sheaf Wheat with Flowers.....		3.00	4.00	5.00	8.00	10.00	
Sheaf on Base, Standing.....			8.00	10.00	15.00		
Pillows .....	6.-8.	8.-10.	12.-15.	15.-18.	20.-25.	25.-35.	40.-50.
Sickle on Easel with Sheaf Wheat and Sago Palm Leaves.....					12.00	15.00	
Sickle and Sheaf on Panel of Galyx....				12.00	15.00	20.00	
Shield .....	6.00	7.50		10.00	15.00		
Shield of Galyx or Magnolia Leaf on Easel with Emblem.....			10.00	12.00	15.00		
Scroll .....			15.00	18.00	20.00		
Wreaths on Panel.....				10.00	12.00	15.00	
Broken Wreath on Base.....			10.00	12.00	15.00		
Wreath of Carnations with Cluster Roses		10.00	12.00	15.00	20.00		
Wreath of all Roses or all Carnations..	10.00	12.00	15.00	18.00	20.00	25.00	
Wreath Reclining on Easel.....	10.00	12.00	15.00	18.00	20.00	25.00	35.- 50.
Wreath on Stand, height with Dove, \$4 extra .....				15.00	18.00	20.00	25.-150.
Wreath Crescent, price same as Stand- ard Wreaths.							
Wreath of Palm Leaves.....		5.00	6.50	8.00	10.00		
Wreath of Ivy Magnolia or Galyx Leaves with clusters of flowers.....	5.00	6.00	7.00	8.00	10.00	15.00	
Wreaths of Assorted Flowers, 10 inch, \$3.00 .....	5.00	8.00	10.00	15.00	20.00	25.00	35.- 50.
Wreaths Reclining on Easel with Palm Leaves, \$2.00 extra each size.							
<b>SPECIAL LODGE DESIGNS</b>							
Epworth League .....	6.00	8.00	10.00	12.00			
Knights of Pythias .....	6.00	8.00	10.00	12.00	15.00	20.00	
Knights Templar, Maltese Cross with Cross and Crown .....						25.00	
Maltese Cross (see Crosses).....							
Order Eastern Star.....	6.00	8.00	10.00	15.00	20.00	25.00	
Elks' Dial .....				15.00	20.00		
G. A. R. Wreath.....	5.00	6.00	8.00	10.00			
Odd Fellows .....		8.00	10.00	15.00	20.00		
Masonic .....	8.00	10.00	15.00	20.00	25.00		
M. W. A. Axe with Beetle on Shield...			10.00	12.00	15.00		
Royal Arcanum .....			7.00				
Other Lodge Designs made to order at reasonable prices. If mounted on Easel with Palm, \$2.00 extra.		8.00	10.00	12.00	15.00		

**Casket Covers** or blankets used for covering the entire casket or just the lower part of the casket. Price varies according to time of year and size of cover. Small for children, \$25, 30, 50; large for grown persons, \$100 to \$500.

## General List of Bedding Plants



### AGERATUM

**Blue Perfection**—For borders; plant 6 to 8 inches apart. Each, 10c; \$1.00 per dozen; \$8.00 per 100.

### ALYSSUM

**Little Gem**—For borders; plant 6 to 8 inches apart. \$1.00 per dozen; \$6.00 per 100.

### ASTERS

We grow the finest assortment of all kinds and colors. Strong transplanted seedlings from soil. 50c per dozen; \$3.50 per 100.

**Giant Crego**—A branching variety with flowers of immense size; separate colors; white, pink, purple and rose.

**Late Branching**—Very fine for cutting; white, rose, pink, purple and lavender.

**American Beauty**—Color of the American Beauty Rose.

**Sensation**—A fine red aster.

**Astermum**—These have flowers nearly as large as Chrysanthemums; separate colors; white, pink and lavender.

### BEGONIAS

**Vernon**—Red, pink and white.

**Gloir de Chatelaine**—Brilliant pink; from 3-inch pots. 25c each; \$2.50 per dozen.

### BALSAMS

**Transplanted Seedlings**—Assorted colors; plant 8 to 10 inches apart. 50c per dozen.

### CALENDULAS

Continuous bloomers; plant 8 to 10 inches apart. \$1.00 per dozen; \$6.00 per dozen.

### CANDYTUFT

**Giant White Hyacinth**—50c per dozen.

### CARNATIONS

In separate colors; red, pink, or white. Each, 20c; \$2.00 per dozen.

### CASTOR BEANS (Ricinus)

For tropical foliage beds; well adapted as center plants for groups of cannas, dahlias, etc. Each, 35c; \$4.00 per dozen.

### CENTAUREA

**Gymnocarpo (Dusty Miller)**—The gray fern-like leaves make effective contrast border between the green lawn and brilliant plants in beds; 10 inches high; plant 6 to 9 inches apart. Each, 10; dozen, \$1.00; per 100, \$6.00.

### CHRYSANTHEMUMS

For fall blooming; choice named varieties; red, white, yellow, bronze and pink. Each, 20c; dozen, \$2.00.

### COLEUS

Particularly fine for borders. Red and yellow; plant 6 inches apart. Per dozen, \$1.00; per 100, \$7.00.

### COSMOS

Extra early flowering; pink and white. Each, 15c; dozen, \$1.50.

### FEVERFEW

**Double White**—Fine for window boxes. 25c each; \$2.50 per dozen. Larger size, 35c each; \$4.00 per dozen.

### FUCHSIAS

Easy of culture in partially shaded locations; single and double. 35c each; \$4.00 per dozen.



Chrysanthemum

## GERANIUMS

Geraniums are the best known and most extensively used of all bedding plants. They continue to bloom throughout the hot summer months. They thrive best in a bright, sunny situation and produce an abundance of bloom throughout the summer. Unless noted: Each, 35c; dozen, \$4.00; specimen plants: Each, 50c; dozen, \$5.50.

**Alphonse Ricard**—Semi-double, dwarf and branching, bright orange red.

**Beauty of Poitevine**—Rosy salmon, nicely shaded and tinted from deep orange to pure salmon.

**Jean Viaud**—Dwarf, compact habit of growth; large trusses, bright rose pink blossoms.

**Mme. Buchner**—Very large trusses; snow white.

**Madam Jaulin**—The lovely "Apple Blossom" geranium; in color a varying combination of peach-pink and blush-white.

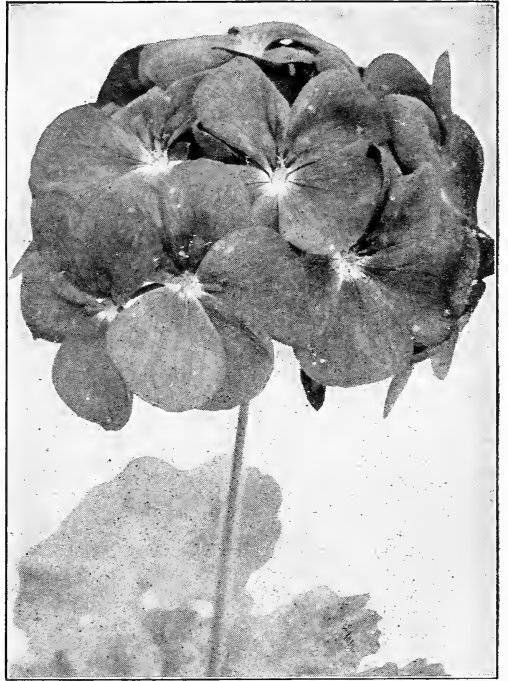
**S. A. Nutt**—The standard dark red; compact growth and more largely used for bedding than any other variety.

**Mme. Landry**—Brilliant shade of apricot salmon shading to copper, with white eye; certainty in blooms.

**Edmond Blanc**—One of the newer geraniums that is attracting attention wherever seen on account of its handsome coloring; being the most brilliant of the cerise shades.

**Ivy Leaf Geranium**—Assorted varieties. Each, 25c; \$2.50 per dozen. Larger size: Each, 35c; per dozen, \$4.00.

**Scented Geranium**—Each 25c; dozen, \$2.50. Large size: Each, 35c; dozen, \$4.00.



Geranium

**Silver Leaf (Mme. Salleroi)**—Silvery foliage; very effective for borders. Each, 10c; dozen, \$1.00; per 100, \$8.00.

## HELIOTROPE

A universal favorite on account of its fragrance. Purple, one of the very best. 35c each; \$4.00 per dozen.

## LOBELIA

**Crystal Palace**—Blue; fine for borders; plant 6 inches apart. 15c each; \$1.50 per dozen.

**Hamburgerei**—Trailing, especially fine for window and porch boxes.

## MARGUERITES

**White**—The old time favorite; very free bloomer. 25c each; \$2.50 per dozen. Larger size: 35c each; \$4.00 per dozen.

## MARIGOLDS

In late summer when many bedding plants are past their prime Marigolds afford a wealth of color that is simply invaluable. Transplanted seedlings, 75c per dozen.

## PANSIES

**Mastodon**—You surely will be pleased with our pansy plants which have been grown from the choicest seeds, transplanted and hardened off; in bud and bloom at time of shipment, and should continue to bloom throughout the whole season if planted and cared for properly. Assorted colors. 60c per basket (one dozen in a basket); 12 baskets, \$6.00.



Marigold



Petunia

**PELARGONIUM**

A valuable class of house and garden plant, related to the geranium, resembling them closely in character, habit and treatment.

**Easter Greeting**—Flowers are large and free; bright amaranth red, each petal is marked with a large blotch. This variety is distinct from the rest and remarkable on account of its long blooming season, from early spring and continuing throughout summer and fall. Small plants: 35c each; dozen, \$4.00. Larger size: 50c each; dozen, \$5.50. Specimen plants: Each, \$1.00 and \$1.50.

**Wurtembergia**—Similar to Easter Greeting; large size flower of a bright carmine, with large velvety blotches. Small plants: 35c each; dozen, \$4.00. Larger size: 50c each; dozen, \$5.50.

**Mrs. Loyal**—The flowers are of medium size and have a white throat; each petal is shaded toward the center with a rich lavender pink and a dark maroon blotch in the center; is literally covered with flowers. Each, 50c.

**SNAPDRAGON (Antirrhinum)**

White, yellow, pink and red. Potted plants: Each, 15c; dozen, \$1.50.

**STOCKS**

**Cut and Come Again**—White, pink, lavender and purple. Potted plants: Each, 15c; per dozen, \$1.50.

**VERBENAS**

The Verbena is one of the prettiest and most popular of the flowering plants; suitable for beds. It commences to flower and spread from the first day the plants are set out until late in the fall. Strong plants: Each, 15c; dozen, \$1.50.

**ZINNIAS**

Flowers large; of fine form and great brilliancy of color. Seedlings, 75c per dozen.

**PETUNIAS**

**Colored Varieties**—Fine bedders; double. Each, 35c; dozen, \$4.00.

**Rosy Morn**—A pleasing pink with white throat. Each, 15c; dozen, \$1.50; per 100, \$7.00.

**Ruffled Giants**—A fine strain of large flowering single varieties; excellent for bedding. Each, 15c; dozen, \$1.50; per 100, \$7.00.

**SALVIA (Scarlet Sage)**

A splendid bedding plant, producing scarlet showy flowers late in the summer.

**Bonfire**—A most excellent variety. Each, 20c; dozen, \$2.00.

**Zurich**—Dwarf and earliest of all to bloom. Each, 20c; dozen, \$2.00.

**TRADESCANTIA (Wandering Jew)**

Beautiful trailing vines with thick, waxy, lance shaped foliage; very useful in baskets and window boxes. Each, 15c; dozen \$1.50.

**VINCA**

**Major Variegata**—More of this used for baskets and vases than there is of any other two basket plants. Beautiful variegated green and white foliage, strong, trailing habit of growth. 4-inch pot plants, 35c; by express, \$4.00 per dozen.

**IVY**

**Parlor**—A fast running vine, that is unsurpassed for use in hanging baskets and urns where delicate green foliage is needed. Each, 15c; dozen, \$1.50.





## Decorative Plants

They're as necessary as beautiful furniture. They lend cheerfulness to every home.

### FERNS

#### ASPARAGUS PLUMOSUS (Lace Fern)

The whole plant is of a bright cheerful green, and one of the most distinct and effective decorative plants; of easy culture, thriving best in full light. After plants become large they throw large tendrils 4 to 6 feet long, which are beautiful for decoration. 50c, \$1.00 and \$1.50 each.

#### ASPARAGUS SPRENGERI

A grand trailing plant, especially useful to grow as a pot plant for home decoration or for planting in hanging baskets or window boxes, where it makes a graceful drooping plant with branches or limbs 4 to 5 feet in length, of a rich shade of green. 50c, \$1.00 and \$1.50 each.



Table Fern



Asparagus Plumosus

**Table Ferneriis**—Made up of an assortment of ferns. Each, \$1.00, \$1.50 and \$2.00.

**Boston Ferns**—The most popular house plant in cultivation. Each, \$1.00, 1.50, \$2.00, \$3.00 and \$4.00.

**Whitmanii (Ostrich Plume)**—Has beautiful plume like fronds. Each, \$1.00, \$1.50, \$2.00, \$3.00.

### PALMS

**Kentia**—This is in our estimation one of the very best palms for house culture, being most graceful and handsome. Each, \$3.00, \$4.00, \$5.00.

## Window and Porch Boxes

They make home more homelike.

The pretty blossoms, the restful foliage, the grateful response in refreshing growth to the attention given them—all unite to lend an atmosphere of homeyness, a suggestion of a pleasant abode to live in—and, obtainable at such a trifling cost, every home might well have several window boxes installed.

We make special groupings and assortments of growing plants to suit shaded, as well as sunny windows, no matter in what direction they face.

Galvanized iron, self-watering boxes made to order. Send size you wish and we will be pleased to quote you prices on them.

**Vincas (trailing), Asparagus Sprengeri (trailing), Ivy Geranium, Geraniums, Daisies, Petunias**—Nice size for boxes. Each, 35c; dozen, \$4.00.

**Lobelia, Sweet Alyssum, Single Petunias**—For boxes. Each, 15c; dozen, \$1.50.

### Our Selection

Where selection is left to us, we can supply plants and vines \$1.50 per running foot. However, this does not include the box. In ordering state the width and length of the box and we will send plenty of plants to give an immediate effect.



Window Boxes

## Lawn and Cemetery Vases

We carry in stock a complete line of Iron Lawn and Cemetery Vases. They are used on the grounds of private homes, about public buildings, in city parks, and particularly in cemeteries. They are always in harmony with the most elaborate monument.

### BEAUTY

1. Height to top of handle, 30 inches; diameter of vase, 22 inches; base, 17 inches; complete with reservoir holding 1½ gallons of water. Each, \$32.00.

2. Height to top of handle, 24 inches; otherwise similar to the above. Each, \$30.00.

### BELL

Height to top of handle, 36 inches; vase, 21 inches; base, 17 inches; complete with a reservoir holding 2½ gallons of water, Each, \$35.00.

### Plants for Lawn and Cemetery Vases

These consist of notable blooming plants and trailing vines that thrive throughout



Bell

the season. We supply them in various collections at prices ranging from \$4.00 to \$10.00 each.

**SPECIAL**—With your purchase of either one of the vases described on this page we will furnish you with a complete collection of 7 plants for planting of same with no extra charge.

## Hanging Baskets

Wired baskets, moss lined and filled with geraniums, vines, etc. Each, \$3.50 to \$5.00.

Filled with ferns for shady places. Each, \$5.00 to \$7.00.

Galvanized iron, self-watering hanging boxes, non-drip; filled with an assortment of plants. Each, \$5.00.



Dayton Beauty

## Dahlias

This well-known fall-blooming plant is deservedly becoming very popular. It takes first place among autumn-flowering plants. Any good, rich garden soil, not too wet, will grow good dahlias. Plant dahlia tubers about the latter part of May, if weather is favorable. If ground is cold and wet defer planting until a later date. Always stake your plants as soon as they are tall enough, using a good stout stake at least 4 feet high. In the fall, after hard frost, cut the tops off within 3 inches from the ground, take up and store in a cool cellar free from frost. Any vegetable cellar is O. K. Red, white and yellow. Each, 25c; \$2.50 per dozen.



Dahlia

## Gladioli

The most attractive and useful of our summer flowering bulbs. It is a flower of easy culture and does well in any soil, but should be planted in full exposure to the sun. Deep planting is to be preferred, sat a depth of 4 to 6 inches. The ease of culture, great variety of color, succession of bloom and many other points in their favor makes the gladiolus a universal favorite. We list only a few of the best sorts of each color.

**Europa**—Snow white, large spikes. Considered as one of the best whites. Each, 20c; \$2.00 per dozen.

**Halley**—A most attractive early blooming sort, with large well opened flowers of delicate salmon pink. Per dozen, 75c; \$5.00 per 100.

**Mrs. F. King**—The best light scarlet. Per dozen, 75c; \$5.00 per 100.

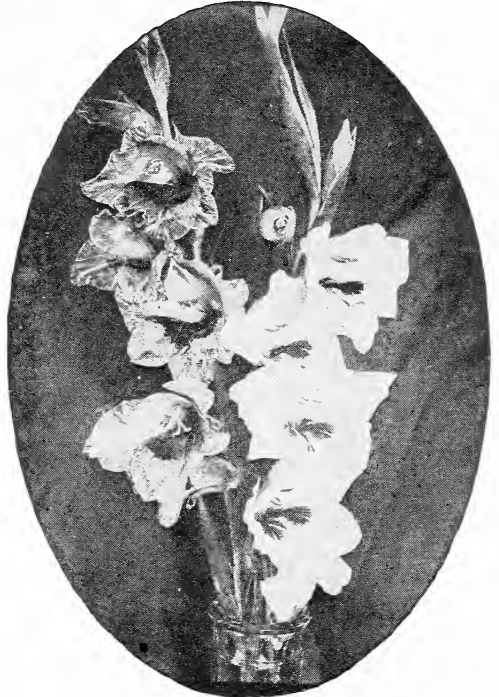
**Mrs. Frank Pendleton**—Flowers of largest size, borne on strong, straight spikes; color of a lovely salmon pink, with brilliant deep red blotches in the throat. Each, 20c; \$2.00 per dozen.

**America**—Beautiful, large, flesh pink. Too much cannot be said in favor of this one. Per dozen, 75c; \$5.00 per 100.

**Augusta**—Pure white, with blue anthers. Per dozen, 75c; \$5.00 per 100.

**Baron Hulot**—One of the finest blue gladioli. Per dozen, \$1.00; \$8.00 per 100.

**Chicago White**—White, with lavender marking in throat. 75c per dozen; \$5.00 per 100.



Gladioli

**Panama**—The new pink that has created such a sensation on account of its rich rose pink color. \$1.00 per dozen; \$7.00 per 100.

**Princes**—Immense, dazzling scarlet, with white center. \$1.00 per dozen; \$7.00 per 100.

Assorted colors, our selection, 75c per dozen; \$5.00 per 100.

## Hardy Perennials

The care with which this class of plants may be grown and the great variety offered is making them more popular each year. They can be worked in here and there among other ornamentals and produce pleasing effects. They delight in rich soils and appreciate a mulch of manure as soon as the ground freezes. Many varieties such as phlox, achillea, daisies and gypsophilas should be divided and transplanted every third or fourth season.

### AQUILEGIA (Columbine)

One of the showiest and most desirable of the hardy garden plants; colors range in all shades of white, blue, red and yellow. Each, 25c; dozen, \$2.50.

### ACHILLEA (The Pearl)

Very hardy, producing a wonderful profusion of double white flowers throughout the entire summer; beautiful and particularly for gardens or in groups among shrubbery. Each, 25c; dozen, \$2.50.

### ANTHEMIS (Tinctoria)

Succeeds on any soil and produces a bountiful supply of yellow and white aster-like flowers throughout the summer. Each, 25c; dozen, \$2.50.

### CHRYSANTHEMUM MAXIMUM (Shasta Daisy)

Requires some covering to insure wintering over or must be transplanted every other season to keep up its vitality. The blooms are very graceful, large, and a wavy white, having long stems. They keep a long time after being cut and bloom throughout the season. Each, 25c; dozen, \$2.50.

### COREOPSIS (Lanceolata)

A very popular hardy plant producing a golden yellow, daisy-like flower; blooms from June until frost. Each, 25c; dozen, \$2.50.

### DIANTHUS (Sweet William)

This popular old-fashioned flower is one of the choicest of our biennials. They bloom in June, coming single and double in a great variety of colors. Each, 25c; dozen, \$2.50.



Iris—Fleur-de-lis

**DIELYTRA SPECTABILIS (Bleeding Heart)**

One of the most delightful of all the early spring flowering plants, bearing numerous rosy red, heart-shaped flowers in drooping racemes. Each, 35c; dozen, \$4.00.

**DIANTHUS (Hardy Garden Pinks)**

Profuse bloomers of sweet single and double clover-scented flowers. In bloom May and June. Each, 25c; dozen, \$2.50.

**MYOSOTIS PALUSTRIS (Forget-me-not)**

The true "Forget-me-not" appealing in its modest, azure beauty and cherished for its sentiment; blooms profusely during early summer. Each, 25c; dozen, \$2.50.

**GAILLARDIA (Blanket Flower)**

A very showy, daisy-like flower that continues in bloom all summer. Flower, dark, reddish-brown; petals vary from scarlet orange to crimson. Each, 25c; dozen, \$2.50.

**GYPSOPHILA (Baby's Breath)**

Blooms during August and September, forming a mass of minute mist-like flowers; very graceful and dainty; puts the finishing touches on bouquets. Each, 25c; dozen, \$2.50.

**HOLLYHOCKS**

This well known biennial is always admired and in demand for its attractive spikes. For planting among shrubbery or as a background is has no equal. Each, 25c; dozen, \$2.50.

**LYCHNIS CALCEDONICA**

(Rose Campion)

A very hardy plant, growing from 2 to 3 feet; very free flowering; large heads of the brightest scarlet. Each, 25c; dozen, \$2.50.

**LARKSPUR (Delphinium)**

One of the most attractive and satisfactory of the hardy perennials; their long

spikes of flowers appear from June until frost, if not allowed to go to seed. Each, 35c; dozen, \$4.00.

**POPPY (Oriental)**

Brilliant and free bloomers; for a gorgeous display no other flower equals them. Flowers are very large, crimson; after blooming in June the plants die back and do not reappear until September, at which time they transplant most safely. Each, 25c; dozen, \$2.50.

**PYRETHRUM HYBRIDUM**

Single and double daisy-like flowers that are very graceful and pretty. There are mixed shades of white, red and pink and are splendid for cut flowers lasting a long time. Each, 25c; dozen, \$2.50.

**RUDBECKIA (Golden Glow)**

Well worthy of a place in every garden; grows to a height of about six feet; flowers yellow, large aster-like and produces in great profusion during August and September; valuable for use as a background with other flowers or for a quick growing screen. Each, 35c; dozen, \$4.00.

**LILY-OF-THE-VALLEY**

A well known little favorite; does best in shady places. Each, 25c; dozen, \$2.50.

**PERENNIAL PHLOX**

The beauty and usefulness of these grand plants give them a deservedly first place among the hardy plants. The best expected to be had with phlox are produced by planting masses of each color. A very wide range of color is now to be had and planting them in this manner the phlox will be the pride of the garden. Each, 25c; \$2.50 per dozen.

**Bridesmaid**—Pure white, large crimson eye.

**Eclairer**—Brilliant, rosy magneta, with lighter halo.

**Jeanne d'Arc**—Pure white; one of the best.

**Pantheon**—Deep salmon rose; very fine.

**Elizabeth Campbell**—Bright salmon pink.

**IRIS FLEUR-DE-LIS**

These are all sun lovers and delight in a well-drained situation. They almost out rival the orchid in delicacy and richness of coloring. They are splendid for beds, borders or front of shrubbery. Plant in bold groups for best effect. Avoid planting too deep, barely covering the rhizomes (creeping root stem), being quite sufficient. Each, 20c; \$2.00 per dozen.

"S" refers to the three standard, or upright curling petals; "F" to three falls or drooping petals.

**Hector "S"**—Soft clouded yellow.

**"F"**—Velvety crimson; showy; 30 inches.

**Celeste**—Fine satiny blue. This is one of the most beautiful iris.

**Pharaon**—Lilac; very fine.

**Her Majesty**—Standard old rose, falls white striped rosy lilac; very large flower. Each, 20c; dozen, \$2.00.

**Florentina Alba**—Sweet scented, free flowering; white. Each, 20c; dozen, \$2.00.



Peony Field.

## Peonies

There is no plant which equals the peony in beauty and usefulness. They are perfectly hardy in the extreme North. Once you have them planted the flowers and plants increase in size and beauty with age. The peony rivals the rose in brilliant coloring, sweet fragrance and perfection of flower. We would advise our customers to beware of "cheap" peonies. An inferior variety will take as much care and space as a choice one, and the first cost of a peony is nothing to the disappointment after years of waiting. An important point to observe is not to plant too deeply. The roots should be placed so that the crowns (or eyes) are covered with two or three inches of soil. Planting too deep is often the cause of too shy blooming. Plant as early as possible in the spring, as they sprout very quickly. It is better to plant in September and October than too late in the spring. If your order is received too late for planting we will hold that part of your order and deliver in early fall.

**Festiva Maxima**—The best known peony. Flowers of immense size, 7 to 8 inches in diameter, snow white, with some red spots on the edges of the center petals; very fragrant. Each, 75c.

**Felix Crousse**—Bright red, distinct color, very large and massive; very free bloomer; one of our grandest varieties. Each, \$1.00.

**Edulis Superba**—Soft pink; very early. Each, 75c.

**Madame de Verneville**—Medium sized, globular flower petals, crisp and semi-

transparent; creamy, white throughout, flaked with purple at center. Each, 75c.

**L'Indispensable**—Very massive, solid blush pink flowers. Each, 75c.

**Officinalis Rubra**—This is the old-fashioned red, the most brilliant of all red peonies; early and a splendid cut flower. Each, 75c.

### Spencer Sweet Peas

#### Orchid Flowering or Giant Wonder

A wonderful type, quite distinct from the old sorts, with beautifully formed huge, open and upright standards and immense wings, the flowers measuring from 2 to 2½ inches across. Both standards and wings are daintily waved. A very large percentage of these varieties bearing four or more of these immense flowers to the stem, making them unsurpassed as cut flowers. The following are the best of the new and old sorts:

**King White**—Immense blooms, faultlessly waved and frilled.

**Hercules**—A lovely soft rosy pink, large flowers.

**Florence Nightingale**—The largest and finest, pure lavender.

**Barbara**—A beautiful rich salmon.

**Blanche Ferry**—A very fine pink and white, of very large size.

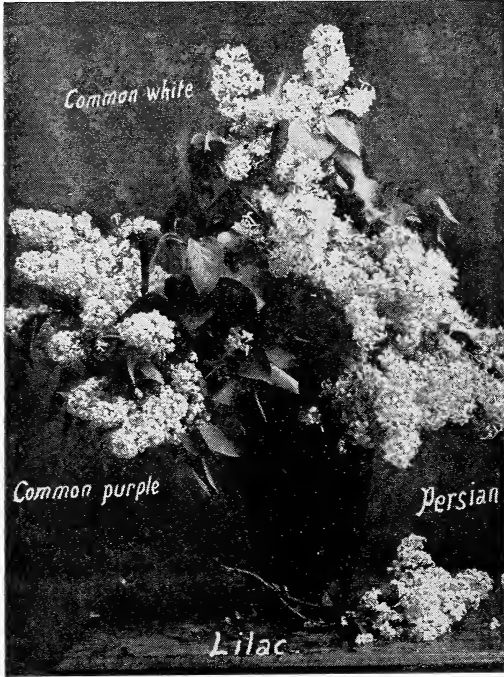
**King Edward's Spencer**—The best pure red.

**Royal Purple**—Rich, royal purple.

**King Manuel**—Maroon or dark chocolate. Pkt., each, 15c; 6 for 50c.

## Hardy Ornamental Shrubs

**N**OTHING is more beautiful on the lawn or in the flower garden. Our stock is very large and fine and we feel sure that they will give our customers satisfaction in every way. There is nothing which so quickly and for so little cost adds to the beauty and cheerfulness of the surroundings as an assortment of hardy shrubs.



**CORNUS (Dogwood)**

**Siberica**—The best red bark shrub we have; valuable for hedges, or to liven up groups of other ornamental shrubs; strong plants, 60c each; dozen, \$6.00.

**Elegantissima Variegata**—Purplish red branches and beautiful silver variegated foliage. Each, 75c; dozen, \$8.00.

### LILACS (Syringa)

Best beloved of all the old time garden shrubs whose flowers never fail to charm with their delicate beauty or refresh with their delicate fragrance.

**Purple Lilac**—Each, 60c; dozen, \$6.00.

**White Lilac**—Each, 60c; dozen, \$6.00.

**Persian Lilac**—Dwarf, growing with slender branches and narrow leaves. Each, 60c; dozen, \$6.00.

### LONICERA (Honeysuckle)

Handsome, upright shrubs, with showy flowers and bright fruit; most of the species are very hardy; prefer a sunny situation; invaluable for border and group plantings.

**Tartarica**—A tall growing class attaining 8 to 10 feet, if left unpruned; bearing quantities of red and orange berries.

**White:** Each, 60c; dozen, \$6.00.

**Pink:** Each, 60c; dozen, \$6.00.

**Morrowi**—A spreading variety, growing 4 to 6 feet tall. Each, 60c; dozen, \$6.00.

### PHILADELPHUS

(Syringa or Mock Orange)

One of the best and popular of our shrubs.

**Grandiflora**—Produces very large flowers in June and July. Each, 60c; dozen, \$6.00.

**Aurea (Golden Syringa)**—A dwarf variety, having a rich, yellow foliage; the best hardy dwarf golden foliage shrub. Each, 75c; dozen, \$8.00.

### SPIREAS

A large group of showy, free-flowering shrubs of inestimable value; among them may be found those that bloom in early spring and from periods from mid-summer up to frost. They thrive best in moist, fertile soil, preferably sunny exposures.

**Van Houtteii**—One of the most attractive, graceful and hardy shrubs we have. Produces an abundance of drooping sprays of white flowers early in June. Also called Bridal Wreath. Each, 60c; \$6.00 per dozen.

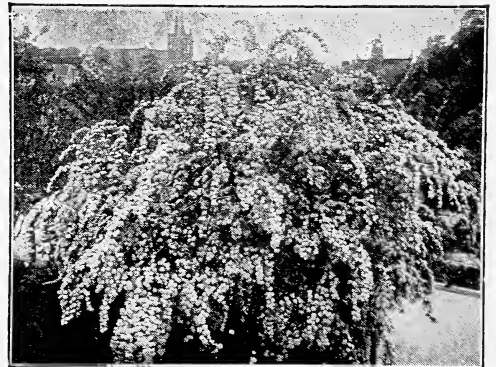
**S. Anthony Waterer**—Dwarf form, hardy and vigorous; blooms throughout the summer in flat terminal clusters of rose red color; 2 feet. Each, 60c; \$6.00 per dozen.

**S. Billardi**—Hardy, upright, with brownish branches; 4 to 5 feet tall; flowers pink, in long, dense panicles in summer. Each, 60c; \$6.00 per dozen.

**S. Sorbifolia**—One of the handsomest sorts from a foliage viewpoint, and very desirable as a lawn specimen; blooms in mid-summer with fine panicles of purest white. Each, 60c; dozen, \$6.00.

### VIBURNUM

**V. Sterilis (Snowball)**—An old time favorite, and is perfectly hardy; filled with a mass of white snowballs during May or June. Each, 60c; dozen, \$6.00.



**Spirea Van Houtteii**

# Hardy Climbing Vines

## AMPELOPSIS

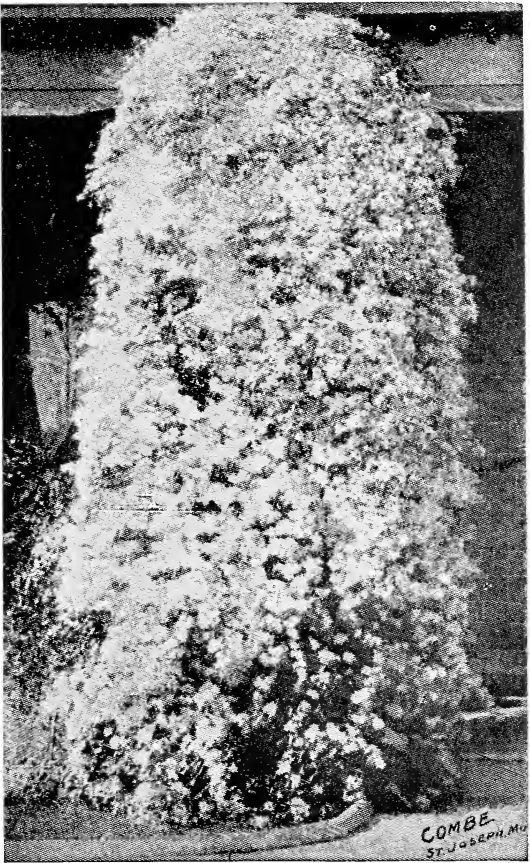
**Ampelopsis Quinquefolia** (American Ivy)  
—A hardy and vigorous grower; one of the best for covering porches, walls or unsightly spots; foliage colors very brilliantly in the fall; purple berries. Each, 50c; dozen, \$5.00.

**A. Englemanni**—A rapid grower, often climbing ten feet in a single season. This is best vine known for covering stone or brickwork. Each, 50c; dozen, \$5.00.

## CLEMATIS

**C. Paniculata**—A very hardy, white clematis; the large clusters remain in bloom for a long time, fairly covering the entire plant and they are very fragrant. Each, 90c.

**C. Jackmanii**—Flowers deep, violet purple; a very popular and desirable variety; needs winter protection. Each, \$1.00.



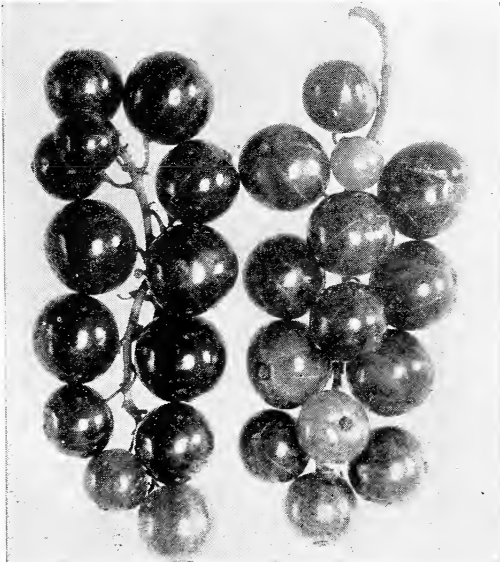
Clematis

Try some of the above  
Vines this year on your  
Fence, House, Trees or  
Outbuildings.

# Small Fruit Department

## CURRENTS

Hardy, easily cultivated, standing neglect well and liberally responding to cultivation and generous treatment. Your garden is not complete without them.



Currents

✓ **Cherry Currant**—The standard variety. The growth is strong, stout and erect; the fruit is of large size, deep red and rather acid; very productive; strong 2-year-old plants. Each, 30c; \$2.50 per dozen.

✓ **White Grape Currant**—The best variety of white currants. The bushes are thrifty and productive, bearing large white currants of the very sweetest flavor; fine for culinary purposes. Two-year-old plants, each, 30c; \$2.50 per dozen.

✓ **Perfection**—The greatest of all currants. The berries are rich, mild sub-acid and few seeded. It is one of our most profitable currants. Two-year-old plants, each, 35c; \$4.00 per dozen.

## GOOSEBERRIES

This fruit requires practically the same cultivation as the currant; hardy, vigorous and reliable.

✓ **Downing**—Fruit large, roundish, light green, with distinct veins; skin smooth; splendid for both cooking and table use. Each, 35c; \$4.00 per dozen.

✓ **Carrie**—The best all around gooseberry introduced to date. Vigorous grower; free from disease; great producer of good size, mild-acid, light red berries. Each, 50c; \$5.00 per dozen.



Everbearing Strawberries

### RASPBERRIES

When properly cultivated is quite profitable. Plant in good, rich soil; cultivate well or mulch heavily. For field, rows six feet apart, four feet in the row.

**Sunbeam**—Hardest red raspberry; fruit of good size, dark red, rather acid and of an everlasting habit. Dozen, \$1.50; \$8.00 per 100.

**King**—Very hardy, thrifty and productive; berries are large, light red, firm and of good quality; one of the best. Dozen, \$1.50; \$8.00 per 100.

**St. Regis**—A genuine, practical profitable and continuous bearer; berries bright crimson, large size, firm and meaty, sugary; a grand variety. Dozen, \$1.50; \$8.00 per 100.

**Older**—A very hardy, medium early and reliable bearer; fruit black and large, having very small seeds and of fine quality. Dozen, \$1.50; \$8.00 per 100.

### STRAWBERRIES

First of all the small fruits comes the beautiful, wholesome and appetizing strawberry. They will succeed in any soil that is adapted to ordinary farm or garden crops; soil should be thoroughly prepared to a good depth, well drained and enriched; ground should always be kept clean and well cultivated.

Standard and tested varieties for the North and Northwest.

**Senator Dunlap**—One of the best all around sorts and without question is the

most popular variety; berries medium size, firm, dark colored, uniform and very productive; one of the best for canning. 50c per 25; \$1.50 per 100.

### EVERBEARING STRAWBERRIES

They have come to stay. Their productiveness is almost beyond belief. The variety offered below is of American origin, and under ordinary conditions produce their main crop of fruit at the same time as the other varieties and keep on bearing until frost. Good cultivation is essential to bring about the best results.

✓ **Progressive**—The strongest and most prolific fruiting of all varieties. Dozen, 60c; \$3.00 per 100.

### GRAPES (Beta)

We are listing only one grape, which we have found to be perfectly hardy. Also very early, ripening about September. Its thrift, hardiness and productiveness make it especially valuable for general planting in the Northwest. Each, 35c; \$4.00 per dozen.

The small fruits give probably the greatest returns on your original investment, of any of the fruits, and delight and satisfy the most careful buyers. Every garden should contain a few Raspberry bushes, a dozen or two of each of Currants and Gooseberries, and 50 or 100 each of the Spring and Everbearing Strawberry plants. These will help keep the family table well supplied with fresh fruits during the summer months after the first year.





## Fruit Trees

Please do not compare prices of our trees with cheaper and inferior stock.

### APPLE

**Duchess**—Very hardy, early and prolific bearer. Fruit large, handsomely striped with crimson; fine for cooking and eating. The standard early commercial sort.

**Patten's Greening**—Very hardy, free from blight, vigorous, spreading grower, bears early and abundantly. Fruit large, yellow; good eating and cooking apple. One of the best all round varieties.

**Wealthy**—One of the most popular grown in this state. Very hardy, Fruit large, red.

Good strong trees of any of the above, each, \$1.10.

### CRAB APPLE

**Hyslop**—Fruit medium; heavy shadings of deep crimson and splashes of maroon; flesh fine, firm, yellow; bears abundantly.

**Florence**—A hardy spreading tree; color carmine; flesh yellowish, acid; excellent for cooking; a fine jelly crab, and valuable for early market as well as home use.

**Whitney No. 20**—Hardy, thrifty upright grower; fruit large, handsome and of good quality for eating.

**Minnesota**—One of the most desirable. Bears liberally with age and is growing in favor; fruit large, light yellow, often mottled with blush on sunny side when allowed to fully ripen. Delicious for eating and very desirable for culinary purposes. Strong trees each, \$1.20.

### PLUMS

They are perfectly hardy and will thrive any where in the Northwest. By all means plant a dozen or two plum trees, which have proven the test of our extreme and severe winters.

**Cheney**—Very early red and one of the largest.

**Forest Garden**—Reddish yellow. Fruit of good quality.

**Wolf**—Tree vigorous and hardy. Fruit large and hard to equal for cooking purposes.

**Stoddard**—Very productive. Large, round and red. Good quality.

**Surprise**—One of the best. Meaty, fine flavor; very large and red, with many light dots on the skin. A good bearer and a good keeper. Fine for culinary purposes.

**Wyant**—Fruit medium to large, slightly oblong and distinctly flattened; purplish red. A very heavy yielder.

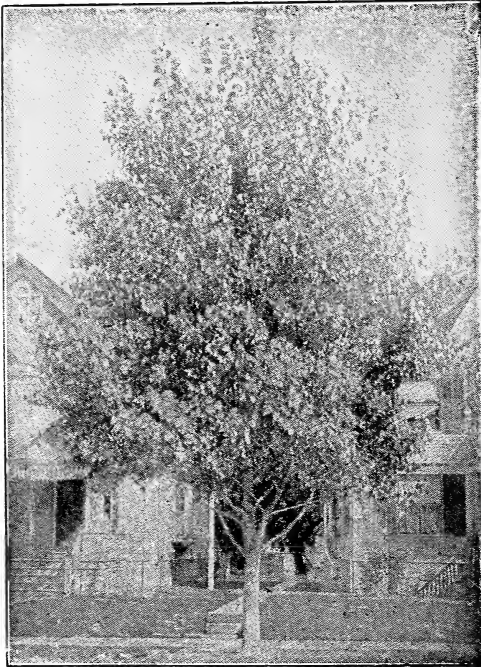
**De Soto**—The old stand-by. Tree perfectly hardy. Color red, ripening very early. A great bearer.

Strong trees of any of the above; each, \$1.20.

### COMPASS CHERRY

A very desirable fruit and perfectly hardy. It usually bears the first year after planting. Can be grown anywhere in the Northwest. Fruit dark red. Good for eating and canning.

Strong trees; each, \$1.20.



Norway Poplar

## Deciduous Ornamental Trees

White Birch, 6 to 8 feet; each, \$1.50; dozen, \$15.00.

Elm, American, 6 to 8 feet; each, \$1.50; dozen, \$12.00.

Linden, American, 6 to 8 feet; each, \$1.50; dozen, \$15.00.

Mountain Ash, 6 to 8 feet; each, \$1.50; dozen, \$15.00.

Norway Poplar, 6 to 8 feet; each 85c; dozen, \$9.00.

Golden Willow, 4 to 5 feet; each, 50c; dozen, \$5.00.

Box Elder, 6 to 8 feet; each, 75c; dozen, \$8.00.

### MAKE YOUR HOUSE A HOME

Don't imagine your house is finished when the plumber has finished—then commence the work of converting it into a comfortable, picturesque home for your family. Trees and shrubs play a big part in accomplishing this.

Plant this year if possible.

## Hedge Plants

**Barberry (Thunbergii)**—This barberry is not under the ban for eradication. Very neat and dense in growth; 2 to 3 feet. Per 100, \$25.00.

**Buckthorn**—This is the hardiest of all of our hedge plants, and can be trimmed to any shape desired. Two to 3 feet; \$25.00 per 100; 3 to 4 feet, \$35.00 per 100.

**Rosa Rugosa**—Forms a beautiful hedge; large, dark green, glossy foliage. Flowers are large, single fragrant and produced in abundance until frost, followed by large scarlet fruit. Two to 3 feet; \$6.50 per dozen; \$50.00 per 100.

**Willow Golden**—Showy variety with golden bark of high color, making it very conspicuous during the winter. Two to 3 feet; \$8.00 per 100.



Barberry



Frau Karl Druschki

## Roses

You all are aware we have very severe winters for roses. Therefore must use judgment as to what varieties we should plant which will stand our extreme winter. However, all varieties should be laid down and covered with earth before the ground freezes in the fall. Or, if too large, wrap with hay or straw. An occasional soaking during dry weather is a great help to them.

**Baby Rambler**—Best of all roses. Blooms in clusters from June until frost. Valuable also as a pot plant. Two-year-old strong plants; each, 80c.

### HYBRID PERPETUAL ROSES

**Strong Two-year-old Plants: Each, 90c.**

**Frau Karl Druschki**—The best pure white perpetual bloomer, a vigorous grower and bloomer.

**Gruss an Teplitz**—The best rich crimson; very persistent bloomer; strong grower and very fragrant.

**Paul Neyron**—Deep pink; very double, fragrant; blooms all summer. Flowers the largest of any variety.

### CLIMBING ROSES

**Strong 3-year-old Plants: Each, 75c;**

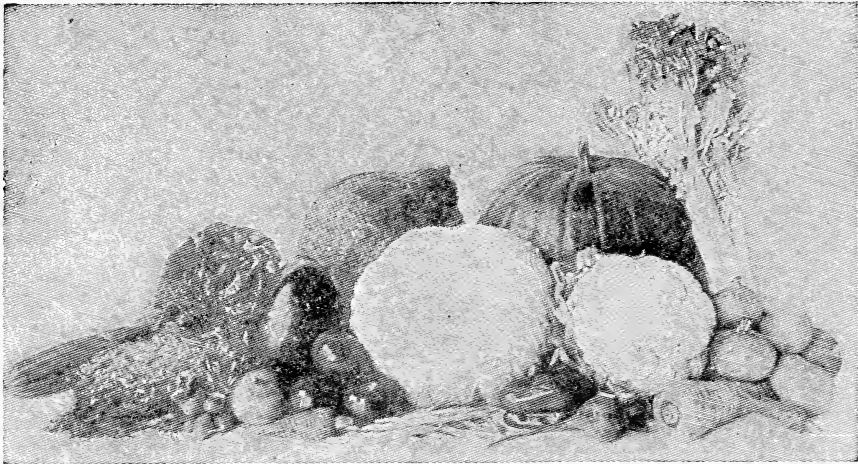
**\$8.00 per Dozen.**

**Crimson Rambler**—This rose needs no description. Everybody knows it. Produces its flowers in pyramidal clusters of large numbers. Remains in bloom a long time. The profusion of bloom is marvelous, and the variety deserves the popularity and praise it receives.

**Dorothy Perkins**—The best of all climbing roses; has a strong, vigorous growth; flowers are borne in clusters of a beautiful shell pink, full double, and of a large size for a cluster rose.

**Prairie Queen**—If you want a rose for your porch this is the one. Bright red, vigorous grower and profuse bloomer. A favorite everywhere.

**Baltimore Belle**—One of the best of climbing roses. Will grow 10 to 15 feet in a year, and be covered with clusters of large double flowers of pale bluish color.



## Vegetable Plants

We make a specialty of raising the most superior grade of vegetable plants. Our plants are started early and grown in a cool temperature, transplanted and thoroughly hardened; produced from the best seed. By our perfect system of packing can guarantee their safe arrival by express. We recommend for you to have your plants sent by express.

	Per Dozen	Per 100 Exp.	Per 1000 Exp.
<b>CABBAGE</b>			
Early Jersey Wakefield	\$ .25	\$ 1.50	\$10.00
Charleston, med. early.	.25	1.50	10.00
Danish Baldhead, late..	.25	1.50	10.00
Surehead, late .....	.25	1.50	10.00
Flat Dutch, late.....	.25	1.50	10.00
<b>CAULIFLOWER</b>			
Early Snowball .....	.35	2.00	12.00
<b>CELERY</b>			
Golden Self-Bleaching..	.25	1.50	6.00
<b>EGG PLANT</b>			
Black Beauty, potted..	1.00		
10c each			
<b>PEPPER</b>			
Mango Sweet Potted..	1.00		
10c each			
<b>GROUND CHERRY</b>			
Huck Tomato.....	.50	2.25	12.50
Very fine for preserving			
<b>TOMATOES</b>			
Earliana .....	.50	2.25	12.50
John Baer .....	.50	2.25	12.50
Bonny Best .....	.50	2.25	12.50
Ponderosa .....	.50	2.25	12.50
Golden Fig. small yellow	.50	2.25	12.50
Potted Tomato Plants..			
3-inch pots .....	1.25		
Potted Tomato Plants..			
4-inch pots .....	1.50		
Potted Tomato Plants..			
5-inch pots .....	2.00		
(By express only)			

### MINT

Leaves are used for seasoning. Clumps: Each, 20c; dozen, \$1.50.

### CHIVES

They are grown for their small leaves which are produced very early in the spring and are used for giving a mild onion flavor to various dishes. Each, 20c; dozen, \$1.50.

### RHUBARB

Linnaeus—It is the first article of the season from the garden and no garden is complete without it. Clumps, 25c each; \$2.50 per dozen.

### ASPARAGUS

Conover's Colossal—A large variety of quick growth. Dozen, 25c; \$2.00 per 100.

### HORSE RADISH

Each, 20c; dozen, \$1.50.



Tomato Plants

# Minnesota State Department of Agriculture

## OFFICE OF STATE ENTOMOLOGIST

No. 1430

St. Paul, Minn., January 6, 1922,

### CERTIFICATE OF NURSERY INSPECTION

This is to certify that in accordance with Sec. 1, Chapter 206, Session Laws of 1913, the nursery stock and premises of Schuster Nursery of Crookston, Minn., E. W. Schuster, proprietor, have been carefully examined by a duly authorized inspector and found apparently free from dangerously injurious insects and contagious plant diseases.

This certificate is good until November 1, 1922, unless revoked, and covers only stock actually on the premises when examined.

(Seal)

A. G. RUGGLES,

State Entomologist.

G. W. PEAKE,

Chief Deputy Nursery Inspector.

O. K. A. G. RUGGLES.



## Bridal Bouquets and Designs

Wedding Bells of Flowers, each.....	\$10.00 to \$20.00
Bridal Bouquets, each.....	3.00 to 10.00
Bridal Shower Bouquets, each .....	5.00 to 25.00
Bridesmaid Bouquets, each .....	3.00 to 15.00
Ladies' Corsage Bouquets, each.....	2.00 to 25.00
Buttoniere for the Groom, each.....	.25 to .50
Buttoniere for the Best Man, each....	.25 to .50

## Cannas

No bedding plant is equal to the Cannas; are easily grown, and attain large size in ordinary soil. Plant in good, rich garden soil, about the end of May, when all danger of frost is past. Water sparingly for first two weeks after planting. Set the plants 18 inches apart each way, and where more than one kind is used, be careful to set the dwarf growing varieties at outside of bed. Should be taken up in the fall when the tops are killed by the frost, and stored away in a dark, cool place. Our stock is very large, numbers many thousands, and all true to name, each variety being the best of its kind.

There is nothing more beautiful than a bed of Cannas, with their gorgeous flowers of all colors, which are pro-

duced above their rich, glossy foliage. No park or landscape planting is complete without several beds of these indispensable plants. Aside from the fact of its magnificent foliage display, it is exceedingly valuable on account of the great clusters of flowers which are produced the entire summer.

**King Humbert** — Bronze foliage; bright orange scarlet streaked with crimson. Each, 35c; dozen, \$4.00.

**Florence Vaughan**—Yellow flowers dotted with bright red. Each, 35c; dozen \$4.00.

**Charles Henderson**—Crimson flower and a good bedder. Each, 35c; dozen, \$4.00.

**Hungaria**—Rosy pink; a very free bloomer. Each, 35c; dozen \$4.00.



Trees, Shrubs,  
Small Fruit,  
Vegetable  
Plants

---

---

Cut Flowers,  
Funeral and  
Wedding  
Designs

---

---

**Edw. W. Schuster**  
Crookston - - Minn.

---

---

